

1 **Dorsolateral Prefrontal Cortex Metabolic Profiles in Autism Spectrum Disorder Correlate**  
2 **Atypically with Nonverbal IQ and Typically with Attention Switching**

3

4 Akila Weerasekera<sup>1</sup>, Adrian Ion-Mărgineanu<sup>2</sup>, Nicole M. McGuiggan<sup>3</sup>, Nandita Shetty<sup>3</sup>, Robert  
5 M. Joseph<sup>4</sup>, Shantanu Ghosh<sup>3,5</sup>, Mohamad Alshikho<sup>3</sup>, Martha R. Herbert<sup>3,6</sup>, Tal Kenet<sup>3\*</sup>, Eva-  
6 Maria Ratai<sup>1\*</sup>

7

8 <sup>1</sup>Department of Radiology, and Athinoula A. Martinos Center for Biomedical Imaging,  
9 Massachusetts General Hospital, Harvard Medical School, Boston, MA, USA.

10 <sup>2</sup>Department of Electrical Engineering (ESAT), STADIUS Center for Dynamical Systems, Signal  
11 Processing and Data Analytics, KU Leuven, Leuven, Belgium.

12 <sup>3</sup>Department of Neurology, and Athinoula A. Martinos Center for Biomedical Imaging,  
13 Massachusetts General Hospital, Harvard Medical School, Boston, MA, USA.

14 <sup>4</sup>Boston University School of Medicine, Department of Anatomy and Neurobiology, Boston, MA,  
15 USA.

16 <sup>5</sup>Psychoacoustics and Neural Dynamics Lab, Akal University, Raman Road, Talwandi Sabo  
17 151302, Punjab, India.

18 <sup>6</sup>Higher Synthesis Foundation, Cambridge, MA, USA

19

20

21

22

23 \*Share senior authorship

24

25

26 **Corresponding Author:** Eva-Maria Ratai  
27 Athinoula A. Martinos Center for Biomedical Imaging  
28 Massachusetts General Hospital, Department of Radiology, Neuroradiology Division  
29 149 13th Street, Suite 2318  
30 Charlestown, MA 02129, USA  
31 Email: [eratai@mgh.harvard.edu](mailto:eratai@mgh.harvard.edu)  
32 Phone: +1-617-726-1744  
33 Fax: (617) 726-7422

34

35 **ABSTRACT**

36 **Background:** The neurometabolic profile of associated with autism spectrum disorder (ASD)  
37 has been reported to be abnormal by some studies showing region specific metabolite levels in  
38 ASD, while others report no group differences. The neurometabolic profile of the left dorsolateral  
39 prefrontal cortex (DLPFC) is of particular interest due to the DLPFC relevance to cognitive and  
40 executive function, and to ASD. **Method:** We used <sup>1</sup>H-MRS to investigate neurometabolic  
41 profiles in the DLPFC of ASD and sex/IQ-matched typically developing (TD) children (ages 9-  
42 13). We focused on levels of Glutamate and Glutamine (Glx) due to many reported Glx  
43 abnormalities ASD, and of Choline (Cho) because of its relationship to intelligence quotient (IQ)  
44 and to attentional re-orienting difficulties. **Results:** While no significant group differences were  
45 observed in absolute concentrations, metabolite levels were correlated with the behavioral  
46 phenotype of ASD children. In the ASD group but not the TD group, nonverbal IQ (NVIQ) was  
47 negatively associated with Cho ( $r=-0.59$ ,  $p=0.026$ ) and positively associated with Glx/Cr ( $r=0.66$ ,  
48  $p=0.011$ ). Furthermore, attentional-switching scores in the ASD group correlated negatively with  
49 Cho ( $r=-0.69$ ,  $p=0.009$ ), and positively with Glx/Cr for both the ASD ( $r=0.73$ ,  $p=0.004$ ) and TD  
50 ( $r=0.54$ ,  $p=0.040$ ) groups. **Conclusions:** Cho and Glx/Cr have different neurometabolic roles in  
51 modulating NVIQ in ASD compared to TD children, while their role in attentional switching  
52 seems preserved in ASD. Elucidating the apparently divergent role of neurometabolites in ASD  
53 in the absence of significant group differences in absolute levels is an important step towards  
54 understanding and mapping the neural correlates of ASD. These results are also relevant in the  
55 context of the significant cognitive function heterogeneity associated with the ASD phenotype,  
56 as they suggest possible underlying neural mechanisms that do not overlap which those  
57 expected from typical development.

58

59

60

61 *Key words: MRS, choline, glutamate, Glx, executive function*

62

## 63 1. INTRODUCTION

64

65 Autism spectrum disorder (ASD) is an early onset neurodevelopmental disorder  
66 characterized by deficits in social interaction and communication and limited and repetitive  
67 behaviors and interests (Margari et al., 2018; Hiremath et al., 2021). Studies of ASD have  
68 shown a wide range of abnormalities in brain function and structure (Müller and Fishman, 2018;  
69 Forde et al., 2020), as well as abnormalities in the levels of brain metabolites. However, many  
70 questions about the underlying neuropathology of ASD remain unanswered (Blatt, 2012; Howlin,  
71 2021).

72 In this study, we sought to gain a better understanding of how metabolite imbalances in the  
73 frontal cortex may contribute to ASD symptomatology. The association of the frontal cortex in  
74 the neurobiology of ASD has long been recognized (Courchesne et al., 2011; Stockman, 2013;  
75 Stoner et al., 2014). The frontal regions of the brain are known to play a key role in executive  
76 and socioemotional function, two of the cognitive processes known to be impaired in ASD (Kim  
77 et al., 2015). In particular, structural and metabolic irregularities have been reported in the  
78 dorsolateral prefrontal cortex (DLPFC) in ASD, and the DLPFC has long been associated with  
79 deficits in executive function and social cognition (Alexander et al., 1986; Haznedar, 2006;  
80 Schmitz et al., 2007; Kalbe et al., 2010).

81 Postmortem studies suggests that children with ASD have an abnormally larger number of  
82 neurons in the DLPFC than typical developing children, and that the DLPFC contain areas of  
83 immature cells that do not exhibit the regular layered organization of the cerebral cortex  
84 (Courchesne et al., 2011; Lainhart and Lange, 2011). Complementing these findings,  
85 neuroimaging studies of ASD individuals have shown atypical structural and functional  
86 connections between the PFC and other brain areas (García Domínguez et al., 2013; Supekar  
87 et al., 2013).

88 Metabolic abnormalities in ASD have been mapped primarily using postmortem histological  
89 methods, as well as non-invasively using <sup>1</sup>H-magnetic resonance spectroscopy (<sup>1</sup>H-MRS,  
90 henceforth MRS), a technique that allows the detection and quantification of absolute and  
91 relative concentration of neurometabolites. Postmortem studies of frontal cortex abnormalities in  
92 ASD have found GABAergic, glutamatergic, mitochondrial, and microglial dysfunction (Blatt,  
93 2012; Wei et al., 2014; Varghese et al., 2017; Fetit et al., 2021). In parallel, MRS based studies  
94 of ASD have shown lower GABA levels and higher glutamate levels in ASD children, in line with  
95 postmortem studies. Interestingly, alterations in glutamate or combined glutamate and  
96 glutamine (Glx) levels in ASD appear to vary between children and adults, with fewer  
97 abnormalities, particularly in GABA levels, detected in adults, suggesting age or disorder  
98 associated changes over the lifespan (Naaijen et al., 2015; Ajram et al., 2019).

99 Many of the metabolic abnormalities documented in the DLPFC in ASD or other related  
100 disorders also found associations with behavioral phenotypes. For instance, one study reported  
101 a negative association between left DLPFC concentrations of glutamate with perspective taking  
102 scores in ASD adults (Montag et al., 2008). In parallel, in electrophysiological studies,  
103 cholinergic pathways have been associated with atypical social interaction and behaviors, as

104 well as with ASD symptom severity, orientation of attention and sensory integration (Lam et al.,  
105 2006; Orekhova and Stroganova, 2014). Furthermore, a recent <sup>1</sup>H-MRS study conducted in  
106 individuals with generalized anxiety disorder (GAD), a common comorbid diagnosis in ASD,  
107 reported left DLPFC Cho/Cr levels inversely predicted IQ and predicted the severity of anxiety in  
108 individuals diagnosed with generalized anxiety, but this was not the case in the neurotypical  
109 control group, further highlighting the relationship between left DLPFC and cognitive functioning,  
110 and underscoring the need for further research into behavioral correlates of choline containing  
111 metabolites (Coplan et al., 2018). In combination, these studies points to the importance of  
112 additional mapping of the metabolic profile of the DLPFC in determining ASD related cognitive  
113 deficits.

114 Furthermore, categorizing the clinical heterogeneity in children with ASD is essential to the  
115 formulation of a framework that could lead to development of new research studies and  
116 measurements to capture subgroup differences within the disorder. Deficits in cognitive,  
117 emotional, and social behavior often manifest differently across ASD subgroups (ie,  
118 verbal/nonverbal, high/low IQ). Much of the research so far have focused on the autism  
119 phenotype with less intervention needs, often described as “high functioning”. Less than about  
120 15% of studies have targeted the most comprehensively impacted ASD individuals who are  
121 nonverbal or minimally verbal (Jack and A. Pelphrey, 2017). Therefore, better understanding of  
122 the neurobiological/chemical underpinnings of how heterogeneity in cognitive and executive  
123 function may correlated with biological underpinnings is critical for advancing our understanding  
124 of the neural bases that underlie heterogeneity in ASD.

125 Here, we used <sup>1</sup>H-MRS to investigate the neurometabolic profiles in the left DLPFC of 14  
126 children with ASD ages 9-13, and 16 age-, sex-, and IQ- matched typically developing children.  
127 We focused on two metabolites: Glx due to widely documented abnormalities in Glx in ASD  
128 (Cochran et al., 2015; Ajram et al., 2017, 2019), and Cho, because of its previously mapped  
129 relationship to IQ in the DLPFC (Barbey et al., 2013; Coplan et al., 2018), and to attention re-  
130 orienting difficulties due to deficits in cholinergic arousal system (Deutsch et al., 2010; Anand et  
131 al., 2011; Orekhova and Stroganova, 2014). We were interested both in possible differences in  
132 absolute levels of these metabolites in ASD, and in any association these metabolites may have  
133 with assessments of intellectual and executive function (specifically attention), as well as  
134 severity of ASD. More specifically, since IQ and attentional switching have been shown to  
135 correlate with metabolites in the DLPFC (Lauber et al., 1996; Smith et al., 2004; Barbey et al.,  
136 2013), we hypothesized that DLPFC Cho and Glx levels would show significant associations  
137 with these neuropsychological scores and may show distinct association patterns in ASD and  
138 TD children.

139

## 140 2. METHODS & MATERIALS

### 141 2.1 Study participants and behavioral assessments

142 We recruited 17 children with ASD and 17 TD children matched on IQ, age, sex, and  
143 handedness, for this study. Of these, the MRS data of 3 of 17 ASD children and 1 of 17 TD  
144 children did not pass quality control, as detailed below. The remaining sample therefore

145 consisted of 14 children with ASD and 16 TD children. Parents of the participants provided  
 146 informed consent according to protocols approved by the MGH Institutional Review Board (IRB).  
 147 Participant assent was also provided in addition to parent consent for participants aged 14-17.  
 148 Phenotypic data collected from all participants who passed MRS data quality control are  
 149 summarized in **Table 1**. The age range was 6–17 and 7–17 years in the TD and ASD groups,  
 150 respectively, with a mean age of 13.3 and median age of 13. All participants were right-handed,  
 151 with the exception of two ASD individuals, determined from information collected using the Dean  
 152 Questionnaire (Piro, 1998). Participants with ASD had a prior clinical diagnosis of ASD and met  
 153 ASD criteria on the Autism Diagnosis Observation Schedule, Version 2 (ADOS-2) (Lord et al.,  
 154 2012; Hus et al., 2014) administered by a trained research assistant with inter-rater reliability.  
 155 The Social Communication Questionnaire - Lifetime Version (SCQ Lifetime) (Rutter Bailey, A., &  
 156 Lord, C., 2003) was administered to further confirm ASD in ASD participants and rule out ASD  
 157 in TD participants. ASD participants who did not meet a cutoff of  $\geq 15$  on the SCQ or who had a  
 158 borderline score on the ADOS-2 were further evaluated by expert clinician and co-author Dr.  
 159 Robert Joseph to confirm the ASD diagnosis. Individuals with autism-related medical conditions  
 160 (e.g., Fragile-X syndrome, tuberous sclerosis) and other known risk factors (e.g., gestation <36  
 161 weeks) were excluded from the study. All TD participants were below the threshold on the SCQ  
 162 Lifetime questionnaire. Parent-questionnaires were administered to confirm that participants  
 163 were free of any neurological or psychiatric conditions and substance use in the past 6 months.  
 164 For ASD, the Social Responsiveness Scale (SRS-2) was used to assess the severity of the  
 165 ASD symptoms (Bruni, 2014). Verbal IQ (VIQ) and nonverbal IQ (NVIQ) were assessed using  
 166 the Differential Ability Scales – II (Beran, 2007) for all participants. The TD and ASD groups did  
 167 not differ on VIQ, and showed a non-statistically significant trend towards a group difference on  
 168 NVIQ. Lastly, all participants completed the INN (Inhibition-Naming), INI (Inhibition-Inhibition),  
 169 and INS (Inhibition-Switching) sections of the NEPSY-II neurocognitive evaluation. Derived from  
 170 these sections, the Inhibition Contrast Scaled Score (ICS-I), which measures the ability to  
 171 voluntarily inhibit attention, and the Switching Contrast Scaled Score (ICS-S), which measures  
 172 the ability for switching attention between competing stimuli, were computed for each  
 173 participant.

174 **Table 1. Characterization of the participants.**

	ASD ( <i>n</i> = 14males)		TD ( <i>n</i> = 16males)		<i>p</i> -value
	Mean (SD)	Range	Mean (SD)	Range	
Age	11 (2)	8-14	10 (2)	7-14	0.36
NVIQ	100.9 (16.4)	70-127	112.4 (15.3)	91-149	0.06
VIQ	108.7 (19.4)	66-141	116.4 (11.4)	98-142	0.21
ICS-I	9.2 (3.2)	1-16	10.0 (3.7)	2-17	0.68
ICS-S	9.5 (3.7)	8-31	9.3 (4.0)	0-13	0.89
SRS	83.5 (9.6)	67-100	--	--	--

175

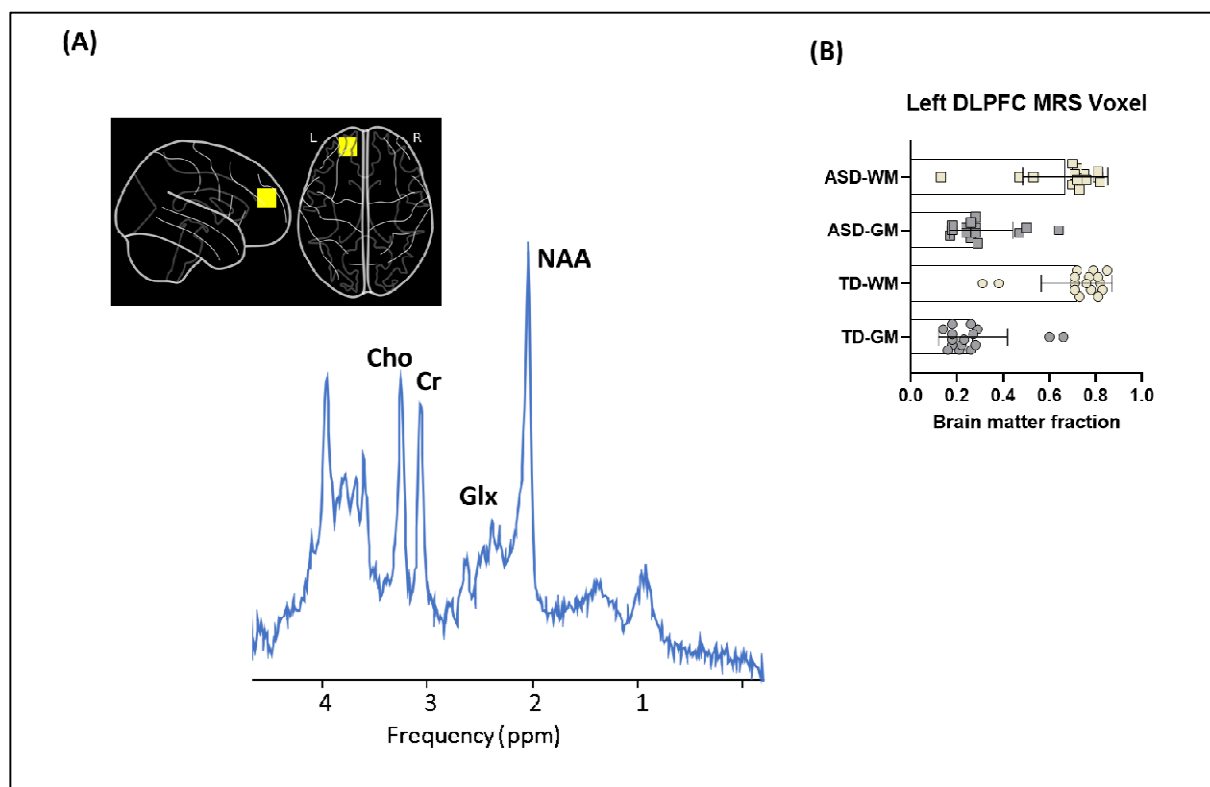
176 The  $p$ -values are from two-sample  $t$ -tests for the difference in means between the ASD and TD  
177 groups. NVIQ: nonverbal IQ; VIQ: verbal IQ; ICS-I: inhibition of attention, as measures on the  
178 Nepsy-II; ICS-S: attentional switching as measures on the Nepsy-II; SRS: Social  
179 Responsiveness Scale.

180

## 181 2.2 Brain imaging data acquisition and processing

182 Brain imaging was performed using a 3T Siemens Trio MR scanner (Siemens Healthineers,  
183 Erlangen Germany) equipped with a 12-channel head coil. In all participants, a high-resolution  
184 multi-echo Magnetization Prepared - Rapid Gradient Echo MEMPRAGE (T1-weighted structural  
185 MRI) volume was also acquired (TR/TE1/TE2/TE3/TE4 = 2530/1.69/3.55/5.41/7.27 ms, flip  
186 angle = 7°, voxel size = 1 mm isotropic), for the purpose of anatomical localization, MRS voxel  
187 placement and the correction for partial volume effects of cerebrospinal fluid (CSF).

188 <sup>1</sup>H-MRS protocol: Single voxel MRS was acquired using a conventional Point RESolved  
189 Spectroscopy (PRESS) sequence (TE=30ms, TR=2.5s, bandwidth=1.2 kHz, and 96 averages,  
190 1024 sample points). A 20x20x20 mm voxel was placed in the left DLPFC (**Figure 1A**).



191

192 **Figure 1: Voxel placement, representative spectrum and brain matter fractions. (A)** Voxel  
193 placement on left DLPFC and representative spectrum. **(B)** Gray and white matter (GM, WM)  
194 fractions within the 8 cm<sup>3</sup> left DLPFC-voxel in ASD and TD subjects.

195

196 MR spectra were processed off-line using the LCModel software, version 6.3 (Provencher,  
197 2001) for quantitative assessment of the following neurometabolites: N-acetylaspartate (NAA),



198 Creatine (Cr), choline (Cho), myo-inositol (ml), and glutamate+glutamine  
199 (Glu+Gln). LCModel analysis was conducted on spectra within the chemical shift range 0.5–4.1  
200 ppm. Spectra were excluded when the signal to noise ratio (SNR), estimated  
201 by LCModel (defined as peak height of NAA divided by the root mean square of the noise of  
202 the LCModel fit) was less than 5 and the Cramér-Rao lower bounds (CRLB) higher than 20%.

203 All metabolite levels were adjusted for gray matter (GM), white matter (WM), and cerebrospinal  
204 fluid (CSF) contributions as follows: the MEMPRAGE images and the voxel coordinates from  
205 the Siemens RDA files were used in Gannet toolkit version 3.1 (Edden et al., 2014) to generate  
206 binary masks of the voxel location. These masks were then used in SPM 12 (Penny et al.,  
207 2007) to calculate the partial volumes of GM, WM and CSF percentages within the voxel. The  
208 segmented tissue fractions were then used to correct for metabolite concentrations quantified  
209 using LC Model for CSF content according to the literature (Gasparovic et al., 2006).

## 210 *2.5. Statistical analyses and multiple comparisons*

211 Statistical analysis was performed using Prism GraphPad v9 (GraphPad, La Jolla, California)  
212 with unpaired, two-tailed t-tests on the ASD and TD groups. Pearson correlation coefficients  
213 were calculated to assess the relationship between neurometabolite concentrations and each  
214 behavioral measure. Additionally, we assessed effects of combined metabolite levels in ASD  
215 and TD with a multivariate linear regression model in GraphPad (least squares method:  
216  $Y_{\text{Behavior}} = \beta_0 + \beta_1[\text{met1}]_{\text{group}} + \beta_2[\text{met2}]_{\text{group}}$ , where dependent variable Y is the behavior measure  
217 and continuous predictor variables are metabolite levels).

218 We tested for group differences in ASD versus TD in mean concentrations of Cho, Glx, Cr, for 3  
219 tests in all; no significant group differences emerged, and so we did not correct the results for  
220 multiple comparisons. We also tested the following correlations within each group: Cho  
221 correlations with VIQ, NVIQ, SRS (ASD only), ICS-S, ICS-I, and Glx/Cr with the same 5  
222 behavioral metrics, for 10 correlations tests in total in the ASD group, and 8 in the TD group.  
223 Lastly, we tested for significant differences between slopes for the ASD vs TD groups only for  
224 correlations between Cho and NVIQ, and Glx/Cr and NVIQ.

225 When considering a correction for multiple comparisons, we first considered potential  
226 dependencies across the behavioral measures. As expected, NVIQ and VIQ were significantly  
227 correlated (combined groups,  $r=0.52$ ,  $p=0.003$ ), and NVIQ and ICS-S were also significantly  
228 correlated (combined groups,  $r=0.53$ ,  $p=0.004$ ) ICS-I and SRS scores were not correlated with  
229 ICS-S, ICS-I, VIQ or NVIQ. Because the behavioral measures are not statistically independent,  
230 it is challenging to account for such dependencies when correcting for multiple comparisons.  
231 We therefore chose to report uncorrected p-values, following recent best practices (Lu and  
232 Belitskaya-Levy, 2015; Amrhein et al., 2019; Lowe, 2019). We used \* to mark p values of 0.05  
233 or below, and \*\* to mark p-values of 0.005 or below, i.e. p values that would survive a  
234 Bonferroni correction for 10 comparisons.

235

## 236 **3. RESULTS**

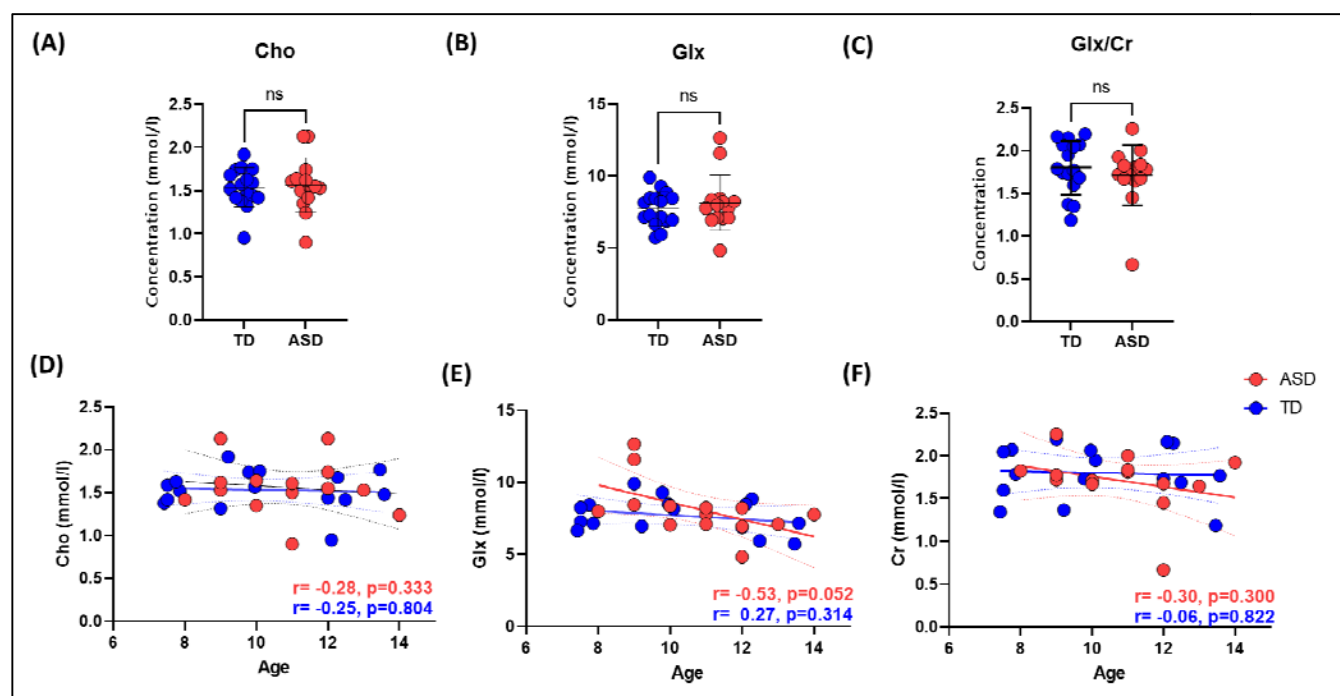
### 237 *3.1 Tissue composition within the MRS voxel.*

238 We began by testing whether the voxels chosen across the two groups had similar  
 239 compositions. As expected, the groups did not differ significantly in mean grey matter, white  
 240 matter, or CSF fraction within the voxel (**Figure 1B**) ( $p > 0.05$  for all).

### 241 3.2 Neurometabolite levels and age effects

242 Next, we investigated group differences in absolute metabolite levels, for Glx and Cho. No  
 243 significant differences in absolute levels of these two neurometabolites were observed between  
 244 groups (**Figures 2A-B**, and **Table 2**). Because maturation trajectories of metabolites in this age  
 245 range are not well understood (Nelson et al., 2019; Porges et al., 2021), we then tested for age  
 246 effects of metabolite concentrations within our sample. No significant age-related metabolite  
 247 changes were observed for either group ( $p > 0.05$ ) for Cho (**Figure 2D**), while a negative trend  
 248 was observed for Glx in the ASD group ( $r = -0.53$ ,  $p = 0.052$ ) (**Figure 2E**). Given this trend, we  
 249 opted to normalize Glx levels with Creatine (Cr) levels, as is common practice (Wilson et al.,  
 250 2019). The Cr referenced Glx levels still did not differ between groups (**Figure 2C**), and the  
 251 trend with age in the ASD group was indeed removed by this normalization (**Figure 2F**).

252



253  
 254 **Figure 2:** Metabolite concentrations between groups, and correlation with age. Top Row: Group  
 255 comparisons for (A) Cho, (B) Glx, (C) Glx/Cr. Bottom row: Correlations between age and  
 256 metabolites levels for (D) Cho, (E) Glx, (F) Glx/Cr.

257

258

259 **Table 2: Average metabolite levels**

Diagnosis	Cho	Glx	Glx/Cr
-----------	-----	-----	--------



	(mmol/l)	(mmol/l)	
<b>ASD (n=14)</b>	1.57±0.30	8.15±1.86	1.71±0.34
<b>TD (n=16)</b>	1.54±0.22	7.72±1.14	1.80±0.30

260 Values are the mean ± SD

261

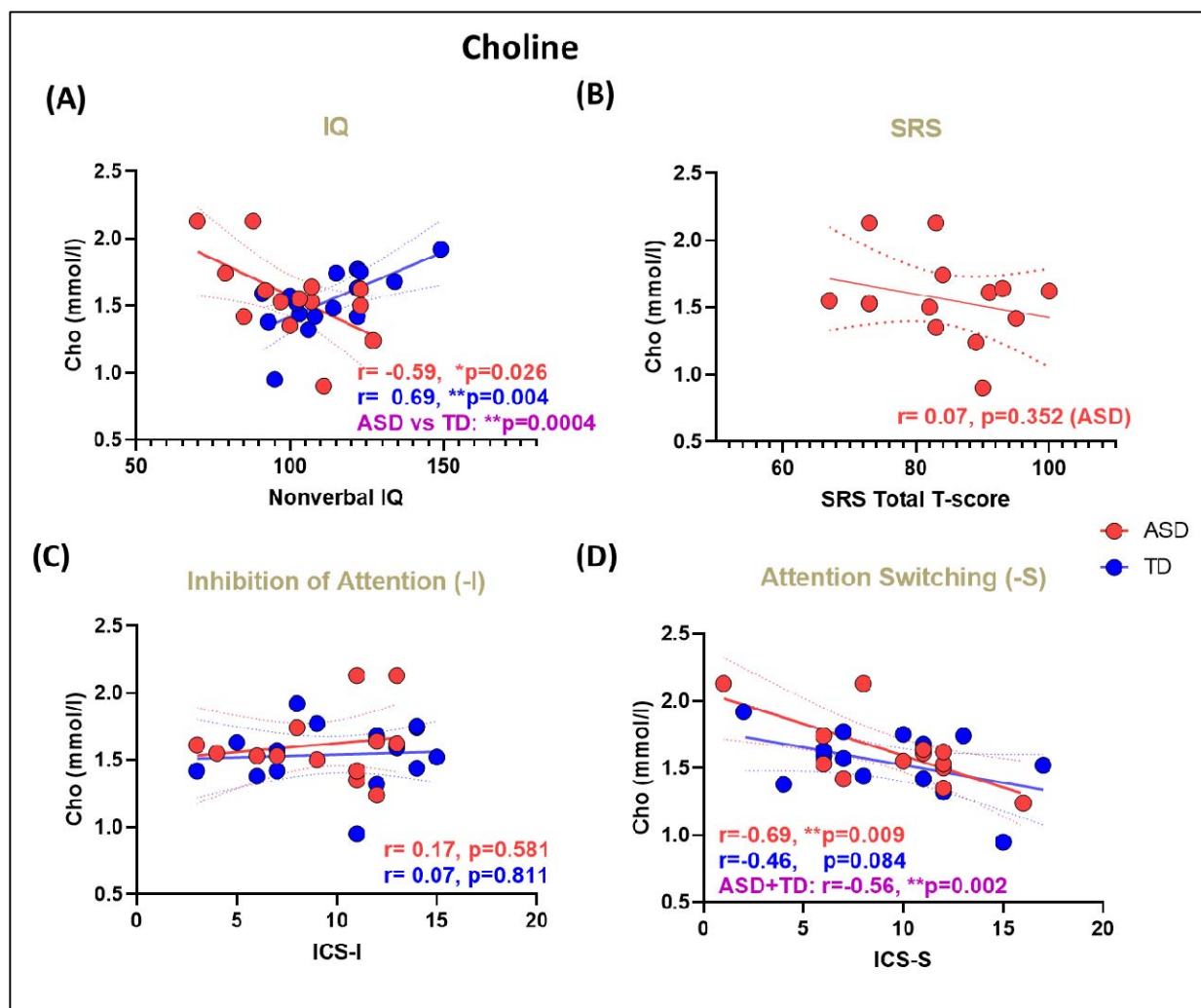
### 262 3.3 Correlations between Cho and behavioral measures

263 We then investigated the relationship between Cho levels in the left DLPFC and VIQ/NVIQ,  
264 ASD severity, and measures of attention. Between VIQ and NVIQ, significant correlations were  
265 found only with NVIQ (**Figure 3A**). In the ASD group, absolute Cho levels showed a negative  
266 correlation with NVIQ ( $r = -0.59, p = 0.026$ ). In contrast, in the TD group, Cho levels correlated  
267 positively with NVIQ ( $r = -0.68, p = 0.004$ ). There was a significant group difference in the slopes,  
268 indicating a significant group difference in the interaction between NVIQ and Cho.

269 No significant correlations were found between Cho and ASD SRS scores, which assess ASD  
270 severity (**Figure 3B**).

271 Lastly, we looked at two behavioral measures of attention: inhibition of attention (ICS-I) and  
272 attentional switching (ICS-S). While no significant correlations were found between ICS-I and  
273 Cho (**Figure 3C**), ICS-S values in both groups correlated significantly with Cho (**Figure 3D**), and  
274 this significant correlation was especially pronounced in the ASD group ( $r = -0.69, p = 0.009$ ).  
275 There was no group difference in the direction of this correlation, and indeed, combining the two  
276 groups strengthened the correlation ( $r = -0.56, p = 0.002$ ).

277



278

279 **Figure 3: Correlation between behavioral measures, and Cho.** (A) NVIQ. r and p values are  
 280 shown for each group separately. A statistical ASD vs TD comparison of difference in slopes  
 281 shows a highly significant difference between the two slopes (purple) (B) SRS. (C) inhibition of  
 282 attention. (D) Attentional switching. Since both groups showed a similar trend, we also  
 283 computed r and p values for both groups combined (purple). **Red:** ASD. **Blue:** TD. Dashed  
 284 lines indicate the 95% confidence intervals for regression lines. r=correlation coefficient  
 285 (Pearson's). p=uncorrected p-values.

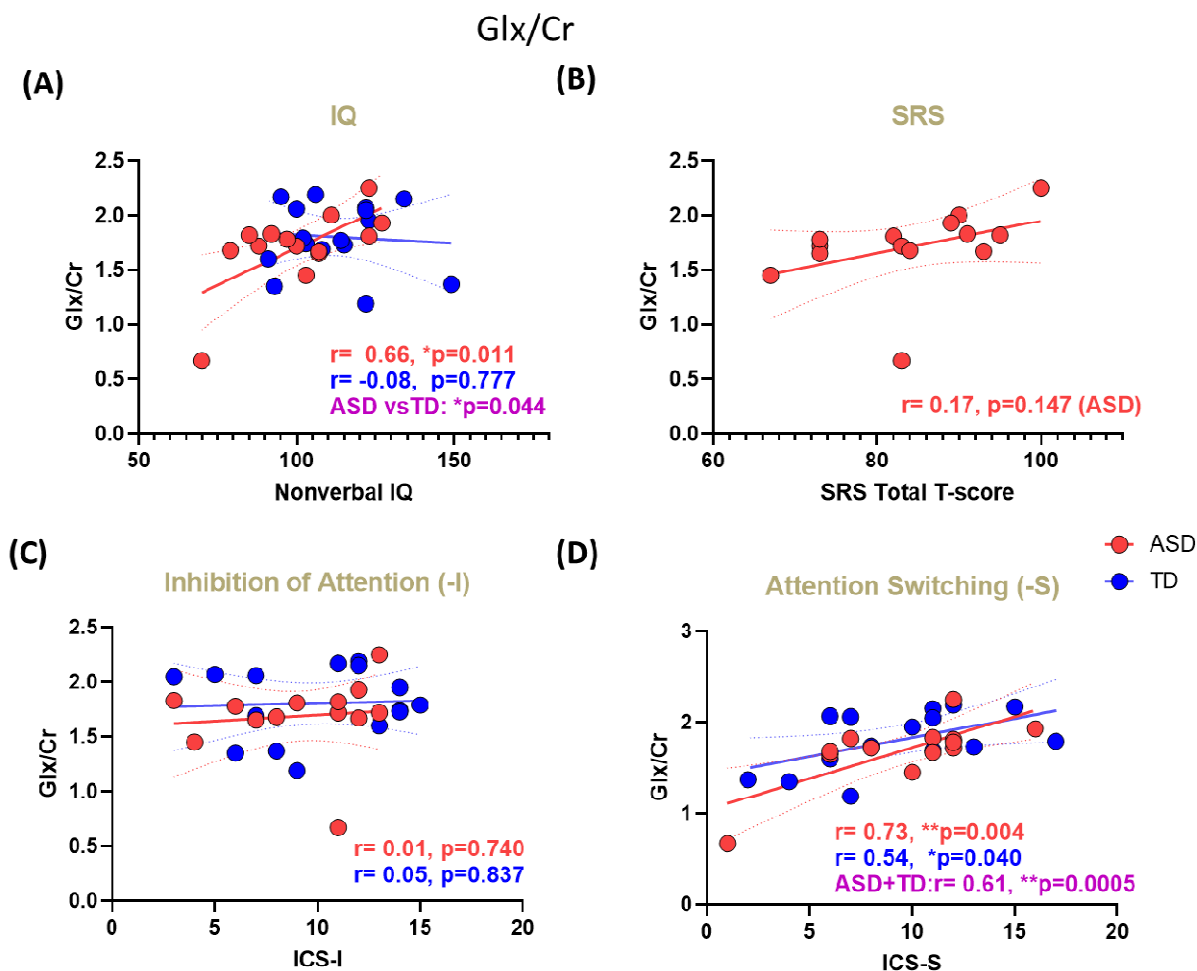
286

### 287 3.4 Correlations between Glx/Cr and behavior measures

288 The same analyses were then repeated with Glx/Cr instead of Cho (Section 3.3). As with Cho,  
 289 VIQ did not correlate with Glx/Cr in either group. As with Cho, Glx/Cr was significantly correlated  
 290 with NVIQ in the ASD group, albeit in the opposite direction – positively rather than negatively;  
 291 in contrast to the finding with Cho, there was no significant correlation between Glx/Cr and  
 292 NVIQ in the TD group (**Figure 4A**).

293 No significant association was found between Glx/Cr levels and the SRS scores (ASD group)  
 294 (**Figure 4B**). Glx/Cr did not correlate with ICS-I (**Figure 4C**), and was positively correlated with  
 295 attentional switching (**Figure 4D**) for both ASD ( $r=0.73$ ,  $p=0.004$ ) and TD ( $r=0.54$ ,  $p=0.040$ )  
 296 groups. Indeed, when the ASD and TD groups were combined, we again observed an increased  
 297 statistical significance for the correlation between ICS-S and Glx/Cr ( $r=0.61$ ,  $p=0.0005$ ).

298

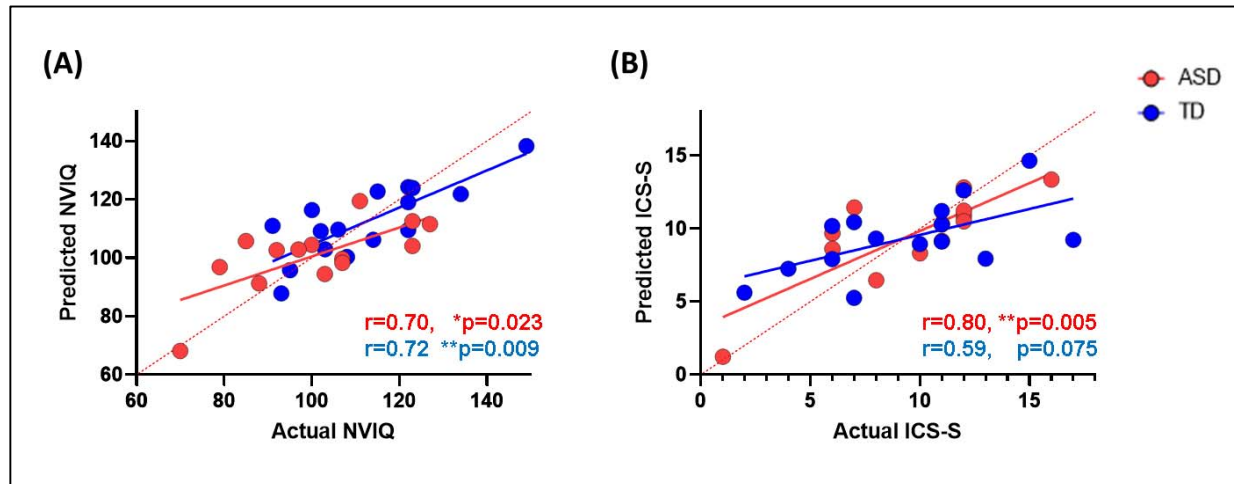


299

300 **Figure 4: Correlation between behavioral measures, and Glx/Cr.** (A) NVIQ.  $r$  and  $p$  values  
 301 are shown for each group separately. A statistical ASD vs TD comparison of difference in slopes  
 302 shows a highly significant difference between the two slopes (purple) (B) SRS. (C) inhibition of  
 303 attention. (D) Attentional switching. Since both groups showed a similar trend, we also  
 304 computed  $r$  and  $p$  values for both groups combined (purple). **Red:** ASD. **Blue:** TD. Dashed lines  
 305 indicate the 95% confidence intervals for regression lines.  $r$ =correlation coefficient (Pearson's).  
 306  $p$ =uncorrected  $p$ -values.

307

308 Lastly, a multivariate linear regression model:  $Y_{[Beh]} \sim \text{Intercept } (\beta_0) + \beta_1[\text{Glx/Cr}]_{[TD/ASD]} + \beta_2$   
309  $[\text{Cho}]_{[TD/ASD]}$ , showed that the combined Cho and Glx/Cr predicted both behavioral measures,  
310 NVIQ ( $r=0.70$ ,  $p=0.023$ ) and ICS-S ( $r=0.80$ ,  $p=0.005$ ) among ASD children and NVIQ ( $r=0.72$ ,  
311  $p=0.009$ ) among TD children (**Figure 5**).



312

313 **Figure 5. Multivariate linear regression model in ASD and TD.** Performance of combined  
314 Cho+Glx/Cr predicting (A) NVIQ and (B) ICS-S

315

316

#### 317 4. DISCUSSION

318

319 In this study, no significant differences in the left DLPFC metabolite levels, either  
320 absolute or creatine referenced, were found between children with ASD and TD children. In  
321 spite of no differences in absolute levels of neurometabolites, in agreement with the initial  
322 hypotheses, we found significant associations between neuropsychological profiles and  
323 metabolites of interest. Specifically, we observed a significant negative correlation between Cho  
324 and NVIQ for children with ASD versus a significant positive correlation between these values  
325 for the TD group. Choline also showed a significant negative correlation with the ICS-S score  
326 (attentional switching) within the ASD group. Even though this association was not significant for  
327 the TD group, combining both groups yielded stronger negative statistical significance, meaning  
328 both groups followed a similar trend for this association. NVIQ was also positively correlated  
329 with the Glx/Cr ratio in the TD group, but not in the ASD group. Additionally, the combination of  
330 Cho and Glx/Cr predicted both NVIQ and ICS-S in the ASD group, but only NVIQ in the TD  
331 group.

332 Choline containing compounds are key components of cell membranes, and essential  
333 for the synthesis of acetylcholine (ACh), a neurotransmitter linked with learning, memory and  
334 attention, that has also been associated with cognitive dysfunction and anxiety severity  
335 (Ferguson et al., 2003; Moon and Jeong, 2015). Additionally, Cho levels are also associated  
336 with the dopaminergic neuronal transduction and synaptic activity and overall dopaminergic and  
337 cholinergic balance, involved in attention, memory, and academic achievements (Wiguna et al.,

338 2012). A previous study of individuals with generalized anxiety disorder reported an inverse  
339 association with the left DLPFC Cho/Cr and full scale IQ (FSIQ), while no such relationship was  
340 observed for the control group (Coplan et al., 2018). Furthermore, Cho levels have also been  
341 associated with white matter density and speculated to reflect excessive neuronal connectivity  
342 or abnormal myelination (Laycock et al., 2008). Our finding of a significant association between  
343 low Cho levels and higher NVIQ and better performance on attentional switching in ASD is  
344 consistent with the classical view. Increased Cho may be a marker of incomplete myelination or  
345 neuroinflammation, which is also in part consistent with the prior studies (Jung et al., 1999;  
346 Coplan et al., 2018) that found lower Cho levels were associated with increased IQ, and higher  
347 Cho levels were associated with increased anxiety Index. This is in contrast to the TD group  
348 which is likely not to have any markers of neuroinflammation, and thus in TD, Cho is associated  
349 with the synthesis of acetylcholine (ACh), a neurotransmitter associated with memory, learning  
350 and attention.

351 In parallel to the findings of associations with Cho levels, we also found a significant  
352 positive correlation between Glx/Cr ratio and NVIQ in the ASD group, but not in the TD group.  
353 Glx/Cr ratio also showed a positive association with the ICS-S score for attention switching for  
354 both ASD and TD groups, and the combination of the two groups showed a much stronger  
355 statistical significance. Glutamate is synthesized from glutamine in neurons and released into  
356 the synapse, which is converted back into glutamine in glial cells, by the enzyme glutamine-  
357 synthetase. Glutamate to GABA conversion is catalyzed by the neuronal enzyme glutamate  
358 decarboxylase. Glutamate and GABA have been found as reliable markers of cortical excitability  
359 and inhibition, and thus critical for the mechanisms of neuroplasticity and learning. Moreover,  
360 brain excitation and inhibition levels are thought to be critical for triggering the onset of sensitive  
361 periods for cognitive skill acquisition by shaping plastic responsiveness of underlying neural  
362 systems in response to environmental stimulation (Werker and Hensch, 2015). MRS studies of  
363 Glx in neurodevelopmental disorders, including ASD and ADHD, have reported abnormal  
364 glutamate or Glx levels in patient populations relative to typically developing subjects (Carrey et  
365 al., 2007; Brown et al., 2013; Cochran et al., 2015). Higher levels of glutamate have been  
366 hypothesized to indicate hyperexcitability in these disorders that affect neuronal-network  
367 dynamics involved in learning, and memory consolidation (Pugh et al., 2014). No group-level  
368 differences were found in Glx or Glx/Cr in our study. Yet, we found a significant positive  
369 correlation between Glx/Cr and nonverbal intelligence only in the ASD group. This may suggest  
370 that DLPFC Glx in ASD may have a different glutamatergic transmission than that of TD  
371 children. It also suggests a possible neural mechanism within the DLPFC for the heterogeneity  
372 observed in cognitive function in ASD.

373 There is a multitude of evidence suggesting a neurochemical basis of higher-  
374 level cognitive skills, yet the exact mechanisms remain largely unknown. Across developmental  
375 disorders such as ASD and attention-related disorders, neurometabolites profiles has been  
376 found to vary compared to typically developing age-matched counterparts (Perlov et al., 2009;  
377 Baruth et al., 2013). In a <sup>1</sup>H-MRS study using children with reading disabilities (RD), it was  
378 shown that RD children had elevated Cho and glutamate relative to TD children. They further  
379 indicated that Cho and glutamate levels inversely correlated with reading and related language  
380 measures such that increased concentrations were associated with poorer performance (Pugh

381 et al., 2014). A more recent RD study reported a negative association between Cho and reading  
382 ability of children aged between 6 and 8 (Del Tufo et al., 2018). The same study also observed  
383 a positive relationship between glutamate concentration and reading performance. Lastly, the  
384 fact that in both the ASD and TD groups both Cho and Glx/Cr levels were correlated with  
385 attentional switching scores, but not with attentional inhibition, is consistent with the putative role  
386 of the prefrontal cortex in attention, since its role for attentional switching, but not inhibition of  
387 attention, is well established (Rossi et al., 2009). Attentional switching happens in the twin  
388 anticorrelated functional networks involving the DLPFC as a task-positive functional site,  
389 demonstrated by Fox and colleagues (Fox et al., 2005). The task-switching aspect and its  
390 relationship with neurometabolites in ASD is worth exploring as a biomarker for further  
391 investigation. Several limitations of the present study should be noted. Our final analysis  
392 included just 14 children with ASD and 16 TD children. Future studies with larger samples are  
393 needed to gain greater statistical power and validate our findings. Since we included males  
394 between the ages of 7-14 years, our results in this study are representative for only males in this  
395 age group. Furthermore, the cross-sectional design of our study limited the power to detect age-  
396 driven changes in the neurometabolic profile which could hinder ability to identify disorder  
397 specific biomarkers in ASD. Therefore, longitudinal MRS studies are clearly necessary. Despite  
398 these limitations it should be noted that it is unlikely that our findings can be fully explained by  
399 potential confounds, such as differences in voxel tissue composition, age- or IQ. There were no  
400 significant between-group differences in voxel brain matter and CSF, metabolite concentrations  
401 were tissue corrected, and the results are consistent with prior metabolites studies of ASD and  
402 of other related disorders.

403 In summary, the main findings revealed no significant group difference in Cho or Glx/Cr  
404 metabolite levels between groups, alongside relevant correlations with behavioral measures.  
405 Specifically, we documented an inverse relationship between both Cho and Glx/Cr and  
406 nonverbal intelligence in ASD children, which was opposite in direction when compared with  
407 age-, IQ- matched TD children. This suggests that Cho and Glx/Cr may have different  
408 neurometabolic roles in ASD compared to TD children in overall cognitive function. In contrast,  
409 for both groups, attention switching scores showed an inverse relationship with Cho and a  
410 positive correlation with Glx/Cr, suggesting further that the roles of metabolites for executive  
411 function skills, and specifically attentional switching and inhibition of attention, are preserved in  
412 ASD. These results are especially interesting in the context of the significant heterogeneity  
413 associated with the ASD phenotype (Lenroot and Yeung, 2013), since they suggest possible  
414 underlying neural mechanisms for the cognitive heterogeneity in particular, which do not overlap  
415 which those expected from typical development. Although the mechanisms connecting these  
416 neurometabolites to atypical cognitive functioning alongside typical executive functioning remain  
417 to be elucidated, the overall finding that the role of neurometabolites in ASD does not follow a  
418 consistent pattern relative to TD children may provide valuable information on potential  
419 neurobiological pathways of atypical development, and the heterogeneities associated with  
420 cognitive function in ASD in particular.

## 421 **ACKNOWLEDGMENT**



422 We like to thank our participants and their families. This study was supported by the following:  
423 The National Institutes of Health (R01NS048455, MH); the Nancy Lurie Marks Foundation (MH);  
424 MIT-MGH Strategic Partnership grant from the Executive Committee on Research (ECOR) at  
425 Massachusetts General Hospital (EMR); the National Institute of Child Health and Development  
426 (R01HD073254, TK); the National Institute of Mental Health (R01MH117998, TK)

#### 427 **Author contributions**

428 **EMR, TK, MRH, AW:** Conceptualization; **EMR, MRH, NMM, TK:** Data curation; **AW, AIM:** Data  
429 analysis; **EMR, TK, MRH:** Methodology; Project administration; Supervision; **EMR, TK, AW:**  
430 Validation; Visualization; **Writing:** AK, EMR and TK wrote the manuscript, all other authors  
431 reviewed and or edited the manuscript.

#### 432 **CONFLICT OF INTEREST**

433 The authors have no conflicts of interest to declare in relation to this work. E.M.R. serves on the  
434 Scientific Advisory Board of BrainSpec Inc.

435

#### 436 **REFERENCES**

437 Ajram, L. A., Horder, J., Mendez, M. A., Galanopoulos, A., Brennan, L. P., Wichers, R. H., et al.  
438 (2017). Shifting brain inhibitory balance and connectivity of the prefrontal cortex of adults  
439 with autism spectrum disorder. *Transl. Psychiatry*. doi: 10.1038/tp.2017.104.

440 Ajram, L. A., Pereira, A. C., Durieux, A. M. S., Velthuis, H. E., Petrinovic, M. M., and McAlonan,  
441 G. M. (2019). The contribution of [1H] magnetic resonance spectroscopy to the study of  
442 excitation-inhibition in autism. *Prog. Neuro-Psychopharmacology Biol. Psychiatry*. doi:  
443 10.1016/j.pnpbp.2018.09.010.

444 Alexander, G. E., DeLong, M. R., and Strick, P. L. (1986). Parallel organization of functionally  
445 segregated circuits linking basal ganglia and cortex. *Annu. Rev. Neurosci.* doi:  
446 10.1146/annurev.ne.09.030186.002041.

447 Amrhein, V., Greenland, S., Mcshane, B., Wasserstein, R. L., Schirm, A. L., and Lazar, N. A.  
448 (2019). Moving to a World Beyond “ $p < 0.05$ .” *Am. Stat.*

449 Anand, R., A., S., Ponath, G., I., J., Nasir, M., and B., S. (2011). “Nicotinic Acetylcholine  
450 Receptor Alterations in Autism Spectrum Disorders – Biomarkers and Therapeutic  
451 Targets,” in *Autism - A Neurodevelopmental Journey from Genes to Behaviour* doi:  
452 10.5772/20752.

453 Barbey, A. K., Colom, R., and Grafman, J. (2013). Dorsolateral prefrontal contributions to  
454 human intelligence. *Neuropsychologia*. doi: 10.1016/j.neuropsychologia.2012.05.017.

455 Baruth, J. M., Wall, C. A., Patterson, M. C., and Port, J. D. (2013). Proton Magnetic Resonance  
456 Spectroscopy as a Probe into the Pathophysiology of Autism Spectrum Disorders (ASD): A  
457 Review. *Autism Res.* doi: 10.1002/aur.1273.

458 Beran, T. N. (2007). Elliott, C. D. (2007). *Differential Ability Scales* (2nd ed.). San Antonio, TX:  
459 Harcourt Assessment. *Can. J. Sch. Psychol.* doi: 10.1177/0829573507302967.

460 Blatt, G. J. (2012). The Neuropathology of Autism. *Scientifica (Cairo)*. doi:

- 461 10.6064/2012/703675.
- 462 Brown, M. S., Singel, D., Hepburn, S., and Rojas, D. C. (2013). Increased glutamate  
463 concentration in the auditory cortex of persons with autism and first-degree relatives: A 1H-  
464 MRS study. *Autism Res.* doi: 10.1002/aur.1260.
- 465 Bruni, T. P. (2014). Test Review: Social Responsiveness Scale–Second Edition (SRS-2). *J.*  
466 *Psychoeduc. Assess.* doi: 10.1177/0734282913517525.
- 467 Carrey, N. J., MacMaster, F. P., Gaudet, L., and Schmidt, M. H. (2007). Striatal creatine and  
468 glutamate/glutamine in attention-deficit/ hyperactivity disorder. *J. Child Adolesc.*  
469 *Psychopharmacol.* doi: 10.1089/cap.2006.0008.
- 470 Cochran, D. M., Sikoglu, E. M., Hodge, S. M., Edden, R. A. E., Foley, A., Kennedy, D. N., et al.  
471 (2015). Relationship among glutamine,  $\gamma$ -aminobutyric acid, and social cognition in autism  
472 spectrum disorders. *J. Child Adolesc. Psychopharmacol.* doi: 10.1089/cap.2014.0112.
- 473 Coplan, J. D., Webler, R., Gopinath, S., Abdallah, C. G., and Mathew, S. J. (2018).  
474 Neurobiology of the dorsolateral prefrontal cortex in GAD: Aberrant neurometabolic  
475 correlation to hippocampus and relationship to anxiety sensitivity and IQ. *J. Affect. Disord.*  
476 doi: 10.1016/j.jad.2017.12.001.
- 477 Courchesne, E., Mouton, P. R., Calhoun, M. E., Semendeferi, K., Ahrens-Barbeau, C., Hallet,  
478 M. J., et al. (2011). Neuron number and size in prefrontal cortex of children with autism.  
479 *JAMA - J. Am. Med. Assoc.* doi: 10.1001/jama.2011.1638.
- 480 Del Tufo, S. N., Frost, S. J., Hoeft, F., Cutting, L. E., Molfese, P. J., Mason, G. F., et al. (2018).  
481 Neurochemistry predicts convergence of written and spoken language: A proton magnetic  
482 resonance spectroscopy study of cross-modal language integration. *Front. Psychol.* doi:  
483 10.3389/fpsyg.2018.01507.
- 484 Deutsch, S. I., Urbano, M. R., Neumann, S. A., Burket, J. A., and Katz, E. (2010). Cholinergic  
485 abnormalities in autism: Is there a rationale for selective nicotinic agonist interventions?  
486 *Clin. Neuropharmacol.* doi: 10.1097/WNF.0b013e3181d6f7ad.
- 487 Edden, R. A. E., Puts, N. A. J., Harris, A. D., Barker, P. B., and Evans, C. J. (2014). Gannet: A  
488 batch-processing tool for the quantitative analysis of gamma-aminobutyric acid-edited MR  
489 spectroscopy spectra. *J. Magn. Reson. Imaging.* doi: 10.1002/jmri.24478.
- 490 Ferguson, S. M., Savchenko, V., Apparsundaram, S., Zwick, M., Wright, J., Heilman, C. J., et al.  
491 (2003). Vesicular Localization and Activity-Dependent Trafficking of Presynaptic Choline  
492 Transporters. *J. Neurosci.* doi: 10.1523/jneurosci.23-30-09697.2003.
- 493 Fetit, R., Hillary, R. F., Price, D. J., and Lawrie, S. M. (2021). The neuropathology of autism: A  
494 systematic review of post-mortem studies of autism and related disorders. *Neurosci.*  
495 *Biobehav. Rev.* doi: 10.1016/j.neubiorev.2021.07.014.
- 496 Forde, N., Llera, A., Dell'Acqua, F., Ecker, C., Buitelaar, J. K., and Beckmann, C. F. (2020).  
497 P.124 Linking functional and structural brain organisation in autism spectrum disorder. *Eur.*  
498 *Neuropsychopharmacol.* doi: 10.1016/j.euroneuro.2020.09.103.
- 499 Fox, M. D., Snyder, A. Z., Vincent, J. L., Corbetta, M., Van Essen, D. C., and Raichle, M. E.  
500 (2005). The human brain is intrinsically organized into dynamic, anticorrelated functional  
501 networks. *Proc. Natl. Acad. Sci. U. S. A.* doi: 10.1073/pnas.0504136102.
- 502 García Domínguez, L., Stieben, J., Pérez Velázquez, J. L., and Shanker, S. (2013). The

- 503 Imaginary Part of Coherency in Autism: Differences in Cortical Functional Connectivity in  
504 Preschool Children. *PLoS One*. doi: 10.1371/journal.pone.0075941.
- 505 Gasparovic, C., Song, T., Devier, D., Bockholt, H. J., Caprihan, A., Mullins, P. G., et al. (2006).  
506 Use of tissue water as a concentration reference for proton spectroscopic imaging. *Magn.*  
507 *Reson. Med*. doi: 10.1002/mrm.20901.
- 508 Haznedar, M. (2006). Volumetric Analysis and Three-Dimensional Glucose Metabolic Mapping  
509 of the Striatum and Thalamus in Patients With Autism Spectrum Disorders. *Am. J.*  
510 *Psychiatry*. doi: 10.1176/appi.ajp.163.7.1252.
- 511 Hiremath, C. S., Sagar, K. J. V., Yamini, B. K., Girimaji, A. S., Kumar, R., Sravanti, S. L., et al.  
512 (2021). Emerging behavioral and neuroimaging biomarkers for early and accurate  
513 characterization of autism spectrum disorders: a systematic review. *Transl. Psychiatry*. doi:  
514 10.1038/s41398-020-01178-6.
- 515 Howlin, P. (2021). Adults with Autism: Changes in Understanding Since DSM-111. *J. Autism*  
516 *Dev. Disord*. doi: 10.1007/s10803-020-04847-z.
- 517 Hus, V., Gotham, K., and Lord, C. (2014). Standardizing ADOS domain scores: Separating  
518 severity of social affect and restricted and repetitive behaviors. *J. Autism Dev. Disord*. doi:  
519 10.1007/s10803-012-1719-1.
- 520 Jack, A., and A. Pelphrey, K. (2017). Annual Research Review: Understudied populations within  
521 the autism spectrum – current trends and future directions in neuroimaging research. *J.*  
522 *Child Psychol. Psychiatry Allied Discip*. 58. doi: 10.1111/jcpp.12687.
- 523 Jung, R. E., Brooks, W. M., Yeo, R. A., Chiulli, S. J., Weers, D. C., and Sibbitt, W. L. (1999).  
524 Biochemical markers of intelligence: A proton MR spectroscopy study of normal human  
525 brain. *Proc. R. Soc. B Biol. Sci*. doi: 10.1098/rspb.1999.0790.
- 526 Kalbe, E., Schlegel, M., Sack, A. T., Nowak, D. A., Dafotakis, M., Bangard, C., et al. (2010).  
527 Dissociating cognitive from affective theory of mind: A TMS study. *Cortex*. doi:  
528 10.1016/j.cortex.2009.07.010.
- 529 Kim, S. Y., Choi, U. S., Park, S. Y., Oh, S. H., Yoon, H. W., Koh, Y. J., et al. (2015). Abnormal  
530 activation of the social brain network in children with autism spectrum disorder: An fMRI  
531 study. *Psychiatry Investig*. doi: 10.4306/pi.2015.12.1.37.
- 532 Lainhart, J. E., and Lange, N. (2011). Increased neuron number and head size in autism. *JAMA*  
533 *- J. Am. Med. Assoc*. doi: 10.1001/jama.2011.1633.
- 534 Lam, K. S. L., Aman, M. G., and Arnold, L. E. (2006). Neurochemical correlates of autistic  
535 disorder: A review of the literature. *Res. Dev. Disabil*. doi: 10.1016/j.ridd.2005.03.003.
- 536 Lauber, E. J., Meyer, D. E., Evans, J. E., Rubinstein, J., Gmeindl, L., Junck, L., et al. (1996).  
537 The brain areas involved in the executive control of task switching as revealed by PET.  
538 *Neuroimage*. doi: 10.1016/s1053-8119(96)80249-7.
- 539 Laycock, S. K., Wilkinson, I. D., Wallis, L. I., Darwent, G., Wonders, S. H., Fawcett, A. J., et al.  
540 (2008). Cerebellar volume and cerebellar metabolic characteristics in adults with dyslexia.  
541 in *Annals of the New York Academy of Sciences* doi: 10.1196/annals.1416.002.
- 542 Lenroot, R. K., and Yeung, P. K. (2013). Heterogeneity within autism spectrum disorders: What  
543 have we learned from neuroimaging studies? *Front. Hum. Neurosci*. doi:  
544 10.3389/fnhum.2013.00733.

- 545 Lord, C., Petkova, E., Hus, V., Gan, W., Lu, F., Martin, D. M., et al. (2012). A multisite study of  
546 the clinical diagnosis of different autism spectrum disorders. *Arch. Gen. Psychiatry*. doi:  
547 10.1001/archgenpsychiatry.2011.148.
- 548 Lowe, N. K. (2019). The Push to Move Health Care Science Beyond  $p < .05$ . *JOGNN - J. Obstet.*  
549 *Gynecol. Neonatal Nurs.* 48, 493–494. doi: 10.1016/j.jogn.2019.07.005.
- 550 Lu, Y., and Belitskaya-Levy, I. (2015). The debate about p-values. *Shanghai Arch. Psychiatry*.  
551 doi: 10.11919/j.issn.1002-0829.216027.
- 552 Margari, L., De Giacomo, A., Craig, F., Palumbi, R., Peschechera, A., Margari, M., et al. (2018).  
553 Frontal lobe metabolic alterations in autism spectrum disorder: A 1h-magnetic resonance  
554 spectroscopy study. *Neuropsychiatr. Dis. Treat.* doi: 10.2147/ndt.s165375.
- 555 Montag, C., Schubert, F., Heinz, A., and Gallinat, J. (2008). Prefrontal cortex glutamate  
556 correlates with mental perspective-taking. *PLoS One*. doi: 10.1371/journal.pone.0003890.
- 557 Moon, C. M., and Jeong, G. W. (2015). Functional neuroanatomy on the working memory under  
558 emotional distraction in patients with generalized anxiety disorder. *Psychiatry Clin.*  
559 *Neurosci.* doi: 10.1111/pcn.12295.
- 560 Müller, R. A., and Fishman, I. (2018). Brain Connectivity and Neuroimaging of Social Networks  
561 in Autism. *Trends Cogn. Sci.* doi: 10.1016/j.tics.2018.09.008.
- 562 Naaijen, J., Lythgoe, D. J., Amiri, H., Buitelaar, J. K., and Glennon, J. C. (2015). Fronto-striatal  
563 glutamatergic compounds in compulsive and impulsive syndromes: A review of magnetic  
564 resonance spectroscopy studies. *Neurosci. Biobehav. Rev.* doi:  
565 10.1016/j.neubiorev.2015.02.009.
- 566 Nelson, M. B., O'Neil, S. H., Wisnowski, J. L., Hart, D., Sawardekar, S., Rauh, V., et al. (2019).  
567 Maturation of brain microstructure and metabolism associates with increased capacity for  
568 self-regulation during the transition from childhood to adolescence. *J. Neurosci.* doi:  
569 10.1523/jneurosci.2422-18.2019.
- 570 Orekhova, E. V., and Stroganova, T. A. (2014). Arousal and attention re-orienting in autism  
571 spectrum disorders: Evidence from auditory event-related potentials. *Front. Hum. Neurosci.*  
572 doi: 10.3389/fnhum.2014.00034.
- 573 Penny, W., Friston, K., Ashburner, J., Kiebel, S., and Nichols, T. (2007). *Statistical Parametric*  
574 *Mapping: The Analysis of Functional Brain Images*. doi: 10.1016/B978-0-12-372560-  
575 8.X5000-1.
- 576 Perlov, E., Philipsen, A., Matthies, S., Drieling, T., Maier, S., Bubl, E., et al. (2009).  
577 Spectroscopic findings in attention-deficit/hyperactivity disorder: Review and meta-analysis.  
578 *World J. Biol. Psychiatry*. doi: 10.1080/15622970802176032.
- 579 Piro, J. M. (1998). Handedness and intelligence: Patterns of hand preference in gifted and  
580 nongifted children. *Dev. Neuropsychol.* doi: 10.1080/87565649809540732.
- 581 Porges, E. C., Jensen, G., Foster, B., Edden, R. A. E., and Puts, N. A. J. (2021). The trajectory  
582 of cortical gaba across the lifespan, an individual participant data meta-analysis of edited  
583 mrs studies. *Elife*. doi: 10.7554/eLife.62575.
- 584 Provencher, S. W. (2001). Automatic quantitation of localized in vivo 1H spectra with LCModel.  
585 *NMR Biomed.* doi: 10.1002/nbm.698.

- 586 Pugh, K. R., Frost, S. J., Rothman, D. L., Hoeft, F., Del Tufo, S. N., Mason, G. F., et al. (2014).  
587 Glutamate and choline levels predict individual differences in reading ability in emergent  
588 readers. *J. Neurosci.* doi: 10.1523/JNEUROSCI.3907-13.2014.
- 589 Rossi, A. F., Pessoa, L., Desimone, R., and Ungerleider, L. G. (2009). The prefrontal cortex and  
590 the executive control of attention. in *Experimental Brain Research* doi: 10.1007/s00221-  
591 008-1642-z.
- 592 Rutter Bailey, A., & Lord, C., M. (2003). Manual of the Social Communication Questionnaire.  
593 *Los Angeles, CA.*
- 594 Schmitz, N., Daly, E., and Murphy, D. (2007). Frontal anatomy and reaction time in Autism.  
595 *Neurosci. Lett.* doi: 10.1016/j.neulet.2006.07.077.
- 596 Smith, A. B., Taylor, E., Brammer, M., and Rubia, K. (2004). Neural Correlates of Switching Set  
597 as Measured in Fast, Event-Related Functional Magnetic Resonance Imaging. *Hum. Brain*  
598 *Mapp.* doi: 10.1002/hbm.20007.
- 599 Stockman, J. A. (2013). Neuron Number and Size in Prefrontal Cortex of Children With Autism.  
600 *Yearb. Pediatr.* doi: 10.1016/j.yped.2011.12.022.
- 601 Stoner, R., Chow, M. L., Boyle, M. P., Sunkin, S. M., Mouton, P. R., Roy, S., et al. (2014).  
602 Patches of Disorganization in the Neocortex of Children with Autism. *N. Engl. J. Med.* doi:  
603 10.1056/nejmoa1307491.
- 604 Supekar, K., Uddin, L. Q., Khouzam, A., Phillips, J., Gaillard, W. D., Kenworthy, L. E., et al.  
605 (2013). Brain Hyperconnectivity in Children with Autism and its Links to Social Deficits. *Cell*  
606 *Rep.* doi: 10.1016/j.celrep.2013.10.001.
- 607 Varghese, M., Keshav, N., Jacot-Descombes, S., Warda, T., Wicinski, B., Dickstein, D. L., et al.  
608 (2017). Autism spectrum disorder: neuropathology and animal models. *Acta Neuropathol.*  
609 doi: 10.1007/s00401-017-1736-4.
- 610 Wei, H., Alberts, I., and Li, X. (2014). The apoptotic perspective of autism. *Int. J. Dev. Neurosci.*  
611 doi: 10.1016/j.ijdevneu.2014.04.004.
- 612 Werker, J. F., and Hensch, T. K. (2015). Critical periods in speech perception: New directions.  
613 *Annu. Rev. Psychol.* doi: 10.1146/annurev-psych-010814-015104.
- 614 Wiguna, T., Guerrero, A. P. S., Wibisono, S., and Sastroasmoro, S. (2012). Effect of 12-week  
615 administration of 20-mg long-acting methylphenidate on Glu/Cr, NAA/Cr, Cho/Cr, and  
616 ml/Cr ratios in the prefrontal cortices of school-age children in Indonesia: A study using 1H  
617 Magnetic Resonance Spectroscopy (MRS). *Clin. Neuropharmacol.* doi:  
618 10.1097/WNF.0b013e3182452572.
- 619 Wilson, M., Andronesi, O., Barker, P. B., Bartha, R., Bizzi, A., Bolan, P. J., et al. (2019).  
620 Methodological consensus on clinical proton MRS of the brain: Review and  
621 recommendations. *Magn. Reson. Med.* doi: 10.1002/mrm.27742.
- 622