

1 **Full title**

2 Sexual risk-taking behavior amongst emerging adults in Africa: a systematic review and meta-  
3 analysis

4 **Short title**

5 Sexual behavior amongst emerging adults in Africa: systematic review

6 **Authors**

7 Stevenson K. Chea<sup>1, 2, 3\*</sup>, Vincent A. Kagonya<sup>4</sup>, Osman Abdullahi<sup>5</sup>, Amina A. Abubakar<sup>4, 5, 6, 7</sup>,  
8 Souheila Abbeddou<sup>3</sup>, Kristien Michielsens<sup>2</sup> and Amin S. Hassan<sup>4, 5</sup>

9 **Affiliations**

10 <sup>1</sup>Department of Nursing Sciences, School of Health and Human Sciences, Pwani University,  
11 Kilifi, Kenya

12 <sup>2</sup>International Centre for Reproductive Health, Department of Public Health and Primary Care,  
13 Faculty of Medicine and Health Sciences, Ghent University, Ghent, Belgium

14 <sup>3</sup>Public Health Nutrition Unit, Department of Public Health and Primary Care, Faculty of  
15 Medicine and Health Sciences, Ghent University, Ghent, Belgium

16 <sup>4</sup>Centre for Geographic Medicine Research, Kenya Medical Research Institute, Kilifi, Kenya

17 <sup>5</sup>Department of Public Health, School of Health and Human Sciences, Pwani University, Kilifi,  
18 Kenya

19 <sup>6</sup>Department of Psychiatry, University of Oxford, Oxford, United Kingdom

20 <sup>7</sup>Institute for Human Development, Aga Khan University, Nairobi, Kenya

21 **\*Corresponding Author**

22 E-mail: [cheastevenson@gmail.com](mailto:cheastevenson@gmail.com) (SC)

23 ORCHID: 0000-0002-8096-711X

24

NOTE: This preprint reports new research that has not been certified by peer review and should not be used to guide clinical practice.

## 25 **Abstract**

## 26 **Background**

27 Incidence of HIV and other sexually transmitted infections (STIs) among emerging adults  
28 (EmA) is high in some African settings. Estimates on sexual risk-taking behavior (SRTB)  
29 among EmA is varied in literature, which presents a challenge when designing targeted  
30 interventions. We aimed to review and summarize literature on prevalence and risk factors of  
31 SRTB among EmA in Africa.

## 32 **Methods**

33 A search for studies published in PubMed, Embase and Psych Info involving EmA (18 – 25  
34 years), conducted in Africa and reporting one or more SRTB was done. Pooled prevalence  
35 estimates were summarized using forest plots. Heterogeneity in SRTB was explored by sex,  
36 geographic region, year of publication and outcome definition. Risk factors were synthesized  
37 using a modified socio-ecological model.

## 38 **Results**

39 Overall, 117 studies were analyzed. Non-condom use had the highest pooled prevalence  
40 (46.0% [95% CI: 14.0-51.0]), followed by study-defined SRTB (37.0% [95% CI: 23.0 -51.0]),  
41 concurrency (35.0% [95% CI: 19.0-53.0]), multiple sex partnerships (30.0% [95% CI: 24.0-  
42 37.0]), younger age at sexual debut (25.0% [95% CI: 19.0- 31.0]), age disparate relationships  
43 (24.0% [95% CI: 17.0-32.0]) and transactional sex (17.0% [95% CI: 11.0-24.0]). In four of the  
44 seven outcomes, heterogeneity was partially explained by sex, with female participants having  
45 higher pooled prevalence estimates compared to their male counterparts. In four of the seven  
46 outcomes, alcohol/drug use was the most common risk factor.

## 47 **Conclusions**

48 SRTB was common among EmA and differentially higher in emerging female adults. Non-  
49 condom use had the highest pooled prevalence, which may contribute to the propagation of  
50 HIV and other STIs in this population. Interventions targeting emerging female adults and  
51 alcohol/drug use may reduce SRTB, which may in-turn mitigate propagation of HIV and other  
52 STIs among EmA in Africa.

53

54 **Key words:** Sexual risk-taking, emerging adults

## 55 **Background**

56 HIV-1 transmission in the general population in sub-Saharan Africa (sSA) is estimated to have  
57 declined from 1.4 million in 2010 to 800,000 in 2019 [1]. However, new HIV-1 infections  
58 among young adults continue to raise concerns as they are estimated to contribute 31% of new  
59 infections in sSA in 2019 [1]. Earlier studies from Mozambique, Uganda, Tanzania and  
60 Zimbabwe indicate that sexual risk-taking behavior (SRTB) is highly prevalent among EmA  
61 [2-6]. Literature suggests a positive linear association between SRTB and STIs, including HIV  
62 [7], which may partially explain the high rates of STIs, including HIV-1 infection among EmA  
63 in Africa.

64 Emerging adulthood is a relatively new concept of development for the period from late teens  
65 through the early twenties, with a focus on ages 18-25 years [8]. During this time,  
66 experimentation that began in adolescence intensifies [9]. Emerging adulthood is a distinct  
67 period demographically [10], subjectively and in terms of identity explorations [9].  
68 Demographically, the transition from teenage hood into emerging adulthood is characterized  
69 with a move from parents' houses to a semi-autonomous life [11]. Subjectively, EmA feel they  
70 have left adolescence but have not yet completely transitioned into adulthood [12]. Lastly,  
71 emerging adulthood is the period of life that offers most opportunity for identity explorations  
72 in the areas of work and relationships [13]. Identity formation involves trying out various life  
73 possibilities and gradually moving towards making enduring decisions and commitments.  
74 Romantic relationships at this age often include sexual intercourse [14], which likely exposes  
75 EmA to SRTB.

76 Another notable characteristic in emerging adulthood is SRTB. Evidence from the USA  
77 suggests that the prevalence of SRTB was higher during emerging adulthood (31.8%)  
78 compared to adolescence (21.6%) [15]. Literature on SRTB amongst EmA suggests that  
79 outcomes remain varied in estimates. For example, a recent systematic review has shown that

80 SRTB among youth in Africa range from 3% in Zimbabwe to 89% in Uganda [16]. The review  
81 however did not focus on EmA only as it included studies that recruited HIV-1 infected  
82 individuals aged 10-24 years. In this review, the most common SRTB was non-condom use at  
83 88.7% [16]. Another systematic review mainly focused on adolescents and reported prevalence  
84 of non-condom use ranging from 35-55% [17]. Importantly and in both studies, the potential  
85 explanation for the wide variation in SRTB prevalence estimates was not explored. Variations  
86 in SRTB estimates present a challenge in the design and implementation of effective and  
87 targeted interventions. We aimed to systematically review and summarize comparable  
88 literature on prevalence and risk factors of SRTB among EmA in Africa.

## 89 **Methods**

### 90 **Search strategy**

91 Literature published on PubMed, Embase, and Psych Info up to April 2020 was searched. The  
92 search was done using relevant key concepts and search terms based on the Population,  
93 Exposure, Comparison, Outcome and Setting (PECOS) approach (File S1). To identify articles  
94 that may have been missed in the search, snowballing was used to search reference lists of all  
95 eligible articles. The preferred reporting items for systematic reviews and meta-analyses  
96 (PRISMA) guidelines were used in reporting the methods and findings [18, 19]. The protocol  
97 for this systematic review was registered on PROSPERO (registration number  
98 CRD42020150075).

99

### 100 **Eligibility**

101 Eligibility criteria for inclusion of studies in the review were: (i) participants 18-25 years old  
102 (or mean and/or median age within 18-25 years, or outcome data reported in an eligible sub-  
103 population), (ii) quantified any SRTB assessed as a primary or secondary outcome, (iii)  
104 conducted in Africa, (iv) observational studies, and (v) published in English. Two investigators  
105 (SC and VAK) screened all the articles by title/abstract then by full text for eligibility.  
106 Disagreements on eligibility were settled through consultation and consensus building.

107

### 108 **Outcome definition**

109 The primary outcome was SRTB. Studies reporting one or more of six different variants or  
110 sub-variants of SRTB including: non-condom use, multiple sex partnerships, transactional sex,  
111 younger age at sexual debut, concurrency and age disparate relationships were assessed. In  
112 cases where studies reported two or more SRTBs combined as one outcome, we reported this

113 separately as “study-defined SRTB”. Thus, and all-together, seven SRTB outcomes were  
114 assessed.

115

## 116 **Data extraction**

117 Eligible articles were reviewed and relevant data extracted. These included author details, year  
118 of publication, sample size, study design, study setting, participants’ sex and age. Outcome-  
119 specific data included definition of the outcome, prevalence estimate, all the risk factors that  
120 were assessed and risk factors reported to be significantly associated with the outcome. In  
121 studies that reported different variants of an outcome, prevalence estimates for both the  
122 outcome and its variants were extracted only if the outcome definitions differed based on the  
123 recall period (e.g. main outcome [non-condom use in the past one year]; variant [non-condom  
124 use in the past 6 months]). Where the recall period was similar or not specified (e.g. main  
125 outcome [non-condom use with casual partner]; variant [non-condom use with regular  
126 partner]), only the prevalence estimate of the main outcome, as defined in the study objectives,  
127 was extracted. In studies where outcome data were stratified by sex, estimates were collapsed  
128 to obtain an overall estimate. Similarly, for such studies, factors reported to be significantly  
129 associated with reported outcomes were extracted only if they were significant in both sexes  
130 with a similar direction of association. This approach was taken to ensure consistency in  
131 reporting of risk factors. Data abstraction was independently conducted by two investigators  
132 (SC and VK) and a comparison of results done. Disagreements were settled through  
133 consultations and consensus building.

134

## 135 **Quality assessment**

136 The quality assessment tool for systematic reviews of observational studies (QATSO) was used  
137 to appraise the quality of eligible studies. The QATSO tool has been shown to be practical,

138 simple, and easy when reviewing observational studies in the context of health risk outcomes  
139 and has been shown to have good inter-rater reliability [20]. During data extraction, each study  
140 that met the inclusion criteria was reviewed against the five risk-of-bias items that check on  
141 external validity (1 item), bias (1 item), reporting (2 items), and confounding (1 item). Items  
142 were coded and scored as 1 if the condition was met and 0 if not. The summed score was then  
143 divided by the total number of all applicable items. Next, the resultant score was converted to  
144 a percentage that guided the generation of a ‘traffic light’ rating of a study as “Poor” (less than  
145 33%), “Satisfactory” (33-66%), or “Good” (greater than 66%). All eligible studies regardless  
146 of quality score were included in analysis.

147

## 148 **Data analysis**

149 Prevalence estimates from the seven pre-determined SRTB outcomes were summarized and  
150 presented using forest plots. Heterogeneity in the prevalence estimates was further explored by  
151 sex, geographical region where studies were conducted, year of publication, and outcome  
152 definition. Weighted individual proportions and their variances were first computed. Since  
153 proportional data from observational studies is often skewed [21], observed proportions from  
154 individual studies were then transformed using the double arcsine transformation [22].  
155 Secondly, the transformed proportions and their sampling variances were pooled to generate  
156 summary proportions. To consider within and between study variances and to allow  
157 generalizability of the findings, random effect models were used to calculate the summary  
158 proportions [23]. Random effects modeling was estimated using the DerSimonian and Laird  
159 method. In this method, the summary proportion was estimated as the weighted average of the  
160 observed proportion of individual studies where the weighting for each study is the inverse of  
161 the total variance of a study [24]. In this case, total variance was the sum of within study and  
162 between study variance. Finally, the transformed proportions were converted back and pooled



163 prevalence estimates reported. Analysis was performed in Stata 15.0 (StataCorp.2017. Stata  
164 Statistical Software: Release 15. College Station, TX: StataCorp LLC. 2019).  
165 Risk factors of each SRTB outcome were synthesized, summarized, and grouped into five  
166 thematic categories based on a modified socio-ecological model [25, 26]: (i) Socio-  
167 demographic, (ii) relationship and behavioral, (iii) knowledge, attitude and beliefs, (iv) family  
168 and community and (v) mental and physical health factors. For studies that reported variants  
169 of the outcomes, only risk factors from the main SRTB outcome were included in the synthesis.

## 170 **Results**

### 171 **Characteristics of eligible studies**

172 From the three databases, we obtained a combined 4,280 hits (PubMed [n=720], Psych info  
173 [n=1,323] and Embase [n=2,237]) of which 1,139 were duplicates. A further 3,024 articles  
174 were also excluded. The remaining 117 articles met all eligibility criteria and were included  
175 in the analysis (Fig 1). Overall, eligible studies comprised 163,251 EmA, with sample sizes  
176 ranging from 50 to 27,757 participants. In summary, majority of eligible studies were published  
177 after 2010 (n=89 [76.1%]), used a cross sectional study design (n=109 [93.2%]), had a sample  
178 size of less than 1000 participants (n= 75 [64.1%]), recruited both male and female participants  
179 (n=81 [69.2%]), and were from the Eastern Africa region (n=57 [48.7%]) (Table 1). The most  
180 reported SRTB outcome was non-condom use (n=93 [79.5%]). Overall, 36 (30.7%) studies  
181 reported SRTB outcomes and their variants. Based on the QATSO, a majority of studies had a  
182 good quality score (n=91 [77.8%]) (Table 2).

183

184

185

186

187

188

189

190

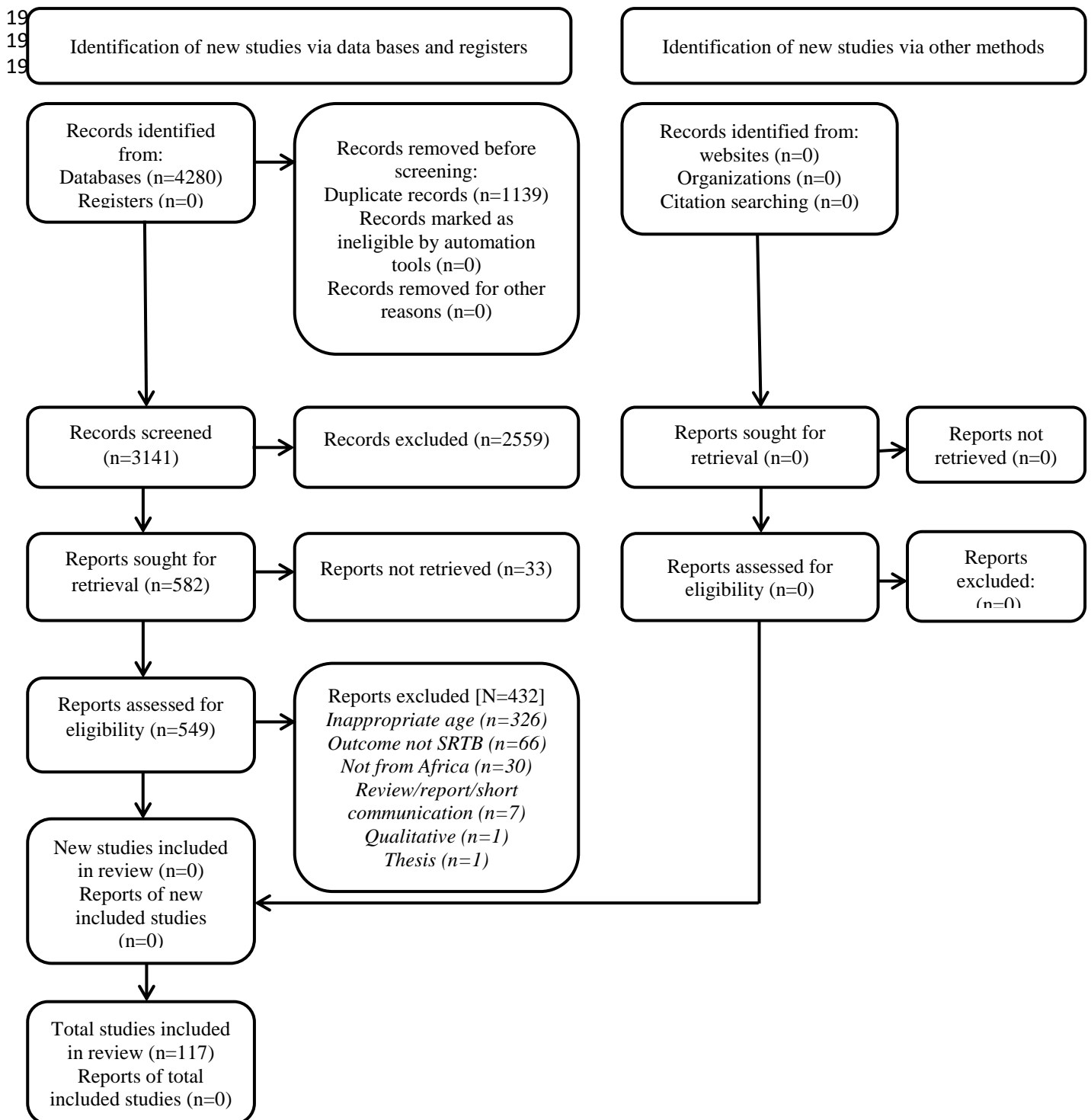
191

192

193

194

195 **Fig 1: PRISMA flow chart illustrating how number of articles included in analysis was arrived at**



199 **Table 1: Description of studies included in the analysis by year of publication, study design, African region in which individual studies were**  
 200 **conducted, sample size and sex of study participants (n=117)**  
 201

	Non-condom use (n=93)	Multiple sex partners (n=69)	Transactional sex (n=31)	Younger age at sexual debut (n=31)	Concurrency (n=13)	Age-disparate relationship (n=12)	Study-defined SRTB (n=14)	Overall (N=117)
<b>Year</b>								
Up to 2009	23 (24.7)	18 (26.1)	11 (35.5)	5 (16.1)	2 (15.4)	0 (0.0)	4 (28.6)	28 (23.9)
2010-2020	70 (75.3)	51 (73.9)	20 (64.5)	26 (83.9)	11 (84.6)	12 (100.0)	10 (71.4)	89 (76.1)
<b>Design</b>								
Cross sectional	87 (93.5)	64 (92.7)	30 (96.8)	30 (96.8)	11 (84.6)	11 (91.7)	13 (92.9)	109 (93.2)
Cohort	6 (6.5)	5 (7.3)	1 (3.2)	1 (3.2)	2 (15.4)	1 (8.3)	1 (7.1)	8 (6.8)
<b>*African Region</b>								
EA	44 (47.3)	35 (50.7)	15 (48.4)	17 (54.8)	4 (30.8)	6 (50.0)	7 (50.0)	57 (48.7)
SA	27 (29.0)	18 (26.1)	11 (35.5)	6 (19.4)	6 (46.2)	5 (41.7)	5 (35.7)	34 (29.1)
WA/CA/NA	21 (22.6)	14 (20.3)	5 (16.1)	8 (25.8)	3 (23.0)	1 (8.3)	2 (14.3)	24 (20.5)
MR	1 (1.1)	2 (2.9)	0 (0)	0 (0)	0 (0)	0 (0)	0 (0.0)	2 (1.7)
<b>Sample</b>								
Up to 1000	62 (66.7)	44 (63.8)	23 (74.2)	19 (61.3)	9 (69.2)	8 (66.7)	6 (42.9)	75 (64.1)
1001+	31 (33.3)	25 (36.2)	8 (25.8)	12 (38.7)	4 (30.8)	4 (33.3)	8 (57.1)	42 (35.9)
<b>Sex</b>								
Male & female	67 (72.0)	56 (81.2)	24 (77.4)	21 (67.7)	6 (46.2)	7 (58.3)	13 (92.9)	81 (69.2)
Male only	8 (8.6)	3 (4.3)	3 (9.7)	2 (6.5)	5 (38.4)	1 (8.4)	1 (7.1)	13 (11.1)
Female only	18 (19.4)	10 (14.5)	4 (12.9)	8 (25.8)	2 (15.4)	4 (33.3)	0 (0.0)	23 (19.7)

202  
 203 \*African sub-regions as grouped by United Nations Geo-scheme for Africa to include Eastern Africa (EA), Southern Africa (SA), Western Africa (WA), Central  
 204 Africa (CA), Northern Africa (NA) and Multiple regions (MR; conducted in several countries belonging to more than one region).

205 **Table 2: Distribution of studies included in analysis by their quality as assessed using the**  
206 **QUATSO tool (n=117)**

Quality score (%)	Quality assessment	Number of studies n (%)
<33	Poor	6 (5.1)
33-66	Satisfactory	20 (17.1)
>66	Good	91 (77.8)

207

208

## 209 **Pooled prevalence and risk factors of sexual risk-taking behavior**

### 210 **i) Non-condom use**

211 Overall, 93 (79.5%) studies reported non-condom use, thirty of which comprised a cumulative  
212 forty-four sub-variants of the outcome yielding 137 records. Non-condom use at last sexual  
213 encounter was the most used definition (n=42 [30.7%]) (S1 Table). The pooled prevalence of  
214 non-condom use was 46.0% (95% CI: 41.0-51.0) (A in S1 Fig). There was significant  
215 heterogeneity between studies ( $I^2=99.7%$ ,  $p<0.01$ ), with female-only studies and both-sex  
216 studies (compared to male-only studies,  $p=0.04$ ), studies from the Eastern Africa region  
217 (compared to other regions,  $p<0.01$ ) and studies published before 2010 (compared to those  
218 published after 2010,  $p=0.01$ ) having significantly higher pooled estimates (Table 3 and B, C,  
219 D and E in S1 Fig).

220 Of the 93 studies, 57 (61.2%) assessed risk factors for non-condom use (S2 Table). Of these,  
221 42 reported at least one significant factor associated with non-condom use. Alcohol/illicit drug  
222 use was the most common risk factor for non-condom use (n=13 studies) (Table 4).

223  
224  
225

**Table 3: Overall pooled prevalence estimates of the seven SRTB outcomes assessed in the current review as well as pooled estimates by sex of study participants, African region where studies were conducted, year of publication and definition of individual SRTB outcomes in primary studies; and outstanding/frequently reported risk factors and their categories for all outcomes and their variants in the included studies (n=117)**

	Non-Condom use (n=93)	Multiple sex partners (n=69)	Transactional sex (n=31)	Younger age at sexual debut (n=31)	Concurrency (n=13)	Age-disparate relationship (n=12)	Study defined SRTB (n=14)
<b>Total records</b>	137	74	32	31	13	12	14
Pooled prevalence, % (95% CI)	46 (41-51)	30 (24-37)	17 (11-24)	25 (19-31)	35 (19-53)	24 (17-32)	37 (23-51)
Total heterogeneity, % (p value)	99.7 (p<0.01)	99.7 (p<0.01)	99.2 (p<0.01)	99.1 (p<0.01)	99.6 (p<0.01)	98.4 (p<0.01)	99.6 (p<0.01)
<b>Sub-group analysis by sex</b>							
<i>Both male &amp; female</i>							
Pooled prevalence (%); 95% CI	47 (41-53)	30 (23-37)	13 (7-20)	23 (17-29)	24 (17-32)	23 (15-32)	39 (25-53)
Heterogeneity (%); p value	99.7 (p<0.01)	99.8 (p<0.01)	99.1 (p<0.01)	98.9 (p<0.01)	95.7 (p<0.01)	98.1 (p<0.01)	99.5 (p<0.01)
<i>Male</i>							
Pooled prevalence (%); 95% CI	29 (18-42)	40 (3-85)	28 (13-45)	29 (26-33)	57 (18-91)	3 (1-6) ***	13 (11-14) ***
Heterogeneity (%); p value	99.2 (p<0.01)	*	*	*	99.8 (p<0.01)	*	*
<i>Female</i>							
Pooled prevalence (%); 95% CI	47 (39-55)	29 (18-41)	32 (16-52)	29 (11-51)	16 (12-20)	34 (24-45)	
Heterogeneity (%); p value	99.2 (p<0.01)	98.9 (p<0.01)	99.0 (p<0.01)	99.4 (p<0.01)	*	97.1 (p<0.01)	
Heterogeneity between groups (p value)	p=0.04	p=0.91	p=0.04	p=0.21	p=0.02	p<0.01	p<0.01
<b>Sub-group analysis by region where study was conducted</b>							
<i>Eastern Africa</i>							
Pooled prevalence (%); 95% CI	49 (43-55)	28 (23-34)	14 (8-22)	20 (15-25)	49 (14-86)	31 (24-38)	30 (18-43)
Heterogeneity (%); p value	99.4 (p<0.01)	98.8 (p<0.01)	98.6 (p<0.01)	97.4 (p<0.01)	99.8 (p<0.01)	95.8 (p<0.01)	99.1 (p<0.01)
<i>Western/Central/Northern Africa</i>							
Pooled prevalence (%); 95% CI	48 (37-59)	33 (15-54)	19 (13-25)	39 (18-62)	21 (12-31)	29 (25-34) ***	39 (37-42)
Heterogeneity (%); p value	99.7 (p<0.01)	99.8 (p<0.01)	91.8 (p<0.01)	99.5 (p<0.01)	*	*	*
<i>Southern Africa</i>							
Pooled prevalence (%); 95% CI	36 (27-44)	33 (24-43)	20 (8-36)	24 (14-34)	33 (9-64)	16 (7-28)	47 (17-78)
Heterogeneity (%); p value	99.4 (p<0.01)	99.3 (p<0.01)	99.6 (p<0.01)	99.2 (p<0.01)	99.7 (p<0.01)	98.6 (p<0.01)	99.8 (p<0.01)
<i>Multiple regions</i>							
Pooled prevalence (%); 95% CI	82 (81-83) ***	17 (16-17)					
Heterogeneity (%); p value	*	*					
Heterogeneity between groups (p value)	p<0.01	p<0.01	p=0.60	p=0.19	p=0.29	p=0.10	p=0.37
<b>Sub-group analysis by year of publication</b>							
<i>Up to 2009</i>							
Pooled prevalence (%); 95% CI	57 (48-66)	27 (19-36)	16 (6-29)	17 (13-21)	36 (34-38)	**	33 (5-70)
Heterogeneity (%); p value	99.6 (p<0.01)	99.2 (p<0.01)	99.5 (p<0.01)	94.8 (p<0.01)	*	**	99.8 (p<0.01)
<i>2010-2020</i>							
Pooled prevalence (%); 95% CI	43 (37-49)	31 (23-40)	17 (10-25)	27 (19-35)	33 (16-53)	**	38 (23-55)
Heterogeneity (%); p value	99.7 (p<0.01)	99.8 (p<0.01)	98.9 (p<0.01)	99.1 (p<0.01)	99.5 (p<0.01)	**	99.5 (p<0.01)

Heterogeneity between groups (p value)	p=0.01	p=0.46	p=0.90	p=0.02	p=0.81	**	p=0.79
<b>Sub-group analysis by outcome definition</b>							
<i>12 months or less</i>							
Pooled prevalence (%); 95% CI	43 (34-53)	28 (24-32)	20 (9-36)		47 (22-73)		28 (11-49)
Heterogeneity (%); p value	99.5 (p<0.01)	99.1 (p<0.01)	98.9 (p<0.01)		99.4 (p<0.01)		99.7 (p<0.01)
<i>Unspecified recall period</i>							
Pooled prevalence (%); 95% CI	47 (36-58)	42 (25-59)	16 (8-25)		22 (6-44)		65 (40-86)
Heterogeneity (%); p value	99.7 (p<0.01)	99.5 (p<0.01)	99.3 (p<0.01)		99.7 (p<0.01)		*
<i>Lifetime/ever</i>							
Pooled prevalence (%); 95% CI		30 (20-41)	13 (4-27)				
Heterogeneity (%); p value		98.4 (p<0.01)	98.4 (p<0.01)				
<i>Last sex</i>							
Pooled prevalence (%); 95% CI	45 (36-53)						
Heterogeneity (%); p value	99.6 (p<0.01)						
<i>Never/first sex</i>							
Pooled prevalence (%); 95% CI	50 (39-61)						
Heterogeneity (%); p value	99.5 (p<0.01)						
<i>First sex before age 18 years</i>							
Pooled prevalence (%); 95% CI				24 (19-29)			
Heterogeneity (%); p value				98.7 (p<0.01)			
<i>First sex at age 18-20 years</i>							
Pooled prevalence (%); 95% CI				32 (6-68)			
Heterogeneity (%); p value				99.6 (p<0.01)			
<i>Age difference 4 years or more</i>							
Pooled prevalence (%); 95% CI						26 (19-33)	
Heterogeneity (%); p value						97.0 (p<0.01)	
<i>Age difference unspecified</i>							
Pooled prevalence (%); 95% CI						12 (11-13)	
Heterogeneity (%); p value						*	
<i>Lifetime/ever/last sex</i>							
Pooled prevalence (%); 95% CI							33 (25-41)
Heterogeneity (%); p value							*
Heterogeneity between groups (p value)	p=0.81	p=0.29	p=0.75	p=0.60	p=0.14	p<0.01	p=0.04

226

\*Three or less studies in sub-group hence no heterogeneity estimates

227

\*\*All studies fall in one category hence no sub-groups

228

\*\*\*Prevalence estimate is for one study only since that is the only study in the sub-group

229  
230  
231

**Table 4: Summary of factors reported to be significantly associated with SRTB outcomes in studies included in analysis grouped in five thematic areas derived from a modified socio-ecological model**

	Non- condom use	Multiple sex partners	Transactional sex	Younger age at sexual debut	Concurrency	Age-disparate relationships	Study-defined SRTB
Socio-demographic factors	Female gender (n=6); low SES/not participating in savings group (n=5); male gender (n=4); older age (n=4); low education/not schooling/being a 1 <sup>st</sup> yr student (n=4); younger age (n=4); rural residence (n=3); being married (n=2); being single (n=1); poor academic performance (n=1); being Christian (n=1)	Male gender (n=7); older age (n=4); being a Christian/catholic (n=3); female gender (n=2); younger age (n=2); urban residence (n=2); not in school/low education (n=2); being single (n=2); low SES (n=1); belonging to nursing department (n=1); being a 1 <sup>st</sup> year student (n=1)	Low education (n=2); low SES (n=2); female gender (n=1); younger age (n=1); male gender (n=1); being married (n=1); rural residence (n=1); older age (n=1)	Low SES (n=2); female gender (n=1); older age (n=1)	Older age (n=1); male gender (n=1); not having slept at parents' home the previous night (n=1)	Being food insecure (n=1); being married (n=1); low SES/poverty (n=1); high SES (n=1)	Older age (n=2); being male (n=2); low education (n=3); urban residence (n=1); being female (n=2); low socioeconomic status (n=1); high SES (n=1); high education (n=1); rural residence (n=1); living in a household at the time of 1 <sup>st</sup> sex (n=1); not attending a religious institution (n=1)
Relationship/behavioural factors	Using alcohol/drugs/having alcohol use expectancy (n=13); experiencing physical/sexual violence (n=5); having had sex/sex partner (n=3); having low intention to engage in safe sex (n=2); not talking to partner about condom (n=2); not experienced physical/sexual violence (n=2); watching porn (n=2); having been pregnant (n=1); not using condom at 1 <sup>st</sup> sex (n=1); having a younger partner (n=1); early sex debut (n=1); having had an unstable 1 <sup>st</sup> partner (n=1); late sex debut (n=1); having relationship problems (n=1)	Drug/alcohol use(n=11); sexual/physical violence/abuse experience(n=5); attending night club (n=4); watching porn (n=3); early sex debut (n=2); not discussing/communicating sexuality (n=1); having partner with huge age difference (n=1); travelling for work (n=1); engaging in transactional sex (n=1); not using condom (n=1); using condom (n=1); engaging in theft/vandalism/fighting/gambling (n=1); peer pressure/having friends with sex experience (n=1)	Drug/alcohol use(n=4); perpetrating IPV (n=2); attending night club (n=1); seeking a relationship with a foreigner (n=1)	Drug/alcohol use(n=1); older 1 <sup>st</sup> partner (n=1); 1 <sup>st</sup> sex partner being a boyfriend (n=1)	Having MSPs (n=2); early sex debut (n=2); alcohol/drug use (n=1); perpetrating IPV (n=1); attending 2 or more sex venues (n=1); living in another town/village (n=1); having a casual/unstable relationship (n=1); having sex frequently; not using condom (n=1); meeting at least 1 sex partner at a venue (n=1)	Nil	Alcohol/drug use (n=5); having relationship problems (n=1); high peer pressure (n=1); watching porn (n=1)



Knowledge, attitude & belief factors	Having false beliefs about condom and HIV (n=3); low knowledge of HIV transmission/low HIV literacy (n=2); believing that partner/close family member hates condom (n=2); not knowing one's HIV status (n=2); low HIV risk perception (n=1); having conservative attitude about gender relations (n=1); approving IPV (n=1); not knowing where to get condom (n=1); low partner risk reduction self-efficacy (n=1); believing that condom prevents HIV (n=1); getting HIV info from friends (n=1); feeling at risk of getting pregnant (n=1)	Not knowing partner HIV status (n=1)	Perceiving oneself to be fashionable (n=1)	Nil	Having more equitable gender norms (n=2); having gender role conflict (n=1)	Nil	Paying no attention to HIV risk/low risk perception (n=1); believing that one is at risk of getting pregnant (n=1); believing that one is at risk of getting HIV (n=1); believing that sexual partner hates condom (n=1); believing that one can take care of HIV+ people without worries (n=1); believing that condom prevents HIV (n=1); getting HIV info from friends (n=1); not being tested for HIV (n=1)
Family & community factors	Low social participation/not belonging to a social network (n=2); household with few residents/having no dependants (n=2); having had caring caregivers while young (n=1); parent with more years of education (n=1)	Low family/community connectedness/parental monitoring/low quality of parent-child relationship (n=2); living with a single mother (n=1); living with grandparent (n=1); living alone (n=1); parents divorced (n=1); not belonging to a social network (n=1); being orphaned (n=1)	Low family connectedness/support/not receiving pocket money from parents (n=1)	Not having a close friend/not belonging to a social network (n=2); not residing with parents (n=1); having moved from an area severally (n=1); living with both parents (n=1); having had caring caregivers at young age (n=1); being from a well-off family (n=1)	Being close to social camps (n=1); camp viewing concurrency as normative behaviour (n=1); living with father only (n=1)	Nil	Living with single parent (n=1); living away from family (n=1); not having marital relationship with household head (n=1); not having family connectedness (n=1); having legal problems (n=1); having serious injury (n=1); being a crime victim (n=1); high household SES (n=1); low household SES (n=1)
Mental/physical health factors	Few VCT counselors in facility (n=1); using private health facility (n=1); having STI (n=1)	Having STIs (n=2); having depression (n=2); not using ARV (n=1); having anxiety (n=1); having psychosis (n=1); having disability (n=1)	Nil	Nil	Nil	Nil	Nil

## 233 **ii) Multiple sex partnerships (MSP)**

234 Overall, 69 (59.0%) studies reported MSP, five of which included sub-variants of the outcome  
235 yielding 74 records. The majority of studies (n=57 [77.0%]) defined the outcome as having  
236 MSP in the last 12 months or less (S1 Table). The pooled prevalence of MSP was 30.0% (95%  
237 CI: 24.0-37.0) (A in S2 Fig). There was significant heterogeneity between studies ( $I^2=99.7\%$ ,  
238  $p<0.01$ ), with studies from both the Western Africa/Central Africa/Northern Africa  
239 (WA/CA/NA) and Southern Africa (SA) regions having equal and significantly higher pooled  
240 prevalence estimates compared to the other regions ( $p=0.01$ ) (Table 3 and B, C, D and E in S2  
241 Fig).

242 Of the 69 studies, 35 (50.7%) assessed risk factors for MSP (S2 Table). Of these, 27 reported  
243 at least one significant factor associated with MSP. Alcohol/illicit drug use was the most  
244 common risk factor for MSP (n=11 studies) (Table 4).

## 245 **iii) Transactional sex (TS)**

246 Overall, 31 (26.5%) studies reported TS, one of which included a sub-variant of the outcome  
247 yielding 32 records. The majority of studies (n=18 [56.3%]) defined TS without including a  
248 recall period (S1 Table). The pooled prevalence of TS was 17.0% (95% CI: 11.0-24.0) (A in  
249 S3 Fig). There was significant heterogeneity between studies ( $I^2=99.2\%$ ,  $p<0.01$ ), with female-  
250 only studies (compared to male-only studies and both-sex studies,  $p=0.04$ ) having significantly  
251 higher prevalence estimates (Table 3 and B, C, D and E in S3 Fig).

252 Of the 31 studies, 12 (38.7%) assessed risk factors for TS (S2 Table). Of these, 11 reported at  
253 least one significant factor associated with TS. Alcohol/illicit drug use was the most common  
254 risk factor for TS (n=4 studies) (Table 4).

## 255 **iv) Younger age at sexual debut (YASD)**

256 Overall, 31 (26.5%) studies reported YASD. None included a sub-variant of the outcome. The  
257 majority of studies (n=26 [83.9%]) defined YASD as having first sex before the age of 18 years

258 (S1 Table). The pooled prevalence of YASD was 25.0% (95% CI: 19.0-31.0) (A in S4 Fig).  
259 There was significant heterogeneity between studies ( $I^2=99.1\%$ ,  $p<0.01$ ), with studies  
260 published after 2010 having higher pooled prevalence estimate, compared to those published  
261 prior 2010 ( $p=0.02$ ) (Table 3 and B, C, D and E in S4 Fig).  
262 Of the 31 studies, 10 (32.2%) assessed risk factors for YASD (S2 Table). Of these, 6 reported  
263 at least one significant factor associated with YASD. Low socioeconomic status and not  
264 belonging to a social network were the two outstanding risk factors for YASD (n=2 studies  
265 each) (Table 4).

#### 266 **v) Concurrency**

267 Overall, 13 (11.1%) studies reported concurrency. None included a sub-variant of the outcome,  
268 yielding 13 records. The majority of studies defined concurrency as having concurrent sexual  
269 partners in the last 12 months or less (n=7 [53.9%]) (S1 Table). The pooled prevalence of  
270 concurrency was 35.0% (95% CI: 19.0-53.0) (A in S5 Fig). There was significant heterogeneity  
271 between studies ( $I^2=99.6\%$ ,  $p<0.01$ ), with male-exclusive studies (compared to female-  
272 exclusive studies and both-sex studies,  $p<0.02$ ) having higher pooled estimates (Table 3 and  
273 B, C, D and E in S5 Fig).  
274 Of the 13 studies, 9 (69.2%) assessed risk factors for concurrency (S2 Table). Of these, 7  
275 reported at least one significant factor associated with concurrency. Having multiple sex  
276 partners, younger age at sexual debut and having equitable gender norms were standing out as  
277 risk factors for concurrency, (n=2 studies each) (Table 4).

#### 278 **vi) Age-disparate relationships**

279 Overall, 12 (10.2%) studies reported age-disparate relationships. None included a sub-variant  
280 of the outcome, yielding 12 records. The majority of studies defined age-disparate relationships  
281 as an age difference of four years or more between sexual partners (n=10 [83.3%]) (S1 Table).  
282 The pooled prevalence of age-disparate relationships was 24.0% (95% CI: 17.0-32.0) (A in S6

283 Fig). There was significant heterogeneity between studies ( $I^2=98.4\%$ ,  $p<0.01$ ), with female-  
284 exclusive studies (compared to male-exclusive studies and both-sex studies,  $p<0.01$ ) and  
285 studies using definition of age difference of four or more years between sexual partners  
286 (compared to studies not specifying an age difference between sexual partners,  $p<0.01$ ) having  
287 higher pooled prevalence estimates (Table 3 and B, C, D and E in S6 Fig).

288 Of the 12 studies, only 3 (25.0%) assessed risk factors for age-disparate relationships (S2  
289 Table). Of these, two reported at least one significant factor associated with age-disparate  
290 relationships. Being food insecure, being married, low socio-economic status and high socio-  
291 economic status were each reported to be significantly associated with age-disparate  
292 relationships (n=1 study each).

### 293 **vii) Study-defined SRTB**

294 Overall, 14 (11.9%) studies reported study-defined SRTB. None included a sub-variant of the  
295 outcome, yielding 14 records. The majority of studies defined the outcome as engaging in  
296 SRTB in the last 12 months or less (n=8 [57.2%]) (S1 Table). The pooled prevalence of study-  
297 defined SRTB was 37.0% (95%CI: 23.0- 51.0) (A in S7 Fig). There was significant  
298 heterogeneity between studies ( $I^2=99.6\%$ ,  $p<0.01$ ), with both-sex studies (compared to male-  
299 exclusive studies,  $p<0.01$ ) and studies defining SRTB with no recall period (compared to  
300 studies defining study-defined SRTB with a recall period of 12 months or less and those  
301 defining it as study-defined SRTB in life-time,  $p=0.04$ ) having higher pooled prevalence  
302 estimates (Table 3 and B, C, D and E in S7 Fig).

303 Of the 14 studies, 13 (92.8%) assessed risk factors for study-defined SRTB (S2 Table). Of  
304 these, 9 reported at least one significant factor associated with study-defined SRTB.  
305 Alcohol/illicit drug use was the most common risk factor for study-defined SRTB (n=5 studies)  
306 (Table 4).

## 307 **Discussion**

308 Estimates of SRTB are varied in literature. We aimed to systematically review and summarize  
309 prevalence and risk factors of SRTB among EmA in Africa. Consistent with previous reviews  
310 from Africa, our overall findings suggest that SRTB in Africa is common, ranging from about  
311 one in every five (transactional sex) to one in every two (non-condom use) EmA engaging in  
312 some form of SRTB.

313 Our findings demonstrate that non-condom use was the most assessed SRTB. This is likely  
314 because it has strongly been associated with HIV and other sexually transmitted infections (1)  
315 and has been reported to be prevalent in populations. Indeed, we observed that about one in  
316 two EmA reported non-condom use. Our estimate is comparable to the 35.0-89.0% prevalence  
317 range reported in reviews of studies among adolescents and young adults from sSA [16, 17],  
318 but much higher than the 27.5% reported among adolescents from the United States [27] and  
319 the 33% reported among female undergraduate students from Vietnam [28].

320 Our review also observed that about one in three EmA from Africa engaged in MSP. While  
321 this may generally be considered high, the estimate is indeed comparable to other reviews  
322 summarizing literature from adolescents and young adults in Africa reporting MSP estimates  
323 ranging from 2.5-88.2% [16, 17]. Further, these are also consistent with the 26.0-31.4%  
324 estimates among adolescents and young adults from the US [29, 30], suggesting that the burden  
325 of MSP among EmA in Africa may be comparable to that from non-African settings.

326 We also observed that about one in six EmA from Africa reported TS. While this may be  
327 considered comparable to another review reporting a pooled prevalence of 20.1% among HIV-  
328 infected adolescents in sSA [31], the combined estimates are much lower compared to the 20.6-  
329 60.0% range reported in another review involving HIV-infected adolescents aged 10-24 years  
330 from sSA [16]. Further, a study of HIV-infected adolescents and young men who have sex with  
331 men (MSM) from the USA reported a 27.8% prevalence of TS [32] which is higher than our

332 estimate. The distinct difference in estimates reported in the three reviews from sSA and the  
333 US study may be a reflection of the complexities involved in the definition of TS in different  
334 African contexts [16] and may warrant development and validation of a standardized and  
335 context relevant approach in the definition of TS in Africa.

336 Our findings also suggest that one in four EmA in Africa initiate sex at a younger age, with  
337 most studies using less than 18 years old as YASD. On the one hand, our estimate is  
338 comparatively lower compared to the 25.5-42.1% range reported from another review  
339 involving studies among HIV-infected adolescents aged 10-19 years from sSA [31]. The higher  
340 estimate reported in the latter review may be attributed to the inclusion of studies involving  
341 younger (10-19 years), which is therefore inherently more likely to bias the estimate on the  
342 higher side, compared to our inclusion of EmA aged 18-25 years. On the other hand, our  
343 estimate is comparatively higher compared to the 10% reported from another review involving  
344 studies among HIV-infected adolescents age 10-19 years from sSA [17]. The lower estimate  
345 in the latter review may be attributed to the inclusion of HIV- infected adolescents. By virtue  
346 of their HIV infection status, this population is likely to delay sexual debut, as has been reported  
347 elsewhere [33]. Further, studies from the USA report YASD estimates ranging from 16.0-  
348 28.0% [27, 34], which is consistent to our findings and suggest that YASD is common and  
349 comparable across the two regions.

350 We also observed that about one in three EmA in Africa engage in concurrent sexual  
351 relationships. To our knowledge, we could not find a systematic review of literature on  
352 concurrency amongst adolescents and young adults in Africa. A study from the USA among  
353 African American adolescent females aged 15-21 years reported a concurrency prevalence of  
354 23.3% [30], which is comparatively lower compared to our estimate. Combined, these  
355 estimates may suggest that concurrency is much more common in the African setting, which  
356 may be attributed to low socio-economic status that forces EmA to have concurrent sexual

357 partners for material gain. Indeed, our review shows that engaging in casual sex for monetary  
358 gain stood out as a risk factor for concurrency[35] .

359 We also reported that about one in four EmA in Africa engaged in age-disparate relationships,  
360 with most studies defining this as an age difference of more than four years between sexual  
361 partners. Our estimate was comparable to the range of 4.0-65.7% prevalence reported from a  
362 review of studies among HIV-infected adolescents aged 10-24 years from Africa [16], but  
363 higher compared to the range of 10-17% prevalence reported in three studies among  
364 adolescents and young adults from the USA [36-38]. The higher prevalence of age-disparate  
365 relationships among EmA from Africa may be explained by the low socio-economic status in  
366 the African context, with adolescents and younger adults, mostly from disadvantaged  
367 backgrounds, engaging in relationships with older, more established partners for material gains,  
368 as has been reported elsewhere [39]. Indeed, and in our findings, low socio-economic status  
369 stood out as a risk factor for age-disparate relationships [3, 40].

370 There was significant between-studies heterogeneity in the prevalence estimates across all  
371 seven SRTB outcomes. Most heterogeneity was partially explained by variations from sex,  
372 with female participants having higher pooled prevalence in four of the seven outcomes,  
373 compared to their male counterparts. Differences in the way emerging female adults are  
374 socialized in the African context may have impacted on their increased SRTB [39, 41]. In  
375 addition, low socio-economic status, along with cultural practices like child marriage and  
376 coercion of young girls into early sexual activities with adults are common and may have led  
377 to increased SRTB among emerging female adults [39].

378 Further, alcohol/illicit drug use stood out as the most common risk factor in four of the seven  
379 outcomes. Alcohol/illicit drug use among EmA in African settings is common. Indeed, a review  
380 of studies among 15–24-year-olds in Eastern Africa reported 52.0% median prevalence of ever  
381 using alcohol [42], with some groups like university students reporting up to 89.0% prevalence

382 of alcohol/illicit drug use [42]. Alcohol/substance use is known to impair inhibitory control  
383 [43] and is therefore not surprising that this leads to increased SRTB [43].

384 A major strength of our review is the inclusion of multiple SRTBs. However, our findings are  
385 not without limitations. First, SRTB outcomes were self-reported in most of the eligible studies,  
386 which may have led to an over- or underestimation of outcomes. However, use of Audio  
387 Computer-Assisted Interview (ACASI) for data collection in some of the studies may have  
388 reduced reporting bias [44]. Second, all eligible studies were included in the review regardless  
389 of their quality. Inclusion of low-quality studies may raise concerns on the rigor of our SRTB  
390 estimates. However, only a small proportion of the studies (5.1%) were of low quality, and this  
391 is unlikely to have had a significant impact on the overall findings. Last, the majority (93%) of  
392 studies included in the review were cross-sectional in design, which makes it impossible to  
393 determine directionality of associations for risk factors. However, this was beyond the scope  
394 of the current review. Still, the paucity of longitudinal SRTB studies warrants more rigorous  
395 longitudinal studies to better understand causal pathways and direction of association for risk  
396 factors among EmA in Africa.

397

## 398 **Conclusion and recommendations**

399 Overall, our findings suggest that SRTB among EmA is common in the African setting. Non-  
400 condom use was most frequently assessed and had the highest, while transactional sex had the  
401 lowest pooled prevalence estimate. There was significant between-studies heterogeneity in the  
402 pooled prevalence estimates, with female participants tending to have higher SRTB estimates  
403 than their male counterparts. Alcohol/illicit drug use stood out as the most associated risk factor  
404 for SRTB. Interventions targeting emerging female adults' alcohol/illicit drug use may reduce  
405 SRTB, which may in-turn mitigate propagation of HIV and other STIs amongst EmA in Africa.

406



## 407 **Author contributions**

408 Conceptualization - SC, AH

409 Data curation – SC, AH, VK

410 Formal analysis – SC, AH

411 Funding acquisition – AH, AA

412 Investigation – SC, VK

413 Methodology – SC, AH, KM, SA

414 Project administration – SC, OA

415 Resources – SA, KM

416 Supervision – KM, SA, AH, AA, OA

417 Validation – KM, SA, AH, AA, VK, OA

418 Visualization – SC, AH

419 Writing- original draft preparation – SC

420 Writing – review and editing – KM, SA, AH, AA, VK, OA

421

## 422 **Supporting information**

423 **S1 File. Full search syntax**

424 **S2 File. PRISM 2009 checklist**

425 **S1 Table. Definitions of SRTB outcomes as reported in primary studies.** Table showing

426 definitions of the seven SRTB outcomes as reported in the 117 primary studies and their

427 variants summarized and grouped based on recall period.

428 **S2 Table. Factors assessed for their association with SRTB outcomes.** Table showing

429 Summary of factors assessed for their association with individual SRTB outcomes in studies

430 included in analysis grouped in five thematic areas derived from a modified socio-ecological  
431 model.

432 **S1 Fig. Forest plots showing pooled prevalence of non-condom use.** (A) Forest plot  
433 illustrating pooled prevalence of non-condom use from the 137 records (obtained from 93  
434 studies that assessed non-condom use). (B) Forest plot illustrating pooled prevalence of non-  
435 condom use grouped by sex of the study participants. (C) Forest plot illustrating pooled  
436 prevalence of non-condom use grouped by the African region in which the primary study was  
437 conducted. (D) Forest plot illustrating pooled prevalence of non-condom use grouped by the  
438 year of publication of primary studies. (E) Forest plot illustrating pooled prevalence of non-  
439 condom use grouped by the definition of non-condom use in primary studies.

440 **S2 Fig. Forest plots showing pooled prevalence of multiple sex partners.** (A) Forest plot  
441 illustrating pooled prevalence of multiple sex partners (MSP) from the 74 records (obtained  
442 from 69 studies that assessed MSP). (B) Forest plot illustrating pooled prevalence of MSP from  
443 the 74 records grouped by sex of the study participants. (C) Forest plot illustrating pooled  
444 prevalence of MSP grouped by the African region in which the primary study was conducted.  
445 (D) Forest plot illustrating pooled prevalence of MSP grouped by the year of publication of  
446 primary studies. (E) Forest plot illustrating pooled prevalence of MSP grouped by the definition  
447 of MSP in primary studies.

448 **S3 Fig. Forest plots showing pooled prevalence of transactional sex.** (A) Forest plot  
449 illustrating pooled prevalence of transactional sex (TS) from the 32 records (obtained from 31  
450 studies that assessed TS). (B) Forest plot illustrating pooled prevalence of TS from the 32  
451 records grouped by sex of the study participants. (C) Forest plot illustrating pooled prevalence  
452 of TS grouped by the African region in which the primary study was conducted. (D) Forest  
453 plot illustrating pooled prevalence of TS by year of publication of primary studies. (E) Forest  
454 plot illustrating pooled prevalence of TS grouped by the definition of TS in primary studies.

455 **S4 Fig. Forest plots showing pooled prevalence of younger age at sexual debut.** (A) Forest  
456 plot illustrating pooled prevalence of younger age at sexual debut (YASD) from the 31 studies  
457 that assessed YASD. (B) Forest plot illustrating pooled prevalence of YASD from the 31  
458 studies grouped by sex of the study participants. (C) Forest plot illustrating pooled prevalence  
459 of YASD grouped by the African region in which the primary study was conducted. (D) Forest  
460 plot illustrating pooled prevalence of YASD grouped by year of publication of primary studies.  
461 (E) Forest plot illustrating pooled prevalence of YASD grouped by the definition of YASD in  
462 primary studies.

463 **S5 Fig. Forest plots showing pooled prevalence of concurrency.** (A) Forest plot illustrating  
464 pooled prevalence of concurrency from the 13 studies that assessed concurrency. (B) Forest  
465 plot illustrating pooled prevalence of concurrency from the 13 studies grouped by sex of the  
466 study participants. (C) Forest plot illustrating pooled prevalence of concurrency grouped by  
467 the African region in which the primary study was conducted. (D) Forest plot illustrating  
468 pooled prevalence of concurrency grouped by year of publication of primary studies. (E) Forest  
469 plot illustrating pooled prevalence of concurrency grouped by the definition of concurrency in  
470 primary studies.

471 **S6 Fig. Forest plots showing pooled prevalence of age-disparate relationships.** (A) Forest  
472 plot illustrating pooled prevalence of age-disparate relationships from the 12 studies that  
473 assessed age-disparate relationships. (B) Forest plot illustrating pooled prevalence of age-  
474 disparate relationships from the 12 studies grouped by sex of the study participants. (C) Forest  
475 plot illustrating pooled prevalence of age-disparate relationships grouped by the African region  
476 in which the primary study was conducted. (D) Forest plot illustrating pooled prevalence of  
477 age-disparate relationships grouped by year of publication of primary studies. (E) Forest plot  
478 illustrating pooled prevalence of age-disparate relationships grouped by the definition of age-  
479 disparate relationships in primary studies.

480 **S7 Fig. Forest plots showing pooled prevalence of study-defined SRTB.** (A) Forest plot  
481 illustrating pooled prevalence of study-defined sexual risk-taking behaviour (SRTB) from the  
482 14 studies that assessed study-defined SRTB. (B) Forest plot illustrating pooled prevalence of  
483 study-defined SRTB from the 14 studies grouped by sex of the study participants. (C) Forest  
484 plot illustrating pooled prevalence of study-defined SRTB grouped by the African region in  
485 which the primary study was conducted. (D) Forest plot illustrating pooled prevalence of study-  
486 defined SRTB grouped by year of publication of primary studies. (E) Forest plot illustrating  
487 pooled prevalence of study-defined SRTB grouped by the definition of study-defined SRTB in  
488 primary studies.

489

## 490 **Conflict of interest**

491 The authors declare that there are no conflicts of interest regarding the publication of this paper.

492

## 493 **Funding**

494 This work was partially funded by the Medical Research Council [Grant number  
495 MR/M025454/1] to AA. This award is jointly funded by the UK Medical Research Council  
496 (MRC) and the UK Department for International Development (DFID) under MRC/DFID  
497 concordant agreement and is also part of the EDCTP2 program supported by the European  
498 Union. The authors are also grateful for the support of the Sub-Saharan African Network for  
499 TB/HIV-1 Research Excellence (SANTHE), a DELTAS Africa Initiative [grant number DEL-  
500 15–006] to AH. The DELTAS Africa Initiative is an independent funding scheme of the  
501 African Academy of Sciences (AAS)'s Alliance for Accelerating Excellence in Science in  
502 Africa (AESA) and supported by the New Partnership for Africa's Development Planning and  
503 Coordinating Agency (NEPAD Agency) with funding from the Wellcome Trust [grant number

504 107752/Z/15/Z] and the UK government. The funders had no role in study design, data  
505 collection and analysis, decision to publish, or preparation of the manuscript.

506

## 507 **Acknowledgement**

508 First, we would like to acknowledge the efforts of the scientists who authored the primary  
509 studies included in the current review. This work would not have been possible without their  
510 prior work. Secondly, we thank the researchers who availed their research articles upon request  
511 after we failed to obtain them in the various data bases. These include Dr. Mary B Adam (AIC  
512 Kijabe hospital, Kenya) and Dr. Yuichiro Yahata (Ministry of Health, Labour and Welfare,  
513 Japan). Finally, we appreciate Prof Hans Koot (Vrije Universiteit Amsterdam, Netherlands)  
514 and Mr. Alex Maina (Centre for Geographic Medicine Research, Kenya Medical Research  
515 Institute, Kenya) for their help during formal search for research articles.

516

## 517 **References**

- 518 1. UNAIDS. UNAIDS DATA 2020. Geneva, Switzerland: United Nations; 2020.  
519 <https://www.unaids.org/en/resources/documents/2020/unaids-data>: Accessed 09/04/2022
- 520 2. Mhalu A, Leyna GH, Mmbaga EJ. Risky behaviours among young people living with  
521 HIV attending care and treatment clinics in Dar Es Salaam, Tanzania: implications for  
522 prevention with a positive approach. *J Int AIDS Soc.* 2013;16(1):17342-.
- 523 3. Pascoe SJS, Langhaug LF, Mavhu W, Hargreaves J, Jaffar S, Hayes R, et al. Poverty,  
524 food insufficiency and HIV infection and sexual behaviour among young rural Zimbabwean  
525 women. *PloS one.* 2015;10(1):e0115290-e.
- 526 4. Ankunda R ML, Kiwanuka N,. Sexual risk related behaviour among youth living with  
527 HIV in central Uganda: implications for HIV prevention. *Pan African Medical Journal* 2016;  
528 24:49 doi:1011604/pamj201624496633. 2016.
- 529 5. Zango A, Dube K, Kelbert S, Meque I, Cumbe F, Chen PL, et al. Determinants of  
530 Prevalent HIV Infection and Late HIV Diagnosis among Young Women with Two or More  
531 Sexual Partners in Beira, Mozambique. *PLoS ONE* 8(5): e63427  
532 doi:101371/journalpone0063427. 2013.
- 533 6. Santelli JS, Edelstein ZR, Mathur S, Wei Y, Zhang W, Orr MG, et al. Behavioral,  
534 biological, and demographic risk and protective factors for new HIV infections among youth  
535 in Rakai, Uganda. *J Acquir Immune Defic Syndr* 2013 Jul 1;63(3):393-400 doi:  
536 101097/QAI0b013e3182926795 PMID: 23535293; PMCID: PMC4131841. 2013.
- 537 7. Othieno CJ, Okoth R, Peltzer K, Pengpid S, Malla LO. Risky HIV sexual behaviour  
538 and depression among University of Nairobi students. *Annals of General Psychiatry.*  
539 2015;14(1):16.
- 540 8. Levinson D. *The seasons of a man's life.* New York 1978.
- 541 9. Arnett JJ. Emerging adulthood: A theory of development from the late teens through  
542 the twenties. *American Psychologist.* 2000;55(5):469-80.
- 543 10. Rindfuss RR. The young adult years: diversity, structural change, and fertility.  
544 *Demography* 1991 1991;28(4):493-512.
- 545 11. Goldscheider FK, Davanzo J. *Semiautonomy and leaving home in early adulthood.*  
546 University of North Carolina Press; 1986. p. 187-201. accessed
- 547 12. Arnett JJ. Young people's conceptions of the transition to adulthood. *Youth & Society.*  
548 1997;29(1):3-23.
- 549 13. Valde GA. Identity Closure: A Fifth Identity Status. *The Journal of Genetic*  
550 *Psychology.* 1996;157(3):245-54.
- 551 14. Michael RT, John H. Gagnon, Edward O. Laumann, and Gina Kolata. *Sex in America,*  
552 *A Definitive Survey:* Little, Brown and Company, Inc., Boston; 1994.
- 553 15. Arnett JJ. Reckless behaviour in adolescence: a developmental perspective.  
554 *Developmental Review,* 12: 339-73. 1992.
- 555 16. Toska E, Pantelic M, Meinck F, Keck K, Haghghat R, Cluver L. Sex in the shadow of  
556 HIV: A systematic review of prevalence, risk factors, and interventions to reduce sexual risk-  
557 taking among HIV-positive adolescents and youth in sub-Saharan Africa. *PLoS One.*  
558 2017;12(6):e0178106.
- 559 17. Zgambo M, Kalembo FW, Mbakaya BC. Risky behaviours and their correlates among  
560 adolescents living with HIV in sub-Saharan Africa: a systematic review. *Reprod Health.*  
561 2018;15(1):180.

- 562 18. Liberati A, Altman DG, Tetzlaff J, Mulrow C, Gotzsche PC, Ioannidis JP, et al. The  
563 PRISMA statement for reporting systematic reviews and meta-analyses of studies that evaluate  
564 health care interventions: explanation and elaboration. *PLoS Med*. 2009;6(7):e1000100.
- 565 19. Page MJ, McKenzie JE, Bossuyt PM, Boutron I, Hoffmann TC, Mulrow CD, et al. The  
566 PRISMA 2020 statement: an updated guideline for reporting systematic reviews. *BMJ (Clinical  
567 research ed)*. 2021;372:n71.
- 568 20. Wong WC, Cheung CS, Hart GJ. Development of a quality assessment tool for  
569 systematic reviews of observational studies (QATSO) of HIV prevalence in men having sex  
570 with men and associated risk behaviours. *Emerg Themes Epidemiol*. 2008;5:23.
- 571 21. Hunter JP, Saratzis A, Sutton AJ, Boucher RH, Sayers RD, Bown MJ. In meta-analyses  
572 of proportion studies, funnel plots were found to be an inaccurate method of assessing  
573 publication bias. *J Clin Epidemiol* 2014 Aug;67(8):897-903 doi: 101016/j.jclinepi201403003  
574 Epub 2014 Apr 29 PMID: 24794697. 2014.
- 575 22. Murray FF, John WT. Transformations Related to the Angular and the Square Root.  
576 *The Annals of Mathematical Statistics*. 1950;21(4):607-11.
- 577 23. Coburn KM, JL. V. Publication bias as a function of study characteristics. *Psychol  
578 Methods* 2015;20(3):310-30.
- 579 24. DerSimonian R, Laird N. Meta-analysis in clinical trials. *Control Clin Trials* 1986  
580 Sep;7(3):177-88 doi: 101016/0197-2456(86)90046-2 PMID: 3802833. 1986.
- 581 25. Bronfenbrenner. U. *The ecology of human development: Experiments by nature and  
582 design*: Harvard University Press. Cambridge, MA: Harvard University Press; 1979.; 1979.
- 583 26. Stokols. Translating social ecological theory into guidelines for community health  
584 promotion. *Am J Health Promot* 1996 Mar-Apr;10(4):282-98 doi: 104278/0890-1171-104282  
585 PMID: 10159709. 1996.
- 586 27. Khurana A, Romer D, Betancourt LM, Brodsky NL, Giannetta JM, Hurt H. Stronger  
587 Working Memory Reduces Sexual Risk Taking in Adolescents, Even After Controlling for  
588 Parental Influences. *Child Dev*. 2015;86(4):1125-41.
- 589 28. Bui TC, Markham CM, Ross MW. Perceived gender inequality, sexual communication  
590 self-efficacy, and sexual behaviour among female undergraduate students in the Mekong Delta  
591 of Vietnam. *Sex Health* 2012 Sep;9(4):314-22 doi: 101071/SH11067 PMID: 22877589;  
592 PMCID: PMC3435105. 2012.
- 593 29. Caldeira KM, Arria AM, O'Grady KE, Zarate EM, Vincent KB, Wish ED. Prospective  
594 associations between alcohol and drug consumption and risky sex among female college  
595 students. *J Alcohol Drug Educ*. 2009;53(2).
- 596 30. Seth P, Patel SN, Sales JM, Diclemente RJ, Wingood GM, Rose ES. The Impact of  
597 Depressive Symptomatology on Risky Sexual Behavior and Sexual Communication among  
598 African American Female Adolescents. *Psychol Health Med*. 2011;16(3):346-56.
- 599 31. Ssewanyana D, Mwangala PN, Van BA, Newton CR, Abubakar A. Health Risk  
600 Behaviour among Adolescents Living with HIV in Sub-Saharan Africa: A Systematic Review  
601 and Meta-Analysis. *Biomed Res Int* 2018 Jan 28;2018:7375831 doi: 101155/2018/7375831  
602 PMID: 29789804; PMCID: PMC5896333. 2018.
- 603 32. Philbin MM, Kinnard EN, Tanner AE, Ware S, Chambers BD, Ma A, et al. The  
604 Association between Incarceration and Transactional Sex among HIV-infected Young Men  
605 Who Have Sex with Men in the United States. *J Urban Health*. 2018;95:576–83.
- 606 33. Onsomu EO, Kimani JK, Abuya BA, Arif AA, Moore D, Duren-Winfield V, et al.  
607 Delaying sexual debut as a strategy for reducing HIV epidemic in Kenya *African Journal of  
608 Reproductive Health*. 2013;17(2).



- 609 34. Khurana A, Romer D, Betancourt LM, Brodsky NL, Giannetta JM, Hurt H. Early  
610 adolescent sexual debut: the mediating role of working memory ability, sensation seeking, and  
611 impulsivity. *Dev Psychol.* 2012;48(5):1416-28.
- 612 35. Xu H, Luke N, Zulu EM. Concurrent sexual partnerships among youth in urban Kenya:  
613 Prevalence and partnership effects. *Population Studies.* 2010;64(3):247-61.
- 614 36. Ryan S, Franzetta K, Manlove JS, Schelar E. Older Sexual Partners During  
615 Adolescence: Links to Reproductive Health Outcomes in Young Adulthood. *Perspectives on*  
616 *Sexual and Reproductive Health.* 2008;40(1):17-26.
- 617 37. Manlove J, Terry-Humen E, Ikramullah E. Young Teenagers and Older Sexual  
618 Partners: Correlates and Consequences for Males and Females. *Perspectives on Sexual and*  
619 *Reproductive Health.* 2006;38(4):197-207.
- 620 38. Meier A, Erickson GA, McLaughlin H. Older Sexual Partners and Adolescent Females'  
621 Mental Health. *Perspect Sex Reprod Health.* 2016;48(1):25-33.
- 622 39. Melesse DY, Cane RM, Mangombe A, Ijadunola MY, Manu A, Bamgboye EA, et al.  
623 Inequalities in early marriage, childbearing and sexual debut among adolescents in sub-Saharan  
624 Africa. *Reproductive Health.* 2021;18.
- 625 40. Masa R, Graham L, Khan Z, Chowa G, Patel L. Food insecurity, sexual risk taking, and  
626 sexual victimization in Ghanaian adolescents and young South African adults. *International*  
627 *journal of public health.* 2019;64(2):153-63.
- 628 41. Kushal SA, Amin YM, Reza S, Hossain FB, Shawon MSR. Regional and Sex  
629 Differences in the Prevalence and Correlates of Early Sexual Initiation Among Adolescents  
630 Aged 12-15 Years in 50 Countries. *J Adolesc Health* 2022 Apr;70(4):607-616 doi:  
631 101016/jjadohealth202110027 Epub 2021 Dec 10 PMID: 34895994. 2022.
- 632 42. Francis JM, Grosskurth H, Changalucha J, Kapiga SH, Weiss HA. Systematic review  
633 and meta-analysis: prevalence of alcohol use among young people in eastern Africa. *Trop Med*  
634 *Int Health* 2014 Apr;19(4):476-88 doi: 101111/tmi12267 Epub 2014 Jan 31 PMID: 24479379;  
635 PMID: PMC4065366. 2014.
- 636 43. Crane CA, Godleski SA, Przybyla SM, Schlauch RC, Testa M. The Proximal Effects  
637 of Acute Alcohol Consumption on Male-to-Female Aggression: A Meta-Analytic Review of  
638 the Experimental Literature. *Trauma Violence Abuse* 2016 Dec;17(5):520-531 doi:  
639 101177/1524838015584374 Epub 2015 May 24 PMID: 26009568; PMID: PMC4798910.  
640 2016.
- 641 44. Falb K, Tanner S, Asghar K, Souidi S, Mierzwa S, Assazenew A, et al. Implementation  
642 of Audio-Computer Assisted Self-Interview (ACASI) among adolescent girls in humanitarian  
643 settings: feasibility, acceptability, and lessons learned. *Conflict and Health.* 2017;10(1):32.

644