

1           **Ex-PRESS implantation versus trabeculectomy for long-term maintenance of low**  
2                           **intraocular pressure in patients with open angle glaucoma**

3

4   **Short title:** Ex-PRESS implantation versus trabeculectomy for low intraocular pressure  
5 maintenance

6

7 Kana Tokumo<sup>1\*</sup>, Naoki Okada, Hiromitsu Onoe, Kaori Komatsu, Shun Masuda, Hideaki  
8 Okumichi, Kazuyuki Hirooka, Ryo Asaoka, Yoshiaki Kiuchi,

9 <sup>1</sup> Department of Ophthalmology and Visual Science, Hiroshima University Graduate School of  
10 Biomedical Sciences Hiroshima University, Hiroshima, Japan

11 <sup>2</sup> Seirei Hamamatsu General Hospital Department of Ophthalmology, Shizuoka, Japan

12

13   **\*Corresponding author**

14 E-mail: [kanatokumo@hiroshima-u.ac.jp](mailto:kanatokumo@hiroshima-u.ac.jp) (KT) ORCID: <https://orcid.org/0000-0001-5147-4829>

15

16   **Authors' contributions**

17 All authors contributed to the study conception and design. Material preparation, data collection,  
18 and data analysis were performed by Kana Tokumo and Shun Masuda. The first draft of the  
19 manuscript was written by Kana Tokumo. All authors commented on the previous versions of  
20 the manuscript. All authors read and approved the final manuscript.

21

22   **Registry**

23 This study was registered with the University Hospital Medical Information Network Clinical  
24 Trials Registry of Japan (identifier University Hospital Medical Information Network  
25 000008981; date of access and registration, September 25, 2012

26

27

## 28 **Abstract**

29 **Purpose:** To compare the efficacy of Ex-PRESS implantation to trabeculectomy with mitomycin  
30 C, for maintaining low target intraocular pressure (IOP) in patients with open angle glaucoma.

31 **Materials and Methods:** Patients were randomly assigned to receive Ex-PRESS implantation or  
32 trabeculectomy. Patients with IOP  $\geq 15$  mmHg were included in this study. Surgical success was  
33 defined according to three target mean IOP ranges (5 mmHg  $\leq$  IOP  $\leq$  18 mmHg [criterion A], 5  
34 mmHg  $\leq$  IOP  $\leq$  15 mmHg [criterion B], and 5 mmHg  $\leq$  IOP  $\leq$  12 mmHg [criterion C])  
35 representing reductions of at least 20% below baseline on two consecutive follow-up visits 3  
36 months post surgery.

37 **Results:** A total of 73 patients, including 30 in the Ex-PRESS implantation group and 43 in the  
38 trabeculectomy group, were included in the study. The baseline IOP was  $20.4 \pm 4.9$  mmHg in the  
39 Ex-PRESS implantation group and  $21.9 \pm 7.9$  mmHg in the trabeculectomy group. There were  
40 no significant differences in baseline ocular or demographic characteristics between the two  
41 groups. There was no statistical difference in IOP every 6 months. After the 3-year follow-up,  
42 success rates were A) 60.0% and 60.2%, B) 45.7% and 58.1%, and C) 31.5% and 40.5% for the  
43 Ex-PRESS implantation and trabeculectomy groups, respectively. A greater number of glaucoma  
44 medications before surgery was associated with a higher failure rate in the trabeculectomy group  
45 but not the Ex-PRESS implantation group.

46 **Conclusions:** Both procedures resulted in similar IOP reductions and success rates for low target  
47 IOP. The number of preoperative glaucoma medications was a risk factor for trabeculectomy  
48 failure.  
49

## 50 **Introduction**

51 Filtering surgery is widely used for the treatment of glaucoma with uncontrollable intraocular  
52 pressure (IOP). Currently, the most popular filtering surgery is trabeculectomy (TLE), in which  
53 aqueous humor filtration is enhanced and IOP reduced by creating a scleral flap that leads to bleb  
54 formation in the conjunctiva. The success and complication rates for TLE are well established  
55 [1-2].

56 The Ex-PRESS glaucoma filtration device (Alcon Laboratories, Fort Worth, TX, USA) was  
57 introduced as a modification to TLE. Although the surgical procedure and postoperative  
58 management is similar to TLE, Ex-PRESS (EXP) surgery does not require sclerectomy or  
59 iridectomy. Therefore, postoperative inflammation and hemorrhage may be reduced. Both  
60 surgical procedures can achieve similar IOP reductions with few complications when the target  
61 pressure is set to 18 mmHg [3-5]. However, the optimal target IOP for glaucoma treatment  
62 depends on disease stage, IOP before treatment, age, and other risk factors. In general, more  
63 severe glaucoma requires lower IOP post surgery to maintain visual function [6-8].

64 The success of TLE depends on preoperative IOP, previous surgery, number of preoperative  
65 medications, and race [9]. There is a high incidence of normal tension glaucoma (NTG) in the  
66 Japanese population [10], and visual field impairment in subjects with NTG often progresses  
67 even when IOP is within the normal range. Therefore, NTG patients may benefit from a  
68 postoperative target pressure below that of patients with higher preoperative IOP.

69 This study compared the efficacy and safety of EXP to TLE for achieving target postoperative  
70 IOPs of  $\leq 18$ ,  $\leq 15$ , and  $\leq 12$  mmHg, each representing reductions of at least 20% below baseline,

71 among patients in the Japanese population with open angle glaucoma (OAG, including  
72 exfoliation glaucoma and primary OAG).

73

## 74 **Materials and methods**

75 The institutional review board of Hiroshima University approved the study protocol before  
76 recruitment. This study was registered with the University Hospital Medical Information  
77 Network Clinical Trials Registry of Japan (identifier University Hospital Medical Information  
78 Network 000008981; date of access and registration, September 25, 2012). All patients provided  
79 written informed consent before participation, and the study was conducted in accordance with  
80 the tenets of the Declaration of Helsinki.

81

## 82 **Randomization and treatment**

83 The study was conducted at the Department of Ophthalmology, Hiroshima University Hospital.  
84 Patients were enrolled between November 2012 and March 2015. Follow-up was done for one  
85 year, three years if possible. Patients were randomized to receive TLE or EXP using a computer-  
86 based random number generator. Clinicians enrolled participants to this study. Random  
87 allocation were prepared by staff not associated with this study and he assigned participants to  
88 interventions. It was confirmed after patient enrollment is completed which surgery will be  
89 performed. Both patients and clinicians were aware of the therapy (therefore, this was an open-  
90 label, randomized study).

91

## 92 **Patients and inclusion criteria**

93 This was a single-center clinical trial of OAG patients > 20 years and older with or without  
94 cataract scheduled for filtration surgery. Patients who previously underwent glaucoma surgery  
95 were excluded. However, subjects who underwent cataract surgery more than 6 months prior to  
96 planned TLE or EXP were included. We analyzed the first eye when both eyes met the inclusion  
97 criteria. Subjects with preoperative IOP < 15 mmHg were excluded after randomization, and  
98 their data were analyzed in another study.

99

## 100 **Outcome measures**

101 Goldman applanation tonometry was used to measure the IOP. Preoperative IOP and best-  
102 corrected visual acuity (VA) were recorded during the examination immediately before surgery.

103 We documented the IOP and VA the day after surgery and at every follow-up visit. Postoperative  
104 IOP and VA values measured every six months for three years were included in the efficacy  
105 (surgical success) analysis. The surgical procedures and postoperative management were similar  
106 for each case.

107 Anesthesia included subconjunctival 2% lidocaine injection. A limbal-based conjunctival flap  
108 was utilized, followed by the creation of a half-thickness scleral flap. Small pieces of gelatin  
109 sponge soaked with 0.4 mg/mL mitomycin C (MMC) was applied to the exposed tissue,  
110 including the posterior surface of Tenon's capsule and conjunctiva, adjacent episcleral tissue,  
111 and scleral flap for 5 min. After 5 min, all sponges were removed, and the wound was irrigated  
112 with 100 mL of balanced salt solution. For patients assigned TLE, a block incision was made in  
113 the region of the trabecular meshwork, followed by peripheral iridectomy. For those patients  
114 randomized to receive EXP, a small scleral tunnel was created as a shunt in the region of the

115 trabecular meshwork using a 25-G needle. The scleral flap and conjunctiva were closed with 10-  
116 0 nylon sutures.

117 Patients were treated with laser suture lysis if IOP was higher than the target IOP. The target IOP  
118 for most patients was set at 8–10 mmHg 2 weeks postoperatively.<sup>8</sup>

119 All patients received a similar topical medical regimen, including postoperatively: 1.5%  
120 levofloxacin and 0.1% topical betamethasone three times per day. Patients receiving combined  
121 cataract surgery were also administered nepafenac three times a day. Topical atropine sulfate  
122 (1%) was used as needed. All doses were tapered at the surgeon's discretion.

123

## 124 **Parameters for surgical success**

125 The primary outcome was surgical success based on target postoperative IOP range at 6-month  
126 intervals with or without antiglaucoma medications according to guidelines by the World  
127 Glaucoma Association [11]. There were three target IOP ranges: (A)  $5 \text{ mmHg} \leq \text{IOP} \leq 18 \text{ mmHg}$ ,  
128 (B)  $5 \text{ mmHg} \leq \text{IOP} \leq 15 \text{ mmHg}$ , and (C)  $5 \text{ mmHg} \leq \text{IOP} \leq 12 \text{ mmHg}$ . Failure was defined as an  
129 IOP above the indicated range on two consecutive follow-up visits 3 months after surgery and a  
130 reduction of less than 20% below baseline, or the need for further glaucoma surgery. The need  
131 for laser suture lysis or bleb needling was not considered surgical failure as these procedures are  
132 part of routine postoperative management for filtration surgeries.

133

## 134 **Statistical analysis**

135 All statistical analyses were performed using JMP version 15 (Cary, North Carolina, USA).

136 Results are presented as mean  $\pm$  standard deviation (SD) unless otherwise indicated. Mean values

137 of normally distributed continuous variables were compared between groups by Student's t-test  
138 and proportion (e.g., of patients with visual stability or surgical success) by chi-square test.  
139 Measured IOP values were compared using the Mann–Whitney nonparametric test with  
140 Bonferroni correction for repeated measures. Patients requiring additional surgery were censored  
141 from the analysis after reoperation. Success rates were analyzed over time using Kaplan–Meier  
142 survival curves. The survival data were analyzed using regression analysis based on the Cox  
143 proportional hazards model. All statistical tests were two-sided, and P-values <0.05 were  
144 considered statistically significant. A sample size calculation determined that 30 eyes in each  
145 group were required to detect a 2.5-mmHg difference in IOP with an SD of 2.75 mmHg and  
146 power of 80%. To account for patient dropout, 73 eyes were included.

147

## 148 **Results**

149 A total of 105 patients with OAG (105 eyes) were enrolled in the study. Two patients who had  
150 glaucoma surgery were excluded. After randomization, 30 patients whose preoperative IOP was  
151 <15 mmHg were excluded. Thirty eyes were treated with EX-PRESS implantation (EXP group)  
152 and 43 eyes with TLE (TLE group). The number of patients who could be followed is shown in  
153 Fig 1. Patients who had mild to severe cataract underwent combined cataract surgery. All  
154 patients were Japanese. Patient demographics and basic characteristics are summarized in Table  
155 1. The mean follow-up period was  $25.9 \pm 12.9$  months in the EXP group and  $23.8 \pm 13.1$  months  
156 in the TLE group. No differences were found in baseline IOP, sex ratio, age, and number of  
157 glaucoma medications between EXP and TLE groups.

158



Characteristics	EXP group (n = 30)	TLE group (n = 43)	P-values
Age (years), mean $\pm$ SD	68.3 $\pm$ 11.9	68.7 $\pm$ 12.4	0.90*
Sex, n (%)			0.64 <sup>†</sup>
Male	17 (56.7)	22 (51.2)	
Female	13 (43.3)	21 (48.8)	
IOP (mmHg), mean $\pm$ SD	20.4 $\pm$ 4.9	21.9 $\pm$ 7.9	0.84 <sup>‡</sup>
Glaucoma medications, n, mean $\pm$ SD	3.1 $\pm$ 0.8	3.3 $\pm$ 0.8	0.44*
Follow-up period (months), mean $\pm$ SD	25.9 $\pm$ 12.9	23.8 $\pm$ 13.1	0.50*
Previous cataract surgery, n (%)	11(36.7)	11 (19.6)	0.31*
Surgery (%)			0.59 <sup>†</sup>
Glaucoma surgery alone	22 (73.3)	29 (67.4)	
Combined glaucoma and cataract surgery	8 (26.7)	14 (32.6)	

159 **Fig 1. Flowchart of follow-up.**

160 Table 1. Baseline demographics and ocular characteristics of the EXP group (30 eyes) and TLE  
161 group (43 eyes).

162 EXP, Ex-PRESS; IOP, intraocular pressure; LogMAR, logarithm of the minimal angle of  
163 resolution; SD, standard deviation; TLE, trabeculectomy

164 \*Student's t-tests

165 <sup>‡</sup>Mann–Whitney nonparametric tests

166 <sup>†</sup>Pearson chi-square tests

167

168 **IOP reduction**

169 The mean IOP at each postoperative visit is presented in Table 2 and shown graphically in Fig 2.  
170 Both surgical procedures led to a significant sustained reduction in IOP. In the EXP group, the  
171 IOP decreased from  $20.4 \pm 4.9$  to  $13.2 \pm 1.9$  mmHg at the 3-year follow-up visit ( $P = 0.001$ ,  
172 paired t-tests). In the TLE group, the IOP decreased from  $21.9 \pm 7.9$  to  $13.5 \pm 5.0$  mmHg at the 3-  
173 year follow-up visit ( $P = 0.0012$ , paired t-tests). Both surgical procedures resulted in a significant  
174 reduction in IOP after surgery compared to the preoperative IOP. There were no differences in  
175 IOP between the two groups during observation.  
176 Kaplan–Meier survival analysis was used to compare success rates between the two treatment  
177 groups. We created three definitions of success and compared the survival curves. At the 1-year  
178 follow-up, the success rates of EXP and TLE were 72.0% and 70.8%, 65.3% and 68.3%, and  
179 55.1% and 58.5% for criteria A, B, and C, respectively. At the 3-year follow-up, success rates of  
180 EXP and TLE were 60.0% and 60.2%, 45.7% and 58.1%, and 31.5% and 40.5% for criteria A, B,  
181 and C, respectively (Fig 3).  
182 No significant differences in treatment efficacy were found between strata (A,  $P = 0.93$ ; B,  $P =$   
183  $0.53$ ; C,  $P = 0.58$ , log-rank test).

184

185 **Table 2. Mean intraocular pressure and medication use.**

	<b>EXP group (n = 30)</b>	<b>TLE group (n = 43)</b>	<b>P-values</b>
Baseline IOP (mmHg)	$20.4 \pm 4.9$	$21.9 \pm 7.9$	0.84‡
Glaucoma medications, n	$3.1 \pm 0.8$	$3.3 \pm 0.8$	0.44*
6 months			
IOP (mmHg)	$12.0 \pm 3.9$	$11.2 \pm 2.9$	0.46‡
Glaucoma medications, n	$0.3 \pm 0.8$	$0.2 \pm 0.8$	0.83*

12 months			
IOP (mmHg)	12.1 ± 3.5	12.4 ± 4.3	0.68‡
Glaucoma medications, n	0.5 ± 1.2	0.6 ± 1.3	0.82*
18 months			
IOP (mmHg)	12.8 ± 3.9	12.8 ± 4.7	0.82‡
Glaucoma medications, n	1.2 ± 1.5	1.0 ± 1.5	0.70*
24 months			
IOP (mmHg)	13.2 ± 3.3	13.1 ± 4.5	0.68‡
Glaucoma medications, n	1.5 ± 1.7	1.1 ± 1.5	0.52*
30 months			
IOP (mmHg)	15.5 ± 5.5	13.4 ± 4.3	0.15‡
Glaucoma medications, n	1.7 ± 1.9	1.0 ± 1.5	0.29 *
36 months			
IOP (mmHg)	13.2 ± 1.9	13.5 ± 5.0	0.91‡
Glaucoma medications, n	2.2 ± 1.3	1.2 ± 1.5	0.04*

186 EXP, Ex-PRESS; IOP, intraocular pressure; TLE, trabeculectomy

187 Data are presented as mean ± SD, unless otherwise indicated.

188 \*Student t-tests

189 ‡Based on Mann–Whitney nonparametric tests with Bonferroni correction, P-values <0.0083

190 were statistically significant.

191

192 **Fig 2. IOP (in mmHg) for the EXP (30 eyes) and TLE groups (43 eyes) from the preoperative**

193 **visit to the 3-year follow-up visit (mean ± SD).**

194 **Fig 3. Kaplan–Meier survival curves of surgical outcomes for eyes in the EXP (30 eyes; solid**  
195 **line) and TLE groups (43 eyes; dotted line).**

196

### 197 **Glaucoma medication use**

198 The mean number of glaucoma medications required at each postoperative visit is shown in  
199 Table 2. Both groups required significantly fewer glaucoma medications after surgery, with no  
200 significant differences between groups. The EXP group required more postoperative eye drops  
201 than the TLE group. The difference increased gradually with time.

202

### 203 **Visual acuities**

204 Decimal VA was converted to logarithm of minimum angle of resolution equivalents (logMAR)  
205 for statistical analysis. All patients who underwent glaucoma surgery combined with cataract  
206 surgery showed improvement in VA, so these patients were excluded from VA analysis. Fig 4  
207 shows the VA results 1 year after glaucoma surgery. LogMAR VA did not differ significantly  
208 between the groups immediately after the procedure ( $0.30 \pm 0.60$  in the EXP group and  $0.14 \pm$   
209  $0.33$  in TLE group,  $P = 0.20$  by Mann–Whitney U-test), at 1 year post surgery ( $0.37 \pm 0.61$  in the  
210 EXP group and  $0.20 \pm 0.43$  in TLE group,  $P = 0.24$  by Mann–Whitney U-test) or 3 years post  
211 surgery ( $0.44 \pm 0.55$  in the EXP group and  $0.33 \pm 0.52$  in TLE group,  $P = 0.34$  by Mann–  
212 Whitney U-test). Six patients in each group lost more than two lines at the last visit, while one  
213 subject in the TLE group developed cataract, which resulted in a decrease in VA. The others lost  
214 their vision due to glaucoma progression.

215

216 **Fig 4. Scatterplot comparing VA (logMAR) values at baseline and 1-year visit for individual**  
217 **patients in the EXP (30 eyes; circular dots) and TLE groups (43 eyes; diamond dots).**

218

## 219 **Postoperative complications**

220 Table 3 shows complications of the two groups in the early and late postoperative periods. At the  
221 first month postoperatively, 13 patients in the EXP group and 10 patients in the TLE group  
222 developed early complications. These included hyphema, choroidal detachment, shallow anterior  
223 chamber, hypotony maculopathy, and conjunctiva leakage. Both groups showed similar  
224 complications. There was no statistically significant difference in the total prevalence of early-  
225 phase complications between groups ( $P = 0.07$  Student t-test). Only the TLE group showed late-  
226 phase postoperative complications, one case of choroidal detachment and one of conjunctiva  
227 leakage. However, there was no statistically significant difference in the prevalence of late-phase  
228 complications between groups ( $P = 0.27$  by Student's t-test).

229

230 Table 3. Early postoperative complications and late postoperative complications.

	<b>EXP group n (%)</b>	<b>TLE group n (%)</b>	<b>P-values†</b>
Early postoperative complication			
Hyphema	4 (13.3)	2 (4.7)	0.18
Shallow anterior chamber	5 (16.7)	6 (14.0)	0.70
Choroidal detachment	6 (20.0)	4 (9.3)	0.19
Conjunctiva leakage	5 (16.7)	4 (9.3)	0.35
Hypotony maculopathy	0	1 (2.3)	0.40
Total number of complications	13 (43.3)	10 (23.3)	0.07
Late postoperative complications			
Hyphema	0	0	-
Shallow anterior chamber	0	0	-
Choroidal detachment	0	1 (2.3)	0.40

Conjunctiva leakage	0	1 (2.3)	0.40
Hypotony maculopathy	0	0	-
Total number of complications	0	2 (4.7)	0.27

231 †Pearson chi-square tests

232

233 **Risk factors for surgical failure by multivariate Cox proportional**  
234 **hazards model**

235 The baseline characteristics, including history of cataract surgery, glaucoma diagnosis,  
236 preoperative IOP, and number of glaucoma medications were evaluated as prognostic factors for  
237 surgical failure (Table 4). The number of preoperative medications was a risk factor for failure to  
238 satisfy criteria A and B in the TLE group. Glaucoma surgery with cataract surgery reduced the  
239 risk of failure for criterion C in the EXP group. Factors not significantly associated with target  
240 IOP success rates included preoperative IOP, lens status, and diagnosis.

241

242

243

244

245

246 **Table 4. Multivariate Cox proportional hazard ratios for risk factors for failure.**

EXP	Criterion A			Criterion B			Criterion C		
	5 mmHg ≤ IOP ≤ 18 mmHg			5 mmHg ≤ IOP ≤ 15 mmHg			5 mmHg ≤ IOP ≤ 12 mmHg		
	Risk Ratio	P value	95% CI	Risk Ratio	P value	95% CI	Risk Ratio	P value	95% CI
With/without cataract surgery									
EXP with cataract surgery	0.26	0.17	0.04–1.74	0.18	0.07	0.03–1.19	0.11	0.01	0.02–0.62
EXP only	1.00			1.00			1.00		
Diagnosis									
PXG	2.83	0.22	0.52–15.35	2.90	0.19	0.60–14.34	3.20	0.09	0.84–12.29
POAG	1.00			1.00			1.00		
Lens status									
Pseudophakia	0.52	0.60	0.05–5.80	0.21	0.16	0.03–1.77	0.30	0.15	0.06–1.56
Phakia	1.00			1.00			1.00		
Preoperative IOP	0.86	0.18	0.67–1.03	1.05	0.37	0.93–1.16	1.10	0.06	0.99–1.22
No. of glaucoma medication	2.24	0.18	0.74–7.94	1.09	0.83	0.50–2.65	1.53	0.23	0.78–3.29
TLE									
	Criterion A			Criterion B			Criterion C		
	5 mmHg ≤ IOP ≤ 18 mmHg			5 mmHg ≤ IOP ≤ 15 mmHg			5 mmHg ≤ IOP ≤ 12 mmHg		
	Risk Ratio	P value	95% CI	Risk Ratio	P value	95% CI	Risk Ratio	P value	95% CI
With/without cataract surgery									
TLE with cataract surgery	1.58	0.50	0.42–6.00	1.42	0.59	0.38–5.28	1.02	0.97	0.34–3.05
TLE only	1.00			1.00			1.00		
Diagnosis									
PXG	0.41	0.31	0.07–2.31	0.33	0.18	0.06–1.67	0.64	0.44	0.21–1.98
POAG	1.00			1.00			1.00		
Lens status									
Pseudophakia	0.70	0.69	0.12–3.94	0.62	0.57	0.12–3.26	0.87	0.74	0.22–2.92
Phakia	1.00			1.00			1.00		
Preoperative IOP	0.12	0.25	0.84–1.02	0.97	0.48	0.89–1.04	1.01	0.74	0.95–1.06
No. of glaucoma medication	6.31	0.04	1.11–7.13	2.68	0.03	1.19–7.65	1.52	0.20	0.83–3.05



247 CI, Confidence interval; EXP, Ex-PRESS; IOP, intraocular pressure; POAG, primary open angle glaucoma; PXG, pseudo exfoliative

248 glaucoma; SD, standard deviation; TLE, trabeculectomy

249

## 250 **Discussion**

251 Most previous studies defined successful TLE or EXP as a postoperative IOP of 18 mmHg or  
252 less. However, the Advanced Glaucoma Intervention Study reported that visual field impairment  
253 progressed unless the IOP was maintained at  $< 12.3$  mmHg [8], and subjects with NTG often  
254 have IOP values  $< 18$  mmHg. Therefore, in this study, we set the target IOP at several lower  
255 levels (criteria B and C).

256 Filtering surgery, including TLE, is a common and standard modality for patients with long-  
257 standing glaucoma. While we expected EXP to reduce IOP as effectively as TLE, based on  
258 previous studies [3-4,12], an equivalent efficacy has not been demonstrated for lower target IOP  
259 ranges. As the baseline IOP of some patients was in the normal range under maximum medical  
260 therapy, some studies have used the percentage reduction from baseline as an outcome metric in  
261 addition to absolute IOP levels. However, this criterion is not applicable in all situations. In the  
262 Japanese population, NTG accounts for the majority of glaucoma cases [10]. Low preoperative  
263 IOP as in NTG makes it difficult to achieve a 20% reduction from baseline after filtering surgery  
264 without complications [13-14]. Therefore, only patients with IOP  $\geq 15$  mmHg were included in  
265 this study.

266 Several previous prospective studies have compared the success rate of TLE to EXP both with  
267 and without the use of glaucoma medications. Gonzalez-Rodriguez et al [4] defined surgical  
268 success as  $5 \leq \text{IOP} \leq 18$  (criterion A in our study) and a 20% reduction from baseline, and  
269 reported success rates of 59% and 76% for EXP and TLE groups, respectively, at 24 months and  
270 52% and 61%, respectively, at 36 months. In accord with our results using criterion A, these  
271 rates did not differ between procedures.

272 Most previous studies have found no difference in the number of glaucoma medications required  
273 by patients following EXP or TLE [4,5,15-17], while a few have reported that the EXP group  
274 required fewer glaucoma medications [3,18] and one that patients required more medications  
275 following Ex-PRESS implantation [19]. In the current study, we found no significant difference  
276 in the number of glaucoma medications required before or after surgery. However, the EXP  
277 group required more glaucoma medications than the TLE group post surgery, and the group  
278 difference in the number of eye drops required increased gradually during follow-up. Thus, it is  
279 likely that the EXP group will eventually require a significantly greater number or significantly  
280 higher doses of glaucoma medications.

281 We found little difference in complication rates following EXP or TLE. One patient in the TLE  
282 group developed cataract, which resulted in loss of VA during the observation period, while  
283 there were no cases of cataract progression in the EXP group. Similarly, Beltran-Agullo and  
284 colleagues reported that cataract progression was more frequent following TLE than EXP [20],  
285 potentially because EXP does not require peripheral iridectomy and thus carries a lower risk of  
286 hypotony. Aqueous flare elevation may occur during or following filtration surgery due to  
287 disruption of the blood–aqueous barrier, and flare severity increases with inflammatory activity  
288 in the anterior segment [21]. One case study reported substantial flare on the first day after EXP  
289 that subsided by the third day [22], while another reported elevated flare at 4 weeks after TLE  
290 [23]. The more sustained flare after TLE may also result from iridectomy. Further, the reduced  
291 inflammation following EXP may prevent cataract progression. Moreover, Arimura and  
292 colleagues [16] reported a significantly greater total number of complications following TLE  
293 than following EXP. However, other studies have reported similar incidences of most early  
294 complications with the exception of hyphema [24]. In the current study as well, there were no

295 significant differences in early and late postoperative complications between treatment groups.  
296 No late complications due to hypotony, such as hypotony maculopathy and choroidal  
297 detachment, were observed in the EXP group. However, one case in the TLE group exhibited  
298 choroidal detachment related to over filtration and low IOP. We assume that this is because EXP  
299 surgery creates a constant aqueous outflow route. From this, we expect that EXP is more suitable  
300 for patients at risk for complications related to low IOP. For example, young patients with long  
301 axial length tend to develop hypotony maculopathy after TLE [25], which could lead to a  
302 reduction in VA.

303 A Cox regression model identified the number of glaucoma medications before surgery as a risk  
304 factor for surgical failure in the TLE group, consistent with previous studies [26-27] and  
305 suggesting that preservatives of glaucoma medication increase the risk of TLE failure [28].  
306 Postoperative subconjunctival fibrosis after ophthalmic surgery results in increased numbers of  
307 conjunctival fibroblasts and inflammatory cells [29], and preservatives will further increase the  
308 number of conjunctival fibroblasts and macrophages while reducing the number of conjunctival  
309 goblet cells [28]. These alterations lead to production of predisposition to heal the fistula  
310 drainage, resulting in uncontrolled IOP [26,28]. Since the role of the conjunctiva is the same in  
311 TLE and EXP, it can be expected that glaucoma medication will reduce the surgical success of  
312 EXP through similar mechanisms. However, the number of glaucoma medications was not a risk  
313 factor for EXP failure in this study. EXP does not require iridectomy and leads to less bleeding  
314 and inflammatory cell infiltration. As a result, fibrosis of the conjunctiva may be prevented after  
315 EXP, reducing the risk of surgical failure.

316 One limitation of this study is the group imbalance and relatively small number of patients  
317 because we exclude patients with preoperative IOP < 15 mmHg after randomization. We  
318 followed patients for 3 years in this study. The number of dropout patients increased with long-  
319 term follow-up, which is another limitation of this study. As glaucoma requires lifelong  
320 treatment, longer-term clinical follow is required.

321 In conclusion, no differences in surgical success, IOP, VA, and failure rates were noted between  
322 the EXP and TLE groups in this study. We also found that the number of glaucoma medications  
323 was a risk factor for surgical failure in the TLE group but not the EXP group.

324

## 325 **Acknowledgments**

326 The authors would like to thank Enago ([www.enago.jp](http://www.enago.jp)) for the English language review

327

328

## 329 **References**

- 330 1. Borisuth NS, Phillips B, Krupin T. The risk profile of glaucoma filtration surgery. *Curr*  
331 *Opin Ophthalmol.* 1999;10: 112-116.
- 332 2. Sugimoto Y, Mochizuki H, Ohkubo S, Higashide T, Sugiyama K, Kiuchi Y.  
333 Intraocular pressure outcomes and risk factors for failure in the collaborative bleb-related  
334 infection incidence and treatment study. *Ophthalmology.* 2015;122: 2223-2233.
- 335 3. de Jong L, Lafuma A, Aguadé AS, Berdeaux G. Five-year extension of a clinical trial  
336 comparing the EX-PRESS glaucoma filtration device and trabeculectomy in primary open-angle  
337 glaucoma. *Clin Ophthalmol.* 2011;5: 527-533.
- 338 4. Gonzalez-Rodriguez JM, Trope GE, Drori-Wagschal L, Jinapriya D, Buys YM.  
339 Comparison of trabeculectomy versus Ex-PRESS: 3-year follow-up. *Br J Ophthalmol.* 2016;100:  
340 1269-1273.
- 341 5. Wagschal LD, Trope GE, Jinapriya D, Jin YP, Buys YM. Prospective randomized  
342 study comparing Ex-PRESS to trabeculectomy: 1-year results. *J Glaucoma.* 2015;24: 624-629.
- 343 6. de Moraes CG, Liebmann JM, Medeiros FA, Weinreb RN. Management of advanced  
344 glaucoma: Characterization and monitoring. *Surv Ophthalmol.* 2016;61: 597-615.
- 345 7. Peters D, Bengtsson B, Heijl A. Factors associated with lifetime risk of open-angle  
346 glaucoma blindness. *Acta Ophthalmol.* 2014;92: 421-425.
- 347 8. The Advanced Glaucoma Intervention Study (AGIS): 7. The relationship between  
348 control of intraocular pressure and visual field deterioration. The AGIS Investigators. *Am J*  
349 *Ophthalmol.* 2000;130: 429-440.
- 350 9. Husain R, Clarke JCK, Seah SKL, Khaw PT. A review of trabeculectomy in East  
351 Asian people--the influence of race. *Eye (Lond).* 2005;19: 243-252.

- 352 10. Iwase A, Suzuki Y, Araie M, Yamamoto T, Abe H, Shirato S, et al. The prevalence of  
353 primary open-angle glaucoma in Japanese: the Tajimi Study. *Ophthalmology*. 2004;111: 1641-  
354 1648.
- 355 11. Shaarawy T, Sherwood M, Grehn F. *Guidelines on Design and Reporting of Glaucoma*  
356 *Surgical Trials*. Kugler Publications; 2009.
- 357 12. Gedde SJ, Herndon LW, Brandt JD, Budenz DL, Feuer WJ, Schiffman JC, et al.  
358 Surgical complications in the tube versus trabeculectomy study during the first year of follow-up.  
359 *Am J Ophthalmol*. 2007;143: 23-31.
- 360 13. Yuasa Y, Sugimoto Y, Hirooka K, Ohkubo S, Higashide T, Sugiyama K, et al.  
361 Effectiveness of trabeculectomy with mitomycin C for glaucomatous eyes with low intraocular  
362 pressure on treatment eye drops. *Acta Ophthalmol*. 2020;98: e81-e87.
- 363 14. Schultz SK, Iverson SM, Shi W, Greenfield DS. Safety and efficacy of achieving  
364 single-digit intraocular pressure targets with filtration surgery in eyes with progressive normal-  
365 tension glaucoma. *J Glaucoma*. 2016;25: 217-222.
- 366 15. Moisseiev E, Zunz E, Tzur R, Kurtz S, Shemesh G. Standard trabeculectomy and Ex-  
367 PRESS miniature glaucoma shunt: A comparative study and literature review. *J Glaucoma*.  
368 2015;24: 410-416.
- 369 16. Arimura S, Miyake S, Iwasaki K, Gozawa M, Matsumura T, Takamura Y, et al.  
370 Randomised clinical trial for postoperative complications after Ex-PRESS implantation versus  
371 trabeculectomy with 2-year follow-up. *Sci Rep*. 2018;8: 16168.
- 372 17. Netland PA, Sarkisian SR, Moster MR, Ahmed II, Condon G, Salim S, et al.  
373 Randomized, prospective, comparative trial of EX-PRESS glaucoma filtration device versus  
374 trabeculectomy (XVT study). *Am J Ophthalmol*. 2014;157: 433-440.e3.

- 375 18. Dahan E, Ben Simon GJ, Lafuma A. Comparison of trabeculectomy and Ex-PRESS  
376 implantation in fellow eyes of the same patient: a prospective, randomised study. *Eye (Lond)*.  
377 2012;26: 703-710.
- 378 19. Hashimoto Y, Michihata N, Matsui H, Fushimi K, Yasunaga H, Aihara M.  
379 Reoperation rates after Ex-PRESS versus trabeculectomy for primary open-angle or normal-  
380 tension glaucoma: a national database study in Japan. *Eye (Lond)*. 2020;34: 1069-1076.
- 381 20. Beltran-Agullo L, Trope GE, Jin Y, Wagschal LD, Jinapriya D, Buys YM. Comparison  
382 of visual recovery following ex-PRESS versus trabeculectomy: results of a prospective  
383 randomized controlled trial. *J Glaucoma*. 2015;24: 181-186.
- 384 21. Sawa M. Laser flare-cell photometer: principle and significance in clinical and basic  
385 ophthalmology. *Jpn J Ophthalmol*. 2017;61: 21-42.
- 386 22. Ishida K, Moroto N, Murata K, Yamamoto T. Effect of glaucoma implant surgery on  
387 intraocular pressure reduction, flare count, anterior chamber depth, and corneal endothelium in  
388 primary open-angle glaucoma. *Jpn J Ophthalmol*. 2017;61: 334-346.
- 389 23. Inatani M, Ogata-Iwao M, Takihara Y, Iwao K, Inoue T, Kasaoka N, et al. A  
390 prospective study of postoperative aqueous flare in trabeculectomy alone versus  
391 phacotrabeculectomy. *Nippon Ganka Gakkai Zasshi*. 2012;116: 856-861.
- 392 24. Wang W, Zhang X. Meta-analysis of randomized controlled trials comparing EX-  
393 PRESS implantation with trabeculectomy for open-angle glaucoma. *PLoS ONE*. 2014;9:  
394 e100578.
- 395 25. Sakamoto M, Matsumoto Y, Mori S, Ueda K, Inoue Y, Kurimoto T, et al. Excessive  
396 scleral shrinkage, rather than choroidal thickening, is a major contributor to the development of  
397 hypotony maculopathy after trabeculectomy. *PLoS ONE*. 2018;13: e0191862.



- 398 26. Issa de Fendi L, Cena de Oliveira T, Bigheti Pereira C, Pereira Bigheti C, Viani GA.  
399 Additive effect of risk factors for trabeculectomy failure in glaucoma patients: A risk-group from  
400 a cohort study. *J Glaucoma*. 2016;25: e879-e883.
- 401 27. Landers J, Martin K, Sarkies N, Bourne R, Watson P. A twenty-year follow-up study  
402 of trabeculectomy: risk factors and outcomes. *Ophthalmology*. 2012;119: 694-702
- 403 28. Sherwood MB, Grierson I, Millar L, Hitchings RA. Long-term morphologic effects of  
404 antiglaucoma drugs on the conjunctiva and Tenon's capsule in glaucomatous patients.  
405 *Ophthalmology*. 1989;96: 327-335.
- 406 29. Broadway DC, Grierson I, Hitchings RA. Local effects of previous conjunctival  
407 incisional surgery and the subsequent outcome of filtration surgery. *Am J Ophthalmol*. 1998;125:  
408 805-818.

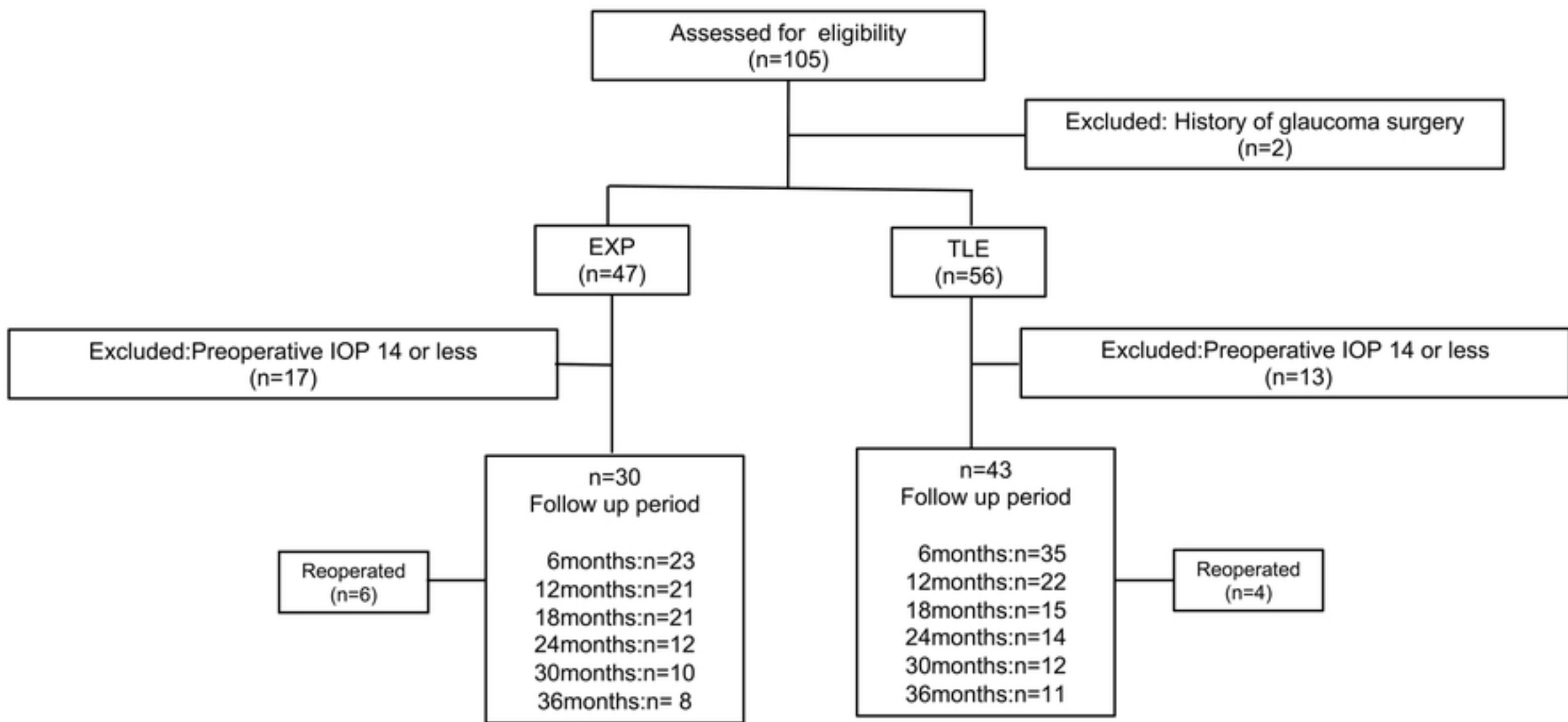


Figure 1

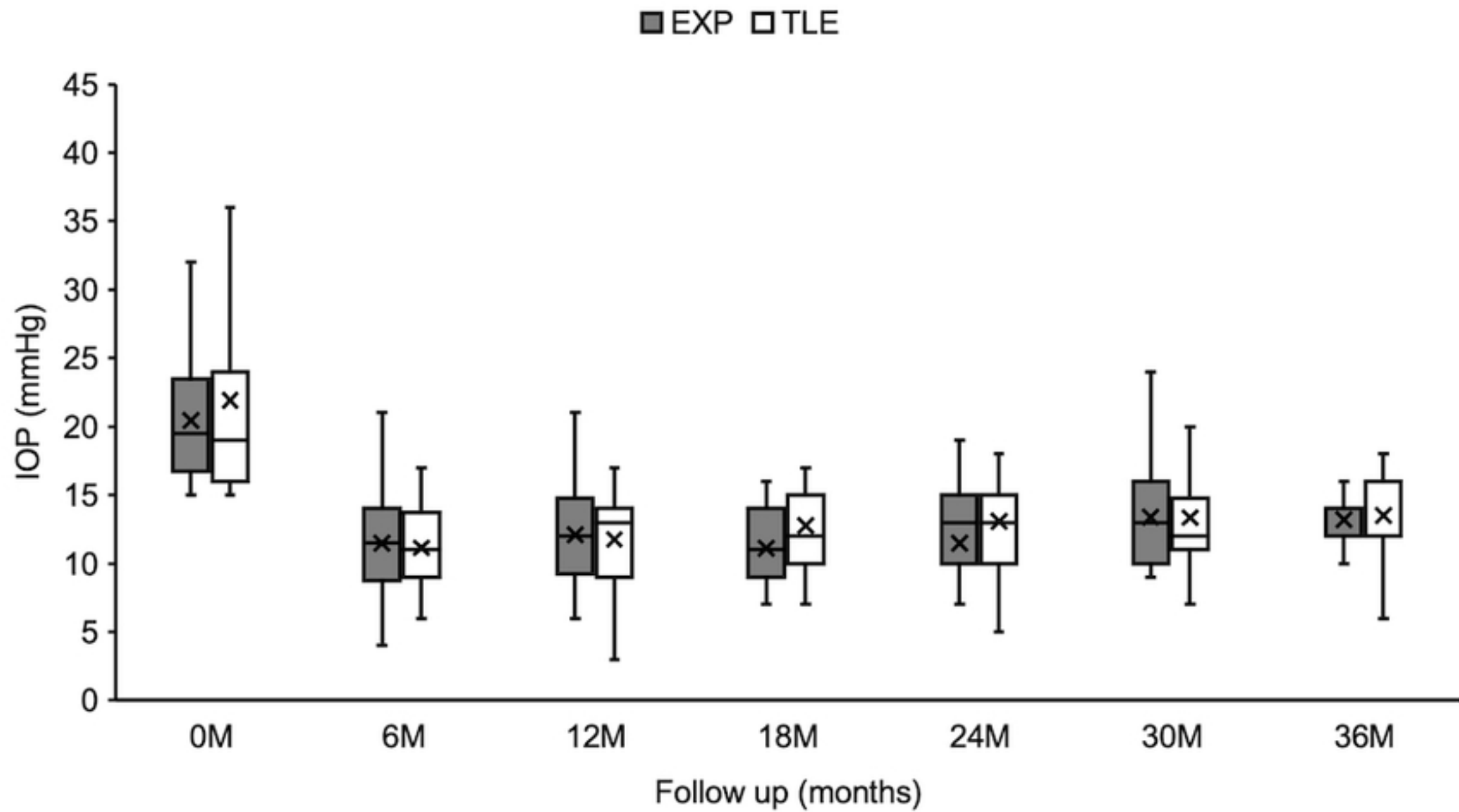
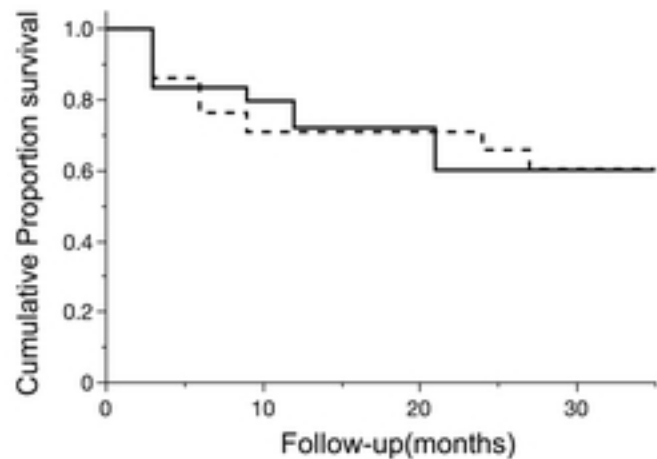
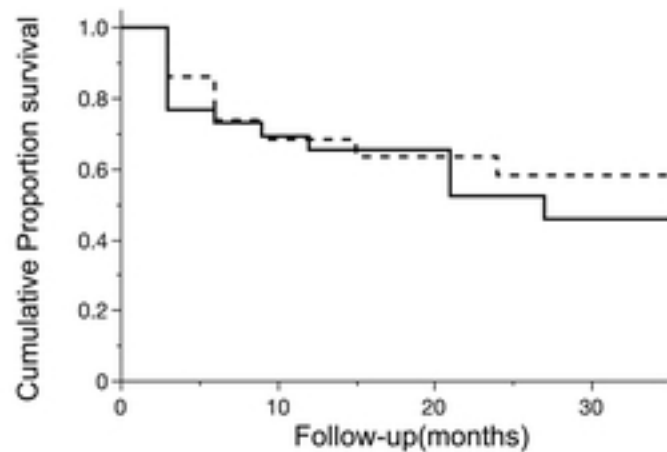


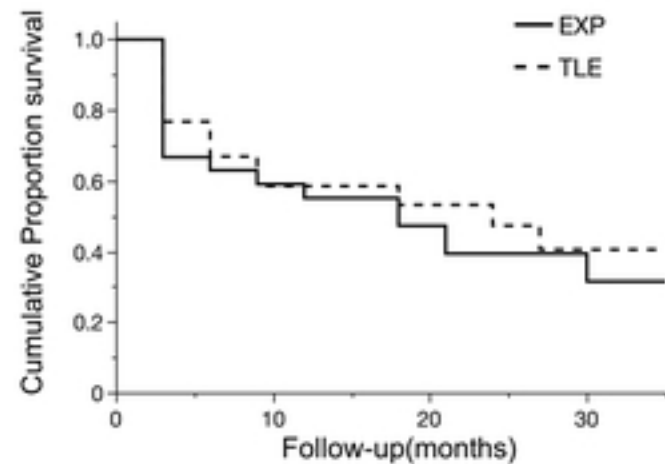
Figure2



A)  $5\text{mmHg} \leq \text{IOP} \leq 18\text{mmHg}$



B)  $5\text{mmHg} \leq \text{IOP} \leq 15\text{mmHg}$



C)  $5\text{mmHg} \leq \text{IOP} \leq 12 \text{ mmHg}$

Figure 3

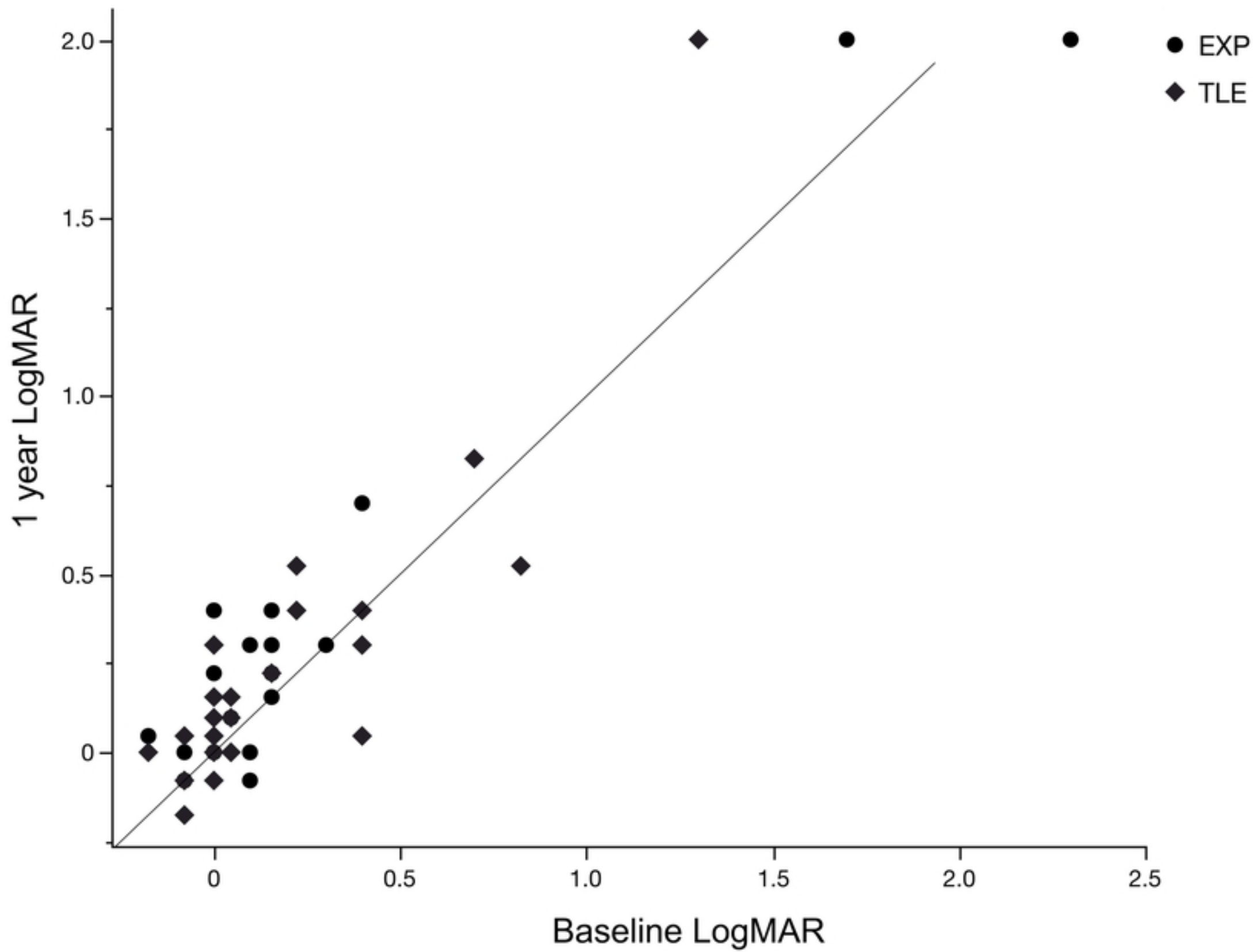


Figure4