

1 **Noninvasive diagnosis of secondary infections in COVID-19 by sequencing of plasma microbial cell-** 2 **free DNA.**

3
4 Grace Lisius¹, Radha Duttagupta², Asim A. Ahmed², Matthew Hensley³, Nameer Al-Yousif⁴, Michael Lu¹,
5 William Bain^{3,5,6}, Faraaz Shah^{3,5}, Caitlin Schaefer^{3,5}, Shulin Qin^{3,7}, Xiaohong Wang³, Yingze Zhang^{3,5}, Kevin J.
6 Mitchell⁸, Ellen K. Hughes⁸, Jana L. Jacobs⁹, Asma Naqvi⁹, Ghady Haidar⁹, John W. Mellors⁹,
7 Barbara Methé^{3,7}, Bryan J. McVerry^{3,5,7}, Alison Morris^{3,7}, Georgios D. Kitsios^{3,5,7}

8
9 ¹Internal Medicine Residency Program, UPMC, Pittsburgh, PA;

10 ²Karius Inc, Redwood City, CA;

11 ³Division of Pulmonary, Allergy and Critical Care Medicine, University of Pittsburgh, Pittsburgh, PA;

12 ⁴Internal Medicine Residency Program, UPMC Mercy, Pittsburgh, PA;

13 ⁵Acute Lung Injury Center for Excellence, Division of Pulmonary, Allergy and Critical Care Medicine, University
14 of Pittsburgh, Pittsburgh, PA;

15 ⁶Veterans Affairs Pittsburgh Health System, Pittsburgh, PA;

16 ⁷Center for Medicine and the Microbiome, University of Pittsburgh, Pittsburgh, PA;

17 ⁸Computer Vision Group, Veytel LLC, Pittsburgh, PA;

18 ⁹University of Pittsburgh School of Medicine, Division of Infectious Diseases, Pittsburgh, PA.

19
20 Corresponding Author:

21 Georgios D. Kitsios, MD, PhD

22 Assistant Professor of Medicine

23 Division of Pulmonary, Allergy and Critical Care Medicine

24 University of Pittsburgh Medical Center

25 Address: UPMC Montefiore Hospital, NW628, 3459 Fifth Avenue, Pittsburgh, PA 15213

26 Email: kitsiosg@upmc.edu

27 **Summary of conflict-of-interest statements:** Drs. Duttagupta and Ahmed are employed by Karius, Inc. Dr.

28 Kitsios, Dr. Haidar have received research funding from Karius, Inc in 2018-2019. Dr. Mellors is a consultant to

29 Gilead Sciences and owns shares or share options in Co-Crystal Pharmaceuticals, ID Connect, and Abound
30 Bio, all unrelated to the current work. Dr. McVerry has received research funding from Bayer Pharmaceuticals,
31 Inc. and consulting fees from Boehringer Ingelheim, both unrelated to this work. All other authors disclosed no
32 conflict of interest.

33 **Funding information:** Dr. Kitsios: University of Pittsburgh Clinical and Translational Science Institute, COVID-
34 19 Pilot Award; NIH (K23 HL139987; R03 HL162655). Dr. Bain: Career Development award number IK2
35 BX004886 from the U.S. Department of Veterans Affairs Biomedical Laboratory R&D (BLRD) Service. Caitlin
36 Schaefer: NIH (P01 HL114453).

37 **Abstract:**

38 Background: Secondary infection (SI) diagnosis in COVID-19 is challenging, due to overlapping clinical
39 presentations, practical limitations in obtaining samples from the lower respiratory tract (LRT), and low
40 sensitivity of microbiologic cultures.

41 Research Question: Can metagenomic sequencing of plasma microbial cell-free DNA (mcfDNA-Seq) help
42 diagnose SIs complicating COVID-19?

43 Study Design and Methods: We enrolled 42 inpatients with COVID-19 classified as microbiologically-confirmed
44 SI (Micro-SI, n=8), clinically-diagnosed SI (Clinical-SI, n=13, i.e. empiric antimicrobials), or no clinical suspicion
45 for SI (No-Suspected-SI, n=21) at time of enrollment. From baseline and follow-up plasma samples (days 5
46 and 10 post-enrollment), we quantified mcfDNA for all detected microbes by mcfDNA sequencing and
47 measured nine host-response biomarkers. From LRT samples among intubated subjects, we quantified
48 bacterial burden with 16S rRNA gene quantitative PCR.

49 Results: We performed mcfDNA-Seq in 82 plasma samples. Sequencing was successful in 60/82 (73.2%)
50 samples, which had significantly lower levels of human cfDNA than failed samples ($p<0.0001$). McfDNA
51 detection was significantly higher in Micro-SI (15/16 [94%]) compared to Clinical-SI samples (8/14 [57%],
52 $p=0.03$), and unexpectedly common in No-Suspected-SI samples (25/30 [83%]), similar to detection rate in
53 Micro-SI. We detected culture-concordant mcfDNA species in 13/16 Micro-SI samples (81%) and mcfDNA
54 levels tracked with SI outcome (resolution or persistence) under antibiotic therapy. McfDNA levels correlated
55 significantly with LRT bacterial burden ($r=0.74$, $p=0.02$) as well as plasma biomarkers of host response (white
56 blood cell count, IL-6, IL-8, and SPD, all $p<0.05$). Baseline mcfDNA levels were predictive of worse 90-day
57 survival (hazard ratio 1.30 [1.02-1.64] for each \log_{10} mcfDNA, $p=0.03$).

58 Interpretation: High circulating levels of mcfDNA in a substantial proportion of patients with COVID-19 without
59 clinical suspicion for SI suggest that SIs may often remain undiagnosed. McfDNA-Seq, when clinically
60 available, can offer a non-invasive diagnostic tool for pathogen identification, with prognostic value on host
61 inflammatory response and clinical outcomes.

62 **Key Words:** COVID-19, microbial cell-free DNA sequencing, secondary infection, pneumonia, acute
63 respiratory failure

64 **Introduction:**

65 Secondary bacterial or fungal infections complicate the course of up to 50% of hospitalized patients
66 with COVID-19 and contribute to worse clinical outcomes.¹⁻³ Diagnosis of secondary infections (SI) has
67 presented clinicians with major challenges during the pandemic. Readily available indicators of clinical infection
68 such as fever, leukocytosis or consolidations on chest imaging cannot distinguish isolated SARS-CoV-2
69 infection from a secondary pneumonia by super-infecting organisms.^{4,5} Blood cultures are obtained routinely
70 when a SI is suspected in COVID-19, but their diagnostic yield is low, especially in the case of secondary
71 pneumonias, when direct lower respiratory tract (LRT) sampling is recommended.⁶ LRT sampling for
72 microbiologic studies can be challenging, such as in severely hypoxemic patients on non-invasive respiratory
73 support, and can have low diagnostic sensitivity, due to antecedent antibiotics or slow/fastidious organism
74 growth, as in the case of fungal pathogens.⁷

75 The challenges of SI diagnostic work-up and variable clinical practices have hindered acquisition of
76 accurate SI incidence estimates in severely ill patients with COVID-19. With the prevailing diagnostic
77 uncertainty, empiric antibiotics have been prescribed in 75-85% of hospitalized patients, often initiated due to
78 clinical deterioration and then empirically continued, even in the absence of diagnostic evidence supporting an
79 SI.^{8,9} Overcoming the diagnostic challenges of SI with reliable, sensitive and non-invasive techniques could
80 optimize diagnostic yield, enabling antibiotic targeting and stewardship.⁴

81 Metagenomic sequencing of plasma microbial cell-free DNA (mcfDNA) can offer a non-invasive,
82 sensitive diagnostic tool for SIs caused by DNA pathogens. Plasma metagenomics in sepsis provides rapid
83 and actionable results, with 95% concordance with blood-cultured organisms, facilitating adjustments of
84 empiric antimicrobials to targeted therapy.¹⁰ We have previously provided proof-of-concept evidence that
85 patients with COVID-19 with high levels of circulating mcfDNA of common respiratory pathogens were at risk of
86 worse clinical outcome.¹¹ Although the ability to comprehensively assess for SI-causal pathogens with non-
87 invasive blood samples is appealing, feasibility and clinical validity data for mcfDNA sequencing in COVID-19
88 are needed. In this study, we report the analyses of a cohort of 42 hospitalized patients with severe COVID-19
89 who were comprehensively screened for SI pathogens with serial plasma mcfDNA sequencing.

90
91 **Methods:**

92 Clinical cohort enrollment and COVID-19 diagnosis: From April 2020 through September 2020, we

93 conducted an observational, prospective cohort study of hospitalized patients with acute hypoxemic respiratory
94 failure and confirmed severe COVID-19 pneumonia as previously described.^{12,13} The University of Pittsburgh
95 Institutional Review Board (IRB) approved the protocols and we obtained written or electronic informed
96 consent by all participants or their surrogates in accordance with the Declaration of Helsinki. We diagnosed
97 COVID-19 based on institutional clinical criteria (clinical symptoms, hypoxemia and abnormal chest
98 radiographic findings) with confirmatory molecular testing (positive SARS-CoV-2 nasopharyngeal quantitative
99 polymerase chain reaction [qPCR]).

100 Biospecimen collection and experiments: We collected blood samples in EDTA tubes on enrollment
101 (baseline - day 1) for centrifugation, separation and storage of plasma and additional blood constituents until
102 conduct of experiments. We also collected repeat blood samples on days 5 and 10 post-enrollment from
103 critically ill patients who remained hospitalized in the intensive care unit (ICU). We collected endotracheal
104 aspirates (ETA) from mechanically-ventilated patients concurrently with blood sample acquisition.

105 We conducted plasma microbial cell-free DNA metagenomic sequencing (mcfDNA-Seq) with the Karius
106 Test[®] [Karius Inc., Redwood City, CA] and classified the derived metagenomic sequences as human (hcfDNA)
107 vs. microbial (mcfDNA). Based on minimum sequencing coverage metric required for quality control, we
108 classified sequencing runs as “Pass”, “Qualitatively Pass” or “Failed”. All microbes were reported at species
109 level and included a quantitative measure of abundance expressed as DNA molecules per microliter (MPMs),
110 with the exception of the “Qualitative Pass” calls where the reported organism could not be quantified. We
111 classified microbes identified by mcfDNA-Seq into recognized respiratory pathogens vs. microbes of unclear
112 clinical importance.¹⁴ For contextualization, we compared mcfDNA levels among subjects with COVID-19 with
113 our previously published dataset of mechanically ventilated patients with and without pneumonia.¹⁴

114 To profile the host response, we measured plasma levels of nine prognostic biomarkers (eight
115 interleukin [IL]-6, IL-8, pentraxin-3, procalcitonin, receptor for advanced glycation end products [RAGE],
116 angiopoietin-2 (Ang-2), suppression of tumorigenicity [ST]-2, and tumor necrosis factor receptor [TNFR]-1 with
117 Luminex, and surfactant Protein D [SPD] with ELISA; R&D Systems, Minnesota). We measured plasma SARS-
118 CoV-2 viral levels (vRNA) following RNA extraction and qPCR amplification with a sensitive in-house method.¹⁵
119 From available ETA samples, we separately extracted genomic DNA and RNA and performed bacterial 16S

rRNA gene and SARS-CoV-2 RNA qPCR for assessment of bacterial and viral load in the LRT, respectively.^{5,16}

Diagnosis and classification of secondary infections:

We reviewed all available clinical, microbiologic and antimicrobial treatment data around the timing of baseline samples (+/- 3 days) for patients with COVID-19 to ascertain the presence/absence or clinical suspicion for SI. We classified subjects in three groups, assessed by two reviewers:

- a. Microbiologically-Confirmed Secondary Infection (**Micro-SI**), when typical pathogenic microbes were isolated on clinical biospecimen cultures (blood, LRT, urine or tissue) and the subject was receiving antimicrobials for the documented infection.
- b. Clinically-Diagnosed Secondary Infections (**Clinical-SI**), when empiric antimicrobials were administered without microbiologic SI confirmation.
- c. “No Clinical Suspicion for SI” (**No-Suspected-SI**), when microbiologic workup for SI was negative or not performed, and no empiric antimicrobials were prescribed.

We repeated classifications into the Micro-SI, Clinical-SI and No-Suspected-SI categories at the timing of follow-up samples (days 5 and 10 post-enrollment) from updated clinical and microbiologic data, when available. We quantified radiographic edema of baseline chest x-rays with the Radiographic Assessment of Lung Edema (RALE) score with the use of the *PulmAnnotator* software.^{17,18}

Statistical analysis:

For “Pass” samples with zero microbial calls, we assigned a microbial MPM of “1” to allow for log₁₀-transformations, and utilized log₁₀-transformed values of plasma biomarkers and mcfDNA levels for analyses due to non-normal data. We compared clinical variables, biomarker and cfDNA levels between different categories (i.e. sequencing run success, SI clinical groups) and the historical non-COVID-19 cohort using non-parametric tests, Wilcoxon signed-rank and Fischer’s exact tests. We examined for correlations between biomarkers and cfDNA levels with the Pearson’s method, adjusted for multiple comparisons with the Benjamini-Hochberg method. We analyzed the impact of baseline mcfDNA levels on 90-day survival by Kaplan-Meier curves stratified by total mcfDNA tertiles and by constructing Cox proportional age-adjusted hazards models. We performed all analyses with the R software (R version 3.5.1).

148

149 **Results:**

150 Clinical cohort characteristics:

151 We included 42 patients (median age 65.1 years, 62% men), who contributed a total of 82 plasma
152 samples for cfDNA sequencing (median of 2 samples per subject). From available baseline data, we classified
153 subjects as Micro-SI (n=8), Clinical-SI (n=13) and No-Suspected-SI (n=21) (Table 1). We found lower rates of
154 invasive mechanical ventilation ($p = 0.05$) and lower total white blood cell count ($p=0.04$) in Clinical-SI patients
155 and no other significant clinical variable differences between SI groups. Plasma vRNA was notably lower in
156 Micro-SI ($p\leq 0.05$). In biomarker comparisons, we found significant between-group differences in IL-8 and Ang-
157 2 levels (lower in Clinical-SI).

158

159 Outputs of plasma metagenomic sequencing runs:

160 Based on the sequencing run success criteria of the 82 samples, we classified 52 (63%) as “Pass”
161 (successful), eight (10%) as “Qualitative Pass” and 22 samples (27%) as “Fail”. “Pass” samples had
162 significantly lower levels of hcfDNA compared to “Qualitative Pass”, or “Fail” samples ($p<0.0001$, e-Figure 1).
163 We also found that a successful sequencing run (“Pass”) on a Day 1 sample for a given subject was
164 significantly associated with a “Pass” run on a Day 5 sample (Fisher’s odds ratio 11.9, 95% confidence
165 interval-CI [1.00-703.8], $p=0.04$). From “Qualitative Pass” samples, we utilized only qualitative information
166 about identified microbial species, whereas we utilized quantitative mcfDNA data (expressed as MPMs) from
167 “Pass” samples only.

168

169 Plasma metagenomics results by SI category:

170 Among the 53 “Pass” samples across all time-points, Micro-SI diagnosis had more samples positive for
171 mcfDNA (i.e. DNA reads from at least one microbial species reported, 15/16 [94%] samples) compared to
172 Clinical-SI (8/14 [57%], $p=0.03$). Unexpectedly, a high proportion of No-Suspected-SI samples were positive
173 for mcfDNA (25/30 [83%]), similar to Micro-SI samples. All eight “Qualitative Pass” samples, one Clinical-SI
174 and seven No-Suspected-SI, were positive for mcfDNA, with 3/8 samples reporting ≥ 2 microbial species.

175 Among baseline “Pass” samples (n = 25), 18 (72%) were positive for mcfDNA, with a median
176 (interquartile range – IQR) of 812.9 (151.3-2435.5) MPMs per sample, 59.1% of which corresponded to typical
177 pathogenic organisms. Stratified by SI categories, 4/5 (80.0%) Micro-SI, 3/8 (37.5%) Clinical-SI and 11/12
178 (91.6%) No-Suspected-SI samples were positive for mcfDNA, with a statistically significant higher proportion of
179 positive samples in No-Suspected-SI compared to Clinical-SI samples (Fisher’s p=0.01). We found no
180 significant differences in hcfDNA, total mcfDNA and pathogen mcfDNA MPMs between SI groups (Figure 1A-
181 C), although Micro-SI samples had numerically higher total and pathogen mcfDNA MPM levels (Table 1).

182 Among baseline “Pass” samples in Micro-SI subjects, plasma metagenomics reported mcfDNA from
183 the culprit organisms identified by cultures in 3/5 (60.0%) cases (*E.coli* in subject 4, *Pseudomonas aeruginosa*
184 in subject 3 and *Proteus mirabilis* in subject 6) (e-Figure 2, eTable 2). The two discordant Micro-SI samples
185 involved two probable ventilator-associated pneumonia (VAP) cases: subject 1 with negative mcfDNA-Seq
186 when LRT cultures taken three days prior to plasma sampling showed rare *E.coli* growth, and case subject 2
187 with light Methicillin-sensitive *S. aureus* growth in LRT cultures taken two days prior to plasma sampling was
188 deemed as culprit, but mcfDNA-Seq reported *E. faecalis* and *E.coli* mcfDNA. When considering all available
189 Micro-SI samples (five baseline and 11 follow-up samples), mcfDNA-Seq results were concordant with cultures
190 in 13/16 (81.3%) of comparisons.

191 Baseline samples from Clinical-SI subjects contained mcfDNA in 37.5 % of cases (3/8). Case 11 had
192 high mcfDNA levels for plausible pathogens (*K. pneumoniae* and *P. aeruginosa*; Figure 1C, e-Figure 2, and
193 eTable 2), which had not been detected by blood cultures (no LRT specimen cultures available). For the other
194 two Clinical-SI subjects (15 and 21), reported mcfDNA belonged mostly to Human Herpesviruses, which could
195 represent viral re-activation in context of critical illness.¹⁹

196 Among No-Suspected-SI patients at baseline, 11/12 (91.6%) samples were positive for mcfDNA, with
197 five samples showing >100 pathogen mcfDNA MPMs in the range of Micro-SI subjects (annotated species in
198 Figure 1C, e-Figure 2). The remaining six subjects with mcfDNA revealed organisms of unclear clinical
199 significance: Herpesvirus DNA in four subjects (27, 28, 38 and 42), and gram-positive bacteria often
200 considered as skin contaminants in blood cultures (*Lactobacillus gasseri* and *S. epidermidis*) in three subjects
201 (38, 41 and 42). Notably, 3/4 (75%) of the baseline “Qualitative Pass” samples for No-Suspected-SI subjects

(25, 30, 36) were also positive for pathogen mcfDNA, even though the absolute burden of mcfDNA MPMs could not be reliably estimated.

Comparison of circulating cfDNA burden in COVID-19 vs. historic non-COVID samples:

Comparing against published data from our group for mechanically ventilated patients with microbiologically confirmed pneumonia (n=26), clinically diagnosed pneumonia (n=41) and uninfected controls (n=16, intubated for airway protection or due to cardiogenic pulmonary edema), we found markedly higher levels of hcfDNA in subjects with COVID-19 compared to all non-COVID patient groups (e-Figure 3A, $p < 0.005$ for all comparisons). Patients without COVID with microbiologically confirmed pneumonia had higher mcfDNA levels compared to No-Suspected-SI in patients with COVID-19, who in turn had markedly higher mcfDNA levels compared to uninfected controls (e-Figure 3B-C, all $p < 0.05$).

Trajectories of plasma cfDNA levels in subjects with COVID-19:

We updated SI classifications at the time of the follow-up sample acquisition and found that few subjects transitioned into a different SI diagnostic category (4/26 [15%] and 4/16 [25%] for days 5 and 10, respectively, e-Figure 4, 5). Micro-SI subjects had significantly higher total and pathogen mcfDNA levels compared to No-Suspected-SI subjects at post-enrollment day 5 ($p < 0.05$, e-Figure 5).

We examined subject-level trajectories in four cases with persistent culture-proven SI or persistent pathogen mcfDNA detection on available longitudinal samples (Figure 2). Subject 3 was diagnosed with resistant *Pseudomonas aeruginosa* VAP with clinical and microbiologic relapse, demonstrating persistently elevated *Pseudomonas aeruginosa* mcfDNA for >30 days on repeated sampling (Figure 2). For subject 4 McfDNA-Seq demonstrated a transition in detected bacterial species in follow-up samples corresponding to two different VAP episodes (by *E. coli* and *Pseudomonas aeruginosa* respectively). Subject 6 had unexplained, persistent *Proteus mirabilis* mcfDNA detection following treatment of a urinary tract infection, but was found to have a late parotid gland abscess that was drained and cultures grew *Proteus mirabilis*. Last, for subject 26 diagnosed as No-Suspected-SI (i.e. no empiric antimicrobials) who died on day 6 with multi-organ failure attributed to isolated SARS-CoV-2 infection, we found high pathogen mcfDNA levels, including *Klebsiella pneumoniae*, raising concern for the possibility of an undetected and undertreated SI.

230

231 McfDNA is associated with plasma host-response biomarkers and LRT bacterial burden:

232 We next examined the relationship between mcfDNA-Seq results and clinical/laboratory parameters of
233 COVID-19 severity. We found no significant correlation between mcfDNA and SARS-CoV-2 viral load (plasma
234 and ETA vRNA), radiographic severity (quantified by RALE scores) or clinical severity by WHO ordinal scale.
235 However, there was a weak, significant correlation between hcfDNA and RALE scores ($r=0.33$, $p=0.03$).

236 We then examined for correlations between cfDNA levels and host-response biomarkers measured in
237 plasma. Total and pathogen mcfDNA levels were significantly correlated with IL-6, IL-8 and SPD levels,
238 whereas hcfDNA levels were significantly correlated with IL-6, IL-8, pentraxin-3 and procalcitonin levels
239 following adjustment for multiple comparisons (Figure 3). Pathogen mcfDNA levels were significantly correlated
240 with 16S rRNA gene copies by qPCR in ETA specimens, a surrogate of LRT bacterial load ($r=0.92$, $p=0.0004$).

241

242 Baseline mcfDNA levels are predictive of 90-day survival:

243 Baseline hcfDNA and total mcfDNA levels were not significantly associated with cumulative mortality at
244 90 days from ICU admission (Figure 4A-B). However, baseline total mcfDNA levels were significantly
245 associated with worse 90-day survival in a Cox proportional hazards model adjusted for age (hazard ratio for
246 \log_{10} -transformed mcfDNA 1.30, [1.02-1.64], $p=0.03$). Stratified by baseline total mcfDNA tertiles (high>1499,
247 middle 344-1499, low<344 MPMs), subjects in the high mcfDNA tertile had worse 90-day survival by Kaplan-
248 Meier curve analysis compared to subjects in other tertiles (global log-rank $p=0.02$), whereas hcfDNA tertiles
249 were not predictive of 90-day survival (Figure 4C-D). In contrast to the significant prognostic information of
250 baseline total mcfDNA levels, there were no 90-day survival differences between the clinical classification SI
251 groups (log-rank $p=0.62$ for Micro-SI, Clinical-SI and No-Suspected-SI, data not shown). Stratified by 90-day
252 survival, we found no significant differences in the longitudinal trajectories of total mcfDNA and hcfDNA levels
253 between survivors and non-survivors (e-Figure 5A, B).

254

255 **Discussion:**

256 In this exploratory study, we systematically evaluated 42 COVID-19 inpatients with culture-independent
257 mcfDNA-Seq. We found no significant differences in mcfDNA levels by SI clinical categories at baseline,

258 although culture-confirmed cases of SI (Micro-SI) had higher mcfDNA levels on follow-up samples. The
259 mcfDNA species corresponded to clinically isolated pathogens in 81% of Micro-SI samples, and indicated
260 potentially missed, super-infecting pathogens in up to 41% of subjects for whom there was no clinical suspicion
261 for SI (No-Suspected-SI). Our molecular analyses revealed significant correlations of circulating mcfDNA levels
262 with LRT bacterial burden, suggestive of plausible secondary pneumonias, as well as with plasma host-
263 response biomarkers. Subjects with the highest tertile of mcfDNA burden had significantly lower 90-day
264 survival independent of SI group. Longitudinal assessments revealed that mcfDNA levels can persist in SI
265 without adequate source control such as the patient with parotitis or potentially with antibiotic resistant
266 pathogens such as the patient with resistant *Pseudomonas* VAP. Our results were also notable for an
267 unexpectedly high rate of failed mcfDNA-Seq runs due to high burden of circulating hcfDNA, which was much
268 higher than historic cases of non-COVID-19 pneumonia, perhaps due to significant human tissue damage in
269 severely ill patients with COVID-19, including patients supported by extra-corporeal membrane oxygenation.
270 The higher likelihood of subsequent failed samples after initial failed samples suggests subject-specific
271 influences on sequencing run outputs and results.

272 Our study highlights the challenge of clinically distinguishing cases with isolated SARS-CoV-2 infection
273 from those complicated by SIs. The results of host-response biomarker analyses and mcfDNA-Seq did not
274 match the clinical SI diagnoses and clinically-directed microbiologic work-up. For example, procalcitonin levels
275 are often used as diagnostic biomarkers for bacterial infections, but have unclear diagnostic value for SIs in
276 COVID-19.^{20,21} We found similar procalcitonin levels among clinical SI groups, and importantly no significant
277 association with mcfDNA levels. The clinical validity of mcfDNA sequencing was further supported by the
278 significant correlations with LRT bacterial burden and systemic host-response biomarkers, as well as by the
279 predictive value on 90-day survival. Our study suggests that noninvasive mcfDNA sequencing may offer
280 insights into the presence of an SI and its impact on outcome.

281 Circulating mcfDNA was significantly associated with host immune response in COVID-19. McfDNA
282 species may reflect SI-causal pathogens (regardless of their viability in the bloodstream), but may also signify
283 lung barrier disruption in patients with acute lung injury from COVID-19, or even gut barrier disruption in
284 patients with circulatory shock and hypoperfusion.¹⁴ Thus, positive mcfDNA calls should not be directly
285 interpreted as evidence of superinfecting pathogens, but interpreted within the context of a critical illness with

286 colonized mucosal surfaces by microbiota and impaired barrier function. The significant correlation between
287 hcfDNA levels and RALE scores suggests that lung injury may account, at least in part, for the systemic levels
288 of circulating hcfDNA. The significant correlations of mcfDNA with IL-6 and IL-8 levels highlighted the potential
289 importance of mcfDNA in the inflammatory cascade of COVID-19, since mcfDNA can be recognized by Toll-
290 like receptors and propagate systemic inflammatory responses, independent of the effects of SARS-CoV-2 on
291 innate immunity.²² Additionally, the case of Herpesvirus DNA identification highlighted the prevalence of viral
292 re-activation in critical illness. Thus, any positive mcfDNA signal requires careful interpretation, as it may
293 represent superinfecting bacterial or fungal VAP pathogens, translocating commensal microbes, sample
294 collection skin/environmental contaminants or re-activated viral organisms.

295 Our study has several limitations. The sample size of 42 subjects limits the statistical power for some of
296 the analyses, yet it is to our knowledge the largest study to utilize plasma metagenomics in patients with
297 COVID-19, and we found significant associations with host inflammation and outcomes, consistent with our
298 hypotheses. Clinical samples for microbiologic workup were collected at the discretion of the treating clinicians,
299 and thus some of the mcfDNA-culture comparisons are limited. Nonetheless, our clinical dataset is
300 representative of standard of care at a tertiary academic center. We systematically examined all patients for
301 molecular evidence of possible SI using systematic evaluation with mcfDNA testing, regardless of clinician
302 impressions. It is possible that for certain No-Suspected-SI subjects, the mcfDNA reported may not represent
303 an active infection. Careful review of the mcfDNA-Seq output and integration with available evidence on
304 organismal pathogenicity can help further inform interpretation of pathogen mcfDNA. Nonetheless, circulating
305 mcfDNA carries prognostic information underlined by the significant associations with systemic inflammation
306 and survival.¹¹ Our study was limited by an unexpected amount of failed mcfDNA-Seq analyses due to high
307 amounts of interfering hcfDNA, but this finding provided important insight into the high degree of human
308 cellular damage in COVID-19.

309 Our study advances understanding of the pathobiologic and diagnostic importance of circulating
310 mcfDNA in COVID-19 and demonstrates limitations in clinical assessment of SIs. McfDNA correlated with
311 biomarkers of host immune response and LRT microbial burden. Additional characterization of host
312 inflammatory response components and triggers in COVID-19 is essential in the era of immunomodulatory
313 therapeutics. The noninvasive modality of quantifying mcfDNA load and accurately identifying microbial

314 species may offer a sensitive tool for SI detection, as well as further advance our understanding of the role of
315 translocating microbiota in critical illness. McfDNA sequencing may be particularly helpful in spontaneously
316 breathing patients on high flow nasal cannula or non-invasive mechanical ventilation, for whom access to LRT
317 specimens is challenging. Further prospective investigation for treatment guidance is necessary to
318 systematically evaluate the incidence of molecular evidence for SI and examine the impact of non-invasive
319 screening on patient outcomes.

320 References

- 321 1. Zhou F, Yu T, Du R, et al. Clinical course and risk factors for mortality of adult inpatients with COVID-19
322 in Wuhan, China: a retrospective cohort study. *The Lancet*. 2020;395(10229):1054-1062.
- 323 2. Rouze A, Martin-Loeches I, Povoas P, et al. Relationship between SARS-CoV-2 infection and the
324 incidence of ventilator-associated lower respiratory tract infections: a European multicenter cohort
325 study. *Intensive Care Med*. 2021;47(2):188-198.
- 326 3. Maes M, Higginson E, Pereira-Dias J, et al. Ventilator-associated pneumonia in critically ill patients with
327 COVID-19. *Crit Care*. 2021;25(1):25.
- 328 4. Pickens CO, Gao CA, Cuttica MJ, et al. Bacterial Superinfection Pneumonia in Patients Mechanically
329 Ventilated for COVID-19 Pneumonia. *Am J Respir Crit Care Med*. 2021;204(8):921-932.
- 330 5. Kitsios GD, Morris A. Seek and Ye Shall Find: COVID-19 and Bacterial Superinfection. *Am J Respir Crit
331 Care Med*. 2021;204(8):875-877.
- 332 6. Hughes S, Troise O, Donaldson H, Mughal N, Moore LSP. Bacterial and fungal coinfection among
333 hospitalized patients with COVID-19: a retrospective cohort study in a UK secondary-care setting. *Clin
334 Microbiol Infect*. 2020;26(10):1395-1399.
- 335 7. Investigators NC. Bronchoscopy on intubated patients with COVID-19 is associated with low infectious
336 risk to operators. *Annals of the American Thoracic Society*. 2021;18(7):1243-1246.
- 337 8. Langford BJ, So M, Raybardhan S, et al. Antibiotic prescribing in patients with COVID-19: rapid review
338 and meta-analysis. *Clin Microbiol Infect*. 2021;27(4):520-531.
- 339 9. Russell CD, Fairfield CJ, Drake TM, et al. Co-infections, secondary infections, and antimicrobial use in
340 patients hospitalised with COVID-19 during the first pandemic wave from the ISARIC WHO CCP-UK
341 study: a multicentre, prospective cohort study. *The Lancet Microbe*. 2021;2(8):e354-e365.
- 342 10. Blauwkamp TA, Thair S, Rosen MJ, et al. Analytical and clinical validation of a microbial cell-free DNA
343 sequencing test for infectious disease. *Nat Microbiol*. 2019;4(4):663-674.
- 344 11. Kitsios GD, Bain W, Al-Yousif N, et al. Plasma microbial cell-free DNA load is associated with mortality in
345 patients with COVID-19. *Respir Res*. 2021;22(1):24.
- 346 12. Drohan CM, Nouraie SM, Bain W, et al. Biomarker-Based Classification of Patients With Acute
347 Respiratory Failure Into Inflammatory Subphenotypes: A Single-Center Exploratory Study. *Crit Care
348 Explor*. 2021;3(8):e0518.
- 349 13. Bain W, Yang H, Shah FA, et al. COVID-19 versus Non-COVID-19 Acute Respiratory Distress Syndrome:
350 Comparison of Demographics, Physiologic Parameters, Inflammatory Biomarkers, and Clinical
351 Outcomes. *Ann Am Thorac Soc*. 2021;18(7):1202-1210.
- 352 14. Yang H, Haidar G, Al-Yousif NS, et al. Circulating microbial cell-free DNA is associated with
353 inflammatory host-responses in severe pneumonia. *Thorax*. 2021;76(12):1231-1235.
- 354 15. Jacobs JL, Bain W, Naqvi A, et al. SARS-CoV-2 Viremia is Associated with COVID-19 Severity and Predicts
355 Clinical Outcomes. *Clin Infect Dis*. 2021.
- 356 16. Jacobs J, Naqvi A, Shah F, et al. Plasma SARS-CoV-2 RNA levels as a biomarker of lower respiratory tract
357 SARS-CoV-2 infection in critically ill patients with COVID-19. *Journal of Infectious Diseases*. 2022;In
358 press.
- 359 17. Kotok D, Yang L, Evankovich JW, et al. The evolution of radiographic edema in ARDS and its association
360 with clinical outcomes: A prospective cohort study in adult patients. *J Crit Care*. 2020;56:222-228.
- 361 18. Al-Yousif N, Komanduri S, Qurashi H, et al. Radiographic Lung Edema in Hospitalized Patients with
362 COVID-19 Is Associated with Disease Severity and Clinical Outcomes. *B104. COVID ACROSS THE CARE
363 CONTINUUM*: American Thoracic Society; 2022:A3554-A3554.
- 364 19. Meyer A, Buetti N, Houhou-Fidouh N, et al. HSV-1 reactivation is associated with an increased risk of
365 mortality and pneumonia in critically ill COVID-19 patients. *Crit Care*. 2021;25(1):417.

- 366 20. Heer RS, Mandal AK, Kho J, et al. Elevated procalcitonin concentrations in severe Covid-19 may not
367 reflect bacterial co-infection. *Ann Clin Biochem.* 2021;58(5):520-527.
- 368 21. Atallah NJ, Warren HM, Roberts MB, et al. Baseline procalcitonin as a predictor of bacterial infection
369 and clinical outcomes in COVID-19: A case-control study. *PLoS One.* 2022;17(1):e0262342.
- 370 22. Savva A, Roger T. Targeting toll-like receptors: promising therapeutic strategies for the management of
371 sepsis-associated pathology and infectious diseases. *Frontiers in immunology.* 2013;4:387.
372

TABLE 1: Cohort characteristics by COVID-19 and SI category

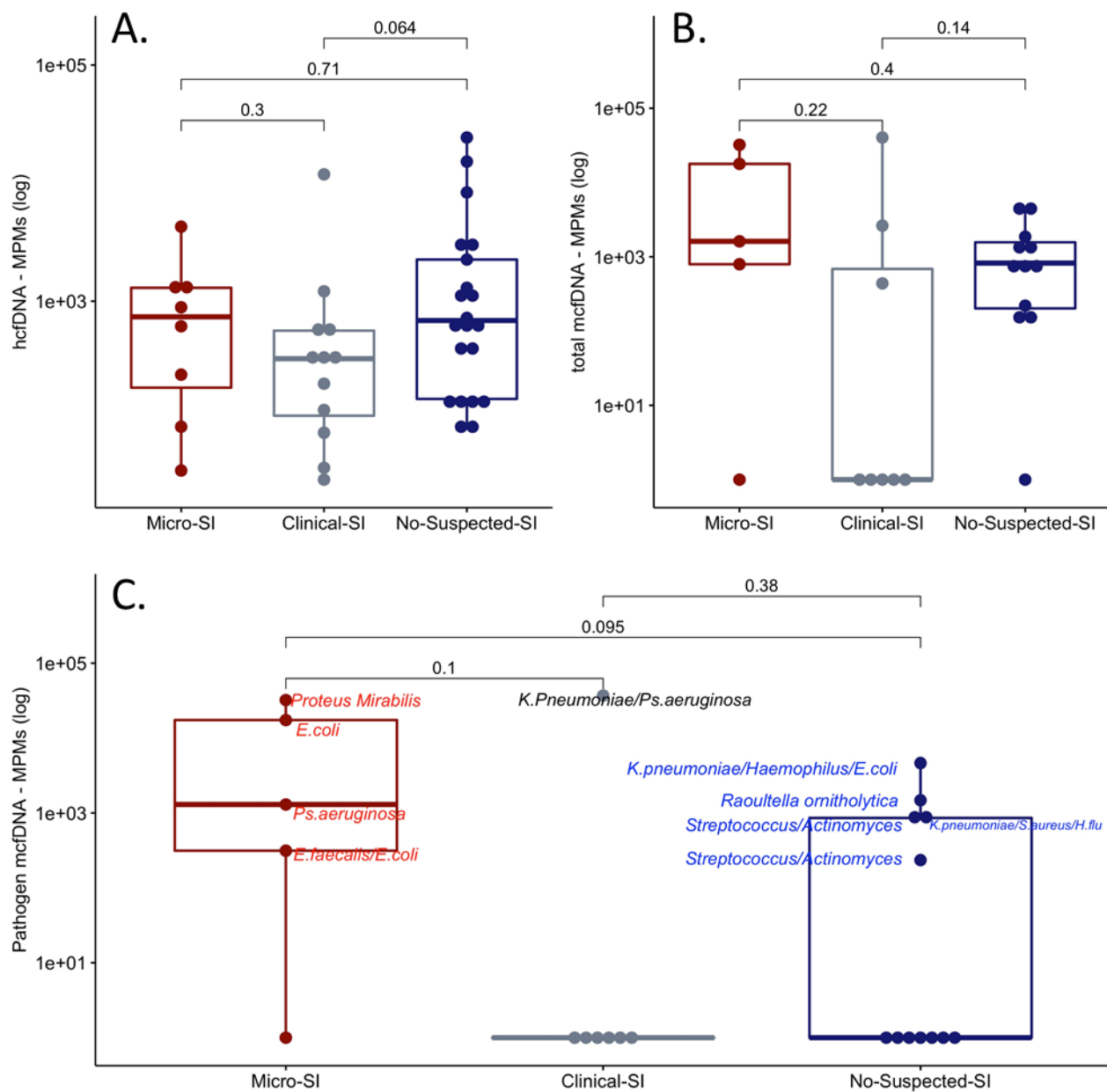
Variable	All patients	Micro-SI	Clinical-SI	No-Suspected-SI	P-value
N	42	8	13	21	
Male, n (%)	26 (61.9)	6 (75.0)	8 (61.5)	12 (57.1)	0.68
Age (median [IQR])	65.1 [58.4, 76.5]	61.6 [56.4, 65.6]	73.5 [61.6, 76.7]	64.7 [58.1, 76.8]	0.26
BMI (median [IQR])	32.3 [26.5, 39.1]	32.3 [28.6, 41.1]	33.5 [30.8, 36.4]	30.1 [26.2, 38.9]	0.58
Diabetes, n (%)	18 (42.9)	5 (62.5)	3 (25.0)	10 (47.6)	0.17
COPD, n (%)	10 (23.8)	2 (25.0)	3 (25.0)	5 (23.8)	0.99
Immunosuppression, n (%)	4 (9.5)	1 (12.5)	0 (0.0)	3 (14.3)	0.37
Invasive Mechanical Ventilation, n (%)	27 (64.3)	7 (87.5)	5 (38.5)	15 (71.4)	0.05
ECMO, n (%)	8 (19.5)	3 (37.5)	1 (7.7)	4 (19.0)	0.24
WBC (median [IQR])	10.2 [6.7, 12.4]	13.3 [10.0, 14.2]	6.7 [5.9, 11.8]	10.6 [7.4, 11.7]	0.04
WHO ordinal scale at ICU admission (median [IQR])	8.0 [7.2, 9.0]	7.0 [5.0, 9.0]	7.0 [6.0, 7.0]	6.0 [5.0, 6.0]	0.22
RALE score (median [IQR])	24.0 [21.1, 31.2]	21.8 [20.6, 23.1]	22.2 [21.0, 32.6]	26.2 [23.0, 35.8]	0.10
SARS-CoV-2 RNA in Plasma (cps/mL, median [IQR])	867.0 [40.0, 5,742.5]	3.0 [3.0, 3.0]	1,795.5 [86.5, 6,840.0]	2,491.0 [220.0, 5,445.0]	0.05
SARS-CoV-2 RNA in ETA (cps/mL, median [IQR])	215,466.7 [2,718.8, 729,422.2]	29.0 [29.0, 2,804.8]	338,240.0 [17,920.0, 508,444.4]	339,911.1 [33,351.1, 950,400.0]	0.18
IL-6 pg/ml (median [IQR])	37.1 [15.7, 159.5]	128.0 [66.9, 188.4]	26.9 [14.7, 41.4]	36.0 [16.8, 165.7]	0.44
IL-8 pg/ml (median [IQR])	22.8 [14.7, 41.4]	29.1 [19.9, 52.4]	13.9 [7.1, 20.0]	29.9 [17.6, 53.6]	0.05
ST2 pg/ml (median [IQR])	190532.0 [95113.3, 268265.7]	190,174.0 [89,313.7, 276,629.2]	206,023.5 [151,105.8, 270,770.7]	185961.2 [97840.6, 253415.2]	0.79
TNFR1 pg/ml (median [IQR])	4539.0 [3500.3, 8877.2]	7,622.3 [4,678.7, 11,256.5]	4,072.4 [3,179.9, 5,512.4]	4498.0 [3390.3, 9493.9]	0.28
SPD pg/ml (median [IQR])	25.1 [14.0, 57.6]	40.0 [21.9, 83.8]	39.0 [27.0, 55.1]	20.5 [8.3, 29.7]	0.26
RAGE pg/ml (median [IQR])	4576.8 [2422.6, 9071.2]	2,519.2 [1,566.5, 8,520.3]	2,689.6 [2,383.5, 8,455.6]	5879.8 [3856.5, 9982.9]	0.17
Ang-2 pg/ml (median [IQR])	4354.0 [2484.3, 7375.3]	9,805.2 [5,706.4, 15,904.0]	3,292.3 [2,098.3, 4,486.3]	3,195.6 [2,422.8, 5,096.5]	0.01

		14,848.5]	7,299.0]		
Procalcitonin pg/ml (median [IQR])	461.0 [187.9, 1516.1]	403.8 [164.1, 798.8]	206.1 [147.6, 454.8]	815.1 [272.2, 1767.8]	0.08
Pentraxin-3 pg/ml (median [IQR])	7826.2 [3584.4, 16080.0]	6,908.7 [2,682.9, 8,793.6]	6,827.5 [3,649.9, 11,186.3]	13548.5 [3976.4, 20466.9]	0.14
Human cfDNA MPM (median [IQR])	563.5 [148.6, 1284.8]	750.6 [200.8, 1,299.4]	325.9 [109.1, 563.7]	686.2 [148.7, 2253.5]	0.17
Total microbial cfDNA MPM (median [IQR])	812.9 [151.3, 2435.5]	1,614.9 [794.8, 1,7812.8]	1.0 [1.0, 818.1]	1026.6 [457.7, 2464.9]	0.17
Bacterial cfDNA MPM (median [IQR])	600.4 [1.0, 2906.1]	9,349.2 [559.7, 28,503.5]	1.0 [1.0, 86.0]	822.9 [117.9, 1956.0]	0.07
Fungal cfDNA MPM (median [IQR])	1.0 [1.0, 1.0]	158.8 [1.0, 388.7]	1.0 [1.0, 1.0]	1.0 [1.0, 1.0]	<0.01
Respiratory pathogen cfDNA MPM (median [IQR])	1.0 [1.0, 1,480.8]	9,349.2 [559.7, 28,503.5]	1.0 [1.0, 13.5]	118.0 [1.0, 1480.8]	0.06

374 *COVID-19 diagnosis made by positive nasopharyngeal (NP) qPCR test for SARS-CoV-2 in 42/43 subjects, and for one subject with negative NP
375 qPCR test by positive anti-spike protein antibodies (patient enrolled in April 2020, prior to initiation of vaccination programs). P-values significant
376 below threshold of 0.05 are shown in bold. Abbreviations: Microbiologically-Diagnosed Secondary Infection (Micro-SI); Clinically-Diagnosed
377 Secondary Infections (Clinical-SI); No Clinical Suspicion for SI (No-Suspected-SI); chronic obstructive pulmonary disease (COPD); extracorporeal
378 membrane oxygenation (ECMO); Radiographic Assessment of Lung Edema score (RALE score); receptor for advanced glycation end products
379 (RAGE); suppression of tumorigenicity (ST-2); tumour necrosis factor receptor (TNFR-1); Surfactant Protein D (SPD); molecules per microliter
380 (MPMs).

381

382 Figure 1:



383

384

385

386

387

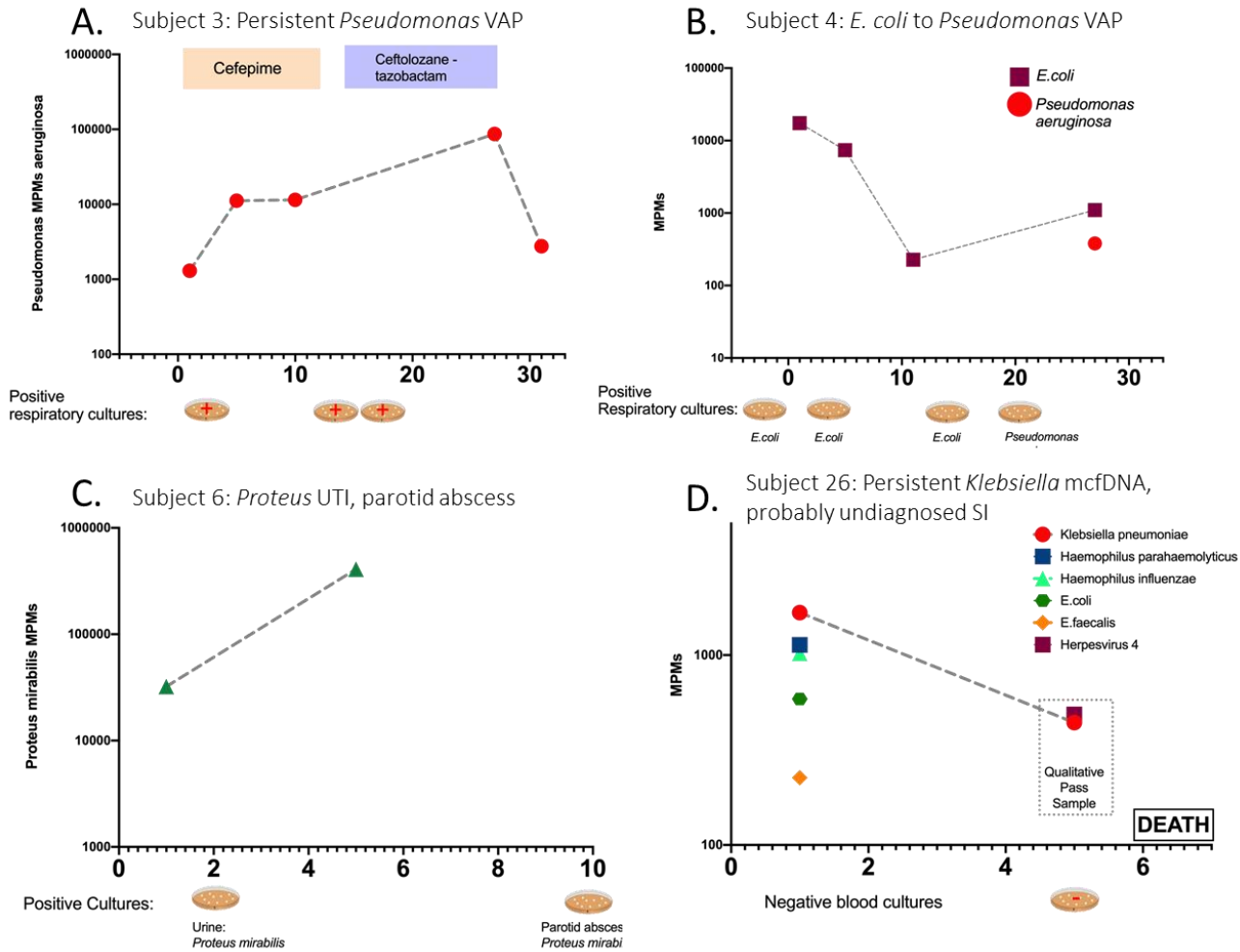
388

389

390

Figure 1: Clinical classification of secondary infection diagnosis among patients with COVID-19 did not show significant differences in human (A) or microbial cell-free DNA levels (B-C). Subjects classified as Microbiologically-Confirmed Secondary Infection (Micro-SI) had numerically higher but statistically non-significant different levels of total and pathogen microbial cell-free DNA (mcfDNA) compared to subjects classified as Clinically-Diagnosed Secondary Infections (Clinical-SI) or those with no Clinical Suspicion for SI (No-Suspected-SI). Pairwise comparisons were conducted with Wilcoxon test. In panel C, the most abundant microbial species in each of the positive samples for pathogen mcfDNA are shown.

391 Figure 2:



392

393

394

395

396

397

398

399

400

401

402

403

404

405

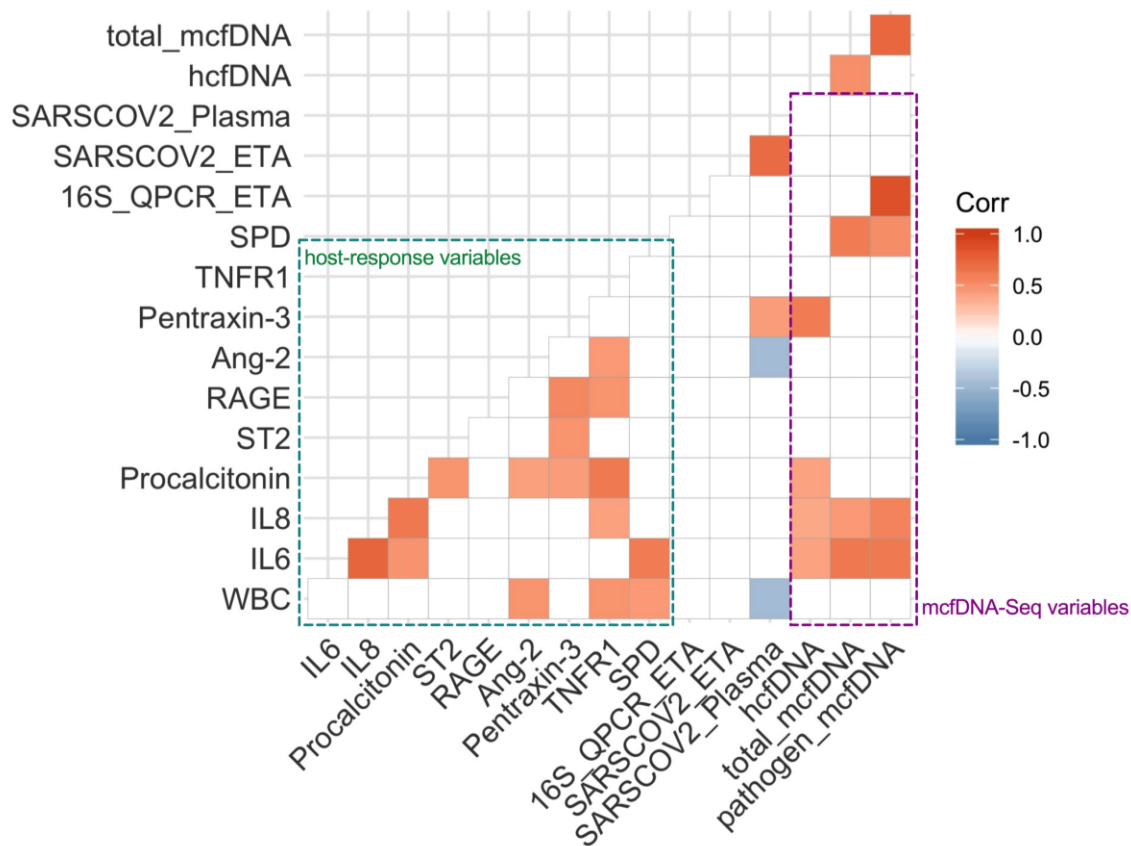
406

407

408

409

Figure 2: Comparison of plasma mcfDNA sequencing with microbiologic/clinical diagnoses across the timeline of four subjects with serial sampling. Species-specific microbial MPMS (y-axis) are shown across sequential sampling days from enrollment, (x-axis). Petri dish graphics along the x-axis denote the timing and results of clinically obtained microbiological testing. Subject 3 (A) was an immunocompetent patient with a persistent culture-confirmed *Pseudomonas* VAP that persisted through the antimicrobials, with timing and therapy noted above. Subject 3 had persistently elevated *Pseudomonas* mcfDNA levels throughout the extended infection course, which ultimately correlated with clinical improvement (A). Subject 4 (B) had sequential VAPs with changing pathogens detected on invasive respiratory cultures, *E. coli* followed by *Pseudomonas*, which was concordantly reported on noninvasive mcfDNA sampling. Subject 6 (C) was a patient with diabetes who was initially found to have a resistant *Proteus* urinary infection, and a subsequent persistent septic clinical picture, later found to have a polymicrobial, including *Proteus*, parotid gland abscess. *Proteus* mcfDNA levels remained elevated in Subject 6 during initial antimicrobial therapy for urinary infection, suggesting the persistent source of infection. Subject 26 (D) was clinically determined No-Suspicion-for-SI, but had a deteriorating clinical course, without cultures obtained for 5 days or empiric antimicrobials, and ultimately died of shock and multisystem organ failure. Noninvasive testing revealed persistent levels of *Klebsiella pneumoniae* mcfDNA levels, which suggests an undiagnosed SI may have contributed to the clinical course.



410

411

412

413

414

415

416

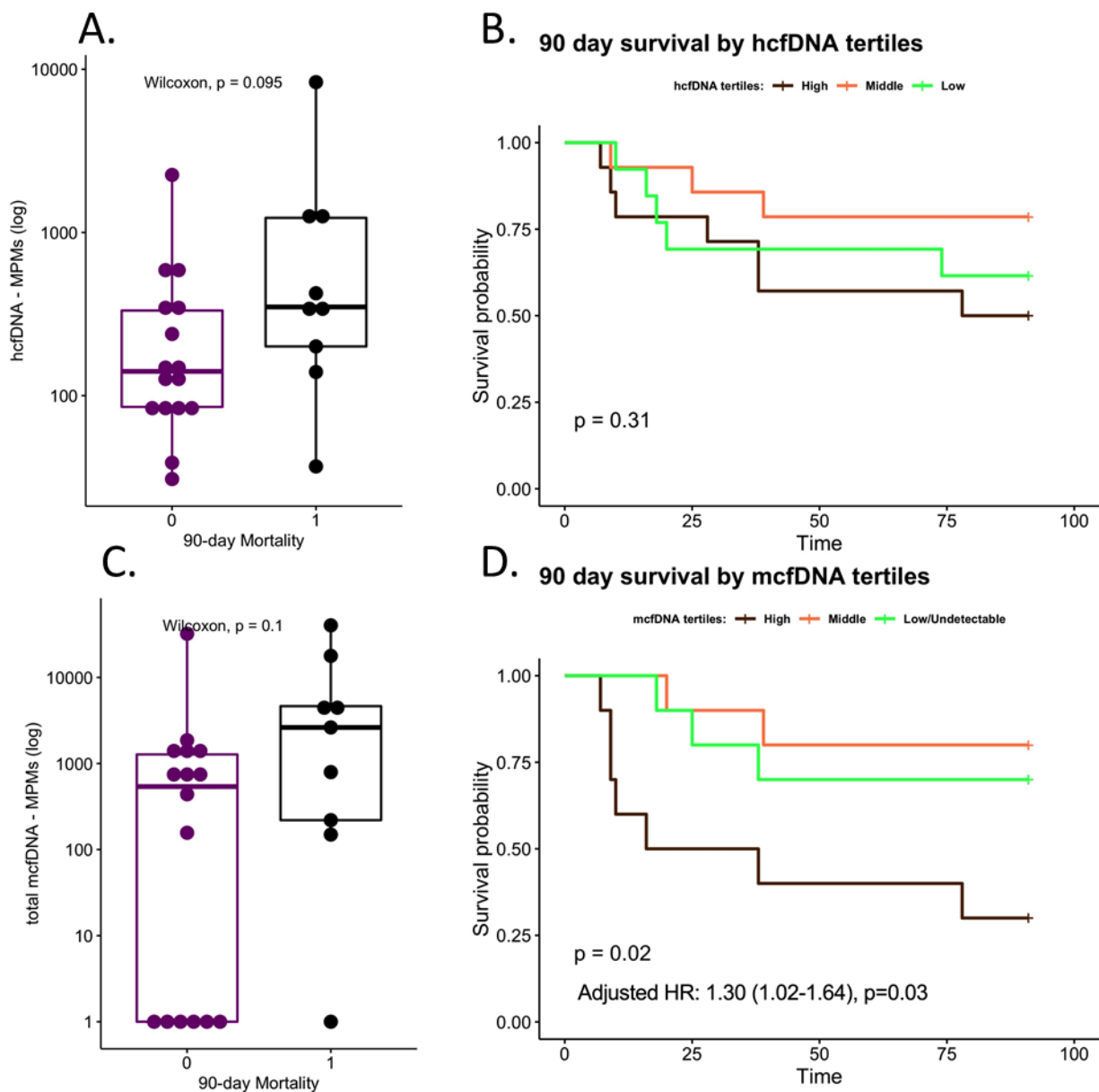
417

418

419

Figure 3: Plasma microbial cell-free DNA levels were significantly correlated with lower respiratory tract bacterial load and plasma host response biomarkers. Correlogram demonstrating comparisons of host nine response biomarkers (green dashed box), number of 16S rRNA gene copies by qPCR in Endotracheal Aspirates (ETA, surrogate for lower respiratory tract bacterial load), number of SARS-COV-2 RNA copies in ETA and plasma samples by qPCR, and mcfDNA-Seq output (hcfDNA, total mcfDNA and pathogen mcfDNA – purple dashed box). Significant correlations with the Pearson’s method and following adjustment for multiple comparisons by the Benjamini-Hochberg method are shown, with direction and strength of correlation depicted by the color scale on the right panel.

420 Figure 4:



421

422

423

424

425

426

427

428

429

Figure 4: Highest microbial cell-free DNA levels at baseline were significantly associated with worse 90-day survival. 90-day non-survivors had numerically higher (but statistically non-significant) plasma hcfDNA (A) and mcfDNA (C) levels. HcfDNA levels were not significantly associated with 90-day survival by Kaplan-Meier analysis (B). Patients with the highest tertile of mcfDNA (>1499 Molecules per Microliter) had significantly worse survival compared to patients in the other two mcfDNA tertiles (D). In a Cox proportional hazards model adjusted for age, mcfDNA levels were significantly associated with increased hazards of death (D, adjusted hazard ratio for \log_{10} -transformed mcfDNA 1.30, 95% confidence interval 1.02-1.64, $p=0.03$).

430
431

SUPPLEMENT:

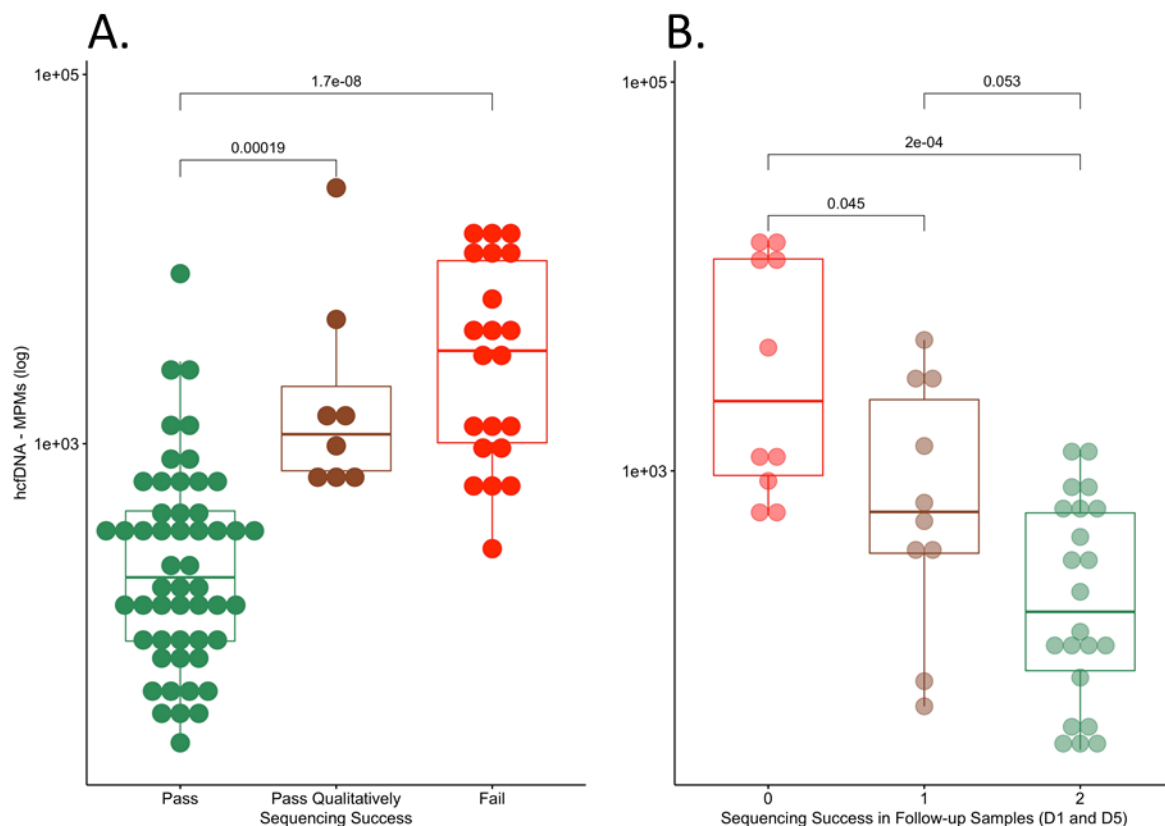
e-Table 1: Baseline characteristics by sequencing run success.

Variable	Pass	Pass Qualitatively	Fail	P-value
N	25	5	12	
Male, n (%)	20 (64.5)	1 (20.0)	8 (61.5)	0.12
Age (median [IQR])	68.7 [60.2, 76.8]	78.4 [63.1, 86.8]	58.5 [57.2, 64.7]	0.04
BMI (median [IQR])	31.6 [26.4, 34.0]	30.1 [26.8, 36.4]	39.6 [28.7, 42.4]	0.35
Diabetes, n (%)	11 (44.0)	3 (60.0)	4 (33.3)	0.59
COPD, n (%)	9 (36.0)	1 (20.0)	0 (0.0)	0.05
Immunosuppression, n (%)	2 (8.0)	1 (20.0)	1 (8.3)	0.7
Invasive Mechanical Ventilation, n (%)	14 (56.0)	4 (80.0)	9 (75.0)	0.39
ECMO, n (%)	3 (12.0)	1 (20.0)	4 (33.3)	0.3
WBC (median [IQR])	9.4 [6.3, 11.8]	11.1 [11.1, 11.5]	10.2 [7.4, 13.7]	0.46
WHO ordinal scale at ICU admission (median [IQR])	5.0 [5.0, 6.0]	5.5 [5.0, 6.5]	7.0 [6.0, 8.5]	0.01
RALE score (median [IQR])	22.5 [21.0, 28.0]	23.0 [22.8, 24.0]	27.5 [20.6, 35.8]	0.56
SARS-CoV-2 RNA in Plasma (cps/mL, median [IQR])	196.5 [3.0, 3349.0]	6352.0 [3286.0, 26029.3]	2491.0 [335.0, 6874.5]	0.3
IL6 pg/ml (median [IQR])	33.9 [16.9, 124.9]	165.7 [89.7, 1109.9]	51.1 [15.7, 221.3]	0.19
IL8 pg/ml (median [IQR])	22.2 [13.9, 33.6]	35.9 [29.9, 181.2]	17.6 [15.1, 62.3]	0.29
ST2 pg/ml (median [IQR])	142138.6 [78170.4, 198277.7]	253415.2 [218252.9, 578677.0]	287500.3 [216718.3, 328329.0]	<0.01
TNFR1 pg/ml (median [IQR])	4186.0 [3555.3, 7971.9]	9493.9 [6465.9, 12598.6]	4919.9 [3417.1, 6956.2]	0.44
SPD pg/ml (median [IQR])	24.3 [10.0, 43.0]	80.5 [20.8, 141.9]	26.0 [13.2, 53.1]	0.46
RAGE pg/ml (median [IQR])	4245.9 [2419.5, 9023.2]	4518.6 [2410.7, 9982.9]	5518.4 [2884.1, 7936.1]	0.97
Ang-2 pg/ml (median [IQR])	3905.8 [1935.6, 7130.4]	4505.1 [3942.7, 8903.3]	4543.4 [2886.8, 10443.9]	0.5
Procalcitonin pg/ml (median [IQR])	280.0 [167.0, 558.5]	3630.8 [1767.8, 4556.7]	580.8 [240.5, 1478.0]	0.01
Pentraxin-3 pg/ml (median [IQR])	6085.9 [2937.8, 13127.0]	19508.6 [6766.4, 32196.3]	12979.7 [7122.9, 18778.3]	0.1
Human cfDNA MPM (median [IQR])	200.3 [91.3, 424.2]	722.2 [686.2, 1299.7]	1343.1 [949.5, 3731.9]	<0.01

Total microbial cfDNA MPM (median [IQR])	794.8 [1.0, 1863.1]	1480.8 [818.1, 21805.9]	NA	0.14
Bacterial cfDNA MPM (median [IQR])	252.3 [1.0, 1343.9]	1480.8 [537.1, 21805.9]	42735.5 [42735.5, 42735.5]	0.13
Fungal cfDNA MPM (median [IQR])	1.0 [1.0, 1.0]	1.0 [1.0, 1.0]	1.0 [1.0, 1.0]	0.67
Respiratory pathogen cfDNA MPM (median [IQR])	1.0 [1.0, 1015.8]	1480.8 [1.0, 21805.9]	42735.5 [42735.5, 42735.5]	0.12

432 P-values significant below threshold of 0.05 are shown in bold. Abbreviations: Microbiologically-Diagnosed Secondary Infection (Micro-SI);
433 Clinically-Diagnosed secondary infections (Clinical-SI); No Clinical Suspicion for SI (No-Suspected-SI); chronic obstructive pulmonary disease
434 (COPD); extracorporeal membrane oxygenation (ECMO); Radiographic Assessment of Lung Edema score (RALE score); receptor for advanced
435 glycation end products (RAGE); suppression of tumorigenicity (ST-2); tumour necrosis factor receptor (TNFR-1); Surfactant Protein D (SPD);
436 molecules per microliter (MPMs).

437 e-Figure 1:



438

439 e-Figure 1: Successful plasma metagenomic sequencing runs had significantly lower levels of human cell-free
440 DNA compared to unsuccessful runs. We classified the derived metagenomic sequences as human (hcfDNA)
441 vs. microbial (mcfDNA), expressed as molecules per microliter (MPMs). Based on meeting minimum
442 sequencing coverage metric required for quality control, we classified sequencing runs as successful (“Pass”),
443 “Qualitatively Pass” or “Failed”. Baseline “Pass” samples had significantly lower hcfDNA compared to
444 “Qualitatively Pass” or “Failed” samples (Wilcoxon test pairs $p < 0.001$, panel A). We also found that among
445 subjects with both Day 1 and Day 5 samples, those samples that failed on both time points per subject (i.e. “0”
446 sequencing success in panel B) had significantly higher hcfDNA levels compared to “Pass” samples on both
447 days (Wilcoxon p -value < 0.001).

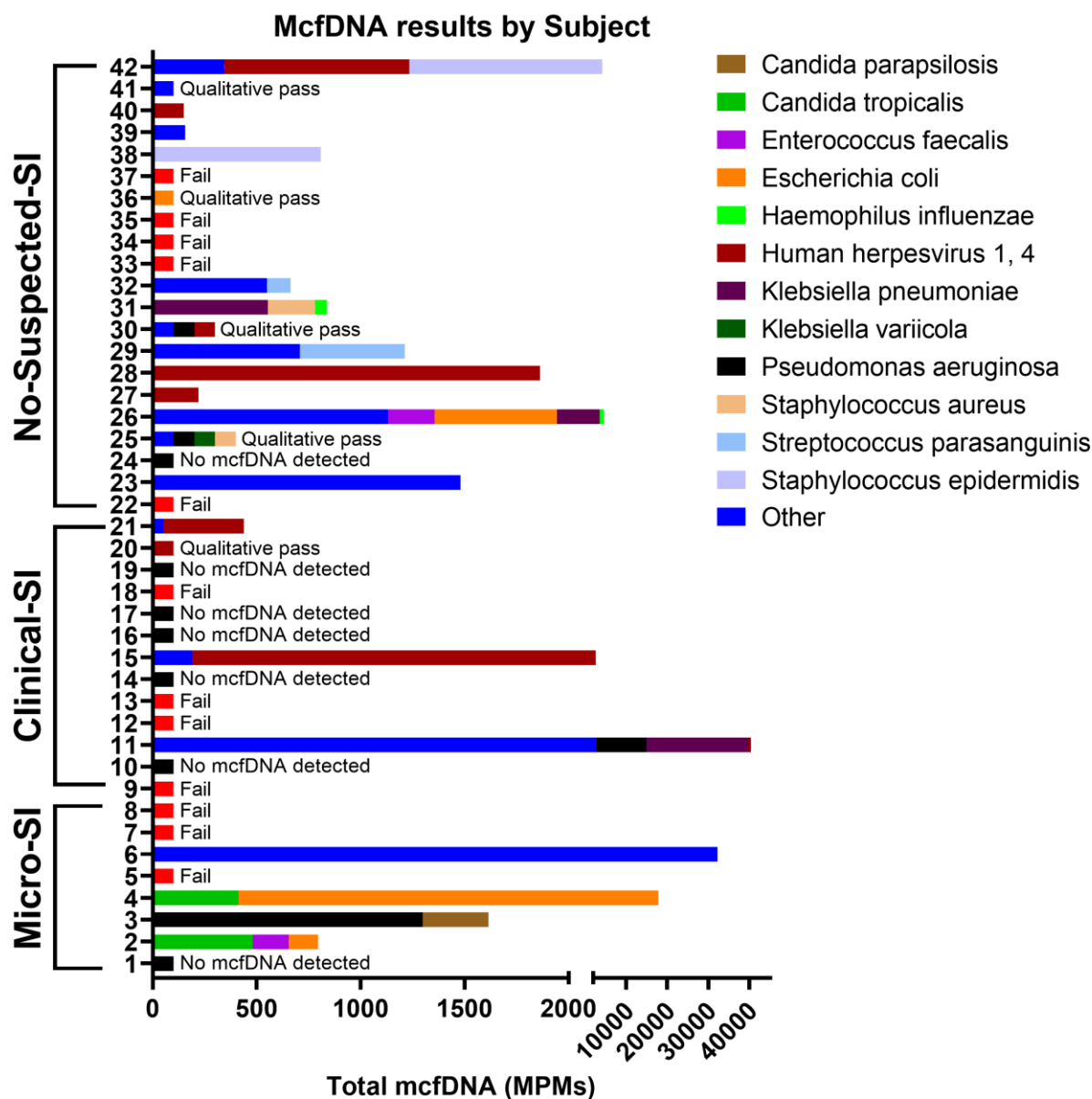
448

449

450

451

452 e-Figure 2:



453

454

455

456

457

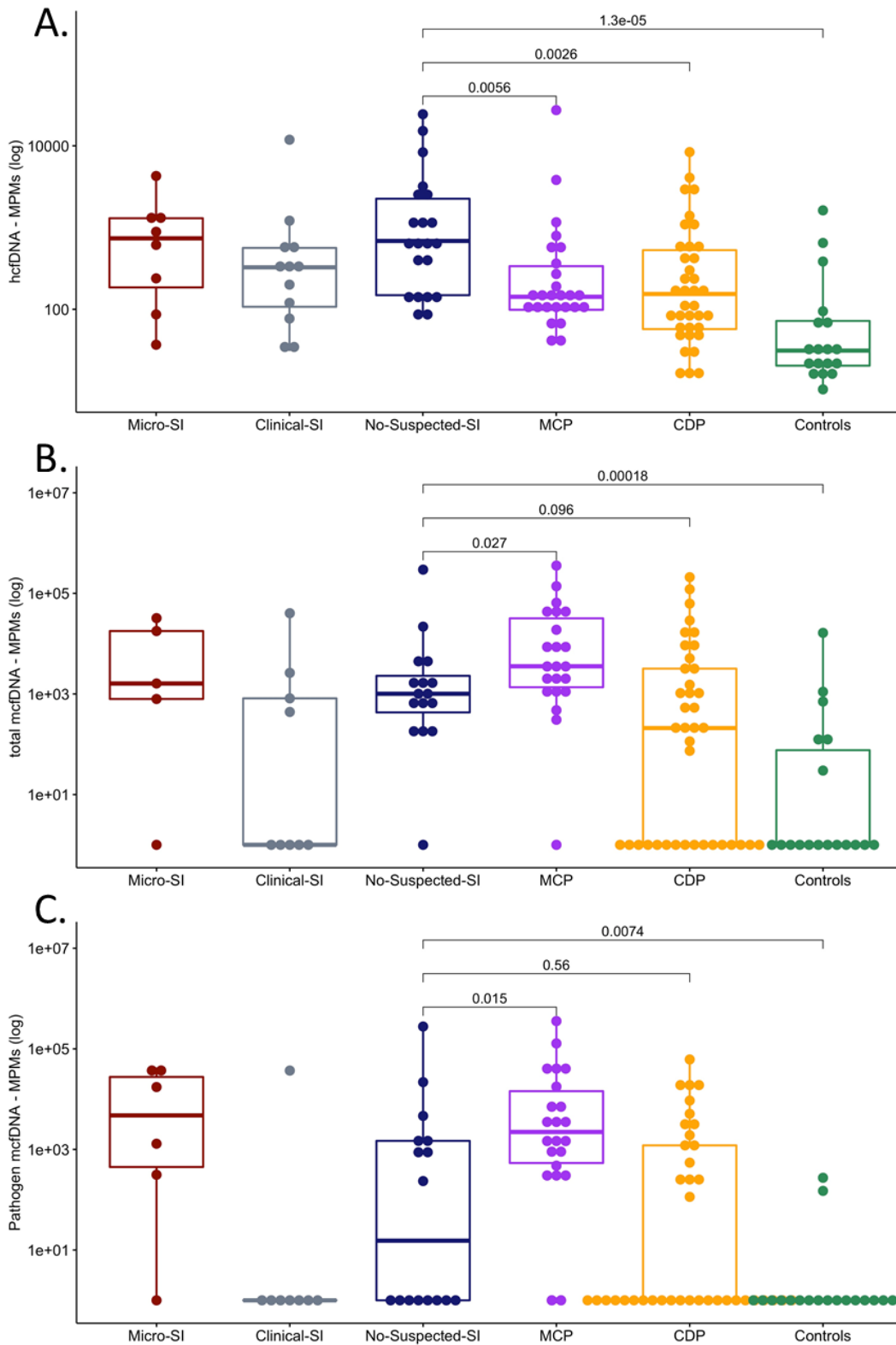
458

459

460

e-Figure 2: Significantly higher proportion of positive samples with mcfDNA species calls in No-Suspected-SI compared to Clinical-SI samples. We display samples grouped by SI classification and sample identifier, showing the species and respective MPMs called by mcfDNA-Seq. Standardized bars indicate failed samples, samples with no species called, and those with qualitative pass, yielding species each denoted with standardized bar. Infrequently called species were combined for visual simplicity.

e-Figure 3:



461

462

463

464

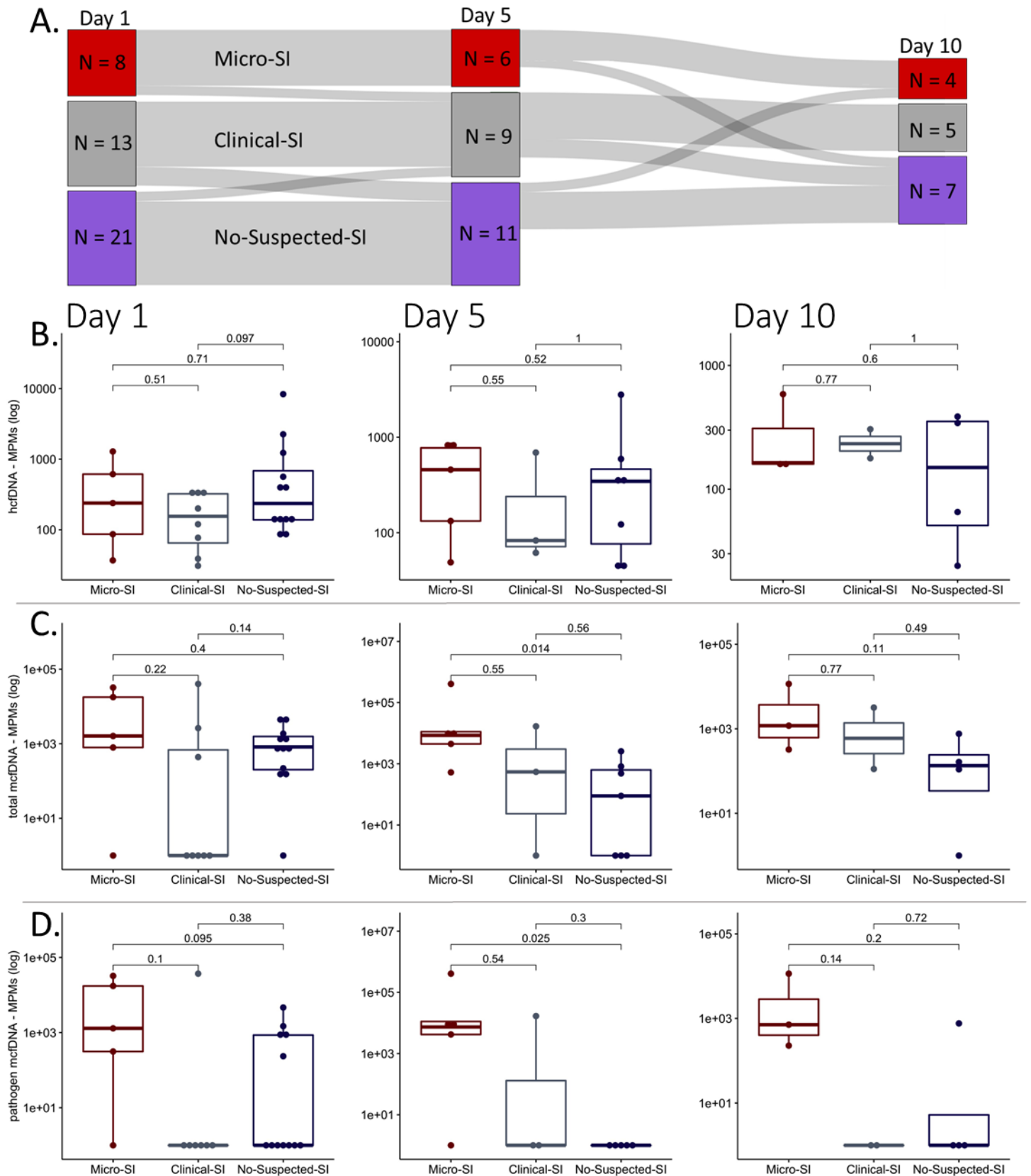
e-Figure 3: Subjects with COVID-19 have much higher levels of human cell-free DNA compared to non-COVID subjects with and without pneumonia. To contextualize the circulating cfDNA load in our COVID-19 cohort, we compared hcfDNA, total mcfDNA and pathogen mcfDNA MPMs between the COVID-19 SI categories against

465 available published data from our group for mechanically ventilated patients with microbiologically-confirmed
466 pneumonia (n=26, MCP), clinically-diagnosed pneumonia (n=41, CDP) and uninfected controls (n=16,
467 intubated for airway protection or due to cardiogenic pulmonary edema). We found markedly higher levels of
468 hcfDNA in subjects with COVID-19 compared to all non-COVID patient groups (p-values shown for the No-
469 Suspected-SI only for parsimony). Non-COVID patients with microbiologically-confirmed pneumonia had higher
470 mcfDNA levels compared to patients with COVID-19 with No-Suspected-SI, who in turn had markedly higher
471 mcfDNA levels compared to uninfected controls.

472

473

474 e-Figure 4:



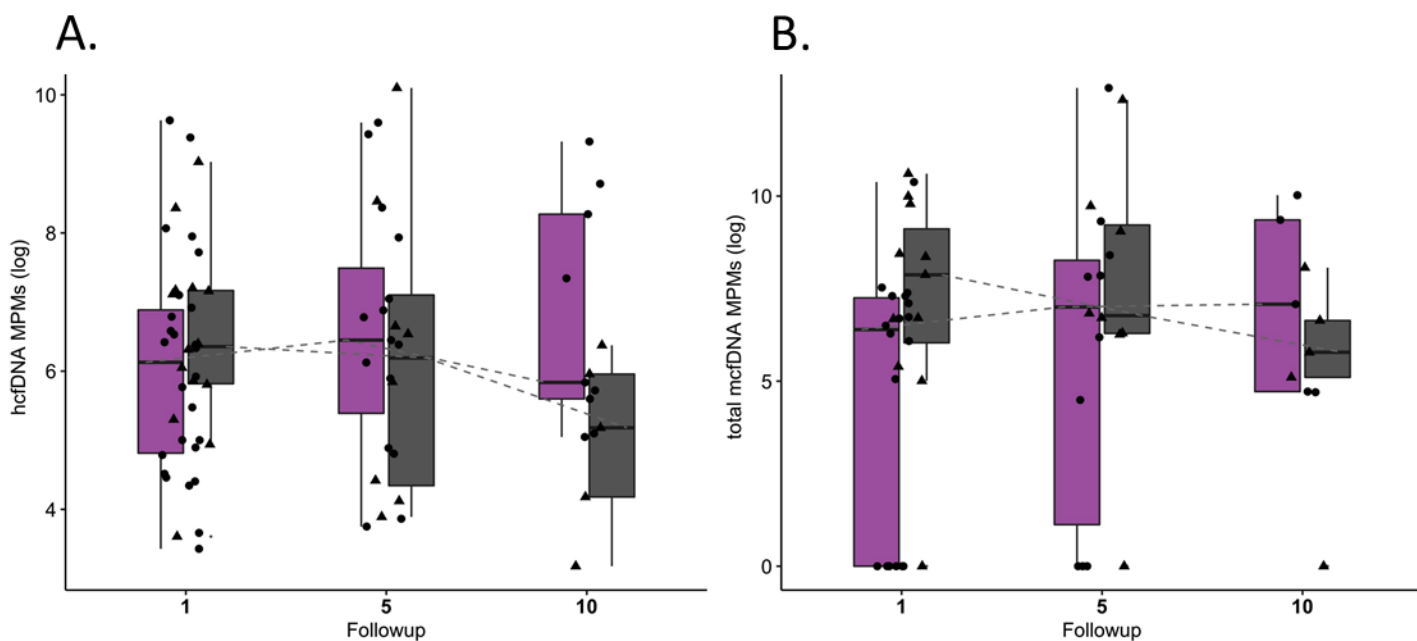
475
476

e-Figure 4: Longitudinal subject, mcfDNA and human cfDNA changes across SI classification. This Sankey plot shows the subjects who transitioned between SI categories throughout the study from days 1, to 5, and 10 (A).

477

478 Height of bars represents number of subjects. Attrition occurred throughout the study leading to decreased
479 height of day 5 and 10 nodes. HcfDNA was not significantly different among SI groups across the study period
480 (B). Total mcfDNA was not significantly different among SI categories on enrollment (C). Micro-SI subjects had
481 significantly higher total and pathogen mcfDNA versus No-Suspected-SI subjects at Day 5 (C, D).
482
483

e-Figure 5:



484
485 e-Figure 5: Human and total mcfDNA trajectories among survivors and non-survivors. Trajectories of human
486 cfDNA and total mcfDNA were not significantly different across the study period in survivors and non-survivors
487 (A, B).
488
489
490
491

492 e-Table 2: Subject cfDNA and culture results

ID	Day	SI group	cfDNA sequencing run	hcfDNA MPMs	McfDNA (Organism, MPMs)	Clinical microbiology results [Sample Type (Time from research sample): Results]	Synthesis of mcfDNA with clinical microbiology
1	1	Micro-SI	Pass	238.8	No Organism Reported, 0	- <u>Blood</u> (Day -3): NG - <u>BAL</u> (Day -3): GS: Many WBCs; Moderate GNRs; Cx: Rare <i>Escherichia coli</i> , Light NRF	- Discordant
	5	Micro-SI	Pass	457.4	<i>Escherichia coli</i> , 4208 <i>Bacteroides vulgatus</i> , 255		- Concordant - Microbe of unclear clinical significance
2	1	Micro-SI	Pass	36.8	<i>Candida tropicalis</i> , 481 <i>Enterococcus faecalis</i> , 174 <i>Escherichia coli</i> , 140	- <u>BAL</u> (Day -2): GS: Many WBCs, Few GPC; Cx: Light MSSA, NRF, Yeast	- Discordant
	5	Micro-SI	Pass	49.0	<i>Human herpesvirus 1</i> , 449 <i>Candida tropicalis</i> , 75	- <u>CSF</u> (Day -1): Cx: NG, PCR: HSV ND; Ag: Cryptococcal ND	- Discordant - Microbe of unclear clinical significance
	10	No-Suspected-SI	Pass	24.0	No Organism Reported, 0	- <u>Blood</u> (Day -2): NG	- Concordant
3	1	Micro-SI	Pass	86.5	<i>Pseudomonas aeruginosa</i> , 1298 <i>Candida parapsilosis</i> , 317	- <u>Sputum</u> (Day -2): GS: Few WBCs, Moderate GNR; Cx: Moderate <i>Pseudomonas aeruginosa</i> , Rare NRF	- Concordant
	5	Micro-SI	Pass	132.5	<i>Pseudomonas aeruginosa</i> , 11148		- Concordant
	10	Micro-SI	Pass	155.6	<i>Pseudomonas aeruginosa</i> , 11455 <i>Candida parapsilosis</i> , 121	- <u>Sputum</u> (Day -2): GS: Moderate WBCs, Few GNR; Cx: Heavy <i>Pseudomonas aeruginosa</i> , Rare NRF - <u>Urine</u> (Day 0): Cx: NG	- Concordant, - Microbe of unclear clinical significance
	27	Micro-SI	Pass	332.6	<i>Pseudomonas aeruginosa</i> , 86832		- Culture not available -- concordant with prior infection
	31	Micro-SI	Pass	47.7	<i>Pseudomonas aeruginosa</i> , 2763	- <u>Sputum</u> (Day -1): GS: Many WBCs, Few GNR Cx: Moderate <i>Pseudomonas aeruginosa</i> , Light NRF - <u>Urine</u> (Day -1): Cx: NG - <u>Stool</u> (Day +1): PCR: <i>C. difficile</i> ND	- Concordant

4	1	Micro-SI	Pass	1284.8	<i>Escherichia coli</i> , 17400 <i>Candida tropicalis</i> , 413	- Blood (Day -2): <i>Staphylococcus epidermidis</i> - BAL (Day -1): GS: Many WBCs, Rare GPCP Cx: <i>Staphylococcus aureus</i> (>100,000 cfu/mL), <i>Escherichia coli</i> (600 cfu/mL) - Blood (Day 0): NG	- Concordant, - Microbe of unclear clinical significance
	5	Micro-SI	Pass	773.2	<i>Escherichia coli</i> , 7388 <i>Candida tropicalis</i> , 841 <i>Prevotella bivia</i> , 278	- Pleural Fluid (Day +2): GS: Few WBCs, Cx: NG	- Concordant, - Microbe of unclear clinical significance
	11	Micro-SI	Pass	586.6	<i>Escherichia coli</i> , 228 <i>Prevotella bivia</i> , 96	- Blood (Day 0): <i>Staphylococcus capitis</i>	- Culture not available -- concordant with prior infection - Microbe of unclear clinical significance
	27	Micro-SI	Pass	86.0	<i>Pseudomonas aeruginosa</i> , 1101 <i>Escherichia coli</i> , 381 <i>Human herpesvirus 1</i> , 95 <i>Burkholderia cepacia complex</i> , 58	- BAL (Day 0): GS: Many WBCs, Many GNRs Cx: Heavy <i>Pseudomonas aeruginosa</i> - Stool (Day 0): PCR: <i>C. difficile</i> ND - Blood: (Day +1): NG	- Concordant, - Microbe of unclear clinical significance
5	1	Micro-SI	Fail	887.9	NA	- BAL (Day +2): GS: Many WBCs, Few GNR, Rare GPCP, Rare GPCCH, Cx: <i>Klebsiella aerogenes</i> (>100,000 cfu/mL), MSSA (52,000 cfu/mL)	- Comparison not possible
	5	Micro-SI	Fail	4306.1	NA	- Blood (Day -2): Fungitell: ND - Stool (Day +2): PCR: <i>C. difficile</i> Detected	- Comparison not possible
	10	Micro-SI	Fail	6076.6	NA	- ETA (Day -1): GS: Few WBCs, Cx: Light <i>Klebsiella aerogenes</i> , Rare MSSA, Rare NRF - Blood (Day -1): NG - BAL (Day 0): GS: Many WBCs, Cx: <i>Klebsiella aerogenes</i> (60,000 cfu/mL), Yeast	- Comparison not possible
6	1	Micro-SI	Pass	613.3	<i>Proteus mirabilis</i> , 32205	- Blood (Day +1): <i>Staphylococcus epidermidis</i> - Urine (Day +1): Cx:	- Concordant

						<i>Proteus mirabilis</i> (80,000 Col/mL), Yeast	
	5	Micro-SI	Pass	880.7	<i>Proteus mirabilis</i> , 409005 <i>Human herpesvirus</i> 4, 291	- Parotid gland <u>drainage</u> (Day +5): GS: No WBCs or organisms; Cx: Light MRSA, Rare <i>Proteus</i> <i>mirabilis</i> , Light <i>Corynebacterium</i> <i>tuberculostearicum</i> , Rare <i>Corynebacterium</i> <i>striatum</i>	- Concordant, - Microbe of unclear clinical significance
7	1	Micro-SI	Fail	1343.1	NA	- BAL (Day 0): GS: Moderate WBCs, Cx: NRF	- Comparison not possible
	5	Clinical-SI	Pass	61.6	<i>Candida tropicalis</i> , 544	- BAL (Day -1): GS: No WBCs, Cx: Rare NRF	- Microbe of unclear clinical significance
	10	Clinical-SI	Pass	177.8	<i>Candida tropicalis</i> , 2171 <i>Human herpesvirus</i> 1, 1013	- BAL (Day +2): GS: No WBCs, Cx: Yeast	- Microbe of unclear clinical significance
8	1	Micro-SI	Fail	4274.9	NA	- Blood (Day +1): NG - Urine (Day +1): Cx: multiple organisms, likely contaminated - Sputum (Day +1): GS: Moderate WBCs, Cx: Rare NRF	- Comparison not possible
9	1	Clinical-SI	Fail	1213.0	NA	- BAL (Day +2): GS: Many WBCs, Moderate GPCP, Moderate GPCCH; Cx: NRF	- Concordant
	5	Clinical-SI	Fail	1150.3	NA	- BAL (Day -2): GS: Many WBCs, Moderate GPCP, Moderate GPCCH, Cx: NRF - Blood (Day 0): NG	- Concordant
	10	Clinical-SI	Pass		<i>Candida tropicalis</i> , 112	- Blood (Day +1): NG	- Microbe of unclear clinical significance
10	1	Clinical-SI	Pass	38.8	No Organism Reported, 0	- Blood (Day -2): NG - Sputum (Day +1): GS: Rare WBCs, Cx: NG	- Concordant
	5	No-Suspected-SI	Pass	592.5	No Organism Reported, 0		- Comparison not possible
	10	No-Suspected-SI	Pass	342.6	<i>Human herpesvirus</i> 1, 110		- Microbe of unclear clinical significance
11	1	Clinical-SI	Pass	349.6	<i>Klebsiella</i> <i>pneumoniae</i> , 24841 <i>Pseudomonas</i> <i>aeruginosa</i> , 12119	-Blood (Day +2): NG	- Plausible pathogen identified - Microbe of unclear clinical significance

						<i>Pediococcus acidilactici</i> , 2800 <i>Human herpesvirus 4</i> , 574		
	5	Clinical-SI	Pass	690.5		<i>Klebsiella pneumoniae</i> , 4073 <i>Enterococcus faecalis</i> , 7331 <i>Pseudomonas aeruginosa</i> , 5413	- Stool (Day 0): PCR: <i>C. difficile</i> ND	- Plausible pathogen identified
12	1	Clinical-SI	Fail	551.7	NA		- Stool (Day -1): PCR: <i>C. difficile</i> ND	- Comparison not possible
	5	Clinical-SI	Pass	82.9	No Organism Reported, 0			- Comparison not possible
	10	No-Suspected-SI	Pass	65.3	<i>Escherichia coli</i> , 763			- Plausible pathogen identified
	67	Micro-SI	Fail	9803.8	NA		- BAL (Day -7): GS: Few WBCs, Few GPCPCs, Cx: <i>Klebsiella pneumoniae</i> , NRF	- Comparison not possible
13	1	Clinical-SI	Fail	11870.3	NA		- Urine (Day -2): Cx: NG (1,000 - 10,000 col/ml mixed growth of 3 or more organisms) - Blood (Day -1): NG - Blood (Day +2): NG - Sputum (Day +2): GS: Few WBCs, Cx: Light NRF	- Comparison not possible
	5	Clinical-SI	Fail	12444.5	NA		- Blood (Day -2): NG - Sputum (Day -2): GS: Few WBCs, Cx: Light NRF - Blood (Day 0): NG - Sputum (Day 0): GS: Few WBCs, Cx: Rare NRF	- Comparison not possible
	10	Clinical-SI	Fail	11195.5	NA		- Blood (Day -1): NG	- Comparison not possible
14	1	Clinical-SI	Pass	119.8	No Organism Reported, 0			- Comparison not possible
	5	No-Suspected-SI	Pass	42.6	No Organism Reported, 0			- Comparison not possible
15	1	Clinical-SI	Pass	200.3	<i>Human herpesvirus 1</i> , 2435 <i>Streptococcus thermophilus</i> , 128 <i>Pantoea atis</i> , 63		- Blind BAL (Day -2): GS: Few WBCs, Cx: 4200 cfu/mL, GNR No ID or sensitivity performed, Yeast	- Microbe of unclear clinical significance
16	1	Clinical-SI	Pass	319.9	No Organism Reported, 0		- Blood (Day 0): NG - RCx (Day +2): Cx: NRF	- Concordant
	5	Clinical-SI						- Comparison not possible
17	1	Clinical-SI	Pass	30.8	No Organism		- Blood (Day -2): NG	- Concordant

					Reported, 0	- Urine (Day -1): Cx: NG
18	1	Clinical-SI	Fail		NA	- Comparison not possible
19	1	Clinical-SI	Pass	332.0	No Organism Reported, 0	- Comparison not possible
	5	Clinical-SI				- RCx (Day 0): Cx: Yeast - Comparison not possible
	10	No-Suspected-SI				- Blood (Day -2): NG - Urine (Day -2): Cx: NG - Comparison not possible - RCx (Day -2): Cx: NRF - RCx (Day +1): Cx: Yeast
20	1	Clinical-SI	Pass Qualitatively	599.7	<i>Human herpesvirus 4</i>	- Microbe of unclear clinical significance
	5	Clinical-SI				- RCx (Day 0): Cx: NRF - Comparison not possible
	10	Clinical-SI				- Comparison not possible
21	1	Clinical-SI	Pass	77.0	<i>Human herpesvirus 4, 388</i> <i>Bacteroides ovatus, 51</i>	- RCx (Day 0): Cx: NRF - Microbe of unclear clinical significance
22	1	No-Suspected-SI	Fail	2836.1	NA	- Blood (Day -2): NG - Urine (Day -2): Cx: NG - Comparison not possible
23	1	No-Suspected-SI	Pass	133.6	<i>Raoultella ornithinolytica, 1481</i>	- Microbe of unclear clinical significance
	5	No-Suspected-SI	Pass	47.6	<i>Candida tropicalis, 89</i>	- Blood (Day -1): NG - Microbe of unclear clinical significance
24	1	No-Suspected-SI	Pass	563.5	No Organism Reported, 0	- Blood (Day -2): NG - Concordant
25	1	No-Suspected-SI	Pass Qualitatively	1299.7	<i>Pseudomonas aeruginosa,</i> <i>Streptococcus mitis,</i> <i>Klebsiella variicola,</i> <i>Staphylococcus aureus,</i>	- Blood (Day -2): NG - Plausible pathogen identified
26	1	No-Suspected-SI	Pass	424.2	<i>Klebsiella pneumoniae, 1673</i> <i>Haemophilus parahaemolyticus, 1132</i> <i>Haemophilus influenzae, 1022</i> <i>Escherichia coli, 587</i> <i>Enterococcus faecalis, 226</i>	- Plausible pathogen identified
	5	No-Suspected-SI	Pass Qualitatively	4711.9	<i>Human herpesvirus 4,</i> <i>Klebsiella pneumoniae,</i>	- Blood (Day -1): NG - Plausible pathogen identified - Microbe of unclear clinical significance

27	1	No-Suspected-SI	Pass	1229.0	Human herpesvirus 4, 220		- Microbe of unclear clinical significance
	5	No-Suspected-SI	Pass	345.4	Human herpesvirus 4, 619 Staphylococcus epidermidis, 200 Scardovia wiggisiae, 232		- Microbe of unclear clinical significance
	10	No-Suspected-SI	Pass	386.5	Human herpesvirus 4, 164		- Microbe of unclear clinical significance
28	1	No-Suspected-SI	Pass	2253.5	Human herpesvirus 4, 1863	- Blood (Day -3): NG - Urine (Day -2): Cx: NG	- Microbe of unclear clinical significance
29	1	No-Suspected-SI	Pass	373.1	Streptococcus parasanguinis, 505 Actinomyces odontolyticus, 270 Streptococcus gordonii, 205 Streptococcus sanguinis, 147 Rothia mucilaginosa, 88		- Plausible pathogen identified - Microbe of unclear clinical significance
30	5	No-Suspected-SI	Pass Qualitatively	24326.7	Corynebacterium striatum, Pseudomonas aeruginosa, Human herpesvirus 4,	- Bronchial Wash (Day -1): GS: Many WBCs, Many GNR, Many GPR, Cx: Heavy Pseudomonas aeruginosa, Heavy NRF	- Plausible pathogen identified - Microbe of unclear clinical significance
31	1	No-Suspected-SI	Pass	91.3	Klebsiella pneumoniae, 554 Staphylococcus aureus, 228 Haemophilus influenzae, 57		- Plausible pathogen identified
32	1	No-Suspected-SI	Pass	81.8	Actinomyces graevenitzii, 123 Helicobacter pylori, 121 Rothia mucilaginosa, 120 Streptococcus parasanguinis, 112 Streptococcus salivarius, 104 Streptococcus gordonii, 84	- Blood (Day -1): NG	- Plausible pathogen identified - Microbe of unclear clinical significance
33	1	No-Suspected-SI	Fail	1011.1	NA	- BAL (Day 0): GS: Moderate WBCs, Few GPCP, Cx: NRF	- Comparison not possible
	6	No-Suspected-SI	Pass Qualitatively	973.8	Candida tropicalis		- Microbe of unclear clinical significance
	10	No-Suspected-SI	Pass Qualitatively	1546.6	Candida tropicalis	- BAL (Day -1): GS: Few WBCs, Cx: Yeast , NRF	- Microbe of unclear clinical significance

							- Blood (Day 0): NG	
34	1	No-Suspected-SI	Fail	15218.0	NA		- Blood (Day -2): NG	- Comparison not possible
	5	No-Suspected-SI	Fail	14729.6	NA			- Comparison not possible
	10	No-Suspected-SI	Fail	3913.3	NA		- Blood (Day -1): NG - Sputum (Day -1): GS: Moderate GPCP, Few WBCs, Few Yeast, Few GPR, Cx: Heavy NRF	- Comparison not possible
35	1	No-Suspected-SI	Fail	591.5	NA			- Comparison not possible
	5	Clinical-SI	Fail	632.2	NA		- ETA (Day -1): GS: Few WBCs, Rare GPCP, Moderate NRF - ETA (Day +2): GS: Few GPCP, Few GPR, Few GNR, Few WBCs, Cx: Moderate NRF	- Comparison not possible
	10	Clinical-SI	Fail	270.0	NA		- Blood (Day -2): NG - Sputum (Day -2): GS: Few GPCP, Few GNR, Few WBCs, Rare GPR, Cx: Heavy NRF - BAL (Day -2): GS: Few WBCs, Rare GPCP, Rare GPR, Rare GNR, Cx: NRF; ND legionella Cx, ND RVP	- Comparison not possible
36	1	No-Suspected-SI	Pass Qualitatively	686.2	<i>Escherichia coli</i>		- Blood (Day -1): NG - Urine (Day -1): Cx: NG - Blood (Day +2): NG	- Plausible pathogen identified
	5	No-Suspected-SI	Pass	362.7	<i>Human herpesvirus 1, 2565</i>			- Microbe of unclear clinical significance
37	1	No-Suspected-SI	Fail	3188.8	NA		- Blood (Day -2): NG, PCR: CMV ND - Urine (Day -1): Cx: NG - Urine (Day -1): Ag: Legionella ND	- Comparison not possible
	5	No-Suspected-SI	Pass	2792.4	No Organism Reported, 0			- Comparison not possible
38	1	No-Suspected-SI	Pass	148.7	<i>Staphylococcus epidermidis, 808</i>		- Blood (Day -1): NG - BAL (Day -1): GS: Rare WBCs, GPCP, NRF	- Microbe of unclear clinical significance
	5	No-Suspected-SI	Pass	122.2	<i>Staphylococcus epidermidis, 485</i>			- Microbe of unclear clinical significance
	10	Micro-SI	Pass	163.7	<i>Enterococcus faecalis, 712</i>		- Blood (Day -2): NG - Urine (Day -2): Cx:	- Concordant

						<i>Prevotella denticola</i> , 170 <i>Lactobacillus gasseri</i> , 157 <i>Prevotella oris</i> , 148	<i>Enterococcus faecalis</i> - BAL (Day -2): GS: Rare WBCs, Rare GPCP, Cx: NRF	
39	1	No-Suspected-SI	Pass	148.6		<i>Rothia mucilaginosa</i> , 157	- Blood (Day -2): NG	- Microbe of unclear clinical significance
40	1	No-Suspected-SI	Pass	139.7		<i>Human herpesvirus</i> 4, 149		- Microbe of unclear clinical significance
41	1	No-Suspected-SI	Pass Qualitatively	722.2		<i>Lactobacillus gasseri</i>		- Microbe of unclear clinical significance
42	1	No-Suspected-SI	Pass	8340.9		<i>Staphylococcus epidermidis</i> , 3036 <i>Human herpesvirus</i> 4, 889 <i>Helicobacter pylori</i> , 345	- Blood (Day -2): NG - Urine (Day -2): Ag: Streptococcus pneumonia & Legionella ND	- Microbe of unclear clinical significance

493 Abbreviations: Not detected (ND); no growth (NG); normal respiratory flora (NRF); gram stain (GS); culture (Cx); gram negative rods (GNRs); gram
494 positive cocci in chains (GPCCH); gram positive cocci in pairs (GPCP); T2 Candida fungal test (T2).

495

496 e-Table 3: Microbial species classifications

Taxon	Class	Anatomic Compartment
<i>Actinomyces graevenitzi</i>	Recognized pathogen	Oral
<i>Actinomyces odontolyticus</i>	Recognized pathogen	Oral
<i>Bacteroides ovatus</i>	Microbe with unclear clinical importance	GI
<i>Bacteroides vulgatus</i>	Microbe with unclear clinical importance	GI
<i>Burkholderia cepacia complex</i>	Recognized pathogen	Respiratory, Nosocomial
<i>Candida parapsilosis</i>	Microbe with unclear clinical importance	Skin, GI
<i>Candida tropicalis</i>	Microbe with unclear clinical importance	Skin, GI
<i>Corynebacterium striatum</i>	Microbe with unclear clinical importance	Skin
<i>Enterococcus faecalis</i>	Recognized pathogen	GI
<i>Enterococcus faecium</i>	Recognized pathogen	GI
<i>Escherichia coli</i>	Recognized pathogen	GI
<i>Haemophilus influenzae</i>	Recognized pathogen	Oral
<i>Haemophilus parahaemolyticus</i>	Microbe with unclear clinical importance	Oral
<i>Helicobacter pylori</i>	Microbe with unclear clinical importance	GI
<i>Human herpesvirus 1</i>	Microbe with unclear clinical importance	Unknown
<i>Human herpesvirus 4</i>	Microbe with unclear clinical importance	Unknown

<i>Klebsiella pneumoniae</i>	Recognized pathogen	Oral, GI
<i>Klebsiella variicola</i>	Recognized pathogen	GI
<i>Lactobacillus gasseri</i>	Microbe with unclear clinical importance	GI
<i>Pantoea ananatis</i>	Microbe with unclear clinical importance	Unknown
<i>Pediococcus acidilactici</i>	Microbe with unclear clinical importance	GI
<i>Prevotella bivia</i>	Microbe with unclear clinical importance	Oral
<i>Prevotella denticola</i>	Microbe with unclear clinical importance	Oral
<i>Prevotella oris</i>	Microbe with unclear clinical importance	Oral
<i>Proteus mirabilis</i>	Recognized pathogen	GI
<i>Pseudomonas aeruginosa</i>	Recognized pathogen	GI, Pulmonary, Nosocomial
<i>Raoultella ornithinolytica</i>	Recognized pathogen	GI
<i>Rothia mucilaginosa</i>	Microbe with unclear clinical importance	Oral
<i>Staphylococcus aureus</i>	Recognized pathogen	Skin
<i>Staphylococcus epidermidis</i>	Microbe with unclear clinical importance	Skin
<i>Streptococcus gordonii</i>	Microbe with unclear clinical importance	Oral
<i>Streptococcus infantarius</i>	Microbe with unclear clinical importance	Oral
<i>Streptococcus mitis</i>	Recognized pathogen	Oral, Skin
<i>Streptococcus parasanguinis</i>	Recognized pathogen	Oral
<i>Streptococcus salivarius</i>	Microbe with unclear clinical importance	Oral
<i>Streptococcus sanguinis</i>	Microbe with unclear clinical importance	Oral
<i>Streptococcus thermophilus</i>	Microbe with unclear clinical importance	Oral
<i>Scardovia wiggisiae</i>	Microbe with unclear clinical importance	Oral

497