

1 **COVID-19 induced birth sex ratio changes in**

2 **England and Wales**

3

4 Gwinyai Masukume^{1,*}, Margaret Ryan², Rumbidzai Masukume³, Dorota Zammit⁴, Victor
5 Grech⁵, Witness Mapanga^{6,7}, Yosuke Inoue⁸

6

7 ¹Independent Researcher, Munster, Ireland

8 ²Trinity College Dublin, Dublin, Ireland

9 ³Department of Obstetrics and Gynaecology, Faculty of Health Sciences, University of the
10 Witwatersrand, Johannesburg, South Africa

11 ⁴National Statistics Office, Valletta, Malta

12 ⁵Academic Department of Paediatrics, Medical School, Mater Dei Hospital, Msida, Malta

13 ⁶Division of Medical Oncology, Department of Medicine, School of Clinical Medicine,
14 Faculty of Health Sciences, University of the Witwatersrand, Johannesburg, South Africa

15 ⁷Noncommunicable Diseases Research Division, Wits Health Consortium (PTY) Ltd,
16 Johannesburg, South Africa

17 ⁸Department of Epidemiology and Prevention, Center for Clinical Sciences, National Center
18 for Global Health and Medicine, Tokyo, Japan

19

20 *Corresponding author: parturitions@gmail.com

21

22

23

24

25 **Abstract**

26 **Background**

27 The sex ratio at birth (male live births divided by total live births) may be a sentinel health
28 indicator. Stressful events reduce this ratio 3-5 months later by increasing male fetal loss.

29 This ratio can also change 9 months after major population events that are linked to an
30 increase or decrease in the frequency of sexual intercourse at the population level, with the
31 ratio either rising or falling respectively after the event. We postulated that stress caused by
32 the COVID-19 pandemic may have affected the ratio in England and Wales.

33 **Methods**

34 Publicly available, monthly live birth data for England and Wales was obtained from the
35 Office for National Statistics up to December 2020. The sex ratio at birth for 2020 (global
36 COVID-19 onset) was predicted using data from 2012-2019. Observed and predicted values
37 were compared.

38 **Results**

39 Three months after COVID-19 was declared pandemic (March 2020), there was a significant
40 fall in the sex ratio at birth to 0.5100 in June 2020 which was below the 95% prediction
41 interval of 0.5102-0.5179. Nine months after the pandemic declaration, (December 2020),
42 there was a significant rise to 0.5171 (95% prediction interval 0.5085-0.5162). However,
43 December 2020 had the lowest number of live births of any month from 2012 to 2020.

44 **Conclusions**

45 Given that June 2020 falls within the crucial window when population stressors are known to
46 affect the sex ratio at birth, these findings imply that the start of the COVID-19 pandemic
47 caused population stress with notable effects on those who were already pregnant by causing
48 a disproportionate loss of male fetuses. The finding of a higher sex ratio at birth in December

49 2020, i.e., 9 months after COVID-19 was declared a pandemic, suggests that lockdown
50 restrictions initially spurred more sexual activity in a subset of the population in March 2020.

51

52 **Keywords** Sex ratio at birth, population stressor, COVID-19, lockdown, England, Wales,

53 sexual intercourse

54

55

56

57

58

59

60

61

62

63

64

65

66

67

68

69

70

71

72

73

74 **Introduction**

75 Male live births outnumber female live births at the population level (Graunt 1676). The
76 secondary sex ratio, commonly known as the sex ratio at birth (SRB), is calculated as male
77 divided by total live births (Grech 2014). The SRB may serve as a sentinel health indicator,
78 revealing unfavourable conditions through a decline and better conditions through an increase
79 (Davis et al. 1998; Grech & Masukume 2016).

80 In response to population-level events, the SRB may remain unchanged (Grech & Scherb
81 2021; Masukume & Grech 2016), transiently increase, or decrease. The increases or
82 decreases have been noted to occur within two distinct time windows. The first window is 3-5
83 months after sudden and unanticipated stressful events such as terrorist attacks (Bruckner et
84 al. 2010), the death of a well-known public person (Grech 2015), or unexpected national
85 election results (Retnakaran & Ye 2020). This first window is linked to a disproportionate
86 pregnancy loss of male fetuses, which is reflected in a lower SRB a few months after the
87 stressful event. Male fetuses are more vulnerable to the effects of maternal stress (Aiken &
88 Ozanne 2013; Catalano et al. 2021), in accordance with the Trivers-Willard hypothesis,
89 which holds that unfavourable environmental conditions might lower the ratio of males to
90 females (Trivers & Willard 1973).

91 The second window occurs 9 months after an event and can result in either a drop or a rise in
92 the SRB. The SRB can decrease 9 months after a stressful event, such as a massive
93 earthquake, and this is ascribed to a decrease in population-level sexual intercourse frequency
94 and/or reduced sperm motility (Fukuda et al. 2018; Fukuda et al. 1996). The SRB may
95 increase 9 months later if the event is linked to a population-level opportunity for more
96 frequent sexual activity, such as the celebratory atmosphere during the first-ever home
97 Fédération Internationale de Football Association (FIFA) 2010 World Cup tournament with a
98 strong showing by the local team (Masukume & Grech 2015). It has been established that

99 SRB and the fertile phase of the menstrual cycle have a U-shaped association (Guerrero
100 1974). The SRB would be skewed toward male births because of this U-shaped association if
101 coitus was more common at the population level and more conceptions occurred further from
102 the centre of the fertile period.

103 It has been suggested that an SRB decrease could be brought on by COVID-19 stress (Abdoli
104 2020). Indeed, we noted that the SRB fell in South Africa in June 2020, 3 months after
105 COVID-19 was proclaimed a pandemic (Masukume et al. 2022), and in Japan in December
106 2020, 9 months after the proclamation (Inoue & Mizoue 2022).

107 March 2020 was a key month for COVID-19 in England and Wales. This month saw an
108 increase in local and international media coverage of the virus (Ng et al. 2021) as the World
109 Health Organization (WHO) declared COVID-19 to be a pandemic (Cucinotta & Vanelli
110 2020). The first COVID-19 related death in England was also reported in March 2020
111 (Mahase 2020). Furthermore, on 23 March 2020, the Prime Minister of the United Kingdom
112 (UK), i.e., England, Wales, Scotland and Northern Ireland made a major announcement on
113 ‘lockdown’ restrictions, the closure of non-essential enterprises and the requirement to stay at
114 home save for a few limited circumstances, in one of the most watched broadcasts. Higher
115 levels of COVID-19-related anxiety, depression and trauma symptoms were observed in the
116 general population in the UK from 23 to 28 March 2020 compared to previous epidemiologic
117 periods (Shevlin et al. 2020). This study sought to ascertain whether the SRB in England and
118 Wales changed in response to the COVID-19 pandemic, as well as when this change took
119 place.

120

121 **Material and methods**

122 **Data and statistical analysis**

123 We used publicly available, monthly live birth data for England and Wales obtained from the
124 Office for National Statistics, which is typically the most comprehensive data source
125 available (Office for National Statistics 2022). The 108-month period (9 years) covered by
126 the data, from January 2012 to December 2020, was consistent with the number of months
127 examined in earlier research on the subject (Inoue & Mizoue 2022; Masukume et al. 2022).
128 The most recent month for which data was available was December 2020.
129 The source of live birth data is a legal record that is the result of a child's parent(s) or
130 informant formally registering the birth at a registry office. The doctor or midwife who
131 attended the birth fills out a birth notification form. The coronavirus pandemic did not
132 influence birth notifications the same way it did on birth registrations, which were delayed.
133 For 2020, 0.3% of birth registrations across England and Wales were still unlinked to birth
134 notifications (Office for National Statistics 2021).
135 Using data from January 2012 to December 2019, we predicted SRBs for the 2020 months
136 because the disease now known as COVID-19 was initially notified to WHO on 31 December
137 2019 (Wu & McGoogan 2020). We utilized an autoregressive moving average (ARMA)
138 model with the minimum Akaike Information Criterion (AIC) (i.e., autoregressive parameter
139 [4] and moving average parameter [4]) to fit SRBs for January 2012 to December 2019 after
140 checking for stationarity with the Dickey-Fuller test ($p < .001$) (Table S1). The results from
141 this model were applied to predict SRBs for 2020. The 95% upper and lower bounds of the
142 predicted SRBs were calculated using Stata's 'predict' command and the 'mse' option
143 (StataCorp 2019).

144

145 **Ethical considerations**

146 The data were anonymized, thus ethical approval was not required.

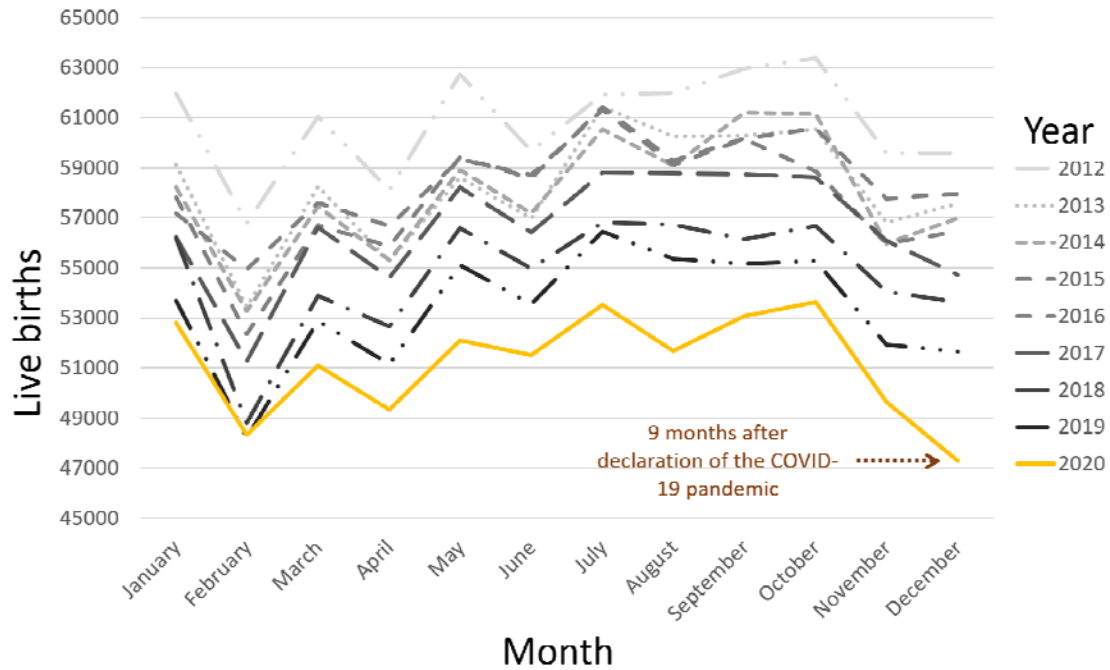
147

148 **Results**

149 A total of 6,108,030 live births—3,133,915 males and 2,974,115 females—were recorded
150 during the 9-year period between January 2012 and December 2020, with an SRB of 0.5131.
151 From 2012 through 2020, December 2020 had the fewest live births of any month with
152 47,291 (Figure 1). The SRB for June 2020 was 0.5100, the lowest of any June throughout the
153 study period. June 2020 was also the first time June had had the lowest SRB of the year. The
154 SRB for December 2020 was 0.5171, which was the highest for any December throughout
155 the study period. Additionally, December 2020 marked the first time the month had the
156 highest SRB of the year (Figure 2). The lowest yearly SRB over the 9-year period was 0.5122
157 observed in 2020.

158 There was a significant fall in the SRB of 0.5100 in June 2020 which was below the 95%
159 prediction interval of 0.5102-0.5179. In December 2020, there was a significant rise in the
160 SRB of 0.5171 which was above the 95% prediction interval of 0.5085-0.5162 (Figure 3 and
161 Table 1).

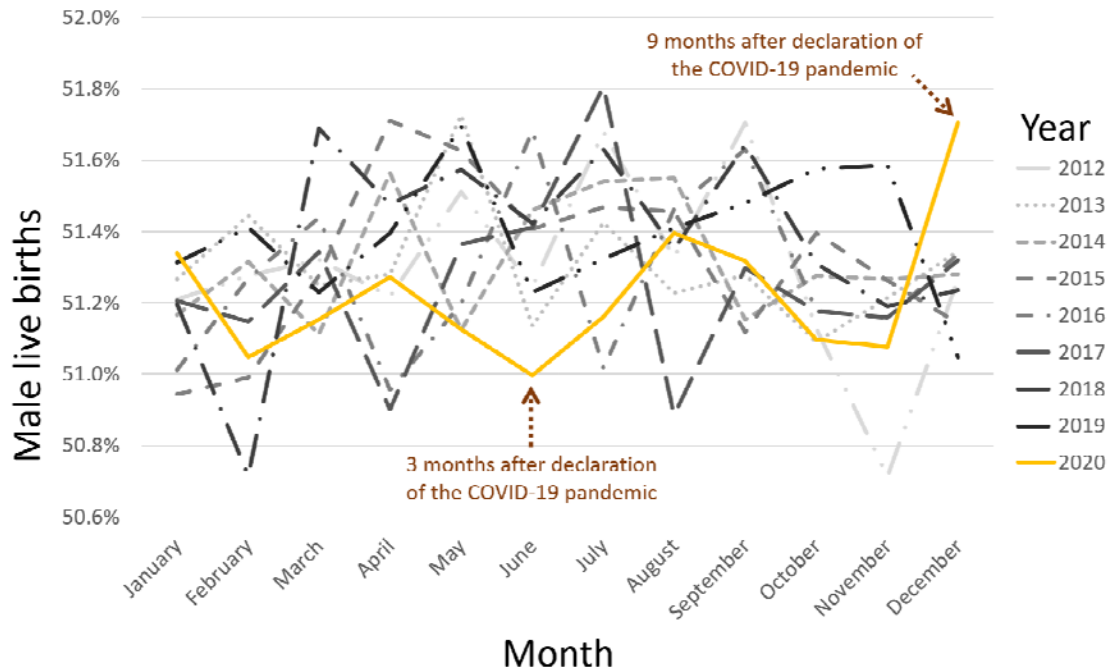
162



163

164 **Figure 1.** Total live births over 9 years, from January 2012 to December 2020.

165

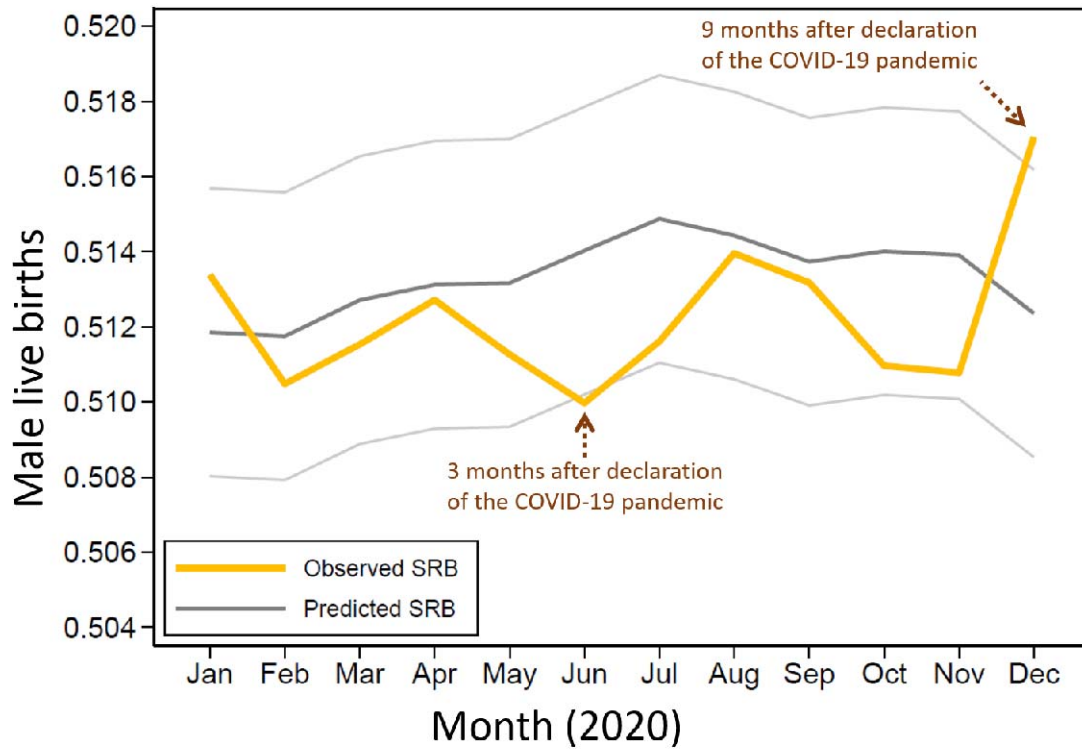


166

167 **Figure 2.** Monthly proportion of male live births over 9 years, from January 2012 to

168 December 2020.

169



170

171 **Figure 3.** Observed and predicted sex ratio at birth (SRB) in 2020.

172

173 **Table 1.** Observed and predicted sex ratio at birth for 2020.

Month	Males	Females	Observed SRB	Predicted SRB	Lower 95% PI	Upper 95% PI
January	27109	25695	0.5134	0.5119	0.5080	0.5157
February	24665	23652	0.5105	0.5118	0.5079	0.5156
March	26129	24951	0.5115	0.5127	0.5089	0.5165
April	25296	24041	0.5127	0.5131	0.5093	0.5169
May	26634	25460	0.5113	0.5132	0.5093	0.5170
June	26261	25234	0.5100	0.5140	0.5102	0.5179
July	27379	26136	0.5116	0.5149	0.5110	0.5187
August	26552	25110	0.5140	0.5144	0.5106	0.5183
September	27239	25840	0.5132	0.5137	0.5099	0.5176

October	27400	26224	0.5110	0.5140	0.5102	0.5178
November	25354	24284	0.5108	0.5139	0.5101	0.5177
December	24452	22839	0.5171	0.5124	0.5085	0.5162

174 SRB - sex ratio at birth, PI – prediction interval

175

176 **Discussion**

177 **Principal findings**

178 In this study, we observed that the COVID-19 pandemic affected SRB in England and Wales.

179 We observed that December 2020 had notably the fewest live births of any month over the

180 108-month study period, with 47,291 live births, 9 months after the pandemic was declared in

181 March 2020. With an SRB of 0.5100, June 2020's SRB was significantly the lowest of any

182 June during the study period. Indeed, the lowest SRB of the year was recorded for the first

183 time in June 2020. This SRB decline took place 3 months after the pandemic was declared.

184 The December 2020 SRB, which was 0.5171, was significantly the highest SRB for any

185 December throughout the study period. Indeed, for the first time in 2020, December saw the

186 highest SRB of the year.

187 **Comparison with other studies**

188 Three months after the COVID-19 pandemic was declared, a decline in the SRB was noted in

189 South Africa in June 2022 (Masukume et al. 2022), which is similar to the transient decline in

190 SRB observed in this study in June 2020. This is consistent with studies that found a transient

191 reduction in SRB 3-5 months after unanticipated occurrences that stressed populations

192 (Calleja 2020; Catalano et al. 2006; Grech 2015; Retnakaran & Ye 2020).

193 Excess male fetal loss, particularly in those who were 20 to 28 weeks (4-7 months) pregnant

194 at the time of the major stressful event, has been linked to a drop in the SRB 3 months later

195 (Bruckner et al. 2010). A stillbirth is defined in England and Wales as a fetal death that

196 occurs at ≥ 24 completed weeks of pregnancy, whereas a miscarriage happens at < 24
197 completed weeks (Gurol-Urganci et al. 2022; Jones et al. 2022). Thus, our findings indicating
198 a decreased SRB in England and Wales in June 2020, 3 months after the declaration of the
199 COVID-19 pandemic, imply an increase in miscarriage and stillbirth rates during the early
200 part of the COVID-19 pandemic, disproportionately affecting male fetuses.

201 Moreover, a rise in stillbirths from 2.38 per 1,000 births between 1 October 2019 and 31
202 January 2020 (defined as the pre-pandemic period) to 9.31 per 1,000 births between 1
203 February and 14 June 2020 (defined as the pandemic period) was reported from an English
204 centre (Khalil et al. 2020). Although the sex of the stillbirths was not provided, in this
205 English paper, male fetuses typically account for the majority of stillbirths (Mondal et al.
206 2014). These particular stillbirths had no connection to clinically severe acute respiratory
207 syndrome coronavirus 2 (SARS-CoV-2) infection, which indicates an indirect stillbirth
208 mechanism possibly involving increased maternal stress and anxiety. Internationally,
209 miscarriages are typically not included in such statistics (Gurol-Urganci et al. 2022; Jones et
210 al. 2022). Because a drop in the SRB might also be used to detect male fetal loss (Bruckner et
211 al. 2010), our results also indicate that there may have been an unrecognised excess of male
212 fetal loss before 24 weeks gestation (miscarriages). This is because national level statistics
213 from England (Gurol-Urganci et al. 2022) and Wales (Jones et al. 2022) did not indicate a
214 rise in stillbirths throughout the COVID-19 period of the current investigation, in contrast to
215 the aforementioned single centre study (Khalil et al. 2020).

216 Despite the SRB rising, in England and Wales, in December 2020, 9 months after the
217 COVID-19 pandemic was declared, this happened in the context of a sharp reduction in
218 overall live births compared to Decembers prior. Contrasting this with the fact that 9 months
219 following the 2010 FIFA World Cup in South Africa, there was an increase in SRB along
220 with an increase in the overall number of live births (Masukume & Grech 2015; Masukume

221 et al. 2016). This suggests that whereas a greater fraction of the population engaged in sexual
222 activity more frequently in South Africa during the 2010 World Cup, a smaller portion of the
223 population did so in England and Wales in March 2020. This is consistent with a British
224 study that looked at the first 4 months of the lockdown and found that some people who were
225 cohabiting felt like they had more partnered sexual activity since the lockdown, but people
226 who were not cohabiting felt like they had less (Mercer et al. 2021).

227 Contrary to our current findings, the SRB fell in Japan, as we previously reported, in
228 December 2020, 9 months after COVID-19 was designated a pandemic (Inoue & Mizoue
229 2022), but this Japanese decline might have been within the same context as a significant
230 decline in overall live births for December 2020 seen in England and Wales (Ghaznavi et al.
231 2022). This would suggest less frequent sexual encounters (Guerrero 1974), and indeed
232 declines in sexual activity associated with the start of the COVID-19 pandemic have been
233 suggested in Japan (Kitamura et al. 2021).

234 Overall, our research demonstrates that the SRB is a very valuable sentinel health indicator
235 since, unlike other indicators, it is usually available for entire populations (Davis et al. 1998).
236 Population dynamics can be better understood by triangulating the SRB with additional data.

237 **Strengths and limitations**

238 The study's results cannot be extrapolated to the individual level due to the ecological fallacy
239 (Björk et al. 2021). However, the ecologic study method is arguably the most appropriate for
240 examining how a population stressor affects a population outcome (Pearce 2011).

241 March 2020 saw the temporary suspension of birth registration in England and Wales. As
242 soon as it was safe to do so, registrations started up again in June 2020. Under normal
243 circumstances, more than 95% of births are typically documented within the required 42-day
244 window. In 2020, only 58% of births were reported within 42 days, a notable reduction. Due
245 to this known delay, the cut-off date for incorporating 2020 live birth registrations was five

246 and a half months later than usual, in August 2021. Similar distributions for the baby's sex
247 were found in both the linked registrations data and the unlinked notifications when birth
248 registrations and birth notifications were compared. The aforementioned birth registration
249 delays had little bearing on the current analysis because 0.3% of notifications across England
250 and Wales were still unlinked (Office for National Statistics 2021).

251 The analysis presented here pertains to England and Wales' initial COVID-19 wave (Knock
252 et al. 2021). England and Wales had seen more waves at the time of writing. In the waves that
253 followed, the SRB might have been perturbed. When the live birth data for these times are
254 made accessible, this is a topic for further study. In the years between 2012 and 2020, we also
255 noticed other major SRB dips and peaks, but we had not *a priori* hypothesised how they
256 might have arisen; thus, we did not address them further in this paper.

257 **Conclusions**

258 These results suggest that the start of the COVID-19 pandemic caused population stress with
259 notable effects on those who were already pregnant by causing a disproportionate loss of
260 male fetuses given that June 2020 falls within the critical window when population stressors
261 are known to affect the sex ratio at birth. The finding of a higher sex ratio at birth in
262 December 2020, 9 months after COVID-19 was declared a pandemic, indicates that
263 lockdown regulations initially encouraged more partnered sexual activity in a small portion of
264 the population. Future pandemic preparedness (Marston et al. 2017) and social policy (Cook
265 & Ulriksen 2021) can be influenced by our findings. Examples of how this knowledge could
266 be applied to prevent a potential SRB reduction include targeted increases in resources for
267 maternal health services, including improved fetal surveillance, particularly during and in the
268 lead up to 3-5 months after the start of a future pandemic. Future studies should examine
269 whether the SRB changed in other nations after the onset of COVID-19.

270

271 **Acknowledgements**

272 We acknowledge the Office for National Statistics for the recorded live birth data.

273

274 **Funding**

275 The authors received no funding for this work.

276

277 **Competing interests**

278 The authors declare there are no competing interests.

279

280 **Author Contributions**

281 Conceptualization: GM, MR, RM, DZ, VG, WM, YI

282 Data curation: VG, GM, YI

283 Formal analysis: YI, VG, GM

284 Writing – original draft: GM

285 Writing – review & editing: MR, RM, GM, DZ, VG, WM, YI

286

287 **References**

288 Abdoli A. 2020. The COVID-19 stress may influence on the sex ratio at birth. *J Matern Fetal*

289 *Neonatal Med*:1-6. 10.1080/14767058.2020.1846181

290 Aiken CE, and Ozanne SE. 2013. Sex differences in developmental programming models.

291 *Reproduction* 145:R1-13. 10.1530/rep-11-0489

292 Björk J, Modig K, Kahn F, and Ahlbom A. 2021. Revival of ecological studies during the

293 COVID-19 pandemic. *European Journal of Epidemiology* 36:1225-1229.

294 10.1007/s10654-021-00830-9

- 295 Bruckner TA, Catalano R, and Ahern J. 2010. Male fetal loss in the U.S. following the
296 terrorist attacks of September 11, 2001. *BMC Public Health* 10:273. 10.1186/1471-
297 2458-10-273
- 298 Calleja T. 2020. The assassinations of investigative journalists Daphne Caruana Galizia and
299 Veronica Guerin and the male-to-female birth ratio. *Early Human Development*
300 141:104950. 10.1016/j.earlhumdev.2019.104950
- 301 Catalano R, Bruckner T, Casey JA, Gemmill A, Margerison C, and Hartig T. 2021. Twinning
302 during the pandemic: Evidence of selection in utero. *Evolution, Medicine, and Public*
303 *Health* 9:374-382. 10.1093/emph/eoab033
- 304 Catalano R, Bruckner T, Marks AR, and Eskenazi B. 2006. Exogenous shocks to the human
305 sex ratio: the case of September 11, 2001 in New York City. *Hum Reprod* 21:3127-
306 3131. 10.1093/humrep/del283
- 307 Cook S, and Ulriksen MS. 2021. Social policy responses to COVID-19: New issues, old
308 solutions? *Global Social Policy* 21:381-395. 10.1177/14680181211055645
- 309 Cucinotta D, and Vanelli M. 2020. WHO Declares COVID-19 a Pandemic. *Acta Biomed*
310 91:157-160. 10.23750/abm.v91i1.9397
- 311 Davis DL, Gottlieb MB, and Stampnitzky JR. 1998. Reduced ratio of male to female births in
312 several industrial countries: a sentinel health indicator? *Jama* 279:1018-1023.
313 10.1001/jama.279.13.1018
- 314 Fukuda M, Fukuda K, Mason S, Shimizu T, and Yding Andersen C. 2018. The sex ratio at
315 birth after recent major earthquakes in Japan. *Early Hum Dev* 123:30-31.
316 10.1016/j.earlhumdev.2018.06.002
- 317 Fukuda M, Fukuda K, Shimizu T, Yomura W, and Shimizu S. 1996. Kobe earthquake and
318 reduced sperm motility. *Hum Reprod* 11:1244-1246.
319 10.1093/oxfordjournals.humrep.a019365

- 320 Ghaznavi C, Kawashima T, Tanoue Y, Yoneoka D, Makiyama K, Sakamoto H, Ueda P,
321 Eguchi A, and Nomura S. 2022. Changes in marriage, divorce and births during the
322 COVID-19 pandemic in Japan. *BMJ Global Health* 7:e007866. 10.1136/bmjgh-2021-
323 007866
- 324 Graunt J. 1676. Natural and political observations mentioned in a following index, and made
325 upon the Bills of mortality. Available at
326 <https://wellcomecollection.org/works/jt43sbkc>.
- 327 Grech V. 2014. Secular trends in newborn sex ratios. *Early Hum Dev* 90:755-760.
328 10.1016/j.earlhumdev.2014.08.018
- 329 Grech V. 2015. Historic Royal events and the male to female ratio at birth in the United
330 Kingdom. *Eur J Obstet Gynecol Reprod Biol* 191:57-61.
331 10.1016/j.ejogrb.2015.05.012
- 332 Grech V, and Masukume G. 2016. The sex ratio at birth in South Africa may be a sentinel
333 health indicator. *Early Hum Dev* 103:225-227. 10.1016/j.earlhumdev.2016.10.008
- 334 Grech V, and Scherb H. 2021. No local birth sex ratio changes following the August 2019
335 shootings in Montgomery county, Ohio and in El Paso county, Texas. *Med Princ*
336 *Pract*. 10.1159/000521338
- 337 Guerrero R. 1974. Association of the Type and Time of Insemination within the Menstrual
338 Cycle with the Human Sex Ratio at Birth. *New England Journal of Medicine*
339 291:1056-1059. 10.1056/nejm197411142912004
- 340 Gurol-Urganci I, Waite L, Webster K, Jardine J, Carroll F, Dunn G, Frémeaux A, Harris T,
341 Hawdon J, Muller P, van der Meulen J, and Khalil A. 2022. Obstetric interventions
342 and pregnancy outcomes during the COVID-19 pandemic in England: A nationwide
343 cohort study. *PLOS Medicine* 19:e1003884. 10.1371/journal.pmed.1003884

- 344 Inoue Y, and Mizoue T. 2022. A preliminary analysis of the secondary sex ratio decline after
345 the COVID-19 pandemic in Japan. *Am J Hum Biol*:eajhb. 10.1002/ajhb.23750
- 346 Jones H, Seaborne M, Cowley L, Odd D, Paranjothy S, Akbari A, and Brophy S. 2022.
347 Population birth outcomes in 2020 and experiences of expectant mothers during the
348 COVID-19 pandemic: A 'born in Wales' mixed methods study using routine data.
349 *PLoS One* 17:e0267176. 10.1371/journal.pone.0267176
- 350 Khalil A, von Dadelszen P, Draycott T, Ugwumadu A, O'Brien P, and Magee L. 2020.
351 Change in the Incidence of Stillbirth and Preterm Delivery During the COVID-19
352 Pandemic. *Jama* 324:705-706. 10.1001/jama.2020.12746
- 353 Kitamura K, Ae R, and Kosami M. 2021. Survey of Pregnancy and Contraceptive Awareness
354 and Behavior during the COVID-19 Pandemic and Efforts to Raise Awareness and
355 Create Educational Material for Youth.
- 356 Knock ES, Whittles LK, Lees JA, Perez-Guzman PN, Verity R, FitzJohn RG, Gaythorpe
357 KAM, Imai N, Hinsley W, Okell LC, Rosello A, Kantas N, Walters CE, Bhatia S,
358 Watson OJ, Whittaker C, Cattarino L, Boonyasiri A, Djaafara BA, Fraser K, Fu H,
359 Wang H, Xi X, Donnelly CA, Jauneikaite E, Laydon DJ, White PJ, Ghani AC,
360 Ferguson NM, Cori A, and Baguelin M. 2021. Key epidemiological drivers and
361 impact of interventions in the 2020 SARS-CoV-2 epidemic in England. *Sci Transl*
362 *Med* 13. 10.1126/scitranslmed.abg4262
- 363 Mahase E. 2020. Covid-19: UK records first death, as world's cases exceed 100 000. *Bmj*
364 368:m943. 10.1136/bmj.m943
- 365 Marston HD, Paules CI, and Fauci AS. 2017. The Critical Role of Biomedical Research in
366 Pandemic Preparedness. *Jama* 318:1757-1758. 10.1001/jama.2017.15033

- 367 Masukume G, and Grech V. 2015. The sex ratio at birth in South Africa increased 9months
368 after the 2010 FIFA World Cup. *Early Hum Dev* 91:807-809.
369 10.1016/j.earlhumdev.2015.10.006
- 370 Masukume G, and Grech V. 2016. The sex ratio at birth in France was unchanged 9months
371 after the 1998 FIFA World Cup. *Early Hum Dev* 99:13-15.
372 10.1016/j.earlhumdev.2016.04.009
- 373 Masukume G, Grech V, and Scherb H. 2016. Reply: Analysis of the sex ratio at birth in
374 South Africa increased 9months after the 2010 FIFA World Cup. *Early Hum Dev*
375 97:11-13. 10.1016/j.earlhumdev.2015.12.002
- 376 Masukume G, Ryan M, Masukume R, Zammit D, Grech V, and Mapanga W. 2022. COVID-
377 19 onset reduced the sex ratio at birth in South Africa. *PeerJ* 10:e13985.
378 10.7717/peerj.13985
- 379 Mercer CH, Clifton S, Riddell J, Tanton C, Freeman L, Copas AJ, Dema E, Bosó Pérez R,
380 Gibbs J, Macdowall W, Menezes D, Ridge M-C, Bonell C, Sonnenberg P, Field N,
381 and Mitchell KR. 2021. Impacts of COVID-19 on sexual behaviour in Britain:
382 findings from a large, quasi-representative survey (Natsal-COVID). *Sexually*
383 *Transmitted Infections*:sextrans-2021-055210. 10.1136/sextrans-2021-055210
- 384 Mondal D, Galloway TS, Bailey TC, and Mathews F. 2014. Elevated risk of stillbirth in
385 males: systematic review and meta-analysis of more than 30 million births. *BMC*
386 *Medicine* 12:220. 10.1186/s12916-014-0220-4
- 387 Ng R, Chow TYJ, and Yang W. 2021. News media narratives of Covid-19 across 20
388 countries: Early global convergence and later regional divergence. *PLoS One*
389 16:e0256358. 10.1371/journal.pone.0256358
- 390 Office for National Statistics. 2021. Births in England and Wales explained: 2020. *Available*
391 *at*

- 392 [https://www.ons.gov.uk/peoplepopulationandcommunity/birthsdeathsandmarriages/li](https://www.ons.gov.uk/peoplepopulationandcommunity/birthsdeathsandmarriages/livebirths/articles/birthsinenglandandwalesexplained/2020)
393 [vebirths/articles/birthsinenglandandwalesexplained/2020](https://www.ons.gov.uk/peoplepopulationandcommunity/birthsdeathsandmarriages/livebirths/articles/birthsinenglandandwalesexplained/2020).
- 394 Office for National Statistics. 2022. Live births by month of occurrence and sex of baby,
395 England and Wales, 2012 to 2020. Available at
396 [https://www.ons.gov.uk/file?uri=/peoplepopulationandcommunity/birthsdeathsandma](https://www.ons.gov.uk/file?uri=/peoplepopulationandcommunity/birthsdeathsandmarriages/livebirths/adhocs/15002livebirthsbymonthofoccurrenceandsexofbabyenglandandwales2012to2020/livebirthsbymonth.xlsx)
397 [rriages/livebirths/adhocs/15002livebirthsbymonthofoccurrenceandsexofbabyenglanda](https://www.ons.gov.uk/file?uri=/peoplepopulationandcommunity/birthsdeathsandmarriages/livebirths/adhocs/15002livebirthsbymonthofoccurrenceandsexofbabyenglandandwales2012to2020/livebirthsbymonth.xlsx)
398 [ndwales2012to2020/livebirthsbymonth.xlsx](https://www.ons.gov.uk/file?uri=/peoplepopulationandcommunity/birthsdeathsandmarriages/livebirths/adhocs/15002livebirthsbymonthofoccurrenceandsexofbabyenglandandwales2012to2020/livebirthsbymonth.xlsx).
- 399 Pearce N. 2011. Epidemiology in a changing world: variation, causation and ubiquitous risk
400 factors. *Int J Epidemiol* 40:503-512. 10.1093/ije/dyq257
- 401 Retnakaran R, and Ye C. 2020. Outcome of the 2016 United States presidential election and
402 the subsequent sex ratio at birth in Canada: an ecological study. *BMJ Open*
403 10:e031208. 10.1136/bmjopen-2019-031208
- 404 Shevlin M, McBride O, Murphy J, Miller JG, Hartman TK, Levita L, Mason L, Martinez AP,
405 McKay R, Stocks TVA, Bennett KM, Hyland P, Karatzias T, and Bentall RP. 2020.
406 Anxiety, depression, traumatic stress and COVID-19-related anxiety in the UK
407 general population during the COVID-19 pandemic. *BJPsych Open* 6:e125.
408 10.1192/bjo.2020.109
- 409 StataCorp. 2019. Arima postestimation (Online): Stata Statistical Software: Release 16.
410 Available at <https://www.stata.com/manuals/tsarimapostestimation.pdf2022>).
- 411 Trivers RL, and Willard DE. 1973. Natural selection of parental ability to vary the sex ratio
412 of offspring. *Science* 179:90-92. 10.1126/science.179.4068.90
- 413 Wu Z, and McGoogan JM. 2020. Characteristics of and Important Lessons From the
414 Coronavirus Disease 2019 (COVID-19) Outbreak in China: Summary of a Report of
415 72 314 Cases From the Chinese Center for Disease Control and Prevention. *Jama*
416 323:1239-1242. 10.1001/jama.2020.2648

417 **Table S1.** Parameter selection procedure for the autoregressive moving average (ARMA) model to fit and predict secondary sex ratio in England
 418 and Wales.

AR	MA	AR					MA					AIC	
		L1	L2	L3	L4	L5	L1	L2	L3	L4	L5		
1	0	-0.01											-897.15
1	1	0.92					-1.00						-897.39
1	2	0.91					-0.96	-0.04					-897.52
1	3	0.89					-0.95	0.01	-0.07				-893.89
1	4	0.71					-0.75	0.02	-0.03	-0.07			-891.4
1	5	0.62					-0.67	0.01	0.04	0.05	-0.21		-891.78
2	0	-0.01	0.02										-895.18
2	1	0.95	-0.04				-1.00						-897.54
2	2	-0.01	0.86				-0.10	-0.90					-896.00
2	3	NC					NC						
2	4	NC					NC						
2	5	1.30	-0.77				-1.44	0.95	-0.01	-0.01	-0.17		-899.75
3	0	-0.01	0.02	-0.02									-893.2
3	1	0.95	0.02	-0.07			-1.00						-896.00
3	2	-1.53	-0.99	-0.05			1.57	1.00					-893.94

3	3	NC					NC					
3	4	-0.08	-0.02	-0.74			0.02	0.09	0.88	0.16		-894.88
3	5	2.23	-2.03	0.75			-2.40	2.41	-0.94	-0.18	0.12	-898.86
4	0	-0.01	0.02	-0.02	-0.01							-891.21
4	1	0.72	0.02	-0.03	-0.11		-0.75					-892.38
4	2	-0.82	-0.92	0.06	0.08		0.83	0.97				-891.28
4	3	1.90	-1.71	0.68	-0.13		-2.65	2.75	-1.35			-899.42
4	4	1.71	-1.83	1.51	-0.88		-1.80	2.05	-1.80	1.00		-904.70
4	5	1.39	0.05	-1.20	0.65		-1.23	0.03	1.05	-0.68	-0.16	-897.78
5	0	-0.01	0.01	-0.01	-0.02	-0.18						-892.38
5	1	0.56	0.02	-0.02	-0.01	-0.2	-0.61					-893.52
5	2	NC					NC					
5	3	NC					NC					
5	4	0.73	-0.37	0.79	-0.82	-0.18	-0.90	0.47	-0.84	0.96		-903.07
5	5	NC					NC					

419 AIC: Akaike Information Criterion; AR: autoregressive parameter; MA: moving average parameters; NC: not converged.