

1 Contact patterns of UK home delivery drivers and their use of protective
2 measures during the COVID-19 pandemic: a cross-sectional study

3

4 Jessica RE Bridgen; Centre for Health Informatics, Computing and Statistics, Lancaster Medical
5 School, Lancaster University, Lancaster, UK

6 Hua Wei; School of Health Sciences Centre, University of Manchester, Manchester, UK

7 Carl Whitfield; Immunity and Respiratory Medicine, University of Manchester, Manchester, UK

8 Yang Han; Department of Mathematics, University of Manchester, Manchester, UK

9 Ian Hall; Department of Mathematics, University of Manchester, Manchester, UK

10 Chris P Jewell; Department of Mathematics and Statistics, Lancaster University, Lancaster, UK

11 Martie JA van Tongeren; Academic Health Sciences Centre, University of Manchester,
12 Manchester, UK

13 Jonathan M Read; Centre for Health Informatics, Computing and Statistics, Lancaster Medical
14 School, Lancaster University, Lancaster, UK

15 jonathan.read@lancaster.ac.uk (corresponding author)

16

17 Word count: 2634

18 **ABSTRACT**

19 **Objectives:** To quantify contact patterns of UK home delivery drivers and identify
20 protective measures adopted during the pandemic.

21 **Methods:** We conducted a cross-sectional online survey to measure the interactions
22 of 170 UK delivery drivers during a working shift between 7 December 2020 and 31
23 March 2021.

24 **Results:** Delivery drivers had a mean number of 71.6 (95% Confidence Interval (CI)
25 61.0 to 84.1) customer contacts per shift and 15.0 (95%CI 11.19 to 19.20) depot
26 contacts per shift. Maintaining physical distancing with customers was more common
27 than at delivery depots. Prolonged contact (more than 5 minutes) with customers
28 was reported by 5.4% of drivers on their last shift. We found 3.0% of drivers had
29 tested positive for SARS-CoV-2 since the start of the pandemic and 16.8% of drivers
30 had self-isolated due to a suspected or confirmed case of COVID-19. Additionally,
31 5.3% (95%CI 2.3% to 10.2%) of participants reported having worked whilst ill with
32 COVID-19 symptoms, or with a member of their household having a suspected or
33 confirmed case of COVID-19.

34 **Conclusion:** Delivery drivers had a large number of face-to-face customer and
35 depot contacts per shift compared to other working adults during this time. However,
36 transmission risk may be curtailed as contact with customers was of short duration.
37 Most drivers were unable to maintain physical distance with customers and at depots
38 at all times. Usage of protective items such as face masks and hand sanitizer was
39 widespread.

40
41

42 INTRODUCTION

43 The delivery sector has been central in ensuring that services and supplies have
44 remained available throughout the COVID-19 pandemic in the UK. There has been
45 an unprecedented demand for home deliveries during the pandemic, rising sharply
46 with the implementation of nationwide ‘stay at home’ orders.[1] The UK government
47 classed delivery drivers as *key workers*, defined as workers critical to the COVID-19
48 response.[2] Shielding guidance for clinically extremely vulnerable individuals in
49 January 2021 advised the use of food and prescription delivery services to minimise
50 the need to leave home.[3] As non-essential businesses were forced to close for
51 extended periods of time in 2020 and 2021, many businesses relied on online sales
52 to generate income.[4]

53 Transmission of SARS-CoV-2, the virus that causes COVID-19, primarily occurs
54 through airborne routes, however indirect transmission can take place through
55 contaminated surfaces.[5,6] High contact occupations are thought to be associated
56 with an increased likelihood of employees being exposed to SARS-CoV-2 and
57 developing clusters of cases in the workplace.[7,8] Reducing the number of social
58 contacts, increasing ventilation and frequent hand washing were advised methods to
59 reduce workplace risk of exposure to SARS-CoV-2.[9] Delivery drivers interact
60 regularly with other employees at depots (or collection hubs) and with a large
61 number of customers. To mitigate against infection, contact-free deliveries became
62 widely available to minimise contact and reduce transmission risk between delivery
63 drivers and customers.[10] However, several studies have found that transport
64 workers were at a higher risk of severe COVID-19 when compared with non-
65 essential workers.[11,12]

66 We conducted a cross-sectional online survey between 7 December 2020 and 31
67 March 2021 to quantify behaviours thought to be associated with transmission risk of
68 SARS-CoV-2. The study period coincides with the peak and gradual decline of the
69 second wave of COVID-19 in the UK, following the emergence of the alpha variant.
70 [13,14] The UK also entered a period of lockdown during this time, where ‘stay at
71 home’ orders were in place, and non-essential businesses were closed to reduce
72 transmission.[15] We aimed to quantify the contact patterns of delivery drivers within
73 their depot and with their customers, identifying the types of contact they were
74 making.

75

76 METHODS

77

78 Survey methodology

79 An anonymous online survey (the ‘CoCoNet: Home Delivery Driver survey’) was
80 used for data collection. The survey design was adapted from a previous population-
81 wide study.[16] Study participants had to meet the following inclusion criteria: a
82 resident in the UK at the time of the survey, working as a home delivery driver and

83 aged 18 or over. The survey was promoted through university press releases,
84 engagement with delivery driver groups on social media (LinkedIn and Facebook)
85 and targeted Facebook advertisements.

86

87 Survey responses received between 9 December 2020 and 31 March 2021 were
88 included in the analysis. Partial survey responses were analysed for all questions
89 that had been displayed to the participant.

90

91 Age, sex, ethnicity, household size and other demographic information was collected
92 from participants. Employment information was requested, including employment
93 type, working hours, types of items typically delivered and sick pay eligibility. The
94 survey included questions pertaining directly to COVID-19, such as whether
95 participants had tested positive for SARS-CoV-2, if they had to self-isolate due to
96 suspected or confirmed SARS-CoV-2 infection and if they had worked whilst being ill
97 with COVID-19 symptoms. Participants were asked to recall specific details from
98 their last shift working as a delivery driver, including the number of customers they
99 met face-to-face, the number of individuals they had a face-to-face conversation with
100 at their depot and their use of personal protective equipment (PPE). The survey
101 questions can be found in Supplementary Material.

102

103 **Primary and secondary outcome measurements**

104 Our primary outcome measurement was the number of contacts delivery drivers
105 have per shift. This was stratified into contact with customers and contact with
106 individuals (employees or customers) at a delivery depot. A contact was defined as
107 someone whom the participant had a face-to-face conversation with. Secondary
108 outcome measurements were: the number of deliveries per shift; the type of contact
109 drivers were having with customers; ability to maintain physical distance; use of
110 protective items; COVID-related presenteeism; the frequency of self-isolation and
111 COVID-19 infection.

112

113 **Data analysis**

114 Study representativeness was assessed by comparing participant demographics
115 with the Labour Force Survey (LFS) estimates for delivery drivers and couriers.
116 Quarterly labour force surveys for the time period November 2020 to January 2022
117 were aggregated for comparison, due to the relatively small sample size of delivery
118 drivers and couriers included in each individual survey.[17–22]

119

120 To identify occupational and personal characteristics associated with participants'
121 interactions with customers, we fitted a negative binomial regression model to the
122 number of customer contacts per shift. Explanatory variables included in the model
123 were: age, sex, employment type, furthest distance travelled from the collection point
124 to a delivery, weekly working hours and the type of items delivered. The model was
125 assessed for multicollinearity by calculating the variance inflation factor for each
126 independent variable.

127

128 **Ethics statement**

129 This study was approved by the Faculty of Health and Medicine Ethics Committee at
130 Lancaster University (reference FHMREC20040). Participation in the study was
131 voluntary and all participants provided consent before proceeding with the survey.

132

133 **RESULTS**

134

135 **Participant demographics**

136 We received 170 survey responses between 9 December 2020 and 31 March 2021
137 which met our inclusion criteria. Male participants accounted for 75.3% (128/170) of
138 the sample, our survey over sampled females when compared to the aggregated
139 LFS; Table 1. The majority of participants were aged 40 to 59 (56.4%, 96/170).
140 Participants predominantly resided in England (81.8%, 139/170), with 1.8% (3/170)
141 of participants residing in Northern Ireland, 10.6% (18/170) residing in Scotland and
142 5.9% (10/170) residing in Wales. We found that our sample was representative by
143 ethnicity and nation when compared to the population estimates of delivery drivers
144 as reported by the aggregated LFS; Table 1.

145

146 **Employment situation**

147 The majority of participants reported their employment situation to be either self-
148 employed and completely independent (54.3%, 95% confidence interval (CI) 46.3%
149 to 62.2%) or employed full time by one company (28.4%, 95%CI 21.6% to 36.0%);
150 see supplementary material Table 1. Over half of delivery drivers (53.1%, 95%CI
151 45.1% to 61.0%) reported their weekly working hours to be between 31 and 50
152 hours, and 22.2% (95%CI 16.1% to 29.4%) of delivery drivers reported working more
153 than 50 hours a week. The majority of participants reported their most recent working
154 shift to be during the week of completing the survey (92.6%, 95%CI 87.4% to
155 96.1%). A small proportion of participants reported their most recent working shift to
156 be more than a month before completing the survey (2.5%, 95%CI 0.7% to 6.2%).
157 Most participants (68.2%, 95%CI 60.1% to 75.5%) reported that they did not receive
158 statutory sick leave pay whilst working as delivery drivers.

159

160 **Workplace interactions**

161 The mean number of customer contacts was 71.6 (95%CI 61.0 to 84.1) per shift. We
162 found 95.2% (95%CI 90.4% to 98.1%) of participants had brief face-to-face
163 interactions (less than 5 minutes) with customers on their last shift, 5.4% (95%CI
164 2.4% to 10.4%) of participants had prolonged face-to-face interactions (more than 5
165 minutes) with customers and 8.2% (95%CI 4.3% to 13.8%) had entered a customer's
166 property. We found that 61.9% (95%CI 53.5% to 69.8%) of participants were able to
167 maintain physical distance with customers at all times during their last shift. A small
168 proportion of participants (2.7%, 95%CI 0.7% to 6.8%) reported that they could not
169 maintain physical distance at all on their last shift.

170

171 The mean number of contacts per shift in depot (where drivers collected items for
172 delivery) was 27.9 (95%CI 12.2 to 55.8). This was reduced to 15.0 (95%CI 11.19 to
173 19.20) contacts per shift after excluding a single individual who reported making an
174 exceptionally large number of contacts. We found that 42.4% (95%CI 34.2% to
175 50.9%) of participants reported that they were able to maintain physical distance
176 from contacts at the depot at all times during their last shift. Whereas 8.3% (95%CI
177 4.4% to 14.1%) of participants were unable to maintain physical distance at all on
178 their previous shift.

179

180 We found 10.5% (95%CI 6.1% to 16.4%) of participants shared a vehicle with a
181 colleague during their last working week, of which, 56.2% (95%CI 29.9% to 80.2%)
182 reported sharing the vehicle with the same colleague throughout the week.

183

184 The number of contacts made per shift, including both customer and depot
185 interactions, was positively correlated with the number of deliveries made per shift;
186 Figure 1A. Participants who reported typically delivering only large items had the
187 greatest number of customer and depot contacts per shift, making on average more
188 customer contacts than deliveries per shift; Figure 1B. While most drivers delivering
189 large items only reported a one-to-one ratio of customer contacts and deliveries, one
190 individual reported four times the number of customer contacts than deliveries.

191

192 **Frequency and type of deliveries**

193 We found that the mean number of deliveries per shift was 121.8 (95%CI 97.9 to
194 152.3). Approximately half of participants (51.0%, 95%CI 42.8% to 59.1%) reported
195 that the furthest distance they travelled from a collection point to a delivery address
196 during their last working week was under 20 miles. The majority of delivery drivers
197 surveyed (52.5%, 95%CI 44.5% to 60.4%) reported that they typically delivered
198 small parcels (including letters and mail). We found that drivers delivering small
199 parcels and large items had the highest mean number of deliveries per shift, whilst
200 takeaway and grocery delivery drivers had the lowest; Figure 1B.

201

202 **Predictors of customer contacts**

203 A negative binomial model was fitted to the number of face-to-face customer
204 interactions per shift. The variance inflation factor was less than five for all model
205 coefficients indicating multicollinearity was not present. Participants aged 18 to 29
206 (adjusted incidence rate ratio (aIRR) 1.65, 95%CI 1.07 to 2.06) and aged 40 to 49
207 (aIRR 1.64, 95%CI 1.15 to 2.34) had a higher number of customer contacts per shift
208 than those aged 50 to 59; Figure 2, supplementary material Table 2. We found that
209 delivery drivers who were employed by one company full time had a lower number of
210 customer contacts per shift than those self-employed and independent (aIRR 0.66,
211 95% CI 0.47 to 0.94). Participants who usually deliver only groceries (aIRR 0.34,
212 95%CI 0.18 to 0.64), deliver only takeaways (aIRR 0.19, 95%CI 0.11 to 0.37), deliver
213 other unlisted items (aIRR 0.43, 95%CI 0.24 to 0.80) and those who deliver other

214 combinations of items listed (aIRR 0.58, 95%CI 0.38 to 0.93) had fewer customer
215 contacts than those that usually delivery only small parcels.

216 **COVID-19 infection, self-isolation and presenteeism**

217 We found that 3.0% (95%CI 1.0% to 6.9%) of delivery drivers surveyed reported that
218 they had tested positive for COVID-19. Moreover, 16.8% (95%CI 11.4% to 23.3%) of
219 delivery drivers had self-isolated since the start of the pandemic due to a suspected
220 or confirmed case of COVID-19. Approximately one in twenty drivers (5.3%, 95%CI
221 2.3% to 10.2%) reported that they have continued to work whilst being ill with
222 COVID-19 symptoms or with a member of their household having a suspected or
223 confirmed case of COVID-19. In this situation, financial reasons were most often
224 cited as a reason for continuing to work (85.7%, 95%CI 42.1% to 99.6%).

225

226 **Protective measures**

227 We found that 68.3% (95%CI 60.0% to 75.7%) of participants were provided with
228 some PPE items by their employers or contracting companies. However, less than
229 half of participants (48.3%, 95%CI 39.9% to 56.7%) felt that the PPE provided
230 effective protection. Facemasks (82.4%, 95%CI 75.4% to 88.0%) and hand sanitiser
231 (83.7%, 95%CI 76.8% to 89.1%) were the protective items most commonly used by
232 delivery drivers on their last shift. Participants who shared a vehicle during their last
233 working week most often reported using hand sanitizer to prevent infection when
234 sharing a vehicle (81.2%, 95%CI 54.3% to 96.0%), with 50.0% (95%CI 24.7% to
235 75.3%) of participants reporting wearing a facemask and 50.0% (95%CI 24.7% to
236 75.3%) reporting keeping a window open.

237

238 **DISCUSSION**

239

240 We found that delivery drivers made a large number of contacts per shift both at their
241 depot (15.0 per shift) and with customers (71.6 per shift). In comparison, Jarvis *et al.*
242 found that the mean number of contacts among the general population attending
243 their workplace between January 2021 and March 2021 was between 3 and 10
244 contacts per day; this included contacts made outside of the workplace [23]. This
245 suggests delivery drivers have a very large number of contacts compared to the
246 general workforce at this time, which may lead to a higher risk of SARS-CoV-2
247 infection. The importance of contact duration in respiratory virus transmission has
248 been widely documented.[24–28] Face-to-face interactions between delivery drivers
249 and customers are likely to take place outside and to be very short in duration, with
250 only 5.4% of drivers reporting any prolonged contact (more than 5 minutes) with
251 customers during their last working shift. Therefore, whilst delivery drivers have a
252 large number of contacts this may pose only a small risk in terms of exposure and
253 transmission of SARS-CoV-2. Similarly, sharing a vehicle with a colleague for
254 deliveries may be a type of high-risk contact. Nevertheless, as we found most work-
255 related vehicle sharing was fixed-pairing (pair that share a vehicle is fixed) the risk of
256 multiple transmission events is likely to be largely reduced. The duration of contacts
257 made at the depot was not recorded.

258

259 The use of protective measures in the workplace was common. Most delivery drivers
260 reported being able to maintain physical distance with customers and at the depot at
261 least some of the time during their last shift, however, most drivers reported not
262 being able to maintain distance at all times particularly when at the depot.
263 Facemasks and hand sanitiser were commonly used by drivers during their shift.
264 While facemasks offer varying levels of protection to the wearer they help to prevent
265 transmission from an infected individual to others.[29] The majority of drivers
266 received some items of protective items from their employers, however, less than
267 half of drivers felt that this provided effective protection.

268

269 By 7 December 2020, there had been 1,770,619 confirmed cases of COVID-19 in
270 the UK, accounting for approximately 2.6% of the UK population.[13,30] We found
271 3.0% of delivery drivers surveyed had tested positive for SARS-CoV-2 since the start
272 of the pandemic and over a sixth of delivery drivers reported having to self-isolate
273 due to a suspected or confirmed case of SARS-CoV-2. A small proportion of delivery
274 drivers reported working with symptoms of COVID-19 or while a member of their
275 household had a confirmed or suspected SARS-CoV-2 infection. The majority of
276 drivers reported continuing to work in this situation due to financial reasons, this may
277 be associated with statutory sick pay being unavailable for most drivers. Lack of
278 access to paid sick leave is one of the main risk factors for respiratory infectious
279 disease-related presenteeism.[31] Providing access to paid sick leave may therefore
280 help to improve adherence to public health measures such as self-isolation.

281

282 Participants self-reported how many face-to-face interactions they had with
283 customers and at the depot on their last working shift as a delivery driver. For most
284 participants their last working shift was during the same week as completing the
285 survey, but a small proportion (approximately 2.5%) were recalling from a shift over a
286 month ago. There is some risk of uncertainty in recall particularly with the small
287 proportion of participants recalling from a less recent shift. This study may suffer
288 from recruitment bias, the survey was conducted online only without a strict
289 recruitment process. Mean number of contacts were calculated per shift and
290 therefore cannot be directly compared with other contact studies which calculate the
291 number of contacts per hour or per day. Questions pertaining to SARS-CoV-2
292 infection and self-isolation referred to the time period from the start of the pandemic
293 to completing the survey. We did not collect data on how long participants had been
294 working as delivery drivers, therefore estimations of the prevalence of SARS-CoV-2
295 infection and self-isolation amongst participants may not be an accurate
296 representation of all delivery drivers.

297

298

299 **Acknowledgements**

300 We would like to thank the participants of the study for their time and information.

301

302 **Contributions**

303 All authors conceived and designed the study. JREB conducted the analysis and
304 wrote the first draft of the manuscript. All authors edited the manuscript.

305

306 **Data Availability Statement**

307 Data are available in a public, open access repository. The survey data are available
308 from Lancaster University's research directory at:

309 <https://doi.org/10.17635/lancaster/researchdata/553>. License: Creative Commons

310 Attribution licence (CC BY).

311

312 **Competing Interests**

313 We declare we have no competing interests.

314

315 **Funding**

316 HW, CW, YH, IH and MvT received funding from the UKRI COVID-19 Rapid
317 Response call, Grant Ref: MC_PC_19083. JMR and CPJ were supported by UKRI
318 through the JUNIPER modelling consortium, Grant Ref: MR/V038613/1. JREB is
319 supported by a Lancaster University Faculty of Health and Medicine doctoral
320 scholarship.

321

322 **References**

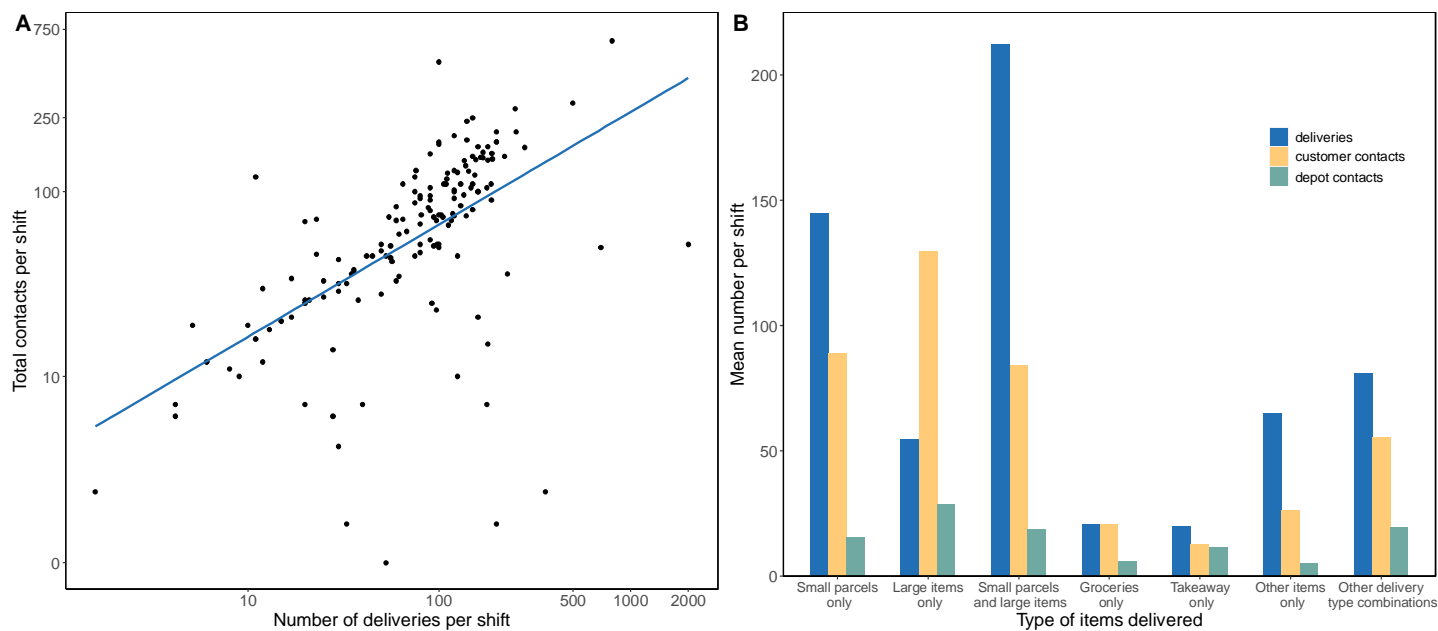
- 323 1 Office for National Statistics. Impact of the coronavirus (COVID-19) pandemic
324 on retail sales in 2020.
325 2021. [https://www.ons.gov.uk/economy/grossdomesticproductgdp/articles/impact](https://www.ons.gov.uk/economy/grossdomesticproductgdp/articles/impactofthecoronaviruscovid19pandemiconretailsalesin2020/2021-01-28)
326 [ofthecoronaviruscovid19pandemiconretailsalesin2020/2021-01-28](https://www.ons.gov.uk/economy/grossdomesticproductgdp/articles/impactofthecoronaviruscovid19pandemiconretailsalesin2020/2021-01-28) (accessed
327 Sep 2021).
- 328 2 GOV UK. Children of critical workers and vulnerable children who can access
329 schools or educational settings. Gov.uk.
330 [https://www.gov.uk/government/publications/coronavirus-covid-19-maintaining-](https://www.gov.uk/government/publications/coronavirus-covid-19-maintaining-educational-provision/guidance-for-schools-colleges-and-local-authorities-on-maintaining-educational-provision)
331 [educational-provision/guidance-for-schools-colleges-and-local-authorities-on-](https://www.gov.uk/government/publications/coronavirus-covid-19-maintaining-educational-provision/guidance-for-schools-colleges-and-local-authorities-on-maintaining-educational-provision)
332 [maintaining-educational-provision](https://www.gov.uk/government/publications/coronavirus-covid-19-maintaining-educational-provision/guidance-for-schools-colleges-and-local-authorities-on-maintaining-educational-provision) (accessed Jan 2022).
- 333 3 Office for National Statistics. Coronavirus and clinically extremely vulnerable
334 people in England - Office for National Statistics.
335 2021. [https://www.ons.gov.uk/peoplepopulationandcommunity/healthandsocialca](https://www.ons.gov.uk/peoplepopulationandcommunity/healthandsocialcare/conditionsanddiseases/bulletins/coronavirusandclinicallyextremelyvulnerablepeopleinengland/11octoberto16october2021)
336 [re/conditionsanddiseases/bulletins/coronavirusandclinicallyextremelyvulnerable](https://www.ons.gov.uk/peoplepopulationandcommunity/healthandsocialcare/conditionsanddiseases/bulletins/coronavirusandclinicallyextremelyvulnerablepeopleinengland/11octoberto16october2021)
337 [eopleinengland/11octoberto16october2021](https://www.ons.gov.uk/peoplepopulationandcommunity/healthandsocialcare/conditionsanddiseases/bulletins/coronavirusandclinicallyextremelyvulnerablepeopleinengland/11octoberto16october2021) (accessed Jan 2022).
- 338 4 Coronavirus: how people and businesses have adapted to lockdowns.
339 2021. [https://www.ons.gov.uk/economy/economicoutputandproductivity/output/ar](https://www.ons.gov.uk/economy/economicoutputandproductivity/output/articles/coronavirushowpeopleandbusinesseshaveadaptedtolockdowns/2021-03-19)
340 [ticles/coronavirushowpeopleandbusinesseshaveadaptedtolockdowns/2021-03-](https://www.ons.gov.uk/economy/economicoutputandproductivity/output/articles/coronavirushowpeopleandbusinesseshaveadaptedtolockdowns/2021-03-19)
341 [19](https://www.ons.gov.uk/economy/economicoutputandproductivity/output/articles/coronavirushowpeopleandbusinesseshaveadaptedtolockdowns/2021-03-19) (accessed 27 Jan 2022).
- 342 5 World Health Organization. Transmission of SARS-CoV-2: implications for
343 infection prevention precautions. 2020. [https://www.who.int/news-](https://www.who.int/news-room/commentaries/detail/transmission-of-sars-cov-2-implications-for-infection-prevention-precautions)
344 [room/commentaries/detail/transmission-of-sars-cov-2-implications-for-infection-](https://www.who.int/news-room/commentaries/detail/transmission-of-sars-cov-2-implications-for-infection-prevention-precautions)
345 [prevention-precautions](https://www.who.int/news-room/commentaries/detail/transmission-of-sars-cov-2-implications-for-infection-prevention-precautions) (accessed Aug 2021).
- 346 6 GOV UK. COVID-19: epidemiology, virology and clinical features. Gov.uk.
347 2022. [https://www.gov.uk/government/publications/wuhan-novel-coronavirus-](https://www.gov.uk/government/publications/wuhan-novel-coronavirus-background-information/wuhan-novel-coronavirus-epidemiology-virology-and-clinical-features)
348 [background-information/wuhan-novel-coronavirus-epidemiology-virology-and-](https://www.gov.uk/government/publications/wuhan-novel-coronavirus-background-information/wuhan-novel-coronavirus-epidemiology-virology-and-clinical-features)
349 [clinical-features](https://www.gov.uk/government/publications/wuhan-novel-coronavirus-background-information/wuhan-novel-coronavirus-epidemiology-virology-and-clinical-features) (accessed 2022).
- 350 7 Office for National Statistics. Which occupations have the highest potential
351 exposure to the coronavirus (COVID-19)?
352 2020. [https://www.ons.gov.uk/employmentandlabourmarket/peopleinwork/emplo](https://www.ons.gov.uk/employmentandlabourmarket/peopleinwork/employmentandemployeetypes/articles/whichoccupationshavethehighestpotentialexposuretothecoronaviruscovid19/2020-05-11)
353 [ymentandemployeetypes/articles/whichoccupationshavethehighestpotentialexpo](https://www.ons.gov.uk/employmentandlabourmarket/peopleinwork/employmentandemployeetypes/articles/whichoccupationshavethehighestpotentialexposuretothecoronaviruscovid19/2020-05-11)
354 [suretothecoronaviruscovid19/2020-05-11](https://www.ons.gov.uk/employmentandlabourmarket/peopleinwork/employmentandemployeetypes/articles/whichoccupationshavethehighestpotentialexposuretothecoronaviruscovid19/2020-05-11) (accessed Aug 2020).
- 355 8 European Centre for Disease Prevention and Control. COVID-19 clusters and
356 outbreaks in occupational settings in the EU/EEA and the UK.
357 2020. [https://www.ecdc.europa.eu/en/publications-data/covid-19-clusters-and-](https://www.ecdc.europa.eu/en/publications-data/covid-19-clusters-and-outbreaks-occupational-settings-eueea-and-uk)
358 [outbreaks-occupational-settings-eueea-and-uk](https://www.ecdc.europa.eu/en/publications-data/covid-19-clusters-and-outbreaks-occupational-settings-eueea-and-uk) (accessed 2021).
- 359 9 Health and Safety Executive. Working safely during the coronavirus (COVID-19)
360 pandemic. <https://www.hse.gov.uk/coronavirus/working-safely/index.htm>
361 (accessed Jan 2022).
- 362 10 Wei H, Daniels S, Whitfield CA, *et al.* Agility and Sustainability: A Qualitative
363 Evaluation of COVID-19 Non-pharmaceutical Interventions in the UK Logistics

- 364 Sector. *Front Public Health* 2022;**10**:864506.
- 365 11 Mutambudzi M, Niedwiedz C, Macdonald EB, *et al.* Occupation and risk of
366 severe COVID-19: prospective cohort study of 120 075 UK Biobank participants.
367 *Occup Environ Med* Published Online First: 9 December 2020.
368 doi:10.1136/oemed-2020-106731
- 369 12 Nafilyan V, Pawelek P, Ayoubkhani D, *et al.* Occupation and COVID-19 mortality
370 in England: a national linked data study of 14.3 million adults. *Occup Environ*
371 *Med* Published Online First: 27 December 2021. doi:10.1136/oemed-2021-
372 107818
- 373 13 Public Health England. Coronavirus (COVID-19) in the UK.
374 2020.<https://coronavirus.data.gov.uk> (accessed Aug 2020).
- 375 14 Public Health England. Investigation of SARS-CoV-2 variants of concern in
376 England: technical briefing 6. 2021.
- 377 15 GOV UK. Prime Minister's address to the nation: 4 January 2021. Gov.uk.
378 2021.[https://www.gov.uk/government/speeches/prime-ministers-address-to-the-](https://www.gov.uk/government/speeches/prime-ministers-address-to-the-nation-4-january-2021)
379 [nation-4-january-2021](https://www.gov.uk/government/speeches/prime-ministers-address-to-the-nation-4-january-2021) (accessed Jan 2022).
- 380 16 Bridgen JRE, Jewell CP, Read JM. Social mixing patterns in the UK following
381 the relaxation of COVID-19 pandemic restrictions: a cross-sectional online
382 survey. *MedRxiv*. 2021. doi:10.1101/2021.10.22.21265371
- 383 17 Northern Ireland Statistics and Research Agency (NISRA), Office for National
384 Statistics, Social Survey Division. Quarterly Labour Force Survey, November,
385 2020 - January, 2021. UK Data Service. 2021. doi:10.5255/UKDA-SN-8788-2
- 386 18 Office for National Statistics, Social Survey Division, Northern Ireland Statistics
387 and Research Agency, Central Survey Unit. Quarterly Labour Force Survey,
388 February - April, 2021. UK Data Service. 2021. doi:10.5255/UKDA-SN-8813-2
- 389 19 Office for National Statistics, Northern Ireland Statistics and Research Agency.
390 Quarterly Labour Force Survey, May - July, 2021. UK Data Service. 2021.
391 doi:10.5255/UKDA-SN-8845-1
- 392 20 Office for National Statistics, Northern Ireland Statistics and Research Agency.
393 Quarterly Labour Force Survey, July - September, 2021. UK Data ServiceUK
394 Data Service. 2021. doi:10.5255/UKDA-SN-8872-1
- 395 21 Office for National Statistics, Northern Ireland Statistics and Research Agency.
396 Quarterly Labour Force Survey, September - November 2021. UK Data Service.
397 2022. doi:10.5255/UKDA-SN-8901-1
- 398 22 Northern Ireland Statistics and Research Agency (NISRA), Office for National
399 Statistics, Social Survey Division. Quarterly Labour Force Survey, November,
400 2021 - January, 2022. UK Data Service. 2022. doi: DOI: 10.5255/UKDA-SN-
401 8927-2
- 402 23 Jarvis C, Edmunds J, CMMID COVID-19 Working Group. Social contacts in

- 403 workplace the UK from the CoMix social contact survey. London School of
404 Hygiene and Tropical Medicine 2021.
405 [https://cmmid.github.io/topics/covid19/reports/comix/Comix%20Report%20cont](https://cmmid.github.io/topics/covid19/reports/comix/Comix%20Report%20contacts%20in%20the%20workplace.pdf)
406 [acts%20in%20the%20workplace.pdf](https://cmmid.github.io/topics/covid19/reports/comix/Comix%20Report%20contacts%20in%20the%20workplace.pdf)
- 407 24 Read JM, Eames KTD, Edmunds WJ. Dynamic social networks and the
408 implications for the spread of infectious disease. *J R Soc Interface*
409 2008;**5**:1001–7.
- 410 25 Smieszek T. A mechanistic model of infection: why duration and intensity of
411 contacts should be included in models of disease spread. *Theor Biol Med Model*
412 2009;**6**:25.
- 413 26 Danon L, Read JM, House TA, *et al.* Social encounter networks: characterizing
414 Great Britain. *Proc Biol Sci* 2013;**280**:20131037.
- 415 27 Thompson HA, Mousa A, Dighe A, *et al.* Severe Acute Respiratory Syndrome
416 Coronavirus 2 (SARS-CoV-2) Setting-specific Transmission Rates: A
417 Systematic Review and Meta-analysis. *Clin Infect Dis* 2021;**73**:e754–64.
- 418 28 De Cao E, Zagheni E, Manfredi P, *et al.* The relative importance of frequency of
419 contacts and duration of exposure for the spread of directly transmitted
420 infections. *Biostatistics* 2014;**15**:470–83.
- 421 29 CDC. Masks and respirators. Centers for Disease Control and Prevention.
422 2022.[https://www.cdc.gov/coronavirus/2019-ncov/prevent-getting-sick/types-of-](https://www.cdc.gov/coronavirus/2019-ncov/prevent-getting-sick/types-of-masks.html)
423 [masks.html](https://www.cdc.gov/coronavirus/2019-ncov/prevent-getting-sick/types-of-masks.html) (accessed 13 Jul 2022).
- 424 30 Office for National Statistics. Population estimates.
425 2021.[https://www.ons.gov.uk/peoplepopulationandcommunity/populationandmig](https://www.ons.gov.uk/peoplepopulationandcommunity/populationandmigration/populationestimates)
426 [ration/populationestimates](https://www.ons.gov.uk/peoplepopulationandcommunity/populationandmigration/populationestimates) (accessed Jan 2022).
- 427 31 Daniels S, Wei H, Han Y, *et al.* Risk factors associated with respiratory
428 infectious disease-related presenteeism: a rapid review. *BMC Public Health*
429 2021;**21**:1955.
- 430

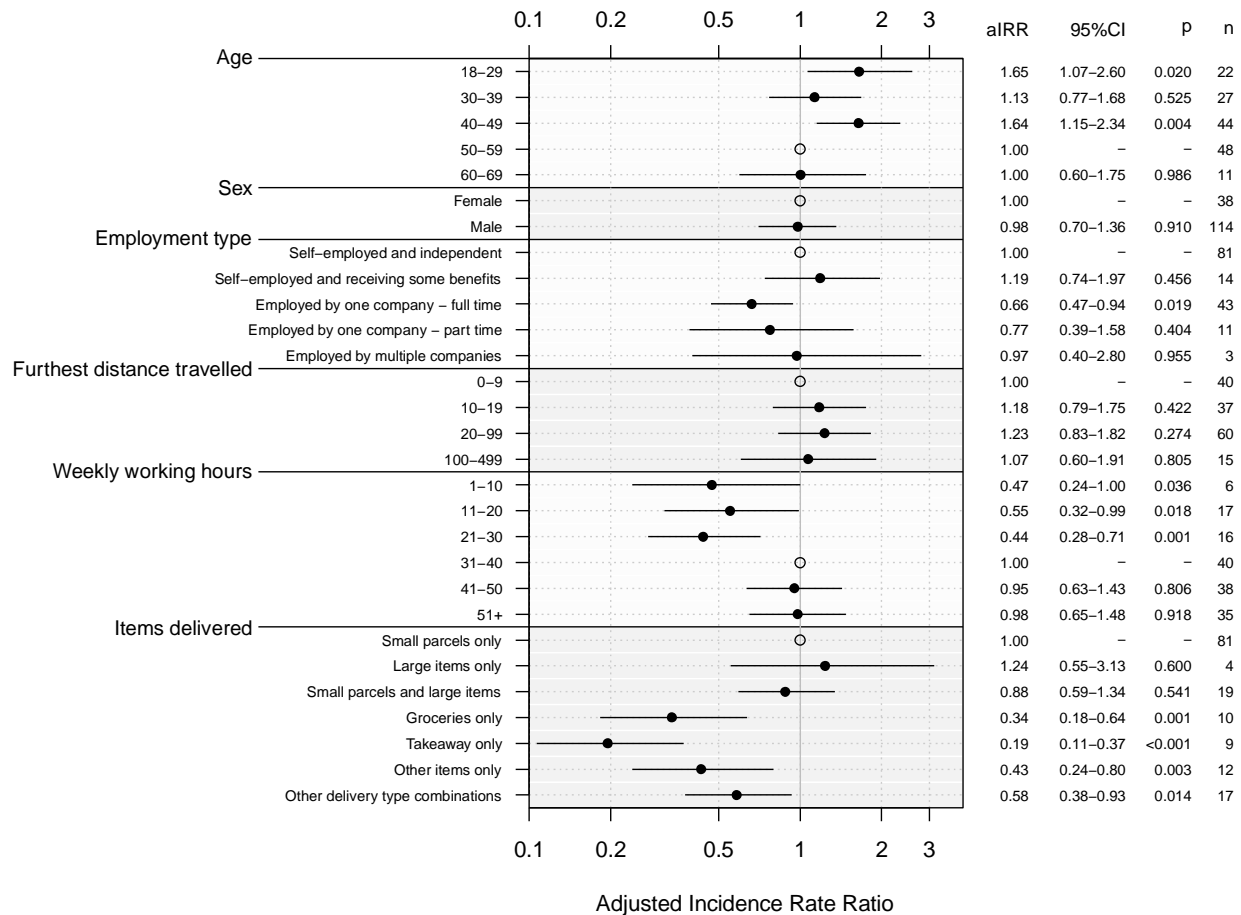
431 **Figures**

432 **Figure 1:** A) Number of total contacts and deliveries made per shift. Note, x-axis and
433 y-axis on log-scale. B) Mean number of deliveries and contacts per shift by delivery
434 type.



435

436 **Figure 2:** Adjusted incidence rate ratios for mean number of customer
 437 contacts reported for selected variables. Open circles represent the reference
 438 group for each variable.



439 **Tables**

440

441 Table 1: Participant demographics and aggregated labour force survey estimates for
 442 'delivery drivers and couriers'. N is the number of participants who provided a
 443 response to the question.
 444

	Number of participants (percentage, 95% binomial confidence interval)	Aggregated Quarterly Labour Force Survey estimates for delivery drivers and couriers* [17–22] November 2020 - January 2022 Number of participants (percentage)
Age group	N = 170 [†]	N = 1785
<18	- **	5 (0.3%)
18-29	27 (15.9%, 10.74%-22.26%)	230 (12.9%)
30-39	35 (20.6%, 14.78%-27.45%)	245 (13.7%)
40-49	46 (27.1%, 20.54%-34.39%)	338 (18.9%)
50-59	50 (29.4%, 22.68%-36.87%)	530 (29.7%)
60-69	12 (7.1%, 3.70%-12.01%)	384 (21.5%)
70+	0 (0.0%, 0.00%-2.15%)	53 (3.0%)
Sex	N = 170 [†]	N = 1785
Female	40 (23.5%, 17.37%-30.63%)	181 (10.1%)
Male	128 (75.3%, 68.11%-81.58%)	1604 (89.9%)
Prefer not to say	2 (1.2%, 0.14%-4.19%)	-
Ethnicity	N = 170	N = 1785
White	156 (91.8%, 86.57%-95.42%)	1648 (92.3%)
Mixed/Multiple ethnic groups	5 (2.9%, 0.96%-6.73%)	9 (0.5%)
Asian/Asian British	5 (2.9%, 0.96%-6.73%)	88 (4.9%)
Black/African/Caribbean/Black British	1 (0.6%, 0.01%-3.23%)	26 (1.5%)
Other ethnic groups	0 (0.0%, 0.00%-2.15%)	14 (0.8%)
Prefer not to say	3 (1.8%, 0.37%-5.07%)	-
No response	0.00 (0%, 0.00%-2.15%)	0 (0.0%)
Nation	N = 170 [†]	N = 1785
England	139 (81.8%, 75.13%-87.26%)	1491 (83.5%)
Northern Ireland	3 (1.8%, 0.37%-5.07%)	79 (4.4%)
Scotland	18 (10.6%, 6.40%-16.22%)	114 (6.4%)
Wales	10 (5.9%, 2.86%-10.55%)	101 (5.7%)

445 * Main occupation of participant recorded as 'delivery drivers and couriers'

446 [†] Question required a response from the participant

447 ** Age group did not meet study inclusion criteria