

1 **Anemia among Pregnant Women in Cambodia: A Descriptive Analysis of Temporal and Geospatial**
2 **Trends and Logistic Regression-Based Examination of Factors Associated with Anemia in Pregnant**
3 **Women**

4 Samnang Um^{1*}, Heng Sopheab¹, An Yom¹, Jonathan A. Muir^{2&}

5 1 The National Institute of Public Health, Tuol Kork District, Phnom Penh, Cambodia, 2 The Global
6 Health Institute, Emory University, Atlanta, Georgia, United States.

7 * umsam nang56@gmail.com

8 [†]These authors contributed equally to this work.

9 [&]These authors also contributed equally to this work.

10 ABSTRACT

11 Anemia is a major public health problem for thirty-two million pregnant women worldwide. Anemia
12 during pregnancy is a leading cause of child low birth weight, preterm birth, and perinatal/neonatal
13 mortality. Pregnant women are at higher risk of anemia due to micronutrient deficiencies,
14 hemoglobinopathies, infections, socio-demographic and behavioral factors. This study aimed to: 1)
15 assess temporal and geospatial trends of anemia in Cambodia and 2) identify factors associated with
16 anemia among pregnant women aged 15-49 years old in Cambodia. We analyzed data from the
17 Cambodia Demographic and Health Survey (CDHS) for 2005, 2010, and 2014. Data were pooled
18 across the three survey years for all pregnant women aged 15-49 years. Survey weights were applied
19 to account for the complex survey design of the CDHS. Descriptive statistics were estimated for key
20 sociodemographic characteristics of the study population. We used logistic regressions to assess
21 factors associated with anemia among pregnant women aged 15-49 years old. Anemia in pregnant
22 women aged 15-49 in Cambodia decreased from 56% in 2005 to 53% in 2014. With the highest in
23 Preah Vihear and Stung Treng provinces (74.3%), in Kratie province (73%), and in Prey Veng
24 (65.4%) in 2005, 2010, and 2014 respectively. Compared to pregnant women from the wealthiest
25 households, women from poorest households were more likely to have anemia (AOR = 2.8; 95% CI:
26 1.76-4.9). Pregnant women from coastal regions were almost twice as likely of having anemia (AOR =
27 1.9; 95% CI: 1.2-3.0). Pregnant women were more likely anemic if they were in their 2nd trimester
28 (AOR = 2.6; 95% CI: 1.9-3.6) or 3rd trimester (AOR = 1.6 95% CI: 1.2-2.3). Anemia remains highly
29 prevalent among pregnant women in Cambodia. Public health interventions and policies to alleviate
30 anemia should be prioritized and shaped to address these factors.

31 **Keywords:** Anemia, Cambodia, Pregnant Women, Maternal Anemia, CDHS

33 Introduction

34 Anemia during pregnancy occurs in both developed and developing countries and is associated
35 with abnormal outcomes in pregnancy; for example, greater risk for low birth weight, preterm birth,
36 and perinatal/neonatal mortality [1]. According to the World Health Organization (WHO), anemia is
37 defined as hemoglobin (Hb) levels less than 11.0 g/dL in pregnant women [2]. In 2019, it was
38 estimated that anemia affected approximately 37% (32 million) of pregnant women worldwide and as
39 many as half of all pregnant women in low-income and middle-income countries were diagnosed
40 with anemia [3]. In Southeast Asia countries, 48% of pregnant women were anemic [4]. These
41 patterns are reflected in Cambodia where the prevalence of anemia is higher among pregnant women
42 compared with non-pregnant women (i.e., 53.2% compared to 45%) [5].

43 Anemia in pregnant women has severe consequences on health as well as social and economic
44 development [6]. contributing to low physical activity and increases maternal morbidity and
45 mortality, especially among those with severe anemia [1] and those living in developing countries [7].
46 The WHO estimates that 20% of maternal deaths are attributable to anemia [2]. In Southeast Asia,
47 half of all maternal deaths were due to anemia in 2016 [8]. In Cambodia, anemia is affected 51.1% of
48 pregnant women aged 15-49 years old in 2019 [9]. Despite significant economic development in
49 Cambodia over the past two decades, the prevalence of anemia in women has not substantially
50 declined.

51 Pregnant women with anemia are twice as likely to die during or shortly after pregnancy
52 compared to those without anemia [8]. In many countries, anemia varies by socioeconomic factors
53 such as education, household wealth status, occupation, and residence [10]. Pregnant women aged 30
54 and older are more likely to develop anemia than younger aged pregnant women [11-13]. Risk of

55 anemia was greater among women living in the lowest wealth quintile, with limited education [14],
56 and rural area [12,13]. Similarly, repeated childbearing, inadequate water hygiene and sanitation
57 status, and parasitic infection increases the risk of anemia in pregnant women [15]. Factors associated
58 with anemia during pregnancy in developing countries include nutritional deficiencies of iron,
59 vitamin B12, folate, and parasitic diseases (for example, malaria) [6,16,17]. Compared to women who
60 initiated antenatal care (ANC) in the first trimester, the odds of having anemia in pregnancy were
61 significantly higher among pregnant women who initiated ANC in the second trimester (AOR=2.71)
62 and third trimester (AOR=5.01) [18].

63 The prevalence of anemia in Cambodia has slowly decreased in both pregnant and non-
64 pregnant women. To further reduce anemia in Cambodia, improved understanding of its geographical
65 distribution and associated risk factors is required. Enhanced understanding will help identify
66 populations at greater risk for anemia and prioritize geographic areas for targeted interventions. To
67 our knowledge, there are no published peer-reviewed studies that assessed social and demographic
68 factors associated with anemia among pregnant women in Cambodia over time. One prior study on
69 anemia patterns and risk factors utilized data from the CHDS 2014 [14]. This study included all
70 women of reproductive age 15-49 years and pooled DHS data from seven South and Southeast Asian
71 countries. An additional study aimed to describe trends in nutritional status of women of
72 reproductive age in Cambodia over four nationally representative Demographic Health Surveys
73 (2000, 2005, 2010, and 2014) and to assess factors associated with nutritional disparities [19]. Finally,
74 a research abstract published in association with a research conference in Cambodia referenced using
75 CDHS 2014; this was a preliminary version of the present study [20]. Given the paucity of scholarship
76 addressing this health concern in Cambodia, in this study we aimed to:

- 77 1. Assess temporal and geospatial trends of anemia among pregnant women in Cambodia
 - 78 2. Identify factors associated with anemia among pregnant women in Cambodia
- 79 Understanding these factors may further support policy development and programs with more
80 effective strategies and interventions in Cambodia to reduce the prevalence of anemia among
81 pregnant women and associated health risks such as maternal mortality.

82

83 **Materials and methods**

84 **Data**

85 To analyze trends and factors associated with anemia in pregnant women in Cambodia, we
86 used existing women's data from the 2005, 2010, and 2014 CDHS. The CDHS is a nationally
87 representative population-based household survey that is regularly conducted roughly every 5 years.
88 The survey typically uses two-stage stratified cluster sampling to collect the samples from all
89 provinces that divided into sampling domains. In the first stage, clusters, or enumeration areas (EAs)
90 that represent the entire country are randomly selected from the sampling frame using probability
91 proportional to cluster size (PPS). The second stage then involves the systematic sampling of
92 households listed in each cluster or EA. Interviews were then conducted with women aged 15-49 in
93 selected households. Using the women's survey questionnaire, variables collected by the CDHS
94 include births to women aged 15-49, sociodemographic characteristics, household assets that are used
95 to calculate a household wealth index, health-related indicators and nutritional status, number of
96 ANC visits and other pregnancy/delivery indicators for past births, and involvement in household
97 decision making using questionnaires. It further includes height and weight measurements of women

98 and children, hemoglobin level, malaria test, and vitamin A level [5]. We restricted our sample to
99 pregnant women with recorded hemoglobin level; which resulted in a total sample size of 1,629
100 (1,567 weighted) pregnant women aged 15-49 (Fig 1).

101 **Fig 1. Selection process and the final sample size from the 2005, 2010, and 2014 CDHS.**

102 **Measurements**

103 Anemia is the outcome variable used in the study. For women in CDHS, hemoglobin was
104 measured by collecting capillary blood from a finger prick with the HemoCue 201+analyzer [19]. The
105 original variable for anemia level in the CHDS was recorded as a categorical variable with “not
106 anemic”, “mild anemia”, “moderate anemia”, and “severe anemia”. Then, the original variable was
107 recoded into the dichotomous variable **Anemia**, with mild, moderate, and severe anemia coded as
108 Anemic = 1 and non-Anemic = 0.

109 Right-hand-sided variables included women’s and household characteristics. Women’s age was
110 categorized into an ordinal level variable with 15-20 years = 1, 21-31 years = 2 (reference category),
111 and 32-49 years = 3. Women’s marital status was coded into a dichotomous variable with Married = 1,
112 Not Married = 0 (includes divorce, single, widowed, and separated). Women’s education was coded as
113 an ordinal level variable with Higher = 1 (reference category), Secondary = 2, Primary = 3, No
114 Education = 4. Women’s occupation was coded as a categorical variable with Professional = 1
115 (reference category; included clerical, technical, managerial, professional, sales, and services),
116 Agriculture/Manual = 2 (included skilled and unskilled manual work), Not Working = 3 (1
117 observation had a missing value). Household level wealth was measured using a wealth index that
118 was coded as an ordinal level variable with richest =1 (reference category), richer = 2, middle = 3,
119 poorer = 4, and poorest = 5 (we opted to use the wealth index that was provided by each respective

120 survey year of the CDHS as opposed to calculating a wealth index across the pooled data. This
121 decision was based on prior research that found wealth status designation was comparable across the
122 CDHS provided indices and an index based on data pooled across years) [20,21].

123 Pregnancy duration (trimester) was coded as an ordinal level variable with 1st = 1 (*reference*
124 *category*), 2nd = 2, and 3rd = 3. BMI was coded as an ordinal level variable with Overweight or Obese =
125 1 (reference category), Normal = 2, and Underweight = 3. Prior births was coded as an ordinal level
126 variable with Less than 3 Births = 1 (reference category), 3-5 Births = 2, and 6 or more Births = 3 (3
127 observations had a missing value). Tobacco use was coded as a dichotomous variable with No Tobacco
128 Use = 0 and Tobacco Use = 1 (possible types of tobacco use included cigarettes, cigars, and chewing
129 tobacco; 2 observations had a missing value). Healthcare barriers was coded as a dichotomous
130 variable with No Barriers = 0 and 1 or more barriers = 1 (possible barriers reported included distance,
131 money, and waiting time; 1 observation had a missing value).

132 Residence was a dichotomous variable representing urban vs. rural place of residence with
133 Rural =1, Urban = 0. Phnom Penh was a dichotomous variable representing residence in the
134 provincial area surrounding Phnom Penh vs. other regions of residence with Other Regions =1,
135 Phnom Penh = 0. Cambodia's domains/provinces were regrouped for analytic purposes into a
136 categorical variable with 4 geographical regions that were coded as Plains = 1 (reference category),
137 Tonle Sap = 2, Coastal/sea = 3, and Mountains = 4. Health facility visit and aborted pregnancy were
138 coded as dichotomous variables representing whether the respondent had visited a health facility in
139 the past year or had ever terminated a pregnancy; results are not presented due to lack of statistical
140 significance in unadjusted analyses.

141

142 **Analytic strategy**

143 Data cleaning and analyses were performed using STATA version 16 (Stata Corp 2019, College
144 Station, TX) [22]. Additional visualization was performed using R version 4.2.0 (code available upon
145 request); the complex survey design of the CHDS was accounted for using the “survey” package
146 [23,24]. Sample weights and complex survey design were accounted for in both descriptive and
147 logistic regression analyses. To convey temporal and geographic trends in anemia prevalence,
148 weighted estimates of overall and region-specific temporal trends in anemia prevalence were
149 visualized using the ggplot2 package in R [25]. In addition, a temporal series of maps illustrating
150 provincial variation in the prevalence of anemia were also prepared by our team using ArcGIS
151 software version 10.8 [26]. The underlying shapefiles of Cambodia provinces were obtained from the
152 publicly available Spatial Data Repository associated with the DHS website at
153 [<https://spatialdata.dhsprogram.com/covariates/>] [27]. Data quality checks and minor data cleaning
154 followed standard procedures in preparation for statistical analysis [28].

155 Cross tabulation chi-square tests were used to describe and provide preliminary assessment of
156 associations between independent variables of interest including maternal demographic, household
157 characteristics, geographical regions, and health-related) and anemia status. Unadjusted models and
158 several pathway specific models were examined prior to fitting the final model (results from the pathway
159 specific models are available upon request). Variables were selected for inclusion in the final adjusted
160 logistic regression if their unadjusted association with anemia had theoretical justification and/or a
161 significance level of $p\text{-value} \leq 0.15$ [12]. Correlation among independent variables was assessed using
162 a combination of cross tabulation chi-square tests and Cramer’s V scores; all results suggested minimal
163 to moderate correlation between independent variables (all Cramer’s v scores were lower than .5,

164 most were lower than .3). Further consideration of whether to include a combination of variables was
165 based on broader evaluations of model fit, which we assessed using Pseudo-R², Deviance, AIC, and BIC
166 scores. The Pseudo-R² value was the largest and the Deviance, AIC, BIC scores were the smallest for the
167 fully adjusted model, indicating that this model had superior fit compared to other models.

168 Unadjusted logistic regression was used to analyze the magnitude effect of associations between
169 anemia and maternal bio-demographic and household characteristics, geographical regions, and
170 health-related factors. Results are reported as Odds Ratios (OR) with 95% confidence intervals (CI).
171 Adjusted logistics regression was then used to assess independent factors associated with anemia after
172 adjusting for other potential confounding factors in the model. Results from the final adjusted model
173 are reported as adjusted odds ratios (AOR) with 95% confidence intervals and corresponding p-
174 values. Results from the final adjusted logistic regression model were considered as statistically
175 significant based on a p-value less than 0.05 and 95% confidence intervals. Evaluations of effect
176 modification were not statistically significant. Observations with missing values were omitted from
177 the regression analyses.

178 This study was approved by the National Ethical Committee for Health Research (Ref: 225
179 NECHR) Cambodia and the Institutional Review Board (IRB) of ICF in Rockville, Maryland, USA.
180 The CDHS data are publicly accessible and were made available to us upon request to the DHS
181 Program website at (<https://dhsprogram.com/data/available-datasets.cfm>) [29]. Written consents
182 were obtained from all participants before the interview with participants in the CDHS.

183

184 Results

185 A little over 60% of pregnant women included in the analysis were aged 21-30 years, and
186 almost 98% were married (Table 1). Approximately 17% had no schooling, 52% had a primary
187 education, 29% had a secondary education, and only 2.6% had a higher education. Roughly 45%
188 were from poorest or poorer household wealth quintiles. Pregnancy duration was rather evenly
189 distributed with 28% of pregnant women in their 1st trimester, 37% in their 2nd trimester, and 36% in
190 their third trimester. Slightly over 50% of pregnant women had a normal BMI, with another 33%
191 were either overweight or obese. About 80% reported having fewer than 3 prior births. Only about
192 6% of pregnant women reported using tobacco. A majority (85%) of them resided in rural areas
193 (Table 1).

194 **Table 1. Descriptive characteristics of anemia prevalence among study population**
 195

Variables	2005					2010					2014					2005-2014				
	Anemic		Not Anemic		P value	Anemic		Not Anemic		P value	Anemic		Not Anemic		P value	Anemic		Not Anemic		P value
	Freq.	%	Freq.	%		Freq.	%	Freq.	%		Freq.	%	Freq.	%		Freq.	%	Freq.	%	
Age (Years)																				
15-20	54	57.5	40	42.5	0.159	52	63.6	30	36.4	0.003	76	58.8	53	41.2	0.386	182	59.7	123	40.3	0.002
21-31	134	51.4	127	48.6		150	47.2	169	52.8		189	51.0	182	49.0		474	49.8	477	50.2	
32-49	84	63.9	47	36.1		44	67.6	21	32.4		62	54.1	53	45.9		190	61.1	121	38.9	
Marital Status																				
Married	269	56.2	210	43.8	0.270	237	52.4	215	47.6	0.215	318	52.8	284	47.2	0.232	824	64.3	709	35.7	0.232
Not Married	2	36.4	4	63.6		10	69.5	4	30.5		10	72.0	4	28.0		22	53.8	12	46.2	
Education																				
Higher	5	74.9	2	25.1	0.633	1	13.6	6	86.4	0.107	9	33.7	17	66.3	0.025	15	36.7	25	63.3	0.025
Secondary School	48	53.4	42	46.6		57	47.4	63	52.6		116	48.5	123	51.5		221	49.2	228	50.8	
Primary School	148	54.2	125	45.8		143	54.6	119	45.4		170	59.5	116	40.5		461	56.2	359	43.8	
No Education	71	61.0	45	39.0		46	59.3	32	40.7		33	50.8	32	49.2		150	58.0	109	42.0	
Occupation																				
Professional	35	43.9	44	56.1	0.045	43	48.6	46	51.4	0.504	46	39.9	70	60.1	0.021	124	43.7	160	56.3	0.010
Agricultural/Manual labor	235	58.0	170	42.0		157	52.5	142	47.5		185	59.1	128	40.9		577	56.7	440	43.3	
Not Working	2	100.0	0	0.0		46	59.3	32	40.7		96	51.7	90	48.3		145	54.4	122	45.6	
Wealth Index																				
Richest	27	40.2	40	59.8	0.002	25	34.8	47	65.2	0.012	51	40.9	73	59.1	0.001	103	39.0	160	61.0	<0.001
Richer	43	43.4	57	56.6		37	51.7	34	48.3		64	51.8	60	48.2		145	48.9	151	51.1	

medRxiv preprint doi: <https://doi.org/10.1101/2022.09.08.22279710>; this version posted May 29, 2023. The copyright holder for this preprint (which was not certified by peer review) is the author/funder, who has granted medRxiv a license to display the preprint in perpetuity. It is made available under a CC-BY 4.0 International license.

Middle	51	57.0	39	43.0		58	51.4	55	48.6		40	39.3	62	60.7		150	49.0	156	51.0	
Poorer	66	60.5	43	39.5		50	52.7	45	47.3		99	66.3	50	33.7		215	60.9	138	39.1	
Poorest	84	70.4	35	29.6		77	66.7	38	33.3		73	63.4	42	36.6		234	66.9	116	33.1	
Pregnancy Duration																				
1st Trimester	53	45.5	64	54.5	0.028	53	37.3	89	62.7	0.001	75	43.8	96	56.2	0.003	182	42.1	250	57.9	<0.001
2nd Trimester	112	65.0	60	35.0		108	65.1	58	34.9		150	63.7	86	36.3		371	64.5	204	35.5	
3rd Trimester	106	54.3	89	45.7		85	54.2	72	45.8		102	49.1	106	50.9		294	52.4	267	47.6	
BMI																				
Overweight or obese	67	45.1	71	54.9	0.042	72	43.7	66	56.3	0.524	27	47.8	29	52.2	0.081	72	45.6	86	54.4	0.005
Normal	182	61.4	114	38.6		152	55.1	124	44.9		184	58.3	132	41.7		518	58.4	370	41.6	
Underweight	23	48.3	28	51.7		23	52.0	29	48.0		117	47.8	127	52.2		255	49.1	265	50.9	
Prior Births																				
Less than 3 Births	190	54.9	156	45.1	0.154	196	50.7	191	49.3	0.207	280	51.4	264	48.6	0.065	666	52.1	612	47.9	0.017
3-5 Births	61	54.4	51	45.6		40	63.5	23	36.5		44	68.3	21	31.7		145	60.5	95	39.5	
6 and more Births	21	77.0	6	23.0		11	65.8	6	34.2		4	56.5	3	43.5		35	70.6	14	29.4	
Tobacco Use																				
No	250	54.6	208	45.4	0.015	234	52.6	211	47.4	0.564	320	52.7	288	47.3	0.021	805	53.2	707	46.8	0.027
Yes	22	78.6	6	21.4		13	60.4	9	39.6		7	100.0	0	0.0		42	74.1	15	25.9	
Healthcare Barriers																				
No Barriers	43	48.4	45	51.6	0.215	50	44.3	63.0	55.7	0.073	81	49.7	82	50.3	0.342	174	47.7	191	52.3	0.019
1 or more Barriers	226	57.3	169	42.7		197	55.7	156.0	44.3		246	54.5	205	45.5		669	55.8	530	44.2	
Place of Residence																				
Urban	23	42.7	32	57.3	0.029	28	39.3	43	60.7	0.025	50	46.1	58	53.9	0.095	101	43.2	133	56.8	<0.001
Rural	248	57.7	182	42.3		219	55.4	176	44.6		278	54.7	230	45.3		745	55.9	588	44.1	

Phnom Penh																				
Phnom Penh	38	41.9	27	58.1	0.047	34	39.3	22	60.7	0.110	49	47.5	54	52.5	0.31	98	43.8	126	56.2	0.010
Other Regions	176	58.1	245	41.9		186	54.8	225	45.2		278	54.4	233	45.6		748	55.7	595	44.3	
Geographic Region																				
Plain	124	51.1	119	48.9	0.187	104	48.5	111	51.5	0.222	119	49.5	121	50.5	0.432	347	49.7	351	50.3	0.019
Tonle Sap	93	59.9	62	40.1		86	53.6	74	46.4		112	53.4	98	46.6		290	55.4	234	44.6	
Coastal	18	66.0	9	34.0		20	66.8	10	33.2		26	62.7	16	37.3		64	64.8	35	35.2	
Plateau/Mountain	37	60.8	24	39.2		37	60.0	25	40.0		70	57.0	53	43.0		144	58.7	102	41.3	
Survey Year																				
2005																272	56.0	214	44.0	0.696
2010																247	52.9	220	47.1	
2014																327	53.2	288	46.8	

196 Notes: Study sample size of 1,567. Survey weights applied to obtain weighted percentages. Plains: Phnom Penh, Kampong Cham/Tbong Khmum, Kandal, Prey Veng, Svay Rieng, and Takeo;
 197 Tonle Sap: Banteay Meanchey, Kampong Chhnang, Kampong Thom, Pursat, Siem Reap, Battambang, Pailin, and Otdar Meanchey; Coastal/sea: Kampot, Kep, Preah Sihanouk, and Koh Kong;
 198 Mountains: Kampong Speu, Kratie, Preah Vihear, Stung Treng, Mondul Kiri, and Ratanak Kiri. Variables with missing values for fewer than 3 observations include: Occupation, BMI, Tobacco
 199 Use, and Healthcare Barriers.

200 The overall prevalence of anemia among pregnant women decreased slightly from 56% in 2005
201 to 53% in 2014 (Fig 2). This decline varied across the four geographical regions with the highest
202 prevalence of anemia in the coastal region in 2010 (66%). Plain region had the lowest prevalence of
203 anemia across all survey years with prevalence levels in 2005 lower than the prevalence levels of
204 other regions in 2014. Anemia was highest among pregnant women in Preah Vihear and Stung Treng
205 provinces (74.3%), in Kratie province (73%), and in Prey Veng (65.4%) for 2005, 2010 and 2014
206 respectively (Fig 3). Pregnant women living in Phnom Penh had the lowest prevalence of anemia in
207 2005 and 2010 (i.e., 33.3% in 2005, 30.0% in 2010. In 2014, the lowest prevalence of anemia among
208 pregnant women was observed in Takeo province (23.8%).

209 **Fig 2. Overall and regional trends of anemia among pregnant women by survey year.**

210 **Fig 3. Geographical distribution of anemia among pregnant women aged 15-49 years old.** Map created
211 using ArcGIS software version 10.8 [26]. Shapefiles for administrative boundaries in Cambodia are
212 publicly accessible through DHS website at [<https://spatialdata.dhsprogram.com/covariates/>] [27].
213 CDHS data are publicly accessible through the DHS website at
214 (<https://dhsprogram.com/data/available-datasets.cfm>) [28].

215
216 Regarding socio-demographic factors associated with anemia in pregnancy in unadjusted
217 logistic regression analysis, pregnant women were more likely to have anemia if they were aged 15-
218 20 (OR= 1.5; 95% CI: 1.1-2.0) or aged 31-49 (OR= 1.6; 95% CI: 1.1-2.2) compared to pregnant
219 women aged 21-30 (Fig 4). Pregnant women with no formal education were more likely to have
220 anemia compared to women with a higher education (2.4; 95% CI: 1.1-5.1) as were women with only
221 a primary level education (OR = 2.2; 95% CI: 1.1-4.5). Women working in agricultural or manual
222 labor fields were more likely to have anemia compared to women working in professional fields (OR
223 = 1.7; 95% CI: 1.2-2.3). Juxtapose pregnant women from the richest wealth quintile, pregnant women
224 with lower wealth were more likely to have anemia; for example, women from the poorest quintile

225 were over 3 times as likely to have anemia (OR = 3.2; 95% CI: 2.1-4.7) and women from the poorer
226 quintile were over 2 times as likely to have anemia (OR = 2.4; 95% CI: 1.6-3.6).

227 **Fig 4. Factors associated with anemia among pregnant women aged 15-49 years old in unadjusted**
228 **logistic regression analysis (n=1,567).** Forest plots were generated using the *forest model* package in
229 R.

230

231 Health indicators associated with anemia in unadjusted logistic regression analysis included
232 pregnancy duration, BMI, number of prior births, tobacco use, and barriers to healthcare. Pregnant
233 women were more likely to have anemia if they were in their 2nd trimester (OR= 2.5; 95% CI: 1.8-
234 3.4) or their 3rd trimester (OR= 1.5; 95% CI: 1.1-2.1) compared to pregnant women in their 1st
235 trimester. A normal BMI was also associated with anemia during pregnancy compared to a BMI
236 indicating that a pregnant woman was overweight or obese (OR= 1.5; 95% CI: 1.1-1.9). Compared to
237 having had fewer than 3 births, pregnant women with 6 or more prior births were more likely to
238 have anemia (2.2; 95% CI: 1.2-4.2). Pregnant women using 1 type of tobacco were more likely to
239 have anemia compared to pregnant women not using tobacco (1.9; 95% CI: 1.1-3.2); using 2 or more
240 types of tobacco was likewise positively associated with having anemia (17.5; 95% CI: 3.7-83.3).
241 Finally, reporting 1 or more barriers to accessing healthcare was associated with anemia during
242 pregnancy (1.4; 95% CI: 1.1-1.8).

243 Geographic regions of residence were likewise associated with a woman having anemia
244 during pregnancy. Pregnant women from rural areas were more likely to have anemia compared to
245 pregnant women from urban areas (1.7; 95% CI: 1.3-2.2). Likewise, pregnant women living outside of
246 the area surrounding Phnom Penh were more likely to have anemia compared to pregnant women

247 from the Phnom Penh area (1.6; 95% CI: 1.1-2.3). Coastal regions were positively associated with
248 anemia compared to plains regions (1.9; 95% CI: 1.2-2.9) as were mountain regions (1.43; 95% CI:
249 1.04-1.98).

250 In the final adjusted logistic model (**Fig 5**), factors independently associated with anemia
251 included age, wealth index, pregnancy duration, BMI, and geographical regions. Pregnant women
252 were more likely to have anemia if they were aged 31-49 (AOR = 1.6; 95% CI: 1.0-2.3) compared to
253 pregnant women aged 21-30. Compared to pregnant women from the richest wealth quintile,
254 pregnant women from the poorest quintile were almost 3 times as likely to have anemia (AOR = 2.8;
255 95% CI: 1.76-4.9) as were women from the poorer quintile (AOR = 2.2; 95% CI: 1.3-3.9). Pregnant
256 women were more likely anemic if they were in their 2nd trimester (AOR = 2.6; 95% CI: 1.9-3.6) or
257 3rd trimester (AOR = 1.6 95% CI: 1.2-2.3) compared to their 1st trimester. Pregnant women with a
258 normal BMI were more likely of developing anemia (AOR = 1.4; 95% CI: 1.0-1.8) compared to
259 pregnant women who were overweight or obese. Pregnant women living in coastal regions had
260 higher odds having anemia (AOR = 1.9; 95% CI: 1.2-3.0) compared to those living in plain region.
261 Statistically significant associations were further visualized as predicted probabilities (see Figs 6–9 in
262 the supplement).

263 **Fig 5. Factors independently associated with anemia among pregnant women aged 15-49 years old in**
264 **adjusted logistic regression analysis (n=1,567). Forest plots were generated using the forest model**
265 **package in R.**

266

267 Discussion

268 Prevalence of anemia among pregnant women in Cambodia decreased slightly from 56% in
269 2005 to 53% in 2014. This prevalence level was relatively higher than many Southeast Asian
270 countries during the same time period [30]; for example, in Thailand the prevalence of anemia among
271 pregnant women ranged from 31% in 2005 to 31.9% in 2016 and prevalence of anemia among
272 pregnant women in Vietnam ranged from 33.8% in 2005 to 28.2% in 2015. The elevated prevalence
273 of anemia among pregnant women in Cambodia may be explained by factors related to dietary habits,
274 nutrition deficiencies in micronutrients such as iron or vitamin A, genetic hemoglobin disorders such
275 as the high prevalence of thalassemia in Cambodia (e.g., prevalence rang 50 to 60%) [27], lack of
276 medical treatments, inflammation [31], and malaria infections, and helminths; these potential
277 pathways require further evaluation [16]. Interventions to help mitigate anemia in Cambodia include
278 the promotion of a diversified diet; recommendations that all pregnant women attend at least 4 ANC
279 visit, receive a standard dose of 30–60 mg iron and 400 µg folic acid beginning as soon as possible
280 during gestation, and iron-containing supplements no later than the first trimester of pregnancy;
281 prevention and treatment of malaria; use of insecticide-treated bed nets; helminth prevention and
282 control; delayed cord clamping; and increased birth spacing [32]. However, some have noted that
283 factors addressed by these interventions cannot fully account for the elevated prevalence of anemia
284 [31] and data from the 2000-2014 Cambodia DHS indicated that the percentage of pregnant women
285 attended four or more antenatal care visits has increased dramatically, from 9% in 2000 to 76% in
286 2014. However proportion was lowest reported by women resided in rural, plateau, and coastal
287 region, lowest families income, limited education, and first pregnant [9], over 76% took standard iron
288 and folic acid supplements during pregnancy and after delivery through the national health system,
289 while only 65% of pregnant women took iron supplements living in lowest wealth households, which

290 lowest in Preah Vihea/Stung Treng (63.3%) and Mondol Kiri/Ratanakiri (56%) [5]. In the last 10
291 years, Cambodia has also piloted weekly iron and folic acid supplementation for women of
292 reproductive age. However, despite evidence for an impact on iron status during pregnancy, factors
293 such as cost and need for behavioral change have hampered implementing this policy on a large scale
294 [5]. In contrast, food fortification efforts, such as iron-fortified fish sauce, are currently underway
295 [33] and 72% of women received medications to combat parasites [5]; hence the interest in better
296 understanding associations between anemia and demographic, economic, and social factors as well as
297 health-seeking behaviors across different parts of the country [34].

298 Our results suggest independent associations between anemia in pregnant women and age,
299 wealth, pregnancy duration, BMI, and region of residence. Older aged pregnant women were more
300 likely to have anemia compared to young pregnant women, which is consistent with previous studies
301 [11-13] and may reflect biological and physical disadvantages with increased maternal age; for
302 example, developing gestational diabetes, high blood pressure during pregnancy, a mother having
303 multiple pregnancies, and enduring the collective impact of exhausting labor-related complications
304 [35-37]. Consistent with studies from Rwanda [38], Ethiopia [39], and Uganda [40], pregnant women
305 were also more likely to have anemia if they were from the poorest wealth quintiles with the patterns
306 of association between anemia and wealth exhibiting a dose response to increased poverty. Lower
307 socioeconomic status is often associated with negative consequences regarding consumption of a
308 healthy diet, greater chance of infection diseases, and less access to healthcare services [42]. In
309 contrast, individuals from higher socioeconomic groups have a comparative advantage that enables
310 them to purchase sufficient food with greater variety and quality, thus protecting against anemia [43].
311 In addition, pregnant women living in the coastal regions of residence were more likely have anemia

312 compared to women living in plains regions. These differences in the prevalence of anemia might be
313 due to variations in socioeconomic status, attention given to focused antenatal care and
314 supplementation of iron sulfate throughout the pregnancy, dietary patterns, sample size, and
315 geographical and lifestyle variations [44]. Finally, pregnant women with a normal BMI were more
316 likely of have anemia compared to pregnant women who were overweight or obese, which is
317 surprising given prior studies suggesting that higher BMI is negatively associated with iron status
318 among pregnant women [45]. This association may be related to nutrition; e.g., it may be that
319 overweight or obese women have a higher iron intake compared to normal weigh women [33].
320 However, the level of iron content of foods consumed by pregnant women in Cambodia remains
321 unclear, hence future research should employ a nutrition survey for pregnant women and evaluate
322 these potential associations directly.

323 This study was conducted using pooled Demographic and Health surveys for 2005, 2010, and
324 2014, which enabled us to perform a descriptive analysis of temporal and geographical trends in
325 anemia among pregnant women and also analyze potential risk factors using nationally representative
326 data and generalize our findings to pregnant women throughout Cambodia. However, using cross-
327 sectional data limits our ability to assess causal relationship among the associated factors that we
328 identified. Using secondary data that was gathered to collect health and demographic data across a
329 broad variety of variables related to child and maternal health enabled us to evaluate some of the
330 factors likely associated with anemia among pregnant women, but other factors such as diet,
331 nutritional supplements (Vitamin B12, folate); malaria infection, non-communicable diseases such as
332 hypertension and diabetes, and awareness about anemia were excluded from the analysis due to data
333 limitations. Finally, the most recent round of CDHS data was gathered in 2014, which may no longer

334 reflect present prevalence of anemia among pregnant women in Cambodia. Future research should
335 further evaluate these relationships and the general prevalence of anemia among pregnant
336 Cambodian women once additional data becomes available (data gathering for the next round of
337 Cambodia DHS data is underway, but delayed due to COVID-19). With additional data, future
338 research should consider a formal spatial analysis for enhancing the scientific rigor of geospatial
339 trends [46].

340 Our findings suggest that the high prevalence of anemia among pregnant women in Cambodia
341 declined only slightly over the 10-year period between 2005 and 2014. This is concerning given that
342 anemia during pregnancy is a public health problem that should be actively addressed to mitigate the
343 proximal and distal health risks associated with the condition. We identified age, socioeconomic
344 status, higher BMI, and regions of residence as potential risk factors associated with anemia during
345 pregnancy. Public health practitioners and policy makers should consider demographic groups
346 represented by these characteristics for better targeting interventions to address anemia among
347 pregnant women in Cambodia.

Acknowledgments

The authors would like to thank the National Institute of Public Health for allowing us to take part in Sabbatical for Writing Program 2022. We also sincerely thank the DHS-ICF, who approved the data used for this paper.

Authors' contributions

Samnang Um contributed to the conceptualization, methodology, data analysis, writing the original draft, review, and editing; **Heng Sopheab** contributed to writing, review, and editing the manuscript; **An Yom** contributed to writing, review, and editing the manuscript; and **Jonathan A. Muir** contributed to methodology, data analysis, writing, review, and editing the manuscript. All authors read and approved the final manuscript.

Data availability

Our study used 2005, 2010, and 2014 Cambodia Demographic and Health Survey (CDHS) datasets. The DHS data are publicly available from the website: <https://dhsprogram.com>.

Funding

The authors received no funding for this study.

Competing interests

The authors have declared that no competing interests exist.

Abbreviations

ANC, Antenatal Care; AOR, Adjusted Odds Ratio; CDHS, Cambodian Demographic Health Survey; EA, Enumeration areas; Hb, Hemoglobin; WHO, World Health Organization

References

1. Rahman MM, Abe SK, Rahman MS, Kanda M, Narita S, Bilano V, et al. Maternal anemia and risk of adverse birth and health outcomes in low-and middle-income countries: systematic review and meta-analysis. *The American journal of clinical nutrition*. 2016;103(2):495-504.
2. WHO. The global prevalence of anaemia in 2011. Geneva: World Health Organization. 2015.
3. Stevens GA, Paciorek CJ, Flores-Urrutia MC, Borghi E, Namaste S, Wirth JP, et al. National, regional, and global estimates of anaemia by severity in women and children for 2000–19: a pooled analysis of population-representative data. *The Lancet Global Health*. 2022;10(5):e627-e39.
4. WHO U. Global Nutrition Targets 2025: Breastfeeding policy brief (WHO/NMH/NHD14. 7). Geneva: World Health Organization. 2014.
5. NIS. National Institute of Statistics. Directorate General for HC. International ICF . Cambodia Demographic and Health Survey 2014. Phnom Penh, Cambodia: National Institute of Statistics/Cambodia, Directorate General for Health/Cambodia, and ICF International; 2015. 2014.
6. McLean E, Cogswell M, Egli I, Wojdyla D, De Benoist B. Worldwide prevalence of anaemia, WHO vitamin and mineral nutrition information system, 1993–2005. *Public health nutrition*. 2009;12(4):444-54.
7. Elzahrani S. Prevalence of iron deficiency anemia among pregnant women attending antenatal clinics at Al-Hada Hospital. *Canadian Journal on Medicine*. 2012;3(1):10-4.
8. Daru J, Zamora J, Fernández-Félix BM, Vogel J, Oladapo OT, Morisaki N, et al. Risk of maternal mortality in women with severe anaemia during pregnancy and post partum: a multilevel analysis. *The Lancet Global Health*. 2018;6(5):e548-e54.
9. Mallick L, Courtney Allen, and Rathavuth Hong. Trends in Maternal and Child Health in Cambodia, 2000-2014. Further Analysis of the 2000, 2005, 2010, and 2014 Cambodia Demographic and Health Surveys. DHS Further Analysis Reports No. 106. Rockville, Maryland, USA: ICF. Available from: https://www.researchgate.net/publication/323150392_Trends_in_Maternal_and_Child_Health_in_Cambodia_2000-2014 [accessed Mar 30 2023]. 2016.
10. Balarajan Y, Ramakrishnan U, Özaltin E, Shankar AH, Subramanian S. Anaemia in low-income and middle-income countries. *The lancet*. 2011;378(9809):2123-35.
11. Woldegebriel AG, Gebregziabihier Gebrehiwot G, Aregay Desta A, Fenta Ajemu K, Berhe AA, Woldearegay TW, et al. Determinants of anemia in pregnancy: findings from the Ethiopian health and demographic survey. *Anemia*. 2020;2020.
12. Lin L, Wei Y, Zhu W, Wang C, Su R, Feng H, et al. Prevalence, risk factors and associated adverse pregnancy outcomes of anaemia in Chinese pregnant women: a multicentre retrospective study. *BMC pregnancy and childbirth*. 2018;18(1):1-8.
13. Wu Y, Ye H, Liu J, Ma Q, Yuan Y, Pang Q, et al. Prevalence of anemia and sociodemographic characteristics among pregnant and non-pregnant women in southwest China: a longitudinal observational study. *BMC Pregnancy and ChildBirth*. 2020;20(1):1-10.
14. Sunuwar DR, Singh DR, Chaudhary NK, Pradhan PMS, Rai P, Tiwari K. Prevalence and factors associated with anemia among women of reproductive age in seven South and Southeast Asian countries: Evidence from nationally representative surveys. *PloS one*. 2020;15(8):e0236449.
15. Harding KL, Aguayo VM, Namirembe G, Webb P. Determinants of anemia among women and children in Nepal and Pakistan: An analysis of recent national survey data. *Maternal & child nutrition*. 2018;14:e12478.
16. Charles CV, Summerlee AJ, Dewey CE. Anemia in Cambodia: Prevalence, etiology and research needs. *Asia Pacific journal of clinical nutrition*. 2012;21(2):171-81.
17. Charles CV, Dewey CE, Daniell WE, Summerlee AJ. Iron-deficiency anaemia in rural Cambodia: community trial of a novel iron supplementation technique. *European journal of public health*. 2011;21(1):43-8.
18. Tibambuya BA, Ganle JK, Ibrahim M. Anaemia at antenatal care initiation and associated factors among pregnant women in West Gonja District, Ghana: a cross-sectional study. *The Pan African medical*

- journal. 2019;33:325. Epub 2019/11/07. doi: 10.11604/pamj.2019.33.325.17924. PubMed PMID: 31692871; PubMed Central PMCID: PMC6815505.
19. Croft T, Marshall A, Allen C. Guide to DHS Statistics. Rockville, Maryland, USA: ICF; 2018. 2018.
 20. Muir JA. Societal Shocks as Social Determinants of Health: The Ohio State University; 2021.
 21. Muir JA. Another mHealth? Examining Motorcycles as a Distance Demolishing Determinant of Health Care Access in South and Southeast Asia. *Journal of Transport & Health*. 2018;11:153-66.
 22. Cunningham SA, Muir JA. Data Cleaning. In: Nichols AN, Edlund J, editors. *The Cambridge Handbook of Research Methods and Statistics for the Social and Behavioral Sciences: Volume 1: Building a Program of Research*. 1: Cambridge University Press; 2023.
 23. R Core Team. R: A Language and Environment for Statistical Computing. Vienna, Austria: R Foundation for Statistical Computing; 2022.
 24. Lumley T. Package 'survey'. Available at the following link: <https://cran.r-project.org>. 2020.
 25. Wickham H. *ggplot2: elegant graphics for data analysis*: springer; 2016.
 26. Desktop A. Release 10.8. 1.(2020). ESRI (Environmental Systems Research Institute), Redlands, CA.
 27. Karakochuk CD, Whitfield KC, Barr SI, Lamers Y, Devlin AM, Vercauteren SM, et al. Genetic hemoglobin disorders rather than iron deficiency are a major predictor of hemoglobin concentration in women of reproductive age in rural Prey Veng, Cambodia. *The Journal of nutrition*. 2015;145(1):134-42.
 28. Cunningham, S., & Muir, J. (2023). Data Cleaning. In A. Nichols & J. Edlund (Eds.), *The Cambridge Handbook of Research Methods and Statistics for the Social and Behavioral Sciences: Volume 1: Building a Program of Research* (Cambridge Handbooks in Psychology, pp. 443-467). Cambridge: Cambridge University Press. doi:10.1017/9781009010054.022.
 29. Asamrew N, Endris AA, Tadesse M. Level of patient satisfaction with inpatient services and its determinants: a study of a specialized hospital in Ethiopia. *Journal of environmental and public health*. 2020;2020.
 30. WHO. World Health Organization-Global Health Observatory Data Repository, Prevalence of anaemia in non-pregnant women (aged 15-49) (%). Available at [\[https://www.who.int/data/gho/data/indicators/indicator-details/GHO/anaemia-in-non-pregnant-women-prevalence\(-\)\]](https://www.who.int/data/gho/data/indicators/indicator-details/GHO/anaemia-in-non-pregnant-women-prevalence(-)). Accessed March 2023.
 31. Wieringa FT, Dahl M, Chamnan C, Poirot E, Kuong K, Sophonneary P, et al. The High Prevalence of Anemia in Cambodian Children and Women Cannot Be Satisfactorily Explained by Nutritional Deficiencies or Hemoglobin Disorders. *Nutrients*. 2016;8(6):348. PubMed PMID: doi:10.3390/nu8060348.
 32. Barrett B. *Nutrition Profile of Cambodia: A Review of Current Conditions and Strategies to Prevent Macronutrient and Micronutrient Deficiencies*. 2020.
 33. Theary C, Panagides D, Lailou A, Vonthanak S, Kanarath C, Chhorvann C, et al. Fish sauce, soy sauce, and vegetable oil fortification in Cambodia: where do we stand to date? *Food and nutrition bulletin*. 2013;34(2_suppl1):S62-S71.
 34. Charles CV, Dewey CE, Hall A, Hak C, Channary S, Summerlee AJ. Anemia in Cambodia: A cross-sectional study of anemia, socioeconomic status and other associated risk factors in rural women. *Asia Pacific journal of clinical nutrition*. 2015;24(2):253-9.
 35. Mayo Clinic Press. *Pregnancy after 35: Healthy moms, healthy babies*. Available at: <https://www.mayoclinic.org/healthy-lifestyle/getting-pregnant/in-depth/pregnancy/art-20045756>. Accessed on March 31, 2022.
 36. Londero AP, Rossetti E, Pittini C, Cagnacci A, Driul L. Maternal age and the risk of adverse pregnancy outcomes: a retrospective cohort study. *BMC pregnancy and childbirth*. 2019;19(1):1-10.
 37. Cavazos-Rehg PA, Krauss MJ, Spitznagel EL, Bommarito K, Madden T, Olsen MA, et al. Maternal age and risk of labor and delivery complications. *Maternal and child health journal*. 2015;19(6):1202-11.
 38. Habyarimana F, Zewotir T, Ramroop S. Spatial distribution and analysis of risk factors associated with Anemia among women of reproductive age: case of 2014 Rwanda demographic and health survey data. *The Open Public Health Journal*. 2018;11(1).
 39. Kibret KT, Chojenta C, D'Arcy E, Loxton D. Spatial distribution and determinant factors of anaemia among women of reproductive age in Ethiopia: a multilevel and spatial analysis. *BMJ open*. 2019;9(4):e027276.

40. Nankinga O, Aguta D. Determinants of Anemia among women in Uganda: further analysis of the Uganda demographic and health surveys. *BMC Public Health*. 2019;19(1):1-9.
41. Soofi S, Khan GN, Sadiq K, Ariff S, Habib A, Kureishy S, et al. Prevalence and possible factors associated with anaemia, and vitamin B 12 and folate deficiencies in women of reproductive age in Pakistan: analysis of national-level secondary survey data. *BMJ open*. 2017;7(12):e018007.
42. Arpey NC, Gaglioti AH, Rosenbaum ME. How socioeconomic status affects patient perceptions of health care: a qualitative study. *Journal of primary care & community health*. 2017;8(3):169-75.
43. Teshale AB, Tesema GA, Worku MG, Yeshaw Y, Tessema ZT. Anemia and its associated factors among women of reproductive age in eastern Africa: A multilevel mixed-effects generalized linear model. *Plos one*. 2020;15(9):e0238957.
44. Balarajan YS, Fawzi WW, Subramanian S. Changing patterns of social inequalities in anaemia among women in India: cross-sectional study using nationally representative data. *BMJ open*. 2013;3(3):e002233.
45. Zimmermann MB, Hurrell RF. Nutritional iron deficiency. *The lancet*. 2007;370(9586):511-20.
46. Sunuwar DR, Singh DR, Adhikari B, Shrestha S, Pradhan PMS. Factors affecting anaemia among women of reproductive age in Nepal: a multilevel and spatial analysis. *BMJ Open*. 2021;11(3):e041982. Epub 2021/03/31. doi: 10.1136/bmjopen-2020-041982. PubMed PMID: 33782019; PubMed Central PMCID: PMC8009228.

Supplemental table

Table 2. Prevalence of Anemia in the 19 domains in CDHS 2005, CDHS 2010 and 2014

Province	CDHS 2005 (n=486)	CDHS 2010 (n=467)	CDHS 2014 (n=615)
	% of anemia	% of anemia	% of anemia
Banteay Meanchey	62.0	37.0	30.0
Kampong Cham/Tbong Khmun	56.0	50.0	44.0
Kampong Chhnang	53.0	67.0	63.0
Kampong Speu	61.0	48.0	56.0
Kampong Thom	62.0	57.0	62.0
Kandal	53.0	49.0	50.0
Kratie	53.0	78.0	66.0
Phnom Penh	34.0	31.0	46.0
Prey Veng	50.0	60.0	69.0
Pursat	56.0	41.0	52.0
Siem Reap	64.0	56.0	53.0
Svay Rieng	45.0	61.0	64.0
Takeo	64.0	40.0	26.0
Otdar Meanchey	78.0	30.0	59.0
Battambang/Pailin	55.0	58.0	50.0
Kampot/Kep	62.0	76.0	61.0
Preah Sihanouk/Koh Kong	76.0	48.0	65.0

Preah Vihear/Stung Treng	73.0	61.0	59.0
Mondul Kiri/Ratanak Kiri	56.0	49.0	42.0

Supplemental figures

Fig 6. Predicted probability of anemia among pregnant women aged 15-49 years old (n=1,567). Visualized using “ggplot2” package in R.

Fig 7. Predicted probability of anemia among pregnant women aged 15-49 years old (n=1,567). Visualized using “ggplot2” package in R.

Fig 8. Predicted probability of anemia among pregnant women aged 15-49 years old (n=1,567). Visualized using “ggplot2” package in R.

Fig 9. Predicted probability of anemia among pregnant women aged 15-49 years old (n=1,567). Visualized using “ggplot2” package in R.

Total number of women aged 15-49 years

CDHS 2014: 17,578
CDHS 2010: 18,754
CDHS 2005: 16,823

Excluded those who were not pregnant and without hemoglobin collection

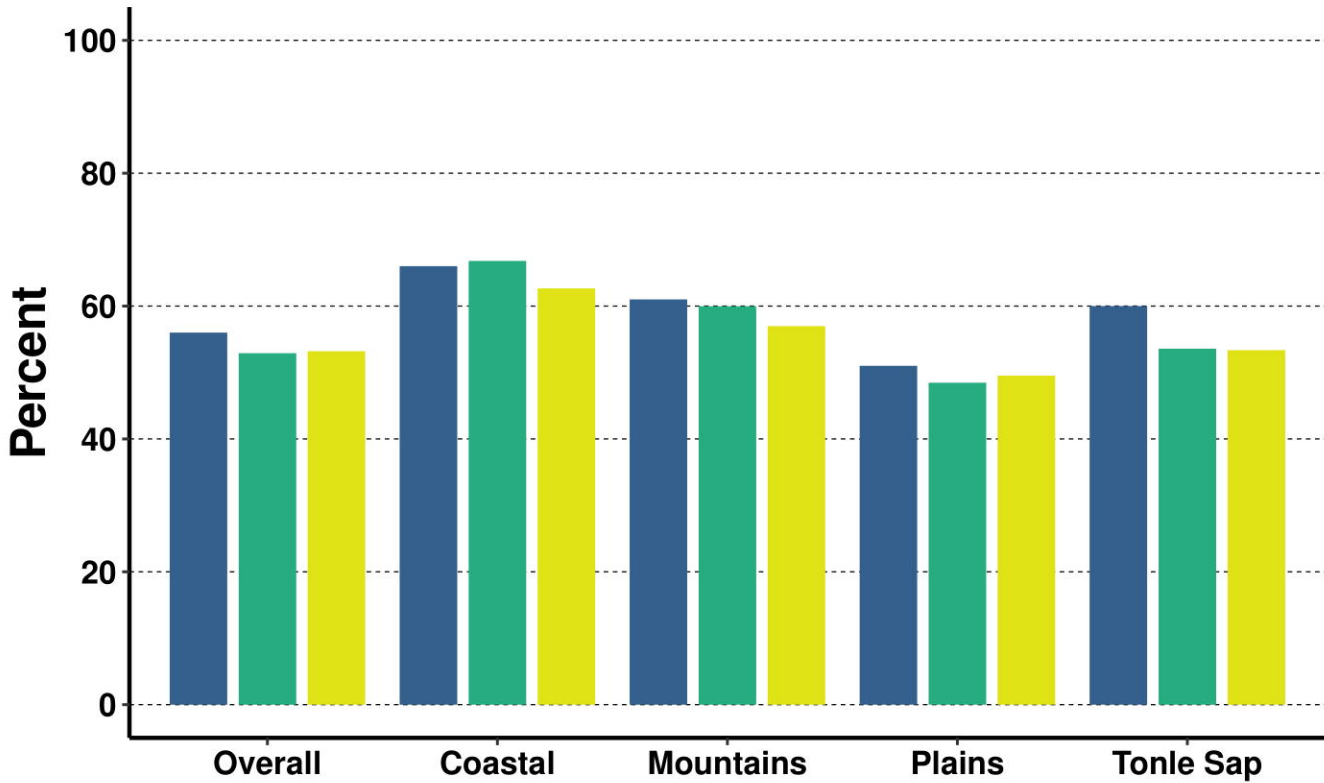
CDHS 2014: 16,323
CDHS 2010: 18,284
CDHS 2005: 16,919

Final sample size included in the data analyzed for the study

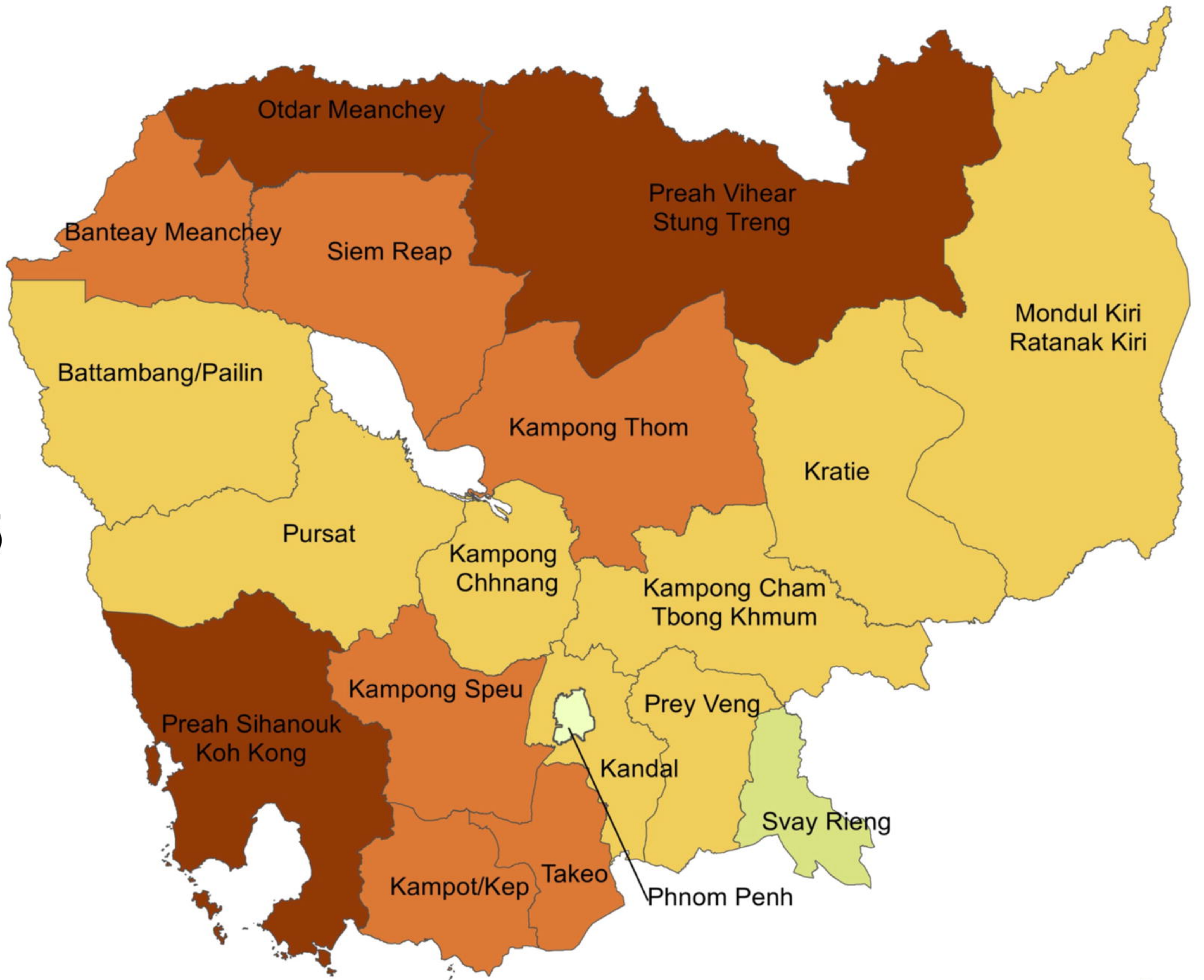
CDHS 2014: 659 (615 weighted cases)
CDHS 2010: 470 (467 weighted cases)
CDHS 2005: 500 (486 weighted cases)

medRxiv preprint doi: <https://doi.org/10.1101/2022.09.08.22279710>; this version posted May 29, 2023. The copyright holder for this preprint (which was not certified by peer review) is the author/funder, who has granted medRxiv a license to display the preprint in perpetuity. It is made available under a CC-BY 4.0 International license.

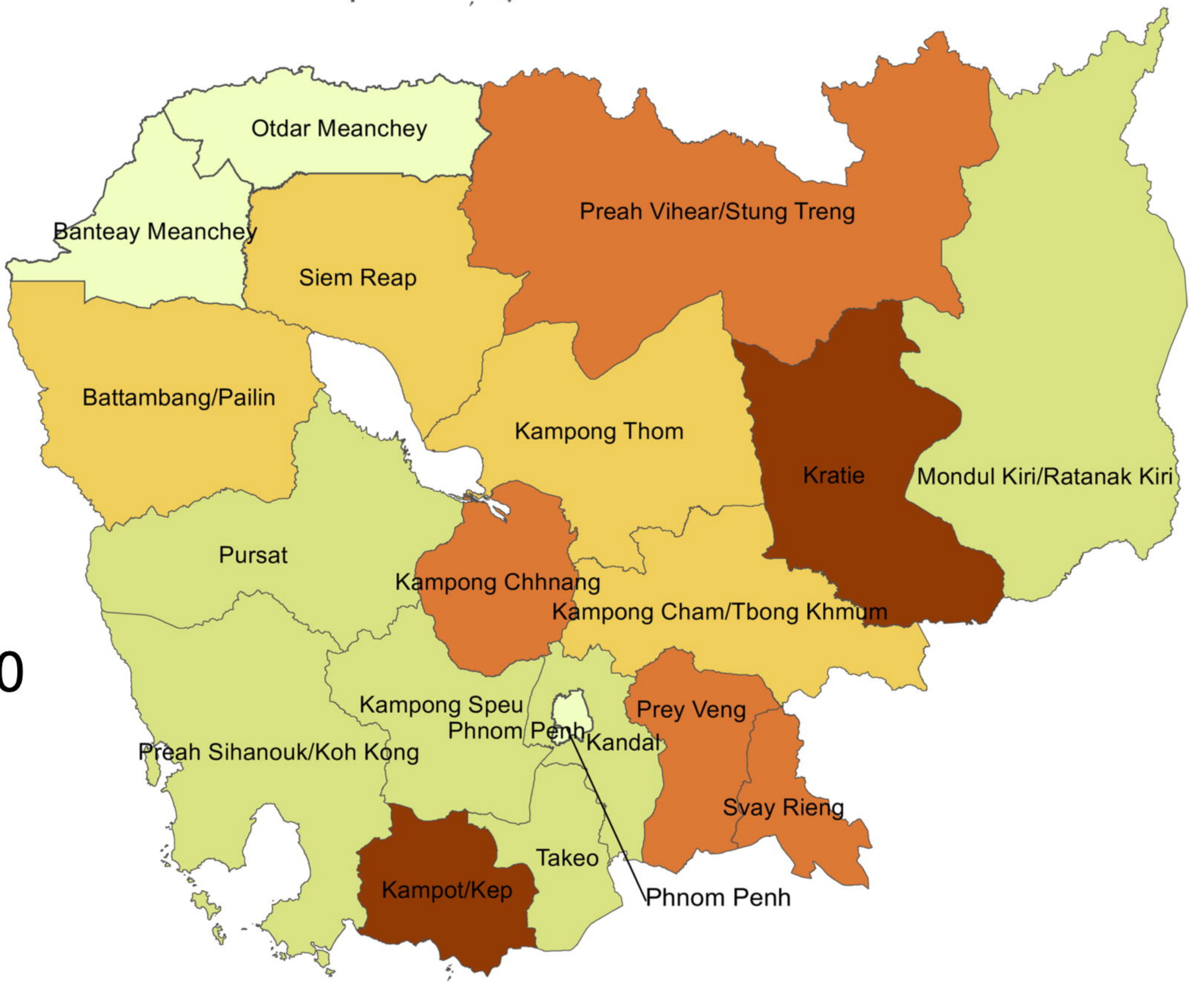
Year 2005 2010 2014



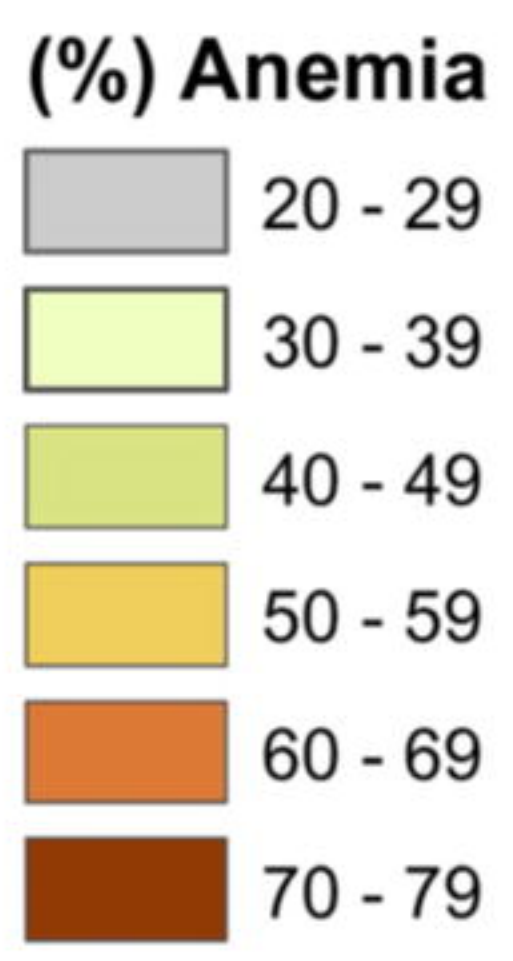
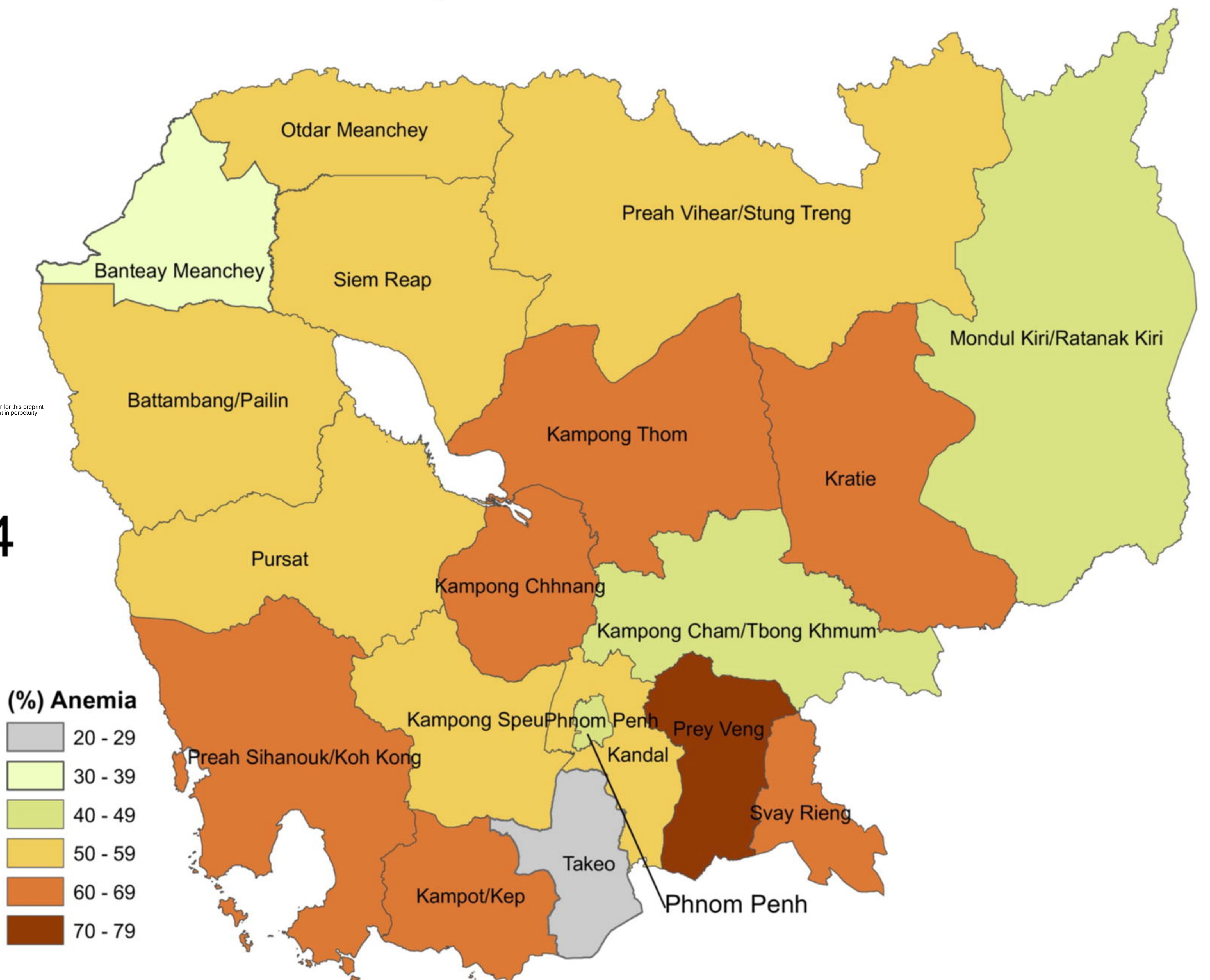
CDHS 2005



CDHS 2010



CDHS 2014



medRxiv preprint doi: <https://doi.org/10.1101/2022.05.08.22278710>; this version posted May 25, 2023. The copyright holder for this preprint (which was not certified by peer review) is the author/funder, who has granted medRxiv a license to display the preprint in perpetuity. It is made available under a CC-BY 4.0 International license.

Variable		Odds Ratio	p
Age	21–30		Reference
	15–20	1.49 (1.11, 2.01)	0.009
	31–49	1.58 (1.14, 2.19)	0.006
Marital Status	Married		Reference
	Not Married	1.55 (0.77, 3.13)	0.224
Education	Higher		Reference
	Secondary	1.67 (0.80, 3.49)	0.172
	Primary	2.21 (1.08, 4.53)	0.030
	No Education	2.38 (1.11, 5.11)	0.026
Occupation	Professional		Reference
	Agricultural/Manual	1.69 (1.26, 2.28)	<0.001
	Not Working	1.53 (1.00, 2.36)	0.052
Wealth Index	Richest		Reference
	Richer	1.50 (1.02, 2.19)	0.037
	Middle	1.50 (1.03, 2.18)	0.032
	Poorer	2.43 (1.63, 3.63)	<0.001
	Poorest	3.15 (2.11, 4.71)	<0.001
Pregnancy Duration	1st Trimester		Reference
	2nd Trimester	2.50 (1.85, 3.38)	<0.001
	3rd Trimester	1.51 (1.09, 2.09)	0.013
BMI	Overweight or Obese		Reference
	Normal	1.44 (1.11, 1.88)	0.007
	Underweight	0.86 (0.54, 1.38)	0.536
Prior Births	Less than 3 Births		Reference
	3–5 Births	1.41 (0.98, 2.02)	0.066
	6 or more Births	2.21 (1.15, 4.24)	0.017
Tobacco Use	No Tobacco Use		Reference
	Tobacco Use	2.05 (1.21, 3.45)	0.007
Healthcare Barriers	No Barriers		Reference
	1 or More Barriers	1.41 (1.08, 1.86)	0.013
Residence	Urban		Reference
	Rural	1.67 (1.26, 2.20)	<0.001
Phnom Penh	Phnom Penh		Reference
	Other Regions	1.61 (1.10, 2.35)	0.014
Regions	Plains		Reference
	Tonle Sap	1.25 (0.93, 1.68)	0.132
	Coastal	1.86 (1.20, 2.89)	0.006
	Mountains	1.43 (1.04, 1.98)	0.027
Year	2014		Reference
	2010	0.99 (0.73, 1.34)	0.939
	2005	1.12 (0.83, 1.50)	0.459

Variable		Odds Ratio	p
Age	21–30	Reference	
	15–20	1.35 (0.97, 1.88)	0.071
	31–49	1.55 (1.03, 2.33)	0.036
Education	Higher	Reference	
	Secondary	1.08 (0.51, 2.28)	0.835
	Primary	1.10 (0.52, 2.35)	0.799
	No Education	0.79 (0.34, 1.84)	0.580
Occupation	Professional	Reference	
	Agricultural/Manual	1.20 (0.84, 1.71)	0.320
	Not Working	1.42 (0.89, 2.26)	0.140
Wealth Index	Richest	Reference	
	Richer	1.32 (0.82, 2.13)	0.252
	Middle	1.39 (0.86, 2.26)	0.183
	Poorer	2.21 (1.27, 3.86)	0.005
	Poorest	2.81 (1.62, 4.86)	<0.001
Pregnancy Duration	1st Trimester	Reference	
	2nd Trimester	2.60 (1.88, 3.58)	<0.001
	3rd Trimester	1.62 (1.15, 2.27)	0.006
BMI	Overweight or Obese	Reference	
	Normal	1.36 (1.00, 1.84)	0.049
	Underweight	1.05 (0.64, 1.72)	0.854
Prior Births	Less than 3 Births	Reference	
	3–5 Births	1.10 (0.71, 1.68)	0.676
	6 or more Births	1.32 (0.57, 3.06)	0.521
Tobacco Use	No Tobacco Use	Reference	
	Tobacco Use	1.26 (0.69, 2.28)	0.455
Healthcare Barriers	No Barriers	Reference	
	1 or More Barriers	1.09 (0.80, 1.48)	0.603
Residence	Urban	Reference	
	Rural	0.99 (0.67, 1.47)	0.977
Regions	Plains	Reference	
	Tonle Sap	1.07 (0.79, 1.45)	0.645
	Coastal	1.87 (1.17, 2.97)	0.009
	Mountains	1.14 (0.79, 1.64)	0.484
Year	2014	Reference	
	2010	1.02 (0.74, 1.41)	0.909
	2005	1.07 (0.76, 1.51)	0.683

0.5 1 2

