

1 **Racial/ethnic disparities in cardiovascular disease mortality attributable to**  
2 **long-term PM<sub>2.5</sub> exposure in the United States from 2001 to 2016**

3 Yiqun Ma, M.Phil.;<sup>1,2</sup> Emma Zang, Ph.D.;<sup>3</sup> Ijeoma Opara, Ph.D., LMSW;<sup>4</sup> Yuan Lu, Sc.D.;<sup>5,6</sup>

4 Harlan M. Krumholz, M.D.;<sup>5,6,7</sup> Kai Chen, Ph.D.<sup>1,2</sup>

5 1 Department of Environmental Health Sciences, Yale School of Public Health, New Haven, CT,  
6 USA

7 2 Yale Center on Climate Change and Health, Yale School of Public Health, New Haven, CT,  
8 USA

9 3 Department of Sociology, Yale University, New Haven, CT, USA

10 4 Department of Social & Behavioral Sciences, Yale School of Public Health, New Haven, CT,  
11 USA

12 5 Center for Outcomes Research and Evaluation, Yale New Haven Hospital, New Haven, CT,  
13 USA

14 6 Section of Cardiovascular Medicine, Department of Medicine, Yale School of Medicine, New  
15 Haven, CT, USA

16 7 Department of Health Policy and Management, Yale School of Public Health, New Haven, CT,  
17 USA

18

19 Corresponding author:

20 Kai Chen, Ph.D., Yale School of Public Health, 60 College Street, New Haven, CT, 06511,

21 USA, [kai.chen@yale.edu](mailto:kai.chen@yale.edu)

22

23 Word count: 3457

24 Main tables: 2

25 Main figures: 4

26

## 27 **Abstract**

### 28 **Background:**

29 The average concentration of fine particulate matter (PM<sub>2.5</sub>) has decreased in the U.S. in recent  
30 years. However, the health benefits of this improvement among different racial/ethnic groups are  
31 not known. This study aimed to estimate the associations between long-term exposure to ambient  
32 PM<sub>2.5</sub> and cause-specific cardiovascular disease (CVD) mortality rate and assess the PM<sub>2.5</sub>-  
33 attributable CVD deaths in non-Hispanic White, non-Hispanic Black, and Hispanic people across  
34 all counties in the contiguous U.S. from 2001 to 2016.

### 35 **Methods:**

36 Using nationwide CVD mortality data for all ages obtained from National Center for Health  
37 Statistics, this study applied interactive fixed effects models to estimate the associations between  
38 12-month moving average of PM<sub>2.5</sub> concentrations and monthly age-adjusted CVD mortality  
39 rates by race/ethnicity, controlling for both measured and unmeasured spatiotemporal  
40 confounders. Mortality from major types of CVD (ischemic heart disease [IHD], myocardial  
41 infarction [MI], stroke, hypertensive disease, and hypertensive heart disease) was also studied.  
42 We then calculated the burden of PM<sub>2.5</sub>-attributable CVD deaths in different race/ethnicity  
43 groups and examined the magnitude of racial/ethnic disparity and its changes over time.

### 44 **Results:**

45 A total of 13,289,147 CVD deaths were included in the study. Each 1- $\mu\text{g}/\text{m}^3$  increase in 12-  
46 month moving average of PM<sub>2.5</sub> concentration was associated with increases of 7.16 (95%  
47 confidence interval [CI]: 3.81, 10.51) CVD deaths per 1,000,000 Black people per month,  
48 significantly higher than the estimates for non-Hispanic White people (*P* value: 0.002). The

49 higher vulnerability in non-Hispanic Black people was also observed for mortality from IHD,  
50 MI, and stroke. Long-term PM<sub>2.5</sub> exposure contributed to approximately 75.47 (95% CI: 40.14,  
51 110.80) CVD deaths per 1,000,000 non-Hispanic Black people annually, over 3 times higher  
52 than the estimated rate in non-Hispanic White people (16.89, 95% CI:13.17, 20.62). From 2001  
53 to 2016, the difference in attributable CVD mortality rate between Black and White people  
54 reduced by 44.04% (from 75.80 to 42.42 per 1,000,000 people), but the burden in Black people  
55 was still over 3 times higher compared to White people.

56 **Conclusions:**

57 Non-Hispanic Black people have the highest PM<sub>2.5</sub>-attributable CVD mortality burden. Although  
58 the racial/ethnic disparity in this burden was narrowed over time, the gap between racial/ethnic  
59 minorities and non-Hispanic White people remains substantial.

60

## 61 **Introduction**

62 Ambient fine particulate matter (PM<sub>2.5</sub>) air pollution is a leading risk factor for mortality in the  
63 United States (U.S.), especially for mortality of cardiovascular diseases (CVD).<sup>1</sup> The detrimental  
64 effect of PM<sub>2.5</sub> on cardiovascular mortality persists even at concentrations below the current air  
65 quality standard.<sup>2-5</sup> Over recent decades, PM<sub>2.5</sub> levels have fallen considerably in the contiguous  
66 U.S., as a result of the national Clean Air Act and other regional efforts.<sup>6, 7</sup> This improvement in  
67 air quality has yielded substantial benefits to human health.<sup>8</sup> However, it is unclear whether the  
68 health benefits of this decreasing trend of PM<sub>2.5</sub>, especially to cardiovascular health, distributed  
69 equitably across different racial/ethnic groups.

70 Most previous studies examined this question focusing only on the PM<sub>2.5</sub> exposure.  
71 Increasing evidence showed an unequal distribution of PM<sub>2.5</sub> exposure across communities, with  
72 racial/ethnic minorities being exposed to disproportionately high levels of PM<sub>2.5</sub>.<sup>9-14</sup> Despite the  
73 improvement in air quality during the past years, the disparity in PM<sub>2.5</sub> exposure remains.<sup>9, 11, 13,</sup>  
74 <sup>14</sup> In the U.S., physical environment and neighborhoods tend to exhibit the symptoms of, and are  
75 shaped by, environmental racism.<sup>15</sup> For example, racial/ethnic minorities in the U.S., such as  
76 Black and Hispanic people, tend to live in neighborhoods where they have higher exposure to air  
77 pollution,<sup>14, 16</sup> close proximity to waste facilities,<sup>17</sup> and low community green space (e.g.  
78 parks).<sup>18, 19</sup> Such factors can all significantly increase the likelihood of PM<sub>2.5</sub> exposure.

79 However, the racial/ethnic disparities in PM<sub>2.5</sub>-attributable mortality burden cannot be  
80 fully explained by the disparities in PM<sub>2.5</sub> exposure. Different PM<sub>2.5</sub>-mortality relationships  
81 across racial/ethnic groups also need to be considered. Due to structural racism and its  
82 downstream social determinants, including lack of access to equitable healthcare resources and

83 chronic racial stressors such as limited employment opportunities, safety concerns, exposure to  
84 racial discrimination, or over-policing,<sup>20</sup> Black people may suffer from greater CVD mortality  
85 consequences of air pollution than White people, even when they live in the same physical  
86 environment.<sup>21</sup> Therefore, it is important to use race/ethnicity-specific exposure-response  
87 function in health burden assessment.<sup>22</sup>

88 Utilizing the nationwide PM<sub>2.5</sub> and cardiovascular mortality data, this study aimed to first  
89 estimate the associations of long-term exposure to PM<sub>2.5</sub> with county-level cardiovascular  
90 mortality rates by race/ethnicity, and then assess the average annual PM<sub>2.5</sub>-attributable CVD  
91 mortality burden across racial/ethnic groups and how the racial/ethnic disparity in this burden  
92 changed over time between 2001 and 2016. Interactive fixed effects (IFE) models, a novel  
93 statistical method for causal inference, were applied to estimate the PM<sub>2.5</sub>-mortality exposure-  
94 response function. In addition to the total CVD mortality, we also analyzed mortality from major  
95 categories of CVD.

96

## 97 **Methods**

### 98 *Study area and population*

99 In total, this study covered 3,103 counties or county equivalents in the contiguous U.S.,  
100 with consistent boundaries over the study period. The cartographic boundary for counties in the  
101 contiguous U.S. was downloaded from the U.S. Census Bureau's TIGER/Line geodatabase.<sup>23</sup>  
102 We merged counties with boundary changes from 2001 to 2016 with neighboring counties  
103 (**Supplemental Methods 1**). County-level population data was collected from the Surveillance,  
104 Epidemiology, and End Results Program, National Cancer Institute.<sup>24</sup> We extracted the total

105 population and population estimates by sex, age, race, and Hispanic origin for each county,  
106 2001-2016.

### 107 *Mortality rate*

108 Mortality data from 2001 to 2016 was provided by the National Center for Health  
109 Statistics, which included the year and month of death, the cause of death (International  
110 Statistical Classification of Diseases and Related Health Problems, 10<sup>th</sup> Revision [ICD-10]  
111 codes), and the sex, age, race, and ethnicity of each deceased person. Information about the race  
112 and Hispanic origin of a decedent was based on death certificates. The categorization of race and  
113 ethnicity followed the national standards “Revisions to the Standards for the Classification of  
114 Federal Data on Race and Ethnicity”.<sup>25</sup> This study focused on CVD mortality (ICD-10 code: I00-  
115 I99) and its major categories, including ischemic heart disease (IHD, I20-I25), stroke (I60-I69),  
116 and hypertensive diseases (HD, I10-I15). Deaths from more specific causes, myocardial  
117 infarction (MI, I21-I23) in IHD and hypertensive heart disease (HHD, I11) in HD, were also  
118 analyzed in this study.

119 We calculated the monthly county-level cause-specific mortality rates for male, female,  
120 non-Hispanic White, non-Hispanic Black, and Hispanic population. All mortality rates were age-  
121 adjusted by direct standardization using the 2000 U.S. Census population as the standard  
122 population. Mortality data in 2000 was also obtained to calculate the 12-month moving average  
123 of mortality rates in a sensitivity analysis.

124 Using anonymized monthly county-level mortality records, this study was determined as  
125 a Not Human Subject research and approved by the Yale Institutional Review Boards (protocol  
126 ID: 2000026808).

127 *Air pollution and temperature*

128 Daily PM<sub>2.5</sub> concentration data from 2000 to 2016 for the contiguous U.S. at a resolution  
129 of 1 km was obtained from the NASA Socioeconomic Data and Applications Center.<sup>26</sup> In brief,  
130 the PM<sub>2.5</sub> concentration was estimated by an ensembled model based on neural network, random  
131 forest, and gradient boosting, using satellite data, meteorological data, land-use variables,  
132 elevation, chemical transport model predictions, and other variables as predictors.<sup>6</sup> The 10-fold  
133 cross-validated coefficients of determination ( $R^2$ ) of this model was 0.86 for daily predictions,  
134 indicating a strong predictive performance.<sup>6</sup>

135 The daily PM<sub>2.5</sub> concentrations were aggregated to monthly county-level to match to the  
136 mortality data. For months from January 2001 to December 2016, we calculated the 12-month  
137 moving average of PM<sub>2.5</sub> concentration for each county to represent the average exposure to  
138 PM<sub>2.5</sub> in the previous one year.<sup>27, 28</sup> Nitrogen dioxide (NO<sub>2</sub>) and ozone (O<sub>3</sub>) data was downloaded  
139 from the same source and processed in the same way as PM<sub>2.5</sub>.<sup>29-32</sup>

140 Monthly mean air temperature data at 4 km × 4 km was obtained from the PRISM  
141 Climate Group.<sup>33</sup> Similar to the air pollution data, we averaged the air temperature data for each  
142 county.

143 *Statistical analysis*

144 We applied IFE models to estimate the associations between long-term exposure to PM<sub>2.5</sub>  
145 and cardiovascular mortality rates. The IFE model is an innovative method in economics for  
146 causal inference, which is more flexible than the commonly-used traditional two-way fixed  
147 effects (TWFE) model.<sup>34</sup> TWFE models can potentially control for both spatial confounders that  
148 only vary across counties (time-invariant confounders) and temporal confounders that only vary

149 by time (county-invariant confounders), either measured or unmeasured.<sup>35</sup> However, this  
150 approach assumes no unmeasured confounders that display different temporal variations across  
151 counties (time-varying individual county effects), which is often violated.<sup>36</sup> Therefore, we used  
152 an extension of the TWFE model, the novel IFE model, which can potentially account for  
153 unmeasured time-varying county-specific confounders.<sup>34, 36, 37</sup> The IFE approach requires weaker  
154 assumptions than TWFE models: it only requires a correct functional form (a relaxed form of  
155 strict exogeneity) and the existence of a low-dimensional decomposition.<sup>36</sup>

156 In the main IFE model, the outcome variable was the monthly county-level mortality rate  
157 and the predictor of interest was the 12-month moving average of PM<sub>2.5</sub> concentration for each  
158 county, each month. Time-invariant and county-invariant confounders were controlled for by  
159 indicator variables for each county and month and air temperature was controlled by a flexible  
160 natural cubic spline with five degrees of freedom (df). Unmeasured time-varying individual  
161 county effect was explicitly modelled by decomposition. Statistical details of the IFE model can  
162 be found in **Supplemental Methods 2**.

163 Based on the estimated coefficient of PM<sub>2.5</sub> ( $\beta$ ) for each cause, which can be interpreted  
164 as the increase in mortality rate associated with 1- $\mu\text{g}/\text{m}^3$  increase in 12-month moving average of  
165 PM<sub>2.5</sub> per month, we then calculated the PM<sub>2.5</sub>-attributable number of deaths (AN) in each  
166 county in each month by  $AN_{i,t} = \beta PM_{2.5_{i,t}} \times Population_{i,t}$ , where  $PM_{2.5_{i,t}}$  is the moving  
167 average of PM<sub>2.5</sub> concentration of the current and previous 11 months for county  $i$ , month  $t$  and  
168  $Population_{i,t}$  is the total population in county  $i$ , month  $t$ . The reference PM<sub>2.5</sub> concentration  
169 was set as 0, since recent epidemiological evidence suggests that there is no safe level of PM<sub>2.5</sub>.<sup>4</sup>

170 <sup>5</sup>



171 We further estimated the association between long-term exposure to PM<sub>2.5</sub> and cause-  
172 specific cardiovascular mortality rates and the attributable mortality burden by race/ethnicity  
173 (non-Hispanic White, non-Hispanic Black, and Hispanic people). We also conducted subgroup  
174 analysis by sex (male and female) to test sex differences and stratified analysis by urban or rural  
175 counties<sup>38</sup> to investigate its potential modification effect. We tested the statistical difference in  
176 effect estimates between different groups by calculating the z score as  $(\hat{Q}_1 - \hat{Q}_2) /$   
177  $\sqrt{(SE_{\hat{Q}_1})^2 + (SE_{\hat{Q}_2})^2}$ , where  $\hat{Q}_1$  and  $\hat{Q}_2$  are the estimates, and  $SE_{\hat{Q}_1}$  and  $SE_{\hat{Q}_2}$  are their respective  
178 standard errors.<sup>39</sup>

179 Several sensitivity analyses were performed to test the robustness of our results: (a)  
180 counties with population size smaller than 5,000 or larger than 200,000 were excluded  
181 (approximately the 10<sup>th</sup> and 90<sup>th</sup> percentiles of county-level population size); (b) 12-month  
182 moving average of CVD mortality rates were used as the outcome; (c) traditional TWFE model  
183 was applied; (d) we additionally adjusted for NO<sub>2</sub> or O<sub>3</sub> in the model; (e) an alternative four or  
184 six df was used in the natural cubic spline of air temperature.

185

## 186 **Results**

### 187 *Description of PM<sub>2.5</sub> exposure and CVD mortality*

188 A total of 13,289,147 CVD deaths was included in the study. From 2001 to 2016, the  
189 mean age-adjusted CVD mortality rate was 232.67 per 1,000,000 people per month in the 3,103  
190 counties in the contiguous U.S. (standard deviation [SD]: 140.97), of which over 70% were from  
191 IHD, stroke, and HD. The mean age-adjusted CVD mortality rate was higher in males (278.43,  
192 SD: 230.46) than in females (195.85, SD: 166.79), and was the highest in non-Hispanic Black

193 people (294.75, SD: 425.72) among the three studied racial/ethnic groups (**Table 1**). The mean  
194 12-month moving average of PM<sub>2.5</sub> concentration was 9.12 µg/m<sup>3</sup> (SD: 3.13) (**Table 1**). The  
195 average PM<sub>2.5</sub> concentrations were in general higher in the eastern U.S. (**Figure 1A**) and have  
196 greatly decreased in most counties in our study period (**Figure 1B**). Among people of different  
197 racial/ethnic groups who died from cardiovascular diseases from 2001 to 2016, although the  
198 long-term PM<sub>2.5</sub> exposure reduced in all three groups (**Figure S1**), the median concentration of  
199 long-term PM<sub>2.5</sub> exposure was the highest in the non-Hispanic Black group (**Figure 1C**).

200 *Association between long-term PM<sub>2.5</sub> exposure and cause-specific CVD mortality by*  
201 *race/ethnicity*

202 We found that each 1-µg/m<sup>3</sup> increase in the 12-month moving average of PM<sub>2.5</sub>  
203 concentration was significantly associated with 2.01 additional CVD deaths per 1,000,000 people  
204 (95% confidence interval [CI]: 1.76, 2.35) per month. Compared to the non-Hispanic White  
205 group, the effect estimate was significantly higher in non-Hispanic Black group (*P* value: 0.002):  
206 each 1- µg/m<sup>3</sup> increase in the 12-month moving average of PM<sub>2.5</sub> concentration was significantly  
207 associated with 7.16 (95% CI: 3.81, 10.51) additional CVD deaths per 1,000,000 non-Hispanic  
208 Black people, while was only associated with 1.76 (95% CI: 1.37, 2.15) CVD deaths per  
209 1,000,000 non-Hispanic White people (**Table 2**). No significant difference was observed  
210 between males and females (**Table S1**).

211 For major CVD categories, 1.67 (95% CI: 1.43, 1.91) IHD deaths, 0.22 (95% CI: 0.08,  
212 0.36) stroke deaths, and 0.11 (95% CI: 0.11, 0.03, 0.19) HD deaths per 1,000,000 people were  
213 linked to a 1-µg/m<sup>3</sup> increase in PM<sub>2.5</sub>. Higher long-term exposure to PM<sub>2.5</sub> was also associated  
214 with higher mortality rates of MI and HHD. For mortality from IHD and its subtype MI, the  
215 effect estimates of the non-Hispanic Black group were the highest among all racial/ethnic groups

216 (IHD: 4.09, 95% CI: 1.80, 6.38; MI: 1.97, 95% CI: 0.68, 3.26). In addition, the association between  
217 long-term PM<sub>2.5</sub> exposure and stroke mortality rate was only significantly positive in the non-  
218 Hispanic Black group (**Table 2**).

### 219 *Average annual PM<sub>2.5</sub>-attributable CVD mortality burden by race/ethnicity*

220 The average annual PM<sub>2.5</sub>-attributable CVD mortality burden was in general higher in  
221 eastern counties, especially in the Ohio Valley region and the Southeast region, which is  
222 consistent with the distribution of PM<sub>2.5</sub> concentrations (**Figure 2A**). In total, approximately  
223 69,675 (95% CI: 57,785, 81,565) CVD deaths were attributable to long-term PM<sub>2.5</sub> exposure  
224 each year from 2001 to 2016, which contributed to about 7.84% of total CVD deaths in the  
225 contiguous U.S. (**Figure 2B**). Among specific causes, approximately 57,889 IHD deaths  
226 (including 15,634 MI deaths), 7,487 stroke deaths, and 3,882 HD deaths (including 1,192 HHD  
227 deaths) were attributable to PM<sub>2.5</sub> each year (**Figure 2B; Table S2**).

228 Among racial/ethnic groups, the average annual PM<sub>2.5</sub>-attributable CVD mortality  
229 burden was 40,315 (95% CI: 31,426, 49,205) deaths in non-Hispanic White people, 35,136 (95%  
230 CI: 18,689, 51,583) deaths in non-Hispanic Black people, and 13,335 (95% CI: -126, 26,795)  
231 deaths in Hispanic people. Although the absolute number of PM<sub>2.5</sub>-attributable deaths was the  
232 highest in the non-Hispanic White group, non-Hispanic Black people still shouldered the highest  
233 relative burden: in average, long-term PM<sub>2.5</sub> exposure contributed to approximately 75.47 (95%  
234 CI: 40.14, 110.80) CVD deaths per 1,000,000 non-Hispanic Black people annually, over 3 times  
235 higher than the estimated rate in non-Hispanic White people (16.89, 95% CI: 13.17, 20.62)  
236 (**Figure 2C**).

### 237 *Changes in racial/ethnic disparity in PM<sub>2.5</sub>-attributable CVD mortality burden over time*

238 From 2001 to 2016, the CVD mortality burden attributable to long-term PM<sub>2.5</sub> exposure  
239 has greatly decreased in most U.S. counties, especially the eastern U.S., with the greatest decline  
240 in West Virginia and Kentucky (**Figure 3A**). In total, PM<sub>2.5</sub>-attributable CVD deaths have  
241 decreased by 34.19%, from 82,047 (95% CI: 68,046, 96,048) in 2001 to 53,996 (95% CI: 44,782,  
242 63,210) in 2016 (**Figure 3B; Table S3**).

243 Despite of the overall decreasing trend, the magnitudes of decrease varied across  
244 different racial/ethnic groups (**Figure 4A**). The non-Hispanic Black group experienced the  
245 greatest reduction in PM<sub>2.5</sub>-attributable CVD mortality burden, from 96.90 deaths (95% CI:  
246 51.54, 142.25) in 2001 to 54.65 (95% CI: 29.07, 80.23) in 2016, per 1,000,000 Black people. As  
247 a result, the racial/ethnic disparity became smaller: comparing to non-Hispanic White people, the  
248 PM<sub>2.5</sub>-attributable CVD mortality rate in non-Hispanic Black people was 75.80 higher in 2001  
249 and 42.42 higher in 2016, which reduced by 44.04%; this difference also reduced by 29.62% for  
250 the Hispanic group, from 7.90 in 2001 to 5.56 in 2016 (**Figure 4B**).

### 251 *Effect modification by urban vs. rural counties and sensitivity analyses*

252 We observed a higher coefficient of PM<sub>2.5</sub> in rural counties compared to urban counties.  
253 In rural counties, each 1- $\mu\text{g}/\text{m}^3$  increase in long-term PM<sub>2.5</sub> exposure was significantly associated  
254 with 2.05 CVD deaths per 1,000,000 people (95% CI: 1.54, 2.56) per month, while in urban  
255 counties, the effect estimate of PM<sub>2.5</sub> became smaller (1.00, 95% CI: 0.62, 1.37). Consistent with  
256 the findings from our main analyses, in both rural and urban counties, the association between  
257 PM<sub>2.5</sub> exposure and CVD mortality rate was stronger in non-Hispanic Black people compared to  
258 non-Hispanic White people (**Table S4**).

259           Sensitivity analyses showed that our results generally remained robust when excluding  
260 counties with population size smaller than 5,000 or greater than 200,000, using 12-month  
261 moving average of CVD mortality rate as the outcome, applying traditional TWFE, additionally  
262 adjusting for NO<sub>2</sub> or O<sub>3</sub> in the model, and using alternative numbers of df for air temperature  
263 (**Table S5**). The time-series plot of the monthly CVD mortality rates in counties with population  
264 size smaller than 5,000 indicated that the outcome measure was stable even in relatively small  
265 counties (**Figure S2**).

266

## 267 **Discussion**

268           This study demonstrates significant racial/ethnic disparities in both vulnerability to and  
269 burden of PM<sub>2.5</sub>-related CVD mortality. First, the association between PM<sub>2.5</sub> exposure and CVD  
270 mortality rate was significantly stronger for non-Hispanic Black people than non-Hispanic White  
271 people in the study. Second, non-Hispanic Black people also had the highest average annual  
272 PM<sub>2.5</sub>-attributable CVD mortality burden. Finally, the racial/ethnic disparities in this burden  
273 narrowed over time from 2001 to 2016, but the gap between racial/ethnic minorities and non-  
274 Hispanic White people persisted.

275           We found long-term exposure to ambient PM<sub>2.5</sub> was associated with a greater increase in  
276 CVD mortality rate among non-Hispanic Black people compared to non-Hispanic White people.  
277 This finding from our study for all ages is consistent with the finding from a previous study  
278 focusing on people 65 years of age or older. A cohort study based on all Medicare beneficiaries  
279 reported that Black people had a higher estimated risk of all-cause mortality in association with  
280 PM<sub>2.5</sub> exposure than the general population.<sup>27</sup> This higher vulnerability of Black people can be

281 explained by residential segregation and other downstream social determinants of structural  
282 racism in the U.S.<sup>40, 41</sup> For example, Black people in the U.S. tend to have limited access to high-  
283 quality healthcare, education, credit, and other socioeconomic opportunities due to systemic  
284 racism. In addition, racism—intersecting and mutually reinforcing societal systems and  
285 institutions which foster and perpetuate racial discrimination and structure opportunities  
286 inequitably—in the U.S., contribute to higher levels of stress and likelihood of living in  
287 neighborhoods that are impacted by environmental racism, resulting in both higher CVD burden  
288 and vulnerability to air pollution.<sup>22, 41</sup>

289 In our study, the relative burden of PM<sub>2.5</sub>-attributable CVD mortality in non-Hispanic  
290 Black people was found to be over 3 times greater than the burden in non-Hispanic White  
291 people. The disparity in this annual burden between Black and White people (58.6 additional  
292 CVD deaths per 1,000,000 people) is of the same magnitude as the contribution of alcohol use to  
293 CVD mortality in the whole U.S. population in 2019 (55.3 CVD deaths per 1,000,000 people),  
294 according to the estimates from the GBD study.<sup>1</sup> This finding reflects both disproportionately  
295 higher PM<sub>2.5</sub> exposure and the aforementioned higher vulnerability of non-Hispanic Black  
296 people in the U.S. Multiple studies consistently demonstrated that people of color are typically  
297 exposed to higher levels of air pollution than non-Hispanic White people in the U.S.,<sup>9-12</sup> which is  
298 a pervasive and persistent consequence of redlining, inequitable siting of emission sources (e.g.,  
299 highways and industrial facilities), and other policies and practices.<sup>40, 41</sup>

300 Benefited by the improvement of air quality in recent decades in the U.S., the overall  
301 PM<sub>2.5</sub>-attributable CVD mortality burden was greatly reduced. Among racial/ethnic groups, this  
302 burden decreased most among non-Hispanic Black people, thus narrowed the racial/ethnic  
303 disparity. However, this reduced disparity found in our study was mainly driven by the high

304 vulnerability of Black people, not by a more equal distribution of air pollution. If we assume the  
305 exposure-response function of non-Hispanic Black people is the same as the one of non-Hispanic  
306 White people, the decreasing trends of PM<sub>2.5</sub>-attributable CVD mortality burden in these two  
307 groups would become almost parallel (**Figure S3**). Similarly, relying on a uniform relative risk  
308 estimate for the whole population, a recent preprint reported a widened gap between the most  
309 and least White communities regarding PM<sub>2.5</sub>-attributable premature deaths from 2010 to 2019.<sup>42</sup>  
310 These different results indicate the importance of using race/ethnicity-specific exposure-response  
311 function when calculating the PM<sub>2.5</sub>-attributable mortality burden.<sup>22</sup>

312 Our results suggested an effect modification by urbanization level of residence, with  
313 stronger associations between PM<sub>2.5</sub> and CVD mortality rates in rural counties compared to  
314 urban counties. A similar pattern was found for the association between PM<sub>10</sub> and non-accidental  
315 mortality in Italy.<sup>43</sup> One possible explanation of this finding is the different mixture compositions  
316 of PM<sub>2.5</sub> in rural and urban counties,<sup>44</sup> which may have different effects on cardiovascular  
317 mortality.<sup>43, 45</sup>

318 This study revealed the possible public health burden of structural racism through  
319 ambient air pollution in the U.S. Our findings could help inform environmental agencies to be  
320 more aware of the effects of environmental racism as a social justice issue. In addition, there is a  
321 need to better design and inform policies that efficiently reduce environmental inequity and  
322 protect vulnerable population in the pursuit of improving overall air quality. In addition,  
323 strategies aiming to reduce chronic racial stressors and ensure equal access to healthcare,  
324 education, and other resources are also urgently needed to reduce the racial/ethnic inequities in  
325 health burden attributable to air pollution such as PM<sub>2.5</sub>.

326 To the best of our knowledge, this study is one of the first studies that examined the  
327 changes in racial/ethnic disparity in PM<sub>2.5</sub>-attributable cardiovascular mortality burden over time  
328 using race/ethnicity-specific exposure-response function. In addition, we applied IFE model, an  
329 innovative causal inference method that controls for both measured and unmeasured time-  
330 varying county-level confounders, to estimate the association between long-term PM<sub>2.5</sub> exposure  
331 and mortality from principal CVD types.

332 However, some limitations should be noted. First, this is a county-level ecological study,  
333 which is susceptible to ecological fallacy. We were also unable to take selective migration into  
334 account. Second, we did not specifically analyze for people of races/ethnicities other than non-  
335 Hispanic White people, non-Hispanic Black people and Hispanic people. Members of other races  
336 such as American Indians, Asians, and Pacific Islanders were not included in the race/ethnicity  
337 specific analyses due to lack of statistical power. Third, the potential measurement error in  
338 mortality data and misreport in race/ethnic categories may influence our results. Finally, we were  
339 unable to further explore the potential mechanism of the racial/ethnic disparity in PM<sub>2.5</sub>  
340 attributable burden, which can be examined in depth in future studies.

341

## 342 **Conclusions**

343 In conclusion, our study indicated that non-Hispanic Black people have the highest  
344 PM<sub>2.5</sub>-attributable CVD mortality burden among all racial/ethnic groups. Although the  
345 racial/ethnic disparity in this burden was narrowed in recent decades, the gap between people of  
346 color and non-Hispanic White people still exists. Policies and practices that aim to reduce both



347 exposure and vulnerability to PM<sub>2.5</sub> for racial/ethnic minorities, in addition to investigating the  
348 effects of structural racism on health, is needed.

349

350 **Acknowledgements**

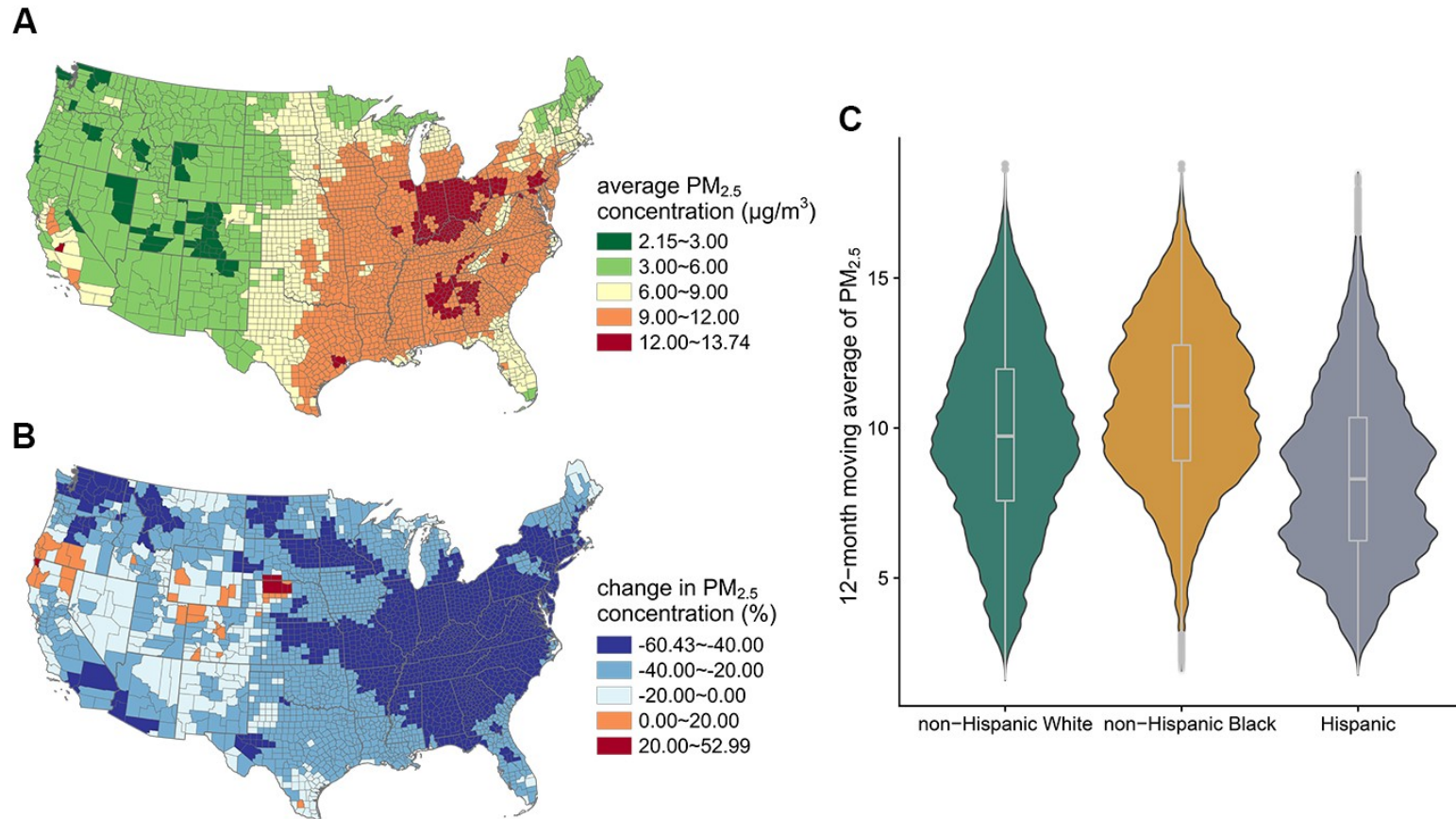
351 Dr. Zang received support from the National Institute on Aging (R21AG074238-01), the  
352 National Institute on Minority Health and Health Disparities (1R01MD017298-01), the Research  
353 Education Core of the Claude D. Pepper Older Americans Independence Center at Yale School  
354 of Medicine (P30AG021342), and the Institution for Social and Policy Studies at Yale  
355 University. Dr. Opara received support from the National Institutes on Health Director’s Early  
356 Independence Award (DP5OD029636; PI: Ijeoma Opara).

357 **Author Contributions**

358 Y.M. conducted formal analyses and drafted the manuscript. K.C. conceived of and  
359 supervised the conduct of this study and edited the manuscript. E.Z. applied and managed the  
360 mortality dataset, supervised the statistical analysis, and revised the manuscript. I.O contributed  
361 to the writing and manuscript revision. Y.L. and H.K. contributed to the interpretation of results  
362 and manuscript revision. All authors reviewed and approved the final version of this manuscript.

363 **Conflict of interests**

364 The authors declare no conflict of interests.



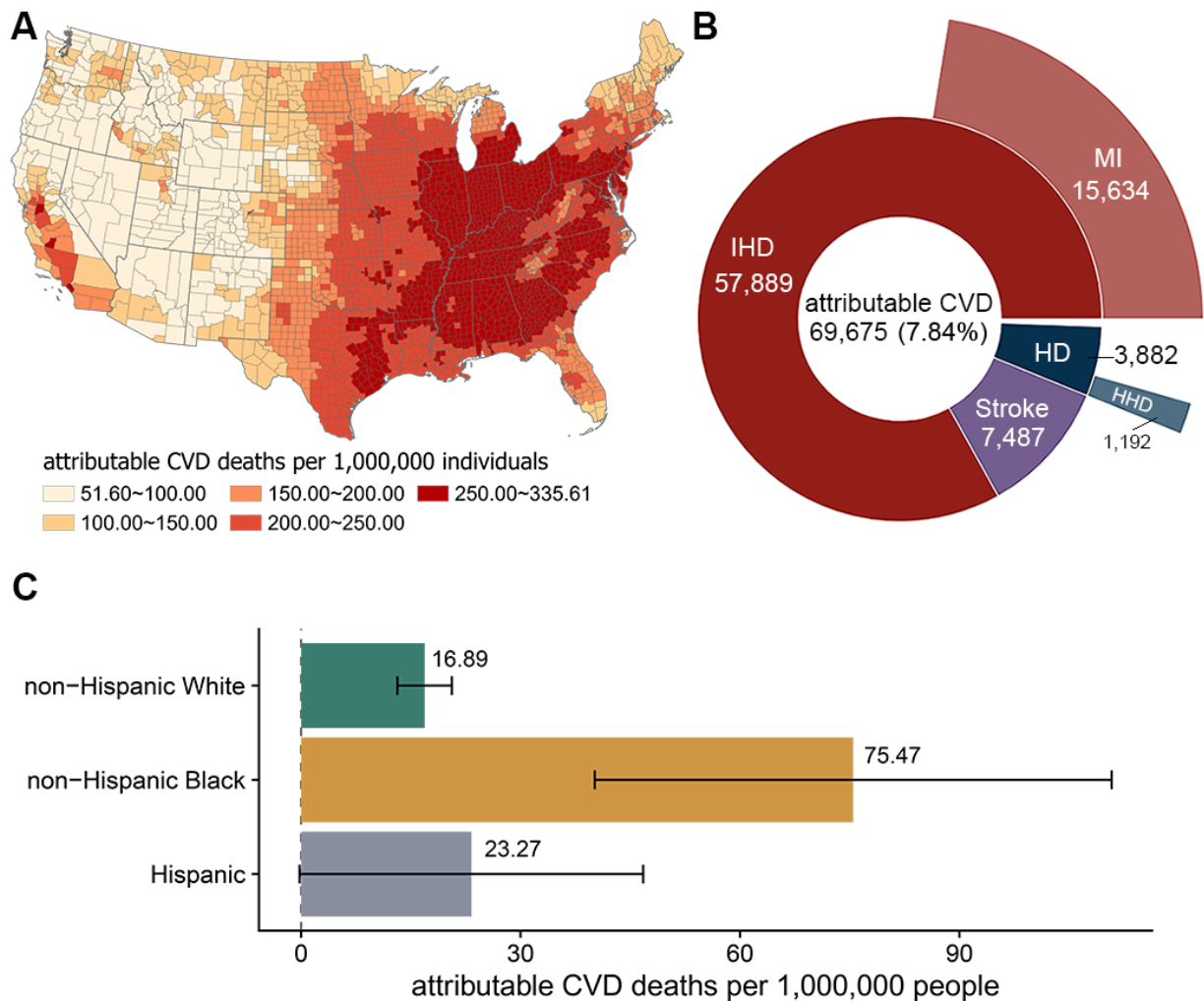
365

366 **Figure 1. Distribution of PM<sub>2.5</sub> concentration in all counties in the contiguous United States**

367 **A.** Average monthly PM<sub>2.5</sub> concentration from 2000 to 2016 in each county (µg/m<sup>3</sup>); **B.** Percent change in annual mean PM<sub>2.5</sub>

368 concentration from 2000 to 2016 (%); **C.** The distribution of long-term PM<sub>2.5</sub> exposure (12-month moving average of PM<sub>2.5</sub>

369 concentration, µg/m<sup>3</sup>) among people of different racial/ethnic groups who died from cardiovascular diseases from 2001 to 2016



370

371 **Figure 2. Average annual cardiovascular deaths attributable to PM<sub>2.5</sub> (2001–2016)**

372 **A.** Average annual PM<sub>2.5</sub>-attributable cardiovascular deaths per 1,000,000 individuals from 2001

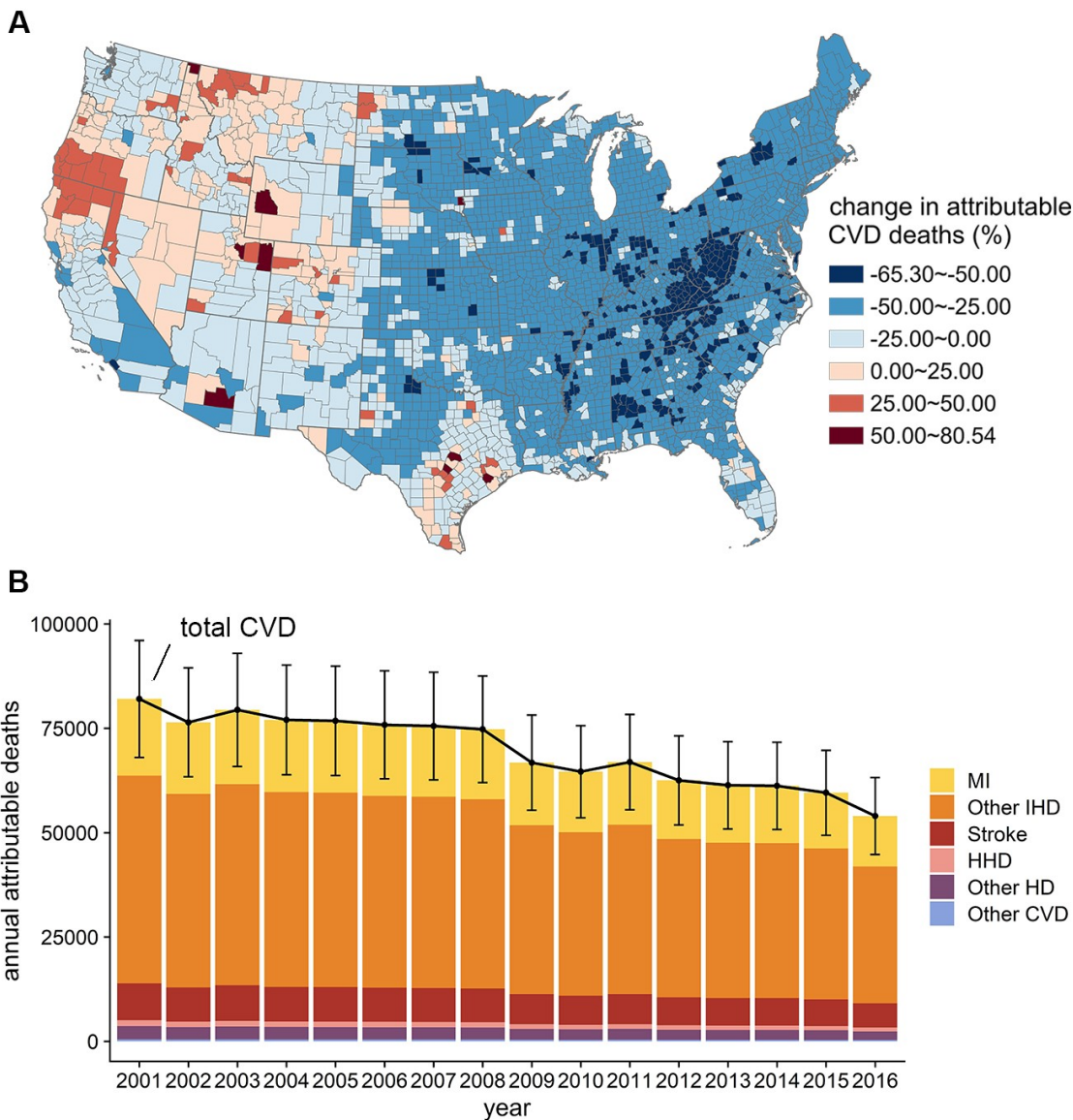
373 to 2016 in each county; **B.** Average annual PM<sub>2.5</sub>-attributable deaths from cardiovascular disease

374 (CVD), ischemic heart disease (IHD), myocardial infarction (MI), stroke, hypertensive disease

375 (HD), and hypertensive heart disease (HHD) from 2001 to 2016; **C.** Average annual PM<sub>2.5</sub>-

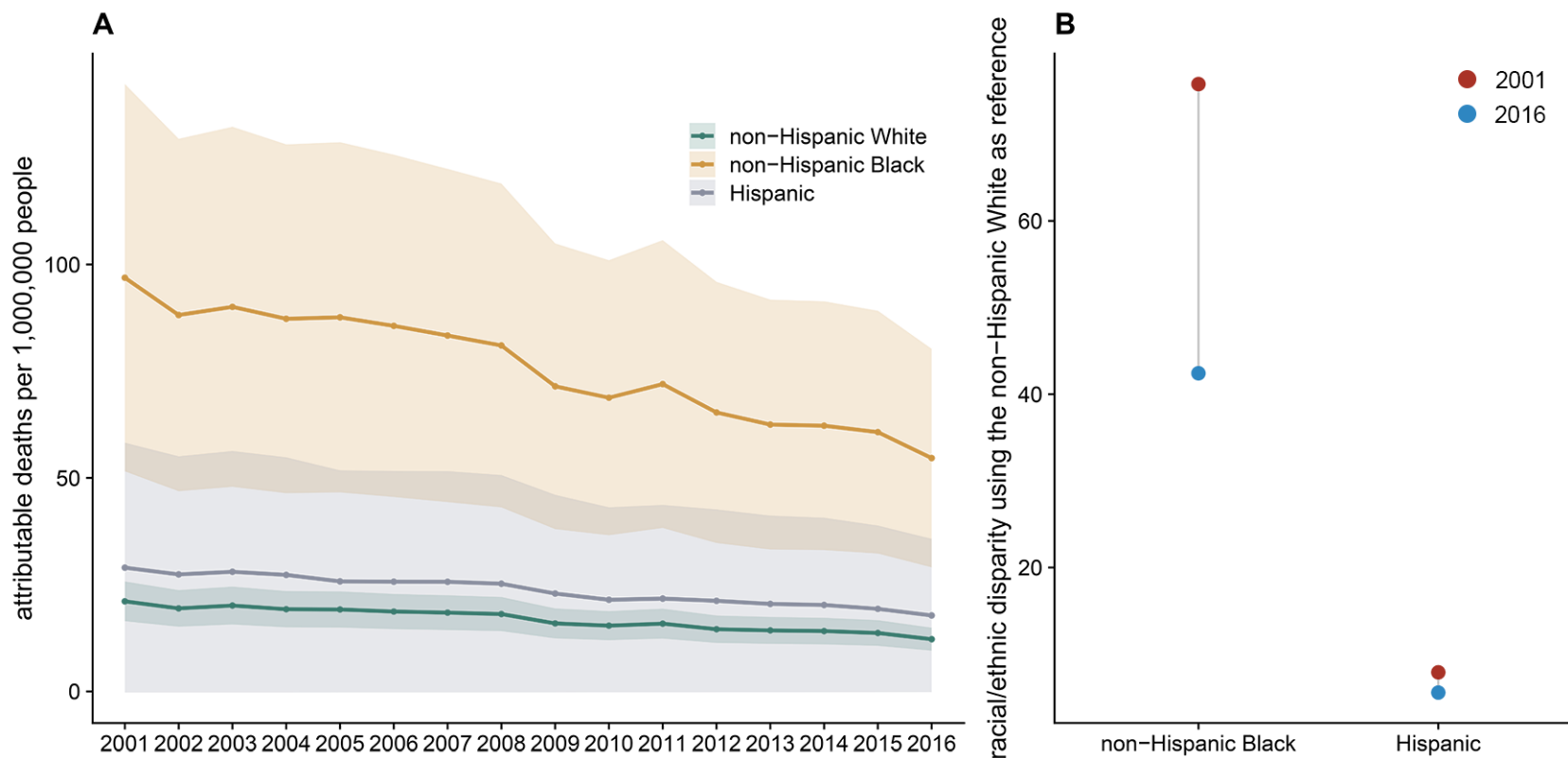
376 attributable cardiovascular deaths per 1,000,000 individuals from 2001 to 2016 in each

377 racial/ethnic group.



378  
379 **Figure 3. Changes in annual cardiovascular deaths attributable to PM<sub>2.5</sub> by county and by**  
380 **specific cause from 2001 to 2016**

381 **A.** Percent change in annual PM<sub>2.5</sub>-attributable cardiovascular deaths from 2001 to 2016 in each  
382 county; **B.** Annual PM<sub>2.5</sub>-attributable deaths from cardiovascular disease (CVD), including  
383 myocardial infarction (MI) and other ischemic heart disease (IHD), stroke, hypertensive heart  
384 disease (HHD) and other hypertensive disease (HD), and other CVD, from 2001 to 2016.



385

386 **Figure 4. Racial/ethnic disparity in annual cardiovascular mortality rates attributable to PM<sub>2.5</sub> from 2001 to 2016**

387 **A.** Annual PM<sub>2.5</sub>-attributable cardiovascular disease (CVD) deaths per 1,000,000 people by race/ethnicity from 2001 to 2016; **B.**

388 Racial/ethnic disparity in PM<sub>2.5</sub>-attributable CVD deaths per 1,000,000 people, using non-Hispanic White people as the reference

389 group.

390

**Table 1. Monthly descriptive statistics for all 3,103 contiguous U.S. counties from 2001 to 2016\***

	Mean (SD <sup>†</sup> )	Min	Median (IQR <sup>‡</sup> )	Max
<i>Environmental factors</i>				
12-month moving average of PM <sub>2.5</sub> (µg/m <sup>3</sup> )	9.12 (3.13)	1.54	9.23 (4.33)	18.79
Air temperature (°C)	12.70 (9.90)	-20.58	13.57 (15.61)	35.41
<i>Age-adjusted mortality rate (per 1,000,000 individuals)</i>				
Cardiovascular disease	232.67 (140.97)	0.00	217.52 (140.42)	15,508.56
Ischemic heart disease	111.37 (97.71)	0.00	97.88 (95.61)	15,508.56
Myocardial infarction	47.70 (65.91)	0.00	30.91 (66.48)	4,169.58
Stroke	40.01 (53.16)	0.00	30.48 (56.68)	3,877.14
Hypertensive disease	14.32 (31.09)	0.00	0.00 (18.90)	2,584.76
Hypertensive heart disease	6.89 (21.80)	0.00	0.00 (3.98)	2,584.76
<i>Age-adjusted CVD<sup>§</sup> mortality rate by race/ethnicity (per 1,000,000 individuals)</i>				
Non-Hispanic White	230.19 (158.33)	0.00	213.54 (144.14)	15,508.56
Non-Hispanic Black	294.75 (425.72)	0.00	234.17 (407.62)	44,840.80
Hispanic	134.11 (399.58)	0.00	0.00 (141.02)	22,011.77
<i>Age-adjusted CVD mortality rate by sex (per 1,000,000 individuals)</i>				
Male	278.43 (230.46)	0.00	250.13 (213.63)	15,508.56
Female	195.85 (166.79)	0.00	175.77 (151.65)	15,508.56

\*Some neighboring counties were combined due to historical boundary changes

<sup>†</sup>SD: standard deviation

<sup>‡</sup>IQR: interquartile range

<sup>§</sup>CVD: cardiovascular disease

391

392

393

**Table 2. Deaths per 1,000,000 individuals associated with 1- $\mu\text{g}/\text{m}^3$  increase in 12-month moving average of  $\text{PM}_{2.5}$  per month by race/ethnicity**

Cause of death	Race/ethnicity	Estimate (95% CI)*	P value†
Cardiovascular disease	Whole population	2.01 (1.67, 2.35)	-
	Non-Hispanic White	1.76 (1.37, 2.15)	reference
	Non-Hispanic Black	7.16 (3.81, 10.51)	0.002
	Hispanic	2.66 (-0.03, 5.35)	0.516
Ischemic heart disease	Whole population	1.67 (1.43, 1.91)	-
	Non-Hispanic White	1.64 (1.37, 1.91)	reference
	Non-Hispanic Black	4.09 (1.80, 6.38)	0.038
	Hispanic	1.52 (-0.21, 3.25)	0.893
Myocardial infarction	Whole population	0.45 (0.29, 0.61)	-
	Non-Hispanic White	0.45 (0.26, 0.63)	reference
	Non-Hispanic Black	1.97 (0.68, 3.26)	0.022
	Hispanic	0.45 (-0.58, 1.48)	0.999
Stroke	Whole population	0.22 (0.08, 0.36)	-
	Non-Hispanic White	0.11 (-0.04, 0.26)	reference
	Non-Hispanic Black	1.76 (0.67, 2.85)	0.003
	Hispanic	0.05 (-1.01, 1.11)	0.916
Hypertensive disease	Whole population	0.11 (0.03, 0.19)	-
	Non-Hispanic White	0.05 (-0.04, 0.14)	reference
	Non-Hispanic Black	0.65 (-0.01, 1.31)	0.072
	Hispanic	0.15 (-0.31, 0.61)	0.668
Hypertensive heart disease	Whole population	0.03 (-0.02, 0.09)	-
	Non-Hispanic White	0.03 (-0.03, 0.09)	reference
	Non-Hispanic Black	0.04 (-0.33, 0.41)	0.944
	Hispanic	-0.15 (-0.41, 0.11)	0.200

\*CI: confidence interval

†We tested the statistical differences in effect estimates between non-Hispanic Black and non-Hispanic White people and between Hispanic and non-Hispanic White people, based on the z score calculated using the coefficients and standard errors for different groups.



395 **References**

- 396 1. Vos T, Lim SS, Abbafati C, Abbas KM, Abbasi M, Abbasifard M, Abbasi-Kangevari M,  
397 Abastabar H, Abd-Allah F and Abdelalim A. Global burden of 369 diseases and injuries in 204  
398 countries and territories, 1990–2019: a systematic analysis for the Global Burden of Disease  
399 Study 2019. *Lancet*. 2020;396:1204-1222.
- 400 2. Brunekreef B, Strak M, Chen J, Andersen ZJ, Atkinson R, Bauwelinck M and al. e.  
401 Mortality and Morbidity Effects of Long-Term Exposure to Low-Level PM<sub>2.5</sub>, BC, NO<sub>2</sub>, and  
402 O<sub>3</sub>: An Analysis of European Cohorts in the ELAPSE Project. *HEI Report Series*. 2021.
- 403 3. Crouse DL, Peters PA, van Donkelaar A, Goldberg MS, Villeneuve PJ, Brion O, Khan S,  
404 Atari DO, Jerrett M and Pope III CA. Risk of nonaccidental and cardiovascular mortality in  
405 relation to long-term exposure to low concentrations of fine particulate matter: a Canadian  
406 national-level cohort study. *Environ Health Perspect*. 2012;120:708-714.
- 407 4. Brauer M, Brook JR, Christidis T, Chu Y, Crouse DL, Erickson A, Hystad P, Li C,  
408 Martin RV, Meng J, Pappin AJ, Pinault LL, Brauer M, Donkelaar Av, Weagle C, Weichenthal S  
409 and Burnett RT. Mortality–Air Pollution Associations in Low-Exposure Environments  
410 (MAPLE): Phase 2. *HEI Report Series*. 2022.
- 411 5. Dominici F, Zanobetti A, Schwartz J, Braun D, Sabath B and Wu X. Assessing Adverse  
412 Health Effects of Long-Term Exposure to Low Levels of Ambient Air Pollution: Implementation  
413 of Causal Inference Methods. *HEI Report Series*. 2022.
- 414 6. Di Q, Amini H, Shi L, Kloog I, Silvern R, Kelly J, Sabath MB, Choirat C, Koutrakis P,  
415 Lyapustin A, Wang Y, Mickley LJ and Schwartz J. An Ensemble-based Model of PM<sub>2.5</sub>  
416 Concentration Across the Contiguous United States with High Spatiotemporal Resolution.  
417 *Environ Int*. 2019;130:104909.

- 418 7. Hubbell BJ, Crume RV, Evarts DM and Cohen JM. Policy monitor: regulation and  
419 progress under the 1990 Clean Air Act amendments. *Rev Environ Econ Policy*. 2010;4:122-138.
- 420 8. Fann N, Coffman E, Timin B and Kelly JT. The estimated change in the level and  
421 distribution of PM2.5-attributable health impacts in the United States: 2005–2014. *Environ Res*.  
422 2018;167:506-514.
- 423 9. Liu J, Clark LP, Bechle MJ, Hajat A, Kim S-Y, Robinson AL, Sheppard L, Szpiro AA  
424 and Marshall JD. Disparities in air pollution exposure in the United States by race/ethnicity and  
425 income, 1990–2010. *Environ Health Perspect*. 2021;129:127005.
- 426 10. Tessum CW, Paoletta DA, Chambliss SE, Apte JS, Hill JD and Marshall JD. PM2.5  
427 pollutants disproportionately and systemically affect people of color in the United States. *Sci Adv*.  
428 2021;7:eabf4491.
- 429 11. Jbaily A, Zhou X, Liu J, Lee T-H, Kamareddine L, Verguet S and Dominici F. Air  
430 pollution exposure disparities across US population and income groups. *Nature*. 2022;601:228-  
431 233.
- 432 12. Hajat A, Hsia C and O’Neill MS. Socioeconomic disparities and air pollution exposure: a  
433 global review. *Curr Environ Health Rep*. 2015;2:440-450.
- 434 13. Colmer J, Hardman I, Shimshack J and Voorheis J. Disparities in PM2.5 air pollution in  
435 the United States. *Science*. 2020;369:575-578.
- 436 14. Kravitz-Wirtz N, Crowder K, Hajat A and Sass V. The long-term dynamics of  
437 racial/ethnic inequality in neighborhood air pollution exposure, 1990-2009. *Du Bois Rev*.  
438 2016;13:237-259.
- 439 15. Wright WJ. As above, so below: Anti-Black violence as environmental racism. *Antipode*.  
440 2021;53:791-809.

- 441 16. Woo B, Kravitz-Wirtz N, Sass V, Crowder K, Teixeira S and Takeuchi DT. Residential  
442 segregation and racial/ethnic disparities in ambient air pollution. *Race Soc Probl.* 2019;11:60-67.
- 443 17. Mascarenhas M, Grattet R and Mege K. Toxic waste and race in twenty-first century  
444 america: neighborhood poverty and racial composition in the siting of hazardous waste facilities.  
445 *Environment and Society.* 2021;12:108-126.
- 446 18. Rigolon A, Yañez E, Aboelata MJ and Bennett R. “A park is not just a park”: Toward  
447 counter-narratives to advance equitable green space policy in the United States. *Cities.*  
448 2022;128:103792.
- 449 19. Rigolon A, Browning MH, McAnirlin O and Yoon H. Green space and health equity: a  
450 systematic review on the potential of green space to reduce health disparities. *Int J Environ Res*  
451 *Public Health.* 2021;18:2563.
- 452 20. McLeod MN, Heller D, Manze MG and Echeverria SE. Police interactions and the  
453 mental health of Black Americans: A systematic review. *J Racial Ethn Health Disparities.*  
454 2020;7:10-27.
- 455 21. Zang E and Kim N. Intergenerational upward mobility and racial differences in mortality  
456 among young adults: Evidence from county-level analyses. *Health Place.* 2021;70:102628.
- 457 22. Spiller E, Proville J, Roy A and Muller NZ. Mortality risk from PM2.5: a comparison of  
458 modeling approaches to identify disparities across racial/ethnic groups in policy outcomes.  
459 *Environ Health Perspect.* 2021;129:127004.
- 460 23. United States Census Bureau. Cartographic Boundary Files. 2019.
- 461 24. The SEER Program. U.S. County Population Data - 1969-2020. 2022.
- 462 25. Management Oo and Budget. Revisions to the standards for the classification of federal  
463 data on race and ethnicity. *Federal Register.* 1997;62:58782-58790.

- 464 26. Di Q, Wei Y, Shtein A, Hultquist C, Xing X, Amini H, Shi L, Kloog I, Silvern R, Kelly  
465 JT, Sabath MB, Choirat C, Koutrakis P, Lyapustin A, Wang Y and Mickley LJ. Daily and  
466 Annual PM2.5 Concentrations for the Contiguous United States, 1-km Grids, v1 (2000 - 2016).  
467 2021.
- 468 27. Di Q, Wang Y, Zanobetti A, Wang Y, Koutrakis P, Choirat C, Dominici F and Schwartz  
469 JD. Air pollution and mortality in the Medicare population. *N Engl J Med*. 2017;376:2513-2522.
- 470 28. Wei Y, Wang Y, Wu X, Di Q, Shi L, Koutrakis P, Zanobetti A, Dominici F and Schwartz  
471 JD. Causal effects of air pollution on mortality rate in Massachusetts. *Am J Epidemiol*.  
472 2020;189:1316-1323.
- 473 29. Di Q, Amini H, Shi L, Kloog I, Silvern R, Kelly JT, Sabath MB, Choirat C, Koutrakis P,  
474 Lyapustin A, Wang Y, Mickley LJ and Schwartz J. Assessing NO2 concentration and model  
475 uncertainty with high spatiotemporal resolution across the contiguous United States. *Environ Sci*  
476 *Technol*. 2019;54:1372-1384.
- 477 30. Di Q, Wei Y, Shtein A, Hultquist C, Xing X, Amini H, Shi L, Kloog I, Silvern R, Kelly  
478 JT, Sabath MB, Choirat C, Koutrakis P, Lyapustin A, Wang Y and Schwartz J. Daily and Annual  
479 NO2 Concentrations for the Contiguous United States, 1-km Grids, v1 (2000 - 2016). 2022.
- 480 31. Requia WJ, Di Q, Silvern R, Kelly JT, Koutrakis P, Mickley LJ, Sulprizio MP, Amini H,  
481 Shi L and Schwartz J. An Ensemble Learning Approach for Estimating High Spatiotemporal  
482 Resolution of Ground-level Ozone in the Contiguous U.S. *Environ Sci Technol*. 2020;54:11037-  
483 11047.
- 484 32. Requia WJ, Wei Y, Shtein A, Hultquist C, Xing X, Di Q, Silvern R, Kelly JT, Koutrakis  
485 P, Mickley LJ, Sulprizio MP, Amini H, Shi L and Schwartz J. Daily 8-Hour Maximum and

- 486 Annual O3 Concentrations for the Contiguous United States, 1-km Grids, v1 (2000 - 2016).  
487 2021.
- 488 33. PRISM Climate Group. PRISM Climate Data Recent Years (Jan 1981 - Jan 2022). 2016.
- 489 34. Bai J. Panel data models with interactive fixed effects. *Econometrica*. 2009;77:1229-  
490 1279.
- 491 35. Goodman-Bacon A. Difference-in-differences with variation in treatment timing. *J*  
492 *Econom*. 2021;225:254-277.
- 493 36. Liu L, Wang Y and Xu Y. A practical guide to counterfactual estimators for causal  
494 inference with time-series cross-sectional data. *Am J Pol Sci*. 2022.
- 495 37. Xu Y. Generalized synthetic control method: causal inference with interactive fixed  
496 effects models. *Polit Anal*. 2017;25:57-76.
- 497 38. National Center for Health Statistics. NCHS Urban-Rural Classification Scheme for  
498 Counties. 2017.
- 499 39. Chen K, Dubrow R, Breitner S, Wolf K, Linseisen J, Schmitz T, Heier M, von Scheidt  
500 W, Kuch B, Meisinger C, Peters A, Schwettmann L, Leidl R, Linkohr B, Grallert H, Gieger C,  
501 Schneider A and Group KS. Triggering of myocardial infarction by heat exposure is modified by  
502 medication intake. *Nat Cardiovasc Res*. 2022;1:727-731.
- 503 40. Van Horne YO, Alcalá CS, Peltier RE, Quintana PJE, Seto E, Gonzales M, Johnston JE,  
504 Montoya LD, Quirós-Alcalá L and Beamer PI. An applied environmental justice framework for  
505 exposure science. *J Expo Sci Environ Epidemiol*. 2022.
- 506 41. Seltenrich N. The one-two-three punch: exposure, susceptibility, and disease burden  
507 among U.S. populations of color. *Environ Health Perspect*. 2022;130:034001.

- 508 42. Kerr GH, Martin RV, Donkelaar AV, Brauer M, Bukart K, Wozniak S, Goldberg DL and  
509 Anenberg SC. Increasing disparities in air pollution health burdens in the United States. *Earth  
510 and Space Science Open Archive*. 2022:35.
- 511 43. Renzi M, Forastiere F, Schwartz J, Davoli M, Michelozzi P and Stafoggia M. Long-term  
512 PM10 exposure and cause-specific mortality in the Latium Region (Italy): a difference-in-  
513 differences approach. *Environ Health Perspect*. 2019;127:067004.
- 514 44. Götschi T, Hazenkamp-von Arx ME, Heinrich J, Bono R, Burney P, Forsberg B, Jarvis  
515 D, Maldonado J, Norbäck D and Stern WB. Elemental composition and reflectance of ambient  
516 fine particles at 21 European locations. *Atmos Environ*. 2005;39:5947-5958.
- 517 45. Atkinson RW, Mills IC, Walton HA and Anderson HR. Fine particle components and  
518 health—a systematic review and meta-analysis of epidemiological time series studies of daily  
519 mortality and hospital admissions. *J Expo Sci Environ Epidemiol*. 2015;25:208-214.
- 520