

## 1 Evaluation of QuantiFERON SARS-CoV-2 interferon- $\gamma$ release assay following SARS-CoV-2 2 infection and vaccination

3  
4 Síle A Johnson<sup>1,2,3</sup>, Eloise Phillips<sup>1</sup>, Sandra Adele<sup>1,4,5</sup>, Stephanie Longet<sup>6,7</sup>, Tom Malone<sup>1</sup>, Chris  
5 Mason<sup>2</sup>, Lizzie Stafford<sup>8,9</sup>, Anni Jamsen<sup>8,9</sup>, Siobhan Gardiner<sup>8,9</sup>, Alexandra Deeks<sup>1,9</sup>, Janice  
6 Neo<sup>3</sup>, Emily J Blurton<sup>3</sup>, Jemima White<sup>2</sup>, Muhammed Ali<sup>1,4,5</sup>, Barbara Kronsteiner-  
7 Dobramysl<sup>1,4</sup>, Dónal T Skelly<sup>1,8,10</sup>, Katie Jeffery<sup>8,11</sup>, Christopher P Conlon<sup>4,8</sup>, Philip Goulder<sup>12</sup>,  
8 PITCH Consortium, Miles Carroll<sup>6,7</sup>, Eleanor Barnes<sup>1,8,13,14</sup>, Paul Klenerman<sup>1,8,13,14</sup>, Susanna J  
9 Dunachie<sup>1,4,5,8,\*</sup>

### 10 11 Affiliations

12  
13 <sup>1</sup>Peter Medawar Building for Pathogen Research, Nuffield Department of Clinical Medicine,  
14 University of Oxford, Oxford, UK

15 <sup>2</sup>University of Oxford Medical School, University of Oxford, Oxford, UK

16 <sup>3</sup>University Hospital of Derby and Burton, UK

17 <sup>4</sup>Oxford Centre For Global Health Research, Nuffield Department of Clinical Medicine,  
18 University of Oxford, Oxford, UK

19 <sup>5</sup>Mahidol-Oxford Tropical Medicine Research Unit, Mahidol University, Bangkok, Thailand

20 <sup>6</sup>Wellcome Centre for Human Genetics, Nuffield Department of Medicine, University of  
21 Oxford, Oxford, UK

22 <sup>7</sup>Pandemic Sciences Institute, Nuffield Department of Medicine, University of Oxford, UK

23 <sup>8</sup>Oxford University Hospitals NHS Foundation Trust, Oxford, UK

24 <sup>9</sup>Department of Experimental Medicine, Nuffield Department of Clinical Medicine,  
25 University of Oxford, Oxford, UK

26 <sup>10</sup>Nuffield Department of Clinical Neurosciences, University of Oxford, Oxford, UK

27 <sup>11</sup>Radcliffe Department of Medicine, University of Oxford, Oxford, UK

28 <sup>12</sup>Peter Medawar Building for Pathogen Research, Department of Paediatrics, University of  
29 Oxford, Oxford, UK

30 <sup>13</sup>NIHR Oxford Biomedical Research Centre, University of Oxford, Oxford, UK

31 <sup>14</sup>Translational Gastroenterology Unit, University of Oxford, Oxford, UK

32 \*Correspondence: [susie.dunachie@ndm.ox.ac.uk](mailto:susie.dunachie@ndm.ox.ac.uk)

### 33 34 35 Key words

36  
37 QuantiFERON, SARS-CoV-2, T cells, ELISpot, COVID-19

38  
39  
40  
41  
42  
43  
44  
45  
46  
47  
48  
NOTE: This preprint reports new research that has not been certified by peer review and should not be used to guide clinical practice.

49

## 50 Abstract

51

52 **Background:** T cells are important in preventing severe disease from SARS-CoV-2, but  
53 scalable and field-adaptable alternatives to expert T cell assays are needed. The interferon-  
54 gamma release assay QuantiFERON platform was developed to detect T cell responses to  
55 SARS-CoV-2 from whole blood with relatively basic equipment and flexibility of processing  
56 timelines.

57 **Methods:** 48 participants with different infection and vaccination backgrounds were  
58 recruited. Whole blood samples were analysed using the QuantiFERON SARS-CoV-2 assay in  
59 parallel with the well-established 'Protective Immunity from T Cells in Healthcare workers'  
60 (PITCH) ELISpot, which can evaluate spike-specific T cell responses.

61 **Aims:** The primary aims of this cross-sectional observational cohort study were to establish  
62 if the QuantiFERON SARS-CoV-2 assay could discern differences between specified groups  
63 and to assess the sensitivity of the assay compared to the PITCH ELISpot.

64 **Findings:** The QuantiFERON SARS-CoV-2 distinguished acutely infected individuals (12-21  
65 days post positive PCR) from naïve individuals ( $p < 0.0001$ ) with 100% sensitivity and  
66 specificity for SARS-CoV-2 T cells, whilst the PITCH ELISpot had reduced sensitivity (62.5%)  
67 for the acute infection group. Sensitivity with QuantiFERON for previous infection was  
68 12.5% (172-444 days post positive test) and was inferior to the PITCH ELISpot (75%).  
69 Although the QuantiFERON assay could discern differences between unvaccinated and  
70 vaccinated individuals (55-166 days since second vaccination), the latter also had reduced  
71 sensitivity (55.5%) compared to the PITCH ELISpot (66.6%).

72 **Conclusion:** The QuantiFERON SARS-CoV-2 assay showed potential as a T cell evaluation tool  
73 soon after SARS-CoV-2 infection but has lower sensitivity for use in reliable evaluation of  
74 vaccination or more distant infection.

75

## 76 Introduction

77 COVID-19 is a respiratory infection caused by SARS-CoV-2 with a recorded global burden of  
78 more than 500 million confirmed cases and over 6 million deaths (1). We and others have  
79 sought to characterise the immunological response to SARS-CoV-2 both following natural  
80 infection and vaccination (2–11). T cells are an important component of the immune  
81 response to SARS-CoV-2 infection and vaccination, persisting for several months post  
82 infection (4,8–10,12–16). T cells have also been extensively studied following vaccination  
83 alone (4,5,17–20) as well as in participants with combined past SARS-CoV-2 infection (5,17).  
84 Multiple assay platforms, including the *ex vivo* interferon-gamma enzyme-linked absorbent  
85 spot (IFN- $\gamma$  ELISpot), Activation Induced Cell Marker (AIM), intracellular staining (ICS), T Cell  
86 proliferation assays and whole blood IFN- $\gamma$  ELISA assays can be employed to evaluate T cell  
87 responses. Although these assays provide characterisation of T cell function, they can be  
88 time-consuming and require extensive laboratory reagents, equipment as well as expertise  
89 within hours of blood draw for reliable results.

90

91 The QuantiFERON SARS-CoV-2 assay is based on the well-characterised QuantiFERON TB  
92 interferon-gamma release assay (IGRA) (21). The basis for this platform is a whole blood cell-  
93 stimulation assay with plasma harvest for IFN- $\gamma$  ELISA evaluation. The advantage of this  
94 platform is the workflow is straight forward to follow with tolerance for pause between  
95 steps which could accommodate various levels of expertise and diverse clinical/research

96 settings including in low- and middle-income countries. A handful of studies have utilised  
97 the QuantiFERON SARS-CoV-2 assay (21–29). A small internal feasibility study carried out by  
98 Qiagen found quantifiable responses to vaccination over the course of four weeks after  
99 second vaccination (21). When analysing T cell responses after SARS-CoV-2 infection, the  
100 study showed detectable responses in three out of four participants with the assay.  
101 However, an important limitation of this small study was the lack of reference to a well-  
102 established cell-based assay to evaluate the potential of the QuantiFERON SARS-CoV-2 assay  
103 to accurately assess T cell responses.

104  
105 Therefore, the present study sought to evaluate T cell responses using the QuantiFERON  
106 SARS-CoV-2 assay with parallel analysis using the well-established PITCH ELISpot (4–6,17,30)  
107 following SARS-CoV-2 infection and vaccination. The study also explored the sensitivity and  
108 specificity of the QuantiFERON SARS-CoV-2 assay in detecting SARS-CoV-2-specific T cell  
109 responses. Herein we present data to demonstrate a potential role for QuantiFERON SARS-  
110 CoV-2 as a reliable T cell evaluation tool soon after SARS-CoV-2 infection, but with low  
111 sensitivity compared to the conventional ELISpot assay for studying T cells following  
112 vaccination.

## 113 114 **Materials and Methods**

### 115 ***Study design and participant recruitment***

116 Participants were sampled in the community or OPTIC (Oxford Protective T cell Immunity  
117 against COVID-19) study clinic in Oxford, UK once each between 9<sup>th</sup> and 18<sup>th</sup> June 2021.  
118 48 participants were invited to participate by word of mouth and email communication of  
119 local healthcare workers, research scientists and students and informed consent was  
120 obtained under one of two studies: The GI Biobank Study 16/YH/0247, approved by the  
121 research ethics committee (REC) at Yorkshire & The Humber - Sheffield Research Ethics  
122 Committee on 29 July 2016, which had been amended for this purpose on 8 June 2020 or  
123 the Family Study R71346/RE001, approved by Oxford University's Medical Sciences Inter-  
124 Divisional REC (MS-IDREC-R71346/RE00). Our target was 10 participants per group as a  
125 feasible number allowing meaningful statistical comparison, although no formal power  
126 calculation was performed.

127  
128 Participants were sampled in the community or at the OPTIC (Oxford Protective T cell  
129 Immunity against COVID-19) study clinic in Oxford, UK once each during the month of June  
130 2021. Following blood draw, samples for the QuantiFERON SARS-CoV-2 assay were kept at  
131 4-8°C degrees for up to 48 hours before processing. The rest of the sample was used for  
132 isolation of peripheral blood mononuclear cells (PBMC) that were cryopreserved on the  
133 sample day and frozen for future use in the PITCH ELISpot assay. Participants were  
134 designated as naïve or previously infected for SARS-CoV-2 based on a positive PCR and/or  
135 serology at any time. Acute SARS-CoV-2 infection group was classified as blood sampling 12-  
136 21 days since a positive PCR test. For vaccination status, participants were designated as  
137 unvaccinated or vaccinated according to self-reported status. Serological status was  
138 determined using the Mesoscale Discovery (MSD) assay as described below, with a positive  
139 result for anti-S and/or anti-N supporting previous infection in an unvaccinated participant,  
140 and a positive result for anti-N supporting previous infection in a vaccinated participant  
141 (**Supplementary Figure 1**) meriting their exclusion from analysis.

142

143 ***QuantiFERON SARS-CoV-2 assay***

144 SARS-CoV-2-specific T cells were analysed using the QuantiFERON SARS-CoV-2 Research Use  
145 Only platform. The QuantiFERON SARS-CoV-2 Starter Pack (Qiagen, cat. no. 626115),  
146 Extended Pack (Qiagen, cat. no. 626215) and Control Set (Qiagen, cat. no. 626015) were  
147 employed, consisting of assay tubes coated with one of three sets of selected SARS-CoV-2 T  
148 cell antigens: Ag1 - CD4<sup>+</sup> T cell epitopes from the S1 subunit (receptor binding domain) of  
149 the SARS-CoV-2 spike protein, Ag2 - CD4<sup>+</sup> and CD8<sup>+</sup> epitopes from the S1 and S2 subunits of  
150 the SARS-CoV-2 spike protein and Ag3 (Extended Pack) - CD4<sup>+</sup> and CD8<sup>+</sup> epitopes from S1  
151 and S2, as in Ag2, but also immunodominant CD8<sup>+</sup> epitopes of the whole proteome. The  
152 Control pack contains a 'Nil tube' which serves as the negative control and a 'Mitogen tube'  
153 which serves as a positive control.

154  
155 The QuantiFERON SARS-CoV-2 kits were used in accordance with the manufacturer's  
156 instructions. Whole blood samples, 0.8-1.2 ml, were collected directly into the assay  
157 collection tubes or into lithium heparin blood tubes for later transfer to the assay tubes.  
158 Assay tubes containing the whole blood were shaken and incubated for 16-24 hours at 37°C  
159 before centrifugation at 2,500 g for 15 minutes. Plasma was harvested from the top layer of  
160 the tube by gentle pipetting before being subjected to IFN- $\gamma$  ELISA (Qiagen, cat. no. 626410).  
161 Following ELISA, quantitative results (IFN- $\gamma$  concentration in IU/ml) were generated by  
162 subtracting the 'Nil' values from samples and interpolating values using an 8-parameter  
163 logistic model standard curve. In the absence of instruction from the manufacturer, the  
164 threshold to designate responses as positive was selected to be values greater than the  
165 mean of the Nil controls + 2 standard deviations, in keeping with a frequently used  
166 threshold for ELISpot assays (4,31). A total of 6-7 ml whole blood per participant time point  
167 was required for the three antigen tubes and controls. Samples were randomised for  
168 processing with the technician blinded to study group status to mitigate performance and  
169 verification bias.

170

171 ***Isolation of peripheral blood mononuclear cells (PBMC), plasma and serum***

172 PBMCs and plasma were isolated by density gradient centrifugation from 10 ml blood  
173 collected in EDTA tubes, and serum was collected in a serum-separating tube (SST, Becton  
174 Dickinson) as previously described (4). Briefly, PBMCs were isolated by density gradient  
175 centrifugation using Lymphoprep<sup>TM</sup> ( $\rho=1.077$  g/ml, Stem Cell Technologies), washed twice  
176 with R0 (RPMI 1640 (Sigma, St. Louis, MO, USA) containing 10 mM Pen/Strep (100 U/mL)  
177 and 2 mM L-glutamine (100  $\mu$ g/mL) (Sigma)) and resuspended in R10 (R0 supplemented  
178 with 10% FBS) or AutoMACs Rinse Buffer and counted using the Guava<sup>®</sup> ViaCount<sup>TM</sup> assay  
179 on the Muse Cell Analyzer (Luminex Cooperation). PBMCs were resuspended in freezing mix  
180 (FBS with 10% DMSO) and frozen down to -80°C before storage in liquid nitrogen. To obtain  
181 plasma, the uppermost fraction following the initial Lymphoprep centrifugation above was  
182 collected and centrifuged at 2000g for 10 minutes to remove platelets before storage at -  
183 80°C. Donor blood was also collected in a serum-separating tube (SST, Becton Dickinson)  
184 which was centrifuged at 2000g for 10 minutes. Serum was removed and stored at -80°C. As  
185 for the QuantiFERON testing, samples were randomised for processing with the technician  
186 blinded to study group status in order to mitigate performance and verification bias.

187

188 ***In-house PITCH ELISpot assay***

189 The PITCH ELISpot Standard Operating Procedure (SOP) is available as published previously  
190 (17). *Ex vivo* IFN- $\gamma$  ELISpot assays were set up from cryopreserved peripheral blood  
191 mononuclear cells (PBMCs) using the Human IFN- $\gamma$  ELISpot Basic kit (Mabtech 3420-2A).  
192 MultiScreen-IP filter plates (Millipore, MAIPS4510) were coated with 50  $\mu$ l/well using the  
193 ELISpot Basic Kit Capture antibody (clone 1-D1K) at 10  $\mu$ g/ml diluted in sterile phosphate  
194 buffered saline (PBS; Fisher Scientific) or sterile carbonate bicarbonate (Sigma Aldrich) for 8  
195 to 48 h at 4°C. PBMCs were thawed and resuspended in Rab10 (filtered R0 media (Sigma)  
196 supplemented with 10% Human serum) with DNase, and allowed to rest for 2-3 h in an  
197 incubator at 37°C, 5% CO<sub>2</sub>, 95% humidity prior to stimulation with peptides. The capture  
198 antibody coated plates were washed twice with R0, then blocked with 100  $\mu$ L/well of Rab10  
199 for 1/2-8 h at RT or 8-48h at 4°C. Rested cells were centrifuged and resuspended in 1 ml  
200 Rab10 for counting on Muse™ Cell Analyser or Bio-Rad TC10™ Automated Cell Counter.  
201 After blocking, overlapping peptide pools (18-mers with 10 amino acid overlap Mimotopes)  
202 representing the spike (S1+S2), Membrane (M) or nucleocapsid (NP) SARS-CoV-2 proteins  
203 were added to 200,000 PBMCs/well at a final concentration of 2  $\mu$ g/ml for 16 to 18 h. S1 and  
204 S2 were added in separate test wells, M and NP were combined in a singular test well. Pools  
205 consisting of CMV, EBV and influenza peptides at a final concentration of 2  $\mu$ g/ml (CEF;  
206 Proimmune) and concanavalin A (ConA) at a final concentration of 5  $\mu$ g/ml were used as  
207 positive controls. DMSO was used as the negative control at the equivalent concentration to  
208 the peptides. After cell stimulation overnight, wells were washed 7 times 100-200  $\mu$ L/well  
209 with PBS with 0.05% (v/v) Tween20 (Sigma Aldrich) and incubated with 50  $\mu$ L/well of the  
210 ELISpot Basic kit biotinylated detection antibody (clone 7-B6-1) diluted in PBS at 1  $\mu$ g/ml, for  
211 2-4 h at room temperature (RT). Wells were then washed 7 times with 100-200 $\mu$ L/well PBS-  
212 0.05% (v/v) Tween20, and then incubated with 50  $\mu$ L/well of the ELISpot Basic kit  
213 streptavidin-ALP, diluted in PBS at 1  $\mu$ g/ml for 1-2 h at RT. Wells were then washed 7 times  
214 with 100-200  $\mu$ L/well PBS-0.05% Tween20 and colour development was carried out using  
215 the 1-step NBT/BCIP Substrate Solution. 50  $\mu$ l of filtered NBT/BCIP was added to each well  
216 for 5-7 minutes in the dark at RT. Colour development was stopped by washing the wells  
217 with cold tap water. Air dried plates were scanned and analysed with the CTL Cellular  
218 Technologies Series 6 ALFA. Antigen-specific responses were quantified by subtracting the  
219 mean spots of the control wells from the test wells and the results were expressed as spot-  
220 forming units (SFU)/10<sup>6</sup> PBMCs. Responses were defined as positive if values were greater  
221 than the mean of the DMSO control + 2 standard deviations with a minimum of 20 SFCs per  
222 1 million PBMCs (4,31).

223

#### 224 ***Mesoscale Discovery (MSD) binding assay***

225 IgG responses to SARS-CoV-2 were measured using a multiplexed MSD immunoassay: The V-  
226 PLEX COVID-19 Coronavirus Panel 3 (IgG) Kit from Meso Scale Diagnostics, Rockville, MD  
227 USA. A MULTI-SPOT® 96-well, 10 spot plate was coated with three SARS CoV-2 antigens (S,  
228 RBD, N) and bovine serum albumin. Antigens were spotted at 200–400  $\mu$ g/mL (MSD®  
229 Coronavirus Plate 3). Multiplex MSD assays were performed as per the instructions of the  
230 manufacturer. To measure IgG antibodies, 96-well plates were blocked with MSD Blocker A  
231 for 30 minutes. Following washing with washing buffer, samples diluted 1:1,000-10,000 in  
232 diluent buffer, or MSD standard or undiluted internal MSD controls, were added to the  
233 wells. After 2 h incubation and a washing step, detection antibody (MSD SULFO-TAG Anti-  
234 Human IgG Antibody, 1/200) was added. Following washing, MSD GOLD Read Buffer B was  
235 added and plates were read using a MESO® SECTOR S 600 Reader. The standard curve was

236 established by fitting the signals from the standard using a 4-parameter logistic model.  
237 Concentrations of samples were determined from the electrochemiluminescence signals by  
238 back-fitting to the standard curve and multiplied by the dilution factor. Concentrations are  
239 expressed in Arbitrary Units/ml (AU/ml). Cut-offs were determined for each SARS-CoV-2  
240 antigen (S, RBD and N) based on the concentrations measured in 103 pre-pandemic sera + 3  
241 Standard Deviation as previously published (5). Cut-off for S: 1160 AU/ml; cut-off for RBD:  
242 1169 AU/ml; cut-off for N: 3874 AU/ml. Samples were processed blindly to mitigate  
243 performance and verification bias.

244

### 245 **Statistical analyses**

246 Data were analysed by non-parametric tests: Mann-Whitney for non-paired comparisons  
247 between two groups and Kruskal Wallis with Dunn's correction for comparisons between  
248 multiple groups. Correlation studies to compare values from different assays was calculated  
249 using Spearman correlation coefficient. To calculate sensitivity, specificity, positive  
250 predictive value and negative predictive value, the gold standard was designated as the  
251 'clinical phenotype'(CP) – self-reported vaccination or infection, with input from the MSD  
252 antibody binding assay. The threshold above which a sample was designated as 'positive'  
253 was designated as mean of the negative + 2 SD (4,31). Five tests were assessed:  
254 QuantiFERON SARS-CoV-2 Ag1, Ag2 and Ag3 and PITCH ELISpot S1+S2 and M+NP. For any of  
255 the given tests, a true positive (TP) was designated as being above threshold in CP+. A true  
256 negative (TN) was below threshold in CP-. A false positive (FP) was above threshold in CP-. A  
257 false negative was below threshold in CP+. To calculate sensitivity, specificity, positive  
258 predictive values (PPV) and negative predictive values, a 2x2 table was designed for each  
259 test and the following formulae applied: sensitivity = TP/TP+FN; specificity = TN/TN+FP; PPV  
260 = TP/TP+FP and NPV = TN/TN+FN.

261 GraphPad Prism v9.1.0 was used for statistical analysis and graphical representation.

262

## 263 **Results**

### 264 **Participants of the study**

265 Participants were recruited in June 2021 when the delta variant of SARS-CoV-2 was the  
266 dominant variant (32). Participants were assigned into 5 groups based on previous SARS-  
267 CoV-2 infection and vaccination status: Unvaccinated Naïve, Vaccinated Naïve,  
268 Unvaccinated Acute Infection, Unvaccinated Previous Infection and Vaccinated Previous  
269 Infection. Prior to data analysis, anti-S and anti-N antibodies were measured by Meso Scale  
270 discovery (MSD) assay to exclude asymptomatic previous infection status (**Supplementary**  
271 **Figure 1**) resulting in two participants being excluded from further analysis. One was  
272 excluded from the 'unvaccinated naïve' as they had positive Spike IgG, suggesting previous  
273 infection/vaccination. The other was excluded from the 'vaccinated naïve' group as they had  
274 positive N IgG suggesting previous infection. None of the participants who had previous  
275 infection required hospitalisation. Demographic information about the 46 participants  
276 included in the analysis is shown in **Table 1**. The age of the participants ranged from 18 to  
277 56 with a median age of 24. Unvaccinated individuals were younger than vaccinated  
278 individuals (median 23 v median 28 respectively,  $p = 0.002$ ) due to the progress of the  
279 national vaccination programme at the time of sampling (**Table 1**). There was no statistically  
280 significant difference between the median age of naïve and previously infected (27 v. 24  
281 respectively,  $p = 0.18$ ). In general, gender balance was achieved – except for the  
282 unvaccinated, acute infection group who were all participants from an outbreak in a local

283 women's rugby team. The participants in all groups predominantly identified as being of  
284 'white' ethnicity. Most recipients received the Pfizer/BioNTech BNT162b2 vaccine reflecting  
285 the national vaccination roll out in the UK for this age group, with the remainder receiving  
286 the Oxford/AstraZeneca AZD1222 vaccine.

287

### 288 ***QuantiFERON SARS-CoV-2 in SARS-CoV-2 infected individuals***

289 To examine the QuantiFERON SARS-CoV-2 assay in SARS-CoV-2-infected individuals, samples  
290 from the unvaccinated naïve group were compared to unvaccinated, acute infection  
291 samples (median of 16 days, range 12-21 days since positive SARS-CoV-2 PCR). The same  
292 unvaccinated naïve samples were also compared to unvaccinated, previous infection  
293 samples (median of 256, range 172-444 days since positive test). For all three QuantiFERON  
294 assay tubes, Ag1, Ag2 and Ag3, there was significantly greater IFN- $\gamma$  detected for acute  
295 infection individuals compared to naïve controls (**Figure 1A**;  $p < 0.0001$  for all). Samples  
296 were also compared using two PITCH ELISpot assays – one against the spike protein (S1+S2)  
297 and one against structural proteins M protein and nucleocapsid protein (M+NP). A  
298 significant difference was also seen in the PITCH ELISpot comparison for S1+S2 and M+NP  
299 between naïve and acute infection groups (**Figure 1B**;  $p = 0.037$  and  $p = 0.019$  respectively).  
300 For the naïve vs previous infection group comparison, there was no statistically significant  
301 difference in the amount of IFN- $\gamma$  produced in any of the three QuantiFERON tubes (**Figure**  
302 **1C**), although the PITCH ELISpot was able to detect differences in S1+S2 ( $p = 0.029$ ) and  
303 M+NP ( $p = 0.007$ ) when comparing the two groups (**Figure 1D**). When looking at vaccinated  
304 individuals and aiming to differentiate SARS-CoV-2 infection naïve and previous infection  
305 (median of 222 days, range 175-433 days since positive test), there were no statistically  
306 significant differences between the groups using QuantiFERON Ag1, Ag2 or Ag3 (**Figure 1E**).  
307 The PITCH ELISpot found a difference between the vaccinated naïve and vaccinated previous  
308 infection groups with M+NP ( $p = 0.0005$ ) but not for S1+S2 ( $p = 0.254$ ) (**Figure 1F**).

309

### 310 ***QuantiFERON SARS-CoV-2 in individuals vaccinated against SARS-CoV-2***

311 To examine the QuantiFERON SARS-CoV-2 assay in vaccinated individuals, we compared  
312 samples from unvaccinated naïve versus vaccinated naïve individuals (median of 102, range  
313 55-166 days since second vaccination). Here, there was no difference between the two  
314 groups for Ag1 ( $p = 0.206$ ) or Ag2 ( $p = 0.082$ ) but there was a statistically significant  
315 difference for Ag3 ( $p = 0.029$ ) (**Figure 1G**). The PITCH ELISpot demonstrated differences  
316 between the groups for S1+S2 ( $p = 0.0005$ ) but not M+NP ( $p = 0.072$ ) (**Figure 1H**).  
317 We also compared SARS-CoV-2 previously infected individuals with and without vaccination,  
318 (median of 65, range 54-160 days since second vaccination). The QuantiFERON assay was  
319 able to detect statistically significant differences between the two groups for all three assay  
320 tubes; Ag1 ( $p = 0.015$ ), Ag2 ( $p = 0.007$ ) and Ag3 ( $p = 0.027$ ) (**Figure 1I**) – largely due to a lack  
321 of responses in the previously infected unvaccinated cohort. The PITCH ELISpot did not  
322 present differences between the groups for either S1+S2 ( $p = 0.115$ ) or M+NP ( $p = 0.245$ )  
323 (**Figure 1J**).

324

### 325 ***Sensitivity of the QuantiFERON SARS-CoV-2 assay***

326 The QuantiFERON SARS-CoV-2 assay utilises the QuantiFERON IGRA technology, known for  
327 its use in detecting tuberculosis with QuantiFERON TB Gold. This assay has a standardised  
328 threshold for designating samples as being 'positive'. As such, we sought to present the  
329 current data as qualitative positive or negative results. As there was no threshold provided

330 with the QuantiFERON SARS-CoV-2 assay, we utilised the threshold established for ELISpot  
331 assays: the mean of the negative control samples (in this case, the 'Nil' tubes) plus two  
332 standard deviations, as previously published (4,31). Samples above threshold were used to  
333 determine the sensitivity of a given test for SARS-CoV-2 T cell responses.

334  
335 Using this threshold, for Ag1, none of the unvaccinated naïve samples were above threshold  
336 (**Figure 2A**), with 22.2% of vaccinated naïve, 75% of unvaccinated acute infection, none of  
337 unvaccinated previous infection, and 58.3% of vaccinated previous infection above  
338 threshold. For Ag2, the results were similar to Ag1: none of the naïve samples were above  
339 threshold, with 22.2% of vaccinated naïve, 100% of unvaccinated acute infection, none of  
340 unvaccinated previous infection and 58.3% of vaccinated previous infection above threshold  
341 (**Figure 2B**). For Ag3, none of the unvaccinated naïve samples were above threshold. 55.5%  
342 of vaccinated naïve samples were above threshold, 100% unvaccinated acute infection,  
343 12.5% of unvaccinated previous infection and 50% of vaccinated previous infection were  
344 above threshold (**Figure 2C**). The S1+S2 PITCH ELISpot showed greater sensitivity for SARS-  
345 CoV-2 T cell responses in general (**Figure 2D**). 11.11% of unvaccinated naïve samples were  
346 above threshold, with 66.6% of vaccinated naïve, 62.5% of unvaccinated acute infection,  
347 75% of unvaccinated previous infection and 91.67% of vaccinated previous infection above  
348 threshold. For M+NP, there was less sensitivity compared to S1+S2 with 0% of naïve  
349 unvaccinated and naïve vaccinated above threshold (**Figure 2E**), 10% of vaccinated naïve,  
350 37.5% of unvaccinated acute infection and unvaccinated previous infection, and 91.67% of  
351 vaccinated previous infection above threshold.

352  
353 Sensitivity, specificity, positive predictive values and negative predictive values of all groups  
354 for each of the five tests are detailed in **Table 2** with clinical positive (CP) phenotypes  
355 determined on the basis of historic infection and/or vaccination, with the MSD antibody  
356 assay removing those reported naïve which had positive antibody responses. For  
357 unvaccinated naïve samples, all three QuantiFERON SARS-CoV-2 assay tubes had 100%  
358 specificity and 100% negative predictive value (NPV) for SARS-CoV-2 T cells, as did the PITCH  
359 ELISpot M+NP but PITCH ELISpot S1+S2 had only 88.9% specificity. For vaccinated naïve  
360 samples, PITCH ELISpot S1+S2 had greater sensitivity (66.6%) than any of the QuantiFERON  
361 tubes Ag1, Ag2 or Ag3 (22.2%, 22.2% and 55.5% respectively). For this group, all tests had  
362 100% positive predictive value for SARS-CoV-2 T cells. For the unvaccinated acute infection  
363 group, all five tests exhibited 100% PPV, and as stated before, the QuantiFERON SARS-CoV-2  
364 Ag2 and Ag3 exhibited 100% sensitivity for SARS-CoV-2 T cells whilst Ag1 had 75% and PITCH  
365 ELISpot S1+S2 and M+NP had 62.5% and 37.5% respectively. For the unvaccinated previous  
366 infection group, as before the PITCH ELISpot had superior sensitivity with S1+S2 at 75% and  
367 M+NP at 37.5% whilst the QuantiFERON SARS-CoV-2 achieved 0%, 0% and 12.5% for Ag1,  
368 Ag2 and Ag3 respectively. Finally, there was greater sensitivity for SARS-CoV-2 T cells using  
369 the PITCH ELISpot (91.67% for both S1+S2 and M+NP) than QuantiFERON SARS-CoV-2 which  
370 only achieved 58.33% sensitivity for Ag1 and Ag2, and only 50% for Ag3. All tests for this  
371 group had 100% PPV.

### 372 373 **Correlation of QuantiFERON SARS-CoV-2 assay tubes**

374 Correlation analysis was performed between the three assay tubes for the QuantiFERON  
375 SARS-CoV-2 (**Supplementary Figure 2**). For all three comparisons (Ag1 v Ag2, Ag1 v Ag3 and  
376 Ag2 v Ag3) there was significant correlation ( $R^2$  0.7132 – 0.889,  $p < 0.0001$ ).



377  
378  
379  
380  
381  
382  
383  
384  
385  
386  
387  
388  
389  
390  
391  
392  
393  
394  
395  
396  
397  
398  
399  
400  
401  
402  
403  
404  
405  
406  
407  
408  
409  
410  
411  
412  
413  
414  
415  
416  
417  
418  
419  
420  
421  
422  
423

***Correlation of the QuantiFERON SARS-CoV-2 assay with PITCH ELISpot and MSD antibody platform***

Correlation analysis was performed between the three QuantiFERON SARS-CoV-2 assay tubes and the PITCH ELISpot assay. For all three assay tubes there was no significant correlation with PITCH ELISpot S1+S2 (**Figure 3A-C**) or with PITCH M+NP (**Figure 3D-F**). The QuantiFERON SARS-CoV-2 Ag1, Ag2 and Ag3 showed statistically significant correlation with S IgG (**Figure 4A-C**) RBD IgG (**Figure 4D-F**) and N IgG (**Figure 4G-I**).

**Discussion**

T cells are increasingly recognised for their role in SARS-CoV-2 infection and vaccination (33–36). However, cell-based assays which evaluate T cells are typically labour- and expertise-intensive, require specialist equipment, and need specialist processing of fresh blood within 3-4 hours of blood draw. Therefore, validating simple, commercially available kits could expand the repertoire of tools for evaluating T cells in the context of SARS-CoV-2, particularly in research laboratories which do not have means to overcome the above barriers. The present study sought to do this with the commercially available QuantiFERON SARS-CoV-2 assay, which is based on the same technology of the QuantiFERON TB Gold used worldwide (reviewed in (37)). This assay has a straight-forward work-flow, basic equipment requirements compared to other cell-based assays and tolerance of delays in processing. Moreover, the read-out can be seen at times with the naked eye, which may merit further investigation (**Supplementary Figure 4**).

The data presented in this study demonstrates a robust read-out for all three QuantiFERON assay tubes (Ag1, Ag2, Ag3) for acute infection samples within 21 days of positive PCR, with superior sensitivity for SARS-CoV-2 T cell responses than both the S1+S2 and M+NP ELISpot for these samples. Furthermore, none of the naïve samples generated a positive result, making the QuantiFERON SARS-CoV-2 highly specific. These results support a utility for the QuantiFERON SARS-CoV-2 in evaluating T cell responses during or soon after acute infection. The QuantiFERON SARS-CoV-2 was unable to detect robust responses in individuals who had tested positive for SARS-CoV-2 infection 172-444 days earlier, suggesting the possibility of a restricted time frame for detection using this assay. Effector T cell responses to SARS-CoV-2 infection decrease over time (8,13) which may explain why T cell responses were not detected in more distant infection, but are typically still detectable by research assays more than 6 months later (20,38,39). Further work to increase the sensitivity of the QuantiFERON SARS-CoV-2 assay to detect SARS-CoV-2 T cell responses in this group would be useful for evaluating T cell responses in distant infection.

The highly sensitive and specific results in the acute infection samples show potential for the assay to be used as a diagnostic test, as is the case for the QuantiFERON TB IGRA in settings where PCR testing may not be feasible. T cells can be detected as soon as 3-5 post symptom onset, with a similar kinetic profile to antibody detection (40,41), which supports the use of T cell-based diagnostic SARS-CoV-2 tests. However, the utility of such a diagnostic test would be at the time of symptom onset, which was not possible to assess in the current study due to national isolation guidelines at the time of sampling. Further studies closer to symptom onset are required to investigate further.

424 The low responses to Ag1, Ag2 or Ag3 seen in naïve participants post vaccination limit the  
425 utility of the QuantiFERON assay for scaled up study of response to vaccination. This is  
426 disappointing when there is a huge need for large scale prospective longitudinal studies in a  
427 range of populations and settings, to establish immune correlates of protection and  
428 differences in vaccine response between vulnerable patient groups. A larger dynamic range  
429 of IFN- $\gamma$  responses post vaccination or infection has been observed in another whole blood  
430 ELISA-based assay (9,10), although some of these samplings were taken closer to the time of  
431 vaccination which may explain their greater sensitivity for SARS-CoV-2 T cell responses than  
432 in the present study. Further work to raise the sensitivity of the QuantiFERON assay, such as  
433 increasing the detection of IFN- $\gamma$  by ELISA, would be hugely valuable and would have high  
434 potential for transfer to other emerging outbreak pathogens in regions of the world with  
435 limited laboratory capacity. Nevertheless, the presence or absence of a T cell response  
436 detectable by the QuantiFERON assay could prove to be a useful parameter to include in  
437 longitudinal studies of vaccine immunogenicity and correlates of protection.

438  
439 With the exception of the acutely infected group, the PITCH ELISpot S1+S2 exhibited  
440 superior sensitivity for SARS-CoV-2 T cell responses compared to the QuantiFERON SARS-  
441 CoV-2 assay in keeping with other studies which have demonstrated the value of ELISpot  
442 compared to other T cell evaluation tools (42,43). Likely factors contributing to the relatively  
443 inferior performance of the QuantiFERON platform could include the T cell concentration in  
444 whole blood samples, processing timelines and concentrations/selection of epitopes for T  
445 cell stimulation. However, much of the information required to draw strong conclusions is  
446 proprietary information, thus limiting our understanding for the performance differences  
447 between the platforms.

448  
449 According to the manufacturer, the epitopes lining the Ag1 assay tube activate CD4<sup>+</sup> T cells  
450 specific to RBD, Ag2 activates CD4<sup>+</sup> and CD8<sup>+</sup> T cells specific to S1 and S2, and Ag3 activates  
451 CD4<sup>+</sup> and CD8<sup>+</sup> T cells against numerous SARS-CoV-2 peptides including spike. In the five sets  
452 of two-group comparisons illustrated in **Figure 1**, Ag1 was able to discern statistically  
453 significant differences in two of the five group comparisons, Ag2 in three of five and Ag3 in  
454 three of five. In terms of sensitivity, Ag3 had the highest sensitivity for SARS-CoV-2-specific T  
455 cells in four of the five individual groups. Overall, there was correlation between the  
456 QuantiFERON SARS-CoV-2 assay tubes. Taken together, the present data suggests the Ag3  
457 tube may be the most useful of the three for evaluating SARS-CoV-2-specific T cells in  
458 infection and vaccination. Unfortunately, none of the combination of antigens provided by  
459 the manufacturer enable identification of previous infection in vaccinated individuals,  
460 because all three antigen sets contain spike peptides.

461  
462 There was little evidence to support a strong correlation between the QuantiFERON SARS-  
463 CoV-2 assay tubes and the ELISpot assay. Interestingly, there was statistically significant  
464 correlations between QuantiFERON SARS-CoV-2 and the MSD antibody data, however R  
465 squared values were relatively low, therefore strong conclusions about a true relationship  
466 between the sample sets cannot be drawn but may merit further investigation with a larger  
467 sample set.

468  
469 The primary aim of this study was to determine the utility of the commercially-available  
470 QuantiFERON SARS-CoV-2 assay in evaluating T cells following SARS-CoV-2 infection and

471 vaccination. The data demonstrates this assay, particularly the Ag3 assay tube, to be highly  
472 sensitive and specific in detecting SARS-CoV-2 T cells in acute but not past infection, and  
473 capable of discerning differences in T cell responses in unvaccinated and vaccinated  
474 individuals albeit with reduced sensitivity compared to the PITCH ELISpot. The assay was  
475 also relatively easy to perform, using equipment commonly available in a hospital  
476 laboratory. Therefore, the assay may be beneficial in laboratories which do not have access  
477 to established T cell assays, and as a dichotomous measure for monitoring of vaccine  
478 immunogenicity. Further research is required to define a suitable timeline following  
479 infection or vaccination during which the QuantiFERON SARS-CoV-2 assay may be applied to  
480 detect SARS-CoV-2-specific T cells as well as further development of the platform to  
481 increase the sensitivity for SARS-CoV-2 T cell responses in more distant infection and  
482 vaccination.

483

#### 484 **Limitations**

485 This study has a number of limitations. Firstly, genotype data for past infections was  
486 unavailable, although we know that the previously infected participants were chiefly  
487 infected by early pandemic strain virus in wave 1, and the acute infection group were  
488 infected when the delta variant was predominant (32). Further testing in populations with  
489 documented different variants is required, although T cell responses have been shown to be  
490 only marginally impacted by alpha, beta, gamma and delta variants (5,6) and 75-85%  
491 preserved in Omicron (44–50). This study involved only a single time point, without  
492 samples between the acute and previous infection timepoints. Furthermore, for naïve  
493 samples, we cannot rule out the possibility that asymptomatic infection may have occurred  
494 previously as antibodies reduce significantly over time (8). This study enrolled young (ages  
495 18-56) and healthy individuals, whilst T cell response to vaccination is known to be affected  
496 by aging (51) and immunosuppression (52,53). This study was biased towards female  
497 participants, although larger studies have not found sex to be a determinant of SARS-CoV-2-  
498 specific T cell responses (5). There was also limited ethnic diversity in this cohort. Finally,  
499 the number of participants recruited may have rendered some of the statistical analysis sub-  
500 optimal, particularly in regard to correlation analysis with a significant proportion of zero  
501 values in the QuantiFERON assays. The limitations suggest further larger studies with  
502 genetically sequenced strains with a population to include a range of SARS-CoV-2 variants,  
503 ages, co-morbidities, sexes and ethnicities are warranted.

504

#### 505 **Data Availability Statement**

506 The data underlying this article are available in the article and in its online supplementary  
507 material.

508

#### 509 **Funding Statement**

510 This work was funded by the UK Department of Health and Social Care as part of the PITCH  
511 (Protective Immunity from T cells to Covid-19 in Health workers) Consortium, with  
512 contributions from the National Core Study: Immunity (NCSi4P programme) 'Optimal  
513 cellular assays for SARS-CoV-2 T cell, B cell and innate immunity', UKRI through the UK  
514 Coronavirus Immunology Consortium (UK-CIC), the Huo Family Foundation, The National  
515 Institute for Health Research (UKRIDHSC COVID-19 Rapid Response Rolling Call, Grant  
516 Reference Number COV19-RECPLAS) and U.S. Food and Drug Administration Medical  
517 Countermeasures Initiative contract 75F40120C00085.

518 E.B. and P.K. are NIHR Senior Investigators and P.K. is funded by WT109965MA. S.J.D. is  
519 funded by an NIHR Global Research Professorship (NIHR300791). D.S. is supported by the  
520 NIHR Academic Clinical Lecturer programme in Oxford.

521  
522 The views expressed are those of the author(s) and not necessarily those of the NHS, the  
523 NIHR, the Department of Health and Social Care or UKHSA or the US Food and Drug  
524 Administration.

### 525 **Ethics Approval Statement**

527 Participants were enrolled in the OPTIC study (GI Biobank Study 16/YH/0247, approved by  
528 the research ethics committee (REC) at Yorkshire & The Humber - Sheffield Research Ethics  
529 Committee on 29 July 2016, and amended for the OPTIC study on 8 June 2020 or the Family  
530 Study R71346/RE001, approved by Oxford University's Medical Sciences Inter-Divisional REC  
531 (MS-IDREC-R71346/RE00).

### 532 **Patient Consent Statement**

534 All participants in the study gave written, informed consent.

### 535 **Permission to Reproduce Material from Other Sources**

537 Not applicable

### 538 **Clinical Trial Registration**

540 Not applicable

### 541 **Conflict of Interest Disclosure**

542 S.J.D declares fees as a Scientific Advisor to the Scottish Parliament on COVID-19. No other  
543 competing interests declared.

545  
546 QuantiFERON assays were purchased as part of a commercial contract and the company  
547 played no role in this report.

### 548 **Acknowledgements**

549 We are grateful to all our healthcare worker colleagues who participated in the study, and  
550 to Lisa Fielding for administrative support.

### 551 **Author Contributions**

552  
553 SAJ, SJD, EB and PK conceptualised the study. SAJ, SJD, EB, MC, KJ, CPC and PK designed and  
554 oversaw the clinical study. SAJ, CM, LS, AJ, JW and SJD recruited participants and collected  
555 samples. SAJ, EP, SA, SL, TM, MA, DTS implemented laboratory testing. SAJ and JN  
556 undertook data analysis. AD undertook project administration. SJD, PK and EB acquired the  
557 funding. SAJ, JN, EJB, PK and SD prepared the manuscript, which was reviewed by all  
558 contributing authors.

560

561

562

563

564

## 565 References

566

- 567 1. WHO Coronavirus (COVID-19) Dashboard [Internet]. [cited 2022 Apr 19]. Available  
568 from: <https://covid19.who.int>
- 569 2. Amirthalingam G, Bernal JL, Andrews NJ, Whitaker H, Gower C, Stowe J, et al.  
570 Serological responses and vaccine effectiveness for extended COVID-19 vaccine  
571 schedules in England. *Nature Communications*. 2021;12(1):7217.
- 572 3. Dan JM, Mateus J, Kato Y, Hastie KM, Yu ED, Faliti CE, et al. Immunological memory to  
573 SARS-CoV-2 assessed for up to 8 months after infection. *Science*. 2021;371(6529).
- 574 4. Ogbe A, Kronsteiner B, Skelly DT, Pace M, Brown A, Adland E, et al. T cell assays  
575 differentiate clinical and subclinical SARS-CoV-2 infections from cross-reactive  
576 antiviral responses. *Nature Communications*. 2021;12(1):2055.
- 577 5. Payne RP, Longet S, Austin JA, Skelly DT, Dejnirattisai W, Adele S, et al.  
578 Immunogenicity of standard and extended dosing intervals of BNT162b2 mRNA  
579 vaccine. *Cell*. 2021;184(23):5699-5714.e11.
- 580 6. Skelly DT, Harding AC, Gilbert-Jaramillo J, Knight ML, Longet S, Brown A, et al. Two  
581 doses of SARS-CoV-2 vaccination induce robust immune responses to emerging  
582 SARS-CoV-2 variants of concern. *Nature Communications*. 2021;12(1):5061.
- 583 7. Tarke A, Coelho CH, Zhang Z, Dan JM, Yu ED, Methot N, et al. SARS-CoV-2 vaccination  
584 induces immunological T cell memory able to cross-recognize variants from Alpha to  
585 Omicron. *Cell*. 2022;185(5):847-859.e11.
- 586 8. Tomic A, Skelly DT, Ogbe A, O'Connor D, Pace M, Adland E, et al. Divergent  
587 trajectories of antiviral memory after SARS-CoV-2 infection. *Nature Communications*.  
588 2022;13(1):1251.
- 589 9. Tan AT, Lim JM, Le Bert N, Kunasegaran K, Chia A, Qui MD, et al. Rapid measurement  
590 of SARS-CoV-2 spike T cells in whole blood from vaccinated and naturally infected  
591 individuals. *The Journal of Clinical Investigation*. 2021;131(17).
- 592 10. Le Bert N, Clapham HE, Tan AT, Chia WN, Tham CYL, Lim JM, et al. Highly functional  
593 virus-specific cellular immune response in asymptomatic SARS-CoV-2 infection. *The  
594 Journal of Experimental Medicine*. 2021;218(5).
- 595 11. Le Bert N, Tan AT, Kunasegaran K, Tham CYL, Hafezi M, Chia A, et al. SARS-CoV-2-  
596 specific T cell immunity in cases of COVID-19 and SARS, and uninfected controls.  
597 *Nature*. 2020;584(7821):457–62.
- 598 12. Bilich T, Med ST, Bilich T, Nelde A, Heitmann JS, Maringer Y, et al. Coronavirus T cell  
599 and antibody kinetics delineate SARS-CoV-2 peptides mediating long-term immune  
600 responses in COVID-19 convalescent individuals. 2021;7517:17–20.
- 601 13. Cohen KW, Linderman SL, Moodie Z, Czartoski J, Lai L, Mantus G, et al. Longitudinal  
602 analysis shows durable and broad immune memory after SARS-CoV-2 infection with  
603 persisting antibody responses and memory B and T cells. *Cell Reports Medicine*.  
604 2021;2(7):100354.
- 605 14. Grifoni A, Weiskopf D, Ramirez SI, Mateus J, Dan JM, Moderbacher CR, et al. Targets  
606 of T cell responses to SARS-CoV-2 coronavirus in humans with COVID-19 disease and  
607 unexposed individuals. *Cell*. 2020;181(7):1489-1501.e15.
- 608 15. Rodda LB, Netland J, Shehata L, Pruner KB, Morawski PA, Thouvenel CD, et al.  
609 Functional SARS-CoV-2-specific immune memory persists after Mild COVID-19. *Cell*.  
610 2021;184(1):169-183.e17.
- 611 16. Zuo J, Dowell AC, Pearce H, Verma K, Long HM, Begum J, et al. Robust SARS-CoV-2-

- 612 specific T cell immunity is maintained at 6 months following primary infection. *Nature*  
613 *Immunology*. 2021;22.
- 614 17. Angyal A, Longet S, Moore SC, Payne RP, Harding A, Tipton T, et al. T-cell and antibody  
615 responses to first BNT162b2 vaccine dose in previously infected and SARS-CoV-2-  
616 naive UK health-care workers: a multicentre prospective cohort study. *The Lancet*  
617 *Microbe*. 2022;3(1):e21–31.
- 618 18. Ewer KJ, Barrett JR, Belij-rammerstorfer S, Sharpe H, Makinson R, Morter R, et al. T  
619 cell and antibody responses induced by a single dose of ChAdOx1 nCoV-19 (AZD1222)  
620 vaccine in a phase 1/2 clinical trial. *Nature Medicine*. 2021;27:270-278.
- 621 19. Folegatti PM, Ewer KJ, Aley PK, Angus B, Becker S, Belij-Rammerstorfer S, et al. Safety  
622 and immunogenicity of the ChAdOx1 nCoV-19 vaccine against SARS-CoV-2: a  
623 preliminary report of a phase 1 / 2 , single-blind , randomised controlled trial. *The*  
624 *Lancet*. 2020; 396(10249): 467–78.
- 625 20. Mateus J, Dan JM, Zhang Z, Moderbacher CR, Lammers M, Goodwin B, et al. Low-dose  
626 mRNA-1273 COVID-19 vaccine generates durable memory enhanced by cross-reactive  
627 T cells. 2021;374(6566):1–27.
- 628 21. Jaganathan S, Stieber F, Rao SN, Manissero D, Boyle J. Preliminary evaluation of  
629 QuantiFERON SARS-CoV-2 and QIArearch anti-SARS-CoV-2 total test in recently  
630 vaccinated individuals. *Infectious Diseases and Therapy*. 2021;10(4)2765-2776.
- 631 22. Bonelli MM, Mrak D, Perkmann T, Haslacher H, Aletaha D. SARS-CoV-2 vaccination in  
632 rituximab-treated patients: evidence for impaired humoral but inducible cellular  
633 immune response. *Annals of the Rheumatic Diseases*. 2021;80:1355–1356.
- 634 23. Krüttgen A, Klingel H, Haase G, Haefner H, Imöhl M, Kleines M. Evaluation of the  
635 QuantiFERON SARS-CoV-2 interferon- $\gamma$  release assay in mRNA-1273 vaccinated  
636 health care workers. *Journal of Virological Methods*. 2021;298:114295.
- 637 24. Martínez-Gallo M, Esperalba J, Pujol-Borrell R, Sandá V, Arrese-Muñoz I, Fernández-  
638 Naval C, et al. Commercialized kits to assess T-cell responses against SARS-CoV-2 S  
639 peptides. A pilot study in health care workers. *Medicina Clinica*. 2021:S0025-  
640 7753(21)00529-7.
- 641 25. Tychala A, Meletis G, Katsimpourlia E, Gkeka I, Dimitriadou R, Sidiropoulou E, et al.  
642 Evaluation of the QuantiFERON SARS-CoV-2 assay to assess cellular immunogenicity  
643 of the BNT162b2 mRNA COVID-19 vaccine in individuals with low and high humoral  
644 response. *Human Vaccines & Immunotherapeutics*. 2021;00(00):1–2.
- 645 26. Van Praet JT, Vandecasteele S, De Roo A, De Vriese AS, Reynders M. Humoral and  
646 cellular immunogenicity of the BNT162b2 messenger RNA Coronavirus disease 2019  
647 vaccine in nursing home residents. *Clinical Infectious Diseases*. 2021;73, 2145–2147.
- 648 27. Aiello A, Coppola A, Vanini V, Petrone L, Cuzzi G, Salmi A, et al. Accuracy of  
649 QuantiFERON SARS-CoV-2 research use only assay and characterization of the CD4+  
650 and CD8+ T cell-SARS-CoV-2 response: comparison with a homemade interferon- $\gamma$   
651 release assay. *International Journal of Infectious Diseases*. 2022;122, 841–849.
- 652 28. Tormo N, Giménez E, Martínez-Navarro M, Albert E, Navalpotro D, Torres I, et al.  
653 Performance comparison of a flow cytometry immunoassay for intracellular cytokine  
654 staining and the QuantiFERON® SARS-CoV-2 test for detection and quantification of  
655 SARS-CoV-2-Spike-reactive-IFN- $\gamma$ -producing T cells after COVID-19 vaccination.  
656 *European Journal of Clinical Microbiology & Infectious Diseases*. 2022;41(4):657–662.
- 657 29. Barreiro P, Sanz JC, San Román J, Pérez-Abeledo M, Carretero M, Megías G, et al. A  
658 pilot study for the evaluation of an Interferon Gamma Release Assay (IGRA) to

- 659 measure T-cell immune responses after SARS-CoV-2 infection or vaccination in a  
660 unique cloistered cohort. *Journal of Clinical Microbiology*. 2022;60(3):e0219921.
- 661 30. Phillips E, Adele S, Malone T, Deeks A, Stafford L, Dobson SL, et al. Comparison of two  
662 T cell assays to evaluate T cell responses to SARS-CoV-2 following vaccination in naïve  
663 and convalescent healthcare workers. *medRxiv*. 2022; 2022.02.05.22270447
- 664 31. Reynolds C, Goudet A, Jenjaroen K, Sumonwiriya M, Rinchai D, Musson J, et al. T cell  
665 immunity to the alkyl hydroperoxide reductase of *Burkholderia pseudomallei*: a  
666 correlate of disease outcome in acute melioidosis. *Journal of Immunology*.  
667 2015;194(10):4814–4824.
- 668 32. Variants: distribution of case data, 9th July 2021 [Internet]. [cited 2022 Apr 19].  
669 Available from: [https://www.gov.uk/government/publications/covid-19-variants-](https://www.gov.uk/government/publications/covid-19-variants-genomically-confirmed-case-numbers/variants-distribution-of-case-data-9-july-2021)  
670 [genomically-confirmed-case-numbers/variants-distribution-of-case-data-9-july-2021](https://www.gov.uk/government/publications/covid-19-variants-genomically-confirmed-case-numbers/variants-distribution-of-case-data-9-july-2021)
- 671 33. McMahan K, Yu J, Mercado NB, Loos C, Tostanoski LH, Chandrashekar A, et al.  
672 Correlates of protection against SARS-CoV-2 in rhesus macaques. *Nature*.  
673 2021;590(7847):630–4.
- 674 34. Molodtsov IA, Kegeles E, Mitin AN, Mityaeva O, Musatova OE, Panova AE, et al.  
675 Severe Acute Respiratory Syndrome Coronavirus 2 (SARS-CoV-2)–Specific T Cells and  
676 Antibodies in Coronavirus Disease 2019 (COVID-19) Protection: A Prospective Study.  
677 *Clinical Infectious Diseases*. 2022;12:ciac278.
- 678 35. Kundu R, Narean JS, Wang L, Fenn J, Pillay T, Fernandez ND, et al. Cross-reactive  
679 memory T cells associate with protection against SARS-CoV-2 infection in COVID-19  
680 contacts. *Nature Communications*. 2022;13(1):80.
- 681 36. Swadling L, Diniz MO, Schmidt NM, Amin OE, Chandran A, Shaw E, et al. Pre-existing  
682 polymerase-specific T cells expand in abortive seronegative SARS-CoV-2. *Nature*.  
683 2022;601(7891):110–7.
- 684 37. Whitworth HS, Scott M, Connell DW, Dongés B, Lalvani A. IGRAs--the gateway to T cell  
685 based TB diagnosis. *Methods*. 2013;61(1):52–62.
- 686 38. Zhang Z, Mateus J, Coelho CH, Dan JM, Moderbacher CR, Gálvez RI, et al. Humoral  
687 and cellular immune memory to four COVID-19 vaccines. *Cell*. 2022;185(14):2434-  
688 2451.e17.
- 689 39. Moore SC, Kronsteiner B, Longet S, Adele S, Deeks AS, Liu C, et al. Evolution of long-  
690 term hybrid immunity in healthcare workers after different COVID-19 vaccination  
691 regimens: a longitudinal observational cohort study. *medRxiv*.  
692 2022;2022.06.06.22275865.
- 693 40. Rydzynski Moderbacher C, Ramirez SI, Dan JM, Grifoni A, Hastie KM, Weiskopf D, et  
694 al. Antigen-Specific Adaptive Immunity to SARS-CoV-2 in Acute COVID-19 and  
695 Associations with Age and Disease Severity. *Cell*. 2020/09/16. 2020 Nov  
696 12;183(4):996-1012.e19.
- 697 41. Tan AT, Linster M, Tan CW, Le Bert N, Chia WN, Kunasegaran K, et al. Early induction  
698 of functional SARS-CoV-2-specific T cells associates with rapid viral clearance and mild  
699 disease in COVID-19 patients. *Cell Reports*. 2021;34(6):108728.
- 700 42. Karlsson AC, Martin JN, Younger SR, Brecht BM, Epling L, Ronquillo R, et al. Comparison  
701 of the ELISPOT and cytokine flow cytometry assays for the enumeration of antigen-  
702 specific T cells. *Journal of Immunological Methods*. 2003;283(1–2):141–153.
- 703 43. Tanguay S, Killian JJ. Direct comparison of ELISPOT and ELISA-based assays for  
704 detection of individual cytokine-secreting cells. *Lymphokine and Cytokine Research*.  
705 1994;13(4):259–263.

- 706 44. De Marco L, D’Orso S, Pirronello M, Verdiani A, Termine A, Fabrizio C, et al. Preserved  
707 T cell reactivity to the SARS-CoV-2 Omicron variant indicates continued protection in  
708 vaccinated individuals. *bioRxiv*. 2021;2021.12.30.474453.
- 709 45. GeurtsvanKessel CH, Geers D, Schmitz KS, Mykytyn AZ, Lamers MM, Bogers S, et al.  
710 Divergent SARS CoV-2 Omicron-reactive T- and B cell responses in COVID-19 vaccine  
711 recipients. *Science Immunology*. 2022;eabo2202.
- 712 46. Keeton R, Tincho MB, Ngomti A, Baguma R, Benede N, Suzuki A, et al. SARS-CoV-2  
713 spike T cell responses induced upon vaccination or infection remain robust against  
714 Omicron. *medRxiv*. 2021;1:2021.12.26.21268380.
- 715 47. Madelon N, Heikkilä N, Sabater Royo I, Fontannaz P, Breville G, Lauper K, et al.  
716 Omicron-specific cytotoxic T-cell responses after a third dose of mRNA Covid-19  
717 vaccine among patients with multiple sclerosis treated with Ocrelizumab. *JAMA*  
718 *Neurology*. 2022;10–5.
- 719 48. Tarke A, Sidney J, Methot N, Yu ED, Zhang Y, Dan JM, et al. Impact of SARS-CoV-2  
720 variants on the total CD4(+) and CD8(+) T cell reactivity in infected or vaccinated  
721 individuals. *Cell Reports Medicine*. 2021;2(7):100355.
- 722 49. Liu C, Ginn HM, Dejnirattisai W, Supasa P, Wang B, Tuekprakhon A, et al. Reduced  
723 neutralization of SARS-CoV-2 B.1.617 by vaccine and convalescent serum. *Cell*.  
724 2021;184(16):4220–4236.e13.
- 725 50. Gao Y, Cai C, Grifoni A, Müller TR, Niessl J, Olofsson A, et al Ancestral SARS-CoV-2-  
726 specific T cells cross-recognize the Omicron variant. *Nature Medicine*. 2022;28:472-  
727 476.
- 728 51. Parry H, Bruton R, Stephens C, Brown K, Amirthalingam G, Otter A, et al. Differential  
729 immunogenicity of BNT162b2 or ChAdOx1 vaccines after extended-interval  
730 homologous dual vaccination in older people. *Immunity & Ageing*. 2021;18(1):34.
- 731 52. Kearns P, Siebert S, Willicombe M, Gaskell C, Kirkham A, Pirrie S, et al. Examining the  
732 immunological effects of CoVID-19 vaccination in patients with conditions potentially  
733 leading to diminished immune response capacity – The OCTAVE Trial. *SSRN Electronic*  
734 *Journal*. 2021;1–25.
- 735 53. Prendecki M, Thomson T, Clarke CL, Martin P, Gleeson S, De Aguiar RC, et al.  
736 Immunological responses to SARS-CoV-2 vaccines in kidney transplant recipients.  
737 *Lancet*. 2021;398(10310):1482–1484.  
738  
739



740 **Tables and Figures**

	Unvaccinated Naive	Vaccinated Naive	Unvaccinated Acute infection	Unvaccinated Previous infection	Vaccinated Previous infection
<b>Number of subjects</b>	9	9	8	8	12
<b>Age, median (range)</b>	23 (22, 37)	30.1 (27, 46)	26 (19, 33)	23 (18, 24)	25.2 (21, 56)
<b>Gender</b>					
Male	5 (55.5%)	3 (33.3%)	0 (0%)	4 (50%)	6 (50%)
Female	4 (44.4%)	6 (66.6%)	8 (100%)	4 (50%)	6 (50%)
Other	0 (0%)	0 (0%)	0 (0%)	0 (0%)	0 (0%)
<b>Ethnicity</b>					
White	5 (55.5%)	7 (77.7%)	7 (87.5%)	7 (87.5%)	9 (75%)
Black	1 (11.1%)	0 (0%)	0 (0%)	0 (0%)	1 (8.33%)
Asian	2 (22.2%)	1 (11.1%)	0 (0%)	1 (12.5%)	1 (8.33%)
Mixed	1 (11.1%)	0 (0%)	1 (12.5%)	0 (0%)	1 (8.33%)
Other	0 (0%)	1 (11.1%)	0 (0%)	0 (0%)	0 (0%)
<b>Vaccine</b>					
Pfizer BNT162b2	N/A	8 (88.8%)	N/A	N/A	8 (75%)
Oxford/AstraZeneca AZD1222	N/A	1 (11.1%)	N/A	N/A	4 (25%)
<b>Days since V2, median (range)</b>	N/A	102 (55, 166)	N/A	N/A	65 (54, 160)
<b>Days since SARS-COV-2, median (range)</b>	N/A	N/A	16 (12, 21)	256 (172, 444)	221 (145, 433)

741  
742  
743  
744  
745  
746  
747

**Table 1** Characteristics of participants in this study

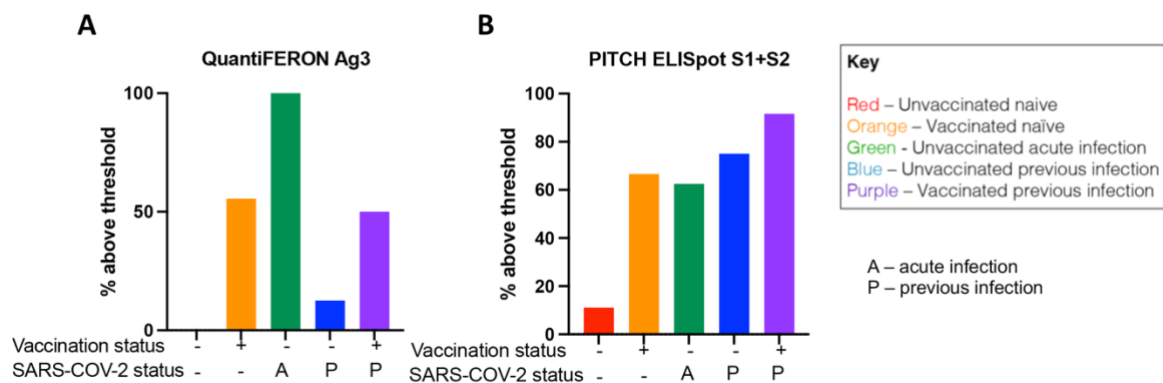
	QuantiFERON Ag1	QuantiFERON Ag2	QuantiFERON Ag3	PITCH ELISpot S1+S2	PITCH ELISpot M+NP																																																												
SARS-COV-2 Unvaccinated Naïve	<table border="1"> <tr><td>CP+</td><td>CP-</td></tr> <tr><td>0</td><td>0</td></tr> <tr><td>NA</td><td>100</td></tr> </table> <table border="1"> <tr><td>Test+</td><td>NA</td></tr> <tr><td>Test-</td><td>100</td></tr> </table>	CP+	CP-	0	0	NA	100	Test+	NA	Test-	100	<table border="1"> <tr><td>CP+</td><td>CP-</td></tr> <tr><td>0</td><td>0</td></tr> <tr><td>NA</td><td>100</td></tr> </table> <table border="1"> <tr><td>Test+</td><td>NA</td></tr> <tr><td>Test-</td><td>100</td></tr> </table>	CP+	CP-	0	0	NA	100	Test+	NA	Test-	100	<table border="1"> <tr><td>CP+</td><td>CP-</td></tr> <tr><td>0</td><td>0</td></tr> <tr><td>NA</td><td>100</td></tr> </table> <table border="1"> <tr><td>Test+</td><td>NA</td></tr> <tr><td>Test-</td><td>100</td></tr> </table>	CP+	CP-	0	0	NA	100	Test+	NA	Test-	100	<table border="1"> <tr><td>CP+</td><td>CP-</td></tr> <tr><td>0</td><td>1</td></tr> <tr><td>NA</td><td>88.9</td></tr> </table> <table border="1"> <tr><td>Test+</td><td>0</td></tr> <tr><td>Test-</td><td>100</td></tr> </table>	CP+	CP-	0	1	NA	88.9	Test+	0	Test-	100	<table border="1"> <tr><td>CP+</td><td>CP-</td></tr> <tr><td>0</td><td>0</td></tr> <tr><td>NA</td><td>100</td></tr> </table> <table border="1"> <tr><td>Test+</td><td>0</td></tr> <tr><td>Test-</td><td>100</td></tr> </table>	CP+	CP-	0	0	NA	100	Test+	0	Test-	100										
CP+	CP-																																																																
0	0																																																																
NA	100																																																																
Test+	NA																																																																
Test-	100																																																																
CP+	CP-																																																																
0	0																																																																
NA	100																																																																
Test+	NA																																																																
Test-	100																																																																
CP+	CP-																																																																
0	0																																																																
NA	100																																																																
Test+	NA																																																																
Test-	100																																																																
CP+	CP-																																																																
0	1																																																																
NA	88.9																																																																
Test+	0																																																																
Test-	100																																																																
CP+	CP-																																																																
0	0																																																																
NA	100																																																																
Test+	0																																																																
Test-	100																																																																
SARS-COV-2 Vaccinated Naïve	<table border="1"> <tr><td>CP+</td><td>CP-</td></tr> <tr><td>2</td><td>0</td></tr> <tr><td>7</td><td>0</td></tr> <tr><td>22.2</td><td>NA</td></tr> </table> <table border="1"> <tr><td>Test+</td><td>100</td></tr> <tr><td>Test-</td><td>0</td></tr> </table>	CP+	CP-	2	0	7	0	22.2	NA	Test+	100	Test-	0	<table border="1"> <tr><td>CP+</td><td>CP-</td></tr> <tr><td>2</td><td>0</td></tr> <tr><td>7</td><td>0</td></tr> <tr><td>22.2</td><td>NA</td></tr> </table> <table border="1"> <tr><td>Test+</td><td>100</td></tr> <tr><td>Test-</td><td>0</td></tr> </table>	CP+	CP-	2	0	7	0	22.2	NA	Test+	100	Test-	0	<table border="1"> <tr><td>CP+</td><td>CP-</td></tr> <tr><td>5</td><td>0</td></tr> <tr><td>2</td><td>0</td></tr> <tr><td>55.5</td><td>NA</td></tr> </table> <table border="1"> <tr><td>Test+</td><td>100</td></tr> <tr><td>Test-</td><td>0</td></tr> </table>	CP+	CP-	5	0	2	0	55.5	NA	Test+	100	Test-	0	<table border="1"> <tr><td>CP+</td><td>CP-</td></tr> <tr><td>6</td><td>0</td></tr> <tr><td>3</td><td>0</td></tr> <tr><td>66.6</td><td>NA</td></tr> </table> <table border="1"> <tr><td>Test+</td><td>100</td></tr> <tr><td>Test-</td><td>0</td></tr> </table>	CP+	CP-	6	0	3	0	66.6	NA	Test+	100	Test-	0	<table border="1"> <tr><td>CP+</td><td>CP-</td></tr> <tr><td>0</td><td>0</td></tr> <tr><td>0</td><td>9</td></tr> <tr><td>NA</td><td>100</td></tr> </table> <table border="1"> <tr><td>Test+</td><td>0</td></tr> <tr><td>Test-</td><td>100</td></tr> </table>	CP+	CP-	0	0	0	9	NA	100	Test+	0	Test-	100
CP+	CP-																																																																
2	0																																																																
7	0																																																																
22.2	NA																																																																
Test+	100																																																																
Test-	0																																																																
CP+	CP-																																																																
2	0																																																																
7	0																																																																
22.2	NA																																																																
Test+	100																																																																
Test-	0																																																																
CP+	CP-																																																																
5	0																																																																
2	0																																																																
55.5	NA																																																																
Test+	100																																																																
Test-	0																																																																
CP+	CP-																																																																
6	0																																																																
3	0																																																																
66.6	NA																																																																
Test+	100																																																																
Test-	0																																																																
CP+	CP-																																																																
0	0																																																																
0	9																																																																
NA	100																																																																
Test+	0																																																																
Test-	100																																																																
SARS-COV-2 Unvaccinated Acute	<table border="1"> <tr><td>CP+</td><td>CP-</td></tr> <tr><td>6</td><td>0</td></tr> <tr><td>2</td><td>0</td></tr> <tr><td>75</td><td>NA</td></tr> </table> <table border="1"> <tr><td>Test+</td><td>100</td></tr> <tr><td>Test-</td><td>0</td></tr> </table>	CP+	CP-	6	0	2	0	75	NA	Test+	100	Test-	0	<table border="1"> <tr><td>CP+</td><td>CP-</td></tr> <tr><td>8</td><td>0</td></tr> <tr><td>0</td><td>0</td></tr> <tr><td>100</td><td>NA</td></tr> </table> <table border="1"> <tr><td>Test+</td><td>100</td></tr> <tr><td>Test-</td><td>NA</td></tr> </table>	CP+	CP-	8	0	0	0	100	NA	Test+	100	Test-	NA	<table border="1"> <tr><td>CP+</td><td>CP-</td></tr> <tr><td>8</td><td>0</td></tr> <tr><td>0</td><td>0</td></tr> <tr><td>100</td><td>NA</td></tr> </table> <table border="1"> <tr><td>Test+</td><td>100</td></tr> <tr><td>Test-</td><td>NA</td></tr> </table>	CP+	CP-	8	0	0	0	100	NA	Test+	100	Test-	NA	<table border="1"> <tr><td>CP+</td><td>CP-</td></tr> <tr><td>5</td><td>0</td></tr> <tr><td>3</td><td>0</td></tr> <tr><td>62.5</td><td>NA</td></tr> </table> <table border="1"> <tr><td>Test+</td><td>100</td></tr> <tr><td>Test-</td><td>0</td></tr> </table>	CP+	CP-	5	0	3	0	62.5	NA	Test+	100	Test-	0	<table border="1"> <tr><td>CP+</td><td>CP-</td></tr> <tr><td>3</td><td>0</td></tr> <tr><td>5</td><td>0</td></tr> <tr><td>37.5</td><td>NA</td></tr> </table> <table border="1"> <tr><td>Test+</td><td>100</td></tr> <tr><td>Test-</td><td>0</td></tr> </table>	CP+	CP-	3	0	5	0	37.5	NA	Test+	100	Test-	0
CP+	CP-																																																																
6	0																																																																
2	0																																																																
75	NA																																																																
Test+	100																																																																
Test-	0																																																																
CP+	CP-																																																																
8	0																																																																
0	0																																																																
100	NA																																																																
Test+	100																																																																
Test-	NA																																																																
CP+	CP-																																																																
8	0																																																																
0	0																																																																
100	NA																																																																
Test+	100																																																																
Test-	NA																																																																
CP+	CP-																																																																
5	0																																																																
3	0																																																																
62.5	NA																																																																
Test+	100																																																																
Test-	0																																																																
CP+	CP-																																																																
3	0																																																																
5	0																																																																
37.5	NA																																																																
Test+	100																																																																
Test-	0																																																																
SARS-COV-2 Unvaccinated Previously infected	<table border="1"> <tr><td>CP+</td><td>CP-</td></tr> <tr><td>0</td><td>0</td></tr> <tr><td>8</td><td>0</td></tr> <tr><td>0</td><td>NA</td></tr> </table> <table border="1"> <tr><td>Test+</td><td>NA</td></tr> <tr><td>Test-</td><td>0</td></tr> </table>	CP+	CP-	0	0	8	0	0	NA	Test+	NA	Test-	0	<table border="1"> <tr><td>CP+</td><td>CP-</td></tr> <tr><td>0</td><td>0</td></tr> <tr><td>8</td><td>0</td></tr> <tr><td>0</td><td>NA</td></tr> </table> <table border="1"> <tr><td>Test+</td><td>NA</td></tr> <tr><td>Test-</td><td>0</td></tr> </table>	CP+	CP-	0	0	8	0	0	NA	Test+	NA	Test-	0	<table border="1"> <tr><td>CP+</td><td>CP-</td></tr> <tr><td>1</td><td>0</td></tr> <tr><td>7</td><td>0</td></tr> <tr><td>12.5</td><td>NA</td></tr> </table> <table border="1"> <tr><td>Test+</td><td>100</td></tr> <tr><td>Test-</td><td>0</td></tr> </table>	CP+	CP-	1	0	7	0	12.5	NA	Test+	100	Test-	0	<table border="1"> <tr><td>CP+</td><td>CP-</td></tr> <tr><td>6</td><td>0</td></tr> <tr><td>2</td><td>0</td></tr> <tr><td>75</td><td>NA</td></tr> </table> <table border="1"> <tr><td>Test+</td><td>100</td></tr> <tr><td>Test-</td><td>0</td></tr> </table>	CP+	CP-	6	0	2	0	75	NA	Test+	100	Test-	0	<table border="1"> <tr><td>CP+</td><td>CP-</td></tr> <tr><td>3</td><td>0</td></tr> <tr><td>5</td><td>0</td></tr> <tr><td>37.5</td><td>NA</td></tr> </table> <table border="1"> <tr><td>Test+</td><td>100</td></tr> <tr><td>Test-</td><td>0</td></tr> </table>	CP+	CP-	3	0	5	0	37.5	NA	Test+	100	Test-	0
CP+	CP-																																																																
0	0																																																																
8	0																																																																
0	NA																																																																
Test+	NA																																																																
Test-	0																																																																
CP+	CP-																																																																
0	0																																																																
8	0																																																																
0	NA																																																																
Test+	NA																																																																
Test-	0																																																																
CP+	CP-																																																																
1	0																																																																
7	0																																																																
12.5	NA																																																																
Test+	100																																																																
Test-	0																																																																
CP+	CP-																																																																
6	0																																																																
2	0																																																																
75	NA																																																																
Test+	100																																																																
Test-	0																																																																
CP+	CP-																																																																
3	0																																																																
5	0																																																																
37.5	NA																																																																
Test+	100																																																																
Test-	0																																																																
SARS-COV-2 Vaccinated Previously infected	<table border="1"> <tr><td>CP+</td><td>CP-</td></tr> <tr><td>7</td><td>0</td></tr> <tr><td>5</td><td>0</td></tr> <tr><td>58.33</td><td>NA</td></tr> </table> <table border="1"> <tr><td>Test+</td><td>100</td></tr> <tr><td>Test-</td><td>0</td></tr> </table>	CP+	CP-	7	0	5	0	58.33	NA	Test+	100	Test-	0	<table border="1"> <tr><td>CP+</td><td>CP-</td></tr> <tr><td>7</td><td>0</td></tr> <tr><td>5</td><td>0</td></tr> <tr><td>58.33</td><td>NA</td></tr> </table> <table border="1"> <tr><td>Test+</td><td>100</td></tr> <tr><td>Test-</td><td>0</td></tr> </table>	CP+	CP-	7	0	5	0	58.33	NA	Test+	100	Test-	0	<table border="1"> <tr><td>CP+</td><td>CP-</td></tr> <tr><td>6</td><td>0</td></tr> <tr><td>6</td><td>0</td></tr> <tr><td>50</td><td>NA</td></tr> </table> <table border="1"> <tr><td>Test+</td><td>100</td></tr> <tr><td>Test-</td><td>0</td></tr> </table>	CP+	CP-	6	0	6	0	50	NA	Test+	100	Test-	0	<table border="1"> <tr><td>CP+</td><td>CP-</td></tr> <tr><td>11</td><td>0</td></tr> <tr><td>1</td><td>0</td></tr> <tr><td>91.67</td><td>NA</td></tr> </table> <table border="1"> <tr><td>Test+</td><td>100</td></tr> <tr><td>Test-</td><td>0</td></tr> </table>	CP+	CP-	11	0	1	0	91.67	NA	Test+	100	Test-	0	<table border="1"> <tr><td>CP+</td><td>CP-</td></tr> <tr><td>11</td><td>0</td></tr> <tr><td>1</td><td>0</td></tr> <tr><td>91.67</td><td>NA</td></tr> </table> <table border="1"> <tr><td>Test+</td><td>100</td></tr> <tr><td>Test-</td><td>0</td></tr> </table>	CP+	CP-	11	0	1	0	91.67	NA	Test+	100	Test-	0
CP+	CP-																																																																
7	0																																																																
5	0																																																																
58.33	NA																																																																
Test+	100																																																																
Test-	0																																																																
CP+	CP-																																																																
7	0																																																																
5	0																																																																
58.33	NA																																																																
Test+	100																																																																
Test-	0																																																																
CP+	CP-																																																																
6	0																																																																
6	0																																																																
50	NA																																																																
Test+	100																																																																
Test-	0																																																																
CP+	CP-																																																																
11	0																																																																
1	0																																																																
91.67	NA																																																																
Test+	100																																																																
Test-	0																																																																
CP+	CP-																																																																
11	0																																																																
1	0																																																																
91.67	NA																																																																
Test+	100																																																																
Test-	0																																																																

Key  
 CP+ CP-  
 TP FP PPV%  
 FN TN NPV%  
 Sn% Sp%

CP = clinical phenotype  
 Sn = sensitivity,  $[\text{TP}/(\text{TP}+\text{FN})]\times 100$   
 Sp = specificity,  $[\text{TN}/(\text{TN}+\text{FP})]\times 100$   
 PPV = positive predictive value,  $[\text{TP}/(\text{TP}+\text{FP})]\times 100$   
 NPV = negative predictive value,  $[\text{FN}/(\text{FN}+\text{TN})]\times 100$

748  
 749  
 750  
 751  
 752

**Table 2** Sensitivity, specificity, positive predictive values and negative predictive values for QuantiFERON and ELISpot assays. TP, true positive; FP, false positive; TN, true negative; FN, false negative.



753

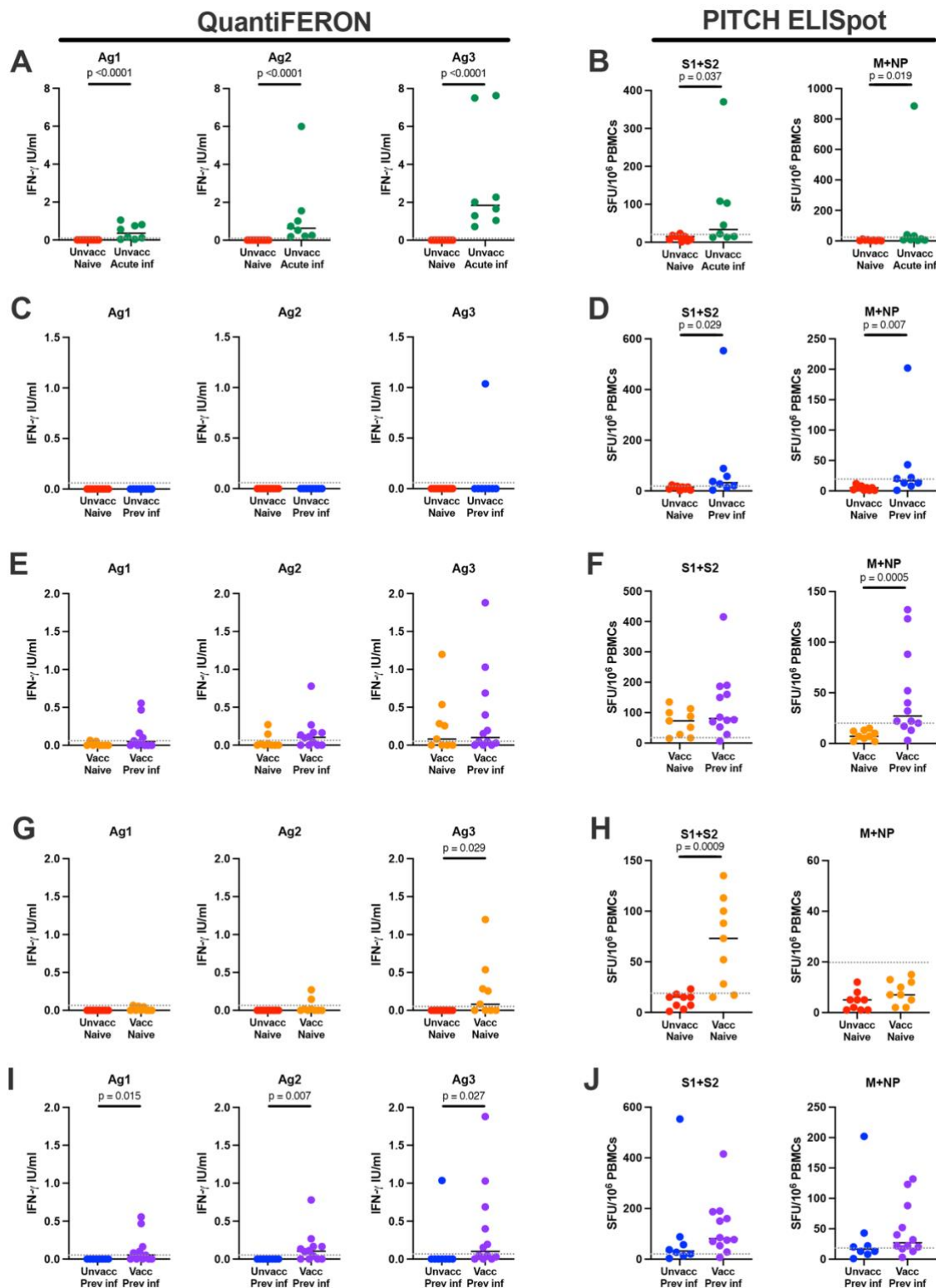
754

755 **Graphical abstract.** With the exception of acute infection group, the PITCH ELISpot S1+S2

756 had greater sensitivity for SARS-CoV-2 specific T cell responses compared with the

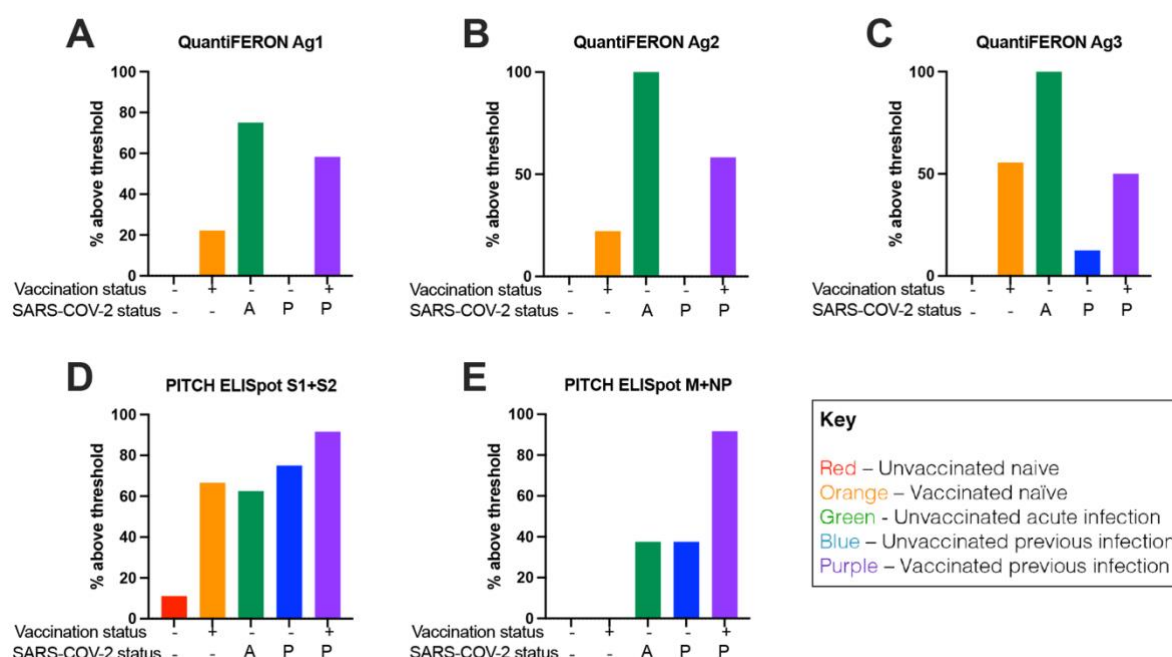
757 QuantiFERON SARS-CoV-2 assay tube Ag3.

758

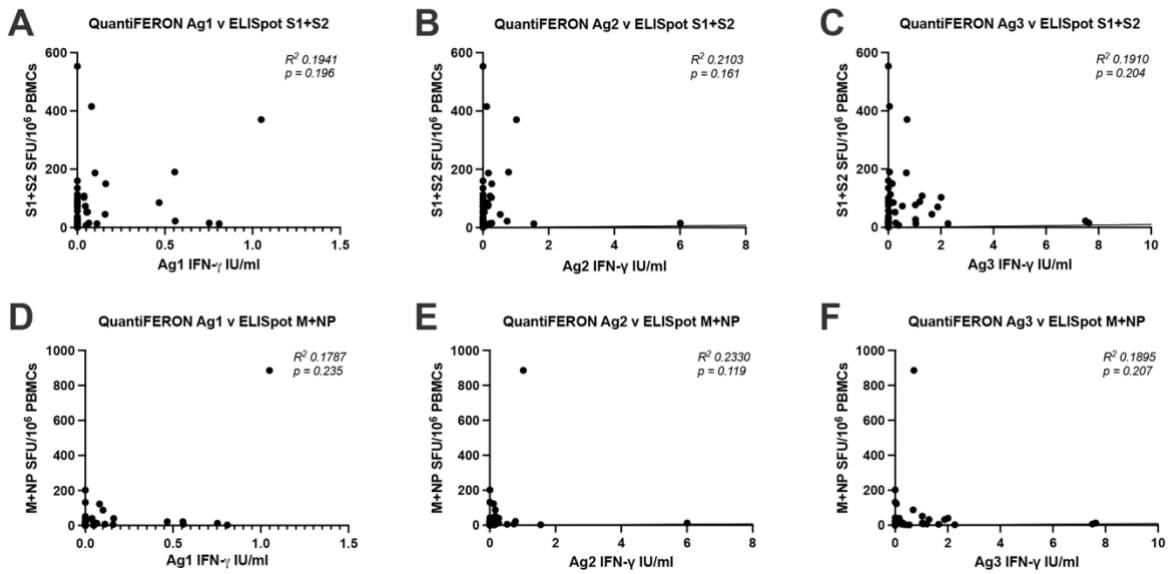


759  
 760 **Figure 1. Comparison of T cell responses between indicated groups measured by**  
 761 **QuantiFERON and PITCH ELISpot.** (A) T cell responses to SARS-CoV-2 in unvaccinated naïve  
 762 and unvaccinated acute infection using QuantiFERON Ag1, Ag2 and Ag3, and (B) ELISpot  
 763 S1+S2 and M+NP. (C) T cell responses to SARS-CoV-2 in unvaccinated naïve and  
 764 unvaccinated previous infection using QuantiFERON Ag1, Ag2 and Ag3, and (D) ELISpot

765 S1+S2 and M+NP. (E) T cell responses to SARS-CoV-2 in vaccinated naïve and vaccinated  
 766 previous infection using QuantiFERON Ag1, Ag2 and Ag3, and (F) ELISpot S1+S2 and M+NP.  
 767 (G) T cell responses to SARS-CoV-2 in unvaccinated naïve and vaccinated naïve using  
 768 QuantiFERON Ag1, Ag2 and Ag3, and (H) ELISpot S1+S2 and M+NP. (I) T cell responses to  
 769 SARS-CoV-2 in unvaccinated previous infection and vaccinated previous infection using  
 770 QuantiFERON Ag1, Ag2 and Ag3, and (J) ELISpot S1+S2 and M+NP. Unvacc naïve –  
 771 unvaccinated naïve, n = 9; unvacc acute inf - unvaccinated acute infection, n = 8; unvacc  
 772 prev inf - unvaccinated previous infection, n = 8; vacc naïve - vaccinated naïve, n = 10; vacc  
 773 prev inf – vaccinated previous infection, n = 12. Unpaired comparisons between groups  
 774 were performed using Mann-Whitney test, with statistical significance as  $p < 0.05$ . Horizontal  
 775 dotted lines represent the threshold of each assay based on negative assay controls (see  
 776 Methods).  
 777

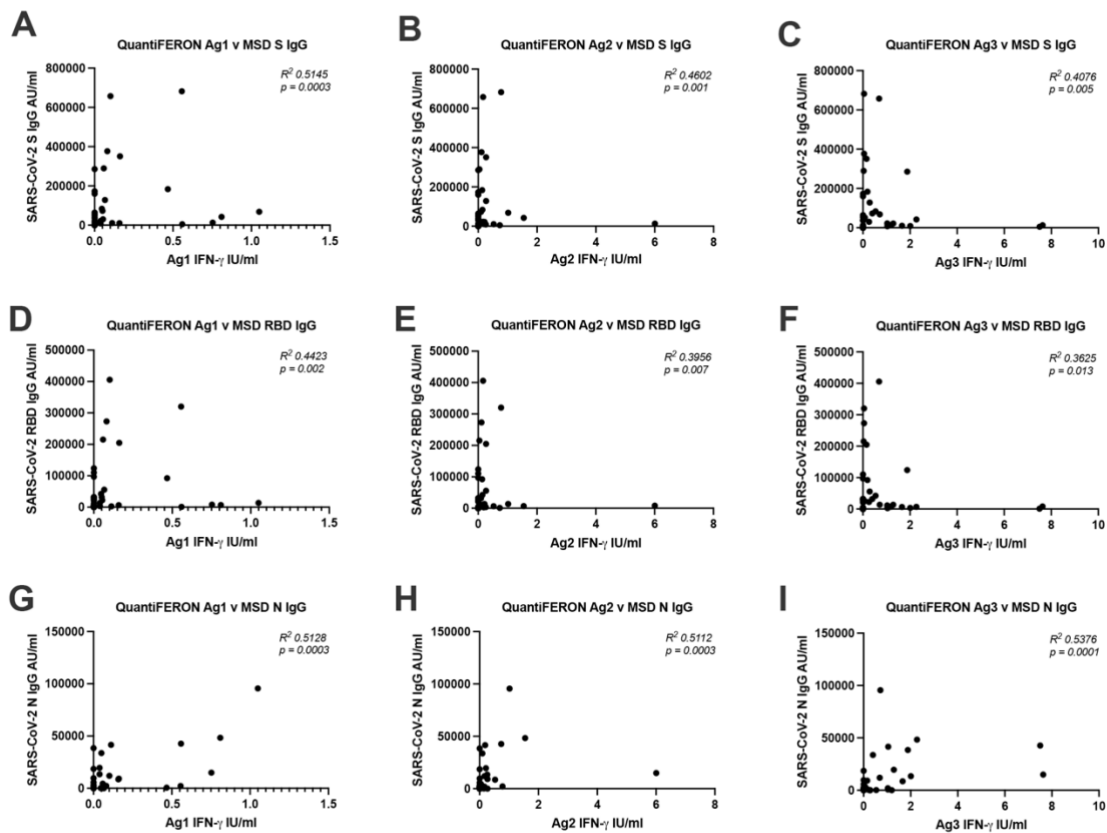


778  
 779 **Figure 2. Percentage of samples above threshold for indicated groups using QuantiFERON**  
 780 **and PITCH ELISpot.** The threshold to designate responses as positive was selected to be  
 781 values greater than the mean of the Nil controls + 2 standard deviations, with a minimum of  
 782 20 SFCs per million PBMCs for ELISpot. Percentage of samples above threshold for all five  
 783 groups using (A) QuantiFERON Ag1 (B) QuantiFERON Ag2 (C) QuantiFERON Ag3 (D) PITCH  
 784 ELISpot S1+S2 (E) PITCH ELISpot M+NP. Unvaccinated naïve, n = 9; unvaccinated acute  
 785 infection, n = 8; unvaccinated previous infection, n = 8; vaccinated naïve, n = 10;  
 786 vaccinated previous infection, n = 12. A – acute infection; P – previous infection.  
 787



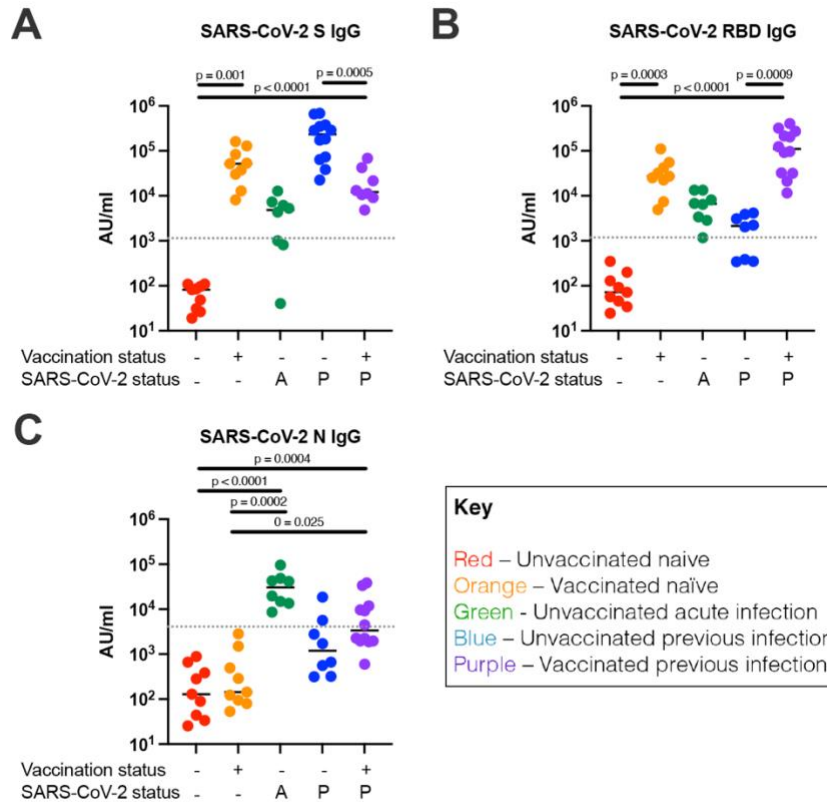
788  
 789  
 790  
 791  
 792  
 793  
 794

**Figure 3. Correlation between T cell responses measured by QuantiFERON and PITCH ELISpot.** (A-C) Correlation between QuantiFERON Ag1, Ag2 and Ag3 with ELISpot S1+S2. (D-F) Correlation between QuantiFERON Ag1, Ag2 and Ag3 with ELISpot M+NP. N = 47 for each analysis. Correlation analysis was carried out with Spearman's r correlation and two-tailed P values reported, with alpha = 0.05.

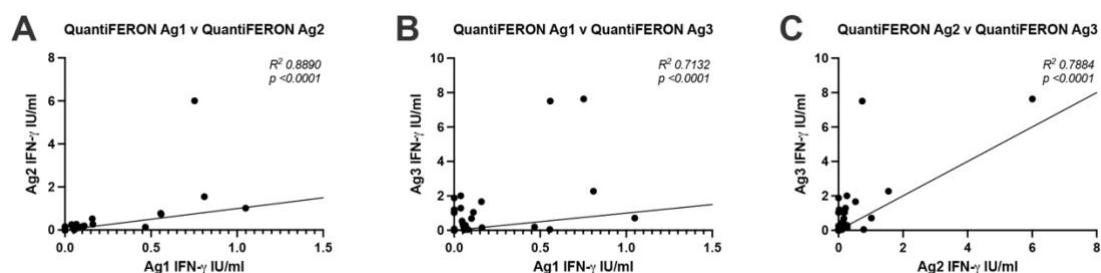


795

796 **Figure 4. Correlation between T cell responses measured by QuantiFERON and antibodies**  
 797 **measured by MSD binding assay.** (A-C) Correlation between QuantiFERON Ag1, Ag2 and  
 798 Ag3 with MSD S IgG. (D-F) Correlation between QuantiFERON Ag1, Ag2 and Ag3 with MSD  
 799 RBD IgG. (G-I) Correlation between QuantiFERON Ag1, Ag2 and Ag3 with MSD N IgG. N = 47  
 800 for each analysis. Correlation analysis was carried out with Spearman's r correlation and  
 801 two-tailed P values reported, with alpha = 0.05.  
 802

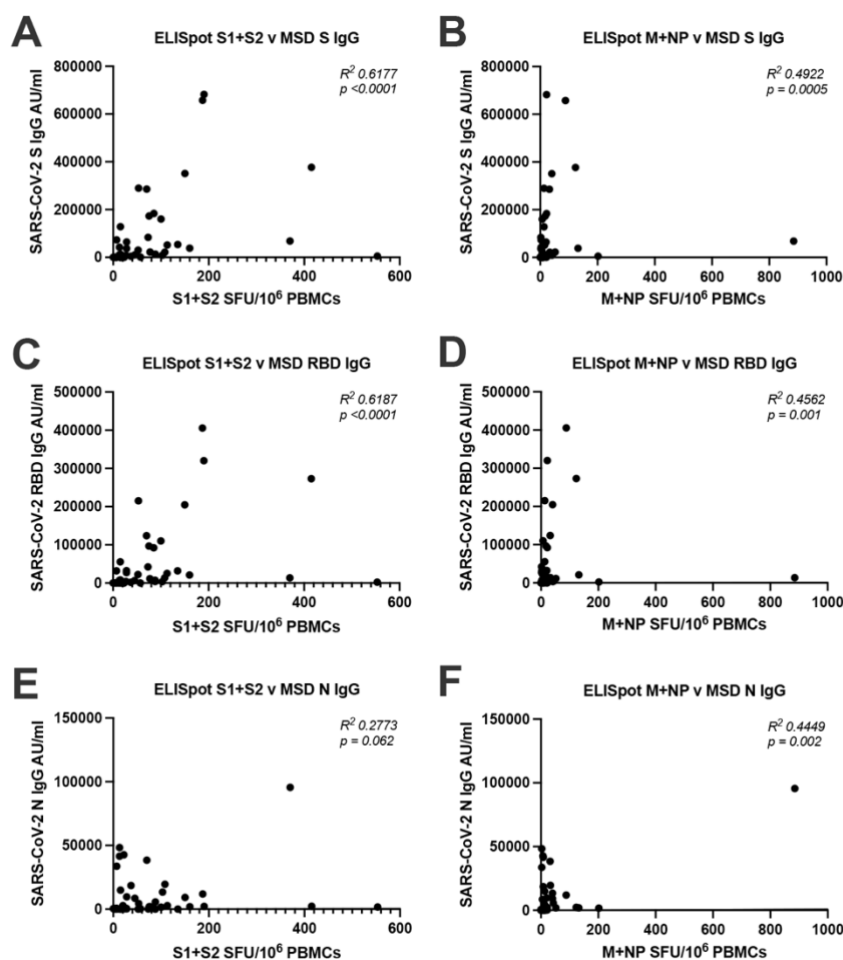


803  
 804 **Supplementary Figure 1. SARS-CoV-2 S-, RBD- and N-specific IgG responses using MSD**  
 805 **binding assay.** (A) S IgG antibody titres for individual groups. (B) RBD IgG antibody titres for  
 806 individual groups. (C) N IgG antibody titres for individual groups. Unvaccinated naïve, n = 9;  
 807 unvaccinated acute infection, n = 8; unvaccinated previous infection, n = 8; vaccinated  
 808 naïve, n = 10; vaccinated previous infection, n = 12. A – acute infection; P – previous  
 809 infection. Unpaired comparisons between groups were performed using Kruskal-Wallis test  
 810 with Dunn's correction. Horizontal dotted lines represent the threshold of each assay based  
 811 on pre-pandemic controls (see Methods).  
 812  
 813



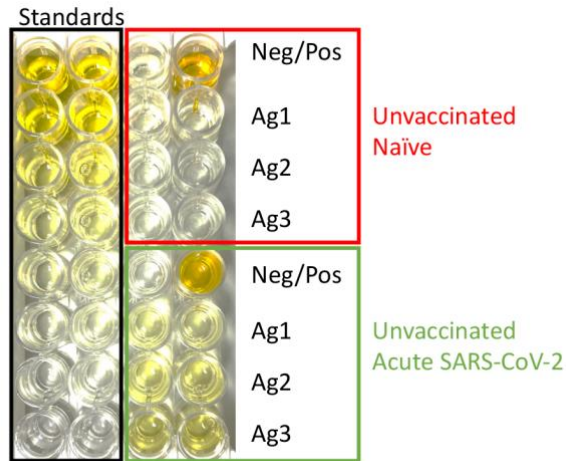
814

815 **Supplementary Figure 2. Correlation between T cell responses measured by QuantiFERON**  
816 **assay tubes.** (A) Correlation between Ag 1 v Ag2 (B), Ag1 v Ag3 and (C) Ag2 v Ag3.  
817 N = 47 for each analysis. Correlation analysis was carried out with Spearman's r correlation  
818 and two-tailed P values reported, with alpha = 0.05.  
819  
820



821 **Supplementary Figure 3. Correlation between T cell responses measured by ELISpot and**  
822 **antibodies measured by MSD binding assay.** (A) Correlation analysis between ELISpot S1+S2  
823 and MSD S IgG (B) ELISpot M+NP and MSD S IgG (C) ELISpot S1+S2 and MSD RBD IgG (D)  
824 ELISpot M+NP and MSD RBD IgG (E) ELISpot S1+S2 and MSD N IgG (F) ELISpot M+NP and  
825 MSD N IgG. N = 47 for each analysis. Correlation analysis was carried out with Spearman's r  
826 correlation and two-tailed P values reported, with alpha = 0.05.  
827  
828





829  
830  
831  
832  
833  
834  
835  
836  
837

**Supplementary Figure 4. Visual representation of the Quantiferon IFN-  $\gamma$  ELISA plate.**  
Standards are depicted in duplicate in the first two columns (black box). Wells from a sample of an unvaccinated, naïve participant are depicted (red box) with a negative control (top left), positive control (top right) and the experimental wells of Ag1, Ag2 and Ag3 in duplicate. Wells from a sample of an unvaccinated, acute infection participant are depicted (green box) are similarly presented.