

An automated EEG algorithm detect polymorphic delta activity in acute encephalopathy presenting as postoperative delirium

Running titel: EEG based delirium monitoring

Fienke L Ditzel, MD¹ Suzanne CA Hut, PhD^{1,2} Sandra MA Dijkstra-Kersten, PhD¹

Tianne Numan, PhD¹ Frans SS Leijten, MD PhD² Mark van den Boogaard, PhD³

Arjen JC Slooter Prof. MD PhD^{1,4}

1. Department of Intensive Care Medicine and University Medical Center Utrecht Brain Center, University Medical Center Utrecht, Utrecht University, Utrecht, the Netherlands

2. Department of Clinical Neurophysiology, and University Medical Center Utrecht Brain Center, University Medical Center Utrecht, Utrecht University, Utrecht, the Netherlands

3. Department of Intensive Care Medicine, Radboud Institute for Health Sciences, Radboud University Medical Center, Nijmegen, the Netherlands

4 Department of Neurology, UZ Brussel and Vrije Universiteit Brussel, Brussels, Belgium

Corresponding author: Fienke L. Ditzel, MD. Department of Intensive Care Medicine. University Medical Center Utrecht. PO Box 85500 3508 GA Utrecht The Netherlands. f.l.ditzel-2@umcutrecht.nl 0031630487255 ORCID-ID: 0000-0003-2011-9917

Clinical Trial Identifier: NCT02404181

<https://clinicaltrials.gov/ct2/show/NCT02404181?cond=NCT02404181&draw=2&rank>

=1

Data Sharing Statement: Individual deidentified participant data will not be shared

Abstract

Aim

Delirium, a clinical manifestation of acute encephalopathy, is often unrecognised. An important electroencephalography (EEG) characteristic of acute encephalopathy is polymorphic delta activity (PDA), which can be detected automatically. We aimed to study whether automated assessment of PDA in unselected EEG could detect acute encephalopathy that presents clinically as delirium.

Methods

We assessed PDA in 145 elderly patients using the first 96 seconds of unselected single-channel EEG (Fp2-Pz). We compared fully automated PDA detection with visual inspection by EEG experts. Additionally, we tested its performance as a delirium monitor by comparing PDA detection with a standardized delirium assessment by a clinical expert panel.

Results

PDA detection showed an area under the receiver operating characteristic (AUC) of 0.86 (95%CI 0.81–0.90) compared to EEG experts. When compared with the delirium classification of clinical experts, PDA detection achieved an AUC of 0.78 (95%CI 0.71–0.85). PDA detection correlated with the likelihood of delirium, its severity and the levels of attention and consciousness (all $p < 0.001$).

Conclusion

Automated PDA detection in unselected, single-channel EEG can classify acute encephalopathy clinically presenting as delirium.

Significance

A fully automated EEG algorithm can assist in the recognition of delirium.

Keywords

Acute encephalopathy, delirium, electroencephalography, postoperative care, polymorphic delta activity.

1. Introduction

Delirium is associated with higher mortality¹ long-term cognitive impairment,¹⁻³ longer duration of hospital admission,⁴ decline in independently living⁵ and therefore increased health care costs.^{6,7} It is highly prevalent, with an overall frequency of 23% in hospitalised patients.⁸ Recognition of delirium is essential for early treatment of underlying conditions and optimal communication, as a delirious state may impair a patient's ability to understand explanations of procedures and prognosis.⁹

Unfortunately, delirium often remains undetected in various hospital settings.⁹⁻¹² Therefore, several delirium assessment tools have been developed to improve recognition.^{11,13} Although excellent results have been reported in research settings, the diagnostic performance of these tools was found to be disappointing in routine, daily practice^{14,15} as key elements of these tools are subjective and therefore difficult to standardise if numerous nurses use the tool as part of daily care. Further, the diagnosis of delirium may be difficult, as experts were found to disagree in 21% of cases, even though they based their conclusion on exactly the same information.¹⁶ Therefore, there is a need for an objective monitor to routinely determine the brain state of patients at risk for delirium.

Acute encephalopathy is a rapidly developing pathobiological process in the brain that can be objectively measured with electroencephalography (EEG), and that clinically presents as (subsyndromal)delirium or, in severe cases, as coma.¹⁷ The association between delirium and EEG slowing has been known for decades.¹⁸⁻²⁰ Since EEG slowing correlates with delirium severity,²¹⁻²³ and normalises after delirium resolution,²⁴ EEG may have the potential to monitor delirium over time. However, conventional EEG is time-consuming, expensive and unpractical for routine delirium

assessments, as it can only be performed and interpreted by trained personnel.

We previously showed that single-channel EEG (Fp2-Pz) can detect postoperative delirium based on increased relative delta power,²⁵ which we validated in a multicentre study.²² However, relative delta power can be nonspecific since noise, such as eye- and glosso-kinetic movement artefacts, also manifest predominantly within this range. Another important limitation of previous studies was the manual selection of EEG epochs at first.^{18,20} Selection of artefact-free epochs can be time consuming and has a high inter-operator variability.²⁶ Therefore, results of these previous studies cannot be used in a routine clinical setting. To provide a delirium monitoring tool suitable for routine daily care, an algorithm is needed that functions without any manual EEG epoch selection after recording.

Acute encephalopathy presenting as delirium is characterised in the EEG by arrhythmic slow waves with suppression of alpha activity, known as polymorphic delta activity (PDA).^{13,27-29} Based on defined wave shape characteristics for PDA and automated detection and rejection, an algorithm was developed to function without any pre-selection of EEG epochs for delirium monitoring in daily clinical practice. The aim of this study was to test the hypothesis that a fully automated PDA wave shape algorithm can detect acute encephalopathy in unselected single-channel EEG, clinically presenting as postoperative delirium.

2. Methods

2.1 Study design and population

The current investigation is based on data from a prior prospective, multicentre cohort study, described in more detail elsewhere.²² The study design was approved prior to patient enrolment by the local ethical committee of University Medical Center Utrecht (protocol 13-634) and registered at clinical trial (NCT02404181, principal investigator: AJC Slooter). This manuscript adheres to the applicable Standards for Reporting of Diagnostic Accuracy Studies (STARD) guidelines. In short, elderly patients were included who were ≥ 60 years, scheduled for major surgery with an expected hospital stay of ≥ 2 days, and considered at risk of delirium.⁶ All patients gave signed informed consent and anonymity was preserved. Exclusion criteria were neurosurgery and the inability to undergo cognitive testing due to deafness or a language barrier. Additionally, we excluded patients with a Mini-Mental State Examination (MMSE) ≤ 23 because dementia could affect slow-wave EEG activity.^{30,31}

2.2 Measurements

Patients underwent EEG recordings in resting state with eyes closed. All measurements were performed by a trained researcher on the day before surgery (T-1) and during each of the first three postoperative days (T1-T3). The researcher constantly ensured patients were awake and sat still while recording. EEG measurements were directly followed by an extensive delirium assessment, described below.

2.2.1 Assessment of acute encephalopathy by EEG experts

The reference for acute encephalopathy assessment consisted of the

classification of three EEG experts from the Department of Clinical Neurophysiology at the University Medical Center Utrecht, the Netherlands who, independently of each other, visually inspected the single-channel EEGs. All experts had over 15 years of clinical EEG experience. To provide training in recognising delta waves and artefacts such as eye movement, a training dataset was used,²⁵ which contained of 21-channel EEGs (n=56) paired with their Fp2-Pz EEG derivation. PDA was defined when four criteria were met: 1) a frequency within 0.5 to 5 Hz; 2) being present at least three times per minute; 3) containing at least two sequent waves; 4) having a higher amplitude than alpha activity in the same recording. Blinded to clinical information, the EEG experts classified the single-channel EEGs into either "acute encephalopathy", "possible acute encephalopathy/doubt", or "no acute encephalopathy". To provide a final binary conclusion "no acute encephalopathy" or "acute encephalopathy", discussion sessions were organised to evaluate the EEGs for which there was no majority vote or when the majority vote conclusion was "doubt".

2.2.3 Assessment of delirium by clinical experts

Delirium assessments were performed by trained researcher based on a standardised, videotaped cognitive assessment of about fifteen minutes that included the Delirium Rating Scale Revised-98 (DRS-R-98),^{32,33} the Richmond Agitation and Sedation Scale (RASS),³⁴ and the Confusion Assessment Method in the ICU (CAM-ICU).^{34,35} These videotapes were rated by varying pairs of two, or in case of disagreement three, delirium experts. The complete panel contained 38 clinicians, mainly psychiatrist and geriatricians, with at least five, but mostly over 10 years of experience. Blinded to each other and the EEG recording, they classified patients as

either having "no delirium", "possible delirium/subsyndromal delirium" or "delirium", according to the Diagnostic and Statistical Manual of Mental Disorders (DSM-5) delirium criteria. In addition, the clinical experts reported the likelihood of delirium on a numeric rating scale (NRS) ranging from 1 to 10 (higher scores represented a higher likelihood of delirium). The final classification was based on the majority vote, where "possible delirium" was grouped with "delirium."

2.2.3 Detection of polymorphic delta activity

Detection of PDA was done with a fully automated wave shape analysis algorithm (DeltaScan algorithm version 2.4.2). Of the recorded channels Fp2-Pz and T8-Pz (using Fpz as a reference), analyses were solely performed on Fp2-Pz with a sampling frequency of 512Hz. The algorithm consists of 1) a pre-processing module, 2) an artefact module and 3) a module to detect PDA wave shapes.

The first pre-processing step was to use a high-pass filter (cut-off 0.125Hz) to remove low-frequency noise and slow drift from the EEG recordings. Secondly, multiple filters were used to remove line noise from power grids (50/60), device disturbances (24/64 Hz) and their harmonics. After pre-processing, the artefact module ran to reject non-EEG signals such as motion artefacts, disconnected electrodes or strong electrical interference.

Detection of PDA was run on the first non-rejected 96 seconds using a classifier based on supervised machine learning techniques. The classifier was trained to recognise wave characteristics of PDA on a training dataset that contained surgical patients with delirium (n=28) or without delirium (n=28).²⁵ Training data of healthy volunteers (n=27) was added to provide target-free EEG to distinguish PDA from delta

activity generated by eye movements. Both types of wave shapes were manually marked by a clinical technician with 10 years of experience in neurophysiology. Examples of these detected wave shapes and the artefact module are shown in figure 1.

Thereafter, the amount of detected PDA was translated to an ordinal score ranging from 1 to 5. This PDA Score aims to represent the likelihood of acute encephalopathy labelled: "1" very unlikely, "2" unlikely, "3" possibly, "4" likely and "5" very likely. Within this range, scores 1 and 2 are intended to represent "no acute encephalopathy" and scores 3-5 "acute encephalopathy".

PDA Scores were set on the prespecified Receiver Operating Characteristic-curve (ROC) of our sample that was completely independent of the training dataset. A PDA Score of "1" was assigned when none or only one specific PDA wave was detected. Since the boundary between PDA Scores 2 and 3 is crucial for assignment to the categories "no acute encephalopathy" and "acute encephalopathy" an optimum was chosen between the sensitivity, specificity and negative predictive value (NPV) using the EEG experts and the clinical experts described above. The boundaries between PDA Scores 3, 4 and 5, were set by sorting the positively assessed EEG measurements based on the amount of detected PDA and dividing them into three equal bins. Examples of recordings with PDA Scores (1-5) are shown in figure 2.

2.3 Statistical analyses

First, we compared positive assessments for acute encephalopathy as classified by PDA detection (PDA Score 3-5) with acute encephalopathy according to EEG experts. Secondly, we compared these positive assessments with assessments classified as delirium according to the clinical experts. Next, we expressed the performance of

PDA detection as the Area Under the Receiver Operating Characteristic (AUC) for the two expert panels. In addition, we performed a stratified analysis based on the presence or absence of a medical history of stroke or transient ischemic attack (TIA) and compared strata with DeLong's test.

Predictive values were calculated for each PDA Score boundary ranging from 1-5. Spearman's rank correlation coefficients (r_s) were determined to investigate correlations between PDA Scores (1-5) and the scores of the clinical experts on likelihood of delirium (averaged Numeric Rating Scale, NRS), the severity of delirium (averaged DRS-R-98), level of attention (i.e., averaged item-10 of the DRS-R-98 score), and level of consciousness (averaged RASS). A P-value of < 0.05 was considered significant. Analyses were performed with SPSS version 26.0.0.1 and Ri386 version 4.0.3.

3. Results

3.1 Study population

Of the 159 patients (n=360 assessments) that were available for analysis, we excluded 10 patients (n=21 assessments) with a preoperative MMSE score ≤ 23 from the analysis. Subsequently, we excluded assessments with missing expert diagnoses due to incomplete clinical data (n=7 assessments) or insufficient EEG (n=11 assessments). Of the remaining 145 patients (n=321 assessments), the automated artefact algorithm rejected 9 assessments (success rate 97%). A flowchart of the included patients and assessments can be found in Supplement 1. The final study population included 145 patients (n=312 assessments). Patient characteristics are shown in Table 1.

3.2 Classification of delirium/acute encephalopathy

The EEG experts classified 47% of the population with acute encephalopathy (68 patients, 115 assessments) and the clinical experts diagnosed 32% of the patients with delirium (47 patients, 68 assessments). The overall overlap between both expert panels on assessment level was 70%. No patients were classified as delirious on the day before surgery (T-1) by the clinical experts. PDA detection distinguished five groups with the following labels: "1" very unlikely (n=172 assessments, 55%), "2" unlikely (n=25 assessments, 8%), "3" possibly (n=47 assessments, 15%), "4" likely (n=37 assessments, 12%) and "5" very likely (n=31 assessments, 10%). An overview of these groups and classification of both panels can be found in Supplement 2.

3.3 Accuracy of polymorphic delta detection

The AUC for PDA detection was 0.86 (95% CI 0.81–0.90) for acute

encephalopathy according to the EEG experts, and 0.78 (95% CI 0.71– 0.85) for delirium according to the clinical experts (Figure 3).

The boundary between 2 and 3 on the ROC, representing the cut off between acute encephalopathy and no acute encephalopathy, showed a sensitivity of 0.80 and a specificity of 0.88, according to the EEG experts. The same boundary showed a sensitivity of 0.74 and a specificity of 0.73 for delirium according to the clinical experts. Table 2 shows the predictive values for all PDA Scores. A specificity of 1 was reached for a PDA Score of "5" compared to visual inspection of EEG experts and 0.96 for the clinical reference.

When we stratified our data based on the presence or absence of a previous stroke or TIA, there was no significant difference in the AUC using either expert panel (Supplement 3).

The PDA Score (1-5) correlated significantly with the likelihood of delirium (NRS, $r_s = .37$, 95%CI 0.25-0.47), the severity of delirium (DRS-R-98, $r_s = .46$, 95%CI 0.36-0.55), the level of attention (i.e. item-10 of the DRS-R-98 score, $r_s = .41$, 95%CI 0.32-0.51) and level of consciousness (RASS, $r_s = -.32$, 95%CI -0.44- -0.19) ($p < .001$ for all comparisons).

4. Discussion

This multicentre cohort study aimed to investigate the diagnostic performance of PDA detection on manually unselected single-channel EEG in diagnosing acute encephalopathy presenting as postoperative delirium. In summary, PDA detection classified acute encephalopathy with an AUC of 0.86 compared to visual inspection by EEG experts. An AUC of 0.78 was found for delirium detection using the clinical experts as a reference. PDA detection correlated with the likelihood and severity of delirium as well as the levels of attention and consciousness. Importantly, this performance is similar to automated detection of relative delta power in single-channel EEG that was manually selected for artefact-free epochs,²² hampering application in routine, daily care.

Interestingly, we found that the EEG experts included more positive assessments than the clinical experts (115 and 68, respectively). EEG abnormalities accompanying delirium have shown to be associated with poor outcomes, such as mortality and length of stay.^{36,37} Previously, we showed that acute encephalopathy in EEG without confirmed delirium is associated with a significantly higher DRS-R-98 score than no acute encephalopathy and no delirium.²⁹ In the current study, the amount of PDA correlated with delirium severity. We speculate that assessments classified as acute encephalopathy without delirium, indicate subsyndromal delirium. Such subsyndromal delirium could resolve before it becomes clinically apparent or could deteriorate to full-blown delirium. PDA may therefore be an early indicator of delirium, allowing earlier treatment of underlying conditions.^{38,39}

Interest in minimal lead EEG-based delirium monitoring seems to be rising. Previous studies showed a similar performance to the findings in this study^{37,40,41} but did

not use a pre-hand trained automated artefact algorithm. For application in clinical practice, automated artefact detection and rejection is an important feature. Secondly, previous studies had a data-driven approach instead of validating findings²⁵ in a completely independent dataset as was done in this study.

An important strength of our study was furthermore the use of a comprehensive reference standard, including two expert panels. PDA detection was compared with the classification of three experienced, well-trained EEG experts assessing all EEG. In addition, PDA detection was compared with the classification of two (or three, in case of discordance) experienced clinicians, who based their diagnosis on at least 20 minutes of video recorded cognitive testing. It is essential that reference panels consist of more than one expert, as we showed previously that experts often disagree on the diagnosis of delirium although they based their conclusion on exactly the same clinical information.¹⁶ Since the cognitive assessment and EEG measurement were immediately followed by each other, we were able to capture the patient's status both clinically and physiologically in a time frame that is unlikely to be subject to fluctuations.

A limitation of the study is the inclusion of only postoperative patients, mainly after cardiothoracic or vascular surgery. The inclusion of a more heterogeneous group of patients would allow us to determine whether the results can be generalised to other settings. Our proper screening of patients and videotaped cognitive testing make it unlikely - although not impossible - that any present PDA could be due to other causes. For example, an unknown structural cerebral abnormality⁴² could possibly affect the outcomes. However, analyses that were stratified on the presence or absence of a previous stroke or TIA, yielded similar results. Delta activity due to sleep seems unlikely since the researcher constantly ensured that patients were awake.

Further research should explore the properties of the studied algorithm in patients who may show increased delta activity in EEG, such as dementia,^{30,31,43} or other neurological⁴² and psychiatric disorders.^{44,45} Secondly, since the presence and severity of delirium symptoms may change within 24 hours, it is important to study the fluctuation of delirium symptoms over the day and their correspondence with detection of PDA. Lastly, the correlation between PDA and length of stay or mortality is important to understand the significance of EEG based monitoring. PDA detection can be implemented in daily clinical care, since output is generated without any manual pre-selection of epochs after recording. The technology presented can be incorporated into an easy-to-apply tool with a simple likelihood score (1-5) to measure altered mental status. PDA detection can especially aid in the diagnosis of hypoactive delirium, which is more common but more often not recognised than hyperactive delirium and may be confused with fatigue, sleepiness or depression.⁴⁶ The PDA score allows for the monitoring of brain function as a time dependent parameter such as temperature and blood pressure.

In conclusion, since delirium is often not detected in usual care, recognition could be improved with an easy-to-apply EEG monitor with automated analysis. Our findings show that automated detection of PDA can diagnose acute encephalopathy clinically presenting as delirium.

Highlights

- We validated a fully automated algorithm with an integrated artefact detector based on prespecified wave shape characteristics
- Detection of polymorphic delta activity was compared with visual inspection of EEG and delirium assessment based on 20-minute videotaped cognitive testing
- The amount of PDA can be translated in a delirium probability score that can be used in daily delirium monitoring with single-channel EEG

Acknowledgements: The authors would like to especially thank The Dutch delirium study group who served as members of the clinical expert panel, as well as Nizare R V R Henriquez and Nico W Teunissen of the Department of Neurology and Neurosurgery and University Medical Center Utrecht Brain Center, University Medical Center Utrecht, Utrecht University, Utrecht, The Netherlands, who served as members of EEG expert panel.

Disclosure: The sponsor and Prolira, the company that developed the monitor and the latest algorithm in detecting PDA, had no role in the study design, data analysis, data interpretation, writing of the report, or the decision to submit for publication.

Declaration of interests: Arjen JC Slooter is an advisor for Prolira, a start-up company that develops an EEG-based delirium monitor. Any (future) profits from EEG-based delirium monitoring will be used for future scientific research only. None of the other authors reports any conflicts of interest.

Funding: This work was supported by European Union Horizon 2020 [grant number 820555].

Details of authors' contribution: All authors confirmed they have contributed to the intellectual content of this article and gave final approval of the version to be published.

Fienke L Ditzel: this author contributed with data preparation, analysis and preparation of the manuscript

Suzanne CA Hut: this author contributed with data preparation, analysis and revision of the manuscript

Sandra MA Dijkstra-Kersten: this author contributed with data preparation and analysis

Tianne Numan: this author contributed with data collection, data preparation, revision of the manuscript

Frans SS Leijten: this author contributed with data collection and revision of the manuscript

Mark van den Boogaard: this author contributed with data collection and revision of the manuscript

Arjen JC Slooter: this author contributed with data collection and revision of the manuscript

Legends

Figure 1 Examples of detected wave shapes

Examples of detected wave shapes including Polymorphic Delta Activity (PDA) (red) and eye movement (green). The pink line represents the artefact algorithm that deselected improper EEG signal.

Figure 2 Examples of Polymorphic Delta Activity (PDA) Score

Examples of single-channel EEG recordings (Fp2-Pz) of each PDA Score ranging from 1 (no PDA) to 5 (a lot of PDA). This PDA Score aims to represent the likelihood of acute encephalopathy labelled: "1" very unlikely, "2" unlikely, "3" possibly, "4" likely and "5" very likely. Within this range, scores 1 and 2 are intended to represent "no acute encephalopathy" and scores 3-5 "acute encephalopathy".

Figure 3 Receiver Operating Characteristic (ROC) curves for Polymorphic Delta Activity (PDA)

ROC-curves show the sensitivity and specificity for every boundary of the PDA Score. The Area Under the Receiver Operating Characteristic (AUC) for acute encephalopathy was 0.86 (95% Confidence Interval (CI) 0.81-0.90) using visual inspection of EEG experts as a reference. The AUC for delirium was 0.78 (95% CI 0.71-0.85) using clinical experts as a reference.

Glossary of Terms

AUC: Area Under the receiver operating Characteristic

BMI: Body Mass Index

CAM-ICU: Confusion Assessment Method in the ICU

CAM-S: Confusion Assessment Method-Severity

CI: Confidence Interval

DSM-5: Diagnostic and Statistical Manual of Mental Disorders fifth

DRS-R-98: Delirium Rating Scale Revised-98

EEG: Electroencephalogram

IQR: Interquartile range

MMSE: Mini-Mental State Examination

NPV: Negative Predictive Value

NRS: Numeric Rating Scale

PPV: Positive Predictive Value.

RASS: Richmond Agitation and Sedation Scale

ROC: Receiver Operating Characteristic-curve

SD: Standard Deviation

TIA: Transient Ischemic Attack

References

1. Tsui A, Searle SD, Bowden H, et al. The effect of baseline cognition and delirium on long-term cognitive impairment and mortality: a prospective population-based study. *Lancet Heal Longev*. Published online 2022:232-241. doi:10.1016/s2666-7568(22)00013-7
2. Austin CA, O’Gorman T, Stern E, et al. Association between Postoperative Delirium and Long-term Cognitive Function after Major Nonemergent Surgery. *JAMA Surg*. Published online 2019. doi:10.1001/jamasurg.2018.5093
3. Goldberg TE, Chen C, Wang Y, et al. Association of delirium with long-term cognitive decline: A meta-analysis. *JAMA Neurol*. 2020;77(11):1373-1381. doi:10.1001/jamaneurol.2020.2273
4. Salluh JIF, Wang H, Schneider EB, et al. Outcome of delirium in critically ill patients: Systematic review and meta-analysis. *BMJ*. 2015;350:1-10. doi:10.1136/bmj.h2538
5. Shi Z, Mei X, Li C, et al. Postoperative delirium is associated with longterm decline in activities of daily living. *Anesthesiology*. 2019;131(3):492-500. doi:10.1097/ALN.0000000000002849
6. Inouye SK, Westendorp RGJ, Saczynski Jane S. Delirium in elderly people. *Lancet*. 2014;383(9920):911-922. doi:10.1016/S0140-6736(13)60688-1.Delirium
7. Leslie DL, Marcantonio ER, Zhang Y, Leo-Summers L, Inouye SK. One-year

- health care costs associated with delirium in the elderly population. *Arch Intern Med*. Published online 2008. doi:10.1001/archinternmed.2007.4
8. Gibb K, Seeley A, Quinn T, et al. The consistent burden in published estimates of delirium occurrence in medical inpatients over four decades: A systematic review and meta-analysis study. *Age Ageing*. 2020;49(3):352-360.
doi:10.1093/ageing/afaa040
 9. Marra A, Kotfis K, Hosie A, et al. Delirium Monitoring: Yes or No? That Is The Question. *Am J Crit Care*. 2019;28(2):127-135. doi:10.4037/ajcc2019874
 10. Buurman BM, Hoogerduijn JG, de Haan RJ, et al. Geriatric conditions in acutely hospitalized older patients: Prevalence and One-Year survival and functional decline. *PLoS One*. 2011;6(11). doi:10.1371/journal.pone.0026951
 11. Van Eijk MMJ, Van Marum RJ, Klijn IAM, De Wit N, Kesecioglu J, Slooter AJC. Comparison of delirium assessment tools in a mixed intensive care unit. *Crit Care Med*. 2009;37(6):1881-1885. doi:10.1097/CCM.0b013e3181a00118
 12. Spronk PE, Riekerk B, Hofhuis J, Rommes JH. Occurrence of delirium is severely underestimated in the ICU during daily care. *Intensive Care Med*. 2009;35(7):1276-1280. doi:10.1007/s00134-009-1466-8
 13. Pandharipande PP, Ely EW, Arora RC, et al. The intensive care delirium research agenda: a multinational, interprofessional perspective. *Intensive Care Med*. 2017;43(9):1329-1339. doi:10.1007/s00134-017-4860-7
 14. Van Eijk MM, Van Den Boogaard M, Van Marum RJ, et al. Routine use of the

- confusion assessment method for the intensive care unit: A multicenter study. *Am J Respir Crit Care Med.* 2011;184(3):340-344. doi:10.1164/rccm.201101-0065OC
15. Lindroth H, Bratzke L, Twadell S, et al. Predicting postoperative delirium severity in older adults: The role of surgical risk and executive function. *Int J Geriatr Psychiatry.* 2019;34(7):1018-1028. doi:10.1002/gps.5104
 16. Numan T, van den Boogaard M, Kamper AM, Rood PJT, Peelen LM, Slooter AJC. Recognition of Delirium in Postoperative Elderly Patients: A Multicenter Study. *J Am Geriatr Soc.* Published online 2017. doi:10.1111/jgs.14933
 17. Slooter AJC, Otte WM, Devlin JW, et al. Updated nomenclature of delirium and acute encephalopathy: statement of ten Societies. *Intensive Care Med.* Published online 2020:4-6. doi:10.1007/s00134-019-05907-4
 18. Boord MS, Moezzi B, Davis D, et al. Clinical Neurophysiology Investigating how electroencephalogram measures associate with delirium : A systematic review. *Clin Neurophysiol.* 2020;(xxxx). doi:10.1016/j.clinph.2020.09.009
 19. Engel GL, Romano J. Delirium, a syndrome of cerebral insufficiency (reprint). *JChronDis.* 1959;9:260-277.
 20. Wiegand TLT, Rémi J, Dimitriadis K. Electroencephalography in delirium assessment: a scoping review. *BMC Neurol.* 2022;22(1):1-23. doi:10.1186/s12883-022-02557-w
 21. Kimchi EY, Neelagiri A, Whitt W, Sagi AR. Clinical EEG slowing correlates

- with delirium severity and predicts poor clinical outcomes. *Neurology*. Published online 2019. doi:10.1212/WNL.00000000000008164
22. Numan T, van den Boogaard M, Kamper AM, et al. Delirium detection using relative delta power based on 1-minute single-channel EEG: a multicentre study. *Br J Anaesth*. 2019;122(1):60-68. doi:10.1016/j.bja.2018.08.021
 23. Tanabe S, Mohanty R, Lindroth H, et al. Cohort study into the neural correlates of postoperative delirium: the role of connectivity and slow-wave activity. *Br J Anaesth*. 2020;125(1):55-66. doi:10.1016/j.bja.2020.02.027
 24. Jacobson SA, Leuchter AF, Walter DO, Weiner H. Serial quantitative EEG among elderly subjects with delirium. *Biol Psychiatry*. 1993;34(3):135-140. doi:10.1016/0006-3223(93)90382-N
 25. Van Der Kooi AW, Zaal IJ, Klijn FA, et al. Delirium detection using EEG: What and how to measure. *Chest*. 2015;147(1):94-101. doi:10.1378/chest.13-3050
 26. van Diessen E, Numan T, van Dellen E, et al. Opportunities and methodological challenges in EEG and MEG resting state functional brain network research. *Clin Neurophysiol*. 2015;126(8):1468-1481. doi:10.1016/j.clinph.2014.11.018
 27. Niedermeyer E, Lopes Da Silva F. Electroencephalography: Basic Principles, Clinical Applications, and Related Fields. In: ; 2005:439-448.
 28. Smith HAB, Williams SR. *Delirium Acute Brain Dysfunction in the Critically Ill*.; 2020.

29. Hut SC, Dijkstra-Kersten SM, Numan T, et al. EEG and clinical assessment in delirium and acute encephalopathy . *Psychiatry Clin Neurosci*. Published online 2021:0-3. doi:10.1111/pcn.13225
30. Jenssen S. Electroencephalogram in the dementia workup. *Am J Alzheimers Dis Other Demen*. 2005;20(3):159-166. doi:10.1177/153331750502000309
31. Thomas C, Hestermann U, Walther S, et al. Prolonged activation EEG differentiates dementia with and without delirium in frail elderly patients. *J Neurol Neurosurg Psychiatry*. 2008;79(2):119-125.
doi:10.1136/jnnp.2006.111732
32. de Rooij SE, van Munster BC, Korevaar JC, et al. Delirium subtype identification and the validation of the Delirium Rating Scale—Revised-98 (Dutch version) in hospitalized elderly patients. *Int J Geriatr Psychiatry*. 2006;21(9):876-882.
doi:10.1002/gps.1577
33. Trzepacz PT, Mittal D, Torres R, Canary K, Norton J, Jimerson N. Validation of the Delirium Rating Scale-Revised-98. *J Neuropsychiatry Clin Neurosci*. 2001;13(2):229-242. doi:10.1176/jnp.13.2.229
34. Ely EW, Truman B, Shintani A, et al. Monitoring Sedation Status Over Time in ICU PatientsReliability and Validity of the Richmond Agitation-Sedation Scale (RASS). *JAMA*. 2003;289(22):2983-2991. doi:10.1001/jama.289.22.2983
35. Luetz A, Heymann A, Radtke FM, et al. Different assessment tools for intensive care unit delirium: Which score to use? *Crit Care Med*. 2010;38(2):409-418.

doi:10.1097/CCM.0b013e3181cabb42

36. Shinozaki G, Bormann NL, Chan AC, et al. Identification of patients with high mortality risk and prediction of outcomes in delirium by bispectral EEG. *J Clin Psychiatry*. 2019;80(5). doi:10.4088/JCP.19m12749
37. van Sleuwen M, Sun H, Eckhardt C, et al. Physiological Assessment of Delirium Severity. *Crit Care Med*. 2021;Publish Ah:1-9.
doi:10.1097/ccm.0000000000005224
38. Heymann A, Radtke F, Schiemann A, et al. Delayed treatment of delirium increases mortality rate in intensive care unit patients. *J Int Med Res*. 2010;38(5):1584-1595. doi:10.1177/147323001003800503
39. Luetz A, Weiss B, Boettcher S, Burmeister J, Wernecke KD, Spies C. Routine delirium monitoring is independently associated with a reduction of hospital mortality in critically ill surgical patients: A prospective, observational cohort study. *J Crit Care*. Published online 2016. doi:10.1016/j.jcrc.2016.05.028
40. Shinozaki G, Chan AC, Sparr NA, et al. Delirium detection by a novel bispectral electroencephalography device in general hospital. *Psychiatry Clin Neurosci*. 2018;72(12):856-863. doi:10.1111/pcn.12783
41. Urdanibia-Centelles O, Nielsen RM, Rostrup E, et al. Automatic continuous EEG signal analysis for diagnosis of delirium in patients with sepsis. *Clin Neurophysiol*. 2021;132(9):2075-2082. doi:10.1016/j.clinph.2021.05.013
42. van Dellen E, Hillebrand A, Douw L, Heimans JJ, Reijneveld JC, Stam CJ. Local

- polymorphic delta activity in cortical lesions causes global decreases in functional connectivity. *Neuroimage*. 2013;83:524-532.
doi:10.1016/j.neuroimage.2013.06.009
43. Kwak YT. Quantitative EEG findings in different stages of Alzheimer's disease. *J Clin Neurophysiol*. 2006;23(5):456-461.
44. Chang Y, Xu J, Shi N, Pang X, Zhang B, Cai Z. Dysfunction of preattentive visual information processing among patients with major depressive disorder. *Biol Psychiatry*. 2011;69(8):742-747. doi:10.1016/j.biopsych.2010.12.024
45. Ranlund S, Nottage J, Shaikh M, et al. Resting EEG in psychosis and at-risk populations - A possible endophenotype? *Schizophr Res*. 2014;153(1-3):96-102.
doi:10.1016/j.schres.2013.12.017
46. Balasanova AA, Park D. Nursing Insights on Delirium in the Intensive Care Unit: A Quality Improvement Study. *Crit Care Nurs Q*. 2021;44(2):277-286.
doi:10.1097/CNQ.0000000000000361

Tables

Table 1 Patient characteristics

	All patients (n=145)
Age in years, mean (SD)	77 (6.3)
Male sex, n (%)	99 (68%)
Female sex, n (%)	46 (32%)
MMSE[†], median (IQR)	28 (27-29)
Medical history, n (%)	
Stroke or TIA[‡]	40 (29%)
Any psychiatric disease[§]	6 (4%)
>10 IE alcohol/week	29 (25%)
Alcohol IE/week, median (IQR)	2 (12)
Benzodiazepine use <24h	25 (17%)
Surgery type, n (%)	
Cardiothoracic or vascular	131 (90%)
Orthopaedic	8 (6%)
Other	6 (4%)

Data are presented as mean with standard deviation (SD), median with interquartile range (IQR), or number (n) in percentage (%).[†]Mini-Mental State Exam, [‡]Transient ischemic attack, [§]All patients with a psychiatric disease had a medical history of depression. One patient had a medical history of bipolar disorder.

Table 2 Predictive values for each Polymorphic delta activity (PDA) Score

	PDA score	Clinical Experts	EEG Experts
NPV	1	0.91	0.88
	2	0.92	0.92
PPV	3	0.21	0.68
	4	0.51	0.78
	5	0.68	1

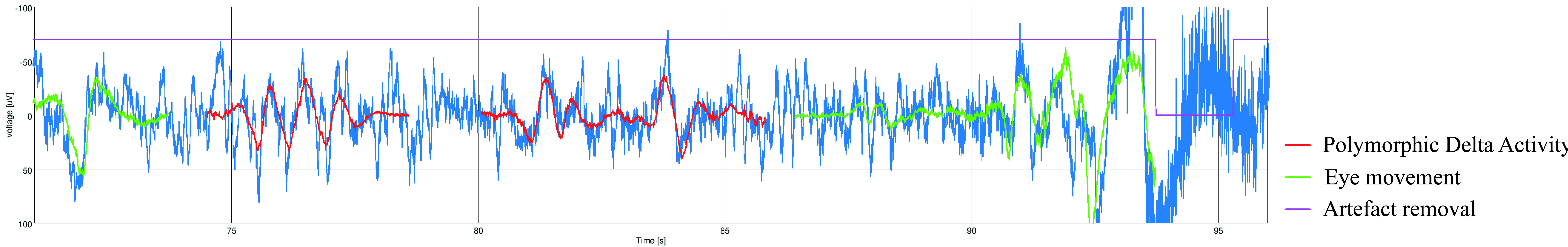
The boundary between 2 and 3 represents the cut off value between acute

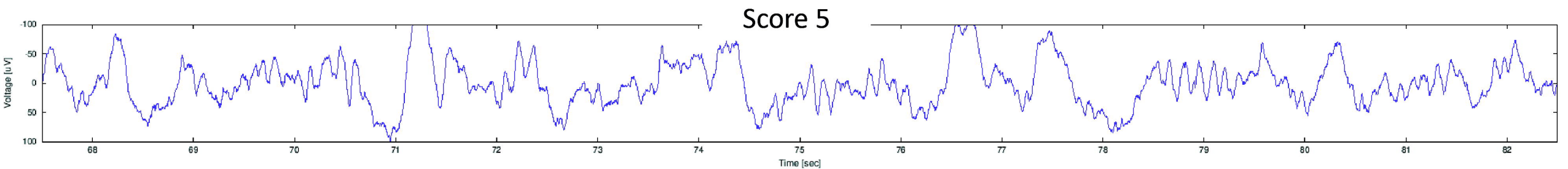
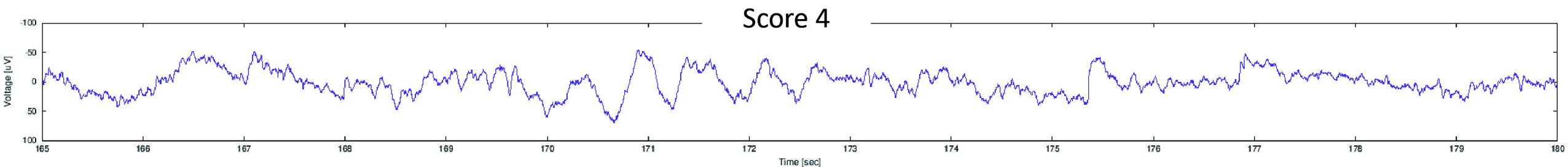
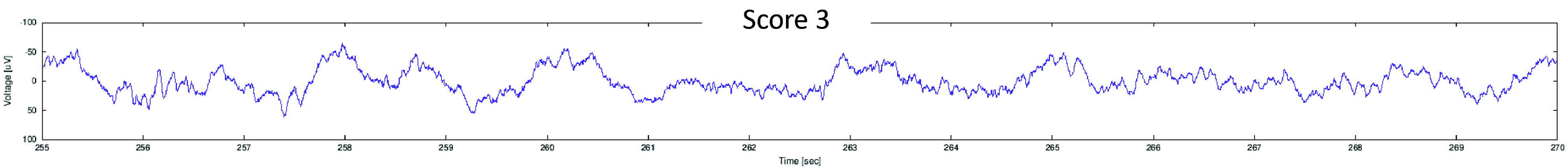
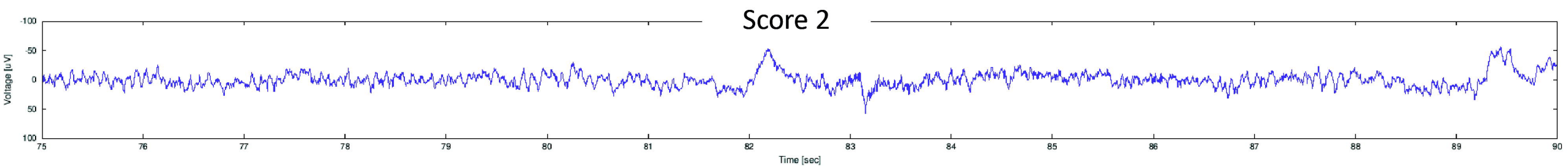
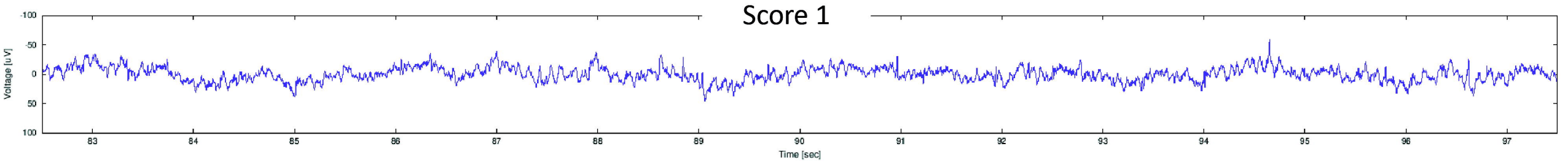
encephalopathy and no acute encephalopathy. NPV = negative predictive value. PPV =

positive predictive value.

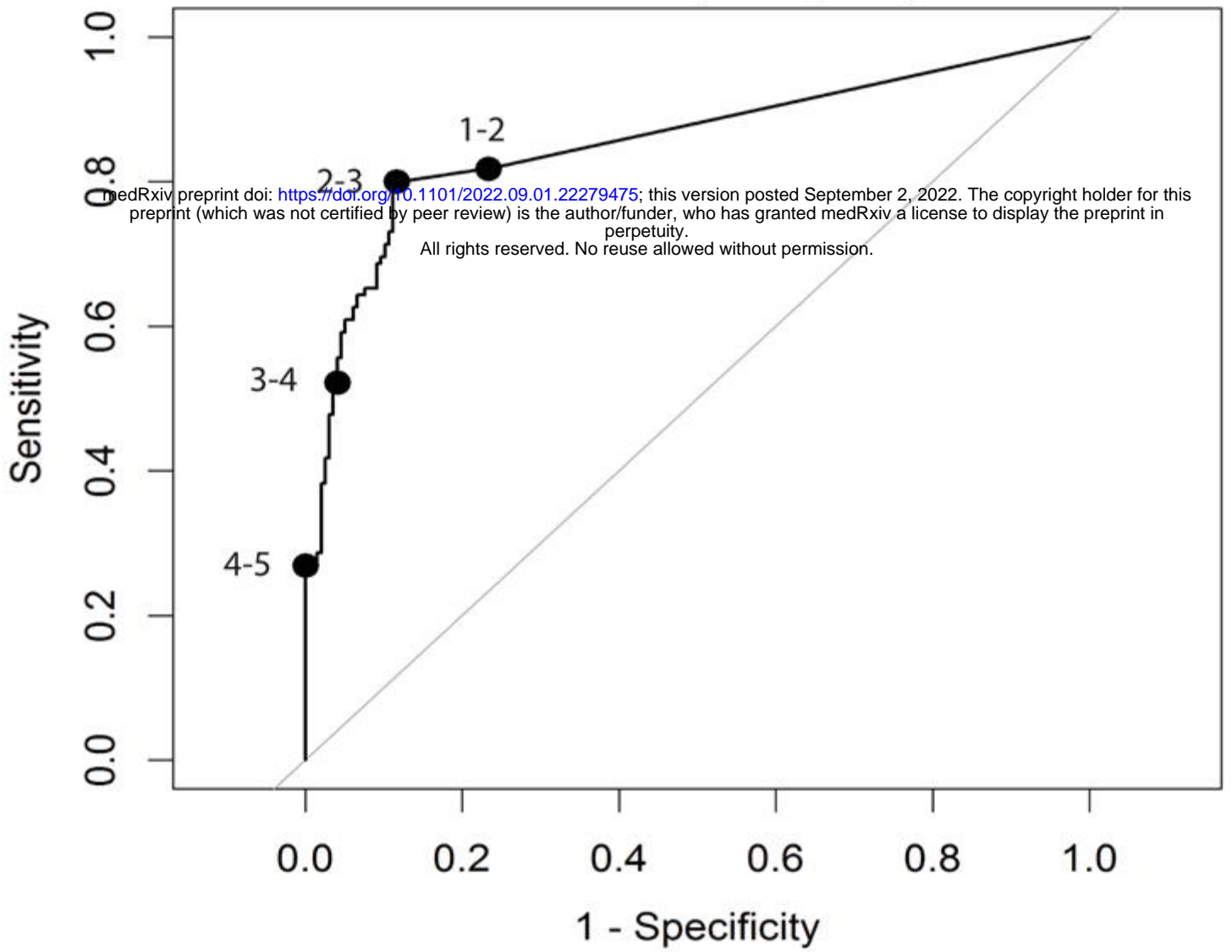
Supporting information

- 1 Flowchart of included patients and assessments
- 2 Polymorphic delta activity (PDA) Score compared to the expert panel
- 3 Stratified analysis for a medical history containing TIA or Stroke

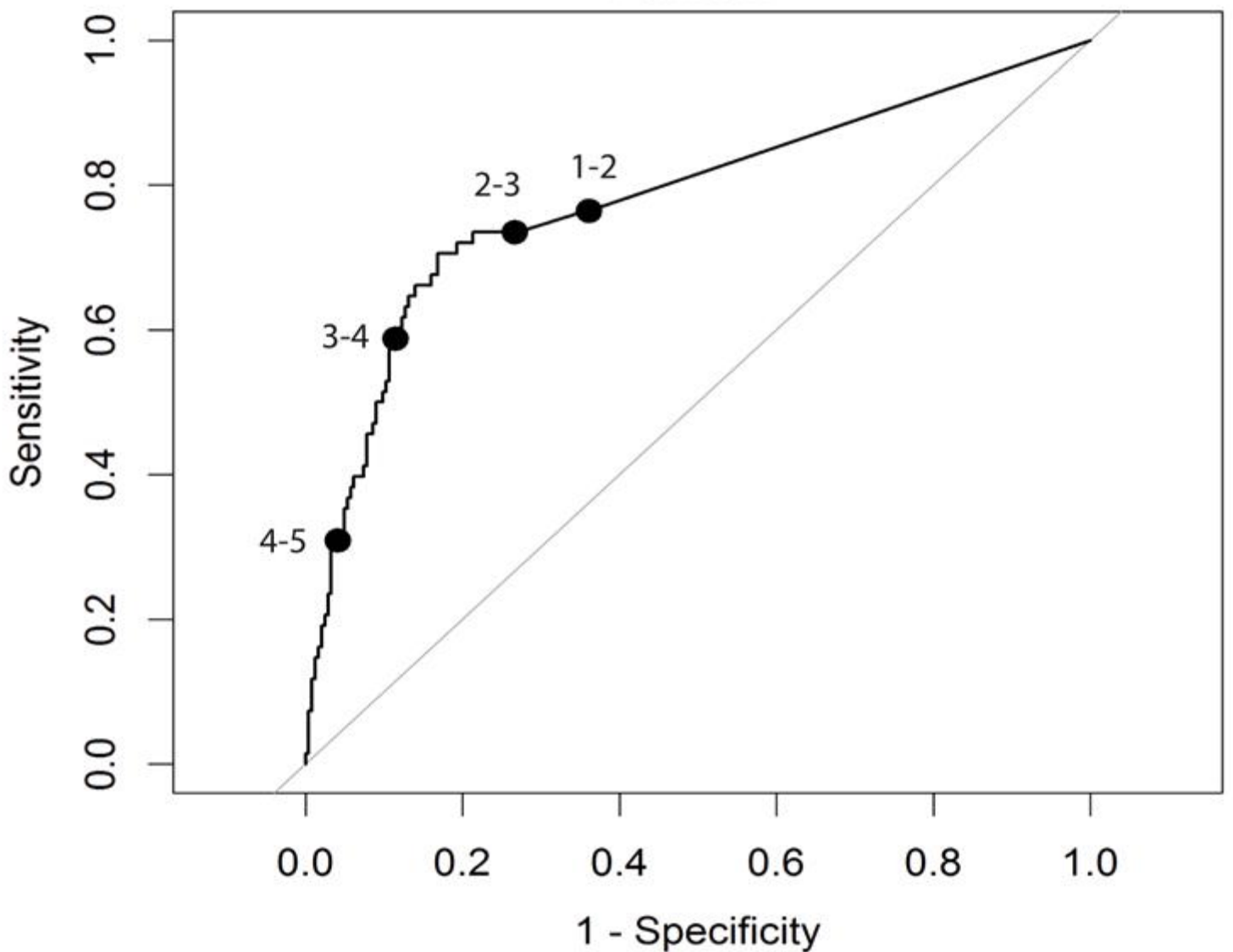




Acute Encephalopathy



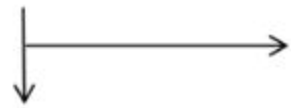
Delirium



Potentially eligible participants = 159
(*n=360 assessments*)



Eligible participants = 145
(*n=321 assessments*)



Included population = 145
(*n=312 assessments*)

Reasons for exclusion:

- 10 patients with MMSE ≤ 23
(*n=21 assessments*)
 - Incomplete clinical data
(*n=7 assessments*)
 - Insufficient EEG quality due to artefacts
(*n=11 assessments*)
-
- Rejection of the algorithm
(*n=9 assessments*)