

1 **The Shift of Percent Excess Mortality during the COVID-19**
2 **pandemic (2020 – 2022) in Singapore, South Korea, Australia, New**
3 **Zealand and Hong Kong SAR**

4
5 **Xiaohan Cao¹, Yunlong Zi^{2,3*}, Yuyan Zhu^{1*}**

6
7 ¹ Department of Applied Biology and Chemical Technology, The Hong Kong Polytechnic
8 University, Hung Hom, Kowloon, Hong Kong, China

9 ² Thrust of Sustainable Energy and Environment, The Hong Kong University of Science and
10 Technology (Guangzhou), Nansha, Guangzhou, Guangdong 511400, China

11 ³ Department of Mechanical and Aerospace Engineering, The Hong Kong University of
12 Science and Technology, Clear Water Bay, Hong Kong SAR, China

13 *** Correspondence:**

14 Yunlong Zi

15 ylzi@ust.hk

16 Yuyan Zhu

17 yuyan.zhu@polyu.edu.hk

18

19 **Keywords: COVID-19; Percent excess mortality; Zero-COVID policy; Living-with-**
20 **COVID policy; Vaccine**

21

22

23 Abstract

24 **Introduction:** With the economic recession and pandemic fatigue, milder viral variants and
25 higher vaccine coverage along the time lay the basis for lifting anti-COVID policies to restore
26 COVID-19 normalcy. However, when and how to adjust the anti-COVID policies remain under
27 debate in many countries.

28 **Methods:** In this study, four countries (Singapore, South Korea, Australia, and New Zealand)
29 and one region (Hong Kong SAR), that have shifted from the zero-COVID (ZC) policy to or
30 close to the living-with-COVID (LWC) during or after the Omicron outbreak, were selected as
31 research objects. All-cause mortality data were collected for these objects from 2009-2019.
32 The expected mortality was estimated by a simple linear regression method. Excess mortality
33 over time was calculated as the difference between the expected mortality and the observed
34 mortality. Finally, percent excess mortality (PEM) was calculated as the excess mortality
35 divided by the expected mortality.

36 **Results:** In the examined four countries, PEM fluctuated around 0% and was lower than 10%
37 most of the time under the ZC policy before 2022. After shifting to the LWC policy, all the
38 examined countries increased the PEM. Briefly, countries with high population density
39 (Singapore and South Korea) experienced an average PEM of 20-40% during the first half of
40 2022, and followed by a lower average PEM of 15-18% during the second half of 2022. For
41 countries with low population density under the LWC policy, Australia experienced an average
42 PEM of 39.85% during the first half of 2022, while New Zealand was the only country in our
43 analysis that achieved no more than 10% in average PEM all the time. On the contrary, Hong
44 Kong SAR under their ZC policy attained an average PEM of 71.14% during the first half of
45 2022, while its average PEM decreased to 9.19% in the second half of 2022 with LWC-like
46 policy.

47 **Conclusion:** PEM under different policies within each country/region overtime demonstrated
48 that the mortality burden caused by COVID-19 had been reduced overtime. Moreover, anti-
49 COVID policies are suggested to control the excess mortality to achieve as low as 10% in PEM.

50

51 Abbreviations

52	Percent excess mortality	PEM
53	Percent COVID-excess mortality	PCEM
54	Zero-COVID	ZC
55	Living-with COVID	LWC

56

57 Contribution to the field

- 58 • This study compared excess mortality within the same country/region, instead of among
59 countries, thus, PEM during the outbreaks of different SARS-cov-2 variants overtime
60 could reflect the effectiveness of regional specific anti-pandemic policies in protecting
61 the lives of citizens locally.
- 62 • Our analysis demonstrated that Singapore, South Korea and Australia might implement
63 the LWC policy without sufficient preparation, which resulted in a very high mortality
64 burden during the first half of 2022.
- 65 • The reduced PEM in late 2022 in the examined countries/regions suggested that the
66 mortality burden caused by COVID-19 was reduced overtime, laying a great foundation
67 to call for a further relief of LWC policy in the world in the near future.

- 68
- 69
- 70
- This study delineated a threshold of percent excess mortality, which is 10%, as a criterion to assess the effectiveness of anti-COVID policies.

71 Introduction

72 On November 24, 2021, a new variant of SARS-CoV-2 (B.1.1.529) was reported to the World
73 Health Organization (WHO) by South Africa which was later named Omicron (1). Since the
74 emergence of the Omicron variant, the world has entered a post-COVID-19 era. Compared
75 with other variants, Delta in particular, Omicron is characterized by its relatively low
76 pathogenicity and high transmissibility (2). The low pathogenicity considerably reduces the
77 risks of hospitalization and fatality; however, the high transmissibility significantly increases
78 the number of confirmed cases, which in turn, may overwhelm hospitals and cause high
79 mortality in the end. Taken together, whether the mortality burden caused by the Omicron surge
80 is tolerable to the society is unclear. Subsequently, when and how to adjust the anti-COVID
81 policies has been under debate in the world.

82 Besides the evolution of the SARS-Cov-2 variants, with the accelerated vaccination coverage
83 and the emergence of effective antiviral drugs (3), the case fatality rate of SARS-CoV-2 virus
84 decreased from 80 times higher than that of influenza in April 2020 to less than 2 times higher
85 than that of influenza in early 2022 (4). Accordingly, some countries, such as Singapore and
86 New Zealand, transitioned step by step from a zero-COVID (ZC) policy to a living-with-
87 COVID (LWC) policy prior to or during the Omicron outbreak (5). By contrast, some other
88 countries, such as China,(4) continue to stick to the dynamic ZC policy, with the considerations
89 of the limited medication resources, the high transmissibility of Omicron and its tendency to
90 escape from vaccine-induced immunity (6). The ZC policy aims at zero uncontrolled
91 transmission of COVID-19 viruses in a specific geographic region (5) by means of control
92 measures such as COVID mass testing, case quarantine, contact tracing, and border closure (7)
93 to varying degrees depending on their epidemiological situations. Existing evidence showed
94 that the ZC policy could effectively prevent the spread of the virus and significantly reduce the
95 fatality rate by up to 96% (8). In addition, China kept positive economic growth in 2020 and
96 2021 under the ZC policy, which was not easy considering the worldwide economic hardship
97 (9). However, the continuation of the ZC policy has its own challenges. Taking China as an
98 example, its current "dynamic ZC" policy is encountering enormous pressure and high costs of
99 disease prevention, especially during the epidemic outbreak in Shenzhen, Jilin Province, and
100 Shanghai in the first half of 2022 (10, 11). In addition, more stringent prevention and control
101 measures during the pandemic affect the quality of life, which is owing to the decreased social
102 connections caused by mandated lockdowns and socially restrictive physical distancing (12).
103 However, when and how to implement the LWC policy appropriately need to consider the
104 balance between the public health and economics.

105 Mortality rate is considered as an objective indicator to assess the burden of the disease on
106 society and is also the basis for decision-making in the public health (13). The quantification
107 of COVID-associated deaths varies among countries/regions due to the differences in the
108 definition of "COVID-associated deaths", such as the calculation of the number of cases that
109 "die from COVID-19" and "die with COVID-19" (14). Besides COVID-associated deaths,
110 there might also be non-negligible deaths due to insufficient medical resources during the
111 pandemic, which are not included in the statistics of COVID-19 deaths (14). Thus, COVID-
112 associated deaths alone underestimate the impact of the pandemic. By contrast, all-cause
113 mortality is more robust and objective. To better evaluate the magnitude of COVID-19 and its
114 effects on society, scientists proposed the use of "excess mortality," which is defined as the net
115 difference between observed mortality and expected mortality (15). The recent mainstream
116 studies (14-16) focused on comparing excess mortality/percent excess mortality (PEM) and
117 COVID-associated deaths/death rate. These comparisons mainly reflected the differences in
118 the measurements of deaths across countries/regions. However, the impact of different virus

119 variants or different anti-pandemic policies on society within the same country/region has not
120 been evaluated. Therefore, there is a lack of evidence to evaluate the effectiveness of the LWC
121 policy in saving lives during the Omicron era overtime.

122 Herein excess mortality was employed to evaluate the effectiveness of different policies in
123 protecting the lives of citizens within the same country/region during the pandemic. Based on
124 excess mortality, this study adopted the concept of PEM for assessing the mortality burden
125 attributed to different variants of the virus and different public health policies. PEM is the
126 percentage of excess mortality divided by the threshold (15), which is the expected mortality
127 in this study. Since the SARS-COV-2 variant and the vaccination rate were the dominant
128 factors in adopting the LWC policy from the ZC policy in many areas, we selected four
129 countries (Singapore, South Korea, Australia, New Zealand) and one region (Hong Kong) as
130 the representative research objects. The four countries implemented the LWC policy during the
131 Delta/Omicron era, while Hong Kong experienced Omicron outbreaks under specialized ZC
132 policies. The influence of natural fluctuation in expected mortality each year was considered
133 via simple linear regression. This analysis focused on the changes in PEM within the same
134 country/region over the entire pandemic period. Our results delineated a threshold of PEM as
135 a criterion to assess the effectiveness of anti-COVID policies. Furthermore, our study revealed
136 the significant reduction in PEM overtime in the examined countries/regions under LWC
137 policy and suggested that the mortality burden caused by COVID-19 was reduced overtime,
138 laying a great foundation to call for a further relief of LWC policy in the world in the near
139 future.

140

141 **Materials and Methods**

142 **1. Data Collection**

143 Data on all-cause mortality were obtained for four countries (i.e., Singapore, South Korea,
144 Australia, and New Zealand) and one region (i.e., Hong Kong) from governmental sources,
145 including either weekly or monthly mortality data during the pandemic from January 2020 to
146 September 2022 for Singapore, September 2022 (week 39) for South Korea, July 2022 (week
147 30) for Australia, October 2022 (week 43) for New Zealand and September 2022 for Hong
148 Kong. Details were listed in Table 1. In addition, data on confirmed cases and COVID-
149 associated deaths of four countries and one region were extracted from Google's COVID map
150 (originally from Johns Hopkins University) (17).

151

152 **2. Calculation of expected mortality**

153 Expected mortality is defined as deaths that occurred in a period assuming there is no pandemic
154 and is estimated based on the past trends of all-cause mortality. This study adopted the simple
155 linear regression method to estimate expected mortality. Data on all-cause mortality were
156 obtained for four countries (i.e. Singapore, South Korea, Australia, and New Zealand) and one
157 region (i.e. Hong Kong SAR) from 2009 to 2019. Firstly, we examined different periods of the
158 death data ranging from 2009 to 2019 and employed simple linear regression analysis. Only
159 the data period with R^2 larger than 0.85 in the linear regression analysis was selected for further
160 calculation (Table 1). Next, within the selected period, linear regression analysis was
161 performed on the data of the corresponding week/month to calculate the expected mortality
162 during the pandemic. For example, the death data of Januarys from 2009 to 2019 in Singapore
163 were analyzed with linear regression to calculate the expected mortality in January 2021 and
164 2022.

165

166 3. Calculation of excess mortality and PEM

167 Based on expected mortality, excess mortality was calculated using the equation below:

$$168 \text{ Excess mortality} = \text{Observed mortality} - \text{Expected mortality} \quad (15)$$

169 Accordingly, PEM was calculated using the equation below:

$$170 \text{ PEM} = \left(\frac{\text{Excess mortality}}{\text{Expected mortality}} \right) \times 100\% \quad (15)$$

171 4. Calculation of percent COVID-excess mortality (PCEM)

172 PCEM is defined as the percentage of COVID-associated deaths divided by expected
173 mortality. Data on COVID-associated deaths were obtained from Google's COVID map
174 (originally from Johns Hopkins University) (17). PCEM was calculated using the equation
175 below:

$$176 \text{ PCEM} = \left(\frac{\text{COVID-associated deaths}}{\text{Expected mortality}} \right) \times 100\%$$

177 By comparing PCEM with PEM, we can see the contribution of COVID-associated
178 deaths to the overall excess mortality during the pandemic period.

179 Results

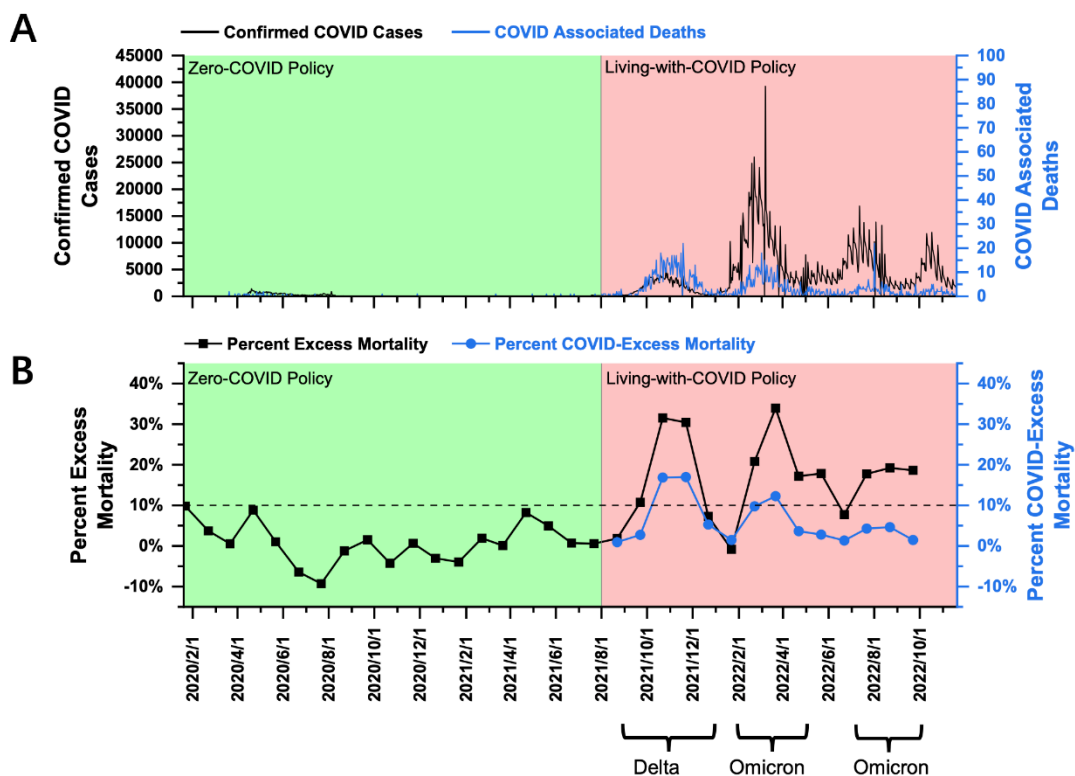
- 180 • **Singapore:** PEM in Singapore under the ZC policy fluctuated around 0% and did not
181 exceed 10%. After shifting to the LWC policy, PEM reached over 10% with an average
182 of 24.23% in response to the Delta variant in late 2021. Then Singapore encountered
183 the Omicron outbreaks. The average PEM was 23.98% in early 2022 and 18.53% in
184 late 2022.

185 Singapore had a total population of 5.686 million as of 2020 (18) and a population density of
186 8019 people per square kilometer (19). From January 2020 to July 2021, Singapore effectively
187 implemented the ZC policy, and the total number of deaths from COVID was only 37 (Figure
188 1A). In August 2021, Singapore announced the implementation of the LWC policy. Since then,
189 it experienced four rounds of COVID-19 outbreaks. The first one was the Delta epidemic from
190 September to December 2021, with a daily increase of more than 3,000 confirmed cases and
191 10-15 COVID-associated deaths daily at the peak (Figure 1A); the second COVID outbreak
192 was the Omicron epidemic starting from the end of January 2022 to April 2022 with a daily
193 increase of 17,000-19,000 confirmed cases but only about 10 daily COVID-associated deaths
194 at the peak (Figure 1A). Omicron and its evolving variants raised the third (July - September
195 2022) and fourth outbreak (starting from the end of September 2022) with a daily increase of
196 5000-12,000 confirmed cases and less than 10 daily COVID-associated deaths (Figure 1A).
197 These above low COVID-associated death data posed Singapore as the world model for
198 handling the COVID pandemic. However, the definition of COVID-associated deaths varies
199 from country to country. When PEM was used to evaluate the total mortality burden under the
200 LWC policy, the analysis, as shown below, suggested a different conclusion.

201 Using the monthly mortality data published by the Singapore government (20), a PEM curve
202 from January 2020 to September 2022 was obtained and shown in Figure 1B. PEM in
203 Singapore under the ZC policy before August 2021 fluctuated around 0% and did not exceed
204 10%. After shifting to the LWC policy in August 2021, Singapore encountered the Delta
205 outbreak. Peak PEM was as high as 31.53% (October 2021), and the average during the Delta

206 outbreak (September - December 2021) was 24.23% (Figure 1B). The Omicron outbreak began
 207 in late January 2022. PEM peaked at 33.94% in March 2022, with an average value of 23.98%
 208 (February - April 2022) (Figure 1B). The second Omicron outbreak began in mid-June and
 209 lasted until September with a peak and an average PEM of 19.23% (August 2022) and 18.53%,
 210 respectively (July – September 2022) (Figure 1B). Data on all-cause mortality after October 1,
 211 2022 have not been released by the Singapore government; thus analysis of PEM during the
 212 third Omicron Outbreak is out of scope in this paper. The current data showed that PEM
 213 increased greatly after the policy transition during both Delta and Omicron outbreaks. In
 214 addition, under LWC policy, PEM remained high for Delta and the first Omicron outbreak,
 215 while PEM dropped significantly as it progressed into the second half of 2022. Furthermore,
 216 PCEM curve was significantly lower than PEM curve (Figure 1B), suggesting a good number
 217 of deaths were caused by COVID indirectly under the LWC policy. It may be attributed to the
 218 overwhelmed medical resources or the under-quantification of COVID-associated deaths.
 219 Collectively, the LWC policy in Singapore in the first half of 2022 failed to control the
 220 mortality burden well. However, as the COVID variant evolved and became less virulent, as
 221 well as an increased rate of vaccine inoculation and potential development of herd immunity,
 222 PEM decreased significantly overtime but remained above 10%.

Figure 1



223

224 Figure 1. COVID-19 pandemic and mortality statistics in Singapore. (A) SARS-CoV-2
 225 confirmed cases (black) and COVID-associated deaths (blue) from January 22, 2020, to
 226 November 20, 2022 (17). (B) Percent excess mortality (monthly) from January 2020 to
 227 September 2022 and percent COVID-excess Mortality (monthly) during the living-with-
 228 COVID policy period from August 2021 to September 2022. The dotted line is the 10% percent
 229 excess mortality/percent COVID-excess mortality line.

230

- 231 • **South Korea:** PEM in South Korea under the ZC policy fluctuated around 0%, and
232 most of the time, it did not exceed 10%. After shifting to the LWC policy, PEM
233 exceeded 10% and averaged at 12.83% in response to the Delta variant in late 2021.
234 Then, South Korea faced the Omicron outbreaks with an average PEM of 43.59% in
235 early 2022 and 14.91% in late of 2022.

236 South Korea had a population of 51.836 million as of 2020 (18) and a population density of
237 532 people per square kilometer (19). From January 2020 to November 2021, South Korea
238 implemented the ZC policy, and the total number of COVID-19 confirmed cases and the total
239 number of COVID-associated deaths were 368,000 and 2,874, respectively (Figure 2A). On
240 November 1, 2021, South Korea declared to live with COVID. Since then, South Korea
241 experienced a wave of Delta outbreak from November to December 2021, with more than
242 7,000 daily confirmed cases and 70-80 COVID-associated deaths daily at the peak (Figure 2A).
243 Later from February to May 2022, South Korea faced a wave of Omicron outbreak. The daily
244 confirmed cases were about 400,000, and the daily COVID-associated deaths were 350-400 at
245 the peak (Figure 2A). Moving forward to the second half of 2022, South Korea encountered
246 another Omicron outbreak (July - September 2022) with a daily increase of 5000-15,000
247 confirmed cases and around 50 daily COVID-associated deaths (Figure 2A).

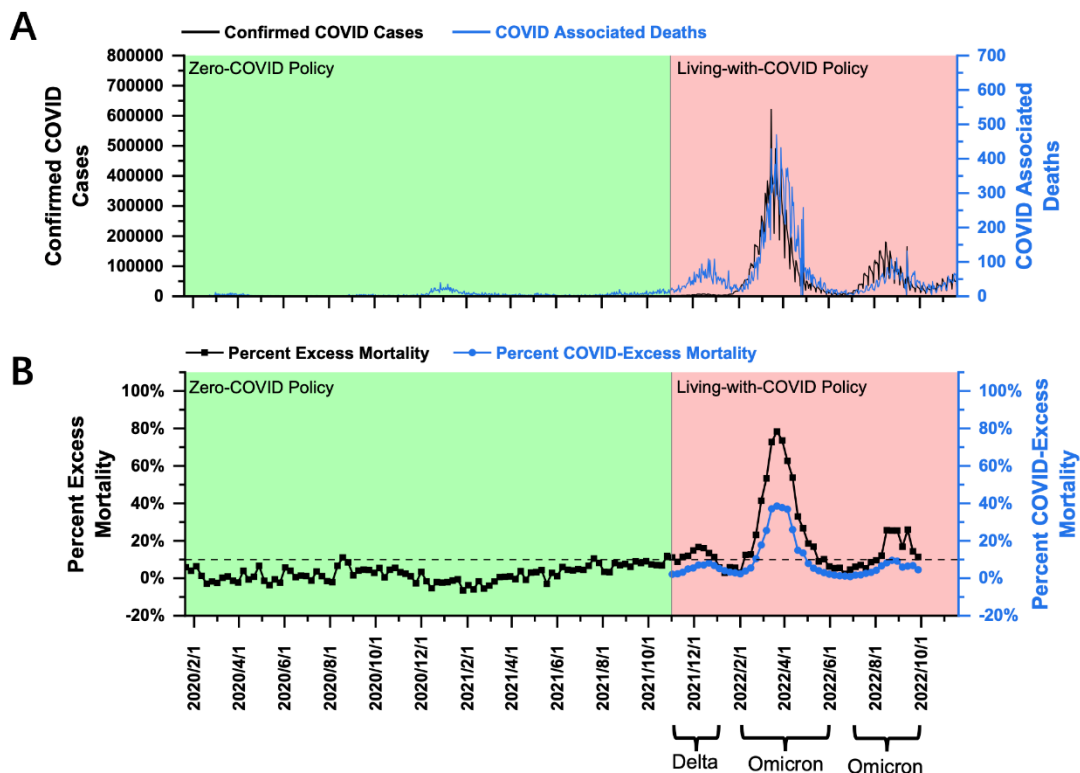
248 Using the weekly mortality data in South Korea provided by the Human Mortality Database
249 (which has been collated with the data published by the Korean government) (21), a PEM curve
250 from January 2020 to September 2022 (week 3, 2020 - week 39, 2022) was obtained and shown
251 in Figure 2B. PEM in South Korea under the ZC policy from January 2020 to November 1,
252 2021 (week 3, 2020 - week 44, 2021) fluctuated around 0%, and most of the time, it did not
253 exceed 10% (Figure 2B). After transitioning to the LWC policy on November 1, 2021, South
254 Korea encountered the Delta outbreak. PEM peaked at 16.70% in December 2021 (week 49,
255 2021), and the average was about 12.83% in November and December 2021 (weeks 44-52,
256 2021) (Figure 2B). Statistically, South Korea performed better than Singapore in Delta
257 prevention under the LWC policy. However, considering the high population density in
258 Singapore, the policies in the two countries cannot be compared by statistics only.

259 PEM in South Korea fell below 0% in January 2022 (Figure 2B). It could be partially due to
260 the decline of COVID-associated death with the temporary pandemic recession and possibly
261 due to the limitation in estimating expected mortality for January 2022. Notably, South Korea
262 had a significantly large number of deaths in January 2018, which exceeded 7,000 per week,
263 whereas the number of deaths was less than 6,000 per week in January in years prior to 2018
264 (21). Thus, a large number of deaths in January 2018 shifted the fitting curve upwards and
265 increased the estimation of expected mortality. Later from February 2018 until the beginning
266 of the pandemic, South Korea's death toll remained to be similar to that in the previous years.
267 The reason for the sudden increase in the number of deaths in January 2018 remains unknown.
268 If the average number of weekly deaths in January 2019-2021 was used to calculate expected
269 mortality, PEM in January 2022 was still below 10%. Thus, the mortality burden in January
270 2022 is comparable to that under ZC policy.

271 The Omicron outbreak occurred from February to May 2022. PEM peaked at about 78.33% in
272 February 2022 (week 12, 2022), and the average was 43.59% from February to May 2022
273 (weeks 7-19, 2022) (Figure 2B). In the second half of 2022, South Korea experienced another
274 round of Omicron outbreak from July to September 2022 (weeks 27-39, 2022) with a peak and
275 average PEM of 25.93% (week 37, 2022) and 14.91% (Figure 2B). Analysis of PEM in months
276 beyond October 1, 2022 was unavailable until the government's further release of data on all-
277 cause mortality. The current data showed that PEM increased greatly after the policy transition
278 during both Delta and Omicron outbreaks. In addition, under the LWC policy, the mortality

279 burden decreased significantly in response to two Omicron outbreaks that occurred in the first
 280 and second half of 2022. Furthermore, PECM curve was significantly lower than PEM curve
 281 during the Omicron outbreak (Figure 2B), suggesting that a good number of deaths were caused
 282 by COVID indirectly under the LWC policy when encountering the Omicron variant. It might
 283 be attributed to the overwhelmed medical resources or the under quantification of COVID-
 284 associated deaths. Collectively, the LWC policy in South Korea in early 2022 failed to control
 285 the mortality burden well. However, later in the second half of 2022, the average PEM,
 286 although it remained above 10%, dropped drastically. Decreasing mortality burden might be
 287 due to less virulent variants and the potential development of herd immunity.

Figure 2



288
 289 Figure 2. COVID-19 pandemic and mortality statistics in South Korea. (A) SARS-CoV-2
 290 confirmed cases (black) and COVID-associated deaths (blue) from January 22, 2020, to
 291 November 20, 2022 (17). (B) Percent excess mortality (weekly) from week 3, 2020 to week
 292 39, 2022 and percent COVID-excess mortality (weekly) during the living-with-COVID policy
 293 period from week 44, 2021 to week 39, 2022. The dotted line is the 10% percent excess
 294 mortality/percent COVID-excess mortality line.

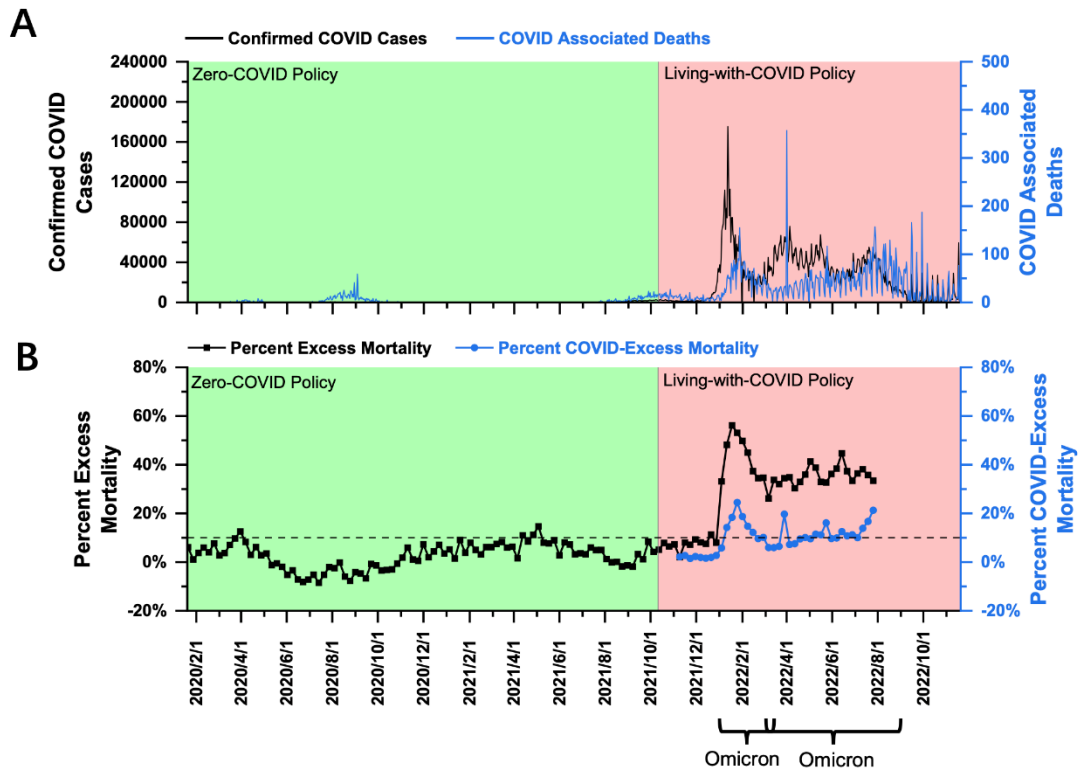
- 295
 296 • **Australia:** PEM in Australia under the ZC policy fluctuated around 0%, and most of
 297 the time, it did not exceed 10%. After shifting to the LWC policy, Australia encountered
 298 two subsequent Omicron outbreaks. PEM reached an average of 39.85% in early 2022
 299 and decreased to 35.68% in late 2022.

300 Australia had a population of 25.693 million as of 2020 (18) and a population density of 3
 301 people per square kilometer (19). From January 2020 to October 11, 2021, Australia effectively
 302 implemented the ZC policy. The total confirmed cases of COVID-19 were 131,000, and the
 303 total COVID-associated deaths were 1,461 (Figure 3A). On October 11, 2021, Australia
 304 announced the beginning of the LWC policy, which coincided with the Delta outbreak, leading
 305 to a daily increase of more than 2,000 confirmed cases and daily COVID-associated death of

306 10-15 (Figure 3A). Since then, Australia has experienced two waves of Omicron outbreaks.
307 The first wave lasted from the end of December 2021 to March 2022, with more than 100,000
308 confirmed cases per day (Figure 3A) and more than 80 COVID-associated deaths per day. The
309 second wave started at the end of February 2022, while the first wave had not completely
310 subsided until August 2022. During the second wave of Omicron, there was a daily increase of
311 more than 50,000 confirmed cases and a large fluctuation of daily COVID-associated deaths
312 of about 20-50 (Figure 3A).

313 Using the Australian weekly death data provided by the Human Mortality Database (which has
314 been collated with the data published by the Australian government) (21), a PEM curve from
315 January 2020 to July 2022 (week 3, 2020 – week 30, 2022) was obtained and shown in Figure
316 3B. Australia only published data on all-cause mortality for 2015-2019, and the annual death
317 data fluctuated significantly, so it was impossible to perform any effective linear fitting.
318 Therefore, in this study, the average number of yearly deaths for 2016-2019 was used to
319 estimate expected mortality. As shown in Figure 3B, PEM in Australia under the ZC policy
320 before October 11, 2021 (week 40, 2021) fluctuated around 0% and was below 10% most of
321 the time. After transitioning to the LWC policy on October 11, 2021, Australia experienced a
322 Omicron outbreak beginning in late December 2021, and PEM rose to nearly 10% in the last
323 two weeks of 2021. As Australia continued its LWC policy, the impact of Omicron was
324 significantly enhanced, with a peak PEM at about 56.12% in January 2022 (week 3, 2022) and
325 an average of 39.85% from January and March 2022 (weeks 1-13, 2022). The second wave of
326 the Omicron outbreak (March - August 2022) achieved a peak PEM of 44.65% (Week 24, 2022)
327 and an average PEM of 35.68% (Weeks 11-30, 2022) (Figure 3B). The second Omicron
328 outbreak lasted until the end of August 2022. However, all-cause death data beyond August 1,
329 2022, was not released by the government, so PEM analysis in this study covered up to July
330 2022. The current data showed that PEM increased significantly after the policy transition
331 during two waves of the Omicron outbreak. In addition, under the LWC policy, average PEM
332 decreased in response to two Omicron outbreaks. Furthermore, PCEM curve was significantly
333 lower than PEM curve (Figure 3B), suggesting that a good number of deaths were caused by
334 COVID indirectly under the LWC policy. It might be attributed to the overwhelmed medical
335 resources or the under quantification of COVID-associated deaths. Collectively, the LWC
336 policy in Australia failed to control the mortality burden well. Average PEM decreased slightly
337 in response to two subsequent Omicron outbreaks that occurred in early and late 2022, which
338 might be due to a decreasing virulence of the virus and the potential development of herb
339 immunity through acquired immunity and vaccine inoculation.

Figure 3



340

341 Figure 3. COVID-19 pandemic and mortality statistics in Australia. (A) SARS-CoV-2
 342 confirmed cases (black) and COVID-associated deaths (blue) from January 22, 2020, to
 343 November 20, 2022 (17). (B) Percent excess mortality (weekly) from week 3, 2020 to week
 344 30, 2022 and percent COVID-excess mortality (weekly) during the living-with-COVID policy
 345 period from week 40, 2021 to week 30, 2022. The dotted line is the 10% percent excess
 346 mortality/percent COVID-excess mortality line.

347

- 348 • New Zealand: PEM in New Zealand under the ZC policy fluctuated around 0%, and
 349 most of the time, it did not exceed 10%. After shifting to the LWC policy, New Zealand
 350 encountered Omicron outbreaks. PEM averaged at 9.48% and 7.67% in early and late
 351 2022, respectively.

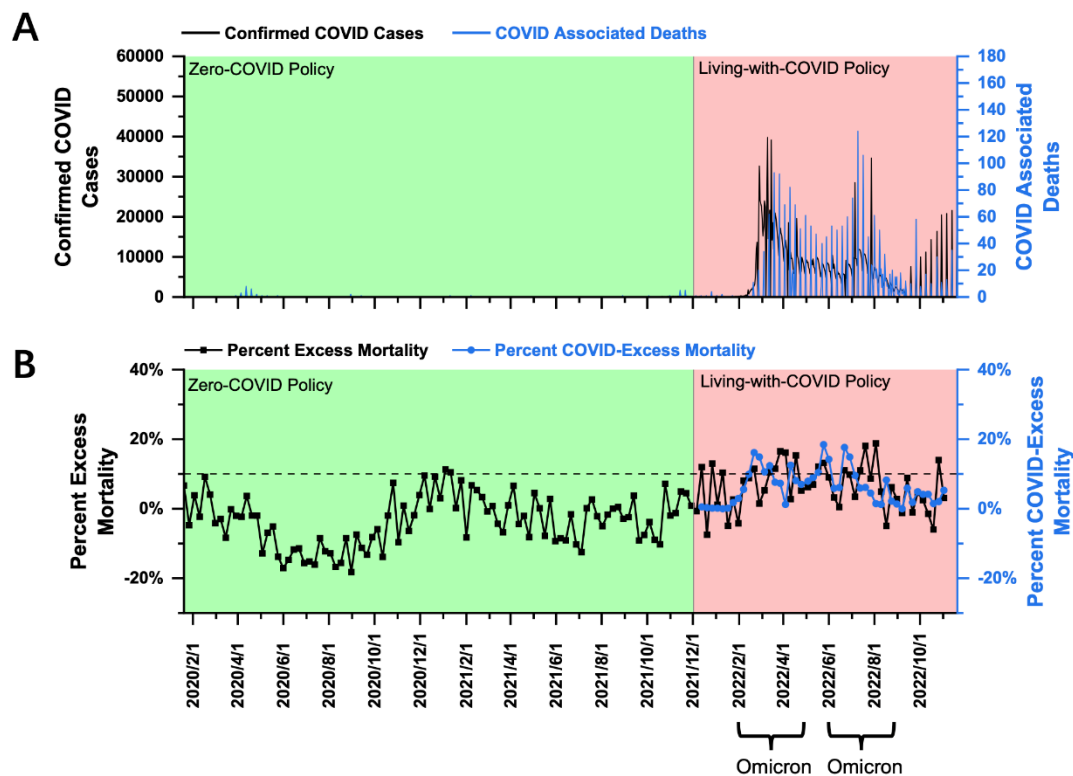
352 New Zealand had a population of 5.090 million as of 2020 (18) and a population density of 19
 353 people per square kilometer (19). From January 2020 to November 2021, New Zealand
 354 effectively implemented the ZC policy. The total confirmed cases were nearly 120,000, and
 355 the total COVID-associated deaths were 44 during this ZC policy period (Figure 4A). On
 356 December 3, 2021, New Zealand implemented the LWC policy. Then it encountered two waves
 357 of Omicron outbreak. The first began in February 2022 and lasted until the end of April 2022,
 358 with more than 20,000 daily confirmed cases (Figure 4A) and 10-20 daily COVID-associated
 359 deaths. The second Omicron outbreak (June - August 2022) experienced 5000-10,000 daily
 360 confirmed cases and about 10 daily COVID-associated deaths (Figure 4A).

361 Using the weekly death data in New Zealand provided by the Human Mortality Database
 362 (which has been collated with the data published by the New Zealand government) (21), a PEM
 363 curve from January 2020 to October 2022 (week 3, 2020 - week 43, 2022) was obtained and
 364 shown in Figure 4B. PEM under the ZC policy before December 2021 fluctuated around 0%

365 and remained below 10% (Figure 4B). After transitioning to the LWC policy on December 3,
 366 2021, New Zealand experienced a relatively long period of a steady phase from December
 367 2021 (week 47) to late-February 2022 (week 9) until the beginning of the Omicron outbreak.
 368 Starting in week 10 in 2022, PEM exceeded 10% and continued to rise to a peak at about 16.53%
 369 in week 12. The average PEM during the Omicron outbreak (weeks 8-20, 2022) was 9.48%
 370 (Figure 4B). The second Omicron outbreak began in June 2022 and lasted until August 2022,
 371 and the peak PEM was 18.77% (Week 30, 2022), and the average PEM was only 7.67% (Weeks
 372 21-33, 2022) (Figure 4B).

373 In our analysis, New Zealand is the only country that achieved approximately 10% average
 374 PEM during the Omicron outbreak under the LWC policy, which might be a result of the
 375 ultrahigh vaccination rate, especially among the elderly. There was no significant difference
 376 between PCEM and PEM curves (Figure 4B), suggesting that data on COVID-associated
 377 deaths well reflected the mortality burden attributed to COVID-19. Collectively, the LWC
 378 policy in New Zealand in the examined period acceptably succeeded in controlling the
 379 mortality burden.

Figure 4



380

381 Figure 4. COVID-19 pandemic and mortality statistics in New Zealand. (A) SARS-CoV-2
 382 confirmed cases (black) and COVID-associated deaths (blue) from January 22, 2020, to
 383 November 20, 2022 (17). (B) Percent excess mortality (weekly) from week 3, 2020 to week
 384 43, 2022 and percent COVID-excess mortality (weekly) during the living-with-COVID policy
 385 period from week 47, 2021 to week 43, 2022. The dotted line is the 10% percent excess
 386 mortality/percent COVID-excess mortality line.

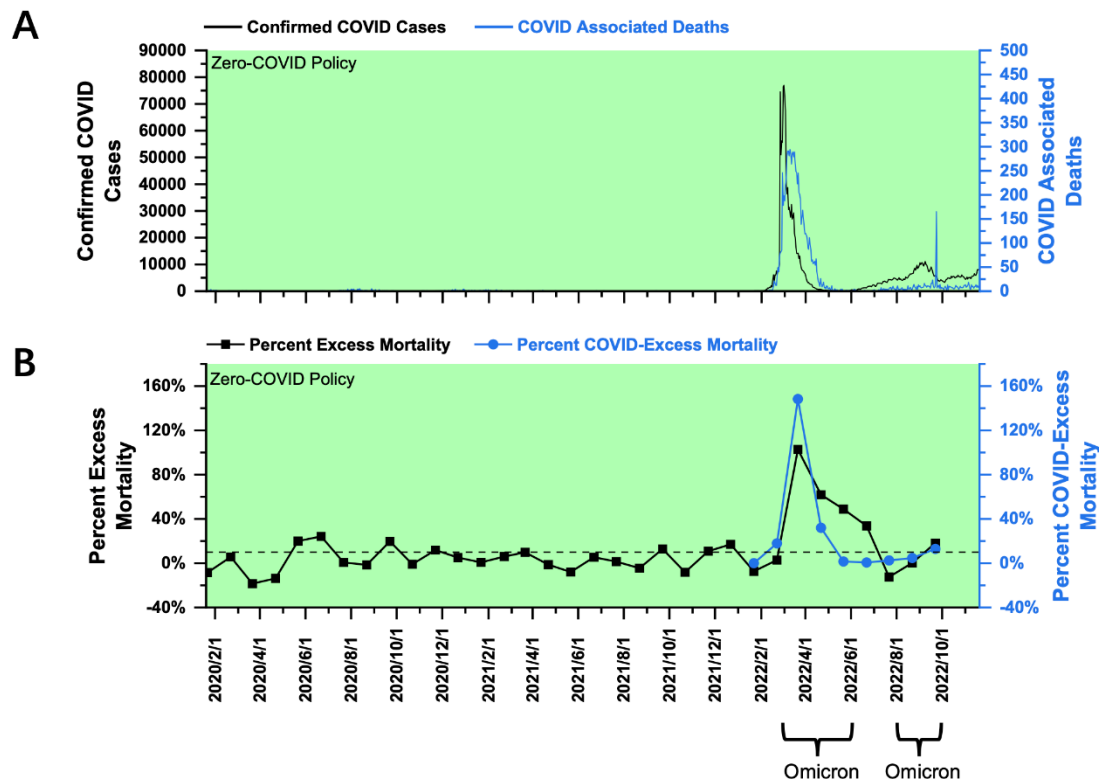
387

- 388 • **Hong Kong:** PEM under the ZC policy before 2022 fluctuated and remained
389 approximately about 10% most of the time. However, during the outbreak of the
390 Omicron variant, the average PEM was 71.14% in the first half of 2022 and decreased
391 to 9.19% in the second half.

392 Hong Kong had a population of 7.481 million as of 2020 (18) and a population density of 7,126
393 people per square kilometer (19). Hong Kong has implemented the ZC policy since January
394 2020. Before Omicron struck at the beginning of February 2022, Hong Kong underwent a
395 period of a stationary state of the pandemic with total confirmed cases of nearly 15,000 and
396 total COVID-associated deaths of 213 (Figure 5A), proving the effectiveness of the ZC policy.
397 Then, from March to the mid-May 2022, Hong Kong experienced a major wave of Omicron
398 outbreak, with over 1.2 million confirmed cases and more than 9000 COVID-associated deaths
399 total (Figure 5A). Then Hong Kong experienced a second wave in August and September 2022,
400 with 400,000 confirmed cases and more than 600 COVID-associated deaths total (Figure 5A).

401 Using the monthly death data published by the Hong Kong government for analysis (22), a
402 PEM curve from January 2020 to September 2022 was obtained and shown in Figure 5B. PEM
403 under the ZC policy before February 2022 fluctuated and remained approximately about 10%
404 most of the time. The periods with about 20% PEM mainly corresponded to several waves of
405 SARS-CoV-2 in the first two years of the pandemic. Considering the high population density
406 in Hong Kong, the containment measures against COVID-19 executed by the government
407 before February 2022 were acceptable. However, a major wave of the Omicron variant
408 breached the long streak of the stationary phase with a peak PEM of 102.77% in March 2022
409 and an average PEM of 71.14% (March-May 2022) (Figure 5B). Then, in August and
410 September, Hong Kong experienced another wave of Omicron outbreak with a peak and an
411 average PEM of 18.17% (September 2022) and 9.19% (August -September 2022) (Figure 5B).
412 Data on all-cause mortality from October 1, 2022, onwards were still unavailable from the
413 government website. Even under the ZC policy, Hong Kong failed to control the spread of the
414 Omicron variant in early 2022. The Omicron surge could be attributed to its high population
415 density, the low vaccination rate among the elderly (23), the highly contagious variant, and
416 increased social mixing during the lunar new year. The outbreak in Hong Kong aroused endless
417 debates on the ZC policy and its effectiveness in preventing a variant as contagious as Omicron.
418 The current data showed that PEM increased greatly in response to the Omicron outbreak in
419 early 2022. However, PEM decreased significantly in late 2022 when encountering another
420 wave of Omicron outbreak. Furthermore, PCEM curve was considerably higher than PEM
421 curve in February and March 2022 (Figure 5B), suggesting that a good number of reported
422 COVID-associated deaths might be overreported. It might be because Hong Kong counted
423 patients who “died with COVID” into the pool of “COVID-associated deaths.” Then, PEM
424 curve became higher than PCEM curve, indicating an under quantification of COVID-
425 associated deaths. Collectively, the specialized ZC policy in Hong Kong was unsuccessful in
426 controlling the mortality burden during the Omicron outbreak in the first half of 2022. Average
427 PEM decreased as progressed into the second half of 2022 due to the reduced pathogenicity of
428 the virus and the potential development of herd immunity.

Figure 5



429

430 Figure 5 COVID-19 pandemic and mortality statistics in Hong Kong. (A) SARS-CoV-2
 431 confirmed cases (black) and COVID-associated deaths (blue) from January 22, 2020, to
 432 November 20, 2022 (17). (B) Percent excess mortality (monthly) in Hong Kong from January
 433 2020 to September 2022 and percent COVID-excess mortality (monthly) from January 2022
 434 to September 2022. The dotted line is the 10% percent excess mortality/percent COVID-
 435 excess mortality line.

436

437 Discussion

438 The goal of this study is to delineate a threshold of PEM as a criterion to assess the effectiveness
 439 of different anti-pandemic policies in response to different variants of viruses. During the
 440 implementation of the ZC policy, PEM in various countries did not exceed 10% most of the
 441 time. Occasionally it fluctuated around 10% for a short time and then quickly declined. After
 442 shifting to the LWC policy, PEM increased significantly and exceeded 10% in early 2022.
 443 Detailed summary of PEM data for each country/region is listed in Table 2. Thus, when PEM
 444 is kept roughly at or below 10%, the mortality burden during the COVID pandemic could be
 445 considered acceptable to the public, government officials, and healthcare professionals, etc.
 446 Therefore, the PEM threshold of 10% might be set as a criterion to assess the effectiveness of
 447 anti-pandemic policies in controlling the mortality burden. Furthermore, the policymakers are
 448 suggested to control the PEM within 10% during outbreaks.

449 The four countries analyzed in this study can be classified into two groups: Singapore and
 450 South Korea, which are high in population density, influenced by Confucian culture, and are
 451 located in the northern hemisphere, as group A; while Australia and New Zealand, which are
 452 low in population density, influenced by Anglo-Saxon culture and are located in the southern
 453 hemisphere, as group B. Countries in group A dealt with both Delta and Omicron variants while

454 those in Group B only dealt with the Omicron variant. Peak PEM in Group A was 16-30% and
455 30-70% in response to the Delta and the Omicron variants, respectively. Regarding countries
456 in Group B and their responses to the Omicron variant, Australia had a PEM of about 10% at
457 the beginning of the outbreak, which later exceeded 10% and reached over 50%. New Zealand
458 maintained a low average PEM of almost 10%, with a peak of 16.69%. Collectively, it is
459 relatively challenging for Group A countries to control the PEM below 10% during the
460 Omicron era. From the mortality burden standpoint, Group A countries/regions may implant
461 the LWC policy without sufficient preparation, which will lead to a high mortality burden in
462 early 2022. While for Group B countries, New Zealand set a good model of exercising LWC
463 policy during omicron outbreaks, which could be learned by other countries/regions with low
464 population density.

465 PEM during the omicron outbreak was not less than that during Delta outbreaks in Group A
466 countries (Figure 1B, 2B). The difference in PEM in response to the Omicron variant between
467 Group A and New Zealand was mainly due to differences in population density (24). In addition,
468 the higher PEM in Group A countries can be largely attributed to the following factors. First,
469 influenced by the Confucian culture, multigenerational households are more common, which
470 leads to over-crowdedness and increase the risk of COVID-19 transmission and infection (25).
471 Second, the northern hemisphere was experiencing winter during the Omicron outbreak, which
472 was associated with a surge of COVID-19 infections and deaths (26). Such association can be
473 attributed to biological factors, including the susceptibility of COVID viruses to heat and UV-
474 radiation (27, 28), and behavioral factors, such as the tendency to have more gatherings in
475 crowded indoor areas in cold weather.

476 Hong Kong has been implementing a ZC policy throughout the entire period of the pandemic.
477 The spread of the virus was well controlled in the first two years of the pandemic until the
478 Omicron outbreak. The surge of Omicron in Hong Kong was partially due to low vaccination
479 coverage, especially among the elderly population. By December 23, 2021, 52% of vaccine-
480 eligible individuals received at least one dose, and 49% received at least two doses, of which
481 only 7% received a booster dose for those aged 60 years and above, (23). 96% of COVID-
482 associated deaths during January 6 – March 21, 2022, happened to those elders aged ≥ 60 years,
483 while 70% of this age group were unvaccinated (23). In contrast, New Zealand, as the only
484 country with an average PEM of 10% during the Omicron outbreak under the LWC policy in
485 our analysis, benefited from the ultrahigh vaccination rate, especially among the elderly (96.5%
486 were fully vaccinated for elders above 60 years old and $> 90\%$ were boosted for these above
487 70 years old) (29) (Data were extracted on May 3, 2022). In agreement with multiple studies,
488 a high vaccination rate is associated with low excess mortality and is an essential indicator of
489 adjusting anti-pandemic policy (4, 30). The underlying reasons for the low vaccination in Hong
490 Kong rate remained unclear. Still, it was possibly due to vaccine hesitancy caused by the
491 inefficiency in vaccination promotion and the widespread misunderstandings of the side-effects
492 of COVID vaccines (23, 31). In addition, the Chinese Lunar new year, which coincided with
493 the Omicron outbreak, facilitated the spread of the virus owing to increased gatherings among
494 families and friends. Also, although both were named the “ZC policy,” the precautionary
495 measures implemented by Hong Kong were different and less strict than those in mainland
496 China, which might also fail to control the Omicron surge.

497 Since the emergence of the Omicron variant, there have been endless debates on public health
498 policies. As most countries transitioned to the LWC policy, countries/regions that insisted on
499 the ZC policy were thrust into the limelight. Numerous parties have criticized government
500 officials' authoritarian rules imposed on the general public and blamed that the ZC policy
501 lacked basic humanity without considering the specific local conditions, such as population
502 density, population structure, vaccination coverage, availability of healthcare resources, and

503 culture, etc. To ease the evaluation process, we proposed a PEM threshold of 10% as a standard
504 to assess the effectiveness of any anti-pandemic policy from the perspective of whether the
505 mortality burden of the pandemic was tolerable to the society. The analysis of PEM was simple
506 yet efficient and provided a preliminary evaluation of the feasibility of the policy. Although
507 collectively named the LWC policy, the content and stringency highly varied among
508 countries/regions. Thus, it is not a matter of implementing which policy but rather of rules and
509 regulations that can effectively minimize the mortality burden on society during the pandemic.
510 We suggest that anti-pandemic policies be adjusted to achieve a PEM of 10%.

511

512 In addition, we found that PEM during Omicron outbreaks in early 2022 was not less than that
513 during Delta outbreaks, suggesting that Omicron should not be the key reason for the policy
514 transition towards LWC. However, PEM decreased significantly from early to late 2022 in all
515 studied countries/regions, suggesting that the mortality burden in response to the Omicron
516 outbreak fell, which might be due to the following factors. First, herd immunity was developed
517 along the pandemic's progression as more individuals acquired immunity through infection or
518 vaccination (32). Second, the COVID virus variant evolved with reduced pathogenicity,
519 significantly decreasing deaths and severe cases (33). Third, the government was more prompt
520 in adjusting anti-pandemic policies, including enhanced regulation on infectious individuals,
521 to encounter each COVID outbreak. The mortality burden caused by COVID-19 was reduced
522 over time, laying a great foundation to call for further relief of LWC policy in the near future.
523 In the long run, the world may eventually have to coexist with the COVID virus. Still, the
524 preconditions of transitioning to a LWC policy need to be examined, and high vaccination
525 coverage is a crucial requirement. PEM can serve as a reference, but further research to identify
526 more dimensions to assess the impact of the disease is needed for better policy-making and
527 implementation.

528

529 There are some limitations in this study. First, PEM is calculated using the all-cause mortality
530 reported by official statistics. Therefore, the practicality and validity of PEM-based analysis
531 depend on the infrastructure and capacity to record and report mortality in each location. In
532 addition, the frequency of data reporting affects the accuracy of data as monthly death reports
533 tend to even out any fluctuations in weekly death reports and result in underestimation. Second,
534 to simplify the evaluation, we did not consider the impact of the economy on health and
535 mortality in the long run. Studies from other angles like economy and life quality are needed
536 to help develop appropriate policies during the pandemic.

537

538 **Patient and Public Involvement**

539 This work did not have any involvement.

540

541 **Funding sources**

542 This work was supported by PolyU Internal Funding (#P0030234) to Yuyan Zhu, and the start-
543 up fund of Hong Kong University of Science and Technology (Guangzhou) (# G0101000092)
544 to Yulong Zi.

545

546 **Author contribution statement**

547 Xiaohan Cao: data collection, literature search, figures, data interpretation, writing; Yunlong
548 ZI: study design, data collection, data interpretation, writing; Yuyan ZHU: study design,
549 literature search, figures, data interpretation, writing.

550

551 Notes

552 The authors declare no competing financial interest.

553

554 Acknowledgements

555 We thank Dr. GAO Qi from the Chinese University of Hong Kong and Prof. LU Jian from
556 City University of Hong Kong for the insightful comments and suggestions. Part of data and
557 the manuscript has been released as a pre-print at
558 <https://www.medrxiv.org/content/10.1101/2022.08.31.22279422v1> (34).

559

560 References

- 561 1. Sars-Cov-2 B.1.1.529 (Omicron) Variant - United States, December 1-8, 2021. *MMWR Morb*
562 *Mortal Wkly Rep* (2021) 70(50):1731-4. Epub 20211217. doi: 10.15585/mmwr.mm7050e1.
- 563 2. Bálint G, Vörös-Horváth B, Széchenyi A. Omicron: Increased Transmissibility and Decreased
564 Pathogenicity. *Signal Transduct Target Ther* (2022) 7(1):151. Epub 20220507. doi: 10.1038/s41392-
565 022-01009-8.
- 566 3. Fan H, Lou F, Fan J, Li M, Tong Y. The Emergence of Powerful Oral Anti-Covid-19 Drugs in the
567 Post-Vaccine Era. *Lancet Microbe* (2022) 3(2):e91. Epub 20211125. doi: 10.1016/s2666-
568 5247(21)00278-0.
- 569 4. Chen JM, Chen YQ. China Can Prepare to End Its Zero-Covid Policy. *Nat Med* (2022)
570 28(6):1104-5. doi: 10.1038/s41591-022-01794-3.
- 571 5. Zhan Z, Li J, Cheng ZJ. Zero-Covid Strategy: What's Next? *Int J Health Policy Manag* (2022).
572 Epub 20220102. doi: 10.34172/ijhpm.2022.6757.
- 573 6. Hoffmann M, Krüger N, Schulz S, Cossmann A, Rocha C, Kempf A, et al. The Omicron Variant
574 Is Highly Resistant against Antibody-Mediated Neutralization: Implications for Control of the Covid-
575 19 Pandemic. *Cell* (2022) 185(3):447-56.e11. Epub 20211224. doi: 10.1016/j.cell.2021.12.032.
- 576 7. Skegg DC, Hill PC. Defining Covid-19 Elimination. *Bmj* (2021) 374:n1794. Epub 20210715. doi:
577 10.1136/bmj.n1794.
- 578 8. Cheshmehzangi A, Zou T, Su Z. Commentary: China's Zero-Covid Approach Depends on
579 Shanghai's Outbreak Control. *Frontiers in Public Health* (2022) 10.
- 580 9. Habibi Z, Habibi H, Mohammadi MA. The Potential Impact of Covid-19 on the Chinese Gdp,
581 Trade, and Economy. *Economies* (2022) 10(4). doi: 10.3390/economies10040073.
- 582 10. China Daily. China's Effective Anti-Pandemic Efforts Bespeak Institutional Strength (2022)
583 [cited 2022 June 30]. Available from:
584 <https://www.chinadaily.com.cn/a/202205/07/WS6275fdd7a310fd2b29e5b36b.html>.
- 585 11. Zhang X, Zhang W, Chen S. Shanghai's Life-Saving Efforts against the Current Omicron Wave
586 of the Covid-19 Pandemic. *Lancet* (2022) 399(10340):2011-2. Epub 20220506. doi: 10.1016/s0140-
587 6736(22)00838-8.
- 588 12. Akinin LB, Andretti B, Goldszmidt R, Helliwell JF, Petherick A, De Neve JE, et al. Policy
589 Stringency and Mental Health During the Covid-19 Pandemic: A Longitudinal Analysis of Data from
590 15 Countries. *Lancet Public Health* (2022) 7(5):e417-e26. Epub 20220421. doi: 10.1016/s2468-
591 2667(22)00060-3.

- 592 13. O’Driscoll M, Ribeiro Dos Santos G, Wang L, Cummings DAT, Azman AS, Paireau J, et al. Age-
593 Specific Mortality and Immunity Patterns of Sars-Cov-2. *Nature* (2021) 590(7844):140-5. doi:
594 10.1038/s41586-020-2918-0.
- 595 14. Estimating Excess Mortality Due to the Covid-19 Pandemic: A Systematic Analysis of Covid-
596 19-Related Mortality, 2020-21. *Lancet* (2022) 399(10334):1513-36. Epub 20220310. doi:
597 10.1016/s0140-6736(21)02796-3.
- 598 15. Centers for Disease Control and Prevention. Excess Deaths Associated with Covid-19 (2022)
599 [cited 2022 May 20]. Available from:
600 https://www.cdc.gov/nchs/nvss/vsrr/covid19/excess_deaths.htm#references.
- 601 16. Németh L, Jdanov DA, Shkolnikov VM. An Open-Sourced, Web-Based Application to Analyze
602 Weekly Excess Mortality Based on the Short-Term Mortality Fluctuations Data Series. *PLoS One*
603 (2021) 16(2):e0246663. Epub 20210205. doi: 10.1371/journal.pone.0246663.
- 604 17. Google News. Coronavirus (Covid-19) (2022) [cited 2022 July 4]. Available from:
605 <https://news.google.com/covid19/map?hl=en-US&gl=US&ceid=US%3Aen>.
- 606 18. The World Bank. Population, Total (2020) [cited 2022 June 29]. Available from:
607 <https://data.worldbank.org/indicator/SP.POP.TOTL>.
- 608 19. The World Bank. Population Density (People Per Sq. Km of Land Area) (2020) [cited 2022
609 June 30]. Available from: <https://data.worldbank.org/indicator/EN.POP.DNST>.
- 610 20. Department of Statistics Singapore. Deaths by Ethnic Group and Sex (2022) [cited 2022 May
611 9]. Available from: <https://tablebuilder.singstat.gov.sg/table/TS/M810121>.
- 612 21. HMD. Human Mortality Database. Max Planck Institute for Demographic Research
613 (Germany) UoC, Berkeley (USA), and French Institute for Demographic Studies (France), . (2022)
614 [cited 2022 June 7]. Available from: www.mortality.org.
- 615 22. Census and Statistics Department. Hong Kong Monthly Digest of Statistics (2022) [cited 2022
616 June 13]. Available from:
617 <https://www.censtatd.gov.hk/en/EIndexbySubject.html?pcode=B1010002&scode=460>.
- 618 23. Smith DJ, Hakim AJ, Leung GM, Xu W, Schluter WW, Novak RT, et al. Covid-19 Mortality and
619 Vaccine Coverage - Hong Kong Special Administrative Region, China, January 6, 2022-March 21,
620 2022. *MMWR Morb Mortal Wkly Rep* (2022) 71(15):545-8. Epub 20220415. doi:
621 10.15585/mmwr.mm7115e1.
- 622 24. Díaz Ramírez M, Veneri P, Lembcke AC. Where Did It Hit Harder? Understanding the
623 Geography of Excess Mortality During the Covid-19 Pandemic. *J Reg Sci* (2022). Epub 20220502. doi:
624 10.1111/jors.12595.
- 625 25. Ghosh AK, Venkatraman S, Soroka O, Reshetnyak E, Rajan M, An A, et al. Association
626 between Overcrowded Households, Multigenerational Households, and Covid-19: A Cohort Study.
627 *Public Health* (2021) 198:273-9. Epub 20210803. doi: 10.1016/j.puhe.2021.07.039.
- 628 26. Chen S, Prettner K, Kuhn M, Geldsetzer P, Wang C, Bärnighausen T, et al. Climate and the
629 Spread of Covid-19. *Sci Rep* (2021) 11(1):9042. Epub 20210427. doi: 10.1038/s41598-021-87692-z.
- 630 27. Chin AWH, Chu JTS, Perera MRA, Hui KPY, Yen HL, Chan MCW, et al. Stability of Sars-Cov-2 in
631 Different Environmental Conditions. *Lancet Microbe* (2020) 1(1):e10. Epub 20200402. doi:
632 10.1016/s2666-5247(20)30003-3.
- 633 28. Buonanno M, Welch D, Shuryak I, Brenner DJ. Far-Uvc Light (222 Nm) Efficiently and Safely
634 Inactivates Airborne Human Coronaviruses. *Sci Rep* (2020) 10(1):10285. Epub 20200624. doi:
635 10.1038/s41598-020-67211-2.
- 636 29. Manatū Hauora Ministry of Health. Covid-19: Vaccine Data (2022) [cited 2022 May 3].
637 Available from: [https://www.health.govt.nz/covid-19-novel-coronavirus/covid-19-data-and-](https://www.health.govt.nz/covid-19-novel-coronavirus/covid-19-data-and-statistics/covid-19-vaccine-data)
638 [statistics/covid-19-vaccine-data](https://www.health.govt.nz/covid-19-novel-coronavirus/covid-19-data-and-statistics/covid-19-vaccine-data).
- 639 30. Burki T. Dynamic Zero Covid Policy in the Fight against Covid. *Lancet Respir Med* (2022)
640 10(6):e58-e9. Epub 20220420. doi: 10.1016/s2213-2600(22)00142-4.
- 641 31. Yuan S. Zero Covid in China: What Next? *Lancet* (2022) 399(10338):1856-7. doi:
642 10.1016/s0140-6736(22)00873-x.

- 643 32. Randolph HE, Barreiro LB. Herd Immunity: Understanding Covid-19. *Immunity* (2020)
644 52(5):737-41. doi: 10.1016/j.immuni.2020.04.012.
- 645 33. Shuai H, Chan JF-W, Hu B, Chai Y, Yuen TT-T, Yin F, et al. Attenuated Replication and
646 Pathogenicity of Sars-Cov-2 B.1.1.529 Omicron. *Nature* (2022) 603(7902):693-9. doi:
647 10.1038/s41586-022-04442-5.
- 648 34. Cao X, Li Y, Zi Y, Zhu Y. Zero-Covid Policy or Living-with-Covid Policy? Analysis Based on
649 Percent Excess Mortality. *medRxiv* (2022):2022.08.31.22279422. doi: 10.1101/2022.08.31.22279422.
- 650

651 Captions

652 Figure 1 COVID-19 pandemic and mortality statistics in Singapore. (A) SARS-CoV-2
653 confirmed cases (black) and COVID-associated deaths (blue) from January 22, 2020, to
654 November 20, 2022 (17). (B) Percent excess mortality (monthly) from January 2020 to
655 September 2022 and percent COVID-excess Mortality (monthly) during the living-with-
656 COVID policy period from August 2021 to September 2022. The dotted line is the 10% percent
657 excess mortality/percent COVID-excess mortality line.

658 Figure 2 COVID-19 pandemic and mortality statistics in South Korea. (A) SARS-CoV-2
659 confirmed cases (black) and COVID-associated deaths (blue) from January 22, 2020, to
660 November 20, 2022 (17). (B) Percent excess mortality (weekly) from week 3, 2020 to week
661 39, 2022 and percent COVID-excess mortality (weekly) during the living-with-COVID
662 period from week 44, 2021 to week 39, 2022. The dotted line is the 10% percent excess
663 mortality/percent COVID-excess mortality line.

664 Figure 3 COVID-19 pandemic and mortality statistics in Australia. (A) SARS-CoV-2
665 confirmed cases (black) and COVID-associated deaths (blue) from January 22, 2020, to
666 November 20, 2022 (17). (B) Percent excess mortality (weekly) from week 3, 2020 to week
667 30, 2022 and percent COVID-excess mortality (weekly) during the living-with-COVID policy
668 period from week 40, 2021 to week 30, 2022. The dotted line is the 10% percent excess
669 mortality/percent COVID-excess mortality line.

670 Figure 4 COVID-19 pandemic and mortality statistics in New Zealand. (A) SARS-CoV-2
671 confirmed cases (black) and COVID-associated deaths (blue) from January 22, 2020, to
672 November 20, 2022 (17). (B) Percent excess mortality (weekly) from week 3, 2020 to week
673 43, 2022 and percent COVID-excess mortality (weekly) during the living-with-COVID
674 period from week 47, 2021 to week 43, 2022. The dotted line is the 10% percent excess
675 mortality/percent COVID-excess mortality line.

676 Figure 5 COVID-19 pandemic and mortality statistics in Hong Kong. (A) SARS-CoV-2
677 confirmed cases (black) and COVID-associated deaths (blue) from January 22, 2020, to
678 November 20, 2022 (17). (B) Percent excess mortality (monthly) in Hong Kong from January
679 2020 to September 2022 and percent COVID-excess mortality (monthly) from January 2022
680 to September 2022. The dotted line is the 10% percent excess mortality/percent COVID-excess
681 mortality line.

682

683 Table 1. Source of all-cause mortality data by countries/regions and the time period selection
 684 for calculating expected mortality/ percent excess mortality.

	Source	Time Unit	Time Period Used to Estimate Expected Mortality	Time Period Used to Calculate Percent Excess Mortality	URL
Singapore	Singapore Deaths By Ethnic Group And Sex, Monthly (20)	Month	January 2009 – December 2019	January 2020 – September 2022	https://tablebuilder.singstat.gov.sg/table/TS/M810121
South Korea (i.e. Republic of Korea)	South Korea Human Mortality Database Short-term Mortality Fluctuations (21)	Week	Week 1, 2010 – Week 52, 2019	Week 1, 2020 – Week 39, 2022	https://mpidr.shinyapps.io/stmortality/
Australia	Australia Human Mortality Database Short-term Mortality Fluctuations (21)	Week	Week 1, 2015 – Week 52, 2019	Week 1, 2020 – Week 30, 2022	https://mpidr.shinyapps.io/stmortality/
New Zealand	New Zealand Human Mortality Database Short-term Mortality Fluctuations (21)	Week	Week 1, 2011 – Week 52, 2019	Week 1, 2020 – Week 43, 2022	https://mpidr.shinyapps.io/stmortality/
Hong Kong	Hong Kong Monthly Digest of Statistics (22)	Month	January 2009 – December 2019	January 2020 – September 2022	https://www.censtatd.gov.hk/en/EIndexbySubject.html?pcode=B1010002&scode=460

685

686 Table 2. Summary of percent excess mortality stratified by the zero-COVID policy and the
 687 living-with-COVID policy, including peak and average percent excess mortality for SARS-
 688 CoV-2 Delta and Omicron variants and their corresponding durations for four countries and
 689 one region.

	Zero-COVID policy	Living-with-COVID policy								
		Delta			Omicron (in early 2022)			Omicron (in late 2022)		
		Duration	Average	Peak	Duration	Average	Peak	Duration	Average	Peak
Singapore	0-10%	September - December, 2021	24.23%	31.53%	February - April, 2022	23.98%	33.94%	July - September, 2022	18.53%	19.23%
South Korea	0-10%	November - December, 2021	12.83%	16.70%	February - May, 2022	43.59%	78.33%	July - September, 2022	14.91%	25.93%
Australia	0-10%	NA	NA	NA	January - March, 2022	39.85%	56.12%	March - July, 2022	35.68%	44.65%
New Zealand	0-10%	NA	NA	NA	February - April, 2022	9.48%	16.53%	June - August, 2022	7.67%	18.77%
		Zero-COVID policy								
		2021-2022			Omicron (in early 2022)			Omicron (in late 2022)		
		Duration	Average	Peak	Duration	Average	Peak	Duration	Average	Peak
Hong Kong	January 2020- January 2022	3.13%	24.19%	February - April, 2022	71.14%	102.77%	August - September, 2022	9.19%	18.17%	

690 NA=not applicable.