

1 **Title:** Impact of COVID-19 and Effects of Vaccination with BNT162b2 on Patient-Reported
2 Health-Related Quality of Life, Symptoms, and Work Productivity Among US Adult Outpatients
3 with SARS-CoV-2

4
5 **Authors:** Manuela Di Fusco^{1*}, Xiaowu Sun², Mary M. Moran³, Henriette Coetzer², Joann M.
6 Zamparo³, Laura Puzniak³, Mary B. Alvarez⁴, Ying P. Tabak², Joseph C. Cappelleri⁵

7
8 **Affiliations:**

9 ¹ Pfizer Inc., Health Economics and Outcomes Research, New York, NY, USA

10 ² CVS Health, Woonsocket, RI, USA

11 ³ Pfizer Inc., MDSCA Vaccines, Collegeville, PA, USA

12 ⁴ Pfizer Inc., Field Medical Outcomes and Analytics, New York, NY, USA

13 ⁵ Pfizer Inc., Statistical Research and Data Science Center, Groton, CT, USA

14

15 *** Corresponding author:**

16 Manuela Di Fusco

17 Health Economics and Outcomes Research

18 Pfizer, Inc., New York, NY, USA

19 Manuela.difusco@pfizer.com

20

21

22

23

24 **ABSTRACT**

25 **Background:** Although there is extensive literature on the clinical benefits of COVID-19
26 vaccination, data on humanistic effects are limited. This study evaluated the impact of SARS-
27 CoV-2 infection on symptoms, Health Related Quality of Life (HRQoL) and Work Productivity
28 and Impairment (WPAI) prior to and one month following infection, and compared results
29 between individuals vaccinated with BNT162b2 and those unvaccinated.

30 **Methods:** Subjects with ≥ 1 self-reported symptom and positive RT-PCR for SARS-CoV-2 at
31 CVS Health US test sites were recruited between 01/31/2022-04/30/2022. Socio-demographics,
32 clinical characteristics and vaccination status were evaluated. Self-reported symptoms, HRQoL,
33 and WPAI outcomes were assessed using questionnaires and validated instruments (EQ-5D-5L,
34 WPAI-GH) across acute COVID time points from pre-COVID to Week 4, and between
35 vaccination groups. Mixed models for repeated measures were conducted for multivariable
36 analyses, adjusting for several covariates. Effect size (ES) of Cohen's d was calculated to
37 quantify the magnitude of outcome changes within and between vaccination groups.

38 **Results:** The study population included 430 subjects: 197 unvaccinated and 233 vaccinated with
39 BNT162b2. Mean (SD) age was 42.4 years (14.3), 76.0% were female, 38.8% reported prior
40 infection and 24.2% at least one comorbidity. Statistically significant differences in outcomes
41 were observed compared with baseline and between groups. The EQ-Visual analogue scale
42 scores and Utility Index dropped in both cohorts at Day 3 and increased by Week 4, but did not
43 return to pre-COVID levels. The mean changes were statistically lower in the BNT162b2 cohort
44 at Day 3 and Week 4. The BNT162b2 cohort reported lower prevalence and fewer symptoms at
45 index date and Week 4. At Week 1, COVID-19 had a large impact on all WPAI-GH domains:
46 the work productivity time loss among unvaccinated and vaccinated was 65.0% and 53.8%, and

47 the mean activity impairment was 50.2% and 43.9%, respectively. With the exception of
48 absenteeism at Week 4, the BNT162b2 cohort was associated with statistically significant less
49 worsening in all WPAI-GH scores at both Week 1 and 4.

50 **Conclusions:** COVID-19 negatively impacted HRQoL and work productivity among mildly
51 symptomatic outpatients. Compared with unvaccinated, those vaccinated with BNT162b2 were
52 less impacted by COVID-19 infection and recovered faster.

53

54 **Keywords:** COVID-19, SARS-CoV-2, HRQoL, WPAI, Quality of Life, COVID-19 symptoms,
55 BNT162b2, humanistic

56 **BACKGROUND**

57 The impact of the COVID-19 pandemic on the sustainability of quality of life of patients has
58 been reported globally [1-4]. The prolonged multisystem symptoms associated to SARS-CoV-2
59 infection can negatively affect daily activities, ability to work, and social interactions, leading to
60 poor health-related quality of life (HRQoL) [1-4].

61 The introduction of COVID-19 vaccination has significantly impacted the COVID-19 response,
62 and evidence regarding the efficacy, safety and effectiveness of vaccination is extensive [5].

63 However, there is limited research on the potential benefits of vaccination on physical, mental,
64 social, emotional functioning and economic well-being. Most of the studies assessing humanistic
65 outcomes of COVID-19 infection have been limited to inpatients [1, 2, 6] were conducted
66 outside of the US or focused on specific disease states and organ-specific functions [7-9].

67 Leveraging a US national retail pharmacy SARS-CoV-2 test database and using validated
68 patient-reported outcome measures (PROMs), this study assessed COVID-19 symptoms,
69 HRQoL and WPAI prior to through one month following SARS-CoV-2 infection in outpatients,
70 and compared results between unvaccinated individuals and those vaccinated with BNT162b2.

71

72 **METHODS**

73 **Study Design and Participants**

74 The source population consisted of individuals testing for SARS-CoV-2 at one of ~5,000 CVS
75 Health test sites across the US. As part of the registration process for scheduling a SARS-CoV-2
76 test at CVS Health, individuals are required to complete a screening questionnaire including
77 demographics, symptoms, comorbidities, and vaccination status. The screening variables and

78 RT-PCR test results are loaded in an analytic dataset, where ~80-90% of test results are reported
79 within 2-3 days. Leveraging this analytic platform, this study was designed as a prospective
80 survey-based patient-reported outcomes study targeting adults ≥ 18 with a positive RT-PCR test
81 result and self-reporting at least one symptom. These individuals were emailed an invitation as
82 soon as the test results became available, no later than 4 days from testing. The email invitation
83 directed the potential participants to an e-consent website to learn about the study, survey
84 schedule and informed consent. Figure 1 summarizes the study design. Recruitment of
85 participants was carried out between 01/31/2022 and 04/30/2022 (Ct.gov NCT05160636).

86

87 **Data Sources and Variables**

88 *Baseline characteristics and symptoms*

89 Baseline characteristics of the participants were obtained via the CVS Health pre-test screening
90 questionnaire. These included self-reported demographics, comorbidities (including
91 immunocompromised status), COVID-19 vaccination history, social determinants of health
92 including the Social Vulnerability Index (SVI), work and/or residency in a high-risk or
93 healthcare setting, and symptoms. The list of baseline COVID-19 symptoms was based on the
94 CDC [10].

95

96 *Exposure groups*

97 Immunocompetent participants were considered fully vaccinated with BNT162b2 if they self-
98 reported receipt of 2 doses of BNT162b2 ≥ 14 days of SARS-CoV-2 testing. They were
99 considered partially vaccinated if reporting receipt of a single dose and boosted if reporting
100 receipt of 3 doses. Participants self-reporting an immunocompromising condition and receipt of

101 3 doses were considered fully vaccinated (i.e., 3-dose primary series completion); if reporting 4
102 doses, they were considered boosted. Participants were considered unvaccinated if they did not
103 report any COVID-19 vaccine dose prior to testing. Heterologous schedules were excluded.

104

105 *HRQoL*

106 To assess HRQoL, we used the validated EQ-5D-5L questionnaire [11, 12]. On the day of
107 enrollment, consented participants completed the EQ-5D-5L questionnaire twice, using two
108 versions: a modified version where all the questions were past tense to retrospectively assess pre-
109 COVID-19 baseline QoL, and the standard version in present tense to assess current QoL. To
110 minimize responder bias, the order of administration of the two versions was random.

111 Subsequent completion was requested at one month (short-term study design in Figure 1). The
112 EQ-5D-5L results at each time point were converted into the Utility Index (UI) using the US-
113 based weights by Pickard et al [12, 13].

114

115 *Work Productivity and Activity Impairment*

116 To measure impairments in both paid work and unpaid work, we used the Work Productivity and
117 Activity Impairment General Health V2.0 (WPAI:GH) measure [14, 15]. Participants were asked
118 to complete this questionnaire twice, seven days after their RT-PCR test: once referencing seven
119 days prior to COVID-19 symptom onset and an additional assessment referencing the past seven
120 days. Similar to the EQ-5D-5L, subsequent completion of the WPAI was requested at one month
121 (Figure 1). Four WPAI scores were computed at each time point: percent of worktime missed
122 (absenteeism), percent of impairment while working (presenteeism), percent of work

123 productivity loss (considering both absenteeism and presenteeism), and percent of activity
124 impairment. Only employed subjects were included for work productivity analyses.

125

126 *Post-COVID 19 Symptoms and Vaccination Status Update*

127 To supplement the pre-test screening questionnaire and enable the collection of on-going or new
128 symptoms after the acute phase, participants were sent an additional survey four weeks following
129 the test asking to complete a checklist of COVID-19 related symptoms based on the CDC list
130 [16], To confirm vaccination status, participants' subsequent responses to vaccination date
131 questions were compared with their index responses; if responses did not match, the information
132 was queried and adjudicated, and the latest information was typically used.

133

134 **Statistical Analysis**

135 Descriptive statistics were used to analyze participant characteristics at baseline. Continuous
136 variables were described using means and standard deviations. Categorical variables were
137 reported using number and percentage distributions. For continuous variables, t-tests were used
138 to test difference in means and Wilcoxon tests were used to test difference in medians. For
139 categorical variables, chi-square tests were used to test differences between groups. When cell
140 frequency was less than 5, Fisher's exact tests were used for 2-by-2 tables and Freeman-Halton
141 tests for r-by-c tables [17, 18]. P values were all two-sided and not adjusted for multiplicity.
142 Mixed models for repeated measures (MMRM) [19] were used to estimate the magnitude of
143 COVID-19 impact on HRQoL and WPAI over time. Models included variables of time, self-
144 reported SARS-CoV-2 vaccination status, and interaction of time by vaccination status, as well
145 as covariates of participant pre-COVID-19 symptom onset score, sociodemographic

146 characteristics (age, sex, regions, social vulnerability, race/ethnicity, high risk occupations),
147 previously tested positive for COVID-19, severity of acute illness (number of symptoms reported
148 on index date), and immunocompromised status. Assessment time was fitted as a categorical
149 covariate and a repeated effect (repeated by subject). Least squares mean (LS mean) and
150 standard errors of PRO scores for each time point of assessment were calculated. Per guidelines,
151 no adjustment was made for missing data when scoring the EQ-5D-5L UI and WPAI [11, 15].
152 Missing data at each time were not imputed. All available data were included in the analysis.
153
154 Cohen's d, or a variation of it, was calculated to assess the magnitude of score change from
155 baseline within the BNT162b2 vaccinated cohort and, separately, the unvaccinated cohort, as
156 well as the difference between BNT162b2 and unvaccinated cohorts [20, 21]. Specifically,
157 within-cohort effect size (ES) was calculated as mean change from baseline to follow-up, divided
158 by the standard deviation of change scores from baseline to follow-up. Between-cohort ES was
159 calculated as the difference in mean changes from baseline between cohorts, divided by the
160 pooled standard deviation of change scores. When calculating model based ESs, the numerators
161 were the predicted mean change from the model for within-cohort ESs, and predicted differences
162 from the model for between-cohort ESs. Denominators were the corresponding observed
163 standard deviations. Values of 0.2, 0.5, and 0.8 standard deviation (SD) units represent small,
164 medium, and large ES, respectively. These cut-off estimates have been widely used to establish
165 important differences in HRQoL studies [22]. As such, we considered the magnitude of
166 (standardized) effect sizes of at least 0.20 SD units as important or meaningful differences in
167 gauging the magnitude of within-patient change and between-group differences. All data
168 obtained were collected and analyzed with SAS Version 9.4 (SAS Institute, Cary, NC). The

169 study followed the Strengthening the Reporting of Observational Studies in Epidemiology
170 (STROBE) reporting guideline [23].

171

172 **RESULTS**

173 **Baseline characteristics**

174 A total of 39,889 eligible candidates were outreached. Of those, 676 consented and completed
175 the first survey, for a consent rate of 1.7%. Compared with individuals in the CVS Health
176 analytic dataset who did not participate in our study, the study sample was over-represented by
177 women and Caucasians, with slightly more individuals vaccinated and with comorbidities
178 (Supplemental Table 1). The final study population included 430 subjects (Figure 2). 100%
179 completed the EQ-5D-5L questionnaire at pre-COVID-19 baseline and at Day 3, and 77.0%
180 completed it at Week 4. The WPAI-GH questionnaire was completed by 88.1% of the
181 participants at pre-COVID-19 baseline, 88.1% at Week 1 and 76.9% at Week 4.

182 The sociodemographic characteristics of the baseline participants are shown in Table 1. Overall,
183 the mean (SD) age was 42.4 (14.3), 76% were female, 68.6% Caucasian, 58.7% from Southern
184 US. There were 24.2% participants who reported ≥ 1 comorbidities, including 4.4% with
185 immunocompromising conditions and 39% reported a previous COVID-19 infection.

186 About 46% (197) were unvaccinated and 54% (233) were vaccinated with BNT162b2; of those,
187 respectively 140 (60%) and 93 (40%) received 2 and 3 doses. Compared with unvaccinated,
188 BNT162b2 participants were comparable with respect to gender, working and living settings, and
189 comorbidities, slight older with mean age 43.7 vs. 40.9 ($p=0.049$); living in less vulnerable area
190 with lower mean social vulnerability index (0.40 vs. 0.49, $P<<0.001$); and slight differences in

191 race/ethnicity and region. In the vaccinated group, mean (SD) time since vaccination before
192 infection was 186 (105) days.

193 At index date, the most reported acute symptoms were respiratory and systemic. BNT162b2
194 vaccinated participants reported fewer overall acute COVID-19 symptoms on average than
195 unvaccinated participants, mean 5.1 vs. 5.6, $P=0.034$ (Table 1). Directionally, the proportions of
196 all systemic and GI-related symptoms were numerically lower in the BNT162b2 cohort. Relative
197 to unvaccinated, those vaccinated with BNT162b2 reported significantly fewer symptoms of
198 fever (30.5% vs. 47.2% $P<0.001$), chills (42.9% vs. 57.4%, $P=0.003$), muscle or body aches
199 (49.4% vs. 59.4%, $P=0.038$), and diarrhea (15.9% vs. 25.9%, $P=0.010$), but more congestion or
200 runny nose (80.7% vs. 68.0%, $P=0.003$).

201

202 **Post-COVID-19 symptoms**

203 At Week 4, the mean number of symptoms was statistically lower in the BNT162B2 cohort (2.5
204 vs. 3.7, $p=0.002$). The overall prevalence decreased over time too, especially fever, cough,
205 headache, fatigue, diarrhea, muscle pain; however, ~70% of participants still reported at least 1
206 post-COVID-19 symptom. Directionally, the proportions of all symptoms were numerically
207 lower in the BNT162b2 cohort. Symptoms of worsening after physical or mental activities
208 (10.3% vs. 20.6%), general pain/discomfort (11.4% vs. 19.4%), change in smell or taste (10.9%
209 vs. 20.6%), headache (16.0% vs. 25.2%), sleep problems (20.0% vs. 29.7%), mood changes
210 (7.4% vs. 14.8%), memory loss (6.3% vs. 17.4%) and diarrhea (3.4% vs. 11.0%) were
211 statistically significant ($P < 0.05$) (Table 2).

212

213 **Health-Related Quality of life**

214 *Utility Index scores*

215 Mean pre-COVID-19 baseline UIs did not differ between the BNT162b2 and unvaccinated
216 cohorts, respectively 0.924 and 0.918 (P=0.547). COVID-19 infection had a detrimental effect
217 on the HRQoL of participants, especially during the acute episode (Day 3). In both the
218 BNT162b2 and the unvaccinated cohorts, UIs were lower at Day 3 and Week 4 relative to pre-
219 COVID-19. While UIs improvement was observed over time, the UI did not return to pre-
220 COVID levels at Week 4 (Table 3).

221 The BNT162B2 cohort was less impacted than the unvaccinated cohort, at both Day 3 and Week
222 4. After controlling for pre-COVID baseline score and other covariates, the least-square estimate
223 UI scores at Day 3 were, respectively 0.77 and 0.84 in the unvaccinated and BNT162B2 cohorts
224 (Table 4). Moderate ESs of, respectively, 0.64 and 0.49 were observed from baseline. At Week
225 4, the least-square estimate UI scores were, respectively, 0.86 and 0.90. Small-to-moderate ESs
226 of, respectively, 0.38 and 0.13 were observed from baseline. The differences between the two
227 groups were statistically significant (P<0.05). (Table 4) Small-to-medium ESs between cohorts
228 were observed and were 0.36 and 0.32 for Day 3 and Week 4, respectively. (Table 4,
229 Supplemental Figure 1 and 2)

230

231 *EQ-VAS*

232 The pattern of EQ-VAS scores was similar to that observed for UIs. Mean pre-COVID-19
233 baseline EQ-VAS were similar for the BNT162b2 and unvaccinated cohorts, respectively 86.9
234 and 87.8 (P=0.414) (Table 3). Similar to the UIs, the pre-COVID EQ-VAS were rated relatively
235 high by the participants, indicating a generally healthy cohort. The least-square estimate EQ-
236 VAS scores for the BNT162b2 and unvaccinated cohorts were, respectively, 76.2 and 72.6 at

237 Day 3 and 85.0 and 81.6 at Week 4. After controlling for pre-COVID-19 baseline score and
238 other covariates, the least-square estimates of change from pre-COVID-19 baseline in EQ VAS
239 for the BNT162B2 and the unvaccinated cohort were -11.1 and -14.8, respectively on Day 3, and
240 -2.3 and -5.7, respectively at Week 4. COVID-19 had a large adverse impact on EQ-VAS with
241 an ES of -0.89 for BNT162B2 cohort and -0.86 for Unvaccinated cohort on Day 3, and small ES
242 (-0.22) for BNT162B2 cohort and approaching medium ES (-0.42) for Unvaccinated cohort at
243 Week 4. BNT162B2 cohort was associated with 3.6 (P=0.013) on Day 3 and 3.4 (P=0.016) at
244 Week 4 less drop in EQ VAS than the Unvaccinated cohort. The ESs between cohorts were
245 small yet relevant, being 0.25 and 0.28 for Day 3 and Week 4, respectively (Table 4,
246 Supplemental Figure 1 and 2).

247

248 *EQ-5D-5L dimensions*

249 The health status of the study participants according to the dimensions of EQ-5D-5L is reported
250 in Figure 3 and Supplemental Table 2. In both groups, at Day 3, over half of the cohort reported
251 problems in usual activities, pain/discomfort and anxiety/depression, while the vast majority
252 reported no or slight problems in mobility and self-care. At Week 4, the vast majority continued
253 to report no or slight problems with mobility, self-care, as well as for usual activities; most
254 reported no, slight or moderate problems with pain/discomfort and anxiety/depression.
255 BNT162b2 cohort had lower mean responses across all 5 domains at both Day 3 and Week 4
256 relative to unvaccinated.

257

258 **Work Productivity and Activity Impairment**

259 Approximately 65% of participants reported being currently employed at baseline (155 in the
260 BNT162b2 cohort and 129 unvaccinated), and were eligible to complete the absenteeism,
261 presenteeism and work-productivity loss questions. At Week 1, COVID-19 had a large impact on
262 all four WPAI-GH domains for both the unvaccinated and BNT162b2 cohort. The mean time loss
263 due to absenteeism was, respectively, 65.0% and 45.6%; the mean time loss due to presenteeism
264 was, respectively, 46.8% and 38.4%; the mean time of work productivity loss was 65.0% and
265 53.8%, and the mean time of activity impairment was 50.2% and 43.9%. All within-cohort ESs
266 were > 0.8 , which are considered large effects (Table 3). After controlling for pre-COVID-19
267 baseline score, and other covariates, the BNT162b2 cohort was associated with less worsening in
268 WPAI-GH scores. Small-to-medium ESs were observed for work-related scores (absenteeism -
269 0.50, presenteeism -0.26, and work productivity loss -0.32) between the BNT162b2 cohort and
270 the unvaccinated cohort (Table 4). At Week 4, the mean time loss dropped across all four
271 domains. The time loss due to absenteeism dropped substantially; the change from baseline in
272 absenteeism was not found to be statistically significant between the BNT162b2 cohort and the
273 unvaccinated cohort. Small-to-medium ESs were observed for presenteeism (-0.38) work
274 productivity loss (-0.29), and activity impairment (-0.34) between the BNT162b2 cohort and the
275 unvaccinated cohort (Table 4, Supplemental Figure 3 and 4).

276

277 **DISCUSSION**

278 The impacts of SARS-CoV-2 infection go beyond its clinical outcomes.

279 We found that mild acute infection can negatively impact the humanistic outcomes for up to four
280 weeks post infection. Shortly after infection, the UI and EQ-VAS HRQoL scores dropped from
281 pre-COVID, and over half of the study population reported problems in usual activities,

282 pain/discomfort and anxiety/depression. At Week 1, the work productivity and activity
283 impairment time loss were over 50%. At Week 4, both the HRQoL and WPAI scores improved,
284 although they did not return to pre-COVID levels. Individuals vaccinated with BNT162b2 were
285 less impacted and recovered faster than unvaccinated individuals. Multivariable analyses showed
286 that BNT162b2 was significantly associated with higher EQ-VAS and UI scores, less symptoms
287 and better WPAI scores, except for absenteeism at Week 4.

288 There is limited evidence measuring the health-related wellbeing of non-hospitalized individuals
289 affected by COVID-19 [1-4]. To our knowledge, this is the first report measuring the impact of
290 COVID-19 on the HRQoL and WPAI among a national sample of outpatients in the United
291 States. In contrast to our study, previous research that used EQ-5D scales to measure COVID-19
292 impact on the HRQoL reported mean UI scores ranging from 0.61 to 0.86 depending on the
293 hospitalization treatment and time since discharge [1, 2]. The EQ-VAS scores ranged from 50.7
294 to 70.3 [1, 2]. In our study, the HRQoL scores at Day 3 and Week 4 among outpatients with mild
295 disease are higher than those, likely due to the different study populations and periods. In a small
296 US study assessing the impact of COVID-19 on WPAI ~4 months post-infection among subjects
297 enrolled in clinical trials before the introduction of vaccines, 46% of the non-hospitalized
298 patients reported health-related impairment in daily activities [24]. Among the employed, 11.5%
299 missed work and 38.9% reported impairment at work due to health. In our study, all the WPAI
300 scores among unvaccinated at Week 1 are higher, and those at Week 4 similar or lower than
301 those, likely due to the different cut-off, study populations, periods and design.

302 HRQoL and WPAI studies are scarce in COVID-19 related vaccination research. To our
303 knowledge, this is the first report on the effects of BNT162b2 on these patient-centric outcomes.

304 These results indicate an additive benefit beyond vaccine effectiveness that should be explored
305 further.

306 Strengths of this study include the nationally representative real-world source population of
307 mildly symptomatic outpatients, the prospective collection of the primary outcomes via validated
308 instruments, and the representativeness of the employed population for work productivity
309 analyses (~65% of the cohort). The age distribution of study participants was comparable with
310 the non-enrolled tested population ($p=0.076$ for mean age, Supplemental Table 1) and with CDC
311 research in non-hospitalized adults: 91.6% were between 18 and 64 and 8.4% were 65 or older,
312 which was quite similar to Hernandez-Romieu [25], 92.7% and 7.3%, respectively. In the
313 vaccinated group, the time between vaccination and breakthrough infection (mean: ~6 months)
314 was consistent with literature on vaccine-induced duration of protection [5].

315 The study findings are subject to limitations. All the data analyzed was self-reported and may be
316 subject to error, missingness, recall bias, social desirability bias, and selection bias associated
317 with survey drop-out. Out of 430 participants completing Day 3 survey, 12% (51/430) missed
318 Week 1 and 23% (99/430) missed Week 4 survey. The drop in responses may partly be the result
319 of responders' fatigue, and/or recovered cases not returning to follow-up surveys. Female and
320 older age (≥ 30 years) were found to be more likely to miss follow-up surveys. However, after
321 taking into account several variables, the model predicting missingness indicated that
322 missingness was not associated with vaccination status, nor with HRQoL in terms of EQ VAS on
323 Day 3 and its change from pre-COVID-19 baseline (Supplemental Table 3).

324 The study population differed from non-enrolled tested outpatients in being predominantly
325 female, white, with a higher vaccination uptake, and slightly more comorbidities (Supplemental
326 Table 1). The female over-representation is in line with prior research indicating that women are

327 more likely to contribute to health research surveys [2]. In our study, ~24% of participants
328 reported at least one comorbidity, in contrast to 20% among the non-enrolled tested and ~35% in
329 Hernandez-Romieu (2021) [25]. Various models were fit to account for potential effects due to
330 sociodemographic factors and comorbidities. These adjusted effect sizes between BNT162b2 and
331 unvaccinated cohorts were similar and consistent with those calculated from observed data
332 (unadjusted effect sizes).

333 The pre-COVID baseline scores were slightly higher than US population norms. The mean EQ-
334 VAS and UI were 86.9 and 0.924 for the BNT162b2 cohort, and 87.8 and 0.918 for the
335 unvaccinated cohort, respectively. Cha et al (2019) reported a mean EQ-VAS of 84.6 for the U.S.
336 general population [12]. Jiang et al (2021) reported the US population norm of EQ-VAS as 80.4
337 and the mean EQ-5D-5L UI as 0.851 [26]. The healthy pre-infection status of the study
338 population and the potential for retrospective recall bias may partially explain the differences. A
339 modified EQ-5D-5L questionnaire was used to retrospectively measure pre-COVID-19 baseline
340 data; despite literature suggesting concordance between prospective and retrospective
341 measurements of EQ-5D-5L [27, 28], and a good correlation between assessment of baseline
342 before the index date and recall assessment of the baseline after index date, there is currently no
343 information regarding the recall application of the EQ-5D-5L for COVID-related studies.

344 The pre-COVID-19 values for absenteeism and presenteeism were 3.1% and 9.5% in the
345 BNT162b2 cohort, and were generally in line with Tundia et al (2015) [29], whom reported 4%
346 absenteeism and 10% presenteeism for the US general population. The reported values were
347 slightly higher among unvaccinated, respectively 11.7% and 9.4%.

348

349 There is currently no standard definition of minimal clinically important difference of PROs in
350 COVID-19 research. We used effect size (ES) of Cohen's d to quantify the magnitude of score
351 change from baseline within the BNT162b2 vaccinated cohort and the unvaccinated cohort, as
352 well the difference between these two cohorts [20]. An effect size ES of 0 between groups
353 indicates that the average (typical) treated vaccinated person has a score that is no different from
354 the typical control person; equivalently, scores of the typical treated person are more favorable
355 than 50% of the individual scores in the control group, meaning no incremental benefit (a coin
356 toss as to which intervention is better). If the vaccinated cohort is presumed more effective than
357 the unvaccinated cohort, effect sizes thresholds of 0.2, 0.3, 0.5, and 0.8 (in absolute value)
358 indicate that, based on the standardized normal distribution, the score of the typical person in the
359 vaccinated cohort is more favorable than 58% (8% incremental benefit), 62% (12% incremental
360 benefit), 69% (19% incremental benefit), and 70% (29% increment benefit) of the scores from
361 individuals in the unvaccinated cohort. For example, from baseline to Week 1, the increase in the
362 absenteeism WPAI score of the typical person in the vaccinated cohort was less (more favorable)
363 than the corresponding change in 69% of individuals in the unvaccinated group (effect size = -
364 0.5). Depending on the type of outcome, the same type of effect size interpretation for between
365 cohorts can be given within cohort. For instance, from baseline to Week 4, the quality of life EQ-
366 VAS score of the typical person in the vaccine cohort at Week 4 was less (worse) than 59% of
367 the individual scores in the vaccine cohort at baseline (effect size = -0.22); the quality of life EQ-
368 VAS score of the typical person in the unvaccinated cohort at Week 4 was less (worse) than 66%
369 of the individual scores in the unvaccinated cohort at baseline (effect size = -0.42).
370

371 The study did not assess the impact on pediatrics, caregivers, long-term outcomes (e.g., “Long
372 COVID”), and the data was collected during Omicron predominance in the US. Therefore, these
373 findings may not be generalizable to prior or future variants, other countries, time periods and
374 populations that were excluded. COVID-19 sequelae can affect a substantial portion of patients,
375 with long-term consequences for their health, continuity of care and ability to work [1, 2].
376 Persistent symptoms and work impairment were reported ~4 months after infection among non-
377 hospitalized US patients enrolled in clinical trials [24]. Continued follow-up studies covering
378 longer time periods may inform whether the protection provided by COVID-19 vaccination
379 extends beyond the acute phase. Only generic PROMs were used in this study; COVID-19
380 disease-specific instruments are under development [30, 31], warranting research on their
381 implementation. The PROMs omitted questions on vaccine adverse events. The mean 6-month
382 interval between vaccination and breakthrough infection and a medical review ruled out cases of
383 residual symptoms from vaccination. Research on the impact of vaccine adverse events on
384 HRQoL is warranted.

385 Lastly, the study adopted an observational design, which is limited in establishing causal
386 relationships. Future studies using different data collection methods could corroborate the study
387 findings, including those with more rigorous study design.

388 Consistent with literature, our study found that COVID-19 is detrimental to mildly symptomatic
389 COVID-19 patients. The findings provide a meaningful contribution suggesting that the ability
390 of BNT162b2 to reduce adverse outcomes from COVID-19 disease can translate to lessening the
391 broad impact of COVID-19 and improvements in quality of life, work productivity and activity.
392

393 **CONCLUSION**

394 This study found that mild COVID-19 infection at a time of Omicron predominance adversely
395 impacted the HRQoL, daily activity and work productivity of patients. This detrimental effect
396 improved over time, although it persisted for at least one month post infection. Compared with
397 unvaccinated, those vaccinated with BNT162b2 were less impacted and recovered faster. These
398 findings advance research on COVID-19 associated humanistic outcomes and the potential effect
399 of BNT162b2 in lessening the loss of HRQoL, daily activity and work productivity due to
400 COVID-19. The results can inform the estimation of quality-adjusted life years and indirect cost
401 savings in health economic studies.

402

403 **List of Abbreviations**

404 CDC: Centers for Disease Control and Prevention; CI: Confidence interval; EQ-5D-5L:
405 EuroQoL Group 5 dimension and 5 level questionnaire; ES: Effect size; GH: General Health;
406 HRQoL: Health Related Quality of Life; MMRM: Mixed models for repeated measures; SD:
407 standard deviation; SE: standard error; STROBE: the Strengthening the Reporting of
408 Observational Studies in Epidemiology; UI: utility index; VAS: Visual analogue scale; WPAI:
409 Work Productivity and Impairment.

410

411 **DECLARATIONS:**

412 **Ethics Approval and consent to participate**

413 This study was approved by the Sterling IRB, Protocol #C4591034. Participation in the study
414 was voluntary and anonymous. Consent was obtained electronically via the CVS Health E-

415 Consent platform. Participants were informed of their right to refuse or withdraw from the study
416 at any time. Participants were compensated for their time.

417 **Consent for publication**

418 All authors have given their approval for this manuscript version to be published.

419 **Availability of data and material**

420 Aggregated data that support the findings of this study are available upon reasonable request
421 from the corresponding author MDF, subject to review. These data are not publicly available due
422 to them containing information that could compromise research participant privacy/consent.

423 **Competing interests**

424 MDF, MMM, JMZ, LP, MBA and JCC are employees of Pfizer and may hold stock or stock
425 options of Pfizer. XS and HC are employees of CVS Health and may hold stock of CVS health.
426 YPT was employee of CVS Health when current study was conducted.

427 **Funding**

428 This study was sponsored by Pfizer Inc.

429 **Authors' contributions**

430 All named authors meet the International Committee of Medical Journal Editors (ICMJE) criteria
431 for authorship for this article. All authors contributed to study conception and design, data
432 acquisition, analysis, and interpretation, drafting and revising of the manuscript.

433 **Acknowledgements**

434 The authors acknowledge Alejandro Cane, Deepa Malhotra and Nancy Gifford (Pfizer
435 employees), Joseph Ferenchick, Shiyu Lin and Shawn Edmonds (CVS Health employees) for
436 specific contributions to this research project. Editorial support was provided by Laura Anatale-
437 Tardiff and Leena Samuel at CVS Health and was funded by Pfizer.

438

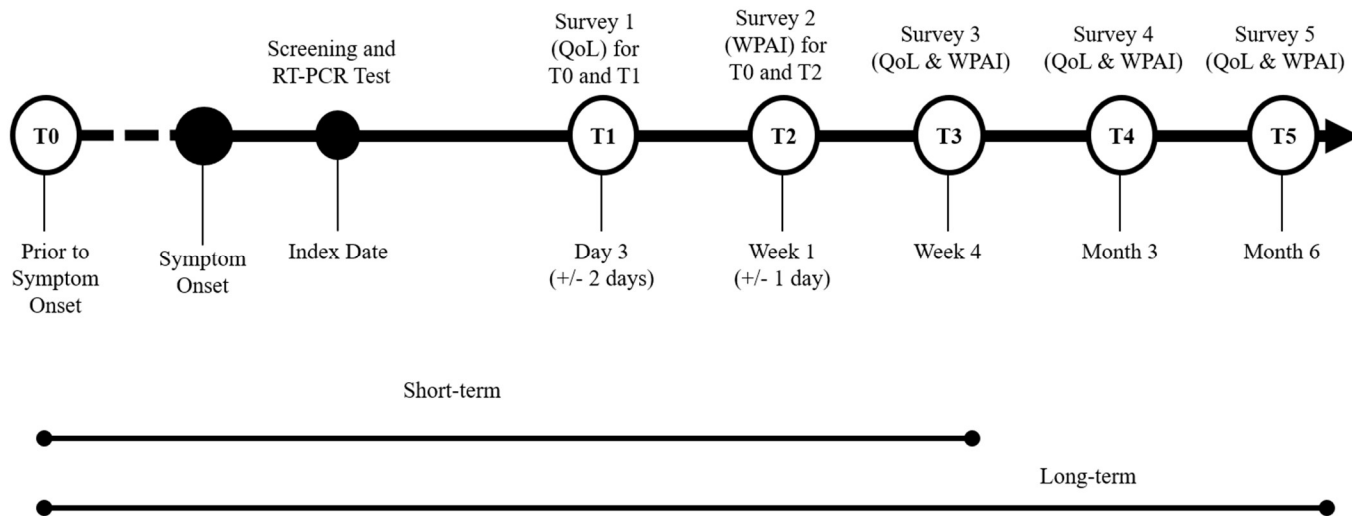
439 **REFERENCES**

- 440 1. Poudel AN, Zhu S, Cooper N, Roderick P, Alwan N, Tarrant C, Ziauddeen N, Yao GL
441 (2021) Impact of Covid-19 on health-related quality of life of patients: A structured
442 review. *PLoS One*. 16(10):e0259164.
- 443 2. Nandasena H, Pathirathna M, Atapattu A, Prasanga P (2022) Quality of life of COVID 19
444 patients after discharge: Systematic review. *PloS one*. 17(2):e0263941.
- 445 3. Figueiredo EAB, Silva WT, Tsopanoglou SP, Vitorino DFdM, Oliveira LFLd, Silva
446 KLS, Luz HDH, Ávila MR, Oliveira LFFd, Lacerda ACR (2022) The health-related
447 quality of life in patients with post-COVID-19 after hospitalization: a systematic review.
448 *Revista da Sociedade Brasileira de Medicina Tropical*. 55.
- 449 4. Amdal CD, Pe M, Falk RS, Piccinin C, Bottomley A, Arraras JI, Darlington AS, Hofso
450 K, Holzner B, Jørgensen NMH (2021) Health-related quality of life issues, including
451 symptoms, in patients with active COVID-19 or post COVID-19; a systematic literature
452 review. *Quality of Life Research*. 30(12):3367-81.
- 453 5. International Vaccine Access Center, Johns Hopkins Bloomberg School of Public Health,
454 World Health Organization. Results of COVID-19 Vaccine Effectiveness & Impact
455 Studies: An Ongoing Systematic Review. [https://view-hub.org/sites/default/files/2022-
456 04/COVID19_VE_and_Impact_Lit_Review_Methods.pdf](https://view-hub.org/sites/default/files/2022-04/COVID19_VE_and_Impact_Lit_Review_Methods.pdf) Accessed August 15, 2022.
- 457 6. Arab-Zozani M, Hashemi F, Safari H, Yousefi M, Ameri H (2020) Health-related quality
458 of life and its associated factors in COVID-19 patients. *Osong public health and research
459 perspectives*. 11(5):296.
- 460 7. Petersen EL, Goßling A, Adam G, Aepfelbacher M, Behrendt C-A, Cavus E, Cheng B,
461 Fischer N, Gallinat J, Kühn S (2022) Multi-organ assessment in mainly non-hospitalized
462 individuals after SARS-CoV-2 infection: the Hamburg City Health Study COVID
463 programme. *European Heart Journal*. 43(11):1124-37.
- 464 8. McKay SC, Lembach H, Hann A, Okoth K, Anderton J, Nirantharakumar K, Magill L,
465 Torlinska B, Armstrong M, Mascaro J (2021) Health - related quality of life, uncertainty
466 and coping strategies in solid organ transplant recipients during shielding for the
467 COVID - 19 pandemic. *Transplant International*. 34(11):2122-37.
- 468 9. Talman S, Boonman-de Winter L, De Mol M, Hoefman E, Van Etten R, De Backer I
469 (2021) Pulmonary function and health-related quality of life after COVID-19 pneumonia.
470 *Respiratory Medicine*. 176:106272.
- 471 10. Centers for Disease Control and Prevention. Updates - Symptoms of COVID-19.
472 <https://www.cdc.gov/coronavirus/2019-ncov/symptoms-testing/symptoms.html> Accessed
473 August 1 2021.
- 474 11. EuroQol Research Foundation. (2019) EQ-5D-5L User Guide, Version 3.0.
475 <https://euroqol.org/publications/user-guides> Accessed August 5, 2021.
- 476 12. Cha AS, Law EH, Shaw JW, Pickard AS (2019) A comparison of self-rated health using
477 EQ-5D VAS in the United States in 2002 and 2017. *Quality of Life Research*.
478 28(11):3065-9.

- 479 13. Pickard AS, Law EH, Jiang R, Pullenayegum E, Shaw JW, Xie F, Oppe M, Boye KS,
480 Chapman RH, Gong CL (2019) United States valuation of EQ-5D-5L health states using
481 an international protocol. *Value in Health*. 22(8):931-41.
- 482 14. Reilly MC, Zbrozek AS, Dukes EM (1993) The validity and reproducibility of a work
483 productivity and activity impairment instrument. *Pharmacoeconomics*. 4(5):353-65.
- 484 15. Reilly Associates. (2002) WPAI Scoring.
485 http://www.reillyassociates.net/WPAI_Scoring.html Accessed August 5, 2021.
- 486 16. Centers for Disease Control and Prevention. Long COVID or Post-COVID Conditions.
487 <https://www.cdc.gov/coronavirus/2019-ncov/long-term-effects/index.html> Accessed
488 August 15, 2022.
- 489 17. Rosner B (2015) *Fundamentals of biostatistics*. Cengage learning,
- 490 18. Freeman G, Halton JH (1951) Note on an exact treatment of contingency, goodness of fit
491 and other problems of significance. *Biometrika*. 38(1/2):141-9.
- 492 19. Fitzmaurice GM, Laird NM, Ware JH (2012) *Applied longitudinal analysis*. John Wiley
493 & Sons, Hoboken, NJ
- 494 20. Cohen J (1988) *Statistical power analysis for the behavioral sciences*. 2nd ed. Lawrence
495 Erlbaum Assoc, Hillsdale, NJ.
- 496 21. McLeod LD, Cappelleri JC, Hays RD (2016) Best (but oft-forgotten) practices:
497 expressing and interpreting associations and effect sizes in clinical outcome assessments.
498 *The American journal of clinical nutrition*. 103(3):685-93.
- 499 22. Mouelhi Y, Jouve E, Castelli C, Gentile S (2020) How is the minimal clinically important
500 difference established in health-related quality of life instruments? Review of anchors
501 and methods. *Health and Quality of Life Outcomes*. 18(1):1-17.
- 502 23. STROBE Statement—Checklist of items that should be included in reports of cohort
503 studies. <https://www.strobe-statement.org/download/strobe-checklist-cohort-studies-pdf>
504 Accessed August 5, 2022.
- 505 24. Jacobson KB, Rao M, Bonilla H, Subramanian A, Hack I, Madrigal M, Singh U,
506 Jagannathan P, Grant P (2021) Patients with uncomplicated COVID-19 have long-term
507 persistent symptoms and functional impairment similar to patients with severe COVID-
508 19: a cautionary tale during a global pandemic. *Clinical Infectious Diseases*. doi:
509 10.1093/cid/ciab103.
- 510 25. Hernandez-Romieu AC, Leung S, Mbanya A, Jackson BR, Cope JR, Bushman D, Dixon
511 M, Brown J, McLeod T, Saydah S (2021) Health care utilization and clinical
512 characteristics of nonhospitalized adults in an integrated health care system 28–180 days
513 after COVID-19 diagnosis—Georgia, May 2020–March 2021. *Morbidity and Mortality*
514 *Weekly Report*. 70(17):644.
- 515 26. Jiang R, Janssen M, Pickard AS (2021) US population norms for the EQ-5D-5L and
516 comparison of norms from face-to-face and online samples. *Quality of Life Research*.
517 30(3):803-16.
- 518 27. Lawson A, Tan AC, Naylor J, Harris IA (2020) Is retrospective assessment of health-
519 related quality of life valid? *BMC Musculoskeletal Disorders*. 21(1):1-10.
- 520 28. Rajan SS, Wang M, Singh N, Jacob AP, Parker SA, Czap AL, Bowry R, Grotta JC,
521 Yamal JM (2021) Retrospectively Collected EQ-5D-5L Data as Valid Proxies for
522 Imputing Missing Information in Longitudinal Studies. *Value Health*. 24(12):1720-7. doi:
523 10.1016/j.jval.2021.07.007.

- 524 29. Tundia N, Hass S, Fuldeore M, Wang LL, Cavanaugh T, Boone J, Heaton P (2015)
525 Validation and US population norms of health-related productivity questionnaire. Value
526 in Health. 18(3):A24.
- 527 30. Romano C, Fehnel S, Stoddard J, Sadoff J, Lewis S, McNulty P, Chan EK, Evans E,
528 Jamieson C, Slagle AF (2022) Development of a novel patient-reported outcome measure
529 to assess signs and symptoms of COVID-19. Journal of Patient-Reported Outcomes.
530 6(1):1-12.
- 531 31. Hughes SE, Haroon S, Subramanian A, McMullan C, Aiyegbusi OL, Turner GM,
532 Jackson L, Davies EH, Frost C, McNamara G (2022) Development and validation of the
533 symptom burden questionnaire for long covid (SBQ-LC): Rasch analysis. BMJ. 377.
534

535 **Figure 1. Study design** ^a

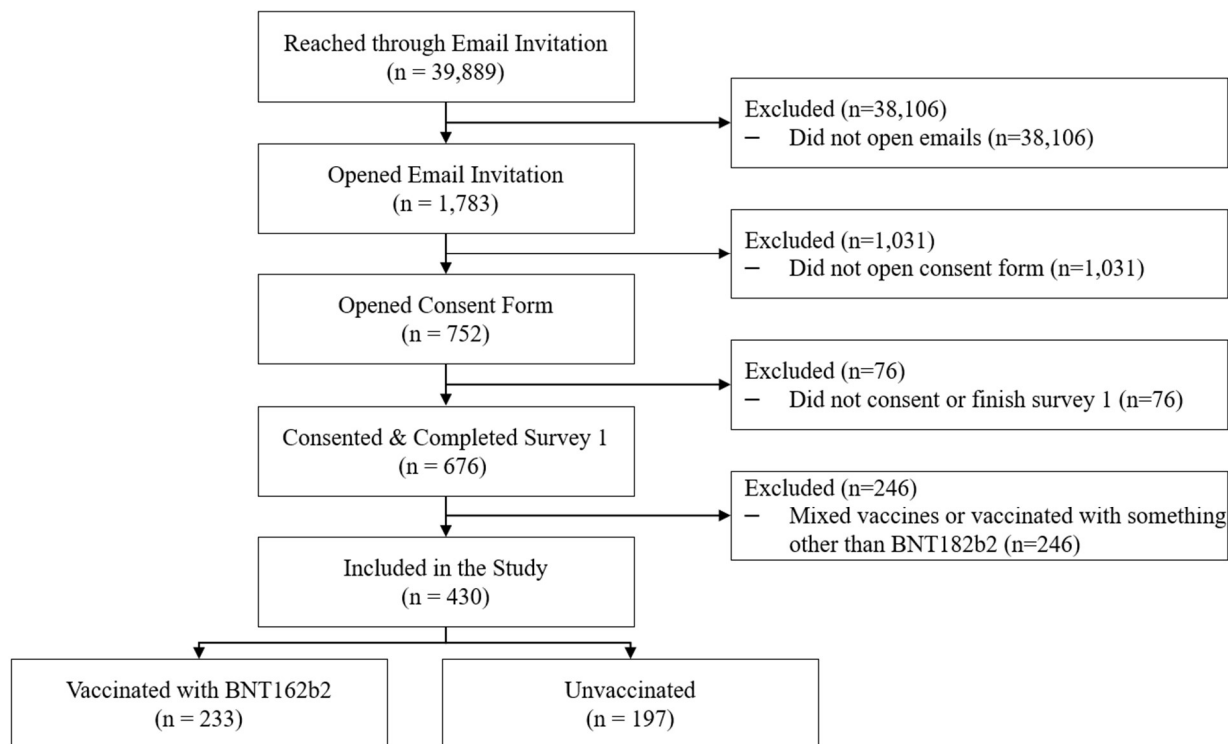


536

537 ^a QoL refers to the EQ-5D-5L survey

538

539 **Figure 2.** Study flow diagram



540
541

542 **Table 1** Patient Characteristics on Index Day

	All	BNT162b2	Unvaccinated	P-value ^a
Total, n	430	233	197	
Age, years				
Mean, SD	42.4 (14.3)	43.7 (15.3)	40.9 (12.9)	0.049
18-29	87 (20.2%)	49 (21.0%)	38 (19.3%)	0.011
30-49	213 (49.5%)	100 (42.9%)	113 (57.4%)	
50-64	94 (21.9%)	60 (25.8%)	34 (17.3%)	
≥65	36 (8.4%)	24 (10.3%)	12 (6.1%)	
Gender				0.966
Female	327 (76.0%)	177 (76.0%)	150 (76.1%)	
Male	103 (24.0%)	56 (24.0%)	47 (23.9%)	
Race / Ethnicity				0.026
White or Caucasian (not Hispanic or Latino)	295 (68.6%)	166 (71.2%)	129 (65.5%)	
Black or African American	20 (4.7%)	7 (3.0%)	13 (6.6%)	
Hispanic	61 (14.2%)	35 (15.0%)	26 (13.2%)	
Asian	22 (5.1%)	15 (6.4%)	7 (3.6%)	
Patient Refused	13 (3.0%)	5 (2.2%)	8 (4.1%)	
Other	19 (4.4%)	5 (2.2%)	14 (7.1%)	
CMS Geographic Region (n, %)				0.009
Region 1: ME, NH, VT, MA, CT, RI	19 (4.4%)	10 (4.3%)	9 (4.6%)	
Region 2: NY, NJ, PR, VI	11 (2.6%)	7 (3.0%)	4 (2.0%)	
Region 3: PA, DE, MD, DC, WV, VA	37 (8.6%)	22 (9.4%)	15 (7.6%)	
Region 4: KY, TN, NC, SC, GA, MS, AL, FL	156 (36.3%)	81 (34.8%)	75 (38.1%)	
Region 5: MN, WI, IL, MI, IN, OH	58 (13.5%)	31 (13.3%)	27 (13.7%)	
Region 6: NM, OK, AR, TX, LA	82 (19.1%)	56 (24.0%)	26 (13.2%)	
Region 7: NE, IA, KS, MO	19 (4.4%)	11 (4.7%)	8 (4.1%)	
Region 8 : MT, ND, SD, WY, UT, CO	1 (0.2%)	1 (0.4%)	0 (0.0%)	
Region 9: CA, NV, AZ, GU	46 (10.7%)	13 (5.6%)	33 (16.8%)	
Region 10: AK, WA, OR, ID	1 (0.2%)	1 (0.4%)	0 (0.0%)	
U.S. Geographic Region				0.005
Northeast	53 (12.2%)	29 (12.3%)	24 (12.2%)	
South	254 (58.7%)	150 (63.6%)	104 (52.8%)	
Midwest	77 (17.8%)	42 (17.8%)	35 (17.8%)	
West	49 (11.3%)	15 (6.4%)	34 (17.3%)	
Previously Tested Positive	167 (38.8%)	89 (38.2%)	78 (39.6%)	0.589

	All	BNT162b2	Unvaccinated	P-value ^a
Work in healthcare	47 (10.9%)	29 (12.4%)	18 (9.1%)	0.309
Work in high-risk setting	44 (10.2%)	30 (12.9%)	14 (7.1%)	0.158
Live in high-risk setting	22 (5.1%)	12 (5.2%)	10 (5.1%)	0.553
Social vulnerability index				
Mean (SD)	0.44 (0.22)	0.40 (0.22)	0.49 (0.21)	<0.001
Median (Q1, Q3)	0.41 (0.27, 0.59)	0.37 (0.23, 0.55)	0.47 (0.31, 0.63)	<0.001
Self-Reported Comorbidity				
Asthma or Chronic Lung Disease	34 (7.9%)	21 (9.0%)	13 (6.6%)	0.355
Cirrhosis of the liver	1 (0.2%)	1 (0.4%)	0 (0.0%)	1.0000
Immunocompromised Conditions or Weakened Immune System ^c	19 (4.4%)	12 (5.2%)	7 (3.6%)	0.422
Diabetes	20 (4.7%)	13 (5.6%)	7 (3.6%)	0.320
Heart Conditions or Hypertension	52 (12.1%)	30 (12.9%)	22 (11.2%)	0.588
Overweight or obesity	19 (4.4%)	12 (5.2%)	7 (3.6%)	0.422
At least 1 comorbidity	104 (24.2%)	61 (26.2%)	43 (21.8%)	0.294
Number of comorbidities, Mean (SD)	0.34 (0.68)	0.38 (0.75)	0.28 (0.58)	0.138
Index day ^b acute COVID-19 symptoms				
Systemic symptoms				
Fever	164 (38.1%)	71 (30.5%)	93 (47.2%)	<0.001
Chills	213 (49.5%)	100 (42.9%)	113 (57.4%)	0.003
Muscle or Body Aches	232 (54.0%)	115 (49.4%)	117 (59.4%)	0.038
Headache	293 (68.1%)	153 (65.7%)	140 (71.1%)	0.231
Fatigue	266 (61.9%)	141 (60.5%)	125 (63.5%)	0.532
Respiratory symptoms				
Shortness of Breath or Difficulty Breathing	54 (12.6%)	25 (10.7%)	29 (14.7%)	0.213
Cough	309 (71.9%)	168 (72.1%)	141 (71.6%)	0.903
Sore Throat	238 (55.3%)	134 (57.5%)	104 (52.8%)	0.327
New/Recent Loss of Taste or Smell	45 (10.5%)	23 (9.9%)	22 (11.2%)	0.662
Congestion or Runny Nose	322 (74.9%)	188 (80.7%)	134 (68.0%)	0.003
GI symptoms				
Nausea or Vomiting	55 (12.8%)	24 (10.3%)	31 (15.7%)	0.093
Diarrhea	88 (20.5%)	37 (15.9%)	51 (25.9%)	0.010
Number of acute COVID-19 symptoms, Mean (SD)	5.3 (2.6)	5.1 (2.4)	5.6 (2.7)	0.034

543 ^a P value refers to the comparison between BNT162B2 and Unvaccinated.

544 ^b COVID-19 test nasal swab day

545 ^c Immunocompromised conditions includes compromised immune system (such as from
546 immuno-compromising drugs, solid organ or blood stem cell transplant, HIV, or other
547 conditions), conditions that result in a weakened immune system, including cancer treatment,
548 and kidney failure or end stage renal disease

549 **Table 2** Post-COVID-19 Symptoms at Week 4

Symptom	All	BNT162b2	Unvaccinated	P-value ^a
General symptoms				
Tiredness or fatigue	136 (41.2%)	71 (40.6%)	65 (41.9%)	0.802
Symptoms that get worse after physical or mental activities	50 (15.2%)	18 (10.3%)	32 (20.6%)	0.009
Fever	1 (0.3%)	0 (0.0%)	1 (0.7%)	0.470
General pain/discomfort	50 (15.2%)	20 (11.4%)	30 (19.4%)	0.045
Respiratory and cardiac				
Difficulty breathing or shortness of breath	58 (17.6%)	26 (14.9%)	32 (20.6%)	0.168
Cough	86 (26.1%)	40 (22.9%)	46 (29.7%)	0.159
Chest or stomach pain	32 (9.7%)	14 (8.0%)	18 (11.6%)	0.268
Fast-beating or pounding heart (also known as heart palpitations)	38 (11.5%)	17 (9.7%)	21 (13.5%)	0.276
Neurologic				
Change in smell or taste	51 (15.5%)	19 (10.9%)	32 (20.6%)	0.014
Headache	67 (20.3%)	28 (16.0%)	39 (25.2%)	0.039
Dizziness on standing (lightheadedness)	45 (13.6%)	20 (11.4%)	25 (16.1%)	0.214
Difficulty thinking or concentrating (sometimes referred to as “brain fog”)	86 (26.1%)	43 (24.6%)	43 (27.7%)	0.513
Pins-and-needles feeling	24 (7.3%)	10 (5.7%)	14 (9.0%)	0.247
Sleep problems	81 (24.5%)	35 (20.0%)	46 (29.7%)	0.042
Mood changes	36 (10.9%)	13 (7.4%)	23 (14.8%)	0.031
Memory loss	38 (11.5%)	11 (6.3%)	27 (17.4%)	0.002
Other				
Diarrhea	23 (7.0%)	6 (3.4%)	17 (11.0%)	0.007
Joint or muscle pain	67 (20.3%)	29 (16.6%)	38 (24.5%)	0.073
Rash	11 (3.3%)	3 (1.7%)	8 (5.2%)	0.082
Changes in period cycles	28 (11.5%)	12 (9.4%)	16 (13.8%)	0.280
Number of post-COVID-19 symptoms, Mean (SD)	3.1 (3.6)	2.5 (3.0)	3.7 (4.1)	0.002
0	100 (30.3%)	54 (30.9%)	46 (29.7%)	0.001
1-2	100 (30.3%)	59 (33.7%)	41 (26.5%)	
3-5	61 (18.5%)	40 (22.9%)	21 (13.5%)	
6-8	32 (9.7%)	9 (5.1%)	23 (14.8%)	
≥9	37 (11.2%)	13 (7.4%)	24 (15.5%)	

550 ^a P-values of t-test for number of symptoms, chi-square or Fisher’s exact tests when any one cell
 551 has an expected frequency less than 5 for individual symptoms and number of symptom
 552 category comparing the BNT162b2 cohort and the unvaccinated cohort.

553 **Table 3** Summary of EQ-5D-5L and WPAI-GH Scores^a and Their Changes from Baseline by Assessment Time
 554

	BNT162b2 Cohort						Unvaccinated Cohort						Difference in Change from Baseline Between Cohorts		
	Score		Change from Baseline ^b				Score		Change from Baseline						
	n	Mean (SD)	n	Mean (SD)	P-value ^c	ES _w ^d	n	Mean (SD)	n	Mean (SD)	P-value ^c	ES _w ^d	Mean (SD)	P-value ^e	ES _o ^f
EQ-5D-5L															
Visual analogue scale (VAS)															
Baseline ^g	233	86.9 (10.7)					197	87.8 (11.0)						0.414 ^h	
Day 3	233	73.9 (15.6)	233	-13.0 (12.5)	<0.001	-1.04	194	71.8 (19.6)	194	-16.1 (17.1)	<0.001	-0.94	3.1 (14.8)	0.033	0.21
Week 4	171	82.9 (13.8)	171	-3.7 (10.7)	<0.001	-0.35	151	80.9 (15.7)	151	-7.2 (13.7)	<0.001	-0.53	3.5 (12.2)	0.011	0.28
Utility Index (US weight)															
Baseline ^e	233	0.924 (0.117)					197	0.918 (0.117)						0.547 ^h	
Day 3	233	0.820 (0.193)	233	-0.105 (0.159)	<0.001	-0.66	197	0.762 (0.252)	197	-0.155 (0.228)	<0.001	-0.68	0.050 (0.194)	0.007	0.26
Week 4	176	0.882 (0.145)	176	-0.039 (0.120)	<0.001	-0.33	155	0.838 (0.197)	155	-0.074 (0.156)	<0.001	-0.47	0.035 (0.138)	0.023	0.25
WPAI-GH															
Absenteeism															
Baseline ^e	153	2.8 (11.8)					129	11.7 (26.4)						<0.001 ^h	
Week 1	153	44.9 (38.3)	147	42.5 (38.8)	<0.001	1.09	129	66.7 (37.0)	127	55.5 (39.2)	<0.001	1.42	-13.0 (39.0)	0.006	-0.33
Week 4	128	4.6 (17.2)	122	1.4 (20.1)	0.460	0.07	106	3.3 (12.2)	102	-7.7 (28.1)	0.007	-0.27	9.0 (24.1)	0.006	0.37
Presenteeism															
Baseline ^e	153	9.5 (18.5)					124	9.4 (20.4)						0.958 ^h	
Week 1	123	41.7 (27.4)	119	33.0 (29.1)	<0.001	1.13	82	47.8 (34.2)	81	38.2 (35.9)	<0.001	1.06	-5.1 (32.1)	0.268	-0.16
Week 4	125	11.7 (18.8)	119	1.4 (24.5)	0.527	0.06	105	18.7 (23.4)	96	10.7 (24.1)	<0.001	0.45	-9.3 (24.3)	0.006	-0.38
Work productivity loss															
Baseline ^e	152	10.5 (20.0)					123	14.2 (24.7)						0.175 ^h	
Week 1	123	56.6 (31.5)	118	46.7 (34.5)	<0.001	1.35	82	66.9 (32.4)	80	53.2 (35.3)	<0.001	1.51	-6.4 (34.9)	0.203	-0.18

Week 4	125	12.9 (20.7)	118	1.4 (27.5)	0.589	0.05	105	19.8 (24.6)	96	7.7 (30.6)	0.016	0.25	-6.3 (29.0)	0.113	-0.22
Activity impairment															
Baseline ^c	203	12.5 (22.2)					176	17.2 (27.2)						0.065 ^h	
Week 1	202	48.6 (29.8)	202	36.1 (31.9)	<0.001	1.13	176	54.2 (32.7)	176	37.0 (37.5)	<0.001	0.99	-0.9 (34.6)	0.801	-0.03
Week 4	175	15.5 (21.7)	175	2.3 (26.3)	0.242	0.09	155	25.9 (28.5)	155	8.8 (33.8)	0.002	0.26	-6.4 (30.1)	0.053	-0.21

555 ^a Score ranges: EQ-5D-5L VAS 0 to 100, EQ-5D-5L UI (the United States weights) -0.573 to 1; WPAI-GH (absenteeism,
556 presenteeism, work productivity loss, and activity impairment) 0 to 100 percent.

557 ^b Baseline refers to pre-COVID-19 symptom onset.

558 ^c P-value of t-test comparing mean score changes from baseline and 0 within BNT162b2 or Unvaccinated cohorts.

559 ^d ES_w refers to effect size for score changes from baseline within BNT162b2 or Unvaccinated cohorts.

560 ^e P-value of t-test comparing mean score changes from baseline between BNT162b2 and Unvaccinated cohorts.

561 ^f ES_b refers to effect size for score changes from baseline between BNT162b2 and Unvaccinated cohorts.

562 ^g Prior to symptom onset (pre-COVID).

563 ^h P-values of t-tests comparing pre-COVID-19 baseline mean scores between BNT162b2 and Unvaccinated cohorts.

564

565 **Table 4** Least-Square Mean Estimate and 95% Confidence Interval for EQ-5D-5L and WPAI-GH Scores ^a

Variable	BNT162b2 Cohort				Unvaccinated Cohort				Between Cohort Difference		
	Score	Change from Baseline			Score	Change from Baseline					
	LSE (95% CI)	LSE (95% CI)	P-value ^b	ES _w ^c	LSE (95% CI)	LSE (95% CI)	P-value ^b	ES _w ^c	LSE (95% CI)	P-value ^d	ES _b ^e
EQ-5D-5L											
Visual analogue scale (VAS)											
Day 3	76.2 (73.3, 79.2)	-11.1 (-14.1, -8.2)	<0.001	-0.89	72.6 (69.7, 75.4)	-14.8 (-17.6, -11.9)	<0.001	-0.86	3.6 (0.8, 6.5)	0.013	0.25
Week 4	85.0 (82.1, 87.9)	-2.3 (-5.2, 0.6)	0.119	-0.22	81.6 (78.8, 84.4)	-5.7 (-8.5, -2.9)	<0.001	-0.42	3.4 (0.6, 6.2)	0.016	0.28
Utility Index (US weight)											
Day 3	0.842 (0.805, 0.879)	-0.077 (-0.115, -0.040)	<0.001	-0.49	0.773 (0.736, 0.809)	-0.147 (-0.183, -0.110)	<0.001	-0.64	0.069 (0.032, 0.107)	<0.001	0.36
Week 4	0.903 (0.868, 0.938)	-0.016 (-0.051, 0.019)	0.369	-0.13	0.859 (0.826, 0.892)	-0.060 (-0.093, -0.027)	<0.001	-0.38	0.044 (0.013, 0.075)	0.005	0.32
WPAI-GH											
Absenteeism											
Week 1	45.6 (38.0, 53.1)	39.1 (31.6, 46.7)	<0.001	1.01	65.0 (57.5, 72.5)	58.6 (51.1, 66.0)	<0.001	1.49	-19.4 (-28.3, -10.6)	<0.001	-0.50
Week 4	5.3 (0.0, 10.7)	-1.1 (-6.5, 4.2)	0.676	-0.06	2.2 (0.0, 7.1) ^f	-4.3 (-9.2, 0.6)	0.086	-0.15	3.2 (-1.1, 7.4)	0.145	0.13
Presenteeism											
Week 1	38.4 (30.3, 46.5)	29.0 (20.8, 37.1)	<0.001	1.00	46.8 (38.6, 55.1)	37.4 (29.1, 45.6)	<0.001	1.04	-8.4 (-16.7, -0.1)	0.047	-0.26
Week 4	6.8 (0, 13.9) ^f	-2.7 (-9.7, 4.4)	0.458	-0.11	16.0 (9.4, 22.5)	6.5 (0.0, 13.0)	0.050	0.27	-9.2 (-14.7, -3.6)	0.001	-0.38
Work productivity loss											
Week 1	53.8 (45.1, 62.4)	42.4 (33.8, 51.0)	<0.001	1.23	65.0 (56.2, 73.7)	53.6 (44.8, 62.4)	<0.001	1.52	-11.2 (-19.9, -2.5)	0.012	-0.32
Week 4	8.6 (0.9, 16.2)	-2.8 (-10.4, 4.9)	0.476	-0.10	17.0 (9.9, 24.0)	5.7 (-1.4, 12.7)	0.116	0.18	-8.4 (-14.5, -2.3)	0.007	-0.29
Activity impairment											
Week 1	43.9 (37.7, 50.1)	29.0 (22.8, 35.3)	<0.001	0.91	50.2 (44.2, 56.2)	35.4 (29.3, 41.4)	<0.001	0.94	-6.3 (-12.4, -0.2)	0.044	-0.18

Week 4	11.0 (5.1, 16.9)	-3.9 (-9.7, 2.0)	0.194	-0.15	21.3 (15.7, 26.9)	6.4 (0.8, 12.0)	0.025	0.19	-10.3 (-15.6, -5.0)	<0.001	-0.34
--------	------------------	------------------	-------	-------	-------------------	-----------------	-------	------	---------------------	--------	-------

566 Abbreviations: LSE = Least-Square Mean Estimate; CI = Confidence Interval.

567 ^a Multivariate models include variables for time, vaccination status and interaction of time by vaccination status, as well as covariates
568 of participant pre-COVID-19 symptom onset score, sociodemographic characteristics (age, sex, regions, social vulnerability,
569 race/ethnicity, high risk occupations), previously tested positive for COVID-19, severity of acute illness (number of symptoms
570 reported on index date), and immunocompromised status. Parameter estimates are presented in Supplemental Table 3.

571 ^b P-value refers to the comparison of least-square mean estimates score changes from baseline and 0 within BNT162b2 or
572 Unvaccinated cohorts

573 ^c ES_w, within-cohort effect size, was calculated as the least square estimate of mean change from divided by the observed standard
574 deviation of change scores from baseline to follow-up.

575 ^d ES_b, between-cohort effect size, was calculated as the difference in least square estimates of mean changes from baseline between
576 cohorts, divided by the observed pooled standard deviation of change scores

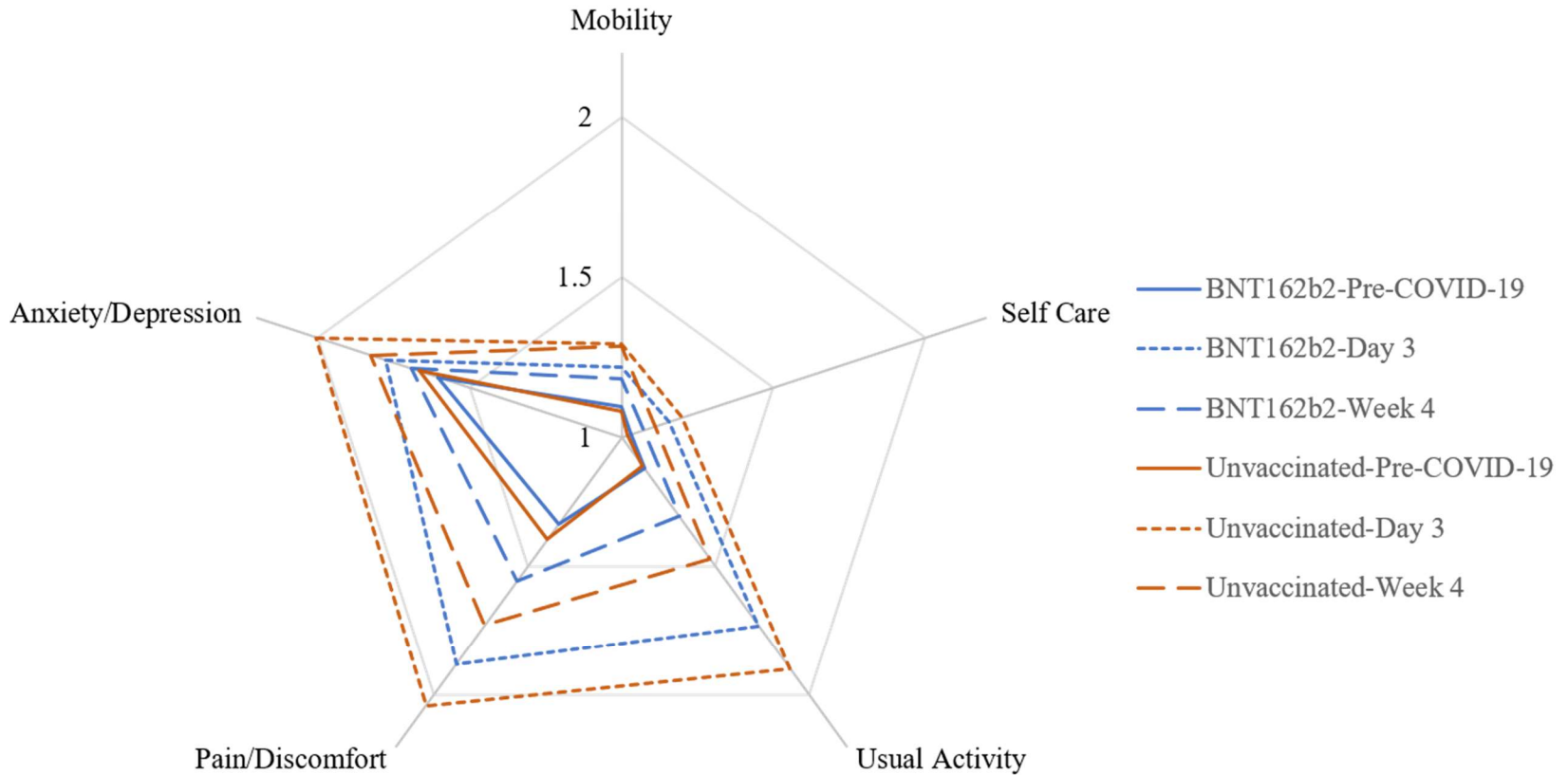
577 ^e P-value refers to the difference in least-square mean estimates between BNT162b2 and Unvaccinated cohorts.

578 ^f Lower limit of 95% CI was truncated from -2.7 to 0 for absenteeism and -0.3 to 0 for presenteeism at Week 4 because the valid range
579 is 0 to 100.

580
581
582
583
584
585
586
587
588
589
590
591
592
593
594
595
596

597 **Figure 3** Mean Responses of EQ-5D-5L Dimensions by Timepoint

598



599

600

601 Mean dimension scores range from 1 for no problem to 5 for extreme / unable. The blue and red solid lines indicate that vaccinated
602 and unvaccinated were similar at the pre-COVID baseline. At Day 3 and Week 4 post-index date, vaccinated cohort was less impacted
603 (lower scores) than unvaccinated by COVID on anxiety/depression, pain/discomfort, and usual activities (dotted lines for Day 3,
604 dashed lines for Week 4).

605

Supplemental Table 1 Patient Characteristics by Enrollment Status

Patient characteristics	Enrolled N=676	Not-Enrolled N=39,213	P value
Vaccinated			<0.001
Yes	465 (68.8%)	22,125 (56.4%)	
No	211 (31.2%)	17,087 (43.6%)	
Missing			
Age, years			
Mean, SD	43.2 (14.7)	42.1 (15.5)	0.076
Median, Q1, Q3	41 (31--55)	40 (29--54)	0.010
Age Category			
18-29	134 (19.8%)	10,095 (25.7%)	0.005
30-49	317 (46.9%)	16,706 (42.6%)	
50-64	156 (23.1%)	8,561 (21.8%)	
≥65	69 (10.2%)	3,850 (9.8%)	
Gender, n (%)			<0.001
Male	181 (26.8%)	17,843 (45.5%)	
Female	495 (73.2%)	21,370 (54.5%)	
Race / Ethnicity, n (%)			<0.001
White or Caucasian (non-Hispanic or Latino)	486 (71.9%)	22,647 (57.8%)	
Black or African American	32 (4.7%)	4,162 (10.6%)	
Hispanic or Latino	85 (12.6%)	6,878 (17.5%)	
Asian	35 (5.2%)	2,551 (6.5%)	
Patient Refused	16 (2.4%)	1,535 (3.9%)	
Other	22 (3.3%)	1,439 (3.7%)	
US Geographic Region			0.258
Northeast	92 (13.6%)	4,387 (11.2%)	
South	402 (59.5%)	24,305 (62.0%)	
Midwest	118 (17.5%)	6,414 (16.4%)	
West	64 (9.5%)	4,105 (10.5%)	
Number of acute COVID-19 symptoms, Mean (SD)	5.2 (2.5)	5.1 (2.5)	0.732
Number of comorbidities, Mean (SD)	0.3 (0.7)	0.3 (0.6)	0.021
≥1 comorbidity	164 (24.3%)	7,677 (19.6%)	0.002

Supplemental Table 2 Summary of EQ-5D-5L Dimensions

Dimension	All	BNT162b2	Unvaccinated	P-value ^a
Pre-COVID-19 Baseline				
Mobility				0.841
No problems	396 (92.1%)	213 (91.4%)	183 (92.9%)	
Slight problems	30 (7.0%)	18 (7.7%)	12 (6.1%)	
Moderate problems	4 (0.9%)	2 (0.9%)	2 (1.0%)	
Severe problems	0 (0.0%)	0 (0.0%)	0 (0.0%)	
Unable	0 (0.0%)	0 (0.0%)	0 (0.0%)	
Missing	0 (0.0%)	0 (0.0%)	0 (0.0%)	
Self-Care				0.560
No problems	419 (97.4%)	226 (97.0%)	193 (98.0%)	
Slight problems	11 (2.6%)	7 (3.0%)	4 (2.0%)	
Moderate problems	0 (0.0%)	0 (0.0%)	0 (0.0%)	
Severe problems	0 (0.0%)	0 (0.0%)	0 (0.0%)	
Unable	0 (0.0%)	0 (0.0%)	0 (0.0%)	
Missing	0 (0.0%)	0 (0.0%)	0 (0.0%)	
Usual Activities				0.904
No problems	394 (91.6%)	214 (91.8%)	180 (91.4%)	
Slight problems	23 (5.4%)	11 (4.7%)	12 (6.1%)	
Moderate problems	12 (2.8%)	7 (3.0%)	5 (2.5%)	
Severe problems	1 (0.2%)	1 (0.4%)	0 (0.0%)	
Unable	0 (0.0%)	0 (0.0%)	0 (0.0%)	
Missing	0 (0.0%)	0 (0.0%)	0 (0.0%)	
Pain / Discomfort				0.614
No	307 (71.4%)	172 (73.8%)	135 (68.5%)	
Slight	93 (21.6%)	46 (19.7%)	47 (23.9%)	
Moderate	27 (6.3%)	13 (5.6%)	14 (7.1%)	
Severe	3 (0.7%)	2 (0.9%)	1 (0.5%)	
Extreme	0 (0.0%)	0 (0.0%)	0 (0.0%)	
Missing	0 (0.0%)	0 (0.0%)	0 (0.0%)	
Anxiety / Depression				0.395
No	230 (53.5%)	124 (53.2%)	106 (53.8%)	
Slightly	140 (32.6%)	80 (34.3%)	60 (30.5%)	
Moderately	49 (11.4%)	26 (11.2%)	23 (11.7%)	
Severely	10 (2.3%)	3 (1.3%)	7 (3.6%)	
Extremely	1 (0.2%)	0 (0.0%)	1 (0.5%)	
Missing	0 (0.0%)	0 (0.0%)	0 (0.0%)	
Days 3				
Mobility				0.131

No problems	343 (79.8%)	193 (82.8%)	150 (76.1%)	
Slight problems	68 (15.8%)	31 (13.3%)	37 (18.8%)	
Moderate problems	17 (4.0%)	7 (3.0%)	10 (5.1%)	
Severe problems	2 (0.5%)	2 (0.9%)	0 (0.0%)	
Unable	0 (0.0%)	0 (0.0%)	0 (0.0%)	
Missing	0 (0.0%)	0 (0.0%)	0 (0.0%)	
Self-Care				0.571
No problems	370 (86.0%)	205 (88.0%)	165 (83.8%)	
Slight problems	47 (10.9%)	21 (9.0%)	26 (13.2%)	
Moderate problems	11 (2.6%)	6 (2.6%)	5 (2.5%)	
Severe problems	2 (0.5%)	1 (0.4%)	1 (0.5%)	
Unable	0 (0.0%)	0 (0.0%)	0 (0.0%)	
Missing	0 (0.0%)	0 (0.0%)	0 (0.0%)	
Usual Activities				0.361
No problems	207 (48.1%)	117 (50.2%)	90 (45.7%)	
Slight problems	132 (30.7%)	75 (32.2%)	57 (28.9%)	
Moderate problems	64 (14.9%)	30 (12.9%)	34 (17.3%)	
Severe problems	21 (4.9%)	9 (3.9%)	12 (6.1%)	
Unable	6 (1.4%)	2 (0.9%)	4 (2.0%)	
Missing	0 (0.0%)	0 (0.0%)	0 (0.0%)	
Pain / Discomfort				0.080
No	145 (33.7%)	85 (36.5%)	60 (30.5%)	
Slight	183 (42.6%)	99 (42.5%)	84 (42.6%)	
Moderate	82 (19.1%)	43 (18.5%)	39 (19.8%)	
Severe	17 (4.0%)	4 (1.7%)	13 (6.6%)	
Extreme	3 (0.7%)	2 (0.9%)	1 (0.5%)	
Missing	0 (0.0%)	0 (0.0%)	0 (0.0%)	
Anxiety / Depression				0.047
No	190 (44.2%)	108 (46.4%)	82 (41.6%)	
Slightly	135 (31.4%)	79 (33.9%)	56 (28.4%)	
Moderately	75 (17.4%)	37 (15.9%)	38 (19.3%)	
Severely	26 (6.1%)	8 (3.4%)	18 (9.1%)	
Extremely	4 (0.9%)	1 (0.4%)	3 (1.5%)	
Missing	0 (0.0%)	0 (0.0%)	0 (0.0%)	
Week 4				
Mobility				0.278
No problems	270 (81.3%)	149 (84.7%)	121 (77.6%)	
Slight problems	49 (14.8%)	22 (12.5%)	27 (17.3%)	
Moderate problems	12 (3.6%)	5 (2.8%)	7 (4.5%)	
Severe problems	1 (0.3%)	0 (0.0%)	1 (0.6%)	
Unable	0 (0.0%)	0 (0.0%)	0 (0.0%)	

Missing	1 (0.0%)	1 (0.0%)	0 (0.0%)	
Self-Care				0.068
No problems	308 (93.1%)	167 (94.9%)	141 (91.0%)	
Slight problems	17 (5.1%)	5 (2.8%)	12 (7.7%)	
Moderate problems	5 (1.5%)	4 (2.3%)	1 (0.7%)	
Severe problems	1 (0.3%)	0 (0.0%)	1 (0.7%)	
Unable	0 (0.0%)	0 (0.0%)	0 (0.0%)	
Missing	2 (0.0%)	1 (0.0%)	1 (0.0%)	
Usual Activities				0.152
No problems	232 (70.1%)	132 (75.0%)	100 (64.5%)	
Slight problems	75 (22.7%)	35 (19.9%)	40 (25.8%)	
Moderate problems	20 (6.0%)	8 (4.6%)	12 (7.7%)	
Severe problems	4 (1.2%)	1 (0.6%)	3 (1.9%)	
Unable	0 (0.0%)	0 (0.0%)	0 (0.0%)	
Missing	2 (0.0%)	1 (0.0%)	1 (0.0%)	
Pain / Discomfort				0.097
No	170 (51.4%)	95 (54.0%)	75 (48.4%)	
Slight	118 (35.6%)	66 (37.5%)	52 (33.5%)	
Moderate	37 (11.2%)	13 (7.4%)	24 (15.5%)	
Severe	5 (1.5%)	2 (1.1%)	3 (1.9%)	
Extreme	1 (0.3%)	0 (0.0%)	1 (0.7%)	
Missing	2 (0.0%)	1 (0.0%)	1 (0.0%)	
Anxiety / Depression				0.605
No	167 (50.5%)	92 (52.3%)	75 (48.4%)	
Slightly	98 (29.6%)	53 (30.1%)	45 (29.0%)	
Moderately	51 (15.4%)	25 (14.2%)	26 (16.8%)	
Severely	10 (3.0%)	5 (2.8%)	5 (3.2%)	
Extremely	5 (1.5%)	1 (0.6%)	4 (2.6%)	
Missing	2 (0.0%)	1 (0.0%)	1 (0.0%)	

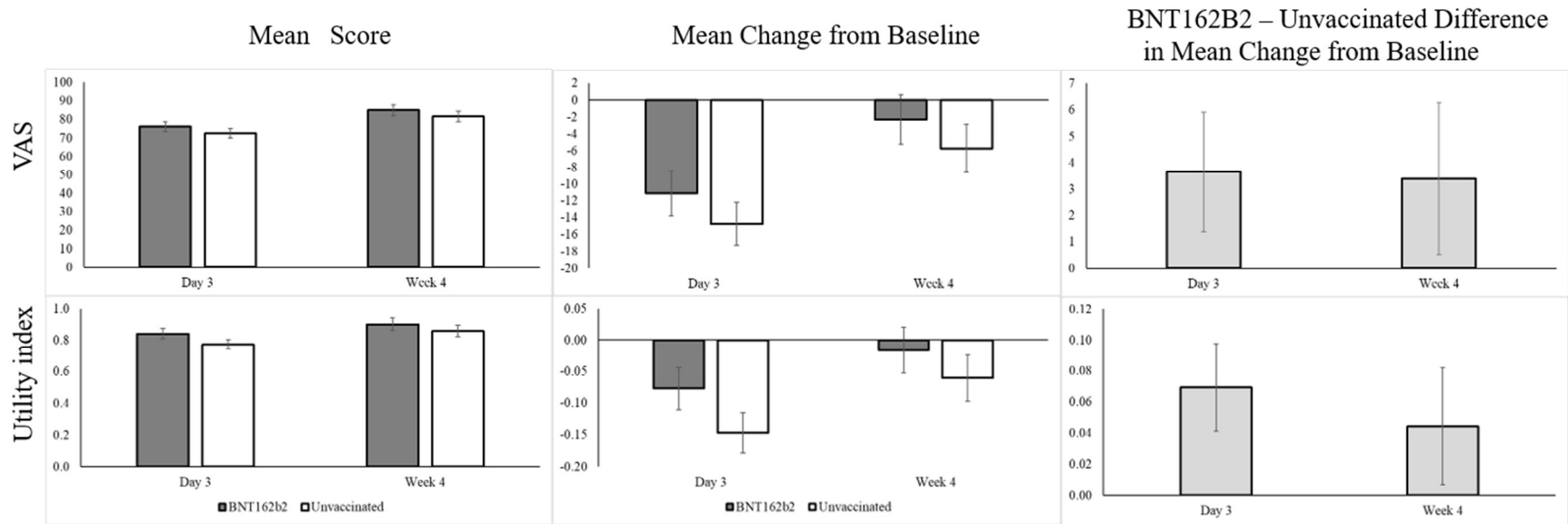
^a P values of Freeman-Halton tests comparing BNT162b2 cohort and unvaccinated cohort, excluding category of missing.

Supplemental Table 3 Mixed Models for Repeated Measurements EQ-5D-5L and WPAI-GH Scores

	EQ VAS		EQ-5D-5L Utility Index (U.S. weights)		Absenteeism		Presenteeism		Work productivity loss		Activity impairment	
	Coeff (SE)	P value	Coeff (SE)	P value	Coeff (SE)	P value	Coeff (SE)	P value	Coeff (SE)	P value	Coeff (SE)	P value
Intercept	4.51 (5.36)	0.401	0.038 (0.062)	0.546	53.6 (4.9)	<0.001	41.4 (5.7)	<0.001	57.7 (6.0)	<0.001	41.2 (4.9)	<0.001
Vaccinated												
BNT162B2/BNT162b2	3.65 (1.46)	0.013	0.069 (0.019)	<0.001	-19.4 (4.5)	<0.001	-8.4 (4.2)	0.047	-11.2 (4.4)	0.012	-6.3 (3.1)	0.044
No	Reference		Reference		Reference		Reference		Reference		Reference	
Assessment Time												
Day 2-4 / Week 1	Reference		Reference		Reference		Reference		Reference		Reference	
Week 4	9.04 (1.23)	<0.001	0.086 (0.014)	<0.001	-62.9 (3.4)	<0.001	-30.9 (3.3)	<0.001	-48.0 (3.6)	<0.001	-28.9 (2.5)	<0.001
Assessment Time * Vaccinated												
Day 2-4 / Week 1 * BNT162b2	Reference		Reference		Reference		Reference		Reference		Reference	
Week 4 * BNT162B2	-0.25 (1.69)	0.884	-0.025 (0.020)	0.209	22.6 (4.8)	<0.001	-0.8 (4.4)	0.863	2.8 (4.8)	0.561	-4.0 (3.5)	0.257
Pre-COVID-19 Baseline Score	-0.22 (0.05)	<0.001	-0.177 (0.057)	0.002	-0.8 (0.0)	<0.001	-0.7 (0.1)	<0.001	-0.8 (0.1)	<0.001	-0.7 (0.0)	<0.001
Age, years												
18-29	Reference		Reference		Reference		Reference		Reference		Reference	
30-49	-1.82 (1.45)	0.211	-0.011 (0.018)	0.532	3.9 (2.4)	0.102	5.6 (3.0)	0.065	4.1 (3.2)	0.204	7.8 (2.9)	0.006
50-64	-2.84 (1.74)	0.102	-0.048 (0.021)	0.025	10.8 (2.9)	<0.001	6.8 (3.8)	0.074	7.3 (4.1)	0.075	13.7 (3.5)	<0.001
≥65	-1.86 (2.29)	0.417	-0.025 (0.028)	0.367	1.7 (5.5)	0.760	0.3 (7.4)	0.964	-1.4 (7.9)	0.863	6.9 (4.7)	0.139
Gender												
Male	4.07 (1.30)	0.002	0.028 (0.016)	0.080	-2.1 (2.2)	0.360	-6.8 (2.9)	0.019	-5.8 (3.1)	0.057	-9.8 (2.6)	<0.001
Female	Reference		Reference		Reference		Reference		Reference		Reference	
Race / Ethnicity												
White (non-Hispanic)	Reference		Reference		Reference		Reference		Reference		Reference	
Black/African American	2.17 (2.73)	0.428	0.017 (0.033)	0.613	-1.8 (5.1)	0.726	0.8 (6.4)	0.899	0.1 (7.1)	0.994	-1.9 (5.6)	0.730
Hispanic or Latino	0.65 (1.68)	0.701	0.005 (0.021)	0.818	-1.9 (3.0)	0.530	4.3 (3.9)	0.268	4.8 (4.1)	0.243	-2.3 (3.4)	0.494

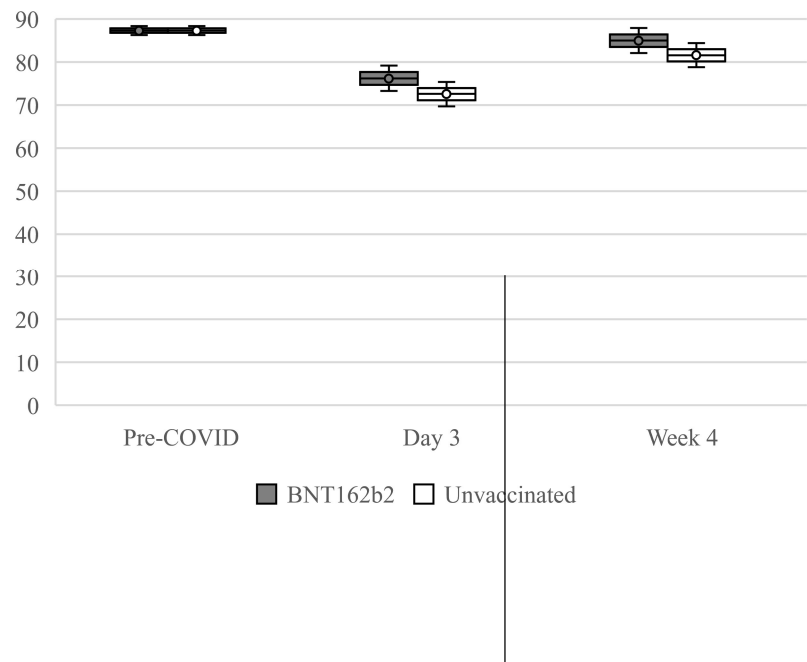
Asian	4.24 (2.54)	0.096	0.032 (0.031)	0.316	-1.7 (4.7)	0.713	1.4 (5.8)	0.807	2.4 (6.3)	0.705	0.9 (5.2)	0.858
Patient refused	-0.30 (3.26)	0.927	0.031 (0.040)	0.438	-3.3 (6.1)	0.589	1.1 (8.4)	0.897	-2.3 (9.0)	0.800	-6.4 (7.0)	0.359
Other	2.90 (2.81)	0.303	0.019 (0.035)	0.582	3.9 (4.8)	0.418	-6.9 (6.5)	0.288	-3.1 (6.9)	0.661	-7.5 (5.8)	0.198
Region												
Northeast	1.91 (2.00)	0.341	0.015 (0.025)	0.534	6.2 (3.3)	0.057	-1.9 (4.2)	0.648	-0.5 (4.5)	0.908	-2.3 (3.9)	0.551
South	0.87 (1.51)	0.568	-0.002 (0.019)	0.905	-1.0 (2.6)	0.698	-2.4 (3.3)	0.466	-2.4 (3.5)	0.507	-2.9 (3.0)	0.328
Midwest	Reference		Reference		Reference		Reference		Reference		Reference	
West	0.49 (2.08)	0.815	0.019 (0.026)	0.448	-0.7 (3.4)	0.830	-0.8 (4.5)	0.857	-1.3 (4.8)	0.793	-3.7 (4.2)	0.374
Social Vulnerability Index												
<0.25	Reference		Reference		Reference		Reference		Reference		Reference	
≥0.25 and <0.5	1.21 (1.45)	0.403	0.034 (0.018)	0.060	1.3 (2.4)	0.579	-3.9 (3.0)	0.196	-4.6 (3.3)	0.158	-5.2 (2.9)	0.076
≥0.5 and <0.75	0.93 (1.62)	0.568	0.020 (0.020)	0.321	4.7 (2.8)	0.090	-4.8 (3.6)	0.180	-6.0 (3.9)	0.124	-3.6 (3.3)	0.276
≥0.75	-2.80 (2.14)	0.192	0.009 (0.026)	0.740	2.3 (3.7)	0.531	-9.3 (4.7)	0.048	-7.8 (5.0)	0.121	-5.0 (4.3)	0.247
Previously tested positive	0.99 (1.13)	0.381	0.003 (0.014)	0.816	-1.9 (2.0)	0.333	-0.5 (2.6)	0.851	-2.7 (2.8)	0.329	-1.2 (2.3)	0.591
Work in healthcare	-0.90 (1.80)	0.616	-0.018 (0.022)	0.424	3.1 (2.8)	0.272	0.8 (3.6)	0.818	-0.7 (4.0)	0.851	3.7 (3.6)	0.300
Work in high-risk setting	-2.83 (1.96)	0.150	-0.006 (0.024)	0.790	4.7 (3.4)	0.166	10.3 (4.3)	0.017	13.3 (4.6)	0.004	5.7 (4.0)	0.155
Live in high-risk setting	1.36 (2.53)	0.591	-0.028 (0.031)	0.370	3.2 (4.7)	0.502	4.8 (6.0)	0.431	7.2 (6.5)	0.268	12.1 (5.0)	0.017
Immunocompromised	1.22 (2.61)	0.639	-0.018 (0.032)	0.560	13.1 (6.1)	0.033	9.9 (8.4)	0.243	7.9 (9.1)	0.385	5.5 (5.1)	0.282
Number of Symptoms on index day	-0.59 (0.23)	0.009	-0.010 (0.003)	0.001	0.8 (0.4)	0.048	1.3 (0.5)	0.008	1.9 (0.5)	0.001	1.8 (0.4)	<0.001

Supplemental Figure 1 Least-Square Estimates and 95% Confidence Intervals of EQ-5D-5L Scores ^a

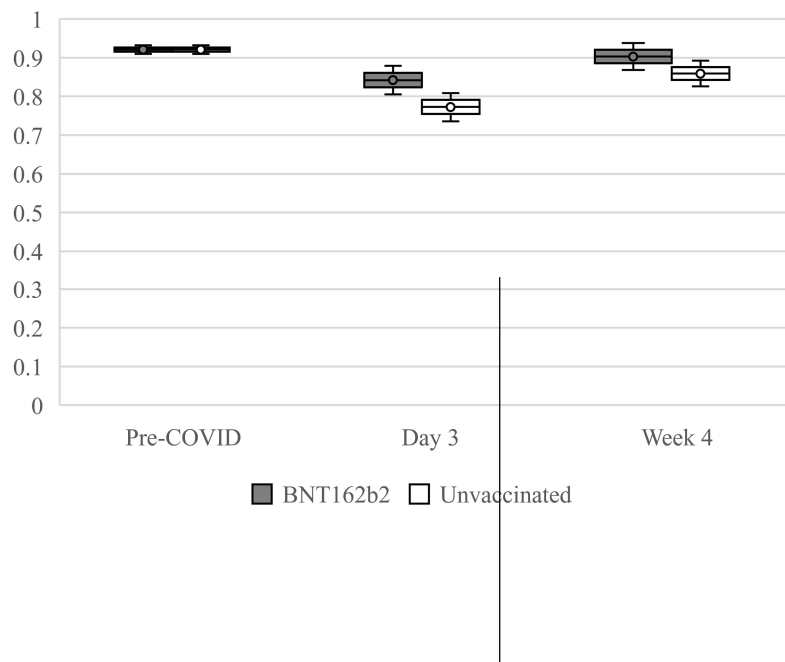


^a Score ranges: EQ-5D-5L VAS 0 to 100, EQ-5D-5L UI (the United States weights) -0.573 to 1.

Visual Analog Scale (VAS)

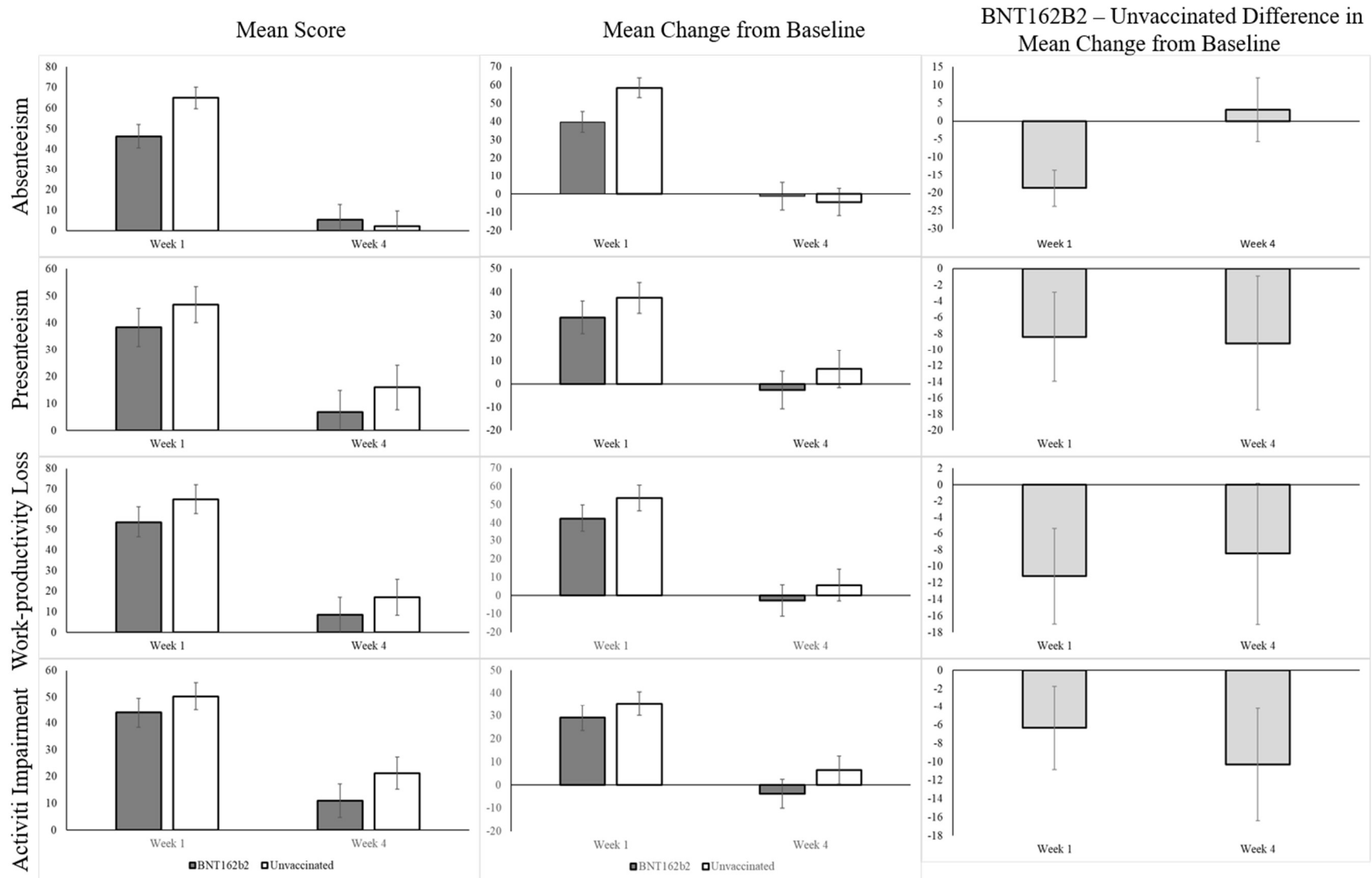


Utility Index (UI)



^a Score ranges: EQ-5D-5L VAS 0 to 100, EQ-5D-5L UI (the United States weights) -0.573 to 1. Dots are the mean values and whiskers are the 95% Confidence Intervals. The Pre-COVID values represent the pooled means with 95% Confidence Internals. The Day 3 and Week 4 values are the least square estimate scores.

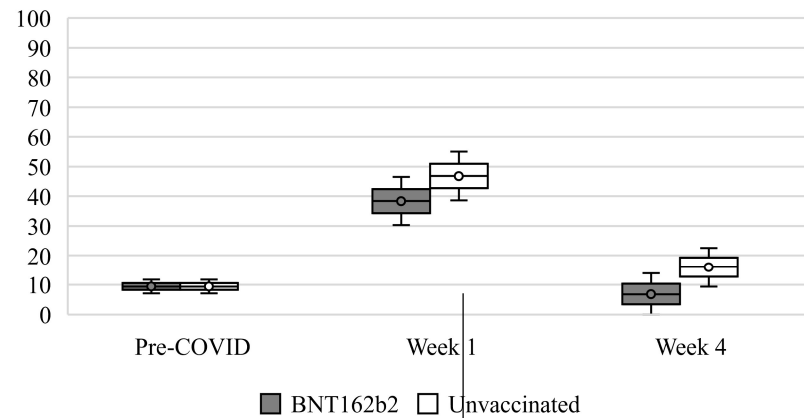
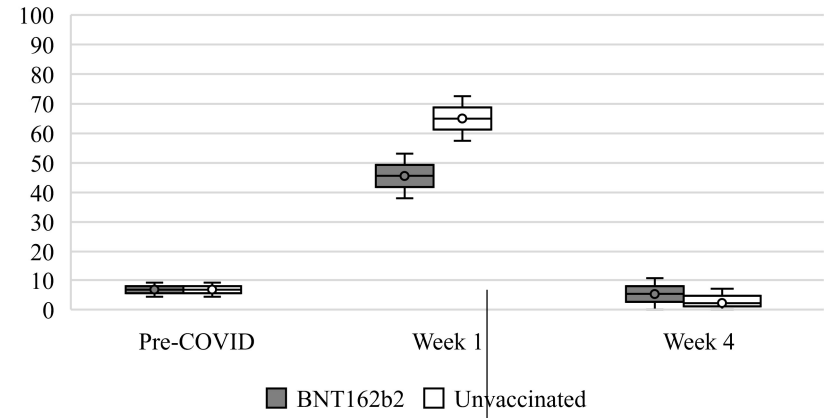
Supplemental Figure 3 Least-Square Estimates and 95% Confidence Intervals of WPAI-GH Scores ^a



^a WPAI-GH score (absenteeism, presenteeism, work productivity loss, and activity impairment) ranges from 0 to 100 percent.

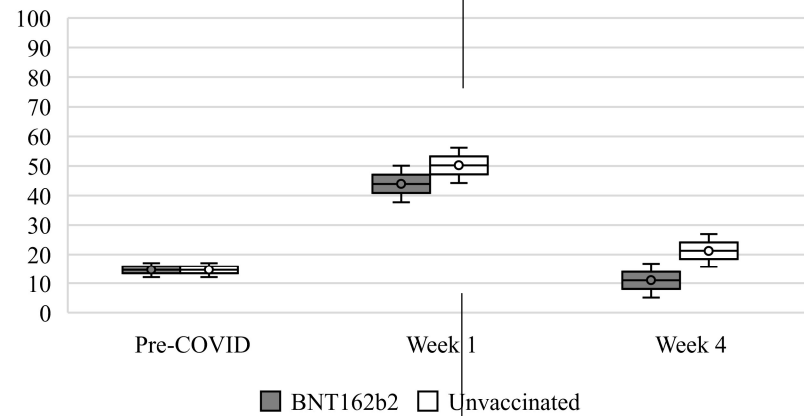
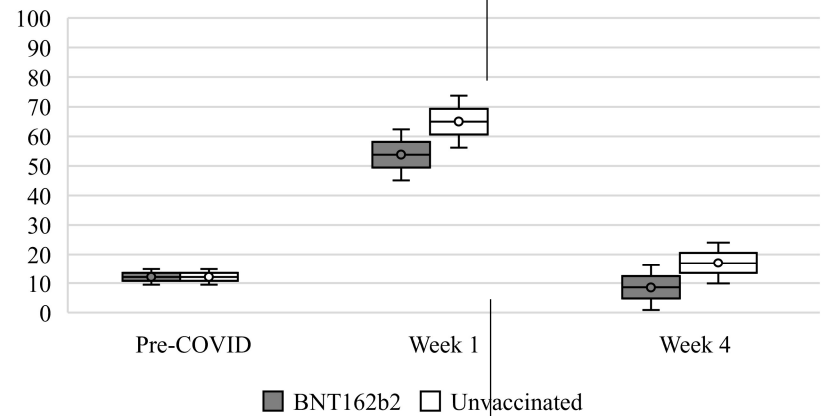
Absenteeism

Presenteeism



Work Productivity loss

Activity Impairment



a

WPAI-GH score (absenteeism, presenteeism, work productivity loss, and activity impairment) ranges from 0 to 100 percent. Dots are the mean values and whiskers are the 95% Confidence Intervals. The Pre-COVID values represent the pooled means with 95% Confidence Internals. The Week 1 and Week 4 values are the least square estimate scores.

Supplemental Table 4 Model Predicting the Missingness at Week 1 and Week 4

	Summary: % (n) / Mean (SD)			Model		
	Total	Week 1 Missing	Week 4 Missing	Coeff (SE)	P value	Odds Ratio
Intercept	430	11.9% (51)	23.0% (99)	-3.14 (1.19)	0.009	
Assessment Time						
Week 4	430		23.0% (99)	0.85 (0.12)	<0.001	2.3 (1.9, 2.9)
Week 1	430	11.9% (51)		Reference	.	1.0
Vaccination status						
BNT162b2	233	12.9% (30)	24.5% (57)	0.36 (0.26)	0.166	1.4 (0.9, 2.4)
Unvaccinated	197	10.7% (21)	21.3% (42)	Reference	.	1.0
EQ VAS on Day 3	72.9 (17.5)	68.9 (19.1)	71.7 (17.3)	0.00 (0.01)	0.967	1.0 (1.0, 1.0)
EQ VAS change from pre-COVID-19 baseline to Day 3	-14.4 (14.8)	-18.2 (18.9)	-16.0 (16.6)	-0.01 (0.01)	0.311	1.0 (1.0, 1.0)
Age, years						
18-29	87	8.0% (7)	16.1% (14)	Reference	.	1.0
30-49	213	10.3% (22)	23.9% (51)	0.69 (0.36)	0.052	2.0 (1.0, 4.0)
50-64	94	16.0% (15)	27.7% (26)	0.94 (0.40)	0.019	2.6 (1.2, 5.6)
≥65	36	19.4% (7)	22.2% (8)	0.72 (0.52)	0.161	2.1 (0.8, 5.6)
Gender						
Male	103	4.9% (5)	16.5% (17)	-0.80 (0.32)	0.013	0.4 (0.2, 0.8)
Female	327	14.1% (46)	25.1% (82)	Reference	.	1.0
Race / Ethnicity						
White (non-Hispanic)	295	9.8% (29)	19.7% (58)	Reference	.	1.0
Black/African American	20	20.0% (4)	35.0% (7)	0.67 (0.50)	0.184	2.0 (0.7, 5.3)
Hispanic or Latino	61	11.5% (7)	27.9% (17)	0.21 (0.36)	0.565	1.2 (0.6, 2.5)
Asian	22	18.2% (4)	27.3% (6)	0.37 (0.52)	0.480	1.4 (0.5, 4.0)

Patient refused	13	30.8% (4)	30.8% (4)	0.94 (0.62)	0.128	2.6 (0.8, 8.6)
Other	19	15.8% (3)	36.8% (7)	1.22 (0.54)	0.024	3.4 (1.2, 9.8)
Region						
Northeast	52	7.7% (4)	21.2% (11)	0.50 (0.48)	0.295	1.7 (0.6, 4.2)
South	252	13.5% (34)	24.6% (62)	0.32 (0.37)	0.378	1.4 (0.7, 2.8)
Midwest	77	6.5% (5)	16.9% (13)	Reference	.	1.0
West	49	16.3% (8)	26.5% (13)	0.44 (0.47)	0.343	1.6 (0.6, 3.9)
Social Vulnerability Index						
<0.25	98	12.2% (12)	22.4% (22)	Reference	.	1.0
≥0.25 and <0.5	164	9.8% (16)	19.5% (32)	-0.22 (0.33)	0.496	0.8 (0.4, 1.5)
≥0.5 and <0.75	120	12.5% (15)	25.0% (30)	0.07 (0.35)	0.850	1.1 (0.5, 2.1)
≥0.75	48	16.7% (8)	31.3% (15)	0.38 (0.45)	0.397	1.5 (0.6, 3.5)
Previously tested positive	167	15.6% (26)	26.9% (45)	0.45 (0.25)	0.069	1.6 (1.0, 2.5)
Work in healthcare	47	12.8% (6)	19.1% (9)	-0.24 (0.42)	0.567	0.8 (0.3, 1.8)
Work in high-risk setting	44	13.6% (6)	22.7% (10)	-0.25 (0.43)	0.559	0.8 (0.3, 1.8)
Live in high-risk setting	22	9.1% (2)	27.3% (6)	0.38 (0.54)	0.484	1.5 (0.5, 4.3)
Immunocompromised	19	10.5% (2)	15.8% (3)	-0.33 (0.67)	0.623	0.7 (0.2, 2.7)
Number of Symptoms on index day	5.3 (2.6)	5.4 (2.6)	5.0 (2.5)	-0.07 (0.05)	0.188	0.9 (0.8, 1.0)