

1 **Circulating B Cells in Relapsing-Remitting Multiple Sclerosis Show**
2 **Markedly Different Patterns of Regulatory Marker Expression Compared**
3 **with Healthy Controls**

4 Daniel W. Mielcarz, PhD*, Alan J. Bergeron, John K. DeLong, Alexandra Dias,
5 Kathleen M. Smith, Karen L. Mack, Lloyd H. Kasper, MD and Jacqueline Y.
6 Channon, PhD

7 Departments of Microbiology/Immunology and the Dartmouth Cancer Center,
8 Geisel School of Medicine at Dartmouth, Lebanon, New Hampshire, USA

9 **Running Title:** B Cell Subset Phenotype in RRMS.

10 **Abstract**

11 Recent evidence has shown that B cells may play a key role in the pathogenesis
12 of relapsing-remitting multiple sclerosis. Studies in our laboratory have shown a
13 difference in the production of IL-6 and IL-10 by B cells isolated from RRMS
14 patients compared with healthy controls. In order to further characterize the
15 nature of the B cells in RRMS patients, we analyzed samples from patients on no
16 disease modifying treatment for B cell expression of multiple phenotypic and
17 regulatory markers. We observed an increased frequency in the number of
18 circulating B cells, an increase in B1 B cells and a decrease in memory B cells in
19 RRMS patients. These B1 cells showed a significantly higher frequency of CD5
20 expression and the memory B cells a significant increase in the class-switched
21 IgD- phenotype. We also examined death receptors involved in apoptotic
22 pathways. CD95 frequency was significantly lower in RRMS patients than healthy
23 controls in all B cell subsets. Conversely, frequency of PD-1 was elevated in both

24 the naïve and memory B cell subsets, and PD-L1 was elevated in B1 cells from
25 RRMS patients. Finally, we examined a series of immunoreceptor tyrosine-based
26 inhibition motif (ITIM)-containing inhibitory receptors, including members of the
27 SIGLEC family. Significantly higher levels of CD22, CD305 and CD307d were
28 seen in RRMS patients, while significantly lower levels of SIGLEC-10 were
29 observed. Taken together, these results indicate a potential for differential
30 regulation of B cells in RRMS patients that may provide an avenue for B cell
31 directed therapies for the disease.

32 **Introduction**

33 Multiple sclerosis (MS) is a chronic inflammatory disease of the CNS
34 leading to demyelination and neurodegeneration, and relapsing-remitting multiple
35 sclerosis (RRMS) is associated with acute inflammatory episodes resulting in a
36 reduction in neurological function separated by periods of remission¹. T_h1 and
37 T_h17 subsets of myelin-specific CD4⁺ cells have traditionally been thought to be
38 the main pathogenic cells in RRMS². However, recent studies provide strong
39 evidence for a role for B cells in the pathology of RRMS. It is known that CSF
40 samples from patients with active RRMS are enriched in memory B cells and that
41 persisting plasmablasts are a major source of antibody-secreting cells
42 responsible for oligoclonal bands in the CSF³. In addition to oligoclonal bands
43 found in the CSF, MS patients have also been shown to have a unique
44 autoantibody signature in their serum⁴. Therapy directed at the depletion of
45 CD20⁺ B cells has been shown in Phase II clinical trials to be effective in
46 reducing relapse rate and reducing lesions as detected by MRI in those with

47 RRMS^{5, 6}. Interestingly, a Phase II trial with atacicept, a soluble inhibitor of B cell
48 survival, showed higher levels of inflammation and MRI activity in treated patients,
49 indicating that there may be a pleiotropic effect of B cells in RRMS⁷. These two
50 studies and others suggest a role for B cell regulation and homeostasis in the
51 pathogenesis of RRMS.

52 B cell homeostasis has been implicated in several autoimmune diseases,
53 including RRMS. One means by which the immune system controls immune
54 responses is through Fas/FasL interactions. In general, binding of Fas(CD95) by
55 FasL leads to apoptosis of the cell expressing Fas⁸. This mechanism typically
56 occurs as an immune response is ending, as a way to prevent runaway
57 inflammation. Fas and FasL have been shown to be present at high levels in
58 brain lesions of MS patients⁹. Examination of Fas/FasL regulation in RRMS, has
59 focused on T cells, however studies from other disorders and animal models
60 shed light on important roles for Fas in B cell development, regulation and
61 homeostasis. Ligation of Fas on B cells has been specifically shown to lead to
62 apoptosis of B cells in vitro¹⁰. Lack of Fas expression in germinal center B cells
63 has been shown to lead to aberrant proliferation of both T and B cells and
64 defects in negative selection against autoantigens¹¹.

65 Another way in which the immune system regulates itself is through PD-
66 1/PD-L1/PD-L2 interactions. PD-1 (programmed cell death-1) - a member of the
67 CD28/CTLA4 family of receptors - is expressed on activated lymphocytes and
68 serves as a checkpoint by which active immune responses are controlled and
69 ended following pathogen clearance to prevent ongoing inflammation and

70 autoimmunity^{12, 13}. PD-L1 and PD-L2 are the ligands for PD-1 whose interactions
71 lead to a down regulation of immune response and/or apoptosis in the cell
72 expressing PD-1. PD-L1 is expressed on a broad range of tissues, while PD-L2
73 is restricted to cells of hematopoietic origin¹⁴. The involvement of PD-1 in
74 autoimmunity is supported by the fact that PD-1 knockout mice develop a
75 spontaneous autoimmune disease resembling human lupus or autoimmune
76 cardiomyopathy depending on genetic background^{15, 16}. Furthermore, in EAE,
77 blockade of PD-1 or PD-L1 exacerbates disease¹⁷. In MS, these markers have
78 been shown to be modulated depending on whether the subject is exhibiting
79 active or stable disease, with a reduction of PD-1 on T cells and a reduction of
80 PD-L1 on monocytes in active compared with stable disease, potentially
81 indicating an important role for this receptor ligand pair in RRMS¹⁸.

82 Immunoreceptor tyrosine-based inhibition motif (ITIM) is a protein domain
83 present on many transmembrane proteins found on immune cells that
84 downregulates activation¹⁹. The ITIM domain becomes phosphorylated upon
85 ligation, and it in turn activates phosphatases that downregulate activation signal
86 transduction¹⁹. Prominent members of the ITIM-containing family of receptors are
87 the sialic acid-binding immunoglobulin-type lectins or siglecs. These siglecs are
88 often involved in the downregulation of immune responses. Two siglecs of
89 particular interest are Siglec-10 and CD22. CD22 is found on mature B cells and
90 downregulates BCR-driven immune responses. Siglec-10 associates with CD24
91 to downregulate immune responses. Other ITIM-containing proteins of interest
92 are CD305 and CD307d. CD305, or Leukocyte-associated immunoglobulin-like

93 receptor 1 (LAIR-1) is thought to be an inhibitory receptor. It is expressed on B
94 cells and T cells, and specifically has been seen on most naïve and memory B
95 cells²⁰. Mice lacking the LAIR-1 gene show defects in B cell function²¹. CD307d,
96 or Fc receptor like protein 4 (FcRL4) is also an inhibitory receptor but is seen on
97 a smaller fraction of B cells²⁰. CD307d expression was noted in HIV-infected
98 individuals on a subset of exhausted tissue-resident memory B cells²². Recently,
99 CD307d has been shown to efficiently bind IgA, indicating a role for this inhibitory
100 receptor in binding immune complexes²³.

101 Recent studies in our laboratory have shown important differences in IL-6
102 and IL-10 cytokine production by B cells isolated from RRMS patients compared
103 with healthy controls, as well as changes in B cell subset composition
104 (manuscript in preparation). To further examine differences between RRMS
105 patients and healthy controls, we examined expression of the previously
106 described proteins related to B cell function, regulation and homeostasis via flow
107 cytometry.

108 **Materials and Methods**

109 *Patients*

110 For this trial, 10 patients not on disease modifying therapy with clinically defined
111 RRMS (McDonald criteria) were enrolled and treated with IFN β -1b every other
112 day (qOD). The treatment window was 6 months during which time 200 ml blood
113 was drawn and assayed for immunologic changes at baseline, month 2 and
114 month 6 post-therapy. The principal immunologic outcome was the effect of
115 therapy on B cells as determined by phenotypic changes and intracellular

116 cytokine expression using cryopreserved PBMCs. In this study, baseline samples
117 were examined for differences with 10 healthy controls. This study was approved
118 by the Geisel School of Medicine at Dartmouth Institutional Review Board.

119 *PBMC Isolation and cryopreservation*

120 Blood was collected in 200ml blood bags containing sodium citrate. Peripheral
121 blood mononuclear cells were isolated via density gradient separation. Briefly,
122 20 ml of blood was overlaid with 20 ml of Histopaque-1077. Blood was
123 centrifuged at 1800 rpm for 30 minutes at 25°C. Following centrifugation, PBMCs
124 were removed and washed 2 times via centrifugation with HBSS without calcium
125 and magnesium ions. PBMCs were counted and adjusted to desired
126 concentration in human AB serum + 10% DMSO. PBMCs were then frozen
127 overnight at -80°C in a cryopreservation chamber, then transferred to -140°C for
128 long-term storage.

129 *Flow cytometry for B cell subset analysis*

130 A violet amine viability dye (Invitrogen) and anti-CD14-Pacific blue was present in
131 all panels as a dump channel and viability after thawing and washing was >80%
132 of thawed cells. Antibodies were from BD or from BioLegend and were all
133 titrated before use (see Table 1 for antibody source and clone information). Each
134 panel contained duplicate fully-stained samples and a fluorescence-minus-one
135 (FMO) tube for each antibody. Patient PBMCs were thawed on the same day
136 and stained in 96-well plates. Healthy controls (10 samples) were thawed on a
137 different day and stained in the same way as for patient samples. Inter-day
138 staining variability was controlled for by use of an aliquot of cryopreserved

139 PBMCs from the same donor that was thawed and stained daily in parallel with
140 patient or healthy control PBMCs. Flow cytometry was carried out using a 10-
141 color Gallios cytometer (Beckman Coulter). FlowJo software (Tree Star, Inc.) was
142 used for post-hoc compensation and analysis.

143 *Statistical analysis*

144
145 Groups were compared using an unpaired, two-tailed t test with Welch's
146 correction using Prism software (GraphPad).

147 **Results**

148 *Differing frequencies of B cell subsets are seen in RRMS patients and healthy* 149 *controls*

150 Circulating mature CD19+/CD20+ B cells can be divided into three main subsets:
151 naïve (CD27-CD43-), memory (CD27+CD43-), and B1 (CD27+CD43+)²⁴.
152 Cryopreserved peripheral blood mononuclear cells (PBMC) from RRMS patients
153 and age- and gender-matched healthy controls were thawed and stained for flow
154 cytometry as described in the materials and methods to determine frequencies of
155 these B cell subsets. Subsets were gated as shown in Figure 1A. RRMS patients
156 had a significantly higher ($p<0.05$) frequency of total B cells (Figure 1B)
157 compared to healthy controls. Examining subset frequencies, RRMS patients had
158 a lower frequency of memory B cells ($p<0.05$) and a higher frequency of B1 B
159 cells ($p<0.01$) and a trend toward in an increase in naïve B cells (Figure 1C). In
160 the mouse, B1 cells can be divided into CD5+ and CD5- types (B1a and B1b,
161 respectively), and CD5+ B cells have been shown to be increased in the CSF of
162 MS patients^{25, 26}. To that end, we examined CD5 expression on B1 cells from

163 RRMS patients and healthy controls. RRMS patients had a significantly higher
164 ($p<0.01$) frequency of CD5+ B1 B cells (Figure 1D). Memory B cells can be
165 further subdivided into unswitched (IgM+/IgD+) and class switched (IgM-/IgD-)
166 subsets²⁷. RRMS patients had a significantly higher ($p<0.05$) proportion of
167 switched memory B cells, indicating a more antigen-experienced phenotype
168 (Figure 1E).

169 *Apoptosis inducing and related checkpoint molecules are differentially expressed*
170 *on B cells from RRMS patients and healthy controls*

171 A key mechanism of immune control involves the induction of apoptosis through
172 death receptors on B and T cells. We examined two of these inhibitory receptors:
173 CD95(Fas) and PD-1. Healthy controls had a consistently high frequency of
174 CD95 on all three subsets of B cells examined, particularly the memory and B1
175 subsets where the frequency approached 100% (Figure 2A). In contrast, RRMS
176 patients had significantly lower frequencies of CD95+ naïve ($p<0.0001$), memory
177 ($p<0.0001$) and B1 B cells ($p<0.0001$). Interestingly, among the CD95+ cells in
178 the B1 subset, a significant ($p<0.0001$) reduction in mean fluorescent intensity
179 was observed (Figure 2B). This reduced expression may make FasL-triggered
180 homeostasis more difficult for these B cells, particularly in the B1 subset, perhaps
181 contributing to the pathogenesis of RRMS. PD-1 is a surface molecule, that when
182 ligated, decreases the activation state of the cell expressing it. Unlike the lower
183 levels of CD95 seen, RRMS patients had a significantly higher frequency of PD-1
184 expressing naïve ($p<0.01$) and memory ($p<0.001$) B cells (Figure 3A), compared
185 with the very low levels (~2-5%) seen in healthy controls. B1 B cells showed a

186 trend toward higher frequency that was not statistically significant (Fig. 3A), but
187 all three B cell subsets showed significant increases in expression of PD-1 as
188 measured by MFI, with B1 B cells expression the highest levels of PD-1 (Fig. 3B).
189 In contrast to the CD95 results, these elevated levels of PD-1 suggest that the B
190 cells from RRMS patients may be more susceptible to regulation, although the
191 frequency of PD-1 positive B cells is much lower than that of the CD95 B cells.

192 In addition to CD95 and PD-1, the frequency of expression of PD-L1 and
193 PD-L2 – the apoptosis inducing ligands of PD-1 – on B cells was also examined.
194 PD-L1 showed constitutive expression (near 100%) on both naïve and memory B
195 cells in both controls and RRMS patients (Fig. 3C). However, while B1 B cells
196 from RRMS patients had a nearly constitutive level of PD-L1 expression, B1 B
197 cells from healthy controls had a mean expression of 87%, a statistically
198 significant lower level (Figure 3C; $p < 0.001$). While no differences were seen
199 between HCs and RRMS patients, PD-L1 was expressed at a lower level on the
200 B1 B cell subset compared with the naïve and memory subsets (Figure 3D). This
201 differential expression in B1 B cells may indicate an increased ability for this
202 population of B cells in RRMS patients to reduce activation in PD-1 expressing T
203 cells and B cells. PD-L2 was expressed on a very low frequency of B cells in both
204 healthy controls and RRMS patients, and at similar levels (Fig. 3E), but the PD-
205 L2+ fraction from all subsets showed a significant increase in expression level as
206 measured by MFI (Figure 3F; $p < 0.0001$ for naïve and B1; $p < 0.05$ for memory).
207 This increased level of may indicate an increase ability for the three B cell
208 subsets to inhibit activation of PD-1 expressing cells.

209 *Immunoreceptor tyrosine-based inhibition motif (ITIM)-containing inhibitory*
210 *receptors show differing levels of expression in RRMS and healthy controls*

211 Sialic acid-binding immunoglobulin-type lectins - Siglecs – are a family of
212 lectins chiefly found on immune cells. The majority of siglecs contain an ITIM
213 that, when phosphorylated, inhibits immune activation. We examined two siglecs
214 known to be present on B cells: CD22 and siglec-10. CD22 is phosphorylated
215 upon B cell receptor activation and activates a signaling pathway that regulates
216 BCR-mediated cellular activation through Ca⁺ modulation. In naïve and memory
217 B cells, CD22 frequency is present at constitutive levels in both RRMS patients
218 and healthy controls (data not shown). However, in B1 B cells, RRMS patients
219 show a significantly lower frequency ($p < 0.001$) of CD22 expression, with a mean
220 frequency of 76.5% compared to healthy controls at 94.5%. This suggests that
221 B1 B cells from RRMS patients may be less able to control BCR-mediated
222 activation. Like CD22, Siglec-10 is an ITIM containing transmembrane protein
223 found on B cells. Siglec-10 shows homology to CD33 and associates with CD24
224 to act as an inhibitor of tissue-damage-associated immune responses. In all three
225 B cell subsets examined, we see a significant reduction in frequency of siglec-10
226 expression (Figure 4B; naïve B, $p < 0.01$; memory B, $p < 0.05$; B1 B, $p < 0.0001$). As
227 with CD22, the most dramatic reduction is seen in the B1 B cell subset, with a
228 mean expression in healthy controls of 60% reduced to 20% in RRMS patients.
229 Taken together, the evidence shows that B cells from RRMS patients, particularly
230 the B1 B cell subset, will be less able to control immune activation through ITIM-
231 containing siglecs.

232 To gain a fuller understanding of ITIM-mediated control of B cell activation,
233 expression of CD305 (LAIR1) and CD307d (FcRL4) - which contain ITIM motifs -
234 were examined. Similar to the siglecs, CD305 and CD307d act to inhibit
235 activation in immune cells. However, where the siglecs examined showed lower
236 levels of expression in RRMS patients, both CD305 and CD307d showed higher
237 levels of expression. The frequency of CD305 in both memory B ($p<0.05$) and B1
238 B ($p<0.0001$) was increased in RRMS patients compared with healthy controls
239 (Figure 5A). In healthy individuals, CD307d+ B cells are normally restricted to the
240 mucosa and mesenteric lymph nodes, with low frequencies found in circulation.
241 We observed a similar result, however, in RRMS patients we observed a
242 statistically significant increase in CD307d+ cell frequency in both the naïve
243 ($p<0.0001$) and memory ($p<0.0001$) B cell subsets. Given that both of these
244 markers (CD305 and CD307d) are inhibitory, it may be that this increase seen in
245 RRMS is a compensatory mechanism to deal with lower levels of the ITIM-
246 containing siglecs.

247 **Discussion**

248 The importance of B cells in RRMS pathogenesis has become clear
249 through many recent studies. Here we demonstrate several important
250 differences in subset composition and phenotype between RRMS patients and
251 healthy controls. RRMS patients had a significant increase in the frequency of B
252 cells in the PBMC fraction. Examining B cell subsets, RRMS patients had fewer
253 memory cells and more B1 cells in circulation when compared with healthy
254 controls, the memory cells showed a higher proportion of the IgD- switched

255 memory phenotype and the B1 cells showed a higher proportion of CD5
256 expression (an activation marker). In some or all B cell subsets, RRMS patients
257 had a lower frequency of CD95 expression, higher PD-1, higher PD-L1, lower
258 Siglec-10, lower CD22, higher CD305 and higher CD307d. Expression levels as
259 measured by MFI showed similar differences as well.

260 There are multiple mechanisms to achieve homeostasis after an
261 inflammatory response. One mechanism by which the immune system controls
262 immune responses is through elimination of activated cells through apoptosis. A
263 primary means by which lymphocytes are driven to undergo apoptosis is through
264 Fas/FasL interactions. Fas is upregulated on activated lymphocytes, including B
265 cells, and when bound by FasL causes the cells to form the death-inducing
266 signaling complex, which leads to apoptosis. Fas/FasL interactions are critical to
267 maintaining immune homeostasis, and the lack of Fas leads to autoimmune
268 disease in both mice and humans. In EAE, Fas-driven apoptosis of B cells has
269 been shown in the CNS during the recovery phase of the disease ²⁸. Patients
270 with MS show high levels of Fas/FasL in brain lesions. We observed that B cells
271 of all subsets we examined (naïve, memory and B1) had a lower frequency of
272 expression of Fas when compared with healthy controls, and that the B1 subset
273 in healthy individuals expressed at least double the level of expression of Fas
274 compared to patients. Interestingly, the B1 subset itself was significantly
275 increased in the blood of RRMS patients. These results indicate that this
276 apoptosis-inducing pathway may be defective in patients with RRMS, and

277 potentially indicates a means by which pathogenic B cells escape homeostatic
278 control by the immune system in this disease.

279 Another means by which immune responses can be controlled is through
280 direct inhibition of activation. While its effects on T cells have been well studied,
281 recently PD-1 on human B cells was shown to associate with the BCR and
282 decrease activation ²⁹. We observed a significant increase in frequency PD-1
283 expression in naïve and memory B cells in patients with RRMS, with a
284 concomitant increase in expression in the PD-1 expressing B cells. The
285 frequency on the B1 subset was similar to healthy controls, but the expression
286 was significantly higher. These results may indicate a compensatory mechanism
287 by which immune activation is controlled in these individuals due to the lower
288 frequency of Fas expression in these B cells. The ligands for PD-1, PD-L1 and
289 PD-L2 show different patterns of expression, with PD-L1 being widely expressed
290 on hematopoietic and non-hematopoietic cells and PD-L2 generally being
291 restricted to APCs. We observed high frequency of PD-L1 expression on all
292 subsets of B cells examined, with small but significant increases seen in RRMS
293 patient memory and B1 B cells. PD-L2 showed similar frequencies of expression
294 on all subsets, but small but significant increases in expression levels in all three
295 B cell cell subsets in RRMS patients. These increases in ligand expression may
296 indicate an attempt by the immune system to decrease activation in PD-1
297 expressing T cells and B cells in light of the increased activation that is seen with
298 disease.

299 Proteins containing ITIMs are critical modulators of the immune response.
300 They typically increase with activation and activate phosphatases that act upon
301 phosphorylated activation-induced signal transduction molecules which can
302 serve to dampen immune responses. The siglecs are a family of sialic acid
303 binding transmembrane proteins that contain ITIM domains and serve to dampen
304 immune activation. Two prominent siglecs involved in B cell function are CD22
305 and siglec-10. We observed lower frequencies of expression of both of these
306 proteins in RRMS patients. Siglec-10 showed a lower frequency of expression
307 on naïve, memory and B1 B cells, which may indicate an overall dysfunction in
308 siglec-10 mediated regulation of B cell activation. However, in the naïve and B1
309 cell subsets, the Siglec-10 positive cells that were present had a higher relative
310 expression of the protein when compared with healthy controls, potentially
311 showing that this smaller subset of cells may be more susceptible to regulation
312 than those from healthy controls. CD22 showed a higher frequency of expression
313 overall compared to siglec-10, and RRMS patients showed a slight decrease in
314 frequency in naïve B cells and a more substantial decrease in the B1 B cell
315 population. In contrast to what was seen with siglec-10, cell surface expression
316 of CD22 was decreased in all three cell subsets. These observations of CD22
317 indicate another potential defect in the ability of B cells from RRMS patients to be
318 downregulated.

319 CD305 (LAIR-1) and CD307d (FcRL4) are Ig superfamily members
320 containing ITIMs found on the surface of some B cells. CD305 or LAIR-1 is a
321 collagen receptor that has also been shown to bind the complement component

322 C1q to inhibit dendritic cell activation. Other reports have focused on the ability of
323 LAIR-1 to control type I interferon expression by dendritic cells. In the present
324 study, we observed a high frequency of CD305 expression on naïve B cells and
325 B1 B cells, with a slightly reduced frequency on memory B cells. This frequency
326 was slightly increased in RRMS patients on both memory and B1 B cells. Surface
327 expression on the CD305+ B1 B cells was also increased in RRMS patients.
328 CD307d or FcRL4 frequency was much lower overall, but was increased in both
329 the naïve and memory B cell populations in RRMS patients. Conversely, the
330 level of expression on the CD307d+ cells in RRMS patients was reduced in both
331 the memory and B1 B cell subsets. Taken together, the expression patterns of
332 these ITIM-containing Ig superfamily members indicates cells in RRMS patients
333 that may be slightly more susceptible to inhibition of B cell activation through
334 ligation of these receptors.

335 In this study we demonstrate significant differences in B cell subset
336 composition and phenotype in RRMS patients, especially in relation to markers
337 that may play an important role in immune regulation and homeostasis. The
338 balance of changes seem to indicate B cells that are more resistant to common
339 means of regulation (CD95 and siglec-mediated) and perhaps less resistant to
340 alternative means of regulation (PD-1 and ITIM-containing Ig superfamily-
341 mediated). This unique phenotypic signature seen in RRMS patients may
342 provide a means for screening for disease or assessing B cell-directed or other
343 therapies. Finally, these markers may provide new targets for B cell-mediated

344 therapy of MS that could be more specific than current B cell ablating
345 approaches.

346 **Acknowledgements**

347 This work was supported by funding from Bayer Healthcare Pharmaceuticals.
348 Studies were performed in DartLab, the Immunoassay and Flow Cytometry
349 Shared Resource at the Geisel School of Medicine, which receives support from
350 the Norris Cotton Cancer Center and the Dartmouth COBRE Center for
351 Molecular, Cellular and Translational Immunological Research.

352

353

354

355

356

357

358

359

360

361

362

363

364

365

366

367

368

- 369 1. Noseworthy JH, Lucchinetti C, Rodriguez M, Weinshenker BG. Multiple
370 sclerosis. *N Engl J Med*. 2000 Sep 28;343(13):938-52.
- 371 2. Weiner HL. The challenge of multiple sclerosis: how do we cure a chronic
372 heterogeneous disease? *Ann Neurol*. 2009 Mar;65(3):239-48.
- 373 3. Haas J, Bekeredjian-Ding I, Milkova M, et al. B cells undergo unique
374 compartmentalized redistribution in multiple sclerosis. *J Autoimmun*. 2011
375 Dec;37(4):289-99.
- 376 4. Quintana FJ, Farez MF, Viglietta V, et al. Antigen microarrays identify
377 unique serum autoantibody signatures in clinical and pathologic subtypes of
378 multiple sclerosis. *Proc Natl Acad Sci U S A*. 2008 Dec 2;105(48):18889-94.
- 379 5. Hauser SL, Waubant E, Arnold DL, et al. B-cell depletion with rituximab in
380 relapsing-remitting multiple sclerosis. *N Engl J Med*. 2008 Feb 14;358(7):676-88.
- 381 6. Bar-Or A, Calabresi PA, Arnold D, et al. Rituximab in relapsing-remitting
382 multiple sclerosis: a 72-week, open-label, phase I trial. *Ann Neurol*. 2008
383 Mar;63(3):395-400.
- 384 7. Lulu S, Waubant E. Humoral-targeted immunotherapies in multiple
385 sclerosis. *Neurotherapeutics : the journal of the American Society for*
386 *Experimental NeuroTherapeutics*. 2013 Jan;10(1):34-43.
- 387 8. Nagata S, Golstein P. The Fas death factor. *Science*. 1995 Mar
388 10;267(5203):1449-56.
- 389 9. Dowling P, Shang G, Raval S, Menonna J, Cook S, Husar W. Involvement
390 of the CD95 (APO-1/Fas) receptor/ligand system in multiple sclerosis brain. *J*
391 *Exp Med*. 1996 Oct 1;184(4):1513-8.
- 392 10. Medina F, Segundo C, Rodriguez C, Brieva JA. Regulatory role of CD95
393 ligation on human B cells induced in vivo capable of spontaneous and high-rate
394 Ig secretion. *Eur J Immunol*. 1997 Mar;27(3):700-6.
- 395 11. Hao Z, Duncan GS, Seagal J, et al. Fas receptor expression in germinal-
396 center B cells is essential for T and B lymphocyte homeostasis. *Immunity*. 2008
397 Oct 17;29(4):615-27.
- 398 12. Agata Y, Kawasaki A, Nishimura H, et al. Expression of the PD-1 antigen
399 on the surface of stimulated mouse T and B lymphocytes. *Int Immunol*. 1996
400 May;8(5):765-72.
- 401 13. Ishida Y, Agata Y, Shibahara K, Honjo T. Induced expression of PD-1, a
402 novel member of the immunoglobulin gene superfamily, upon programmed cell
403 death. *EMBO J*. 1992 Nov;11(11):3887-95.
- 404 14. Loke P, Allison JP. PD-L1 and PD-L2 are differentially regulated by Th1
405 and Th2 cells. *Proc Natl Acad Sci U S A*. 2003 Apr 29;100(9):5336-41.
- 406 15. Nishimura H, Okazaki T, Tanaka Y, et al. Autoimmune dilated
407 cardiomyopathy in PD-1 receptor-deficient mice. *Science*. 2001 Jan
408 12;291(5502):319-22.

- 409 16. Nishimura H, Nose M, Hiai H, Minato N, Honjo T. Development of lupus-
410 like autoimmune diseases by disruption of the PD-1 gene encoding an ITIM
411 motif-carrying immunoreceptor. *Immunity*. 1999 Aug;11(2):141-51.
- 412 17. Carter LL, Leach MW, Azoitei ML, et al. PD-1/PD-L1, but not PD-1/PD-L2,
413 interactions regulate the severity of experimental autoimmune encephalomyelitis.
414 *J Neuroimmunol*. 2007 Jan;182(1-2):124-34.
- 415 18. Trabattoni D, Saresella M, Pacei M, et al. Costimulatory pathways in
416 multiple sclerosis: distinctive expression of PD-1 and PD-L1 in patients with
417 different patterns of disease. *J Immunol*. 2009 Oct 15;183(8):4984-93.
- 418 19. Deroon M, Jaeger S, Du Pasquier L, Vivier E. Immunoreceptor tyrosine-
419 based inhibition motifs: a quest in the past and future. *Immunol Rev*. 2008
420 Aug;224:11-43.
- 421 20. Llinas L, Lazaro A, de Salort J, Matesanz-Isabel J, Sintes J, Engel P.
422 Expression profiles of novel cell surface molecules on B-cell subsets and plasma
423 cells as analyzed by flow cytometry. *Immunol Lett*. 2011 Jan 30;134(2):113-21.
- 424 21. Tang X, Tian L, Estes G, et al. Leukocyte-associated Ig-like receptor-1-
425 deficient mice have an altered immune cell phenotype. *J Immunol*. 2012 Jan
426 15;188(2):548-58.
- 427 22. Moir S, Ho J, Malaspina A, et al. Evidence for HIV-associated B cell
428 exhaustion in a dysfunctional memory B cell compartment in HIV-infected viremic
429 individuals. *J Exp Med*. 2008 Aug 4;205(8):1797-805.
- 430 23. Wilson TJ, Fuchs A, Colonna M. Cutting edge: human FcRL4 and FcRL5
431 are receptors for IgA and IgG. *J Immunol*. 2012 May 15;188(10):4741-5.
- 432 24. Griffin DO, Holodick NE, Rothstein TL. Human B1 cells in umbilical cord
433 and adult peripheral blood express the novel phenotype CD20+ CD27+ CD43+
434 CD70. *J Exp Med*. 2011 Jan 17;208(1):67-80.
- 435 25. Montecino-Rodriguez E, Dorshkind K. B-1 B cell development in the fetus
436 and adult. *Immunity*. 2012 Jan 27;36(1):13-21.
- 437 26. Mix E, Olsson T, Correale J, et al. B cells expressing CD5 are increased in
438 cerebrospinal fluid of patients with multiple sclerosis. *Clin Exp Immunol*. 1990
439 Jan;79(1):21-7.
- 440 27. McHeyzer-Williams M, Okitsu S, Wang N, McHeyzer-Williams L.
441 Molecular programming of B cell memory. *Nat Rev Immunol*. 2012 Jan;12(1):24-
442 34.
- 443 28. White CA, Nguyen KB, Pender MP. B cell apoptosis in the central nervous
444 system in experimental autoimmune encephalomyelitis: roles of B cell CD95,
445 CD95L and Bcl-2 expression. *J Autoimmun*. 2000 May;14(3):195-204.
- 446 29. Thibult ML, Mamessier E, Gertner-Dardenne J, et al. PD-1 is a novel
447 regulator of human B-cell activation. *Int Immunol*. 2013 Feb;25(2):129-37.
- 448
- 449

450

451 **Figure Legends**

452 **Figure 1. B cell subset frequencies differ in RRMS patients and healthy**

453 **controls.** Cryopreserved and thawed PBMC from 10 RRMS patients and 10

454 healthy controls were analyzed via flow cytometry. (A) Gating strategy for

455 delineating subsets. From left to right: viable, CD14⁻ cells were gated, then

456 CD20⁺ B cells. CD27 and CD43 expression was used to delineate naïve B cells

457 (CD27⁻CD43⁻), memory B cells (CD27⁺CD43⁻) and B1 B cells (CD27⁺CD43⁺).

458 Representative data from 1 RRMS patient at baseline is shown. The following

459 graphs represent 10 healthy controls and 10 RRMS patients. Samples were

460 analyzed in triplicate, and error bars represent the standard error of the mean.

461 Groups were compared by unpaired, two-tailed t test with Welch's correction *

462 $p < 0.05$ ** $p < 0.01$. (B) Total B cell frequencies. (C) B cell subset frequencies. (D)

463 Frequency of CD5 expression on on B1 B cells. (E) Frequency of switched

464 memory B cells.

465 **Figure 2. CD95 expression on B cell subsets is higher in healthy controls**

466 **than RRMS patients.**

467 Cryopreserved and thawed PBMC from 10 RRMS patients and 10 healthy

468 controls were analyzed via flow cytometry. Cells were gated as in Figure 1 and

469 examined for CD95 expression. Samples were analyzed in triplicate, and error

470 bars represent the standard error of the mean. Groups were compared by

471 unpaired, two-tailed t test with Welch's correction **** $p < 0.0001$. (A) CD95

472 frequency on B cell subsets. (B) CD95 geometric mean fluorescence intensity

473 (MFI) on B cell subsets.

474 **Figure 3. PD-1, PD-L1 and PD-L2 expression on B cell subsets differs in**
475 **healthy controls and RRMS patients.**

476 Cryopreserved and thawed PBMC from 10 RRMS patients and 10 healthy
477 controls were analyzed via flow cytometry. Cells were gated as in Figure 1 and
478 examined for PD-1, PD-L1 and PD-L2 expression. Samples were analyzed in
479 triplicate, and error bars represent the standard error of the mean. Groups were
480 compared by unpaired, two-tailed t test with Welch's correction * $p < 0.05$, **
481 $p < 0.01$ *** $p < 0.001$ **** $p < 0.0001$. (A) PD-1 frequency on B cell subsets. (B) PD-
482 1 geometric mean fluorescence intensity (MFI) on B cell subsets. (C) PD-L1
483 frequency on B cell subsets. (D) PD-L1 geometric mean fluorescence intensity
484 (MFI) on B cell subsets. (E) PD-L2 frequency on B cell subsets. (F) PD-L2
485 geometric mean fluorescence intensity (MFI) on B cell subsets.

486

487 **Figure 4. SIGLEC expression on B cell subsets shows marked differences**
488 **in healthy controls and RRMS patients.**

489 Cryopreserved and thawed PBMC from 10 RRMS patients and 10 healthy
490 controls were analyzed via flow cytometry. Cells were gated as in Figure 1 and
491 examined for SIGLEC-10 and CD22 expression. Samples were analyzed in
492 triplicate, and error bars represent the standard error of the mean. Groups were
493 compared by unpaired, two-tailed t test with Welch's correction * $p < 0.05$, **
494 $p < 0.01$ *** $p < 0.001$ **** $p < 0.0001$. (A) SIGLEC-10 frequency on B cell subsets.
495 (B) SIGLEC-10 geometric mean fluorescence intensity (MFI) on B cell subsets.

496 (C) CD22 frequency on B cell subsets. (D) CD22 geometric mean fluorescence
497 intensity (MFI) on B cell subsets.

498 **Figure 5. Healthy control and RRMS patients have differing levels of**
499 **expression the ITIM-containing markers CD305 and CD307d.**

500 Cryopreserved and thawed PBMC from 10 RRMS patients and 10 healthy
501 controls were analyzed via flow cytometry. Cells were gated as in Figure 1 and
502 examined for CD305 and CD307d expression. Samples were analyzed in
503 triplicate, and error bars represent the standard error of the mean. Groups were
504 compared by unpaired, two-tailed t test with Welch's correction * $p < 0.05$, **
505 $p < 0.01$ *** $p < 0.001$ **** $p < 0.0001$. (A) CD305 frequency on B cell subsets. (B)
506 CD305 geometric mean fluorescence intensity (MFI) on B cell subsets. (C)
507 CD307d frequency on B cell subsets. (D) CD307d geometric mean fluorescence
508 intensity (MFI) on B cell subsets.

509

510

Figure 1

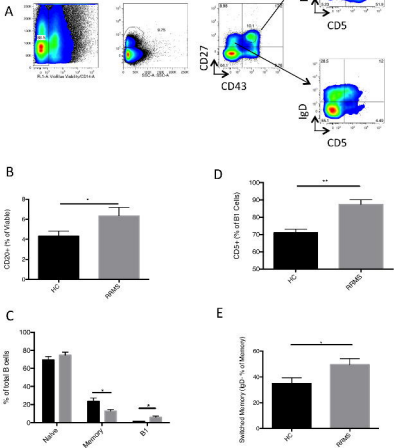


Figure 2

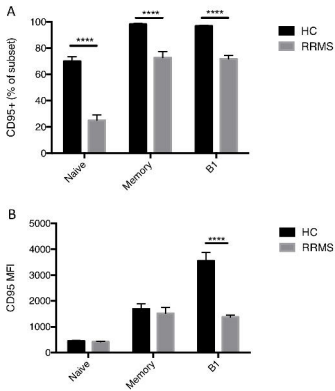


Figure 3

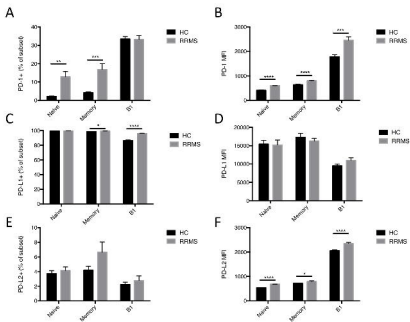


Figure 4

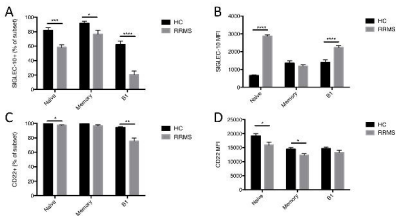


Figure 5

