

1 **Title**

2 **An effective volunteer community-based COVID-19 response program: the Vashon, WA Medical**  
3 **Reserve Corp Experience**

4  
5 James Bristow<sup>1,2</sup>, Clayton Olney<sup>1-3</sup>, Vashon MRC COVID-19 Steering Committee<sup>2</sup>, John Weinschel<sup>1,4</sup>,  
6 Robert Rovig<sup>5</sup>, Rick Wallace<sup>4</sup>, and Karla J. Lindquist<sup>6</sup>.

7

8

9 **Author affiliations**

10 1) Vashon Medical Reserve Corps, Vashon WA 98070

11 2) Vashon MRC Steering Committee\*, Vashon WA 98070

12 3) Madigan Army Medical Center, Joint Base Lewis McChord, WA 98431

13 4) VashonBePrepared, Vashon WA 98070

14 5) Robert Rovig, Atlas Genomics, Seattle WA

15 6) Department of Epidemiology and Biostatistics, University of California San Francisco, San  
16 Francisco CA 94158

17

18 \* Vashon MRC Steering Committee membership to be listed in acknowledgements- Zachary I. Miller,  
19 Ina Oppliger, Lydia Aquillar-Bryan, Bonny S. Olney, Allen deSteiger, Shawn Boeser, Marijke van  
20 Heeswijk and Tyler Young.

## Volunteer Community-Based COVID-19 Response

21

### 22 **Abstract**

### 23 **Background**

24 Vashon, WA is a rural community at risk from COVID-19 due to advanced age and limited access to  
25 acute care. Medical Reserve Corps are a national network of 800 volunteer healthcare organizations  
26 that have contributed to the pandemic response in many communities. Here we evaluate the  
27 effectiveness of the Vashon Medical Reserve Corp's (VMRC) volunteer, community-based COVID-19  
28 response program that integrated public engagement, SARS-CoV2 testing, contact tracing,  
29 vaccination and material support in reducing COVID-19 transmission and severe disease.

30

### 31 **Methods**

32 This observational cross-sectional study compares cumulative COVID-19 case, hospitalization and  
33 death rates on Vashon with other King County zip codes and the county at large from February 2020  
34 through November 2021. We developed multiple linear regression models of COVID-19 rates using  
35 metrics of age, race/ethnicity, wealth and educational attainment across King County zip codes.  
36 Effectiveness of contact tracing was evaluated by timeliness and success of case investigations, and  
37 identification and testing of named contacts. Vaccination effectiveness was estimated by comparing  
38 time to reach vaccination milestones. We examined vehicle traffic on Vashon ferries and King County  
39 highways to understand whether reduced mobility contributed to Vashon's reduced COVID-19 rates.

40

### 41 **Results**

42 Vashon's cumulative COVID-19 case rate was 29% that of King County overall and was lower across  
43 all age groups and races/ethnicities (both  $p < .01$ ). A multiple linear regression model showed Vashon  
44 to be a significant outlier among King County zip codes with an observed rate 38% of predicted  
45 ( $p < .05$ ), the lowest of any King County zip code. Vashon's observed COVID-19 hospitalization and  
46 death rates were 22% and 32% of those predicted by parallel regression models. Hence, Vashon's  
47 demographics do not explain its reduced COVID rates. Traffic reductions on King County highways  
48 and Vashon ferries were nearly identical throughout the study period suggesting altered mobility  
49 also does not explain Vashon's low COVID-19 rates. Effectiveness of VMRC's COVID-19 response  
50 program was demonstrated by 1) highly effective contact tracing that rapidly interviewed 93% of

## Volunteer Community-Based COVID-19 Response

51 cases and subsequently tested 96% of named contacts, and 2) attainment of vaccination milestones  
52 1-4 months earlier than comparable King County zip codes ( $p < .01$ ).

53

### 54 **Conclusion**

55 VMRC's volunteer, COVID-19 response program was associated with significantly fewer COVID-19  
56 cases than predicted from its demographics. VMRC's contact tracing and vaccination efforts were  
57 highly successful and likely contributed to reduced COVID-19 rates. The VMRC experience suggests  
58 that a decentralized community-based public health program can be highly effective in implementing  
59 epidemic control strategies when focused on an at-risk community. We suggest that MRCs can be  
60 particularly effective in extending the reach of county public health departments and should be  
61 included in ongoing pandemic planning.

62

### 63 **Introduction**

64 Vashon WA, an island community of 11,000 people located in unincorporated King County,  
65 near metropolitan Seattle, shares increased health risks from COVID-19 with other rural US  
66 communities- an aging population with attendant comorbidities, no immediate access to acute care  
67 and a Federally Qualified Health Clinic that is under chronic financial stress (1,2). Vashon's risk is  
68 compounded by a recent history of significant vaccine hesitancy (3).

69 Medical Reserve Corps (MRCs) are a network of ~800 volunteer medical organizations  
70 operating under the auspices of the Assistant Secretary for Preparedness and Response, in the U.S.  
71 Department of Health and Human Services, with the goal of strengthening public health, improving  
72 emergency response capabilities, and building community resiliency (4). In March, 2020 as Seattle  
73 became the nation's first SARS-CoV2 "hotspot" (5), the Vashon Medical Reserve Corps (VMRC) and  
74 VashonBePrepared, two community-based volunteer emergency preparedness organizations,  
75 established an integrated COVID-19 response program with the specific goal of reducing SARS-CoV2  
76 transmission in the community. This integrated response consisted of regular community  
77 engagement and education, free SARS-CoV2 testing, rapid case investigation/contact tracing, an  
78 aggressive vaccination campaign and material support for effected families. In this report we  
79 examine the contributions of Vashon's demography, its COVID-19 response program, and its  
80 geography to its low COVID-19 rates.

81 **Materials and Methods**

82 *Vashon's COVID-19 Public Health Response*

83 The Vashon COVID-19 response program was comprised of 3 primary efforts- community  
84 engagement, community health and community support and was organized into a typical incident  
85 command structure led by an emergency operations center (Fig S1). VMRC coordinated with Public  
86 Health- Seattle King County (PHSKC), but operated independently of it.

87 The primary tool for community engagement tool was twice weekly "[situation reports](#)"  
88 published in the local newspaper and emailed in English or Spanish to >3500 residents. VMRC  
89 operated a COVID-19 hotline 50 hours/week to provide public health guidance and schedule SARS-  
90 CoV2 tests. VMRC also advised more than 40 local businesses and schools about COVID-19 controls  
91 or management of outbreaks.

92 During the study period VMRC collected 5,716 COVID-19 samples at a drive-through site using  
93 supervised patient-collected nasal swab specimens (6) to minimize volunteer exposure and the  
94 amount of personal protective equipment required. SARS-CoV2 PCR was carried out by a CLIA  
95 approved, CAP accredited laboratory (Atlas, Genomics, Seattle WA). Results were usually returned  
96 to VMRC within 24 hours and always within 48 hours. The demographics of VMRC testing closely  
97 mirrored Vashon's population (S2 Table).

98 VMRC investigated 214 cases (89% of all Vashon cases) during the study period. A team of  
99 four physicians delivered positive VMRC test results directly to patients by telephone, always within  
100 24 hours of test completion, and then conducted interviews to identify contacts and provide isolation  
101 and quarantine advice. From Jan-September 2021, PHSKC referred Vashon cases to VMRC for contact  
102 tracing. In July 2021, VMRC's contact tracing protocol was streamlined to focus on household  
103 contacts who comprised >80% of infected contacts through June 2021.

104 Working with Vashon's independent pharmacy, VMRC also delivered 17,013 doses of SARS-  
105 CoV2 vaccines, primarily at a drive through site (March-May 2021) and indoor vaccine clinics  
106 (October-November 2021).

107 During the study period, VashonBePrepared's COVID Relief Fund distributed \$546,000,  
108 primarily to local charities, and was supported by individual charitable donations and FEMA  
109 reimbursement for emergency operations. Details of this effort can be found in S1 Appendix.

110

## Volunteer Community-Based COVID-19 Response

### 111 *Data sources and analysis*

112 The study period extended from the local epidemic onset in February 2020 through November 2021,  
113 prior to the appearance of King County's 1<sup>st</sup> Omicron cases. Daily COVID-19 cases, hospitalizations,  
114 deaths and test numbers for King County as a whole and by zip code were downloaded from the King  
115 County COVID-19 dashboard (7). Population data for King County and Vashon are from the April,  
116 2020 US Census. Zip code level population data are the average of two zip code tabulation area  
117 estimates from the WA Office of Financial Management (8) and Cubit (a commercial data vendor  
118 providing access to US Census information). The Asset Limited, Income Constrained, and Employed  
119 (ALICE) metric, a measure of the working poor, was obtained from United Way (9).

120 We computed unadjusted cumulative case rates normalized per 1,000 population for Vashon  
121 and King County by age and race/ethnicity and compared them by Pearson's  $\chi^2$  tests. PHSKC  
122 provided age, race and gender for all Vashon cases where it was known. Age and gender data for  
123 King County and Vashon COVID-19 cases were essentially complete, but 6% of King County cases and  
124 7% of Vashon cases were missing race and ethnicity. Black, Native American and Hawaiian/Pacific  
125 Islanders collectively make up less than 1% of the Vashon population and 2% of cases, making  
126 accurate assessment of case rates in these populations difficult and posing a risk to confidentiality.  
127 However, because these groups are at significant risk from COVID, it was nonetheless important to  
128 evaluate the collective risk of these populations. To do this, Vashon's minority communities were  
129 combined into a single Black/Indigenous American/Pacific Islander (B/IA/PI) demographic for  
130 comparison with King County and other Vashon populations.

131 To investigate whether Vashon's low case rate is an outlier in King County, we developed a  
132 multiple linear regression model for cumulative COVID-19 case rates in the 77 King County zip codes  
133 with an estimated population greater than 1,000 and that performed more than 500 tests/K  
134 population during the study period. To construct the model, we considered a variety of age,  
135 race/ethnicity, wealth and educational metrics that might logically be related to COVID-19 case rates.  
136 The metric in each of these four categories with the highest  $R^2$  value in a simple linear regression of  
137 COVID-19 rates was then combined into a multiple linear regression model. The 4 metrics employed  
138 are the fraction of: 1) population <30 years of age; 2) population that is White or Asian (which have  
139 similar low COVID-19 rates in King County); 3) adult population with a Bachelor's degree; and 4)  
140 households below the ALICE threshold (S3 Fig). We used multiple linear regression with

## Volunteer Community-Based COVID-19 Response

141 heteroscedasticity-consistent (HC3) robust standard errors (10) because analyses showed modest  
142 deviation from normality and heteroscedasticity (11-13) ( $p < 0.05$ ). We calculated 95% prediction  
143 intervals from the multivariable model using robust standard errors of the point prediction for each  
144 observation. Multiple linear regression models of hospitalization and death rates in King County  
145 were developed using the same variables and statistical methods.

146 To directly evaluate the effectiveness of VMRC's COVID-19 response program we examined  
147 the timeliness of VMRC's vaccination campaign and its case investigation/contact tracing effort. We  
148 compared the number of vaccine doses administered over time in King County and Vashon,  
149 normalized for total population, using a Kolmogorov–Smirnov two-sample test to compare the two  
150 cumulative distributions (14). We chose this metric because it reflects vaccination of the total at-risk  
151 population and it is independent of changing eligibility requirements during the study period. To  
152 extend this analysis, we similarly compared vaccination of Vashon to the 6 King County zip codes  
153 predicted by the regression model to have the most similar case rates, and the 6 zip codes with the  
154 lowest observed case rates. We also calculated the time required to reach milestones of 1400-1600  
155 doses/K population, approximating 2 doses for 70-80% of population.

156 To assess population mobility during the study period, we obtained King County highway and  
157 Vashon ferry traffic data from the Washington State Department of Transportation. Using 2019 as a  
158 baseline, we compared the fractional quarterly reduction in combined vehicle traffic on Vashon's  
159 three ferries to the reduction in vehicle counts from 21 King County traffic recorders for which  
160 complete data were available. To determine the absolute magnitude of mixing between Vashon and  
161 surrounding communities, we also calculated the daily number of round trips to and from Vashon  
162 (drivers plus passengers and foot-traffic) and normalized it for Vashon's population.

163 The study protocol was reviewed and approved by the Human Subjects Protection Program  
164 at the University of California, San Francisco (#22-36518). Statistical comparisons were made with  
165 the Stata 17 software package (StataCorp LLC, College Station, TX). P-values  $< 0.05$  were considered  
166 statistically significant for all tests. Data from this study have been submitted to Dryad and are  
167 available without restriction upon publication (15). The manuscript was prepared in accordance with  
168 STROBE guidelines (16).

169  
170

171 **Results**

172 Weekly counts of SARS-CoV2 cases/100,000 population for the study period are shown in Fig 1. As  
173 was the case in much of rural America (17), the pandemic was delayed in reaching Vashon, but  
174 COVID-19 cases surged in November 2020, reaching 95% of the rate in King County as a whole, and  
175 again in October 2021 when Vashon's rate exceeded the county rate. More than half of all Vashon's  
176 cases observed during the study period occurred during these spikes. However, unlike many other  
177 rural communities and King County as a whole, Vashon's case rate quickly declined producing a  
178 cumulative rate 71% lower than that of King County overall (22.0 vs 76.8 cases/1K).

179 **Fig 1) Chronology of SARS-CoV2 cases, tests and test positivity rate for King County and Vashon.**

180 A) Cases are presented as a rolling 7-day average normalized per 100K population. Vashon incidence  
181 rates approached King County's during the Beta surge in winter 2020 and exceeded it during the  
182 Delta surge in winter 2021. B) Tests are presented as a 14-day rolling average. VMRC performed  
183 41% of all Vashon tests but identified 65% of all Vashon cases. \* Indicates a 2-week gap in PHSKC test  
184 reporting. C) Despite its low case rate, Vashon's test positivity rate often approached or exceeded  
185 the King County rate- a result of effective contact tracing.

186 On average 1.5% of Vashon residents were tested weekly, a rate 73% of the King County rate  
187 (Fig 1B). Notably, VMRC performed 42% of all tests of Vashon residents, yet identified 65% (157/243)  
188 of Vashon COVID-19 cases. Vashon's cumulative 1.8% overall test positivity rate compares favorably  
189 with King County's 4.5% rate VMRC's peak test positivity rate exceeded King County's during local  
190 surges (Fig 1C), likely as a result of VMRC's contact tracing activities described below.

191 Because Vashon is older (median age 54 vs 37 years) and less racially diverse (86% vs 64%  
192 white) than King County as a whole, we compared unadjusted cumulative case rates for Vashon and  
193 King County by age and race/ethnicity (Fig 2). Vashon's case rates were lower across all age groups  
194 (Fig 2A,  $p < .01$ ). Importantly, the greatest difference in case rates were in those older than age 50 for  
195 whom COVID-19 poses the greatest risk (1). Vashon's cumulative case rate was just 20% that of King  
196 County in this age group (12 vs 61 cases/K). We calculated an expected case rate for Vashon by  
197 applying King County rates for each age group to Vashon's age distribution. The Vashon case rate  
198 predicted from its age demographics is 91% of the observed King County rate.

199 **Fig 2) Unadjusted cumulative COVID-19 case rates by age and race/ethnicity.**

## Volunteer Community-Based COVID-19 Response

200 Vashon case rates were lower across all age brackets (panel A,  $p < .01$ ) and race/ethnicities (panel B,  
201  $p < .01$ ). Expected rates for Vashon were calculated by applying King County rates for each group to  
202 the Vashon population. A single rate was calculated for Black, Native American/Alaska Native, and  
203 Pacific/Hawaiian Islanders because these groups collectively represent  $< 1\%$  of the Vashon  
204 population.

205 We performed a similar analysis for race and ethnicity (Fig 2B). Vashon case rates were again  
206 lower than King County rates for all groups ( $p < .01$ ). When King County case rates were applied to  
207 Vashon's demography, the predicted Vashon rate is 93% of the King County rate and more than 3  
208 times Vashon's actual rate. It is notable that Vashon's non-white/non-Asian communities, while  
209 protected from COVID-19 compared with King County overall, still had cumulative case rates 2-3  
210 times higher than Vashon's white and Asian communities just as they did throughout King County  
211 and the nation (7,18,19).

212 To extend the demographic analysis, we developed a multiple linear regression model of  
213 cumulative COVID-19 rates in King County predicted by age, race/ethnicity, educational attainment  
214 and wealth. Components of this model are the fractions of:

- 215 • population age  $< 30$  years- the age groups with the highest King County rates;
- 216 • population that are white or Asian- groups with the lowest King County rates;
- 217 • adult population with a Bachelor's degree; and
- 218 • households meeting ALICE criteria (9)- a measure of the working poor.

219 Predicted and observed cumulative COVID-19 rates for each zip code are shown in Fig 3,  
220 ranked by predicted value. Cumulative COVID-19 cases varied by 7-fold across King County zip codes  
221 and the regression model explains 88% of the variation. Vashon is a significant outlier with an  
222 observed rate 38% of predicted ( $p < .05$ ) and 35% lower than any other observed rate in King County.  
223 No King County zip code was predicted to have a cumulative case rate as low as Vashon's observed  
224 rate. In absolute terms, this translates to 407 fewer observed Vashon cases than predicted from the  
225 demographic model.

### 226 **Fig 3) Models of Cumulative COVID-19 Rates in King County, WA**

227 Zip code-aggregated metrics of age, race/ethnicity, education and wealth were used to construct  
228 multiple linear regression models of cumulative COVID-19 case rates (A), hospitalizations (B) and  
229 deaths (C). Closed circles show predicted case rates in rank order and open circles are observed case



## Volunteer Community-Based COVID-19 Response

230 rates. Vashon is the only zip code with a case rate below the 95% prediction interval. Beta  
231 coefficients, confidence intervals and p-values for independent variables are shown in panel D.

232 We also modeled cumulative King County hospitalization (Fig 3B) and death rates (Fig 3C).  
233 Hospitalizations closely paralleled the model of cases with a similar adjusted  $R^2$  value,  $\beta$ -coefficients  
234 in the same relative order, and Vashon's predicted rate 4.5 times higher than observed ( $p=.07$ ).  
235 Modeling of death rates showed more scatter with an  $R^2$  value of 0.50, in part due to the relatively  
236 small number of deaths in many zip codes. While not achieving statistical significance, Vashon  
237 predictions translate to 28 fewer hospitalizations and 9 fewer deaths than predicted from Vashon  
238 demographics. Interestingly, educational attainment is the dominant variable in all three models and  
239 the only variable that was significant in each (Fig 3D). Age was a surprisingly poor predictor of COVID-  
240 19 cases, hospitalizations and deaths in King County.

241 Despite its history of vaccine hesitancy (3), Vashon was vaccinated at a significantly  
242 accelerated pace compared to King County overall (Fig 4, Kolmogorov–Smirnov,  $p<0.01$ ). Notably  
243 VMRC administered 75% of all doses delivered to Vashon residents. Vashon's advanced median age  
244 meant more of its population was eligible for vaccination, facilitating an early start that allowed the  
245 community to reach 1500 doses/K population (a surrogate for 75% vaccination) 4 months earlier  
246 than King County overall (184 vs 311 days). Vashon was also vaccinated significantly faster than zip  
247 codes predicted to have similar case counts from the regression model and those with the lowest  
248 cumulative case rates (Fig 4B,  $p<0.01$ ), reaching the 1500 doses/K milestone 140 days and 78 days  
249 faster than zip codes with similar demographics and lowest cases respectively.

### 250 **Fig 4) Vaccine accumulation curves for Vashon and King County over time.**

251 (A) Cumulative vaccine doses administered for Vashon and King County were normalized for total  
252 population. Vashon was vaccinated at an accelerated pace compared with King County ( $p<0.01$ ).  
253 VMRC administered 75% of all doses to Vashon residents during the study period. (B) Vashon was  
254 also vaccinated faster than the 6 zip codes with the most similar predicted case counts (3 higher and  
255 3 lower) and the 6 zip codes with the lowest cumulative case counts (both  $p<0.01$ ).

256 To understand the relative impact of vaccination on cumulative COVID-19 rates, we repeated  
257 the multiple regression analysis including vaccination rate. As expected, inclusion of vaccination  
258 rates in the model resulted in an increase in  $R^2$  value and decrease in standard error, but the

## Volunteer Community-Based COVID-19 Response

259 predicted value for Vashon COVID-19 cases remained twice the observed value (S4 Fig), suggesting  
260 that vaccination rate only partially explains Vashon's low COVID-19 rates.

261 We next examined VMRC's contact tracing effort. From April 2020 through June 2021 VMRC  
262 conducted case investigation and contact tracing for 106 Vashon cases- 80 tested by VMRC, 17  
263 referred by PHSKC and 9 self-referred (Fig 5). We were able to interview 97 cases (92% of this cohort)  
264 with an average time from test to interview of 1.7 days. Case investigation failed in 8 of 17 PHSKC-  
265 referred cases, and just 1 case tested by VMRC. In contrast, due to reporting delays and resource  
266 limitations, PHSKC and the WA Department of Public Health *attempted* case investigation of just 75%  
267 of Vashon cases through early June, 2021. This cohort could be parsed into 55 index cases and 51  
268 cases among contacts. All contacts named during VMRC interviews were notified, 94% of contacts  
269 were tested, and 27% of all contacts tested positive. Notably, 73% of index cases named contacts,  
270 but only 28% of cases among contacts did. This reflects the fact that most secondary or tertiary cases  
271 were in quarantine before testing and as a result had many fewer contacts (0.6 vs 3.5 contacts per  
272 successful interview).

### 273 **Fig 5) VMRC Case Investigation and Contract Tracing**

274 Cases from April 2020 through June 2021 investigated by VMRC were parsed into 55 index cases and  
275 51 cases among contacts of index, secondary and tertiary cases. The limited number of contacts of  
276 non-index cases reflects success of isolation and quarantine. Overall, 31% of contacts tested positive  
277 compared with 2% of all Vashon tests. Summary data for this cohort are under the "Complete CT"  
278 heading. Household contacts had a 48% positive rate and represented 75% of cases among contacts.  
279 Thereafter, a 2<sup>nd</sup> cohort consisting of 66 index cases focused on household contacts (under  
280 "Households" heading). \*45 of 66 Household cohort index cases named contacts, similar to the initial  
281 cohort.

282 In this initial cohort we found that household contacts were more than 3 times more likely to  
283 test positive than non-household contacts (47% vs 13%). We used this information to prioritize our  
284 efforts during streamlining of the volunteer effort in summer of 2021 as VMRC's contact tracing  
285 resources became limiting. From July through November, we focused contact tracing on household  
286 contacts while asking individuals to notify potential contacts and have them call VMRC's hotline for  
287 quarantine advice and testing. The experience from July-November 2021 was very similar to the  
288 earlier period- VMRC investigated a similar fraction of all Vashon cases and 94% of known cases were

## Volunteer Community-Based COVID-19 Response

289 interviewed (Table 1) with an average test-to-interview time of 1.6 days. As before, half of cases that  
290 could not be reached for interview (3/6) were referrals from PHSKC. As expected, the number of  
291 named contacts fell from 2.0 to 1.2 per successful interview, and over 90% of secondary cases were  
292 in household contacts.

293 Finally, because Vashon's geography may have contributed to its low COVID-19 case rate by  
294 reducing mobility (20,21), we compared quarterly reductions in vehicle traffic on Vashon ferries and  
295 King County highways (Fig 6). Vehicle traffic reductions on Vashon ferries and King County highways  
296 were nearly identical throughout the study period (Fig 5B). Because there is essentially no through-  
297 traffic on Vashon, we used Vashon ferry passenger data to estimate the absolute size of the  
298 population making a daily roundtrip to or from Vashon. While there is no direct comparator for King  
299 County overall, the reduction in passenger traffic to and from Vashon mirrored the overall reduction  
300 in vehicle traffic across the study period (Fig 5B). Moreover, a population equivalent to 20-35% of  
301 Vashon's population made a daily roundtrip to or from Vashon during the study period, with a mean  
302 of 27% (Fig 5B). Travel to and from Vashon appears to have provided ample opportunity for local  
303 seeding of COVID-19 as evidenced by the occurrence of Vashon cases in 19 of the 21 months of study.

### 304 ***Fig 6) Comparison of pandemic-related mobility in King County and Vashon***

305 A) Map of permanent traffic recorders (red stars) in King County. The three Vashon ferries are  
306 shown as black lines from the north and south ends of Vashon. B) Quarterly vehicle traffic for King  
307 County and Vashon expressed as the fractional reduction from the same quarter of 2019.  
308 Reductions are very similar ( $p=.93$ ). C) Reduction in daily roundtrip passenger travel to and from  
309 Vashon, normalized for population. Open bars are 2019 data and black bars represent the study  
310 period. Horizontal lines show averages for 2019 and the study period. Map created with Google  
311 Maps.

312

### 313 **Discussion**

314 COVID-19 poses particular risk to rural populations due to an aging population with attendant co-  
315 morbidities and limited access to acute care. Recognizing this risk, VMRC and VashonBePrepared  
316 implemented an integrated community-based program of public engagement, testing, contact  
317 tracing, vaccination and community support that was associated with a 62% reduction in cumulative  
318 COVID-19 cases compared to that predicted from a multivariable linear regression model of COVID-

## Volunteer Community-Based COVID-19 Response

319 19 in King County, WA. Vashon hospitalizations and deaths were also reduced although these  
320 changes did not reach statistical significance. While Vashon's number of deaths and hospitalizations  
321 are small, Vashon ranked in the top quartile of King County zip codes for both case fatality rate (1.7%)  
322 and death rate among those hospitalized for COVID-19 (50%), suggesting that the primary benefit of  
323 the Vashon COVID-19 response program was reducing COVID-19 transmission.

324 VMRC's contact tracing and vaccination programs were particularly effective elements of  
325 Vashon's COVID-19 response. VMRC contact tracing compares very favorably with published US data  
326 with respect to speed of case investigation, successful interview rate and contacts notified/tested  
327 (22-24). PHSKC did well by national standards (25), but did not attempt to contact 12% of King  
328 County cases due to reporting delays and was successful in 80% of attempted interviews, for an  
329 overall successful interview rate of 70%. In contrast, VMRC successfully interviewed 93% of all cases  
330 reported to it. Vashon conducted interviews in half the time required by PHSKC (25), primarily  
331 because test results were directly accessible to the contact tracing team rather than reported to a  
332 centralized state-wide system requiring subsequent referral to the county. VMRC delivered test  
333 results by telephone rather than email or text, so case investigation could begin immediately.  
334 Vashon residents were also much more likely to identify contacts than residents of large  
335 metropolitan areas, we speculate because of outreach efforts emphasized the importance of  
336 identification and appropriately-timed testing of close contacts.

337 Despite its history of vaccine hesitancy (3), VMRC working with a local pharmacy was able to  
338 rapidly vaccinate the community reaching 1500 doses/K (a proxy for 75% completion of the primary  
339 vaccine series) 127 days earlier than King County as a whole and 145 days sooner than zip codes with  
340 similar demography. Collectively, our findings do not diminish the effectiveness of PHSKC, but rather  
341 suggest that a more decentralized effort can be particularly effective when targeted on rural or other  
342 at-risk rural communities.

343 Our study has limitations. First, the regression model presented was developed to fit local  
344 data with the specific goal of understanding whether or not Vashon is a statistical outlier. As such,  
345 it may not be generalizable to other areas. Second, we can't separate the contribution of the several  
346 elements of Vashon's COVID-19 response program to its overall success. While our data show that  
347 SARS-CoV2 testing, contact tracing and vaccination were highly effective, integration of COVID-19  
348 response elements is important (26), and we managed that by providing Vashon residents with "one-

## Volunteer Community-Based COVID-19 Response

349 stop shopping” for COVID-19 concerns. Further, trust is an essential component of successful  
350 pandemic responses both globally and locally (27,28) and was likely engendered through VMRC’s  
351 public engagement and material support. Third, because Vashon is an island, we cannot completely  
352 exclude geographic isolation as a protective factor. Traffic data suggest that is not the case, but may  
353 be an imperfect proxy for mobility. Geography likely did contribute to a sense of community that  
354 facilitated the Vashon community’s acceptance of COVID-19 control efforts.

355 Finally, it is not clear whether the VMRC program can be translated to other communities.  
356 VMRC clearly benefitted from pre-existing organizational expertise as well as a committed base of  
357 registered emergency workers with a broad range of professional experience. Many communities  
358 will lack this expertise. However, if provided with appropriate planning, protocols and tools, we  
359 believe most communities could carry out this program, especially with the support of a local clinic  
360 and their public health department. Indeed, elements of our program were successfully exported  
361 and implemented in several rural and tribal Pacific northwest communities.

362 The activities we describe here are just one example of the under-appreciated effort from  
363 the nation’s 800 MRC units, most of which contributed in substantial ways to their local pandemic  
364 response. We believe that MRCs can be particularly effective at extending the reach of county public  
365 health departments because they are community-based. Expanding the number of MRCs and  
366 strengthening their connections with public health departments should be an essential element of  
367 ongoing pandemic planning.

368

### 369 **Acknowledgements**

370 We thank the members of VMRC’s COVID-19 Steering Committee for tireless support of their  
371 community during the pandemic. Committee members are James Bristow, Clayton Olney, Zachary I.  
372 Miller, Ina Oppliger, Lydia Aguillar, Bonny S. Olney, Allen de Steiger, Shawn Boeser, Marijke Van  
373 Heeswijk and Tyler Young. We thank Julia Hood, Sargis Pagosjans and Kathryn Lau for sharing PHSKC  
374 data. We also thank Jay Shendure, and Owatha Tatum for encouraging this work in its early stages  
375 and Axel Visel, Nigel Mouncey and Rick Rogers for critical reading of the manuscript. Finally, we  
376 thank the Vashon community for accepting the shared responsibility to keep each other safe.

377

378

379 **References**

- 380 1. Dessie ZG, Zewotir T. Mortality-related risk factors of COVID-19: a systematic review and  
381 meta-analysis of 42 studies and 423,117 patients. *BMC Infect Dis*. 2021 Aug 21;21(1):855. doi:  
382 10.1186/s12879-021-06536-3. PMID: 34418980; PMCID: PMC8380115.
- 383 2. Dobis EA and McGranahan D. *Rural Residents Appear to be More Vulnerable to Serious*  
384 *Infection or Death from Coronavirus COVID-19*. USDA Economic Research Service, Feb 1,  
385 2001; [https://www.ers.usda.gov/amber-waves/2021/february/rural-residents-appear-to-](https://www.ers.usda.gov/amber-waves/2021/february/rural-residents-appear-to-be-more-vulnerable-to-serious-infection-or-death-from-coronavirus-covid-19/)  
386 [be-more-vulnerable-to-serious-infection-or-death-from-coronavirus-covid-19/](https://www.ers.usda.gov/amber-waves/2021/february/rural-residents-appear-to-be-more-vulnerable-to-serious-infection-or-death-from-coronavirus-covid-19/)
- 387 3. Holloway B, Edited by Mazer-Field J. BBC News, April 11, 2017. Available at  
388 <https://www.bbc.com/news/av/health-39558607>
- 389 4. Raja K. The Medical Reserve Corps: Volunteers Augmenting Local Public Health Preparedness  
390 and Response. *J Public Health Manag Pract*. 2019 Jan/Feb;25(1):95-97. doi:  
391 10.1097/PHH.0000000000000945. PMID: 30507807.
- 392 5. Bedford T, Greninger AL, Roychoudhury P, Starita LM, Famulare M, Huang ML, Nalla A, Pepper  
393 G, Reinhardt A, Xie H, Shrestha L, Nguyen TN, Adler A, Brandstetter E, Cho S, Giroux D, Han  
394 PD, Fay K, Frazar CD, Ilcisin M, Lacombe K, Lee J, Kiavand A, Richardson M, Sibley TR, Truong  
395 M, Wolf CR, Nickerson DA, Rieder MJ, Englund JA; Seattle Flu Study Investigators, Hadfield J,  
396 Hodcroft EB, Huddleston J, Moncla LH, Müller NF, Neher RA, Deng X, Gu W, Federman S, Chiu  
397 C, Duchin JS, Gautom R, Melly G, Hiatt B, Dykema P, Lindquist S, Queen K, Tao Y, Uehara A,  
398 Tong S, MacCannell D, Armstrong GL, Baird GS, Chu HY, Shendure J, Jerome KR. Cryptic  
399 transmission of SARS-CoV-2 in Washington state. *Science*. 2020 Oct 30;370(6516):571-575.  
400 doi: 10.1126/science.abc0523. Epub 2020 Sep 10. PMID: 32913002; PMCID: PMC7810035.
- 401 6. Tu YP, Jennings R, Hart B, Cangelosi GA, Wood RC, Wehber K, Verma P, Vojta D, Berke EM.  
402 *Swabs Collected by Patients or Health Care Workers for SARS-CoV-2 Testing*. *N Engl J Med*.  
403 2020 Jul 30;383(5):494-496. Doi: 10.1056/NEJMc2016321. Epub 2020 Jun 3. PMID: 32492294;  
404 PMCID: PMC7289274.
- 405 7. King County, WA COVID-19 Summary Dashboard, Feb 22, 2022 update.  
406 <https://kingcounty.gov/depts/health/covid-19/data/summary-dashboard.aspx>

## Volunteer Community-Based COVID-19 Response

- 407 8. Washington State Office of Financial Management, Small Area Estimate Program.  
408 [https://ofm.wa.gov/washington-data-research/population-demographics/population-](https://ofm.wa.gov/washington-data-research/population-demographics/population-estimates/estimates-april-1-population-age-sex-race-and-hispanic-origin)  
409 [estimates/estimates-april-1-population-age-sex-race-and-hispanic-origin](https://ofm.wa.gov/washington-data-research/population-demographics/population-estimates/estimates-april-1-population-age-sex-race-and-hispanic-origin)
- 410 9. United for ALICE, 2018 report. <https://www.unitedforalice.org/methodology>
- 411 10. Davidson, R., and J. G. MacKinnon. 1993. Estimation and Inference in Econometrics. New  
412 York: Oxford University Press.
- 413 11. D’Agostino, R. B., A. J. Belanger, and R. B. D’Agostino, Jr. 1990. A suggestion for using powerful  
414 and informative tests of normality. *American Statistician* 44: 316–321.
- 415 12. Breusch, T. S., and A. R. Pagan. 1979. A simple test for heteroscedasticity and random  
416 coefficient variation. *Econometrica* 47: 1287-1294.
- 417 13. Cook, R. D., and S. Weisberg. 1983. Diagnostics for heteroscedasticity in regression.  
418 *Biometrika* 70: 1-10.
- 419 14. Pratt, J.W., Gibbons, J.D. 1981. Kolmogorov-Smirnov Two-Sample Tests. In: Concepts of  
420 Nonparametric Theory. Springer Series in Statistics. Springer, New York, NY.
- 421 15. All data are available at <https://orcid.org/0000-0002-1971-2273>
- 422 16. von Elm E, Altman DG, Egger M, Pocock SJ, Gøtzsche PC, Vandenbroucke JP; STROBE  
423 Initiative. The Strengthening the Reporting of Observational Studies in Epidemiology  
424 (STROBE) statement: guidelines for reporting observational studies. [Lancet. 2007 Oct](https://doi.org/10.1016/S0140-6736(07)61632-3)  
425 [20;370\(9596\):1453-7.](https://doi.org/10.1016/S0140-6736(07)61632-3) PMID: 18064739
- 426 17. Paul R, Arif AA, Adeyemi O, Ghosh S, Han D. Progression of COVID-19 From Urban to Rural  
427 Areas in the United States: A Spatiotemporal Analysis of Prevalence Rates. *J Rural Health.*  
428 2020 Sep;36(4):591-601. doi: 10.1111/jrh.12486. Epub 2020 Jun 30. PMID: 32602983; PMCID:  
429 PMC7361905.
- 430 18. Escobar GE, Adams, AS, Liu VX, Soltesz L, Chen Y-F, Parodi SM, Ray GT, Myers LC, Ramaprasad  
431 CM, Dlott, R, Lee C. *Racial Disparities in COVID-19 Testing and Outcomes.* *Ann Intern Med.*  
432 2021 Jun;174(6):786-793. Doi: 10.7326/M20-6979. Epub 2021 Feb 9. PMID: 33556278
- 433 19. Muñoz-Price LS, Nattinger AB, Rivera F, Hanson R, Gmehlin CG, Perez A, Singh S, Buchan BW,  
434 Ledebouer NA, Pezzin LE. *Racial Disparities in Incidence and Outcomes Among Patients With*  
435 *COVID-19.* *JAMA Netw Open.* 2020 Sep 1;3(9):e2021892. Doi:  
436 10.1001/jamanetworkopen.2020.21892. PMID: 32975575

## Volunteer Community-Based COVID-19 Response

- 437 20. Nouvellet P, Bhatia S, Cori A, Ainslie KEC, Baguelin M, Bhatt S, Boonyasiri A, Brazeau NF,  
438 Cattarino L, Cooper LV, Coupland H, Cucunuba ZM, Cuomo-Dannenburg G, Dighe A, Djaafara  
439 BA, Dorigatti I, Eales OD, van Elsland SL, Nascimento FF, FitzJohn RG, Gaythorpe KAM,  
440 Geidelberg L, Green WD, Hamlet A, Hauck K, Hinsley W, Imai N, Jeffrey B, Knock E, Laydon  
441 DJ, Lees JA, Mangal T, Mellan TA, Nedjati-Gilani G, Parag KV, Pons-Salort M, Ragonnet-  
442 Cronin M, Riley S, Unwin HJT, Verity R, Vollmer MAC, Volz E, Walker PGT, Walters CE, Wang  
443 H, Watson OJ, Whittaker C, Whittles LK, Xi X, Ferguson NM, Donnelly CA. Reduction in  
444 mobility and COVID-19 transmission. *Nat Commun*. 2021 Feb 17;12(1):1090. doi:  
445 10.1038/s41467-021-21358-2. PMID: 33597546; PMCID: PMC7889876.
- 446 21. Levin MW, Shang M, Stern R. [Effects of short-term travel on COVID-19 spread: A novel SEIR](#)  
447 [model and case study in Minnesota.](#) *PloS One*. 2021 Jan 22;16(1):e0245919. Doi:  
448 10.1371/journal.pone.0245919. eCollection 2021. PMID: 33481956
- 449 22. Spencer KD, Chung CL, Stargel A, Shultz A, Thorpe PG, Carter MW, Taylor MM, McFarlane  
450 M, Rose D, Honein MA, Walke H. COVID-19 Case Investigation and Contact Tracing Efforts  
451 from Health Departments - United States, June 25-July 24, 2020. *MMWR Morb Mortal Wkly*  
452 *Rep*. 2021 Jan 22;70(3):83-87. doi: 10.15585/mmwr.mm7003a3. PMID: 33476317; PMCID:  
453 PMC7821771.
- 454 23. RA, Manahan LM, Miller JS, Moonan PK, Lipparelli MB, DiFedele LM, Davis LB, Lash RR,  
455 Oeltmann JE. *COVID-19 Contact Tracing Outcomes in Washington State, August and October*  
456 *2020*. *Front Public Health*. 2021 Nov 26;9:782296. Doi: 10.3389/fpubh.2021.782296. PMID:  
457 34900921; PMCID: PMC8661592.
- 458 24. Lash RR, Moonan PK, Byers BL, Bonacci RA, Bonner KE, Donahue M, Donovan CV, Grome HN,  
459 Janssen JM, Magleby R, McLaughlin HP, Miller JS, Pratt CQ, Steinberg J, Varela K, Anschuetz  
460 GL, Cieslak PR, Fialkowski V, Fleischauer AT, Goddard C, Johnson SJ, Morris M, Moses J,  
461 Newman A, Prinzing L, Sulka AC, Va P, Willis M, Oeltmann JE; COVID-19 Contact Tracing  
462 Assessment Team. *COVID-19 Case Investigation and Contact Tracing in the US, 2020*. *JAMA*  
463 *Netw Open*. 2021 Jun 1;4(6):e2115850. Doi: 10.1001/jamanetworkopen.2021.15850. PMID:  
464 34081135; PMCID: PMC8176334.
- 465 25. Hood JE, Kubiak RW, Avoundjian T, Kern E, Fagalde M, Collins HN, Meacham E, Baldwin M,  
466 Lechtenberg RJ, Bennett A, Thibault CS, Stewart S, Duchin JS, Golden MR. A Multifaceted



## Volunteer Community-Based COVID-19 Response

- 467 Evaluation of a COVID-19 Contact Tracing Program in King County, Washington. *J Public*  
468 *Health Manag Pract.* 2022 Jul-Aug 01;28(4):334-343. doi: 10.1097/PHH.0000000000001541.  
469 PMID: 35616571; PMCID: PMC9119327.
- 470 26. Girum T, Lentiro K, Geremew M, Migora B, Shewamare S. Global strategies and  
471 effectiveness for COVID-19 prevention through contact tracing, screening, quarantine, and  
472 isolation: a systematic review. *Trop Med Health.* 2020 Nov 23;48(1):91. doi:  
473 10.1186/s41182-020-00285-w. PMID: 33292755; PMCID: PMC7680824.
- 474 **27.** COVID-19 National Preparedness Collaborators. *Pandemic preparedness and COVID-19: an*  
475 *exploratory analysis of infection and fatality rates, and contextual factors associated with*  
476 *preparedness in 177 countries, from Jan 1, 2020, to Sept 30, 2021.* *Lancet.* 2022 Feb 1:S0140-  
477 6736(22)00172-6. Doi: 10.1016/S0140-6736(22)00172-6. Epub ahead of print. PMID:  
478 35120592; PMCID: PMC8806194.
- 479 28. Kerr CC, Mistry D, Stuart RM, Rosenfeld K, Hart GR, Núñez RC, Cohen JA, Selvaraj P,  
480 Abey Suriya RG, Jastrzębski M, George L, Hagedorn B, Panovska-Griffiths J, Fagalde M,  
481 Duchin J, Famulare M, Klein DJ. Controlling COVID-19 via test-trace-quarantine. *Nat*  
482 *Commun.* 2021 May 20;12(1):2993. doi: 10.1038/s41467-021-23276-9. PMID: 34017008;  
483 PMCID: PMC8137690.
- 484  
485

486 **Supporting Information Captions**

487

488 **S1 Fig: Structure of the Vashon COVID-19 response program**

489 VashonBePrepared.org is a 501c3 organization that houses Vashon MRC and the Community  
490 Emergency Response Team for administrative and legal purposes. Following emergency activation  
491 by Vashon Fire & Rescue, the Vashon COVID-19 response assumed a typical incident command  
492 structure with operational control by an Emergency Operations Center.

493 The Emergency Operations Center is staffed by volunteers from each of the 3 participating  
494 organizations. VashonBePrepared took primary responsibility for community engagement and  
495 material support; the MRC had primary responsibility for the health-related activities and the  
496 Community Emergency Response Team had responsibility for logistics.

497 VashonBePrepared raised more than \$400,000 for its COVID-19 Relief Fund from hundreds  
498 of donors. Because some costs were reimbursed through CARES Act and FEMA funding, the Relief  
499 Fund was ultimately able to distribute \$546,000 in 4 areas: health, food security, housing security,  
500 and economic recovery. The testing and contact tracing effort that is the main thrust of this paper  
501 had a monthly cost of \$1,200 as tests were largely paid by patient insurance. Uninsured patient tests  
502 were covered by the CARES Act or the COVID-19 Relief Fund.

503 The Relief Fund supported food security through the funding of the Vashon Maury  
504 Community Food Bank, the Vashon Senior Center and the Vashon Island School District Nutrition  
505 program, resulting in the distribution of more than 25,000 meals and 4,300 bags of groceries.  
506 VashonBePrepared, working with the local Chamber of Commerce, provided economic relief by  
507 helping 400 residents with applications for unemployment and other state or county benefits. The  
508 Relief Fund also provided emergency rent relief and other support to over 400 families needing  
509 assistance. Vashon's Hispanic community received specific attention from these relief efforts.

511 **Demographics & Testing for COVID-19: Vashon and King County, WA**

<b>Age</b>	<b>VMRC Tests</b>	<b>Vashon Population</b>	<b>King County Population</b>
0-9	7.1%	7.0%	11.0%
10-19	11.5%	10.2%	11.2%
20-29	10.2%	7.4%	15.1%
30-39	13.4%	8.4%	17.6%
40-49	15.5%	11.7%	13.6%
50-59	17.6%	15.9%	12.3%
60-69	14.2%	21.6%	10.2%
70+	10.6%	17.9%	9.0%
Total tests or population	3,566	11,095	2,269,675
<b><u>Race/Ethnicity</u></b>			
White	85.4%	84.1%	54.2%
Hispanic	5.3%	5.7%	10.7%
Multi-racial	5.0%	7.2%	7.4%
Asian	2.5%	2.0%	19.8%
Black	1.1%	0.7%	6.5%
Hawaiian, Pacific Islander	0.5%	0.1%	0.9%
Native Amer/ AK Native	0.2%	0.2%	0.5%
Total tests or population	3,240	11,095	2,269,675

512 **S2 Table: VMRC testing, Vashon and King County demographics** Vashon and King County total  
 513 populations are from the 2020 US Census, and age and race/ethnicity compositions are from the  
 514 2019 American Community Survey estimate. Forty percent of the Vashon population is over age 60-  
 515 twice the fraction in King County overall. VMRC testing was skewed toward younger age groups.  
 516 VMRC tests were roughly reflective of Vashon’s racial/ethnic makeup, with slight under-sampling of  
 517 the Hispanic community and over-sampling of the Black and Hawaiian/Pacific Islander communities.

518  
 519  
 520 **S2 Fig: Components of the multiple linear regression model for cases**

521 Ordinary least squares linear regression of COVID-19 cases was carried out against several logical  
 522 variables of age, race/ethnicity, educational attainment and wealth that might be associated with  
 523 cumulative COVID-19 rates. Those with the highest R2 value are above. Multiple age groupings were  
 524 evaluated and while none performed well, age <30 had the highest R<sup>2</sup> value for cases (above) as well  
 525 as hospitalizations and deaths (not shown). Total population, population density, and testing rate  
 526 were also considered for inclusion in the model, but were not correlated with cumulative COVID-19  
 527 rates in King County.

528

529 ***S3 Fig) Regression model of King County cumulative COVID-19 cases including vaccination rates***

530 Inclusion of vaccine doses administered/K population improves the  $R^2$  value and standard error of

531 regression analysis carried out as in Fig 3. Vashon's predicted rank improves from 32 to 21 and while

532 it is no longer a statistical outlier, its predicted rate remains twice its observed rate.

533

534

535

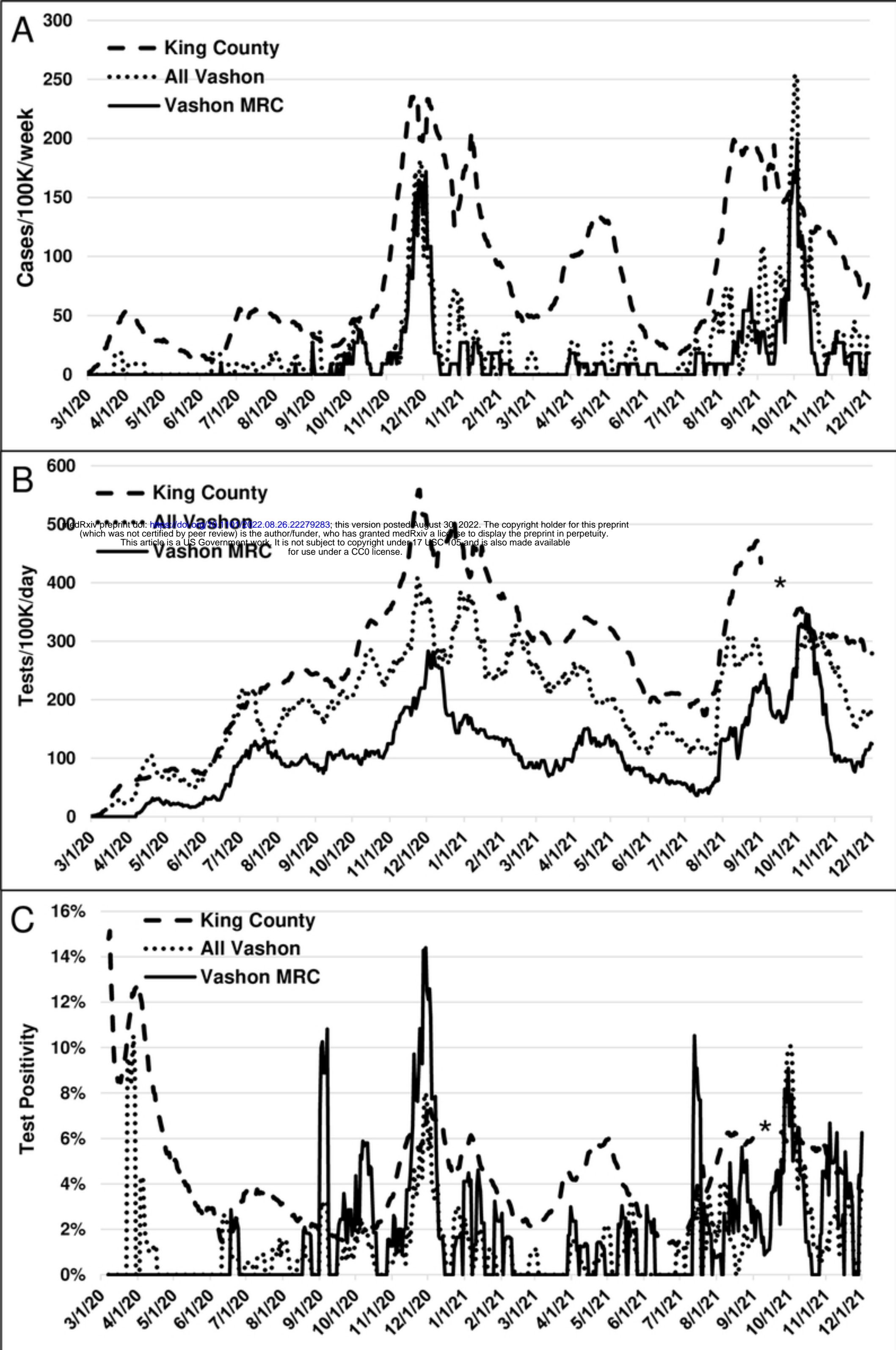


Figure 1

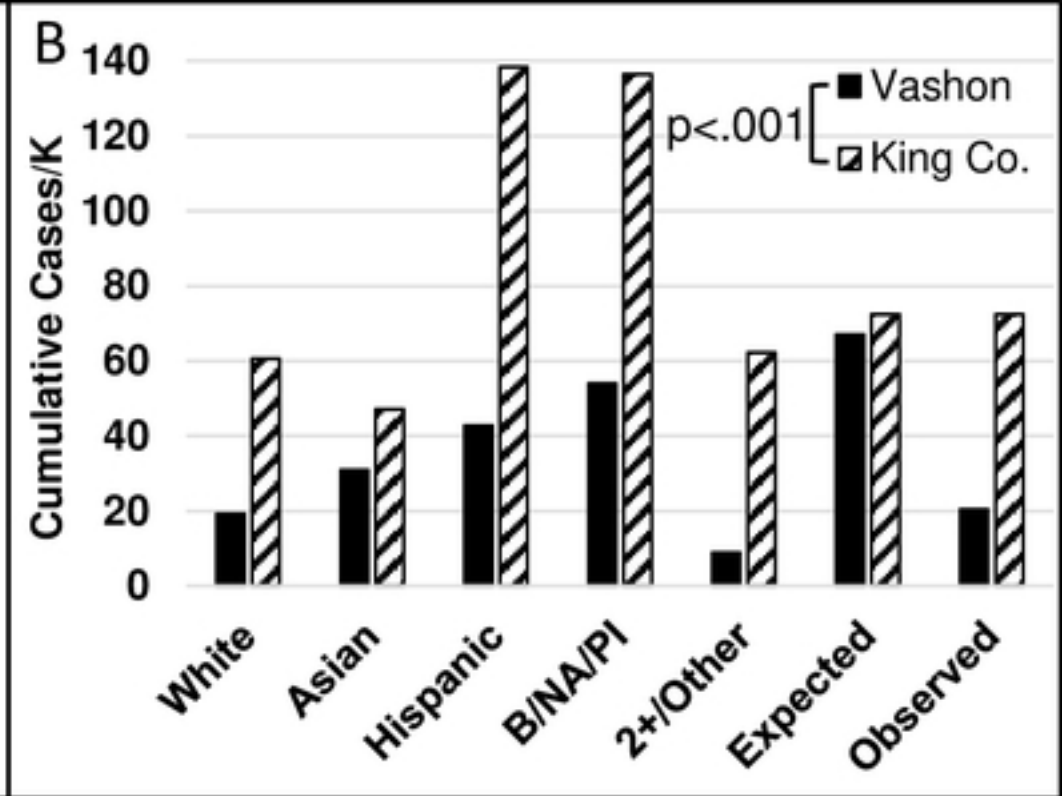
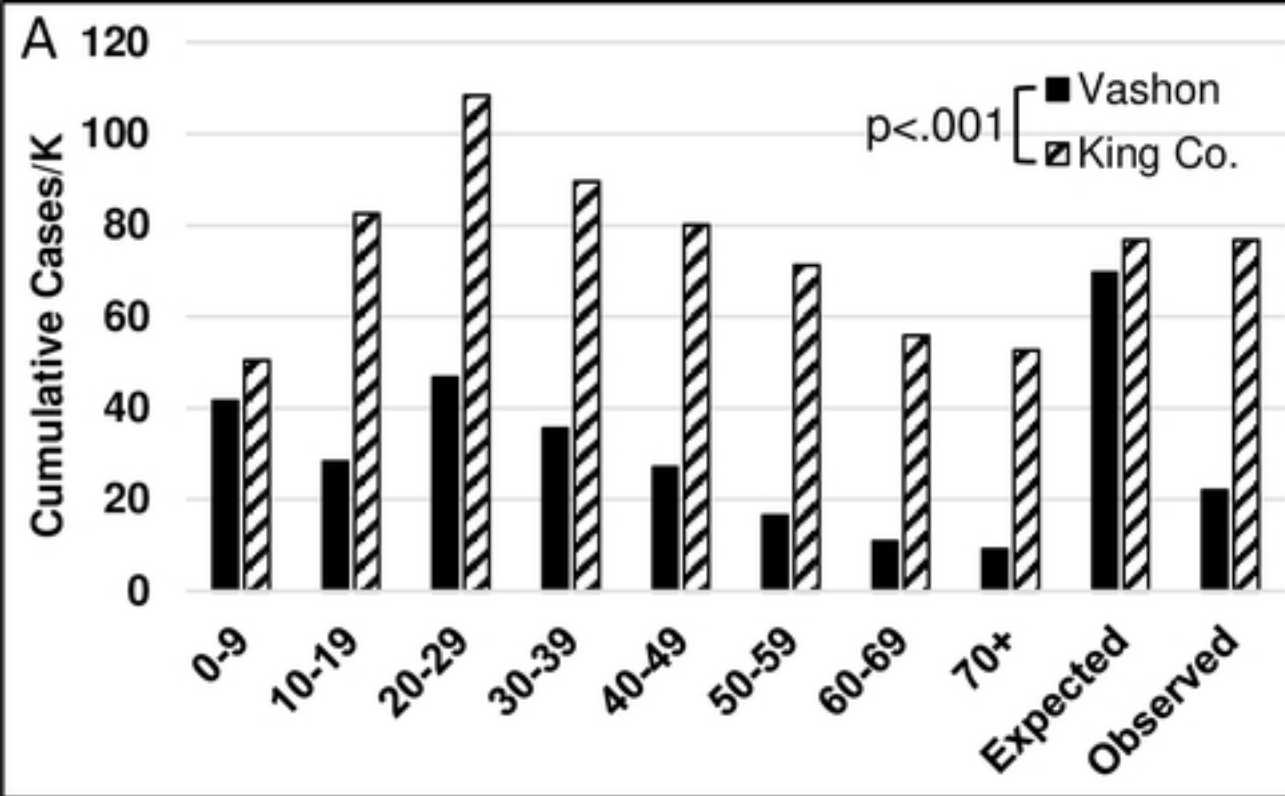


Figure 2

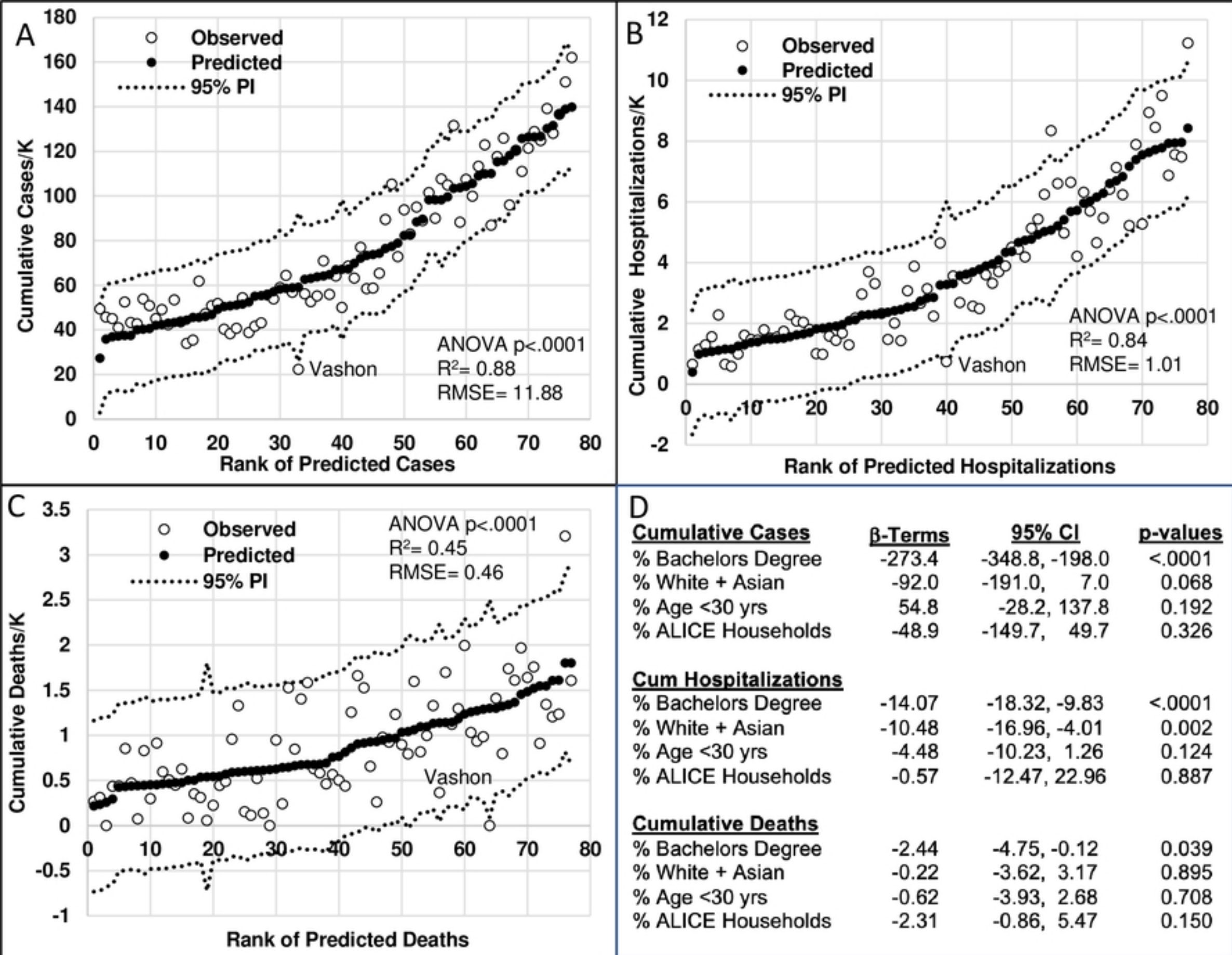


Figure 3

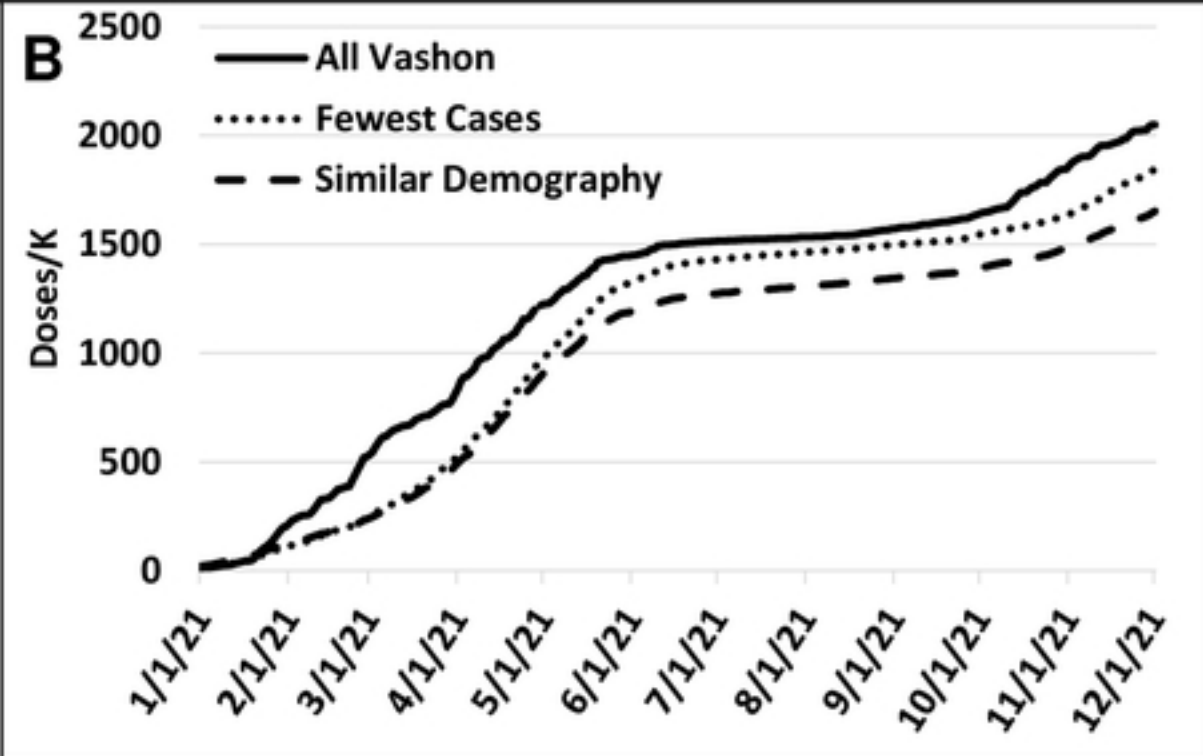
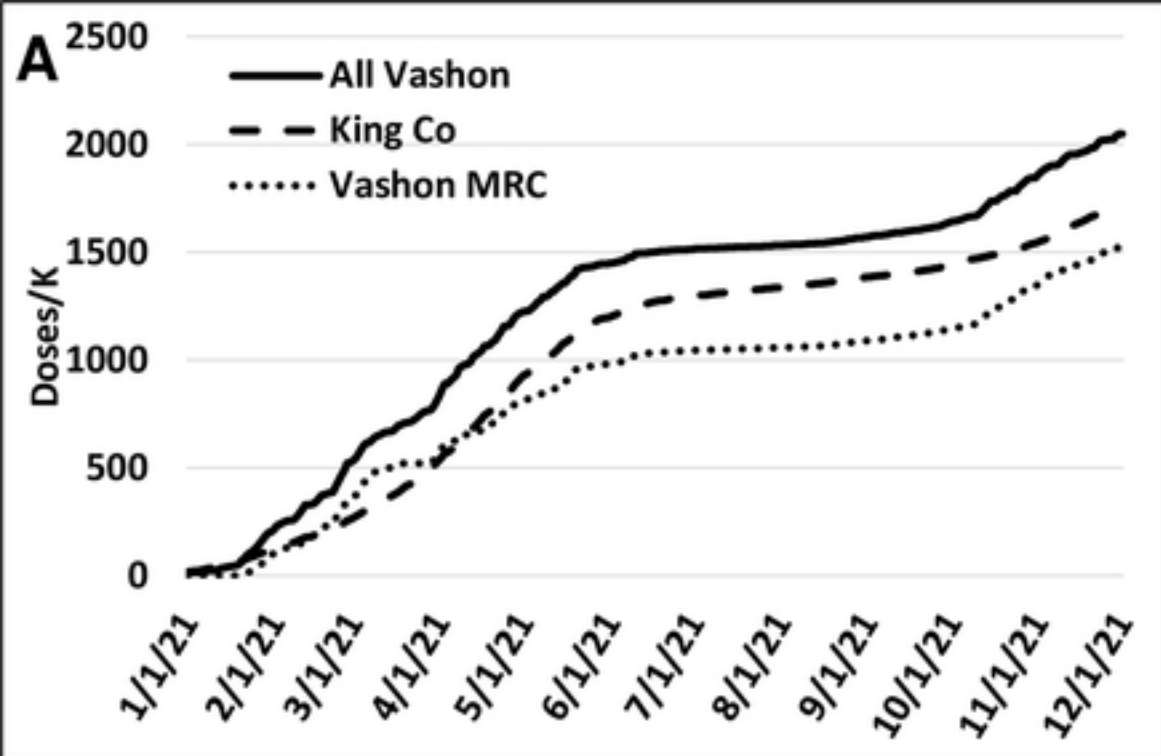


Figure 4



	Index Cases	2 <sup>o</sup> Cases	3 <sup>o</sup> Cases	4 <sup>o</sup> Cases	Complete CT	Households
<b>Cases</b>	55	45	4	2	106	105*
<b>Interview attempted (% of total)</b>	50 (91%)	45 (100%)	4 (100%)	2 (100%)	101 (95%)	101 (96%)
<b>Interviewed (% of total)</b>	46 (84%)	45 (100%)	4 (100%)	2 (100%)	97 (92%)	99 (94%)
<b># That named contacts (% of total)</b>	40 (73%)	10 (22%)	2 (50%)	0 (0%)	54 (51%)	45 (68%*)
<b># Contacts (% tested)</b>	159 (96%)	28 (100%)	3 (100%)	-	190 (94%)	117 (100%)
<b># Positive contacts (% of all Contacts )</b>	45 (28%)	4 (14%)	2 (67%)	-	51 (27%)	39 (33%)
<b># Positive Household contacts (% Pos)</b>	34 (47%)	2 (67%)	2 (67%)	-	38 (48%)	36 (34%)
<b># Positive Non-household contacts( % Pos)</b>	11 (13%)	2 (8%)	-	-	13 (11%)	3 (25%)
<b>Household % of cases among contacts</b>	76%	50%	100%	-	75%	92%

Figure 5

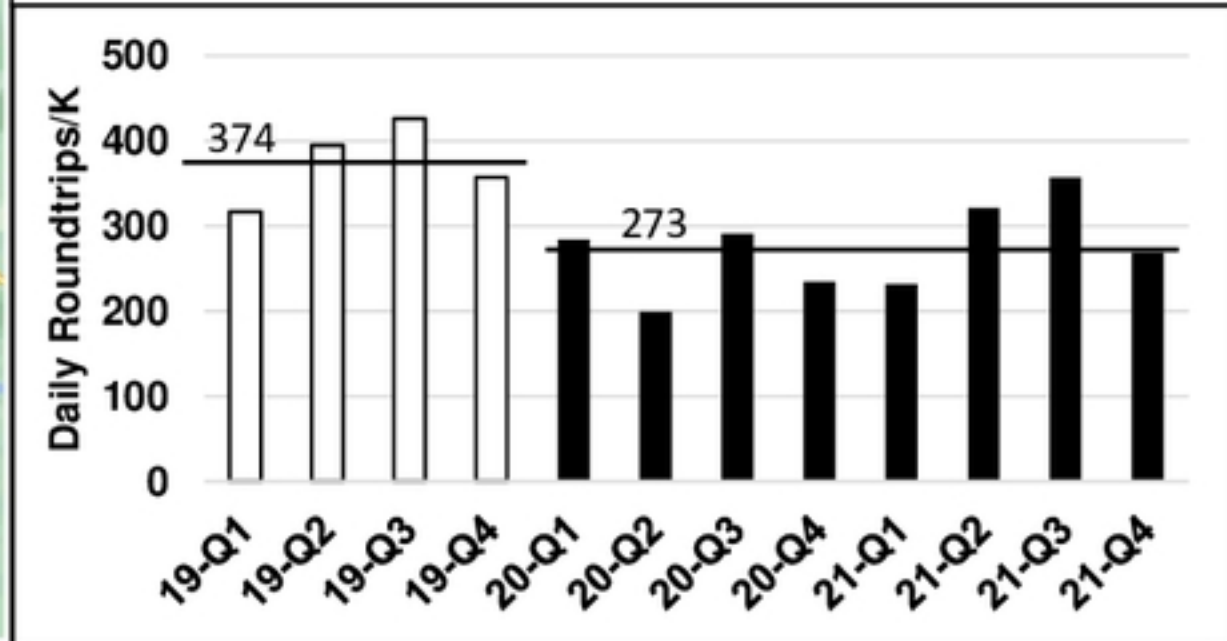
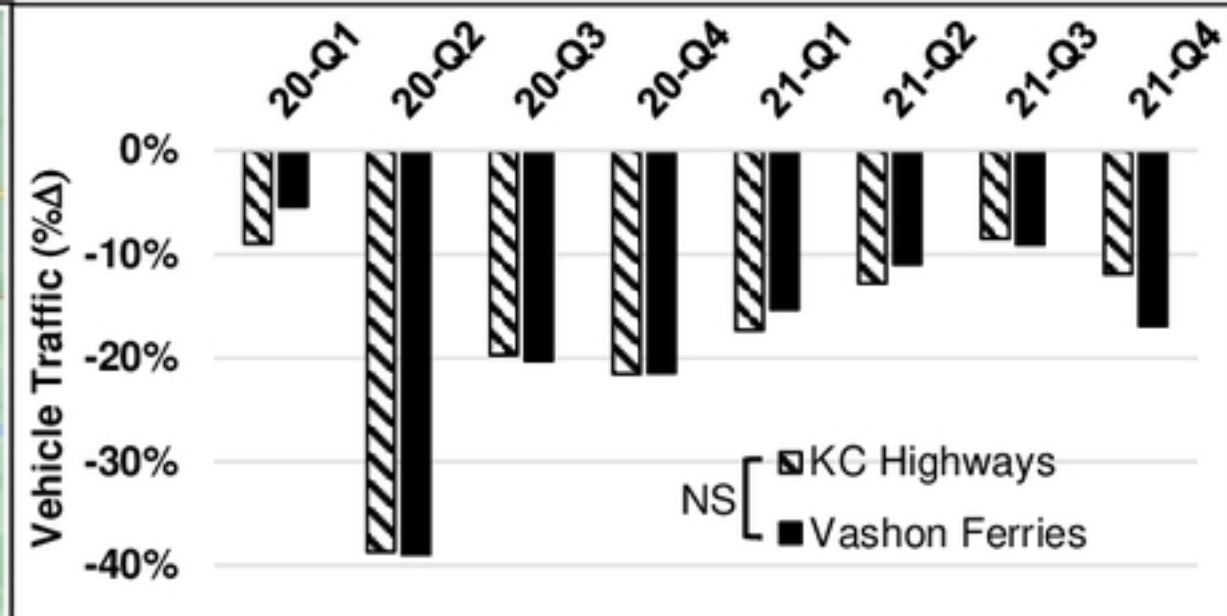
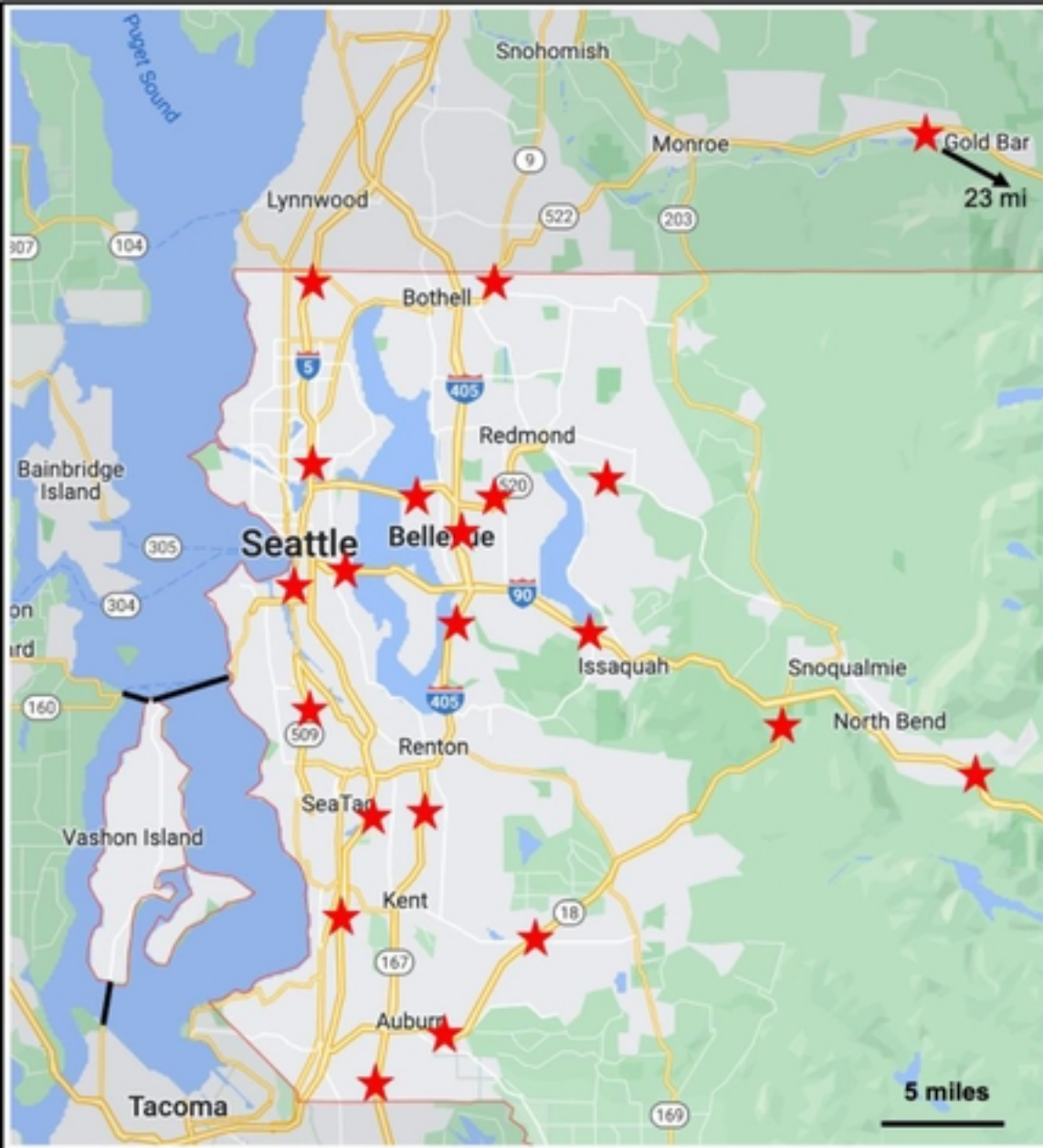


Figure 6

Vashon Fire & Rescue Chief (activation)  
Emergency Operations Center (management)

VashonBePrepared.org

Community engagement  
Food support  
Unemployment assistance  
Housing assistance  
Operations  
Finance  
Administration

Medical Reserve Corps

COVID-19 Testing  
Patient education  
Business COVID controls  
Mental health support  
Vaccination

Community Emergency  
Response Team

Planning  
Logistics  
IT support

Figure S1

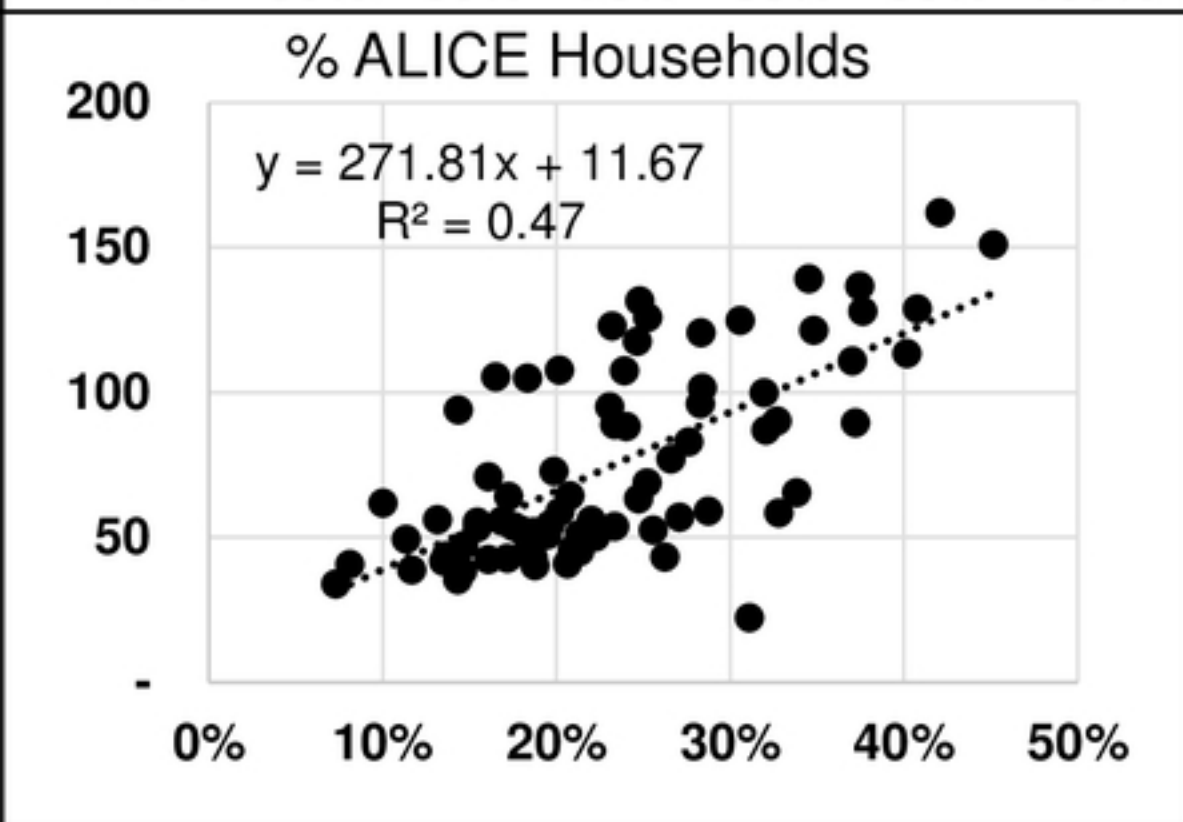
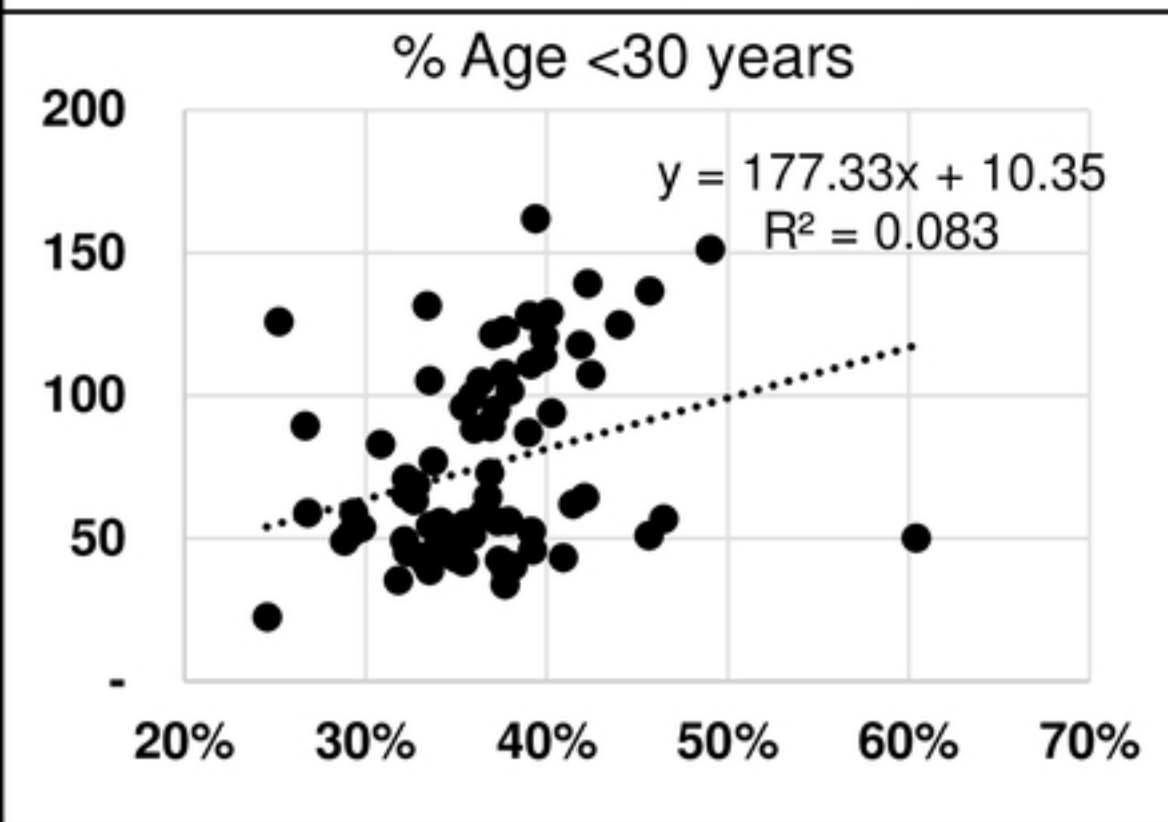
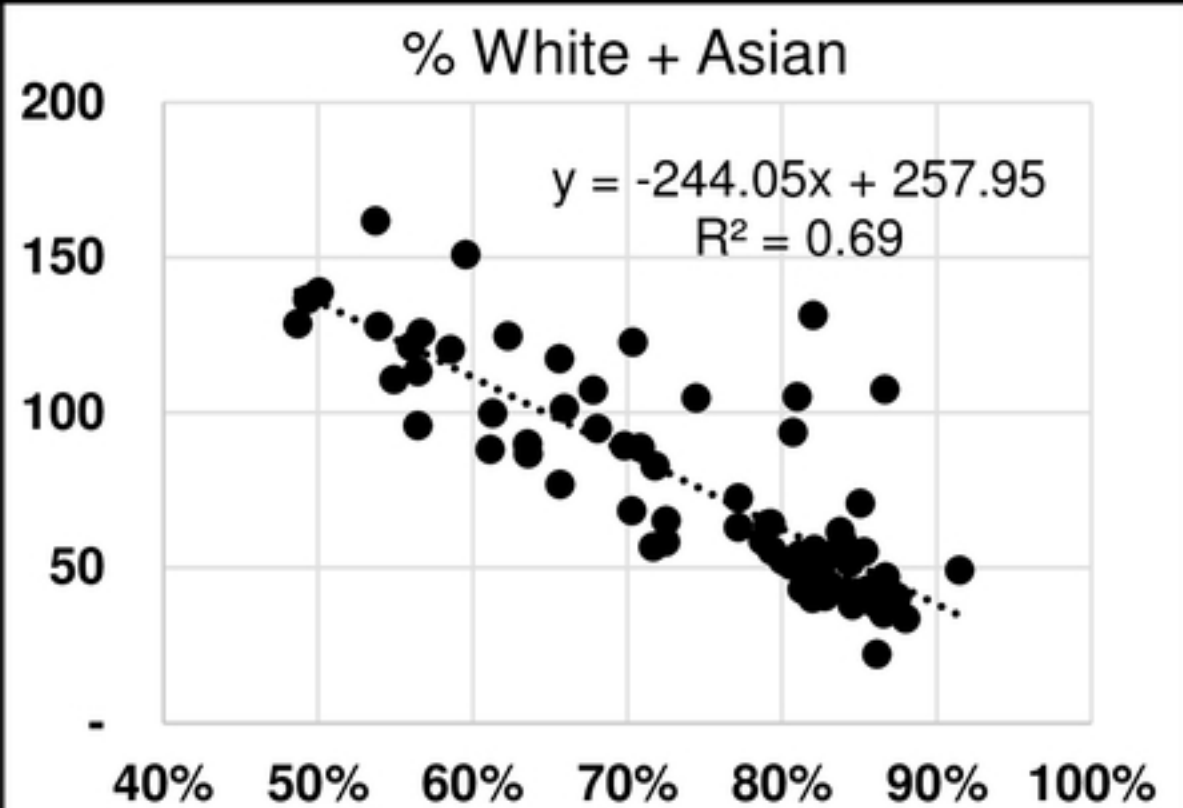
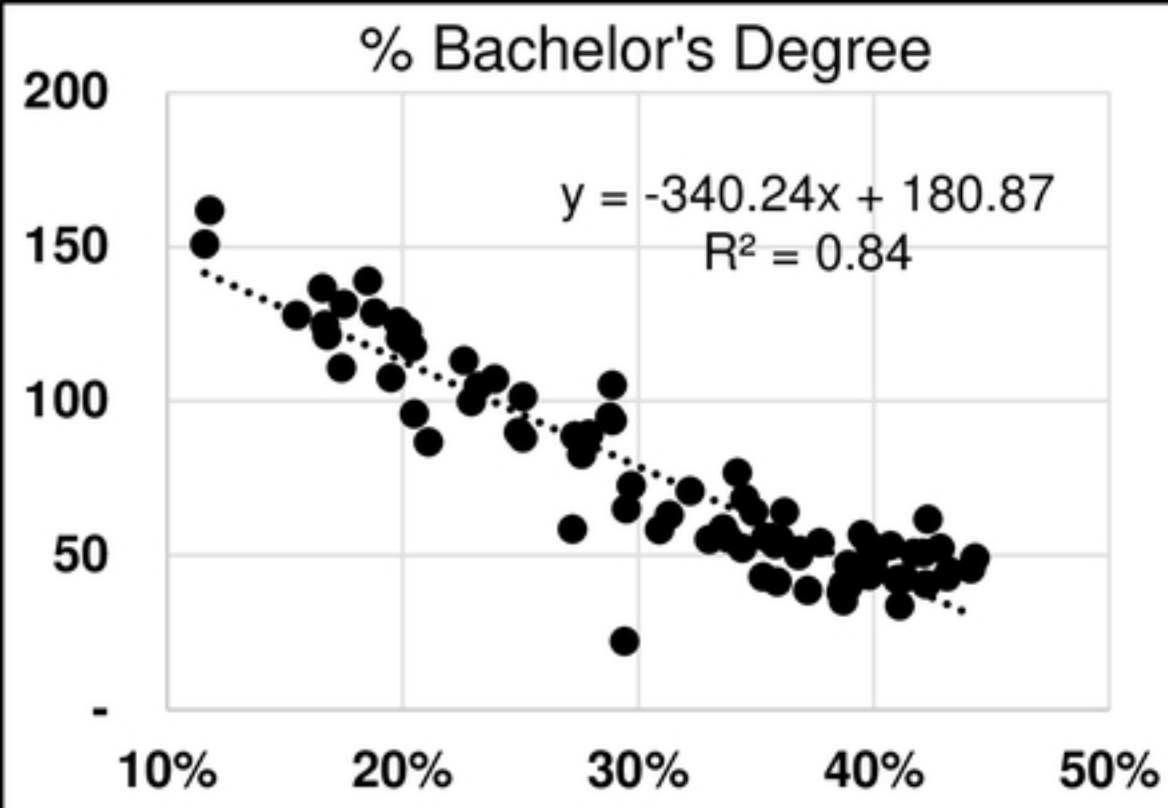
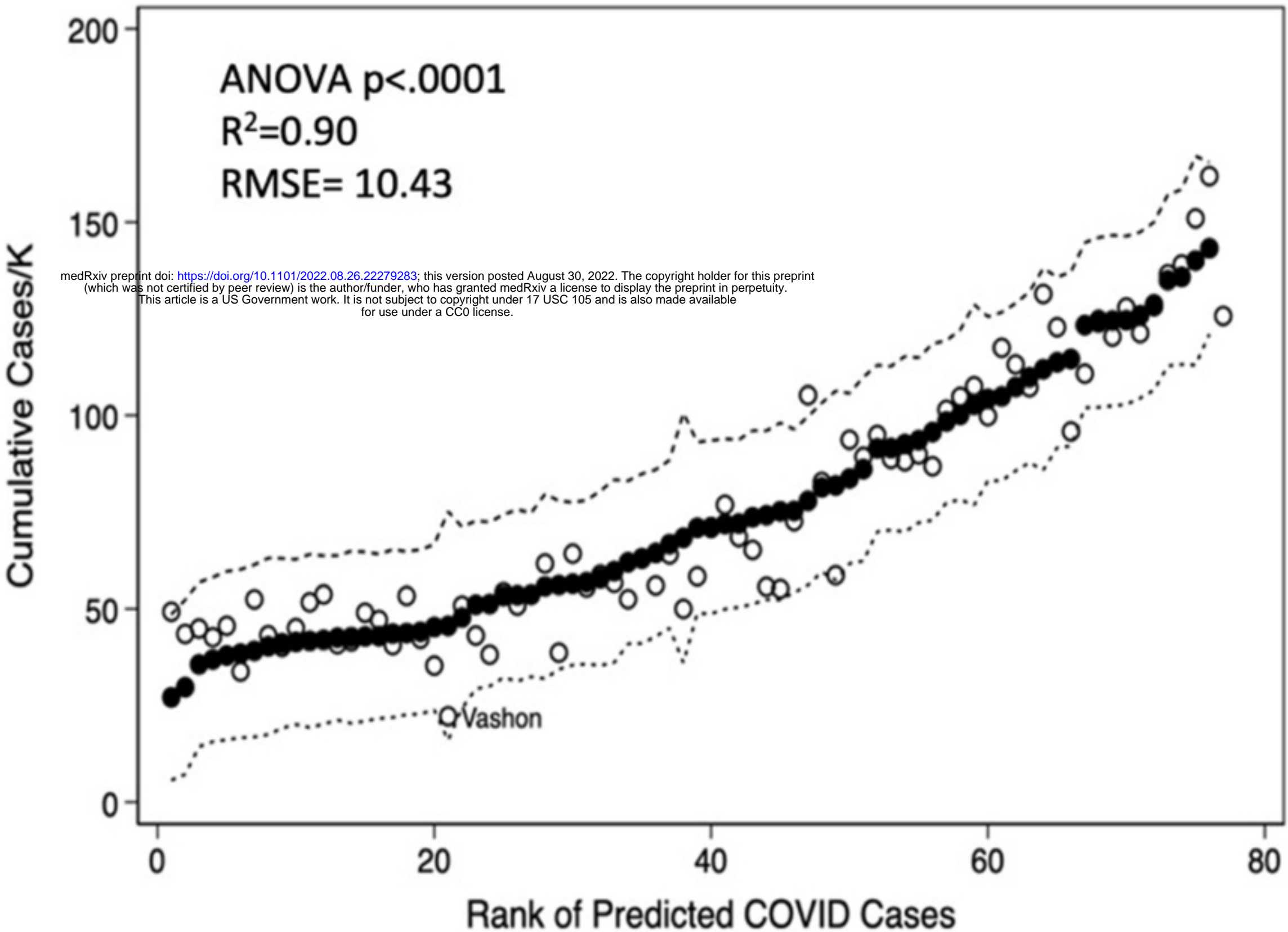


Figure S2



<i>Variable</i>	<i><math>\beta</math> Coefficient</i>	<i>95% CI</i>	<i>p Value</i>
<i>Vaccination</i>	-54.23	-86.74, -21.73	0.001
<i>BA Degree</i>	-155.43	-239.33, -71.53	0.001
<i>White/Asian</i>	-120.10	-207.42, -32.78	0.008
<i>Age 30</i>	-32.86	-139.81, 74.10	0.542
<i>ALICE</i>	-30.35	-108.46, 47.74	0.441

Figure S3