

1 **Primary postpartum haemorrhage and longer-term**
2 **physical, psychological, and psychosocial health outcomes**
3 **for women and their partners: a mixed-methods systematic**
4 **review**

5 Su Mon Latt^{1*}, Fiona Alderdice¹, Madeline Elkington¹, Mahkawnghta Awng Shar², Jennifer J
6 Kurinczuk¹, Rachel Rowe¹

7

8 ¹National Perinatal Epidemiology Unit, Nuffield Department of Population Health, University of
9 Oxford, Oxford, United Kingdom.

10 ²Health and Nutrition Specialist, United Nations International Children Fund, Myanmar.

11

12 ***Corresponding author:**

13 Email: sumon.latt@dph.ox.ac.uk (SL)

14 **Abstract**

15 **Objectives**

16 Most research about outcomes following postpartum haemorrhage (PPH) has focused on
17 immediate outcomes. There are fewer studies investigating longer-term maternal morbidity
18 following PPH, resulting in a significant knowledge gap. This review aimed to synthesize the
19 evidence about the longer-term physical and psychological consequences of primary PPH for
20 women and their partners from high income settings.

21 **Methods**

22 The review was registered with PROSPERO and five electronic databases were searched.
23 Studies were independently screened against the eligibility criteria by two reviewers and data
24 were extracted from both quantitative and qualitative studies that reported non-immediate health
25 outcomes of primary PPH.

26 **Results**

27 Data were included from 24 studies, of which 16 were quantitative, five were qualitative and
28 three used mixed-methods. The included studies were of mixed methodological quality. Of the
29 nine studies reporting outcomes beyond five years after birth, only two quantitative studies and
30 one qualitative study had a follow-up period longer than ten years. Seven studies reported
31 outcomes or experiences for partners. The evidence indicated that women with PPH were more
32 likely to have persistent physical and psychological health problems after birth compared with
33 women who did not have a PPH. These problems, including PTSD symptoms and cardiovascular
34 disease, may be severe and extend for many years after birth and were more pronounced after a
35 severe PPH, as indicated by a blood transfusion or hysterectomy. There was limited evidence

36 about outcomes for partners after PPH, but conflicting evidence of association between PTSD
37 and PPH among partners who witnessed PPH.

38 **Conclusion**

39 This review explored existing evidence about longer-term physical and psychological health
40 outcomes among women who had a primary PPH in high income countries, and their partners.
41 While the evidence about health outcomes beyond five years after PPH is limited, our findings
42 indicate that women can experience long lasting negative impacts after primary PPH, including
43 PTSD symptoms and cardiovascular disease, extending for many years after birth.

44 **PROSPERO registration number:** CRD42020161144

45 **Introduction**

46 Postpartum haemorrhage (PPH) is defined by the World Health Organization (WHO) as blood
47 loss of 500 ml or more from the genital tract within 24 hours after birth, (1) although the
48 definition and the cut off point for the severity of PPH varies. (2) The incidence of PPH is
49 increasing across the high-income countries. (3, 4) Most research about outcomes following PPH
50 has focused on immediate outcomes including, for example, acute organ failure, (5) blood loss,
51 hypovolemic shock and maternal death. (6, 7) There are fewer studies investigating longer-term
52 maternal morbidity following PPH, resulting in a significant knowledge gap around the
53 associations between PPH and subsequent health and wellbeing, including the impact on the
54 psychosocial and emotional wellbeing of women and their partners. (5, 8-13).

55 A systematic review conducted in 2016 investigated the prevalence of women's emotional and
56 physical health problems following PPH and included six quantitative studies. (14) Several
57 articles investigating potential physical or psychological consequences of PPH have been
58 published since the last systematic search in April 2015. (15-17) A further systematic review
59 found a potential association between PPH and post-traumatic stress disorder (PTSD), but this
60 conclusion was limited by the small number of studies investigating this association. (18) Neither
61 of these reviews included qualitative research exploring women's experience of PPH, suggesting
62 a comprehensive systematic review using an integrated mixed-methods approach would be
63 valuable. (19) A mixed-methods systematic review was therefore conducted to synthesize the
64 evidence about the longer-term physical and psychological consequences of PPH for women and
65 their partners.

66 **Methods**

67 The protocol for this review was registered with PROSPERO (CRD42020161144) and the
68 review is reported according to the Preferred Reporting Items for Systematic Review and Meta-
69 Analysis (PRISMA) 2020 checklist (**S1 Checklist**). (20)

70 **Eligibility criteria**

71 We searched published literature for quantitative cohort, case-control, cross-sectional, or case
72 series studies; qualitative studies including analysis of interviews, free text boxes/open-ended
73 survey questions which explored women's and partners' experiences of care or seeking care and
74 information following PPH, and/or their perceptions about the physical, psychological and
75 psychosocial impact of PPH; and mixed-methods studies with an eligible qualitative or
76 quantitative component. The inclusion/exclusion criteria in Table 1 were applied.

77 **Table 1. Inclusion and exclusion criteria**

Category	Inclusion criteria	Exclusion criteria
Population	Women who gave birth after at least 24 weeks' gestation and had a PPH, and/or their partners.	Women who had a PPH and/or their partners who were a subset of study participants (e.g. women who had a PPH as a subset of women with a range of maternal morbidities) unless separate data from women who had a PPH could be retrieved.
Exposure	For quantitative studies, primary PPH, defined as: Bleeding from the genital tract, within 24 hours of giving birth, with an estimated blood loss of >500 ml and/or blood transfusion within 24 hours of giving birth and/or having emergency peripartum hysterectomy (EPH) or arterial embolization following PPH, and/or peripartum fall in haemoglobin concentration of > 2g/dl. For qualitative studies, PPH regardless of definition.	Quantitative studies where PPH was not the primary exposure of interest or in which PPH was not well-defined and measured by one of the criteria described.
Comparison	Studies with or without a control or comparison group, comprising participants who did not experience a PPH.	None
Outcomes	For quantitative studies, any non-immediate and non-fatal physical, psychological and psychosocial health outcomes for women and their partners after PPH. For qualitative studies, women's and/or partners' experiences of care and of seeking care around the time of PPH and during the postpartum period, and their perceptions about the physical, psychological and psychosocial impact of PPH.	For quantitative studies: immediate outcomes, including maternal death following PPH, acute organ failure, sepsis, shock, and with intervention outcomes such as hysterectomy, intensive care admission, blood transfusion during initial birth admission; pregnancy-related outcomes, including secondary PPH, or recurrence of PPH in subsequent pregnancies.
Time	For quantitative studies, any follow-up duration after hospital discharge following PPH. For qualitative studies, all studies regardless of follow-up duration.	None
Setting	High-income countries as defined by the World Bank (21) at the time of study.	Low/middle-income countries.
Language	English language	Papers which were not written in English

78 **Search strategy**

79 Searches (**S1 File**) were conducted in Medline (Ovid), Embase, Web of Science, CINAHL and
80 PsycINFO on 16th December 2019 and updated on 6th January 2021 and on 31st May 2022, from
81 the inception of each database to the search date. Reference lists from all included full text
82 articles were hand searched.

83 **Screening and study selection**

84 Search results were imported into the reference management software Endnote and duplicates
85 were removed. (22) Search results were then imported into Covidence software for screening and
86 data extraction. (23) Titles and abstracts of all articles identified were independently screened by
87 SL and MS against the inclusion criteria. Full text screening was conducted independently by SL
88 and ME using the above eligibility criteria. Any disagreements were resolved by consensus
89 between reviewers, involving RR when necessary.

90 **Data extraction**

91 Data extraction was performed independently by SL, and either MS or ME. Study characteristics
92 and outcome information were extracted for both quantitative and qualitative studies using
93 bespoke data extraction forms developed and pilot-tested for this review (**S2 File**). For
94 qualitative studies, all the text and themes reported under findings or results from included
95 studies were imported into NVivo software and treated as a primary textual data source for
96 analysis. Data from mixed method studies were entered in both forms as appropriate.

97 **Risk of bias and quality assessment**

98 Risk of bias and quality assessment for the included studies was conducted by SM, MA and ME,
99 with two independent reviewers for each study, with any disagreements resolved by consensus as
100 described above. Included quantitative studies (and the quantitative component of mixed-
101 methods studies) were assessed using the risk of bias assessment for non-randomized studies
102 (ROBANS) tool (**S1 Table**). (24)

103 Quality assessment for qualitative studies was conducted using the Critical Appraisal Skills
104 Programme (CASP) tool. (25) The response options for Questions 1-9 were modified from
105 yes/no/unclear to include the option to respond ‘partly’ where a paper addressed some items in
106 the checklist associated with the question, but not all. Quantitative and qualitative components of
107 mixed-methods studies were assessed and reported separately.

108 **Data synthesis**

109 Since the quantitative studies were not homogeneous in terms of study design and outcome
110 measurements, we used a narrative synthesis approach, presenting quantitative study results in
111 structured tables. (26) Qualitative studies were synthesised using the approach described by
112 Thomas and Harden. (27-29) This involved: 1) free line-by-line coding of the findings of
113 primary studies; 2) the organization of codes in related areas to construct ‘descriptive’ themes;
114 and 3) the development of ‘analytical’ themes to answer the research questions. (27-29)

115 We used the Joanna Briggs Institute (JBI) convergent segregated approach for mixed-methods
116 systematic reviews, whereby following separate analysis of the quantitative and qualitative
117 evidence, the similarities and differences in findings were compared to produce a narrative
118 summary. (30)

119 **Results**

120 The search yielded 15,742 references, of which 7,625 were duplicates and were removed (*Fig 1*).

121 After removing duplicates, a total of 8,117 references remained. Following title and abstract
122 screening, 127 references were included for full text review. An additional six references were
123 identified through other sources. After removal of ineligible studies, 33 papers reporting 24
124 studies were included in the review, of which 16 were quantitative, five qualitative, and three
125 mixed-methods studies.

126 **Fig 1. PRISMA flow diagram for study selection (20)**

127 **Characteristics of included studies**

128 Included studies were conducted in Australia, New Zealand, France, the Netherlands, Sweden,
129 Switzerland, South Korea, Canada, the UK and the United States, between 2005 and 2021. The
130 follow-up time was from hospital discharge following PPH to up to six weeks postpartum in
131 seven studies, (31-38) up to a year in four studies, (12, 16, 39-42) up to five years in three
132 studies, (43-46) and longer than five years in nine studies. (47-58) One qualitative study did not
133 report on follow-up duration. (59) The definitions for PPH and severe PPH used in these studies
134 varied widely. In studies defining PPH according to blood loss volume, this varied from 500ml
135 to 1000ml for vaginal birth and from 750 ml to 1500 ml for Caesarean birth. In four studies, PPH
136 was identified by using ICD 10 codes recorded in hospital or insurance databases. (35, 42, 51,
137 52) Definitions for severe PPH also varied widely, from >1000ml to >2000ml. In seven studies
138 where the exposure was severe PPH, severity was also indicated by combining blood loss
139 volume with interventions such as emergency peripartum hysterectomy (EPH) and/or arterial
140 embolization following PPH. (39, 44, 47-49, 54, 56) PPH was not well defined in one qualitative

141 study, (38) however, all qualitative studies were included regardless of their definitions as these
142 were not part of the eligibility criteria for qualitative studies.

143 Summary characteristics of all included studies are presented in Table 2.

144 **Table 2. Characteristics of included studies**

Study	Country Year of study	Setting	Aims	Population Sample size	Study design	Outcome(s) / Themes reported (for qualitative studies)
Quantitative studies						
Cho 2021 (51)	South Korea 2007-2015	Merged databases of the South Korean insurance claim and health screening programme	To determine whether PPH is associated with cardiovascular disease (CVD) beyond the peripartum period.	Women who gave birth in 2007 N= 150,381	Retrospective cohort Population-based study	Newly diagnosed CVD and/or ischemic heart disease
Chaleur 2008 (8)	France 1999-2004	University of Nimes Hospital	To explore the effect of severe PPH and its related treatments on postpartum venous thromboembolic risk	Women in their first intended pregnancy N=32,463	Prospective cohort Population-based study	Superficial venous thrombosis
De la Cruz 2016 (44)	United States Year of study not reported	Online community with 1.7 million registered users	To explore if women who had emergency peripartum hysterectomy (EPH) are positive for post-traumatic stress disorder (PTSD) compared with women who did not have EPH more likely to screen	Women from online EPH group N= 409	Retrospective cohort	PTSD, postpartum depression (PPD), both PTSD and PPD

Study	Country Year of study	Setting	Aims	Population Sample size	Study design	Outcome(s) / Themes reported (for qualitative studies)
Chessman 2018 (32)	Australia Records from 2007-2010	New South Wales public hospital	To determine the association between red blood cell transfusion and breastfeeding among women who had a PPH at birth taking into account postpartum haemoglobin concentrations	Women who had a PPH and had a red blood cell transfusion following a singleton birth of at least 37weeks' gestation. N= 15,451	Retrospective cohort Population-based study	Any breastfeeding at hospital discharge
Drayton 2016 (33)	Australia Records from 2007-2012	All New South Wales hospitals	To determine the association between red blood cell transfusion and breastfeeding at discharge among women who had a PPH during their birth admission	All women giving birth in New South Wales, Australia N= 40,149	Retrospective cohort Population-based study	Exclusive breastfeeding, partial breastfeeding, any breastfeeding
Eckerdal 2016 (34)	Sweden 2006-2012	Uppsala University hospital	To explore the association between PPH and PPD	Women who gave birth at University Hospital in Uppsala N=446	Prospective cohort Population-based study	PPD

Study	Country Year of study	Setting	Aims	Population Sample size	Study design	Outcome(s) / Themes reported (for qualitative studies)
Eggel 2021; Bernasconi 2021 (54, 60)	Switzerland Records from 2003-2013	University Maternity Hospital in Lausanne	To evaluate long term psychological, gynaecological and sexual outcomes among patients with uterine artery embolization following PPH	Women who had PPH and had uterine artery embolization at University Maternity Hospital N=252 women, 142 partners	Case-control Hospital-based study	PPD, PTSD, Symptoms of menstrual disturbances, sexual dysfunction
Feinberg 2005 (45)	United States Records from 1998-2002	A tertiary hospital in Chicago	To determine the incidence of Sheehan's syndrome among patients with obstetric haemorrhage	Women who gave birth at North-western Memorial Hospital with obstetric haemorrhage N=109	Retrospective cohort Hospital-based study	Symptoms of Sheehan's syndrome

Study	Country Year of study	Setting	Aims	Population Sample size	Study design	Outcome(s) / Themes reported (for qualitative studies)
Knight 2016 (39)	UK (England) 2013 using records from 2005-2006	111 UK hospitals with consultant-led maternity units	To explore the longer-term health outcomes of women following EPH to control haemorrhage and to see how these differ from longer-term health outcomes in women who gave birth without EPH	Women who gave birth and had EPH in UK hospitals N=78	Case-control Population-based study	Pain, depression, anxiety, difficulty in sexual intercourse, severe tiredness, menopausal symptoms, flashbacks, difficulty in concentration
Liu 2021 (42)	Sweden Records from 2007-2014	Record-linkage using Swedish national birth register linked with national patient register and prescribed drug register	To examine the association between PPH and PPD	Women who had a live birth between 37 weeks and 42 weeks gestational age N=486,722	Retrospective cohort Population-based study	PPD

Study	Country Year of study	Setting	Aims	Population Sample size	Study design	Outcome(s) / Themes reported (for qualitative studies)
Michelet 2015 (47)	France 2012 using records from 2004-2011	Lariboisiere Hospital in France	To investigate the psychological impact of EPH	Women admitted with PPH who underwent EPH. N=869	Retrospective cohort Hospital-based study	PTSD, anxiety, PPD
Parry-Smith 2021a; Parry-Smith 2021b (52, 53)	UK (England) Records from 1990-2018	NHS hospitals in England	To examine long term risk of developing hypertension, CVD and mental ill health among women who had a PPH compared with women who did not	Women aged between 16-46 years who gave births in England N=42,327	Retrospective cohort Population-based study	Hypertension, CVD, PPD, depression, PTSD, anxiety
Ricbourg 2015 (16)	France 2010-2011	Lariboisiere Hospital in France	To investigate the psychological impact of PPH on women and their partners, including its impacts on PTSD, PPD, and the mother/child relationship	Women admitted with PPH N=40 women, 26 partners	Prospective cohort Hospital-based study	PTSD, PPD, mother and infant bonding

Study	Country Year of study	Setting	Aims	Population Sample size	Study design	Outcome(s) / Themes reported (for qualitative studies)
Sentilhes 2011 (48)	France 2009 using records from 1994-2007	University affiliated tertiary referral centre at Rouen University Hospital in France	To estimate the longer-term psychological impact of severe PPH	Women with PPH who underwent pelvic arterial embolization at the tertiary obstetric centre N=68	Retrospective cohort Hospital- based study	Psychological symptoms including negative memories
Thompson 2010; Thompson 2011 (12, 40)	Australia and New Zealand 2006-2007	17 hospitals across Australia and New Zealand	To explore the physical and psychological health outcomes and breastfeeding outcomes for women following PPH	Women who had primary PPH in Australia and New Zealand N=206	Prospective cohort Population-based study	Range of physical and psychological outcomes

Study	Country Year of study	Setting	Aims	Population Sample size	Study design	Outcome(s) / Themes reported (for qualitative studies)
Thurn 2018 (35)	Sweden 2016 using records from 1999-2002	Tertiary hospitals in Sweden	To investigate postpartum blood transfusion and PPH as potential risk factors for postpartum venous thromboembolism (VTE)	Women who gave birth in Stockholm N=82,376	Retrospective cohort Population-based study	VTE
Ukah 2020 (50)	Canada Records from 1989-2016	Registry containing all hospital discharges in Quebec, Canada	To investigate the association between obstetric haemorrhage and CVD up to three decades after birth	Women who gave birth in Quebec, Canada N=1,224,975	Retrospective cohort Population-based study	Hospitalisation for CVD
Van Steijn 2019; Van Steijn 2020 (36, 37)	Netherlands 2015-2017	8 hospitals in Amsterdam, Netherlands	To evaluate whether (i) severe PPH is a risk factor for PTSD in women and (ii) witnessing severe PPH is a risk factor for developing PTSD in partners	Women with \geq 2000 ml of blood loss and their partners in Netherlands N= 308 women, 185 partners	Prospective cohort Population-based study	PTSD

Study	Country Year of study	Setting	Aims	Population Sample size	Study design	Outcome(s) / Themes reported (for qualitative studies)
Van Stralen 2018 (49)	Netherlands 2012-2013	98 hospitals with a maternity unit in the Netherlands	To investigate quality of life and psychological impact of major obstetric haemorrhage on women and their partners	Women who experienced major obstetric haemorrhage and had hysterectomy and arterial embolization in the Netherlands N=58 women, 49 partners	Retrospective cohort Population-based study	General health status and psychological outcomes
Qualitative studies						
Briley, 2020 (38)	United Kingdom Not reported	Postnatal wards in two South London NHS Trusts	To investigate the experience of PPH, for women, birth partners, and health care professionals	Women who had experienced PPH and their partners N=9 women, 4 partners	Qualitative in-depth-interview study Maximum variation purposive sampling, semi-structured face to face interviews, thematic analysis	Knowledge specific to PPH, effective and appropriate responses to PPH, communication of risk factors, and quantifying blood loss

Study	Country Year of study	Setting	Aims	Population Sample size	Study design	Outcome(s) / Themes reported (for qualitative studies)
De La Cruz 2013 (43)	United States Not reported	Online/internet group	To explore women's peripartum experiences of EPH to make recommendations for care	EPH survivors from an English-speaking international internet support group N=15	Qualitative interview study using grounded theory Purposive sampling, semi-structured telephone interviews, constant comparative thematic analysis	Death/dying, pain, fear, bonding, numbness/delayed emotional response, communication
Dunning 2016 (46)	United Kingdom 2013-2014	One teaching hospital in London	To investigate the experiences of women who have had a primary PPH and the experiences of birth partners who witnessed the PPH	Women who had an estimated blood loss of ≥ 500 ml within 24 hours after vaginal birth and their partners who were present at the time of the PPH N=11 women, 6 partners	Qualitative interview study Maximum variation sampling, explanatory, semi-structured face to face interviews, thematic analysis	Control, communication, consequence (physical and psychological impact), competence

Study	Country Year of study	Setting	Aims	Population Sample size	Study design	Outcome(s) / Themes reported (for qualitative studies)
Elmir 2012a; Elmir 2012b; Elmir 2012c; Elmir 2014 (55-58)	Australia 2009	University campuses and public places such as pharmacies and child care centres	To describe women's experiences of having an EPH following a severe PPH including impacts on early mothering experiences and to explore the way that women find meaning and positivity in their lives	Women who had an EPH following a severe PPH. N=21	Qualitative interview study using naturalistic inquiry approach Purposive snowball sampling, semi-structured face to face/telephone/e-mail/internet interviews, thematic analysis using inductive method	Between life and death, loss of normality, early mothering experiences, moving forward
Knight 2016 (39)	United Kingdom 2013	111 UK hospitals with maternity units	To explore the longer-term health outcomes of women following an EPH to control haemorrhage	Women who had an EPH to control haemorrhage N=78	Mixed method study using open-ended survey questions Purposive sampling, free text questions at the end of follow-up questionnaire, thematic analysis	The staff providing care, organization / structure of care, longer-term impact of birth experiences

Study	Country Year of study	Setting	Aims	Population Sample size	Study design	Outcome(s) / Themes reported (for qualitative studies)
Snowdon 2012 (61)	United Kingdom 2006-2007	Two hospitals in UK	To explore women's and partners' experiences of severe PPH and its management	Women who had experienced severe PPH and their partners N=9 women, 6 partners	Qualitative interview study using interpretative phenomenological approach Purposive sampling, semi-structured face to face interviews, thematic analysis	Confidence vs fear, trust vs mistrust, satisfaction/ dissatisfaction, communication difficulties
Thompson, 2010; Thompson, 2011 (12, 41)	Australia and New Zealand 2006-2007	17 hospitals with maternity services in Australia and New Zealand	To identify sources of distress for women and gaps in service provision, particularly their informational needs	Women who had severe PPH N=206	Mixed-method study using open-ended survey questions Purposive sampling, open-ended self- completed survey questions, thematic analysis	Adequacy of care, emotional responses to the experience, implications for the future, and concerns for their baby

Study	Country Year of study	Setting	Aims	Population Sample size	Study design	Outcome(s) / Themes reported (for qualitative studies)
Woiski 2015 (59)	Netherlands, Not reported	3 University Hospitals in Netherlands, and childbirth forums on internet	To identify obstacles and facilitators for providing high quality PPH care, from both patient and professional perspectives	Women who gave birth and lost more than 1000 ml of blood after birth N=12	Qualitative interview study Purposive maximum variation sampling, semi-structured face to face/ telephone interviews with patients, framework analysis	Influencing factors from patient perspectives, professional factors and organizational factors

145 **Quantitative studies**

146 **Risk of bias assessment**

147 The results of risk of bias assessment for quantitative studies and quantitative components of
 148 mixed-methods studies are presented in **Table 3**. Most included studies (n=15) had a low risk of
 149 bias (i.e., low risk in most domains assessed). However, four studies had a high risk of bias in
 150 two or more areas of domains assessed, with the main sources of potential bias being participant
 151 selection, outcome measurement and incomplete data. (44, 47, 49, 54)

152 **Table 3 Risk of bias for quantitative studies using ROBANS (24)**

Study	Participant selection	Exposure measurement	Confounding	Outcome measurement	Incomplete data	Selective reporting
Chauleur 2008 (8)	+	+	+	+	?	+
Chessman 2018 (32)	+	+	+	+	?	+
Cho 2021 (51)	+	+	+	+	+	+
De la Cruz 2016 (44)	-	?	+	-	+	+
Drayton 2016 (33)	+	+	+	-	+	+
Eckerdal 2016 (34)	+	+	+	+	?	+
Eggel 2021; Bernasconi 2021 (54, 60)	+	+	+	-	-	+
Feinberg 2005 (45)	+	+	+	+	-	+
Knight 2016 (39)	+	+	+	+	-	+
Liu 2021 (42)	+	+	+	+	+	+
Michelet 2015 (47)	-	+	-	-	+	+

Parry-Smith 2021a; Parry-Smith 2021b (52, 53)						
Ricbourg 2015 (16)						
Sentilhes 2011 (48)						
Thompson 2010; Thompson 2011(12, 40)						
Thurn 2018 (35)						
Ukah 2020 (50)						
Van Steijn 2019; Van Steijn 2020 (36, 37)						
Van Stralen 2018 (49)						
	Low risk of bias , Unclear, High risk of bias					

153 **Results of quantitative synthesis**

154 Quantitative findings are summarised separately for physical and psychological health outcomes

155 for women and their partners in Table 4.

156 **Table 4. Physical and psychological health outcomes investigated by included quantitative studies**

Study	Sample size (N)	Time since PPH	Outcome	Outcome assessment	Percentage or median/mean (IQR/SD) PPH	Percentage or median/mean (IQR/SD) No PPH	Risk ratio (RR) or Odds ratio (OR) or Hazard ratio (HR) (95% CI; p value)
Physical health outcomes							
Thompson 2011 (40)	206	2 months	General Health	Median SF36	75 (60–80)	NC	NC
		4 months			72.5 (60–80)	NC	NC
Van Stralen 2018 (49)	58	6-9 years		Mean SF36	70 (23.7)	71.5 SF36 reference group	NR (p=0.23)
Drayton 2016 (33)	40,149	Hospital Discharge		Perinatal database	81% (PPH only) 71% (PPH with transfusion)	83%	NR
Chessman 2018 (32)	15,451	Hospital discharge	Exclusive breastfeeding	Perinatal database	67% (Hb >90g/dl)	79%	NR
					71% (Hb 70-90g/dl)		
					65% (Hb <70 g/dl)		
Knight 2016 (39)	78	7 days		Health questionnaire	39%	60%	NR (p=0.089)
		1.5 months			14%	40%	NR (p=0.018)
		6 months			12%	19%	NR (p=0.519)
Thompson 2010 (12)	206	7 days		Health questionnaire	63%	NC	NC
		2 months			58%	NC	NC
		4 months			45%	NC	NC
Chauleur 2008 (8)	32,463	1.5 months		VTE	Colour duplex ultrasound	NR	NR

Study	Sample size (N)	Time since PPH	Outcome	Outcome assessment	Percentage or median/mean (IQR/SD) PPH	Percentage or median/mean (IQR/SD) No PPH	Risk ratio (RR) or Odds ratio (OR) or Hazard ratio (HR) (95% CI; p value)
Thurn 2018 (35)	82,376	1.5 months		ICD 10 diagnostic codes	NR	NR	aRR=5.3 (1.6, 17; p=0.005)
							OR=2.85 (1.47, 1.55; p=0.001)
							aOR=2.7 (1.4, 5.2)
							aOR=1.4 (0.5, 3.5) (Further adjusted for blood transfusion)
Cho 2021 (51)	150,381	Up to 8 years	CVD	ICD 10 diagnostic codes	4.5% (PPH) 6.9% (PPH with transfusion)	4.6%	aHR=0.96 (0.86, 1.07) (PPH) aHR=1.60 (1.25, 2.06) (PPH with transfusion)
Ukah 2020 (50)	1,224,975	Up to 29 years		ICD 10 diagnostic codes	NR	NR	aHR=1.00 (0.95, 1.06) (PPH) aHR=1.38 (1.13, 1.68) (PPH with transfusion)
Parry-Smith 2021a (52)	42,327	Up to 8 years		Diagnostic codes from English primary care database	0.16%	0.18%	aHR=0.86 (0.52, 1.43; p=0.57)
Feinberg 2005 (45)	109	12-40 months		Sheehan's Syndrome	Two or more symptoms in questionnaire	25%	7%
Knight 2016 (39)	78	12 months	Difficulty in sexual intercourse	Health questionnaire	27%	6%	NR
		8.1 years			13%	8%	NR

Study	Sample size (N)	Time since PPH	Outcome	Outcome assessment	Percentage or median/mean (IQR/SD) PPH	Percentage or median/mean (IQR/SD) No PPH	Risk ratio (RR) or Odds ratio (OR) or Hazard ratio (HR) (95% CI; p value)
Eggel 2021 (54)	252	8.1 years	Sexual dysfunction	Mean FSFI score	23.8 (0.4)	23.2 (0.6)	NR
Knight 2016 (39)	78	12 months	Menopausal symptoms	Health questionnaire	17%	0%	NR
		8.1 years			33%	13%	NR
Knight 2016 (39)	78	12 months	Pain	Health questionnaire	43%	19%	NR
		8.1 years			10%	10%	NR
Knight 2016 (39)	78	12 months	Severe tiredness and Fatigue	Health questionnaire	33%	13%	NR
		8.1 years			17%	21%	NR
Thompson 2011 (40)	206	2 months	Postpartum fatigue	Median Milligan score	17 (15-18)	NC	NC
		4 months			15 (14-17)	NC	NC
Thompson 2011 (40)	206	2 months	Mastitis	Health questionnaire	22%	NC	NC
		4 months			14%	NC	NC
Van Stralen 2018 (49)	58	6-9 years	Patient Perception-Consequences	Mean B-IPQ	7.5 (2.6)	NC	NC
Eggel 2021 (54)	252	8.1 years	Amenorrhoea	Health questionnaire	12%	14%	NR
			Dysmenorrhoea		22%	25%	NR
			Spotting		7%	7%	NR
Psychological health outcomes							
Michelet 2015 (47)	869	26.5 months	Anxiety	Median HADS	10 (8-12)	NC	NC
Thompson 2011 (40)	206	2 months		Median STAI scale	10 (9-11)	NC	NC
		4 months		(State subscale)	10 (9-11)	NC	NC

Study	Sample size (N)	Time since PPH	Outcome	Outcome assessment	Percentage or median/mean (IQR/SD) PPH	Percentage or median/mean (IQR/SD) No PPH	Risk ratio (RR) or Odds ratio (OR) or Hazard ratio (HR) (95% CI; p value)	
Knight 2016 (39)	78	12 months		Health and wellbeing questionnaire	27%	10%	NR	
		8.1 years			17%	17%	NR	
Parry-Smith 2021b (53)	42,327	Up to 8 years		Diagnostic codes from English primary care database	5%	5%	aHR=0.99 (0.90, 1.09; p=0.881)	
Michelet 2015 (47)	869	26.5months	Postpartum depression / Depression	Median HADS scale	6 (2-8)	NC	NC	
Knight 2016 (39)	78	12 months		Health and wellbeing questionnaire	33%	8%	NR	
		8.1 years		13%	19%	NR		
Delacruz 2016 (44)	409	6 months		EPDS (score ≥12)	6%	9%	NR	
		36 months		0%	4%	NR		
Eckerdal 2016 (34)	446	1.5 months		EPDS (score ≥12)	14%	10%	aOR=1.81 (0.91, 3.57)	
Ricbourg 2015 (16)	40	1 months		EPDS (score ≥12)	35%	15%	NR	
		3 months		11%	0%	NR		
Thompson 2011 (40)	206	2 months		EPDS (score ≥12)	11%	NC	NC	
		4 months		13%	NC	NC		
Liu 2021 (42)	486,722	12 months			ICD-10 codes for depression or PPD, or prescription record of antidepressants	NR	NR	aHR=1.08 (0.99, 1.17)
Parry-Smith 2021b (53)	42,327	Up to 8 years			Diagnostic codes from English primary care database	5.34%	4.75%	aHR=1.10 (1.01, 1.21; p=0.037)
Bernasconi 2021 (60)	142	8 years		MINI score	4.1 (0.5)	2.7 (0.3)	NR, (p=0.015)	
De la cruz 2016 (44)	409	6 months	Post-traumatic stress disorder	PSS score (≥15)	9%	1%	aOR=2.46 (1.92, 3.16)	
		36 months		PSS score (≥15)	24%	5%	aOR=1.90 (1.57, 2.30)	

Study	Sample size (N)	Time since PPH	Outcome	Outcome assessment	Percentage or median/mean (IQR/SD) PPH	Percentage or median/mean (IQR/SD) No PPH	Risk ratio (RR) or Odds ratio (OR) or Hazard ratio (HR) (95% CI; p value)
Michelet 2015 (47)	869	26.5 months	Post-traumatic stress disorder	IESR (≥ 30)	64%	NC	NC
Ricbourg 2015 (16)	40	1 months		IESR (≥ 30)	45%	21%	NR
		3 months			24%	13%	NR
Thompson 2011 (40)	206	2 months		PCL (>44)	5%	NC	NC
		4 months			3%	NC	NC
Van Steijn 2020 (37)	308	1-1.5 months		PCL-5 (≥ 32)	7%	1.7%	RR=4.45 (0.99, 20.06; p=0.035)
		1.5 months		CAPS-5	5.60%	0%	NR, (p=0.007)
Parry-Smith 2021b (53)	42,327	12 months		Diagnostic codes from English primary care database	NR	NR	aHR=3.44 (1.31, 9.03)
		Up to 8 years			0.20%	0.17%	aHR=1.17 (0.73, 1.89; p=0.511)
Bernasconi 2021 (60)	142	8 years		Mother-infant bonding	TSQ (≥ 7)	3.5 (0.4) 22.2%	2.0 (0.2) 4.8%
Ricbourg 2015 (16)	40	1 months	Median Mother Infant Bonding Scale (MIBS)		1 (0-2)	0 (0-2)	NR
		3 months			1 (0-1)	0 (0-2)	NR
Thompson 2011 (40)	206	2 months	General mental health	Median SF36	80 (70-80)	NC	NC
		4 months		80 (70-90)	NC	NC	
Van Stralen 2018 (49)	58	6-9 years		Mean SF36	75 (17.4)	75.5	NR (p=0.85)
Knight 2016 (39)	78	12 months		Difficulty in concentrating	Health questionnaire	23%	2%
		8.1 years	23%			17%	NR
Knight 2016 (39)	78	12 months	Flashbacks to labour or birth	Health questionnaire	33%	6%	NR
		8.1 years			17%	2%	NR
Sentilhes 2011 (48)	68	1-15 years	Negative memories of PPH	Survey question	68%	NC	NC

Study	Sample size (N)	Time since PPH	Outcome	Outcome assessment	Percentage or median/mean (IQR/SD) PPH	Percentage or median/mean (IQR/SD) No PPH	Risk ratio (RR) or Odds ratio (OR) or Hazard ratio (HR) (95% CI; p value)
Sentilhes 2011 (48)		1-15 years	Suggestion by hospital staff of a visit to psychologist	Survey question	66%	NC	NC

aRR= adjusted risk ratio, **aOR**= adjusted odds ratio, **aHR**=adjusted hazard ratio
NC= No comparison group, **NR**= Not reported
Outcome measurements:
SF 36 (Short form health survey): Scores 0-100 with a higher score reflecting better outcomes
Milligan score: Scores 10–14 ‘no/low’ postpartum fatigue, 15–20 ‘medium’, and 21–40 ‘high’ postpartum fatigue
B-IPQ (Brief Illness Perception Questionnaire): Scores 0-80 with higher scores reflecting a greater perceived burden of a disease and lower scores reflecting better outcomes
FSFI (Female Sexual Function Index Questionnaire): Scores 2-36 with higher scores indicating high sexual activity and satisfaction, and lower scores indicating sexual difficulties or low sexual activity
HADS (Hospital Anxiety and Depression Scale): Scores 0-21 with 0-7 normal, 8-10 borderline abnormal, 11-21- abnormal
STAI (Spielberger State-Trait Anxiety Inventory): Scores 6-24 with >12 indicating high anxiety
EPDS (Edinburgh Postnatal Depression Scale): Scores 0-30 with >12 indicating postnatal depression.
MINI (Mini International Neuropsychiatric Interview): Scores 0-10
PSS Scale (Post-traumatic stress disorder symptom scale): 17 item checklist with ≥ 15 indicating PTSD
IESR Scale (Impact of Events Scale): Scores 0-88 with ≥ 30 indicating PTSD
PCL scale (17 item checklist): Scores 17-85 with >44 indicating PTSD
PCL-5 score (20 item self-report tool): Scores 0-80 with ≥ 32 indicating PTSD
CAPS-5 score (Gold standard to diagnose PTSD using criterion A, B-E, F, G): Having at least one B Criterion symptom, one C Criterion symptom, two D Criterion symptoms and two E Criterion symptoms indicates PTSD.
TSQ (Trauma Screening Questionnaire): Score 0-10 with ≥ 7 indicating PTSD
Mother Infant Bonding Scale: Scores 0-27 with a high score indicating a disorder related to mother-child bonding.

157 **Physical health outcomes for women**

158 Two studies reported on general health status in women following PPH. (40, 49) While the first
159 found a decline in general health status at two months and four months following the PPH, (40)
160 the second found that there was no difference in SF36 score for women following PPH compared
161 to the SF36 reference group values. (49) Neither study collected data from an appropriate
162 comparison group.

163 All four studies that explored breastfeeding as an outcome reported that there was no significant
164 difference in the proportion of exclusive breastfeeding at hospital discharge among mothers who
165 had a PPH, compared with mothers who did not have a PPH. (12, 32, 33, 39) However, the
166 proportion of exclusive breastfeeding at hospital discharge (and at six weeks and six months after
167 birth) was slightly lower among mothers who received a blood transfusion, had a low
168 Haemoglobin level or an EPH following PPH, compared with women who did not have a PPH in
169 three studies. (32, 33, 39) One study did not have a comparison group of women who did not
170 have a PPH. (12)

171 Two studies explored the potential association between PPH and venous thromboembolism
172 (VTE) at six weeks postpartum. (8, 35) In one study, severe PPH was strongly associated with
173 the occurrence of VTE in the first six weeks after birth after adjusting for caesarean section and
174 low molecular weight heparin use after birth (OR 5.3, 95% CI: 1.6-17, p=0.005). (8) In the
175 second, the authors concluded that PPH was not a major risk factor for VTE unless there was an
176 associated blood transfusion following PPH. (35)

177 Three studies explored the potential association between PPH and the risk of CVD up to 29 years
178 after birth. (50-52) Two studies suggested that women with PPH requiring blood transfusion had

179 a higher risk of hospitalization for CVD (aHR 1.60, 95% CI 1.25-2.06 and aHR 1.38, 95% CI
180 1.13, 1.68) compared with women without PPH, after adjusting for potential confounders. (50,
181 51) However, the third study did not find an association between PPH and hypertension or CVD.
182 (aHR 1.03, 95% CI 0.87-1.22) (52)

183 Other physical outcomes investigated, each addressed by one study, included Sheehan's
184 syndrome (damage to the pituitary gland following major haemorrhage), (45) difficulty in sexual
185 intercourse, (39) menopausal symptoms, (39) menstrual disturbances, (54) pain, severe tiredness
186 (39) and fatigue, and mastitis. (12) A higher proportion of women reported these symptoms in
187 severe PPH or EPH groups compared to women who did not have a PPH or EPH.

188 **Psychological health outcomes for women**

189 Four studies reported the prevalence of anxiety following PPH at different time points. (39, 40,
190 47, 53). The exposed group in these studies was women who had a PPH or severe PPH and the
191 follow-up time ranged from two months to eight years after birth. The score for the Hospital
192 Anxiety and Depression Scale (HADS) in the first study indicated moderate anxiety among
193 women who had EPH at median follow-up time of 26.5 months after birth. (47) The second
194 study showed there was mild anxiety among women who had a PPH at both two month and four
195 month follow-up times. (40) Both of these studies did not have comparison groups. The results
196 from the third study indicated women who had hysterectomy were more likely to report
197 anxiety/nerves (27%) compared with women who did not have a PPH (10%) in the first 12
198 months after birth. Another study, with a follow-up duration of up to 8 years, did not find any
199 association between PPH and anxiety. (53)

200 Nine studies explored potential associations between PPH and postpartum depression (PPD) or
201 depression. (16, 34, 39, 40, 42, 44, 47, 53, 60) with the follow-up time ranging from one month
202 to eight years after birth. Taken together, the findings of these studies were inconclusive,
203 suggesting different directions of association between PPH and depression. Two studies reported
204 a slightly higher prevalence of depression in the PPH group compared with the non-PPH group
205 at one, three and 12 months after birth. (16, 34) and another two studies with a follow-up of up to
206 8 years found a higher mean depression score among women who had UAE following PPH, (60)
207 and a 10% increased risk of developing PPD among women who had a PPH compared to women
208 who did not have a PPH after adjusting for age, BMI, smoking, ethnicity, birthweight and
209 delivery method (aHR 1.10, 95% CI 1.01-1.21, p 0.037). (53) The results from multivariable
210 regression models from two further studies suggested no statistically significant association
211 between PPH and PPD at six weeks and 12 months after birth. (34, 42), while a further study
212 reported a slightly higher prevalence of depression in the non-PPH group (6% in PPH vs 9% in
213 non-PPH) at six months after birth. (44) Two studies did not have comparison groups, but one
214 reported a median HAD score of 6 (normal) while the other reported 11% and 13% of women
215 who had a PPH and/or EPH had symptoms of postpartum depression at two and four months
216 after birth. (40, 47)

217 Seven studies explored the association between PPH and post-traumatic stress disorder (PTSD)
218 at different time points ranging from 1 month to 8 years after birth, indicating a potential
219 association between PPH and PTSD. (16, 37, 40, 44, 47, 53, 60) Five studies found a higher risk
220 of PTSD among women who had a PPH and/or UAE or EPH compared with women who did not
221 experience a PPH. (16, 37, 44, 53, 60) Four of these studies also reported adjusted odds (aOR),
222 risk ratios (aRR) or aHR and these studies suggested a significant association between PPH and

223 PTSD up to eight years after birth [aRR=4.45 (1.5 month); aRR=2.46 (6 months); aHR= 3.44
224 (within 12 months); aRR=1.90 (36 months); aOR=5.1 (8 years)]. (37, 44, 53, 60) The other two
225 studies did not have comparison groups, but reported respectively 5% prevalence of PTSD
226 among women who had a PPH at two months after birth (40) and 64% prevalence of PTSD
227 among women who had an EPH at the median follow-up of 26.5 months. (47)

228 Other psychological health outcomes investigated included mother-infant bonding, (16) general
229 mental health score, (40, 49) difficulty in concentrating, flashbacks, (39) negative memories of
230 PPH, and suggestion by hospital staff of a visit to psychologist. (48) Results indicated that a
231 higher proportion of women in severe PPH or EPH groups reported having difficulties in
232 concentrations and flashbacks compared with women who did not have a PPH or an EPH.

233 **Physical and psychological health outcomes for partners**





234 Three quantitative studies reported on the prevalence of psychological health outcomes among
235 partners of women who had experienced PPH. (36, 49, 60) The first study reported that there was
236 no strong association between PTSD diagnosis and witnessing PPH among partners of women
237 according to a self-report questionnaire. (36) The second study explored the quality of life for
238 partners of women who had experienced severe PPH using SF-36 general health survey tools.
239 (49) The results indicated that partners of women who had severe PPH had better scores overall
240 compared with the reference group's scores from myocardial infarct and systemic lupus
241 erythematosus patients. In contrast to these studies, the third study reported that there was a
242 higher prevalence of depression and PTSD among partners of women who had PPH compared to
243 partners of women without PPH (11.5% versus 1.5%, $p=0.019$). (60)

244 **Qualitative studies**

245 **Quality assessment**

246 The results of quality assessment for the eight included qualitative studies and qualitative
247 components of mixed-methods studies are presented in **Table 5**. All but one of the studies had a
248 response of “yes” to at least seven of the questions in the CASP tool, with the remaining study,
249 having a “partially” response for three questions. (39) Only two of eight studies (46, 61) reported
250 the relationship between researchers and participants clearly (i.e., Q6), so it was not possible to
251 assess whether the roles of researchers had a potential impact on the research study and
252 interpretation of findings.

253 Table 5. Quality assessment for qualitative studies using CASP tool (25)

Study	1. Clear statement of aims	2. Qualitative methodology appropriate?	3. Research design appropriate for the aims?	4. Recruitment strategy appropriate?	5. Data Collection addressed the research issue?	6. Relationship between researcher and participants adequately considered?	7. Ethical consideration	8. Data analysis rigorous?	9. A clear statement of findings?	10. How valuable is the research?
Briley 2020 (38)	+	+	+	+	+	?	+	+	+	Moderate
De La Cruz 2013 (43)	+	+	+	+	+	?	+	+	+	Moderate
Dunning 2016 (46)	+	+	+	+	+	+	+	+	+	High
Elmir 2012a; Elmir 2012b; Elmir 2012c; Elmir 2014 (55-58)	+	+	+	+	+	?	+		+	Moderate
Knight 2016 (39)	+	+	+	+	+	?	+	+	+	Moderate
Snowdon 2012 (61)	+	+	+	+	+	+	+	+	+	High
Thompson 2010; Thompson 2011 (12, 41)	+	+	+	+	+	?	+	+	+	High
Woiski 2015 (12, 41, 59)	+	+	+	+	+	?	+	+	+	Low
Items 1-9 scored as Yes  , Partially  , Can't tell  , No  Item 10 scored as low, moderate, or high value										

254 **Results of qualitative synthesis**

255 Analytical themes are presented under four headings: physical impact, psychological impact,
256 psychosocial impact, and experiences of care. **Fig 2** presents the overall structure of the themes
257 arising from the synthesis, organized into four key time periods: during the emergency,
258 immediate hospital recovery, postnatal period up to six months after birth, and longer-term.

259 **Fig 2. Summary of analytic themes from thematic synthesis of qualitative studies (n=8)**

260 **Women's experiences**

261 **Physical impact**

262 *Painful recovery*

263 This theme was contributed to by five studies and encompasses women's experiences of pain at
264 the time of the PPH and for up to a year afterwards. (39, 41, 43, 46, 56) Physical limitations
265 during the immediate postnatal period and beyond were consistently reported by women across
266 five studies. (39, 41, 43, 46, 56) Their descriptions indicated that pain prevented them from
267 performing simple day to day activities such as walking and cooking dinner. (46, 56) One
268 particular concern raised by women was that they were not able to take proper care of their
269 babies as they were not fully recovered from pain. (41) In the longer-term, one woman who
270 experienced an EPH reported that it took a year for her to physically recover. (39)

271 *Obstacles to breastfeeding*

272 This theme was contributed to by three studies. (12, 43, 55) During their immediate hospital
273 recovery, women reflected that their initial separation from their baby when they were admitted

274 to intensive care was one of the key barriers to initiating breastfeeding. (12, 55) Other key
275 obstacles reported by women included pain, fatigue, limited mobility and posture problems, and
276 delayed milk production. (12, 55) Women also talked about how their efforts and willingness to
277 breastfeed after PPH were not sufficiently supported by health care professionals, including for
278 example being told that they should not be bothered to breastfeed after a traumatic childbirth (12,
279 43)

280 **Psychological impact**

281 *Brush with death*

282 This theme was contributed to by three studies and encompasses women's acute psychological
283 distress as a result of an unexpected encounter with an emerging life-threatening event. (41, 43,
284 56)

285 For many women, being so close to death was traumatic and frightening, particularly when
286 women did not anticipate that death was a possibility. (41, 43, 56) Their, overwhelmingly
287 negative, emotional responses to this were described as varying from "shock", to having a
288 "major anxiety attack" or having an "out of body experience". (41, 43, 56) Elmir et al. (2012)
289 also highlighted that women were afraid of "leaving their young children behind to the
290 unknown" and not knowing "whether or not they would cope without a mother".

291 *Symptoms of post-traumatic stress and long term recovery*

292 This theme was contributed to by five studies and describes women's experiences of post-
293 traumatic stress symptoms (PTSD) following PPH. (39, 41, 43, 46, 56, 62) PTSD is characterised
294 by four key symptoms: reliving experiences, avoidance of reminders of trauma, negative
295 thoughts and mood, and hyperarousal. (14)

296 Women described re-experiencing their traumatic birth in the form of vivid memories,
297 flashbacks and nightmares. (41, 56) Triggers for flashbacks included seeing other pregnant
298 women, being in a hospital environment or seeing stories in the media about giving birth. (56)
299 Women also talked about avoiding reminders of trauma. One woman, for example, said that she
300 avoided hospital environments. (56) For some women, reported in two studies, these symptoms
301 were severe, including having suicidal thoughts. (39, 56)
302 While the overwhelming majority of women's observations from most studies were negative,
303 women from one study reflected on being able to take something positive from their experiences,
304 talking about how it helped them find some perspectives and resilience. (62)

305 **Psychosocial impact**

306 *Interrupted bonding*

307 This theme was contributed to by three studies and reflects women's perceptions of bonding with
308 their infants and their role as a mother during their recovery in hospital and in the postnatal
309 period. (12, 43, 55) This theme is interlinked with the theme: obstacles to breastfeeding.
310 Women reported feeling that bonding with their babies was disrupted by physical separation
311 because of their admission to intensive care or their babies' admission to neonatal care. Women
312 talked about having concerns for their babies' wellbeing and not knowing if they were okay. (12,
313 55) Women reflected that this initial separation prevented them from holding, touching and
314 breastfeeding their babies, and many felt that this was a key barrier establishing a close
315 relationship with their babies.
316 Women's reports in these studies showed that this initial interrupted bonding could continue in
317 the weeks following hospital discharge for mothers, some of whom experienced extreme

318 tiredness, continuing for up to a year after childbirth. Some women in one study talked about
319 feeling “upset” and “guilty” when their caring responsibilities were taken away by their family
320 members and partners. (55)

321 *Loss of future family*

322 This theme was contributed by two studies and encompasses women’s feelings of loss in relation
323 to future childbearing following PPH. (39, 41) At four months after childbirth, some women
324 talked about feeling worried about having a PPH in any future births and losing their confidence
325 in their ability to go through birth again. (41) Traumatic birth experiences convinced some
326 women not to have more children. (41) Women who had a hysterectomy following PPH talked
327 about their regret at not being able to have more children. (39)

328 *Relationship stress with their partners*

329 This theme was contributed to by three studies and reflects women’s perceptions of their
330 relationships with their partner following PPH and/or hysterectomy, in the immediate postnatal
331 period and up to a year after birth. (39, 46, 57) In one study, one woman who had a PPH
332 described having a relationship breakdown with her partner following a traumatic birth. (46)
333 Women who had a hysterectomy following PPH talked about sexual tension and intimacy issues
334 with their partners. (39, 57) For instance, a woman in one study mentioned loss of libido and
335 avoidance of physical contact with her partner, (39) with this lack of sexual desire and “fear for
336 intimacy” also being echoed by women in a second study. Women also reported developing
337 insecurities over time causing a strain in their marriage. (57)

338

339

340 ***Loss of female identity***

341 This theme was contributed to by two studies and covers women's experiences of hysterectomy
342 as a consequence of a PPH. (39, 57) Women's accounts reflected that the memories lingered
343 with them for many years and this changed how they felt about themselves as a woman. (57) For
344 some women the lack of uterus was associated with feelings of incompleteness and emptiness.
345 (57) This was echoed by women in the second study as they talked about how hysterectomy
346 made them feel like a different person and not like a "complete woman". (39)

347 **Experiences of care**

348 ***Adequacy of care***

349 This theme was contributed to by six studies. Both positive and negative experiences of care
350 were reported by women, but all demonstrated the crucial role of health care professionals
351 helping women feel calm and supported in an emergency when they established mutual trust.
352 (38, 39, 41, 43, 46, 59) Some women reflected that they appreciated it when the doctors and
353 midwives appeared confident and calm, and took time to reassure them afterwards. (38, 46)
354 Others described feeling unsupported when midwives were "impatient" towards them, "too
355 busy" to explain things or did not "acknowledge" them while providing care. Women's accounts
356 also showed how the care environment could affect their overall experiences. One woman, for
357 example, reported that she was very pleased to be in the critical care unit compared to a busy
358 ward. (39)

359 Insufficient follow-up care and limited resources for psychological health during the postnatal
360 period were identified in four studies. (38, 39, 41, 43) Women's accounts indicated a need for
361 psychological counselling and follow-up debrief during the postnatal period. (39, 41, 43) Some

362 women also mentioned that patient information websites and support for breastfeeding would be
363 helpful for them. (41, 59)

364 *Communication gaps and information needs*

365 This theme was contributed to by six studies and describes women's information and
366 communication needs and preferences, including their information seeking behaviours. (38, 39,
367 41, 43, 46, 59, 61) It is important to provide women who had experienced PPH a thorough
368 explanation and clear communication about their condition, treatments received including
369 hysterectomy and its potential consequences. (39) A lack of information about their current
370 health condition could worsen psychological distress for women and their partners. (43, 61)

371 During the emergency, women appreciated receiving a full explanation and information about
372 their hysterectomy and the indications for it before they consented to have an EPH. Women from
373 five studies consistently reported that they would have liked to know about available treatment
374 options and consequences of PPH, including recovery time after they had experienced PPH. (38,
375 41, 43, 46, 61)

376 During the immediate recovery period, women's accounts demonstrated that most women were
377 unaware of excessive blood loss. (38, 46) They wanted information about what had happened to
378 them, their current location (e.g. ICU or postnatal ward), and the condition of their babies in
379 simple terms without using confusing technical words. (41, 43, 61) Another communication gap
380 reported by women who had a hysterectomy was that nurses were not aware of their complicated
381 birth and women found it "unsettling" when they had to explain to that they did not have a uterus
382 for examination, and had no need for contraception. (43)

383 Women’s information needs extended into the postnatal period, and included communication
384 about the implications of PPH and recovery time, impacts on breastfeeding, and available
385 support services. (41, 43, 46, 59)

386 **Partners’ experiences**

387 Three qualitative studies also included partners of women as participants. (38, 46, 61) Partners’
388 accounts showed that, while women were facing life and death situations, partners also
389 experienced psychological distress from witnessing this. (46, 61) One partner described himself
390 as “desperate” at being left alone with his baby without support or communication about what
391 had happened to the baby’s mother. (61) This was also echoed by others as “distressing”, and
392 one partner reported seeking help from the GP and counselling services in the months after
393 witnessing such a traumatic birth. (46)

394 During the emergency and the immediate recovery period, partners appreciated it when doctors
395 took time to reassure them and did not find it helpful when health care staff appeared to show
396 panic or went quiet. (38) In terms of information and communication needs and preferences
397 around the time of the PPH, (38, 46, 61) partners wanted more information about available
398 treatment options and potential implications while waiting to find out what had happened. (46,
399 61) They reported feeling frustrated when they were being asked to leave the emergency room
400 without being fully informed about what was happening. (46, 61) Some suggested that an
401 information sheet about PPH would be helpful for partners and family members to be able to
402 learn more about the situation. (61)

403 **Discussion**

404 The main aim of this review was to identify and summarise the available quantitative and
405 qualitative evidence about longer-term physical, psychological and psychosocial health outcomes
406 for women and their partners following primary PPH in high-income countries. We included 24
407 studies with a mix of methodological quality ranging from weak to strong. Follow-up time
408 ranged from hospital discharge following PPH to 29 years. Among these, nine studies explored
409 the longer-term impacts of primary PPH after five years, and just two quantitative studies (48,
410 50) and one qualitative study (55-58) had a follow-up period longer than ten years. Therefore,
411 there is limited research about longer-term health outcomes following primary PPH compared
412 with the many studies that have investigated acute morbidity and health outcomes related to
413 primary PPH. (7)

414 Our review provides evidence that women with PPH are more likely to have persistent physical
415 and psychological health problems during the postpartum period compared with women who
416 have not had a PPH. These differences were more pronounced for women who had some
417 indication of severe PPH such as a blood transfusion, or an EPH. The quantitative findings
418 suggest that women with severe PPH are more likely to have a long recovery time, low general
419 health score, symptoms of tiredness/fatigue, and are less likely to exclusively breastfeed. These
420 quantitative findings are consistent with women's descriptions of their physical functioning and
421 limitations in performing simple day-to-day activities and women's experiences of challenges
422 around initiating and maintaining breastfeeding from qualitative studies. Our review's findings
423 build upon the findings of a previous review conducted in 2016 by including updated literature
424 and by synthesizing available qualitative evidence on women's and partners' experiences of PPH
425 illuminating the different directions and size of effects in quantitative studies. (14)

426 A survey conducted among 372 women who had major obstetric haemorrhage in the
427 Netherlands, in which PPH was not distinguished from an antepartum haemorrhage, indicated
428 that 28% of the participants experienced longer-term negative impacts up to six years after birth.
429 (63) Major obstetric haemorrhage was found to have a negative impact on the partner and family,
430 and on their work, and 25% of these women reported having an additional absence from work in
431 addition to maternity leave. (63)

432 Bearing in mind the limitations identified in terms of the quantity and quality of the evidence,
433 our review indicates that some longer-term physical and psychological health outcomes after
434 PPH may be severe and extended several years after childbirth. Included quantitative studies
435 indicated that the prevalence of PTSD symptoms ranged from 3% to 64% among women with
436 PPH. Women's descriptions from qualitative studies, which included key symptoms of PTSD
437 such as flashbacks and nightmares of having PPH, were supportive of these quantitative findings.
438 These PTSD symptoms were commonly present among women who had severe PPH and lasted
439 for years after birth. This finding is supported by qualitative studies which concluded that
440 childbirth related PTSD can have severe and lasting effects on women and their relationships
441 with family. (64-66) In the general population, the mean prevalence of postpartum PTSD is 4%-
442 6% and may be higher, with a mean prevalence of 19% among women with physical
443 complications and mental health problems such as depression. (67, 68) While our review's
444 findings are indicative of a higher prevalence of PTSD symptoms following primary PPH, (16,
445 37, 44, 60) more evidence is required before concluding a causal association between PPH and
446 PTSD. (18)

447 Our review included three studies which explored the association between PPH and CVD, and
448 the findings suggested that women who had a severe PPH requiring a transfusion were more

449 likely to develop CVD in later life. Prior studies have suggested that women with severe PPH are
450 at a higher risk of acute heart failure and myocardial ischaemia which results from haemorrhagic
451 shock. (69, 70) Therefore, there is a potential that this acute failure has implications for the
452 cardiovascular system which may put women at higher risk of developing subsequent CVD in
453 later life. Other obstetric complications, including pre-eclampsia, preterm birth, maternal
454 anaemia, and gestational diabetes, have also been shown to increase the subsequent risk of
455 developing CVD. (71-74) It is therefore important to consider women's obstetric history before
456 reaching conclusions about a casual association between PPH and CVD.

457 Qualitative evidence included in this review indicated that whether women received adequate
458 support during the immediate recovery and postnatal period may affect their acute psychological
459 wellbeing and have an impact on longer-term psychological health outcomes after PPH. For
460 example, women's accounts suggested that they received insufficient follow-up care and had
461 unmet needs for breastfeeding and psychological health services. Health care professionals and
462 family members were crucial in helping women feel calm and supported. This is supported by
463 qualitative studies conducted in Australia which have described how care providers' interactions
464 and postnatal support from partners can affect women's experiences of trauma during childbirth.
465 (75-77)

466 We found very limited evidence about outcomes for partners after PPH, with only three
467 quantitative studies without comparison groups. The evidence from one study suggested an
468 increased risk of PTSD among partners who witnessed PPH while another two studies did not
469 indicate any strong associations between PTSD or general health status. However, partners'
470 accounts in qualitative studies indicated that they experienced acute psychological stress and
471 anxiety due to inadequate information when women were in the emergency room, and some of

472 them required counselling services after witnessing PPH. PPH may also have an impact on
473 relationships between women and their partners. Witnessing their partner having PPH and
474 having relationship difficulties may affect partner's psychological wellbeing beyond the
475 postnatal period. Qualitative studies into fathers' experiences who witnessed birth trauma have
476 identified that this can affect their mental health and relationships with friends and family long
477 into the postnatal period. (78, 79) Studies have also found that men are more likely to cope with
478 these traumatic experiences by avoidance, and may be reluctant to seek necessary care which
479 may lead to poor psychological health outcomes. (80, 81) Therefore, it is crucial to investigate
480 the potential psychological impact among partners who have witnessed a PPH.

481 **Strengths and limitations**

482 To our knowledge this is the first mixed-methods systematic review integrating quantitative and
483 qualitative evidence to explore the potential longer-term health outcomes of primary PPH. The
484 inclusion of qualitative evidence about women's and partners' experiences helped illuminate our
485 understanding of findings from the quantitative studies. A comprehensive and reproducible
486 search strategy was conducted, the methods were rigorous, and quality assessment and data
487 extraction were performed by two authors independently of each other.

488 Many of the limitations of this review reflect shortcomings of the included studies. First, there
489 were some challenges associated with drawing conclusions about the association between PPH
490 and some health outcomes because most included studies did not have appropriate comparison
491 groups and conclusions were made from the prevalence/proportions among the exposed group
492 without consideration of potential confounders. For most studies, the follow-up time was less
493 than five years. Most studies used self-reported health questionnaires, rather than objective
494 measurements, such as clinical diagnosis.

495 At the review level, the heterogeneity of studies, including different definitions of PPH, different
496 follow-up time and variation in the outcomes investigated, meant that it was not possible to
497 conduct meta-analysis. Additionally, the number of studies that made an attempt to establish the
498 potential longer-term impact of PPH was limited. Due to resource limitations, we were unable to
499 consider for inclusion five potentially eligible papers that were not written in English.

500 **Implications for research**

501 There is limited evidence about the longer-term impact of primary PPH on women and their
502 partners, hence there is a need for further research in this area. In particular, cohort studies with
503 comparison groups, and longer duration of follow-up should be conducted to explore the
504 association between PPH and selected chronic health outcomes, for instance, CVD. Study
505 designs could be improved by using standardised outcome assessment such as applying
506 standardised self-report tools validated for this population or clinical interviews. Additionally,
507 emphasis on the potential cumulative impact of PPH throughout the obstetric history of women
508 should be considered. This is particularly important in multiparous women who may have more
509 than one primary PPH with a potentially more severe impact. As evidenced by qualitative
510 studies, differences in quality of health care (e.g., frequency of follow up, access to counselling
511 and psychologist) should be also considered in any future prospective cohort studies.

512 In spite of increasing trends in PPH, women are less likely to experience adverse fatal outcomes
513 due to better management and recording of severe PPH compared to the past decade. (4, 82)
514 Globally, the research focus on other near-miss complications has shifted from maternal
515 mortality to surveillance of the burden of severe maternal morbidity, including improvement in
516 the quality of follow-up care. (83, 84) The same principle should be applied to future research on

517 PPH to explore whether the trajectory of PPH and its acute morbidities is associated with
518 subsequent risks of developing chronic disease.

519 More research should also be conducted to explore the potential longer-term psychological
520 implications for partners witnessing PPH. Qualitative evidence in this review suggested signs of
521 acute distress, with significant information needs and follow up support needs for partners who
522 witnessed women experiencing PPH. Obtaining information about partners' mental health and
523 coping strategies could be beneficial to both the woman and her partner in terms of identifying
524 support needs moving forward.

525 **Conclusions**

526 This review synthesized evidence about longer-term physical and psychological health outcomes
527 among women who had a primary PPH in high-income countries, and their partners. While the
528 available evidence mainly focuses on immediate health outcomes following birth, this review
529 suggests that women can have longer-term health problems associated with PPH beyond one-
530 year after childbirth. The extent of the impact of these health outcomes is poorly researched and
531 may be influenced by the severity of PPH, presence of other obstetric complications, and the
532 quality of care received. The limitations of the evidence about longer-term health outcomes after
533 PPH emphasizes the need for further research in this area.

534 **Acknowledgements**

535 We would like to express our sincere appreciation to Nia Roberts (Senior librarian, University of
536 Oxford Bodleian Health Care Libraries) for her guidance in developing search strategies.

537 **References**

- 538 1. WHO Recommendations for the Prevention and Treatment of Postpartum Haemorrhage.
539 WHO Guidelines Approved by the Guidelines Review Committee. Geneva 2012.
- 540 2. Borovac-Pinheiro A, Pacagnella RC, Cecatti JG, Miller S, El Ayadi AM, Souza JP, et al.
541 Postpartum hemorrhage: new insights for definition and diagnosis. *Am J Obstet Gynecol.*
542 2018;219(2):162-8.
- 543 3. Knight M, Callaghan WM, Berg C, Alexander S, Bouvier-Colle M-H, Ford JB, et al.
544 Trends in Postpartum Hemorrhage in High Resource Countries: A Review and
545 Recommendations From the International Postpartum Hemorrhage Collaborative Group.
546 *Obstetrical & Gynecological Survey.* 2010;65(4):211-2.
- 547 4. Flood M, McDonald SJ, Pollock W, Cullinane F, Davey MA. Incidence, trends and
548 severity of primary postpartum haemorrhage in Australia: A population-based study using
549 Victorian Perinatal Data Collection data for 764 244 births. *Australian and New Zealand Journal*
550 *of Obstetrics and Gynaecology.* 2019;59(2):228-34.
- 551 5. Bateman BT, Berman MF, Riley LE, Leffert LR. The Epidemiology of Postpartum
552 Hemorrhage in a Large, Nationwide Sample of Deliveries. *Obstetric Anesthesia Digest.*
553 2011;31(2):89.
- 554 6. Meher S, Cuthbert A, Kirkham J, Williamson P, Abalos E, Aflaifel N, et al. Core
555 outcome sets for prevention and treatment of postpartum haemorrhage: an international Delphi
556 consensus study. *BJOG: An International Journal of Obstetrics & Gynaecology.* 2019;126(1):83-
557 93.

- 558 7. Maswime S, Buchmann E. A systematic review of maternal near miss and mortality due
559 to postpartum hemorrhage. *International Journal Of Gynaecology And Obstetrics*.
560 2017;137(1):pp1-7.
- 561 8. Chauleur C, Cochery-Nouvellon E, Mercier E, Aya G, Marès P, Mismetti P, et al.
562 Analysis of the venous thromboembolic risk associated with severe postpartum haemorrhage in
563 the NOHA First cohort. *Thrombosis and Haemostasis*. 2008;100(5):773-9.
- 564 9. Hoveyda F, MacKenzie IZ. Secondary postpartum haemorrhage: incidence, morbidity
565 and current management. *BJOG*. 2001;108(9):927-30.
- 566 10. Liu S, Heaman M, Kramer MS, Demissie K, Wen SW, Marcoux S, et al. Length of
567 hospital stay, obstetric conditions at childbirth, and maternal readmission: a population-based
568 cohort study. *Am J Obstet Gynecol*. 2002;187(3):681-7.
- 569 11. Naz H, Sarwar I, Fawad A, Nisa AU. Maternal morbidity and mortality due to primary
570 PPH--experience at Ayub Teaching Hospital Abbottabad. *J Ayub Med Coll Abbottabad*.
571 2008;20(2):59-65.
- 572 12. Thompson JF, Heal LJ, Roberts CL, Ellwood DA. Women's breastfeeding experiences
573 following a significant primary postpartum haemorrhage: A multicentre cohort study. *Int*
574 *Breastfeed J*. 2010;5:5.
- 575 13. Thompson JF, Roberts CL, Ellwood DA. Emotional and physical health outcomes after
576 significant primary post-partum haemorrhage (PPH): a multicentre cohort study. *The Australian*
577 *& New Zealand journal of obstetrics & gynaecology*. 2011;51(4):365-71.
- 578 14. Carroll M, Daly D, Begley CM. The prevalence of women's emotional and physical
579 health problems following a postpartum haemorrhage: a systematic review. *BMC Pregnancy*
580 *Childbirth*. 2016;16:261.

- 581 15. Patricia E, Natasa K, Johanna L, Charlotte H, Linnea K, Ulf H, et al. Delineating the
582 Association between Heavy Postpartum Haemorrhage and Postpartum Depression. PLoS ONE.
583 2016;11(1):e0144274.
- 584 16. Ricbourg A, Gosme C, Gayat E, Ventre C, Barranger E, Mebazaa A. Emotional impact of
585 severe post-partum haemorrhage on women and their partners: an observational, case-matched,
586 prospective, single-centre pilot study. European Journal of Obstetrics and Gynecology.
587 2015;193:140-3.
- 588 17. van Steijn ME, Scheepstra KWF, Zaat TR, van Der Post JAM, Olf M, van Pampus MG.
589 Posttraumatic stress disorder in partners following severe postpartum haemorrhage: A
590 prospective cohort study. Women and birth : journal of the Australian College of Midwives.
591 2019.
- 592 18. Zaat TR, van Steijn ME, de Haan-Jebbink JM, Olf M, Stramrood CAI, van Pampus MG.
593 Posttraumatic stress disorder related to postpartum haemorrhage: A systematic review. Eur J
594 Obstet Gynecol Reprod Biol. 2018;225:214-20.
- 595 19. Pearson A, White H, Bath-Hextall F, Salmond S, Apostolo J, Kirkpatrick P. A mixed-
596 methods approach to systematic reviews. Int J Evid Based Healthc. 2015;13(3):121-31.
- 597 20. Page MJ, McKenzie JE, Bossuyt PM, Boutron I, Hoffmann TC, Mulrow CD, et al. The
598 PRISMA 2020 statement: An updated guideline for reporting systematic reviews. Int J Surg.
599 2021;88:105906.
- 600 21. High Income countries classification: The World Bank; 2019 [Available from:
601 [https://datahelpdesk.worldbank.org/knowledgebase/articles/906519-world-bank-country-and-](https://datahelpdesk.worldbank.org/knowledgebase/articles/906519-world-bank-country-and-lending-groups)
602 [lending-groups](https://datahelpdesk.worldbank.org/knowledgebase/articles/906519-world-bank-country-and-lending-groups)].

- 603 22. Bramer WM, Giustini D, de Jonge GB, Holland L, Bekhuis T. De-duplication of database
604 search results for systematic reviews in EndNote. *J Med Libr Assoc.* 2016;104(3):240-3.
- 605 23. Say L, Chou D, Gemmill A, Tunçalp Ö, Moller A-B, Daniels J, et al. Articles: Global
606 causes of maternal death: a WHO systematic analysis. *The Lancet Global Health.* 2014;2:e323-
607 e33.
- 608 24. Kim SY, Park JE, Lee YJ, Seo HJ, Sheen SS, Hahn S, et al. Testing a tool for assessing
609 the risk of bias for nonrandomized studies showed moderate reliability and promising validity. *J*
610 *Clin Epidemiol.* 2013;66(4):408-14.
- 611 25. Critical Appraisal Skills Programme (2018) 2018 [Available from: [https://casp-](https://casp-uk.net/wp-content/uploads/2018/01/CASP-Qualitative-Checklist-2018.pdf)
612 [uk.net/wp-content/uploads/2018/01/CASP-Qualitative-Checklist-2018.pdf](https://casp-uk.net/wp-content/uploads/2018/01/CASP-Qualitative-Checklist-2018.pdf)].
- 613 26. Greenhalgh T, Robert G, Macfarlane F, Bate P, Kyriakidou O, Peacock R. Storylines of
614 research in diffusion of innovation: a meta-narrative approach to systematic review. *Soc Sci*
615 *Med.* 2005;61(2):417-30.
- 616 27. Coates R, Cupples G, Scamell A, McCourt C. Women's experiences of induction of
617 labour: Qualitative systematic review and thematic synthesis. *Midwifery.* 2019;69:17-28.
- 618 28. Walker RC, Graham A, Palmer SC, Jagroop A, Tipene-Leach DC. Understanding the
619 experiences, perspectives and values of indigenous women around smoking cessation in
620 pregnancy: systematic review and thematic synthesis of qualitative studies. *Int J Equity Health.*
621 2019;18(1):74.
- 622 29. Thomas J, Harden A. Methods for the thematic synthesis of qualitative research in
623 systematic reviews. *BMC Med Res Methodol.* 2008;8:45.
- 624 30. Lucyllynn Lizarondo¹ CS, Judith Carrier, Christina Godfrey, Kendra Rieger, Susan
625 Salmond, Joao Apostolo, Pamela Kirkpatrick, Heather Loveday. Chapter 8: Mixed methods

- 626 systematic reviews. 2017. In: Joanna Briggs Institute Reviewer's Manual [Internet]. Joanna
627 Briggs Institute. Available from: <https://reviewersmanual.joannabriggs.org/>.
- 628 31. Chauleur C, Cochery-Nouvellon E, Mercier E, Aya G, Mares P, Mismetti P, et al.
629 Analysis of the venous thromboembolic risk associated with severe postpartum haemorrhage in
630 the NOHA First cohort. *Thrombosis & Haemostasis*. 2008;100(5):773-9.
- 631 32. Chessman J, Patterson J, Nippita T, Drayton B, Ford J. Haemoglobin concentration
632 following postpartum haemorrhage and the association between blood transfusion and
633 breastfeeding: a retrospective cohort study. *BMC Research Notes*. 2018;11(1):686.
- 634 33. Drayton BA, Patterson JA, Nippita TA, Ford JB. Red blood cell transfusion after
635 postpartum haemorrhage and breastmilk feeding at discharge: A population-based study.
636 *Australian & New Zealand Journal of Obstetrics & Gynaecology*. 2016;56(6):591-8.
- 637 34. Eckerdal P, Kollia N, Lofblad J, Hellgren C, Karlsson L, Hogberg U, et al. Delineating
638 the Association between Heavy Postpartum Haemorrhage and Postpartum Depression. *PLoS*
639 *ONE* [Electronic Resource]. 2016;11(1):e0144274.
- 640 35. Thurn L, Wikman A, Lindqvist PG. Postpartum blood transfusion and hemorrhage as
641 independent risk factors for venous thromboembolism. *Thrombosis Research*. 2018;165:54-60.
- 642 36. van Steijn ME, Scheepstra KWF, Zaat TR, van der Post JAM, Olf M, van Pampus MG.
643 Posttraumatic stress disorder in partners following severe postpartum haemorrhage: A
644 prospective cohort study. *Women & Birth: Journal of the Australian College of Midwives*.
645 2019;13:13.
- 646 37. van Steijn ME, Scheepstra KWF, Zaat TR, van Rooijen DE, Stramrood CAI, Dijksman
647 LM, et al. Severe postpartum hemorrhage increases risk of posttraumatic stress disorder: a
648 prospective cohort study. *J Psychosom Obstet Gynaecol*. 2020:1-11.

- 649 38. Briley AL, Silverio SA, Singh C, Sandall J, Bewley S. "It's like a bus, going downhill,
650 without a driver": A qualitative study of how postpartum haemorrhage is experienced by women,
651 their birth partners, and healthcare professionals. *Women Birth*. 2020.
- 652 39. Knight M, Acosta C, Brocklehurst P, Cheshire A, Fitzpatrick K, Hinton L, et al. NIHR
653 Journals Library Programme Grants for Applied Research. 2016;06:06.
- 654 40. Thompson JF, Roberts CL, Ellwood DA. Emotional and physical health outcomes after
655 significant primary post-partum haemorrhage (PPH): a multicentre cohort study. *Australian &
656 New Zealand Journal of Obstetrics & Gynaecology*. 2011;51(4):365-71.
- 657 41. Thompson JF, Ford JB, Raynes-Greenow CH, Roberts CL, Ellwood DA. Women's
658 experiences of care and their concerns and needs following a significant primary postpartum
659 hemorrhage. *Birth*. 2011;38(4):327-35.
- 660 42. Liu C, Butwick A, Sand A, Wikstrom AK, Snowden JM, Stephansson O. The association
661 between postpartum hemorrhage and postpartum depression: A Swedish national register-based
662 study. *PLoS One*. 2021;16(8):e0255938.
- 663 43. de la Cruz CZ, Coulter ML, O'Rourke K, Amina Alio P, Daley EM, Mahan CS. Women's
664 experiences, emotional responses, and perceptions of care after emergency peripartum
665 hysterectomy: a qualitative survey of women from 6 months to 3 years postpartum. *Birth*.
666 2013;40(4):256-63.
- 667 44. de la Cruz CZ, Coulter M, O'Rourke K, Mbah AK, Salihu HM. Post-traumatic stress
668 disorder following emergency peripartum hysterectomy. *Archives of Gynecology & Obstetrics*.
669 2016;294(4):681-8.
- 670 45. Feinberg EC, Molitch ME, Endres LK, Peaceman AM. The incidence of Sheehan's
671 syndrome after obstetric hemorrhage. *Fertility & Sterility*. 2005;84(4):975-9.

- 672 46. Dunning T, Harris JM, Sandall J. Women and their birth partners' experiences following
673 a primary postpartum haemorrhage: a qualitative study. *BMC Pregnancy & Childbirth*.
674 2016;16:80.
- 675 47. Michelet D, Ricbourg A, Gosme C, Rossignol M, Schurando P, Barranger E, et al.
676 Emergency hysterectomy for life-threatening postpartum haemorrhage: Risk factors and
677 psychological impact. *Gynecologie, Obstetrique & Fertilité*. 2015;43(12):773-9.
- 678 48. Sentilhes L, Gromez A, Clavier E, Resch B, Descamps P, Marpeau L. Long-term
679 psychological impact of severe postpartum hemorrhage. *Acta Obstet Gynecol Scand*.
680 2011;90(6):615-20.
- 681 49. van Stralen G, Ruijten LLM, Kaptein AA, Wolterbeek R, van Roosmalen J. Major
682 obstetric hemorrhage: a follow-up survey on quality of life of women and their partners. *Journal*
683 *of Psychosomatic Obstetrics & Gynecology*. 2018;39(1):38-46.
- 684 50. Ukah UV, Platt RW, Potter BJ, Paradis G, Dayan N, He S, et al. Obstetric haemorrhage
685 and risk of cardiovascular disease after three decades: a population-based cohort study. *BJOG*.
686 2020.
- 687 51. Cho GJ, Lee KM, Kim HY, Han SW, Oh MJ, Chiec L, et al. Postpartum haemorrhage
688 requiring transfusion and risk of cardiovascular disease later in life: a retrospective cohort study.
689 *BJOG*. 2021;128(4):738-44.
- 690 52. Parry-Smith W, Sumilo D, Subramanian A, Gokhale K, Okoth K, Gallos I, et al.
691 Postpartum haemorrhage and risk of long-term hypertension and cardiovascular disease: an
692 English population-based longitudinal study using linked primary and secondary care databases.
693 *BMJ Open*. 2021;11(5):e041566.

- 694 53. Parry-Smith W, Okoth K, Subramanian A, Gokhale KM, Chandan JS, Humpston C, et al.
695 Postpartum haemorrhage and risk of mental ill health: A population-based longitudinal study
696 using linked primary and secondary care databases. *J Psychiatr Res.* 2021;137:419-25.
- 697 54. Eggel B, Bernasconi M, Quibel T, Horsch A, Vial Y, Denys A, et al. Gynecological,
698 reproductive and sexual outcomes after uterine artery embolization for post-partum haemorrhage.
699 *Sci Rep.* 2021;11(1):833.
- 700 55. Elmir R, Schmied V, Wilkes L, Jackson D. Separation, failure and temporary
701 relinquishment: women's experiences of early mothering in the context of emergency
702 hysterectomy. *Journal of Clinical Nursing.* 2012;21(7-8):1119-27.
- 703 56. Elmir R, Schmied V, Jackson D, Wilkes L. Between life and death: women's experiences
704 of coming close to death, and surviving a severe postpartum haemorrhage and emergency
705 hysterectomy. *Midwifery.* 2012;28(2):228-35.
- 706 57. Elmir R, Jackson D, Schmied V, Wilkes L. 'Less feminine and less a woman': the impact
707 of unplanned postpartum hysterectomy on women. *International Journal of Childbirth.*
708 2012;2(1):51-60.
- 709 58. Elmir R. Finding Meaning in Life Following Emergency Postpartum Hysterectomy:
710 What Doesn't Kill Us Makes Us Stronger. *J Midwifery Womens Health.* 2014;59(5):510-5.
- 711 59. Woiski MD, Belfroid E, Liefers J, Grol RP, Scheepers HC, Hermens RP. Influencing
712 factors for high quality care on postpartum haemorrhage in the Netherlands: patient and
713 professional perspectives. *BMC Pregnancy & Childbirth.* 2015;15:272.
- 714 60. Bernasconi M, Eggel-Hort B, Horsch A, Vial Y, Denys A, Quibel T, et al. Paternal and
715 maternal long-term psychological outcomes after uterine artery embolization for severe post-
716 partum hemorrhage. *Scientific reports.* 2021;11(1):13990-.

- 717 61. Snowdon C, Elbourne D, Forsey M, Alfirevic Z. Information-hungry and disempowered:
718 a qualitative study of women and their partners' experiences of severe postpartum haemorrhage.
719 *Midwifery*. 2012;28(6):791-9.
- 720 62. Elmir R. Finding Meaning in Life Following Emergency Postpartum Hysterectomy:
721 What Doesn't Kill Us Makes Us Stronger. *Journal of Midwifery & Women's Health*.
722 2014;59(5):510-5.
- 723 63. de Visser SM, Kirchner CA, van der Velden BGJ, de Wit AC, Dijkman A, Huisjes AJM,
724 et al. Major obstetric hemorrhage: Patients' perspective on the quality of care. *European Journal*
725 *of Obstetrics, Gynecology, & Reproductive Biology*. 2018;224:146-52.
- 726 64. Ayers S, Eagle A, Waring H. The effects of childbirth-related post-traumatic stress
727 disorder on women and their relationships: A qualitative study. *Psychology, health & medicine*.
728 2006;11(4):389-98.
- 729 65. Peeler S, Stedmon J, Chung MC, Skirton H. Women's experiences of living with
730 postnatal PTSD. *Midwifery*. 2018;56:70-8.
- 731 66. Beck CT. Post-Traumatic Stress Disorder Due to Childbirth: The Aftermath. *Nurs Res*.
732 2004;53(4):216-24.
- 733 67. Yildiz PD, Ayers S, Phillips L. The prevalence of posttraumatic stress disorder in
734 pregnancy and after birth: A systematic review and meta-analysis. *J Affect Disord*.
735 2017;208:634-45.
- 736 68. Dekel S, Stuebe C, Dishy G. Childbirth Induced Posttraumatic Stress Syndrome: A
737 Systematic Review of Prevalence and Risk Factors. *Front Psychol*. 2017;8:560.

- 738 69. Karpati PCJ, Rossignol M, Payen D, Mebazaa A, Pirot M, Cholley B, et al. High
739 incidence of myocardial ischemia during postpartum hemorrhage. *Anesthesiology*.
740 2004;100(1):30-6.
- 741 70. Arnott C, Patel S, Hyett J, Jennings G, Woodward M, Celermajer DS. Women and
742 Cardiovascular Disease: Pregnancy, the Forgotten Risk Factor. *Heart Lung Circ*.
743 2020;29(5):662-7.
- 744 71. Bhattacharya S, Prescott GJ, Iversen L, Campbell DM, Smith WC, Hannaford PC.
745 Hypertensive disorders of pregnancy and future health and mortality: A record linkage study.
746 *Pregnancy Hypertens*. 2012;2(1):1-7.
- 747 72. Auger N, Potter BJ, He S, Healy-Profitos J, Schnitzer ME, Paradis G. Maternal
748 Cardiovascular Disease 3 Decades After Preterm Birth: Longitudinal Cohort Study of Pregnancy
749 Vascular Disorders. *Hypertension*. 2020;75(3):788-95.
- 750 73. Azulay CE, Pariente G, Shoham-Vardi I, Kessous R, Sergienko R, Sheiner E. Maternal
751 anemia during pregnancy and subsequent risk for cardiovascular disease. *J Matern Fetal*
752 *Neonatal Med*. 2015;28(15):1762-5.
- 753 74. Li J, Song C, Li C, Liu P, Sun Z, Yang X. Increased risk of cardiovascular disease in
754 women with prior gestational diabetes: A systematic review and meta-analysis. *Diabetes Res*
755 *Clin Pract*. 2018;140:324-38.
- 756 75. Reed R, Sharman R, Inglis C. Women's descriptions of childbirth trauma relating to care
757 provider actions and interactions. *BMC Pregnancy Childbirth*. 2017;17(1):21.
- 758 76. Elmir R, Schmied V, Wilkes L, Jackson D. Women's perceptions and experiences of a
759 traumatic birth: a meta-ethnography. *J Adv Nurs*. 2010;66(10):2142-53.

- 760 77. Kirova K, Snell T. Women's experiences of positive postnatal partner support. *J Reprod*
761 *Infant Psychol.* 2019;37(2):206-18.
- 762 78. Etheridge J, Slade P. "Nothing's actually happened to me.": the experiences of fathers
763 who found childbirth traumatic. *BMC pregnancy and childbirth.* 2017;17(1):80.
- 764 79. Daniels E, Arden-Close E, Mayers A. Be quiet and man up: a qualitative questionnaire
765 study into fathers who witnessed their Partner's birth trauma. *BMC pregnancy and childbirth.*,
766 2020;20(1):236.
- 767 80. Darwin Z, Galdas P, Hinchliff S, Littlewood E, McMillan D, McGowan L, et al. Fathers'
768 views and experiences of their own mental health during pregnancy and the first postnatal year: a
769 qualitative interview study of men participating in the UK Born and Bred in Yorkshire (BaBY)
770 cohort. *BMC Pregnancy Childbirth.* 2017;17(1):45.
- 771 81. Vallin E, Nestander H, Wells MB. A literature review and meta-ethnography of fathers'
772 psychological health and received social support during unpredictable complicated childbirths.
773 *Midwifery.* 2019;68:48-55.
- 774 82. Ford JB, Patterson JA, Seeho SK, Roberts CL. Trends and outcomes of postpartum
775 haemorrhage, 2003-2011. *BMC Pregnancy Childbirth.* 2015;15:334.
- 776 83. Knight M, Callaghan WM, Berg C, Alexander S, Bouvier-Colle MH, Ford JB, et al.
777 Trends in postpartum hemorrhage in high resource countries: a review and recommendations
778 from the International Postpartum Hemorrhage Collaborative Group. *BMC Pregnancy*
779 *Childbirth.* 2009;9:55.
- 780 84. Geller SE, Koch AR, Garland CE, MacDonald EJ, Storey F, Lawton B. A global view of
781 severe maternal morbidity: moving beyond maternal mortality. *Reprod Health.* 2018;15(Suppl
782 1):98.

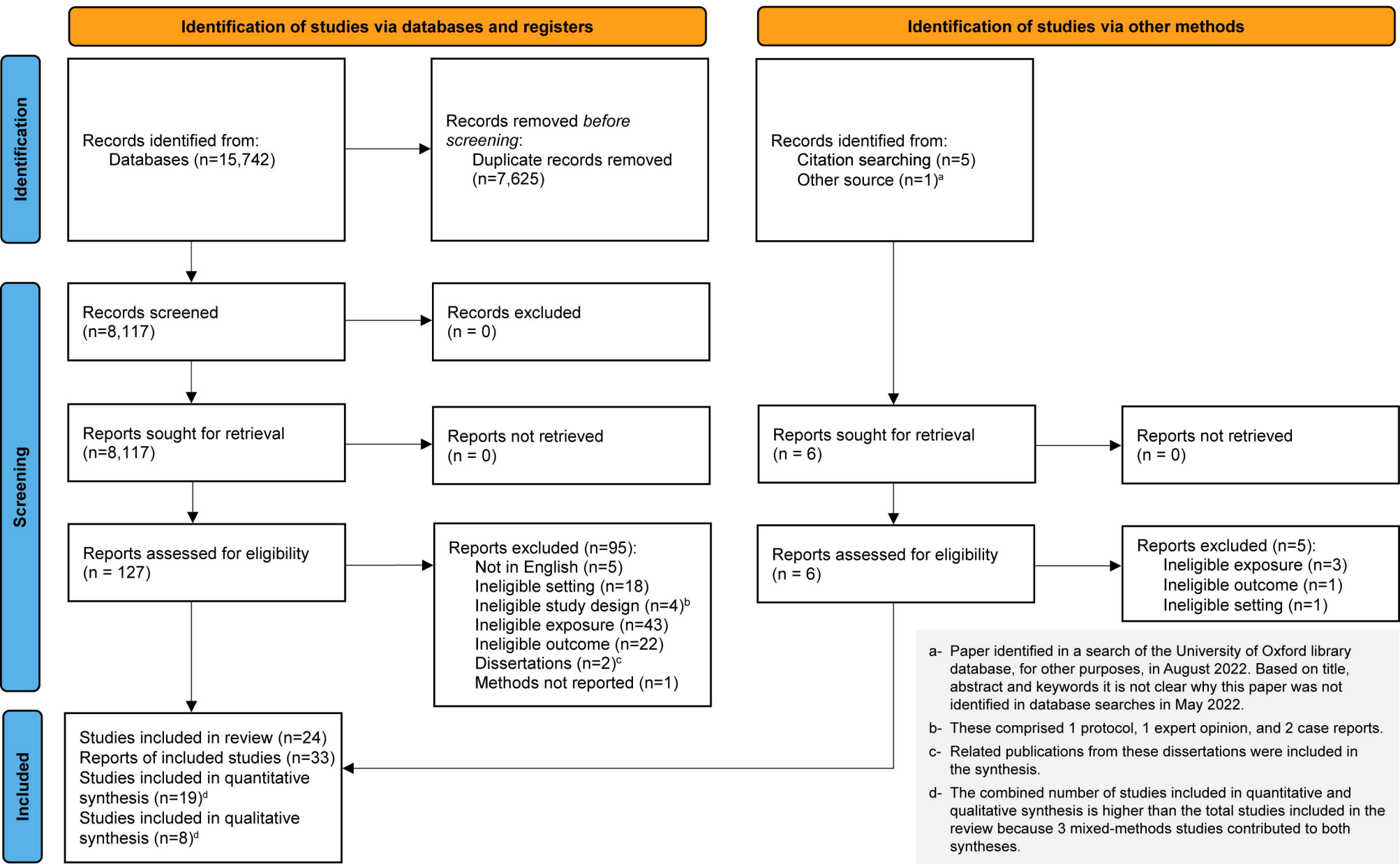
783 **Supporting Information**

784 **S1 Checklist. PRISMA 2020 checklist.**

785 **S1 File. Medline Search Strategy.**

786 **S2 File. Data extraction forms**

787 **S1 Table. Modified risk of bias assessment tool for non-randomized studies (ROBANS)**



Follow-up timeline

During emergency

Hospital recovery
(Up to 1 week)

Postnatal
(Up to 12 months)

Longer term

Physical

Painful recovery

Obstacles to breastfeeding

Psychological

Brush with death *

Post-traumatic stress and long-term recovery

Psychosocial

Interrupted bonding

Loss of future family

Relationship stress with partners

Loss of female identity

Experiences of care

Adequacy of care *

Communication gaps and information needs *

* Themes also contributed to by partners