

1 **Understanding the effects of Universal Test and Treat on**
2 **longitudinal HIV care continuum outcomes among South African**
3 **youth: a retrospective cohort study**

4
5 Lindsey M. Filiatreau^{1,2§}, Jessie K. Edwards³, Nkosinathi Masilela⁴, F. Xavier Gómez-Olivé⁴,
6 Nicole Haberland⁵, Brian W. Pence³, Joanna Maselko³, Kathryn E. Muessig⁶, Chodziwadziwa
7 Whiteson Kabudula⁴, Mi-Suk Kang Dufour⁷, Sheri A. Lippman^{4,7}, Kathleen Kahn⁴, and Audrey
8 Pettifor^{3,4,8}

9
10 1 Department of Psychiatry, School of Medicine, Washington University in St. Louis

11 2 International Center for Child Health and Development, Brown School, Washington University
12 in St. Louis

13 3 Department of Epidemiology, Gillings School of Global Public Health, University of North
14 Carolina at Chapel Hill, Chapel Hill, North Carolina, USA

15 4 MRC/Wits Rural Public Health and Health Transitions Research Unit (Agincourt), School of
16 Public Health, Faculty of Health Sciences, University of the Witwatersrand, South Africa

17 5 Population Council, New York, New York, USA

18 6 Department of Health Behavior, Gillings School of Global Public Health, University of North
19 Carolina at Chapel Hill, Chapel Hill, North Carolina, USA

20 7 Division of Prevention Science, Department of Medicine, University of California, San
21 Francisco, San Francisco, California, USA

22 8 Carolina Population Center, Chapel Hill, North Carolina, USA

23

24 § Corresponding Author: Lindsey M. Filiatreau

25

26 Department of Psychiatry

27 660 S. Euclid Ave.

28 St. Louis, MO 63110

29 flindsey@wustl.edu

30 Phone: 502.827.3672

31 Fax: 314.935.8511

32

33 E-mail addresses of authors:

34 LMF: flindsey@wustl.edu

35 JKE: jessedwards@unc.edu

36 NM: Nkosinathi.masilela@wits.ac.za

37 FXG-O: f.gomez-olivecasas@wits.ac.za

38 NH: nhaberland@popcouncil.org

39 BWP: bpence@unc.edu

40 JM: jmaselko@unc.edu

41 KM: kmuessig@med.unc.edu

42 CWK: chodziwadziwa.kabudula@wits.ac.za

43 MKD: mi-suk@berkeley.edu

44 SAL: sheri.lippman@ucsf.edu

45 KK: Kathleen.kahn@wits.ac.za

46 AP: apettif@email.unc.edu

47 **Abstract**

48 **Introduction:** Little is known about when youth living with HIV (YLHIV) are most susceptible
49 to disengagement from HIV care. The longitudinal HIV care continuum is an underutilized tool
50 that can provide a holistic understanding of population-level HIV care trajectories and be used to
51 compare treatment outcomes across groups. We aimed to explore effects of the Universal Test
52 and Treat policy (UTT) on longitudinal care outcomes among South African youth living with
53 HIV (YLHIV) and identify temporally precise opportunities for re-engaging this priority
54 population.

55
56 **Methods:** Using medical record and census data, we conducted a retrospective cohort study
57 among youth aged 18-24 newly diagnosed with HIV between August 2015 and December 2018
58 in nine health care facilities in rural South Africa. We used weighted Fine and Grey sub-
59 distribution proportional hazards models to characterize longitudinal care continuum outcomes in
60 the population overall and stratified by treatment era of diagnosis. We estimated the proportion
61 of individuals in each stage of the continuum over time and the mean time spent in each stage in
62 the first year following diagnosis. Estimates for the two groups were compared using differences
63 (diagnosis pre-UTT=referent).

64
65 **Results:** A total of 420 YLHIV were included. By the end of the first year following diagnosis,
66 just 23% of individuals had no 90-or-more-day lapse in care and were virally suppressed. Those
67 diagnosed in the UTT era spent less time as ART-naïve (mean difference=-19.3 days; 95% CI: -
68 27.7, -10.9) and more time virally suppressed (mean difference=17.7; 95% CI: 1.0, 34.4)
69 compared to those diagnosed pre-UTT adoption. Most individuals who were diagnosed in the

70 UTT era and experienced a 90-or-more-day lapse in care disengaged between diagnosis and
71 linkage to care or ART initiation and viral suppression.

72

73 **Conclusions:** Implementation of UTT yielded modest improvements in time spent on ART and
74 virally suppressed among South African YLHIV. However, meeting UNAIDS' 95-95-95 targets
75 remains a challenge in this priority population. Retention in care and re-engagement
76 interventions that can be implemented between diagnosis and linkage to care (e.g., longitudinal
77 counseling following diagnosis) or ART initiation and viral suppression may be particularly
78 important to improving treatment outcomes among South African YLHIV.

79

80

81 **Keywords:** Universal Test and Treat; HIV care continuum; youth living with HIV; South Africa;
82 viral suppression; retention in care

83 **Introduction**

84 Traditional methods for monitoring HIV treatment outcomes often fail to capture the complexity
85 of the processes of engagement, disengagement, and reengagement in care that individuals living
86 with HIV may cycle through over time. The longitudinal HIV care continuum framework is an
87 underutilized alternative to these approaches that can provide a more nuanced picture of
88 population-level outcomes over time (1,2). This tool may be particularly useful for assessing
89 holistic differences in treatment outcomes in distinct groups and can be harnessed to identify
90 specific gaps in treatment and care services at precise time points following diagnosis (1,3).

91
92 Existing evidence suggests youth living with HIV (YLHIV) experience worse HIV treatment
93 outcomes at each stage in the HIV care continuum compared to adults (4–8). In sub-Saharan
94 Africa, YLHIV are particularly vulnerable to suboptimal treatment outcomes (7,9). A 2016 meta-
95 analysis conducted by Zanoni and colleagues found that just 14% of South African YLHIV aged
96 15 to 24 accessed antiretroviral treatment (ART) (10). Among those who accessed treatment, an
97 estimated 83% were retained in care and 81% were virally suppressed, yielding an overall
98 prevalence of suppression of 10% (10).

99
100 In line with the World Health Organization’s treatment recommendations, the South African
101 government adopted a Universal Test and Treat (UTT) policy in September 2016 (11). This
102 policy increased access to ART for all people living with HIV regardless of clinical stage and
103 improved a number of HIV treatment outcomes among South African adults living with HIV
104 (12). However, some studies suggest UTT increased attrition from care following treatment
105 initiation (13). While little is known about the specific effects of this policy on treatment

106 outcomes among YLHIV specifically, current data suggest poor retention in care and viral
107 suppression persist in the population (14,15).

108
109 Addressing barriers to sustained engagement in care among YLHIV is critical if we are to end
110 the HIV epidemic by 2030 (8,16). Yet, a limited number of studies have identified temporally
111 precise opportunities for re-engaging this population following lapses in care (6). We draw on
112 the longitudinal HIV care continuum framework to estimate the proportion of individuals in each
113 stage of the HIV care continuum over time and the restricted mean time spent in each stage
114 during the first year following diagnosis in a population of YLHIV in rural South Africa. We
115 compare these outcomes by treatment era of diagnosis-- pre- or post-UTT implementation-- to
116 illuminate the effects of this policy on longitudinal care trajectories and opportunities for re-
117 engaging this priority population under current treatment recommendations.

118

119 **Methods**

120 **Study site**

121 This study was conducted in the Agincourt Health and Socio-Demographic Surveillance System
122 study area (HDSS) in rural Mpumalanga Province, South Africa (17). This area is approximately
123 500 kilometers northeast of Johannesburg (17) and home to nearly 120,000 individuals (18). An
124 estimated 27% of young women and 6% of young men ages 20 to 24 in this area are living with
125 HIV (19). Access to public sector services and economic opportunities post-schooling is limited,
126 contributing to a high degree of work-related migration, particularly among youth exiting the
127 school system (20). Nine publicly funded health care facilities provide medical services to a
128 majority of study area residents. Within these facilities, access to primary health care and ART is

129 free of charge. However, patient wait times often exceed national standards and there is limited
130 to no differentiated care for young people (21).

131

132 **Study population**

133 We extracted data for all individuals aged 18 to 24 with a recorded HIV diagnosis in the HDSS-
134 Clinic Link System (n=685), described in further detail below, between August 1st, 2015, and
135 December 31st, 2018. Individuals who were not diagnosed in one of the nine publicly funded
136 health care facilities used by residents of the Agincourt HDSS (n=251), had a viral load
137 measurement below 400 copies/mL within seven days of diagnosis (n=29) or migrated into the
138 Agincourt HDSS after their first HIV diagnosis (n=16) were excluded from the analysis to ensure
139 participants were diagnosed and entered HIV care in an Agincourt HDSS facility.

140

141 **Data source**

142 We used data from the Agincourt HDSS-Clinic Link System, previously described, to determine
143 population clinical outcomes (22–25). Briefly, the Clinic Link System is a population-based
144 clinical care database that covers consenting/assenting patients seeking HIV-specific services or
145 chronic care in all nine publicly funded health care facilities used by study area residents. Data
146 typists, stationed at each of the facilities since 2014, consent/assent patients seeking care on a
147 daily basis. After obtaining written informed consent/assent, clinical visit data and patient
148 demographic data are captured in the Clinic Link System and linked to corresponding records in
149 the Agincourt HDSS census database. Data typists continually update clinical records data as
150 individuals return for services.

151

152 Because the HDSS-Clinic Link System viral load data were occasionally missing, viral load
153 measurements were supplemented using viral load data from the South African National Health
154 Laboratory Service. The South African National Health Laboratory Service provides HIV
155 diagnostic services to approximately 80% of South Africans and conducted more than 5 million
156 viral load tests across 16 laboratories in 2018 (26,27).

157
158 Mortality and migration data were obtained from the Agincourt HDSS census database and
159 linked to the HDSS-Clinic Link System data. The Agincourt HDSS database has been updated
160 annually since 2000 and provides information on resident status and vital events such as
161 migrations, births, and deaths (17).

162

163 **Measures**

164 *Linkage to care:* Individuals were considered linked to care on the first of the following dates:
165 results delivered for CD4 testing after HIV diagnosis, a follow-up visit with an indication of HIV
166 treatment delivery, or a CD4 or viral load test after HIV diagnosis.

167

168 *Loss to follow-up:* Participants with no documented clinic visits for any given 90-day period
169 following diagnosis were considered lost to follow-up (LTFU) on the first date the definition was
170 met (i.e., the 90th day following the most recent visit date). This definition is consistent with a
171 lapse in medication coverage defined in the South African national HIV adherence guidelines
172 (28). We also considered a 180-day clinic visit lapse definition of LTFU. Results from this
173 analysis are presented in the Supplemental Material.

174

175 *Treatment status:* Participants were considered on ART the first date of any HIV treatment
176 medication pickup. Individuals who had a suppressed viral load measurement prior to the first
177 recorded ART pickup date (n=3) were considered on ART the same date as the suppressed viral
178 load measurement.

179
180 *Viral suppression status:* Viral load measurements less than 400 copies/mL were considered
181 virally suppressed (29,30).

182
183 *Virologic failure:* Viral load measurements of 1000 copies/mL and above subsequent to a
184 suppressed viral load measurement were considered indicative of virologic failure (31,32).

185
186 *Suboptimal treatment outcome:* Because death (n=1) and virologic failure (n=3) were uncommon
187 in the study population overall, we combined the competing events of LTFU, death, and
188 virologic failure in a “suboptimal treatment outcomes” measure.

189
190 **Statistical analysis**

191 To characterize the longitudinal HIV care continuum in the study population we utilized analytic
192 methods similar to those formalized by Lesko et. al (3). These methods are designed to account
193 for competing events and transitions into and out of multiple states over time (2). First, we fit a
194 Fine and Grey sub-distribution proportional hazards models with no covariates and used the
195 Breslow estimator to calculate the cumulative incidence of each of the following care continuum
196 events following diagnosis: suboptimal treatment outcome prior to linkage to care; linkage to
197 care; suboptimal treatment outcome prior to ART initiation (and after linkage to care); ART

198 initiation; suboptimal treatment outcome prior to viral suppression (and after ART initiation);
199 viral suppression; suboptimal treatment outcome following suppression (see S1 Table for
200 additional details and competing events). Date of diagnosis served as the origin for each outcome
201 and administrative censoring occurred on day 365 following diagnosis or February 1, 2019. Once
202 an individual was LTFU, they were not permitted to reenter the study population.

203
204 We then estimated the proportion of the population in eight mutually exclusive stages of the HIV
205 care continuum at each timepoint following diagnosis (i.e. on any day during the 365 days of
206 follow-up):

- 207 1) Diagnosed with HIV- not yet linked to care
- 208 2) Suboptimal treatment outcome before linkage to care
- 209 3) Linked to care- ART naïve
- 210 4) Suboptimal treatment outcome after linkage to care but before ART initiation
- 211 5) On ART- virally non-suppressed
- 212 6) Suboptimal treatment outcome after ART initiation but before viral suppression
- 213 7) On ART- virally suppressed
- 214 8) Suboptimal treatment outcome after suppression

215 This was accomplished by adding and subtracting cumulative incidence curves (see S2 Table for
216 equations). The proportion of individuals in each stage of the continuum is presented as a set of
217 stacked curves that sum to one at each time point by design. The area between adjacent curves
218 represents the restricted (as each participant is followed for a maximum of one year and all
219 outcomes may not be observed) mean time spent in each stage over the one-year follow-up
220 period. Given individuals who were LTFU were not permitted to reenter the study population,

221 estimates of the mean time spent linked to care- ART naïve; on ART- virally non-suppressed;
222 and on ART- virally suppressed, represent the mean time spent in each of these stages with no
223 prior 90-or-more day gap in care. Potential care continuum transitions are specified in the S1
224 Figure.

225
226 Ultimately, we estimated 1) the proportion of participants in each stage of the continuum and 2)
227 the restricted mean time spent in each stage of the continuum over the one-year period following
228 diagnosis in the cohort overall and stratified by treatment era of diagnosis. We used inverse
229 probability of treatment weights to account for meaningful differences in the distribution of sex
230 and age at diagnosis between the two groups. We calculated differences in outcomes among
231 those diagnosed pre- (referent) and post-UTT implementation and estimated the 95% Wald
232 confidence intervals (CI) using the standard error of estimates obtained from 300 non-parametric
233 resamples of the data (33). All analyses were conducted in SAS 9.4 (SAS Institute Inc., Cary,
234 NC).

235

236 **Ethics**

237 This study was approved by the University of North Carolina at Chapel Hill's Institutional
238 Review Board, the University of the Witwatersrand's Human Research Ethics Committee, and
239 the Mpumalanga Provincial Health Research Committee.

240

241 **Results**

242 A total of 420 individuals were included. A majority were female (n=389; 92.6%) and diagnosed
243 after the adoption of UTT (n=266; 63.3%) (Table 1). Median age at diagnosis was 22.2

244 (interquartile range [IQR]: 20.4-23.7) and median CD4 cell count at diagnosis or entry into care
 245 was 333 (IQR: 217-458) (Table 1).

246

247 **Table 1. Characteristics of study participants, stratified by treatment era of diagnosis**

	Total (n=420) n (%)	Pre-UTT (n=154) n (%)	UTT (n=266) n (%)
Sex			
Female	389 (92.6)	146 (94.8)	243 (91.4)
Male	31 (7.4)	8 (5.2)	23 (8.6)
Age at diagnosis (median/IQR)	22.2 (20.4- 23.7)	22.3 (20.7- 23.6)	22.2 (20.3-23.6)
CD4 cell count at diagnosis/entry into care (median/IQR) [†]	333 (217-458)	329 (200-438)	333.5 (220.5- 482.5)
<200 cells/mm ³	74 (22.5)	32 (24.8)	42 (21.0)
≥200 cells/mm ³	255 (77.5)	97 (75.2)	158 (79.0)

248 Abbreviations: IQR- interquartile range; UTT- Universal Test and Treat

249 [†]missing baseline CD4 n=91

250

251 At day 90 post-diagnosis, 81.8% of all participants had ever linked to care, 61.6% had ever
 252 initiated ART, and 5.9% had ever achieved viral suppression (S2 Figure). Over one-third
 253 (33.8%) were LTFU on day 90 (S2 Figure). By 6 and 12 months post-diagnosis, 16.9% and
 254 30.9% of all participants had ever achieved viral suppression, respectively (S2 Figure). By the
 255 end of the first year following diagnosis, 68.2% of all participants were LTFU, 0.2% had died,
 256 and 0.7% had experienced virologic failure. Participants spent a mean time of 19.5 days (95%
 257 CI: 16.0, 23.0) between diagnosis and linkage to care; 29.4 days (95% CI: 25.6, 33.3) linked to
 258 care but ART-naive; 107.4 days (95% CI: 95.9, 118.8) on ART but virally non-suppressed; and
 259 53.7 days (95% CI: 45.2, 62.2) virally suppressed (Table 2).

260 **Table 2. Time spent in each stage of care continuum over 1-year follow-up period and**
 261 **percent of individuals in each stage at end of follow-up**

	Mean days (95% CI)	Percent (95% CI)
Diagnosed with HIV (not yet linked)	19.5 (16.0, 23.0)	0.1 (0.0, 0.3)
Suboptimal treatment outcome before linkage	49.7 (40.0, 59.4)	18.0 (14.4, 21.7)
Linked to care (ART naïve)	29.4 (25.6, 33.3)	0.0 (0.0, 0.0)
Suboptimal treatment outcome before ART	49.9 (39.9, 59.8)	18.5 (14.8, 22.3)
On ART (non-suppressed)	107.4 (95.9, 118.8)	7.3 (4.5, 10.1)
Suboptimal treatment outcome before suppression	48.8 (40.3, 57.2)	25.0 (20.8, 29.3)
Virally suppressed	53.7 (45.2, 62.2)	23.0 (18.7, 27.3)
Suboptimal treatment outcome after suppression	6.7 (4.1, 9.3)	7.9 (5.3, 10.5)

262 Abbreviations: ART- antiretroviral therapy; CI- confidence interval; UTT- Universal Test and Treat

263

264 In weighted analyses, individuals diagnosed in the UTT era initiated ART more quickly after
 265 linkage to care (restricted mean time difference [MD] of time between linkage to care and ART
 266 initiation: -18.9; 95% CI: -27.3, -10.6), and spent more time over the one-year follow-up period
 267 on ART and virally suppressed when compared to those diagnosed in the pre-UTT era (MD of
 268 time spent on ART- virally non-suppressed: 12.7; 95% CI: -8.2, 33.7; MD of time spent virally
 269 suppressed: 17.7; 95% CI: 1.0, 34.4) (Table 3). Compared to their counterparts, time spent LTFU
 270 between diagnosis and linkage to care was greater among those diagnosed in the UTT era while
 271 time spent between linkage to care and ART initiation was greater among those diagnosed in the
 272 pre-UTT era (Table 3).

273 **Table 3. Time spent in each stage of the HIV care continuum over 1-year follow-up period by treatment era of diagnosis**

	Pre-UTT Mean days (95% CI)	UTT Mean days (95% CI)	Difference in mean days (95% CI)
Crude			
Diagnosed with HIV (not yet linked)	17.3 (11.9, 22.7)	21.4 (16.8, 26.0)	4.1 (-2.9, 11.2)
Suboptimal treatment outcome before linkage	40.8 (26.7, 55.0)	54.7 (42.0, 67.3)	13.8 (-5.0, 32.7)
Linked to care (ART naïve)	41.3 (33.6, 49.0)	22.3 (18.7, 26.0)	-18.9 (-27.3, -10.6)
Suboptimal treatment outcome before ART	66.9 (47.9, 85.9)	40.0 (29.2, 50.8)	-26.9 (-48.7, -5.1)
On ART (non-suppressed)	99.2 (82.2, 116.3)	111.8 (97.6, 125.9)	12.5 (-8.5, 33.5)
Suboptimal treatment outcome before suppression	51.3 (37.4, 65.2)	47.2 (36.3, 58.1)	-4.1 (-21.5, 13.3)
Virally suppressed	43.2 (31.0, 55.5)	59.6 (47.9, 71.3)	16.4 (-0.4, 33.1)
Suboptimal treatment outcome after suppression	4.9 (1.4, 8.4)	8.0 (4.4, 11.5)	3.1 (-1.9, 8.0)
Weighted[†]			
Diagnosed with HIV (not yet linked)	16.9 (11.6, 22.1)	21.3 (16.7, 25.8)	4.4 (-2.5, 11.3)
Suboptimal treatment outcome before linkage	39.8 (26.0, 53.6)	54.0 (41.4, 66.7)	14.2 (-4.3, 32.7)
Linked to care (ART naïve)	41.5 (33.7, 49.3)	22.2 (18.6, 25.9)	-19.3 (-27.7, -10.9)
Suboptimal treatment outcome before ART	66.1 (47.2, 85.1)	39.5 (28.8, 50.2)	-26.6 (-48.3, -5.0)
On ART (non-suppressed)	99.4 (82.4, 116.4)	112.1 (98.0, 126.2)	12.7 (-8.2, 33.7)
Suboptimal treatment outcome before suppression	54.0 (39.4, 68.6)	47.7 (36.7, 58.7)	-6.3 (-24.4, 11.8)
Virally suppressed	42.2 (30.1, 54.4)	59.9 (48.2, 71.6)	17.7 (1.0, 34.4)
Suboptimal treatment outcome after suppression	5.0 (1.4, 8.7)	8.2 (4.5, 11.9)	3.2 (-2.0, 8.4)

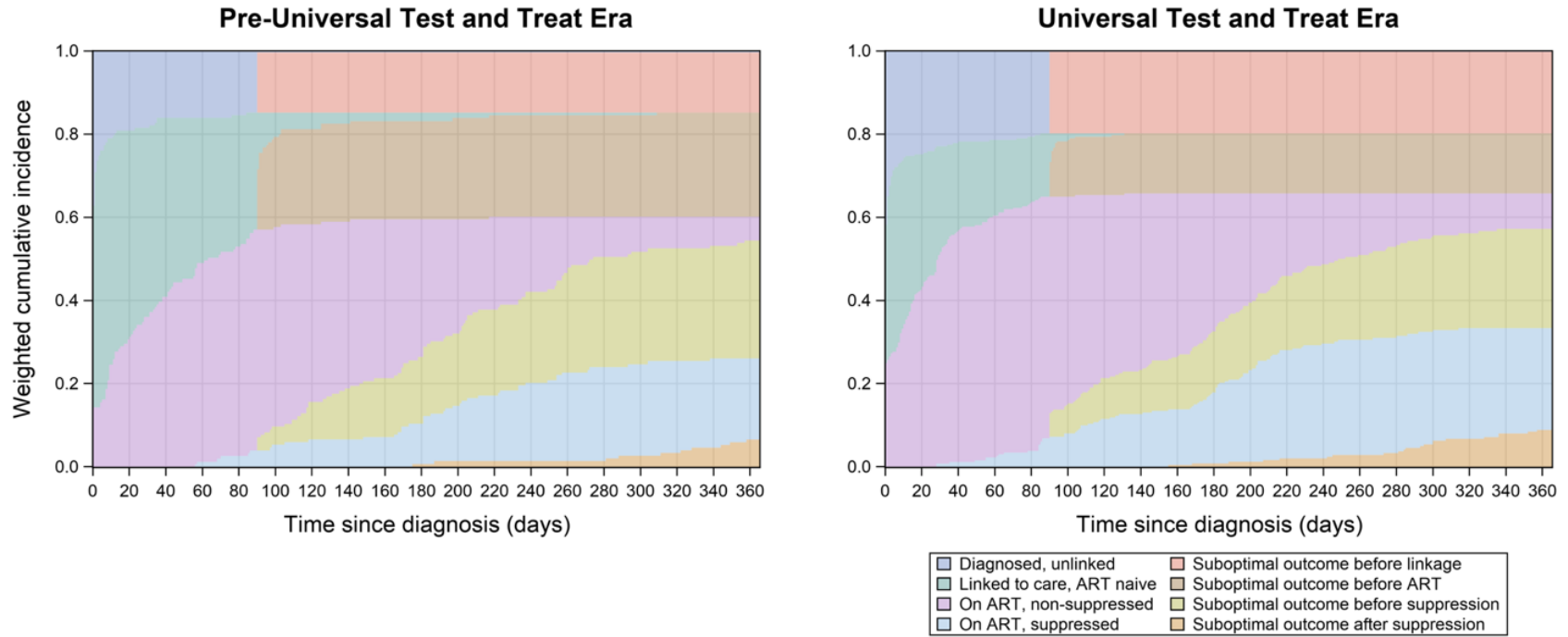
274 Abbreviations: ART- antiretroviral therapy; CI- confidence interval; UTT- Universal Test and Treat

275 [†]Weighted to account for differences in age at diagnosis and sex by treatment era of diagnosis

276 By the end of follow-up, 85.2% of participants diagnosed in the pre-UTT era had ever linked to
277 care, 60.1% had ever initiated ART, and 26.0% had ever achieved viral suppression (Figure).
278 Among those diagnosed in the UTT era, 80.2% had ever linked to care, 65.7% had ever initiated
279 ART, and 33.3% had ever achieved viral suppression (Figure). On the last day of follow-up,
280 5.7% of participants diagnosed in the pre-UTT era were on ART but non-suppressed, and 19.5%
281 were virally suppressed (Table 4; Figure). Among those diagnosed in the UTT era, 8.5% were on
282 ART but non-suppressed, and 24.5% were virally suppressed (Table 4; Figure). Over 70% of
283 participants diagnosed in the pre-UTT era, as compared to just over 60% in the post-UTT era
284 experienced a suboptimal treatment outcome by the end of the first year following diagnosis with
285 HIV (Table 4; Figure). Suboptimal outcomes between linkage to care and ART initiation were
286 more common among those diagnosed in the pre-UTT versus UTT era by the end of study
287 follow-up and sub-optimal outcomes between diagnosis and linkage to care were more common
288 among those diagnosed in the UTT versus pre-UTT (Table 4; Figure). Approximately 25% of
289 those diagnosed in both the pre-UTT and UTT eras were LTFU between ART initiation and viral
290 suppression (Table 4; Figure).

291

292 In analyses using the less restrictive LTFU definition, differences in the restricted mean time
293 spent in each stage of the care continuum and the proportion in each stage at the end of the one-
294 year follow-up period were attenuated (S3-5 Tables).



295

296 **Figure. Cumulative incidence of HIV care outcomes over 1-year following diagnosis, stratified by treatment era**

297 Abbreviations: ART- antiretroviral treatment; LTFU- lost to follow-up; UTT- Universal Test and Treat

298 Weighted to account for differences in age at diagnosis and sex by era of diagnosis

299 **Table 4. Proportion of participants in each stage of the HIV care continuum 1-year following diagnosis by treatment era of**
 300 **diagnosis**

	Pre-UTT Percent (95% CI)	UTT Percent (95% CI)	Percent difference (95% CI)
Crude			
Diagnosed with HIV (not yet linked)	0.4 (0.0, 0.7)	0.2 (0.0, 0.4)	-0.2 (-0.6, 0.3)
Suboptimal treatment outcome before linkage	14.8 (9.6, 20.1)	19.9 (15.2, 24.6)	5.0 (-2.0, 12.0)
Linked to care (ART naïve)	0.0 (-0.1, 0.1)	0.0 (0.0, 0.0)	0.0 (-0.1, 0.1)
Suboptimal treatment outcome before ART	25.2 (18.0-32.4)	14.6 (10.6-18.7)	-10.6 (-18.8, -2.4)
On ART (non-suppressed)	5.8 (2.1, 9.6)	8.5 (4.7, 12.3)	2.6 (-2.5, 7.8)
Suboptimal treatment outcome before suppression	27.2 (20.3-34.1)	23.6 (18.2-28.9)	-3.6 (-12.3, 5.0)
Virally suppressed	20.1 (13.6, 26.5)	24.5 (19.1, 29.9)	4.5 (-3.7, 12.7)
Suboptimal treatment outcome after suppression	6.5 (3.0-10.0)	8.7 (5.2-12.3)	2.2 (-2.7, 7.2)
Weighted^a			
Diagnosed with HIV (not yet linked)	0.4 (0.0, 0.7)	0.2 (0.0, 0.4)	-0.2 (-0.6, 0.3)
Suboptimal treatment outcome before linkage	14.5 (9.3-19.6)	19.6 (14.9-24.3)	5.2 (-0.2, 12.0)
Linked to care (ART naïve)	0.0 (-0.1, 0.1)	0.0 (0.0, 0.0)	0.0 (-0.1, 0.1)
Suboptimal treatment outcome before ART	25.0 (17.8-32.2)	14.4 (10.4-18.5)	-10.6 (-18.8, -2.4)
On ART (non-suppressed)	5.7 (2.0, 9.4)	8.5 (4.7, 12.3)	2.8 (-2.3, 7.9)
Suboptimal treatment outcome before suppression	28.4 (21.3-35.5)	23.9 (18.5-29.2)	-4.5 (-13.4, 4.4)
Virally suppressed	19.5 (13.1, 25.9)	24.5 (19.1, 29.9)	5.0 (-3.1, 13.1)
Suboptimal treatment outcome after suppression	6.5 (3.0-10.1)	8.9 (5.2-12.5)	2.3 (-2.7, 7.4)

301 Abbreviations: UTT- Universal Test and Treat; ART- antiretroviral therapy; CI- confidence interval

302 [†]Weighted to account for differences in age at diagnosis and sex by treatment era of diagnosis

303

304 **Discussion**

305 This study characterizes longitudinal HIV care continuum outcomes among YLHIV newly
306 initiating HIV care in nine publicly funded health care facilities in rural South Africa pre- and
307 post-implementation of the UTT policy. Overall, 82% of individuals had linked to care, 63% had
308 initiated ART, and 31% had achieved viral suppression by one year following diagnosis. There
309 were modest improvements in time spent on ART and virally suppressed among YLHIV
310 diagnosed after the adoption of the UTT policy. However, the proportion of individuals
311 diagnosed in the UTT era who had initiated ART, were retained in care, and were virally
312 suppressed one year following diagnosis was well below the Joint United Nations' Programme
313 on HIV/AIDS' 95-95-95 goal. A substantial proportion of individuals diagnosed in the UTT era
314 disengaged from care in the periods between diagnosis and linkage to care and ART initiation
315 and viral suppression.

316
317 Approximately 66% of individuals diagnosed during the UTT era initiated ART in the first year
318 following diagnosis. The mean time spent suppressed during this period was 60 days and just
319 25% of individuals were suppressed at the end of follow-up. This represents a substantial gap in
320 sustained retention on ART and viral suppression among YLHIV diagnosed in the era of UTT
321 that must be urgently addressed.

322
323 Implementation of UTT appeared to influence the timing of care disengagement among YLHIV
324 in this study. Specifically, those diagnosed in the pre-UTT era were more likely to be LTFU
325 between linkage to care and ART initiation while those diagnosed in the UTT era were more
326 likely to be LTFU between diagnosis and linkage to care. This suggests individuals diagnosed

327 during the UTT era may have been less likely to return to care to start ART if they were not
328 initiated the same day they were diagnosed. Existing evidence suggests low ART readiness may
329 impede retention in care following diagnosis in the UTT era (34). For example, a study of adults
330 immediately referred for ART in South Africa found that individuals who did not expect to
331 receive a positive HIV diagnosis had significantly lower odds of ART readiness than others
332 (adjusted odds ratio 0.26; 95% CI: 0.09, 0.78) and that the odds of linkage to care among those
333 expressing treatment readiness were 2.97 times that in individuals who were not ready to initiate
334 ART (34,35).

335
336 These findings have important implications for HIV policy and programming for South African
337 YLHIV in the UTT era. First, improved counseling and linkage to care at the point of diagnosis
338 with HIV may be critical to the success of same-day ART initiation policies. Second, increased
339 resources in the UTT era should be spent on retention in care efforts for YLHIV, particularly in
340 the periods between diagnosis and linkage to care and ART initiation and viral suppression.
341 Longitudinal counseling following diagnosis has been shown to improve linkage to care in other
342 settings across sub-Saharan Africa (36,37). For example, in a cluster randomized controlled trial
343 exploring the effects of a counseling intervention on treatment outcomes among people living
344 with HIV in Uganda, those in the intervention arm were significantly more likely to link to care
345 compared to those in the control arm (37). Differentiated, youth-friendly medical care and
346 programs that target improvements in young people's self-esteem, social support, and overall
347 psychosocial well-being may also be important to improving care outcomes for YLHIV (38–44).
348 A retrospective cohort study of youth initiating ART at 37 facilities in South Africa
349 demonstrated just 19% of study participants receiving support services were non-suppressed 5-

350 years after ART initiation compared to 37% of those who did not receive community based-
351 services (44). Care models such as these should be prioritized for South African YLHIV
352 particularly in the critical first year following diagnosis.

353
354 Increased attention must also center on monitoring care services for this group, specifically.
355 While the cross-sectional HIV care cascade (45) is useful in describing the proportion of
356 individuals in each stage of the care continuum at a specific point in time, it provides a mere
357 snapshot of the true patient experience (2,46). Longitudinal HIV care cascades allow for a
358 nuanced exploration of population-level outcomes over time (1,2) and can aid in assessing the
359 effectiveness of HIV care programs as individuals progress through each stage of the continuum.
360 Ultimately, these cascades can be harnessed to identify specific gaps in treatment and care
361 services at precise time points following diagnosis (1,3).

362
363 This analysis had limitations. First, viral load monitoring is recommended just once per year
364 under the South African National HIV Treatment guidelines (28). Because we were primarily
365 interested in assessing HIV treatment outcomes in the first year following an individual's
366 diagnosis, most participants had one opportunity to achieve viral suppression during the study
367 period. Among those who achieved viral suppression, true time to viral suppression may have
368 been shorter but went uncaptured because of infrequent viral load monitoring. Similarly,
369 virologic failure among individuals who achieved suppression may have been under-captured
370 due to infrequent viral load monitoring. Misclassified person-time could subsequently result in
371 biased effect estimates. Second, mortality and migration data were only accessible from 2014-
372 2017. Individuals who died in 2018 and were not yet administratively censored or LTFU before

373 the time of death would have misclassified person-time. Given just one participant died in the
374 2014-2017 follow-up period, this was a minor concern. Lastly, the nature of the Clinic Link
375 System prevented us from reliably ascertaining the reason for individuals' LTFU. It is possible
376 that individuals who were classified as LTFU transferred into care at a clinic outside the nine
377 included health care facilities, as documented in other studies (24,25). Individuals who
378 transferred care and were classified as LTFU may have progressed through additional stages in
379 the HIV care continuum during the one-year follow-up period, though we do not expect
380 differential migration with respect to treatment era.

381

382 **Conclusions**

383 Implementation of the World Health Organization's UTT policy yielded modest improvements
384 in the time spent on ART and virally suppressed among South African YLHIV. However, with
385 just 66% of YLHIV diagnosed in the UTT era initiating ART, and just 25% virally suppressed
386 one year following diagnosis, meeting UNAIDS 95-95-95 targets remains a challenge. HIV
387 treatment programs and policies for YLHIV in the UTT era should specifically center on
388 improving longitudinal care outcome monitoring and retention in care in the periods immediately
389 following diagnosis and ART initiation.

390

391 **Abbreviations**

392	ART	anti-retroviral therapy
393	HDSS	Health and Socio-Demographic Surveillance System study area
394	HIV	human-immunodeficiency virus
395	LTFU	lost-to follow-up

396 UNAIDS United Nations' Joint Programme on HIV/AIDS

397 UTT Universal Test and Treat policy

398 YLHIV youth living with HIV

399

400 **Declarations**

401 **Ethics approval and consent to participate**

402 This study was approved by the University of North Carolina at Chapel Hill's Institutional
403 Review Board, the University of the Witwatersrand's Human Research Ethics Committee, and
404 the Mpumalanga Provincial Health Research Committee. All individuals provided written
405 informed consent or assent for inclusion of their electronic health records in the Agincourt-
406 HDSS Clinic Link System.

407 **Consent for publication**

408 Not applicable.

409 **Availability of data and materials**

410 The datasets analyzed during the current study are not publicly available due to the sensitive nature
411 of HIV treatment and care data. Data may be made available from the study team on reasonable
412 request.

413 **Competing interests**

414 Funding acknowledgments are listed below under the "Funding" section. The authors declare
415 that they have no other competing interests.

416 **Funding**

417 Author LMF was supported in part by ViiV Healthcare, NIH Research Training Grant # D43
418 TW009340 funded by the Fogarty International Center, NINDS, NIMH, and NHBLI, and NIMHD

419 grant T37 MD014218; author JKE was supported in part by NIH award # K01AI125087 funded
420 by NIAID; additional funding for this project was provided in part by the American people through
421 the President's Emergency Plan for AIDS Relief (PEPFAR) and United States Agency for
422 International Development (USAID) under the Cooperative Agreement Project SOAR
423 (Supporting Operational AIDS Research), # AID-OAA-14-00060 and the Department of Science
424 and Innovation, the University of the Witwatersrand, and the Medical Research Council, South
425 Africa. The content of this publication is the sole responsibility of the authors and does not
426 necessarily reflect the views or policies of the U.S. Agency for International Development,
427 PEPFAR, or the National Institutes of Health, and does not imply endorsement by the U.S.
428 Government.

429 **Authors contributions**

430 LMF- Conceptualization; Funding; Project administration; Data curation; Formal analysis;
431 Methodology; Writing- original draft; JKE- Conceptualization; Methodology; Writing- revising
432 & editing; NM-Project administration; Data curation; Writing- revising & editing; FXGO-
433 Project administration; Methodology; Writing- revising & editing; NH- Funding; Writing-
434 revising & editing; BP- Methodology; Writing- revising & editing; AM- Methodology; Writing-
435 revising & editing; KM- Methodology; Writing- revising & editing; CWK- Data curation;
436 Project administration; Writing- revising & editing; MKD- Data curation; Writing- revising &
437 editing; SAL- Funding; Methodology; Writing- revising & editing; KK- Funding; Methodology;
438 Project administration; Writing- revising & editing; AP- Conceptualization; Funding;
439 Methodology; Writing- revising & editing.

440 **Acknowledgments**

441 The authors would like to thank all the individuals who participated in this study.

442

443 **References**

- 444 1. Jose S, Delpuch V, Howarth A, Burns F, Hill T, Porter K, et al. A continuum of HIV care
445 describing mortality and loss to follow-up: a longitudinal cohort study. *The Lancet HIV*.
446 2018 Jun 1;5(6):e301–8.
- 447 2. Mody A, Glidden D v, Eshun-Wilson I, Sikombe K, Simbeza S, Mukamba N, et al.
448 Longitudinal Care Cascade Outcomes Among People Eligible for Antiretroviral Therapy
449 Who Are Newly Linking to Care in Zambia: A Multistate Analysis. *Clinical Infectious*
450 *Diseases* [Internet]. 2020 Dec 17 [cited 2021 Feb 11];71(10):e561–70. Available from:
451 <https://academic.oup.com/cid/article/71/10/e561/5805511>
- 452 3. Lesko CR, Edwards JK, Moore RD, Lau B. A longitudinal, HIV care continuum: 10-year
453 restricted mean time in each care continuum stage after enrollment in care, by history of
454 IDU. *AIDS* [Internet]. 2016 [cited 2019 Oct 3];30(14):2227–34. Available from:
455 <http://www.ncbi.nlm.nih.gov/pubmed/27314178>
- 456 4. Beer L, Mattson CL, Bradley H, Shouse RL. Trends in ART prescription and viral
457 suppression among HIV-positive young adults in care in the United States, 2009-2013.
458 *Journal of Acquired Immune Deficiency Syndromes*. 2017 Sep 1;76(1):e1–6.
- 459 5. Lee S, Kapogiannis BG, Allison S. Improving the youth HIV prevention and care
460 continuums: The adolescent medicine trials network for HIV/AIDS interventions. Vol. 8,
461 *JMIR Research Protocols*. JMIR Publications Inc.; 2019.
- 462 6. Zanoni BC, Mayer KH. The Adolescent and Young Adult HIV Cascade of Care in the
463 United States: Exaggerated Health Disparities. *AIDS Patient Care and STDs*. 2014 Mar
464 1;28(3):128–35.

- 465 7. Enane LA, Davies MA, Leroy V, Edmonds A, Apondi E, Adedimeji A, et al. Traversing
466 the cascade: urgent research priorities for implementing the “treat all” strategy for children
467 and adolescents living with HIV in sub-Saharan Africa. *Journal of Virus Eradication*.
468 2018;4(Suppl 2):40–6.
- 469 8. UNAIDS. Ending the AIDS epidemic for adolescents, with adolescents. Geneva,
470 Switzerland; 2016. 2030 p.
- 471 9. Slogrove AL, Sohn AH. The global epidemiology of adolescents living with HIV: Time
472 for more granular data to improve adolescent health outcomes. Vol. 13, *Current Opinion*
473 *in HIV and AIDS*. Lippincott Williams and Wilkins; 2018. p. 170–8.
- 474 10. Zanoni BC, Archary M, Buchan S, Katz IT, Haberer JE. Systematic review and meta-
475 analysis of the adolescent HIV continuum of care in South Africa: the Cresting Wave.
476 *BMJ Global Health*. 2016;1(e000004).
- 477 11. Pillay Y, Pillay A. Implementation of the Universal Test and Treat strategy for HIV
478 positive patients and differentiated care for stable patients. Pretoria, South Africa; 2016.
- 479 12. Lippman SA, El Ayadi AM, Grignon JS, Puren A, Liegler T, Venter WDF, et al.
480 Improvements in the South African HIV care cascade: findings on 90-90-90 targets from
481 successive population-representative surveys in North West Province. *J Int AIDS Soc*.
482 2019 Jun 1;22(6).
- 483 13. Onoya D, Hendrickson C, Sineke T, Maskew M, Long L, Bor J, et al. Attrition in HIV
484 care following HIV diagnosis: a comparison of the pre-UTT and UTT eras in South
485 Africa. *J Int AIDS Soc*. 2021 Feb 1;24(2).

- 486 14. Pettifor A, Filiatreau L, Delany-Moretlwe S. Time to strengthen HIV treatment and
487 prevention for youth. *The Lancet HIV* [Internet]. 2019 Oct [cited 2019 Oct 5];6(11).
488 Available from: <https://linkinghub.elsevier.com/retrieve/pii/S2352301819302322>
- 489 15. Davies MA, Pinto J. Targeting 90-90-90 - Don't leave children and adolescents behind. *J*
490 *Int AIDS Soc.* 2015;18(Suppl 6):20745.
- 491 16. Gleeson HS, Oliveras Rodriguez CA, Hatane L, Hart D. Ending AIDS by 2030: The
492 importance of an interlinked approach and meaningful youth leadership: The. *J Int AIDS*
493 *Soc.* 2018;21:e25061.
- 494 17. Kahn K, Collinson MA, Xavier Gómez-olivé F, Mokoena O, Twine R, Mee P, et al.
495 Profile: Agincourt health and socio-demographic surveillance system. *International*
496 *Journal of Epidemiology.* 2012 Aug 1;41(4):988–1001.
- 497 18. MRC/Wits Agincourt Research Unit. Research Findings – MRC/Wits Agincourt Unit
498 [Internet]. 2014 [cited 2019 May 31]. Available from:
499 https://www.agincourt.co.za/?page_id=1911
- 500 19. Gómez-Olivé FX, Angotti N, Houle B, Klipstein-Grobusch K, Kabudula C, Menken J, et
501 al. Prevalence of HIV among those 15 and older in rural South Africa. *AIDS Care -*
502 *Psychological and Socio-Medical Aspects of AIDS/HIV.* 2013;25(9):1122–8.
- 503 20. Collinson MA, White MJ, Bocquier P, McGarvey ST, Afolabi SA, Clark SJ, et al.
504 Migration and the epidemiological transition: Insights from the Agincourt sub-district of
505 northeast South Africa. *Global Health Action.* 2014;7(SUPP.1).
- 506 21. West R, Leslie H, Gómez-Olivé FX, Kahn K, Twine R, Filiatreau L, et al. Using multiple
507 modes of assessment to measure patient experience in public clinics in rural Mpumalanga,
508 South Africa. In: *South African AIDS Conference.* Durban, South Africa; 2019.

- 509 22. Kabudula CW, Clark BD, Gómez-Olivé FX, Tollman S, Menken J, Reniers G. The
510 promise of record linkage for assessing the uptake of health services in resource
511 constrained settings: a pilot study from South Africa. *BMC Medical Research*
512 *Methodology*. 2014 Dec 24;14(1):71.
- 513 23. Lippman SA, Pettifor A, Rebombo D, Julien A, Wagner RG, Kang Dufour MS, et al.
514 Evaluation of the Tsimba community mobilization intervention to improve engagement in
515 HIV testing and care in South Africa: Study protocol for a cluster randomized trial.
516 *Implementation Science*. 2017 Jan 17;12(1):1–13.
- 517 24. Etoori D, Gomez-Olive FX, Reniers G, Rice B, Renju J, Kabudula CW, et al. Outcomes
518 After Being Lost to Follow-up Differ for Pregnant and Postpartum Women When
519 Compared With the General HIV Treatment Population in Rural South Africa. *J Acquir*
520 *Immune Defic Syndr [Internet]*. 2020 Oct 1 [cited 2021 Aug 31];85(2):127–37. Available
521 from: [/pmc/articles/PMC7495979/](https://pubmed.ncbi.nlm.nih.gov/34459799/)
- 522 25. Etoori D, Wringe A, Kabudula CW, Renju J, Rice B, Gomez-Olive FX, et al.
523 Misreporting of Patient Outcomes in the South African National HIV Treatment Database:
524 Consequences for Programme Planning, Monitoring, and Evaluation. *Frontiers in Public*
525 *Health*. 2020 Apr 7;8:100.
- 526 26. Sherman GG, Mazanderani AH, Barron P, Bhardwaj S, Niit R, Okobi M, et al. Toward
527 elimination of mother-to-child transmission of HIV in South Africa: How best to monitor
528 early infant infections within the Prevention of Mother-to-Child Transmission Program.
529 *Journal of Global Health*. 2017 Apr 12;7(1).

- 530 27. Girdwood SJ, Crompton T, Sharma M, Dorward J, Garrett N, Drain PK, et al. Cost-
531 effectiveness of adoption strategies for point of care HIV viral load monitoring in South
532 Africa. *EClinicalMedicine*. 2020 Nov 1;28:100607.
- 533 28. Department of Health Republic of South Africa. Adherence Guidelines for HIV, TB and
534 NCDs. Policy and service guidelines for linkage to care, adherence to treatment and
535 retention in care [Internet]. Pretoria, South Africa; 2016 [cited 2020 Sep 2]. Available
536 from: [https://www.nacosa.org.za/wp-content/uploads/2016/11/Integrated-Adherence-](https://www.nacosa.org.za/wp-content/uploads/2016/11/Integrated-Adherence-Guidelines-NDOH.pdf)
537 [Guidelines-NDOH.pdf](https://www.nacosa.org.za/wp-content/uploads/2016/11/Integrated-Adherence-Guidelines-NDOH.pdf)
- 538 29. Moosa A, Gengiah TN, Lewis L, Naidoo K. Long-term adherence to antiretroviral therapy
539 in a South African adult patient cohort: a retrospective study. *BMC Infect Dis*. 2019 Sep
540 5;19(1):775.
- 541 30. Kharsany ABM, Cawood C, Lewis L, Yende-Zuma N, Khanyile D, Puren A, et al. Trends
542 in HIV Prevention, Treatment, and Incidence in a Hyperendemic Area of KwaZulu-Natal,
543 South Africa. *JAMA Netw Open*. 2019 Nov 1;2(11):e1914378.
- 544 31. Kiweewa F, Esber A, Musingye E, Reed D, Crowell TA, Cham F, et al. HIV virologic
545 failure and its predictors among HIV-infected adults on antiretroviral therapy in the
546 African Cohort Study. *PLoS ONE*. 2019 Feb 1;14(2):e0211344.
- 547 32. Laprise C, De Pokomandy A, Baril JG, Dufresne S, Trottier H. Virologic failure following
548 persistent low-level viremia in a cohort of HIV-positive patients: Results from 12 years of
549 observation. *Clinical Infectious Diseases*. 2013 Nov 15;57(10):1489–96.
- 550 33. Efron B, Tibshirani R. *An Introduction to the Bootstrap*. 1st ed. Chapman and Hall/CRC;
551 1994.

- 552 34. Maughan-Brown B, Harrison A, Galárraga O, Kuo C, Smith P, Bekker LG, et al. Factors
553 affecting linkage to HIV care and ART initiation following referral for ART by a mobile
554 health clinic in South Africa: evidence from a multimethod study. *Journal of Behavioral*
555 *Medicine*. 2019 Oct 1;42(5):883–97.
- 556 35. Maughan-Brown B, Smith P, Kuo C, Harrison A, Lurie MN, Bekker LG, et al. Readiness
557 for Antiretroviral Therapy: Implications for Linking HIV-Infected Individuals to Care and
558 Treatment. *AIDS and Behavior*. 2018 Mar 1;22(3):691–700.
- 559 36. Hecce ME, Chi BH, Liao RC, Hoffmann CJ. Re-thinking Linkage to Care in the Era of
560 Universal Test and Treat: Insights from Implementation and Behavioral Science for
561 Achieving the Second 90. *AIDS and Behavior* [Internet]. 2019 Sep 1 [cited 2021 Feb
562 26];23(2):120–8. Available from: <https://doi.org/10.1007/s10461-019-02541-5>
- 563 37. Ruzagira E, Grosskurth H, Kamali A, Baisley K. Brief counselling after home-based HIV
564 counselling and testing strongly increases linkage to care: A cluster-randomized trial in
565 Uganda. *J Int AIDS Soc* [Internet]. 2017 Oct 1 [cited 2021 Feb 26];20(2):e25014.
566 Available from: <http://doi.wiley.com/10.1002/jia2.25014>
- 567 38. Willis N, Napei T, Armstrong A, Jackson H, Apollo T, Mushavi A, et al. Zvandiri-
568 Bringing a Differentiated Service Delivery Program to Scale for Children, Adolescents,
569 and Young People in Zimbabwe. *J Acquir Immune Defic Syndr* [Internet]. 2018 [cited
570 2019 Sep 28];78 Suppl 2:S115–23. Available from:
571 <http://www.ncbi.nlm.nih.gov/pubmed/29994833>
- 572 39. Reif LK, McNairy ML, Lamb MR, Fayorsey R, Elul B. Youth-friendly services and
573 differentiated models of care are needed to improve outcomes for young people living

- 574 with HIV. *Current Opinion in HIV and AIDS* [Internet]. 2018 May 1 [cited 2021 Feb
575 21];13(3):249–56. Available from: <https://pubmed.ncbi.nlm.nih.gov/29432230/>
- 576 40. Ruria EC, Masaba R, Kose J, Woelk G, Mwangi E, Matu L, et al. Optimizing linkage to
577 care and initiation and retention on treatment of adolescents with newly diagnosed HIV
578 infection. *AIDS* [Internet]. 2017 Jul 1 [cited 2021 Jan 6];31:S253–60. Available from:
579 <http://journals.lww.com/00002030-201707013-00008>
- 580 41. Lamb MR, Fayorsey R, Nuwagaba-Biribonwoha H, Viola V, Mutabazi V, Alwar T, et al.
581 High attrition before and after ART initiation among youth (15–24 years of age) enrolled
582 in HIV care. *AIDS* [Internet]. 2014 Feb 20 [cited 2018 Jan 26];28(4):559–68. Available
583 from: <http://www.ncbi.nlm.nih.gov/pubmed/24076661>
- 584 42. Bhana A, Mellins CA, Petersen I, Alicea S, Myeza N, Holst H, et al. The VUKA family
585 program: piloting a family-based psychosocial intervention to promote health and mental
586 health among HIV infected early adolescents in South Africa. *AIDS Care* [Internet]. 2014
587 Jan [cited 2018 Jan 27];26(1):1–11. Available from:
588 <http://www.ncbi.nlm.nih.gov/pubmed/23767772>
- 589 43. Casale M, Carlqvist A, Cluver L. Recent Interventions to Improve Retention in HIV Care
590 and Adherence to Antiretroviral Treatment Among Adolescents and Youth: A Systematic
591 Review. *AIDS Patient Care and STDs* [Internet]. 2019 Jun 1 [cited 2021 Aug
592 3];33(6):237. Available from: </pmc/articles/PMC6588099/>
- 593 44. Fatti G, Jackson D, Goga AE, Shaikh N, Eley B, Nachega JB, et al. The effectiveness and
594 cost-effectiveness of community-based support for adolescents receiving antiretroviral
595 treatment: An operational research study in South Africa. *J Int AIDS Soc* [Internet]. 2018

- 596 Feb 1 [cited 2020 Dec 30];21(Suppl Suppl 1). Available from:
597 <https://pubmed.ncbi.nlm.nih.gov/29485714/>
- 598 45. Gardner EM, McLees MP, Steiner JF, del Rio C, Burman WJ. The spectrum of
599 engagement in HIV care and its relevance to test-and-treat strategies for prevention of
600 HIV infection. *Clinical Infectious Diseases* [Internet]. 2011 Mar 15 [cited 2017 Sep
601 17];52(6):793–800. Available from: [https://academic.oup.com/cid/article-](https://academic.oup.com/cid/article-lookup/doi/10.1093/cid/ciq243)
602 [lookup/doi/10.1093/cid/ciq243](https://academic.oup.com/cid/article-lookup/doi/10.1093/cid/ciq243)
- 603 46. Nash D, Robertson MK. How to Evolve the Response to the Global HIV Epidemic With
604 New Metrics and Targets Based on Pre-Treatment CD4 Counts [Internet]. Vol. 16,
605 Current HIV/AIDS Reports. Current Medicine Group LLC 1; 2019 [cited 2021 Feb 16]. p.
606 304–13. Available from: <https://pubmed.ncbi.nlm.nih.gov/31278620/>

607

608 **Additional Files**

609 S1 Table: Events of interest in longitudinal HIV care continuum

610 S2 Table: Equations for estimating the proportion of individuals in each stage of the continuum
611 at any given time point during study follow-up

612 S1 Figure: Framework for flow through the longitudinal HIV care continuum

613 S2 Figure. Cumulative incidence of HIV care outcomes over the 1-year follow-up period in
614 study population overall

615 S3 Table. Time spent in each stage of care continuum over 1-year follow-up period and percent
616 of individuals in each stage at end of follow-up^a

617 S4 Table. Time spent in each stage of the HIV care continuum over 1-year follow-up period by
618 treatment era of diagnosis^a

619 S5 Table. Proportion of participants in each stage of the HIV care continuum 1-year following
620 diagnosis by treatment era of diagnosis^a