

1 Symptom presentation among SARS-CoV-2 2 positive cases and the impact of COVID-19 3 vaccination; three prospective household cohorts 4

5 **Authors**

6 Ilse Westerhof¹, Marieke de Hoog¹, Margareta Ieven², Christine Lammens², Janko van Beek³, Ganna
7 Rozhnova^{1,4}, Dirk Eggink⁵, Sjoerd Euser⁶, Joanne Wildenbeest⁷, Liesbeth Duijts⁸, Marlies van Houten^{9,10},
8 Herman Goossens², Carlo Giaquinto¹¹, Patricia Bruijning-Verhagen¹

- 9
- 10 1. Julius Centre for Health Sciences and Primary Care, Department of Epidemiology, University Medical Centre Utrecht,
11 Utrecht, The Netherlands
 - 12 2. Laboratory of Medical Microbiology, Vaccine & Infectious Disease Institute, University of Antwerp, Antwerp, Belgium
 - 13 3. Department of Viroscience, Erasmus University Medical Center Rotterdam, Rotterdam, The Netherlands
 - 14 4. BioISI—Biosystems & Integrative Sciences Institute, Faculdade de Ciências, Universidade de Lisboa, Lisboa, Portugal
 - 15 5. Centre for Infectious Disease Control, WHO COVID-19 Reference Laboratory, National Institute for Public Health and
16 the Environment (RIVM), Bilthoven, The Netherlands.
 - 17 6. Streeklaboratorium voor de Volksgezondheid Kennemerland, Department of Epidemiology, Kennemerland, The
18 Netherlands
 - 19 7. Department of Pediatric Infectious Diseases and Immunology, Wilhelmina Children's Hospital University Medical
20 Center Utrecht, Utrecht, The Netherlands
 - 21 8. Erasmus MC - Sophia Children's Hospital, Erasmus University Medical Center, Department of Pediatrics, Rotterdam,
22 The Netherlands
 - 23 9. Spaarne Gasthuis Academy, Spaarne Gasthuis, Hoofddorp, The Netherlands
 - 24 10. Spaarne Gasthuis, department of Pediatrics, Haarlem and Hoofddorp, The Netherlands
 - 25 11. Department of Women and Child Health, University of Padova, Padova, Italy

27 **Corresponding Author**

28 Ilse Westerhof (E: I.Westerhof-4@umcutrecht.nl)

29 Julius Centre for Health Sciences and Primary Care, Department of Epidemiology, University Medical
30 Centre Utrecht, Utrecht, The Netherlands, PO Box 85500, 3508 GA Utrecht

NOTE: This preprint reports new research that has not been certified by peer review and should not be used to guide clinical practice.

31 Abstract

32 **OBJECTIVE:** Using data from European prospective household studies, we systematically compared the
33 symptom burden of the wild-type and Alpha variant infected individuals versus the Omicron BA.1 and BA.2
34 infected individuals across paediatric and adult age-groups. In addition, we measured the impact of COVID-
35 19 vaccination on the Omicron symptom burden.

36 **METHODS:** The household transmission studies were conducted during the wild-type and Alpha period
37 (April 2020 to April 2021) and the early Omicron BA.1 and BA.2 dominant period (January to March 2022).
38 All three studies used similar protocols. Households were prospectively followed from detection of the
39 first SARS-CoV-2 index case until at least day 21 including (repeated) PCR testing, paired serology and daily
40 symptom reporting for all household members. To avoid possible index-case ascertainment bias, we
41 restricted analyses to secondary household cases. Age-stratified SARS-CoV-2 symptom burden was
42 compared for wild-type/Alpha versus Omicron infections and for primary versus primary plus booster
43 series vaccinated adult cases.

44 **FINDINGS:** In total 216 secondary cases from wild-type/Alpha, and 130 from the Omicron period were
45 included. Unvaccinated children <12 years experienced more symptoms and higher maximum and
46 cumulative severity scores during the Omicron compared to the wild-type/Alpha period ($p=0.004$, $p=0.011$
47 and $p=0.075$, respectively). In adults, disease duration and maximum and cumulative severity scores were
48 reduced during the Omicron period. Adjusted for age, gender and prior immunity Omicron was associated
49 with lower odds for loss of smell or taste (Odds Ratio [OR]: 0.14; 95%CI 0.03-0.50), and higher, but non-
50 significant odds for upper respiratory symptoms, fever and fatigue (ORs varying between 1.85-2.23).
51 Comparing primary versus primary plus booster vaccinated adult cases during the Omicron period no
52 differences were observed in disease severity or duration ($p\geq 0.12$).

53 **INTERPRETATION:** In children, the Omicron variant causes higher symptom burden compared to the wild-
54 type/Alpha. Adults experienced a lower symptom burden possibly due to prior vaccination. A shift in most
55 frequently reported symptoms occurred with a marked reduction in loss of smell or taste during the
56 Omicron period. An additional effect of booster vaccination on symptom severity in infected adults
57 compared to primary series only, could not be demonstrated.

58 Introduction

59 Since the onset of the Coronavirus Disease 2019 (COVID-19) pandemic in December 2019, several SARS-
60 CoV-2 Variants of Concern (VoC) have emerged¹. With the emergence of the Omicron VOC (BA.1) and its
61 descendants (BA.2 and further), the pandemic has taken a new turn. Omicron variants are characterized
62 by a high number of mutations compared to the ancestral strain and are associated with immune escape
63 and enhanced ACE-2 binding^{2,3}. In addition, unlike other variants the Omicron variants are less capable of
64 infecting the lower respiratory tract due to a shift in cellular tropism away from TMPRSS2 expressing cells,
65 promoting faster replication in the upper airways but reduced replication in the lungs.^{4,5} As a
66 consequence, the clinical picture of SARS-CoV-2 infection is changing, both in vaccinated and unvaccinated
67 individuals. To date, most studies describing the changing symptomatology of COVID-19 during the
68 Omicron period have focused on cases in hospital.^{6,7} This restricts analyses to more severe cases and
69 therefore provides little understanding on disease evolution in community cases, which represent the
70 overwhelming majority of all cases, and in particular in children, who only rarely require medical care for
71 SARS-CoV-2 infection⁸.

72 An appropriate setting to study the COVID-19 disease spectrum across paediatric and adult age-groups is
73 within households. We used a dataset from three prospective SARS-CoV-2 household transmission studies
74 that used similar protocols to study age-stratified symptom burden of SARS-CoV2 infections during the
75 wild-type/Alpha dominant period compared to the Omicron BA.1 and BA.2 dominant period, considering
76 differences in vaccination and prior infection status. Our analyses are restricted to secondary household
77 cases to avoid index case ascertainment bias.

78

79 Methods

80 Study design and study population

81 We used data from three prospective household transmission studies conducted in two different SARS-
82 CoV-2 variant periods: the RECOVER household study and CoKids study (Wild-type/Alpha period) and the
83 VERDI-RECOVER household study (Omicron period; Supplement Figure 1-2). The primary aim of the
84 RECOVER household study was to characterize within household transmission of SARS-CoV-2 and the
85 impact of implemented measures within the household to prevent transmission. From April 2020 until
86 April 2021, data from 276 Dutch, Belgium and Swiss households with SARS-CoV-2 were collected. Study
87 design and results on household transmission are published elsewhere.⁹ The Cokids study was set up to
88 determine the susceptibility, transmissibility and disease course of SARS-CoV-2 infection in children. From
89 August 2020 until July 2021, data of 79 SARS-CoV-2 outbreaks of Dutch households with at least one child
90 <18 years of age were collected. Study design and initial results are published elsewhere.¹⁰ The VERDI-
91 RECOVER household study recruited from January to March 2022 during the period when Omicron BA.1
92 and BA.2 were dominant. This study aims to estimate household transmission rates in partially vaccinated
93 populations and explores the viral kinetics in Omicron variant infected subjects. During wild-type/Alpha
94 period, vaccination became available for adults (from January 2021 onwards). During the Omicron period,
95 booster vaccinations were available for adults (in the Netherlands from December 2021 onwards) and
96 primary series for adolescents (in the Netherlands from July 2021 onwards). Vaccination for children aged
97 5 to 11 became available for medical risk groups during mid-January 2022 in the Netherlands.

98 In all three studies, household outbreaks had started with the identification of an index case followed by
99 repeated sampling and daily symptom monitoring in all household members until the outbreak ended.
100 Enrolment took place within 48 hours following a positive SARS-CoV-2 PCR test of the index case.
101 Households were excluded if one or more household members did not consent to participate. In the
102 VERDI-RECOVER household study, the additional exclusion criterium was SARS-CoV2 positivity in any of
103 the household members in the previous two weeks. Here, these three studies were used to study and
104 compare the COVID-19 disease spectrum across paediatric and adult age-groups between SARS-CoV-2
105 variants (wild-type, Alpha and Omicron BA.1 and BA.2).

106 The studies were reviewed and ethically approved by the Medical Ethical Committee Utrecht, The
107 Netherlands (reference number 17-069/M), the Medical Ethical Committee of the Vrije Universiteit
108 university Medical Centre (VUmc), The Netherlands (reference number A2012.901), and the Medical
109 Ethical Committee of Erasmus Medical Centre, The Netherlands (reference number MEC-2020-0609).
110 Written informed consent was obtained from all participating household members and/or their legal
111 representatives.

112 [Study procedures](#)

113 Most study procedures were done remotely using self-sampling and an interactive study mobile phone
114 application to accommodate pandemic restrictions on movement, social distancing, and isolation. At
115 baseline, each household member completed a questionnaire including age, comorbidities, recent
116 respiratory complaints, previous infections, and COVID-19 vaccination status. During follow-up,
117 participants daily reported on presence and severity of a set of respiratory and systemic symptoms (see
118 Supplementary Table 1), which was continued until 21 days after last symptom-onset in any household
119 member.

120 A courier delivered sample kits at home for self-sampling of specimens for viral and serological testing.
121 Self-sampling was supported by live instruction or instruction videos and leaflets, delivered with the
122 sampling material. A telephone helpdesk was available 7 days a week during working hours. In each of the
123 studies, the core protocol included a nose-throat swab (NTS) sample at day 0 for all household members
124 and, if applicable, an additional nose-throat swab from a household member when he/she developed
125 symptoms during follow-up. The core protocol could be extended with additional sample time points and
126 specimens, but this differed between studies (Supplement Table 1). Therefore, those additional results
127 were not used in the current analysis to guarantee similarity in case detection across cohorts. Dried blood
128 spot (DBS) using self-finger-prick were collected at enrolment and end of follow-up.

129 For data collection on symptoms, questionnaires, and self-sampling we used a custom-made mobile phone
130 application compatible with Apple and Android systems, developed by the UMCU in collaboration with
131 YourResearch Holding BV. The study App contained all study related tasks and questionnaires along with
132 tutorial videos, FAQs, and options to contact the study team. All data entered in the study App were stored
133 in an online secured database. Data were accessible and could be navigated by the study team in real-time
134 by authorized login on the online portal. Daily App-notifications were sent to participants to remind them
135 to complete diary entry and self-sampling when applicable. Study teams received daily reports on
136 participant non-compliance which was followed-up by email, phone, or text-message.

137 Laboratory analysis

138 NTS samples were PCR tested for presence of SARS-CoV-2 and DBS were tested by multiplex protein
139 microarray for antibodies as described previously ^{9,10} at either the Streeklab Haarlem (CoKids cohort),
140 National Institute for Public Health and the Environment (CoKids cohort), Antwerp University (RECOVER
141 and VERDI-RECOVER cohorts), or Erasmus University Medical Center Rotterdam (RECOVER and VERDI-
142 RECOVER cohorts). Details on the PCR and DBS methods used can be found in Supplement 1.

143 Definitions

144 Confirmed SARS-CoV-2 infection was defined as a positive RT-PCR SARS-CoV-2 result or seroconversion
145 defined as SARS-CoV-2 nucleoprotein (NP)-antibody negative at enrolment and positive at the end of
146 follow-up. A secondary household case was defined as a confirmed SARS-CoV-2 infection in a household
147 member not being the index case.

148 We used the daily symptom data and date of positive test result to define onset and ending of a SARS-
149 CoV-2 episode. An episode started on the day of symptom onset, which had to fall within the seven days
150 prior to, or seven days post first positive test result. An episode ended on the last symptomatic day that
151 was followed by at least two days without any symptoms. SARS-CoV-2 disease severity was categorized
152 into symptomatic disease, pauci-symptomatic, and asymptomatic episodes. Symptomatic disease was
153 defined as: 1) onset of fever OR 2) two consecutive days with one respiratory (cough, sore throat, runny
154 or congested nose, dyspnea) and one systemic symptom (headache, muscle ache, sweats or chills or
155 tiredness) or with at least two respiratory symptoms. Subjects meeting the criteria for symptomatic
156 disease additionally received a daily severity score which consisted of a 5-point Likert scale per reported
157 symptom present, except for fever, which was categorized as <38/38-39/39-40/>40 degrees Celsius. An
158 episode was defined as pauci-symptomatic if symptoms occurred within the specified time-window but
159 remained below the threshold for a symptomatic disease episode, and asymptomatic if no symptoms were
160 reported.

161 Vaccination status was categorized into unvaccinated, incompletely vaccinated, primary vaccinated, or
162 primary plus booster vaccinated. Primary vaccinated was defined as; two doses of a mRNA vaccine
163 BNT162b2 or mRNA-1273 (Pfizer-BioNtech; Moderna), two doses of the vector-based AZD1222
164 (AstraZeneca) or a single dose of the vector-based Ad26.COVID.S vaccine (Johnson & Johnson) at least 14
165 days prior to enrolment. Primary plus booster vaccinated was defined as a third dose of mRNA vaccine, or
166 a second dose if the primary series consisted of the single-dose Ad26.COVID.S vaccine, at least 6 months
167 after completion of the primary series and at least 14 days prior to enrolment. Prior infection was
168 determined when previous infections were reported in the questionnaire or when antibodies (NP
169 antibodies during omicron period) were detected in the dried bloodspot at enrolment indicating a previous
170 infection. Prior immunity was defined by the presence of antibodies at enrolment, being vaccinated before
171 enrolment, and/or self-reported prior enrolment infection.

172 [Statistical analysis](#)

173 Our population for analysis included all secondary household cases from the three cohorts. Index cases
174 were excluded, because index case ascertainment strategies differed between cohorts, because of testing
175 availability, and are inherently incomplete, which may select for more severe cases. We grouped cases by
176 variant dominant period. Secondary cases from the RECOVER and CoKids cohorts were therefore assigned
177 to the wild-type/Alpha variant, whereas cases from the VERDI-RECOVER cohort were assigned to the
178 Omicron BA.1 and BA.2 period (see supplementary Figure 1 for variant prevalence over time from national
179 surveillance¹¹). Population demographic and vaccination characteristics were compared by variant period
180 using proportions and medians with interquartile ranges (IQR).

181 We compared the symptoms and severity of secondary case episodes in the wild-type/Alpha variant
182 dominant period to those in the Omicron dominant period stratified by age-category: child (age 0-11),
183 adolescent: (age 12-17), and adult (age above 17) and visualized using bar-charts, heat plots, and spline
184 charts. Missing diaries and severity scores were imputed using the symptoms and severity of the day
185 before and after the missing value. Cases that did not complete any diary were excluded. For each
186 symptomatic episode we computed the maximum severity score, referring to the day with highest
187 reported score during the episode, and the cumulative severity score, referring to the sum of severity
188 scores during the entire episode. We used Chi-square test for symptom frequency and Mann-Whitney U
189 test for symptom duration, number of symptoms, maximum and cumulative severity score. Next, we
190 explored the association between variant and symptoms using binomial and Gaussian multivariable
191 regression models. Odds ratios (ORs) were computed for each respiratory and systemic symptom to
192 quantify the association between variant and symptom frequency, adjusted for age, gender and prior
193 immunity. Prior immunity was based on vaccination status, serology at baseline and/or a reported
194 previous positive PCR or antigen test. For unvaccinated secondary cases with missing serology at baseline
195 and no prior positive test, we assumed no prior immunity. In sensitivity analyses we repeated the
196 multivariate analyses assuming the 18 persons with unknown baseline serology had a prior infection.

197 The multivariate analysis was repeated to assess the effect of vaccination status (primary series versus
198 booster) on symptom burden and the symptom duration and severity. Since the distributions of diseases
199 severity and duration were skewed, the data was log-transformed before estimating the mean difference
200 in diseases severity and duration between variants. This analysis was restricted to adults during the
201 Omicron dominant period, as this was the only age-group who were eligible for booster vaccination at the
202 time.

203 Statistical analyses were performed with R version 4.0.3 (R Core Team, Vienna, Austria). T-test and Chi-
204 square and multivariate logistic regression were used for statistical analysis with Holm-Bonferroni
205 correction ($p < 0.05$).

206

207 Results

208 In total, 355 secondary household cases were detected across the three cohorts. 9 cases were excluded
209 because of missing/incomplete diaries (see details on data completeness in Supplementary Table 2) or an
210 infection with the Delta variant (1 case). For the remaining participants, data completeness was > 99% for
211 diaries and severity scores, 80-87% for NTS samples and 66-96% for DBS. Of 346 cases included in analysis,
212 216 occurred during the wild-type/Alpha period and 130 during the Omicron period. Age varied between
213 0 and 78 years and the majority were adults (57.8%, Table 1). The proportion of children < 12 years of age
214 was slightly higher during the Omicron period (38.5% vs 26.4%). During the wild-type/Alpha period, 6 cases
215 (2.8%) had a prior SARS-CoV-2 infection and no cases had received any vaccination. In contrast, during the
216 Omicron period, 37.7% had a prior SARS-CoV-2 infection and 63 (96.9%) of adults had received at least the
217 primary series and 45 (71.4%) a booster vaccination. Of adolescents, 14 (93.3%) had received primary
218 vaccination, whereas children < 12 years were all unvaccinated. Of the individuals with available serology
219 test results, 3.6% (6/165) had NP antibodies during wild-type/Alpha period and 35.7% (40/112) during the
220 Omicron period.

221 Symptom burden during wild-type/Alpha and Omicron periods

222 Table 2 and Figures 1-3 show the SARS-CoV-2 symptom burden per period stratified by age-group.
223 Infection remained asymptomatic in 13.0% versus 6.2% ($p=0.045$) of cases in the wild-type/Alpha versus
224 Omicron period, less pauci-symptomatic and more symptomatic disease was observed in the Omicron
225 period (63.4% versus 75.4%, $p=0.021$). Overall, the symptom burden was highest in adults during the wild-
226 type/Alpha period and differences across age-groups largely disappeared during the Omicron period.
227 There were diverging trends in symptom burden between children and adults. Among adults, maximum
228 and cumulative severity scores tended to be lower during the Omicron period ($p=0.06$ and $p=0.024$). Loss
229 of smell or taste was significantly less common during the Omicron period ($p=0.001$), whereas sore throat
230 was more common ($p=0.017$; Figure 1-3). The number of adolescents included in analysis was low, but
231 data suggest a higher proportion of symptomatic disease during the Omicron period (86.7% versus 58.3%,
232 $p=0.062$) and a higher number of symptoms during the Omicron period ($p=0.076$). In particular cough, sore
233 throat, cold shivers, and fever, while disease severity was not increased. In children < 12 years, the number
234 of reported symptoms and the maximum severity score were significantly increased during the Omicron
235 period ($p\leq 0.011$, Table 2 and Figure 1-3). In particular fatigue was more common during the Omicron
236 period ($p=0.004$), and symptom duration was twice as long (3 days to 6 days, $p=0.044$).

237 After adjustment for age, gender, and prior immunity, the Omicron variant was associated with lower odds
238 of loss of smell or taste (OR:0.14; 95%CI 0.03-0.50), whereas the Odds ratios for coughing (OR:1.85; 95%CI
239 0.92-3.78), fever (OR:2.23; 95%CI 1.03-4.81), sore throat (OR: 1.89; 95% CI 0.92-3.88), nasal
240 congestion/runny nose (OR:1.97; 95%CI 0.89-4.59), and fatigue (OR:2.00; 95%CI 0.98-4.14) suggest and
241 increase in these symptoms compared to the wild-type/Alpha variant (Table 3). Sensitivity analyses
242 assuming the 18 persons with unknown NP antibodies at enrolment as infected, show equal trends in
243 similar directions.

244 [Vaccination status and symptom burden in adults during the Omicron period](#)

245 Comparing subjects who had received the primary series of SARS-CoV-2 vaccination to those who had also
246 received a booster dose, no significant differences were observed for any symptom or symptom burden
247 outcome measure (Table 4-5; Supplement Figure 3-5). Sensitivity analysis assuming three subjects with
248 unknown NP antibodies at enrolment as prior immune, showed similar results.

249

250 Discussion

251 Our analysis on symptom data of secondary household cases of SARS-CoV2 in a non-hospitalized general
252 community, detected by comprehensive screening, provides a detailed comparison of SARS-CoV2 disease
253 profiles in the community during two periods. During the wild-type/Alpha variant period, the population
254 immunity was low, while in the (early) Omicron period, when BA.1 and BA.2 subvariants were dominant,
255 a large proportion of the adult and adolescent population had been vaccinated, but not children < 12 years.
256 Interestingly, the symptom burden in children was higher during the Omicron period compared to the
257 wild-type/Alpha period. In adults, there was a reduction in the number and duration of symptoms present
258 during the Omicron period when nearly all of them had evidence of prior immunity from vaccination or
259 previous infection. Trends in adolescents (93.3% vaccinated during Omicron period) were less clear, but
260 overall numbers of infections in this age-group were low. Adjusted for age, gender and prior immunity
261 Omicron was associated with lower odds for loss of smell or taste (Odds Ratio [OR]: 0.14; 95%CI 0.03-0.50),
262 and higher, but non-significant odds for upper respiratory symptoms, fever and fatigue (ORs varying
263 between 1.85-2.23). No significant differences in symptoms were observed between primary versus
264 primary plus booster vaccinated adults during the Omicron period.

265 There is a general consensus that the Omicron BA.1 and BA.2 variant and its descendants cause less severe
266 disease compared to previous variants of SARS-CoV-2^{12,13}. This notion is largely based on the lower risk of
267 SARS-CoV-2 hospitalization and in particular ICU admission, both in vaccinated and unvaccinated subjects,
268 observed during the Omicron dominant period⁷. Our results demonstrate that the average symptom
269 burden of SARS-CoV-2 respiratory illness in the community setting has not decreased substantially, and
270 was even increased in (largely non-immune) children when compared to earlier variants. Symptoms of
271 upper respiratory illness were more common during the Omicron period, while loss of smell and taste, a
272 typical symptom of earlier variants, was infrequent. In adults and adolescents, there was also a nearly 50%
273 reduction in dyspnea, but this was non-significant because of small sample size. This shift in disease
274 symptoms for Omicron has been described by others¹⁴, and may be explained by the altered replication
275 and cellular tropism of the Omicron variant in different compartments of the respiratory tract compared
276 to earlier variants¹⁴. Several studies have described reduced replication of Omicron variants in lung
277 parenchyma, but increased replication with higher viral loads in bronchial and nasopharyngeal
278 mucosae.^{15,16} This may lead to more mucosal damage and inflammation, predominantly in the upper
279 respiratory tract, which is then reflected in the symptom burden. This is particularly evident in subjects
280 without prior immunity, i.e. unvaccinated children < 12 years of age in our study.

281 We found no difference in symptomatology between primary series vaccinated and primary plus booster
282 series vaccinated cases during the omicron dominant period, but our sample size was small. A study on
283 breakthrough infections among vaccinated health care workers showed that 11% of the primary series
284 vaccinated participants were asymptomatic compared to 16% of the primary plus booster series
285 vaccinated participants¹⁷, suggesting a small effect of boosters on symptom burden..

286 The interpretation of our results has some limitations. First, it is possible that coinfections with other
287 pathogens influence disease severity and coinfection rates may vary over time. Based on National
288 Virological Surveillance data from the Netherlands most respiratory viruses circulated at lower rates during
289 the Omicron period compared to wild-type/Alpha period^{18,19}. This could, therefore, not explain the higher
290 symptom burden in children. Second, although similar protocol were used, the samples from the cohorts
291 were tested at different laboratories (see Supplement Table 1), this may limit comparability to some
292 extent. Third, we based prior infection status on the results of serology testing at enrolment and on self-
293 reported history of positive PCR or antigen tests. Availability of PCR testing was limited in the first year of
294 the pandemic and antibodies from prior infection may have been undetectable at the time of enrolment
295 due to waning²⁰. In our cohort, 44.6% of the adults had evidence of prior infection during the Omicron
296 BA.1 and BA.2 period, but this is likely an underestimate. Lastly, the low number of adolescent participants
297 yielded in insufficient power to obtain precise estimates for this age-group.

298

299 Conclusion

300 In children, the Omicron variant causes higher symptom burden compared to the wild-type/Alpha. Adults
301 experienced a lower symptom burden possibly due to prior vaccination. A shift in most frequently reported
302 symptoms occurred with a marked reduction in loss of smell or taste during the Omicron period . An
303 additional effect of booster vaccination on symptom severity in infected adults compared to primary series
304 only, could not be demonstrated.

305 Acknowledgements

306 We would like to thank all participants of the studies. In addition, we would like to thank Anne van der
307 Linden for support with testing of the DBS specimens.

308 This work forms part of RECOVER (Rapid European COVID-19 Emergency Response research) and VERDI
309 (SARS-coV2 variants Evaluation in pRegnancy and paeDiatrics cohorts). RECOVER (101003589) is funded
310 by the EU Horizon 2020 research and innovation program. VERDI project (101045989) is funded by the
311 European Union. Views and opinions expressed are however those of the author(s) only and do not
312 necessarily reflect those of the European Union or the European Health and Digital Executive Agency.
313 Neither the European Union nor the granting authority can be held responsible for them. In addition,
314 part of the work is funded by ZonMw.

315 References

- 316 1. World Health Organization. Tracking SARS-CoV-2 variants. World Health Organization. Published 2021.
317 Accessed July 17, 2022. <https://www.who.int/activities/tracking-SARS-CoV-2-variants>
- 318 2. Fan Y, Li X, Zhang L, Wan S, Zhang L, Zhou F. SARS-CoV-2 Omicron variant: recent progress and future
319 perspectives. *Signal Transduct Target Ther*. 2022;7(1):141. doi:10.1038/S41392-022-00997-X
- 320 3. Gupta R. SARS-CoV-2 Omicron spike mediated immune escape and tropism shift. *Res Sq*. Published online
321 January 17, 2022. doi:10.21203/RS.3.RS-1191837/V1
- 322 4. Harvey WT, Carabelli AM, Jackson B, et al. SARS-CoV-2 variants, spike mutations and immune escape. *Nat*
323 *Rev Microbiol* 2021 197. 2021;19(7):409-424. doi:10.1038/s41579-021-00573-0
- 324 5. Miller NL, Clark T, Raman R, Sasisekharan R. Insights on the mutational landscape of the SARS-CoV-2 Omicron
325 variant. *bioRxiv*. Published online December 10, 2021:2021.12.06.471499. doi:10.1101/2021.12.06.471499
- 326 6. Aiello TF, Puerta-Alcalde P, Chumbita M, et al. Infection with the Omicron variant of SARS-CoV-2 is associated
327 with less severe disease in hospitalized patients with COVID-19. *J Infect*. 2022;0(0).
328 doi:10.1016/j.jinf.2022.07.029
- 329 7. Nyberg T, Ferguson NM, Nash SG, et al. Comparative analysis of the risks of hospitalisation and death
330 associated with SARS-CoV-2 omicron (B.1.1.529) and delta (B.1.617.2) variants in England: a cohort study.
331 *Lancet*. 2022;399(10332):1303-1312. doi:10.1016/S0140-6736(22)00462-7
- 332 8. Whittaker R, Greve-Isdahl M, Bøås H, Suren P, Buanes EA, Veneti L. COVID-19 Hospitalization Among Children
333 <18 Years by Variant Wave in Norway. *Pediatrics*. 2022;150(3):2022057564. doi:10.1542/peds.2022-
334 057564
- 335 9. Verberk JDM, de Hoog MLA, Westerhof I, et al. Transmission of SARS-CoV-2 within households: a remote
336 prospective cohort study in European countries. *Eur J Epidemiol*. 2022;37(5):549-561. doi:10.1007/s10654-
337 022-00870-9
- 338 10. de Hoog M, Sluiter-Post J, Westerhof I, et al. Incidence rates and symptomatology of community infections
339 with SARS-CoV-2 in children and parents: The CoKids longitudinal household study. *medRxiv*. Published online
340 December 11, 2021:2021.12.10.21267600. doi:10.1101/2021.12.10.21267600
- 341 11. Rijksinstituut voor Volksgezondheid en Milieu. Varianten van het coronavirus SARS-CoV-2. Published 2022.
342 Accessed May 19, 2022. <https://www.rivm.nl/coronavirus-covid-19/virus/varianten>

- 343 12. Wolter N, Jassat W, Walaza S, et al. Early assessment of the clinical severity of the SARS-CoV-2 omicron variant
344 in South Africa: a data linkage study. *Lancet (London, England)*. 2022;399(10323):437-446.
345 doi:10.1016/S0140-6736(22)00017-4
- 346 13. Ulloa AC, Buchan SA, Daneman N, Brown KA. Estimates of SARS-CoV-2 Omicron Variant Severity in Ontario,
347 Canada. *JAMA*. 2022;327(13). doi:10.1001/JAMA.2022.2274
- 348 14. Vihta KD, Pouwels KB, Peto TE, et al. Omicron-associated changes in SARS-CoV-2 symptoms in the United
349 Kingdom. *medRxiv*. Published online May 18, 2022:2022.01.18.22269082. doi:10.1101/2022.01.18.22269082
- 350 15. Meng B, Abdullahi A, Ferreira IATM, et al. Altered TMPRSS2 usage by SARS-CoV-2 Omicron impacts infectivity
351 and fusogenicity. *Nat* 2022 6037902. 2022;603(7902):706-714. doi:10.1038/s41586-022-04474-x
- 352 16. Hui KPY, Ho JCW, Cheung M chun, et al. SARS-CoV-2 Omicron variant replication in human bronchus and lung
353 ex vivo. *Nat* 2022 6037902. 2022;603(7902):715-720. doi:10.1038/s41586-022-04479-6
- 354 17. Robilotti E V, Whiting K, Lucca A, et al. Effectiveness of mRNA booster vaccine among health Care workers in
355 New York City during the omicron surge, December 2021- January 2022. *Clin Microbiol Infect*. Published
356 online August 3, 2022. doi:10.1016/J.CMI.2022.07.017
- 357 18. Nivel. Actuele weekcijfers aandoeningen – Surveillance. Published 2021. Accessed June 6, 2022.
358 <https://www.nivel.nl/nl/nivel-zorgregistraties-eerste-lijn/actuele-weekcijfers-aandoeningen-surveillance>
- 359 19. Rijksinstituut voor Volksgezondheid en Milieu. Virologische weekstaten | RIVM. Rijksinstituut voor
360 Volksgezondheid en Milieu. Published 2022. Accessed July 18, 2022. [https://www.rivm.nl/surveillance-van-](https://www.rivm.nl/surveillance-van-infectieziekten/virologische-weekstaten)
361 [infectieziekten/virologische-weekstaten](https://www.rivm.nl/surveillance-van-infectieziekten/virologische-weekstaten)
- 362 20. Liu W, Russell RM, Bibollet-Ruche F, et al. Predictors of Nonseroconversion after SARS-CoV-2 Infection. *Emerg*
363 *Infect Dis*. 2021;27(9):2454-2458. doi:10.3201/eid2709.211042
- 364

Symptom presentation among SARS-CoV-2 positive cases and the impact of COVID-19 vaccination; three prospective household cohorts

Tables and figures

Authors

Ilse Westerhof¹, Marieke de Hoog¹, Margareta Ieven², Christine Lammens², Janko van Beek³, Ganna Rozhnova^{1,4}, Dirk Eggink⁵, Sjoerd Euser⁶, Joanne Wildenbeest⁷, Liesbeth Duijts⁸, Marlies van Houten^{9,10}, Herman Goossens², Carlo Giaquinto¹¹, Patricia Bruijning-Verhagen¹

1. Julius Centre for Health Sciences and Primary Care, Department of Epidemiology, University Medical Centre Utrecht, Utrecht, The Netherlands
2. Laboratory of Medical Microbiology, Vaccine & Infectious Disease Institute, University of Antwerp, Antwerp, Belgium
3. Department of Viroscience, Erasmus University Medical Center Rotterdam, Rotterdam, The Netherlands
4. BioISI—Biosystems & Integrative Sciences Institute, Faculdade de Ciências, Universidade de Lisboa, Lisboa, Portugal
5. Centre for Infectious Disease Control, WHO COVID-19 Reference Laboratory, National Institute for Public Health and the Environment (RIVM), Bilthoven, The Netherlands.
6. Streeklaboratorium voor de Volksgezondheid Kennemerland, Department of Epidemiology, Kennemerland, The Netherlands
7. Department of Pediatric Infectious Diseases and Immunology, Wilhelmina Children's Hospital University Medical Center Utrecht, Utrecht, The Netherlands
8. Erasmus MC - Sophia Children's Hospital, Erasmus University Medical Center, Department of Pediatrics, Rotterdam, The Netherlands
9. Spaarne Gasthuis Academy, Spaarne Gasthuis, Hoofddorp, The Netherlands
10. Spaarne Gasthuis, department of Pediatrics, Haarlem and Hoofddorp, The Netherlands
11. Department of Women and Child Health, University of Padova, Padova, Italy

Corresponding Author

Ilse Westerhof (E: I.Westerhof-4@umcutrecht.nl)

Julius Centre for Health Sciences and Primary Care, Department of Epidemiology, University Medical Centre Utrecht, Utrecht, The Netherlands, PO Box 85500, 3508 GA Utrecht

Table 1 Baseline characteristics secondary household cases

| | Mean (SD) or No. (%) | | | | | |
|-----------------------------|------------------------------|------------------------------------|-----------------------------|--------------------------|------------------------------------|-----------------------------|
| | Wild-type/Alpha Period | | | Omicron Period | | |
| | Adult (≥18 years) (n=135) | Adolescent (12-17 years) (n=24) | Child (<12 years) (n=57) | Adult (≥18 years) (n=65) | Adolescent (12-17 years) (n=15) | Child (<12 years) (n=50) |
| Mean age (SD) | 42.1 (13.7) | 14.9 (1.6) | 6.1 (3.2) | 42.1 (5.0) | 13.9 (1.6) | 7.1 (3.1) |
| Female | 60 (44.4%) | 14 (58.3%) | 23 (40.4%) | 37 (56.9%) | 4 (26.7%) | 24 (48.0%) |
| Prior infection* | | | | | | |
| Yes | 2 (1.5%) | 0 (0.0%) | 4 (7.0%) | 29 (44.6%) | 5 (33.3%) | 15 (30.0%) |
| No | 133 (98.5%) | 24 (100.0%) | 53 (93.0%) | 33 (50.8%) | 9 (60.0%) | 27 (54.0%) |
| Unknown | 0 (0.0%) | 0 (0.0%) | 0 (0.0%) | 3 (4.6%) | 1 (6.7%) | 8 (16.0%) |
| Prior immunity# | | | | | | |
| Yes | 2 (1.5%) | 0 (0.0%) | 4 (7.0%) | 65 (100.0%) | 15 (100.0%) | 16 (32.0%) |
| No | 133 (98.5%) | 24 (100%) | 53 (93.0%) | 0 (0.0%) | 0 (0.0%) | 34 (68.0%) |
| Vaccination status | | | | | | |
| Primary plus booster series | 0 (0.0%) | 0 (0.0%) | 0 (0.0%) | 45 (69.2%) | 0 (0.0%) | 0 (0.0%) |
| Primary series | 0 (0.0%) | 0 (0.0%) | 0 (0.0%) | 18 (27.7%) | 14 (93.3%) | 0 (0.0%) |
| Incomplete primary series | 0 (0.0%) | 0 (0.0%) | 0 (0.0%) | 2 (3.1%) | 0 (0.0%) | 1 (2.0%) |
| No vaccination | 135 (100.0%) | 24 (100%) | 57 (100.0%) | 0 (0.0%) | 1 (6.7%) | 49 (98.0%) |

*Prior infection is defined as having NP antibodies at enrolment and/or a reported previous infection in the baseline questionnaire.
#Prior immunity is defined as reported vaccinated before enrolment, having NP antibodies at enrolment, or a reported previous infection in the baseline questionnaire.

Table 2 Symptom burden of SARS-CoV-2 infections Wild-type/Alpha versus Omicron variant per age group

| | No. (%) or median (IQR) | | | | | | | | |
|--|---------------------------------|------------------------|----------------------|--------------------------------|------------------------|----------------------|--------------------------------|------------------------|----------------------|
| | Adult >18 years | | | Adolescent 12-17 years | | | Child < 12 years | | |
| | Wild-type/alpha period n=135 | Omicron Period n=65 | p-value [§] | Wild-type/alpha period n=24 | Omicron Period n=15 | p-value [§] | Wild-type/alpha period n=57 | Omicron Period n=50 | p-value [§] |
| Disease category | | | 0.046 | | | 0.139 | | | 0.034 |
| Symptomatic disease | 103 (76.3%) | 55 (84.6%) | | 14 (58.3%) | 13 (86.7%) | | 20 (35.1%) | 30 (60.0%) | |
| Pauci-symptomatic | 20 (14.8%) | 10 (15.4%) | | 7 (29.2%) | 2 (13.3%) | | 24 (42.1%) | 12 (24.0%) | |
| Asymptomatic | 12 (8.9%) | 0 (0.0%) | | 3 (12.5%) | 0 (0.0%) | | 13 (22.8%) | 8 (16.0%) | |
| Days with symptoms | 13 (7.5-21) | 10 (6-18) | 0.095 | 7 (1-12) | 6 (4-8) | 0.7 | 3 (1-7) | 6 (4-11.5) | 0.044 |
| Number of symptoms | 6 (3-6) | 5 (4-7) | 0.3 | 2.5 (1-5.5) | 4 (3-6.5) | 0.076 | 2 (1-3) | 3 (1.5-5) | 0.004 |
| Maximum severity score [§] | 14 (10-18) | 11 (9.5-15) | 0.066 | 11 (7.5-19.5) | 10 (10-12) | 0.8 | 7 (4-11) | 10 (8.5-14) | 0.011 |
| Cumulative severity score [§] | 80.5 (55.5-128) | 54.0 (33.5-115) | 0.024 | 40.5 (22-128) | 34 (28-62) | >0.9 | 20.5 (14-49) | 40.5 (28-69.5) | 0.075 |

[§] calculated for cases with symptomatic disease
[§] Bold p-values indicate significant differences after correction for multiple testing.

Table 3 Adjusted odds ratios for symptom frequency for Omicron versus Wild-type/alpha variant. No significant OR's after correction for multiple testing.

| Symptom | OR (95% CI) | P-value [§] |
|---|------------------|----------------------|
| Muscle ache | 0.67 (0.25-1.67) | 0.4 |
| Coughing | 1.85 (0.92-3.78) | 0.085 |
| Fever | 2.23 (1.03-4.81) | 0.041 |
| Sore throat | 1.89 (0.92-3.88) | 0.082 |
| Nasal congestion/ Runny nose | 1.97 (0.89-4.59) | 0.103 |
| Dyspnea | 0.60 (0.16-1.89) | 0.4 |
| Headache | 1.39 (0.68-2.82) | 0.4 |
| Cold shivers | 1.00 (0.37-2.56) | 1.0 |
| Fatigue | 2.00 (0.98-4.14) | 0.058 |
| Diarrhea | 0.93 (0.32-2.50) | 0.9 |
| Loss of smell/taste | 0.14 (0.03-0.50) | 0.005 |
| An OR > 1 indicates higher odds during the Omicron period. | | |
| § Bold p-values indicate significant differences after correction for multiple testing. | | |

Table 4 Symptom burden among SARS-CoV-2 infected Omicron adults stratified by vaccination status.

| | No. (%) or median (IQR) | | p-value |
|--|-------------------------|-----------------------------|----------------|
| | Primary series | Primary plus booster series | |
| | n=18 | n=45 | |
| Disease severity | | | 0.5 |
| - Symptomatic | 16 (88.9%) | 37 (82.2%) | |
| - Pauci-symptomatic | 2 (11.1%) | 8 (17.8%) | |
| - Asymptomatic | 0 (0%) | 0 (0%) | |
| | | | p-value |
| Days with symptom | 10 (6.5-15) | 11 (6-18) | 0.4 |
| Number of symptoms | 5 (4-7) | 5 (4-6) | 0.8 |
| Maximum severity score [§] | 10 (9-12) | 12 (10-15) | 0.088 |
| Cumulative severity score [§] | 47 (28.5-75.5) | 64 (34-136) | 0.24 |

Table 5 Adjusted odds ratios for symptom frequency and severity in primary versus primary plus booster vaccinated subjects among Omicron infected adults.

| Symptom | OR (95% CI) | P-value |
|---|---------------------------------------|---------|
| Hoarseness | 0.56 (0.15-1.95) | 0.4 |
| Nasal congestion/ Runny nose | 0.65 (0.03-5.83) | 0.7 |
| Muscle ache | 1.21 (0.38-4) | 0.7 |
| Coughing | 1.18 (0.27-4.58) | 0.8 |
| Fever | 1.44 (0.43-5.35) | 0.6 |
| Sore throat | 0.38 (0.07-1.45) | 0.19 |
| Dyspnea | 0.86 (0.19-4.55) | 0.8 |
| Headache | 0.62 (0.14-2.32) | 0.6 |
| Cold shivers | 2.22 (0.45-14.09) | 0.4 |
| Fatigue | 0.67 (0.15-2.56) | 0.6 |
| Diarrhea | 1.53 (0.28-12.31) | 0.6 |
| Loss of smell/taste | 5.89 (0.92-117.48) | 0.12 |
| Vomiting | ∞ (0- ∞) | |
| Duration and severity | Absolute difference estimate (95% CI) | p-value |
| Days with symptom | 0.11 (-0.24-0.64) | 0.6 |
| Number of symptoms | 0.07 (-1.04-1.18) | 0.9 |
| Maximum severity score [§] | 0.16 (-0.04-0.42) | 0.13 |
| Cumulative severity score [§] | 25.55 (-20.78-71.87) | 0.3 |
| An OR/estimates > 1 indicates higher odds/estimates for persons with booster vaccination. | | |
| [§] calculated for cases with symptomatic disease. | | |

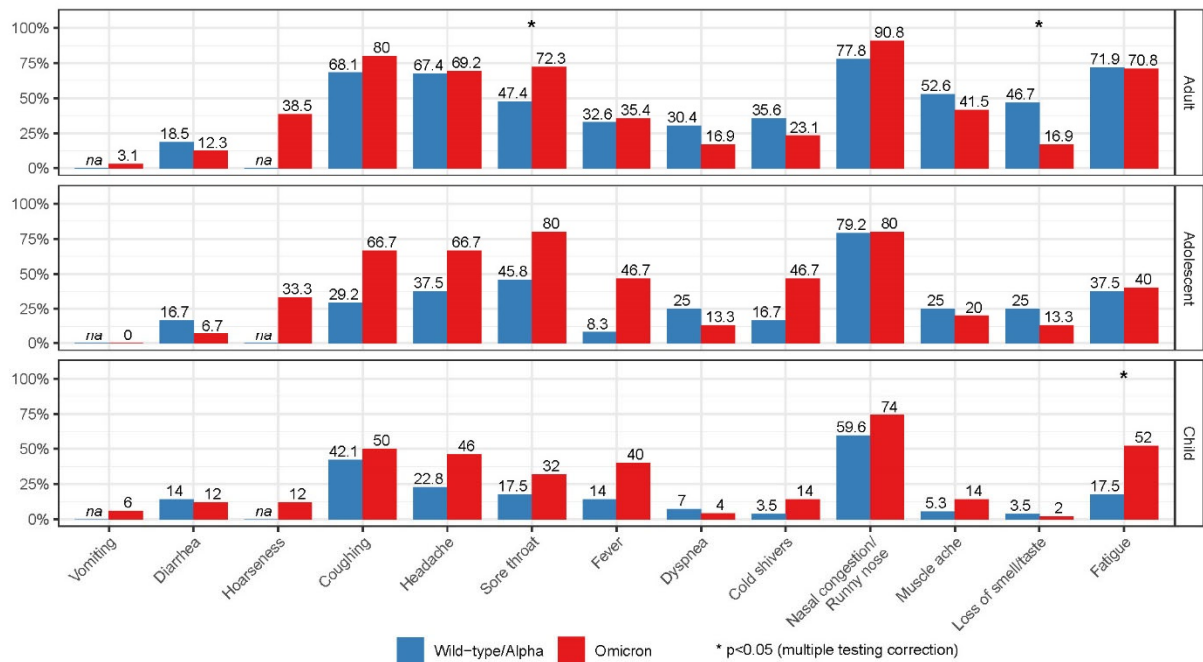


Figure 1 Symptom frequency by age-category and variant (Wild-type/Alpha versus Omicron)

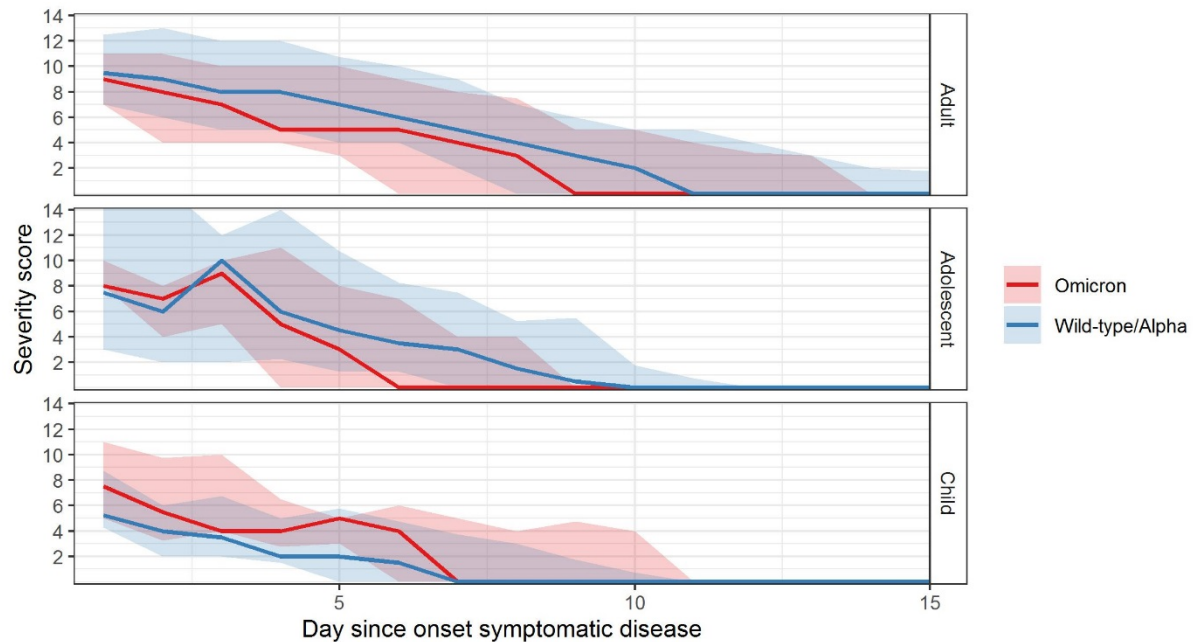


Figure 2 Symptom severity scores over time for symptomatic SARS-CoV-2 episodes by Wild-type/Alpha versus Omicron variant and age-group. Line indicate median and shade interquartile range

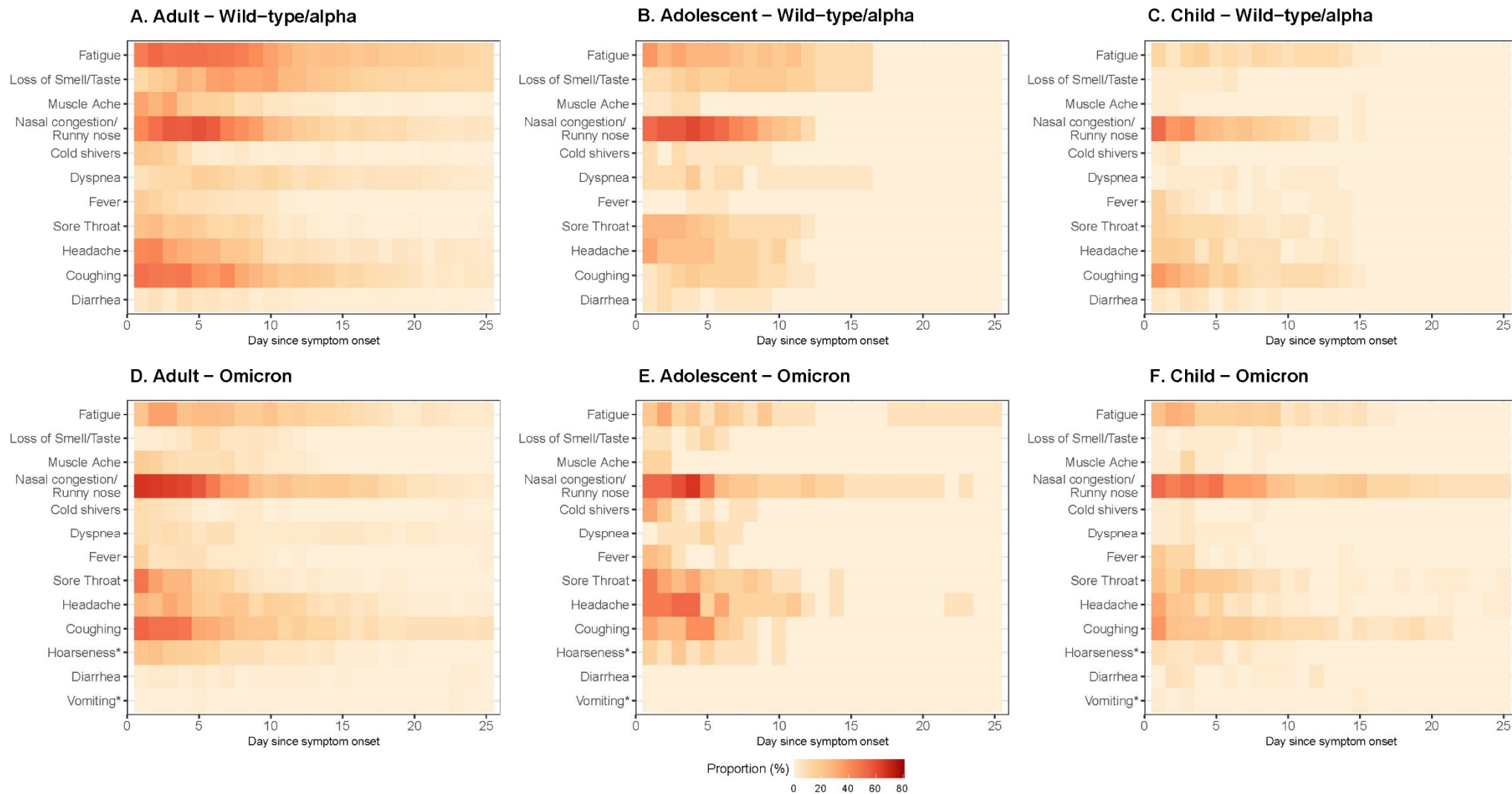


Figure 3 Symptom frequency per day since onset, age-group and variant. Includes all infected subjects (including asymptomatic cases).

* indicate symptoms exclusively asked during omicron period.