

1 Symptom presentation among SARS-CoV-2 2 positive cases and the impact of COVID-19 3 vaccination; three prospective household cohorts 4

5 **Authors**

6 Ilse Westerhof¹, Marieke L. A. de Hoog¹, Greet Ieven², Christine Lammens², Janko van Beek³, Ganna
7 Rozhnova^{1,4}, Dirk Eggink⁵, Sjoerd M Euser⁶, Joanne G Wildenbeest⁷, Liesbeth Duijts⁸, Marlies A. van
8 Houten^{9,10}, Herman Goossens², Carlo Giaquinto¹¹, Patricia C. J. L. Bruijning-Verhagen¹

- 9
- 10 1. Julius Centre for Health Sciences and Primary Care, Department of Epidemiology, University Medical Centre Utrecht,
11 Utrecht, The Netherlands
 - 12 2. Laboratory of Medical Microbiology, Vaccine & Infectious Disease Institute, University of Antwerp, Antwerp, Belgium
 - 13 3. Department of Viroscience, Erasmus University Medical Center Rotterdam, Rotterdam, The Netherlands
 - 14 4. BioISI—Biosystems & Integrative Sciences Institute, Faculdade de Ciências, Universidade de Lisboa, Lisboa, Portugal
 - 15 5. Centre for Infectious Disease Control, WHO COVID-19 Reference Laboratory, National Institute for Public Health and
16 the Environment (RIVM), Bilthoven, The Netherlands.
 - 17 6. Streeklaboratorium voor de Volksgezondheid Kennemerland, Department of Epidemiology, Kennemerland, The
18 Netherlands
 - 19 7. Department of Pediatric Infectious Diseases and Immunology, Wilhelmina Children's Hospital University Medical
20 Center Utrecht, Utrecht, The Netherlands
 - 21 8. Erasmus MC - Sophia Children's Hospital, Erasmus University Medical Center, Department of Pediatrics, Rotterdam,
22 The Netherlands
 - 23 9. Spaarne Gasthuis Academy, Spaarne Gasthuis, Hoofddorp, The Netherlands
 - 24 10. Spaarne Gasthuis, department of Pediatrics, Haarlem and Hoofddorp, The Netherlands
 - 25 11. Department of Women and Child Health, University of Padova, Padova, Italy

26 27 **Corresponding Author**

28 Ilse Westerhof (E: I.Westerhof-4@umcutrecht.nl)

29 Julius Centre for Health Sciences and Primary Care, Department of Epidemiology, University Medical
30 Centre Utrecht, Utrecht, The Netherlands, PO Box 85500, 3508 GA Utrecht

NOTE: This preprint reports new research that has not been certified by peer review and should not be used to guide clinical practice.

31 Abstract

32 **BACKGROUND:** The symptom burden of Omicron BA.1 and BA.2 in the community and across paediatric
33 and adult age-groups compared to earlier variants of SARS-CoV-2, and the impact of COVID-19
34 vaccination on the symptom burden is unclear. We aimed to systematically compare the symptom
35 burden of the wild-type and Alpha variant infected individuals versus the Omicron BA.1 and BA.2
36 infected individuals, using European prospective household studies.

37 **METHODS:** We combined data from three European prospective household studies conducted during the
38 wild-type and Alpha period (April 2020 to April 2021) and the early Omicron BA.1 and BA.2 dominant
39 period (January to March 2022). All three household transmission studies used similar protocols.
40 Households were prospectively followed from detection of the first SARS-CoV-2 index case until at least
41 day 21 including (repeated) PCR testing, paired serology and daily symptom reporting for all household
42 members. To avoid possible index-case ascertainment bias, we restricted analyses to secondary household
43 cases. Age-stratified SARS-CoV-2 symptom burden was compared for wild-type/Alpha versus Omicron
44 infections and for primary versus primary plus booster series vaccinated adult cases.

45 **FINDINGS:** In total 216 secondary cases from wild-type/Alpha, and 130 from the Omicron period were
46 included. Unvaccinated children <12 years experienced more symptoms and higher maximum and
47 cumulative severity scores during the Omicron compared to the wild-type/Alpha period ($p=0.004$, $p=0.011$
48 and $p=0.075$, respectively). In adults, disease duration and maximum and cumulative severity scores were
49 reduced during the Omicron period. Overall, the odds ratios (OR) adjusted for age, gender and prior
50 immunity, showed lower odds of loss of smell or taste during the Omicron period (OR:0.14; 95%CI 0.03-
51 0.50), whereas sore throat (OR:2.23; 95%CI 1.03-4.81), fatigue (OR:2.00; 95%CI 0.98-4.14) and coughing
52 (OR:1.85; 95%CI 0.92-3.78) were more frequent. Comparing primary versus primary plus booster
53 vaccinated adult cases during the Omicron period no differences were observed in disease severity or
54 duration ($p\geq 0.12$).

55 **INTERPRETATION:** Upper respiratory tract symptoms are more common in SARS-CoV-2 infections during
56 the Omicron period compared to wild-type/Alpha period, but loss of smell or taste is less frequent. In
57 children, the Omicron variant causes higher symptom burden compared to the wild-type/Alpha. Adults
58 experienced a lower symptom burden possibly due to prior vaccination. However, no significant
59 differences in symptom severity between primary versus primary plus booster series vaccinated adults
60 were observed.

61 Introduction

62 Since the onset of the Coronavirus Disease 2019 (COVID-19) pandemic in December 2019, several SARS-
63 CoV-2 Variants of Concern (VoC) have emerged¹. With the emergence of the Omicron VOC (BA.1) and its
64 descendants (BA.2 and further), the pandemic has taken a new turn. Omicron variants are characterized
65 by a high number of mutations compared to the ancestral strain and are associated with immune escape
66 and enhanced ACE-2 binding^{2,3}. In addition, unlike other variants the Omicron variants are less capable of
67 infecting the lower respiratory tract due to a shift in cellular tropism away from TMPRSS2 expressing cells,
68 promoting faster replication in the upper airways but reduced replication in the lungs.^{4,5}. As a
69 consequence, the clinical picture of SARS-CoV-2 infection is changing, both in vaccinated and unvaccinated
70 individuals. To date, most studies describing the changing symptomatology of COVID-19 during the
71 Omicron period have focused on cases in hospital.^{6,7} This restricts analyses to more severe cases and
72 therefore provides little understanding on disease evolution in community cases, which represent the
73 overwhelming majority of all cases, and in particular in children, who only rarely require medical care for
74 SARS-CoV-2 infection⁸.

75 An appropriate setting to study the COVID-19 disease spectrum across paediatric and adult age-groups is
76 within households. We used a dataset from three prospective SARS-CoV-2 household transmission studies
77 that used similar protocols to study age-stratified symptom burden of SARS-CoV2 infections during the
78 wild-type/Alpha dominant period compared to the Omicron BA.1 and BA.2 dominant period, considering
79 differences in vaccination and prior infection status. Our analyses are restricted to secondary household
80 cases to avoid index case ascertainment bias.

81

82 Methods

83 Study design and study population

84 We used data from three prospective household transmission studies conducted in two different SARS-
85 CoV-2 variant periods: the RECOVER household study and CoKids study (Wild-type/Alpha period) and the
86 VERDI-RECOVER household study (Omicron period; Supplement Figure 1-2). The primary aim of the
87 RECOVER household study was to characterize within household transmission of SARS-CoV-2 and the
88 impact of implemented measures within the household to prevent transmission. From April 2020 until
89 April 2021, data from 276 Dutch, Belgium and Swiss households with SARS-CoV-2 were collected. Study
90 design and results on household transmission are published elsewhere.⁹ The Cokids study was set up to
91 determine the susceptibility, transmissibility and disease course of SARS-CoV-2 infection in children. From
92 August 2020 until July 2021, data of 79 SARS-CoV-2 outbreaks of Dutch households with at least one child
93 <18 years of age were collected. Study design and initial results are published elsewhere.¹⁰ The VERDI-
94 RECOVER household study recruited from January to March 2022 during the period when Omicron BA.1
95 and BA.2 were dominant. This study aims to estimate household transmission rates in partially vaccinated
96 populations and explores the viral kinetics in Omicron variant infected subjects. During wild-type/Alpha
97 period, vaccination became available for adults (from January 2021 onwards). During the Omicron period,
98 booster vaccinations were available for adults (in the Netherlands from December 2021 onwards) and
99 primary series for adolescents (in the Netherlands from July 2021 onwards). Vaccination for children aged
100 5 to 11 became available for medical risk groups during mid-January 2022 in the Netherlands.

101 In all three studies, household outbreaks had started with the identification of an index case followed by
102 repeated sampling and daily symptom monitoring in all household members until the outbreak ended.
103 Enrollment took place within 48 hours following a positive SARS-CoV-2 PCR test of the index case.
104 Households were excluded if one or more household members did not consent to participate. In the
105 VERDI-RECOVER household study, the additional exclusion criterium was SARS-CoV2 positivity in any of
106 the household members in the previous two weeks. Here, these three studies were used to study and
107 compare the COVID-19 disease spectrum across paediatric and adult age-groups between SARS-CoV-2
108 variants (wild-type, Alpha and Omicron BA.1 and BA.2).

109 The studies were reviewed and ethically approved by the Medical Ethical Committee Utrecht, The
110 Netherlands (reference number 17-069/M), the Medical Ethical Committee of the Vrije Universiteit
111 university Medical Centre (VUmc), The Netherlands (reference number A2012.901), and the Medical
112 Ethical Committee of Erasmus Medical Centre, The Netherlands (reference number MEC-2020-0609).
113 Written informed consent was obtained from all participating household members and/or their legal
114 representatives.

115 [Study procedures](#)

116 Most study procedures were done remotely using self-sampling and an interactive study mobile phone
117 application to accommodate pandemic restrictions on movement, social distancing, and isolation. At
118 baseline, each household member completed a questionnaire including age, comorbidities, recent
119 respiratory complaints, previous infections, and COVID-19 vaccination status. During follow-up,
120 participants daily reported on presence and severity of a set of respiratory and systemic symptoms (see
121 Supplementary Table 1), which was continued until 21 days after last symptom-onset in any household
122 member.

123 A courier delivered sample kits at home for self-sampling of specimens for viral and serological testing.
124 Self-sampling was supported by live instruction or instruction videos and leaflets, delivered with the
125 sampling material. A telephone helpdesk was available 7 days a week during working hours. In each of the
126 studies, the core protocol included a nose-throat swab (NTS) sample at day 0 for all household members
127 and, if applicable, an additional nose-throat swab from a household member when he/she developed
128 symptoms during follow-up. The core protocol could be extended with additional sample time points and
129 specimens, but this differed between studies (Supplement Table 1). Therefore, those additional results
130 were not used in the current analysis to guarantee similarity in case detection across cohorts. Dried blood
131 spot (DBS) using self-finger-prick were collected at enrollment and end of follow-up.

132 For data collection on symptoms, questionnaires, and self-sampling we used a custom-made mobile phone
133 application compatible with Apple and Android systems, developed by the UMCU in collaboration with
134 YourResearch Holding BV. The study App contained all study related tasks and questionnaires along with
135 tutorial videos, FAQs, and options to contact the study team. All data entered in the study App were stored
136 in an online secured database. Data were accessible and could be navigated by the study team in real-time
137 by authorized login on the online portal. Daily App-notifications were sent to participants to remind them
138 to complete diary entry and self-sampling when applicable. Study teams received daily reports on
139 participant non-compliance which was followed-up by email, phone, or text-message.

140 Laboratory analysis

141 NTS samples were PCR tested for presence of SARS-CoV-2 and DBS were tested by multiplex protein
142 microarray for antibodies as described previously ^{9,10} at either the Streeklab Haarlem (CoKids cohort),
143 National Institute for Public Health and the Environment (CoKids cohort), Antwerp University (RECOVER
144 and VERDI-RECOVER cohorts), or Erasmus University Medical Center Rotterdam (RECOVER and VERDI-
145 RECOVER cohorts). Details on the PCR and DBS methods used can be found in Supplement 1.

146 Definitions

147 Confirmed SARS-CoV-2 infection was defined as a positive RT-PCR SARS-CoV-2 result or seroconversion
148 defined as SARS-CoV-2 nucleoprotein (NP)-antibody negative at enrollment and positive at the end of
149 follow-up. A secondary household case was defined as a confirmed SARS-CoV-2 infection in a household
150 member not being the index case.

151 We used the daily symptom data and date of positive test result to define onset and ending of a SARS-
152 CoV-2 episode. An episode started on the day of symptom onset, which had to fall within the seven days
153 prior to, or seven days post first positive test result. An episode ended on the last symptomatic day that
154 was followed by at least two days without any symptoms. SARS-CoV-2 disease severity was categorized
155 into symptomatic disease, pauci-symptomatic, and asymptomatic episodes. Symptomatic disease was
156 defined as: 1) onset of fever OR 2) two consecutive days with one respiratory (cough, sore throat, runny
157 or congested nose, dyspnea) and one systemic symptom (headache, muscle ache, sweats or chills or
158 tiredness) or with at least two respiratory symptoms. Subjects meeting the criteria for symptomatic
159 disease additionally received a daily severity score which consisted of a 5-point Likert scale per reported
160 symptom present, except for fever, which was categorized as <38/38-39/39-40/>40 degrees Celsius. An
161 episode was defined as pauci-symptomatic if symptoms occurred within the specified time-window but
162 remained below the threshold for a symptomatic disease episode, and asymptomatic if no symptoms were
163 reported.

164 Vaccination status was categorized into unvaccinated, incompletely vaccinated, primary vaccinated, or
165 primary plus booster vaccinated. Primary vaccinated was defined as; two doses of a mRNA vaccine
166 BNT162b2 or mRNA-1273 (Pfizer-BioNtech; Moderna), two doses of the vector-based AZD1222
167 (AstraZeneca) or a single dose of the vector-based Ad26.COVID.S vaccine (Johnson & Johnson) at least 14
168 days prior to enrollment. Primary plus booster vaccinated was defined as a third dose of mRNA vaccine,
169 or a second dose if the primary series consisted of the single-dose Ad26.COVID.S vaccine, at least 6 months
170 after completion of the primary series and at least 14 days prior to enrollment. Prior infection was
171 determined when previous infections were reported in the questionnaire or when antibodies (NP
172 antibodies during omicron period) were detected in the dried bloodspot at enrollment indicating a
173 previous infection. Prior immunity was defined by the presence of antibodies at enrollment, being
174 vaccinated before enrollment, and/or self-reported prior enrollment infection.

175 [Statistical analysis](#)

176 Our population for analysis included all secondary household cases from the three cohorts. Index cases
177 were excluded, because index case ascertainment strategies differed between cohorts, because of testing
178 availability, and are inherently incomplete, which may select for more severe cases. We grouped cases by
179 variant dominant period. Secondary cases from the RECOVER and CoKids cohorts were therefore assigned
180 to the wild-type/Alpha variant, whereas cases from the VERDI-RECOVER cohort were assigned to the
181 Omicron BA.1 and BA.2 period (see supplementary Figure 1 for variant prevalence over time from national
182 surveillance¹¹). Population demographic and vaccination characteristics were compared by variant period
183 using proportions and medians with interquartile ranges (IQR).

184 We compared the symptoms and severity of secondary case episodes in the wild-type/Alpha variant
185 dominant period to those in the Omicron dominant period stratified by age-category: child (age 0-11),
186 adolescent: (age 12-17), and adult (age above 17) and visualized using bar-charts, heat plots, and spline
187 charts. Missing diaries and severity scores were imputed using the symptoms and severity of the day
188 before and after the missing value. Cases that did not complete any diary were excluded. For each
189 symptomatic episode we computed the maximum severity score, referring to the day with highest
190 reported score during the episode, and the cumulative severity score, referring to the sum of severity
191 scores during the entire episode. We used Chi-square test for symptom frequency and Mann-Whitney U
192 test for symptom duration, number of symptoms, maximum and cumulative severity score. Next, we
193 explored the association between variant and symptoms using binomial and Gaussian multivariable
194 regression models. Odds ratios (ORs) were computed for each respiratory and systemic symptom to
195 quantify the association between variant and symptom frequency, adjusted for age, gender and prior
196 immunity. Prior immunity was based on vaccination status, serology at baseline and/or a reported
197 previous positive PCR or antigen test. For unvaccinated secondary cases with missing serology at baseline
198 and no prior positive test, we assumed no prior immunity. In sensitivity analyses we repeated the
199 multivariate analyses assuming the 18 persons with unknown baseline serology had a prior infection.

200 The multivariate analysis was repeated to assess the effect of vaccination status (primary series versus
201 booster) on symptom burden and the symptom duration and severity. Since the distributions of diseases
202 severity and duration were skewed, the data was log-transformed before estimating the mean difference
203 in diseases severity and duration between variants. This analysis was restricted to adults during the
204 Omicron dominant period, as this was the only age-group who were eligible for booster vaccination at the
205 time.

206 Statistical analyses were performed with R version 4.0.3 (R Core Team, Vienna, Austria). T-test and Chi-
207 square and multivariate logistic regression were used for statistical analysis with Holm-Bonferroni
208 correction ($p < 0.05$).

209

210 Results

211 In total, 355 secondary household cases were detected across the three cohorts. 9 cases were excluded
212 because of missing/incomplete diaries (see details on data completeness in Supplementary Table 2) or an
213 infection with the Delta variant (1 case). For the remaining participants, data completeness was > 99% for
214 diaries and severity scores, 80-87% for NTS samples and 66-96% for DBS. Of 346 cases included in analysis,
215 216 occurred during the wild-type/Alpha period and 130 during the Omicron period. Age varied between
216 0 and 78 years and the majority were adults (57.8%, Table 1). The proportion of children < 12 years of age
217 was slightly higher during the Omicron period (38.5% vs 26.4%). During the wild-type/Alpha period, 6 cases
218 (2.8%) had a prior SARS-CoV-2 infection and no cases had received any vaccination. In contrast, during the
219 Omicron period, 37.7% had a prior SARS-CoV-2 infection and 63 (96.9%) of adults had received at least the
220 primary series and 45 (71.4%) a booster vaccination. Of adolescents, 14 (93.3%) had received primary
221 vaccination, whereas children < 12 years were all unvaccinated. Of the individuals with available serology
222 test results, 3.6% (6/165) had NP antibodies during wild-type/Alpha period and 35.7% (40/112) during the
223 Omicron period.

224 Symptom burden during wild-type/Alpha and Omicron periods

225 Table 2 and Figures 1-3 show the SARS-CoV-2 symptom burden per period stratified by age-group.
226 Infection remained asymptomatic in 13.0% versus 6.2% ($p=0.045$) of cases in the wild-type/Alpha versus
227 Omicron period, and more symptomatic disease was observed in the Omicron period (63.4% versus 75.4%,
228 $p=0.021$). Overall, the symptom burden was highest in adults during the wild-type/Alpha period and
229 differences across age-groups largely disappeared during the Omicron period. There were diverging trends
230 in symptom burden between children and adults. Among adults, maximum and cumulative severity scores
231 tended to be lower during the Omicron period ($p=0.06$ and $p=0.024$). Loss of smell or taste was significantly
232 less common during the Omicron period ($p=0.001$), whereas sore throat was more common ($p=0.017$;
233 Figure 1-3). The number of adolescents included in analysis was low, but data suggest a higher proportion
234 of symptomatic disease during the Omicron period (86.7% versus 58.3%, $p=0.062$) and a higher number of
235 symptoms during the Omicron period ($p=0.076$). In particular cough, sore throat, cold shivers, and fever,
236 while disease severity was not increased. In children < 12 years, the number of reported symptoms and
237 the maximum severity score were significantly increased during the Omicron period ($p\leq 0.011$, Table 2 and
238 Figure 1-3). In particular fatigue was more common during the Omicron period ($p=0.004$), and symptom
239 duration was twice as long during the Omicron period (3 days to 6 days, $p=0.044$).

240 After adjustment for age, gender, and prior immunity, the Omicron variant was associated with lower odds
241 of loss of smell or taste (OR:0.14; 95%CI 0.03-0.50), whereas sore throat (OR:2.23; 95%CI 1.03-4.81),
242 fatigue (OR:2.00; 95%CI 0.98-4.14), and coughing (OR:1.85; 95%CI 0.92-3.78) were more frequent
243 compared to the wild-type/Alpha variant (Table 3). Sensitivity analyses assuming the 18 persons with
244 unknown NP antibodies at enrollment as infected, show equal trends in similar directions.

245 [Vaccination status and symptom burden in adults during the Omicron period](#)

246 Comparing subjects who had received the primary series of SARS-CoV-2 vaccination to those who had also
247 received a booster dose, no significant differences were observed for any symptom or symptom burden
248 outcome measure (Table 3; Supplement Figure 3-5). Sensitivity analysis assuming three subjects with
249 unknown NP antibodies at enrollment as prior immune, showed similar results.

250

251 Discussion

252 Our analysis on symptom data of secondary household cases of SARS-CoV2 in a non-hospitalized general
253 community, detected by comprehensive screening, provides a detailed comparison of SARS-CoV2 disease
254 profiles in the community during two periods. During the wild-type/Alpha variant period, the population
255 immunity was low, while in the (early) Omicron period, when BA.1 and BA.2 subvariants were dominant,
256 a large proportion of the adult and adolescent population had been vaccinated, but not children < 12 years.
257 Interestingly, the symptom burden in children was higher during the Omicron period compared to the
258 wild-type/Alpha period. In adults, there was a reduction in the number and duration of symptoms present
259 during the Omicron period when nearly all of them had evidence of prior immunity from vaccination or
260 previous infection. Trends in adolescents (93.3% vaccinated during Omicron period) were less clear, but
261 overall numbers of infections in this age-group were low. Overall, sore throat, fatigue and coughing were
262 more common among cases in the Omicron period compared to wild-type/alpha period (OR: 1.89; 95% CI
263 0.92-3.88, OR:2.00; 95%CI 0.98-4.14, and OR:1.85; 95%CI 0.92-3.78, respectively), while loss of smell and
264 taste was less common (OR:0.14; 95%CI 0.03-0.50). No significant differences in symptoms were observed
265 between primary versus primary plus booster vaccinated adults during the Omicron period.

266 There is a general consensus that the Omicron BA.1 and BA.2 variant and its descendants cause less severe
267 disease compared to previous variants of SARS-CoV-2^{12,13}. This notion is largely based on the lower risk of
268 SARS-CoV-2 hospitalization and in particular ICU admission, both in vaccinated and unvaccinated subjects,
269 observed during the Omicron dominant period⁷. Our results however demonstrate that the overall
270 symptom burden of SARS-CoV-2 respiratory illness in the community setting has not decreased
271 substantially, and was even increased in (largely non-immune) children when compared to earlier variants.
272 Symptoms of upper respiratory illness were more common during the Omicron period, while loss of smell
273 and taste, a typical symptom of earlier variants, was infrequent. In adults and adolescents, there was also
274 a nearly 50% reduction in dyspnea, but this was non-significant because of small sample size. This shift in
275 disease symptoms for Omicron has been described by others¹⁴, and may be explained by the altered
276 replication and cellular tropism of the Omicron variant in different compartments of the respiratory tract
277 compared to earlier variants¹⁴. Several studies have described reduced replication of Omicron variants in
278 lung parenchyma, but increased replication with higher viral loads in bronchial and nasopharyngeal
279 mucosae.^{15,16} This may lead to more mucosal damage and inflammation, predominantly in the upper
280 respiratory tract, which is then reflected in the symptom burden. This is particularly evident in subjects
281 without prior immunity, i.e. unvaccinated children < 12 years of age in our study.

282 We found no difference in symptomatology between primary series vaccinated and primary plus booster
283 series vaccinated cases during the omicron dominant period, but our sample size was small. A study about
284 breakthrough infections among vaccinated health care workers showed that 11% of the primary series
285 vaccinated participants were asymptomatic compared to 16% of the primary plus booster series
286 vaccinated participants¹⁷. More research is needed to clarify the impact of COVID-19 vaccination on
287 symptom burden.

288 The interpretation of our results has some limitations. First, it is possible that coinfections with other
289 pathogens influence disease severity and coinfection rates may vary over time. Based on National
290 Virological Surveillance data from the Netherlands most respiratory viruses circulated at lower rates during
291 the Omicron period compared to wild-type/Alpha period^{18,19}. This could, therefore, not explain the higher
292 symptom burden in children. Second, although similar protocol were used, the samples from the cohorts
293 were tested at different laboratories (see Supplement Table 1), this may limit comparability to some
294 extent. Third, we based prior infection status on the results of serology testing and on self-reported
295 positive PCR or antigen tests. Availability of testing was limited in the first year of the pandemic and
296 antibodies after infection can wane quickly and may have been undetectable in some subjects²⁰. Our
297 results indicated prior immunity in 44.6% of the adults during the Omicron BA.1 and BA.2 period, which
298 could be an underestimation because of waning antibodies. Data from February 2022 showed that 26 -
299 55% of the Dutch blood donors aged 18 to 65 had NP antibodies²¹. However, waning of antibodies does
300 not mean waning of all protection. Moss (2022) suggest that SARS-CoV-2 specific T cell responses, that are
301 also elicited after vaccination, are essential for viral clearance, can prevent infection without
302 seroconversion, provide robust memory and mediate the recognition of viral variants. This can protect
303 against serious infection and death.²² Waning and undetectable antibodies may have led to some
304 misclassification of prior infection status, in particular during the Omicron dominant period. If prior
305 infection is protective, the symptom burden of an Omicron infection compared to Wild-type/Alpha variant
306 infection may be somewhat underestimated. Lastly, low number of adolescent participants yielded in
307 insufficient power to obtain precise estimates for this age-group.

308

309 Conclusion

310 Upper respiratory tract symptoms are more common in SARS-CoV-2 infections during the Omicron period
311 compared to wild-type/Alpha period, but loss of smell or taste is less frequent. In children, the Omicron
312 variant causes higher symptom burden compared to wild-type/Alpha. Adults experienced shorter illness,
313 possibly owing to the protective effect of vaccination, there were no significant differences in symptom
314 severity between primary versus primary plus booster series.

315

316 Acknowledgements

317 We would like to thank all participants of the studies. In addition, we would like to thank Anne van der
318 Linden for support with testing of the DBS specimens.

319 This work forms part of RECOVER (Rapid European COVID-19 Emergency Response research) and VERDI
320 (SARS-coV2 variants Evaluation in pRegnancy and paeDiatrics cohorts). RECOVER (101003589) is funded
321 by the EU Horizon 2020 research and innovation program. VERDI project (101045989) is funded by the
322 European Union. Views and opinions expressed are however those of the author(s) only and do not
323 necessarily reflect those of the European Union or the European Health and Digital Executive Agency.
324 Neither the European Union nor the granting authority can be held responsible for them. In addition,
325 part of the work is funded by ZonMw.

326 References

- 327 1. World Health Organization. Tracking SARS-CoV-2 variants. World Health Organization. Published
328 2021. Accessed July 17, 2022. <https://www.who.int/activities/tracking-SARS-CoV-2-variants>
- 329 2. Fan Y, Li X, Zhang L, Wan S, Zhang L, Zhou F. SARS-CoV-2 Omicron variant: recent progress and
330 future perspectives. *Signal Transduct Target Ther*. 2022;7(1):141. doi:10.1038/S41392-022-00997-
331 X
- 332 3. Gupta R. SARS-CoV-2 Omicron spike mediated immune escape and tropism shift. *Res Sq*. Published
333 online January 17, 2022. doi:10.21203/RS.3.RS-1191837/V1
- 334 4. Harvey WT, Carabelli AM, Jackson B, et al. SARS-CoV-2 variants, spike mutations and immune
335 escape. *Nat Rev Microbiol* 2021 197. 2021;19(7):409-424. doi:10.1038/s41579-021-00573-0
- 336 5. Miller NL, Clark T, Raman R, Sasisekharan R. Insights on the mutational landscape of the SARS-CoV-
337 2 Omicron variant. *bioRxiv*. Published online December 10, 2021:2021.12.06.471499.
338 doi:10.1101/2021.12.06.471499
- 339 6. Aiello TF, Puerta-Alcalde P, Chumbita M, et al. Infection with the Omicron variant of SARS-CoV-2 is
340 associated with less severe disease in hospitalized patients with COVID-19. *J Infect*. 2022;0(0).
341 doi:10.1016/j.jinf.2022.07.029
- 342 7. Nyberg T, Ferguson NM, Nash SG, et al. Comparative analysis of the risks of hospitalisation and
343 death associated with SARS-CoV-2 omicron (B.1.1.529) and delta (B.1.617.2) variants in England: a
344 cohort study. *Lancet*. 2022;399(10332):1303-1312. doi:10.1016/S0140-6736(22)00462-7
- 345 8. Whittaker R, Greve-Isdahl M, Bøås H, Suren P, Buanes EA, Veneti L. COVID-19 Hospitalization
346 Among Children <18 Years by Variant Wave in Norway. *Pediatrics*.
347 2022;150(3):2022057564. doi:10.1542/peds.2022-057564
- 348 9. Verberk JDM, de Hoog MLA, Westerhof I, et al. Transmission of SARS-CoV-2 within households: a
349 remote prospective cohort study in European countries. *Eur J Epidemiol*. 2022;37(5):549-561.
350 doi:10.1007/s10654-022-00870-9

- 351 10. de Hoog M, Sluiter-Post J, Westerhof I, et al. Incidence rates and symptomatology of community
352 infections with SARS-CoV-2 in children and parents: The CoKids longitudinal household study.
353 *medRxiv*. Published online December 11, 2021:2021.12.10.21267600.
354 doi:10.1101/2021.12.10.21267600
- 355 11. Rijksinstituut voor Volksgezondheid en Milieu. Varianten van het coronavirus SARS-CoV-2.
356 Published 2022. Accessed May 19, 2022. [https://www.rivm.nl/coronavirus-covid-](https://www.rivm.nl/coronavirus-covid-19/virus/varianten)
357 [19/virus/varianten](https://www.rivm.nl/coronavirus-covid-19/virus/varianten)
- 358 12. Wolter N, Jassat W, Walaza S, et al. Early assessment of the clinical severity of the SARS-CoV-2
359 omicron variant in South Africa: a data linkage study. *Lancet (London, England)*.
360 2022;399(10323):437-446. doi:10.1016/S0140-6736(22)00017-4
- 361 13. Ulloa AC, Buchan SA, Daneman N, Brown KA. Estimates of SARS-CoV-2 Omicron Variant Severity in
362 Ontario, Canada. *JAMA*. 2022;327(13). doi:10.1001/JAMA.2022.2274
- 363 14. Vihta KD, Pouwels KB, Peto TE, et al. Omicron-associated changes in SARS-CoV-2 symptoms in the
364 United Kingdom. *medRxiv*. Published online May 18, 2022:2022.01.18.22269082.
365 doi:10.1101/2022.01.18.22269082
- 366 15. Meng B, Abdullahi A, Ferreira IATM, et al. Altered TMPRSS2 usage by SARS-CoV-2 Omicron impacts
367 infectivity and fusogenicity. *Nat 2022 6037902*. 2022;603(7902):706-714. doi:10.1038/s41586-022-
368 04474-x
- 369 16. Hui KPY, Ho JCW, Cheung M chun, et al. SARS-CoV-2 Omicron variant replication in human bronchus
370 and lung ex vivo. *Nat 2022 6037902*. 2022;603(7902):715-720. doi:10.1038/s41586-022-04479-6
- 371 17. Robilotti E V, Whiting K, Lucca A, et al. Effectiveness of mRNA booster vaccine among health Care
372 workers in New York City during the omicron surge, December 2021- January 2022. *Clin Microbiol*
373 *Infect*. Published online August 3, 2022. doi:10.1016/J.CMI.2022.07.017
- 374 18. Nivel. Actuele weekcijfers aandoeningen – Surveillance. Published 2021. Accessed June 6, 2022.
375 [https://www.nivel.nl/nl/nivel-zorgregistraties-eerste-lijn/actuele-weekcijfers-aandoeningen-](https://www.nivel.nl/nl/nivel-zorgregistraties-eerste-lijn/actuele-weekcijfers-aandoeningen-surveillance)
376 [surveillance](https://www.nivel.nl/nl/nivel-zorgregistraties-eerste-lijn/actuele-weekcijfers-aandoeningen-surveillance)
- 377 19. Rijksinstituut voor Volksgezondheid en Milieu. Virologische weekstaten | RIVM. Rijksinstituut voor
378 Volksgezondheid en Milieu. Published 2022. Accessed July 18, 2022.
379 <https://www.rivm.nl/surveillance-van-infectieziekten/virologische-weekstaten>

- 380 20. Liu W, Russell RM, Bibollet-Ruche F, et al. Predictors of Nonseroconversion after SARS-CoV-2
381 Infection. *Emerg Infect Dis*. 2021;27(9):2454-2458. doi:10.3201/eid2709.211042
- 382 21. Sanquin. Ondanks booster recordaantal coronabesmettingen. Sanquin. Published 2022. Accessed
383 June 18, 2022. [https://www.sanquin.nl/over-sanquin/nieuws/2022/03/ondanks-booster-](https://www.sanquin.nl/over-sanquin/nieuws/2022/03/ondanks-booster-recordaantal-coronabesmettingen)
384 [recordaantal-coronabesmettingen](https://www.sanquin.nl/over-sanquin/nieuws/2022/03/ondanks-booster-recordaantal-coronabesmettingen)
- 385 22. Moss P. The T cell immune response against SARS-CoV-2. *Nat Immunol* 2022 232. 2022;23(2):186-
386 193. doi:10.1038/s41590-021-01122-w

Symptom presentation among SARS-CoV-2 positive cases and the impact of COVID-19 vaccination; three prospective household cohorts.

Tables and figures

Ilse Westerhof¹, Marieke L. A. de Hoog¹, Greet Ieven², Christine Lammens², Janko van Beek³, Ganna Rozhnova^{1,4}, Dirk Eggink⁵, Sjoerd M Euser⁶, Joanne G Wildenbeest⁷, Liesbeth Duijts⁸, Marlies A. van Houten^{9,10}, Herman Goossens², Carlo Giaquinto¹¹, Patricia C. J. L. Bruijning-Verhagen¹

1. Julius Centre for Health Sciences and Primary Care, Department of Epidemiology, University Medical Centre Utrecht, Utrecht, The Netherlands
2. Laboratory of Medical Microbiology, Vaccine & Infectious Disease Institute, University of Antwerp, Antwerp, Belgium
3. Department of Viroscience, Erasmus University Medical Center Rotterdam, Rotterdam, The Netherlands
4. BioISI—Biosystems & Integrative Sciences Institute, Faculdade de Ciências, Universidade de Lisboa, Lisboa, Portugal
5. Centre for Infectious Disease Control, WHO COVID-19 Reference Laboratory, National Institute for Public Health and the Environment (RIVM), Bilthoven, The Netherlands.
6. Streeklaboratorium voor de Volksgezondheid Kennemerland, Department of Epidemiology, Kennemerland, The Netherlands
7. Department of Pediatric Infectious Diseases and Immunology, Wilhelmina Children's Hospital University Medical Center Utrecht, Utrecht, The Netherlands
8. Erasmus MC - Sophia Children's Hospital, Erasmus University Medical Center -, Department of Pediatrics, Rotterdam, The Netherlands
9. Spaarne Gasthuis Academy, Spaarne Gasthuis, Hoofddorp, The Netherlands
10. Spaarne Gasthuis, department of Pediatrics, Haarlem and Hoofddorp, The Netherlands
11. Department of Women and Child Health, University of Padova, Padova, Italy

Table 1 Baseline characteristics secondary household cases

	Mean (SD) or No. (%)					
	Wild-type/Alpha Period			Omicron Period		
	Adult (≥18 years) (n=135)	Adolescent (12-17 years) (n=24)	Child (<12 years) (n=57)	Adult (≥18 years) (n=65)	Adolescent (12-17 years) (n=15)	Child (<12 years) (n=50)
Mean age (SD)	42.1 (13.7)	14.9 (1.6)	6.1 (3.2)	42.1 (5.0)	13.9 (1.6)	7.1 (3.1)
Female	60 (44.4%)	14 (58.3%)	23 (40.4%)	37 (56.9%)	4 (26.7%)	24 (48.0%)
Prior infection*						
Yes	2 (1.5%)	0 (0.0%)	4 (7.0%)	29 (44.6%)	5 (33.3%)	15 (30.0%)
No	133 (98.5%)	24 (100.0%)	53 (93.0%)	33 (50.8%)	9 (60.0%)	27 (54.0%)
Unknown	0 (0.0%)	0 (0.0%)	0 (0.0%)	3 (4.6%)	1 (6.7%)	8 (16.0%)
Prior immunity#						
Yes	2 (1.5%)	0 (0.0%)	4 (7.0%)	65 (100.0%)	15 (100.0%)	16 (32.0%)
No	133 (98.5%)	24 (100%)	53 (93.0%)	0 (0.0%)	0 (0.0%)	34 (68.0%)
Vaccination status						
Primary plus booster series	0 (0.0%)	0 (0.0%)	0 (0.0%)	45 (69.2%)	0 (0.0%)	0 (0.0%)
Primary series	0 (0.0%)	0 (0.0%)	0 (0.0%)	18 (27.7%)	14 (93.3%)	0 (0.0%)
Incomplete primary series	0 (0.0%)	0 (0.0%)	0 (0.0%)	2 (3.1%)	0 (0.0%)	1 (2.0%)
No vaccination	135 (100.0%)	24 (100%)	57 (100.0%)	0 (0.0%)	1 (6.7%)	49 (98.0%)

*Prior infection is defined as having NP antibodies at enrollment and/or a reported previous infection in the baseline questionnaire.
#Prior immunity is defined as reported vaccinated before enrollment, having NP antibodies at enrollment, or a reported previous infection in the baseline questionnaire.

Table 2 Symptom burden of SARS-CoV-2 infections Wild-type/Alpha versus Omicron variant per age group

	No. (%) or median (IQR)								
	Adult >18 years			Adolescent 12-17 years			Child < 12 years		
	Wild-type/alpha period n=135	Omicron Period n=65	p-value [§]	Wild-type/alpha period n=24	Omicron Period n=15	p-value [§]	Wild-type/alpha period n=57	Omicron Period n=50	p-value [§]
Disease category			0.046			0.139			0.034
Symptomatic disease	103 (76.3%)	55 (84.6%)		14 (58.3%)	13 (86.7%)		20 (35.1%)	30 (60.0%)	
Pauci-symptomatic	20 (14.8%)	10 (15.4%)		7 (29.2%)	2 (13.3%)		24 (42.1%)	12 (24.0%)	
Asymptomatic	12 (8.9%)	0 (0.0%)		3 (12.5%)	0 (0.0%)		13 (22.8%)	8 (16.0%)	
Days with symptoms	13 (7.5-21)	10 (6-18)	0.095	7 (1-12)	6 (4-8)	0.7	3 (1-7)	6 (4-11.5)	0.044
Number of symptoms	6 (3-6)	5 (4-7)	0.3	2.5 (1-5.5)	4 (3-6.5)	0.076	2 (1-3)	3 (1.5-5)	0.004
Maximum severity score [§]	14 (10-18)	11 (9.5-15)	0.066	11 (7.5-19.5)	10 (10-12)	0.8	7 (4-11)	10 (8.5-14)	0.011
Cumulative severity score [§]	80.5 (55.5-128)	54.0 (33.5-115)	0.024	40.5 (22-128)	34 (28-62)	>0.9	20.5 (14-49)	40.5 (28-69.5)	0.075

[§] calculated for cases with symptomatic disease

[§] Bold p-values indicate significant differences after correction for multiple testing.

Table 3 Adjusted odds ratios for symptom frequency and severity for Omicron versus Wild-type/alpha variant. No significant OR's and absolute difference estimates after correction for multiple testing.

Symptom	OR (95% CI)	P-value [§]
Muscle ache	0.67 (0.25-1.67)	0.4
Coughing	1.85 (0.92-3.78)	0.085
Fever	2.23 (1.03-4.81)	0.041
Sore throat	1.89 (0.92-3.88)	0.082
Nasal congestion/ Runny nose	1.97 (0.89-4.59)	0.103
Dyspnea	0.60 (0.16-1.89)	0.4
Headache	1.39 (0.68-2.82)	0.4
Cold shivers	1.00 (0.37-2.56)	1.0
Fatigue	2.00 (0.98-4.14)	0.058
Diarrhea	0.93 (0.32-2.50)	0.9
Loss of smell/taste	0.14 (0.03-0.50)	0.005
Duration and severity	Absolute difference estimate (95% CI)	p-value [§]
Days with symptom	0.18 (-0.16-0.66)	0.3
Number of symptoms	0.49 (-0.41-1.40)	0.3
Maximum severity score [§]	0.09 (-0.11-0.34)	0.4
Cumulative severity score [§]	-17.7 (-56.5-21.2)	0.4
An OR > 1/estimate > 0 indicates higher odds/estimates during the Omicron period.		
[§] calculated for cases with symptomatic disease.		
[§] Bold p-values indicate significant differences after correction for multiple testing.		

Table 4 Symptom burden among SARS-CoV-2 infected Omicron adults stratified by vaccination status.

	No. (%) or median (IQR)		p-value
	Primary series	Primary plus booster series	
	n=18	n=45	
Disease severity			0.5
- Symptomatic	16 (88.9%)	37 (82.2%)	
- Pauci-symptomatic	2 (11.1%)	8 (17.8%)	
- Asymptomatic	0 (0%)	0 (0%)	
Days with symptom	10 (6.5-15)	11 (6-18)	0.4
Number of symptoms	5 (4-7)	5 (4-6)	0.8
Maximum severity score [§]	10 (9-12)	12 (10-15)	0.088
Cumulative severity score [§]	47 (28.5-75.5)	64 (34-136)	0.24

Table 5 Adjusted odds ratios for symptom frequency and severity in primary versus primary plus booster vaccinated subjects among Omicron infected adults.

Symptom	OR (95% CI)	P-value
Hoarseness	0.56 (0.15-1.95)	0.4
Nasal congestion/ Runny nose	0.65 (0.03-5.83)	0.7
Muscle ache	1.21 (0.38-4)	0.7
Coughing	1.18 (0.27-4.58)	0.8
Fever	1.44 (0.43-5.35)	0.6
Sore throat	0.38 (0.07-1.45)	0.19
Dyspnea	0.86 (0.19-4.55)	0.8
Headache	0.62 (0.14-2.32)	0.6
Cold shivers	2.22 (0.45-14.09)	0.4
Fatigue	0.67 (0.15-2.56)	0.6
Diarrhea	1.53 (0.28-12.31)	0.6
Loss of smell/taste	5.89 (0.92-117.48)	0.12
Vomiting	∞ (0- ∞)	
Duration and severity	Absolute difference estimate (95% CI)	p-value
Days with symptom	0.11 (-0.24-0.64)	0.6
Number of symptoms	0.07 (-1.04-1.18)	0.9
Maximum severity score [§]	0.16 (-0.04-0.42)	0.13
Cumulative severity score [§]	25.55 (-20.78-71.87)	0.3
An OR/estimates > 1 indicates higher odds/estimates for persons with booster vaccination.		
[§] calculated for cases with symptomatic disease.		

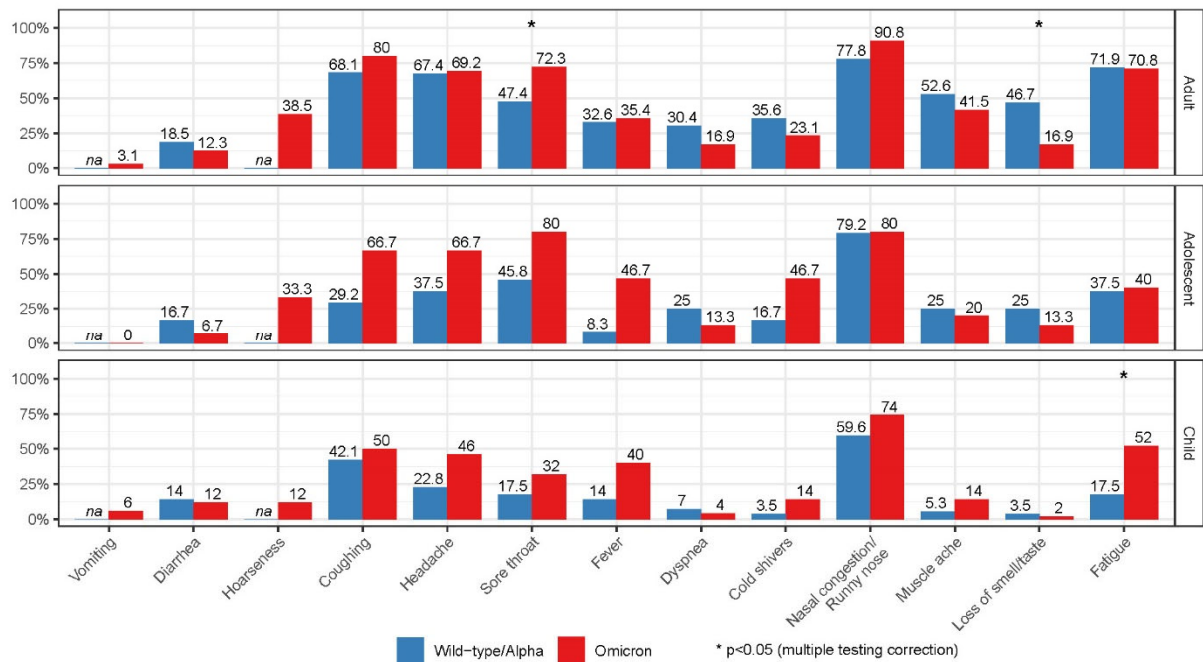


Figure 1 Symptom frequency by age-category and variant (Wild-type/Alpha versus Omicron)

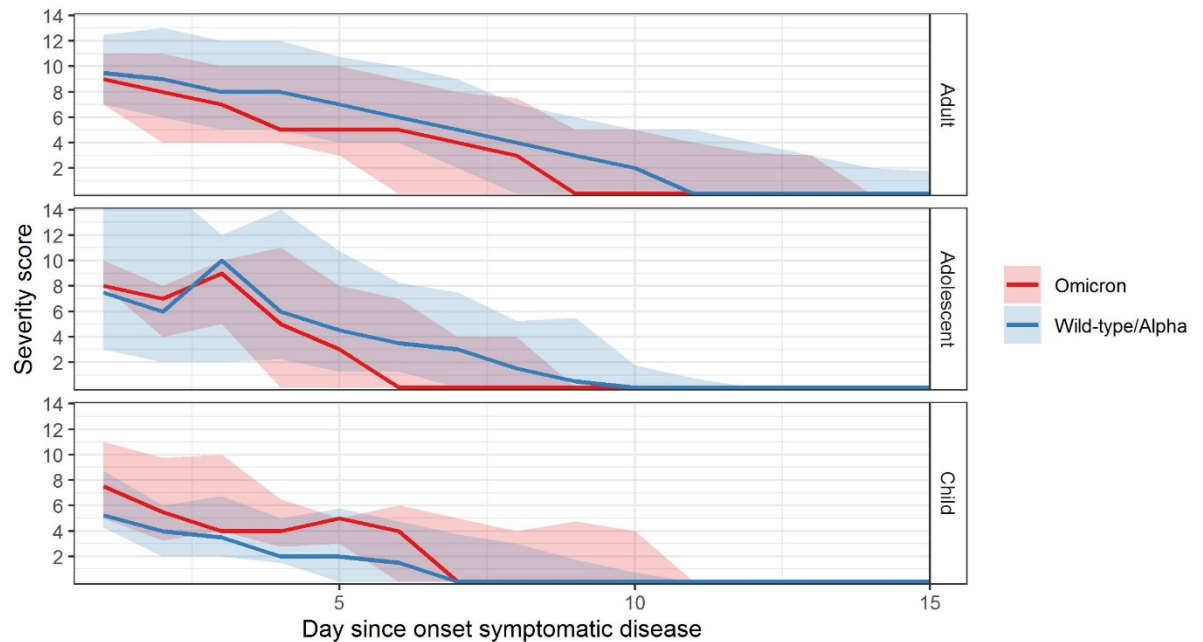


Figure 2 Symptom severity scores over time for symptomatic SARS-CoV-2 episodes by Wild-type/Alpha versus Omicron variant and age-group. Line indicate median and shade interquartile range

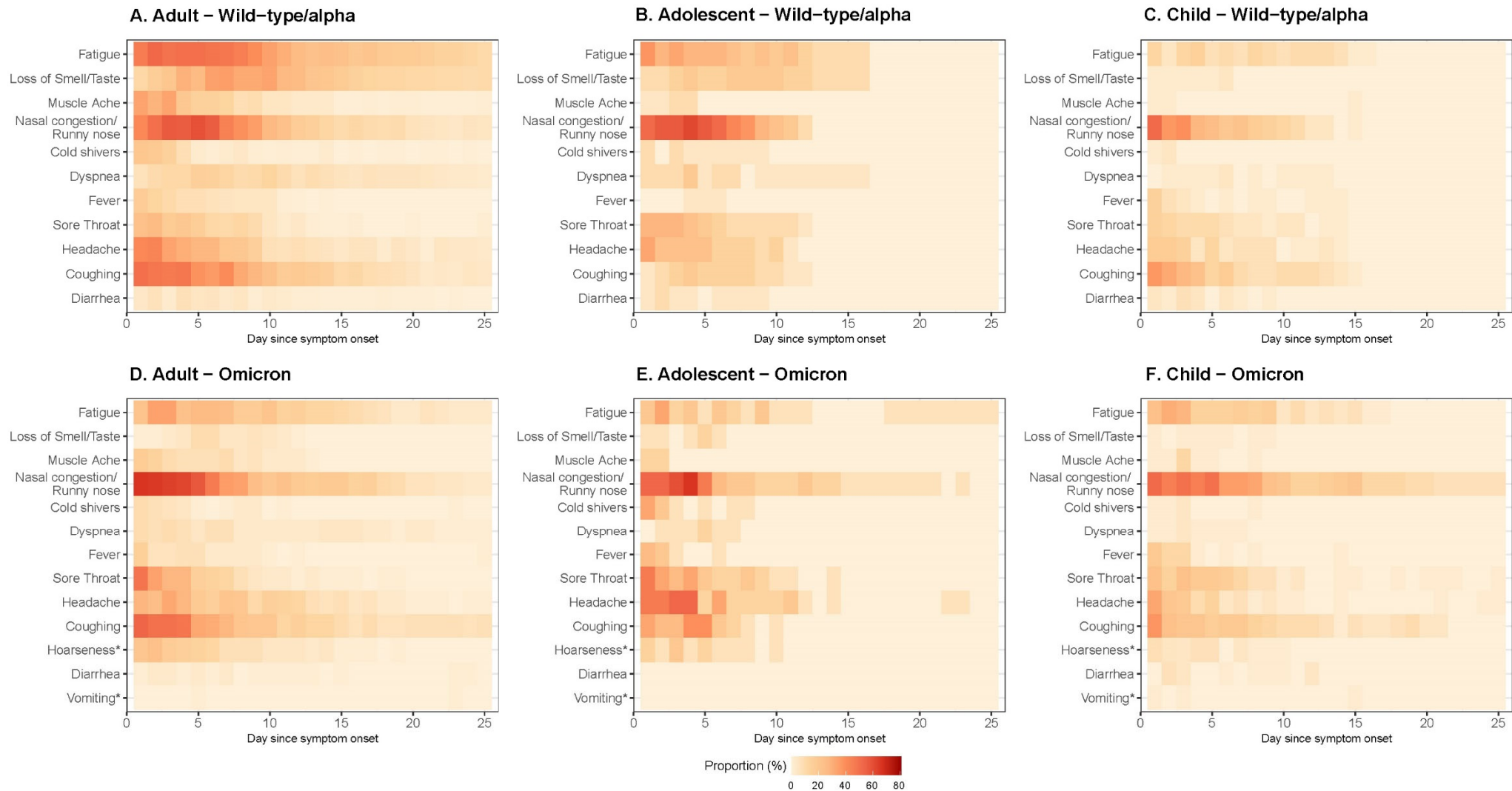


Figure 3 Symptom frequency per day since onset, age-group and variant. Includes all infected subjects (including asymptomatic cases).

* indicate symptoms exclusively asked during omicron period.