

1 **Development of the Sm14/GLA-SE - schistosomiasis**
2 **vaccine candidate: An open, not placebo-controlled,**
3 **standardized dose immunization phase Ib clinical trial**
4 **targeting healthy young women**
5
6

7 Marilia Santini-Oliveira¹, Patrícia Machado Pinto², Tatiane dos Santos², Monica Magno Vilar²,
8 Beatriz Grinsztejn¹, Valdilea Veloso¹, Elan C. Paes-de-Almeida³, Maria A. Z. Amaral⁴, Celso
9 R. Ramos⁵, Miryam Marroquin-Quelopana⁵, Rhea Coler⁶, Steven Reed⁷, Marcia Ciol⁸, Wilson
10 Savino^{9,10}, Juçara de Carvalho Parra¹¹ Marília Sirianni dos Santos Almeida², Miriam Tandler^{2*}

11
12 ¹Evando Chagas National Institute of Infectology, Fiocruz, Rio de Janeiro, 21045-900, Brazil.

13 ²Laboratory of Experimental Schistosomiasis, Oswaldo Cruz Institute, Oswaldo Cruz
14 Foundation (Fiocruz), Av. Brasil, nº 4365, Manguinhos, 21045-900, Rio de Janeiro, Brazil.

15
16 ³Department of Basic Sciences, Fluminense Federal University, Nova Friburgo, RJ, Brazil

17 ⁴Program for Development of the *Mata Atlântica Campus*, Fiocruz, Rio de Janeiro, Brazil

18 ⁵Fenix Biotec Treinamento SS LTDA, São Paulo, Brazil

19 ⁶Department of Global Health, University of Washington, Seattle, USA

20 ⁷HDT Bio, Seattle, USA

21 ⁸Department of Rehabilitation Medicine, School of Medicine, University of Washington,
22 Seattle, USA

23
24 ⁹Laboratory on Thymus Research, Oswaldo Cruz Institute, Oswaldo Cruz Foundation, Rio de
25 Janeiro, Brazil

26
27 ¹⁰Brazilian National Institute of Science and Technology on Neuroimmunomodulation,
28 Oswaldo Cruz Institute, Oswaldo Cruz Foundation, Rio de Janeiro, Brazil

29
30 ¹¹ René Rachou Institute — Fiocruz Minas, Oswaldo Cruz Foundation, Belo Horizonte, Brazil

31
32 *Corresponding author:

33 E-mail address: mtandler@ioc.fiocruz.br; tandlermiriam@gmail.com (MT)

35 **Abstract**

36 We report the successful closure of Phase I clinical trials of the *Schistosoma mansoni* 14 kDa
37 fatty acid-binding protein (Sm14) + glucopyranosyl lipid A in squalene emulsion (GLA-SE)
38 vaccine candidate against human Schistosomiasis, comprising Phases Ia and Ib. Shown here are
39 the results of Phase Ib, an open, not placebo-controlled, standardized-dose immunization trial,
40 involving 10 healthy 18-49 years old women submitted to the same clinical protocol and the
41 same batch of cGMP Sm14+GLA-SE used in Phase Ia, which was one on men. Fifty µg Sm14
42 protein plus 10 µg GLA-SE per dose were given intramuscularly thrice at 30-day intervals.
43 Participants were assessed clinically, biochemically, and immunologically for up to 120 days.
44 In preambular experiments involving vaccinated pregnant female rabbits, we did not find any
45 toxicological feature either in offspring or mothers, as ascertained by histopathology and
46 biochemical parameters. The vaccine induced adaptive immunity in the animals, as defined by
47 the detection of anti-Sm14 antibodies in the sera. In women, neither serious nor light adverse
48 events were observed. Sm14+GLA-SE vaccination induced high titers of anti-Sm14 serum IgG
49 antibody production. Total anti-IgG serum levels remained high 120 days after the first
50 vaccination dose. Significant increases in Sm14-specific total IgG, IgG1, and IgG3 were
51 observed 30 days after the first vaccination, with specific IgG2 and IgG4 after 60 days.
52 Sm14+GLA-SE vaccination also elicited robust cytokine responses with increased TNFα,
53 IFNγ, and IL-2 profiles in all female vaccinees on days 90 and 120.
54 As in Phase Ia, the Sm14+GLA-SE vaccine was shown to be strongly immunogenic and well
55 tolerated. The completion of Phase I clinical trials performed to the highest standards set by the
56 Good Clinical Research Practice (GCP) standards and pre-clinical data in pregnant rabbits
57 enabled the vaccine candidate to proceed to Phase II clinical trials in endemic areas.

58

59 **Study registration ID:** NCT01154049 at <http://www.clinicaltrials.gov>. Brazilian Registry of

60 Clinical Trials UTN: U1111-1135-6815

61

62 **Keywords:** Vaccine; Schistosomiasis; Phase Ib clinical trial; toxicology; pregnant rabbits;

63 Sm14 protein

64

66 **Introduction**

67 Schistosomiasis is a parasitic disease that affects populations living in areas with very poor
68 sanitary conditions where they get infected through the contact with contaminated water during
69 their daily working, domestic or leisure activities. Children are the main target of the infection
70 that strongly compromises their physical and cognitive development [1,2]. Such a feature turns
71 schistosomiasis, not only into a disease resulting from poverty, but also into a backwardness
72 generator in endemic countries. Schistosomiasis is present in tropical areas of America,
73 Medium East, Asia and Africa, where the impact over public health is catastrophic as a
74 consequence of the size of the territory affected as well as the number of people getting
75 infected. The World Health Organization (WHO) estimates that over 240 million people living
76 in 78 countries are infected and around 800 million live in areas with risk of transmission and
77 infection and are part of global programs directed to the effective control of transmission of
78 schistosomiasis [3]. According to the Ministry of Health, in Brazil, around 1.5 million people
79 live in areas of risk of acquiring the disease [4]. Yet, we still lack a vaccine for protecting the
80 populations from the disease.

81 Presently, the so-called Mass Drug Administration (MDA) program against schistosomiasis is
82 the strategy adopted by WHO in which populations in endemic areas are treated annually with
83 Praziquantel without previous diagnosis. Such strategy actually led to an improvement with
84 regards to the pathology associated to schistosomiasis [5]. However, the world prevalence is
85 still as high as it has always been and the Disability-Adjusted Life Years (DALYs) value ,
86 which is an important tool to assess the impact of diseases, has increased [6].

87 The Sm14 vaccine candidate has been developed at the Oswaldo Cruz Foundation (Fundação
88 Oswaldo Cruz, Fiocruz, Brazil) as a humanitarian vaccine to be used on the population living in
89 areas with risk of infection [7–9].

90 The Sm14 recombinant protein is currently the basis for a molecular antiparasitic vaccine
91 associated to GLA-SE adjuvant has been developed as an anthelmintic bivalent vaccine,
92 directed against fasciolosis and schistosomiasis. Sm14 is a member of the Fatty Acid Binding
93 Proteins family, originally isolated from *S. mansoni* [10], already identified in most parasite
94 helminths of human and veterinary importance [5–15].

95 During the experimental phase of Sm14 vaccine development, concentrated in vaccination of
96 outbred animals, it was possible to demonstrate consistent protection against challenge
97 infection with cercariae of *S. mansoni* and significant reduction of adult worm burdens of
98 vaccinated/infected animals evidenced by mean values of adult worm loads and additional
99 measures of the distribution of frequencies of Swiss-Webster mice in sequential worm burdens
100 rates [16–19]. Therefore, one can expect that vaccination with Sm14+GLA-SE in human may
101 lead to the reduction of worm burdens, reducing reinfection rates and diminishing the
102 aggressive inflammatory response that has been observed following interrupted chemotherapy
103 in children living in high-transmission areas [20,21].

104 The major objective of the Sm14 vaccine project is to promote health access through a safe and
105 immunogenic vaccine capable of blocking the transmission of the disease. This will avoid that
106 populations continue to receive repeated doses of chemotherapeutic drugs during childhood and
107 youth. The design of the vaccine foresees its large-scale use associated to the other control
108 measures already known such as chemotherapy with Praziquantel, sanitation, health education,
109 etc., capable of promoting the control of the disease and mitigating the suffering historically
110 produced by this disease in tropical countries.

111 The Brazilian National Sanitary Surveillance Agency (Anvisa) approved the start of the
112 Clinical Protocol for Phase Ia Study (CE# 990768/10-8), nonendemic area of Rio de Janeiro,
113 Brazil, with 20 healthy male volunteers, which was completed with success and validated. The
114 validation was done with the use of a Data Bank fed with all records of the study for

115 calculations and detailed and descriptive statistical analyses of results [22]. In order to comply
116 with the requirements for a similar study in women, Anvisa requested experiments done in
117 pregnant experimental animals. On a second round, and after completion of a requirement for
118 testing the toxicity of the product under investigation, Anvisa approved the Phase Ib Clinical
119 Trial, same Brazilian region as the phase 1a clinical trial, this time with female volunteers. As
120 required by the regulatory agency, the Sm14+GLA-SE formulation was preambularly tested
121 and successfully approved in pregnant rabbits.

122 The step related to process of vaccination on Phase Ib (with young adult female volunteers)
123 was conducted by the Evandro Chagas National Institute of Infectology (INI/Fiocruz) using the
124 same batches of the Sm14+GLA-SE used on Phase Ia.

125 The immunogenicity induced by the vaccine Sm14+GLA-SE in women was also approached
126 by means of a platform made available by the Access to Advanced Health Institute (AAHI)
127 (previously Infectious Disease Research Institute IDRI) Seattle, USA to where sera and cells
128 collected in different points of the study from volunteers were shipped. The steps needed to
129 attest safety and immunogenicity of the vaccine and validation of the study were completed and
130 are described in the present work.

131

132 **Materials and Methods**

133 **Vaccine Antigen and Adjuvant**

134 For the studies carried out in rabbits as well as the clinical trial, the Sm14 vaccine used in the
135 study was produced at the Ludwig Institute for Cancer Research (LICR) and Cornell
136 University, NY, USA under Good Manufacturing Practice conditions (cGMP). Hermetically
137 closed vials, with individual doses (0.55 mL), labelled with product name, Sm 14, lot number
138 (PBR-0057-002), date of manufacture and “*only for investigational use*”, were shipped to

139 Brazil under the import authorization from the National Council for Scientific and
140 Technological Development (CNPq) and the Anvisa. Vials were kept at 2-8°C under
141 continuous temperature control from the origin at Fiocruz (Rio de Janeiro) until use, with
142 regular inspections assuring contents remaining liquid and transparent without suspended
143 particles.

144 The Infectious Diseases Research Institute/ Access to Advanced Health Institute (IDRI/AAHI)
145 provided the Glucopyranosyl Lipid-A adjuvant in Squalene Emulsion (GLA-SE) vials
146 containing 0.4 mL, at a concentration of 40 µg/mL, also produced under GMP conditions,
147 labelled with lot number (Part # 0037-09M001) and manufacturing date. Shipping and storage
148 followed the same procedures as described above.

149 The batches of Sm14 and adjuvant were filled finished as single doses and mixed at the
150 moment of immunizations.

151 To formulate the vaccine antigen dose at the time of administration, 0.4 mL of a 200µg/mL
152 Sm14 suspension were aspirated using a 1 mL sterile syringe. Subsequently, the volume of the
153 syringe was injected into the vial containing the GLA-SE adjuvant, obtaining a total volume of
154 0.8 ml mixture. After mixing by inverting the vial, 0.5 mL containing 50µg of Sm14 protein
155 and 10µg adjuvant was administered by intra-muscular route to both animals and women
156 volunteers. The dose used in these studies were based on a clinical protocol approved by
157 Anvisa for the Phase Ia study in male volunteers [22]. The two components of the vaccine
158 candidate, kept in separate vials, were monitored by Pharmaceutical Product Development
159 (PPD) [23]. Samples were sent to PPD for control every three months in accordance with
160 applicable standard operating procedures and the US Food and Drug Administration (FDA)
161 regulations. Stability of the Sm14 GMP lot was followed by PPD and updated “Certificate of
162 Analysis” issued.

163 **Pre-clinical experiments on safety and immunogenicity of pregnant**
164 **rabbits and respective off springs, following Sm14 vaccination in**
165 **the mothers**

166 The study in pregnant rabbits was conducted in accordance with the protocol provided by
167 Anvisa. It was reviewed and approved by the Ethics Committee on Animal Research of Fiocruz
168 (CEUA/Fiocruz) n° L0063/08 – LW 19/2013.

169 The reproductive toxicity tests were performed with the same vaccine lot further used in Phase
170 I Clinical Trials, which was produced under current good manufacturing practice (cGMP)
171 conditions by LICR/Cornell University, NY, USA. Vials containing individual doses (0.55 mL,
172 200 µg/mL) were labelled with the product name (Sm14) and lot number (PBR-0057-002).
173 Vials were kept at +2-8°C under continuous temperature control until use, with regular
174 inspections to assure that the contents remained liquid and transparent without suspended
175 particles.

176 Twenty-four NZW pregnant rabbits, with the same age and weight at the beginning of the
177 experiment, were divided into two groups just after mating: one group comprising 12 rabbits
178 immunized with three equal doses of 50 µg Sm14+10 µg GLA-SE/dose, with a 7-day interval
179 between doses; and the control group, comprising 12 rabbits injected with PBS, same days
180 intramuscularly. Injections of 0.5 mL/dose for each dose schedule were at the external middle
181 third of the right and left thigh alternately, and administered on days 0 (day 9 of pregnancy), 7
182 (day 16 of pregnancy), and 14 (day 23 of pregnancy). The pregnancy period of these animals is
183 approximately 30 days. Necropsy and anatomopathological evaluations were performed on day
184 29 of pregnancy.

185 All animals had the inoculation area shaved and marked before each immunizing dose, to
186 assess further possible local reactions that might include erythema and edema; both being
187 scored according to standard protocols [24]. Daily clinical evaluation of each animal was

188 performed and duly recorded in the individual data chart by a veterinarian. Parameters such as
189 occurrence of abortion, stress level, appetite, manure, and skin/local reactions at inoculations
190 sites, were evaluated and measured. Body weight was determined at the beginning and at the
191 end of the study. Food and water consumption was recorded every day individually.

192 Biochemical and blood cell evaluation was done following current laboratory practices and
193 included liver, renal and pancreatic functions, as well as red and white blood cell countings and
194 coagulation parameters.

195 All animals were anesthetized with thiopental sodium and euthanized by exsanguination.
196 Detailed anatomopathological analyses of all organs were carried out following euthanasia. All
197 animals were subjected to a macroscopic inspection of the organs and cavities. Samples of
198 organs were collected in buffered 10% formalin for later microscopic analysis. The ovaries,
199 uteri, and fetuses were collected and fixed for further analysis, such as number, size, weight,
200 *corpora lutea*, placenta and living fetuses. Paraffin-embedded tissue sections were stained with
201 hematoxylin and eosin (H&E) and examined under a light microscope [25].

202 Serum samples were collected from all rabbits before the start of pregnancy and on the date of
203 euthanasia. The total anti-Sm14 IgG antibody titers in rabbit sera samples were determined by
204 ELISA [26] in accordance with previously described procedures [27]. Briefly, the wells were
205 coated overnight at 4°C with 100 µL/well of Sm14 protein solution at 4 µg/mL in carbonate
206 buffer 0.1 M pH 9.6, blocked for 1h at 37°C, and then serum samples were added in two-fold
207 serial dilution from 1/100 up to 1/1600. After washing, peroxidase conjugated goat anti-rabbit
208 total IgG specific to the gamma chain (Santa Cruz Biotechnology, USA) was added to each
209 well, and the plates were incubated for 1h at 37°C. Wells were washed and the reaction was
210 developed by the addition of TMB substrate (Sigma-Aldrich, T0440) for 15 min at room
211 temperature in the dark followed by the addition of Stop reagent (Sigma-Aldrich S5814);
212 subsequently, the OD at 450 nm was measured using a BIORAD device, Model 680.

213 All statistical analyses were carried out by using GraphPad Prism version 4.0 software. All
214 analyses were conducted by applying the two-tailed test, with p -values below 0.05 considered
215 to be significant.

216

217 **Phase Ib clinical trial in healthy women**

218 The methodology used to conduct the Sm14+GLA-SE candidate vaccine Phase 1b clinical trial
219 in women was essentially the same described by Santini-Oliveira et al. [22] for Phase 1a with
220 healthy male adults (CE # 990768/10-8 - CAAE 0018.0.009.000-10). The protocol for the Phase Ib
221 trial was approved by Anvisa (CE# 0577594139) and by the Evandro Chagas Review Council
222 of the National Institute of Infectious Diseases (INI), Fiocruz (CAAE 09627212.4.0000-5262).
223 In addition, tests were monitored by TECHTRIALS, an independent research company, and
224 data was deposited into a Data Bank [28] under the code NCT01154049.

225 Twenty healthy female volunteers from a non-endemic area of Brazil (City of Rio de Janeiro)
226 were enrolled and registered under numbers from #1 to #20. Among them, 10 were selected
227 and went up to the end of the study. Inclusion criteria comprised negative pregnancy test,
228 availability during the whole duration of the trial, no evidence of any acute infection, no
229 previous or ongoing serious chronic disease, normal findings for organ functions as
230 demonstrated by laboratory tests and physical examination of the cardio-respiratory and
231 brain/neurological, abdominal organs, skin, and lymphatic system. Exclusion criteria included
232 pregnancy/breast feeding, abnormal hematology or blood chemistry counting or data, any kind
233 of ongoing infection, including infection by the human immunodeficiency virus (HIV), any
234 chronic disease, alcohol/drug abuse or history of medication or vaccination in the preceding
235 month. After clinical screening, the 10 participants aging 26-48 years (mean=36.3, sd=6.8)
236 were selected for the trial, and their demographic characteristics are depicted in S1 Table.

237 Full physical exams and laboratory tests were done on baseline and days 0, 7, 30, 37, 60, 67,
238 90 and 120 (Supplemental figure 1). Participants were monitored at the site up to one hour after
239 vaccination and followed-up by phone 20-28 hours afterwards. According to Santini-Oliveira
240 [22], all adverse episodes were evaluated in compliance with the International Centers for
241 Tropical Disease Research network (ICTDR), and according to the degree of severity as
242 follows: Level 1 (tolerable with mild discomfort and not interfering with regular activities);
243 Level 2 (discomfort with the impairment of regular activities but not requiring any specific
244 medical assistance, or treatment); Level 3 (requiring discharge of regular activities and medical
245 intervention) and Level 4 (life threatening). The laboratory at the Evandro Chagas National
246 Institute of Infectology (INI) is certified by the College of American Pathologists (CAP, EUA)
247 and laboratory tests were evaluated based on the INI Standard Values Chart. The study
248 followed FDA regulations [29].

249 Samples of peripheral blood mononuclear cells (PBMCs) and of sera were collected from all
250 subjects on baseline and days 0, 30, 60, 90 and 120. Immediately after collection, PBMCs were
251 separated by centrifugation at room temperature in Ficoll-Paque Plus (GE Healthcare, USA)
252 and mixed with Fetal Bovine Serum (FBS) (Gibco Life Technologies, USA) and 10% DMSO.
253 Cells were subsequently transferred to 2 mL cryovials and frozen down to -80°C in a
254 NALGENE™ Cryo 1°C freezing container (Nalgene, USA) overnight. On the following day
255 vials were transferred to liquid nitrogen and later dry shipped to the Infectious Disease
256 Research Institute (IDRI, Seattle, USA) where they were stored in liquid nitrogen until use.

257 Sera were also stored in Brazil at -80°C and transferred in dry ice to IDRI for analysis. At
258 IDRI, sera were stored at -80°C, till experiments were performed. The immunogenicity
259 analyses included isotype check of anti-Sm14 antibodies and cell-mediated responses
260 specifically induced after vaccination with Sm14+GLA-SE. It also included detection and
261 quantification of intracellular cytokines after stimulation of PBMCs with purified rSm14.

262 Immune cell responses were measured using the PBMC Luminex Kit for T cell cytokines
263 (Milliplex [®]MAP) [22]. Isotyping and the correlation between the development and the size of
264 humoral response measured in terms of IgG against the Sm14 protein were done by enzyme-
265 linked immunosorbent assay ELISA [22,26].

266 Descriptive analysis using IBM SPSS v20 statistical package was performed for all variables.
267 Boxplots for all follow-ups assessed whether observations were outside the limits specified for
268 specific laboratory tests. Proportions of adverse events and 95% confidence intervals were
269 calculated using Clopper-Pearson method [30]. For toxicity grading scales, we used limit
270 values based on published information when available, which included clinical experience and
271 reviewed vaccine clinical trials on healthy subjects. Toxicity grading scales were based on the
272 local laboratory reference values when those were defined. Statistical analyses of
273 immunogenicity data were performed using analysis of variance, followed by Tukey's test for
274 multiple comparisons.

275 The statistical analysis was done based on the evaluation of local and systemic
276 reactogenicity observed in the first 36 hours after each dose of the vaccine. Results of
277 chemical and hematological exams were compared to reference values in accordance with
278 the Richet Laboratory (LR) criteria and ICTDR, including levels of toxicity as defined by
279 FDA [29].

280

281

282

283

285 Results

286 **Sm14 vaccine candidate does not induce any toxicological effect in** 287 **pregnant rabbits**

288 The body weights and structures of the analyzed organs in all pregnant rabbits, irrespective of
289 being or not vaccinated were within normal limits, according to established criteria [31].
290 Macroscopic analysis of organs and cavities revealed results consistent with the usual aspects
291 for normal pregnant rabbits [32]. The ovaries of all 24 animals were consistent with normal
292 appearance. All analyzed uteri were comparable with a normal pregnant uterus for outbred
293 rabbits according to established criteria [33]. The microscopic results showed that the ovaries
294 of all 24 pregnant rabbits had follicles at different stages of development in the cortical region,
295 usual interstitial stromal glands and containing varying numbers of *corpora lutea* (Figure 1).
296 There was no statistically significant difference for any of the parameters assessed in this study
297 between vaccinated and control animals. Table 1 shows that the duration of pregnancy, the
298 number of implantation sites in the uterus, and the number and viability of pups guarantee the
299 absence of maternal and embryo-fetal toxicity in pregnant rabbits vaccinated with Sm14+GLA-
300 SE. The results were also consistent with the morphological and physiological aspects reported
301 for farmed NZW rabbits [31–33].

302 **Fig 1. Normal macroscopic and microscopic views of an ovary from a Sm14/GLA-SE vaccinated pregnant**
303 **rabbit.** Panel **A** depicts the normal macroscopic pattern of the ovary, showing multinodular outer surface and
304 brownish with marked vessels. Panel **B** shows microscopic view with follicles in various stages of development in
305 the cortical region (within the black circles). Corpora lutea (CL) can be seen in panel **C** whereas a higher
306 magnification of a follicle can be seen in Panel **D**. Sections were stained with Hematoxylin-eosin. Scale
307 magnification with the objectives for 40x (in panel B), 100x (in panel C) and 200x in panel D).

308

309

310
311

Table 1.
Sm14 vaccination does not induce changes in pregnancy parameters

Experimental Groups	Number of fetuses	Size of fetuses (cm)	Weight of Fetuses (g)	Number of corpora lutea	Number of Placentae (deployments)	Number of Live Fetuses	Percentage of Live Male Fetuses/Litter
Sm14+GLA-SE	6.60 ± 2.78	6.85 ± 2.40	23.43 ± 11.32	6.33 ± 3.14	7.58 ± 3.02	83	56.25 ± 30.24
PBS Control	7.00 ± 3.24	7.10 ± 0.83	21.58 ± 7.32	7.25 ± 2.89	8.42 ± 2.99	84	55.60 ± 34.91

312 Data are presented as the mean ± standard deviation. The parameters were evaluated by Student's *t*-test to compare the mean values of groups. In all cases, differences
313 were considered statistically significant for p values of < 0.05. No differences were found.

314 The skin and subcutaneous tissue were removed from the injection sites of the immunized
315 animals. The results of the individual tests showed no significant histopathological alterations in
316 the skin at the immunization site. In the anatomopathological evaluation of the organs, it was
317 observed that all groups, including the control group, had small and scarce foci of calcification in
318 5% of the cortical and medullary tubules of the kidneys.

319 Lastly, ELISA was used to analyze sera collected from the animals after the final injection and
320 showed considerably high production of the anti-Sm14 antibody in the sera of vaccinated versus
321 non-vaccinated PBS-treated pregnant rabbits. Anti-Sm14 antibody levels (evaluated by optical
322 density) were clearly high in the vaccinated group as compared to controls (Figure 2).

323

324 **Figure 2. Total anti-Sm14 IgG antibody titers, determined by ELISA, of all rabbit serum samples from the two**
325 **groups in the reproductive toxicity study. OD: optical density.**

326

327 **Sm14 vaccine candidate does not induce any major adverse effects** 328 **(AEs) in healthy women**

329 The certification of Sm14+GLA-SE vaccine safety in this preclinical study paved the way for the
330 phase Ib clinical trial of the vaccine in young adult non-pregnant women. The candidate vaccine
331 Sm14+GLA-SE was shown to be safe with no serious adverse events as observed in the participants after
332 any of three doses. No local reactions at the site of the injection occurred, except for local pain which
333 affected 9 out of 10 women after the first dose, 5 out of 9 after the second, and 4 out of 10 after the third
334 (all lasting less than 24 hours after injection). Only one subject reported involuntary muscle contractions
335 lasting 5 minutes near the site of infection after the first dose. Table 2 shows the adverse events associated
336 with vaccination of the healthy female volunteers in the Phase Ib.

338
339
340
341

Table 2.
Adverse events related to the injection of vaccine: reactions at the site of the injection and systemic reactions during the first 36 hours after the administration of the vaccine

Type of Adverse Effect	First Dose (Day 1)	Proportion (95% Confidence Intervall)	
		Second Dose (Day 31)	Third Dose (Day 61)
Number of participants	10	10*	10
Serious adverse effects	0.000 (0.000, 0.308)	0.000 (0.000, 0.308)	0.000 (0.000, 0.308)
Reactions in the of the injection			
Reaction to touch	0.000 (0.000, 0.308)	0.000 (0.000, 0.308)	0.000 (0.000, 0.308)
Erythema	0.000 (0.000, 0.308)	0.000 (0.000, 0.308)	0.000 (0.000, 0.308)
Induration	0.000 (0.000, 0.308)	0.000 (0.000, 0.308)	0.000 (0.000, 0.308)
Edema	0.000 (0.000, 0.308)	0.000 (0.000, 0.308)	0.000 (0.000, 0.308)
Local pain	0.900 (0.555, 0.997)	0.556 (0.212, 0.863)	0.400 (0.122, 0.738)
Involuntary muscle contractions, light	0.100 (0.003, 0.445)	0.000 (0.000, 0.308)	0.000 (0.000, 0.308)

342 *One missing value for local pain

343 With regards to systemic adverse events, two participants had fever at D7, and two others had
344 light local hyperemia and headache at D37, probably related to the vaccine. Physical exams on all
345 days (baseline, 0, 7, 30, 37, 60, 67, 90, and 120) showed no clinical alterations or abnormalities.
346 Laboratory exams did not show alterations that could be classified as toxicity according to the
347 ICTDR criteria, except for ALT and GGT, with few participants showing elevated values within
348 toxicity levels. However, these participants also had elevated values prior to the vaccination (at
349 baseline), and since they had no other abnormal laboratory findings or clinical symptoms, they
350 were considered as most probably not related to the vaccine. All other single instances of values

351 outside of the normal range were evaluated and, given that no abnormal laboratory findings or
 352 clinical symptoms were observed, they were all considered as non-clinically significant (that is,
 353 most probably not related to the vaccine). These data show that the vaccine produced very few
 354 adverse effects and all the observed events were local and mild (Tables 3 and 4).

355
 356
 357
 358
 359

Table 3.
Secondary adverse events* in Sm14 vaccinated young

Day of Exam	Symptoms	Relationship to the Sm14 Vaccine
D0**	Patient #10: Vomit, light. Patient #13: Sleepiness, light.	Not related to the vaccine.
D7	Patient #7: Fever. Patient #8: Fever.	Fever in patients #7 and #8: probably related to vaccine
D30	Patient #12: Gallstones, light	Not related to the vaccine.
D37	Patient #10: Local hyperemia light. Patient #13: Light hepatic steatosis; light headache.	Patient #10 probably related to vaccine #13 possibly related to vaccine.
D60	Patient #3: Cold. Patient #10: Flu, light. Patient #14: Urinary tract infection, light	Not related to the vaccine
D67	Patient #1: Cervicalgia, light. Patient #5: Pain in right heel, light.	Not related to the vaccine
D90	Patient #7: Vaginal discharge, light. Patient #13: Flu, light.	Not related to the vaccine
D120	Patient #2: Light elevation of GGT. Patient #3: Moderate eosinophilia. Patient #10: Light Headache.	Not related to the vaccine

360 * New symptoms since last examen.
 361 ** Previous exam was at Baseline. D0 is the day of the first dose.
 362 Numbers preceded by # correspond to participant's code numbers.

364
365

Table 4.
Summary of laboratory tests and physical exams in Sm14 vaccinated young adult women

Type of Test	Findings * (#: Participant study number; RV= Reference Values)	Toxicity Evaluation
Hematologic tests		
MCV (fl)	#3: slightly below lower limit at D120	No toxicity observed.
Total leucocytes (/μL)	#2 and #10: above upper limit for LR RV, but below ICTDR at baseline. #13: above upper limit for LR RV, but below ICTDR at D90 and D120.	No toxicity observed.
Eosinophil (%)	#2: above upper limit for LR RV at D37, D67, D120 #3: above upper limit for LR RV at B, D7, D67, D90, D120 #7: above upper limit for LR RV at, B, D7, D90 #12: above upper limit for LR RV at, D37, D67, D90	ICTDR has no recommendations for toxicity. Elevated values on all follow-ups were probably not related to vaccine.
Neutrophil (%)	Observations within LR RV for all follow-ups.	No toxicity observed.
Segmented neutrophil (%)	#2: slightly above LR RV at D90 (NCS) #3: below LR RV at B	ICTDR has no recommendations for toxicity. Elevated values D90 was probably not related to vaccine.
Lymphocytes (%)	A few values were below the lower limit of VR LR.	ICTDR has no recommendations for toxicity. No toxicity observed.
Atypical lymphocyte	None observed	No toxicity observed.
Monocytes (%)	#1: value above the LR RV at D120 (NCS) #12: value above the LR VR at D37 (NCS)	ICTDR has no recommendations for toxicity.
Hemoglobin (g/dL)	Few values were observed below the VR LR.	No toxicity observed
Platelets (/μL)	#14: above LR RV at D37 (NCS)	No toxicity observed
Red blood cells (M/μL)	Few values observed below the LR RV.	No toxicity observed
Hematocrit (%)	Few values observed below the LR RV.	No toxicity observed.

Basophil (%), Myelocyte (%), Metamyelocyte (%)	None found in all participants during the entire study.	
Activated partial thromboplastin time PTT (sec)	Few values below the LR RV.	No toxicity observed.
Prothrombin time (seg)	No values outside LR RV.	No toxicity observed
Prothrombin ratio (%)	#2: Above LR RV at D7 (NCS) #14: Above LR RV at B (NCS), D7 (NCS), D120 (NCS).	No toxicity observed according to medical chart.
International Normalized Ratio (RNI)	No values were above the LR RV.	No toxicity observed.

Blood Chemistry

Sodium (mmol/L)	No values were above the LR RV.	No toxicity observed.
Potassium (mmol/L)	#1: Above LR RV at D37 (NCS), D67 (G1). #10: Above LR RV at D37 (NCS).	#1 did not show other symptoms or other abnormal laboratory findings and was considered no toxicity, according to medical chart.

Liver function

Total Bilirubin (mg/dL)	No values were above the LR RV.	No toxicity observed.
Direct Bilirubin (mg/dL)	#1: Value above LR RV at Baseline – not attributable to vaccine.	No toxicity observed.
Indirect Bilirubin (mg/dL)	No values were above the LR RV.	No toxicity observed
Alkaline Phosphatase (U/L)	#13: Above LR RV at all follow-ups, including baseline.	High values for #13 probably not be due to vaccine (was high at baseline). No toxicity observed according to medical chart.
AST (U/L)	#12: Above LR RV at D90 (NCS)	#12 Not clinically significant according to medical chart. No toxicity observed.
ALT (U/L)	#12: Above LR RV at D90 (G1 – NCS) #13: Above LR RV at D7, D67, D90 (NCS for all).	#12 Above ICTDR threshold for grade 1 toxicity, but not clinically significant according to medical chart. No other toxicity observed.

GGT (U/L)	Above LR RV at: #2: B, D7, D37, D67, D90, D120 (G1 in all, but not D7) #12: B (G1), D7(G2), D37(G2), D67(G1), D90(G2), D120(G2) #13: B (G2), D7(G2), D37(G2), D67(G2), D90(G2), D120(G2)	All three participants had elevated GGT at baseline, and their elevated values through the follow-up were most likely not to the vaccine.
Kidney function (serum tests)		
Creatinin (mg/dL)	#13: Above LR RV at D67 e D120, but below ICTDR toxicity.	No toxicity observed.
Urea (mg/dl)	No values were above the LR RV.	No toxicity observed.
Other blood test		
Calcitonin (pg/mL)	No values were above the LR RV	No toxicity observed.
Abdomen physical exam		
Abnormalities	None observed.	No toxicity observed.

366 NCS = Not clinically significant according to the medical chart and medical interpretation.

367 G1 = Toxicity Grade 1, G2 = Toxicity Grade 2;

368 Numbers preceded by # correspond to participant's code numbers.

369

370

371 **Sm14 does induce adaptive immune responses in healthy women**

372 As occurred with male subjects on Phase IA [22], the immune response of females vaccinated
373 with the Sm14+GLA-SE was characterized by high levels of anti-Sm14 IgG, mainly of the IgG₁
374 isotype. Responses were augmented after the second dose. Ninety percent of vaccinated subjects
375 developed higher specific total IgG antibody titres 90 days post vaccination and these titres
376 remained as high up to 120 days. Compared to baseline, total specific IgG, as well as IgG₁ and
377 IgG₃, increases were statistically significant from day-60 (Figure 3). The levels of specific IgG₂
378 and IgG₄ increased after the second dose and achieved statistical significance from day-90 up to
379 day-120. Also, neither general nor specific IgE increases were detected at any time.

380 The Sm14+GLA-SE vaccination elicited robust cytokine responses. Cytokine profiles show
381 increased TNF α , IFN γ , and IL-2 in vaccinated individuals on days 90 and 120. Analysis results
382 indicated overall comparable responses among male and female cohorts [22] (Fig 3).

383
384 **Figure 3. Levels of anti-Sm14 antibody classes and cytokine production stimulated by vaccination.** (A) ELISA
385 antibody results (B) Percentage of CD4⁺ T cells expressing combinations of IFN γ , TNF α and IL-2 production in CD4⁺
386 T cells on days 0, 30, 90 and 120. *p*-values for comparison was performed for vaccinated group to baseline (Day 0).
387 **p*-values at the 0.05 significance level.

388

389 Discussion

390 Safety is the most important attribute of a vaccine designed for large-scale use in endemic
391 populations. The studies described herein were the basis for legal authorization to start clinical
392 trials for the Sm14 vaccine in Brazil. The preparation was evaluated according to WHO
393 recommendations and guidelines in multiple-dose and reproductive studies that provided pre-
394 clinical data ensuring the safety of the vaccine formulation [34].

395 For obtaining authorization from the Brazilian health authorities to initiate phase I clinical trials of
396 Sm14+GLA-SE anti-schistosomiasis vaccine, Anvisa has approved the study to be performed in
397 healthy men living in non-endemic areas for schistosomiasis but did impose a restriction to the
398 engagement of women of childbearing age. A preambular reproductive toxicity test was required
399 in pregnant rabbits, to ensure vaccine safety for this population group. The variations observed in
400 laboratory blood tests did not indicate a significant effect on the health of the animals. Coherently,
401 the animals did not show relevant clinical alterations associated with the study and no
402 macroscopic or histopathological alterations were observed that represented clinical significance.
403 Most of the analysed parameters were within the normal range of variation, indicating that the
404 vaccine was safe and well tolerated at either dose level, in addition to providing clear humoral
405 immune response.

406 These data provided the green light to the Sm14 vaccine clinical test in women at childbearing
407 age, to evaluate the clinical steps of the safety and immunologic evaluation of the Sm14+GLA-SE
408 anti-schistosomiasis candidate vaccine in healthy volunteer women (clinical trial Phase Ib).

409 Results obtained in women have confirmed the pattern of responses of Phase Ia with male adults
410 [22]. Our immunological analysis revealed that Sm14 induced a broad spectrum of immune
411 responses stimulating both Th1 and Th2 cytokines. However, there was neither a specific nor a
412 general IgE increase, an immunoglobulin associated to the pathogenesis of immediate
413 hypersensitivity reactions because of its ability to bind specifically to high affinity receptors on
414 mast cells or basophils by the alpha chain of the FC receptor.

415

416 **Conclusion and perspectives**

417 Preclinical assays on pregnant rabbits revealed that the candidate anti-schistosomiasis rSm14-
418 GLA-SE vaccine test resulted in no changes concerning the reproductive status and well as other
419 pregnancy parameters. Moreover, Phase Ib clinical trial applied to healthy young adult women
420 confirmed that no serious adverse events were observed after three doses of 50 µg Sm14 + 10µg
421 GLA-SE in 10 women from a schistosomiasis non-endemic area, administered three times with
422 30-day interval.

423 Based on data generated from the clinical studies done so far, severe toxicity (Grade 3 or 4), either
424 local and/or systemic, is not expected to occur. The administration of the investigational product is
425 anticipated to be well tolerated. So, local reactions (such as pain at the site of injection, erythema,
426 induration, edema, or pruritus) may occur but are usually mild, self-limited, and subside without
427 treatment.

428 As observed on this trial, adaptive cell-mediated and humoral immune responses (IgG and
429 isotypes, but not IgE), along with many previous preclinical results, strongly support Sm14 as an

430 effective vaccine against *S. mansoni* infection. Possibly, it will also be useful against infections
431 caused by other species of *Schistosoma*.

432 Clinical studies are a prerequisite for licensing drugs and immunobiologicals by regulatory
433 agencies in most countries. In this way, they are a constituent part of the process of research and
434 development of supplies for human health. The Sm14+GLA-SE vaccine is at an advanced stage of
435 development, after successfully passing through pre-clinical stages and Clinical phases Ia and Ib,
436 is presently in phase II, clinical trial in the Senegal River Delta region, in African endemic sites
437 for both *S. mansoni* and *S. haemathobium*. It is believed that the development of a safe, effective,
438 and humanitarian vaccine will change the epidemiological profile of this disease, thus freeing
439 countries such as Brazil and much of the African continent from one of the major stigmas of
440 underdevelopment, which are parasitic diseases and particularly schistosomiasis.

441

442 **Acknowledgements**

443 We thank the researchers and nurses from the staff of the INI/Fiocruz, for conducting the study.
444 Lots of thanks to Tom Vedvick of the Infectious Disease Research Institute, for most valuable
445 advices and support for the formulation of Sm14with GLA, to Andrew J. G. Simpson, scientific
446 director of the company Orygen Biotecnologia S.A, that funded part of clinical trials for the
447 Sm14-GLA-SE Schistosomiasis Vaccine Development Project, to Donald De Roo, from LICR for
448 technical support for setting up the Fill Finish procedures at Florida Biologix and Quality Control
449 Panel at PPD Inc., to Carlos Henrique Henrique of Ourofino Animal Health Inc. for support at all
450 levels with operational steps and pre-clinical animal tests and finally to Jorge Bermudez, former
451 Vice President of Innovation and Production of Fiocruz and to PHI/WHO(World Health
452 Organization) for strategic support.

453

454 **Funding:** This study was funded by FINEP (*Financiadora de Estudos e Projetos* – Federal
455 Governmental Funding Agency); FAPERJ (Funding Agency from Rio de Janeiro State);
456 IOC/FIOCRUZ (Oswaldo Cruz Institute/Oswaldo Cruz Foundation, Brazilian Health Ministry),
457 CNPq (Brazilian Ministry of Science Technology & Innovation), OUROFINO Saúde Animal, and
458 Orygen Biotecnologia.

460 References

- 461
- 462 1. Poole H, Terlouw DJ, Naunje A, Mzembe K, Stanton M, Betson M, et al. Schistosomiasis in
463 pre-school-age children and their mothers in Chikhwawa district, Malawi with notes on
464 characterization of schistosomes and snails. *Parasit Vectors*. 2014 Apr 1;7:153.
- 465 2. Osakunor DNM, Woolhouse MEJ, Mutapi F. Paediatric schistosomiasis: What we know and
466 what we need to know. *PLoS Negl Trop Dis*. 2018 Feb 8;12(2):e0006144.
- 467 3. World Health Organization. WHO guideline on control and elimination of human
468 schistosomiasis [Internet]. Geneva: World Health Organization; 2022 [cited 2022 May 18].
469 118 p. Available from: <https://apps.who.int/iris/handle/10665/351856>
- 470 4. Brasil. Ministério da Saúde. Secretaria de Vigilância em Saúde. Departamento de Vigilância
471 Epidemiológica. Vigilância da Esquistossomose Mansoní : diretrizes técnicas. 4th ed. Brasília:
472 Ministério da Saúde; 2014. 144 p.
- 473 5. World Health Organization, editor. Preventive chemotherapy in human helminthiasis:
474 coordinated use of anthelmintic drugs in control interventions; a manual for health
475 professionals and programme managers. Geneva: World Health Organization; 2006. 62 p.
- 476 6. Bergquist NR. Schistosomiasis: from risk assessment to control. *Trends in Parasitology*. 2002
477 Jul 1;18(7):309–14.
- 478 7. Tendler M, Almeida MS, Delbem ACB, Silvaii JoseFD, Savino W, Garrattf RC, et al. A
479 *Schistosoma mansoní* fatty acid-binding protein, Sm14, is the potential basis of a dual-purpose
480 anti-helminth vaccine. *Proc Natl Acad Sci USA*. 1996;5.
- 481 8. Tendler M, Almeida M, Simpson A. Development of the Brazilian Anti Schistosomiasis
482 Vaccine Based on the Recombinant Fatty Acid Binding Protein Sm14 Plus GLA-SE Adjuvant.
483 *Front Immunol*. 2015 May 12;6:218.
- 484 9. Tendler M, Almeida MS, Vilar MM, Pinto PM, Limaverde-Sousa G. Current Status of the
485 Sm14/GLA-SE Schistosomiasis Vaccine: Overcoming Barriers and Paradigms towards the
486 First Anti-Parasitic Human(itarian) Vaccine. *Tropical Medicine and Infectious Disease*. 2018
487 Dec;3(4):121.
- 488 10. Moser D, Tendler M, Griffiths G, Klinkert MQ. A 14-kDa *Schistosoma mansoní* polypeptide
489 is homologous to a gene family of fatty acid binding proteins. *J Biol Chem*. 1991 May
490 5;266(13):8447–54.
- 491 11. Bergquist NR, Colley DG. Schistosomiasis Vaccine: Research to Development. *Parasitology*
492 Today. 1998 Mar 1;14(3):99–104.
- 493 12. Al-Sherbiny M, Osman A, Barakat R, El Morshedy H, Bergquist R, Olds R. In vitro cellular
494 and humoral responses to *Schistosoma mansoní* vaccine candidate antigens. *Acta Tropica*.
495 2003 Oct 1;88(2):117–30.
- 496 13. Tendler M, Simpson AJG. The biotechnology-value chain: Development of Sm14 as a
497 schistosomiasis vaccine. *Acta Tropica*. 2008 Nov 1;108(2):263–6.

- 498 14. Molehin AJ, Rojo JU, Siddiqui SZ, Gray SA, Carter D, Siddiqui AA. Development of a
499 schistosomiasis vaccine. *Expert Review of Vaccines*. 2016 May 3;15(5):619–27.
- 500 15. Hotez PJ, Bottazzi ME, Bethony J, Diemert DD. Advancing the Development of a Human
501 Schistosomiasis Vaccine. *Trends in Parasitology*. 2019 Feb 1;35(2):104–8.
- 502 16. Tendler M, Pinto RM, Côrtes M, Gebara G. *Schistosoma mansoni*: comparative evaluation of
503 different routes of experimental infection. *Rev Inst Med Trop Sao Paulo*. 1985 Jun;27(3):111–
504 4.
- 505 17. Tendler M, Pinto RM, Oliveira Lima A, Gebara G, Katz N. *Schistosoma mansoni*: vaccination
506 with adult worm antigens. *Int J Parasitol*. 1986 Aug;16(4):347–52.
- 507 18. Tendler M, Pinto RM, Lima A de O, Savino W, Katz N. Vaccination in murine
508 schistosomiasis with adult worm-derived antigens: variables influencing protection in outbred
509 mice. *Int J Parasitol*. 1991 Jun;21(3):299–306.
- 510 19. Tendler M, Almeida MS, Pinto RM, Noronha D, Katz N. *Schistosoma mansoni*-New Zealand
511 rabbit model: resistance induced by infection followed by active immunization with protective
512 antigens. *J Parasitol*. 1991 Feb;77(1):138–41.
- 513 20. Olveda RM, Daniel BL, Ramirez BDL, Aligui GDL, Acosta LP, Fevidal P, et al.
514 Schistosomiasis Japonica in the Philippines: The Long-Term Impact of Population-Based
515 Chemotherapy on Infection, Transmission, and Morbidity. *The Journal of Infectious Diseases*.
516 1996 Jul 1;174(1):163–72.
- 517 21. Reimert CM, Tukahebwa EM, Kabatereine NB, Dunne DW, Vennervald BJ. Assessment of
518 *Schistosoma mansoni* induced intestinal inflammation by means of eosinophil cationic protein,
519 eosinophil protein X and myeloperoxidase before and after treatment with praziquantel. *Acta
520 Tropica*. 2008 Mar 1;105(3):253–9.
- 521 22. Santini-Oliveira M, Coler RN, Parra J, Veloso V, Jayashankar L, Pinto PM, et al.
522 Schistosomiasis vaccine candidate Sm14/GLA-SE: Phase 1 safety and immunogenicity
523 clinical trial in healthy, male adults. *Vaccine*. 2016 Jan 20;34(4):586–94.
- 524 23. Global Pharmaceutical Contract Research Organization (CRO) | PPD [Internet]. PPD Inc.
525 [cited 2022 Jun 20]. Available from: <https://www.ppd.com>
- 526 24. Draize JH. Dermal Toxicity. In: Division of pharmacology food and drug administration
527 department of health education and welfare, editor. *Appraisal of the Safety of Chemicals in
528 Foods, Drugs, and Cosmetics*. Texas: The Association of Food & Drug Officials of the United
529 States; 1959. p. 46–59.
- 530 25. Montenegro MR, Franco M. *Patologia: processos gerais*. 4th ed. São Paulo: Atheneu; 2004.
531 320 p.
- 532 26. Engvall E. The ELISA, Enzyme-Linked Immunosorbent Assay. *Clinical Chemistry*. 2010 Feb
533 1;56(2):319–20.
- 534 27. Brito CF, Fonseca CT, Goes AM, Azevedo V, Simpson AJ, Oliveira SC. Human IgG1 and
535 IgG3 recognition of *Schistosoma mansoni* 14kDa fatty acid-binding recombinant protein.
536 *Parasite Immunol*. 2000 Jan;22(1):41–8.

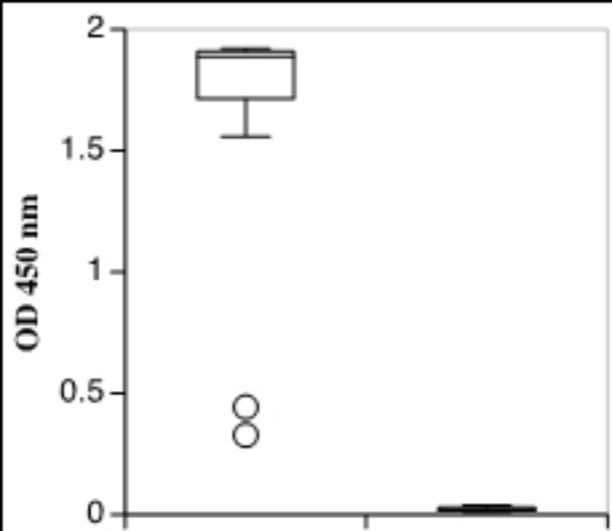
- 537 28. Oswaldo Cruz Foundation. Phase 1 Study to Evaluate the Safety of the Vaccine Prepared
538 sm14 Against Schistosomiasis [Internet]. clinicaltrials.gov; 2016 Aug [cited 2022 May 10].
539 Report No.: NCT01154049. Available from: <https://clinicaltrials.gov/ct2/show/NCT01154049>
- 540 29. Food and Drug Administration. FDA. Guidance for industry: toxicity grading scale for healthy
541 adult and adolescent volunteers enrolled in preventive vaccine clinical trials [Internet].
542 Rockville: Center for Biologics Evaluation and Research; 2007 [cited 2022 Jun 20]. 8 p.
543 Available from: <https://www.fda.gov/media/73679/download>
- 544 30. Clopper CJ, Pearson ES. The Use of Confidence or Fiducial Limits Illustrated in the Case of
545 the Binomial. *Biometrika*. 1934;26(4):404–13.
- 546 31. Jones TC, Hunt RD, King NW. *Patologia veterinária*. 6th ed. São Paulo: Manole; 2000. 1424
547 p.
- 548 32. Mouwen, J. M. V. M VD JE. *Atlas Colorido de Patologia Veterinária*. 2a Ed. Elsevier; 2008.
549 158 p.
- 550 33. Bacha WJ, Bacha LM. *Color atlas of veterinary histology*. 3rd ed. Philadelphia, PA: Wiley-
551 Blackwell; 2012. 356 p.
- 552 34. Annex 1 - WHO guidelines on non clinical evaluation of vaccines [Internet]. [cited 2022 Mar
553 9]. Available from: <https://www.who.int/publications/m/item/annex1-nonclinical.p31-63>
- 554 35. Oswaldo Cruz Foundation. Safety and Immunogenicity Evaluation of the Vaccine Candidate
555 Sm14 Against Schistosomiasis in Senegalese School Children Healthy or Infected With *S.*
556 *Mansoni* and/or *S. Haematobium*. A Comparative, Randomized, Controlled, Open-label Trial
557 [Internet]. clinicaltrials.gov; 2019 Dec [cited 2022 May 10]. Report No.: NCT03799510.
558 Available from: <https://clinicaltrials.gov/ct2/show/NCT03799510>
- 559 36. Tendler M, Foundation OC. Safety and Immunogenicity Evaluation of the Vaccine Candidate
560 Sm14 in Combination With the Adjuvant Glucopyranosyl Lipid A (GLA-SE) in Adults Living
561 in Endemic Regions for *S. Mansoni* and *S. Haematobium* in Senegal. A Comparative,
562 Randomized, Open-label Trial [Internet]. clinicaltrials.gov; 2017 Dec [cited 2022 May 15].
563 Report No.: NCT03041766. Available from: <https://clinicaltrials.gov/ct2/show/NCT03041766>

565 **Supporting information**

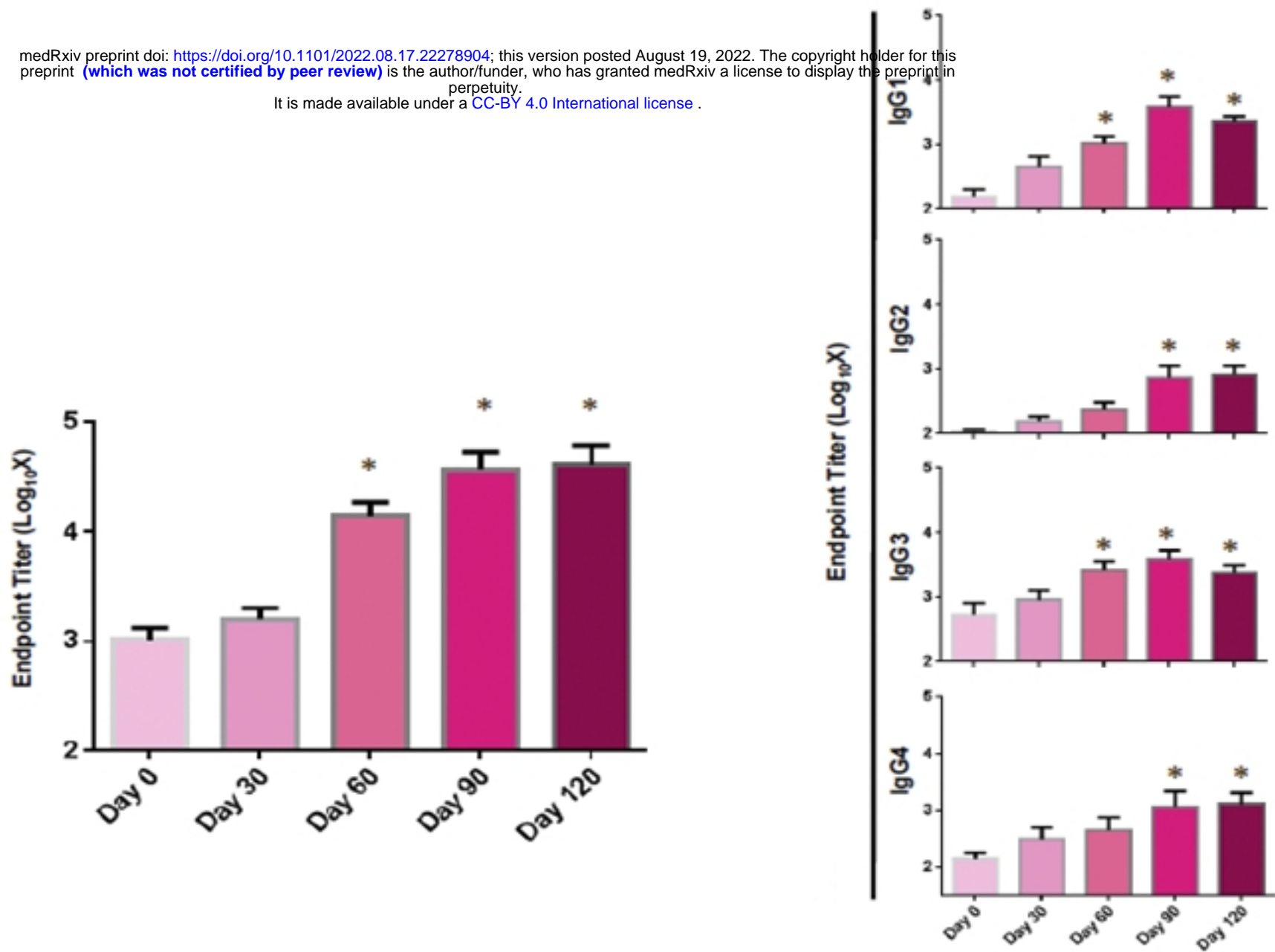
566 **S1 Table. Demographic characteristics of the female participants at the baseline.**
567 (DOCX)

568
569 **S1 Fig. Flowchart for the phase 1b clinical trial, including enrollment and clinical follow-up**
570 **at the Brazilian National Institute of Infectology Evandro Chagas.**
571 (TIF)

572



A



* = p-values significant at 0.05 significance level when compared between pre-vaccination (Day 0) and post-vaccination.

B

