

1 **Title page**

2

3 **Original article**

4

5 **Title**

6 Participation in the nation-wide cervical cancer screening  
7 programme in Denmark during the COVID-19 pandemic: An  
8 observational study

9

10 **List of authors:**

11 Tina Bech Olesen<sup>1</sup>; Henry Jensen<sup>1</sup>; Henrik Møller<sup>1</sup>; Jens Winther Jensen<sup>1</sup>; Marianne Waldstrøm<sup>2,3</sup>;  
12 Berit Andersen<sup>4,5</sup>

13

14 **Affiliations:**

15 <sup>1</sup> The Danish Clinical Quality Program – National Clinical Registries (RKKP), Denmark

16 <sup>2</sup> Department of Pathology, Lillebaelt Hospital, Denmark

17 <sup>3</sup> Department of Regional Health Research, University of Southern Denmark, Denmark

18 <sup>4</sup> University Research Clinic for Cancer Screening, Department of Public Health Programmes,  
19 Randers Regional Hospital, Aarhus, Denmark

20 <sup>5</sup> Department of Clinical Medicine, Aarhus University, Aarhus, Denmark

21

22 **Short title:** Cervical cancer screening participation during the pandemic

23

24 **Word count:** 3,318 words

25

26 **Corresponding author**

27 Tina Bech Olesen, MSc, MSc, PhD, Project Manager, Resources & Innovation, The Danish Clinical  
28 Quality Program – National Clinical Registries (RKKP), Denmark, E-mail: [tiao@rkkp.dk](mailto:tiao@rkkp.dk),  
29 Telephone: +45 51624880.

30 **Abstract** (254 words)

31

## 32 **Background**

33 In contrast to most of the world, the cervical cancer screening programme continued in Denmark  
34 throughout the COVID-19 pandemic. We examined the cervical cancer screening participation  
35 during the pandemic in Denmark.

36

## 37 **Methods**

38 We included all women aged 23-64 years old invited to participate in cervical cancer screening  
39 from 2015-2021 as registered in the Cervical Cancer Screening Database combined with  
40 population-wide registries. Using a generalised linear model, we estimated prevalence ratios (PR)  
41 and 95% confidence intervals (CI) of cervical cancer screening participation within 90, 180 and 365  
42 days since invitation during the pandemic in comparison with the previous years adjusting for age,  
43 year and month of invitation.

44

## 45 **Results**

46 Altogether, 2,220,000 invited women (in 1,466,353 individuals) were included in the study. Before  
47 the pandemic, 36% of invited women participated in screening within 90 days, 54% participated  
48 within 180 days and 65% participated within 365 days. At the start of the pandemic, participation in  
49 cervical cancer screening within 90 days was lower (pre-lockdown PR=0.58; 95% CI: 0.56-0.59  
50 and 1<sup>st</sup> lockdown PR=0.76; 95% CI: 0.75-0.77) compared with the previous years. A reduction in  
51 participation within 180 days was also seen during pre-lockdown (PR=0.89; 95% CI: 0.88-0.90)  
52 and 1<sup>st</sup> lockdown (PR=0.92; 95% CI: 0.91-0.93). Allowing for 365 days to participation, only a  
53 slight reduction (3%) in participation was seen with slightly lower participation in some groups  
54 (immigrants, low education and low income).

55

## 56 **Conclusions**

57 The overall participation in cervical cancer screening was reduced during the early phase of the  
58 pandemic. However, the decline almost diminished with longer follow-up time.

59

## 60 **Funding**

61 The study was funded by the Danish Cancer Society Scientific Committee (grant number R321-  
62 A17417) and the Danish regions.

63

## 64 **Keywords**

65 Cervical cancer screening; COVID-19 pandemic; epidemiology

66

67

68 **INTRODUCTION**

69 The COVID-19 pandemic is a global health crisis, which has caused extensive disruptions to the  
70 society and to the healthcare systems across the world. Population-wide restrictions (“lockdowns”)  
71 were imposed in most countries throughout the pandemic closing down schools and workplaces and  
72 restricting travel to reduce the transmission of COVID-19 and to limit the potential burden on the  
73 healthcare systems. Within the healthcare system, prioritisations and re-organisations were done to  
74 ensure sufficient capacity to take care of patients in need of hospitalisation due to COVID-19. The  
75 prioritisations within the healthcare system resulted in a temporary halting of the cervical cancer  
76 screening programme in most of the world. On the contrary, in Denmark the cervical cancer  
77 screening programmes remained open throughout the pandemic. At the same time; however, at the  
78 national televised press conferences, the health authorities asked the Danish population to stay at  
79 home if possible and concurrently, the Danish College of General Practitioners recommended  
80 general practitioners to postpone routine cervical smears during a four-week period in March/ April  
81 2020 (1). Nevertheless, the cervical cancer screening programme continued – and invitations and  
82 reminders were sent out – throughout the pandemic in Denmark.

83  
84 It is estimated that the disruptions to the cervical cancer screening programmes in high-income  
85 countries because of the pandemic could potentially increase cervical cancer cases by up to 5-6%  
86 and increase the number of cervical cancers detected at a higher stage (2). Disruptions to the  
87 cervical cancer screening programme may therefore be worrisome. Marked reductions in the  
88 number of women screened for cervical cancer during the early phase of the pandemic have been  
89 reported in many other countries (3-6), whilst the participation in cervical cancer screening during  
90 the pandemic in Denmark has not yet been described.

91  
92 It is well known, that participation in cervical cancer screening is generally reduced among women  
93 of lower socio-economic status (7) and among immigrant women (8, 9). This divergence in  
94 participation may have been exacerbated during the COVID-19 pandemic. However, so far no  
95 studies have put spotlight on this.

96  
97 In this large, population-based nationwide study, we examined the participation in cervical cancer  
98 screening during the COVID-19 pandemic in Denmark in comparison with the previous years.  
99 Moreover, we examined whether the participation in cervical cancer screening during the pandemic  
100 differed across population groups with different socioeconomic status.

101

102

103

## 104 **METHODS**

### 105 *Setting*

106 The study was set in Denmark, which has a population of approximately 5.8 million inhabitants  
107 (10). Denmark has a tax-funded healthcare system, with universal access to healthcare for all  
108 residents including national screening programmes for breast, cervical and colorectal cancer. The  
109 population-based administrative and health registries in Denmark can be linked through the unique  
110 personal identifier, assigned to all residents at birth or immigration (11, 12).

111

### 112 *The cervical cancer screening programme*

113 In Denmark, all women aged 23-64 years old are invited to participate in cervical cancer screening  
114 every three years (women aged 23-49 years old) or every five years (women aged 50-64 years old)  
115 (13). The women receive an invitation letter (electronic letters via secure digital e-mail since 2018;  
116 however, women exempted from digital mail still receive ordinary mail) with an invitation to book  
117 an appointment with their general practitioner for a cervical screening test. Reminders to participate  
118 in cervical cancer screening are sent out to non-participants after 3 months and again after 6  
119 months. The obtained samples are analysed for cytology and/or HPV at a pathology department.  
120 The outcome of the test is sent to the woman and her general practitioner.

121

### 122 *The COVID-19 pandemic in Denmark*

123 In Denmark, three main waves of the COVID-19 pandemic have occurred that is, in the spring of  
124 2020, in the winter of 2020/2021 and again in the winter of 2021/2022 (14).

125

126 In efforts to minimise the spread of the infection, population-wide restrictions (“lockdown”) were  
127 imposed in Denmark 11 March 2020 and subsequently, large parts of the society were closed down.  
128 Within the healthcare system, elective procedures were cancelled or postponed and resources were  
129 reallocated to take care of patients in need of hospitalisation because of COVID-19.

130

131 Extensive testing facilities were set up in Denmark from May 2020 providing COVID-19 tests free-  
132 of-charge to the whole population (15). Vaccination against COVID-19 began in December 2020 in  
133 Denmark and a high vaccination coverage has been achieved and by March 2022, approximately  
134 81% of the population had received two doses and more than 61% had received three doses of the  
135 vaccine (16).

136

### 137 *Study population*

138 The study population comprised all women aged 23-64 years old invited to participate in cervical  
139 cancer screening from 1 January 2015 to 30 September 2021, as registered in the Cervical Cancer  
140 Screening Database (17), which contain information on all women invited to participate in cervical  
141 cancer screening in Denmark since 2009. The Cervical Cancer Screening Database comprise  
142 population data from the Civil Registration System (11) including all persons with a permanent  
143 address in Denmark, cervical cancer cases are obtained from the Danish Cancer Register (18),  
144 cervical cytology samples are obtained from the Danish Pathology Register (19) and information on  
145 invitations and reminders is obtained from the invitation registration system.

146

147 We excluded invitations in women who died within 1 year since invitation (N=110), women who  
148 emigrated within 1 year since invitation (N=138), women residing in the Faroe Islands or Greenland

149 (N=762), women with an unknown postal address (N=261), women who unregistered from the  
150 screening programme within 1 year since invitation (N=56,920) and invitations in women with  
151 missing information on region of residence (N=1,742) (Supplementary Figure 1).

152

### 153 *Exposure of interest*

154 The exposure of interest was the COVID-pandemic in Denmark. The different phases of the  
155 pandemic were defined, in accordance with the governmental responses to the COVID-19 pandemic  
156 in Denmark, as follows:

- 157 • Pre-pandemic period: 1 January 2015 to 31 January 2020
- 158 • Pre-lockdown period: 1st February to 10 March 2020
- 159 • 1st lockdown: 11 March to 15 April 2020
- 160 • 1st re-opening: 16 April to 15 December 2020
- 161 • 2nd lockdown: 16 December 2020 to 27 February 2021
- 162 • 2nd re-opening: 28 February 2021 to 30 September 2021 (end of inclusion period)

163

164 We considered pre-lockdown and 1<sup>st</sup> lockdown as the start of the pandemic.

165

### 166 *Outcome of interest*

167 The main outcome of interest was participation in cervical cancer screening defined as having a  
168 cervical cancer screening test performed within 90, 180 and 365 days since invitation, respectively,  
169 among women invited to participate in the cervical screening programme.

170

### 171 *Explanatory variables*

172 The following variables were examined independently: age, ethnicity, cohabitation status,  
173 educational level, disposable income and healthcare usage. Age was defined at the date of  
174 invitation, as registered in the Cervical Cancer Screening Database (17). From Statistics Denmark  
175 (10), we obtained information on ethnicity, marital status, educational level and level of income.  
176 Ethnicity was categorised as Danish descent, Western immigrant, Non-western immigrant and  
177 descendants of immigrants. Cohabitation status was categorised as single (i.e. living alone, divorced  
178 or not married), co-habiting/ co-living, and married (i.e. married or registered partnership) in  
179 accordance with Statistics Denmark (10). Education level was defined in accordance with the  
180 International Standard Classification of Education (ISCED) of the United Nations Education,  
181 Scientific and Cultural Organization (UNESCO) into short (ISCED level 1-2), medium (ISCED  
182 level 3-4) and long (ISCED level 5-8) (10). Income was defined as official disposable income  
183 depreciated to 2015 level and categorised into five quintiles. To indicate the level of healthcare use  
184 by each patient, we counted the total number of contacts to general practitioners, private practising  
185 medical specialists, physiotherapists, and chiropractors in the year for invitation as registered in the  
186 Danish National Health Service Register (20), which contain information on visits to primary  
187 healthcare (e.g., general practitioners and medical specialists) in Denmark since 1990. We  
188 categorised healthcare usage as rare (0-3 visits per year), low (4-6 visits per year), average (7-11  
189 visits per year), high (12-18 visits per year) and frequent ( $\geq 19$  visits per years).

190

### 191 *Statistical analyses*

192 We examined characteristics of women invited to participate in cervical cancer screening during the  
193 study period. Thereafter, we examined the participation in cervical cancer screening within 90 days,

194 180 and 365 days since invitation among women invited to participate in screening per month and  
195 during the different phases of the pandemic overall and stratifying by the explanatory variables.  
196 Additionally, we examined time from invitation to participation in median number of days and  
197 interquartile interval (IQI) overall and during the pandemic phases.

198  
199 Using a generalised linear model (GLM) with log link for the Poisson family with robust standard  
200 errors (SE), we estimated prevalence ratios (PR) and 95% confidence intervals (CI) of participation  
201 in cervical cancer screening within 90 days, 180 and 365 days, respectively, among women invited  
202 to participate in screening during the different phases of the pandemic overall and stratifying by the  
203 explanatory variables. Firstly, we calculated unadjusted analyses. Thereafter, the analyses were  
204 adjusted for month of invitation to allow for seasonality and year of invitation to take into account  
205 the underlying decreasing trend in participation in cervical cancer screening. Finally, the analyses  
206 were adjusted for age to take into account the effect of age on the other explanatory variables. All  
207 analyses were conducted using STATA version 17.0.

208  
209 *Ethical considerations*

210 The study is registered at the Central Denmark Region's register of research projects (journal  
211 number 1-16-02-381-20). Patient consent is not required by Danish law for register-based studies.

212  
213

## 214 RESULTS

### 215 *Descriptive characteristics of the study population*

216 Altogether, 2,220,000 invited women (in 1,466,353 individuals) were included in the study. The  
217 median age at invitation was 40 years (IQR=30-49 years), the majority of women (82.2%) were of  
218 Danish descent, 45.9% were married and 60.4% of women had a low educational level. The  
219 distribution of the descriptive characteristics was broadly similar throughout the study period (Table  
220 1).

221

### 222 *Participation during the COVID-19 pandemic*

223 Figure 1 shows the participation in cervical cancer screening within 90, 180 and 365 days  
224 throughout the study period. Before the pandemic, approximately 36% of women participated in  
225 cervical cancer screening within 90 days, 54% of women participated within 180 days and 65% of  
226 women participated within 365 days (Supplementary Tables 1-3).

227

228 In March and April 2020, the participation in cervical cancer screening within 90 days dropped  
229 markedly to approximately 20% after which the participation resumed to normal levels (Figure 1).  
230 This was also reflected in a prevalence ratio (PR) of 0.58 (95% CI: 0.56-0.59) during pre-lockdown  
231 and a PR of 0.76 (95% CI: 0.75-0.77) during 1<sup>st</sup> lockdown resuming to PRs of 0.96-0.99 throughout  
232 the rest of the study period (Supplementary Table 4).

233

234 A reduction in the participation in cervical cancer screening within 180 days was also observed  
235 among women invited at the start the pandemic (Figure 1) reflected in a PR of 0.89 (95% CI: 0.88-  
236 0.90) during pre-lockdown and a PR of 0.92 (95% CI: 0.91-0.93) during 1<sup>st</sup> lockdown. From 1<sup>st</sup> re-  
237 opening and onwards the level of participation within 180 days returned to pre-pandemic levels  
238 (Supplementary Table 5).

239

240 The participation in cervical cancer screening within 365 days among women invited at the start of  
241 the pandemic was only slightly reduced (Figure 1) reflected in overall PRs of 0.97 (95% CI: 0.96-  
242 0.98) during both pre-lockdown and 1<sup>st</sup> lockdown where after the participation increased to the  
243 same level as before the pandemic (Table 2).

244

### 245 *Participation during the COVID-19 pandemic by socio-economic variables*

246 Before the pandemic, the participation in cervical cancer screening within 365 days was lowest  
247 among the youngest age group (57%), among immigrants (44-50% in immigrants and 38% in  
248 descendants of immigrants), among women living alone (56%), among women with the lowest  
249 income level (52%) and among women who rarely use the healthcare system (52%) (Supplementary  
250 Figures 2-4 and Supplementary Tables 1-3).

251

252 During pre-lockdown and 1<sup>st</sup> lockdown (the start of the pandemic), the participation in screening  
253 within 365 days was reduced among women aged 40-49 years old, 60-64 years old, among  
254 descendants of immigrants, among women with a low educational level and a low income (Table  
255 2).

256

### 257 *Time to participation*

258 The median time from invitation to participation was 94 days (IQR=42-200) before the pandemic;  
259 however, this increased to 120 days (IQR=72-207) among women invited during pre-lockdown and  
260 to 122 days (IQR=53-201) during 1<sup>st</sup> lockdown. Thereafter, the time to participation resumed to 86  
261 days during the 1<sup>st</sup> re-opening (Table 1).



262 **DISCUSSION**

263 *Main findings*

264 In this population-based study, comprising 2,220,000 women invited for cervical cancer screening  
265 from 2015-2021 (in 1,466,353 individuals), we found a large decline in participation within 90 days  
266 since invitation at the start of the pandemic, a smaller decline in participation within 180 days and  
267 only a slight reduction in participation within 365 days. The reduction in participation within 365  
268 days was most pronounced among descendants of immigrants, among women with a low  
269 educational level and a low income.

270

271 *Comparison with previous studies and explanation of findings*

272 In most countries, population-based screening for cervical cancer was halted at the start of the  
273 pandemic. This led to pronounced reductions in the number of women screened for cervical cancer  
274 during the early phase of the pandemic (3-5). To our knowledge, no studies have described the  
275 long-term participation in cervical cancer screening during the pandemic. We found a marked  
276 reduction (42% in pre-lockdown and 24% in 1<sup>st</sup> lockdown) in the short term (within 90 days)  
277 cervical cancer screening participation at the start of the pandemic compared with the previous  
278 years. This reduction in participation could be explained either by a change in health behaviour or  
279 could perhaps reflect inconsistent messages from the health authorities at the start of the pandemic.  
280 The screening programme was open and invitations and reminders were sent out; however, the  
281 health authorities asked the population to stay at home at the national televised press conferences  
282 and at the same time, the College of General Practitioners recommended general practitioners to  
283 postpone routine cervical screening samples during a four-week period in March/ April 2020 (1).  
284 The inconsistent health messages could thus have led women to not participate in screening.  
285 Congruently, a Danish qualitative study found that inconsistent health communication from the  
286 authorities led women to postpone or cancel their screening appointments (21). With the longer  
287 follow-up time, we observed a less reduced participation (11% in pre-lockdown and 8% in 1<sup>st</sup>  
288 lockdown within 180 days and only 3% in both pre-lockdown and 1<sup>st</sup> lockdown within 365 days),  
289 which was reflected by the longer time to participation (>120 days versus approx. 89 days) at the  
290 early phase of the pandemic. The disruption to the cervical cancer screening programme in  
291 Denmark thus appear only to have a temporary effect with most women resuming cervical cancer  
292 screening with a longer follow-up period. This is in accordance with findings in a qualitative study  
293 showing that women were concerned about visiting healthcare settings during the pandemic but  
294 were willing to participate when screening programmes resumed (22). In the Danish cervical cancer  
295 screening programme, reminders are sent out to non-participants after 3 and 6 months and this could  
296 have prompted women postponing or cancelling their screening appointments at the start of the  
297 pandemic to participate at a later time point.

298

299 The severity of the pandemic and the pandemic response varied across the world with Denmark  
300 managing to keep the number of hospitalisations due to COVID-19 at relatively low level (14). The  
301 pandemic response in Denmark included periodic lockdowns, extensive COVID-19 testing free-of-  
302 charge to the whole population (15) and a high COVID-19 vaccination coverage. The cervical  
303 cancer screening participation may therefore be different in other countries with a different  
304 pandemic response and a more severe impact of the pandemic.

305

306 Women of lower socio-economic status (7) and immigrant women (8, 9) have earlier been shown to  
307 have a lower participation in cervical cancer screening. This was evident from our study also in that  
308 immigrants, women living alone and women with a low income level had the lowest participation in  
309 cervical cancer screening throughout the study period. A concern is that the pandemic may have  
310 affected socially disadvantaged individuals disproportionately. We found an overall 3% reduction in  
311 participation within 365 days; however, among descendants of immigrants and among women with  
312 a low income a 5% reduction was seen and among women with a low educational level a 4%  
313 reduction was found. It is therefore important to ensure that all women – regardless of  
314 socioeconomic status – resume participation in cervical cancer screening at the aftermath of the  
315 pandemic. To our knowledge, our study is the first to describe cervical cancer screening  
316 participation during the pandemic according to socio-economic groups.

317  
318 A few previous studies have examined the participation in cervical cancer screening during the  
319 pandemic according to age groups. One study found that women aged 30-39 years old (6) had the  
320 lowest participation in screening during the first six months of the pandemic, whilst another study  
321 showed that the oldest age groups (50-59 and 60-69 years old) (23) had the lowest cervical cancer  
322 screening participation during the first year of the pandemic. Additionally, a study by Castañón et  
323 al. estimated that women aged 40-49 years old would have the greatest burden of excess cervical  
324 cancer diagnoses due to a delay in screening because of the pandemic (3). We found that women  
325 aged 40-49 years old and 60-64 years old had a lower than usual participation in cervical cancer  
326 screening at the start of the pandemic. The pandemic thus appears to affect different age groups  
327 differently. Women aged 60-64 years old may have been hesitant to come into contact with the  
328 healthcare system at the start of the pandemic possibly explaining the lower participation in this age  
329 group. Surprisingly, this effect lasted even when examining participation within 365 days since  
330 invitation. A concern is therefore that some women did not resume screening even with the longest  
331 follow-up time.

### 332 333 *Strengths and limitations*

334 A major strength of the study is the high quality of data covering the entire population of women  
335 invited to participate in the cervical screening programme in Denmark. Danish national registers are  
336 known to be reliable and to have high completeness (24), which also confers to the Danish Quality  
337 Database for Cervical Screening (17). While the quality of the Danish registers is high, some  
338 limitations relate to the data e.g., the study did not include data on comorbidities, which may affect  
339 participation in screening during the pandemic as individuals with underlying disease were advised  
340 to self-isolate at the height of the pandemic. However, as age is strongly associated with the level of  
341 comorbidity, the inclusion of age in the statistical model reduces the theoretical impact of  
342 comorbidity on the results.

### 343 344 *Implications of the findings*

345 Our findings show that the overall participation in cervical cancer screening was almost at the same  
346 level as the previous years when allowing for the longest follow-up time; however, some groups  
347 had a slightly lower participation (descendants of immigrants, women with a low educational level  
348 and women with a low income) and it is therefore important to ensure that all women re-enter the  
349 cervical cancer screening programme at the aftermath of the pandemic. Our results also show that  
350 some age groups (women aged 40-49 years old and 60-64 years old) had a lower participation in

351 screening than usual possibly indicating that the restrictions within a society affects different age  
352 groups disproportionately. It is thus important to take this information into account when planning a  
353 pandemic response and ensure that all women have access to screening.

354  
355 Contrasting health messages may have been conveyed by the cervical cancer screening programme  
356 being open, the general practitioners recommending a postponement of cervical cancer screening  
357 tests and at the same time, the health authorities recommending people to stay at home. Inconsistent  
358 health communication from the authorities may therefore have led some women to refrain from  
359 participating in screening. The health communication therefore needs to be precise and consistent to  
360 ensure that all women are well-informed and know when they can safely participate in cervical  
361 cancer screening during a pandemic.

362  
363 *Conclusion*

364 The cervical cancer screening programme continued throughout the COVID-19 pandemic in  
365 Denmark. The participation was reduced at the start of the pandemic; however, most women  
366 resumed screening with the longest follow-up time although some groups of women had a slightly  
367 lower participation than usual.

368 **Tables and figures**

369

370 Table 1. Baseline characteristics of women invited to participate in cervical cancer screening in  
371 Denmark from 2015 to 2021

372 Figure 1. Participation in cervical cancer screening in Denmark within 90, 180 and 365 days since  
373 invitation from 2015 to 2021

374 Table 2. Prevalence ratios and 95% confidence intervals of participation in cervical cancer  
375 screening in Denmark within 365 days since invitation from 2015 to 2021

376

377 **Supplementary Tables and figures**

378 Supplementary Figure 1. Flow-chart of the study population

379

380 Supplementary Table 1. Proportion of women participating in cervical cancer screening in Denmark  
381 within 90 days since invitation from 2015 to 2021

382

383 Supplementary Table 2. Proportion of women participating in cervical cancer screening in Denmark  
384 within 180 days since invitation from 2015 to 2021

385

386 Supplementary Table 3. Proportion of women participating in cervical cancer screening in Denmark  
387 within 365 days since invitation from 2015 to 2021

388

389 Supplementary Table 4. Prevalence ratios and 95% confidence intervals of participation in cervical  
390 cancer screening in Denmark within 90 days since invitation from 2015 to 2021

391

392 Supplementary Table 5. Prevalence ratios and 95% confidence intervals of participation in cervical  
393 cancer screening in Denmark within 180 days since invitation from 2015 to 2021

394

395 Supplementary Figure 2. Proportion of women participating in cervical cancer screening in  
396 Denmark within 90 days since invitation from 2015 to 2021 stratified by the explanatory variables

397

398 Supplementary Figure 3. Proportion of women participating in cervical cancer screening in  
399 Denmark within 180 days since invitation from 2015 to 2021 stratified by the explanatory variables

400

401 Supplementary Figure 4. Proportion of women participating in cervical cancer screening in  
402 Denmark within 180 days since invitation from 2015 to 2021 stratified by the explanatory variables

403

404

405

406 **Authorship**

- 407 1. TBO, HJ, HM, JWJ, MW and BA designed the study. TBO and HJ acquired the data; HJ  
408 analysed the data. All authors contributed to the interpretation of the data.  
409 2. TBO drafted the article. All authors revised the article critically for important intellectual content.  
410 3. All authors approved the final version of the article to be published.  
411 4. All authors agree to be accountable for all aspects of the work in ensuring that questions related  
412 to the accuracy or integrity of any part of the work are appropriately investigated and resolved.

413

414 **Funding**

415 The study was funded by the Danish Cancer Society Scientific Committee (grant number R321-  
416 A17417) and the Danish regions.

417

418 **Acknowledgements**

419 We would like to thank Flemming Bro, MD, PhD, GP, Senior researcher from the Research Unit for  
420 General Practice, Aarhus for his valuable comments to the manuscript.

421

422 **Conflicts of interest**

423 The authors report no conflict of interest.

424

425 **Materials availability statement**

426 Not applicable.

427 **Data availability statement**

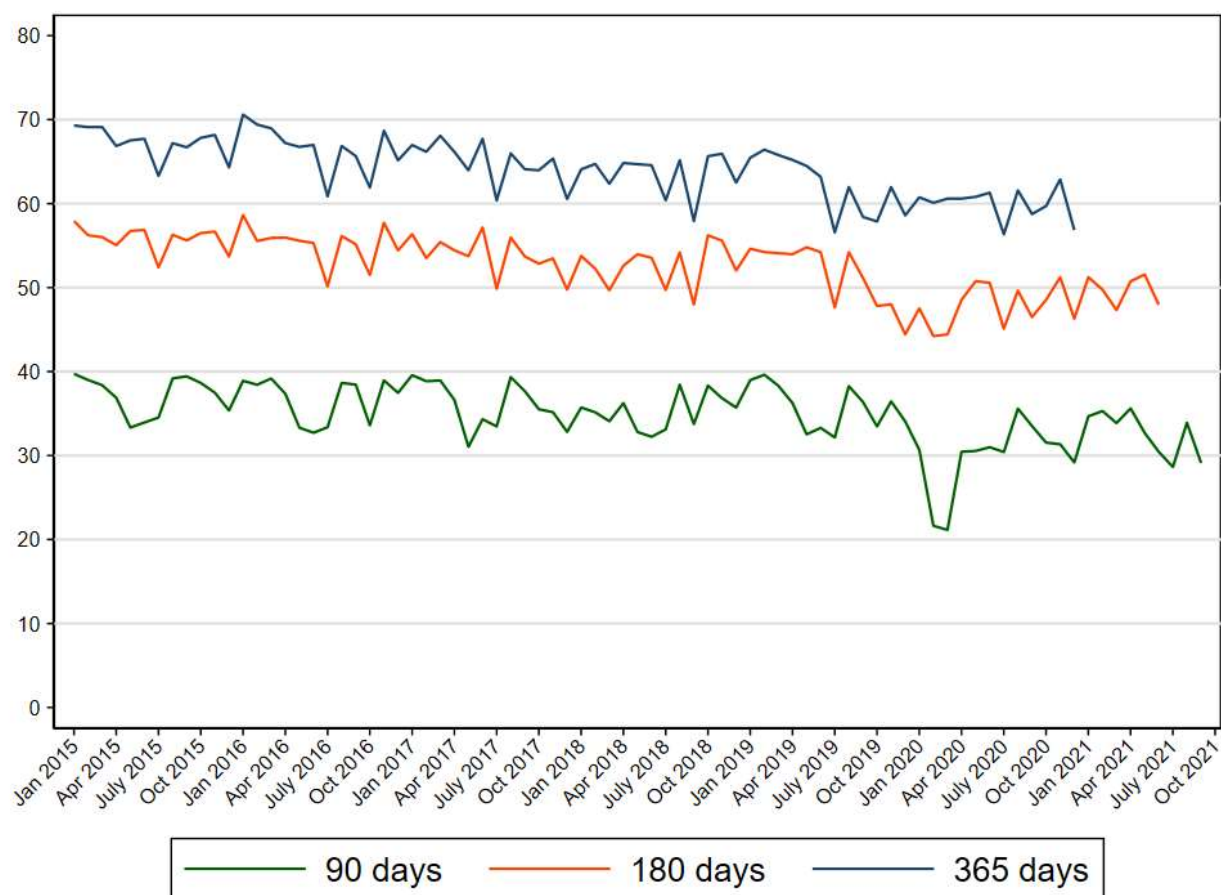
428 In order to comply with the Danish regulations on data privacy, the datasets generated and analysed  
429 during this project are not publicly available as the data are stored and maintained electronically at  
430 Statistics Denmark, where it only can be accessed by pre-approved researchers using a secure VPN  
431 remote access. Furthermore, no data at a personal level nor data not exclusively necessary for  
432 publication are allowed to be extracted from the secure data environment at Statistics Denmark.  
433 Access to the data can; however, be granted by the authors of the present study upon a reasonable  
434 scientific proposal within the boundaries of the present project and for scientific purposes only.

435 **Table 1. Baseline characteristics of women invited to participate in cervical cancer screening**  
436 **in Denmark from 2015 to 2021**

	Pre-pandemic (01Jan2015- 31Jan2020)	Pre-lockdown (01Feb2020- 10Mar2020)	1st lockdown (11Mar2020- 15Apr2020)	1st re-opening (16Apr2020- 15Dec2020)	2nd lockdown (16Dec2020- 27Feb2021)	2nd re-opening (28Feb2021- 30Sep2021)	Total
	N (%)	N (%)	N (%)	N (%)	N (%)	N (%)	N (%)
<b>Total</b>	1641199 (73.9)	41876 (1.9)	31255 (1.4)	223386 (10.1)	69729 (3.1)	212555 (9.6)	2220000 (100.0)
<b>Age at invitation</b>							
23-29 years	384272 (23.4)	10223 (24.4)	7731 (24.7)	58569 (26.2)	17624 (25.3)	56816 (26.7)	535235 (24.1)
30-39 years	412249 (25.1)	10614 (25.3)	7712 (24.7)	56783 (25.4)	17571 (25.2)	54367 (25.6)	559296 (25.2)
40-49 years	495153 (30.2)	12690 (30.3)	9233 (29.5)	63872 (28.6)	19051 (27.3)	59366 (27.9)	659365 (29.7)
50-59 years	246814 (15.0)	6665 (15.9)	5269 (16.9)	34841 (15.6)	11810 (16.9)	31387 (14.8)	336786 (15.2)
60-64 years	102711 (6.3)	1684 (4.0)	1310 (4.2)	9321 (4.2)	3673 (5.3)	10619 (5.0)	129318 (5.8)
Median (IQR)	41 (31; 49)	40 (30; 48)	40 (30; 49)	39 (30; 48)	40 (30; 49)	39 (30; 48)	40 (30; 49)
<b>Ethnicity</b>							
Danish descent	1358106 (82.8)	33975 (81.2)	25778 (82.5)	177501 (79.5)	45340 (81.3)	132376 (81.0)	1773076 (82.2)
Descendant of immigrant	31339 (1.9)	918 (2.2)	781 (2.5)	5723 (2.6)	1260 (2.3)	3881 (2.4)	43902 (2.0)
Western Immigrant	87100 (5.3)	2581 (6.2)	1655 (5.3)	15869 (7.1)	3247 (5.8)	9710 (5.9)	120162 (5.6)
Non-western immigrant	163638 (10.0)	4375 (10.5)	3027 (9.7)	24176 (10.8)	5928 (10.6)	17535 (10.7)	218679 (10.1)
<b>Cohabitation status</b>							
Single	529023 (32.3)	13708 (32.8)	10300 (33.0)	76687 (34.4)	3867 (35.1)	N/A	633585 (32.5)
Cohabiting	351991 (21.5)	9225 (22.1)	6829 (21.9)	50379 (22.6)	2369 (21.5)	N/A	420793 (21.6)
Married	759009 (46.3)	18890 (45.2)	14088 (45.1)	96132 (43.1)	4794 (43.5)	N/A	892913 (45.9)
<b>Educational level (ISCED)</b>							
ISCED15 level 1-2	960324 (60.6)	24481 (59.3)	18667 (60.6)	129791 (59.3)	40565 (60.1)	122230 (60.4)	1296058 (60.4)
ISCED15 level 3-4	393390 (24.8)	10185 (24.7)	7539 (24.5)	52354 (23.9)	16772 (24.8)	48870 (24.1)	529110 (24.7)
ISCED15 level 5-8	231157 (14.6)	6589 (16.0)	4600 (14.9)	36716 (16.8)	10173 (15.1)	31395 (15.5)	320630 (14.9)
<b>Disposable income</b>							
Lowest quintile	322307 (19.9)	7419 (18.2)	5869 (19.0)	43920 (20.4)	12715 (18.6)	39486 (19.3)	431716 (19.8)
Second quintile	334113 (20.6)	7611 (18.7)	5878 (19.0)	40851 (19.0)	12137 (17.8)	36480 (17.9)	437070 (20.0)
Third quintile	338563 (20.9)	8066 (19.8)	5850 (18.9)	40863 (19.0)	11738 (17.2)	34157 (16.7)	439237 (20.1)
Fourth quintile	326174 (20.1)	8604 (21.1)	6449 (20.9)	43279 (20.1)	14025 (20.5)	40367 (19.8)	438898 (20.1)
Highest quintile	301566 (18.6)	9067 (22.2)	6878 (22.2)	46484 (21.6)	17742 (26.0)	53702 (26.3)	435439 (20.0)
<b>Healthcare usage</b>							
Rare	319960 (19.5)	8519 (20.3)	5985 (19.1)	47619 (21.3)	13413 (19.2)	43973 (20.7)	439469 (19.8)
Low	366807 (22.3)	9020 (21.5)	6774 (21.7)	48280 (21.6)	15181 (21.8)	45102 (21.2)	491164 (22.1)
Average	347589 (21.2)	8758 (20.9)	6637 (21.2)	46608 (20.9)	14364 (20.6)	44024 (20.7)	467980 (21.1)
High	299358 (18.2)	7583 (18.1)	5727 (18.3)	40091 (17.9)	12967 (18.6)	38760 (18.2)	404486 (18.2)
Frequent	307485 (18.7)	7996 (19.1)	6132 (19.6)	40788 (18.3)	13804 (19.8)	40696 (19.1)	416901 (18.8)
<b>Time from invitation to participation, median (IQR)</b>	94 (42; 200)	120 (72; 207)	122 (53; 201)	86 (36; 161)	69 (29; 133)	51 (28; 101)	89 (39; 184)

437  
438 IQI= interquartile interval; ISCED=International Standard Classification of Education

439 **Figure 1. Participation in cervical cancer screening in Denmark within 90, 180 and 365 days**  
440 **since invitation from 2015 to 2021**



441

442 **Table 2. Prevalence ratios and 95% confidence intervals of participation in cervical cancer**  
 443 **screening in Denmark within 365 days since invitation from 2015 to 2021\***

		Pre-pandemic (01Jan2015- 31Jan2020)		Pre-lockdown (01Feb2020- 10Mar2020)		1st lockdown (11Mar2020- 15Apr2020)		1st re-opening (16Apr2020- 15Dec2020)		2nd lockdown (16Dec2020- 31Dec2020)	
		N=1641199		N=41876		N=31255		N=223386		N=69729	
	N	PR	[95%CI]	PR	[95%CI]	PR	[95%CI]	PR	[95%CI]	PR	[95%CI]
<b>Overall</b>	2220000	1.00	-	0.97	[0.96; 0.98]	0.97	[0.96; 0.98]	1.01	[1.00; 1.01]	0.99	[0.97; 1.00]
<b>Age at invitation</b>											
23-29 years	535235	1.00	-	0.96	[0.94; 0.98]	0.98	[0.95; 1.00]	0.99	[0.98; 1.00]	1.00	[0.96; 1.04]
30-39 years	559296	1.00	-	0.97	[0.95; 0.99]	0.99	[0.97; 1.01]	1.01	[1.00; 1.02]	1.00	[0.97; 1.04]
40-49 years	659365	1.00	-	0.95	[0.93; 0.96]	0.94	[0.92; 0.95]	1.00	[0.99; 1.01]	0.93	[0.90; 0.96]
50-59 years	336786	1.00	-	1.01	[0.99; 1.03]	1.00	[0.98; 1.02]	1.02	[1.01; 1.03]	1.05	[1.01; 1.08]
60-64 years	129318	1.00	-	0.95	[0.92; 0.99]	0.93	[0.90; 0.97]	0.98	[0.96; 1.00]	0.93	[0.87; 0.99]
<b>Ethnicity</b>											
Danish descent	1773076	1.00	-	0.96	[0.95; 0.97]	0.96	[0.95; 0.97]	1.00	[1.00; 1.01]	0.97	[0.96; 0.99]
Descendant of immigrant	43902	1.00	-	0.95	[0.86; 1.05]	0.88	[0.79; 0.98]	0.97	[0.92; 1.02]	0.93	[0.78; 1.12]
Western Immigrant	120162	1.00	-	1.03	[0.98; 1.09]	1.04	[0.98; 1.11]	1.09	[1.06; 1.12]	1.06	[0.95; 1.17]
Non-western immigrant	218679	1.00	-	0.99	[0.95; 1.02]	0.98	[0.94; 1.02]	1.04	[1.02; 1.06]	1.07	[1.00; 1.14]
<b>Cohabitation status</b>											
Single	633585	1.00	-	0.97	[0.95; 0.98]	0.96	[0.94; 0.98]	1.02	[1.01; 1.02]	0.98	[0.95; 1.02]
Cohabiting	420793	1.00	-	0.96	[0.94; 0.98]	0.97	[0.95; 0.99]	1.00	[0.99; 1.01]	1.00	[0.96; 1.04]
Married	892913	1.00	-	0.97	[0.96; 0.98]	0.97	[0.96; 0.99]	1.00	[1.00; 1.01]	0.98	[0.96; 1.01]
<b>Educational level (ISCED)</b>											
ISCED15 level 1-2	1297050	1.00	-	0.96	[0.95; 0.97]	0.96	[0.95; 0.98]	1.01	[1.00; 1.01]	0.99	[0.97; 1.01]
ISCED15 level 3-4	529165	1.00	-	0.96	[0.95; 0.98]	0.97	[0.95; 0.99]	1.00	[0.99; 1.01]	0.97	[0.94; 1.00]
ISCED15 level 5-8	319925	1.00	-	1.00	[0.98; 1.02]	0.99	[0.97; 1.02]	1.04	[1.03; 1.05]	1.06	[1.01; 1.10]
<b>Disposable income</b>											
Lowest quintile	419122	1.00	-	0.95	[0.93; 0.98]	0.96	[0.93; 0.98]	1.02	[1.01; 1.04]	1.02	[0.97; 1.07]
Second quintile	422225	1.00	-	0.95	[0.92; 0.97]	0.94	[0.91; 0.96]	1.00	[0.99; 1.01]	1.00	[0.95; 1.04]
Third quintile	424081	1.00	-	0.96	[0.94; 0.98]	0.95	[0.93; 0.97]	0.99	[0.98; 1.00]	0.94	[0.91; 0.98]
Fourth quintile	425069	1.00	-	0.96	[0.95; 0.98]	0.96	[0.95; 0.98]	1.00	[0.99; 1.01]	0.96	[0.93; 0.99]
Highest quintile	424457	1.00	-	0.98	[0.96; 0.99]	0.96	[0.95; 0.98]	1.00	[0.99; 1.00]	0.97	[0.95; 1.00]
<b>Healthcare usage</b>											
Rare	439469	1.00	-	0.97	[0.95; 0.99]	0.97	[0.95; 1.00]	1.02	[1.01; 1.03]	0.99	[0.94; 1.04]
Low	491164	1.00	-	0.97	[0.95; 0.99]	0.95	[0.93; 0.97]	1.00	[0.99; 1.01]	0.95	[0.91; 0.99]
Average	467980	1.00	-	0.95	[0.94; 0.97]	0.95	[0.93; 0.97]	1.00	[0.99; 1.01]	1.00	[0.97; 1.04]
High	404486	1.00	-	0.97	[0.95; 0.98]	0.96	[0.94; 0.98]	1.01	[1.00; 1.02]	0.99	[0.96; 1.03]
Frequent	416901	1.00	-	0.97	[0.95; 0.99]	0.98	[0.97; 1.00]	1.00	[0.99; 1.01]	0.96	[0.93; 1.00]

444

445 \* Adjusted for month, year and age at invitation; PR=prevalence ratio; CI=confidence interval; ISCED=International  
 446 Standard Classification of Education



447 **Supplementary Figure 1. Flow-chart of the study population**

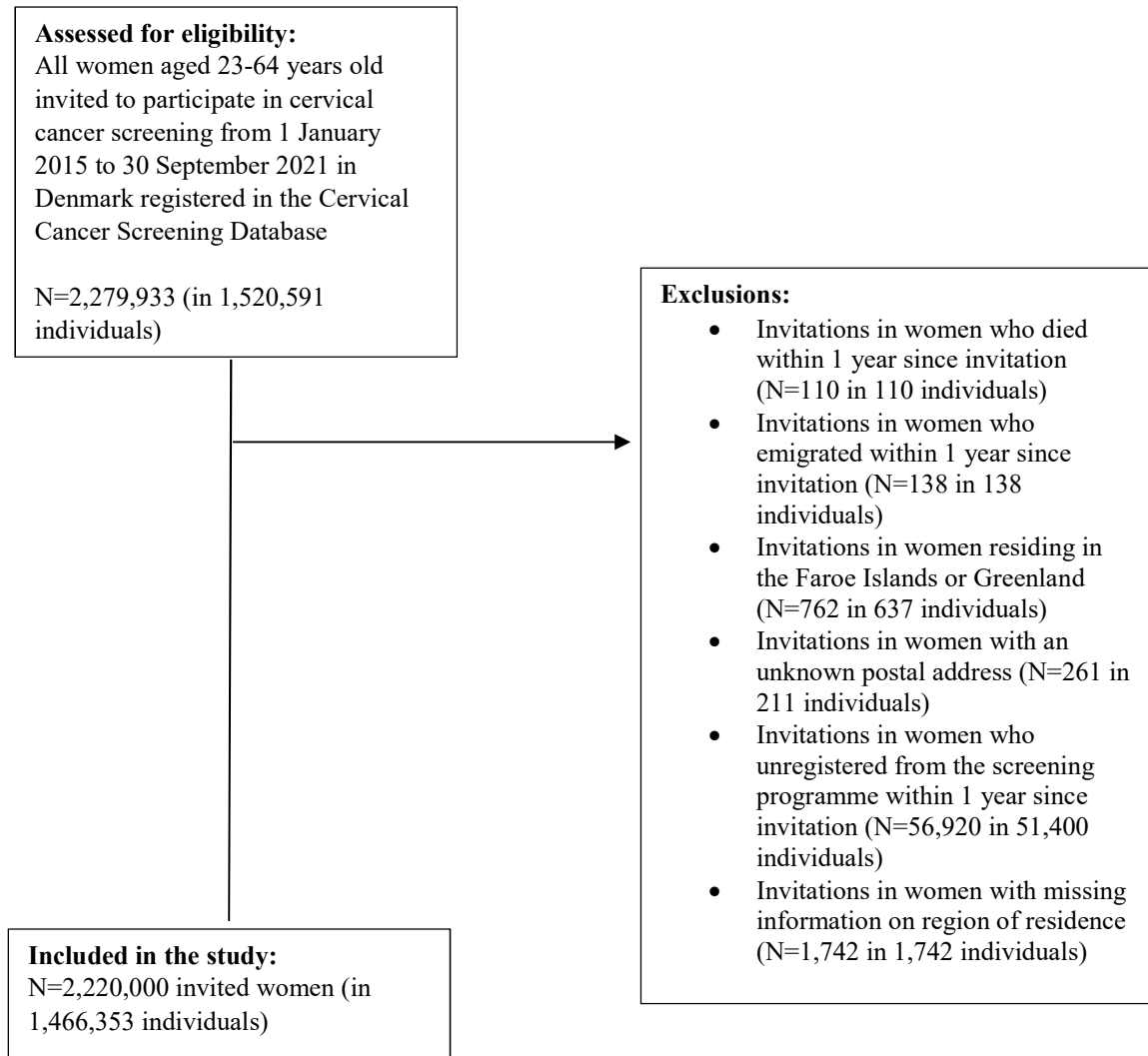
448

449

450

451

452



453 **Supplementary Table 1. Proportion of women participating in cervical cancer screening in**  
454 **Denmark within 90 days since invitation from 2015 to 2021**

	Pre-pandemic (01Jan2015- 31Jan2020)	Pre-lockdown (01Feb2020- 10Mar2020)	1st lockdown (11Mar2020- 15Apr2020)	1st re-opening (16Apr2020- 15Dec2020)	2nd lockdown (16Dec2020- 27Feb2021)	2nd re-opening (28Feb2021- 30Sep2021)
	%	%	%	%	%	%
<b>Total</b>	36.2	20.6	26.7	32.0	34.3	32.3
<b>Age at invitation</b>						
23-29 years	28.9	16.8	21.1	25.5	27.5	24.7
30-39 years	33.5	19.4	25.8	29.5	30.7	29.2
40-49 years	39.2	21.5	28.7	35.1	37.5	36.8
50-59 years	41.8	25.3	30.9	38.4	41.3	39.0
60-64 years	47.0	25.2	34.3	42.0	45.6	43.3
<b>Ethnicity</b>						
Danish descent	38.9	22.4	29.0	35.3	36.8	35.7
Descendant of immigrant	17.6	9.4	12.4	14.8	16.4	16.5
Western immigrant	20.9	12.2	17.0	17.4	23.7	21.6
Non-western immigrant	26.1	13.6	16.5	21.5	23.2	22.7
<b>Cohabitation status</b>						
Single	30.1	17.1	22.1	26.5	24.9	N/A
Cohabiting	34.4	20.1	26.2	31.2	31.4	N/A
Married	41.4	23.4	30.4	36.8	35.7	N/A
<b>Educational level (ISCED)</b>						
ISCED15 level 1-2	36.4	21.0	26.2	32.3	34.4	32.9
ISCED15 level 3-4	38.0	21.1	28.4	33.8	36.7	34.5
ISCED15 level 5-8	34.3	19.0	27.3	30.4	34.6	33.2
<b>Disposable income</b>						
Lowest quintile	26.0	14.5	17.5	23.0	24.1	22.7
Second quintile	31.6	17.6	21.4	26.8	28.8	26.9
Third quintile	38.1	21.6	27.6	32.5	33.1	31.8
Fourth quintile	42.8	24.0	32.0	38.6	40.0	37.9
Highest quintile	44.6	25.7	34.2	41.9	43.6	42.7
<b>Healthcare usage</b>						
Rare	26.2	13.5	18.0	21.0	23.0	19.7
Low	34.2	18.4	24.2	30.6	31.8	30.8
Average	37.6	21.2	27.0	34.1	35.5	34.4
High	40.3	23.9	29.9	36.4	38.7	36.8
Frequent	43.6	26.8	34.6	39.4	42.8	40.8

455  
456 ISCED=International Standard Classification of Education  
457

458 **Supplementary Table 2. Proportion of women participating in cervical cancer screening in**  
 459 **Denmark within 180 days since invitation from 2015 to 2021**

	Pre-pandemic (01Jan2015- 31Jan2020)	Pre-lockdown (01Feb2020- 10Mar2020)	1st lockdown (11Mar2020- 15Apr2020)	1st re-opening (16Apr2020- 15Dec2020)	2nd lockdown (16Dec2020- 27Feb2021)	2nd re-opening (28Feb2021- 30Jun2021)
	%	%	%	%	%	%
<b>Total</b>	53.8	44.3	46.1	49.0	50.1	49.5
<b>Age at invitation</b>						
23-29 years	44.8	36.0	38.2	40.7	41.1	39.8
30-39 years	51.4	41.3	44.3	46.5	47.0	46.7
40-49 years	58.7	47.9	49.4	54.2	54.7	55.3
50-59 years	58.4	52.1	52.4	55.1	57.3	56.4
60-64 years	62.8	55.3	55.0	58.3	61.1	60.2
<b>Ethnicity</b>						
Danish descent	57.4	47.9	49.6	53.4	53.4	53.6
Descendant of immigrant	28.3	21.2	20.1	25.1	24.5	26.5
Western immigrant	33.4	27.3	30.2	30.1	35.5	35.1
Non-western immigrant	40.2	30.8	32.1	34.8	36.8	36.5
<b>Cohabitation status</b>						
Single	45.3	37.4	38.6	41.4	39.3	N/A
Cohabiting	52.0	42.4	45.6	48.4	47.3	N/A
Married	60.6	50.2	52.0	55.4	54.7	N/A
<b>Educational level (ISCED)</b>						
ISCED15 level 1-2	53.8	44.5	45.5	49.3	50.0	49.8
ISCED15 level 3-4	56.0	46.0	47.8	51.2	52.9	52.1
ISCED15 level 5-8	52.1	41.9	47.2	47.3	51.8	51.4
<b>Disposable income</b>						
Lowest quintile	40.6	31.7	32.9	37.2	36.7	36.3
Second quintile	46.8	37.3	37.6	41.7	42.8	41.1
Third quintile	55.5	45.4	46.4	49.5	48.8	48.2
Fourth quintile	62.8	51.9	53.7	58.1	57.0	56.3
Highest quintile	65.9	55.8	58.5	62.4	62.3	63.1
<b>Healthcare usage</b>						
Rare	41.2	31.7	34.5	34.7	35.2	33.5
Low	52.0	42.7	43.3	48.1	47.9	47.9
Average	56.1	45.8	47.4	52.0	52.5	52.0
High	58.9	49.4	50.7	55.0	55.9	55.0
Frequent	61.5	52.8	55.0	57.3	59.0	59.3

460  
 461 ISCED=International Standard Classification of Education  
 462

463 **Supplementary Table 3. Proportion of women participating in cervical cancer screening in**  
464 **Denmark within 365 days since invitation from 2015 to 2021**

	<b>Pre-pandemic (01Jan2015- 31Jan2020)</b>	<b>Pre-lockdown (01Feb2020- 10Mar2020)</b>	<b>1st lockdown (11Mar2020- 15Apr2020)</b>	<b>1st re-opening (16Apr2020- 15Dec2020)</b>	<b>2nd lockdown (16Dec2020- 31Dec2020)</b>
	%	%	%	%	%
<b>Total</b>	64.9	60.5	60.2	60.3	57.3
<b>Age at invitation</b>					
23-29 years	57.0	51.5	52.5	52.5	50.3
30-39 years	64.3	59.0	59.9	59.7	57.3
40-49 years	69.9	64.8	64.0	65.5	59.2
50-59 years	66.4	66.4	64.2	63.6	63.2
60-64 years	69.0	68.1	64.7	65.9	59.4
<b>Ethnicity</b>					
Danish descent	68.7	64.7	64.1	65.1	61.8
Descendant of immigrant	37.8	33.7	30.5	34.1	28.9
Western immigrant	43.8	41.7	42.6	41.3	38.1
Non-western immigrant	50.5	44.9	44.3	44.6	42.6
<b>Cohabitation status</b>					
Single	56.0	52.2	51.5	52.1	47.9
Cohabiting	64.4	59.9	60.9	61.1	59.1
Married	71.4	66.9	66.4	66.7	64.1
<b>Educational level (ISCED)</b>					
ISCED15 level 1-2	64.8	60.4	59.6	60.6	56.8
ISCED15 level 3-4	67.0	62.6	62.0	62.5	61.0
ISCED15 level 5-8	63.8	58.9	61.2	59.4	59.4
<b>Disposable income</b>					
Lowest quintile	52.0	46.8	46.5	48.7	46.1
Second quintile	57.5	51.9	50.7	52.6	50.6
Third quintile	66.4	61.1	60.2	60.5	55.7
Fourth quintile	73.9	68.8	68.7	69.5	65.1
Highest quintile	77.4	74.5	73.4	74.3	71.5
<b>Healthcare usage</b>					
Rare	51.5	46.7	46.4	45.3	42.2
Low	63.6	59.9	58.4	59.7	54.9
Average	67.6	62.6	62.1	63.7	62.4
High	70.2	66.0	65.3	66.8	64.1
Frequent	72.2	68.1	68.9	68.5	64.4

465 ISCED=International Standard Classification of Education  
466  
467  
468

469  
470

**Supplementary Table 4. Prevalence ratios and 95% confidence intervals of participation in cervical cancer screening in Denmark within 90 days since invitation from 2015 to 2021\***

	N	Pre-pandemic (01Jan2015-31Jan2020) N=1641199		Pre-lockdown (01Feb2020-10Mar2020) N=41876		1st lockdown (11Mar2020-15Apr2020) N=31255		1st re-opening (16Apr2020-15Dec2020) N=223386		2nd lockdown (16Dec2020-27Feb2021) N=69729		2nd re-opening (28Feb2021-30Sep2021) N=212555	
		PR	[95%CI]	PR	[95%CI]	PR	[95%CI]	PR	[95%CI]	PR	[95%CI]	PR	[95%CI]
<b>Overall</b>	2220000	1.00	-	0.58	[0.56; 0.59]	0.76	[0.75; 0.77]	0.96	[0.95; 0.96]	0.99	[0.97; 1.00]	0.97	[0.97; 0.98]
<b>Age at invitation</b>													
23-29 years	535235	1.00	-	0.60	[0.57; 0.63]	0.76	[0.72; 0.79]	0.94	[0.92; 0.96]	0.99	[0.97; 1.02]	0.92	[0.90; 0.94]
30-39 years	559296	1.00	-	0.60	[0.58; 0.63]	0.80	[0.77; 0.83]	0.95	[0.94; 0.97]	0.98	[0.96; 1.01]	0.96	[0.94; 0.97]
40-49 years	659365	1.00	-	0.54	[0.52; 0.56]	0.73	[0.71; 0.76]	0.95	[0.94; 0.96]	0.98	[0.96; 1.00]	1.00	[0.98; 1.01]
50-59 years	336786	1.00	-	0.60	[0.57; 0.63]	0.76	[0.73; 0.79]	0.97	[0.96; 0.99]	0.99	[0.97; 1.02]	1.00	[0.98; 1.02]
60-64 years	129318	1.00	-	0.53	[0.48; 0.57]	0.75	[0.69; 0.81]	0.97	[0.94; 1.00]	0.99	[0.95; 1.03]	1.01	[0.98; 1.04]
<b>Ethnicity</b>													
Danish descent	1773076	1.00	-	0.58	[0.56; 0.59]	0.76	[0.74; 0.77]	0.96	[0.95; 0.96]	0.96	[0.95; 0.97]	0.96	[0.95; 0.97]
Descendant of immigrant	43902	1.00	-	0.55	[0.44; 0.68]	0.78	[0.64; 0.95]	0.92	[0.85; 1.00]	0.96	[0.83; 1.10]	0.95	[0.86; 1.05]
Western Immigrant	120162	1.00	-	0.63	[0.57; 0.71]	0.89	[0.79; 0.99]	1.00	[0.96; 1.05]	1.21	[1.12; 1.30]	1.23	[1.16; 1.29]
Non-western immigrant	218679	1.00	-	0.56	[0.52; 0.60]	0.70	[0.64; 0.76]	0.98	[0.95; 1.01]	0.97	[0.92; 1.02]	1.04	[1.01; 1.08]
<b>Cohabitation status</b>													
Single	633585	1.00	-	0.58	[0.55; 0.60]	0.77	[0.74; 0.80]	0.96	[0.95; 0.98]	0.95	[0.89; 1.00]	N/A	N/A
Cohabiting	420793	1.00	-	0.59	[0.56; 0.61]	0.78	[0.75; 0.81]	0.95	[0.93; 0.96]	0.97	[0.91; 1.03]	N/A	N/A
Married	892913	1.00	-	0.57	[0.56; 0.59]	0.76	[0.74; 0.78]	0.96	[0.95; 0.97]	0.91	[0.88; 0.95]	N/A	N/A
<b>Educational level (ISCED)</b>													
ISCED15 level 1-2	1297050	1.00	-	0.58	[0.56; 0.59]	0.75	[0.73; 0.77]	0.96	[0.95; 0.97]	0.98	[0.97; 1.00]	0.98	[0.97; 1.00]
ISCED15 level 3-4	529165	1.00	-	0.56	[0.54; 0.58]	0.76	[0.73; 0.79]	0.95	[0.94; 0.97]	0.99	[0.97; 1.02]	0.98	[0.97; 1.00]
ISCED15 level 5-8	319925	1.00	-	0.60	[0.57; 0.63]	0.81	[0.76; 0.85]	0.99	[0.97; 1.01]	1.07	[1.04; 1.11]	1.09	[1.07; 1.12]
<b>Disposable income</b>													
Lowest quintile	419122	1.00	-	0.57	[0.54; 0.60]	0.71	[0.67; 0.75]	0.95	[0.93; 0.97]	0.98	[0.94; 1.02]	0.96	[0.93; 0.98]
Second quintile	422225	1.00	-	0.58	[0.55; 0.61]	0.72	[0.69; 0.76]	0.94	[0.92; 0.96]	0.97	[0.94; 1.00]	0.96	[0.94; 0.98]
Third quintile	424081	1.00	-	0.58	[0.56; 0.61]	0.76	[0.73; 0.79]	0.94	[0.92; 0.96]	0.92	[0.90; 0.95]	0.93	[0.91; 0.95]
Fourth quintile	425069	1.00	-	0.56	[0.54; 0.59]	0.76	[0.73; 0.79]	0.95	[0.94; 0.97]	0.97	[0.95; 0.99]	0.95	[0.93; 0.96]
Highest quintile	424457	1.00	-	0.57	[0.55; 0.59]	0.76	[0.73; 0.78]	0.96	[0.94; 0.97]	0.98	[0.96; 1.00]	0.98	[0.96; 0.99]
<b>Healthcare usage</b>													
Rare	439469	1.00	-	0.54	[0.51; 0.57]	0.74	[0.70; 0.78]	0.96	[0.94; 0.98]	0.95	[0.92; 0.99]	0.92	[0.90; 0.95]
Low	491164	1.00	-	0.53	[0.51; 0.56]	0.73	[0.69; 0.76]	0.94	[0.92; 0.96]	0.94	[0.91; 0.96]	0.96	[0.94; 0.97]
Average	467980	1.00	-	0.57	[0.54; 0.59]	0.74	[0.71; 0.77]	0.96	[0.94; 0.97]	0.98	[0.95; 1.00]	0.97	[0.96; 0.99]
High	404486	1.00	-	0.60	[0.57; 0.62]	0.76	[0.73; 0.79]	0.95	[0.93; 0.97]	0.99	[0.96; 1.01]	0.97	[0.95; 0.98]
Frequent	416901	1.00	-	0.62	[0.60; 0.64]	0.80	[0.77; 0.83]	0.96	[0.94; 0.97]	1.01	[0.98; 1.03]	0.99	[0.97; 1.01]

471  
472  
473  
474  
475  
476

\* Adjusted for month, year and age at invitation; PR=prevalence ratio; CI=confidence interval; ISCED=International Standard Classification of Education

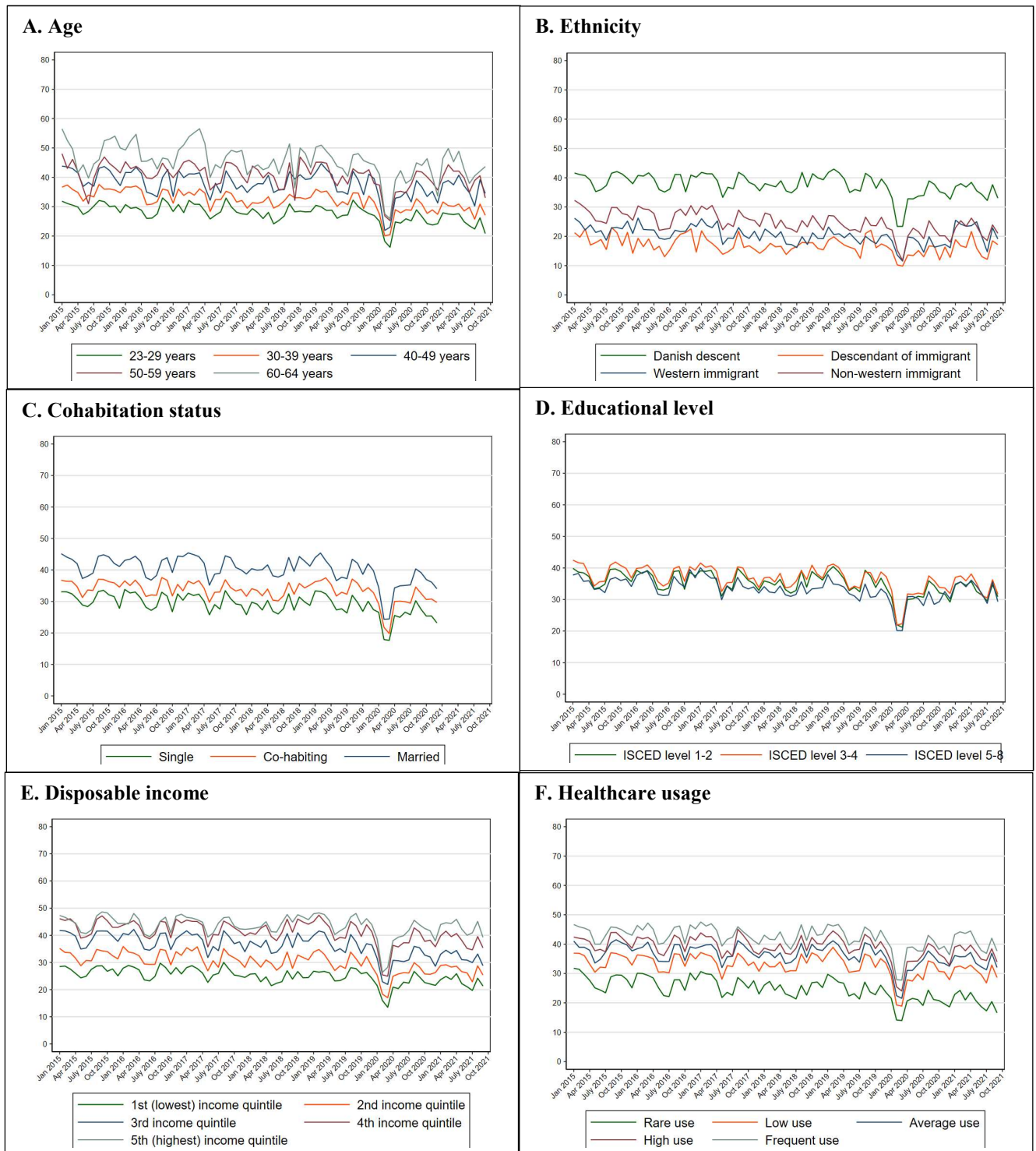
477 **Supplementary Table 5. Prevalence ratios and 95% confidence intervals of participation in**  
478 **cervical cancer screening in Denmark within 180 days since invitation from 2015 to 2021\***

		Pre-pandemic (01Jan2015- 31Jan2020)		Pre-lockdown (01Feb2020- 10Mar2020)		1st lock-down (11Mar2020- 15Apr2020)		1st re-opening (16Apr2020- 15Dec2020)		2nd lock-down (16Dec2020- 27Feb2021)		2nd re-opening (28Feb2021- 30June2021)	
	N	PR	[95%CI]	PR	[95%CI]	PR	[95%CI]	PR	[95%CI]	PR	[95%CI]	PR	[95%CI]
		N=1641199		N=41876		N=31255		N=223386		N=69729		N=212555	
<b>Overall</b>	2220000	1.00	-	0.89	[0.88; 0.90]	0.92	[0.91; 0.93]	0.99	[0.98; 0.99]	1.02	[1.01; 1.03]	1.00	[1.00; 1.01]
<b>Age at invitation</b>													
23-29 years	535235	1.00	-	0.89	[0.86; 0.91]	0.92	[0.89; 0.95]	0.98	[0.96; 0.99]	1.02	[1.00; 1.04]	0.98	[0.96; 0.99]
30-39 years	559296	1.00	-	0.89	[0.86; 0.91]	0.94	[0.91; 0.96]	0.99	[0.98; 1.00]	1.03	[1.01; 1.05]	1.01	[0.99; 1.02]
40-49 years	659365	1.00	-	0.86	[0.84; 0.88]	0.88	[0.86; 0.90]	0.98	[0.97; 0.99]	1.00	[0.99; 1.02]	0.99	[0.98; 1.01]
50-59 years	336786	1.00	-	0.92	[0.90; 0.95]	0.95	[0.92; 0.97]	1.00	[0.99; 1.02]	1.03	[1.01; 1.05]	1.03	[1.01; 1.05]
60-64 years	129318	1.00	-	0.88	[0.84; 0.92]	0.91	[0.86; 0.95]	0.97	[0.95; 0.99]	1.00	[0.97; 1.04]	0.99	[0.97; 1.02]
<b>Ethnicity</b>													
Danish descent	1773076	1.00	-	0.88	[0.87; 0.89]	0.91	[0.90; 0.92]	0.99	[0.98; 0.99]	0.99	[0.98; 1.00]	0.98	[0.98; 0.99]
Descendant of immigrant	43902	1.00	-	0.84	[0.73; 0.96]	0.82	[0.70; 0.95]	0.96	[0.91; 1.02]	0.93	[0.84; 1.04]	0.96	[0.88; 1.05]
Western Immigrant	120162	1.00	-	0.92	[0.86; 0.99]	1.01	[0.93; 1.09]	1.06	[1.03; 1.10]	1.18	[1.11; 1.24]	1.18	[1.12; 1.24]
Non-western immigrant	218679	1.00	-	0.89	[0.84; 0.93]	0.92	[0.88; 0.98]	1.02	[1.00; 1.04]	1.08	[1.04; 1.12]	1.09	[1.05; 1.12]
<b>Cohabitation status</b>													
Single	633585	1.00	-	0.88	[0.86; 0.90]	0.91	[0.88; 0.93]	1.00	[0.99; 1.01]	1.03	[0.98; 1.07]	N/A	N/A
Cohabiting	420793	1.00	-	0.87	[0.85; 0.90]	0.92	[0.89; 0.95]	0.98	[0.97; 0.99]	1.01	[0.97; 1.06]	N/A	N/A
Married	892913	1.00	-	0.89	[0.88; 0.90]	0.92	[0.90; 0.94]	0.99	[0.98; 0.99]	1.01	[0.98; 1.03]	N/A	N/A
<b>Educational level (ISCED)</b>													
ISCED15 level 1-2	1297050	1.00	-	0.89	[0.87; 0.90]	0.91	[0.89; 0.92]	0.99	[0.98; 1.00]	1.02	[1.00; 1.03]	1.00	[0.99; 1.01]
ISCED15 level 3-4	529165	1.00	-	0.88	[0.86; 0.90]	0.90	[0.88; 0.93]	0.98	[0.97; 0.99]	1.02	[1.00; 1.04]	1.02	[1.01; 1.03]
ISCED15 level 5-8	319925	1.00	-	0.89	[0.86; 0.92]	0.97	[0.94; 1.00]	1.02	[1.01; 1.04]	1.11	[1.09; 1.14]	1.08	[1.06; 1.10]
<b>Disposable income</b>													
Lowest quintile	419122	1.00	-	0.86	[0.83; 0.89]	0.89	[0.85; 0.92]	1.00	[0.98; 1.01]	1.02	[1.00; 1.05]	1.00	[0.98; 1.02]
Second quintile	422225	1.00	-	0.87	[0.84; 0.90]	0.88	[0.85; 0.91]	0.98	[0.96; 0.99]	1.01	[0.99; 1.04]	0.98	[0.96; 1.00]
Third quintile	424081	1.00	-	0.89	[0.86; 0.91]	0.90	[0.88; 0.93]	0.97	[0.96; 0.98]	0.98	[0.96; 1.00]	0.96	[0.95; 0.98]
Fourth quintile	425069	1.00	-	0.88	[0.86; 0.90]	0.90	[0.88; 0.93]	0.98	[0.97; 0.99]	0.99	[0.97; 1.01]	0.97	[0.95; 0.98]
Highest quintile	424457	1.00	-	0.88	[0.87; 0.90]	0.92	[0.90; 0.94]	0.98	[0.97; 0.99]	0.99	[0.98; 1.01]	0.99	[0.98; 1.00]
<b>Healthcare usage</b>													
Rare	439469	1.00	-	0.87	[0.84; 0.90]	0.94	[0.91; 0.98]	1.01	[0.99; 1.02]	0.99	[0.97; 1.02]	0.97	[0.95; 0.99]
Low	491164	1.00	-	0.87	[0.85; 0.89]	0.88	[0.86; 0.91]	0.98	[0.96; 0.99]	0.99	[0.97; 1.01]	0.98	[0.96; 1.00]
Average	467980	1.00	-	0.87	[0.85; 0.89]	0.90	[0.87; 0.92]	0.98	[0.97; 0.99]	1.01	[0.99; 1.03]	0.99	[0.98; 1.01]
High	404486	1.00	-	0.89	[0.87; 0.91]	0.91	[0.88; 0.93]	0.99	[0.98; 1.00]	1.02	[1.00; 1.04]	0.99	[0.98; 1.01]
Frequent	416901	1.00	-	0.91	[0.89; 0.93]	0.93	[0.91; 0.96]	0.98	[0.97; 0.99]	1.02	[1.01; 1.04]	1.02	[1.01; 1.03]

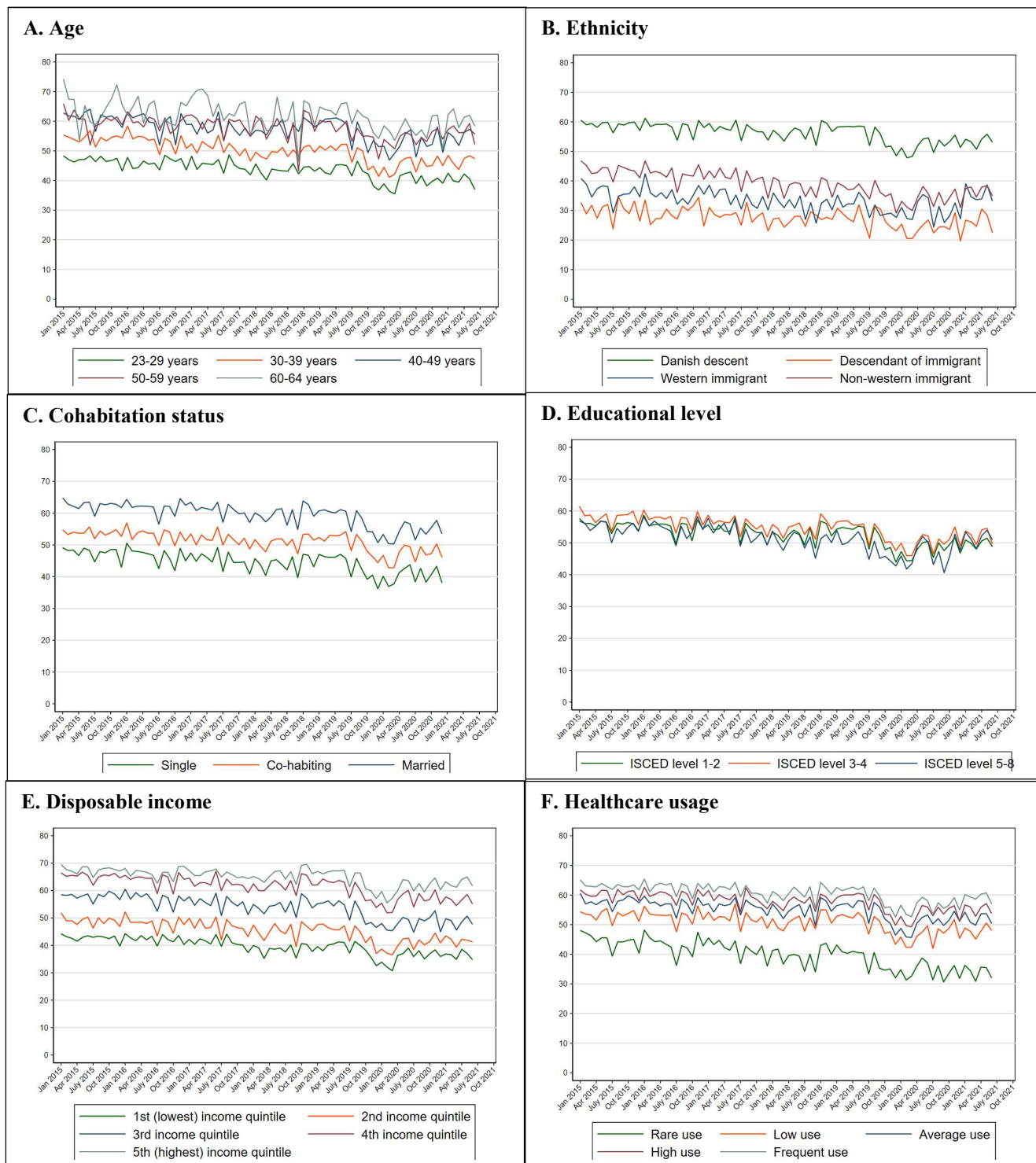
479

480 \* Adjusted for month, year and age at invitation; PR=prevalence ratio; CI=confidence interval; ISCED=International  
481 Standard Classification of Education

482 **Supplementary Figure 2. Proportion of women participating in cervical cancer screening in**  
 483 **Denmark within 90 days since invitation from 2015 to 2021 stratified by the explanatory**  
 484 **variables**  
 485  
 486

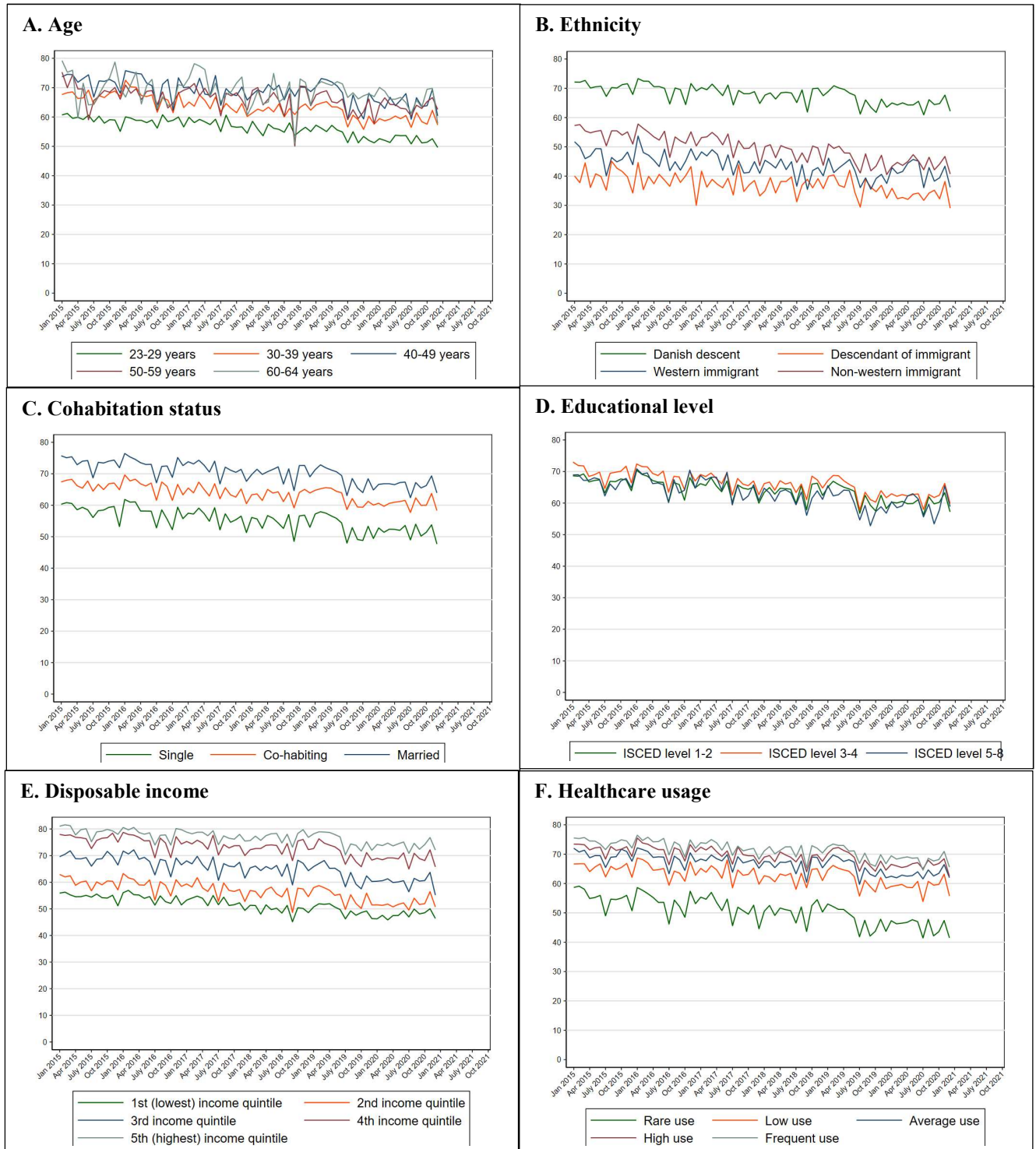


487 **Supplementary Figure 3. Proportion of women participating in cervical cancer screening in**  
 488 **Denmark within 180 days since invitation from 2015 to 2021 stratified by the explanatory**  
 489 **variables**  
 490  
 491





492 **Supplementary Figure 4. Proportion of women participating in cervical cancer screening in**  
 493 **Denmark within 365 days since invitation from 2015 to 2021 stratified by the explanatory**  
 494 **variables**  
 495  
 496  
 497



498 **REFERENCES**

499

- 500 1. Dansk Selskab for Almen Medicin. Forslag til begrænsning af smittespredning i  
501 almen praksis 2020 [Available from: [https://www.dsam.dk/files/366/gul\\_groen\\_liste.pdf](https://www.dsam.dk/files/366/gul_groen_liste.pdf).  
502 2. Smith MA, Burger EA, Castanon A, de Kok I, Hanley SJB, Rebolj M, et al. Impact  
503 of disruptions and recovery for established cervical screening programs across a range of high-  
504 income country program designs, using COVID-19 as an example: A modelled analysis. *Prev*  
505 *Med.* 2021;151:106623.  
506 3. Castanon A, Rebolj M, Pesola F, Pearmain P, Stubbs R. COVID-19 disruption to  
507 cervical cancer screening in England. *J Med Screen.* 2022:9691413221090892.  
508 4. Cancer Registry of Norway. Cancer in Norway 2020 - Cancer incidence, mortality,  
509 survival and prevalence in Norway. Oslo, Norway: Cancer Registry of Norway; 2021.  
510 5. Meggetto O, Jembere N, Gao J, Walker MJ, Rey M, Rabeneck L, et al. The impact  
511 of the COVID-19 pandemic on the Ontario Cervical Screening Program, colposcopy and  
512 treatment services in Ontario, Canada: a population-based study. *Bjog.* 2021;128(9):1503-10.  
513 6. Ivanuš U, Jerman T, Gašper Oblak U, Meglič L, Florjančič M, Strojjan Fležar M, et  
514 al. The impact of the COVID-19 pandemic on organised cervical cancer screening: The first  
515 results of the Slovenian cervical screening programme and registry. *Lancet Reg Health Eur.*  
516 2021;5:100101.  
517 7. Harder E, Juul KE, Jensen SM, Thomsen LT, Frederiksen K, Kjaer SK. Factors  
518 associated with non-participation in cervical cancer screening - A nationwide study of nearly  
519 half a million women in Denmark. *Prev Med.* 2018;111:94-100.  
520 8. Hertzum-Larsen R, Kjær SK, Frederiksen K, Thomsen LT. Participation in cervical  
521 cancer screening among immigrants and Danish-born women in Denmark. *Prev Med.*  
522 2019;123:55-64.  
523 9. Badre-Esfahani S, Larsen MB, Seibæk L, Petersen LK, Blaakær J, Andersen B. Low  
524 attendance by non-native women to human papillomavirus vaccination and cervical cancer  
525 screening - A Danish nationwide register-based cohort study. *Prev Med Rep.* 2020;19:101106.  
526 10. Statistics Denmark [15/01/2021]. Available from: <https://www.dst.dk/en#>.  
527 11. Schmidt M, Pedersen L, Sørensen HT. The Danish Civil Registration System as a  
528 tool in epidemiology. *Eur J Epidemiol.* 2014;29(8):541-9.  
529 12. Schmidt M, Schmidt SAJ, Adelborg K, Sundbøll J, Laugesen K, Ehrenstein V, et al.  
530 The Danish health care system and epidemiological research: from health care contacts to  
531 database records. *Clin Epidemiol.* 2019;11:563-91.  
532 13. Bonde J, Schroll JB, Kristensen BK, Lynge E, Waldstrøm M, Andersen B. [Phased  
533 implementation of HPV-based cervical cancer screening in Denmark]. *Ugeskr Laeger.*  
534 2022;184(9).  
535 14. Statens Serum Institut. Overvågningdata for covid-19 i Danmark og Europa  
536 [17/01/2021]. Available from: <https://covid19.ssi.dk/overvagningsdata>.  
537 15. Pottegård A, Kristensen KB, Reilev M, Lund LC, Ernst MT, Hallas J, et al. Existing  
538 Data Sources in Clinical Epidemiology: The Danish COVID-19 Cohort. *Clin Epidemiol.*  
539 2020;12:875-81.  
540 16. Statens Serum Institut. Vaccination mod covid-19 [17/01/2021]. Available from:  
541 <https://covid19.ssi.dk/vaccination>.  
542 17. Rygaard C. The Danish Quality Database for Cervical Cancer Screening. *Clin*  
543 *Epidemiol.* 2016;8:655-60.  
544 18. Gjerstorff ML. The Danish Cancer Registry. *Scand J Public Health.* 2011;39(7  
545 Suppl):42-5.  
546 19. Bjerregaard B, Larsen OB. The Danish Pathology Register. *Scand J Public Health.*  
547 2011;39(7 Suppl):72-4.  
548 20. Andersen JS, Olivarius Nde F, Krasnik A. The Danish National Health Service  
549 Register. *Scand J Public Health.* 2011;39(7 Suppl):34-7.

- 550 21. Kirkegaard P, Edwards A, Andersen B. Balancing risks: Qualitative study of  
551 attitudes, motivations and intentions about attending for mammography during the COVID-19  
552 pandemic. *Scand J Public Health*. 2021;49(7):700-6.
- 553 22. Wilson R, Quinn-Scoggins H, Moriarty Y, Hughes J, Goddard M, Cannings-John R,  
554 et al. Intentions to participate in cervical and colorectal cancer screening during the COVID-19  
555 pandemic: A mixed-methods study. *Prev Med*. 2021;153:106826.
- 556 23. Walker MJ, Meggetto O, Gao J, Espino-Hernández G, Jembere N, Bravo CA, et al.  
557 Measuring the impact of the COVID-19 pandemic on organized cancer screening and diagnostic  
558 follow-up care in Ontario, Canada: A provincial, population-based study. *Prev Med*.  
559 2021;151:106586.
- 560 24. Thygesen LC, Daasnes C, Thaulow I, Brønnum-Hansen H. Introduction to Danish  
561 (nationwide) registers on health and social issues: structure, access, legislation, and archiving.  
562 *Scand J Public Health*. 2011;39(7 Suppl):12-6.
- 563
- 564