

Article

Combined BRCA2 and MAGEC3 expression predict outcome in Advanced Ovarian Cancers

Emmanuel B. Omole¹, Iqbal Aijaz¹, James Ellegate Jr¹, Emily Isenhardt^{1,2}, Mohamed M. Desouki³, Michalis Mastroi¹, Kristen Humphrey¹, Emily M. Dougherty¹, Spencer R. Rosario², Kent L. Nastiuk^{1,4}, Joyce E. Ohm^{1*} and Kevin H. Eng^{1,2}

¹ Department of Cancer Genetics and Genomics, Roswell Park Comprehensive Cancer Center, Buffalo, NY 14263, USA

² Department of Biostatistics and Bioinformatics, Roswell Park Comprehensive Cancer Center, Buffalo, NY 14263, USA

³ Department of Pathology, Roswell Park Comprehensive Cancer Center, Buffalo, NY 14263, USA

⁴ Department of Urology, Roswell Park Comprehensive Cancer Center, Buffalo, NY 14263, USA

* Correspondence: joyce.ohm@roswellpark.org

Simple Summary: Early detection of ovarian cancer is a significant clinical challenge, with most women presenting with advanced stages of disease at initial diagnosis. The aim of this study was to evaluate the role of MAGEC3 and BRCA2 in epithelial ovarian cancer progression. We evaluated the effect of MAGEC3 and BRCA2 on the other's expression. We tested this in humans using immunohistochemical staining of human tumor samples obtained from patients with epithelial ovarian cancer (n = 357). We found a weak inverse correlation between MAGEC3 and BRCA2 expression in epithelial ovarian cancers. Further, our data suggests that the combined expression of MAGEC3 and BRCA2 may be a better predictor of outcomes in patients than the individual markers alone.

Abstract: Like *BRCA2*, *MAGEC3* is an ovarian cancer predisposition gene that has been shown to have prognostic significance in ovarian cancer patients. Despite the clinical significance of each individual gene, no studies have been done to assess the clinical significance of their combined expression. We therefore sought to determine the relationship between *MAGEC3* and *BRCA2* expression in ovarian cancer and their association with patient characteristics and outcomes. Immunohistochemical staining was quantitated on tumor microarrays of human tumor samples obtained from 357 patients with epithelial ovarian cancer to ascertain *BRCA2* expression levels. In conjunction with our previously published *MAGEC3* expression data, we observed a weak inverse correlation of *MAGEC3* with *BRCA2* expression ($r = -0.15$; $p < 0.05$) in cases with full-length *BRCA2*. Patients with optimal cytoreduction, loss of *MAGEC3*, and detectable *BRCA2* expression had better overall (median OS: 127.9 vs 65.3 months, $p = 0.035$) and progression-free (median PFS: 85.3 vs 18.8 months, $p = 0.002$) survival compared to patients that were *BRCA2* expressors with *MAGEC3* normal levels. Our results suggest that combined expression of *MAGEC3* and *BRCA2* serves as a better predictor of prognosis than each marker alone.

Keywords: ovarian cancer; immunohistochemistry; *MAGEC3*; *BRCA2*

1. Introduction

Ovarian cancer is a heterogeneous disease and it remains the leading cause of mortality from gynecologic malignancies, with more than 19,000 new cases and 12,810 deaths expected in the United States in 2022 [1]. Epithelial ovarian cancer (EOC), which accounts for over 90% of all ovarian cancers, is comprised of five distinct subtypes, amongst which high-grade serous ovarian carcinoma (HGSOC) is the most commonly diagnosed [2]. HGSOC is also the most lethal subtype, accounting for about 70% of all epithelial ovarian cancer cases [3, 4] and 70%–80% of all ovarian cancer deaths [5] due to it being diagnosed at an advanced stage [6].

Since most women present with advanced stages of disease at initial diagnosis [4, 7, 8], early detection of ovarian cancer remains an increasingly important clinical challenge [2, 8, 9]. There is a compelling argument for novel ovarian cancer screening methodologies, given that the current strategy results in early detection of ovarian cancer in only ~20% of patients [10]. Advances in ovarian cancer diagnosis include the use of genetic testing to identify mutated genes associated with epithelial ovarian cancer in patients with a known family history of breast and ovarian cancer, such as *TP53*, *PIK3CA*, *KRAS*, and *BRCA1/2* [2, 8].

BRCA1/2 genes encode proteins involved in the repair of DNA double-strand breaks via the homologous recombination pathway [11–14]. Germline and somatic mutations, as well as promoter methylation, are the common causes of *BRCA1/2* dysfunction [15, 16] which impairs DNA repair leading to increased risk of tumorigenesis [17]. *BRCA2* mutations specifically are associated with a 15–30% lifetime risk of ovarian cancer [18]. Most of the deleterious mutations that have been identified in ovarian cancer families are frameshift (insertions or deletions) mutations or nonsense mutation which result in premature termination of the protein-coding sequences [19–22]. Resultant *BRCA2* mutant proteins retain their N-terminal transactivation domain which enables its recombinational repair and checkpoint roles [23–25] but the C-terminal, which harbors the nuclear localization signals (NLS), is lost [25]. The inability to translocate into the nucleus explains why these mutants are nonfunctional and unable to facilitate the DNA repair process in most cases [20, 25, 26].

BRCA1/2 mutations serve as a marker of vulnerability to PARP inhibitors (olaparib, rucaparib, and niraparib). These have become viable treatment options for patients with advanced epithelial ovarian cancer due to enhanced clinical effectiveness and tolerable toxicity [27–31]. While women with *BRCA1/2* mutations retain the best response to PARP inhibitors [32], tumors with genomic instability still show clinically significant response to therapy [33], prompting researchers to consider whether other markers like ATM, FANCA/F, CHK2, RAD51B/C, and CDK12 could be used as de facto surrogate markers of deficient homologous repair [34, 35] to expand the pool of women who could benefit from PARP inhibitor therapy.

One such potential marker is MAGEC3. MAGEC3 is a member of the “Type II” melanoma antigen gene (MAGE) family by DNA sequence homology and has low but ubiquitous protein expression in most tissues with high expression in testes and tonsil [36]. In the context of cancer, members of the family have shown varying functions in DNA repair and cell cycle regulation, [37, 38] as well as potential application as markers of stemness in cancer cells [39]. Biochemically, MAGE proteins bind specifically to E3 RING ubiquitin ligases through their MAGE homology domains (MHDs) and regulate protein ubiquitination by enhancing E3 ligase activity [37, 38, 40, 41]. Previously, we described a linkage between early-onset ovarian cancers [42] and MAGEC3 [43, 44] and more recently found that MAGEC3 is a potential prognostic biomarker in ovarian cancer, as loss levels were associated with a favorable progression-free survival (PFS) in ovarian cancer patients [36].

The relationship between both *BRCA2* and MAGEC3 protein expression and their clinical significance in ovarian carcinoma is unknown. Immunohistochemistry (IHC) is a low-cost and easily accessible technique that allows for the query of both N- and C-terminal domains of the *BRCA2* protein, including protein truncation of the C-terminal of the

BRCA2 protein which severely diminishes protein function [45]. Similarly, IHC has also been used to detect expression of the MAGEC3 protein [36, 46]. Herein, we describe the relationship between MAGEC3 and BRCA2 in patient samples using IHC and tested the hypothesis that their co-expression is correlated with clinical outcome.

2. Materials and Methods

2.1. Ovarian Cancer Patients

Two cohorts of patients were used: (1) Patients with advanced high-grade serous ovarian carcinoma treated at Roswell Park Cancer Institute (RPCI) who had previously had BRCA2 genetic testing. This cohort was used for the pilot experiment and classified into three categories based on the results of the genetic testing: BRCA2-Wildtype, BRCA2-Mutant, and BRCA2-Loss. (2) Patients with a primary diagnosis of ovarian cancer treated at RPCI by maximal debulking surgery and first-line platinum-based chemotherapy between 2000 and 2012 were obtained from a curated database under an institutional review board-approved protocol. Tumor blocks from these cohorts were taken during primary debulking surgery and prior to the initiation of systemic therapy.

In total, there were $n = 3$ ovarian cancer patients from cohort 1 with sequenced tumor samples processed as whole tissue sections for the pilot experiment and $n = 357$ ovarian cancer patients from cohort 2 with unsequenced tumor samples for the tissue microarray analysis. The detailed handling protocol for the tissue specimens has been previously described [47].

2.2. Whole Tissue Sections

The whole tissue sections derived from formalin-fixed and paraffin-embedded tumor tissues obtained from three sets of sequenced ovarian tumor cases in cohort 1 to qualify antibody reactivity. IHC H-scores were generated using $n=30$ photographs of randomly selected fields on each slide.

2.3. Tissue Microarray (TMA) Construction

The tissue microarrays (TMA) were constructed using formalin-fixed and paraffin-embedded tumor tissues punched from each donor block from cohort 2. Triplicate TMAs (containing three representative cores from each tumor) were prepared and stained to assess tumor heterogeneity. These TMAs included all epithelial ovarian cancer subtypes, non-tumor control tissues, and reference cores for normalization across different blocks.

2.4. Antibody Validation

The Human Protein Atlas [48] (HPA052067) was used to vet the BRCA2 antibodies, in accordance with the International Working Group for Antibody Validation [49] and were evaluated and authorized for IHC and supported for antigen specificity. The BRCA2 antibodies are directed against the BRCA2 C-terminal amino acids (2587–2601 amino acids, Abcam ab53887, Cambridge, MA, USA) and BRCA2 N-terminal amino acids (100–150 amino acids, Proteintech 19791-1-AP, Rosemont, IL, USA).

The MAGEC3 antibody has been previously described [36].

2.5. Immunohistochemistry

Formalin-fixed paraffin sections were cut at a thickness of $4\mu\text{m}$, placed on glass slides and heated at 60°C for 1 hour. The TMA sections were then deparaffinized with xylene and ethanol and rinsed in water. For antigen retrieval, slides were pretreated in an antigen retrieval high pH solution (catalog #GV804, Dako, Santa Clara, CA, USA) for 20 min and allowed to cool for 20 min at room temperature. The slides were incubated with a solution

of 3% H₂O₂ for 10 minutes. “BRCA2 N-terminal” antibody (catalog #19791-1-AP, Proteintech, Rosemont, IL, USA) was added to one set of slides at 1:500 dilution while “BRCA2 C-terminal” antibody (catalog# ab53887, Abcam, Cambridge, MA, USA) was added to the other set of slides at 1:500 dilution and incubated for 60 minutes at room temperature. This was followed by incubation with biotinylated goat anti-rabbit secondary antibody (catalog # 14708, Cell Signaling Technology, Boston, MA, USA), 1:1000 dilution for 15 minutes at room temperature. ABC reagent (catalog #PK 6100, Vector Labs, Burlingame, CA) was used for signal enhancement and applied for 30 minutes. Slides were incubated for 5 minutes with 3,3'-diaminobenzidine (DAB) substrate (catalog #K3467, Dako, Carpinteria, CA) and then counterstained for 20 seconds with DAKO Hematoxylin (catalog #CS700, Dako, Carpinteria, CA). Slides were dehydrated in several baths of graded alcohols and xylenes prior to being cover slipped.

TMA were previously stained for MAGEC3 as described [36].

2.6. Digital Image Analysis

Digital images of both IHC-stained whole tissue sections and IHC-stained TMA slides were captured using a whole slide scanner at 10X magnification (Leica ScanScope, Aperio Technologies, UK), and the digital images were stored in SVS format (Aperio). The digital images were retrieved using a file management web interface (eSlide Manager, Aperio) and reviewed with the server software (ImageScope, Aperio, version 12.3.3.5048). Digital images of representative whole tissue section fields and TMA cores were extracted through the server software (ImageScope, Aperio, version 12.3.3.5048) at 10× magnification and quantified into H-scores using an automated IHC profiler built in a digital image analysis software (ImageJ version 1.52a, National Institute of Health, USA) [50].

2.7. Statistical Methods

After the IHC scoring was complete, the optimal cutpoint of the IHC staining score for BRCA2 expression was determined using H-scores obtained for the C-terminal of the sequenced ovarian tumor cases with the aid of the R package, *cutpointsr* [179]. We stratified the BRCA2 C-terminal H-scores into two different groups (BRCA2 expressors and BRCA2 non-expressors).

All statistical analyses were performed using the R 3.1.2 statistical computing language. Associations between BRCA2/MAGEC3 expression and categorical variables were tested by chi-square tests and continuous variables were tested by one way ANOVA tests. Survival probabilities were calculated by Kaplan-Meier analysis using log-rank testing. A nominal significance threshold of 0.05 was used unless otherwise specified. The multivariate analysis included stage, categorized as early (I, II, IIIA, or IIIB) or late (IIIC or IV), grade (1 vs. 2/3), debulking status (optimal vs. suboptimal), and platinum-sensitive versus refractory disease.

3. Results

3.1. Validation of IHC Measurements of BRCA2 Protein Expression in Cancer Tissue

We first tested whether IHC BRCA2 protein expression confirmed the predicted expression by molecularly characterized and sequenced ovarian tumor samples. The adopted two-antibody IHC strategy, which utilizes antibodies specific towards the N-terminus and C-terminus, allows for discrimination between the presence of normal protein, protein truncation, and loss of protein expression in the tumor samples (**Figure 1A**). These antibodies were applied to three cases confirmed to have BRCA2 wild type (WT), BRCA2 truncating mutation in exon 11 (Mutant), and total loss of BRCA2 (Loss) through sequencing. Visual analysis of IHC staining shows that, as expected, wildtype samples have adequate staining observed with both the N-terminal and C-terminal antibodies, mutant

samples have staining only at the N-terminal and not the C-terminal, and BRCA2 loss has poor staining intensity seen with for both antibodies (**Figure 1B**). 194
195

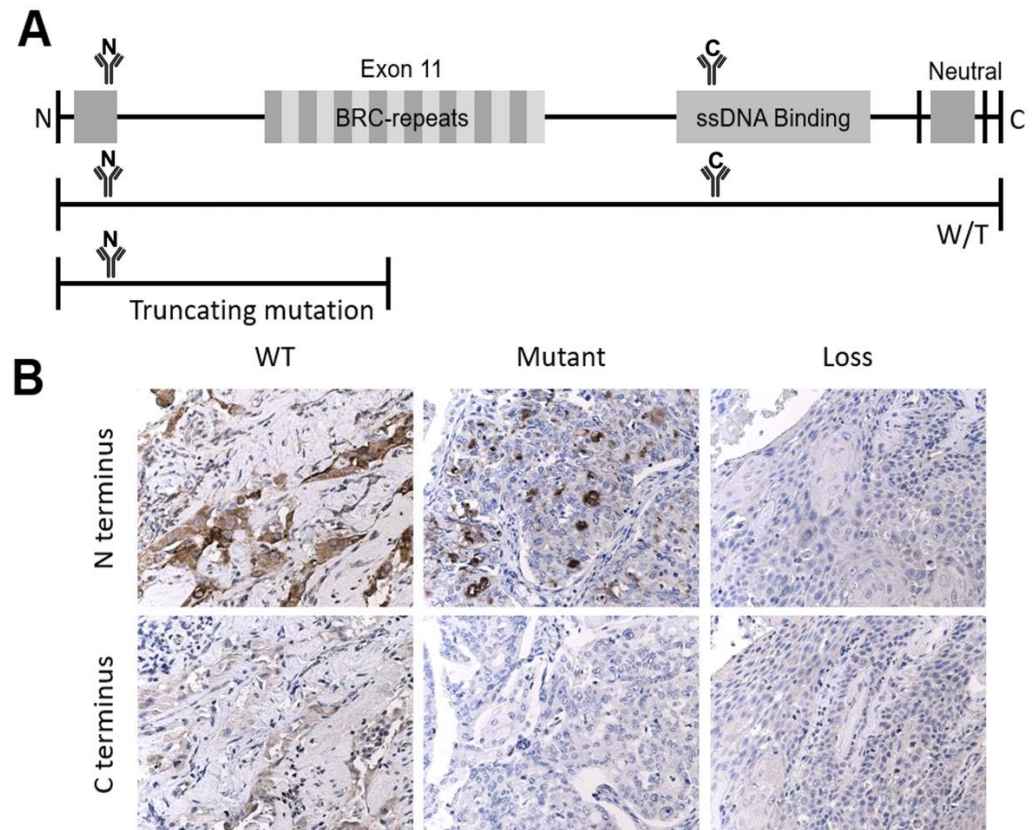


Figure 1. Schematic showing immunohistochemical staining of BRCA2 protein using two-antibody strategy. (A) A full-length gene model, a full-length wild-type protein model bound by both the N-terminal and C-terminal antibodies, and a truncated protein bound by only the N-terminal antibody (loss protein model not shown as it is not expressed and therefore cannot be bound by either antibody). (B) Representative images of sequenced ovarian cases with known genomic status. Wild-type (WT) expression pattern with staining of strong intensity with N-terminal antibody (top left) and moderate intensity with C-terminal antibody (bottom left) in some of the tumor cell nuclei; aberrant expression with moderate staining intensity with N-terminal antibody (top middle) and poor staining intensity with C-terminal antibody (bottom middle) in the verified case with truncating mutation (Mutant); poor staining intensity of both N-terminal (top right) and C-terminal (bottom right) antibodies in the verified case with BRCA2 loss (Loss). 196
197
198
199
200
201
202
203
204
205
206
207
208

To further validate this strategy, the staining intensity and percentage of positive tumor cells was quantified using an automated IHC H-scoring algorithm built in ImageJ. The resulting H-scores show that N-terminal expression levels are significantly different between BRCA2 wild type, BRCA2 mutant, and BRCA2 loss in sequenced cases (WT vs Mutant: t-test, $p < 0.001$; WT vs Loss: $p < 0.001$; Mutant vs Loss: $p < 0.001$) (**Figure S1**). However, given that a truncating mutation renders the protein non-functional, samples that demonstrate lack of C-terminal staining should functionally mimic BRCA2 loss. The difference in C-terminal expression levels when BRCA2 wildtype was compared to BRCA2 mutant and BRCA2 loss cases was observed to be statistically significant (WT vs Mutant: t-test, $p < 0.001$; WT vs Loss: $p < 0.001$), while the difference in C-terminal expression levels for the BRCA2 mutant and BRCA2 loss cases was not statistically significant (Mutant vs Loss: t-test, $p = 0.9$) (**Figure 2A**). Given its ability to differentiate wild-type cases from the functionally impaired mutant and loss cases, C-terminal scoring was used for further analyses. C-terminal scores for the BRCA2 mutant and BRCA2 loss cases were combined and termed "BRCA2 non-expressors" while the BRCA2 wild-type cases were termed "BRCA2 expressors." When the same IHC strategy was applied to 357 unsequenced patient samples with unknown BRCA2 status, we used the C-terminal expression levels of the BRCA2 209
210
211
212
213
214
215
216
217
218
219
220
221
222
223
224
225

expressors and non-expressors to determine an optimal cutoff point for stratifying the unsequenced cases. The optimal cutoff point utilized to stratify the larger unsequenced cohort of patients into “BRCA2 expressors” and “BRCA2 non-expressors” was a H-score of 49.5 (Figure 2B).

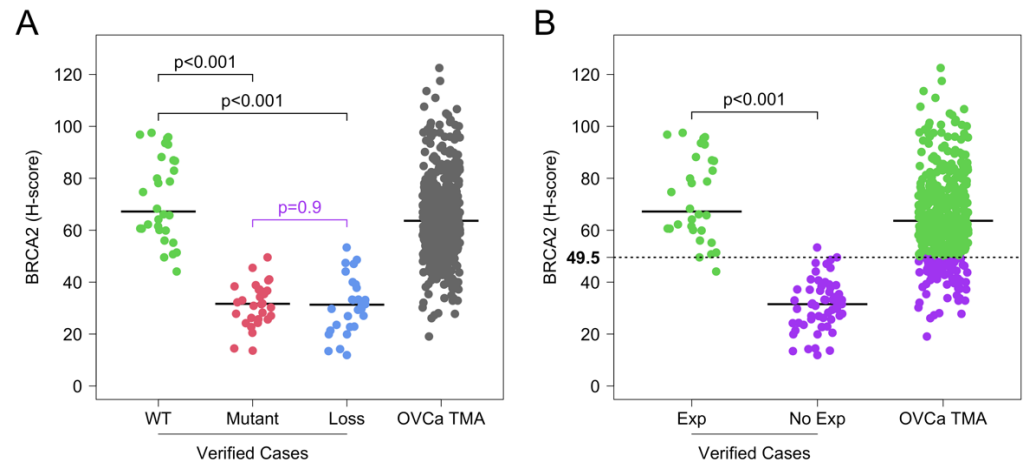


Figure 2. BRCA2 protein expression in the sequenced ovarian tumor cases and unsequenced TMAs. (A) C-terminal expression of the BRCA2 wildtype (WT) is statistically different compared to BRCA2 mutant (Mutant) and BRCA2 loss (Loss) in the sequenced ovarian tumor cases, but there is no statistical difference between the Mutant and Loss cases. This was plotted alongside the distribution of unsequenced TMA H-scores. (B) For the sequenced ovarian tumor cases, BRCA2 C-terminal expression of the WT was categorized as BRCA2 expressors (Exp) while those of the Mutant and Loss were grouped as BRCA2 non-expressors (No Exp). An optimal cutoff point of 49.5 was determined based on the C-terminal expression levels of the sequenced ovarian tumor cases and was used to stratify the unsequenced ovarian cancer TMA (OVCA TMA) H-scores into Exp and No Exp.

MAGEC3 protein expression quantitation by IHC for patients in this cohort was previously reported in a recent publication from our lab [36]. Expression levels were dichotomized at the median into either "MAGEC3 Normal" or "MAGEC3 Loss" based on the findings that higher levels of MAGEC3 were not significantly different from expression in normal ovary tissue (t-test, $p = 0.368$), while lower levels of MAGEC3 were significantly lower (t-test, $p < 0.001$). Given our interest in the combined effect of MAGEC3 and BRCA2 expression levels on patient prognosis, we used MAGEC3 expression data from the prior publication as well as the BRCA2 levels ascertained in this study for subsequent analyses.

3.2. Clinical Characteristics of Ovarian Cancer Microarray Patient Population

A total of 357 tumor tissues from patients with ovarian and primary peritoneal cancer were analyzed using IHC. From the demographic information of de-identified patients in this study (Table 1), the mean age of diagnosis was 63 years (range 21-93 years) and 52.1% of patients were diagnosed after 2006. Most of the patients were white (334; 94.9%), non-Hispanic (350; 99.4%), and presented with advanced/late-stage disease (81.5%), poorly differentiated tumors (73.5%) and serous histology (79.6%). Platinum-sensitive disease was demonstrated in 156 of the 357 patients (55.5%) with 125 patients classified as platinum resistant or treatment refractory (42.5%). For survival data, the patients were followed for an average of 65.2 months (maximum 274.2 months).

Using the optimal cutoff point calculated above, 299/357 (83.8%) of the patients were classified as BRCA2 expressors while 58/357 (16.2%) were BRCA2 non-expressors. Using the previously reported stratification of MAGEC3, 173/357 (48.5%) of patients in this cohort are MAGEC3 loss while 184/357 (51.5%) are MAGEC3 normal. When considering the combination of BRCA2 and MAGEC3 levels, 34 (9.5%) were BRCA2 non-expressors and showed MAGEC3 loss levels, 139 (40%) were BRCA2 expressors with MAGEC3 loss levels, 24 (6.7%) were BRCA2 non-expressors with MAGEC3 normal levels, and 160 (44.8%) were BRCA2 expressors with MAGEC3 normal levels. Through extensive statistical

analysis, BRCA2 expression and normal MAGEC3 levels were associated with cases as- 269
certained after 2006 (Chi-sq test, $p < 0.001$), ovary as primary site of origin (Chi-sq test, 270
 $p < 0.001$), poorly/undifferentiated tumors (Chi-sq test, $p = 0.03$) and serous histology (Chi- 271
sq test, $p < 0.001$). 272
273

Table 1. Clinical characteristics of the ovary discovery cohort by MAGEC3 and BRCA2 protein expression level 274

Characteristic	All Ovary Patients <i>n</i> = 357	MAGE ^{loss}		MAGE ^{normal}		<i>p</i> -Value
		BRCA2 ^{exp(-)} <i>n</i> = 34	BRCA2 ^{exp(+)} <i>n</i> = 139	BRCA2 ^{exp(-)} <i>n</i> = 24	BRCA2 ^{exp(+)} <i>n</i> = 160	
Age of Diagnosis [years]						
Mean (Range)	63 (21-93)	61 (21-85)	63 (31-93)	69 (47-89)	63 (21-89)	0.1†
Missing	0	0	0	0	0	
Year of Diagnosis [n (%)]						
Before 2006	177 (52.1)	14 (43.8)	104 (81.9)	5 (21.7)	54 (34.2)	<0.001‡
After 2006	163 (47.9)	18 (56.3)	23 (18.1)	18 (78.3)	104 (65.8)	
Missing	17	2	12	1	2	
Race [n (%)]						
White	334 (94.9)	31 (94)	130 (96.3)	24 (100)	149 (93.1)	0.2§
Black or African American	8 (2.3)	1 (3)	0 (0)	0 (0)	7 (4.4)	
Other	10 (2.8)	1 (3)	5 (3.7)	0 (0)	4 (2.5)	
Missing	5	1	4	0	0	
Hispanic [n (%)]						
No	350 (99.4)	34 (100)	133 (99.3)	24 (100)	159 (99.4)	0.9§
Yes	2 (0.6)	0 (0)	1 (0.7)	0 (0)	1 (0.6)	
Missing	5	0	5	0	0	
Primary [n (%)]						
Ovary	310 (88.1)	27 (81.8)	131 (94.9)	16 (66.7)	136 (86.6)	<0.001‡
Primary Peritoneal	42 (11.9)	6 (18.2)	7 (5.1)	8 (33.3)	21 (13.4)	
Missing	5	1	1	0	3	
FIGO Stage [n (%)]						
I/II/III A/B	65 (18.5)	8 (24.2)	28 (20.6)	4 (17.4)	25 (15.7)	0.6‡
IIIC/IV	286 (81.5)	25 (75.8)	108 (79.4)	19 (82.6)	134 (84.3)	
Missing	6	1	3	1	1	
Grade [n (%)]						
Well/Moderately differentiated	93 (26.5)	5 (14.7)	44 (32.6)	2 (8.3)	42 (26.6)	0.03‡
Poorly/Undifferentiated	258 (73.5)	29 (85.3)	91 (67.4)	22 (91.7)	116 (73.4)	
Missing	6	0	4	0	2	
Histology [n (%)]						
Serous	284 (79.6)	17 (50)	114 (82)	20 (83.3)	133 (83.1)	<0.001‡
Other Epithelial	73 (20.4)	17 (50)	25 (18)	4 (16.7)	27 (16.9)	
Missing	0	0	0	0	0	
Cytoreduction [n (%)]						
R0	98 (27.8)	9 (28.1)	41 (29.9)	5 (20.8)	43 (26.9)	0.09‡
Not R0	255 (72.2)	23 (71.9)	96 (70.1)	19 (79.2)	117 (73.1)	
Missing	4	2	2	0	0	
Platinum sensitivity [n (%)]						
Sensitive	156 (55.5)	9 (37.5)	65 (55.1)	11 (68.8)	71 (57.7)	0.8‡
Resistant	125 (44.5)	15 (62.5)	53 (44.9)	5 (31.3)	52 (42.3)	
Missing	76	10	21	8	37	
Treatment Outcome [n (%)]						
Complete Response	169 (57.5)	9 (37.5)	65 (55.1)	9 (52.9)	86 (63.7)	0.2‡
Not Complete Response	125 (42.5)	15 (62.5)	53 (44.9)	8 (47.1)	49 (36.3)	
Missing	63	10	21	7	25	

n may vary by characteristic due to missing data

†*P*-value was calculated using one-way ANOVA test.

‡*P*-value was calculated using the chi-squared test.

§Chi-squared approximation may be incorrect

3.3. BRCA2 Protein Shows a Weak Negative Correlation with MAGEC3 Expression in Ovarian Cancer Tumor Samples 276
277

The H-scores from the semi-quantitative analysis of MAGEC3 TMAs in our previous study [36] were correlated with the H-scores of BRCA2 TMAs in this current study using a two-sided Pearson's correlation test. The initial assessment of the relationship between MAGEC3 and BRCA2 expression in the tumor samples revealed no correlation (Figure 3A). However, when the cases were stratified based on BRCA2 expression, the MAGEC3 H-scores were shown to be inversely correlated with the H-scores of BRCA2 expressors in the ovarian tumor samples ($r = -0.15$; $p < 0.05$) (Figure 3B), while a positive correlation was observed in the BRCA2 non-expressors ($r = 0.32$; $p < 0.05$) (Figure 3C). 278
279
280
281
282
283
284
285
286

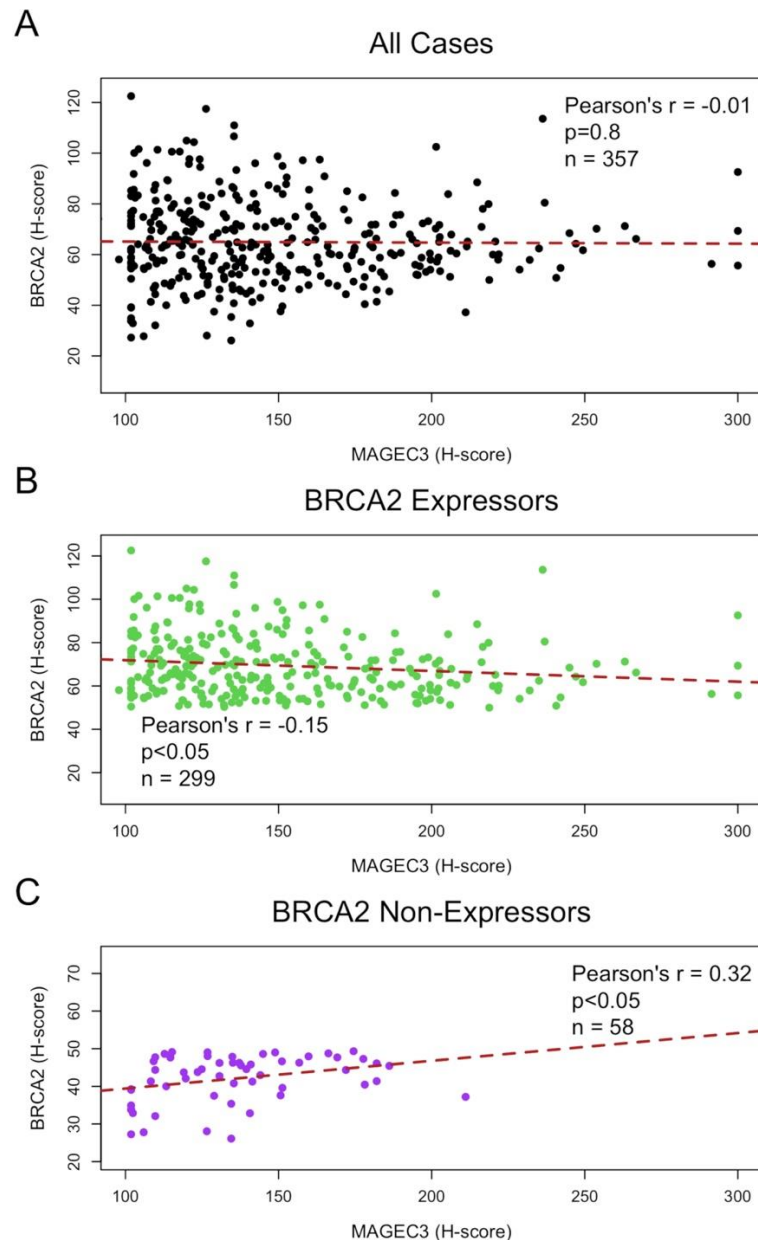


Figure 3. Correlation between MAGEC3 protein and BRCA2 C-terminal protein expression in ovarian tumor TMAs (A) No correlation between MAGEC3 and BRCA2 expression in the tumor samples prior to stratification based on BRCA2 expression levels. (B) MAGEC3 H-scores were observed to be inversely correlated with the H-scores of BRCA2 expressors. (C) MAGEC3 H-scores were observed to be positively correlated with the H-scores of BRCA2 non-expressors. 287
288
289
290
291
292

3.4. MAGEC3 and BRCA2 Association with Prognosis in Epithelial Ovarian Cancer 293

The impact of age at diagnosis, disease stage, grade, histology, cytoreduction status, and *MAGEC3*/*BRCA2* expression on clinical outcome was analyzed using both univariate and multivariate Cox proportional hazards regression analyses (**Table 2**). The age at diagnosis, grade, and R0 cytoreduction were univariately associated with prognosis in epithelial ovarian cancers. Multivariate regression analysis indicated that patients with advanced stage disease (HR = 3.28, 95% CI 2.05-5.26, $p < 0.001$) and poorly/undifferentiated tumors (HR = 1.34, 95% CI 1.02-1.76, $p = 0.04$) were statistically significant predictors of survival.

Table 2. Discovery cohort survival analysis.

Ovarian Cancer		Univariate Analysis (n=357) †			Multivariate Analysis (n=342)		
Covariate	Risk Level	Hazard Ratio	95% CI	p-value‡	Hazard Ratio	95% CI	p-value‡
Age	+10 years	1.3	(1.18-1.42)	< 0.001	1.32	(1.19-1.46)	< 0.001
Stage	I/II/IIIA/B		Reference			Reference	
	IIIC/IV	3.45	(2.4-4.96)	< 0.001	3.28	(2.05-5.26)	< 0.001
Grade	Well/Moderately differentiated		Reference			Reference	
	Poorly/Undifferentiated	1.15	(0.89-1.49)	0.3	1.34	(1.02-1.76)	0.04
Histology	Other Epithelial		Reference			Stratifier§	
	Serous	1.17	(0.87-1.57)	0.3			
Cytoreduction	R0		Reference			Stratifier§	
	Not R0	2.43	(1.84-3.15)	< 0.001			
MAGEC3 and BRCA2	Loss~Exp(-)		Reference			Reference	
	Normal~Exp(-)	1.29	(0.85-1.95)	0.2	1.14	(0.73-1.79)	0.6
	Loss~Exp(+)	1.17	(0.72-1.89)	0.5	1	(0.61-1.63)	1
	Normal~Exp(+)	1.16	(0.91-1.49)	0.2	1.14	(0.88-1.48)	0.3

†n may vary due to missing data

‡P-value calculated using the Wald test

§Covariate violated the proportional hazards assumption

Independent evaluation of the relationship between *BRCA2* expression and patient outcomes in our cohort of advanced ovarian cancer cases revealed that *BRCA2* expression levels did not impact overall survival (log-rank $p = 0.198$) and progression-free survival (log-rank $p = 0.15$) in patients with optimal cytoreduction (**Figure S2**), whereas independent evaluation of *MAGEC3* expression in our previous study revealed that women with *MAGEC3* loss had better progression-free survival (log-rank $p = 0.002$) [36]. In patients with optimal cytoreduction, subgroup analyses of combined expression of *MAGEC3* and *BRCA2* showed that patients that were *BRCA2* expressors with *MAGEC3* loss levels had better overall survival compared to patients that were *BRCA2* expressors with *MAGEC3* normal levels (median OS: 127.9 vs 65.3 months; log-rank $p = 0.035$) (**Figure 4A**). This was also observed for progression free survival (median PFS: 85.3 vs 18.8 months; log-rank $p = 0.002$) (**Figure 4B**). Conversely, in *BRCA2* non-expressor cases, having *MAGEC3* loss levels conferred no survival benefit over *MAGEC3* normal levels in overall survival (log-rank $p = 0.677$) nor progression-free survival (log-rank $p = 0.753$) (**Figure 4C+D**).

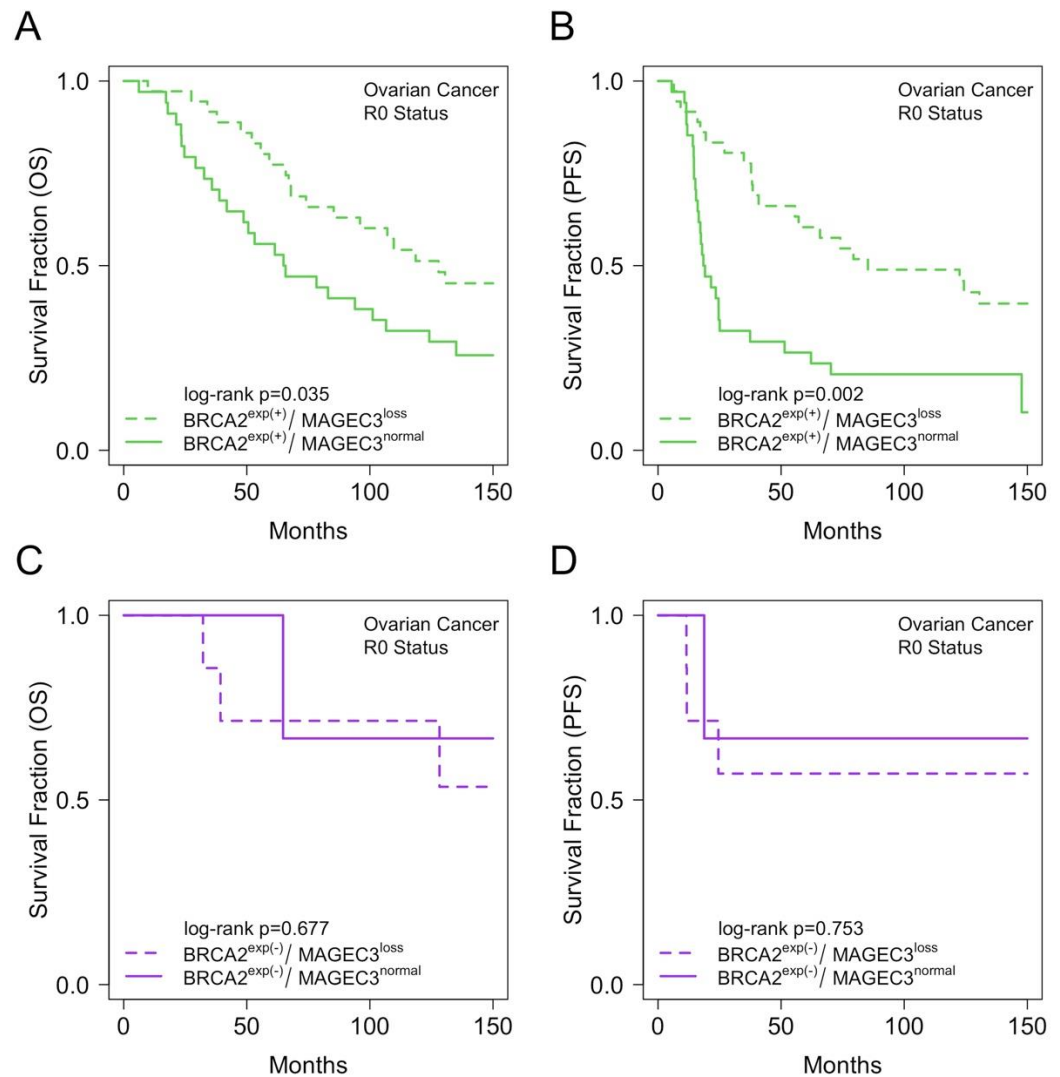


Figure 4. Expression of MAGEC3 and BRCA2 predict outcomes in ovarian cancer patients with optimal cytoreduction. Kaplan–Meier plot showing (A) overall survival trends for MAGEC3 normal and loss cases in BRCA2 expressors, (B) progression-free survival trends for MAGEC3 normal and loss cases in BRCA2 expressors, (C) overall survival trends for MAGEC3 normal and loss cases in BRCA2 non-expressors, (D) progression-free survival trends for MAGEC3 normal and loss cases in BRCA2 non-expressors for ovarian cancer patients with optimal cytoreduction.

4. Discussion

The aims of this study were to evaluate BRCA2 and MAGEC3 for their influence in epithelial ovarian cancer progression and to assess the clinical significance of their combined expression. Like BRCA2 [51], evaluation of MAGEC3 protein expression has been identified as a novel prognostic biomarker in ovarian cancer [36]. However, the relationship between both BRCA2 and MAGEC3 protein expression and their clinical significance in ovarian carcinoma is unknown.

The growing importance of IHC as a tool for detecting protein dysfunction via protein expression profiles, combined with its ease of use and practicality in identifying the protein of interest within the tumor's cellular compartment, makes it a highly appealing technique to measure validated biomarkers. It proved to be a viable and cost-effective approach for determining BRCA2 protein expression in tumor samples for this study, as similarly reported by other studies [52, 53], as well as for determining MAGEC3 protein expression [36]. We used a dual antibody strategy to discriminate differential expression of BRCA2 at both the N-terminal and C-terminal. Because of its ability to differentiate the wild-type case from mutant and loss cases, C-terminal expression was used to define

318

319
320
321
322
323
324

325

326
327
328
329
330
331

332
333
334
335
336
337
338
339
340

BRCA2 expression in a large unsequenced cohort. Prior studies also support the idea that the C-terminal antibody could be useful in screening cancers for BRCA mutations as well as BRCA2 protein expression in patients with unknown mutation status [45, 52, 54]. Using this approach, we identified 83.8% (299/357) of patients as BRCA2 expressors and 16.2% (58/357) as BRCA2 non-expressors.

In the assessment of the relationship between MAGEC3 and BRCA2 proteins in the tumor samples from the unsequenced cohort, there was no significant correlation of protein expression when looking at all cases. However, when we looked at only BRCA2 expressors, there was an inverse correlation with MAGEC3 expression. An interesting conjecture emerges that, like other proteins in the MAGE family, MAGEC3 is interacting with an E3 ligase which leads to the ubiquitination and subsequent degradation of a protein, in this case BRCA2. Because this downregulation was only observed in BRCA2 expressors, it is possible that this downregulation will only occur in cells expressing a full-length BRCA2 protein. Preliminary *in vitro* data from our lab supports this hypothesis, as overexpression of MAGEC3 results in a reduction of BRCA2 protein level in both fibrosarcoma (HT1080) and ovarian cancer (SKOV3) cell lines [55]. It is important to note that both the HT1080 and SKOV3 were reported to have a wild-type *BRCA2* gene [56].

In the unsequenced cohort of patients, survival analyses for overall and progression-free survival showed no significant relationship between BRCA2 expression and patient outcomes; whereas our previous study of the same cohort showed that women with MAGEC3 loss had better progression-free survival [36]. For ovarian cancer patients with optimal cytoreduction, combined expression of MAGEC3 and BRCA2 showed that patients that were BRCA2 expressors with MAGEC3 loss levels had better overall and progression-free survival compared with patients who were BRCA2 expressors with normal MAGEC3 levels. Interestingly, in patients that were BRCA2 non-expressors, MAGEC3 loss levels conferred no survival advantage over MAGEC3 normal levels for both overall survival and progression-free survival. Given our results showing that MAGEC3 downregulates BRCA2, we anticipated that higher levels of MAGEC3 would mimic BRCA2 loss status resulting in susceptibility to platinum-based therapies and prolonged survival. However, we note that the correlation observed in these patients was weak and that the *in vitro* experiments which showed downregulation of BRCA2 were performed at supraphysiological levels of MAGEC3 which would enhance its downregulating effects. A possible explanation for the trends observed is likely related to MAGEC3's additional role in augmenting DNA repair [36]. Additional unpublished data from our lab revealed that ovarian cancer cells expressing MAGEC3 fare better under cisplatin (CDDP) insult by clearing cisplatin adducts [55]. These results led us to conclude that MAGEC3 is a prognostic marker in cases that are BRCA2 expressors and that its role in DNA repair, as opposed to its weaker role in downregulating BRCA2, is responsible for the trends observed. Because MAGEC3 only retains its prognostic ability in BRCA2 expressors, the combined expression remains a better predictor of outcomes in patients than the individual markers alone.

Limitations of our study include the use of only three sequenced ovarian tumor cases with known genomic status to develop our IHC assay, as well as the use of retrospective cohorts for the ovarian cancer TMAs. To reduce batch-processing effects and resulting slide-to-slide variation, the scores were normalized using normal control cores. Slide staining was done by the pathology core facility at Roswell Park Comprehensive Cancer Center using appropriate antibodies for IHC.

Despite these limitations, our study has considerable strengths including the analysis of a large cohort of patients to provide insight into the relationship between MAGEC3 and BRCA2 protein expression in ovarian cancer cases. Additionally, the integration and utilization of the automated semi-quantitative IHC profiler built into Image J for assessment of the expression levels of the proteins eliminated any visual bias and high-level observer variation that might have occurred with conventional and manual pathological TMA slide assessment. This was reported as effective in similar studies [57, 58].

5. Conclusions

The combined expression of MAGEC3 and BRCA2 serves as a better predictor of prognosis than either marker alone, as MAGEC3 only retains its prognostic significance in BRCA2 expressors. Ovarian cancer cases expressing BRCA2 with low levels of MAGEC3 fare better than those with normal levels. This is contrary to expectations, given MAGEC3's role in downregulating BRCA2. Given the role of MAGEC3 in augmenting DNA repair, we propose that loss of this augmentation explains the favorable trend of patients with low MAGEC3 levels. Further work is needed to confirm this hypothesis.

Supplementary Materials: The following supporting information can be downloaded at: www.mdpi.com/xxx/s1, Figure S1: BRCA2 N-terminal expression in the sequenced ovarian tumor cases.; Figure S2: Kaplan–Meier survival curves for independent evaluation of the relationship between BRCA2 expression and patient outcomes in the larger cohort of patients with unsequenced advanced ovarian cancer cases.

Author Contributions: Conceptualization, K.H.E., E.B.O. and I.A.; methodology, E.B.O., J.E.J., I.A., M.M., S.R.R. and K.H.E.; software, K.H.E.; formal analysis, E.B.O., J.E.J., E.I., S.R.R., E.M.D. and K.H.E.; investigation, E.B.O., J.E.J., I.A., M.M., K.H. and K.H.E.; resources, I.A., M.M. and K.H.E; data curation, E.B.O., J.E.J., I.A. and K.H.E.; writing—original draft preparation, E.B.O. and K.H.E.; writing—review and editing, E.B.O., J.E.J., I.A., M.M.D., E.I., E.M.D., S.R.R., K.L.N, J.E.O. and K.H.E.; visualization, E.B.O, J.E.J., I.A., M.M.D., S.R.R., K.H.E., M.M. and K.H.; supervision, S.R.R., K.L.N., J.E.O. and K.H.E.; project administration, E.B.O.; funding acquisition, K.H.E. All authors have read and agreed to the published version of the manuscript.

Funding: This research was funded by Department of Defense grants OC170368 and PC180449 (to K.H.E.), the Roswell Park Cancer Center Support Grant P30CA016056, and grants from the Roswell Park Alliance Foundation.

Institutional Review Board Statement: The study was conducted in accordance with the Declaration of Helsinki and approved by the Institutional Review Board of Roswell Park Comprehensive Cancer Center (protocol code BDR109119, 2 December 2019).

Informed Consent Statement: Our research was approved as a non-human subject research study; thus, patient consent was waived. The research was classified as non-human subject research because it utilized de-identified tissue specimens obtained for other objectives, such as under another study design, as part of an ongoing biorepository, or as residual material following a clinical intervention. If the specimens were coded, the holder of the re-identification key was prohibited by institutional regulations or a direct agreement from providing the key to the investigator or other research employees under any circumstances. Furthermore, the investigator agreed not to seek for Identifiers or re-identification. Roswell Park's biorepositories use an honest broker system to link specimens with associated data and provide it to researchers in a HIPAA-compliant, de-identified format. The study proposal was submitted to the Institutional Assessment Board office for review of human subject protections such as privacy and confidentiality, as well as the safeguarding of identifiable health information, in accordance with Roswell Park policy.

Data Availability Statement: The data and code used in this manuscript are available upon request.

Acknowledgments: We would like to acknowledge the Roswell Park Comprehensive Cancer Center pathology core and experimental tumor model resource for their assistance in preparing and reviewing the tissue microarrays for our analysis.

Conflicts of Interest: The authors declare no conflict of interest.

References

1. Siegel, R.L., et al., *Cancer statistics, 2022*. CA Cancer J Clin, 2022. **72**(1): p. 7-33. 444
2. Matulonis, U.A., et al., *Ovarian cancer*. Nat Rev Dis Primers, 2016. **2**: p. 16061. 445
3. Jayson, G.C., et al., *Ovarian cancer*. Lancet, 2014. **384**(9951): p. 1376-88. 446
4. Morgan, R.D., et al., *PARP inhibitors in platinum-sensitive high-grade serous ovarian cancer*. Cancer Chemother Pharmacol, 2018. **81**(4): p. 647-658. 447
5. Bowtell, D.D., et al., *Rethinking ovarian cancer II: reducing mortality from high-grade serous ovarian cancer*. Nat Rev Cancer, 2015. **15**(11): p. 668-79. 448
6. Rendi, M.H., R.L. Garcia, and D.S. Dizon, *Epithelial carcinoma of the ovary, fallopian tube, and peritoneum: histopathology*. Available via www.uptodate.com. Last updated February, 2022. 449
7. Menon, U., et al., *Ovarian cancer population screening and mortality after long-term follow-up in the UK Collaborative Trial of Ovarian Cancer Screening (UKCTOCS): a randomised controlled trial*. Lancet, 2021. **397**(10290): p. 2182-2193. 450
8. Guo, T., et al., *Cellular Mechanism of Gene Mutations and Potential Therapeutic Targets in Ovarian Cancer*. Cancer Manag Res, 2021. **13**: p. 3081-3100. 451
9. Badgwell, D. and R.C. Bast, Jr., *Early detection of ovarian cancer*. Dis Markers, 2007. **23**(5-6): p. 397-410. 452
10. Bast, R.C., Jr., et al., *Biomarkers and Strategies for Early Detection of Ovarian Cancer*. Cancer Epidemiol Biomarkers Prev, 2020. **29**(12): p. 2504-2512. 453
11. Ashworth, A., *A synthetic lethal therapeutic approach: poly(ADP) ribose polymerase inhibitors for the treatment of cancers deficient in DNA double-strand break repair*. J Clin Oncol, 2008. **26**(22): p. 3785-90. 454
12. Koczkowska, M., et al., *Detection of somatic BRCA1/2 mutations in ovarian cancer - next-generation sequencing analysis of 100 cases*. Cancer Med, 2016. **5**(7): p. 1640-6. 455
13. Girolimetti, G., et al., *BRCA-associated ovarian cancer: from molecular genetics to risk management*. Biomed Res Int, 2014. **2014**: p. 787143. 456
14. Bolton, K.L., et al., *Association between BRCA1 and BRCA2 mutations and survival in women with invasive epithelial ovarian cancer*. JAMA, 2012. **307**(4): p. 382-90. 457
15. Bai, X., et al., *BRCA1 promoter hypermethylation in sporadic epithelial ovarian carcinoma: Association with low expression of BRCA1, improved survival and co-expression of DNA methyltransferases*. Oncol Lett, 2014. **7**(4): p. 1088-1096. 458
16. Garg, K., et al., *BRCA1 immunohistochemistry in a molecularly characterized cohort of ovarian high-grade serous carcinomas*. Am J Surg Pathol, 2013. **37**(1): p. 138-46. 459
17. Huang, M., et al., *Identifying disparities in germline and somatic testing for ovarian cancer*. Gynecol Oncol, 2019. **153**(2): p. 297-303. 460
18. Wooster, R., et al., *Localization of a breast cancer susceptibility gene, BRCA2, to chromosome 13q12-13*. Science, 1994. **265**(5181): p. 2088-90. 461
19. Prat, J., A. Ribe, and A. Gallardo, *Hereditary ovarian cancer*. Hum Pathol, 2005. **36**(8): p. 861-70. 462
20. Spain, B.H., et al., *Truncated BRCA2 is cytoplasmic: implications for cancer-linked mutations*. Proc Natl Acad Sci U S A, 1999. **96**(24): p. 13920-5. 463
21. Rahman, N. and M.R. Stratton, *The genetics of breast cancer susceptibility*. Annu Rev Genet, 1998. **32**: p. 95-121. 464
22. Hakansson, S., et al., *Moderate frequency of BRCA1 and BRCA2 germ-line mutations in Scandinavian familial breast cancer*. Am J Hum Genet, 1997. **60**(5): p. 1068-78. 465
23. Chatterjee, G., et al., *Distinct binding of BRCA2 BRC repeats to RAD51 generates differential DNA damage sensitivity*. Nucleic Acids Res, 2016. **44**(11): p. 5256-70. 466
24. Krejci, L., et al., *Homologous recombination and its regulation*. Nucleic Acids Res, 2012. **40**(13): p. 5795-818. 467
25. Xia, B., et al., *Control of BRCA2 cellular and clinical functions by a nuclear partner, PALB2*. Mol Cell, 2006. **22**(6): p. 719-729. 468

-
26. Baughan, S. and M.A. Tainsky, *K3326X and Other C-Terminal BRCA2 Variants Implicated in Hereditary Cancer Syndromes: A Review*. *Cancers* (Basel), 2021. **13**(3). 487-488
 27. Rodriguez-Freixinos, V., et al., *Chemotherapy and PARP inhibitors in heavily pretreated BRCA1/2 mutation ovarian cancer (BMOC) patients*. *Gynecol Oncol*, 2019. **152**(2): p. 270-277. 489-490
 28. Redelico, T., *Rucaparib and Niraparib in Advanced Ovarian Cancer*. *J Adv Pract Oncol*, 2019. **10**(4): p. 402-408. 491
 29. Banerjee, S. and S. Kaye, *PARP inhibitors in BRCA gene-mutated ovarian cancer and beyond*. *Curr Oncol Rep*, 2011. **13**(6): p. 442-9. 492-493
 30. Rose, M., et al., *PARP Inhibitors: Clinical Relevance, Mechanisms of Action and Tumor Resistance*. *Front Cell Dev Biol*, 2020. **8**: p. 564601. 494-495
 31. Moore, K., et al., *Maintenance Olaparib in Patients with Newly Diagnosed Advanced Ovarian Cancer*. *N Engl J Med*, 2018. **379**(26): p. 2495-2505. 496-497
 32. Ganguly, B., et al., *Role of Biomarkers in the Development of PARP Inhibitors*. *Biomark Cancer*, 2016. **8**(Suppl 1): p. 15-25. 498
 33. Swisher, E.M., et al., *Rucaparib in relapsed, platinum-sensitive high-grade ovarian carcinoma (ARIEL2 Part 1): an international, multicentre, open-label, phase 2 trial*. *Lancet Oncol*, 2017. **18**(1): p. 75-87. 499-500
 34. Mateo, J., et al., *DNA-Repair Defects and Olaparib in Metastatic Prostate Cancer*. *N Engl J Med*, 2015. **373**(18): p. 1697-708. 501
 35. Criscuolo, D., et al., *Identification of Novel Biomarkers of Homologous Recombination Defect in DNA Repair to Predict Sensitivity of Prostate Cancer Cells to PARP-Inhibitors*. *Int J Mol Sci*, 2019. **20**(12). 502-503
 36. Ellegate, J., Jr., et al., *Loss of MAGEC3 Expression Is Associated with Prognosis in Advanced Ovarian Cancers*. *Cancers* (Basel), 2022. **14**(3). 504-505
 37. Weon, J.L. and P.R. Potts, *The MAGE protein family and cancer*. *Curr Opin Cell Biol*, 2015. **37**: p. 1-8. 506
 38. Pineda, C.T., et al., *Degradation of AMPK by a cancer-specific ubiquitin ligase*. *Cell*, 2015. **160**(4): p. 715-728. 507
 39. Gordeeva, O., A. Gordeev, and S. Khaydukov, *Expression dynamics of Mage family genes during self-renewal and differentiation of mouse pluripotent stem and teratocarcinoma cells*. *Oncotarget*, 2019. **10**(35): p. 3248-3266. 508-509
 40. Doyle, J.M., et al., *MAGE-RING protein complexes comprise a family of E3 ubiquitin ligases*. *Mol Cell*, 2010. **39**(6): p. 963-74. 510
 41. Hao, J., et al., *Cancer-testis antigen HCA587/MAGE-C2 interacts with BS69 and promotes its degradation in the ubiquitin-proteasome pathway*. *Biochem Biophys Res Commun*, 2014. **449**(4): p. 386-91. 511-512
 42. Eng, K.H., et al., *Paternal lineage early onset hereditary ovarian cancers: A Familial Ovarian Cancer Registry study*. *PLoS Genet*, 2018. **14**(2): p. e1007194. 513-514
 43. George, S.H. and P. Shaw, *BRCA and Early Events in the Development of Serous Ovarian Cancer*. *Front Oncol*, 2014. **4**: p. 5. 515
 44. Tian, Y., et al., *0D/3D coupling of g-C₃N₄ QDs/hierarchical macro-mesoporous CuO-SiO₂ for high-efficiency norfloxacin removal in photo-Fenton-like processes*. *J Hazard Mater*, 2021. **419**: p. 126359. 516-517
 45. Liu, Q., et al., *A novel BRCA2 mutation in prostate cancer sensitive to combined radiotherapy and androgen deprivation therapy*. *Cancer Biol Ther*, 2018. **19**(8): p. 669-675. 518-519
 46. Wu, Q., et al., *MAGE-C3 promotes cancer metastasis by inducing epithelial-mesenchymal transition and immunosuppression in esophageal squamous cell carcinoma*. *Cancer Commun (Lond)*, 2021. 520-521
 47. Daudi, S., et al., *Expression and immune responses to MAGE antigens predict survival in epithelial ovarian cancer*. *PLoS One*, 2014. **9**(8): p. e104099. 522-523
 48. Uhlen, M., et al., *A human protein atlas for normal and cancer tissues based on antibody proteomics*. *Mol Cell Proteomics*, 2005. **4**(12): p. 1920-32. 524-525
 49. Uhlen, M., et al., *A proposal for validation of antibodies*. *Nature methods*, 2016. **13**(10): p. 823-827. 526
 50. Varghese, F., et al., *IHC Profiler: an open source plugin for the quantitative evaluation and automated scoring of immunohistochemistry images of human tissue samples*. *PLoS One*, 2014. **9**(5): p. e96801. 527-528
 51. Huang, J., W. Hu, and A.K. Sood, *Prognostic biomarkers in ovarian cancer*. *Cancer Biomark*, 2010. **8**(4-5): p. 231-51. 529

52. Kashima, K., et al., *Screening of BRCA1 mutation using immunohistochemical staining with C-terminal and N-terminal antibodies in familial ovarian cancers*. Jpn J Cancer Res, 2000. **91**(4): p. 399-409. 530
531
53. Vorrius, T.R., et al., *Immunohistochemical detection of BRCA-1 and BRCA-2 expression in human breast and ovarian tumors*. Journal of Histotechnology, 2009. **32**(4): p. 202-203. 532
533
54. Thorgeirsson, T., et al., *Intracellular location of BRCA2 protein expression and prostate cancer progression in the Swedish Watchful Waiting Cohort*. Carcinogenesis, 2016. **37**(3): p. 262-268. 534
535
55. Aijaz, I. Roswell Park Comprehensive Cancer Center: Buffalo, New York, USA. 2022: *Unpublished work*. 536
56. Stordal, B., et al., *BRCA1/2 mutation analysis in 41 ovarian cell lines reveals only one functionally deleterious BRCA1 mutation*. Molecular oncology, 2013. **7**(3): p. 567-579. 537
538
57. Guirado, R., et al., *Automated analysis of images for molecular quantification in immunohistochemistry*. Heliyon, 2018. **4**(6): p. 539
e00669. 540
58. Vrekoussis, T., et al., *Image analysis of breast cancer immunohistochemistry-stained sections using ImageJ: an RGB-based model*. Anticancer Research, 2009. **29**(12): p. 4995-4998. 541
542
543