

# 1 **Determinants of the Omega-3 Index in the UK Biobank**

2

3 Jan Philipp Schuchardt 1, 2, \*

4 Nathan Tintle 1, 3

5 Jason Westra 1

6 William S. Harris 1, 4

7

8 1 The Fatty Acid Research Institute, Sioux Falls, SD, USA

9 2 Institute of Food Science and Human Nutrition, Leibniz University Hannover, Germany

10 3 Department of Population Health Nursing Science, College of Nursing, University of Illinois – Chicago,  
11 Chicago, IL, USA

12 4 Department of Internal Medicine, Sanford School of Medicine, University of South Dakota, Sioux Falls,  
13 SD, USA

14

15 \* Correspondence: Jan Philipp Schuchardt  
16 Leibniz University Hannover  
17 Institute of Food Science and Human Nutrition  
18 30167 Hannover, Germany  
19 Email: [schuchardt@nutrition.uni-hannover.de](mailto:schuchardt@nutrition.uni-hannover.de)  
20 Tel.: +49 511 762 2987  
21 Fax: +49 511 762 5729

22

23 Keywords: DHA, EPA, erythrocyte, fish intake, predictor

24

25

26

27

## 28 **Abstract**

29 Information on the Omega-3 Index (O3I) in the United Kingdom (UK) are scarce. The UK-  
30 Biobank (UKBB) contains data on total plasma omega-3 polyunsaturated fatty acids (n3-  
31 PUFA%) and DHA% measured by NMR. The aim of our study was to create an equation to  
32 estimate the O3I (eO3I) from these data. We first performed an interlaboratory experiment with  
33 250 random blood samples in which the O3I was measured in erythrocytes by gas  
34 chromatography, and total n3% and DHA% were measured in plasma by NMR. The best  
35 predictor of eO3I included both DHA% and a derived metric, the total n3%-DHA%. Together  
36 these explained 65% of the variability ( $r=0.832$ ,  $p<0.0001$ ). We then estimated the O3I in  
37 117,108 UKBB subjects and correlated it with demographic and lifestyle variables in  
38 multivariable adjusted models. The mean (SD) eO3I was 5.58% (2.35%) this UKBB cohort.  
39 Several predictors were significantly correlated with eO3I (all  $p<0.0001$ ). In general order of  
40 impact and with directionality (- = inverse, + = direct): oily-fish consumption (+), fish oil  
41 supplement use (+), female sex (+), older age (+), alcohol use (+), smoking (-), higher waist  
42 circumference and BMI (-), lower socioeconomic status and less education (-). Only 20.5% of  
43 eO3I variability could be explained by predictors investigated, and oily-fish consumption  
44 accounted for 7.0% of that. With the availability of the eO3I in the UKBB cohort we will be in a  
45 position to link risk for a variety of diseases with this commonly-used and well-documented  
46 marker of n3-PUFA biostatus.

47

48

## 49 **Introduction**

50 A large number of epidemiological, clinical and experimental studies have been conducted over  
51 the past few decades investigating the role of long chain omega-3 polyunsaturated fatty acids  
52 (n3 PUFAs) for health. In particular, eicosapentaenoic acid (20:5, EPA) and docosahexaenoic  
53 acid (22:6, DHA) are viewed to have beneficial effects for cardiovascular disease (CVD)<sup>(1-3)</sup>,  
54 cancer<sup>(3,4)</sup>, diabetes<sup>(5,6)</sup>, metabolic syndrome<sup>(7)</sup>, dementia or Alzheimer's disease<sup>(8)</sup>, and  
55 depression<sup>(9)</sup>. However, results from randomized trials exploring the potential protective nature  
56 of n3 PUFAs on disease outcomes across this spectrum vary from beneficial to null. Because of  
57 the inability of relatively short-term (years, not decades) intervention studies to reveal the  
58 adverse effects of subclinical nutritional deficiencies, a clearer picture of the relationships  
59 between n3 PUFAs and risk for human disease may be achieved using prospective  
60 observational data based on n3 PUFA biomarkers rather than dietary intake data as the  
61 exposure.

62 The n3 PUFA biostatus can be assessed in a variety of lipid pools. First, n3 PUFAs can be  
63 measured across numerous blood compartments including red blood cells (RBCs), whole  
64 plasma, whole blood, platelets, leukocytes and plasma lipid classes (i.e., phospholipids,  
65 cholesteryl esters, triglycerides, and free FAs). RBCs are perhaps best suited to quantify long-  
66 term n3 PUFA blood levels since n3 PUFAs in RBCs are constant over weeks and months  
67 compared to total plasma fatty acids or plasma phospholipid fatty acids where stability is only  
68 observed over days<sup>(10)</sup>. In addition, the n3 PUFA content of RBCs is similar to that of many  
69 organs including the heart, intestines, and muscle, while FAs in different compartments are less  
70 correlated with levels in other organs<sup>(11)</sup>.

71 The Omega-3 Index (O3I) – defined as the EPA + DHA content of RBCs as a percent of total  
72 identified FAs <sup>(12)</sup> – has proven to be a suitable marker for measuring the n3 PUFA biostatus,  
73 which – for the reasons mentioned – also shows the lowest intra-individual variability compared  
74 to other markers such as plasma or plasma phospholipids. O3I levels can be categorized as  
75 desirable ( $\geq 8\%$ ), moderate ( $>6$  to  $8\%$ ), low ( $>4$  to  $6\%$ ), or very low ( $\leq 4\%$ ) <sup>(13)</sup>. A target O3I value  
76 for a reduced risk for fatal coronary heart disease of  $\geq 8\%$  has been proposed <sup>(12)</sup>, whereas  
77 individuals with O3I levels of  $\leq 4\%$  are at highest risk <sup>(12)</sup>.

78 Despite its importance, few national health surveys have quantified n3 PUFA levels, mainly in  
79 blood plasma or phospholipids. The National Health and Nutrition Examination Survey  
80 (NHANES) reported plasma fatty acid levels as concentrations ( $\mu\text{mol/L}$ ), whereas the Canadian  
81 Health Measures Survey used RBCs and reported national O3I levels <sup>(14)</sup>. The latter found that  
82 the mean O3I was comparatively low at 4.5%. Data from other studies show that the average  
83 O3I is also in the low range in countries such as the USA, Italy, or Germany and not as high as  
84 in Japan or South Korea, where mean O3I levels are in a desirable range. Comprehensive data  
85 on the O3I status are not available in the United Kingdom (UK), however, with data from the UK  
86 Biobank (UKBB) now available <sup>(15,16)</sup>, the n3 PUFA biostatus in that country may now  
87 theoretically be determined. However, the plasma FA data from the UKBB were expressed as  
88 concentrations or as a percent of total plasma fatty acids, so how these metrics compare with  
89 the O3I is unclear.

90 The first aim of our study was to develop an equation to estimate the O3I (eO3I) from the  
91 nuclear magnetic resonance (NMR) data of the UK Biobank so as to be able to compare UK O3I  
92 levels with those in other countries. The second aim was to examine the cross-sectional  
93 relations of the eO3I with important demographic (age, ethnic group, sex), anthropometric [body  
94 mass index (BMI), waist circumference (WC)] and lifestyle [fish oil supplement use, (oily) fish  
95 consumption, alcohol use, smoking, etc.] factors to help define the determinants of the eO3I. To  
96 accomplish these aims, we first performed an interlaboratory experiment to compare NMR-  
97 derived FA data with the O3I using gas chromatography (GC)-derived data. With a conversion  
98 equation thus generated, eO3I values were computed and then correlated in multivariable  
99 adjusted models with demographic and lifestyle variables.

100

## 101 **Methods**

### 102 *UK Biobank*

103 UK Biobank is a prospective, population-based cohort of approximately 500,000 individuals  
104 recruited between 2007 and 2010 at assessment centers across England, Wales and Scotland.  
105 Baseline data derived from questionnaires, biological samples and physical measurements  
106 were collected on all participating individuals, with longitudinal monitoring occurring via a mix of  
107 in-person and Electronic Medical Record data <sup>(15,16)</sup>. The participants completed a touchscreen  
108 questionnaire, which collected information on socio-demographic characteristics, diet, and  
109 lifestyle factors. Anthropometric measurements were taken using standardized procedures. The  
110 touchscreen questionnaire and other resources are shown on the UK Biobank website  
111 (<http://www.ukbiobank.ac.uk>). UK Biobank has ethical approval (Ref. 11/NW/0382) from the  
112 North West Multi-centre Research Ethics Committee as a Research Tissue Bank (RTB). This  
113 approval means that researchers do not require separate ethical clearance and can operate  
114 under the RTB approval. All participants gave electronic signed informed consent. The UK

115 Biobank study was conducted according to the guidelines laid down in the Declaration of  
116 Helsinki.

117 A random sample of approximately 125,000 participants was selected for biomarker  
118 assessment using nuclear magnetic resonance (NMR, Nightingale Health Plc, Helsinki, Finland)  
119 <sup>(17)</sup> which included some plasma FAs. Usable NMR data were available from 117,938  
120 participants. After removing individuals with missing information on BMI, socioeconomic status  
121 (SES) or alcohol use (n=830), the final sample size for this study was 117,108 (**Figure 1**).

122

### 123 *Interlaboratory experiment*

124 An interlaboratory experiment was undertaken to gather data for the creation of an O3I  
125 prediction equation (Figure 1). Random blood samples (n=250) received at OmegaQuant  
126 Analytics (OQA, Sioux Falls, SD, USA) for routine testing of the O3I were used for this study.  
127 EDTA blood tubes were spun to isolate the RBC fraction which was then analyzed for the O3I  
128 by GC as previously described <sup>(18)</sup>. The plasma from these samples, which is normally  
129 discarded, was stored at -80C°. Once 250 had been collected (over about 2 weeks), the plasma  
130 aliquots were sent on dry ice for NMR analysis at the Nightingale lab. The data received from  
131 this analysis (n=242, 8 being technically inadequate) included multiple biometrics <sup>(19)</sup> which were  
132 subsequently used as predictors of the O3I as described below. The University of South Dakota  
133 Institutional Review Board reviewed this project and determined that because the project  
134 involved only deidentified samples and data, it did not meet the definition of “human subjects  
135 research” found in the federal regulations, and therefore did not require IRB approval.

136

### 137 Statistical methods

#### 138 *Generating a prediction model for the estimated Omega-3 Index*

139 As noted, the O3I is the sum of DHA and EPA in RBCs expressed as a percent of total RBC  
140 FAs. The relevant NMR data for this study were plasma DHA and total n3 PUFAs (each  
141 expressed as a percent of total FAs). No data on other n3 PUFAs were available. Thus, we  
142 began by examining predictions of the O3I by total n3 PUFA%, DHA% and non-DHA n3  
143 PUFA% (i.e., total n3 PUFAs - DHA%). Quadratic terms for each predictor plus an interaction  
144 term were evaluated for evidence of improved fit using a significance level of 0.05. The  
145 remaining 246 biometric measurements <sup>(19)</sup> were then added to the model one at a time for  
146 evidence of improved fit, using a Bonferroni adjusted significance level of  $0.05/246 = 0.0002$  as  
147 the criterion for addition to the predictive model. Three individuals with extreme DHA%/non-  
148 DHA% were temporarily excluded from the analyses to improve model fitting (two individuals  
149 with DHA%<1 and one individual with DHA%>4 and non-DHA%>5) yielding a model building  
150 sample size of 239. The final model was evaluated using R-squared, Residual Standard Error  
151 and the distribution of residuals. Values of the eO3I were then imputed by making stochastic  
152 draws from the predicted sampling distributions (final predictive model) as described by Rubin  
153 for data missing at random <sup>(20)</sup>. Sensitivity analyses were conducted considering extreme values  
154 of the observed DHA% and logarithmic transformations of the predictor and response variables.  
155

#### 156 *The eO3I and participant characteristics*

157 We used eO3I data generated as described above to investigate its relationship with 14 sample  
158 characteristics: demographic (sex, age, ethnic group, deprivation index, urbanicity, education),  
159 anthropometric (BMI, WC), dietary (frequency of oily and non-oily fish consumption and regular  
160 fish oil use), and behavioral (smoking, alcohol use, exercise) (**Table 1**). BMI was classified  
161 according to the World Health Organization (WHO) into “normal weight”, “overweight” and  
162 “obesity”. For WC categories, the cohort was divided into quartiles. Information on fish portion  
163 sizes and fish oil supplement EPA+DHA content was not collected. Townsend deprivation index  
164 scores were derived from national census data about car ownership, household overcrowding,  
165 owner occupation, and unemployment aggregated for residential postcodes <sup>(21)</sup>. Higher  
166 deprivation index scores indicate greater degrees of socioeconomic deprivation. Our analysis  
167 used national quintiles of the deprivation index instead of continuous scores <sup>(22)</sup>. Four groups of  
168 education were formed: College (or University degree, other professional qualifications),  
169 Associates (A or AS level or equivalent), SEs (O level, General Certificate of Secondary  
170 Education, Certificate of Secondary Education, National Vocational Qualifications, Higher  
171 National Diploma, Higher National Certificate or equivalent), none. We analyzed the bivariate  
172 relationships between the eO3I and each of the 14 sample characteristics considering multiple  
173 imputations in the estimation of standard errors. A fully adjusted linear model predicted the eO3I  
174 by each of the 14 sample characteristics simultaneously, again accounting for multiple  
175 imputation in the estimation of standard errors. Model  $R^2$  was computed. In order to estimate the  
176 contribution of each predictor towards model  $R^2$ , each of the 14 sample characteristics was then  
177 removed from the model (one at a time) and computing the difference in  $R^2$  between the full and  
178 drop-one model. Parallel analyses were conducted for plasma percent DHA (direct NMR  
179 measurement), without the need for multiple imputation. All analyses were conducted in R  
180 version 4.1.2. and used a 0.05 statistical significance threshold.

181

## 182 **Results**

### 183 *Generating a prediction equation based on the interlaboratory experiment*

184 In models predicting the O3I by a single variable, percent DHA was a better predictor ( $r^2=0.65$ ),  
185 than total n3 ( $r^2=0.60$ ). We then added non-DHA% to the model with DHA%, yielding a model  
186 with  $r^2=0.67$ . Residuals showed a reasonably normal distribution (**supplemental Figure 1**).  
187 Quadratic terms and an interaction between DHA% and non-DHA% were added to the model,  
188 but none showed evidence of improvement [ $p=0.41$  (quadratic DHA%);  $p=0.80$  (quadratic non-  
189 DHA%);  $p=0.20$  (interaction DHA and non-DHA%)]. Log transforming the O3I and/or DHA% and  
190 non-DHA% prior to fitting the regression equation did not improve the  $r^2$  values (61-65%) with  
191 little visible improvement in the normality of outliers (details not shown). Thus, the  
192 untransformed, additive model with two terms was determined to be the final prediction model  
193 (**Table 2**). The correlation of the eO3I vs observed O3I values was 0.823 on the complete  
194 dataset of  $n=242$ , including three extreme values which were not included in the initial model-  
195 building step (**Figure 2**).

196

### 197 *Demographics of the UK Biobank sample*

198 The demographics of the analyzed UK Biobank sample are in Table 1. The cohort had a mean  
199 age of 57 years with slightly more women than men. The individuals were overwhelmingly white



200 and lived in urban areas. The mean deprivation index was -1.3, meaning that, on average, this  
201 sample was somewhat less deprived than typical in the UK (which would be an index of 0). The  
202 plurality of individuals were overweight, followed by normal weight and then obese.

203 Most individuals in the cohort stated that they regularly ate fish. Non-oily fish is slightly preferred  
204 compared to oily fish. Almost half of the individuals stated that they eat non-oily fish 1x/week.  
205 However, the proportion of individuals who eat oily fish 1x/week is also quite high at 38%.  
206 Regular fish oil supplement use was reported by 31%. Most of the study participants reported  
207 some regular alcohol use. More than half of the individuals were non-smokers, some were ex-  
208 smokers and a few continued to smoke.

### 209 210 *Predicted Omega-3 Index in the UK Biobank sample*

211 In the interlaboratory experiment, the mean (SD) of plasma DHA% from the NMR analysis was  
212 2.1% (0.6%) and the plasma non-DHA% was 2.1% (0.9%). The mean (SD) GC-based O3I  
213 [6.5% (2.2%)] was (naturally) the same as that estimated from the regression equation from the  
214 NMR data. All three measurements showed modest right-skewness.

215 The mean eO3I was 5.58% for all 117,938 individuals in this UKBB cohort. We used multiple  
216 (i.e., 10) imputations for each person using the prediction equation in Table 2 in order to  
217 compute the SDs. The SD ignoring the multiple imputation step was 1.89%, whereas with  
218 imputations it was 2.25%, reflecting the variability from different analytical methods (NMR vs  
219 GC), different sample types (plasma vs RBC), and different n3 PUFAs (DHA vs EPA+DHA).

### 220 221 *Correlates of the estimated Omega-3 Index in the UK Biobank sample (Table 3)*

222 With the exceptions of rurality/urbanicity, virtually every metric included in **Table 3** was  
223 statistically significantly correlated with the eO3I ( $p < 0.0001$ ). For the *behavior-independent*  
224 demographic variables, both **sex** and **age** were strongly associated with the eO3I (Table 3 and  
225 **Figure 3a**). The eO3I in men was -0.62 percentage points lower than in women before, and -  
226 0.38% lower after adjustment. Additionally, the eO3I increased with age. Compared to the 40-50  
227 year-age-group (Reference group), the eO3I in the 50-60 year-, and 60-70 year-age-group  
228 increased by 0.29% and 0.64% respectively. After adjustment, the eO3I was still directly  
229 associated with age (0.14% and 0.34%, respectively).

230 There was an inverse association between the eO3I and **BMI**, both before and after adjustment  
231 (Table 3). Compared to normal weight people, the mean eO3I was 0.4% and 0.88% lower in the  
232 overweight and obese individuals, respectively. These differences were somewhat attenuated  
233 after adjustment but remained -0.13% or -0.38%, respectively.

234 Associations between **WC** and eO3I were examined as a further body fat variable (Table 3 and  
235 Figure 3b). Compared to the reference group, there was a monotonic decrease in the eO3I  
236 across WC quartiles. In the group with the highest WC, the eO3I was reduced by 1.13%  
237 (adjusted, -0.55%) compared to the reference group.

238 With regards to **ethnic group**, the eO3I in Blacks and Asians was not significantly different from  
239 that in Whites. "Other" ethnic groups (3% of the total) had higher eO3I than Whites (0.94%,  
240 adjusted, 1.03%).

241 SES (as reflected by the **deprivation index**) was inversely associated with the eO3I. Compared  
242 to the group of least deprived individuals, the eO3I decreased continuously as the **deprivation**  
243 **index** increased. The most deprived group showed a 0.13% lower eO3I after adjustment  
244 compared to the least deprived group.

245 Another SES-related metric is the level of **education**. Compared to the group with the highest  
246 professional qualification (College, reference), the eO3I was lower in each successive group of  
247 educational achievement. At the extremes, individuals with the least education had a mean  
248 eO3I of -0.42% (adjusted, -0.23%) lower than the reference group.

249 As expected, regular consumption of **oily fish** and taking **fish oil supplements** were the  
250 strongest *behaviour-related* associations with the eO3I (Table 3, Figure 3c). The mean eO3I of  
251 people who take fish oil and eat oily fish at least 2x/week (n=8279) was 7.34%, but only 36% of  
252 them had an eO3I  $\geq 8\%$  (Figure 3d). The 14 characteristics examined in this study together  
253 explained about 21% of the variability in the eO3I (**Table 4**). Regular oily fish intake alone  
254 explained 7%, or about 34% of the total. Compared to non-fish eaters (reference), even less  
255 than one serving of oily fish per week was associated with a 0.77% higher eO3I (0.47% after  
256 adjustment). As oily fish consumption continued to increase, so did the eO3I, with 1 portion of  
257 oily fish per week being associated with a 1.56% higher eO3I (adjusted, 1.11%), and 2.64%  
258 higher eO3I (adjusted, 2.12%) with 2 or more portions of oily fish per week. **Non-oily fish**  
259 **consumption** was more weakly associated with the eO3I, explaining less than 1% of the eO3I  
260 variability (Table 4). After adjustment, the difference in eO3I between non-fish eaters and those  
261 consuming at least 2 portions of non-oily fish per week was only 0.49%.

262 On average, individuals who reported regular **fish oil supplement** use had a 0.97% higher  
263 eO3I than individuals who didn't. Even after adjustment for all the other factors in Table 3, it was  
264 still 0.68% higher. The impact of fish oil supplementation on the eO3I was additive with the  
265 number of oily fish servings per week (Figure 3c). People who reported taking a fish oil  
266 supplement and consuming two or more oily fish meals per week had a mean eO3I of 7.3%  
267 (2.7%) compared with 4.1% (1.7%) for those at the other extreme consuming neither  
268 ( $p < 0.0001$ ). Fish oil intake explained  $\sim 9\%$  of the total explained variability in the eO3I (Table 4).

269 **Alcohol** use also showed associations with the n3 PUFA biostatus. Compared to the group with  
270 the lowest alcohol use (none, reference group), the eO3I was increased with higher alcohol use.  
271 The highest alcohol use (daily) had a 0.4% higher eO3I (adjusted, 0.3%) compared to the  
272 reference group.

273 **Smoking** was negatively associated with the eO3I. Smokers had a 0.86% lower eO3I compared  
274 to non-smokers, even after adjustment (-0.58%).

275 The level of **exercise** showed a weak but still significant inverse relationship to the eO3I.  
276 Compared to the group with the lowest level of physical activity (reference group), the eO3I was  
277 only lower in the group with the highest level of physical activity (adjusted -0.15%).

278 The plasma DHA% measured by NMR showed the same patterns/relationships with regards to  
279 all 14 characteristics as did the eO3I (**Supplemental Table 1**). However, all together, these  
280 predictors accounted for approximately 30% of the variability in DHA% (**Supplemental Table**  
281 **2**), compared to only around 20% for the eO3I (Table 4). For both DHA and eO3I, oily fish  
282 consumption and fish oil supplement use explained most of the variation.

283

## 284 **Discussion**

285 In order to be able to investigate relationships between n3 PUFAs and health or disease  
286 measures on populational level, it is preferable to use a biomarker of n3 PUFA status rather  
287 than an estimate of dietary intake from a questionnaire. This is because biomarker levels are  
288 objectively measured, precise, and reflect not only dietary intake but *in vivo* metabolic  
289 conversions that cannot be captured with memory-based dietary intake surveys. The UK  
290 Biobank provides a large database to investigate such associations due to its extensive health  
291 data and number of participants. Since the O3I, which is a common metric to evaluate the n3  
292 PUFA biostatus, was not measured directly in the UK Biobank, our goal was to develop a  
293 prediction model for the O3I in order to convert the data that do exist on n3 PUFA biostatus  
294 (plasma DHA% and total n3% from NMR) into the eO3I. We found very good agreement  
295 ( $r=0.82$ ) between the estimated O3I values (eO3I) and the actual O3I. The eO3I equation was  
296 built on data from 242 samples, which were not included in the UK Biobank. We assumed that  
297 since the same lab (Nightingale) and method (NMR) were used for the UK Biobank analyses  
298 and for our interlaboratory test that the conversion equation should be applicable to UK Biobank  
299 data.

300

### 301 ***eO3I in the UK Biobank in comparison with other countries***

302 In the UK there are no datasets from which a national, average O3I can be determined. A global  
303 survey on n3 PUFA levels in different countries reported “very low“ n3 PUFA levels in RBCs  
304 (<4% EPA + DHA of total FAs) for the UK using extrapolated data from 5 studies including 461  
305 individuals<sup>(23)</sup>. The mean eO3I in the UK Biobank cohort of 117,938 individuals was 5.58%, and  
306 thus, significantly higher than that estimated by Stark et al. The eO3I in the UK Biobank is  
307 comparable to that of countries such as Germany (5.8%) or the USA (5.44%), as shown in a  
308 recent report<sup>(13)</sup>. Nevertheless, an average O3I of 5.58% is still well below the optimal of  $\geq 8\%$ .  
309 People who regularly eat oily fish and supplement fish oil have a significantly better n3 PUFA  
310 biostatus. The mean eO3I of people who take fish oil and eat oily fish at least 2x/week ( $n=8279$ )  
311 was 7.34% (2.66%), and 35.7% ( $n=2957$ ) of them had an eO3I  $\geq 8\%$ . Thus, even among this  
312 group with the highest oily fish + supplement use, an optimal eO3I was not the norm.

313

### 314 ***Predictors of the eO3I in the UK Biobank cohort***

315 Various factors besides EPA+DHA intake can affect O3I levels. Several other authors have  
316 explored this question<sup>(24-27)</sup>. Since not all comparative studies in the literature used the O3I as a  
317 metric, the general term “n3 PUFA biostatus” is used below, which means the eO3I in relation to  
318 this study.

319 A higher n3 PUFA biostatus in **men compared to women** has been observed previously<sup>(28,29)</sup>.  
320 It has been suggested that a healthier diet (e.g., higher consumption of fish or plant n3 PUFAs)  
321 and lifestyle (e.g., no smoking) could be a reason for the higher n3 PUFA biostatus in women  
322<sup>(28)</sup>. However, the influence of factors such as smoking or (oily) fish and fish oil supplement  
323 intake and obesity were all considered in our model, and even after the adjustment there  
324 remained a significant and biologically relevant difference in the eO3I between the sexes. Other



325 factors independent of lifestyle (e.g., genetics and metabolism) may also play a role. The reason  
326 for a higher n3 PUFA biostatus in females could be due to enhanced production of EPA + DHA  
327 from the precursor FA alpha-linolenic acid (ALA, C18:3), a conversion mediated at least in part  
328 by estrogen<sup>(30-32)</sup>. In a series of studies, Burdge and Wootton<sup>(31,33)</sup> concluded that estrogen up-  
329 regulates delta-6 desaturase, which is the rate-limiting step in the conversion from ALA to EPA  
330 and DHA. However, dietary intakes of n3 PUFAs were not controlled for over the entire study  
331 period, whereby a dietetic effect on the intake of preformed EPA+DHA cannot be ruled out<sup>(34)</sup>.  
332 In a study by Giltay et al.<sup>(30-32)</sup> in postmenopausal women who received hormone replacement  
333 therapy, the level of DHA in plasma cholesteryl esters increased by 20%, which was attributed  
334 to the estrogenic effect.

335 Although not addressed in this study, **genotype** could play a role in determining n3 PUFA  
336 biostatus. This, however, is controversial with some studies reporting an effect of a “heritability”  
337 score<sup>(28)</sup>, on the O3I whereas others found no association with the O3I of any given single  
338 nucleotide polymorphism<sup>(35)</sup>. We hope to investigate a possible genetic influence on the level of  
339 eO3I in future UK Biobank studies.

340 An **age-related influence** on the n3 PUFA biostatus is also known and has been established in  
341 several studies<sup>(27,28,36)</sup>. The reason for increased n3 PUFA biostatus in older individuals may be  
342 a function of decreased n3 PUFA turnover in tissues in older individuals<sup>(37)</sup>, but it does not  
343 appear to simply be the result of higher fish intake or supplement use as these were included in  
344 the adjusted model.

345 Our data are in line with comparable epidemiological studies which also found inverse  
346 associations between **anthropometric markers** such as the **BMI**<sup>(38)</sup> or **WC**<sup>(28,36)</sup> and n3 PUFA  
347 biostatus. In obese individuals, the eO3I in the present cohort was 0.38% lower than that of  
348 normal weight individuals. The associations between WC and n3 PUFA biostatus appeared to  
349 be even stronger than those with BMI with a 0.55% lower eO3I in the group with highest WC  
350 compared to the reference group. Since WC is a direct reflection specifically of abdominal  
351 obesity, WC is now thought to be superior to BMI as a predictor of cardio-metabolic diseases  
352<sup>(39)</sup>. As to potential mechanisms, Cazolla et al. proposed that increased oxidative stress in obese  
353 individuals could lead to a reduction in the levels of EPA and DHA in RBC membranes<sup>(40)</sup>. This  
354 was based on their observation that RBCs from obese individuals were more susceptible to  
355 oxidative stress than those from normal weight subjects. A disturbed hepatic PUFA metabolism  
356 may also contribute to a lower n3 PUFA biostatus. Animal studies found that obesity and  
357 diabetes resulted in reduced expression of key enzymes involved in the synthesis of EPA+DHA  
358 from ALA<sup>(41)</sup>.

359 Several lifestyle variables were also associated with n3 PUFA biostatus. Consistent with the  
360 literature<sup>(24,28,36,42-44)</sup>, we found a strong negative influence of **smoking** on the n3 PUFA  
361 biostatus. Increased oxidative stress and lipid peroxidation, caused by smoking, may destroy  
362 long chain PUFAs such as EPA and DHA in cell membrane phospholipids and, thus, influence  
363 their levels in the body<sup>(45,46)</sup>. The possibility that this relationship is explained by differences in  
364 fish consumption and/or supplement use between smokers and non-smokers seems unlikely  
365 given the inclusion of these variables in the adjusted analysis. We also observed that the n3  
366 PUFA biostatus was directly related to **alcohol** use, since the eO3I increased along with the  
367 reported frequency of alcohol use. Some studies also found alcohol use as an independent  
368 predictor of the n3 PUFA biostatus<sup>(47)</sup>, while others did not<sup>(24,36)</sup>. In the study by di Giuseppe, a  
369 positive influence of alcohol was only found in women and predominantly with wine drinking

370 (and not beer or spirits). Since the UK Biobank does not provide information on the type of  
371 alcoholic beverages, a further differentiated analysis is not possible at this point. One can  
372 speculate that individuals that drink more alcohol may also eat more fish, and there was a  
373 modest association between oily fish eaters and drinking alcohol (e.g., 60% of daily alcohol  
374 users eat oily fish at least once/week vs 50% of monthly/hardly ever alcohol users). However,  
375 as with all of the potential determinants of the eO3I discussed here, significant associations with  
376 alcohol use remained after multivariable adjustment. In contrast, **exercise** in the UK Biobank  
377 cohort was only weakly associated with n3 PUFA biostatus. Small but significant differences  
378 were only found between the group with the highest and lowest reported minutes per week of  
379 physical exercise. In line with our results, a previous study<sup>(48)</sup> found significantly lower O3I  
380 levels in German national elite winter endurance athletes (mean O3I: 4.97%) or National  
381 Collegiate Athletic Association Division I athletes in the US (mean O3I: 4.33%)<sup>(49)</sup> compared to  
382 the general population in Germany (mean O3I: 5.8%) and the US (mean O3I: 5.44%)<sup>(13)</sup>. In  
383 contrast to our results, a cross-sectional study showed that exercise time, exercise capacity and  
384 heart rate recovery strongly correlated with the O3I in patients with coronary artery disease<sup>(50)</sup>.

385 The consumption of preformed **EPA and DHA** has the greatest influence on the n3 PUFA  
386 biostatus, as various other studies have already shown<sup>(24,28,36,38)</sup>. The highest vs the lowest oily  
387 fish intake was associated with an unadjusted increase in the eO3I of 2.6%, decreasing only to  
388 2.2% after adjustment. Fish oil supplement use had the second greatest effect in our study (i.e.,  
389 1% increase; 0.67% adjusted). The adjusted value was approximately equal to that (0.5%) of  
390 consuming <4 servings of oily fish per month. Since daily consumption of the most generic fish  
391 oil supplement would provide about 300 mg of EPA+DHA per day (about 2100 mg per week),  
392 and one serving of an oily fish like salmon would provide roughly 1000 mg of EPA+DHA per  
393 week, the smaller effect of on the eO3I of reported supplement use here suggests that the  
394 respondents in this cohort may have either overestimated what “regular” fish oil consumption  
395 means or underestimated their fish intake. These limitations are elaborated on below. Suffice it  
396 to say, that as noted above, people reporting both >2 oily fish meals per week AND fish oil  
397 supplement use had an adjusted eO3I of 7.34% compared to the 4.08% of the reference group  
398 consuming no fish or supplements.

399 The **deprivation index** – a measure of SES – was also identified as an inverse and  
400 independent predictor of the n3 PUFA biostatus confirming past studies (Harris et al. 2012).  
401 Individuals with higher SES have a better health behavior, a lower BMI, and smoke less<sup>(51)</sup>, and  
402 they eat healthier food, which also includes higher fish and seafood consumption<sup>(52,53)</sup>.  
403 However, several of these factors were considered in our adjusted model, and the inverse  
404 relationship between the eO3I and the deprivation index remained significant. We also identified  
405 **education** as a strong independent predictor for eO3I as have others (Wagner et al. 2015). The  
406 association between education and the eO3I was still significant even after adjustment for the  
407 deprivation index.

408

### 409 **Strength and limitations**

410 The strength of the study is clearly the very large and fairly well-characterized cohort and an  
411 objectively measured biomarker of n3 PUFA status. However, the study has a number of  
412 potential limitations. First, the eO3I had to be extrapolated from plasma n3 PUFA measures  
413 done by NMR. The imprecision arising from this extrapolation (accounted for with multiple

414 imputations of the eO3I) diminished the ability of the suite of variables we included to predict n3  
415 PUFA biostatus. Specifically, the 14 factors explained 30% of the variability in plasma DHA%  
416 but only 20% of the eO3I variability. Thus, some relationships may have been missed as a  
417 result of using the eO3I. Another limitation is the relatively narrow age range of participants,  
418 from 40 to 70 years. Thus, our data on the eO3I cannot be extrapolated to other age groups.  
419 Obviously, these data only apply to the UK, or perhaps “western” populations in general (given  
420 the similarity in eO3I values seen here and in other countries <sup>(13)</sup>; but they do not apply to  
421 countries with diets and lifestyles differing markedly from those in the UK.

422 Finally, self-reported fish consumption data is prone to under- and over-reporting. Given a  
423 general understanding of “fish as a healthy food”, people are more likely to over-report their fish  
424 consumption. In the UK Biobank study, no portion sizes of oily and non-oily fish consumption  
425 were collected which could, theoretically, have allowed more precise associations between fish  
426 intake and eO3I to be observed. In addition, no other data on fish oil supplement intake was  
427 collected (e.g., dosage, potency, and frequency of intake). These variables therefore only  
428 provided a rough estimate of the actual consumption of fish and fish oil. As usual, data from  
429 cross-sectional studies cannot reveal causal relationships. Our data are thus only hypothesis-  
430 generating.

431

## 432 **Conclusion**

433 The results of this investigation allow for the first time an estimation of the average O3I in the  
434 UK. Secondly, they largely confirm previously observed determinants of the O3I, namely oily  
435 fish consumption, fish oil intake, sex, age, WC, BMI, and various lifestyle variables. A recent  
436 study with the UK Biobank showed that fish oil supplementation was associated with reduced  
437 risk for CVD outcomes and all-cause mortality <sup>(54)</sup>. With the ability to derive an eO3I as a metric  
438 for the n3 PUFA biostatus, it will now be possible to investigate its relationship with risk for  
439 multiple diseases such as CVD, type 2 diabetes mellitus, or neurodegenerative disorders in the  
440 UK Biobank.

441

442 **Financial support:** This research received no external financial support.

443 **Conflicts of Interest:** WSH holds stock in OmegaQuant Analytics. The other authors declare  
444 no conflict of interests.

445 **Authorship:** JPS: Investigation, Conceptualization, Writing-Original draft preparation. WSH:  
446 Investigation, Conceptualization, Data curation, Methodology, Supervision, Writing- Reviewing  
447 and Editing. NT: Validation, Data curation, Writing - Review & Editing. JW: Validation, Data  
448 curation. All authors have read and agreed to the submitted version of the manuscript.

449

## 450 **References**

- 451 1. Hu Y, Hu FB, Manson JE (2019) Marine Omega-3 Supplementation and Cardiovascular  
452 Disease: An Updated Meta-Analysis of 13 Randomized Controlled Trials Involving 127 477  
453 Participants. *JAMA* **8**, 19, e013543.

- 454 2. Del Gobbo LC, Imamura F, Aslibekyan S *et al.* (2016)  $\omega$ -3 Polyunsaturated Fatty Acid  
455 Biomarkers and Coronary Heart Disease: Pooling Project of 19 Cohort Studies. *JAMA*  
456 *Intern Med* **176**, 8, 1155–1166.
- 457 3. Harris WS, Tintle NL, Imamura F *et al.* (2021) Blood n-3 fatty acid levels and total and  
458 cause-specific mortality from 17 prospective studies. *Nat Commun* **12**, 1, 2329.
- 459 4. Liu J, Li X, Hou J *et al.* (2021) Dietary Intake of N-3 and N-6 Polyunsaturated Fatty Acids  
460 and Risk of Cancer: Meta-Analysis of Data from 32 Studies. *Nutr Cancer* **73**, 6, 901–913.
- 461 5. Ma M-Y, Li K-L, Zheng H *et al.* (2021) Omega-3 index and type 2 diabetes: Systematic  
462 review and meta-analysis. *Prostaglandins Leukot Essent Fatty Acids* **174**, 102361.
- 463 6. Qian F, Ardisson Korat AV, Imamura F *et al.* (2021) n-3 Fatty Acid Biomarkers and Incident  
464 Type 2 Diabetes: An Individual Participant-Level Pooling Project of 20 Prospective Cohort  
465 Studies. *Diabetes Care* **44**, 5, 1133–1142.
- 466 7. Liu R, Chen L, Wang Y *et al.* (2020) High ratio of  $\omega$ -3/ $\omega$ -6 polyunsaturated fatty acids  
467 targets mTORC1 to prevent high-fat diet-induced metabolic syndrome and mitochondrial  
468 dysfunction in mice. *J Nutr Biochem* **79**, 108330.
- 469 8. Kostı RI, Kasdaglı MI, Kyrozis A *et al.* (2022) Fish intake, n-3 fatty acid body status, and  
470 risk of cognitive decline: a systematic review and a dose-response meta-analysis of  
471 observational and experimental studies. *Nutr Rev* **80**, 6, 1445–1458.
- 472 9. Deyama S, Ishikawa Y, Yoshikawa K *et al.* (2017) Resolvin D1 and D2 Reverse  
473 Lipopolysaccharide-Induced Depression-Like Behaviors Through the mTORC1 Signaling  
474 Pathway. *Int J Neuropsychopharmacol* **20**, 7, 575–584.
- 475 10. Harris WS & Thomas RM (2010) Biological variability of blood omega-3 biomarkers. *Clin*  
476 *Biochem* **43**, 3, 338–340.
- 477 11. Fenton JI, Gurdell EA, Davidson EA *et al.* (2016) Red blood cell PUFAs reflect the  
478 phospholipid PUFA composition of major organs. *Prostaglandins Leukot Essent Fatty Acids*  
479 **112**, 12–23.
- 480 12. Harris WS & Schacky C von (2004) The Omega-3 Index: a new risk factor for death from  
481 coronary heart disease? *Prev Med* **39**, 1, 212–220.
- 482 13. Schuchardt JP, Cerrato M, Ceseri M *et al.* (2022) Red blood cell fatty acid patterns from 7  
483 countries: Focus on the Omega-3 index. *Prostaglandins Leukot Essent Fatty Acids* **179**,  
484 102418.
- 485 14. Demonty I, Langlois K, Greene-Finestone LS *et al.* (2021) Proportions of long-chain  $\omega$ -3  
486 fatty acids in erythrocyte membranes of Canadian adults: Results from the Canadian  
487 Health Measures Survey 2012-2015. *Am J Clin Nutr* **113**, 4, 993–1008.
- 488 15. Collins R (2012) What makes UK Biobank special? *The Lancet* **379**, 9822, 1173–1174.
- 489 16. Sudlow C, Gallacher J, Allen N *et al.* (2015) UK biobank: an open access resource for  
490 identifying the causes of a wide range of complex diseases of middle and old age. *PLoS*  
491 *Med* **12**, 3, e1001779.
- 492 17. Würtz P, Raiko JR, Magnussen CG *et al.* (2012) High-throughput quantification of  
493 circulating metabolites improves prediction of subclinical atherosclerosis. *Eur Heart J* **33**,  
494 18, 2307–2316.
- 495 18. DeFina LF, Bassett MH, Finley CE *et al.* (2016) Association between omega-3 fatty acids  
496 and serum prostate-specific antigen. *Nutr Cancer* **68**, 1, 58–62.
- 497 19. Würtz P, Havulinna AS, Soininen P *et al.* (2015) Metabolite Profiling and Cardiovascular  
498 Event Risk. *Circulation* **131**, 9, 774–785.
- 499 20. Rubin DB (1987) *Multiple Imputation for Nonresponse in Surveys*. Hoboken, NJ, USA: John  
500 Wiley & Sons, Inc.

- 501 21. Mackenbach JP (1988) Health and deprivation. Inequality and the North. *Health Policy* **10**,  
502 2, 207.
- 503 22. Office for National Statistics, National Records of Scotland, Northern Ireland Statistics and  
504 Research Agency (2017) *2011 Census aggregate data (Data downloaded: 1 February*  
505 *2017)*.
- 506 23. Stark KD, van Elswyk ME, Higgins MR *et al.* (2016) Global survey of the omega-3 fatty  
507 acids, docosahexaenoic acid and eicosapentaenoic acid in the blood stream of healthy  
508 adults. *Prog Lipid Res* **63**, 132–152.
- 509 24. Block RC, Harris WS, Pottala JV (2008) Determinants of Blood Cell Omega-3 Fatty Acid  
510 Content. *Open Biomark J* **1**, 1–6.
- 511 25. Flock MR, Skulas-Ray AC, Harris WS *et al.* (2013) Determinants of Erythrocyte Omega-3  
512 Fatty Acid Content in Response to Fish Oil Supplementation: A Dose–Response  
513 Randomized Controlled Trial. *JAMA* **2**, 6.
- 514 26. Lorigeril M de, Salen P, Martin J-L *et al.* (2008) Interactions of wine drinking with omega-3  
515 fatty acids in patients with coronary heart disease: a fish-like effect of moderate wine  
516 drinking. *Am Heart J* **155**, 1, 175–181.
- 517 27. Groot RHM de, van Boxtel MPJ, Schiepers OJG *et al.* (2009) Age dependence of plasma  
518 phospholipid fatty acid levels: potential role of linoleic acid in the age-associated increase in  
519 docosahexaenoic acid and eicosapentaenoic acid concentrations. *Br J Nutr* **102**, 7, 1058–  
520 1064.
- 521 28. Harris WS, Pottala JV, Lacey SM *et al.* (2012) Clinical correlates and heritability of  
522 erythrocyte eicosapentaenoic and docosahexaenoic acid content in the Framingham Heart  
523 Study. *Atherosclerosis* **225**, 2, 425–431.
- 524 29. Itomura M., Fujioka S., Hamazaki K. *et al.* (2008) Factors influencing EPA + DHA levels in  
525 red blood cells in Japan. *In Vivo* **22**, 131–135.
- 526 30. Harris WS, Tintle NL, Manson JE *et al.* (2021) Effects of menopausal hormone therapy on  
527 erythrocyte n-3 and n-6 PUFA concentrations in the Women's Health Initiative randomized  
528 trial. *Am J Clin Nutr* **113**, 6, 1700–1706.
- 529 31. Burdge GC & Wootton SA (2003) Conversion of  $\alpha$ -linolenic acid to palmitic, palmitoleic,  
530 stearic and oleic acids in men and women. *Prostaglandins, Leukotrienes and Essential*  
531 *Fatty Acids* **69**, 4, 283–290.
- 532 32. Giltay EJ, Gooren LJJ, Toorians AWFT *et al.* (2004) Docosahexaenoic acid concentrations  
533 are higher in women than in men because of estrogenic effects. *Am J Clin Nutr* **80**, 5,  
534 1167–1174.
- 535 33. Burdge GC, Jones AE, Wootton SA (2002) Eicosapentaenoic and docosapentaenoic acids  
536 are the principal products of alpha-linolenic acid metabolism in young men\*. *Br J Nutr* **88**, 4,  
537 355–363.
- 538 34. Hodson L, Skeaff CM, Fielding BA (2008) Fatty acid composition of adipose tissue and  
539 blood in humans and its use as a biomarker of dietary intake. *Prog Lipid Res* **47**, 5, 348–  
540 380.
- 541 35. Kalsbeek A, Veenstra J, Westra J *et al.* (2018) A genome-wide association study of red-  
542 blood cell fatty acids and ratios incorporating dietary covariates: Framingham Heart Study  
543 Offspring Cohort. *PLoS One* **13**, 4, e0194882.
- 544 36. Wagner A, Simon C, Morio B *et al.* (2015) Omega-3 index levels and associated factors in  
545 a middle-aged French population: the MONA LISA-NUT Study. *Eur J Clin Nutr* **69**, 4, 436–  
546 441.



- 547 37. Plourde M, Chouinard-Watkins R, Vandal M *et al.* (2011) Plasma incorporation, apparent  
548 retroconversion and  $\beta$ -oxidation of  $^{13}\text{C}$ -docosahexaenoic acid in the elderly. *Nutr Metab*  
549 (*Lond*) **8**, 5.
- 550 38. Sands SA, Reid KJ, Windsor SL *et al.* (2005) The impact of age, body mass index, and fish  
551 intake on the EPA and DHA content of human erythrocytes. *Lipids* **40**, 4, 343–347.
- 552 39. Nevill AM, Duncan MJ, Myers T (2022) BMI is dead; long live waist-circumference indices:  
553 But which index should we choose to predict cardio-metabolic risk? *Nutr Metab Cardiovasc*  
554 *Dis* **32**, 7, 1642–1650.
- 555 40. Cazzola R, Rondanelli M, Russo-Volpe S *et al.* (2004) Decreased membrane fluidity and  
556 altered susceptibility to peroxidation and lipid composition in overweight and obese female  
557 erythrocytes. *J Lipid Res* **45**, 10, 1846–1851.
- 558 41. Wang Y, Botolin D, Xu J *et al.* (2006) Regulation of hepatic fatty acid elongase and  
559 desaturase expression in diabetes and obesity. *J Lipid Res* **47**, 9, 2028–2041.
- 560 42. Zehr KR, Segovia A, Shah M *et al.* (2019) Associations of medium and long chain omega-3  
561 polyunsaturated fatty acids with blood pressure in Hispanic and non-Hispanic smokers and  
562 nonsmokers. *Prostaglandins Leukot Essent Fatty Acids* **144**, 10–15.
- 563 43. Hoge A, Bernardy F, Donneau A-F *et al.* (2018) Low omega-3 index values and  
564 monounsaturated fatty acid levels in early pregnancy: an analysis of maternal erythrocytes  
565 fatty acids. *Lipids Health Dis* **17**, 1, 63.
- 566 44. Sala-Vila A, Harris WS, Cofán M *et al.* (2011) Determinants of the omega-3 index in a  
567 Mediterranean population at increased risk for CHD. *Br J Nutr* **106**, 3, 425–431.
- 568 45. Polidori MC, Mecocci P, Stahl W *et al.* (2003) Cigarette smoking cessation increases  
569 plasma levels of several antioxidant micronutrients and improves resistance towards  
570 oxidative challenge. *Br J Nutr* **90**, 1, 147–150.
- 571 46. Morrow JD, Frei B, Longmire AW *et al.* (1995) Increase in circulating products of lipid  
572 peroxidation (F<sub>2</sub>-isoprostanes) in smokers. Smoking as a cause of oxidative damage. *N*  
573 *Engl J Med* **332**, 18, 1198–1203.
- 574 47. Di Giuseppe R, Lorigeril M de, Salen P *et al.* (2009) Alcohol consumption and n-3  
575 polyunsaturated fatty acids in healthy men and women from 3 European populations. *Am J*  
576 *Clin Nutr* **89**, 1, 354–362.
- 577 48. Schacky C von, Kemper M, Haslbauer R *et al.* (2014) Low Omega-3 Index in 106 German  
578 elite winter endurance athletes: a pilot study. *Int J Sport Nutr Exerc Metab* **24**, 5, 559–564.
- 579 49. Ritz PP, Rogers MB, Zabinsky JS *et al.* (2020) Dietary and Biological Assessment of the  
580 Omega-3 Status of Collegiate Athletes: A Cross-Sectional Analysis. *PLoS One* **15**, 4,  
581 e0228834.
- 582 50. Moyers B, Farzaneh-Far R, Harris WS *et al.* (2011) Relation of whole blood n-3 fatty acid  
583 levels to exercise parameters in patients with stable coronary artery disease (from the heart  
584 and soul study). *Am J Cardiol* **107**, 8, 1149–1154.
- 585 51. Cutler DM & Lleras-Muney A (2010) Understanding differences in health behaviors by  
586 education. *J Health Econ* **29**, 1, 1–28.
- 587 52. Heuer T, Krems C, Moon K *et al.* (2015) Food consumption of adults in Germany: results of  
588 the German National Nutrition Survey II based on diet history interviews. *Br J Nutr* **113**, 10,  
589 1603–1614.
- 590 53. Dijkstra SC, Neter JE, Brouwer IA *et al.* (2014) Adherence to dietary guidelines for fruit,  
591 vegetables and fish among older Dutch adults; the role of education, income and job  
592 prestige. *J Nutr Health Aging* **18**, 2, 115–121.

- 593 54. Li Z-H, Zhong W-F, Liu S *et al.* (2020) Associations of habitual fish oil supplementation with  
594 cardiovascular outcomes and all cause mortality: evidence from a large population based  
595 cohort study. *BMJ* **368**, m456.  
596  
597

598 **Tables**

599 **Table 1: Demographics of the UK Biobank sample (n=117,108).**

<b>Characteristic</b>	<b>Percent (n) or Mean (SD)</b>
<b>Sex</b>	
Female	54.21% (63,480)
Male	45.79% (53,628)
<b>Age (years)</b>	
	57.1 (8.1)
40-50y	23.33% (27,322)
50-60y	33.22% (38,907)
60-70y	43.45% (50,879)
<b>BMI (kg/m<sup>2</sup>)</b>	
	27.4 (4.8)
18.5-24.9 (normal weight)	32.46% (38,013)
25.0-29.9 (overweight)	42.55% (49,832)
≥30 (obese)	24.47% (28,656)
<b>Waist Circumference (cm)</b>	
<80	22.81% (26,717)
80-90	26.28% (30,777)
90-99	25.14% (29,439)
>99	25.74% (30,145)
Do not know/ No answer	0.03% (30)
<b>Ethnic group</b>	
White	94.50% (110,662)
Black	0.57% (662)
Asian	1.93% (2,257)
Other	3.01% (3,527)
<b>Deprivation index</b>	
	-1.3 (3.1)
Least Deprived	36.82% (43,115)
Next least deprived	21.19% (24,819)
Typical Deprivation	14.59% (17,090)
Somewhat deprived	13.23% (15,495)
Most deprived	14.17% (16,589)
<b>Urbanicity</b>	
England/Wales- Urban	85.6% (100,250)
England/Wales - Rural	6.59% (7,722)
Scotland - Rural	0.66% (773)
Scotland - Urban	6.18% (7,236)
<b>Education</b>	
College	37.57% (43,992)
Associates	10.99% (12,869)
SE	33.28% (38,969)
None	17.1% (20,023)
Do not know/ No answer	1.07% (1,255)
<b>Oily fish consumption</b>	

Never	10.86% (12,715)
Less than 1x/week	32.75% (38,356)
1x/week	37.83% (44,304)
At least 2x/week	17.97% (21,042)
<b>Non-oily fish consumption</b>	
Never	4.71% (5,511)
Less than 1x/week	28.75% (33,668)
1x/week	49.49% (57,958)
At least 2x/week	16.52% (19,347)
<b>Regular fish oil consumption</b>	
No	68.43% (80,142)
Yes	31.31% (36,669)
<b>Alcohol use</b>	
Rarely/Never	19.36% (22,667)
1-3x/month	11.28% (13,208)
1-2x/week	25.82% (30,233)
3-4x/week	23.27% (27,254)
Daily	20.28% (23,746)
<b>Smoker</b>	
Never	54.37% (63,671)
Previous	34.7% (40,632)
Current	10.55% (12,350)
<b>Exercise (min/week)</b>	
<150	22.12% (25,901)
150-320	22.81% (26,710)
320-660	22.92% (26,846)
>660	23.17% (27,130)
Do not know/ No answer	8.98% (10,521)

600

601

602 **Table 2: Regression model predicting the Omega-3 Index (n=239).**

Predictor	Beta (SE)	P-value
Intercept	-0.1014 (0.315)	0.75
NMR DHA%	2.6290 (0.194)	$<2 \times 10^{-16}$
NMR non-DHA%	0.4673 (0.126)	0.00027
Model summary statistics: Residual SE (1.217); $r^2=0.673$ ; $r=0.823$		

603



604 **Table 3: Associations of demographic characteristics and the estimated Omega-3 Index**  
 605 **(eO3I) in unadjusted and adjusted (for all variables in Table 1) analyses (n=117,108).**

Characteristics	eO3I Mean (SD)	eO3I Unadj Diff or Corr (95% CI)	Unadj P-value	eO3I Adj Diff or Corr (95% CI)	Adj P-value
<b>Sex</b>					
Female	5.9 (2.2)	0		0	
Male	5.2 (2.2)	-0.62 (-0.65,-0.59)	<0.0001***	-0.38 (-0.42,-0.34)	<0.0001***
<b>Age (years)</b>					
40-50 (reference)	5.2 (2.1)	0		0	
50-60	5.5 (2.2)	0.29 (0.25,0.33)	<0.0001***	0.15 (0.11,0.19)	<0.0001***
60-70	5.8 (2.3)	0.64 (0.6,0.68)	<0.0001***	0.35 (0.31,0.39)	<0.0001***
<b>BMI (kg/m<sup>2</sup>)</b>					
18.5-24.9 (normal weight; reference)	6 (2.3)	0		0	
25.0-29.9 (overweight)	5.6 (2.2)	-0.4 (-0.43,-0.36)	<0.0001***	-0.13 (-0.18,-0.09)	<0.0001***
≥30 (obese)	5.1 (2.1)	-0.88 (-0.92,-0.84)	<0.0001***	-0.38 (-0.44,-0.32)	<0.0001***
<b>Waist Circumference (cm)</b>					
<80 (reference)	6.2 (2.3)	0		0	
80-90	5.8 (2.2)	-0.38 (-0.42,-0.33)	<0.0001***	-0.22 (-0.27,-0.17)	<0.0001***
90-99	5.4 (2.2)	-0.72 (-0.77,-0.67)	<0.0001***	-0.37 (-0.43,-0.31)	<0.0001***
>99	5.0 (2.1)	-1.13 (-1.18,-1.08)	<0.0001***	-0.55 (-0.63,-0.47)	<0.0001***
Do not know/No answer	4.9 (1.7)	-1.23 (-2.24,-0.21)	0.018*	-0.8 (-1.78,0.17)	0.1
<b>Ethnic group</b>					
White (reference)	5.6 (2.2)	0		0	
Black	5.7 (2.3)	0.09 (-0.12,0.31)	0.41	0.17 (-0.04,0.38)	0.12
Asian	5 (2.3)	-0.58 (-0.7,-0.46)	<0.0001***	0 (-0.12,0.12)	0.97
Other	6.5 (2.6)	0.94 (0.85,1.04)	<0.0001***	1.03 (0.93,1.12)	<0.0001***
<b>Deprivation index</b>					
Least Deprived (reference)	5.7 (2.2)	0		0	
Next least deprived	5.6 (2.2)	-0.09 (-0.13,-0.04)	0.0001**	-0.01 (-0.06,0.03)	0.49
Typical Deprivation	5.5 (2.2)	-0.2 (-0.25,-0.15)	<0.0001***	-0.07 (-0.12,-0.02)	0.003**
Somewhat deprived	5.4 (2.2)	-0.33 (-0.38,-0.28)	<0.0001***	-0.12 (-0.17,-0.07)	<0.0001***
Most deprived	5.3 (2.3)	-0.42 (-0.48,-0.37)	<0.0001***	-0.12 (-0.18,-0.07)	<0.0001***
<b>Urbanicity</b>					
England/Wales- Urban (reference)	5.6 (2.2)	0		0	
England/Wales – Rural	5.8 (2.2)	0.22 (0.16,0.28)	<0.0001***	0.02 (-0.04,0.08)	0.5
Scotland – Rural	5.6 (2.3)	0.01 (-0.19,0.2)	0.96	0.03 (-0.15,0.21)	0.74
Scotland – Urban	5.5 (2.2)	-0.1 (-0.16,-0.03)	0.0027**	-0.06 (-0.12,0)	0.049*
<b>Education</b>					
College (reference)	5.8 (2.3)	0		0	
Associates	5.7 (2.2)	-0.14 (-0.2,-0.09)	<0.0001***	-0.08 (-0.13,-0.03)	0.00094**
SEs	5.4 (2.2)	-0.37 (-0.41,-0.34)	<0.0001***	-0.18 (-0.22,-0.15)	<0.0001***

None	5.4 (2.2)	-0.42 (-0.47,-0.38)	<0.0001***	-0.23 (-0.27,-0.18)	<0.0001***
Do not know/No answer	5.4 (2.2)	-0.39 (-0.54,-0.23)	<0.0001***	-0.26 (-0.4,-0.11)	0.00056**
<b>Oily fish consumption</b>					
Never (reference)	4.3 (1.7)	0		0	
Less than 1x/week	5 (1.9)	0.77 (0.71,0.82)	<0.0001***	0.47 (0.41,0.53)	<0.0001***
1x/week	5.8 (2.1)	1.56 (1.51,1.62)	<0.0001***	1.11 (1.05,1.17)	<0.0001***
At least 2x/week	6.9 (2.6)	2.64 (2.57,2.7)	<0.0001***	2.12 (2.05,2.18)	<0.0001***
<b>Non-oily fish consumption</b>					
Never (reference)	4.3 (2)	0		0	
Less than 1x/week	5.3 (2.2)	1 (0.92,1.07)	<0.0001***	0.34 (0.26,0.42)	<0.0001***
1x/week	5.7 (2.2)	1.38 (1.31,1.46)	<0.0001***	0.35 (0.26,0.43)	<0.0001***
At least 2x/week	6.1 (2.4)	1.79 (1.71,1.87)	<0.0001***	0.49 (0.4,0.58)	<0.0001***
<b>Regular Fish oil consumption</b>					
No (reference)	5.3 (2.1)	0		0	
Yes	6.2 (2.3)	0.97 (0.93,1)	<0.0001***	0.68 (0.65,0.71)	<0.0001***
<b>Alcohol use</b>					
Rarely/Never (reference)	5.4 (2.3)	0		0	
1-3x/month	5.4 (2.2)	-0.02 (-0.08,0.04)	0.61	0.01 (-0.05,0.07)	0.69
1-2x/week	5.5 (2.2)	0.14 (0.09,0.19)	<0.0001***	0.11 (0.06,0.16)	<0.0001***
3-4x/week	5.8 (2.2)	0.38 (0.33,0.43)	<0.0001***	0.26 (0.21,0.31)	<0.0001***
Daily	5.8 (2.2)	0.4 (0.35,0.45)	<0.0001***	0.3 (0.25,0.35)	<0.0001***
<b>Smoker</b>					
Never (reference)	5.7 (2.3)	0		0	
Previous	5.6 (2.3)	-0.04 (-0.08,-0.01)	0.025*	-0.03 (-0.07,-0)	0.07
Current	4.8 (2)	-0.86 (-0.92,-0.8)	<0.0001***	-0.58 (-0.64,-0.53)	<0.0001***
<b>Exercise (min/week)</b>					
<150 (reference)	5.5 (2.2)	0		0	
150-320	5.7 (2.2)	0.23 (0.18,0.27)	<0.0001***	0.01 (-0.03,0.05)	0.68
320-660	5.7 (2.3)	0.26 (0.21,0.3)	<0.0001***	-0.04 (-0.08,0.01)	0.092
>660	5.6 (2.3)	0.12 (0.07,0.16)	<0.0001***	-0.16 (-0.21,-0.12)	<0.0001***
Do not know/No answer	5.3 (2.2)	-0.17 (-0.17,-0.04)	0.00086**	-0.1 (-0.16,-0.04)	0.00074**

606

607

608

609 **Table 4: R-squared values for the participant's characteristics on the variability of eO3I.**

<b>Variable dropped<sup>1</sup></b>	<b>New R-squared<sup>1</sup></b>	<b>Uniquely explained variability<sup>2</sup></b>
<b>Overall model</b>	20.5%	
<b>Oily fish consumption</b>	13.5%	7.0%
<b>Regular fish oil consumption</b>	18.7%	1.8%
<b>Smoking</b>	19.9%	0.6%
<b>Ethnic group</b>	19.9%	0.6%
<b>Sex</b>	20.1%	0.4%
<b>Age</b>	20.2%	0.3%
<b>Alcohol use</b>	20.2%	0.3%
<b>Waist Circumference</b>	20.2%	0.3%
<b>BMI</b>	20.3%	0.2%
<b>Education</b>	20.3%	0.2%
<b>Non-oily fish consumption</b>	20.4%	0.1%
<b>Exercise</b>	20.4%	0.1%
<b>Deprivation index</b>	20.5%	0.0%
<b>Urbanicity</b>	20.5%	0.0%

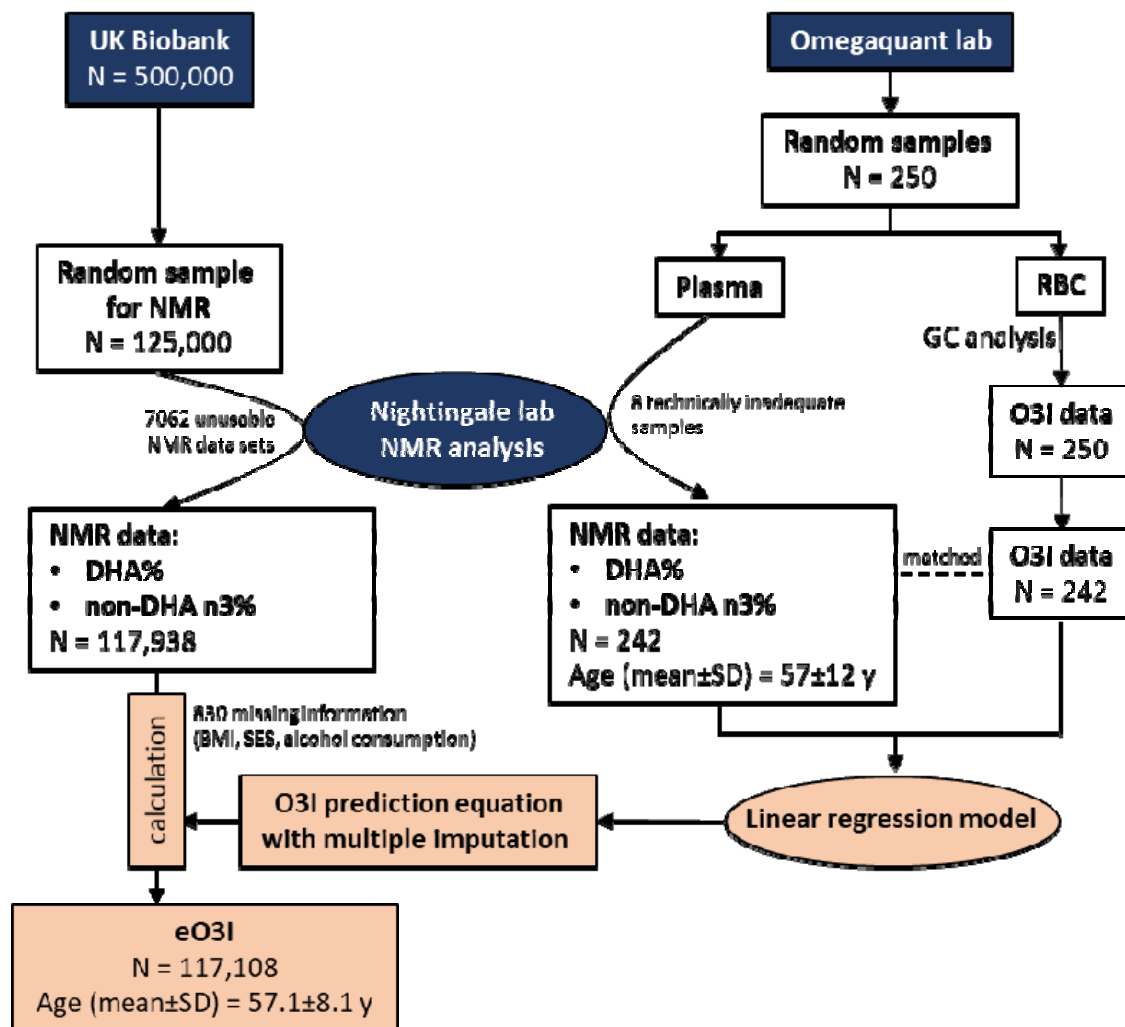
610 1. The new model R-squared for the remaining 13 variables when predicting eO3I. Variables are ranked according to  
611 their independent contribution on the total variability.

612 2. Uniquely explained variability is computed as the difference in the model without the variable compared to the full  
613 model with all 14 variables (overall model).

614

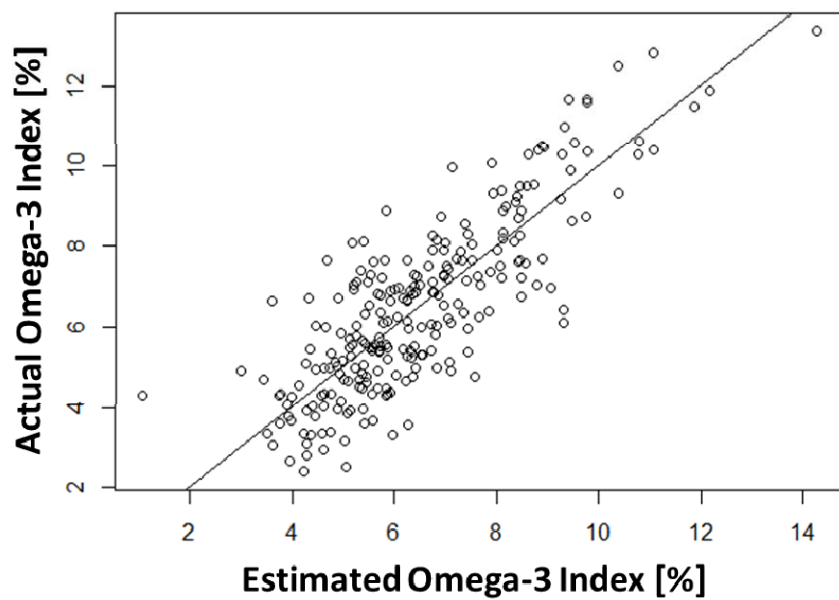
615

616 **Figures**



617  
618 **Figure 1: Flow chart for the interlaboratory experiment to create an Omega-3 Index (O3I)**  
619 **prediction equation and calculation of the estimated Omega-3 Index (eO3I) from the UK**  
620 **Biobank data (for details see text).**

621

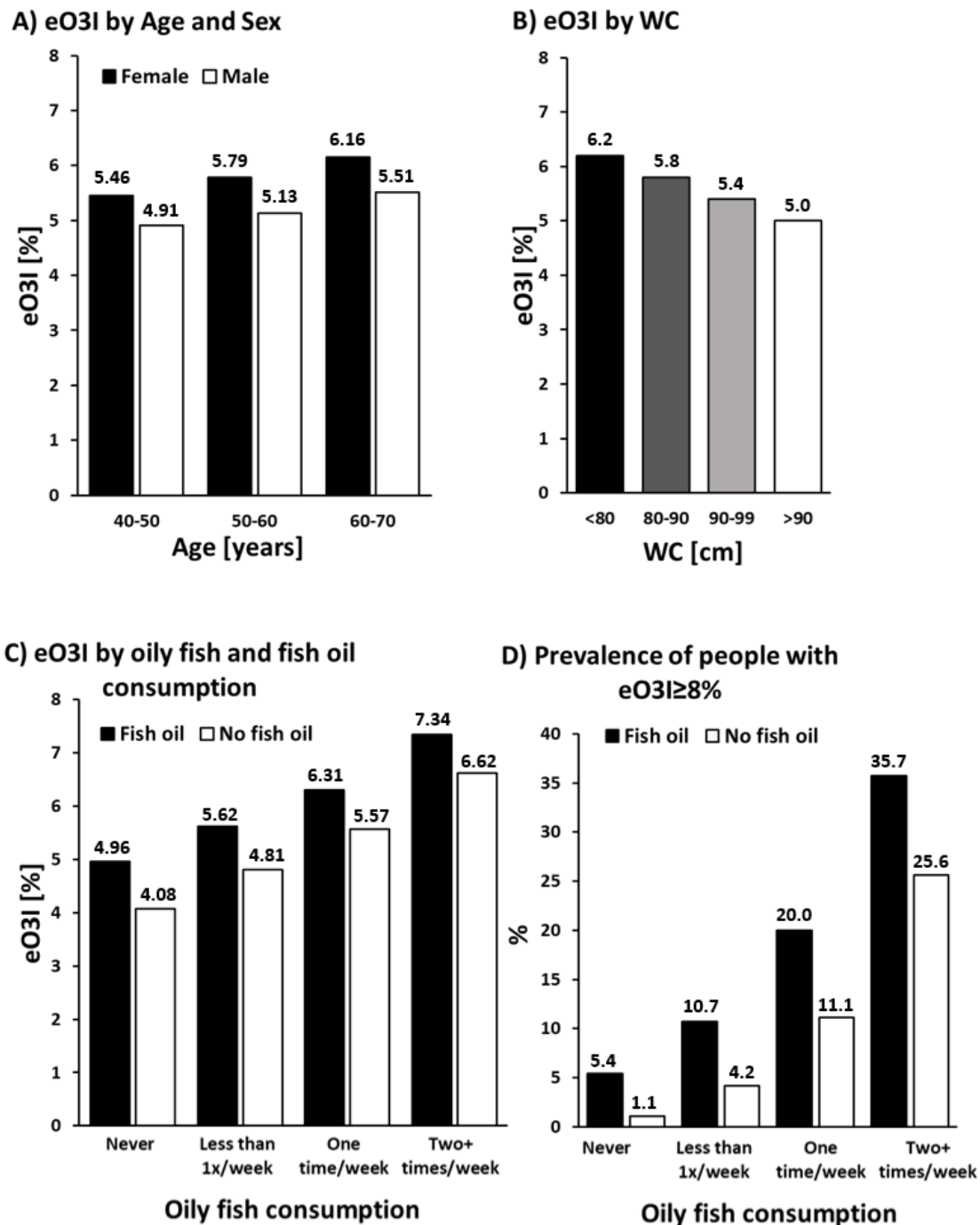


622

623 **Figure 2:** Predicted Omega-3 Index (eO3I) vs actual Omega-3 Index (O3I). The line of identity  
624 ( $y=x$ ) is plotted. All values are percent of total RBC FAs. Final  $r=0.823$ .

625





626  
 627 **Figure 3: Predicted Omega-3 Index (eO3I) by A) age and sex, B) waist circumference**  
 628 **(WC), C) oily fish and fish oil consumption. D) Percentage of people with an eO3I ≥ 8%**  
 629 **depending on oily fish and fish oil consumption.**

630 All pairwise comparisons (male vs. female in each age group, sex-specific age groups, all WC categories, fish oil vs.  
 631 no fish oil in different oily fish consumption groups and between different oily fish consumption groups) were  
 632  $p < 0.0001$ .

634 **Supplemental Material**

635 **Supplemental Table 1: Associations of demographic characteristics and DHA%**  
 636 **(measured by NMR) in unadjusted and adjusted (for all variables in Table 1) analyses**  
 637 **(n=117,108).**

Characteristics	DHA% Mean (SD)	DHA% Unadj Diff or Corr (95% CI)	Unadj P-value	DHA% Adj Diff or Corr (95% CI)	Adj P-value
<b>Sex</b>					
Female	2.1 (0.7)	0		0	
Male	1.9 (0.7)	-0.24 (-0.25,-0.24)	<0.0001***	-0.13 (-0.14,-0.12)	<0.0001***
<b>Age (years)</b>					
40-50 (reference)	1.9 (0.6)	0		0	
50-60	2 (0.7)	0.07 (0.06,0.08)	<0.0001***	0.03 (0.02,0.03)	<0.0001***
60-70	2.1 (0.7)	0.17 (0.16,0.18)	<0.0001***	0.09 (0.08,0.09)	<0.0001***
<b>BMI (kg/m<sup>2</sup>)</b>					
18.5-24.9 (normal weight; reference)	2.2 (0.7)	0		0	
25.0-29.9 (overweight)	2 (0.7)	-0.19 (-0.2,-0.19)	<0.0001***	-0.07 (-0.08,-0.06)	<0.0001***
≥30 (obese)	1.8 (0.6)	-0.4 (-0.41,-0.39)	<0.0001***	-0.17 (-0.18,-0.16)	<0.0001***
<b>Waist Circumference (cm)</b>					
<80 (reference)	2.3 (0.7)	0		0	
80-90	2.1 (0.7)	-0.18 (-0.19,-0.17)	<0.0001***	-0.11 (-0.12,-0.1)	<0.0001***
90-99	1.9 (0.7)	-0.33 (-0.34,-0.32)	<0.0001***	-0.18 (-0.19,-0.17)	<0.0001***
>99	1.8 (0.6)	-0.5 (-0.51,-0.49)	<0.0001***	-0.26 (-0.28,-0.24)	<0.0001***
Do not know/No answer	1.7 (0.5)	-0.55 (-0.79,-0.32)	<0.0001***	-0.37 (-0.58,-0.17)	0.00035**
<b>Ethnic group</b>					
White (reference)	2 (0.7)	0		0	
Black	2.1 (0.7)	0.06 (0,0.11)	0.034*	0.07 (0.02,0.11)	0.003**
Asian	1.8 (0.7)	-0.21 (-0.24,-0.18)	<0.0001***	-0.01 (-0.04,0.01)	0.43
Other	2.4 (0.8)	0.35 (0.33,0.37)	<0.0001***	0.38 (0.36,0.4)	<0.0001***
<b>Deprivation index</b>					
Least Deprived (reference)	2.1 (0.7)	0		0	
Next least deprived	2 (0.7)	-0.03 (-0.04,-0.02)	<0.0001***	0 (-0.01,0.01)	0.56
Typical Deprivation	2 (0.7)	-0.07 (-0.08,-0.05)	<0.0001***	-0.02 (-0.03,-0.01)	<0.0001***
Somewhat deprived	1.9 (0.7)	-0.11 (-0.13,-0.1)	<0.0001***	-0.04 (-0.05,-0.03)	<0.0001***
Most deprived	1.9 (0.7)	-0.14 (-0.16,-0.13)	<0.0001***	-0.04 (-0.05,-0.02)	<0.0001***
<b>Urbanicity</b>					
England/Wales- Urban (reference)	2 (0.7)	0		0	
England/Wales – Rural	2.1 (0.7)	0.08 (0.06,0.1)	<0.0001***	0.01 (-0.01,0.02)	0.23
Scotland – Rural	2 (0.7)	0 (-0.04,0.05)	0.86	0.01 (-0.03,0.05)	0.59
Scotland – Urban	2 (0.7)	-0.02 (-0.04,-0.01)	0.0024**	-0.02 (-0.03,0)	0.028*
<b>Education</b>					

College (reference)	2.1 (0.7)	0		0	
Associates	2 (0.7)	-0.05 (-0.07,-0.04)	<0.0001***	-0.03 (-0.04,-0.02)	<0.0001***
SEs	2 (0.7)	-0.14 (-0.15,-0.13)	<0.0001***	-0.07 (-0.08,-0.06)	<0.0001***
None	1.9 (0.7)	-0.18 (-0.19,-0.17)	<0.0001***	-0.09 (-0.1,-0.08)	<0.0001***
Do not know/No answer	1.9 (0.6)	-0.17 (-0.21,-0.13)	<0.0001***	-0.11 (-0.14,-0.07)	<0.0001***
<b>Oily fish consumption</b>					
Never (reference)	1.6 (0.5)	0		0	
Less than 1x/week	1.8 (0.5)	0.26 (0.25,0.27)	<0.0001***	0.16 (0.15,0.17)	<0.0001***
1x/week	2.1 (0.6)	0.53 (0.52,0.55)	<0.0001***	0.38 (0.37,0.4)	<0.0001***
At least 2x/week	2.5 (0.8)	0.9 (0.89,0.92)	<0.0001***	0.73 (0.71,0.74)	<0.0001***
<b>Non-oily fish consumption</b>					
Never (reference)	1.6 (0.6)	0		0	
Less than 1x/week	1.9 (0.6)	0.33 (0.31,0.35)	<0.0001***	0.11 (0.1,0.13)	<0.0001***
1x/week	2 (0.7)	0.46 (0.44,0.48)	<0.0001***	0.11 (0.09,0.13)	<0.0001***
At least 2x/week	2.2 (0.7)	0.6 (0.58,0.62)	<0.0001***	0.16 (0.14,0.18)	<0.0001***
<b>Regular Fish oil consumption</b>					
No (reference)	1.9 (0.6)	0		0	
Yes	2.2 (0.7)	0.32 (0.31,0.33)	<0.0001***	0.22 (0.21,0.23)	<0.0001***
<b>Alcohol use</b>					
Rarely/Never (reference)	1.9 (0.7)	0		0	
1-3x/month	1.9 (0.7)	0 (-0.01,0.01)	0.95	0 (-0.01,0.02)	0.5
1-2x/week	2 (0.7)	0.06 (0.05,0.07)	<0.0001***	0.04 (0.03,0.05)	<0.0001***
3-4x/week	2.1 (0.7)	0.15 (0.13,0.16)	<0.0001***	0.1 (0.09,0.11)	<0.0001***
Daily	2.1 (0.7)	0.15 (0.14,0.16)	<0.0001***	0.12 (0.1,0.13)	<0.0001***
<b>Smoker</b>					
Never (reference)	2.1 (0.7)	0		0	
Previous	2 (0.7)	-0.03 (-0.04,-0.02)	<0.0001***	-0.01 (-0.02,-0.01)	0.00074**
Current	1.7 (0.6)	-0.31 (-0.32,-0.3)	<0.0001***	-0.21 (-0.22,-0.2)	<0.0001***
<b>Exercise (min/week)</b>					
<150 (reference)	2 (0.7)	0		0	
150-320	2 (0.7)	0.09 (0.09,0.1)	<0.0001***	0 (0,0.02)	0.2
320-660	2.1 (0.7)	0.1 (0.09,0.12)	<0.0001***	-0.01 (-0.02,0)	0.23
>660	2 (0.7)	0.06 (0.05,0.07)	<0.0001***	-0.04 (-0.05,-0.03)	<0.0001***
Do not know/No answer	1.9 (0.7)	-0.04 (-0.06,-0.03)	<0.0001***	-0.03 (-0.05,-0.02)	<0.0001***

638

639

640 **Supplemental Table 2: R-squared values for the participant's characteristics on the**  
641 **variability of DHA% measure by NMR.**

---

<b>Overall model</b>	29.2%	
<b>Variable dropped<sup>1</sup></b>	<b>New R-squared<sup>1</sup></b>	<b>Uniquely explained variability<sup>2</sup></b>
<b>Oily fish consumption</b>	20.1%	9.1%
<b>Regular fish oil consumption</b>	27.0%	2.2%
<b>Ethnic group</b>	28.4%	0.9%
<b>Smoking</b>	28.4%	0.8%
<b>Waist Circumference</b>	28.6%	0.6%
<b>Sex</b>	28.6%	0.6%
<b>Alcohol use</b>	28.8%	0.4%
<b>BMI</b>	28.8%	0.4%
<b>Education</b>	29.0%	0.3%
<b>Age</b>	29.0%	0.2%
<b>Non-oily fish consumption</b>	29.0%	0.2%
<b>Exercise</b>	29.1%	0.1%
<b>Urbanicity</b>	29.1%	0.1%
<b>Deprivation index</b>	29.2%	0.1%

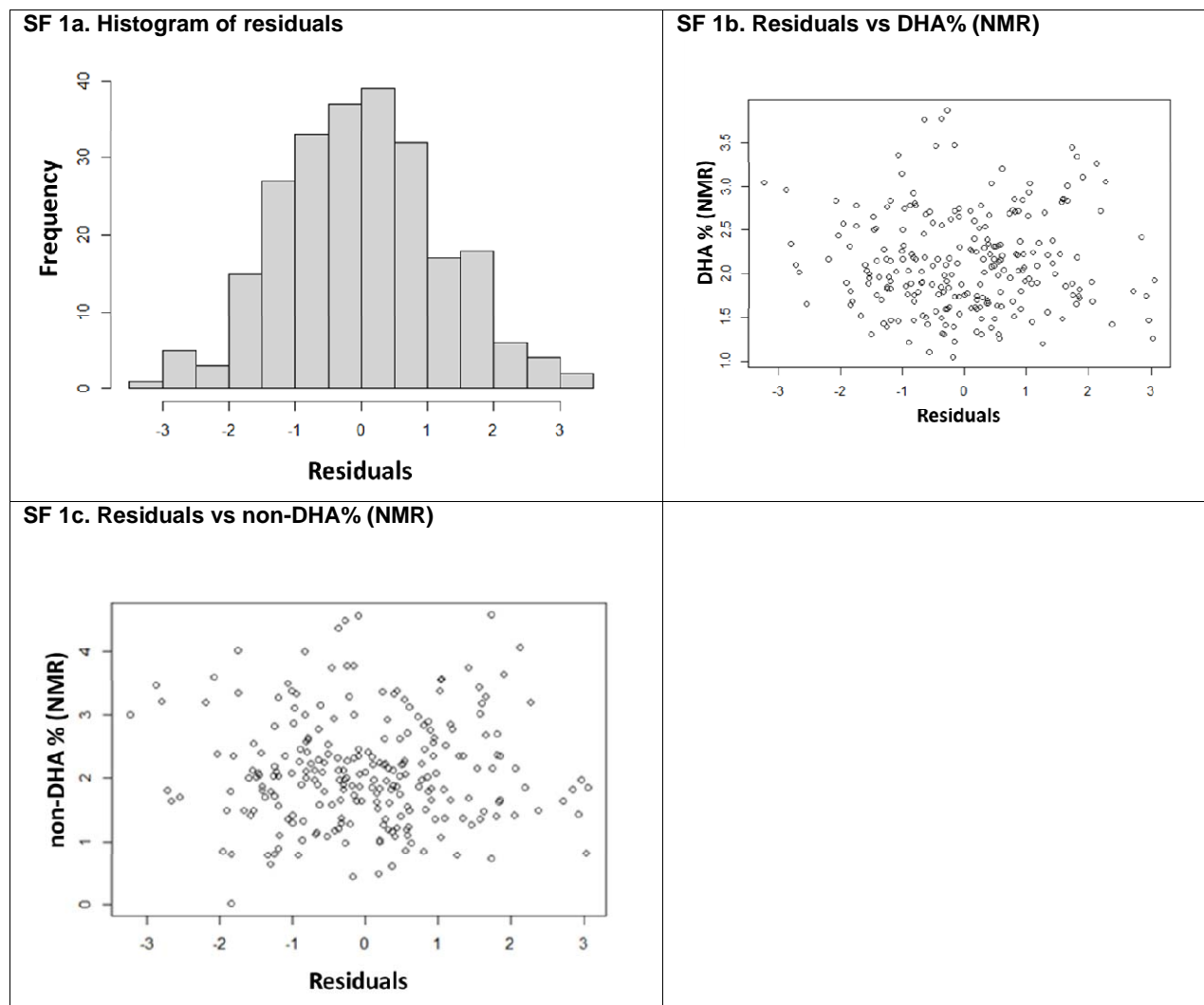
---

642 1. New R-squared provides the model R-squared for the other 13 variables when predicting DHA%. Variables are  
643 ranked according to their independent contribution on the total variability.

644 2. Uniquely explained variability is computed as the difference in the model without the variable compared to the full  
645 model with all 14 variables (overall model).

646

647



648 **Supplemental Figure 1: Prediction model diagnostics.**

649 Figure 1a shows the normality of the residuals for the final prediction model. Figures 1b and 1c show good model fit  
650 characteristics when looking at the prediction model residuals vs both predictor variables (DHA% [Figure 1b]; non-  
651 DHA% [Figure 1c]).

652

653