

Mitochondrial DNA haplogroup variation in hydrocephalus

Tina N Munch^{1,2,3}, Paula L Hedley^{4,5}, Christian M Hagen^{4,5}, Joanna Elson^{4,6}, Marie Bækvad-Hansen^{4,5}, Frank Geller¹, Jonas Bybjerg-Grauholm^{4,5}, Merete Nordentoft^{5,8}, Anders Børglum^{5,9}, Preben B Mortensen^{5,10}, Thomas M Werge^{5,11}, Mads Melbye^{3,12,13,14}, David M Hougaard^{4,5}, Michael Christiansen^{4,5,15#}.

1. Department of Epidemiology Research, Statens Serum Institut, Copenhagen, Denmark.
2. Department of Neurosurgery, Copenhagen University Hospital, Copenhagen, Denmark.
3. Department of Clinical Medicine, University of Copenhagen, Copenhagen, Denmark
4. Department for Congenital Disorders, Statens Serum Institut, Copenhagen, Denmark.
5. The Lundbeck Foundation Initiative for Integrative Psychiatric Research, iPSYCH, Aarhus, Denmark.
6. University of Newcastle, Newcastle, United Kingdom
7. Department of Clinical Medicine, Aarhus University, Aarhus, Denmark
8. Mental Health Centre, Capital Region of Denmark, Denmark
9. Institute of Medical Genetics, Aarhus University, Aarhus, Denmark
10. Center for Register Research, Institute of Economics, Aarhus University, Aarhus, Denmark
11. Mental Health Centre, Sct Hans, Capital Region of Denmark, Denmark
12. Department of Genetics, Stanford University School of Medicine, Stanford, California, USA
13. Centre for Fertility and Health, Norwegian Institute of Public Health, Oslo, Norway
14. K.G. Jebsen Center for Genetic Epidemiology, Norwegian university of Science and Technology, Trondheim, Norway
15. Department of Biomedical Science, University of Copenhagen, Copenhagen, Denmark.

Running title: *mtDNA haplogroups in hydrocephalus*

#Correspondence:

Professor, Chief physician

Michael Christiansen, FRCPath, MD

Department for Congenital Disorders, Statens Serum Institut

And Department of Biomedical Sciences, University of Copenhagen.

Ph: +4520720463. E-mail: mic@ssi.dk

Abstract

Hydrocephalus is a genetically and phenotypically heterogeneous condition with complex etiology. Ciliary dysfunction has been shown to play a role, either through interference with signaling functions in primary cilia, cerebrospinal fluid flow by motile cilia, or both. Ciliary function is highly energy-dependent, consequently, variation in mitochondrial OXPHOS function might be a susceptibility factor for hydrocephalus. Furthermore, familial hydrocephalus exhibits preferential maternal inheritance. Mitochondrial DNA (mtDNA) haplogroups, have been associated with different characteristics of OXPHOS function as well as susceptibility to autism spectrum disorders, a frequent co-morbidity of hydrocephalus. This nested case-cohort study, a substudy of the iPSYCH study, used mtDNA data from 191 hydrocephalus cases and 24,831 population controls and found no association between hydrocephalus and any mtDNA haplogroup. Likewise, the distribution of European macro-haplogroups, HV, JT, and UK, did not differ between 172 hydrocephalus cases and 21,850 population controls. Thus, mtDNA haplogroups are not susceptibility factors for hydrocephalus.

Keywords: Mitochondrial DNA, Mitochondrial haplogroups, Hydrocephalus, Ciliopathies, Oxidative Phosphorylation

Introduction

Hydrocephalus (HC) is a heterogeneous disorder characterized by the abnormal amounts of cerebrospinal fluid (CSF) within the ventricles and subarachnoid space of the brain.[1] It is a common disorder with a frequency of around 1:1000 children.[2] Primary HC, e.g., HC without underlying tumors, hemorrhage or CNS infections obstructing or impeding the normal flow or absorption of CSF may present as syndromic, as well as isolated HC. Primary HC may be caused by congenital obstructions of CSF outlets in the ventricular system, the most common being stenosis of the Sylvian aqueduct that connects the third and fourth ventricle. Communicating forms of primary HC may be caused by a disturbed balance of the production and absorption of CSF leading to accumulation of CSF in the ventricular system or the subarachnoid space, or by impaired neurogenesis yielding abnormal amounts of CSF relative to the brain volume.[3]

Monogenic forms of HC exist,[4] but the genetic etiology is complex and > 100 genes associated with HC have been reported in the literature, however with highly variable penetrance.

Interestingly, a nationwide population-based familial aggregation study of HC revealed preferential maternal inheritance.[2] The maternal component was not explained by risk factors likely to aggregate in families, [2] and may point towards X-linked genetic etiologies or involvement of mitochondrial DNA (mtDNA).

Many of the known HC-associated genes are involved in classical ciliopathies [5, 6] or in signaling pathways, such as sonic-hedgehog (Shh), wingless (Wnt), Notch, and PI3K-Akt-mTOR pathways, that are essential for brain development.[7] These pathways are compartmentalized - at least partly - in primary cilia.[8, 9] This role of ciliary function [10] and cilia-associated genes in HC is supported by the finding that genetically engineered mice with a HC phenotype overwhelmingly had genetic variants in cilia-associated genes.[11]

As ciliary function depends on a multitude of energy-requiring processes,[12] genetic or environmentally induced variation in OXPHOS function, or more broadly, mitochondrial function,[13] could modify the phenotype. This “Bioenergetic paradigm” [14] has been suggested to play a role in metabolic disorders/ biophysical traits,[15, 16] neurological diseases,[17] cardiomyopathies,[18, 19, 20, 21, 22] psychiatric diseases,[23] cancers,[24] and developmental disorders.[25] Furthermore, HC exhibits many comorbidities, including autism spectrum disease [26] that has been associated with altered mitochondrial function,[27, 28] and in some – but not all [29, 30] - studies with mtDNA haplogroups.[31] Mitochondrial DNA haplogroups, representing evolutionarily fixed groups of sequence variants in mtDNA, exhibit different characteristics of OXPHOS function [32, 33] and disease associations.[14, 34]

Based on the above, we hypothesized that variation in mtDNA haplogroups might explain the variable penetrance of HC. In consequence, we ascertained and compared mtDNA haplotypes and macro-haplotypes from HC cases and background population controls from the iPSYCH cohort.

Materials and Methods

Study design

This is a register-based case-cohort study using data from national health registries and genetic data from the iPSYCH study. The study is thus a sub-study of the Lundbeck Foundation Initiative for Integrative Psychiatric Research (iPSYCH: <http://iPSYCH.au.dk>). The iPSYCH cohort was selected from a study base of 1,472,762 singleton births born between May 1 1981 and Dec 31 2005. The inclusion criteria were that they were alive and residing in Denmark at one year of age, had an identifiable mother with a Danish Civil Registration number, and had a dried blood spot card stored in the Danish Neonatal Screening Biobank within the Danish National Biobank,[35]. The cohort comprised 57,875 psychiatric patients and a random sampled control cohort of 28,606 individuals. Details on time periods of selection as well as genomic variability data are given in Pedersen et al, 2018.[36]

Ethics

The study was approved by the Scientific Ethics Committees of the Central Denmark Region (www.komite.rm.dk)(J.nr.: 1-10-72-287-12) and the Danish Data Protection Agency (www.datatilsynet.dk)(J.nr.: 2012-41-0110). Informed consent was waived in accordance with the conditions of ethics approval.[36]

Hydrocephalus cases and controls

Hydrocephalus cases included individuals registered in the Danish National Patient Register 2016 or earlier with ICD 10 diagnosis code Q03, Q038, Q038A, Q038C, Q039, G910, G911, G912, G913, G918 and G919 or ICD 8 diagnosis code 74200, 74201, 74208, 7409, 34794 and 34795.

A total of 191 hydrocephalus cases were identified in the iPSYCH cohort with haplotyped mtDNA and 24,831 background population controls. Among these, 172 hydrocephalus cases and 21,850 background population controls belonged to the European macro-haplogroups, HV, JT, and UK.

Genetic analysis and mtDNA haplotyping

Two 3.2-mm disks were excised from each blood spot. DNA was extracted using Extract-N-Amp Blood PCR Kit (Sigma-Aldrich), whole genome amplified (WGA) in triplicate using the REPLIg kit (Qiagen), followed by pooling into a single aliquot. The amplified DNA samples were genotyped at the Broad Institute (MA, USA) using the PGC developed PsychChip v 1.0 (Illumina, CA, USA) typing 588,454 variants. Finally, samples with less than 97 % call rate, or where the estimated gender differed from the expected gender, were removed. We then isolated the 418 mitochondrial loci and reviewed the genotype calls, before exporting into the PED/MAP format using GenomeStudio (Illumina). MtDNA haplotyping was performed as described previously.[37, 38] using the haplogroup defining SNPs reported in www.phylotree.org. [39] Figure 1 illustrates the phylogenetic tree of mtDNA haplogroups.

Statistics

The associations between HC and mtDNA haplogroups and macro-haplogroups (Figure 1) were examined using Fisher's exact test. P-values less than 0.05 were considered significant.

Results

We identified 191 cases of HC and 24,831 background population controls with available mtDNA. As presented in Table 1, 34 % of the HC cases were females, whereas 49 % of the background population controls were female. Mean age of HC cases was 22.4 years, which was virtually similar to the mean age of 22.8 years among background population controls.

Table 2 and Table 3 present the distribution of mtDNA haplogroups and mtDNA macro-haplogroups in HC cases and controls, respectively. The distribution of mtDNA haplogroups did not differ between HC cases and controls as shown in Table 2. Likewise, we observed no significant association between any of the European macro-haplogroups (HV, JT, and UK) and HC (Table 3).

Discussion

We have, for the first time, shown that genetic variation of mtDNA, at the level haplogroups and European macro-haplogroups is not associated with HC in the Danish population. This does not preclude that mtDNA variation at a more distant phylogenetic level, e.g. individual “private” variants or sub-haplogroups, may be of significance.

The mtDNA haplogroup variation is frequently found associated with late-presenting degenerative diseases, whereas rarer mtDNA variants often present as classical mitochondriopathies,[14, 34] which are maternally inherited. This rarer mtDNA model of disease would be more in line with the tendency for maternal inheritance found in the previously mentioned familial aggregation study[2]. Furthermore, rarer mtDNA diseases often negatively influence the ability to reproduce. Many rare mitochondrial diseases, either caused by mtDNA variants or nuclear genes coding for parts of the mitochondrial proteome or mitochondrial regulatory genes, have been described to present with HC, e.g. fatty acid oxidation defects,[40] mitochondrial respiratory complex deficiencies,[41, 42] loss of mitochondrial apoptosis-inducing factor,[43] and Fowler syndrome.[44]

Thus, this study does not exclude associations between rare mtDNA variants and hydrocephalus.

Interestingly, we found hydrocephalus associated variants the *MTO1* gene in a single heterozygote carrier among a subset of 72 whole-exome sequenced hydrocephalus patients from the same cohort as this study (yet unpublished data). *MTO1* encodes the mitochondrial translocation optimization 1 protein, which is involved in tRNA modification to increase the accuracy and efficiency of mtDNA translation.[45] Furthermore, the study revealed significant involvement of the ciliome.

Hydrocephalus has been associated with other mitochondrial gene mutations in experimental studies, either because of impaired brain development or loss of ciliated epithelium in the ependymal layer.[43]

A limitation of the study is that we have not examined the potential significance of variation in the nuclear genes coding for a large part (~ 99 %) of the mitoproteome, and genes controlling interaction between mtDNA and the nuclear genome.[46] Such studies would have required a larger number of HC cases and much more extensive sequencing. Furthermore, the distribution of haplogroups in both controls and HC patients is similar to that previously reported for a large unbiased Danish nation-wide study [37] with such a great variation in frequency of different haplogroups (Table 2), that the study has insufficient statistical power to evaluate the association between the less frequent haplogroups and hydrocephalus.

In conclusion, we did not find significant associations between hydrocephalus and mtDNA at the haplogroup or macro-haplogroup levels. Yet, compelling evidence for the interaction between HC, brain development, ciliary- dependent signaling pathways,[47] and mitochondrial function exists,[13] but more likely due to rare mtDNA population variants. It has been shown that less frequent mtDNA variants are often mildly deleterious, and there have been attempts to link their collective impact with a number of phenotypes[48, 49, 50] We suggest that more extensive studies involving whole-exome-sequencing of the nuclear genome and full mtDNA sequencing are performed to better assess the role of mitochondrial function in modifying the complex genetic and molecular etiology of HC. This is of clinical importance as mitochondrial functional involvement may assist in defining new pharmaceutical targets.[51]

Acknowledgements

The iPSYCH study was funded by the Lundbeck Foundation Initiative for Integrative Psychiatric Research (www.ipsych.au.dk). This research has been conducted using the Danish National Biobank resource, supported by the Novo Nordisk Foundation.

Declaration of interest statement

The authors report there are no competing interests to declare.

References

1. Rekate HL. Hydrocephalus and adjustable valves. *J Neurosurg Pediatr.* 2008 Jul;2(1):12-3; discussion 13. doi: 10.3171/PED/2008/2/7/012. PubMed PMID: 18590388.
2. Munch TN, Rostgaard K, Rasmussen ML, et al. Familial aggregation of congenital hydrocephalus in a nationwide cohort. *Brain.* 2012 Aug;135(Pt 8):2409-15. doi: 10.1093/brain/aws158. PubMed PMID: 22763745.
3. Kahle KT, Kulkarni AV, Limbrick DD, Jr., et al. Hydrocephalus in children. *Lancet.* 2016 Feb 20;387(10020):788-99. doi: 10.1016/S0140-6736(15)60694-8. PubMed PMID: 26256071.
4. Kousi M, Katsanis N. The Genetic Basis of Hydrocephalus. *Annu Rev Neurosci.* 2016 Jul 8;39:409-35. doi: 10.1146/annurev-neuro-070815-014023. PubMed PMID: 27145913.
5. Reiter JF, Leroux MR. Genes and molecular pathways underpinning ciliopathies. *Nat Rev Mol Cell Biol.* 2017 Sep;18(9):533-547. doi: 10.1038/nrm.2017.60. PubMed PMID: 28698599; PubMed Central PMCID: PMC5851292.
6. Kundishora AJ, Singh AK, Allington G, et al. Genomics of human congenital hydrocephalus. *Childs Nerv Syst.* 2021 Nov;37(11):3325-3340. doi: 10.1007/s00381-021-05230-8. PubMed PMID: 34232380.
7. Liu S, Trupiano MX, Simon J, et al. The essential role of primary cilia in cerebral cortical development and disorders. *Curr Top Dev Biol.* 2021;142:99-146. doi: 10.1016/bs.ctdb.2020.11.003. PubMed PMID: 33706927; PubMed Central PMCID: PMC8740521.
8. Loo CKC, Pearen MA, Ramm GA. The Role of Sonic Hedgehog in Human Holoprosencephaly and Short-Rib Polydactyly Syndromes. *Int J Mol Sci.* 2021 Sep 12;22(18). doi: 10.3390/ijms22189854. PubMed PMID: 34576017; PubMed Central PMCID: PMC8468456.
9. Chung CY, Singh K, Kotiadis VN, et al. Constitutive activation of the PI3K-Akt-mTORC1 pathway sustains the m.3243 A > G mtDNA mutation. *Nat Commun.* 2021 Nov 4;12(1):6409. doi: 10.1038/s41467-021-26746-2. PubMed PMID: 34737295; PubMed Central PMCID: PMC8568893.
10. Kumar V, Umair Z, Kumar S, et al. The regulatory roles of motile cilia in CSF circulation and hydrocephalus. *Fluids Barriers CNS.* 2021 Jul 7;18(1):31. doi: 10.1186/s12987-021-00265-0. PubMed PMID: 34233705; PubMed Central PMCID: PMC8261947.
11. Vogel P, Read RW, Hansen GM, et al. Congenital hydrocephalus in genetically engineered mice. *Vet Pathol.* 2012 Jan;49(1):166-81. doi: 10.1177/0300985811415708. PubMed PMID: 21746835.
12. Lin W, Qiao C, Hu J, et al. Conserved role of ATP synthase in mammalian cilia. *Exp Cell Res.* 2021 Apr 1;401(1):112520. doi: 10.1016/j.yexcr.2021.112520. PubMed PMID: 33639177.
13. Burkhalter MD, Sridhar A, Sampaio P, et al. Imbalanced mitochondrial function provokes heterotaxy via aberrant ciliogenesis. *J Clin Invest.* 2019 May 16;129(7):2841-2855. doi: 10.1172/JCI98890. PubMed PMID: 31094706; PubMed Central PMCID: PMC6597216.
14. Wallace DC. A mitochondrial bioenergetic etiology of disease. *J Clin Invest.* 2013 Apr;123(4):1405-12. doi: 10.1172/JCI61398. PubMed PMID: 23543062; PubMed Central PMCID: PMC3614529.
15. Kraja AT, Liu C, Fetterman JL, et al. Associations of Mitochondrial and Nuclear Mitochondrial Variants and Genes with Seven Metabolic Traits. *Am J Hum Genet.* 2019 Jan 3;104(1):112-138. doi: 10.1016/j.ajhg.2018.12.001. PubMed PMID: 30595373; PubMed Central PMCID: PMC6323610.
16. Yonova-Doing E, Calabrese C, Gomez-Duran A, et al. An atlas of mitochondrial DNA genotype-phenotype associations in the UK Biobank. *Nat Genet.* 2021 Jul;53(7):982-993. doi: 10.1038/s41588-021-00868-1. PubMed PMID: 34002094; PubMed Central PMCID: PMC87611844.
17. Antonyova V, Kejik Z, Brogyanyi T, et al. Role of mtDNA disturbances in the pathogenesis of Alzheimer's and Parkinson's disease. *DNA Repair (Amst).* 2020 Jul - Aug;91-92:102871. doi: 10.1016/j.dnarep.2020.102871. PubMed PMID: 32502755.

18. Hagen CM, Aidt FH, Hedley PL, et al. Mitochondrial haplogroups modify the risk of developing hypertrophic cardiomyopathy in a Danish population. *PLoS One*. 2013;8(8):e71904. doi: 10.1371/journal.pone.0071904. PubMed PMID: 23940792; PubMed Central PMCID: PMC3734310.
19. Hagen CM, Aidt FH, Havndrup O, et al. Private mitochondrial DNA variants in danish patients with hypertrophic cardiomyopathy. *PLoS One*. 2015;10(4):e0124540.
20. Hagen CM, Aidt FH, Havndrup O, et al. MT-CYB mutations in hypertrophic cardiomyopathy. *Molecular genetics & genomic medicine*. 2013;1(1):54-65.
21. Hagen CM, Elson JL, Hedley PL, et al. Evolutionary dissection of mtDNA hg H: A susceptibility factor for hypertrophic cardiomyopathy. *Mitochondrial DNA Part A*. 2020;31(6):238-244.
22. Christiansen M, Hagen CM, Hedley PL. Mitochondrial haplogroups are associated with hypertrophic cardiomyopathy in the Indian population. *Mitochondrion*. 2014;20:105-106.
23. Sequeira A, Martin MV, Rollins B, et al. Mitochondrial mutations and polymorphisms in psychiatric disorders. *Front Genet*. 2012;3:103. doi: 10.3389/fgene.2012.00103. PubMed PMID: 22723804; PubMed Central PMCID: PMC3379031.
24. Gonzalez MDM, Santos C, Alarcon C, et al. Mitochondrial DNA haplogroups J and T increase the risk of glioma. *Mitochondrion*. 2021 May;58:95-101. doi: 10.1016/j.mito.2021.02.013. PubMed PMID: 33675980.
25. Smits P, Saada A, Wortmann SB, et al. Mutation in mitochondrial ribosomal protein MRPS22 leads to Cornelia de Lange-like phenotype, brain abnormalities and hypertrophic cardiomyopathy. *Eur J Hum Genet*. 2011 Apr;19(4):394-9. doi: 10.1038/ejhg.2010.214. PubMed PMID: 21189481; PubMed Central PMCID: PMC3060326.
26. Munch TN, Hedley PL, Hagen CM, et al. Co-occurring hydrocephalus in autism spectrum disorder: a Danish population-based cohort study. *Journal of neurodevelopmental disorders*. 2021;13(1):1-9.
27. Haas RH. Autism and mitochondrial disease. *Dev Disabil Res Rev*. 2010;16(2):144-53. doi: 10.1002/ddrr.112. PubMed PMID: 20818729.
28. Balachandar V, Rajagopalan K, Jayaramayya K, et al. Mitochondrial dysfunction: A hidden trigger of autism? *Genes Dis*. 2021 Sep;8(5):629-639. doi: 10.1016/j.gendis.2020.07.002. PubMed PMID: 34291134; PubMed Central PMCID: PMC8278534.
29. Hadjixenofontos A, Schmidt MA, Whitehead PL, et al. Evaluating mitochondrial DNA variation in autism spectrum disorders. *Ann Hum Genet*. 2013 Jan;77(1):9-21. doi: 10.1111/j.1469-1809.2012.00736.x. PubMed PMID: 23130936; PubMed Central PMCID: PMC3535511.
30. Kent L, Gallagher L, Elliott HR, et al. An investigation of mitochondrial haplogroups in autism. *Am J Med Genet B Neuropsychiatr Genet*. 2008 Sep 5;147B(6):987-9. doi: 10.1002/ajmg.b.30687. PubMed PMID: 18161860.
31. Chalkia D, Singh LN, Leipzig J, et al. Association Between Mitochondrial DNA Haplogroup Variation and Autism Spectrum Disorders. *JAMA Psychiatry*. 2017 Nov 1;74(11):1161-1168. doi: 10.1001/jamapsychiatry.2017.2604. PubMed PMID: 28832883; PubMed Central PMCID: PMC5710217.
32. Gomez-Duran A, Pacheu-Grau D, Lopez-Gallardo E, et al. Unmasking the causes of multifactorial disorders: OXPHOS differences between mitochondrial haplogroups. *Hum Mol Genet*. 2010 Sep 1;19(17):3343-53. doi: 10.1093/hmg/ddq246. PubMed PMID: 20566709.
33. Kiiskila J, Jokelainen J, Kytovuori L, et al. Association of mitochondrial DNA haplogroups J and K with low response in exercise training among Finnish military conscripts. *BMC Genomics*. 2021 Jan 22;22(1):75. doi: 10.1186/s12864-021-07383-x. PubMed PMID: 33482721; PubMed Central PMCID: PMC7821635.
34. Wallace DC. Mitochondrial genetic medicine. *Nat Genet*. 2018 Dec;50(12):1642-1649. doi: 10.1038/s41588-018-0264-z. PubMed PMID: 30374071.

35. Norgaard-Pedersen B, Hougaard DM. Storage policies and use of the Danish Newborn Screening Biobank. *J Inher Metab Dis*. 2007 Aug;30(4):530-6. doi: 10.1007/s10545-007-0631-x. PubMed PMID: 17632694.
36. Pedersen CB, Bybjerg-Grauholm J, Pedersen MG, et al. The iPSYCH2012 case-cohort sample: new directions for unravelling genetic and environmental architectures of severe mental disorders. *Mol Psychiatry*. 2018 Jan;23(1):6-14. doi: 10.1038/mp.2017.196. PubMed PMID: 28924187; PubMed Central PMCID: PMC5754466.
37. Bybjerg-Grauholm J, Hagen CM, Goncalves VF, et al. Complex spatio-temporal distribution and genomic ancestry of mitochondrial DNA haplogroups in 24,216 Danes. *PLoS One*. 2018;13(12):e0208829. doi: 10.1371/journal.pone.0208829. PubMed PMID: 30543675; PubMed Central PMCID: PMC6292624.
38. Hagen CM, Goncalves VF, Hedley PL, et al. Schizophrenia-associated mt-DNA SNPs exhibit highly variable haplogroup affiliation and nuclear ancestry: Bi-genomic dependence raises major concerns for link to disease. *PLoS One*. 2018;13(12):e0208828. doi: 10.1371/journal.pone.0208828. PubMed PMID: 30532134; PubMed Central PMCID: PMC6287820.
39. van Oven M, Kayser M. Updated comprehensive phylogenetic tree of global human mitochondrial DNA variation. *Hum Mutat*. 2009 Feb;30(2):E386-94. doi: 10.1002/humu.20921. PubMed PMID: 18853457.
40. Yahyaoui R, Espinosa MG, Gomez C, et al. Neonatal carnitine palmitoyltransferase II deficiency associated with Dandy-Walker syndrome and sudden death. *Mol Genet Metab*. 2011 Nov;104(3):414-6. doi: 10.1016/j.ymgme.2011.05.003. PubMed PMID: 21641254.
41. Berger I, Ben-Neriah Z, Dor-Wolman T, et al. Early prenatal ventriculomegaly due to an AIFM1 mutation identified by linkage analysis and whole exome sequencing. *Mol Genet Metab*. 2011 Dec;104(4):517-20. doi: 10.1016/j.ymgme.2011.09.020. PubMed PMID: 22019070.
42. Abdulhag UN, Soiferman D, Schueler-Furman O, et al. Mitochondrial complex IV deficiency, caused by mutated COX6B1, is associated with encephalomyopathy, hydrocephalus and cardiomyopathy. *Eur J Hum Genet*. 2015 Feb;23(2):159-64. doi: 10.1038/ejhg.2014.85. PubMed PMID: 24781756; PubMed Central PMCID: PMC4297913.
43. Delavallee L, Mathiah N, Cabon L, et al. Mitochondrial AIF loss causes metabolic reprogramming, caspase-independent cell death blockade, embryonic lethality, and perinatal hydrocephalus. *Mol Metab*. 2020 Oct;40:101027. doi: 10.1016/j.molmet.2020.101027. PubMed PMID: 32480041; PubMed Central PMCID: PMC7334469.
44. Radio FC, Di Meglio L, Agolini E, et al. Proliferative vasculopathy and hydranencephaly-hydrocephaly syndrome or Fowler syndrome: Report of a family and insight into the disease's mechanism. *Mol Genet Genomic Med*. 2018 May;6(3):446-451. doi: 10.1002/mgg3.376. PubMed PMID: 29500860; PubMed Central PMCID: PMC6014450.
45. Ghezzi D, Baruffini E, Haack TB, et al. Mutations of the mitochondrial-tRNA modifier MTO1 cause hypertrophic cardiomyopathy and lactic acidosis. *Am J Hum Genet*. 2012 Jun 8;90(6):1079-87. doi: 10.1016/j.ajhg.2012.04.011. PubMed PMID: 22608499; PubMed Central PMCID: PMC3370278.
46. Picard M, Zhang J, Hancock S, et al. Progressive increase in mtDNA 3243A>G heteroplasmy causes abrupt transcriptional reprogramming. *Proc Natl Acad Sci U S A*. 2014 Sep 23;111(38):E4033-42. doi: 10.1073/pnas.1414028111. PubMed PMID: 25192935; PubMed Central PMCID: PMC4183335.
47. Olstad EW, Ringers C, Hansen JN, et al. Ciliary Beating Compartmentalizes Cerebrospinal Fluid Flow in the Brain and Regulates Ventricular Development. *Curr Biol*. 2019 Jan 21;29(2):229-241 e6. doi: 10.1016/j.cub.2018.11.059. PubMed PMID: 30612902; PubMed Central PMCID: PMC6345627.
48. Venter M, Tomas C, Pienaar IS, et al. MtDNA population variation in Myalgic encephalomyelitis/Chronic fatigue syndrome in two populations: a study of mildly deleterious

- variants. *Sci Rep.* 2019 Feb 27;9(1):2914. doi: 10.1038/s41598-019-39060-1. PubMed PMID: 30814539; PubMed Central PMCID: PMC6393470.
49. Pienaar IS, Howell N, Elson JL. MutPred mutational load analysis shows mildly deleterious mitochondrial DNA variants are not more prevalent in Alzheimer's patients, but may be under-represented in healthy older individuals. *Mitochondrion.* 2017 May;34:141-146. doi: 10.1016/j.mito.2017.04.002. PubMed PMID: 28396254.
50. Pienaar IS, Mohammed R, Courtley R, et al. Investigation of the correlation between mildly deleterious mtDNA Variations and the clinical progression of multiple sclerosis. *Mult Scler Relat Disord.* 2021 Aug;53:103055. doi: 10.1016/j.msard.2021.103055. PubMed PMID: 34119746.
51. Sanchis-Gomar F, Lippi G, Lucia A. 'Mitotherapy' for Heart Failure. *Trends Mol Med.* 2016 Apr;22(4):267-269. doi: 10.1016/j.molmed.2016.02.007. PubMed PMID: 26965961.

Table 1. Demographics of the cohort of HC patients and controls.

	HC cases	Controls
Number	191	24,831
Sex (Women %)	34.6	49.0
Age, median (interquartile range)	22.4 (16.7 – 27.6)	22.8 (17.5 – 28.7)

Table 2. Distribution of mtDNA haplogroups in HC cases and controls.

Haplogroup	HC % (N)	Controls % (N)	OR (95% cfi)	p-value
H	47.1 (90)	45.6 (11 322)	1.03 (0.79 – 1.42)	0.716
U	14.1 (27)	13.4 (3 338)	1.05 (0.67 – 1.60)	0.750
J	11.0 (21)	9.0 (2 234)	1.22 (0.75 – 1.98)	0.311
T	8.9 (17)	9.2 (2 285)	0.97 (0.55 – 1.59)	1.000
K	4.7 (9)	7.4 (1 835)	0.64 (0.28 – 1.21)	0.208
I	4.2 (8)	2.8 (685)	1.50 (0.65 – 3.11)	0.260
V	3.7 (7)	3.4 (836)	1.09 (0.43 – 2.31)	0.690
R	3.1 (6)	2.7 (673)	1.15 (0.42 – 2.60)	0.652
M	1.0 (2)	1.6 (398)	0.63 (0.08 – 2.39)	0.773
L	0.5 (1)	0.7 (175)	0.71 (0.02 – 4.23)	1.000
N	0.5 (1)	1.2 (308)	0.42 (0.01 – 2.38)	0.734
W	0.5 (1)	1.3 (333)	0.38 (0.01 – 2.20)	0.526
X	0.5 (1)	1.6 (409)	0.31 (0.01 – 1.78)	0.382
Total	100 (191)	100 (24 831)	-	-

Table 3. Associations between macro-haplogroups and hydrocephalus.

Macro-haplogroup	HC % (N)	Controls % (N)	OR (95%-cfi)	p-value
HV	56.3 (97)	55.6 (12 158)	1.03 (0.75 – 1.41)	0.8777
JT	22.1 (38)	20.7 (4 519)	1.09 (0.74 – 1.57)	0.6371
UK	21.5 (37)	23.6 (5 173)	0.88 (0.60 – 1.28)	0.5888
Total	99.9 (172)	99.9 (21 850)	-	-

Figures

Figure 1.

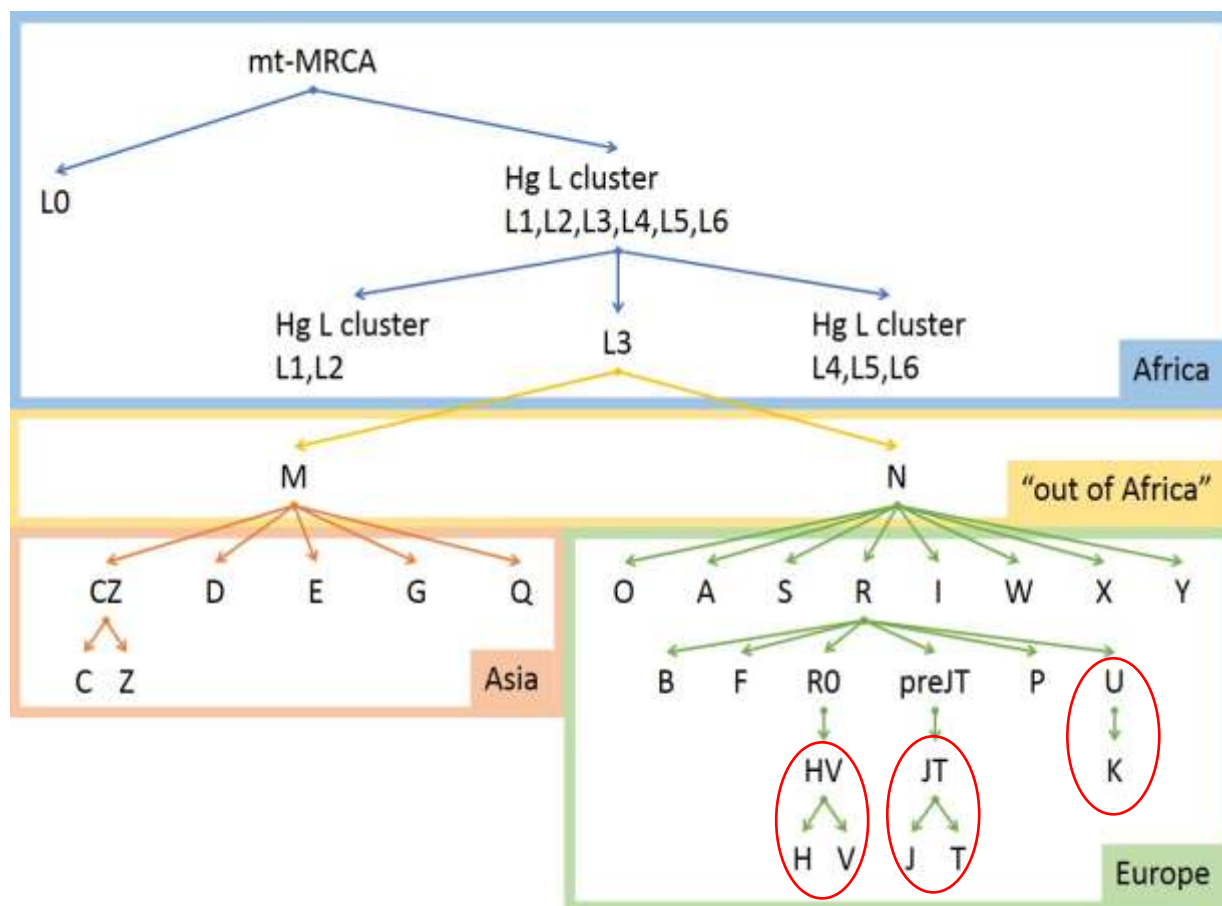


Figure caption

Figure 1. Phylogenetic tree of mtDNA haplogroups (www.phylotree.org). MRCA: Most recent common ancestor. The red circles denote the macro-haplogroups HV, JT, and UK.