

1 **Article Title**

2 Methylation of the glucocorticoid receptor gene (NR3C1) in dyads mother-child exposed to intimate
3 partner violence in Cameroon: Association with anxiety symptoms

4 **Each author's complete name and institutional affiliation(s)**

5 1. Dany Laure Wadji ^{1,2}

6 2. Naser Morina³

7 3. Chantal Martin-Soelch ¹,

8 4. Chantal Wicky ⁴

9 **Affiliations**

10 1. IReachLab, Unit of Clinical and Health Psychology, University of Fribourg, Fribourg,
11 Switzerland;

12 2. University Hospital Center (CHU) St Justine, University of Montreal, Montreal, Canada;

13 3. Department of Consultant-Liaison Psychiatry and Psychosomatic Medicine, University;
14 Hospital Zurich, University of Zurich, Zurich, Switzerland.

15 4. Department of Biology, University of Fribourg, Fribourg, Switzerland;

16 **Corresponding author**

17 E-mail: dany.nkonlack@unifr.ch

18 **Contributorship**

19 "WS and CMS are Joint Senior Authors"

20

21 **Abstract**

22 **Background:** The glucocorticoid receptor (GR), which is encoded by the *NR3C1* (Nuclear Receptor
23 Subfamily 3 Group C Member 1) gene plays an important role in the modulation of the hypothalamic-
24 pituitary-adrenal (HPA) axis activity by providing feedback regulation which allows termination of the
25 stress response. Little is known about epigenetic programming at the level of NGFI-A putative binding
26 site (CpG) of the *NR3C1* exon 1F in dyads mother-child exposed to intimate partner violence (IPV) more
27 specifically in an unstudied region such as the Sub-Saharan Africa where levels of violence are very high.

28 **Objective:** Examine *NR3C1* exon 1F methylation in response to IPV and possible association with cortisol
29 concentration and mental health.

30 **Method:** We recruited 20 mother-child dyads exposed to IPV and a control group of 20 mother-child
31 dyads not exposed to IPV. We administered self-reported questionnaires to measure mother's mental
32 health and collected saliva samples for cortisol dosage and bisulfite sequencing of DNA methylation.

33 **Results:** Regarding the mothers, our results showed a significant difference in methylation level at CpG
34 16-21 sites of the *NR3C1* exon 1F promoter region between the groups. In the exposed group as
35 compared to the control group, there was a significant positive association between the level of
36 methylation at CpG 16-21 sites and mother's mental health in particular anxiety symptoms. However,
37 we did not find any significant correlation between methylation level and cortisol concentration. In
38 children, we did not find any significant result.

39 **Conclusion:** This study highlights a NGFI-A putative binding site (CpG 16-21) that is more methylated in
40 mothers exposed to IPV and which may have the potential to confer vulnerability for psychopathologies.

41

42

43

44 Introduction

45 Approximately 30% of women worldwide are victims of intimate partner violence (IPV) (1). In
46 sub-Saharan Africa, the rate of IPV is particularly high, with an overall prevalence of 36% exceeding the
47 global average, due to cultural habits and cultural norms (2, 3). IPV is associated with a wide range of
48 physical and psychological symptoms for women and their children such as injuries, anxiety, depression,
49 chronic pain or post-traumatic stress disorder (4, 5). The effects of IPV are not limited to poor physical
50 and mental health of direct victims (6, 7) but also have important overwhelming economic burden on
51 society in terms of direct and indirect costs related to health care services, social rehabilitation
52 programs, and adult/juvenile crime (8).

53 At a physiological level, the hypothalamic-pituitary-adrenal (HPA) axis plays a central role in in
54 the body's responses to stress and can therefore be central in understanding how adverse environment
55 including IPV is associated with various health issues (9). Upon acute stress, a cascade of events,
56 including the release of hypothalamic corticotropin-releasing factor (CRF), activates the pituitary-
57 adrenal system leading to the production of cortisol in the circulating blood, as well as in body fluids
58 such as saliva (10, 11). Increasing cortisol level will in turn induce a negative feedback on the
59 hypothalamus leading to the inhibition of CRF synthesis and eventually dampening of the HPA axis
60 response to stress (12, 13). In contrast, chronic stress has the potential to dysregulate the HPA axis,
61 resulting in blunted cortisol reactivity, which increases risk of a number of stress-related physical and
62 mental diseases (14, 15).

63 Previous research suggested an association between IPV and HPA axis activity. For example,
64 high cortisol concentration was observed in women who experienced IPV as compared to a control
65 group, through salivary/plasma cortisol assessment with measurements such as cortisol awakening
66 response (CAR) (16) and area under the curve with respect to ground (AUCg) (17), or through hair
67 cortisol assessment (18, 19). Further evidence suggested a correlation between HPA axis dysregulation

68 as shown by elevated cortisol production and enhanced mental health problems (20–22). However, the
69 molecular mechanisms underlying the impact of IPV on mental health is still poorly understood.

70 Cortisol induces stress responses by binding to the glucocorticoid receptor (GR), which is
71 encoded by the *NR3C1* (Nuclear Receptor Subfamily 3 Group C Member 1) gene. This receptor plays an
72 important role in the modulation of HPA axis activity by providing feedback regulation which allows
73 termination of the stress response (19, 23, 24). This negative feedback loop which provides a means for
74 HPA axis homeostasis, relies on the availability of glucocorticoid receptors (GR) (25). The activity of the
75 *NR3C1* receptor can be modulated at the transcriptional level of the gene which can be downregulated
76 upon methylation of its promoter region. The *NR3C1* gene consists of nine untranslated alternative
77 spliced exon 1 variants and 8 coding exons (26). The region encompassing exon 1 variants also functions
78 as a proximal promoter and includes multiple methylation-sensitive cytosine phosphate-guanine (CpG)
79 dinucleotide repeats (27). The most studied promoter region is the exon 1F which includes 47 CpG sites
80 as well as several binding sites of the transcription factor NGFI-A (nerve growth factor-inducible protein
81 A) (see Fig. 1). Binding of NGFI-A to exon 1F promoter region increases GR expression, however,
82 increased methylation of *NR3C1* in this region reduces glucocorticoid receptor gene expression, thereby
83 limiting the availability of glucocorticoid receptors (28, 29). Consequently, the negative feedback loop
84 regulating HPA axis activity is disrupted (30, 31) putting people at greater risk of mental health problems
85 (32, 33).

86 Previous intergenerational studies have showed an association between IPV and DNA
87 methylation of several genes. For example, a correlation between IPV and *NR3C1* DNA methylation in
88 exon 1F promoter region was shown in offspring of mothers, victims of IPV during pregnancy (34). This
89 study was the first intergenerational study on dyads mother-child to indicate that *NR3C1* promoter
90 methylation is associated with IPV. Further, grandmaternal (G1) exposure to interpersonal violence
91 during pregnancy was associated with several differentially methylated genes in grandchildren (G3) (e.g.
92 *CFTR*, *CORIN*, *BARX1* and *SMYD3* genes) (35). However, they did not examine epigenetic modification in

93 mothers (G2). A more recent study examined genome-wide epigenetic modifications in response to
94 domestic violence. It revealed that two genes involved in neuronal development, BDNF (brain-derived
95 neurotrophic factor) and CLPX (caseinolytic mitochondrial matrix peptidase chaperone subunit), were
96 differentially methylated in adolescents and their mothers exposed to domestic violence (36).

97 Taken together, prior studies with dyads mother-child are pointing towards a role of epigenetic
98 programming in response to IPV at the level of several genes at several CpG sites within their promoter.
99 However, the epigenetic mechanism underlying the link between IPV and poor mental health is still not
100 fully understood. The *NR3C1* exon 1F gene, which appears to be particularly important because of its
101 link to the HPA axis, has received so far very little attention in studies on IPV. In recent works from our
102 group with a larger sample of dyads mother-child exposed to IPV, including the dyads examined in the
103 present paper, we showed on one hand that mothers exposed to IPV compared to the control group
104 have high levels of anxiety and depression symptoms and that their children exhibited high levels of
105 externalizing symptoms such as delinquent and aggressive behaviour (7) and on the other hand exposed
106 mother presented increased HPA-axis activity i.e. higher post-awakening cortisol concentrations (17).
107 Exploring *NR3C1* promoter methylation in the region of exon 1F and possible association with total
108 cortisol concentration and symptoms of psychopathology in this sub-sample, can provide a stronger
109 argument for long-term consequences of IPV particularly in an unstudied region like Sub-Saharan Africa
110 where levels of violence are very high.

111 This epigenetic study on IPV targeting a traumatized population of women and children, aims
112 to provide evidence of DNA methylation of *NR3C1* exon 1F promoter region. We hypothesized that: 1)
113 the exposed group will present significant higher DNA methylation compared to the control group, 2)
114 global *NR3C1* DNA methylation levels and CpG specific sites DNA methylation level in the promoter
115 region, including known transcription binding factor binding sites, would be significantly associated with
116 cortisol concentration and current symptoms of psychopathology.

117 **Materials and Methods**

118 **Participants**

119 The study received approval from the National Commission for Ethics in Cameroon (NO
120 2019/02/1141/CE/CNERSH/SP). We recruited a total of 75 mother-child dyads with the help of the
121 Association for the Fight against Domestic Violence (ALVF) a non-profit organisation based in Cameroon,
122 which aids female victims of IPV. However, the present study was conducted on a subsample of 40
123 mother-infant dyads because in this pilot study we were eager to see if the epigenetic data collection
124 and their analysis were possible in the Cameroonian context. Thus, we collected 40 samples from 20
125 mother-child dyads exposed to IPV (mean age \pm SD: 37.05 \pm 7.515, range 25–53 years) and 40 samples
126 from 20 mother-child dyads not exposed to IPV (mean age \pm SD: 37.65 \pm 4.03, range 26–44 years). The
127 recruitment was done with the help of community agents of ALVF who performed a door-to-door
128 sensitization and awareness campaign for our study. Mothers were aware that their participation in the
129 study was voluntary and that not agreeing to participate would have no consequences on service
130 provision by ALVF. The inclusion criteria were (1) being physically, sexually, and/or psychologically
131 abused or injured in the past 12 months; (2) having a biological child aged 2–18 who have seen and
132 heard violent acts, seen injuries resulting from the violence, or been told about the violence in the past
133 12 months (if a mother had more than one child in this age range, she was asked to select the one whom
134 she felt had been most exposed); and (3) the ability to express herself in French or English. Mothers
135 who did not speak and understand either French or English were excluded, as well as those with children
136 older than 18. All mothers denied any history of medical or neurological illness or use of psychotropic
137 medications. Demographic information was collected, including the participant's age, sex, level of
138 education, number of children, matrimonial status, profession, ethnic group and religion (see Table 1).

139 **Material and methods**

140 After obtaining informed written consent as well as assent or written informed consent on
141 behalf of minors, mothers completed self-report questionnaires and provided saliva using Oragenes kits

142 (OG-600 Oragene) for epigenetic analysis. Salicaps (IBL International GmbH) were also used for salivary
143 cortisol assessment. Each mother was given a pack containing six labeled Salicaps—three for themselves
144 and three for their children—in which to collect saliva three times the next day at home: immediately
145 after waking up, 30 minutes after waking up, and 45 minutes after waking up. Detailed information
146 about the procedure for cortisol assessment can be found in an associated publication (17).

147 **Measures**

148 **Assessment of IPV**

149 IPV was measured using the Revised Conflict Tactics Scale [CTS2; 37, 1996; French version by
150 38,1997]. This 78-item version explores violence between the mother and her partner in the past 12
151 months on five scales: negotiation skills (e.g. ‘I explained my side or suggested a compromise’),
152 psychological abuse (e.g. ‘insulted, stomped out of room, or threatened to hit me’), physical abuse (e.g.
153 ‘pushed, kicked, burned, scalded, or slapped me’), sexual abuse (e.g. ‘used force, used threats, to make
154 me have sex’), and injuries (e.g. ‘felt pain, needed to see a doctor because of a fight’). The CTS2 is scored
155 by adding the midpoints of the response categories chosen by the participant. The midpoints were 0 = 0
156 times, 1 = 1 time, 2 = 2 times, 4 = 3–5 times, 8 = 6–10 times, 15 = 11–20 times, and 25 = more than 20
157 times. Since there is no total score of the CTS2 and no validated cut-off score, we used the subscale
158 scores, namely the scores for psychological abuse, physical abuse, sexual abuse, and injuries, and
159 analyzed each of the subscales of the CTS2 separately. The global Cronbach’s alpha coefficient for this
160 scale was 0.88. Looking at the subscales, we found a Cronbach’s alpha of .57 for psychological abuse,
161 .71 for physical abuse, .50 for sexual abuse and .79 for injury.

162 **Mother mental health indicators**

163 Hospital Anxiety and Depression Scale [HADS; 39; French version by 40] was used to examine
164 mothers’ current anxiety and depression symptoms. The HADS is composed of 14 items rated from zero
165 to three, with seven questions related to anxiety and seven others related to depression. Two scores

166 are obtained, with a minimum of zero and a maximum of 21. Higher scores indicate higher levels of
167 anxiety and depression (Cronbach's coefficient: anxiety subscale =.72 and depression subscale =.61).

168 **Cortisol measures**

169 The participants were instructed to bring the samples immediately after collection to the ALVF
170 premises. In total, we received 240 samples for cortisol assessment. All samples (n = 240) were kept
171 cool in a refrigerator for a few days in Yaoundé (Cameroon). Afterwards, the samples were sent to
172 Fribourg (Switzerland), where they were frozen and stored at -20°C before being sent to Dresden
173 (Germany) for analysis and assaying in the Laboratory of Biopsychology of the Technical University of
174 Dresden, Germany (Luminescence Immunoassay, IBL). After thawing, the SaliCaps were centrifuged at
175 3,000 rpm for 5 min, which resulted in a clear supernatant of low viscosity. Salivary concentrations were
176 measured using commercially available chemiluminescence immunoassay with high sensitivity (IBL
177 International, Hamburg, Germany).

178 **Saliva sampling for genomic DNA extraction**

179 Saliva was collected using the OG-600 Oragene DNA self-collection kit following the
180 manufacturer's instructions (DNA Genotek). Each participant was asked to provide 2 ml of saliva, which
181 was mixed with 2 ml of the Oragene solution, beginning the initial stage of DNA isolation and stabilizing
182 the sample until extraction could be performed. In total, we received 80 samples for DNA methylation
183 analysis which, like cortisol samples, were kept cool in a refrigerator for a few days in Yaoundé and sent
184 to Fribourg, where they were frozen and stored at -20°C.

185 **Sodium bisulfite sequencing**

186 Genomic DNA was isolated from the saliva of the 80 participants using the kit Saliva DNA
187 Isolation 96-Well Kit from Norgen (RU35200). Genomic DNA bisulfite conversion was achieved using
188 EpiTect Fast 96 DNA Bisulfite Kit from Qiagen. Amplicons of 406 bp from the 1F genomic region of the
189 NR3C1 gene (chromosome V from 143'404'319 to 143'403'963 - GRCH38.p12 version of the genome)
190 were generated by PCR as described in Perroud et al. 2011. Oligonucleotides used for the amplification

191 were as followed: forward primer 5'-TTTGAAGTTTTTTTAGAGGG-3' and reverse primer 5'-
192 CCCCCAACTCCCCAAAAA-3'. Libraries for Illumina sequencing were prepared according to the
193 manufacturer instructions. Amplicons were sequenced on an Illumina MySeq platform at the SICCH
194 (Swiss Integrative Center for Human Health, Fribourg, Switzerland).

195 **Data analysis**

196 Output sequences were processed to deliver percentages of methylation at each of the 47 CpG
197 dinucleotides examined. The reads were quality controlled with FastQC (v0.11.9) (41) and MultiQC
198 (v1.8.1) (42). Mapping of the raw reads to the region of interest (3936bp 5'-UTR of gene NR3C1
199 chrom5:143401879-143405816) was performed with bwa-meth (v0.2.2) (43) and to validate the data,
200 some of the bam files were visualized with IGV (v2.8.13) (44). Counting the methylations positions at
201 CpGs was carried with MethylExtract (v1.9.1) (45) leading to a tab-delimited file containing the
202 methylated and unmethylated counts for each sample and each CpG position. Each of the 47 CpG
203 positions within the region of interest was evaluated and transformed into percent methylation. To
204 avoid sequencing quality issues, the counts were calculated from the best quality regions, meaning from
205 the forward reads for the most 5' CpG #1 (CpG pos 1495 to CpG pos 1757) and from the reverse reads
206 to the last most 3' CpG #47 (CpG pos 1771 to CpG pos 1850). Zero counts for unmethylated regions
207 were transformed to "NA" to avoid calculation issues.

208 Methylation analysis was conducted regarding global mean methylation level and regarding
209 specific CpG methylation level. Global *NR3C1* DNA methylation levels was computed as one mean score
210 per individual indexing overall DNA methylation levels across all the CpG islands of the exon 1F. Based
211 on previous research (33, 29), specific CpG sites in the promoter region proximal to a known
212 transcription binding factor were identified as : CpG 12-13, CpG 16-21, CpG 30-32, CpG 37-38 and their
213 DNA methylation level was calculated.

214 First, we tested the normality of the data including anxiety and depression measures, and
215 cortisol and DNA methylation measures. Normal Q-Q plots and box plots showed that almost all

216 variables were not normally distributed (all $p_s < .05$). The exceptions were the anxiety and depression
217 scores on HADS. Comparison between groups were made using a non-parametric Mann-Whitney U test.
218 Spearman correlation was used to test basic associations between DNA methylation and cortisol
219 concentration respectively mental health scores.

220 To determine the total concentration of cortisol post awakening, we computed the cortisol area
221 under the curve with respect to the ground (AUCg) according to the formula described by 46 (2013).
222 Since cortisol and methylation data were skewed, we performed log-transformation of the data to
223 achieve normal distribution before testing our models.

224 The associations between DNA methylation and cortisol concentration respectively symptoms
225 of psychopathology were explored in linear regression models, using mother's mental health scores as
226 outcome variable and methylation level as the independent variable. The exposed group was coded as
227 0 and the control group was coded as 1. other covariates (such as cortisol level, age, profession, level of
228 education) were added to the model as explanatory variables.

229 All analyses were conducted using SPSS for Windows, version 28.

230 Results

231 A total of 40 dyads (mother and children) participated to the study. 20 dyads were exposed to
232 IPV and 20 were used as a control group. Mothers were aged between 25 and 53 years and children
233 between 2 and 18 years. Sociodemographic characteristics showed significant differences between the
234 two groups on matrimonial status ($U = 107.5, p = .019$) using Mann-Whitney analysis. There were no
235 significant group differences for mother's profession, mother's level of education, mother's age and
236 child's age (all $p > .445$) (Table 1). IPV exposed mothers reported higher rates of different types of abuse.
237 Analyses showed significant group differences on psychological abuse ($U = 60, p = .009$), physical abuse
238 ($U = 43, p = .003$), sexual abuse ($U = 56, p = .000$), and injuries ($U = 111, p = .044$). Assessing mental
239 health indicators (HADS score), we observed high levels of anxiety in the exposed group compared to

240 the control group ($U = 42.5, p < .001$). No significant differences across the groups were found for
241 depression. Altogether, the exposed group exhibited significantly higher level of various types of abuse
242 associated with anxiety (see Table 1).

243 **Table 1. Sociodemographic characteristics, cortisol measures, CTS and HADS scores of participants**

Variables	Exposed group		Control group		Mann-Whitney analysis	
	N	%	N	%	U	p
Sociodemographic characteristics						
Mother's age (mean, SD)	37.75 (± 8.07)		37.65 (± 4.03)		215	.698
Child's age (mean, SD)	9.81 (± 4.35)		8.65 (± 3.774)			.445
					171.5	
Mother's level of education						
Primary education	9	52.9	10	50.0	186	.641
Secondary education	7	41.2	6	30.0		
University level	1	5.9	4	20.0		
Mother's matrimonial status						
Married	9	47.4	16	80.0	107.5	.019
Single	8	42.1	3	15.0		*
Divorced	1	5.3	0	0,0		
Widow	0	0	1	5.0		
Cohabitation	1	5.3	0	0		
Mother's profession						
Teacher	1	5.0	5	25.0	224	.529
Business	1	5.0	0	20.0		
Secretary	1	5.0	0	15.0		

Housekeeper	9	45.0	4	15.0
Clerk	3	15.0	3	5.0
Cultivator	2	10.0	0	5.0
Hairdresser	1	5.0	3	5.0
Student	1	5.0	1	10.0
Laundress	1	5.0	0	25.0
Accountant	0	5.0	1	20.0
Pastor	0	5.0	1	15.0
Seamstress	0	5.0	2	15.0
		Mean (SD)	Mean (SD)	
Cortisol measures				
AUCg measure Mother	279.91	(125.84)	226.78	(73.5) 139 .158
AUCg measure Child	356.56	(242.08)	312.60	(180.12) 198 .968
CTS2 scores				
Psychological abuse	87.62	(44.21)	50.20	(24.87) 60 .009
				*
Physical abuse	68.08	(57.19)	11.95	(14.42) 43 .003
				*
Sexual abuse	39.67	(40.16)	5.60	(10.11) 56 .000
				*
Injuries	7.78	(14.7)	0.10	(.30) 111 .044
				*
HADS scores				

Anxiety symptoms	10.82 (2.92)	5.05 (3.85)	42.5	.001
				*
Depression symptoms	7.33 (3.61)	5.55 (2.37)	129	.141

244 *Note.* SD: standard deviation; U: Mann-Whitney coefficient; *P*: *P* value; N: frequency, %: percentage, *:
245 significant values, CTS2: Revised Conflict Tactics Scale, AUCg: Area Under the Curve with respect to
246 ground; HADS: Hospital Anxiety and Depression Scale.

247 Cortisol measures

248 In order to determine whether there are evidence of HPA axis deregulation, we measured the
249 level of cortisol from saliva in the different groups. Although we observed a higher level of cortisol in
250 exposed groups (mothers and children), our results indicated no significant difference between the
251 exposed and the control groups, for mothers ($U = 139, p = .158$) and children ($U = 198, p = .968$).

252 DNA methylation comparison between groups for mothers and children

253 We examined the methylation level of the 47 CpG dinucleotides in the exon 1F promoter region
254 of the NR3C1 gene to assess whether there is a link between exposure to IPV and methylation of a gene
255 involved in HPA axis regulation. Regarding the mothers, when comparing the average NR3C1
256 methylation level of the 47 CpG island between the groups, our results showed a higher methylation
257 level in the exposed group, however, the difference was not significant. Next, we examined in more
258 details, 4 groups of CpGs sites that correspond to putative binding sites for the NGFI-A transcription
259 factor, which is known to regulate transcription of the NR3C1 gene. We found a significantly higher
260 methylation percentage at CpG 16-21 in the exposed group ($U = 119,5, p = .028$) (Table 2), relative to
261 the methylation level in control group. The effect size for this analysis ($d = .73$) was medium according
262 to Cohen's (47) convention.

263

264

265

266 Table 2. Mean and site-specific DNA methylation comparison across groups of mothers and children

	Exposed group	Control group	Mann-Whitney analysis	
	M (SD)	M (SD)	U	p
Mothers				
Global mean methylation	0.89 (0.28)	0.76 (0.30)	149	
				.174
Site specific mean methylation				
CpG 12-13	0.79 (±0.76)	0.51 (±0.67)	160,5	.258
CpG 16-21	0.80 (±0.35)	0.47 (±0.53)		.028
			119.5	*
CpG 30-32	0.97 (±0.50)	1.11 (±0.66)	234	.357
CpG 37-38	0.09 (±0.24)	0.30 (±0.51)	236	.183
Children				
Global mean methylation	0.74 (0.40)	0.74 (0.45)	181	
				.813
Site specific mean methylation				
CpG 12-13	0.59 (±0.75)	0.54 (±1.10)	165,5	.496
CpG 16-21	0.44 (±0.41)	0.63 (±1.12)	186	.923
CpG 30-32	1.05 (±0.92)	0.79 (±0.72)	160.5	.411
CpG 37-38	0.07 (±0.24)	0.08 (±0.35)	182	.835

267 **Note.** U= Mann-Whitney coefficient, M (SD) = mean (standard deviation), p= p-value, *= significant

268 values

269 The same methylation analysis was performed with children. However, there was no significant
270 difference in global mean methylation and methylation level at NGFI-A binding sites between the
271 groups.

272 **Association between DNA methylation and mother's anxiety and depression symptoms**

273 Spearman rho correlation analysis showed in the exposed group as compared to the control
274 group, a significant positive association between the level of methylation at CpG 16_21 and symptoms
275 of anxiety ($r = .507, p = .038$) (see Fig. 2). The association with depression symptoms did not reach
276 significance.

277 Further linear regression model testing the effect of methylation level on mother's anxiety was
278 statistically significant, $F(6) = 6.495, p < .001$. The model explained 59% of the variance. Parameter
279 estimate showed statistically significant results for group ($B = -4.931, p < .001, 95\% \text{ CI}, -7.485 \text{ to } -2.377$)
280 and methylation level at CpG 16_21 ($B = 2.614, p = .046; 95\% \text{ CI}, 0.047 \text{ to } 5.182$). Other parameter
281 estimate such as age, profession, level of education and cortisol level were not significant
282 (all P values $> .202$).

283 Taken together, our results showed a significant positive association between the level of
284 methylation at CpG 16-21 sites and symptoms of anxiety in the exposed group as compared with the
285 control group.

286 **Discussion**

287 This study on IPV in sub-Saharan Africa provides evidence for epigenetic modifications
288 associated with IPV known to be highly prevalent in this region. The most interesting result of this study
289 was the significant difference in methylation level at CpG 16-21 sites of the *NR3C1* exon 1F promoter
290 region in the exposed mothers as compared to the control group. This CpG group encompasses a
291 putative NGFI-A binding site, that might be involved in the regulation of *NR3C1* gene transcription. In
292 addition, there was a significant positive association between the level of methylation at CpG 16-21 sites

293 and mother's mental health in particular anxiety symptoms in the exposed mothers group compared to
294 the control group.

295 The results are consistent with our hypothesis. The differential methylation level at CpG 16-21
296 sites which corresponds to a NGFI-A putative binding site, suggests that GR gene expression in exposed
297 mothers might be down-regulated. However, given that the observed increase in methylation level was
298 subtle, the deregulation of the HPA axis may not be strong. Moreover, this interpretation is consistent
299 with the absence of a significant correlation between methylation level and cortisol concentration in
300 mothers and their children exposed to IPV.

301 Concerning the children, our results showed no significant DNA methylation difference between
302 the groups. These results are in contrast to the findings of 34, who found that methylation status of the
303 GR gene of adolescent children was influenced by their mother's experience of IPV. A possible
304 explanation for such discrepancies can lie in the type of tissue used and the developmental period
305 studied. While 34 studied the effect of IPV before birth and used blood samples, we investigated the
306 postnatal period (with children aged 2 to 18 years) and examined saliva samples which may show lower
307 levels of methylation compared to blood DNA methylation as evidenced by 48. Furthermore, the small
308 sample size may greatly limit the statistical power to detect the relationship as statistically significant.

309 One striking finding was the very low level of methylation at the canonical NGFI-A binding site
310 (CpGs 37-38) in all groups. 1F CpG #37 is the most widely studied CpG in both animal and human. Higher
311 level of methylation has been associated with a wide variety of early life stress (reviewed in 26, 33).
312 However, there are also studies that report decreased level of methylation at this particular CpG in
313 response to individuals with PTSD or in newborns who were exposed to maternal smoking or maternal
314 anxious-depressed condition (reviewed in 26). One possible interpretation of our results is that the
315 NR3C1 receptor gene is still actively regulated, at least in the cells included in the saliva samples. This
316 hypothesis is in line with our cortisol measurements, which do not point towards a strong deregulation
317 of the HPA axis.

318 Exposed mothers in this study have different forms of abuse (e.g. injuries, psychological,
319 physical and sexual abuse) and also differ in anxiety and depression symptoms. Within the exposed
320 group, we found a significant positive association between symptoms of the mothers in anxiety and
321 level of methylation at CpG 16-21 sites. This suggest that methylation of the CpG 16-21 sites, though
322 average, may have the potential to induce changes in the HPA axis function by increasing the risk of
323 poor mental health. CpG 16-21 methylation might confer a certain vulnerability. These results add to
324 accumulating knowledge of the mechanisms by which early adversity in particular IPV contributes to
325 developmental trajectories and psychopathology in IPV victims.

326 **Limitations**

327 When interpreting the results of the present study, several limitations need to be taken into
328 account. First, methylation levels were low in mothers and even lower in children (less than 10%).
329 Although the observed differences in DNA methylation between the exposed and control group were
330 statistically significant at the CpG 16-21 sites, they were medium effect sizes. Second, the sample size
331 was small limiting the power of the conclusion. Third, epigenetic analysis was based on saliva samples,
332 which can account for small level of methylation as compared to blood sample as shown in previous
333 studies (48). Perhaps, saliva might not be the ideal proxy for methylation measurements as suggested
334 by a previous finding (49). Fourth, we used the conflict tactic scale (CTS2) which is a self-reported
335 retrospective instrument used to measure IPV with some subscales like psychological abuse showing
336 low reliability (.57). Fifth, salivary cortisol which is prone to substantial intra-individual variability and
337 limited reliability (50), was examined. Lastly, for cortisol assessment, we have three measurements per
338 person on a single day which can lead to significant negative impact on estimate of the total cortisol
339 concentration. However, in this context, many challenges prevented us from collecting saliva for more
340 than one day. First participants negatively perceived giving their saliva and second during data
341 collection, some women were banned by their partners to participate again in the study.

342 Despite these limitations, this research has laid the basis for identifying critical links between
343 psychological parameters and biological markers, such as cortisol levels and *NR3C1* gene methylation in
344 mother-child dyads exposed to domestic violence.

345 **Clinical implication**

346 This is the first study reporting the link between IPV and DNA methylation of *NR3C1* exon 1F
347 promoter region in Sub-Saharan Africa. We provide evidence of epigenetic alterations associated with
348 IPV in a non-western cultural setting where numerous social norms, are known major risk factors for
349 IPV (51, 52).

350 The results of this study have several clinical implications for women mental health. Firstly, this
351 study highlighted that IPV is detrimental to the well-being of women exposed to it. This result is
352 strengthened by the inclusion of methylation and cortisol analyses from saliva samples as well as mental
353 health measures. There is an urgent need to create awareness on this. In order to reach all levels of
354 society, particularly in sub-Saharan Africa, community workers may serve as a key resource due to their
355 networking with the local population, NGOs, and IPV professionals. Secondly, we identified a NGFI-A
356 putative binding site (CpG 16-21) that is more methylated in exposed mothers and which may have the
357 potential to confer vulnerability for psychopathologies. This evidence may assist professionals with
358 timely prevention and intervention strategies

359 **Conclusion**

360 Our result showed a significant difference in DNA methylation at CpG 16-21 sites of the *NR3C1*
361 proximal promoter (exon 1F) between the exposed and control group. This study lays the foundation
362 for future epigenetic studies in sub-Saharan Africa. Still, our results warrant replication. Future studies
363 with ethnically diverse samples can provide more robust conclusions. Epigenetic methylation of related
364 stress genes such as the *FK506* binding protein 5 (*FKBP5*) gene and the oxytocin receptor (*OXTR*) gene
365 could provide further insights into potentially more pronounced impact of IPV and their role in stress-
366 related disorders.

367 **Acknowledgements**

368 We are thankful to the families who participated and contributed to this work, as well as to the
369 ALVF in Cameroon and their community agents for facilitating the recruitment of participants. We would
370 also like to acknowledge Prof. Ketcha Wanda with whom we started this project and who passed away.
371 Finally, we thank Prof. Linda Booij for her support and valuable feedback.

372

373 **Literature Cited**

- 374 1. García-Moreno C, Pallitto C, Devries K, Stöckl H, Watts C, Abrahams N. Global and regional estimates
375 of violence against women: Prevalence and health effects of intimate partner violence and non-
376 partner sexual violence. Geneva Switzerland: World Health Organization; 2013.
- 377 2. Anderson K, van Ee E. Mothers and Children Exposed to Intimate Partner Violence: A Review of
378 Treatment Interventions. *Int J Environ Res Public Health* 2018; 15(9).
- 379 3. Ahinkorah BO, Dickson KS, Seidu A-A. Women decision-making capacity and intimate partner
380 violence among women in sub-Saharan Africa. *Arch Public Health* 2018; 76:5.
- 381 4. Campbell JC. Health consequences of intimate partner violence. *The Lancet* 2002; 359(9314):1331–
382 6.
- 383 5. Huecker MR, King KC, Jordan GA, Smock W. *StatPearls: Domestic Violence*. Treasure Island (FL);
384 2022.
- 385 6. Agüero JM, Herrera-Almanza C, Villa K. Do human capital investments mediate the intergenerational
386 transmission of domestic violence? *SSM Popul Health* 2022; 17:100985.
- 387 7. Wadji DL, Ketcha Wanda GJM, Wicky C, Morina N, Martin-Soelch C. From the Mother to the Child:
388 The Intergenerational Transmission of Experiences of Violence in Mother-Child Dyads Exposed to
389 Intimate Partner Violence in Cameroon. *J Interpers Violence* 2020; 37(5-6):NP3346-NP3376.
- 390 8. Roldós MI, Corso P. The economic burden of intimate partner violence in ecuador: setting the
391 agenda for future research and violence prevention policies. *West J Emerg Med* 2013; 14(4):347–53.
- 392 9. Dunlavy CJ. Introduction to the Hypothalamic-Pituitary-Adrenal Axis: Healthy and Dysregulated
393 Stress Responses, Developmental Stress and Neurodegeneration. *J Undergrad Neurosci Educ* 2018;
394 16(2):R59-R60.
- 395 10. Bibi S, Shah M, Malik MO, Goosens KA. T3 is linked to stress-associated reduction of prolactin in
396 lactating women. *J Neuroendocrinol* 2021; 33(8):e13003.
- 397 11. Mourtzi N, Sertedaki A, Charmandari E. Glucocorticoid Signaling and Epigenetic Alterations in
398 Stress-Related Disorders. *Int J Mol Sci* 2021; 22(11).
- 399 12. Hinds JA, Sanchez ER. The Role of the Hypothalamus–Pituitary–Adrenal (HPA) Axis in Test-Induced
400 Anxiety: Assessments, Physiological Responses, and Molecular Details. *Stresses* 2022; 2(1):146–55.
- 401 13. Farrell C, Doolin K, O' Leary N, Jairaj C, Roddy D, Tozzi L et al. DNA methylation differences at the
402 glucocorticoid receptor gene in depression are related to functional alterations in hypothalamic-
403 pituitary-adrenal axis activity and to early life emotional abuse. *Psychiatry Res* 2018; 265:341–8.
- 404 14. Klatzkin RR, Baldassaro A, Rashid S. Physiological responses to acute stress and the drive to eat:
405 The impact of perceived life stress. *Appetite* 2019; 133:393–9.
- 406 15. Borrow AP, Heck AL, Miller AM, Sheng JA, Stover SA, Daniels RM et al. Chronic variable stress alters
407 hypothalamic-pituitary-adrenal axis function in the female mouse. *Physiol Behav* 2019; 209:112613.
- 408 16. Pinto RJ, Correia-Santos P, Costa-Leite J, Levendosky AA, Jongenelen I. Cortisol awakening
409 response among women exposed to intimate partner violence. *Psychoneuroendocrinology* 2016;
410 74:57–64.

- 411 17. Wadji DL, Gaillard C, Ketcha Wanda GJM, Wicky C, Morina N, Martin-Soelch C. HPA-axis activity
412 and the moderating effect of self-esteem in the context of intimate partner violence in Cameroon. *Eur*
413 *J Psychotraumatol* 2021; 12(1):1930897.
- 414 18. Boeckel MG, Viola TW, Daruy-Filho L, Martinez M, Grassi-Oliveira R. Intimate partner violence is
415 associated with increased maternal hair cortisol in mother-child dyads. *Compr Psychiatry* 2017; 72:18–
416 24.
- 417 19. Alhalal E, Falatah R. Intimate partner violence and hair cortisol concentration: A biomarker for HPA
418 axis function. *Psychoneuroendocrinology* 2020; 122:104897.
- 419 20. Misiak B, Łoniewski I, Marlicz W, Frydecka D, Szulc A, Rudzki L et al. The HPA axis dysregulation in
420 severe mental illness: Can we shift the blame to gut microbiota? *Prog Neuropsychopharmacol Biol*
421 *Psychiatry* 2020; 102:109951.
- 422 21. Tomas C, Newton J, Watson S. A review of hypothalamic-pituitary-adrenal axis function in chronic
423 fatigue syndrome. *ISRN Neurosci* 2013; 2013:784520.
- 424 22. Clemens V, Bürgin D, Eckert A, Kind N, Dölitzsch C, Fegert JM et al. Hypothalamic-pituitary-adrenal
425 axis activation in a high-risk sample of children, adolescents and young adults in residential youth care
426 - Associations with adverse childhood experiences and mental health problems. *Psychiatry Res* 2020;
427 284:112778.
- 428 23. Smith SM, Vale WW. The role of the hypothalamic-pituitary-adrenal axis in neuroendocrine
429 responses to stress. *Dialogues Clin Neurosci* 2006; 8(4):383–95.
- 430 24. Herman JP, McKlveen JM, Ghosal S, Kopp B, Wulsin A, Makinson R et al. Regulation of the
431 Hypothalamic-Pituitary-Adrenocortical Stress Response. *Compr Physiol* 2016; 6(2):603–21.
- 432 25. Gjerstad JK, Lightman SL, Spiga F. Role of glucocorticoid negative feedback in the regulation of HPA
433 axis pulsatility. *Stress* 2018; 21(5):403–16.
- 434 26. Palma-Gudiel H, Córdova-Palomera A, Leza JC, Fañanás L. Glucocorticoid receptor gene (NR3C1)
435 methylation processes as mediators of early adversity in stress-related disorders causality: A critical
436 review. *Neurosci Biobehav Rev* 2015; 55:520–35.
- 437 27. Assis Pinheiro J de, Freitas FV, Borçoi AR, Mendes SO, Conti CL, Arpini JK et al. Alcohol
438 consumption, depression, overweight and cortisol levels as determining factors for NR3C1 gene
439 methylation. *Sci Rep* 2021; 11(1):6768.
- 440 28. Ostlund BD, Conradt E, Crowell SE, Tyrka AR, Marsit CJ, Lester BM. Prenatal Stress, Fearfulness,
441 and the Epigenome: Exploratory Analysis of Sex Differences in DNA Methylation of the Glucocorticoid
442 Receptor Gene. *Front Behav Neurosci* 2016; 10:147.
- 443 29. McGowan PO, Sasaki A, D'Alessio AC, Dymov S, Labonté B, Szyf M et al. Epigenetic regulation of
444 the glucocorticoid receptor in human brain associates with childhood abuse. *Nat Neurosci* 2009;
445 12(3):342–8.
- 446 30. Chatzittofis A, Boström ADE, Ciuculete DM, Öberg KG, Arver S, Schiöth HB et al. HPA axis
447 dysregulation is associated with differential methylation of CpG-sites in related genes. *Sci Rep* 2021;
448 11(1):20134.
- 449 31. Suh JS, Fiori LM, Ali M, Harkness KL, Ramonas M, Minuzzi L et al. Hypothalamus volume and DNA
450 methylation of stress axis genes in major depressive disorder: A CAN-BIND study report.
451 *Psychoneuroendocrinology* 2021; 132:105348.

- 452 32. Parade SH, Ridout KK, Seifer R, Armstrong DA, Marsit CJ, McWilliams MA et al. Methylation of the
453 Glucocorticoid Receptor Gene Promoter in Preschoolers: Links With Internalizing Behavior Problems.
454 Child Dev 2016; 87(1):86–97.
- 455 33. Daskalakis NP, Yehuda R. Site-specific methylation changes in the glucocorticoid receptor exon 1F
456 promoter in relation to life adversity: systematic review of contributing factors. Front Neurosci 2014;
457 8:369.
- 458 34. Radtke KM, Ruf M, Gunter HM, Dohrmann K, Schauer M, Meyer A et al. Transgenerational impact
459 of intimate partner violence on methylation in the promoter of the glucocorticoid receptor. Transl
460 Psychiatry 2011; 1:e21.
- 461 35. Serpeloni F, Radtke K, Assis SG de, Henning F, Nätt D, Elbert T. Grandmaternal stress during
462 pregnancy and DNA methylation of the third generation: an epigenome-wide association study. Transl
463 Psychiatry 2017; 7(8):e1202.
- 464 36. Serpeloni F, Nätt D, Assis SG de, Wieling E, Elbert T. Experiencing community and domestic
465 violence is associated with epigenetic changes in DNA methylation of BDNF and CLPX in adolescents.
466 Psychophysiology 2019; 57(1).
- 467 37. Straus MA, Hamby SL, Boney-McCoy S, Sugarman DB. The revised Conflict Tactics Scales (CTS2):
468 Development and preliminary psychometric data. Journal of Family Issues 1996; 17(3):283–316.
- 469 38. Lussier Y. Questionnaire sur la résolution des conflits conjugaux. Trois-rivieres, Quebec: Université
470 du Québec à Trois-Rivières; 1997.
- 471 39. Zigmond AS, Snaith RP. The hospital anxiety and depression scale. Acta Psychiatr Scand 1983;
472 67(6):361–70.
- 473 40. Lepine JP, Godchau M, Brun P. Anxiety and depression in inpatients. The Lancet 1985; 326(8469-
474 8470):1425–6.
- 475 41. FastQC; 2010. Available from: URL: <https://www.bioinformatics.babraham.ac.uk/projects/fastqc/>.
- 476 42. Ewels P, Magnusson M, Lundin S, Käller M. MultiQC: summarize analysis results for multiple tools
477 and samples in a single report. Bioinformatics 2016; 32(19):3047–8.
- 478 43. Pedersen BS, Eyring K, de Subhajyoti, Yang IV, Schwartz DA. Fast and accurate alignment of long
479 bisulfite-seq reads; 2014 Jan 6. Available from: URL: <http://arxiv.org/pdf/1401.1129v2>.
- 480 44. Thorvaldsdóttir H, Robinson JT, Mesirov JP. Integrative Genomics Viewer (IGV): high-performance
481 genomics data visualization and exploration. Brief Bioinform 2013; 14(2):178–92.
- 482 45. Barturen G, Rueda A, Oliver JL, Hackenberg M. MethylExtract: High-Quality methylation maps and
483 SNV calling from whole genome bisulfite sequencing data. F1000Res 2013; 2:217.
- 484 46. Pruessner JC, Kirschbaum C, Meinlschmid G, Hellhammer DH. Two formulas for computation of the
485 area under the curve represent measures of total hormone concentration versus time-dependent
486 change. Psychoneuroendocrinology 2003; 28(7):916–31.
- 487 47. Cohen J. Statistical power analysis for the behavioral sciences. 2nd edition. New York, London:
488 Psychology Press; Taylor & Francis Group; 1988.
- 489 48. Wu H-C, Wang Q, Chung WK, Andrulis IL, Daly MB, John EM et al. Correlation of DNA methylation
490 levels in blood and saliva DNA in young girls of the LEGACY Girls study. Epigenetics 2014; 9(7):929–33.
- 491 49. Godderis L, Schouteden C, Tabish A, Poels K, Hoet P, Baccarelli AA et al. Global Methylation and
492 Hydroxymethylation in DNA from Blood and Saliva in Healthy Volunteers. Biomed Res Int 2015; 2015.

493 50. Stalder T, Kirschbaum C, Kudielka BM, Adam EK, Pruessner JC, Wüst S et al. Assessment of the
494 cortisol awakening response: Expert consensus guidelines. *Psychoneuroendocrinology* 2016; 63:414–
495 32.

496 51. Sikweyiya Y, Addo-Lartey AA, Alangea DO, Dako-Gyeke P, Chirwa ED, Coker-Appiah D et al.
497 Patriarchy and gender-inequitable attitudes as drivers of intimate partner violence against women in
498 the central region of Ghana. *BMC Public Health* 2020; 20(1):682.

499 52. Rani M, Bonu S, Diop-Sidibe N. An Empirical Investigation of Attitudes towards Wife-Beating
500 among Men and Women in Seven Sub-Saharan African Countries. *Afr J Reprod Health* 2004; 8(3):116.

501

502 **Data reporting**

503 The data that support the findings of this study are openly available in
504 <https://doi.org/10.3886/E177242V1>

505 **Financial Disclosure Statement**

506 This research was funded by the Swiss Government Excellence Scholarships (2018.0801) and the Swiss
507 National Science Foundation (SNSF) (P1FRP1_199872) awarded to the first author. This work was also
508 supported by the University of Fribourg Research Pool.

509 **Competing interests**

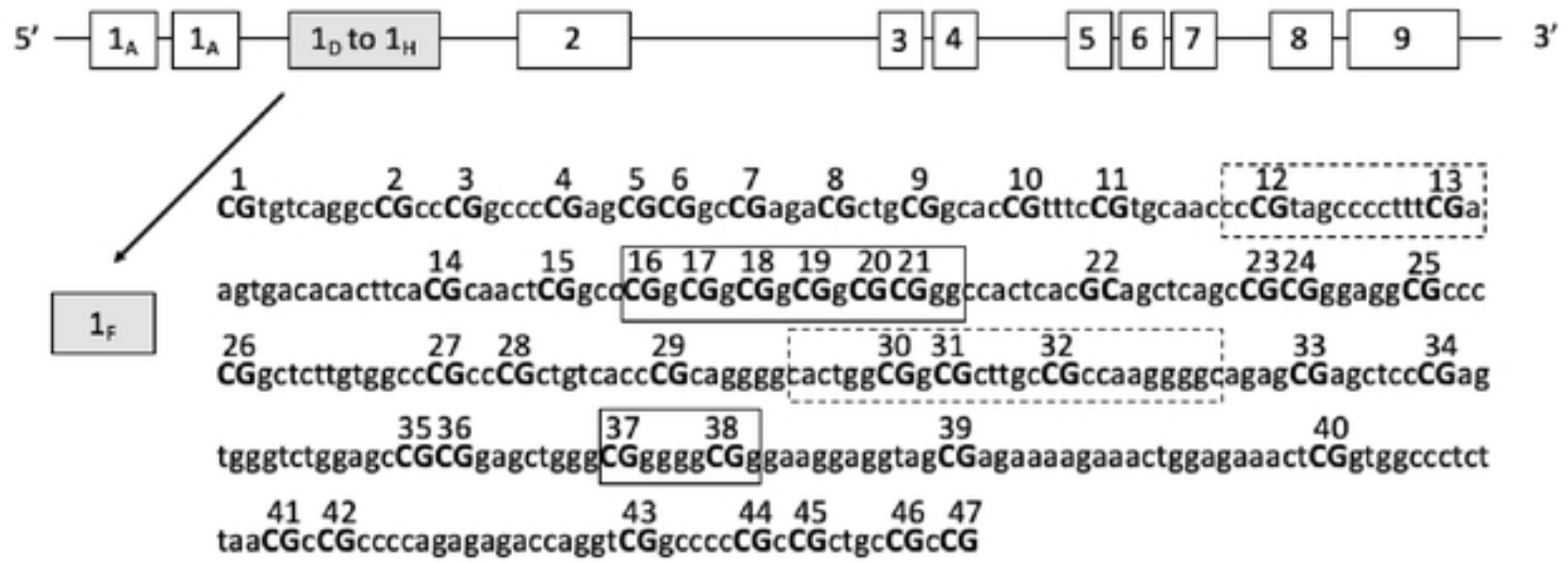
510 The authors declare that they have no competing interests.

511

512 **Authors' contributions**

513 **DLW, NM, CMS** and **CW** designed and directed the project; **DLW** collected and analyzed the data; **CW**
514 performed the epigenetic analysis; **DLW** wrote the first draft of the manuscript which was reviewed and
515 edited by **CW** and **CMS**.

516



medRxiv preprint doi: <https://doi.org/10.1101/2022.08.14.22278760>; this version posted August 16, 2022. The copyright holder for this preprint (which was not certified by peer review) is the author/funder, who has granted medRxiv a license to display the preprint in perpetuity. It is made available under a [CC-BY 4.0 International license](https://creativecommons.org/licenses/by/4.0/).

Fig 1. NR3C1 gene structure. The NR3C1 gene covers a region of more than 80 kb on chromosome V. It contains 8 coding exons (2-9) and 9 alternative spliced 5' non coding exon 1 variants. The region encompassing exon 1 variants is also known to function as a proximal promoter. Methylation of CpG dinucleotides (capital letters, 1-47) of exon 1F promoter region is examined in this study. Boxes represent known or putative canonical NGFI-A binding sites and broken-line boxes represent non canonical NGFI-a binding sites.

