

1 **Wide mismatches in the sequences of primers and probes for Monkeypox**
2 **virus diagnostic assays**

3
4 Fuqing Wu^{1*}, Jeremiah Oghuan¹, Anna Gitter¹, Kristina D. Mena¹, Eric L. Brown¹

5
6
7 1: The University of Texas Health Science Center at Houston, School of Public Health
8 Houston, Texas, USA 77030

9
10 * Correspondence to FW at fuqing.wu@uth.tmc.edu.

11
12
13
14
15
16
17
18
19
20
21
22
23

24 **Abstract**

25 Rapid and accurate diagnosis of infections is fundamental to containment of disease. Several
26 monkeypox virus (MPV) real-time diagnostic assays have been recommended by the CDC;
27 however, the specificity of the primers and probes in these assays for the ongoing MPV outbreak
28 has not been investigated. We analyzed the primer and probe sequences present in the CDC
29 recommended monkeypox virus (MPV) generic real-time PCR assay by aligning those
30 sequences against 1,730 MPV complete genomes reported in 2022 worldwide. Sequence
31 mismatches were found in 99.08% and 97.46% of genomes for the MPV generic forward and
32 reverse primers, respectively. Mismatch-corrected primers were synthesized and compared to the
33 generic assay for MPV detection. Results showed that the two primer-template mismatches
34 resulted in a ~11-fold underestimation of initial template DNA in the reaction and 4-fold increase
35 in the 95% LOD. We further evaluated the specificity of seven other real-time PCR assays used
36 for MPV and orthopoxvirus (OPV) detection and identified two assays with the highest matching
37 score (>99.6%) to the global MPV genome database in 2022. Genetic variations in the primer-
38 probe regions across MPV genomes could indicate the temporal and spatial emergence pattern of
39 monkeypox disease. Our results show that the current MPV real-time generic assay may not be
40 optimal to accurately detect MPV, and the mismatch-corrected assay with full complementarity
41 between primers and current MPV genomes could provide a more sensitive and accurate
42 detection of MPV.

43

44

45

46

47 **Introduction**

48 Our ability to detect emerging and re-emerging infectious disease agents has never been so
49 important as it is today. While the SARS-CoV-2 is gradually becoming an endemic virus, the
50 world is now seeing the re-emergence of the monkeypox virus (MPV). As of September 26,
51 2022, there were over 25,000 reported cases in the United States and over 66,000 cases in 106
52 countries ¹. The World Health Organization (WHO) has declared a public health emergency of
53 international concern on July 23, 2022 to respond the rapid spread of MPV worldwide.

54
55 Monkeypox virus, a species of the *Orthopoxvirus* (OPV) genus, is a zoonotic double-stranded
56 DNA virus with a ~197 kbp genome ^{2,3}. In 1970, monkeypox was first identified in humans in
57 the Democratic Republic of the Congo and in other African nations ⁴. Sporadic monkeypox cases
58 were reported outside of Africa (U.S. and Europe), however, the infections were either related to
59 international travel or exposure to animals imported from Africa ^{5,6}. The first MPV case
60 associated with the present outbreak was reported on May 6 in the United Kingdom, followed by
61 cases in Spain, Portugal, and Canada ^{5,7}. On May 18, cases were reported in Belgium and Italy;
62 on May 20, cases were reported in Australia, France, Germany, and the Netherlands; and on May
63 21, cases were reported in Switzerland and Israel ⁷. Such a wide outbreak within two weeks in
64 multiple counties across continents suggests that early non-reported transmission occurred before
65 May 2022 ⁸.

66
67 The polymerase-chain reaction (PCR) has been used in the detection and diagnosis of viral
68 infections such as SARS-CoV-2. On June 6, 2022 the Centers for Disease Control and
69 Prevention (CDC) released a real-time PCR test using generic primers and probe for the

70 detection of MPV⁹ based on previous work conducted in 2010 describing the detection of a
71 West African MPV strain and a Congo Basin MPV strain¹⁰. This MPV generic assay has been
72 used to identify human MPV infections and MPV present in wastewater samples^{11,12}. Several
73 other real-time PCR assays have also been reported for MPV or OPV detection in clinical
74 samples^{10,13–17}. However, the specificity and suitability of these generic primers and probes need
75 to be carefully addressed because most of the primers and probes (generic or lineage-specific)
76 were based on sequenced genomes obtained from MPV strains circulating more than a decade
77 ago (2002 to 2009). Given the rapid evolution of viral species, including DNA viruses^{18,19} it is
78 likely that mutations have emerged in presently circulating MPV strains including the regions
79 targeted by those oligos used for MPV detection. The present report analyzes the oligo sequences
80 used in conjunction with the current real-time MPV assays by aligning primer sequences against
81 683 reported MPV complete genomes from GISAID as of August 5, 2022. This analysis
82 identified wide variations in the primer and probe sequences compared to the genome of
83 currently circulating MPV stains. Our results indicate that the current MPV real-time generic
84 assay may not be optimal to accurately detect MPV.

85

86

87 **Materials and Methods**

88 **Data source.** The MPV genomes were downloaded from GISAID (<https://gisaid.org/>). As of
89 September 22 (10:50 am), 2022, 1,779 complete MPV genomes were available, including 1,730
90 genomes (samples) collected and sequenced in 2022. The remaining 49 samples include 7
91 samples from 1962 to 2005, 11 samples collected in 2006, 12 samples in 2007, 7 samples in
92 2017, 8 samples in 2018, 2 samples in 2019, and 2 samples in 2021. In the United States, there

93 are 333 complete MPV genomes sampled from May 2022 to August 2022. Metadata includes
94 accession ID, sample collection date, sequence data submission date, and sampling location
95 (continent/country) associated with the sequences. The monkeypox virus reference genome
96 Zaire-96-I-16 was downloaded from NCBI (NC_003310.1). MPV real-time assays (primers and
97 probes) were from published studies including MPV Generic assay ⁹, MPV_O2L ¹³, MPV_F3L
98 ¹⁴, MPV_C3L ¹⁰, MPV_G2R_WA ¹⁰, OPV_B2R ¹⁵, OPV_I7L ¹⁶, and OPV_F8L ¹⁷.

99
100 **Sequence alignment.** Genome sequences were downloaded as *fasta* files and imported into R
101 (version 4.1.3) as the MPV genome database for analysis. We aligned each of the oligo
102 (including forward primer, reverse primer, and probe) sequences and their reverse complements
103 to the database and computed the percentage of genomes where the oligo sequences were a 100%
104 match. The MPV generic assay and the MPV_G2R_WA assay target two regions of the genome
105 (in inverted terminal repeats region), the other assays have one target. If the oligo is found in
106 more than one target but with different number of matches, the larger value is used as the
107 percentage of 100% match. For example, the forward primer used in the G2R_WA assay is
108 found in sense and antisense strands, but the number of 100% genome matches is 1,779 and
109 1,778, respectively, therefore, 1,779 was used to calculate the percentage of matching genomes.
110 For non-matches, sequences were extracted and aligned using SnapGene software
111 (<https://www.snapgene.com/>) to identify the specific nucleotides that differ between the oligos
112 and the genomic data. The major types of sequence variation(s) are listed in Figures 1 and 3A. In
113 total, the original sequence and identified sequence variations accounted for 99.2% ~ 100% of
114 the total genomes for the MPV real-time assays. These analyses were performed with customized
115 R script.

116

117 **Real-time PCR.** Quantitative PCR was performed with PCR primers and TaqMan probe. Briefly,

118 the real-time PCR Multiplex Supermix (Bio-Rad, Cat #: 12010220) was mixed with the primers,

119 probe, and nuclease-free H₂O (VWR, Cat #: 10220-402) and then added to respective wells of a

120 96-well PCR plate (Bio-Rad, Cat #: HSL9605). For MPV_FR-generic assay, forward primer

121 MPV-F-generic (5'-GGA AAA TGT AAA GAC AAC GAA TAC AG-3') and reverse primer

122 MPV-R-generic (5'-GCT ATC ACA TAA TCT GGA AGC GTA-3') were used; for MPV_FR-

123 m assay, mismatch-corrected primers, *i.e.*, MPV-F-m (5'-GGA AAG TGT AAA GAC AAC

124 GAA TAC AG-3') and MPV-R-m (5'-GCT ATC ACA TAA TCT GAA AGC GTA-3'), were

125 used (Figure 1A). Probe MPV-P-generic (/56-FAM/AA GCC GTA A/ZEN/T CTA TGT TGT

126 CTA TCG TGT CC/3IABkFQ/) was used for both assays. All primers and probe were

127 synthesized from Integrated DNA Technologies (IDT) and final reaction concentrations were

128 500 nM and 250 nM, respectively. A 211-bp MPV DNA covering the primer and probe region

129 was synthesized at IDT and used as the PCR template. This synthetic DNA fragment is found in

130 96.71% (1,673 out of 1,730) of MPV genomes reported in 2022. The standard curves for the

131 MPV generic assay (with mismatches) and for the mismatch-corrected assay (with full

132 complementarity) were generated by serial ten-fold dilutions of the synthesized MPV gene

133 fragment from $2.16 \times 10^0 \sim 2.16 \times 10^7$ copies/ μ L. Each concentration has three replicates, and the

134 mean value is used to build the standard curve. For a fine determination of the limit of detection

135 (LOD) for both assays, we used two-fold serial dilutions starting from 21.6 copies/ μ L and ran 16

136 replicates at each concentration tested. Another 16 replicates were performed to confirm results

137 for the mismatch-corrected assay at 1.3 copies/ μ L. Cycle threshold (C_t) values above 40 were

138 considered negative. The LOD is defined as the lowest concentration of targets at which more

139 than 95% of replicates are positive. The real-time PCR reactions were carried out using a Bio-
140 Rad CFX Opus 96 Detection System at the following conditions: polymerase activation (95 °C
141 for 3 min), PCR (48 cycles, denature at 95 °C for 3 s, and anneal/extend at 60 °C for 30 s).

142
143 **Mutation-based epidemiological analysis.** For each MPV assay tested, we identified the major
144 variation type(s) in the genome database and then assigned an identity as ‘match’ or ‘variation’
145 to each genome. Two variation types were found for the MPV_G2R_WA assay and were labeled
146 as ‘Variation_1’ and ‘Variation_2’, respectively. Merging with the metadata associated with the
147 genome, we summarized the number of genomes for ‘match’ and ‘variation’ groups based on the
148 sampling collection time (year), and sampling location (continent). We also sub-grouped the
149 database by only selecting the year ‘2022’ to compute ‘variation’ percentages present in the
150 current MPV outbreak.

151

152 **Results**

153 **Generic MPV forward and reverse primers do not match the majority of reported genomes.**

154 To investigate whether forward and reverse primers and probe in the MPV generic assay match
155 to the genomes present in the current MPV outbreak, we aligned the three oligo sequences and
156 their reverse complements against the reported 1,730 complete genomes available in 2022. The
157 MPV generic forward sequence (MPV-F) had 100% identity to 4 genomes (0.23%). A single-
158 nucleotide mutation A194165G (synonymous mutation, MPV-F-m in Figure 1A) was found in
159 99.08% of the published MPV genomes in 2022 (Figure 1B), mostly from May to August 2022.
160 Similar observations were also found in the generic reverse primer (MPV-R), which only
161 matches to 1.73% of the genomes. A nonsynonymous substitution, G194233A in the reverse

162 primer region, was observed in 97.46% of the genomes. In contrast, the probe sequence (MPV-P)
163 is conserved and matches 99.31% of the genomes in the database.

164
165 We further compared the MPV generic primers and probe with sequenced samples from the U.S.
166 Of the total of 330 genomes reported from May to August 2022, the A194165G mutation in the
167 forward primer region was observed in all U.S. genomes, and the G194233A mutation observed
168 in the reverse primer was found in 97.58% of the U.S. genomes (Figure 1C) consistent with the
169 results in Figure 1B. These results show that the CDC recommended forward and reverse
170 primers used for MPV generic testing are not 100% identical to the major genome sequences in
171 recent samples with MPV.

172
173 **Mismatch-corrected primers have improved quantification and lower limits of detection.**

174 Some studies have reported positive detection of MPV in clinical and wastewater samples using
175 the generic real-time assay^{11,12}, suggesting that these primers can amplify the targeted region
176 even with a substitution in each of the primers. We therefore evaluated the real-time PCR
177 performance for the generic primers (FR_generic) and new primers with mismatches corrected
178 (FR_match) using a synthesized 211-bp MPV gene fragment (found in 96.71% of genomes in
179 2022) covering the primer and probe region. Standard curves from serial 7-log dilutions show
180 that both assays have similar amplification efficiencies with $R^2 > 0.99$ (Figure 2A-B). Under the
181 same concentrations of MPV gene template ranging from $2.16 \sim 2.16 \times 10^7$ copies/ μ L, MPV
182 FR_generic has a consistently higher Ct values (3.46 ± 0.39) than FR_match, suggesting that the
183 two mismatches in FR_generic primers cause about 11-fold underestimation of the initial
184 template concentration (Figure 2C). We next evaluated the limit of detection (LOD) by

185 conducting 2X dilutions of template DNA, and each has ~16 replicates. The 95% LOD for
186 FR_generic assay is 10.8 copies per reaction while the FR_match is 2.7 copies per reaction
187 (Table 1). Together, these results showed that the current MPV generic assay could still detect
188 MPV, but the template concentration quantified from this assay is underestimated by about an
189 order of magnitude. In addition, the mismatch-corrected primers have a lower 95% limit of
190 detection, which is important for samples with low MPV concentrations.

191

192 **Evaluation of the specificity of other primers and probes for monkeypox virus and**
193 **orthopoxvirus (OPV) detection.**

194 Next, we evaluated seven other developed real-time PCR assays, targeting *O2L*, *F3L*, *C3L*, and
195 *G2R* genes for MPV, *B2R*, *I7L* and *F8L* genes for OPV detection. The selected targets are
196 generally conserved regions within viral genomes to maximize viral detection^{13,15}. We aligned
197 primer and probe sequences and their reverse complements in the seven assays against the total
198 1,779 MPV genomes and computed the percentage of genomes with a 100% match. As shown in
199 Table 1, the four reported assays designed for MPV detection have varied results. The primers in
200 MPV_O2L have a ~99% match with the database, but the probe only matches 1.8% of genomes.
201 This ratio goes down to 0.23% when aligned to the genomes in 2022. Primers and probe
202 sequences used in the MPV_F3L assay matches >99.7% of the genomes, suggesting its
203 suitability for detection of the MPV-2022 outbreak. The MPV_C3L assay designed for the
204 detection of the MPV Congo Basin strain poorly matches to the current MPV genomes (0.23%).
205 Primers used in the MPV_G2R_WA assay designed to detect the West African strain showed a
206 100% match to the database and 99.65% match for the probe, thereby validating previous
207 phylogenetic analysis results that the current MPV lineage belonging to the West Africa clade²⁰.

208

209 We further evaluated three real-time assays (OPV_B2R, OPV_I7L, and OPV_F8L) for the
210 detection of viruses belonging to the *Orthopoxvirus* genus, which includes monkeypox virus,
211 camelpox virus, cowpox virus, and vaccinia virus²¹. OPV_B2R primers highly match the
212 database genomes, but its probe sequence has no match (Table 2). OPV_I7L has good matches
213 for the forward primer and probe, but its reverse primer only matches 1.56% of the genomes.
214 OPV_F8L oligos for the non-variola OPV generic test recommended by CDC has a high match
215 percentage (>99%) with the genomes (Table 2). Thus, the MPV_F3L, MPV_G2R_WA, and
216 OPV_F8L assays matches to >99% of the sequenced MPV genomes.

217

218 **Genetic variations across real-time PCR assays for MPV or OPV detection and**
219 **epidemiological analysis.**

220 Probes in MPV_O2L and OPV_B2R and reverse primer in OPV_I7L match 0 ~ 1.56% of the
221 genomes, suggesting potential variations in the current MPV genomes. We next analyzed MPV
222 genomic sequences to identify the main variations. About 98% of the MPV genomes have a G-
223 >T mutation in the probe used in MPV_O2L assay, and this mutation is present in 99.48% of the
224 MPV-2022 outbreak genomes (Figure 3A). Further analysis based on the sample collection date
225 identified this G->T mutation in two samples in 1962 and 1970, was not detected in samples
226 from 1978 to 2007, and re-emerged from 2017 onward and became dominant in current outbreak
227 (Figure 3B). For the OPV_I7L assay, a C->T mutation was observed at the 3' end of the reverse
228 primer in 95.11% of all genomes and in 97.75% of genomes sequenced in 2022. It is interesting
229 that this mutation is mostly observed in samples from Europe, South, and North America
230 whereas the original sequence was more common in samples from Africa and Asia (Figure 3C).

231 A G->C substitution in the probe sequence of OPV_B2R was observed in nearly all genomes
232 sequenced in the MPV-2022 outbreak (Figure 3A).

233
234 The MPV_G2R_WA assay probe has a 98.09% match to the database sequences (Figure 3A).
235 Two variation types were found for the rest of the 1.91% genomes. A 7-nucleotide variation
236 (variation_1) was found in 28 genomes from 1978 to 2007 (Figure 3A and 3D). Variation_1
237 reappears in 2022 in one male patient's sample (age 50) from Luxembourg, and four children
238 samples (age 3 to 10) from Tshopo and Kwilu provinces in the Democratic Republic of the
239 Congo. Although 99.54% of the 2022 MPV genomes are conserved in this probe region, one new
240 C->T synonymous variation (variation_2) (Figure 3A) was identified from a sample obtained on
241 May 18, 2022 from Canada. Those results suggest that the genetic variations in MPV conserved
242 genomic regions covering the real-time PCR primer and probe sequences might be used to
243 indicate the temporal and spatial emergence pattern of monkeypox disease.

244

245 **Discussion**

246 Accurate diagnostics are fundamental for successful epidemic control²². PCR-based molecular
247 methods are widely used for pathogen detection in clinical and environmental samples. As a
248 rapid and reliable tool, TaqMan real-time PCR offers high sensitivity and specificity that targets
249 a respective pathogen's genome by using a designed probe, and forward and reverse primers.
250 Therefore, an exact match between the three oligos and the target genome are required for
251 sensitive and accurate diagnostics. Here, we analyzed the sequence of primers and probe used in
252 the CDC recommended MPV generic real-time PCR assay as well as seven other MPV and OPV
253 diagnostic assays by aligning respective primer/probe sequences against published MPV full

254 genomes. Our results showed two mismatches in more than 99% of genomes for the MPV
255 generic forward and reverse primers (Figure 1). One mutation G194233A is close to the 3' end
256 of the reverse primer, suggesting it may significantly impact the binding efficiency during
257 amplification.

258

259 Theoretically, every mismatch, irrespective of its position within the primer sequence could
260 reduce thermal stability of the primer-template DNA duplex and impact PCR performance^{23,24}.
261 Mismatches have often been reported to undermine real-time PCR based diagnostics.
262 Stadhouders *et al.* examined the impact of primer-template mismatches and found that one G→A
263 mismatch at the 3' end of primer could lead to an increase of >8 Ct values depending on the
264 position²⁴. Klungthong *et al.* found a single mismatch at the 3rd base of the probe significantly
265 reduced sensitivity for detection of influenza A/H1N1/2009²⁵. In another study, Persson *et al*
266 reported that that a single G→T mismatch at 3' -end of the reverse primer for detection of
267 hepatitis A virus by RT-PCR assay causes underestimation of the template concentration by a
268 factor of 1.7–1.8 and an ~2-fold increase in 95% LOD²⁶.

269

270 The two identified mismatches, despite neither of them being at the 1st position of 3' end, may
271 have combined effects on PCR performance. We thus synthesized primers with an identical
272 match to the MPV genome and compared results generated by the assay with mismatches. Our
273 results showed that the two primer-template mismatches resulted in a ~11-fold underestimation
274 of initial template DNA in the reaction and 4-fold increase in the 95% LOD in our real-time PCR
275 settings. Those results indicated that the mismatch-corrected assay with full complementarity
276 between primers and current MPV genomes could provide a more sensitive detection of MPV,

277 which is important for samples with low viral concentrations such as wastewater²⁷⁻³⁰.
278 Furthermore, the fully matched primers showed an improved quantification of the initial DNA
279 concentration needed for the quantitative analysis associated with tracking disease progression or
280 assessing estimates of prevalence.

281
282 Of the seven other assays evaluated for MPV or OPV detection, MPV_F3L, MPV_G2R_WA,
283 and OPV_F8L had the highest matches (>99%) to the 2022 global genome database. However,
284 specificity, another important parameter for real-time PCR-based diagnostics, needs further
285 investigation for these three assays. For example, we found that primers and probe in the
286 MPV_F3L assay had high a homology to OM460002.1 cowpox virus isolate No-H2 genome
287 (two mismatches in the probe and reverse primer), suggesting it could also amplify cowpox virus.
288 On the other hand, the choice for the three assays may also depend on the sample types. For
289 example, the three assays may work well for clinical samples and provide reliable diagnostics for
290 human MPV. However, extra attention is needed to interpret positive results for wastewater
291 samples, which may contain waste of human, cat, dog, mice, rabbits, and cow origins³¹.

292
293 It is necessary to mention that sequence matching is just one of the parameters determining the
294 detection sensitivity and specificity. Other parameters such as primer dimer formation, GC
295 content, the quality of the template DNA, the PCR master mix, and inhibitors present in the
296 sample may also impact the diagnostic efficiency and mismatch-induced effects^{24,32,33}. An ideal
297 diagnostic assay needs to consider and assess those factors in a comprehensive way. This study
298 used a synthetic MPV gene fragment to test the mismatch effects, but it is recommended to

299 verify the results using a full-length viral genome, which may introduce more complexity and
300 even increase the underestimation ²⁶.

301
302 In summary, our analysis showed that primers and probe in the recommended MPV generic real-
303 time assay harbor wide deviations from the sequenced MPV genomes, especially the genomes
304 released in current monkeypox outbreak. The mismatch-corrected assay, harboring full
305 complementarity to >97% MPV genomes, shows a higher sensitivity and improved
306 quantification and may be an alternative approach for the MPV detection. Improved diagnostic
307 capabilities are critical as public health practitioners and clinicians respond to the growing MPV
308 outbreak.

309

310 **Declaration of Competing Interest**

311 The authors declare no competing interest.

312

313 **Code Availability**

314 All data and code produced in the present study are available upon reasonable request to the
315 authors.

316

317 **Acknowledgement**

318 We are grateful to Dr. Alanna Morrison and the colleagues in the TEPHI for helpful discussion.

319 This work is supported by Faculty Startup funding from the Center of Infectious Diseases at

320 UTHealth, the UT system Rising STARS award, and the Texas Epidemic Public Health Institute

321 (TEPHI).

322

323 Ethical Approval Statement

324 This article does not contain any studies involving animals or humans performed by any authors.

325

326 Reference

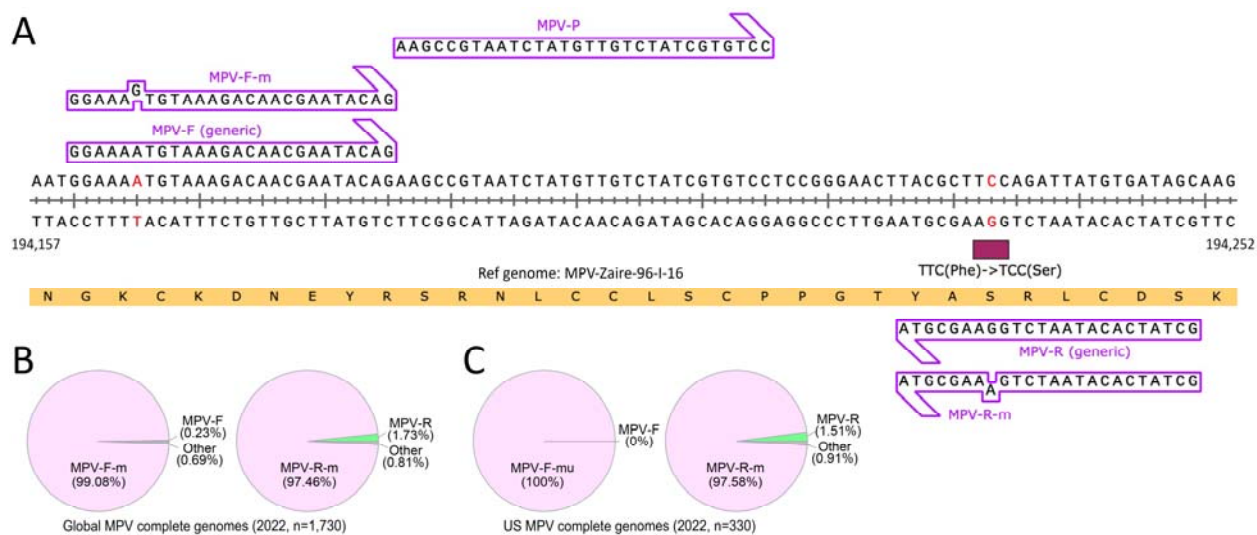
- 327 1. CDC. 2022 Monkeypox Outbreak Global Map. Centers for Disease Control and Prevention.
328 Published June 24, 2022. Accessed August 9, 2022.
329 <https://www.cdc.gov/poxvirus/monkeypox/lab-personnel/index.html>
- 330 2. Petersen E, Kantele A, Koopmans M, et al. Human Monkeypox: Epidemiologic and Clinical
331 Characteristics, Diagnosis, and Prevention. *Infectious Disease Clinics*. 2019;33(4):1027-
332 1043. doi:10.1016/j.idc.2019.03.001
- 333 3. Frampton D, Rampling T, Cross A, et al. Genomic characteristics and clinical effect of the
334 emergent SARS-CoV-2 B.1.1.7 lineage in London, UK: a whole-genome sequencing and
335 hospital-based cohort study. *The Lancet Infectious Diseases*. 2021;21(9):1246-1256.
336 doi:10.1016/S1473-3099(21)00170-5
- 337 4. Breman JG, Kalisa-Ruti, Steniowski MV, Zanotto E, Gromyko AI, Arita I. Human
338 monkeypox, 1970-79. *Bull World Health Organ*. 1980;58(2):165-182.
- 339 5. Thornhill JP, Barkati S, Walmsley S, et al. Monkeypox Virus Infection in Humans across 16
340 Countries — April–June 2022. *New England Journal of Medicine*. 2022;0(0):null.
341 doi:10.1056/NEJMoa2207323
- 342 6. Titanji BK, Tegomoh B, Nematollahi S, Konomos M, Kulkarni PA. Monkeypox: A
343 Contemporary Review for Healthcare Professionals. *Open Forum Infectious Diseases*.
344 2022;9(7):ofac310. doi:10.1093/ofid/ofac310
- 345 7. Kumar N, Acharya A, Gendelman HE, Byrareddy SN. The 2022 outbreak and the
346 pathobiology of the monkeypox virus. *Journal of Autoimmunity*. 2022;131:102855.
347 doi:10.1016/j.jaut.2022.102855
- 348 8. Vivancos R, Anderson C, Blomquist P, et al. Community transmission of monkeypox in the
349 United Kingdom, April to May 2022. *Euro Surveill*. 2022;27(22):2200422.
350 doi:10.2807/1560-7917.ES.2022.27.22.2200422
- 351 9. CDC. Test Procedure: Monkeypox virus Generic Real-Time PCR Test. Centers for Disease
352 Control and Prevention. Published June 6, 2022. Accessed August 9, 2022.
353 <https://www.cdc.gov/poxvirus/monkeypox/pdf/PCR-Diagnostic-Protocol-508.pdf>

- 354 10. Li Y, Zhao H, Wilkins K, Hughes C, Damon IK. Real-time PCR assays for the specific
355 detection of monkeypox virus West African and Congo Basin strain DNA. *J Virol Methods*.
356 2010;169(1):223-227. doi:10.1016/j.jviromet.2010.07.012
- 357 11. Peiró-Mestres A, Fuertes I, Camprubí-Ferrer D, et al. Frequent detection of monkeypox virus
358 DNA in saliva, semen, and other clinical samples from 12 patients, Barcelona, Spain, May to
359 June 2022. *Eurosurveillance*. 2022;27(28):2200503. doi:10.2807/1560-
360 7917.ES.2022.27.28.2200503
- 361 12. Wolfe MK, Duong D, Hughes B, Chan-Herur V, White BJ, Boehm AB. Detection of
362 monkeypox viral DNA in a routine wastewater monitoring program. Published online July
363 26, 2022:2022.07.25.22278043. doi:10.1101/2022.07.25.22278043
- 364 13. Wawina-Bokalanga T, Sklenovska N, Vanmechelen B, et al. An accurate and rapid Real-
365 time PCR approach for human Monkeypox virus diagnosis. Published online June 23,
366 2022:2022.06.23.22276033. doi:10.1101/2022.06.23.22276033
- 367 14. Maksyutov RA, Gavrilova EV, Shchelkunov SN. Species-specific differentiation of variola,
368 monkeypox, and varicella-zoster viruses by multiplex real-time PCR assay. *J Virol Methods*.
369 2016;236:215-220. doi:10.1016/j.jviromet.2016.07.024
- 370 15. Stellberger T, Stockmar I, Haase M, et al. Multiplex Real-Time PCR Assay for the Detection
371 and Differentiation of Poxviruses and Poxvirus Vectors. *Applied Biosafety*.
372 2015;20(4):192-200. doi:10.1177/153567601502000405
- 373 16. Schroeder K, Nitsche A. Multicolour, multiplex real-time PCR assay for the detection of
374 human-pathogenic poxviruses. *Mol Cell Probes*. 2010;24(2):110-113.
375 doi:10.1016/j.mcp.2009.10.008
- 376 17. CDC. Test Procedure: Non-variola Orthopoxvirus Generic Real-Time PCR Test. Published
377 June 6, 2022. [https://www.cdc.gov/poxvirus/monkeypox/pdf/non-variola-orthopoxvirus-
378 generic-real-time-pcr-test.pdf](https://www.cdc.gov/poxvirus/monkeypox/pdf/non-variola-orthopoxvirus-generic-real-time-pcr-test.pdf)
- 379 18. Nasir A, Caetano-Anollés G. A phylogenomic data-driven exploration of viral origins and
380 evolution. *Science Advances*. 2015;1(8):e1500527. doi:10.1126/sciadv.1500527
- 381 19. Villarreal LP. Evolution of Viruses. *Encyclopedia of Virology*. Published online 2008:174-
382 184. doi:10.1016/B978-012374410-4.00706-8
- 383 20. Wang L, Shang J, Weng S, et al. Genomic annotation and molecular evolution of
384 monkeypox virus outbreak in 2022. *Journal of Medical Virology*. 2022;1(7).
385 doi:10.1002/jmv.28036
- 386 21. Petersen BW, Karem KL, Damon IK. Orthopoxviruses: Variola, Vaccinia, Cowpox, and
387 Monkeypox. In: Kaslow RA, Stanberry LR, Le Duc JW, eds. *Viral Infections of Humans:
388 Epidemiology and Control*. Springer US; 2014:501-517. doi:10.1007/978-1-4899-7448-8_21

- 389 22. Kelly-Cirino CD, Nkengasong J, Kettler H, et al. Importance of diagnostics in epidemic and
390 pandemic preparedness. *BMJ Glob Health*. 2019;4(Suppl 2):e001179. doi:10.1136/bmjgh-
391 2018-001179
- 392 23. So KYK, Fong JJ, Lam IPY, Dudgeon D. Pitfalls during in silico prediction of primer
393 specificity for eDNA surveillance. *Ecosphere*. 2020;11(7):e03193. doi:10.1002/ecs2.3193
- 394 24. Stadhouders R, Pas SD, Anber J, Voermans J, Mes THM, Schutten M. The Effect of Primer-
395 Template Mismatches on the Detection and Quantification of Nucleic Acids Using the 5'
396 Nuclease Assay. *The Journal of Molecular Diagnostics*. 2010;12(1):109-117.
397 doi:10.2353/jmoldx.2010.090035
- 398 25. Klungthong C, Chinnawirotpisan P, Hussem K, et al. The impact of primer and probe-
399 template mismatches on the sensitivity of pandemic influenza A/H1N1/2009 virus detection
400 by real-time RT-PCR. *J Clin Virol*. 2010;48(2):91-95. doi:10.1016/j.jcv.2010.03.012
- 401 26. Persson S, Karlsson M, Borsch-Reniers H, Ellström P, Eriksson R, Simonsson M. Missing
402 the Match Might Not Cost You the Game: Primer-Template Mismatches Studied in Different
403 Hepatitis A Virus Variants. *Food Environ Virol*. 2019;11(3):297-308. doi:10.1007/s12560-
404 019-09387-z
- 405 27. Wu F, Zhang J, Xiao A, et al. SARS-CoV-2 Titers in Wastewater Are Higher than Expected
406 from Clinically Confirmed Cases. *mSystems*. 2020;5(4):e00614-20.
407 doi:10.1128/mSystems.00614-20
- 408 28. Wu F, Lee WL, Chen H, et al. Making Waves: Wastewater Surveillance of SARS-CoV-2 in
409 an Endemic Future. *Water Research*. Published online May 3, 2022:118535.
410 doi:10.1016/j.watres.2022.118535
- 411 29. Wölfel R, Corman VM, Guggemos W, et al. Virological assessment of hospitalized patients
412 with COVID-2019. *Nature*. 2020;581(7809):465-469. doi:10.1038/s41586-020-2196-x
- 413 30. Killingley B, Mann AJ, Kalinova M, et al. Safety, tolerability and viral kinetics during
414 SARS-CoV-2 human challenge in young adults. *Nat Med*. Published online March 31,
415 2022:1-11. doi:10.1038/s41591-022-01780-9
- 416 31. Smyth DS, Trujillo M, Gregory DA, et al. Tracking cryptic SARS-CoV-2 lineages detected
417 in NYC wastewater. *Nat Commun*. 2022;13(1):635. doi:10.1038/s41467-022-28246-3
- 418 32. Kralik P, Ricchi M. A Basic Guide to Real Time PCR in Microbial Diagnostics: Definitions,
419 Parameters, and Everything. *Frontiers in Microbiology*. 2017;8. Accessed August 10, 2022.
420 <https://www.frontiersin.org/articles/10.3389/fmicb.2017.00108>
- 421 33. Ruijter JM, Ramakers C, Hoogaars WMH, et al. Amplification efficiency: linking baseline
422 and bias in the analysis of quantitative PCR data. *Nucleic Acids Res*. 2009;37(6):e45.
423 doi:10.1093/nar/gkp045

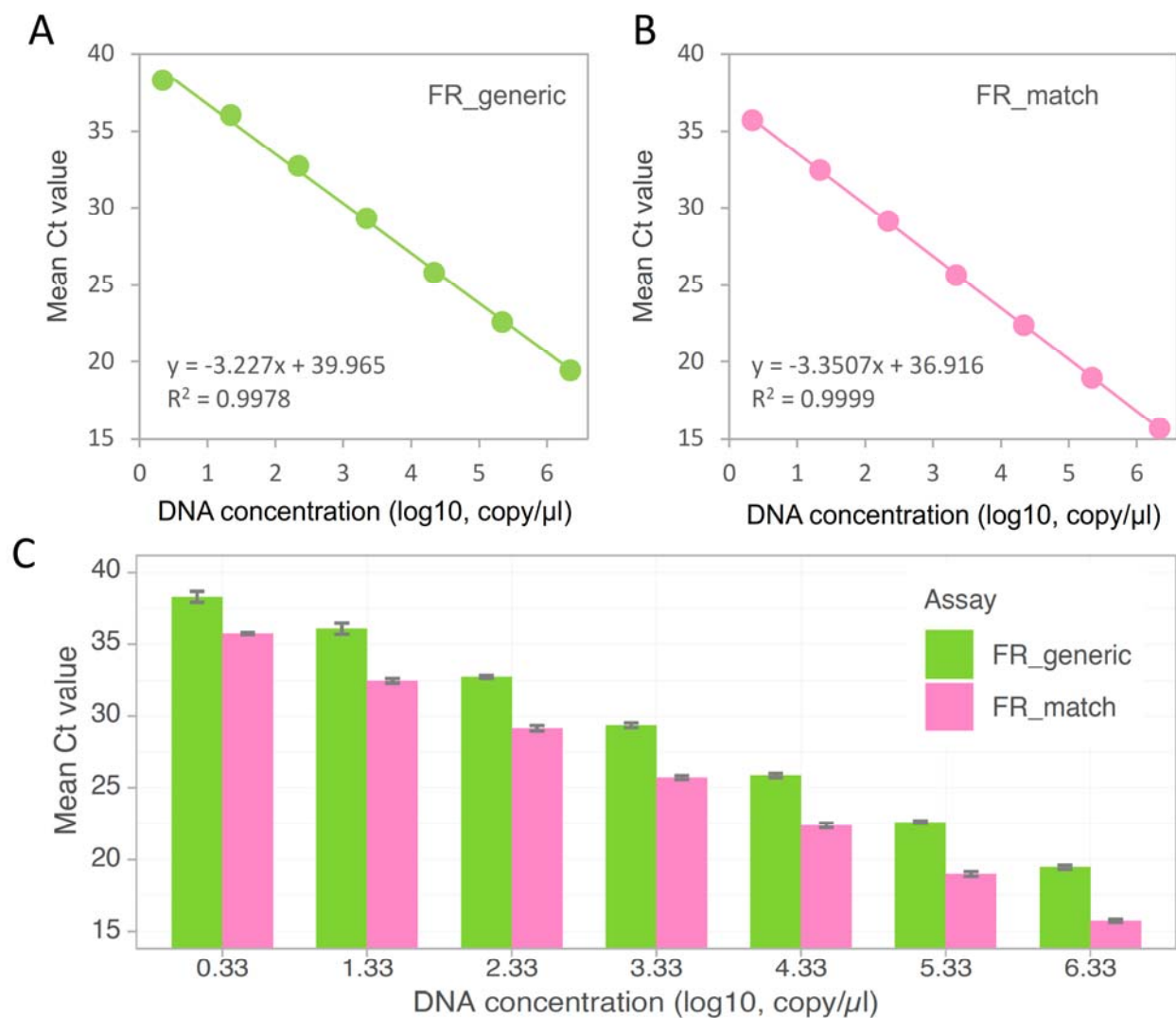
424

425
426
427
428
429
430
431
432
433
434
435
436
437
438



439
440

441 **Figure 1. MPV generic forward and reverse primers do not match to the majority of**
442 **reported genomes. (A)** Alignment of MPV generic forward primer, reverse primer, and probe
443 sequences (recommended in the CDC test procedure for MPV ⁹) to the MPV reference genome
444 (MPV-Zaire-96-I-16). The corresponding oligo sequences with mismatches found in the genome
445 database for forward (MPV-F-m) and reverse primers (MPV-R-m) were also added on top of the
446 reference genome. Red nucleotides indicate genetic variations identified in the MPV genome
447 database and the nonsynonymous mutation is marketed by a red box. **(B-C)** The abundance of
448 MPV-F (generic) and MPV-F-m, MPV-R (generic) and MPV-R-m in the currently available
449 1,730 MPV genomes worldwide published in 2022 (B), and in the 330 U.S. genomes (C).
450



451

452

453 **Figure 2. Sensitivity analysis for the MPV generic real time PCR assay and mismatch**

454 **corrected assay. (A-B) Standard curves for MPV FR_generic (A) and FR_match (B) assays.**

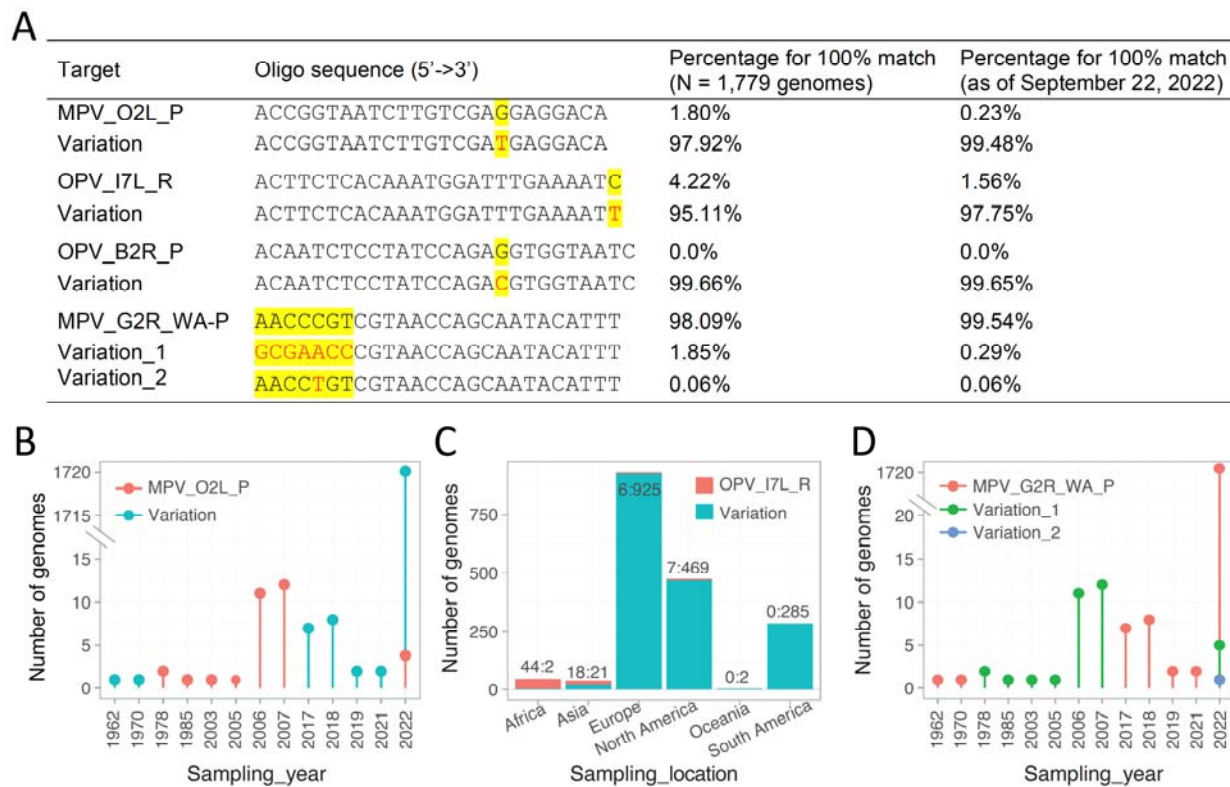
455 Data shown represent the mean of three replicates with standard deviations. Trendlines with

456 trendline equations and coefficient of determination were added. (C) Mismatch-corrected assay

457 (FR_match) has lower Ct values under the same concentrations of initial template DNA.

458

459



460

461 **Figure 3. Genetic variations across real-time PCR assays for MPV or OPV detection and**

462 **epidemiological analysis. (A) Genetic variations in the MPV genome database compared to**

463 **primer and probe sequences used in detection assays. (B) Temporal analysis for the genetic**

464 **variation in MPV_O2L probe sequence. This variation is found in 99.48% of the genomes in**

465 **2022. (C) Proportion of genomes for the reverse primer used in the OPV_I7L assay with or**

466 **without variation by continent. (D) Incidence of MPV_G2R_WA probe sequence and its two**

467 **variation types across the genomic database by year.**

468

469

470

471

472

473 **Table 1. Limits of detection for MPV generic assay (FR_generic) and mismatch-corrected assay**
 474 **(FR_match).**

	DNA template volume (μl)	Synthetic MPV gene fragment concentrations (copies / mL)						
		21,622	10,811	5,405	2,703	1,351	676	0
FR_generic	2	100% (16/16)	100% (16/16)	100% (16/16)	75% (12/16)	50% (8/16)	Not tested	12.5% (2/16)
FR_match	2	100% (14/14)	100% (16/16)	100% (16/16)	100% (16/16)	100% (32/32)	81% (13/16)	0% (0/16)

Note: Reactions with Ct < 40 are considered as 'positive'.

475
476
477

478

479 **Table 2. Evaluation of the sequence specificity of primers and probes for monkeypox virus**
 480 **(MPV) or orthopoxvirus (OPV) detection.**

481

Target	Oligo ¹	Oligo sequence (5'→3')	Percentage for 100% match (total MPV genomes, N=1,779) ²	Percentage for 100% match (genomes in 2022, N=1,730) ²
MPV_O2L	Forward (+)	TAGTGAGTTCGGCGACAAAG	99.78%	99.77%
	Reverse (+)	GTATCGCATCTCTCGGGTATTC	98.99%	98.96%
	Probe (+)	ACCGTAATCTTGTCGAGGAGACA	1.80%	0.23%
MPV_F3L	Forward (+)	CATCTATTATAGCATCAGCATCAGA	99.72%	99.71%
	Reverse (+)	GATACTCCTCCTCGTTGGTCTAC	99.83%	99.83%
	Probe (+)	TGTAGGCCGTGTATCAGCATCCATT	99.78%	99.77%
MPV_C3L	Forward (-)	TGTCTACCTGGATACAGAAAGCAA	1.80%	0.23%
	Reverse (-)	GGCATCTCCGTTAATACATTGAT	1.80%	0.23%
	Probe (-)	CCCATATATGCTAAATGTACCGGTACCGGA	1.80%	0.23%
MPV_G2R_WA	Forward (±)	CACACCGTCTCTTCCACAGA	100.0%	100.00%
	Reverse (±)	GATACAGGTTAATTTCCACATCG	100.0%	100.00%
	Probe (±)	AACCCGTCGTAACCAGCAATACATTT	98.09%	99.65%
OPV_B2R	Forward (+)	CTATCAAAGAGAAGGCCAA	99.83%	99.83%
	Reverse (+)	ATTCTCATAATTTCCCTTCCAT	99.83%	99.83%
	Probe (-)	ACAATCTCTATCCAGAGGTGGTAATC	0.00%	0.00%
OPV_I7L	Forward (+)	TAATACTTCGATTGCTCATCCAGG	99.27%	99.25%
	Reverse (+)	ACTTCTCACAAATGGATTGAAAATC	4.22%	1.56%
	Probe (+)	TCCTTACGTGATAAATCAT	99.55%	99.54%
OPV_F8L	Forward (-)	TCAACTGAAAAGGCCATCTATGA	99.38%	99.36%
	Reverse (-)	GAGTATAGAGCACTATTTCTAAATCCCA	99.21%	99.19%
	Probe (-)	CCATGCAATATACGTACAGATAGTAGCCAAC	99.16%	99.13%

482 ¹: (+): indicates sense strand; (-) indicates anti-sense strand; (±) indicates that oligo has two binding sites, one each on sense
 483 and antisense strand.

484 ²: This is the percentage of complete genomes that the primer/probe sequence can 100% match with at least one target site. As
 485 of September 22 (10:50am), there are 1,779 complete genomes published in GISAID, of which 1,730 are published in 2022.

486