

1 Immunogenicity of an additional mRNA-1273 SARS-CoV-2 2 vaccination in people living with HIV with hyporesponse after 3 primary vaccination

4 Marlou J. Jongkees¹ MD, Daryl Geers^{2*} MSc, Kathryn S. Hensley^{1*} MD, Wesley Huisman³ MSc,
5 Corine H. GeurtsvanKessel² MD PhD, Susanne Bogers² MSc, Lennert Gommers² BSc, Grigorios
6 Papageorgiou⁴ PhD, Simon P. Jochems³ PhD, Jan G. den Hollander⁵ MD PhD, Emile F.
7 Schippers^{6,7} MD PhD, Heidi S.M. Ammerlaan⁸ MD, Wouter F.W. Bierman⁹ MD PhD, Marc van
8 der Valk^{10,11} MD PhD, Marvin A.H. Berrevoets¹² MD PhD, Robert Soetekouw¹³ MD, Nienke
9 Langebeek¹⁴ PhD, Anke H.W. Bruns¹⁵ MD PhD, Eliane M.S. Leyten¹⁶ MD PhD, Kim C.E. Sigaloff¹¹
10 MD PhD, Marit G.A. van Vonderen¹⁷ MD PhD, Corine E. Delsing¹⁸ MD, Judith Branger¹⁹ MD
11 PhD, Peter D. Katsikis²⁰ MD PhD, Yvonne M. Mueller²⁰ PhD, Rory D. de Vries² PhD, Bart J.A.
12 Rijnders¹ MD PhD, Kees Brinkman²¹ MD PhD, Casper Rokx^{1*} MD PhD, Anna H.E. Roukens^{6*} MD
13 PhD

14 1. Department of Internal Medicine, Section Infectious Diseases, and Department of
15 Medical Microbiology and Infectious Diseases, Erasmus University Medical Centre,
16 Rotterdam, the Netherlands

17 2. Department of Viroscience, Erasmus University Medical Centre, Rotterdam, the
18 Netherlands

19 3. Department of Parasitology, Leiden University Centre for Infectious Diseases, Leiden
20 University Medical Centre, Leiden, the Netherlands

21 4. Department of Biostatistics, Erasmus University Medical Centre, Rotterdam, the
22 Netherlands

NOTE: This preprint reports new research that has not been certified by peer review and should not be used to guide clinical practice.

- 23 5. Department of Internal Medicine, Maastricht Hospital, Rotterdam, the Netherlands
- 24 6. Department of Infectious Diseases, Leiden University Medical Centre, Leiden, the
25 Netherlands
- 26 7. Department of Internal Medicine, Haga Teaching Hospital, The Hague, the Netherlands
- 27 8. Department of Internal Medicine, Catharina Hospital, Eindhoven, the Netherlands
- 28 9. Department of Internal Medicine and Infectious Diseases, University Medical Centre
29 Groningen, Groningen, the Netherlands
- 30 10. Department of Internal Medicine and Infectious Diseases, DC Klinieken, Amsterdam, the
31 Netherlands
- 32 11. Department of Infectious Diseases, Amsterdam Institute for Infection and Immunity,
33 Amsterdam University Medical Centres, Amsterdam, the Netherlands
- 34 12. Department of Internal Medicine, Elisabeth-Tweesteden Hospital, Tilburg, the
35 Netherlands
- 36 13. Department of Internal Medicine and Infectious Diseases, Spaarne Gasthuis, Haarlem, the
37 Netherlands
- 38 14. Department of Internal Medicine and Infectious Diseases, Rijnstate Hospital, Arnhem, the
39 Netherlands
- 40 15. Department of Internal Medicine and Infectious Diseases, University Medical Centre
41 Utrecht, Utrecht, the Netherlands
- 42 16. Department of Internal Medicine and Infectious Diseases, Haaglanden Medical Centre,
43 The Hague, the Netherlands
- 44 17. Department of Internal Medicine, Medical Centre Leeuwarden, Leeuwarden, the
45 Netherlands

46 18. Department of Internal Medicine and Infectious Diseases, Medisch Spectrum Twente,
47 Enschede, the Netherlands

48 19. Department of Internal Medicine, Flevo Hospital, Almere, the Netherlands

49 20. Department of Immunology, Erasmus University Medical Centre, Rotterdam, the
50 Netherlands

51 21. Department of Internal Medicine and Infectious Diseases, OLVG Hospital, Amsterdam, the
52 Netherlands

53 *Contributed equally to this manuscript

54 **Corresponding author**

55 Dr. Anna H.E. Roukens

56 A.H.E.Roukens@lumc.nl

57 **Abstract**

58 **Background**

59 The COVIH study is a prospective SARS-CoV-2 vaccination study in people living with HIV
60 (PLWH). Of the 1154 PLWH enrolled, 14% showed a reduced or absent antibody response
61 after a primary vaccination regimen. As the response to an additional vaccination in PLWH
62 with hyporesponse is unknown, we evaluated whether an additional vaccination boosts
63 immune responses in these hyporesponders.

64 **Methods**

65 Consenting hyporesponders received an additional 100 µg of mRNA-1273. Hyporesponse
66 was defined as ≤ 300 spike(S)-specific binding antibody units [BAU]/mL. The primary
67 endpoint was the increase in antibodies 28 days after the additional vaccination. Secondary
68 endpoints were the correlation between patient characteristics and antibody response,
69 levels of neutralizing antibodies, S-specific T-cell and B-cell responses, and reactogenicity.

70 **Results**

71 Of the 75 PLWH enrolled, five were excluded as their antibody level had increased to >300
72 BAU/mL at baseline, two for a SARS-CoV-2 infection before the primary endpoint evaluation
73 and two were lost to follow-up. Of the 66 remaining participants, 40 previously received
74 ChAdOx1-S, 22 BNT162b2, and four Ad26.COVS. The median age was 63 [IQR:60-66], 86%
75 were male, pre-vaccination and nadir CD4+ T-cell counts were 650/ μ L [IQR:423-941] and
76 230/ μ L [IQR:145-345] and 96% had HIV-RNA <50 copies/ml. The mean antibody level before
77 the additional vaccination was 35 BAU/mL (SEM 5.4) and 45/66 (68%) were antibody
78 negative. After the additional mRNA-1273 vaccination, antibodies were >300 BAU/mL in

79 64/66 (97%) with a mean increase of 4282 BAU/mL (95%CI:3241-5323). No patient
80 characteristics correlated with the magnitude of the antibody response nor did the primary
81 vaccination regimen. The additional vaccination significantly increased the proportion of
82 participants with detectable ancestral S-specific B-cells (p=0.016) and CD4+ T-cells (p=0.037).

83 **Conclusion**

84 An additional mRNA-1273 vaccination induced a robust serological response in 97% of the
85 PLWH with a hyporesponse after a primary vaccination regimen. This response was observed
86 regardless of the primary vaccination regimen or patient characteristics.

87 *Keywords: SARS-CoV-2 vaccines; HIV; COVID-19; additional dose; non-responder.*

88 Introduction

89 People living with HIV (PLWH) show diminished responses to a wide variety of vaccines
90 compared to HIV-negative controls, such as hepatitis B[1] and seasonal influenza vaccines[2].
91 As we hypothesized that this also holds true for SARS-CoV-2 vaccines, we previously
92 investigated the immunogenicity of SARS-CoV-2 vaccinations in PLWH with the vaccines
93 currently approved in the Netherlands. Whereas smaller studies showed variable antibody
94 responses after SARS-CoV-2 vaccination in PLWH compared to HIV-negative controls[3-9], our
95 study in 1154 PLWH clearly demonstrated a diminished antibody response[10]. In total, 165
96 (14.3%) of the participants were hyporesponders (≤ 300 spike (S)-specific binding antibody
97 units [BAU]/mL by chemiluminescence immunoassay [DiaSorin Liaison]) and in 33 of them the
98 antibody level remained below the cut-off level of test positivity (33.8 BAU/mL). In comparison
99 with HIV-negative controls, hyporesponse rates were 6.7% (59/884) versus none (0/94) after
100 vaccination with BNT162b2, 4.0% (4/100) versus none (0/247) after mRNA-1273, 54.7%
101 (82/150) versus 38.5% (10/26) after ChAdOx1-S and all (20/20) versus 98.6% (72/73) after
102 Ad26.COV2.S. CD4+ T-cell counts under 250 cells/ μ L, age above 65 years, and male sex were
103 associated with lower antibody levels (all $p \leq 0.001$). The reduced response against SARS-CoV-
104 2 in PLWH compared to HIV-negative controls is in line with the higher breakthrough infection
105 risk observed in PLWH compared to HIV-negative controls (adjusted hazard ratio 1.28)[11]. In
106 addition, a higher incidence of SARS-CoV-2 mortality was observed in PLWH (adjusted hazard
107 ratio's 3.29 and 2.59)[12, 13]. It was reported that the magnitude of the antibody response
108 after vaccination correlates with protection against symptomatic infection with the ancestral
109 viral strain[14]. This correlation likely holds true for novel emerging variants, although it is
110 known that the neutralization potency diminishes with every new variant[15] and that two

111 doses of BNT162b2 vaccination are not very effective in preventing symptomatic Omicron
112 BA.1 or BA.2 infection[16]. With the continuing emergence of novel variants, it is reasonable
113 to assume that antibodies remain important for clinical protection against SARS-CoV-2
114 infection. Indeed, in healthy individuals, one additional vaccination after a primary vaccination
115 regimen restored neutralization potency against the subvariants BA.2.12.1 and BA.4/5[17].
116 Following from these observations and reasoning, PLWH may require additional vaccinations
117 to achieve adequate protection against SARS-CoV-2 infection, especially with the emergence
118 of novel antigenically distinct variants like the currently circulating Omicron lineage.

119 The effect of an additional SARS-CoV-2 vaccination on the humoral and cellular immune
120 responses in PLWH with a low or absent serological response after completing a primary
121 vaccination regimen is unknown. Three studies on additional SARS-CoV-2 vaccinations in
122 PLWH have been performed that showed an increase in antibody levels, without analysis on
123 the cellular immune response[18-20]. All three studies did not focus on those who may benefit
124 most from additional vaccinations, namely the subgroup of hyporesponders after a primary
125 vaccination regimen.

126 The aim of this study was to evaluate the SARS-CoV-2 spike (S)-specific immune responses
127 after an additional mRNA-1273 vaccination in PLWH, who had a serological hyporesponse
128 after a primary SARS-CoV-2 vaccination regimen.

129 **Methods**

130 **Study design and participants**

131 We conducted a nested single arm intervention trial embedded within the prospective
132 nationwide cohort study in 22 of the 24 HIV treatment centres in the Netherlands (COVID-19
133 Vaccination response In people living with HIV, COVIH, n=1154). All 165 PLWH from the COVIH
134 study with a hyporesponse (defined as ≤ 300 (S)-specific binding antibody units [BAU]/mL,
135 measured at 4–6 weeks after a primary vaccination regimen with either two doses of
136 BNT162b2, mRNA-1273, ChAdOx1-S, or one dose of Ad26.COV2.S) were eligible for
137 participation. The serological assay cut-off definitions used here followed the consensus by
138 the Dutch national expert working group (HARMONY) on the harmonization of SARS-CoV-2
139 immunological assays. Participants with evidence of intercurrent SARS-CoV-2 infection,
140 demonstrated by a history of a reported or documented positive PCR or rapid antigen test, or
141 with serological evidence of >300 BAU/mL shortly before the additional vaccination, were
142 excluded.

143 **Clinical procedures**

144 The intervention consisted of a single mRNA-1273 vaccination (100 μ g) administered at the
145 Erasmus University Medical Centre or Leiden University Medical Centre, both in the
146 Netherlands. Blood samples were obtained immediately before the vaccination (at the same
147 visit; T0) and 28 days later (T1) for collection of serum and peripheral blood mononuclear cells
148 (PBMCs).

149 Clinical data were extracted from an electronic case record file. Recorded study variables
150 included year of birth, sex assigned at birth, dates and type of primary SARS-CoV-2

151 vaccinations, current use of combination antiretroviral therapy (cART), most recent plasma
152 HIV-RNA (copies/mL), most recent CD4+ T-cell count (cells/ μ L), nadir CD4+ T-cell count
153 (cells/ μ L), and use of immunosuppressant medication.

154 Local and systemic adverse events were evaluated via a standardized printed or electronic
155 diary concerning vaccination related side-effects and medication use in the seven days after
156 the additional vaccination.

157 **Laboratory procedures**

158 All serum samples were assessed at the Erasmus University Medical Centre (WHO SARS-CoV-
159 2 reference laboratory) for the presence of SARS-CoV-2 S1-specific binding antibodies
160 (hereafter S1-specific antibodies) with a validated IgG Trimeric chemiluminescence
161 immunoassay (DiaSorin Liaison) with a lower limit of detection at 4.81 BAU/mL and a cut-off
162 level for positivity at 33.8 BAU/mL.

163 SARS-CoV-2 S-specific neutralizing antibodies and S-specific T-cells were measured on a
164 selection of 40 participants of whom 20 had their primary vaccination with ChAdOx1-S and 20
165 with BNT162b2. Selection was based on the S1-specific antibodies 28 days after the additional
166 vaccination (T1), to represent the whole range of antibody responses as good as possible.
167 Neutralizing functionality of antibodies was assessed by a plaque reduction neutralization test
168 (PRNT) and the SARS-CoV-2 S-specific T-cells by an activation induced marker (AIM) assay (see
169 Supplementary Appendix 1 for further details on laboratory tests).

170 SARS-CoV-2-S-fluorochrome-labelled tetramers were used to compare the S-specific B-cell
171 compartment on a selection of 18 participants that were balanced for primary vaccination
172 regimen (ChAdOx1-S or BNT162b2) and CD4+ T-cell counts. Four of these 18 participants were
173 also included in a subgroup during the initial study, in which PBMCs were collected 21 days

174 (+/- 3 days) after the first vaccination (AV1), and 4–6 weeks after completing a primary
175 vaccination schedule (AV20). These PBMCs were used for longitudinal analysis of class-
176 switching S-specific B-cells.

177 **Outcomes**

178 The primary outcome was defined as the increase in S1-specific antibodies in PLWH 28 days
179 after the additional vaccination compared to the S1-specific antibodies immediately prior to
180 additional vaccination. An adequate response was defined as the presence of S1-specific
181 antibodies >300 BAU/mL. Secondary outcomes included the association between patient
182 characteristics and antibody responses, the detection of SARS-CoV-2 S-specific neutralizing
183 antibodies targeting the ancestral SARS-CoV-2 (D614G) and Omicron (BA.1) variant, T-cell and
184 B-cell responses targeting the ancestral SARS-CoV-2 (Wuhan-Hu1), and additionally T-cell
185 responses targeting the Omicron (BA.1) variant. Lastly, we evaluated the tolerability by
186 monitoring local and systemic vaccine related adverse events. Severity of reactogenicity was
187 measured as mild (symptoms present but no functional impairment or medication needed),
188 moderate (necessitating medication, no functional impairment) or severe (impairing daily
189 functioning).

190 **Sample size and statistical analysis plan**

191 The study was designed with the anticipation that 10% of the PLWH would have a serological
192 hyporesponse after the primary vaccination series in the COVIH study. If we would be able to
193 include 80 PLWH, we would have >95% power to detect a 20% increase in PLWH with an
194 adequate serological response after the additional vaccination (one-sided alpha 0.05).

195 The baseline characteristics were described as number (percentage) or median (interquartile
196 range [IQR]). The primary outcome was assessed as the difference between the S1-specific

197 antibodies at T1 minus T0 with a 95% Confidence Interval (CI) by a Wilcoxon signed-rank test.
198 We evaluated the proportion with adequate serological responses by a McNemar's test. To
199 investigate factors associated with the absolute increase in antibody response at 28 days after
200 the additional vaccination in PLWH, we used unpaired *t* tests and a proportional odds
201 generalized linear multivariable model with the covariates sex, age (subgroups 18-65 versus
202 >65 years), most recent CD4+ T-cell count (subgroups <500 versus >500/mm³), nadir CD4+ T-
203 cell count (subgroups <500 versus >500/mm³), and primary vaccination regimen (mRNA
204 versus vector). 95% confidence intervals and p-values were reported for each coefficient in
205 the regression model. Coefficients with p-values <0.05 were considered significant.

206 Undetectable serological responses (<4.81 BAU/mL) were reported as 4.81 in the statistical
207 analyses, undetectable neutralizing antibodies (<10) as 10, and undetectable S-specific T-cell
208 and B-cell responses (<0.01) as 0.01.

209 Data was analysed using GraphPad Prism 9.3.1. Flow cytometry data was analysed using
210 FlowJo software version 10.8.1. FlowJo software was used to gate CD19+ B-cells and OMIQ
211 data analysis software was used for further analysis (www.omiq.ai). Cytonorm was used for
212 batch corrections followed by Uniform Manifold Approximation and Projection (UMAP)
213 dimensionality reduction to visualize the phenotypes of S-specific B-cells.

214 Results

215 Baseline characteristics

216 Between 22nd November 2021 and 28th December 2021, 75 of the 165 invited PLWH were
217 enrolled into this substudy. Before the additional vaccination was given, five (6.7%)
218 participants had an increase in their S1-specific antibodies to >300 BAU/mL and were
219 excluded. Two (2.7%) participants were excluded due to a PCR-confirmed SARS-CoV-2
220 infection within 28 days after the additional vaccination and two (2.7%) participants were lost
221 to follow-up after having received the additional vaccination. Overall, 66 PLWH were included
222 for the analysis. Of the 66 participants, 40 (60.6%) received ChAdOx1-S, 22 (33.3%) BNT162b2
223 and four (6.1%) Ad26.COV2.S as primary vaccination regimen (**Figure 1**).

224 Baseline characteristics of all participants are described in **Table 1**, including the
225 characteristics of PLWH with hyporesponse from the initial study who were not enrolled in
226 this substudy. Participants had a median age of 63 years [IQR:60-66], 86% were male and most
227 recent median CD4+ T-cell count was 650 cells/ μ L [IQR:423-941] and nadir CD4+ T-cell count
228 was 230 cells/ μ L [IQR:145-345]. The majority (97%) was on cART and had a suppressed plasma
229 HIV-RNA (96% <50 copies/mL). No participants used immunosuppressant medication. Among
230 the 66 participants analysed, the median time between completing the primary vaccination
231 series and the additional vaccination was 172 days [IQR:154-195].

232 The mean S1-specific antibody level directly pre-vaccination was 35 BAU/mL (SEM 5.4),
233 including 45 participants with serological responses below the cut-off of the test (<33.8
234 BAU/mL). Following ChAdOx1-S primary vaccination the antibody level directly pre-
235 vaccination was mean 31 BAU/mL (SEM 5.4), 46 BAU/mL (SEM 12.8) after BNT162b2 and 19
236 BAU/mL (SEM 6.3) after Ad26.COV2.S.

237 **S1-specific antibodies**

238 Twenty-eight days [IQR:28.0-28.0] after the additional vaccination, S1-specific antibodies
239 >300 BAU/mL were measured in 64/66 (97.0%) of the participants ($p<0.0001$). All participants
240 showed an increase in S1-specific antibodies after vaccination, which was mean 4282 BAU/mL
241 (95%CI:3241-5323, $p<0.0001$) (**Figure 2**).

242 Only two participants with a well suppressed HIV on cART did not reach >300 BAU/mL after
243 the additional vaccination with S1-specific antibodies increasing from 8.71 and <4.81 BAU/mL
244 to 94.7 and 107 BAU/mL, respectively. Both participants received BNT162b2 as primary
245 vaccination and were males with low CD4+ T-cell nadirs <50 cells/ μ L and most recent CD4+ T-
246 cell counts of 230 cells/ μ L and 313 cells/ μ L.

247 The mean increase in S1-specific antibodies was comparable between primary vaccination
248 with ChAdOx1-S, BNT162b2 or Ad26.COVS. A mean increase of 3890 BAU/mL (95%CI:2945-
249 4835) was measured after primary vaccination with ChAdOx1-S, 4549 BAU/mL (95%CI:1986-
250 7112) after primary vaccination with BNT162b2 and 6744 BAU/mL (95%CI:-1978-15465) after
251 primary vaccination with ad26.COVS ($p=0.57$). The mean increase in S1-specific antibodies
252 was also not significantly different between most recent CD4+ T-cell count of <500 versus
253 >500/ mm^3 (5400 BAU/mL versus 3895 BAU/mL, $p=0.85$), age 18-65 versus >65 years (4336
254 BAU/mL versus 4183 BAU/mL, $p=0.52$) and male versus female (4372 BAU/mL versus 3714
255 BAU/mL, $p=0.42$).

256 A proportional odds generalized linear regression model was performed to investigate factors
257 associated with the absolute increase in antibody response 28 days after the additional
258 vaccination. This adjusted analysis did not identify significant associations between any of the
259 patient characteristics of interest and S1-specific antibody responses (**Table 2**).

260 **Neutralizing antibodies**

261 After additional vaccination, neutralizing antibodies against the ancestral SARS-CoV-2 were
262 present in all subgroup participants (40/40) and against the Omicron (BA.1) variant in 65% of
263 participants (26/40) (**Figure 3A**). Neutralizing antibodies against the ancestral virus were
264 higher when participants had primary vaccination with ChadOx1-S compared to primary
265 vaccination with BNT162b2, mean PRNT50 of 3526 versus 1611 ($p=0.003$). Neutralizing
266 antibodies against the circulating Omicron variant were numerically higher as well after
267 ChadOx1-S, mean PRNT50 of 889 versus 442 ($p=0.46$).

268 A positive correlation between S1-specific antibodies and the neutralizing antibodies against
269 the ancestral variant ($R = 0.66$, $p<0.0001$) was observed (**Figure 3B**). That correlation was less
270 clear for neutralizing antibodies against the Omicron variant ($R = 0.45$, $p<0.0001$) (**Figure 3C**).

271 **Frequency of SARS-CoV-2 S-specific T-cells**

272 Before additional vaccination high frequencies of ancestral S-specific T-cells (median 0.075%
273 [IQR:0.010-0.210]) and Omicron S-specific T-cells (median 0.055% [IQR:0.013-0.235]) were
274 detected. Additional vaccination led to a non-significant increase in ancestral S-specific CD4+
275 T-cells (median 0.075%, $p=0.51$) (**Figure 4**). However, the proportion of PLWH with detectable
276 ancestral S-specific CD4+ T-cells significantly increased from 27/40 (67.5%) before additional
277 vaccination (T0) to 34/39 (87.2%) after additional vaccination (T1) ($p=0.037$). Omicron S-
278 specific CD4+ T-cells were comparable before and after additional vaccination ($p=0.95$), and
279 also the proportion of PLWH with detectable Omicron S-specific CD4+ T-cells did not differ
280 between T0 and T1 ($p=0.945$).

281 S-specific CD8+ T-cells were infrequently observed in study participants and no effect on S-
282 specific CD8+ T-cells was observed after additional vaccination for both the ancestral SARS-
283 CoV-2 (p=0.876) and the Omicron variant (p=0.482).

284 **Frequency and phenotype of SARS-CoV-2 S-specific B-cells**

285 Low frequencies (median 0.017% [IQR:0.001-0.034]) of S-specific B-cells were detected at T0.
286 S-specific B-cells significantly increased (median 0.258% [IQR:0.126-0.488], p=0.0003) 28 days
287 after participants received the additional vaccination (**Figure 5A**). The proportion of PLWH
288 with detectable S-specific B-cells also significantly increased from 13/18 (72.2%) at T0 to all
289 participants (100%) at T1 (p=0.016). To further investigate the phenotype of S-specific B-cells,
290 we compared the frequencies of unswitched (IgD, IgM and IgMD) and switched (IgG and IgA)
291 S-specific B-cells (Supplementary Figure 3). Although not many S-specific B-cells were present
292 before the additional vaccination, the majority was already class-switched to IgG (mean 61%).
293 However, a significant increase in switched IgG (mean 82%, p=0.013) was observed 28 days
294 after the additional vaccination (**Figure 5B**). Longitudinal analysis of class-switching of S-
295 specific B-cells suggests a decrease in switched IgG+ S-specific B-cells after a primary
296 vaccination regimen in the PLWH with initial hyporesponse (Supplementary Figure 4). Because
297 the majority of S-specific B-cells class-switched to IgG, we further focused on this memory IgG-
298 compartment. As expected, percentages of IgG+ S-specific B-cells correlated with the S1-
299 specific antibodies (**Figure 5C**). However, percentages of IgG+ S-specific memory B-cells did
300 not correlate with the most recent CD4+ T-cell count (Supplementary Figure 5). To investigate
301 the phenotypical properties of IgG+ S-specific B-cells (e.g. migratory capacity (CXCR3),
302 proliferating (Ki67), activation status (CD95), recent germinal center graduation (CD21-)[21],
303 and memory subsets, like CD45RB+ B-cells and CD11c+CD19^{high} cells[22]), we used a panel of

304 24 antibodies. In total, 6004 S-specific B-cells were measured from all samples. To visualize
305 how the phenotype of S-specific B-cells changed after additional vaccination, we performed
306 Uniform Manifold Approximation and Projection (UMAP) dimensionality reduction and
307 depicted the S-specific B-cells per timepoint in black (**Figure 5D**). Activated (CD95+), Migrating
308 (CXCR3+) and memory (CD11c+CD19^{high}) S-specific IgG+ B-cells were significantly most
309 prevalent at T1, as were B-cells recently graduating from the germinal centers (CD21- B-cells).
310 Proliferating (Ki67) S-specific IgG+ B-cells were not significantly different between T0 and T1
311 (**Figure 5E**, Supplementary Figure 6).

312 **Reactogenicity**

313 The additional dose was well tolerated and no serious adverse events were reported. Overall,
314 66.1% of the participants reported local or systemic adverse events, with pain at the injection
315 site as most frequent local reaction and generalised myalgia and headache as most frequent
316 systemic reactions (Supplementary Figure 3).

317 **Discussion**

318 To our knowledge, this study is the first to report the immunogenicity of an additional SARS-
319 CoV-2 vaccination in PLWH who had a low antibody response after a primary vaccination
320 regimen. A substantial increase in S1-specific antibodies and memory B-cells was shown,
321 supporting the usefulness of additional booster vaccinations in PLWH and in particular for
322 those with a documented hyporesponse after a primary vaccination regimen.

323 Remarkably, there was no significant association between the increase in S1-specific
324 antibodies and the primary vaccination regimen, most recent CD4+ T-cell count, nadir CD4+
325 T-cell count, age, and sex. However, smaller differences between these variables cannot be
326 ruled out since the study was powered on overall responsiveness and not for absolute
327 differences in S1-specific antibodies between groups.

328 As expected, a positive correlation was observed between neutralization potency and S1-
329 specific antibodies. This supports the observation that the correlation between the magnitude
330 of the antibody levels and neutralization for the ancestral strain is also true in PLWH for
331 variants. Since neutralization was reported to be a correlate of protection against infection
332 and disease, our data support a strategy to obtain an ultimate level of antibodies for optimal
333 protection against SARS-CoV-2 infection in PLWH.

334 S-specific T-cells were detected before the additional vaccination in the majority of PLWH,
335 despite the low levels of S1-specific antibodies. This implicates that although it is important to
336 boost S1-specific antibodies in hyporesponders, there still is a second line of defence. After an
337 additional vaccination, the proportion of participants with detected CD4+ T-cells targeting the
338 ancestral variant significantly increased, but not for the Omicron variant and neither was such

339 effect observed for CD8+ T-cell responses. However, it is known that these S1-specific T-cells
340 against ancestral SARS-CoV-2 cross-react with Omicron[23].

341 Furthermore, there was a significant induction of activated/homing and memory S-specific B-
342 cells after additional vaccination that correlated with the S1-specific antibodies. Combined
343 with the longitudinal B-cell data from four participants, this implicates that an additional
344 vaccination is needed in these PLWH with hyporesponse to induce activation and memory B-
345 cells for durable protection.

346 Other studies of additional SARS-CoV-2 vaccinations in different immunocompromised patient
347 groups with a hyporesponse after a primary vaccination regimen also show that additional
348 vaccination led to an increase in antibody levels. Nonetheless, lower seroconversion rates
349 above a predefined cut-off were observed[24, 25]. However, the cut-offs for response differed
350 between the studies and some studies only included participants with an antibody level <50
351 BAU/mL after a primary vaccination regimen, making the results less comparable with this
352 study. A comparable study in patients receiving chemotherapy, immunotherapy, or both for
353 solid tumours showed that 46 of the 48 hyporesponders reached S1-specific antibodies >300
354 BAU/mL 28 days after a third mRNA-1273 vaccination[26]. Therefore, compared to the
355 literature on additional vaccinations in immunocompromised patients' groups, PLWH that are
356 on an effective cART regimen with hyporesponse after a primary vaccination regimen appear
357 to seroconvert more frequently and with higher increases in magnitude of S1-specific antibody
358 response after an additional vaccine dose.

359 Our study had several limitations. First, our study population had an imbalance in sex
360 distribution. Participants were generally virally suppressed on cART with CD4+ T-cell counts
361 above 500 cells/ μ L, limiting the generalisability to the overall population of PLWH.

362 Furthermore, the absence of a control group should be noted. Measuring the S1-specific
363 antibodies is no standard policy in the healthy population, making it difficult to compose a
364 control group of hyporesponders. Although we did not meet our predefined sample size for a
365 study power of >95%, the observed effect size was considerably higher than anticipated. As a
366 consequence, the risk of an underpowered study is very unlikely. Our results show the
367 immune responses before and 28 days after an additional vaccination. Further follow-up will
368 take place at 6, 12, 18 and 24 months after the additional vaccination to determine the waning
369 of immune responses in PLWH, which is important as faster waning of some other vaccines
370 has been observed in this population[27]. Decay of S1-specific antibodies and T-cell responses
371 has been described in a small study population of eight PLWH compared to 25 controls two
372 weeks and six months after a primary vaccination regimen[28]. Virally suppressed PLWH with
373 high CD4+ T-cell counts showed persistent S1-specific T-cell responses and a significant decline
374 in S1-specific antibodies, both similar to healthy controls. However, our follow-up will take
375 place in a larger study population, with both initial hyporesponders and adequate responders,
376 and with different vaccination regimens. Ideally, our results should be confirmed by clinical
377 outcome studies in PLWH. Therefore, we will also collect clinical data during the two-year
378 follow-up, including the incidence of breakthrough infections.

379 In conclusion, an additional mRNA-1273 vaccination substantially improved humoral and
380 cellular immune response in PLWH with low SARS-CoV-2 antibodies after a primary
381 vaccination regimen. This shows that additional vaccinations are an effective approach in
382 compensating for the reduced antibody responses in PLWH. In addition, the results of this
383 study indicate that also primary vaccine responsive people with waning vaccine induced
384 responses can expect benefit from future boosters to reinforce protection against infection
385 with viral variants.

386 **Footnotes**

387 **Conflict of interest statements**

388 All authors have completed the ICMJE disclosure form and declare no support directly related
389 to the submitted work.

390 **Conflict of interest statements outside the submitted work**

391 SJ received grants from the Dutch research council (NWO), EU (Horizon 2020) and the Bill and
392 Melinda Gates foundation. WFWB declares reimbursement for participation of patient in trial
393 by GSK to institution. DG and RDdV are supported by the Health~Holland grant EMCLHS20017
394 co-funded by the PPP Allowance made available by the Health~Holland, Top Sector Life
395 Sciences & Health, to stimulate public–private partnerships. RDdV is listed as inventor of the
396 fusion inhibitory lipopeptide [SARS_{HRC}-PEG₄]₂-chol on a provisional patent application. KCES
397 received honorariums for advisory boards from Gilead and ViiV. CR has received research
398 grants from ViiV, Gilead, ZonMW, AIDSfonds, Erasmus MC, and Health~Holland and
399 honorariums for advisory boards from Gilead and ViiV. BJAR declares research grants from
400 Gilead and MSD and honorary for advisory boards for AstraZeneca, Roche, Gilead, F2G. KB
401 received research and educational grants from ViiV, Gilead, and consulting fees for advisory
402 boards for ViiV, Gilead, MSD and AstraZeneca. AR received grants from the Bill and Melinda
403 Gates foundation and the Leids Universitair Fonds, participated on a board of investor-
404 initiated clinical trial on convalescent plasma for COVID-19 and is chief editor of the Dutch
405 journal of Infectious Diseases and member of the EMA expert group vaccines.

406 All other authors declare no conflicts of interest.

407 **Ethics committee approval**

408 The trial was performed in accordance with the principles of the Declaration of Helsinki, Good
409 Clinical Practice guidelines, and in accordance with the Dutch Medical Research Involving
410 Human Subjects Act (WMO). Participants signed an extra informed consent form for
411 participation in the substudy. The trial was reviewed and approved by the Medical research
412 Ethics Committees United Nieuwegein (MEC-U, reference 20.125). The trial was registered in
413 the Netherlands Trial Register (NL9214).

414 **Funding**

415 This work was supported by the Dutch Organization for Health Research and Development
416 (ZonMw) [10430072010008] and the Health~Holland [EMCLHS20017 to DG and RDdV] co-
417 funded by the PPP Allowance made available by the Health~Holland, Top Sector Life Sciences
418 & Health, to stimulate public –private partnerships.

419 **Role of funding source**

420 The funder of the study provided feedback on the study protocol but had no role in
421 recruitment, data collection, data analysis, data interpretation, writing, or the decision to
422 submit the manuscript.

423 **Data sharing statement**

424 Individual participant data that underlie the results reported in this article, after de-
425 identification, will be made available to researchers who provide a methodologically sound
426 study proposal.

427 **Authors' contributions**

428 Conceptualization: MJJ, KSH, DG, BJAR, KB, CR, AHER, YMM, PDK, RDdV, CHGvK

429 Formal analysis: MJJ, DG, WH, GP

430 Funding acquisition: BJAR, KB, CR, AHER, RDdV

431 Investigation: MJJ, KSH, DG, WH, SB, LG, JGdH, EFS, HSMA, WFWB, MvdV, MAHB, RS, NL,

432 AHWB, EML, KCES, MGA vV, CED, JB, BJAR, KB, CR, AHER

433 Methodology: MJJ, KSH, BJAR, KB, CR, AHER, YMM, PDK, GP, RDdV, CHGvK

434 Project administration: MJJ, KSH, BJAR, KB, CR, AHER

435 Supervision: BJAR, KB, CR, AHER, YMM, RDdV, CHGvK

436 Validation: MJJ, KSH, DG, CR, BJAR, KB, CR, AHER, YMM, RDdV, CHGvK

437 Visualisation: MJJ, DG, KSH, WH, BJAR, KB, CR, AHER

438 Writing – original draft: MJJ, KSH, WH, BJAR, KB, CR, AHER

439 Writing – review & editing: all authors contributed to reviewing and editing of the manuscript

440 **Acknowledgements**

441 Foremost, we would like to thank all participants of the study. We also want to thank the
442 following people for recruitment of participants: Femke van Malsen, Roos van Heerde, Natasja
443 van Holten, Willemien Dorama, Maartje Wagemaker, Ayten Karisli, René van Engen, Vincent
444 Peters, Suzanne de Munnik, Vera Maas, Laura Laan, Jasmijn Steiner, Leontine van der Prijt and
445 Jolanda van der Swaluw. Finally, we would like to thank Alessandro Sette and Alba Grifoni (La
446 Jolla Institute for Immunology, La Jolla, San Diego, USA) for providing the peptide pools used
447 in the AIM assay.

448 **References**

- 449 1. van den Berg R, van Hoogstraten I, van Agtmael M. Non-responsiveness to hepatitis B
450 vaccination in HIV seropositive patients; possible causes and solutions. *AIDS Rev.*
451 **2009**;11(3):157-64.
- 452 2. Pallikkuth S, De Armas LR, Pahwa R, et al. Impact of aging and HIV infection on serologic
453 response to seasonal influenza vaccination. *Aids.* **2018**;32(9):1085-94.
- 454 3. Madhi SA, Koen AL, Izu A, et al. Safety and immunogenicity of the ChAdOx1 nCoV-19
455 (AZD1222) vaccine against SARS-CoV-2 in people living with and without HIV in South Africa:
456 an interim analysis of a randomised, double-blind, placebo-controlled, phase 1B/2A trial.
457 *Lancet HIV.* **2021**;8(9):e568-e80.
- 458 4. Frater J, Ewer KJ, Ogbe A, et al. Safety and immunogenicity of the ChAdOx1 nCoV-19
459 (AZD1222) vaccine against SARS-CoV-2 in HIV infection: a single-arm substudy of a phase 2/3
460 clinical trial. *Lancet HIV.* **2021**;8(8):e474-e85.
- 461 5. Levy I, Wieder-Finesod A, Litchevsky V, et al. Immunogenicity and safety of the
462 BNT162b2 mRNA COVID-19 vaccine in people living with HIV-1. *Clin Microbiol Infect.*
463 **2021**;27(12):1851-5.
- 464 6. Lombardi A, Butta GM, Donnici L, et al. Anti-spike antibodies and neutralising antibody
465 activity in people living with HIV vaccinated with COVID-19 mRNA-1273 vaccine: a prospective
466 single-centre cohort study. *Lancet Reg Health Eur.* **2022**;13:100287.
- 467 7. Rahav G, Lustig Y, Lavee J, et al. BNT162b2 mRNA COVID-19 vaccination in
468 immunocompromised patients: A prospective cohort study. *EClinicalMedicine.*
469 **2021**;41:101158.

- 470 8. Antinori A, Cicalini S, Meschi S, et al. Humoral and cellular immune response elicited
471 by mRNA vaccination against SARS-CoV-2 in people living with HIV (PLWH) receiving
472 antiretroviral therapy (ART) according with current CD4 T-lymphocyte count. Clin Infect Dis.
473 **2022**.
- 474 9. Corma-Gómez A, Fernández-Fuertes M, García E, et al. Severe immunosuppression is
475 related to poorer immunogenicity to SARS-CoV-2 vaccines among people living with HIV. Clin
476 Microbiol Infect. **2022**.
- 477 10. Hensley KS, Jongkees MJ, Geers D, et al. Immunogenicity and reactogenicity of SARS-
478 CoV-2 vaccines in people living with HIV: a nationwide prospective cohort study in the
479 Netherlands. medRxiv 22273221. [preprint] March 31, 2022 [cited 2022 July 28]. Available
480 from: <https://doi.org/10.1101/2022.03.31.22273221>
- 481 11. Coburn SB, Humes E, Lang R, et al. Analysis of Postvaccination Breakthrough COVID-19
482 Infections Among Adults With HIV in the United States. JAMA Netw Open.
483 **2022**;5(6):e2215934.
- 484 12. Hippisley-Cox J, Coupland CA, Mehta N, et al. Risk prediction of covid-19 related death
485 and hospital admission in adults after covid-19 vaccination: national prospective cohort study.
486 Bmj. **2021**;374:n2244.
- 487 13. Bhaskaran K, Rentsch CT, MacKenna B, et al. HIV infection and COVID-19 death: a
488 population-based cohort analysis of UK primary care data and linked national death
489 registrations within the OpenSAFELY platform. Lancet HIV. **2021**;8(1):e24-e32.
- 490 14. Khoury DS, Cromer D, Reynaldi A, et al. Neutralizing antibody levels are highly
491 predictive of immune protection from symptomatic SARS-CoV-2 infection. Nat Med.
492 **2021**;27(7):1205-11.

- 493 15. Hachmann NP, Miller J, Collier AY, et al. Neutralization Escape by SARS-CoV-2 Omicron
494 Subvariants BA.2.12.1, BA.4, and BA.5. *N Engl J Med.* **2022**;387(1):86-8.
- 495 16. Altarawneh HN, Chemaitelly H, Ayoub HH, et al. Effects of Previous Infection and
496 Vaccination on Symptomatic Omicron Infections. *N Engl J Med.* **2022**;387(1):21-34.
- 497 17. Qu P, Faraone J, Evans JP, et al. Neutralization of the SARS-CoV-2 Omicron BA.4/5 and
498 BA.2.12.1 Subvariants. *N Engl J Med.* **2022**;386(26):2526-8.
- 499 18. Lapointe HR, Mwimanzi F, Cheung PK, et al. People with HIV receiving suppressive
500 antiretroviral therapy show typical antibody durability after dual COVID-19 vaccination, and
501 strong third dose responses. *J Infect Dis.* **2022**.
- 502 19. Tan Y, Zou S, Ming F, et al. Early Efficacy and Safety of the Third Dose Inactivated
503 COVID-19 Vaccine Among People Living With HIV. *J Acquir Immune Defic Syndr.*
504 **2022**;90(3):e1-e3.
- 505 20. Yan Y, Davgadorj C, Lyu C, Zhang S, Qiu Y. Immunogenicity of a third dose of inactivated
506 COVID-19 vaccine in people living with HIV-1, HBV, and tuberculosis during the Omicron
507 variant epidemic: A cross-sectional study. *J Infect.* **2022**.
- 508 21. Lau D, Lan LY, Andrews SF, et al. Low CD21 expression defines a population of recent
509 germinal center graduates primed for plasma cell differentiation. *Sci Immunol.* **2017**;2(7).
- 510 22. Golinski ML, Demeules M, Derambure C, et al. CD11c(+) B Cells Are Mainly Memory
511 Cells, Precursors of Antibody Secreting Cells in Healthy Donors. *Front Immunol.* **2020**;11:32.
- 512 23. GeurtsvanKessel CH, Geers D, Schmitz KS, et al. Divergent SARS-CoV-2 Omicron-
513 reactive T and B cell responses in COVID-19 vaccine recipients. *Sci Immunol.*
514 **2022**;7(69):eabo2202.
- 515 24. Lee A, Wong SY, Chai LYA, et al. Efficacy of covid-19 vaccines in immunocompromised
516 patients: systematic review and meta-analysis. *Bmj.* **2022**;376:e068632.

- 517 25. Manothummetha K, Chuleerarux N, Sanguankeo A, et al. Immunogenicity and Risk
518 Factors Associated With Poor Humoral Immune Response of SARS-CoV-2 Vaccines in
519 Recipients of Solid Organ Transplant: A Systematic Review and Meta-Analysis. *JAMA Netw*
520 *Open.* **2022**;5(4):e226822.
- 521 26. Oosting SF, van der Veldt AAM, Fehrmann RSN, et al. Immunogenicity after second and
522 third mRNA-1273 vaccination doses in patients receiving chemotherapy, immunotherapy, or
523 both for solid tumours. *The Lancet Oncology.* **2022**;23(7):833-5.
- 524 27. Kernéis S, Launay O, Turbelin C, Batteux F, Hanslik T, Boëlle PY. Long-term immune
525 responses to vaccination in HIV-infected patients: a systematic review and meta-analysis. *Clin*
526 *Infect Dis.* **2014**;58(8):1130-9.
- 527 28. Woldemeskel BA, Karaba AH, Garliss CC, et al. Decay of coronavirus disease 2019
528 mRNA vaccine-induced immunity in people with HIV. *Aids.* **2022**;36(9):1315-7.

529 **Tables**

530 **Table 1. Baseline characteristics of PLWH.**

	COVIH participants	COVIH-BOOST participants		
	With hyporesponse, not included N = 99	With hyporesponse, included N = 66	Primary mRNA vaccination ^a N = 22	Primary vector vaccination ^b N = 44
Sex assigned at birth				
Male	87 (87.9)	57 (86.4)	20 (90.9)	37 (84.1)
Female	12 (12.1)	9 (13.6)	2 (9.1)	7 (15.9)
Age category				
18-55 years	33 (33.3)	9 (13.6)	5 (22.7)	4 (9.1)
56-65 years	43 (43.4)	34 (51.5)	3 (13.6)	31 (70.5)
65+ years	23 (23.2)	23 (34.9)	14 (63.6)	9 (20.5)
SARS-CoV-2 vaccinations in primary schedule				
BNT162b2	37 (37.4)	22 (33.3)	22 (100)	N/A
mRNA-1273	4 (4.0)	N/A	N/A	N/A
ChAdOx1-S	42 (42.4)	40 (60.6)	N/A	40 (90.9)
Ad26.COVS.2.S	16 (16.2)	4 (6.1)	N/A	4 (9.1)
On cART				
Yes	99 (100)	64 (97.0)	20 (90.9)	44 (100)
Most recent plasma HIV viral load				

<50 copies/mL	93 (93.9)	63 (95.5)	20 (90.9)	43 (97.7)
≥50 copies/mL	6 (6.1)	3 (4.5)	2 (9.1)	1 (2.3)
Most recent CD4+ T-cell count				
<250 cells/μL	13 (13.1)	5 (7.6)	4 (18.2)	1 (2.3)
250-500 cells/μL	21 (21.2)	12 (18.2)	5 (22.7)	7 (15.9)
>500 cells/μL	65 (65.7)	49 (74.2)	13 (59.1)	36 (81.8)
Nadir CD4+ T-cell count				
<250 cells/μL	45 (45.5)	31 (47.0)	12 (54.5)	19 (43.2)
250-500 cells/μL	32 (32.3)	19 (28.8)	5 (22.7)	14 (31.8)
>500 cells/μL	9 (9.1)	7 (10.6)	1 (4.5)	6 (13.6)
Unknown	13 (13.1)	9 (13.6)	4 (18.2)	5 (11.4)
Use of immunosuppressant medication				
Yes	4 (4.0)	0	0	0
Days since completing primary vaccination	N/A	172 [154-195]	192 [165-206]	168 [152-181]

531 Values are number (percentage) for categorical variables or median [IQR] for continuous
532 variables. ^aBNT162b2, mRNA-1273. ^bChadOx1-S, Ad26.COVS.2.S. N/A: not applicable, cART:
533 combination antiretroviral therapy, IQR: interquartile range.

534 **Table 2. Multiple linear regression model of the association between antibody response and**
535 **different variables in PLWH (N=66) after additional vaccination.** The association between
536 patient-related and vaccine-related variables on the absolute increase in S1-specific binding
537 antibodies 28 days after the additional mRNA-1273 vaccination in PLWH with hyporesponse
538 after a primary vaccination regimen was investigated by means of a proportional odds
539 generalized linear regression model.

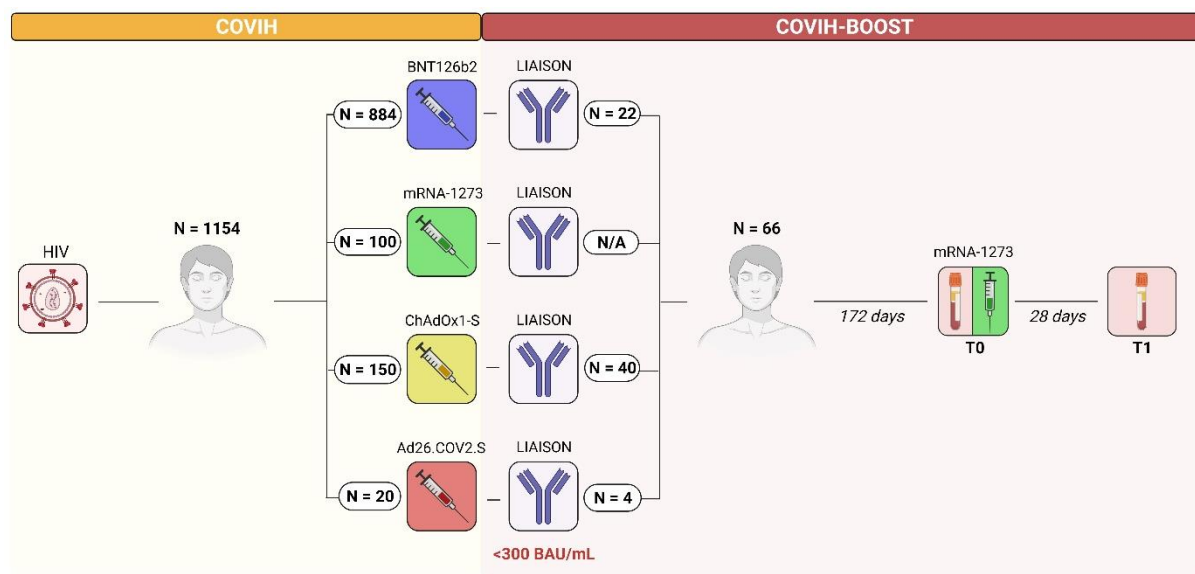
**S1-specific binding antibodies 28 days after
additional vaccination in 66 PLWH**

Variable	Estimate	95% CI	p-value
Male sex	869.1	-2483 to 4221	0.61
Age >65 vs 18-65 years	-576.3	-3851 to 2698	0.73
Most recent CD4+ T-cell count <500/mm ³ vs >500/mm ³	1301	-1257 to 3859	0.31
Nadir CD4+ T-cell count <500/mm ³ vs >500/mm ³	-1175	-4288 to 1938	0.45
Primary vaccination type mRNA	-523.4	-3498 to 2452	0.73

540

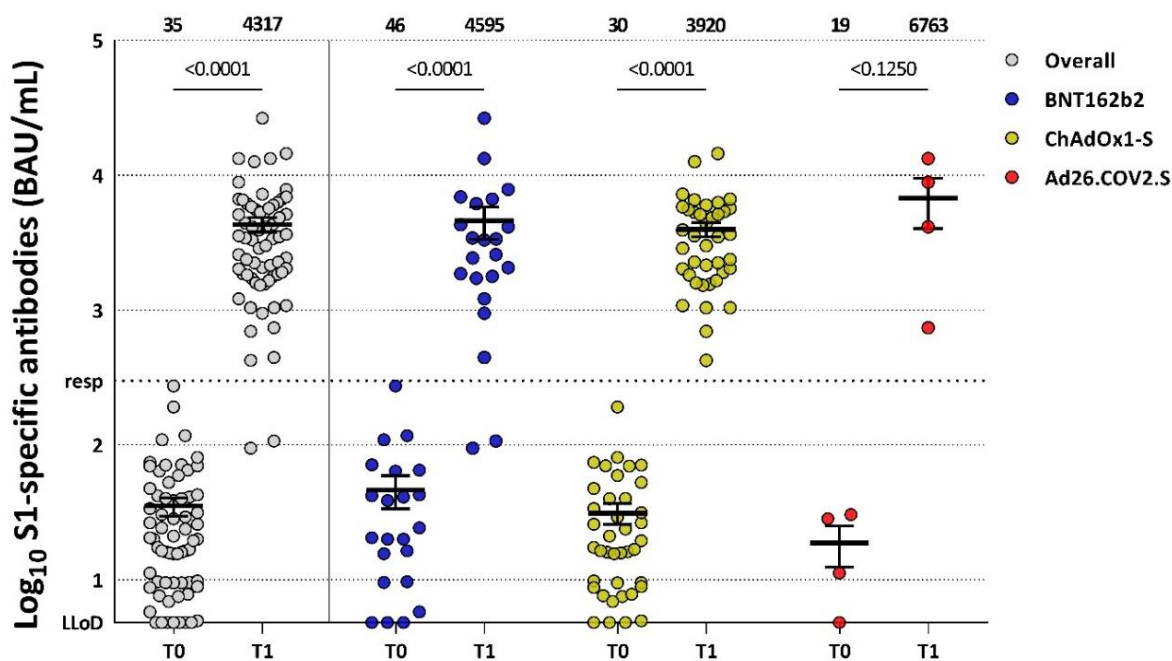
541 **Figures**

542 **Figure 1. Study overview.** Overview of the initial COVIH study and the COVIH-BOOST substudy
543 with the number of included participants. A total of N=66 participants with hyporesponse
544 after a primary vaccination regimen were enrolled in the substudy for additional mRNA-1273
545 vaccination and study of their immune response. N/A: not applicable.

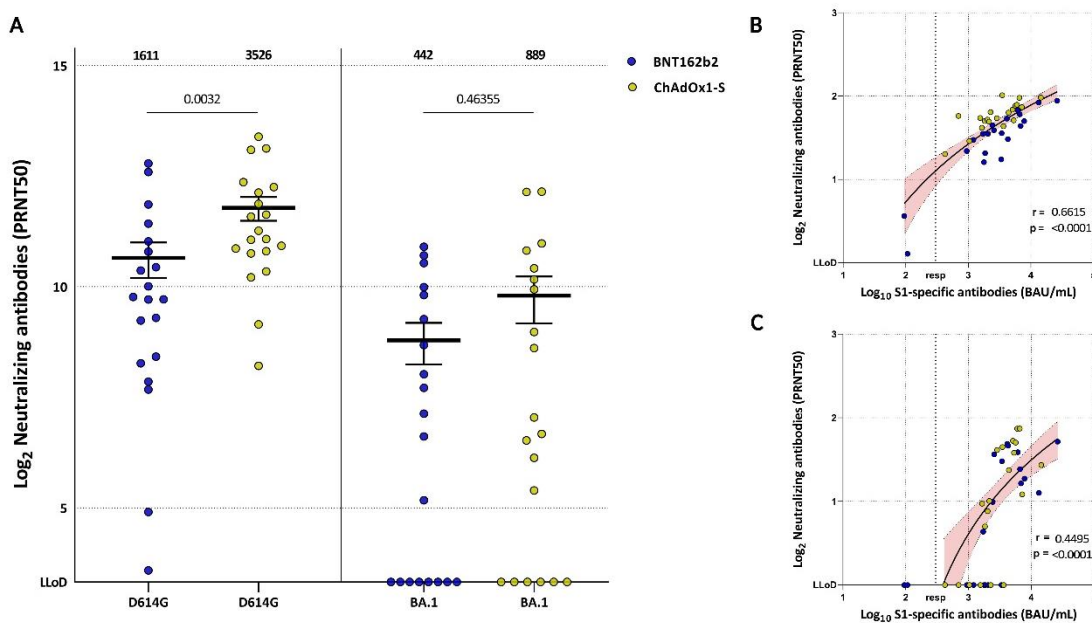


546

547 **Figure 2. SARS-CoV-2 S1-specific binding antibody levels in PLWH after additional mRNA-**
 548 **1273 vaccination.** Levels of S1-specific binding antibodies measured 28 days after the
 549 additional mRNA-1273 vaccination in all 66 PLWH (grey), in 22 PLWH after primary vaccination
 550 with BNT162b2 (blue), in 40 PLWH after primary vaccination with ChadOx1-S (yellow), and in
 551 four PLWH after primary vaccination with Ad26.COVID.2.S (red). The thick horizontal bar shows
 552 the mean S1-specific binding antibody level, also indicated above the graph, with error bars
 553 showing the standard error of the mean. LLoD is 4.81 BAU/mL, adequate responder (resp) cut-
 554 off is 300 BAU/mL (dotted line). Comparisons of timepoints were performed by paired *t* test.
 555 S: spike, LLoD: lower limit of detection, T0: before additional vaccination, T1: 28 days after
 556 additional vaccination.

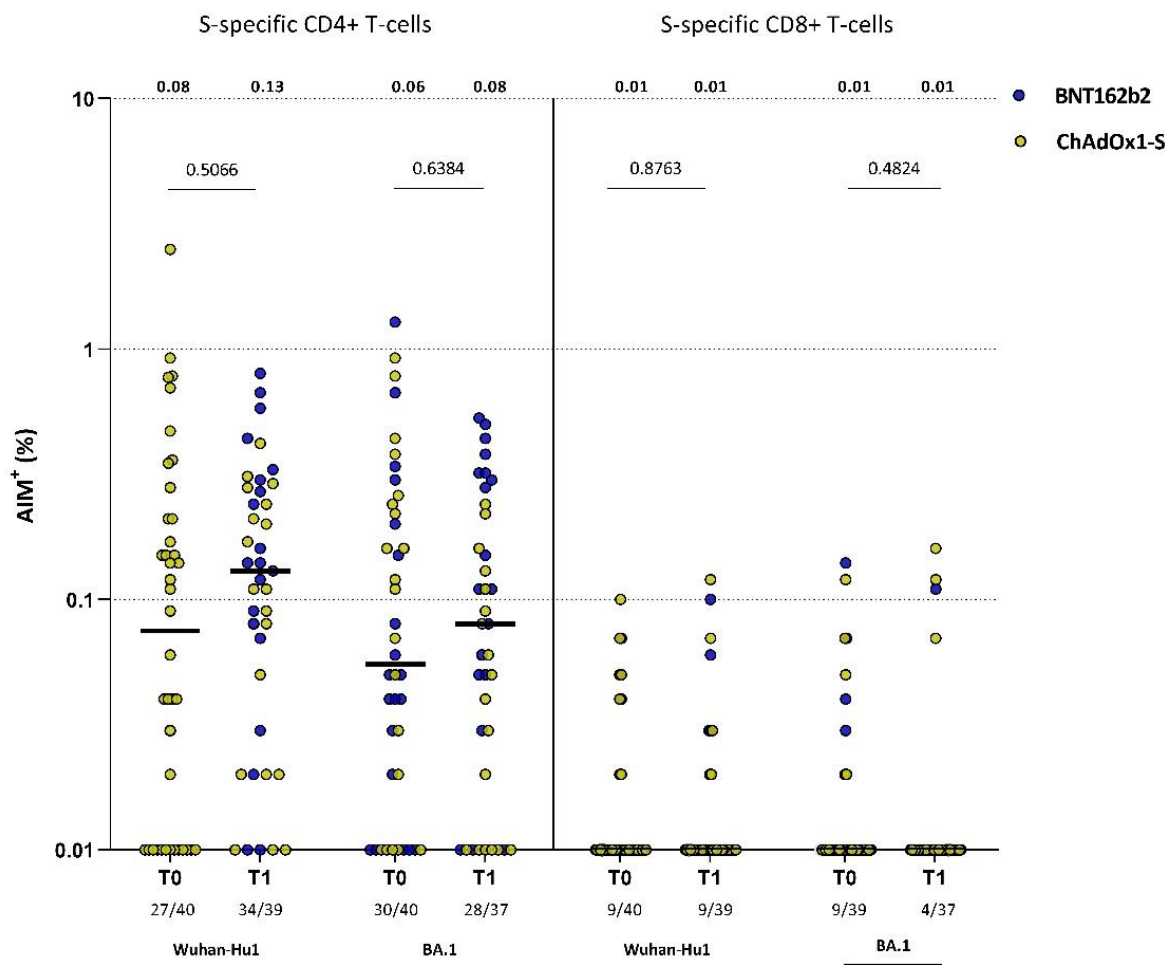


558 **Figure 3. Neutralizing antibodies to SARS-CoV-2 in subgroup participants (N=40) after**
559 **additional mRNA-1273 vaccination.** (A) PRNT50 titer measured 28 days after the additional
560 mRNA-1273 vaccination against the ancestral SARS-CoV-2 (D614G) and Omicron (BA.1) variant
561 after primary vaccination with ChAdOx1-S (yellow) and BNT162b2 (blue). The thick horizontal
562 bar shows the mean neutralizing antibody titer, also indicated above the graph, with error
563 bars showing the standard error of the mean. LLoD is 10. Comparisons between the two
564 different primary vaccination groups were performed using unpaired *t* test. (B) Correlation
565 between the S1-specific binding antibody levels and neutralizing antibody levels targeting the
566 ancestral SARS-CoV-2 by a linear regression analysis on transformed data, $R=0.66$, $p<0.0001$.
567 (C) Correlation between the S1-specific binding antibody levels and neutralizing antibody
568 levels targeting the Omicron BA.1 variant by a linear regression analysis on transformed data,
569 $R=0.45$, $p<0.0001$. Adequate responder (resp) cut-off is 300 BAU/mL (dotted line). LLoD: lower
570 limit of detection, S: spike.

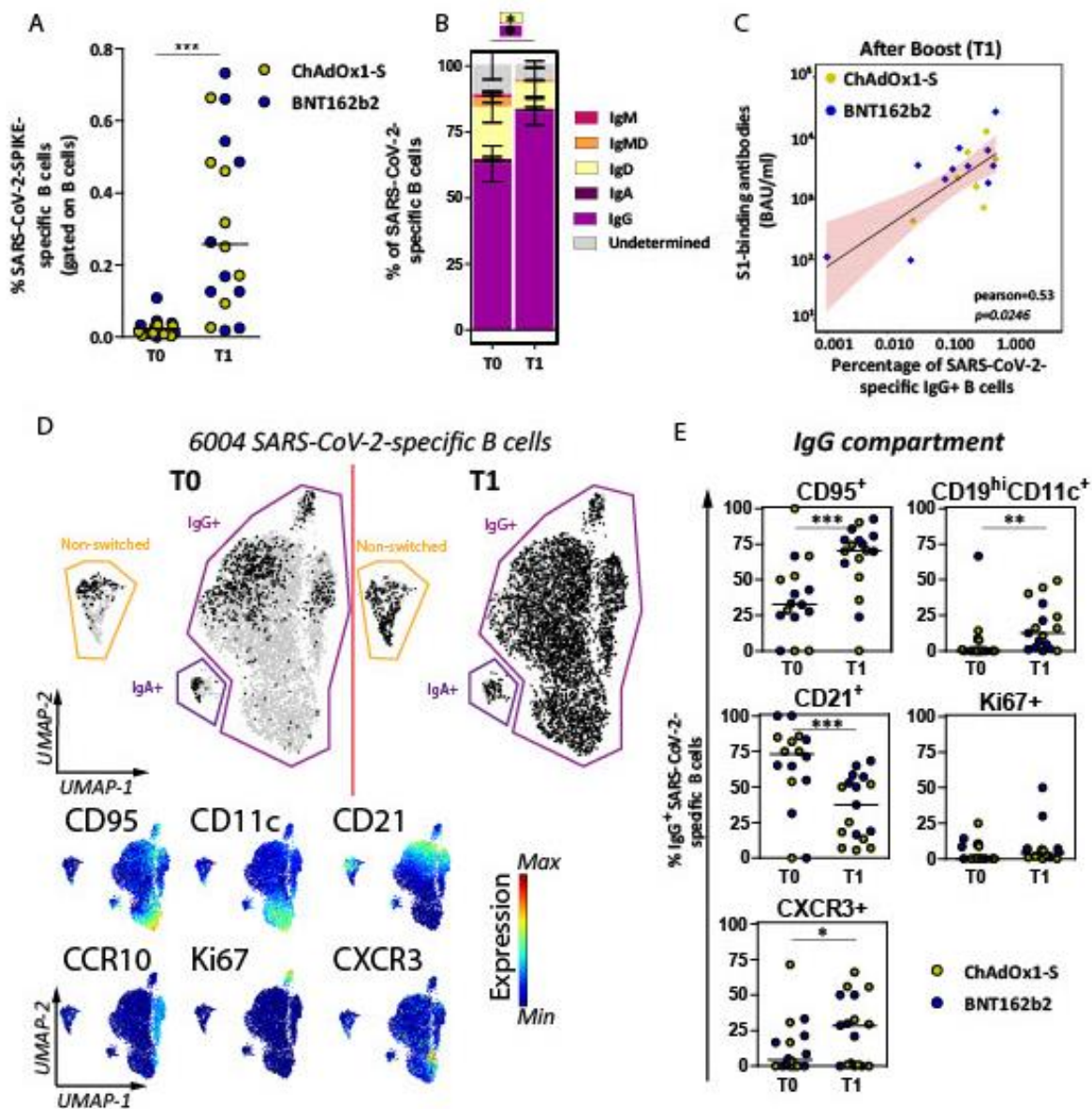


571

572 **Figure 4. Frequency of SARS-CoV-2 S-specific T-cells in subgroup participants (n=40) before**
 573 **and 28 days after additional mRNA-1273 vaccination.** CD4+ (CD4+CD40L+CD137+) and CD8+
 574 (CD8+CD69+CD137+) T-cell responses to ancestral spike (Wuhan-Hu1) and Omicron spike
 575 (BA.1) measured by the AIM assay before additional vaccination (T0) compared to 28 days
 576 after additional vaccination (T1). Participants who received ChAdOx1-S as primary vaccination
 577 are shown in yellow, participants who received BNT162b2 as primary vaccination are shown
 578 in blue. The horizontal line shows the median, also indicated above the graph. The total
 579 numbers of participants with detectable S-specific T-cells are indicated below the graphs.
 580 Comparisons of timepoints were performed by unpaired *t* test. AIM: activation induced
 581 marker assay, S: spike, T0: before additional vaccination, T1: 28 days after additional
 582 vaccination.



583 **Figure 5. Frequency and phenotype of SARS-CoV-2 S-specific B-cells in subgroup participants**
584 **(n=18) before and 28 days after an additional mRNA-1273 vaccination.** (A) Percentages of S-
585 specific B-cells are shown as frequencies from total B-cells per individual and each individual
586 is colored according to the primary vaccination regimen (yellow: ChAdOx1-s (n=8) and blue:
587 BNT162b2 (n=10)). The horizontal line shows the median. (B) Isotype usage of S-specific B-
588 cells are shown as stacked bars at T0 and T1. (C) Correlation plot between S1-specific binding
589 antibody levels and IgG+ S-specific B-cells. Pearson correlation analysis on non-transformed
590 data is depicted and linear regression results shown as a black line with red shaded 95%
591 confidence intervals. (D) Uniform Manifold Approximation and Projection (UMAP) for all 6004
592 S-specific B-cells (grey) to cluster cells based on 24 different markers. S-specific B-cells are
593 overlaid based on timepoint (black) on top of all cells (grey). Normalized expression of six
594 selected markers is shown below the overlaid UMAP. Expression plots for all markers can be
595 found in Supplementary Figure 6. (E) Manually gated B-cell subsets are shown within the IgG+
596 B-cell compartment at each timepoint. Statistical analyses, Wilcoxon matched pairs tests were
597 performed for panels A, B and E to compare T0 vs T1. *=p<0.05, **=p<0.01, ***=p<0.001.
598 Individuals and median values are shown for panels A and E. Means with standard error of
599 means are shown in panel B.



600