

SARS-CoV-2 viral clearance and viral load kinetics in young children (1-6 years) compared to adults: Results of a longitudinal study in Germany

Anna Sandoni^{1*}, Angelika Schaffrath Rosario¹, Janine Michel², Tim Kuttig¹, Juliane Wurm¹, Stefan Damerow¹, Helena Iwanowski¹, Bianca Finkel¹, Livia Schrick², Udo Buchholz³, Walter Haas³, Gianni Varnaccia¹, Ulrike Kubisch¹, Susanne Jordan¹, Anja Schienkiewitz¹, Andreas Nitsche², Julika Loss¹

¹ Department of Epidemiology and Health Monitoring, Robert Koch Institute, Berlin, Germany, ² Centre for Biological Threats and Special Pathogens, Robert Koch Institute, Berlin, Germany, ³ Department of Infectious Disease Epidemiology, Robert Koch Institute, Berlin, Germany

*Correspondence: Anna Sandoni, sandonia@rki.de

Keywords: SARS-CoV-2, children, viral clearance, viral load, viral shedding, infectivity, daycare center, COVID-19

ABSTRACT

Objective: To investigate SARS-COV-2 viral clearance and viral load kinetics in the course of infection in children aged 1-6 years in comparison with adults.

Methods: Prospective cohort study of infected daycare children and staff and their close contacts in households from 11/2020-06/2021, comprising serial (self) sampling of upper respiratory tract specimen and testing for SARS-CoV-2 via PCR. Data on symptoms and exposure were used to determine the date of probable infection for each participant. We determined (a) viral clearance, and (b) viral load dynamics over time. Samples were taken from day 4-6 to day 16-18 after diagnosis of the index case in the respective daycare group (5 samples per participant).

Results: We included 40 children (1-6 years) and 67 adults (18-77 years) with SARS-CoV-2 infection. Samples were available at a mean of 4.3 points of time per participant. Among the participants, the 12-day study period fell in different periods within the individual course of infection, ranging from day 5-17 to day 15-26 after assumed infection.

Children reached viral clearance at a median of 20 days after assumed infection (95% CI 17-21 days, Kaplan Meier Analysis), adults at 23 days (95% CI 20-25 days, difference not significant). In both children and adults, viral load decreased over time with trajectories of the mean viral load not being statistically different between groups. Only small proportions of those tested positive had a viral load of >1 million copies/ml, which is considered the threshold for infectivity. Kaplan-Meier calculations show that from day 15 (95% CI 13-15), 50% of all participants that had a viral load no longer infectious or were negative.

Conclusion: Children aged 1-6 and adults infected with SARS-CoV-2 (wild type and Alpha variant) did not differ significantly in terms of viral load kinetics and time needed to clear the virus. Therefore, containment measures are important also in the daycare settings as long as the pandemic continues.

INTRODUCTION

The role of daycare children in the spread of SARS-CoV-2 has been discussed controversially since the beginning of the COVID-19 pandemic in March 2020. Daycare centers promote the physical and psycho-social development, health and well-being of young children, and in many European countries reach a high proportion of young children from all social groups. In Germany, for example,

45 35% of 0- to 2-year-olds and 93% of 3- to 6-year-olds are enrolled in a daycare program (1).
46 Pandemic-related closures or (repeated) quarantine and isolation periods of children are likely to
47 have detrimental effects on psychosocial well-being, physical activity and body weight (2-5).
48 However, daycare programs mainly serve children in an age group that is (for the time being, June
49 2022) not eligible for vaccination against SARS-CoV-2 in Germany. In addition, measures that help
50 contain the transmission of SARS-CoV-2, such as wearing masks and physical distancing, are difficult
51 to implement among toddlers and preschoolers. Therefore, understanding the transmissibility and
52 kinetics of SARS-CoV-2 among daycare children is critical for the development of adequate mitigation
53 policies, such as recommended time for isolation, testing strategies, and hygiene concepts
54 contributes to understanding the role of daycare children in the spread of SARS-CoV-2 also in
55 comparison to school children and adults.

56 Two indicators that help assess the infectivity of an individual and the duration of infectiousness are
57 viral clearance (VC) and viral load (VL). VC is defined as the state when the virus is eliminated from
58 the respiratory tract, as can be seen in negative PCR tests after a (series of) positive PCR test(s). VL
59 refers to the amount of viral RNA detected in specimen from the respiratory tract. As we have
60 learned in the course of the pandemic with regard to SARS-CoV-2, a positive PCR result does not
61 equate to infectivity of the person tested. Rather, a threshold of SARS-CoV-2 RNA copies/ml has been
62 determined above which it can be assumed that the amount of viral material is sufficient for
63 transmission. Therefore, the measurement of viral load is helpful to better interpret PCR test results.
64 Studies from the early period of the COVID-19 pandemic from Germany and the USA did not find
65 significant differences between the VL of adults as compared to children aged 1-5 or 1-6 years,
66 respectively (6, 7).

67 As for viral clearance, a comprehensive systematic review and meta-analysis, including studies
68 published until 6/2020, yields a mean period of 17 days with a maximum of 83 days needed for
69 COVID-19 patients of all age groups to reach VC from SARS-CoV-2 in the upper respiratory tract (8).

70 Most studies on VC and VL are based on data of hospitalized individuals or individuals seeking
71 medical attendance (9-12). Mild or asymptomatic cases are probably underrepresented in these
72 studies. This may especially be true for young children, as COVID-19 in childhood often does not
73 present with any (severe) symptoms. We see a dearth of studies that (a) investigate the infectivity of
74 SARS-CoV-2 positive individuals over time in a non-clinical community setting, (b) that correlate the
75 PCR test results in the individual course of infection, and (c) explicitly focus on the age group of
76 daycare children. Analyses have confirmed transmissions from infected children to close contacts
77 within the daycare setting, and also to household members (13), highlighting the importance of
78 investigating the role of daycare children in the infection process in more detail.

79 Therefore, we will examine the following research questions:

- 80 - How long does it take for children aged 1-6 to clear SARS-CoV-2 from their upper respiratory
81 tract (VC)? Is there a difference to adults?
- 82 - How does the viral load (VL) of SARS-CoV-2 develop over time in children aged 1-6, compared
83 to adults?

84

85 **MATERIALS AND METHODS**

86 *Study design/Subjects*

87 We analyzed data from the COALA study (14), which is an outbreak-related examination study in
88 daycare centers, carried out from October 2020 to June 2021 in the “second” and “third wave” of the

89 pandemic in Germany. At this time SARS-CoV-2 wildtype, followed by the alpha variant of concern
90 (VOC), were predominant. COALA has a prospective longitudinal, case-related study design. Daycare
91 center groups with one or more SARS-CoV-2 positive cases (child or staff) were enrolled in the study.
92 30 daycare groups from 20 different communities across Germany were included. SARS-CoV-2 cases
93 as well as their close contacts within their respective daycare group and household were visited at
94 home by a trained study team four to six days after the SARS-CoV-2 index cases' test date. Further
95 details of the study design and methods are described elsewhere (14).

96 A total of 1047 individuals was included in the COALA study (n=447 children and n=600 adults), of
97 which only positively tested individuals, were included in the current analyses. Amongst the children,
98 n=343 were in the age group of daycare children (1-6 years of age; children of older ages were
99 siblings and not included here).

100 *Sampling*

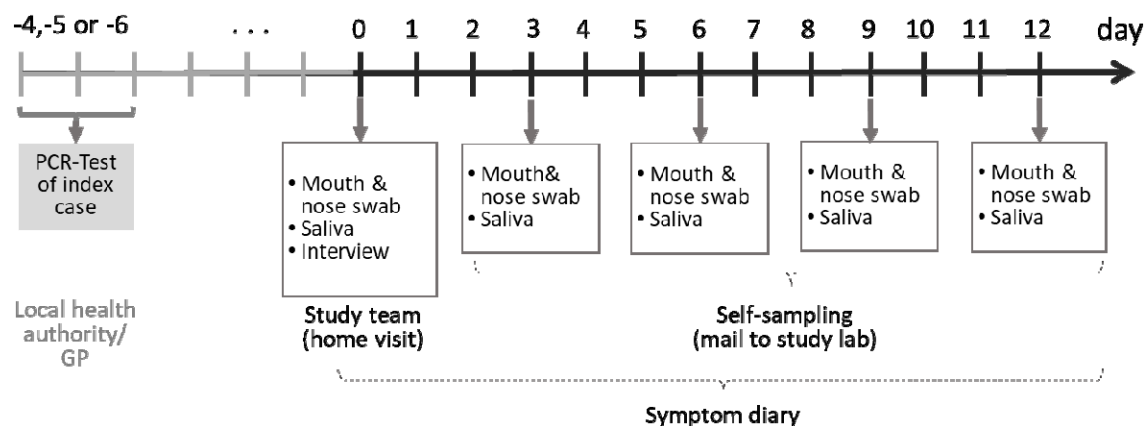
101 During the home visits, mouth-nose swabs (MNS) and saliva samples were taken. For the following
102 12 days after the home visit, participants were instructed to take these samples from their upper
103 respiratory tract and from their children themselves every three days (self-sampling) and to send
104 them to the Robert Koch Institute (RKI) by postal shipment (Fig. 1).

105

106

107

108



109

110 *Figure 1: Timeline sampling scheme for bio samples taken from the participants of the COALA study (SARS-CoV-2 index*
111 *cases, secondary cases and close contacts of SARS-CoV2 cases in the respective daycare center group and households).*
112 *Participants were enrolled 4-6 days after the index case got tested. GP = general practitioner*

113 The close-meshed sampling and PCR testing over the 12 days study period made it possible to detect
114 newly infected participants at an early stage. Moreover, it allowed to determine viral clearance and
115 to quantify viral loads for each participant over the course of infection.

116 *Assessment of Symptoms*

117 After the initial surveys during the home visits, household members were instructed to record clinical
118 symptoms throughout the 12 days study period in a standardized symptom-diary, documenting
119 symptoms e.g. fever $\geq 38^{\circ}\text{C}$, chills, cough, shortness of breath.

120

121 *Laboratory testing*

122 All biological samples (MNS and saliva) were tested for SARS-CoV-2 RNA presence and quantity by
123 real-time reverse transcription polymerase chain reaction (real-time RT-PCR) as described by Michel
124 et al (16). Results were given in cycle threshold (CT) values (number of needed cycles surpassing the
125 threshold for a positive test). For better comparison with other studies, CT values were converted to
126 actual RNA copy numbers per milliliter. As a positive PCR result (values $\geq 10^4$ RNA copies/ml; \triangleq CT
127 40 in our laboratory) does not equate infectivity, a threshold within the positive PCR range was
128 defined above which an individual's infectivity can be assumed. For SARS-CoV-2, this threshold was
129 set at 10^6 RNA copies/ml (\triangleq CT 24.7 in our laboratory) (17). Log₁₀ RNA copies/ml were calculated
130 based on the cycle threshold (CT) of the E gene. Comparative analysis of E gene and delta CT of E
131 gene and c-myc, either obtained in the multiplex or in a single plex PCR, showed no significant
132 difference in exemplary sample courses, allowing the use of the E gene CTs directly for calculation of
133 RNA quantities (exemplary courses shown in Suppl. fig 1).

134 *Determination of assumed infection date*

135 In order to determine the starting point for calculating the period until viral clearance is reached, we
136 decided against using the onset of symptoms (as young children are often asymptomatic or present
137 only with very unspecific symptoms). Neither did it seem recommendable to use the date of the first
138 positive PCR test, as the timepoint of testing among the cases differed substantially (e.g. sometimes
139 asymptomatic primary cases were not detected before secondary cases who presented with
140 symptoms were diagnosed). We therefore decided to determine the probable date of infection with
141 SARS-CoV-2 for each participant, using date of testing, symptom diary, and questionnaires on
142 exposure and symptom history. All sampling days were then expressed as days since assumed
143 infection for each participant. For calculations, the index cases' first positive test date by the health
144 department and a mean incubation period of SARS-CoV-2 of six days were taken as a basis and
145 applied to index cases and secondary cases in daycare centers and households.

146 *Definition of VC*

147 To determine viral clearance, we calculated the time from the assumed date of infection until the
148 first negative PCR test, which was not followed by another positive PCR test in the self-sampling. If
149 only one of the two samples received (MNS or saliva) was positive, the person was classified as
150 positive at that time.

151 *Definition of VL*

152 Viral load is defined as the number of SARS-CoV-2 RNA copies/mL in the PCR sample. If both the MNS
153 and the saliva sample of a person had a positive result on the same day, we used the sample with the
154 higher viral load for the analyses.

155 For the analysis of viral load, CT values measured in the PCR analysis were converted into RNA
156 copies/ml by the following formula: $83.33333 \cdot e^{((CT \text{ value} - 38.248)/-1.4)}$ that was determined by
157 serial dilution and measurement of pre-quantified target RNA. Then, the number of RNA copies/ml
158 was transformed to the log scale (with base 10), resulting in a linear transformation of the original CT
159 values, but with opposite sign.

160

161 *Statistical analysis*

162 To examine the time to viral clearance, Kaplan-Meier survival time analysis was applied. The time
163 from infection to the first negative test is equaled with “survival” time. A Kaplan-Meier analysis
164 computes the probability of occurrence of a negative PCR-test at a certain point of time, taking into
165 account the number of participants still in the study at this time. For some participants, a negative
166 test was not yet recorded during the study period, i.e. they still had a positive test on the last
167 sampling day. In these cases, the event of interest (PCR negativity) did not happen during this time.
168 These participants were labeled as “censored observations”. For these censored observations, the
169 only information is that the event (=first negative test) did not occur by the end of the study, which
170 can be due to the following reasons: a) inclusion in the study early in the individual course of
171 infection, e.g. when a secondary household case got infected during the last days of the study period,
172 b) early study dropouts and c) prolonged viral shedding.

173 To test for significant differences between daycare children and adults, a log-rank test was applied,
174 which is the standard test for comparison of two groups in Kaplan-Meier survival time analysis.

175 For viral load over time, mean, median, quartiles and distribution were calculated separately for
176 children and adults. The difference in the mean course of viral load for children vs. adults is given as
177 mean (Fig. 4) and median with 95%-confidence interval (Fig.5) for each time point. The difference
178 was tested for significance in a linear mixed model which included VL as dependent variable, the
179 individual participant as random effect and day since assumed infection (as a linear variable), age
180 group (child/adult) and specimen type (mouth-nose swab or saliva) as independent variables.
181 Descriptive calculations were performed using STATA 17.0 (Stata Corp, College Station, Texas, USA,
182 2021). SAS 9.4/TS1M7 (SAS Institute Inc., Cary, NC, USA, 2016) was used for survival analysis and
183 mixed model calculations and R 4.1 (R Foundation for Statistical Computing, Vienna, Austria, 2022,
184 www.R-project.org) was used for graphical representation.

185

186 RESULTS

187 *Sample*

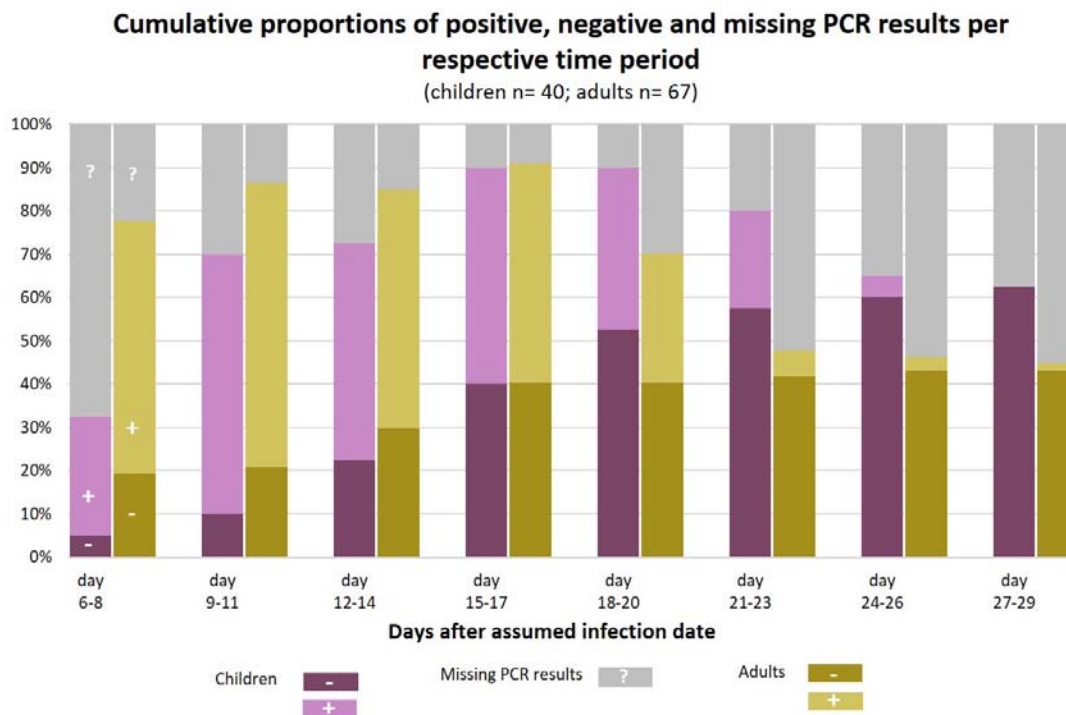
188 Of all included individuals, 67 adults (18-77 years; female=56,7%) and 40 children (1-6 years;
189 female=50%) were tested positive by PCR for SARS-CoV-2 in at least one specimen during the COALA
190 study and were included into the current analysis.

191

192 *Viral clearance*

193 26/40 children and 29/67 adults reached viral clearance during the study period, with the last
194 sampling occurring on day 8 to 30 (children), and day 5 to 27 (adults), respectively, after their
195 individual infection date. The remaining 14 children and 38 adults still had positive PCR results at the
196 time of the last sampling in the study period. Therefore, no statement on VC can be made for these
197 participants on an individual basis, but they can be included in the Kaplan-Meier analysis.

198 Figure 2 shows the cumulative proportion of children and adults who were found to have cleared
199 SARS-CoV-2 at different points of time after infection.



200

201 *Figure 2: Cumulative proportion of children and adults with a negative (purple) PCR test on SARS-CoV-2, compared to the*
 202 *proportion of children and adults who were still tested positive (pink) at different points of time after the assumed infection.*
 203 *PCR test results were not available from all study participants at all points of time; the proportion of children and adults for*
 204 *whom no information of a SARS-CoV-2 PCR was available at a given point of time is shown in grey color. Reasons for missing*
 205 *PCR tests were for example that participants were not yet included in the study, e.g. index cases had probably been infected*
 206 *more than 6-8 days ago when the study team arrived for the testings (enrolment started 4-6 days after test date of index*
 207 *case). Other cases finished their 12-day self-sampling period earlier than day 20, or 24, or 27 after their infection date. In*
 208 *addition, few participants skipped single sampling appointments.*

209

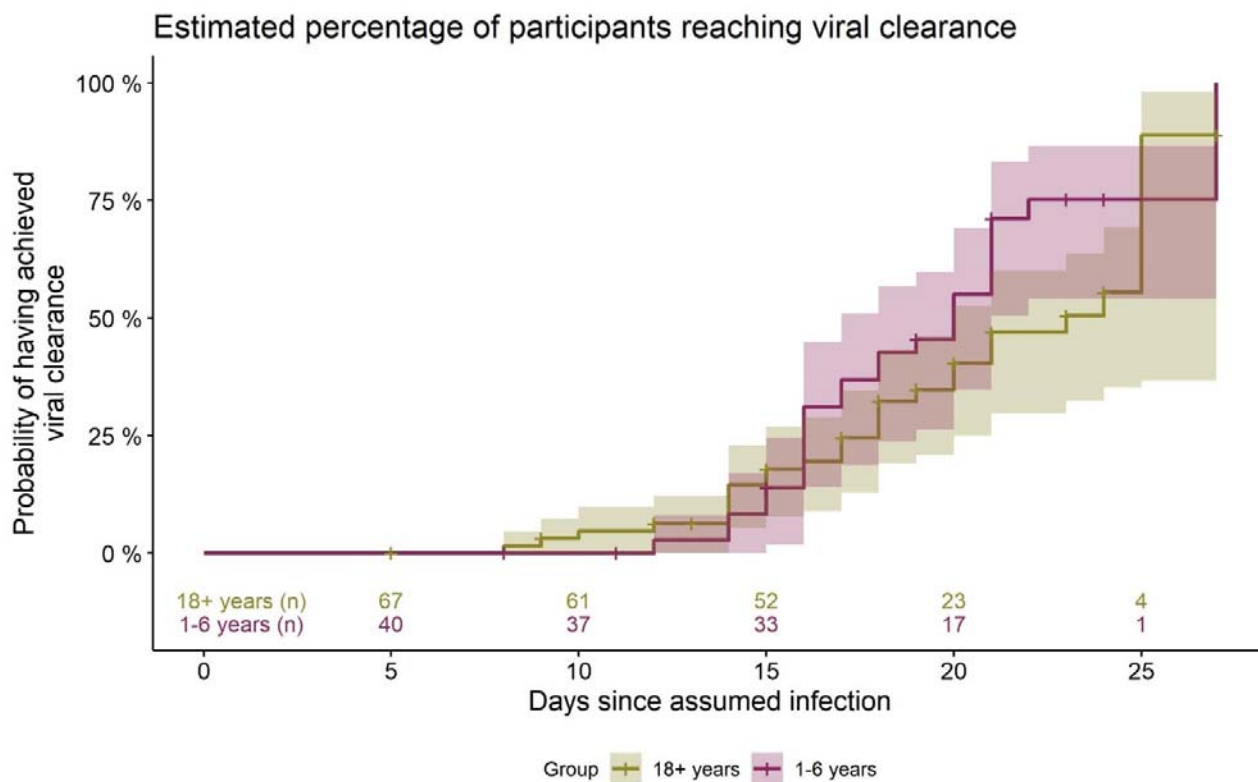
210 According to Kaplan-Meier-survival time analysis, the estimated median time from infection to the
 211 first negative PCR test, i.e. time to viral clearance, is 20 days (95% CI 17-21 days) for the daycare
 212 children. 1/4 had their first negative test at or before an estimated 16 days after infection, 3/4 at or
 213 before day 22. The percentage of children having reached VC at day 21 was estimated as 71% (95% CI
 214 55-85%).

215 In the adult cohort, viral clearance occurred at an estimated median of 23 days after infection (95%
 216 CI 20-25 days). 1/4 had their first negative test at or before an estimated 18 days since infection, 3/4
 217 at or before day 25. The percentage of adults having reached VC was 47% by day 21 (95% CI 33-63%),
 218 56% by day 24 (95% CI 40-72%) and 90% by day 25 (95% CI 63-99%) (Fig. 2).

219 The log-rank test for differences between children and adults has a p -value of $p = 0.10$ ($\chi^2(1) = 2.65$),
 220 showing that distributions between the groups do not differ significantly.

221

222



223

224 *Figure 3: Estimated percentage (from Kaplan-Meier survival analysis) of daycare children and adults having accomplished*
 225 *viral clearance at the respective timepoints during the course of infection. Days counted since day of assumed infection (day*
 226 *zero). Group 18+ and 1-6 years: numbers of participants still positive immediately before the respective time point. Shaded*
 227 *area: 95% CI.*

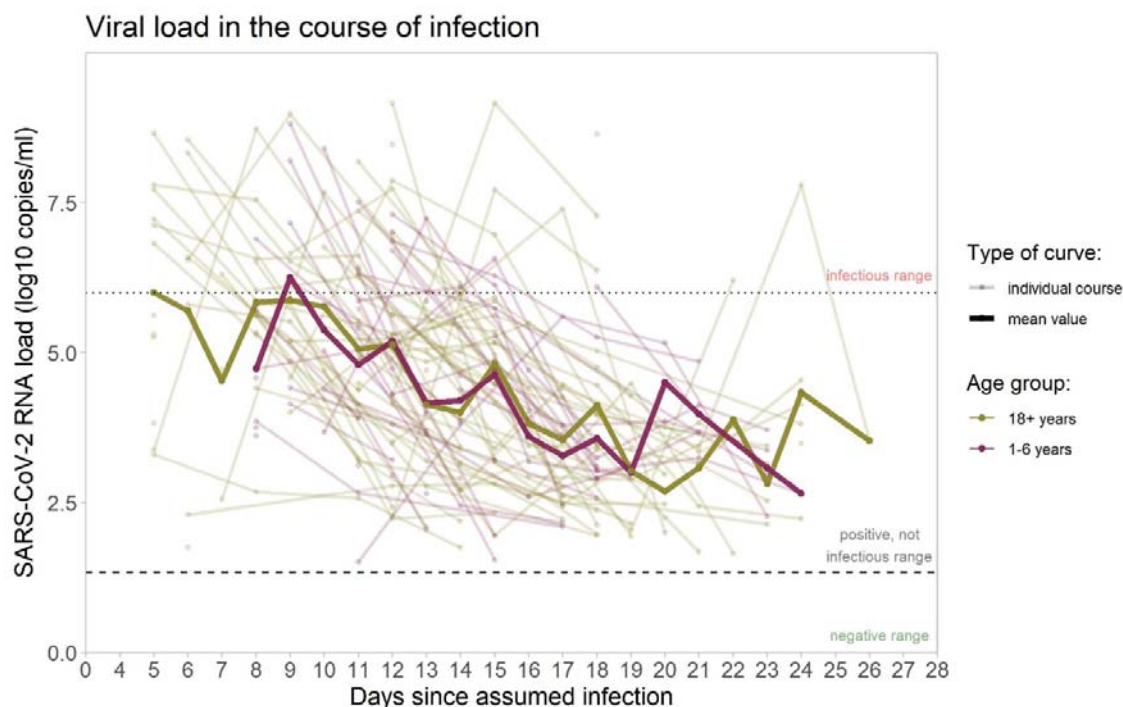
228

229

230

231 *Viral load*

232 *Changes of viral load over time, throughout the natural course of infection, vary substantially*
 233 *between individuals (Fig. 4).*

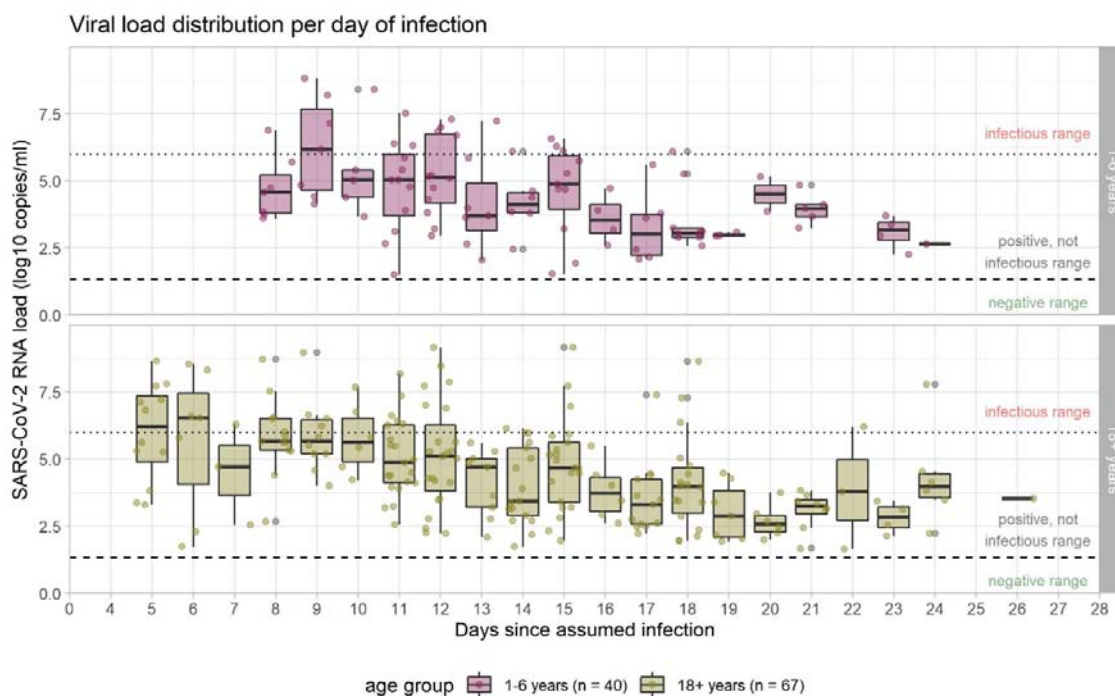


234

235

236 *Figure 4: SARS-CoV-2 RNA copies/ml in the samples from upper respiratory tract. Viral load courses (individual courses and*
237 *mean courses of children and adults), shown from the day of assumed infection (day zero) onwards. Dotted line marks 10^6*
238 *RNA copies/ml as threshold for infectivity ($\geq 10^6$ RNA copies/ml denotes infectious range); dashed line marks threshold for*
239 *positivity with values $\geq 10^1$ RNA copies/ml considered as positive. Analysis restricted to samples considered positive (102*
240 *samples in 40 children, 214 samples in 67 adults) with increasingly fewer samples in the progression of the course of*
241 *infection*
242

243 The broad range of all viral load values of different individuals on certain days after infection is also
244 reflected in the boxplot figure (Fig. 5). Regarding the raw mean values of viral load, there is a
245 decreasing trend over time since infection, with no clear differences between children and adults.
246 The mean viral load of both groups (adults and children) stays below the threshold of 10^6 RNA
247 copies/ml, considered necessary for transmission, from day nine the course of infection. The same
248 holds true for the median (Fig. 5), indicating that at any time point after day nine, less than half of
249 the positive specimens (often, considerably less than half) were above the infectivity threshold.
250 Single values above this threshold were observed until day 18 in children and until day 24 in adults.



251
252
253
254
255
256
257
258
259

Figure 5: Viral load in the course of infection. Medians are calculated for those samples which were available on the given days, and are indicated by midlines; the top and bottom edges of boxes represent the interquartile range (IQR). Whiskers indicate the upper and lower values. Dotted line marks the threshold for infectivity 10^6 RNA copies/ml (\pm CT 24.7 in our laboratory); dashed line marks the threshold for positivity with values $\geq 10^1$ RNA copies/ml (\pm CT 40 in our laboratory) considered as positive. Analysis restricted to samples considered positive (104 samples in 40 children, 214 samples in 67 adults) with increasingly fewer samples in the progression of the course of infection.

260
261
262

Furthermore, the linear mixed model indicates an estimated difference in the trajectories of the mean viral load over time of -0.35 log₁₀ RNA copies/ml (95% CI -0.79 - 0.10) for children vs. adults ($p=0.12$) which is not statistically significant.

263
264
265
266
267
268
269
270

Among the participants with a positive PCR test result, those whose viral load is considered high enough to allow virus transmission to others, are of special interest from a public health point of view. Table 1 details that only small proportions of those tested can be considered infectious, confirming graphic evidence from Figures 3 and 4. The proportion of individuals in whose samples more than 10^6 SARS Co-V-2 RNA copies/ml could be detected, peaked until days 11 and 12, and then decreased markedly (Tab. 1). Kaplan-Meier calculations show that from day 15 (95% CI 13-15), 50% and from day 17 (95% CI 15-20), 75% of all participants had a VL that can be classified as either negative or no longer infectious (graph not shown).

271
272
273

Overall, more than half ($n=63$, 59%, 95% CI 49-68%) of the participants with positive SARS-CoV-2 test did not show a VL considered to be infectious at any day of the study period. Numerical differences between children and adults were not significant (χ^2 -test: $p=0.32$).

274

	PARTICIPANTS WITH A VIRAL LOAD ABOVE 10 ⁶ RNA COPIES/ML					
	Children (1-6 years)			Adults (18-77 years)		
DAYS AFTER ASSUMED INFECTION	PCR tests with VL >10 ⁶ RNA copies/ml, n	% of all available tests that day (respective n)	% of all pediatric participants, n=40	PCR tests with VL >10 ⁶ RNA copies/ml, n	% of all available tests that day (respective n)	% of all adult participants, n=67
5	-	-	-	6	50.0% (12)	8.8%
6	-	-	-	4	57.1% (7)	5.9%
7	-	-	-	1	33.3% (3)	1.4%
8	1	14.3% (7)	2.5%	4	30.8% (13)	5.9%
9	4	57.1% (7)	10%	4	40.0% (10)	5.9%
10	1	20.0% (5)	2.5%	2	33.3% (6)	2.9%
11	3	25.0% (12)	7.5%	6	28.6% (21)	8.6%
12	4	30.7% (13)	10%	6	26.1% (23)	8.9%
13	1	14.3% (7)	2.5%	0	0% (9)	0%
14	0	0% (6)	0%	1	5.9% (17)	1.5%
15	3	27.2% (11)	7.5%	3	14.3% (21)	4.4%
16	0	0% (5)	0%	0	0% (6)	0%
17	0	0% (6)	0%	1	7.7% (13)	1.5%
18	0	0% (9)	0%	3	16.7% (18)	4.5%
19	0	0% (3)	0%	0	0% (7)	0%
20	0	0% (2)	0%	0	0% (6)	0%
21	0	0% (5)	0%	0	0% (8)	0%
22	-	-	-	1	33.3% (3)	1.5%
23	0	0% (4)	0%	0	0% (5)	0%
24	0	0% (1)	0%	1	16.7% (6)	1.5%

275

276 *Tab.1: Number and proportion of children and adults showing a viral load in the infectious range, detailed for*
 277 *different days of the infection course. Samples are not provided by all participants on each day, because (a) the*
 278 *sampling scheme asked participants to send in swabs every third day only, and (b) the sampling scheme started*
 279 *on day 4-6 after testing date of the index case, therefore participants were included on different days of their*
 280 *individual course of infection, and the sampled over a period of 12 days. Dashes: no samples received.*

281

282

283

284 DISCUSSION

285 Summary of main findings

286 Among daycare children (age 1-6 years), the median time span from assumed SARS-CoV-2 infection
 287 to the first negative PCR test was 20 days, which was not significantly different from the age group of
 288 adults (23 days). Presuming an incubation period of six days, this may roughly be translated into a
 289 median period of 14 days after onset of symptoms (if any) until the virus is cleared from the
 290 respiratory tract. Although SARS-CoV-2 may persist for weeks and viral loads throughout the
 291 individual course of infection are very heterogeneous, its quantity in the airways is mostly below the

292 threshold set for an individual's infectivity, as could be shown by tracking of viral load over time. 17
293 days after assumed infection (i.e. circa 11 days after symptom onset), 75% of participants were not
294 infectious anymore, as they had either a negative PCR test or a positive test with a viral load of less
295 than 1 million copies per milliliter. Viral load, in the mean, decreased gradually over time, and the
296 viral load trajectory did not differ significantly between young children and adults.

297 Further findings from the COALA study, which focused on actual transmission risk and secondary
298 attack rates (13) also underscore no significant differences between daycare children and adults: In
299 the enrolled daycare centers, the transmission risk from pediatric primary cases did not differ
300 significantly from that from adult primary cases (11% vs. 7.0% of close contacts got infected).

301

302 *Comparisons with other studies*

303 Our study confirms the finding that SARS-CoV-2 is often present in the upper airways for weeks,
304 while other viruses such as influenza are rarely shed for more than seven days (8, 18-20).

305 Prolonged periods of continued or inconsistent positive testing may be explained by the physiological
306 half-life of respiratory epithelial cells (three months) and the ability of the PCR tests to detect non-
307 viable viral fragments at very low concentrations (21, 22).

308 When comparing our results with those of other SARS-CoV-2 studies, it should be reflected that there
309 are different methods to calculate the elimination period. VC, i.e. the state when a person has
310 'cleared' the virus from their body, is sometimes defined as the day of the last positive PCR test, in
311 other studies as the day of the first negative PCR test. For calculating the period until VC is reached,
312 studies have referred to the day of symptom onset, or the day of the first positive PCR test.
313 Therefore, calculations of the period needed for an individual to eliminate the virus can only
314 cautiously be compared between different studies.

315 Regarding VC we found three relevant studies: Gupta et al. (23) analysed data of 85 children and
316 adolescents (aged 0-18) who were tested positive for SARS-CoV-2 and admitted to hospital during
317 April and May 2020 in Rajasthan/India. The participants were tested by PCR every 3 days. The
318 authors found that median time for children to clear the virus was 7 days, calculated from symptom
319 onset, which is considerably shorter when compared to our results. Gupta et al. found that 99% of
320 children reached viral clearance by day 15 after symptom onset; this may correspond to approx. 19-
321 21 days after infection, a period after which, in our study, only approx. 50-75% of children were free
322 of virus, according to the Kaplan Meyer analysis.

323 A German study among 208 participants carried out between January and May 2020 (24) showed
324 results similar to ours. Here, the median time to reach VC was 12.5 days, and 75% of the participants
325 were determined free of SARS-CoV-2 21.5 days after symptom onset. However, the study had not
326 focused on young children, but included participants of all age groups, without reporting on
327 differences between age groups.

328 A notably longer median time to clear the virus from one's body was found in a study conducted
329 from March-June 2020 in Washington/USA. Median time to reach VC (from first positive PCR test)
330 was 22 days for children aged 0-5 years (n=24) (25). Overall, the elimination period in the different
331 studies shows inconsistent duration of about 13 to 24 days for VC, and our result of 20 days fits well
332 with the current state of research.

333 Three studies were found that assessed individual VL of SARS-CoV-2 over time: In the sample
334 presented by Bahar et al., there was no meaningful difference between viral loads throughout the

335 course of SARS-CoV-2 infection between children and adults (25), which is similar to our finding.
336 Costa et al. investigated 256 infected children (1-18 years) and 928 adults (from June 2020-January
337 2021 in Spain) and found similar SARS-CoV-2 viral loads in the first days after symptom onset.
338 However, PCR tests after three days after symptom onset showed a significantly lower VL in children
339 as compared to adults ($p=0.002$) (26). Our results could not directly confirm this finding, but this may
340 partly be due to the smaller sample size.

341 Jang et al. also looked into the progression of VL, and describe that from about day 10 post-infection,
342 SARS-CoV-2 RNA can still be detected, but its amount remains predominantly below an infectious
343 threshold (27). This finding is consistent with the viral load dynamics found in our study.

344

345 *Limitations/strengths*

346 First, it is a limitation that the sample size of the COALA study is relatively small, and may not be
347 representative for all children infected with SARS-CoV-2 in this age group. In addition, the
348 participating adults were recruited from the daycare setting, which means they were mostly staff or
349 parents of young children. On the other hand, this sample can provide insights into courses of SARS-
350 CoV-2 kinetics outside the clinical setting. The participants were closely examined over a period of
351 almost two weeks. Thus, compared to other studies, it was possible to analyze viral load dynamics
352 much more precisely, and to identify SARS-CoV-2 cases that might not have been detected
353 otherwise, for example due to a lack of symptoms.

354 Second, as our study design focused on the role of children, we included pediatric index cases
355 preferentially to adult index-cases. As sampling started at the same point of time for primary and
356 secondary cases, primary cases were more likely to be tested in later stage of infection. Therefore
357 here were fewer censored observations in the group of children than in the adult group which may
358 bias the statement regarding VC duration and VL.

359 Third, as the data collection for our study was set from 10/2020-6/2021, when the SARS-CoV-2 wild
360 type and alpha VOC were dominant, it is unclear whether conclusions can be drawn about other
361 variants.

362 *Implications for policy and practice*

363 The observation that it usually takes several weeks for children aged 1-6 years to eliminate SARS-
364 CoV-2 from one's respiratory tract emphasizes that SARS-CoV-2 cases in daycare programs among
365 enrolled children should be taken seriously, and isolation for infected children and quarantine of
366 (non-immunized) close contacts need to be adhered to for an adequate span of time.

367 Our data also show, on the other hand, that persisting positive tests may not necessarily correspond
368 to a child's infectiousness. In our study the vast majority of positive SARS-CoV-2 PCR test results
369 beyond day 15 after the probable infection yielded a viral load well under the threshold of 10^6 RNA
370 copies/ml. Viral load is recognized as a strong determinant of transmission risk (28) and according to
371 our data, there are probably only few days when a child's dose of viral shedding is high enough to
372 transmit the virus to others. These findings may add to other data which inform decisions on the
373 length of isolation periods for children and adults. Other factors besides viral shedding (type of
374 contact, respiratory volume, coughing, etc.) also play explicit roles in transmission, and viral shedding
375 alone cannot be equated with transmission. In addition to epidemiological research findings on SARS-
376 CoV-2 transmission in daycare-aged children, psychosocial and educational aspects should be
377 considered for the selection of appropriate containment measures in the daycare setting.

378 *Conclusion*

379 On the whole, our study does neither fuel fears that children may be significant drivers of the COVID-
380 19 pandemic, nor confirm theories that they hardly play a role in transmission dynamics. The viral
381 load kinetics and transmission risks of young children are similar to those of adults, which supports to
382 maintain containment measures in the daycare setting in order to provide protection to children and
383 staff members.

384 **Ethics statement**

385 The Ethics Committee of the Berlin Medical Association has reviewed the COALA study and approved
386 the implementation of the study (Eth-39/20). The participation in the study is voluntary and all
387 participants are informed about the objectives and contents of the study as well as data protection
388 and give their written informed consent; children aged from 14 to 17 years give their own written
389 consent in addition. Every participant is assigned to a sequential study number (ANR) in order to
390 ensure pseudonymization of the study documents and material.

391 COALA is registered in the German Clinical Trail Register (DRKS-ID=DRKS00023501).

392 **Funding**

393 Corona outbreak-related examinations in day care centers – COALA is conducted by the RKI and is
394 funded by the Federal Ministry of Health under grant number ZMVI1-2520COR404 for the period
395 June 2020 to December 2021. COALA is one out of four modules of the “Corona day care center
396 study: Research on the organizational, hygienic and educational challenges of emergency day care in
397 day care centers as well as on acute respiratory diseases during the implementation of measures to
398 contain SARS-CoV-2”, which is being conducted by the German Youth Institute (DJI) together with the
399 RKI. The Federal Ministry of Health was not involved in the design of the study or collection of data.

400 **Acknowledgements**

401 We would like to thank all our colleagues at the RKI in the Department Epidemiology and Health
402 Monitoring, the Department Infectious Disease Epidemiology, and the Centre for Biological Threats
403 and Special Pathogens for their support. Special thanks to the colleagues of SurvAd, the
404 Epidemiological Central Laboratory, and the COALA study team at the RKI. We would like to thank all
405 participants for their support of the study. For their advice in the development of the study design
406 we would like to thank all federal state health authorities, local health authorities, experts on day
407 care centers, and colleagues at the German Youth Institute (DJI) who supported us designing the
408 interviews.

409

410 **Author contributions**

411 JL, ASch, UB, WH and SJ designed the study. JWu, HI, ASa, UK and BF were responsible for participant
412 recruitment, data and specimen collection. AN, JM, LS performed laboratory testing and analysed lab
413 results. ASR, JWu, SD, ASch, TK, ASa, and GV carried out the analysis and were responsible for the
414 accuracy of the data analysis.

415 ASa, JL and ASR wrote the manuscript, which was then reviewed and approved by all other authors.

416

417

418

419

- 420 1. Bundesministerium für Familie S, Frauen und Jugend (Hrsg). Kindertagesbetreuung Kompakt.
421 Ausbaustand und Bedarf 2021. BMFSFJ, Berlin; 2021.
- 422 2. Schlack R, Neuperdt L, Hölling H, De Bock F, Ravens-Sieberer U, Mauz E, et al. Auswirkungen
423 des COVID-19-Pandemiegesehens und behördlicher Infektionsschutzmaßnahmen auf die
424 psychische Gesundheit von Kindern und Jugendlichen. *Journal of Health Monitoring*. 2020(4):23--34.
- 425 3. Schmidt SCE, Burchartz A, Kolb S, Niessner C, Oriwol D, Hanssen-Doose A, et al. Zur Situation
426 der körperlich-sportlichen Aktivität von Kindern und Jugendlichen während der COVID-19 Pandemie
427 in Deutschland : Die Motorik-Modul Studie (MoMo). 2021.
- 428 4. Ghosh R, Dubey MJ, Chatterjee S, Dubey S. Impact of COVID -19 on children: special focus on
429 the psychosocial aspect. *Minerva pediatrica*. 2020;72(3):226-35.
- 430 5. Almeida ILL, Rego JF, Teixeira ACG, Moreira MR. Social isolation and its impact on child and
431 adolescent development: a systematic review. *Revista paulista de pediatria : orgao oficial da*
432 *Sociedade de Pediatria de Sao Paulo*. 2021;40:e2020385.
- 433 6. Jones TC, Biele G, Mühlemann B, Veith T, Schneider J, Beheim-Schwarzbach J, et al.
434 Estimating infectiousness throughout SARS-CoV-2 infection course. *Science (New York, NY)*.
435 2021;373(6551).
- 436 7. Madera S, Crawford E, Langelier C, Tran NK, Thornborrow E, Miller S, et al. Nasopharyngeal
437 SARS-CoV-2 viral loads in young children do not differ significantly from those in older children and
438 adults. *Scientific reports*. 2021;11(1):1-4.
- 439 8. Cevik M, Tate M, Lloyd O, Maraolo AE, Schafers J, Ho A. SARS-CoV-2, SARS-CoV, and MERS-
440 CoV viral load dynamics, duration of viral shedding, and infectiousness: a systematic review and
441 meta-analysis. *The Lancet Microbe*. 2021;2(1):e13-e22.
- 442 9. Baggio S, L'Huillier AG, Yerly S, Bellon M, Wagner N, Rohr M, et al. Severe Acute Respiratory
443 Syndrome Coronavirus 2 (SARS-CoV-2) Viral Load in the Upper Respiratory Tract of Children and
444 Adults With Early Acute Coronavirus Disease 2019 (COVID-19). *Clinical infectious diseases : an official*
445 *publication of the Infectious Diseases Society of America*. 2021;73(1):148-50.
- 446 10. Chen PZ, Bobrovitz N, Premji ZA, Koopmans M, Fisman DN, Gu FX. SARS-CoV-2 shedding
447 dynamics across the respiratory tract, sex, and disease severity for adult and pediatric COVID-19.
448 *eLife*. 2021;10.
- 449 11. Chung E, Chow EJ, Wilcox NC, Burstein R, Brandstetter E, Han PD, et al. Comparison of
450 Symptoms and RNA Levels in Children and Adults With SARS-CoV-2 Infection in the Community
451 Setting. *JAMA pediatrics*. 2021;175(10):e212025.
- 452 12. Liu Y, Yan LM, Wan L, Xiang TX, Le A, Liu JM, et al. Viral dynamics in mild and severe cases of
453 COVID-19. *The Lancet Infectious diseases*. 2020;20(6):656-7.
- 454 13. Loss J, Wurm J, Varnaccia G, Schienkiewitz A, Iwanowski H, Loer A-KM, et al. Transmission of
455 SARS-CoV-2 among children and staff in German daycare centers: results from the COALA study.
456 *medRxiv*. 2021:2021.12.21.21268157.
- 457 14. Schienkiewitz A, Jordan S, Hornbacher A, Perlitz H, Zeisler ML, Sandoni A, et al. SARS-CoV-2
458 Transmissibility Within Day Care Centers-Study Protocol of a Prospective Analysis of Outbreaks in
459 Germany. *Frontiers in public health*. 2021;9:773850.
- 460 15. Schilling J, Buda S, Tolksdorf K. Zweite Aktualisierung der „Retrospektiven Phaseneinteilung
461 der COVID-19-Pandemie in Deutschland“. *Epid Bull* 2022;10:3-5.
- 462 16. Michel J, Neumann M, Krause E, Rinner T, Muzeniek T, Grossegeisse M, et al. Resource-
463 efficient internally controlled in-house real-time PCR detection of SARS-CoV-2. *Virology journal*.
464 2021;18(1):110.
- 465 17. Vierbaum L, Wojtalewicz N, Grunert HP, Lindig V, Duehring U, Drosten C, et al. RNA reference
466 materials with defined viral RNA loads of SARS-CoV-2-A useful tool towards a better PCR assay
467 harmonization. *PloS one*. 2022;17(1):e0262656.
- 468 18. Qi L, Yang Y, Jiang D, Tu C, Wan L, Chen X, et al. Factors associated with the duration of viral
469 shedding in adults with COVID-19 outside of Wuhan, China: a retrospective cohort study.
470 *International journal of infectious diseases : IJID : official publication of the International Society for*
471 *Infectious Diseases*. 2020;96:531-7.

- 472 19. Cao B, Wang Y, Wen D, Liu W, Wang J, Fan G, et al. A Trial of Lopinavir-Ritonavir in Adults
473 Hospitalized with Severe Covid-19. *The New England journal of medicine*. 2020;382(19):1787-99.
- 474 20. Pawelek KA, Huynh GT, Quinlivan M, Cullinane A, Rong L, Perelson AS. Modeling within-host
475 dynamics of influenza virus infection including immune responses. *PLoS computational biology*.
476 2012;8(6):e1002588.
- 477 21. Mancuso P, Venturelli F, Vicentini M, Perilli C, Larosa E, Bisaccia E, et al. Temporal profile and
478 determinants of viral shedding and of viral clearance confirmation on nasopharyngeal swabs from
479 SARS-CoV-2-positive subjects: a population-based prospective cohort study in Reggio Emilia, Italy.
480 *BMJ Open*. 2020;10(8):e040380.
- 481 22. Wölfel R, Corman VM, Guggemos W, Seilmaier M, Zange S, Müller MA, et al. Virological
482 assessment of hospitalized patients with COVID-2019. *Nature*. 2020;581(7809):465-9.
- 483 23. Gupta ML, Gothwal S, Gupta RK, Sharma RB, Meena JS, Sulaniya PK, et al. Duration of Viral
484 Clearance in Children With SARS-CoV-2 Infection in Rajasthan, India. *Indian Pediatrics*.
485 2021;58(2):123-5.
- 486 24. Woudenberg T, Eberle U, Marosevic D, Liebl B, Ackermann N, Katz K, et al. Detection and viral
487 RNA shedding of SARS-CoV-2 in respiratory specimens relative to symptom onset among COVID-19
488 patients in Bavaria, Germany. *Epidemiology and infection*. 2021;149:e150.
- 489 25. Bahar B, Jacquot C, Mo YD, DeBiasi RL, Campos J, Delaney M. Kinetics of viral clearance and
490 antibody production across age groups in SARS-CoV-2 infected children. *medRxiv*.
491 2020:2020.08.06.20162446.
- 492 26. Costa R, Bueno F, Albert E, Torres I, Carbonell-Sahuquillo S, Barrés-Fernández A, et al. Upper
493 respiratory tract SARS-CoV-2 RNA loads in symptomatic and asymptomatic children and adults.
494 *Clinical microbiology and infection : the official publication of the European Society of Clinical
495 Microbiology and Infectious Diseases*. 2021;27(12):1858.e1-.e7.
- 496 27. Jang S, Rhee JY, Wi YM, Jung BK. Viral kinetics of SARS-CoV-2 over the preclinical, clinical, and
497 postclinical period. *International journal of infectious diseases : IJID : official publication of the
498 International Society for Infectious Diseases*. 2021;102:561-5.
- 499 28. Watanabe T, Bartrand TA, Weir MH, Omura T, Haas CN. Development of a dose-response
500 model for SARS coronavirus. *Risk analysis : an official publication of the Society for Risk Analysis*.
501 2010;30(7):1129-38.

502