

1 **Title:** Procalcitonin and High APACHE Scores are Associated with the Development of
2 Acute Kidney Injury in Patients with SARS-CoV-2.

3
4 Andrade Sierra Jorge^{1,2,3}, Delgado Astorga Claudia¹, Nava Vargas Miriam Gabriela¹, Rojas
5 Campos Enrique³, Arellano Arteaga Kevin Javier¹, Hernández Morales Karla¹, Andrade
6 Castellanos Carlos A¹, Andrade-Ortega Antonio de Jesús², González-Correa Luis Gerardo³.

7 ¹Department of Internal Medicine. Hospital Civil de Guadalajara “Dr. Juan I Menchaca”.
8 Guadalajara, Jalisco, Mexico.

9 ²Department of Physiology, University Health Sciences Center, University of Guadalajara,
10 Guadalajara, Jalisco, Mexico.

11 ³Medical Research Unit in Kidney Diseases, Specialties Hospital, National Western Medical
12 Center, Mexican Institute of Social Security. Guadalajara, Jalisco, Mexico.

13

14

15 **Corresponding author:** Jorge Andrade Sierra, MD, PhD

16 Department of Physiology, University Health Sciences Center (*Centro Universitario de*
17 *Ciencias de la Salud*), University of Guadalajara, Guadalajara, Jalisco, Mexico.

18 Sierra Mojada No. 950, Col. Independencia

19 Guadalajara, Jalisco, México CP 44340

20 Phone: +52 (33) 10585200

21 E-mail: jorg_andrade@hotmail.com

22

23

24

25

26

27

28 **Abbreviations**

29 Coronavirus 2019 (COVID-19)

30 Systemic arterial hypertension (SAH)

31 Diabetes mellitus (DM)

32 Acute kidney injury (AKI)

33 C-reactive protein (CRP)

34 Procalcitonin (PCT)

35 Lactate dehydrogenase (LDH)

36 Alanine aminotransferase (ALT)

37 SCr: Serum creatinine

38 Continuous Renal Replacement Therapy (CRRT)

39 Reverse Transcriptase Polymerase Chain Reaction (RT-PCR)

40 Kidney Disease Improving Global Outcomes (KDIGO)

41 Acute Physiology and Chronic Health Evaluation II (APACHE II)

42 Sequential Organ Failure Assessment (SOFA)

43 Estimated glomerular filtration rate (eGFR)

44 Chronic Kidney Disease (CKD)

45 Oxygen to fraction of inspired oxygen ($\text{PaO}_2/\text{FiO}_2$)

46 Body Mass Index (BMI)

47 Invasive mechanical ventilation (IMV)

48 Angiotensin-converting Enzyme Inhibitors (ACEi)

49 Angiotensin receptor blockers (ARBs)

50 Neutrophil gelatinase-associated lipocalin (NGAL)

51 Kidney injury molecule 1 (KIM-1)

52

53

54

55 **Abstract**

56 **Background.** Acute kidney injury (AKI) is associated with poor outcomes in patients infected
57 with SARS-CoV-2. Sepsis, direct injury to kidney cells by the virus, and severe systemic
58 inflammation are mechanisms implicated in its development. We investigated the association
59 between inflammatory markers (C-reactive protein, procalcitonin, D-dimer, lactate
60 dehydrogenase, and ferritin) in patients infected with SARS-CoV-2 and the development of
61 AKI. **Methods:** A prospective cohort study performed at the Civil Hospital (Dr. Juan I.
62 Menchaca) Guadalajara, Mexico, included patients aged >18 years with a diagnosis of SARS-
63 CoV-2 pneumonia confirmed by RT-PCR and who did or did not present with AKI (KDIGO)
64 while hospitalized. Biomarkers of inflammation were recorded, and kidney function was
65 estimated using the CKD-EPI formula. **Results:** 291 patients were included (68% men; mean
66 age, 57 years). The incidence of AKI was 40.5% (118 patients); 21% developed stage 1 AKI,
67 6% developed stage 2 AKI, and 14% developed stage 3 AKI. The development of AKI was
68 associated with phosphate higher ($p = 0.002$) (RR 1.39, CI 95% 1.13 – 1.72), high
69 procalcitonin levels at hospital admission ($p = 0.005$) (RR 2.09, CI 95% 1.26-3.50), and high
70 APACHE scores ($p = 0.011$) (RR 2.0, CI 95% 1.17-3.40). The survival analysis free of AKI
71 according to procalcitonin levels and APACHE scores demonstrated a lower survival in
72 patients with procalcitonin >0.5 ng/ml ($p = 0.001$) and APACHE >15 points ($p = 0.004$).
73 **Conclusions:** phosphate, high procalcitonin levels, and APACHE scores >15 were predictors
74 of AKI development in patients hospitalized with COVID-19.

75 **Key words.** Acute kidney injury, SARS-CoV-2, inflammatory markers.

76

77

78

79

80

81

82

83 **Introduction.**

84 The coronavirus 19 (COVID-19) pandemic, which originated with the novel coronavirus
85 (SARS-CoV-2), caused 318 thousand deaths in Mexico as of February 2022 (1). Older adults
86 with comorbidities(2, 3) are at a higher risk of complications from SARS-CoV-2 infections.
87 Kidney damage is one of the main complications and can be demonstrated by the presence of
88 hematuria, proteinuria (4-6), and the development of acute kidney injury (AKI), with high
89 incidence reported in hospitalized patients.(7-10) The severity leads to even higher mortality,
90 which has a multifactorial etiology (11, 12). Nevertheless, baseline characteristics, patient
91 interventions in critical care, and organ crosstalk are mechanisms that influence the
92 appearance of AKI, but possible direct injury by the virus on kidney cells (podocytes,
93 proximal tubule cells, and the epithelial cells of Bowman’s capsule (13-15)) and uncontrolled
94 systemic inflammation are factors that also influence its development and severity in patients
95 with COVID-19 (4, 16, 17). Inflammation and the consequent increase in some biomarkers
96 also appear to be associated with kidney damage and poor outcomes (2, 3, 18-25). In fact, the
97 therapeutic conduct for the prevention of developing AKI associated with COVID-19 is
98 similar to other etiologies (avoiding nephrotoxins, periodic review of serum creatinine (SCr),
99 urinary output, and hemodynamic monitoring), and in critically ill patients with COVID-19, it
100 could reduce the appearance or severity of AKI (26). Our hospital has been a referral center
101 for patients without social security throughout the pandemic, and the limitations of some
102 resources, such as urinary markers (neutrophil gelatinase-associated lipocalin (NGAL) and
103 kidney injury molecule 1 (KIM-1)), demand the use of low-cost inflammatory markers to
104 predict the development of AKI. Our objective was to determine the existing association
105 between CRP, PCT, D-dimer, LDH, and ferritin levels and the development and severity of
106 AKI in patients hospitalized with pneumonia caused by SARS-CoV-2 without social security.

107 **Methods**

108 A prospective cohort study was performed in patients without social security coverage
109 (Internal Medicine Department “Dr. Juan I. Menchaca” Civil Hospital in Guadalajara) from
110 March 1, 2020, to March 1, 2021. All patients tested positive for SARS-CoV-2 using reverse
111 transcriptase polymerase chain reaction (RT-PCR). Based on the development of AKI using
112 the Kidney Disease Improving Global Outcomes (KDIGO) classification, patients were
113 classified into two groups: those with and without AKI. All patients in our study had normal

114 kidney function when admitted to the hospital, and we could not clinically determine
115 infections other than COVID-19.

116 *Data collection*

117 Quantitative polymerase chain reaction (RT-PCR) was used to determine the presence of
118 SARS-CoV-2 in the nasopharyngeal swabs. All registered patients were tested for
119 inflammatory biomarkers (lactate dehydrogenase, ferritin, highly sensitive C-reactive protein,
120 D-dimer, and procalcitonin) upon admission and during hospitalization, and the following
121 data were collected: age, sex, history of smoking, alcoholism, prescribed medication use, and
122 comorbidities. The patients' anthropometric characteristics and presence of other infections
123 (as documented by clinical evaluation or confirmed by any microbiological method) were also
124 recorded. The following biochemical variables were recorded: glucose, urea, SCr, uric acid,
125 glycated hemoglobin, lipids, liver enzymes, electrolytes, hemoglobin, platelets, leukocytes,
126 and lymphocytes. Imaging studies, such as chest radiography or tomography, were performed
127 on all patients upon hospital admission. Disease severity was assessed using the Acute
128 Physiology and Chronic Health Evaluation II (APACHE II) scoring system and sequential
129 organ failure assessment (SOFA). Glomerular filtration rate (eGFR) was estimated using the
130 CKD-EPI formula (27).

131 Patients with chronic kidney disease (CKD), kidney transplant, obstructive kidney
132 comorbidities, single kidney, neoplastic or autoimmune diseases, chronic use of anti-
133 inflammatory drugs, and use of immunosuppressant drugs were excluded from the study.

134 The present study complies with the ethical principles for medical research in human beings
135 as stipulated by the Declaration of Helsinki, 64th General Assembly, Fortaleza, Brazil,
136 October 2013, in addition to adhering to the standards of good clinical practice. All
137 procedures were performed according to the national regulations stipulated in the General
138 Health Legal Guidelines for Health Care Research in Mexico, 2nd Title, Ethical Aspects for
139 Research in Human Beings, Chapter 1, Article 17. The study protocol was reviewed and
140 approved by the Ethics Committee of the Hospital Civil de Guadalajara, "Dr. Juan I
141 Menchaca" (*HCG-JIM*). Registration number: 17CI14 039 116 COFEPRIS. Guadalajara,
142 Jalisco, México.

143 **Consent to participate statement**

144 All patients signed informed consent forms prior to hospital admission and provided consent
145 to participate in the study.

146 ***Inflammatory markers***

147 **Procalcitonin.** Measurements were performed using the sandwich principle of an automated
148 electrochemiluminescent immunoassay (Cobas E411,Roche).

149 **Ferritin.** Measured using the immunoturbidimetric assay: Image 800 (Dyasys).

150 **Highly sensitive C-reactive protein (hsCRP).** Measurements were performed using a
151 particle-enhanced immunoturbidimetric assay Cobas® c501 (Roche).

152 **D-Dimer.** Measured using an immunochromatography assay: Ramp®.

153

154 ***Definitions***

155 **SARS CoV-2 pneumonia:** defined by the National Institutes of Health as individuals with
156 SARS-CoV-2 infection confirmed by RT-PCR testing who have SpO₂ <94% on room air at
157 sea level, a ratio of arterial partial pressure of oxygen to fraction of inspired oxygen
158 (PaO₂/FiO₂) <300 mmHg, respiratory frequency >30 breaths/min, or lung infiltrates >50%
159 (28).

160 **Acute kidney injury (AKI) (29):** An abrupt decrease in GFR manifested by an increase in
161 SCr or oliguria within the first 48 hours to seven days.

162 We classified AKI considering only the increase in SCr:

163 AKI1: Increase in SCr 1.5 to 1.9 times the baseline level, or an increase of >0.3 mg/dl.

164 AKI2: Increase in SCr 2 to 2.9 times the baseline level.

165 AKI3: Increase in SCr by 3 times the baseline, an increase of SCr >4 mg/dl, or the onset of
166 renal replacement therapy.

167

168 ***Statistical analysis***

169 The data are presented as mean ± standard deviation or median, numbers, and percentages
170 where appropriate. Student's t-test or the Mann-Whitney U test, depending on the distribution,
171 was used to compare groups. The Cox proportional hazards model was used to estimate the
172 risk of AKI. Survival free of AKI and mortality was evaluated using the Kaplan-Meier test.
173 Statistical analysis was performed using SPSS™ software, version 17. Statistical significance
174 was set at $p < 0.05$.

175

176

177 Results

178 A total of 291 patients were eligible for inclusion in this study. The average age was 57±14
 179 years, and 68% (n=198) corresponded to the male sex. At the time of hospital admission, the
 180 average body mass index (BMI) was 31 kg/m², and approximately 40% of the patients had an
 181 associated comorbidity (DM or SAH). Ninety-five percent (95%) of the patients required
 182 some form of supplementary oxygen, and 20% were categorized as having severe illness
 183 requiring high-flow nasal cannulas and/or invasive mechanical ventilation (IMV) with an
 184 average of 9.5 days of hospitalization. On admission, no infectious processes other than the
 185 infection due to COVID-19, and all patients received dexamethasone at a dosage of 6 mg/day
 186 for 10 days during their hospital stay. The baseline characteristics of the patients are presented
 187 in TABLE 1.

188 **Table 1. Demographic characteristics of patients with acute kidney injury (AKI) and**
 189 **COVID-19.**

Characteristics	Total n=291	AKI n=118	No AKI n=173
Age (years)	57 ± 14	61 ± 14*	54 ± 13*
Sex- Masculine, n (%)	198 (68)	88 (75) *	110 (64) *
Smoking, n (%)	89 (31)	41 (35)	48 (28)
Hospitalization (days)	9.5 ± 7.0	12 ± 7.8*	7.7 ± 5.7*
Comorbidities			
BMI, (Kg/m ²)	30.9 ± 6.9	31.2 ± 7.5	30.6 ± 6.4
Diabetes, n (%)	113 (39)	55 (46.6) *	58 (33.5) *
Hypertension, n (%)	112 (38)	58 (49.2) *	54 (31.2) *
Oxygen requirement n (%)			
No use	5 (1.7%)	----	5 (2.9%)
Nasal prongs	94 (32.3%)	30 (25.5%)	64 (37%)
Mask	133 (45.7%)	49 (41.5%)	84 (48.6%)
High flow	42 (14.4%)	28 (23.7%)	14 (8 %)
CPAP	1 (0.3%)	----	1 (0.6)
IMV	16 (5.5%)	11 (9.3%)	5 (2.9)

Medications use			
Metformin, n (%)	72 (25)	38 (32.2) *	34 (19.7) *
ACEi or ARBs, n (%)	75 (26)	25 (21)	50 (29)
Diuretics, n (%)	51 (18)	44 (37) *	7 (4) *
Dexamethasone, n (%)	285 (97.9)	116 (98.3)	169 (98)
Evaluation of scales			
APACHE II (pts)	9.70 ± 5.43	12.7 ± 6.0*	7.7 ± 3.9*
SOFA (pts)	3.06 ± 2.40	4.1 ± 3.0*	2.40 ± 1.50*
Laboratory exams at admission			
Hemoglobin (gr/dL)	14.65 ± 2.30	14.4 ± 2.4	14.8 ± 2.2
Leukocytes (x10 ⁹ /L)	11.16 ± 5.21	12.6 ± 5.58	10.0 ± 4.7
Lymphocytes (x10 ⁹ /L)	9.73 ± 5.17	0.94 ± 0.52	1.0 ± 0.51
Platelets (x10 ⁹ /L)	263 ± 89	266 ± 91	260 ± 87
Glucose (mg/dL)	183 ± 121	215 ± 151*	161 ± 88*
Hemoglobin A1c (%)	7.9 ± 2.5	8.18 ± 2.6	7.8 ± 2.4
Inflammatory markers at admission			
LDH (u/L)	391 ± 169	428 ± 166	367 ± 168
Ferritin (µg/L)	815 ± 529	884 ± 592	737 ± 486
D-Dimer (mg/mL)	434(170-1483)	670(230- 2706)*	327(148-927)*
CRP (mg/dL)	148 ± 108	158 ± 110	142 ± 107
Procalcitonin (ng/mL)	0.28(0.11-.77)	0.72(0.34-2.01)*	0.16(0.09-.34)*
Severe Sepsis/Septic Shock, n (%)	66 (23)	58 (49) *	8 (4.6) *
Creatinine, at baseline (mg/dL)	.80 ± 0.19	0.87 ± 0.22	0.74 ± 0.15
Stages of AKI, n (%)			
1	---	61(51.7%)	---
2	---	16 (13.6 %)	---
3	---	41 (34.7%)	---

Recovery from AKI, n (%)			
Yes	---	65 (55)	---
No	---	53 (45)	---

190 **AKI:** acute kidney injury; **BMI:** body mass index; **CRP:** C-reactive protein; **LDH:** lactate
191 dehydrogenase; **CPAP:** continuous positive airway pressure; **IMV:** invasive mechanical
192 ventilation. **ACEi or ARBs:** angiotensin-converting enzyme inhibitors or angiotensin
193 receptor blockers * $p<0.05$ Comparison between groups with and without AKI.

194

195 *Acute kidney injury (AKI):* AKI was recorded in 40.5% (118 of the 291 patients). Seventy-one
196 patients (21%) had stage 1 AKI, 16 (6%) had stage 2 AKI, and 41 (14%) had stage 3 AKI.
197 The development of severe sepsis or septic shock during follow-up was documented in 49%
198 (58 of 118) ($p<0.05$). In the group that developed AKI, male sex predominated (75% vs. 64%
199 in the group without AKI, respectively), older age (61 vs. 54 years), and prolonged hospital
200 stay (12 vs. 7.7 days) ($p<0.05$). Approximately 50% of patients with AKI had some type of
201 associated comorbidity (DM or SAH) compared to only 30% in the group without AKI
202 ($p<0.05$). The use of dexamethasone, angiotensin-converting enzyme inhibitors (ACEi), and
203 angiotensin receptor blockers (ARBs) was similar in both groups, whereas the use of diuretics
204 was higher in patients with AKI. The highest points in severity on the APACHE II and SOFA
205 scores at the time of hospital admission were recorded in patients who developed AKI
206 ($p<0.05$). Baseline hemoglobin, platelets, leukocytes, lymphocytes, CRP, LDH, and ferritin
207 levels at hospital admission did not differ between groups, while glucose levels (215 vs. 161),
208 PCT (0.72 vs. 0.16), and D-dimer (670 mg/dL vs. 327 mg/dL) ($p=0.001$) were significantly
209 higher in patients with AKI than in those without AKI. During follow-up, inflammatory
210 markers in AKI stages 2 and 3 presented higher levels of PCT on days 6 and 12 ($p = 0.009$
211 and $p = 0.012$, respectively), ferritin on days 6 and 12 ($p=NS$), and D-dimer on day 6 ($p=$
212 0.017). TABLE 2

213

214

215

216

217

218 **Table 2. Markers of inflammation on hospitalization and during follow-up in patients**
 219 **with COVID-19 and acute kidney injury (AKI).**

	AKI total N = 118	AKI 1 N = 61	AKI 2 and 3 N = 57
Ferritin			
On hospitalization	884±592	839±479	933±699
Day-3	815±508	637±392	964±520
Day-6	846±499	594±423	1111±439
Day-12	972±510	781±516	1104±482
LDH (u/L)			
On hospitalization	428±166	396±168	462±158
Day-3	474±391 [§]	388±249	578±498
Day-6	383±157	368±132	416±176
Day-12	339±140	340±153	339±133
D-Dimer (ng/mL)			
On hospitalization	670 (230-2706)	543 (210-1830)	970 (274-3260)
Day-3	1259 (472-4308)	921(239-3683)	2264 (855-2264)
Day-6	1727 (646-3911)	960 (588-2534)*	2928 (868-5000)*
Day-12	1782 (708-3201)	1007 (461-1940)	2234 (1702-4452)
CRP (mg/dL)			
On hospitalization	158±110	148±109	171±112
Day-3	105±100 [§]	83±86	125±107
Day-6	85±91	78±110	91±72
Day-12	115±76	81±76	143±66
Procalcitonin (ng/mL)			
On hospitalization	0.72 (0.34-2.01)	0.53 (0.22-1.13)*	1.0 (0.52-2.80)*
Day-3	0.42(0.20-1.90)	0.28 (0.15-0.64)*	1.13 (0.33-7.52)*
Day-6	0.49 (0.16-1.56)	0.23 (0.11-.62)*	1.29 (0.20-3.9)*
Day-12	1.18 (0.37-2.96)	0.43 (0.15-1.16)*	1.94 (0.56-6.10)*

220 **AKI:** acute kidney injury; **CRP:** C-reactive protein; **LDH:** lactate dehydrogenase; § $p < 0.05$ vs. No AKI
 221 * $p = < 0.05$ AKI 1 vs. AKI 2 and 3.

222

223 In the multivariate analysis, phosphate higher ($p = 0.002$, RR 1.39, CI 95% 1.13 – 1.72), PCT
224 level >0.5 ng/ml on hospitalization ($p = 0.005$, RR 2.09, CI 95% 1.26-3.50), and points >15 (p
225 $= 0.011$; RR 2.0 CI 95% 1.17-3.40) showed a significant association with the development of
226 AKI. TABLE 3

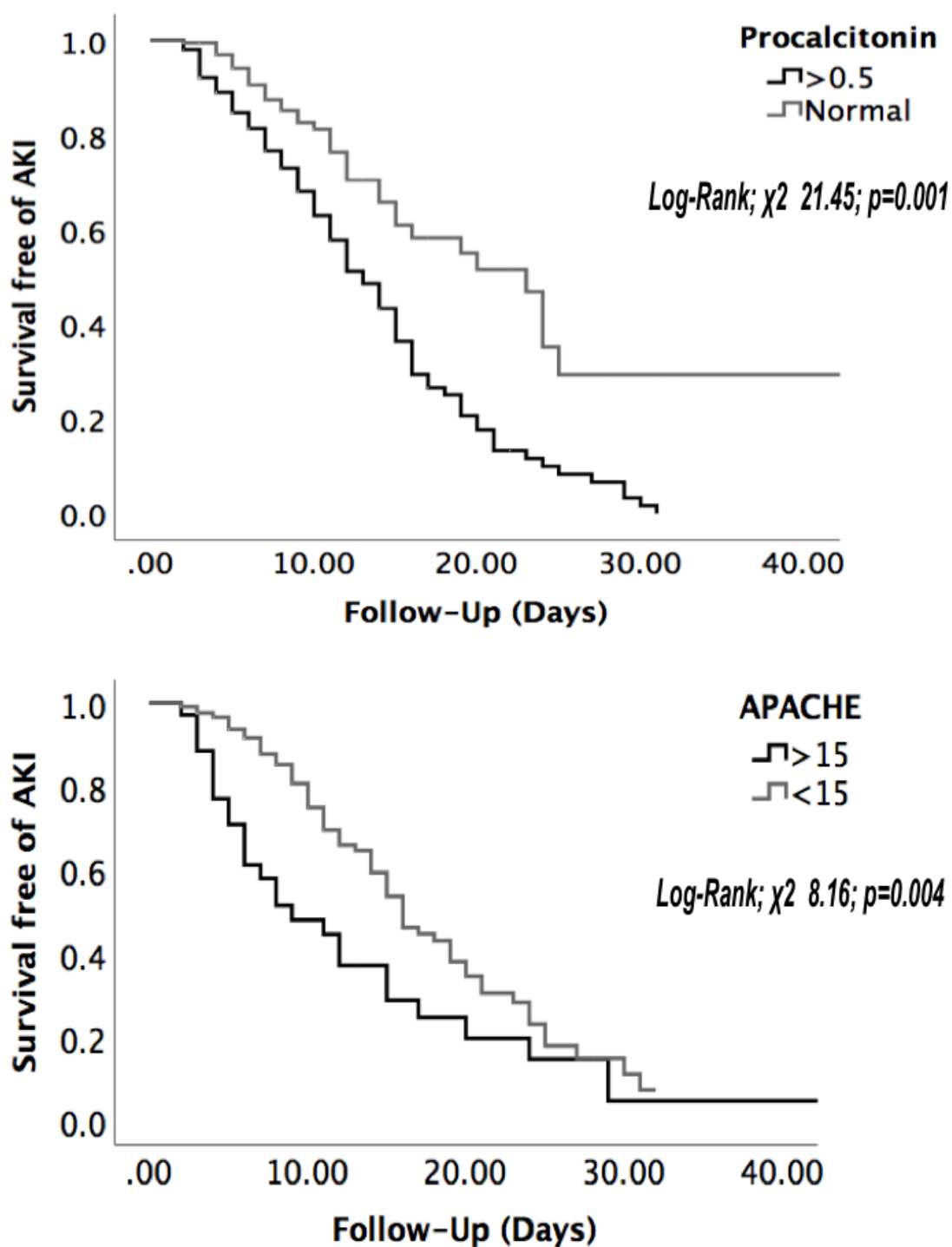
227 **Table 3. Multivariate analysis for risk factors associated with AKI in patients**
228 **with COVID-19.**

Variable	Multivariate Analysis		
	RR	CI 95%	P
Phosphate	1.39	1.13 – 1.72	0.002
APACHE	2.0	1.17 – 3.40	0.011
Procalcitonin	2.09	1.26 – 3.50	0.005

229

230 Fifty-five percent of those who developed AKI recovered kidney function, the majority of
231 whom had AKI stage 1. The survival analysis free of AKI according to PCT levels (≥ 0.5
232 ng/ml) ($p = 0.001$) and points on the APACHE score (>15 points) ($p = 0.004$) demonstrated a
233 lower survival. FIGURE 1.

Figure 1



234

235 **DISCUSSION**

236 The present study concurs with the Latin American registry (30), which describes a high
237 frequency of AKI (65%). In Mexico, incidences of 33.7 and 58.6% are reported, where half

238 correspond to severe cases, with comorbidities consistent with the present study, where we
239 documented that 30% of patients were overweight or had some degree of obesity.(31, 32)
240 The development of AKI has been associated not only with obesity but also with being
241 overweight (33). The present study did not perform an analysis of the obesity subgroups, but
242 both study groups had similar BMIs, and there was no demonstrated association with the
243 development of AKI. We found a high prevalence of SAH and DM with higher
244 concentrations of glucose and HbA1C in those who developed AKI, but these were not
245 associated with risk. Our results are consistent with the literature, where age is a risk factor
246 for severe illness (19) and leads to a higher risk of AKI (34). Hirsch et al. demonstrated a
247 higher risk of AKI (*OR 1.03, CI 95% 1.03-1.04; p < 0.001*) in those aged >60 years (7).
248 Similarly, Fisher et al. (35) reported that older age (67 vs. 60 years; *p < 0.001*) was an
249 independent risk factor for developing AKI. In Mexico, Casas-Aparicio *et al.* associated
250 higher age with AKI development (*OR 1.07, CI 95% 1.01 - 1.13; p = 0.024*) (31). In our
251 cohort, although the AKI group were older (61 ± 14 vs 54 ± 13 ; *p < 0.001*), we were unable to
252 consolidate these results not achieving statistical significance. Hyperphosphatemia is related
253 to the risks of AKI and mortality(36). In this cohort we did not find hyperphosphatemia but
254 but phosphatase levels were higher in AKI group. There is evidence that AKI is a phenomenon
255 associated with the activation of proinflammatory cytokines, and with this, it calls for the use
256 of markers of kidney injury (27). Some biomarkers predict AKI(37); however, the high costs
257 and lack of availability of these tests in our region forced us to use biochemical parameters
258 that are within reach in our practice to predict AKI events. PCT is barely detectable in healthy
259 individuals; however, diverse conditions tend to elevate it (surgery, trauma, burns,
260 pancreatitis, and sepsis), where levels can be markedly high (38-42). One of the advantages of
261 PCT is its rapid increase 6 h after the onset of the inflammatory process (27). The elimination
262 pathway of PCT is not clear, but due to its low molecular weight and deterioration of kidney
263 function, it can elevate its levels; therefore, it is not a reliable parameter in the case of illness
264 because the thresholds are different (43-45). Considering this aspect, the present study
265 excluded patients with the onset of deterioration of kidney function and any patient who had
266 conditions that would affect PCT values. The present multivariate analysis showed a
267 significant risk for the development of AKI, with PCT rates >0.5 ng/ml at the moment of
268 hospitalization. Some studies have demonstrated an association between PCT and the
269 development of kidney damage in contexts other than COVID-19 (20, 38-40). Feng *et al.*
270 showed the sensitivity (76%) and specificity (75%) of PCT in predicting AKI (*OR 9.63, 95%*
271 *CI 95% 4.38–21.18*) (38), and Chun K. *et al.* (39) reported that in septic patients hospitalized

272 in an intensive care unit (ICU), PCT was significantly high ($p < 0.001$) and was associated
273 with AKI ($OR\ 1.006, 1,000-1,011; p = 0,035$). In the present study, 50% of the patients who
274 developed AKI had a case of severe sepsis or septic shock that developed during their hospital
275 stay ($p < 0.05$); however, our analysis did not demonstrate an association of the risk for the
276 development of AKI. Regarding COVID-19, Wang *et al.* found that PCT levels were a
277 predictor of kidney damage (46). This association can be measured by an exaggerated
278 inflammatory response, even if the pathophysiological mechanism is unclear (47, 48). As a
279 crucial component of the inflammatory cascade, the expression of PCT can be correlated with
280 the levels of systemic inflammation and the development of AKI in patients with COVID-19
281 (63). Procalcitonin is a chemoattractant produced by monocytes in the inflammatory area,
282 which contributes to the increase and recruitment of parenchymal cells with greater release of
283 cytokines associated with acute kidney damage (39). Another implicated mechanism is the
284 direct toxic effect of PCT on mesangial cells and apoptosis (48). Additionally, other markers
285 demonstrate increments dependent on the reduction of the GFT (49), and in AKI, CRP and D-
286 dimer levels have been shown to be high (31). The reduction in kidney function can explain
287 our results of the increase in D-dimer levels predominantly in stages 2 and 3 of AKI;
288 however, the analysis did not show an association with the risk for AKI. In severely ill
289 patients, the APACHE II score is used over the long term to predict hospital mortality up to
290 28 days in different contexts (sepsis and pancreatitis). Zou *et al.* documented excellent
291 discriminative power for mortality in patients with COVID-19 with point scores ≥ 17 (50). In
292 the context of COVID-19, the APACHE II score was also associated with AKI in a Latin
293 American cohort ($OR\ 1.97, CI\ 95\% 1.08-2.64; p < 0.05$), with higher mortality in those who
294 had higher point scores ($OR\ 1.08, CI\ 95\%, 1.02-1.98; p < 0.05$) and in those who developed
295 stage 3 AKI ($OR\ 1.11, CI\ 95\%, 1.05-2.57; p < 0.05$). These data support that in COVID-19
296 patients, AKI is a decisive phenomenon in the prognosis of these patients (67). In different
297 studies on patients with COVID-19, higher APACHE II scores have been associated with
298 poor prognosis and AKI severity (68, 69). We found that >15 points on the APACHE II score
299 demonstrated significance for the development of AKI, which could be explained by the
300 severity of the clinical scenario of COVID-19 and the patient's comorbidities upon
301 hospitalization. Until now, it remains unknown whether recovery from AKI in COVID-19
302 differs from other forms of AKI, and the direct, long-term impact of the SARS CoV-2 virus
303 on kidney function in those who regain function remains unclear; however, the
304 recommendation is a follow-up period of at least 2 to 3 months(51). Despite the high
305 incidence of AKI, the majority of our patients had a favorable prognosis regarding recovery of

306 kidney function, since more than half of the patients studied had an improvement in GFR;
307 however, progression from stages 2 to 3 was associated with poor recovery.

308 **CONCLUSIONS**

309 In this retrospective cohort, significantly high PCT levels were found on hospital admission in
310 patients who developed AKI, and this was a predictor of AKI development. The trajectory of
311 PCT throughout the follow-up did not show significant differences between those who did
312 and did not develop AKI. Therefore, the use of PCT reinforces the importance of this marker
313 as a predictor for the development of AKI in patients with COVID-19 infection without
314 superinfections when admitted to the hospital.

315 **LIMITATIONS**

316 The present study had some limitations. We recognize that this study is unicentric. However,
317 being a referral center for patients infected with SARS-CoV-2 who do not have social security
318 in our region favors extrapolation of the results to other populations, especially in those with
319 limited access to health care. The majority of patients before hospitalization had passed a
320 considerable amount of time since acquiring the viral infection; therefore, subclinical bacterial
321 superinfection could not be ruled out. Economic limitations (lack of treatment with
322 continuous slow therapies) could influence the lack of recovery of kidney function, especially
323 in those who developed severe AKI. Finally, the lack of measurement and/or comparison of
324 markers valid for AKI does not permit the determination of PCT levels.

325 **Data Availability**

326 Most clinical data are restricted to protecting information from misuse. The data may be
327 shared by the OPD, Hospital Civil de Guadalajara, and Dr. Juan I Menchaca (*HCG-JIM*) after
328 approval from the Ethics Committee of the Institution. The data supporting the findings of this
329 study are available from the corresponding author upon reasonable request.

330 **Conflict of interest**

331 All the authors have declared no conflicts of interest.

332 **Funding statement**

333 The study did not receive any private or governmental funding.

334 **Acknowledgements**

335 Not applicable.

336 **Author Contributions**

337 a) Conception and design for: Jorge Andrade-Sierra, Claudia Delgado Astorga and
338 Enrique Rojas Campos.

339 b) Analysis and interpretation of data: Jorge Andrade-Sierra, Claudia Delgado Astorga,
340 Miriam Gabriela Nava Vargas and Enrique Rojas Campos.

341 c) Drafting and critically revising the article for important intellectual content: Jorge
342 Andrade-Sierra, Karla Hernández Morales, Carlos A Andrade Castellanos, Javier
343 Arellano Arteaga, Andrade-Ortega Antonio de Jesús, Luis Gerardo González-Correa.

344 d) Final approval of the version to be published: All the team.

345

346

347

348

349 **REFERENCES**

350 1. <https://covid19.who.int/region/amro/country/mx>.

351 2. Tian W, Jiang W, Yao J, Nicholson CJ, Li RH, Sigurslid HH, et al. Predictors of
352 mortality in hospitalized COVID-19 patients: A systematic review and meta-analysis.
353 *J Med Virol.* 2020;92(10):1875-83.

354 3. Bertsimas D, Lukin G, Mingardi L, Nohadani O, Orfanoudaki A, Stellato B, et al.
355 COVID-19 mortality risk assessment: An international multi-center study. *PLoS One.*
356 2020;15(12):e0243262.

357 4. Cheng Y, Luo R, Wang K, Zhang M, Wang Z, Dong L, et al. Kidney disease is
358 associated with in-hospital death of patients with COVID-19. *Kidney Int.*
359 2020;97(5):829-38.

360 5. Izzedine H, Jhaveri KD. Acute kidney injury in patients with COVID-19: an update
361 on the pathophysiology. *Nephrol Dial Transplant.* 2021;36(2):224-6.

362 6. Pei G, Zhang Z, Peng J, Liu L, Zhang C, Yu C, et al. Renal Involvement and
363 Early Prognosis in Patients with COVID-19 Pneumonia. *J Am Soc Nephrol.*
364 2020;31(6):1157-65.

365 7. Hirsch JS, Ng JH, Ross DW, Sharma P, Shah HH, Barnett RL, et al. Acute
366 kidney injury in patients hospitalized with COVID-19. *Kidney Int.* 2020;98(1):209-18.

367 8. Moledina DG, Simonov M, Yamamoto Y, Alausa J, Arora T, Biswas A, et al. The
368 Association of COVID-19 With Acute Kidney Injury Independent of Severity of Illness:
369 A Multicenter Cohort Study. *Am J Kidney Dis.* 2021;77(4):490-9 e1.

370 9. Singh J, Malik P, Patel N, Pothuru S, Israni A, Chakinala RC, et al. Kidney
371 disease and COVID-19 disease severity-systematic review and meta-analysis. *Clin*
372 *Exp Med.* 2022;22(1):125-35.

373 10. Raina R, Mahajan ZA, Vasistha P, Chakraborty R, Mukunda K, Tibrewal A, et al.
374 Incidence and Outcomes of Acute Kidney Injury in COVID-19: A Systematic Review.
375 *Blood Purif.* 2022;51(3):199-212.

- 376 11. Ali H, Daoud A, Mohamed MM, Salim SA, Yessayan L, Baharani J, et al. Survival
377 rate in acute kidney injury superimposed COVID-19 patients: a systematic review and
378 meta-analysis. *Ren Fail.* 2020;42(1):393-7.
- 379 12. Lim JH, Park SH, Jeon Y, Cho JH, Jung HY, Choi JY, et al. Fatal Outcomes of
380 COVID-19 in Patients with Severe Acute Kidney Injury. *J Clin Med.* 2020;9(6).
- 381 13. Diao B, Wang C, Wang R, Feng Z, Zhang J, Yang H, et al. Human kidney is a
382 target for novel severe acute respiratory syndrome coronavirus 2 infection. *Nat*
383 *Commun.* 2021;12(1):2506.
- 384 14. Abbate M, Rottoli D, Gianatti A. COVID-19 Attacks the Kidney: Ultrastructural
385 Evidence for the Presence of Virus in the Glomerular Epithelium. *Nephron.*
386 2020;144(7):341-2.
- 387 15. Martinez-Rojas MA, Vega-Vega O, Bobadilla NA. Is the kidney a target of SARS-
388 CoV-2? *Am J Physiol Renal Physiol.* 2020;318(6):F1454-F62.
- 389 16. Ronco C, Reis T. Kidney involvement in COVID-19 and rationale for
390 extracorporeal therapies. *Nat Rev Nephrol.* 2020;16(6):308-10.
- 391 17. Nadim MK, Forni LG, Mehta RL, Connor MJ, Jr., Liu KD, Ostermann M, et al.
392 COVID-19-associated acute kidney injury: consensus report of the 25th Acute
393 Disease Quality Initiative (ADQI) Workgroup. *Nat Rev Nephrol.* 2020;16(12):747-64.
- 394 18. Joannidis M, Forni LG, Klein SJ, Honore PM, Kashani K, Ostermann M, et al.
395 Lung-kidney interactions in critically ill patients: consensus report of the Acute
396 Disease Quality Initiative (ADQI) 21 Workgroup. *Intensive Care Med.* 2020;46(4):654-
397 72.
- 398 19. Ou M, Zhu J, Ji P, Li H, Zhong Z, Li B, et al. Risk factors of severe cases with
399 COVID-19: a meta-analysis. *Epidemiol Infect.* 2020;148:e175.
- 400 20. Huang I, Pranata R, Lim MA, Oehadian A, Alisjahbana B. C-reactive protein,
401 procalcitonin, D-dimer, and ferritin in severe coronavirus disease-2019: a meta-
402 analysis. *Ther Adv Respir Dis.* 2020;14:1753466620937175.
- 403 21. Kermali M, Khalsa RK, Pillai K, Ismail Z, Harky A. The role of biomarkers in
404 diagnosis of COVID-19 - A systematic review. *Life Sci.* 2020;254:117788.
- 405 22. Ciaccio M, Agnello L. Biochemical biomarkers alterations in Coronavirus Disease
406 2019 (COVID-19). *Diagnosis (Berl).* 2020;7(4):365-72.
- 407 23. Menez S, Moledina DG, Thiessen-Philbrook H, Wilson FP, Obeid W, Simonov M,
408 et al. Prognostic Significance of Urinary Biomarkers in Patients Hospitalized With
409 COVID-19. *Am J Kidney Dis.* 2022;79(2):257-67 e1.
- 410 24. Mahmudpour M, Roozbeh J, Keshavarz M, Farrokhi S, Nabipour I. COVID-19
411 cytokine storm: The anger of inflammation. *Cytokine.* 2020;133:155151.
- 412 25. Ragab D, Salah Eldin H, Taeimah M, Khattab R, Salem R. The COVID-19
413 Cytokine Storm; What We Know So Far. *Front Immunol.* 2020;11:1446.
- 414 26. Ronco C, Reis T, Husain-Syed F. Management of acute kidney injury in patients
415 with COVID-19. *Lancet Respir Med.* 2020;8(7):738-42.
- 416 27. Levey AS, Stevens LA, Schmid CH, Zhang YL, Castro AF, 3rd, Feldman HI, et al.
417 A new equation to estimate glomerular filtration rate. *Ann Intern Med.*
418 2009;150(9):604-12.
- 419 28. <https://www.covid19treatmentguidelines.nih.gov/overview/clinical-spectrum/> [
420 29. Levey AS, Eckardt KU, Dorman NM, Christiansen SL, Hoorn EJ, Ingelfinger JR,
421 et al. Nomenclature for kidney function and disease: report of a Kidney Disease:
422 Improving Global Outcomes (KDIGO) Consensus Conference. *Kidney Int.*
423 2020;97(6):1117-29.
- 424 30. Lombardi R, Ferreira A, Ponce D, Claire-Del Granada R, Aroca G, Venegas Y,
425 et al. Latin American registry of renal involvement in COVID-19 disease. *The*

- 426 relevance of assessing proteinuria throughout the clinical course. *PLoS One*.
427 2022;17(1):e0261764.
- 428 31. Casas-Aparicio GA, Leon-Rodriguez I, Alvarado-de la Barrera C, Gonzalez-
429 Navarro M, Peralta-Prado AB, Luna-Villalobos Y, et al. Acute kidney injury in patients
430 with severe COVID-19 in Mexico. *PLoS One*. 2021;16(2):e0246595.
- 431 32. Chavez-Iniguez JS, Cano-Cervantes JH, Maggiani-Aguilera P, Lavelle-Gongora
432 N, Marcial-Meza J, Camacho-Murillo EP, et al. Mortality and evolution between
433 community and hospital-acquired COVID-AKI. *PLoS One*. 2021;16(11):e0257619.
- 434 33. van Son J, Oussaada SM, Sekercan A, Beudel M, Dongelmans DA, van Assen
435 S, et al. Overweight and Obesity Are Associated With Acute Kidney Injury and Acute
436 Respiratory Distress Syndrome, but Not With Increased Mortality in Hospitalized
437 COVID-19 Patients: A Retrospective Cohort Study. *Front Endocrinol (Lausanne)*.
438 2021;12:747732.
- 439 34. Chan L, Chaudhary K, Saha A, Chauhan K, Vaid A, Zhao S, et al. AKI in
440 Hospitalized Patients with COVID-19. *J Am Soc Nephrol*. 2021;32(1):151-60.
- 441 35. Fisher M, Neugarten J, Bellin E, Yunes M, Stahl L, Johns TS, et al. AKI in
442 Hospitalized Patients with and without COVID-19: A Comparison Study. *J Am Soc*
443 *Nephrol*. 2020;31(9):2145-57.
- 444 36. Moon H, Chin HJ, Na KY, Joo KW, Kim YS, Kim S, et al. Hyperphosphatemia
445 and risks of acute kidney injury, end-stage renal disease, and mortality in hospitalized
446 patients. *BMC Nephrol*. 2019;20(1):362.
- 447 37. Lin J, Chen J, Wu D, Li X, Guo X, Shi S, et al. Biomarkers for the early prediction
448 of contrast-induced nephropathy after percutaneous coronary intervention in adults:
449 A systematic review and meta-analysis. *Angiology*. 2022;73(3):207-17.
- 450 38. Feng Y, He H, Jia C, Xu Z, Li Y, Liao D. Meta-analysis of procalcitonin as a
451 predictor for acute kidney injury. *Medicine (Baltimore)*. 2021;100(10):e24999.
- 452 39. Chun K, Chung W, Kim AJ, Kim H, Ro H, Chang JH, et al. Association between
453 acute kidney injury and serum procalcitonin levels and their diagnostic usefulness in
454 critically ill patients. *Sci Rep*. 2019;9(1):4777.
- 455 40. Nie X, Wu B, He Y, Huang X, Dai Z, Miao Q, et al. Serum procalcitonin predicts
456 development of acute kidney injury in patients with suspected infection. *Clin Chem*
457 *Lab Med*. 2013;51(8):1655-61.
- 458 41. Dias BH, Rozario AP, Olakkengil SA, V A. Procalcitonin Strip Test as an
459 Independent Predictor in Acute Pancreatitis. *The Indian journal of surgery*.
460 2015;77(Suppl 3):1012-7.
- 461 42. Simsek O, Kocael A, Kocael P, Orhan A, Cengiz M, Balci H, et al. Inflammatory
462 mediators in the diagnosis and treatment of acute pancreatitis: pentraxin-3,
463 procalcitonin and myeloperoxidase. *Archives of Medical Science*. 2018;14(2):288-96.
- 464 43. Level C, Chauveau P, Delmas Y, Lasseur C, Pelle G, Peuchant E, et al.
465 Procalcitonin: a new marker of inflammation in haemodialysis patients? *Nephrol Dial*
466 *Transplant*. 2001;16(5):980-6.
- 467 44. Nakamura Y, Murai A, Mizunuma M, Ohta D, Kawano Y, Matsumoto N, et al.
468 Potential use of procalcitonin as biomarker for bacterial sepsis in patients with or
469 without acute kidney injury. *J Infect Chemother*. 2015;21(4):257-63.
- 470 45. Amour J, Birenbaum A, Langeron O, Le Manach Y, Bertrand M, Coriat P, et al.
471 Influence of renal dysfunction on the accuracy of procalcitonin for the diagnosis of
472 postoperative infection after vascular surgery. *Crit Care Med*. 2008;36(4):1147-54.
- 473 46. Wang RR, He M, Kang Y. A risk score based on procalcitonin for predicting acute
474 kidney injury in COVID-19 patients. *J Clin Lab Anal*. 2021;35(6):e23805.

- 475 47. Okusa MD. The inflammatory cascade in acute ischemic renal failure. *Nephron*.
476 2002;90(2):133-8.
- 477 48. Araujo M, Doi SQ, Palant CE, Nylen ES, Becker KL. Procalcitonin induced
478 cytotoxicity and apoptosis in mesangial cells: implications for septic renal injury.
479 *Inflamm Res*. 2013;62(10):887-94.
- 480 49. Spring JL, Winkler A, Levy JH. The influence of various patient characteristics on
481 D-dimer concentration in critically ill patients and its role as a prognostic indicator in
482 the intensive care unit setting. *Clin Lab Med*. 2014;34(3):675-86.
- 483 50. Zou X, Li S, Fang M, Hu M, Bian Y, Ling J, et al. Acute Physiology and Chronic
484 Health Evaluation II Score as a Predictor of Hospital Mortality in Patients of
485 Coronavirus Disease 2019. *Crit Care Med*. 2020;48(8):e657-e65.
- 486 51. Kashani K, Rosner MH, Haase M, Lewington AJP, O'Donoghue DJ, Wilson FP,
487 et al. Quality Improvement Goals for Acute Kidney Injury. *Clin J Am Soc Nephrol*.
488 2019;14(6):941-53.

489

490

491

492 **Figure Legends**

493 **Table 1.** Demographic characteristics of patients diagnosed with acute kidney injury (AKI)
494 and COVID-19.

495 **Table 2.** Markers of inflammation on hospitalization and during follow-up in patients with
496 COVID-19 and acute kidney injury (AKI).

497 **Table 3.** Multivariate analysis for risk factors associated with acute kidney injury (AKI) in
498 patients with COVID-19.

499 **Figure 1.** Acute kidney injury-free time according to procalcitonin and APACHE score.