

Title:

Outcomes of a resource-adapted Wilms tumor treatment protocol in Lilongwe, Malawi, 2016-2021: successes and enduring barriers to cure.

Authors

1. David M. Holmes, MD
 - a. Baylor College of Medicine, Houston, TX
 - b. Address: 6838 Staffordshire Blvd, Houston, TX, 77030
 - c. Phone: 507-271-9548; Email: dh15@bcm.edu
 - d. Twitter: @DavidHolmesMD
2. Apatsa Matatiyo, MBBS
 - a. University of North Carolina Project Malawi, Lilongwe, Malawi
3. Atupele Mpasas, MBBS
 - a. Baylor College of Medicine Children's Foundation, Lilongwe, Malawi
 - b. Global Hematology-Oncology Pediatric Excellence (HOPE), Lilongwe, Malawi
4. Minke H. W. Huibers, MD, PhD
 - a. Academy and Outreach, Princess Maxima Center, Utrecht, Netherlands
 - b. Global Child health group, Amsterdam University Hospital, Amsterdam, Netherlands
5. Geoffrey Manda, MBBS, MSc
 - a. Kamuzu University of Health Sciences, Blantyre, Malawi
6. Tamiwe Tomoka, MBBS, Msc, FCPATH

- a. University of North Carolina Project Malawi, Lilongwe, Malawi
 - b. University of Malawi, Lilongwe, Malawi
7. Maurice Mulenga, MBBS, FCPATH (SA) Anat, MSc Cyto (Stell)
- a. Kamuzu Central Hospital, Lilongwe, Malawi
8. Ruth Namazzi, MD
- a. Global Hematology-Oncology Pediatric Excellence (HOPE), Kampala, Uganda
 - b. Makerere University College of Health Sciences, Kampala, Uganda
9. Parth Mehta, MD, MPH
- a. Global Hematology-Oncology Pediatric Excellence (HOPE), Houston, TX
 - b. Baylor College of Medicine, Houston, TX
 - c. Texas Children's Hospital, Houston, TX
10. Mark Zobeck, MD, MPH
- a. Global Hematology-Oncology Pediatric Excellence (HOPE), Houston, TX
 - b. Baylor College of Medicine, Houston, TX
 - c. Texas Children's Hospital, Houston, TX
11. Rizine Mzikamanda, MBBS
- a. Global Hematology-Oncology Pediatric Excellence (HOPE), Lilongwe, Malawi
 - b. Baylor College of Medicine, Houston, TX
12. Murali Chintagumpala, MD
- a. Baylor College of Medicine, Houston, TX
 - b. Texas Children's Hospital, Houston, TX

13. Carl Allen, MD, PhD

- a. Global Hematology-Oncology Pediatric Excellence (HOPE), Houston, TX
- b. Baylor College of Medicine, Houston, TX
- c. Texas Children's Hospital, Houston, TX

14. Jed G. Nuchtern, MD

- a. Baylor College of Medicine, Houston, TX
- b. Texas Children's Hospital, Houston, TX

15. Eric Borgstein, MD

- a. University of Malawi College of Medicine

16. Daniel C. Aronson, MD, PhD

- a. University Children's Hospital Zürich, Switzerland

17. Nmazuo Ozuah, MD

- a. Global Hematology-Oncology Pediatric Excellence (HOPE), Lilongwe, Malawi
- b. Kamuzu Central Hospital, Baylor College of Medicine, Houston, TX
- c. Texas Children's Hospital, Houston, TX

18. Bip Nandi, MBBChir

- a. Global Hematology-Oncology Pediatric Excellence (HOPE), Lilongwe, Malawi
- b. Baylor College of Medicine, Houston, TX
- c. Kamuzu Central Hospital, Lilongwe, Malawi

19. Casey L. McAtee, MD, MPH

- a. Global Hematology-Oncology Pediatric Excellence (HOPE), Lilongwe,
Malawi
- b. Baylor College of Medicine, Houston, TX
- c. Texas Children's Hospital, Houston, TX
- d. Twitter: mcatee_md

Disclaimers: none, all authors

Abstract

Purpose

Wilms tumor is a common renal cancer of childhood with long-term survival rates exceeding 80% in high-resource countries, yet survival remains below 50% in the low-resource settings of Africa. We assessed outcomes of a resource-adapted treatment protocol at a Malawian hospital to identify actionable factors affecting survival.

Methods:

We assessed clinical outcomes with a single-center retrospective cohort study of children diagnosed between 2016 and 2021 in Lilongwe, Malawi.

Findings:

We identified 136 patients with Wilms tumor, most commonly with stage III (25.7%) or IV disease (25.7%). Two-year overall survival (OS) was: Stage I, 78%; Stage II, 27%; Stage III, 62%; Stage IV, 23%, Stage V, 0%. Event-free survival (EFS) was: Stage I, 60%; Stage II, 0%; Stage III, 51%; Stage IV, 13%; Stage V, 0%. After death, treatment abandonment was the most common event comprising EFS, occurring in 26.5% of patients. Among 43% of patients who completed therapy, 2-year OS was 80% and EFS was 69%. Relapse was documented in 9.6% of patients. Radiotherapy was indicated for 40.4% patients, among whom only three received it due to regional unavailability. Factors associated with OS were severe acute malnutrition (Hazard ratio, HR, 1.9), increasing tumor stage (HR, 1.5), and inferior vena cava involvement (HR, 2.7). On multivariable analysis, only tumor stage remained associated with outcome.

Interpretation

Implementing a curative resource-adapted treatment protocol in an extremely resourced-constrained environment was feasible in Malawi and resulted in relatively favorable outcomes in low-stage disease, particularly among those who completed therapy. However, factors such as late-stage disease, frequent abandonment, and absent radiotherapy represent ongoing implementation barriers that should be the focus of continued research funding and intervention in Africa.

Introduction

Wilms tumor (nephroblastoma), an embryonal tumor of the kidney, is among the most common cancers of childhood.^{1,2} In high-income countries, advances in therapy have achieved long-term survival in >80% of children.^{3,4} This success is attributable to early diagnosis, multidisciplinary risk-adapted therapy, and well-resourced supportive care infrastructure.^{3,5,6} Similar outcomes have not been realized in low-and-middle income countries (LMICs) where most pediatric cancer occurs, particularly in sub-Saharan Africa where long-term survival remains dismal.⁷⁻⁹ A systematic review of Wilms tumor outcomes in the LMICs of sub-Saharan Africa from 2000-2019 found that overall survival was consistently between 20-50%.²

Such disparities are the result of limited capacity to deliver pediatric cancer care within the context of resource-constrained public health systems. Capacity limitations manifest as delayed diagnosis, treatment abandonment, personnel shortages, absent therapeutics, and limited supportive care infrastructure.^{1,10} To overcome these challenges, pediatric cancer centers in LMICs have implemented resource-adapted strategies that contextually adapt protocols to local capacity constraints, such as by lowering chemotherapy intensity to limit blood product requirements.¹¹⁻¹³

Wilms tumor is treated with chemotherapy, surgery, and radiotherapy, but access to these components remains unavailable throughout much of Africa.^{3,5} The purpose of this study was to determine the outcomes of a pragmatic, resource-adapted Wilms tumor protocol in a cancer center in Malawi, a low-income country with limited medical infrastructure typical of countries throughout sub-Saharan Africa. We also aimed to

identify actionable factors influencing mortality to continue to improve the treatment approach to Wilms tumor in similar settings.

Materials and Methods

Study design and setting

We conducted a retrospective cohort study of patients aged ≤ 18 years with Wilms tumor between January 2016 and December 2021 at Kamuzu Central Hospital (KCH) in Lilongwe, Malawi, a referral center serving a population of nine million people spanning Central and Northern Malawi. The Pediatric Oncology Unit contains 30 beds with access to chemotherapy, pathology services, oncology nursing, pediatric hematologist-oncologists, and pediatric surgeons.

Patient characteristics and diagnosis

Data were extracted from paper charts. Tumor stage and histologic grade were determined according to International Society of Paediatric Oncology (SIOP) guidelines by reviewing histological and surgical reports.¹⁴ In accordance with SIOP guidelines, patients were identified by characteristic abdominal imaging. These guidelines implement a post-surgical staging system; thus, histological and surgical evaluation are required to differentiate local stages I-III (Supplemental table 1). Patients with Stage IV and V disease were identified with imaging; otherwise, patients without surgical or histopathological data available (e.g., due to presurgical death) were categorized as unstaged. Malnutrition was diagnosed and treated by nutritionists according to World Health Organization guidelines.¹⁵

Treatment received

The treatment protocol was built upon a SIOP backbone incorporating eight weeks of pre-operative vincristine (1.5 mg/m²/dose) and dactinomycin (0.045 mg/kg/dose) for non-metastatic disease with the addition of doxorubicin (50 mg/m²/dose) for metastatic or bilateral disease. Standard chemotherapy dose adjustments were made for children <12 months.¹⁶ Post-operative chemotherapy regimens were selected according to tumor stage and tumor histology (Supplemental table 2). Surgical complications were defined as any of the following during or up to 30 days post-operatively: death, re-operation, surgical site infection, or wound dehiscence.

Patients with persistent metastatic disease at the time of nephrectomy and patients with Stage V disease were given escalated treatment intensity with cyclophosphamide (2200 mg/m²/cycle) and etoposide (500 mg/m²/cycle) added to vincristine (2 mg/m²/dose) and doxorubicin (30 mg/m²/dose) (i.e., Children's Oncology Group "Regimen M").⁴ If patients were deemed unlikely to tolerate escalated treatment intensity, the pre-operative regimen was continued. While radiotherapy is not available in Malawi, need for radiation was determined consistent with SIOP guidelines.¹⁷

The protocol was modified to accommodate resource limitations consistent with SIOP published guidelines for LMICs.¹² Specifically, pre-operative chemotherapy was extended for up to eight weeks (12 weeks for Stage V) to minimize risk of perioperative morbidity/mortality. Two additional site-specific modifications were made: 1) Patients with Stage I or II disease with low-risk histology were given five cycles of dactinomycin and vincristine-based therapy due to limited relapse salvage options in Malawi, and 2)

Selected patients with Stage III tumors who tolerated pre-operative chemotherapy were chosen to receive Regimen M post-operatively. Finally, upon frequent stockouts of dactinomycin, dactinomycin-containing regimens were substituted during these periods with doxorubicin (50 mg/m²/cycle) and cyclophosphamide (1200 mg/m²/cycle).

Statistical analysis

Overall survival was determined by vital status at patients' last encounter. A treatment-related death was defined as death during therapy unattributable to disease progression. Event-free survival was calculated using the earliest of death, disease progression, relapse, or treatment abandonment. Treatment abandonment was defined as an unplanned hiatus of ≥ 4 weeks in the scheduled curative-intent therapy plan.¹⁸ Patients were right-censored at the earlier of their last date of follow-up or March 2022.

Kaplan-Meier survival curves and Cox proportional hazards models were used to identify risk factors associated with survival. Variables assessed were age, sex, use of traditional medicine, acute malnutrition at diagnosis, tumor stage, time-to-surgery, and inferior vena cava involvement. Median follow-up time was calculated using the reverse Kaplan-Meier method.¹⁹

Analyses were performed in R.^{20,21} Data collection occurred from January-March 2022 with analysis through May 2022 in accordance with Strengthening the Reporting of Observational Studies in Epidemiology (STROBE) guidelines.²² The study was approved by institutional review boards in Malawi and the United States.

Results

Study cohort

We identified 141 patients with suspected Wilms tumor. Five patients (3.5%) with non-Wilms histology were excluded to create a study cohort of 136 patients (Table 1). Non-Wilms diagnoses included neuroblastoma, renal cell carcinoma, and mesoblastic nephroma. The median age was 3.8 years (interquartile range, IQR, 2.4-5.3). A single patient was HIV positive.

Radiological diagnoses were made by ultrasound in 123 patients (90.4%) and by computed tomography (CT) with/without ultrasound in 63 (46.3%). Chest imaging was documented by X-ray (n=98) and/or CT (n=76) in 126 patients (92.7%). The median reported duration of symptoms prior to presentation was six weeks (IQR 4-12). Moderate acute malnutrition was identified in 20 (14.7%) patients and severe acute malnutrition in 36 (26.5%) (Table 1).

Tumor characteristics and staging

Most patients had either Stage III (25.7%) or Stage IV (25.7%, Table 1) disease. Staging was unavailable for 24 (17.7%) patients, most commonly due to pre-operative death or treatment abandonment. Bilateral disease occurred in five patients (3.7%). Among those with metastatic disease, 16 (11.8%) had pulmonary metastases, 10 (7.4%) hepatic, and 7 (5.1%) both. Thirteen (9.6%) patients had tumor within the IVC. Post-operative histology reports were available for 74 patients (80% of patients undergoing nephrectomy). Among these, 8 (10.8%) were SIOP low risk tumors, 56 (75.7%) intermediate risk, and 9 (12.2%) high risk.

Therapy received

Pre-operative chemotherapy was started in 129 (94.9%) patients (Figure 1). Two patients had up-front resection for suspected mesoblastic nephroma, and five patients were discharged on palliative care. The median duration of pre-operative chemotherapy (i.e., time-to-surgery) was seven weeks (IQR, 5-11). Ninety-two patients (68%) underwent nephrectomy. The most common reasons for failure to reach nephrectomy were pre-operative death (50%) and treatment abandonment (39%).

Eighty-nine patients (65.4%) received postoperative chemotherapy for a median duration of 15 weeks (IQR, 10-22 weeks; Table 2). In total, fifty-nine patients (43.4%) completed therapy. The most common reasons for failure to complete therapy were death and treatment abandonment. Thirty-six patients (26.5%) abandoned therapy. The median time to abandonment was eight weeks (IQR, 1-17 weeks), with 53% abandoning prior to nephrectomy.

Radiotherapy was indicated for 55 patients (40.4%). Among these, three received it abroad due to its unavailability in Malawi.

Surgical outcomes

Operative or postoperative complications occurred in 12 patients (13% of nephrectomies), most often due to infection (Table 3). The 30-day re-operation rate was 4%. There were four cases of post-operative intussusception requiring laparotomy and reduction, and one case of small bowel stricture requiring laparotomy with bowel resection and anastomosis. A single intra-operative death occurred due to suspected hemorrhage versus air embolus. There were no other 30-day perioperative deaths.

Survival outcomes

Median follow-up time was 21 months (IQR, 13-31). Overall survival (OS) at one and two years was 59% (95%CI, 51-69) and 48% (95%CI, 39-60), respectively. Event free survival (EFS) was 34% (95%CI, 27-43) at both one and two years (Figure 2). Among those who completed all therapy, two-year OS was 80% (95%CI, 69-93) and EFS was 69% (95%CI, 59-82). Two-year EFS ranged from 0% in those with Stage V disease to 60% (95% CI, 45-80) in those with Stage I disease (Table 4).

Of 24 patients presenting with lung metastases, 16 (67%) had follow-up imaging. Fourteen patients (88%) had persistent lung involvement, among whom none were alive two years from diagnosis. Both patients with resolution of lung metastases are alive. Of ten patients with liver metastases at diagnosis, a single patient survived to two years. Of patients with vena cava involvement, two of thirteen survived.

Within the cohort, 39 (28.7%) patients died from disease progression, 10 (7.4%) from treatment-related causes (e.g., sepsis), and 12 (8.8%) of unknown causes at home (Table 4). Among eight patients returning to care after abandonment, two were alive two years from diagnosis. Of all deaths, 25% occurred within fifty days of diagnosis.

Thirteen children (9.6%) had documented relapse. All were started on a salvage chemotherapeutic regimen with dose-reduced ifosfamide, carboplatin, and etoposide, and four patients had repeat surgery for debulking. The median time to relapse was 15 months from diagnosis (IQR, 13-21 months). Two relapsed patients are alive at 3.6 and 4.7 years from diagnosis, one of whom received radiotherapy.

In addition to patients with persistent metastatic disease, thirteen patients with Stage III disease received escalated therapy with Regimen M post-operatively rather

than standard therapy due to absent radiotherapy. Of these, four patients (31%) were alive at 12 months, four (31%) abandoned therapy, four (31%) died, and one (8%) was lost to follow-up prior to 12 months. In comparison, of ten patients receiving standard therapy with follow-up data available to one year, nine were alive, one died, and none abandoned.

Factors Influencing Survival

Factors significantly associated with OS on univariable analysis were severe acute malnutrition (hazard ratio, HR, 1.9; 95%CI, 1.1-3.2), increasing tumor stage (HR, 1.5; 95%CI, 1.2-1.8), and vena caval tumor involvement (HR, 2.7; 95%CI, 1.4-5.4). A post-hoc multivariable analysis showed that acute malnutrition was no longer significantly associated with outcome when controlled for tumor stage at diagnosis.

Discussion

Wilms tumor is highly curable with well-established surgical techniques, minimal-to-moderately myelosuppressive chemotherapy, and external beam radiation that can be given safely to young children. Its backbone chemotherapy is relatively inexpensive, widely available, and typically well-tolerated with minimal toxicity. Wilms tumor is thus ideally suited to be cured even in resource-limited settings. Our evaluation of outcomes of a resource-adapted Wilms tumor treatment protocol in Malawi demonstrates the potential for high rates of cure for patients with low stage disease, but also the enduring barriers to broadly realizing these cure rates in resource-limited settings.

Between 2016-2021, two-year OS among patients with Wilms tumor was 48%, consistent with contemporary outcomes in the low-resource settings of sub-Saharan Africa.²³ During this period, regional OS ranged from 0-53% at approximately three years, averaging 44% and 27% in East and West Africa, respectively. Survival reported here is similar to that reported by Queen Elizabeth Central Hospital in Blantyre, Malawi where 2-year OS and EFS was 46%.⁸ By comparison, OS in relatively high-income South Africa averaged 76% during the same period.²³ In the most recent SIOP and COG reports from high-income countries, OS was >80% across all risk groups, approaching 100% in low-risk disease.^{4,16,24}

Treatment abandonment, occurring in 27% of patients, was the major determinant of event free survival (EFS) in the cohort. In regional studies, abandonment ranges from 3% in South Africa to as high as 35% in Sudan.^{9,25,26} A recent review of all-cancer abandonment across five African pediatric cancer centers reported that contemporary rates remain consistently above 10%.²⁷

While high OS among low-stage disease reflects progress within the setting of the cancer center, EFS reflects the true burden of mortality within our cohort due to abandonment. For example, OS for stage I/II disease was 71%, but EFS was reduced to 54% due primarily to abandonment. Only two patients who abandoned therapy survived to two years after completing treatment upon return, thus abandonment is most likely fatal for patients with this outcome. Addressing abandonment must be as central to resource-adapted protocols as diagnostic protocols and risk-stratification.

Treatment abandonment is a multifaceted phenomenon caused by complex structural and socioeconomic barriers that are often beyond the control of providers and

families.^{27,29–32} Financial pressures are common and include unaffordable therapy, absent transportation, and loss of parental income. Developing strategies to improve retention is a top priority among providers and organizations working in sub-Saharan Africa. For example, regional networks such as the Collaborative African Network for Childhood Cancer and Research have decreased treatment abandonment and improved outcomes for Wilms tumor through follow-up programs, robust contact networks, and direct financial support to families.^{27,33}

While our center implements an active follow-up system and utilizes financial support to families, a large catchment area with travel time to the cancer center routinely >12 hours may have contributed to our high rate of abandonment, as well as incompletely addressing the financial impact of therapy for an extremely resource-limited population. Further study into implementation strategies that are generalizable to the heterogenous array of logistical and financial challenges facing cancer centers in LMICs are essential.

Another major contributor to low survival in our setting was the high proportion of patients with advanced disease at presentation. Two-thirds of staged patients had either stage III or stage IV disease, a distribution that is consistent with other African studies and is the reciprocal of the stage distribution in high-income countries where 40-60% of patients present at stages I or II.^{34,35}

Addressing the negative prognostic influence of late-stage cancer presentation in low-resource settings is essential, particularly as capacity-building efforts in LMICs continue to improve outcomes among those who are able to access – and as importantly, to complete – care at these centers. At 71%, the two-year OS among

patients in our cohort with stage I or stage II disease was relatively favorable in light of severe resource constraints, albeit limited by the general inability to salvage relapsed disease. By contrast, patients with stage IV disease, presenting in a quarter of patients, had an OS of 23%. Modern Wilms tumor protocols rely on high-dose chemotherapy and radiotherapy to cure late-stage disease, treatment modalities that are widely unavailable or infeasible in LMICs. Therefore, strategies to reduce late presentation in LMICs must continue to be pursued as a comprehensive approach to treating Wilms tumor in our setting.

Finally, the regional absence of radiation therapy is an important barrier to cure, evidenced by dismal outcomes among patients who required it. Among 55 patients (40.4%) for whom radiotherapy was indicated only three received it. Among patients with persistence metastases at time-of-surgery, a population where radiotherapy is critical, none survived despite escalating chemotherapy intensity. Although a larger study with sufficiently powered hypothesis tests is required to draw conclusions, increasing post-operative therapy intensity to Regimen M among patients with Stage III disease had no apparent effect on survival in our cohort. Abandonment was exclusive to patients receiving higher-intensity therapy in this sub-cohort, highlighting the potential risk of treatment intensification leading to higher rates of abandonment.

These data support SIOP's resource-adapted recommendations that absent radiotherapy, patients with persistent metastases at time of nephrectomy should be transitioned to palliative care.¹² In centers with access to robust pediatric surgery programs, excision of resectable metastatic lesions as implemented in the SIOP 93-01 trial may be considered in these cases, allowing for continuation with standard post-

operative regimens that have been shown to result in favorable response.³⁶ However, in the cases of unresectable metastatic disease at the time of nephrectomy, limited supportive care capacity in LMICs likely precludes the most myelosuppressive salvage regimens incorporated in that trial.

Successful pediatric surgical programs are essential to cure Wilms tumor. Our data show that a successful surgical oncology program is feasible in resource-limited settings, particularly among patients with low-stage disease. The overall post-operative surgical complication rate was 13%, the majority being infections treated effectively with antibiotics, thus approximating complication rates of high-resource settings.³⁷

Treatment-related mortality, occurring in 16% of patients, was typical of regional experience but more common than that documented in high-resource settings.^{16,26,38} Toxicity associated with Wilms tumor is less common than that observed in treating cancers such as Burkitt lymphoma in resource-limited settings, but these high rates relative to high-resource settings underscore the continued importance of building supportive care capacity in LMIC cancer centers.

Strengths and Limitations

This study leveraged high-quality clinical data documenting six years' experience treating Wilms tumor in a resource-limited setting in sub-Saharan Africa to create among the largest datasets of clinical outcomes in such a setting yet published. In doing so, the study achieves stage-specific insights into the realities of treating Wilms tumor in a low-income country, and it provides support for the priorities to be pursued with next-step funding, research, and intervention. As with all retrospective studies, the study was

limited by bias introduced by incomplete data collection or documentation (e.g., chest imaging). Inconsistent drug availability mandated frequent deviation from the protocol, thus creating significant heterogeneity in the approach to treating individual risk groups and limiting conclusions regarding risk-group-specific treatment approaches. However, protocol deviations due to stockouts are common in pediatric cancer care in sub-Saharan Africa, thus the protocol's pragmatic, adaptable approach is generalizable to the broader region.^{38,39} Finally, as long-term follow-up after therapy was not maintained for many patients, rates of relapse may be underreported in this study.

Conclusions

Survival rates of children with Wilms tumor in this low-resource setting are a stark reminder that the greatest prognostic factor for Wilms tumor survival is local treatment capacity rather than tumor biology. Capacity-building programs in sub-Saharan Africa have resulted in favorable outcomes among children with low-stage disease and those who complete therapy, but factors such as advanced disease at diagnosis, concomitant comorbidities, high abandonment rates, and lack of available radiotherapy represent the important scientific, public health, and capacity-building yet to be sufficiently addressed.

Acknowledgements

We would like to thank the physicians, nurses, pharmacists, social workers, therapists, and administrators that have dedicated their professional lives to the care of children with cancer in Malawi. We thank our patients and their families for contributing their data to this manuscript.

Tables

Table 1: Characteristics of 136 patients with Wilms tumor within the study cohort

Age in years (Median, IQR)	3.8 (2.4, 5.3)
Male sex	68 (50.0%)
Reported duration of symptoms in weeks (median, IQR)	6.0 (4.0, 12.0)
Moderate acute malnutrition at diagnosis	20 (14.7%)
Severe acute malnutrition at diagnosis	36 (26.5%)
Overall stage	
Stage I	30 (22.1%)
Stage II	7 (5.1%)
Stage III	35 (25.7%)
Stage IV	35 (25.7%)
Stage V	5 (3.7%)
Un-staged	24 (17.6%)
Wilms histological subtype[^]	
Low risk	8 (11%)
Intermediate risk	56 (77%)
High risk	9 (12%)

Legend: IQR, interquartile range. Data are n (%) unless otherwise specified.

[^] Histologic subtypes are 1) Low risk: 100% necrotic; 2) Intermediate risk: regressive type, mixed type, epithelial type, stromal type, or focal anaplasia; and 3) High risk: blastemal type or diffuse anaplasia. Histological grade data represent 73 patients with post-surgical histological grade data available.

Table 2. Chemotherapy regimens, surgery, and radiotherapy received

	Overall (N=136)
Pre-operative chemotherapy regimen	
Vincristine + dactinomycin (VA)	18 (13.2%)
Vincristine + dactinomycin + doxorubicin (VAD)	33 (24.2%)
Vincristine + doxorubicin + cyclophosphamide (VDC)	66(48.5%)
Other	12(8.8%)
No chemotherapy received or Palliation	7 (5.1%)
Received nephrectomy	92 (67.6)
Received radiotherapy	3 (2.2%)
Post-operative chemotherapy regimen	
Vincristine + dactinomycin (VA)	14 (10.3%)
Vincristine + dactinomycin + doxorubicin (VAD)	14 (10.3%)
Vincristine + doxorubicin + cyclophosphamide (VDC)	42(30.9%)
Regimen M (VAD + etoposide + cyclophosphamide)	25 (18.4%)
Other	4 (2.9%)

Legend: Vincristine 1.5 mg/m²/dose; Dactinomycin 0.045 mg/kg/dose; Doxorubicin 50 mg/m²/dose; Cyclophosphamide 1500 mg/m²/dose; Regimen M: VAD + cyclophosphamide 2200 mg/m²/cycle; etoposide 100 mg/m²/dose. Dosing adjustments were made in mg/kg for children <12 months.

Table 3: Surgical outcomes of nephrectomy

Nephrectomies	N = 92
Post-operative length of stay (days)	
Median (IQR)	7.0 (6.0, 8.0)
Intra-operative mortality	1 (1%)
Perioperative mortality	0 (0%)
Re-operation within 30 days	5 (5%)
Post-operative infection	6 (6.5%)
Reoperations	N=5
Small bowel intussusception	4 (80%)
Small bowel stricture	1 (20%)

Legend

Data are n(%) unless otherwise specified.

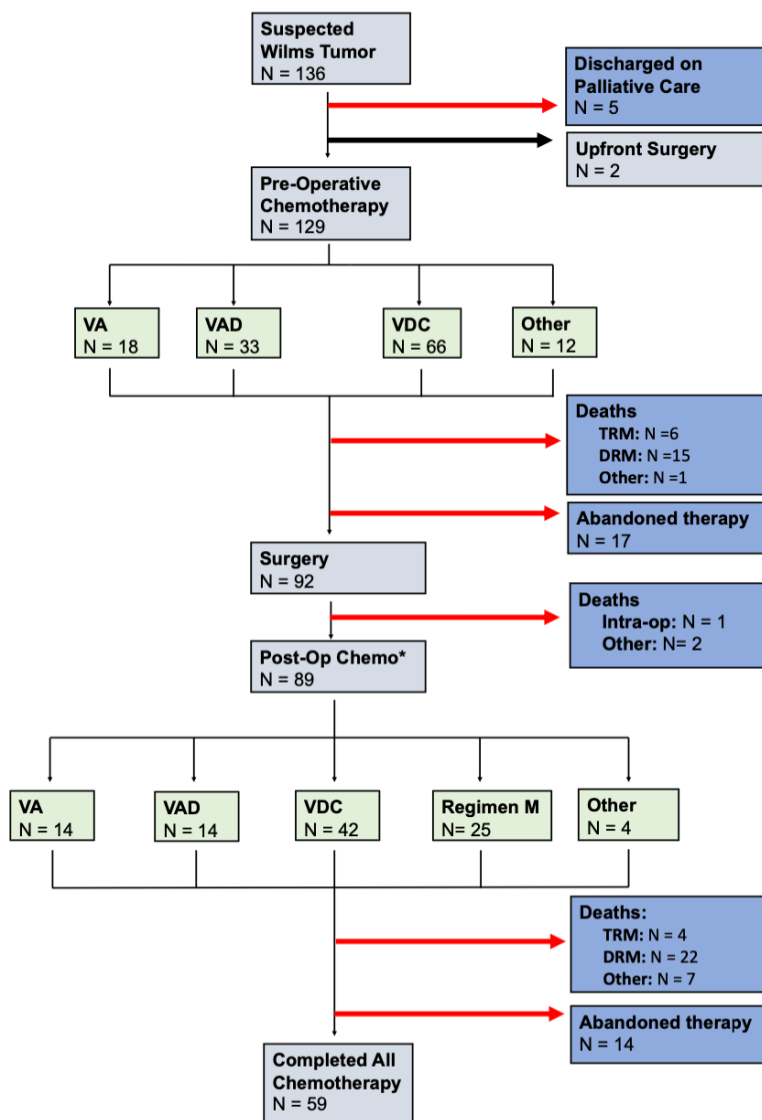
Table 4: Survival and events at two years within the cohort

Survival	Overall survival	Event-free survival
Entire cohort	48% (39-60)	34% (27-43)
Overall stage		
Stage I	78% (62-98)	60% (45-80)
Stage II	27% (5-100)	0%
Stage III	62% (45-85)	51% (37-71)
Stage IV	23% (11-47)	13% (6-32)
Stage V	0%	0%
Events	Overall (N=136)	
Death (any cause)	61 (44.9%)	
Treatment related mortality	10 (7.4%)	
Surgical death	1 (0.7%)	
Death to disease progression	39 (28.7%)	
Unknown cause of death	12 (8.8%)	
Treatment abandonment	36 (26.5%)	
Relapse	13 (9.6%)	

Legend: Survival data are presented as survival percentage (95% confidence interval) determined with the Kaplan-Meier method. Entire cohort data represent survival among 136 patients. Stage-specific survival data represent patients with Stage I (n=30), Stage II (n=7), Stage III (n=35), stage IV (n=35), and Stage V (n=5) disease.

Figures

Figure 1: Study profile for Wilms tumor Patients treated at KCH from 2016-2021. T

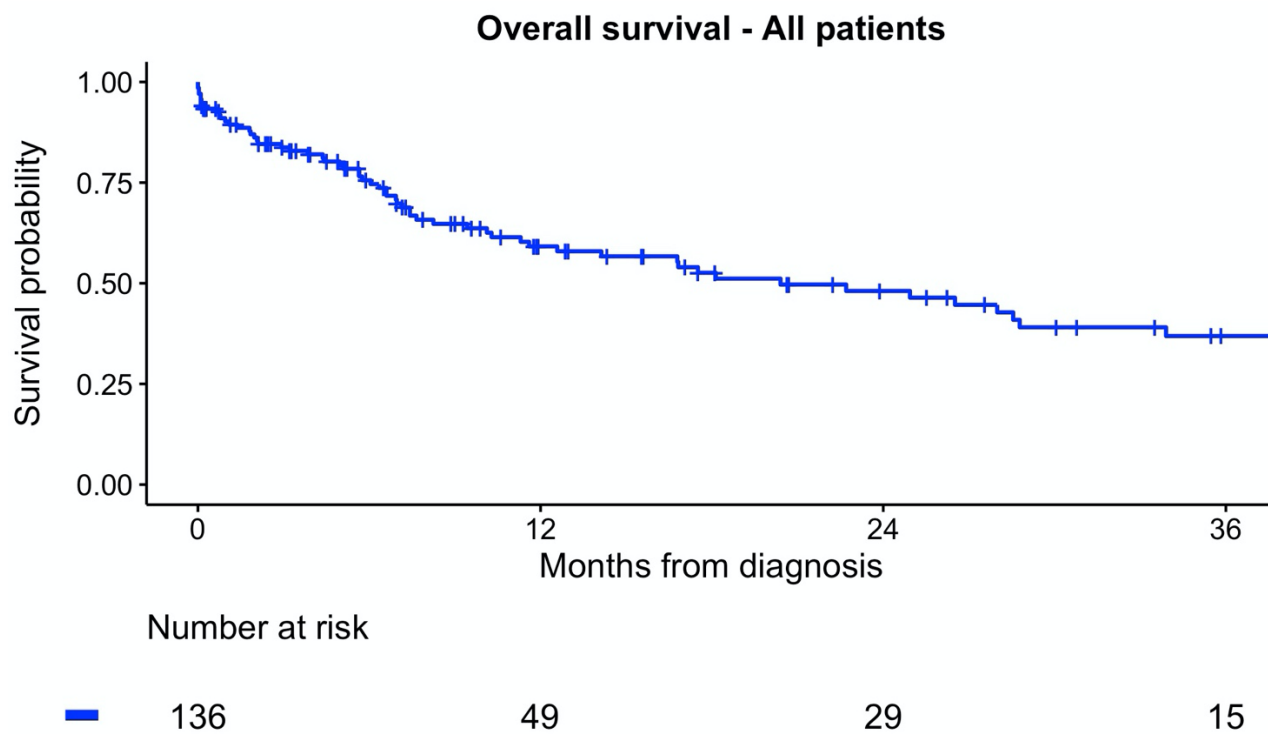


Legend: The number of abandoned patients depicted does not include those who abandoned but returned to continue therapy. TRM = treatment related mortality, DRM =

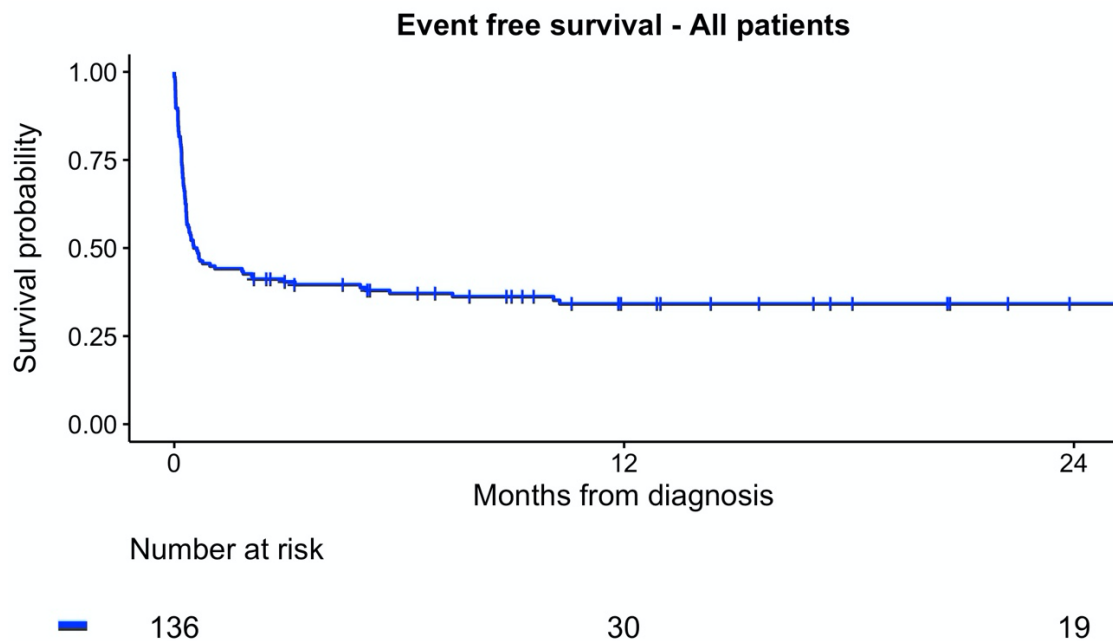
disease related mortality, VA = vincristine and dactinomycin, VAD = vincristine, dactinomycin, and doxorubicin, VDC = vincristine, doxorubicin, and cyclophosphamide

Figure 2 – Event-free and overall survival of Wilms tumor patients in Malawi

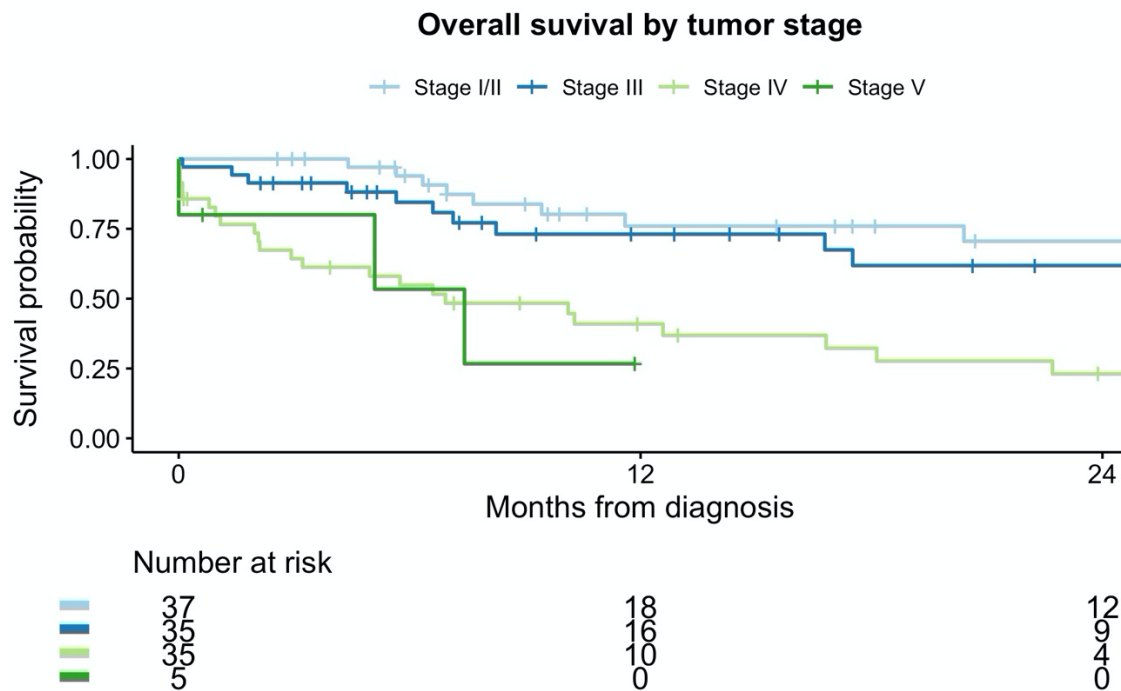
Panel A



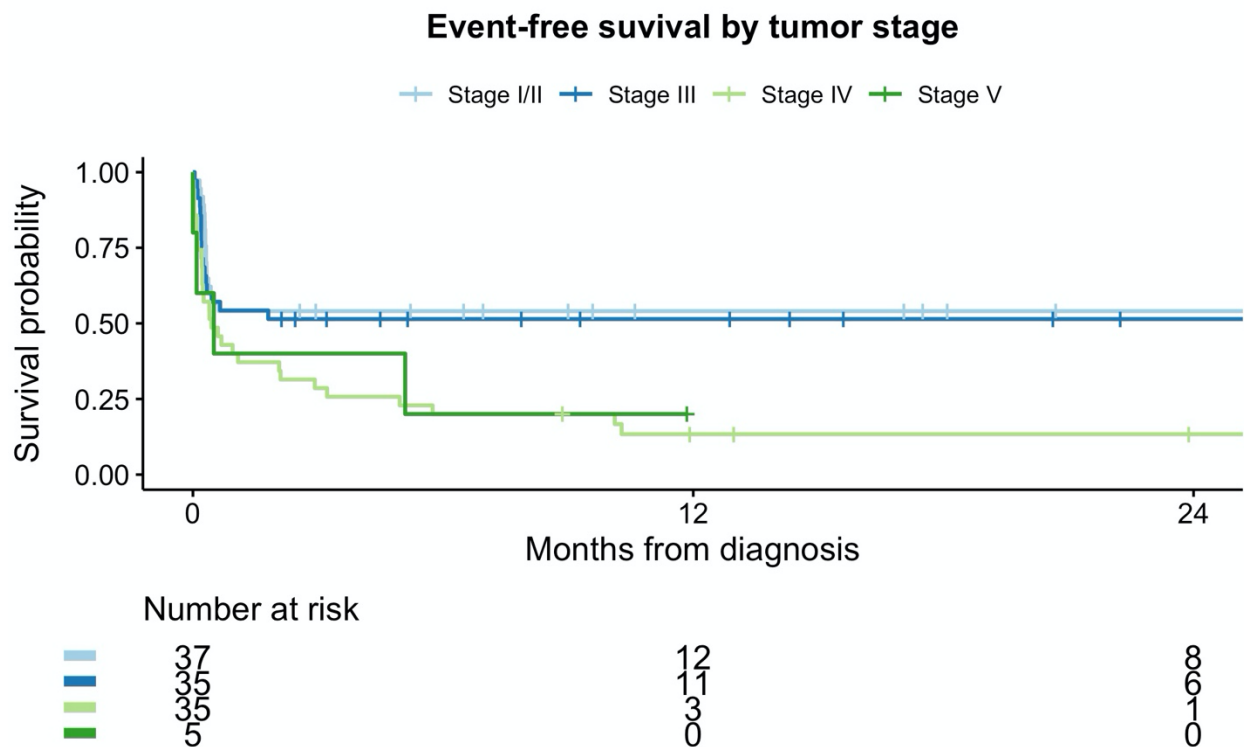
Panel B



Panel C



Panel D



Legend: Panels C & D represent 104 patients for whom staging workup was completed. Stages I & II have been combined due to low sample size among patients with Stage II disease (n=7).

References

1. Ekenze SO, Nwangwu EI, Ezomike UO, Orji EI, Okafor OO. Continuing barriers to care of Wilms tumor in a low-income country. *Pediatr Blood Cancer*. 2019;66(1):e27416. doi:10.1002/pbc.27416
2. Chu A, Heck JE, Ribeiro KB, et al. Wilms' tumour: a systematic review of risk factors and meta-analysis: Wilms' tumour: systematic review. *Paediatr Perinat Ep*. 2010;24(5):449-469. doi:10.1111/j.1365-3016.2010.01133.x
3. Dome JS, Graf N, Geller JI, et al. Advances in Wilms Tumor Treatment and Biology: Progress Through International Collaboration. *J Clin Oncol*. 2015;33(27):2999-3007. doi:10.1200/jco.2015.62.1888
4. Dix DB, Fernandez CV, Chi YY, et al. Augmentation of Therapy for Combined Loss of Heterozygosity 1p and 16q in Favorable Histology Wilms Tumor: A Children's Oncology Group AREN0532 and AREN0533 Study Report. *J Clin Oncol*. 2019;37(30):2769-2777. doi:10.1200/jco.18.01972
5. Metzger ML, Dome JS. Current Therapy for Wilms' Tumor. *Oncol*. 2005;10(10):815-826. doi:10.1634/theoncologist.10-10-815
6. Koshinaga T, Takimoto T, Oue T, et al. Outcome of renal tumors registered in Japan Wilms Tumor Study-2 (JWiTS-2): A report from the Japan Children's Cancer Group (JCCG). *Pediatr Blood Cancer*. 2018;65(7):e27056. doi:10.1002/pbc.27056
7. Moreira C, Nacheff MN, Ziamati S, et al. Treatment of nephroblastoma in Africa: Results of the first French African pediatric oncology group (GFAOP) study. *Pediatr Blood Cancer*. 2012;58(1):37-42. doi:10.1002/pbc.23284
8. Israels T, Pidini D, Borgstein E, et al. Survival of children with a Wilms tumor in Blantyre, Malawi. *Pediatr Hemat Oncol*. 2018;35(3):1-7. doi:10.1080/08880018.2018.1498564
9. Abuidris DO, Elimam ME, Nugud FM, Elgaili EM, Ahmed ME, Arora RS. Wilms tumour in Sudan. *Pediatr Blood Cancer*. 2008;50(6):1135-1137. doi:10.1002/pbc.21547
10. Slone JS, Slone AK, Wally O, et al. Establishing a Pediatric Hematology-Oncology Program in Botswana. *J Global Oncol*. 2018;(4):1-9. doi:10.1200/jgo.17.00095
11. Bansal D, Davidson A, Supriyadi E, Njuguna F, Ribeiro RC, Kaspers GJL. SIOP PODC adapted risk stratification and treatment guidelines: Recommendations for acute myeloid leukemia in resource-limited settings. *Pediatr Blood Cancer*. 2019;27:e28087. doi:10.1002/pbc.28087

12. Israels T, Moreira C, Scanlan T, et al. SIOP PODC: Clinical guidelines for the management of children with Wilms tumour in a low income setting. *Pediatr Blood Cancer*. 2013;60(1):5-11. doi:10.1002/pbc.24321
13. Bouda GC, Traoré F, Couitchere L, et al. Advanced Burkitt Lymphoma in Sub-Saharan Africa Pediatric Units: Results of the Third Prospective Multicenter Study of the Groupe Franco-Africain d'Oncologie Pédiatrique. *J Global Oncol*. 2019;5(5):1-9. doi:10.1200/jgo.19.00172
14. Groenendijk A, Tinteren H van, Jiang Y, et al. Outcome of SIOP patients with low- or intermediate-risk Wilms tumour relapsing after initial vincristine and actinomycin-D therapy only – the SIOP 93–01 and 2001 protocols. *Eur J Cancer*. 2022;163:88-97. doi:10.1016/j.ejca.2021.12.014
15. Organization WH, Fund UNC. WHO child growth standards and the identification of severe acute malnutrition in infants and children. Published online 2009.
16. Fernandez CV, Mullen EA, Chi YY, et al. Outcome and Prognostic Factors in Stage III Favorable-Histology Wilms Tumor: A Report From the Children's Oncology Group Study AREN0532. *J Clin Oncol*. 2017;36(3):JCO.2017.73.799. doi:10.1200/jco.2017.73.7999
17. Pasqualini C, Furtwängler R, Tinteren H van, et al. Outcome of patients with stage IV high-risk Wilms tumour treated according to the SIOP2001 protocol: A report of the SIOP Renal Tumour Study Group. *Eur J Cancer*. 2020;128:38-46. doi:10.1016/j.ejca.2020.01.001
18. Mostert S, Arora RS, Arreola M, et al. Abandonment of treatment for childhood cancer: position statement of a SIOP PODC Working Group. *Lancet Oncol*. 2011;12(8):719-720. doi:10.1016/s1470-2045(11)70128-0
19. Clark TG, Bradburn MJ, Love SB, Altman DG. Survival Analysis Part I: Basic concepts and first analyses. *Brit J Cancer*. 2003;89(2):232-238. doi:10.1038/sj.bjc.6601118
20. Therneau T. *A Package for Survival Analysis in R.*; 2020. <https://CRAN.R-project.org/package=survival>
21. Team RC. *R: A Language and Environment for Statistical Computing*. <https://www.R-project.org/>
22. Elm E von, Altman DG, Egger M, et al. The Strengthening the Reporting of Observational Studies in Epidemiology (STROBE) statement: guidelines for reporting observational studies. *J Clin Epidemiol*. 2008;61(4):344-349. doi:10.1016/j.jclinepi.2007.11.008
23. Ekenze SO, Okafor OC, Obasi AA, Okafor DC, Nnabugwu II. Wilms tumor in Africa: A systematic review of management challenges and outcome in two decades (2000-2019). *Pediatr Blood Cancer*. 2020;67(11):e28695. doi:10.1002/pbc.28695

24. Vujanić GM, D'Hooghe E, Graf N, et al. Prognostic significance of histopathological response to preoperative chemotherapy in unilateral Wilms' tumor: An analysis of 899 patients treated on the SIOP WT 2001 protocol in the UK-CCLG and GPOH studies. *Int J Cancer*. 2021;149(6):1332-1340. doi:10.1002/ijc.33707
25. Lifson LF, Hadley GP, Wiles NL, Pillay K. Nutritional status of children with Wilms' tumour on admission to a South African hospital and its influence on outcome. *Pediatric Blood Amp Cancer*. 2017;64(7):e26382. doi:10.1002/pbc.26382
26. Uittenboogaard A, Njuguna F, Mostert S, et al. Outcomes of Wilms tumor treatment in western Kenya. *Pediatr Blood Cancer*. 2022;69(4):e29503. doi:10.1002/pbc.29503
27. Chagaluka G, Afungchwi GM, Landman L, et al. Treatment abandonment: A report from the collaborative African network for childhood cancer care and research—CANCaRe Africa. *Pediatr Blood Cancer*. 2021;68(12):e29367. doi:10.1002/pbc.29367
28. Stanley CC, Westmoreland KD, Itimu S, et al. Quantifying bias in survival estimates resulting from loss to follow-up among children with lymphoma in Malawi. *Pediatr Blood Cancer*. 2017;64(6):e26370. doi:10.1002/pbc.26370
29. Vasquez L, Diaz R, Chavez S, et al. Factors associated with abandonment of therapy by children diagnosed with solid tumors in Peru. *Pediatr Blood Cancer*. 2018;65(6):e27007. doi:10.1002/pbc.27007
30. Atwiine B, Busingye I, Kyarisiima R, et al. "Money was the problem": Caregivers' self-reported reasons for abandoning their children's cancer treatment in southwest Uganda. *Pediatr Blood Cancer*. 2021;68(11):e29311. doi:10.1002/pbc.29311
31. Mansell R, Purssell E. Treatment abandonment in children with cancer in Sub-Saharan Africa: Systematic literature review and meta-analysis. *J Adv Nurs*. 2017;74(4):800-808. doi:10.1111/jan.13476
32. Stanley CC, Gronde T van der, Westmoreland KD, et al. Risk factors and reasons for treatment abandonment among children with lymphoma in Malawi. *Support Care Cancer*. 2018;26(3):967-973. doi:10.1007/s00520-017-3917-z
33. Chagaluka G, Paintsil V, Renner L, et al. Improvement of overall survival in the Collaborative Wilms Tumour Africa Project. *Pediatr Blood Cancer*. 2020;67(9):e28383. doi:10.1002/pbc.28383
34. Hol JA, Lopez-Yurda MI, Tinteren HV, et al. Prognostic significance of age in 5631 patients with Wilms tumour prospectively registered in International Society of Paediatric Oncology (SIOP) 93-01 and 2001. *Plos One*. 2019;14(8):e0221373. doi:10.1371/journal.pone.0221373

35. Aguirre-Neto JC de, Camargo B de, Tinteren H van, et al. International Comparisons of Clinical Demographics and Outcomes in the International Society of Pediatric Oncology Wilms Tumor 2001 Trial and Study. *Jco Global Oncol.* 2022;8(8):e2100425. doi:10.1200/go.21.00425
36. Verschuur A, Tinteren HV, Graf N, Bergeron C, Sandstedt B, Kraker J de. Treatment of Pulmonary Metastases in Children With Stage IV Nephroblastoma With Risk-Based Use of Pulmonary Radiotherapy. *J Clin Oncol.* 2012;30(28):3533-3539. doi:10.1200/jco.2011.35.8747
37. Powis M, Messahel B, Hobson R, Gornall P, Walker J, Pritchard-Jones K. Surgical complications after immediate nephrectomy versus preoperative chemotherapy in non-metastatic Wilms' tumour: Findings from the 1991–2001 United Kingdom Children's Cancer Study Group UKW3 Trial. *J Pediatr Surg.* 2013;48(11):2181-2186. doi:10.1016/j.jpedsurg.2013.07.001
38. Yao AJJ, Moreira C, Traoré F, et al. Treatment of Wilms Tumor in Sub-Saharan Africa: Results of the Second French African Pediatric Oncology Group Study. *J Global Oncol.* 2019;5(5):JGO.18.00204. doi:10.1200/jgo.18.00204
39. Mehta PS, Wiernikowski JT, Petrilli JAS, Barr RD, SIOP WG on EM of the PO in DC committee of. Essential medicines for pediatric oncology in developing countries. *Pediatr Blood Cancer.* 2013;60(5):889-891. doi:10.1002/pbc.24476