

1 Performance of Rapid Antigen Tests to Detect Symptomatic and Asymptomatic SARS-CoV-2
2 Infection

3 Apurv Soni MD, PhD^{1,2,3}, Carly Herbert BA¹, Honghuang Lin PhD^{1,2}, Yi Yan PhD⁴, Caitlin Pretz
4 MS¹, Pamela Stamegna MD¹, Biqi Wang PhD^{1,2}, Taylor Orwig BS¹, Colton Wright MS¹, Seanan
5 Tarrant BS¹, Stephanie Behar BA¹, Thejas Suvarna BBA, BS⁵, Summer Schrader BA⁵, Emma
6 Harman MPH⁵, Chris Nowak BA⁵, Vik Kheterpal MD⁵, Lokinendi V Rao PhD⁶, Lisa Cashman
7 MPH⁶, Elizabeth Orvek MS³, Didem Ayturk MS³, Laura Gibson MD⁷, Adrian Zai, MD PhD³,
8 Steven Wong BA³, Peter Lazar BS³, Ziyue Wang MPH⁸, Andreas Filippaios¹, Bruce Barton
9 PhD³, Chad J. Achenbach MD, MPH⁹, Robert L. Murphy MD⁹, Matthew Robinson MD¹⁰, Yukari
10 C. Manabe MD¹⁰, Shishir Pandey BE¹, Andres Colubri PhD¹¹, Laurel O'Connor MD¹², Stephenie
11 C. Lemon PhD³, Nisha Fahey DO, ScM^{1,3,13}, Katherine L Luzuriaga MD^{14,15}, Nathaniel Hafer
12 PhD^{14,15}, Kristian Roth PhD⁴, Toby Lowe⁴, Timothy Stenzel MD PhD¹⁶, William Heetderks PhD¹⁷,
13 John Broach MD, MPH, MBA¹², David D McManus MD, ScM^{1,2,8}

14 Affiliations:

15 ¹Program in Digital Medicine, Department of Medicine, University of Massachusetts Chan
16 Medical School, Worcester, MA, USA

17 ²Division of Health System Science, Department of Medicine, University of Massachusetts Chan
18 Medical School, Worcester, MA, USA

19 ³Department of Population and Quantitative Health Sciences, University of Massachusetts Chan
20 Medical School, Worcester, MA, USA

21 ⁴OHT7 Office of Product Evaluation and Quality, Center for Devices and Radiological Health, US
22 Food and Drug Administration, Silver Spring, Maryland

23 ⁵CareEvolution, LLC, Ann Arbor, MI, USA

24 ⁶Quest Diagnostics, Marlborough, MA, USA

25 ⁷Division of Infectious Disease, Department of Medicine, University of Massachusetts Chan
26 Medical School, Worcester, MA, USA

27 ⁸Division of Cardiology, Department of Medicine, University of Massachusetts Chan Medical
28 School, Worcester, MA, USA

29 ⁹Division of Infectious Disease, Department of Medicine, Havey Institute for Global Health,
30 Feinberg School of Medicine, Northwestern University, Chicago, IL, USA

31 ¹⁰Division of Infectious Disease, Department of Medicine, Johns Hopkins University School of
32 Medicine, Baltimore, MD, USA

33 ¹¹Department of Microbiology and Physiological Systems, University of Massachusetts Chan
34 Medical School, Worcester, MA, USA

35 ¹²Department of Emergency Medicine, University of Massachusetts Chan Medical School,
36 Worcester, MA, USA

37 ¹³Department of Pediatrics, University of Massachusetts Chan Medical School, Worcester, MA,
38 USA

39 ¹⁴University of Massachusetts Center for Clinical and Translational Science, University of
40 Massachusetts Chan Medical School, Worcester, MA, USA

41 ¹⁵Program in Molecular Medicine, University of Massachusetts Chan Medical School,
42 Worcester, MA, USA

43 ¹⁶ Division of Microbiology, OHT7 Office of Product Evaluation and Quality, Center for Devices and
44 Radiological Health, US Food and Drug Administration, Silver Spring, Maryland

45 ¹⁷National Institute of Biomedical Imaging and Bioengineering, NIH, via contract with Kelly
46 Services, Bethesda, MD, USA

47 Corresponding Author:
48 Apurv Soni, MD PhD
49 Assistant Professor, Program in Digital Medicine
50 Department of Medicine
51 UMass Chan Medical School
52 Worcester, MA
53 01605

54
55

56 **Abstract**

57 **Background:** Performance of rapid antigen tests for SARS-CoV-2 (Ag-RDT) varies over the
58 course of an infection, and their performance in screening for SARS-CoV-2 is not well
59 established. We aimed to evaluate performance of Ag-RDT for detection of SARS-CoV-2 for
60 symptomatic and asymptomatic participants.

61 **Methods:** Participants >2 years old across the United States enrolled in the study between
62 October 2021 and February 2022. Participants completed Ag-RDT and molecular testing (RT-
63 PCR) for SARS-CoV-2 every 48 hours for 15 days. This analysis was limited to participants who
64 were asymptomatic and tested negative on their first day of study participation. Onset of
65 infection was defined as the day of first positive RT-PCR result. Sensitivity of Ag-RDT was
66 measured based on testing once, twice (after 48-hours), and thrice (after 96 hours). Analysis
67 was repeated for different Days Post Index PCR Positivity (DPIPP) and stratified based on
68 symptom-status.

69 **Results:** In total, 5,609 of 7,361 participants were eligible for this analysis. Among 154
70 participants who tested positive for SARS-CoV-2, 97 were asymptomatic and 57 had symptoms
71 at infection onset. Serial testing with Ag-RDT twice 48-hours apart resulted in an aggregated
72 sensitivity of 93.4% (95% CI: 89.1-96.1%) among symptomatic participants on DPIPP 0-6.
73 Excluding singleton positives, aggregated sensitivity on DPIPP 0-6 for two-time serial-testing
74 among asymptomatic participants was lower at 62.7% (54.7-70.0%) but improved to 79.0%
75 (71.0-85.3%) with testing three times at 48-hour intervals.

76 **Discussion:** Performance of Ag-RDT was optimized when asymptomatic participants tested
77 three-times at 48-hour intervals and when symptomatic participants tested two-times separated
78 by 48-hours.

79

80

81

82

83 **Introduction**

84 SARS-CoV-2 diagnostic testing remains a cornerstone in our nation's fight against COVID-19,
85 and at-home rapid antigen tests (Ag-RDTs), while not perfect, provide a fast and convenient
86 testing option. This type of test is available without a prescription (i.e., over-the-counter [OTC]),
87 easy-to-use, widely available, and, in some cases, preferred by the population over molecular
88 assays that require appointments, waiting in-line at testing centers, and waiting 24-48 hours for
89 results.¹⁻³ Despite their popularity, key gaps remain in our understanding of these tests, notably
90 their performance as a screening tool among asymptomatic people. Reports on Ag-RDT
91 performance among individuals testing while they are asymptomatic have been highly varied,
92 ranging from sensitivities of 35.8% to 71% in cross-sectional screening evaluations.^{4,5} However,
93 performance has typically been evaluated based on the single use of Ag-RDTs, and few studies
94 have evaluated serial testing performance of Ag-RDTs among asymptomatic individuals.
95 Furthermore, United States Food and Drug Administration (FDA) emergency use authorization
96 (EUA) of OTC antigen tests required a post-authorization demonstration of Ag-RDT
97 performance in a population with asymptomatic infection using serial testing. This manuscript
98 describes primary findings from a large study designed in coordination with the National
99 Institutes of Health (NIH), Food and Drug Administration (FDA), and three major rapid antigen
100 test manufacturers to evaluate the performance of serial testing using rapid antigen tests for
101 detection of SARS-CoV-2 among asymptomatic individuals within the first week of infection. A
102 primary goal of this study was to provide broadly applicable data that could be leveraged to
103 satisfy the post-authorization requirement for all authorized OTC antigen tests.

104 **Methods**

105 *Study Population and Design:* Between October 18, 2021 and January 31, 2022, this 15-day
106 prospective cohort study enrolled participants over the age of two years from across the country
107 through a novel digital site-less study protocol. Details of the study design and protocol are

108 described elsewhere.⁶ This study was approved by WIRB-Copernicus Group (WCG) Institutional
109 Review Board (20214875). In brief, participants were eligible to enroll through a smartphone
110 app if they did not have a SARS-CoV-2 infection in the prior three months, were without any
111 symptoms in the 14 days prior to enrollment and were able to drop-off prepaid envelopes with
112 nasal swab samples at their local FedEx drop-off location. Enrolled participants were assigned
113 to one of three types of EUA Ag-RDT (Quidel QuickVue At-Home OTC COVID-19 Test,
114 BinaxNow COVID-19 Antigen Self-Test, or BD Veritor At-Home COVID-19 Test) and received a
115 home delivery of 10 Ag-RDTs and 7 home collection kits for reverse transcriptase polymerase
116 chain reaction (RT-PCR) samples. Participants were asked to perform two self-collected
117 bilateral anterior nasal swab collections and paired testing (Ag-RDT (at home) and RT-PCR
118 (mailed to central lab)) between study day 1 and study day 13 on 48 hour intervals, with an
119 additional end-of-study bilateral anterior nasal swab collection for home Ag-RDT on study day
120 15. Two FDA-authorized, high sensitivity RT-PCR assays were performed on each nasal swab
121 sample received at the central lab, and an additional tiebreaker assay was performed if the two
122 RT-PCR assays were discordant.

123 *Measures:* Ag-RDT results were based on self-reporting (Quidel QuickVue At-Home OTC
124 COVID-19 Test, BinaxNow COVID-19 Antigen Self-Test) or an automatic reader (BD Veritor At-
125 Home COVID-19 Test), as per EUA instructions for use. Molecular comparator RT-PCR results
126 were based on a combination of molecular test results for detection of SARS-Cov-2 infection
127 (Table S1), and onset of infection was defined as the day on which the molecular comparator
128 result was positive for the first time. Cycle threshold (Ct) values for the E-gene from one RT-
129 PCR test were used as a measure to quantify viral load. To approximate performance of Ag-
130 RDT if a person starts testing on different days from onset of infection, we identified Days Past
131 Index PCR Positivity (DPIPP) as different strata, for which, performance was calculated.
132 Symptomatic or asymptomatic classification was based on presence or absence of symptoms

133 on DPIPP for which the performance is calculated. Therefore, an individual who was
134 asymptomatic on DPIPP 0 may become symptomatic on DPIPP 2 and vice-versa.

135 *Statistical Analysis:* Participants were eligible for inclusion in this analysis if they did not report
136 any symptoms and had negative SARS-CoV-2 molecular and Ag-RDT tests on study day 1. Our
137 decision to pool performance across the different tests was based on: 1) findings not shown in
138 this report that suggested the sensitivity of different Ag-RDT was similar to each other as a
139 function of the viral load; and 2) the study was not designed to evaluate differences in
140 performance between the three different types of Ag-RDTs. Performance was calculated using
141 sensitivity (rapid antigen positivity/comparator positivity) for single-day testing, two-times serial
142 testing at 48-hour intervals, and three-times serial testing at 48-hour intervals for symptomatic
143 and asymptomatic individuals based on day and patterns of positivity, as described in Table 1.
144 Calculations for sensitivity were repeated with testing starting on different DPIPP. Confidence
145 intervals for one-week sensitivity were estimated using the bootstrapping technique.⁷ Negative
146 Percent Agreement was calculated as a proportion of paired tests (Ag-RDT and molecular tests
147 performed on the same-day) based on the following formula: True Negative/[False Positive +
148 True Negative], where True Negative refers to instances a negative molecular test was paired
149 with a negative Ag-RDT on the same day and False-Positive refers to a negative molecular test
150 paired with a positive Ag-RDT test. To evaluate the viral dynamics during infection, a mixed
151 effects logistic regression model was used to predict the probability of Ag-RDT positivity based
152 on Ct value and symptom status. Ct values, symptom status, rapid antigen testing series (one
153 test, two-tests, or three-tests), and their three-way interactions were fixed effects, while
154 participants' IDs was included as a random effect. Additionally, we used the Cochran-Armitage
155 test for trend to evaluate the associations between symptoms and Ct value categories (i.e., <20,
156 20-24.99, 25-29.99, 30-34.99, or 35+) among individuals who tested positive on a single rapid
157 antigen test, two consecutive tests, and three consecutive tests, respectively. We used

158 Bonferroni corrections ($0.05/3=0.017$) to adjust for multiple comparisons. All analyses were
159 performed using R 4.1.1.⁸

160 **Results**

161 A total of 7,361 participants enrolled in the study, and 5,353 were eligible for this analysis. Of
162 the participants eligible for analysis, 154 individuals tested RT-PCR positive for SARS-CoV-2
163 during the study based on a composite definition described in Table S1; 97 were without
164 symptoms and 57 had symptoms at infection onset (Figure 1). Among the 5,199 participants
165 who did not test positive, there were 32,998 days of paired Ag-RDT and RT-PCR testing, where
166 comparator result was negative. Among these, 32,862 days had a concordant Ag-RDT negative
167 result, yielding a negative percent agreement of 99.6% (95% CI: 99.5-99.7%).

168 Performance of Ag-RDT to detect SARS-CoV-2 on day of infection onset (DPIPP: 0) was higher
169 among symptomatic participants (59.6%, 46.7-71.4%) in comparison to asymptomatic
170 participants (9.3%, 5.0-16.7%) (Figure 2; Table S2). Serial-testing with two Ag-RDT tests 48-
171 hours apart (Symptomatic: 92.2%, 81.5-96.9%; Asymptomatic: 39.3%, 29.8-49.7%) and three
172 Ag-RDT tests 48-hours apart (Symptomatic: 93.6%, 82.8-97.8%; Asymptomatic: 56.4%, 45.4-
173 66.9%) improved performance of Ag-RDT.

174 Notably, we observed that twenty participants had a singleton RT-PCR+, defined as a positive
175 test preceded and followed by a negative RT-PCR test within 48-54 hours. Of those with
176 singleton RT-PCR+ tests, none tested positive on Ag-RDT, only one had symptoms on the day
177 of the singleton positive test, and average Ct value was >35 (Figure S1). Excluding these
178 participants did not impact sensitivity of Ag-RDT among symptomatic participants, but improved
179 asymptomatic sensitivity to 11.7%, 50.7%, and 74.6% based on testing one, two, or three times
180 with Ag-RDT at 48-hour intervals, respectively, beginning on DPIPP 0.

181 To approximate real-world scenarios, where a person may not necessarily start testing with Ag-
182 RDT on the day of infection onset, we calculated performance separately on DPIPP 2, 4, 6, 8,
183 and 10 (Figure 2; Table S2) to approximate scenarios where a person started serially testing
184 with Ag-RDTs on those days. Aggregated performance of Ag-RDT for DPIPP 0-6 among all
185 participants who were symptomatic on a given DPIPP was 82.5% (78.3-86.3%) for single-
186 timepoint testing but with a range of sensitivity (calculated on a per DPIPP day basis) from 59.6
187 to 94.8%. Serial-testing using two-time testing improved sensitivity to 93.4% (90.4-95.9%) and
188 94.3% (91.4-97.0%) for three-time testing. Sensitivity of performing single test, two-test serial
189 testing, and three-test serial testing for asymptomatic people was 34.4% (28.8-39.8%), 55.3%
190 (48.2-61.6%), 68.5% (61.0-75.7%), respectively during the first week of infection (DPIPP 0-6).
191 Excluding singleton RT-PCR positive, the first-week (DPIPP 0-6) sensitivity for asymptomatic
192 individuals was 38.8% (32.7-45.2-%), 62.7% (57.0-70.5%), 79.0% (70.1-87.4%), respectively for
193 testing one, two, or three times with Ag-RDT at 48-hour intervals.

194 Performance of Ag-RDT among symptomatic and asymptomatic participants was evaluated by
195 Ct value to analyze the performance by viral load. The distribution of Ct values significantly
196 differed between symptomatic and asymptomatic participants, with symptomatic participants
197 having lower Ct values on average than asymptomatic participants at DPIPP 0 and 2 ($p < 0.001$)
198 (Figure 3). On the day of index PCR positivity, more than 75% of asymptomatic individuals had
199 a Ct value 30 or higher, whereas less than 33% of symptomatic individuals had a Ct value 30 or
200 higher. At the end of 1-week from index PCR positivity (DPIPP 6), the majority of both
201 asymptomatic and symptomatic individuals had a Ct value less than 30. Figure 4 demonstrates
202 the sensitivity of Ag-RDT for different Ct values based on postestimation results from a
203 multilevel model. The sensitivity was lowest among asymptomatic participants who performed a
204 single test for all Ct values > 20 , compared to symptomatic participants who performed a single
205 test and symptomatic and asymptomatic participants who performed two-test and three-test

206 serial testing (Figure 4; Table S3). Two-test serial testing among symptomatic individuals and
207 three-times serial testing among both asymptomatic individuals and symptomatic individuals
208 demonstrated sensitivity above 80% for Ct values < 32.

209 **Discussion**

210 We report findings from the largest study to date of paired Ag-RDT and RT-PCR testing for a
211 comparative performance evaluation of Ag-RDTs among people with and without symptoms.
212 These results provide compelling reasons to suggest that frequency of Ag-RDT testing should
213 be adjusted to include additional repeat testing. These data suggest an improvement in test
214 performance when symptomatic individuals test two times 48-hours apart using Ag-RDTs.
215 Likewise, there are notable performance improvements in asymptomatic individuals when an
216 initial Ag-RDT test was followed by at least 2 subsequent tests at 48-hour intervals. These
217 results should be considered in the context of our study protocol which indicated testing at 48-
218 hour intervals, and thus these data cannot support conclusions about serial testing for time
219 intervals shorter than 48-hours.

220 These findings represent a comprehensive evaluation of the time dependent performance of Ag-
221 RDT tests among the intended use population (i.e., symptomatic and asymptomatic individuals)
222 throughout the course of molecular test positivity. Restricting findings from our study to match
223 observation windows from previous studies, we found similar sensitivity as found in previous
224 studies for asymptomatic and symptomatic participants for a single-time test.⁹ Unlike previous
225 reports, which used composite sampling methods and lacked sufficient longitudinal data to
226 adequately evaluate performance of Ag-RDT from the onset of infection, we were able to
227 approximate performance of Ag-RDT for symptomatic and asymptomatic users by comparing
228 performance within the first week of infection, to align with the indications listed in the EUA, and
229 to evaluate the performance of serial testing within this paradigm.^{10,11}

230 We observed that more than one in ten new infections were singleton-positive, which escaped
231 detection by rapid antigen tests. Evaluation of Ct values of these singleton-positive revealed that
232 all of them had Ct value > 30 and average Ct count was 35. The finding of singleton RT-PCR
233 positive testing needs to be further investigated to understand the clinical significance of this
234 observation.

235 Our finding of higher Ct value associated with lower sensitivity is in line with results from a
236 comprehensive meta-analysis encompassing data from 214 clinical studies and 112,323
237 samples, which demonstrated that sensitivity of rapid antigen testing deteriorated with
238 increasing Ct values.⁹ We also observed that rapid antigen tests have higher sensitivity among
239 symptomatic participants, regardless of Ct value. The finding that performance of rapid antigen
240 tests differed with respect to Ct values between symptomatic and asymptomatic participants
241 was unexpected, as rapid antigen test performance has often been considered to be a function
242 of viral load.^{12,13} However, this may suggest that the difference in performance between
243 asymptomatic and symptomatic participants is more than just a function of viral dynamics. It is
244 possible that symptomatic and asymptomatic individuals differ in three other domains: 1)
245 interpretation of results; 2) administration of tests; 3) physiology (i.e., amount of secretions
246 available for sampling). Previous work found that symptom status was not a predictor of false
247 negative results; however, self-interpretation of results may introduce bias.¹⁴ These three
248 hypotheses are subject to further inquiry, as it is important to determine the role of these factors
249 in rapid antigen test performance. Additionally, a previous report suggested that certain
250 haplotypes of the human leukocyte antigen (HLA) loci are two to eight-fold more likely to
251 experience an asymptomatic infection, and in a large GWAS study, this haplotype was found to
252 be prevalent in roughly 10% of the patients.¹⁵ Similar observations have been made with Human
253 Immunodeficiency Virus, where certain genotypes are associated with lower propensity of
254 infection. The impact of HLA haplotype on COVID-19 infections should be investigated further.

255 This study does have limitations. This study was conducted during the circulation of the Delta
256 and Omicron SARS-CoV-2 variants, and future variants may warrant further investigation,
257 especially as milder, less symptomatic variants emerge.^{16,17} Additionally, specimens were self-
258 collected for RT-PCR and Ag-RDTs were self-performed. However, data has consistently shown
259 substantial agreement between self-collected and clinician-collected anterior nasal swabs for
260 SARS-CoV-2 testing.^{18,19} Further, this primary analysis does not account for differences in
261 severity or type of symptoms. Public health implications of our findings suggest that people
262 testing for SARS-CoV-2 should exercise caution despite an initial negative rapid antigen-test
263 and favor mask-wearing and avoiding crowded places if they suspect they may be infected or
264 have been exposed. Additionally, the rates of false positive results in the study were low;
265 therefore, any Ag-RDT positive result should be considered positive without the need to retest.
266 Further, in the context of reports of viral culture positivity more than five days after initial positive
267 test, our findings support isolation for a longer period of time to prevent the potential of spread
268 of SARS-CoV-2 to others.²⁰ Further research is needed to quantitatively estimate the benefits of
269 Ag-RDT for early detection of infection and initiation of treatment, especially in settings where
270 access to molecular testing is limited or molecular test results are delayed. Dissemination of
271 clear guidance for appropriate testing using Ag-RDT based on data from this study may help
272 preserve confidence in the performance of serial Ag-RDT to detect SARS-CoV-2 virus,
273 especially as reports of individual false negative Ag-RDT from inadequate serial testing,
274 contrary to the tests' intended usage and guidance from the FDA, proliferate in lay media.

275

276 Competing Interest Statement: DDM reports consulting and research grants from Bristol-Myers
277 Squibb and Pfizer, consulting and research support from Fitbit, consulting and research support
278 from Flexcon, research grant from Boehringer Ingelheim, consulting from Avania, non-financial
279 research support from Apple Computer, consulting/other support from Heart Rhythm Society.
280 YCM has received research grant support to Johns Hopkins University from Hologic, Cepheid,
281 Roche, ChemBio, Becton Dickinson, miDiagnostics, and has provided consultative support to
282 Abbott..

283 Funding Statement: This study was funded by the NIH RADx Tech program under
284 3U54HL143541-02S2 and NIH CTSA grant UL1TR001453. The views expressed in this
285 manuscript are those of the authors and do not necessarily represent the views of the National
286 Institute of Biomedical Imaging and Bioengineering; the National Heart, Lung, and Blood
287 Institute; the National Institutes of Health, or the U.S. Department of Health and Human
288 Services. Salary support from the National Institutes of Health U54HL143541, R01HL141434,
289 R01HL137794, R61HL158541, R01HL137734, U01HL146382 (AS, DDM), U54EB007958-13
290 (YCM, MLR), AI272201400007C, UM1AI068613 (YCM), U54EB027049 and U54EB027049-
291 02S1 (CJA, RLM).

292 Acknowledgment: We are grateful to our study participants and to our collaborators from the
293 National Institute of Health (NIBIB and NHLBI) who provided scientific input into the design of
294 this study and interpretation of our results but could not formally join as co-authors due to
295 institutional policies and to the Food and Drug Administration (Office of In Vitro Diagnostics and
296 Radiological Health) for their involvement in the primary TUAH study. We received meaningful
297 contributions from Drs. Bruce Tromberg, Jill Heemskerk, Dennis Buxton, Felicia Qashu, Erin
298 Iturriaga, Jue Chen, Andrew Weitz, and Krishna Juluru. We are greatly appreciative of the
299 contribution to this study by the numerous staff at UMass Chan, including critical support from
300 Karen Gilliam, Mary Janet McCarthy, Amber Showers, Cynthia Kinahan, Kimberly Cantin, and
301 Danielle Howard. We would also like to acknowledge the support provided by clinical
302 coordinators from Threewire, Inc. We are thankful to county health departments across the
303 country who helped with recruitment for this study by spreading the word in their networks.

304 References

- 305 1. Ricks S, Kendall EA, Dowdy DW, Sacks JA, Schumacher SG, Arinaminpathy N. Quantifying
306 the potential value of antigen-detection rapid diagnostic tests for COVID-19: a modelling
307 analysis. *BMC Med.* 2021;19(1):75. doi:10.1186/s12916-021-01948-z
- 308 2. Møller IJB, Utke AR, Rysgaard UK, Østergaard LJ, Jespersen S. Diagnostic performance,
309 user acceptability, and safety of unsupervised SARS-CoV-2 rapid antigen-detecting tests
310 performed at home. *International Journal of Infectious Diseases.* 2022;116:358-364.
311 doi:10.1016/j.ijid.2022.01.019
- 312 3. Peeling RW, Olliaro PL, Boeras DI, Fongwen N. Scaling up COVID-19 rapid antigen tests:
313 promises and challenges. *Lancet Infect Dis.* 2021;21(9):e290-e295. doi:10.1016/S1473-
314 3099(21)00048-7
- 315 4. Siddiqui ZK, Mihir C, Robinson ML, et al. Implementation and Accuracy of BinaxNOW
316 Rapid Antigen COVID-19 Test in Asymptomatic and Symptomatic Populations in a High-
317 Volume Self-Referral Testing Site. *Microbiol Spectr.* 2021;9(3):e01008-21.
318 doi:10.1128/Spectrum.01008-21
- 319 5. Prince-Guerra JL, Almendares O, Nolen LD, et al. Evaluation of Abbott BinaxNOW Rapid
320 Antigen Test for SARS-CoV-2 Infection at Two Community-Based Testing Sites — Pima
321 County, Arizona, November 3–17, 2020. *Morbidity and Mortality Weekly Report.*
322 2021;70(3):100. doi:10.15585/MMWR.MM7003E3
- 323 6. Soni A, Herbert C, Pretz C, Stamegna P, Filippaios A. Finding a Needle in the Haystack:
324 Design and Implementation of a Digital Site-less Clinical Study of Serial Rapid Antigen
325 Testing to Identify Asymptomatic SARS-CoV-2 Infection. *medRxiv.* Published online August
326 8, 2022.
- 327 7. Davison AC, Hinkley D v. *Bootstrap Methods and Their Application.* Cambridge University
328 Press; 1997. doi:DOI: 10.1017/CBO9780511802843
- 329 8. R Development Core Team. R: A language and environment for statistical computing.
330 Published online 2022.
- 331 9. Brümmer LE, Katzenschlager S, Gaeddert M, et al. Accuracy of novel antigen rapid
332 diagnostics for SARS-CoV-2: A living systematic review and meta-analysis. *PLoS Med.*
333 2021;18(8):e1003735-. <https://doi.org/10.1371/journal.pmed.1003735>
- 334 10. Winnett AV, Akana R, Shelby N, et al. Extreme differences in SARS-CoV-2 Omicron viral
335 loads among specimen types drives poor performance of nasal rapid antigen tests for
336 detecting presumably pre-infectious and infectious individuals, predicting improved
337 performance of combination specimen antigen tests. *medRxiv.* Published online January 1,
338 2022:2022.07.13.22277513. doi:10.1101/2022.07.13.22277513
- 339 11. Chu VT, Schwartz NG, Donnelly MAP, et al. Comparison of Home Antigen Testing With RT-
340 PCR and Viral Culture During the Course of SARS-CoV-2 Infection. *JAMA Intern Med.*
341 2022;182(7):701-709. doi:10.1001/jamainternmed.2022.1827

- 342 12. Routsias JG, Mavrouli M, Tsoplou P, Dioikitopoulou K, Tsakris A. Diagnostic performance
343 of rapid antigen tests (RATs) for SARS-CoV-2 and their efficacy in monitoring the
344 infectiousness of COVID-19 patients. *Scientific Reports* |. 123AD;11:22863.
345 doi:10.1038/s41598-021-02197-z
- 346 13. Mak GC, Cheng PK, Lau SS, et al. Evaluation of rapid antigen test for detection of SARS-
347 CoV-2 virus. *Journal of Clinical Virology*. 2020;129. doi:10.1016/J.JCV.2020.104500
- 348 14. Stohr JJM, Zwart VF, Goderski G, et al. Self-testing for the detection of SARS-CoV-2
349 infection with rapid antigen tests for people with suspected COVID-19 in the community.
350 *Clinical Microbiology and Infection*. 2022;28(5):695-700. doi:10.1016/J.CMI.2021.07.039
- 351 15. Augusto DG, Yusufali T, Peyser ND, et al. HLA-B*15:01 is associated with asymptomatic
352 SARS-CoV-2 infection. *medRxiv*. Published online September 10,
353 2021:2021.05.13.21257065. doi:10.1101/2021.05.13.21257065
- 354 16. Soni A, Herbert C, Filippaios A, et al. Comparison of Rapid Antigen Tests' Performance
355 Between Delta and Omicron Variants of SARS-CoV-2. *Ann Intern Med*. Published online
356 October 11, 2022. doi:10.7326/M22-0760
- 357 17. Fan Y, Li X, Zhang L, Wan S, Zhang L, Zhou F. SARS-CoV-2 Omicron variant: recent progress
358 and future perspectives. *Signal Transduct Target Ther*. 2022;7(1):141.
359 doi:10.1038/s41392-022-00997-x
- 360 18. McCulloch DJ, Kim AE, Wilcox NC, et al. Comparison of Unsupervised Home Self-collected
361 Midnasal Swabs With Clinician-Collected Nasopharyngeal Swabs for Detection of SARS-
362 CoV-2 Infection. *JAMA Netw Open*. 2020;3(7):e2016382-e2016382.
363 doi:10.1001/jamanetworkopen.2020.16382
- 364 19. Lindner AK, Nikolai O, Kausch F, et al. Head-to-head comparison of SARS-CoV-2 antigen-
365 detecting rapid test with self-collected nasal swab >versus
366 professional-collected nasopharyngeal swab. *European Respiratory Journal*.
367 2021;57(4):2003961. doi:10.1183/13993003.03961-2020
- 368 20. Boucau J, Marino C, Regan J, et al. Duration of Shedding of Culturable Virus in SARS-CoV-2
369 Omicron (BA.1) Infection. *New England Journal of Medicine*. 2022;387(3):275-277.
370 doi:10.1056/NEJMc2202092
- 371
- 372
- 373

374 **Tables and Figures**

375 **Table 1: Matrix for Calculation of Sensitivity of Rapid Antigen Tests for Detection of**

Days Past Index PCR Positivity – DPIPP (strata)	Denominator for Sensitivity: PCR Positive on following DPIPP	Numerator for Sensitivity: At least one positive rapid antigen test on one of the following DPIPP (Other days could not be missing, invalid, or uninterpreted)		
		Single test	2-test serial testing	3-test serial testing
0	0	0	0, 2	0, 2, 4
2	0 and 2	2	2, 4	2, 4, 6
4	0 and 4	4	4, 6	4, 6, 8
6	0 and 6	6	6, 8	6, 8, 10
8	0 and 8	8	8, 10	8, 10, 12
10	0 and 10	10	10, 12	NA

Classification of symptomatic vs asymptomatic based on symptom self-report on DPIPP

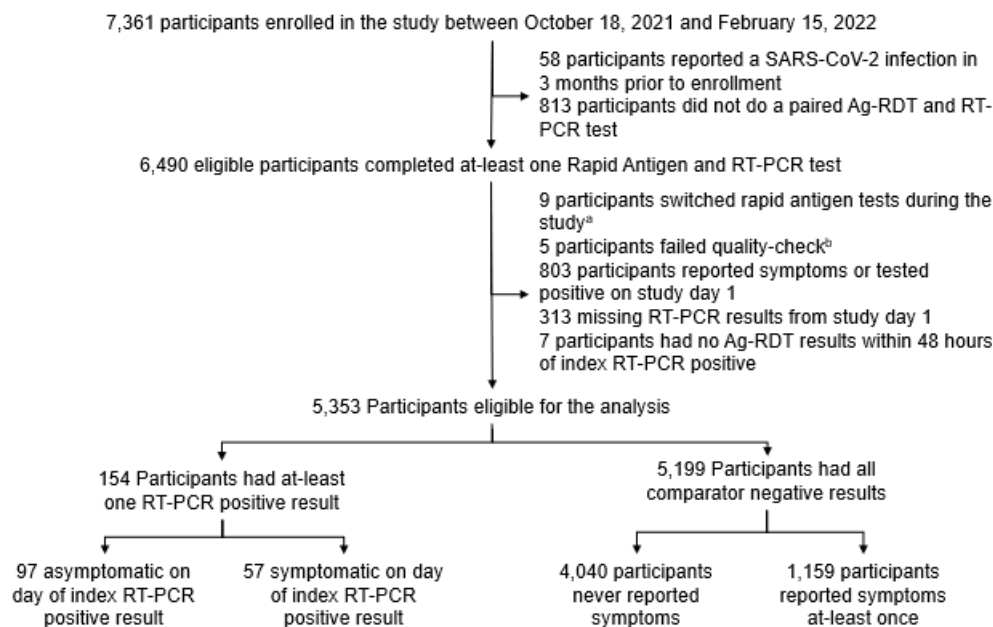
376 **SARS-CoV-2 Virus in Relation to Days Past Index PCR Positivity (DPIPP)**

377

378

379

Figure 1: CONSORT Diagram for Test Us At Home Study to Calculate Performance of Rapid Antigen Tests for Detection of SARS-CoV-2 Virus



380

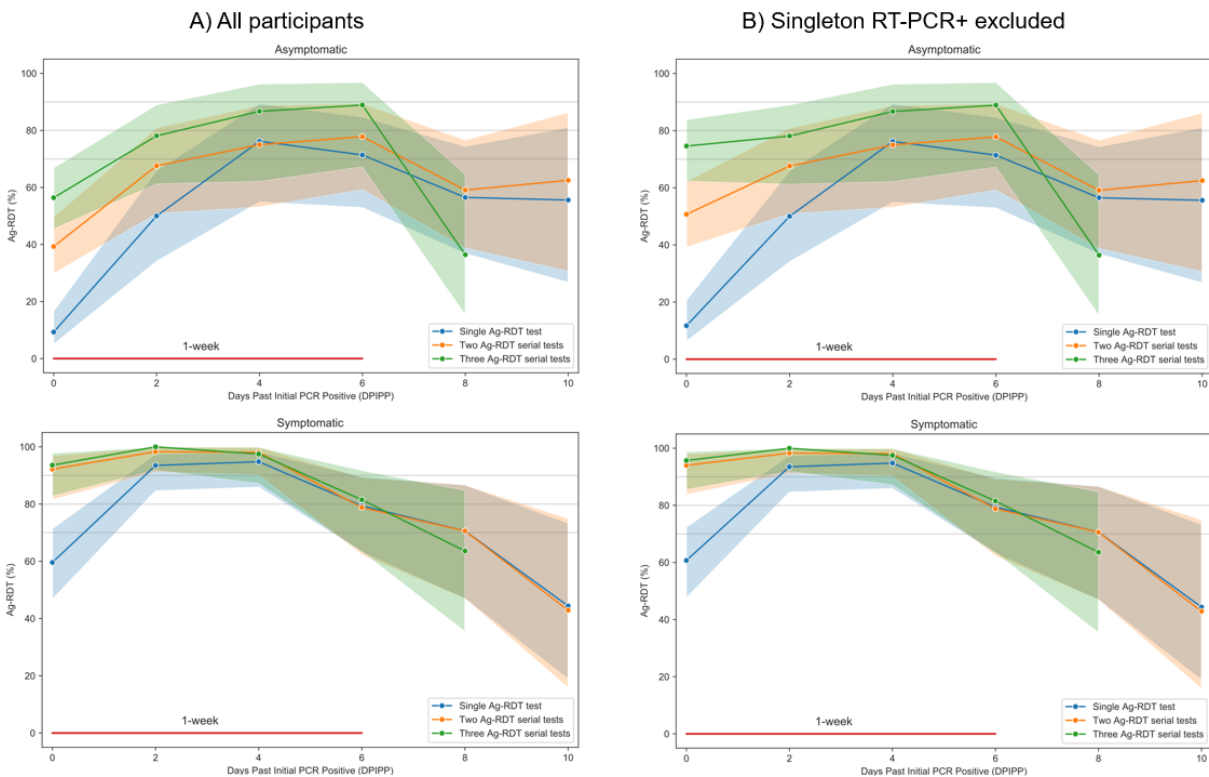
381 Legend:

382 7,361 total participants were enrolled in the study, and 154 participants were eligible for the
383 analysis and tested positive for SARS-CoV-2 by RT-PCR during the study period. Of these
384 participants, 97 were asymptomatic and 57 were symptomatic on day of index comparator
385 positive result. a= participants replaced their assigned rapid antigen tests with commercially
386 obtained rapid antigen tests; b= dates of RT-PCR testing could not be verified based on
387 triangulation of self-reported, shipping, and resulting data.

388

389

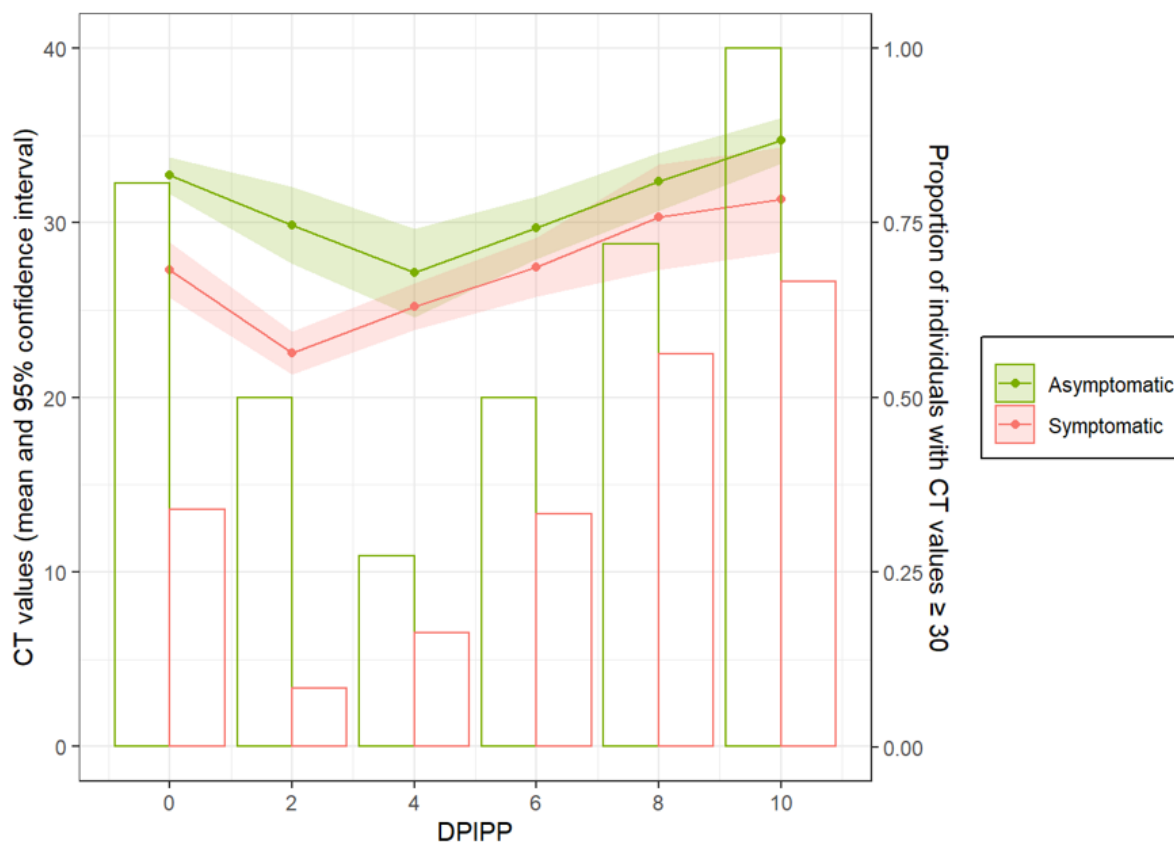
390 **Figure 2: Performance of Rapid Antigen Tests for Detection of SARS-CoV-2 Virus in**
391 **Relation to First Day of Molecular Positivity**



392
393 Legend: Performance was calculated using sensitivity (rapid antigen positivity/comparator
394 positivity) for single-day testing, two-times serial testing at 48-hour intervals, and three-
395 times serial testing at 48-hour intervals for symptomatic and asymptomatic individuals
396 based on day and patterns of positivity. Calculations for sensitivity were repeated with
397 testing starting on different DPIPP. Error bars represent 95% Confidence Intervals.
398 Performance of Ag-RDT to detect SARS-CoV-2 on day of infection onset was higher
399 among symptomatic participants (59.6%) compared to asymptomatic participants (9.3%).
400 Serial-testing with two Ag-RDT tests 48-hours apart and three Ag-RDT tests 48-hours apart
401 improved performance of Ag-RDT within the first week of SARS-CoV-2 infection. Excluding
402 participants with singleton RT-PCR+ results improved sensitivity of Ag-RDT among
403 asymptomatic participants to 11.7%, 50.7%, and 74.6% based on testing one, two, or three
404 times with Ag-RDT at 48-hour intervals, respectively, beginning on DPIPP 0.

405

406 **Figure 3: Cycle Threshold values by Day Post Index PCR-Positivity by Symptom Status**

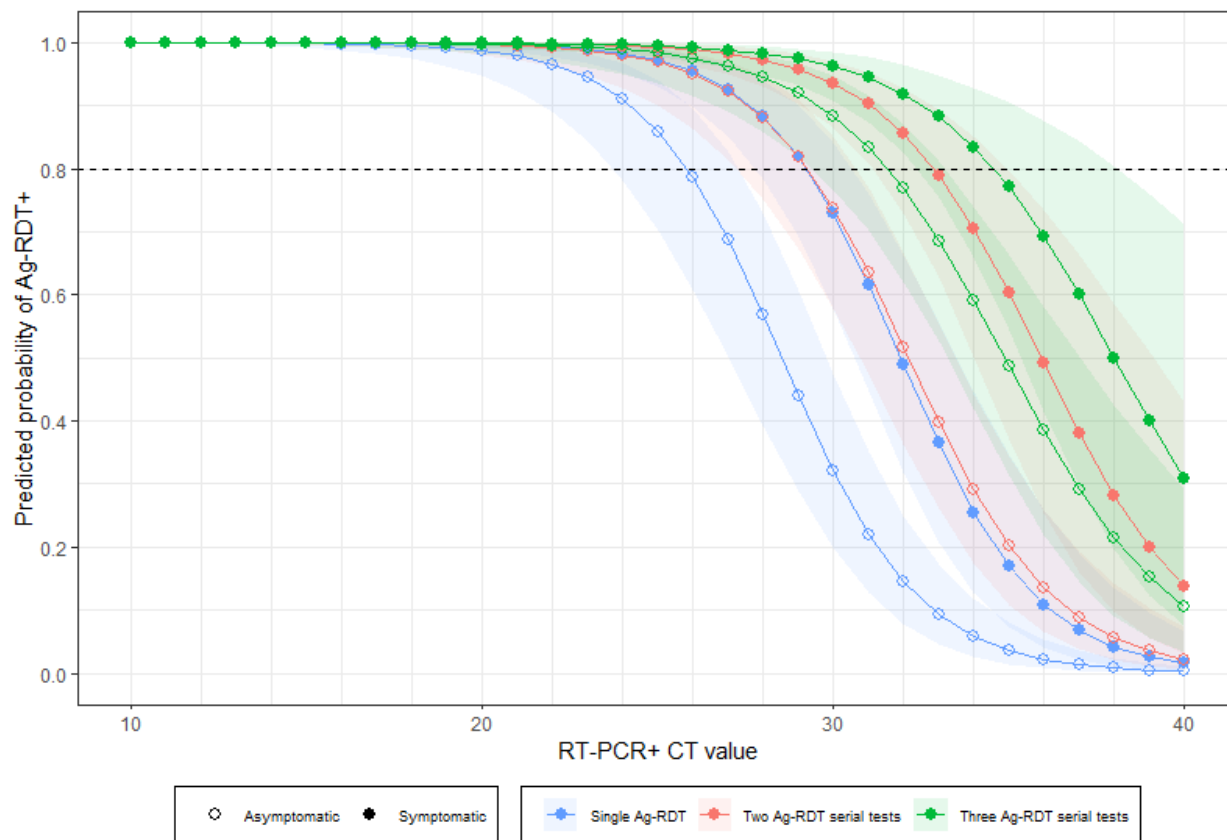


407

408 Legend: Error bars represent 95% Confidence Intervals. Symptomatic participants who
409 tested positive by RT-PCR had significantly lower Cycle threshold (Ct) values on average
410 than asymptomatic participants at DPIPP 0 and 2. On DPIPP 0, >75% of asymptomatic
411 individuals had a Ct value ≥ 30 , whereas <33% of symptomatic individuals had a Ct value
412 ≥ 30 . Symptomatic participants had a lower proportion of individuals with CT values ≥ 30 at
413 all DPIPP. DPIPP: Day post index PCR-positive.

414

415 **Figure 4: Predicted Probability of Rapid Antigen Test Positivity by Symptom Status and**
416 **Serial Testing Schedule**



417
418 Legend: A mixed effects logistic regression model was used to predict the probability of Ag-RDT
419 positivity based on Ct value and symptom status. Error bars represent 95% Confidence
420 Intervals. The sensitivity was lowest among asymptomatic participants who performed a single
421 test for all Ct values > 20. Two-test serial testing among symptomatic individuals and three-
422 times serial testing among both asymptomatic individuals and symptomatic individuals
423 demonstrated sensitivity above 80% for Ct values < 32.

424