

1 **Title:** The effect of exercise on aerobic capacity in individuals with spinal cord injury: A systematic
2 review with meta-analysis and meta-regression

3

4 **Authors:** Daniel D. Hodgkiss¹, Gurjeet S. Bhangu^{2,3}, Carole Lunny⁴, Catherine R. Jutzeler^{5,6}, Shin-Yi
5 Chiou^{1,7,8,9}, Matthias Walter^{2,10}, Samuel J. E. Lucas^{1,7}, Andrei V. Krassioukov^{2,11,12}, Tom E.
6 Nightingale^{1,2,9*}

7

8 **Running head:** Exercise and fitness in SCI

9

10 **Author Affiliations:**

11 ¹ School of Sport, Exercise and Rehabilitation Sciences, University of Birmingham, UK.

12 ² International Collaboration on Repair Discoveries (ICORD), University of British Columbia,
13 Vancouver, British Columbia, Canada.

14 ³ MD Undergraduate Program, Faculty of Medicine, University of British Columbia, Vancouver,
15 Canada.

16 ⁴ Knowledge Translation Program, Li Ka Shing Knowledge Institute, St. Michael's Hospital, Toronto,
17 and the University of British Columbia, Vancouver, British Columbia, Canada.

18 ⁵ Department of Health Sciences and Technology, ETH Zurich, Zurich, Switzerland.

19 ⁶ Schulthess Clinic, Zurich, Switzerland.

20 ⁷ Centre for Human Brain Health, University of Birmingham, United Kingdom.

21 ⁸ MRC Versus Arthritis Centre for Musculoskeletal Ageing Research, University of Birmingham,
22 United Kingdom.

23 ⁹ Centre for Trauma Science Research, University of Birmingham, United Kingdom.

24 ¹⁰ Department of Urology, University Hospital Basel, University of Basel, Basel, Switzerland.

25 ¹¹ Department of Medicine, Division of Physical Medicine and Rehabilitation, University of British
26 Columbia, Vancouver, British Columbia, Canada.

27 ¹² GF Strong Rehabilitation Centre, Vancouver Coastal Health, Vancouver, British Columbia, Canada.

28

29 **Correspondence and requests should be addressed to:**

30 Corresponding author*: Tom E. Nightingale PhD,

31 Assistant Professor, School of Sport, Exercise and Rehabilitation Sciences, University of Birmingham,

32 Edgbaston, Birmingham, UK,

33 **Email:** T.E.Nightingale@bham.ac.uk **Tel:** +44 (0)121 414 6977

34

35 **Word count:** 11,222 words; **Abstract word count:** 500 words

36 **Number of tables:** 2; **Number of figures:** 4

37

38

39

40

41

42

43

44

45

46

47

48

49

50

51

52

53

54

55

56

57

58

59

60

61 **ABSTRACT**

62 **Background**

63 A low level of cardiorespiratory fitness [CRF; defined as peak oxygen uptake ($V\dot{O}_{2peak}$) or peak
64 power output (PPO)] is a widely reported consequence of spinal cord injury (SCI) and a major risk
65 factor associated with chronic disease. However, CRF can be modified by exercise. This systematic
66 review with meta-analysis and meta-regression aimed to assess whether certain SCI characteristics
67 and/or specific exercise considerations are moderators of changes in CRF.

68

69 **Methods and Findings**

70 Databases (MEDLINE, EMBASE, CENTRAL and Web of Science) were searched from inception to
71 March 2023. A primary meta-analysis was conducted including randomised controlled trials (RCTs;
72 exercise interventions lasting >2 weeks relative to control groups). A secondary meta-analysis pooled
73 independent exercise interventions >2 weeks from longitudinal pre-post and RCT studies to explore
74 whether subgroup differences in injury characteristics and/or exercise intervention parameters
75 explained CRF changes. Further analyses included cohort, cross-sectional and observational study
76 designs. Outcome measures of interest were absolute ($\Delta V\dot{O}_{2peak}$) or relative $V\dot{O}_{2peak}$ ($RV\dot{O}_{2peak}$),
77 and/or PPO. Bias/quality was assessed via The Cochrane Risk of Bias 2 and the National Institute of
78 Health Quality Assessment Tools. Certainty of the evidence was assessed using the Grading of
79 Recommendations Assessment, Development and Evaluation (GRADE) approach. Random effects
80 models were used in all meta-analyses and meta-regressions.

81

82 Of 21,020 identified records, 120 studies comprising 29 RCTs, 67 pre-post studies, 11 cohort, 7 cross-
83 sectional and 6 observational studies were included. The primary meta-analysis revealed significant
84 improvements in $\Delta V\dot{O}_{2peak}$ [0.16 (0.07, 0.25) L/min], $RV\dot{O}_{2peak}$ [2.9 (1.8, 3.9) mL/kg/min] and PPO
85 [9 (5, 14) W] with exercise, relative to controls ($p < 0.001$). Ninety-six studies (117 independent
86 exercise interventions comprising 1,331 participants) were included in the secondary, pooled meta-
87 analysis which demonstrated that exercise interventions significantly improve $\Delta V\dot{O}_{2peak}$ [0.22 (0.17,
88 0.26) L/min], $RV\dot{O}_{2peak}$ [2.8 (2.2, 3.3) mL/kg/min], and PPO [11 (9, 13) W] ($p < 0.001$). There were
89 subgroup differences for $RV\dot{O}_{2peak}$ based on exercise modality ($p = 0.002$) and intervention length
90 ($p = 0.01$), but there were no differences for $\Delta V\dot{O}_{2peak}$. There were subgroup differences ($p \leq 0.008$) for

91 PPO based on time since injury, neurological level of injury, exercise modality, relative exercise
92 intensity, exercise intensity prescription method, and frequency. The meta-regression found that studies
93 with a higher mean age of participants were associated with smaller changes in $AV\dot{V}O_{2peak}$ and
94 $RV\dot{V}O_{2peak}$ ($p < 0.10$). GRADE indicated a moderate level of certainty in the estimated effect for
95 $RV\dot{V}O_{2peak}$, but low levels for $AV\dot{V}O_{2peak}$ and PPO. This review may be limited by the small number of
96 RCTs, which prevented a subgroup analysis within this specific study design.

97

98 **Conclusions**

99 Performing exercise >2 weeks results in significant improvements to $AV\dot{V}O_{2peak}$, $RV\dot{V}O_{2peak}$ and PPO
100 in individuals with SCI. Subgroup comparisons identified that exercise interventions lasting up to 12
101 weeks yield the greatest change in $RV\dot{V}O_{2peak}$. Upper-body aerobic exercise and resistance training
102 also appear the most effective at improving $RV\dot{V}O_{2peak}$ and PPO. Furthermore, acutely-injured,
103 individuals with paraplegia, exercising at a moderate-to-vigorous intensity, prescribed via a percentage
104 of oxygen consumption or heart rate, for ≥ 3 sessions/week will likely experience the greatest change in
105 PPO. Ageing seemingly diminishes the adaptive CRF responses to exercise training in individuals with
106 SCI.

107

108 **Registration**

109 PROSPERO: CRD42018104342

110

111 **KEYWORDS:** Cardiorespiratory Fitness, Cardiopulmonary Fitness, Function, Spinal Cord Injuries,
112 Rehabilitation, Exercise

113

114

115

116

117

118

119

120

121

122 **AUTHOR SUMMARY**

123 Why was this research done?

- 124 - Individuals with spinal cord injury typically exhibit low levels of cardiorespiratory fitness. As
125 such, these individuals are at a higher risk for the development of chronic diseases in
126 comparison to the non-injured population.
- 127 - The current spinal cord injury-specific exercise guidelines encourage moderate-to-vigorous
128 intensity aerobic exercise 40 minutes per week for fitness benefits or 90 minutes per week for
129 cardiometabolic health benefits. Yet, others have suggested individuals with spinal cord injury
130 should be achieving 150 minutes per week in line with non-injured population guidelines.
- 131 - This systematic review with meta-analysis and meta-regression aimed to identify whether
132 specific injury characteristics (e.g., time, level or severity of injury) or exercise intervention
133 parameters (e.g., modality, intensity, volume etc.) result in the greatest changes in
134 cardiorespiratory fitness in individuals with spinal cord injury.

135 What did the researchers do and find?

- 136 - We searched for studies that investigated the effects of exercise interventions lasting longer
137 than 2 weeks on changes in absolute and relative peak oxygen consumption and/or peak
138 power output in individuals with spinal cord injury. In total, we included 120 studies of
139 various study designs: 29 randomised controlled trials, 67 pre-post studies, 11 cohort
140 comparisons, 7 cross-sectional studies and 6 observational studies.
- 141 - The greatest changes in peak power output may be achieved by individuals with acute spinal
142 cord injury or paraplegia. Upper-body aerobic and resistance exercise were identified as the
143 most optimal exercise modalities. Furthermore, prescribing moderate-to-vigorous intensity
144 aerobic exercise using either a percentage of the individual's peak heart rate or oxygen
145 consumption, for three or more sessions per week, resulted in the greatest improvements in
146 peak power output.
- 147 - Our findings support the minimum 40 minutes of weekly moderate-to-vigorous intensity
148 exercise recommended by the spinal cord injury-specific exercise guidelines to significantly
149 improve fitness. However, while not statistically significant, a two-fold greater improvement
150 in peak power output was shown for interventions with exercise performed ≥ 90 min/week in

151 comparison to ≥ 40 min/week. Cross-sectional comparisons also revealed that individuals with
152 spinal cord injury performing higher levels of physical activity were associated with higher
153 cardiorespiratory fitness.

154 What do these findings mean?

- 155 - Exercise interventions > 2 weeks can significantly improve cardiorespiratory fitness in
156 individuals with a spinal cord injury by a clinically meaningful change greater than one spinal
157 cord injury adjusted metabolic equivalent (i.e., ≥ 2.7 mL/kg/min). A one metabolic equivalent
158 improvement has been associated with a reduction in cardiovascular related mortality risk in
159 non-injured individuals.
- 160 - Our findings indicate that certain participant/injury characteristics and exercise intervention
161 parameters are moderators of the changes observed in cardiorespiratory fitness across studies.
162 These factors should be considered in the design of future exercise interventions. Future
163 research should consider: following spinal cord injury-specific reporting guidelines (ensuring
164 transparency of reporting), investigating the dose-response relationship between exercise and
165 cardiorespiratory fitness or influence of exercise intensity in this population, and consider how
166 different injury characteristics impact the benefits of exercise on cardiorespiratory fitness.
- 167 - The main limitation of the study was the lack of randomised controlled trials (RCT)
168 comparing changes in CRF following an exercise intervention relative to a control group. This
169 prevented subgroup comparisons in this study design specifically and therefore we pooled pre-
170 post and RCT exercise interventions to explore these effects.

171

172 **1. INTRODUCTION**

173 Spinal cord injury (SCI) is a complex neurological condition, caused by trauma, disease or
174 degeneration, which results in sensory-motor deficits (i.e., paralysis or paresis) below the level of
175 lesion and autonomic dysfunctions. Progressive physical deconditioning following injury results in
176 increased health care utilisation, reliance on personal assistance services and a greater predisposition
177 towards developing chronic diseases [1,2]. Individuals with SCI are at an increased risk of stroke,
178 cardiovascular disease (CVD), and type-2 diabetes mellitus compared to non-injured counterparts [3–
179 5]. The elevated incidence of these conditions in people with SCI emphasises the need for targeted
180 interventions to address modifiable risk factors for these chronic diseases, such as cardiorespiratory

181 fitness (CRF). In clinical populations CRF is typically defined as an individual's peak oxygen uptake
182 ($\dot{V}O_{2\text{peak}}$) or peak power output (PPO). $\dot{V}O_{2\text{peak}}$ and PPO are determined during graded
183 cardiopulmonary exercise testing (CPET) to the point of volitional exhaustion, and represents the
184 integrated functioning of different bodily systems (pulmonary, cardiovascular and skeletal) to uptake,
185 transport and utilise oxygen for metabolic processes [6]. A number of prospective studies have
186 indicated that CRF is at least as important, if not more so, than other traditional CVD risk factors (e.g.,
187 obesity, hypertension and smoking) and is strongly associated with mortality [7–12].

188

189 Low levels of CRF have been widely reported in the SCI-population [13], with the between-person
190 variability partially explained by the neurological level and severity of injury (i.e., lower CRF reported
191 in individuals with tetraplegia) [14]. A large proportion of the variance in CRF is also explained by
192 physical activity [15], which is reduced in the SCI-population [16,17]. Performing regular physical
193 activity and/or structured exercise has long been promoted for improving CRF in individuals with SCI
194 [18,19]. In 2011, the first evidence-based exercise guidelines, specifically for individuals with SCI
195 were developed [20], which stated that *“for important fitness benefits, adults with SCI should engage*
196 *in at least 20 minutes of moderate-to-vigorous-intensity aerobic activity and strength-training exercises*
197 *2 times per week”*. This guideline has since been updated, yet remains the same with regards to CRF
198 benefits [21]. Although this implies adults with SCI can accrue fitness benefits from volumes of
199 activity well below that promoted in the general population, others have advocated that adults with a
200 physical disability [22,23] and individuals with SCI [24] should aim to perform at least 150 minutes of
201 aerobic exercise per week. For additional health benefits it has been suggested that adults should
202 perform closer to 300 minutes per week of moderate-intensity physical activity [25,26]. While the
203 current SCI-specific guidelines likely represent the *“minimum”* threshold required to achieve CRF
204 benefits, it has been suggested that this creates an impression that individuals with SCI do not need to
205 be as physically active as the general population [27]. The dose-response relationship between exercise
206 volume and CRF improvements in individuals with SCI remains to be elucidated.

207

208 It is noteworthy that the aforementioned SCI-specific exercise guidelines utilise the terminology of
209 *“moderate-to-vigorous”* to describe the desired exercise intensity. This is in contrast to accepted
210 guidelines in the general population whereby moderate and vigorous-intensity exercise are

211 distinguished from one another with specific thresholds (e.g., ≥ 150 minutes of moderate-intensity or
212 ≥ 75 minutes of vigorous-intensity activity per week) [23]. Exercise intervention intensity has been
213 shown to influence the magnitude of change in CRF in patients undergoing cardiac rehabilitation
214 [28,29]. The feasibility/effectiveness of higher intensity exercise is also currently a topical area of
215 research in the SCI-population [30–32]. There is the potential for vigorous-intensity exercise to be
216 more time efficient or lead to superior health benefits, although the impact of different high-intensity
217 interval training protocols on CRF in individuals with SCI compared to moderate-intensity exercise is
218 yet to be determined. A recent systematic review identified that exercise interventions of a specific
219 modality yield distinct changes in certain cardiometabolic health outcomes, but not other outcomes, in
220 individuals with SCI [33]. This provides rationale for wanting to investigate the efficacy of different
221 exercise modalities on CRF in this population. Consequently, a number of research questions requiring
222 further attention include:

223

- 224 1) Do injury-specific characteristics (e.g., tetraplegia vs. paraplegia, acute vs. chronic injuries, motor-
225 complete vs. incomplete) mediate CRF responses to exercise?
- 226 2) What is the best intensity, frequency, and volume of weekly exercise?
- 227 3) Is there an optimal conditioning modality [e.g., upper-body aerobic exercise, resistance training,
228 functional electrical stimulation (FES), hybrid or multimodal exercise interventions etc.]?

229

230 To address these questions, we performed a systematic review with meta-analysis and meta-regression
231 to investigate the impact of different exercise interventions on changes in CRF in individuals with SCI.
232 Moreover, we gathered evidence to determine whether key moderators (e.g., participant/injury
233 characteristics, intervention/study characteristics and risk of bias) influence these intervention effects.

234

235 **2. METHODS**

236 This review is reported as per the Preferred Reporting Items for Systematic Reviews and Meta-
237 Analyses (PRISMA) guidelines [34] (S1 Checklist) and was prospectively registered (PROSPERO ID
238 CRD42018104342). The primary meta-analysis of this review included randomised controlled trials
239 (RCTs; exercise intervention versus a comparison control group). A secondary, pooled meta-analysis
240 was also conducted that combined the intervention arms of RCTs with non-randomised study designs

241 (RCTs and pre-post exercise interventions without a comparison control group). Further secondary
242 meta-analyses were conducted that included cohort comparisons (e.g., physically inactive vs. habitual
243 exercisers) and observational studies (e.g., standard of care rehabilitation), along with RCTs that
244 specifically compared the impact of different exercise intensities (e.g., low or moderate-intensity vs.
245 vigorous or supramaximal) on CRF outcomes. Lastly, we qualitatively reviewed cross-sectional studies
246 that reported associations between physical activity and CRF outcomes.

247

248 **2.1. Eligibility criteria**

249 Studies were required to meet the following inclusion criteria: 1) Adult (≥ 18 years) participants; 2) any
250 acquired (traumatic, infection, cancer) SCI (*note, studies were included if >80% of the sample met*
251 *these two aforementioned inclusion criteria*); 3) an exercise or physical activity intervention lasting >2
252 weeks (RCTs, pre-post and observational trials); 4) report a measurable exposure variable (i.e., cohort
253 studies: athletes vs. non-athletes or sedentary vs. active participants; and cross-sectional studies: self-
254 reported or objectively measured habitual physical activity level) and; 5) report CRF-specific outcomes
255 [i.e., absolute ($AV \square O_{2peak}$) or expressed as relative to body mass $V \square O_{2peak}$ ($RV \square O_{2peak}$), evaluated via
256 analysis of expired air during a peak (or symptom-limited) CPET or submaximal prediction, or PPO].

257

258 Studies were excluded if they met the following criteria: 1) non-human; 2) non-original work (i.e.,
259 reviews, guideline documents, editorials, viewpoints, letter-to-editor, protocol paper); 3) case-reports
260 and case series with a number (n) of participants <5 (to increase the robustness of our findings given
261 the inclusion of smaller sample sizes in previous reviews [18,35,36]); 4) non-peer reviewed (i.e.,
262 conference proceeding/abstracts/posters); 5) children or adolescents (<18 years); 6) non-SCI (non-
263 injured participants or other neurological conditions); 7) does not report a CRF-specific outcome; 8)
264 single exercise sessions or an intervention <2 weeks; 9) no suitable comparison (i.e., control group or
265 baseline data pre-intervention) or exposure variable measured; and 10) no full text. Studies with
266 concurrent interventions (i.e., diet, lifestyle or respiratory training) were included only if the effects of
267 exercise could be isolated.

268

269 **2.2. Search strategy**

270 A search of the following electronic databases: MEDLINE (via Pubmed), Excerpta Medica Database

271 (EMBASE; via Ovid), Web of Science and the Cochrane Central Register of Controlled Trials
272 (CENTRAL) was conducted from their respective inception through to March 25, 2023. Search terms
273 were developed by the corresponding author (TN) and agreed upon by co-authors (AK, MW). The
274 search strategy combined key words describing the following: 1) condition (e.g., SCI); 2) ‘intervention
275 or exposure variable’ (e.g., rehabilitation, exercise and physical activity); and 3) ‘outcome’ (e.g.,
276 $\dot{V}\text{O}_{2\text{peak}}$ or PPO). Details of the complete search strategy can be found in online supplementary
277 material (S2). Search results were collated using Endnote software (Thomson Reuters, NY) and
278 duplicates removed.

279

280 **2.3. Study selection and data extraction**

281 The citations retrieved from the search strategy were screened by title, abstract, and full text by two
282 independent reviewers (DH, GB). At each stage of the evaluation, studies were excluded if the
283 inclusion criteria were not satisfied. A conservative approach was taken, whereby if insufficient
284 information was available to warrant study exclusion during the title and abstract stages of the
285 screening, studies were retained in the sample for full text screening. TN resolved any disagreement
286 with regards to study inclusion. There was no restriction on the language of studies. Where necessary,
287 reviewers screened using Google translate [37] or sought assistance from bilingual co-authors.

288

289 Two authors (DH, GB) independently extracted data in duplicate using Microsoft Excel. Any
290 disagreements were resolved via mutual consensus. Where more than one publication was apparent for
291 the same participants, data were extracted from the study with the largest sample size to avoid
292 duplication. Author, year, study design, sample size, participant demographics/injury characteristics,
293 exercise parameters (including the type, frequency, duration, intensity and weekly volume), or physical
294 activity exposure details (training history, objective wearable device or validated self-report
295 questionnaire) and adverse events were extracted. For RCTs, pre-post interventions and observational
296 studies, mean \pm standard deviation (SD) for $\dot{V}\text{O}_{2\text{peak}}$ and PPO outcomes at baseline and post-
297 intervention/control or observation period were extracted to assess change in CRF. For cross-sectional
298 studies, mean \pm SD outcomes were extracted for the unique cohorts, along with the significance and
299 magnitude of associations between CRF and habitual physical activity. Where possible, $\dot{V}\text{O}_{2\text{peak}}$
300 values were extracted in relative (mL/kg/min) and absolute (L/min) terms or calculated using pre- and

301 post-intervention body mass values when provided. As it is widely accepted that $V\dot{O}_{2peak}$ should be
302 expressed in relative terms, to account for changes in body mass, results are presented for both
303 $AV\dot{O}_{2peak}$ and $RV\dot{O}_{2peak}$, but the discussion focuses primarily on $RV\dot{O}_{2peak}$. PPO values were
304 extracted in watts (W) only. If there was insufficient information, the authors were contacted via email
305 (N=13) and given a two-week window to provide additional data or clarity (responses received, N=8
306 [38–45]). Detailed notes were recorded outlining the reasons for study inclusion/exclusion and the
307 number of studies included and excluded at each stage.

308

309 **2.4. Risk of bias**

310 Study quality was appraised by at least two independent reviewers in duplicate (DH, GB, SYC), with
311 any conflicts resolved by a third reviewer (TN). The Cochrane Risk of Bias 2 (RoB 2) was used to
312 assess the risk of bias of the RCTs [46]. Reviewers determined the level of bias for each domain using
313 the RoB 2 algorithms and is presented visually using Robvis [47]. Non-randomised designs were
314 assessed using assessment tools generated by the National Institutes of Health (NIH) and National
315 Heart, Lung and Blood Institute (NHLBI, Bethesda, MD). Pre-post studies were rated using the Quality
316 Assessment Tool for Before-After (Pre-Post) Studies with No Control Group (12 items) and
317 observational and cross-sectional studies were rated using the Quality Assessment Tool for
318 Observational Cohort and Cross-Sectional Studies (14 items). Studies were subsequently classified as
319 good, fair or poor quality using the guidance provided within each tool and is presented visually in
320 online supplementary material.

321

322 **2.5. Data synthesis and analysis**

323 A variety of methods [i.e., indices of heart rate (HR), $V\dot{O}_2$ or ratings of perceived exertion (RPE)]
324 have been utilised in the literature to establish, prescribe and regulate exercise intensity in the SCI-
325 population, which creates complexity when classifying the intensity of exercise. Each intervention was
326 classified as having prescribed either light, moderate, vigorous or supramaximal-intensity aerobic
327 exercise, based on thresholds proposed by the American College of Sports Medicine (ACSM) [48]
328 (S3). If a study reported a progression in intensity that spanned the moderate and vigorous-intensity
329 categories (e.g., 60–65% $V\dot{O}_{2peak}$), it was classified as ‘moderate-to-vigorous’. If insufficient data
330 were provided, studies were classified as ‘mixed-intensity/cannot determine’. Furthermore, where a

331 study reported frequency of sessions or length of interventions as a range (e.g., 6-8 weeks), the
332 midpoint was extracted and if a study reported duration as a range (e.g., 40-45 min), the greater value
333 was extracted. Descriptions of adverse events in the included studies were also collated. These were
334 categorised into the following subgroups: 1) bone, joint or muscular pain, 2) autonomic or
335 cardiovascular function, 3) skin irritation or pressure sores, and 4) other.

336

337 Means \pm SD were estimated from median and interquartile range (IQR) [49] or median and range [50],
338 where required. Where CRF data was only presented in figures, data were extrapolated using
339 Photoshop (Adobe Inc). To combine within-study subgroups and to estimate SD of the delta (Δ) change
340 in CRF using correlation factors, we followed guidance from the Cochrane handbook [49]. Correlation
341 factors were calculated for AV \square O_{2peak}, RV \square O_{2peak} and PPO using studies that reported pre-post SD
342 and SD of the Δ change using the following equation:

343

$$344 \quad Corr = \frac{(SD_{Pre})^2 + (SD_{Post})^2 - (SD_{Change})^2}{2 \times SD_{Pre} \times SD_{Post}}$$

345

346 The specific correlation factors that were calculated for each study were averaged across each study
347 design (S4) and applied in the following equation to calculate SD of the change for studies where these
348 values were not reported:

349

$$350 \quad SD_{Change} = \sqrt{(SD_{Pre})^2 + (SD_{Post})^2 - 2 \times corr \times SD_{Pre} \times SD_{Post}}$$

351

352 where *corr* represents the correlation coefficient.

353

354 Since AV \square O_{2peak}, RV \square O_{2peak}, and PPO are continuous variables, expressed using the same units across
355 studies, we utilised weighted mean differences (WMDs) and 95% confidence intervals (CI) as
356 summary statistics. A primary meta-analysis was carried out that included RCTs comparing Δ in CRF
357 outcomes following an exercise intervention relative to control groups. A secondary, pooled meta-
358 analysis describing Δ in CRF outcomes in response to prospective, well-characterised exercise
359 interventions lasting >2 weeks (e.g., combining exercise intervention-arms from RCTs and pre-post
360 studies) was also conducted to facilitate subgroup comparisons. Nine separate subgroup analyses were

361 performed for this pooled, secondary meta-analysis to describe Δ in each CRF outcome with studies
362 categorised into subgroups based on the following: 1) time since injury [(TSI), e.g., acute (<1-year),
363 chronic (\geq 1-year)]; 2) neurological level of injury (e.g., tetraplegia, paraplegia); 3) injury severity [e.g.,
364 grading in accordance with the American Spinal Injury Association Impairment Scale (AIS): motor-
365 complete (AIS A-B), motor-incomplete (AIS C-D)]; 4) exercise modality [e.g., aerobic volitional
366 upper-body, resistance training, FES, gait training, behaviour change]; 5) relative exercise intensity
367 (e.g., light, moderate, moderate-to-vigorous, vigorous, supramaximal); 6) method used to prescribe
368 exercise intensity (e.g., $\dot{V}\text{O}_2$, HR, RPE, workload); 7) frequency of exercise sessions per week (<3,
369 \geq 3 to <5, \geq 5); 8) exercise volume [e.g., SCI-specific exercise guidelines for fitness (40 - 89 min/wk)
370 [21], SCI-specific exercise guidelines for cardiometabolic health (90 - 149 min/wk) [21], achieving
371 general population exercise guidelines (\geq 150 min/wk) [23], and 9) length of intervention (\leq 6 weeks, >6
372 to \leq 12 weeks, >12 weeks). Studies were also classified as ‘mixed’ or ‘not reported/cannot determine’.
373 Three additional secondary meta-analyses were conducted for different trial designs: 1) comparing
374 inactive vs active participants (e.g., cross-sectional cohort studies); 2) describing Δ in CRF outcomes
375 with standard of care inpatient rehabilitation or free-living follow up (e.g., observational studies) and 3)
376 head-to-head comparison of different exercise intensities (RCTs with exercise interventions comparing
377 low or moderate vs. vigorous or supramaximal-intensity exercise). Meta-analyses were conducted in R
378 (Version 3.5.1, R Foundation for Statistical Computing, Vienna, Austria) using the package metafor
379 [51]. Statistical heterogeneity was assessed using the I^2 and accompanying p -value from the chi-
380 squared test. A random effects model was chosen to account for the variability in the true effect size
381 across studies, given the expected between-study variability of different exercise intervention
382 components and participant characteristics (by nature of SCI being a heterogeneous condition
383 depending on the neurological level and severity of injury). Evidence for differences in effects between
384 the subgroups in the secondary, pooled meta-analysis was explored by comparing effects in the
385 subgroups and the corresponding p -values for interaction (metagen function from the R package meta
386 [52]). Thresholds for statistically significant subgroup differences were adjusted for the number of
387 subgroup comparisons and individual subgroup p -values were adjusted for multiple comparisons via
388 the Bonferroni correction method. To assess the effect of potential outlier studies, leave-one-out
389 analyses were performed with studies removed and pooled WMD recalculated. Sensitivity analyses

390 were also conducted by comparing the WMDs of low and high risk of bias studies, as well as studies
391 with and without imputed data (i.e., extracted from figures or where mean \pm SD were calculated from
392 median, IQR or range), to confirm the robustness of our findings. A further subgroup analysis was
393 performed to compare Δ in CRF outcomes following exercise interventions that matched the CPET
394 modality to the intervention modality (i.e., using an incremental arm-crank ergometry CPET to test the
395 effects of an arm-crank exercise intervention). Potential small study effects in the dataset were assessed
396 using funnel plots. Egger's tests were also conducted in R when there was a minimum of 10 studies
397 included in a meta-analysis [53]. Study design statistical power for both the summary effect size and a
398 range of hypothetical effect sizes was calculated and visualised in firepower plots using the metameta
399 R package, recently described by Quintana [54]. Plots were produced for the pre-post exercise
400 interventions alone and for the RCT exercise interventions alone relative to controls (i.e., the primary
401 meta-analysis studies) to facilitate comparisons between study designs. Data is visualised in R (see
402 Github for scripts: <https://github.com/jutzca/Exercise-and-fitness-in-SCI>). A 2.7 mL/kg/min, and thus
403 1 metabolic equivalent in SCI (1 SCI-MET) [55], change in $RV\dot{V}O_{2peak}$ was considered clinically
404 meaningful.

405

406 To explore potential sources of heterogeneity, a random-effects meta-regression was performed using
407 preselected moderator variables in Stata (Version 13, StataCorp LLC, College Station, TX, USA),
408 adjusted for multiple testing. As per Cochrane recommendations [53], for each included covariate in
409 the model a minimum of 10 studies were required. To achieve this, and to also overcome the issue of
410 collinearity between moderators, some moderators were not included in the analysis. Moderators were
411 selected *a priori*, based on their potential to influence CRF responses. Exercise intensity prescription
412 was later added as a moderator in the meta-regression in light of a recent study challenging strategies
413 for prescribing exercise intensity in individuals with SCI [56]. Moderators fell into two categories:
414 model 1) participant/injury characteristics [continuous variables: age, TSI and baseline CRF;
415 categorical variables: sex (n=male), neurological level of injury (n=PARA), severity (n=motor-
416 complete)]; or model 2) intervention/study characteristics [continuous variables: exercise session
417 duration, frequency, weekly exercise volume, intervention length; categorical variables: exercise
418 modality, exercise intensity, method of exercise intensity prescription, and risk of bias classification].
419 Any potential covariates of the effect of $AV\dot{V}O_{2peak}$, $RV\dot{V}O_{2peak}$, and PPO with $p \leq 0.10$ identified via

420 univariate meta-regression were subsequently included in multivariate meta-regression modelling. The
421 level of significance for multivariate meta-regression was set at $p \leq 0.10$. Because meta-regression can
422 result in inflated false-positive rates when heterogeneity is present, or when there are few studies, a
423 permutation test described by Higgins and Thompson [57] was used to verify the significance of the
424 predictors in the final model, whereby 10,000 permutations were generated.

425

426 **2.6. Certainty on the body of the evidence assessment using the GRADE approach**

427 The Grading of Recommendations Assessment, Development and Evaluation (GRADE) approach [58]
428 was used to evaluate the certainty of the evidence for $AV \square O_{2peak}$, $RV \square O_{2peak}$ and PPO for the pooled,
429 pre-post and RCT exercise interventions secondary meta-analysis. It was decided that the greater
430 number of studies included in the pooled meta-analysis, in comparison to the primary meta-analysis
431 consisting of RCTs only, would provide a more accurate assessment of the current body of evidence.
432 Two authors (DH, SYC) independently assessed the certainty of evidence for each outcome, with any
433 conflicts resolved by the corresponding author (TN). The certainty of the evidence was graded from
434 'High' to 'Moderate', 'Low' or 'Very Low'. GRADE certainty in the evidence was downgraded if one
435 or more of the following criteria were present: 1) risk of bias, 2) inconsistency in the results for a given
436 outcome, 3) indirectness, 4) imprecision, and 5) small study effects.

437

438 **3. RESULTS**

439 The initial database search identified 14,248 articles after removal of duplicates. A further 12,322
440 studies were removed following the screening of titles and abstracts. The remaining 1,926 articles were
441 selected for full-text review based on inclusion and exclusion criteria (S2). Of these, a total of 120
442 eligible studies, across each specific study design (RCT = 29, pre-post = 67, observational = 6, cross-
443 sectional cohort = 11, cross-sectional association = 7), were included in this review. Twenty-nine RCTs
444 were included in the primary meta-analysis. Ninety-six studies, comprising the RCTs and pre-post
445 studies (total = 117 independent interventions), were included in the secondary, pooled meta-analysis.
446 Summaries of the pooled cohorts and descriptions of the individual studies included within each
447 additional secondary meta-analysis are provided as supplementary material.

448

449

[PLEASE INSERT FIGURE 1 HERE]

450

451 **3.1. Primary meta-analysis: RCT exercise intervention vs control groups**

452 Twenty-two RCTs assessed changes in CRF outcomes between exercise intervention (n=283
453 participants) and control (n=252 participants) groups. Participant demographics, injury characteristics,
454 exercise intervention parameters and changes in CRF outcomes for each RCT can be found in Figure 2.
455 A summary of the pooled cohort characteristics, summary statistics for the meta-analysis and forest
456 plots for each CRF outcome are presented in supplementary material (S5). The meta-analysis of RCTs
457 revealed a significantly higher $AV\dot{V}O_{2peak}$ [0.16 (0.07, 0.25) L/min, $p<0.001$], $RV\dot{V}O_{2peak}$ [2.9 (1.8,
458 3.9) mL/kg/min, $p<0.001$], and PPO [9 (5, 14) W, $p<0.001$] following exercise interventions relative to
459 controls. There was significant heterogeneity present across all CRF outcomes ($p<0.001$), with I^2
460 values of 87%, 93% and 88% for $AV\dot{V}O_{2peak}$, $RV\dot{V}O_{2peak}$, and PPO, respectively.

461

462 *[PLEASE INSERT FIGURE 2 HERE]*

463

464 **3.2. Secondary, pooled meta-analysis: Effects of prescribed, prospective exercise interventions**
465 **from pre-post and RCT studies**

466 CRF responses were pooled across 96 studies, comprising 117 exercise interventions in total, taken
467 from 81 pre-post exercise interventions and 36 independent exercise intervention arms from RCTs.
468 Some studies included multiple exercise intervention arms/phases, hence the greater total number of
469 exercise interventions than studies. A summary of the demographic/injury characteristics and
470 intervention parameters for the pooled cohort (i.e., all 117 interventions) included in the analyses for
471 $AV\dot{V}O_{2peak}$, $RV\dot{V}O_{2peak}$, and PPO are presented in supplementary material (S6). Participant
472 demographics and exercise intervention parameters across the total 117 exercise interventions are
473 summarised below. Summaries of the interventions for each CRF outcome, along with details of the
474 specific studies is presented in online supplementary material (S6).

475

476 **3.2.1. Participants**

477 Across the 117 exercise interventions, there were a total of 1,331 participants. Most interventions
478 included both males and females (63% of studies), where females made up between 6-80% of the
479 mixed cohorts. There were no female-only cohorts. Mean age ranged between 23 to 58 years and the

480 majority of participants had chronic injuries (64% >1-year), with mean TSI ranging between 56 days to
481 24 years. Sixty-three interventions included a mixed cohort of paraplegia and tetraplegia, of which
482 individuals with paraplegia made up between 10-88% of the mixed cohorts. Four interventions
483 recruited individuals with tetraplegia-only, 39 paraplegia-only, and 11 did not specify. Participants
484 across all AIS groups were included, of which 41 interventions were motor-complete-only, 19 were
485 motor-incomplete-only, and 20 did not report. Thirty-seven interventions recruited both motor-
486 complete and incomplete individuals, of which 33% were motor-incomplete. Weighted mean
487 $AV \square O_{2peak}$ and $RV \square O_{2peak}$ at baseline was 1.28 (0.51-3.50) L/min and 17.8 (7.3-36.9) mL/kg/min,
488 respectively, and PPO was 49 (0-168) W.

489

490 **3.2.2. Exercise intervention characteristics**

491 Length of interventions ranged from 4 to 52 weeks, and whilst most studies reported a specific,
492 predetermined intervention length, some reported a range [59–61], a total or targeted number of
493 sessions [60,62–66], or provided an average [65,67,68]. Exercise sessions were completed between two
494 to seven times per week. Eleven studies reported a range (e.g., “two to three sessions”) or maximum
495 frequency (e.g., “up to three sessions/week”) [60,63,66,69–76], and frequency was either not reported
496 or could not be determined in seven studies [39,77–82]. The remainder reported an exact frequency
497 (e.g., three sessions per week). The duration of exercise sessions ranged from 5 to 90 minutes, with five
498 studies reporting a range (e.g., 20-30 min) [60,76,83–85] and six studies reporting a progression to a
499 target duration [63,86–90]. Duration was not reported or could not be determined in 15 studies. Based
500 on current exercise guidelines, 23 interventions prescribed exercise within the SCI-specific exercise
501 guidelines for fitness (40-89 min/week), 45 interventions targeted the SCI-specific exercise guidelines
502 for cardiometabolic health (90-149 min/week), and 30 were greater than general population exercise
503 guidelines (≥ 150 min/week).

504

505 Forty-two interventions utilised aerobic upper-body exercise, 7 upper-body resistance training, 22 FES,
506 15 gait training, 5 behaviour change, and 26 mixed/multimodal interventions. Following the ACSM
507 thresholds, one intervention prescribed light-intensity (1%), 17 prescribed moderate-intensity (14%),
508 35 prescribed moderate-to-vigorous-intensity (30%), 26 prescribed vigorous-intensity (22%), and 2
509 prescribed supramaximal-intensity exercise (2%). Intensity could not be determined from 36

510 interventions (31%). With regards to exercise intensity prescription methods, 35 interventions used HR,
511 regulated either via HR_{peak} (% HR_{peak} , i.e., determined via a CPET; N=10), HR_{max} (% HR_{max} , i.e., age-
512 predicted; N=10), or HR reserve (%HRR; N=15). Fourteen interventions established intensity using
513 $V\dot{O}_{2peak}$ (% $V\dot{O}_{2peak}$; N=13) or $V\dot{O}_2$ reserve (% $V\dot{O}_{2reserve}$; N=1) calculated from the pre-
514 intervention CPET. Fourteen interventions utilised RPE, using either the Borg CR10 scale (N=7) or the
515 Borg 6-20 scale (N=7). Workload was used to prescribe intensity in 11 interventions, via a percentage
516 of PPO (%PPO; N=6), one repetition maximum (%1RM; N=4), or maximal tolerated power (%MTP;
517 N=1). Forty-three interventions either used a mixture of prescription methods or intensity could not be
518 classified.

519

520 3.2.3. Adverse events

521 Adverse events were described in 18 interventions, comprising at least 49/1,331 (3.7%) participants
522 (S7). These events were related to: 1) bone, joint or muscular pain (n=10 participants), 2) autonomic or
523 cardiovascular function (n=8 participants), 3) skin irritation or pressure sores (n=18 participants), and
524 4) other events including anxiety, nausea, dizziness and issues with testing equipment (n=3
525 participants). The following adverse events were reported in four other pre-post studies but could not
526 be categorised as above. Beillot et al. [77] stated that participants experienced “*spontaneous fractures*
527 *of lower limbs, occurrence of a syringomyelia and pressure sores at the foot and ankle*” (n=10), but
528 did not define the number of participants who sustained each event. Likewise, Janssen and Pringle [70]
529 reported “*lightheadedness in some subjects*” and Gibbons et al. [91] stated that “*a number of*
530 *participants showed some level of autonomic dysreflexia during the FES response test*”, but both
531 studies did not quantify further. Vestergaard et al. [92] reported adverse events relating to “*slight non-*
532 *persisting pain in neck (n=1), arms and shoulders (n=4) during and between training sessions, dizziness*
533 *that disappeared after 5-min (n=1), feeling tired in the head/dizziness that disappeared after training*
534 *with no other signs of autonomic hyperreflexia (n=2), increased spasms (n=2), and vomiting just after*
535 *training (n=2)*”. However, as only seven participants completed the intervention, it cannot be
536 determined whether these events were reported for one or multiple participants.

537

538 3.2.4. Change in CRF outcomes

539 Seventy-four exercise interventions assessed the change in $AV\dot{V}O_{2peak}$, revealing a significant increase
540 of 0.22 [0.17, 0.26] L/min ($p<0.001$). There were no significant subgroup differences for any of the
541 nine subgroup analyses. Seventy-nine exercise interventions assessed the change in $RV\dot{V}O_{2peak}$,
542 revealing a significant increase of 2.8 [2.3, 3.3] mL/kg/min ($p<0.001$). There were significant subgroup
543 differences for exercise modality ($p=0.002$) and length of intervention ($p=0.01$), but there were no
544 other differences (Figure 3). Sixty-five exercise interventions assessed the change in PPO, revealing a
545 significant increase of 11 [9, 13] W ($p<0.001$). There were significant subgroup differences for TSI
546 ($p<0.001$), neurological level of injury ($p<0.001$), exercise modality ($p=0.002$), relative exercise
547 intensity ($p=0.001$), method of exercise intensity prescription ($p<0.001$), and frequency ($p<0.001$)
548 (Figure 3). There was significant heterogeneity present across all CRF outcomes ($p<0.001$), with I^2
549 values of 72%, 53% and 78% for $AV\dot{V}O_{2peak}$, $RV\dot{V}O_{2peak}$, and PPO, respectively. Forest plots for each
550 subgroup analysis are presented in supplementary material (S6).

551

552 An additional subgroup analysis grouped interventions into those that matched the CPET modality to
553 the exercise intervention and those that did not. Following the adjustment for subgroup comparisons,
554 there were no significant differences in $AV\dot{V}O_{2peak}$, $RV\dot{V}O_{2peak}$ or PPO (S9). However, there were
555 trends for a greater $AV\dot{V}O_{2peak}$ ($p=0.05$) and $RV\dot{V}O_{2peak}$ ($p=0.06$) in studies with matched CPET and
556 intervention modalities in comparison to interventions without matched modalities. A sub-analysis for
557 gait training interventions alone also revealed no subgroup differences between studies that used upper-
558 body or treadmill CPETs to determine CRF outcomes (S10).

559

560 *[PLEASE INSERT FIGURE 3 HERE]*

561

562 **3.2.5. Sensitivity analyses**

563 Leave-one-out analyses identified outliers for $AV\dot{V}O_{2peak}$ [42][61,93]. A sensitivity analysis for risk of
564 bias revealed no differences in the pooled effects for low and high risk of bias studies (S8). A
565 sensitivity analysis comparing studies with imputed data via conversion of medians (IQR), extrapolated
566 data from figures, and studies without imputed data revealed no differences in the pooled effects for
567 any outcome. (S8).

568

569 **3.2.6. Study-design statistical power considerations**

570 Median statistical power and observed effect sizes for each CRF outcome and study design (i.e., pre-
571 post studies compared to RCT interventions relative to controls) are reported in Figure 4. Across each
572 CRF outcome, median statistical power was higher for the RCTs included in the primary meta-analysis
573 in comparison to the pre-post studies. In general, this indicates that the RCT studies were designed to
574 reliably detect a wider range of effect sizes in comparison to the pre-post studies.

575

576 *[PLEASE INSERT FIGURE 4 HERE]*

577

578 **3.2.7. Meta-regression**

579 *Model 1 - Participant and injury characteristics*

580 Exercise interventions with a greater mean age of participants were associated with smaller changes in
581 the effect estimates for $AV\dot{V}O_{2peak}$ ($p=0.08$) and $RV\dot{V}O_{2peak}$ ($p=0.01$). The coefficients indicate that for
582 every one-year increase in mean age of participants in an exercise intervention, the effect on
583 $AV\dot{V}O_{2peak}$ and $RV\dot{V}O_{2peak}$ decreases on average by 0.003 L/min and 0.041 mL/kg/min, respectively,
584 holding all other covariates constant (Table 1). There were no associations between the other moderator
585 variables included in this model and $AV\dot{V}O_{2peak}$ or $RV\dot{V}O_{2peak}$. Whilst there were no significant
586 associations between PPO and the other moderator variables (Table 1), there was a trend for an
587 association between PPO and TSI ($p=0.18$). The coefficient for TSI indicates that for every additional
588 year since injury, the effect on PPO following an exercise intervention decreases by 1.5W on average
589 (Table 1).

590

591 *Model 2 - Exercise intervention and study characteristics*

592 There were no significant associations between the exercise intervention and study characteristics
593 included in model 2 for $AV\dot{V}O_{2peak}$, $RV\dot{V}O_{2peak}$, or PPO (Table 1).

594

595 *[PLEASE INSERT TABLE 1 HERE]*

596

597 **3.2.8. Small study effects**

598 Egger's tests for funnel plot asymmetry were not statistically significant for $AV\dot{V}O_{2peak}$ ($Z = -1.20, p =$
599 0.23), $RV\dot{V}O_{2peak}$ ($Z = -0.44, p = 0.66$), or PPO ($Z = 0.76, p = 0.45$). Funnel plots are provided in
600 supplementary material (S6).

601

602 **3.3. Secondary Meta-Analyses**

603 **3.3.1. Cross-sectional studies**

604 Eleven studies included cross-sectional data comparing CRF outcomes in active ($n=182$ participants)
605 vs. inactive ($n=134$ participants) individuals with SCI. Inactive participants were mainly classified as
606 sedentary, whereas active participants varied from recreationally active wheelchair sport players to
607 paralympic athletes. A meta-analysis of cross-sectional cohort studies revealed significantly ($p<0.001$)
608 higher $AV\dot{V}O_{2peak}$ [0.55 ($0.43, 0.67$) L/min], $RV\dot{V}O_{2peak}$, [9.1 ($7.0, 11.2$) mL/kg/min] and PPO [38
609 ($32, 45$) W] in active compared to inactive individuals with SCI (S11). Given the significant
610 heterogeneity in $RV\dot{V}O_{2peak}$, a sensitivity analysis was conducted to compare inactive individuals with
611 either 'active' or 'elite athletes'. There was a significantly higher $RV\dot{V}O_{2peak}$ [6.4 ($4.7, 8.1$)
612 mL/kg/min, $p<0.001$] in 'active' compared to inactive individuals, but an even higher $RV\dot{V}O_{2peak}$ [11.2
613 ($9.6, 12.9$) mL/kg/min, $p<0.001$] in 'elite athletes' compared to inactive.

614

615 Seven studies ($n=581$ participants) included cross-sectional data and assessed associations between
616 habitual physical activity level (as a continuous variable) and CRF outcomes (S12). Six studies
617 assessed physical activity exposure using self-report methods [38,40,94–97], whereas one study used a
618 validated research-grade wearable device [98]. The measurement period used to capture physical
619 activity dimensions ranged from 3 to 7 days. There was considerable variability across studies with
620 regards to the physical activity dimensions captured: hours per week of exercise/sport, minutes per day
621 or week of mild, moderate, heavy-intensity for the subcategories of leisure time physical activity
622 (LTPA), lifestyle or household activity or cumulative activity. Collectively, data indicates significant
623 positive correlations of a larger magnitude between CRF/PPO outcomes and the volume of sport,
624 exercise or LTPA rather than household activity. The only study to use a validated wearable device
625 indicated that participants performing ≥ 150 min/week of moderate-to-vigorous physical activity
626 (MVPA) had a significantly higher CRF relative to a low activity group (performing <40 min/wk).
627 Whereas, there was no significant difference in CRF between the low activity group and participants

628 achieving the SCI-specific exercise guidelines (40 - 149 min/week) [98]. These data have been
629 replicated in a recent study, which compared CRF outcomes for participants achieving either the SCI-
630 specific exercise guidelines for fitness (40 - 89 min/week) and cardiometabolic health (90 - 149
631 min/week) [21] with the Exercise and Sport Science Australia (ESSA) position statement
632 recommending that individuals with SCI achieve ≥ 150 min/week [24]. There were no differences in
633 CRF outcomes between individuals classified as inactive and those meeting the current SCI-specific
634 exercise guidelines, yet there were significant differences across all CRF outcomes between inactive
635 individuals and those achieving the ESSA guidelines. Furthermore, $\Delta V\dot{O}_{2peak}$ and PPO were greater
636 for individuals meeting the ESSA guidelines, relative to the current SCI-specific exercise guidelines.
637 Across studies, significant, positive correlations were reported for the amount of moderate-to-vigorous
638 LTPA or cumulative activity with CRF/PPO outcomes, which was not the case for mild or light-
639 intensity activity.

640

641 **3.3.2. Observational inpatient rehabilitation or community free-living studies**

642 Six studies (n=354 participants) included observational longitudinal data and assessed changes in CRF
643 outcomes following either standard of care inpatient rehabilitation [99–101] or a period of community
644 free-living [99,102,103]. Whilst one study described a training programme for elite-level wheelchair
645 rugby players, it could not be determined whether players adhered to the pre-specified training
646 programme throughout the season and therefore the study was categorised as a community free-living
647 observational study in this review [104]. The duration between assessments for standard of care varied,
648 ranging from 5 to 28 weeks, whereas the follow-up period for community observations ranged from 30
649 weeks to 2.9 years. Reporting on the therapies used within standard of care was poor and only one
650 study included a measurement of physical activity during the community-based free-living follow-up
651 (self-reported mean sport activity) [102]. There were significant improvements following standard of
652 care, but not following community-based free-living, in $\Delta V\dot{O}_{2peak}$ [0.12 (0.07, 0.17) L/min, $p < 0.001$
653 vs. 0.09 (0.00, 0.19) L/min, $p = 0.06$] and $\Delta RV\dot{O}_{2peak}$ [2.1 (1.0, 3.2) mL/kg/min, $p < 0.001$ vs -0.5 (-2.5,
654 1.5) mL/kg/min, $p = 0.64$] (S13). Significant improvements in PPO were identified following both
655 standard of care [6 (3, 9) W, $p < 0.001$] and community-based free-living [7 (2, 12) W, $p = 0.006$] (S13).

656

657 **3.3.3. RCT exercise intensity comparisons**

658 Seven RCTs compared changes in CRF outcomes between low or moderate (n=52 participants) and
659 vigorous or supramaximal (n=51 participants) exercise intensity groups. These studies utilised upper-
660 body aerobic exercise and gait training. A meta-analysis revealed no significant differences between
661 low or moderate and vigorous or supramaximal intensity in $AV\dot{V}O_{2peak}$ ($p=0.67$), $RV\dot{V}O_{2peak}$ ($p=0.88$)
662 or PPO ($p=0.62$) (S14). There were also no significant subgroup differences between studies that
663 matched exercise volume between intensity groups and those that did not.

664

665 **3.4. Risk of Bias**

666 Full risk of bias assessments for pre-post and RCT interventions can be found in supplementary
667 material (S5, S6, S14). Twenty-six pre-post studies were rated as having good, 27 as having fair, and
668 14 as having poor methodological quality. Six RCTs were rated as having a low risk of bias, 8 as
669 having some concerns, and 15 as having a high risk of bias. The most common domains in the RCTs
670 with either some concerns or high risk were 'bias in the measurement of the outcome' and 'bias in
671 selection of the reported result'. Reporting was inadequate in many of the included studies, which made
672 the assessment of risk of bias challenging. Notably, reporting of blinding, eligibility or selection
673 criteria, as well as the enrolment of participants (i.e., a lack of CONSORT flow diagrams) was poor.
674 Individual risk of bias assessments for each study design are provided in supplementary material (S5,
675 S6, S11-14).

676

677 **3.5. Evidence appraisal using GRADE**

678 Overall, the GRADE assessment revealed a Moderate certainty in the body of evidence for
679 improvements in $RV\dot{V}O_{2peak}$, but a 'Low' certainty in the body of evidence for improvements in
680 $AV\dot{V}O_{2peak}$ and PPO (Table 2). The certainty rating for $AV\dot{V}O_{2peak}$ was downgraded due to imprecision
681 and a lack of high-quality study designs, whereas $RV\dot{V}O_{2peak}$ was downgraded as a result of
682 imprecision. The certainty rating for PPO was downgraded due to imprecision and inconsistency,
683 resulting from considerable heterogeneity in the included exercise interventions.

684

685 *[PLEASE INSERT TABLE 2 HERE]*

686

687 **4. DISCUSSION**

688 This review provides a large evidence-based summary and appraisal on the effects of prescribed and
689 prospective exercise interventions >2 weeks on CRF in individuals with SCI. The results from the
690 primary meta-analysis of RCTs support the role of exercise in improving CRF in this population by
691 0.16 L/min and 9W in $AV\dot{V}O_{2peak}$ and PPO, respectively. The primary meta-analysis also indicates a
692 clinically meaningful change in $RV\dot{V}O_{2peak}$ of 2.9 mL/kg/min. Subgroup analyses in the secondary,
693 pooled meta-analysis revealed no effects of injury characteristics or exercise intervention parameters
694 on $AV\dot{V}O_{2peak}$, but an effect of exercise modality and length of intervention on $RV\dot{V}O_{2peak}$. There were
695 also significant subgroup differences for PPO based on TSI, neurological level of injury, exercise
696 modality, exercise intensity, method of exercise intensity prescription, and frequency of sessions per
697 week. The GRADE assessment including RCTs and pre-post intervention studies revealed ‘Moderate’
698 certainty in the evidence for improvements in $RV\dot{V}O_{2peak}$, yet ‘Low’ certainty in the evidence for
699 significant improvements in $AV\dot{V}O_{2peak}$ and PPO.

700

701 Following exercise interventions, $V\dot{V}O_{2peak}$ improves in individuals with both acute and chronic SCI.
702 However, this review highlights the need for more exercise interventions in the acute phase post-SCI.
703 Indeed, a recent review by Van der Scheer et al. [35] rated the confidence in the evidence base for
704 exercise in acute SCI as ‘Very Low’, and called for more RCTs to control for the deteriorations in
705 fitness and health occurring almost immediately following SCI. With regards to PPO in the current
706 review, the meta-regression revealed a trend for an association between TSI and changes in PPO, with
707 individuals with long-term injuries exhibiting smaller changes in PPO in comparison to those with
708 relatively newer injuries. The subgroup analysis based on TSI also revealed that individuals with acute
709 SCI exhibit a greater change than individuals with chronic SCI. This may be due to exercise being
710 delivered in combination with standard of care inpatient rehabilitation for individuals with acute
711 injuries, representing an additive effect. Indeed, the secondary meta-analysis with longitudinal
712 observational studies indicates a 6W improvement in PPO with standard of care inpatient rehabilitation
713 alone during the subacute period. This could be influenced by spontaneous motor recovery in the first
714 few months following SCI [105]. Or alternatively, this subacute period may provide a familiarisation
715 effect to novel modalities of exercise that patients were previously unaccustomed to and/or provides a
716 notable stimulus to naive upper-body musculature following a period of bed rest and deconditioning,
717 possibly representing a regression to the mean artefact. Ultimately, more rigorous RCTs are required in

718 the subacute phase post-SCI that compare standard of care versus standard of care plus a specific
719 exercise intervention to truly quantify the independent effects of a prescribed exercise intervention in
720 the inpatient setting.

721

722 Exercise results in improved $\dot{V}\dot{O}_{2\text{peak}}$ regardless of the neurological level of injury. In particular, this
723 review reveals a pooled improvement of 5.9 mL/kg/min in studies that included only individuals with
724 tetraplegia (N=3 interventions). For comparison, there is a considerably larger evidence-base for
725 studies including only individuals with paraplegia (N=31 interventions). A recent systematic review
726 suggested that aerobic exercise results in minimal returns on investment in individuals with tetraplegia,
727 with $\dot{V}\dot{O}_{2\text{peak}}$ improving on average only 9% following 10-37 weeks of training [106]. However, their
728 review excluded studies with a sample size <10. Consequently, the Dicarolo study [93], which reported
729 a 94% increase in $\dot{V}\dot{O}_{2\text{peak}}$ was excluded from their analysis. Whilst the inclusion of this study in the
730 current analysis may have augmented the overall effect, as identified by our leave-one-out analysis,
731 there was nothing untoward in this study to suggest a reason for this exaggerated response. Therefore,
732 our findings indicate that exercise improves CRF in individuals with tetraplegia and that the magnitude
733 of change is not significantly different to individuals with paraplegia.

734

735 However, the pooled meta-analysis highlights that individuals with paraplegia (16W) are likely to
736 accrue greater absolute changes in PPO than those with tetraplegia (9W). Typically, higher
737 neurological levels of injury result in a loss of trunk control, motor impairments in the upper-limbs and
738 reduced mechanical efficiency, compared to lower levels of injury [107,108]. Therefore, individuals
739 with tetraplegia may not have the physical or motor capacity to adapt as effectively as individuals with
740 paraplegia, and thus could experience a ceiling effect with training. Indeed, a recent study identified
741 lesion level as a significant predictor of PPO in a group of handcyclists with SCI [109]. To account for
742 baseline motor function differences between individuals with tetraplegia and paraplegia, we determined
743 relative percentage change for studies that included upper-body aerobic exercise interventions only.
744 The relative percentage change was similar between neurological level of injury classifications: 46%
745 tetraplegia (N=1 interventions) vs. 53% paraplegia (N=9 interventions). While only one tetraplegia-
746 only intervention was included in this subgroup analysis [110], normalising for baseline values seems
747 to indicate similar relative magnitudes of change in PPO.

748

749 Williams et al. [111] recently demonstrated that individuals with a lower level of injury (<T6)
750 significantly improved PPO compared to individuals with a higher level of injury (\geq T6), suggesting a
751 potential role of disrupted cardiovascular control in mediating changes in PPO [112,113]. Whilst
752 methods for ameliorating the reduction in sympathetic cardiovascular control typically associated with
753 injuries \geq T6 have been investigated (e.g., abdominal binding [114], lower-body positive pressure [115],
754 and midodrine [116]), the evidence for an improved CRF is still mixed. A recent case-report has
755 indicated that epidural spinal cord stimulation (SCS) can safely and effectively restore cardiovascular
756 control and improve CRF [117]. With an explosion in SCS studies over the last few years [118],
757 particularly including transcutaneous SCS, the pairing of exercise with novel and non-invasive
758 neuromodulatory approaches will likely continue to receive considerable research attention. Future,
759 adequately powered, research may want to consider separating participants into paraplegic and
760 tetraplegic groups or dichotomize by injuries above and below T6 to account for differences in
761 sympathetic cardiovascular control. Currently, there is a paucity of studies analysing data in this
762 fashion, which limits our understanding of how neurological level of injury and the degree of impaired
763 sympathetic cardiovascular control influences the magnitude of change in CRF following an exercise
764 intervention. Researchers may want to consider conducting a battery of autonomic nervous system
765 stress tests at baseline (e.g., Valsalva manoeuvre, head-up tilt, sympathetic skin responses etc. [119]),
766 to determine the degree of supraspinal sympathetic disruption rather than relying on a neurological
767 level of injury derived from a motor-sensory examination. This is important as recent research has
768 indicated that cardiovascular instability cannot be predicted by motor-sensory level and completeness
769 of SCI [120].

770

771 There were no significant subgroup differences in CRF based on injury severity. However, the
772 subgroup analysis suggests that individuals with a motor-incomplete SCI may not yield PPO
773 improvements of the same magnitude as individuals with a motor-complete SCI. This is most likely
774 due to the majority of motor-incomplete studies implementing gait training as its exercise modality,
775 which we reveal is the least effective modality for improving CRF. The gait training interventions that
776 measured PPO (N=2 interventions) used arm-crank ergometry (ACE) as the CPET modality,
777 demonstrating no transfer effect from lower-body to upper-body exercise. During data extraction,

778 reviewers noted poor reporting of injury severity in a number of studies. Whilst this may be due to
779 older studies having used alternative severity scales (e.g., International Stoke Mandeville Games
780 Federation or Frankel), researchers should endeavour to perform an International Standards for
781 Neurological Classification of SCI (ISNCSCI) exam during screening, and subsequently report an AIS
782 grade, to enable better comparisons to be made between injury severities in the future.

783

784 Van der Scheer et al. [35] concluded that there was high certainty in the evidence that exercise
785 interventions ≥ 2 weeks can improve CRF in young and middle-aged adults. However, they revealed
786 that there was a lack of studies exploring the effects of exercise in older adults with SCI (>65 years).
787 The oldest mean age included in our review is 57.9 years [121], and thus supports their call for more
788 research to be conducted in the older SCI population. Interestingly, our meta-regression identified that
789 exercise interventions with a higher mean age were associated with smaller changes in $V\dot{O}_{2peak}$,
790 suggesting that older adults do not achieve the same CRF benefits as younger or middle-aged adults.
791 This is not surprising given the progressive physical deconditioning that occurs naturally with age, as
792 previously shown in the non-injured population [122]. Research indicates that SCI represents a model
793 of advanced ageing [123], with the ageing process being exacerbated in individuals with SCI possibly
794 due to diminished mobility independence resulting in physical deconditioning. Older adults with SCI
795 find it harder to change body position, transfer, and move around independently in comparison to
796 younger adults with SCI [124]. Moreover, it has been suggested that older adults with SCI do not
797 perform volumes or intensities of leisure time physical activity required to achieve fitness benefits
798 [125]. These changes will likely result in reduced incidental physical activity outside of a prescribed
799 exercise intervention. Ageing skeletal muscle is also susceptible to mitochondrial dysfunction, which
800 may be related to chronic inflammation (e.g., “inflammaging”), possibly explaining the diminished
801 responses in CRF for older adults with SCI. Future research may want to investigate optimal strategies
802 for improving CRF in older adults. Moreover, there is a need for more longitudinal studies that explore
803 the age-related decline in CRF in the SCI population, and whether this is accelerated relative to the
804 non-injured population.

805

806 Despite a number of recent reviews summarising the effects of specific exercise modalities on the
807 change in CRF following SCI, including aerobic ACE [126], FES-cycling [36], and aerobic plus

808 muscle strength training (mixed multimodal) interventions [127], to the best of our knowledge our
809 secondary, pooled meta-analysis is the first to directly compare the effects of a wide range of exercise
810 modalities on the change in CRF in individuals with SCI. This review revealed there was a significant
811 subgroup difference in $RV\dot{V}O_{2peak}$, with the greatest changes gained via upper-body aerobic exercise or
812 resistance training. The change in $RV\dot{V}O_{2peak}$ for upper-body aerobic exercise in the current review
813 (21%) is equivalent to the average 21% improvement reported in a recent systematic review on the
814 effects of ACE in chronic SCI [126]. Whilst the current review did not exclusively investigate ACE, it
815 is evident that aerobic, volitional upper-body exercise training can improve CRF in individuals with
816 SCI. Activating larger amounts of skeletal muscle mass via FES exercise interventions also appears to
817 improve $RV\dot{V}O_{2peak}$, yet it is noteworthy that more accessible and less expensive training modalities
818 such as aerobic and resistance training may yield similar or even greater increases in $RV\dot{V}O_{2peak}$,
819 despite utilising less muscle mass. Additionally, $RV\dot{V}O_{2peak}$ improves following multimodal/hybrid
820 exercise interventions, which challenges a 2015 review reporting inconclusive findings on the effects
821 of combined upper-body aerobic and muscle strength training on CRF [127]. Yet, as the current review
822 included a wide range of interventions not restricted to the upper-body (e.g., aquatic treadmill [63],
823 hybrid cycling [64,69,128], multimodal exercises [129,130], etc.), it is recommended that more
824 research is conducted to delineate whether the improvements in $RV\dot{V}O_{2peak}$ with multimodal/hybrid
825 exercise interventions are due to the combination of upper- and lower-body exercise modalities, or due
826 to concurrent training modalities that predominantly use the upper-body (e.g., aerobic plus muscle
827 strength training). Finally, both gait training and behaviour change interventions appear less effective at
828 improving $RV\dot{V}O_{2peak}$ and PPO.

829
830 Aerobic, upper-body exercise and resistance training modalities demonstrate the greatest improvements
831 in PPO, by 15W and 20W, respectively. It is perhaps unsurprising that resistance training resulted in
832 the largest change in PPO given that these interventions included upper-body exercises prescribed to
833 increase muscular strength, as shown by Jacobs et al. [131]. Volitional exercise, as opposed to activity-
834 based therapy modalities (i.e., interventions that provide activation of the neuromuscular system below
835 the level of lesion with the goal of retraining the nervous system, such as FES and gait training), may
836 therefore be more beneficial at improving PPO. Ultimately, these improvements have important
837 ramifications for individuals with SCI that are dependent on performing functional upper-body

838 movements such as transfers or wheelchair propulsion [99,103], and may lead to increased quality of
839 life with more functional independence [132].

840

841 Several studies directly compared the effects of specific exercise modalities on the change in CRF
842 [42,63,86]. Notably, Gorman et al. [63] demonstrated that there were no transfer effects from a robotic
843 treadmill exercise intervention to ACE performance in a CPET. This review also demonstrates a trend
844 for greater changes in $\dot{V}\dot{O}_{2peak}$ are likely achieved when the CPET modality is matched to the
845 intervention (S9). Therefore, researchers should endeavour to match the CPET modality to their
846 exercise intervention, or at the very least be careful when interpreting changes in CRF when using
847 different modalities.

848

849 The current SCI-specific exercise guidelines recommend that exercise should be performed at a
850 moderate-to-vigorous intensity [21]. A recent overview of systematic reviews also advocated the use of
851 moderate-to-vigorous intensity for improving aerobic fitness [133]. The current secondary, pooled
852 meta-analysis demonstrates robust improvements across all CRF outcomes for interventions
853 prescribing exercise at this particular intensity. Furthermore, the secondary meta-analysis including
854 cross-sectional studies reveals significant associations of a greater magnitude between MVPA and
855 CRF, as compared to lower-intensity activity. Despite this, our classification of moderate-to-vigorous
856 exercise intensity spans two of the ACSM exercise intensity thresholds (S3). There may be
857 considerable variation in the actual intensity performed by participants given the noticeable range
858 across the two thresholds (e.g., 46-90% $\dot{V}\dot{O}_{2peak}$, 64-95% HR_{peak} , 12-17 RPE etc.). Therefore,
859 individuals with SCI and exercise practitioners should be cautious when prescribing such a broad
860 exercise intensity.

861

862 The secondary meta-analysis comparing RCT exercise intensities reveals similar changes in CRF
863 outcomes between moderate- and vigorous-intensity interventions. This is in agreement with a previous
864 review [30] and supports the viewpoint from a special communication on high-intensity interval
865 training (HIIT) [31], which suggested that vigorous-intensity exercise is more time efficient and may
866 result in similar if not superior CRF and skeletal muscle oxidative capacity improvements in
867 comparison to moderate-intensity exercise. Interestingly, in a response to a Letter-to-the-Editor [27],

868 the SCI-specific exercise guideline developers acknowledge the need for shorter, effective protocols to
869 be documented in the literature [134]. Furthermore, recent evidence has suggested that HIIT may be
870 more enjoyable than moderate-intensity exercise for individuals with SCI [135], and so this form of
871 training may offer a more time efficient and readily available alternative to moderate-intensity
872 protocols. In the current review, a number of HIIT-based arm-crank ergometry, wheelchair propulsion,
873 and FES hybrid cycling and skiing interventions demonstrated improvements in CRF [69,92,128,136–
874 140]. The potential of “real-world” strategies such as virtual HIIT have also been discussed in a recent
875 review by McMillan et al. [141]. Future exercise interventions should look to compare the effects of
876 different HIIT modalities/protocols (i.e., virtual home-based HIIT versus supervised arm-crank HIIT,
877 the most appropriate number and/or length of intervals and recovery periods, vigorous or supramaximal
878 exercise intensities) before concrete recommendations can be made on the most optimal HIIT
879 prescription for improving CRF. Whilst efforts are ongoing to corroborate the safety and feasibility of
880 HIIT [32,92,142] both researchers and individuals with SCI should be vigilant in identifying risks
881 associated with HIIT such as shoulder discomfort or pain, skin irritation or pressure sores caused by
882 abrasive movements, or increased spasticity, along with monitoring for post-exercise hypotension
883 [143]. As higher-intensity exercise generates a greater metabolic heat load than lower-intensity
884 exercise, which increases core body temperature, considerations should be made for individuals with
885 higher neurological levels of injury exercising at a high-intensity and/or in warm to hot ambient
886 temperatures given their greater likelihood of experiencing thermoregulatory issues [144]. General
887 contraindications for performing HIIT have been discussed in the non-injured population [145] yet they
888 also apply for individuals with SCI.

889
890 This review reveals that $RV\dot{V}O_{2peak}$ improves regardless of the method used to prescribe exercise
891 intensity. With regards to PPO, subgroup difference indicates that the magnitude of change is greater
892 when prescribing intensity via indices of HR (i.e., $\%HR_{peak}$, $\%HR_{max}$, $\%HRR$) or $V\dot{V}O_2$ (i.e.,
893 $\%V\dot{V}O_{2peak}$, $\%V\dot{V}O_{2reserve}$), compared to RPE and workload. A recent systematic review concluded that
894 exercise interventions using RPE to prescribe relative exercise intensities improved PPO in individuals
895 with SCI [146]. Previous research has revealed that RPE results in inter-individual responses to
896 exercise, with the potential for two individuals to perform the same bout of exercise either above or
897 below lactate threshold despite being prescribed the same perceptually regulated intensity, which

898 prevents the development of SCI-specific RPE recommendations [147]. These differences identified in
899 our meta-analysis may also be due to individuals with SCI being unaccustomed to subjective measures
900 of exertion. Accordingly, there have been calls for better reporting of the standardisation and
901 familiarisation procedures used for RPE [146] and have only tentatively recommended its use before
902 the evidence base is expanded [148]. Therefore, it seems plausible to suggest that the blunted
903 improvements in PPO with intensity prescribed via RPE, as compared to other prescription methods,
904 may have resulted from insufficient familiarisation before an exercise intervention.

905

906 Although HR and $\dot{V}\text{O}_2$ have long been used to prescribe exercise intensity, these approaches can
907 result in large training ranges and ignore individual metabolic responses. Particularly, issues may arise
908 with using HR for individuals with a neurological level of injury $\geq T6$, given that these individuals
909 typically exhibit a lower HR_{peak} [149]. The use of fixed percentages (i.e., $\% \text{HR}_{\text{peak}}$, $\% \dot{V}\text{O}_{2\text{peak}}$) in the
910 non-injured population has been questioned [150] and has recently been investigated in individuals
911 with SCI, whereby Hutchinson et al. [56] showed that fixed $\% \text{HR}_{\text{peak}}$ and $\% \dot{V}\text{O}_{2\text{peak}}$ could not
912 guarantee a homogenous domain-specific exercise intensity prescription. Notably, individuals were
913 spread across moderate, heavy and severe domains at the “moderate” and “vigorous” intensity
914 classifications; thereby questioning whether the “moderate-to-vigorous” terminology used in the SCI-
915 specific exercise guidelines is suitable for adults with SCI.

916

917 Given that prescribing exercise intensity via HR and $\dot{V}\text{O}_2$ can typically be resource and cost-
918 intensive, there is some scope for using RPE as a cheaper and more practical method for community-
919 based exercise prescription. However, this may not be as effective as other objective methods. Future
920 research should aim to identify the optimal methods of exercise intensity prescription, as well as
921 consider revisiting the current “moderate-to-vigorous intensity” recommendations. Moreover, further
922 research may want to consider using traditional intensity anchors (e.g., the gas exchange threshold,
923 critical power or lactate threshold) rather than prescribing exercise relative to physiological thresholds
924 to see whether this results in more homogeneous CRF responses to exercise, given research in non-
925 injured individuals suggests this may increase the precision of exercise intensity prescription [151,152].
926 However, it is worth acknowledging that it is not always possible to identify such traditional intensity
927 anchors in individuals with higher levels of SCI [153,154].

928

929 Subgroup analyses based on frequency of sessions and exercise volume reveal no differences in
930 $RV \square O_{2peak}$, thereby supporting the minimal volume of exercise required to attain CRF benefits in
931 individuals with SCI. Furthermore, although there are no statistically significant subgroup differences
932 for PPO based on exercise volume, there is a greater magnitude of change observed for individuals
933 exercising 90-149 min/wk in comparison to 40-89 min/wk (12W vs 7W change, respectively). A
934 greater weekly exercise volume may therefore accrue greater changes in PPO and, as already
935 described, may be important in improving the capacity to perform daily tasks such as bed or wheelchair
936 transfers [99,103]. Although changes in CRF are similar between each exercise volume subgroup, and
937 thus corresponding exercise guidelines, the secondary meta-analysis on cross-sectional cohorts
938 indicates a significant cumulative impact of prolonged participation in physical activity and exercise.
939 To support this point, a sensitivity analysis revealed a larger difference in $RV \square O_{2peak}$ between inactive
940 individuals and elite athletes, compared to between inactive and active individuals, suggesting that
941 those who exercise more exhibit a greater CRF. Indeed, two cross-sectional association studies [40,98],
942 reported significantly higher CRF in individuals with SCI that were habitually performing greater
943 volumes of physical activity. Looking forward, longitudinal RCTs with multiple intervention arms
944 would be the best way to explore dose-response changes with regards to differing volumes of exercise,
945 as has been done in the non-injured population [155–158].

946

947 Subgroup analysis based on length of intervention indicated that exercise interventions of 12 weeks or
948 less yield greater changes in $RV \square O_{2peak}$ than those lasting >12 weeks. This may be explained by
949 compliance and adherence issues during prolonged interventions (i.e., >12 weeks). Indeed, the two
950 behaviour change studies included in this subgroup analysis observed minimal changes in $RV \square O_{2peak}$
951 following 16 [82] and 24 weeks [39]. This perhaps emphasises the benefit of short and intensive
952 exercise interventions ≤ 12 weeks as well as the need for supervised exercise sessions in prolonged
953 interventions to ensure compliance and meaningful changes in $RV \square O_{2peak}$.

954

955 Adverse events were reported for at least 3.7% of the total included participants, with the majority of
956 events related to skin irritation, pressure sores or ulcers. Qualitatively, there was no particular exercise
957 modality that suggested an increased risk for an adverse event, but higher-intensity exercise appeared

958 to reveal more adverse events, albeit being swayed by one study in particular [130]. Reporting was
959 poor in a number of studies with reviewers at times unable to determine the exact number of events per
960 participant. Furthermore, there is generally a lack of follow-up assessments following exercise
961 interventions, so it is currently unknown whether there are any detrimental long-term effects of
962 exercise in the SCI population. Going forward, researchers are encouraged to follow a standardised
963 adverse event reporting procedure (including serious and non-serious adverse events) and ensure that
964 they are transparent with reporting of both the nature and the total numbers of each event, either related
965 or unrelated to the exercise intervention.

966

967 **4.1. Strengths and limitations of the review and future directions**

968 **4.1.1. Limitations of the included studies**

969 Poor reporting of injury characteristics and exercise parameters prevented a perfect comparison of
970 exercise interventions. Overall, studies could have provided more precise descriptions of training
971 parameters to aid with any future refinements to the SCI-specific exercise guidelines. Reporting of
972 adherence to interventions was also poor and should be encouraged to provide an indication of the
973 feasibility or applicability of specific exercise interventions for individuals with SCI. Moreover,
974 adverse events should be transparently reported, even if none occur so that practitioners are able to
975 identify forms of exercise that are most likely to be safe for this population. Additionally, studies
976 typically failed to utilise the training principle of progression, which during prolonged exercise
977 interventions is essential for preventing a plateau in training adaptations and perhaps particularly
978 important in this population for supporting the transition from an inactive lifestyle to higher levels of
979 activity, and ultimately achieving greater CRF benefits [24]. On the whole, the reporting of $\dot{V}O_{2peak}$
980 attainment criteria was poor, with only 24% of the included exercise interventions using at least two
981 criterion methods for identifying when an individual had reached peak capacity, as recently
982 recommended by Alrashidi et al. [159]. At least two methods [e.g., RPE ≥ 17 , respiratory exchange
983 ratio (RER) ≥ 1.1 , plateau in oxygen uptake] should be adopted for confirming the attainment of a true
984 $\dot{V}O_{2peak}$ to prevent magnitudes of change in CRF from being inflated or underestimated. Furthermore,
985 to the best of our knowledge, only 30% of interventions had a prospectively registered clinical trial
986 entry and only 7.7% had a protocol manuscript published. To sustain the integrity and transparency of

987 reporting in this field, researchers are encouraged to prospectively register any planned clinical trials
988 using publicly available repositories.

989

990 The risk of bias assessments on pre-post studies revealed that no study conducted multiple baseline or
991 follow-up assessments. Whilst often time-consuming and impractical with larger sample sizes, multiple
992 assessments ensure reproducibility by accounting for any technical or biological variation, as shown
993 previously in non-injured individuals at risk for type-2 diabetes [160]. In the SCI population,
994 individuals are typically deconditioned and often exhibit variable responses to a CPET. This variance
995 may be explained by profound blood pressure instability [161], including unintentional ‘boosting’ via
996 episodes of autonomic dysreflexia [162]. Researchers should therefore consider performing multiple
997 CPETs at baseline and follow-up to attain reliable assessments of CRF.

998

999 There are also several limitations with regards to the studies included in the secondary meta-analyses
1000 for this review. First, there is only one cross-sectional study using a research-grade wearable device to
1001 investigate the association between physical activity and CRF [98]. Whilst self-report questionnaires
1002 are valid tools for estimating levels of physical activity [97,163–165], there are important drawbacks
1003 including the difficulty of accurately capturing intensity, lack of questionnaires measuring activities of
1004 daily living, and recall bias. Secondly, there is a lack of RCTs comparing near-maximal, maximal or
1005 supramaximal exercise intensities to moderate-intensity exercise. The only supramaximal intervention
1006 included in this review demonstrated a 17W improvement in PPO [139]. The inclusion of more RCTs
1007 comparing vigorous-intensity to lower intensity exercise could identify whether there are, in fact,
1008 benefits to performing shorter but more vigorous-intensity exercise bouts, in comparison to longer
1009 continuous forms of exercise.

1010

1011 **4.1.2. Strengths and limitations of the review**

1012 A major strength of the current study is that we pre-planned and prospectively registered (PROSPERO
1013 ID CRD42018104342) our systematic review. We used GRADE to assess the certainty in the body of
1014 evidence and used quality appraisal tools for the specific study designs included in this review. Our
1015 GRADE assessment demonstrates generalisability within the SCI population, through the inclusion of
1016 participants across the lifespan and with a wide range of injury characteristics. Yet, the ‘Low’

1017 confidence in the evidence for $AV\dot{V}O_{2peak}$ and PPO emphasises the need for more rigorous exercise
1018 interventions to address current gaps in the literature [35]. The disparity in GRADE confidence ratings
1019 across the specific CRF outcomes likely is a factor of the variability of the total number of included
1020 interventions across outcomes $AV\dot{V}O_{2peak}$ (N=74), $RV\dot{V}O_{2peak}$ (N=79) and PPO (N=65).

1021

1022 As there were not enough RCTs to perform subgroup comparisons and a meta-regression on this study
1023 design specifically, we pooled pre-post (N=81) and RCT (N=36) exercise interventions. This is in
1024 accordance with Cochrane guidance stating that the inclusion of non-randomised study designs is
1025 justified when there are only a small number of RCTs available to provide evidence of the effects of
1026 interventions [53]. To consider this limitation, we generated firepower plots to explore the statistical
1027 power of the included RCTs and pre-post studies. These plots demonstrate that the RCTs had greater
1028 median statistical power across CRF outcomes and were designed to reliably detect a wider range of
1029 effect sizes than the pre-post studies. However, the changes in $RV\dot{V}O_{2peak}$ and PPO in the primary
1030 meta-analysis of RCT interventions relative to controls (2.9 mL/kg/min and 9W, respectively) are
1031 similar to those reported in the secondary, pooled meta-analysis (2.8 mL/kg/min and 11W,
1032 respectively), and thus confirms the robustness of our overall findings. Furthermore, our rigorous
1033 approach of adjusting for multiple comparisons minimises any erroneous interpretations of subgroup
1034 differences and therefore strengthens our conclusions on the available evidence.

1035

1036 Despite this, the categorisation of interventions within each subgroup could be considered a limitation
1037 of the current review. Whilst this was done to directly compare the effects of different subgroups (i.e.,
1038 acute vs chronic, tetraplegia vs paraplegia, aerobic vs resistance vs FES etc.), it resulted in an unequal
1039 number of interventions within each classification and likely underpowered the subgroup comparisons.
1040 For example, the subgroup analysis based on exercise intensity reveals an effect of exercise intensity
1041 on PPO, yet this may be influenced by the small number of interventions for light- and supramaximal-
1042 intensity. Despite reporting some significant subgroup differences across dichotomised studies, these
1043 variables were not identified as significant moderator variables in the random-effects meta-regression,
1044 meaning these findings should be viewed with caution. It is perhaps more of a limitation of the
1045 evidence-base *per se*, rather than our meta-analysis, in that more RCTs should be conducted to increase

1046 the power of these subgroups. Another limitation is that despite our comprehensive search strategy we
1047 may have missed relevant studies as abstracts, theses, and other unpublished work were not included.

1048

1049 **4.2. Clinical implications and future directions**

1050 Our results support the current guidelines regarding the minimal weekly volume of exercise necessary
1051 to improve CRF in the SCI population. However, our pooled analysis indicates subgroup differences
1052 for PPO based on certain exercise intervention parameters. To the best of our knowledge, there are no
1053 large-scale epidemiological studies investigating the dose-response relationship between physical
1054 activity and CRF in this population using sensitive and validated methods to quantify the exposure
1055 variable (e.g. free-living physical activity). Such studies have been performed in non-injured
1056 individuals [166,167]. To identify the optimal stimulus for beneficial CRF responses in this population,
1057 dose-ranging studies, akin to those that are used in the pharmaceutical industry, should be conducted. A
1058 recent overview of systematic reviews [168] highlighted the poor reporting in exercise interventions in
1059 health and disease and called upon the inclusion of checklists [e.g., the Consensus on Exercise
1060 Reporting Template (CERT) [169] or the Template for Intervention Description and Replication
1061 (TIDieR) [170]] to improve study quality. This would ultimately lead to a better understanding of the
1062 ‘dose’ of exercise as medicine required to optimise CRF outcomes in this population.

1063

1064 Both the primary meta-analysis of RCTs ($\Delta 2.9$ mL/kg/min) and the secondary, pooled meta-analysis
1065 ($\Delta 2.8$ mL/kg/min) reveal that exercise interventions >2 weeks result in an overall increase in
1066 $RV \square O_{2peak}$ which is roughly equivalent to 1 MET-SCI [metabolic equivalent in SCI (2.7 mL/kg/min)]
1067 [55]. An increase in maximal aerobic capacity (an estimate of CRF) by 1 MET (3.5 mL/kg/min) in non-
1068 injured individuals is associated with a 13% and 15% reduction in all-cause and cardiovascular
1069 mortality, respectively [171]. The current review shows that individuals meeting the SCI-specific
1070 guidelines for cardiometabolic health [21] can improve $RV \square O_{2peak}$ to a similar magnitude to the overall
1071 pooled effect (~1 MET-SCI), highlighting that these guidelines may offer a reduction in CVD risk, and
1072 therefore mortality. Nonetheless, an association between an improvement in CRF and a reduction in
1073 mortality is yet to be established specifically in the SCI population and remains an important avenue of
1074 research for the future.

1075

1076 **5. CONCLUSION**

1077 This systematic review with meta-analysis provides an updated, evidence-based summary of the effects
1078 of exercise interventions on CRF in individuals with SCI. Based on evidence of moderate-to-low
1079 certainty, exercise interventions >2 weeks are associated with significant improvements in CRF, and in
1080 particular, a clinically meaningful change in $RV\dot{V}O_{2peak}$. Subgroup comparisons identified that upper-
1081 body, aerobic exercise and resistance training appear the most effective at improving $RV\dot{V}O_{2peak}$ and
1082 PPO. Furthermore, acutely-injured, paraplegic individuals, exercising at a moderate-to-vigorous
1083 intensity, prescribed via $V\dot{V}O_2$ or HR (at a minimum of either 46% $V\dot{V}O_{2peak}$, 64% HR_{peak} , or 40%
1084 $HRR/V\dot{V}O_{2reserve}$, in accordance with ACSM classifications), for more than 3 sessions/week will likely
1085 experience the greatest change in PPO. Exercise interventions up to 12-weeks are also most likely to
1086 lead to improvements in $RV\dot{V}O_{2peak}$. The meta-regression revealed that older adults may experience
1087 smaller changes in $V\dot{V}O_{2peak}$ following an exercise intervention. Importantly, there is an ever-growing
1088 need for studies to establish a dose-response relationship between exercise and CRF in the SCI
1089 population to determine the most optimal form of exercise prescription to reduce the wide-ranging
1090 consequences typically associated with SCI. To improve the certainty of evidence in the field moving
1091 forward, we call for the development of an SCI-specific reporting template for exercise interventions,
1092 as well as encourage researchers to pre-register and/or publish protocol papers for prospective clinical
1093 exercise trials. Researchers should also consider whether injury characteristics or participant
1094 demographics (e.g., impact of neurological level of injury/severity on motor-sensory or autonomic
1095 cardiovascular control, age, sex) influence changes in CRF outcomes with a period of exercise training.
1096

1097 **6. ACKNOWLEDGEMENTS**

1098 We would like to thank Mr. Sajjad Tavassoly (Faculty of Medicine, UBC, Vancouver, Canada) for his
1099 assistance with piloting the initial database search. We would also like to thank Dr. Matthew Quéré
1100 (Department of Physical Therapy, UBC, Spinal Cord Injury Research Evidence Team, GF Strong
1101 Rehabilitation Centre, Vancouver, Canada) for his assistance with the risk of bias assessments. We
1102 appreciate the assistance of Mr Adrian Cheng (ICORD) and Dr. Alex Williams (ICORD), who helped
1103 pilot the inclusion/exclusion of articles and supported the use of Photoshop to extract data from figures,
1104 respectively. We thank Dr. Sam Weaver (University of Birmingham) for support with the meta-
1105 analysis using R. Figure 3 was created using Biorender.com.

1106

1107 **7. LIST OF ABBREVIATIONS**

1RM	One repetition maximum Arm-crank ergometry
ACSM	American College of Sports Medicine
AIS	American Spinal Injury Association Impairment Scale
AV\dot{V}O_{2peak}	Absolute peak oxygen uptake
CENTRAL	Cochrane Central Register of Controlled Trials
CERT	Consensus on Exercise Reporting Template
CI	Confidence interval
CPET	Cardiopulmonary exercise test
CRF	Cardiorespiratory fitness
CVD	Cardiovascular disease
EMBASE	Excerpta Medica Database
FES	Functional electrical stimulation
GRADE	Grading of Recommendations, Assessment, Development and Evaluation
HIIT	High-intensity interval training
HR	Heart rate
HR_{max}	Maximum heart rate (age-predicted)
HR_{peak}	Peak heart rate
HRR	Heart rate reserve
IQR	Interquartile range
ISNCSCI	International Standards for Neurological Classification of Spinal Cord Injury
LTPA	Leisure time physical activity
MET	Metabolic equivalent
MTP	Maximal tolerated power
MVPA	Moderate-to-vigorous physical activity
PPO	Peak power output

PRISMA	Preferred Reporting Items for Systematic Reviews
RCT	Randomised-controlled trial
RoB 2	The Cochrane Risk of Bias 2 tool
RPE	Rating of perceived exertion
RV□O_{2peak}	Relative peak oxygen uptake
SCI	Spinal cord injury
SCS	Spinal cord stimulation
SD	Standard deviation
TIDieR	Template for Intervention Description and Replication
TSI	Time since injury
V□O₂	Oxygen uptake
V□O_{2peak}	Peak oxygen uptake
V□O_{2reserve}	Reserve oxygen uptake
W	Watts
WMD	Weighted mean difference

1108

1109

1110

1111

1112 **8. REFERENCES**

- 1113 1. Miller LE, Herbert WG. Health and economic benefits of physical activity for patients with spinal
1114 cord injury. *Clinicoecon Outcomes Res.* 2016;8: 551–558.
- 1115 2. Rimmer JH, Schiller W, Chen M-D. Effects of disability-associated low energy expenditure
1116 deconditioning syndrome. *Exerc Sport Sci Rev.* 2012;40: 22–29.
- 1117 3. Cragg JJ, Noonan VK, Dvorak M, Krassioukov A, Mancini GBJ, Borisoff JF. Spinal cord injury
1118 and type 2 diabetes: results from a population health survey. *Neurology.* 2013;81: 1864–1868.
- 1119 4. Cragg JJ, Noonan VK, Krassioukov A, Borisoff J. Cardiovascular disease and spinal cord injury:
1120 results from a national population health survey. *Neurology.* 2013;81: 723–728.
- 1121 5. Wu J-C, Chen Y-C, Liu L, Chen T-J, Huang W-C, Cheng H, et al. Increased risk of stroke after
1122 spinal cord injury: a nationwide 4-year follow-up cohort study. *Neurology.* 2012;78: 1051–1057.
- 1123 6. Ross R, Blair SN, Arena R, Church TS, Després J-P, Franklin BA, et al. Importance of Assessing
1124 Cardiorespiratory Fitness in Clinical Practice: A Case for Fitness as a Clinical Vital Sign: A
1125 Scientific Statement From the American Heart Association. *Circulation.* 2016;134: e653–e699.
- 1126 7. Clausen Johan S.R., Marott Jacob L., Holtermann Andreas, Gyntelberg Finn, Jensen Magnus T.
1127 Midlife Cardiorespiratory Fitness and the Long-Term Risk of Mortality. *J Am Coll Cardiol.*

- 1128 2018;72: 987–995.
- 1129 8. Lee D-C, Sui X, Artero EG, Lee I-M, Church TS, McAuley PA, et al. Long-term effects of
1130 changes in cardiorespiratory fitness and body mass index on all-cause and cardiovascular disease
1131 mortality in men: the Aerobics Center Longitudinal Study. *Circulation*. 2011;124: 2483–2490.
- 1132 9. Myers J, Prakash M, Froelicher V, Do D, Partington S, Atwood JE. Exercise capacity and
1133 mortality among men referred for exercise testing. *N Engl J Med*. 2002;346: 793–801.
- 1134 10. Laukkanen JA, Kurl S, Salonen R, Rauramaa R, Salonen JT. The predictive value of
1135 cardiorespiratory fitness for cardiovascular events in men with various risk profiles: a prospective
1136 population-based cohort study. *Eur Heart J*. 2004;25: 1428–1437.
- 1137 11. Erikssen G, Liestøl K, Bjørnholt J, Thaulow E, Sandvik L, Erikssen J. Changes in physical fitness
1138 and changes in mortality. *Lancet*. 1998;352: 759–762.
- 1139 12. Lee DC, Sui X, Ortega FB, Kim Y-S, Church TS, Winett RA, et al. Comparisons of leisure-time
1140 physical activity and cardiorespiratory fitness as predictors of all-cause mortality in men and
1141 women. *Br J Sports Med*. 2011;45: 504–510.
- 1142 13. Haisma JA, van der Woude LHV, Stam HJ, Bergen MP, Sluis TAR, Bussmann JBJ. Physical
1143 capacity in wheelchair-dependent persons with a spinal cord injury: a critical review of the
1144 literature. *Spinal Cord*. 2006;44: 642–652.
- 1145 14. Simmons OL, Kressler J, Nash MS. Reference fitness values in the untrained spinal cord injury
1146 population. *Arch Phys Med Rehabil*. 2014;95: 2272–2278.
- 1147 15. Stofan JR, DiPietro L, Davis D, Kohl HW 3rd, Blair SN. Physical activity patterns associated with
1148 cardiorespiratory fitness and reduced mortality: the Aerobics Center Longitudinal Study. *Am J
1149 Public Health*. 1998;88: 1807–1813.
- 1150 16. Nightingale TE, Williams S, Thompson D, Bilzon JLJ. Energy balance components in persons
1151 with paraplegia: daily variation and appropriate measurement duration. *Int J Behav Nutr Phys Act*.
1152 2017;14: 132.
- 1153 17. van den Berg-Emons RJ, Bussmann JB, Stam HJ. Accelerometry-based activity spectrum in
1154 persons with chronic physical conditions. *Arch Phys Med Rehabil*. 2010;91: 1856–1861.
- 1155 18. Hicks AL, Martin Ginis KA, Pelletier CA, Ditor DS, Foulon B, Wolfe DL. The effects of exercise
1156 training on physical capacity, strength, body composition and functional performance among
1157 adults with spinal cord injury: a systematic review. *Spinal Cord*. 2011;49: 1103–1127.
- 1158 19. Valent L, Dallmeijer A, Houdijk H, Talsma E, van der Woude L. The effects of upper body
1159 exercise on the physical capacity of people with a spinal cord injury: a systematic review. *Clin
1160 Rehabil*. 2007;21: 315–330.
- 1161 20. Ginis KAM, Hicks AL, Latimer AE, Warburton DER, Bourne C, Ditor DS, et al. The
1162 development of evidence-informed physical activity guidelines for adults with spinal cord injury.
1163 *Spinal Cord*. 2011;49: 1088–1096.
- 1164 21. Martin Ginis KA, van der Scheer JW, Latimer-Cheung AE, Barrow A, Bourne C, Carruthers P, et
1165 al. Evidence-based scientific exercise guidelines for adults with spinal cord injury: an update and a
1166 new guideline. *Spinal Cord*. 2018;56: 308–321.
- 1167 22. Smith B, Kirby N, Skinner B, Wightman L, Lucas R, Foster C. Infographic. Physical activity for
1168 disabled adults. *Br J Sports Med*. 2019;53: 335–336.
- 1169 23. Bull FC, Al-Ansari SS, Biddle S, Borodulin K, Buman MP, Cardon G, et al. World Health
1170 Organization 2020 guidelines on physical activity and sedentary behaviour. *Br J Sports Med*.
1171 2020;54: 1451–1462.
- 1172 24. Tweedy SM, Beckman EM, Geraghty TJ, Theisen D, Perret C, Harvey LA, et al. Exercise and

- 1173 sports science Australia (ESSA) position statement on exercise and spinal cord injury. *J Sci Med*
1174 *Sport*. 2017;20: 108–115.
- 1175 25. Piercy KL, Troiano RP, Ballard RM, Carlson SA, Fulton JE, Galuska DA, et al. The Physical
1176 Activity Guidelines for Americans. *JAMA*. 2018;320: 2020–2028.
- 1177 26. Powell KE, Paluch AE, Blair SN. Physical activity for health: What kind? How much? How
1178 intense? On top of what? *Annu Rev Public Health*. 2011;32: 349–365.
- 1179 27. Tweedy SM, Beckman EM, Connick MJ, Geraghty TJ, Theisen D, Perret C, et al. Correspondence
1180 re “Evidence-based scientific exercise guidelines for adults with spinal cord injury: an update and
1181 new guideline.” *Spinal cord*. 2018. pp. 406–408.
- 1182 28. Yue T, Wang Y, Liu H, Kong Z, Qi F. Effects of High-Intensity Interval vs. Moderate-Intensity
1183 Continuous Training on Cardiac Rehabilitation in Patients With Cardiovascular Disease: A
1184 Systematic Review and Meta-Analysis. *Front Cardiovasc Med*. 2022;9: 845225.
- 1185 29. Hannan AL, Hing W, Simas V, Climstein M, Coombes JS, Jayasinghe R, et al. High-intensity
1186 interval training versus moderate-intensity continuous training within cardiac rehabilitation: a
1187 systematic review and meta-analysis. *Open Access J Sports Med*. 2018;9: 1–17.
- 1188 30. Peters J, Abou L, Rice LA, Dandeneau K, Alluri A, Salvador AF, et al. The effectiveness of
1189 vigorous training on cardiorespiratory fitness in persons with spinal cord injury: a systematic
1190 review and meta-analysis. *Spinal Cord*. 2021;59: 1035–1044.
- 1191 31. Nightingale TE, Metcalfe RS, Vollaard NB, Bilzon JL. Exercise Guidelines to Promote
1192 Cardiometabolic Health in Spinal Cord Injured Humans: Time to Raise the Intensity? *Arch Phys*
1193 *Med Rehabil*. 2017;98: 1693–1704.
- 1194 32. Astorino TA, Hicks AL, Bilzon JL. Viability of high intensity interval training in persons with
1195 spinal cord injury—a perspective review. *Spinal Cord*. 2021;59: 3–8.
- 1196 33. Farrow M, Nightingale TE, Maher J, McKay CD, Thompson D, Bilzon JL. Effect of Exercise on
1197 Cardiometabolic Risk Factors in Adults With Chronic Spinal Cord Injury: A Systematic Review.
1198 *Arch Phys Med Rehabil*. 2020;101: 2177–2205.
- 1199 34. Moher D, Liberati A, Tetzlaff J, Altman DG, PRISMA Group. Preferred reporting items for
1200 systematic reviews and meta-analyses: the PRISMA statement. *BMJ*. 2009;339: b2535.
- 1201 35. van der Scheer JW, Martin Ginis KA, Ditor DS, Goosey-Tolfrey VL, Hicks AL, West CR, et al.
1202 Effects of exercise on fitness and health of adults with spinal cord injury: A systematic review.
1203 *Neurology*. 2017;89: 736–745.
- 1204 36. van der Scheer JW, Goosey-Tolfrey VL, Valentino SE, Davis GM, Ho CH. Functional electrical
1205 stimulation cycling exercise after spinal cord injury: a systematic review of health and fitness-
1206 related outcomes. *J Neuroeng Rehabil*. 2021;18: 99.
- 1207 37. Jackson JL, Kuriyama A, Anton A, Choi A, Fournier J-P, Geier A-K, et al. The Accuracy of
1208 Google Translate for Abstracting Data From Non-English-Language Trials for Systematic
1209 Reviews. *Ann Intern Med*. 2019;171: 677–679.
- 1210 38. Lannem AM, Sørensen M, Lidal IB, Hjeltnes N. Perceptions of exercise mastery in persons with
1211 complete and incomplete spinal cord injury. *Spinal Cord*. 2010;48: 388–392.
- 1212 39. Bombardier CH, Dyer JR, Burns P, Crane DA, Takahashi MM, Barber J, et al. A tele-health
1213 intervention to increase physical fitness in people with spinal cord injury and cardiometabolic
1214 disease or risk factors: a pilot randomized controlled trial. *Spinal Cord*. 2021;59: 63–73.
- 1215 40. Hoevenaars D, Holla JFM, Postma K, van der Woude LHV, Janssen TWJ, de Groot S.
1216 Associations between meeting exercise guidelines, physical fitness, and health in people with
1217 spinal cord injury. *Disabil Rehabil*. 2022; 1–8.

- 1218 41. Piira A, Lannem AM, Sørensen M, Glott T, Knutsen R, Jørgensen L, et al. Manually assisted
1219 body-weight supported locomotor training does not re-establish walking in non-walking subjects
1220 with chronic incomplete spinal cord injury: A randomized clinical trial. *J Rehabil Med*. 2019;51:
1221 113–119.
- 1222 42. Farkas GJ, Gorgey AS, Dolbow DR, Berg AS, Gater DR Jr. Energy Expenditure,
1223 Cardiorespiratory Fitness, and Body Composition Following Arm Cycling or Functional Electrical
1224 Stimulation Exercises in Spinal Cord Injury: A 16-Week Randomized Controlled Trial. *Top*
1225 *Spinal Cord Inj Rehabil*. 2021;27: 121–134.
- 1226 43. Dallmeijer AJ, Hopman MT, van der Woude LH. Lipid, lipoprotein, and apolipoprotein profiles in
1227 active and sedentary men with tetraplegia. *Arch Phys Med Rehabil*. 1997;78: 1173–1176.
- 1228 44. Davis GM, Shephard RJ, Leenen FH. Cardiac effects of short term arm crank training in
1229 paraplegics: echocardiographic evidence. *Eur J Appl Physiol Occup Physiol*. 1987;56: 90–96.
- 1230 45. Hansen RK, Samani A, Laessoe U, Handberg A, Møllgaard M, Figlewski K, et al. Rowing
1231 exercise increases cardiorespiratory fitness and brachial artery diameter but not traditional
1232 cardiometabolic risk factors in spinal cord-injured humans. *Eur J Appl Physiol*. 2023; 1–15.
- 1233 46. Higgins JPT, Sterne JAC, Savovic J, Page MJ, Hróbjartsson A, Boutron I, et al. A revised tool for
1234 assessing risk of bias in randomized trials. *Cochrane Database Syst Rev*. 2016;10: 29–31.
- 1235 47. McGuinness LA, Higgins JPT. Risk-of-bias VISualization (robvis): An R package and Shiny web
1236 app for visualizing risk-of-bias assessments. *Res Synth Methods*. 2021;12: 55–61.
- 1237 48. American College of Sports Medicine. ACSM’s guidelines for exercise testing and prescription. 9th ed.
1238 Lippincott Williams & Wilkins; 2013. Available: <https://shop.lww.com/ACSM-s-Guidelines-for-Exercise-Testing-and-Prescription/p/9781975150181>
1239
- 1240 49. Higgins JPT, Li T, Deeks JJ. Choosing effect measures and computing estimates of effect.
1241 *Cochrane Handbook for Systematic Reviews of Interventions*. Wiley; 2019. pp. 143–176.
1242 doi:10.1002/9781119536604.ch6
- 1243 50. Hozo SP, Djulbegovic B, Hozo I. Estimating the mean and variance from the median, range, and
1244 the size of a sample. *BMC Med Res Methodol*. 2005;5: 13.
- 1245 51. Viechtbauer W. Conducting Meta-Analyses in R with the metafor Package. *J Stat Softw*. 2010;36:
1246 1–48.
- 1247 52. Balduzzi S, Rucker G, Schwarzer G. How to perform a meta-analysis with R: a practical tutorial.
1248 *Evid Based Ment Health*. 2019;22: 153–160.
- 1249 53. Higgins JPT, Thomas J, Chandler J, Cumpston M, Li T, Page MJ, et al. *Cochrane Handbook for*
1250 *Systematic Reviews of Interventions*. John Wiley & Sons; 2019.
- 1251 54. Quintana DS. A Guide for Calculating Study-Level Statistical Power for Meta-Analyses.
1252 *Advances in Methods and Practices in Psychological Science*. 2023;6: 25152459221147260.
- 1253 55. Collins EG, Gater D, Kiratli J, Butler J, Hanson K, Langbein WE. Energy cost of physical
1254 activities in persons with spinal cord injury. *Med Sci Sports Exerc*. 2010;42: 691–700.
- 1255 56. Hutchinson MJ, Goosey-Tolfrey VL. Rethinking aerobic exercise intensity prescription in adults
1256 with spinal cord injury: time to end the use of “moderate to vigorous” intensity? *Spinal Cord*.
1257 2021; 1–7.
- 1258 57. Higgins JPT, Thompson SG. Controlling the risk of spurious findings from meta-regression. *Stat*
1259 *Med*. 2004;23: 1663–1682.
- 1260 58. Guyatt GH, Oxman AD, Vist GE, Kunz R, Falck-Ytter Y, Alonso-Coello P, et al. GRADE: an
1261 emerging consensus on rating quality of evidence and strength of recommendations. *BMJ*.
1262 2008;336: 924–926.

- 1263 59. Han D-S, Hsiao M-Y, Wang T-G, Chen S-Y, Yang W-S. Association of serum myokines and
1264 aerobic exercise training in patients with spinal cord injury: an observational study. *BMC Neurol.*
1265 2016;16: 142.
- 1266 60. Hoekstra F, van Nunen MPM, Gerrits KHL, Stolwijk-Swüste JM, Crins MHP, Janssen TWJ.
1267 Effect of robotic gait training on cardiorespiratory system in incomplete spinal cord injury. *J*
1268 *Rehabil Res Dev.* 2013;50: 1411–1422.
- 1269 61. Pollack SF, Axen K, Spielholz N, Levin N, Haas F, Ragnarsson KT. Aerobic training effects of
1270 electrically induced lower extremity exercises in spinal cord injured people. *Arch Phys Med*
1271 *Rehabil.* 1989;70: 214–219.
- 1272 62. Barstow TJ, Scremin AM, Mutton DL, Kunkel CF, Cagle TG, Whipp BJ. Changes in gas
1273 exchange kinetics with training in patients with spinal cord injury. *Med Sci Sports Exerc.*
1274 1996;28: 1221–1228.
- 1275 63. Gorman PH, Scott W, VanHiel L, Tansey KE, Sweatman WM, Geigle PR. Comparison of peak
1276 oxygen consumption response to aquatic and robotic therapy in individuals with chronic motor
1277 incomplete spinal cord injury: a randomized controlled trial. *Spinal Cord.* 2019;57: 471–481.
- 1278 64. Heesterbeek PJC, Berkelmans HWA, Thijssen DHJ, van Kuppevelt HJM, Hopman MTE,
1279 Duysens J. Increased physical fitness after 4-week training on a new hybrid FES-cycle in persons
1280 with spinal cord injury. *Technol Disabil.* 2005;17: 103–110.
- 1281 65. Mutton DL, Scremin AM, Barstow TJ, Scott MD, Kunkel CF, Cagle TG. Physiologic responses
1282 during functional electrical stimulation leg cycling and hybrid exercise in spinal cord injured
1283 subjects. *Arch Phys Med Rehabil.* 1997;78: 712–718.
- 1284 66. Ozturk ED, Lapointe MS, Kim D-I, Hamner JW, Tan CO. Effect of 6-Month Exercise Training on
1285 Neurovascular Function in Spinal Cord Injury. *Med Sci Sports Exerc.* 2021;53: 38–46.
- 1286 67. Hooker SP, Scremin AM, Mutton DL, Kunkel CF, Cagle G. Peak and submaximal physiologic
1287 responses following electrical stimulation leg cycle ergometer training. *J Rehabil Res Dev.*
1288 1995;32: 361–366.
- 1289 68. Hooker SP, Figoni SF, Rodgers MM, Glaser RM, Mathews T, Suryaprasad AG, et al. Physiologic
1290 effects of electrical stimulation leg cycle exercise training in spinal cord injured persons. *Arch*
1291 *Phys Med Rehabil.* 1992;73: 470–476.
- 1292 69. Hasnan N, Engkasan JP, Husain R, Davis GM. High-Intensity Virtual-reality Arm plus FES-leg
1293 Interval Training in Individuals with Spinal Cord Injury. *Biomed Tech.* 2013;58 Suppl 1.
1294 doi:10.1515/bmt-2013-4028
- 1295 70. Janssen TWJ, Pringle DD. Effects of modified electrical stimulation-induced leg cycle ergometer
1296 training for individuals with spinal cord injury. *J Rehabil Res Dev.* 2008;45: 819–830.
- 1297 71. Jeon JY, Hettinga D, Steadward RD, Wheeler GD, Bell G, Harber V. Reduced plasma glucose and
1298 leptin after 12 weeks of functional electrical stimulation-rowing exercise training in spinal cord
1299 injury patients. *Arch Phys Med Rehabil.* 2010;91: 1957–1959.
- 1300 72. Midha M, Schmitt JK, Sclater M. Exercise effect with the wheelchair aerobic fitness trainer on
1301 conditioning and metabolic function in disabled persons: a pilot study. *Arch Phys Med Rehabil.*
1302 1999;80: 258–261.
- 1303 73. Milia R, Roberto S, Marongiu E, Olla S, Sanna I, Angius L, et al. Improvement in hemodynamic
1304 responses to metaboreflex activation after one year of training in spinal cord injured humans.
1305 *Biomed Res Int.* 2014;2014: 893468.
- 1306 74. Lavado EL, Cardoso JR, Silva LGA, Dela Bela LF, Atallah AN. Effectiveness of aerobic physical
1307 training for treatment of chronic asymptomatic bacteriuria in subjects with spinal cord injury: a
1308 randomized controlled trial. *Clin Rehabil.* 2013;27: 142–149.

- 1309 75. Brazg G, Fahey M, Holleran CL, Connolly M, Woodward J, Hennessy PW, et al. Effects of
1310 Training Intensity on Locomotor Performance in Individuals With Chronic Spinal Cord Injury: A
1311 Randomized Crossover Study. *Neurorehabil Neural Repair*. 2017;31: 944–954.
- 1312 76. Schleifer G, Solinsky R, Hamner JW, Picard G, Taylor JA. Hybrid Functional Electrical
1313 Stimulation Improves Anaerobic Threshold in First Three Years after Spinal Cord Injury. *J*
1314 *Neurotrauma*. 2022;39: 1050–1056.
- 1315 77. Beillot J, Carré F, Le Claire G, Thoumie P, Perruoin-Verbe B, Cormerais A, et al. Energy
1316 consumption of paraplegic locomotion using reciprocating gait orthosis. *Eur J Appl Physiol Occup*
1317 *Physiol*. 1996;73: 376–381.
- 1318 78. Koch I, Schlegel M, Pirrwitz A, Jaschke B, Schlegel K. [Objectification of the training effect of
1319 sports therapy for wheelchair users]. *Int J Rehabil Res*. 1983;6: 439–448.
- 1320 79. Kooijmans H, Post MWM, Stam HJ, van der Woude LHV, Spijkerman DCM, Snoek GJ, et al.
1321 Effectiveness of a Self-Management Intervention to Promote an Active Lifestyle in Persons With
1322 Long-Term Spinal Cord Injury: The HABITS Randomized Clinical Trial. *Neurorehabil Neural*
1323 *Repair*. 2017;31: 991–1004.
- 1324 80. Ma JK, West CR, Martin Ginis KA. The Effects of a Patient and Provider Co-Developed,
1325 Behavioral Physical Activity Intervention on Physical Activity, Psychosocial Predictors, and
1326 Fitness in Individuals with Spinal Cord Injury: A Randomized Controlled Trial. *Sports Med*.
1327 2019;49: 1117–1131.
- 1328 81. Nooijen CF, Stam HJ, Sluis T, Valent L, Twisk J, van den Berg-Emons RJ. A behavioral
1329 intervention promoting physical activity in people with subacute spinal cord injury: secondary
1330 effects on health, social participation and quality of life. *Clin Rehabil*. 2017;31: 772–780.
- 1331 82. Froehlich-Grobe K, Lee J, Ochoa C, Lopez A, Sarker E, Driver S, et al. Effectiveness and
1332 feasibility of the workout on wheels internet intervention (WOWii) for individuals with spinal
1333 cord injury: a randomized controlled trial. *Spinal Cord*. 2022;60: 862–874.
- 1334 83. Bakkum AJT, de Groot S, Stolwijk-Swüste JM, van Kuppevelt DJ, ALLRISC, van der Woude
1335 LHV, et al. Effects of hybrid cycling versus handcycling on wheelchair-specific fitness and
1336 physical activity in people with long-term spinal cord injury: a 16-week randomized controlled
1337 trial. *Spinal Cord*. 2015;53: 395–401.
- 1338 84. Capodaglio P, Grilli C, Bazzini G. Tolerable exercise intensity in the early rehabilitation of
1339 paraplegic patients. A preliminary study. *Spinal Cord*. 1996;34: 684–690.
- 1340 85. Gorgey AS, Lai RE, Khalil RE, Rivers J, Cardozo C, Chen Q, et al. Neuromuscular electrical
1341 stimulation resistance training enhances oxygen uptake and ventilatory efficiency independent of
1342 mitochondrial complexes after spinal cord injury: a randomized clinical trial. *J Appl Physiol*.
1343 2021;131: 265–276.
- 1344 86. Alrashidi AA, Nightingale TE, Currie KD, Hubli M, MacDonald MJ, Hicks AL, et al. Exercise
1345 Improves Cardiorespiratory Fitness, but Not Arterial Health, after Spinal Cord Injury: The
1346 CHOICES Trial. *J Neurotrauma*. 2021;38: 3020–3029.
- 1347 87. Berry HR, Perret C, Saunders BA, Kakebeeke TH, Donaldson NDN, Allan DB, et al.
1348 Cardiorespiratory and power adaptations to stimulated cycle training in paraplegia. *Med Sci*
1349 *Sports Exerc*. 2008;40: 1573–1580.
- 1350 88. Duffell LD, Paddison S, Alahmary AF, Donaldson N, Burridge J. The effects of FES cycling
1351 combined with virtual reality racing biofeedback on voluntary function after incomplete SCI: a
1352 pilot study. *J Neuroeng Rehabil*. 2019;16: 149.
- 1353 89. Durán FS, Lugo L, Ramírez L, Eusse E. Effects of an exercise program on the rehabilitation of
1354 patients with spinal cord injury. *Arch Phys Med Rehabil*. 2001;82: 1349–1354.
- 1355 90. Gorman PH, Scott W, York H, Theyagaraj M, Price-Miller N, McQuaid J, et al. Robotically

- 1356 assisted treadmill exercise training for improving peak fitness in chronic motor incomplete spinal
1357 cord injury: A randomized controlled trial. *J Spinal Cord Med.* 2016;39: 32–44.
- 1358 91. Gibbons RS, Stock CG, Andrews BJ, Gall A, Shave RE. The effect of FES-rowing training on
1359 cardiac structure and function: pilot studies in people with spinal cord injury. *Spinal Cord.*
1360 2016;54: 822–829.
- 1361 92. Vestergaard M, Jensen K, Juul-Kristensen B. Hybrid high-intensity interval training using
1362 functional electrical stimulation leg cycling and arm ski ergometer for people with spinal cord
1363 injuries: a feasibility study. *Pilot Feasibility Stud.* 2022;8: 43.
- 1364 93. DiCarlo SE. Effect of arm ergometry training on wheelchair propulsion endurance of individuals
1365 with quadriplegia. *Phys Ther.* 1988;68: 40–44.
- 1366 94. Janssen TWJ, Dallmeijer AJ, Veeger DJHEJ, van der Woude LHV. Normative values and
1367 determinants of physical capacity in individuals with spinal cord injury. *J Rehabil Res Dev.*
1368 2002;39: 29–39.
- 1369 95. Latimer AE, Ginis KAM, Craven BC, Hicks AL. The physical activity recall assessment for
1370 people with spinal cord injury: validity. *Med Sci Sports Exerc.* 2006;38: 208–216.
- 1371 96. Manns PJ, McCubbin JA, Williams DP. Fitness, inflammation, and the metabolic syndrome in
1372 men with paraplegia. *Arch Phys Med Rehabil.* 2005;86: 1176–1181.
- 1373 97. Martin Ginis KA, Úbeda-Colomer J, Alrashidi AA, Nightingale TE, Au JS, Currie KD, et al.
1374 Construct validation of the leisure time physical activity questionnaire for people with SCI
1375 (LTPAQ-SCI). *Spinal Cord.* 2021;59: 311–318.
- 1376 98. Nightingale TE, Walhin J-P, Thompson D, Bilzon JL. Biomarkers of cardiometabolic health are
1377 associated with body composition characteristics but not physical activity in persons with spinal
1378 cord injury. *J Spinal Cord Med.* 2019;42: 328–337.
- 1379 99. Haisma JA, Post MW, van der Woude LH, Stam HJ, Bergen MP, Sluis TA, et al. Functional
1380 independence and health-related functional status following spinal cord injury: a prospective study
1381 of the association with physical capacity. *J Rehabil Med.* 2008;40: 812–818.
- 1382 100. Leving MT, de Groot S, Woldring FAB, Tepper M, Vegter RJK, van der Woude LHV. Motor
1383 learning outcomes of handrim wheelchair propulsion during active spinal cord injury
1384 rehabilitation in comparison with experienced wheelchair users. *Disabil Rehabil.* 2021;43: 1429–
1385 1442.
- 1386 101. Stewart MW, Melton-Rogers SL, Morrison S, Figoni SF. The measurement properties of
1387 fitness measures and health status for persons with spinal cord injuries. *Arch Phys Med Rehabil.*
1388 2000;81: 394–400.
- 1389 102. Dallmeijer AJ, van der Woude LH, Hollander PA, Angenot EL. Physical performance in
1390 persons with spinal cord injuries after discharge from rehabilitation. *Med Sci Sports Exerc.*
1391 1999;31: 1111–1117.
- 1392 103. Janssen TW, van Oers CA, Rozendaal EP, Willemsen EM, Hollander AP, van der Woude LH.
1393 Changes in physical strain and physical capacity in men with spinal cord injuries. *Med Sci Sports*
1394 *Exerc.* 1996;28: 551–559.
- 1395 104. Szymczak Ł, Podgórski T, Lewandowski J, Janiak A, Michalak E, Domaszewska K. Physical
1396 Fitness and Inflammatory Response to the Training Load of Wheelchair Rugby Players. *Int J*
1397 *Environ Res Public Health.* 2022;19. doi:10.3390/ijerph19042228
- 1398 105. Steeves JD, Kramer JK, Fawcett JW, Cragg J, Lammertse DP, Blight AR, et al. Extent of
1399 spontaneous motor recovery after traumatic cervical sensorimotor complete spinal cord injury.
1400 *Spinal Cord.* 2011;49: 257–265.
- 1401 106. Figoni SF, Dolbow DR, Crawford EC, White ML, Pattanaik S. Does aerobic exercise benefit

- 1402 persons with tetraplegia from spinal cord injury? A systematic review. *J Spinal Cord Med.*
1403 2021;44: 690–703.
- 1404 107. de Groot S, Dallmeijer AJ, Kilkens OJ, van Asbeck FW, Nene AV, Angenot EL, et al. Course
1405 of gross mechanical efficiency in handrim wheelchair propulsion during rehabilitation of people
1406 with spinal cord injury: a prospective cohort study. *Arch Phys Med Rehabil.* 2005;86: 1452–1460.
- 1407 108. Sprigle S, Maurer C, Holowka M. Development of valid and reliable measures of postural
1408 stability. *J Spinal Cord Med.* 2007;30: 40–49.
- 1409 109. Kouwijzer I, Valent L, Osterthun R, van der Woude L, de Groot S, HandbikeBattle group.
1410 Peak power output in handcycling of individuals with a chronic spinal cord injury: predictive
1411 modeling, validation and reference values. *Disabil Rehabil.* 2020;42: 400–409.
- 1412 110. Hjeltnes N, Wallberg-Henriksson H. Improved work capacity but unchanged peak oxygen
1413 uptake during primary rehabilitation in tetraplegic patients. *Spinal Cord.* 1998;36: 691–698.
- 1414 111. Williams AM, Ma JK, Martin Ginis KA, West CR. Effects of a Tailored Physical Activity
1415 Intervention on Cardiovascular Structure and Function in Individuals With Spinal Cord Injury.
1416 *Neurorehabil Neural Repair.* 2021;35: 692–703.
- 1417 112. Cruz S, Blauwet CA. Implications of altered autonomic control on sports performance in
1418 athletes with spinal cord injury. *Auton Neurosci.* 2018;209: 100–104.
- 1419 113. West CR, Gee CM, Voss C, Hubli M, Currie KD, Schmid J, et al. Cardiovascular control,
1420 autonomic function, and elite endurance performance in spinal cord injury. *Scand J Med Sci*
1421 *Sports.* 2015;25: 476–485.
- 1422 114. West CR, Campbell IG, Goosey-Tolfrey VL, Mason BS, Romer LM. Effects of abdominal
1423 binding on field-based exercise responses in Paralympic athletes with cervical spinal cord injury. *J*
1424 *Sci Med Sport.* 2014;17: 351–355.
- 1425 115. Pitetti KH, Barrett PJ, Campbell KD, Malzahn DE. The effect of lower body positive pressure
1426 on the exercise capacity of individuals with spinal cord injury. *Med Sci Sports Exerc.* 1994;26:
1427 463–468.
- 1428 116. Nieshoff EC, Birk TJ, Birk CA, Hinderer SR, Yavuzer G. Double-blinded, placebo-controlled
1429 trial of midodrine for exercise performance enhancement in tetraplegia: a pilot study. *J Spinal*
1430 *Cord Med.* 2004;27: 219–225.
- 1431 117. Nightingale TE, Walter M, Williams AMM, Lam T, Krassioukov AV. Ergogenic effects of an
1432 epidural neuroprosthesis in one individual with spinal cord injury. *Neurology.* 2019;92: 338–340.
- 1433 118. Laskin JJ, Waheed Z, Thorogood NP, Nightingale TE, Noonan VK. Spinal Cord Stimulation
1434 Research in the Restoration of Motor, Sensory, and Autonomic Function for Individuals Living
1435 With Spinal Cord Injuries: A Scoping Review. *Arch Phys Med Rehabil.* 2022.
1436 doi:10.1016/j.apmr.2022.01.161
- 1437 119. Berger MJ, Kimpinski K, Currie KD, Nouraei H, Sadeghi M, Krassioukov AV. Multi-Domain
1438 Assessment of Autonomic Function in Spinal Cord Injury Using a Modified Autonomic Reflex
1439 Screen. *J Neurotrauma.* 2017;34: 2624–2633.
- 1440 120. Wang S, Wecht JM, Legg Ditterline B, Ugiliweneza B, Maher MT, Lombard AT, et al. Heart
1441 rate and blood pressure response improve the prediction of orthostatic cardiovascular
1442 dysregulation in persons with chronic spinal cord injury. *Physiol Rep.* 2020;8: e14617.
- 1443 121. DiPiro ND, Embry AE, Fritz SL, Middleton A, Krause JS, Gregory CM. Effects of aerobic
1444 exercise training on fitness and walking-related outcomes in ambulatory individuals with chronic
1445 incomplete spinal cord injury. *Spinal Cord.* 2016;54: 675–681.
- 1446 122. Fleg JL, Morrell CH, Bos AG, Brant LJ, Talbot LA, Wright JG, et al. Accelerated longitudinal
1447 decline of aerobic capacity in healthy older adults. *Circulation.* 2005;112: 674–682.

- 1448 123. Groah SL, Charlifue S, Tate D, Jensen MP, Molton IR, Forchheimer M, et al. Spinal cord
1449 injury and aging: challenges and recommendations for future research. *Am J Phys Med Rehabil.*
1450 2012;91: 80–93.
- 1451 124. Hinrichs T, Lay V, Arnet U, Eriks-Hoogland I, Koch HG, Rantanen T, et al. Age-related
1452 variation in mobility independence among wheelchair users with spinal cord injury: A cross-
1453 sectional study. *J Spinal Cord Med.* 2016;39: 180–189.
- 1454 125. Jörgensen S, Martin Ginis KA, Lexell J. Leisure time physical activity among older adults
1455 with long-term spinal cord injury. *Spinal Cord.* 2017;55: 848–856.
- 1456 126. Chiou SY, Clarke E, Lam C, Harvey T, Nightingale TE. Effects of Arm-Crank Exercise on
1457 Fitness and Health in Adults With Chronic Spinal Cord Injury: A Systematic Review. *Front*
1458 *Physiol.* 2022;13: 831372.
- 1459 127. Bochekezanian V, Raymond J, de Oliveira CQ, Davis GM. Can combined aerobic and muscle
1460 strength training improve aerobic fitness, muscle strength, function and quality of life in people
1461 with spinal cord injury? A systematic review. *Spinal Cord.* 2015;53: 418–431.
- 1462 128. Brurok B, Helgerud J, Karlsen T, Leivseth G, Hoff J. Effect of aerobic high-intensity hybrid
1463 training on stroke volume and peak oxygen consumption in men with spinal cord injury. *Am J*
1464 *Phys Med Rehabil.* 2011;90: 407–414.
- 1465 129. Gant KL, Nagle KG, Cowan RE, Field-Fote EC, Nash MS, Kressler J, et al. Body System
1466 Effects of a Multi-Modal Training Program Targeting Chronic, Motor Complete Thoracic Spinal
1467 Cord Injury. *J Neurotrauma.* 2018;35: 411–423.
- 1468 130. Lotter JK, Henderson CE, Plawecki A, Holthus ME, Lucas EH, Ardestani MM, et al. Task-
1469 Specific Versus Impairment-Based Training on Locomotor Performance in Individuals With
1470 Chronic Spinal Cord Injury: A Randomized Crossover Study. *Neurorehabil Neural Repair.*
1471 2020;34: 627–639.
- 1472 131. Jacobs PL, Nash MS, Rusinowski JW. Circuit training provides cardiorespiratory and strength
1473 benefits in persons with paraplegia. *Med Sci Sports Exerc.* 2001;33: 711–717.
- 1474 132. Sweet SN, Martin Ginis KA, Tomasone JR. Investigating intermediary variables in the
1475 physical activity and quality of life relationship in persons with spinal cord injury. *Health Psychol.*
1476 2013;32: 877–885.
- 1477 133. Eitvivipart AC, de Oliveira CQ, Arora M, Middleton J, Davis GM. Overview of Systematic
1478 Reviews of Aerobic Fitness and Muscle Strength Training after Spinal Cord Injury. *J*
1479 *Neurotrauma.* 2019;36: 2943–2963.
- 1480 134. Martin Ginis KA, van der Scheer JW, Latimer-Cheung AE, Barrow A, Bourne C, Carruthers
1481 P, et al. Response to correspondence from the ESSA Statement authors. *Spinal cord.* 2018. pp.
1482 409–411.
- 1483 135. Astorino TA, Thum JS. Within-session responses to high-intensity interval training in spinal
1484 cord injury. *Disabil Rehabil.* 2018;40: 444–449.
- 1485 136. Tordi N, Dugue B, Klupzinski D, Rasseneur L, Rouillon JD, Lonsdorfer J. Interval training
1486 program on a wheelchair ergometer for paraplegic subjects. *Spinal Cord.* 2001;39: 532–537.
- 1487 137. de Groot PCE, Hjeltnes N, Heijboer AC, Stal W, Birkeland K. Effect of training intensity on
1488 physical capacity, lipid profile and insulin sensitivity in early rehabilitation of spinal cord injured
1489 individuals. *Spinal Cord.* 2003;41: 673–679.
- 1490 138. Gauthier C, Brosseau R, Hicks AL, Gagnon DH. Feasibility, Safety, and Preliminary
1491 Effectiveness of a Home-Based Self-Managed High-Intensity Interval Training Program Offered
1492 to Long-Term Manual Wheelchair Users. *Rehabil Res Pract.* 2018;2018: 8209360.
- 1493 139. Mcleod JC, Diana H, Hicks AL. Sprint interval training versus moderate-intensity continuous

- 1494 training during inpatient rehabilitation after spinal cord injury: a randomized trial. *Spinal Cord*.
1495 2020;58: 106–115.
- 1496 140. Graham K, Yarar-Fisher C, Li J, McCully KM, Rimmer JH, Powell D, et al. Effects of High-
1497 Intensity Interval Training Versus Moderate-Intensity Training on Cardiometabolic Health
1498 Markers in Individuals With Spinal Cord Injury: A Pilot Study. *Top Spinal Cord Inj Rehabil*.
1499 2019;25: 248–259.
- 1500 141. McMillan DW, Astorino TA, Correa MA, Nash MS, Gater DR. Virtual Strategies for the
1501 Broad Delivery of High Intensity Exercise in Persons With Spinal Cord Injury: Ongoing Studies
1502 and Considerations for Implementation. *Front Sports Act Living*. 2021;3: 703816.
- 1503 142. Maher JL, Whitmarsh C, Smith P, Taylor H, Fard A, Bilzon J. Feasibility study of high-
1504 intensity interval training to reduce cardiometabolic disease risks in individuals with acute spinal
1505 cord injury. *BMJ Open*. 2023;13: e068507.
- 1506 143. Claydon VE, Hol AT, Eng JJ, Krassioukov AV. Cardiovascular responses and postexercise
1507 hypotension after arm cycling exercise in subjects with spinal cord injury. *Arch Phys Med
1508 Rehabil*. 2006;87: 1106–1114.
- 1509 144. Griggs KE, Leicht CA, Price MJ, Goosey-Tolfrey VL. Thermoregulation during intermittent
1510 exercise in athletes with a spinal-cord injury. *Int J Sports Physiol Perform*. 2015;10: 469–475.
- 1511 145. Weston KS, Wisløff U, Coombes JS. High-intensity interval training in patients with lifestyle-
1512 induced cardiometabolic disease: a systematic review and meta-analysis. *Br J Sports Med*.
1513 2014;48: 1227–1234.
- 1514 146. Valentino SE, Hutchinson MJ, Goosey-Tolfrey VL, MacDonald MJ. Effects of Perceptually
1515 Regulated Exercise Training on Cardiorespiratory Fitness and Peak Power Output in Adults With
1516 Spinal Cord Injury: A Systematic Review and Meta-analysis. *Arch Phys Med Rehabil*. 2022.
1517 doi:10.1016/j.apmr.2022.03.008
- 1518 147. Hutchinson MJ, Kouwijzer I, de Groot S, Goosey-Tolfrey VL. Comparison of two Borg
1519 exertion scales for monitoring exercise intensity in able-bodied participants, and those with
1520 paraplegia and tetraplegia. *Spinal Cord*. 2021;59: 1162–1169.
- 1521 148. van der Scheer JW, Hutchinson MJ, Paulson T, Martin Ginis KA, Goosey-Tolfrey VL.
1522 Reliability and Validity of Subjective Measures of Aerobic Intensity in Adults With Spinal Cord
1523 Injury: A Systematic Review. *PM R*. 2018;10: 194–207.
- 1524 149. Cowley KC. A new conceptual framework for the integrated neural control of locomotor and
1525 sympathetic function: implications for exercise after spinal cord injury. *Appl Physiol Nutr Metab*.
1526 2018;43: 1140–1150.
- 1527 150. Jannick NA, Pettitt RW, Granata C, Pyne DB, Bishop DJ. An Examination and Critique of
1528 Current Methods to Determine Exercise Intensity. *Sports Med*. 2020;50: 1729–1756.
- 1529 151. Meyler S, Bottoms L, Wellsted D, Muniz-Pumares D. Variability in exercise tolerance and
1530 physiological responses to exercise prescribed relative to physiological thresholds and to
1531 maximum oxygen uptake. *Exp Physiol*. 2023;108: 581–594.
- 1532 152. Anselmi F, Cavigli L, Pagliaro A, Valente S, Valentini F, Cameli M, et al. The importance of
1533 ventilatory thresholds to define aerobic exercise intensity in cardiac patients and healthy subjects.
1534 *Scand J Med Sci Sports*. 2021;31: 1796–1808.
- 1535 153. Au JS, Sithamparapillai A, Currie KD, Krassioukov AV, MacDonald MJ, Hicks AL.
1536 Assessing Ventilatory Threshold in Individuals With Motor-Complete Spinal Cord Injury. *Arch
1537 Phys Med Rehabil*. 2018;99: 1991–1997.
- 1538 154. Kouwijzer I, Cowan RE, Maher JL, Groot FP, Riedstra F, Valent LJM, et al. Interrater and
1539 intrarater reliability of ventilatory thresholds determined in individuals with spinal cord injury.
1540 *Spinal Cord*. 2019;57: 669–678.

- 1541 155. Tjønnå AE, Leinan IM, Bartnes AT, Jenssen BM, Gibala MJ, Winett RA, et al. Low- and
1542 high-volume of intensive endurance training significantly improves maximal oxygen uptake after
1543 10-weeks of training in healthy men. *PLoS One*. 2013;8: e65382.
- 1544 156. Stensvold D, Viken H, Steinshamn SL, Dalen H, Støylen A, Loennechen JP, et al. Effect of
1545 exercise training for five years on all cause mortality in older adults-the Generation 100 study:
1546 randomised controlled trial. *BMJ*. 2020;371: m3485.
- 1547 157. Church TS, Earnest CP, Skinner JS, Blair SN. Effects of different doses of physical activity on
1548 cardiorespiratory fitness among sedentary, overweight or obese postmenopausal women with
1549 elevated blood pressure: a randomized controlled trial. *JAMA*. 2007;297: 2081–2091.
- 1550 158. Foulds HJA, Bredin SSD, Charlesworth SA, Ivey AC, Warburton DER. Exercise volume and
1551 intensity: a dose-response relationship with health benefits. *Eur J Appl Physiol*. 2014;114: 1563–
1552 1571.
- 1553 159. Alrashidi AA, Nightingale TE, Bhangu GS, Bissonnette-Blais V, Krassioukov AV. Post-
1554 processing of peak oxygen uptake data obtained during cardiopulmonary exercise testing in
1555 individuals with spinal cord injury: A scoping review and analysis of different post- processing
1556 strategies. *Arch Phys Med Rehabil*. 2022. doi:10.1016/j.apmr.2022.11.015
- 1557 160. Phillips BE, Kelly BM, Lilja M, Ponce-González JG, Brogan RJ, Morris DL, et al. A Practical
1558 and Time-Efficient High-Intensity Interval Training Program Modifies Cardio-Metabolic Risk
1559 Factors in Adults with Risk Factors for Type II Diabetes. *Front Endocrinol* . 2017;8: 229.
- 1560 161. Katzelnick CG, Weir JP, Jones A, Galea M, Dyson-Hudson TA, Kirshblum SC, et al. Blood
1561 Pressure Instability in Persons With SCI: Evidence From a 30-Day Home Monitoring
1562 Observation. *Am J Hypertens*. 2019;32: 938–944.
- 1563 162. Nightingale TE, Eginyan G, Balthazaar SJT, Williams AMM, Lam T, Krassioukov AV.
1564 Accidental boosting in an individual with tetraplegia - considerations for the interpretation of
1565 cardiopulmonary exercise testing. *J Spinal Cord Med*. 2021; 1–6.
- 1566 163. Martin Ginis KA, Phang SH, Latimer AE, Arbour-Nicitopoulos KP. Reliability and validity
1567 tests of the leisure time physical activity questionnaire for people with spinal cord injury. *Arch*
1568 *Phys Med Rehabil*. 2012;93: 677–682.
- 1569 164. Ginis KAM, Latimer AE, Hicks AL, Craven BC. Development and evaluation of an activity
1570 measure for people with spinal cord injury. *Med Sci Sports Exerc*. 2005;37: 1099–1111.
- 1571 165. de Groot S, van der Woude LHV, Niezen A, Smit CAJ, Post MWM. Evaluation of the
1572 physical activity scale for individuals with physical disabilities in people with spinal cord injury.
1573 *Spinal Cord*. 2010;48: 542–547.
- 1574 166. Healy GN, Wijndaele K, Dunstan DW, Shaw JE, Salmon J, Zimmet PZ, et al. Objectively
1575 measured sedentary time, physical activity, and metabolic risk: the Australian Diabetes, Obesity
1576 and Lifestyle Study (AusDiab). *Diabetes Care*. 2008;31: 369–371.
- 1577 167. O’Donovan G, Hillsdon M, Ukoumunne OC, Stamatakis E, Hamer M. Objectively measured
1578 physical activity, cardiorespiratory fitness and cardiometabolic risk factors in the Health Survey
1579 for England. *Prev Med*. 2013;57: 201–205.
- 1580 168. Hansford HJ, Wewege MA, Cashin AG, Hagstrom AD, Clifford BK, McAuley JH, et al. If
1581 exercise is medicine, why don’t we know the dose? An overview of systematic reviews assessing
1582 reporting quality of exercise interventions in health and disease. *Br J Sports Med*. 2022;56: 692–
1583 700.
- 1584 169. Slade SC, Dionne CE, Underwood M, Buchbinder R. Consensus on Exercise Reporting
1585 Template (CERT): Explanation and Elaboration Statement. *Br J Sports Med*. 2016;50: 1428–
1586 1437.
- 1587 170. Hoffmann TC, Glasziou PP, Boutron I, Milne R, Perera R, Moher D, et al. Better reporting of

1588 interventions: template for intervention description and replication (TIDieR) checklist and guide.
1589 BMJ. 2014;348: g1687.

1590 171. Kodama S, Saito K, Tanaka S, Maki M, Yachi Y, Asumi M, et al. Cardiorespiratory fitness as
1591 a quantitative predictor of all-cause mortality and cardiovascular events in healthy men and
1592 women: a meta-analysis. JAMA. 2009;301: 2024–2035.

1593

1594 **FIGURE/TABLE LEGEND**

1595 **Figure 1.** PRISMA flow diagram. Abbreviation: PRISMA, Preferred Reporting Items for Systematic
1596 Reviews and Meta-Analyses.

1597 **Figure 2.** Summary of the study design, exercise intervention parameters, participant
1598 demographics/injury characteristics and changes in cardiorespiratory fitness outcomes for each
1599 randomised controlled trial study included in the primary meta-analysis. Studies were assessed for risk
1600 of bias (ROB) and rated as either low (L), some concerns (SC) or high (H) risk. $AV\dot{V}O_{2peak}$, absolute
1601 peak oxygen uptake; BC, behaviour change; FES, functional electrical stimulation; L, light-intensity;
1602 M, moderate-intensity; M/CD, mixed/cannot determine; M-V, moderate-to-vigorous-intensity; NR, not
1603 reported; PPO, peak power output; RT, resistance training; $RV\dot{V}O_{2peak}$, relative peak oxygen uptake;
1604 SCI, spinal cord injury; V, vigorous-intensity.

1605 **Figure 3.** Overview of the subgroup effects for relative peak oxygen uptake (A; $RV\dot{V}O_{2peak}$) and peak
1606 power output (B; PPO) for pooled pre-post and randomised-controlled trial exercise interventions
1607 based on injury-specific characteristics (purple) and exercise intervention parameters (blue). Individual
1608 subgroup effects are highlighted in bold. Differences within each subgroup category are represented by
1609 green ticks whereas subgroup categories without significant differences are represented by red question
1610 marks. AIS, American Spinal Injury Association Impairment Scale; FES, functional electrical
1611 stimulation; Mod-to-Vig, moderate-to-vigorous; NR/CD, not reported/cannot determine; RPE, rating of
1612 perceived exertion; $V\dot{V}O_2$, volume of oxygen consumption W, watts.

1613 **Figure 4.** Firepower plots visualising study-level statistical power for a range of effect sizes between
1614 meta-analyses for pre-post studies alone in comparison to RCT studies included in the primary meta-
1615 analysis (i.e., exercise interventions relative to control groups) for each cardiorespiratory fitness
1616 outcome. Hedges' g effect sizes were calculated for each meta-analysis and used as the observed effect
1617 size, as described by Quintana [54]. (A) Meta-analysis of pre-post studies describing changes in
1618 absolute peak oxygen uptake ($AV\dot{V}O_{2peak}$) had a median power of 62% for detecting an effect size of

1619 0.90, whereas the RCTs had a median power of 86% for detecting an effect size of 1.25. (B) Meta-
1620 analysis of pre-post studies describing changes in relative peak oxygen uptake ($RV\dot{V}O_{2peak}$) had a
1621 median power of 41% for detecting an effect size of 0.67, whereas the RCTs had a median power of
1622 91% for detecting an effect size of 1.57. (C) Meta-analysis of pre-post studies describing changes in
1623 peak power output (PPO) had a median power of 58% for detecting an effect size of 0.91, whereas the
1624 RCTs had a median power of 86% for detecting an effect size of 1.13.

1625 **Table 1.** Meta-regression models with adjusted values for each cardiorespiratory fitness outcome.

1626 **Table 2.** Grading of recommendations assessment, development and evaluation analysis for each
1627 cardiorespiratory fitness outcome.

1628

1629 **SUPPLEMENTARY MATERIAL**

1630 **Supplementary material 1 (S1): PRISMA Checklist**

1631 **Supplementary file 2 (S2): Systematic Review Search Strategy**

1632 **Supplementary file 3 (S3): Description of Exercise Intensity Classifications as per the American**
1633 **College of Sports Medicine (ACSM) guidelines**

1634 **Supplementary file 4 (S4): Calculated Correlation Factors**

1635 **Supplementary file 5 (S5): Primary meta-analysis (RCT interventions relative to controls)**

- 1636 1. Overview of participant demographics and injury characteristics for the pooled RCTs (exercise
1637 intervention vs. true-world control or standard of care)
- 1638 2. Summary of the individual RCTs included in the review
- 1639 3. Quality assessment rating for each study using the Cochrane Risk of Bias 2 tool
- 1640 4. Forest plots and funnel plots for each CRF outcome
- 1641 5. References

1642 **Supplementary file 6 (S4): Change in CRF outcomes in response to prospective, well-**
1643 **characterised exercise interventions lasting >2 weeks from pre-post and RCT studies (Secondary,**
1644 **pooled meta-analysis)**

- 1645 1. Overview of participant demographics and injury characteristics for the pooled exercise
1646 interventions from pre-post and RCT studies
- 1647 2. Summary statistics of the subgroup analyses
- 1648 3. Figure visualising the worldwide coverage of exercise interventions included in the secondary,
1649 pooled meta-analysis
- 1650 4. Summary of the individual studies included in the review
- 1651 5. Forest and funnel plots for change in each CRF outcome for each subgroup comparison (time
1652 since injury, neurological level of injury, injury severity, exercise modality, length of
1653 intervention, relative exercise intensity, method of exercise intensity prescription, frequency of
1654 exercise sessions, and exercise volume)
- 1655 6. Quality assessment ratings for each pre-post study included in the primary meta-analysis
- 1656 7. Risk of bias for each RCT intervention arm included in the primary meta-analysis
- 1657 8. References

1658 **Supplementary file 7 (S7): Adverse events**

1659 **Supplementary file 8 (S8): Sensitivity analyses**

1660 **Supplementary file 9 (S9): CPET vs. exercise intervention modality**

- 1661 1. Forest plots for each CRF outcome

1662 **Supplementary file 10 (S10): Gait-training sub-analysis**

- 1663 1. Forest plots for each CRF outcome

1664 **Supplementary file 11 (S11): Cross-sectional cohort comparisons summary (secondary meta-
1665 analysis)**

- 1666 1. Overview of participant demographics and injury characteristics for the pooled cohort
1667 comparisons
- 1668 2. Summary of the individual studies included in the review
- 1669 3. Quality assessment rating for each study using the NIH tool for observational cohort and cross-
1670 sectional studies

1671 4. Forest plots and funnel plots for each CRF outcome

1672 5. Sensitivity analysis on $RV \square O_{2peak}$

1673 6. References

1674 **Supplementary file 12 (S12): Cross-sectional associations between physical activity and CRF**
1675 **outcomes**

1676 1. Overview of participant demographics and injury characteristics for the pooled association
1677 comparisons

1678 2. Summary of the individual studies included in the review

1679 3. Quality assessment rating for each study using the NIH tool for observational cohort and cross-
1680 sectional studies

1681 4. Visualisation of correlation coefficients between physical activity dimensions and CRF outcomes
1682 across included studies

1683 5. References

1684 **Supplementary file 13 (S13): Observational studies (secondary meta-analysis)**

1685 1. Overview of participant demographics and injury characteristics for the pooled observational
1686 studies

1687 2. Summary of the individual studies included in the review

1688 3. Quality assessment rating for each study using the NIH tool for observational cohort and cross-
1689 sectional studies

1690 4. Forest plots and funnel plots for each CRF outcome

1691 5. References

1692 **Supplementary file 14 (S14): RCTs intensity comparisons (secondary meta-analysis)**

1693 1. Overview of participant demographics and injury characteristics for the pooled RCTs comparing
1694 the effects of different exercise intensities

1695 2. Summary of the individual RCTs comparing exercise intensity included in the review

1696 3. Quality assessment rating for each study using the Cochrane Risk of Bias 2 tool

1697 4. Forest plots and funnel plots for each CRF outcome

1698 5. References

1699

1700

1701

1702

1703

1704

1705

1706

1707

1708

1709

1710

1711

1712

1713

1714

1715

1716

1717

1718

1719

1720

1721

1722

1723

1724

1725

1726

1727

1728

1729

1730

1731

1732

1733

1734

1735

1736

1737

1738

1739

1740

1741

1742

1743

1744

1745

1746

Table 1. Meta-regression models with adjusted values for each cardiorespiratory fitness outcome.

Covariate	Coef.	Std.Err.	t	Unadjusted P>t	95% CI	Adjusted P>t
AV\squareO_{2peak} Model 1 (N = 74)¹ (#covariates = 5)						
Male	0.005	0.003	1.530	0.131	-0.002, 0.012	0.448
Mean Age	-0.003	0.001	-2.430	0.018	-0.005, -0.001	0.083
TSI	-0.000	0.001	-0.440	0.665	-0.003, 0.002	0.995
Injury Class	0.003	0.003	0.850	0.398	-0.004, 0.009	0.899
Severity	-0.007	0.004	-1.910	0.061	-0.015, 0.000	0.219
AV\squareO_{2peak} Model 2 (N = 74)² (#covariates = 6)						
Exercise Type	-0.009	0.014	-0.700	0.489	-0.037, 0.018	0.967
Exercise Intensity	-0.010	0.015	-0.710	0.481	-0.039, 0.019	0.972
Intervention length	-0.000	0.002	-0.130	0.894	-0.004, 0.003	1.000
Minutes	0.004	0.008	0.490	0.626	-0.012, 0.020	0.994
Frequency	-0.012	0.011	-1.110	0.269	-0.035, 0.010	0.831
Volume	0.002	0.003	0.790	0.434	-0.003, 0.007	0.937
RV\squareO_{2peak} Model 1 (N = 79)³ (#covariates = 5)						
Male	0.060	0.044	1.370	0.174	-0.027, 0.146	0.651
Mean Age	-0.041	0.013	-3.200	0.002	-0.066, -0.015	0.013
TSI	-0.005	0.012	-0.430	0.666	-0.030, 0.019	0.996
Injury Class	-0.031	0.047	-0.650	0.518	-0.125, 0.064	0.976
Severity	-0.044	0.040	-1.110	0.272	-0.124, 0.035	0.819
RV\squareO_{2peak} Model 2 (N = 79)⁴ (#covariates = 6)						
Exercise Type	-0.229	0.145	-1.580	0.120	-0.518, 0.061	0.497
Exercise Intensity	-0.093	0.189	-0.490	0.622	-0.470, 0.283	0.996
Intervention length	-0.028	0.033	-0.870	0.385	-0.093, 0.036	0.930
Risk of bias	-0.034	0.329	-0.100	0.919	-0.690, 0.623	1.000
Minutes	-0.023	0.057	-0.400	0.687	-0.137, 0.091	0.998
Frequency	0.183	0.141	1.290	0.200	-0.099, 0.464	0.705
PPO Model 1 (N = 65)⁵ (#covariates = 5)						
Male	-0.137	0.210	-0.650	0.518	-0.557, 0.284	0.972
Mean Age	-0.057	0.073	-0.780	0.439	-0.204, 0.090	0.940
TSI	-0.153	0.069	-2.220	0.031	-0.291, -0.015	0.177
Injury Class	0.005	0.173	0.030	0.978	-0.342, 0.351	1.000
Severity	-0.065	0.173	-0.380	0.707	-0.410, 0.280	0.997
PPO Model 2 (N = 65)⁶ (#covariates = 5)						
Exercise Type	-0.172	0.687	-0.250	0.803	-1.547, 1.203	0.999
Exercise Intensity	-1.310	0.724	-1.810	0.076	-2.759, 0.140	0.202
Minutes	-0.064	0.314	-0.200	0.840	-0.693, 0.566	0.999
Frequency	0.288	0.687	0.420	0.676	-1.087, 1.664	0.989
Volume	-0.176	0.159	-1.110	0.272	-0.495, 0.142	0.669

*1748 Mutations = 10,000

¹1749 R-squared = 14.49%; Model F(5,68) = 3.10 ; Prob > F = 0.01

²1750 R-squared = -6.11%; Model F(6,67) = 0.50; Prob > F = 0.80

³1751 R-squared = 10.57%; Model F(5,73) = 2.76; Prob > F = 0.02

⁴1752 R-squared = 5.0%; Model F(6,72) = 1.60; Prob > F = 0.16

⁵1753 R-squared = 2.98%; Model F(5,59) = 1.41; Prob > F = 0.23

⁶1754 R-squared = 0.23%; Model F(7,59) = 1.02 ; Prob > F = 0.41

1755 Significance is highlighted in bold. Adj R^2 , proportion of between-study variance explained; $AV \square O_{2peak}$, absolute peak
1756 oxygen consumption; Coef, coefficient of variation; Model F, joint test for all covariates; Prob > F, with Knapp-Hartung
1757 modification; $RV \square O_{2peak}$, relative peak oxygen consumption; Std.Err, standard error; TSI, time since injury.
1758

Table 2. Grading of recommendations assessment, development and evaluation analysis for each cardiorespiratory fitness outcome.

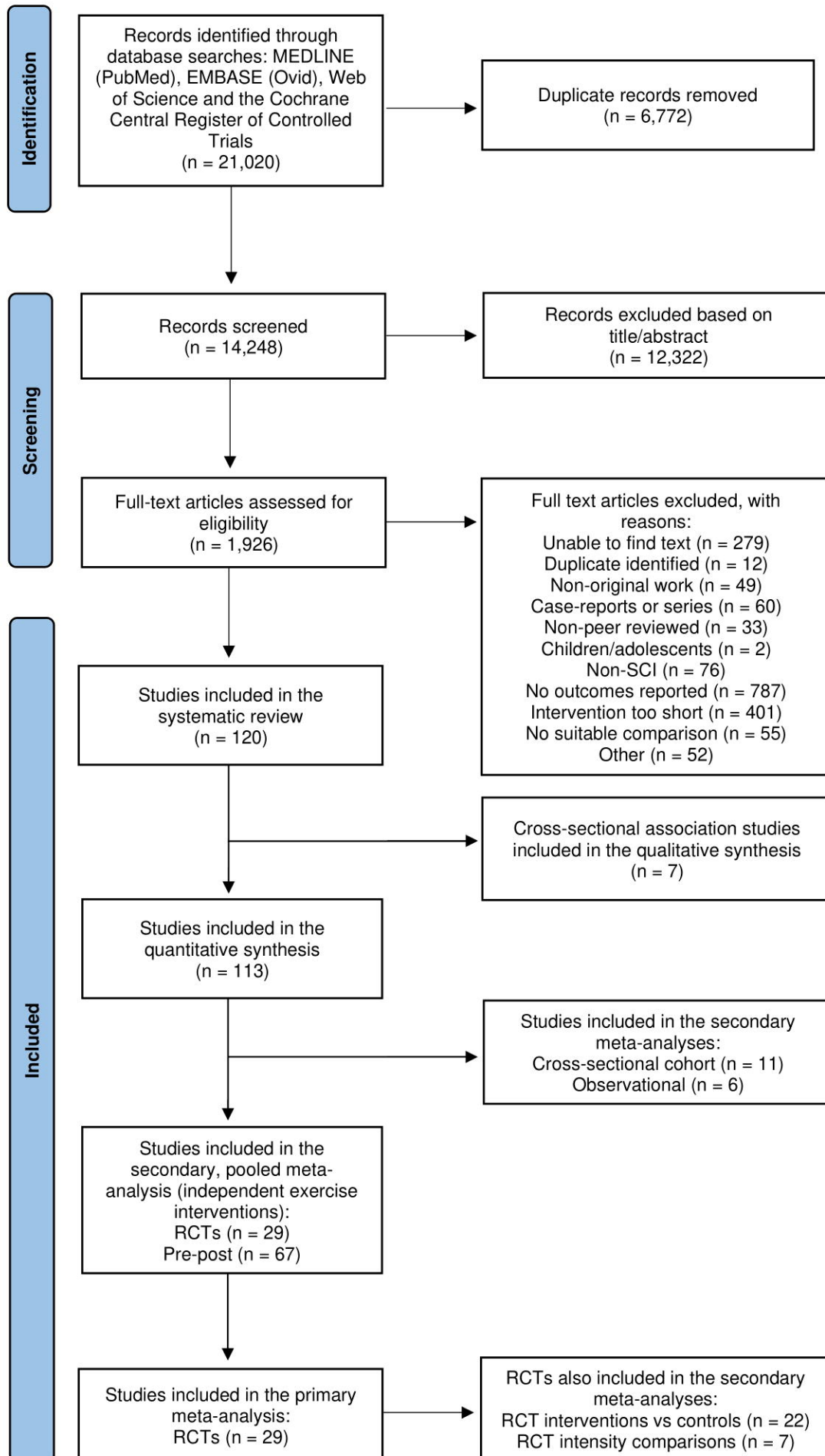
	AV \square O _{2peak} (L/min)	RV \square O _{2peak} (mL/kg/min)	PPO (W)
Summary of findings according to GRADE analysis			
GRADE	LOW	MODERATE	LOW
Comments	<p>Our confidence in the effect estimate is limited: The true effect may be substantially different from the estimate of the effect.</p> <p>Study design and imprecision reduced the GRADE to Low.</p> <p>The evidence supporting improvements in AV\squareO_{2peak} is predominantly in young and middle-aged males that had been injured for >1-year (chronic TSI). Participants were mostly paraplegic (67%) but there were a mixture of injury severities (AIS A-D).</p> <p>There were no subgroup differences to suggest optimal training parameters.</p>	<p>Our confidence in the effect estimate is limited: The true effect may be substantially different from the estimate of the effect.</p> <p>Imprecision reduced the GRADE to Moderate.</p> <p>The evidence supporting improvements in RV\squareO_{2peak} is predominantly in young and middle-aged males that had been injured for >1-year (chronic TSI). Participants were mostly paraplegic (69%) but there were a mixture of injury severities (AIS A-D).</p> <p>Please see Figure 3 for subgroup effects.</p>	<p>Our confidence in the effect estimate is limited: The true effect may be substantially different from the estimate of the effect.</p> <p>Inconsistency and imprecision reduced the Grade to Low.</p> <p>The evidence supporting improvements in PPO is predominantly in young and middle-aged males that had been injured for >1-year (chronic TSI). Participants were mostly paraplegic (73.5%) but there were a mixture of injury severities (AIS A-D).</p> <p>Please see Figure 3 for subgroup effects.</p>
Lower quality criteria			
Study design	<p>Mixture of RCTs and pre-post studies with no control groups.</p> <p>Overall WMDs for RCT interventions relative to controls and pre-post interventions only: RCTs (0.16 L/min) and pre-post studies (0.23 L/min). DOWNGRADE</p>	<p>Mixture of RCTs and pre-post studies with no control groups.</p> <p>Overall WMDs for RCT interventions relative to controls and pre-post interventions only: RCTs (2.9 mL/kg/min) and pre-post studies (2.9 mL/kg/min). NO DOWNGRADE</p>	<p>Mixture of RCTs and pre-post studies with no control groups.</p> <p>Overall WMDs for RCT interventions relative to controls and pre-post interventions only: RCTs (9 W) and pre-post studies (11 W). NO DOWNGRADE</p>
Risk of bias (RoB)	<p>Sensitivity analysis revealed no significant difference between studies with low and high risk of bias. NO DOWNGRADE</p>	<p>Sensitivity analysis revealed no significant difference between studies with low and high risk of bias. NO DOWNGRADE</p>	<p>Sensitivity analysis revealed no significant difference between studies with low and high risk of bias. NO DOWNGRADE</p>
Inconsistency of results	<p>Effect estimates were consistent, with 89% of the included exercise interventions favouring an increase in AV\squareO_{2peak}, but most had a low effect estimate. Large overlap in confidence intervals. I² = 72% NO DOWNGRADE</p>	<p>Effect estimates were consistent, with 92% of the included exercise interventions favouring an increase in RV\squareO_{2peak}, and most had a large effect estimate. Large overlap in confidence intervals. I² = 53% NO DOWNGRADE</p>	<p>Effect estimates were consistent, with 94% of the included exercise interventions favouring an increase in PPO, and most had a large effect estimate. Large overlap in confidence intervals. I² = 78% DOWNGRADE</p>

Indirectness	Most studies (81%) included $AV\dot{V}O_{2peak}$ in their main outcome measures, across a range of participant characteristics. NO DOWNGRADE	Most studies (68%) included $RV\dot{V}O_{2peak}$ in their main outcome measures, across a range of participant characteristics. NO DOWNGRADE	Most studies (80%) included PPO in their main outcome measures, across a range of participant characteristics. NO DOWNGRADE
Imprecision	Large sample size (N=779), however, 66% of the included exercise interventions had 95% CI overlap 0. DOWNGRADE	Large sample size (N=778), however, 75% of the included exercise interventions had 95% CI overlap 0. DOWNGRADE	Large sample size (N=647), however, 65% of the included exercise interventions had 95% CI overlap 0. DOWNGRADE
Small study effects	An exhaustive approach was used during the search strategy (i.e., scientific databases and grey literature search). Egger's test: $Z = -1.20$ ($p = 0.23$). Visual inspection of the funnel plots, data extraction sheets and Tables 3-4 of S6 revealed no noticeable small study effects. NO DOWNGRADE	An exhaustive approach was used during the search strategy (i.e., scientific databases and grey literature search). Egger's test: $Z = -0.44$ ($p = 0.66$). Visual inspection of the funnel plots, data extraction sheets and Tables 3-4 of S6 revealed no noticeable small study effects. NO DOWNGRADE	An exhaustive approach was used during the search strategy (i.e., scientific databases and grey literature search). Egger's test: $Z = 0.76$ ($p = 0.45$). Visual inspection of the funnel plots, data extraction sheets and Tables 3-4 of S6 revealed no noticeable small study effects. NO DOWNGRADE
Higher quality criteria			
Large effect	Yes $Z = 9.90$ ($p < 0.001$) NO UPGRADE	Yes $Z = 9.80$ ($p < 0.001$) NO UPGRADE	Yes $Z = 9.07$ ($p < 0.001$) NO UPGRADE
Dose response	No clear dose response. NO UPGRADE	No clear dose response. NO UPGRADE	No clear dose response. NO UPGRADE
Residual confounding	Mixture of exercise modalities, levels of injury, etc. NO UPGRADE	Mixture of exercise modalities, levels of injury, etc. NO UPGRADE	Mixture of exercise modalities, levels of injury, etc. NO UPGRADE

GRADE certainty in the evidence can be 'High', 'Moderate', 'Low' or 'Very Low' according to published guidelines [34]. Judgement on risk of bias followed Cochrane guidance whereby certainty would be downgraded if the reviewers judged that the high risk of bias studies had influenced the pooled effects. Wide variance of point estimates, minimal or no overlap of confidence intervals, and heterogeneity were included as criteria of inconsistency. For heterogeneity, an outcome with $I^2 > 75\%$ was classed as considerable and resulted in a downgrade. Imprecision was downgraded where $>50\%$ of studies had confidence intervals overlap the no effect line. Indirectness would have been downgraded where $<50\%$ of studies did not include the appropriate main outcome measure or assess a range of participant characteristics. Overall effect sizes are presented as Z-scores. Statistical significance accepted as $p < 0.05$. AIS, American Spinal Injury Association Impairment Scale; $AV\dot{V}O_{2peak}$, absolute peak oxygen consumption; CI, confidence intervals; CRF, cardiorespiratory fitness; PPO, peak power output; RCTs, randomised-controlled trials; RoB, risk of bias; $RV\dot{V}O_{2peak}$, relative peak oxygen consumption; $V\dot{V}O_2$, peak oxygen consumption.

PRISMA 2020 flow diagram for new systematic reviews which included searches of databases and registers only

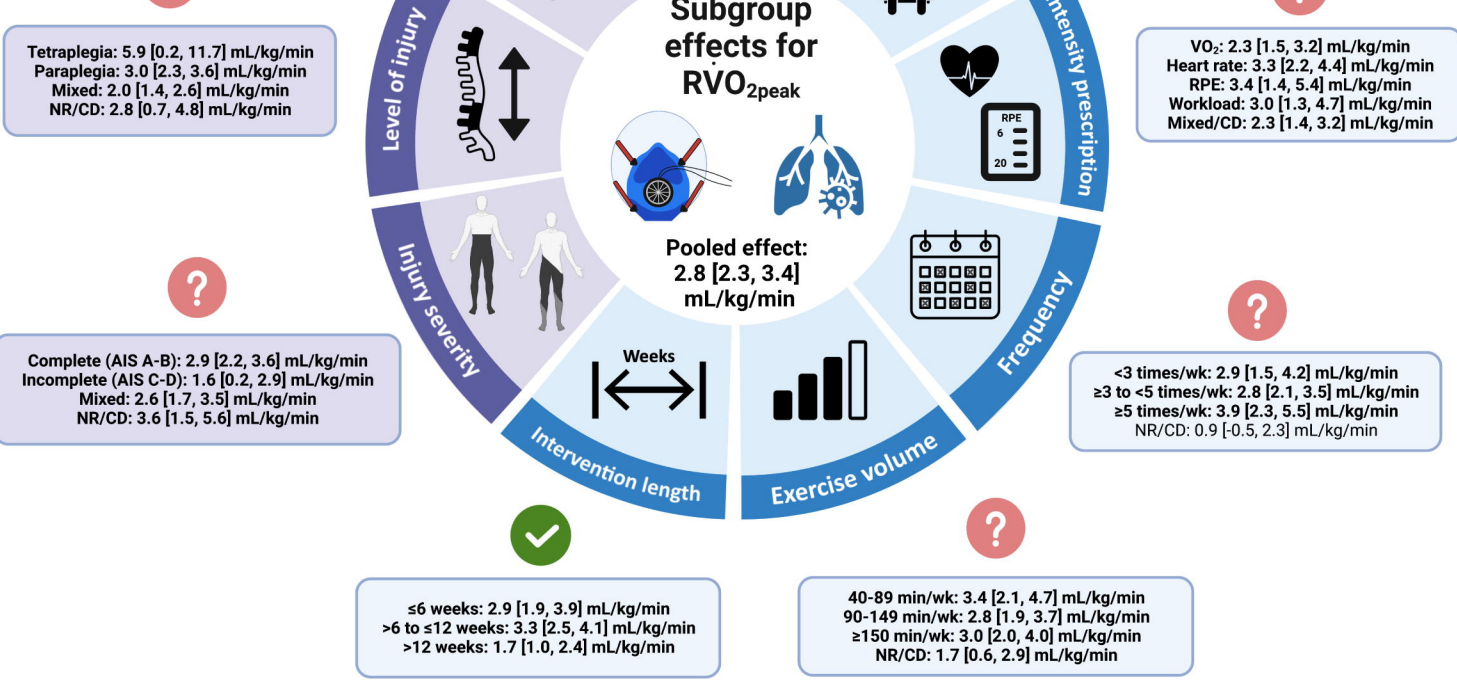
medRxiv preprint doi: <https://doi.org/10.1101/2022.08.05.22278397>; this version posted June 2, 2023. The copyright holder for this preprint (which was not certified by peer review) is the author/funder, who has granted medRxiv a license to display the preprint in perpetuity. It is made available under a [CC-BY 4.0 International license](https://creativecommons.org/licenses/by/4.0/).



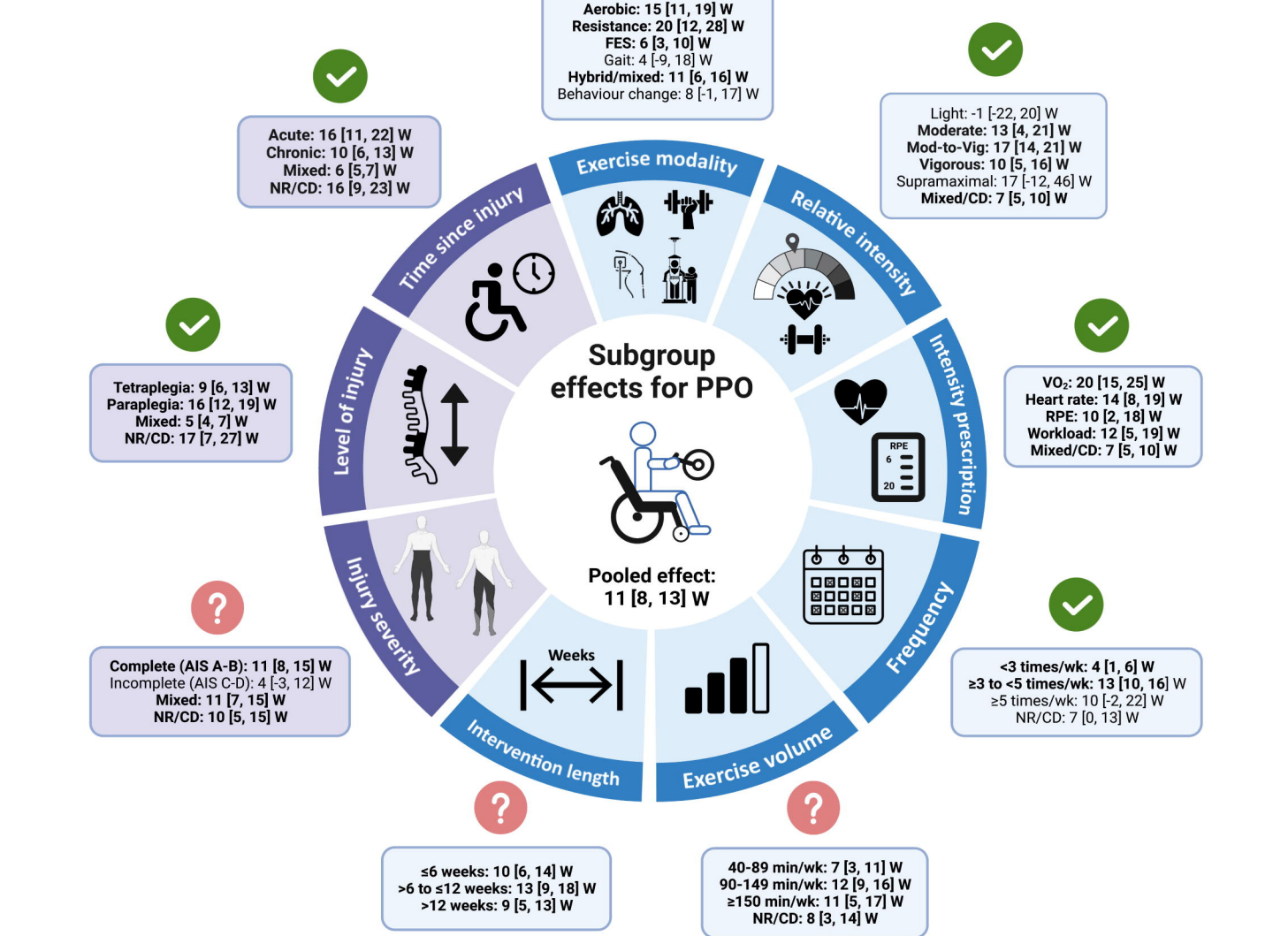
STUDY DESIGN			INTERVENTION DETAILS						PARTICIPANT CHARACTERISTICS				RESULTS						ROB	
Study (Year)	Participants	Randomization	Intervention length [week]	Exercise Modality	Exercise Intensity	Exercise Duration [min]	Exercise Frequency	Exercise Volume [min/week]	Mean Age [yrs]	Ratio Men	Ratio Complete SCI	Ratio Paraplegic SCI	Time since injury [yrs]	$\dot{V}O_{2\text{peak}}$ (L/min)		$\dot{V}O_{2\text{peak}}$ (mL/kg/min)		PPO (Watts)		
														Pre	Post	Pre	Post	Pre	Post	
Taylor (1986)	10	5 Control 5 Intervention	8	Aerobic	V	30min	5	150min	33	1.0	NR	1.0	16	2.5	2.5	15	25	0	0	H
Capodaglio (1996)	8	4 Control 4 Intervention	6	Aerobic	M/CD	30min	5	150min	30	1.0	1.0	1.0	7	NR	NR	15	25	0	0	H
Lavado (2013)	42	21 Control 21 Intervention	16	Aerobic	M-V	60min	2.5	150min	39	0.8	NR	NR	4	2.5	2.5	15	25	0	0	L
Kim (2015)	15	7 Control 8 Intervention	6	Aerobic	M-V	60min	3	180min	35	0.4	1	0	8	2.5	2.5	15	25	0	0	SC
Pelletier (2015)	23	11 Control 12 Intervention	16	Mixed	M-V	20min	2	40min	46	0.8	0.5	NR	9	2.5	2.5	15	25	50	100	H
Rosety-Rodriguez (2015)	17	8 Control 9 Intervention	12	Aerobic	M-V	30min	3	90min	30	1	1	1	5	2.5	2.5	15	25	0	0	H
Gorman (2016)	18	6 Control 12 Intervention	12	Gait Training	V	39min	3	116min	52	NR	0	0	NR	2.5	2.5	15	25	0	0	H
Torhaug (2016)	16	9 Control 9 Intervention	6	RT	V	60min	3	180min	47	1	0.7	1	15	2.5	2.5	15	25	0	0	H
Van der Scheer (2016)	29	15 Control 14 Intervention	16	Aerobic	L	30min	2	60min	55	0.7	0.7	0.7	22	2.5	2.5	15	25	50	100	SC
Akkurt (2017)	33	16 Control 17 Intervention	12	Aerobic	M-V	30min	3	90min	39	0.8	0.6	0.8	3	2.5	2.5	15	25	50	100	L
Kooijmans (2017)	64	31 Control 33 Intervention	42	BC	NR	?	NR	NR	49	0.8	0.8	0.7	23	2.5	2.5	15	25	50	100	L
Nooijen (2017)	39	19 Control 20 Intervention	52	BC	NR	?	NR	NR	44	0.8	0.6	0.7	<1	2.5	2.5	15	25	50	100	SC
Nightingale (2018)	23	8 Control 15 Intervention	6	Aerobic	M-V	45min	4	180min	48	0.3	NR	1	NR	2.5	2.5	15	25	50	100	H
Yarar-Fisher (2018)	11	5 Control 6 Intervention	8	Mixed	V	15min	3	45min	43	0.8	1	0.6	19	2.5	2.5	15	25	50	100	H
Cheung (2019)	16	8 Control 8 Intervention	8	Gait Training	M/CD	30min	3	90min	53	0.5	0	NR	<1	2.5	2.5	15	25	50	100	L
Kim (2019)	17	6 Control 11 Intervention	6	Mixed	M-V	60min	3	180min	NR	NR	NR	NR	NR	2.5	2.5	15	25	50	100	H
Piira (2019)	20	10 Control 10 Intervention	12	Gait Training	M/CD	90min	5	450min	54	0.9	0	0.5	8	2.5	2.5	15	25	50	100	H
Ma (2019)	28	14 Control 14 Intervention	8	BC	NR	?	NR	NR	46	0.6	0.5	0.4	18	2.5	2.5	15	25	50	100	SC
Gorgey (2021)	33	13 Control 20 Intervention	12	FES	M/CD	60min	2	120min	42	0.8	0.8	0.7	13	2.5	2.5	15	25	0	0	L
Bombardier (2021)	15	8 Control 7 Intervention	24	BC	NR	?	NR	NR	49	0.8	NR	0.9	18	2.5	2.5	15	25	50	100	SC
Froehlich-Grobe (2022)	168	81 Control 87 Intervention	16	BC	NR	?	NR	NR	51	0.6	NR	NR	16	2.5	2.5	15	25	50	100	H
Hansen (2023)	33	7 Control 8 Intervention	12	Mixed	M-V	30min	3	90min	50	0.4	0.6	NR	NR	2.5	2.5	15	25	50	100	H

A

medRxiv preprint doi: <https://doi.org/10.1101/2022.08.05.22278307>; this version posted June 2, 2023. The copyright holder for this preprint (which was not certified by peer review) is the author/funder, who has granted medRxiv a license to display the preprint in perpetuity. It is made available under a [CC-BY 4.0 International license](https://creativecommons.org/licenses/by/4.0/).



B



SPINAL CORD INJURY CHARACTERISTICS EXERCISE INTERVENTION PARAMETERS ✓ SIGNIFICANT SUBGROUP DIFFERENCE ? NO SUBGROUP DIFFERENCE

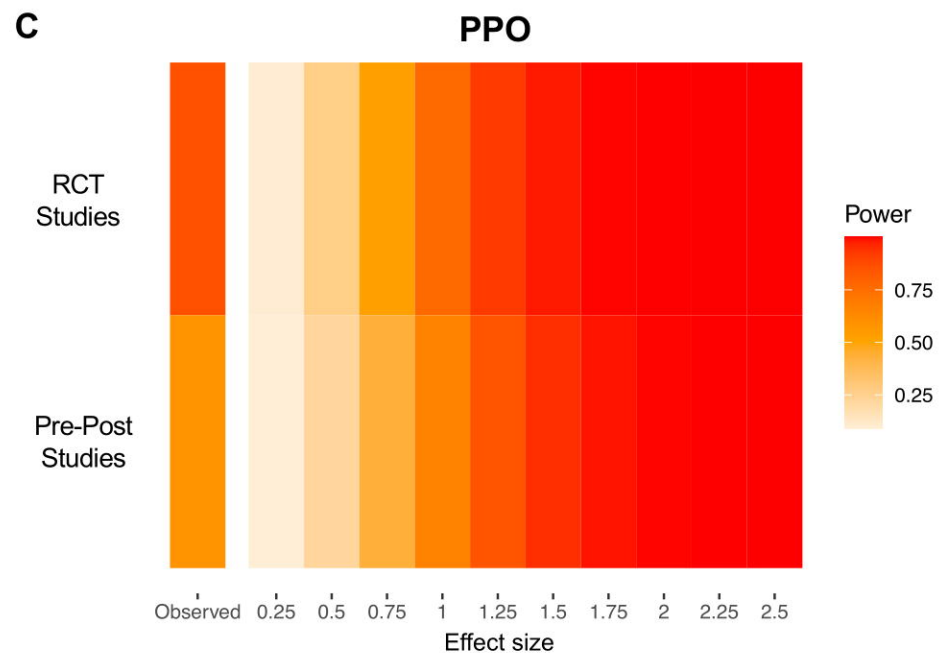
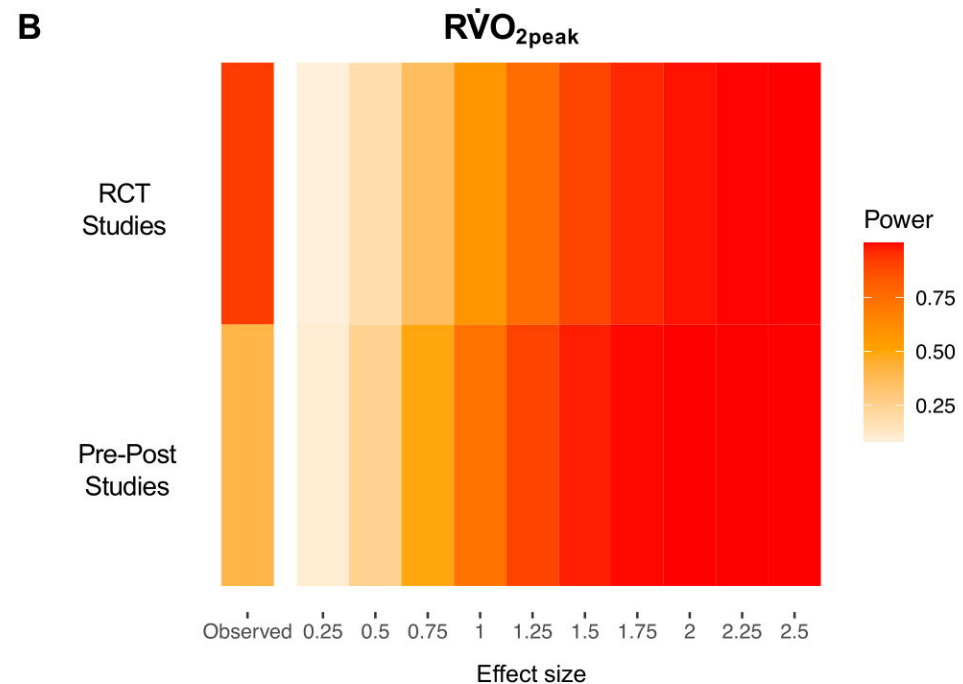
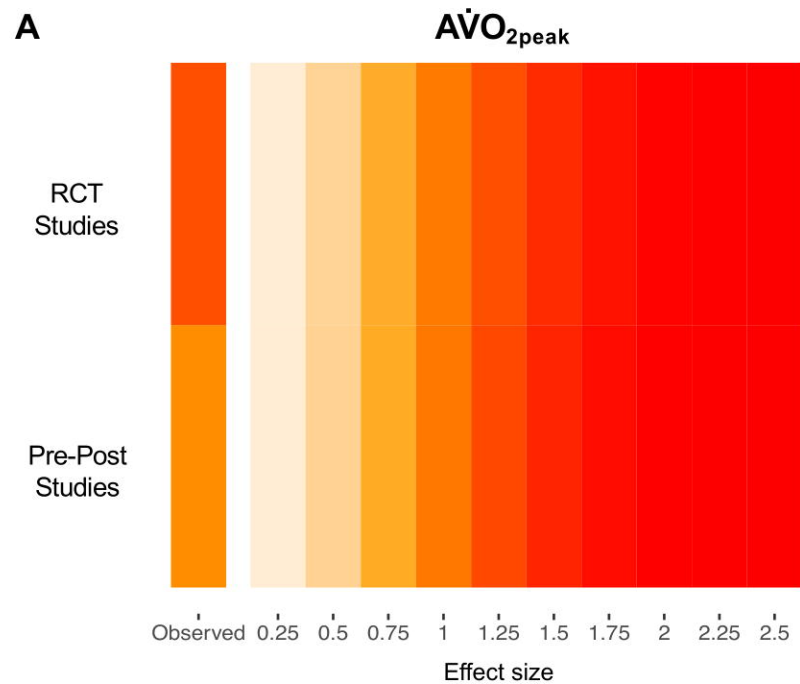


Figure 3. Firepower plots visualising study-level statistical power for a range of effect sizes between meta-analyses for pre-post studies alone in comparison to RCT studies included in the primary meta-analysis (i.e., exercise interventions relative to control groups) for each cardiorespiratory fitness outcome. Hedges' g effect sizes were calculated for each meta-analysis and used as the observed effect size, as described by Quintana [54]. (A) Meta-analysis of pre-post studies describing changes in absolute peak oxygen uptake ($\dot{A}V\text{O}_{2\text{peak}}$) had a median power of 62% for detecting an effect size of 0.90, whereas the RCTs had a median power of 86% for detecting an effect size of 1.25. (B) Meta-analysis of pre-post studies describing changes in relative peak oxygen uptake ($R\dot{V}\text{O}_{2\text{peak}}$) had a median power of 41% for detecting an effect size of 0.67, whereas the RCTs had a median power of 91% for detecting an effect size of 1.57. (C) Meta-analysis of pre-post studies describing changes in peak power output (PPO) had a median power of 58% for detecting an effect size of 0.91, whereas the RCTs had a median power of 86% for detecting an effect size of 1.13.