

1 **Population size, HIV prevalence, and antiretroviral therapy coverage among key**
2 **populations in sub-Saharan Africa: collation and synthesis of survey data 2010-2023**

3 Oliver Stevens MPH^{§1}, Keith Sabin PhD², Rebecca Anderson BSc¹, Sonia Arias Garcia
4 MSc², Kalai Willis MSPH³, Amrita Rao PhD³, Anne F. McIntyre PhD⁴, Elizabeth Fearon
5 PhD⁵, Emilie Grard MPH¹, Alice Stuart-Brown MSc¹, Prof Frances Cowan MD^{6,7}, Prof
6 Louisa Degenhardt PhD⁸, James Stannah MPH¹³, Jinkou Zhao PhD⁹, Avi J. Hakim
7 PhD⁴, Katherine Rucinski PhD³, Isabel Sathane BSc¹⁰, Makini Boothe PhD¹¹, Lydia
8 Atuhaire PhD¹², Prof Peter S. Nyasulu PhD^{12,13}, Mathieu Maheu-Giroux ScD¹⁴, Prof
9 Lucy Platt PhD¹⁵, Brian Rice PhD¹⁶, Wolfgang Hladik MD⁴, Prof Stefan Baral MD³, Mary
10 Mahy ScD², Jeffrey W. Imai-Eaton PhD^{1, 17}

- 11 1. MRC Centre for Global Infectious Disease Analysis, School of Public Health,
12 Imperial College London, London, United Kingdom
13 2. Data for Impact, The Joint United Nations Program on HIV/AIDS (UNAIDS), Geneva,
14 Switzerland
15 3. Johns Hopkins Bloomberg School of Public Health, Baltimore, MD, USA
16 4. US Centers for Disease Control and Prevention (CDC), Atlanta, USA
17 5. Institute for Global Health, University College London, London, United Kingdom
18 6. Liverpool School of Tropical Medicine, Liverpool, United Kingdom
19 7. Centre for Sexual Health and HIV/AIDS Research, Zimbabwe
20 8. National Drug & Alcohol Research Centre, University New South Wales, Sydney,
21 Australia
22 9. The Global Fund to Fight AIDS, Tuberculosis and Malaria, Geneva, Switzerland
23 10. Ministry of Health, Maputo, Mozambique
24 11. Data for Impact, The Joint United Nations Program on HIV/AIDS (UNAIDS), Maputo,
25 Mozambique
26 12. Division of Epidemiology & Biostatistics, Department of Global Health, Faculty of
27 Medicine and Health Sciences, Stellenbosch University, Cape Town, South Africa
28 13. Division of Epidemiology & Biostatistics, School of Public Health, Faculty of Health
29 Sciences, University of the Witwatersrand, Johannesburg, South Africa
30 14. Department of Epidemiology and Biostatistics, School of Population and Global
31 Health, McGill University, Montréal, Canada
32 15. Faculty of Public Health and Policy, London School of Hygiene and Tropical
33 Medicine, London, United Kingdom

- 34 16. Sheffield Centre for Health and Related Research (SCHARR), School of Medicine
35 and Population Health, University of Sheffield, United Kingdom
36 17. Center for Communicable Disease Dynamics, Department of Epidemiology, Harvard
37 T. H. Chan School of Public Health, Boston, MA, USA

38

39 § Correspondence to:

40 Oliver Stevens
41 MRC Centre for Global Infectious Disease Analysis, School of Public Health, Imperial
42 College London
43 St. Mary's Hospital Campus
44 Norfolk Place
45 London
46 W2 1PG
47 United Kingdom
48 o.stevens@imperial.ac.uk

49

50 Word count: 3790 / 3500

51 Abstract: 310 / 300

52 **Abstract**

53 **Background:** Key population HIV programmes in sub-Saharan Africa (SSA) require
54 epidemiologic information to ensure equitable and universal access to effective
55 services. We consolidated survey data among female sex workers (FSW), gay men and
56 other men who have sex with men (MSM), people who inject drugs (PWID), and
57 transgender people to estimate key population size, HIV prevalence, and antiretroviral
58 therapy (ART) coverage for countries in mainland SSA.

59 **Methods:** Key population size estimates (KPSE), HIV prevalence, and ART coverage
60 data from 39 SSA countries between 2010-2023 were collated from existing databases
61 and verified against source documents. We used Bayesian mixed-effects spatial
62 regression to model urban KPSE as a proportion of the gender/year/area-matched 15-
63 49 years adult population. We modelled subnational key population HIV prevalence and
64 ART coverage with age/gender/year/province-matched total population estimates as
65 predictors.

66 **Findings:** We extracted 2065 key population size, 1183 HIV prevalence, and 259 ART
67 coverage data points. Across national urban populations, a median of 1.65% of adult
68 cisgender women were FSW (interquartile range [IQR]=1.35-1.91%), 0.89% of men
69 were MSM (IQR=0.77-0.95%), 0.32% of men injected drugs (IQR=0.31-0.34%), and
70 0.10% of women were transgender (IQR=0.06-0.12%). HIV prevalence among key
71 populations was, on average, 4 to 6 times higher than matched total population
72 prevalence, and ART coverage was correlated with, but lower than, total population
73 ART coverage with wide heterogeneity in relative ART coverage across studies. Across

74 SSA, key populations were estimated as 1.2% (95% credible interval [CrI]: 0.9, 1.6) of
75 the total population aged 15-49 years but 6.1% (95% CrI: 4.5, 8.2) of people living with
76 HIV.

77 **Interpretation:** Key populations in SSA experience higher HIV prevalence and lower
78 ART coverage, underscoring the need for focused prevention and treatment services. In
79 2024, limited data availability and heterogeneity constrain precise estimates for
80 programming and monitoring trends. Strengthening key population surveys and routine
81 data within national HIV strategic information systems would support more precise
82 estimates.

83 **Funding:** UNAIDS, BMGF, NIH

84 **Research in Context**

85 *Evidence before this study*

86 Key populations, including female sex workers (FSW), gay men and other men who
87 have sex with men (MSM), people who inject drugs (PWID), and transgender people,
88 are at higher risk of HIV infection, including in sub-Saharan Africa (SSA). Delivering
89 appropriate HIV prevention and treatment services for key populations and monitoring
90 an equitable HIV response requires robust information on key population size, HIV
91 prevalence, the treatment cascade, and new HIV infections. For this reason, key
92 population surveys, including population size estimation and bio-behavioural surveys,
93 are a standard component of comprehensive national HIV surveillance.

94 Several complementary ongoing initiatives consolidate HIV data on key populations to
95 support programme planning and implementation, global advocacy, and research.
96 These include the Key Population Atlas and Global AIDS Monitoring (Joint United
97 Nations Programme on HIV/AIDS [UNAIDS]), databases maintained by the US Centers
98 for Disease Control and Prevention (CDC) and The Global Fund to Fight AIDS,
99 Tuberculosis and Malaria (The Global Fund), and the Global.HIV initiative (Johns
100 Hopkins University). These include similar data sources, but vary in scope, inclusion
101 criteria, data elements recorded, and linkage to and validation against primary source
102 reports. Incomplete recording of key methodological details limits appraisal and formal
103 evidence synthesis, and therefore utility of data for strategic planning.

104 Many other research studies have systematically reviewed, analysed, and extrapolated
105 key population survey data in sub-Saharan Africa in single countries or across multiple

106 countries. These studies have tended to focus on specific outcomes or population
107 groups of interest, and primarily comprise an appraisal of peer-reviewed literature.

108 *Added value of this study*

109 We consolidated and deduplicated data collected between 2010-2023 from existing key
110 population survey databases maintained by the UNAIDS Key Population Atlas, UNAIDS
111 Global AIDS Monitoring, US CDC, and the Global Fund. We obtained published and
112 grey literature surveillance reports from the Johns Hopkins University Global.HIV
113 repository, additional web-based searches, and engagement with country HIV strategic
114 information teams, and validated each observation of key population size, HIV
115 prevalence, or ART coverage against primary surveillance reports. We used regression
116 to characterise the relationship between key population and total population HIV
117 indicators and extrapolated key population size estimates (KPSE), HIV prevalence, and
118 ART coverage data to national-level estimates for all countries in mainland SSA.

119 This exercise was the most comprehensive effort to date to consolidate key population
120 HIV data in SSA. We analysed over 3000 observations from 126 KPSE, 217 HIV
121 prevalence, and 62 ART coverage studies. We estimated that across urban populations
122 aged 15-49 years in SSA countries, a median of 1.65% of cisgender women were FSW;
123 0.89% of men have sex with men; 0.32% of men injected drugs; and 0.10% of women
124 were transgender. This translated to 3.7 million FSW, 1.9 million MSM, 770,000 PWID,
125 and 230,000 transgender women (TGW) in SSA who require comprehensive HIV
126 prevention or treatment services. FSW, MSM, PWID, and TGW together were estimated
127 as 1.2% of the population aged 15-49 years, but comprised 6.1% of people living with

128 HIV. ART coverage among members of key populations living with HIV increased with
129 total population ART coverage, but was lower for all key populations. We identified large
130 gaps in data availability. Of the four key populations and three indicators studied, only
131 Mozambique had data for all twelve indicators. Data were particularly sparse for
132 transgender populations and PWID.

133 *Implications of all the available evidence*

134 Key populations experience higher HIV prevalence and lower ART coverage across all
135 settings in sub-Saharan Africa than the total population. Extrapolated national estimates
136 provide a foundation for planning appropriate key population-focused services for HIV
137 prevention and treatment in all settings, including those with no or limited data.

138 However, large data availability gaps driven by discriminatory practices and punitive
139 policies against key populations, inconsistency of existing data, and consequent wide
140 uncertainty ranges around estimates limit the ability of existing data to guide granular
141 programmatic planning and target setting for key population services and to monitor
142 trends. More consistent surveillance implementation and improved routine surveillance
143 through HIV prevention and treatment programmes for key populations would support
144 monitoring equitable and equal programme access, as outlined in the Global AIDS
145 Strategy 2021-2026 developed by UNAIDS, its co-sponsors, and other partners to end
146 HIV/AIDS as a public health threat by 2030.

147 **Introduction**

148 Key populations, including female sex workers (FSW), gay men and other men who
149 have sex with men (MSM), people who inject drugs (PWID), and transgender people,
150 experience higher risk of acquiring and transmitting HIV due to a combination of
151 biological and sociostructural factors, including stigma and criminalisation.¹⁻³ The Global
152 AIDS Strategy 2021-2026 calls for “equitable and equal access” to HIV prevention and
153 treatment to reduce HIV incidence and end HIV/AIDS as a public health threat by 2030.⁴
154 Delivering evidence-based HIV services for key populations and monitoring attainment
155 of an equitable HIV response requires robust epidemiologic and service engagement
156 indicators, including key population size, HIV prevalence and incidence, treatment and
157 prevention cascades.

158 Key population survey data are sparse and less representative of their target population
159 than common general population sampling approaches such as national household
160 surveys or sentinel surveillance. Key population surveys often rely on respondent-driven
161 and venue-based sampling methods^{5,6} which require strong assumptions to interpret as
162 population-representative. Household survey sampling frames are inappropriate for
163 reaching populations that are mobile and unlikely to disclose risk behaviour due to
164 societal marginalisation and discrimination.⁷⁻⁹ Key population surveys are often
165 infrequent and commonly restricted to, or disproportionately conducted in, urban areas.

166 Systematic reviews and meta-analyses of population size, HIV prevalence, or
167 antiretroviral therapy (ART) coverage encompassing sub-Saharan Africa (SSA) have
168 been conducted for FSW,^{10,11} MSM,^{12,13} PWID,^{14,15} and transgender women (TGW).^{16,17}

169 Several independent initiatives have been undertaken to consolidate key population
170 surveillance data.^{18–21} These efforts aim to monitor the state of the epidemic, evaluate
171 programmes, and make recommendations on key population data reporting and quality
172 thresholds.

173 We consolidated and harmonised key population size estimates (KPSE), HIV
174 prevalence, and ART coverage data from existing databases and described data
175 availability across countries and over time for each key population. We characterised
176 the relationship between key population and total population HIV indicators and
177 extrapolated KPSE, HIV prevalence, and ART coverage data to national-level estimates
178 for mainland countries in SSA.

179 **Methods**

180 *Data sources and extraction*

181 We consolidated data from studies conducted 2010–2023 from four existing databases
182 and two systematic reviews among FSW, MSM, PWID, and transgender people.^{13,22}
183 Data among incarcerated people were not included as part of this review. The existing
184 databases were the Joint United Nations Programme on HIV/AIDS (UNAIDS) Global
185 AIDS Monitoring submissions,²³ UNAIDS Key Population Atlas,²⁴ the Global Fund to
186 Fight AIDS, Tuberculosis and Malaria (the Global Fund) surveillance database, and a
187 dataset maintained by the US Centers for Disease Control and Prevention (CDC)
188 Division of Global HIV & TB Key Population Surveillance Team (Supplementary Table
189 S1). For each observation, we extracted information about the study methodology,
190 study location (country, subnational location), study population gender and age group,

191 central estimate, sample size, standard error, and primary source or reference (e.g.,
192 survey report) (Supplementary Table S2).

193 Source documents were compiled from archives accompanying each database, the
194 Johns Hopkins University Global.HIV document repository,²⁵ Medline, and Google
195 Scholar, following which we contacted UNAIDS Strategic Information advisors and other
196 HIV programme contacts in each country to seek missing reports. Four authors (OS,
197 RA, EG, AS-B) reviewed source documents to deduplicate observations recorded in
198 multiple databases, validate against sources, and extract missing data elements. During
199 source review, we added observations when additional relevant data were reported, or
200 additional sources were ascertained that were not in the initial databases.

201 Observations were excluded if: key population definition, year, or study area were
202 missing; the study area was non-specific (e.g., 'urban areas' or '5 provinces'); estimates
203 were modelled or extrapolated; or data could not be confirmed by primary source
204 review. There were no age group eligibility criteria for inclusion in analysis. Studies
205 were not excluded or differentiated in our analysis according to study-specific population
206 group definitions based on engaging in risk behaviours or time periods (e.g. sold sex in
207 the last 6 months versus last 12 months; Supplementary Text S1). Transgender men
208 (TGM) were not analysed or reported here due to insufficient data, but available
209 observations are included in supplementary datasets
210 (<https://zenodo.org/records/10838438>).

211 *Data processing*

212 To compare population sizes across settings, KPSE reported as counts were converted
213 to population proportions. Each KPSE was matched to the total population
214 denominator^{26–28} by age, gender, year, and area, and assigned to one of seven method
215 categories²⁹ (Supplementary Text S2). Age information was missing from nearly all key
216 population reports; missing age ranges were assigned as age 15-49 years. Unless
217 gender was specified, PWID were assumed to be men as 90% of people who inject
218 drugs in sub-Saharan Africa are men.²² Surveys among transgender people which did
219 not report gender were assumed to be among transgender women because
220 respondents often reported high prevalence of male partners and receptive anal
221 intercourse, and surveys among TGM in SSA remain rare.¹⁷

222 Key population HIV prevalence and ART coverage observations were compared to total
223 population HIV prevalence or ART coverage, respectively, matched by age, gender,
224 year, and first administrative level (henceforth ‘province’). Provincial age/gender-specific
225 HIV prevalence and ART coverage were extracted from UNAIDS Naomi subnational
226 estimates for 2022 and projected backwards 2000-2021 parallel to national HIV
227 prevalence and ART coverage trajectories among adults 15-49 years.³⁰ Only
228 serologically-determined HIV prevalence observations were included in analysis.

229 Key population ART coverage observations derived from populations with self-reported
230 HIV-positive status or clinic-based recruitment were excluded. ART usage was
231 determined through either self-report or laboratory methods via antiretroviral (ARV)
232 metabolite biomarker or viral load (VL) testing. Viral load suppression (VLS)

233 observations were standardised using a reporting threshold of 1000 copies/ml.³¹ In
234 cases where surveys measured both ARV biomarker and VL, ARV biomarker was used.
235 VLS observations were converted to estimates of ART coverage assuming a logit
236 difference of -0.32, the average difference from studies that measured both viral load
237 and metabolite-confirmed ARV status (Supplementary Text S3).

238 *Analysis*

239 We used Bayesian mixed-effects linear regression to model logit-transformed KPSE
240 proportions among the urban total population aged 15-49 years at provincial level.
241 Separate regressions were estimated for each key population. The model included
242 effects for study method, spatially-correlated random effects between neighbouring
243 countries and provinces, and a study-level random effect allowing correlation among
244 KPSE proportions from the same study. Study method was classified as: (1) non-
245 mapping-based empirical methods that estimated total key population size, or (2)
246 Priorities for Local AIDS Control Efforts (PLACE) or mapped estimates which counted
247 venue- or hotspot-attending population size (see Supplementary Text S2 for details).
248 Within these, method-specific random effects were included to permit empirical
249 deviations from the central estimate. National KPSE counts were extrapolated using
250 urban KPSE proportions, the proportion of the population living in urban areas,³² and
251 the assumed rural-to-urban ratio of key population size. Qualitative data indicate that
252 KPSE proportions are higher in urban areas than rural areas, but no empirical data were
253 available to quantify the rural-to-urban ratio.³³⁻³⁵ To reflect wide uncertainty in the rural-
254 to-urban ratio, we assumed that rural KPSE proportions were, on average, 40% lower

255 than in urban areas, but with a wide range such that 80% of the time the true value will
256 be between 20% and 60% lower.

257 For HIV prevalence, we modelled the relationship between logit-transformed key
258 population HIV prevalence and logit total population HIV prevalence (age 15-49 years).
259 FSW and PWID were modelled separately. Due to limited data, MSM and TGW were
260 modelled together, but with a population type fixed effect reflecting empirical prevalence
261 difference between TGW and MSM.¹⁷ We modelled survey HIV prevalence
262 observations with a beta-binomial distribution to allow for overdispersion, accounting for
263 additional variation between populations and study designs. The model included fixed
264 effects for logit population prevalence interacted with region (Eastern and Southern
265 Africa [ESA] or Western and Central Africa [WCA]) and province-, country-, and study-
266 level random effects. Country- and province-level random effects were spatially
267 correlated.

268 Primary analysis for key population ART coverage, was restricted to diagnostically-
269 determined ART usage (either via ARV biomarker or VL testing). Logit-transformed key
270 population ART coverage was modelled as a function of logit total population ART
271 coverage in the same year, age group, and province. All key populations were modelled
272 together with random slopes for each key population to enable sharing of information
273 about the overall relationship for groups with very limited data. The observed number on
274 ART was modelled with a beta-binomial distribution with fixed effects for logit population
275 ART coverage, spatially correlated country- and province-level random effects, and
276 study-level random effects.

277 We conducted sensitivity analyses in which self-reported ART coverage data were also
278 included. For all three models (KPSE, prevalence, ART coverage) in sensitivity analysis
279 we used ages 15-29 years as the matched total population denominator for MSM and
280 TGW regression analyses, and 15-39 years for FSW, reflecting the younger median age
281 of survey respondents.^{36,3736-38}

282 We combined national KPSE, HIV prevalence, and ART coverage estimates to
283 calculate the number of KPLHIV and on ART. Ninety-five percent credible intervals were
284 generated by combining 1000 posterior samples for each outcome. We calculated 1000
285 regional median KPSE differences from each of the posterior samples of national KPSE
286 proportions, and calculated 95% credible intervals by combining the 1000 regional
287 median differences. KPLHIV estimates were divided by estimates of the total PLHIV
288 aged 15-49 years from 2022 national UNAIDS estimates to calculate the proportion of
289 all PLHIV associated with each key population.³⁹

290 Data were extracted, deduplicated, and validated in Microsoft Excel. Statistical analyses
291 were conducted in R version 4.2.0 using the R-INLA package (v23.4.24). Further
292 statistical methods details are in Supplementary Text S4. The GATHER reporting
293 checklist⁴⁰ is in Supplementary Table S17.

294 *Ethics statement*

295 This study received ethical approval from the Imperial College Research Integrity and
296 Governance Team (ICREC #6412027). Regulatory bodies providing ethical approvals or
297 other ethics considerations for included studies are reported in Supplementary File S3.

298 *Role of the funding source*

299 Authors KS, SA-G, MB, and MM are employees of UNAIDS and contributed to the
300 conceptualisation of the study, interpretation of results, and editing the manuscript. OS,
301 RA, and JWI-E had access to all data included in the study. OS and JWI-E accepted
302 responsibility to submit for publication.

303 **Results**

304 4542 KPSE conducted between 2010 to 2023 were compiled (Figure 1). Following data
305 cleaning, source document review, and area matching, 2065 observations were
306 extracted from 126 studies (Table 1; Supplementary Figure S1). Data were most
307 available for FSW (n=972, data from 35/39 countries; Supplementary Table S3),
308 followed by MSM (n=647, 33/39 countries), PWID (n=329, 23/39 countries), TGW
309 (n=117, 13/39 countries), and TGM (n=16, 2/39 countries). Sixty-nine percent (445/647)
310 of urban MSM population proportion observations were below 1% of the male adult (15-
311 49 years) population (Supplementary Figure S2).

312 We identified 2732 key population HIV prevalence estimates, from which 1183 were
313 extracted from 217 studies after processing. Denominators were reported for 98%
314 (1154/1183) of observations. Most data were available for FSW (n=559, 36/39
315 countries), followed by MSM (n=370, 34/39 countries), PWID (n=159, 21/39 countries),
316 TGW (n=95, 23/39 countries), and TGM (n=5, 5/39 countries).

317 For ART coverage, 621 observations were identified. After processing, 259
318 observations were extracted from 62 studies. Denominators were available for 98%
319 (254/259). Data were most available for FSW (n=135, 27/39 countries), followed by

320 MSM (n=92, 24/39), TGW (n=17, 10/39 countries), and PWID (n=15, 8/39 countries).

321 No data were available for TGM. Fifty-nine percent of observations were VLS [152/259],

322 9% ART metabolite testing [24/259], and 32% self-reported ART usage [83/259].

323 We estimated that, across countries, a median 1.65% of urban cisgender women aged

324 15-49 years were FSW (interquartile range [IQR] 1.35-1.91), 0.89% of men had sex with

325 men (IQR 0.77-0.95), 0.32% of men injected drugs (IQR 0.31-0.34), and 0.10% of

326 women were transgender (IQR 0.06-0.12; Figure 2). Incorporating the rural-to-urban

327 ratio, median proportions of national total populations were 1.19% FSW, 0.66% MSM,

328 0.25% PWID, and 0.08% TGW. In sensitivity analysis using age 15-29 years as a

329 denominator for MSM PSEs and 15-39 years for FSW PSEs, median urban proportions

330 for MSM were 1.36% (IQR 1.15-1.42) and for FSW were 1.82% (IQR 1.60-2.13)

331 (Supplementary Figure S3).

332 Urban KPSE proportions were higher in ESA than WCA among FSW (median

333 difference +0.3%; 95% credible interval [CrI] -0.3, 1.0) and MSM (+0.2%; 95%CrI -0.2,

334 0.5) but uncertainty ranges contained zero. Proportions were similar between regions

335 among PWID and TGW, but KPSE data were sparse overall. PSE proportions derived

336 from PLACE and mapping studies were significantly lower than those derived from other

337 methods among FSW (odds ratio 0.58; 95%CrI 0.40, 0.83), MSM (0.26; 95%CrI 0.17,

338 0.41), and PWID (0.31; 95%CrI 0.19, 0.53), and lower among TGW (0.27; 95%CrI 0.07,

339 1.11) but for TGW the 95% credible interval contained 1 (Supplementary Table S4;

340 Supplementary Figure S4; Supplementary Tables S9-S12).

341 Observed HIV prevalence among key populations was consistently higher than area-
342 matched total population HIV prevalence. Logit key population HIV prevalence in ESA
343 was more strongly correlated with matched logit total population HIV prevalence than in
344 WCA (Figure 3). In ESA, 15% population prevalence corresponded to 53% (95%CrI 45,
345 62) HIV prevalence among FSW, 21% (95%CrI 12, 31) among MSM, 28% (95%CrI 15,
346 45) among PWID, and 22% (95%CrI 14, 34) among TGW. In WCA, relative patterns
347 were similar, but key population HIV prevalence varied less with total population HIV
348 prevalence than in ESA. HIV prevalence differentials between key population and total
349 population were larger when population prevalence was lower (Figure 3C).

350 Supplementary Table S5-S7 report regression results, Supplementary Table S13
351 reports country-specific estimates, and Supplementary Figure S5 reports sensitivity
352 analysis of imputed tested denominators.

353 ART coverage among FSW, MSM, PWID, and TGW was correlated with gender-
354 matched population ART coverage, but with wide heterogeneity in relative ART
355 coverage across studies (Figure 4). At 80% population coverage, predicted ART
356 coverage among FSW was 11% lower (95%CrI 19, 4%), 19% lower (30, 10%) among
357 MSM, 25% lower (41, 11%) among PWID, 13% lower (43, 18%) among TGW.

358 Supplementary Table S8 reports regression results and S14 reports country-specific
359 estimates.

360 In sensitivity analysis including a fixed effect for ART measurement method, self-
361 reported ART coverage was lower than lab-determined ART, but with wide 95% credible
362 interval spanning no difference (odds ratio 0.73, 95%CrI 0.47, 1.15; Supplementary

363 Figure S6, Table S8). Assuming MSM surveys represented MSM aged 15-29 years or
364 FSW surveys represented FSW aged 15-39 years minimally affected on HIV prevalence
365 or ART coverage estimates (Supplementary Table S16).

366 Across SSA, FSW, MSM, PWID, and TGW combined were 1.2% (95%CrI 0.9, 1.6) of
367 the population aged 15-49 years (3.7m FSW, 1.9m MSM, 770,000 PWID, and 230,000
368 TGW), but 6.1% (95%CrI 4.5, 8.2) of PLHIV aged 15-49 years. In ESA this was 4.9%
369 (95%CrI 3.4, 6.9) of PLHIV compared to 1.3% (95%CrI 0.9, 1.8) of the population and,
370 in WCA, 11.7% (95%CrI 8.3, 16.5) of PLHIV compared to 1.2% (95%CrI 0.9, 1.7) of the
371 population. FSW were 4.0% (95%CrI 2.7, 5.7) of PLHIV in SSA (750,000 PLHIV;
372 95%CrI 520,000, 1,100,000), MSM were 1.4% (95%CrI 0.9, 2.0) or 250,000 PLHIV
373 (95%CrI 170,000, 380,000), PWID were 0.5% (95%CrI 0.3, 0.8) or 89,000 PLHIV
374 (95%CrI 50,000, 150,000), and TGW were 0.2% (95%CrI 0.1, 0.5) or 44,000 PLHIV
375 (95%CrI 20,000, 100,000) (Figure 5).

376 Discussion

377 Data from 273 key population surveys provided consistent evidence across sub-
378 Saharan Africa of higher HIV prevalence and lower ART coverage among key
379 populations. We estimated there are 3.7 million FSW, 1.9 million MSM, 770,000 PWID,
380 and 230,000 TGW in SSA who require comprehensive HIV prevention or treatment
381 services. HIV prevalence was estimated to be 21% among FSW, 14% among MSM,
382 11% among PWID, and 20% among TGW. These were 4.6, 5.9, 4.6, and 4.4 times
383 higher than adult population prevalence, respectively, with larger relative differences
384 when population prevalence was lower. Together, key populations constituted 1.2% of

385 the adult population in SSA but 6.1% of PLHIV. ART coverage among key populations
386 increased with total population coverage, but lagged behind at high population ART
387 coverage levels. However, there was wide uncertainty about estimates aggregated
388 within countries and across SSA.

389 This exercise highlighted major data gaps and challenges interpreting existing data.
390 Across the twelve combinations of three indicators and four key populations analysed
391 here, on average countries had data for seven combinations (Supplementary Table S3).
392 Data gaps are larger when restricting to the highest quality and most recent data. These
393 gaps impede planning for equitable and universal access to HIV services and will
394 persist without firm commitments to collect key population survey data. Implementation
395 of high-quality surveys will also require addressing entrenched discriminatory practices
396 and punitive laws and policies against key populations^{3,41–43} In settings lacking or with
397 limited data, our extrapolated estimates can be a foundation with which to guide future
398 surveillance priorities, stimulate in-country data review and use, and estimate HIV
399 epidemic indicators. Future efforts should especially focus on strengthening surveillance
400 for MSM, PWID, and transgender people, and supporting use of HIV service delivery
401 data for all key populations, while ensuring the safety and protection of marginalised
402 individuals and their communities.³

403 Previous key population reviews and meta-analyses^{11,44–46} relied on systematic
404 searches of peer-reviewed literature. Our initial sources were existing databases,
405 primarily populated by surveillance teams in each country or implementing
406 organisations. This resulted in including a larger grey literature body, such as survey

407 reports, which are infrequently indexed by peer-reviewed databases.⁴⁷ However, many
408 observations from initial databases could not be validated in source documents and
409 were excluded from analysis, which in some countries excluded the only reported data.
410 Demand for total population HIV estimates in SSA has promoted high-quality
411 comparable surveillance methods, documentation, and dissemination. Review of key
412 population data by national HIV surveillance teams was introduced into the UNAIDS
413 sub-Saharan African estimates process in 2022, providing context for existing surveys,
414 identifying missing sources and adding new data. This, alongside ongoing key
415 population data initiatives and concerted advocacy efforts that ensure public
416 dissemination, will improve the foundation for HIV surveillance among key populations
417 and promote parity for key populations within national HIV data and strategic
418 information.

419 Systematically collated data on key population size, HIV prevalence, and ART coverage
420 are critical inputs for mathematical modelling analyses that guide optimal HIV resource
421 allocation. Such studies consistently demonstrate that fully meeting the HIV prevention
422 and treatment needs of key populations would be impactful on reducing overall
423 population incidence due to network effects of averting further onward transmission over
424 time and to non-key population partners.^{48,49} Model-based counterfactual indicators that
425 capture these impacts, such as the transmission preventable attributable fraction, are a
426 better basis for intervention prioritisation than simple population proportions reported in
427 survey data.^{48,50,51}

428 Our estimates that 0.29% of men in SSA injected drugs was lower than recent
429 estimates from Degenhardt *et al.* of 0.38%, though uncertainty ranges overlapped.²²
430 This may reflect incorporating the urban-to-rural ratio in national PSE extrapolation in
431 this analysis. We estimated that 1.2% of women aged 15-49 years sold sex, similar to
432 the 1.1% estimated by Laga *et al.*⁵² Our finding of heterogeneous HIV prevalence ratios
433 between MSM and the total population was consistent with Hessou *et al.*,⁵³ particularly
434 in WCA where HIV burden in neighbouring countries can vary considerably. Our
435 estimate of 57% ART coverage among MSM in 2022 was lower than 73% from a meta-
436 analysis by Stannah *et al.*⁵⁴ of studies conducted up to 2022, with overlapping
437 uncertainty. This may be due to exclusion of ART coverage using self-reported HIV
438 status in this analysis.

439 Population size estimates measured in the same population at different times or with
440 multiple methods were highly heterogenous, limiting data use for establishing
441 meaningful programmatic targets or monitoring temporal trends. Very large uncertainty
442 ranges around population size and PLHIV modelled estimates were consistent with
443 findings of other statistically summarised and extrapolated PSE from multiple
444 sources.⁵⁵⁻⁵⁸ Non-existence of rural KPSE studies to empirically inform rural-urban
445 population proportions contributed to five-fold or greater relative uncertainty in
446 extrapolated national estimates. Moreover, quality assessments of individual KPSE
447 studies were not conducted as part of this analysis. Both systematically improving and
448 evaluating study-specific implementation quality and methodological assumptions may
449 reduce heterogeneity and increase the utility of KPSE data.⁵⁹⁻⁶³

450 Seventy-two percent of MSM KPSE observations and 38/39 modelled urban MSM
451 estimates were below 1% of the male adult (15-49 years) population which UNAIDS and
452 WHO recommended in 2020 as a minimum MSM population proportion.⁶⁴ The minimum
453 threshold was specified to ensure that MSM were not overlooked due to lack of data.
454 Variation in MSM proportions measured in PSE studies may reflect ability to engage in
455 sexual behaviours or surveys, affected by legal and social environment and other
456 factors, rather than differences in distribution of sexual preference. It is also uncertain
457 whether MSM recruited in surveys, who are disproportionately young,^{12,13} are
458 representative of the total MSM population. Specifying a minimum 1% threshold for
459 MSM population could result in unrealistic MSM-focused service targets. The threshold
460 should be reconsidered with the wider range of population size and stigma data now
461 available, aligned with risk-based approaches to quantifying sex work and injecting drug
462 use. Study-specific quality assessments will be important to producing accurate KPSE
463 given stigma experienced by MSM in many settings.

464 Integrating key population programme data within key population estimates should be a
465 priority to improve utility of surveillance data to guide programmatic response and
466 monitor trends and subnational variation.⁶⁵ Triangulating routine HIV testing and
467 treatment data with biobehavioural survey data may help disentangle programmatic
468 double counting, coverage of key population-specific services, and accounting for
469 linkage to care in the estimation of ART coverage and viral load suppression.⁶⁶⁻⁶⁸
470 Future surveillance should consider moving beyond strictly defined key population
471 definitions accurately to reflect heterogenous risks among individuals in overlapping risk

472 environments including cisgender MSM and transgender women who sell sex, and FSW
473 and MSM who inject drugs.^{69–71}

474 Several limitations should be considered when interpreting these data and estimates.

475 Firstly, surveys used a range of key population definitions and inclusion criteria which
476 limited comparability, though there was sufficient overlap (Supplementary Text S2).

477 Second, lack of explicit geographic survey sampling frames made it challenging to
478 reflect the catchment population for a given survey in matched denominators,

479 particularly given the mobility of key populations.⁷² This likely exacerbates the observed
480 heterogeneity in KPSE proportions (Figure 2B), and is a major limitation for

481 extrapolating KPSE proportions for programmatic planning. Going forward, specification
482 of population catchments and careful data quality assessments to determine study

483 inclusion and interpretation will improve future data use. Third, sample size or standard
484 errors and age ranges were omitted from most population size data entries, gender was

485 not specified for most observations among PWID, and a small number of observations
486 were missing denominators for number tested. This limited ability to statistically weight,

487 age-standardise, or gender-match data in model extrapolations, though sensitivity

488 analyses indicate little impact on analysis conclusions. Fourth, data were insufficient

489 and too heterogeneous to estimate time trends in population proportions, HIV

490 prevalence, or ART coverage. Application of standardised recruitment methods,

491 population definitions, and indicator reporting in consistent locations will improve

492 monitoring of trends. Finally, this analysis did not include prisoners and other

493 incarcerated people and future studies should look to expand data synthesis and

494 analysis to this key population.

495 In conclusion, key populations across SSA experience disproportionate HIV burden and
496 have lower antiretroviral therapy coverage. Consolidated key population data and
497 synthesised estimates provide a basis for key population programming in all countries,
498 including those with limited locally available data. Despite increasing focus on key
499 populations in HIV/AIDS strategies in SSA, large data gaps remain and estimates are
500 highly uncertain. New surveillance strategies, improved use of routine data, and more
501 consistent surveillance implementation are required to furnish more precise estimates
502 and trends for programme planning and support the monitoring of equitable and equal
503 access to HIV prevention and treatment programmes outlined in the Global AIDS
504 Strategy 2021-2026.

505 **Authors' contributions**

506 OS, KS, MM and JWI-E conceptualised the study. KS, SAG, JZ, AMcl, KW, JS, LD
507 curated key population survey databases. OS, RA, EG, AS-B reviewed primary source
508 documents, deduplicated data, and extracted data. OS analysed the data and wrote the
509 first draft of the manuscript. All authors contributed to interpretation of results and edited
510 the manuscript for intellectual content. All authors read and approved the final version of
511 the manuscript for submission.

512 **Disclaimer**

513 The findings and conclusions in this report are those of the author(s) and do not
514 necessarily represent the official position of the funding agencies.

515 **Conflict of interest**

516 SB acknowledges funding from the National Institutes of Health (NIH); FC
517 acknowledges funding from Wellcome Trust, MRC, NIH, UNITAID, and the Bill and
518 Melinda Gates Foundation (BMGF); LD has received untied educational grants for the
519 study of new opioid medications in Australia from Indivior and Sequirus; LF
520 acknowledges funding from the UKRI Medical Research Council, the Royal Society, and
521 from the Centre for Sexual Health and HIV/AIDS Research Zimbabwe; JI-E
522 acknowledges funding from UNAIDS, NIH, BMGF, UKRI, and BAO Systems, and
523 received support to attend meetings from UNAIDS, the South African Centre for
524 Epidemiological Modelling and Analysis, the International AIDS Society, and BMGF; KR

525 and MM-G received support to attend meetings from UNAIDS; JS acknowledges
526 funding from UNAIDS; OS acknowledges funding from UNAIDS.

527 **Data sharing**

528 Data extracted and code to reproduce the analysis are available at
529 <https://zenodo.org/records/10838438>.

530 **Acknowledgments**

531 This research was supported by UNAIDS, Bill and Melinda Gates Foundation (INV-
532 006733), National Institute of Allergy and Infectious Disease of the National Institutes of
533 Health under award number R01AI136664, and the MRC Centre for Global Infectious
534 Disease Analysis (reference MR/R015600/1), jointly funded by the UK Medical
535 Research Council (MRC) and the UK Foreign, Commonwealth & Development Office
536 (FCDO), under the MRC/FCDO Concordat agreement and is also part of the EDCTP2
537 programme supported by the European Union. MM-G's research program is funded by
538 a *Canada Research Chair* (Tier II) in *Population Health Modeling*.

539 **References**

- 540 1. UNAIDS. *The Gap Report.*; 2014. Accessed April 1, 2022.
541 https://www.unaids.org/en/resources/documents/2014/20140716_UNAIDS_gap_r
542 [eport](#)
- 543 2. Garnett GP. Reductions in HIV incidence are likely to increase the importance of
544 key population programmes for HIV control in sub-Saharan Africa. *J Int AIDS*
545 *Soc.* 2021;24(S3):e25727. doi:10.1002/jia2.25727
- 546 3. World Health Organization. *Consolidated Guidelines on HIV, Viral Hepatitis and*
547 *STI Prevention, Diagnosis, Treatment and Care for Key Populations.*; 2022.
548 http://apps.who.int/iris/bitstream/10665/128048/1/9789241507431_eng.pdf?ua=1
- 549 4. United Nations. End Inequalities. End AIDS. Global AIDS Strategy 2021-2026 |
550 UNAIDS. Published 2021. Accessed May 5, 2021.
551 <https://www.unaids.org/en/resources/documents/2021/2021-2026-global-AIDS->
552 [strategy](#)
- 553 5. Baneshi MR, Rastegari A, Haghdoost AA. Review of Size Estimation Methods. In:
554 *Advances in Experimental Medicine and Biology.* Vol 1333. Springer; 2021:1-15.
555 doi:10.1007/978-3-030-75464-8_1
- 556 6. Abdul-Quader AS, Baughman AL, Hladik W. Estimating the size of key
557 populations: Current status and future possibilities. *Curr Opin HIV AIDS.*
558 Published online 2014. doi:10.1097/COH.0000000000000041

- 559 7. Jin H, Restar A, Beyrer C. Overview of the epidemiological conditions of HIV
560 among key populations in Africa. *J Int AIDS Soc.* 2021;24(S3).
561 doi:10.1002/jia2.25716
- 562 8. Hakim AJ, MacDonald V, Hladik W, et al. Gaps and opportunities: measuring the
563 key population cascade through surveys and services to guide the HIV response.
564 *J Int AIDS Soc.* 2018;21(Suppl Suppl 5):e25119. doi:10.1002/jia2.25119
- 565 9. Sabin K, Zhao J, Garcia Calleja JM, et al. Availability and quality of size
566 estimations of female sex workers, men who have sex with men, people who
567 inject drugs and transgender women in low- and middle-income countries. *PLoS*
568 *One.* 2016;11(5). doi:10.1371/journal.pone.0155150
- 569 10. Atuhaire L, Adetokunboh O, Shumba C, Nyasulu PS. Effect of community-based
570 interventions targeting female sex workers along the HIV care cascade in sub-
571 Saharan Africa: a systematic review and meta-analysis. *Syst Rev.* Published
572 online 2021. doi:10.1186/s13643-021-01688-4
- 573 11. Baral S, Beyrer C, Muessig K, et al. Burden of HIV among female sex workers in
574 low-income and middle-income countries: A systematic review and meta-analysis.
575 *Lancet Infect Dis.* Published online 2012. doi:10.1016/S1473-3099(12)70066-X
- 576 12. Stannah J, Dale E, Elmes J, et al. HIV testing and engagement with the HIV
577 treatment cascade among men who have sex with men in Africa: a systematic
578 review and meta-analysis. *Lancet HIV.* 2019;6(11):e769-e787.
579 doi:10.1016/S2352-3018(19)30239-5

- 580 13. Stannah J, Soni N, Keng J, et al. Trends in HIV testing, the treatment cascade,
581 and HIV incidence among men who have sex with men in Africa: A systematic
582 review and meta-regression analysis. *Lancet HIV*. Published online 2023.
583 doi:0.1016/S2352-3018(23)00111-X
- 584 14. Mathers BM, Degenhardt L, Phillips B, et al. Global epidemiology of injecting drug
585 use and HIV among people who inject drugs: a systematic review. *The Lancet*.
586 Published online 2008. doi:10.1016/S0140-6736(08)61311-2
- 587 15. Degenhardt L, Peacock A, Colledge S, et al. Global prevalence of injecting drug
588 use and sociodemographic characteristics and prevalence of HIV, HBV, and HCV
589 in people who inject drugs: a multistage systematic review. *Lancet Glob Health*.
590 2017;5(12):e1192-e1207. doi:10.1016/S2214-109X(17)30375-3
- 591 16. Kloek M, Bulstra CA, van Noord L, Al-Hassany L, Cowan FM, Hontelez JAC. HIV
592 prevalence among men who have sex with men, transgender women and
593 cisgender male sex workers in sub-Saharan Africa: a systematic review and
594 meta-analysis. *J Int AIDS Soc*. 2022;25(11). doi:10.1002/JIA2.26022
- 595 17. Stevens O. HIV prevalence in transgender populations and cisgender men who
596 have sex with men in sub-Saharan Africa 2010-2022: a meta-analysis. *medRxiv*.
597 Published online 2023. doi:10.1101/2023.11.09.23298289
- 598 18. UNAIDS. Global AIDS Monitoring 2022. Published 2022. Accessed February 18,
599 2022. <https://www.unaids.org/en/global-aids-monitoring>

- 600 19. UNAIDS, WHO. *Recommended Population Size Estimates for Men Who Have*
601 *Sex with Men.*; 2020.
- 602 20. Rao A, Schwartz S, Sabin K, et al. HIV-related data among key populations to
603 inform evidence-based responses: protocol of a systematic review. *Syst Rev.*
604 Published online 2018.
- 605 21. UNAIDS, FHI 360, WHO, CDC, PEPFAR. *Biobehavioural Survey Guidelines For*
606 *Populations At Risk For HIV.*; 2017. Accessed February 17, 2022.
607 <http://apps.who.int/bookorders>.
- 608 22. Degenhardt L, Webb P, Colledge-Frisby S, et al. Epidemiology of injecting drug
609 use, prevalence of injecting-related harm, and exposure to behavioural and
610 environmental risks among people who inject drugs: a systematic review. *Lancet*
611 *Glob Health.* 2023;11(5):e659-e672. doi:10.1016/S2214-109X(23)00057-8
- 612 23. UNAIDS. Global AIDS Monitoring 2022. Published 2022. Accessed February 18,
613 2022. <https://www.unaids.org/en/global-aids-monitoring>
- 614 24. UNAIDS. Key Populations Atlas. Accessed November 27, 2021.
615 <https://kpatlas.unaids.org/dashboard>
- 616 25. Rao A, Schwartz S, Sabin K, et al. HIV-related data among key populations to
617 inform evidence-based responses: protocol of a systematic review. *Syst Rev.*
618 Published online 2018.

- 619 26. UNAIDS. HIV sub-national estimates viewer. Published 2021. Accessed May 12,
620 2022. <https://naomi-spectrum.unaids.org/>
- 621 27. Eaton JW, Dwyer-Lindgren L, Gutreuter S, et al. Naomi: a new modelling tool for
622 estimating HIV epidemic indicators at the district level in sub-Saharan Africa. *J Int*
623 *AIDS Soc.* Published online 2021. doi:10.1002/jia2.25788
- 624 28. Global Rural-Urban Mapping Project (GRUMP). Urban boundaries. Accessed
625 October 25, 2021. <https://sedac.ciesin.columbia.edu/data/collection/grump-v1>
- 626 29. Neal JJ, Prybylski D, Sanchez T, Hladik W. Population size estimation methods:
627 Searching for the holy grail. *JMIR Public Health Surveill.* Published online 2020.
628 doi:10.2196/25076
- 629 30. Eaton JW, Brown T, Puckett R, et al. The Estimation and Projection Package
630 Age-Sex Model and the r-hybrid model: New tools for estimating HIV incidence
631 trends in sub-Saharan Africa. *AIDS.* 2019;33(Suppl 3):S235-S244.
632 doi:10.1097/QAD.0000000000002437
- 633 31. Johnson LF, Kariminia A, Trickey A, et al. Achieving consistency in measures of
634 HIV-1 viral suppression across countries: derivation of an adjustment based on
635 international antiretroviral treatment cohort data. *J Int AIDS Soc.* 2021;24 Suppl
636 5(Suppl 5). doi:10.1002/JIA2.25776
- 637 32. Nations U, of Economic D, Affairs S, Division P. *World Urbanization Prospects*
638 *The 2018 Revision.*; 2018.

- 639 33. Maleke K, Makhakhe N, Peters RPH, et al. HIV risk and prevention among men
640 who have sex with men in rural South Africa. *African Journal of AIDS Research*.
641 2017;16(1):31-38. doi:10.2989/16085906.2017.1292925
- 642 34. Wimark T. The City as a Single Gay Male Magnet? Gay and Lesbian
643 Geographical Concentration in Sweden. 2014;752(September 2013):739-752.
- 644 35. Kobrak P, Ponce R, Zielony R. New Arrivals to New York City: Vulnerability to
645 HIV among Urban Migrant Young Gay Men. *Arch Sex Behav*. Published online
646 2015:2041-2053. doi:10.1007/s10508-015-0494-4
- 647 36. Johnson LF, Mulongeni P, Marr A, Lane T. Age bias in survey sampling and
648 implications for estimating HIV prevalence in men who have sex with men:
649 Insights from mathematical modelling. *Epidemiol Infect*. 2018;146(8):1036-1042.
650 doi:10.1017/S0950268818000961
- 651 37. Stannah J, Dale E, Elmes J, et al. HIV testing and engagement with the HIV
652 treatment cascade among men who have sex with men in Africa: a systematic
653 review and meta-analysis. *Lancet HIV*. 2019;6(11):e769-e787.
654 doi:10.1016/S2352-3018(19)30239-5
- 655 38. Jones HS, Anderson RL, Cust H, et al. HIV incidence among women engaging in
656 sex work in sub-Saharan Africa: a systematic review and meta-analysis. *medRxiv*.
657 Published online January 1, 2023:2023.10.17.23297108.
658 doi:<https://doi.org/10.1101/2023.10.17.23297108>

- 659 39. UNAIDS. Global AIDS Update. Published 2021. Accessed May 12, 2022.
660 <https://www.unaids.org/en/resources/documents/2021/2021-global-aids-update>
- 661 40. Stevens GA, Alkema L, Black RE, et al. Guidelines for Accurate and Transparent
662 Health Estimates Reporting: the GATHER statement. *The Lancet*.
663 2016;388(10062):e19-e23. doi:10.1016/S0140-6736(16)30388-9
- 664 41. Lyons C, Bendaud V, Bourey C, et al. Global assessment of existing HIV and key
665 population stigma indicators: A data mapping exercise to inform country-level
666 stigma measurement. *PLoS Med*. 2022;19(2):e1003914.
667 doi:10.1371/JOURNAL.PMED.1003914
- 668 42. UNAIDS. Prevailing against pandemics by putting people at the centre. Published
669 online 2020.
- 670 43. HIV Policy Lab. HIV Policy Lab. Accessed October 25, 2023.
671 <https://www.hivpolicylab.org/>
- 672 44. Hessou PHS, Glele-Ahanhanzo Y, Adekpedjou R, et al. Comparison of the
673 prevalence rates of HIV infection between men who have sex with men (MSM)
674 and men in the general population in sub-Saharan Africa: A systematic review
675 and meta-analysis. *BMC Public Health*. 2019;19(1):1634. doi:10.1186/s12889-
676 019-8000-x

- 677 45. Stutterheim SE, Van Dijk M, Wang H, Jonas KJ. The worldwide burden of HIV in
678 transgender individuals: An updated systematic review and meta-analysis. *PLoS*
679 *One*. 2021;16(12 December). doi:10.1371/journal.pone.0260063
- 680 46. Degenhardt L, Peacock A, Colledge S, et al. Global prevalence of injecting drug
681 use and sociodemographic characteristics and prevalence of HIV, HBV, and HCV
682 in people who inject drugs: a multistage systematic review. *Lancet Glob Health*.
683 2017;5(12):e1192-e1207. doi:10.1016/S2214-109X(17)30375-3
- 684 47. Stevens O. HIV prevalence in transgender populations and cisgender men who
685 have sex with men in sub-Saharan Africa 2010-2021: a meta-analysis. Published
686 online 2022.
- 687 48. Stone J, Mukandavire C, Boily M, et al. Estimating the contribution of key
688 populations towards HIV transmission in South Africa. *J Int AIDS Soc*.
689 2021;24(1):e25650. doi:10.1002/jia2.25650
- 690 49. Mishra S, Pickles M, Blanchard JF, Moses S, Boily MC. Distinguishing sources of
691 HIV transmission from the distribution of newly acquired HIV infections: Why is it
692 important for HIV prevention planning? *Sex Transm Infect*. 2014;90(1):19-25.
693 doi:10.1136/sextrans-2013-051250
- 694 50. Mishra S, Pickles M, Blanchard JF, Moses S, Shubber Z, Boily MC. Validation of
695 the modes of transmission model as a tool to prioritize HIV prevention targets: A
696 comparative modelling analysis. *PLoS One*. 2014;9(7).
697 doi:10.1371/journal.pone.0101690

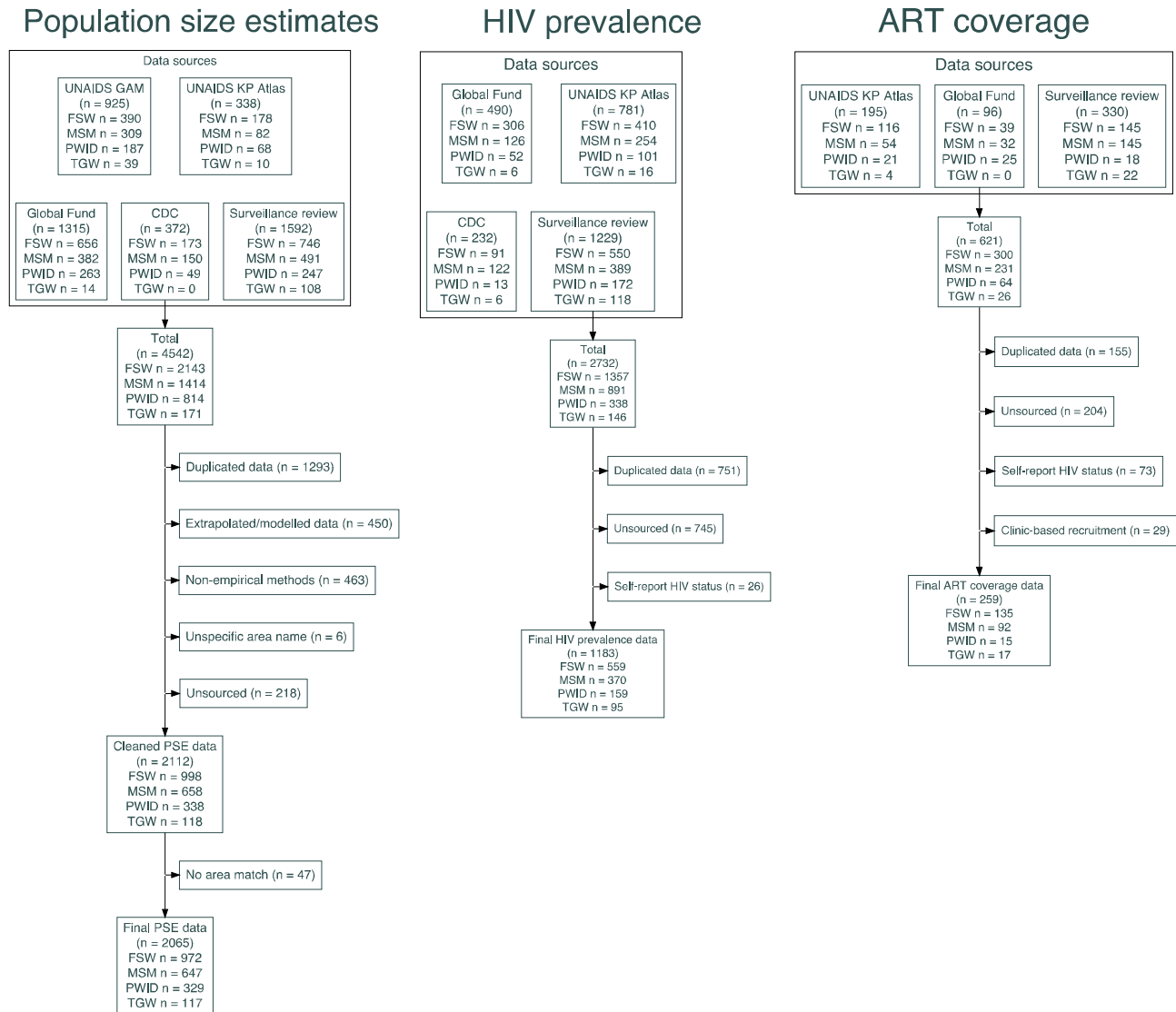
- 698 51. Shubber Z, Mishra S, Vesga JF, Boily MC. The HIV modes of transmission model:
699 A systematic review of its findings and adherence to guidelines. *J Int AIDS Soc.*
700 2014;17(1). doi:10.7448/IAS.17.1.18928
- 701 52. Laga I, Niu X, Rucinski K, et al. Mapping the Population Size of Female Sex
702 Worker in Countries Across Sub-Saharan Africa. *PNAS*. Published online
703 September 19, 2023. doi:10.1073/pnas.2200633120
- 704 53. Hessou PHS, Glele-Ahanhanzo Y, Adekpedjou R, et al. Comparison of the
705 prevalence rates of HIV infection between men who have sex with men (MSM)
706 and men in the general population in sub-Saharan Africa: A systematic review
707 and meta-analysis. *BMC Public Health*. 2019;19(1):1634. doi:10.1186/s12889-
708 019-8000-x
- 709 54. Stannah J, Dale E, Elmes J, et al. HIV testing and engagement with the HIV
710 treatment cascade among men who have sex with men in Africa: a systematic
711 review and meta-analysis. *Lancet HIV*. Published online 2019.
712 doi:10.1016/S2352-3018(19)30239-5
- 713 55. Edwards JK, Hileman S, Donastorg Y, et al. Estimating Sizes of Key Populations
714 at the National Level: Considerations for Study Design and Analysis.
715 *Epidemiology*. 2018;29(6):795-803. doi:10.1097/EDE.0000000000000906
- 716 56. Niu XM, Rao A, Chen D, et al. Using factor analyses to estimate the number of
717 female sex workers across Malawi from multiple regional sources. *Ann Epidemiol.*
718 2021;55:34-40. doi:10.1016/j.annepidem.2020.12.001

- 719 57. Fearon E, Chabata ST, Magutshwa S, et al. Estimating the Population Size of
720 Female Sex Workers in Zimbabwe: Comparison of Estimates Obtained Using
721 Different Methods in Twenty Sites and Development of a National-Level Estimate.
722 *J Acquir Immune Defic Syndr.* 2020;85(1):30-38.
723 doi:10.1097/QAI.0000000000002393
- 724 58. Datta A, Lin W, Rao A, et al. Bayesian Estimation of MSM Population Size in Côte
725 d'Ivoire. *Statistics and Public Policy.* 2019;6(1):1-13.
726 doi:10.1080/2330443X.2018.1546634
- 727 59. Wesson PD, Mirzazadeh A, McFarland W. A Bayesian approach to synthesize
728 estimates of the size of hidden populations: The anchored multiplier. *Int J*
729 *Epidemiol.* 2018;47(5):1636-1644. doi:10.1093/ije/dyy132
- 730 60. Fellows I. Consensus Estimate Calculator. Accessed April 11, 2022.
731 https://epiapps.com/shiny/app_direct/shinyproxy_combine_estimates/
- 732 61. USAID. *Namibia Small Area Estimation: Final Report Small Area Estimation of*
733 *Key Population Sizes in Namibia: Final Report.*; 2021.
- 734 62. Datta A, Lin W, Rao A, et al. Bayesian Estimation of MSM Population Size in Côte
735 d'Ivoire. *Statistics and Public Policy.* 2019;6(1):1-13.
736 doi:10.1080/2330443X.2018.1546634
- 737 63. Rao A, Schwartz S, Viswasam N, et al. Evaluating the quality of HIV
738 epidemiologic evidence for populations in the absence of a reliable sampling

- 739 frame: a modified quality assessment tool. *Ann Epidemiol.* 2022;65:78-83.
740 doi:10.1016/J.ANNEPIDEM.2021.07.009
- 741 64. UNAIDS, WHO. *Recommended Population Size Estimates for Men Who Have*
742 *Sex with Men.*; 2020.
- 743 65. USAID. *Namibia Small Area Estimation: Final Report Small Area Estimation of*
744 *Key Population Sizes in Namibia: Final Report.*; 2021.
- 745 66. Scheibe AP. Still left behind: Using programmatic data to assess harm reduction
746 service coverage and HIV treatment cascades for people who inject drugs in five
747 South African cities. In: *IAS.* ; 2019.
- 748 67. Scheibe A, Grasso M, Raymond HF, et al. Modelling the UNAIDS 90-90-90
749 treatment cascade for gay, bisexual and other men who have sex with men in
750 South Africa: using the findings of a data triangulation process to map a way
751 forward. *AIDS Behav.* 2018;22(3):853-859. doi:10.1007/s10461-017-1773-y
- 752 68. Hakim AJ, MacDonald V, Hladik W, et al. Gaps and opportunities: measuring the
753 key population cascade through surveys and services to guide the HIV response.
754 *J Int AIDS Soc.* 2018;21(Suppl Suppl 5):e25119. doi:10.1002/jia2.25119
- 755 69. Syvertsen JL, Agot K, Ohaga S, Bazzi AR. You can't do this job when you are
756 sober: Heroin use among female sex workers and the need for comprehensive
757 drug treatment programming in Kenya. *Drug Alcohol Depend.* 2019;194:495-499.
758 doi:10.1016/j.drugalcdep.2018.10.019

- 759 70. Poteat T, Ackerman B, Diouf D, et al. HIV prevalence and behavioral and
760 psychosocial factors among transgender women and cisgender men who have
761 sex with men in 8 African countries: A cross-sectional analysis. *PLoS Med*.
762 Published online 2017. doi:10.1371/journal.pmed.1002422
- 763 71. Baral SD, Poteat T, Strömdahl S, Wirtz AL, Guadamuz TE, Beyrer C. Worldwide
764 burden of HIV in transgender women: A systematic review and meta-analysis.
765 *Lancet Infect Dis*. 2013;13(3):214-222. doi:10.1016/S1473-3099(12)70315-8
- 766 72. Davey C, Dirawo J, Mushati P, Magutshwa S, Hargreaves JR, Cowan FM.
767 Mobility and sex work: why, where, when? A typology of female-sex-worker
768 mobility in Zimbabwe. *Soc Sci Med*. 2019;220:322-330.
769 doi:10.1016/j.socscimed.2018.11.027
- 770
- 771

772 **Figures and Tables**



773

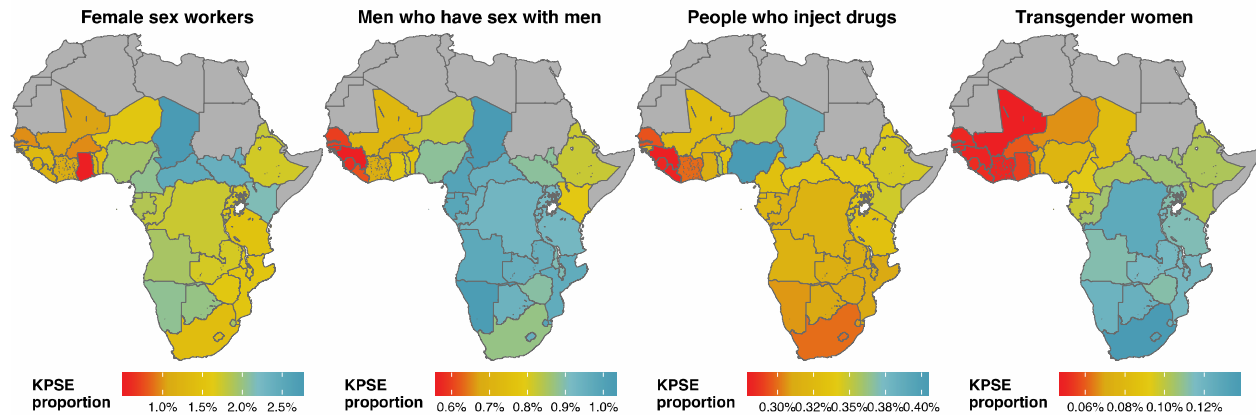
774 **Figure 1:** Flow diagrams describing identified data for key population size estimates, HIV prevalence
 775 data, and key population ART coverage. Each *n* represents number of population/method/location
 776 observations, with potentially observations for multiple subnational locations from the same study in same
 777 country. ART: Antiretroviral therapy coverage; FSW: Female sex worker; MSM: Men who have sex with
 778 men; PWID: People who inject drugs; TGW: Transgender women; KP: Key Population; GAM: Global
 779 AIDS Monitoring; CDC: US Centers for Disease Control and Prevention; PSE: Population size estimate.

780

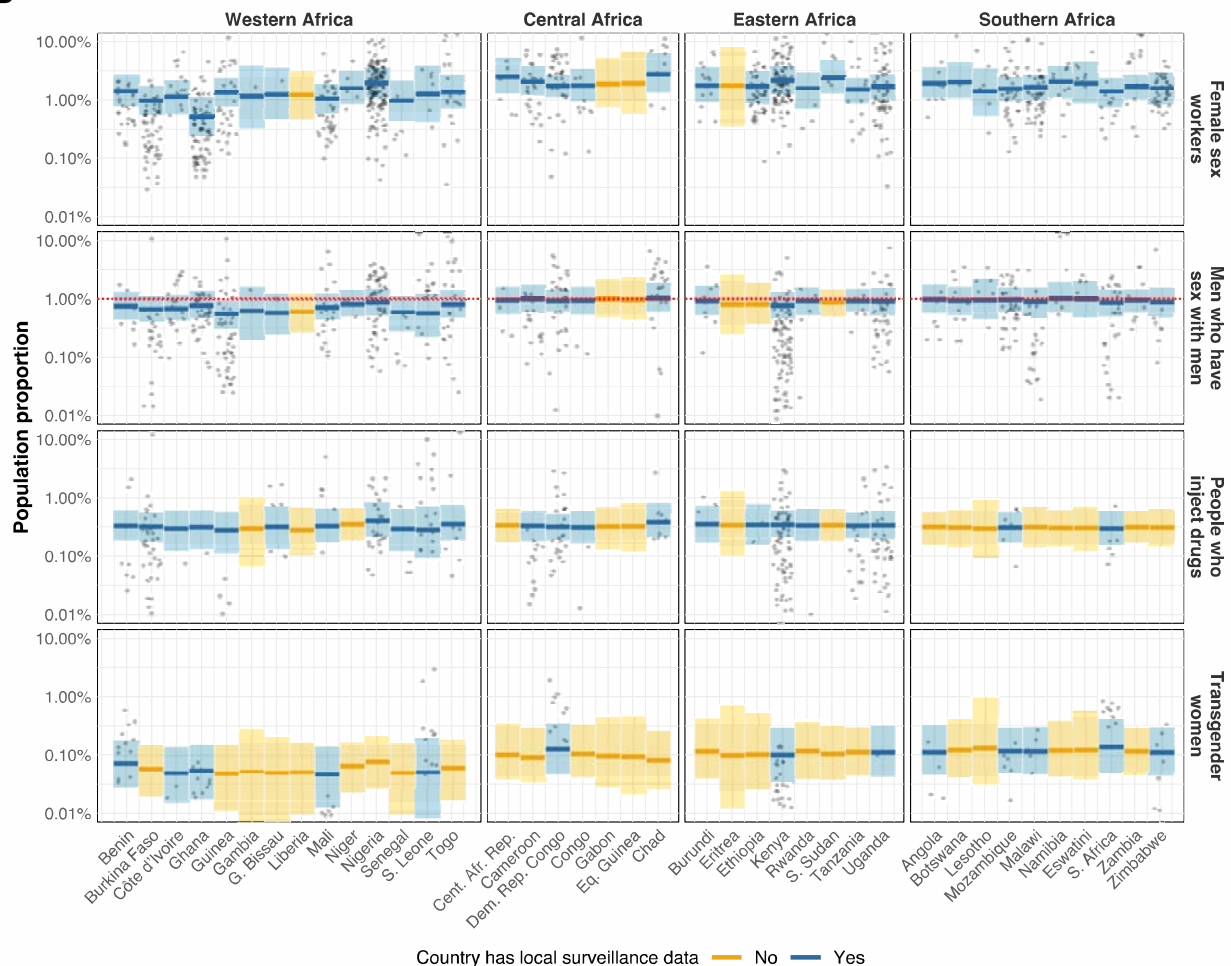
781 **Table 1:** Availability of population size, HIV prevalence, and ART coverage data by key
 782 population and region during period 2010-2023.
 783

Region	Key population	Key Population Size Estimates		HIV prevalence		ART coverage	
		Data-points	Countries with data (n; %)	Data-points	Countries with data (n; %)	Data-points	Countries with data (n; %)
SSA (39 countries)	FSW	972	35 (90)	559	36 (92)	135	27 (69)
	MSM	647	33 (85)	370	34 (87)	92	24 (62)
	PWID	329	23 (59)	159	21 (54)	15	8 (21)
	TGW	117	13 (33)	95	23 (59)	17	10 (26)
	TGM	16	2 (5)	5	5 (13)	0	0 (0)
ESA (18 countries)	FSW	450	17 (94)	236	18 (100)	85	14 (78)
	MSM	291	15 (83)	127	15 (83)	45	12 (67)
	PWID	156	8 (44)	52	9 (50)	10	5 (28)
	TGW	65	7 (39)	38	12 (67)	13	7 (39)
	TGM	16	2 (11)	2	2 (11)	0	0 (0)
WCA (21 countries)	FSW	522	18 (86)	323	18 (86)	50	13 (62)
	MSM	356	18 (86)	243	19 (90)	47	12 (57)
	PWID	173	15 (71)	107	12 (57)	5	3 (14)
	TGW	52	6 (29)	57	11 (52)	4	3 (14)
	TGM	0	0 (0)	3	3 (14)	0	0 (0)

784 SSA: Sub-Saharan Africa; ESA: East and Southern Africa; WCA: Western and Central Africa; FSW:
 785 female sex workers; MSM: men who have sex with men; PWID: people who inject drugs; TGW:
 786 transgender women; TGM: transgender men; ART: antiretroviral therapy



B



787

788

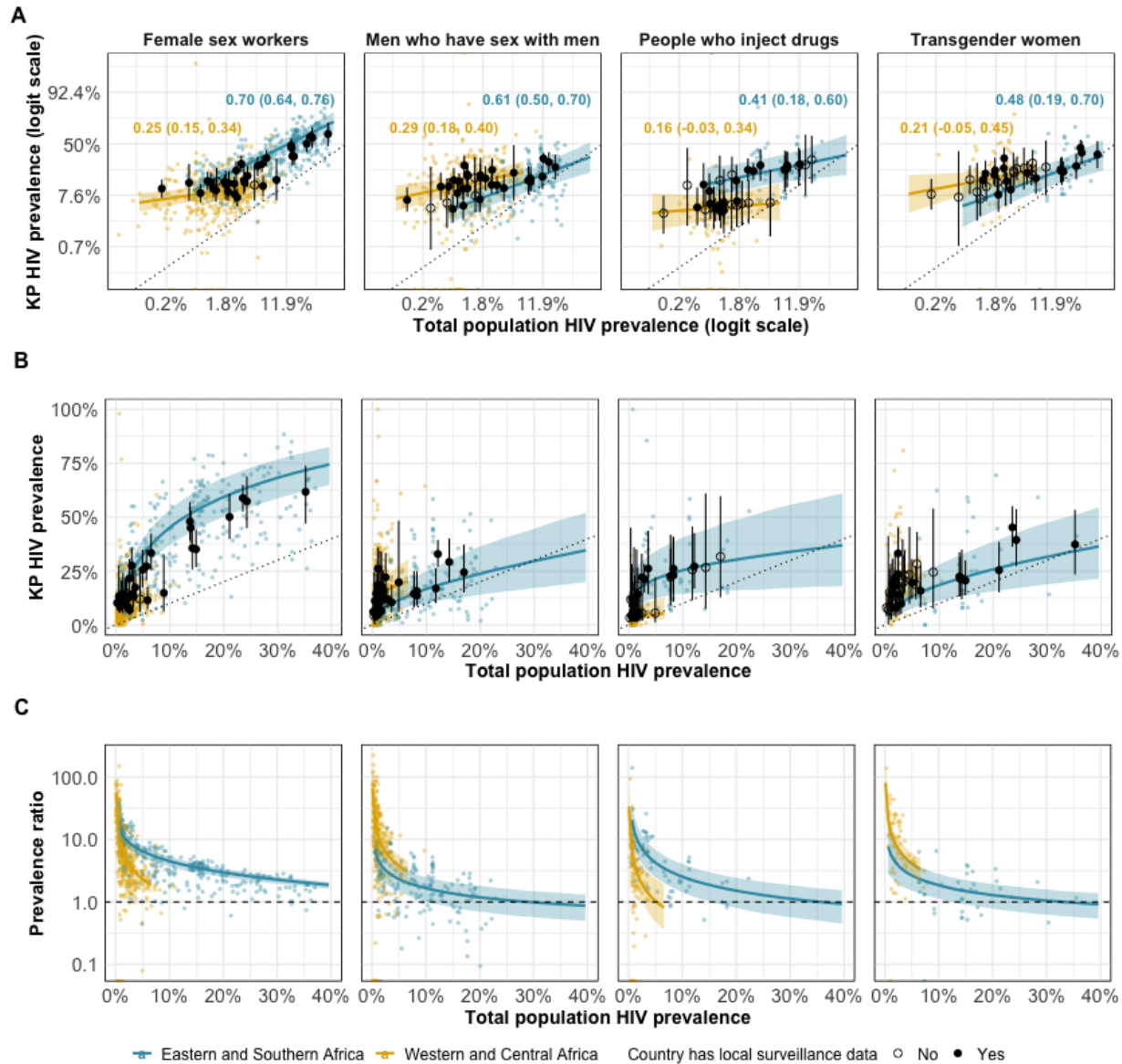
789

790

791

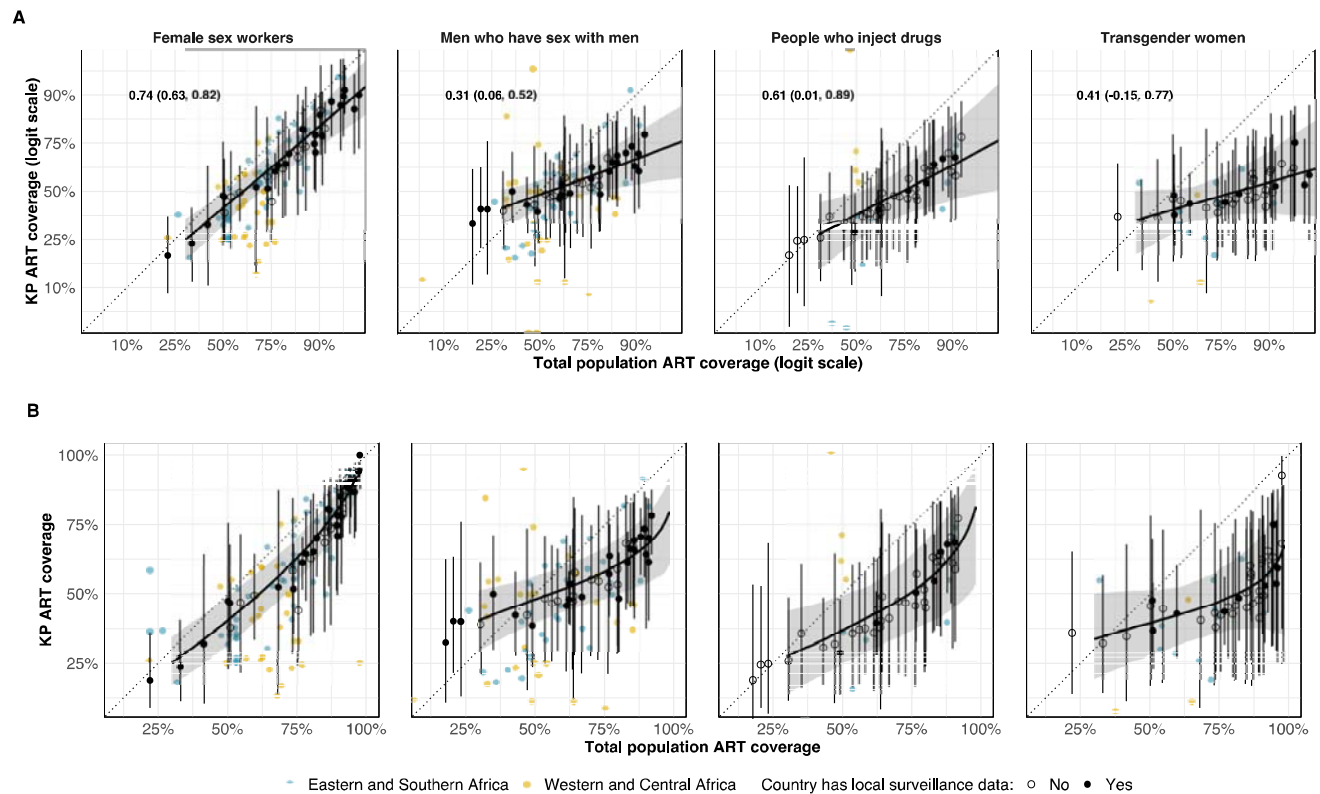
Figure 2: Model estimated urban key population size estimate (KPSE) proportions for female sex workers, men who have sex with men, people who inject drugs, and transgender women as a proportion of gender-matched 15-49 years adult total population. (A) Posterior median estimate for each country. Note: colour range is different for each key population choropleth. (B) Posterior median estimate and

792 95% credible intervals for each country. Points represent observations of subnational KPSE proportions
793 that used empirical methods. Countries that had local surveillance data are shown in blue, and countries
794 informed only by spatial smoothing from neighbouring countries in yellow. Vertical axis shown on log-
795 scale.



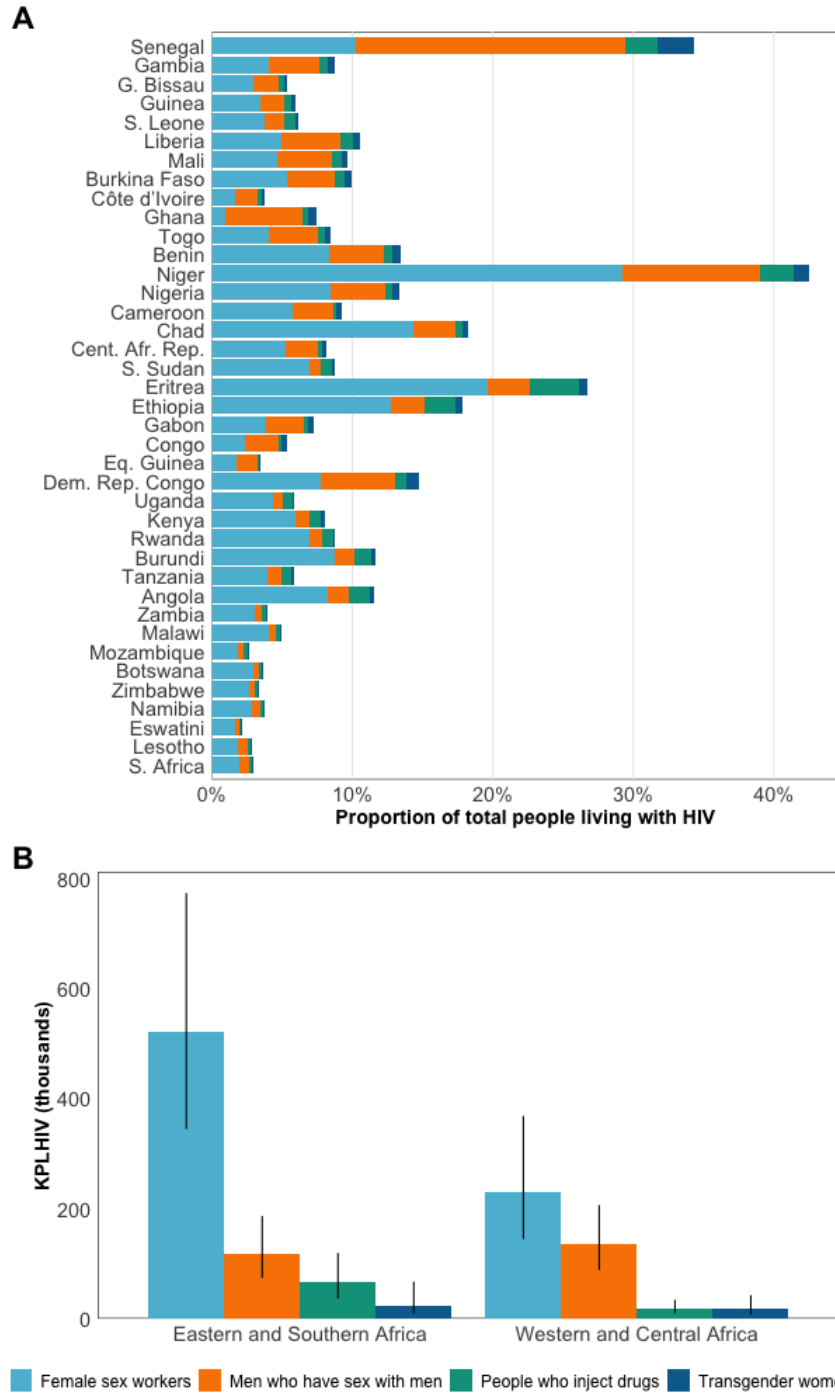
796

797 **Figure 3:** Key population and total population HIV prevalence on the logit scale (A), natural scale (B), and
 798 expressed as a ratio of key population and total population prevalence (C) for female sex workers, men
 799 who have sex with men, people who inject drugs, and transgender women. Coloured points indicate
 800 observed key population prevalence plotted against gender/year/province-matched total population
 801 prevalence. Logit-scale regional correlation coefficients and 95%CrI uncertainty intervals shown in
 802 coloured text in panel A. Coloured lines and shading represent regional estimate and 95% uncertainty
 803 results. Points represent country estimates [filled for countries with HIV prevalence data and empty for
 804 countries without HIV prevalence data] and 95% uncertainty ranges. Dotted line represents line of
 805 equality.



806
807

808 **Figure 4:** Estimated key population ART coverage as a function of total population ART coverage on the
 809 estimated logit scale (upper) and natural scale (lower). Coloured points indicate observed key population
 810 prevalence plotted against gender/year/province-matched total population ART coverage. Logit-scale
 811 correlation coefficients and 95%CrI uncertainty intervals shown in panel A. Black line and shading
 812 represent estimate for sub-Saharan Africa and 95% uncertainty results. Black points represent country
 813 estimates and 95% uncertainty ranges. Dotted line represents line of equality.



814
815
816
817
818

Figure 5: (A) HIV positive key population members as a proportion of all PLHIV aged 15-49 years. Countries are ordered geographically. (B) Estimated number of key populations living with HIV (KPLHIV) in Eastern and Southern Africa and Western and Central Africa.