

1 **Population size, HIV prevalence, and antiretroviral therapy coverage among key**  
2 **populations in sub-Saharan Africa: collation and synthesis of survey data 2010-2023**

3 Oliver Stevens MPH<sup>§1</sup>, Keith Sabin PhD<sup>2</sup>, Rebecca Anderson BSc<sup>1</sup>, Sonia Arias Garcia  
4 MSc<sup>2</sup>, Kalai Willis MSPH<sup>3</sup>, Amrita Rao PhD<sup>3</sup>, Anne F. McIntyre PhD<sup>4</sup>, Elizabeth Fearon  
5 PhD<sup>5</sup>, Emilie Grard MPH<sup>1</sup>, Alice Stuart-Brown MSc<sup>1</sup>, Prof Frances Cowan MD<sup>6,7</sup>, Prof  
6 Louisa Degenhardt PhD<sup>8</sup>, James Stannah MPH<sup>13</sup>, Jinkou Zhao PhD<sup>9</sup>, Avi J. Hakim  
7 PhD<sup>4</sup>, Katherine Rucinski PhD<sup>3</sup>, Isabel Sathane BSc<sup>10</sup>, Makini Boothe PhD<sup>11</sup>, Lydia  
8 Atuhaire PhD<sup>12</sup>, Prof Peter S. Nyasulu PhD<sup>12,13</sup>, Mathieu Maheu-Giroux ScD<sup>14</sup>, Prof  
9 Lucy Platt PhD<sup>15</sup>, Brian Rice PhD<sup>16</sup>, Wolfgang Hladik MD<sup>4</sup>, Prof Stefan Baral MD<sup>3</sup>, Mary  
10 Mahy ScD<sup>2</sup>, Jeffrey W. Imai-Eaton PhD<sup>1, 17</sup>

- 11 1. MRC Centre for Global Infectious Disease Analysis, School of Public Health,  
12 Imperial College London, London, United Kingdom  
13 2. Data for Impact, The Joint United Nations Program on HIV/AIDS (UNAIDS), Geneva,  
14 Switzerland  
15 3. Johns Hopkins Bloomberg School of Public Health, Baltimore, MD, USA  
16 4. US Centers for Disease Control and Prevention (CDC), Atlanta, USA  
17 5. Institute for Global Health, University College London, London, United Kingdom  
18 6. Liverpool School of Tropical Medicine, Liverpool, United Kingdom  
19 7. Centre for Sexual Health and HIV/AIDS Research, Zimbabwe  
20 8. National Drug & Alcohol Research Centre, University New South Wales, Sydney,  
21 Australia  
22 9. The Global Fund to Fight AIDS, Tuberculosis and Malaria, Geneva, Switzerland  
23 10. Ministry of Health, Maputo, Mozambique  
24 11. Data for Impact, The Joint United Nations Program on HIV/AIDS (UNAIDS), Maputo,  
25 Mozambique  
26 12. Division of Epidemiology & Biostatistics, Department of Global Health, Faculty of  
27 Medicine and Health Sciences, Stellenbosch University, Cape Town, South Africa  
28 13. Division of Epidemiology & Biostatistics, School of Public Health, Faculty of Health  
29 Sciences, University of the Witwatersrand, Johannesburg, South Africa  
30 14. Department of Epidemiology and Biostatistics, School of Population and Global  
31 Health, McGill University, Montréal, Canada  
32 15. Faculty of Public Health and Policy, London School of Hygiene and Tropical  
33 Medicine, London, United Kingdom

- 34 16. Sheffield Centre for Health and Related Research (SCHARR), School of Medicine  
35 and Population Health, University of Sheffield, United Kingdom  
36 17. Center for Communicable Disease Dynamics, Department of Epidemiology, Harvard  
37 T. H. Chan School of Public Health, Boston, MA, USA  
38

39

40

41

§ Correspondence to:

42

Oliver Stevens

43

MRC Centre for Global Infectious Disease Analysis, School of Public Health, Imperial

44

College London

45

St. Mary's Hospital Campus

46

Norfolk Place

47

London

48

W2 1PG

49

United Kingdom

50

[o.stevens@imperial.ac.uk](mailto:o.stevens@imperial.ac.uk)

51

52 **Abstract**

53 **Background:** Key population HIV programmes in sub-Saharan Africa (SSA) require  
54 epidemiologic information to ensure equitable and equal access to services. We  
55 consolidated survey data among female sex workers (FSW), men-who-have-sex-with-  
56 men (MSM), people who inject drugs (PWID), and transgender people to estimate  
57 national-level key population size, HIV prevalence, and antiretroviral therapy (ART)  
58 coverage for mainland SSA.

59 **Methods:** Key population size estimates (KPSE), HIV prevalence, and ART coverage  
60 data from 39 SSA countries between 2010-2022 were collated from existing databases  
61 and verified against source documents. We used Bayesian mixed-effects spatial  
62 regression to model urban KPSE as a proportion of the gender-matched 15-49 years  
63 adult population. We modelled subnational key population HIV prevalence and ART  
64 coverage with age/gender/year/province-matched total population estimates as  
65 predictors.

66 **Findings:** We extracted 2062 unique KPSE, 1243 HIV prevalence, and 201 ART  
67 coverage data points. Across national urban populations, a median of 1.71% of women  
68 were FSW (interquartile range [IQR]=1.21-1.97%); 0.92% of men were MSM  
69 (IQR=0.73-1.01%); 0.32% of men injected drugs (IQR=0.28-0.39%), and 0.14% of  
70 women were transgender (IQR=0.12-0.17%). Key population HIV prevalence was 4 to 6  
71 times higher than gender-matched total population prevalence. ART coverage was  
72 correlated with, but lower than, total population ART coverage. Across SSA, key

73 populations were estimated as 1.3% (95%CI: 0.9-1.7%) of the total population aged 15-  
74 49 years but 6.3% (4.6-8.6%) of people living with HIV.

75 **Interpretation:** Key populations in SSA experience disproportionately higher HIV  
76 burden and lower ART coverage, underscoring a need for focused prevention and  
77 treatment services. However, data availability and heterogeneity limit precise estimates  
78 for programming and monitoring trends. Strengthening key population surveys and  
79 routine data within national HIV strategic information systems would support more  
80 precise estimates.

81 **Funding:** UNAIDS, BMGF, NIH

## 82 **Research in Context**

### 83 *Evidence before this study*

84 Key populations, including female sex workers (FSW), men who have sex with men  
85 (MSM), people who inject drugs (PWID), and transgender populations, are at high risk  
86 of HIV globally, including in sub-Saharan Africa (SSA). Delivering appropriate HIV  
87 prevention and treatment programming to these populations, and monitoring attainment  
88 of an equitable HIV response, requires robust information on key population size, HIV  
89 prevalence, the treatment cascade, and new HIV infections. For this reason, key  
90 population surveys, including population size estimation and bio-behavioural surveys,  
91 are a standard component of a comprehensive national HIV surveillance portfolio.

92 Several complementary ongoing initiatives consolidate HIV data on key populations to  
93 support programme planning and implementation, global advocacy, and research.

94 These include the Key Population Atlas and Global AIDS Monitoring (Joint United  
95 Nations Programme on HIV/AIDS [UNAIDS]), databases maintained by the US Centers  
96 for Disease Control and Prevention (CDC) and the Global Fund Against TB, AIDS, and  
97 Malaria (The Global Fund), and the Global.HIV initiative (Johns Hopkins University).

98 These include similar data sources, but vary in scope, inclusion criteria, data elements  
99 recorded, and linkage to and validation against primary source data sets and reports.

100 Incomplete recording of key methodological details limits appraisal and formal evidence  
101 synthesis, and therefore utility of data for strategic planning.

102 Many other research studies have systematically reviewed, analysed, and extrapolated  
103 key population survey data in sub-Saharan Africa in single countries or across multiple

104 countries. These studies have tended to focus on specific outcomes or population  
105 groups of interest, and primarily comprise an appraisal of peer-reviewed literature.

106 *Added value of this study*

107 We consolidated and deduplicated data collected between 2010-2022 from existing key  
108 population surveillance databases maintained by the UNAIDS Key Population Atlas,  
109 UNAIDS Global AIDS Monitoring, US CDC, and the Global Fund. We used the Johns  
110 Hopkins University Global.HIV repository of surveillance reports, additional web-based  
111 searches, and engagement with country HIV strategic information teams to obtain  
112 survey reports in the peer-reviewed and grey literature, and validated each observation  
113 of key population size, HIV prevalence, or ART coverage against primary surveillance  
114 reports. We used regression analyses to characterise the relationship between key  
115 population and total population HIV indicators and extrapolated key population size  
116 estimates (KPSE), HIV prevalence, and ART coverage data to national-level estimates  
117 for all countries in mainland SSA.

118 This exercise was the most comprehensive effort to date to consolidate key population  
119 HIV data in SSA. We analysed 114 KPSE, 198 HIV prevalence, and 56 ART coverage  
120 studies. We estimated that across urban populations in SSA countries aged 15-49, a  
121 median of 1.71% of women were FSW; 0.92% of men have sex with men; 0.32% of  
122 men injected drugs; and 0.14% of women were transgender. This translated to 3.4  
123 million FSW, 2 million MSM, 870,000 PWID, and 380,000 transgender women (TGW) in  
124 SSA who require comprehensive HIV prevention or treatment services. FSW, MSM,  
125 PWID, and TGW combined were estimated as 1.3% of the population aged 15-49, but

126 comprised 6.3% of people living with HIV. ART coverage among members of key  
127 populations living with HIV increased with total population ART coverage, but was lower  
128 for all key populations. We identified large gaps in data availability. Of the four key  
129 populations and three indicators studied, only Mozambique had data for all twelve  
130 indicators. Data were particularly sparse for transgender populations and PWID.

### 131 *Implications of all the available evidence*

132 Key populations experience HIV prevalence and lower ART coverage across all settings  
133 in sub-Saharan Africa than the total population. Extrapolated national estimates provide  
134 a foundation for planning appropriate key population-focused services for HIV  
135 prevention and treatment in all settings, including those with no or limited data.

136 However, large data availability gaps, inconsistency of existing data, and consequent  
137 wide uncertainty ranges around estimates limit the ability of existing data to guide  
138 granular programmatic planning and target setting for key population services and to  
139 monitor trends. More consistent surveillance implementation and improved routine  
140 surveillance through HIV prevention and treatment programmes for key populations  
141 would support monitoring equitable and equal programme access, as outlined in the  
142 Global AIDS Strategy 2021-2026 to end HIV/AIDS as a public health threat by 2030.

## 143 **Introduction**

144 Key populations, including female sex workers (FSW), men who have sex with men  
145 (MSM), people who inject drugs (PWID), and transgender women (TGW), experience  
146 high risk of acquiring and transmitting HIV due to a combination of biological and  
147 sociostructural factors, including stigma and criminalisation.<sup>1-3</sup> The Global AIDS  
148 Strategy 2021-2026 calls for “equitable and equal access” to HIV prevention and  
149 treatment to reduce HIV incidence and end HIV/AIDS as a public health threat by 2030.<sup>4</sup>  
150 Delivering appropriate HIV services for these populations, and monitoring attainment of  
151 an equitable HIV response, requires robust epidemiologic and service engagement  
152 indicators, including key population size, HIV prevalence and incidence, treatment and  
153 prevention cascades.

154 Key population surveys often rely on respondent-driven and venue-based sampling  
155 methods<sup>5,6</sup> whose interpretation as population-representative relies upon strong  
156 assumptions that can be difficult to meet in practice. Household survey sampling frames  
157 are inappropriate for surveying migratory populations that are unlikely to disclose risk  
158 behaviour due to societal marginalisation and discrimination.<sup>7-9</sup> Surveys are often  
159 infrequent and commonly restricted to, or disproportionately conducted in, urban areas.  
160 Consequently, data are sparse and less representative of a target population than  
161 standard general population sampling approaches such as national household surveys  
162 or sentinel surveillance.

163 Systematic reviews and meta-analyses of population size, HIV prevalence, or  
164 antiretroviral treatment (ART) coverage encompassing sub-Saharan Africa (SSA) have



165 been conducted for FSW,<sup>10,11</sup> MSM,<sup>12,13</sup> PWID,<sup>14,15</sup> and TGW.<sup>16,17</sup> Several independent  
166 initiatives have been undertaken to consolidate key population surveillance data.<sup>18–21</sup>  
167 These efforts aim to monitor the state of the epidemic, evaluate programmes, and make  
168 recommendations on key population data reporting and quality thresholds.

169 We consolidated and harmonised key population size estimates (KPSE), HIV  
170 prevalence, and ART coverage data from existing databases and described data  
171 availability across countries and over time for each key population. We characterised  
172 the relationship between key population and total population HIV indicators and  
173 extrapolated KPSE, HIV prevalence, and ART coverage data to national-level estimates  
174 for mainland countries in SSA.

## 175 **Methods**

### 176 *Data sources and extraction*

177 We consolidated data on KPSE, HIV prevalence, and ART coverage from four existing  
178 databases: Joint United Nations Programme on HIV/AIDS (UNAIDS) Global AIDS  
179 Monitoring submissions,<sup>22</sup> UNAIDS Key Population Atlas,<sup>23</sup> the Global Fund to Fight  
180 AIDS, TB, and Malaria (the Global Fund) surveillance database, and a Microsoft Excel  
181 database maintained by the US Centers for Disease Control and Prevention (CDC)  
182 Division of Global HIV & TB Key Population Surveillance Team, and two systematic  
183 review databases<sup>20,24</sup> (Supplementary Table S1). For each observation, we extracted  
184 information about the study methodology, study location (country, subnational location),  
185 study population gender and age group, central estimate, sample size, standard error,  
186 and primary source or reference (e.g., survey report) (Supplementary Table S2).

187 Source documents were compiled from archives accompanying each database, the  
188 Johns Hopkins University Global.HIV document repository,<sup>25</sup> Medline, and Google  
189 Scholar, following which we contacted UNAIDS Strategic Information advisors and other  
190 HIV programme contacts in each country to seek missing reports. Four authors (OS,  
191 RA, EG, AS-B) reviewed source documents to deduplicate observations recorded in  
192 multiple databases, validate against sources, and extract missing data elements. During  
193 source review, we added observations when additional relevant data were reported or  
194 additional sources were ascertained that were not in the initial databases.

195 Observations were excluded if: key population definition, year, or study area were  
196 missing; the study area was non-specific (e.g., ‘urban areas’ or ‘5 provinces’); estimates  
197 were modelled or extrapolated; or data could not be confirmed by primary source  
198 review. Studies were not excluded or differentiated in our analysis according to study-  
199 specific population group definitions based on engaging in risk behaviours or time  
200 periods (e.g. sold sex in the last 6 months versus last 12 months; Supplementary Text  
201 S1). Transgender men (TGM) were not analysed due to insufficient population size, HIV  
202 prevalence, or ART coverage data.

### 203 *Data processing*

204 To facilitate comparison of population sizes across settings, KPSE reported as counts  
205 were converted to population proportions for subnational locations in which key  
206 population surveys were conducted . Each KPSE was matched to the total population  
207 denominator by age, gender, year, and area. String matching was used to assign each

208 survey area to geographic boundaries from the Global Rural/Urban Mapping Project  
209 (GRUMP) or UNAIDS Naomi subnational district populations.<sup>26–28</sup>

210 Age information was missing from nearly all key population reports; missing data was  
211 assigned age 15-49 years. Unless gender was specified, sex workers were assumed to  
212 be women, PWID assumed to be men. Surveys among transgender people which did  
213 not report gender were assumed to be among transgender women because  
214 respondents often reported high prevalence of male partners and receptive anal sex,  
215 and surveys among TGM in SSA remain rare.<sup>17</sup>

216 KPSE methods were classified into five categories: two-source capture-recapture (2S-  
217 CRC), three-source capture-recapture (3S-CRC); [PLACE] and programmatic/hotspot  
218 mapping;<sup>29</sup> network scale-up (NSUM); and successive sampling population size  
219 estimates (SS-PSE). Two additional categories were defined for “Multiple methods –  
220 empirical” or “Multiple methods – mixture”. KPSEs derived by solely non-empirical  
221 methods were excluded from analyses. Further details are in Supplementary Text S2.

222 Key population HIV prevalence and ART coverage observations were compared to total  
223 population HIV prevalence or ART coverage, respectively, matched by age, gender,  
224 year, and first administrative level (henceforth ‘province’). Province-level age/gender-  
225 specific HIV prevalence and ART coverage were extracted from UNAIDS Naomi  
226 subnational estimates for 2022<sup>26,27</sup> and projected backwards 2000-2021 parallel to  
227 national HIV prevalence and ART coverage trajectories among adults 15-49 years.<sup>30</sup>

228 Key population ART coverage observations among only persons who self-reported  
229 being aware of HIV positive status or used clinic-based recruitment were excluded. ART  
230 usage was determined through either self-report or laboratory methods via antiretroviral  
231 metabolite biomarker or viral load testing. Viral load suppression (VLS) observations  
232 were converted to estimates of ART coverage assuming 90% VLS among those on  
233 ART.

### 234 *Analysis*

235 We used Bayesian mixed-effects linear regression to model logit-transformed KPSE  
236 proportions among the urban total population aged 15-49 at the first administrative (e.g.,  
237 province) level. Separate regressions were estimated for each key population. The  
238 model included effects for study method, spatially correlated national random province-  
239 level effects between neighbouring countries and provinces, and a study-level random  
240 effect allowing correlation among KPSE proportions at multiple subnational locations  
241 from the same study. The study method fixed effect was collapsed to two levels: (1) a  
242 pooled reference category of methods that estimated total key population size (2S-CRC,  
243 3S-CRC, SS-PSE, and NSUM); and (2) PLACE/mapped estimates which counted  
244 venue- or hotspot-attending population size. Nested method random effects permitted  
245 method-specific deviation from the fixed effect. National KPSE counts were extrapolated  
246 using urban KPSE proportions, the proportion of the population living in urban areas,<sup>31</sup>  
247 and the rural-to-urban ratio of key population size in urban and rural areas. Qualitative  
248 data indicate that KPSE proportions are higher in urban areas than rural areas, but no  
249 empirical data were available to quantify the rural-to-urban ratio.<sup>32-34</sup> To allow wide

250 uncertainty in the rural-to-urban ratio, we assumed a  $Beta(5,3)$  distribution which had  
251 mean ratio of 0.6 and 80% of the mass between 0.4 and 0.8.

252 For HIV prevalence, we modelled the relationship between logit-transformed key  
253 population HIV prevalence and logit total population HIV prevalence (age 15-49 years).  
254 FSW and PWID were modelled separately. Due to limited data, MSM and TGW were  
255 modelled together.<sup>17</sup> Survey HIV prevalence observations were modelled with a beta-  
256 binomial distribution to allow overdispersion. Missing testing denominators for HIV  
257 prevalence observations were conservatively imputed using the 25<sup>th</sup>-percentile of  
258 observed denominators (imputed denominators: FSW n=127; MSM n=69; PWID n=74;  
259 TGW n=32). The model included fixed effects for logit population prevalence interacted  
260 with region (eastern and southern Africa [ESA] or western and central Africa [WCA]), a  
261 fixed effect for whether HIV status was self-reported or via HIV diagnostic tests, and  
262 province-, country-, and study-level random effects. The MSM-TGW model included a  
263 fixed effect for population type (TGW vs. MSM). Country- and province-level random  
264 effects were spatially correlated. Studies that omitted whether HIV prevalence was self-  
265 reported or diagnostically confirmed were assumed to be self-reported.

266 Primary analysis for key population ART coverage, was restricted to diagnostically  
267 confirmed ART usage (either via ARV biomarker or VL testing). Logit-transformed key  
268 population ART coverage was modelled as a function of logit total population ART  
269 coverage in the same year, age group, and province. All key populations were modelled  
270 together with random slopes for each key population to enable sharing of information  
271 about the overall relationship for groups with very limited data. The observed number on

272 ART was modelled with a beta-binomial distribution with fixed effect terms for logit  
273 population ART coverage, spatially correlated country- and province-level random  
274 effects, and study-level random effects. Missing testing denominators were imputed  
275 using the 25<sup>th</sup>-centile of known denominators (imputed denominators: FSW n=40; MSM  
276 n=16; PWID n=13; TGW=12).

277 We conducted sensitivity analyses which included self-reported ART coverage data with  
278 a fixed effect for self-reported versus diagnostically confirmed ART coverage. For all  
279 three models (KPSE, prevalence, ART coverage), in sensitivity analysis we used ages  
280 15-29 years as the matched total population denominator for MSM and TGW regression  
281 analyses, reflecting the young median age of MSM and TGW survey respondents.<sup>35,36</sup>

282 We combined national KPSE, HIV prevalence, and ART coverage estimates to  
283 calculate the number of KPLHIV and on ART. 95% uncertainty ranges were generated  
284 by combining 1000 posterior samples for each outcome. KPLHIV estimates were  
285 compared with 2022 national UNAIDS estimates<sup>37</sup> for age 15-49 years to calculate the  
286 proportion of PLHIV who were members of each key population.

287 Data were extracted, deduplicated, and validated in Microsoft Excel. Statistical analyses  
288 were conducted in R version 4.2.0 using the R-INLA package (v23.4.24). Further  
289 statistical methods details are in Supplementary Text S3. The GATHER reporting  
290 checklist<sup>38</sup> is in Supplementary Table S14.

291 *Ethics statement*

292 This study received ethical approval from the Imperial College Research Integrity and  
293 Governance Team (ICREC #6412027). Regulatory bodies providing ethical approvals or  
294 other ethics considerations for included studies are reported in Supplementary File S3.

295 *Role of the funding source*

296 Authors KS, SA-G, MB, and MM are employees of UNAIDS and contributed to the  
297 conceptualisation of the study, interpretation of results, and editing the manuscript. OS,  
298 RA, and JWI-E had access to all data included in the study. OS and JWI-E accept  
299 responsibility to submit for publication.

300 **Results**

301 *Key population survey data availability*

302 4215 KPSE conducted between 2010 to 2022 were compiled (Table 1). Following data  
303 cleaning, source document review, and area matching, 2062 observations were  
304 extracted from 114 studies (Figure 1). Data were most available for FSW (n=959, data  
305 from 33/39 countries), followed by MSM (n=664, 30/39 countries), PWID (n=380, 19/39  
306 countries), and TGW (n=110, 11/39 countries). No size estimates were available for  
307 transgender men.

308 KPSE studies have become more common since 2010 (Figure 2). Between 2019-2021,  
309 22 FSW, 17 MSM, 10 PWID, and 8 TGW PSE studies were conducted, increasing from  
310 11, 11, 3, and 0, respectively, in 2010-12 (Figure 2). Seventy-two percent (470/654) of  
311 urban MSM population proportion observations were below 1% of the male adult (15-

312 49y) population (the UNAIDS/WHO guidance for minimum MSM PSE proportions; 78%  
313 [280/360] in ESA and 65% [190/294] in WCA; Supplementary Figure S1).

314 We identified 2416 key population HIV prevalence estimates (Table 1; Supplementary  
315 File 2), from which 1243 were extracted from 198 studies after processing.

316 Denominators were reported for 87% (1082/1243) of observations. Most data were  
317 available for FSW (n=665, 36/39 countries), followed by MSM (n=362, 32/39 countries),  
318 PWID (n=145, 19/39 countries), TGW (n=74, 20/39 countries), and TGM (n=5, 5/39  
319 countries). 92% (1137/1243) of HIV prevalence observations were diagnostically  
320 confirmed.

321 For ART coverage, 561 observations were identified (Table 1). After processing, 201  
322 observations were extracted from 56 studies. Denominators were available for 99%  
323 (199/201). Data were most available for FSW (n=121, 26/39 countries), followed by  
324 MSM (n=71, 23/39), TGW (n=16, 9/39 countries) and PWID (n=11, 7/39 countries). No  
325 data were available for TGM. The percentage that were diagnostically-confirmed varied  
326 by methodology (57% VLS [125/201]; 8% ART metabolite testing [17/201]; 35% self-  
327 reported ART usage [77/201]).

### 328 *Extrapolated urban key population size estimates*

329 Across national urban populations, a median of 1.71% women aged 15-49 years were  
330 FSW (interquartile range [IQR] 1.21-1.97%), 0.92% of men had sex with men (IQR 0.73-  
331 1.01%), 0.32% of men injected drugs (IQR 0.28-0.39%) and 0.14% of women were  
332 transgender (IQR 0.12-0.17%; Figure 3). Incorporating the rural-to-urban ratio, median  
333 proportions of national total populations were 1.34% FSW, 0.71% MSM, 0.27% PWID,



334 and 0.12% TGW. In sensitivity analysis, using age 15-29 years as a denominator for  
335 MSM PSEs, the urban proportion was 1.45% (IQR 1.10-1.58%; Supplementary Figure  
336 S2).

337 Urban KPSE proportions were higher in ESA than WCA among FSW (ESA: 1.77%, IQR  
338 1.51-2.08%; WCA 1.45%, IQR 1.07-1.83%) and MSM (ESA: 0.99%, IQR 0.93-1.23%;  
339 WCA: 0.73%, IQR 0.69-0.94%). Proportions were similar between regions among PWID  
340 and TGW, but KPSE data were sparse overall. PSE proportions derived from PLACE  
341 and mapping studies were significantly lower than those derived from other methods  
342 among FSW (log odds ratio -0.54; 95%CI: -0.93, -0.16), MSM (-1.38; 95%CI: -1.82, -  
343 0.95), and PWID (-1.13; 95%CI: -1.69, -0.55), and lower among TGW (-1.17; 95%CI: -  
344 2.43, 0.14) (Supplementary Table S4; Supplementary Figure S3). Supplementary  
345 Tables S9-S12 report country-specific KPSE proportions.

#### 346 *HIV prevalence among key populations*

347 Most key population HIV prevalence observations were higher than area-matched total  
348 population HIV prevalence (FSW 91% [of observations 607/665]; MSM 85% [305/362];  
349 PWID 85% [123/145]; TGW 85% [63/74]). Logit key population HIV prevalence in ESA  
350 was more strongly correlated with matched logit total population HIV prevalence than in  
351 WCA (ESA: FSW R=0.43, MSM R=0.51, PWID R=0.39, TGW R=0.42; WCA: FSW  
352 R=0.30, MSM R=0.29, PWID R=0.18, TGW R=0.14).

353 Relative HIV prevalence differentials between key population and total population were  
354 larger when population prevalence was lower (Figure 4). For example, in ESA, 1% total  
355 population prevalence corresponded to 14% prevalence among FSW (95% prediction

356 range 10-20%), 5% among MSM (3-8%), 16% among PWID (9-27%), and 7% among  
357 TGW (3-16%). Fifteen percent population HIV prevalence corresponded to 49% HIV  
358 prevalence among FSW (39-59%), 20% among MSM (13-31%), 28% among PWID (15-  
359 45%), and 23% among TGW (15-33%). In WCA, relative patterns were similar, but key  
360 population HIV prevalence varied less with total population HIV prevalence than in ESA.  
361 Supplementary Table S5-S7 report regression results and Supplementary Table S11  
362 reports country-specific estimates.

### 363 *ART coverage among key populations*

364 ART coverage among FSW, MSM, PWID, and TGW was correlated with gender-  
365 matched population ART coverage (logit-scale  $R=0.46$ ,  $0.35$ ,  $0.56$ , and  $0.42$   
366 respectively; Figure 5). At 40% population ART coverage, predicted ART coverage  
367 among FSW was 5% lower (95% prediction range 13% lower to 4% higher), among  
368 MSM was 1% higher (8% lower to 10% higher), among PWID was 4% lower (17% lower  
369 to 12% higher), and among TGW was 6% lower (19% lower to 8% higher). At 80%  
370 population coverage, predicted ART coverage among FSW was 11% lower (20–1%  
371 lower), among MSM 11% lower (20–1% lower), among PWID 13% lower (41% lower to  
372 9% higher), and among TGW 30% lower (44–16% lower). Supplementary Table S8  
373 reports regression results and S11 reports country-specific estimates.

374 In sensitivity analysis including a fixed effect for ART measurement method, self-  
375 reported ART was lower than lab-confirmed ART (odds ratio 0.77, 95% CI 0.52-1.12;  
376 Supplementary Figure S4 and Table S8). Assuming MSM surveys represented MSM

377 aged 15-29 years had minimal impact on HIV prevalence or ART coverage estimates  
378 among MSM (Supplementary Table S13).

### 379 *Disproportionate HIV burden among key populations in SSA*

380 Across SSA, FSW, MSM, PWID, and TGW combined were 1.3% (95%CI: 0.9-1.7%) of  
381 the population aged 15-49 years (3.4m FSW, 2.0m MSM, 870,000 PWID, and 380,000  
382 TGW), but 6.3% (4.6-8.6%) of PLHIV aged 15-49 years. In ESA this was 5.0% (3.6-  
383 7.0%) of PLHIV compared to 1.3% (0.9-1.9%) of the population and, in WCA, 12.0%  
384 (8.4-17.4%) of PLHIV compared to 1.2% (0.9-1.7%) of the population. FSW were 3.8%  
385 (2.5-5.4%) of PLHIV in SSA (710,000 PLHIV; 470,000-1,000,000), MSM were 1.5%  
386 (1.0-2.4%) or 290,000 PLHIV (190,000-450,000), PWID were 0.5% (0.3-1.0%) or  
387 99,000 PLHIV (55,000-190,000), and TGW were 0.4% (0.2-1.0%) or 79,000 PLHIV  
388 (34,000-200,000) (Figure 6).

## 389 **Discussion**

390 Data from 247 key population surveys provided consistent evidence of key populations  
391 at disproportionately high risk of HIV acquisition and transmission in all countries in sub-  
392 Saharan Africa. We estimated there are 3.4m FSW, 2.0m MSM, 870,000 PWID, and  
393 380,000 TGW in SSA who require comprehensive HIV prevention or treatment services.  
394 HIV prevalence among FSW was estimated to be 21%, 14% among MSM, 11% among  
395 PWID, and 20% among TGW. These were 4.6, 5.9, 4.6, and 4.4 times higher than  
396 population prevalence, respectively, with larger relative differences when population  
397 prevalence was lower. Together, these populations constituted 1.3% of the adult  
398 population in SSA but 6.3% of PLHIV. ART coverage among key populations increased

399 consistently with total population coverage, but lagged behind at high levels. However,  
400 there was wide uncertainty about estimates aggregated within countries and across  
401 SSA.

402 This exercise highlighted major data gaps and challenges interpreting existing data.  
403 Across the twelve combinations of four key populations and three indicators analysed  
404 here, countries had data for six combinations on average and three countries lacked  
405 any data (Supplementary Table S3). Data availability gaps widen further when selecting  
406 the highest quality and most recent data. These gaps impede delivery of equitable and  
407 equal access to HIV services and will remain without firm commitments to regularly  
408 collect key population survey data, likely including significant change to entrenched  
409 discriminatory practices and punitive laws and policies against key populations.<sup>3,39–41</sup> In  
410 settings lacking or with limited data, our extrapolated estimates should be a foundation  
411 with which to guide future surveillance priorities, stimulate in-country data review and  
412 use, and estimate HIV epidemic indicators. Future efforts should especially focus on  
413 strengthening surveillance for MSM, PWID, and transgender populations, and  
414 strengthening use of HIV service delivery data for all key populations, while ensuring the  
415 safety and protection of marginalised individuals and their communities.<sup>3</sup>

416 Previous key population reviews and meta-analyses<sup>11,42–44</sup> relied on systematic  
417 searches of peer-reviewed literature. Our initial sources were existing databases,  
418 primarily populated by surveillance teams in each country or implementing  
419 organisations. This resulted in including a larger grey literature body, such as survey  
420 reports, which are infrequently indexed by peer-reviewed databases.<sup>45</sup> However, many

421 observations from initial databases (3% of PSE data, 31% of HIV prevalence data, 36%  
422 of ART coverage data) could not be validated from source documents and were  
423 excluded from this analysis, which in some countries excluded the only reported data.  
424 Demand for total population HIV estimates in SSA has promoted high-quality  
425 comparable surveillance methods, documentation, and dissemination. Review of key  
426 population data by national HIV surveillance teams was introduced into the UNAIDS  
427 sub-Saharan African estimates process in 2023, providing context for existing surveys,  
428 identifying missing sources and adding new data. This, alongside ongoing key  
429 population data initiatives and concerted advocacy efforts that ensure public  
430 dissemination, will improve the foundation for HIV surveillance among key populations  
431 and promote parity for key populations within national HIV data and strategic  
432 information.

433 Systematically collated data on key population size, HIV prevalence, and ART coverage  
434 are critical inputs for mathematical modelling analyses that guide optimisation of HIV  
435 interventions. Such studies consistently demonstrate that fully meeting the HIV  
436 prevention and treatment needs of key populations has a disproportionately large  
437 impact on reducing overall population incidence due to network effects of averting  
438 further onward transmission over time and to non-key population partners.<sup>46,47</sup> Model-  
439 based counterfactual indicators that capture these impacts, such as the transmission  
440 preventable attributable fraction, are a better basis for intervention prioritisation than  
441 simple population proportions reported in survey data.<sup>46,48,49 46,4748,4950–5354–57</sup>

442 We estimated that 0.27% of men in SSA injected drugs, lower than estimates from  
443 Degenhardt *et al.* of 0.38%.<sup>58</sup> This may reflect incorporating the urban-to-rural ratio in  
444 national PSE extrapolation in this analysis. We estimated that 1.4% of women aged 15-  
445 49 years sold sex, slightly higher than 1.1% estimated by Laga *et al.*<sup>59</sup> Our finding of  
446 heterogeneous HIV prevalence ratios between MSM and the total population was  
447 consistent with Hessou *et al.*<sup>60</sup>, particularly in WCA where HIV burden in neighbouring  
448 countries can vary considerably. Our estimate of 62% ART coverage among MSM in  
449 2022 was lower than 73% from a meta-analysis by Stannah *et al.*<sup>61</sup> of studies conducted  
450 up to 2022. This may be due to exclusion of self-reported ART usage in this analysis.

451 Population size estimates measured in the same population at different times or with  
452 multiple methods were highly heterogenous, limiting data use for establishing  
453 meaningful programmatic targets or monitoring temporal trends. Very large uncertainty  
454 ranges around population size and PLHIV modelled estimates were consistent with  
455 findings of other statistically summarised and extrapolated PSE from multiple  
456 sources.<sup>50-53</sup> Non-existence of rural KPSE studies to empirically inform rural-urban  
457 population proportions contributed to five-fold or greater relative uncertainty in  
458 extrapolated national estimates. Quality assessments of individual KPSE studies were  
459 not conducted as part of this analysis. Both systematically improving and evaluating  
460 study-specific implementation quality and methodological assumptions may reduce  
461 heterogeneity and increase the utility of KPSE data.<sup>54-57,62</sup>

462 Seventy-two percent of MSM KPSE observations and 34/39 modelled urban MSM  
463 estimates were below 1% of the male adult (15-49) population which UNAIDS and WHO

464 recommended in 2020 as a minimum MSM population proportion.<sup>63</sup> The minimum  
465 threshold was specified to ensure that MSM were not overlooked due to lack of data.  
466 Variation in MSM proportions measured in PSE studies may reflect ability to engage in  
467 sexual behaviours, affected by legal and social environment and other factors, rather  
468 than differences in distribution of sexual preference. It is also uncertain whether MSM  
469 recruited in surveys, who are disproportionately young<sup>12,13</sup>, are representative of the  
470 total MSM population (Supplementary Figure S2). Nonetheless, specifying a minimum  
471 1% threshold for MSM population could result in unrealistic MSM-focused service  
472 targets. The threshold should be reconsidered with the wider range of data now  
473 available, aligned with risk-based approaches to quantifying sex work and injecting drug  
474 use. Study-specific quality assessments will be key to producing accurate KPSE given  
475 stigma experienced by MSM in many settings.

476 Integrating key population programme data within key population estimates should be a  
477 priority to improve utility of surveillance data to guide programmatic response and  
478 monitor trends and subnational variation.<sup>64</sup> Triangulating routine HIV testing and  
479 treatment data with biobehavioural survey data may help disentangle programmatic  
480 double counting, coverage of key population-specific services, and accounting for  
481 linkage to care in the estimation of ART coverage and viral load suppression.<sup>65–67</sup>  
482 Future surveillance should consider moving beyond strictly defined key population  
483 definitions accurately to reflect heterogenous risks among individuals in overlapping risk  
484 environments including cisgender MSM and transgender women who sell sex, and FSW  
485 and MSM who inject drugs.<sup>68–70</sup>

486 Several limitations should be considered when interpreting these data and estimates.  
487 Firstly, surveys used a range of key population definitions and inclusion criteria which  
488 limited comparability, though there was sufficient overlap (Supplementary Text S2).  
489 Second, lack of explicit geographic survey sampling frames made it challenging to  
490 define appropriate subnational population denominators for KPSE proportions; the  
491 urban extents derived from the Global Rural/Urban Mapping Project may not accurately  
492 reflect the catchment population for a given survey, particularly given the mobility of key  
493 populations.<sup>71</sup> This likely exacerbates the observed heterogeneity in KPSE proportions  
494 (Figure 3B), and is a major limitation for extrapolating KPSE proportions for  
495 programmatic planning. Going forward, careful data quality assessments to determine  
496 study inclusion and interpretation, and specification of population catchments with key  
497 population surveillance reports will improve future data use. Third, sample size or  
498 standard errors and age ranges were omitted from most population size data entries.  
499 This limited ability to statistically weight or age-standardise data in model extrapolations.  
500 Finally, data were insufficient and too heterogeneous to estimate time trends in  
501 population proportions, HIV prevalence, or ART coverage. Application of standardised  
502 recruitment methods, population definitions, and indicator reporting in consistent  
503 locations will improve monitoring of trends.

504 In conclusion, key populations across SSA experience disproportionate HIV burden and  
505 have lower antiretroviral treatment coverage. Consolidated key population data and  
506 synthesised estimates provide a basis for key population programming in all countries,  
507 including those with limited locally available data. Despite increasing focus on key  
508 populations in HIV/AIDS strategies in SSA, new surveillance strategies, improved use of



509 routine data, and more consistent surveillance implementation are required to furnish  
510 more precise estimates and trends for programme planning and support the monitoring  
511 of equitable and equal access to HIV prevention and treatment programmes outlined in  
512 the Global AIDS Strategy 2021-2026.

513 **Authors' contributions**

514 OS, KS, MM and JWI-E conceptualised the study. KS, SAG, JZ, AMcl, KW, LD curated  
515 key population survey databases. OS, RA, EG, AS-B reviewed primary source  
516 documents, deduplicated data, and extracted data. OS analysed the data and wrote the  
517 first draft of the manuscript. All authors contributed to interpretation of results and edited  
518 the manuscript for intellectual content. All authors read and approved the final version of  
519 the manuscript for submission.

520 **Declaration of interests**

521 <Insert declarations from author forms>

522 **Disclaimer**

523 The findings and conclusions in this report are those of the author(s) and do not  
524 necessarily represent the official position of the funding agencies.

525 **Data sharing**

526 Data extracted data for this analysis are available in spreadsheet format in  
527 Supplementary File 2. R code to reproduce analysis is available from <insert URL>.

528 **Acknowledgments**

529 This research was supported by UNAIDS, Bill and Melinda Gates Foundation (INV-  
530 006733), National Institute of Allergy and Infectious Disease of the National Institutes of  
531 Health under award number R01AI136664, and the MRC Centre for Global Infectious  
532 Disease Analysis (reference MR/R015600/1), jointly funded by the UK Medical  
533 Research Council (MRC) and the UK Foreign, Commonwealth & Development Office

534 (FCDO), under the MRC/FCDO Concordat agreement and is also part of the EDCTP2  
535 programme supported by the European Union. MM-G's research program is funded by  
536 a *Canada Research Chair* (Tier II) in *Population Health Modeling*.

537 **References**

- 538 1. UNAIDS. *The Gap Report.*; 2014.
- 539 2. Garnett GP. Reductions in HIV incidence are likely to increase the importance of  
540 key population programmes for HIV control in sub-Saharan Africa. *J Int AIDS*  
541 *Soc.* 2021;24(S3):e25727. doi:10.1002/jia2.25727
- 542 3. World Health Organization. *Consolidated Guidelines on HIV, Viral Hepatitis and*  
543 *STI Prevention, Diagnosis, Treatment and Care for Key Populations.*; 2022.  
544 [http://apps.who.int/iris/bitstream/10665/128048/1/9789241507431\\_eng.pdf?ua=1](http://apps.who.int/iris/bitstream/10665/128048/1/9789241507431_eng.pdf?ua=1)
- 545 4. United Nations. End Inequalities. End AIDS. Global AIDS Strategy 2021-2026 |  
546 UNAIDS. Published 2021. Accessed May 5, 2021.  
547 [https://www.unaids.org/en/resources/documents/2021/2021-2026-global-AIDS-](https://www.unaids.org/en/resources/documents/2021/2021-2026-global-AIDS-strategy)  
548 [strategy](https://www.unaids.org/en/resources/documents/2021/2021-2026-global-AIDS-strategy)
- 549 5. Baneshi MR, Rastegari A, Haghdoost AA. Review of Size Estimation Methods. In:  
550 *Advances in Experimental Medicine and Biology.* Vol 1333. Springer; 2021:1-15.  
551 doi:10.1007/978-3-030-75464-8\_1
- 552 6. Abdul-Quader AS, Baughman AL, Hladik W. Estimating the size of key  
553 populations: Current status and future possibilities. *Curr Opin HIV AIDS.*  
554 Published online 2014. doi:10.1097/COH.0000000000000041

- 555 7. Jin H, Restar A, Beyrer C. Overview of the epidemiological conditions of HIV  
556 among key populations in Africa. *J Int AIDS Soc.* 2021;24(S3).  
557 doi:10.1002/jia2.25716
- 558 8. Hakim AJ, MacDonald V, Hladik W, et al. Gaps and opportunities: measuring the  
559 key population cascade through surveys and services to guide the HIV response.  
560 *J Int AIDS Soc.* 2018;21(Suppl Suppl 5):e25119. doi:10.1002/jia2.25119
- 561 9. Sabin K, Zhao J, Garcia Calleja JM, et al. Availability and quality of size  
562 estimations of female sex workers, men who have sex with men, people who  
563 inject drugs and transgender women in low- and middle-income countries. *PLoS*  
564 *One.* 2016;11(5). doi:10.1371/journal.pone.0155150
- 565 10. Atuhaire L, Adetokunboh O, Shumba C, Nyasulu PS. Effect of community-based  
566 interventions targeting female sex workers along the HIV care cascade in sub-  
567 Saharan Africa: a systematic review and meta-analysis. *Syst Rev.* Published  
568 online 2021. doi:10.1186/s13643-021-01688-4
- 569 11. Baral S, Beyrer C, Muessig K, et al. Burden of HIV among female sex workers in  
570 low-income and middle-income countries: A systematic review and meta-analysis.  
571 *Lancet Infect Dis.* Published online 2012. doi:10.1016/S1473-3099(12)70066-X
- 572 12. Stannah J, Dale E, Elmes J, et al. HIV testing and engagement with the HIV  
573 treatment cascade among men who have sex with men in Africa: a systematic  
574 review and meta-analysis. *Lancet HIV.* 2019;6(11):e769-e787.  
575 doi:10.1016/S2352-3018(19)30239-5

- 576 13. Stannah J, Soni N, Keng J, et al. Trends in HIV testing, the treatment cascade,  
577 and HIV incidence among men who have sex with men in Africa: A systematic  
578 review and meta-regression analysis. *Lancet HIV*. Published online 2023.  
579 doi:0.1016/S2352-3018(23)00111-X
- 580 14. Mathers BM, Degenhardt L, Phillips B, et al. Global epidemiology of injecting drug  
581 use and HIV among people who inject drugs: a systematic review. *The Lancet*.  
582 Published online 2008. doi:10.1016/S0140-6736(08)61311-2
- 583 15. Degenhardt L, Peacock A, Colledge S, et al. Global prevalence of injecting drug  
584 use and sociodemographic characteristics and prevalence of HIV, HBV, and HCV  
585 in people who inject drugs: a multistage systematic review. *Lancet Glob Health*.  
586 2017;5(12):e1192-e1207. doi:10.1016/S2214-109X(17)30375-3
- 587 16. Kloek M, Bulstra CA, van Noord L, Al-Hassany L, Cowan FM, Hontelez JAC. HIV  
588 prevalence among men who have sex with men, transgender women and  
589 cisgender male sex workers in sub-Saharan Africa: a systematic review and  
590 meta-analysis. *J Int AIDS Soc*. 2022;25(11). doi:10.1002/JIA2.26022
- 591 17. Stevens O. HIV prevalence in transgender populations and cisgender men who  
592 have sex with men in sub-Saharan Africa 2010-2022: a meta-analysis. *medRxiv*.  
593 Published online 2023. doi:10.1101/2023.11.09.23298289
- 594 18. UNAIDS. Global AIDS Monitoring 2022. Published 2022. Accessed February 18,  
595 2022. <https://www.unaids.org/en/global-aids-monitoring>

- 596 19. UNAIDS, WHO. *Recommended Population Size Estimates for Men Who Have*  
597 *Sex with Men.*; 2020.
- 598 20. Rao A, Schwartz S, Sabin K, et al. HIV-related data among key populations to  
599 inform evidence-based responses: protocol of a systematic review. *Syst Rev.*  
600 Published online 2018.
- 601 21. UNAIDS, FHI 360, WHO, CDC, PEPFAR. *Biobehavioural Survey Guidelines For*  
602 *Populations At Risk For HIV.*; 2017. Accessed February 17, 2022.  
603 <http://apps.who.int/bookorders>.
- 604 22. UNAIDS. Global AIDS Monitoring 2022. Published 2022. Accessed February 18,  
605 2022. <https://www.unaids.org/en/global-aids-monitoring>
- 606 23. UNAIDS. Key Populations Atlas. Accessed November 27, 2021.  
607 <https://kpatlas.unaids.org/dashboard>
- 608 24. Degenhardt L, Peacock A, Colledge S, et al. Global prevalence of injecting drug  
609 use and sociodemographic characteristics and prevalence of HIV, HBV, and HCV  
610 in people who inject drugs: a multistage systematic review. *Lancet Glob Health.*  
611 2017;5(12):e1192-e1207. doi:10.1016/S2214-109X(17)30375-3
- 612 25. Rao A, Schwartz S, Sabin K, et al. HIV-related data among key populations to  
613 inform evidence-based responses: protocol of a systematic review. *Syst Rev.*  
614 Published online 2018.

- 615 26. UNAIDS. HIV sub-national estimates viewer. Published 2021. Accessed May 12,  
616 2022. <https://naomi-spectrum.unaids.org/>
- 617 27. Eaton JW, Dwyer-Lindgren L, Gutreuter S, et al. Naomi: a new modelling tool for  
618 estimating HIV epidemic indicators at the district level in sub-Saharan Africa. *J Int*  
619 *AIDS Soc.* Published online 2021. doi:10.1002/jia2.25788
- 620 28. Global Rural-Urban Mapping Project (GRUMP). Urban boundaries. Accessed  
621 October 25, 2021. <https://sedac.ciesin.columbia.edu/data/collection/grump-v1>
- 622 29. Weir S. *Priorities for Local AIDS Control Efforts (PLACE)*.; 2019.
- 623 30. Eaton JW, Brown T, Puckett R, et al. The Estimation and Projection Package  
624 Age-Sex Model and the r-hybrid model: New tools for estimating HIV incidence  
625 trends in sub-Saharan Africa. *AIDS.* 2019;33(Suppl 3):S235-S244.  
626 doi:10.1097/QAD.0000000000002437
- 627 31. Nations U, of Economic D, Affairs S, Division P. *World Urbanization Prospects*  
628 *The 2018 Revision.*; 2018.
- 629 32. Maleke K, Makhakhe N, Peters RPH, et al. HIV risk and prevention among men  
630 who have sex with men in rural South Africa. *African Journal of AIDS Research.*  
631 2017;16(1):31-38. doi:10.2989/16085906.2017.1292925
- 632 33. Wimark T. The City as a Single Gay Male Magnet? Gay and Lesbian  
633 Geographical Concentration in Sweden. 2014;752(September 2013):739-752.



- 634 34. Kobrak P, Ponce R, Zielony R. New Arrivals to New York City□: Vulnerability to  
635 HIV among Urban Migrant Young Gay Men. *Arch Sex Behav*. Published online  
636 2015:2041-2053. doi:10.1007/s10508-015-0494-4
- 637 35. Johnson LF, Mulongeni P, Marr A, Lane T. Age bias in survey sampling and  
638 implications for estimating HIV prevalence in men who have sex with men:  
639 Insights from mathematical modelling. *Epidemiol Infect*. 2018;146(8):1036-1042.  
640 doi:10.1017/S0950268818000961
- 641 36. Stannah J, Dale E, Elmes J, et al. HIV testing and engagement with the HIV  
642 treatment cascade among men who have sex with men in Africa: a systematic  
643 review and meta-analysis. *Lancet HIV*. 2019;6(11):e769-e787.  
644 doi:10.1016/S2352-3018(19)30239-5
- 645 37. UNAIDS. Global AIDS Update. Published 2021. Accessed May 12, 2022.  
646 <https://www.unaids.org/en/resources/documents/2021/2021-global-aids-update>
- 647 38. Stevens GA, Alkema L, Black RE, et al. Guidelines for Accurate and Transparent  
648 Health Estimates Reporting: the GATHER statement. *The Lancet*.  
649 2016;388(10062):e19-e23. doi:10.1016/S0140-6736(16)30388-9
- 650 39. Lyons C, Bendaud V, Bourey C, et al. Global assessment of existing HIV and key  
651 population stigma indicators: A data mapping exercise to inform country-level  
652 stigma measurement. *PLoS Med*. 2022;19(2):e1003914.  
653 doi:10.1371/JOURNAL.PMED.1003914

- 654 40. UNAIDS. Prevailing against pandemics by putting people at the centre. Published  
655 online 2020.
- 656 41. HIV Policy Lab. HIV Policy Lab. Accessed October 25, 2023.  
657 <https://www.hivpolicylab.org/>
- 658 42. Hessou PHS, Glele-Ahanhanzo Y, Adekpedjou R, et al. Comparison of the  
659 prevalence rates of HIV infection between men who have sex with men (MSM)  
660 and men in the general population in sub-Saharan Africa: A systematic review  
661 and meta-analysis. *BMC Public Health*. 2019;19(1):1634. doi:10.1186/s12889-  
662 019-8000-x
- 663 43. Stutterheim SE, Van Dijk M, Wang H, Jonas KJ. The worldwide burden of HIV in  
664 transgender individuals: An updated systematic review and meta-analysis. *PLoS*  
665 *One*. 2021;16(12 December). doi:10.1371/journal.pone.0260063
- 666 44. Degenhardt L, Peacock A, Colledge S, et al. Global prevalence of injecting drug  
667 use and sociodemographic characteristics and prevalence of HIV, HBV, and HCV  
668 in people who inject drugs: a multistage systematic review. *Lancet Glob Health*.  
669 2017;5(12):e1192-e1207. doi:10.1016/S2214-109X(17)30375-3
- 670 45. Stevens O. HIV prevalence in transgender populations and cisgender men who  
671 have sex with men in sub-Saharan Africa 2010-2021: a meta-analysis. Published  
672 online 2022.

- 673 46. Stone J, Mukandavire C, Boily M, et al. Estimating the contribution of key  
674 populations towards HIV transmission in South Africa. *J Int AIDS Soc.*  
675 2021;24(1):e25650. doi:10.1002/jia2.25650
- 676 47. Mishra S, Pickles M, Blanchard JF, Moses S, Boily MC. Distinguishing sources of  
677 HIV transmission from the distribution of newly acquired HIV infections: Why is it  
678 important for HIV prevention planning? *Sex Transm Infect.* 2014;90(1):19-25.  
679 doi:10.1136/sextrans-2013-051250
- 680 48. Mishra S, Pickles M, Blanchard JF, Moses S, Shubber Z, Boily MC. Validation of  
681 the modes of transmission model as a tool to prioritize HIV prevention targets: A  
682 comparative modelling analysis. *PLoS One.* 2014;9(7).  
683 doi:10.1371/journal.pone.0101690
- 684 49. Shubber Z, Mishra S, Vesga JF, Boily MC. The HIV modes of transmission model:  
685 A systematic review of its findings and adherence to guidelines. *J Int AIDS Soc.*  
686 2014;17(1). doi:10.7448/IAS.17.1.18928
- 687 50. Edwards JK, Hileman S, Donastorg Y, et al. Estimating Sizes of Key Populations  
688 at the National Level: Considerations for Study Design and Analysis.  
689 *Epidemiology.* 2018;29(6):795-803. doi:10.1097/EDE.0000000000000906
- 690 51. Niu XM, Rao A, Chen D, et al. Using factor analyses to estimate the number of  
691 female sex workers across Malawi from multiple regional sources. *Ann Epidemiol.*  
692 2021;55:34-40. doi:10.1016/j.annepidem.2020.12.001

- 693 52. Fearon E, Chabata ST, Magutshwa S, et al. Estimating the Population Size of  
694 Female Sex Workers in Zimbabwe: Comparison of Estimates Obtained Using  
695 Different Methods in Twenty Sites and Development of a National-Level Estimate.  
696 *J Acquir Immune Defic Syndr.* 2020;85(1):30-38.  
697 doi:10.1097/QAI.0000000000002393
- 698 53. Datta A, Lin W, Rao A, et al. Bayesian Estimation of MSM Population Size in Côte  
699 d'Ivoire. *Statistics and Public Policy.* 2019;6(1):1-13.  
700 doi:10.1080/2330443X.2018.1546634
- 701 54. Wesson PD, Mirzazadeh A, McFarland W. A Bayesian approach to synthesize  
702 estimates of the size of hidden populations: The anchored multiplier. *Int J*  
703 *Epidemiol.* 2018;47(5):1636-1644. doi:10.1093/ije/dyy132
- 704 55. Fellows I. Consensus Estimate Calculator. Accessed April 11, 2022.  
705 [https://epiapps.com/shiny/app\\_direct/shinyproxy\\_combine\\_estimates/](https://epiapps.com/shiny/app_direct/shinyproxy_combine_estimates/)
- 706 56. USAID. *Namibia Small Area Estimation: Final Report Small Area Estimation of*  
707 *Key Population Sizes in Namibia: Final Report.*; 2021.
- 708 57. Datta A, Lin W, Rao A, et al. Bayesian Estimation of MSM Population Size in Côte  
709 d'Ivoire. *Statistics and Public Policy.* 2019;6(1):1-13.  
710 doi:10.1080/2330443X.2018.1546634
- 711 58. Degenhardt L, Webb P, Colledge-Frisby S, et al. Epidemiology of injecting drug  
712 use, prevalence of injecting-related harm, and exposure to behavioural and

- 713 environmental risks among people who inject drugs: a systematic review. *Lancet*  
714 *Glob Health*. 2023;11(5):e659-e672. doi:10.1016/S2214-109X(23)00057-8
- 715 59. Laga I, Niu X, Rucinski K, et al. Mapping the Population Size of Female Sex  
716 Worker in Countries Across Sub-Saharan Africa. *PNAS*. Published online  
717 September 19, 2023. doi:10.1073/pnas.2200633120
- 718 60. Hessou PHS, Glele-Ahanhanzo Y, Adekpedjou R, et al. Comparison of the  
719 prevalence rates of HIV infection between men who have sex with men (MSM)  
720 and men in the general population in sub-Saharan Africa: A systematic review  
721 and meta-analysis. *BMC Public Health*. 2019;19(1):1634. doi:10.1186/s12889-  
722 019-8000-x
- 723 61. Stannah J, Dale E, Elmes J, et al. HIV testing and engagement with the HIV  
724 treatment cascade among men who have sex with men in Africa: a systematic  
725 review and meta-analysis. *Lancet HIV*. Published online 2019.  
726 doi:10.1016/S2352-3018(19)30239-5
- 727 62. Rao A, Schwartz S, Viswasam N, et al. Evaluating the quality of HIV  
728 epidemiologic evidence for populations in the absence of a reliable sampling  
729 frame: a modified quality assessment tool. *Ann Epidemiol*. 2022;65:78-83.  
730 doi:10.1016/J.ANNEPIDEM.2021.07.009
- 731 63. UNAIDS, WHO. *Recommended Population Size Estimates for Men Who Have*  
732 *Sex with Men.*; 2020.

- 733 64. USAID. *Namibia Small Area Estimation: Final Report Small Area Estimation of*  
734 *Key Population Sizes in Namibia: Final Report.*; 2021.
- 735 65. Scheibe AP. Still left behind: Using programmatic data to assess harm reduction  
736 service coverage and HIV treatment cascades for people who inject drugs in five  
737 South African cities. In: *IAS.* ; 2019.
- 738 66. Scheibe A, Grasso M, Raymond HF, et al. Modelling the UNAIDS 90-90-90  
739 treatment cascade for gay, bisexual and other men who have sex with men in  
740 South Africa: using the findings of a data triangulation process to map a way  
741 forward. *AIDS Behav.* 2018;22(3):853-859. doi:10.1007/s10461-017-1773-y
- 742 67. Hakim AJ, MacDonald V, Hladik W, et al. Gaps and opportunities: measuring the  
743 key population cascade through surveys and services to guide the HIV response.  
744 *J Int AIDS Soc.* 2018;21(Suppl Suppl 5):e25119. doi:10.1002/jia2.25119
- 745 68. Syvertsen JL, Agot K, Ohaga S, Bazzi AR. You can't do this job when you are  
746 sober: Heroin use among female sex workers and the need for comprehensive  
747 drug treatment programming in Kenya. *Drug Alcohol Depend.* 2019;194:495-499.  
748 doi:10.1016/j.drugalcdep.2018.10.019
- 749 69. Poteat T, Ackerman B, Diouf D, et al. HIV prevalence and behavioral and  
750 psychosocial factors among transgender women and cisgender men who have  
751 sex with men in 8 African countries: A cross-sectional analysis. *PLoS Med.*  
752 Published online 2017. doi:10.1371/journal.pmed.1002422

753 70. Baral SD, Poteat T, Strömdahl S, Wirtz AL, Guadamuz TE, Beyrer C. Worldwide  
754 burden of HIV in transgender women: A systematic review and meta-analysis.  
755 *Lancet Infect Dis.* 2013;13(3):214-222. doi:10.1016/S1473-3099(12)70315-8

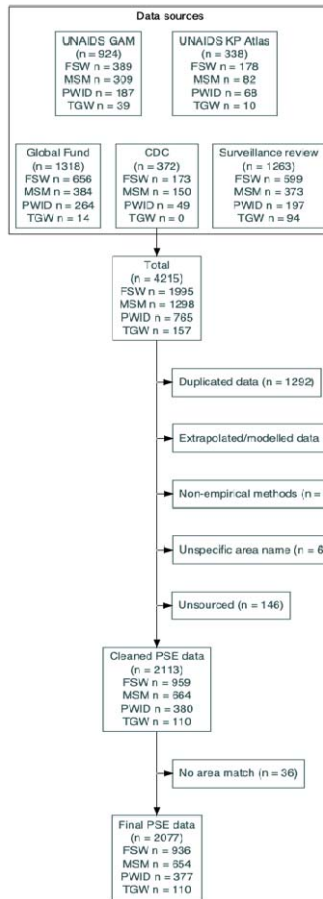
756 71. Davey C, Dirawo J, Mushati P, Magutshwa S, Hargreaves JR, Cowan FM.  
757 Mobility and sex work: why, where, when? A typology of female-sex-worker  
758 mobility in Zimbabwe. *Soc Sci Med.* 2019;220:322-330.  
759 doi:10.1016/j.socscimed.2018.11.027

760

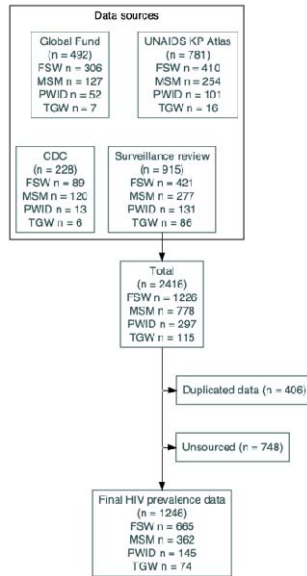
761

762 **Figures and Tables**

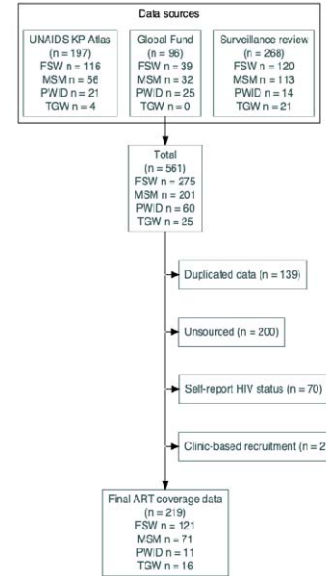
**Population size estimates**



**HIV prevalence**



**ART coverage**



763

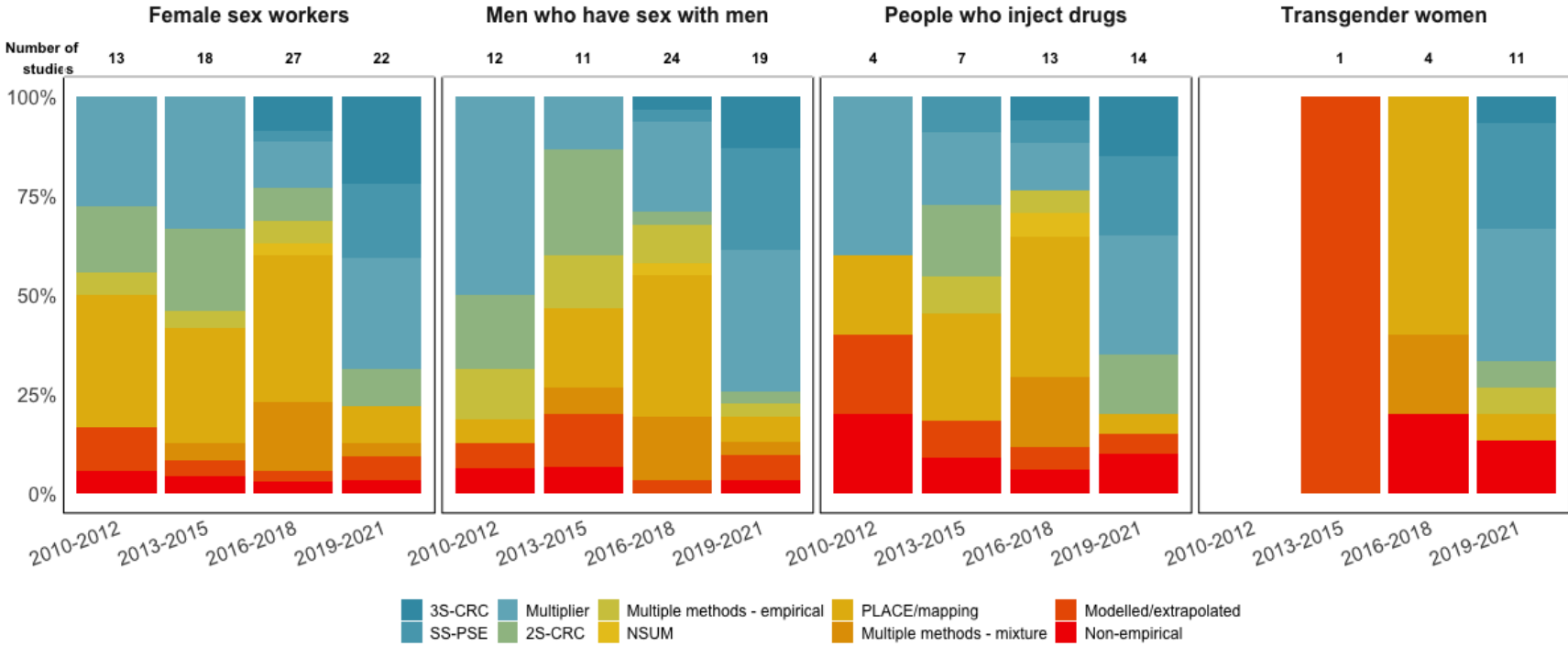
764 **Figure 1:** Flow diagrammes describing identified data for key population size estimates, HIV prevalence  
 765 data, and key population ART coverage. Each *n* represents number of population/method/location  
 766 observations, with potentially observations for multiple subnational locations from the same study in same  
 767 country. ART: Antiretroviral coverage; FSW: Female sex worker; MSM: Men who have sex with men;  
 768 PWID: People who inject drugs; TGW: Transgender women; KP: Key Population; GAM: Global AIDS  
 769 Monitoring; CDC: US Centers for Disease Control and Prevention; PSE: Population size estimate.



770 **Table 1:** Availability of population size, HIV prevalence, and ART coverage data by key  
771 population and region during period 2010-2022.

Region	Key population	Key Population Size Estimates (KPSE)		HIV prevalence		ART coverage	
		Observations	Countries with data (n; %)	Observations	Countries with data (n; %)	Observations	Countries with data (n; %)
SSA (39 countries)	FSW	959	33 (85)	665	36 (92)	121	26 (67)
	MSM	664	30 (77)	362	32 (82)	71	23 (59)
	PWID	380	19 (49)	145	19 (49)	11	7 (18)
	TGW	110	11 (28)	74	20 (51)	16	9 (23)
	TGM	0	0 (0)	5	4 (10)	0	0 (0)
ESA (18 countries)	FSW	552	17 (94)	336	18 (100)	77	14 (78)
	MSM	365	14 (78)	140	15 (83)	38	12 (67)
	PWID	238	7 (39)	62	9 (50)	6	4 (22)
	TGW	68	6 (33)	32	11 (61)	13	7 (39)
	TGM	0	0 (0)	2	2 (5)	0	0 (0)
WCA (21 countries)	FSW	407	16 (76)	329	18 (86)	44	12 (57)
	MSM	299	16 (76)	222	17 (81)	33	11 (52)
	PWID	142	12 (57)	83	10 (48)	5	3 (14)
	TGW	42	5 (24)	42	9 (43)	3	2 (10)
	TGM	0	0 (0)	3	3 (8)	0	0 (0)

772 SSA: Sub-Saharan Africa; ESA: East and Southern Africa; WCA: Western and Central Africa; FSW:  
773 female sex workers; MSM: men who have sex with men; PWID: people who inject drugs; TGW:  
774 transgender women; TGM: transgender men; KPSE: key population size estimate; ART: antiretroviral  
775 therapy

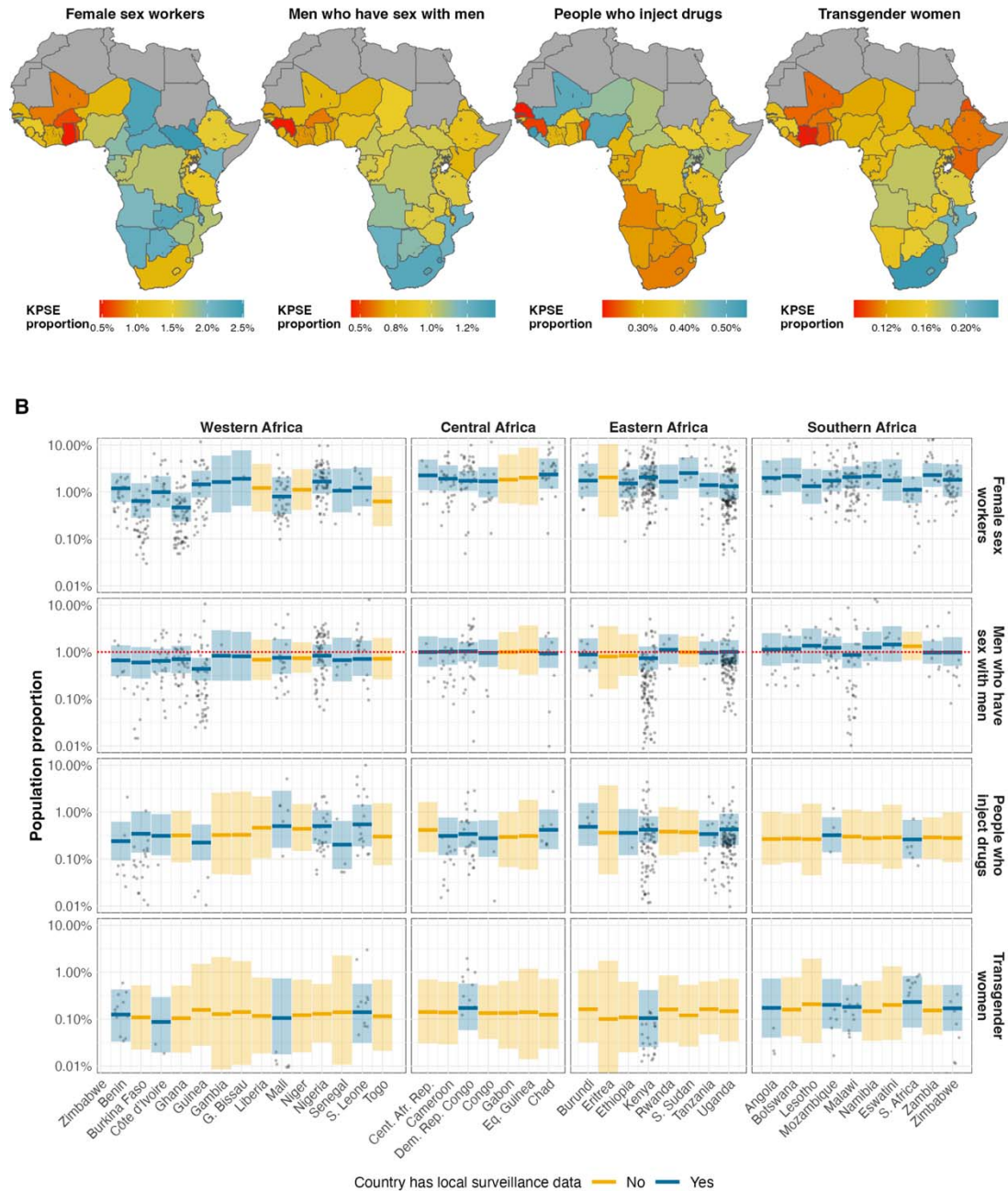


776

777 **Figure 2:** Distribution of size estimation methods implemented over time by key population. The number of size estimation studies is shown above  
 778 the bars. Bars are colour coded by method empiricism from highest (3S-CRC) to lowest (non-empirical).  
 779

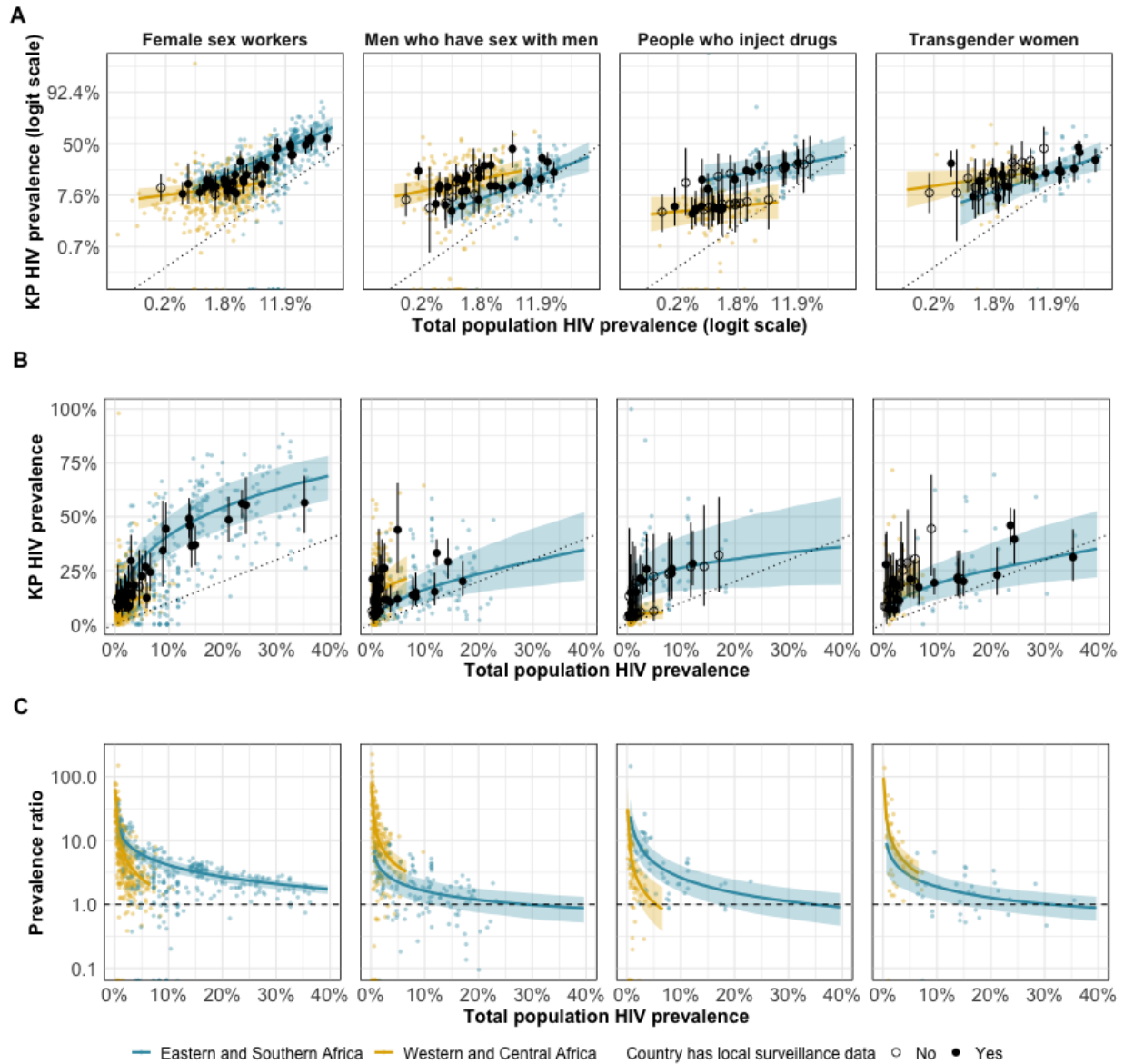
780 3S-CRC: Three-source capture-recapture; 2S-CRC: Two-source capture-recapture; SS-PSE: Successive sampling population size estimate;  
 781 NSUM: network scale-up method; PLACE: Priorities for Local AIDS Control Efforts

It is made available under a [CC-BY-NC-ND 4.0 International license](https://creativecommons.org/licenses/by-nc-nd/4.0/).



782  
783

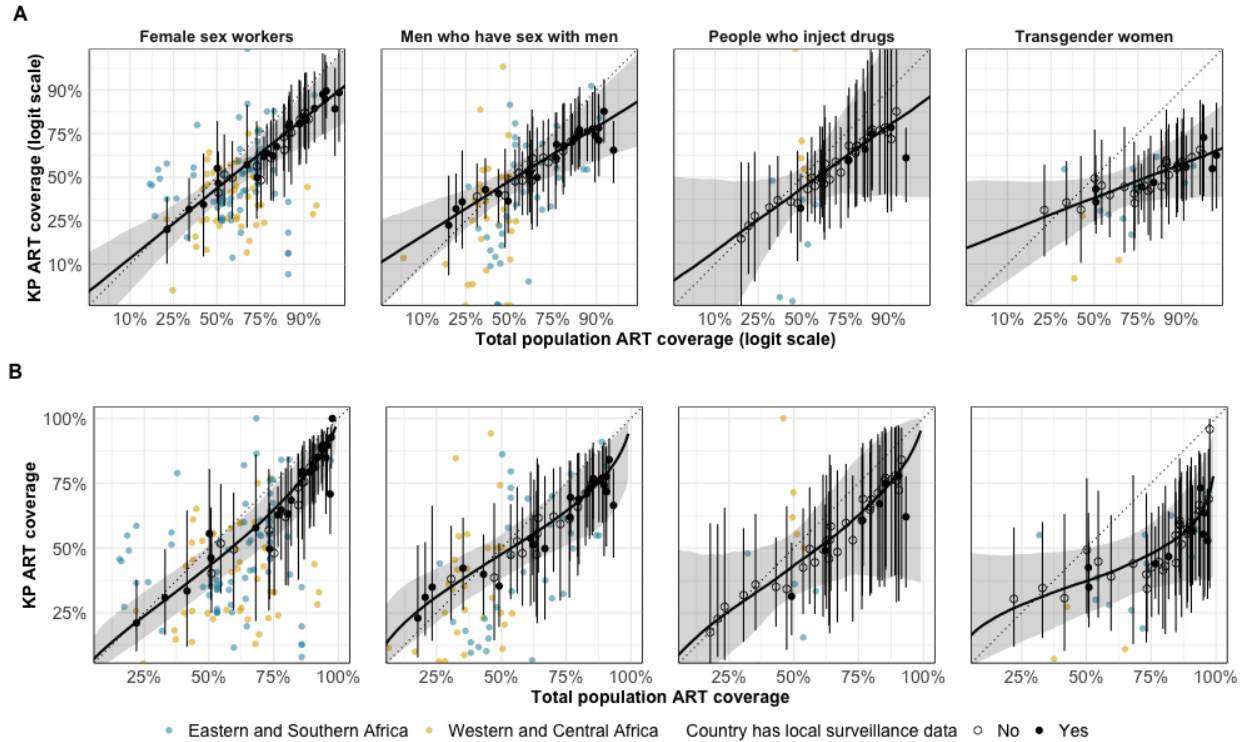
784 **Figure 3:** Model estimated urban key population size estimate (KPSE) proportions for female sex  
785 workers, men who have sex with men, people who inject drugs, and transgender women as a proportion  
786 of gender-matched 15-49 years adult total population. (A) Posterior median estimate for each country.  
787 Note: colour range is different for each key population choropleth. (B) Posterior median estimate and  
788 95% credible intervals for each country. Points represent observations of subnational KPSE proportions  
789 that used empirical methods. Countries that had local surveillance data are shown in blue, and countries  
790 informed only by spatial smoothing from neighbouring countries in yellow. Vertical axis shown on log-  
791 scale.



792

793 **Figure 4:** Key population and total population HIV prevalence on the logit scale (A), natural scale (B), and  
794 expressed as a ratio of key population and total population prevalence (C) for female sex workers, men  
795 who have sex with men, people who inject drugs, and transgender women. Coloured points indicate  
796 observed key population prevalence plotted against gender/year/province-matched total population  
797 prevalence. Coloured lines and shading represent regional estimate and 95% uncertainty results. Points  
798 represent country estimates [filled for countries with HIV prevalence data and empty for countries without  
799 HIV prevalence data] and 95% uncertainty ranges. Dotted line represents line of equality.

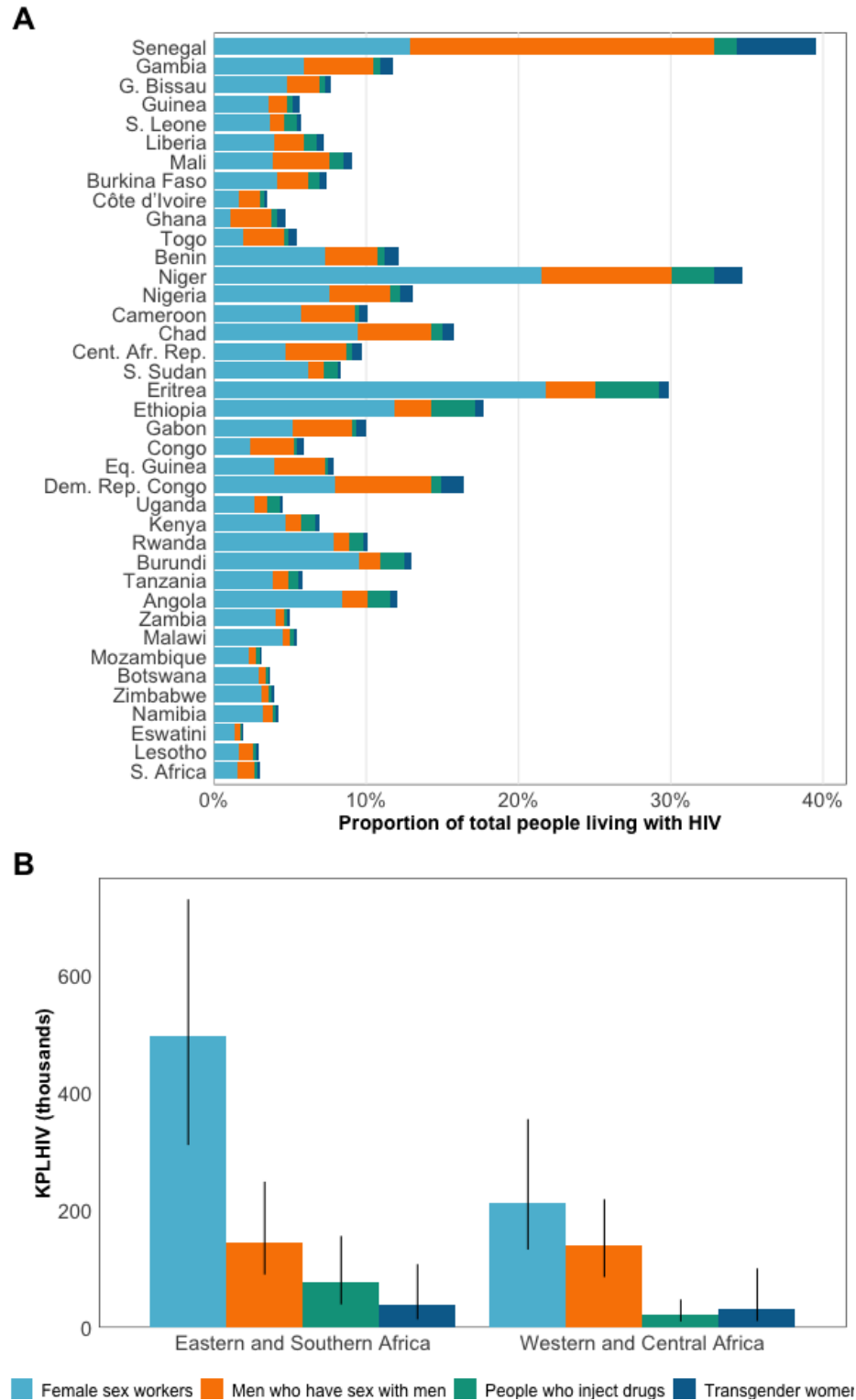
It is made available under a [CC-BY-NC-ND 4.0 International license](https://creativecommons.org/licenses/by-nc-nd/4.0/) .



800  
801  
802  
803  
804  
805  
806

**Figure 5:** Estimated key population ART coverage as a function of total population ART coverage on the estimated logit scale (upper) and natural scale (lower). Coloured points indicate observed key population prevalence plotted against gender/year/province-matched total population ART coverage. Black line and shading represent estimate for sub-Saharan Africa and 95% uncertainty results. Black points represent country estimates and 95% uncertainty ranges. Dotted line represents line of equality.

It is made available under a [CC-BY-NC-ND 4.0 International license](https://creativecommons.org/licenses/by-nc-nd/4.0/).



**Figure 6:** (A) HIV positive key population members as a proportion of all PLHIV aged 15-49 years. Countries are ordered geographically. (B) Estimated number of key populations living with HIV (KPLIV) in Eastern and Southern Africa and Western and Central Africa.