

# 1 **Key population size, HIV prevalence, and ART coverage in sub-** 2 **Saharan Africa: systematic collation and synthesis of survey data**

3 Oliver Stevens<sup>§1</sup>, Keith Sabin<sup>2</sup>, Sonia Arias Garcia<sup>2</sup>, Rebecca Anderson<sup>1</sup>, Kalai Willis<sup>3</sup>,  
4 Abu Abdul-Quader<sup>4</sup>, Anne McIntyre<sup>4</sup>, Elizabeth Fearon<sup>5</sup>, Emilie Grard<sup>1</sup>, Alice Stewart-  
5 Brown<sup>1</sup>, Frances Cowan<sup>6,7</sup>, Louisa Degenhardt<sup>8</sup>, Jinkou Zhao<sup>9</sup>, Avi Hakim<sup>4</sup>, Katherine  
6 Rucinski<sup>3</sup>, Isabel Sathane<sup>10</sup>, Makini Boothe<sup>11</sup>, Lydia Atuhuire<sup>12</sup>, Peter Nyasulu<sup>12</sup>, Lucy  
7 Platt<sup>13</sup>, Brian Rice<sup>13</sup>, Wolfgang Hladik<sup>4</sup>, Stefan Baral<sup>3</sup>, Mary Mahy<sup>2</sup>, Jeffrey W. Eaton<sup>1</sup>

- 8 1. MRC Centre for Global Infectious Disease Analysis, School of Public Health, Imperial  
9 College London, London, United Kingdom
- 10 2. Strategic Information Department, The Joint United Nations Program on HIV/AIDS  
11 (UNAIDS), Geneva, Switzerland
- 12 3. Johns Hopkins University, Baltimore, USA
- 13 4. US Centers for Disease Control and Prevention (CDC), Atlanta, USA
- 14 5. Centre for Mathematical Modelling of Infectious Diseases, London School of Hygiene  
15 and Tropical Medicine, London, United Kingdom
- 16 6. Liverpool School of Tropical Medicine, Liverpool, United Kingdom
- 17 7. Centre for Sexual Health and HIV/AIDS Research, Zimbabwe
- 18 8. National Drug & Alcohol Research Centre, University New South Wales, Sydney,  
19 Australia
- 20 9. The Global Fund to Fight AIDS, Tuberculosis and Malaria, Geneva, Switzerland
- 21 10. Ministry of Health, Maputo, Mozambique

22 11. Strategic Information Department, The Joint United Nations Program on HIV/AIDS  
23 (UNAIDS), Maputo, Mozambique

24 12. Department of Global Health, Faculty of Medicine and Health Sciences, Stellenbosch  
25 University, South Africa

26 13. London School of Hygiene and Tropical Medicine, London, United Kingdom

27

28

29 § Correspondence to:

30 Oliver Stevens

31 MRC Centre for Global Infectious Disease Analysis, School of Public Health, Imperial

32 College London

33 St. Mary's Hospital Campus

34 Norfolk Place

35 London

36 W2 1PG

37 United Kingdom

38 [o.stevens@imperial.ac.uk](mailto:o.stevens@imperial.ac.uk)

39

40

41 **Abstract**

42 **Background:** HIV programmes in sub-Saharan Africa (SSA) require information about  
43 HIV among key populations to ensure equitable and equal access to HIV prevention  
44 and treatment. Surveillance has been conducted among female sex workers (FSW),  
45 men who have sex with men (MSM), people who inject drugs (PWID), and transgender  
46 populations, but is not systematically included in national HIV estimates. We  
47 consolidated existing KP surveys to create national-level estimates of key population  
48 size, HIV prevalence, and ART coverage for mainland SSA.

49 **Methods:** Key population size estimates (KPSE), HIV prevalence, and ART coverage  
50 data from 38 countries from 2010-2021 were collated from existing databases,  
51 deduplicated, and verified against primary sources. We used Bayesian mixed-effects  
52 regression to spatially smooth KPSE, and regressed subnational key population HIV  
53 prevalence and ART coverage against age/sex/year/province-matched total population  
54 estimates.

55 **Findings:** We extracted 1449 unique KPSE datapoints, 1181 HIV prevalence  
56 datapoints, and 242 ART coverage datapoints. Countries had data for a median of five  
57 of the twelve population/outcome stratifications. Across countries, a median of 1.44% of  
58 urban women were FSW (interquartile range [IQR] 0.83-1.89%); 0.60% of urban men  
59 were MSM; and 0.16% of urban adults injected drugs (IQR 0.14-0.24%). HIV  
60 prevalence in all key populations was higher than matched total population prevalence.  
61 ART coverage was correlated with, but lower than, total population ART coverage.

62 Across SSA, key populations were estimated as 1.1% (95%CI 0.7-1.9%) of the  
63 population but 5.1% (95%CI 3.2-10.3%) of all PLHIV aged 15-49 years.

64 **Interpretation:** Key populations in sub-Saharan experience disproportionate HIV  
65 burden and somewhat lower ART coverage, underscoring need for focused prevention  
66 and treatment services. However, large heterogeneity and incomplete data availability  
67 limit precise estimates for programming and monitoring trends. Future efforts should  
68 focus on integrating and strengthening key population surveys and routine data within  
69 national HIV strategic information systems.

70 **Funding:** UNAIDS

71 **Research in Context**

72 **Evidence before this study**

73 Key populations (KPs), including female sex workers (FSW), men who have sex with  
74 men (MSM), people who inject drugs (PWID), and transgender women (TGW), are  
75 disproportionately vulnerable to HIV in sub-Saharan Africa (SSA). Delivering  
76 appropriate HIV prevention and treatment programming for these populations, and  
77 monitoring attainment of an equitable HIV response, requires robust information on key  
78 population size, HIV prevalence, the treatment cascade, and new HIV infections. For  
79 this reason, key population surveys including population size estimation and bio-  
80 behavioural survey are a standard component of a comprehensive national HIV  
81 surveillance portfolio,

82 Several organisations have initiatives to consolidate HIV data about key populations for  
83 global monitoring, programme planning, and research purposes. These include the Joint  
84 United Nations Programme on HIV/AIDS (UNAIDS) Key Population Atlas, UNAIDS  
85 Global AIDS Monitoring submissions, the US Centers for Disease Control and  
86 Prevention (CDC), the Global Fund Against TB, AIDS, and Malaria (GFTAM), and the  
87 Johns Hopkins University Global.HIV initiative. Existing initiatives include much overlap  
88 of data, but vary in scope, inclusion and exclusion criteria, data elements recorded, and  
89 linkage to and validation against primary source data sets and reports. Omission or  
90 incomplete recording of key methodological details inhibits appraisal and formal  
91 evidence synthesis, and therefore utility of data for strategic planning.

92 Many other research studies have systematically reviewed, analysed, and extrapolated  
93 key population survey data in sub-Saharan Africa in single countries or across multiple  
94 countries. These studies have tended to focus on specific outcomes or population  
95 groups of interest and primarily reviewed peer-reviewed literature.

#### 96 **Added value of this study**

97 We consolidated and deduplicated data from 2010-2021 from existing key population  
98 surveillance databases maintained by the UNAIDS Key Population Atlas, UNAIDS  
99 Global AIDS Monitoring (GAM), the US CDC, GFTAM. We used the Johns Hopkins  
100 University Global.HIV repository of surveillance reports and additional web-based  
101 searches, and engagement with in-country HIV strategic information teams to source  
102 primary sources in the peer-reviewed and grey literature, and validated each  
103 observation of KP population size, HIV prevalence, or ART coverage against primary  
104 surveillance reports. Using regression, we characterised the relationship between key  
105 population and total population HIV indicators and extrapolated key population size  
106 estimates (KPSE), HIV prevalence, and ART coverage data to national-level estimates  
107 for all countries in mainland SSA.

108 This exercise was the most comprehensive effort to date to consolidate KP HIV data in  
109 SSA. We analysed 90 KPSE, 159 HIV prevalence, and 72 ART coverage studies. We  
110 estimated that across SSA countries, a median of 1.44% of urban women were FSW;  
111 0.60% of urban men have sex with men; and 0.16% of urban adults injected drugs.  
112 Though FSW, MSM, and PWID combined were estimated as only 1.1% of the  
113 population they comprised 5.1% of all people living with HIV aged 15-49 years. KP ART

114 coverage increased consistently with total population ART coverage, but lagged behind  
115 at high population coverage levels. We identified large gaps in data availability. Of the  
116 four KPs and three indicators studied, only Kenya and Mozambique had data for all  
117 twelve indicators. Data were particularly sparse for PWID in Southern Africa.

### 118 **Implications of all the available evidence**

119 Consolidated data show that key populations, including FSW, MSM, PWID, and TGW,  
120 experience disproportionate vulnerability to HIV and lower ART coverage across all  
121 settings in sub-Saharan Africa . This evidence along with synthesised extrapolated  
122 estimates provide a foundation for planning appropriate key population focused services  
123 for HIV prevention and treatment in all settings, including those with no or limited data.

124 However, large data availability gaps, large heterogeneity, and inconsistency of existing  
125 data, and associated wide uncertainty ranges in resulting estimates limits the ability of  
126 existing data to guide granular programmatic planning and target setting for KP services  
127 or robustly monitor trends. New strategies and more consistent surveillance  
128 implementation are required credibly to monitor equitable and equal access to HIV  
129 prevention and treatment programmes outlined in the Global AIDS Strategy 2021-2026  
130 in order to end HIV/AIDS as a public health threat by 2030.

131

## 132 **Introduction**

133 Key populations, including female sex workers (FSW), men who have sex with men  
134 (MSM), people who inject drugs (PWID), and transgender women (TGW), are  
135 disproportionately vulnerable to HIV in sub-Saharan Africa (SSA).<sup>1,2</sup> The Global AIDS  
136 Strategy 2021-2026 calls for equitable and equal access to HIV prevention and  
137 treatment programmes through the removal of structural barriers to reduce HIV  
138 incidence and end HIV/AIDS as a public health threat by 2030.<sup>3</sup> Delivering appropriate  
139 HIV prevention and treatment programming for these populations, and monitoring  
140 attainment of an equitable HIV response, requires robust information on key population  
141 size, HIV prevalence, the treatment cascade, and new HIV infections.

142 Key population surveys rely on respondent-driven or network sampling methods<sup>4,5</sup>  
143 because KPs are hard to reach in household survey sampling frames due to small  
144 population size, high mobility and transient living arrangements, non-disclosure of risk  
145 behaviour, and societal marginalisation.<sup>6-8</sup> Surveys are commonly restricted to or  
146 disproportionately conducted in urban areas and studies are conducted infrequently.  
147 Consequently, data are sparse and less representative of a consistent target population  
148 than standard general population sampling approaches such as national household  
149 surveys or sentinel surveillance.

150 Systematic reviews and meta-analyses of population size, HIV prevalence, or ART  
151 coverage encompassing SSA have been conducted for FSW,<sup>9,10</sup> MSM,<sup>11</sup> and PWID.<sup>12,13</sup>  
152 Studies on transgender populations in SSA have been published,<sup>14-17</sup> but data were  
153 insufficient to conduct region-level meta-analysis of HIV prevalence. Several



154 organisations have undertaken efforts to consolidate key population surveillance data,  
155 including the Joint United Nations Program on HIV/AIDS (UNAIDS) Key Population  
156 Atlas, the US Centers for Disease Control and Prevention (CDC), the Global Fund to  
157 Fight AIDS, TB, and Malaria (GF), and the Johns Hopkins University Global.HIV  
158 initiative.<sup>18–21</sup> These efforts aim to monitor the state of the epidemic, evaluate  
159 programmes, and make recommendations on key population data reporting and quality  
160 thresholds.

161 We consolidated and harmonised key population size estimates, HIV prevalence, and  
162 ART coverage data from existing databases and described data availability across  
163 countries and over time for each key population group. Using regression, we  
164 characterised the relationship between key population and total population HIV  
165 indicators and extrapolated key population size, HIV prevalence, and ART coverage  
166 data to national-level estimates for all mainland countries in SSA.

## 167 **Methods**

### 168 *Data sources and extraction*

169 We consolidated data on key population size estimates (KPSE), HIV prevalence, and  
170 ART coverage from four existing databases: data submitted for UNAIDS Global AIDS  
171 Monitoring,<sup>18</sup> UNAIDS Key Population Atlas,<sup>22</sup> the Global Fund surveillance database,  
172 and a spreadsheet maintained by the CDC's Division of Global HIV & TB Key  
173 Population Surveillance Team. For each observation, we extracted data elements about  
174 the study methodology, study location (country, subnational location), study population  
175 sex and age group, central estimate, sample size, standard error, and primary source or

176 reference (e.g. survey report). Descriptions of the databases and data extraction  
177 elements are in Supplementary Table S1 and S2.

178 Primary source documents were compiled from archives accompanying each database,  
179 the Global.HIV document repository,<sup>20</sup> and internet searches, following which we  
180 contacted UNAIDS Strategic Information advisors and other HIV programme contacts in  
181 each country to seek missing reports and other sources. Four authors (OS, RA, EG,  
182 AS-B) reviewed primary source documents to deduplicate data recorded in multiple  
183 databases, validate against primary sources, and extract missing data elements. During  
184 primary source review, we added observations in cases where additional relevant data  
185 were reported in primary sources or additional sources were ascertained that were not  
186 included in the initial databases.

187 Observations were excluded if: data were duplicated across or within databases;  
188 information about key population definition, year, or surveillance area were missing; the  
189 surveillance area was non-specific (e.g. 'urban areas' or '5 provinces'); estimates were  
190 modelled or extrapolated; or data could not be confirmed by primary source review.

#### 191 *Data processing*

192 KPSE reported as counts were converted to population proportion to facilitate  
193 comparison of population sizes across settings. Geographic boundaries from the Global  
194 Rural/Urban Mapping Project (GRUMP) and UNAIDS Naomi subnational district  
195 populations were used to derive total population denominators for subnational locations  
196 in which key population surveys were conducted.<sup>23–25</sup> Each KPSE was matched to the  
197 total population denominator by age, sex, year, and area. String matching was used to

198 assign a GRUMP or Naomi area name to each survey area, thereby matching to a total  
199 population denominator.

200 Age information was missing from nearly all key population data entries; missing data  
201 was assigned ages 15-49 years. Unless a gender was specified, all sex workers were  
202 assumed to be female, PWID assumed to be both genders, and transgender people  
203 assumed to be transwomen (TGW).

#### 204 *Classifying KPSE methods*

205 KPSE methods were classified into seven categories: two- and three-source capture-  
206 recapture (2S/3S-CRC); PLACE/programmatic mapping;<sup>26</sup> object, service, and event  
207 multipliers; and successive-sampling population size estimates (SS-PSE). Within a  
208 given survey, multiple size estimation methods were commonly conducted which were  
209 combined into a final consensus KPSE. Where possible, separate estimates for each  
210 method were extracted. For cases where only a final estimate of multiple methods was  
211 reported, two further categories were defined: “Multiple methods - empirical” or “Multiple  
212 methods - mixture”. The former contained estimates derived from multiple of the seven  
213 methods above, while the latter were derived from both empirical and non-empirical  
214 methods (enumeration, wisdom of the crowds, key informant interviews, and the Delphi  
215 method). KPSEs derived by solely non-empirical methods were excluded from  
216 regression analyses.

#### 217 *Transforming HIV prevalence and ART coverage data*

218 To facilitate cross-country comparison, key population HIV prevalence and ART  
219 coverage data were compared to estimates for HIV prevalence or ART coverage among

220 the total population estimates for a given age, sex, year, and first administrative level  
221 (henceforth 'province'). Province-level estimates of age/sex-specific HIV prevalence and  
222 ART coverage were extracted from UNAIDS Naomi subnational estimates for 2020<sup>23,24</sup>  
223 and projected back in time 2000-2021 parallel to the Spectrum<sup>27</sup> 15-49 national HIV  
224 prevalence and ART coverage trajectories.

225 KP survey ART coverage data were either self-reported or laboratory confirmed via  
226 either antiretroviral metabolite biomarker or viral load testing. Viral load suppression  
227 (VLS) observations were converted to estimates of ART coverage assuming 90% VLS  
228 among those on ART.

## 229 *Analysis*

230 To synthesise KPSE observations, we used Bayesian mixed-effects linear regression to  
231 model logit-transformed KP proportion among the urban total population aged 15-49  
232 separately for each KP. The model included fixed and random effects for study method,  
233 a spatially-correlated country effect allowing population proportions to be correlated  
234 between neighbouring countries, and a study-level random effect allowing for correlation  
235 in KP proportions observed at multiple subnational locations in the same study. The  
236 fixed effect for study method had three levels: (1) a pooled reference category of  
237 capture-recapture, SS-PSE, and multiplier methods for which KP population proportions  
238 were assumed unbiased; (2) PLACE/mapped estimates; and (3) other methods. A  
239 random effect for each method permitted method-specific deviation from the fixed effect  
240 estimates. National KPSE counts were extrapolated using estimated population  
241 proportions for urban areas, the proportion of the total population living in urban areas,<sup>28</sup>

242 and the relative abundance of KPs in urban and rural areas. Expert consensus was that  
243 KP proportions were higher in urban areas than rural areas, but no empirical population  
244 size data were available to inform an estimate. To allow for uncertainty in the ratio of  
245 rural-to-urban population proportion, we assumed a  $Beta(5,3)$  distribution which had  
246 mean ratio of 0.6 and 80% of the mass between 0.4 and 0.8.

247 For HIV prevalence, we modelled the relationship between logit-transformed KP HIV  
248 prevalence and logit total population HIV prevalence (age 15-49 years) separately for  
249 FSW and PWID, and modelled together for MSM and TGW.<sup>29</sup> Missing denominators for  
250 HIV prevalence observations were imputed using the 25<sup>th</sup>-centile of observed  
251 denominators (imputed denominators: FSW n=192; MSM n=108; PWID n=41). The  
252 number of KPs living with HIV (KPLHIV) was modelled with a beta-binomial distribution  
253 to allow overdispersion. The model included fixed effects for logit population prevalence  
254 interacted with region (ESA/WCA) to allow a different relationship between KP and total  
255 population prevalence across regions, a fixed effect for whether HIV status was self-  
256 reported or via HIV diagnostic tests, and country-level and study-level random effects.  
257 An additional fixed effect for KP was included in the MSM-TGW model. Country-level  
258 random effects were spatially correlated. Studies that omitted whether HIV prevalence  
259 was self-reported or diagnostically confirmed were assumed to be self-reported.

260 Logit-transformed KP ART coverage was modelled as a function of logit total population  
261 ART coverage in the same year, age group, and province, analogously to HIV  
262 prevalence. For each key population, missing denominators were imputed using the  
263 25<sup>th</sup>-centile of known denominators (imputed denominators: FSW n=44; MSM n=23;

264 PWID n=28). The observed number on ART was modelled with a beta-binomial  
265 distribution with fixed effect terms for logit population ART coverage interacted with  
266 region, spatially correlated country-level random effects and study-level random effects.

267 We conducted sensitivity analyses which included a fixed effect for diagnostically  
268 confirmed or self-reported ART usage, with diagnostically confirmed as the reference  
269 category. For all three models (KPSE, prevalence, ART coverage), in sensitivity  
270 analysis we used ages 15-29 as the matched total population denominator for MSM and  
271 TGW regression analyses reflecting the young median age captured in MSM and TGW  
272 surveys.<sup>30,31</sup>

273 We combined national KPSE, HIV prevalence, and ART coverage estimates to  
274 calculate the number of KPLHIV and on ART. 95% uncertainty ranges were generated  
275 by combining 1000 posterior samples for each outcome. KPLHIV estimates were  
276 compared with 2021 national UNAIDS estimates<sup>32</sup> for age 15-49 years to calculate the  
277 proportion of PLHIV who were members of each KP.

278 Data were extracted, deduplicated, and validated in Microsoft Excel. Statistical analyses  
279 were conducted in R version 4.1.2 using the R-INLA package (v21.12.21.2). Further  
280 methods information is available in Supplementary Text S2.

### 281 *Role of the funding source*

282 Authors KS, SA-G, MB, and MM are employees of UNAIDS and contributed to the  
283 conceptualisation of the study, interpretation of results, and editing the manuscript. All

284 authors had access to all study data. OS and JWE accept responsibility to submit for  
285 publication.

## 286 **Results**

### 287 *Key population survey data availability*

288 5014 KPSE conducted between 2010 to 2021 were compiled (Table 1; Supplementary  
289 Table S1). Following data cleaning, primary source review, and area matching, 1449  
290 observations were extracted from 90 studies (Figure 1). Data were most available for  
291 FSW (n=657, data from 30/38 countries), followed by MSM (n=445, 27/38 countries),  
292 PWID (n=274, 16/38 countries), and TG (n=73, 9/38 countries). No TG KPSE were  
293 disaggregated by gender.

294 KPSE studies have become more common since 2010 (Figure 2). In 2016-2018, 23  
295 FSW, 23 MSM, 12 PWID, and 6 TG PSE studies were recorded, increasing from 15, 12,  
296 6, and 0, respectively, in 2010-12. The proportion of KPSE derived from empirical  
297 methods increased from 71% (22/31) in 2010-2012 to 90% in 2019-2021 (53/59) (Figure  
298 2). Seventy percent (310/445) of MSM population proportion estimates were below 1%  
299 (68% [200/294] in ESA and 73% [110/151] in WCA; Supplementary Figure S1).

300 Data consolidation identified 3944 KP HIV prevalence estimates (Table 1;  
301 Supplementary Table S1), from which 1181 were extracted from 159 studies after  
302 deduplication, source review, and area matching. Denominators were reported for 88%  
303 (1039/1181) of observations. Most data were available for FSW (n=568, 33/38  
304 countries), followed by MSM (n=359, 30/38 countries), PWID (n=159, 17/38 countries),

305 TGW (n=87, 20/38 countries), and TGM (n=8, 4/38 countries). Most studies reported  
306 diagnostically confirmed HIV prevalence estimates (89%; 142/159).

307 For ART coverage, data consolidation identified 607 initial observations (Table 1;  
308 Supplementary Table S1). Following data processing, 242 observations for KP ART  
309 coverage were extracted from 72 studies. Denominators were available for 90%  
310 (216/242). Data were most available for FSW (n=129, 20/38 countries), followed by  
311 MSM (n=78, 17/38), PWID (n=19, 6/38 countries), and TGW (n=16, 10/38 countries).  
312 Around half of studies reported laboratory-confirmed treatment status (46%; 33/72).

### 313 *Key population size estimates*

314 Across SSA countries, a median of 1.44% of urban women aged 15-49 years were  
315 FSW (interquartile range [IQR] 0.83-1.89%), 0.60% of men had sex with men (IQR 0.53-  
316 0.90%), and 0.16% of adults injected drugs (IQR 0.14-0.24%; Figure 3, Supplementary  
317 Table S4). Data were insufficient to estimate transgender population proportions. In  
318 sensitivity analysis using age 15-29 years as denominator for MSM KPSEs, the  
319 proportion increased to 1.00% (IQR 0.82-1.40%) of men aged 15-29 (Supplementary  
320 Figure S2).

321 Urban PSE proportions for FSW were similar in ESA and WCA (ESA: 1.46%, IQR 1.13-  
322 1.92%; WCA 1.43%, IQR 0.83-1.64%). MSM proportions were lower in WCA than ESA  
323 (ESA: 0.86%, IQR 0.66-1.01%; WCA: 0.55%, IQR 0.49-0.59%). Conversely, PWID  
324 proportions were lower in ESA (0.14%, IQR 0.13-0.17%) than in WCA (0.20%, IQR  
325 0.14-0.29%), but PWID KPSE data in ESA were sparse. Only two southern African



326 countries had PWID KPSE data, and most data points in ESA were from district-level  
327 mapping studies in Kenya and Uganda.

328 Relative to empirical methods, estimates derived from PLACE and mapping studies for  
329 PWID were lower (OR 0.35, 95%CI 0.13-0.88), and marginally lower for MSM (OR 0.65,  
330 95%CI 0.36-1.33), but not for FSW (OR 1.12, 95%CI 0.48-2.60) (Table 2).

### 331 *HIV prevalence among key populations*

332 Most KP HIV prevalence observations were higher than area-matched total population  
333 HIV prevalence (FSW 95% (492/518); MSM 84% (259/310); PWID 81% (105/130); TGW  
334 84% (73/87)). Key population HIV prevalence in ESA was more strongly correlated with  
335 matched total population HIV prevalence than in WCA (ESA: FSW  $R^2=0.40$ , MSM  
336  $R^2=0.44$ , PWID  $R^2=0.09$ , TGW  $R^2=0.48$ ; WCA: FSW  $R^2=0.34$ , MSM  $R^2=0.12$ , PWID  
337  $R^2=0.31$ , TGW  $R^2=0.31$ ). Relative HIV prevalence differentials between KP and total  
338 population were larger when population prevalence was lower (Figure 4). For example,  
339 in ESA, 1% total population prevalence corresponded to a 20% predicted prevalence  
340 among FSW (95% prediction range 7-45%), 8% among MSM (3-21%), 3% among  
341 PWID (1-7%), and 10% among TGW (3-27%). Fifteen percent population HIV  
342 prevalence corresponded to FSW HIV prevalence of 41% (18-69%), MSM prevalence of  
343 19% (8-40%), PWID prevalence of 36% (26-50%), and TGW prevalence of 24% (10-  
344 47%). In WCA, relative patterns were similar, but KP HIV prevalence varied less with  
345 total population HIV prevalence than in ESA. Supplementary Table S5 reports country-  
346 specific estimates.

347 ART coverage among FSW and MSM ART coverage was strongly correlated with  
348 population ART coverage (logit-scale  $R^2=0.67$  and  $0.73$ , respectively), but less  
349 correlated among PWID ( $R^2=0.33$ ; Figure 5). In models not adjusted for ART  
350 measurement method (lab-confirmed versus self-reported), at 40% population ART  
351 coverage, predicted FSW ART coverage was 8% higher (95% prediction range 0-18%),  
352 MSM ART coverage was 7% lower (-3-15%), and in PWID 4% lower (-13-18%). At 80%  
353 population coverage, predicted FSW ART coverage was 10% lower (3-18%), in MSM  
354 19% lower (7-32%), and in PWID 21% lower (6-37%). Supplementary Table S6 reports  
355 country-specific estimates.

356 In sensitivity analysis including a fixed effect for ART measurement method, self-  
357 reported ART was significantly higher than lab-confirmed ART in FSW and MSM, but  
358 not in PWID (FSW: OR 1.68, 95%CI 1.00-2.86; MSM: OR 2.16, 1.07-4.39; PWID OR  
359 2.22, 0.63-7.55; Supplementary Table S3). Assuming lab-confirmed ART coverage was  
360 unbiased reduced predicted key population ART coverage (Supplementary Figure S3).  
361 When assuming surveys represented MSM aged 15-29 years, the gap between total  
362 male population and MSM ART coverage was smaller. For example, 80% total  
363 population ART coverage corresponded to 66% MSM ART coverage when using 15-29  
364 year reference age compared to 61% when using age 15-49 years (Supplementary  
365 Figure S6).

### 366 *Disproportionate HIV burden among key populations in SSA*

367 Across SSA, FSW, MSM and PWID combined were 1.5% (95%CI 1.1-2.0%) of the  
368 population aged 15-49 years, but 6.3% (4.8-8.5%) of PLHIV. In ESA this was 4.5% (3.3-

369 6.4%) of PLHIV compared to 1.2% (0.9-1.8%) of the population and, in WCA, 14.2%  
370 (9.9-21.3%) of PLHIV compared to 1.6% (1.2-2.5%) of the population. FSW were 4.1%  
371 (2.8-5.9%) of all PLHIV in SSA (790,000 PLHIV; 540,000-1,100,000), MSM were 1.5%  
372 (0.9-2.7%) or 300,000 PLHIV (180,000-520,000), and PWID were 0.6% (0.3-1.3%) or  
373 120,000 PLHIV (60,000-250,000) (Figure 6).

## 374 **Discussion**

375 Consolidated key population survey data reinforce that KPs are disproportionately  
376 vulnerable to HIV in sub-Saharan Africa. We estimated there are 3.7m FSW, 1.9m  
377 MSM, and 1.4m PWID in SSA who require comprehensive HIV prevention or treatment  
378 services. HIV prevalence was 18% among FSW, 13% among MSM, 6% among PWID,  
379 and 19% among TGW, 3.6, 4.8, 1.5, and 3.8 times higher than population prevalence,  
380 respectively, with larger relative differences when population prevalence was lower.  
381 Together, FSW, MSM, and PWID constituted 1.5% of the adult population in SSA but  
382 6.3% of PLHIV. ART coverage among KPs increased consistently with total population  
383 coverage, but at high levels of ART coverage, coverage among KPs lagged somewhat  
384 behind. However, there was wide uncertainty about estimates at continental level and  
385 within countries.

386 This exercise highlighted major data gaps and challenges interpreting existing data.  
387 Across the twelve combinations of four KPs and three indicators analysed here, we  
388 sourced a median of five combinations in each country. Only Kenya and Mozambique  
389 had data for all twelve, and six countries lacked any key population data. These gaps  
390 impede evaluation of the Global AIDS Strategy 2021-26 on progress towards equitable

391 and equal access to HIV services. In settings with lacking or limited data, extrapolated  
392 estimates should be considered a foundation with which to target future surveillance,  
393 stimulate in-country data use and review processes, and estimate HIV epidemic  
394 indicators. Most countries had some surveillance for FSW; future efforts should  
395 especially focus on strengthening surveillance for MSM, PWID, and TG populations.

396 Previous key population reviews and meta-analyses<sup>10,13,14,33</sup> relied on systematic  
397 searches of peer-reviewed literature. Our initial sources were existing databases,  
398 primarily populated by in-country surveillance teams or implementing organisations.  
399 This resulted in inclusion of a larger grey literature body, such as survey reports, which  
400 is poorly indexed by peer-reviewed databases.<sup>29</sup> However, many observations (12% of  
401 PSE data, 26% of HIV prevalence data, 16% of ART coverage data), could not be  
402 sourced and were excluded from this analysis, which in some countries excluded the  
403 only available data. Strong data use for general population HIV estimates in SSA has  
404 promoted high-quality comparable surveillance methods, documentation, and  
405 dissemination. The absence of such systems for key population data has led to weaker  
406 sourcing, ownership, dissemination, and retention of these data which limits more  
407 complex epidemiological analyses. This next step for this project is to produce data  
408 workbooks with HIV surveillance teams in each country to review and provide context  
409 for existing data; identify missing sources and add new data; and create a foundation for  
410 KP surveillance data and strategic information derived from them to become a core  
411 component of the UNAIDS-supported HIV estimates process.

412 That FSW, MSM, and PWID constitute 6.3% of SSA PLHIV aged 15-49 does not  
413 directly relate to the distribution of new infections across population groups or future  
414 incidence patterns. UNAIDS estimates that key populations comprise 25% of new  
415 infections in 2021 in SSA.<sup>32</sup> Moreover, mathematical modelling has highlighted that  
416 preventing and treating HIV among key populations has larger impact on reducing  
417 population incidence due to network effects of averting further onward transmission.<sup>34,35</sup>  
418 Indicators and modelling that capture these impacts are a better basis for intervention  
419 prioritisation than solely burden estimates.<sup>36,37</sup>

420 Population size data measured in the same population at different times or the with  
421 multiple methods were highly heterogenous. This resulted in very large uncertainty  
422 ranges around modelled estimates for population size and PLHIV spanning five-fold  
423 differences or greater, even in countries with recent size estimates using modern  
424 empirical methods. Large uncertainty ranges were consistent with findings of others  
425 who have statistically summarised and extrapolated PSE from multiple sources.<sup>38-41</sup>  
426 Virtually all KPSE data were collected among selected urban populations, and we  
427 lacked data from any setting to empirically inform plausible rural-urban population  
428 proportions. Such heterogeneity for KPs size may limit the utility of these data for  
429 establishing meaningful programmatic targets for those in need of HIV prevention,  
430 testing, and treatment services, or to monitor temporal trends. More sophisticated  
431 methods have been developed to pool multiple estimates of population size and  
432 extrapolate to district-level.<sup>41-44</sup>

433 Our median PWID population proportion of 0.16% across SSA countries was lower than  
434 estimates from Degenhardt et al. of 0.28%, primarily reflecting exclusion of SSA island  
435 states with concentrated HIV epidemics and higher PWID proportions from this  
436 analysis.<sup>13</sup> Meta-analysis by Stannah et al.<sup>11</sup> of studies conducted up to 2016 estimated  
437 that MSM ART coverage in SSA is 24%, lower than estimates from this analysis which  
438 may represent programmatic scale-up amongst MSM in recent years. This analysis was  
439 consistent with Hessou et al.<sup>33</sup> in identifying heterogeneous HIV prevalence ratios  
440 between the total population and MSM, particularly in WCA where HIV burden in  
441 neighbouring countries can vary considerably.

442 In our analysis, 70% percent of MSM KPSE observations and 34 of 38 modelled urban  
443 MSM estimates from this analysis were below 1%, which UNAIDS and WHO  
444 recommended in 2016 as a minimum MSM population proportion.<sup>19</sup> The minimum  
445 threshold was specified to ensure that MSM were not overlooked due to lack of data.  
446 The difference may arise because empirical PSE methods focus on enumerating visible  
447 MSM with higher HIV vulnerability, rather the number men who would have sex with  
448 men if able, which may lie around 1% or greater. Our analysis included many empirical  
449 PSE studies conducted since the 2016 guidance, and the threshold should be  
450 reconsidered with the wider range of data now available, aligned with risk-based  
451 approaches to quantifying sex work and injecting drug use.

452 Considering the intrinsic challenges robustly surveying hard-to-reach populations and  
453 the ultimate purpose of surveillance to guide programmatic response, incorporating key  
454 population programme data within key population estimates should be a priority to

455 support the production of longitudinal estimates and subnational estimates.<sup>44</sup>

456 Triangulating routine HIV testing and treatment data with biobehavioural survey data will  
457 be required to address programmatic double counting, coverage of key population-  
458 specific services, and accounting for linkage to care in the estimation of ART coverage  
459 and viral load suppression.<sup>7,45,46</sup> Future surveillance will also need to move beyond  
460 strictly defined key population definitions to reflect individuals in overlapping risk  
461 environments including cis-MSM and transwomen who sell sex, and FSW and MSM  
462 who inject drugs.<sup>47-49</sup>

463 Several limitations should be considered when interpreting these estimates. Firstly,  
464 surveys used a range of key population definitions and inclusion criteria which limited  
465 comparability. Second, defining appropriate total population denominators to calculate  
466 KPSE proportions for surveys without explicitly geographic sampling frames is  
467 challenging, and the urban extents derived from the Global Rural/Urban Mapping  
468 Project may not accurately reflect the catchment population for a given survey,  
469 particularly given the mobility of key populations.<sup>50</sup> This likely exacerbates the observed  
470 heterogeneity in KPSE proportions (Figure 3B), and is a major limitation for  
471 extrapolating KPSE proportions for programmatic planning. Going forward, inclusion of  
472 population catchments with KP surveillance reports will improve future data use. Third,  
473 sample size or standard errors were omitted from most population size data entries and  
474 all size estimates were equally weighted within the model. In some cases, sample sizes  
475 or standard error estimates could be recovered with further review of primary sources.  
476 Fourth, data were insufficient and too heterogeneous to estimate time trends in  
477 population proportions, HIV prevalence, or ART coverage. Application of standardised

478 KP survey methodology in consistent locations will improve monitoring of trends. Finally,  
479 regression models for KP ART coverage that included measurement method estimated  
480 lower odds of ART usage when it was laboratory confirmed versus self-reported.  
481 However, this estimate was inconsistent with studies comparing self-report and lab-  
482 confirmed ART status in the same study population, which consistently find that self-  
483 report understated true ART usage among KP samples<sup>51–54</sup> and general population  
484 samples.<sup>55–57</sup> Therefore, we did not incorporate systematic difference by method into  
485 modelled ART coverage estimates, but this adds uncertainty to our assessment of ART  
486 coverage.

487 In conclusion, key populations across sub-Saharan Africa experience disproportionate  
488 HIV burden and have somewhat lower antiretroviral treatment coverage. Despite  
489 increasing focus on key populations in sub-Saharan Africa in AIDS strategies, estimates  
490 that may be insufficiently precise to plan and monitor programmes and limited ability to  
491 evaluate trends due to large heterogeneity in surveillance data. Consolidated KP data  
492 and synthesised estimates provide a basis for key population programming in all  
493 countries, including those with limited locally available data. However, future effort  
494 should focus on integrating and strengthening key population surveillance and routine  
495 data within national HIV surveillance systems to plan and monitor more effective HIV  
496 responses.



497 **Authors' contributions**

498 OS, KS, MM and JWE conceptualised the study. KS, SAG, JZ, AA-Q, KW, LD curated  
499 key population survey databases. OS, RA, EG, AS-B reviewed primary source  
500 documents, deduplicated data, and extracted data. OS analysed the data and wrote the  
501 first draft of the manuscript. All authors contributed to interpretation of results and edited  
502 the manuscript for intellectual content. All authors read and approved the final version of  
503 the manuscript for submission.

504 **Acknowledgments**

505 This research was supported by UNAIDS and the MRC Centre for Global Infectious  
506 Disease Analysis (reference MR/R015600/1), jointly funded by the UK Medical  
507 Research Council (MRC) and the UK Foreign, Commonwealth & Development Office  
508 (FCDO), under the MRC/FCDO Concordat agreement and is also part of the EDCTP2  
509 programme supported by the European Union.

## 510 References

- 511 1. UNAIDS. *The Gap Report*. (2014).
- 512 2. Garnett, G. P. Reductions in HIV incidence are likely to increase the importance  
513 of key population programmes for HIV control in sub-Saharan Africa. *J. Int. AIDS*  
514 *Soc.* **24**, e25727 (2021).
- 515 3. United Nations. End Inequalities. End AIDS. Global AIDS Strategy 2021-2026 |  
516 UNAIDS. [https://www.unaids.org/en/resources/documents/2021/2021-2026-](https://www.unaids.org/en/resources/documents/2021/2021-2026-global-AIDS-strategy)  
517 [global-AIDS-strategy](https://www.unaids.org/en/resources/documents/2021/2021-2026-global-AIDS-strategy).
- 518 4. Baneshi, M. R., Rastegari, A. & Haghdoost, A. A. Review of Size Estimation  
519 Methods. in *Advances in Experimental Medicine and Biology* vol. 1333 1–15  
520 (Springer, 2021).
- 521 5. Abdul-Quader, A. S., Baughman, A. L. & Hladik, W. Estimating the size of key  
522 populations: Current status and future possibilities. *Current Opinion in HIV and*  
523 *AIDS* (2014) doi:10.1097/COH.000000000000041.
- 524 6. Jin, H., Restar, A. & Beyrer, C. Overview of the epidemiological conditions of HIV  
525 among key populations in Africa. *Journal of the International AIDS Society* vol. 24  
526 (2021).
- 527 7. Hakim, A. J. *et al.* Gaps and opportunities: measuring the key population cascade  
528 through surveys and services to guide the HIV response. *J. Int. AIDS Soc.* **21**,  
529 e25119 (2018).
- 530 8. Sabin, K. *et al.* Availability and quality of size estimations of female sex workers,  
531 men who have sex with men, people who inject drugs and transgender women in  
532 low- and middle-income countries. *PLoS One* **11**, (2016).

- 533 9. Atuhaire, L., Adetokunboh, O., Shumba, C. & Nyasulu, P. S. Effect of community-  
534 based interventions targeting female sex workers along the HIV care cascade in  
535 sub-Saharan Africa: a systematic review and meta-analysis. *Syst. Rev.* (2021)  
536 doi:10.1186/s13643-021-01688-4.
- 537 10. Baral, S. *et al.* Burden of HIV among female sex workers in low-income and  
538 middle-income countries: A systematic review and meta-analysis. *Lancet Infect.*  
539 *Dis.* (2012) doi:10.1016/S1473-3099(12)70066-X.
- 540 11. Stannah, J. *et al.* HIV testing and engagement with the HIV treatment cascade  
541 among men who have sex with men in Africa: a systematic review and meta-  
542 analysis. *Lancet HIV* (2019) doi:10.1016/S2352-3018(19)30239-5.
- 543 12. Mathers, B. M. *et al.* Global epidemiology of injecting drug use and HIV among  
544 people who inject drugs: a systematic review. *Lancet* (2008) doi:10.1016/S0140-  
545 6736(08)61311-2.
- 546 13. Degenhardt, L. *et al.* Global prevalence of injecting drug use and  
547 sociodemographic characteristics and prevalence of HIV, HBV, and HCV in  
548 people who inject drugs: a multistage systematic review. *Lancet Glob. Heal.* **5**,  
549 e1192–e1207 (2017).
- 550 14. Stutterheim, S. E., Van Dijk, M., Wang, H. & Jonas, K. J. The worldwide burden of  
551 HIV in transgender individuals: An updated systematic review and meta-analysis.  
552 *PLoS ONE* vol. 16 (2021).
- 553 15. King, R. *et al.* HIV and transgender women in Kampala, Uganda—Double  
554 Jeopardy. *Cult. Heal. Sex.* **21**, 727–740 (2019).
- 555 16. Stevens, O. Estimating key population size, HIV prevalence, and ART coverage

- 556 for sub-Saharan Africa at the national level. (2022).
- 557 17. Mujugira, A. *et al.* “You are not a man”: a multi-method study of trans stigma and  
558 risk of HIV and sexually transmitted infections among trans men in Uganda. *J. Int.*  
559 *AIDS Soc.* **24**, (2021).
- 560 18. UNAIDS. Global AIDS Monitoring 2022. [https://www.unaids.org/en/global-aids-](https://www.unaids.org/en/global-aids-monitoring)  
561 [monitoring](https://www.unaids.org/en/global-aids-monitoring) (2022).
- 562 19. UNAIDS & WHO. *Recommended population size estimates for men who have*  
563 *sex with men.* (2020).
- 564 20. Rao, A. *et al.* HIV-related data among key populations to inform evidence-based  
565 responses: protocol of a systematic review. *Syst. Rev.* (2018).
- 566 21. UNAIDS, FHI 360, WHO, CDC & PEPFAR. *Biobehavioural Survey Guidelines For*  
567 *Populations At Risk For HIV.* (2017).
- 568 22. UNAIDS. Key Populations Atlas. <https://kpatlas.unaids.org/dashboard>.
- 569 23. UNAIDS. HIV sub-national estimates viewer. <https://naomi-spectrum.unaids.org/>  
570 (2021).
- 571 24. Eaton, J. W. *et al.* Naomi: a new modelling tool for estimating HIV epidemic  
572 indicators at the district level in sub-Saharan Africa. *J. Int. AIDS Soc.* (2021)  
573 doi:10.1002/jia2.25788.
- 574 25. Global Rural-Urban Mapping Project (GRUMP). Urban boundaries.  
575 <https://sedac.ciesin.columbia.edu/data/collection/grump-v1>.
- 576 26. Weir, S. *Priorities for Local AIDS Control Efforts (PLACE).*  
577 [https://www.measureevaluation.org/resources/publications/ms-19-](https://www.measureevaluation.org/resources/publications/ms-19-173/at_download/document)  
578 [173/at\\_download/document](https://www.measureevaluation.org/resources/publications/ms-19-173/at_download/document) (2019).

- 579 27. Eaton, J. W. *et al.* The Estimation and Projection Package Age-Sex Model and  
580 the r-hybrid model: New tools for estimating HIV incidence trends in sub-Saharan  
581 Africa. *AIDS* **33**, S235–S244 (2019).
- 582 28. Nations, U., of Economic, D., Affairs, S. & Division, P. *World Urbanization*  
583 *Prospects The 2018 Revision*. (2018).
- 584 29. Stevens, O. HIV prevalence in transgender populations and cisgender men who  
585 have sex with men in sub-Saharan Africa 2010-2021: a meta-analysis. (2022).
- 586 30. Johnson, L. F., Mulongeni, P., Marr, A. & Lane, T. Age bias in survey sampling  
587 and implications for estimating HIV prevalence in men who have sex with men:  
588 Insights from mathematical modelling. *Epidemiol. Infect.* **146**, 1036–1042 (2018).
- 589 31. Stannah, J. *et al.* HIV testing and engagement with the HIV treatment cascade  
590 among men who have sex with men in Africa: a systematic review and meta-  
591 analysis. *Lancet HIV* **6**, e769–e787 (2019).
- 592 32. UNAIDS. Global AIDS Update.  
593 <https://www.unaids.org/en/resources/documents/2021/2021-global-aids-update>  
594 (2021).
- 595 33. Hessou, P. H. S. *et al.* Comparison of the prevalence rates of HIV infection  
596 between men who have sex with men (MSM) and men in the general population  
597 in sub-Saharan Africa: A systematic review and meta-analysis. *BMC Public*  
598 *Health* **19**, 1634 (2019).
- 599 34. Stone, J. *et al.* Estimating the contribution of key populations towards HIV  
600 transmission in South Africa. *J. Int. AIDS Soc.* **24**, e25650 (2021).
- 601 35. Mishra, S., Pickles, M., Blanchard, J. F., Moses, S. & Boily, M. C. Distinguishing

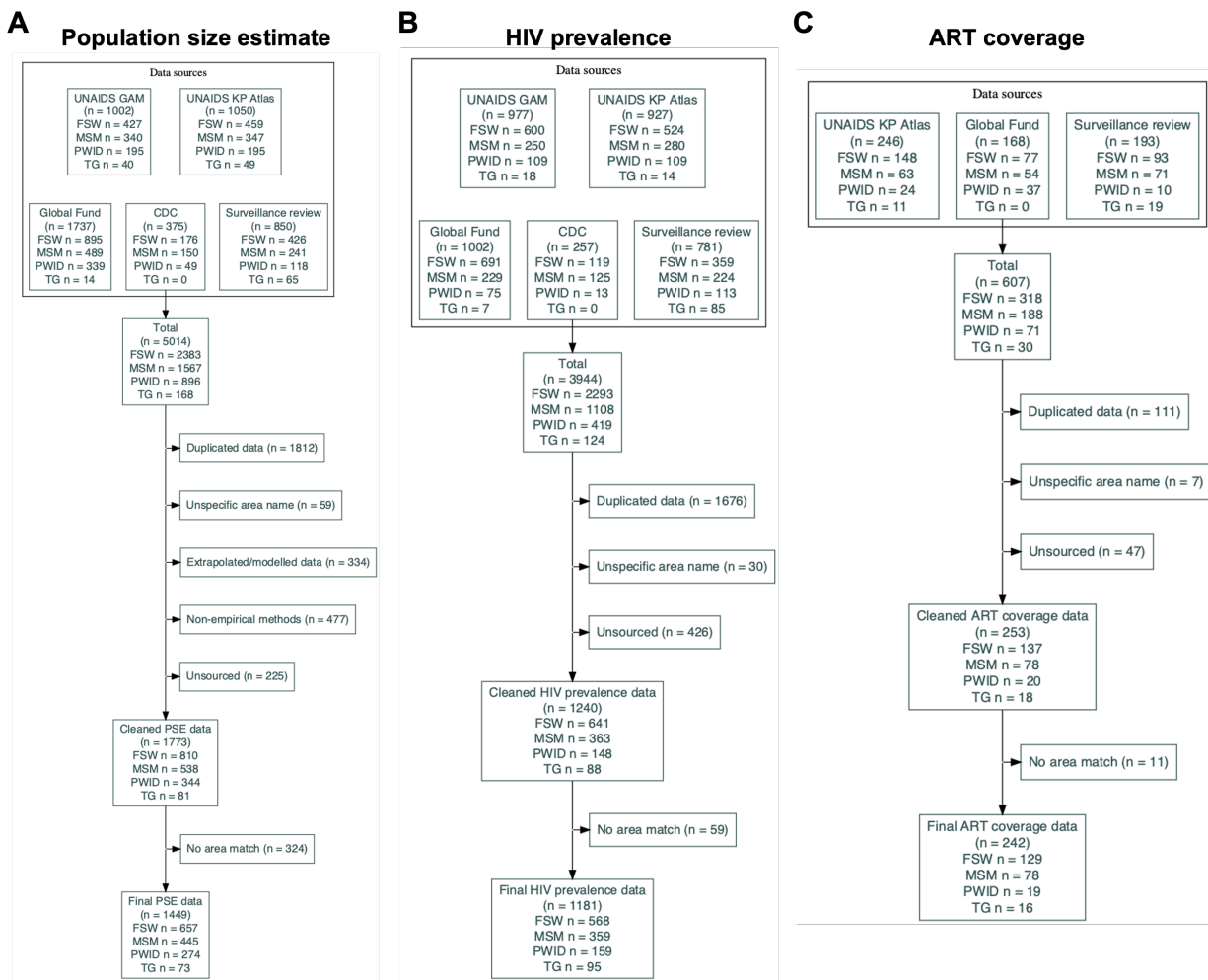
- 602 sources of HIV transmission from the distribution of newly acquired HIV infections:  
603 Why is it important for HIV prevention planning? *Sex. Transm. Infect.* **90**, 19–25  
604 (2014).
- 605 36. Mishra, S. *et al.* Validation of the modes of transmission model as a tool to  
606 prioritize HIV prevention targets: A comparative modelling analysis. *PLoS One* **9**,  
607 (2014).
- 608 37. Shubber, Z., Mishra, S., Vesga, J. F. & Boily, M. C. The HIV modes of  
609 transmission model: A systematic review of its findings and adherence to  
610 guidelines. *Journal of the International AIDS Society* vol. 17 (2014).
- 611 38. Edwards, J. K. *et al.* Estimating Sizes of Key Populations at the National Level:  
612 Considerations for Study Design and Analysis. *Epidemiology* **29**, 795–803 (2018).
- 613 39. Niu, X. M. *et al.* Using factor analyses to estimate the number of female sex  
614 workers across Malawi from multiple regional sources. *Ann. Epidemiol.* **55**, 34–40  
615 (2021).
- 616 40. Fearon, E. *et al.* Estimating the Population Size of Female Sex Workers in  
617 Zimbabwe: Comparison of Estimates Obtained Using Different Methods in Twenty  
618 Sites and Development of a National-Level Estimate. *J. Acquir. Immune Defic.*  
619 *Syndr.* **85**, 30–38 (2020).
- 620 41. Datta, A. *et al.* Bayesian Estimation of MSM Population Size in Côte d’Ivoire. *Stat.*  
621 *Public Policy* **6**, 1–13 (2019).
- 622 42. Wesson, P. D., Mirzazadeh, A. & McFarland, W. A Bayesian approach to  
623 synthesize estimates of the size of hidden populations: The anchored multiplier.  
624 *Int. J. Epidemiol.* **47**, 1636–1644 (2018).

- 625 43. Fellows, I. Consensus Estimate Calculator.  
626 [https://epiapps.com/shiny/app\\_direct/shinyproxy\\_combine\\_estimates/](https://epiapps.com/shiny/app_direct/shinyproxy_combine_estimates/).
- 627 44. USAID. *Namibia Small Area Estimation: Final Report Small Area Estimation of*  
628 *Key Population Sizes in Namibia: Final Report.* (2021).
- 629 45. Scheibe, A. P. Still left behind: Using programmatic data to assess harm reduction  
630 service coverage and HIV treatment cascades for people who inject drugs in five  
631 South African cities. in *IAS* (2019).
- 632 46. Scheibe, A. *et al.* Modelling the UNAIDS 90-90-90 treatment cascade for gay,  
633 bisexual and other men who have sex with men in South Africa: using the findings  
634 of a data triangulation process to map a way forward. *AIDS Behav.* **22**, 853–859  
635 (2018).
- 636 47. Syvertsen, J. L., Agot, K., Ohaga, S. & Bazzi, A. R. You can't do this job when  
637 you are sober: Heroin use among female sex workers and the need for  
638 comprehensive drug treatment programming in Kenya. *Drug Alcohol Depend.*  
639 **194**, 495–499 (2019).
- 640 48. Poteat, T. *et al.* HIV prevalence and behavioral and psychosocial factors among  
641 transgender women and cisgender men who have sex with men in 8 African  
642 countries: A cross-sectional analysis. *PLoS Med.* (2017)  
643 doi:10.1371/journal.pmed.1002422.
- 644 49. Baral, S. D. *et al.* Worldwide burden of HIV in transgender women: A systematic  
645 review and meta-analysis. *Lancet Infect. Dis.* **13**, 214–222 (2013).
- 646 50. Davey, C. *et al.* Mobility and sex work: why, where, when? A typology of female-  
647 sex-worker mobility in Zimbabwe. *Soc. Sci. Med.* **220**, 322–330 (2019).

- 648 51. Hakim, A. J. *et al.* An urgent need for HIV testing among men who have sex with  
649 men and transgender women in Bamako, Mali: Low awareness of HIV infection  
650 and viral suppression among those living with HIV. *PLoS One* **13**, 1–14 (2018).
- 651 52. Smith, A. D. *et al.* HIV burden and correlates of infection among transfeminine  
652 people and cisgender men who have sex with men in Nairobi, Kenya: an  
653 observational study. *Lancet HIV* **8**, e274–e283 (2021).
- 654 53. Fogel, J. M. *et al.* Accuracy of Self-Reported HIV Status Among African Men and  
655 Transgender Women Who Have Sex with Men Who were Screened for  
656 Participation in a Research Study: HPTN 075. *AIDS Behav.* **23**, 289–294 (2019).
- 657 54. Cowan, F. M. *et al.* The HIV care cascade among female sex workers in  
658 Zimbabwe: Results of a population-based survey from the sisters antiretroviral  
659 therapy programme for prevention of HIV, an integrated response (SAPPH-IRe)  
660 trial. *J. Acquir. Immune Defic. Syndr.* **74**, 375–382 (2017).
- 661 55. Grabowski, M. K. *et al.* The validity of self-reported antiretroviral use in persons  
662 living with HIV: A population-based study. *AIDS* **32**, 363–369 (2018).
- 663 56. Kim, A. A. *et al.* Undisclosed HIV infection and antiretroviral therapy use in the  
664 Kenya AIDS indicator survey 2012: Relevance to national targets for HIV  
665 diagnosis and treatment. in *AIDS* vol. 30 2685–2695 (Lippincott Williams and  
666 Wilkins, 2016).
- 667 57. Huerga, H. *et al.* A comparison of self-report and antiretroviral detection to inform  
668 estimates of antiretroviral therapy coverage, viral load suppression and HIV  
669 incidence in Kwazulu-Natal, South Africa. *BMC Infect. Dis.* **17**, (2017).
- 670



671 **Figures and Tables**



672

673 **Figure 1:** Flow diagrammes describing identified data for (A) key population size

674 estimates, (B) HIV prevalence data, and (C) key population ART coverage. Each *n*

675 represents number of population/method/location observations, with potentially

676 observations for multiple subnational locations from the same study in same country.

677 ART: Antiretroviral coverage; FSW: Female sex worker; MSM: Men who have sex with

678 men; PWID: People who inject drugs; TG: Transgender people; KP: Key Population;

679 GAM: Global AIDS Monitoring; CDC: US Centers for Disease Control and Prevention;

680 PSE: Population size estimate.

681

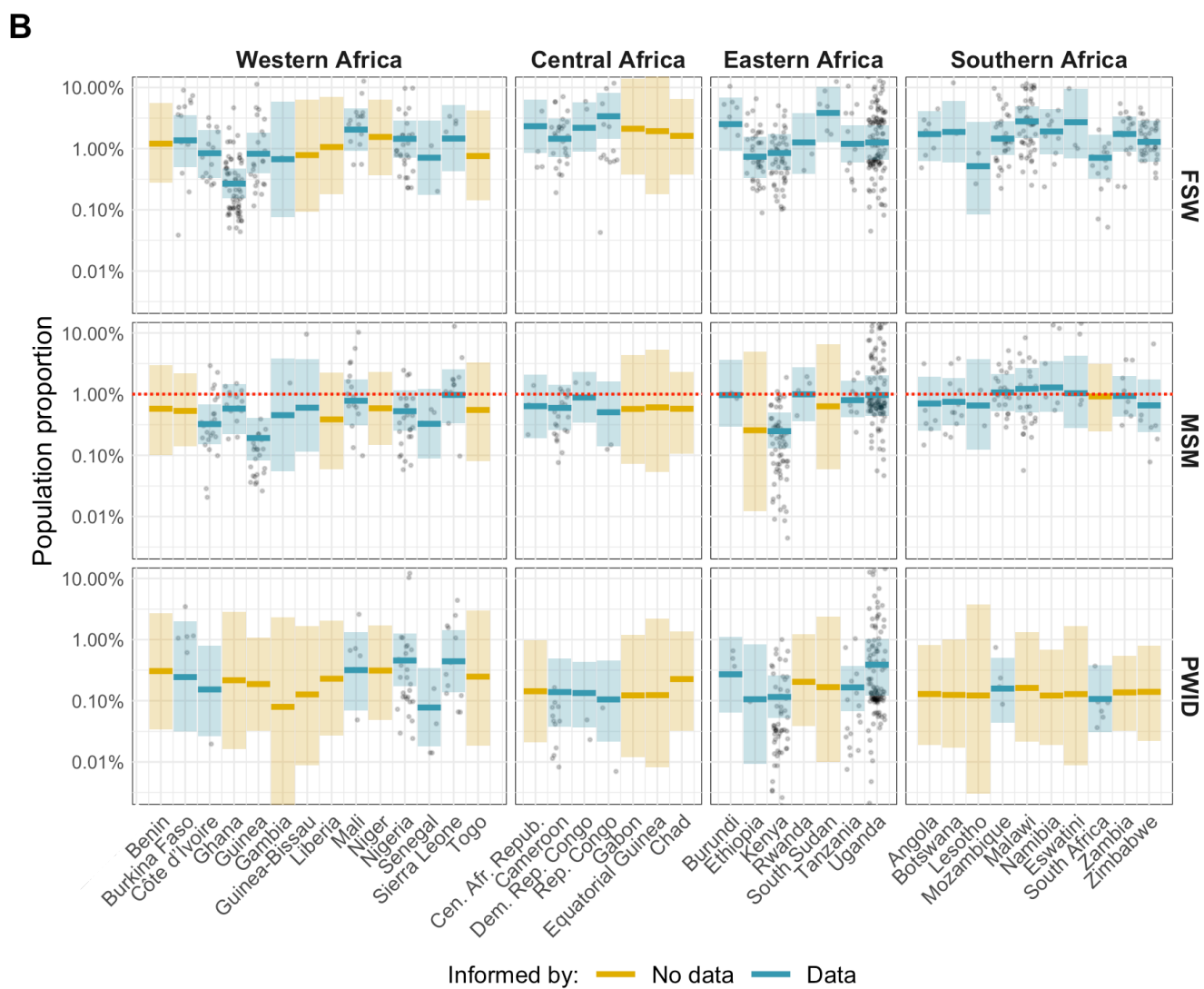
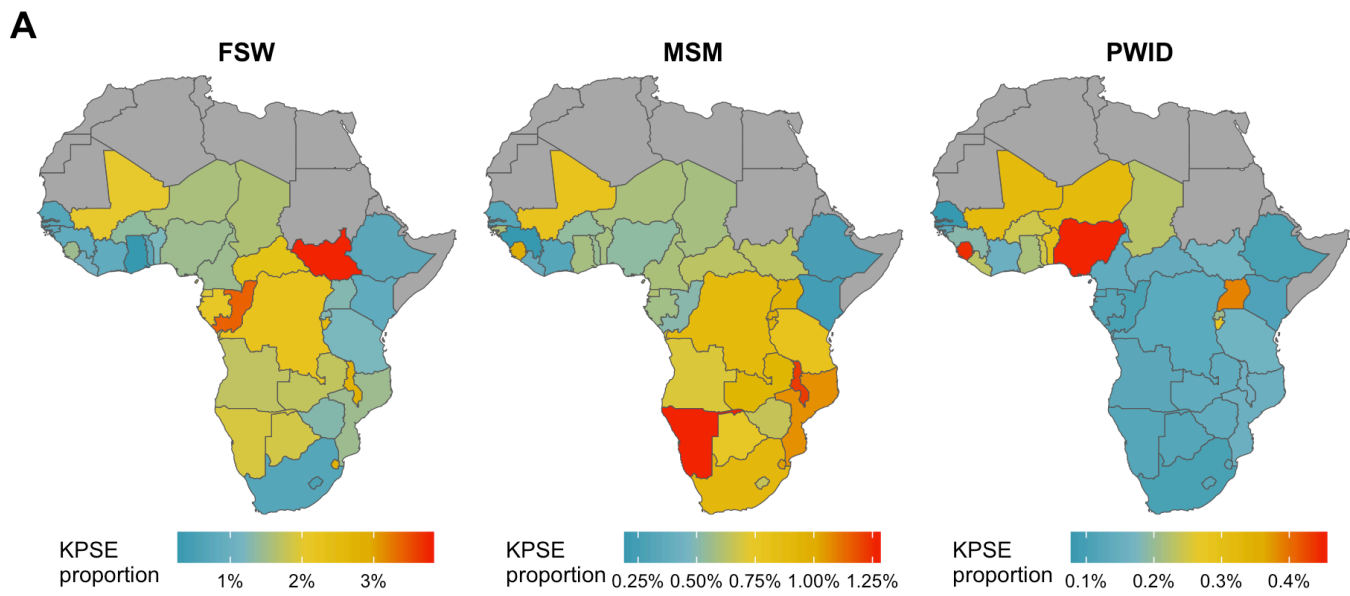
Region	KP	KPSE		HIV prevalence		ART coverage	
		Data points	Countries with data (%; n/N)	Data points	Countries with data (%; n/N)	Data points	Countries with data (%; n/N)
ESA	FSW	433	100% (17/17)	250	100% (17/17)	89	82% (14/17)
	MSM	294	82% (14/17)	133	82% (14/17)	49	65% (11/17)
	PWID	202	41% (7/17)	54	47% (8/17)	13	24% (4/17)
	TG	45	29% (5/17)	36	59% (10/17)	11	41% (7/17)
WCA	FSW	224	62% (13/21)	318	76% (16/21)	40	29% (6/21)
	MSM	151	62% (13/21)	226	76% (16/21)	29	29% (6/21)
	PWID	72	43% (9/21)	105	43% (9/21)	6	10% (2/21)
	TG	28	19% (4/21)	59	48% (10/21)	5	14% (3/21)

682

683 **Table 1:** Availability of population size, HIV prevalence, and ART coverage data by key

684 population and region during period 2010-2021.



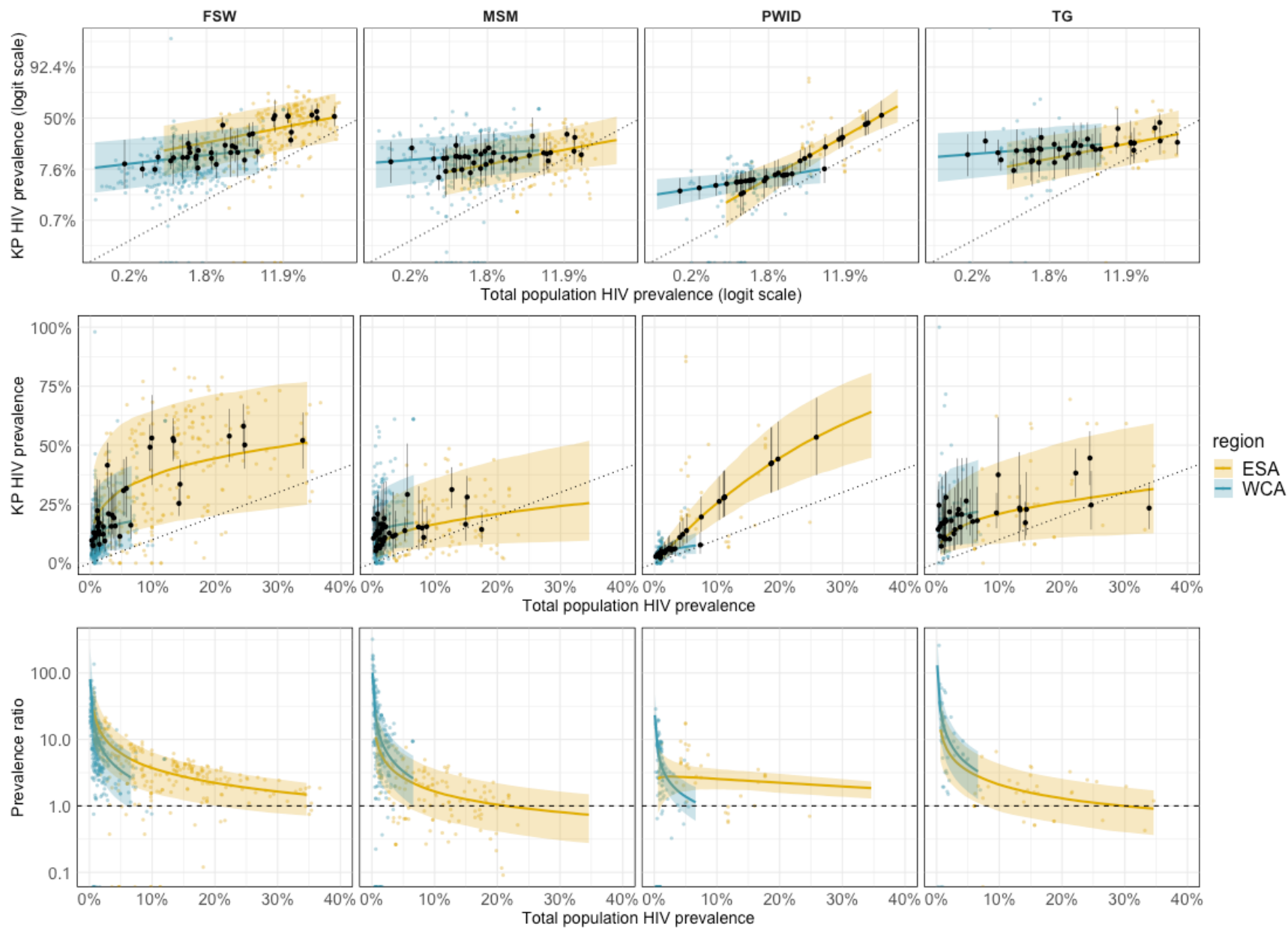


694 **Figure 3:** Model estimated urban key population size estimate (KPSE) proportions for  
695 female sex workers (FSW), men who have sex with men (MSM), and people who inject  
696 drugs (PWID) as a proportion of sex-matched 15-49 adult total population. (A) Posterior  
697 median estimate for each country. Note: colour range is different for each KP  
698 chloropleth. (B) Posterior median estimate and 95% credible intervals for each country.  
699 Points are observed subnational KPSE proportion data points that used empirical  
700 methods. Countries where modelled estimates were informed by local surveillance data  
701 are shown in blue, and countries informed only by spatial smoothing from neighbouring  
702 countries in yellow. Vertical axis shown on log-scale.

Method	KP	Odds ratio (95%CI)	Number of studies	Number of datapoints
3S-CRC	FSW	1.02 (0.7-1.57)	8	31
	MSM	1.02 (0.77-1.38)	5	16
	PWID	1.00 (0.68-1.42)	3	10
2S-CRC	FSW	0.85 (0.6-1.17)	14	116
	MSM	0.98 (0.71-1.23)	7	36
	PWID	0.97 (0.65-1.32)	5	9
SS-PSE	FSW	0.88 (0.53-1.24)	5	16
	MSM	0.98 (0.71-1.28)	5	16
	PWID	0.97 (0.68-1.3)	4	8
Object multiplier	FSW	1.22 (0.92-1.9)	18	85
	MSM	1.06 (0.86-1.44)	17	50
	PWID	1.01 (0.72-1.48)	8	14
Event multiplier	FSW	0.86 (0.53-1.23)	5	19
	MSM	0.97 (0.69-1.28)	6	12
	PWID	0.98 (0.68-1.35)	1	1
Service multiplier	FSW	1.26 (0.95-1.9)	15	75
	MSM	1.00 (0.78-1.28)	17	49
	PWID	1.06 (0.8-1.73)	8	18
PLACE/Mapping	FSW	1.10 (0.49-2.55)	23	292
	MSM	0.66 (0.34-1.34)	13	240
	PWID	0.35 (0.14-0.91)	8	193
Multiple methods - empirical	FSW	1.39 (0.46-4.26)	3	8
	MSM	2.47 (0.75-7.9)	5	18
	PWID	0.76 (0.18-3.43)	1	6
Multiple methods - mixture	FSW	1.31 (0.41-4.17)	3	13
	MSM	2.58 (0.87-7.56)	2	4
	PWID	0.71 (0.15-3.03)	1	7

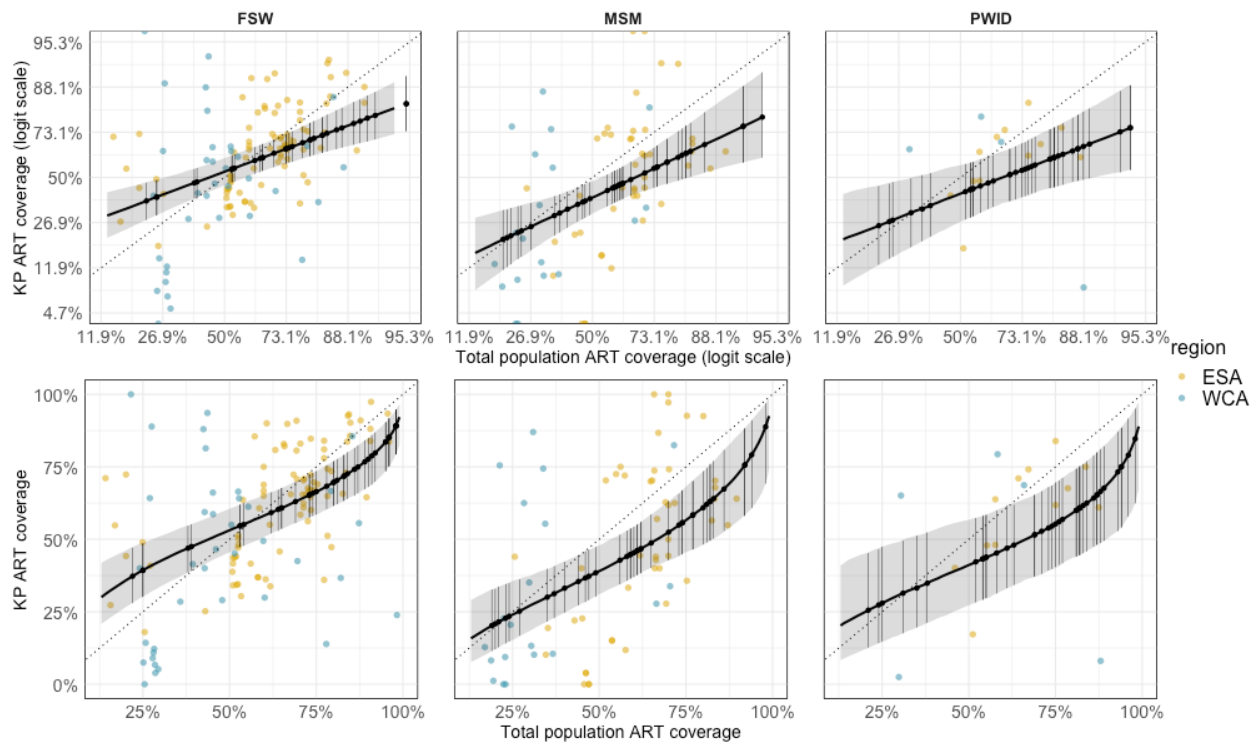
703

704 **Table 2:** Odds ratios for population size proportions by method relative to population  
705 size estimates pooled across all empirical methods (Two and three source CRC (2S-  
706 and 3S-CRC), successive sampling population size estimation (SS-PSE), and multiplier  
707 methods). Each key population estimated in separate regression models, but results  
708 presented together for ease of comparability.



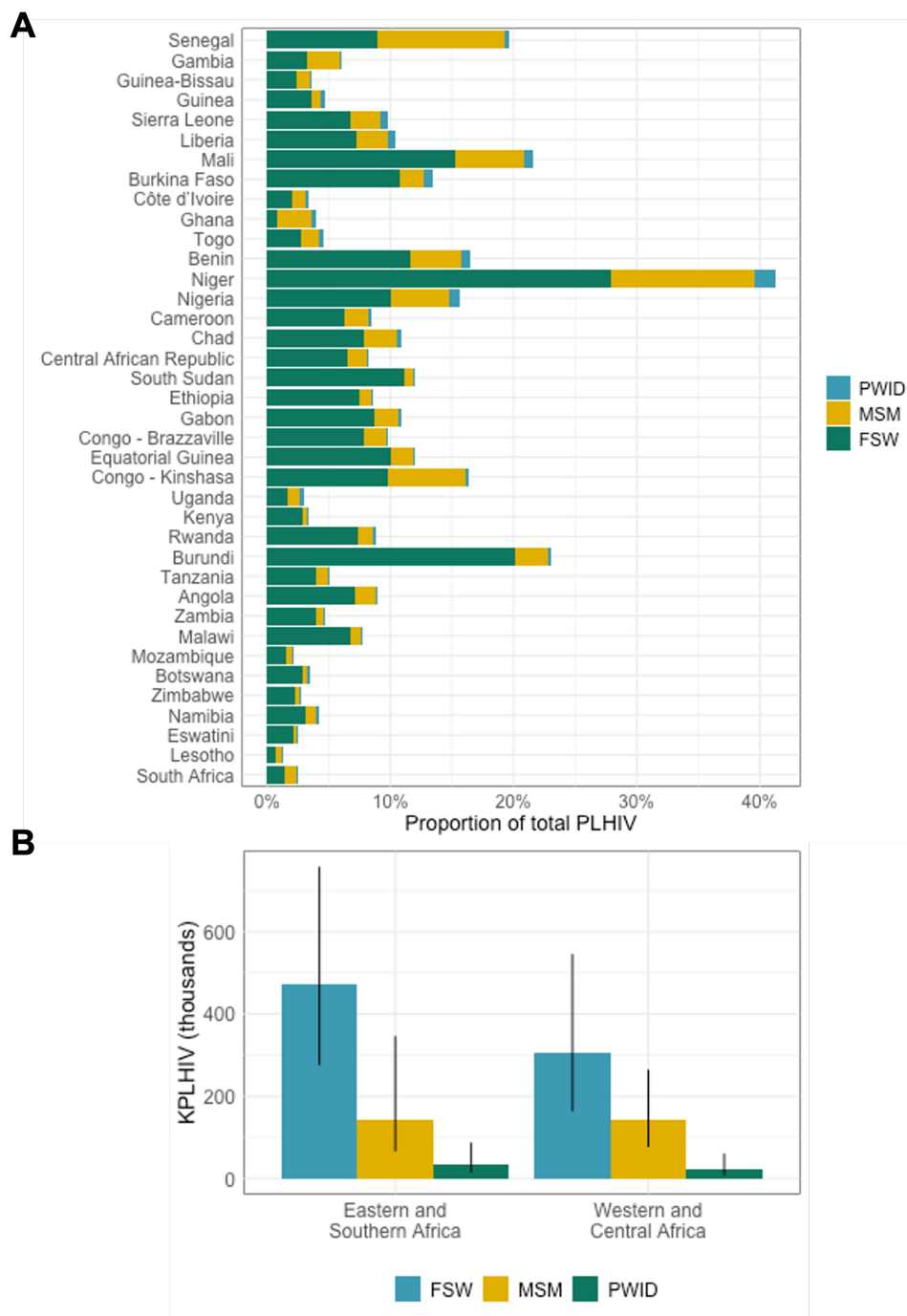
710 **Figure 4:** Key population and total population HIV prevalence on the logit scale (upper), natural scale (middle), and  
711 expressed as a ratio of KP and total population prevalence (lower) for female sex workers (FSW), men who have sex with  
712 men (MSM), people who inject drugs (PWID), and transgender people (TG). Grey points indicate observed KP prevalence  
713 plotted against province-level total population prevalence. Black points represent country estimates and 95% uncertainty  
714 ranges. Dotted line represents line of equality.





715

716 **Figure 5:** Estimated key population ART coverage as a function of total population ART  
717 coverage on the estimated logit scale (upper) and natural scale (lower). Black points  
718 represent national estimates.



719

720 **Figure 6:** (A) HIV positive KPs as a proportion of all PLHIV aged 15-49 years. Countries  
 721 are ordered geographically. (B) Estimated number of KP living with HIV (KPLIV) in  
 722 Eastern and Southern Africa and Western and Central Africa.