

1 **TITLE PAGE**

2

3 **A phase 2A trial of the safety and tolerability of increased dose rifampicin and**  
4 **adjunctive linezolid, with or without aspirin, for HIV-associated tuberculous**  
5 **meningitis (The LASER-TBM Trial)**

6

7 Angharad G Davis (corresponding author)<sup>1,2,3</sup>, Sean Wasserman<sup>3,4</sup>, Cari Stek<sup>3,5</sup>, Mpumi  
8 Maxebengula<sup>3</sup>, C. Jason Liang<sup>6</sup>, Stephani Stegmann<sup>3</sup>, Sonya Koekemoer<sup>3</sup>, Amanda  
9 Jackson<sup>3</sup>, Yakub Kadernani<sup>3</sup>, Marise Bremer<sup>3</sup>, Remy Daroowala<sup>3,5</sup>, Saalikha Aziz<sup>3</sup>, Rene  
10 Goliath<sup>3</sup>, Louise Lai Sai<sup>3</sup>, Thandi Sihoyiya<sup>3</sup>, Paolo Denti<sup>14</sup>, Rachel PJ Lai<sup>1,5</sup>, Thomas Crede<sup>7</sup>,  
11 Jonathan Naude<sup>7</sup>, Patryk Szymanski<sup>7</sup>, Yakoob Vallie<sup>8</sup>, Ismail Abbas Banderker<sup>8</sup>, Muhammed  
12 S Moosa<sup>8</sup>, Peter Raubenheimer<sup>4</sup>, Sally Candy<sup>9</sup>, Curtis Offiah<sup>10</sup>, Gerda Wahl<sup>11</sup>, Isak Vorster<sup>9</sup>,  
13 Gary Maartens<sup>3,12</sup>, John Black<sup>11</sup>, Graeme Meintjes<sup>3,4</sup>, Robert J Wilkinson (co-corresponding  
14 author)<sup>1,2,3,4,5</sup>

15

16 **Corresponding author:** Angharad Davis, The Francis Crick Institute, 1 Midland Road,  
17 London NW1 1AT; Email: [angharad.davis@crick.ac.uk](mailto:angharad.davis@crick.ac.uk); Phone: +44 2037966956

18 **Co-corresponding author:** Robert J Wilkinson, The Francis Crick Institute, 1 Midland Road,  
19 London NW1 1AT; Email: [robert.wilkinson@crick.ac.uk](mailto:robert.wilkinson@crick.ac.uk); Phone: +44 2037966956

20

21 **SUMMARY:** In this phase 2a randomised control trial we demonstrate that high-dose  
22 rifampicin and adjunctive linezolid is safe in adult HIV-associated tuberculous meningitis.  
23 Larger studies are required to evaluate potential toxicity with aspirin, in relation to benefit on  
24 morbidity and mortality.

25

26 **Keywords:** Tuberculous meningitis; HIV; rifampicin; linezolid; aspirin

27 **Word count: 3500 words**

28 **NOTE:** This preprint reports new research that has not been certified by peer review and should not be used to guide clinical practice.  
**Table count: 5; Figure count: 6**

## 29 **AFFILIATIONS**

- 30 1. The Francis Crick Institute, Midland Road, London, NW1 1AT, United Kingdom
- 31 2. Faculty of Life Sciences, University College London, WC1E 6BT, United Kingdom
- 32 3. Wellcome Centre for Infectious Diseases Research in Africa, Institute of Infectious  
33 Disease and Molecular Medicine, University of Cape Town, Observatory 7925, Republic of  
34 South Africa
- 35 4. Department of Medicine, University of Cape Town, Observatory 7925, Republic of South  
36 Africa
- 37 5. Department of Infectious Diseases, Imperial College London, W12 0NN, United Kingdom
- 38 6. Biostatistics Research Branch, National Institute of Allergy and Infectious Diseases,  
39 Maryland, USA
- 40 7. Mitchells Plain Hospital, 8 A Z Berman Drive, Lenteguur, Cape Town, 7785, South Africa
- 41 8. New Somerset Hospital, Portwood Rd, Green Point, Cape Town, 8051, South Africa
- 42 9. Division of Diagnostic Radiology, University of Cape Town, Groote Schuur Hospital,  
43 Observatory 7925, Republic of South Africa.
- 44 10. Department of Neuroradiology, Imaging Department, Royal London Hospital, Barts  
45 Health NHS Trust, Whitechapel, London, E1 1BB, United Kingdom
- 46 11. Department of Medicine, Walter Sisulu University, Mthatha 5117, Republic of South  
47 Africa
- 48 12. Division of Clinical Pharmacology, Department of Medicine, University of Cape Town,  
49 Observatory 7925, Republic of South Africa

50

## 51 **FUNDING**

52 AGD is supported by a UCL Wellcome Trust PhD Programme for Clinicians Fellowship  
53 (award number 175479). SW is supported by the European & Developing Countries Clinical  
54 Trials Partnership (Grant number CDF1018), Wellcome (Grant number 203135/Z/16/Z and  
55 104803), and National Institutes of Health (K43TW011421). RL is supported MRC CDA  
56 Fellowship (MRC/R008922/1). RJW receives support from Wellcome (104803; 203135) as

57 well as the Francis Crick Institute which is funded by UKRI (FC0010218); Wellcome  
58 (FC0010218) and CRUK (FC0010218). He also receives support from Meningitis Now and  
59 NIH (R01AI45436). GrM is supported by Wellcome Trust (214321/Z/18/Z), and the South  
60 African Research Chairs Initiative of the Department of Science and Technology and  
61 National Research Foundation (NRF) of South Africa (Grant No 64787). For the purposes of  
62 open access the authors have applied a CC-BY public copyright licence to any author  
63 accepted manuscript arising from this submission.

64  
65  
66  
67  
68  
69  
70  
71  
72  
73  
74  
75  
76  
77  
78  
79  
80  
81  
82  
83  
84

85 **ABSTRACT**

86

87 **Background:** Drug regimens which include intensified antibiotics alongside effective anti-  
88 inflammatory therapies may improve outcomes in Tuberculous Meningitis (TBM). Safety  
89 data on their use in combination and in the context of HIV is needed to inform clinical trial  
90 design.

91

92 **Methods:** We conducted a phase 2 open-label parallel-design RCT to assess safety of high-  
93 dose rifampicin, linezolid and aspirin in HIV-associated TBM. Participants were randomised  
94 (1.4:1:1) to three treatment arms (arm 1, standard of care (SOC); arm 2 SOC + additional  
95 rifampicin (up to 35mg/kg/day)) + linezolid 1200mg/day reducing after 28/7 to 600mg/day;  
96 arm 3, as per arm 2 + aspirin 1000mg/day) for 56 days, when the primary outcome of  
97 adverse events of special interest (AESI) or death was assessed.

98

99 **Results:** 52 participants were randomised. 59% had mild disease (MRC Grade 1) vs 39%  
100 (Grade 2) vs 2% (Grade 3). 33% of participants had microbiologically-confirmed TBM; vs  
101 41% 'possible' or 25% 'probable'. AESI or death occurred in 10/16 (arm 3) vs 4/14 (arm 2)  
102 vs 6/20 (arm 1) ( $p=0.083$ ). The cumulative proportion of AESI or death (Kaplan-Meier  
103 method) demonstrated worse outcomes in arm 3 vs arm 1 ( $p=0.04$ ), however only one event  
104 in arm 3 was attributable to aspirin and was mild. There was no difference in efficacy  
105 (Modified Rankin Scale) at day 56 between the three arms.

106

107 **Conclusions:** High-dose rifampicin and adjunctive linezolid can safely be added to SOC in  
108 HIV-associated TBM. Larger studies are required to evaluate whether potential toxicity  
109 associated with these interventions, particularly aspirin, is outweighed by mortality or  
110 morbidity benefit.

111

112

## 113 INTRODUCTION

114

115 Tuberculous meningitis (TBM) is the most severe form of tuberculosis. With currently  
116 available treatment mortality is high; up to 50% in those co-infected with HIV<sup>1</sup>. In those who  
117 survive, there is a high burden of disability due to neurological sequelae such as stroke<sup>2</sup>,  
118 epilepsy<sup>3</sup>, inflammatory complications within the spinal cord<sup>4</sup> and neurocognitive  
119 impairment<sup>5</sup>. Drug regimens used to treat TBM are largely based on those used in  
120 pulmonary tuberculosis. There is a need to design and evaluate new regimens that account  
121 for the differing ability of drugs to penetrate the central nervous system (CNS) whilst  
122 simultaneously counteracting the dysregulated immune response which occurs in TBM in  
123 order to improve outcomes in this disease.

124

125 Rifampicin at standard adult doses seldom achieves adequate cerebrospinal fluid (CSF)  
126 concentrations<sup>6</sup>; it is therefore likely that higher doses would increase bactericidal activity  
127 within the CNS. Two randomised controlled trials (RCT) in TBM have evaluated high-dose  
128 rifampicin (13mg/kg intravenous<sup>7</sup> and 15mg/kg oral<sup>8</sup>) with conflicting results. A recent  
129 pharmacokinetic (PK) study suggested that doses higher than 15mg/kg may improve  
130 outcomes by demonstrating ~8 and ~6 fold higher CSF exposures with 35mg/kg (oral) and  
131 20mg/kg (IV) doses respectively compared to standard oral dose (10mg/kg)<sup>9</sup>. Linezolid,  
132 which is now part of the WHO recommended treatment in drug resistant TB<sup>10</sup>, is known to  
133 have broad tissue penetration, including into the CNS<sup>11</sup>. Two observational studies of  
134 linezolid found favourable clinical and laboratory outcomes in both children and adults with  
135 TBM<sup>12,13</sup>. However, frequently reported haematological and neuropathic toxicity are  
136 concerning<sup>14</sup>. In TBM this toxicity, which is rarely severe<sup>15</sup> and largely reversible<sup>16</sup>, may be  
137 acceptable. Aspirin targets key pathogenic processes which occur during TBM: inhibition of  
138 thromboxane and platelet aggregation<sup>17</sup> at lower doses (75mg daily), and inhibition of  
139 proinflammatory prostaglandins and thromboxane A<sub>2</sub><sup>18</sup> at higher doses (>600mg daily). The  
140 latter may be further augmented by aspirin's ability to trigger production of pro-resolving lipid

141 mediators<sup>19</sup>. Three RCT have evaluated aspirin at varying doses (from 75mg daily to  
142 1000mg/day) with varying outcomes in TBM<sup>20-22</sup>. The latest of these demonstrated reduction  
143 in infarcts and death with 1000mg of aspirin compared to placebo in HIV-negative patients  
144 with microbiologically confirmed TBM<sup>20</sup>. The safety of high-dose aspirin, which may lead to  
145 anti-inflammatory effects, has yet to be evaluated in the context of HIV and in conjunction  
146 with adjunctive antimicrobial drugs.

147  
148 A number of clinical trials are investigating either the PK properties of linezolid  
149 (NCT04021121, NCT03537495) or efficacy of high-dose rifampicin (ISRCTN15668391) as  
150 single adjunctive therapies in TBM, and one phase 3 trial aims to assess efficacy of linezolid,  
151 high-dose rifampicin, and lower-dose aspirin (NCT04145258). However, safety data on the  
152 use of rifampicin and linezolid in combination, of high-dose aspirin in combination with  
153 intensified antibiotics, and in the context of HIV co-infection is absent. LASER-TBM aimed to  
154 generate much needed safety data on the use of enhanced antimicrobial therapy including  
155 higher-dose rifampicin (35mg/kg) and linezolid (1200mg reducing to 600mg daily) with or  
156 without adjunctive high-dose aspirin (1000mg daily) in HIV-associated TBM, to inform their  
157 use in definitive clinical trials.

158

## 159 **METHODS**

160

161 LASER-TBM was an open label, parallel group, randomised, multi-arm phase 2A trial in  
162 which participants were randomised to one of three treatment arms as specified below.  
163 Investigational drugs were given for the first 56 days of therapy. Primary endpoint data was  
164 collected at day 56. Treatment was subsequently continued per South African national  
165 guidance. Participants completed study follow up at 6 months. Interim analysis for safety  
166 was performed by an independent data safety monitoring board (DSMB) board after every  
167 15 participants enrolled. A full version of the study protocol is published elsewhere<sup>23</sup>.

168

## 169 **Study participants and sites**

170

171 Adults aged 18 or over with a diagnosis of possible, probable or definite TBM as per uniform  
172 case definition<sup>24</sup>, and a confirmed HIV-1 seropositivity were eligible for enrolment. Exclusion  
173 criteria are listed in Box S1 (supplementary appendix). Written informed consent was  
174 obtained from participants where individuals were assessed to have capacity; in those  
175 without capacity to consent, proxy consent from next of kin was obtained. In the latter cases  
176 deferred consent was obtained from the patient as soon as they were able.

177 Potential participants were referred whilst inpatients at four regional referral hospitals across  
178 South Africa. Subsequent follow-up occurred in inpatient wards and outpatient clinics at  
179 respective sites, or at two TB hospitals in Cape Town.

180

## 181 **Intervention**

182

183 Participants were randomised to one of three treatment arms (1.4:1:1). Proportionally more  
184 participants were randomised to arm 1 to account for anticipated higher mortality with  
185 standard of care, compared to the intervention arms.

186

- 187 • Arm 1 (standard of care): rifampicin 10 mg/kg, isoniazid (H) 5 mg/kg, ethambutol (E)  
188 15 mg/kg, and pyrazinamide (Z) 25 mg/kg daily for 56 days
- 189 • Arm 2: as per arm 1 plus adjunctive 25mg/kg rifampicin (total dose 35mg/kg) and  
190 linezolid (1200mg for 28 days, reducing to 600mg for 28 days) daily for 56 days
- 191 • Arm 3: as per arm 2 plus adjunctive aspirin (1000mg) daily for 56 days

192

193 Dosing was calculated by weight bands as published in the study protocol<sup>23</sup>. After 56 days  
194 participants were referred to government TB facilities to receive continuation therapy  
195 (rifampicin 10mg/kg/day and isoniazid 5mg/kg/day) for 7 months as per national South  
196 African guidelines<sup>25</sup>.

197

198 Participants allocated to arms 2 and 3 were further randomised (1:1) to receive oral  
199 rifampicin 35 mg/kg or IV rifampicin 20 mg/kg once daily for the first 3 days of therapy (in  
200 addition to HZE and linezolid with or without aspirin, according to the experimental arm).  
201 Results of this PK sub-study are published elsewhere<sup>26</sup>.

202

### 203 **Outcome Measures**

204

205 The primary endpoint of the study was the cumulative proportion of participants experiencing  
206 AESI or dying by 56 days. AESI were selected based on anticipated toxicity related to the  
207 two interventional arms: bleeding (gastrointestinal bleeding and intracerebral haemorrhage);  
208 haematological (anaemia, neutropenia, thrombocytopenia); transaminitis; and neuropathic  
209 (peripheral and optic neuropathy) (see Table 1). Secondary endpoints included death and  
210 severe disability by 56 days, death by 56 days and 180 days; disability at 56 and 180 days;  
211 incidence of grade 3 or 4 adverse events, permanent discontinuation of study drugs, severity  
212 and frequency of haematological and neurological AESI related to linezolid use; severity and  
213 frequency of major bleeding (gastrointestinal and intracerebral) related to aspirin use;  
214 occurrence of TBM-Immune Reconstitution Inflammatory Syndrome (IRIS) assessed by the  
215 modified International Network for the Study of HIV-associated IRIS (INSHI) criteria<sup>27</sup>; and  
216 MRI and CT changes at day 56.

217

### 218 **Study schedule and safety outcome measures**

219

220 Participants were screened and enrolled within 5 days of commencing TB treatment. They  
221 were assessed at five subsequent study visits (days 3, 7, 14, 28, 56) at which point they  
222 were referred to government TB clinics for continuation phase therapy (Figure S1).

223 Participants were assessed clinically at one further timepoint (day 180) either in person or  
224 telephonically. Where feasible, imaging (either CT and/or MRI) was performed at baseline



225 and day 56. A neurological assessment including full motor and sensory examination of the  
226 limbs and cranial nerve examination was performed at each study visit. Participants'  
227 functional neurological status was assessed using the Modified Rankin Scale at each study  
228 visit up to day 56 and telephonically at day 180. Assessment for AESI was also made at  
229 each study visit up to and including day 56 involving; a clinical history to assess symptoms  
230 of bleeding (GI or intracerebral), BPNS and modified total neuropathy score to assess for  
231 peripheral neuropathy, a LogMAR or tumbling E charts to assess for optic neuropathy, a full  
232 blood count to assess for haematological abnormalities and liver function tests to assess for  
233 a transaminitis. A full list of clinical outcome measures and assessments performed at each  
234 study visit are listed in the published protocol<sup>23</sup>.

235

### 236 **Study oversight**

237

238 An independent DSMB oversaw the safety of the trial and advised to continue recruitment  
239 without change after review of primary endpoint data for each 15 participants enrolled. No  
240 formal stopping rules were stipulated but rather were left to the discretion of the DSMB.

241

242 Approval for the trial was granted by the University of Cape Town Human Research Ethics  
243 Committee (293/2018), Walter Sisulu University Human Research Committee (012/2019)  
244 and the South African Health Products Regulatory Authority (20180622). The trial was  
245 registered on the South African National Clinical Trials Register (DOH-27-0319-6230), Pan  
246 African National Clinical Trials Register (PACTR201902921101705) and [clinicaltrials.gov](https://clinicaltrials.gov)  
247 ([NCT03927313](https://clinicaltrials.gov/ct2/show/study/NCT03927313)).

248

249

250

251

252

253 **STATISTICAL ANALYSIS**

254

255 **Sample size**

256 No formal statistical power calculation was performed. Even as single adjunctive therapies  
257 there was limited available data on the use of these drugs in TBM to predict likely rate of  
258 AESI and/or death. Given this would be further complicated when considering likely event  
259 rate when the drugs were combined, it was felt a more pragmatic approach was to create a  
260 recruitment target of 100 participants with frequent blinded review of cumulative safety  
261 events by an independent DSMB. An aim of LASER-TBM was also to serve as a planning  
262 study to generate PK and safety data to inform a phase 3 RCT of intensified treatment in  
263 TBM (NCT04145258), which in part would influence resulting sample size of that study. The  
264 rate of recruitment was slower than anticipated due to the COVID-19 pandemic and in  
265 January 2021 a decision was made, in consultation with the DSMB, to cease recruitment to  
266 allow commencement of the aforementioned phase 3 RCT.

267

268 **Statistical analysis**

269

270 Analysis was performed in GraphPad Prism v.9.0 and R v.3.6.0. The primary analysis was  
271 performed in the modified intent-to-treat population (those who receive any dose of the study  
272 drug). A sensitivity analysis was planned for the per-protocol population (those who  
273 completed treatment as specified in the protocol) however given the small sample size and  
274 since these populations were similar, here we report the most conservative analysis  
275 (modified intention to treat).

276

277 The primary endpoint, frequency of AESI or death (where data is censored at the first event  
278 prior to day 56) was summarized and compared across arms using a chi-squared test. A  
279 time to event analysis was performed for worst grade (in each individual participant) AESI or  
280 death; comparisons between study groups were made using the log-rank test. Neurological

281 disability (measured by Modified Rankin Score), as well as radiological outcomes at day 56  
282 were compared across treatment arms using chi-squared test. We used spaghetti plots to  
283 visually represent longitudinal CSF parameters (lymphocytes, polymorphonuclear cells,  
284 protein and glucose) over time and used t tests to compare longitudinal summaries (mean  
285 and SD) of each individual trajectory across treatment arms.

286

287 Details of further analysis can be found in the full statistical analysis plan published  
288 alongside the study protocol<sup>23</sup>.

289

## 290 **RESULTS**

291

292 98 patients were screened and 52 were randomised between June 2019 and January 2021  
293 (Figure 1). Reasons for screening exclusion are summarised in Table S1. One participant  
294 was randomised but excluded prior to any study IP being dispensed due to emergence of an  
295 exclusion criterion (eGFR <20) on a hospital blood test performed prior to randomisation.  
296 Another participant was excluded from the modified intention to treat analysis as they died  
297 prior to receiving any dose of study drug. Six participants discontinued the study prior to day  
298 56, and a further four participants discontinued between day 56 and day 180 (Table S2).

299

300 The baseline characteristics of the participants stratified by treatment arm are described in  
301 Table 1. Most participants were male (71%) and the median age was 39 (34-46). Most  
302 participants had mild disease (MRC Grade 1 59%; Grade 2 39%; Grade 3 2%). A third  
303 (33%) of participants had microbiologically confirmed TBM at baseline, with the remaining  
304 participants defined as possible (41%) or probable TBM (25%) as per the uniform TBM case  
305 definition<sup>24</sup>.

306

307 The primary endpoint analysis was performed in the modified intention to treat population  
308 (n=50; arm 1, 20; arm 2, 14; arm 3, 16). The composite primary endpoint of AESI or death

309 occurred in 6/20 in arm 1, 4/14 in arm 2, and 10/16 participants in arm 3, ( $p=0.083$ ). The  
310 occurrence of each category of AESI stratified by treatment arm are summarised in table 3  
311 with further detail on timing and outcome of each of these events listed in table 4. Frequency  
312 of death prior to day 56 was similar across arms ( $n=7$ ; arm 1, 3; arm 2, 1; arm 3, 3;  $p=0.649$ )  
313 and in no case was cause of death related to study investigational product (table 5). Grade 3  
314 or 4 AE (grade 3: arm 1, 7 vs arm 2, 7 vs arm 3, 9,  $p=0.44$ ; grade 4: arm 1, 2 vs arm 2, 4 vs  
315 arm 3, 4,  $p=0.38$ ) or serious adverse events for reasons other than death (arm 1, 6 vs arm 2,  
316 8 vs arm 3, 7,  $p=0.37$ ) were similar across treatment arms.

317

318 The cumulative incidence of the composite endpoint of worst grade AESI or death at day 56  
319 demonstrated worse outcomes when comparing arm 3 vs arm 1 ( $p=0.043$ ), with similar  
320 proportions observed in other pre-specified analysis (arm 2 vs arm 1 ( $p=0.3$ ), arm 2+3  
321 combined vs arm 1 ( $p=0.5$ )) (Figure 2, log rank test). Similarly, analysis for death alone  
322 demonstrated no difference between arms (Figure 3). The cumulative incidence of AESI  
323 events was greater in arm 3 vs arm 1 ( $p=0.02$ ), however, when arms 2 and 3 were combined  
324 and compared to arm 1 this difference was less marked ( $p=0.18$ ) (Figure 4).

325

326 The frequency of grade 5 MRS (severe disability) or death was 4 (arm 1) vs 3 (arm 2) vs 5  
327 (arm 3),  $p=0.774$ . The frequency of good (defined as MRS grade 0-3), and bad outcomes  
328 (MRS Grade 4-6) were similar across arms ( $p=0.616$ ) (Figure 5). *Post hoc* analysis of  
329 change in neurological function (as measured by MRS) found similar changes of MRS from  
330 baseline to day 56 between the three arms (Figure 4a). Few IRIS events occurred (arm 1, 2;  
331 arm 2, 2; arm 3, 3), of which 4/7 were defined as neurological IRIS. Within the first 56 days  
332 of treatment, four participants developed new onset lower limb weakness (TB myelopathy 2;  
333 TB radiculomyelopathy/arachnoiditis 1; other (no cause found prior to death) 1); three  
334 participants developed a new onset hemiplegia; one patient developed a new onset isolated  
335 cranial nerve palsy (lower motor neuron VII). Thirteen participants presented with new onset  
336 seizures at TBM diagnosis. A further nine participants had new onset seizures within the first

337 2 months of follow up (arm 1, 5; arm 2; 2; arm 3, 2;  $p=0.54$ ). Baseline and follow up imaging  
338 was performed in only 9 patients at the timepoints pre-specified within the protocol. Follow  
339 up imaging demonstrated new or worsening leptomenigeal enhancement in 2/9 participants  
340 (arm 1 and arm 2), new evidence of infarction in 2/9 participants (arm 1 and arm 2), new or  
341 worsening tuberculomas in 2/9 participants (arm 1 and arm 2) which was associated with  
342 worsening sulcal effacement in 1/9 participant (arm 1).

343

344 Spaghetti plot analysis of longitudinal CSF parameters (lymphocyte and polymorphonuclear  
345 cell count, protein and glucose) over time demonstrated downward trend of parameters  
346 across all three treatment arms (figure 6). Individual values are plotted and the  
347 superimposed line represents the mean values at each timepoint in each treatment arm. T  
348 tests comparing mean and variance at each time point demonstrated no difference between  
349 arms.

350

351

## 352 **DISCUSSION**

353

354 The LASER-TBM study was a phase 2a RCT which evaluated the safety of high-dose  
355 rifampicin (35mg/kg daily), adjunctive linezolid (1200mg reducing to 600mg after 28 days)  
356 and adjunctive aspirin (1000mg daily) for the first 56 days of treatment in HIV-associated  
357 TBM. Primary endpoint analysis showed no significant difference in the incidence of AESI or  
358 death between treatment arms, although there was a trend towards an increase in events in  
359 arm 3. There was no difference in death or disability at day 56 across arms; and a similar  
360 frequency of clinical or radiological events occurred in each arm. Exploratory analysis found  
361 no difference in change in CSF parameters over time by arm.

362

363 Although secondary analysis revealed a significantly higher number of events (AESI or  
364 death) in arm 3 vs arm 1 ( $p=0.04$ ), it is reassuring that no deaths were attributed to aspirin.

365 Only one bleeding event occurred, after minimal exposure to high-dose aspirin (1 dose),  
366 resolved immediately following discontinuation of the drug, and was not associated with any  
367 laboratory markers to suggest significant gastrointestinal bleeding. Toxicity attributable to  
368 linezolid was similarly mild; of seven events potentially attributable to linezolid occurring in  
369 participants randomised to experimental arms, 3/7 were due to an alternative cause and 2/7  
370 had recovered prior to the subsequent study visit. No patient was formally diagnosed with  
371 peripheral neuropathy, which is expected given most recent studies showing a median time  
372 to onset of neuropathy occurs after 10 weeks of treatment<sup>15,16</sup>. Only one participant  
373 developed a change in visual acuity, which may have been due to linezolid, although on  
374 review by an ophthalmologist was assessed more likely due to ethambutol. The number of  
375 participants in whom potential abnormalities were detected using the LogMAR and tumbling  
376 E assessments, compared to the confirmed number of cases of optic neuropathy calls into  
377 question the specificity of these outcome measures. Given that linezolid has potential to  
378 treat TBM as well as drug resistant TB we must consider whether better outcome measures  
379 can be developed to reliably detect abnormalities attributable to these drugs in both the  
380 clinical and research setting in order to prevent overestimation of toxicity, particularly when  
381 used for a short duration. Toxicity due to rifampicin was similarly infrequent with only two  
382 participants developing clinically significant transaminitis. In both cases the transaminitis  
383 recovered with treatment interruption. These results suggest that toxicity associated with the  
384 enhanced antitubercular regimen (rifampicin 35mg/kg and adjunctive linezolid) is not  
385 common when used in combination for two months to treat HIV-associated TBM. This is  
386 encouraging in the context of a disease where no specific evidenced-based antitubercular  
387 regimen exists, and provides rationale for the ongoing phase 3 RCT (NCT04145258) where  
388 participants are randomised to receive both high-dose rifampicin and linezolid at doses  
389 identical to that used in this study.

390

391 There are several limitations to this study. Although no formal power calculation took place,  
392 final sample size was substantially smaller than the target of 100 participants. The COVID-

393 19 pandemic adversely affected recruitment to the study, and in January 2021 a decision  
394 was made to stop recruitment to enable commencement of a similar phase 3 study which  
395 was ready to start resulting in a lower than proposed sample size. It is unknown whether the  
396 significantly higher number of AESI or death in arm 3 vs arm 1 demonstrated within the  
397 secondary analysis reflects a true safety risk of the regimen containing aspirin, or is due to  
398 chance given the lower than anticipated numbers of participants recruited. Secondly, the  
399 majority participants recruited had mild TBM. The reasons for this is likely multifactorial  
400 including i) patients dying prior to screening given that up to 5 days of TB treatment was  
401 allowed prior to enrolment and ii) patients with decreased levels of consciousness arriving at  
402 hospital alone and therefore not having available next of kin available for proxy consent. In  
403 the latter case a protocol amendment was approved to allow deferred consent in these  
404 patients, however, is likely to explain in part the higher rate of mild disease in our cohort.  
405 The mild level of disease within our patient cohort likely explains the low level of mortality;  
406 16% 2-month mortality contrasted the oft quoted 50% mortality within the literature<sup>1</sup>. The  
407 primary endpoint of AESI *or* death was designed with the assumption that observed mortality  
408 would be near or approaching 50%. The relatively few numbers of deaths led to a greater  
409 proportion of AESI in the composite endpoint of AESI *or* death. Given that all of the listed  
410 AESI were proportionally more likely to occur in the experimental arm 3, it is unsurprising  
411 that the number of events within the composite endpoint of AESI or death occurred in arm 3  
412 where the greatest number of interventions was given. This is supported by the observation  
413 that when considering AESI alone, the cumulative incidence of events was significantly  
414 greater in arm 3, suggesting that the composite endpoint of AESI or death was driven by the  
415 higher rate of AESI in arm 3.

416

417 Ours is the first RCT to evaluate linezolid in TBM, an important drug in this context. It is the  
418 first completed trial to focus on an exclusively HIV-positive population, a vulnerable group in  
419 TBM. It is also the first study to date to systematically evaluate the safety of a novel drug  
420 regimen containing enhanced antitubercular treatments alongside a host directed therapy in

421 TBM. To improve outcomes in TBM therapeutic advance must simultaneously aim to  
422 enhance bacterial clearance within the CNS which controlling the dysregulated host  
423 inflammatory response. Our data provides rationale for the safe use of high-dose rifampicin  
424 and linezolid in TBM and supports ongoing evaluation of the efficacy of these drugs in a  
425 phase 3 trial. It is less clear whether high-dose aspirin is safe in this context. Given the  
426 results of previous studies which did not demonstrate any safety concerns, as well as its  
427 potential to target key pathways which play a role in the pathogenesis of TBM a larger study  
428 is now required to see if potential harm is offset by a morbidity and mortality benefit.

429

### 430 **ACKNOWLEDGMENTS**

431

432 We would like to thank firstly the participants and their carers for agreeing to take part in the  
433 study. We would like to acknowledge staff at referring hospitals, at Western Cape and  
434 Eastern Cape provincial governments, and at UCT Clinical Research Centre for their help  
435 with making the study a success. We would like to thank the Data Safety and Management  
436 Board for their advice and guidance throughout the trial, namely; Professor David Lalloo  
437 (chair, Liverpool School for Tropical Medicine), Dr David Meya (College of Health Sciences,  
438 Makerere University and Division of Infectious Diseases and International Medicine,  
439 University of Minnesota), Dr Evelyne Kestelyn (Clinical Trials Unit, Centre for Tropical  
440 Medicine and Global Health, University of Oxford), Dr Maryline Bonnet (Institute of Research  
441 for Development, France), Dr Angela Crook, (MRC Clinical Trials Unit, University College  
442 London).

443

444

445

446

447

448

449

450



451 **REFERENCES**

452

453 1. Marais S, Pepper DJ, Schutz C, Wilkinson RJ, Meintjes G. Presentation and  
454 outcome of tuberculous meningitis in a high HIV prevalence setting. *PLoS One*.

455 2011;6(5):e20077. doi:10.1371/journal.pone.0020077

456 2. Lammie GA, Hewlett RH, Schoeman JF, Donald PR. Tuberculous cerebrovascular  
457 disease: a review. *J Infect*. Sep 2009;59(3):156-66. doi:10.1016/j.jinf.2009.07.012

458 3. Misra UK, Kumar M, Kalita J. Seizures in tuberculous meningitis. *Epilepsy Res*. Dec  
459 2018;148:90-95. doi:10.1016/j.eplesyres.2018.10.005

460 4. Marais S, Roos I, Mitha A, Mabusha SJ, Patel V, Bhigjee AI. Spinal Tuberculosis:  
461 Clinicoradiological Findings in 274 Patients. *Clin Infect Dis*. Jun 18 2018;67(1):89-98.

462 doi:10.1093/cid/ciy020

463 5. Davis AG, Nightingale S, Springer PE, et al. Neurocognitive and functional  
464 impairment in adult and paediatric tuberculous meningitis. *Wellcome Open Res*. 2019;4:178.

465 doi:10.12688/wellcomeopenres.15516.1

466 6. Donald PR. Cerebrospinal fluid concentrations of antituberculosis agents in adults  
467 and children. *Tuberculosis (Edinb)*. Sep 2010;90(5):279-92. doi:10.1016/j.tube.2010.07.002

468 7. Ruslami R, Ganiem AR, Dian S, et al. Intensified regimen containing rifampicin and  
469 moxifloxacin for tuberculous meningitis: an open-label, randomised controlled phase 2 trial.

470 *Lancet Infect Dis*. Jan 2013;13(1):27-35. doi:10.1016/S1473-3099(12)70264-5

471 8. Heemskerk AD, Bang ND, Mai NT, et al. Intensified Antituberculosis Therapy in  
472 Adults with Tuberculous Meningitis. *N Engl J Med*. Jan 14 2016;374(2):124-34.

473 doi:10.1056/NEJMoa1507062

474 9. Cresswell FV, Meya DB, Kagimu E, et al. High-Dose Oral and Intravenous  
475 Rifampicin for the Treatment of Tuberculous Meningitis in Predominantly Human

476 Immunodeficiency Virus (HIV)-Positive Ugandan Adults: A Phase II Open-Label

477 Randomized Controlled Trial. *Clin Infect Dis*. Sep 7 2021;73(5):876-884.

478 doi:10.1093/cid/ciab162

- 479 10. World Health Organisation (WHO). World Health Organisation consolidated  
480 guidelines on drug-resistant tuberculosis treatment. 2019;
- 481 11. Nau R, Sorgel F, Eiffert H. Penetration of drugs through the blood-cerebrospinal  
482 fluid/blood-brain barrier for treatment of central nervous system infections. *Clin Microbiol*  
483 *Rev.* Oct 2010;23(4):858-83. doi:10.1128/CMR.00007-10
- 484 12. Li H, Lu J, Liu J, Zhao Y, Ni X, Zhao S. Linezolid is Associated with Improved Early  
485 Outcomes of Childhood Tuberculous Meningitis. *Pediatr Infect Dis J.* Jun 2016;35(6):607-10.  
486 doi:10.1097/INF.0000000000001114
- 487 13. Sun F, Ruan Q, Wang J, et al. Linezolid manifests a rapid and dramatic therapeutic  
488 effect for patients with life-threatening tuberculous meningitis. *Antimicrob Agents*  
489 *Chemother.* Oct 2014;58(10):6297-301. doi:10.1128/AAC.02784-14
- 490 14. Zhang X, Falagas ME, Vardakas KZ, et al. Systematic review and meta-analysis of  
491 the efficacy and safety of therapy with linezolid containing regimens in the treatment of  
492 multidrug-resistant and extensively drug-resistant tuberculosis. *J Thorac Dis.* Apr  
493 2015;7(4):603-15. doi:10.3978/j.issn.2072-1439.2015.03.10
- 494 15. Wasserman S, Brust JCM, Abdelwahab MT, et al. Linezolid toxicity in patients with  
495 drug-resistant tuberculosis: a prospective cohort study. *J Antimicrob Chemother.* Mar 31  
496 2022;77(4):1146-1154. doi:10.1093/jac/dkac019
- 497 16. Conradie F, Diacon AH, Ngubane N, et al. Treatment of Highly Drug-Resistant  
498 Pulmonary Tuberculosis. *N Engl J Med.* Mar 5 2020;382(10):893-902.  
499 doi:10.1056/NEJMoa1901814
- 500 17. Richman IB, Owens DK. Aspirin for Primary Prevention. *Med Clin North Am.* Jul  
501 2017;101(4):713-724. doi:10.1016/j.mcna.2017.03.004
- 502 18. Botting RM. Vane's discovery of the mechanism of action of aspirin changed our  
503 understanding of its clinical pharmacology. *Pharmacol Rep.* May-Jun 2010;62(3):518-25.  
504 doi:10.1016/s1734-1140(10)70308-x

- 505 19. Spite M, Serhan CN. Novel lipid mediators promote resolution of acute inflammation:  
506 impact of aspirin and statins. *Circ Res*. Nov 12 2010;107(10):1170-84.  
507 doi:10.1161/CIRCRESAHA.110.223883
- 508 20. Mai NT, Dobbs N, Phu NH, et al. A randomised double blind placebo controlled  
509 phase 2 trial of adjunctive aspirin for tuberculous meningitis in HIV-uninfected adults. *Elife*.  
510 Feb 27 2018;7doi:10.7554/eLife.33478
- 511 21. Schoeman JF, Janse van Rensburg A, Laubscher JA, Springer P. The role of aspirin  
512 in childhood tuberculous meningitis. *J Child Neurol*. Aug 2011;26(8):956-62.  
513 doi:10.1177/0883073811398132
- 514 22. Misra UK, Kalita J, Nair PP. Role of aspirin in tuberculous meningitis: a randomized  
515 open label placebo controlled trial. *J Neurol Sci*. Jun 15 2010;293(1-2):12-7.  
516 doi:10.1016/j.jns.2010.03.025
- 517 23. Davis AG, Wasserman S, Maxebengula M, et al. Study protocol for a phase 2A trial  
518 of the safety and tolerability of increased dose rifampicin and adjunctive linezolid, with or  
519 without aspirin, for HIV-associated tuberculous meningitis [LASER-TBM]. *Wellcome Open*  
520 *Res*. 2021;6:136. doi:10.12688/wellcomeopenres.16783.1
- 521 24. Marais S, Thwaites G, Schoeman JF, et al. Tuberculous meningitis: a uniform case  
522 definition for use in clinical research. *Lancet Infect Dis*. Nov 2010;10(11):803-12.  
523 doi:10.1016/S1473-3099(10)70138-9
- 524 25. South Africa Department of Health National Tuberculosis Management Guidelines.  
525 2014;
- 526 26. Wasserman S, Davis A, Stek C, et al. Plasma Pharmacokinetics of High-Dose Oral  
527 versus Intravenous Rifampicin in Patients with Tuberculous Meningitis: a Randomized  
528 Controlled Trial. *Antimicrob Agents Chemother*. Jul 16 2021;65(8):e0014021.  
529 doi:10.1128/AAC.00140-21
- 530 27. Meintjes G, Lawn SD, Scano F, et al. Tuberculosis-associated immune reconstitution  
531 inflammatory syndrome: case definitions for use in resource-limited settings. *Lancet Infect*  
532 *Dis*. Aug 2008;8(8):516-23. doi:10.1016/S1473-3099(08)70184-1

533

534

535

536

537

538

539

540

541

542

543

544

545

546

547

548

549

550

551

552

553

554

555

556

557

558

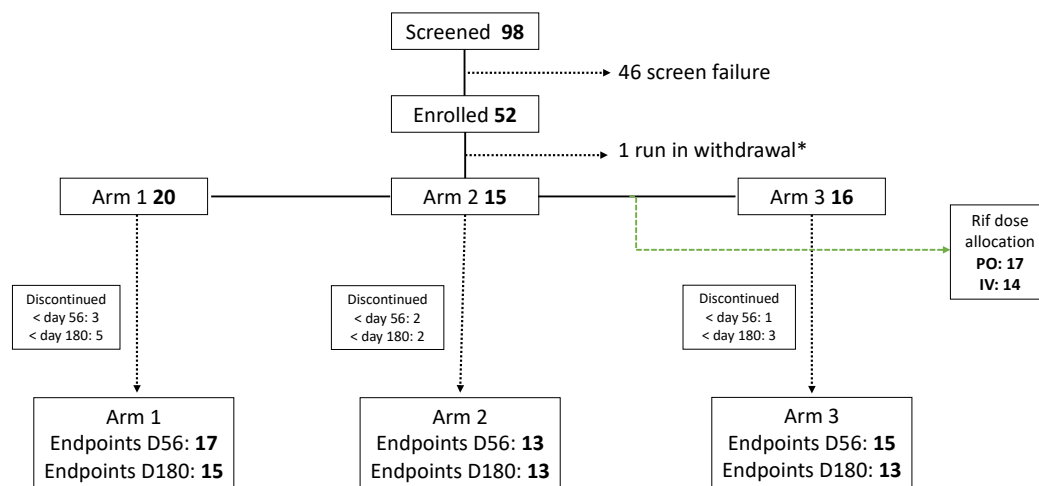
559

560

561 **FIGURES**

562

563 **Figure 1: Consolidated Standards of Reporting Trials (CONSORT) diagram**



564

565

566 Abbreviations: Rif, rifampicin

567 \*patient randomized but withdrawn prior to receiving study IP due to emergence of

568 exclusion criteria

569 Legend: CONSORT diagram to describe recruitment and arm allocation. Reasons for

570 screening exclusions and early study withdrawals are listed in Tables S1 and S2

571

572

573

574

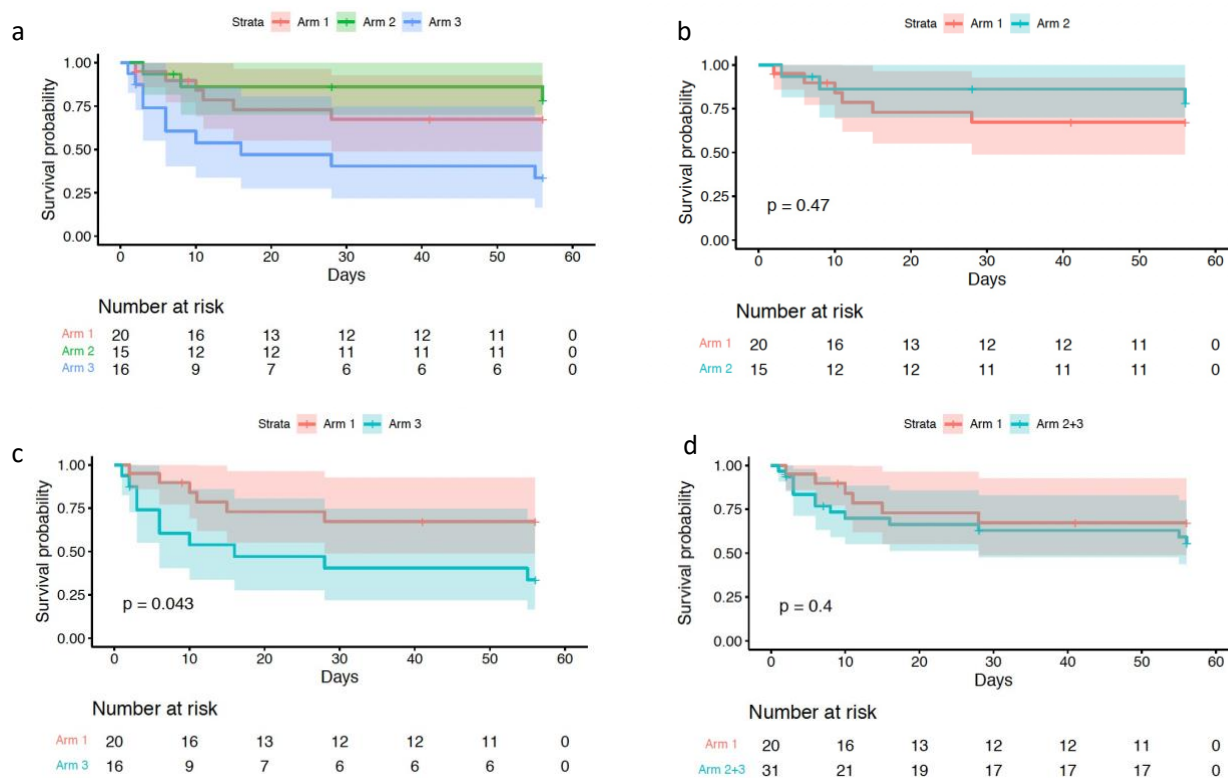
575

576

577

578

579 **Figure 2: Time to worst grade AEI or death**



580

581

582 Kaplan-Meier analysis of time to worse grade AEI or death, comparing arm 1, 2 and 3 (a),

583 arm 2 vs arm 1 (b), arm 3 vs arm 1 (c) and arm 2 and 3 combined vs arm 1 (d).

584

585

586

587

588

589

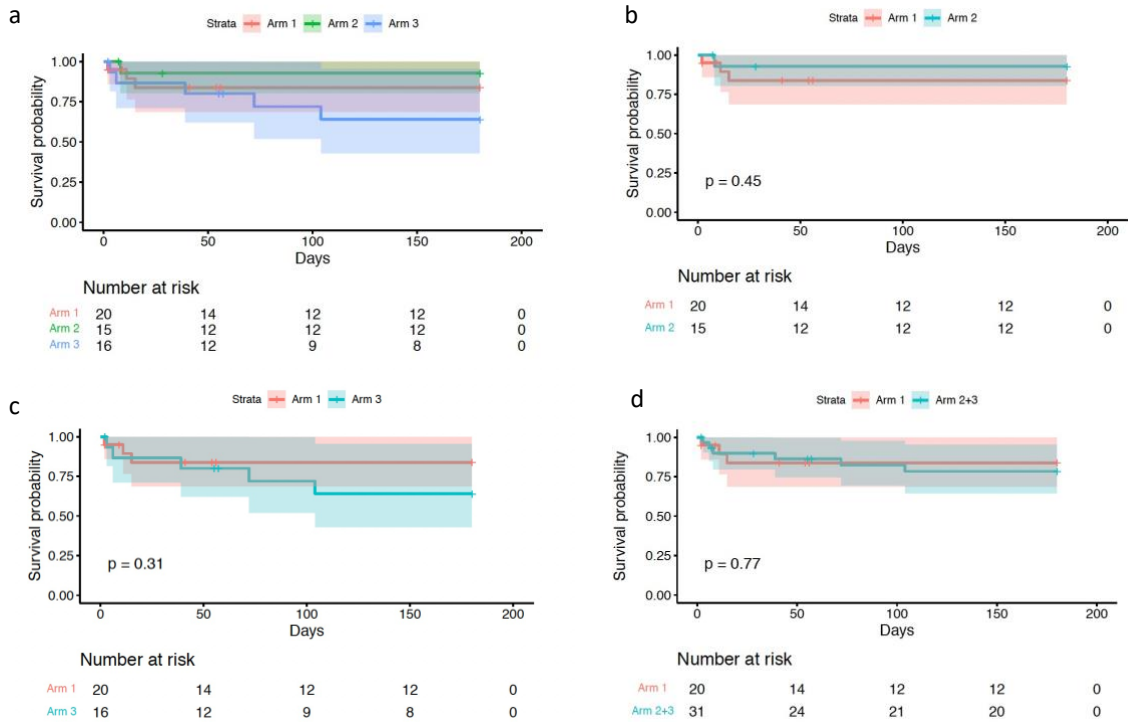
590

591

592

593

594 **Figure 3 Time to death**



595

596

597 Kaplan-Meier analysis of time to death, comparing arm 1, 2 and 3 (a), arm 2 vs arm 1 (b),

598 arm 3 vs arm 1 (c) and arm 2 and 3 combined vs arm 1 (d).

599

600

601

602

603

604

605

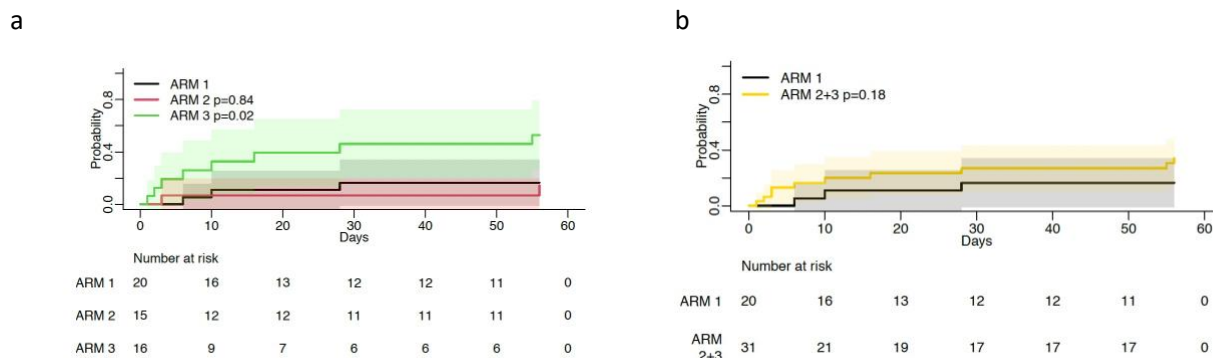
606

607

608

609

610 **Figure 4 Time to AESI**



611

612 Kaplan-Meier analysis of time to AESI, comparing arm 1, 2 and 3 (a), and arm 2 and 3

613 combined vs arm 1 (b).

614

615

616

617

618

619

620

621

622

623

624

625

626

627

628

629

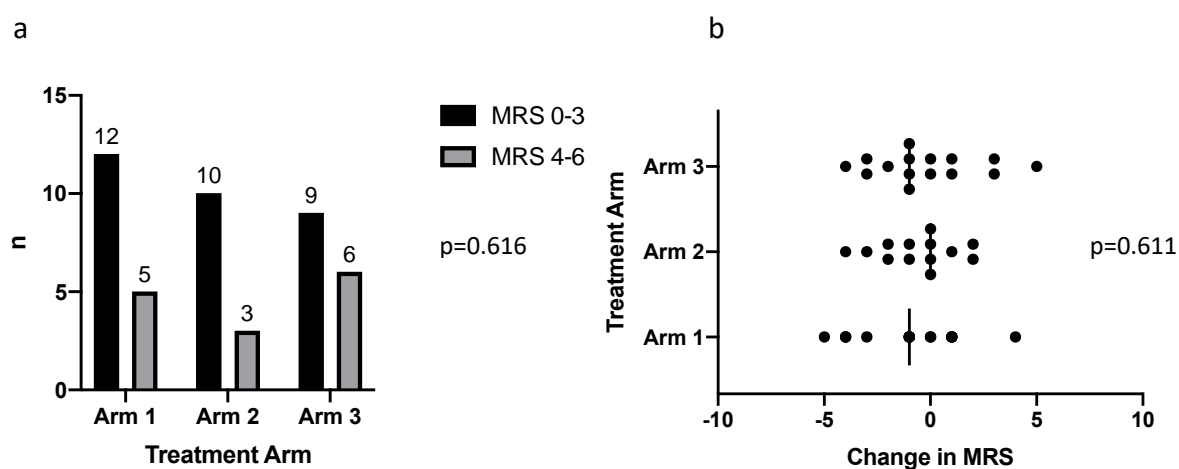
630



631 **Figure 5: Functional outcome at day 56 as defined by Modified Rankin Scale**

632

633



634

635 Figure 3a demonstrates a comparison between good outcome (MRS 0-3) vs bad outcome

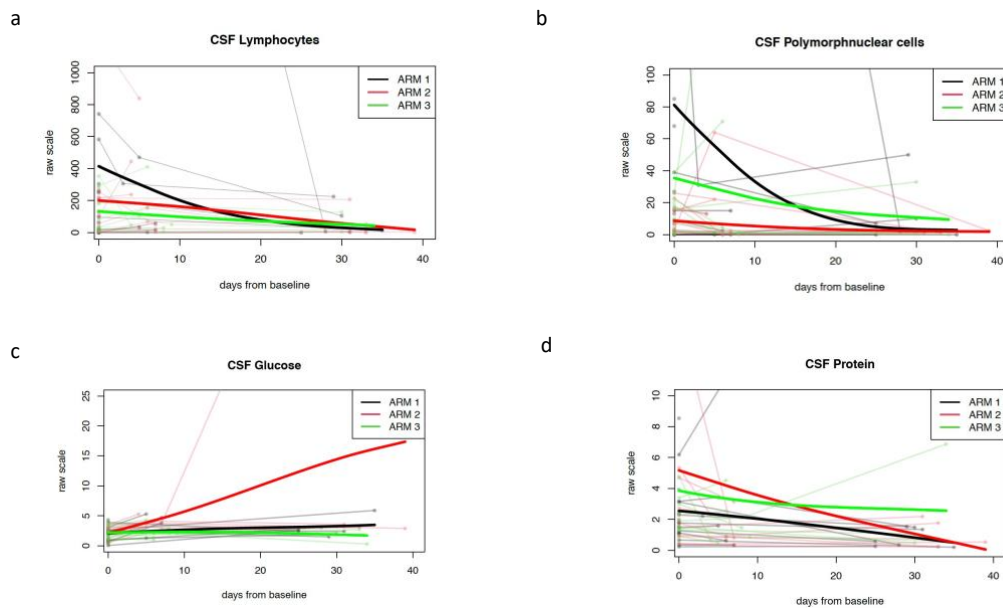
636 stratified by arm at day 56. Figure 3b compares change in MRS between enrolment and day

637 56, across treatment arms.

638

639

640 **Figure 6: Change in CSF parameters over time**



641

642 Spaghetti plots for CSF parameters (lymphocyte count (a), polymorphonuclear cells (b),  
643 glucose (c), protein (d)) plotted as individual values over time (faint lines), with mean values  
644 for each treatment arm represented by superimposed line (bold lines).

645

646

647

648

649

650

651

652

653

654

655

656

657

658 **TABLES**

659

660 **Table 1: Adverse events of special interest (AESI) assessed in the trial**

<b>AESI</b>	<b>Investigational product</b>	<b>Objective measure</b>
Gastrointestinal haemorrhage	Aspirin	Clinical and laboratory measures to suggest haemorrhage
Intracerebral haemorrhage	Aspirin	Radiological evidence of haemorrhage
Transaminitis	Rifampicin	ALT, bilirubin (DAIDS criteria, Grade 3 and 4)
Anaemia	Linezolid	Hb (DAIDS criteria, Grade 3 and 4)
Neutropenia	Linezolid	Neutrophils (DAIDS criteria, Grade 3 and 4)
Thrombocytopenia	Linezolid	Plt count (DAIDS criteria, Grade 3 and 4)
Peripheral Neuropathy	Linezolid	Full neurological history and examination, BPNS, mTNS
Change in LogMAR score (visual acuity)	Linezolid	Visual acuity measured by logMAR chart (or tumbling E chart in illiterate participants)

661 Abbreviations: ALT, alanine transaminase; DAIDS, Division of AIDS; BPNS, Brief Peripheral

662 Neuropathy Score; mTNS, modified Total Neuropathy Score.

663

664

665

**Table 2: Baseline characteristics**

	Arm 1 (n=20)	Arm 2 (n=15)	Arm 3 (n=16)
Age, median (IQR) years	39.5 (34-48.5)	37 (34.5–42.5)	41.5 (31.8-46)
Gender, male n (%)	10 (50)	10 (66.7)	16 (62.5)
Uniform case definition, n (%)			
- Definite	8 (40)	3 (20)	6 (37.5)
- Probable	5 (25)	4 (26.7)	4 (25.0)
- Possible	7 (35)	8 (53.3)	6 (37.5)
BMRC TBM Grade, n (%)			
- Grade 1	11 (55)	11 (73.3)	8 (50)
- Grade 2	8 (40)	4 (26.7)	8 (50)
- Grade 3	1 (5)	0 (0)	0 (0)
CD4 T-cell count, median (IQR), cells/μL	116.5 (58.6-283)	131 (82.5-186)	158.5 (85.5-331.5)
HIV viral load, median (IQR), copies/mL	89,150 (1000-203,711)	37,960 (2428 – 394,839)	2686 (1361-777,620)
ART status, n (%)			
- On ART	6 (30)	5 (33)	5 (31)
- Previous ART	3 (15)	6 (40)	5 (31)
- ART naive	11 (55)	4 (27)	6 (38)
Of those on ART, duration in weeks, median (range)	288.9 (22.4-459.3)	23.7 (0.4-83.6)	355 (2.9-879.1)
CSF cell count/biochemical data available (n)	17	14	13
Polymorphonuclear cells, median (IQR), cells/ μL	13 (0-85)	4 (2-16)	16 (3-22)
Lymphocytes, median (IQR), cells/ μL	63 (10-259)	79 (11-218)	82 (28-278)
Protein, mg/dL	1.78 (1.13-3.13)	1.89 (0.95-4.2)	1.9 (1.32-2.99)
CSF Glucose, mg/dL	2.2 (0.9-2.5)	2.4 (1.9-2.9)	1.7 (1.2-3.3)
Baseline radiology available (n)	16	12	11
Hydrocephalus n (%)	1 (6.3)	1 (8.3)	1 (9.1)
Meningeal enhancement n, (%)	4 (25)	2 (16.7)	6 (54.5)
Tuberculoma(s) n, (%)	1 (6.3)	2 (16.7)	2 (18.2)
Infarct(s) n. (%)	4 (25)	1 (8.3)	3 (27.3)

Abbreviations: IQR, interquartile range; ART, antiretroviral therapy; BMRC, British Medical Research

**Table 3: AESI by treatment arm**

	<b>Arm 1 (n=20)</b>	<b>Arm 2 (n=14)</b>	<b>Arm 3 (n=16)</b>	<b><i>p value</i> **</b>
Bleeding, n* (%)	0 (0)	0 (0)	1 (6)	0.338
Transaminitis, n (%)	0 (0)	0 (0)	2 (13)	0.109
Hematological, n (%)	2 (10)	0 (0)	1 (6)	0.481
Peripheral Neuropathy, n (%)	2 (10)	2 (14)	4 (25)	0.46
Change in LogMAR score, n (%)	0 (0)	2 (14)	2 (13)	0.231

\*individuals with an event

\*\* arm 3 vs arm 1

**Table 4: Details of AESI by event**

AE name	Treatment arm	Days of treatment	DAIDS grade	Pre-existing	Outcome
Melaena	3	1	1	No	Two episodes of black stool. No associated change in Hb or urea. Aspirin stopped and not restarted as per protocol. No further events.
Transaminitis	3	16	3	No	Improved to grade 2 but not restarted on high-dose rifampicin at discretion of site PI.
Transaminitis	3	6	4	No	Improved, successfully rechallenged with rifafour FDC. High-dose rifampicin not restarted per protocol.
Neutropenia	1	13	3	Yes	No change in study medication (arm 1)
Neutropenia	3	28	3	No	Linezolid stopped, resolved. Not restarted.
Anemia	1	28	3	No	No change in study medication (arm 1)
Neurosensory symptoms	1	10	2	No	No change in study medication (arm 1). Normal at subsequent visit.
Neurosensory symptoms	1	6	2	No	No change in study medication (arm 1). Normal at subsequent visit.
Neurosensory symptoms	2	3	1	No	Linezolid stopped. MRI show anterior cord changes (possible ischaemic or inflammatory aetiology). Not restarted on linezolid although felt clinically not to be consistent with peripheral neuropathy.
Neurosensory symptoms	2	7	1	No	All study medication stopped due to relocation of participant and therefore withdrawal from study. No follow up BPNS performed.
Bilateral lower limb weakness	3	18	2	No	Linezolid stopped. MRI showed changes consistent with TB radiculopathy//arachnoiditis. Linezolid not restarted at discretion of site PI , although clinically unlikely peripheral neuropathy.
Paresthesia left leg	3	18	1	No	
Neurosensory symptoms	3	3	1	No	Linezolid stopped. Normal at subsequent visit although linezolid not restarted at discretion of site PI.
Neurosensory symptoms	3	10	1	No	Linezolid stopped. Participant subsequently died, cause of death not related to linezolid.
Asymptomatic increase in BPNS	3	13	1	No	Linezolid stopped. Normal at subsequent visit. Linezolid restarted at 600mg as per protocol.
Increase in LogMAR	2	56	1	No	Noted on day 56 visit, therefore no change in study medication. No follow up notes.
Increase in LogMAR	2	55	1	No	Optic neuropathy ruled out by ophthalmology. Linezolid restarted.
Change in visual acuity with related change in LogMAR	3	42	4	No	Seen by ophthalmology. Diagnosis: Parietal stroke +/- ethambutol related optic neuropathy.
Increase in LogMAR	3	55	1	No	Noted on day 56 visit, therefore no change in study medication. No follow up notes.

Abbreviations: Hb; haemoglobin; FDC, fixed dose combination; BPNS, Brief Peripheral Neuropathy Score; LogMAR, Logarithm of the Minimum Angle of Resolution.; MRI, Magnetic Resonance Imaging; PI, principal investigator.

1 **Table 5: Timing and cause of death prior to day 56**

Cause of death	Treatment Arm	Days of IP
Renal Failure	1	11
TB Meningitis	1	15
TB Meningitis	1	2
TB Meningitis	2	8
TB Meningitis	2	0*
Pulmonary embolism	3	39
TB Meningitis	3	6
TB Meningitis	3	3

2

3 \*death prior to receiving study IP and therefore excluded from modified intention to treat

4 population analysis

5

6

7

8

9

10

11

12

13

14

15

16

17

18

19

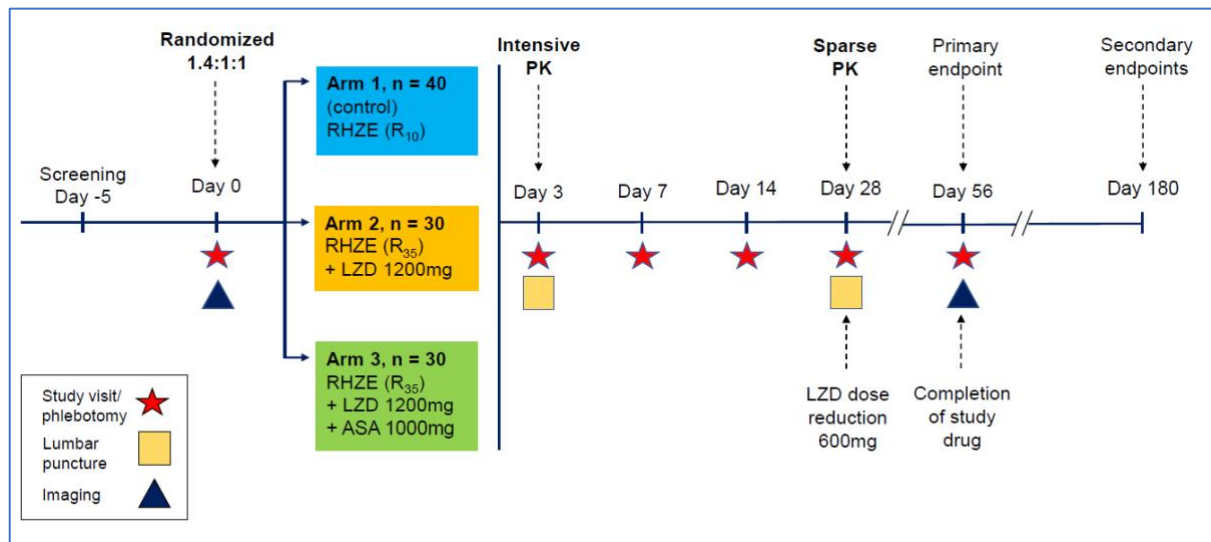
20

21 **SUPPLEMENTARY MATERIAL**

22

23 **Figure S1: Study schedule**

24



25

26 Legend: Study design schematic describing randomisation to study arms, treatment  
27 intervention per arm, visit schedule, overview of clinical procedures and timepoints relating to  
28 primary and secondary endpoint data collection

29 Abbreviations: RHZE: Rifampicin, Isoniazid, Pyrazinamide, Ethambutol; R<sub>10</sub>: Rifampicin  
30 10mg/kg/day; R<sub>35</sub>: Rifampicin 35mg/kg/day; LZD: Linezolid; ASA; Aspirin;

31

32

33

34

35

36

37

38

39

40

41



42 **Table S1: Reasons for screening exclusion.**

43

Reason*	n	%
Chronic aspirin or NSAID use	9	13.2
HIV uninfected	8	11.8
Investigator discretion	8	11.8
Received more than 5 days of anti-TB treatment in 30 days prior to enrolment	7	10.3
Not 'possible', 'probable' or 'definite' TBM	6	8.8
Haemoglobin < 8 g/dL	5	7.4
INR > 1.4	4	5.9
No consent for enrolment given by the patient	3	4.4
Peripheral neuropathy scoring Grade 3 or above on modified BPNS	3	4.4
Standard TB treatment contraindicated	2	2.9
Known rifampicin resistance during this episode	2	2.9
Previous drug resistant TB	2	2.9
Uses a 'disallowed medication' that cannot safely be stopped	2	2.9
Pregnant (>17 weeks at baseline)	1	1.5
Allergy to RHZE, LZD, aspirin	1	1.5
Died before enrolment	1	1.5
Evidence of bacterial or cryptococcal meningitis	1	1.5
eGFR < 20	1	1.5
Platelet count < 50 10 <sup>9</sup> /L	1	1.5
Relocation prior to enrolment	1	1.5

44 Abbreviations: NSAID, non-steroidal anti-inflammatory drug; BPNS; brief peripheral

45 neuropathy score; Rif, rifampicin; RHZE; rifamur; LZD, linezolid; ASA, aspirin

46 \*more than one reason can be assign to each participant

47 **Table S2: Reason for study withdrawals prior to day 56**

48

Withdrawal	Reason
1	Participant relocated to Malawi and therefore unable to attend study follow up visits
2	Participant relocated to Kwazulu-Natal and therefore unable to attend study follow up visits
3	Participant withdrew consent
4	Participant withdrew consent
5	Participant developed acute psychosis and was unsafe to follow up
6	Participant lost to follow up

49

50

51

52

53

54

55

56

57

58

59

60

61

62

63

64

65

## 66 **Box S1: Eligibility Criteria**

### 67 **Inclusion criteria**

- 68 • Age >18 years
- 69 • proven HIV-1 seropositivity
- 70 • Diagnosis of 'possible', 'probable' or 'definite' TBM

### 71 **Exclusion criteria**

- 72 • Rifampicin-resistant *M.tb* detected on any clinical specimen;
- 73 • History of allergy or hypersensitivity to RIF, isoniazid, ethambutol, pyrazinamide, LZD or
- 74 ASA;
- 75 • Received more than 5 days of antitubercular therapy in the 30 days prior to screening;
- 76 • Receipt of regular daily ASA or NSAID prior to TBM diagnosis
- 77 • CSF unobtainable by lumbar puncture or another procedure;
- 78 • Evidence of bacterial or cryptococcal meningitis;
- 79 • Severe concurrent uncontrolled opportunistic infection including, but not limited to, active
- 80 cytomegalovirus-associated disease, Kaposi sarcoma, *Pneumocystis jirovecii*
- 81 pneumonia, HIV related or unrelated malignancy, or gastrointestinal bleeding;
- 82 • Any other form of immunosuppressive therapy, including antineoplastic and biologic
- 83 agents, apart from corticosteroids;
- 84 • More than 17 weeks pregnant at baseline;
- 85 • Peripheral neuropathy scoring Grade 3 or above on the BPNS;
- 86 • Any disease or condition in which the use of the standard anti-TB drugs (or any of their
- 87 components) are contraindicated. This includes, but is not limited to, allergy to any TB
- 88 drug or their components;
- 89 • The presence of one or more of the following:
  - 90 - Estimated glomerular filtration rate (eGFR) < 20ml/min/1.73 m<sup>2</sup>\*
  - 91 - INR > 1.4 and/or clinical evidence of liver failure or decompensated cirrhosis;
  - 92 - Haemoglobin < 8.0 g/dL;
  - 93 - Platelets < 50 x10<sup>9</sup> /L;
  - 94 - Neutrophils < 0.5 x 10<sup>9</sup> cells/L;
- 95 • Any disease or condition in which any of the medicinal products listed in the section
- 96 pertaining to prohibited medication is used and cannot be safely stopped;
- 97 • Known or suspected history of drug abuse or any other reason that is, in the opinion of
- 98 investigators, sufficient to compromise the safety or cooperation of the participant.

99 \*Calculated using the Cockcroft-Gault equation; INR: International normalised ration; BPNS: Brief Peripheral  
100 Neuropathy Score; NSAID: Non Steroidal Anti Inflammatory Drug;