

Genomic epidemiology reveals the dominance of Hennepin County in transmission of SARS-CoV-2 in Minnesota from 2020-2022

Matthew Scotch^{1,2,3}, Kimberly Lauer⁴, Eric D. Wieben⁵, Yesesri Cherukuri⁶, Julie M Cunningham⁷, Eric W Klee^{4,8}, Jonathan J. Harrington⁸, Julie S Lau⁸, Samantha J McDonough⁸, Mark Mutawe⁸, John C. O'Horo⁹, Chad E. Rentmeester^{7,10}, Nicole R Schlicher⁷, Valerie T White⁷, Susan K Schneider⁷, Peter T Vedell⁴, Xiong Wang¹¹, Joseph D Yao⁷, Bobbi S Pritt^{7#}, Andrew P Norgan^{7*}

1. Research Affiliate, Mayo Clinic Arizona, Phoenix, AZ USA
2. Biodesign Center for Environmental Health Engineering, Arizona State University, Tempe, AZ USA
3. College of Health Solutions, Arizona State University, Phoenix, Arizona USA
4. Department of Quantitative Health Sciences, Mayo Clinic Rochester, Rochester, MN, USA
5. Department of Biochemistry and Molecular Biology, Mayo Clinic Rochester, Rochester, MN, USA
6. Research Services, Mayo Clinic Florida, Jacksonville, FL, USA
7. Department of Laboratory Medicine and Pathology, Mayo Clinic, Rochester, Minnesota, USA
8. Center for Individualized Medicine, Rochester, MN, USA
9. Division of Public Health, Infectious Diseases, and Occupational Medicine, Mayo Clinic, Rochester, Minnesota, USA
10. Saint Mary's University of Minnesota, Winona, MN, USA
11. Minnesota Department of Health, St. Paul, MN, USA

Joint Senior Authors

*Contact: Norgan.Andrew@mayo.edu

Keywords: Epidemiology; Computational Biology; SARS-CoV-2; Phylogeography; Minnesota; High-Throughput Nucleotide Sequencing

Abstract

SARS-CoV-2 has had an unprecedented impact on human health and highlights the need for genomic epidemiology studies to increase our understanding of the evolution and spread of pathogens and to inform policy decisions. We sequenced viral genomes from over 22,000 patients tested at Mayo Clinic Laboratories between 2020-2022 and leveraged detailed patient metadata to describe county and regional spread in Minnesota via Bayesian phylodynamics. We found that spread in the state was mostly dominated by viruses from Hennepin County, which contains the state's largest metropolis. This includes the spread of earlier clades as well as variants of concern Alpha and Delta. Ramsey County, the second most populated county had its greatest impact later in the pandemic during variants of concern Alpha, Delta, and early Omicron.

The earliest introduction into Minnesota was to Hennepin from a domestic (USA) source on around January 23, 2020; six weeks before the first confirmed case in the state. The first county-to-county introductions were estimated to originate from Hennepin to somewhere in Central Minnesota around February 28 and from Hennepin to bordering Ramsey County around March 1. Both international and domestic introductions were most abundant in Hennepin (home to an international airport). Hennepin also was, by far, the most dominant source of in-state transmissions to other Minnesota locations (n=1,832) over the two-year period.

We measured the ratio of introductions to total viral flow into and out of each county/region. A value of 1 suggests a location as being a "sink" (accepts SARS-CoV-2 lineages but never exports them to other counties), while a value of 0 indicates a county as being a "source". Most locations were "sinks" throughout the pandemic. Central Minnesota (outside of Hennepin and Ramsey) was dominated by introductions early, but later in 2020 and early 2021 experienced brief fluctuating trends of higher virus exportation. Hennepin showed a different trend than all others as it consistently acted as a source for other Minnesota counties. However, there were

brief periods of fluctuation such as an increase in the ratio of introductions towards the end of 2020 and early 2021, potentially driven by introductions from international locations.

INTRODUCTION

Genomic epidemiology has provided valuable insight into transmission, evolution, and public health surveillance of severe acute respiratory syndrome coronavirus 2 (SARS-CoV-2), the cause of coronavirus disease 2019 (COVID-19). This has been feasible, in large part, to unprecedented viral genomic sequencing efforts across the globe. As of the 29th of December 2022, there are over 14.4M virus sequences in GISAID [1] and over 6.5M in NCBI Virus [2] and GenBank [3]. Studies that focus on localized spread such as counties or regions within a state or province can highlight and uncover transmission events that could inform statewide surveillance and prevention efforts. However, there have been limited SARS-CoV-2 genomic epidemiology studies at this geographic level in the United States. Work by Moreno *et al.* [4] examined evolution and spread of SARS-CoV-2 among two counties (Dane and Milwaukee) in Wisconsin, from the start of the pandemic until the end of April 2020, based on analysis of 247 new full-length SARS-CoV-2 genomes combined with sequences in GISAID. Using this data, they derived county data on synonymous and non-synonymous single nucleotide variants (SNVs), and performed a variety of phylogenetic analyses (using Nextstrain [5] and BEAST2 [6]), determined R0 for their region, and examined the number and timing of introductions to the two counties and how each introduction subsequently impacted the local transmission [4]. The authors were ultimately able to conclude that early transmission within Dane County was not due to its initial introduction followed by local spread, but rather multiple later introductions into the region [4]. In other work, Deng *et al.* [7] sequenced 36 clinical samples from different counties in Northern California, sourced from the California Department of Public Health, Santa Clara County Public Health Department, and the University of California San Francisco. Their phylogenetic analysis revealed multiple California clusters including Santa Clara County, Solano County, San Benito County, as well as lineages from Washington State and Europe [7]. They also identified several early notable SNVs including D614G in the Spike protein [7]. Work by Müller *et al.* [8] examined SARS-CoV-2 introduction and spread in the State of Washington

including at the county level early in the pandemic from February to July 2020 with a focus on the 614G variant and Google workplace mobility data. Alpert *et al.* created county-level risk maps for international importation of early Alpha variants via air transport [9]. Other work such as Valesano *et al.* [10], Holland *et al.* [11], and Currie *et al.* [12] examined spread on college campuses.

Although these studies have provided within-state snapshots into the genomic epidemiology of SARS-CoV-2, they did not consider how localized evolution and spread within a state changed over multiple years of the pandemic with the introduction and circulation of different variants of concern such as Alpha, Delta, and Omicron. As the virus continues to evolve, such studies are needed and can inform local and state public health response by highlighting the roles of various counties on state-wide transmission. In addition, they can elucidate the impact of out of state introductions on local spread which can inform policy on travel.

RESULTS

We sequenced SARS-CoV-2 genomes from genomic material collected from clinical samples of patients tested for SARS-CoV-2 infection at Mayo Clinic Laboratories (Figs. S1-S2) over a two-year period from March 2020 to March 2022. We combined these sequences with additional genomes generated for surveillance purposes by the Minnesota Department of Health (MDH) and performed Bayesian phylodynamics to understand in-state spread as well as the impact and timing of introductions into the State of Minnesota (see Methods).

Most of the patients from whom we collected a biological specimen and generated a SARS-CoV-2 genome resided in the State of Minnesota (96%) (Table S1). The breakdown by gender was nearly 50/50 between males and females while 50 percent of the patients were between 18-45. Fifteen percent were under 18 while 11 percent were 65 or older.

Hennepin County consistently drives in-state transmission

We down-sampled Minnesota genomes with county metadata proportional to their case rates for a Minnesota dataset of 4,586 genomes representing 20 counties (Table S2). We

analyzed the timing and impact of introductions into the Minnesota by adding additional genomes from NCBI GenBank [3] as part of an international dataset used in NextStrain [5] (see Methods). To address the computational burden of adding additional sequences to our already large dataset, we aggregated the additional samples into discrete traits *International* and *USA* and grouped counties with less sequences into areas in the state such as Southern, Central, and Northern Minnesota (Fig. 1 and Table S3).

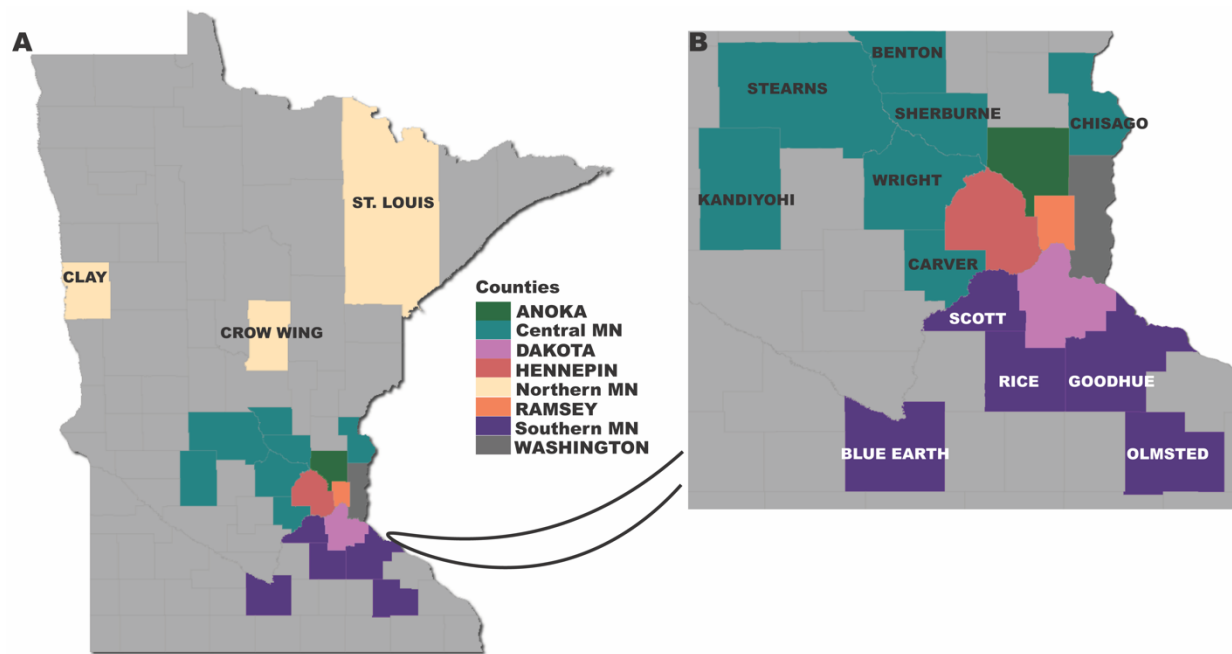


Figure 1. Map of Minnesota counties included in the phylodynamic analysis. Counties with the same color are part of a discrete region (northern, central, and southern) used in the analysis. We show an inset of a portion of the map for visualization purposes.

We implemented Bayesian phylodynamic models to examine transmissions in Minnesota from early 2020 to early 2022 (see Methods). We recorded Markov jumps [13] to estimate the timing of introductions and their directionality. After introductions from domestic and international locations, our analysis shows that Hennepin County, the most populous county which includes Minneapolis, the most populated city, drove the transmission of SARS-CoV-2 viruses in the state (Fig. 2A and Fig. S3). This includes the formation of earlier clades including 20A, 20C, and 20G, as well as variants of concern Alpha (Fig. S4) and Delta (Fig. S5). The

counties in *Central Minnesota* also contributed to spread including 20G, Alpha, and Delta. Like Hennepin, Ramsey County, the second most populated county (which includes St. Paul, the Capital and second most populated city) also contributed to early evolution and spread (such as 20G) however it had greater impact later in the pandemic including variants of concern Alpha (Fig. S4) and Delta (Fig. S5).

Markov jump estimates (Fig. 2B) as shown via a Chord diagram suggest that transmission of SARS-CoV-2 within the state largely originated from Hennepin County (thick arcs and wider fragments at the outer circle). However, we also note existence of transmission back to these areas (white space between arc points and outer fragment) from nearby counties from Central Minnesota.

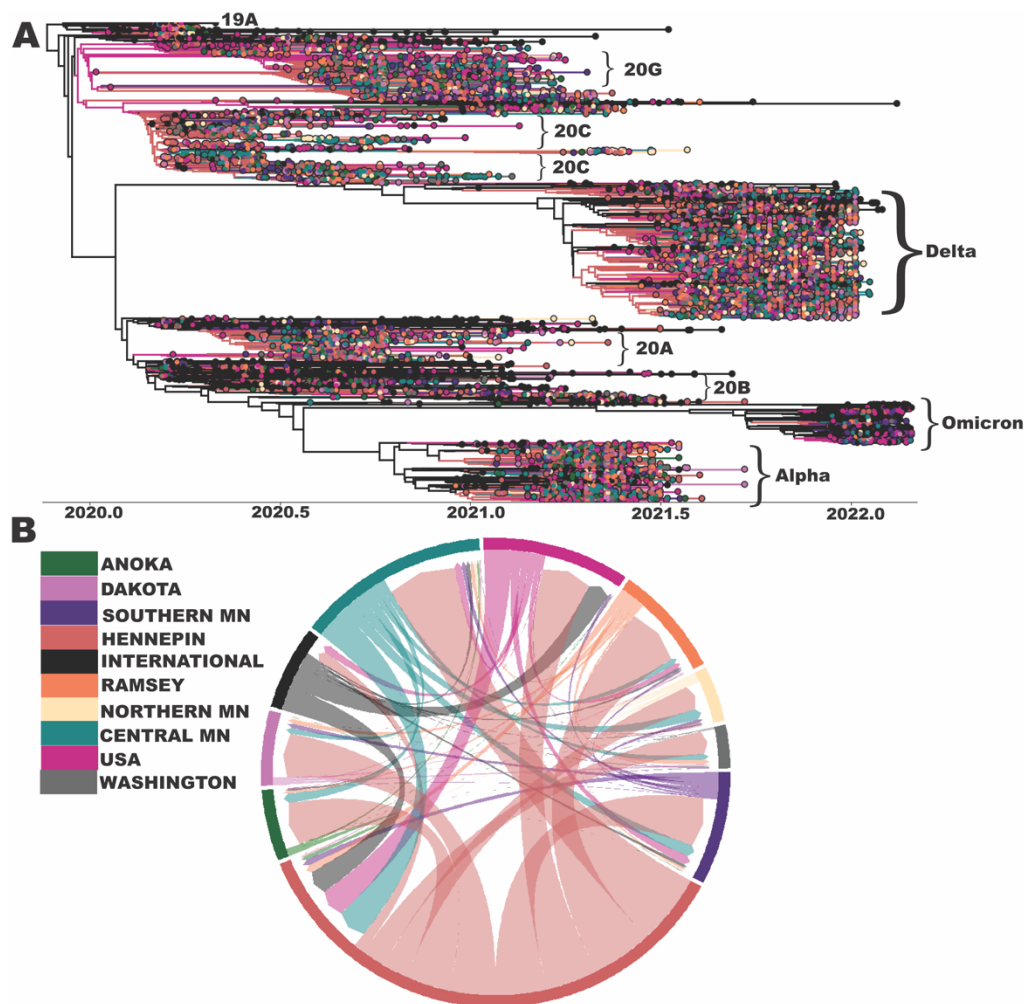


Fig. 2. SARS-CoV-2 evolution and spread to and within the State of Minnesota. A) Maximum clade credibility (MCC) tree of 6,479 SARS-CoV-2 genomes from Minnesota counties and regions as well as international locations and other domestic locations in USA. We annotate the different clades by Nextclade-assigned names or VoCs [14]. B) Markov jumps between locations as shown via a Chord diagram. The colors for both panels represent the locations depicted in the legend. *Central MN* includes seven Minnesota counties: Benton, Carver, Chisago, Kandiyohi, Sherburne, Stearns, and Wright. *Northern MN* includes three counties: Clay, Crow Wing, and Saint Louis. *Southern MN* includes five counties: Blue Earth, Goodhue, Olmsted, Rice, and Scott. *USA* includes all states except for Minnesota. Abbreviation: MN – Minnesota.

We measured the ratio of introductions to total viral flow into and out of each county by month from March 2020 to January 2022. A value of 1 suggests a county as solely being a “sink” (accepts SARS-CoV-2 lineages but never exports them to other counties), while a value

of 0 indicates a county as solely being a “source”. Anoka, Dakota, Ramsey, Northern Minnesota, Southern Minnesota, and Washington were all fueled by introductions throughout the pandemic (Fig 3). Meanwhile, Central Minnesota (outside of Hennepin and Ramsey) was dominated by introductions early in the pandemic but later in 2020 and early 2021 experienced brief fluctuating trends of higher virus exportation. Hennepin County showed a drastically different trend than all others as it consistently acted as a source for other Minnesota counties over the nearly two-year period. However, it did experience brief periods of fluctuation such as a spike in the ratio of introductions towards the end of 2020 and early 2021, potentially driven by the dominance of international introductions (Fig. 3, as seen by the dip in the ratio of introductions for *international* viruses during this same time period).

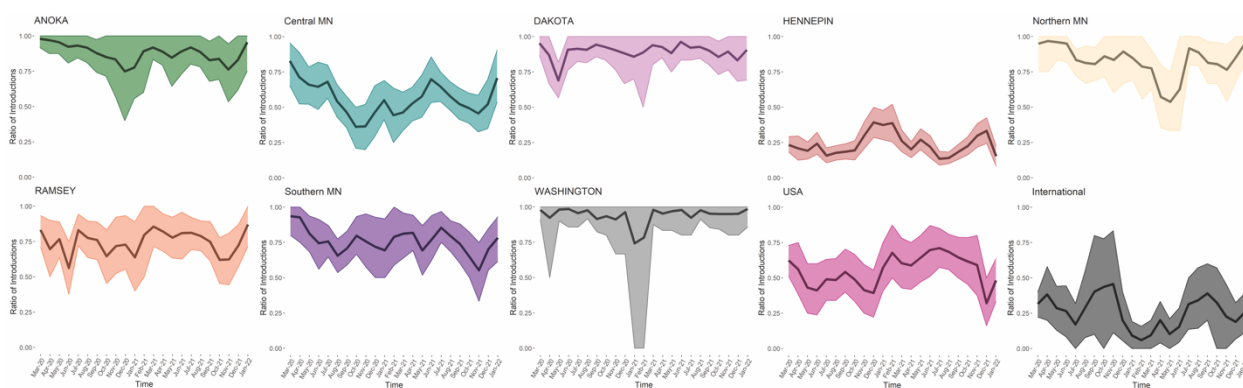


Fig. 3. Ratio of introductions to total viral flow into and out of each discrete location by month from March 2020 – January 2022. We show the posterior mean ratio and 95% Bayesian highest posterior density interval.

Low-to-intermediate spatial mixing within the State of Minnesota

We assessed county-specific virus diversity via a normalized Shannon diversity index (Fig. S6) that we computed based on the duration of time associated with continuous partitions of the phylogeographic tree as determined by Markov jumps [15] (see Methods). The index, in this context, measures the degree of spatial structure (based on counties) during the evolution and spread of SARS-CoV-2 viruses in Minnesota. A value of 0, indicates exclusive spatial structure such as an outbreak contained to only one county [15]. Conversely, a value of 1, suggests

significant spatial mixing of SARS-CoV-2 between counties [15]. The counties and regions show low to intermediate (0.25 to 0.5 Shannon) spatial mixing with brief periods of waxing and waning. The two dotted vertical lines indicate changes in state-wide policy. The second line on May 28, 2021 indicates the end of all COVID-19 restrictions in the state [16].

Hennepin County received the vast majority of out of state introductions and was the dominant source for in-state transmission

We focused on the timing and source of introductions into the state during the pandemic (Fig. 4) as estimated from our maximum clade credibility tree (Fig. 2A). The earliest introduction into Minnesota was to Hennepin County from a domestic source on around January 23, 2020 (depicted with an arrow in Fig. 4). This is about one month before the first patient in the state, a man from Ramsey County (which borders Hennepin), developed symptoms and around six weeks before (March 6, 2020) the Department of Health confirmed the infection [17]. The first international introduction occurred in Hennepin on around February 11 with another shortly thereafter on around February 13. The first two in-state introductions were estimated to originate from Hennepin to somewhere in Central Minnesota around February 28 and from Hennepin to Ramsey around March 1. International introductions were most abundant in Hennepin County (home to the Minneapolis/St. Paul International (MSP) airport) totaling 119 separate incidents over the two-year pandemic. The domestic (USA) introductions were most frequent to Hennepin as well (n=89) followed by Southern Minnesota (n=57), potentially from nearby states. Hennepin also was, by far, the most dominant source in-state to other Minnesota locations (n=1,832), followed by Central Minnesota (n=347).

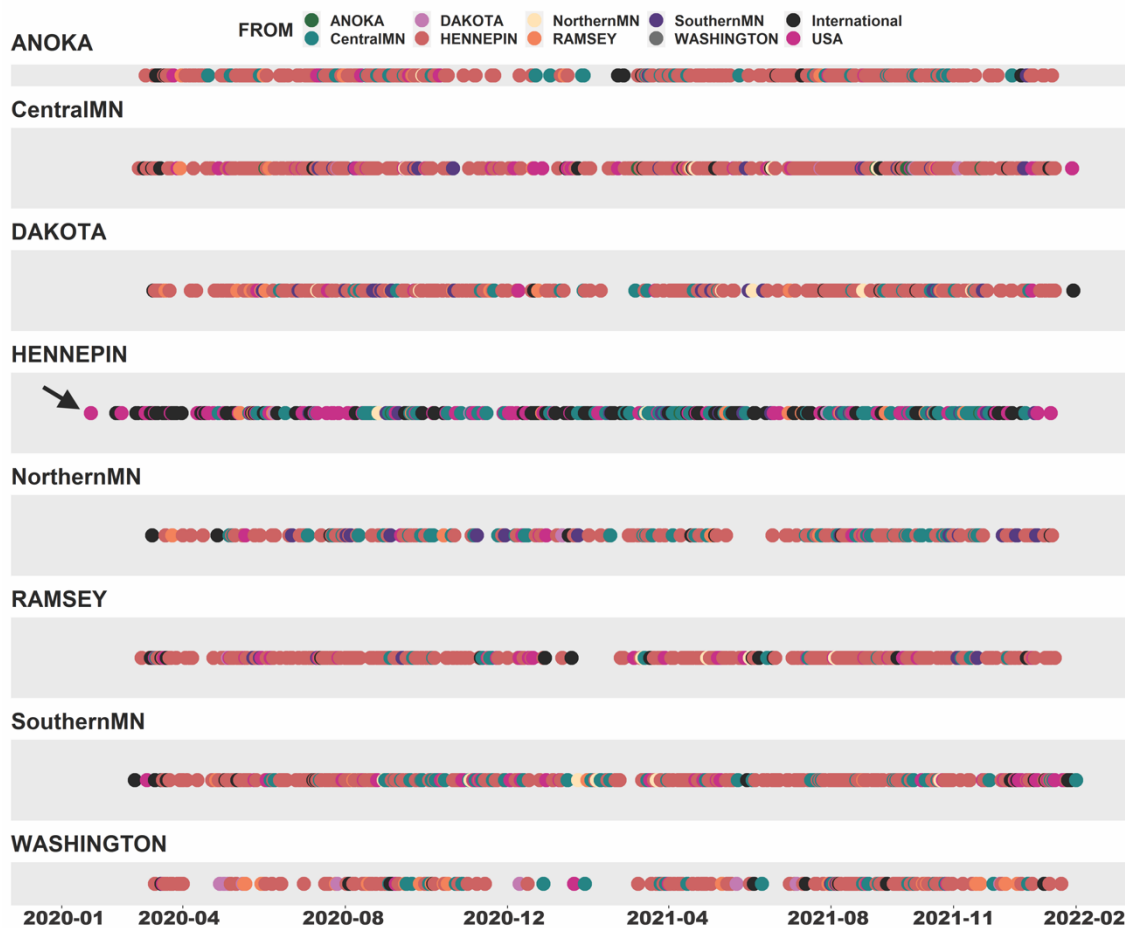


Fig. 4. Timing and source of international, domestic, and within state introductions for each discrete location.

The colors correspond to the source location. We use an arrow to show the first introduction into Minnesota which occurred in Hennepin County at around January 23, 2020 (from a USA location). We used Baltic to extract introductions (migration events) along the annotated branches of the phylogeographic tree.

DISCUSSION

We analyzed over 22,000 new genomes of patients tested at Mayo Clinic Laboratories during a two-year period in the COVID-19 pandemic. We focused our analysis on in-state transmission of SARS-CoV-2, mostly at the county (2nd administrative boundary) level, to describe the spread into and within Minnesota. Despite numerous efforts in genomic epidemiology, few studies have focused on county-to-county transmission in the US over most of the pandemic (including different VoCs). We expand on earlier efforts such *Moreno et al.* and

[4] and Deng *et al.*[7] but include multiple variants and an extensive timeframe. We found that spread in the state was mostly dominated by viruses from Hennepin County, which contains the largest metropolis. Ramsey County, the second most populated county had its greatest impact later in the pandemic during variants of concern Alpha, Delta, and early Omicron.

The earliest introduction into Minnesota was to Hennepin from a domestic (USA) source about six weeks before the first confirmed case in the state. This suggests that earlier (and likely milder) infections of SARS-CoV-2 occurred before the first documented case.

The dominance of Hennepin County as a source for in-state transmission may have dampened the spatial diversity of SARS-CoV-2 viruses within each location. Anecdotally, the fluctuation in spatial diversity over time (that did exist) did not appear to be impacted by key state-mandated policies nor did it appear to have any relationship with reported clinical cases (Fig. S6).

As the virus continues to evolve, more within state genomic epidemiology studies are needed to inform local and state public health response by highlighting the roles of various counties on state-wide transmission. In addition, they can elucidate the impact of out of state introductions on local spread which can inform policies such as travel.

We note several limitations in the study including the likelihood of location-specific sampling bias. We attempted to supplement known locations of patients in our study (biased towards southeastern Minnesota) with existing sequences provided via the Minnesota Department of Health. We scaled our number of sequences to the rate of known COVID-19 cases, and, after doing so, omitted counties with a limited number of sequences. Thus, we are unable to account for virus spread from less populated areas of the state. We also attempted to include a representative sample of USA and international sequences. However, it is possible that additional sequences (context) might change the distribution of virus clades and the timing of introductions into the state, which could alter our interpretations of SARS-CoV-2 spread. We also only included early Omicron sequences and thus we are unable to describe an informed

picture of its evolutionary diffusion in the state. In addition, our use of different versions of the DRAGEN pipeline over the course of our two-year study period, likely led to differences in variant frequencies across virus lineages/VoCs.

MATERIALS and METHODS

RNA extraction, library preparation and next generation sequencing

From March 2020 to March 2022, we analyzed patient nasopharyngeal or mid-nasal turbinate swabs that tested positive for COVID-19 via RT-qPCR at Mayo Clinic Laboratories and had a Ct value of 28 or lower. We extracted viral RNA on the Hamilton Microlab STAR Automated Liquid Handler system (Hamilton Company, Reno, NV USA) with the use of Promega Maxwell HT Viral TNA Kit (Fitchburg, WI). We generated libraries using the COVIDSeq Test reagent kit from Illumina (San Diego, CA USA) following the manufacturer's instructions. We sequenced the pooled libraries as 100 x 2 paired end reads using the NovaSeq SP sequencing kit and Xp 2-Lane kit with NovaSeq Control Software v1.6.0. We used the Illumina RTA version 3.4.4 for base-calling.

We de-multiplexed raw sequence data into individual sample fastq files using bcl2fastq2-v2.19.0 [18]. We used Illumina's Dynamic Read Analysis for GENomics (DRAGEN) COVID Lineage software and pipeline [19] (versions 3.5.1, 3.5.3, and 3.5.6) for reference-based alignment to Wuhan-1 (NC_045512.2), quality assessment, variant calling, and generation of consensus sequences.

We excluded sequences from downstream analysis if they met any of the following criteria, including: 1) given an overall score of *fail* by the DRAGEN pipeline due to having an insufficient amount of detectable viral reads; 2) given an overall quality score by Nextclade [14] as *bad*; 3) potentially contaminated based on presence of unusual allele frequencies (< 0.9); 3) duplicate runs; 4) positive or negative controls.

Phylogenetic analysis of SARS-CoV-2

We assembled a representative dataset (N=6,479, Fig S6) that included SARS-CoV-2 genome sequences from the 20 counties with the greatest number of reported COVID-19 cases as of February 28, 2022 as well as a global representation of sequences available via GenBank as part of an open access dataset from Nextstrain (Table S3) [20]. We used the list of

accessions to download sequences from NCBI Virus [2]. We removed sequences less than 29K nucleotides in length as well as duplicates.

We included sequences from December 2019 (including Wuhan-1, GenBank accession MN908947) to February 28, 2022, as well as their sampling location and collection date metadata. To partially address sampling bias, we sampled at a rate of 5 sequences per 1,000 county cases (Table S2) and used the *filter* module in augur [21] to distribute (as equally as possible) our heterochronous sequences by month (Fig. S7). For each county, we attempted to include SARS-CoV-2 genomes across the two-year timeframe by supplementing our dataset with sequences provided by the Minnesota Department of Health (MDH) (and available in GISAID). The MDH sequences were produced from randomly selected samples from clinics and community testing sites. Sample Ct values were equal or below 30.

We aligned all sequences using Mafft [22] and soft masked problematic sites within coding and non-coding regions (UTRs) using a program described in [23, 24]. We created initial phylogenetic trees via Nextstrain's augur pipeline [5] with IQTree and rooted based on Wuhan-1 (MN908947) [25]. We used TempEST [26] to examine the temporal signal of our heterochronous samples and removed outliers based on visualization of root-to-tip divergence and the residuals. We used least-square dating as done in [27] to refine the root.

Phylodynamics of SARS-CoV-2 in Minnesota

Our dataset showed a positive correlation (0.93) of sampling date and genetic divergence thus suggesting a strict molecular clock [26]. Since our downstream inferencing framework utilizes a rooted and non-bifurcating starting tree, we used the program *di2multi* in the R package *ape* [28] to manipulate our refined tree as necessary.

For Bayesian inference, we leveraged a pre-release of BEAST v1.10.5 (ThorneyTreeLikelihood v0.1.1) and BEASTGen v0.3 (pre-thorney) to specify a more efficient likelihood function intended for larger sequence datasets [29, 30]. We used our starting trees and specified a GTR + Γ model of DNA substitution and a non-parametric Bayesian SkyGrid

coalescent model for our tree prior [31]. We ran our Markov-chain Monte Carlo (MCMC) simulation for 10^9 steps and sampling every 10^5 steps. We checked for convergence of model parameters via Tracer v1.7.1 [32] with an ideal effective sample size (ESS) threshold of 200. We generated log marginal likelihoods and evaluated population growth priors via a stepping stone and path sampling procedure [33]. Our results suggested the use of the non-parametric Skygrid tree prior over a constant growth model (Table S4).

We used LogCombiner to sample 1,000 trees from the posterior distribution and used this as empirical data for ancestral state reconstruction of our location traits. We specified all non-US sequences as “International” and non-Minnesota US states as “USA”. For computational efficiency, we kept the five counties with the greatest number of cases as independent locations and grouped the remaining fifteen counties into three discrete regions including Southern, Central, and Northern Minnesota (Table S3). In BEAUti [34], we specified an asymmetric transmission rate matrix of $K(K*1)$ where K is equivalent to the number of discrete locations ($n=10$ for our dataset). We recorded Markov jumps [13] between locations to estimate the timing and source of introductions. We combined posterior log data via LogCombiner v.10.4 [34] as needed and used TreeAnnotator v.10.4 [34] to create a single maximum clade credibility (MCC) tree after 10% burn-in. We used baltic [35] for tree visualization and to extract the timing of discrete location transitions along the branches of the MCC for our estimates of introductions. We used SpreadD3 [36] to calculate the Bayes factors to identify the most parsimonious origin-destination scenarios (Table S5).

We used two programs of the BEAST library [37], introduced in [15], as part of our Bayesian phylodynamic analyses. *TreeMarkovJumpHistoryAnalyzer* samples from the posterior distribution of trees to collect the timing and location of each Markov jump [15]. We used the output from this program to calculate the ratio of introductions to total viral flow into and out of each county (number of introductions / (number of introductions + number of exports)) as described in Lemey *et al.* [15] as well as the visualization of the weights of pairwise transmission

between counties via a chord diagram. *TreeStateTimeSummarizer*, which also samples from the posterior distribution of trees, notes the contiguous partitions for a given discrete state [15]. We used the output from this program to calculate the normalized Shannon diversity metric as described in Lemey *et al.* [15]. We used this measure to assess the level of location diversity for the viruses within each county during a specified time-period. For our analysis, we used *NormShannon method* in the R package *QSutils* [38] to calculate normalized monthly diversity metrics for each county and *HDinterval* [39] for the corresponding 95% highest posterior density region.

Human subjects and ethics approval

This research was conducted under approval of ethics by the Mayo Clinic Institutional Review Board and assigned a study ID IRB#: 20-005896 and entitled *Large Scale Whole Genome Sequencing of SARS-CoV-2*. All our published datasets contain randomly generated study IDs and no personal identifiers. All data analysis was performed behind the Mayo Clinic firewall.

Data availability

We have deposited the SARS-CoV-2 genomes and metadata from this study in GISAID with a list available at doi.org/10.55876/gis8.220720me. The Minnesota Department of Health sequences used in this study are available on GISAID with acknowledgments at doi.org/10.55876/gis8.220709mv. Our GenBank international sequences were identified via the Nextstrain [20] site and obtained from NCBI Virus [2]. We have deposited BEAST XML files and our empirical set of posterior .trees file in figshare at doi.org/10.6084/m9.figshare.21777995.v1, doi.org/10.6084/m9.figshare.21778004.v1, doi.org/10.6084/m9.figshare.21777998.v1.

Acknowledgements

This publication was supported by funding from the Center for Individualized Medicine-Mayo Clinic Research. Research reported in this publication was also supported by the National

Institute of Allergy and Infectious Diseases (NIAID) of the National Institutes of Health (NIH) under Award Number R01AI164481 (to MS). The content is solely the responsibility of the authors and does not necessarily represent the official views of the National Institutes of Health. The authors would like to thank Gytis Dudas for his assistance with the Baltic Python library. The authors would also like to thank Scott Lunt and Rob Timmer for their assistance with the mforge high-performance computing environment. The authors acknowledge the laboratories that submitted the SARS-CoV-2 genome data to GISAID that were used in this work.

The authors dedicate this publication to Mr. Peter T Vedell who sadly passed away during the writing of this manuscript.

Author contributions

MS designed the genomic epidemiology study, performed the data analysis, and wrote the manuscript. APN and BSP jointly supervised the study and providing funding, reviewed the manuscript, and approved the final manuscript. CER performed data analysis, assisted in reviewing and writing the manuscript. KL, YC, PTV and EWK implemented the DRAGEN and Nextstrain bioinformatics pipeline and variant analysis pipelines, performed variant analysis, and reviewed the manuscript. JMC, JSL, MM, SJM, VTW, NRS, SKS and EDW supervised and performed the sample extraction, viral genomic sequencing, primary analysis of the sequencing and variant data, and reviewed the manuscript. JJH managed the execution of the study and reviewed the manuscript. JCO extracted the clinical data, performed primary data analysis, and reviewed the manuscript. JDY coordinated the provision of samples for quality control and sequencing, assisted with variant interpretation, and reviewed the manuscript. XW supervised the generation of the Minnesota Department of Health genomic sequences, performed primary analysis of the MDH sequence data, and reviewed the manuscript.

Competing interests

The authors declare no competing interests.

Materials & Correspondence

Please direct requests for materials or other correspondence to Andrew P. Norgan, MD, Mayo Clinic, 200 First Street SW, Rochester, MN USA 55905 (email: Norgan.Andrew@mayo.edu).

REFERENCES

1. Shu, Y. and J. McCauley, *GISAID: Global initiative on sharing all influenza data - from vision to reality*. Euro Surveill, 2017. **22**(13).
2. Hatcher, E.L., et al., *Virus Variation Resource - improved response to emergent viral outbreaks*. Nucleic Acids Res, 2017. **45**(D1): p. D482-D490.
3. Sayers, E.W., et al., *GenBank*. Nucleic Acids Res, 2021. **49**(D1): p. D92-D96.
4. Moreno, G.K., et al., *Revealing fine-scale spatiotemporal differences in SARS-CoV-2 introduction and spread*. Nat Commun, 2020. **11**(1): p. 5558.
5. Hadfield, J., et al., *Nextstrain: real-time tracking of pathogen evolution*. Bioinformatics, 2018. **34**(23): p. 4121-4123.
6. Bouckaert, R., et al., *BEAST 2.5: An advanced software platform for Bayesian evolutionary analysis*. PLoS Comput Biol, 2019. **15**(4): p. e1006650.
7. Deng, X., et al., *Genomic surveillance reveals multiple introductions of SARS-CoV-2 into Northern California*. Science, 2020. **369**(6503): p. 582-587.
8. Muller, N.F., et al., *Viral genomes reveal patterns of the SARS-CoV-2 outbreak in Washington State*. Sci Transl Med, 2021. **13**(595).
9. Alpert, T., et al., *Early introductions and transmission of SARS-CoV-2 variant B.1.1.7 in the United States*. Cell, 2021. **184**(10): p. 2595-2604 e13.
10. Valesano, A.L., et al., *SARS-CoV-2 Genomic Surveillance Reveals Little Spread From a Large University Campus to the Surrounding Community*. Open Forum Infect Dis, 2021. **8**(11): p. ofab518.
11. Holland, L.A., et al., *An 81-Nucleotide Deletion in SARS-CoV-2 ORF7a Identified from Sentinel Surveillance in Arizona (January to March 2020)*. J Virol, 2020. **94**(14).
12. Currie, D.W., et al., *Interventions to Disrupt Coronavirus Disease Transmission at a University, Wisconsin, USA, August-October 2020*. Emerg Infect Dis, 2021. **27**(11): p. 2776-2785.
13. Minin, V.N. and M.A. Suchard, *Counting labeled transitions in continuous-time Markov models of evolution*. J Math Biol, 2008. **56**(3): p. 391-412.
14. Aksamentov, I., et al., *Nextclade: clade assignment, mutation calling and quality control for viral genomes*. . zenodo, 2021.
15. Lemey, P., et al., *Untangling introductions and persistence in COVID-19 resurgence in Europe*. Nature, 2021. **595**(7869): p. 713-717.
16. *Impact of Opening and Closing Decisions by state*. 2022 [cited 2022 Apr 28]; Available from: <https://coronavirus.jhu.edu/data/state-timeline/new-confirmed-cases/minnesota/99>.
17. *Health officials confirm first case of novel coronavirus in Minnesota*. 2020 March 6; Available from: <https://www.health.state.mn.us/news/pressrel/2020/covid19030620.html>.
18. Illumina. *bcl2fastq2 Software Release Notes*. 2017 Mar 7 [cited 2021 Dec 7]; Available from: <https://support.illumina.com/content/dam/illumina-support/documents/downloads/software/bcl2fastq/bcl2fastq2-conversion-software-v2-19-release-notes.pdf>.
19. Illumina. *DRAGEN COVID Lineage*. 2021 [cited 2021 Dec 7]; Available from: <https://www.illumina.com/products/by-type/informatics-products/basespace-sequence-hub/apps/dragen-covid-lineage.html>.
20. *Genomic epidemiology of SARS-CoV-2 with subsampling focused globally over the past 6 months*. 2022 [cited 2022 May 1]; Available from: <https://nextstrain.org/ncov/open/global/6m>.
21. Huddleston, J., et al., *Augur: a bioinformatics toolkit for phylogenetic analyses of human pathogens*. J Open Source Softw, 2021. **6**(57).
22. Katoh, K., et al., *MAFFT: a novel method for rapid multiple sequence alignment based on fast Fourier transform*. Nucleic Acids Res, 2002. **30**(14): p. 3059-66.

23. Turakhia, Y., et al., *Stability of SARS-CoV-2 phylogenies*. PLoS Genet, 2020. **16**(11): p. e1009175.
24. De Maio, N., et al. *Masking strategies for SARS-CoV-2 alignments*. 2020 [cited 2021 Nov 16]; Available from: <https://virological.org/t/masking-strategies-for-sars-cov-2-alignments/480/3>.
25. Wu, F., et al. *Severe acute respiratory syndrome coronavirus 2 isolate Wuhan-Hu-1, complete genome*. 2020 Mar 18 [cited 2022 May 1]; Available from: <https://www.ncbi.nlm.nih.gov/nucore/MN908947>.
26. Rambaut, A., et al., *Exploring the temporal structure of heterochronous sequences using TempEst (formerly Path-O-Gen)*. Virus Evol, 2016. **2**(1): p. vew007.
27. Gu, H., et al., *Genomic epidemiology of SARS-CoV-2 under an elimination strategy in Hong Kong*. Nat Commun, 2022. **13**(1): p. 736.
28. Paradis, E. and K. Schliep, *ape 5.0: an environment for modern phylogenetics and evolutionary analyses in R*. Bioinformatics, 2019. **35**(3): p. 526-528.
29. BEAST. *Approaches for analyzing large phylogenetic datasets*. 2021 [cited 2021 Nov 16]; Available from: https://beast.community/thorney_beast.
30. McCrone, J.T. *BEAST v1.10.5 pre-release of ThorneyTreeLikelihood v0.1.1*. 2021 [cited 2021 Nov 16]; Available from: https://github.com/beast-dev/beast-mcmc/releases/tag/v1.10.5pre_thorney_v0.1.1.
31. Hill, V. and G. Baele, *Bayesian estimation of past population dynamics in BEAST 1.10 using the Skygrid coalescent model*. Mol Biol Evol, 2019.
32. Rambaut, A., et al., *Posterior Summarization in Bayesian Phylogenetics Using Tracer 1.7*. Syst Biol, 2018. **67**(5): p. 901-904.
33. Baele, G., et al., *Improving the accuracy of demographic and molecular clock model comparison while accommodating phylogenetic uncertainty*. Mol Biol Evol, 2012. **29**(9): p. 2157-67.
34. Suchard, M.A., et al., *Bayesian phylogenetic and phylodynamic data integration using BEAST 1.10*. Virus Evol, 2018. **4**(1): p. vey016.
35. Dudas, G. *baltic*. 2016 [cited 2022 May 9]; Available from: <https://github.com/evogytis/baltic>.
36. Bielejec, F., et al., *SpreaD3: Interactive Visualization of Spatiotemporal History and Trait Evolutionary Processes*. Mol Biol Evol, 2016. **33**(8): p. 2167-9.
37. Suchard, M.A. *beast-mcmc*. 2022 [cited 2022 Dec 28]; Available from: <https://github.com/beast-dev/beast-mcmc>.
38. Guerrero-Murillo, M. and J. Gregori. *QSutils*. 2022 [cited R package version 1.14.0]; Available from: <https://doi.org/doi:10.18129/B9.bioc.QSutils>.
39. Meredith, M. and J. Kruschke. *HDInterval*. 2020; 0.2.2:[Available from: <https://CRAN.R-project.org/package=HDInterval>]
40. Dong, E., H. Du, and L. Gardner, *An interactive web-based dashboard to track COVID-19 in real time*. Lancet Infect Dis, 2020. **20**(5): p. 533-534.
41. *Governor Walz Extends Stay Home Order in Minnesota*. 2020 Apr 30; Available from: <https://mn.gov/governor/news/?id=1055-430501>.
42. *County Population Totals: 2020-2021*. US Census Bureau 2022; Available from: <https://www.census.gov/data/datasets/time-series/demo/popest/2020s-counties-total.html>.

SUPPLEMENTARY MATERIALS

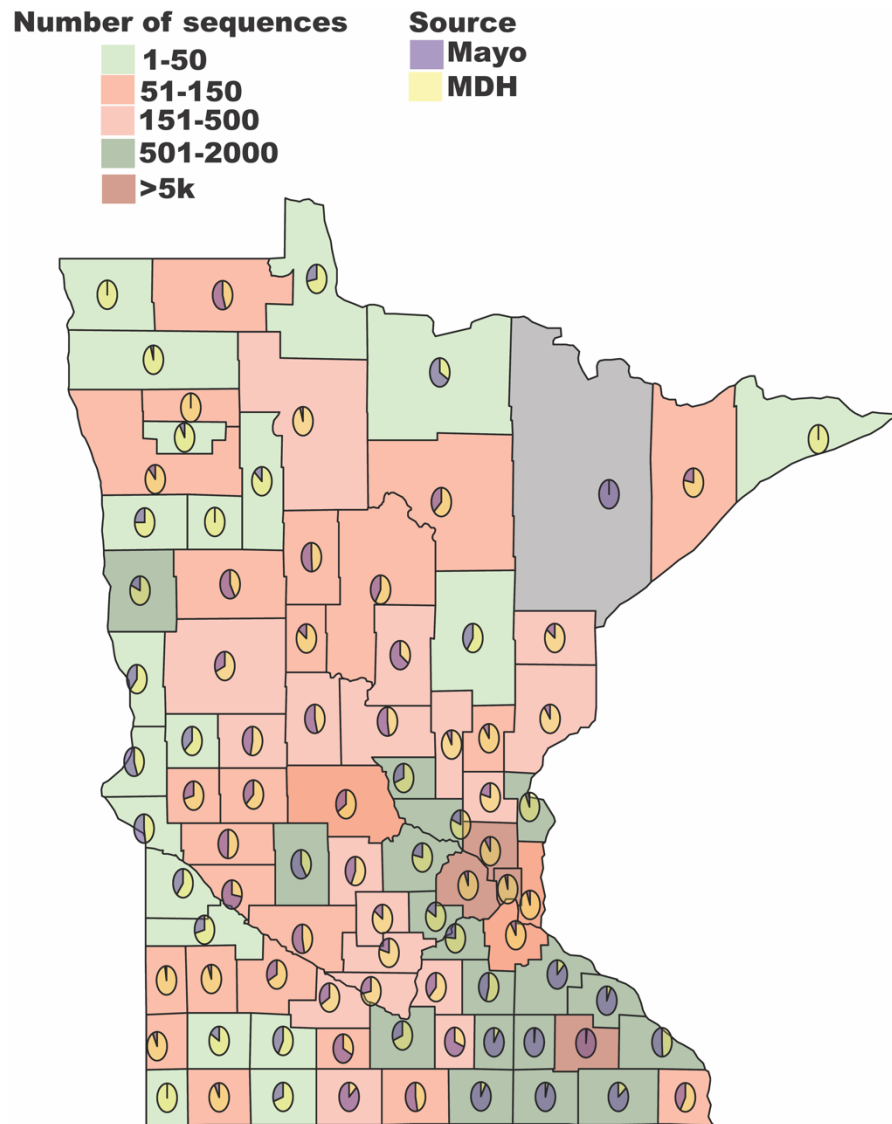


Fig. S1. County map of Minnesota with number of sequences (N=76,875) eligible for analysis by source. Here, *Mayo* (N=21,669) represents new sequences generated from this study at Mayo Clinic Laboratories with a known sampling location in a Minnesota county. *MDH* (N=55,206), refers to a sequence available on GISAID with county metadata provided by the Minnesota Department of Health (MDH).

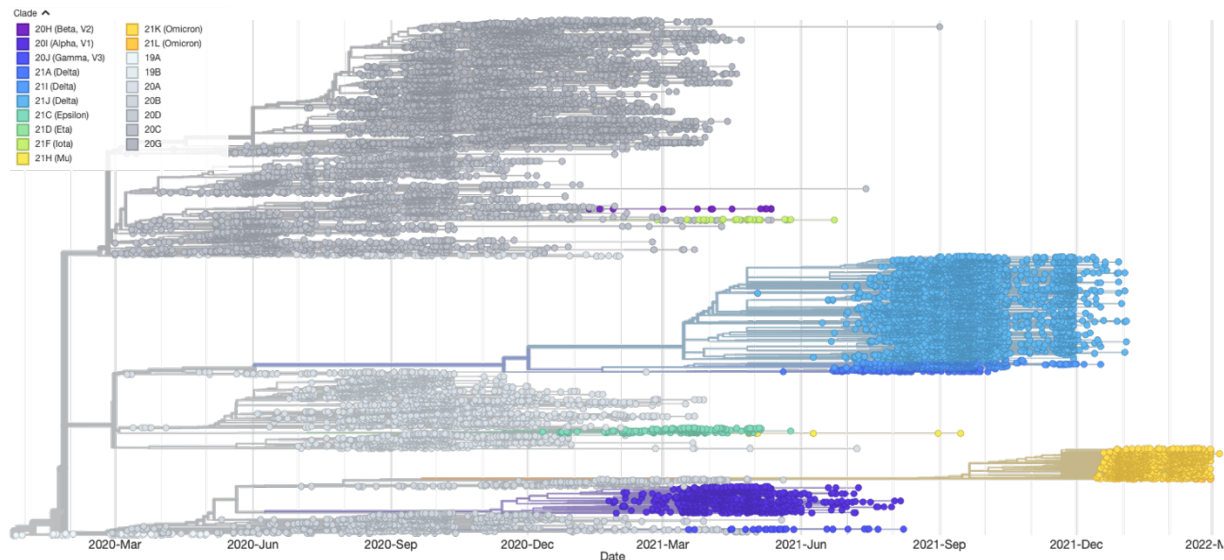


Fig. S2. Phylogeny of 24,070 full genome SARS-CoV-2 sequences generated for this study from 2020-2022 via Nextstrain (augur v15.0.2). Branch colors indicate the assigned clade.



Figure S3. Hennepin-specific lineages based on the MCC tree in Figure 2. The root of each lineage represents introductions into Hennepin with the colors defined in the legend.

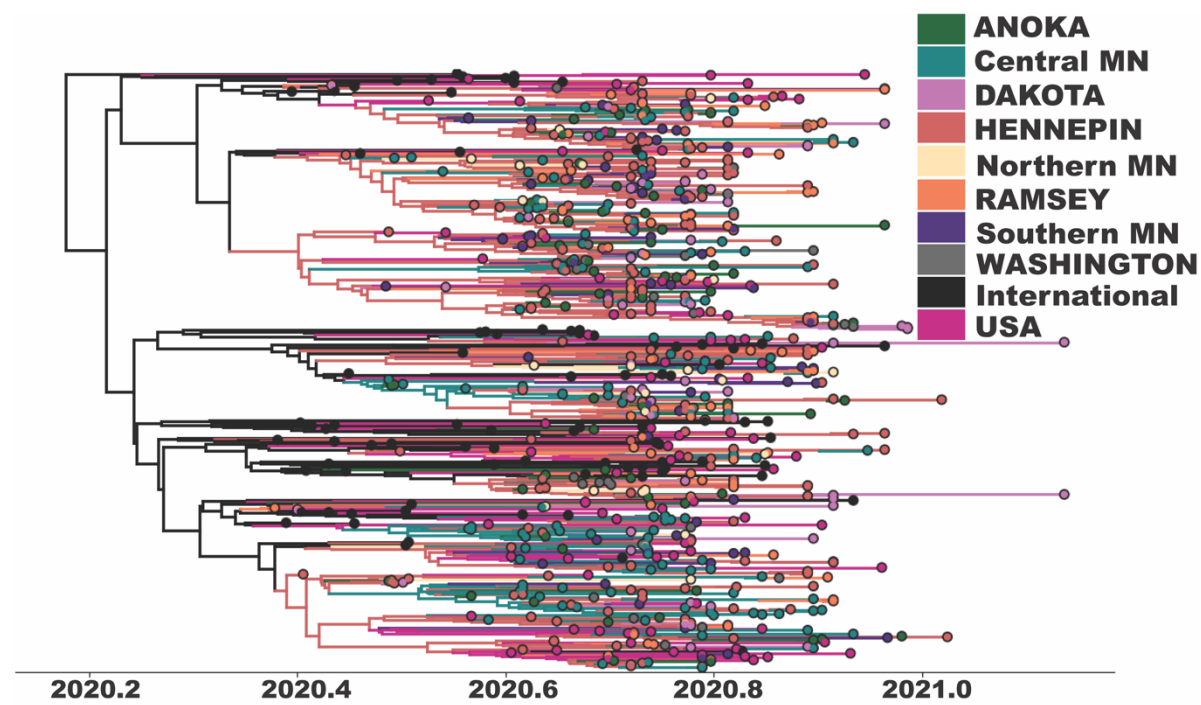


Figure S4. Alpha clade of SARS-CoV-2 in Minnesota based on the MCC tree in Figure 2.

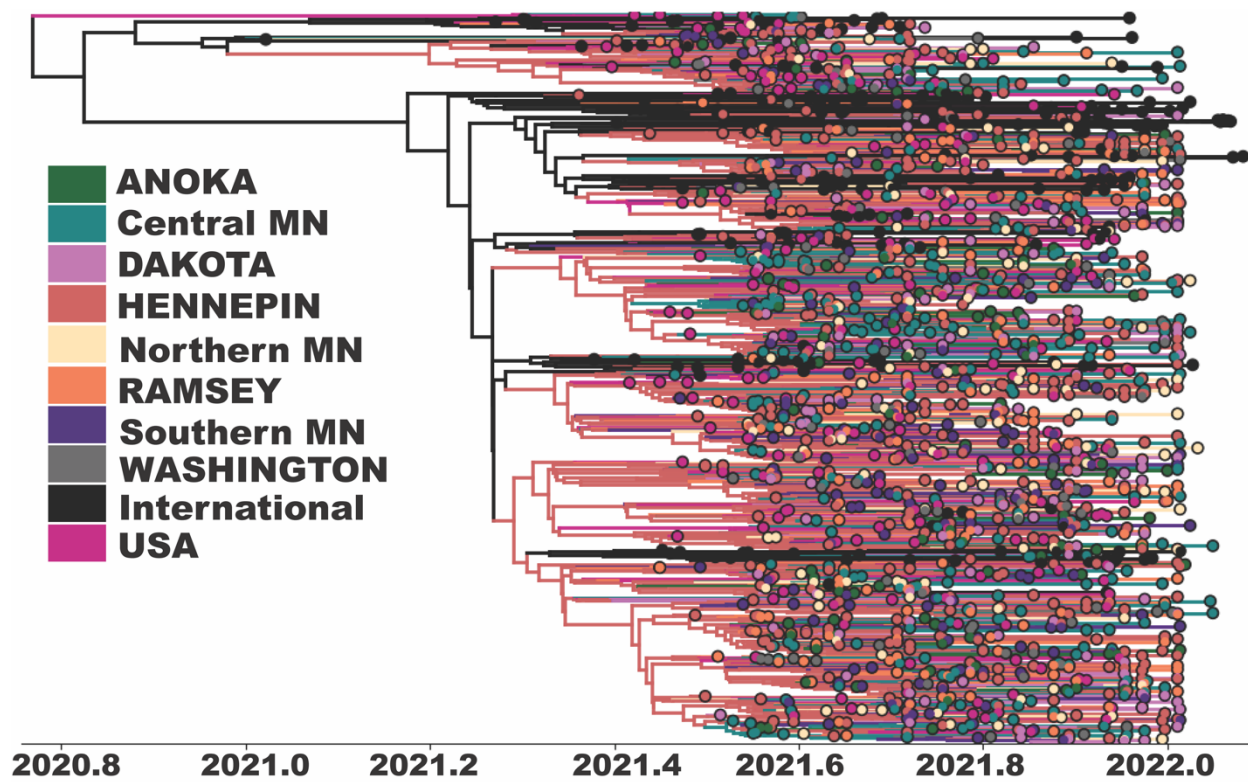


Figure S5. Delta clade of SARS-CoV-2 in Minnesota based on the MCC tree in Figure 2.

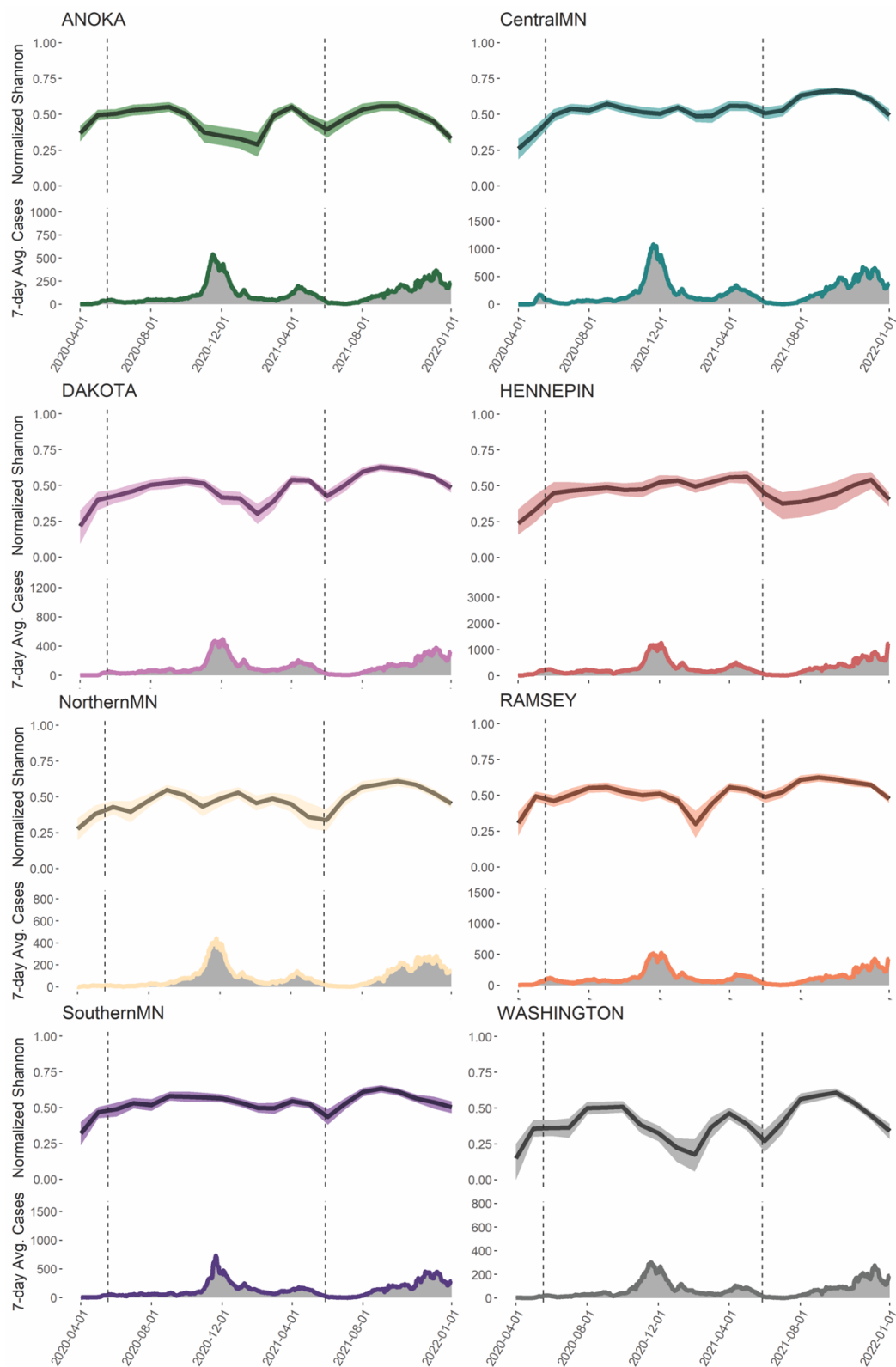


Fig. S6. Virus diversity and cases per county/location. On the top of each panel, we show the normalized Shannon diversity index over time for each Minnesota county or region in the study. The shaded areas represent the

95% Bayesian highest posterior density (HPD). Below, we show the seven-day average cases for the particular county or region obtained from [40] via outbreak.info. We aggregated the data for Northern, Central, and Southern Minnesota based on the counties listed in Table S3. The first vertical line indicates the end of lockdown in Minnesota on May 18, 2020 [41]. The second vertical line indicates the end of all COVID-19 restrictions in the State on May 28, 2021 [16].

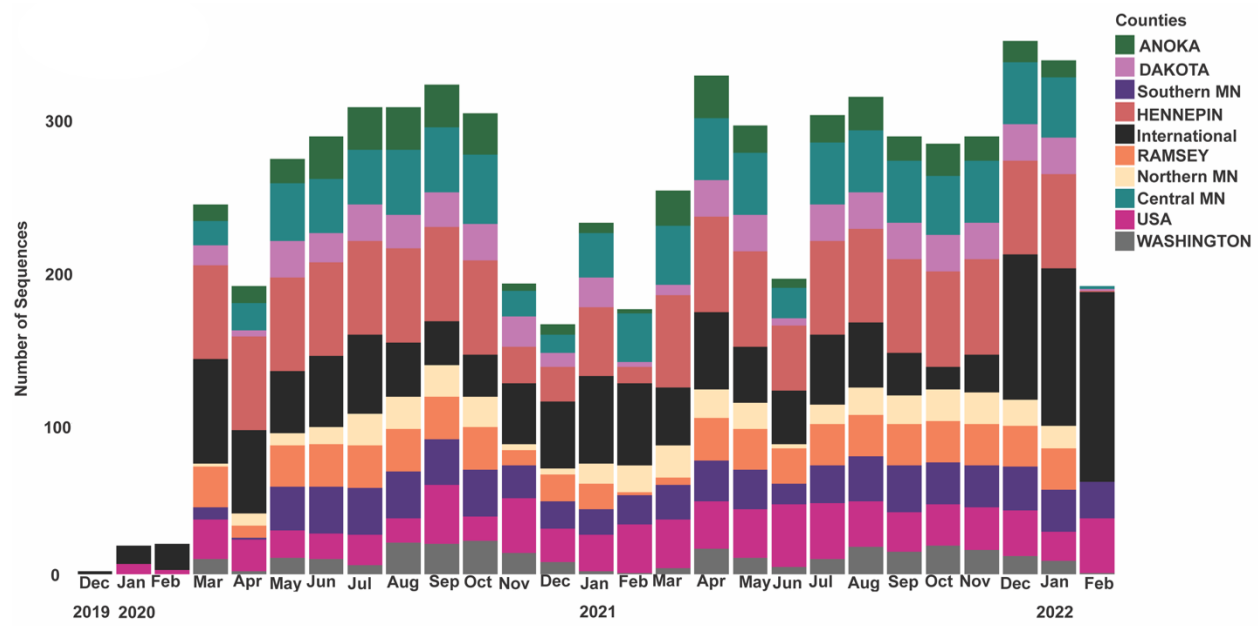


Fig S7. Sequence distribution by Minnesota county/region by month for our phylodynamic analysis.

Table S1. Demographics of N = 22,514 Mayo Clinic Laboratories COVID-19 patients included in the study.

Demographic	Category	Count (%)
Gender	Male	11,423 (49)
	Female	11,076 (51)
	Non-binary	15 (<1)
Age	< 18	3,416 (15)
	18-45	11,204 (50)
	46-64	5,350 (24)
	65+	2,544 (11)
State	Minnesota	21,669 (96)
	Wisconsin	413 (2)
	Iowa	184 (1)
	Other States	148 (1)

Table S2. Number of sequences by county. We show the cumulative number of confirmed COVID-19 cases on February 28, 2022, used to guide the number of sequences (5 per 1,000 cases) for the analysis. We also include population estimates per county based on US Census data [42].

Counties	Number of Sequences (N = 4,586)	Confirmed COVID-19 Cases on February 28, 2022	2020 Population
Anoka	392	78,318	363,887
Benton	65	12,913	41,379
Blue Earth	85	16,900	69,112
Carver	106	21,100	106,922
Chisago	62	12,348	56,621
Clay	70	14,028	65,318
Crow Wing	71	14,130	66,123
Dakota	434	86,741	439,882
Goodhue	61	12,235	47,582
Hennepin	1266	253,289	1,281,565
Kandiyohi	64	12,817	43,732
Olmsted	195	38,908	162,847
Ramsey	521	104,283	552,352
Rice	82	16,310	67,097
Saint Louis	194	38,764	200,231
Scott	158	31,699	150,928
Sherburne	113	22,531	97,183
Stearns	238	47,520	158,292
Washington	264	52,881	267,568
Wright	145	29,096	141,337

Table S3. Number of sequences by location for the phylodynamic analysis.

Location	Number of Sequences (N = 6,479)
Anoka	392
Dakota	434
Hennepin	1266
Ramsey	521
Washington	264
Central Minnesota*	793
Northern Minnesota [§]	335
Southern Minnesota [#]	581
International	1227
USA	666

*Central Minnesota includes seven counties: Benton, Carver, Chisago, Kandiyohi, Sherburne, Stearns, and Wright.

[§]Northern Minnesota includes three counties: Clay, Crow Wing, and Saint Louis. [#]Southern Minnesota includes five counties: Blue Earth, Goodhue, Olmsted, Rice, and Scott

Table S4. Log marginal likelihood values calculated via stepping-stone and path-sampling for different coalescent models under a strict molecular clock. The results favor the use of a non-parametric Skygrid coalescent model.

Tree Prior	Stepping-Stone	Path-Sampling
Skygrid	-14926.81	-14917.62
Constant	-15556.77	-15545.55

Table S5. Bayes factor and posterior probability values for support of non-zero SARS-CoV-2 transmission of

Minnesota counties that met our *a priori* threshold > 100. We list the forty-two routes out of 90 in this category.

We omitted routes that did not involve Minnesota such as USA→International or International →USA. Hennepin was most often included as the origin (9/42) and all routes had the highest Bayes factor (74,564) and a posterior probability of 1.0 (not shown). Meanwhile, Ramsey was most popular as the destination (7/42), followed by Hennepin (6/42). However, routes with a destination of Southern Minnesota were the most frequent (4/42) among those with the highest Bayes factor (74,564) and a posterior probability of 1.0 (not shown).

From	To	Bayes Factor
Central MN	HENNEPIN	74,564.19
Central MN	Northern MN	74,564.19
Central MN	Southern MN	74,564.19
Central MN	WASHINGTON	74,564.19
DAKOTA	WASHINGTON	74,564.19
HENNEPIN	International	74,564.19
HENNEPIN	Northern MN	74,564.19
HENNEPIN	RAMSEY	74,564.19
HENNEPIN	Southern MN	74,564.19
HENNEPIN	USA	74,564.19
HENNEPIN	WASHINGTON	74,564.19
International	Southern MN	74,564.19
RAMSEY	WASHINGTON	74,564.19
Central MN	ANOKA	74,564.19
HENNEPIN	ANOKA	74,564.19
HENNEPIN	Central MN	74,564.19
International	Central MN	74,564.19
Northern MN	Central MN	74,564.19
HENNEPIN	DAKOTA	74,564.19
RAMSEY	DAKOTA	74,564.19
Southern MN	DAKOTA	74,564.19
International	HENNEPIN	74,564.19
USA	HENNEPIN	74,564.19
Southern MN	Northern MN	74,564.19
USA	RAMSEY	74,564.19
USA	Southern MN	74,564.19
USA	Central MN	24,849.21
RAMSEY	HENNEPIN	9,313.27
Central MN	DAKOTA	6,771.03
Northern MN	DAKOTA	4,378.33

International	RAMSEY	3,916.58
Southern MN	Central MN	3,916.58
RAMSEY	ANOKA	3,234.00
Central MN	RAMSEY	2,974.61
Southern MN	HENNEPIN	1,767.25
DAKOTA	RAMSEY	1,686.54
RAMSEY	Central MN	1,686.54
International	ANOKA	1,648.88
Northern MN	Southern MN	858.84
Southern MN	RAMSEY	460.72
ANOKA	HENNEPIN	266.89
Northern MN	RAMSEY	124.88