

1 **Preventing iatrogenic HCV infection: A quantitative risk assessment based on**  
2 **observational data in an Egyptian hospital.**

3 Paul Henriot<sup>1,2</sup>, Wagida A. Anwar<sup>3</sup>, Maha El Gaafary<sup>3</sup>, Samia Abdo<sup>4</sup>, Mona Rafik<sup>4</sup>, Wafaa M. Hussein<sup>3</sup>, Dalia  
4 Sos<sup>3</sup>, Isis Magdy<sup>3</sup>, Kévin Jean<sup>1,2</sup>, Laura Temime<sup>1,2</sup>

5 <sup>1</sup>MESuRS Laboratory, Conservatoire national des arts et métiers, 292 rue Saint-Martin, 75003, Paris

6 <sup>2</sup>PACRI Unit, Conservatoire national des arts et métiers / Institut Pasteur, France

7 <sup>3</sup>Department of Community, Environmental and Occupational Medicine, Faculty of Medicine, Ain Shams  
8 University, Cairo, Egypt

9 <sup>4</sup>Department of Clinical Pathology, Faculty of Medicine, Ain Shams University, Cairo, Egypt

10 **Contact information** : Paul Henriot, Conservatoire national des arts et métiers (MESuRS Laboratory), 292 rue  
11 Saint-Martin, 75003, Paris. **Email address**: paul.henriot@lecnam.net

12 **Background:** When compliance with infection control recommendations is non-optimal, hospitals  
13 may play an important role in hepatitis C (HCV) transmission. However, few studies have analysed  
14 HCV acquisition risk based on detailed empirical data in order to identify high-risk patient profiles or  
15 transmission hotspots.

16 **Methods:** We used data from a prospective cohort study conducted on 500 patients in the internal  
17 medicine and surgery departments of Ain Shams hospital (Cairo, Egypt). We first performed a  
18 sequence analysis to describe patient trajectory profiles. Second, we estimated each patient's  
19 individual risk of HCV acquisition based on ward-specific prevalence and procedures undergone. We  
20 then identified within-hospital risk hotspots by computing ward-level risks. A beta regression model  
21 was used to highlight upon-admission factors linked to HCV acquisition risk. Finally, ward-focused  
22 and patient-focused strategies were assessed for their ability to reduce HCV infection risk.

23 **Findings:** Sequence analysis identified 4 distinct patient profiles. The estimated HCV acquisition risk  
24 varied widely between patients and patient profiles. The risk was found to be higher in the internal  
25 medicine hospital compared to the surgery hospital (median: 0.188% IQR [0.142%-0.235%] vs.  
26 0.043%, CI 95%: [0.036%-0.050%]). Upon-admission risk predictors included source of admission,  
27 age, reason for hospitalization, and history of anti-schistosomiasis treatment, injection and  
28 endoscopy. Patient-focused interventions were found to be most effective to reduce HCV infection  
29 risk.

30 **Interpretation:** Our results might help reduce the risk of HCV acquisition during hospitalisation in  
31 Egypt by targeting enhanced control measures to ward-level transmission hotspots and to at-risk  
32 patients identified upon admission.

33 **Funding:** INSERM-ANRS (France Recherche Nord and Sud Sida-HIV Hépatites)

34

35

36

37

38 **Research in context**

39 **Evidence before this study**

40 We searched PubMed for articles published between Jan 1, 1990 and Jul 05, 2022, and focused on  
41 risk assessment of iatrogenic HCV transmission. We used “Hepatitis C”, “risk assessment”, “model”,  
42 “transmission”, “hospital” and “patients” as keywords. We found five risk assessment articles, the  
43 oldest published in 1999 and the most recent in 2012. All of these studies were conducted in  
44 countries with low HCV prevalence and were only focusing on HCV transmission from patients to  
45 healthcare workers. In addition, the risks estimated within these studies were based on limited  
46 observations and did not take into account the procedure-specific transmission risk.

47 **Added value of this study**

48 Our study presents a probabilistic risk assessment of HCV transmission to patients within an Egyptian  
49 hospital using detailed empirical data. Based on these results, at-risk patient profiles and  
50 transmission hotspots were identified. In addition, we simulated ward-focused and patient-focused  
51 interventions in order to estimate the efficacy of a better equipment handling on the overall risk of  
52 HCV infection. Patient-focused interventions, for instance dedicating sterilized single-use material,  
53 were often found to be more efficient than ward-focused ones. However, targeting wards might be  
54 financially, logistically and ethically more acceptable.

55 **Implications of all the available evidence**

56 Considering the promising though insufficient results and high costs of the Egyptian HCV elimination  
57 program, our results may help reduce HCV transmission at an hospital level. The score we built may  
58 be used upon admission to detect high risk patients. In addition, enhanced control measures in  
59 transmission hotspots may lead to an important risk reduction for hospitalized patients. Finally, this  
60 work could be extended to other bloodborne pathogens such as Hepatitis B or HIV.

61

62

63 **Introduction**

64 Hepatitis C virus (HCV) is a bloodborne pathogen usually transmitted during iatrogenic procedures or  
65 unsafe injections like drug use. Even though a direct-acting antiviral treatment is available, an  
66 estimated 58 million people were still living with hepatitis C worldwide in 2019, with significant  
67 morbidity and mortality consequences, mostly due to liver cirrhosis and hepatocellular carcinoma.<sup>1</sup>  
68 Hence, preventing HCV transmission remains key in the fight against HCV in Egypt.

69 While the implementation of infection control measures has substantially reduced the risk of  
70 nosocomial HCV transmission, hospitals may still play an important role in the epidemic dynamics of  
71 HCV, due to potential exposure to infected patients and contaminated equipment.<sup>2,3</sup> This is  
72 particularly true in low-to-middle-income countries, such as Egypt.<sup>4,5</sup> However, HCV outbreaks in  
73 healthcare settings are seldom detected and investigated, so that the transmission routes often  
74 remain unknown.

75 A few studies quantified the HCV acquisition risk in hospitals.<sup>6,7,8,9,10</sup> However, these studies were  
76 mostly focused on the occupational risk to healthcare workers, most used data from the literature  
77 rather than actual observations, and none accounted for procedure-specific risk levels. In this

78 context, the first objective of this work is to assess the risk of nosocomial HCV infection for the  
79 patients hospitalized in an Egyptian hospital. To that aim, we propose a probabilistic risk assessment  
80 framework informed by detailed empirical data recently collected in this hospital. Based on this  
81 assessment, the second objective is then to identify transmission hotspots as well as at-risk patient  
82 profiles to better manage the HCV risk within the hospital.

83

## 84 **Methods**

### 85 ***Data and setting***

86 Data was collected as part of a prospective cohort study (ANRS 12320 IMMHoTHep project,  
87 “Investigative Mathematical Modeling of Hospital Transmission of Hepatitis C”) conducted over a 6-  
88 month period in 2017.<sup>11</sup> This study focused on patients hospitalized in the internal medicine and  
89 surgery departments of the Ain Shams University Hospital in Cairo, Egypt. These departments were  
90 further organized into 15 and ten wards, respectively.

91 Five hundred patients were included upon their admission to the hospital, either through the  
92 outpatient clinics or the emergency department. Their individual trajectories were then followed up  
93 over the course of their entire hospitalizations. This included information on their HCV status upon  
94 admission, their geographical movements between departments and wards within the hospital and  
95 the invasive procedures they underwent within these locations. Procedures performed were  
96 aggregated into 15 groups following expert opinion (Table 1). Further data about patients, such as  
97 demographic information, or end of study status, were collected upon admission and discharge<sup>11</sup>.

### 98 ***Ethical considerations***

99 Ethical approval was obtained from the Institutional Review Board of the Faculty of Medicine of Ain  
100 Shams University and from the Sheffield University, School of Health and Related Research.

### 101 ***Trajectory analysis***

102 To identify typical hospitalization profiles, we performed a sequence analysis based on patient  
103 trajectories between seven locations (Surgery department, Internal medicine department,  
104 Emergency room, ICU, Endoscopy building, MRI building, Outpatients clinic) within the hospital.  
105 Sequence analysis is a non-parametric approach to investigate and cluster longitudinal life course  
106 data between individuals.<sup>12,13</sup> Here, sequences were composed of five-minute-long events over the  
107 course of hospitalization, completed by the post-hospitalization status (i.e., deceased or discharged),  
108 so that all trajectories had the same length as the longest one. Therefore, each sequence was  
109 composed of at least two out of nine states, describing location within the hospital (seven states) and  
110 post-hospitalization status (two states).

111 To compute differences between sequences, substitution and indel costs were calculated based on  
112 the observed transition rates between the states previously defined. We used the optimal matching  
113 (OM) method to compute the distance matrix between individual sequences.<sup>14</sup> Then, we compared  
114 partitions built with the Ward’s minimum variance method<sup>15</sup> using the Point Biserial Correlation  
115 (PBC)<sup>16</sup> to find the optimal number of clusters.

116 All sequence analyses were performed using the R package TraMineR.<sup>17</sup>

### 117 ***Per-procedure risk estimation***

118 We firstly estimated the risk of iatrogenic HCV infection following a procedure performed with  
119 contaminated equipment, for each of the 15 procedure types identified in the data. This was based  
120 on a previous meta-analysis studying the association between HCV infection and ten groups of  
121 iatrogenic procedures.<sup>18</sup> The 15 procedure types in the data were aggregated to match the groups  
122 considered in this meta-analysis (Table 1). Odds-ratio (OR) distributions were considered log-normal  
123 with mean equal to the average ORs and standard deviation derived from the associated confidence  
124 intervals.

125 The risk of getting HCV-infected through injection by contaminated equipment was then used as a  
126 reference to determine the other procedure-specific risks. Ross *et al.*<sup>7</sup> estimated this risk at 2.20%  
127 (plausible interval, 1%-9.2%). Here, we translated this as a PERT-distributed<sup>19</sup> risk distribution, with a  
128 median of 2.20% and an analytically calculated mode of 1.23% (Text S1):

$$129 \quad Risk_{injection} \sim \text{PERT}(1, 1 \cdot 23, 9 \cdot 2)$$

130 The procedure-specific risk of HCV infection due to contaminated equipment was calculated for each  
131 procedure  $p$  as the ratio between the OR of this procedure (denoted  $OR_p$ ) and the injection OR,  
132 multiplied by the risk due to injection with contaminated equipment, as follows:

$$Risk_p = \frac{OR_p}{OR_{injection}} \times Risk_{injection}$$

133

#### 134 **Individual risk assessment**

135 For each patient, the cumulative risk of HCV acquisition over the entire hospitalisation was computed  
136 from the within-hospital individual trajectory, the ward-specific HCV prevalence and procedure-  
137 associated risks, as follows:

$$R = 1 - \prod_{i=1}^n \prod_{j=1}^{m_i} (1 - r_{j,p} \times P_i \times (1 - A))$$

138 where  $n$  is the total number of wards visited by the patient,  $m_i$  the total number of procedures  
139 undergone by the patient in ward  $i$ ,  $r_{j,p}$  the risk of HCV acquisition while undergoing the  $j^{th}$   
140 procedure if the equipment is contaminated,  $A$  the probability of proper equipment handling (i.e.,  
141 equipment decontamination or use of disposable equipment) and  $P_i$  the HCV prevalence in ward  $i$ .

142 The risk  $r_{j,p}$  was computed as described in the previous section, based on the procedure type  $p$ .  
143 The ward-specific prevalence  $P_i$ , was used as a proxy of the ward-specific probability of medical  
144 equipment being contaminated by HCV prior to infection control procedures. It was considered to be  
145 constant over time and equal to the proportion of HCV-positive patients among all patients that  
146 passed through ward  $i$  in our database. For simplicity, the probability of correct infection control in  
147 equipment handling was assumed independent of the procedure type. Syringe reuse was taken as a  
148 proxy to estimate this probability at 97%, based on a study by Anwar *et al.*<sup>20</sup> which found that 3% of  
149 nurses from two hospital departments in Egypt and Saudi Arabia reused syringes between patients.

150 Finally, to maximize statistical power in the identification of hotspots and at-risk profiles, we  
151 performed this individual risk assessment using the data from all 500 patients included in the  
152 IMMHoThep study, irrespective of their HCV status upon admission, even though in reality the  
153 initially HCV-positive patients were not at-risk.

#### 154 **Ward-level risk assessment for hotspot identification**

155 To determine the risk of HCV infection associated with each ward in the internal medicine and  
156 surgery departments, we calculated for each patient the risk of getting infected through invasive  
157 procedures undergone within each unique ward (based on subsets of their trajectories), as in the  
158 previous subsection. The distribution of a ward-specific risk was composed of the average risks of all  
159 patients visiting it. To shed light on the components of this risk, the ward-level HCV prevalence and  
160 average number of procedures per patient and procedure group were also calculated.

#### 161 **Statistical analyses of patient-level determinants of the HCV infection risk**

162 We investigated differences between the clusters identified through the patient trajectory analyses  
163 across: (i) *age, HCV infection risk, duration of hospitalization and average number of procedures per*  
164 *patient* as quantitative variables; and (ii) *gender, education level, marital status, source of admission,*  
165 *source of admission, patient localization, history of hospitalization, hospitalization reason and status*  
166 *at the end of follow-up* as categorical variables. Differences were computed using the  $\chi^2$  test for  
167 qualitative variables and the Kruskal-Wallis test for quantitative variables.

168 We performed a beta regression to identify upon-admission factors associated with nosocomial HCV  
169 risk.<sup>21</sup> As some patients had an infection risk equal to 0, data was transformed following this formula:  
170  $y' = (y \times (n - 1) + 0.5) / n$ , where  $y$  is the risk data and  $n$  is the sample size.<sup>22</sup> Explanatory  
171 variables included: *age, gender, source of admission, patient localization, history of hospitalization,*  
172 *and hospitalization reason, previous anti-schistosomiasis treatment and history of multiple invasive*  
173 *procedures*. A backward selection was performed to discriminate the best model based on the Akaike  
174 information criterion (AIC).

175 Finally, using logistic regression, we assessed the capacity of a score based on the variables appearing  
176 in the best beta regression model to identify at-high-risk patients. We defined high-risk patients as  
177 those belonging to the upper 25% of the risk distribution (over the 75<sup>th</sup> percentile). The training data  
178 was composed of 70% of the entire dataset whereas the other 30% was used for the testing dataset.  
179 If data unbalance was detected, up-sampling was used to equalise sample sizes for both groups.  
180 Cross-validation was performed over 50 folds. Area under the ROC curve (AUC), specificity and  
181 sensitivity were computed using the R packages *caret*<sup>23</sup> and *Mlevel*<sup>24</sup>. A sensitivity analysis was  
182 performed on the cut-off for dichotomization; for each case, the Informedness<sup>25</sup> metric was  
183 calculated and considered as a proxy of the quality of the model.

#### 184 **Assessment of patient and ward-focused strategies**

185 We assessed the potential effectiveness of two strategies on the reduction of the HCV infection risk:

186 i) A patient-focused strategy, assuming the probability  $A$  of proper equipment handling to be 1 for  
187 the most at-risk patients, selected following two sub-strategies: a) randomly (Random-selection) and  
188 b) using upon admission the calculated score based on our beta regression model. Here all potential  
189 HCV-positive patients within the most-at risk group were considered HCV-negative upon admission,  
190 so that they did not impact the risk of other patients visiting the same wards. Strategies targeted at  
191 100, 125, 150, 175 and 200 at-risk patients among 500 were explored.

192 ii) A ward-focused intervention, assuming the probability  $A$  of proper equipment handling to be 1  
193 within the most at-risk wards. Wards were ranked from higher to lower risk and the number of  
194 targeted wards was chosen based on the cumulative number of patients visiting at least once these  
195 particular wards, so that the total number of patients was the closest possible to the number of  
196 patients targeted in the corresponding patient-focused scenario.

197

## 198 **Results**

### 199 ***Patient trajectory description***

200 The sequence analysis identified four groups of patients (Fig.1, Supp. Fig. S1). Their sizes were  
201 heterogeneous (356, 54, 14 and 76 patients, respectively). Group one (the largest one) included  
202 patients with a short hospital stay in internal medicine or surgery, Groups two and four represented  
203 patients with intermediate lengths of stay in surgery and internal medicine, respectively, and Group  
204 three was composed of patients with long stays in internal medicine. In the latter, 36% of patients  
205 were deceased at the end of follow-up. Patients in Group three were older than in the other groups  
206 (median: 64 years old, IQR [46-67]), had longer hospital stays (20.4 days [17.5-23.2]) and underwent  
207 more invasive procedures (median: 43 [15 – 77]) (Table S1).

### 208 ***HCV infection risk assessment***

209 The estimated per-procedure median risk of HCV infection due to contaminated equipment ranged  
210 from 1.961%% [IQR 1.339% - 2.923%] for endoscopy up to 3.750% [IQR 2.566% - 5.584%] for wound  
211 care (Supp. Fig. S1).

212 The median patient HCV infection risk over the entire database was 0.043% [0.026%-0.093%] (Mean:  
213 0.114%, IC95% [0.091%-0.137%]). This risk differed significantly between patient groups ( $p < 0.001$ ),  
214 with a greater risk of getting HCV infected in group 3 (median: 0.470%, IQR [0.081% - 0.823%]) (Supp.  
215 Table S1).

### 216 ***Ward-level risk assessment and hotspot identification***

217 Overall, the risk of HCV infection was higher in the internal medicine hospital compared to the  
218 surgery hospital (0.043%, CI 95%: [0.036%-0.050%] vs. 0.188% [0.142%-0.235%], t.test  $p < 3.62 \cdot 10^{-9}$ ).

219 Within internal medicine, HCV prevalence was found highest in the tropical medicine ward (50% CI  
220 95% [32.100% - 67.900%]), followed by the GIT (31% [15.620%-45.980%]), and geriatric wards (20%  
221 [0%-55.060%]). Conversely, the average number of procedures within the ER ICU ward was found to  
222 be the highest with 33.1 acts, followed by the geriatric ward with 21.6 acts, while the tropical  
223 medicine and GIT wards only held the 9th and 10th places among the 15 wards, with 10.45 and 8.24  
224 procedures per patient on average. The median estimated risk of HCV infection was highest in the  
225 geriatric ward (0.621% IQR [0.114%-0.649%], mean: 0.431%) represented by 5 patients, followed by  
226 the ward of tropical medicine (0.271 % [0.146 %- 0.599%], mean: 2.850%), represented by 30  
227 patients and ER ICU ward (0.242% IQR [0.180%-0.811%], mean: 0.474%), represented by 11 patients  
228 (Fig. 2).

229 Within surgery (Fig. 3), HCV prevalence was high within the urosurgery, orthopaedics, and  
230 neurosurgery wards, at 20% [0%-55.060%], 57.140% [20.480% -93.800%] and 5.330% [0% - 15.790%].  
231 The ICU ward was associated with the highest number of invasive acts, with an average of 12.75  
232 procedures per patient. Within the orthopaedics and neurosurgery wards, patients underwent 8.5  
233 and 7.4 invasive procedures on average, respectively, and only 1.4 in the urosurgery ward. The  
234 highest risk was found in the urosurgery ward (0.045% IQR [0.044%- 0.046%], mean: 0.101%), but  
235 only 7 patients visited it. This was followed by the orthopaedics (0.037 % IQR [0.024 %- 0.053 %],  
236 mean: 0.046%) and the neurosurgery (0.021% IQR [0.021 %- 0.089 %], mean: 0.165%) wards,  
237 represented by 75 and 6 patients respectively.

### 238 ***Identification of at-risk patient profiles upon admission***

239 The best beta regression model explaining the patient HCV infection risk from upon-admission  
240 variables is described in Table 2. The hospitalisation cause came out as a key driver of HCV risk,  
241 reflecting the higher risk in internal medicine patients, as well as a particularly elevated risk in  
242 patients with liver or gastro-intestinal (GIT) complaints. In addition, patients with a history of anti-  
243 schistosomiasis treatment were found at higher risk of HCV infection. Other variables selected in the  
244 best model were the source of admission and age, with a higher risk in patients admitted via the  
245 emergency room or older; and a history of injection or endoscopy.

246 A score based on these explanatory variables allowed to discriminate high-risk patients upon  
247 admission. The calculated AUC was 0.79 (95% CI: [0.71-0.87]) with a sensitivity of 0.73 [0.65-0.79],  
248 and a specificity of 0.68 [0.54-0.79] (Table S3). Based on a sensitivity analysis, we found that using a  
249 cut-off at the 90<sup>th</sup> percentile of the overall distribution led to the best logistic regression based on the  
250 Informedness criteria (Table S3).

251

### 252 ***Assessment of patient and ward-focused strategies***

253 All simulated interventions led to at least a two-fold reduction of the overall risk, except those based  
254 on randomly selecting patients (Fig. 4, Supp. Table S2). In addition, patient-focused interventions  
255 were generally found to be more effective than ward-focused (Fig. 4, Supp. Table S2). Nevertheless,  
256 for interventions targeting less than 100 patients (20% of patients), targeting the most at-risk wards  
257 (i.e., Rheumatology, Tropical medicine, ER ICU, GIT and endoscopy) was more efficient at reducing  
258 the risk than score-based patient targeting (reduction of 52.51% vs. 56.02%).

259

### 260 **Discussion**

261 This study aimed at better understanding patient trajectories within an Egyptian hospital to help  
262 manage the HCV infection risk. Our work was based on data collected on 500 patients within Ain  
263 Shams hospital, Egypt, and on a meta-analysis investigating the risk of HCV infection for multiple  
264 hospital-based procedures,<sup>18</sup> from which we computed HCV infection risks for all patients over the  
265 course of their hospitalisation.

266 Due to high uncertainty, notably on per-procedure infection control practices, our risk estimates  
267 should be considered relatively, rather than focusing on their absolute values. For instance, we  
268 propose a prioritisation of wards in terms of HCV infection risk in the surgery and internal medicine  
269 departments. In particular, we found that the internal medicine department is the most at-risk of  
270 HCV infection, with the geriatric, tropical and endoscopy wards within this department identified as  
271 potential “hotspots”. This is consistent with a previous risk assessment study conducted in a German  
272 hospital in 2008 in which the highest risk of bloodborne pathogen infection for HCW was within the  
273 internal medicine departments.<sup>25</sup>

274 Several data-related and methodological limitations could be highlighted in our study.

275 First, we were limited by our data and had few observations of patients for multiple wards. In  
276 particular, the highest estimated risks were observed in wards that received a low number of  
277 patients (Neurosurgery and geriatric). In future studies, investigating these specific risks based on  
278 more patient visits might give more accurate estimates of the corresponding ward-level HCV  
279 infection risks.

280 Second, we did not have access to HCV status upon patient discharge. A study assessing the HCV  
281 status after hospitalisation in addition to the HCV status upon admission would be needed to really  
282 quantify the risk of getting HCV infected during a hospital stay from data. However, we believe that  
283 the analyses we performed, based on detailed data on patient trajectories and per-procedure risk  
284 ranking, do provide valid conclusions in terms of the identification of possible hotspots and at-risk  
285 patient profiles within the hospital.

286 Third, we only accounted for transmission between patients within the same ward and did not  
287 investigate potential transmission from healthcare workers to patients, which can be an important  
288 HCV gateway.<sup>26</sup> This may have led us to under-estimate all the HCV acquisition risks, but should not  
289 have affected the prioritisation we propose in terms of geographical hotspots and patient profiles  
290 upon admission. Indeed, an earlier study performed in the same hospital on a larger staff population  
291 confirmed that HCV RNA positive healthcare workers were very rare, and that highest proportions of  
292 HCV-infected healthcare workers were found in the internal medicine department.<sup>27</sup>

293 Fourth, our beta-regression model identified several upon-admission variables as associated with the  
294 risk of HCV infection during hospitalization. These associations should not be interpreted as causal.  
295 For example, patients with a history of anti-schistosomiasis treatment were found to be more at risk  
296 of HCV infection, possibly reflecting the high prevalence among other patients they are exposed to.

297 While HCV prevalence varies widely between countries, Egypt has historically been the most affected  
298 country worldwide, with an HCV prevalence still over 10% in the adult population in the mid 2010's<sup>29</sup>.  
299 The scaling-up of DAA treatments has temporarily yielded the hope that a large test-and-treat  
300 strategy could be sufficient to eliminate the epidemics.<sup>29</sup> In this context, Egypt launched an ambitious  
301 national treatment programme in 2014, followed by an intensive screening and treatment  
302 programme in 2018, with the objective of eliminating HCV within the country by 2021. In 2018 and  
303 2019, almost 50 million Egyptian residents were screened (80% of the adult population), resulting in  
304 an HCV seroprevalence reduced to 4.6% in the adult population.<sup>30</sup> The number of HCV contaminated  
305 individuals registered for treatment decreased after the first treatment phase and became  
306 insufficient to reach the elimination target on time.<sup>31</sup> Despite promising results, elimination was not  
307 achieved and the cost of this program was estimated at more than 2 billion US dollars.<sup>29</sup> Hence,  
308 articulating primary HCV prevention, especially in healthcare settings,<sup>32</sup> together with treatment and  
309 cure remain remains key.

310 In a context of limited budget and human resources, this work may help better manage the HCV risk  
311 within Egyptian hospitals in two ways. First, infection control could be reinforced locally in the  
312 hotspots we identified. This could for instance imply systematic HCV screening for patients newly  
313 admitted to these specific wards, hiring of dedicated hygiene personnel within these wards, or  
314 allocation of the available disposable equipment to these wards. Second, the score we proposed  
315 could be systematically computed upon admission for all newly admitted patients. Those identified  
316 as at high risk could then be “flagged” for reinforced precautions over the course of their  
317 hospitalisation. When comparing such ward-focused and patient-focused strategies, we found that  
318 interventions targeted at identified at-risk patients upon admission were most effective. However,  
319 interventions focused on ward hotspots also allowed to reduce the risk more than two-fold and may  
320 in practice prove both easier to implement logistically and more acceptable from an ethical point of  
321 view. In addition, when hospital resources only allowed to target less than 20% of patients for  
322 reinforced infection control, ward-focused interventions were actually most effective.

323 In addition, the framework we developed could also be extended to assess and manage iatrogenic  
324 HCV risks in other hospitals or risks associated with other blood-borne pathogens such as HIV or HBV.



325 This would require, in the first case, the collection of data on patient trajectories similar to the  
326 IMMHoTHep data in other hospitals; and in the second case, estimates of the per-procedure  
327 infection risks associated with these other pathogens.

328 Finally, in future work, the detailed data we collected on patient trajectories and invasive procedures  
329 could be used to inform mechanistic models simulating dynamically the transmission of HCV or other  
330 blood-borne pathogens within the hospital. Such models would allow to assess the impact of  
331 potential control measures in a more accurate way than the very simplified assessment proposed  
332 here.

### 333 **Contributors**

334 PH, KJ and LT conceived the study, wrote the protocol and data analysis plan. PH did the analyses.  
335 Data curation was carried by MEG, MR, WMH, IM and LT. PH wrote the first draft of the report with  
336 input from LT, KJ, WAA, MEG, SA, MR, WMH, DS and IM. All authors had full access to all the data in  
337 the study and had final responsibility for the decision to submit for publication.

### 338 **Declaration of interests**

339 We declare no competing interests.

### 340 **Acknowledgements**

341 This study was funded by INSERM-ANRS (France Recherche Nord and Sud Sida-HIV Hépatites), grant  
342 number 12320 B115.

343

344

345

346

347

348

349

350

351

352

353

354

355

356

357

358

359

360

361

362

363

364 **References**

365

366 1. World Health Organization. Regional Office for Europe. Consultation on the global health  
367 sector strategies on HIV, viral hepatitis and sexually transmitted infections (STIs), 2022–2030:  
368 virtual meeting report: Copenhagen, Denmark and online 16–17 June 2021. Copenhagen:  
369 World Health Organization. Regional Office for Europe, 2022.

370

371 2. Johannessen I, Danial J, Smith DB, *et al.* Molecular and epidemiological evidence of patient-  
372 to-patient hepatitis C virus transmission in a Scottish emergency department. *Journal of*  
373 *Hospital Infection* 2018; **98**: 412–8.

374

375 3. Mazzucco W, Chiara di Maio V, Bronte F, *et al.* Phylogenetic analysis in the clinical risk  
376 management of an outbreak of hepatitis C virus infection among transfused thalassaemia  
377 patients in Italy. *Journal of Hospital Infection* 2021; **115**: 51–8.

378

379

380 4. Senosy SA, El Shabrawy EM. Hepatitis C virus in patients on regular hemodialysis in Beni-Suef  
381 Governorate, Egypt: *Journal of the Egyptian Public Health Association* 2016; **91**: 86–9.

382

383 5. Metwally A, Mohsen A, Saleh R, *et al.* Prioritizing High-Risk Practices and Exploring New  
384 Emerging Ones Associated With Hepatitis C Virus Infection in Egypt. *Iran J Public Health* 2014;  
385 **43**: 1385–94.

386

387 6. Yazdanpanah Y, Boëlle P-Y, Carrat F, Guiguet M, Abiteboul D, Valleron A-J. Risk of hepatitis C  
388 virus transmission to surgeons and nurses from infected patients : model-based estimates in  
389 France. *Journal of Hepatology* 1999; **30**: 765–9.

390

391 7. Ross RS, Viazov S, Roggendorf M. Risk of Hepatitis C Transmission From Infected Medical  
392 Staff to Patients: Model-Based Calculations for Surgical Settings. *Arch Intern Med* 2000; **160**:  
393 2313.

394

395

396 8. Thorburn D. Risk of hepatitis C virus transmission from patients to surgeons: model based on  
397 an unlinked anonymous study of hepatitis C virus prevalence in hospital patients in Glasgow.  
398 *Gut* 2003; **52**: 1333–8.

399

400 9. Rischitelli G, Lasarev M, McCauley L. Career Risk of Hepatitis C Virus Infection Among U.S.  
401 Emergency Medical and Public Safety Workers: *Journal of Occupational and Environmental*  
402 *Medicine* 2005; **47**: 1174–81.

403

- 404 10. Gańczak M, Szczeniowski A, Jurewicz A, Karakiewicz B, Szych Z. Model-based estimates of  
405 the risk of HCV transmission from infected patients to gynaecologic and obstetric staff.  
406 *Przeegl Epidemiol* 2012; **66**: 437–43.  
407  
408
- 409 11. Anwar WA, El Gaafary M, Girgis SA, *et al.* Hepatitis C virus infection and risk factors among  
410 patients and health-care workers of Ain Shams University hospitals, Cairo, Egypt. *PLoS ONE*  
411 2021; **16**: e0246836.  
412
- 413 12. Piccarreta R, Studer M. Holistic analysis of the life course: Methodological challenges and  
414 new perspectives. *Advances in Life Course Research* 2019; **41**: 100251.  
415
- 416 13. Gosselin A, Desgrées du Loû A, Lelièvre E. How to use sequence analysis for life course  
417 epidemiology? An example on HIV-positive Sub-Saharan migrants in France. *J Epidemiol*  
418 *Community Health* 2018; **72**: 507–12.  
419
- 420  
421 14. Abbott A, Tsay A. Sequence Analysis and Optimal Matching Methods in Sociology: Review  
422 and Prospect. *Sociological Methods & Research* 2000; **29**: 3–33.  
423
- 424 15. Ward JH. Hierarchical Grouping to Optimize an Objective Function. *Journal of the American*  
425 *Statistical Association* 1963; **58**: 236–44.  
426
- 427 16. Kornbrot D. Point Biserial Correlation. In: Balakrishnan N, Colton T, Everitt B, Piegorsch W,  
428 Ruggeri F, Teugels JL, eds. Wiley StatsRef: Statistics Reference Online, 1st edn. Wiley, 2014.  
429
- 430 17. Gabadinho A, Ritschard G, Müller N, Studer M (2011). “Analyzing and Visualizing State  
431 Sequences in R with TraMineR.” *Journal of Statistical Software*, **40**(4), 1–37.  
432
- 433 18. Henriot P, Castry M, Luong Nguyen LB, Shimakawa Y, Jean K, Temime L. Meta-analysis: Risk  
434 of hepatitis C virus infection associated with hospital-based invasive procedures. *Aliment*  
435 *Pharmacol Ther.*, 2022 (Published ahead of print). doi:10.1111/apt.17106  
436
- 437 19. Clark CE. Letter to the Editor—The PERT Model for the Distribution of an Activity Time.  
438 *Operations Research* 1962; **10**: 405–6.  
439
- 440 20. Anwar MM, Mohamed Lotfy AA, Alrashidy AA. Safe injection awareness and practices among  
441 nursing staff in an Egyptian and a Saudi hospital. *J Egypt Public Health Assoc* 2019; **94**: 21.  
442
- 443 21. Ferrari S, Cribari-Neto F. Beta Regression for Modelling Rates and Proportions. *Journal of*  
444 *Applied Statistics* 2004; **31**: 799–815.  
445
- 446 22. Smithson M, Verkuilen J. A better lemon squeezer? Maximum-likelihood regression with  
447 beta-distributed dependent variables. *Psychological Methods* 2006; **11**: 54–71.  
448
- 449 23. Kuhn M. Building Predictive Models in R Using the **caret** Package. *J Stat Softf* 2008; **28**.  
450
- 451 24. Christopher R John (2020). MLevel: Machine Learning Model Evaluation. R package version  
452 0.3. <https://CRAN.R-project.org/package=MLevel> (accessed Apr 4 2022)  
453
- 454 25. Youden WJ. Index for rating diagnostic tests. *Cancer* 1950; **3**: 32–5.

455  
456  
457  
458  
459  
460  
461  
462  
463  
464  
465  
466  
467  
468  
469  
470  
471  
472  
473  
474  
475  
476  
477  
478  
479  
480  
481  
482  
483  
484  
485  
486  
487  
488  
489

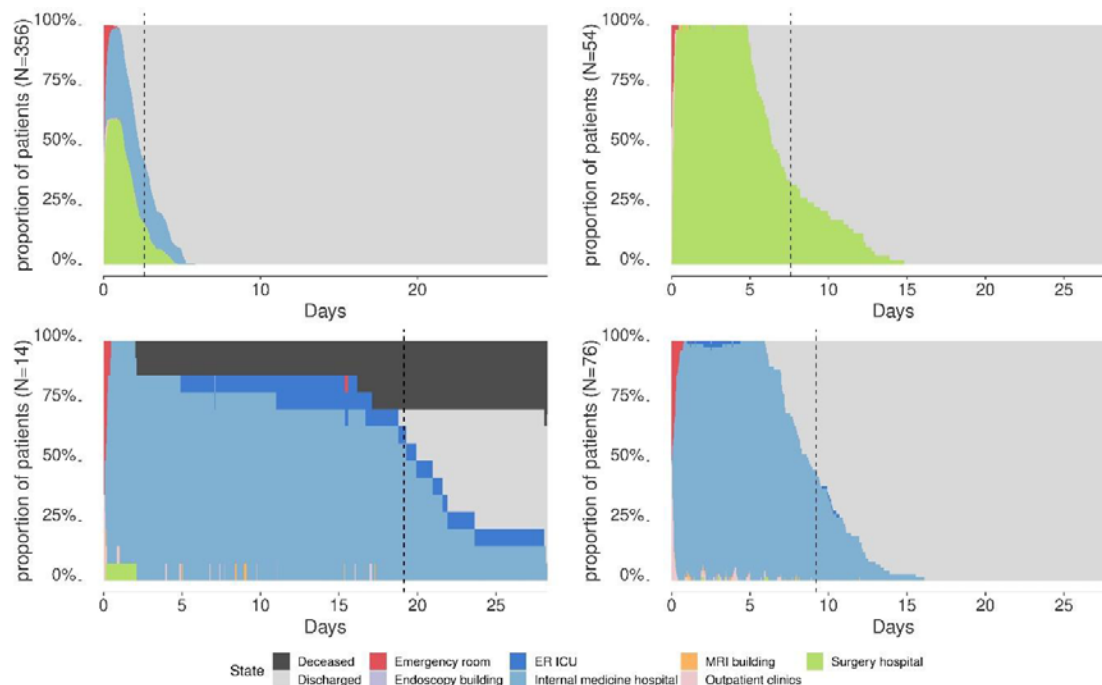
26. Wicker S, Cinatl J, Berger A, Doerr HW, Gottschalk R, Rabenau HF. Determination of risk of infection with blood-borne pathogens following a needlestick injury in hospital workers. *Ann Occup Hyg.* 2008;52(7):615-622. doi:10.1093/annhyg/men044
27. Okasha O., Munier A., Delarocque Astagneau, E., El Houssinie, M., Rafik, M. et al. (2015). Hepatitis C virus infection and risk factors in health-care workers at Ain Shams University Hospitals, Cairo, Egypt. *EMHJ-Eastern Mediterranean Health Journal*, 21 (3), 199 - 212. World Health Organization, Regional Office for the Eastern Mediterranean. <https://apps.who.int/iris/handle/10665/255088> (accessed June 10 2022)
28. Gomaa A, Allam N, Elsharkawy A, El Kassas M, Waked I. Hepatitis C infection in Egypt: prevalence, impact and management strategies. *HMER* 2017; **Volume 9**: 17–25.
29. Schwander B, Feldstein J, Sulo S, Gonzalez L, ElShishiney G, Hassany M. Pursuing Elimination of Hepatitis C in Egypt: Cost-Effectiveness and Economic Evaluation of a Country-Wide Program. *Infect Dis Ther* 2022; **11**: 1193–203.
30. Waked I, Esmat G, Elsharkawy A, et al. Screening and Treatment Program to Eliminate Hepatitis C in Egypt. *N Engl J Med* 2020; **382**: 1166–74.
31. Waked I. Case study of hepatitis C virus control in Egypt: impact of access program. *Antiviral Therapy* 2022; **27**: 1-6.
32. Mostafa A, El-Sayed MH, El Kassas M, Elhamamsy M, Elsis GH. Safety-Engineered Syringes: An Intervention to Decrease Hepatitis C Burden in Developing Countries—A Cost-Effectiveness Analysis From Egypt. *Value in Health Regional Issues* 2019; **19**: 51–8.

490 **FIGURES AND TABLES**

491

492 **Table 1.** Odds-ratios (OR) of HCV infection associated with exposure to iatrogenic procedures, based  
493 on a previously published meta-analysis<sup>18</sup>. The 15 procedure types in the IMMHoTHep data (second  
494 column) are aggregated into 8 of the 10 procedure groups defined in the meta-analysis and sorted  
495 from higher to lower risk. No procedures from the remaining 2 groups defined in the meta-analysis  
496 (dental care and transplantation) were observed in the IMMHoTHep data.

<b>Procedure groups in meta-analysis</b>	<b>Procedures in data</b>	<b>OR [CI 95%]</b>
<i>Wound care</i>	<i>Stitches, Wound dressing</i>	2.83 [1.85-4.32]
<i>Blood transfusion</i>	<i>Blood transfusion</i>	2.60 [2.09-3.22]
<i>IV - Catheter</i>	<i>Intravenous, Cardiac catheter</i>	2.42 [1.68-3.51]
<i>Surgery</i>	<i>Surgery</i>	2.30 [1.77-3.00]
<i>Other procedures</i>	<i>Other invasive procedures, drainage catheter</i>	2.28 [1.43-3.64]
<i>Haemodialysis</i>	<i>Dialysis</i>	2.02 [0.98-4.17]
<i>Injection</i>	<i>Injection, Blood glucose, Blood sample</i>	1.67 [1.17-2.38]
<i>Endoscopy</i>	<i>Endoscopy, Endotracheal intubation, gastric lavage</i>	1.48 [0.95-2.3]

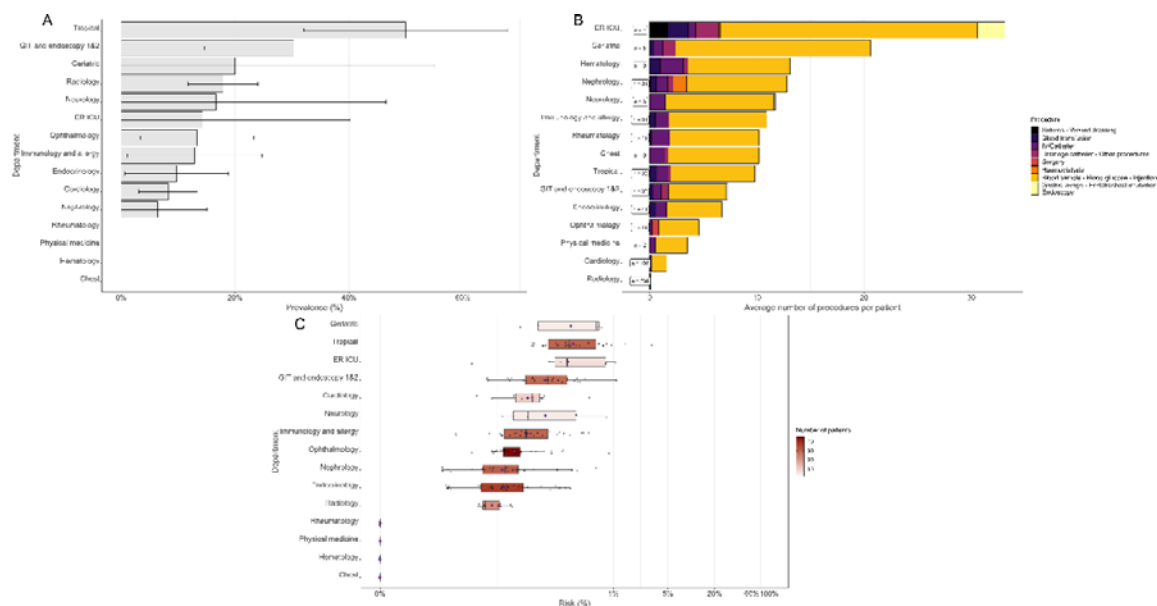


497

498

499

**Figure 1.** Chronograms for each of the four clusters of patients identified after sequence analysis. Dotted lines represent the average length of stay for each group of patients.



500

501

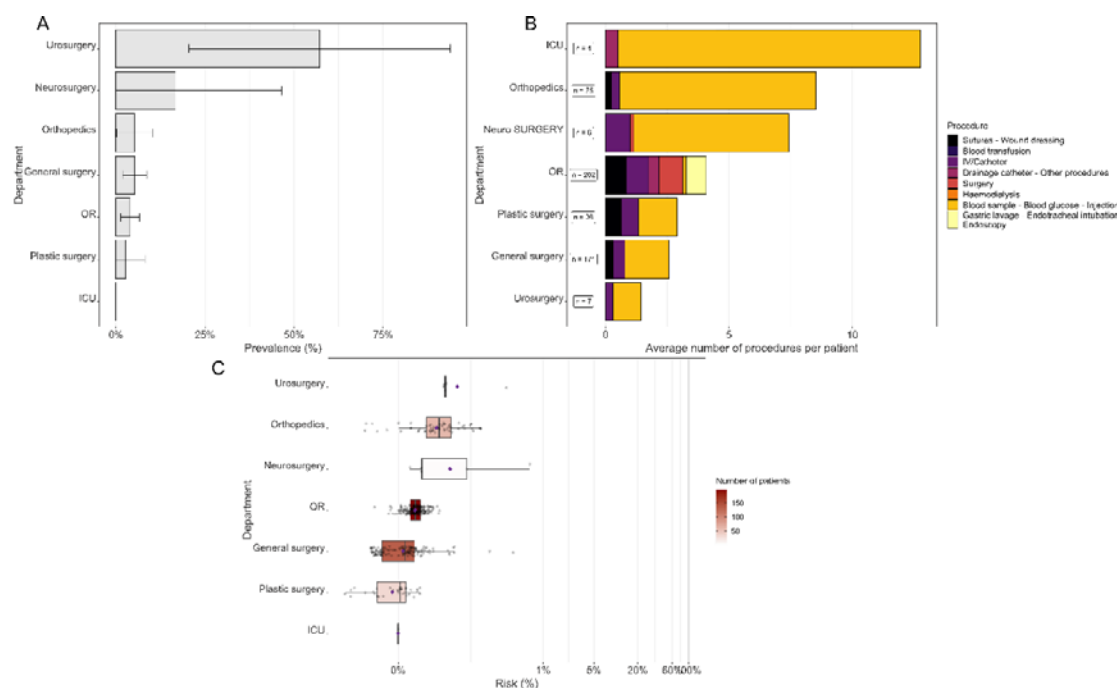
502

503

504

505

**Figure 2.** Panel of ward characteristics for each ward in the Internal medicine hospital. (A) HCV prevalence in each ward with their associated 95% confidence intervals. (B) Average number of procedures per patient. Procedure types are represented from the high-risk ones to the low-risk ones (from left to right). (C) Boxplots of average ward-specific risk of HCV infection, coloured according to the number of patients visiting these wards. Mean values are represented by purple diamond dots.



506

507 **Figure 3.** Panel of ward characteristics for each ward in the Surgery hospital. (A) HCV  
 508 prevalence in each ward with their associated 95% confidence intervals. (B) Average number of  
 509 procedures per patient. Procedure types are represented from the high-risk ones to the low-  
 510 risk ones (from left to right). (C) Boxplots of average ward-specific risk of HCV infection,  
 511 coloured according to the number of patients visiting these wards. Mean values are  
 512 represented by purple diamond dots. Three wards are not represented because no patients  
 513 underwent invasive procedures within them.

514

515

516

517

518

519

520

521

522

523

524

525

526

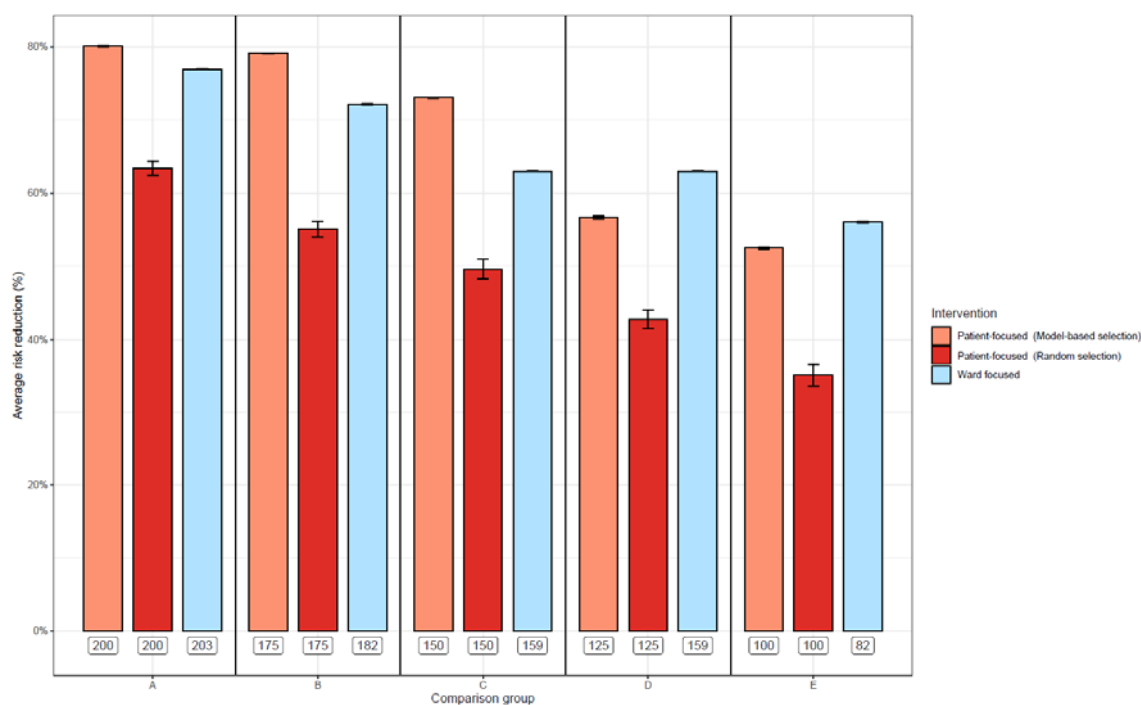
527

528 **Table 2.** Result of the multivariate beta-regression analysis.

Characteristic	$\beta$	Std. Error	p-value
<b>Source of admission</b>			
Outpatient clinic	-	-	
Emergency room	0.081	0.051	0.114
<b>Age</b>	0.003	0.002	0.065
<b>Reason for hospitalisation</b>			
General surgery	-	-	
Special surgery	0.064	0.075	0.395
General IM	0.276	0.089	<0.01**
Special IM	0.195	0.068	<0.01**
Liver/ GIT complaint	0.443	0.092	<0.001***
<b>Previous anti-schistosomiasis treatment</b>			
No / Doesn't remember	-	-	-
Yes	0.169	0.084	0.043*
<b>Previous injection</b>			
No / Doesn't remember	-	-	-
Yes	0.097	0.052	0.062
<b>Previous endoscopy</b>			
No / Doesn't remember	-	-	-
Yes	0.118	0.072	0.102

529

IM: internal medicine. GIT: gastro-intestinal



530

531 **Figure 4.** Effect of simulated intervention on the overall risk of HCV infection during hospitalization.  
 532 Error bars correspond to the 95% confidence intervals of the mean. Labels under bars correspond to  
 533 the number of concerned patients for a given intervention for the five sub-scenarios considered in  
 534 the analysis.