

1 Phenome-wide Mendelian randomization study of plasma triglycerides and 2,600 disease traits

2

3 Short Title: Phenome-wide Mendelian randomization study of plasma triglycerides

4

5 Joshua K. Park^{1,2,3*}, Shantanu Bafna^{1,2,*}, Iain S. Forrest^{1,2,3}, Áine Duffy^{1,2}, Carla Marquez-

6 Luna^{1,2}, Ben O. Petrazzini^{1,2}, Ha My Vy^{1,2}, Daniel M. Jordan^{1,2}, Marie Verbanck⁴, Jagat

7 Narula^{5,6}, Robert S. Rosenson^{5,7}, Ghislain Rocheleau^{1,2}, Ron Do^{1,2,†}

8

9 ¹Charles Bronfman Institute for Personalized Medicine, Icahn School of Medicine at Mount
10 Sinai, New York, NY, USA

11 ²Department of Genetics and Genomic Sciences, Icahn School of Medicine at Mount Sinai, New
12 York, NY, USA

13 ³Medical Scientist Training Program, Icahn School of Medicine at Mount Sinai, New York, NY,
14 USA

15 ⁴Université Paris Cité, UR 7537 BioSTM, Paris, France

16 ⁵Department of Medicine, Icahn School of Medicine at Mount Sinai, New York, NY

17 ⁶Cardiovascular Imaging Program, Zena and Michael A. Wiener Cardiovascular Institute, Mount
18 Sinai Heart, Icahn School of Medicine at Mount Sinai, New York, NY

19 ⁷Metabolism and Lipids Unit, Zena and Michael A. Wiener Cardiovascular Institute, Mount
20 Sinai Heart, Icahn School of Medicine at Mount Sinai, New York, NY

21 *These authors contributed equally to this work.

22 †Corresponding author

23 E-mail: ron.do@mssm.edu (RD)

24 **Abbreviations:** ALD, alcoholic liver disease; ANGPTL3, angiotensin-like 3; ANGPTL4,
25 angiotensin-like 4; ApoB, apolipoprotein B; APOC3, apolipoprotein C-III; ASCVD,
26 atherosclerotic cardiovascular disease; CAD, coronary artery disease; GLGC, Global Lipids
27 Genetics Consortium; HDL-C, high-density lipoprotein cholesterol; IHD, ischemic heart disease;
28 IV, instrumental variable; LDL-C, low-density lipoprotein cholesterol; MR-PRESSO, Mendelian
29 randomization pleiotropy residual sum and outlier; MVMR, Multivariable Mendelian
30 randomization; NAFLD, non-alcoholic fatty liver disease; OR, odds ratio; REDUCE-IT,
31 Reduction of Cardiovascular Events with Icosapent Ethyl-Intervention Trial; STRENGTH,
32 Statin Residual Risk Reduction With EpaNova in High CV Risk Patients With
33 Hypertriglyceridemia; TG, triglyceride

34

35 **Keywords:** Cardiovascular disease; Coronary artery disease; Dyslipidemia; FinnGen;
36 Hypertriglyceridemia; Lipids; Mendelian randomization; Phenome-wide MR; Triglyceride-rich
37 lipoprotein; Triglycerides; UK Biobank

38

39 Abstract

40 **Background:** Causality between plasma triglyceride (TG) levels and atherosclerotic
41 cardiovascular disease (ASCVD) risk remains controversial despite more than four decades of
42 study and two recent landmark trials, STRENGTH and REDUCE-IT. Further unclear is the
43 association between TG levels and non-atherosclerotic diseases across organ systems.

44
45 **Methods:** Here, we conducted a phenome-wide, two-sample Mendelian randomization (MR)
46 analysis using inverse-variance weighted (IVW) regression to systematically infer the causal
47 effects of plasma TG levels on 2,600 disease traits in the European ancestry population of UK
48 Biobank. For replication, we externally tested 221 nominally significant associations ($p < 0.05$)
49 in an independent cohort from FinnGen. To account for potential horizontal pleiotropy and the
50 influence of invalid instrumental variables, we performed sensitivity analyses using MR-Egger
51 regression, weighted median estimator, and MR-PRESSO. Finally, we used multivariable MR
52 controlling for correlated lipid fractions to distinguish the independent effect of plasma TG
53 levels.

54
55 **Results:** Our results identified 7 disease traits reaching Bonferroni-corrected significance in both
56 the discovery ($p < 1.92 \times 10^{-5}$) and replication analyses ($p < 2.26 \times 10^{-4}$), supporting a causal
57 relationship between plasma TG levels and ASCVDs, including coronary artery disease (OR
58 1.33, 95% CI 1.24-1.43, $p = 2.47 \times 10^{-13}$). We also identified 12 disease traits that were
59 Bonferroni-significant in the discovery or replication analysis and at least nominally significant
60 in the other analysis ($p < 0.05$), identifying plasma TG levels as a novel risk factor for 9 non-
61 ASCVD diseases, including uterine leiomyoma (OR 1.19, 95% CI 1.10-1.29, $p = 1.17 \times 10^{-5}$).

62

63 **Conclusions:** Taking a phenome-wide, two-sample MR approach, we identified causal
64 associations between plasma TG levels and 19 disease traits across organ systems. Our findings
65 suggest unrealized drug repurposing opportunities or adverse effects related to approved and
66 emerging TG-lowering agents as well as mechanistic insights for future study.

67

68 **Funding:** RD is supported by the National Institute of General Medical Sciences of the National
69 Institutes of Health (NIH) (R35-GM124836) and the National Heart, Lung, and Blood Institute
70 of the NIH (R01-HL139865 and R01-HL155915).

71 **Introduction**

72 Atherosclerotic cardiovascular disease (ASCVD) remains the leading cause of death
73 worldwide despite the effectiveness of statin therapy in reducing low-density lipoprotein
74 cholesterol (LDL-C) levels (Baigent et al., 2005) (Roth et al., 2020). Additional therapeutic
75 targets and adjunctive treatments are needed to address the burden arising from residual risk
76 (Rosenson & Goonewardena, 2021). Triglycerides (TG) play vital roles in physiology, ranging
77 from energy storage and mobilization to inflammation, thrombosis, and hormone-like signaling
78 (Zewinger et al., 2020) (Norata et al., 2007). However, a causal relationship between TGs and
79 ASCVDs remains controversial (Miller et al., 2011) (Albrink & Man, 1959), recently
80 culminating in the conflicting reports of two double-blinded randomized controlled trials (RCT),
81 STRENGTH and REDUCE-IT (Nicholls et al., 2020) (Bhatt et al., 2019) (Doi et al., 2021).
82 Nevertheless, drug development for reducing TG-rich lipoproteins (TRL) is an active area of
83 research and several targets have now been validated, including angiopoietin-like 3 (ANGPTL3)
84 (Graham et al., 2017) (Dewey et al., 2017) (Musunuru et al., 2010) (Gaudet et al., 2017),
85 angiopoietin-like 4 (ANGPTL4) (Dewey et al., 2016), and apolipoprotein C-III (APOC3)
86 (Gaudet et al., 2015) (Crosby et al., 2014). Clinical trials are currently evaluating these targets
87 for dyslipidemias (Arrowhead, 2021b) (Arrowhead, 2021a).

88 Whether TGs are causal risk factors or simply associative biomarkers remains uncertain
89 not only for ASCVDs but also other diseases of different organ systems. Understanding the
90 causal effects of TGs across a broader range of human diseases could have significant
91 implications for drug repurposing. TG-lowering agents, such as fibrates (Frick et al., 1987)
92 (Group, 2010) and omega-3 fatty acids (Bhatt et al., 2019) have already been approved; however,
93 not knowing which diseases are causally affected by TGs precludes their use for indications

94 other than hypertriglyceridemia. Understanding the protective effects of TGs could also have
95 implications for drug safety. With the recent approval of icosapent ethyl (Bhatt et al., 2019)
96 (Gaba et al., 2022) and the ongoing development of other TG-lowering agents (Shaik &
97 Rosenson, 2021), such as ANGPTL3 (Graham et al., 2017) (Dewey et al., 2017), ANGPTL4, and
98 APOC3 inhibitors (Gaudet et al., 2015), long-term safety becomes a matter of concern. Post-
99 market surveillance data are limited; therefore, identifying diseases with negative causal links to
100 TGs could suggest adverse side effects, whereas protective causal links to TGs could suggest
101 therapeutic avenues and indices informative for drug development. Further, this could inform
102 polypharmacy and drug titration in clinical practice.

103 Several methodological challenges have prohibited causal conclusions about TGs across
104 human diseases. First, TGs are correlated with established ASCVD risk factors, such as obesity
105 and insulin resistance (Eckel et al., 2005). They also correlate with LDL particles or
106 apolipoprotein B (apoB) concentration (Cromwell et al., 2007) and inversely correlate with high-
107 density lipoprotein cholesterol (HDL-C) (Phillips & Smith, 1991). Conventional observational
108 studies have thus been limited in drawing causal inferences due to potential confounding.
109 Secondly, available TG-lowering agents have pleiotropic effects on several major lipid fractions,
110 including VLDL-C, LDL-C, HDL-C, and apolipoproteins, including APOC3 (Group, 2010)
111 (Keech et al., 2005) (Frick et al., 1987). Thus, costly RCTs have had limited power to
112 disentangle the effects of lowering TG specifically (Triglyceride Coronary Disease Genetics et
113 al., 2010) (Goldberg et al., 2011) (Bhatt et al., 2019). Finally, Mendelian randomization (MR)
114 studies have typically focused on individual diseases selected *a priori* (Davey Smith & Hemani,
115 2014), narrowing the scope of causal estimates to ASCVDs while overlooking non-ASCVD
116 diseases (Harrison et al., 2018) (Smith et al., 2014) (Allara et al., 2019).

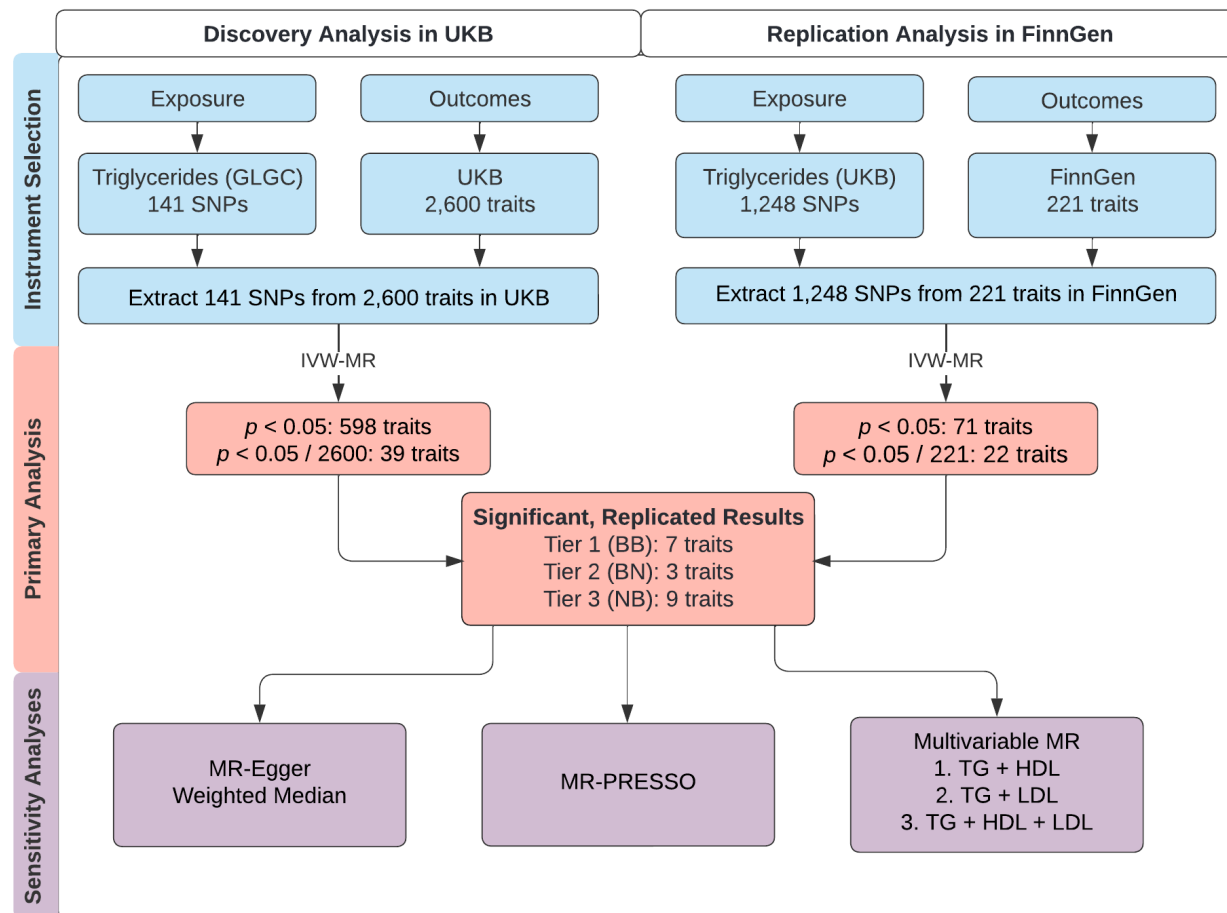
117 Phenome-wide MR is a high-throughput extension of MR that, under specific
118 assumptions, estimates the causal effects of an exposure on multiple outcomes simultaneously.
119 As in conventional MR, this method uses genetic variants as instrumental variables (IV) to proxy
120 modifiable exposures while minimizing confounding (Davey Smith & Ebrahim, 2003). A
121 distinction, however, is that phenome-wide MR enables comprehensive scans of the phenotypic
122 spectrum, limiting bias from prior assumptions and facilitating the discovery of unforeseen
123 causal relationships. This has recently become feasible with the maturation of large-scale
124 biobanks providing extensive genetic and phenotypic data, such as the UK Biobank (UKB)
125 (Bycroft et al., 2018) and FinnGen project (FinnGen, 2020).

126 Here, we use phenome-wide MR to systematically estimate the causal effects of plasma
127 TGs on 2,600 disease outcomes in UKB, followed by replication testing in FinnGen. We then
128 apply multiple MR methods for sensitivity analyses and multivariable MR to control for plasma
129 LDL-C and HDL-C level.

130 **Methods**

131 **Study design and data sources**

132 We followed the guidelines published by Burgess et al. (Burgess et al., 2020) and the
133 Strengthening the Reporting of Observational Studies in Epidemiology (STROBE) guidelines
134 (Skrivankova et al., 2021). Accordingly, we note that MR analyses rely on three important
135 instrumental variable assumptions: (1) the genetic variant is directly associated with the
136 exposure; (2) the genetic variant is unrelated to confounders between the exposure and outcome;
137 and (3) the genetic variant has no effect on the outcome other than through the exposure (Davey
138 Smith & Ebrahim, 2003). This study uses three non-overlapping genome-wide association
139 studies (GWAS). A schematic figure summarizes the study design (Fig 1).



140

141 **Fig 1. Study overview.**

142 A schematic summarizing the study design. GLGC, Global Lipids Genetics Consortium; HDL,
 143 high-density lipoprotein; IVW, inverse-variance weighted; LDL, low-density lipoprotein; MR,
 144 Mendelian randomization; MR-PRESSO, Mendelian Randomization Pleiotropy RESidual Sum
 145 and Outlier; SNP, single-nucleotide polymorphism; TG, triglyceride; UKB, UK Biobank. Tier 1
 146 (BB): At least Bonferroni-significant in both the discovery and replication analyses. Tier 2 (BN):
 147 At least Bonferroni-significant in the discovery analysis and at least nominally significant in the
 148 replication analysis. Tier 3 (NB): At least nominally significant in the discovery analysis and at
 149 least Bonferroni-significant in the replication analysis.

150

151 For primary and sensitivity analyses, we conducted two-sample MR taking summary
152 statistics for genetic associations with plasma TGs from one dataset (Global Lipids Genetics
153 Consortium, GLGC) (Willer et al., 2013) and summary statistics for genetic associations with
154 outcomes from a second, independent dataset (UKB). The CARDIoGRAMplusC4D Metabochip
155 study by GLGC involved 63,746 cases and 130,681 controls (Deloukas et al., 2013). UKB is a
156 longitudinal, population-based cohort study with genetic and phenotypic data on over 500,000
157 participants aged 40-69 years at recruitment from across the United Kingdom during 2006-2010
158 (Sudlow et al., 2015). The sociodemographic and health-related characteristics of UKB
159 participants have been described elsewhere (Fry et al., 2017).

160 For replication analysis, we again performed two-sample MR but used summary statistics
161 for TG from UKB and summary statistics for outcomes from FinnGen (Release 4; 176,899
162 samples; 169,962,023 variants). FinnGen is a large public-private partnership started in August
163 2017 aiming to collect and analyze genomic and phenotypic data from 500,000 Finnish biobank
164 participants (FinnGen, 2020) (Kurki et al., 2022). For both primary and replication analysis,
165 there is likely to be minimal sample overlap in the two-sample MR, which can cause weak-
166 instrument bias and inflated type 1 error (Burgess et al., 2016).

167

168 **Genetic instruments**

169 For primary and secondary analyses, we identified 3,086 single nucleotide
170 polymorphisms (SNP) associated with plasma TG levels in GLGC at a genome-wide
171 significance threshold of $p < 5 \times 10^{-8}$. A total of 141 independent SNPs were then selected at a
172 linkage disequilibrium (LD) threshold of $r^2 < 0.05$ using the 1000 Genomes LD European panel
173 as the reference population (Auton et al., 2015). To select independent SNPs, we used the

174 PLINK software's LD clumping command (Purcell et al., 2007) with the following options: --
175 clump-p1 0.00000005 --clump-p2 0.0005 --clump-r2 0.05 --clump-kb 250.

176 For replication analysis, we identified 1,388 SNPs associated with plasma TG levels in
177 UKB after restricting for genome-wide significance ($p < 5 \times 10^{-8}$) and LD-clumping. The SNPs
178 were selected at an LD threshold of $r^2 < 0.05$ using the 1000 Genomes LD European panel as the
179 reference population. LD clumping was performed by PLINK using the same command as
180 above. We then restricted to 1,248 SNPs for genetic instrumentation based on whether the SNP
181 was also available in the FinnGen dataset.

182

183 **Disease outcomes**

184 As a phenome-wide investigation, this study examined many binary disease outcomes.
185 For outcomes of primary and sensitivity analyses, we used genome-wide association summary
186 statistics from the European ancestry subset of UKB. The focus on European ancestry was
187 needed to reduce heterogeneity and maximize statistical power. Pan-UKB performed 16,000
188 genome-wide association studies in ~500,000 UKB participants of various ancestries using
189 genetic and phenotypic data (PanUKBTeam, 2020). A total of 7,221 total phenotypes were
190 categorized as “biomarker”, “continuous”, “categorical”, “ICD-10 code”, “phecode”, or
191 “prescription” (PanUKBTeam, 2020). We filtered for outcomes to retain categorical, ICD-10,
192 and phecode types; non-null heritability in European ancestry as estimated by Pan-UKB; and
193 relevance to disease, excluding medications. This yielded 2,600 traits for primary analysis.

194 For outcomes of replication analysis, we used genome-wide association summary
195 statistics from FinnGen. To allow for compatibility between UKB and FinnGen datasets,
196 phenotypes coded as FinnGen “endpoint IDs” were mapped to ICD-10 codes or phecodes

197 corresponding to the coding convention used by UKB. Categorical traits in UKB could not be
198 reliably mapped to FinnGen IDs, requiring us to omit categorical traits from replication analysis.
199 Of 2,444 available FinnGen outcomes, we ultimately selected 221 outcomes for replication
200 testing based on two conditions: (1) The outcome has an equivalent phenotype documented as an
201 ICD-10 code or phecode in UKB, which we had included in the discovery analysis, and (2) the
202 outcome was at least nominally significant ($p < 0.05$) in the discovery analysis.

203

204 **Statistical analyses**

205 Primary discovery analysis used the inverse-variance weighted (IVW) method of two-
206 sample MR over the more horizontal pleiotropy-robust MR-Egger regression method to
207 maximize statistical power (Burgess et al., 2013). To proxy TG, we selected the 141 TG-
208 associated SNPs from Pan-UKB identified above as instrumental variables in MR testing. All
209 SNPs were harmonized to match the effect and non-effect allele at each SNP. For replication
210 analyses, we conducted IVW tests using TG-associated SNPs from UKB as exposures and 221
211 traits at least nominally significant ($p < 0.05$) in the discovery analysis as outcomes from
212 FinnGen. R (4.1.0) was used for all analyses (R Core Team, 2021).

213 For sensitivity analyses, we addressed the possible presence of horizontal pleiotropy by
214 applying MR-Egger (Bowden et al., 2015), weighted median estimator (Bowden et al., 2016),
215 and MR-PRESSO outlier tests (Verbanck et al., 2018) on Bonferroni-significant traits identified
216 in the primary analysis above. MR-PRESSO outlier tests were performed on 16 traits with
217 significant MR-PRESSO global test results ($p < 0.05$). To account for potential horizontal
218 pleiotropy due to outliers, we examined the MR-PRESSO outlier test p-values from the
219 discovery analysis, and as recommended (Burgess et al., 2020), removed outlier IVs (between 1

220 and 10 SNPs for each outcome) based on a corrected significance threshold ($p < 0.05 / 141 =$
221 3.55×10^{-4}). IVW tests were then re-run without the outlier IVs in the discovery analysis.

222 Additionally, we fitted multivariable MR (MVMR) models controlling for plasma LDL-
223 C and HDL-C levels in the discovery stage. MVMR uses genetic variants associated with
224 multiple exposures to estimate the effect of each exposure on an outcome, thereby accounting for
225 potentially correlated exposures (Sanderson, 2021). We extracted the 141 LD-independent TG-
226 associated SNPs described above from the summary statistics for LDL and HDL provided by
227 GLGC. We then performed three MVMR IVW tests against traits Bonferroni-significant in our
228 discovery analysis with the following sets of exposures: TG and LDL; TG and HDL; or TG,
229 HDL, and LDL.

230 To account for multiple testing, a conservative Bonferroni threshold for statistical
231 significance was set to $p < 0.05 / 2600 = 1.92 \times 10^{-5}$ for the discovery analysis. For replication
232 analysis, a similar conservative Bonferroni threshold was set to $p < 0.05 / 221 = 2.26 \times 10^{-4}$. We
233 determined three tiers of statistical evidence based on the Bonferroni or nominal threshold ($p <$
234 0.05) in both the discovery and replication analyses. These three tiers are defined below:

- 235 1. Tier 1 (BB): At least Bonferroni-significant in both the discovery and replication analyses.
- 236 2. Tier 2 (BN): At least Bonferroni-significant in the discovery analysis and at least nominally
237 significant in the replication analysis.
- 238 3. Tier 3 (NB): At least nominally significant in the discovery analysis and at least Bonferroni-
239 significant in the replication analysis.

240

241 **Ethical approval**

242 UK Biobank has approval from the North West Multi Centre Research Ethics Committee
243 (MREC) as a Research Tissue Bank (RTB) (11/NW/0382), and all participants of UKB provided
244 written informed consent. More information is available at ([https://www.ukbiobank.ac.uk/learn-](https://www.ukbiobank.ac.uk/learn-more-about-uk-biobank/about-us/ethics)
245 [more-about-uk-biobank/about-us/ethics](https://www.ukbiobank.ac.uk/learn-more-about-uk-biobank/about-us/ethics)). The work described in this study was approved by
246 UKB under application number 16218. All participants of FinnGen provided written informed
247 consent for biobank research, based on the Finnish Biobank Act. The Coordinating Ethics
248 Committee of the Hospital District of Helsinki and Uusimaa (HUS) approved the FinnGen study
249 protocol Nr HUS/990/2017. More information is available at
250 (https://www.finngen.fi/en/code_of_conduct).

251

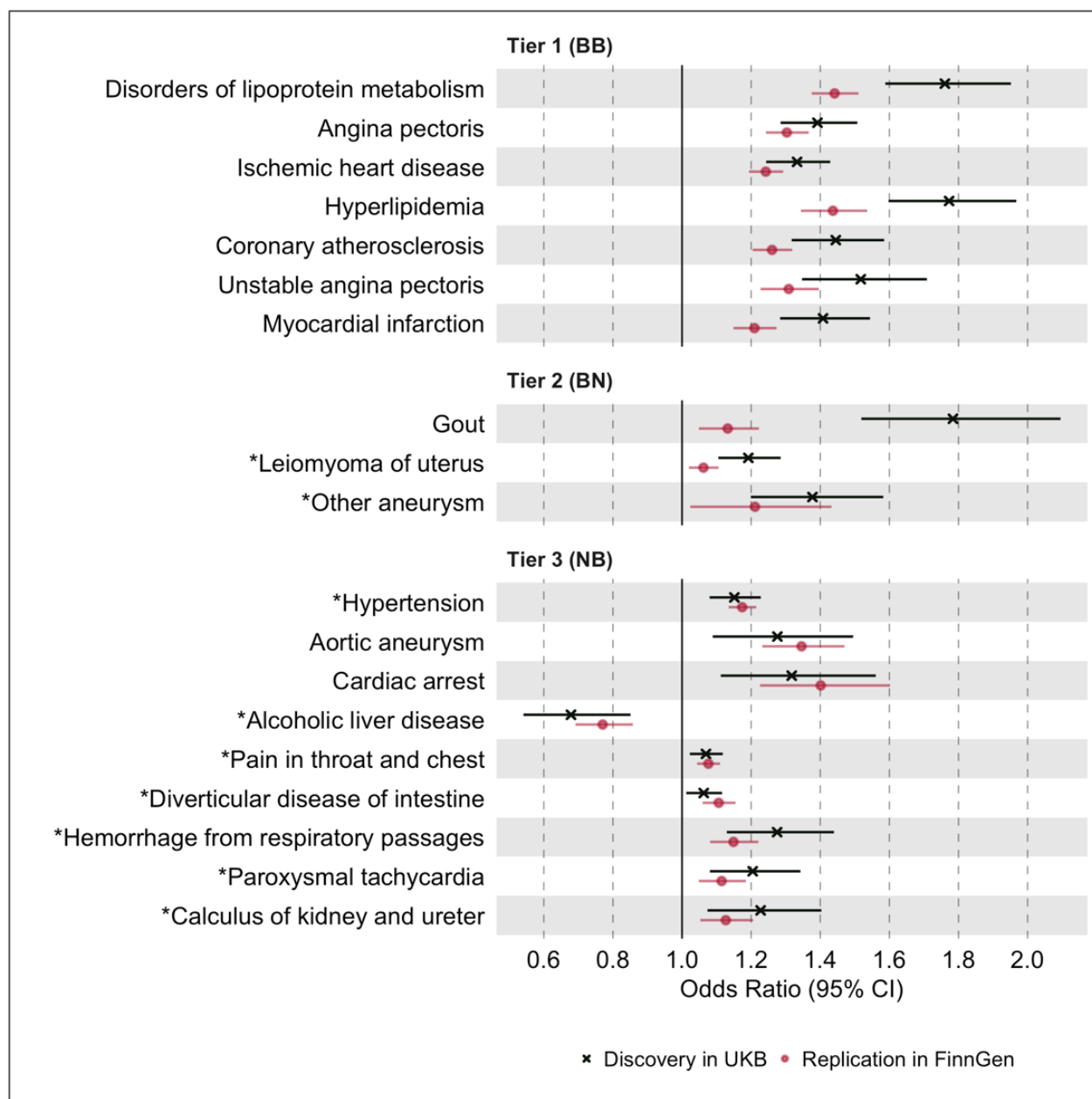
252 **Data availability**

253 All data generated in this study are included in the manuscript and supplementary tables.
254 All analyses used publicly available data (UKB, FinnGen), including previously published
255 GWAS (GLGC) (Willer et al., 2013). Obtaining access to UKB (PanUKBTeam, 2020) and
256 FinnGen (FinnGen, 2020) GWAS summary statistics is detailed here
257 (https://www.finngen.fi/en/access_results) and here ([https://www.ukbiobank.ac.uk/enable-your-](https://www.ukbiobank.ac.uk/enable-your-research/apply-for-access)
258 [research/apply-for-access](https://www.ukbiobank.ac.uk/enable-your-research/apply-for-access)). Please note the summary statistics for FinnGen and Pan-UKB are
259 made publicly available.

260 **Results**

261 **Genetically proxied plasma TG levels and phenome-wide disease risk**

262 In the discovery analysis, we identified nominally significant associations ($p < 0.05$)
263 between plasma TG levels and 598 disease traits in UKB (S1 Table). Of these, 39 disease traits
264 were statistically significant after multiple testing correction with a conservative Bonferroni-
265 corrected threshold ($p < 1.92 \times 10^{-5}$). As a positive control, plasma TG levels were positively
266 associated with gout with an odds ratio (OR) of 1.78 for gout (95% CI 1.52-2.09, $p = 7.41 \times 10^{-$
267 ¹¹), in agreement with prior studies (Yu et al., 2021). In the replication analysis, we identified
268 nominally significant associations ($p < 0.05$) between plasma TG levels and 71 disease traits in
269 FinnGen (S2 Table). Of these, 22 traits were Bonferroni-significant. A summary of the 19 most
270 statistically significant and replicated results have been organized into three predefined tiers of
271 evidence (Fig 2). We note that the magnitude of estimates from the discovery analysis were
272 generally greater than those from replication analysis, especially among tier 1 and tier 2
273 associations, potentially as a manifestation of winner's curse bias (Göring et al., 2001).



274
 275 **Fig 2. Causal estimates of genetically proxied plasma TG levels on disease risk using IVW**
 276 **regression in UKB and FinnGen.**
 277 Causal estimates from inverse-variance weighted (IVW) regression are shown as odds ratios
 278 (OR) per 1 SD increase in plasma triglyceride (TG) levels (mmol/L). Asterisks indicate novel
 279 associations. Black indicates discovery analysis results using UKB. Red indicates replication
 280 analysis results using FinnGen. Horizontal lines represent 95% confidence intervals. Tier 1 (BB):

281 At least Bonferroni-significant in both the discovery and replication analyses. Tier 2 (BN): At
282 least Bonferroni-significant in the discovery analysis and at least nominally significant in the
283 replication analysis. Tier 3 (NB): At least nominally significant in the discovery analysis and at
284 least Bonferroni-significant in the replication analysis. Full results are provided in S1 and S2
285 Tables.

286

287 For tier 1 results, genetically determined plasma TG levels were positively associated
288 with 7 disease traits in both the discovery and replication analyses. These were Bonferroni-
289 significant in both analyses, and all were related to dyslipidemias or ASCVD. Among traits
290 related to ASCVD, the strongest association by statistical significance was for angina pectoris in
291 both the discovery UKB cohort (OR 1.39, 95% CI 1.29-1.51, $p = 2.11 \times 10^{-13}$) and the replication
292 FinnGen cohort (OR 1.30, 95% CI 1.24-1.37, $p = 1.25 \times 10^{-26}$). For tier 2 results, plasma TG
293 levels were positively associated with 3 disease traits, including non-ASCVDs: gout, uterine
294 leiomyoma, and “other aneurysms” (phecode-442). The strongest association by significance,
295 after gout, was for leiomyoma of the uterus in both the discovery (OR 1.19, 95% CI 1.10-1.29, p
296 $= 1.17 \times 10^{-5}$) and replication cohorts (OR 1.06, 95% CI 1.02-1.11, $p = 3.60 \times 10^{-3}$). For tier 3
297 results, 9 disease traits were identified, and a greater proportion were non-ASCVD traits. The
298 strongest association by significance was for hypertension in both the discovery (OR 1.51, 95%
299 CI 1.08-1.23, $p = 3.20 \times 10^{-5}$) and replication cohorts (OR 1.17, 95% CI 1.14-1.22, $p = 9.49 \times$
300 10^{-20}).

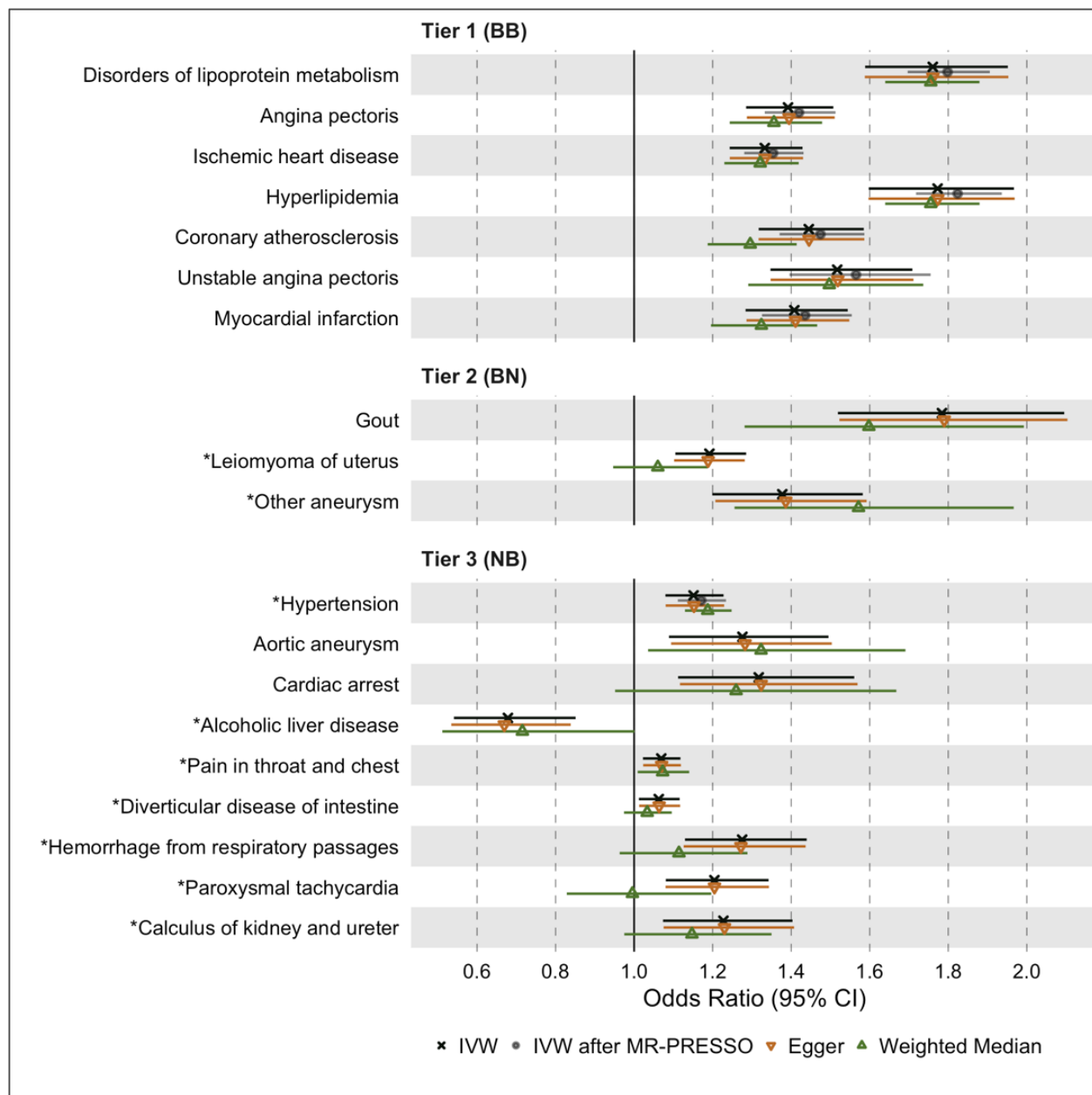
301

302

303

304 **Sensitivity analyses using MR-PRESSO, MR-Egger, and Weighted Median methods**

305 To account for potential horizontal pleiotropy bias due to outlier IVs, we next used the
306 MR-PRESSO test on the 19 significant and replicated associations identified above, which were
307 categorized into three tiers of statistical evidence. MR-PRESSO suspected outlier IVs for 16 of
308 the 19 associations, and between 1 and 10 IVs were identified for 8 associations (S3 Table). We
309 then re-ran IVW MR for these 8 associations after removing outlier IVs (S3 Table). Among tier
310 1 results, all 7 associations increased in significance after outlier removal (Fig 3). For tier 2
311 results, two of three associations had significant global MR-PRESSO test values but no outlier
312 IVs were removed. For tier 3 results, seven of nine associations had significant global MR-
313 PRESSO test values, and outlier IVs were removed for one of these associations (S3 Table),
314 which increased in significance: hypertension ($p = 3.20 \times 10^{-5}$ to $p = 2.80 \times 10^{-8}$). Importantly,
315 all associations maintained the same effect direction after the MR-PRESSO outlier test, in
316 keeping with the initial discovery analysis.



317
 318 **Fig 3. Causal estimates of genetically proxied plasma TG levels on disease risk using MR-**
 319 **Egger, Weighted Median, and MR-PRESSO methods in UKB.**
 320 Shown are sensitivity analysis results from the discovery stage using instruments from GLGC
 321 and outcomes from UKB. Levels of statistical significance are expressed as $-\log_{10}(p)$ values.
 322 Associations with insignificant global MR-PRESSO test results ($p > 0.05$) were not rerun and do
 323 not have data points for IVW after MR-PRESSO. Tier 1 (BB): At least Bonferroni-significant in

324 both the discovery and replication analyses. Tier 2 (BN): At least Bonferroni-significant in the
325 discovery analysis and at least nominally significant in the replication analysis. Tier 3 (NB): At
326 least nominally significant in the discovery analysis and at least Bonferroni-significant in the
327 replication analysis. Full results are found in S1 and S3 Tables.

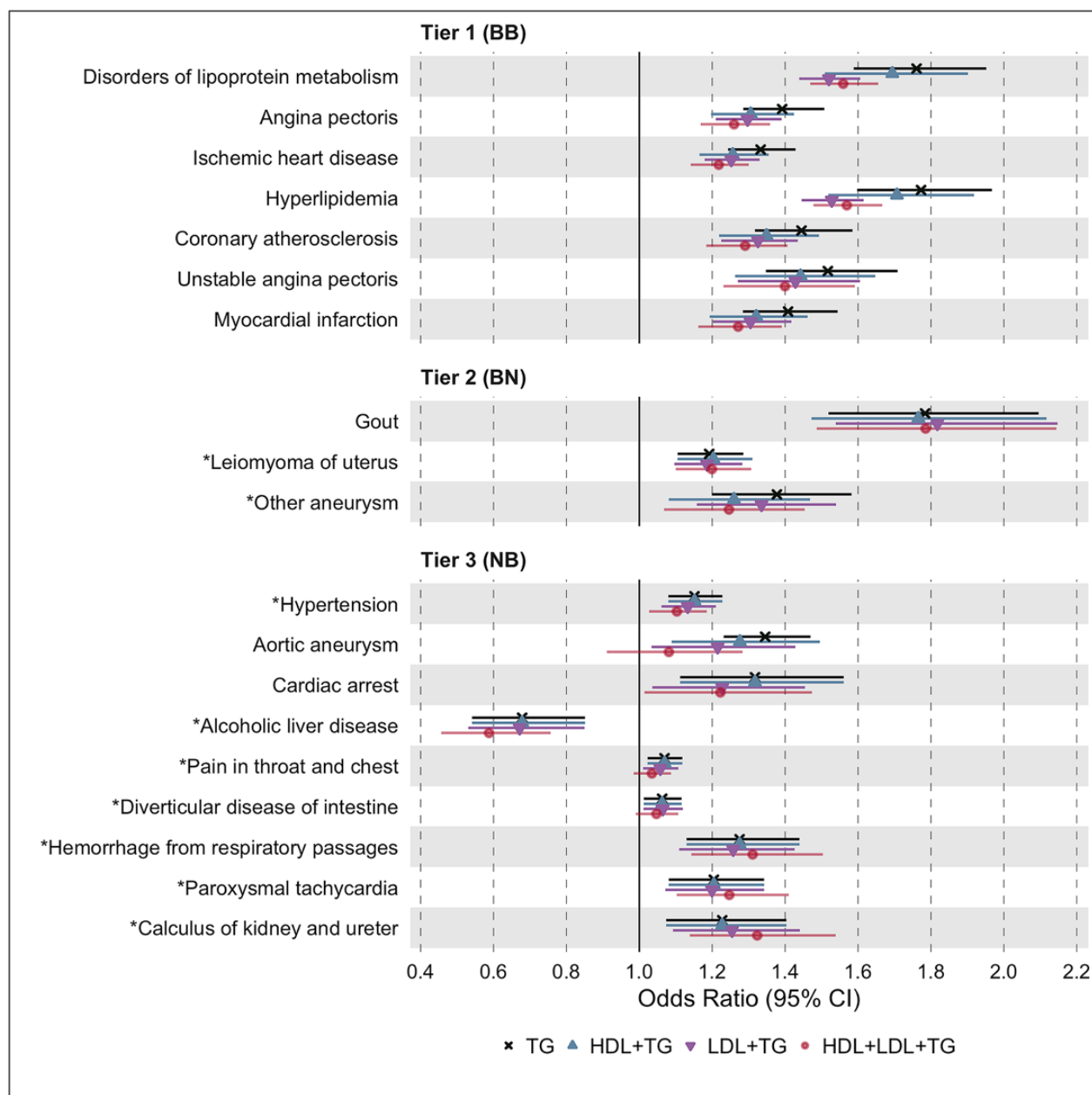
328

329 To further account for horizontal pleiotropy, we conducted sensitivity analyses for the 19
330 significant and replicated traits using the MR-Egger and weighted median estimators on UKB
331 data (Fig 3). MR-Egger results were comparable to IVW results for all 19 traits across the three
332 tiers of evidence. However, weighted median results were less statistically significant than IVW
333 and MR-Egger results for most traits except for disorders of lipid metabolism, hyperlipidemia,
334 and hypertension.

335

336 **Separating the independent effects of plasma TG levels**

337 To isolate the independent effect of plasma TG levels from those of correlated lipid
338 fractions, we next conducted multivariable MR (MVMR) on the 19 significant and replicated
339 associations using the IVW estimator on UKB data, adjusting for plasma HDL-C, LDL-C, or
340 both simultaneously (Fig 4). For tier 1 associations, we observed an increase in statistical
341 significance for disorders of lipid metabolism and hyperlipidemia after adjustment. For tier 2
342 results, we observed an increase in significance for gout. For tier 3 results, we observed an
343 increase in significance for alcoholic liver disease, paroxysmal tachycardia, and calculus of
344 kidney and ureter. Aside from these, MVMR led to a decrease in statistical significance for the
345 remaining associations. However, all 19 associations remained in the same direction of causality
346 despite multivariable adjustment (S4 Table).



347
 348 **Fig 4. Causal estimates of genetically proxied plasma TG levels on disease risk using**
 349 **multivariable IVW regression controlling for plasma LDL-C and HDL-C levels in UKB.**
 350 Shown are the multivariable MR results from the discovery analysis, using genetic instruments
 351 for plasma TG levels from GLGC and disease traits from UKB. Degrees of statistical
 352 significance are categorized into three tiers: Tier 1 (BB): At least Bonferroni-significant in both
 353 the discovery and replication analyses. Tier 2 (BN): At least Bonferroni-significant in the

354 discovery analysis and at least nominally significant in the replication analysis. Tier 3 (NB): At
355 least nominally significant in the discovery analysis and at least Bonferroni-significant in the
356 replication analysis. Full results are provided in S4 Table.

357 **Discussion**

358 We performed phenome-wide, two-sample MR to estimate the causal effects of plasma
359 TG levels on a spectrum of human disease traits ($n = 2,600$) using a discovery cohort from UKB
360 and a replication cohort from FinnGen. We report 7 disease traits reaching Bonferroni-corrected
361 significance in both the discovery and replication analyses, which we categorized as tier 1
362 results. These traits were predominantly manifestations of ASCVD, such as ischemic heart
363 disease, angina pectoris, and myocardial infarction. Using multivariable MR, we found that these
364 associations remained even after controlling for LDL-C and HDL-C (Fig 4). We also identified 3
365 disease traits that are both Bonferroni-significant in the discovery analysis ($p < 1.92 \times 10^{-5}$) and
366 at least nominally significant in the replication analysis ($p < 0.05$), categorized as tier 2 results.
367 Lastly, we identified 9 disease traits at least nominally significant in the discovery analysis and
368 Bonferroni-significant in replication analysis, categorized as tier 3 results. Several of these
369 disease traits have never been reported to be causally associated with TGs, introducing new
370 opportunities for drug repurposing and further mechanistic studies.

371 Our results are consistent with prior work suggesting that plasma TG levels are causally
372 associated with ASCVD risk (Triglyceride Coronary Disease Genetics et al., 2010) (Castañer et
373 al., 2020) (Do et al., 2013) (Dewey et al., 2016) (Holmes et al., 2015) (White et al., 2016) (Varbo
374 et al., 2013) (Ibi et al., 2021) (Rosenson et al., 2021). We do not prove here that circulating TGs
375 *per se* are directly atherogenic; rather, we show that plasma TG measurement, which comprises
376 multiple classes of triglyceride-rich lipoproteins (TRL) and their remnants, captures a clinically
377 significant mechanism that is causally associated with ASCVD (Rosenson et al., 2021). This
378 interpretation is concordant with the emerging consensus that apolipoprotein B (apoB) particle
379 number is a more important determinant of atherogenesis than LDL-C and that TRL particles are

380 as important a risk factor in ASCVD as LDL particles, since they both carry a single apoB
381 molecule (FERENCE et al., 2019) (Marston et al., 2021) (Richardson et al., 2020). According to this
382 paradigm, the causal association we observe between plasma TG levels and ASCVD risk may be
383 mediated by the concentration of apoB particles in TRLs, captured by plasma TG level
384 measurements. If reducing TRLs proportionally reduces apoB levels (FERENCE et al., 2019), these
385 results support that lowering plasma TG levels could serve as a valid therapeutic strategy to
386 reducing ASCVD risk. Additional studies controlling for apoB are needed to test whether
387 decreasing plasma TGs without a concomitant decrease in apoB could reduce ASCVD risk by
388 alternative mechanisms unrelated to apoB.

389 Regarding non-ASCVDs, we show novel causal associations between plasma TG levels
390 and uterine leiomyomas (uterine fibroids), diverticular disease of intestine, paroxysmal
391 tachycardia, hemorrhage from respiratory passages (hemoptysis), and calculus of kidney and
392 ureter (kidney stones). Prior studies had reported correlational associations between many of
393 these diseases and plasma TG levels or risk factors correlated to plasma TGs. For example,
394 studies had documented positive correlations between leiomyoma risk and plasma TG levels
395 (Uimari et al., 2016) (Tonoyan et al., 2021) (Peshkova et al., 2020). Others had shown
396 diverticular disease risk is positively associated with BMI, body fat percentage, and visceral fat
397 area (Shih et al., 2022) (Freckelton et al., 2018) (Böhm, 2021). Similarly, kidney stones have
398 been associated with the triglyceride-glucose (TyG) index (Qin et al., 2021), and atrial
399 tachycardias have been associated with VLDL levels in metabolic syndrome patients (Lee et al.,
400 2017) (Park & Lee, 2018). Our study is the first to suggest that these associations may be
401 causally related and specific to plasma TG levels, as opposed to or in addition to confounding
402 risk factors, such as obesity and hormone replacement therapy. We thus present rationale for

403 repurposing TG-lowering agents towards these diseases and pursuing mechanistic studies
404 interrogating TG biology; however, RCTs are necessary to better evaluate clinical potential.

405 Our results also identified a novel, negative causal association between plasma TG levels
406 and alcoholic liver disease (ALD), suggesting that excessively reducing plasma TG levels may
407 increase risk of this disease trait. A mechanistic explanation for this association remains elusive
408 as previous studies on dysregulated lipid metabolism in liver disease have generally focused on
409 non-alcoholic fatty liver disease (NAFLD). However, one animal study suggests that medium-
410 chain TGs may decrease lipid peroxidation and reverse established alcoholic liver injury in rat
411 models of ALD (Nanji et al., 1996). Nevertheless, that elevated TG levels may protect against
412 ALD is surprising and requires validation. It remains unclear whether this association is only
413 relevant to lifelong, chronic lowering of plasma TG levels rather than transient lowering by drug-
414 based interventions. It is also unclear whether ALD could be prevented by increasing TG levels.
415 Our finding emphasizes the potential intolerability of TG-lowering agents and the importance of
416 maintaining these drugs' concentrations within therapeutic windows for patient safety.

417 This study has several limitations. First, horizontal pleiotropy has been shown to be
418 common in genetic variation, which can cause bias in MR testing (Verbanck et al., 2018) (Jordan
419 et al., 2019). We used MR tests that are robust to horizontal pleiotropy including the MR-
420 PRESSO test as well as MR-Egger and weighted median estimators as sensitivity analyses.
421 Second, genetic variants confer exposures that are lifelong but small in effect size; thus, MR may
422 over- or underestimate the effect sizes of pharmacological interventions. MR also cannot make
423 comparisons between TG-lowering agents as it evaluates drug targets, not drug subclasses and
424 unique pharmacodynamics (Gill et al., 2019) (Sofat et al., 2010). However, the utility of MR in
425 drug target validation is well-established as estimates still indicate the presence and direction of

426 causality (Gill et al., 2021). Third, we were unable to reliably map “categorical” traits from UKB
427 to corresponding traits in FinnGen for all traits, testing for replication only 221 of the 598
428 associations that were nominally significant in the primary analysis. Moreover, ICD-10 codes
429 and phecodes are imperfect descriptors of disease, liable to misclassification. Lastly, we
430 acknowledge that this study was restricted to populations of European ancestry, limiting the
431 generalizability of our findings. A recent study observed comparable MR estimates for the causal
432 effects of lipid traits on ischemic stroke risk between African and European ancestry individuals
433 (Fatumo et al., 2021), suggesting the potential generalizability of MR results across ancestries in
434 some specific cases. Nevertheless, trans-ancestry MR analyses are warranted to validate our
435 study’s findings in diverse ancestry populations.

436 In conclusion, this study demonstrates a high-throughput application of two-sample MR
437 to estimate the causal effects of plasma TGs on disease risk phenome-wide. With the
438 proliferation of multiomic data, this systematic approach could be generalized to study the causal
439 effects of serum biomarkers at scale to support the prioritization of targets for drug discovery.
440 Further studies are needed however to consider the functional and qualitative attributes of TRL
441 and TG subtypes. Metabolomic data partitioning TRLs by size and composition may enable this
442 to identify the subcomponent of a plasma TG measurement that drives disease risk (Holmes et
443 al., 2015). Diverse study designs are warranted to further triangulate evidence for the causal
444 effects of plasma TG levels on disease risk.

445

446 **Acknowledgements**

447 We acknowledge the participants and investigators of the FinnGen and UKB studies.

448

449 **Competing interests**

450 RD reports receiving grants from AstraZeneca; grants and non-financial support from Goldfinch
451 Bio; being a scientific co-founder, consultant, and equity holder (pending) for Pensieve Health;
452 and a consultant for Variant Bio, all unrelated to this work. RSR reports receiving grants from
453 Amgen, Arrowhead, Lilly, Novartis and Regeneron; consulting fees from Amgen, Arrowhead,
454 Lilly, Novartis and Regeneron; honoraria for non-promotional lectures from Amgen, Kowa and
455 Regeneron, royalties from Wolters Kluwer (UpToDate); and stock holdings in MediMergent,
456 LLC.

457 **References**

- 458 Albrink, M. J., & Man, E. B. (1959). Serum Triglycerides in Coronary Artery Disease. *A.M.A.*
459 *Archives of Internal Medicine*, 103(1), 4-8.
460 <https://doi.org/10.1001/archinte.1959.00270010010002>
- 461 Allara, E., Morani, G., Carter, P., Gkatzionis, A., Zuber, V., Foley, C. N., Rees, J. M. B., Mason,
462 A. M., Bell, S., Gill, D., Lindström, S., Butterworth, A. S., Angelantonio, E. D., Peters,
463 J., & Burgess, S. (2019). Genetic Determinants of Lipids and Cardiovascular Disease
464 Outcomes. *Circulation: Genomic and Precision Medicine*, 12(12), e002711.
465 <https://doi.org/doi:10.1161/CIRCGEN.119.002711>
- 466 Arrowhead. (2021a). *Study of ARO-ANG3 in Adults With Mixed Dyslipidemia (ARCHES-2)*. U.S.
467 National Library of Medicine. <https://clinicaltrials.gov/ct2/show/NCT04832971>
- 468 Arrowhead. (2021b). *Study of ARO-APOC3 in Adults With Mixed Dyslipidemia (MUIR)*. U.S.
469 National Library of Medicine. <https://clinicaltrials.gov/ct2/show/NCT04998201>
- 470 Auton, A., Abecasis, G. R., Altshuler, D. M., Durbin, R. M., Abecasis, G. R., Bentley, D. R.,
471 Chakravarti, A., Clark, A. G., Donnelly, P., Eichler, E. E., Flicek, P., Gabriel, S. B.,
472 Gibbs, R. A., Green, E. D., Hurles, M. E., Knoppers, B. M., Korbel, J. O., Lander, E. S.,
473 Lee, C., . . . Abecasis, G. R. (2015). A global reference for human genetic variation.
474 *Nature*, 526(7571), 68-74. <https://doi.org/10.1038/nature15393>
- 475 Baigent, C., Keech, A., Kearney, P. M., Blackwell, L., Buck, G., Pollicino, C., Kirby, A.,
476 Sourjina, T., Peto, R., Collins, R., & Simes, R. (2005). Efficacy and safety of cholesterol-
477 lowering treatment: prospective meta-analysis of data from 90,056 participants in 14
478 randomised trials of statins. *Lancet (London, England)*, 366(9493), 1267-1278.
479 [https://doi.org/10.1016/s0140-6736\(05\)67394-1](https://doi.org/10.1016/s0140-6736(05)67394-1)

- 480 Bhatt, D. L., Steg, P. G., Miller, M., Brinton, E. A., Jacobson, T. A., Ketchum, S. B., Doyle, R.
481 T., Juliano, R. A., Jiao, L., Granowitz, C., Tardif, J.-C., & Ballantyne, C. M. (2019).
482 Cardiovascular Risk Reduction with Icosapent Ethyl for Hypertriglyceridemia. *New*
483 *England Journal of Medicine*, 380(1), 11-22. <https://doi.org/10.1056/nejmoa1812792>
- 484 Böhm, S. K. (2021). Excessive Body Weight and Diverticular Disease. *Visc Med*, 37(5), 372-
485 382. <https://doi.org/10.1159/000518674>
- 486 Bowden, J., Davey Smith, G., & Burgess, S. (2015). Mendelian randomization with invalid
487 instruments: effect estimation and bias detection through Egger regression. *International*
488 *Journal of Epidemiology*, 44(2), 512-525. <https://doi.org/10.1093/ije/dyv080>
- 489 Bowden, J., Davey Smith, G., Haycock, P. C., & Burgess, S. (2016). Consistent Estimation in
490 Mendelian Randomization with Some Invalid Instruments Using a Weighted Median
491 Estimator. *Genetic Epidemiology*, 40(4), 304-314. <https://doi.org/10.1002/gepi.21965>
- 492 Burgess, S., Butterworth, A., & Thompson, S. G. (2013). Mendelian Randomization Analysis
493 With Multiple Genetic Variants Using Summarized Data. *Genetic Epidemiology*, 37(7),
494 658-665. <https://doi.org/10.1002/gepi.21758>
- 495 Burgess, S., Davey Smith, G., Davies, N. M., Dudbridge, F., Gill, D., Glymour, M. M., Hartwig,
496 F. P., Holmes, M. V., Minelli, C., Relton, C. L., & Theodoratou, E. (2020). Guidelines
497 for performing Mendelian randomization investigations. *Wellcome open research*, 4, 186.
498 <https://doi.org/10.12688/wellcomeopenres.15555.2>
- 499 Burgess, S., Davies, N. M., & Thompson, S. G. (2016). Bias due to participant overlap in two-
500 sample Mendelian randomization. *Genet Epidemiol*, 40(7), 597-608.
501 <https://doi.org/10.1002/gepi.21998>

502 Bycroft, C., Freeman, C., Petkova, D., Band, G., Elliott, L. T., Sharp, K., Motyer, A., Vukcevic,
503 D., Delaneau, O., O'Connell, J., Cortes, A., Welsh, S., Young, A., Effingham, M.,
504 McVean, G., Leslie, S., Allen, N., Donnelly, P., & Marchini, J. (2018). The UK Biobank
505 resource with deep phenotyping and genomic data. *Nature*, *562*(7726), 203-209.
506 <https://doi.org/10.1038/s41586-018-0579-z>

507 Castañer, O., Pintó, X., Subirana, I., Amor, A. J., Ros, E., Hernáez, Á., Martínez-González, M.,
508 Corella, D., Salas-Salvadó, J., Estruch, R., Lapetra, J., Gómez-Gracia, E., Alonso-Gomez,
509 A. M., Fiol, M., Serra-Majem, L., Corbella, E., Benaiges, D., Sorli, J. V., Ruiz-Canela,
510 M., . . . Fitó, M. (2020). Remnant Cholesterol, Not LDL Cholesterol, Is Associated With
511 Incident Cardiovascular Disease. *J Am Coll Cardiol*, *76*(23), 2712-2724.
512 <https://doi.org/10.1016/j.jacc.2020.10.008>

513 Cromwell, W. C., Otvos, J. D., Keyes, M. J., Pencina, M. J., Sullivan, L., Vasan, R. S., Wilson,
514 P. W., & D'Agostino, R. B. (2007). LDL Particle Number and Risk of Future
515 Cardiovascular Disease in the Framingham Offspring Study - Implications for LDL
516 Management. *J Clin Lipidol*, *1*(6), 583-592. <https://doi.org/10.1016/j.jacl.2007.10.001>

517 Crosby, J., Peloso, G. M., Auer, P. L., Crosslin, D. R., Stitzel, N. O., Lange, L. A., Lu, Y., Tang,
518 Z. Z., Zhang, H., Hindy, G., Masca, N., Stirrups, K., Kanoni, S., Do, R., Jun, G., Hu, Y.,
519 Kang, H. M., Xue, C., Goel, A., . . . Kathiresan, S. (2014). Loss-of-function mutations in
520 APOC3, triglycerides, and coronary disease. *N Engl J Med*, *371*(1), 22-31.
521 <https://doi.org/10.1056/NEJMoa1307095>

522 Davey Smith, G., & Ebrahim, S. (2003). 'Mendelian randomization': can genetic epidemiology
523 contribute to understanding environmental determinants of disease?*. *International*
524 *Journal of Epidemiology*, *32*(1), 1-22. <https://doi.org/10.1093/ije/dyg070>

- 525 Davey Smith, G., & Hemani, G. (2014). Mendelian randomization: genetic anchors for causal
526 inference in epidemiological studies. *Human molecular genetics*, 23(R1), R89-R98.
527 <https://doi.org/10.1093/hmg/ddu328>
- 528 Deloukas, P., Kanoni, S., Willenborg, C., Farrall, M., Assimes, T. L., Thompson, J. R.,
529 Ingelsson, E., Saleheen, D., Erdmann, J., Goldstein, B. A., Stirrups, K., König, I. R.,
530 Cazier, J. B., Johansson, A., Hall, A. S., Lee, J. Y., Willer, C. J., Chambers, J. C., Esko,
531 T., . . . Samani, N. J. (2013). Large-scale association analysis identifies new risk loci for
532 coronary artery disease. *Nat Genet*, 45(1), 25-33. <https://doi.org/10.1038/ng.2480>
- 533 Dewey, F. E., Gusarova, V., Dunbar, R. L., O'Dushlaine, C., Schurmann, C., Gottesman, O.,
534 McCarthy, S., Van Hout, C. V., Bruse, S., Dansky, H. M., Leader, J. B., Murray, M. F.,
535 Ritchie, M. D., Kirchner, H. L., Habegger, L., Lopez, A., Penn, J., Zhao, A., Shao, W., . .
536 . Baras, A. (2017). Genetic and Pharmacologic Inactivation of ANGPTL3 and
537 Cardiovascular Disease. *N Engl J Med*, 377(3), 211-221.
538 <https://doi.org/10.1056/NEJMoa1612790>
- 539 Dewey, F. E., Gusarova, V., O'Dushlaine, C., Gottesman, O., Trejos, J., Hunt, C., Van Hout, C.
540 V., Habegger, L., Buckler, D., Lai, K.-M. V., Leader, J. B., Murray, M. F., Ritchie, M.
541 D., Kirchner, H. L., Ledbetter, D. H., Penn, J., Lopez, A., Borecki, I. B., Overton, J. D., .
542 . . Shuldiner, A. R. (2016). Inactivating Variants in ANGPTL4 and Risk of Coronary
543 Artery Disease. *New England Journal of Medicine*, 374(12), 1123-1133.
544 <https://doi.org/10.1056/nejmoa1510926>
- 545 Do, R., Willer, C. J., Schmidt, E. M., Sengupta, S., Gao, C., Peloso, G. M., Gustafsson, S.,
546 Kanoni, S., Ganna, A., Chen, J., Buchkovich, M. L., Mora, S., Beckmann, J. S., Bragg-
547 Gresham, J. L., Chang, H. Y., Demirkan, A., Den Hertog, H. M., Donnelly, L. A., Ehret,

- 548 G. B., . . . Kathiresan, S. (2013). Common variants associated with plasma triglycerides
549 and risk for coronary artery disease. *Nat Genet*, *45*(11), 1345-1352.
550 <https://doi.org/10.1038/ng.2795>
- 551 Doi, T., Langsted, A., & Nordestgaard, B. G. (2021). A possible explanation for the contrasting
552 results of REDUCE-IT vs. STRENGTH: cohort study mimicking trial designs. *European*
553 *Heart Journal*, *42*(47), 4807-4817. <https://doi.org/10.1093/eurheartj/ehab555>
- 554 Eckel, R. H., Grundy, S. M., & Zimmet, P. Z. (2005). The metabolic syndrome. *The Lancet*,
555 *365*(9468), 1415-1428. [https://doi.org/https://doi.org/10.1016/S0140-6736\(05\)66378-7](https://doi.org/https://doi.org/10.1016/S0140-6736(05)66378-7)
- 556 Fatumo, S., Karhunen, V., Chikowore, T., Sounkou, T., Udosen, B., Ezenwa, C., Nakabuye, M.,
557 Soremekun, O., Daghlas, I., Ryan, D. K., Taylor, A., Mason, A. M., Damrauer, S. M.,
558 Vujkovic, M., Keene, K. L., Fornage, M., Järvelin, M.-R., Burgess, S., & Gill, D. (2021).
559 Metabolic Traits and Stroke Risk in Individuals of African Ancestry: Mendelian
560 Randomization Analysis. *Stroke*, *52*(8), 2680-2684.
561 <https://doi.org/doi:10.1161/STROKEAHA.121.034747>
- 562 Ference, B. A., Kastelein, J. J. P., Ray, K. K., Ginsberg, H. N., Chapman, M. J., Packard, C. J.,
563 Laufs, U., Oliver-Williams, C., Wood, A. M., Butterworth, A. S., Di Angelantonio, E.,
564 Danesh, J., Nicholls, S. J., Bhatt, D. L., Sabatine, M. S., & Catapano, A. L. (2019).
565 Association of Triglyceride-Lowering LPL Variants and LDL-C–Lowering LDLR
566 Variants With Risk of Coronary Heart Disease. *JAMA*, *321*(4), 364-373.
567 <https://doi.org/10.1001/jama.2018.20045>
- 568 FinnGen. (2020). *FinnGen Documentation of R4 Release*
569 <https://finngen.gitbook.io/documentation/>

- 570 Freckelton, J., Holt, D., Borsaru, A., Gwini, S., Croagh, D., & Moore, G. (2018). The role of
571 body composition in diverticular disease. *Int J Colorectal Dis*, 33(9), 1299-1302.
572 <https://doi.org/10.1007/s00384-018-3058-y>
- 573 Frick, M. H., Elo, O., Haapa, K., Heinonen, O. P., Heinsalmi, P., Helo, P., Huttunen, J. K.,
574 Kaitaniemi, P., Koskinen, P., Manninen, V., Mäenpää, H., Mälkönen, M., Mänttari, M.,
575 Norola, S., Pasternack, A., Pikkarainen, J., Romo, M., Sjöblom, T., & Nikkilä, E. A.
576 (1987). Helsinki Heart Study: Primary-Prevention Trial with Gemfibrozil in Middle-
577 Aged Men with Dyslipidemia. *New England Journal of Medicine*, 317(20), 1237-1245.
578 <https://doi.org/10.1056/NEJM198711123172001>
- 579 Fry, A., Littlejohns, T. J., Sudlow, C., Doherty, N., Adamska, L., Sprosen, T., Collins, R., &
580 Allen, N. E. (2017). Comparison of Sociodemographic and Health-Related
581 Characteristics of UK Biobank Participants With Those of the General Population.
582 *American Journal of Epidemiology*, 186(9), 1026-1034.
583 <https://doi.org/10.1093/aje/kwx246>
- 584 Gaba, P., Bhatt, D. L., Steg, P. G., Miller, M., Brinton, E. A., Jacobson, T. A., Ketchum, S. B.,
585 Juliano, R. A., Jiao, L., Doyle, R. T., Granowitz, C., Tardif, J.-C., Giugliano, R. P.,
586 Martens, F. M. A. C., Gibson, C. M., & Ballantyne, C. M. (2022). Prevention of
587 Cardiovascular Events and Mortality With Icosapent Ethyl in Patients With
588 Prior Myocardial Infarction. *Journal of the American College of Cardiology*, 79(17),
589 1660-1671. <https://doi.org/https://doi.org/10.1016/j.jacc.2022.02.035>
- 590 Gaudet, D., Alexander, V. J., Baker, B. F., Brisson, D., Tremblay, K., Singleton, W., Geary, R.
591 S., Hughes, S. G., Viney, N. J., Graham, M. J., Crooke, R. M., Witztum, J. L., Brunzell,
592 J. D., & Kastelein, J. J. (2015). Antisense Inhibition of Apolipoprotein C-III in Patients

593 with Hypertriglyceridemia. *N Engl J Med*, 373(5), 438-447.
594 <https://doi.org/10.1056/NEJMoa1400283>

595 Gaudet, D., Gipe, D. A., Pordy, R., Ahmad, Z., Cuchel, M., Shah, P. K., Chyu, K. Y., Sasiela, W.
596 J., Chan, K. C., Brisson, D., Khoury, E., Banerjee, P., Gusarova, V., Gromada, J., Stahl,
597 N., Yancopoulos, G. D., & Hovingh, G. K. (2017). ANGPTL3 Inhibition in Homozygous
598 Familial Hypercholesterolemia. *N Engl J Med*, 377(3), 296-297.
599 <https://doi.org/10.1056/NEJMc1705994>

600 Gill, D., Georgakis, M. K., Koskeridis, F., Jiang, L., Feng, Q., Wei, W.-Q., Theodoratou, E.,
601 Elliott, P., Denny, J. C., Malik, R., Evangelou, E., Dehghan, A., Dichgans, M., &
602 Tzoulaki, I. (2019). Use of Genetic Variants Related to Antihypertensive Drugs to Inform
603 on Efficacy and Side Effects. *Circulation*, 140(4), 270-279.
604 <https://doi.org/10.1161/circulationaha.118.038814>

605 Gill, D., Georgakis, M. K., Walker, V. M., Schmidt, A. F., Gkatzionis, A., Freitag, D. F., Finan,
606 C., Hingorani, A. D., Howson, J. M. M., Burgess, S., Swerdlow, D. I., Davey Smith, G.,
607 Holmes, M. V., Dichgans, M., Scott, R. A., Zheng, J., Psaty, B. M., & Davies, N. M.
608 (2021). Mendelian randomization for studying the effects of perturbing drug targets.
609 *Wellcome open research*, 6, 16-16. <https://doi.org/10.12688/wellcomeopenres.16544.2>

610 Goldberg, I. J., Eckel, R. H., & McPherson, R. (2011). Triglycerides and heart disease: still a
611 hypothesis? *Arteriosclerosis, thrombosis, and vascular biology*, 31(8), 1716-1725.
612 <https://doi.org/10.1161/ATVBAHA.111.226100>

613 Göring, H. H., Terwilliger, J. D., & Blangero, J. (2001). Large upward bias in estimation of
614 locus-specific effects from genomewide scans. *American journal of human genetics*,
615 69(6), 1357-1369. <https://doi.org/10.1086/324471>

616 Graham, M. J., Lee, R. G., Brandt, T. A., Tai, L.-J., Fu, W., Peralta, R., Yu, R., Hurh, E., Paz, E.,
617 McEvoy, B. W., Baker, B. F., Pham, N. C., Digenio, A., Hughes, S. G., Geary, R. S.,
618 Witztum, J. L., Crooke, R. M., & Tsimikas, S. (2017). Cardiovascular and Metabolic
619 Effects of ANGPTL3 Antisense Oligonucleotides. *New England Journal of Medicine*,
620 *377*(3), 222-232. <https://doi.org/10.1056/NEJMoa1701329>

621 Group, T. A. S. (2010). Effects of Combination Lipid Therapy in Type 2 Diabetes Mellitus. *New*
622 *England Journal of Medicine*, *362*(17), 1563-1574.
623 <https://doi.org/10.1056/NEJMoa1001282>

624 Harrison, S. C., Holmes, M. V., Burgess, S., Asselbergs, F. W., Jones, G. T., Baas, A. F., van 't
625 Hof, F. N., de Bakker, P. I. W., Blankensteijn, J. D., Powell, J. T., Saratzis, A., de Borst,
626 G. J., Swerdlow, D. I., van der Graaf, Y., van Rij, A. M., Carey, D. J., Elmore, J. R.,
627 Tromp, G., Kuivaniemi, H., . . . Humphries, S. E. (2018). Genetic Association of Lipids
628 and Lipid Drug Targets With Abdominal Aortic Aneurysm: A Meta-analysis. *JAMA*
629 *cardiology*, *3*(1), 26-33. <https://doi.org/10.1001/jamacardio.2017.4293>

630 Holmes, M. V., Asselbergs, F. W., Palmer, T. M., Drenos, F., Lanktree, M. B., Nelson, C. P.,
631 Dale, C. E., Padmanabhan, S., Finan, C., Swerdlow, D. I., Tragante, V., van Iperen, E. P.,
632 Sivapalaratnam, S., Shah, S., Elbers, C. C., Shah, T., Engmann, J., Giambartolomei, C.,
633 White, J., . . . Casas, J. P. (2015). Mendelian randomization of blood lipids for coronary
634 heart disease. *Eur Heart J*, *36*(9), 539-550. <https://doi.org/10.1093/eurheartj/ehv571>

635 Ibi, D., Blauw, L. L., Noordam, R., Dollé, M. E. T., Jukema, J. W., Rosendaal, F. R.,
636 Christodoulides, C., Neville, M. J., Koivula, R., Rensen, P. C. N., Karpe, F., & van Dijk,
637 K. W. (2021). Triglyceride-lowering LPL alleles combined with LDL-C-lowering alleles

638 are associated with an additively improved lipoprotein profile. *Atherosclerosis*, 328, 144-
639 152. <https://doi.org/10.1016/j.atherosclerosis.2021.04.015>

640 Jordan, D. M., Verbanck, M., & Do, R. (2019). HOPS: a quantitative score reveals pervasive
641 horizontal pleiotropy in human genetic variation is driven by extreme polygenicity of
642 human traits and diseases. *Genome Biol*, 20(1), 222. <https://doi.org/10.1186/s13059-019-1844-7>
643 1844-7

644 Keech, A., Simes, R. J., Barter, P., Best, J., Scott, R., Taskinen, M. R., Forder, P., Pillai, A.,
645 Davis, T., Glasziou, P., Drury, P., Kesäniemi, Y. A., Sullivan, D., Hunt, D., Colman, P.,
646 d'Emden, M., Whiting, M., Ehnholm, C., & Laakso, M. (2005). Effects of long-term
647 fenofibrate therapy on cardiovascular events in 9795 people with type 2 diabetes mellitus
648 (the FIELD study): randomised controlled trial. *Lancet (London, England)*, 366(9500),
649 1849-1861. [https://doi.org/10.1016/s0140-6736\(05\)67667-2](https://doi.org/10.1016/s0140-6736(05)67667-2)

650 Kurki, M. I., Karjalainen, J., Palta, P., Sipilä, T. P., Kristiansson, K., Donner, K., Reeve, M. P.,
651 Laivuori, H., Aavikko, M., Kaunisto, M. A., Loukola, A., Lahtela, E., Mattsson, H.,
652 Laiho, P., Della Briotta Parolo, P., Lehisto, A., Kanai, M., Mars, N., Rämö, J., . . .
653 Palotie, A. (2022). FinnGen: Unique genetic insights from combining isolated population
654 and national health register data. *medRxiv*, 2022.2003.2003.22271360.
655 <https://doi.org/10.1101/2022.03.03.22271360>

656 Lee, H. C., Chen, C. C., Tsai, W. C., Lin, H. T., Shiao, Y. L., Sheu, S. H., Wu, B. N., Chen, C.
657 H., & Lai, W. T. (2017). Very-Low-Density Lipoprotein of Metabolic Syndrome
658 Modulates Gap Junctions and Slows Cardiac Conduction. *Sci Rep*, 7(1), 12050.
659 <https://doi.org/10.1038/s41598-017-11416-5>

- 660 Marston, N. A., Giugliano, R. P., Melloni, G. E. M., Park, J.-G., Morrill, V., Blazing, M. A.,
661 Ference, B., Stein, E., Stroes, E. S., Braunwald, E., Ellinor, P. T., Lubitz, S. A., Ruff, C.
662 T., & Sabatine, M. S. (2021). Association of Apolipoprotein B–Containing Lipoproteins
663 and Risk of Myocardial Infarction in Individuals With and Without Atherosclerosis:
664 Distinguishing Between Particle Concentration, Type, and Content. *JAMA cardiology*.
665 <https://doi.org/10.1001/jamacardio.2021.5083>
- 666 Miller, M., Stone, N. J., Ballantyne, C., Bittner, V., Criqui, M. H., Ginsberg, H. N., Goldberg, A.
667 C., Howard, W. J., Jacobson, M. S., Kris-Etherton, P. M., Lennie, T. A., Levi, M.,
668 Mazzone, T., & Pennathur, S. (2011). Triglycerides and Cardiovascular Disease.
669 *Circulation*, 123(20), 2292-2333. <https://doi.org/doi:10.1161/CIR.0b013e3182160726>
- 670 Musunuru, K., Pirruccello, J. P., Do, R., Peloso, G. M., Guiducci, C., Sougnez, C., Garimella, K.
671 V., Fisher, S., Abreu, J., Barry, A. J., Fennell, T., Banks, E., Ambrogio, L., Cibulskis, K.,
672 Kernytsky, A., Gonzalez, E., Rudzicz, N., Engert, J. C., DePristo, M. A., . . . Kathiresan,
673 S. (2010). Exome sequencing, ANGPTL3 mutations, and familial combined
674 hypolipidemia. *N Engl J Med*, 363(23), 2220-2227.
675 <https://doi.org/10.1056/NEJMoa1002926>
- 676 Nanji, A. A., Yang, E. K., Fogt, F., Sadrzadeh, S. M., & Dannenberg, A. J. (1996). Medium
677 chain triglycerides and vitamin E reduce the severity of established experimental
678 alcoholic liver disease. *Journal of Pharmacology and Experimental Therapeutics*, 277(3),
679 1694-1700. <https://jpet.aspetjournals.org/content/jpet/277/3/1694.full.pdf>
- 680 Nicholls, S. J., Lincoff, A. M., Garcia, M., Bash, D., Ballantyne, C. M., Barter, P. J., Davidson,
681 M. H., Kastelein, J. J. P., Koenig, W., McGuire, D. K., Mozaffarian, D., Ridker, P. M.,
682 Ray, K. K., Katona, B. G., Himmelmann, A., Loss, L. E., Rensfeldt, M., Lundström, T.,

- 683 Agrawal, R., . . . Nissen, S. E. (2020). Effect of High-Dose Omega-3 Fatty Acids vs Corn
684 Oil on Major Adverse Cardiovascular Events in Patients at High Cardiovascular Risk.
685 *JAMA*, 324(22), 2268. <https://doi.org/10.1001/jama.2020.22258>
- 686 Norata, G. D., Grigore, L., Raselli, S., Redaelli, L., Hamsten, A., Maggi, F., Eriksson, P., &
687 Catapano, A. L. (2007). Post-prandial endothelial dysfunction in hypertriglyceridemic
688 subjects: molecular mechanisms and gene expression studies. *Atherosclerosis*, 193(2),
689 321-327. <https://doi.org/10.1016/j.atherosclerosis.2006.09.015>
- 690 PanUKBTeam. (2020). *Pan-UK Biobank* <https://pan.ukbb.broadinstitute.org>.
- 691 Park, B., & Lee, Y. J. (2018). Metabolic syndrome and its components as risk factors for
692 prolonged corrected QT interval in apparently healthy Korean men and women. *J Clin*
693 *Lipidol*, 12(5), 1298-1304. <https://doi.org/10.1016/j.jacl.2018.07.004>
- 694 Peshkova, T., Nakashidze, I., Petrovic, N., Beridze, S., Kedelidze, N., Artmeladze, M., &
695 Kamashidze, K. (2020). 73 Study of lipid profile and thyroid hormones in patients with
696 uterine fibroids. *International Journal of Gynecologic Cancer*, 30(Suppl 3), A41-A41.
697 <https://doi.org/10.1136/ijgc-2020-IGCS.69>
- 698 Phillips, A. N., & Smith, G. D. (1991). How independent are "independent" effects? Relative risk
699 estimation when correlated exposures are measured imprecisely. *J Clin Epidemiol*,
700 44(11), 1223-1231. [https://doi.org/10.1016/0895-4356\(91\)90155-3](https://doi.org/10.1016/0895-4356(91)90155-3)
- 701 Purcell, S., Neale, B., Todd-Brown, K., Thomas, L., Ferreira, M. A. R., Bender, D., Maller, J.,
702 Sklar, P., de Bakker, P. I. W., Daly, M. J., & Sham, P. C. (2007). PLINK: a tool set for
703 whole-genome association and population-based linkage analyses. *American journal of*
704 *human genetics*, 81(3), 559-575. <https://doi.org/10.1086/519795>

- 705 Qin, Z., Zhao, J., Geng, J., Chang, K., Liao, R., & Su, B. (2021). Higher Triglyceride–Glucose
706 Index Is Associated With Increased Likelihood of Kidney Stones [Original Research].
707 *Frontiers in Endocrinology, 12*. <https://doi.org/10.3389/fendo.2021.774567>
- 708 R Core Team. (2021). *R: A language and environment for statistical computing*. In R Foundation
709 for Statistical Computing. <https://www.R-project.org/>
- 710 Richardson, T. G., Sanderson, E., Palmer, T. M., Ala-Korpela, M., Ference, B. A., Davey Smith,
711 G., & Holmes, M. V. (2020). Evaluating the relationship between circulating lipoprotein
712 lipids and apolipoproteins with risk of coronary heart disease: A multivariable Mendelian
713 randomisation analysis. *PLOS Medicine, 17*(3), e1003062-e1003062.
714 <https://doi.org/10.1371/journal.pmed.1003062>
- 715 Rosenson, R. S., & Goonewardena, S. N. (2021). The Residual Risk Odyssey: From LDL to
716 Lp(a)*. *Journal of the American College of Cardiology, 78*(5), 434-436.
717 <https://doi.org/https://doi.org/10.1016/j.jacc.2021.04.103>
- 718 Rosenson, R. S., Shaik, A., & Song, W. (2021). New Therapies for Lowering Triglyceride-Rich
719 Lipoproteins: JACC Focus Seminar 3/4. *Journal of the American College of Cardiology,*
720 *78*(18), 1817-1830. <https://doi.org/https://doi.org/10.1016/j.jacc.2021.08.051>
- 721 Roth, G. A., Mensah, G. A., Johnson, C. O., Addolorato, G., Ammirati, E., Baddour, L. M.,
722 Barengo, N. C., Beaton, A. Z., Benjamin, E. J., Benziger, C. P., Bonny, A., Brauer, M.,
723 Brodmann, M., Cahill, T. J., Carapetis, J., Catapano, A. L., Chugh, S. S., Cooper, L. T.,
724 Coresh, J., . . . Fuster, V. (2020). Global Burden of Cardiovascular Diseases and Risk
725 Factors, 1990–2019: Update From the GBD 2019 Study. *Journal of the American*
726 *College of Cardiology, 76*(25), 2982-3021.
727 <https://doi.org/https://doi.org/10.1016/j.jacc.2020.11.010>

- 728 Sanderson, E. (2021). Multivariable Mendelian Randomization and Mediation. *Cold Spring*
729 *Harbor Perspectives in Medicine*, 11(2), a038984.
730 <https://doi.org/10.1101/cshperspect.a038984>
- 731 Shaik, A., & Rosenson, R. S. (2021). Genetics of Triglyceride-Rich Lipoproteins Guide
732 Identification of Pharmacotherapy for Cardiovascular Risk Reduction. *Cardiovascular*
733 *Drugs and Therapy*, 35(3), 677-690. <https://doi.org/10.1007/s10557-021-07168-0>
- 734 Shih, C. W., Chen, Y. H., & Chen, W. L. (2022). Percentage of body fat is associated with
735 increased risk of diverticulosis: A cross sectional study. *PLOS ONE*, 17(3), e0264746.
736 <https://doi.org/10.1371/journal.pone.0264746>
- 737 Skrivankova, V. W., Richmond, R. C., Woolf, B. A. R., Yarmolinsky, J., Davies, N. M.,
738 Swanson, S. A., VanderWeele, T. J., Higgins, J. P. T., Timpson, N. J., Dimou, N.,
739 Langenberg, C., Golub, R. M., Loder, E. W., Gallo, V., Tybjaerg-Hansen, A., Davey
740 Smith, G., Egger, M., & Richards, J. B. (2021). Strengthening the Reporting of
741 Observational Studies in Epidemiology Using Mendelian Randomization: The STROBE-
742 MR Statement. *JAMA*, 326(16), 1614-1621. <https://doi.org/10.1001/jama.2021.18236>
- 743 Smith, J. G., Luk, K., Schulz, C.-A., Engert, J. C., Do, R., Hindy, G., Rukh, G., Dufresne, L.,
744 Almgren, P., Owens, D. S., Harris, T. B., Peloso, G. M., Kerr, K. F., Wong, Q., Smith, A.
745 V., Budoff, M. J., Rotter, J. I., Cupples, L. A., Rich, S., . . . Aging Research in Genetic
746 Epidemiology Extracoronary Calcium Working, G. (2014). Association of Low-Density
747 Lipoprotein Cholesterol-Related Genetic Variants With Aortic Valve Calcium and
748 Incident Aortic Stenosis. *JAMA*, 312(17), 1764-1771.
749 <https://doi.org/10.1001/jama.2014.13959>

750 Sofat, R., Hingorani, A. D., Smeeth, L., Humphries, S. E., Talmud, P. J., Cooper, J., Shah, T.,
751 Sandhu, M. S., Ricketts, S. L., Boekholdt, S. M., Wareham, N., Khaw, K. T., Kumari,
752 M., Kivimaki, M., Marmot, M., Asselbergs, F. W., van der Harst, P., Dullaart, R. P.,
753 Navis, G., . . . Casas, J. P. (2010). Separating the mechanism-based and off-target actions
754 of cholesteryl ester transfer protein inhibitors with CETP gene polymorphisms.
755 *Circulation*, *121*(1), 52-62. <https://doi.org/10.1161/circulationaha.109.865444>

756 Sudlow, C., Gallacher, J., Allen, N., Beral, V., Burton, P., Danesh, J., Downey, P., Elliott, P.,
757 Green, J., Landray, M., Liu, B., Matthews, P., Ong, G., Pell, J., Silman, A., Young, A.,
758 Sprosen, T., Peakman, T., & Collins, R. (2015). UK Biobank: An Open Access Resource
759 for Identifying the Causes of a Wide Range of Complex Diseases of Middle and Old Age.
760 *PLOS Medicine*, *12*(3), e1001779. <https://doi.org/10.1371/journal.pmed.1001779>

761 Tonoyan, N. M., Chagovets, V. V., Starodubtseva, N. L., Tokareva, A. O., Chingin, K.,
762 Kozachenko, I. F., Adamyan, L. V., & Frankevich, V. E. (2021). Alterations in lipid
763 profile upon uterine fibroids and its recurrence. *Scientific Reports*, *11*(1), 11447.
764 <https://doi.org/10.1038/s41598-021-89859-0>

765 Triglyceride Coronary Disease Genetics, C., Emerging Risk Factors, C., Sarwar, N., Sandhu, M.
766 S., Ricketts, S. L., Butterworth, A. S., Di Angelantonio, E., Boekholdt, S. M., Ouwehand,
767 W., Watkins, H., Samani, N. J., Saleheen, D., Lawlor, D., Reilly, M. P., Hingorani, A. D.,
768 Talmud, P. J., & Danesh, J. (2010). Triglyceride-mediated pathways and coronary
769 disease: collaborative analysis of 101 studies. *Lancet (London, England)*, *375*(9726),
770 1634-1639. [https://doi.org/10.1016/S0140-6736\(10\)60545-4](https://doi.org/10.1016/S0140-6736(10)60545-4)

771 Uimari, O., Auvinen, J., Jokelainen, J., Puukka, K., Ruukonen, A., Järvelin, M.-R., Piltonen, T.,
772 Keinänen-Kiukaanniemi, S., Zondervan, K., Järvelä, I., Ryyänen, M., & Martikainen, H.

- 773 (2016). Uterine fibroids and cardiovascular risk. *Human Reproduction*, 31(12), 2689-
774 2703. <https://doi.org/10.1093/humrep/dew249>
- 775 Varbo, A., Benn, M., Tybjaerg-Hansen, A., Jørgensen, A. B., Frikke-Schmidt, R., &
776 Nordestgaard, B. G. (2013). Remnant cholesterol as a causal risk factor for ischemic
777 heart disease. *J Am Coll Cardiol*, 61(4), 427-436.
778 <https://doi.org/10.1016/j.jacc.2012.08.1026>
- 779 Verbanck, M., Chen, C.-Y., Neale, B., & Do, R. (2018). Detection of widespread horizontal
780 pleiotropy in causal relationships inferred from Mendelian randomization between
781 complex traits and diseases. *Nature Genetics*, 50(5), 693-698.
782 <https://doi.org/10.1038/s41588-018-0099-7>
- 783 White, J., Swerdlow, D. I., Preiss, D., Fairhurst-Hunter, Z., Keating, B. J., Asselbergs, F. W.,
784 Sattar, N., Humphries, S. E., Hingorani, A. D., & Holmes, M. V. (2016). Association of
785 Lipid Fractions With Risks for Coronary Artery Disease and Diabetes. *JAMA cardiology*,
786 1(6), 692-699. <https://doi.org/10.1001/jamacardio.2016.1884>
- 787 Willer, C. J., Schmidt, E. M., Sengupta, S., Peloso, G. M., Gustafsson, S., Kanoni, S., Ganna, A.,
788 Chen, J., Buchkovich, M. L., Mora, S., Beckmann, J. S., Bragg-Gresham, J. L., Chang, H.
789 Y., Demirkan, A., Den Hertog, H. M., Do, R., Donnelly, L. A., Ehret, G. B., Esko, T., . . .
790 Abecasis, G. R. (2013). Discovery and refinement of loci associated with lipid levels. *Nat*
791 *Genet*, 45(11), 1274-1283. <https://doi.org/10.1038/ng.2797>
- 792 Yu, X., Wang, T., Huang, S., & Zeng, P. (2021). Evaluation of the causal effects of blood lipid
793 levels on gout with summary level GWAS data: two-sample Mendelian randomization
794 and mediation analysis. *Journal of Human Genetics*, 66(5), 465-473.
795 <https://doi.org/10.1038/s10038-020-00863-0>

796 Zewinger, S., Reiser, J., Jankowski, V., Alansary, D., Hahm, E., Triem, S., Klug, M., Schunk, S.
797 J., Schmit, D., Kramann, R., Körbel, C., Ampofo, E., Laschke, M. W., Selejan, S.-R.,
798 Paschen, A., Herter, T., Schuster, S., Silbernagel, G., Sester, M., . . . Speer, T. (2020).
799 Apolipoprotein C3 induces inflammation and organ damage by alternative inflammasome
800 activation. *Nature Immunology*, 21(1), 30-41. <https://doi.org/10.1038/s41590-019-0548-1>
801

802 **Supplementary files**

803 **S1 Table. Causal estimates of plasma TG levels on 2,600 traits in UKB using multiple MR** 804 **methods.**

805 Shown are the estimates, standard deviations, and p -values of MR results using IVW, MR-Egger,
806 and Weighted Median methods. 141 SNPs were used as instrumental variables to proxy plasma
807 TG levels. A Bonferroni threshold for statistical significance was set to $p < 0.05 / 2600 = 1.92 \times$
808 10^{-5} for this discovery analysis.

809

810 **S2 Table. Causal estimates of plasma TG levels on 221 traits in FinnGen using multiple** 811 **MR methods.**

812 Shown are the estimates, standard deviations, and p -values of MR results using IVW, MR-Egger,
813 and Weighted Median methods. 1,248 SNPs were used as instrumental variables to proxy plasma
814 TG levels. A Bonferroni threshold for statistical significance was set to $p < 0.05 / 221 = 2.26 \times$
815 10^{-4} for this replication analysis.

816

817 **S3 Table. IVW-MR estimates of significant and replicated associations (Tier 1-3) after MR-** 818 **PRESSO outlier tests using UKB data.**

819 Shown are the estimates, standard deviations, and p -values of IVW-MR results in the discovery
820 analysis, before and after outlier IV removal, for significant and replicated traits (tier 1-3) that
821 had significant MR-PRESSO global test results ($p < 0.05$) in the primary IVW analysis of the
822 discovery UKB cohort.

823

824 **S4 Table. Multivariable IVW-MR estimates of plasma TG levels on significant and**
825 **replicated associations (Tier 1-3) using UKB data.**

826 Shown are the estimates, standard deviations, and *p*-values of multivariable IVW-MR results
827 controlling for HDL-C, LDL-C, or both, in the discovery stage. Only tier 1-3 results significant
828 and replicated as predefined in the methods were examined in this analysis.