

1

2

3

**A pro-oxidant combination of resveratrol and copper
down-regulates hallmarks of cancer and immune
checkpoints in patients with advanced oral cancer:
Results of an exploratory study (RESCU 004)**

4

5

6

7

8

Aishwarya Pilankar^{1,4}, Hitesh Singhavi^{2,4}, Gorantla V. Raghuram^{1,4},

9

Sophiya Siddiqui^{1,4}, Naveen Kumar Khare^{1,4}, Vishalkumar Jadhav^{1,4},

10

Harshali Tandel^{1,4}, Kavita Pal^{1,4}, Atanu Bhattacharjee^{3,4},

11

Pankaj Chaturvedi^{2,4}, Indraneel Mitra^{1,4,*}

12

¹ Translational Research Laboratory, Tata Memorial Centre, Advanced Centre for
Treatment, Research and Education in Cancer, Kharghar, Navi Mumbai – 410 210

13

14

² Department of Head and Neck Surgery, Tata Memorial Centre,

15

Tata Memorial Hospital, Parel, Mumbai – 400 012

16

³ Section of Biostatistics, Tata Memorial Centre,

17

Centre for Cancer Epidemiology, Kharghar, Navi Mumbai – 410 210

18

⁴ Homi Bhabha National Institute, Anushakti Nagar, Mumbai –400094

19

*

20

Author for correspondence: Indraneel Mitra; imitra@actrec.gov.in

21

ORCID identifier: 0000-0002-5768-3821

22

Tel.: +91-22-68735000, ext 5136

23

Fax: +91-22-2740 5080

24

25

26 **Abstract**

27 **Background:** Our earlier studies have shown that cell-free chromatin particles
28 (cfChPs) that are released from dying cancer cells are readily internalised by
29 bystander cells leading to activation of two hallmarks of cancer viz. genome
30 instability and inflammation. These hallmarks could be down-regulated by
31 deactivating cfChPs via medium of oxygen radicals generated upon admixing small
32 quantities of the nutraceuticals resveratrol (R) and copper (Cu). In this exploratory
33 study, we investigated whether oral administration of R and Cu (R-Cu) would down-
34 regulate the hallmarks of cancer and immune checkpoints in advanced squamous
35 cell carcinoma of oral cavity (OSCC).

36 **Patients and methods:** The study comprised of 25 patients divided into 5 equal
37 groups. Five patients acted as controls; the remaining 20 were given R-Cu in four
38 escalating doses. The lowest dose of R-Cu was 5.6mg and 560ng respectively, and
39 the highest dose was 500mg and 5mg respectively. An initial biopsy was taken from
40 patients at first presentation, and a second biopsy was taken 2 weeks later on the
41 operating table. R-Cu was administered orally twice daily in the intervening period.
42 Confocal microscopy was performed on tumour sections after fluorescent immuno-
43 staining with anti-DNA and anti-histone antibodies to detect presence of cfChPs in
44 the tumour micro-environment (TME). Immunofluorescence analysis was performed
45 for 23 biomarkers representing the 10 Hallmarks of cancer, including 5 immune
46 checkpoints, defined by Hanahan and Weinberg.

47 **Results:** Confocal microscopy detected copious presence of cfChPs in TME of
48 OSCC, which were eradicated / deactivated following two-week treatment with R-Cu.
49 Eradication of cfChPs from TME was associated with marked down-regulation of 21 /
50 23 biomarkers, including the five immune checkpoints. The lower two doses of R-Cu

51 were more effective than the higher doses. No adverse effects attributable to R-Cu
52 were observed.

53 **Conclusion:** These results suggest that cfChPs released into TME from dying
54 cancer cells are global instigators for cancer hallmarks and immune checkpoints in
55 surviving cancer cells. The ability of R-Cu to deactivate cfChPs raises the prospect
56 of a novel and non-toxic form of cancer treatment which sans killing of cancer cells,
57 and instead induces healing by down-regulating cancer hallmarks and immune
58 check-points.

59 **Clinical Trial Registration:**

60 [http://ctri.nic.in/Clinicaltrials/login.php,\(CTRI/2018/03/012459\)](http://ctri.nic.in/Clinicaltrials/login.php,(CTRI/2018/03/012459))

61 Introduction

62 Results of treatment of advanced squamous cell carcinoma of oral cavity (OSCC)
63 continue to remain unsatisfactory, and is associated with considerable toxic side
64 effects. Novel therapeutic approaches that are non-toxic are urgently needed. Our
65 earlier studies have shown that cell-free chromatin particles (cfChPs) that are
66 released from dying cancer cells can readily enter into surrounding bystander cells
67 leading to activation of two critical hallmarks of cancer viz. dsDNA breaks (genome
68 instability) and inflammation, which could lead to their oncogenic transformation (1).
69 Activation of these cancer hallmarks could be abrogated by concurrent treatment
70 with a combination of the nutraceuticals resveratrol (R) and copper (Cu) (1, 2).
71 Fukuhara *et.al* were the first to demonstrate that oxygen radicals are generated upon
72 admixing R and Cu (3). They showed that R acts as a catalyst to reduce Cu (II) to Cu
73 (I) resulting in generation of oxygen radicals that are capable of cleaving plasmid
74 pBR322 DNA (3, 4). We have extended these findings to show that oxygen radicals
75 that are generated following admixture of R and Cu (R-Cu) can degrade genomic
76 DNA and RNA (5), and can deactivate extra-cellular cfChPs by degrading their DNA
77 component, both *in vitro* and *in vivo* (1, 2, 6 - 10).

78 Oxygen radicals are short lived molecular entities which contain an unpaired electron
79 making them exceptionally reactive as they search for another electron to pair with,
80 and in the process they can damage biomolecules such as DNA, proteins and lipids
81 (11). Oxygen radical are normally generated by mitochondria (12); their over-
82 production leads to oxidative stress which has several harmful effects on host cells
83 (13). However, paradoxically, when oxygen radicals are artificially generated in the
84 extracellular compartments of the body, such as by R-Cu, they can have wide
85 ranging therapeutic effects in animal models and in human conditions that are

86 associated with elevated levels of extracellular cfChPs (2, 6 - 10). These effects are
87 mediated via the ability of oxygen radicals to deactivate extracellular cfChPs.

88 Oral administration of R-Cu leads to generation of oxygen radicals in the stomach,
89 which are absorbed and have systemic effects in the form of deactivation of
90 extracellular cfChPs. Our pre-clinical studies have shown that oral administration of
91 small quantities of R-Cu can have remarkable therapeutic effects in conditions
92 associated with elevated levels of cfChPs (2, 6-8). For example, R-Cu administered
93 orally can prevent toxic side effects of chemotherapy (6), and radiotherapy (2), and
94 prevent fatality in mice following bacterial endotoxin induced sepsis (7). We have
95 also shown that prolonged oral administration of R-Cu to ageing mice can down-
96 regulate several biological hallmarks of ageing and neurodegeneration (8). Our early
97 results in patients receiving high dose chemotherapy and bone marrow
98 transplantation for multiple myeloma have shown that orally administered R-Cu can
99 significantly reduce Grade III-IV mucositis (9). Blood levels of inflammatory cytokines
100 were also found to be significantly reduced following R-Cu treatment in that study
101 (9). We have also shown in an observational study that oral administration of R-Cu to
102 patients with severe Covid-19 reduced their mortality by nearly 50% (10).
103 Significantly, we have discovered that cfChPs deactivating activity of R-Cu is
104 retained even when the molar concentration of Cu is reduced 10,000 fold with
105 respect to that of R (2, 5 - 10). Consequently, in our pre-clinical and clinical studies,
106 the molar ratio of R to Cu was maintained at $1:10^{-4}$ (2, 6 - 10).

107 In the present exploratory study, we investigated whether oral administration of R-Cu
108 would lead to down-regulation of hallmarks of cancer and immune checkpoints in
109 patients with OSCC. We show that cfChPs that were released from dying cancer
110 cells are abundantly present in the tumour microenvironment (TME), and that orally

111 administered R-Cu dramatically reduced cfChPs in TME. Elimination of cfChPs from
112 TME was associated with significant down-regulation of 21/23 biomarkers
113 representing the 10 hallmarks of cancer, including 5 immune check-points, that have
114 been defined by Hanahan and Weinberg. These exploratory findings suggest that
115 prolonged treatment with R-Cu may have the potential to induce healing without
116 having to kill cancer cells.

117

118 **Patients and Methods**

119 **Ethics approval**

120 This study was approved by Institutional Ethics Committee (IEC) of Advanced Centre
121 for Treatment, Research and Education in Cancer, Tata Memorial Centre. A written
122 informed consent was obtained from all study participants as stipulated by IEC. The
123 trial was registered under Clinical Trial Registry of India (no.CTRI/2018/03/012459)

124 **Patients and R-Cu treatment**

125 The study comprised of 25 patients with advanced OSCC who were divided into 5
126 groups of 5 patients each. A representative image of OSCC and H&E section of the
127 tumour is given in Supplementary Fig.1. The first 5 patients acted as controls; the
128 remaining 20 were given R-Cu orally, twice daily, in four escalating doses
129 (Supplementary Table 1). Resveratrol (trade name TRANSMAX™) was procured
130 from Biotivia, USA [<https://www.biotivia.com/product/transmax/>]; Chelated Copper
131 was procured from Carlson Laboratories, USA [<https://carlsonlabs.com/chelated-copper/>]. The lowest dose of R-Cu (Dose level I) comprised of 5.6mg of R and 560ng
132 of Cu (molar ratio 1:10⁻⁴). This dose was arrived at by direct conversion of dose of R
133 and Cu that we have used in our pre-clinical studies (R = 1mg/Kg and that of Cu
134

135 0.1µg/Kg) using a standard conversion formula (14). Dose levels II and III were
136 approximately 10 fold and 100 fold higher than dose level I; dose level IV comprised
137 of doses of R and Cu that have been recommended by the respective vendors for
138 use as health supplements.

139 R is supplied by the vendor as capsules containing 500mg of trans-resveratrol
140 powder, and Cu is supplied as 5 mg tablets. For the purposes of this study, R
141 powder was removed from the capsules and weighed as per requirement. Cu tablets
142 were crushed in a pestle and mortar and the powder was weighed as per
143 requirement. R powder being insoluble in water, and unpalatable at higher doses,
144 was administered using honey as a vehicle (~15 mL). Cu, being soluble in water was
145 administered as water based solution (20mL). R and Cu were administered orally,
146 one after the other, on empty stomach, twice daily for 2 weeks. The control group
147 received vehicles (honey and water) alone.

148 A diagnostic punch biopsy was taken from patients under local anaesthesia at the
149 time of their first presentation to Tata Memorial Hospital, and a second biopsy was
150 taken 2 weeks later at the time of surgery on the operating table under anaesthesia.
151 In the intervening two weeks, R-Cu was administered orally in four escalating doses
152 as described above. The control group received vehicles alone (~15mL honey
153 followed by 20 mL of water). No adverse side effects attributable to R-Cu were
154 recorded.

155 **Fluorescence immune-staining and confocal microscopy**

156 Formalin fixed paraffin embedded (FFPE) sections of tumour tissues were stained
157 with fluorescent anti-DNA and anti-histone antibodies and examined by confocal
158 microscopy, as described by us earlier (7). This was done to investigate the
159 presence of cfChPs (if any) in TME. Fluorescence intensity was quantified by

160 randomly choosing five confocal fields (~ 50 cells per field), and calculating mean
161 fluorescence intensity (MFI) which was expressed as mean \pm S.E.M.

162 **Immunofluorescence**

163 Indirect immunofluorescence (IF) on FFPE sections of tumour tissues were
164 performed according to the method described by us earlier (1). All IF analyses were
165 performed in a blinded fashion such that the examiner was unaware of the identity of
166 the slides being analysed. IF was used to assess the expression of 3 anti-oxidant
167 enzymes viz. superoxide dismutase, catalase and glutathione peroxidase. Also
168 examined by IF were 23 biomarkers representing 10 hallmarks of cancer, including 5
169 immune checkpoints (Supplementary Table 2). Source and catalogue numbers of
170 antibodies used are given in (Supplementary Table 3 a - c). One thousand cells were
171 analysed on each slide for all IF studies, and the number of positive cells was
172 recorded. Results were expressed as mean number of positive cells (\pm SEM) / 1000
173 cells.

174 **Statistical analysis**

175 Statistical comparison of pre versus post treatment values was performed in two
176 ways: 1) combined comparison of all four treatment groups with the control group
177 was performed applying two-way ANOVA using R software; 2) comparison of pre
178 versus post treatment values within each treatment group was performed by paired
179 Student's t-test using Graphpad Prism 6.0 software.

180

181

182

183 **Results**

184 **R-Cu treatment up-regulates anti-oxidant enzymes in tumour cells**

185 As an initial step, we examined whether oxygen radicals generated following oral
186 administration of R-Cu might have diffused into the tumour tissue? This was
187 indirectly examined by IF analysis of the three antioxidant enzymes mentioned
188 above. We observed that R-Cu treatment had led to increased expression of all three
189 enzymes within tumour cells (Fig.1 upper panels). This indicated that oxygen-
190 radicals had entered into the tumour cells, and that the latter in an attempt to detoxify
191 the offending oxygen-radicals, had up-regulated anti-oxidant enzymes as a cellular
192 defence mechanism. Combined statistical comparison of pre versus post treatment
193 values of the four treatment groups with the control group using two-way ANOVA
194 showed that R-Cu treatment had led to a highly significant up-regulation of all three
195 antioxidant enzymes (Fig 1 lower panels). Individual comparison of pre and post
196 treatment values within each treatment group using paired t test also showed
197 significant increase in post R-Cu values for all three enzymes with respect to dose
198 levels I – III. However, no significant difference between pre and post treatment
199 values was seen in case of level IV for any of the three enzymes. No difference in
200 antioxidant enzyme levels was seen between pre and post samples in the control
201 group (Fig.1 lower panels).

202 **R-Cu treatment eradicates / deactivates profusion of cfChPs present in TME**

203 Confocal microscopy of FFPE sections of tumour tissues was performed after
204 fluorescent immuno-staining with anti-DNA (red) and anti-histone (green) antibodies.
205 Upon superimposing the fluorescent DNA and histone images, copious presence of
206 yellow fluorescent signals, representing cfChPs, were detected in TME (Fig. 2, upper
207 panel). The yellow cfChPs signals were virtually eliminated following two-week

208 treatment with R-Cu. Mean fluorescent intensity (MFI) of yellow fluorescent cfChPs
209 signals was quantitatively estimated and statistical analysis of the results was
210 performed. Combined statistical comparison of pre versus post treatment MFI values
211 of the four treatment groups with the control group using two-way ANOVA showed
212 that treatment with R-Cu had led to a highly significant reduction in cfChPs in TME
213 (Fig. 2, lower panel). A significant reduction in post treatment values was also seen
214 within each treatment group when analysed by paired t test. No difference in pre and
215 post treatment MFI values was seen in the control group (Fig. 2, lower panel). It
216 should be noted that some of the red (DNA) and green (histone) fluorescent signals
217 had not strictly co-localised. This is likely to be due to unevenness of cut surfaces of
218 FFPE sections preventing the respective antibodies to have access to some of the
219 DNA and Histone epitopes on cfChPs.

220 **R-Cu treatment down-regulates cancer hallmarks and immune checkpoints**

221 Comparative results of IF analysis of pre and post R-Cu treatment values of the 10
222 hallmarks of cancer represented by 23 biomarkers, including 5 immune checkpoints,
223 is given in Fig.3 (upper and lower panels). Combined statistical comparison of the
224 four treatment groups with the control group using two-way ANOVA showed a highly
225 significant reduction in biomarker expression in the post R-Cu treatment samples in
226 21 / 23 cases (Fig. 3 lower panels). The exceptions were VEGFA (angiogenesis) and
227 Glut1 (cellular energetics), wherein difference between pre and post values did not
228 reach statistical significance. We conclude from these exploratory results that
229 eradication of cfChPs from TME following R-Cu treatment is associated with down-
230 regulation of 21/23 biomarkers representing 10 cancer hallmarks, and 5 immune
231 checkpoints, that we examined.

232 Comparison of pre versus post treatment values within each treatment group using
233 paired t-test showed that, on the whole, the two lower dose levels (I and II) were
234 more effective. In these two treatment groups, a statistically significant reduction in
235 biomarker expression was seen in the post treatment samples in all 23 biomarkers
236 examined (23/23) (Fig. 3 lower panels). In case of dose level III, 20/23 and
237 biomarkers showed statistical significant reduction in the post treatment samples.
238 Dose level IV was least effective, with only 3/23 biomarkers showing significantly
239 reduced values in the post R-Cu samples (Fig. 3 lower panels).

240 **Immune checkpoint proteins are expressed by lymphocytes present in TME**

241 We were curious to find out whether the immune checkpoints PD-1, CTLA-4, Tim3
242 and NKG2A were being expressed by tumour infiltrating lymphocytes (TIL) present in
243 TME. We performed dual IF analyses on tumour sections in which each checkpoint
244 protein was simultaneously immune-stained for CD4 and CD8 lymphocytes
245 (Supplementary Fig. 2 a - d). We found that all four immune checkpoint proteins co-
246 localized with both types of immune lymphocytes. This finding confirmed that cfChPs
247 released from the dying tumour cells had induced TIL present in TME to activate
248 immune checkpoint proteins.

249 **Discussion**

250 Results of this exploratory study need to be confirmed in a larger series of patients,
251 and in other tumour types. Nonetheless, several observations that we made may be
252 worthy of note. For example, that 1) oxygen radicals generated following oral
253 administration of R-Cu were ostensibly absorbed from the stomach to enter into
254 systemic circulation and reach the tumour cells; 2) this led the latter to up-regulate
255 anti-oxidant enzymes as a cellular defence mechanism; 3) cfChPs are copiously
256 present in TME having been derived from dying tumour cells; 4) oxygen radicals that

257 diffuse into the extracellular spaces of the tumour eradicate / deactivate the
258 profusion of cfChPs present in TME; 5) eradication of cfChPs from TME is
259 associated with down-regulation of 21 / 23 biomarkers representing the 10 hallmarks
260 of cancer, including 5 immune checkpoints, that have been defined by Hanahan and
261 Weinberg (15). The mechanistic steps involved in oxygen radical induced down-
262 regulation of cancer hallmarks are graphically illustrated in Fig.4.

263 In spite of the fact that R-Cu generated oxygen radicals had diffused into the tumour
264 cells, we did not observe any gross damage to the tumour cell DNA following R-Cu
265 treatment (Fig. 2 a). This suggested that the surviving tumour cells had protected
266 themselves from damage by oxygen radical by up-regulating cellular anti-oxidant
267 enzymes. No systemic toxic side effects were reported following R-Cu treatment for
268 any of the dose levels administered; the up-regulated anti-oxidant enzymes had
269 apparently protected all cells of the body from oxidative damage in a similar manner.

270

271 Results of our study suggest that cfChPs from dying cancer cells released into TME
272 aggravate the oncogenic constitution of surviving cancer cells by activating cancer
273 hallmarks in the tumour cells, and by activating immune checkpoint proteins in TIL.
274 TME is known to play a critical role in all stages of tumour progression and
275 metastases (16). It has been proposed that therapeutic targeting of constituents of
276 TME could be a promising approach to controlling cancer (17). Our exploratory
277 results presented herein suggest that treatment with R-Cu may be one such
278 therapeutic approach which targets cfChPs present in TME via medium of oxygen
279 radicals, and eradicates them to have potential therapeutic effects.

280 Our previous results had showed, and which are confirmed in the current study, that
281 cellular uptake of cfChPs leads to activation of two critical hallmarks of cancer viz.

282 dsDNA breaks (genomic instability) and inflammation (1). These two hallmarks are
283 also crucial sensors of cellular stress triggering widespread physiological and cellular
284 responses, which also include cancer hallmarks (18, 19). This leads us to
285 hypothesize that cfChPs from dying cancer cells trigger a stress response in
286 surviving cells leading to global activation of cancer hallmarks and immune
287 checkpoints.

288 We observed that the two lower dose levels of R-Cu were more effective than the
289 higher ones. It is noteworthy that the amount of R present in the lowest dose (level I)
290 was ~90 times less, and that of Cu ~4500 times less, than those that are
291 recommended by the respective vendors for use as health supplements. Thus, small
292 quantities of a combination of R and Cu can generate sufficient oxygen radicals to
293 have profound effects in terms of down-regulation of cancer hallmarks and immune
294 checkpoints by targeting a hitherto unknown constituent of TME.

295 Our analysis showed that R-Cu treatment led to down-regulation of all five immune
296 check-points viz. PDL-1, PD-1, CTLA-4, TIM-3, and NKG2A that were examined.
297 Targeted therapy of immune checkpoints has drawn much recent attention, and is
298 beginning to show promising results in cancer treatment (20). However, what triggers
299 activation of immune checkpoints has remained known. Our exploratory results
300 suggest that cfChPs released from dying cancer cells into TME may be global
301 activators of immune checkpoint proteins, and that they can be down-regulated by
302 two-week treatment with small quantities of orally administered R-Cu. If the role of
303 cfChPs in checkpoint activation is further confirmed, a new form of cancer
304 immunotherapy might emerge whereby all known immune checkpoints are
305 simultaneously down-regulated by small quantities of R-Cu.

306

307 **Conclusion and future prospects**

308 Our results suggest that cfChPs released from dying cancer cells are global
309 instigators of cancer hallmarks and immune checkpoints. That cfChPs can be
310 deactivated by small quantities of R-Cu raise the prospect of a novel and non-toxic
311 form of cancer treatment which sans killing of cancer cells, and instead, induces
312 healing by down-regulating hallmarks of cancer and immune checkpoint proteins. It
313 has been argued that cancer is akin to a non-healing wound (21), and that hallmarks
314 of cancer are also the hallmarks of wound healing (22). This being so, it is possible
315 that cancer may be healed, like a wound, without having to be killed, and that oxygen
316 radicals generated upon oral administration of R-Cu may prove to be a novel cancer
317 healing agent of the future.

318

319

320 **Acknowledgments**

321 The authors sincerely thank Dr. Snehal Shabrish for preparing the infographic.
322 Thanks are also due to Mr. Ashish Pawar and Mr. Roshan Shaikh for their help in
323 preparing the manuscript.

324

325 **Ethics Statement**

326 This study was approved by Institutional Ethics Committee (IEC) of Advanced Centre
327 for Treatment, Research and Education in Cancer, Tata Memorial Centre. A written
328 informed consent was obtained from all study participants as stipulated by IEC. The
329 trial was registered under Clinical Trial Registry of India (no.CTRI/2018/03/012459)

330

331 **Author Contributions**

332 AP: Investigation and visualization. HS: Investigation, methodology, project
333 administration and supervision. GVR: Data curation, formal analysis, investigation,
334 software, supervision, validation, visualization and writing—original draft. SS:
335 Investigation and visualization. NKK: Investigation, methodology, project
336 administration and supervision. VJ: Investigation and methodology. HT:
337 Investigation. KP: Data curation, formal analysis, methodology, project
338 administration, software, supervision, validation and writing—original draft. AB:
339 Formal analysis. PC: Methodology, project administration and supervision. IM:
340 Conceptualization, funding acquisition, methodology, project administration,
341 resources, overall supervision, writing—original draft, writing—review and editing.

342

343 **Funding**

344 This study was funded by Department of Atomic Energy, Government of India
345 through its grant CTCTMC to Tata Memorial Centre awarded to IM. The study
346 funders had no role in the conduct, design and interpretation of results in this study.

347

348 **Data Availability:** All data produced in the present work are contained in the
349 manuscript.

350

351 **Conflict of Interest**

352 The authors declare that there is no conflict of interest that could be viewed as
353 influencing the fairness of the research reported.

354

355

356

357 **References**

- 358 1. Mitra I, Samant U, Sharma S, Raghuram GV, Saha T, Tidke P, et al. Cell-free
359 chromatin from dying cancer cells integrate into genomes of bystander healthy
360 cells to induce DNA damage and inflammation. *Cell Death Discov.* 2017;3(1):1–
361 14.
- 362 2. Kirolikar S, Prasannan P, Raghuram G V., Pancholi N, Saha T, Tidke P, et al.
363 Prevention of radiation-induced bystander effects by agents that inactivate cell-
364 free chromatin released from irradiated dying cells. *Cell Death Dis.*
365 2018;9(12):1–16.
- 366 3. Fukuhara K, Miyata N. Resveratrol as a new type of DNA-cleaving agent. *Bioorg*
367 *Med Chem Lett.* 1998;8(22):3187–92.
- 368 4. Fukuhara K, Nagakawa M, Nakanishi I, Ohkubo K, Imai K, Urano S, et al.
369 Structural basis for DNA-cleaving activity of resveratrol in the presence of Cu(II).
370 *Bioorg Med Chem.* 2006;14(5):1437–43.
- 371 5. Subramaniam S, Vohra I, Iyer A, Nair NK, Mitra I. A paradoxical synergism
372 between resveratrol and copper (II) with respect to degradation of DNA and
373 RNA. *F1000Research.* 2015;4:1145.
- 374 6. Mitra I, Pal K, Pancholi N, Shaikh A, Rane B, Tidke P, et al. Prevention of
375 chemotherapy toxicity by agents that neutralize or degrade cell-free chromatin.
376 *Ann Oncol.* 2017;28(9):2119–27.
- 377 7. Mitra I, Pal K, Pancholi N, Tidke P, Siddiqui S, Rane B, et al. Cell-free chromatin
378 particles released from dying host cells are global instigators of endotoxin sepsis
379 in mice. *PLoS One.* 2020;15(3):1–22.
- 380 8. Pal K, Gorantla RV, D'souza J, Mehta S, Jadhav V, Shaikh A, Rane B, Tandel H,
381 Kondhalkar D, Chaudhary S, Mitra I. A pro-oxidant combination of resveratrol
382 and copper down-regulates multiple biological hallmarks of ageing and
383 neurodegeneration. *bioRxiv.* 2022 Jan 1.
- 384 9. Agarwal A, Khandelwal A, Pal K, Khare NK, Jadhav V, Gurjar M, et al. A novel
385 pro-oxidant combination of resveratrol and copper reduces transplant related
386 toxicities in patients receiving high dose melphalan for multiple myeloma
387 (RESCU 001). *PLoS One.* 2022;17(2):1–9.

- 388 10. Mittra I, Souza R de, Bhadade R, Madke T, Shankpal PD, Joshi M, et al.
389 Resveratrol and copper for treatment of severe COVID-19: an observational
390 study (RESCU 002). *medRxiv*. 2020;6(165):1–13.
- 391 11. Halliwell B, Gutteridge JMC. Role of free radicals and catalytic metal ions in
392 human disease: An overview. *Methods Enzymol*. 1990;186:1–85.
- 393 12. Ray PD, Huang BW, Tsuji Y. Reactive oxygen species (ROS) homeostasis and
394 redox regulation in cellular signaling. *Cell Signal*. 2012;24(5):981–90.
- 395 13. Pizzino G, Irrera N, Cucinotta M, Pallio G, Mannino F, Arcoraci V, et al. Oxidative
396 stress: harms and benefits for human health. *Oxid Med Cell Longev*.
397 2017;2017:1–13.
- 398 14. Reagan-Shaw S, Nihal M, Ahmad N. Dose translation from animal to human
399 studies revisited. *FASEB J*. 2008;22(3):659–61.
- 400 15. Hanahan D, Weinberg RA. Hallmarks of cancer: the next generation. *Cell*.
401 2011;144(5):646–74.
- 402 16. Whiteside TL. The tumor microenvironment and its role in promoting tumor
403 growth. *Oncogene*. 2008;27(45):5904–12.
- 404 17. Roma-Rodrigues C, Mendes R, Baptista P V., Fernandes AR. Targeting tumor
405 microenvironment for cancer therapy. *Int J Mol Sci*. 2019;20(4):1–31.
- 406 18. Sato H, Niimi A, Yasuhara T, Permata TBM, Hagiwara Y, Isono M, et al. DNA
407 double-strand break repair pathway regulates PD-L1 expression in cancer cells.
408 *Nat Commun*. 2017;8(1):1–11.
- 409 19. Liu YZ, Wang YX, Jiang CL. Inflammation: the common pathway of stress-
410 related diseases. *Front Hum Neurosci*. 2017;11(316):1–11.
- 411 20. Gong J, Chehrazi-Raffle A, Reddi S, Salgia R. Development of PD-1 and PD-L1
412 inhibitors as a form of cancer immunotherapy: a comprehensive review of
413 registration trials and future considerations. *J Immunother Cancer*. 2018;6(1):1–
414 18.
- 415 21. Schäfer M, Werner S. Cancer as an overheating wound: An old hypothesis
416 revisited. *Nat Rev Mol Cell Biol*. 2008;9(8):628–38.
- 417 22. MacCarthy-Morrogh L, Martin P. The hallmarks of cancer are also the hallmarks
418 of wound healing. *Sci Signal*. 2020;13(648):1–13.

419 **Legends to figures**

420

421 **Figure 1**

422 R-Cu treatment up-regulates anti-oxidant enzymes in OSCC tumour cells. FFPE
423 sections of tumour tissues were stained with antibodies against superoxide
424 dismutase (SOD), catalase and glutathione peroxidase (GPx), and examined under
425 fluorescence microscopy. Upper panels provide representative images (scale bar
426 10µm); lower panels represent quantitative analysis of cells positive for respective
427 anti-oxidant enzymes. One thousand cells were analysed in each case and the
428 number of cells showing positive signals were recorded. Combined statistical
429 comparison of pre versus post treatment values of all four treatment groups with the
430 control group was done using two-way ANOVA; p values are given under each
431 graph. Comparison of pre versus post treatment values within each treatment group
432 was performed by paired Student's t-test. Results are represented as mean ± SEM
433 values of 5 animals in each group. * < p < 0.05; ** < p < 0.01; *** < p < 0.001; ns= not
434 significant).

435

436 **Figure 2**

437 cfChPs are copiously present in TME of OSCC and are eradicated following
438 treatment with R-Cu. Representative confocal images of FFPE sections of tumour
439 tissues immuno-stained with anti-DNA (red) and anti-histone (green) antibodies
440 (upper panel). Upon superimposing red and green fluorescence images, a profusion
441 of cfCh particles (yellow) is seen in TME resulting from co-localisation of red (DNA)
442 and green (histone) signals. Yellow cfCh signals were markedly reduced following R-

443 Cu treatment. For quantitative analysis, MFI of five randomly chosen confocal fields
444 (~50 cells per field) was recorded (lower panel). Combined statistical comparison of
445 pre versus post treatment values of all four treatment groups with the control group
446 was done using two-way ANOVA; p values are given under the graph. Comparison
447 of pre versus post treatment values within each treatment group was performed by
448 paired Student's t-test. Results are represented as mean \pm SEM values of tissue
449 sections of 5 animals in each group, except for pre and post values of dose levels I
450 and II, wherein n was =4. * $< p < 0.05$; ** $< p < 0.01$, *** $< p < 0.001$; ns= not
451 significant).

452

453 **Figure 3**

454 R-Cu treatment down-regulates cancer hallmark biomarkers, including immune
455 check-points, in OSCC. Upper panels are representative IF images (scale bar
456 10 μ m); lower panels represent results of quantitative analysis of various biomarkers.
457 One thousand cells were analysed in each case and the number of cells showing
458 positive fluorescent signals were recorded. Combined statistical comparison of pre
459 versus post treatment values of all four treatment groups with the control group was
460 done using two-way ANOVA; p values are given under each graph. Comparison of
461 pre versus post treatment values within each treatment group was performed by
462 paired Student's t-test. Results are represented as mean \pm SEM values of tissue
463 sections of 5 animals in each group. * $< p < 0.05$; ** $< p < 0.01$; *** $< p < 0.001$, **** $<$
464 $p < 0.0001$).

465

466 **Figure 4**

467 Graphical illustration of the mechanistic steps involved in oxygen radical induced
468 down-regulation of cancer hallmarks. **A.** cfChPs released from dying cancer cells
469 induce DNA damage and inflammation, and up-regulate cancer hallmarks, in
470 surviving cancer cells. **B.** Oxygen radicals generated upon oral ingestion of R-Cu are
471 systemically absorbed from the stomach to reach TME leading to eradication of
472 extra-cellular cfChPs. Oxygen radicals also enter into the surviving cancer cells; but
473 their cellular entry leads to activation of anti-oxidant enzymes which detoxify and
474 eliminate the offending agents. SOD = superoxide dismutase; GPx = glutathione
475 peroxidase; TME = tumour microenvironment.

476 **Legends to supplementary figures**

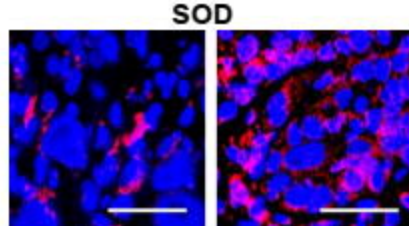
477 **Supplementary Figure 1**

478 A representative photograph of advanced OSCC **A**, and its squamous cell origin as
479 seen on a H&E section **B**.

480 **Supplementary Figure 2**

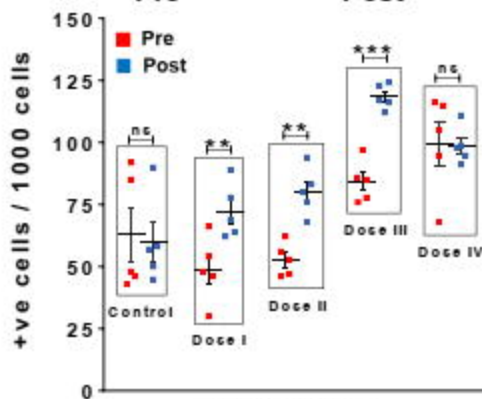
481 Representative images showing expression of various immune checkpoint proteins
482 by CD4 and CD8 lymphocytes. FFPE sections of OSCC tumour tissues were
483 simultaneously immune-stained with antibodies against various immune-checkpoint
484 proteins and those against CD4 and CD8 lymphocytes (scale bar 10µm).

Figure 1

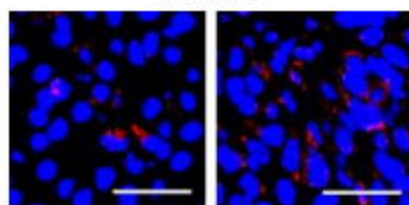


Pre

Post

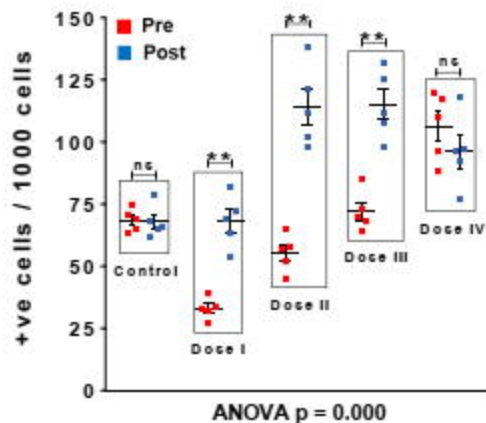


Catalase

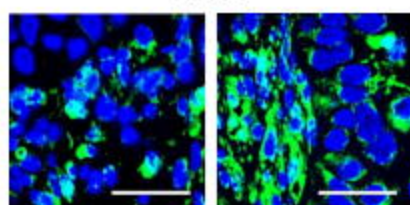


Pre

Post

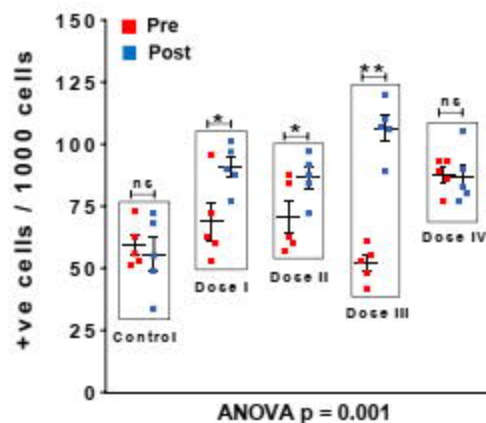


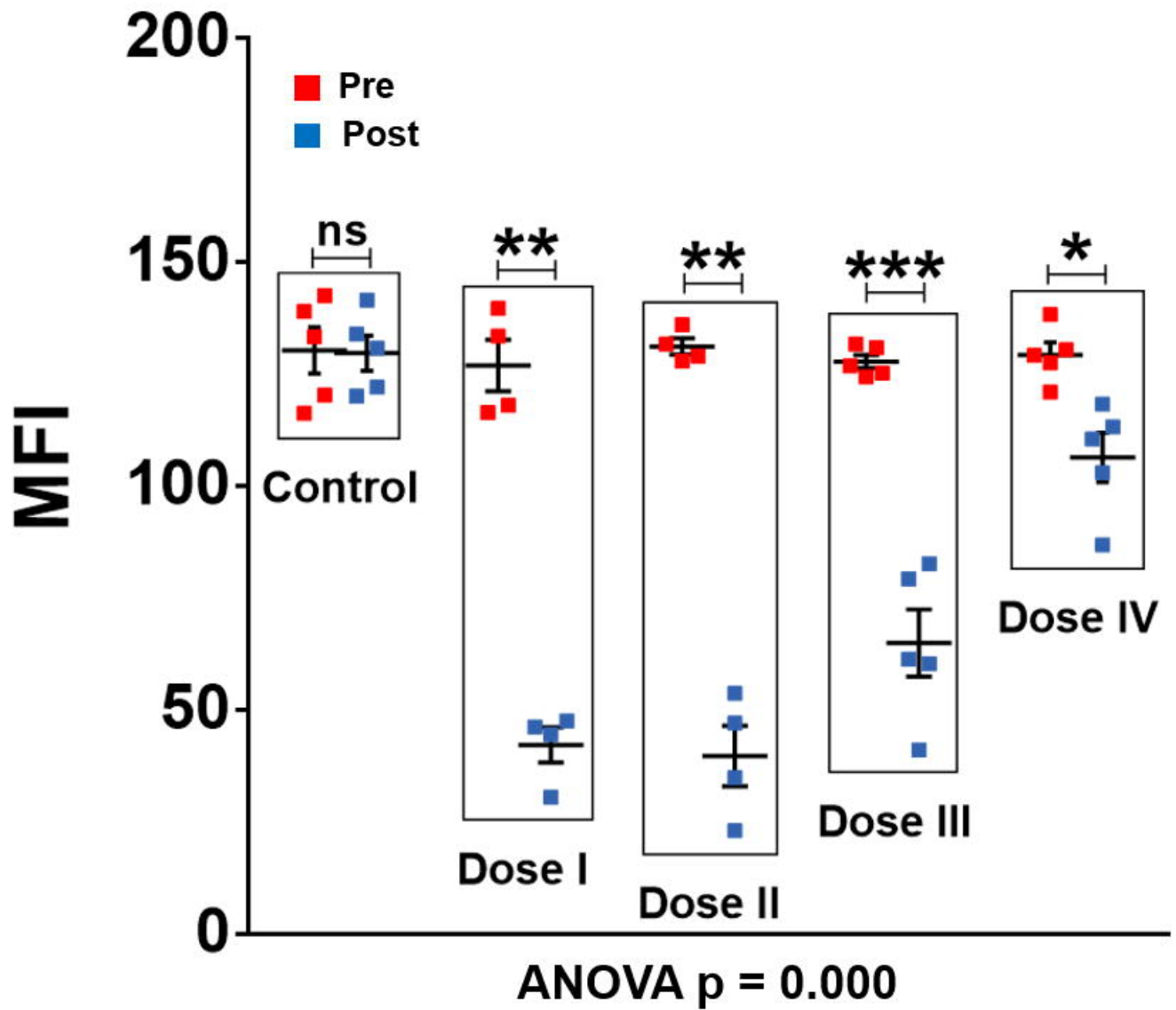
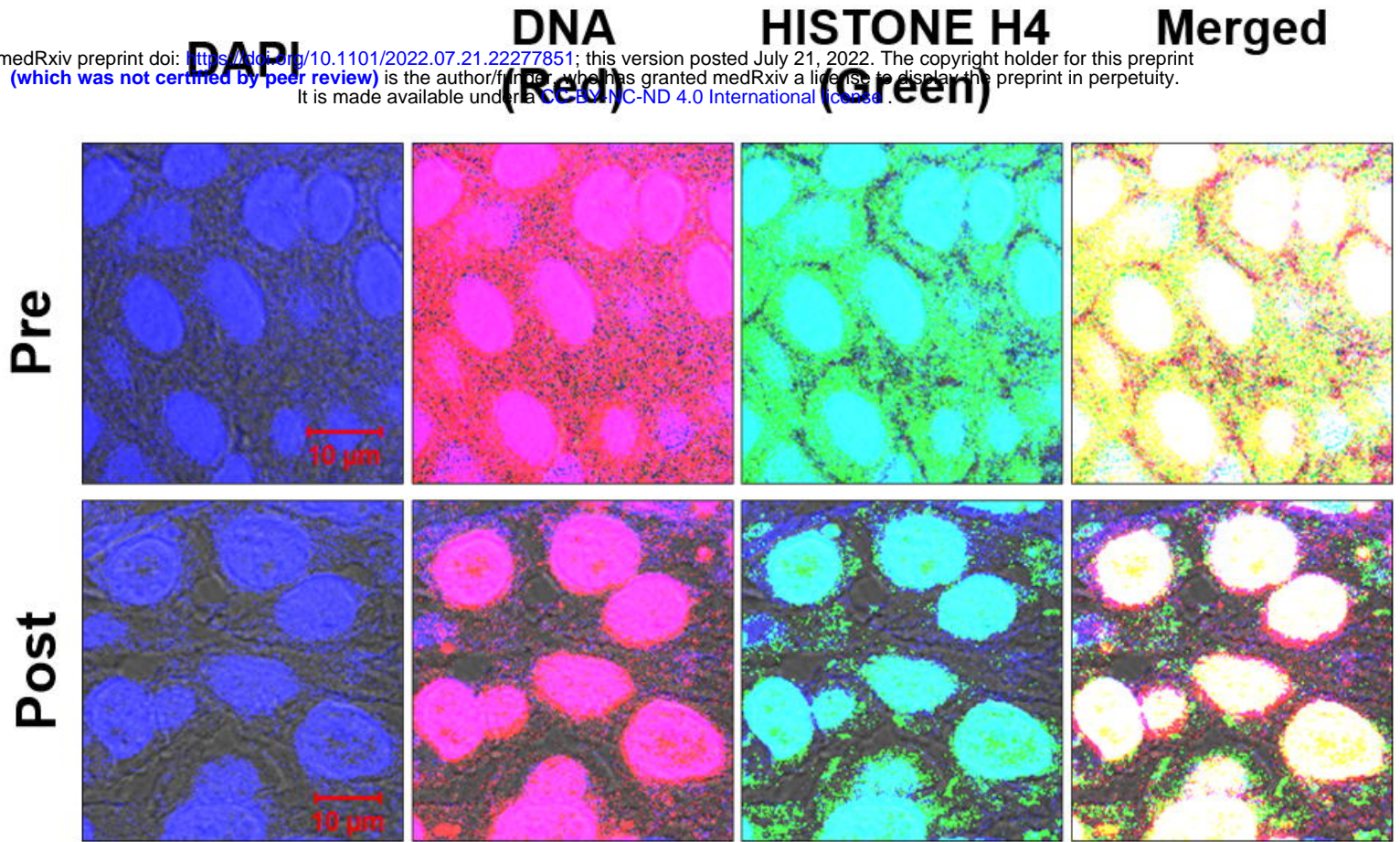
GPx



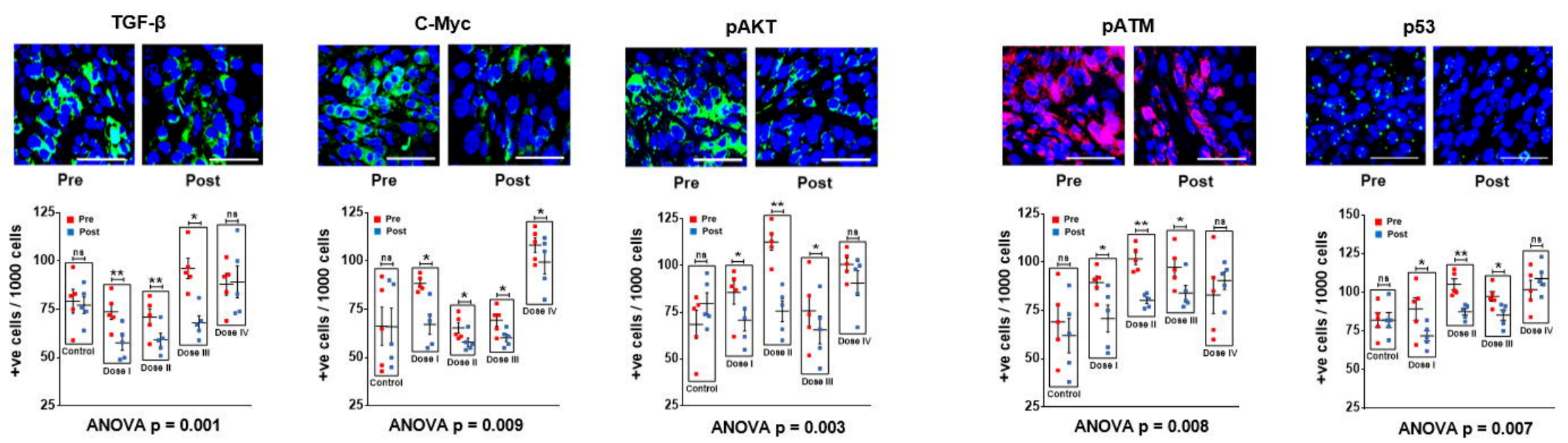
Pre

Post



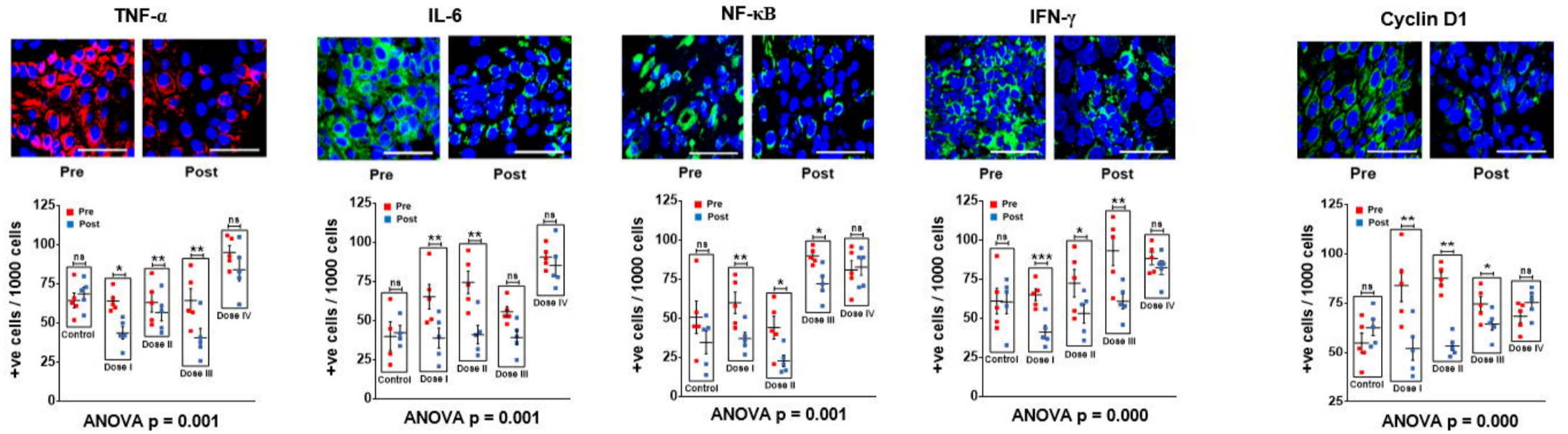


Sustained Proliferation



Evading Growth Suppressors

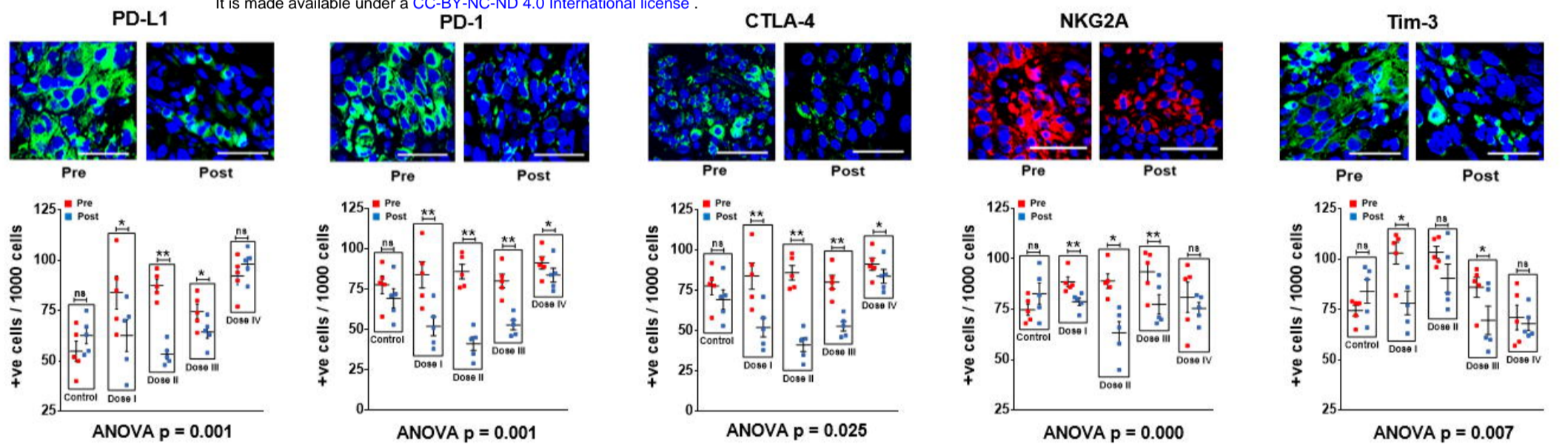
Tumour Promoting Inflammation



Enabling Replicative Immortality

medRxiv preprint doi: <https://doi.org/10.1101/2022.07.21.22277851>; this version posted July 21, 2022. The copyright holder for this preprint (which was not certified by peer review) is the author/funder, who has granted medRxiv a license to display the preprint in perpetuity. It is made available under a [CC-BY-NC-ND 4.0 International license](https://creativecommons.org/licenses/by-nc-nd/4.0/).

Avoiding Immune Destruction

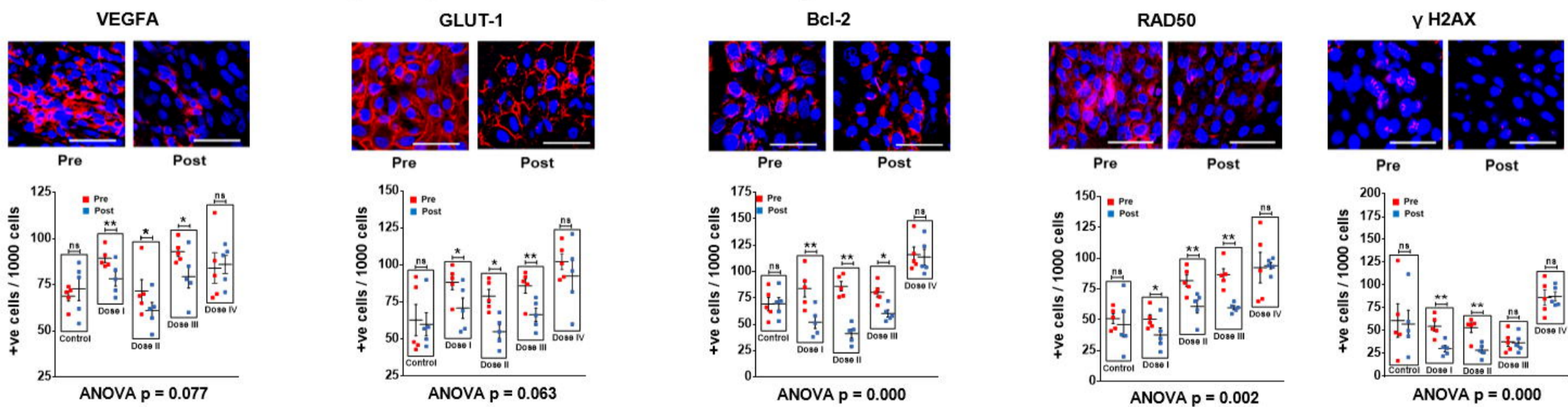


Inducing Angiogenesis

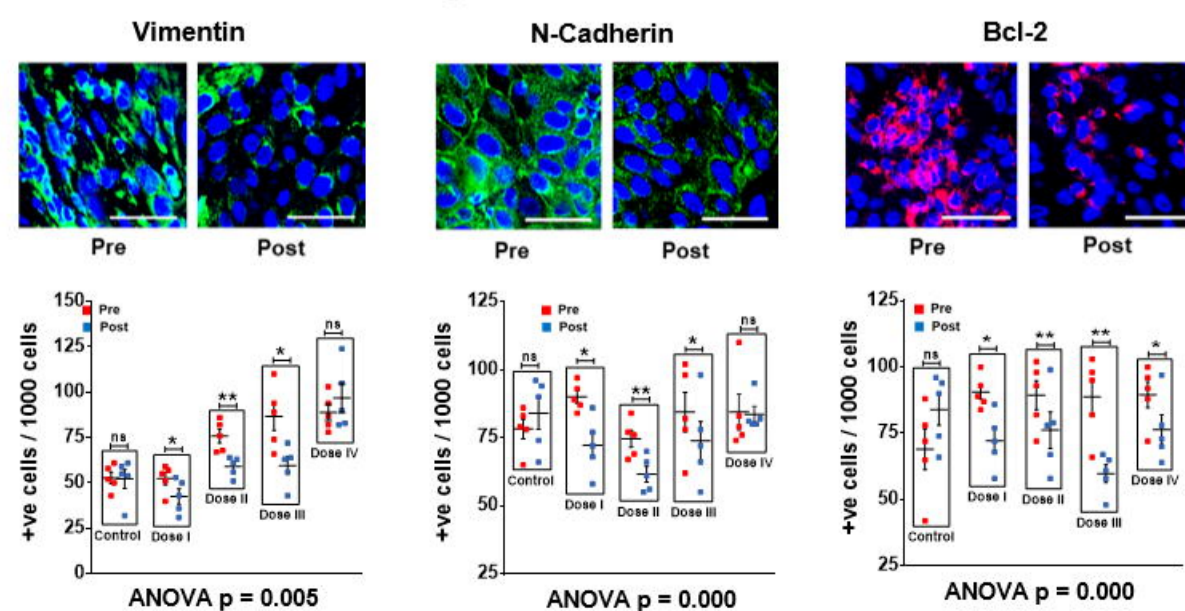
Deregulating Cellular Energetics

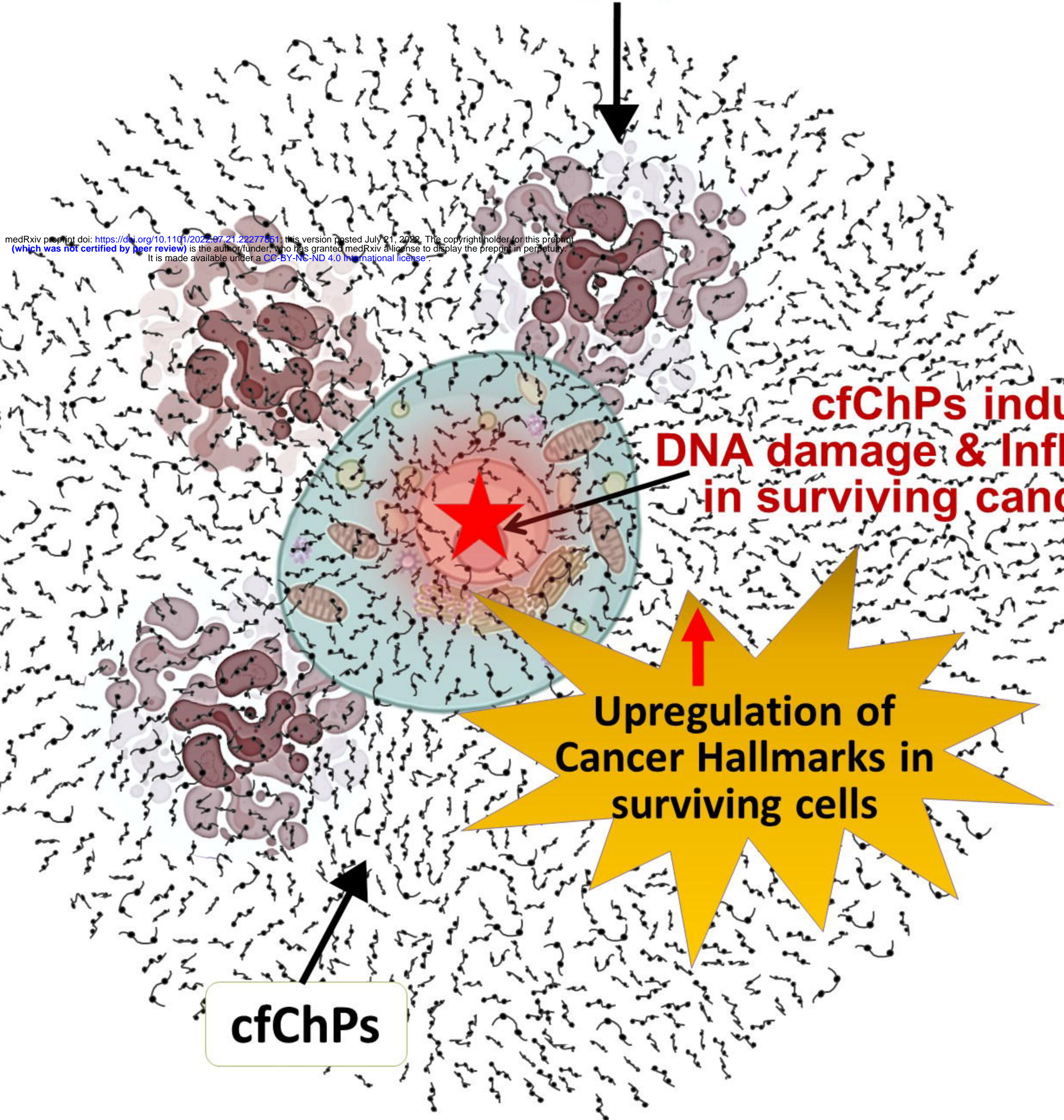
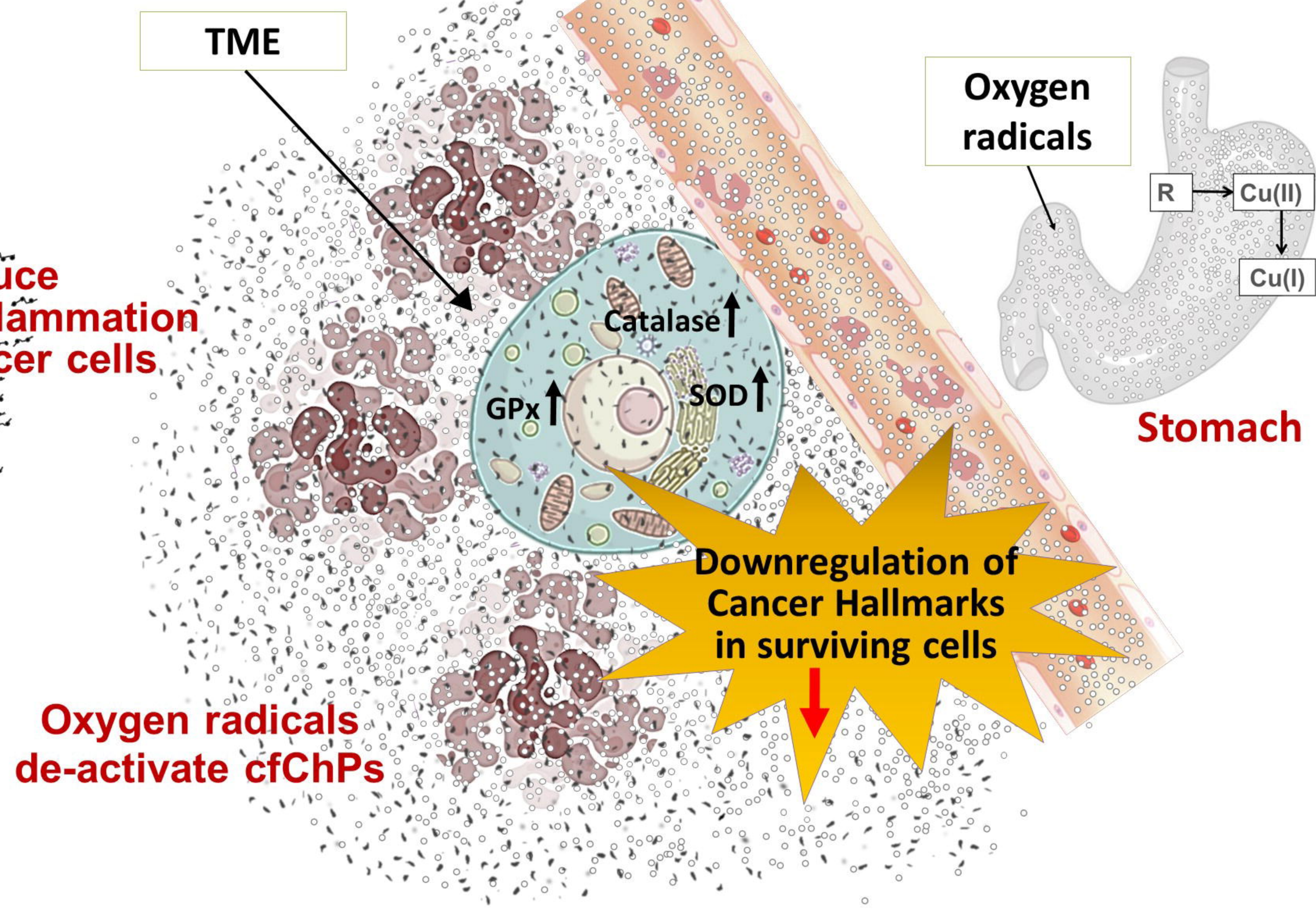
Resisting Cell Death

Genomic Instability and Mutation



Activating Invasion and Metastasis



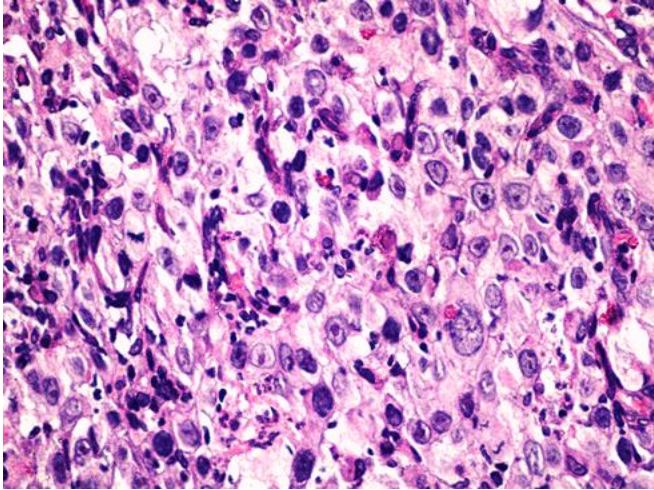
A**cfChPs are released from dying cancer cells****B****Oxygen radicals are absorbed from stomach**

Supplementary Fig. 1

A

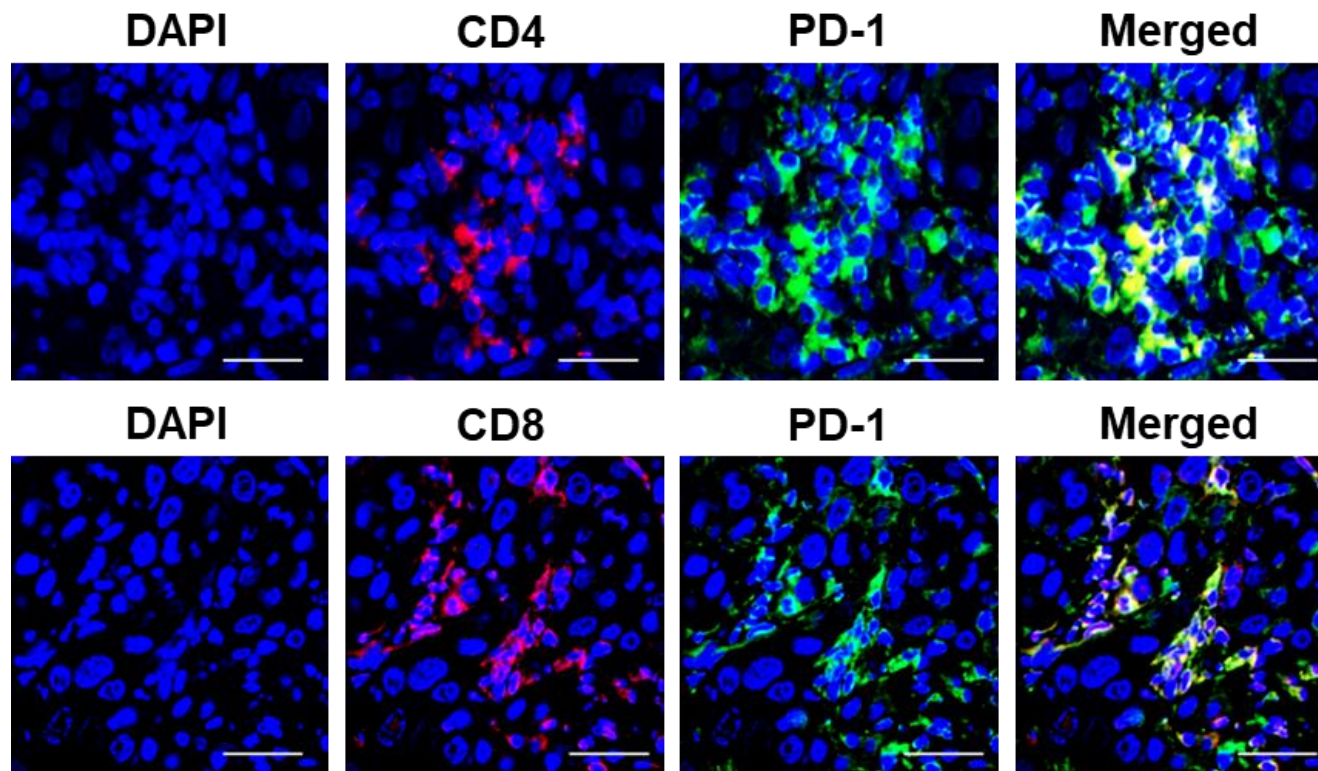


B



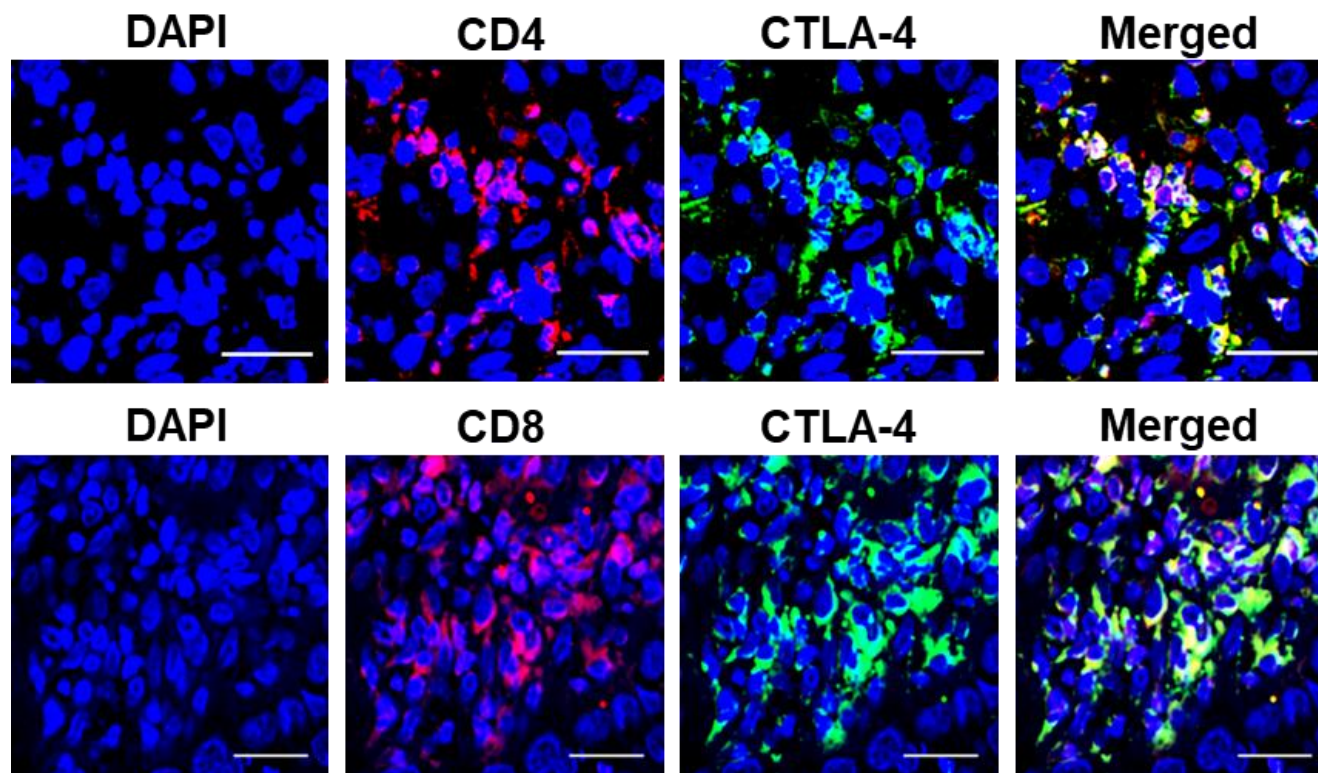
Supplementary Fig. 2 a

a



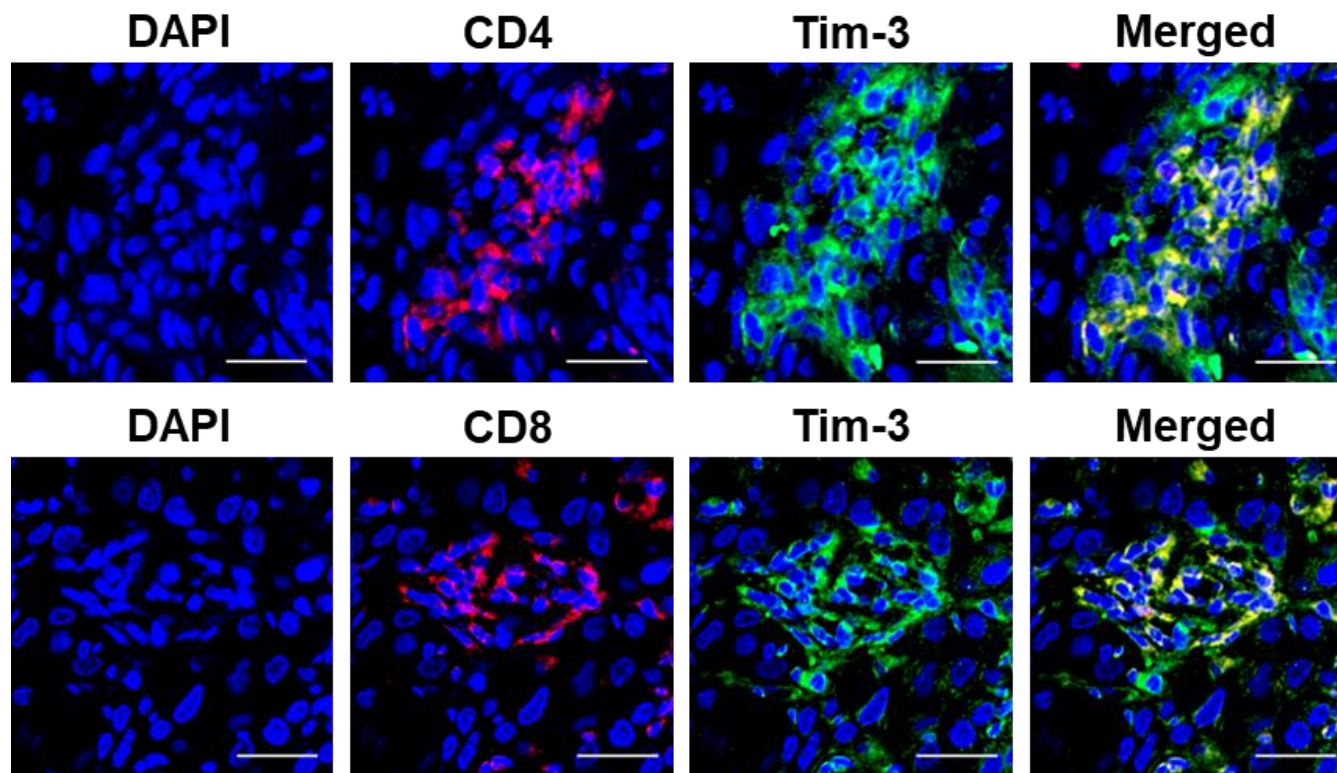
Supplementary Fig. 2 b

b



Supplementary Fig. 2 c

C



Supplementary Fig. 2 d

d

