

Balk R et al. Validation of SeptiCyte RAPID for sepsis vs. SIRS

Validation of SeptiCyte RAPID to discriminate sepsis from non-infectious systemic inflammation

Robert Balk¹, Annette M. Esper², Greg S. Martin², Russell R. Miller III³, Bert K. Lopansri^{4,5}, John P. Burke^{4,5}, Mitchell Levy⁶, Steven Opal⁶, Richard E. Rothman⁷, Franco R. D'Alessio⁷, Venkataramana K. Sidhaye⁷, Neil R. Aggarwal⁸, Jared A. Greenberg¹, Mark Yoder¹, Gourang Patel¹, Emily Gilbert⁹, Jorge P. Parada⁹, Majid Afshar¹⁰, Jordan A. Kempker², Tom van der Poll¹¹, Marcus J. Schultz¹¹, Brendon P. Scicluna¹², Peter M.C. Klein Klouwenberg¹³, Janice Liebler¹⁴, Emily Blodget¹⁴, Santhi Kumar¹⁴, Krupa Navalkar¹⁵, Thomas D. Yager¹⁵, Dayle Sampson¹⁵, James T. Kirk¹⁵, Silvia Cermelli¹⁵, Roy F. Davis¹⁵, and Richard B. Brandon¹⁵

¹Rush Medical College and Rush University Medical Center, Chicago, Illinois;

²Grady Memorial Hospital and Emory University School of Medicine, Atlanta, Georgia;

³FirstHealth of the Carolinas, Pinehurst, North Carolina;

⁴Intermountain Medical Center, Murray, Utah;

⁵University of Utah School of Medicine, Salt Lake City, Utah;

⁶Brown University, Providence, Rhode Island;

⁷Johns Hopkins University School of Medicine, Baltimore, Maryland;

⁸Anschutz Medical Campus, University of Colorado, Denver, Colorado;

⁹Loyola University Medical Center, Maywood, Illinois;

¹⁰University of Wisconsin School of Medicine and Public Health, Madison, Wisconsin;

¹¹Amsterdam UMC, University of Amsterdam, Amsterdam, the Netherlands;

¹²Centre for Molecular Medicine and Biobanking, University of Malta, Malta; and Department of Applied Biomedical Science, Faculty of Health Sciences, Mater Dei hospital, University of Malta, Malta

¹³Isala Hospital, Zwolle, the Netherlands;

¹⁴Keck Hospital of University of Southern California (USC); and Los Angeles County and USC Medical Center;

¹⁵Immunexpress Inc., Seattle, Washington

Corresponding Author, to whom requests for reprints and correspondence should be addressed: Dr. Robert Balk, Rush Medical College and Rush University Medical Center, Chicago, Illinois.

This article has an Online Data Supplement, which is accessible online and linked to the article.

NOTE: This preprint reports new research that has not been certified by peer review and should not be used to guide clinical practice.

Balk R et al. Validation of SeptiCyte RAPID for sepsis vs. SIRS

Running title: Validation of SeptiCyte RAPID for sepsis vs. SIRS

Author Contributions:

Conceptualization: RFD, SC, RBB, DS, TDY

Methodology: RFD, SC, DS, TDY, KN

Investigation: RB, AME, GSM, RRMIII, BKL, JPB, ML, SO, RER, FRDA, VKS, NRA, JAG, MY, GP, EG, MA, FRDA, JPP, JAK, TvdP, MJS, BPS, PMCKK, JL, EB, SK

Supervision: SC, RFD, RB, AME, GSM, RRMIII, BKL, TvdP, JL, EG

Data Curation & Review: SC, DS, KN

Clinical Assessment: SO, RER, ML

Custom software: DS, KN

Visualization: DS, KN, TDY

Formal analysis: DS, KN, TDY, SC

Writing: initial & successive drafts: TDY, RBB, RFD

Writing: review and edits: TDY, RBB, RFD, SC, JTK, RB, GM, JAK, BPS, TvdP, PMCKK

Funding acquisition: Immunexpress, Inc.

Sources of Support: This study was supported by Immunexpress Inc.

Best Descriptor: CRITICAL CARE, 4.12 Sepsis/Multiple Organ Failure

WORD COUNT:

INTRO 427 words

METHODS 512 words

RESULTS 1095 words

DISCUSSION 1,373 words

CONCLUSIONS 91 words

ACKNOWLEDGEMENTS 52 words

TOTAL 3,550 words

Balk R et al. Validation of SeptiCyte RAPID for sepsis vs. SIRS

Abbreviations:

%A, Percent Agreement; ANOVA, Analysis of Variance; AUC, Area Under (Receiver Operator Characteristic) Curve; CAD, Coronary artery disease; CKD, Chronic kidney disease; CPAP, Continuous positive airway pressure; Cq, Quantification Cycle (for PCR); CRP, C-Reactive Protein; ED, Emergency Department; ICU, Intensive Care Unit; IQR, Interquartile Range; Ku, Unweighted inter-observer kappa; Kw, Linearly weighted inter-observer kappa; LR, Likelihood Ratio; PCR, Polymerase Chain Reaction; PCT, Procalcitonin; PLA2G7, Phospholipase A2, Group VII; PLAC8, Placenta associated 8; ROC, Receiver Operator Characteristic (curve); RPD, Retrospective Physician Diagnosis; RT-qPCR, Reverse Transcription - Quantitative Polymerase Chain Reaction; SIRS, Systemic Inflammatory Response Syndrome; SSC, Surviving Sepsis Campaign; Tukey HSD, Tukey Honestly Significant Difference; WBC, White Blood Cell.

Balk R et al. Validation of SeptiCyte RAPID for sepsis vs. SIRS

ABSTRACT

Rationale: SeptiCyte RAPID, a molecular test distinguishing sepsis from non-infectious systemic inflammation, has potential clinical utility.

Objectives: Clinical validation of SeptiCyte RAPID, based on testing retrospective (banked) and prospectively collected patient samples.

Methods: Testing retrospective (banked) and prospective samples from adult patients in ICU either with systemic inflammatory response syndrome (SIRS) or suspected of sepsis, with test results compared to “gold standard” clinical evaluation by a blinded three physician external panel.

Measurements and Main Results: The cartridge-based SeptiCyte RAPID assay accepts a PAXgene blood RNA sample and provides sample-to-answer processing in ~1 hour. The test output (SeptiScore, range 0-15) falls into four interpretation bands, with higher scores indicating higher probabilities of sepsis. SeptiCyte RAPID performance is comparable to that for SeptiCyte LAB, with Area Under the ROC Curve (AUC) ranging from 0.82 – 0.85, negative predictive value 0.91 (sensitivity 0.94) for SeptiScores between 0.1 and 5.0 (Band 1, lowest risk of sepsis), and positive predictive value 0.81 (specificity 0.90) for SeptiScores between 7.4 and 15 (Band 4, highest risk of sepsis). For ninety percent of blood culture confirmed sepsis cases, SeptiCyte RAPID indicated an elevated (Band 3 or 4) risk of sepsis. In multivariable analysis, SeptiScore was the most important variable for sepsis diagnosis. A likelihood ratio method was developed to estimate the post-test probability of sepsis for individual patients, when combining the SeptiScore with additional clinical parameters.

Conclusions: This study validates SeptiCyte RAPID for differentiating patients with sepsis vs. SIRS, on the first day of ICU admission.

Keywords: sepsis, diagnosis, host response, SIRS, sepsis scoring systems

ABSTRACT WORD COUNT: 228 words (maximum allowed 250)

Balk R et al. Validation of SeptiCyte RAPID for sepsis vs. SIRS

INTRODUCTION

Sepsis is an important and expensive global health problem with high morbidity and mortality (1). According to the World Health Organization, more than 11 million people die from sepsis worldwide annually, comprising more than the deaths caused by all cancers combined (2). Sepsis is the leading cause of death in U.S. hospitals is ranked as the most expensive disease state to manage for admitted patients (3), with total annual costs of treatment and rehabilitation estimated at \$62 billion (4). Before the COVID-19 pandemic, at least 1.7 million adults in the United States developed sepsis annually (5). During the pandemic, this problem was greatly exacerbated, as most COVID-19 deaths are due to viral and/or bacterial sepsis (6). Up to 20% of all deaths worldwide can be attributed to sepsis on an annual basis (1).

Early identification of sepsis and implementation of treatment bundles have been shown to improve outcomes for sepsis patients (7). However, early identification of sepsis can be difficult for many reasons. In the early stages of the disease, patients present with clinical signs that are common to many other non-infectious conditions (8). Furthermore, sepsis does not have a diagnostic gold standard since blood cultures lack timeliness (9) and are negative in 30-50% of retrospectively diagnosed cases (10,11). In addition, unnecessary administration of broad-spectrum antibiotic therapy for presumed sepsis may adversely contribute to the growing problem of multidrug resistant organisms and carries the risk of adverse drug reactions (12).

We previously reported on the development and validation of a diagnostic assay (SeptiCyte LAB) to differentiate patients with sepsis from those with non-infectious systemic inflammation, providing a probability of sepsis based on measurement of four host immune response

Balk R et al. Validation of SeptiCyte RAPID for sepsis vs. SIRS

biomarkers (13, 14). Here we present data on the clinical validation of SeptiCyte RAPID, a simplified and improved cartridge-based version of this assay. SeptiCyte RAPID assay addresses a clinical need for more rapid and accurate differentiation of sepsis from non-infectious systemic inflammatory response syndrome (SIRS) within a clinically actionable (~1 hour) time frame. Some of these results have been presented earlier in the form of an abstract (15).

Balk R et al. Validation of SeptiCyte RAPID for sepsis vs. SIRS

METHODS

Study Cohorts

Clinical validation of SeptiCyte RAPID used PAXgene blood RNA samples from retrospective (N=356) and prospective (N=63) patient cohorts. The retrospective cohort was drawn from the observational MARS and VENUS trials (www.clinicaltrials.gov NCT01905033 and NCT02127502) which have been previously described (14). The retrospective cohort comprised 80% of the 447 patients used for the 510(k) clearance of SeptiCyte LAB for which duplicate banked PAXgene blood RNA samples remained available.

The prospective cohort consisted of 63 critically ill adult subjects enrolled in an observational trial (NEPTUNE, www.clinicaltrials.gov NCT05469048) between the dates May 26, 2020 - April 25, 2021 at Emory University / Grady Memorial Hospital (Atlanta GA), Rush University Medical Center (Chicago IL) and University of Southern California Medical Center (with 2 separate sites, Keck Hospital of USC, and LAC+USC Medical Center, in Los Angeles CA). The study protocol was approved by each institutional review board (see below). All patients (or legally authorized representatives) provided signed informed consent. Subjects were considered for inclusion if adult (≥ 18 years old), exhibited two or more SIRS criteria, and received an ICU admission order. Subjects were “suspected of sepsis” if microbiological tests were ordered within 24 hours of the ICU admission order. Subjects were excluded if therapeutic antibiotic treatment was initiated >24 hours before ICU admission order. As much as possible, enrollments were consecutive; however, during the COVID-19 pandemic, screening did not happen every day, and initial consenting sometimes resulted in later refusal to participate. PAXgene blood

Balk R et al. Validation of SeptiCyte RAPID for sepsis vs. SIRS

samples were collected within 24 hours of ICU admission order, and run fresh, in real time on Idylla instruments installed at the sites. Clinical data were collected as described in (14).

Ethics approvals for the MARS and VENUS trials (retrospective cohort) are referenced in Miller et al. (2018). Ethics approvals for the NEPTUNE trial (prospective cohort) are as follows: # IRB00115400 (Emory University); # 00-115400 (Grady Memorial Hospital); # 19101603-IRB01 (Rush University Medical Center), and # HS-19-0884-CR001 (University of Southern California Medical Center). The retrospective and prospective trials comply with the CONSORT checklist, and a CONSORT flow diagram is provided in the Online Data Supplement, Section 1.

Reference Method and Calculations

Clinical performance of SeptiCyte RAPID was determined by comparison to retrospective physician diagnoses (RPD), as described in (14) and Online Data Supplement, Section 2.

Sepsis probability as a function of RAPID SeptiScore was calculated by a “sliding window” approach (Online Data Supplement, Section 3). The continuous range of sepsis probabilities was also parsed into four bands, with higher sepsis probabilities correlating with higher SeptiScores. Band boundaries were pre-defined, based on an independent set of 195 clinical samples from the MARS consortium, to give 90% sensitivity for binarization at the Band 1/2 cutoff (SeptiScore 4.95) and 80% specificity for binarization at the Band 3/4 cutoff (SeptiScore 7.45), using site clinical adjudications as Ground Truth values. The intermediate zone between the Band 1/2 and Band 3/4 cutoffs was divided in half to define the Band 2/3 cutoff (SeptiScore 6.15).

Balk R et al. Validation of SeptiCyte RAPID for sepsis vs. SIRS

Statistical methods for additional data analyses, including combining the SeptiScore with other clinical variables, are described in the Online Data Supplement, Sections 3-8.

RESULTS

Demographic and Clinical Characteristics

The demographics of the population from the combined retrospective and prospective clinical validation cohorts (n=419) are presented in **Table 1**. Sepsis, SIRS or indeterminate diagnoses were assigned by consensus RPD. When compared to patients with SIRS, those patients who were adjudicated as having sepsis tended to be older ($p = 0.016$). There were no significant differences by sex or race/ethnicity.

Patients originated from a variety of locations within the hospital systems in our study. When coming from the ED, post-anesthesia unit or post-operating room, a higher proportion of patients were found to have SIRS (as opposed to being septic), while the opposite was found for patients coming from hospital wards.

Clinical characteristics of the study population are presented in **Table 2**. The highly statistically significant culture results are of particular note: positive blood cultures, positive urine cultures, and dual-positive cultures (blood+urine) were very highly associated with RPD diagnoses of sepsis, as opposed to SIRS, with p-values of 2.7×10^{-12} , 3.1×10^{-6} , and 9.0×10^{-4} respectively.

SeptiCyte RAPID Performance: Primary Analyses

Test and Device Description

Balk R et al. Validation of SeptiCyte RAPID for sepsis vs. SIRS

SeptiCyte RAPID is an *in-vitro* diagnostic test for simultaneous amplification and detection of two RNA transcripts (PLA2G7 and PLAC8) in human blood samples. The test is run on a near-to-patient platform, Idylla, manufactured by Biocartis NV (Mechelen, Belgium). The SeptiCyte RAPID test is performed by pipetting 0.9 mL of PAXgene-stabilized blood (corresponding to 0.24 mL of drawn blood) into a custom cartridge which performs all assay steps including sample extraction/purification and RT-qPCR for the detection and relative quantification of the PLAC8 and PLA2G7 mRNA targets. Test results are presented automatically through a software-generated report which includes a quantitative probability score (SeptiScore, range 0-15), calculated by combining the RT-qPCR Cq values measured for PLAC8 and PLA2G7. The test has a hands-on time of ~2 min and a turnaround time of ~1 hour.

Comparison to Predicate

A strong correlation of SeptiScores between SeptiCyte LAB and SeptiCyte RAPID, based upon the 356 clinical samples from the retrospective cohort run on both platforms, was found (Pearson's sample correlation coefficient $r = 0.88$) as shown in **Figure 1**. In serial dilution experiments, SeptiCyte RAPID scores were verified to be independent of the white blood cell (WBC) count across an input range of 25 to 25,000 WBC/ μ l.

ROC Curve Analyses

Receiver operating characteristic (ROC) curve analyses were performed on samples from the combined retrospective and prospective cohorts (**Figure 2A**). Performance estimates ranged from AUC 0.82-0.85 (depending upon RPD method) and were statistically indistinguishable both from each other, and from SeptiCyte LAB AUC values (14). ROC analyses were also performed on the prospective cohort alone (**Figure 2B**), with AUCs ranging from 0.86-0.95 and again being statistically indistinguishable from each other. Finally, a comparison of the ROC curves from

Balk R et al. Validation of SeptiCyte RAPID for sepsis vs. SIRS

Figures 2A vs. 2B showed an absence of significant differences, except for the unanimous RPD curves in the two figures, for which deLong's test gave $p = 0.013$.

Sepsis Probability Distributions

Patients with higher SeptiScores have higher probabilities of sepsis (**Figure 3A**). To assist in interpretation and downstream clinical decision making, we also report SeptiScores in terms of four probability bands (**Figure 3B**) as for the predicate, SeptiCyte LAB. A strong correlation was found between the banding schemes for SeptiCyte LAB and SeptiCyte RAPID (**Figure 4**).

Table 3 presents SeptiScores for the complete (retrospective + prospective) cohort, parsed into the four probability bands. Assignment of sepsis or SIRS was by consensus RPD. The probability and likelihood ratio of sepsis increases with increasing SeptiScore, with band-averaged sepsis probabilities of 9% (Band 1), 21% (Band 2), 42% (Band 3), and 81% (Band 4).

SeptiCyte RAPID Clinical Performance: Secondary Analyses

Chi-squared analyses (**Table 4**) indicated that, after sorting patients into the four SeptiScore bands, no significant differences were found with respect to baseline demographic criteria (sex, age, race or ethnicity). Positive culture results (blood, urine, and blood/urine double positive) were more predominant in the higher SeptiScore bands (especially Band 4), with chi-squared analyses giving p-values of 7.2×10^{-6} , 0.023 and 0.005 for the observed distributions of these positive results into Band 4 vs. pooled Bands 1+2+3. Of the positive results from blood, urine, and blood+urine culture, the percentages falling in Band 4 were 63%, 52% and 73% respectively, and the percentages falling in either Band 3 or Band 4 were 83%, 64% and 82% respectively. Of the 41 patients with blood culture positive results, only one had a SeptiScore in

Balk R et al. Validation of SeptiCyte RAPID for sepsis vs. SIRS

band 1, and this patient was diagnosed as SIRS by RPD with the blood culture result (coagulase negative Staphylococcus) being considered a potential contaminant.

Multivariable analysis: We asked whether SeptiCyte RAPID provides diagnostic clinical utility for discriminating between sepsis and SIRS patients, beyond that provided by other clinical variables and laboratory assessments available at first day of ICU admission. Fourteen variables in addition to SeptiCyte RAPID were examined (see Online Data Supplement, Section 6). We evaluated all 32,767 possible combinations of the fifteen variables, and performance was assessed by AUC against consensus RPD. Procalcitonin was included in this analysis, as well as lactate which is rapid and commonly used parameter to determine which patients should receive sepsis treatment bundles (16, 17). **Figure 5** shows the results of the analysis. With respect to individual variables, SeptiScore was found to rank highest by AUC. When combinations of clinical variables were considered, those containing SeptiScore were found to have higher AUCs than all combinations lacking SeptiScore.

Sepsis probability adjustments: The preceding multivariable analysis suggests that SeptiCyte RAPID might be combined with other clinical variables to boost the overall performance at discriminating between sepsis and SIRS (see the red distribution of AUCs in Figure 5). Therefore, we investigated which additional clinical variables could be used in combination with SeptiCyte RAPID to improve diagnostic performance (post-test probability of sepsis).

Additional clinical variables of importance were identified through a machine learning (Random Forest) analysis of our clinical validation data (Online Data Supplement, Section 7). Assurance

Balk R et al. Validation of SeptiCyte RAPID for sepsis vs. SIRS

of the results was gained through a literature search and by consulting with practising sepsis experts. We then combined the identified significant variables in a sequential likelihood ratio analysis (18, 19). The pre- versus post-test sepsis probabilities for six example patients are shown in **Figure 6**. These patients were chosen based on Forced RPD that represented three SIRS (band 1-2) and three sepsis (band 4) patients. For band 1-2 patients the post-test probability of sepsis was decreased, while for band 4 patients the post-test probability of sepsis was increased. Additional detail on the calculations for these six patients are given in **Table 5** and Online Data Supplement, Section 8.

DISCUSSION

We have presented data validating the use of SeptiCyte RAPID for differentiating sepsis from SIRS in critically ill adult patients, within a clinically actionable time frame. The test is a cartridge-based, fully integrated assay measuring the transcription levels of the host immune response biomarkers PLAC8 and PLA2G7. The test provides a quantitative score, the SeptiScore, ranging from 0-15 with higher scores indicating higher probabilities of sepsis. Sepsis probabilities can be interpreted either in terms of a continuum from 0% to 100% (Figure 3A), or quantized into four “probability bands” (Figure 3B). The latter interpretation, however, may result in a loss of diagnostic resolution, compared to interpretation along a continuous sepsis probability scale. This is because the sepsis probability is not constant within each band, but rather increases from the lower edge to the upper edge of each band.

Patients in this study came from the ED, post-anesthesia unit, post-operating rooms and wards, and were tested in the ICU. For the full (retrospective + prospective) cohort, diagnostic

Balk R et al. Validation of SeptiCyte RAPID for sepsis vs. SIRS

performance of SeptiCyte RAPID was equivalent to that previously reported for the predicate device, SeptiCyte LAB (14) with AUC ranging from 0.81 – 0.84 depending upon comparator method (RPD). Using consensus RPD as reference, patients with Band 1 SeptiScores had an estimated 9% probability of sepsis, while those with Band 4 SeptiScores had a much higher estimated probability of sepsis (~81%). For the prospective cohort, diagnostic performance of SeptiCyte RAPID based on AUC was higher than for the full cohort, ranging from 0.86 – 0.98 depending upon RPD method. With consensus RPD, patients with Band 1 SeptiScores were estimated to have a ~0% average probability of sepsis, while patients with Band 4 SeptiScores were estimated to have an average sepsis probability of ~83%.

We note that the comparator method used (RPD) is imperfect. In our complete (n=419) validation dataset, three expert clinicians failed to reach either a unanimous or consensus diagnosis for 41/419 (9.8%) of patients. The use of an imperfect comparator sets an upper limit to the measurable diagnostic performance of a new test (20). This observation mirrors the real-life reality that the diagnosis of sepsis is often difficult, even through a retrospective review that includes all the clinical data and outcome information.

In a multivariable analysis, we examined all possible combinations of SeptiScore and up to 14 additional clinical or laboratory variables, including lactate and PCT. We found that SeptiScore alone had greater performance than any combination of variables without SeptiScore, for differentiating sepsis vs. SIRS (Figure 5). However, our analysis also indicated it should be possible to moderately boost the performance of SeptiCyte RAPID by combining the SeptiScore value with other clinical parameters. Accordingly, we developed a likelihood ratio approach for updating post-test sepsis probabilities, through the sequential application of likelihood ratios

Balk R et al. Validation of SeptiCyte RAPID for sepsis vs. SIRS

calculated with additional clinical parameters (Figure 6 and Online Data Supplement, Section 8).

We believe this approach may have utility for patients with intermediate SeptiScore values (in Band 2 or Band 3).

In 2017 the Surviving Sepsis Campaign (SSC) published updated sepsis management guidelines with the objective of guiding and improving the care of sepsis (21). These guidelines and the introduction of the sepsis core measures by the United States Centers for Medicare and Medicaid Services inadvertently led to encouraging physicians to initiate early broad-spectrum antibiotics in patients who were at low risk for sepsis (22). The recent updated Surviving Sepsis Campaign guidelines (2021) has attempted to address this problem by dividing the patients into 3 groups (low, intermediate, and high) based on sepsis probability and have recommended appropriate evaluation and treatment of these groups (23). SeptiCyte RAPID aligns well with these guidelines, and could have a role in supporting their implementation and in contributing to their further refinement and evolution.

The SSC low sepsis probability group has, under previous guidelines, been treated early resulting in poor antibiotic stewardship. The new guidelines recommend deferring antibiotics, and monitoring and evaluate for other etiologies that may underlie the presenting symptoms. A SeptiScore <5 (Band 1) with a sensitivity of 0.94 in this group of patients would support the deferring of antibiotics thereby facilitating antibiotic and diagnostic stewardship.

For patients falling in the SSC intermediate sepsis probability (without shock) group, the SSC recommendation is a rapid assessment of infectious versus non-infectious cause of the illness. Septicyte RAPID, with a one-hour turnaround time, rapidly differentiates infectious positive from infection negative systemic inflammation. The presence of elevated SeptiScores in this

Balk R et al. Validation of SeptiCyte RAPID for sepsis vs. SIRS

group would provide confirming evidence for infectious etiology, and could enable appropriate early antibiotic administration 24 to 48 hours before any positive microbiological results are available. The resulting SeptiScore turnaround time of ~1 hour would also aid in meeting the recommend 3 hour initiation of antibiotics for this group.

Those patients with high sepsis probability per the SSC guidelines, differentiated by the presence of shock, should appropriately be treated within 1 hour of recognition. SeptiScores >7.2 in this patient group, with specificity 0.9 or greater, would confirm the high probability of sepsis and the continuation of antibiotics.

We note several limitations to the present study. We have focused only on adult patients within 24 hours of ICU admission, so generalization to other patient cohorts not been established. We have not conducted serial sampling to measure variation in SeptiCyte RAPID scores as patients move into, through, and out of ICU. We have, however, previously reported strong diagnostic performance of SeptiCyte LAB in children (24) and the high correlation between SeptiCyte LAB and SeptiCyte RAPID (Figure 1) suggests that an equivalently strong performance in children will be found for SeptiCyte RAPID.

SeptiScores falling in Bands 2 or 3 do not, by themselves, provide definitive conclusions (i.e. very high or low probabilities) regarding absence or presence of sepsis. For SeptiScores in this range, it may be necessary to combine the readings with data from other clinical parameters, to adjust the inferred sepsis probabilities (see Table 5 and Figure 6).

During the discovery and initial validation of the PLAC8 and PLA2G7 biomarkers used in SeptiCyte RAPID (13, 14), patients with a broad range of co-morbidities were examined,

Balk R et al. Validation of SeptiCyte RAPID for sepsis vs. SIRS

including septic patients with confirmed bacterial, viral, fungal infections and malignancies, and non-septic patients with non-infectious systemic inflammation of varying etiologies. The validation cohort also included use of a broad range of prescribed medications such as immunosuppressants, anti-neoplastic drugs, antithrombotics, corticosteroids and statins. To our knowledge, SeptiCyte RAPID results are unaffected by these factors. However, there may be other specific conditions and treatments we have not yet examined, that may affect SeptiCyte RAPID performance.

We have shown that the Limit of Quantitation (LoQ) and Limit of Detection (LoD) of SeptiCyte RAPID is 25 WBC/ μ L of blood, and we have validated the test to an upper limit of 25,000 WBC/uL. This dynamic range of SeptiCyte RAPID is broad and extends well below and above the 4,000-11,000 WBC/uL normal reference range. However, we have not yet completed an evaluation of the assay on severely neutropenic patients. It also is possible that SeptiCyte RAPID scores might be skewed by selective leukopenias due to disease or medications, for example T cell depletion in HIV / AIDS. However, it is known from single cell sequencing studies that both PLAC8 and PLA2G7 are expressed across a range of different white cell types (25) which would mitigate the effect of a selective leukopenia.

The time between injecting a blood sample into the SeptiCyte RAPID cartridge and generating a test report is only ~1 hour. However, by the time patient blood is drawn and delivered e.g. to a STAT lab, the total time between blood draw and presentation of the test result to an attending clinician is likely to be 1.5-2 hours. Although this is longer than requirements to implement a 1-hour sepsis bundle, SeptiCyte RAPID would clearly provide timely information with respect to implementation of a 3-hour sepsis bundle, which has been shown to have a low level of

Balk R et al. Validation of SeptiCyte RAPID for sepsis vs. SIRS

compliance in US hospitals (26, 27). Compliance with a 3-hour sepsis bundle in patients with severe sepsis and septic shock has been shown to improve survival and reduce overall costs (Leisman et al., 2017).

CONCLUSION

SeptiCyte RAPID addresses a clinical need for more rapid and accurate differentiation of sepsis from non-infectious systemic inflammation conditions by providing a probability of sepsis within a timeframe that would allow clinicians to take meaningful action. SeptiCyte RAPID may provide clinical utility through better patient management decisions, appropriate implementation and timing of sepsis bundles, the timing and choice of therapies, downstream antibiotic and diagnostic stewardship. Finally, the test may also enable a more appropriate selection or stratification of patients in clinical trials for sepsis pharmacological agents and therapeutic medical devices.

Balk R et al. Validation of SeptiCyte RAPID for sepsis vs. SIRS

ACKNOWLEDGEMENTS

The authors thank the clinical study coordinators of the NEPTUNE study: Joyce D. Brown (Rush University), Liliacna Jara (University of Southern California), Leona Wells and Maya C. Whaley (Grady Memorial Hospital). The authors also thank the laboratory technical staff at each institution, at Reach Bio (Seattle WA), and at Biocartis (Mechelen, Belgium).

Balk R et al. Validation of SeptiCyte RAPID for sepsis vs. SIRS

REFERENCES

1. Rudd KE, Johnson SC, Agesa KM, Shackelford KA, Tsoi D, Kievlan DR, et al. Global, regional, and national sepsis incidence and mortality, 1990–2017: analysis for the Global Burden of Disease Study. *Lancet* 2020;395:200–211.
2. Kempker JA, Martin GS. A global accounting of sepsis. *Lancet* 2020;395:168-170.
3. Torio CM, Moore BJ. National Inpatient Hospital Costs: The Most Expensive Conditions by Payer, 2013. In: Healthcare Cost and Utilization Project (HCUP) Statistical Briefs [Internet]. Statistical Brief #204, published May, 2016. Rockville (MD): Agency for Healthcare Research and Quality (US). Available from: <https://www.ncbi.nlm.nih.gov/books/NBK368492/>
4. Paoli, C. J., Reynolds, M. A., Sinha, M., Gitlin, M. & Crouser, E. Epidemiology and Costs of Sepsis in the United States—An Analysis Based on Timing of Diagnosis and Severity Level. *Crit Care Med* 2018;46:1889–1897.
5. Rhee C, Dantes R, Epstein L, Murphy DJ, Seymour CW, Iwashyna TJ, et al.; CDC Prevention Epicenter Program. Incidence and Trends of Sepsis in US Hospitals Using Clinical vs Claims Data, 2009-2014. *JAMA*. 2017;318:1241-1249.
6. Elezkurtaj S, Greuel S, Ihlow J, Michaelis EG, Bischoff P, Kunze CA, et al. Causes of death and comorbidities in hospitalized patients with COVID-19. *Sci Rep* 2021;11:4263.
7. Levy MM, Evans LE, Rhodes A. The Surviving Sepsis Campaign Bundle: 2018 update. *Intensive Care Med*. 2018; 44:925-928.

Balk R et al. Validation of SeptiCyte RAPID for sepsis vs. SIRS

8. Liu VX, Bhimarao M, Greene JD, Manickam RN, Martinez A, Schuler A, et al. The Presentation, Pace, and Profile of Infection and Sepsis Patients Hospitalized Through the Emergency Department: An Exploratory Analysis. *Critical Care Explor* 2021;3:e0344.

9. Lambregts, M. M. C., Bernards, A. T., Beek, M. T. van der, Visser, L. G. & Boer, M. G. de. Time to positivity of blood cultures supports early re-evaluation of empiric broad-spectrum antimicrobial therapy. *PLOS One* 2019;14:e0208819.

10. Panday, RSN, Lammers, E. M. J., Alam, N. & Nanayakkara, P. W. B. An overview of positive cultures and clinical outcomes in septic patients: a sub-analysis of the Prehospital Antibiotics Against Sepsis (PHANTASi) trial. *Crit Care* 2019;23:182

11. Panday RSN, Wang S, Ven PM van de, Hekker TAM, Alam N, Nanayakkara PWB. Evaluation of blood culture epidemiology and efficiency in a large European teaching hospital. *PLOS One* 2019;14:e0214052.

12. Kadri, SS. Key takeaways from the U.S. CDC's 2019 antibiotic resistance threats report for frontline providers. *Crit Care Med* 2020;48:939-945.

13. McHugh L, Seldon TA, Brandon RA, Kirk JT, Rapisarda A, Sutherland AJ, et al. A Molecular Host Response Assay to Discriminate Between Sepsis and Infection-Negative Systemic Inflammation in Critically Ill Patients: Discovery and Validation in Independent Cohorts. *PLOS Med* 2015;12:e1001916.

Balk R et al. Validation of SeptiCyte RAPID for sepsis vs. SIRS

14. Miller RR 3rd, Lopansri BK, Burke JP, Levy M, Opal S, Rothman RE, et al. Validation of a Host Response Assay, SeptiCyte LAB, for Discriminating Sepsis from Systemic Inflammatory Response Syndrome in the ICU. *Am J Resp Crit Care Med* 2018;198:903-913.

15. Kirk J, Yager T, Cermelli S, Sampson D, Brandon R, Sillekens P, et al. Clinical performance of a rapid sepsis test on a near-patient molecular testing platform. Abstract # P481, ISICEM 2020, Brussels, Belgium.

16. Faust JS, Weingart SD. The Past, Present, and Future of the Centers for Medicare and Medicaid Services Quality Measure SEP-1: The Early Management Bundle for Severe Sepsis/Septic Shock. *Emerg Med Clin North Am.* 2017;35:219-231.

17. Rhee C, Chiotos K, Cosgrove SE, Heil EL, Kadri SS, Kalil AC, et al. Infectious Diseases Society of America Position Paper: Recommended Revisions to the National Severe Sepsis and Septic Shock Early Management Bundle (SEP-1) Sepsis Quality Measure. *Clin Infect Dis.* 2020;72:ciaa059.

18. Gallagher EJ. Clinical utility of likelihood ratios. *Ann Emerg Med* 1998;31:391-397.

19. Parikh R, Parikh S, Arun E, Thomas R. Likelihood ratios: clinical application in day-to-day practice. *Indian J Ophthalmol* 2009;57:217-221.

20. Lopansri BK, Miller RR III, Burke JP, Levy M, Opal S, Rothman RE, et al. Physician agreement on the diagnosis of sepsis in the intensive care unit: estimation of concordance and analysis of underlying factors in a multicenter cohort. *J Intensive Care.* 2019;7:13.

Balk R et al. Validation of SeptiCyte RAPID for sepsis vs. SIRS

21. Rhodes A, Evans LE, Alhazzani W, Levy MM, Antonelli M, Ferrer R, et al. Surviving Sepsis Campaign: International Guidelines for Management of Sepsis and Septic Shock: 2016. *Crit Care Med*. 2017;45:486-552.

22. Swenson KE, Winslow DL. Impact of Sepsis Mandates on Sepsis Care: Unintended Consequences. *J Infect Dis* 2020;222:S166–S173.

23. Evans L, Rhodes A, Alhazzani W, Antonelli M, Coopersmith CM, French C, et al. Surviving Sepsis Campaign: International Guidelines for Management of Sepsis and Septic Shock 2021. *Crit Care Med*. 2021;49:e1063-e1143.

24. Zimmerman JJ, Sullivan E, Yager TD, Cheng C, Permut L, Cermelli S, et al. Diagnostic Accuracy of a Host Gene Expression Signature That Discriminates Clinical Severe Sepsis Syndrome and Infection-Negative Systemic Inflammation Among Critically Ill Children. *Crit Care Med* 2017;45:e418–e425.

25. Reyes M, Filbin MR, Bhattacharyya RP, Billman K, Eisenhaure T, Hung DT, et al. An immune-cell signature of bacterial sepsis. *Nat Med* 2020;26:333–340.

26. Deis, A. S., Whiles, B. B., Brown, A. R., Satterwhite, C. L. & Simpson, S. Q. Three-Hour Bundle Compliance and Outcomes in Patients With Undiagnosed Severe Sepsis. *Chest* 2018;153:39–45.

27. Leisman DE, Doerfler ME, Ward MF, Masick KD, Wie BJ, Gribben JL, et al. Survival Benefit and Cost Savings From Compliance With a Simplified 3-Hour Sepsis Bundle in a Series of Prospective, Multisite, Observational Cohorts. *Crit Care Med*. 2017;45:395-406.

Balk R et al. Validation of SeptiCyte RAPID for sepsis vs. SIRS

FIGURE LEGENDS

Figure 1. Correlation plot for SeptiCyte LAB vs. SeptiCyte RAPID. The scores for SeptiCyte RAPID (2 gene assay, x-axis scale 0-15) and SeptiCyte LAB (4 gene assay, x-axis scale 0-10) were measured for 356 patients from retrospective clinical trials performed in the USA [VENUS study] and Europe [MARS study]. A least-squares linear fit to the data points ($y = -0.48 + 0.82x$) had Pearson's sample correlation coefficient $r = 0.88$.

Figure 2. Diagnostic performance of SeptiCyte RAPID. ROC curve analyses for SeptiCyte RAPID were performed using three different RPD methods (consensus, forced and unanimous), for either the full cohort (retrospective and prospective patients) or the prospective cohort. DeLong's test was used to determine if differences between curves were statistically significant. **(A)** Full cohort ROC curves for forced (black), consensus (blue) and unanimous (red) RPD, with AUC = 0.82, 0.85 and 0.85 respectively. **(B)** Prospective cohort ROC curves for forced (black), consensus (blue) and unanimous (red) RPD, with AUC = 0.86, 0.90 and 0.95 respectively.

Figure 3. Probability of sepsis as a function of SeptiScore. **(A)** Sliding window calculation of P(sepsis) across the 0-15 SeptiScore range. A sliding window 4-score-units wide, shifted in 1-unit increments, was defined. The number of sepsis and SIRS in the window was counted and P(sepsis) calculated as $N_{\text{sepsis}} / (N_{\text{sepsis}} + N_{\text{SIRS}})$. Key: black curve, forced RPD; blue curve, consensus RPD; red curve, unanimous RPD. At bottom: green points, SIRS; red points, sepsis (by forced RPD). **(B)** Division of SeptiScore range into four sepsis probability bands.

Balk R et al. Validation of SeptiCyte RAPID for sepsis vs. SIRS

Figure 4. Comparison of sepsis probabilities per band for SeptiCyte RAPID vs. SeptiCyte LAB.

The ratio to the right of each whisker (x:y) indicates the number of patients called as sepsis (x) or SIRS (y) in the associated SeptiScore band. The number above each whisker describes the percentage of sepsis calls in each band. Assignment of sepsis or SIRS was by consensus RPD.

Figure 5. Comparison of lactate, procalcitonin and SeptiScore, without or with additional

clinical variables, for discrimination of sepsis vs. SIRS. Area under curve (AUC) distributions

are shown for all 32,767 possible logistic combinations of the following variables: age, race

(African-American or not), sex, MAP max, T min, T max, HR min, HR max, WBC min, WBC

max, glucose max, lactate, procalcitonin, SeptiScore, num.SIRS. (Abbreviations: MAP, mean

arterial pressure; T, core body temperature; HR, heart rate; WBC, white blood cell count;

num.SIRS, number of SIRS criteria met.) Performance was assessed against consensus RPD.

Key: grey vertical line, lactate alone; grey distribution, lactate combined with other clinical

variables except SeptiScore or PCT; blue vertical line, PCT alone; blue distribution, PCT

combined with other clinical variables except SeptiScore; red vertical line, SeptiScore alone; red

distribution, SeptiScore combined with other clinical variables.

Figure 6. Sepsis probability trajectories for selected patients by sequential likelihood ratio

analysis. Abbreviations: PCT, procalcitonin; Tmax, maximum body core temperature; WBC

min, minimum white blood cell count; RR max, maximum respiratory rate; Num.SIRS, number

of SIRS criteria met; MAP min, minimum value of mean arterial pressure. Details of the analysis

are provided in Online Data Supplement, Section 8.

Table 1. Demographic characteristics of study population. There were 41 (9.8%) indeterminates by consensus RPD, which are not shown in this table or included in the p-value calculations. A one-way ANOVA was used to calculate p-values across the Consensus RPD categories. An asterisk (*) in the right-most column highlights a pairwise comparison that attained statistical significance. NA: not available, because numbers were too low to perform calculation.

Parameter		SIRS (N=224) (Consensus)	Sepsis (N=154) (Consensus)	p-value
		N (%)	N (%)	
Age	Median (Interquartile range, IQR))	57 (42-69)	62 (49-71)	p = 0.016*
Sex	Female	98 (44%)	71 (46%)	p = 0.24
	Male	126 (56%)	83 (54%)	p = 0.22
Race / Ethnicity	Asian	10 (4.5%)	9 (5.8%)	p = 0.30
	Black (American or European of African descent)	65 (29%)	37 (24%)	p = 0.45
	Hispanic	11 (4.9%)	10 (6.5%)	p = 0.31
	Other	1 (0.4%)	1 (0.6%)	NA
	Unknown	2 (0.9%)	2 (1.3%)	NA
	White	135 (60%)	95 (62%)	p = 0.23
Study Site	Europe (1 site)	76 (34%)	50 (32%)	p = 0.22
	United States (9 sites)	148 (66%)	104 (68%)	p = 0.23
Source of Admission	Emergency department	138 (61.9%)	95 (61.7%)	p = 0.23
	ICU	7 (3.1%)	5 (3.2%)	p = 0.26
	Wards	13 (5.8%)	26 (16.9%)	p = 0.16
	Other	13 (5.8%)	8 (5.2%)	p = 0.45
	Post Anesthesia Unit or Post-Operating Room	34 (15%)	7 (4.5%)	p = 0.026*
	Coronary care facility	4 (1.8%)	1 (0.65%)	p = 0.68
	Intensive Care Unit, other hospital	14 (6.3%)	12 (7.8%)	p = 0.29

Table 2. Clinical characteristics of study population. Consensus RPD was used as the comparator. There were 41/419 (9.8%) indeterminates by consensus RPD, which are not shown in this table or included in the p-value calculations. For categorical variables, a chi-squared test was used to calculate p-values across the SIRS and sepsis categories, except when $N < 5$ for one or both categories in which case a binomial exact test was used instead. For continuous variables, Welch's two sample t-test was used to calculate p-values across the SIRS and sepsis categories.

Category	SIRS (n=224; 59.3%)	Sepsis (n=154; 40.7%)	p-value
	N (%) or Median (IQR)	N (%) or Median (IQR)	
Culture results			
Blood (+/- Other)	2 (5.0%)	38 (95.0%)	2.7×10^{-12}
Urine (+/- Other)	3 (12.5%)	21 (87.5%)	3.1×10^{-6}
Blood + Urine (+/- Other) (double positive)	1 (9.1%)	10 (90.9%)	9.0×10^{-4}
Sputum (+/- Other)	17 (60.7%)	11 (39.3%)	0.88
Other culture*	5 (23.8%)	16 (76.2%)	9.3×10^{-4}
Viral positives / coinfections (by PCR)	8 (25.0%)	24 (75.0%)	7.8×10^{-5}
No culture data recorded**	201 (79.1%)	53 (20.9%)	1.2×10^{-10}
Presumed initial site of infection			
Pulmonary (N=71)	8 (14.3%)	48 (85.7%)	7.0×10^{-12}
Abdominal (N=27)	1 (3.7%)	26 (96.3%)	4.1×10^{-9}
Blood (N=14)	0 (0%)	14 (100%)	6.3×10^{-6}
Urinary Tract (N=25)	2 (8.0%)	23 (92.0%)	1.8×10^{-7}
Central Nervous System (N=9)	4 (44.4%)	5 (55.6%)	0.50
Other (N=16)	2 (12.5%)	14 (87.5%)	1.2×10^{-4}
Multiple (N=5)	0 (0%)	5 (100%)	0.011
Not Identified at Initial Evaluation (N=226)	207 (91.6%)	19 (8.4%)	$< 1 \times 10^{-15}$
Clinical parameters (Median, IQR)			
Minimum Temperature	36 (35.5-36.4)	36.1 (35.2-36.7)	0.9
Maximum Temperature	37.2 (36.9-37.8)	37.8 (37.2-38.6)	< 0.001

Balk R et al. Validation of SeptiCyte RAPID for sepsis vs. SIRS

Category	SIRS (n=224; 59.3%)	Sepsis (n=154; 40.7%)	p-value
	N (%) or Median (IQR)	N (%) or Median (IQR)	
SOFA	6.0 (4.0-8.0)	7.0 (5.0-9.0)	0.004
Procalcitonin	0.28 (0.05-1.33)	5.19 (0.85-25.72)	$< 1 \times 10^{-5}$
WBC max (cells/uL x 10 ⁻³)	12.65 (8.3-17.20)	14.9 (9.94-21.15)	2×10^{-4}
Lactate	2.05 (1.40-3.28)	2.40 (1.55-4.05)	0.5
Interventions (Median, IQR)			
Invasive mechanical ventilation	86 (62.3%)	52 (37.7%)	0.47
Antibiotic administration	134 (47.3%)	149 (52.6%)	4.3×10^{-5}
Vasopressor Use	59 (46.5%)	68 (53.5%)	0.0032
Outcomes (Median, IQR)			
Hospital length of stay	4 (3-7)	8 (4-15)	< 0.001
ICU length of stay	1.8 (1.2-3.3)	3.2 (1.7-7.0)	< 0.001
Death	19 (8.5%)	22 (14.3%)	0.095
SeptiCyte RAPID Score *** (Median, IQR)	5.3 (4.6-6.3)	7.9 (6.8-9.6)	$< 1 \times 10^{-5}$

* Other culture includes the following sample types: bronchial combicath, bronchoalveolar lavage (BAL), cerebrospinal fluid (CSF), pus, nares, stool, throat swab, drain fluid, body fluid, interstitial fluid, skin swab.

** including 7 positive blood cultures deemed to be false positives

*** Clinicians did not have access to SeptiCyte RAPID Scores during their clinical assessments of patients

Table 3. Interpretation of SeptiCyte RAPID scores. This table provides the performance metrics for SeptiScores falling within each band. The consensus RPD method was used as comparator, for which a total of 224 SIRS and 154 sepsis calls were made.

SeptiScore Band	Average Probability		Sepsis Likelihood Ratio	Percentage of Cohort
	SIRS	Sepsis		
Band 4 (7.4 – 15) High Risk of Sepsis	23 (19%)	96 (81%)	6.05	32%
Band 3 (6.2 – 7.3)	41 (58%)	30 (42%)	1.07	19%
Band 2 (5.0 – 6.1)	73 (79%)	19 (21%)	0.38	24%
Band 1 (0 – 4.9) Low Risk of Sepsis	87 (91%)	9 (9%)	0.15	25%

Table 4. Characteristics of all patients stratified by RPD, demographic and clinical parameters, and SeptiScore band. A chi-squared test or ANOVA was used, for categorical variables or continuous variables, respectively, to calculate p-values across or within the SeptiScore bands as appropriate. In the chi-squared analyses, $p(B_i, i=1 \dots 4)$ means the probability of the observed vs. expected distributions of patients across sub-categories (e.g. male, female; or Black, White, Other) within band B_i .

Category	Subcategory	SeptiScore 0-4.9 (Band B1) (N=104; 24.8%)	SeptiScore 5-6.1 (Band B2) (N=103; 24.6%)	SeptiScore 6.2-7.3 (Band B3) (N=82; 19.6%)	SeptiScore 7.4-15 (Band B4) (N=130; 31.0%)	Significance
RPD Process						
RPD: Consensus (sepsis+SIRS = 378)	Indeterminate (N=41; 9.8%)	8 (7.7%)	11 (10.7%)	11 (13.4%)	11 (8.5%)	$p(B_1, B_2, B_3, B_4) = 1.6 \times 10^{-9}, 4.7 \times 10^{-4}, 0.53, <1.0 \times 10^{-15}$
	Sepsis (N=154; 36.8%)	9 (8.6%)	19 (18.4%)	30 (36.6%)	96 (73.8%)	
	SIRS (N=224; 53.5%)	87 (83.6%)	73 (70.9%)	41 (50.0%)	23 (17.7%)	
RPD: Forced (sepsis+SIRS = 419)	Sepsis (N=176; 42.0%)	13 (12.5%)	23 (22.3%)	37 (45.1%)	103 (79.2%)	$p(B_1, B_2, B_3, B_4) = 1.1 \times 10^{-9}, 5.2 \times 10^{-5}, 0.57, <1.0 \times 10^{-15}$
	SIRS (N=243; 58.0%)	91 (87.5%)	80 (77.7%)	45 (54.9%)	27 (20.8%)	
RPD: Unanimous (sepsis+SIRS = 276)	Sepsis (N=119; 28.4%)	7 (6.7%)	12 (11.6%)	23 (28.0%)	77 (59.2%)	$p(B_1, B_2, B_3, B_4) = 6.3 \times 10^{-7}, 6.0 \times 10^{-4}, 0.97, 3.2 \times 10^{-15}$
	SIRS (N=157; 37.5%)	60 (57.7%)	51 (49.5%)	30 (36.6%)	16 (12.3%)	
	N/A (N=143; 34.1%)	37 (35.6%)	40 (38.8%)	29 (35.4%)	37 (28.5%)	
Demographics						
Age	Median, (Q1-Q3)	56.5 (42.8-68.2)	59 (44.5-69)	58 (41.2-74)	62 (48.2-70)	$p = 0.59$
Sex	female (N=187; 44.6%)	46 (44.2%)	41 (39.8%)	37 (45.1%)	63 (48.5%)	$p(B_1, B_2, B_3, B_4) = 0.93, 0.33, 0.92, 0.38$
	male (N=232; 55.4%)	58 (55.8%)	62 (60.2%)	45 (54.9%)	67 (51.5%)	
Race	Black (N=115; 27.4%)	25 (24.0%)	33 (32.0%)	21 (25.6%)	36 (27.7%)	$p(B_1, B_2, B_3, B_4) = 0.70, 0.22, 0.20, 0.92$
	White (N=254; 60.6%)	65 (62.5%)	63 (61.2%)	46 (56.1%)	80 (61.5%)	
	Other (N=50; 11.9%)	14 (13.5%)	7 (6.8%)	15 (18.3%)	14 (10.8%)	
Culture Results*						
Blood (+/- secondary)	Number (%) positive (out of 41)	1 (2.4%)	6 (14.6%)	8 (19.5%)	26 (63.4%)	$p = 7.0 \times 10^{-5}$

Balk R et al. Validation of SeptiCyte RAPID for sepsis vs. SIRS

Category	Subcategory	SeptiScore 0-4.9 (Band B1) (N=104; 24.8%)	SeptiScore 5-6.1 (Band B2) (N=103; 24.6%)	SeptiScore 6.2-7.3 (Band B3) (N=82; 19.6%)	SeptiScore 7.4-15 (Band B4) (N=130; 31.0%)	Significance
Urine (+/- secondary)	Number (%) positive (out of 25)	5 (20.0%)	4 (16.0%)	3 (12.0%)	13 (52.0%)	p = 0.15
Blood + Urine (+/- tertiary)	Number (%) double positive (out of 11)	0 (0.0%)	2 (18.2%)	1 (9.1%)	8 (72.7%)	p = 0.018
Sputum (+/- secondary)	Number (%) positive (out of 31)	7 (22.6%)	1 (3.2%)	9 (29.0%)	14 (45.2%)	p = 0.026
Other culture**	Number (%) positive (out of 24)	4 (16.7%)	3 (12.5%)	7 (29.2%)	10 (41.7%)	p = 0.26
No culture data recorded ***	Number (%) without data (out of 287)	87 (30.3%)	85 (29.6%)	56 (19.5%)	59 (20.6%)	p = 8.7 x 10 ⁻⁴
Presumed Initial Site of Infection*						
Pulmonary	Number (%) out of 71	6 (8.5%)	11 (15.5%)	16 (22.5%)	38 (53.5%)	p = 6.6 x 10 ⁻⁵
Abdominal	Number (%) out of 33	2 (6.1%)	6 (18.2%)	6 (18.2%)	19 (57.6%)	p = 0.005
Blood	Number (%) out of 15	1 (6.7%)	1 (6.7%)	3 (20.0%)	10 (66.7%)	p = 0.016
Urinary Tract	Number (%) out of 26	3 (11.5%)	5 (19.2%)	2 (7.7%)	16 (61.5%)	p = 0.0073
Central Nervous System	Number (%) out of 11	2 (18.2%)	2 (18.2%)	3 (27.3%)	4 (36.4%)	p = 0.85
Other	Number (%) out of 17	1 (5.9%)	1 (5.9%)	7 (41.2%)	8 (47.1%)	p = 0.014
Multiple	Number (%) out of 5	0 (0.0%)	2 (40.0%)	0 (0.0%)	3 (60.0%)	p = 0.24
Not Identified at Initial Evaluation	Number (%) out of 241	89 (36.9%)	75 (31.1%)	45 (18.7%)	32 (13.3%)	p = 2.5 x 10 ⁻⁹
Clinical Parameters						
Temperature (Min)	Median, (Q1-Q3)	36.0 (35.2-36.4)	36.2 (35.6-36.6)	36.2 (35.5-36.7)	36.0 (35.4-36.7)	p = 0.2
Temperature (Max)	Median, (Q1-Q3)	37.2 (37.0-37.8)	37.3 (36.8-37.9)	37.4 (36.9-38.2)	37.8 (37.2-38.4)	p < 0.001
Lactate	Median, (Q1-Q3)	1.9 (1.3-3.3)	2.1 (1.6-3.3)	2.2 (1.5-3.3)	2.6 (1.6-4.1)	p = 0.69
WBC.Max	Median, (Q1-Q3)	13.5 (8.5-17.2)	12.2 (8.4-17.4)	13.9 (10.2-17.9)	14.6 (9.0-21.1)	p = 0.017
Procalcitonin	Median, (Q1, Q3)	0.3 (0.05-0.9)	0.3 (0.05-1.1)	0.6 (0.16-2.6)	5.6 (1.7-25.8)	p < 1 x 10 ⁻⁵
SeptiScore	Median, (Q1-Q3)	4.4 (3.8-4.7)	5.6 (5.3-5.8)	6.8 (6.5-7.0)	8.7 (8.0-10.1)	p < 1 x 10 ⁻⁵

Balk R et al. Validation of SeptiCyte RAPID for sepsis vs. SIRS

* If small sample size (<5) in one or more categories, implying an increased uncertainty in the quantitative value of p, then calculation of p was performed by Monte Carlo simulation-based method [see <https://www.statskingdom.com/310GoodnessChi.html> for applet and R code].

** “Other culture” includes the following sample types: bronchial combicath, bronchoalveolar lavage (BAL), cerebrospinal fluid (CSF), pus, nares, stool, throat swab, drain fluid, body fluid, interstitial fluid, skin

*** including 7 blood culture false positives

Table 5. Sequential Likelihood Ratio calculations for six example patients. The pre-test probability of sepsis is computed as the fraction of all patients called septic under forced RPD (176/419 = 0.42). The post-test probability of sepsis was computed either after incorporation of the SeptiCyte RAPID data, or after incorporation of the logistic regression formula which uses the data from SeptiCyte RAPID, PCT, Temp max, WBC min, Respiratory Rate max, Mean Arterial Pressure min, and # (SIRS characteristics). Additional details are given in Online Data Supplement, Section 7.

Patient	Forced RPD	SeptiScore	SeptiCyte RAPID Band	pre-test probability of sepsis	post-SeptiCyte RAPID probability of sepsis	post-logistic regression probability of sepsis
A	sepsis	10	4	0.42	0.947	0.98
B	sepsis	8.7	4	0.42	0.838	0.98
C	sepsis	7.5	4	0.42	0.641	0.901
D	SIRS	5.2	2	0.42	0.249	0.176
E	SIRS	4.6	1	0.42	0.186	0.127
F	SIRS	3.4	1	0.42	0.106	0.083

FIGURE 1

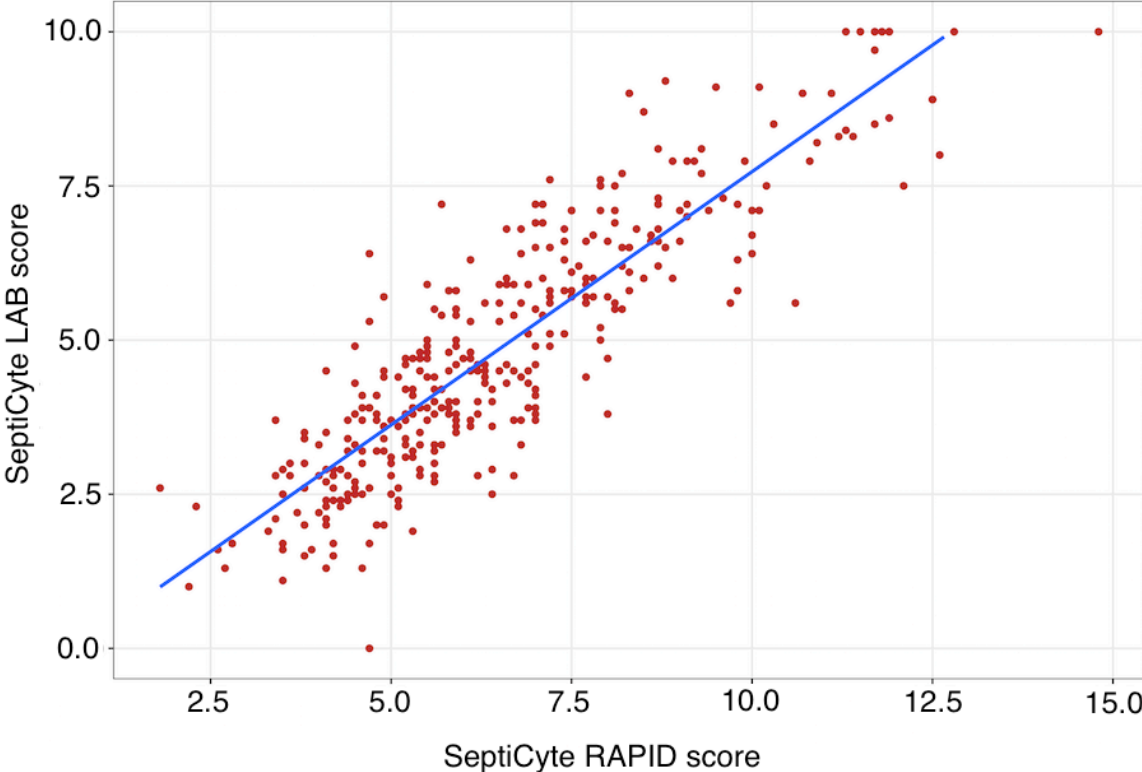


FIGURE 2

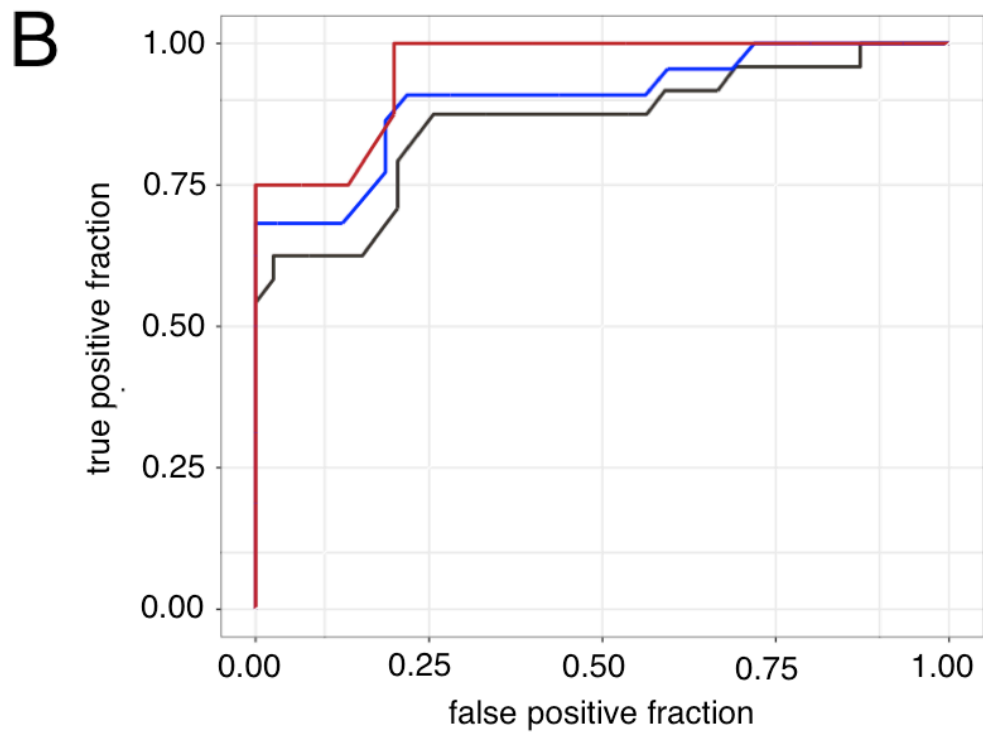
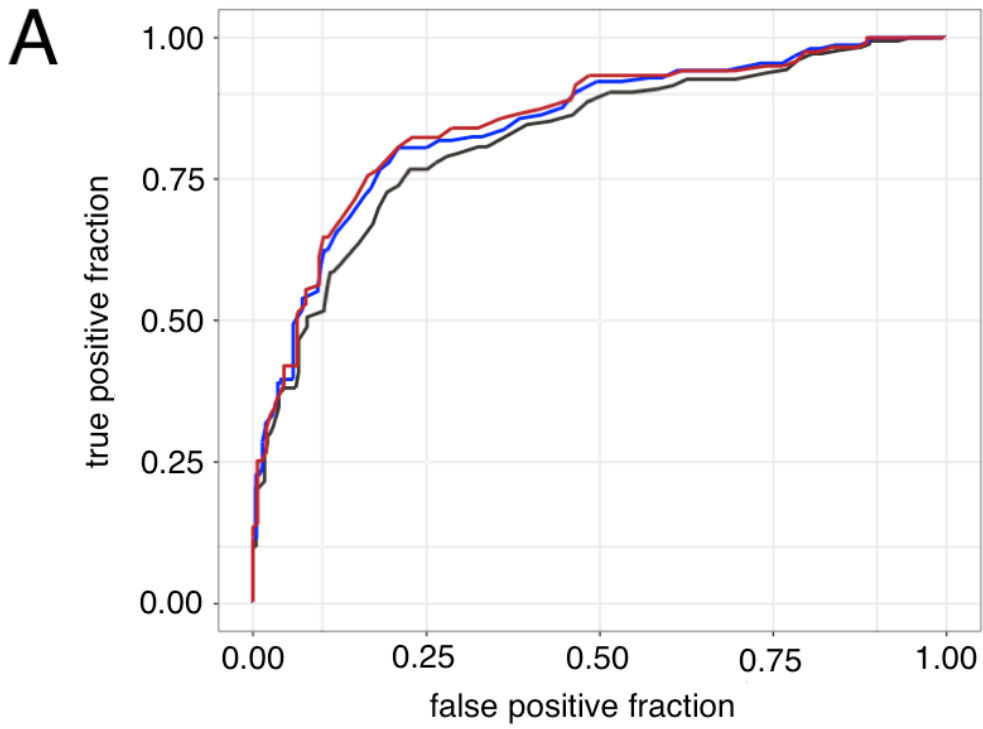


FIGURE 3

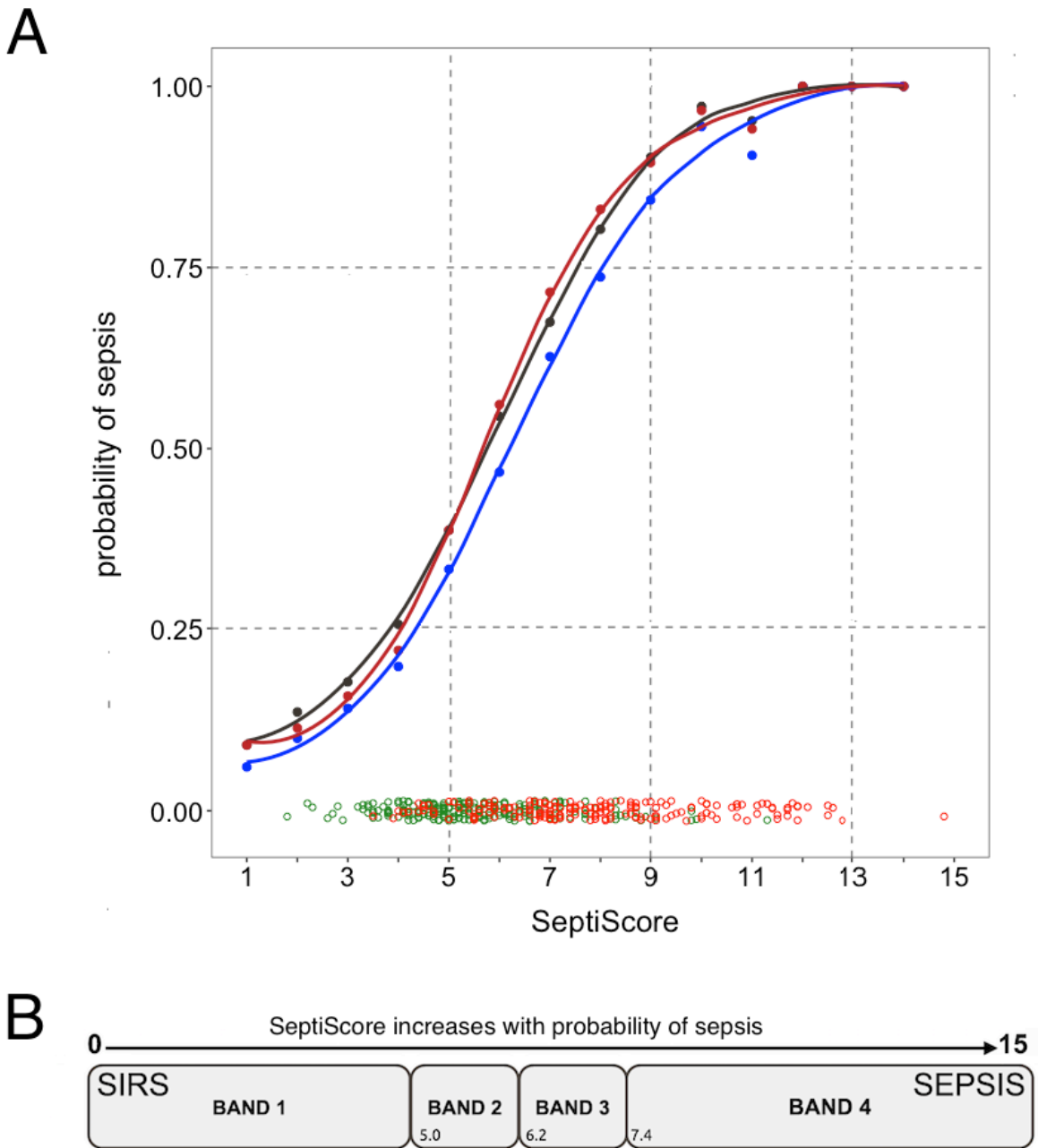


FIGURE 4

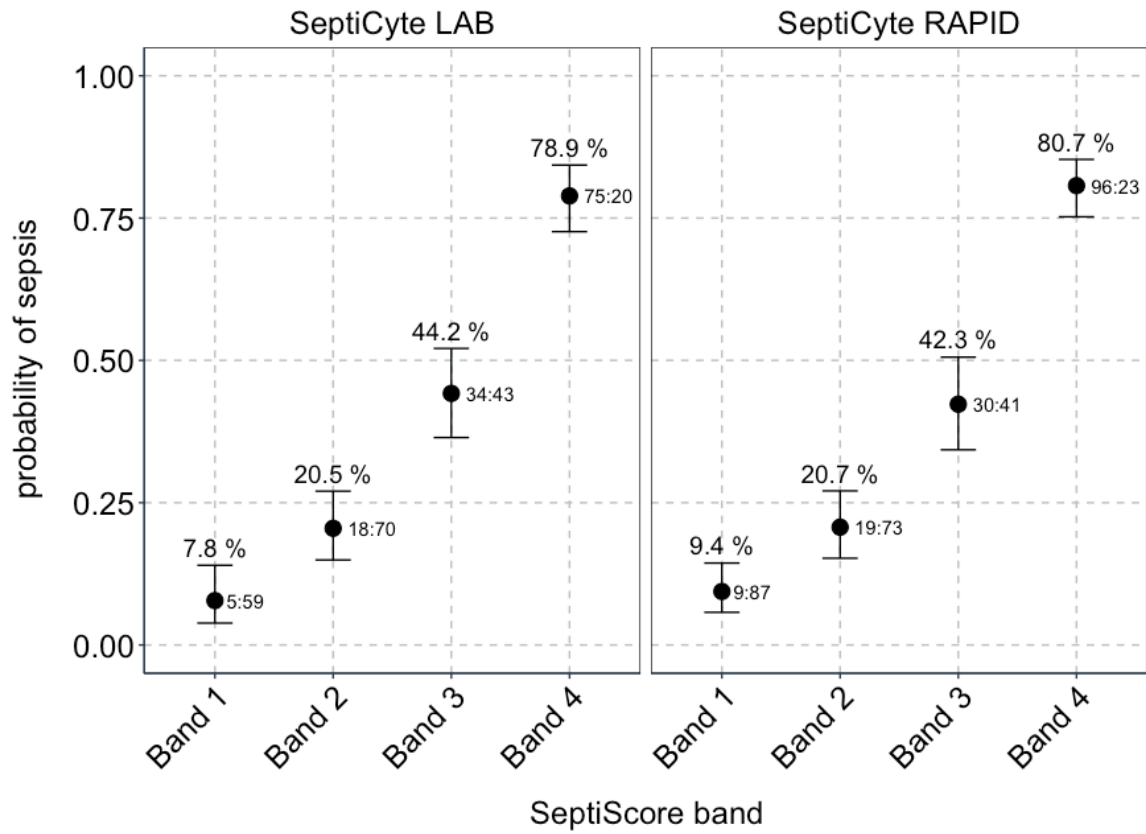


FIGURE 5

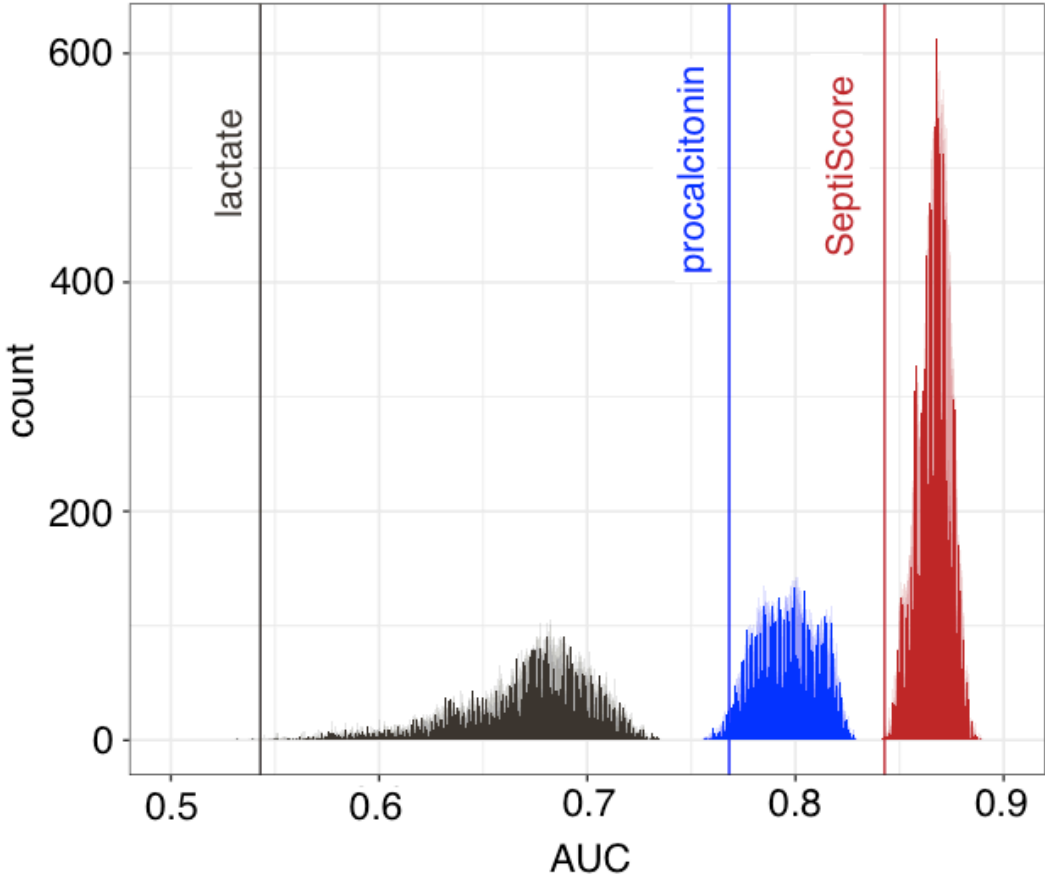


FIGURE 6

