

1 **Long Title: Development and piloting of a primary school-based salt reduction**  
2 **programme: formative work and a process evaluation in rural and urban Malawi**

3

4 **Short Title: Development and piloting of a school-based salt reduction programme in**  
5 **Malawi**

6

7 **Authors:** Nozgechi Phiri<sup>1\*</sup>, Yvonne Cunningham<sup>2</sup>, Stefan Witek-Mcmanus<sup>1,3</sup>, McDonald  
8 Chabwera<sup>1</sup>, Shekinah Munthali<sup>1</sup>, Jones Masiye<sup>4</sup>, Albert Saka<sup>5</sup>, Miryam Katundulu<sup>6</sup>, Caroline  
9 Chipingwa Mwale<sup>5</sup>, Dalitso Dembo Kang'ombe<sup>4</sup>, Joseph Kamangila<sup>7</sup>, Amelia C Crampin<sup>1,2,3</sup>,  
10 Frances S Mair<sup>2</sup>

11

## 12 **Affiliations**

- 13 1. Malawi Epidemiology and Intervention Research Unit, Lilongwe. Malawi
- 14 2. University of Glasgow. Glasgow. Scotland.
- 15 3. Department of Population Health, Faculty of Epidemiology & Public Health, London  
16 School of Hygiene and Tropical Medicine. London. United Kingdom
- 17 4. Ministry of Health, Lilongwe. Malawi.
- 18 5. Ministry of Education, Lilongwe. Malawi.
- 19 6. Malawi Institute of Education, Domasi. Zomba.
- 20 7. Complete Health Foundation, Lilongwe. Malawi

21 \*Corresponding author

22 Email: [nozgechi.phiri@meiru.mw](mailto:nozgechi.phiri@meiru.mw) (NP)

**NOTE: This preprint reports new research that has not been certified by peer review and should not be used to guide clinical practice.**

23 **Keywords:** Qualitative research, trial development, process evaluation, focus groups, salt  
24 reduction, schools, Normalisation Process Theory

25 Word count = 5930, excluding title page, abstract, references, figures and tables.

26 **Abstract: 300 words**

## 27 **Abstract**

28 **Introduction:** Excess salt intake is a major modifiable risk factor for cardiovascular disease.  
29 Promoting salt reduction as part of routine school-health programming may be a pragmatic  
30 way to address this risk factor early in the life course but has not been tested in sub-Saharan  
31 Africa (SSA). Here we describe the formative work with stakeholders and process evaluation  
32 of pilot work to develop a school-based salt reduction programme for children aged 11-14 years,  
33 in preparation for a cluster-randomised trial in rural/urban Malawi.

34 **Materials and methods:** Collection of observational data and documentary evidence (meeting  
35 minutes/field notes) from the earliest key stakeholder engagement with Malawi Ministries of  
36 Health, Education, Local Government and Rural Development and Malawi Institute of  
37 Education, and non-governmental stakeholders; and a series of semi-structured interviews and  
38 focus groups (with head teachers (n=2); teachers (n=4); parents (n=30); and learners (n=40)).  
39 Data analysed thematically and conceptualised through a Normalization Process Theory lens.

40 **Results:** Formative work illustrated a range of administrative, technical, and practical issues  
41 faced during development of the programme; including allocation of stakeholder roles and  
42 responsibilities, harmonisation with pre-existing strategies and competing priorities, resources  
43 required for programme development, and design of effective teaching materials. While  
44 participants were positive about the programme, the process evaluation identified features to  
45 be refined including perceived challenges to participation, recommended adaptations to the

46 content and delivery of lessons, and concerns related to quantity/quality of learning resources  
47 provided.

48 **Conclusion:** This study demonstrates the importance of comprehensive, sustained, and  
49 participatory stakeholder engagement in the development of a novel school health programme  
50 in SSA; and highlights the factors that were critical to successfully achieving this. We also  
51 demonstrate the value of detailed process evaluation in informing development of the  
52 programme to ensure that it was feasible and relevant to the context prior to evaluation through  
53 a cluster-randomised trial.

## 54 **Introduction**

55 Non-communicable diseases (NCDs) are a growing public health concern in Low and Middle  
56 Income Countries (LMICs) especially in sub-Saharan Africa (SSA).[1, 2] Hypertension is the  
57 leading and most important risk factor for cardiovascular diseases (CVDs), which are a major  
58 cause of death.[3] There is therefore a growing need for population-based interventions.

59 An important modifiable risk factor for hypertension is sodium intake,[4] which is  
60 predominantly related to the level of salt in diets.[5] The World Health Organization (WHO)  
61 has set recommended maximum daily intakes; more than 2g per day of sodium intake  
62 (equivalent to 5g of salt) risks development of hypertension.[6-8] Globally, estimated mean  
63 sodium consumption is 3.95g, equivalent to 9.88g of salt per day.[9] Although previously the  
64 highest sodium intake was seen in high income countries,[9] similar trends are now evident in  
65 SSA. While specific statistics about salt intake in children in SSA are largely unavailable,[10]  
66 higher sodium intake in urban rather than rural areas of SSA has been reported [11] among  
67 both adults and children.[7, 12, 13] There is emerging evidence that dietary salt reduction can  
68 reduce blood pressure.[5, 7] A meta-analysis of 10 trials in participants aged 8-16 years showed  
69 that a 4-week modest salt intake reduced mean blood pressure by 1.2/1.3mmHg.[6, 14, 15]

70 The WHO's global action plan for the prevention and control of NCDs 2013-2020 stipulates a  
71 relative 30% reduction in salt intake as one of the 'best buys' of the nine global NCD targets.[16]  
72 Malawi has a high discretionary salt intake and therefore individual or household salt reduction  
73 has the potential to be a highly cost-effective strategy for reducing hypertension and  
74 cardiovascular diseases.[2] This evidence provides the rationale for the proposed trial of a salt  
75 reduction intervention in schools in Malawi.

76 The 'No to Sodium' (No to Na) trial aims to evaluate a 12-week salt reduction programme  
77 embedded in the science and technology curriculum of primary school children (aged 11-14)  
78 through a cluster-randomized trial in rural (Karonga district) and urban (Lilongwe district)  
79 Malawi. This trial builds on a previous trial evaluating the effectiveness of schools in reducing  
80 the salt intake of children and their parents.[6, 15] In this article we describe formative work  
81 done through a process of stakeholder engagement, lessons learnt from a pilot of the  
82 programme and how these influenced the design of the final programme to be evaluated in the  
83 main trial. We used Normalization Process Theory (NPT) as our underpinning theoretical  
84 framework. NPT has been used extensively for designing and evaluating complex health  
85 interventions[17] and has been shown to help trialists 'describe, assess and enhance  
86 implementation potential'.[17, 18] Our aims were:

- 87 1. To describe the formative work of stakeholder engagement undertaken to develop and  
88 refine a salt reduction programme in Malawian primary schools.
- 89 2. To describe qualitative findings relating to perceptions of the programme, including  
90 identified challenges and facilitators likely to influence success of implementation of  
91 the programme during the trial.

## 92 **Materials and methods**

### 93 **Design**

94 We describe the qualitative data collection methods employed to address our research aims  
95 which involved formative work (Phase 1); and a process evaluation of the programme pilot  
96 (Phase 2).

### 97 **Planned trial**

98 This study was conducted in preparation for evaluation of the programme through a cluster  
99 randomized intervention trial in 11–14-year-old school attenders and their families in rural and  
100 urban Malawi. The trial involves 26 schools, with thirteen delivering the 12-week programme  
101 (consisting of lessons and competitions for children and other activities with parents) on salt  
102 reduction to children and their family members as part of the routine curriculum, and thirteen  
103 control schools following the routine curriculum only. Full details of the trial are described  
104 elsewhere. (<https://doi.org/10.1186/ISRCTN13909759>)

### 105 **Ethics statement**

106 Ethical approval was received from the National Committee on Research in the Social Sciences  
107 and Humanities in Malawi (P.11/18/333) and the College of Medical, Veterinary and Life  
108 Sciences Ethics Committee at the University of Glasgow. Verbal and written information about  
109 the study were provided, in participants' mother tongue prior to obtaining written informed  
110 consent. All Focus Group Discussions (FGDs) with adolescents only took place after obtaining  
111 written signed consent from parents and written signed assent from adolescents. This study is  
112 registered at ISRCTN (#13909759).

## 113 **Data collection**

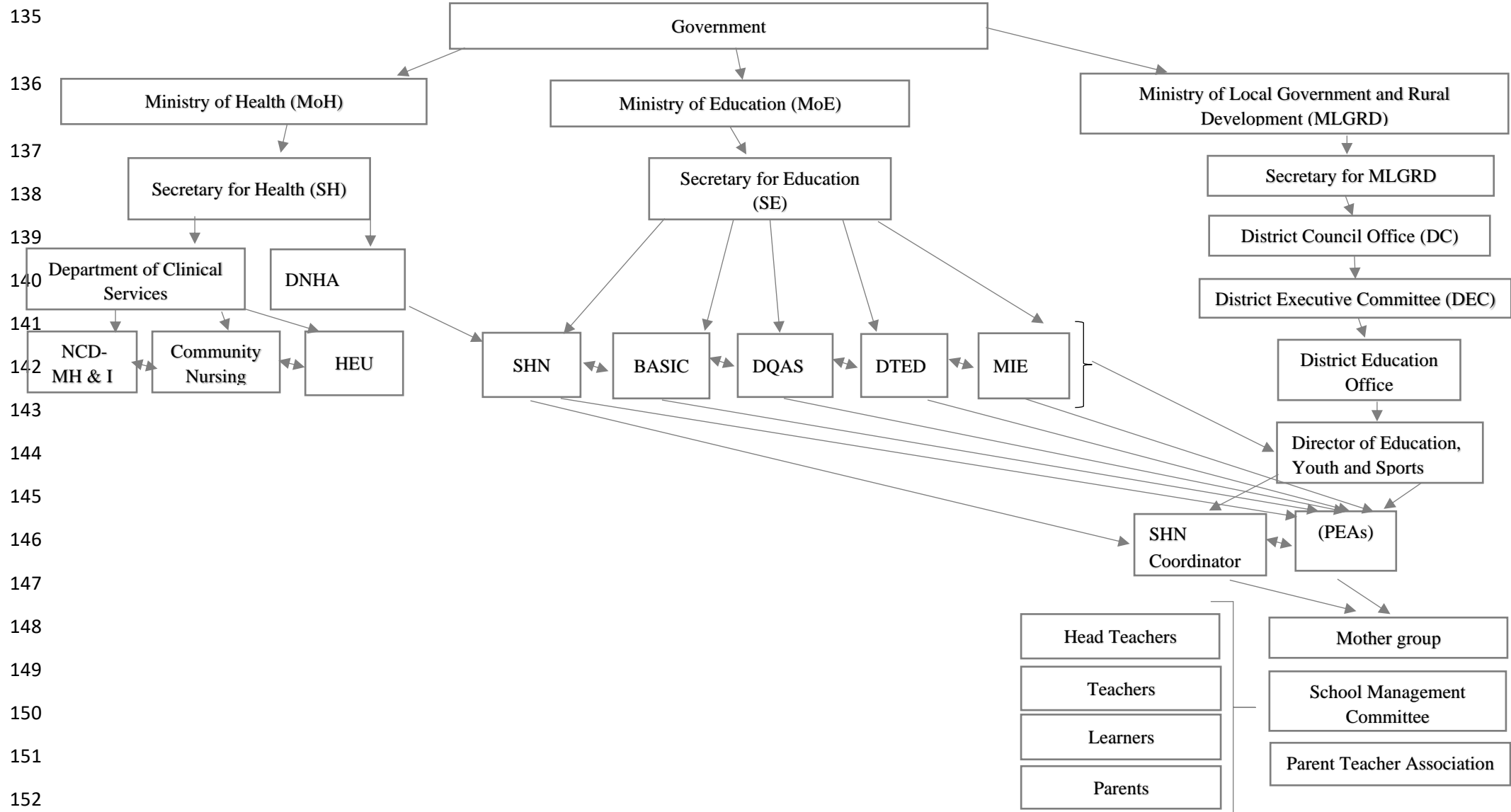
### 114 **Phase 1 Formative work (preliminary engagement activities undertaken to** 115 **develop and refine a school-based salt reduction programme)**

116 The formative work included engaging with local stakeholders in key ministries: Ministries of  
117 Health (MoH), Education (MoE), Local Government and Rural Development (MLGRD) and  
118 the Malawi Institute of Education (MIE), and non-governmental stakeholders (from public and  
119 private sector including the business community) and adolescents and their guardians, to assess  
120 the feasibility and acceptability of the programme before implementation of the trial (Figure  
121 1).

122

123 The School Health and Nutrition (SHN) Programme, a joint programme between MoH and  
124 MoE, had been engaged at grant proposal stage (through individual meetings and e-mails) and  
125 had negotiated support letters for the application from MoH and MoE. On award of the funding,  
126 further meetings took place with the ministries to generate an action plan for stakeholder  
127 engagement. The process of stakeholder engagement continued with a series of small meetings  
128 between the study leads and key people in the MoH and MoE (Fig 1). These meetings involved  
129 small groups (less than 5) and were held in their offices. The study team helped stakeholders  
130 understand the proposed trial by making comprehensive power point presentations at the  
131 beginning of each meeting. The meetings explored views on the planned trial and provided the  
132 opportunity to ask questions, enabling the stakeholders to get a clear understanding of the trial  
133 and its objectives.

134



153 **Fig 1. A pictorial chart of key stakeholders**

154 Data was collected through minutes of meetings and field notes, from the very earliest stages  
155 of engagement which documented the extensive preliminary work undertaken (Table 1) from  
156 when the outline proposal was developed through to when funding was received, and materials  
157 were developed. This initial evaluation work explored how key stakeholders viewed the  
158 proposed programme, and factors influencing these perspectives and responses.

159

160

161

162

163

164

165



166 **Table 1. Showing stakeholder engagement meetings**

<b>TIMELINE</b>	<b>ACTIVITY</b>
	<b>FIRST APPLICATION</b>
8 <sup>th</sup> December 2015	PI meeting with MoH Non- Communicable Diseases, mental health, and Injury (NCD- MH & I) department lead regarding application
12 <sup>th</sup> December 2015	PI introduced proposed study to SHN leads through NCD-MH & I department lead at MoH (co-applicant)
December 2015- January 2016	Calls and informal meetings with MoH and SNH leads on study
20 <sup>th</sup> January 2016	Letter of Support MoH, Letter of Support MoE through SHN
21 <sup>st</sup> January 2016	Outline proposal submission
	<b>Outline proposal rejected</b>
	<b>SECOND APPLICATION</b>
May-June 2017	Calls and informal meetings MoH and SHN leads
15 <sup>th</sup> June 2017	New outline proposal submitted with original MOH- MOE letters of support and addition of new head of NCD-MH & I Department at MoH
	<b>Outline proposal approved</b>
Aug-Sep 2017	Calls and informal meetings MoH and SHN leads
12 <sup>th</sup> Sept 2017	Revised Letter of Support from MoH and MoE through SHN
20 <sup>th</sup> Sept 2017	Full Grant application Submission
1 <sup>st</sup> November 2017	<b>Full proposal approved</b>
	<b>ACTIVITY ON GRANT</b>
11 <sup>th</sup> June 2018	Approval Letter
8 <sup>th</sup> November 2018	MoH-MoE Stakeholder meeting- Discussed name of trial, need to decide focal ministry, iodine reduction, other stakeholders to include
7 <sup>th</sup> December 2018	MoE Stakeholder meeting at MoE offices- to rope in relevant departments and affiliates-
8 <sup>th</sup> Feb 2019	MoH, MoE Stakeholder meeting- included other stakeholders (university, NGOs and business entities)
April 2019	<ol style="list-style-type: none"> <li>1) Department of Nutrition and HIV/AIDS (DNHA), NCD- MH &amp; I and SHN (MoH)- discussion on lead department-</li> <li>2) District Commission (Lilongwe and Karonga)- Gave approval to approach District Executive Committee (DEC), District Education Office and other relevant stakeholders (Primary Education Advisors-PEAs, SHN coordinator)</li> <li>3) Directorate of Quality Assurance and Standards (DQAS)- Discussed the possibility of adding lessons as part of the curriculum.</li> </ol>
April- May 2019	Translation of curriculum and drawing of illustrations
02 <sup>nd</sup> May 2019	Presentation to Karonga District Management Team and vote of approval
3 <sup>rd</sup> May 2019	Presentation to Lilongwe City council and vote of approval

06-08 <sup>th</sup> May 2019	Curriculum development workshop (DNHA, SHN, NCD-MH & I, DQAS, MIE, BASIC)
May 2019	Editing and formatting of curriculum to match Malawi primary school curriculum by MIE and approved through DQAS.
May- June 2019	Meetings with head teachers, Parent teacher associations (PTAs) and School Management committees (SMC)
June 2019	Teacher's training
June-July 2019	Pilot trial
09-11 <sup>th</sup> September 2019	Curriculum refinement workshop (DNHA, SHN, NCD- MH &I, DQAS, MIE, BASIC)

167

168 This preliminary work included developing and adapting the salt reduction programme using  
169 the content of the School-EduSalt Trial conducted in Changzhi, northern China[6] as a starting  
170 point, to suit the needs of Malawian adolescents and fit with the existing primary science and  
171 technology education curriculum in which health education is integrated. This work included  
172 adapting content, illustrations, and food examples to suit the Malawian context. Prior to  
173 adaptation the materials were translated to English, and the elements being shared with the  
174 learners families, were translated after adaptation into the local languages (Chichewa/  
175 Chitumbuka). Learning materials were edited and formatted to be consistent with other science  
176 topics during a stakeholder workshop with two MoH departments (Department of Nutrition  
177 and HIV/AIDS- DNHA & Non- Communicable Diseases, mental health and Injury NCD- MH  
178 & I), four MoE departments (School Health Nutrition- SHN, Directorate of Quality Assurance  
179 and Standards- DQAS, Basic Education (BASIC) Department and Department of Teacher  
180 Education and Development-DTED) and one Ministry of Education affiliate organization  
181 (MIE), (Fig 1).

182

## 183 **Phase 2: Process evaluation of a programme pilot, including identification of** 184 **barriers and facilitators to successful implementation**

185 The pilot programme took place in two primary schools in urban Lilongwe and rural Karonga.  
186 Standard 6 teachers received three days of training that introduced the programme, the  
187 intervention, and associated resources (e.g., parent letters, posters) and activities (e.g., parent  
188 forum, quiz and artistic performances). All learners in “Standard 6” (sixth year of universal  
189 free primary education in Malawi) received the programme for 12 weeks. The programme  
190 included weekly lessons that covered salt and health, harmful effects of salt and guidance on  
191 salt reduction strategies. Four lesson summary letters (in local language) were sent home with  
192 learners for parents to read. Three of the letters asked the parents to respond to several simple

193 questions from the summary as an assessment of their understanding of salt intake and  
194 hypertension, further engaging parents and indicating the number of actively participating  
195 parents. Learners also participated in after-school activities either on their own in artistic  
196 competitions (poems, drama, song performances) or with a parent during family quizzes.  
197 Parents participated in a quiz and forum discussing their experience with the programme.  
198 Teachers purposefully selected and invited learners to Focus Group Discussions (FGDs).  
199 Children took home letters with an information sheet detailing the trial information and consent  
200 forms (in the local language) for parents and guardians, which they returned after being signed.  
201 We conducted four FGDs comprising ten learners each who had participated in the pilot (Table  
202 2).

203 **Table 2. Summary of phase 2 data collection methods and participant**  
204 **characteristics**

Participant type	Data collection method	Number of interviews/ FGDs	Number of participants
Head teachers	Semi-structured interviews	2	2
Teachers	Group interviews	2	4
Parents	FGD	3 (one FGD males/one females/one mixed gender)	30
Learners	FGD	4 (two with boys, two with girls)	40

205  
206 A convenience sample of parents and guardians were invited to participate in FGDs via a letter  
207 and information sheet taken home by learners. Teachers were also invited to participate in  
208 FGDs which lasted 40-60 minutes. Semi-structured interviews were held with head teachers  
209 from each school.

210 A semi-structured interview guide was used to gain perspectives on the learners' views of the  
211 programme, including what they liked or disliked and their suggestions for improvement. For  
212 parents, we explored their experiences with the programme, the learning from their children  
213 and their interactions with teachers and the research team through parent meetings. We  
214 conducted seven non-participatory observations of three lessons delivered to learners.  
215 Interviews and FGDs were audio recorded and transcribed verbatim with the transcripts serving  
216 as data for analysis.

## 217 **Data analysis**

218 Phase 1 and 2 data (minutes, field notes, transcripts, and observations) were coded in NVivo  
219 12 using a thematic approach to analysis as outlined by Braun and Clarke.[19] Transcripts were  
220 initially coded by three separate researchers to develop a codebook. These researchers  
221 discussed any disagreements in the coding through virtual meetings fortnightly to ensure  
222 consistency of coding. Once the coding frame was established, all data was double coded. Field  
223 notes, minutes and transcripts were analysed using a thematic approach to identify participants'  
224 main concerns on the salt reduction education and their perspectives on the curriculum,  
225 delivery mechanisms, family and community involvement as well as policy implications. The  
226 identified themes were then mapped onto the four main constructs of the NPT theoretical  
227 framework; coherence (sense-making), cognitive participation (engagement work), collective  
228 action (operationalization work), and reflexive monitoring (appraisal)[18] to help  
229 conceptualize the data. Themes that fell outside the framework were noted but not excluded  
230 from analysis. In this way, we avoid "shoe-horning" of the data and help identify issues that  
231 might still be important but not fit with our theoretical model. Finally, a descriptive summary  
232 was written to capture the information (with exemplar quotes) in each broad theme. The notes  
233 from the formative work were summarized to form a description of the processes to inform  
234 implementation of the programme during the trial.

## 235 **Results**

### 236 **Phase 1: Formative work**

237 Issues addressed and resolved during stakeholder meetings are as outlined below.

#### 238 **1. Leadership and departmental involvement**

239 A key question was which Ministry would be considered the focal or secretariat Ministry for  
240 the trial. As a health-related trial embedded in schools, clarification was required whether it  
241 should be under Ministry of Health or Ministry of Education (Fig 1) and positively, both  
242 Ministries were keen to assume leadership. Nutrition related initiatives in Malawi are often  
243 spearheaded by the Department of Nutrition and HIV/AIDS (under the Ministry of Health).  
244 However, this trial was deemed unique because it involved delivery of the intervention as part  
245 of the science curriculum, hence the Ministry of Education felt the trial should be overseen by  
246 their Ministry. Even within the Ministry of Health, there was uncertainty whether the trial  
247 should be overseen by the department of Non-Communicable Diseases and Mental Health &  
248 Injuries (NCD-MH & I) or the Department of Nutrition and HIV/AIDS (DNHA). After internal  
249 discussions the Ministry of Health assumed the lead through the DNHA. Department of School  
250 Health and Nutrition (SHN) was mandated by DNHA to oversee trial implementation because  
251 of its links to both the Ministry of Health and Ministry of Education (Table 1 and Fig 1). School  
252 Health and Nutrition with NCD- MH & I worked with the study team during implementation  
253 of the study while DNHA was to be engaged at a minimum capacity, with a later role of  
254 translating results into nutrition policy. Despite reaching agreement there were residual  
255 concerns from other relevant government departments and SHN was instrumental in achieving  
256 final consensus and encouraging full participation.

257 Further smaller meetings provided an opportunity for the School Health and Nutrition  
258 Department to identify other key departments within the Ministry of Health and Education to

259 be included in the next phase of meetings e.g. Department of Quality Assurance and Standards  
260 (DQAS) responsible for supervision and inspection of teaching and learning resources in  
261 schools, Basic Education (BASIC) responsible for teacher’s welfare, Health Education Unit  
262 (HEU) responsible for promoting health education and Malawi Institute of Education (MIE)  
263 an affiliate of the Ministry of Education mandated to design, develop, monitor and evaluate  
264 primary school and teachers curriculum.

## 265 **2. Impact on iodine fortification programme**

266 There was a concern from the DNHA representatives, that the intervention might affect iodine  
267 intake, as salt in Malawi is fortified with iodine as a public health measure to prevent goitre.  
268 Presentations by the study team were made using Malawi data from the Public Health Institute  
269 demonstrating that children and adults have a consistent excess iodine intake in all districts of  
270 Malawi and highlighting the tension between salt advertising capitalizing on the iodization  
271 programme (e.g., “Salt is good for your health”) and picturing high levels of salt application to  
272 food.

273 Another concern was the study title: ‘No to Na’ that might suggest total cessation of salt intake  
274 and lead to inadequate iodine intake undermining the extensive work that had previously been  
275 undertaken to improve iodine intake over the years. The NCD- MH & I department highlighted  
276 that health care workers are already advocating for reduction of salt as management or  
277 treatment strategy for hypertension and other NCDs. It was agreed to use an alternative title  
278 during the trial, and in interactions at district and community level. The study title was “Healthy  
279 Diets Study” to reduce risk of disclosure of the intention of the behavioural intervention in the  
280 control schools while maintaining “No to Na” as the protocol title as submitted to Ethics  
281 Committee.

### 282 **3. Integration into science curriculum**

283 The Ministry of Education through the Department of Quality Assurance and Standards  
284 (DQAS) expressed concerns regarding the proposal to integrate the intervention into the  
285 science curriculum. The DQAS was concerned that with the school curriculum for the year  
286 already set, the only option was to offer it as standalone lessons. DQAS reviewed the proposed  
287 lessons with the support of the Malawi Institute of Education (MIE) and approved them to be  
288 piloted as standalone lessons, one lesson at the end of the day, during standard school hours,  
289 once every week.

290 After resolving these issues with key ministry stakeholders, a kick-off meeting was held at the  
291 beginning of 2019 with fifteen attendees (Table 1). The meeting was held to introduce and  
292 discuss the trial with a larger and diverse stakeholder group.

293 Subsequent meetings were held at the district level of government with the district executive  
294 committee (DEC) in Lilongwe (32 attendees) and Karonga (53 attendees), technical  
295 committees that advises and supports the District Councils (Table 1). As the engagement  
296 continued other smaller office meetings were held with people directly involved in supervising  
297 the schools e.g. the District Education Office, Primary Education Advisors (PEA) and School  
298 Health and Nutrition coordinators.

### 299 **4. Resources required**

300 Although extensive stakeholder engagement was crucial to ensure successful implementation  
301 of the trial overall, the trial team had not anticipated the number and size of meetings that would  
302 ultimately be required. Pre-application discussions had not identified the number of different  
303 Ministry departments that would need to be involved, nor the complexity of processes required  
304 to generate and authorise the materials to be used. This important formative work resulted in  
305 increased study costs to cover conference, subsistence, travel and accommodation costs and



306 delayed the start of piloting. Stakeholder engagement began in September 2018 and the pilot  
307 took place in June-July 2019.

## 308 **5. Development of teaching materials**

309 Before the pilot began, materials from the Edu-Salt programme[6, 15] were translated from  
310 Mandarin to English to generate a template. The materials were then significantly adapted to  
311 reflect the Malawian context, taking due note of the major difference between urban and rural  
312 diets and lifestyles. The study team originally proposed separate materials for urban and rural  
313 communities, but the Ministry of Education (MoE) was clear that if successful, in order to  
314 make the programme scalable only one set of materials should be used. The study team also  
315 proposed that all materials be in the local languages (Chichewa for urban Lilongwe, and  
316 Chitumbuka for rural Karonga). The MoE team were again clear that English was the official  
317 language of instruction for Science in Standard 6 and that lessons must be conducted in English  
318 with English materials. Concerns about this were addressed by the Education team who were  
319 clear that that the teachers may and do explain difficult words or extracts to learners in their  
320 local language to help them grasp the topic, then switch back to English. The exception that  
321 was negotiated was the materials to be shared with the parents (letters and flyer) which were  
322 to be prepared in the two relevant languages. A local illustrator was engaged to add illustrations  
323 to match the content in the curriculum (Fig 2).

324 The materials and programme were discussed in detail at a programme development workshop  
325 that included the key Ministry departments and affiliates as well as teachers and head teachers  
326 (21 attendees). Following this workshop, the programme was further modified and tailored to  
327 fit the Malawian curriculum format.

# Eating More Salt is Unhealthy Eat Less Salt to Live Longer

**Instead of salt use lemons, pepper and herbs such as ginger, garlic, bizale, curry and others to make your food taste better.**

**Eat less preserved foods made from the factory or at home.**

**Keep trying to reduce salt.**

**Do not add extra salt to already cooked foods. Enjoy eating food that has already been salted during cooking.**

**Use small amounts of salt when cooking. Always use a pinch not a palm. You will eat less salt but soon it will taste the same.**

**Make sure to eat more foods cooked from home than from restaurants or chiyaya and do not add extra salt**

**There are many ways to reduce salt consumption. Find ways that work for you now!!**

**MEIRU**  
Malawi Epidemiology and Intervention Research Unit

**Tinned fish**  
**Pickles**  
**Kapenta**  
**Zipiyo**

**Pepper**  
**Curry**  
**Ginger**  
**Garlic**  
**Lemons**  
**Onions**

**ZIDYEWWE RESTAURANT**

**SALT**

**SALT**

328

329 Fig 2. Flyer for parents showing strategies for reducing salt

## 330 **Phase 2: process evaluation of the programme pilot**

331 The findings from the pilot of the programme are presented under five key themes: 1) Sense-  
332 making: teacher, parent and learner views of a school-based intervention for reducing salt  
333 (coherence); 2) Relationship work: engaging learners and through them parents in the salt  
334 reduction programme (cognitive participation); 3) Enacting work: teachers, parents and  
335 learners doing the work of participating in the programme (collective action); 4) Perceived  
336 facilitators to the programme (reflexive monitoring); 5) Perceived challenges to the programme  
337 (reflexive monitoring). These themes are described, and illustrative quotations provided.

### 338 **1. Sense-making: teacher, parent, and learner views of a school-based** 339 **programme for reducing salt intake (coherence).**

340 Learners and parents were positive about the programme and were able to identify possible  
341 adverse effects of a high-salt diet. Participants also recognised their households' high salt  
342 intakes and spoke about how they were able to reduce this and become accustomed to the taste  
343 of less salty food. The learners' FGDs demonstrated learning relating to each of the programme  
344 units including the harmful effects of excessive salt, though some had difficulties  
345 understanding the recommended daily salt intake and how best to measure and reduce their salt  
346 intake. Some parents also spoke of similar challenges as highlighted below:

347 *The way I understood from the several meetings I have been. This is the second one. I*  
348 *heard that the whole household is supposed to eat less than 5 grams per day. So, you*  
349 *will correct me if am wrong right here [Interviewer 2: we need to correct each other]*  
350 *we should eat less than 5 grams of salt [Interviewer 1: Per person?] no per family.*  
351 *[Parent]*

352 Others spoke of putting their learning into practice; and some interviewees linked this new  
353 learning to their existing knowledge, for example about people in their family affected by  
354 relevant conditions such as high blood pressure as shown below:

355 *“I: So why did you decide to tell your parents?”*

356 *P: To protect their life as my mother already has ulcers and my father has Blood*  
357 *Pressure, so we were taught that even our parents should not eat too much salt.”*

358 *[Learners]*

## 359 **2. Relationship work: engaging learners and through them parents in the** 360 **salt reduction programme (cognitive participation)**

361 Learners told their extended families and neighbours about what they had learnt about salt  
362 reduction. This communication was supported by the letters from schools to parents.

363 *When the child got home, he said “I have come with this letter from KPS [Karonga*  
364 *Prevention study now known as Malawi Epidemiology and Intervention Research Unit-*  
365 *MEIRU] who were teaching us at school” then I asked him, what did they teach you?*  
366 *He said, they gave us a letter and told us to give to our father, so here is the letter. I got*  
367 *the letter as an individual and started reading. When I finished the letter, I invited my*  
368 *family and at home I have a mother, my sister, two wives and children, then I started*  
369 *explaining. [Parents]*

370 Parents were invited to a parent forum and then a quiz. At the parent forum, parents discussed  
371 the work their children did in class and at the quiz, two groups of parents competed with one  
372 another, answering questions about salt reduction. Teachers thought engaging parents  
373 consolidated the information that learners delivered at home and meant parents could work  
374 through challenges to reducing salt intake. Parents valued these meetings as it allowed them to

375 learn from other parents and these meetings motivated parents and learners to participate in the  
376 intervention as illustrated below.

377 *“When we took part in the quiz, we were encouraged that we are not alone in this study*  
378 *seeing our fellow parents participating and even the children were encouraged seeing*  
379 *parents there, thank you very much.” [Parent]*

380 Some parents said they agreed to participate because of previous experiences with the research  
381 group, MEIRU which has shown them that their work is honest and aims to help people.

382 The parents who attended FGDs were generally very positive about the parent meetings,  
383 however only half the parents who were invited attended. Some parents explained that the non-  
384 attenders could not come as they worked or went to church on Sundays, but others maintained  
385 that they were negligent. Most parents said that providing incentives, such as drinks or snacks,  
386 would encourage more parents to attend meetings. Teachers also valued incentives as this quote  
387 shows.

388 *And we felt when you were coming to our schools to do that exercise with learners,*  
389 *after classes we thought the learners will be given a little something whether Mahewu*  
390 *[maize drink] just to keep them up to the knocking time. [Head teacher]*

391 Parents’ suggestions for improving participation included: a) providing incentives/gifts to  
392 encourage parent attendance; b) sending meeting invitations well in advance to give parents  
393 time to prepare; c) sharing meeting minutes with absentee parents through their children so that  
394 they could see what they missed; d) engaging with the community through the village chiefs,  
395 where the intervention could be explained to everyone.

396        **3. Enacting work: teachers, parents and learners doing the work of**  
397                    **participating in the programme (collective action)**

398    Learners, parents, and teachers described the practical steps they took to reduce salt.  
399    Participants explained how they reduced their salt intake, some telling stories of, for example,  
400    planting garlic to provide an alternative flavouring or buying a spoon for measuring the salt.  
401    Others said they had stopped putting salt on the table or hid it from others in their house to  
402    ensure that they did not add extra salt to food.

403                    *“I have already explained about challenges which I face. My other family members*  
404                    *complain whenever I add little salt and they add extra salt. So, I take that salt and hide*  
405                    *it somewhere so that they should think that we have run out of salt.” [Parent]*

406    This behaviour change met challenges. Parents had difficulties in reducing salt intake as some  
407    family members (or visitors) resisted, as they found it difficult to become accustomed to the  
408    new taste as this parent explains.

409                    *“...the challenge which I faced was we were separating relish because my husband was*  
410                    *refusing to take low salt. He was saying he can’t manage to follow this advice because*  
411                    *he is accustomed to taking more salt and he can’t start taking little salt. He also said,*  
412                    *this is unhealthy because a person can’t eat relish which he/she feels does not taste*  
413                    *good.” [Parent]*

414    Learners also reported some resistance to reducing salt intake from relatives. Some learners  
415    talked about resistance from their parents who did not want to listen to their children and who  
416    did not want to reduce their salt intake. This learner explains:

417                    *“...when I am telling them they say, “it’s just a topic which you are just learning at*  
418                    *school so that your future should be bright” so it’s what they say.” [Learner]*

419 Some parents agreed that in the beginning it was difficult for them to listen to what their  
420 children were saying (though they did eventually take up the intervention).

#### 421 **4. Perceived facilitators to the programme (reflexive monitoring)**

422 There was positive feedback from learners, parents, and teachers about the programme and  
423 they reported the positive impact that the programme had in their lives. Some felt that their  
424 reduced salt intake had significantly improved their health, as this learner explains:

425 *“I was one of the people who liked to add salt to foods that was already salted whether*  
426 *enough or a lot, I just had to add so I can taste saltiness. But after I have learnt I know*  
427 *that it’s good not to add salt to food that is already salted. It has helped my life.”*  
428 *[Learner]*

429 Teachers felt the programme was beneficial to the nation as the information gained by learners  
430 would spread to parents, neighbours, and the community. A teacher explains:

431 *“...the project was a good one in a sense that we have learnt a lot from it. One, how to*  
432 *control our diet, how to control our sugar levels, how to control our salt levels and how*  
433 *we can manage ourselves. And most of all, learners have learnt a lot from it, in a sense*  
434 *that they have benefited something from it... So, we feel the project has a great impact*  
435 *to the nation because once a learner is taught, he will still be imparting that knowledge*  
436 *to the community, to the family members and to their friends as well. [Teacher]*

437 According to the parents’ FGDs, potential improvements to their lives, and crucially to their  
438 children’s lives, was the greatest motivation for engaging with the programme. Parents spoke  
439 of how their children were the future, and that the children liked to see their parents  
440 participating in meetings at the school.

441 Parents and teachers had suggestions about future expansion of the programme. They wanted  
442 the programme to be incorporated into the syllabus and expanded to the whole of Malawi but  
443 also to include other classes, as it was a programme which could benefit many learners and  
444 families.

445 *“I just want to say you should continue with the program because a lot of people don’t*  
446 *know about salt, so reach out even in villages reach out to them, some don’t know that*  
447 *too much salt intake is harmful, even here in town, some people don’t know about salt.”*  
448 *[Parent]*

449 **5. Appraisal work: perceived challenges to the intervention (reflexive**  
450 **monitoring)**

451 While teachers felt the programme was valuable, they noted some challenges, for example,  
452 the terminology used in the learning materials was unfamiliar to learners and made lessons  
453 difficult. Teachers and learners also mentioned language as a challenge as the learners had  
454 just transitioned from using Chichewa as a language of instruction to English in Standard 5.

455 *“...of course, in class we have active learners, and we also have learners that learn at*  
456 *a slower pace, so we tried so that these slower pace learners should understand because*  
457 *our aim was the learners must teach the parents in the community and we could even*  
458 *try to translate the content from English to their local language for them to understand*  
459 *and take the message to their parent. [Teacher]*

460 Some of the challenges that teachers faced were a lack of time to complete the programme  
461 (some lessons had to be held outside normal school hours) and a lack of teaching materials (or  
462 unsuitable materials).

463 *“...the only problem we had was on time; the time was really short, and I can say the*  
464 *content was over planned, but we tried our best to take time to teach and mainly the*



465 *last period we used it to extend the period with 30 minutes for us to finish the lesson.”*

466 *[Teacher]*

467 Individual schools and teachers also needed to supply some materials, such as ingredients to  
468 cook porridge (for a class experiment), this was difficult as the programme started midway  
469 through the school year when budgets had already been allocated but the ministry of Education  
470 had made it clear that teaching aids are prepared by either the school or the teacher.

471 *“...the challenges that we met, mainly we had inadequate teaching and learning*  
472 *resources. Like we had to have packets of different types of salt. We are talking of*  
473 *kitchen salt, table salt which we can distribute in groups so that every group should*  
474 *have a look at the packet of salt which is not open. So, to get those, it was really a*  
475 *problem. [Teacher]*

## 476 **Discussion**

477 This paper presents: 1) a description of extensive formative work undertaken with stakeholders  
478 to develop and refine a school-based salt reduction programme in preparation for a cluster  
479 randomised trial; and 2) the findings of the process evaluation undertaken during a pilot of the  
480 programme.

481 Stakeholder engagement preceding trial implementation in a LMIC is rarely reported and based  
482 on the findings presented here it is clear that it is time consuming and requires substantial  
483 investment. However, this effort was essential to obtain the support of key stakeholders, avoid  
484 misconceptions and allay any concerns, as well as to clarify which stakeholders would be  
485 responsible for implementation of the programme. This work reaped benefits as outlined in  
486 Table 3 and facilitated approvals for trial activities and minimised potential delays.

487

488 **Table 3– Summary of key achievements and implications of the formative work**

<b>Key achievements for formative work</b>	<b>Impact</b>
<p>Agreed on leadership and key contacts for government departments and their roles in the deployment of the salt reduction programme in schools.</p>	<p>1) Provided a sense of ownership and helped achieve “buy in” of key stakeholders.</p> <p>2) Improved flow of information, minimised approval delays and resolved conflicts.</p>
<p>Addressed concerns about the trial with key government ministries and departments (Fig 1) and reached a shared understanding of the aims and methods of the trial.</p>	<p>Removed barriers to deployment of the intervention (for example, by alleviating concerns that the intervention might reduce iodine consumption or stop salt consumption completely and undermine previous public health messaging.)</p>
<p>Enabled identification and inclusion of relevant and diverse group of stakeholders.</p>	<p>The diversity of input optimised development and refinement of the intervention materials.</p>

489

490 The process evaluation of the programme pilot then identified aspects of the programme that  
 491 needed to be refined or altered, for example, in relation to timing/duration of the lessons,  
 492 content of the lessons and teaching resources, to improve the likelihood of successful  
 493 implementation of the programme (see Table 4). Delivery of the programme was facilitated

494 by the ease with which it could be implemented with minimal disruption to an already packed  
495 curriculum.

496 **Table 4 – Summary of challenges identified in the programme pilot and implications for**  
497 **the trial.**

<b>Challenge</b>	<b>Key changes</b>
Lessons took longer than the allotted time – requiring teachers to work overtime and children to stay later at school	Some lessons were split into two separate lessons to enable the teaching to be incorporated within the school day.
Holding children longer outside school hours	Lesson was shifted from end of the day to mid-morning
Content of lessons above learner proficiency	Content was further simplified, and a glossary was provided with meanings
Language was a barrier to learners fully understanding the intervention as children at this point in their education were reasonably new to science lessons taught in English	Teachers had the flexibility to explain difficult concepts in the local language
Resources too limited to accommodate all the learners.	Produced extra posters and each learner was given a book of the curriculum.

498

499

500 The process evaluation of the programme pilot showed that parents, children, and teachers were  
501 generally positive about the programme. Students had the opportunity to contribute to the  
502 learning process by sharing their views on the topics.

503 Previous research has suggested that prevention programmes are most effective if the approach  
504 is multilevel, involving the learner, school and family.[20] Similarly, a report published by  
505 WHO,[21] concluded that the most effective school interventions are multicomponent and  
506 should include a curriculum taught by trained teachers, supportive school policies, a physical  
507 activity programme and healthy food served by the school canteen services (which rarely exist  
508 in the local setting). In this salt reduction programme participation in parent forums or quizzes  
509 was suboptimal and participants believed this was due to lack of incentives (e.g. snacks,  
510 money), which although they could have been provided in a trial setting would have made the  
511 intervention unsustainable. However, parents enjoyed parent forums as it showed them that  
512 they were not alone in their experiences with the programme and they believed their  
513 participation encouraged their children to comply with the programme.

514 Over the past two decades, school-based health programmes have become a key component of  
515 public health strategies in LMICs. For example, they have been used in the Middle East, Europe,  
516 Asia, Africa, and South America to promote adolescent mental health,[22] and in Zambia,  
517 South Africa, Tanzania and Belize to promote AIDS awareness and sexual and reproductive  
518 health.[23]

519 School-based health programmes focusing on diet and nutrition have included standards placed  
520 on the composition of school meals and limits to food choices available in school canteens as  
521 well as changes to school curricula to improve nutrition education.[21] School-based nutrition  
522 and diet interventions have been widely used with a recent umbrella review identifying thirteen  
523 separate systematic reviews describing eighty-two studies undertaken in the United States,  
524 Mexico, Canada, Europe, Asia, South America, the Middle East and Australia.[24]

525 A review of childhood obesity prevention interventions in Africa,[25] included 17 articles  
526 describing 14 interventions in three countries (South Africa, Tunisia and Uganda). This review

527 identified barriers to implementing school-based interventions as largely resource-related,  
528 including lack of time from teachers and stakeholders, buy-in, training or motivation. Some  
529 interventions in China[26-28] (which were not focused on salt) involved parents and Wang et  
530 al.'s[29] study of a school-based initiative to reduce obesity noted that interactive and  
531 innovative intervention components facilitated the intervention.

532 Apart from No to Na, the only other interventions focused solely on salt reduction were the  
533 Edu-salt programme in China,[6] on which the No to Na intervention is based and the COMBI-  
534 ELS intervention in Vietnam.[30] The COMBI-ELS intervention involved several components  
535 including targeted primary school interventions, mass media communications, training for  
536 cooks, and community programmes. It was not possible to ascertain which elements of the  
537 programme were most effective in changing behaviour nor was it possible to assess the  
538 contribution of the work in schools to the programme's success.

539 A recent systematic review[31] examining the effectiveness of school-based nutrition  
540 interventions in sub-Saharan Africa found 14 studies based in South Africa, Botswana, Burkina  
541 Faso, Kenya, Nigeria, and Tanzania, but none focused on salt reduction, instead they focused  
542 on improving diets to reduce obesity and increasing physical activity. These studies showed  
543 that there was an improvement in nutrition knowledge following the interventions, but this did  
544 not necessarily translate into healthy nutrition behaviour. Just one school based intervention in  
545 South America (Trinidad and Tobago) included salt-reduction in its focus (in this case reducing  
546 the consumption of snack foods high in fat, sugar and salt) as part of a wider programme.[32]

### 547 **Strengths and limitations**

548 A key strength of this study is that it describes the formative work undertaken to develop the  
549 programme and gives an account of the extensive engagement work required. The authors have  
550 not found any other reports of such work, though it is essential to inform future research and

551 policy. Rigorous thematic analysis was conducted, drawing on both inductive (i.e., data-driven)  
552 and deductive (i.e., based on pre-conceived ideas) approaches, until data saturation was reached,  
553 and our analysis was underpinned by a robust theoretical framework, Normalization Process  
554 Theory. Double coding of all pilot process evaluation interviews and coding clinics enhanced  
555 reliability. However, the work was undertaken in Malawi and the findings cannot necessarily  
556 be generalised to other LMICs. We did not interview those who did not engage with the  
557 programme and so respondents may provide a more positive view of the intervention than their  
558 peers who did not engage.

## 559 **Conclusions**

560 This study enhances our understanding of how a range of health, nutrition and education  
561 stakeholders view, experience, and value a school-based programme for salt reduction, and of  
562 the factors that may influence implementation and impact of the programme in a LMIC. Our  
563 work has highlighted the importance of extensive, preliminary engagement with a wide range  
564 of stakeholders to achieve “buy in” and active cooperation but has also demonstrated that future  
565 studies of this kind need to allocate substantial time and funds to this task. Our process  
566 evaluation identified five key challenges that led to refinements to how the programme was  
567 delivered. Our parallel process evaluation of the programme as planned to be implemented  
568 during the trial will help us understand whether these refinements helped and what further  
569 changes, if any, would be required to facilitate scale up beyond the trial or implementation in  
570 similar settings. Work such as this, which generates insights about the feasibility, acceptability,  
571 usability, and up-scalability of school-based programmes, is crucial for practice and policy  
572 decision-making on the future provision of novel health programmes in school settings.

## 573 **Acknowledgements**

574 We would like to thank all the participants who participated in the intervention and in the focus  
575 group discussions or interviews. We owe the head teachers, teachers, learners, and their  
576 guardians from the two primary schools our gratitude for their time, patience, and contributions.  
577 We also acknowledge and thank all key stakeholders who participated and contributed to the  
578 formative work. We would like to thank Hazel Namadingo and Cecilia Nyirenda for all their  
579 work and effort in this study. Gratitude should also go to James Kazembe for the tremendous  
580 work in the illustrations used in the intervention materials.

## 581 **Disclosure statement**

582 No conflict of interest

## 583 **Funding**

584 This work was supported by the Medical Research Council, DfID/NIHR United Kingdom  
585 through the Adolescent Health in low-income countries scheme [MR/R022186/1]

## 586 **References**

- 587 1. Prof Rafael Lozano MN. Global and regional mortality from 235 causes of death for 20 age  
588 groups in 1990 and 2010: a systematic analysis for the Global Burden of Disease Study 2010. *The*  
589 *lancet*. 2012;380(9859):2095-128. doi: [https://doi.org/10.1016/S0140-6736\(12\)61728-0](https://doi.org/10.1016/S0140-6736(12)61728-0).
- 590 2. Price AJ, Crampin AC, Amberbir A, Kayuni-Chihana N, Musicha C, Tafatatha T, et al.  
591 Prevalence of obesity, hypertension, and diabetes, and cascade of care in sub-Saharan Africa: a  
592 cross-sectional, population-based study in rural and urban Malawi. *The lancet Diabetes &*  
593 *endocrinology*. 2018;6(3):208-22. Epub 2018/01/27. doi: 10.1016/s2213-8587(17)30432-1. PubMed  
594 PMID: 29371076; PubMed Central PMCID: PMC5835666.
- 595 3. Organization WH. Noncommunicable diseases progress monitor. Switzerland: World Health  
596 Organization, diseases DfpoN; 2017.
- 597 4. Niinikoski H, Jula A, Viikari J, Rönnemaa T, Heino P, Lagström H, et al. Blood pressure is lower  
598 in children and adolescents with a low-saturated-fat diet since infancy: the special turku coronary  
599 risk factor intervention project. *Hypertension (Dallas, Tex : 1979)*. 2009;53(6):918-24. Epub  
600 2009/04/15. doi: 10.1161/hypertensionaha.109.130146. PubMed PMID: 19364991.
- 601 5. Muthuri SK, Oti SO, Lilford RJ, Oyebode O. Salt Reduction Interventions in Sub-Saharan  
602 Africa: A Systematic Review. *PLoS one*. 2016;11(3):e0149680. Epub 2016/03/11. doi:

- 603 10.1371/journal.pone.0149680. PubMed PMID: 26963805; PubMed Central PMCID:  
604 PMCPMC4786148.
- 605 6. He FJ, Wu Y, Feng XX, Ma J, Ma Y, Wang H, et al. School based education programme to  
606 reduce salt intake in children and their families (School-EduSalt): cluster randomised controlled trial.  
607 BMJ (Clinical research ed). 2015;350:h770. Epub 2015/03/20. doi: 10.1136/bmj.h770. PubMed  
608 PMID: 25788018.
- 609 7. Ha SK. Dietary salt intake and hypertension. *Electrolyte & blood pressure : E & BP.*  
610 2014;12(1):7-18. Epub 2014/07/26. doi: 10.5049/ebp.2014.12.1.7. PubMed PMID: 25061468;  
611 PubMed Central PMCID: PMCPMC4105387.
- 612 8. Organization WH. Guideline: sodium for adults. Switzerland: World Health Organization,  
613 2012 2012. Report No.
- 614 9. Mozaffarian D, Fahimi S, Singh GM, Micha R, Khatibzadeh S, Engell RE, et al. Global sodium  
615 consumption and death from cardiovascular causes. *The New England journal of medicine.*  
616 2014;371(7):624-34. Epub 2014/08/15. doi: 10.1056/NEJMoa1304127. PubMed PMID: 25119608.
- 617 10. Noubiap JJ, Essouma M, Bigna JJ, Jingi AM, Aminde LN, Nansseu JR. Prevalence of elevated  
618 blood pressure in children and adolescents in Africa: a systematic review and meta-analysis. *The*  
619 *Lancet Public health.* 2017;2(8):e375-e86. Epub 2017/12/19. doi: 10.1016/s2468-2667(17)30123-8.  
620 PubMed PMID: 29253478.
- 621 11. Ataklte F, Erqou S, Kaptoge S, Taye B, Echouffo-Tcheugui JB, Kengne AP. Burden of  
622 undiagnosed hypertension in sub-saharan Africa: a systematic review and meta-analysis.  
623 *Hypertension (Dallas, Tex : 1979).* 2015;65(2):291-8. Epub 2014/11/12. doi:  
624 10.1161/hypertensionaha.114.04394. PubMed PMID: 25385758.
- 625 12. Simons-Morton DG, Obarzanek E. Diet and blood pressure in children and adolescents.  
626 *Pediatric nephrology (Berlin, Germany).* 1997;11(2):244-9. Epub 1997/04/01. doi:  
627 10.1007/s004670050271. PubMed PMID: 9090675.
- 628 13. Oyebo O, Oti S, Chen YF, Lilford RJ. Salt intakes in sub-Saharan Africa: a systematic review  
629 and meta-regression. *Population health metrics.* 2016;14:1. Epub 2016/01/14. doi: 10.1186/s12963-  
630 015-0068-7. PubMed PMID: 26759530; PubMed Central PMCID: PMCPMC4709973.
- 631 14. Bazzano LA, Green T, Harrison TN, Reynolds K. Dietary approaches to prevent hypertension.  
632 *Current hypertension reports.* 2013;15(6):694-702. Epub 2013/10/05. doi: 10.1007/s11906-013-  
633 0390-z. PubMed PMID: 24091874; PubMed Central PMCID: PMCPMC4366416.
- 634 15. He FJ, Wu Y, Ma J, Feng X, Wang H, Zhang J, et al. A school-based education programme to  
635 reduce salt intake in children and their families (School-EduSalt): protocol of a cluster randomised  
636 controlled trial. *BMJ open.* 2013;3(7). Epub 2013/07/19. doi: 10.1136/bmjopen-2013-003388.  
637 PubMed PMID: 23864214; PubMed Central PMCID: PMCPMC3717470.
- 638 16. Organization WH. Global action plan for the prevention and control of noncommunicable  
639 diseases: 2013-2020. 2013 2013.
- 640 17. May CR, Cummings A, Girling M, Bracher M, Mair FS, May CM, et al. Using Normalization  
641 Process Theory in feasibility studies and process evaluations of complex healthcare interventions: a  
642 systematic review. *Implementation science : IS.* 2018;13(1):80. Epub 2018/06/09. doi:  
643 10.1186/s13012-018-0758-1. PubMed PMID: 29879986; PubMed Central PMCID: PMCPMC5992634.
- 644 18. Murray E, Treweek S, Pope C, MacFarlane A, Ballini L, Dowrick C, et al. Normalisation process  
645 theory: a framework for developing, evaluating and implementing complex interventions. *BMC*  
646 *medicine.* 2010;8(1):63.
- 647 19. Braun V, Clarke V. What can "thematic analysis" offer health and wellbeing researchers?  
648 *International journal of qualitative studies on health and well-being.* 2014;9:26152. Epub  
649 2014/10/19. doi: 10.3402/qhw.v9.26152. PubMed PMID: 25326092; PubMed Central PMCID:  
650 PMCPMC4201665.
- 651 20. Bindler RC, Goetz S, Butkus SN, Power TG, Ullrich-French S, Steele M. The process of  
652 curriculum development and implementation for an adolescent health project in middle schools. *The*



- 653 Journal of school nursing : the official publication of the National Association of School Nurses.  
654 2012;28(1):13-23. Epub 2011/10/14. doi: 10.1177/1059840511424414. PubMed PMID: 21994321.
- 655 21. Organization WH. Creating an enabling environment for population-based salt reduction  
656 strategies: report of a joint technical meeting held by WHO and the Food Standards Agency, United  
657 Kingdom, July 2010. 2010.
- 658 22. Fazel M, Patel V, Thomas S, Tol W. Mental health interventions in schools in low-income and  
659 middle-income countries. *The Lancet Psychiatry*. 2014;1(5):388-98. doi: 10.1016/S2215-  
660 0366(14)70357-8.
- 661 23. Mason-Jones AJ, Sinclair D Fau - Mathews C, Mathews C Fau - Kagee A, Kagee A Fau -  
662 Hillman A, Hillman A Fau - Lombard C, Lombard C. School-based interventions for preventing HIV,  
663 sexually transmitted infections, and pregnancy in adolescents. *Cochrane Database Systematic  
664 Reviews*. 2016;(1469-493X (Electronic)).
- 665 24. O'Brien KA-O, Barnes C, Yoong SA-OX, Campbell E, Wyse R, Delaney TA-O, et al. School-  
666 Based Nutrition Interventions in Children Aged 6 to 18 Years: An Umbrella Review of Systematic  
667 Reviews. LID - 10.3390/nu13114113 [doi] LID - 4113. *Nutrients*. 2021;(2072-6643 (Electronic)).
- 668 25. Shieh ANBaJ. School-based physical activity and diet interventions can be effective for  
669 addressing obesity in children in LMICs: Evidence from systematic reviews 2020 [updated 2020-11-  
670 13T08:48:02+00:00]. Available from: [https://researchforevidence.fhi360.org/school-based-physical-  
671 activity-and-diet-interventions-can-be-effective-for-addressing-obesity-in-children-in-lmics-  
672 evidence-from-systematic-reviews](https://researchforevidence.fhi360.org/school-based-physical-activity-and-diet-interventions-can-be-effective-for-addressing-obesity-in-children-in-lmics-evidence-from-systematic-reviews).
- 673 26. Cao Z-J, Wang S-M, Chen Y. A randomized trial of multiple interventions for childhood  
674 obesity in China. *American journal of preventive medicine*. 2015;48(5):552-60.
- 675 27. Meng L, Xu H, Liu A, van Raaij J, Bemelmans W, Hu X, et al. The costs and cost-effectiveness  
676 of a school-based comprehensive intervention study on childhood obesity in China. *PloS one*.  
677 2013;8(10):e77971.
- 678 28. Zhou W-j, Xu X-l, Li G, Sharma M, Qie Y-L, Zhao Y. Effectiveness of a school-based nutrition  
679 and food safety education program among primary and junior high school students in Chongqing,  
680 China. *Global health promotion*. 2016;23(1):37-49.
- 681 29. Wang D, Stewart D, Chang C, Shi Y. Effect of a school-based nutrition education program on  
682 adolescents' nutrition-related knowledge, attitudes and behaviour in rural areas of China.  
683 *Environmental Health and Preventive Medicine*. 2015;20(4):271-8. doi: 10.1007/s12199-015-0456-4.
- 684 30. Do HTP, Santos JA, Trieu K, Petersen K, Le MB, Lai DT, et al. Effectiveness of a  
685 Communication for Behavioral Impact (COMBI) intervention to reduce salt intake in a Vietnamese  
686 Province based on estimations from spot urine samples. *The Journal of Clinical Hypertension*.  
687 2016;18(11):1135-42.
- 688 31. Kyere P, Veerman JL, Lee P, Stewart DE. Effectiveness of school-based nutrition interventions  
689 in sub-Saharan Africa: a systematic review. *Public Health Nutrition*. 2020;23(14):2626-36.
- 690 32. Francis M, Nichols SS, Dalrymple N. The effects of a school-based intervention programme  
691 on dietary intakes and physical activity among primary-school children in Trinidad and Tobago.  
692 *Public health nutrition*. 2010;13(5):738-47.

693