

## Arterial hypertension and A $\beta$ -amyloid accumulation have spatially overlapping effects on posterior white matter hyperintensity presence and volume

### Cross-sectional and longitudinal multicentre cohort study

Jose Bernal, PhD<sup>1,2,†</sup>, Stefanie Schreiber, PhD<sup>2,3,†</sup>, Anna Ostendorf<sup>4</sup>, Malte Pfister<sup>3</sup>, Jonas Geisendorfer<sup>3</sup>, Aditya Nemali, MSc<sup>1,2</sup>, Anne Maass, PhD<sup>2</sup>, Renat Yakupov, MSc<sup>2</sup>, Oliver Peters, MD<sup>4,5</sup>, Lukas Preis, MSc<sup>5</sup>, Luisa Schneider, MSc<sup>5</sup>, Ana Lucia Herrera, MSc<sup>5</sup>, Josef Priller, MD<sup>4,6,7,8</sup>, Eike Jakob Spruth, MD<sup>4,6</sup>, Slawek Altenstein, BSc<sup>4,6</sup>, Anja Schneider, MD<sup>9,10</sup>, Klaus Fliessbach, MD<sup>9,10</sup>, Jens Wiltfang, MD<sup>11,12,13</sup>, Björn H. Schott, PhD<sup>11,12</sup>, Ayda Rostamzadeh, MD<sup>14</sup>, Wenzel Glanz, MD<sup>1</sup>, Katharina Buerger, MD<sup>16,17</sup>, Daniel Janowitz, MD<sup>17</sup>, Michael Ewers, PhD<sup>16,17</sup>, Robert Perneczky, PhD<sup>18,19,20,21,33</sup>, Boris-Stephan Rauchmann, MD<sup>19</sup>, Stefan Teipel, MD<sup>22,23</sup>, Ingo Kilimann, MD<sup>22,23</sup>, Christoph Laske, MD<sup>24,25</sup>, Matthias H. Munk, PhD<sup>24,26</sup>, Annika Spotke, MD<sup>9,10</sup>, Nina Roy, MD<sup>9</sup>, Laura Dobisch, MSc<sup>2</sup>, Peter Dechent, PhD<sup>27</sup>, Klaus Scheffler, PhD<sup>28</sup>, Stefan Hetzer, PhD<sup>29</sup>, Steffen Wolfsgruber, PhD<sup>9,10</sup>, Luca Kleineidam, MSc<sup>9,10</sup>, Matthias Schmid, PhD<sup>9, 30</sup>, Moritz Berger, PhD<sup>30</sup>, Frank Jessen, MD<sup>9,14,15</sup>, Miranka Wirth, PhD<sup>31</sup>, Emrah Düzel, MD<sup>1,2,32,†</sup>, Gabriel Ziegler, PhD<sup>1,2, †</sup>

<sup>1</sup>Institute of Cognitive Neurology and Dementia Research, Otto-von-Guericke University Magdeburg, Leipziger Str. 44, 39120 Magdeburg, Germany

<sup>2</sup>German Center for Neurodegenerative Diseases (DZNE), Magdeburg, Leipziger Str. 44, 39120 Magdeburg, Germany

<sup>3</sup>Department of Neurology, University Hospital Magdeburg, Medical Faculty, Leipziger Str. 44, 39120 Magdeburg, Germany

<sup>4</sup>German Center for Neurodegenerative Diseases (DZNE), Berlin, Germany

<sup>5</sup>Charité – Universitätsmedizin Berlin, corporate member of Freie Universität Berlin and Humboldt-Universität zu Berlin-Institute of Psychiatry and Psychotherapy, Berlin, Germany

<sup>6</sup>Department of Psychiatry and Psychotherapy, Charité, Charitéplatz 1, 10117 Berlin, Germany

<sup>7</sup>School of Medicine, Technical University of Munich; Department of Psychiatry and Psychotherapy, Munich, Germany

<sup>8</sup>University of Edinburgh and UK DRI, Edinburgh, UK

<sup>9</sup>German Center for Neurodegenerative Diseases (DZNE), Bonn, Venusberg-Campus 1, 53127 Bonn, Germany

<sup>10</sup>University of Bonn Medical Center, Dept. of Neurodegenerative Disease and Geriatric Psychiatry/Psychiatry, Venusberg-Campus 1, 53127 Bonn, Germany

<sup>11</sup>German Center for Neurodegenerative Diseases (DZNE), Goettingen, Germany

<sup>12</sup>Department of Psychiatry and Psychotherapy, University Medical Center Goettingen, University of Goettingen, Von-Siebold-Str. 5, 37075 Goettingen

<sup>13</sup>Neurosciences and Signaling Group, Institute of Biomedicine (iBiMED), Department of Medical Sciences, University of Aveiro, Aveiro, Portugal

<sup>14</sup>Department of Psychiatry, University of Cologne, Medical Faculty, Kerpener Strasse 62, 50924 Cologne, Germany

<sup>15</sup>Excellence Cluster on Cellular Stress Responses in Aging-Associated Diseases (CECAD), University of Cologne, Joseph-Stelzmann-Strasse 26, 50931 Köln, Germany

<sup>16</sup>German Center for Neurodegenerative Diseases (DZNE, Munich), Feodor-Lynen-Strasse 17, 81377 Munich, Germany

<sup>17</sup>Institute for Stroke and Dementia Research (ISD), University Hospital, LMU Munich, Feodor-Lynen-Strasse 17, 81377 Munich, Germany

<sup>18</sup>German Center for Neurodegenerative Diseases (DZNE, Munich), Feodor-Lynen-Strasse 17, 81377 Munich, Germany

<sup>19</sup>Department of Psychiatry and Psychotherapy, University Hospital, LMU Munich, Munich, Germany

<sup>20</sup>Munich Cluster for Systems Neurology (SyNergy) Munich, Munich, Germany

<sup>21</sup>Ageing Epidemiology Research Unit (AGE), School of Public Health, Imperial College London, London, UK

<sup>22</sup>German Center for Neurodegenerative Diseases (DZNE), Rostock, Germany

<sup>23</sup>Department of Psychosomatic Medicine, Rostock University Medical Center, Gehlsheimer Str. 20, 18147 Rostock

<sup>24</sup>German Center for Neurodegenerative Diseases (DZNE), Tübingen, Germany

<sup>25</sup>Section for Dementia Research, Hertie Institute for Clinical Brain Research and Department of Psychiatry and Psychotherapy, University of Tübingen, Tübingen, Germany

<sup>26</sup>Department of Psychiatry and Psychotherapy, University of Tübingen, Tübingen, Germany

<sup>27</sup>MR-Research in Neurosciences, Department of Cognitive Neurology, Georg-August-University Goettingen, Germany

<sup>28</sup>Department for Biomedical Magnetic Resonance, University of Tübingen, 72076 Tübingen, Germany

<sup>29</sup>Berlin Center for Advanced Neuroimaging, Charité – Universitätsmedizin Berlin, Berlin, Germany

<sup>30</sup>Institute for Medical Biometry, Informatics and Epidemiology, University Hospital Bonn, Venusberg-Campus 1, D-53127 Bonn

<sup>31</sup>German Center for Neurodegenerative Diseases (DZNE), Dresden, Tatzberg 41, 01307 Dresden, Germany

<sup>32</sup>Institute of Cognitive Neuroscience, University College London, London, UK

<sup>33</sup>Sheffield Institute for Translational Neuroscience (SITraN), University of Sheffield, Sheffield, UK

<sup>T</sup> Shared first authorship

<sup>†</sup> Shared last authorship

## Correspondence

Jose Bernal: German Centre for Neurodegenerative Diseases (DZNE), Magdeburg, Leipziger Str. 44, 39120 Magdeburg, Germany; Email: [jose.beralmoyano@dzne.de](mailto:jose.beralmoyano@dzne.de); Telephone number: +49 (0)391 6724531.

Miranka Wirth: German Centre for Neurodegenerative Diseases (DZNE), Dresden, Tatzberg 41, 01307 Dresden, Germany; Email: [miranka.wirth@dzne.de](mailto:miranka.wirth@dzne.de); Telephone number: +49 (0)351 201 463-601.

## Neurology search terms

White matter hyperintensities; vascular risk; Alzheimer's disease; cognitive performance; MRI

## Manuscript word count

Word count for paper: 3000/3000

Word count for abstract: 349/350

Character count for title: 144/150

Number of references: 42

Number of tables: 3

Number of figures: 2

Supplementary data:

Number of tables: 1

Number of figures: 2

## **Key Points**

### **Question**

Is the spatial distribution and volume of cerebral white matter hyperintensities (WMH) related to arterial hypertension, amyloid pathology, and cognition?

### **Findings**

In this cross-sectional and longitudinal cohort study, WMH increased with hypertension and amyloid, with a spatial overlap in occipital and parietal lobes. Amyloid is involved in the relationship between WMH in corona radiata and splenium on cognitive performance. Global, occipital, and frontal WMH were strongly associated cognitive performance and worsening, regardless of hypertension and amyloid status.

### **Meaning**

Posterior white matter is susceptible to vascular disease and amyloid pathology; its damage plays a role in the effect of amyloid pathology on cognition.

## **Abstract**

### **Importance**

Posterior white matter hyperintensities (WMH) in subjects across the Alzheimer's disease (AD) spectrum with minimal vascular pathology suggests that amyloid pathology —not just arterial hypertension— impacts WMH, adversely influencing cognition.

### **Objective**

To characterise the effects of AD pathology, namely  $\beta$ -amyloid ( $A\beta$ ) and hypertension on WMH and cognition.

### **Design**

Cross-sectional and longitudinal

### **Setting**

Multicentre

### **Participants**

We analysed data from subjects with normal cognition (NC), subjective cognitive decline (SCD), and mild cognitive impairment (MCI) enrolled in the ongoing observational multicentre DZNE Longitudinal Cognitive Impairment and Dementia Study. We focused on participants with available magnetic resonance imaging (MRI), cerebrospinal fluid biomarkers, and cognitive and hypertension information. We conducted analyses between 02.2022 and 06.2022.

### **Intervention(s) (for clinical trials) or Exposure(s) (for observational studies):**

NA

### **Main Outcomes and Measures**

Spatial distribution and volume of MRI WMH in relation to  $A\beta_{42/40}$  levels and arterial hypertension. Mediation of the relationship between  $A\beta$  positivity and hypertension on cognition by the regional WMH volume.

### **Results**

We included 355 participants (median age 70.3 [IQR 66.0-74.4] years; 168 female; 121 NC, 154 SCD, 80 MCI). Hypertension and  $A\beta$  positivity were positively associated ( $p_{FDR} < 0.05$ ) with WMH volume, with large spatial

overlap in the occipital lobes (regression coefficient  $\pm$  standard error; hypertension:  $0.49 \pm 0.14$ ; A $\beta$ :  $0.41 \pm 0.15$ ), parietal lobes (hypertension:  $0.62 \pm 0.23$ ; A $\beta$ :  $0.61 \pm 0.24$ ), corona radiata (hypertension:  $0.55 \pm 0.19$ ; A $\beta$ :  $0.61 \pm 0.24$ ), optic radiation (hypertension:  $0.64 \pm 0.19$ ; A $\beta$ :  $0.50 \pm 0.20$ ) and splenium (hypertension:  $0.38 \pm 0.13$ ; A $\beta$ :  $0.39 \pm 0.13$ ). Global and occipital WMH volumes were strongly associated cognitive changes over a three-year period, estimated with preclinical Alzheimer's cognitive composite 5 (PACC5) (global:  $2.18 \pm 0.61$ ,  $p_{FDR} < 0.01$ ; occipital:  $3.31 \pm 0.75$ ,  $p_{FDR} < 0.01$ ), regardless of A $\beta$  and hypertension status. The association between A $\beta$  positivity and baseline cognitive performance (*direct-memory*:  $-0.42 \pm 0.08$ ,  $p_{FDR} < 0.01$ ; executive:  $-0.28 \pm 0.28$ ,  $p_{FDR} < 0.01$ ) was partially mediated by WMH in the corona radiata (*indirect-memory*:  $-0.04 \pm 0.02$ ,  $p_{FDR} < 0.05$ ; executive:  $-0.04 \pm 0.02$ ,  $p_{FDR} < 0.01$ ) and splenium (*indirect-memory*:  $-0.02 \pm 0.02$ ,  $p_{FDR} < 0.01$ ; executive:  $-0.04 \pm 0.02$ ,  $p_{FDR} < 0.01$ ). Evidence supporting hypertension affected cognition was insufficient (*direct-memory*:  $0.03 \pm 0.07$ ,  $p_{FDR} = 0.683$ ; executive:  $-0.05 \pm 0.07$ ,  $p_{FDR} = 0.499$ ; PACC5 change:  $0.01 \pm 0.02$ ,  $p_{FDR} = 0.588$ ).

## Conclusions and Relevance

Posterior white matter is susceptible to vascular disease and A $\beta$  accumulation. Its deterioration is involved in the association between A $\beta$  and cognitive dysfunction. Posterior WMH could be a promising target to tackle the downstream damage related to the interacting and potentiating effect of these two pathologies.

## Trial Registration

German Clinical Trials Register (DRKS00007966, 04/05/2015)

## Abbreviations

A $\beta$   $\beta$ -amyloid

AD Alzheimer's disease

ATN Amyloid/Tau/Neurodegeneration

B regression coefficient

CAA Cerebral amyloid angiopathy

CAT Computational Anatomy Toolbox

CERAD Consortium to Establish a Registry for Alzheimer's Disease

CN Non-complaining healthy controls

CSF Cerebrospinal fluid

CSVD Cerebral small vessel disease

FA Flip angle

FDR False discovery rate

FLAIR Fluid Attenuated Inversion Recovery

GM Grey matter

IQR Interquartile range

MCI Mild cognitive impairment

MRI Magnetic resonance imaging

NC Normal cognition

PACC5 Preclinical Alzheimer's Cognitive Composite scores

ROI Region of interest

ROC Receiver operating characteristic

SCD Subjective cognitive decline

SD Standard deviation

SE Standard error

SPM Statistical parametric mapping



TE Echo time

TI Inversion time

TICV Total intracranial volume

TR Repetition time

VBM Voxel-based morphometry

WM White matter

WMH White matter hyperintensities

## Introduction

The term “cerebral white matter hyperintensities” (WMH) describes dynamic and diffuse microstructural alterations in both periventricular and deep white matter, which appear hypodense on computed tomography and hyperintense on T2-weighted magnetic resonance imaging (MRI) and coincide with demyelination, axon loss, and gliosis.<sup>1,2</sup> WMH are common —especially but not exclusively in old age — and have important clinical symptoms, including apathy, fatigue, delirium, depression, progressive cognitive impairment, physical function disturbances, and increased risk of dementia and stroke.<sup>2,3</sup>

Alterations to the functioning of cerebral micro-vessels —also known as cerebral small vessel disease (CSVD)— caused, for instance, by long-term exposure to cardiovascular risk factors (hypertension particularly) have been assumed to drive WMH formation.<sup>4-6</sup> Nonetheless, recent studies demonstrating elevated global and posterior WMH in patients along the Alzheimer's disease (AD) spectrum with minimal vascular pathology (for review see <sup>1,7-9</sup>) call into question the assumption that any “AD-related” WMH solely reflect a vascular contribution. This viewpoint has also been challenged by studies reporting a more “AD-like” WMH pattern in A $\beta$  positive subjective cognitive decline (SCD), mild cognitive impairment (MCI) or AD. The “AD-like” pattern is roughly confined to deep and periventricular posterior regions comprising the (parieto-)occipital lobe, corona radiata, optic (thalamic) radiation, or the corpus callosum (especially splenium) and presents neuropathologically underlying gliosis, and axonal and myelin loss, but minimal vascular pathology —likely occurring secondary to cortical neurodegeneration.<sup>7-10</sup> Further studies demonstrate frontal or temporoparietal WMH dominance in AD as well and others report mixed results on the relationship between posterior WMH and AD pathology.<sup>11-14</sup> “WMH of presumed vascular origin” are, however, usually depicted in deep and periventricular frontal areas, suggesting some spatial WMH heterogeneity in hypertension compared to AD.<sup>8,15</sup>

To determine and disentangle the effects of both hypertension and AD pathology on WMH and their consequences for cognition, we study WMH of non-demented participants of a large multicentre cohort with available cerebrospinal fluid (CSF) biomarkers, history of hypertension, and cross-sectional as well as longitudinal neuropsychological tests.

## **Design and methods**

### **Overall study design and participants**

We used baseline (magnetic resonance imaging (MRI), cerebrospinal fluid biomarkers, cognitive performance scores, medical records) and longitudinal (cognitive performance scores) data from the DELCODE (DZNE Longitudinal Cognitive Impairment and Dementia Study) cohort, an observational multicentre study from the German Centre for Neurodegenerative Diseases (DZNE) that focuses on the multimodal assessment of preclinical and clinical AD stages.<sup>16</sup> All participants received an extensive assessment at the local study site prior to joining DELCODE, which included medical history, psychiatric and neurological examination, neuropsychological testing, blood laboratory work-up, and routine MRI in accordance with local standards. All memory clinics used the Consortium to Establish a Registry for Alzheimer's Disease (CERAD) neuropsychological test battery<sup>17</sup> to assess cognitive function. We focus on non-complaining healthy controls with normal cognition (NC) and participants with SCD and MCI, but we excluded patients with dementia due to AD. Group definitions and inclusion and exclusion criteria can be found in **eDesign**.

### **Hypertension**

Medical records were retrospectively screened for cardiovascular risk factors at the time of MRI; information was available for most participants (83%, n=871). Patients diagnosed before to have primary or secondary arterial hypertension were considered to suffer from hypertension (1: hypertensive; 0: normotensive). Single blood pressure measurements were not taken into account since repeated, long-term or at-home measurements would be required for the final diagnosis.<sup>18</sup>

### **Cognitive performance**

All participants underwent a rich neuropsychological assessment.<sup>8</sup> We focused on memory and executive function at baseline derived from multiple neuropsychological tests using confirmatory factor analysis to reduce the influence of test-specific effects and measurement errors.<sup>19</sup> Furthermore, we assessed change in the Preclinical Alzheimer's Disease Cognitive Composite (PACC5)<sup>20</sup> scores over a three-year period, which encompasses episodic memory, timed executive function, and global cognition and provides an outcome measure which is sensitive to amyloid-related changes. We estimated individual rates of change of PACC5 scores using linear mixed effect models (**eMethods**).

### **Structural MRI data acquisitions**

We used T1-weighted and FLAIR MRI scans from DELCODE (Acquisition parameters in **eMethods**).

### **Biomarker characterisation**

Lumbar puncture was carried out by trained study assistants for 49% of DELCODE participants. CSF samples were centrifuged, aliquoted and stored at -80°C for retests. Biomarkers known to be related to AD pathology (CSF A $\beta$ 42 and A $\beta$ 40) were determined by commercially available kits (V-PLEX A $\beta$  Peptide Panel 1 (6E10) Kit (K15200E)). Each participant was classified as normal (-) or abnormal (+) with regard to amyloid levels based on the A $\beta$ 42/40 ratio, independently of their pTau status, in line with the ATN classification system.<sup>15</sup> Cut-offs (A $\beta$  positive: A $\beta$ 42/40  $\leq$  0.08; A $\beta$  negative otherwise) were calculated from DELCODE using the Gaussian mixture modelling in the R-package flexmix (v2.3-15) (for details see <sup>16,21</sup>).

### **Segmentation and spatial processing structural MRI**

We processed baseline T1-weighted and FLAIR scans as follows. We performed bias field inhomogeneities correction, skull stripping, and segmentation using the Computational Anatomy Toolbox (CAT) for statistical parametric mapping (SPM).<sup>22</sup> We segmented grey matter (GM), white matter (WM), and CSF from T1-weighted scans using CAT12's AMAP approach and identified WMH probability maps from FLAIR scans using the Lesion Prediction Algorithm in the Lesion Segmentation Toolbox.<sup>23</sup> We then used SPM's geodesic shooting for normalising tissue classes (and WMH maps) into MNI to a study-specific template. We adjusted for local volume changes introduced by the normalisation in GM and WMH probability maps by modulation with Jacobian determinants.<sup>24</sup> Finally, we smoothed WMH maps with Gaussian kernels (4mm and 6mm full width at half maximum). Processing results of all steps were carefully checked visually and statistically using CAT12's covariance-based tools.

### **ROI-based processing**

We extracted WMH volume from 12 regions of interest (ROI) in cerebral WM, as described in detail in a previous study.<sup>11</sup> In brief, we created ROIs in accordance with the STRIVE criteria<sup>25</sup> and included the four lobes of the brain, four major WM tracks and three sections of the corpus callosum and a global cerebral WM mask. We calculated WMH volumes for each ROI and adjusted for total intracranial volume (TICV). All computations were conducted in the template space.

## Statistical analyses

### Relationship between hypertension, A $\beta$ positivity, and group

We tested for associations between hypertension, A $\beta$  positivity, and the group (NC, SCD or MCI) given their potential collinearity<sup>26-29</sup> using the Pearson's Chi-squared test with Yates' continuity correction in the R-package *stats* (v3.6.2).

### Voxel- and ROI-based WMH analysis and mediation models

*Effects of hypertension and A $\beta$  positivity on WMH.* We hypothesised that a history of hypertension and an abnormal build-up of A $\beta$  relate positively to the likelihood of developing WMH, but that both conditions display distinct spatial effects: hypertension on deep and periventricular frontal regions and A $\beta$  on deep and periventricular posterior regions, as discussed in the literature.<sup>1,4-9</sup> We used a 2 $\times$ 2 ANCOVA model in CAT12 to examine the relationship between WMH probability (outcome) and hypertension and A $\beta$  (factors) at a voxel level. Similarly, to probe the same relationship at a ROI level, we built 2 $\times$ 2 ANCOVA models in R (*stats*, v3.6.2), one for each region of interest separately. We controlled for covariates and confounders (see '*Covariates, confounders, and data transformation*' below).

*Effects of WMH on cognitive performance.* Our hypothesis was that cognitive performance and rates of change in cognition declined as WMH presence increased, in agreement with previous findings.<sup>2,3</sup> For voxel-based analysis, we used multiple linear regression in CAT12 with WMH probability as the dependent variable and cognitive performance as the independent variable. Likewise, for each region of interest, we also used multiple linear regression in R (*stats*, v3.6.2) to probe the relationship between regional WMH volume and cognition. We created different models with memory, executive function, and PACC5 rates of change as dependent variables. Note that, for studying the temporal effect of WMH on cognition, we leveraged summary statistics (PACC5 rates of change) instead of using a linear mixed effect model to keep the mass univariate analysis efficient<sup>30</sup> and both the voxel- and region-wise analyses consistent. We controlled for hypertension and A $\beta$  positivity in addition to covariates and confounders (see '*Covariates, confounders, and data transformation*' below).

*Mediation models.* Motivated by theoretical considerations,<sup>31</sup> we also tested for an indirect mediating effect of hypertension and A $\beta$  positivity (independent variables) on cognitive performance (dependent variable) via regional WMH volume (mediator variable). We used the R-package *mediation* (v4.5.0) and multiple linear regression in the R-package *stats* (v3.6.2) for this purpose (**e-Methods**). Significance was assessed using 95% confidence intervals generated by bias corrected bootstrap with 1000 replicates.

*Covariates, confounders, and data transformation.* We adjusted all models for covariates (age, sex, years of education, and clinical group) and confounders (TICV and MRI acquisition site) to reduce biases brought on by correlated regressors. To account for collinearity between TICV and sex, we also chose "overall mean" as "centring" for TICV. We log-transformed regional WMH volumes to account for skewness.

*Explicit mask.* We used an explicit mask to constrain the analysis to voxels in which data for at least five patients were available.

*Correction for multiple comparisons.* We adjusted  $p$ -values for multiple comparisons using the false discovery rates (FDR) approach to deal with the problem of multiple comparisons.<sup>32</sup>

*Reporting.* We reported regression coefficients, standard error, and  $p$ -values.

A schematic overview both processing and analysis methods is illustrated in **eFigure 1**.

## Results

### Sample description

We included baseline data of 355 subjects out of 1079 recruited for DELCODE after quality control and assessing the availability of CSF biomarkers and MRI (**eFigure 2**; median age 70.3 [IQR 66.0-74.4] years, 47.3% female, median years of education 13 [IQR 12-17]). PACC5 trajectories were only available for a subset ( $n=215/355$ ). Demographics and WMH volumes stratified by hypertension and A $\beta$  positivity are summarised in **Table 1**.

We found strong evidence for an association between clinical groups and A $\beta$  positivity ( $X^2=23.469$ ,  $p<0.0001$ ), but not between hypertension and A $\beta$  positivity ( $X^2=2.1302$ ,  $p=0.1444$ ) nor hypertension and clinical groups ( $X^2=2.334$ ,  $p=0.5061$ ). We therefore did not adjust statistical analyses for "clinical groups" to avoid collinearity issues.

### The effect of hypertension and A $\beta$ positivity spatially overlaps in posterior WMH

We first studied the effects of hypertension and A $\beta$  positivity in relation to WMH probability and volume. At a voxel level, although overlapping, the effects of hypertension on WMH probability were diffuse whereas those of A $\beta$  were predominantly observed in the occipital white matter (**Figure 1**; peak: optic radiation,  $xyz = [32, -67, 4]$ ,  $t=5.24$ ,  $p_{FDR}=0.005$ ). Only the contributions of A $\beta$  to occipital WMH probabilities survived FDR correction (**Figure 1b**). At a ROI level, WMH volume in the whole brain increased with hypertension and in the oc-

occipital and parietal lobes, corona radiata and optic radiation, and splenium of the corpus callosum increased with both hypertension and A $\beta$  positivity (**Table 2** and **eFigure 3**). Subjects with hypertension and abnormal A $\beta$  biomarker levels thus had the largest global and regional WMH volumes, whereas those with normotension and A $\beta$  negative biomarker status had the lowest (**eFigure 3**).

### **WMH are associated with lower and worsening cognitive performance**

We then investigated whether cognitive performance at baseline and over time was associated with local WMH probability and regional WMH volume (**Figure 2** and **eTable 1**). We found very strong evidence for an effect of WMH burden and probability on lower and worsening cognitive performance, despite adjusting for hypertension and A $\beta$  positivity. The probability—but not total volume—of frontal periventricular WMH was associated with lower cognitive performance and greater decline over time (at xyz=[16, 26, -10] – memory:  $t=3.51$ ,  $p_{FDR}=0.027$ ; executive function:  $t=4.53$ ,  $p_{FDR}=0.004$ ; PACC5 change:  $t=3.05$ ,  $p_{FDR}=0.051$ ).

### **Posterior WMH plays a role in the effect of A $\beta$ on cognitive performance**

We examined whether A $\beta$  positivity or hypertension were associated with cognition (**Table 3**). We found no clear evidence for an association between hypertension and cognitive performance (regression coefficient  $\pm$  standard error; on memory:  $0.03\pm 0.07$ ,  $p_{FDR}=0.683$ ; on executive function:  $-0.05\pm 0.07$ ,  $p_{FDR}=0.499$ ; on PACC5 change:  $0.01\pm 0.02$ ,  $p_{FDR}=0.588$ ). We did find A $\beta$  positivity to relate to lower memory and executive function, and even cognitive decline over time ( $0.04\pm 0.02$ ,  $p=0.027$ ). However, the latter relationship did not survive FDR correction. The effect of A $\beta$  biomarker status on memory performance was partially mediated by WMH volume in the occipital lobes ( $-0.03\pm 0.02$ ,  $p_{FDR}=0.008$ ) and splenium ( $-0.02\pm 0.02$ ,  $p_{FDR}=0.006$ ) and, less evidently, corona radiata ( $-0.04\pm 0.02$ ,  $p_{FDR}=0.024$ ) and optic radiation ( $-0.04\pm 0.02$ ,  $p_{FDR}=0.042$ ). WMH volume in the splenium and corona radiata partially mediated the effects of A $\beta$  on executive function (splenium:  $-0.04\pm 0.02$ ,  $p_{FDR}=0.008$ ; corona radiata:  $-0.04\pm 0.02$ ,  $p_{FDR}=0.006$ ).

## **Discussion**

Using data from a large multi-site cohort of older adults along the AD spectrum ( $n=355$ ), we investigated the impact of arterial hypertension and A $\beta$  positivity on WMH and cognition. Our findings provide evidence that both arterial hypertension and A $\beta$  positivity are associated with increased presence and volume of WMH, that global and occipital WMH were strongly associated with lower cognition and faster cognitive decline, and that

A $\beta$  plays a role in the association between WMH in the splenium and corona radiata and baseline memory and executive function. Indeed, individuals with hypertension who had abnormally elevated A $\beta$  biomarker levels had the highest WMH burden, whereas those on the other end of the spectrum had the lowest. The effects of hypertension and A $\beta$  positivity on WMH nonetheless overlapped spatially, particularly in the parietal and occipital lobes, and corona radiata, optic radiata, and splenium of the corpus callosum. Despite the fact that hypertension relates to WMH and, in turn, hypertension and WMH are strongly associated with lower cognitive performance, we did not find sufficient evidence for a direct or indirect (through WMH) influence of hypertension on domain-specific cognitive function.

We observed a posterior WMH dominance in A $\beta$  positive older adults in the prodementia stage of the AD continuum. Posterior WMH burden was more prominent nonetheless when both A $\beta$  retention and hypertension occurred simultaneously. Therefore, posterior white matter could be considered vulnerable to the independent yet interacting and potentiating effects of AD and CSVD. One could thus consider posterior WMH to be a structural correlate that underlies the common observations that vascular disease, in particular hypertension, lowers the threshold for all-cause dementia development in face of pre-existing AD pathology.<sup>4-6</sup> As posterior WMH dominance could also relate to cerebrovascular deposition of A $\beta$ , i.e. cerebral amyloid angiopathy (CAA), a condition that highly overlaps with AD pathology (for review see <sup>33,34</sup>), we visually inspected susceptibility-weighted sequences of all MRIs. Isolated lobar haemorrhagic markers were found in less than 10% (19 with possible and 4 with probable CAA) of participants, making a relevant impact of CAA on posterior WMH in our sample highly unlikely.

WMH can negatively impact on executive, memory and global cognitive function, but associations with memory function have been less consistent compared to associations with executive function (for review see <sup>35</sup>). We found rather equally strong relationships between executive or memory performance, respectively, and WMH in widespread regions comprising temporal, parietal and occipital lobes, corpus callosum and several white matter tracts (**eTable 1**). Interestingly, frontoparietal periventricular (corona radiata) and posterior (especially splenial) WMH partially mediated the effect of A $\beta$  on executive and memory functions. Both of these white matter structures are found to be abnormal in AD but are also susceptible to altered hemodynamics e.g. through cerebrovascular risk. As such, these regions are considered clinically relevant and hubs where distinct pathologies impact the neural circuitries that are connected by these two certain regions and that are responsible for cognitive processing.<sup>7,36-38</sup> In particular, white matter damage in the splenium of the corpus callosum, as associated with A $\beta$  pathology, could be expected to translate to lower cognitive functioning in global cognition but also in discrete



domains.<sup>7</sup> In previous studies though, posterior/splenial WMH have been found associated with executive (including attention), but not memory function.<sup>7,10</sup> Differences may arise from WMH quantification methods and/or smaller sample sizes including AD patients only (not individuals with SCD/MCI), in whom largely advanced (medial temporal lobe) AD pathology is the major driver for memory decline, possibly "diluting" concurrent memory effects of posterior WMH.

Contrary to our expectations and to strong evidence from large longitudinal population-based studies (for review see <sup>6</sup>), we did not see a direct or indirect (through WMH) hypertension effect on cognition. This finding might reflect a selection bias of the DELCODE study: exclusion of individuals with advanced vascular disease. This constellation, additionally, explains the somewhat lower prevalence of arterial hypertension (nearly 55% compared to 63%), with a slightly higher number of A $\beta$  positives (35% compared to a range of 17% to 34%) compared to that in population-based cohorts aged over 60 years.<sup>39-41</sup> Our definition of arterial hypertension was based on retrospective screening of medical records for already existing hypertension diagnoses, which might have missed those participants with recently, i.e. newly, diagnosed hypertension after baseline MRI, also contributing to lower prevalence.

This study has limitations. First, our imaging results are cross-sectional. While our findings suggest WMH are indeed spatially associated with both hypertension and A $\beta$  positivity, they do not address causality (e.g. vascular risk first, impaired brain drainage second). Longitudinal analysis of DELCODE imaging data might provide further insights into the influence of lifestyle over time and help disentangle the mixed effects observed in this cross-sectional study. Second, our mediation model assumes WMH volume mediates the association between A $\beta$  and hypertension on cognitive function. While this choice was based on a theoretical consideration<sup>31</sup>, the reverse model would also be feasible.<sup>2,5,42</sup> Third, the study of WMH probability patterns in other cohorts of individuals with a high vascular but low AD profile or vice versa could be informative on the mechanisms leading to these findings. Further, we did not consider WMH patterns, which could be punctuated or confluent, for example, or the clinically established distinction between deep and periventricular WMH.

## **Conclusion**

Our findings point toward a large spatial overlap between the effect of hypertension and A $\beta$  positivity on WMH, with both constellations considered risk factors for white matter damage. Interestingly, our data call into question whether posterior WMH are a core feature related to AD pathology, instead suggesting posterior white

matter is susceptible to vascular disease and A $\beta$  accumulation. Posterior WMH seems to play a role in the association between A $\beta$  positivity and cognitive function, and could therefore be a promising target to tackle the downstream damage related to the interacting and potentiating effect of multiple pathologies.

## Article Information

### Acknowledgement

We would like to express our gratitude to all DELCODE participants. We also thank the Max-Delbrück-centrum für Molekulare medizin in der Helmholtz-Gemeinschaft (MDC), Freie Universität Berlin Center for Cognitive neuroscience Berlin (CCNB), Bernstein Center für Computational Neuroscience Berlin, Universitätsmedizin Göttingen Core Facility MR-Research Göttingen, Institut für Klinische Radiologie Klinikum der Universität München, and Universitätsklinikum Tübingen MR-Forschungszentrum.

This research was supported by the German Center for Neurodegenerative Diseases (Deutsches Zentrum für Neurodegenerative Erkrankungen, DZNE; reference number BN012) and funded by the German Research Foundation (Deutsche Forschungsgemeinschaft, DFG; Project-ID 425899996).

### Author Contributions

Conceptualisation: JB, SS, MW, GZ. Methodology: JB, SS, MW, GZ. Software: JB, GZ. Formal analysis: JB. DELCODE study design: ED, AS, and FJ. Image processing: JB, GZ, RY, MW. Image analysis and modelling: JB, GZ. Investigation: JB, SS, MW, GZ. Writing original draft preparation: JB, SS, MW, GZ. Writing – review and editing: All authors.

### Disclosure

None.

## References

1. Alber J, Alladi S, Bae HJ, et al. White matter hyperintensities in vascular contributions to cognitive impairment and dementia (VCID): Knowledge gaps and opportunities. *Alzheimer's Dement Transl Res Clin Interv*. Elsevier Inc.; 2019;5:107–117.
2. Wardlaw JM, Smith C, Dichgans M. Small vessel disease: mechanisms and clinical implications. *Lancet Neurol*. Elsevier Ltd; 2019;18:684–696.

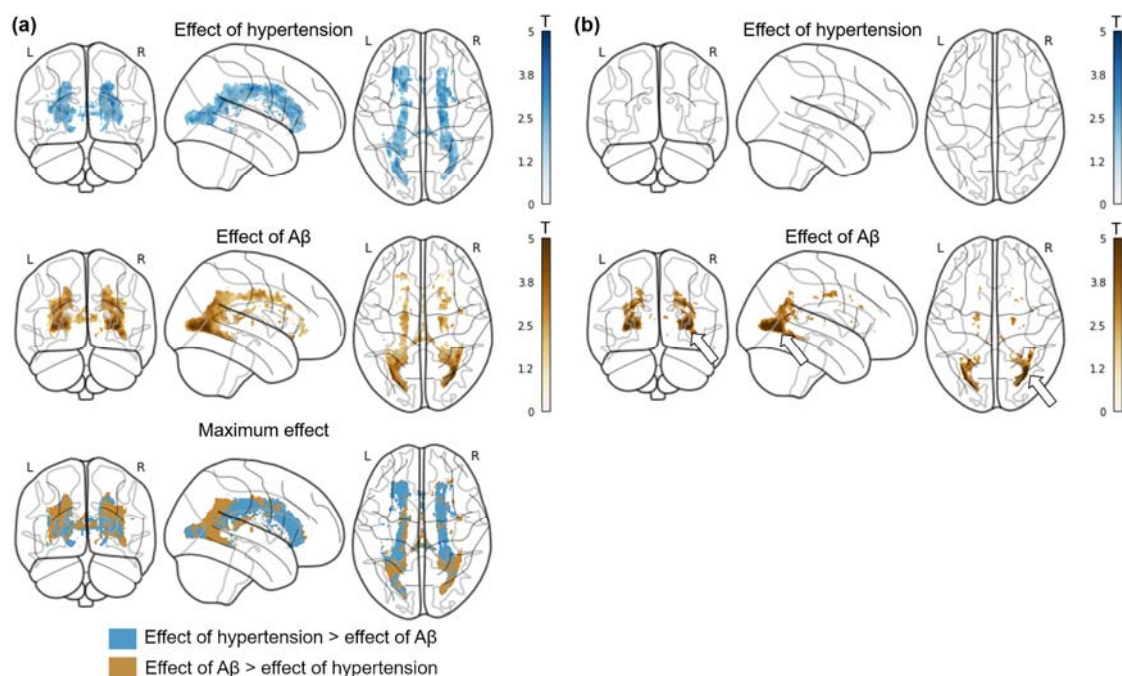
3. Clancy U, Gilmartin D, Jochems ACC, Knox L, Doubal FN, Wardlaw JM. Neuropsychiatric symptoms associated with cerebral small vessel disease: a systematic review and meta-analysis. *The Lancet Psychiatry*. Elsevier Ltd; 2021;8:225–236.
4. Li C, Zhu Y, Ma Y, Hua R, Zhong B, Xie W. Association of Cumulative Blood Pressure With Cognitive Decline, Dementia, and Mortality. *J Am Coll Cardiol*. 2022;79:1321–1335.
5. Ungvari Z, Toth P, Tarantini S, et al. Hypertension-induced cognitive impairment: from pathophysiology to public health. *Nat Rev Nephrol*. Springer US; 2021;17:639–654.
6. Palta P, Albert MS, Gottesman RF. Heart health meets cognitive health: evidence on the role of blood pressure. *Lancet Neurol*. Elsevier Ltd; 2021;20:854–867.
7. Garnier-Crussard A, Bougacha S, Wirth M, et al. White matter hyperintensity topography in Alzheimer's disease and links to cognition. *Alzheimer's Dement*. 2022;18:422–433.
8. Pålhaugen L, Sudre CH, Tecelao S, et al. Brain amyloid and vascular risk are related to distinct white matter hyperintensity patterns. *J Cereb Blood Flow Metab*. 2021;41:1162–1174.
9. Desmarais P, Gao AF, Lanctôt K, et al. White matter hyperintensities in autopsy-confirmed frontotemporal lobar degeneration and Alzheimer's disease. *Alzheimer's Res Ther*. *Alzheimer's Research & Therapy*; 2021;13:1–16.
10. Huynh K, Piguet O, Kwok J, et al. Clinical and Biological Correlates of White Matter Hyperintensities in Patients With Behavioral-Variant Frontotemporal Dementia and Alzheimer Disease. *Neurology*. 2021;96:e1743–e1754.
11. Gaubert M, Lange C, Garnier-Crussard A, et al. Topographic patterns of white matter hyperintensities are associated with multimodal neuroimaging biomarkers of Alzheimer's disease. *Alzheimer's Res Ther*. *Alzheimer's Research & Therapy*; 2021;13:1–11.
12. Weaver NA, Doeven T, Barkhof F, et al. Cerebral amyloid burden is associated with white matter hyperintensity location in specific posterior white matter regions. *Neurobiol Aging*. Elsevier Inc; 2019;84:225–234.
13. McAleese KE, Firbank M, Dey M, et al. Cortical tau load is associated with white matter hyperintensities. *Acta Neuropathol Commun*. *Acta Neuropathologica Communications*; 2015;3:60.
14. Englund E. Neuropathology of white matter changes in Alzheimer's disease and vascular dementia. *Dement Geriatr Cogn Disord*. 1998;9:6–12.
15. Habes M, Sotiras A, Erus G, et al. White matter lesions spatial heterogeneity, links to risk factors, cognition, genetics, and atrophy. *Neurology*. 2018;91:E964–E975.
16. Jessen F, Spottke A, Boecker H, et al. Design and first baseline data of the DZNE multicenter observational study on predementia Alzheimer's disease (DELCODE). *Alzheimer's Res Ther*. *Alzheimer's Research & Therapy*; 2018;10:1–10.
17. Morris J, Heyman A, Mohs R, et al. Consortium to Establish a Registry on Alzheimer's Disease (CERAD). Part I. Clinical and neuropsychological assessment of Alzheimer's disease. *Encycl Clin Neuropsychol*. Epub 2018.:940–944.
18. Whelton PK, Carey RM, Aronow WS, et al. 2017 ACC/AHA/AAPA/ABC/ACPM/AGS/APhA/ASH/ASPC/NMA/PCNA guideline for the prevention, detection, evaluation, and management of high blood pressure in adults a report of the American College of Cardiology/American Heart Association Task Force on Clinical pr. *Hypertension* 2018.
19. Wolfsgruber S, Kleineidam L, Guski J, et al. Minor neuropsychological deficits in patients with subjective cognitive decline. *Neurology*. 2020;95:e1134–e1143.
20. Papp K V., Rentz DM, Orlovsky I, Sperling RA, Mormino EC. Optimizing the preclinical Alzheimer's cognitive composite with semantic processing: The PACC5. *Alzheimer's Dement Transl Res Clin Interv*. Elsevier Inc.; 2017;3:668–677.
21. Jessen F, Wolfsgruber S, Kleineidam L, et al. Subjective cognitive decline and stage 2 of Alzheimer disease in patients from memory centers. *Alzheimer's Dement*. Epub 2022.:1–11.
22. Gaser C, Dahnke R, Kurth K, Luders E, Alzheimer's Disease Neuroimaging Initiative. A computational Anatomy Toolbox for the Analysis of Structural MRI Data. *bioRxiv*. Epub 2022.:1–37.
23. Schmidt P, Wink L. LST $\square$ : A lesion segmentation tool for SPM. 2019.
24. Ashburner J, Friston KJ. Diffeomorphic registration using geodesic shooting and Gauss-Newton optimisation. *Neuroimage*. Elsevier Inc.; 2011;55:954–967.

25. Wardlaw JM, Smith EE, Biessels GJ, et al. Neuroimaging standards for research into small vessel disease and its contribution to ageing and neurodegeneration. *Lancet Neurol*. Elsevier Ltd; 2013;12:822–838.
26. Braun M, Iliff JJ. The impact of neurovascular, blood-brain barrier, and glymphatic dysfunction in neurodegenerative and metabolic diseases. 1st ed. *Int. Rev. Neurobiol*. Elsevier Inc.; 2020.
27. Brickman AM, Tosto G, Gutierrez J, et al. An MRI measure of degenerative and cerebrovascular pathology in Alzheimer disease. *Neurology*. 2018;91:E1402–E1412.
28. Cai Z, Wang C, He W, et al. Cerebral small vessel disease and Alzheimer’s disease. *Clin Interv Aging*. 2015;10:1695–1704.
29. Iturria-Medina Y, Hachinski V, Evans AC. The vascular facet of late-onset Alzheimer’s disease: An essential factor in a complex multifactorial disorder. *Curr Opin Neurol*. 2017;30:623–629.
30. Guillaume B, Hua X, Thompson PM, Waldorp L, Nichols TE. Fast and accurate modelling of longitudinal and repeated measures neuroimaging data. *Neuroimage* [online serial]. Elsevier B.V.; 2014;94:287–302. Accessed at: <http://dx.doi.org/10.1016/j.neuroimage.2014.03.029>.
31. Jack CR, Knopman DS, Jagust WJ, et al. Hypothetical Pathological Cascade in Alzheimer’s Disease. *Lancet Neurol*. 2010;9:1–20.
32. Benjamini Y, Hochberg Y. Controlling the false discovery rate: a practical and powerful approach to multiple testing. *J R Stat Soc Ser B*. JSTOR; Epub 1995.:289–300.
33. Charidimou A, Boulouis G, Haley K, et al. White matter hyperintensity patterns in cerebral amyloid angiopathy and hypertensive arteriopathy. *Neurology*. 2016;86:505–511.
34. Greenberg SM, Bacskai BJ, Hernandez-Guillamon M, Pruzin J, Sperling R, van Velow SJ. Cerebral amyloid angiopathy and Alzheimer disease — one peptide, two pathways Steven. *Nat Rev Neurol*. 2020;16:30–42.
35. Roseborough AD, Saad L, Goodman M, Cipriano LE, Hachinski VC, Whitehead SN. White matter hyperintensities and longitudinal cognitive decline in cognitively normal populations and across diagnostic categories: A meta-analysis, systematic review, and recommendations for future study harmonization. *Alzheimer’s Dement*. Epub 2022.:1–14.
36. Altermatt A, Gaetano L, Magon S, et al. Clinical associations of T2-weighted lesion load and lesion location in small vessel disease: Insights from a large prospective cohort study. *Neuroimage*. Elsevier Ltd; 2019;189:727–733.
37. Kimura Y, Kitagawa K, Oku N, et al. Blood Pressure Lowering with Valsartan Is Associated with Maintenance of Cerebral Blood Flow and Cerebral Perfusion Reserve in Hypertensive Patients with Cerebral Small Vessel Disease. *J Stroke Cerebrovasc Dis*. Elsevier Ltd; 2010;19:85–91.
38. Yoshita M, Fletcher E, Harvey D, et al. Extent and distribution of white matter hyperintensities in normal aging, MCI, and AD. *Neurology*. 2006;67:2192–2198.
39. Keuss SE, Coath W, Nicholas JM, et al. Associations of  $\beta$ -Amyloid and Vascular Burden With Rates of Neurodegeneration in Cognitively Normal Members of the 1946 British Birth Cohort *Neurology*® Published Ahead of Print articles have been peer reviewed and accepted for publication . This manusc. *Neurology*. Epub 2022.:1–38.
40. Krell-Roesch J, Vassilaki M, Mielke MM, et al. Cortical  $\beta$ -amyloid burden, neuropsychiatric symptoms, and cognitive status: the Mayo Clinic Study of Aging. *Transl Psychiatry*. Springer US; 2019;9.
41. Fryar CD, Ostchega Y, Hales CM, Zhang G, Kruszon-Moran D. Hypertension Prevalence and Control Among Adults: United States, 2015-2016. *NCHS Data Brief*. Epub 2017.:1–8.
42. Maillard P, Seshadri S, Beiser A, et al. Effects of systolic blood pressure on white-matter integrity in young adults in the Framingham Heart Study: A cross-sectional study. *Lancet Neurol*. 2012;11:1039–1047.

## Figures

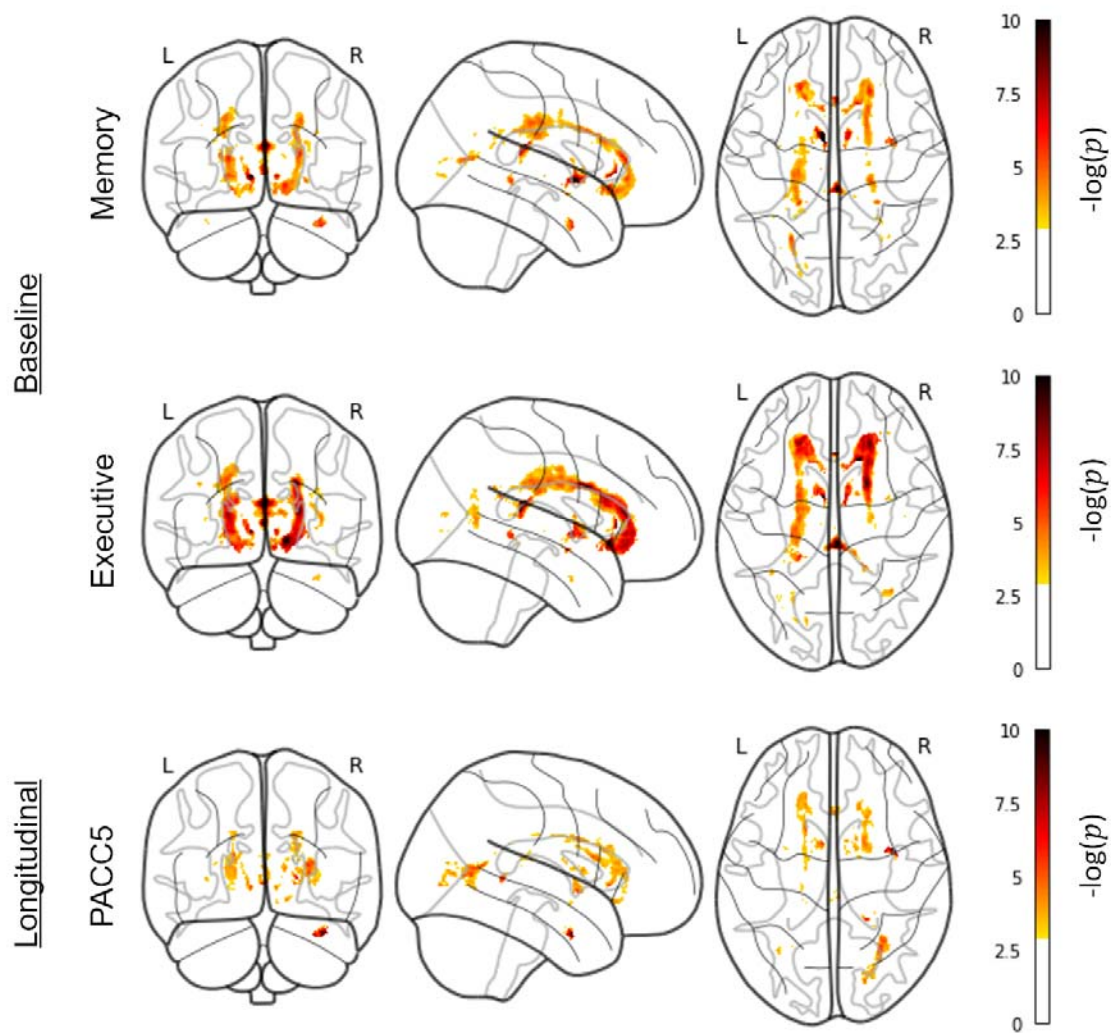
### Figure 1. The effect of hypertension and A $\beta$ positivity spatially overlaps in posterior WMH.

*Analysis.* We examined the relationship between WMH probability (outcome) and hypertension and A $\beta$  positivity (factors) at a voxel level via a 2 $\times$ 2 ANCOVA in CAT12. We accounted for the effects of age, sex, education, site, and TICV. We used an explicit mask to constrain the analysis to voxels in which data for at least five patients were available. *Illustration.* The top and middle rows show glass brain projections of contrasting WMH probability of 355 subjects with and without hypertension and with normal or abnormal concentrations of A $\beta$ , respectively. In the bottom row in a, regions are blue if T values are higher for hypertension than for A $\beta$ ; otherwise, regions are gold. Contrast maps are thresholded at 5% (subfigures a and b show uncorrected and FDR corrected versions, respectively). *Findings.* Although overlapping, the effects of hypertension on WMH probability were diffuse whereas those of A $\beta$  positivity were predominantly observed in the occipital white matter (peak: optic radiation, xyz = [32, -67, 4], t=5.24,  $p_{FDR}$ =0.005). Only the contributions of A $\beta$  positivity to occipital WMH probabilities survived FDR correction (white arrow in b).



### Figure 2. WMH are associated with worse baseline and longitudinal cognitive performance.

*Analysis.* We used multiple linear regression in CAT12 with WMH probability as the dependent variable and cognitive performance as the independent variable. We accounted for the effects of hypertension, A $\beta$  positivity, age, sex, education, site, and TICV. We used an explicit mask to constrain the analysis to voxels in which data for at least five patients were available. We thresholded contrast maps at 5% and adjusted p-values for FDR. *Illustration.* Regression results with memory, executive function, and PACC5 rates of change as independent variables (top to bottom). *Findings.* We found very strong evidence for an effect of WMH on baseline cognitive performance and worsening over time, despite adjusting for hypertension and A $\beta$  positivity. We observed the most evident effect of voxel-wise WMH probability on memory performance in the anterior thalamic radiation (xyz=[-7, -1, -1], t=7.12,  $p_{FDR}$ =1.02e-5), on executive function performance in the splenium (xyz=[2,-30,19], t=7.17,  $p_{FDR}$ =1.91e-5), and on PACC5 change in the inferior longitudinal fasciculus (xyz=[37, -1, -29], t=6.30,  $p_{FDR}$ =1.19e-4). Frontal periventricular WMH probability was consistently associated with lower cognitive performance and greater decline over time (at xyz=[16, 26, -10] - memory: t=3.51,  $p_{FDR}$ =0.027; executive function: t=4.53,  $p_{FDR}$ =0.004; PACC5 change: t=3.05,  $p_{FDR}$ =0.051).



## Tables

**Table 1. Demographics and WMH volume, stratified by hypertension diagnosis and A $\beta$  positivity (n=355).**

	Group	Subjects n (%)	Age in years Median [IQR]	Female n (%)	Education in years Median [IQR]	WMH volume in ml Median [IQR]
Hypertension	No	162 (45.6)	68.9 [64.3, 72.8]	82 (23.1)	14 [12, 17]	1.43 [0.75, 3.05]
	Yes	193 (54.4)	72.0 [67.0, 75.0]	86 (24.2)	13 [12, 17]	2.19 [1.22, 6.14]
A $\beta$ positivity	Negative	230 (64.8)	68.6 [64.8, 73.1]	114 (32.1)	13 [13, 17]	1.54 [0.83, 3.63]
	Positive	125 (35.2)	72.6 [68.6, 75.8]	54 (15.2)	13 [12, 17]	2.77 [1.39, 6.57]

Using the Mann-Whitney U test, we found strong evidence for differences in global WMH volume between subjects with hypertension and normotension ( $W = 11574$ ,  $p = 2.509e-5$ ) and A $\beta$ + vs A $\beta$ - biomarker status ( $W = 10866$ ,  $p$ -value =  $1.453e-4$ ). IQR: interquartile range.

**Table 2. Association between regional WMH volume, hypertension and abnormal A $\beta$  levels.**

	Regional WMH volume	Hypertension		A $\beta$	
		B (SE)	<i>p</i>	B (SE)	<i>p</i>
Lobes	Global white matter	0.284 (0.109)	<b>0.011</b>	0.250 (0.116)	0.030
	Frontal white matter	0.319 (0.024)	0.186	0.354 (0.250)	0.167
	Temporal white matter	0.221 (0.213)	0.309	0.137 (0.226)	0.553
	Occipital white matter	0.486 (0.136)	<b>0.001</b>	0.410 (0.145)	<b>0.006</b>
	Parietal white matter	0.617 (0.226)	<b>0.008</b>	0.608 (0.240)	<b>0.014</b>
Tracts	Corona radiata	0.552 (0.194)	<b>0.006</b>	0.496 (0.206)	<b>0.019</b>
	External capsule	-0.163 (0.199)	0.424	-0.101 (0.212)	0.642
	Internal capsule	0.256 (0.151)	0.099	0.077 (0.161)	0.641

	Optic radiation	0.640 (0.186)	<b>0.001</b>	0.497 (0.198)	<b>0.015</b>
CC	Genu	0.177 (0.106)	0.105	0.149 (0.113)	0.198
	Body	0.204 (0.101)	0.048	0.200 (0.107)	0.069
	Splenium	0.384 (0.125)	<b>0.003</b>	0.390 (0.133)	<b>0.004</b>

We built 2×2 ANCOVA models with the R-package stats (v3.6.2) to examine the relationship between WMH probability (outcome) and hypertension and A $\beta$  positivity (factors) at a ROI level—one for each region of interest separately. We controlled for age, sex, education, site, and total intracranial volume. We log-transformed WMH volumes to deal with skewness. B: regression coefficient. SE: standard error. CC: Corpus callosum. We print  $p_{FDR} < 0.05$  in bold.

**Table 3. A $\beta$  positivity is strongly associated with memory and executive dysfunction ( $p_{FDR} < 0.001$ ); WMH on occipital lobes, corona radiata, optic radiation, and splenium partially mediate these relations.**

Independent variable	Mediator variable [Regional WMH volume]	Dependent variable							
		Memory				Executive function			
		Direct effect		Indirect effect		Direct effect		Indirect effect	
		B (SE)	<i>p</i>	B (SE)	<i>p</i>	B (SE)	<i>p</i>	B (SE)	<i>p</i>
A $\beta$	Occipital white matter	-0.42 (0.08)	<b>&lt;0.001</b>	-0.03 (0.02)	<b>0.004</b>	-0.28 (0.08)	<b>&lt;0.001</b>	-0.02 (0.01)	0.090
	Parietal white matter			-0.02 (0.01)	0.160			-0.02 (0.02)	0.054
	Corona radiata			-0.04 (0.02)	<b>0.014</b>			-0.04 (0.02)	<b>0.002</b>
	Optic radiation			-0.02 (0.02)	<b>0.028</b>			-0.01 (0.01)	0.236
	Splenium			-0.02 (0.02)	<b>0.002</b>			-0.04 (0.02)	<b>0.004</b>

We used the R-package mediation (v4.5.0) and multiple linear regression in the R-package stats (v3.6.2) for this purpose. The significance of p-values for these associations was based on 95% confidence intervals generated using bias corrected bootstrap with 1000 replicates. The effect of WMH on cognition can be found in **eTable 1**. We controlled for hypertension, age, sex, education, site, and total intracranial volume. We log-transformed WMH volumes to deal with skewness. B: regression coefficient. SE: standard error. We print  $p_{FDR} < 0.05$  in bold.