

## **Title**

Efficacy and safety of ensitrelvir in patients with mild-to-moderate COVID-19: a protocol for a multicenter, randomized, double-blind, placebo-controlled, phase 3 study (the SCORPIO-SR trial)

## **Short title**

Ensitrelvir phase 3 protocol for mild-to-moderate COVID-19

## **Authors**

Hiroshi Yotsuyanagi, MD, PhD<sup>1</sup>; Norio Ohmagari, MD, PhD<sup>2</sup>; Yohei Doi MD, PhD<sup>3,4</sup>; Takumi Imamura, MS<sup>5</sup>; Takuhiro Sonoyama, MD, PhD<sup>5</sup>; Genki Ichihashi, MPharm<sup>5</sup>; Takao Sanaki, PhD<sup>6</sup>; Yuko Tsuge, MS<sup>5</sup>; Takeki Uehara, PhD<sup>5\*</sup>; Hiroshi Mukae MD, PhD<sup>7</sup>

## **Affiliations**

<sup>1</sup>The Institute of Medical Science, The University of Tokyo, Tokyo, Japan

<sup>2</sup>Disease Control and Prevention Center, National Center for Global Health, Tokyo, Japan

<sup>3</sup>Division of Infectious Diseases, University of Pittsburgh School of Medicine, Pittsburgh, Pennsylvania, USA

<sup>4</sup>Departments of Microbiology and Infectious Diseases, Fujita Health University School of Medicine, Toyoake, Japan

<sup>5</sup>Drug Development and Regulatory Science Division, Shionogi & Co., Ltd., Osaka, Japan

<sup>6</sup>Research Division, Shionogi & Co., Ltd., Osaka, Japan

<sup>7</sup>Department of Respiratory Medicine, Nagasaki University Graduate School of Biomedical Sciences, Nagasaki, Japan

## **Corresponding author**

\*Takeki Uehara

Drug Development and Regulatory Science Division, Shionogi & Co., Ltd.

Address: 8F, Nissay Yodoyabashi East, 3-3-13 Imabashi, Chuo-ku, Osaka 541-0042, Japan

Email: [takeki.uehara@shionogi.co.jp](mailto:takeki.uehara@shionogi.co.jp)

Telephone: +81-6-6209-6907

**Trial sponsor:** Shionogi & Co., Ltd.

**Protocol version:** Version 10, Amendment 9, Issued 20 September 2022.

## **ABBREVIATIONS**

AE: adverse event

ANCOVA: analysis of covariance

CI: confidence interval

COVID-19: coronavirus disease 2019

CYP3A: cytochrome P450 3A

eCRF: electronic case report form

EQ-5D-5L: EuroQol five-dimension five-level questionnaire

ITT: intention to treat

mITT: modified intention to treat

RNA: ribonucleic acid

RT-PCR: reverse transcription-polymerase chain reaction

SAE: serious adverse event

SARS-CoV-2: severe acute respiratory syndrome coronavirus 2

SpO<sub>2</sub>: saturation of percutaneous oxygen

VOC: variant of concern

WHO: World Health Organization

## **ABSTRACT (350/350 words)**

**Background:** Most antiviral treatments are targeted toward patients with severe or moderate-to-severe illness or those at high risk of developing severe Coronavirus disease 2019 (COVID-19). Limited options exist for patients with mild-to-moderate COVID-19, irrespective of vaccination history or risk status. Ensitrelvir is a novel oral SARS-CoV-2 3C-like protease inhibitor. The phase 2 studies of ensitrelvir have demonstrated promising results in mild-to-moderate COVID-19, whereas the challenge to evaluate the clinical efficacy due to shifting vaccinated status and the emergence of the Omicron variant has been suggested. Here, we describe the protocol for a phase 3 study designed to evaluate the efficacy and safety of ensitrelvir in patients with mild-to-moderate COVID-19, regardless of risk status or vaccination history.

**Methods:** This is a multicenter, randomized, double-blind, placebo-controlled, phase 3 study. Patients with mild-to-moderate COVID-19 within 120 hours from onset will be randomized in a 1:1:1 ratio into 3 treatment arms—ensitrelvir 125 mg (375 mg as loading dose on Day 1), ensitrelvir 250 mg (750 mg as loading dose on Day 1), or placebo. The study interventions will be administered orally once daily for 5 days. The primary endpoint will be the time to resolution of the 5 symptoms of COVID-19 (stuffy or runny nose, sore throat, cough, feeling hot or feverish, low energy or tiredness), and the primary population will be patients with <72 hours from COVID-19 onset to randomization in ensitrelvir 125 mg group. The key secondary endpoints include the change from baseline on Day 4 in the amount of SARS-CoV-2 viral RNA and the time to the first negative SARS-CoV-2 viral titer. Closed testing procedure will be used for the primary and key secondary endpoints in both the primary and entire patient population. All safety assessments and adverse events will be reported.

**Discussion:** Time to resolution of the 5 COVID-19 symptoms is a suitable endpoint to assess antiviral treatment in patients infected with the Omicron variant. In the phase 2 studies, ensitrelvir has demonstrated antiviral efficacy against SARS-CoV-2 and a trend toward reducing time to resolution of symptoms in patients with mild-to-moderate COVID-19. Through this study, we will seek to validate and establish the clinical efficacy and safety of ensitrelvir in patients with mild-to-moderate COVID-19.

**Trial registration:** Japan Registry of Clinical Trials (<https://jrct.niph.go.jp>): jRCT2031210350.

**KEYWORDS:** antiviral, COVID-19, ensitrelvir, mild to moderate, resolution of symptoms.

## INTRODUCTION

Coronavirus disease 2019 (COVID-19) is an infectious respiratory illness caused by severe acute respiratory syndrome coronavirus 2 (SARS-CoV-2)<sup>1</sup> and was declared a global pandemic by the World Health Organization (WHO) in March 2020.<sup>2</sup> Globally, as of July 2022, over 500 million confirmed cases of COVID-19 have been reported, with more than 6 million associated deaths.<sup>3</sup> Common symptoms of COVID-19 include fever, cough, fatigue, shortness of breath, headache, body aches, sore throat, runny or stuffy nose, diarrhea, nausea, and vomiting; some patients may also experience loss of smell and/or taste.<sup>4</sup> High-risk patients such as the elderly and those with comorbidities and underlying health conditions such as cardiovascular disease, respiratory disease, renal disease, diabetes mellitus, obesity, or immunodeficiency are at a greater risk of developing severe COVID-19 symptoms.<sup>5,6</sup> Some COVID-19 symptoms may persist even after cessation of SARS-CoV-2 shedding and recovery from the acute illness causing a wide range of health problems known as post-acute COVID-19 syndrome.<sup>7,8</sup>

The SARS-CoV-2 Omicron is a variant of concern (VOC) designated by WHO.<sup>9</sup> This variant is characterized by spike protein mutations that lead to increased transmissibility and is known to escape from the SARS-CoV-2-neutralizing antibodies.<sup>10</sup> A study from the United Kingdom indicated that common symptoms reported in patients infected with the Omicron variant of SARS-CoV-2 were mostly mild (runny nose, headache, sore throat, sneezing, persistent cough, and hoarse voice).<sup>11</sup> The risk of hospitalization and hospitalization rates were lower during the prevalence of the Omicron variant compared with that of the Delta variant,<sup>11,12</sup> in alignment with studies reporting that infection with the Omicron variant is less severe than that with the Delta variant.<sup>13-15</sup> Although milder, several reports have indicated that infection with the Omicron variant is associated with a higher excess mortality compared with that with the Delta variant<sup>16</sup> and influenza.<sup>12</sup> In Japan, the first patient infected with the Omicron variant of SARS-CoV-2 was reported in November 2021. Subsequently, various Omicron subvariants emerged, BA.2 became the most prevalent in May 2022, replacing the previously dominant BA.1 subvariant. As of September 2022, BA.5 is dominant in Japan<sup>17</sup> and the data about the viral and clinical characteristics continue to be studied. Although vaccination is progressing across the world, new variants and the subvariants that evade SARS-CoV-2-neutralizing antibodies continue to be a threat.

As of April 2022, several therapeutic antiviral drugs against SARS-CoV-2 infection are available worldwide.<sup>18-21</sup> In particular, remdesivir<sup>18</sup> and molnupiravir,<sup>20</sup> both ribonucleic acid (RNA) polymerase inhibitors, as well as nirmatrelvir, a SARS-CoV-2 3C-like (3CL) protease inhibitor, in combination with ritonavir as a pharmacokinetic booster,<sup>19</sup> are antivirals recommended for treating patients at a high risk of developing severe illness. These have been approved for use in Japan as well.<sup>22</sup> However, these drugs

were mostly approved prior to the emergence of the Omicron variant and were also assessed in clinical trials in unvaccinated individuals.<sup>18-21</sup> Therefore, little evidence exists for their efficacy against the Omicron variant and in vaccinated patients. In Japan, remdesivir has been approved for moderate-to-severe COVID-19, regardless of patient risk for progression to severe COVID-19, and for mild COVID-19 patients at a high risk of severe illness.<sup>23</sup> However, treatment options for patients with mild-to-moderate COVID-19, regardless of vaccination status and risk of developing severe illness, are limited. Moreover, post-acute COVID-19 syndrome may affect anyone infected with SARS-CoV-2, even those with mild or no symptoms.<sup>7,8</sup> As a result, a new treatment or prevention measure for post-acute COVID-19 syndrome is needed.

Ensitrelvir fumaric acid (S-217622, hereafter ensitrelvir) is a novel oral SARS-CoV-2 3CL protease inhibitor that originated through collaborative research efforts between Shionogi & Co., Ltd., and Hokkaido University.<sup>24</sup> Ensitrelvir has demonstrated antiviral efficacy against SARS-CoV-2, including the Omicron variant and other VOCs, in both *in vitro* and *in vivo* preclinical studies.<sup>25-27</sup> The tolerability of 5-day administration of ensitrelvir has been confirmed in healthy adult patients in a phase 1 study (Japan Registry of Clinical Trials identifier: jRCT2031210202).<sup>28</sup> Promising results have been observed in the ongoing phase 2/3 study comprising several components—phase 2a, phase 2b, phase 2b/3, and phase 3 (SCORPIO-SR) studies—designed to assess the antiviral efficacy of ensitrelvir. The phase 2a<sup>29</sup> and 2b<sup>30</sup> studies showed that once-daily ensitrelvir administered for 5 days demonstrated a significant reduction in viral titer and viral RNA compared with placebo in mild-to-moderate COVID-19. In the phase 2b study, while there was no significant difference between ensitrelvir and placebo in the time-weighted average change in the total score corresponding to the 12 COVID-19 symptoms (**Supplemental Table 1** with the exception of smell or taste disorder), planned and post hoc analyses demonstrated that ensitrelvir produced favorable improvements in a subtotal of four respiratory symptoms (planned) or in the composite of respiratory symptoms and feverishness (post hoc).<sup>30</sup> Both studies demonstrated that ensitrelvir was safe and well tolerated.<sup>29,30</sup> The phase 2b study was conducted during the dominance of the Omicron variant, and most patients had been vaccinated.<sup>30</sup> These studies suggested the need to evaluate efficacy in endpoints which reflect clinical features of epidemic strains.

In this study, we describe the protocol for a phase 3 study, with emphasis on the study rationale and key endpoints designed to assess the efficacy and safety of ensitrelvir in patients with mild-to-moderate COVID-19, irrespective of their risk status of developing severe illness and vaccination history.

## **MATERIALS AND METHODS**

### **Study design**

This is a multicenter, randomized, double-blind, placebo-controlled, phase 3 study to test the efficacy and safety of ensitrelvir in patients with mild-to-moderate COVID-19. The study will be conducted across several sites in Japan, Korea, Singapore, and Vietnam beginning in February 2022 and has been registered in the Japan Registry of Clinical Trials: jRCT2031210350. Patients will be randomized into three arms—the ensitrelvir 125 mg, ensitrelvir 250 mg, and placebo arms. The intervention period will span 5 days (Day 1–5), during which patients will be administered ensitrelvir or placebo, followed by a follow-up period of 23 days (Day 6–28; **Figure 1**). Patients who provide consent to participate in the exploratory period (Day 29–337) will be further evaluated over the extended follow-up period.

### **Study ethics**

This study will be conducted in accordance with the protocol and consensus ethical principles derived from the Declaration of Helsinki, the Council for International Organizations of Medical Sciences (CIOMS) International Ethical Guidelines, the International Council for Harmonization of Technical Requirements for Pharmaceuticals for Human Use (ICH) Guidelines, and Good Clinical Practice guidelines. The protocol, protocol amendments, and other relevant documents will be submitted to the institutional review boards of the participating sites for approval. All patients will be required to provide written informed consent/assent to participate in the study before undergoing any evaluations or procedures. For minor patients, written informed consent will be obtained from a parent/legal guardian. All patients will be informed about the use of their personal, study-related data in accordance with data protection laws. The information and results of this study will be disclosed at the clinical study registration site and other sites. The results of this study may be published or presented at scientific meetings.

### **Randomization and blinding**

Eligible patients will be randomly assigned to the 3 treatment arms in a 1:1:1 ratio using an interactive response technology, and a study intervention allocation table will be created. Randomization will be stratified by the time from the onset of COVID-19 to randomization (<72 hours vs. ≥72 hours) and by SARS-CoV-2 vaccination history (vaccinated [first dose completed] vs. unvaccinated). Placebo drugs will be indistinguishable in appearance, labeling, and packaging from treatment drugs. All relevant personnel, including the sponsor, patients, and the investigator and sub-investigator, will remain blinded to the

treatments. Unblinding at the request of the investigator may be permitted only in the event of an emergency or adverse event (AE) when knowledge of the intervention may be needed for an appropriate course of therapy.

## **Eligibility criteria**

### *Inclusion criteria*

Patients must be capable of providing signed informed consent/assent and must be  $\geq 12$  years and  $< 70$  years of age at the time of providing informed consent/assent. All patients must (1) have been diagnosed as SARS-CoV-2 positive within 120 hours before randomization via either a nucleic acid detection test using a nasopharyngeal swab, a nasal swab, or saliva (qualitative/quantitative reverse transcription-polymerase chain reaction [RT-PCR] test or isothermal nucleic acid amplification method [e.g., the loop-mediated isothermal amplification method or the transcription-mediated amplification method]), a quantitative antigen test using a nasopharyngeal swab, nasal swab, or saliva, or a qualitative antigen test using a nasopharyngeal or nasal swab; (2) have a time from COVID-19 onset to randomization of  $\leq 120$  hours (when at least one of the 14 symptoms occurs: low energy or tiredness, muscle or body aches, headache, chills or shivering, feeling hot or feverish, stuffy or runny nose, sore throat, cough, shortness of breath, nausea, vomiting, diarrhea, smell disorder, and taste disorder); and (3) have at least one moderate symptom (COVID-19 symptom score 2; **Supplemental Table 1**) or severe symptom (COVID-19 symptom score 3; **Supplemental Table 1**) among the COVID-19 symptoms at enrollment (excluding smell or taste disorder and any symptoms present prior to COVID-19 onset) or at least one moderate symptom or severe pre-existing symptom (present prior to COVID-19 onset), which was considered to have worsened at baseline (before administration of study intervention). Patients' body weight must be  $\geq 40$  kg (if patients are minors at the time of providing informed consent/assent).

### *Exclusion criteria*

Patients will be excluded if they (1) have  $\leq 93\%$  (room air) saturation of percutaneous oxygen ( $SpO_2$ ) during wakefulness; (2) require oxygen administration or respirators; (3) are strongly suspected or expected to have worsening of symptoms associated with the SARS-CoV-2 infection within 48 hours after randomization in the opinion of the investigator or sub-investigator; (4) have suspected active and systemic infections (excluding SARS-CoV-2 infection) requiring treatment at the time of randomization; (5) currently have a chronic history of moderate or severe liver disease or known hepatic or biliary abnormalities (with the exception of Gilbert's syndrome or asymptomatic gallstones) or moderate or severe kidney disease (Grade 2 or higher based on Common Terminology Criteria for Adverse Events<sup>31</sup>);

(6) have used approved or unapproved drugs (e.g., interferon, convalescent plasma, monoclonal antibodies, immunoglobulins, antirheumatic drugs, corticosteroids [oral, injection, inhaled], ivermectin, or favipiravir) for the treatment of SARS-CoV-2 infection within 7 days prior to randomization; (7) have used a strong cytochrome P450 3A (CYP3A) inhibitor, a strong CYP3A inducer, or products containing St. John's wort within 14 days prior to randomization;

Patients satisfying inclusion criteria 1–3 and not satisfying exclusion criteria 1–4 listed above are considered to have mild-to-moderate COVID-19.

## **Interventions**

### *Drug dose and administration*

Based on the results of the phase 2a<sup>29</sup> and 2b<sup>30</sup> studies, patients will be orally administered a once-daily dosage of ensitrelvir 125 mg, ensitrelvir 250 mg, or matching placebo. Two types of placebo doses will be administered—placebo-B, which is identical in appearance and packaging to ensitrelvir 125 mg, and placebo-D, which is identical in appearance and packaging to ensitrelvir 250 mg. For patients assigned to the placebo group, three tablets each of placebo-B and placebo-D will be administered on Day 1, followed by one tablet each of placebo-B and placebo-D administered on Day 2–5. For patients randomized to the ensitrelvir 125 mg group, a loading dose of 375 mg of ensitrelvir (three tablets of 125 mg each) and three tablets of placebo-D will be administered orally on Day 1. Subsequently, a maintenance dose of ensitrelvir 125 mg (one tablet of 125 mg) and one tablet of placebo-D will be administered orally once daily on Day 2–5. For patients randomized to the ensitrelvir 250 mg group, a loading dose of 750 mg of ensitrelvir (three tablets of 250 mg each) and three tablets of placebo-B will be administered on Day 1. Subsequently, a maintenance dose of ensitrelvir 250 mg (one tablet of 250 mg) and one tablet of placebo-B will be administered orally once daily on Day 2–5.

### *Criteria for discontinuation*

The study intervention will be discontinued for patients who experience worsening of the SARS-CoV-2 infection, experience serious or intolerable AEs, are found to be ineligible for the study by the investigator or sub-investigator, request to discontinue the study interventions, are lost to follow-up, become pregnant, or for any other reason per the judgment of the investigator or sub-investigator.

### *Prohibited concomitant therapy*

Because ensitrelvir has an inhibitory effect on CYP3A, patients must refrain from consuming any foods and beverages containing grapefruit or Seville oranges and also avoid consuming products containing St.



John's work during the study intervention period. Details of prohibited concomitant drugs are provided in the **Supplemental Appendix 1**.

### **Outcome measures and endpoints**

The primary endpoint for this study will be the time to resolution of the 5 COVID-19 symptoms, defined as the time from the start of the study intervention until the resolution of the 5 symptoms (stuffy or runny nose, sore throat, cough, feeling hot or feverish, low energy or tiredness) of SARS-CoV-2 infection.

Patients will assess their symptoms using a partially modified index prescribed by the Food and Drug Administration (FDA)<sup>32</sup> (**Supplemental Table 1**). Smell and/or taste disorder will be assessed using a 3-point scale ranging from 0 to 2, where 0 indicates the same as usual, 1 indicates less than usual, and 2 indicates no sense of smell or taste. The remaining 12 symptoms will be assessed using a 4-point scale ranging from 0 to 3, where 0 indicates no symptoms, 1 indicates mild symptoms, 2 indicates moderate symptoms, and 3 indicates severe symptoms. Resolution of symptoms will be assessed as follows: (1) for pre-existing symptoms that were present before the onset of COVID-19 and considered by the patient to have worsened at baseline, severe symptoms at baseline must have improved to moderate or better, moderate symptoms at baseline must have improved to mild or better, and mild symptoms at baseline must have remained mild or better (no symptoms) and (2) for pre-existing symptoms that were present before the onset of COVID-19 and considered by the patient not to have worsened at baseline, severe symptoms at baseline must have remained severe or improved, moderate symptoms at baseline must have remained moderate or improved, and mild symptoms at baseline must have remained mild or better (no symptoms). Symptoms other than the above (those not occurring before the onset of COVID-19 or those that occur at or after baseline) must have completely resolved. Patients will be considered to have achieved the primary endpoint if the 5 COVID-19 symptoms remain resolved for  $\geq 24$  hours.

The two key secondary endpoints for this study will be change from baseline on Day 4 in the amount of SARS-CoV-2 viral RNA (key secondary endpoint 1); time to first negative SARS-CoV-2 viral titer, defined as the time from the first administration of the study intervention until the first confirmation of SARS-CoV-2 viral titer below a pre-determined detection limit (key secondary endpoint 2). Other secondary endpoints will include; the time to resolution of the 5 COVID-19 symptoms without symptom recurrence defined as no increase of any symptom scores to moderate or severe at least for 48 hours after achieving resolution; the time to resolution of the 12 and 14 COVID-19 symptoms, respectively; the proportion of patients with smell or taste disorder at each time point; the proportion of patients without resolution of COVID-19 symptoms 3 weeks after the study intervention; change from baseline in SARS-CoV-2 viral titer and viral RNA at each time point, respectively; and 8-point ordinal scale at each time

point. (**Supplemental Table 2**). Other outcomes will include time to first occurrence of smell and/or taste disorder defined as the time from the start of the study intervention to the first occurrence of smell and/or taste disorder. Safety assessments will include laboratory tests related to hematology, blood chemistry, coagulation, serology, urinalysis, and others; physical examination; and measurement of vital signs (**Supplemental Table 3**).

### **Rationale for the primary endpoint**

The phase 2a<sup>29</sup> and 2b<sup>30</sup> studies demonstrated decreased viral load with ensitrelvir treatment. In the 2a and 2b studies, time to improvement of COVID-19 symptoms was used for clinical assessment, similar to the assessment of influenza treatment, and significant difference was not shown between ensitrelvir and placebo arms. A more stringent endpoint such as the time to resolution of symptoms may be a meaningful clinical target for patients with SARS-CoV-2 infection, and the FDA also recommends the time to clinical recovery for COVID-19 treatment.<sup>32</sup>

In the phase 2a and 2b studies, the 12 COVID-19 symptoms were assessed referring the FDA guidance.<sup>32</sup> It was revealed after the initiation of the phase 3 that stuffy or runny nose, sore throat, cough feeling hot or feverish, and low energy or tiredness were the five most frequently observed symptoms in all 3 treatment groups of the phase 2b study conducted under the BA.1 epidemic (**Table 2**). Furthermore, the clinical features of infection by the BA.4 and BA.5 were studied, and those 5 COVID-19 symptoms were selected as the component of the primary endpoint in the phase 3 study because those may reflect the clinical characteristic of the epidemic variant and the subtype.

The main pathophysiology of COVID-19 is due to viral proliferation for several days after onset followed by inflammatory reaction of host immunity starting around 7 days after onset,<sup>33</sup> and it is recommended to administer an antiviral drug in the earlier phase. It was reported that the patients with disease progression within 3 days and 4-7 days after onset of COVID-19 symptoms accounted for 31% and 37% of hospitalized COVID-19 patients, respectively, in the BA.1 and BA.2 epidemic in Japan, whereas the percentage has changed to 62% and 26%, respectively, in the BA.4 and BA.5.<sup>34</sup> This may suggest that the observational period to predict the prognosis has become shorter under the epidemic of evolving subvariants and may also support the importance of earlier antiviral treatment— <72 hours of onset of COVID-19 symptoms. Hence, we defined patients randomized <72 hours from the onset of COVID-19 as the primary analysis population to evaluate the antiviral and clinical efficacy more clearly. For confirming ensitrelvir profile, we will also analyze the patients randomized within 120 hours from the onset of COVID-19.

In the post-hoc analysis of the phase 2b study, the median time to resolution of the 5 COVID-19 symptoms in patients randomized to the study intervention <72 hours from the COVID-19 onset was shorter both in ensitrelvir 125 mg and 250 mg arms compared to the placebo arm (placebo, 10.4 hours; ensitrelvir 125 mg 6.9 hours; ensitrelvir 250 mg, 6.3 hours; Figure 2). Therefore, the time to resolution of the 5 symptoms of COVID-19 will be assessed as the primary endpoint to confirm the clinical benefit of antiviral treatment in patients with SARS-CoV-2 infection.

The primary endpoint was concluded through the consultation with experts and regulatory authorities.

### **Patient timelines**

The schedule of activities for each patient will include efficacy and safety assessments (**Table 1**).

Efficacy assessments will include virological examinations, patient diaries, and disease severity. Patients will self-assess all 14 symptoms twice daily (morning and evening) from before the first dose of study intervention on Day 1 to Day 9 and once daily (evening) from Day 10 to Day 21. All endpoints assessed using the nasopharyngeal swab will be evaluated per the schedule of activities (**Table 1**). SpO<sub>2</sub> levels and body temperature will be measured and recorded in the diary twice daily (morning and evening) from before the first dose of the study intervention on Day 1 until Day 9 and once daily (evening) from Day 10 to Day 21. If acetaminophen is taken as an antipyretic or analgesic, the COVID-19 symptom score will not be evaluated, and body temperature will not be measured until 4 hours after administration. Disease severity will be scored by the investigator or sub-investigator using the 8-point ordinal scale the schedule of activities (**Table 1**). Safety assessments will be performed per the schedule of activities (**Table 1**).

### **Statistical analysis**

#### *Analysis populations*

Primary and secondary endpoints, other efficacy endpoints except for endpoints related to the viral titer will be assessed in the intention-to-treat (ITT) population, comprising all patients randomized to a study intervention and having SARS-CoV-2 infection confirmed by an RT-PCR test based on the nasopharyngeal swab sample from Visit 1 (pre-intervention). Secondary endpoints and other efficacy endpoints related to the SARS-CoV-2 viral titer will be assessed in the modified ITT (mITT) population, comprising all patients randomized to a study intervention with positive RT-PCR test results on Visit 1 and a SARS-CoV-2 viral titer detected at baseline. All safety assessments will be conducted in the safety analysis population (SAP) comprising patients who were randomized to a study intervention and who received at least one dose of the study intervention.

The population whose time from onset of COVID-19 to randomization in the ITT population is less than 72 hours will be the primary analysis population for both primary and key secondary endpoints. If a significant difference is found in the populations, the same analysis as the primary endpoint and key secondary endpoints will be performed on the entire ITT or mITT population.

Pharmacokinetic/pharmacodynamic analysis of the phase 2b study showed no clear difference in the antiviral efficacy between ensitrelvir 125 mg and 250 mg. It was suggested that the 125 mg may achieve a maximum antiviral effect, and the efficacy analysis population was changed to 125 mg group in the phase 3 study.

### *Statistical tests*

For discrete variables, summary statistics such as the number and proportion of patients in each group will be calculated. For continuous variables, summary statistics such as the number of patients, arithmetic mean (mean), standard deviation (SD), minimum, median, and maximum values will be calculated for each group. The 95% confidence intervals will be calculated using the Clopper-Pearson method and the bootstrap percentile method for the difference in median time. All statistical tests will be performed at a two-sided significance level of .05, unless otherwise specified. Note that the primary comparison will be conducted between the ensitrelvir 125 mg group and the placebo group and comparison between the ensitrelvir 250 mg group and the placebo group will also be conducted in the same fashion as a secondary comparison.

As the primary analysis for the primary endpoint, a comparison of the time to resolution of the 5 COVID-19 symptoms will be performed between ensitrelvir 125 mg group and the placebo group using a Peto-Prentice generalized Wilcoxon test stratified by SARS-CoV-2 vaccination history at a one-sided significance level of .025 in the population with <72 hours from the onset of COVID-19 to randomization out of the ITT population.

The primary analyses for each of the two key secondary endpoints are as follows. For the key secondary endpoint 1, a comparison of the change from baseline on Day 4 in the amount of SARS-CoV-2 viral RNA will be performed between ensitrelvir 125 mg group and the placebo group using an analysis of covariance (ANCOVA) with change from baseline in the amount of SARS-CoV-2 viral RNA as response and SARS-CoV-2 vaccination history and the amount of SARS-CoV-2 viral RNA at baseline as covariates at a one-sided significance level of .025 in the population with <72 hours from the onset of COVID-19 to randomization out of the ITT population. For the key secondary endpoint 2, a comparison of the time to the first negative SARS-CoV-2 viral titer will be performed between ensitrelvir 125 mg group and the placebo group using a log-rank test stratified by SARS-CoV-2 vaccination history at a one-

sided significance level of .025 in the population with <72 hours from the onset of COVID-19 to randomization out of the mITT population. In terms of type 1 error control induced by statistical tests for the primary analyses of primary endpoint and two key secondary endpoints, a fixed-sequence procedure will be applied in a hierarchical order of the primary endpoint, key secondary endpoint 1, and key secondary endpoint 2 in the comparisons between the ensitrelvir 125 mg group and the placebo group. In this procedure, if a preceding statistical test is not significant at a one-sided significance level of .025, the subsequent statistical tests will not be performed. If all of the statistical tests of the primary analyses for the ITT or mITT population with <72 hours from the onset of COVID-19 to randomization are significant, the same fixed-sequence procedure with the same hierarchical order will be applied to the key secondary analyses of the primary endpoint and the key secondary endpoints in the entire ITT population or the entire mITT population. In these key secondary analyses, time from COVID-19 onset to randomization (<72 hours, ≥72 hours) will be added to stratified factors or covariates in each primary analysis.

Other analyses for the primary and key secondary endpoints are in the population with <72 hours from COVID-19 onset to randomization out of the ITT population or mITT population as follows. A comparison of the time to resolution of the 5 COVID-19 symptoms and the time to the first negative SARS-CoV-2 viral titer will be performed between ensitrelvir 125 mg group and the placebo group using a log-rank test and a Peto-Prentice's generalized Wilcoxon test, respectively, stratified by SARS-CoV-2 vaccination history. Kaplan-Meier curves will be plotted for each treatment group. The median time to resolution of the 5 COVID-19 symptoms and first negative SARS-CoV-2 viral titer, along with the respective 95% CIs, will be calculated; the difference in median time between treatment groups, along with 95% CIs, will be calculated. The hazard ratio for the time to resolution of the 5 COVID-19 symptoms and the time to first negative SARS-CoV-2 viral titer of ensitrelvir 125 mg group to the placebo group will be estimated using a Cox proportional hazard model stratified by SARS-CoV-2 vaccination history. Restricted mean survival time with a 21-day investigation period will be estimated for the time to resolution of the 5 COVID-19 symptoms and the time to first negative SARS-CoV-2 viral titer for each treatment group, and a comparison between ensitrelvir 125 mg group and the placebo will be performed. These analyses will be performed for the ITT population or mITT population by adding time from COVID-19 onset to randomization (<72 hours, ≥72 hours) to stratified factors or covariates in each primary analysis. Multiplicity adjustments will not be performed for the above analyses.

Analysis of the time to sustained resolution of the 5 COVID-19 symptoms for 48 hours or longer without any recurrence of the 5 COVID-19 symptoms for 2 days (48 hours) or longer after the resolution of the 5

COVID-19 symptoms will be performed by using the same analysis as the primary endpoint (except for multiplicity adjustment).

For the analysis of the time to resolution of the 12 COVID-19 symptoms which persists for at least 24 hours between ensitrelvir 125 mg group and the placebo group, the same analyses as the primary endpoint will be performed (except for multiplicity adjustment).

For analyzing the change from baseline in SARS-CoV-2 viral titer and the amount of viral RNA at each time point, least squares means and difference between the ensitrelvir 125 mg group and the placebo group based on the ANCOVA model will be calculated in the same fashion as the key secondary endpoint 1 (except for multiplicity adjustment). To evaluate the proportion of patients with a positive SARS-CoV-2 viral titer results at each time point and the proportion of patients with a score of  $\geq 1$ ,  $\geq 2$ ,  $\geq 3$ ,  $\geq 4$ ,  $\geq 5$ ,  $\geq 6$ , and 7 on the 8-point ordinal scale at each time point, the Mantel-Haenszel test will be conducted to compare the ensitrelvir 125 mg group with the placebo group. The same stratification factors used for the primary endpoint will be applied. Additionally, for the proportion of patients with a score of  $\geq 1$ ,  $\geq 2$ ,  $\geq 3$ ,  $\geq 4$ ,  $\geq 5$ ,  $\geq 6$ , and 7 on the 8-point ordinal scale at each time point, the risk ratio and risk difference between ensitrelvir 125 mg group and the placebo group will be estimated using the Mantel-Haenszel method.

#### *Sample size estimation*

Referring to the Kaplan-Meier curve of the time to resolution of the 5 COVID-19 symptoms in a patient group with less than 72 hours from the onset to randomization in the phase 2b study, we assumed a Weibull distribution as shown in **Figure 3**, considering the possibility of observing the effect conservatively in the ensitrelvir group. The assumed median time to resolution of the 5 COVID-19 symptoms corresponds to 8.3 days in the ensitrelvir 125 mg group and 11.1 days in the placebo group. The number of patients required to detect these differences with a power of 80% using the Peto-Prentice generalized Wilcoxon test with a one-sided significance level of .025 was calculated as 230 per group (the time from onset to randomization of less than 72 hours). Assuming about 10% of dropouts due to negative RT-PCR in the test before enrollment, the number of patients with a time from onset to randomization to be enrolled of less than 72 hours was calculated as 260 per group for a total of 780.

As described above, phase 3 consisted of 3 arms; the ensitrelvir 125 mg, ensitrelvir 250 mg, and placebo arms. The analysis population and the primary endpoint were changed based on the phase 2b outcomes as well as the sample size estimation. The original sample size estimation was the following. In the phase 2b study, the median time to resolution for each ensitrelvir arm was conservatively assumed to be 8 days, while that for the placebo arm was assumed to be 10 days. The original primary comparisons were

pairwise comparisons between each ensitrelvir group and the placebo group, which required multiplicity adjustment. Using the Bonferroni method for multiplicity adjustment, the sample size required to detect differences in median time to resolution with 80% power using the log-rank test at a one-sided significance level of .0125 was estimated to be 1428 patients (476 per group). Assuming a dropout rate due to a negative RT-PCR result of 10% before enrollment, the sample size of patients to be enrolled was estimated to be 1590 patients (530 per group).

#### *Imputation of missing data*

Missing data will not be imputed; all statistical analyses will be based on observed cases, unless otherwise specified. Missing assessments in a patient's diary after the initial administration of the study intervention will be imputed: morning times will be imputed as 11:59:59 and evening times will be imputed as 23:59:59 (only evening times apply for Day 10–21).

## **DISCUSSION AND CONCLUSIONS**

We described the protocol for a multicenter, randomized, double-blind, placebo-controlled, phase 3 trial to assess the efficacy and safety of ensitrelvir, a novel oral SARS-CoV-2 3CL protease inhibitor, in expediting the resolution of symptoms in patients with mild-to-moderate COVID-19. We aim to test the hypothesis that COVID-19 symptoms resolve sooner when patients are treated with ensitrelvir compared with placebo. Through this study, we seek to validate the potential antiviral efficacy of ensitrelvir observed in previous studies and to further establish its clinical efficacy and safety.

Approximately 81%–85% of patients with COVID-19 experience mild-to-moderate symptoms.<sup>35,36</sup> However, up to 14% of patients with mild-to-moderate illness can develop severe illness within a week.<sup>35</sup> Specific groups of patients such as those above 75 years of age and those having comorbidities, such as obesity, chronic kidney disease, diabetes mellitus, hypertension, and heart failure, are predisposed to progressing from mild-to-moderate illness to critical forms.<sup>35</sup> Therefore, several treatment strategies are directed toward protecting these vulnerable subgroups.<sup>18-20</sup> Treating patients with mild disease early in the disease course is not only critical for preventing progression of the infection to severe forms but also for containing the spread of the virus.<sup>35</sup> Treatments for individuals who are at a low risk of developing severe illness are limited, and new medicines are awaited to treat such patients.

To maximize patient recruitment during the Omicron epidemic, the phase 3 study applied a seamless study design with continuous patient enrollment after the phase 2b study. The phase 3 protocol was

amended several times including the primary endpoint, analysis population, statistical test and sample size estimation based on the phase 2a and phase 2b results. However, all amendments were made blinded from the phase 3 data and were based on consultations with infectious disease experts and regulatory authorities referring clinical feature of the epidemic Omicron variant and subvariants.

Both ensitrelvir 125 mg and 250 mg regimens demonstrated a potent antiviral efficacy against SARS-CoV-2 in the phase 2a and phase 2b studies, but clear dose response was not observed between the two groups. Furthermore, the analysis between ensitrelvir exposure and viral titer response suggested the nearly maximum effect could be achieved by 125 mg treatment (data to be shown in another manuscript). Either ensitrelvir 125 mg or 250 mg was originally planned to be selected during the phase 3 study based on the phase 2b study, and the primary population will be the patients in ensitrelvir 125 mg group in the phase 3 study, however, both 125 mg and 250 mg will be evaluated through the phase 3 study to assess more ensitrelvir safety profile. Only 125 mg is evaluated in the ongoing SCORPIO-HR study [ClinicalTrials.gov: NCT05305547].

To evaluate the clinical efficacy of ensitrelvir against Omicron infection, we will apply the primary endpoint focusing on the major 5 symptoms of Omicron infection. In the post hoc analyses of the phase 2b study data, a trend toward a difference in the time to resolution of symptoms was observed between the ensitrelvir groups and placebo group; the time to resolution of symptoms was shorter in the ensitrelvir groups than in the placebo group. Additional analysis of the phase 2b study on smell and taste disorder revealed that compared with placebo, ensitrelvir reduced the number of patients experiencing both smell disorder (ensitrelvir 125 mg,  $P < .001$ ; ensitrelvir 250 mg,  $P = .10$ ; **Figure 4A**) and taste disorder (ensitrelvir 125 mg,  $P < .001$ ; ensitrelvir 250 mg,  $P = .07$ ; **Figure 4B**).

Irrespective of risk factors and the severity of infection, symptoms of COVID-19 may persist for a prolonged duration. Therefore, a stringent endpoint such as the time to resolution of symptoms may be suitable for evaluating the clinical efficacy of ensitrelvir in mild-to-moderate infections. Moreover, this endpoint is also appropriate in light of disease modification due to vaccination and the emergence of new variants of the virus. Since there is no established evidence on how symptoms in mild-to-moderate COVID-19 progress over time, the endpoint of time to resolution of COVID-19 symptoms will provide clarity on how symptoms resolve with or without an antiviral treatment.

One of the strengths of this study is that it includes patients with COVID-19, irrespective of whether they are at a high risk of developing severe illness. Additionally, this study will enroll both vaccinated and unvaccinated individuals, unlike other studies assessing oral antivirals that mainly recruited unvaccinated patients. Since vaccination has a large impact on how the infection manifests in individuals, including



vaccinated patients in the study will provide a comprehensive understanding of the antiviral treatment that reflects the current status of the SARS-CoV-2 pandemic.

It is hoped that this phase 3 study will be able to confirm the clinical efficacy and safety of ensitrelvir in the treatment of mild-to-moderate COVID-19, and that the results will help provide evidence on symptom progression or improvement.

## **ACKNOWLEDGEMENTS**

We would like to thank Shintaro Tanaka, Masahiro Kinoshita, Satoshi Kojima, and Manami Yoshida for their contribution toward the development and review of this manuscript. Medical writing and editorial support were provided by Varsha Sreenivasan, PhD, of Cactus Life Sciences (part of Cactus Communications Pvt. Ltd.) and funded by Shionogi & Co., Ltd.

## **AUTHOR CONTRIBUTIONS**

Conceptualization: All authors.

Data curation: Hiroshi Yotsuyanagi, Norio Ohmagari, Yohei Doi, Genki Ichihashi, Takao Sanaki, and Hiroshi Mukae

Formal analysis: Takumi Imamura and Takao Sanaki

Visualization: Takumi Imamura

Methodology: Takao Sanaki

Supervision: Takumi Imamura, Takuhiro Sonoyama, Yuko Tsuge, Takeki Uehara, and Hiroshi Mukae

Project administration: Genki Ichihashi, Yuko Tsuge, and Takeki Uehara

Writing – review and editing: All authors.

## **DATA AVAILABILITY**

Data sharing is not applicable to this article as no data sets were generated or analyzed during the current study.

## **FUNDING**

This study was funded by Shionogi & Co., Ltd. Employees of Shionogi & Co., Ltd., participated in and approved the design and conduct of the study, wrote the protocol, and were involved in the collection, management, analysis, and interpretation of data. Institutional authors reviewed and approved the protocol and collected and interpreted the data.

## **CONFLICTS OF INTEREST**

HY reports consulting fees from Shionogi, lecture fees from Shionogi and ViiV Healthcare, and travel support from Shionogi outside the submitted work. He serves as an advisory board member for Shionogi and President of the Japanese Society of Infectious Diseases. NO declares no conflict of interest. YD reports grants from Shionogi and Entasis; consulting fees from Shionogi, Meiji Seika Pharma, Gilead Sciences, GSK, MSD, Chugai, and bioMerieux; and lecture fees from MSD, AstraZeneca, Shionogi, and Teijin Healthcare outside the submitted work and serves as an advisory board member for FujiFilm. TI, T Sonoyama, GI, T Sanaki, YT, and TU are full-time employees of Shionogi & Co., Ltd., and may own stocks or stock options. HM has received funding relevant to the submitted work from Shionogi and grants from Taisho Pharma; lecture fees from Pfizer, MSD, Shionogi, and Taisho Pharma; and advisory fees from Pfizer, MSD, and Shionogi outside the submitted work.

## REFERENCES

1. Shereen MA, Khan S, Kazmi A, Bashir N, Siddique R. COVID-19 infection: emergence, transmission, and characteristics of human coronaviruses. *J Adv Res.* 2020;24:91–98.
2. WHO Director-General's opening remarks at the media briefing on COVID-19 - 11 March 2020. World Health Organization. 2020; <https://www.who.int/director-general/speeches/detail/who-director-general-s-opening-remarks-at-the-media-briefing-on-covid-19---11-march-2020>. Accessed July 29, 2022.
3. WHO coronavirus (COVID-19) dashboard. World Health Organization. 2022; <https://covid19.who.int/>. Accessed July 29, 2022.
4. Symptoms of COVID-19. Centers for Disease Control and Prevention. 2022; <https://www.cdc.gov/coronavirus/2019-ncov/symptoms-testing/symptoms.html>. Accessed July 29, 2022.
5. Thakur B, Dubey P, Benitez J, et al. A systematic review and meta-analysis of geographic differences in comorbidities and associated severity and mortality among individuals with COVID-19. *Sci Rep.* 2021;11(1):8562.
6. Zheng Z, Peng F, Xu B, et al. Risk factors of critical & mortal COVID-19 cases: a systematic literature review and meta-analysis. *J Infect.* 2020;81(2):e16–e25.
7. Nalbandian A, Sehgal K, Gupta A, et al. Post-acute COVID-19 syndrome. *Nat Med.* 2021;27(4):601–615.
8. Post-COVID conditions. Centers for Disease Control and Prevention. 2022; <https://www.cdc.gov/coronavirus/2019-ncov/long-term-effects/index.html>. Accessed July 29, 2022.
9. Classification of Omicron (B.1.1.529): SARS-CoV-2 Variant of Concern. World Health Organization. 2021; [https://www.who.int/news/item/26-11-2021-classification-of-omicron-\(b.1.1.529\)-sars-cov-2-variant-of-concern](https://www.who.int/news/item/26-11-2021-classification-of-omicron-(b.1.1.529)-sars-cov-2-variant-of-concern). Accessed July 29, 2022.
10. Ao D, Lan T, He X, et al. SARS-CoV-2 Omicron variant: immune escape and vaccine development. *MedComm.* 2022;3(1):e126.
11. Menni C, Valdes AM, Polidori L, et al. Symptom prevalence, duration, and risk of hospital admission in individuals infected with SARS-CoV-2 during periods of omicron and delta variant dominance: a prospective observational study from the ZOE COVID Study. *Lancet.* 2022;399(10335):1618–1624.
12. Current situation of infection [July 13, 2022]. National Institute of Infectious Diseases, Japan. 2022; <https://www.niid.go.jp/niid/en/2019-ncov-e.html>. Accessed July 29, 2022.

13. Wolter N, Jassat W, Walaza S, et al. Early assessment of the clinical severity of the SARS-CoV-2 omicron variant in South Africa: a data linkage study. *Lancet*. 2022;399(10323):437–446.
14. Auvigne V, Vaux S, Strat YL, et al. Severe hospital events following symptomatic infection with Sars-CoV-2 Omicron and Delta variants in France, December 2021 – January 2022: a retrospective, population-based, matched cohort study. *eClinicalMedicine*. 2022;48:101455.
15. Nyberg T, Ferguson NM, Nash SG, et al. Comparative analysis of the risks of hospitalisation and death associated with SARS-CoV-2 omicron (B.1.1.529) and delta (B.1.617.2) variants in England: a cohort study. *Lancet*. 2022;399(10332):1303–1312.
16. Faust JS, Du C, Liang C, et al. Excess mortality in Massachusetts during the Delta and Omicron waves of COVID-19. *JAMA*. 2022;328(1):74–76.
17. Our World in Data, SARS-CoV-2 sequences by variant, Sep 12, 2022, Japan. <https://ourworldindata.org/grapher/covid-variants-bar?country=~JPN>. Accessed Sep 23, 2022.
18. Gottlieb RL, Vaca CE, Paredes R, et al. Early remdesivir to prevent progression to severe Covid-19 in outpatients. *N Engl J Med*. 2022;386(4):305–315.
19. Hammond J, Leister-Tebbe H, Gardner A, et al. Oral nirmatrelvir for high-risk, nonhospitalized adults with Covid-19. *N Engl J Med*. 2022;386(15):1397–1408.
20. Jayk Bernal A, Gomes da Silva MM, Musungaie DB, et al. Molnupiravir for oral treatment of Covid-19 in nonhospitalized patients. *N Engl J Med*. 2022;386(6):509–520.
21. Spinner CD, Gottlieb RL, Criner GJ, et al. Effect of remdesivir vs standard care on clinical status at 11 days in patients with moderate COVID-19: a randomized clinical trial. *JAMA*. 2020;324(11):1048–1057.
22. Approved Medical Products for COVID-19. Pharmaceuticals and Medical Devices Agency. 2022; <https://www.pmda.go.jp/english/about-pmda/0002.html>. Accessed July 29, 2022.
23. Pandemic coronavirus infection (COVID-19): guidance for clinical practice. Ministry of Health, Labour and Welfare. 2022;version 7.2.
24. Unoh Y, Uehara S, Nakahara K, et al. Discovery of S-217622, a noncovalent oral SARS-CoV-2 3CL protease inhibitor clinical candidate for treating COVID-19. *J Med Chem*. 2022;65(9):6499–6512.
25. Uraki R, Kiso M, Iida S, et al. Characterization and antiviral susceptibility of SARS-CoV-2 Omicron BA.2. *Nature*. 2022;607(7917):119–127.
26. Sasaki M, Tabata K, Kishimoto M, et al. Oral administration of S-217622, a SARS-CoV-2 main protease inhibitor, decreases viral load and accelerates recovery from clinical aspects of COVID-19. Preprint at *bioRxiv* <https://www.biorxiv.org/content/10.1101/2022.02.14.480338v1.full>. 2022.

27. Uraki R, Kiso M, Imai M, et al. Therapeutic efficacy of monoclonal antibodies and antivirals against SARS-CoV-2 Omicron BA.1 in Syrian hamsters. *Nat Microbiol.* 2022.
28. Shimizu R et al. Safety, Tolerability, and Pharmacokinetics of the Novel Antiviral Agent Ensitrelvir Fumaric Acid, a SARS-CoV-2 3CL Protease Inhibitor, in Healthy Adults. *Antimicrob Agents Chemother.* 2022; Sep 12; e00632-22
29. Mukae H, Yotsuyanagi H, Ohmagari N, et al. A randomized phase 2/3 study of ensitrelvir, a novel oral SARS-CoV-2 3C-like protease inhibitor, in Japanese patients with mild-to-moderate COVID-19 or asymptomatic SARS-CoV-2 infection: results of the phase 2a part. *Antimicrob Agents Chemother.* 2022; Sep 13; e00697-22
30. Mukae H, Yotsuyanagi H, Ohmagari N, et al. Efficacy and safety of ensitrelvir in patients with mild-to-moderate COVID-19: the phase 2b part of a randomized, placebo-controlled, phase 2/3 study. Preprint at *medRxiv* <https://www.medrxiv.org/content/10.1101/2022.06.22.22276792v1>. 2022.
31. Common Terminology Criteria for Adverse Events (CTCAE). Version 5.0. National Cancer Institute. 2017; [https://ctep.cancer.gov/protocoldevelopment/electronic\\_applications/docs/CTCAE\\_v5\\_Quick\\_Reference\\_8.5x11.pdf](https://ctep.cancer.gov/protocoldevelopment/electronic_applications/docs/CTCAE_v5_Quick_Reference_8.5x11.pdf). Accessed July 29, 2022.
32. Assessing COVID-19-related symptoms in outpatient adult and adolescent subjects in clinical trials of drugs and biological products for COVID-19 prevention or treatment. U.S. Food and Drug Administration. 2020; <https://www.fda.gov/regulatory-information/search-fda-guidance-documents/assessing-covid-19-related-symptoms-outpatient-adult-and-adolescent-subjects-clinical-trials-drugs>. Accessed July 29, 2022.
33. Concept of drug therapy for COVID-19 14.1th edition by the Japanese Association for Infectious Diseases (Sep.7.2022); [https://www.kansensho.or.jp/uploads/files/topics/2019ncov/covid19\\_drug\\_220907.pdf](https://www.kansensho.or.jp/uploads/files/topics/2019ncov/covid19_drug_220907.pdf). Accessed Sep 22, 2022.
34. J-SPEED (Surveillance in Post Extreme Emergencies and Disasters, Japan version) for COVID-19 in Hiroshima (Aug.10.2022 for SARS-COV-2 Infectious Disease Countermeasures Advisory Board) <https://www.mhlw.go.jp/content/10900000/000975398.pdf>. Accessed Sep 22, 2022.
35. Bestetti RB, Furlan-Daniel R, Silva VMR. Pharmacological treatment of patients with mild to moderate COVID-19: a comprehensive review. *Int J Environ Res Public Health.* 2021;18(13):7212.

36. Blair JE, Gotimukul A, Wang F, et al. Mild to moderate COVID-19 illness in adult outpatients: characteristics, symptoms, and outcomes in the first 4 weeks of illness. *Medicine (Baltimore)*. 2021;100(24):e26371.

## FIGURE LEGENDS

### FIGURE 1. Study design.

<sup>a</sup>Optional visit. However, administration of study intervention and entry of participant diary should continue.

<sup>b</sup>Assessments will be performed only for patients providing consent/assent to participate in the exploratory period.

Op, optional; V, visit.

**FIGURE 2.** Kaplan-Meier plot of the time to resolution of the 5 COVID-19 symptoms in a patient group with less than 72 hours from the onset to randomization in Phase 2b study.

**FIGURE 3.** Weibull distribution and corresponding hazard ratio curve assumed when calculating the required number of patients for Phase 3 study for the time to recovery from the 5 symptoms of COVID-19

**FIGURE 4.** Proportion of patients showing occurrence of (A) smell disorder and (B) taste disorder in the phase 2b study.

mg, milligrams.

## SUPPLEMENTAL TABLE LEGENDS

### SUPPLEMENTAL TABLE 1. COVID-19 symptom score.

<sup>a</sup>For items 1–10, sample item wording could be: “What was the severity of your symptom at its worst over the last 24 hours?”

<sup>b</sup>Score values are included in the table for ease of reference. The FDA cautions against including the score values within the response options presented to patients to avoid confusion.

COVID-19, coronavirus disease 2019; FDA, Food and Drug Administration.

### SUPPLEMENTAL TABLE 2. The 8-point ordinal scale for assessing symptom severity.

L, liters; min, minutes.

### SUPPLEMENTAL TABLE 3. List of safety laboratory assessments.

<sup>a</sup>All events of ALT  $\geq 3 \times$ ULN, and bilirubin  $\geq 2 \times$ ULN (>35% direct bilirubin) or ALT  $\geq 3 \times$ ULN and INR >1.5, if INR measured which may indicate severe liver injury, must be reported as an SAE.

$\gamma$ -GTP,  $\gamma$ -glutamyltransferase; ALP, alkaline phosphatase; ALT, alanine aminotransferase; APTT, activated partial thromboplastin time; AST, aspartate aminotransferase; BUN, blood urea nitrogen; CCL, C-C motif ligand; CK,

creatine kinase; CRP, C-reactive protein; HDL-C, high-density lipoprotein cholesterol; IFN, interferon; IgG, immunoglobulin G; IgM, immunoglobulin M; IL, interleukin; INR, international normalized ratio; KL, Krebs von den Lungen; LDH, lactate dehydrogenase; LDL-C, low-density lipoprotein cholesterol; MCH, mean corpuscular hemoglobin; MCV, mean corpuscular volume; SAE, serious adverse event; TARC, thymus and activation-regulated chemokine; TG, triglycerides; UIBC, unsaturated iron binding capacity; ULN, upper limit of normal.



## TABLES AND FIGURES

**TABLE 1.** Schedule of activities.

Procedure	Intervention period					Follow-up period					Exploratory period			Disc.	
	1	2	3	4	5	6	9	14	21	28	85	169	337		
Acceptable time window	-1	-	+1	-	+1	-	+1	±1	±2	±3	±3	±14	±14	±14	+3
Visit	V1		Op V1	V3	Op V2	V4	V5	V6	V7	V8	V9	V10	V11		
	Pre	Post												V2	
Informed consent/assent	X														
Eligibility criteria	X														
Randomization	X														
Study intervention		X	X	X	X	X									
Medical examination	X		X		X		X	X	X	X	X				X
Patient background	X														
Pregnancy test	X										X				X
SARS-CoV-2 nasopharyngeal swab collection	X		X	X	X	X	X	X	X	X					X
Patient diary	X	Twice daily					Once daily								
8-point ordinal scale	X		X		X		X	X	X	X	X				X
Laboratory assessments	X						X		X		X				X
Vital signs	X		X		X		X	X	X	X	X				X
AE review	X	X													X
Concomitant medication review	X		X		X		X	X	X	X	X				X

<b>Blood sampling for drug concentration measurement</b>			X				X								X
<b>Blood sampling for immunity assessment</b>	X										X				X
<b>Post-acute COVID-19 syndrome</b>												X	X	X	

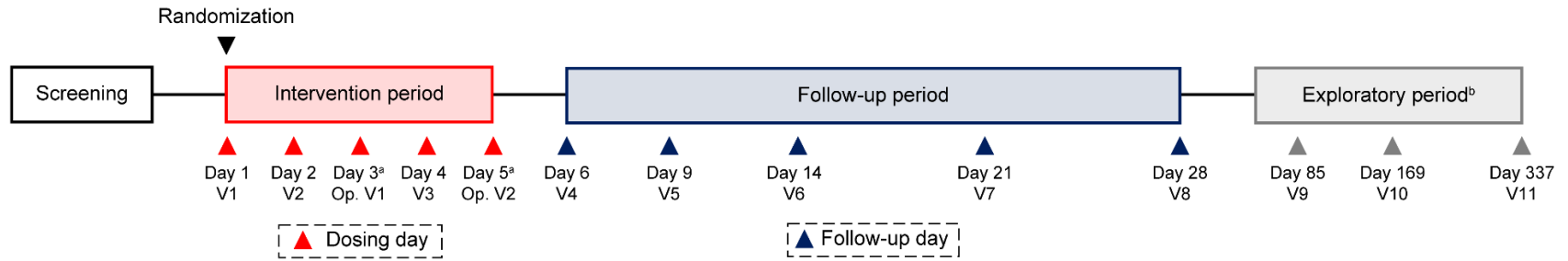
AE, adverse event; COVID-19, coronavirus disease 2019; Disc., discontinuation; Op V, optional visit; Pre, predose; Post, postdose; SARS-CoV-2, severe acute respiratory syndrome coronavirus 2; V, visit.

**TABLE 2.** Patient demographics and clinical characteristics (ITT\* population) in Phase 2b study

<b>Variables</b>		<b>Ensitrevir 125 mg (n=114)</b>	<b>Ensitrevir 250 mg (n=116)</b>	<b>Placebo (n=111)</b>
<b>Sex, n (%)</b>	Male	61 (53.5)	66 (56.9)	72 (64.9)
<b>Age (years) Category, n (%)</b>	Mean (standard deviation)	35.6 (13.5)	35.3 (13.1)	37.3 (12.6)
<b>Time from symptom onset to randomization (hours), n (%)</b>	<24	11 (9.6)	2 (1.7)	5 (4.5)
	≥24 and <48	21 (18.4)	21 (18.1)	24 (21.6)
	≥48 and <72	23 (20.2)	30 (25.9)	25 (22.5)
	≥72 and <96	37 (32.5)	38 (32.8)	33 (29.7)
	≥96 and ≤120	22 (19.3)	23 (19.8)	24 (21.6)
	>120	0 (0.0)	2 (1.7)	0 (0.0)
<b>Vaccination for SARS- CoV-2, n (%)</b>	Yes	97 (85.1)	97 (83.6)	97 (87.4)
<b>Respiratory symptoms, n (%)</b>	Stuffy or runny nose	29 (25.4)	34 (29.3)	26 (23.4)
	Sore throat	65 (57.0)	63 (54.3)	54 (48.6)
	Shortness of breath	8 (7.0)	8 (6.9)	1 (0.9)
	Cough	48 (42.1)	46 (39.7)	49 (44.1)
<b>Systemic symptoms, n (%)</b>	Low energy or tiredness	37 (32.5)	42 (36.2)	27 (24.3)
	Muscle or body aches	26 (22.8)	19 (16.4)	23 (20.7)
	Headache	28 (24.6)	30 (25.9)	24 (21.6)
	Chills or shivering	31 (27.2)	20 (17.2)	17 (15.3)
	Feeling hot or feverish	43 (37.7)	41 (35.3)	36 (32.4)
<b>Digestive symptoms, n (%)</b>	Nausea	4 (3.5)	5 (4.3)	2 (1.8)
	Vomiting	3 (2.6)	3 (2.6)	2 (1.8)
	Diarrhea	6 (5.3)	6 (5.2)	8 (7.2)

<b>Sensory disturbance, n (%)</b>	Anosmia	16 (14.0)	10 (8.6)	10 (9.0)
	Dysgeusia	19 (16.7)	7 (6.0)	9 (8.1)
<b>Variants, n (%)</b>	Delta	0 (0.0)	2 (1.7)	0 (0.0)
	Omicron	114 (100.0)	111 (95.7)	111 (100.0)
	Unknown	0 (0.0)	3 (2.6)	0 (0.0)

**FIGURE 1.** Study design.

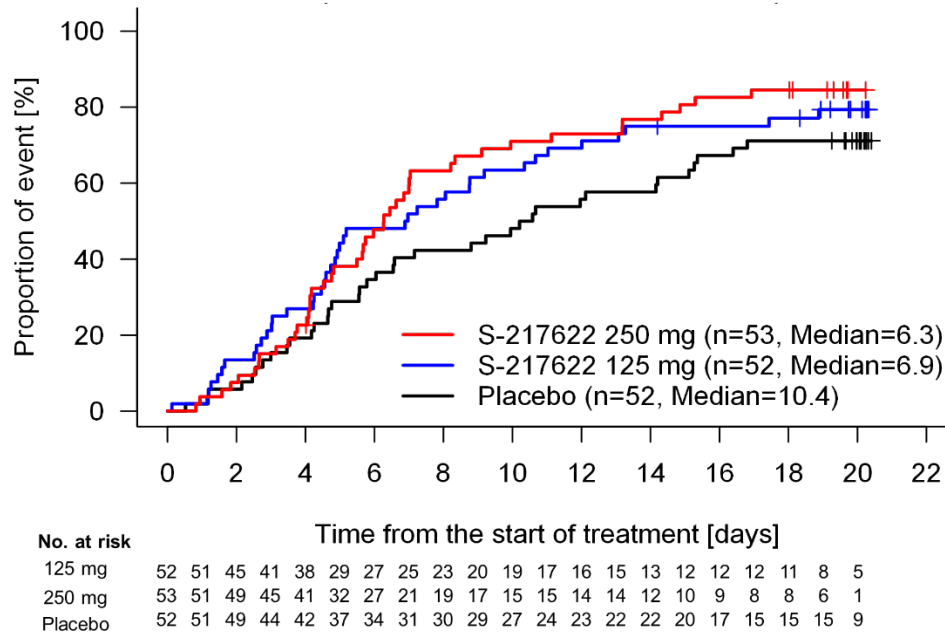


<sup>a</sup>Optional visit. However, administration of study intervention and entry of participant diary should continue.

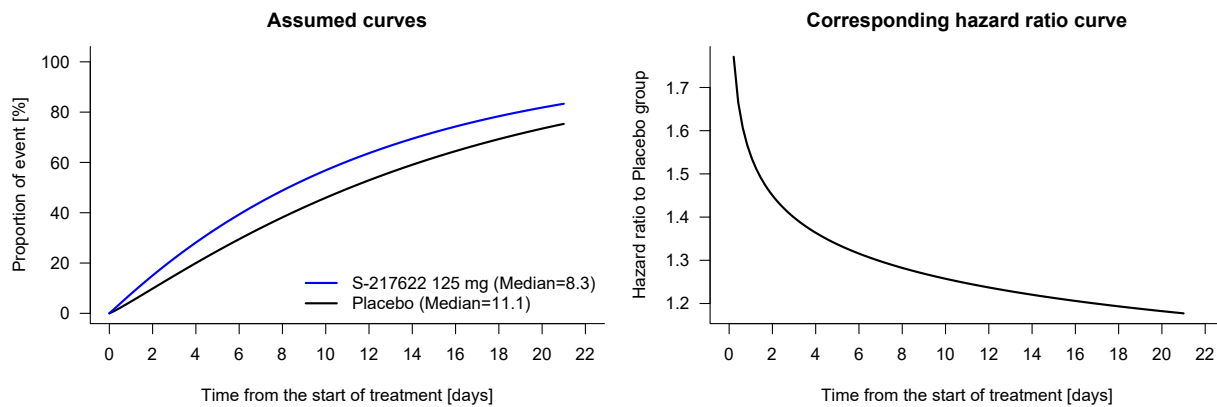
<sup>b</sup>Assessments will be performed only for patients providing consent/assent to participate in the exploratory period.

Op, optional; V, visit.

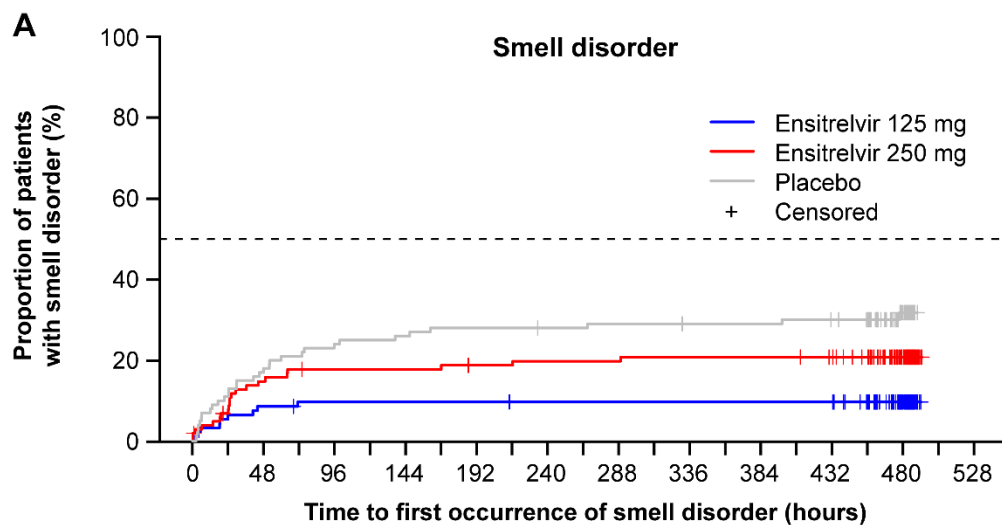
**FIGURE 2.** Kaplan-Meier plot of the time to resolution of the 5 COVID-19 symptoms in a patient group with less than 72 hours from the onset to randomization in Phase 2b study



**FIGURE 3.** Weibull distribution and corresponding hazard ratio curve assumed when calculating the required number of patients for Phase 3 study for the time to resolution of the 5 symptoms of COVID-19

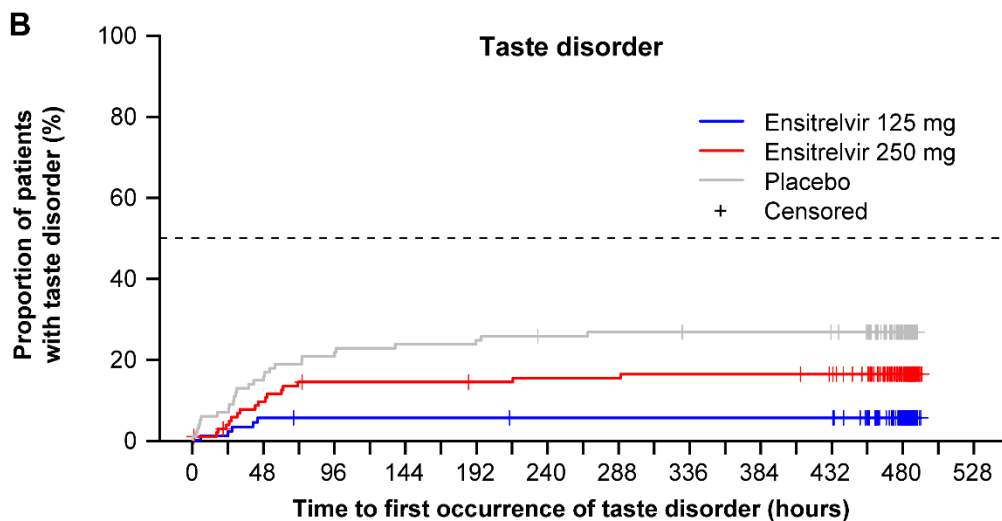


**FIGURE 4.** Proportion of patients showing occurrence of (A) smell disorder and (B) taste disorder in the phase 2b study.



No. at risk

Ensitrelvir 125 mg	93	87	85	83	83	83	83	83	83	82	82	82	82	82	82	82	82	82	74	43	
Ensitrelvir 250 mg	103	94	86	83	82	82	82	82	80	80	79	79	79	78	78	78	78	78	76	71	41
Placebo	100	89	82	79	76	75	74	72	72	72	71	71	70	70	69	69	69	68	67	65	33



No. at risk

Ensitrelvir 125 mg	90	88	85	84	84	84	84	84	84	83	83	83	83	83	83	83	83	83	83	75	46
Ensitrelvir 250 mg	106	100	94	89	88	88	88	88	87	87	86	86	86	85	85	85	85	85	83	78	42
Placebo	101	94	85	82	79	78	77	77	76	75	74	74	73	73	72	72	72	72	71	69	37

mg, milligrams.

## **SUPPLEMENTAL MATERIAL**

### **SUPPLEMENTAL APPENDIX 1**

#### **Prohibited concomitant drugs**

Drugs to be avoided from the time of providing informed consent/assent until the end of the follow-up period (Day 28) or at the time of discontinuation include approved drugs and unapproved drugs (e.g., interferons, convalescent plasma, monoclonal antibodies, immunoglobulins, antirheumatic drugs; oral, injectable, or inhaled corticosteroids; ivermectin, and favipiravir) for the treatment of SARS-CoV-2 infection; CYP3A substrates; antiviral, antibacterial, or antifungal drugs (excluding those for external use); antipyretic analgesics other than acetaminophen; antitussives and expectorants; combination cold remedy; and investigational drugs as part of other clinical trials.

Drugs to be avoided from the time of providing informed consent/assent until 10 days after the last study intervention administration include strong CYP3A inhibitors or inducers; P-glycoprotein (P-gp) inhibitors; breast cancer resistance protein (BCRP) inhibitors; and substrates for P-gp, BCRP, organic anion transporter polypeptide (OATP) 1B1, OATP 1B3, organic cation transporter (OCT) 1, organic anion transporter (OAT) 3, and multidrug and toxin extrusion (MATE) 1 transporters.



## SUPPLEMENTAL TABLES

**SUPPLEMENTAL TABLE 1.** COVID-19 symptom score.

No.	Symptom <sup>a</sup>	Response <sup>b</sup>
1.	Low energy or tiredness	0: None 1: Mild 2: Moderate 3: Severe
2.	Muscle or body aches	
3.	Headache	
4.	Chills or shivering	
5.	Feeling hot or feverish	
6.	Stuffy or runny nose	
7.	Sore throat	
8.	Cough	
9.	Shortness of breath (difficulty breathing)	
10.	Nausea (feeling like you wanted to throw up)	
11.	Vomiting (throw up)	
12.	Diarrhea (loose or watery stools)	
13.	Rate your sense of smell in the last 24 hours	0: My sense of smell is <b>the same as usual</b> 1: My sense of smell is <b>less than usual</b> 2: I have <b>no</b> sense of smell
14.	Rate your sense of taste in the last 24 hours	0: My sense of taste is <b>the same as usual</b> 1: My sense of taste is <b>less than usual</b> 2: I have <b>no</b> sense of taste

<sup>a</sup>For items 1–10, sample item wording could be: “What was the severity of your symptom at its worst over the last 24 hours?”

<sup>b</sup>Score values are included in the table for ease of reference. The FDA cautions against including the score values within the response options presented to patients to avoid confusion.

COVID-19, coronavirus disease 2019; FDA, Food and Drug Administration.

**SUPPLEMENTAL TABLE 2.** The 8-point ordinal scale for assessing symptom severity.

<b>Descriptor</b>	<b>Score</b>
Asymptomatic	0
Symptomatic, no limitation of activities	1
Symptomatic, limitation of activities	2
Hospitalized, no oxygen therapy	3
Hospitalized, with oxygen therapy (<5 L/min)	4
Hospitalized, with oxygen therapy (≥5 L/min)	5
Hospitalized, with ventilation	6
Death	7

L, liters; min, minutes.

**SUPPLEMENTAL TABLE 3.** List of safety laboratory assessments.

No.	Laboratory assessments	Parameters
1.	Hematology	Platelet count, red blood cell count, hemoglobin, hematocrit, red blood cell index (MCV, MCH, reticulocyte count), white blood cell count, differential white blood count (neutrophils, lymphocytes, monocytes, eosinophils, basophils)
2.	Blood chemistry <sup>a</sup>	AST, ALT, total bilirubin, and direct bilirubin, $\gamma$ -GTP, LDH, ALP, uric acid, cholinesterase, total protein, albumin, BUN, serum creatinine, sodium, potassium, chloride, calcium, phosphorus, total cholesterol, blood glucose (fasting), HDL-C, LDL-C, TG, CRP, CK, iron, ferritin, UIBC
3.	Coagulation test	PT-INR, APTT, fibrinogen
4.	Serology	IgG, IgM, haptoglobin
5.	Urinalysis	pH, glucose, protein (qualitative), occult blood, ketones, bilirubin, urobilinogen
6.	Other	IL-6, IFN- $\lambda$ 3, TARC (CCL17), D-dimer, procalcitonin, KL-6

<sup>a</sup>All events of ALT  $\geq 3 \times$ ULN, and bilirubin  $\geq 2 \times$ ULN (>35% direct bilirubin) or ALT  $\geq 3 \times$ ULN and INR >1.5, if INR measured which may indicate severe liver injury, must be reported as an SAE.

$\gamma$ -GTP,  $\gamma$ -glutamyltransferase; ALP, alkaline phosphatase; ALT, alanine aminotransferase; APTT, activated partial thromboplastin time; AST, aspartate aminotransferase; BUN, blood urea nitrogen; CCL, C-C motif ligand; CK, creatine kinase; CRP, C-reactive protein; HDL-C, high-density lipoprotein cholesterol; IFN, interferon; IgG, immunoglobulin G; IgM, immunoglobulin M; IL, interleukin; INR, international normalized ratio; KL, Krebs von den Lungen; LDH, lactate dehydrogenase; LDL-C, low-density lipoprotein cholesterol; MCH, mean corpuscular hemoglobin; MCV, mean corpuscular volume; SAE, serious adverse event; TARC, thymus and activation-regulated chemokine; TG, triglycerides; UIBC, unsaturated iron binding capacity; ULN, upper limit of normal.