

1 Global patterns and drivers of influenza decline during the 2 COVID-19 pandemic

3 Francesco Bonacina^{1,2}, Pierre-Yves Boëlle¹, Vittoria Colizza^{1,3}, Olivier Lopez², Maud Thomas²,
4 Chiara Poletto¹

5 ¹INSERM, Sorbonne Université, Pierre Louis Institute of Epidemiology and Public Health, Paris, France

6 ²Sorbonne Université, CNRS, Laboratoire de Probabilités, Statistique et Modélisation, LPSM, Paris, France

7 ³Tokyo Tech World Research Hub Initiative (WRHI), Tokyo Institute of Technology, Tokyo, Japan

8 Corresponding author: Chiara Poletto (chiara.poletto@inserm.fr)

9 Abstract

10 Influenza circulation declined during the COVID-19 pandemic. The timing and extent of
11 decline and its association with interventions against COVID-19 were described for some
12 regions. Here, we provide a global analysis of the influenza decline between March 2020
13 and September 2021 and investigate its potential drivers. We computed influenza change
14 by country and trimester relative to the 2014-2019 period using the number of samples in
15 the FluNet database. We used random forests to determine important predictors in a list
16 of 20 covariates including demography, weather, pandemic preparedness, COVID-19
17 incidence, and COVID-19 pandemic response. With a regression tree we then classified
18 observations according to these predictors. We found that influenza circulation
19 decreased globally, with COVID-19 incidence and pandemic preparedness being the two
20 most important predictors of this decrease. The regression tree showed interpretable
21 groups of observations by country and trimester: Europe and North America clustered
22 together in spring 2020, with limited influenza decline despite strong COVID-19
23 restrictions; in the period afterwards countries of temperate regions, with high pandemic
24 preparedness, high COVID-19 incidence and stringent social restrictions grouped
25 together having strong influenza decline. Conversely, countries in the tropics, with
26 altogether low pandemic preparedness, low reported COVID-19 incidence and low
27 strength of COVID-19 response showed low influenza decline overall. A final group
28 singled out four “zero-Covid” countries, with the lowest residual influenza levels. The
29 spatiotemporal decline of influenza during the COVID-19 pandemic was global, yet
30 heterogeneous. The sociodemographic context and stage of the COVID-19 pandemic
31 showed non-linear associations with this decline. Zero-Covid countries maintained the
32 lowest levels of reduction with strict border controls and despite close-to-normal social
33 activity. These results suggest that the resurgence of influenza could take equally
34 diverse paths. It also emphasises the importance of influenza reseeding in driving
35 countries’ seasonal influenza epidemics.

36 **Funding** Municipality of Paris, EU Framework Programme for Research and Innovation Horizon
37 2020.

38 Introduction

39 Starting with the global spread of SARS-CoV-2, observations of a sharp decline in influenza
40 circulation were reported. In spring 2020, the flu season was shortened in some northern-
41 hemisphere and tropical countries [1,2]. During the following 18 months, influenza incidence
42 showed an all-time low in New Zealand [3], Australia [4], the United States [5–7] and the WHO
43 European Region [8]. The circulation was still low in 2021.

44

45 The measures adopted in response to the COVID-19 pandemic are likely to have hindered
46 influenza transmission at the same time, since the routes of transmission are identical. Indeed,
47 influenza decline, as well as that of other transmissible diseases, coincided with non-
48 pharmaceutical interventions against COVID-19 [2,6,7] [9,10].

49 Understanding how this decline occurred may help interpret the current influenza trends and
50 anticipate future viral circulation. While the issue has been described for specific countries or
51 regions [2–5,7,8,11–13], little work has been done at the global scale [14,15] [16].

52 Here we provide a global quantitative analysis of the influenza reduction based on the Global
53 Influenza Surveillance and Response System FluNet database [16,17]. We considered the
54 period between March 2020 and September 2021 and estimated influenza reduction by country
55 and trimester relative to a pre-pandemic period (2014-2019). We identified geographical,
56 demographical, health preparedness and COVID-19 status characteristics predictive of
57 influenza decline using random forests and clustered observations with similar decline in time
58 and space using a regression tree.

59 Methods

60 Overview of the methods

61 We used data from the FluNet influenza repository [16,17] to quantify the global influenza
62 change during the COVID-19 pandemic (March 2020 to September 2021) compared to the pre-
63 pandemic period (December 2014 to December 2019). We mapped influenza decline by country
64 and trimester. We then used random forests to identify the most significant predictors of decline
65 and a regression tree to classify countries-trimesters based on these predictors. Potential
66 predictors included a wide range of covariates, among them country factors (geographical,
67 meteorological, demographic and health preparedness factors) and variables associated with
68 the COVID-19 pandemic assembled from sources detailed below.

69 Influenza data and definition of influenza reduction

70 The FluNet influenza repository [16,17] provides weekly counts of influenza specimens by
71 country. For our analysis we considered records from 2014 to 2021. To account for influenza
72 seasonality, we defined 13 weeks-long “influenza trimesters” beginning on the first Monday
73 following December 11, March 12, June 11 and September 11. These dates were chosen so

75 that the middle of the December 11 trimester coincided with the peak of a typical influenza
 76 circulation in the northern hemisphere. As the trimesters correspond approximately to the
 77 astronomical seasons, we refer to these as winter, spring, summer and autumn respectively.
 78 Data from FluNet was aggregated by country and trimester. The 20 trimesters from winter 2014-
 79 15 (Dec 2014-Mar 2015) to autumn 2019 (Sep 2019-Dec 2019) defined the reference “pre-
 80 pandemic” period, the six trimesters from spring 2020 to summer 2021 the “pandemic” period.
 81 The winter 2020 trimester (from Dec 2019 to Mar 2020) was excluded as it overlapped the
 82 period of COVID-19 emergence. We also discarded trimesters having less than 10 processed
 83 influenza specimens per week on average and those typically unaffected by influenza epidemics
 84 (i.e. having less than 5% of the annual positive cases on average during the pre-pandemic
 85 period, essentially “summer” in the northern hemisphere and “winter” in the southern
 86 hemisphere).
 87 For the “pandemic” trimesters, we computed the percentage of influenza positive cases as the
 88 ratio of positive to positive plus negative samples during the trimester (adding 0.5 to avoid
 89 division by zero issues). We computed the “log relative influenza level” as the base-10 logarithm
 90 of the ratio between the percentage of positive cases during a trimester and the average
 91 percentage of positive cases in the corresponding pre-pandemic trimesters [7,13].

92 Variables for prediction of influenza reduction

93 We collected the covariates described in Table 1 from public sources and IATA. Additional
 94 details on computation are provided in the supplementary material.

Variable	Description	Source	Min, max
age	Median age of the country population	[18], [19]	15.1, 48.2
longitude	Population-weighted average of longitude for cities with more than 300K inhabitants by country or country capital longitude, from -180 (W) to 180 (E)	[20]	-100.7, 174.4
latitude	Population-weighted average of latitude for cities with more than 300K inhabitants by country or country capital latitude, from -90 (S) to 90 (N)	[20]	-38.7, 60.4
T	Average temperature (in Celsius degrees) over the country and trimester	[21]	-8.8, 37.8
RH	Average relative humidity over the country and trimester	[21]	17.3, 93.5
IDVI	Infectious Disease Vulnerability Index (IDVI), country level indicator of the vulnerability to health emergencies from 0 (most vulnerable) to 1 (less vulnerable)	[22]	0.15, 1
COVID-19 daily cases	Average daily reported cases of COVID-19 per million inhabitants	[23]	0, 553.5
workplace presence reduction	Median percentage of reduction of daily presence in workplaces. Reduction from the first 5 weeks in 2020 in the same location.	[24]	-22.5%, 69.0%
reduction of international flights	Average percentage of reduction in the inbound and outbound air passengers of the country for each trimester with respect to the same trimester of 2019	[25]	-16.8%, 100%
nb days of school closure	Number of days over the trimester where policies related to schools and universities closure were implemented	[26]	0, 91

nb days of workplace closure	Number of days over the trimester where policies related to workplaces closure were implemented	[26]	0, 91
nb days of public event restrictions	Number of days over the trimester where policies related to event restrictions were implemented	[26]	0, 91
nb days of gathering restrictions	Number of days over the trimester where policies related to social gathering restrictions were implemented	[26]	0, 91
nb days of public transport restrictions	Number of days over the trimester where policies related to public transport restrictions were implemented	[26]	0, 91
nb days of stay at home requirements	Number of days with "shelter-in-place" and otherwise confine to the home orders	[26]	0, 91
nb days of international travel restrictions	Number of days with airport screening, quarantine of arrival passengers or restrictions of international travels	[26]	0, 91
nb days of facial covering requirements	Number of days with policies on the use of facial coverings outside the home	[26]	0, 91
nb days of testing implementation	Number of days with government policy on who has access to testing for current infection (PCR tests)	[26]	0, 91
nb days of contact tracing implementation	Number of days with government policy on contact tracing after a positive diagnosis	[26]	0, 91
nb days of elderly shielding	Number of days with policies to protect older adults (as defined locally) in long-term care facilities and/or community and home-based settings	[26]	0, 91

95 **Table 1. Definition, computation and source of the variables used as predictors of influenza change.**

96 **Clustering and regression tree analysis**

97 We used the VSURF algorithm based on random forests (RFs) to select the covariates that
 98 were highly predictive of influenza reduction [27]. Importance is defined as the increase in
 99 prediction-error when the variable of interest is randomly reshuffled across observations. We
 100 discarded variables with close to zero importance in a univariable analysis. Then, we carried out
 101 a forward selection of predictors, including variables in their order of importance one at a time.
 102 Following Breiman's rule [28], we retained the model with the least variables having prediction
 103 error less than the minimum prediction error plus one standard deviation.

104 Using the variables selected above, we fit a regression tree in order to obtain an interpretable
 105 model [28]. The details of the approach are provided in the supplementary material.

106 Analyses were performed with R version 4.2 and packages *vsurf* [27] and *rpart* [29].

107 **Robustness and sensitivity analyses**

108 The details of the robustness checks and the sensitivity analysis are reported in the
 109 supplementary material. In summary, we checked the robustness of the regression analysis to
 110 stochastic fluctuations in the dataset and to criteria for including the FluNet records in the
 111 analysis; we explored alternative definitions for covariates: COVID-19 daily deaths instead of

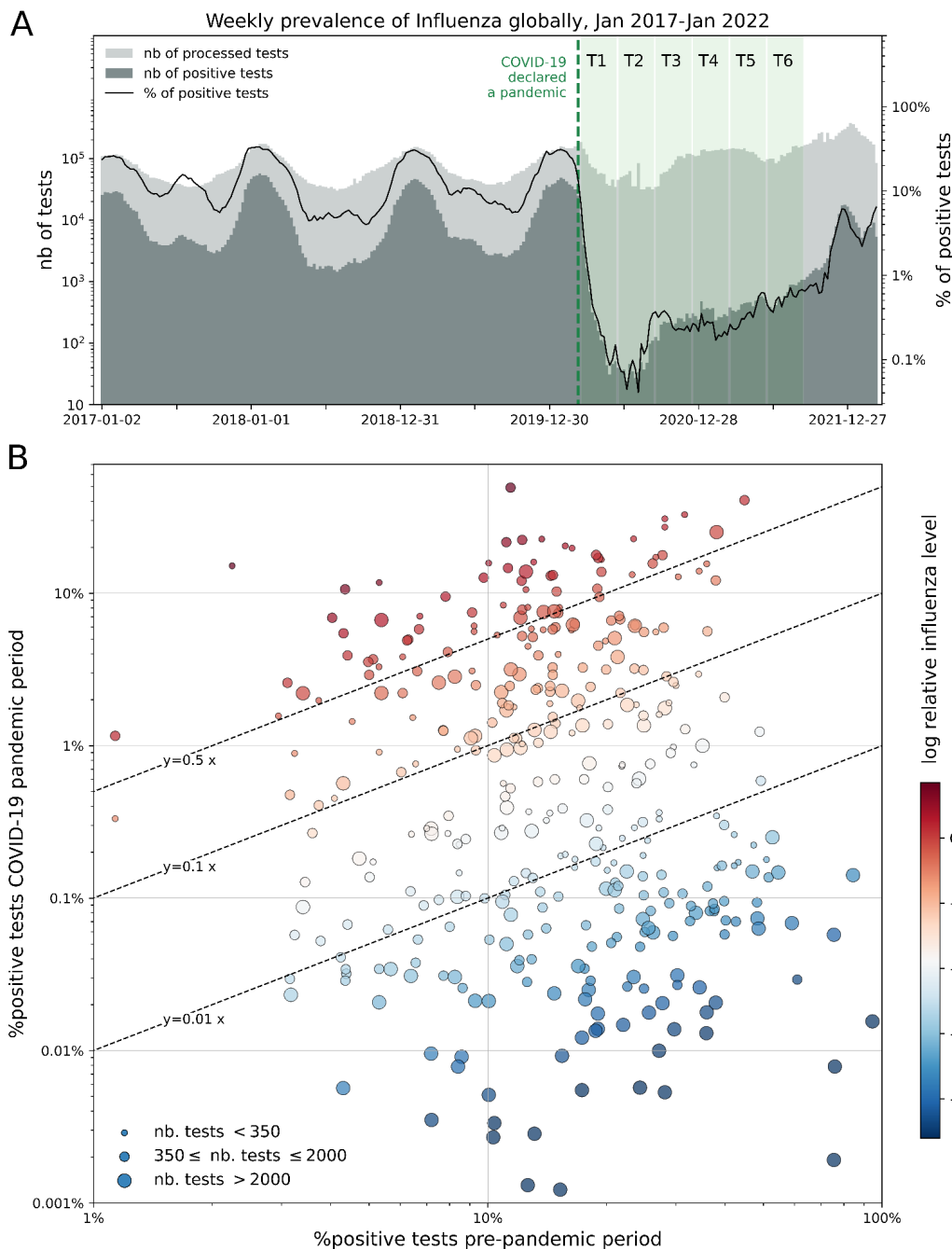
112 COVID-19 daily cases; Oxford COVID-19 Government Response Tracker stringency index
113 instead of governmental response [26]; alternative Google mobility reports instead of presence
114 in workplaces. We also explored separate inclusion of age and IDVI as these were highly
115 correlated ($\rho_{\text{Spearman}}=0.87$, $p_{\text{val}}<0.01$).

116 **Results**

117 **Decline of influenza in space and time**

118 One hundred sixty-six (166) countries contributed data to FluNet between December 2014 and
119 September 2021. Figure 1A shows the time course of the reports. In the pre-pandemic period,
120 the percentage of positive tests varied seasonally between 4% and 33%, with major peaks
121 during seasonal epidemics in northern countries and lower peaks for southern countries. The
122 global number of tests for influenza remained within the range of historical levels throughout the
123 whole COVID-19 pandemic period, but the percentage of influenza positive tests dropped
124 sharply, to a minimum level of 0.04% during the months of July and August 2020.

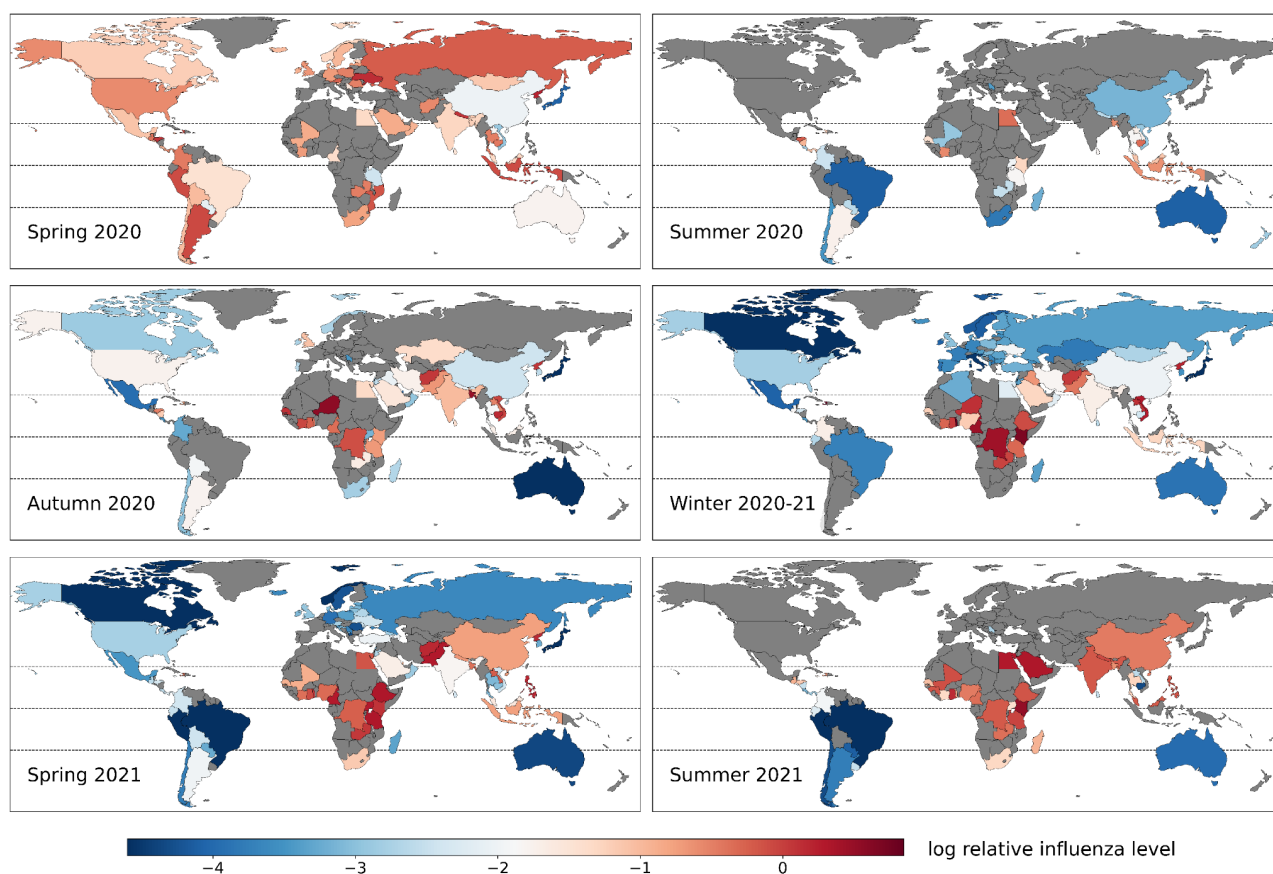
125 One hundred twelve countries remained for analysis during the pandemic, contributing 376
126 trimester-country observations (Table S1). The percentage of influenza positive tests varied
127 across countries and trimesters over five orders of magnitude compared to only two orders of
128 magnitude over the pre-pandemic period (Figure 1B). For 135 out of the 376 observations, the
129 percentage of positive influenza tests was more than 100 times smaller than expected. The
130 reduction of influenza positivity could be dramatic, as shown by the 0 positive tests out of 26114
131 processed tests reported in Japan during Spring 2021, compared to the average 75% expected
132 in the pre-pandemic period. An increase in the percentage of positive tests was seen in 22
133 observations: This was for example the case for Haiti during Winter 2020-21, where the
134 percentage of positive tests was 15% compared to an expected 2.2% before the pandemic.



135 **Figure 1. Change in influenza circulation during the COVID-19 pandemic relative to the pre-pandemic period.**
 136 **A** Weekly counts of processed and positive tests of influenza reported to FluNet for all 166 countries included in the
 137 database from Jan 2017 to Jan 2022. The green shaded area indicates the COVID-19 pandemic period considered in
 138 the study. The six blocks indicate the trimesters. The week in which COVID-19 was declared a pandemic by WHO is
 139 reported as reference. **B** Percentage of positive tests for the pre-pandemic and COVID-19 pandemic periods (Dec
 140 2014 - Dec 2019 and Mar 2020 - Sep 21, respectively), for all 376 countries and trimesters satisfying the filtering
 141 criteria on the FluNet data. For each country-trimester, the x coordinate is the average percentage of positive tests of
 142 the five years included in the pre-pandemic period. The size of the dots is proportional to the number of samples
 143 found in FluNet for the pandemic period. Dots' colour indicates the log relative influenza level.

144 The spatial variation of the influenza decline is mapped in Figure 2 over the 6 pandemic

145 trimesters. For the majority of countries, the decline remained limited during Spring 2020, with
146 46 out of 65 countries reporting less than 90% reduction from the pre-pandemic period (i.e. log
147 relative influenza level > -1). The decline became more pronounced in the subsequent
148 trimesters, especially in North America, Europe, Mexico and Japan during the winter 2020-21
149 and spring 2021. The decline was strong also in the majority of Southern-hemisphere countries
150 during both summer 2020 and summer 2021. Conversely, a number of countries in South Asia
151 (e.g. Bangladesh, Afghanistan), Africa (e.g. Mali, Senegal, Nigeria, Kenya, Zambia) and Central
152 America (e.g. Honduras, Haiti) showed limited influenza reduction throughout the whole COVID-
153 19 pandemic period (log relative influenza levels > -1). The levels of reduction changed over
154 the period. Interestingly, the log relative influenza level was as low as -2.4 during summer 2020
155 in China but increased again starting autumn 2020. A similar increasing trend was observed
156 also in a few other countries, e.g. in Kenya and Nigeria.

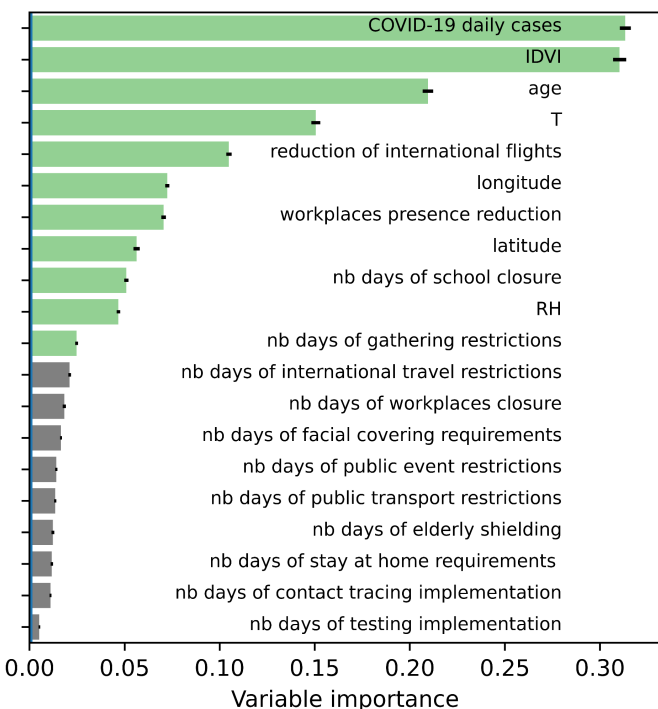


157 **Figure 2: Influenza decline during the first 18 months of COVID-19 pandemic by countries and trimesters.**
158 Maps of the log relative influenza level for the 6 trimesters considered in the analysis. The grey colour indicates
159 countries-trimesters not included in the analysis.

160 Clustering and regression tree analysis

161 The analysis was carried out on 93 countries, totalling 330 country-trimester observations.
162 Among the 20 covariates tested, 11 were selected as predictors of the log relative influenza

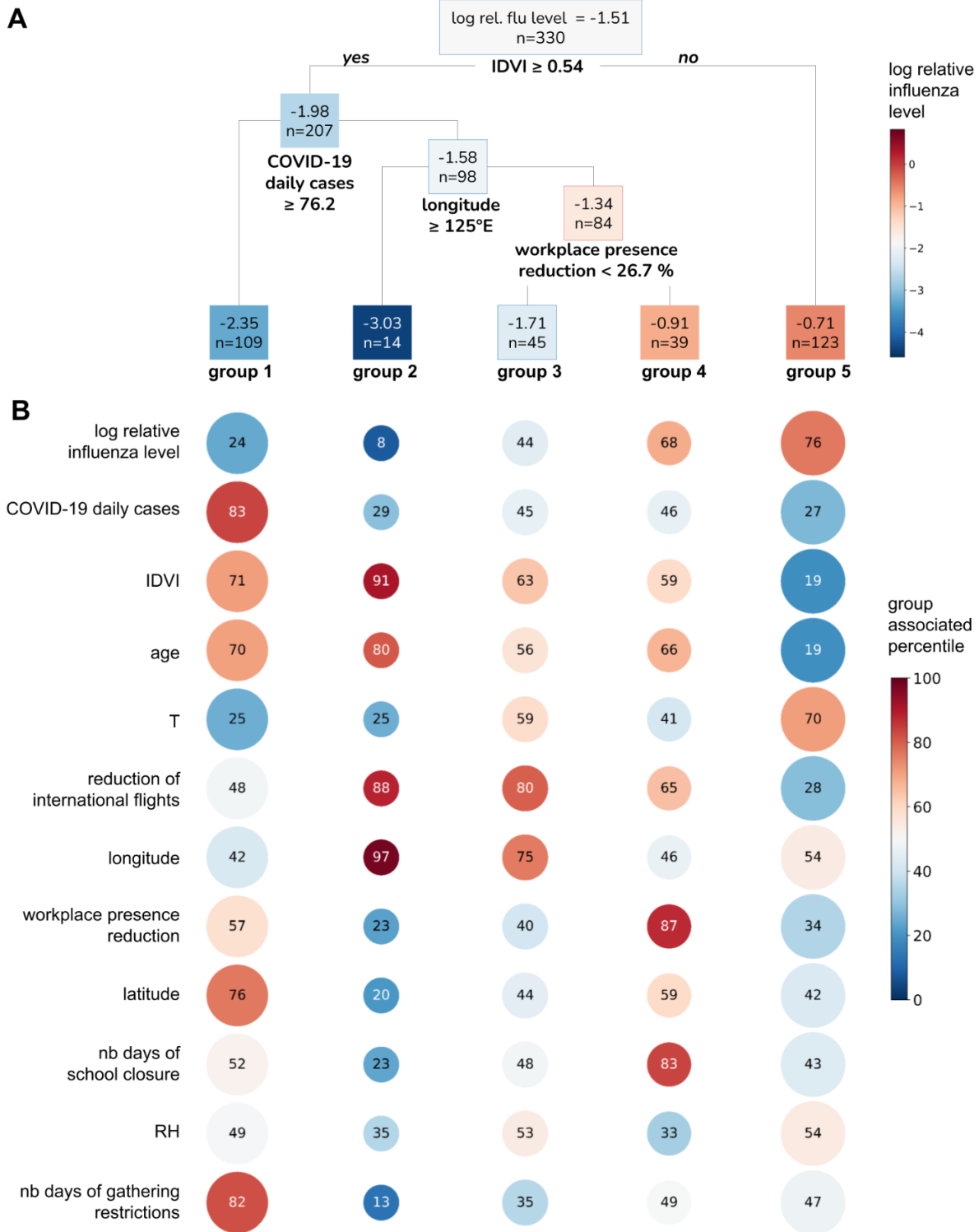
163 level (Figure 3). Sociodemographic, preparedness, geographical, weather and COVID-19
 164 management aspects contributed all to explaining the changes, though COVID-19 daily cases
 165 and IDVI were the most important.



166 **Figure 3: Importance of covariates predicting influenza decline in random forest analysis.** Importance of
 167 covariates as predictors of the log relative influenza level. In green the 11 covariates selected as significant to build
 168 the model with the minimum prediction error following the Breiman's rule. Black segments show the standard
 169 deviations of the importance.

170 The full regression tree built from the data accounted for 69% of the variance of the log relative
 171 influenza level ($R^2 = 0.69$) (Figure S3, Table S2). To interpret the relationships between the
 172 selected variables and the country-trimesters, we focus here on the first four splits based on
 173 IDVI, COVID-19 daily cases, longitude, and workplace mobility reduction (Figure 4A). The five
 174 groups identified by these splits (labelled 1 to 5, Figure 4A) showed a gradient in average log
 175 relative influenza level ranging from -2.3 (reduction by 99.5%) to -0.7 (reduction by 80%). How
 176 the observations in each group rank with respect to the whole dataset is shown in Figure 4B.
 177 Group 1 included 109 countries-trimesters with high influenza decline, corresponding to the
 178 lower quartile of the whole dataset distribution. This group was characterised by high IDVI
 179 (median value corresponding to the 71th pc. of the whole dataset), high COVID-19 daily cases
 180 (83rd pc.), old population (70th pc.), low temperatures (25th pc.). Median reduction of workplace
 181 presence and median number of days with school closure were close to the whole-population
 182 median but were higher than other groups, except for group 4 discussed below. Population
 183 gathering restrictions were especially high (82nd pc.). The corresponding countries-trimesters
 184 included countries in Europe and North America during the 2020-21 influenza season, countries
 185 in temperate South America, and high-IDVI countries in Central America and Tropical Asia

186 (Table S2 in the supplementary material).



187 **Figure 4: Regression tree analysis of influenza decline and characteristics of the identified subgroups. A**
188 Regression tree obtained with the variables selected in Figure 3. We report here the first four splits, which partition
189 the observations in five groups. The full tree is reported in Figure S4 of the supplementary material. For each node
190 the average log relative influenza level and the number of observations are reported (the former is also indicated with
191 a colour scale). **B.** Characteristics of each group. For each variable the colour of the circle indicates the percentile of
192 the whole dataset distribution the median of the group corresponds to. The percentile value is also indicated inside
193 the circle. The size of the circle increases with the number of observations of the group.

194 Group 2 was the smallest and clustered observations with the largest influenza decline (median
195 log relative influenza level corresponding to the least 8% of all data points). It gathered all
196 observations from Australia, Japan, New Zealand and South Korea. These country-trimesters
197 showed low COVID-19 daily cases (29th pc.), high IDVI (91st pc) and high reduction of
198 international flights (88th pc.). Reduction of workplace presence, and number of days of school
199 closure and gathering restrictions were comparatively low (23rd, 23rd, 13rd, pcs., respectively).

200 Group 3 corresponded to 45 observations with intermediary log relative influenza level.
201 Covariates were also close to the median of all data points. Singapore from autumn 2020 to
202 autumn 2021 is part of this group (larger tree in Figure S4). Covariates of these observations
203 are close to the second group - e.g. high influenza reduction, low COVID-19 daily cases, high
204 reduction of international flights. Other observations of group 3 (e.g. Southeast Asia countries,
205 such as Malaysia, Vietnam, Indonesia and Thailand) were similar to Singapore, but had lower
206 population's age and IDVI. They showed, however, a more limited influenza decline.

207 Group 4 had 39 observations corresponding to Europe and North America during the spring
208 2020 trimester. At this period, influenza decline was limited (median log relative influenza level
209 corresponding to the 68th pc. of all data points), but there were already a strong response to the
210 COVID-19 pandemic as quantified e.g. by the reduction in the workplace presence (87th pc.)
211 and number of days of school closure (83rd pc.).

212 Finally, group 5 included 123 country-trimesters with the lowest decrease in influenza relative to
213 the pre-pandemic period (log relative influenza level 76th pc.). In this group, there was a low
214 number of COVID-19 cases (27th pc.), young population (19th pc.), low IDVI (19th pc.) and high
215 temperatures (70th pc.). The response to the COVID-19 pandemic was mild, with limited
216 reduction of international flights (28th pc.), as well as workplace presence reduction (34th pc.)
217 and number of days of school closure (43rd pc.) small compared to the whole population. This
218 group was largely formed by tropical countries, e.g. in Africa, South and Southeast Asia, Central
219 America and the Caribbean (Table S2 of the supplementary material).

220 **Robustness and sensitivity analyses**

221 Variable selection and tree structure were robust to stochastic fluctuations. The five-group
222 classification was robust to small perturbations in the data set, as was the selection of predictive
223 variables. In some cases, for example with different inclusion criteria for FluNet data,
224 observations in Group 1 and Group 2 tended to cluster together. More details are reported in the
225 supplementary material.

226 **Discussion**

227 The systematic analysis of influenza circulation across all continents and climatic regions shows
228 that the influenza decline was global during the spread of the COVID-19 pandemic. This
229 decrease was heterogeneous across countries and trimesters between March 2020 and
230 September 2021. Demographic, socio-economic, weather and COVID-19 characteristics
231 explained a large part of this heterogeneity.

232 Influenza circulation is characterised by marked seasonal epidemics in temperate countries but
233 a more complex annual pattern in the tropics [30]. Surveillance may be reinforced in epidemic
234 times. Using the log relative influenza level allowed adjusting for such changes. We found that
235 influenza declined nearly everywhere and remained low compared to the pre-pandemic period
236 during the 18 first months of the COVID-19 pandemic. Importantly, the global number of
237 influenza tests remained roughly the same in the pre-pandemic and pandemic period, ruling out
238 change in surveillance as the likely explanation. The largest reduction was in summer 2020, and
239 a progressive increase was seen again till September 2021. Temperate countries had the
240 largest reduction, while it was limited in the tropics [11,14,31,32].

241 Influenza circulation could *a priori* change during the COVID-19 pandemic because of
242 governmental measures, self-adopted behavioural changes and direct interaction with SARS-
243 CoV-2. We indeed found that reduction of international flights, presence at workplaces, school
244 attendance and mass gatherings explained part of the reduction, although the impact was non-
245 linear. Initial strong restrictions against COVID-19 had to be relaxed in some low-resource
246 countries [11,33,34] allowing renewed influenza circulation. Conversely, countries where a
247 strong response against the COVID-19 pandemic could be maintained saw little influenza
248 circulation, except in spring 2020 where strong local restrictions in Europe and the USA [5] likely
249 occurred after the end of the influenza season. For the rest of the time, temperate countries in
250 Europe, North America and South America that adopted a COVID-19 response centred over
251 local restrictions by reducing workplace presence, school attendance and gatherings had large
252 reduction in influenza circulation, irrespective of the reduction of international flights. This was
253 very different in four “zero-Covid” nations (Australia, New Zealand, Japan and South Korea)
254 where influenza dropped though local restrictions were limited [35], suggesting a key role for
255 border controls in preventing seeding from abroad. Reducing international flights by 94-97%
256 however did not prevent influenza introduction in Vietnam from neighbouring Cambodia [11]
257 likely due to the difficulty of controlling land borders.

258 Limitation of gatherings or public events, imposed international travel restrictions and school
259 closure were previously found to be the main drivers in suppressing influenza [12,13]. Actual
260 behaviour, i.e. volume of flights rather than imposed international travel restrictions; or
261 percentage presence at the workplace rather than mandatory reduction was however more
262 predictive of influenza reduction than governmental restrictions. Behavioural proxies may indeed
263 capture adhesion to restrictions that depended on place and stage of the pandemic [36–38].

264 Reduction of influenza could also stem from direct viral interference with SARS-CoV-2, for
265 example through competition for cellular resources or interferon production [39,40]. Infection
266 rates with influenza reportedly changed according to SARS-CoV2 status and vice versa [40]. In

267 this respect, we found high influenza decline with high COVID-19 incidence in group 1, and low
268 influenza decline with low COVID-19 incidence in group 5, but also low levels for both in zero-
269 COVID countries. Under-reporting of COVID-19 cases may be an alternative explanation to low
270 COVID-19 reporting in the low-income countries of group 5 [33,34,41].

271 The characterisation of influenza decline in space and time may come of use to analyse its
272 resurgence over time. Loss of exposure to the influenza virus may lead to more severe waves
273 or out of season waves [6,7] and may increase the susceptible pool, especially in children.
274 Already, influenza circulation was typically late in Europe as of spring 2022 [42]. Other
275 epidemiological changes could occur regarding the exposed population and the seeding from
276 the tropics [30] as global air transportation resumes. Deciding on the composition of the vaccine
277 may also prove more difficult due to the change in the evolutionary dynamics of circulating
278 strains [31].

279 Our study is affected by limitations. We assumed that influenza surveillance was not
280 substantially altered during the pandemic period. The number of samples in the FluNet
281 databases indeed did not change substantially over time, as many countries maintained
282 influenza surveillance or quickly resumed it after initial disruption [3,4]. Influenza positivity rate
283 may have been affected by changes in surveillance protocols due to the COVID-19 pandemic.
284 We did not account for influenza vaccination, due to limited information at the global scale.
285 Vaccination rates are highly heterogeneous among countries [43]. While targeted
286 recommendations increased coverage in the elderly during the last 2 seasons in 9 northern
287 hemisphere countries and Australia [43], the efficacy of the influenza vaccine during the study
288 period remains unknown. Those circulating in Southeast Asia during autumn 2020 were not
289 included in the recommendations for the 2020–21 Northern Hemisphere season [11]. Last, we
290 relied on the FluNet database, which integrates worldwide influenza records aggregating
291 countries with highly diverse influenza surveillance quality and coverage. Results from the
292 sensitivity analysis showed that the reported results were similar in varying exclusion criteria.

293 **References**

- 294 1. Emborg H-D, Carnahan A, Bragstad K, Trebbien R, Brytting M, Hungnes O, et al. Abrupt
295 termination of the 2019/20 influenza season following preventive measures against
296 COVID-19 in Denmark, Norway and Sweden. *Eurosurveillance*. 2021;26: 2001160.
297 doi:10.2807/1560-7917.ES.2021.26.22.2001160
- 298 2. Cowling BJ, Ali ST, Ng TWY, Tsang TK, Li JCM, Fong MW, et al. Impact assessment of
299 non-pharmaceutical interventions against coronavirus disease 2019 and influenza in Hong
300 Kong: an observational study. *The Lancet Public Health*. 2020;5: e279–e288. doi:10.1016/
301 S2468-2667(20)30090-6
- 302 3. Huang QS, Wood T, Jelley L, Jennings T, Jefferies S, Daniells K, et al. Impact of the
303 COVID-19 nonpharmaceutical interventions on influenza and other respiratory viral
304 infections in New Zealand. *Nat Commun*. 2021;12: 1001. doi:10.1038/s41467-021-21157-9
- 305 4. Olsen SJ. Decreased Influenza Activity During the COVID-19 Pandemic — United States,
306 Australia, Chile, and South Africa, 2020. *MMWR Morb Mortal Wkly Rep*. 2020;69.
307 doi:10.15585/mmwr.mm6937a6
- 308 5. Zipfel CM, Colizza V, Bansal S. The missing season: The impacts of the COVID-19
309 pandemic on influenza. *Vaccine*. 2021;39: 3645–3648. doi:10.1016/j.vaccine.2021.05.049

- 310 6. Qi Y, Shaman J, Pei S. Quantifying the Impact of COVID-19 Nonpharmaceutical
311 Interventions on Influenza Transmission in the United States. *The Journal of Infectious*
312 *Diseases*. 2021;224: 1500–1508. doi:10.1093/infdis/jiab485
- 313 7. Baker RE, Park SW, Yang W, Vecchi GA, Metcalf CJE, Grenfell BT. The impact of COVID-
314 19 nonpharmaceutical interventions on the future dynamics of endemic infections. *PNAS*.
315 2020;117: 30547–30553. doi:10.1073/pnas.2013182117
- 316 8. Adlhoch C, Mook P, Lamb F, Ferland L, Melidou A, Amato-Gauci AJ, et al. Very little
317 influenza in the WHO European Region during the 2020/21 season, weeks 40 2020 to 8
318 2021. *Eurosurveillance*. 2021;26: 2100221. doi:10.2807/1560-
319 7917.ES.2021.26.11.2100221
- 320 9. Ullrich A, Schranz M, Rexroth U, Hamouda O, Schaade L, Diercke M, et al. Impact of the
321 COVID-19 pandemic and associated non-pharmaceutical interventions on other notifiable
322 infectious diseases in Germany: An analysis of national surveillance data during week 1–
323 2016 – week 32–2020. *The Lancet Regional Health – Europe*. 2021;6.
324 doi:10.1016/j.lanepe.2021.100103
- 325 10. Launay T, Souty C, Vilcu A-M, Turbelin C, Blanchon T, Guerrisi C, et al. Common
326 communicable diseases in the general population in France during the COVID-19
327 pandemic. *PLOS ONE*. 2021;16: e0258391. doi:10.1371/journal.pone.0258391
- 328 11. Siegers JY, Dhanasekaran V, Xie R, Deng Y-M, Patel S, Ieng V, et al. Genetic and
329 Antigenic Characterization of an Influenza A(H3N2) Outbreak in Cambodia and the Greater
330 Mekong Subregion during the COVID-19 Pandemic, 2020. *Journal of Virology*. 95: e01267-
331 21. doi:10.1128/JVI.01267-21
- 332 12. Qiu Z, Cao Z, Zou M, Tang K, Zhang C, Tang J, et al. The effectiveness of governmental
333 nonpharmaceutical interventions against COVID-19 at controlling seasonal influenza
334 transmission: an ecological study. *BMC Infectious Diseases*. 2022;22: 331.
335 doi:10.1186/s12879-022-07317-2
- 336 13. Davis WW, Mott JA, Olsen SJ. The role of non-pharmaceutical interventions on influenza
337 circulation during the COVID-19 pandemic in nine tropical Asian countries. *Influenza Other*
338 *Respir Viruses*. 2022;16: 568–576. doi:10.1111/irv.12953
- 339 14. Karlsson EA, Mook P a. N, Vandemaele K, Fitzner J, Hammond A, Cozza V, et al. Review
340 of global influenza circulation, late 2019 to 2020, and the impact of the COVID-19
341 pandemic on influenza circulation. *Weekly Epidemiological Record*. 2021; 241–265.
- 342 15. Koutsakos M, Wheatley AK, Laurie K, Kent SJ, Rockman S. Influenza lineage extinction
343 during the COVID-19 pandemic? *Nat Rev Microbiol*. 2021;19: 741–742.
344 doi:10.1038/s41579-021-00642-4
- 345 16. Flahault A, Dias-Ferrao V, Chaberty P, Esteves K, Valleron AJ, Lavanchy D. FluNet as a
346 tool for global monitoring of influenza on the Web. *JAMA*. 1998;280: 1330–1332.
- 347 17. National Influenza Centres (NICs) of the Global Influenza Surveillance and Response
348 System (GISRS) and World Health Organisation WHO. FluNet. Available:
349 http://www.who.int/influenza/gisrs_laboratory/flunet/en/
- 350 18. Ritchie H, Mathieu E, Rodés-Guirao L, Appel C, Giattino C, Ortiz-Ospina E, et al.
351 Coronavirus Pandemic (COVID-19). *Our World in Data*. 2020 [cited 10 Nov 2022].
352 Available: <https://ourworldindata.org/coronavirus>
- 353 19. Affairs UND of E and S. *World Population Prospects 2017 - Volume I: Comprehensive*
354 *Tables*. United Nations; 2021. doi:10.18356/9789210001014
- 355 20. *World Urbanization Prospects - Population Division - United Nations*. [cited 30 Apr 2022].
356 Available: <https://population.un.org/wup/Download/>
- 357 21. Hersbach H, Bell B, Berrisford P, Hirahara S, Horányi A, Muñoz-Sabater J, et al. The
358 ERA5 global reanalysis. *QJR Meteorol Soc*. 2020;146: 1999–2049. doi:10.1002/qj.3803
- 359 22. Moore M, Gelfeld B, Okunogbe AT, Paul C. *Identifying Future Disease Hot Spots:*
360 *Infectious Disease Vulnerability Index*. RAND Corporation; 2016 Sep. Available:

- 361 https://www.rand.org/pubs/research_reports/RR1605.html
- 362 23. Dong E, Du H, Gardner L. An interactive web-based dashboard to track COVID-19 in real
363 time. *The Lancet Infectious Diseases*. 2020;20: 533–534. doi:10.1016/S1473-
364 3099(20)30120-1
- 365 24. COVID-19 Community Mobility Report. In: COVID-19 Community Mobility Report [Internet].
366 [cited 28 Jun 2021]. Available: <https://www.google.com/covid19/mobility?hl=en>
- 367 25. International Air Transport Association (IATA). Available: <http://www.iata.org>
- 368 26. Hale T, Angrist N, Goldszmidt R, Kira B, Petherick A, Phillips T, et al. A global panel
369 database of pandemic policies (Oxford COVID-19 Government Response Tracker). *Nat*
370 *Hum Behav*. 2021;5: 529–538. doi:10.1038/s41562-021-01079-8
- 371 27. Genuer R, Poggi J-M, Tuleau-Malot C. VSURF: An R Package for Variable Selection
372 Using Random Forests. *The R Journal*. 2015;7: 19–33.
- 373 28. Breiman L, Friedman JH, Olshen RA, Stone CJ. *Classification And Regression Trees*. 1st
374 ed. Chapman and Hall/CRC; 1984. doi:10.1201/9781315139470
- 375 29. Therneau TM, Atkinson B, Ripley B. rpart : Recursive Partitioning and Regression Trees.
376 2015 [cited 1 Jul 2022]. Available: <https://cran.r-project.org/web/packages/rpart/rpart.pdf>
- 377 30. Tamerius JD, Shaman J, Alonso WJ, Bloom-Feshbach K, Uejio CK, Comrie A, et al.
378 Environmental Predictors of Seasonal Influenza Epidemics across Temperate and Tropical
379 Climates. *PLoS Pathog*. 2013;9: e1003194. doi:10.1371/journal.ppat.1003194
- 380 31. Dhanasekaran V, Sullivan S, Edwards KM, Xie R, Khvorov A, Valkenburg SA, et al.
381 Human seasonal influenza under COVID-19 and the potential consequences of influenza
382 lineage elimination. *Nat Commun*. 2022;13: 1721. doi:10.1038/s41467-022-29402-5
- 383 32. Mott JA, Fry AM, Kondor R, Wentworth DE, Olsen SJ. Re-emergence of influenza virus
384 circulation during 2020 in parts of tropical Asia: Implications for other countries. *Influenza*
385 *and Other Respiratory Viruses*. 2021;15: 415–418. doi:10.1111/irv.12844
- 386 33. Pablos-Méndez A, Vega J, Aranguren FP, Tabish H, Raviglione MC. Covid-19 in Latin
387 America. *BMJ*. 2020;370: m2939. doi:10.1136/bmj.m2939
- 388 34. Salyer SJ, Maeda J, Sembuche S, Kebede Y, Tshangela A, Moussif M, et al. The first and
389 second waves of the COVID-19 pandemic in Africa: a cross-sectional study. *The Lancet*.
390 2021;397: 1265–1275. doi:10.1016/S0140-6736(21)00632-2
- 391 35. Jecker NS, Au DKS. Does Zero-COVID neglect health disparities? *Journal of Medical*
392 *Ethics*. 2022;48: 169–172. doi:10.1136/medethics-2021-107763
- 393 36. Pullano G, Di Domenico L, Sabbatini CE, Valdano E, Turbelin C, Debin M, et al.
394 Underdetection of COVID-19 cases in France threatens epidemic control. *Nature*. 2020; 1–
395 9. doi:10.1038/s41586-020-03095-6
- 396 37. Di Domenico L, Sabbatini CE, Boëlle P-Y, Poletto C, Crépey P, Paireau J, et al. Adherence
397 and sustainability of interventions informing optimal control against the COVID-19
398 pandemic. *Commun Med*. 2021;1: 1–13. doi:10.1038/s43856-021-00057-5
- 399 38. Weitz JS, Park SW, Eksin C, Dushoff J. Awareness-driven behavior changes can shift the
400 shape of epidemics away from peaks and toward plateaus, shoulders, and oscillations.
401 *Proceedings of the National Academy of Sciences*. 2020;117: 32764–32771.
402 doi:10.1073/pnas.2009911117
- 403 39. Opatowski L, Baguelin M, Eggo RM. Influenza interaction with cocirculating pathogens and
404 its impact on surveillance, pathogenesis, and epidemic profile: A key role for mathematical
405 modelling. *PLOS Pathogens*. 2018;14: e1006770. doi:10.1371/journal.ppat.1006770
- 406 40. Piret J, Boivin G. Viral Interference between Respiratory Viruses. *Emerg Infect Dis*.
407 2022;28: 273–281. doi:10.3201/eid2802.211727
- 408 41. Levin AT, Owusu-Boaitey N, Pugh S, Fosdick BK, Zwi AB, Malani A, et al. Assessing the
409 burden of COVID-19 in developing countries: systematic review, meta-analysis and public
410 policy implications. *BMJ Global Health*. 2022;7: e008477. doi:10.1136/bmjgh-2022-008477
- 411 42. Emborg H-D, Vestergaard LS, Botnen AB, Nielsen J, Krause TG, Trebbien R. A late sharp

412 increase in influenza detections and low interim vaccine effectiveness against the
413 circulating A(H3N2) strain, Denmark, 2021/22 influenza season up to 25 March 2022.
414 Eurosurveillance. 2022;27: 2200278. doi:10.2807/1560-7917.ES.2022.27.15.2200278
415 43. Riccio MD, Lina B, Caini S, Staadegaard L, Wieggersma S, Kynčl J, et al. Letter to the
416 editor: Increase of influenza vaccination coverage rates during the COVID-19 pandemic
417 and implications for the upcoming influenza season in northern hemisphere countries and
418 Australia. Eurosurveillance. 2021;26: 2101143. doi:10.2807/1560-
419 7917.ES.2021.26.50.2101143

420 **Acknowledgements**

421 We acknowledge financial support from the Municipality of Paris (<https://www.paris.fr/>) through
422 the programme Emergence(s) to FB and CP; EU H2020 grants MOOD (H2020-874850) to PYB,
423 VC and CP; Institut des Sciences du Calcul et de la Donnée.

424 **Data sharing**

425 All data are available online from the references cited in the manuscript, except for airline data
426 that were used under licence from the International Air Transport Association
427 (<https://www.iata.org/>) and are not available for redistribution.