

1

2 Subgroups of people with high Autism-Spectrum Quotient  
3 scores identified from a large set of personality traits and  
4 attributes

5

6 Short title Subgroups in the high AQ-score  
7 population

8

9 Mao Fujiwara<sup>1,2</sup>, Shotaro Numano<sup>1,2</sup>, Toshiko Tanaka<sup>2</sup>, Motoaki Nakamura<sup>3</sup>, Nobumasa  
10 Kato<sup>3</sup>, Masahiko Haruno<sup>1,3\*</sup>

11

12 <sup>1</sup> Graduate School of Frontier Bioscience, Osaka University, Osaka, Japan

13 <sup>2</sup> Center for Information and Neural Networks, National Institute of Information and  
14 Communications Technology, Osaka, Japan

15 <sup>3</sup> Medical Institute of Developmental Disabilities Research, Showa University, Tokyo,  
16 Japan

17

18 \*Corresponding author

19 E-mail: [mharuno@nict.go.jp](mailto:mharuno@nict.go.jp) (MH)

## 1 **Abstract**

2           The Autism-Spectrum Quotient (AQ) is a widely used index to quantify autistic  
3 traits. Previous studies using clustering analysis have indicated that people showing  
4 high AQ and other autism indices may comprise several subtypes. However, those  
5 studies mainly focused on Big5 personality traits and analyzed a limited number of  
6 samples (participants). The inclusion of a larger set of personality traits and attributes  
7 would contribute not only to understanding autism more deeply, but also to  
8 characterizing AQ more precisely. In addition, an analysis of larger general populations  
9 would give new perspectives on people with high AQ scores. To address these issues,  
10 here we conducted a personality traits-based clustering of 1364 subjects who had an AQ  
11 score of 33 or higher (high AQ group) collected online. We identified three subclasses  
12 (subtypes): Group 1, characterized by emotional instability, low self-esteem, high  
13 hostility, anxiety, depressive tendency and schizotypal traits; Group 2, characterized by  
14 high BIS for an inhibitory attitude towards novelty, and high Interpersonal Reactivity  
15 Index (IRI) and Group 3, characterized by personality traits and attributes consistent of  
16 the average of the general population. Thus, this study provides empirical results  
17 showing subtypes of the high AQ population.

18

## 19 **Introduction**

20 Autism spectrum disorder (ASD) is a developmental disorder characterized by  
21 deficits in social communication and repetitive behaviors, including Asperger syndrome  
22 and pervasive developmental disorder, in addition to typical infantile autism. In general,  
23 ASD is seen in about 1% of the population and is 3~4 times more common in males  
24 than females [1]. The characteristics of ASD are on a continuum from clinical patients  
25 to normal individuals [2-4].

26 The Autism-Spectrum Quotient (AQ) was developed as a self-report  
27 questionnaire measure to quantify autistic characteristics [5]. Generally, the AQ is  
28 higher in males than in females and in scientists than in non-scientists [5,6]. Adults with  
29 Asperger's syndrome and high-functioning autism (AS/HFA) score significantly higher  
30 on the AQ than adults in the general population. These observations indicate that the  
31 AQ is a valid measure of autistic traits [5,7]. As for the relationship between the AQ  
32 and other disorder-related personality traits, there are relatively strong positive  
33 correlations between measures of social skills and communication in the AQ and the  
34 four sub-items of the Schizotypal Personality Questionnaire (SPQ)-interpersonal factors  
35 (social anxiety, suspicion, friendlessness, and emotional suppression) [8]. In addition,

36 almost half of women with borderline personality disorder (BPD) show high AQ scores,  
37 and comorbid BPD correlates with having a higher AQ score [9].

38 The relationship between the AQ and Big5, which describes basic personality  
39 traits, has been long studied. Wakabayashi et al. [7] found that AQ scores are negatively  
40 correlated with extraversion and conscientiousness, positively correlated with  
41 neuroticism, and not correlated with agreeableness. In contrast, Austin [6] reported that  
42 the AQ was negatively correlated with agreeableness. A recent meta-analysis of Big5 in  
43 ASD not only validated a negative association between each Big5 trait and ASD  
44 characteristics, but it also emphasized the importance of extending the relationship of  
45 ASD with personalities beyond Big5 such as attachment style, emotion regulation,  
46 alexithymia, and self-esteem [10].

47 Related to the above observations, there are many cases of the co-occurrence of  
48 autism with anxiety disorders (43-84%), depression (2-30%), obsessive-compulsive  
49 disorder (OCD; 37%), attention-deficit/hyperactivity disorder (59%), agitation and  
50 aggressive behavior (8-34%), and nonspecific abnormal behaviors, such as self-injury  
51 [11]. The data of these broad comorbidities and variable co-occurrence rates suggest  
52 that ASD may consist of several subclasses, and questionnaires about ASD need to link  
53 with these disorders. Such classes, if any, would contribute not only to understanding

54 ASD more deeply and developing future intervention methods for each class, but also to  
55 characterizing ASD indices such as AQ more precisely.

56           Indeed, to identify the subclasses, several studies have conducted a clustering  
57 of people with high ASD scores, although the majority of studies have treated this  
58 population with a high ASD score as a single group [12,13]. A study using the RAADS-  
59 R score (an index of ASD) identified four subtypes based on the Big5 factors.  
60 Specifically, cluster 1 has Big5 features similar to social phobia [11], and cluster 2  
61 shows a Big5 score distribution similar to secondary psychopath and BPD [12]. Cluster  
62 2 and cluster 3 have low agreeableness, extraversion, and average levels of emotional  
63 stability and conscientiousness but high happiness. Cluster 4 has the highest  
64 extraversion, agreeableness, and happiness among the four clusters [13]. That study  
65 examined 364 individuals with high ASD traits recruited from autism-related websites  
66 and based on the results of Big5 factors and subcategories, life satisfaction, and  
67 happiness. Another study clustered 2000 autistic individuals based on 123 item scores  
68 from the Autism Diagnostic Interview-Revised (ADI-R) [14] and reported four  
69 phenotypic clusters: the first associated with severe language deficits, the second with  
70 milder symptoms across the domains, the third with a higher frequency of savant skills,  
71 and the fourth with intermediate severity across all domains.

72            However, the clustering of these previous studies was based on the Big5 or an  
73    ASD index alone. In other words, the relationship between the AQ and personality traits  
74    other than the Big5 remains largely unknown. In addition, most studies were based on  
75    young populations, such as children and undergraduate students; the limited age range  
76    makes it difficult to draw general conclusions [6,15]. Furthermore, when examining  
77    general personality types, small sample sizes and the lack of reproducibility across data  
78    sets and methods have led to inconclusive results [16]. These findings suggest that a  
79    clustering analysis of a larger set of personality traits and attributes beyond the Big5  
80    obtained from a larger and broader population offers useful insights about subclasses in  
81    the population with a high ASD score.

82            Here, we examined online data on AQ and a wide range of personality traits  
83    and attributes, including the Big5, psychopathy, schizophrenia, depression, OCD, and  
84    other mental illness indicators from a more general population (n=18948), and  
85    conducted a co-clustering analysis of 1364 individuals who had an AQ score of 33 or  
86    higher (high AQ group) to identify subgroups within this population. To guarantee the  
87    generality of the results, we used two distance measures for clustering with the Ward  
88    method: the Euclidean distance and the Manhattan distance.

89

## 90 Results

### 91 The number of clusters in the high AQ group was 3

92 We first conducted a Lasso regression to select personality traits and attributes  
93 that contributed to the AQ score. We then conducted a co-clustering of 1364 subjects  
94 with an AQ score  $\geq 33$  using 35 personality traits (and attributes) whose absolute value  
95 of the weights in the Lasso regression was greater than 0.0126, which amounted to 1/20  
96 of the largest absolute value (Table 1) using the Ward method with two different  
97 distance measures: the Euclidian and Manhattan distances. We found the optimal  
98 number of clusters for this group was 3 for both measures (Fig 1). We show the results  
99 only for the Euclidian distance hereafter, as the clusters were comparable between the  
100 two distance measures (see S1 Fig. for the cluster structure from the Manhattan  
101 distance).

102

103 **Table 1. Personality traits and Lasso regression weights used to determine the**  
104 **number of clusters.**

Personality	Coefficient	Personality	Coefficient	Personality	Coefficient
Big5_E <sup>c, k</sup>	0.25257	IQ <sup>c</sup>	0.03040	BIS <sup>k</sup>	0.00810
SPQ_I <sup>c, k</sup>	0.24391	IRI_EC <sup>c, k</sup>	0.02984	RA	0.00808
SPQ_C <sup>c, k</sup>	0.20272	RSS <sup>c, k</sup>	0.02859	BAQ_P <sup>k</sup>	0.00497
SPQ_D <sup>c, k</sup>	0.12839	BAS_D <sup>c, k</sup>	0.02794	SES_parents	0.00378
Big5_O <sup>c, k</sup>	0.11126	PDI_CO <sup>c</sup>	0.02745	TIM	0.00269
Big5_A <sup>c, k</sup>	0.09556	SES_job <sup>c</sup>	0.02532	SVO_C	0.00133
FAD_FW <sup>c</sup>	0.07100	BAQ_H <sup>c, k</sup>	0.02325	OCIR_WA <sup>k</sup>	0



SDS <sup>c, k</sup>	0.06943	OCIR_ST <sup>c, k</sup>	0.02022	OCIR_OB <sup>k</sup>	0
Big5_N <sup>c, k</sup>	0.06760	PSPS_P <sup>c</sup>	0.01909	PDI_DE	0
BAS_R <sup>c, k</sup>	0.06725	RRQ_RE <sup>c</sup>	0.01834	PDI_DI	0
BAQ_A <sup>c, k</sup>	0.06720	PSPS_S <sup>c</sup>	0.01755	PDI_FR	0
OCIR_OR <sup>c, k</sup>	0.06683	STAI_S <sup>c, k</sup>	0.01557	PSS	0
IRI_PD <sup>c, k</sup>	0.06514	FAD_FD <sup>c</sup>	0.01546	SES_self	0
OCIR_NE <sup>c, k</sup>	0.06329	FAD_UP <sup>c</sup>	0.01521	SES_subj	0
BDI <sup>c, k</sup>	0.05434	BAQ_V <sup>c, k</sup>	0.01371	SHS <sup>k</sup>	0
IRI_F <sup>c, k</sup>	0.05109	SES_salary <sup>c</sup>	0.01269	SVO_P	0
Big5_C <sup>c, k</sup>	0.04368	OCIR_CH <sup>k</sup>	0.01257	SVO_I	0
RRQ_RU <sup>c</sup>	0.03574	FAD_SD	0.01169	STAI_T <sup>k</sup>	0
IRI_PT <sup>c, k</sup>	0.03423	BAS_S <sup>k</sup>	0.00911		

105 Absolute values of the coefficient (0.0126) amounted to 1/20 the largest absolute value  
106 of weights in the Lasso regression analysis (in this case, the largest value was assigned  
107 to Big5\_E). The personality traits with values larger than 0.0126 were used both for the  
108 clustering and for determining the number of clusters.

109 <sup>c</sup> what we used for clustering, <sup>k</sup> what we used for kernel density estimation

110

111 **Fig 1. Three clusters in the high AQ group.** The horizontal and vertical axes represent  
112 the personality traits used for the clustering and the subjects, respectively, with each  
113 square showing a standardized score of the corresponding horizontal personality trait of  
114 the subject. Color scale: red, high score; purple, low score. For personality traits on the  
115 horizontal axis, three blocks were identified: block 1 consisted of BAQ, SPQ, BDI,  
116 OCIR, FAD\_FD, and UP; block 2 consisted of Big5 and RSS; and block 3 consisted of

117 BIS/BAS and IRI. The high AQ group was clustered into three subgroups: 575 people  
118 for Group 1, 410 for Group 2, and 379 for Group 3.

119

120 The three groups are summarized as follows. In comparison with the mean  
121 values of the groups, Group 1 showed slightly higher scores on OCIR [17], BDI [18],  
122 SPQ [19], BIS [20], IRI [21] and STAI [22] and lower scores on the Big5 [23] other  
123 than Big5\_N. Group 2 showed higher scores on BIS, the Big5 and IRI, and slightly  
124 higher scores on personality traits related to mental disorders, such as OCIR, SPQ.  
125 Lastly, Group 3 exhibited lower scores on OCIR, BDI and SPQ.

126

## 127 **Characteristics of the three high AQ subgroups**

128 An analysis of variance revealed that 52 out of 61 personality trait (sub-) scores  
129 including the AQ showed significant differences among the three groups (S2 Table).  
130 Figs 2-7 plot the probability density distribution of the personality trait scores for each  
131 group. In these figures, the vertical and horizontal axes show the percentage of the  
132 number of people and the scores, respectively, and p-values were calculated using  
133 Welch's T-test. The threshold for significance was set at 0.0002 (0.05 divided by the  
134 number of items used for the clustering, 35, and the combination of groups, 6).

135 Considering that the p-value tends to decrease with a larger sample size, this threshold

136 was considered a minimum requirement.

137

138 **Fig 2. AQ scores for each group.** For AQ\_S, Group 2 had a significantly higher mean

139 value than Groups 1 and 3 (Group 2 vs. 1,  $f=4.300$ ,  $p=1.924e-05$ ; Group 2 vs. 3,  $f=-$

140  $4.787$ ,  $p=2.018e-06$ ). For AQ\_A, Group 3 had a significantly lower mean value than

141 Groups 1 and 2 (Group 3 vs. 1,  $f=7.594$ ,  $p=8.945e-14$ ; Group 3 vs. 2,  $f=4.964$ ,

142  $p=8.945e-07$ ). For AQ\_D, Group 2 had a significantly higher mean value than Groups 1

143 and 3 (Group 2 vs. 1,  $f=-6.033$ ,  $p=2.339e-09$ ; Group 2 vs. 3,  $f=7.624$ ,  $p=7.182e-14$ ). For

144 AQ\_C, Group 1 had a significantly higher mean value than Groups 2 and 3 (Group 1 vs.

145 2,  $f=6.726$ ,  $p=3.133e-11$ ; Group 1 vs. 3,  $f=7.608$ ,  $p=7.976e-14$ ). For AQ\_I, Group 3 had

146 a significantly higher mean than Groups 1 and 2 (Group 3 vs. 1,  $f=-3.574$ ,  $p=0.0004$ ;

147 Group 3 vs. 2,  $f=-7.436$ ,  $p=2.817e-13$ ). AQ\_S: social skills, AQ\_A: attention switching,

148 AQ\_D: attention to detail, AQ\_C: communication, and AQ\_I: imagination). Higher

149 scores indicate stronger autistic traits; the higher the score, the stronger the autistic trait.

150 In other words, a higher AQ\_S means poorer social skills, a higher AQ\_A means poorer

151 attention switching, a higher AQ\_D means higher attention to detail, a higher AQ\_C

152 means poorer communication, and a higher AQ\_I means poorer imagination.

153

154 **Fig 3. Emotion-related items for each group.** For BAQ\_P, BDI and SDS, Group 1

155 had significantly higher mean values than Groups 2 and 3 (BDI: Group 1 vs. 2,

156  $f=20.451$ ,  $p=1.345e-77$ ; Group 1 vs. 3  $f=24.005$ ,  $p=1.070e-98$ ; and SDS: Group 1 vs. 2,

157  $f=19.305$ ,  $p=8.107e-70$ ; Group 1 vs. 3,  $f=21.119$ ,  $p=7.348e-78$ ). Group 1 also had

158 significantly lower mean values for STAI\_S and STAI\_T than Groups 2 and 3

159 (STAI\_S: Group 1 vs. 2,  $f=14.662$ ,  $p=5.334e-44$ ; Group 1 vs. 3,  $f=17.547$ ,  $p=1.785e-$

160  $59$ ; and STAI\_T: Group 1 vs. 2,  $f=16.849$ ,  $p=1.685e-55$ ; Group 1 vs. 3,  $f=25.416$ ,

161  $p=2.595e-104$ ). For RSS, Group 1 had significantly lower mean values than groups 2

162 and 3 (RSS: Group 1 vs. 2,  $f= -14.869$ ,  $p= 1.350e-44$ ; Group 1 vs. 3  $f= -16.700$ ,  $p=$

163  $8.302e-53$ ). For SHS, Group 1 had significantly lower mean values than groups 2 and 3

164 (SHS: Group 1 vs. 2,  $f= -12.871$ ,  $p= 7.515e-35$ ; Group 1 vs. 3  $f= -15.277$ ,  $p= 1.8612e-$

165  $46$ ). BDI: depression, SDS: depression, STAI\_S: state anxiety, STAI\_T: trait anxiety,

166 RSS: self-esteem, and SHS: subjective happiness. For BAQ\_A and BAQ\_H, Group 1

167 had significantly higher mean values than Groups 2 and 3 (BAQ\_P: Group 1 vs. 2,

168  $f=8.762$ ,  $p=8.907e-18$ ; Group 1 vs. 3,  $f=9.587$ ,  $p=8.745e-21$ ; BAQ\_A: Group 1 vs. 2,

169  $f=10.325$ ,  $p=1.045e-23$ ; Group 1 vs. 3,  $f=17.013$ ,  $p=3.841e-56$ ; and BAQ\_H: Group 1

170 vs. 2,  $f=15.761$ ,  $p=2.372e-49$ ; Group 1 vs. 3,  $f=21.482$ ,  $p=2.118e-80$ ). For BAQ\_V,

171 Group 1 had no significant difference with Groups 2 or 3 (Group 1 vs. 2,  $f=-2.344$ ,  
172  $p=0.019$ ; Group 1 vs. 3,  $f=-1.050$ ,  $p=0.294$ ). BAQ\_P: physical aggression, BAQ\_A:  
173 short temper, BAQ\_H: suspicion, and BAQ\_V: verbal aggression.

174

175 **Fig 4. Big5 for each group.** For Big5\_E, Group 2 had no significant difference with  
176 Groups 1 or 3 (Group 2 vs. 1,  $f=-0.314$ ,  $p=0.753$ , Group 2 vs. 3,  $f=-2.417$ ,  $p=0.016$ ). For  
177 Big5\_A, \_C, and \_O, Group 2 had significantly higher mean values than Groups 1 and 3  
178 (Big5\_A: Group 2 vs. 1,  $f=-13.001$ ,  $p=1.482e-35$ ; Group 2 vs. 3,  $f=6.202$ ,  $p=9.281e-10$ ;  
179 Big5\_C: Group 2 vs. 1,  $f=-10.410$ ,  $p=7.135e-24$ ; Group 2 vs. 3,  $f=4.716$ ,  $p=2.844e-06$ ;  
180 and Big5\_O: Group 2 vs. 1,  $f=-11.016$ ,  $p=1.639e-26$ ; Group 2 vs. 3,  $f=5.205$ ,  $p=2.519e-$   
181  $07$ ). For Big5\_N, Group 3 had a significantly lower mean value than Groups 1 and 2  
182 (Group 3 vs. 1,  $f=23.443$ ,  $p=7.967e-86$ ; Group 3 vs. 2,  $f=17.100$ ,  $p=6.190e-55$ ). Big5\_E:  
183 extroversion, Big5\_A: cooperativeness, Big5\_C: diligence, Big5\_N:neuroticism, and  
184 Big5\_O: openness. For IQ, Group 2 had a significantly higher mean value than Groups  
185 1 and 3 (Group 2 vs 1:  $f = -6.635$ ,  $p = 5.341e-11$ ; Group 2 vs 3:  $f = 6.320$ ,  $p = 5.127e-$   
186  $10$ ; Group 1 vs 3:  $f = 1.081$ ,  $p = 0.280$ ). IQ: intelligence quotient.

187

188

189 **Fig 5. OCD-related scores and schizophrenia-related scores for each group.** Group  
190 3 had significantly lower mean values than Groups 1 and 2 for OCIR\_WA, OCIR\_ST,  
191 OCIR\_OR, OCIR\_CH and OCIR\_NE (OCIR\_WA: Group 3 vs. 1,  $f=10.779$ ,  $p=1.236e-$   
192  $25$ ; Group 3 vs. 2,  $f=6.416$ ,  $p=2.469e-10$ ; OCIR\_ST: Group 3 vs. 1,  $f=11.370$ ,  
193  $p=3.8949e-28$ ; Group 3 vs. 2,  $f=9.154$ ,  $p=4.655e-19$ ; OCIR\_OR: Group 3 vs. 1,  
194  $f=14.759$ ,  $p=1.618e-44$ ; Group 3 vs. 2,  $f=12.428$ ,  $p=1.778e-32$ ; OCIR\_CH: Group 3 vs.  
195 1,  $f=12.608$ ,  $p=8.377e-34$ ; Group 3 vs. 2,  $f=8.830$ ,  $p=7.066e-18$ ; and OCIR\_NE: Group  
196 3 vs. 1,  $f=13.690$ ,  $p=4.514e-39$ ; Group 3 vs. 2,  $f=11.095$ ,  $p=1.222e-26$ ). For OCIR\_OB,  
197 Group 1 had significantly higher mean values than Groups 2 and 3 (Group 1 vs. 2,  
198  $f=9.019$ ,  $p=1.023e-18$ ; Group 1 vs. 3,  $f=22.454$ ,  $p=1.4139e-89$ ) OCIR\_WA: wash,  
199 OCIR\_OB: obsess, OCIR\_ST: store, OCIR\_OR: order, OCIR\_CH: confirm, and  
200 OCIR\_NE: number. Group 1 had significantly higher mean values than Groups 2 and 3  
201 for all SPQ items (SPQ\_C: Group 1 vs. 2,  $f=14.080$ ,  $p=4.438e-41$ ; Group 1 vs. 3,  
202  $f=20.578$ ,  $p=1.411e-77$ ; SPQ\_I: Group 1 vs. 2,  $f=14.636$ ,  $p=2.858e-43$ ; Group 1 vs. 3,  
203  $f=16.457$ ,  $p=3.614e-50$ ; and SPQ\_D: Group 1 vs. 2,  $f=11.455$ ,  $p=2.246e-28$ ; Group 1  
204 vs. 3,  $f=19.712$ ,  $p=5.288e-71$ ). SPQ\_C: cognitive and perceptual, SPQ\_I: interpersonal,  
205 and SPQ\_D: demolition.

206

207 **Fig 6. Behavioral inhibition system (tendency to avoid punishment) and behavioral**  
208 **activation system (tendency to approach reward) for each group.** For BIS, Group 3  
209 had a significantly lower mean value than Groups 1 and 2 (Group 3 vs. 1,  $f=19.186$ ,  
210  $p=8.767e-67$ ; Group 3 vs. 2,  $f=14.641$ ,  $p=8.975e-43$ ). For BAS\_D, Group 2 had a  
211 significantly higher mean value than Groups 1 and 3 (Group 2 vs. 1,  $f=-6.993$ ,  
212  $p=5.081e-12$ ; Group 2 vs. 3,  $f=10.747$ ,  $p=3.242e-25$ ). For BAS\_R and BAS\_S, Group  
213 3 had a significantly lower mean than Groups 1 and 2 (BAS\_R: Group 3 vs. 1,  
214  $f=8.288$ ,  $p=4.331e-16$ ; Group 3 vs. 2,  $f=13.109$ ,  $p=1.500e-35$ ; BAS\_S: Group 3 vs. 1,  
215  $f=5.713$ ,  $p=1.511e-08$ ; Group 3 vs. 2,  $f=8.338$ ,  $p=3.369e-16$ ). BIS: behavioral  
216 inhibitory system, BAS\_D: behavioral activating system\_driven, BAS\_R: behavioral  
217 activating system\_reward responsive, and BAS\_S: behavioral activating  
218 system\_stimulus seeking.

219

220 **Fig 7. Interpersonal reactivity index for each group.**

221 For IRI\_F and IRI\_PD, Group 2 had significantly higher mean values than Groups 1  
222 and 3 (IRI\_F: Group 2 vs. 1,  $f=-7.350$ ,  $p=4.203e-13$ ; Group 2 vs. 3,  $f=12.852$ ,  $p=3.444e-$   
223  $34$ ; IRI\_PD: Group 2 vs. 1,  $f=-9.939$ ,  $p=3.526e-22$ ; Group 2 vs. 3,  $f=12.625$ ,  $p=2.737e-$   
224  $33$ ). For IRI\_PT and IRI\_EC, Group 3 had significantly lower mean values than Groups

225 1 and 2 (IRI\_PT: Group 3 vs. 1,  $f=11.649$ ,  $p=4.029e-29$ ; Group 3 vs. 2,  $f=12.712$ ,  
226  $p=1.069e-33$ ; IRI\_EC: Group 3 vs. 1,  $f=12.127$ ,  $p=3.433e-31$ ; Group 3 vs. 2,  $f=12.791$ ,  
227  $p=6.212e-34$ ). IRI\_F: Imagination, IRI\_PT: Perspective Taking, IRI\_EC: Empathic  
228 Concern, and IRI\_PD: Personal Distress.

229

230 Fig 2 shows the distribution of AQ scores for each group. Group 1, Group 2  
231 and Group3 have higher AQ\_S, AQ\_A, AQ\_I, and AQ\_C compared to the general  
232 population and overall have high autistic tendencies. Group 3 is characterized by high  
233 AQ\_I.

234 Fig 3 shows emotion-related items. BDI and SDS [26] measure depressive  
235 tendencies, STAI\_S measures anxiety as a transient mood by asking how one feels  
236 about oneself at the time of the measurement, and STAI\_T measures one's susceptibility  
237 to anxiety by asking how one usually feels about oneself [27]. Group 1 had higher  
238 depressive tendency and anxiety than the other groups and the general population,  
239 suggesting that members of this group tended to be mentally unstable. In Group 3, both  
240 depression and anxiety were much lower than in Group 1, and they tended to be  
241 mentally calm. Group 2 was similar to Group 3, but STAI\_T was higher than in Group  
242 3. In addition, Group 1 had the lowest self-esteem and the lowest happiness among the



243 three groups. Fig 3 also shows the distribution of BAQ [24] scores, an index of  
244 aggression. Group 1 is characterized by high scores on BAQ\_P, BAQ\_A, and BAQ\_H.  
245 BAQ\_P is a scale measuring physical aggression reactions, with items measuring the  
246 tendency to violent reactions, impulses to violence, and justification of violence.  
247 BAQ\_A is a scale measuring anger arousal, with items measuring anger and low anger  
248 inhibition. BAQ\_H is a scale measuring suspicion and distrust, including malice and  
249 disregard for others, with items measuring negative beliefs and attitudes toward others.  
250 BAQ\_V is a scale that measures verbal aggression reactions and consists of items that  
251 measure assertiveness and argumentativeness [25]. Therefore, Group 1 is highly  
252 suspicious and distrustful, short-tempered, and has little resistance to violence. Group 2  
253 is characterized by high scores on BAQ\_A and BAQ\_H. Like Group 1, this group is  
254 short-tempered and paranoid. By contrast, Group 3's BAQ scores were comparable to  
255 the general population.

256 Fig 4 displays the results for the Big5 and IQ. Big5\_E, Big5\_A, Big5\_C,  
257 Big5\_N, and Big5\_O measure extraversion, agreeableness (concerning compassion and  
258 kindness), conscientiousness (concerning perseverance and thoroughness), neuroticism  
259 (concerning meticulousness and emotional instability) and openness (concerning the  
260 ability to take in a wide range of experiences and make decisions), respectively, and IQ

261 measure reasoning ability. Group 1 is characterized by a higher Big5\_N than the other  
262 groups, indicating that Group 1 is less emotionally stable. Group 2 is characterized by  
263 higher levels of Big5\_A, Big5\_C, and Big5\_O than the other two groups, meaning that  
264 Group 2 is as kind and perseverant as the general population. In addition, Group 2 had a  
265 slightly higher average IQ. Group 3, like the other two groups, is low in extraversion  
266 and shows the general tendency of people with high autistic scores, but it is also  
267 characterized by the lowest Big5\_N among the high AQ groups and is therefore  
268 considered to be the most emotionally stable among the three groups.

269 Fig 5 shows OCD-related and schizophrenia-related scores. For the OCIR,  
270 which measures the frequency of OCD symptoms, Group 1 scored higher than the other  
271 groups on all items. SPQ measures the characteristics of schizotypal personality and  
272 consists of nine subtypes of schizophrenia: SPQ\_C, SPQ\_I, and SPQ\_D are indices for  
273 relational ideation, magical thinking, abnormal perception, and suspicion; social  
274 anxiety, absence of friends, emotional suppression, and suspicion; and odd behavior and  
275 odd speech, respectively. Example questionnaires for each item were "I have to be  
276 careful because people may resent me or have bad intentions toward me, or my friends  
277 may actually be dishonest," "I would rather be alone than interact with others, and I am  
278 not good at socializing," and "I am not good at speaking expressively or expressing my

279 true feelings" [28]. The questions in the survey overlap with those in BAQ\_H for  
280 suspicion and AQ\_S for social anxiety and absence of close friends. All SPQ scores  
281 were predominantly higher for Group 1 than the two groups, but the SPQ\_I scores were  
282 higher than in the general population not only in Group 1 but also Group 2 and Group 3,  
283 suggesting that high AQ people have difficulty with interpersonal relationships. In  
284 addition, all groups scored high on AQ\_S and AQ\_C. Group 3 had the lowest scores on  
285 all items.

286 Fig 6 shows the results for BIS and BAS. BIS concerns the avoidance of  
287 conditioned aversive stimuli, and BAS activates behavior in response to incentives.  
288 BAS has three subscales, BAS\_D, BAS\_R, and BAS\_S, representing a persistent  
289 pursuit of goals (e.g., "I will do anything to get what I need"), positive responses to  
290 rewards (e.g., "I get excited and energized when I get what I want"), and desire for new  
291 rewards (e.g., "I'm eager to get excitement and new sensations"), respectively [29].  
292 Group 2 had a higher BAS\_D score than the other two groups. According to McCrae &  
293 Costa [30], neuroticism is a personality trait that reflects the ease of experiencing  
294 negative emotions, while extraversion is a vivacious personality trait such as being  
295 socially active and seeking excitement and stimulation. Takahashi et al. [31] found a  
296 positive correlation between BIS and neuroticism and a positive correlation between

297 BAS and extraversion. In the present study, Group 1 had a higher BIS and higher  
298 neuroticism tendency (high Big5\_N, i.e. low emotional stability), but there was no  
299 difference in the distribution of Big5\_E scores between the three groups despite the  
300 differences in the distribution of BAS scores. Group 2 showed a similar level of BIS to  
301 Group 1. Group 3 had the same mean and peak score as the average of all subjects for  
302 all items.

303 Fig 7 shows the results for the IRI, which measures empathy. IRI\_EC, IRI\_PT,  
304 IRI\_PD, and IRI\_F represent "the ease with which other-oriented emotions such as  
305 sympathy are aroused," "the degree to which one considers the feelings of others from  
306 their perspective," "the degree to which one is preoccupied with anxiety or fear  
307 generated in oneself by observing the distress of others," and "the tendency to imagine  
308 oneself as a character in a fictional story," respectively [32]. For IRI\_PT and IRI\_EC,  
309 Group 1 and 2 scored higher than the general population, and for IRI\_F, IRI\_PD, Group  
310 2 scored significantly higher than the other two groups. Group 3 showed scores  
311 consistent of the general population for all items of IRI.

312

## 313 **Discussion**

314 The AQ is a valuable tool for quickly quantifying a particular individual on the

315 ASD continuum. However, there has not been sufficient consideration into different  
316 subgroups in the population with high scores. In this study, using a large set of  
317 personality traits and attributes other than happiness and the Big5, we conducted a  
318 clustering analysis of a large population with high AQ scores not limited to clinical  
319 patients. As a result, we identified three subgroups.

320           Group 1 has high AQ\_S, AQ\_A, and AQ\_C. People in this group tend to be  
321 obsessive about one thing, unsociable and not good at communication. Many are  
322 paranoid and distrustful, short-tempered, and have low resistance to violence.  
323 Depressive and anxiety tendencies are also high, and happiness and self-esteem are  
324 lower than those of the overall general population. They also have a tendency toward  
325 OCD and schizophrenia: they are highly afraid of failure. Characteristics of Group 1  
326 such as low self-esteem [33] and high hostility [34] along with high SPQ scores [35] are  
327 reminiscent of BPD. BPD is estimated to be present in about 1-2% of the general  
328 population and more common in females than in males. BPD is often associated with  
329 impulsivity, depression, anxiety disorders, paranoid personality disorder, and  
330 difficulties in interpersonal relationships [36]. The DSM-IV criterion for BPD is to  
331 satisfy five out of nine items, including inappropriately intense anger or difficulty at  
332 controlling anger, chronic feelings of emptiness, and self-injurious behavior (which was

333 difficult to confirm in the present study). It is also reported that BPD is characterized by  
334 unstable personality traits [37], suggesting that a longitudinal study may be necessary.

335           Group 2 has high AQ\_S and AQ\_D, is unsociable, and sensitive to details and  
336 anxiety is slightly higher than the overall average. This group is eager to try what they  
337 want but afraid of failure. The unique feature of this group is that many of them score  
338 high on BIS, IRI and the Big5 (particularly for agreeableness and openness).

339           Group 3, like the other two groups, has higher AQ\_S, SQ\_A, AQ\_C, and AQ\_I  
340 scores than the general population, but its AQ\_A and AQ\_D scores are lower and AQ\_I  
341 score higher than the other two groups. Overall, most of the scores in this group are  
342 comparable with the general population, but among the three groups, Group 3 has the  
343 lowest Big5\_N, suggesting that people in this group are emotionally stable. The scores  
344 of emotionally related items, such as depression and anxiety, are also low. Group 3 has  
345 high interpersonal factors of schizophrenia related to social interactions and AQ in  
346 general, but its members are emotionally stable and resemble typical Asperger's  
347 syndrome.

348           Schwartzman et al. [13] conducted a clustering analysis of people with high  
349 ASD scores measured by the RAADS-R based on the Big5 and their subdivisions. They  
350 identified four clusters. Cluster 1 and Cluster 2 had Big5 traits patterns typical of social

351 phobia [11] and secondary psychopaths and BPD [12], respectively. Cluster 3 had low  
352 agreeableness, extraversion, and average levels of neuroticism and conscientiousness  
353 but high well-being, and Cluster 4 had the highest extraversion and agreeableness and  
354 high well-being.

355           Group 1 in the present study has high depressive tendencies and anxiety and  
356 low happiness. It also had high scores for OCD, schizophrenia, impulsivity, and other  
357 strong characteristics of BPD, but not for secondary psychopathy. These data suggest  
358 that Group 1 in the present study and Cluster 2 in Schwartzman et al. [13] generally  
359 correspond to each other, implying a deeper association with BPD. On the other hand,  
360 Group 2 in the present study has high BIS and IRI. High BIS suggests features of  
361 depression and social phobia [38,39], which are closely related to Cluster 1. In addition,  
362 social phobia is characterized by high IRI [40-42], while strong connection with IRI has  
363 not been reported for depression. Also considering that BDI for Group 2 was not high,  
364 we think that Group 2 is more related to social phobia than depression. The present  
365 study utilized a large set of personality traits and attributes beyond the Big5, including  
366 BIS, which enabled us to conduct a detailed analysis of the AQ based on multiple  
367 indices of personality traits and attributes.

368           By contrast, none of the clusters in Schwartzman et al. [13] matched Group 3,

369 which represents a typical autistic person with a high AQ with other personality scores  
370 comparable to the general population. A potential reason for the gap is that only the  
371 Big5 and a limited number of indices, such as happiness and life satisfaction, were  
372 considered by Schwartzman et al. [13]. In addition, this previous study collected  
373 subjects through a website focusing on autism, which may also account for the  
374 difference. Related to this, the fact that the gender ratio in the high AQ group of the  
375 present study did not match the general 4:1 ratio of males to females for autism may  
376 arise from the gender bias in Internet users.

377           It is possible that the characteristics of personality disorders defined in the  
378 DSM5 (i.e., Cluster A-C) provide useful insights into our clustering results. Group 1,  
379 which has strong characteristics of BPD, is like Cluster B, which includes BPD,  
380 Narcissistic Personality Disorder, Antisocial Personality Disorder, and Acting  
381 Personality Disorder, and is characterized by acting, emotional, and volatile  
382 characteristics. Among these disorders, people with BPD are considered to have  
383 unstable emotions and interpersonal relationships and difficulty controlling impulses.  
384 Although we showed high OCD and SPQ scores for Group 1, more study is needed for  
385 impulsivity in Group 1. Group 2, which shows characteristics of high suspicion and  
386 high anxiety, is like Cluster C, which has anxious and introverted characteristics.



387 Cluster C includes Dependent, Obsessive Compulsive, and Avoidant Personality  
388 Disorders. Group 2 also has similar characteristics for avoidant personality disorder,  
389 which is characterized by an extreme fear of failure and of being rejected by others.  
390 Finally, Group 3, which has high autistic tendencies but average-level scores for traits  
391 other than interpersonal relationships, mostly fits into Cluster A. This category includes  
392 personality disorders such as paranoid (delusional) personality disorder, schizoid  
393 personality disorder, and schizotypal personality disorder. Among these, Group 3 was  
394 closest to schizoid personality disorder, which is characterized by a lack of interest in  
395 others, a preference for being alone, and a lack of concern for the evaluation of oneself  
396 by those nearby.

397           There are several limitations in the present study. First, although inattentive  
398 and hyperactive behaviors are common in children with ASD, children with ADHD also  
399 show similar social difficulties with their peers [43]. Before the development of the  
400 DSM-5, it was not possible for a person with a diagnosis of ASD to be simultaneously  
401 diagnosed with ADHD. However, studies after DSM-5 have shown that ADHD is the  
402 most common comorbidity among children with ASD, with a probability of 40%-70%.  
403 In addition, ADHD and ASD have many copy number variants (CNV) and  
404 chromosomal abnormalities in common, indicating genetic overlap between them [44].

405 Therefore, it is necessary to include ADHD measures in large-scale studies of ASD in  
406 the future.

407           Second, although our results revealed heterogeneity in the high AQ samples,  
408 this does not necessarily mean that people with ASD comprise three subgroups. It is  
409 possible that AQ cannot separate autism from other psychiatric disorders. Even so, we  
410 believe our results will contribute to the better understanding of AQ.

411           Third, although we confirmed that the number of clusters was three by using  
412 two different metrics for clustering, the cluster size may differ depending on the  
413 methods and data, as discussed in a previous study on personality types based on large-  
414 scale data [16], which reported that a simple application of clustering yields a spurious  
415 number of personality types. Therefore, we took a minimalist approach to increase the  
416 cluster size gradually. That is, when we first employed the K-means clustering method  
417 instead of the Ward method, we found two clusters: one with high scores for mental  
418 illness and the other with low scores. This result is consistent with a previous clustering  
419 study [13] of high autistic tendency groups based on the Big5, which reported one group  
420 with characteristics like mental disorders and the other with only high autistic  
421 tendencies. Since we were mainly interested in the structures in the high-score group,  
422 we decided to adopt the Ward method in the present study.

423 Fourth, the personality test data of this study was collected from adult  
424 Japanese speakers between the ages of 19 and 89, and all participants satisfied the  
425 condition to have cognitive ability to complete the surveys through internet access.  
426 Different clusters may emerge if recruiting non-Japanese or children-only participants.

427 In summary, this study conducted a clustering analysis of a large number of  
428 high AQ subjects based on a large set of personality traits and attributes and identified  
429 three subgroups: Group 1, which resembles borderline personality disorder; Group 2,  
430 which resembles social phobia; and Group 3, which has high AQ scores but other  
431 personality scores that resemble the general population. These findings lead to several  
432 important questions for future study. The first is to address whether the three subgroups  
433 are also seen in the clinical population of ASD and how they show differences in real  
434 social behaviors. A previous study based on the Big5 scores from 64 Asperger's  
435 syndrome patients reported larger variances in the patients than in normal controls,  
436 potentially indicating the existence of subgroups [45]. The second is to address how AQ  
437 scores and other personality measures are distinct and overlapping [10]. We believe  
438 these new avenues based on a data-driven approach like ours will help clarify AQ and  
439 ASD.

440

## 441 **Materials and Methods**

### 442 **Participants**

443           Subjects older than 18 years old were recruited through an online survey over a  
444 four-year period from 2016 to 2019. A total of 18926 subjects (10416 males and 8510  
445 females) whose ages ranged from 18~89 years old were collected for the analysis,  
446 excluding duplicate subjects who took the test multiple years. The high AQ group  
447 consisted of 1364 subjects (819 males and 545 females) whose ages ranged from 19 and  
448 83 years old. The mean age was 39.0 years old, with a standard deviation of 14.7 years.  
449 Because all personality questionnaires were written in formal Japanese, proficiency in  
450 the Japanese language was required to complete the survey. Therefore, all participants  
451 were likely to be Japanese, although some may have been foreigners fluent in the  
452 language. The online survey and analysis methods were reviewed and approved by the  
453 Ethics Committee of National Institute of Information and Communications  
454 Technology. The methods were in accordance with the code of ethics and conduct of the  
455 Japanese Psychological Association. Subjects were briefed about the experiment, and  
456 informed consent was obtained from all. The research questions and analyses were not  
457 preregistered.

458

## 459 **Online survey**

460 Data collection was conducted through an online survey in Japanese as follows.

461 A research company recruited the subjects and issued a unique URL to each of them.

462 Subjects accessed the personality trait questionnaires on the server at our institute

463 through the received URL. At the end of the test, we sent a "linkage ID" of the subject

464 with the completion status of the questionnaire to the research company. Based on this

465 ID, the research company gave the subjects reward points (equivalent to 300 yen).

466 The contents and abbreviations of the personality trait questionnaires are

467 explained in Table S1. Specifically, the mental health scores included schizophrenia

468 [SPQ\_C, SPQ\_I, SPQ\_D], delusion [PDI\_DE, PDI\_DI, PDI\_FR, PDI\_CO],

469 psychopathy [PSPS\_P, PSPS\_S], OCD [OCIR\_WA, OCIR\_OB, OCIR\_ST, OCIR\_CH

470 OR, OCIR\_CH, OCIR\_CH], depression [BDI, SDS], anxiety [STAI\_S, STAI\_T], and

471 stress [PSS]. (The abbreviations in square brackets indicate subscales.) Behavioral

472 economics scores included socioeconomic measures [SES] and social value orientation

473 [SVO\_P, SVO\_I, SVO\_C]. Money-related risk aversion and time discounting [RA,

474 TIM] were also examined. Empathy-systematization scores included scales for empathy

475 [IRI\_F, IRI\_PT, IRI\_EC, IRI\_PD] and ASD [AQ\_S, AQ\_D, AQ\_A, AQ\_C, AQ\_I]. The

476 inhibition/activation score included scales for the Behavioral Inhibition System (BIS)

477 and the Behavioral Activation System (BAS) [BAS\_D, BAS\_R, BAS\_S]. All

478 questionnaires were self-reported as described in S1 Table.

479

## 480 **The Autism-Spectrum Quotient (AQ)**

481 We used a Japanese version of the AQ [46], which comprises 10 items for each

482 of five major domains (social skills, attention switching, attention to detail,

483 communication, and imagination). The AQ uses a forced-choice self-report format.

484 Answers are rated on a binary scale, and the maximum score is 50 points; a higher score

485 indicates stronger autistic tendency. Because the cutoff point between people with

486 AS/HFA and the general Japanese population was previously identified to be 32 points

487 [46], AQ scores of 33 or higher were used to define the high AQ group for clustering.

488

## 489 **Analysis**

### 490 **Lasso regression**

491 Initially, to determine which personality traits relate to the AQ, we ran a Lasso

492 regression analysis of scikit-learn in Python [47] to predict individual AQ scores from a

493 total of 56 personality traits (sub-) scores (excluding the AQ) and attributes. In the

494 Lasso regression analysis, we used the total AQ score to characterize the high AQ group

495 beyond the Japanese AQ cutoff value (32). In the subsequent analysis to characterize  
496 each high AQ subgroup, we examined subscales rather than total scores to examine  
497 differences in subscales among subgroups. Data including a missing value was excluded  
498 from the analysis.

## 499 **Clustering**

500 We clustered the high AQ group of 1364 people (7.2% of total respondents)  
501 using the Ward method (using `hclust` in R) with two different metrics: the Euclidean  
502 distance and the Manhattan distance. We used 35 personality traits whose Lasso  
503 coefficient was larger than 1/20 of the largest absolute value of weight in the Lasso  
504 regression analysis. The optimal number of clusters was determined to be 3 by the  
505 `NbClust` method [48] implemented on R for both the Euclidean and the Manhattan  
506 distances. The `cutree` function in R was used to create a tree diagram. We also tested the  
507 K-means algorithm for clustering.

## 508 **Score distributions for each group**

509 We drew a kernel distribution estimate plot and examined the distribution of all  
510 personality trait scores for each group using `kdeplot` of `seaborn` [49] in Python.

511

## 512 **Acknowledgements**

513 We would like to thank Satoshi Tada and Dr. Tomoki Haji for technical assistance, and  
514 Peter Karagiannis for editing an early version of the manuscript.

515

## 516 **References**

- 517 1. Lord C, Elsabbagh M, Baird G, Veenstra-Vanderweele J. Autism spectrum disorder.  
518 *Lancet* (London, England). 2018;392(10146): 508–520.
- 519 2. Wing L. Asperger's syndrome: A clinical account. *Psychological*  
520 *Medicine*.1981;11(1): 115-129.
- 521 3. Wing L. The Continuum of Autistic Characteristics. In: Schopler E, Mesibov GB,  
522 editors. *Diagnosis and Assessment in Autism. Current Issues in Autism*. Boston,  
523 MA: Springer; 1998. pp. 91-110.
- 524 4. Frith U, Mira M. Autism and Asperger syndrome. *Focus on Autistic Behavior*.  
525 1992;7(3): 13-15.
- 526 5. Baron-Cohen S, Wheelwright S, Skinner R, Martin J, Clubley E. The autism-  
527 spectrum quotient (AQ): evidence from Asperger syndrome/high-functioning  
528 autism, males and females, scientists and mathematicians. *Journal of autism and*  
529 *developmental disorders*. 2001;31(1): 5–17.
- 530 6. Austin E. Personality correlates of the broader autism phenotype as assessed by the



- 531 Autism Spectrum Quotient (AQ). *Personality and Individual Differences*.  
532 2005;38(2): 451-460.
- 533 7. Wakabayashi A, Baron-Cohen S, Wheelwright S. Are autistic traits an independent  
534 personality dimension? A study of the Autism-Spectrum Quotient (AQ) and the  
535 NEO-PI-R. *Personality and Individual Differences*. 2006;41(5): 873–883.
- 536 8. Dinsdale NL, Hurd PL, Wakabayashi A, Elliot M, Crespi BJ. How are autism and  
537 schizotypy related? Evidence from a non-clinical population. *PloS one*. 2013;8(5):  
538 e63316.
- 539 9. Dudas RB, Lovejoy C, Cassidy S, Allison C, Smith P, Baron-Cohen S. The overlap  
540 between autistic spectrum conditions and borderline personality disorder. *PloS one*.  
541 2017;12(9): e0184447.
- 542 10. Lodi-Smith J, Rodgers JD, Cunningham SA, Lopata C, Thomeer ML. Meta-analysis  
543 of Big Five personality traits in autism spectrum disorder. *Autism*. 2019  
544 Apr;23(3):556-565.
- 545 11. Rosellini AJ, Brown TA. The NEO Five-Factor Inventory: latent structure and  
546 relationships with dimensions of anxiety and depressive disorders in a large clinical  
547 sample. *Assessment*. 2011;18(1): 27–38.
- 548 12. Strunz S, Westphal L, Ritter K, Heuser I, Dziobek I, Roepke S. Personality

- 549 Pathology of Adults With Autism Spectrum Disorder Without Accompanying  
550 Intellectual Impairment in Comparison to Adults With Personality Disorders.  
551 Journal of autism and developmental disorders. 2015;45(12): 4026–4038.
- 552 13. Schwartzman BC, Wood JJ, Kapp SK. Can the Five Factor Model of Personality  
553 Account for the Variability of Autism Symptom Expression? Multivariate  
554 Approaches to Behavioral Phenotyping in Adult Autism Spectrum Disorder. Journal  
555 of autism and developmental disorders. 2016;46(1): 253–272.
- 556 14. Hu VW, Steinberg ME. Novel clustering of items from the Autism Diagnostic  
557 Interview-Revised to define phenotypes within autism spectrum disorders. Autism  
558 Res. 2009;2(2): 67-77.
- 559 15. Wakabayashi A, Baron-Cohen S, Ashwin C. Do the traits of autism-spectrum  
560 overlap with those of schizophrenia or obsessive-compulsive disorder in the general  
561 population? Research in Autism Spectrum Disorders. 2012;6(2): 717-725.
- 562 16. Gerlach M, Farb B, Revelle W, Nunes Amaral LA. A robust data-driven approach  
563 identifies four personality types across four large data sets. Nat Hum Behav. 2018;2:  
564 735–742.
- 565 17. Foa EB, Huppert JD, Leiberg S, Langner R, Kichic R, Hajcak G, et al. The  
566 Obsessive-Compulsive Inventory: development and validation of a short version.

- 567 Psychological assessment. 2002;14(4): 485–496.
- 568 18. Beck AT, Ward CH, Mendelson M, Mock J, Erbaugh J. An inventory for measuring  
569 depression. Archives of general psychiatry. 1961;4: 561–571.
- 570 19. Raine A. The SPQ: a scale for the assessment of schizotypal personality based on  
571 DSM-III-R criteria. Schizophrenia bulletin. 1991;17(4): 555-564.
- 572 20. Carver CS, White TL. Behavioral inhibition, behavioral activation, and affective  
573 responses to impending reward and punishment: The BIS/BAS Scales. Journal of  
574 Personality and Social Psychology. 1994;67(2): 319–333.
- 575 21. Davis MH. Measuring individual differences in empathy: Evidence for a  
576 multidimensional approach. Journal of Personality and Social Psychology.  
577 1983;44(1): 113–126.
- 578 22. Spielberger CD. State-Trait Anxiety Inventory: a comprehensive bibliography; 2nd  
579 Edition. Palo Alto: Consulting Psychologists Press; 1989.
- 580 23. Goldberg LR. The structure of phenotypic personality traits. American Psychologist.  
581 1993;48(1): 26–34.
- 582 24. Buss AH, Perry M. The Aggression Questionnaire. Journal of Personality and Social  
583 Psychology. 1992;63(3): 452–459.
- 584 25. Ando A, Soga S, Yamasaki K, Shimai S, Shimada H, Utsuki N., et al. Development

- 585 of the Japanese version of the Buss-Perry Aggression Questionnaire (BAQ).  
586 Shinrigaku Kenkyu. 1999;70(5): 384-392.
- 587 26. Zung WWA. SELF-RATING DEPRESSION SCALE. Archives of general  
588 psychiatry. 1965;12: 63–70.
- 589 27. Iwamoto M, Dodo H, Yoneda J, Ishii F, Goto H, Ueda Y, et al. A study of the State-  
590 Trait Anxiety Inventory (STAI) and its application to noise stress. Nippon Eiseigaku  
591 Zasshi (Japanese Journal of Hygiene). 1989;43(6): 1116-1123.
- 592 28. Iijima Y, Sasaki J, Bando N, Asai T. Development of a Japanese Version of the  
593 Schizotypal Personality Questionnaire and Factor Structure of Schizotypy. Japanese  
594 Association of Behavioral and Cognitive Therapies. 2010;36-1: 29-41.
- 595 29. Berkman ET, Lieberman MD, Gable SL. BIS, BAS, and response conflict: Testing  
596 predictions of the revised reinforcement sensitivity theory. Personality and  
597 individual differences. 2009;46(5-6): 586–591.
- 598 30. McCrae RR, Costa PT. Personality in adulthood: A five-factor theory perspective  
599 2nd edition. New York: Guilford Press; 2003.
- 600 31. Takahashi Y, Yamagata S, Kijima N, Shigemasu K, Ono Y, Ando J. Continuity and  
601 change in behavioral inhibition and activation systems: A longitudinal behavioral  
602 genetic study. Personality and Individual Differences. 2007;43(6): 1616-1625.

- 603 32. Davis MH. A Multidimensional Approach to Individual Differences in Empathy  
604 JSAS Catalog of Selected Documents in Psychology. 1980;10(85).
- 605 33. Zeigler-Hill V, Abraham J. Borderline personality features: Instability of self-  
606 esteem and affect. *Journal of Social and Clinical Psychology*. 2006;25(6): 668–687.
- 607 34. Wilson ST, Stanley B, Oquendo MA, Goldberg P, Zalsman G, Mann JJ. Comparing  
608 impulsiveness, hostility, and depression in borderline personality disorder and  
609 bipolar II disorder. *J Clin Psychiatry*. 2007;68(10):1533-1539.
- 610 35. Slotema CW, Bayrak H, Linszen MMJ, Deen M, Sommer IEC. Hallucinations in  
611 patients with borderline personality disorder: characteristics, severity, and  
612 relationship with schizotypy and loneliness. *Acta Psychiatr Scand*. 2019;139(5):  
613 434-442.
- 614 36. Lieb K, Zanarini MC, Schmahl C, Linehan MM, Bohus M. Borderline personality  
615 disorder. *Lancet*. 2004;364(9432): 453-461.
- 616 37. Hopwood CJ, Newman DA., Donnellan MB, Markowitz JC, Grilo CM, Sanislow  
617 CA, et al. The stability of personality traits in individuals with borderline  
618 personality disorder. *Journal of Abnormal Psychology*. 2009;118(4): 806–815.
- 619 38. Kasch KL, Rottenberg J, Arnow BA, Gotlib IH. Behavioral activation and inhibition  
620 systems and the severity and course of depression. *J Abnorm Psychol*. 2002;111(4):

621 589-597.

622 39. Morgan BE, van Honk J, Hermans EJ, Scholten MR, Stein DJ, Kahn RS. Gray's

623 BIS/BAS dimensions in non-comorbid, non-medicated social anxiety disorder.

624 World J Biol Psychiatry. 2009;10: 925-928.

625 40. Pittelkow MM, Aan Het Rot M, Seidel LJ, Feyel N, Roest AM. Social Anxiety and

626 Empathy: A Systematic Review and Meta-analysis. Journal of Anxiety Disorders.

627 2021 Mar;78: 102357.

628 41. Cusi AM, Macqueen GM, Spreng RN, McKinnon MC. Altered empathic

629 responding in major depressive disorder: relation to symptom severity, illness

630 burden, and psychosocial outcome. Psychiatry Res. 2011;188(2): 231-236.

631 42. Wilbertz G, Brakemeier EL, Zobel I, Härter M, Schramm E. Exploring

632 preoperational features in chronic depression. J Affect Disord. 2010;124(3): 262-

633 269.

634 43. Jang J, Matson JL, Williams LW, Tureck K, Goldin RL, Cervantes PE. Rates of

635 comorbid symptoms in children with ASD, ADHD, and comorbid ASD and ADHD.

636 Research in Developmental Disabilities. 2013;34(8): 2369-2378.

637 44. Antshel KM, Zhang-James Y, Wagner KE, Ledesma A, Faraone SV. An update on

638 the comorbidity of ADHD and ASD: a focus on clinical management. Expert review

- 639 of neurotherapeutics. 2016;16(3): 279–293.
- 640 45. Kanai C, Iwanami A, Hashimoto R, Ota H, Tani M, Yamada T, et al. Clinical  
641 characterization of adults with Asperger's syndrome assessed by self-report  
642 questionnaires based on depression, anxiety, and personality. *Research in Autism  
643 Spectrum Disorders*. 2011;5(4): 1451-1458.
- 644 46. Wakabayashi A, Tojo Y, Baron-Cohen S, Wheelwright S. The Autism-Spectrum  
645 Quotient (AQ) Japanese version: evidence from high-functioning clinical group and  
646 normal adults. *The Japanese Journal of Psychology*. 2004;75(1):78-84.
- 647 47. Pedregosa F, Varoquaux G, Gramfort A, Michel V, Thirion B, Grisel O, et al. Scikit-  
648 learn: Machine Learning in Python. *Journal of Machine Learning Research*.  
649 2011;12: 2825-2830.
- 650 48. Charrad M, Ghazzali N, Boiteau V, Niknafs A. NbClust: An R Package for  
651 Determining the Relevant Number of Clusters in a Data Set. *Journal of Statistical  
652 Software*. 2014;61(6): 1-36.
- 653 49. Waskom KL. seaborn: statistical data visualization. *The Journal of Open Source  
654 Software*. 2021;6(60): 3021.

655

## 656 **Supporting information**

657 **S1 Fig. Three clusters from the Manhattan distance.**

658 **S1 Table. The contents, abbreviations and references of the personality trait**

659 **questionnaires.**

660 **S2 Table. Oneway ANOVA result.**

661

## 662 **Data and code availability**

663 The data and code that support the findings of this study are available on

664 request to the corresponding author.

665



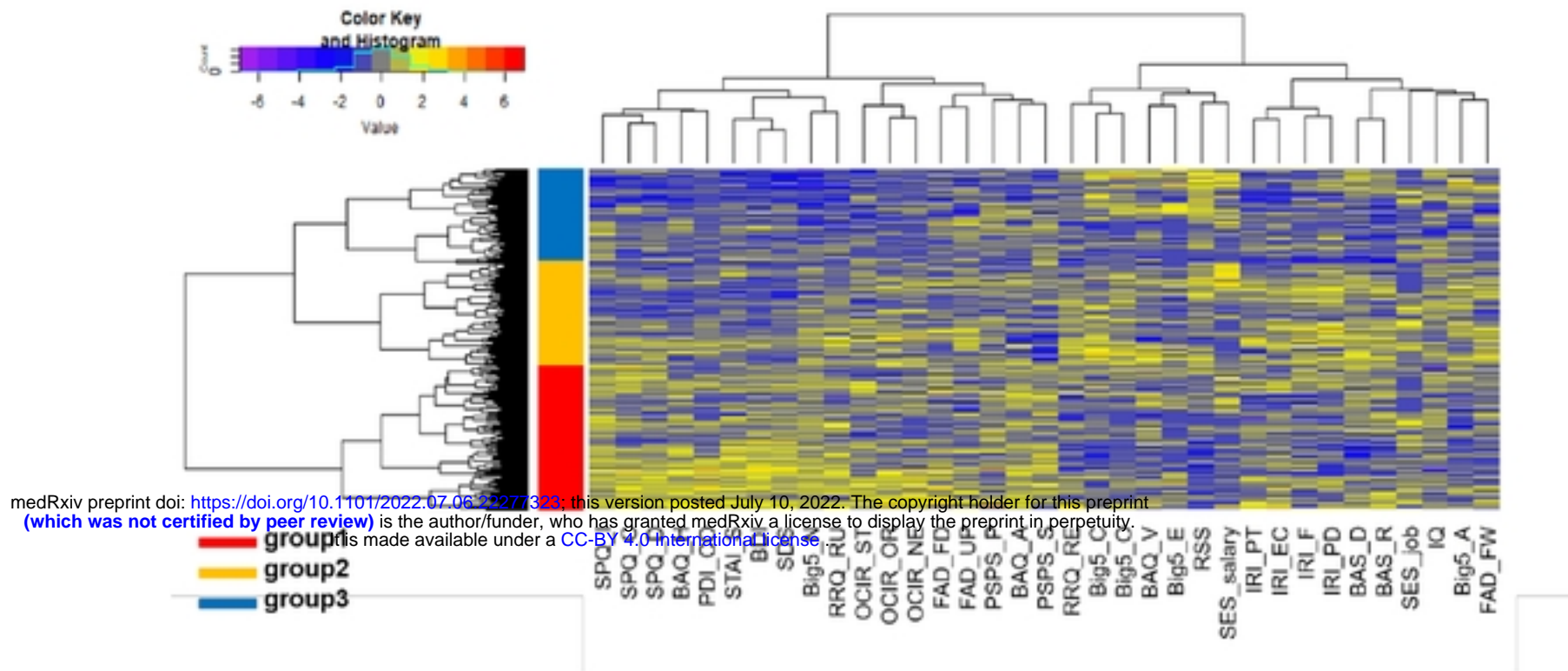


Figure 1 Three clusters in the high AQ group.

medRxiv preprint doi: <https://doi.org/10.1101/2022.07.06.22277823>; this version posted July 10, 2022. The copyright holder for this preprint (which was not certified by peer review) is the author/funder, who has granted medRxiv a license to display the preprint in perpetuity. It is made available under a [CC-BY 4.0 International license](https://creativecommons.org/licenses/by/4.0/).

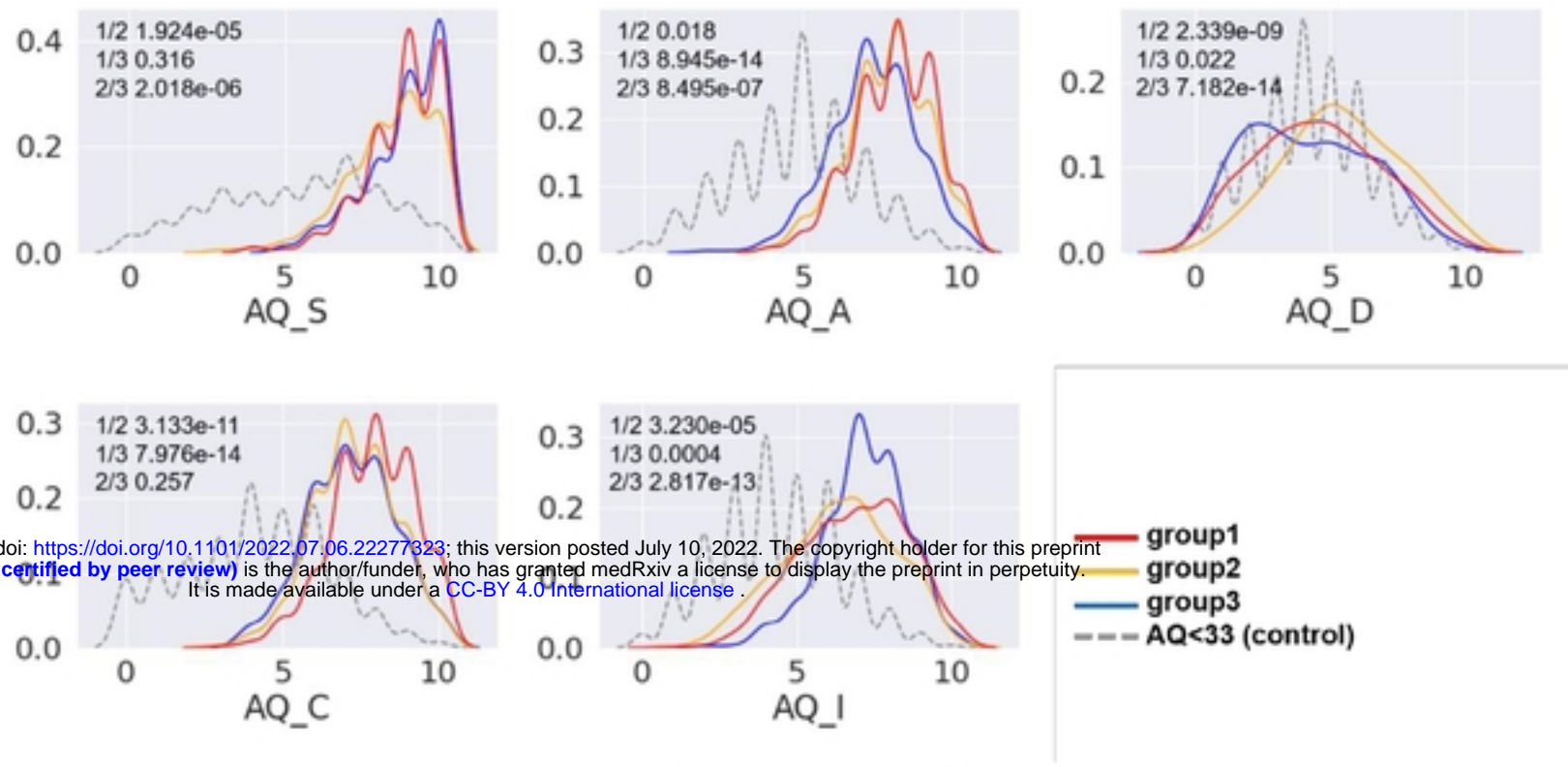


Figure 2 AQ scores for each group

medRxiv preprint doi: <https://doi.org/10.1101/2022.07.06.22277323>; this version posted July 10, 2022. The copyright holder for this preprint (which was not certified by peer review) is the author/funder, who has granted medRxiv a license to display the preprint in perpetuity. It is made available under a [CC-BY 4.0 International license](https://creativecommons.org/licenses/by/4.0/).

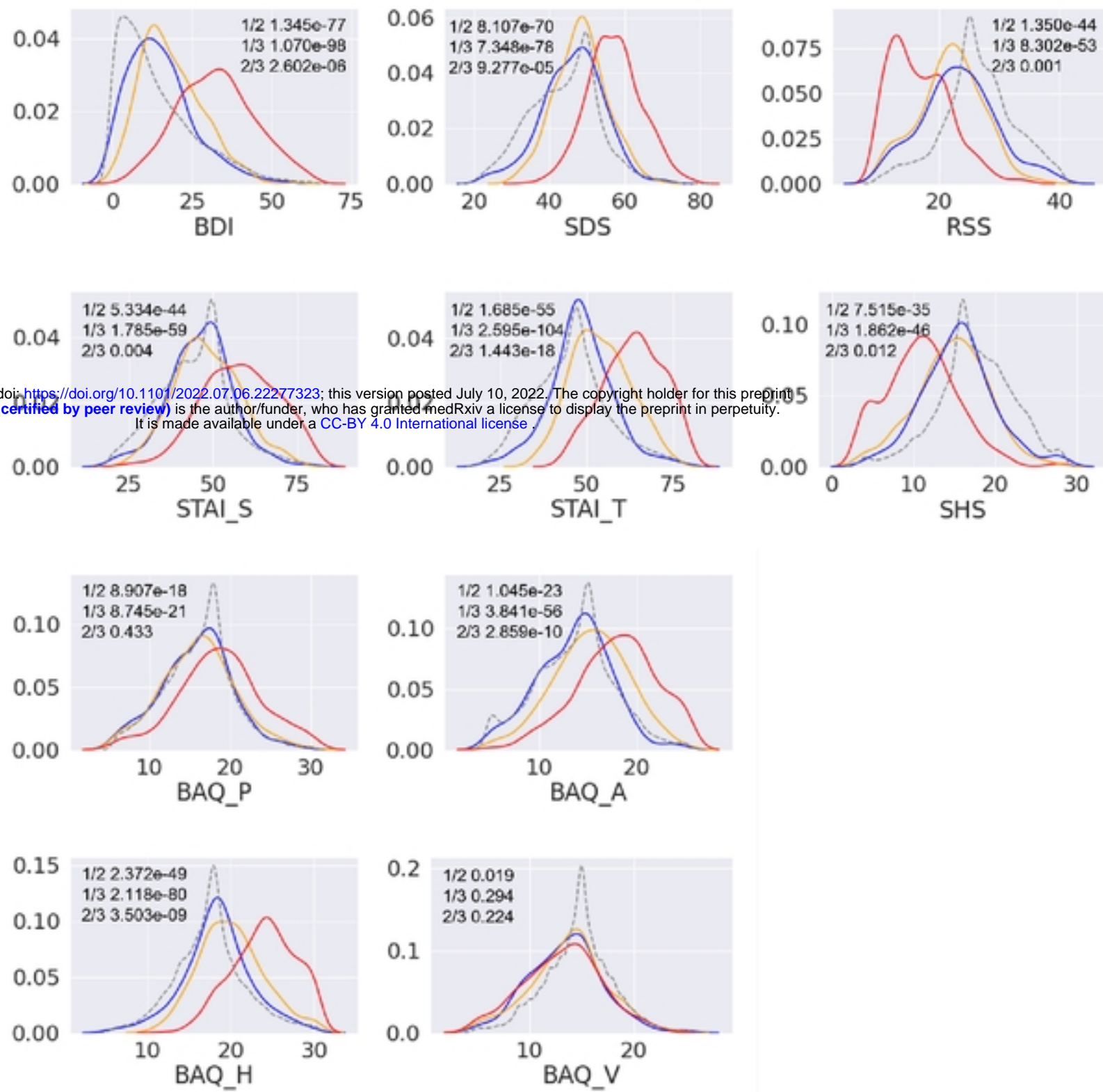
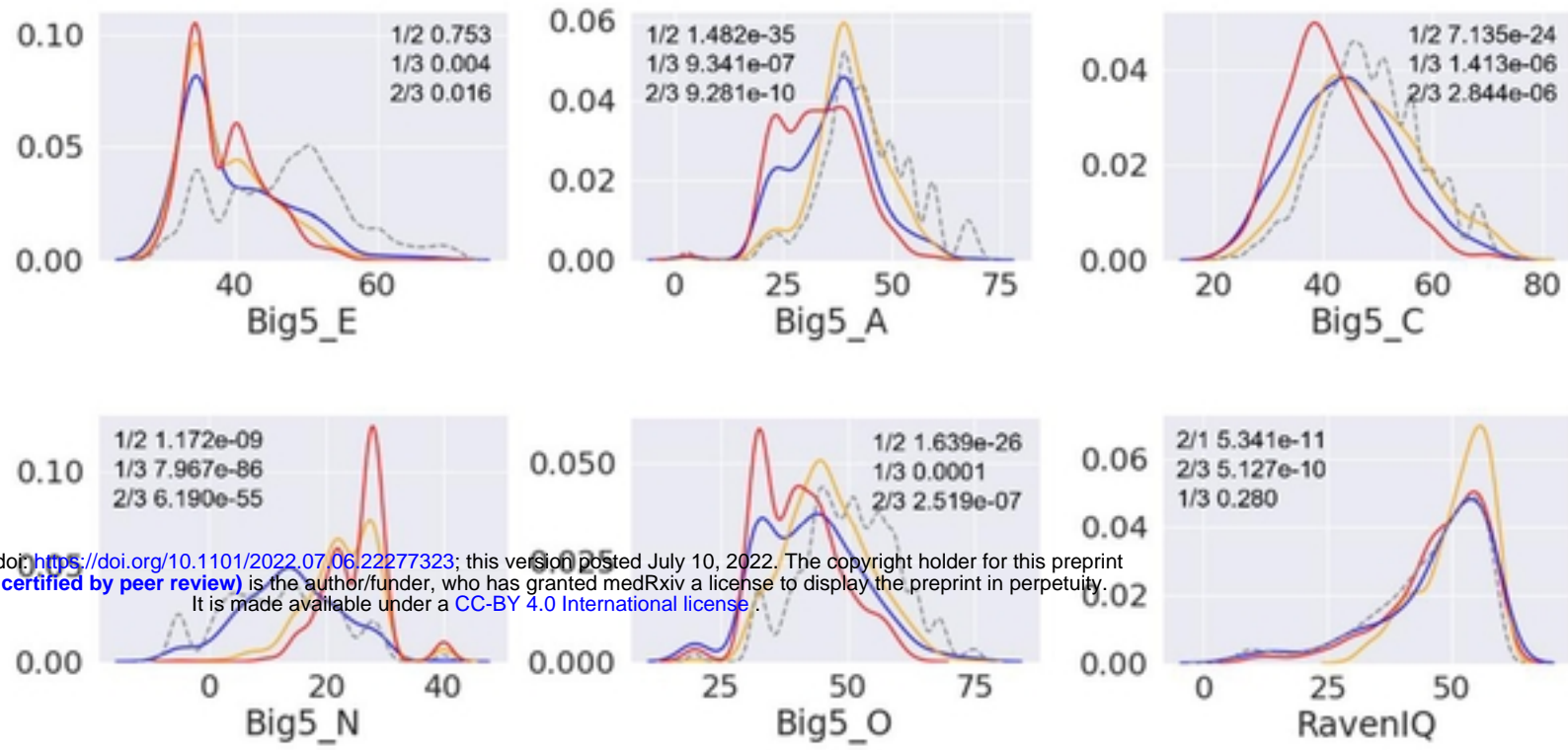


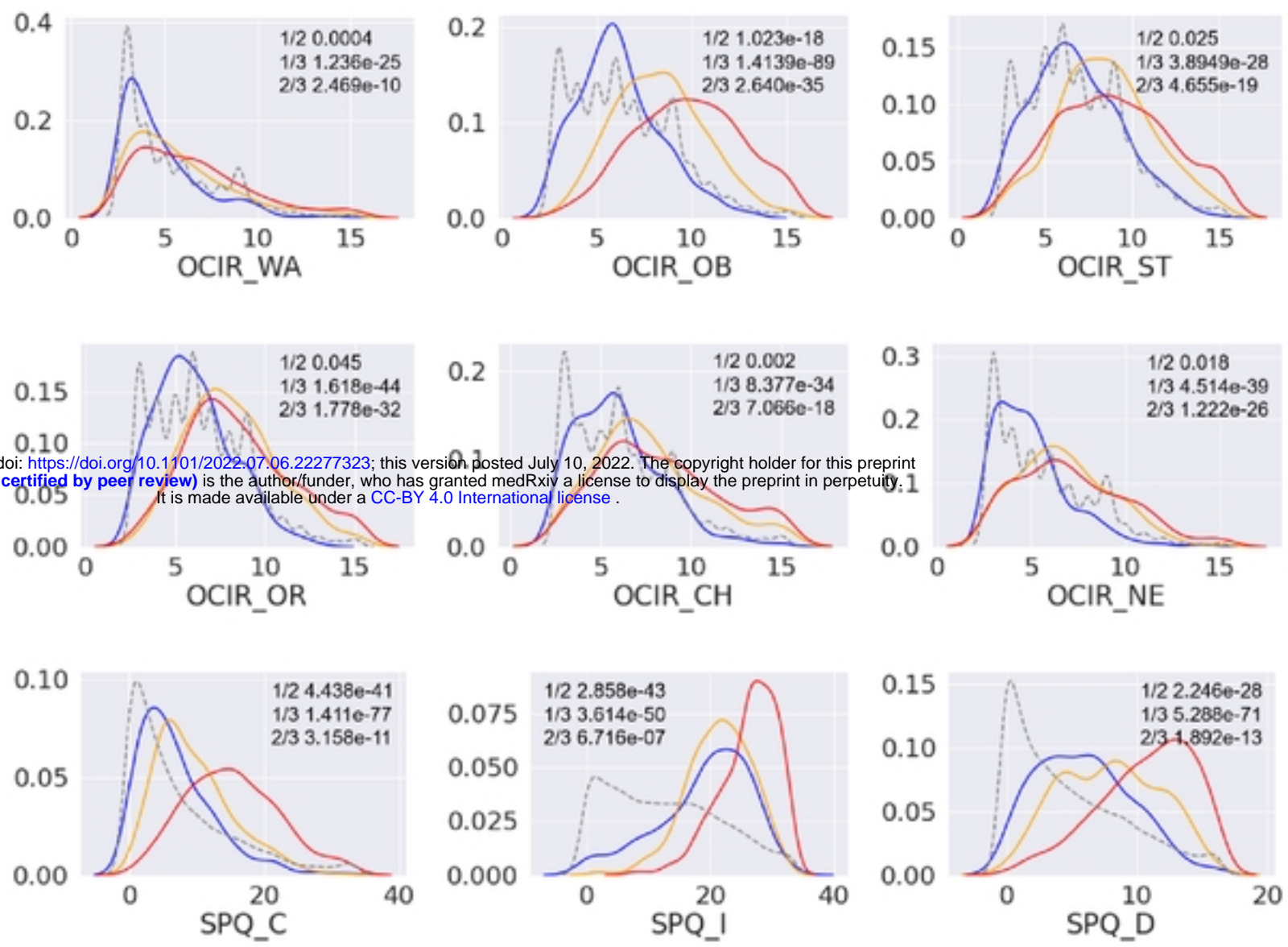
Figure 3 emotion-related items for each group



medRxiv preprint doi: <https://doi.org/10.1101/2022.07.06.22277323>; this version posted July 10, 2022. The copyright holder for this preprint (which was not certified by peer review) is the author/funder, who has granted medRxiv a license to display the preprint in perpetuity. It is made available under a [CC-BY 4.0 International license](https://creativecommons.org/licenses/by/4.0/).

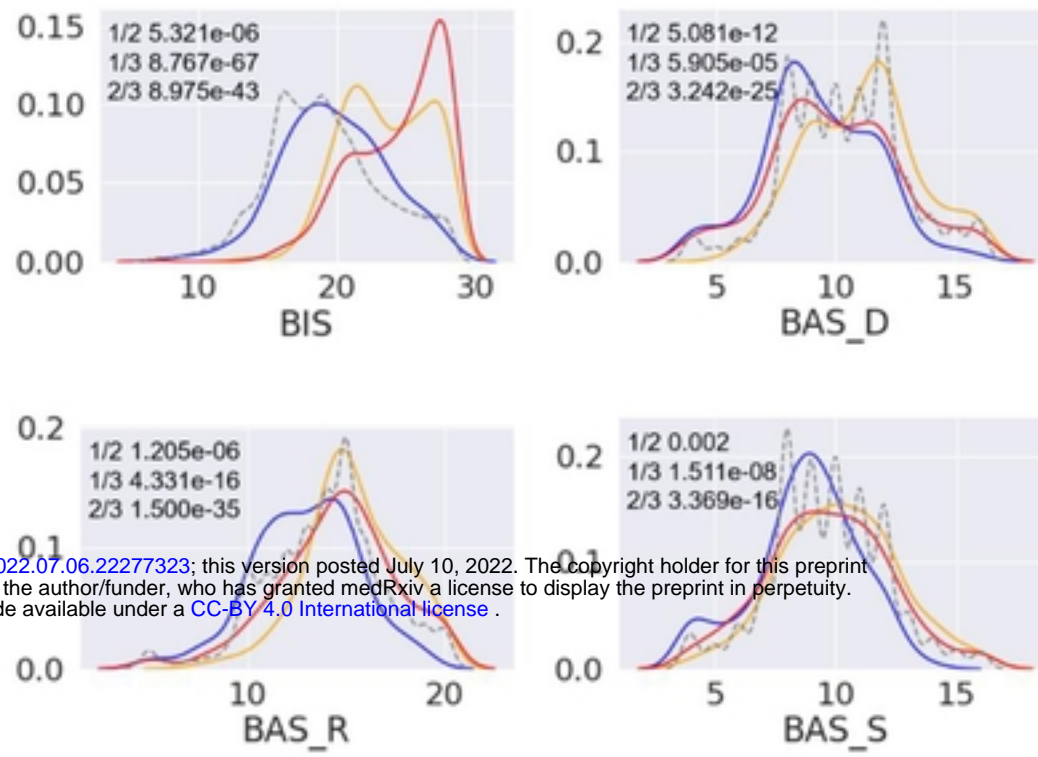
**Figure 4 Big5 and IQ for each group**

medRxiv preprint doi: <https://doi.org/10.1101/2022.07.06.22277323>; this version posted July 10, 2022. The copyright holder for this preprint (which was not certified by peer review) is the author/funder, who has granted medRxiv a license to display the preprint in perpetuity. It is made available under a [CC-BY 4.0 International license](https://creativecommons.org/licenses/by/4.0/).



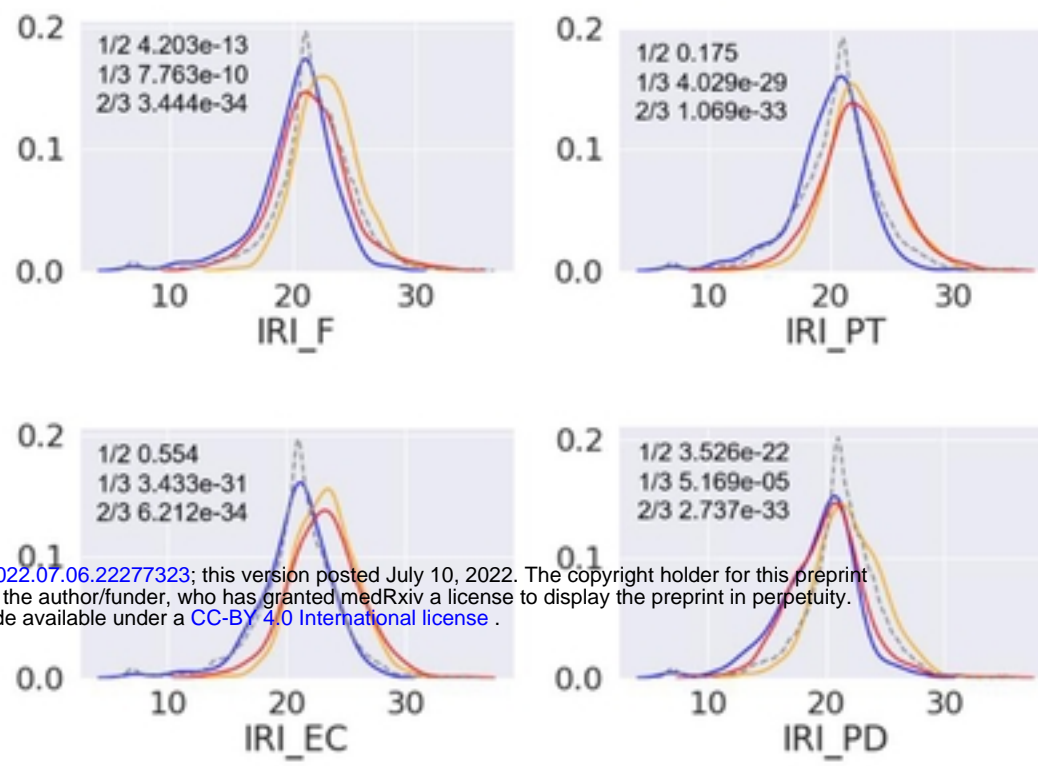
**Figure 5** OCD-related scored and schizophrenia-related scores for each group

medRxiv preprint doi: <https://doi.org/10.1101/2022.07.06.22277323>; this version posted July 10, 2022. The copyright holder for this preprint (which was not certified by peer review) is the author/funder, who has granted medRxiv a license to display the preprint in perpetuity. It is made available under a [CC-BY 4.0 International license](https://creativecommons.org/licenses/by/4.0/).



**Figure 6 Behavioral inhibition system (tendency to avoid punishment) and behavioral activation system (tendency to approach reward) for each group**

medRxiv preprint doi: <https://doi.org/10.1101/2022.07.06.22277323>; this version posted July 10, 2022. The copyright holder for this preprint (which was not certified by peer review) is the author/funder, who has granted medRxiv a license to display the preprint in perpetuity. It is made available under a [CC-BY 4.0 International license](https://creativecommons.org/licenses/by/4.0/).



**Figure 7 Interpersonal reactivity index for each group**