

## TITLE

Profiling of circulating glial cells allows accurate blood-based diagnosis of glial malignancies

## AUTHORS

Kevin O'Neill, MD<sup>1†</sup>, Nelofer Syed, PhD<sup>2†</sup>, Timothy Crook, MBBS<sup>2†</sup>, Sudhir Dubey<sup>3</sup>, MCh, Mahadev Potharaju, MD<sup>4</sup>, Sewanti Limaye, MD, MS<sup>5</sup>, Anantbhusan Ranade, MD<sup>6</sup>, Giulio Anichini, PhD<sup>2</sup>, Darshana Patil, MD<sup>7</sup>, Sudha Murthy, MD<sup>7</sup>, Dadasaheb Akolkar, PhD<sup>7</sup>, Pooja Fulmali, PhD<sup>7</sup>, Kiran Bendale, MD<sup>7</sup>, Vineet Datta, MD<sup>7</sup>, Stefan Schuster, PhD<sup>8</sup>, Shoeb Patel, PhD<sup>7</sup>, Sanket Patil, MS<sup>7</sup>, Rohit Chougule, PhD<sup>7</sup>, Sachin Apurwa, MS<sup>7</sup>, Pradyumna Shejwalkar, MS<sup>7</sup>, Jinumary John, PhD<sup>7</sup>, Ajay Srinivasan, PhD<sup>7</sup>, Rajan Datar, BE<sup>7</sup>.

<sup>†</sup>Contributed equally to this work.

## AFFILIATIONS

<sup>1</sup>Department of Neurosurgery, Imperial College Healthcare NHS Trust, London UK,

<sup>2</sup>Department of Brain Sciences, Hammersmith Hospital, Imperial College London UK,

<sup>3</sup>Institute of Neurosciences, Medanta-The Medicity, Gurugram, India,

<sup>4</sup>Department of Radiation Oncology, Apollo Speciality Hospitals, Chennai, India,

<sup>5</sup>Department of Medical and Precision Oncology, Sir HN Reliance Foundation Hospital and Research Centre, Mumbai, India,

<sup>6</sup>Department of Medical Oncology, Avinash Cancer Centre, Pune, India,

<sup>7</sup>Department of Research and Innovations, Datar Cancer Genetics, Nasik, India,

<sup>8</sup>Department of Research and Innovations, Datar Cancer Genetics Europe GmbH,  
Eckersdorf, Germany.

### **CORRESPONDING AUTHOR**

Nelofer Syed, Department of Brain Sciences, Hammersmith Hospital, Imperial  
College London UK,

n.syed@imperial.ac.uk; +44-02075945292.

## **ABSTRACT**

### *Background:*

Diagnosis of primary glial malignancies (GLI-M) in individuals presenting with Intracranial Space Occupying Lesions (ICSOL) is based on histopathological evaluation (HPE) of tissue obtained by surgical resection or biopsy with attendant resource implications and risks. Approximately 70% of ICSOLs have non-malignant etiology and distinction from malignant lesions rests largely on HPE. Furthermore, GLI-M must be differentiated from non glial malignancies and brain metastases arising from solid tumors in other organs.

### *Methods:*

We describe a non-invasive test for detecting GLI-M with high sensitivity and specificity based on enrichment and identification of Circulating Glial Cells (CGCs) from peripheral blood. The performance characteristics of the test were first established in analytical validation studies. The ability of the test to detect and differentiate GLI-M from low-grade / non-malignant brain tumors (BBT), non glial type central nervous system (CNS) malignancies (NGCM), brain metastases from primary epithelial malignancies in other organs and healthy individuals was evaluated in two case control studies and two prospective studies.

### *Results:*

The cumulative performance metrics of the test across all 4 clinical studies were 99.35% Sensitivity (95%CI: 96.44% - 99.98%) and 100% Specificity (95%CI: 99.37% - 100%).

### *Conclusions:*

The performance characteristics of this test support its clinical utility for diagnostic triaging of individuals presenting with ICSOL and facilitating more effective diagnosis.

## **KEYWORDS**

Circulating Glial Cells; Non-invasive; Glial malignancy; brain tumor; Liquid Biopsy;

Diagnosis

## INTRODUCTION

Brain tumors account for 85% to 90% of all primary central nervous system (CNS) tumors (1) as well as ~300,000 (~1.6%) of the total ~19,300,000 annual cancer incidences and 250,000 (~2.5%) of the total 10,000,000 annual cancer-related mortality globally (2). Glioblastome multiforme (GBM) is the most common (49%) subtype of all malignant tumors (3). In patients presenting with radiological intracranial space occupying lesions (ICSOL), the differential diagnosis includes primary glial malignancy (GLI-M) and metastases from other solid tumors. Non-malignant ICSOLs are more common (3) than GLI-M and have different management, emphasising the critical importance of expeditious establishment of diagnosis.

Standard of Care (SoC) for establishing the diagnosis in such individuals presenting with ICSOL is histopathological evaluation (HPE) of tumor tissue obtained from surgical excision or biopsy. Surgical resection or biopsy is more challenging under circumstances of poor patient performance, in the presence of comorbidities or patients' reluctance (4). Procedural risks are well-documented and include pain and discomfort, intracranial haemorrhage, cerebral edema, infections as well as morbidity and mortality (5). Furthermore, the anatomical site of the lesion may be associated with increased procedural risks and complications. Around 70% of patients with ICSOL have benign conditions (3) indicating that in a sizeable population of symptomatic individuals, the ability to obtain the same inference non-invasively would significantly reduce the requirement for invasive biopsy.

There is, therefore, considerable benefit in non-invasive detection of GLI-M including risk mitigation, resource optimization, cost benefits and avoidance of delays in time to diagnosis and time to treatment, especially in unresectable cases where tissue

sampling is unviable. Previous attempts at non-invasive detection of GLI-M and at differentiating GLI-M from BBT and brain metastases have examined profiles of gene variants (6) or CpG island methylation (7) in cell-free DNA and profiles of exosomal mRNA / miRNA transcripts (8). However, these approaches have been limited by lower sensitivity and specificity (9). Circulating tumor cells (CTCs) are viable tumor derived cells in circulation, the molecular evaluation of which may be an alternative to or comparable with that of the tumor tissue from which they originate (10-12). CTCs are rarely detected in the peripheral blood of healthy individuals and their detection in such populations may be an indication of an underlying malignancy (13, 14).

We have previously described the functional enrichment of CTCs from peripheral blood using a proprietary CTC enrichment medium (CEM) which selectively induces apoptosis in non-malignant cells and permits survival of malignant cells. This method yields sufficient viable CTCs for downstream applications including multiplexed immunocytochemistry (ICC) (13,15). In the present study we have used this enrichment method for harvesting circulating glial cells (CGCs) from blood samples of patients with GLI-M and identification of CGCs based on co-expression of GFAP and OLIG2 as determined by their ICC profiling. We describe the performance characteristics of the blood-based test to detect GLI-M and differentiate it from BBT, NGCM and EPI-M with brain metastases.

## **METHODS**

### **Studies and Samples**

All biological samples reported in this manuscript were primarily obtained from participants in four clinical studies to identify blood-biomarkers for detection of various types of malignancies and to differentiate cancer cases from individuals with benign conditions or healthy individuals. All studies were approved by a credentialled Institutional Ethics Committee (IEC) or Institutional Review Board (IRB) and were performed in accordance with the Declaration of Helsinki as well as any applicable regulatory guidelines. Written informed consent was obtained from adult study participants or their parents in case of patients aged less than 18 years. Details of these studies are provided in Supplementary Materials. All biological samples were processed at the CAP and CLIA accredited facilities of the sponsor, which also adhere to quality standards ISO 9001:2015, ISO 27001:2013 and ISO 15189:2012. The reporting of observational studies in this manuscript is compliant with STROBE guidelines (16).

### **Enrichment of Circulating Tumor / Glial Cells and Immunocytochemistry Profiling**

Blood samples (5 mL or 7.5 mL) were processed for the enrichment of CGCs/CTCs from peripheral blood mononuclear cells (PBMC) as described previously (17). Immunocytochemistry (ICC) profiling of samples for identification of CTCs/CGCs was performed as described previously (15). Comprehensive details are provided in Supplementary Materials.

### **Method Development and Optimization**

Comprehensive details of method development and optimization studies are provided in the Supplementary Materials.

### **Analytical Validation**

Analytical validation established the performance characteristics of the test with standard analyte (U87MG cells), spiked into and serially diluted with healthy donor blood, and processed for tumor cell enrichment (by CEM treatment) and ICC profiling to determine the recovery. Analytical validation parameters included Analyte Stability, Linearity, Limits of Blank, Detection and Quantitation, Sensitivity, Specificity, Accuracy, Precision, and Effect of Interfering Substances. Comprehensive details of the Analytical Validation Methods are provided in Supplementary Materials.

### **Case Control Clinical Study-1**

The ability of the test to identify and differentiate GLI-M from BBT based on assessment of GFAP and OLIG2 was ascertained and established in a cohort of 189 samples which included 145 known cases (recently diagnosed, therapy naïve) of GLI-M, and 44 known cases of BBT (Supplementary Table S1). All samples were assigned to Training and Test Sets in a 70%:30% ratio. The analysts were unblinded to the clinical status of samples in the Training Set to determine the concordance of marker expression (Decision Matrix). Subsequently, the analysts who remained blinded to the actual clinical status of samples in the Test Set, predicted the status of these samples based on the marker expression profiles and the Decision Matrix. The concordance of the prediction with the actual clinical status (which was subsequently revealed) was used to determine the performance characteristics of the test.



### **Case Control Clinical Study-2**

The ability of the test to identify and differentiate GLI-M from BBT and EPI-M based on assessment of GFAP, OLIG2 and PanCK was ascertained and established in a cohort of 586 samples which included 500 healthy adults (no prior diagnosis of cancer nor any current symptoms or clinical features of cancer), 24 previously diagnosed and treated cases of EPI-M with brain metastases, 40 recently diagnosed therapy naïve cases of GLI-M and 22 known cases of BBT (Supplementary Table S2). After sample processing and ICC, the analysts predicted the status of these samples based on the marker expression profiles and the Decision Matrix. The concordance of the prediction with the actual clinical status (which was subsequently revealed) was used to determine the performance characteristics of the test.

### **Prospective Clinical Study-1**

The performance characteristics of the test were evaluated in a prospective multi-center study cohort of 68 individuals presenting with ICSOL on brain imaging suspected of GLI-M (Supplementary Table S3). After sample processing and ICC, the analysis predicted the status of these samples based on the marker expression profiles and the Decision Matrix. The concordance of the prediction with the actual clinical status (which was subsequently revealed) was used to determine the performance characteristics of the test.

### **Prospective Clinical Study-2**

The performance characteristics of the test were evaluated in a prospective cohort of 31 individuals presenting with intra-axial ICSOL on brain imaging (Supplementary

Table S4). After sample processing and ICC, the analysis predicted the status of these samples based on the marker expression profiles and the Decision Matrix. The concordance of the prediction with the actual clinical status (which was subsequently revealed) was used to determine the performance characteristics of the test.

### **Orthogonal Verification - Fluorescence in situ Hybridization (FISH)**

Enriched malignant cells from pre-biopsy blood samples and matched tumor tissue from 44 individuals including 22 cases of GLI-M and 22 cases of BBT were evaluated by fluorescence in situ hybridization (FISH) to determine concordance in detection of EGFR gene amplification. The procedure is described comprehensively in Supplementary Materials.

## **RESULTS**

### **Method Development and Optimization**

The findings of the Method Development and Optimization studies are provided in Supplementary Materials.

### **Analytical Validation**

Table 2 is a summary of all the findings of the analytical validation study.

#### *Stability and Recovery*

In the spiked samples,  $\geq 80\%$  recovery was observed for each cell type for up to 48 h (Supplementary Table S5). In clinical samples, the CTC recovery was  $\geq 85\%$  at 48 h, when 0 h recovery was normalized as 100% (Supplementary Table S5). The findings of the stability and recovery studies indicated that clinical samples could be stored at  $2^{\circ}\text{C}$ - $8^{\circ}\text{C}$  for up to 48 h with  $\leq 15\%$  loss of cells.

### *Linearity*

The linearity interval was determined to be 5 - 1280 cells / 5 mL based on lower limit of linear interval (LLLI) being 5 cells / 5 mL and upper limit of linear interval (ULLI) being 1280 cells / 5 mL for both markers. Similarly,  $R^2 \geq 0.99$  for both markers demonstrated the linear response characteristics of the method (Supplementary Figure S1, Supplementary Table S6). At the sample positivity threshold of 5 cells / 5 mL, the observed deviation from linearity was -17% for GFAP and -19% for OLIG2, which are within the permissible range of -26% to +22% for 15% Allowable Deviation from Linearity (ADL), as specified in CLSI EP06.

### *Limits of Blank, Detection and Quantitation*

LoB, LoD and LoQ were determined as per CLSI recommended guideline EP17-A2. No (marker positive) cells were detected in any of the unspiked samples (no false positives). Thus, the limit of blank was determined to be 0 cells / mL. The Limit of Detection (LoD) was determined as 1 cell / 5 mL for both markers. For the LoQ, the Allowable Deviation from Linearity (ADL) was pre-specified at 15%. The LoQ was determined to be 6 cells / 5 mL for GFAP and 5 cells / 5 mL for OLIG2, thus the overall LoQ was 6 cells / 5 mL.

### *Sensitivity, Specificity and Accuracy*

Based on recovery of marker positive cells in 40 spiked samples (5 – 80 cells / 5 mL), the sensitivity was 92.5% for GFAP and 95.0% for OLIG2. Since marker positive cells were undetectable in any of the un-spiked samples (per marker), the specificity was deemed to be 100%. Accuracy was determined to be 95.3% for GFAP and 96.9% for OLIG2 (Supplementary Table S7).

### *Precision*

Supplementary Table S8 provides the observed mean, SD and CV (%) along with the 95% CI for repeatability and within laboratory precision. The %CVs were 13.7% for repeatability and 23.5% for within laboratory precision at the detection threshold and 10.0% for repeatability and 13.7% for within laboratory precision at 3x detection threshold. The higher observed CV at the lower spike density is a typical and expected feature of *in vitro* detection tests.

#### *Interfering Substances*

The presence of drugs at medically relevant peak plasma concentrations ( $C_{Max}$ ) or the deranged (clinically, high) serum parameters did not significantly impact the sensitivity of the test for detection of spiked U87MG cells (Supplementary Table S9). The study established the ability of the test to remain unaffected in presence of systemic treatment agents (drugs) and elevated serum parameters.

#### **Case Control Clinical Study-1 Findings**

The performance characteristics of the test to detect and differentiate samples from GLI-M and BBT were first established in a stringent, blinded cross-validation study which was designed to minimize the risk of overfitting in the training set. The observations in the training and test set samples are provided in Supplementary Table S10. Among the 101 GLI-M cases in the Training Set, 100 were positive (99%) and 1 was negative (1%) for CGCs. Among the 31 cases of BBT, 1 (3.2%) was positive for CGCs and 30 (96.8%) were negative for CGCs. In absence of follow-up data demonstrating diagnosis of GLI-M, the positive BBT case was considered as a false positive. In the Test Set (n = 57), there were 44 samples with positive and 13 samples with negative findings. All 44 positive samples were determined to be GLI-M yielding a sensitivity of 100%. All negative samples were determined to be BBT

yielding a specificity of 100%. The summary of performance characteristics is provided in Supplementary Table S11 and Table 3.

### **Case Control Clinical Study-2 Findings**

The performance characteristics of the test to detect and differentiate samples from GLI-M, BBT, epithelial malignancies with brain metastases (EPI-M) and healthy individuals was next established in a stringent, blinded case control study. The observations in the study samples are provided in Supplementary Table S12. Among the 40 GLI-M samples, none were positive for CTCs while all were positive for CGCs. Among the 24 EPI-M samples, none were positive for CGCs and all were positive for CTCs. Among the samples from BBT cases (n = 22) and healthy individuals (n = 500), none were positive for CGCs or CTCs. The test thus has a CGC detection sensitivity of 100% and specificity of 100% (Table 3).

### **Prospective Clinical Study-1**

The performance characteristics of the test to identify and differentiate GLI-M and BBT were evaluated in a prospective multi-centric cohort of 68 patients presenting with ICSOL. The observations on samples (status of CGCs) are summarized in Supplementary Table S13. Of the 68 cases, 56 were positive for CGCs and 12 were negative as per the Decision Matrix. After unblinding, it was revealed that all 56 positive samples were GLI-M and all 12 samples were BBT. The test thus had a sensitivity of 100% as well as a specificity of 100% for detection of GLI-M and differentiating GLI-M from BBT (Supplementary Table S14, Table 3).

### **Prospective Clinical Study-2**

The performance characteristics of the test to identify and differentiate GLI-M from BBT and non-glial central nervous system (CNS) malignancies (NGCM) were evaluated in a prospective cohort of 31 patients presenting with intra-axial ICSOL. Of the 31 cases, 13 were positive for CGCs and 18 were negative. After unblinding, it was revealed that all 13 positive samples were GLI-M. Of the 18 negative samples, 1 was GLI-M, 8 were NGCM and 9 were BBT (Supplementary Table S15). The test thus had a sensitivity of 92.9% and a specificity of 100% for detection of GLI-M and differentiating GLI-M from BBT (Supplementary Table S16, Table 3). Table 3 also indicates the cumulative sensitivity, specificity and accuracy of the test based on the sum total of samples analyzed in a blinded manner.

### **Orthogonal Verification – FISH**

Among the 22 cases of BBT, there were no instances of EGFR copy gain detected by FISH on tumor tissue. All 22 samples were also negative for CGCs indicating 100% concordance for specificity (Malignant v/s Benign).

Among the 22 cases of GLI-M, EGFR copy gain was observed on tumor tissue in 8 cases, all of which were also detectable on CGCs indicating 100% concordance (sensitivity). Among the remaining 14 samples with normal EGFR status by FISH, the CGCs also showed normal status indicating 100% concordance (specificity).

### **DISCUSSION**

Presentation of patients with intra-cranial malignancy is frequently symptomatically non-specific and differentiating such patients from those with benign conditions or with absent pathology is challenging. Indicative of this, GBM presents as a medical emergency more frequently than any other common cancer, implying that effective

strategies for rapid diagnostic stratification of patients presenting with suspicious symptoms are urgently required. Furthermore, it is clearly critical to differentiate glial tumours from BBT or metastases from other solid tumors. Obtaining a tissue diagnosis via biopsy of ICSOL is often challenging and has well-described risks.

Here we describe a blood-based test for detection of GLI-M in individuals presenting with ICSOL, based on detection of CGCs by multiplexed fluorescence ICC profiling. The test can detect common subtypes that account for about 97% of all GLI-M, irrespective of age, gender, subtype and grade. The analytical validation of our platform confirmed accuracy and reliability of the test. The clinical validation study demonstrated >99% sensitivity and 100% specificity for detection of GLI-M. The performance characteristics of the test favour clinical adoption of this technology for supporting more effective diagnosis in individuals presenting with ICSOL.

Our test is based on the detection of circulating tumor cells (CTCs), which in the context of a glial malignancy are called circulating glial cells (CGCs). In primary solid organ cancers, the existence of CTCs is linked to dissemination and metastatic spread. Extracranial metastases though rare in GLI-M, have been reported previously (21-25). The detection of circulating (malignant) glial cells (CGCs) in blood samples from patients with GLI-M appears to indicate that while CGCs can enter circulation, they may be unable to find a target tissue where they can egress, survive, and grow (26). Zhang et al hypothesize that the inability to detect extracranial metastasis may be a consequence of the low survival (shorter life span) of patients with GLI-M, and that the probability of detecting extracranial metastases may be higher in patients who survive longer (27).

Several prior studies have shown the presence of CGCs in various subtypes of GLI-M ranging from low grade gliomas to GBM as well as their absence in healthy

individuals and those with non-malignant brain tumors. Using a novel immunocapture method, Bang-Christensen et al reported 0.5 – 42 CGCs / 3 mL blood irrespective of grade or subtype of GLI-M (28). MacArthur et al used density-gradient centrifugation followed by telomerase assay in conjunction with Nestin expression to detect CGCs in 8 out of 11 (72%) cases of glioma prior to radiotherapy with an average of 8.8 CGCs / mL of blood (10). Sullivan et al demonstrated that mesenchymal like properties of CGCs could contribute to their invasiveness, allowing them to enter into circulation (29). Based on chromosome 8 polyploidy and immunostaining for GFAP (positive) and CD45 (negative), Gao et al reported CGCs in peripheral blood of 24 out of 31 (77%) patients with GLI-M with no correlation between the number of CGCs and the subtype / grade of malignancy (30). Similarly, Krol et al reported CGC clusters in 7 of 13 (53.8%) cases of glioblastoma (31).

Our test for detection of CGCs is based on evaluation of GFAP and OLIG2 expression. Further, positive marker expression is based on standardized fluorescence intensities (FI) detected using a sensitive and automated high content screening platform which minimizes the risk of false negatives. The design of our test is not prone to the sensitivity and specificity limitations encountered by prior efforts at CGC/CTC detection; this is substantiated by the high sensitivity and specificity of the test shown in analytical and clinical validation.

We show in the present study that it is possible to obtain sufficient viable CGCs in peripheral blood samples for detection of GLI-M and differentiation of GLI-M from BBT and brain metastases of solid tumors. Our test is minimally invasive and is performed on a venous draw of 5 mL peripheral blood. The test provides an additional layer of high quality evidence which supports clinical decision making, leading to a more effective diagnosis of glial malignancies and providing a window of



opportunity to plan subsequent disease management procedures prior to lifting the scalpel. The strength of our study is the use of an adequately powered sample size and multiple validation studies with blinded sample analysis, all of which demonstrated high concordance between test findings and clinical diagnosis and support clinical application of the test. Although the assay has high performance characteristics for detection of glial malignancy, the test does not detect rarer subtypes such as CNS lymphoma and gliosarcoma. The test is also not intended to differentiate the subtype or grade of malignancy. The 2021 World Health Organization (WHO) guidance for classification of CNS tumors (32) emphasizes on the increasing role of molecular diagnosis by considering gene variants as prognostic features. Advancements in next generation sequencing (NGS) technology platforms suggest a potential for molecular profiling of glial malignancies using the limited yields of tumor nucleic acids (TNA) isolated from CGCs (33). We envisage future iterations of our test to include immuno-profiling of CGCs as well as molecular profiling of CGC-derived TNA for a more holistic role in diagnostic work-up with reduced dependence on tumor tissue.

In conclusion, we present a blood-based, non-radiological test for detection of glial malignancies in symptomatic individuals who are advised an invasive biopsy as part of standard diagnostic work-up. Our test enables more effective clinical decision making by providing direct evidence of the presence of GLI-M in suspected individuals.

## **CONFLICTS OF INTEREST**

The authors Kevin O'Neill, Nelofer Syed, Timothy Crook, Sudhir Dubey, Mahadev Potharaju, Sewanti Limaye, Anantbhushan Ranade, Giulio Anichini have declared no

conflicts of interest. The authors Darshana Patil, Sudha Murthy, Dadasaheb Akolkar, Pooja Fulmali, Kiran Bendale, Vineet Datta, Stefan Schuster, Shoeb Patel, Sanket Patil, Rohit Chougule, Sachin Apurwa, Pradyumna Shejwalkar, Jinumary John, Ajay Srinivasan are employees of Datar Cancer Genetics Private Limited. Rajan Datar is the founder of Datar Cancer Genetics Private Limited.

## **AUTHOR CONTRIBUTIONS**

Kevin O'Neill - Conceptualization, Investigation, Methodology, Project administration, Resources, Writing - review & editing

Nelofer Syed - Conceptualization, Investigation, Methodology, Project administration, Resources, Writing - review & editing

Timothy Crook - Conceptualization, Investigation, Methodology, Project administration, Resources, Writing - review & editing

Sudhir Dubey - Conceptualization, Investigation, Writing - review & editing

Mahadev Potharaju - Conceptualization, Investigation, Writing - review & editing

Sewanti Limaye - Conceptualization, Investigation, Writing - review & editing

Anantbhushan Ranade - Conceptualization, Investigation, Writing - review & editing

Giulio Anichini - Conceptualization, Investigation, Project administration, Resources, Writing - review & editing

Darshana Patil - Conceptualization, Investigation, Methodology, Supervision, Visualization, Writing - review & editing

Sudha S Murthy - Conceptualization, Investigation, Methodology, Supervision, Visualization, Writing - review & editing

Dadasaheb Akolkar - Conceptualization, Investigation, Methodology, Project administration, Resources, Supervision, Validation, Visualization, Writing - review & editing

Kiran Bendale - Conceptualization, Investigation, Methodology, Supervision, Visualization.

Pooja Fulmali - Data curation, Formal analysis, Investigation, Methodology, Project administration, Resources, Supervision, Validation.

Vineet Datta - Conceptualization, Funding acquisition, Project administration, Resources, Supervision, Visualization, Writing - review & editing

Stefan Schuster - Conceptualization, Project administration, Resources, Visualization.

Shoeb Patel – Data curation, Formal analysis, Investigation, Methodology, Validation.

Sanket Patil – Formal analysis, Investigation, Methodology, Validation.

Rohit Chougule – Formal analysis, Investigation, Methodology, Validation.

Sachin Apurwa - Data curation, Formal analysis, Methodology, Software, Supervision, Validation, Visualization.

Pradyumna Shejwalkar – Data curation, Formal analysis, Investigation, Methodology.

Jinumary John - Data curation, Formal analysis, Methodology, Software, Validation, Visualization, Writing - original draft

Ajay Srinivasan - Data curation, Formal analysis, Methodology, Software, Validation, Visualization, Writing - original draft

Rajan Datar - Conceptualization, Funding acquisition, Methodology, Project administration, Resources, Software, Supervision, Visualization, Writing - original draft

## **FUNDING**

This study did not receive any external funding. The entire study was funded by Datar Cancer Genetics Private Limited.

## **ACKNOWLEDGEMENTS**

The authors are grateful to the patients and volunteers who consented for participation in the various clinical studies, provided biological samples, consented for research use of (leftover) samples and publication of deidentified findings. The authors recognize the contributions of Ms. Swati Deshpande and Mr. Milind Agnihotri for managing various operational aspects, as well as the contributions of other staff members at all author organizations.

## REFERENCES

1. Brain Tumor: Statistics. Cancer.Net. [cited 2022 Feb 19]. Available from: <https://www.cancer.net/cancer-types/brain-tumor/statistics>
2. Cancer Stat Facts: Brain and Other Nervous System Cancer [Internet]. seer.cancer.gov. [cited 2022 Feb 19]. Available from: <https://seer.cancer.gov/statfacts/html/prost.html>
3. Miller KD, et al. Brain and other central nervous system tumor statistics, 2021. *CA Cancer J Clin*. 2021 Sep;71(5):381-406. doi: 10.3322/caac.21693.
4. Malone H, Yang J, Hershman DL, Wright JD, Bruce JN, Neugut AI. Complications Following Stereotactic Needle Biopsy of Intracranial Tumors. *World Neurosurg*. 2015 Oct;84(4):1084–9.
5. Koszewski W, Kroh H, Kunert P. [Difficulties in stereotactic biopsies of brain tumors]. *Neurol Neurochir Pol*. 2002;36(3):481–8.
6. Ramkissoon LA, Pegram W, Haberberger J, Danziger N, Lesser G, Strowd R, et al. Genomic Profiling of Circulating Tumor DNA From Cerebrospinal Fluid to Guide Clinical Decision Making for Patients With Primary and Metastatic Brain Tumors. *Front Neurol*. 2020;11:544680.
7. Nassiri F, Chakravarthy A, Feng S, Shen SY, Nejad R, Zuccato JA, et al. Detection and discrimination of intracranial tumors using plasma cell-free DNA methylomes. *Nat Med*. 2020 Jul;26(7):1044–7.
8. Ebrahimkhani S, Vafae F, Hallal S, Wei H, Lee MYT, Young PE, et al. Deep sequencing of circulating exosomal microRNA allows non-invasive glioblastoma diagnosis. *NPJ Precis Oncol*. 2018;2:28.
9. Pickles JC, Fairchild AR, Stone TJ, Brownlee L, Merve A, Yasin SA, et al. DNA methylation-based profiling for paediatric CNS tumour diagnosis and treatment: a population-based study. *Lancet Child Adolesc Heal*. 2020 Feb;4(2):121–30.
10. Macarthur KM, Kao GD, Chandrasekaran S, Alonso-Basanta M, Chapman C, Lustig RA, et al. Detection of brain tumor cells in the peripheral blood by a telomerase promoter-based assay. *Cancer Res*. 2014 Apr;74(8):2152–9.
11. Müller C, Holtschmidt J, Auer M, Heitzer E, Lamszus K, Schulte A, et al. Hematogenous dissemination of glioblastoma multiforme. *Sci Transl Med*. 2014 Jul;6(247):247ra101.

12. Kan LK, Drummond K, Hunn M, Williams D, O'Brien TJ, Monif M. Potential biomarkers and challenges in glioma diagnosis, therapy and prognosis. *BMJ Neurol open*. 2020;2(2):e000069.
13. Akolkar D, Patil D, Crook T, Limaye S, Page R, Datta V, et al. Circulating ensembles of tumor-associated cells: A redoubtable new systemic hallmark of cancer. *Int J cancer*. 2020 Jun;146(12):3485–94.
14. Ranade A, Bhatt A, Page R, Limaye S, Crook T, Akolkar D, et al. Hallmark Circulating Tumor-Associated Cell Clusters Signify 230 Times Higher One-Year Cancer Risk. *Cancer Prev Res (Phila)*. 2021 Jan;14(1):11–6.
15. Gaya A, Crook T, Plowman N, Ranade A, Limaye S, Bhatt A, et al. Evaluation of circulating tumor cell clusters for pan-cancer noninvasive diagnostic triaging. *Cancer Cytopathol*. 2021 Mar;129(3):226–38.
16. von Elm E, et al. The Strengthening the Reporting of Observational Studies in Epidemiology (STROBE) Statement: guidelines for reporting observational studies. *Int J Surg* 2014;12:1495–9. DOI: 10.1016/j.ijsu.2014.07.013
17. Crook T, Gaya A, Page R, Limaye S, Ranade A, Bhatt A, et al. Clinical utility of circulating tumor-associated cells to predict and monitor chemo-response in solid tumors. *Cancer Chemother Pharmacol*. 2021 Feb;87(2):197–205.
18. CLSI. Evaluation of Linearity of Quantitative measurement procedures. 2nd ed. CLSI Guideline EP06. Clinical and Laboratory Standards Institute; 2020.
19. CLSI. Evaluation of Detection Capability for Clinical Laboratory Measurement Procedures.; Approved Guideline. 2nd ed. CLSI document EP17-A2. Clinical and Laboratory Standards Institute; 2012.
20. CLSI. Evaluation of Precision of Quantitative Measurement Procedures.; Approved Guideline. 3rd ed. CLSI document EP05-A3. Clinical and Laboratory Standards Institute; 2014.
21. Hamilton JD, Rapp M, Schneiderhan T, Sabel M, Hayman A, Scherer A, et al. Glioblastoma multiforme metastasis outside the CNS: three case reports and possible mechanisms of escape. *J Clin Oncol Off J Am Soc Clin Oncol*. 2014 Aug;32(22):e80-4.
22. Pasquier B, Pasquier D, N'Golet A, Panh MH, Couderc P. Extraneural metastases of astrocytomas and glioblastomas: clinicopathological study of two cases and review of literature. *Cancer*. (1980) 45:112–25. 10.1002/1097-0142(19800101)45:1<112::AID-CNCR2820450121>3.0.CO;2-9

23. Chang H, Ding Y, Wang P, Wang Q, Lin Y, Li B. Cutaneous metastases of the glioma. *J Craniofac Surg.* (2018) 29:e94–e6. [10.1097/SCS.0000000000004204](https://doi.org/10.1097/SCS.0000000000004204)
24. Perez-Bovet J, Rimbau-Munoz J. Glioblastoma multiforme metastases to the masticator muscles and the scalp. *J Clin Neurosci.* (2018) 53:237–9. [10.1016/j.jocn.2018.04.021](https://doi.org/10.1016/j.jocn.2018.04.021)
25. Rosen J, Blau T, Grau SJ, Barbe MT, Fink GR, Galldiks N. Extracranial metastases of a cerebral glioblastoma: a case report and review of the literature. *Case Rep Oncol.* (2018) 11:591–600. [10.1159/000492111](https://doi.org/10.1159/000492111)
26. Eibl RH, Schneemann M. Liquid Biopsy and Primary Brain Tumors. *Cancers (Basel).* 2021 Oct;13(21).
27. Zhang H, Yuan F, Qi Y, Liu B, Chen Q. Circulating Tumor Cells for Glioma. *Front Oncol.* 2021 Mar 10;11:607150. doi: [10.3389/fonc.2021.607150](https://doi.org/10.3389/fonc.2021.607150).
28. Bang-Christensen SR, Pedersen RS, Pereira MA, Clausen TM, Løppke C, Sand NT, et al. Capture and Detection of Circulating Glioma Cells Using the Recombinant VAR2CSA Malaria Protein. *Cells.* 2019 Aug;8(9).
29. Sullivan JP, Nahed B V, Madden MW, Oliveira SM, Springer S, Bhere D, et al. Brain tumor cells in circulation are enriched for mesenchymal gene expression. *Cancer Discov.* 2014 Nov;4(11):1299–309.
30. Gao F, Cui Y, Jiang H, Sui D, Wang Y, Jiang Z, et al. Circulating tumor cell is a common property of brain glioma and promotes the monitoring system. *Oncotarget.* 2016 Nov;7(44):71330–40.
31. Krol I, Castro-Giner F, Maurer M, Gkoutela S, Szczerba BM, Scherrer R, et al. Detection of circulating tumour cell clusters in human glioblastoma. *Br J Cancer.* 2018 Aug;119(4):487–91.
32. Louis DN, Perry A, Wesseling P, Brat DJ, Cree IA, Figarella-Branger D, Hawkins C, Ng HK, Pfister SM, Reifenberger G, Soffiatti R, von Deimling A, Ellison DW et al. The 2021 WHO Classification of Tumors of the Central Nervous System: a summary. *Neuro Oncol.* 2021 Aug 2;23(8):1231-1251. doi: [10.1093/neuonc/noab106](https://doi.org/10.1093/neuonc/noab106).
33. Kolostova K, Pospisilova E, Pavlickova V, Bartos R, Sames M, Pawlak I, Bobek V. Next generation sequencing of glioblastoma circulating tumor cells: non-invasive solution for disease monitoring. *Am J Transl Res.* 2021 May 15;13(5):4489-4499.

## **LIST OF FIGURES**

### **Figure 1. Schema of Test.**

Functional enrichment of CTCs is achieved using a proprietary CGC/CTC enrichment medium (CEM) that eliminates all non-malignant cells and permits tumor derived malignant cells to survive. Subsequently, the multiplexed immunocytochemistry (ICC) evaluates and identifies CGCs based on positivity of the indicated markers.



## **LIST OF TABLES**

### **Table 1. Decision Matrix.**

The Decision Matrix shows the relation between various marker expression combinations and the predictions for each sample. Primary classification of samples is based on expression of GFAP and OLIG2. The matrix also explains the classification in a subset of samples where PanCK was used in addition to the above markers. GLI-M: Glial malignancy; BBT: benign brain tumor; EPI-M: epithelial malignancy with brain metastases.

### **Table 2. Summary of Analytical Validation.**

The findings of Analytical Validation indicate that the Test provides consistent, accurate and reproducible results with little or no interference from routine endogenous or exogenous factors when samples are obtained, stored and processed under the recommended conditions. Comprehensive details are provided in Supplementary Materials. Numbers within parentheses indicate 95% confidence intervals (95% CI). The two values for repeatability and within laboratory precision are the CV (%) at 5 cells / 5 mL (positivity threshold) and 15 cells / 5 mL (3x positivity threshold) respectively.

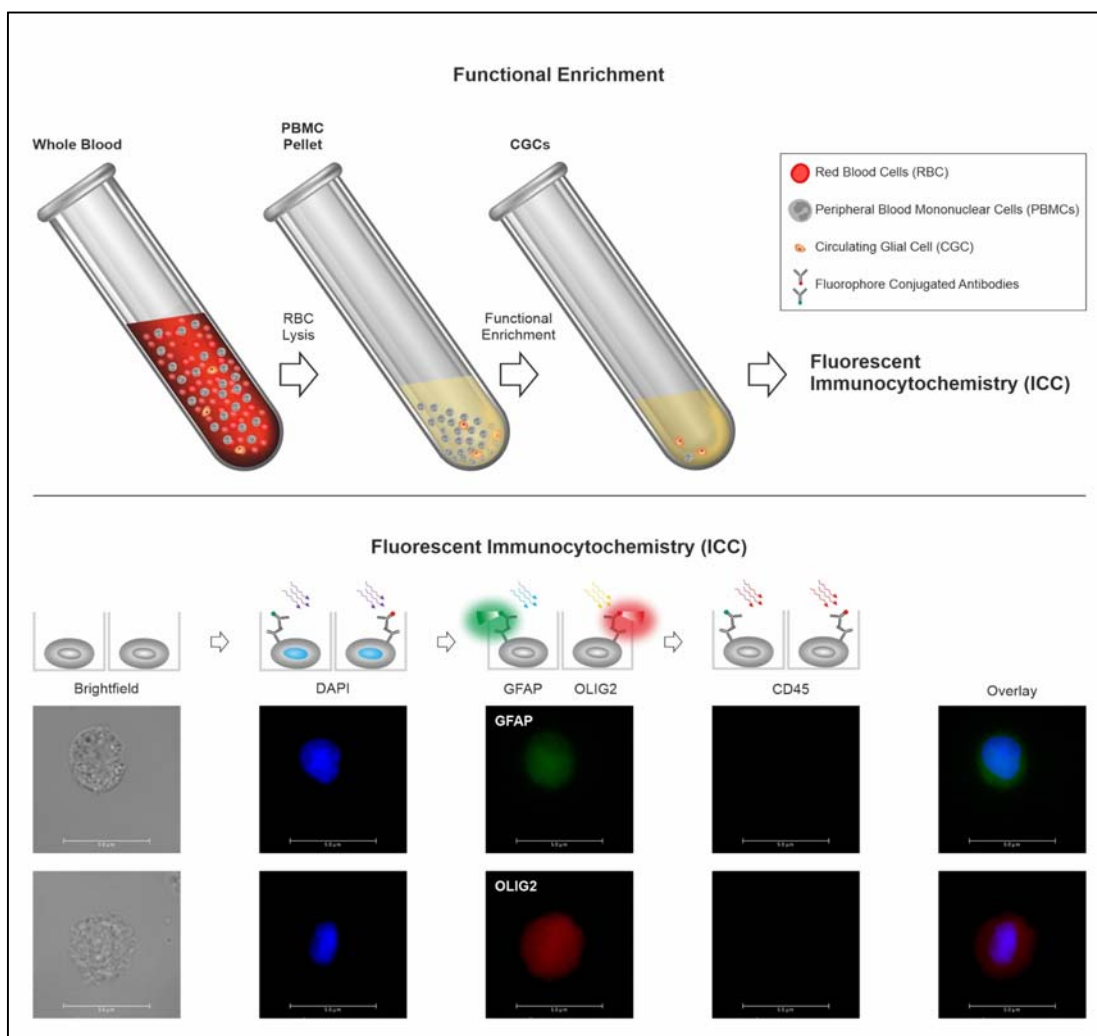
### **Table 3. Clinical Performance Characteristics of the Test.**

Performance characteristics of the test were determined in 2 separate clinical studies, a case control study as well as a prospective study. In both studies, the sensitivity, specificity and accuracy were determined. In the test design, samples with equivocal findings for GLI-M are considered as positive and recommended for

clinical follow-up. Thus the performance characteristics were determined with the same consideration.

## FIGURES

Figure 1. Schema of Test.



## TABLES

Table 1. Decision Matrix.

GFAP	OLIG2	PanCK*	Classification
+	+	-	GLI-M
+	-	-	
-	+	-	
-	-	+	EPI-M
-	-	-	BBT / Healthy
<i>(any other findings)</i>			Indeterminate

\*for the subset of samples where PanCK was evaluated.

**Table 2. Summary of Analytical Validation.**

<b>Parameter</b>	<b>Value</b>
<b>Analyte Stability</b>	48 h
<b>Linearity</b>	$R^2 \geq 0.99$
<b>Linearity Interval</b>	5 – 1280 cells / 5 mL
<b>Limit of Blank</b>	0 cells / 5 mL
<b>Limit of Detection</b>	1 cell / 5 mL
<b>Limit of Quantitation</b>	6 cells / 5 mL
<b>Specificity</b>	100% (85.8% - 100%)
<b>Sensitivity</b>	95.0% (83.1% - 99.4%)
<b>Accuracy</b>	96.9% (89.2% - 99.6%)
<b>Repeatability</b>	13.7% (at 5 cells / 5 mL), 10.0% (at 15 cells / 5 mL)
<b>Within Laboratory Precision</b>	23.5% (at 5 cells / 5 mL), 13.7% (at 15 cells / 5 mL)

**Table 3. Clinical Performance Characteristics of the Test.**

	<b>Sensitivity</b>	<b>Specificity</b>	<b>Accuracy</b>
<b>Case Control Study-1 (Validation Set)</b>	100% (95% CI: 91.96% - 100%) (n = 44)	100% (95% CI: 75.29% - 100%) (n = 13)	100% (95% CI: 93.73% - 100%) (n = 57)
<b>Case Control Study-2</b>	100% (95%CI: 91.19% - 100%) (n = 40)	100% (95%CI: 99.33% - 100%) (n = 546)	100% (95%CI: 99.37% - 100%) (n = 586)
<b>Prospective Study-1</b>	100% (95%CI: 93.62% - 100%) (n = 56)	100% (95%CI: 73.54% - 100%) (n = 12)	100% (95%CI: 94.72% - 100%) (n = 68)
<b>Prospective Study-2</b>	92.86% (95%CI: 66.13% - 99.82%) (n = 14)	100% (95%CI: 80.49% - 100%) (n = 17)	96.77% (95%CI: 83.30% - 99.92%) (n = 31)
<b>Cumulative</b>	99.35% (95%CI: 96.44% - 99.98%) (n = 154)	100% (95%CI: 99.37% - 100%) (n = 588)	99.87% (95%CI: 99.25% - 100%) (n = 742)