

1 TITLE

2 **Quantitative G6PD point-of-care test can be used reliably on cord blood to identify male and**
3 **female newborns at increased risk of neonatal hyperbilirubinaemia: a mixed method study**

4
5 Germana Bancone^{1,2,*}, Mary Ellen Gilder³, Elsie Win¹, Gornpan Gornsawun¹, Penporn Penpitchaporn¹,
6 Paw Khu Moo¹, Laypaw Archasuksan¹, Nan San Wai¹, Sylverine Win¹, Ko Ko Aung¹, Ahmar Hashmi^{5,6},
7 Borimas Hanboonkunupakarn⁴, Francois Nosten^{1,2}, Verena I Carrara^{1,2,7}, Rose McGready^{1,2}

8
9 1. Shoklo Malaria Research Unit, Mahidol-Oxford Tropical Medicine Research Unit, Faculty of Tropical
10 Medicine, Mahidol University, Mae Sot, Thailand.

11 2. Centre for Tropical Medicine and Global Health, Nuffield Department of Medicine, University of
12 Oxford, Oxford, United Kingdom.

13 3. Department of Family Medicine, Faculty of Medicine, Chiang Mai University, Chiang Mai 50200,
14 Thailand.

15 4. Mahidol-Oxford Tropical Medicine Research Unit (MORU), Faculty of Tropical Medicine, Mahidol
16 University, Bangkok, Thailand.

17 5. Institute for Implementation Science, University of Texas Health Sciences Center (UTHealth),
18 Houston, TX USA

19 6. Department of Health Promotion and Behavioral Sciences, School of Public Health, University of
20 Texas Health Sciences Center (UTHealth) Houston, TX USA

21 7. Institute of Global Health, Faculty of Medicine, University of Geneva, Switzerland

22 * corresponding author: germana@tropmedres.ac

23

24

25

26

27

28 ABSTRACT

29 Introduction: New point-of-care (POC) quantitative G6PD testing devices developed to provide safe
30 radical cure for *P. vivax* malaria may be used to diagnose G6PD deficiency in newborns at risk of severe
31 neonatal hyperbilirubinaemia, improving clinical care, and preventing related morbidity and mortality.

32 Methods: We conducted a mixed-methods study analyzing technical performance and usability of the
33 “STANDARD G6PD” Biosensor when used by trained midwives on cord blood samples at two rural
34 clinics on the Thailand-Myanmar border.

35 Results: In 307 cord blood samples, the Biosensor had a sensitivity of 1.000 (95%CI 0.859-1.000) and a
36 specificity of 0.993 (95% CI 0.971-0.999) as compared to gold standard spectrophotometry to diagnose
37 G6PD deficient newborns using a receiving operator characteristic (ROC) analysis-derived threshold of
38 ≤ 4.8 IU/gHb. The Biosensor had a sensitivity of 0.727 (95%CI: 0.498-0.893) and specificity of 0.933
39 (95%CI: 0.876-0.969) for 30-70% activity range in females using ROC analysis-derived range of 4.9 to
40 9.9 IU/gHb. These thresholds allowed identification of all G6PD deficient neonates and 80% of female
41 neonates with intermediate phenotypes.

42 Need of phototherapy treatment for neonatal hyperbilirubinaemia was higher in neonates with
43 deficient and intermediate phenotypes as diagnosed by either reference spectrophotometry or
44 Biosensor.

45 Focus group discussions found high levels of learnability, willingness, satisfaction, and suitability for
46 the Biosensor in this setting. The staff valued the capacity of the Biosensor to identify newborns with
47 G6PD deficiency early (“We can know that early, we can counsel the parents about the chances of their
48 children getting jaundice”) and at the POC, including in more rural settings (“Because we can know the
49 right result of the G6PD deficiency in a short time. Especially for the clinic which does not have a lab”).

50 Conclusions: The Biosensor is a suitable tool in this resource-constrained setting to identify newborns
51 with abnormal G6PD phenotypes at increased risk of neonatal hyperbilirubinaemia.

52

53 INTRODUCTION

54 Pathologically increased levels of bilirubin during the first week of life, i.e. neonatal
55 hyperbilirubinaemia (NH), are common and dangerous for the developing brain. The most severe form
56 of NH, kernicterus, causes neurological sequelae in >80% of neonates (56/100,000 live births globally,
57 [1]). Every year, an estimated twenty-four million newborns are at risk of NH-related adverse outcomes
58 with three-quarters of mortality occurring in sub-Saharan Africa and South Asia [1,2]. These
59 preventable deaths and disabilities disproportionately affect neonates where universal health care and
60 treatment options are scarce, if not absent [3].

61 Several genetic and clinical factors influence the timing and evolution of NH, including G6PD deficiency,
62 ABO blood group incompatibility, prematurity/low birth weight and sepsis [4]. Early identification of
63 these risk factors can dramatically improve neonatal clinical management during the first days of life
64 [5].

65 The enzymatic defect of G6PD deficiency, caused by mutations on the X-linked G6PD gene, is a known
66 risk factor for increased levels of bilirubin after birth and it is associated with susceptibility to drug-
67 induced haemolysis [6]. Risk of severe NH is increased in both deficient and heterozygous newborns
68 with abnormal phenotypes [7-9] and universal neonatal screening of G6PD deficiency is supported by
69 WHO in populations where more than 3-5% of males are affected [10].

70 G6PD deficiency is particularly prevalent among neonates from tropical regions [11], where clinical
71 care is often provided in a non-tertiary hospital or clinic context. Knowledge of G6PD status by medical
72 staff and parents can aid in avoiding potentially haemolytic antibiotics or other agents (such as
73 naphthalene), improved follow-up, and heightened awareness of signs and symptoms of severe NH.

74 G6PD deficiency is very common among the Karen and Burman population along the Thailand-
75 Myanmar border (9-18% in males, [12]) where it is associated with an increased risk to develop NH
76 requiring phototherapy both in G6PD deficient (over 4-fold [13]) and in heterozygous females (over 2-
77 fold [5]) as compared to wild type genotype neonates. In a recent study, screening of G6PD by

78 qualitative Fluorescent Spot Test (FST) on cord blood failed to identify almost 10% of G6PD deficient
79 neonates [14].

80 Demonstrating usability of new quantitative Point-Of-Care (POC) G6PD diagnostic tests by locally
81 trained clinical staff can inform clinical deployment in this setting and in other rural settings. This study
82 assessed the technical performance and usability of the “G6PD STANDARD” (SD Biosensor, Korea) test
83 when used by trained midwives in two clinics along the Thailand-Myanmar border.

84 MATERIALS AND METHODS

85 Study design

86 A mixed-methods study was conducted to evaluate both the technical performance of the “G6PD
87 STANDARD” (SD Biosensor, Korea) test (henceforth “Biosensor”) and its usability by midwives in a non-
88 tertiary setting. G6PD enzymatic activity and haemoglobin concentration measured by the device were
89 compared to the gold standard reference spectrophotometric assay and haematology analyser,
90 respectively. Performance of the G6PD fluorescent spot test (FST) currently used routinely at the point-
91 of-care, was also compared to the reference and new test.

92 Following local staff training, user proficiency was assessed before study start; usability was explored
93 using focus group discussions (FGD) at the end of the study.

94 Study setting and population

95 The study was conducted in SMRU clinics situated along the Thailand-Myanmar border in Tak province
96 (Thailand) where free antenatal care and birthing services are provided for migrant women of
97 predominantly Karen and Burman ethnicity.

98 SMRU midwives come from the same population as the pregnant women and patients seeking care at
99 SMRU clinics. The majority of midwives have primary or secondary education and receive clinical
100 training on-site. Pregnant women attending SMRU clinics at Wang Pha (WPA) and Maw Ker Thai (MKT)
101 were informed about the study at regular antenatal care visits in the 3rd trimester. Informed consent
102 procedures and eligibility assessments for mothers were completed before labour commenced.

103 Eligibility of neonates was assessed immediately after delivery, and those born at an estimated
104 gestational age (EGA) by ultrasound ≥ 35 weeks with no severe maternal complications at delivery and
105 no severe neonatal illness were included. In order to allow laboratory analyses to be performed within
106 30 hours from collection, only neonates born during week days were included. For all neonates,
107 indication for starting phototherapy treatment followed the recommendations of the UK NICE
108 guidelines [15].

109 Blood analyses for technical evaluation of Biosensor
110 Two milliliters of cord blood were collected into EDTA from the umbilical cord using an established
111 SMRU SOP. An aliquot of anticoagulated blood was used by the midwives in the delivery room for the
112 Biosensor following manufacturer's instructions within one hour of collection (Appendix 1). Tests were
113 repeated if the test result was an error or "HI" (a result obtained when G6PD activity is very high,
114 outside the instrument analytic range). High-level and low-level Biosensor controls were run weekly or
115 monthly (depending on availability) from April 2020 until May 2021.

116 An aliquot of anticoagulated blood was analysed by G6PD fluorescent spot test (FST) at the clinical
117 laboratory. The remaining blood was stored at 4°C until shipment to the central SMRU laboratory on
118 the same day.

119 Gold standard reference testing for G6PD and haemoglobin were performed by spectrophotometric
120 assay and haematology analyser (with complete blood and reticulocyte counts), respectively, at the
121 SMRU central laboratory.

122 G6PD spectrophotometric assay was performed using Pointe Scientific kits (assay kit # G7583-180, Lysis
123 Buffer # G7583-LysSB). Kinetic determination of G6PD activity at 340 nm was performed using a
124 SHIMAZU UV-1800 spectrophotometer with temperature controlled cuvette compartment (30°C).
125 Samples were analysed in double and mean activity was expressed in IU/gHb using the Hb
126 concentration obtained by complete blood count analysis. The final result was calculated using
127 manufacturer's Temperature Control Factor of 1.37. Two controls (Normal, Intermediate or Deficient;
128 Analytic Control Systems, Inc. USA) were analysed at every run and results compared to expected

129 ranges provided by manufacturer. Complete blood count was performed using a CeltacF MEK-8222K
130 haematology analyser (Nihon Kohden, Japan). Three-levels quality controls were run every day and
131 device maintenance and calibration were performed regularly. Reticulocytes were analysed by
132 microscopy after staining with supervital staining Crystal Violet.

133 Buffy coat recovered from whole blood after centrifugation was stored at -20°C for later DNA
134 extraction using standard columns kit (Favorgen Biotech, Taiwan). Genotyping for G6PD common
135 mutations was performed through established SOPs [16]. Mahidol mutation was analysed in all
136 samples. Other mutations were only analysed in phenotypically deficient or intermediate samples
137 (G6PD < 9.31IU/gHb by reference test) with wild type or heterozygote Mahidol genotypes. Viangchan,
138 Chinese-4, Kaiping, Canton, Union and Mediterranean were analysed first and full gene sequence was
139 performed if none of these mutations were found.

140

141 Biosensor training, user proficiency and usability assessment

142 Midwives of WPA and MKT SMRU clinics were trained for use of Biosensor and were eligible to
143 participate in the usability component of the study following informed consent. Two to four training
144 sessions were provided at each clinic in the local language by an experienced laboratory technician
145 (author LA). The sessions lasted from 1 to 2 hours and included a short introduction about the test, a
146 practical demonstration using imitation blood, and supervised use of the biosensor by each midwife.
147 Midwives were allowed to practice the procedure the week following the training prior to taking a user
148 proficiency test. The proficiency test was administered by author LA in the local language and it
149 consisted of a questionnaire (modified from a questionnaire developed by PATH
150 ([https://www.finddx.org/wp-content/uploads/2020/09/PATH_STANDARD-G6PD-User-Competency-
151 Assessment-quiz_08oct19.pdf](https://www.finddx.org/wp-content/uploads/2020/09/PATH_STANDARD-G6PD-User-Competency-Assessment-quiz_08oct19.pdf)) and direct observation of two consecutive tests. Midwives were asked
152 to explain out-loud their actions while performing the first test. The proficiency test was analysed by
153 authors GB and GG and midwives who scored <85% were re-trained before study start. A visual aid
154 with all critical steps of the procedure was printed and available in the delivery room during the study.

155 The usability component of the study followed the conceptual framework for acceptance and use of a
156 rapid diagnostic test for malaria proposed by Asimwe et al. [17] that evaluates 6 components:
157 learnability, willingness, suitability, satisfaction, efficacy, and effectiveness. The focus group
158 discussions (FGD) specifically focused on 4 main themes of learnability, willingness, satisfaction, and
159 suitability. Due to COVID, only two of the planned six total FGD were conducted. The midwives were
160 grouped by their seniority, with senior and junior midwives together, and midwife assistants in a
161 separate group in order to encourage honest and open conversation. One researcher (KKA) facilitated
162 the FGD while an experienced assistant took notes; both were fluent in Burmese and Karen languages
163 used in the FGD. Immediately following the FGD, research staff debriefed and noted main themes of
164 the discussion. FGDs were audio-recorded and subsequently translated and transcribed in English. Two
165 researchers (MG and GB) independently analysed the transcript using thematic analysis based on the
166 pre-set framework [17] using Taguette (a free and open access qualitative data analysis software,
167 <https://joss.theoj.org/papers/10.21105/joss.03522>) and confirmed findings with the KKA. Face-to-face
168 meeting and exchange of notes allowed for triangulation between the researchers.

169 Blood analysis for assessment of neonatal hyperbilirubinaemia
170 Routine clinical care for newborns included at least one total serum bilirubin (TSB) test before
171 discharge (around 48h of life) using capillary blood measured on-site by the rapid quantitative
172 bilirubinometer BR-501 (Apel Co. Ltd, Japan).

173

174 Sample size and statistical analyses

175 The expected prevalence of G6PD deficiency in the population living at the border is 9-18% in males
176 and 2-4% in female [12, 16] corresponding to approximately 20-30% heterozygous females, 60% of
177 whom have intermediate activity [18]. Assuming that the proportion of females and males in the
178 neonate population is 50%, 9% were expected to be G6PD deficient and 7% to be G6PD intermediate.
179 In order to obtain 95% CI of the limits of agreement within 0.5 SD of the difference, about 31 neonates

180 with deficiency and 25 with intermediate phenotypes were needed, with a minimum total sample size
181 of 350 samples.

182 Clinical data were double entered in MACRO and collated with laboratory data; data were analysed
183 using SPSSv27.

184 Male median (MM) was calculated in all males with wild type genotypes in both the references
185 spectrophotometric assay and the Biosensor. Deficiency was defined as enzymatic activity below 30%
186 of MM by reference spectrophotometry and receiving operator characteristic (ROC)-derived 30%
187 threshold by Biosensor; intermediate phenotypes were defined as enzymatic activity between 30%
188 and 70% of the MM or ROC-derived threshold.

189 Mean and standard deviation (SD) were reported for continuous variables. Categorical variables were
190 compared by Chi-squared test and ANOVA. Bland-Altman plot was used to inspect correspondence
191 between G6PD activity detected by Biosensor compared to the spectrophotometry assay [19].
192 Correlation was assessed using Pearson's coefficient of correlation and Interclass Correlation
193 Coefficient (ICC). Area under the curve (AUC) of the ROC curve [20] was calculated at different activity
194 thresholds to analyse clinical performances (i.e. sensitivity and specificity) of the Biosensor. Cohen's
195 Kappa coefficient was calculated for categories of phenotypes identified by Biosensor and
196 spectrophotometry.

197 For analysis of haematologic features and risk of neonatal hyperbilirubinaemia, neonates gestational
198 ages assessed by ultrasound were categorized as ≤ 38 and >38 weeks according to epidemiologic
199 studies conducted previously in the same population [21].

200 Statistical significance was assessed at the 5% level.

201 Patient and Public Involvement statement

202 At the outset of the study, the research team engaged the local population through a local ethics and
203 research advisory committee, the Tak Province Community Advisory Board, Thailand. This group is
204 comprised of community leaders, and were asked to advise on study design, process, and outcomes
205 of interest, and subsequently approved the study (TCAB201904).

206 RESULTS

207 A total of 331 cord blood samples were collected between April 2020 and November 2021; six were
208 clotted and excluded from all analysis. Of the remaining 325 samples, 257 (79%) were collected in MKT
209 clinic and 68 in WPA clinic, in 166 (51%) female and 159 male neonates. Mean (SD) of estimated
210 gestational age of newborns was 39.1 (1.0) weeks.

211 General haematologic characteristics

212 As expected for this specimen, haematological characteristics of cord blood (Table 1) show higher
213 white blood cell count, haemoglobin concentrations, reticulocyte counts and larger cellular volumes
214 compared to adult blood. Reticulocyte counts and red cell distribution width were higher in neonates
215 <38 weeks gestational age (P=0.02 and P=0.01 respectively) while the other indexes did not differ by
216 gestational age groups.

217

218

219 **Table 1.** Haematologic characteristics of cord blood samples according to newborn gestational age. Results are shown as mean (SD)

EGA (weeks)	N*	WBC (10 ³ / uL)	NEU (10 ³ / uL)	LYM (10 ³ / uL)	RBC (10 ⁶ / uL)	HGB (g/dL)	HCT (%)	MCV (fL)	MCH (pg)	MCHC (g/dL)	RDW (%)	PLT (10 ³ / uL)	Reticulocyte (%)
<38	19	13.1 (3.6)	9.6 (3.3)	2.7 (1.7)	4.3 (0.4)	14.4 (1.7)	48.0 (5.4)	110.9 (6.6)	33.2 (2.7)	29.9 (1.5)	16.8 (1.5)	259.2 (66.2)	2.8 (1.8)
≥38	298	14.3 (3.8)	10.8 (3.6)	2.8 (1.6)	4.5 (0.5)	14.5 (1.7)	49.0 (5.2)	109.0 (7.9)	32.3 (3.0)	29.6 (1.4)	16.0 (1.2)	261.4 (47.7)	2.1 (1.1)
<i>P</i> _{ANOVA}		0.17	0.16	0.88	0.14	0.68	0.43	0.30	0.21	0.41	0.01	0.85	0.02

220

221 * Number of samples analysed by haematology analyser was 317 out of 325; 7 samples were analysed by Hemocue and result used to calculate G6PD
 222 enzymatic activity.

223

224 G6PD genotypes

225 A total of 26 hemizygous mutated males (21 Mahidol, 2 Kaiping, 1 Viangchan, 1 Coimbra, 1 Orissa), 3
226 homozygous mutated females (Mahidol), 34 heterozygous females (32 Mahidol, 1 Canton, 1
227 Viangchan) and 262 wild type (129 females and 133 males) were found. Overall allelic frequency of all
228 mutated alleles was 13.4%. The distribution of G6PD activity by spectrophotometry and biosensor
229 associated with different genotypes are shown in Figures 1 and Supplementary Tables 1 and 2.

230 Fluorescent spot test

231 The poor performances of the FST in cord blood were confirmed here, with the FST failing to identify
232 23% (7/30) of deficient neonates and 100% of the intermediate females (22/22; Table 2).

233 Technical evaluation of Biosensor

234 Male medians by reference spectrophotometric assay and Biosensor

235 MM G6PD activity by spectrophotometer was 13.3 IU/gHb giving a 30% threshold of 4.0 IU/gHb for
236 diagnosis of deficiency; intermediate activity (30-70%) in females ranged between 4.1 and 9.3 IU/gHb.

237 The cord blood-specific 30% spectrophotometric threshold identified all the hemizygous male and
238 homozygous female newborns (Figure 1A).

239 MM of G6PD activity by Biosensor calculated on 307 samples was 14.4 IU/gHb giving a 30% threshold
240 of 4.3 IU/gHb for diagnosis of deficiency. Intermediate activity (30-70%) in females ranged between
241 4.4 and 10.1 IU/gHb (Figure 1B).

242 In 7% of cases (23/325), the Biosensor provided an initial result of “HI” activity without a numeric value.

243 Of the 19 samples retested, 14 had “HI” results again and 5 samples had an activity ranging from 17.3
244 to 20.0 IU/gHb; all samples with initial or confirmed “HI” results were normal by spectrophotometry
245 and had a wild type genotype. Overall, 18 samples (5.5% of the total) did not have a final numeric
246 result by Biosensor but would have been considered “normal”, according to the spectrophotometric
247 assay.

248 Biosensor performance

249 Biosensor performance was assessed for 307/325 samples that yielded numeric results. The mean
250 ($\pm 1.96SD$) difference in enzymatic activity between Biosensor and spectrophotometry was 1.05 IU/gHb
251 (LoA: -3.52 to 5.62 IU/gHb) as represented in the Bland-Altman plot in Figure 2A. A very strong

252 correlation between enzymatic activity by Biosensor and reference spectrophotometry was observed
253 (Pearson's $r=0.855$, $p<0.001$; $ICC=0.905$, $p<0.001$).

254 The mean ($\pm 1.96SD$) difference in Hb between the Biosensor and haematology analyser was 0.70 g/dL
255 (LoA: -2.83 to 4.23 g/dL) (Figure 2B). A moderate correlation between Hb levels by Biosensor and
256 haematology analyser was observed (Pearson's $r=0.637$, $p<0.001$; $ICC=0.728$, $p<0.001$).

257 Area under the curve (AUC) of the ROC analysis (Figure 3A) of the 30% threshold was 0.999 (95%CI:
258 0.997-1.000); ROC analysis showed that 30% of Biosensor MM (4.3IU/gHb) was associated with
259 sensitivity of 0.931 (95%CI: 0.758-0.988) and specificity of 0.989 (95%CI: 0.966-0.997) while a threshold
260 of 4.8IU/gHb had a sensitivity of 1.000 (95%CI: 0.859-1.000) and a specificity of 0.993 (95% CI: 0.971-
261 0.999). This second threshold was therefore used for the subsequent analyses.

262 AUC of the ROC analysis (Figure 3B) for the 70% threshold was 0.972 (95%CI: 0.949-0.994) and ROC
263 analysis showed that a threshold of 9.9IU/gHb had a better sensitivity and specificity as compared to
264 the 70% of Biosensor MM (10.1 IU/gHb). The ROC-derived threshold had a sensitivity of 0.842 (95%CI:
265 0.716-0.921) and specificity of 0.984 (95%CI: 0.957-0.995) to identify samples with $\leq 70\%$ activity and
266 was used for subsequent analyses.

267 AUC of the ROC analysis for the range 30-70% activity was 0.935 (95%CI: 0.887-0.983); sensitivity and
268 specificity for intermediate phenotypes in females were 0.727 (95%CI 0.498-0.893) and 0.933 (95%CI:
269 0.876-0.969) respectively based on ROC-derived thresholds as compared to 0.592 (95%CI: 0.390-0.770)
270 and 0.953 (95%CI: 0.897-0.980) using Biosensor MM thresholds.

271 When comparing phenotypes defined according to the 30% and 70% thresholds of spectrophotometry
272 and ROC-derived threshold for Biosensor (Table 2), the Biosensor correctly identified all deficient and
273 normal males and all deficient females. In females, the Biosensor incorrectly identified 9% (2/22) of
274 intermediate females (activity by spectrophotometry 33% and 62%) as deficient, and 7% (9/130) of
275 phenotypically normal female neonates as intermediate (activity by spectrophotometer ranging from
276 71% to 113%). It also misdiagnosed 18% (4/22) of intermediate samples as normal. Of these 4 samples,

277 3 were Mahidol heterozygotes and 1 was a wild type and their enzymatic activity by
 278 spectrophotometry ranged from 54% to 64%. Cohen’s kappa coefficient was 0.841, $p < 0.001$. Overall,
 279 the majority of samples with discordant results (11/15) were identified by the Biosensor as having a
 280 “worse” phenotype. Characteristics of the 15 samples with discordant results are reported in
 281 Supplementary Table 3.

282

283 **Table 2.** Diagnostic performance of FST and Biosensor as compared to gold standard
 284 spectrophotometry.

285

		<i>Spectrophotometry</i>				
		Male		Female		
		Deficient	Normal	Deficient	Intermediate	Normal
<i>FST</i>	Deficient	20	0	2	0	0
	Normal	6*	133	2*	22	137
	Total	26	133	4	22	137
<i>Biosensor</i>	Deficient	26	0	4	2 [#]	0
	Intermediate	NA	NA	0	16	9 [§]
	Normal	0	125	0	4 ^{&}	121
	Total	26	125	4	22	130

295 Phenotypes are based on 30% and 70% thresholds for spectrophotometry. For Biosensor, threshold
 296 for deficiency is ≤ 4.8 IU/gHb and 4.9 to 9.9 IU/gHb for intermediate, both obtained by ROC analysis.
 297 Total sample for Biosensor was 307; total sample for FST was 322 (3 samples were not analysed by
 298 FST at the clinic)

299

300 *Enzymatic activities ranging from 12% to 27% of spectrophotometry MM.

301 [#] Two Mahidol heterozygotes with activity by spectrophotometry of 33% and 62% of MM.

302 [§] Two Mahidol heterozygotes and 7 wild type samples with enzymatic activity by spectrophotometry
 303 ranging from 71% to 113%.

304 [&] Three Mahidol heterozygotes and 1 wild type samples with enzymatic activity by
 305 spectrophotometry ranging from 54% to 64%.

306 Characteristics of discordant samples are reported in Supplementary Table 1.

307

308

309

310

311 No difference in results were observed by clinic (ICC=0.899, $p < 0.001$ in MKT and ICC=0.930, $p < 0.001$ in

312 WPA) or user. In MKT clinic where the test was used over 20 months, a trend of larger absolute mean

313 differences in activity (Biosensor - Spectrophotometry) were observed in the last 4-8 months of use as
314 compared to the first 12 months (Supplementary Figure 1).

315 Risk of neonatal hyperbilirubinaemia

316 Risk of neonatal hyperbilirubinemia by phenotype (determined by spectrophotometry) was assessed
317 in term neonates (EGA \geq 38weeks). A significantly larger proportion of G6PD deficient neonates (29%)
318 underwent phototherapy for treatment of NH as compared to G6PD normal (6%, RR[95%CI] =4.9 [2.3-
319 10.5]; P<0.001). A larger proportion of female neonates with intermediate phenotypes (90% of whom
320 were heterozygotes) required phototherapy (15%), although in this small cohort the difference did not
321 reach statistical significance (RR[95%CI] =2.6 [0.8-8.1]; P=0.13; supplementary Table 4. Relative risk by
322 quantitative phenotypes were similar to those already established by genotypes in the same
323 population [5].

324 Biosensor training, user proficiency and usability assessment

325 A total of 22 midwives in two clinics were initially trained and completed the users' proficiency test,
326 including 7 senior, 10 junior and 5 assistant midwives. Median (min-max) observed score from the
327 questionnaire (max 7 points) and observed tests (max 18 points) was 22.1 (18-24.5). The median score
328 did not differ by seniority: assistant 21.4 (18.0-23.5), junior 22.0 (19.3-24.5), senior 22.8 (21.0-24.5);
329 most midwives (72%) had a score >21 points (>85% of maximum score). The most common mistakes
330 in the questionnaire were on how to mix the blood and the buffer (pipetting 10 times vs shaking the
331 buffer tube) and on volume of blood mixture to transfer into the device. On observation, the most
332 common mistakes were failure to check the date on Biosensor screen and failure to check test expiry
333 date (rated as minor mistakes as expired test strips are automatically recognized by the Biosensor and
334 rejected).

335 Two focus group discussions were held in December 2021 in MKT clinic, four weeks after completion
336 of the sample collection at that site; one FGD included 6 senior and junior midwives, and one included
337 6 assistant midwives. Discussions on satisfaction, learnability, willingness, and suitability and future
338 use are summarized in Table 3. Overall satisfaction was high, although staff were concerned with
339 invalid results, and found it challenging to dedicate one member of the team to perform the biosensor

340 test in the delivery room in the busy postpartum period. In terms of learnability, the midwife assistants
 341 reported learning the device more easily, though some were anxious about missing steps. The senior
 342 staff were anxious about mistakes and clotted blood, and reported the need to refer to the instructions
 343 as a problem. Contrary to the positive expressions to keep using the device at the clinic, the midwives’
 344 willingness to use the device was not high and they requested a dedicated staff to perform the test or
 345 the test to be done in the laboratory. In terms of suitability and future use, the midwives found the
 346 results clinically useful and a valuable diagnostic tool in both their setting and field clinics. However,
 347 they were concerned about neglecting clinical care while doing a laboratory test, the cost of the device,
 348 and emphasized the need for good training.

349 **Table 3.** Selected quotes by theme from focus group discussions.

Theme	Quotes
A. Satisfaction	<p>“It is very good for the children. It is good to know if the child has G6PD deficiency or not from birth. The advantage of the device is that it can detect the children without having to do a heel stick on the baby. On the other hand, there is an increase in work.... But now that we are good at using it, it’s fine.” [FGD1]</p> <p>“Sometimes if someone is doing the test by using the device it means there are fewer staffs to be with mothers and babies which is not good.” [FGD1]</p>
B. Learnability	<p>“After the one-time training, we had 1 or 2 times experiences practically. Then we can do it.” [FGD2]</p> <p>“I am really scared I will forget the steps.” [FGD2]</p> <p>“We have to look at the book very often, if not we forget the process of what to put and how to put it.” [FGD1]</p>
C. Willingness	<p>“Facilitator: Yes. What do you think about keeping on using this device in the future? Participant: Of course. It is good. Participant: Yes, it is good. But if we can have a specific staff to do it then it will be better.” [FGD2]</p> <p>“To make changes, take out the blood and send it to the lab. Then only lab staff have to do that.” [FGD1]</p>
D. Suitability & Future Use	<p>“Because we can know that early, we can have counseling with the parents about the chances of their children getting yellow skin. We can take time to counsel.” [FGD1]</p> <p>“Because we can know the right result of the G6PD deficiency in a short time. Especially for the clinic which doesn’t have a lab then it is difficult to know the G6PD status. But with this device, they will only need to take a little blood from the baby and they can know the result of G6PD.” [FGD2]</p>

350

351 DISCUSSION

352 This is the first study to assess clinical performance and usability by locally trained health workers of
353 the “STANDARD G6PD” Biosensor test for identification of G6PD deficient and intermediate
354 phenotypes in cord blood. Current data, together with previously collected evidence from clinical trials
355 in the same population [5], clearly indicate that newborn heterozygous girls with G6PD intermediate
356 phenotypes, who are not identified by the FST, are at increased risk of NH and require phototherapy
357 [7, 8]. The availability of a validated POC quantitative test such as the Biosensor and its inclusion in
358 diagnostics guidelines for neonatal care at birth will allow identification of this group of neonates and
359 better clinical care in several settings [22-25]. Together with other easy-to-use non-invasive tools for
360 diagnosis of NH (e.g. Transcutaneous bilirubinometers), this study provides evidence that Biosensor
361 could be used in non-tertiary rural settings for identification of neonates who need referral to higher
362 levels of care. In settings where phototherapy is available, this study indicates that the Biosensor is a
363 better option than FST to support clinical management of neonates. Technical performance of the
364 Biosensor using ROC-derived threshold was comparable to that observed in adult blood in laboratory
365 and field studies [26-29].

366 The phenotypic classification provided by the Biosensor was superior to the currently available
367 qualitative test (FST) both for deficient and for intermediate phenotypes. Among intermediate
368 phenotypes, 80% were identified as either deficient or intermediate, allowing a better identification
369 of neonates at potential jaundice risk as compared to the currently used FST-based diagnosis [14, 30].

370 Poor performance of FST can be explained by the higher G6PD enzymatic activity at birth as compared
371 to adulthood [31, 32]; this is probably the result of several haematological factors including younger
372 red cell age, increased number of reticulocytes with higher G6PD activity [33, 34] and higher WBC
373 count [28] as observed here. Importantly, because of higher enzymatic activity in cord blood,
374 thresholds established in adult blood cannot be used to identify deficient or intermediate phenotypes
375 by either spectrophotometry or Biosensor at birth and would have missed identification of 10% (3/29)

376 deficient neonates (2/26 deficient males and 1/4 deficient females) and 86% (19/22) intermediate
377 females.

378 Biosensor haemoglobin values had a moderate correlation with those assessed by automatic
379 haematology analyser. Although cord (and neonatal) blood samples have higher haemoglobin levels
380 and increased viscosity, Biosensor's performance in measuring G6PD activity was not worse at higher
381 haemoglobin levels.

382 While the Biosensor provided a numeric result in 94.5% of cases, in few cases an "error" message or a
383 "HI" result was obtained which, according to the protocol, required re-analysis of the sample. Samples
384 that tested "HI" were confirmed to be normal, both phenotypically by spectrophotometry and by
385 genotype (all wild type). In routine practice it will not be needed to repeat the test in samples showing
386 "HI" result should the manufacturers include this information in the instructions for use.

387 The usability component highlighted important themes to be taken into consideration for future use
388 of the Biosensor at birth. The midwives have been involved in previous research regarding neonatal
389 jaundice and appreciated the importance of early G6PD diagnosis to identify newborns most at risk of
390 neonatal hyperbilirubinaemia and to facilitate optimal clinical care and parental counselling. The non-
391 invasive nature of cord blood analysis was considered an advantage. In this setting, the SMRU
392 midwives recommended that the test be performed by dedicated staff or by the available laboratory
393 to assure appropriate clinical care is provided to the newborns and mothers; nevertheless, they
394 estimated that in more rural contexts it may be appropriate for trained birth attendants to perform
395 the test. Of note, midwives considered their reliance on reading the visual aid while performing the
396 test (which is standard practice in laboratories) a weakness and this aspect might need to be taken
397 into account when training clinic field staff. Usability results obtained here might not be generalizable
398 to every other context but there are data being collected in several rural and community-based
399 settings that corroborate ease of use of this device to guide malaria treatment after appropriate
400 training [26, 35, 36] .

401 Although midwives felt uncertain about properly conducting the test at the beginning of the study, the
402 laboratory data showed highly accurate results in the first 12 months of use and very good results in
403 the latter 8 months, supporting suitability of the test among health care workers without prior
404 experience in diagnostics. Follow up studies should explore the causes of this slight decrease in quality
405 over time which could be attributed to environmental or users' factors as well as device durability over
406 >1 year of use in tropical conditions.

407

408 Limitations

409 A practical limitation of Biosensor testing on cord blood is the extra step needed to collect the blood
410 with a syringe from the cord. A sampling device that collects a fixed volume of blood directly from the
411 cord would streamline the process.

412 It is very likely that performance and reference ranges observed here in cord blood could apply to
413 neonatal capillary or venous blood collected within the first 24 hours of life but this was not evaluated
414 during the study.

415 The study was conducted in a period critically influenced by the COVID-19 pandemic. Travel restrictions
416 resulted in a delayed study start, reduced enrolment in one clinic (WPA), and a protracted enrolment
417 duration of the study overall. Fewer than planned FGD were conducted—including planned discussions
418 at key time points during the study—and they occurred in a single clinical site providing a possibly
419 narrower point of view on the usability topics explored. Additional staff stressors and human resource
420 limitations due to COVID-19 and the political unrest in 2021 were not assessed but may have
421 influenced the results of both the technical and usability components of the study.

422

423 CONCLUSIONS

424 The “STANDARD G6PD” Biosensor is a reliable POC tool to support the perinatal care of newborns at
425 higher risk of neonatal hyperbilirubinemia by demonstrating very high sensitivity in identification of
426 deficient newborns and high sensitivity in identification of female newborns with intermediate activity.

427 Its use by trained personnel in rural clinics and birthing centers with a high prevalence of G6PD
428 deficiency, together with assessment of bilirubin levels before discharge, has the potential to avert
429 disability and death from hyperbilirubinaemia.

430 Extending use of the Biosensor for newborn testing in countries where it is already deployed for
431 malaria case management in resource-constrained settings [37], would provide a higher return on this
432 investment. Use of Biosensor in populations with prevalent G6PD deficiency outside malaria endemic
433 regions might increase the benefit-cost ratio of universal screening [38] in all settings [39].

434

435 ACKNOWLEDGMENTS

436 The authors wish to thank all the mothers for their collaboration and understanding; the study would
437 not have been possible without the hard work and dedication of all SMRU staff involved, especially
438 during such a difficult time of political unrest and COVID-19 pandemic. Acknowledgments are also
439 extended to SD Biosensor for donating the devices and the tests for the study.

440 ETHICAL APPROVAL

441 The study was approved by Oxford Tropical Research Ethics Committee, UK (OxTREC 532-19), the
442 Mahidol University Faculty of Tropical Medicine Ethics Committee, Thailand (TMEC 19-048, MUTM
443 2019-080-02) and the Tak Province Border Community Ethics Advisory Board (TCAB201904). Written
444 informed consent was obtained from literate mothers and midwives; a thumbprint was obtained in
445 the presence of a literate witness for illiterate mothers.

446 COMPETING INTERESTS

447 None declared.

448 FUNDING

449 The study was supported by a grant to GB by the Wellcome Trust Institutional Translational Partnership
450 Awards: Thailand Major Overseas Programme (WT-iTP-2019/004). SMRU is supported by the
451 Wellcome Trust [grant 220111]. For the purpose of Open Access, the authors have applied a CC BY
452 public copyright licence to any author accepted manuscript version arising from this submission. The
453 funders had no role in study design, data collection and analysis, decision to publish, or preparation of
454 the manuscript.

455 DATA AVAILABILITY STATEMENT

456 De-identified participant data are available from the Mahidol Oxford Tropical Medicine Data Access
457 Committee upon request from this link: [https://www.tropmedres.ac/units/moru-bangkok/bioethics-](https://www.tropmedres.ac/units/moru-bangkok/bioethics-engagement/datasharing)
458 [engagement/datasharing](https://www.tropmedres.ac/units/moru-bangkok/bioethics-engagement/datasharing).

459

460 REFERENCES

461

- 462 1. Bhutani VK, Zipursky A, Blencowe H, Khanna R, Sgro M, Ebbesen F, et al. Neonatal
463 hyperbilirubinemia and Rhesus disease of the newborn: incidence and impairment estimates
464 for 2010 at regional and global levels. *Pediatric research*. 2013;74 Suppl 1:86-100.
- 465 2. Bhutani VK, Vilms RJ, Hamerman-Johnson L. Universal bilirubin screening for severe
466 neonatal hyperbilirubinemia. *J Perinatol*. 2010;30 Suppl:S6-15.
- 467 3. Olusanya BO, Kaplan M, Hansen TWR. Neonatal hyperbilirubinaemia: a global
468 perspective. *Lancet Child Adolesc Health*. 2018;2(8):610-20.
- 469 4. Lauer BJ, Spector ND. Hyperbilirubinemia in the newborn. *Pediatr Rev*.
470 2011;32(8):341-9.
- 471 5. Bancone G, Gornsawun G, Peerawaranun P, Penpitchaporn P, Paw MK, Poe DD, et al.
472 Contribution of genetic factors to high rates of neonatal hyperbilirubinaemia on the
473 Thailand-Myanmar border. *Plos Global Public Health*. 2022.
- 474 6. Cappellini MD, Fiorelli G. Glucose-6-phosphate dehydrogenase deficiency. *Lancet*.
475 2008;371(9606):64-74.
- 476 7. Kaplan M, Hamerman C, Vreman HJ, Stevenson DK, Beutler E. Acute hemolysis and
477 severe neonatal hyperbilirubinemia in glucose-6-phosphate dehydrogenase-deficient
478 heterozygotes. *The Journal of pediatrics*. 2001;139(1):137-40.

- 479 8. Meloni T, Forteleoni G, Dore A, Cutillo S. Neonatal hyperbilirubinaemia in
480 heterozygous glucose-6-phosphate dehydrogenase deficient females. *British journal of*
481 *haematology*. 1983;53(2):241-6.
- 482 9. Molou E, Schulpis KH, Thodi G, Georgiou V, Dotsikas Y, Papadopoulos K, et al.
483 Glucose-6-Phosphate Dehydrogenase (G6PD) deficiency in Greek newborns: the
484 Mediterranean C563T mutation screening. *Scandinavian journal of clinical and laboratory*
485 *investigation*. 2014;74(3):259-63.
- 486 10. WHO Working Group. Glucose-6-phosphate dehydrogenase deficiency. *Bulletin of*
487 *the World Health Organization*. 1989;67(6):601-11.
- 488 11. Howes RE, Piel FB, Patil AP, Nyangiri OA, Gething PW, Dewi M, et al. G6PD deficiency
489 prevalence and estimates of affected populations in malaria endemic countries: a
490 geostatistical model-based map. *PLoS medicine*. 2012;9(11):e1001339.
- 491 12. Bancone G, Chu CS, Somsakchaichoen R, Chowwiwat N, Parker DM,
492 Charunwatthana P, et al. Characterization of G6PD Genotypes and Phenotypes on the
493 Northwestern Thailand-Myanmar Border. *PloS one*. 2014;9(12):e116063.
- 494 13. Turner C, Carrara V, Aye Mya Thein N, Chit Mo Mo Win N, Turner P, Bancone G, et al.
495 Neonatal intensive care in a Karen refugee camp: a 4 year descriptive study. *PloS one*.
496 2013;8(8):e72721.
- 497 14. Thielemans L, Gornawun G, Hanboonkunupakarn B, Paw MK, Porn P, Moo PK, et al.
498 Diagnostic performances of the fluorescent spot test for G6PD deficiency in newborns along
499 the Thailand-Myanmar border: A cohort study. *Wellcome open research*. 2018;3:1.
- 500 15. Health NCCfWsCs. NICE. Neonatal jaundice: clinical guideline2010.
- 501 16. Bancone G, Chowwiwat N, Somsakchaichoen R, Poodpanya L, Moo PK, Gornawun
502 G, et al. Single Low Dose Primaquine (0.25mg/kg) Does Not Cause Clinically Significant
503 Haemolysis in G6PD Deficient Subjects. *PloS one*. 2016;11(3):e0151898.
- 504 17. Asiimwe C, Kyabayinze DJ, Kyalisiima Z, Nabakooza J, Bajabaite M, Counihan H, et al.
505 Early experiences on the feasibility, acceptability, and use of malaria rapid diagnostic tests at
506 peripheral health centres in Uganda-insights into some barriers and facilitators. *Implement*
507 *Sci*. 2012;7:5.
- 508 18. Bancone G, Gilder ME, Chowwiwat N, Gornawun G, Win E, Cho WW, et al.
509 Prevalences of inherited red blood cell disorders in pregnant women of different ethnicities
510 living along the Thailand-Myanmar border. *Wellcome open research*. 2017;2:72.
- 511 19. Bland JM, Altman DG. Statistical methods for assessing agreement between two
512 methods of clinical measurement. *Lancet*. 1986;1(8476):307-10.
- 513 20. Kumar R, Indrayan A. Receiver operating characteristic (ROC) curve for medical
514 researchers. *Indian pediatrics*. 2011;48(4):277-87.
- 515 21. Thielemans L, Peerawaranun P, Mukaka M, Paw MK, Wiladphaingern J, Landier J, et
516 al. High levels of pathological jaundice in the first 24 hours and neonatal hyperbilirubinaemia
517 in an epidemiological cohort study on the Thailand-Myanmar border. *PloS one*.
518 2021;16(10):e0258127.
- 519 22. Aynalem YA, Mulu GB, Akalu TY, Shiferaw WS. Prevalence of neonatal
520 hyperbilirubinaemia and its association with glucose-6-phosphate dehydrogenase deficiency
521 and blood-type incompatibility in sub-Saharan Africa: a systematic review and meta-analysis.
522 *BMJ Paediatr Open*. 2020;4(1):e000750.
- 523 23. Bernardo J, Nock M. Pediatric Provider Insight Into Newborn Screening for Glucose-6-
524 Phosphate Dehydrogenase Deficiency. *Clin Pediatr (Phila)*. 2015;54(6):575-8.

- 525 24. DelFavero JJ, Jnah AJ, Newberry D. Glucose-6-Phosphate Dehydrogenase Deficiency
526 and the Benefits of Early Screening. *Neonatal Netw.* 2020;39(5):270-82.
- 527 25. Wong RJ, Montiel C, Kunda M, Stevenson DK, Bhutani VK. A novel point-of-care
528 device for measuring glucose-6-phosphate dehydrogenase enzyme deficiency. *Semin*
529 *Perinatol.* 2021;45(1):151356.
- 530 26. Alam MS, Kibria MG, Jahan N, Thriemer K, Hossain MS, Douglas NM, et al. Field
531 evaluation of quantitative point of care diagnostics to measure glucose-6-phosphate
532 dehydrogenase activity. *PloS one.* 2018;13(11):e0206331.
- 533 27. Pal S, Bansil P, Bancone G, Hrutkay S, Kahn M, Gornsawun G, et al. Evaluation of a
534 Novel Quantitative Test for Glucose-6-Phosphate Dehydrogenase Deficiency: Bringing
535 Quantitative Testing for Glucose-6-Phosphate Dehydrogenase Deficiency Closer to the
536 Patient. *The American journal of tropical medicine and hygiene.* 2019;100(1):213-21.
- 537 28. Pal S, Myburgh J, Bansil P, Hann A, Robertson L, Gerth-Guyette E, et al. Reference and
538 point-of-care testing for G6PD deficiency: Blood disorder interference, contrived specimens,
539 and fingerstick equivalence and precision. *PloS one.* 2021;16(9):e0257560.
- 540 29. Zobrist S, Brito M, Garbin E, Monteiro WM, Clementino Freitas S, Macedo M, et al.
541 Evaluation of a point-of-care diagnostic to identify glucose-6-phosphate dehydrogenase
542 deficiency in Brazil. *PLoS neglected tropical diseases.* 2021;15(8):e0009649.
- 543 30. Kosaryan M, Mahdavi MR, Jalali H, Roshan P. Why does the Iranian national program
544 of screening newborns for G6PD enzyme deficiency miss a large number of affected infants?
545 *Pediatric hematology and oncology.* 2014;31(1):95-100.
- 546 31. Doherty AN, Kring EA, Posey YF, Maisels MJ. Glucose-6-phosphate dehydrogenase
547 activity levels in white newborn infants. *The Journal of pediatrics.* 2014;164(6):1416-20.
- 548 32. Kaplan M, Abramov A. Neonatal hyperbilirubinemia associated with glucose-6-
549 phosphate dehydrogenase deficiency in Sephardic-Jewish neonates: incidence, severity, and
550 the effect of phototherapy. *Pediatrics.* 1992;90(3):401-5.
- 551 33. Ellis D, Sewell CE, Skinner LG. Reticulocyte enzymes and protein synthesis. *Nature.*
552 1956;177(4500):190-1.
- 553 34. Srivastava A, Evans KJ, Sexton AE, Schofield L, Creek DJ. Metabolomics-Based
554 Elucidation of Active Metabolic Pathways in Erythrocytes and HSC-Derived Reticulocytes.
555 *Journal of proteome research.* 2017;16(4):1492-505.
- 556 35. Engel N, Ghergu C, Matin MA, Kibria MG, Thriemer K, Price RN, et al. Implementing
557 radical cure diagnostics for malaria: user perspectives on G6PD testing in Bangladesh.
558 *Malaria journal.* 2021;20(1):217.
- 559 36. Gerth-Guyette E, Adissu W, Brito M, Garbin E, Macedo M, Sharma A, et al. Usability
560 of a point-of-care diagnostic to identify glucose-6-phosphate dehydrogenase deficiency: a
561 multi-country assessment of test label comprehension and results interpretation. *Malaria*
562 *journal.* 2021;20(1):307.
- 563 37. Chu CS, Bancone G, Kelley M, Advani N, Domingo GJ, Cutiongo-de la Paz EM, et al.
564 Optimizing G6PD testing for *Plasmodium vivax* case management: why sex, counseling, and
565 community engagement matter. *Wellcome open research.* 2020;5:21.
- 566 38. Vidavalur R, Bhutani VK. Economic evaluation of point of care universal newborn
567 screening for glucose-6-Phosphate dehydrogenase deficiency in United States. *J Matern*
568 *Fetal Neonatal Med.* 2021:1-9.
- 569 39. Watchko JF, Kaplan M, Stark AR, Stevenson DK, Bhutani VK. Should we screen
570 newborns for glucose-6-phosphate dehydrogenase deficiency in the United States? *J*
571 *Perinatol.* 2013;33(7):499-504.

Quantitative G6PD point-of-care test can be used reliably on cord blood to identify male and female newborns at increased risk of neonatal hyperbilirubinaemia: a mixed method study

Figure 1. Distribution of G6PD enzymatic activity from cord blood samples detected by gold standard spectrophotometry assay (A) and Biosensor (B) according to sex and genotype

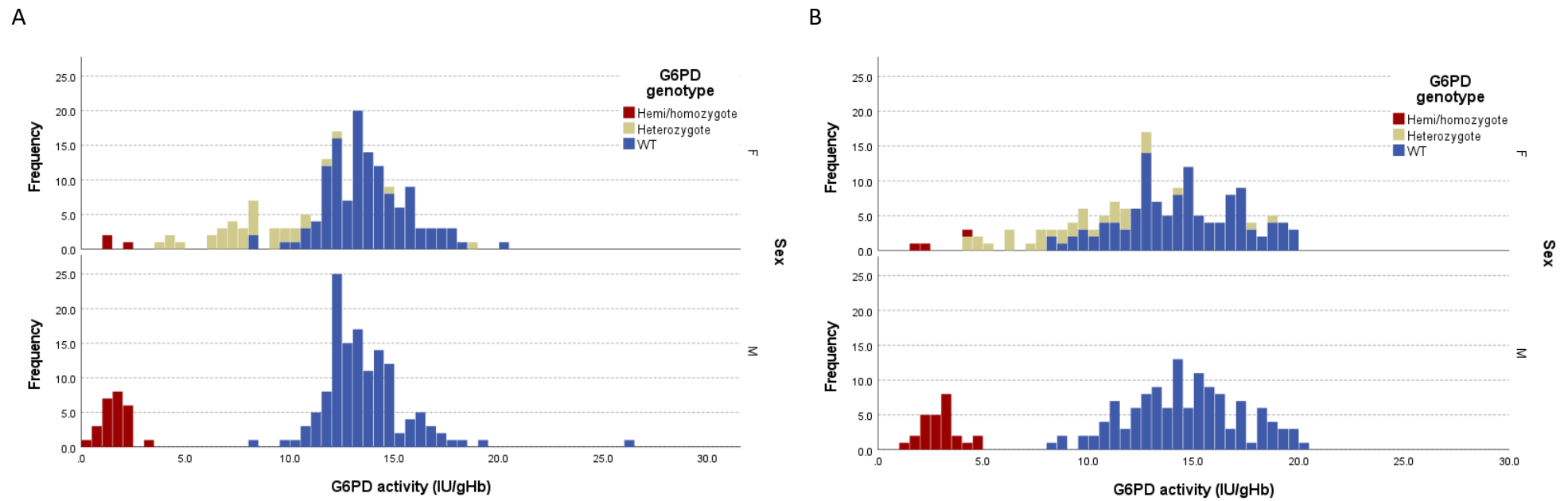
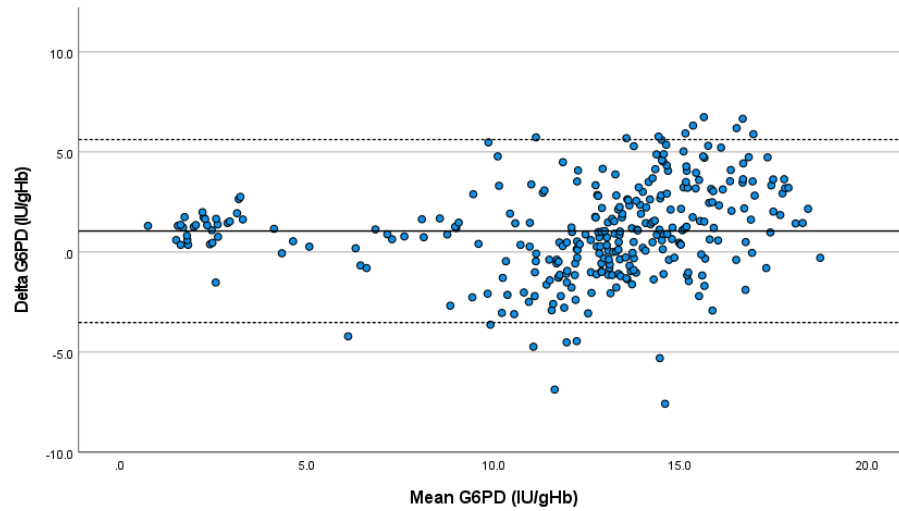


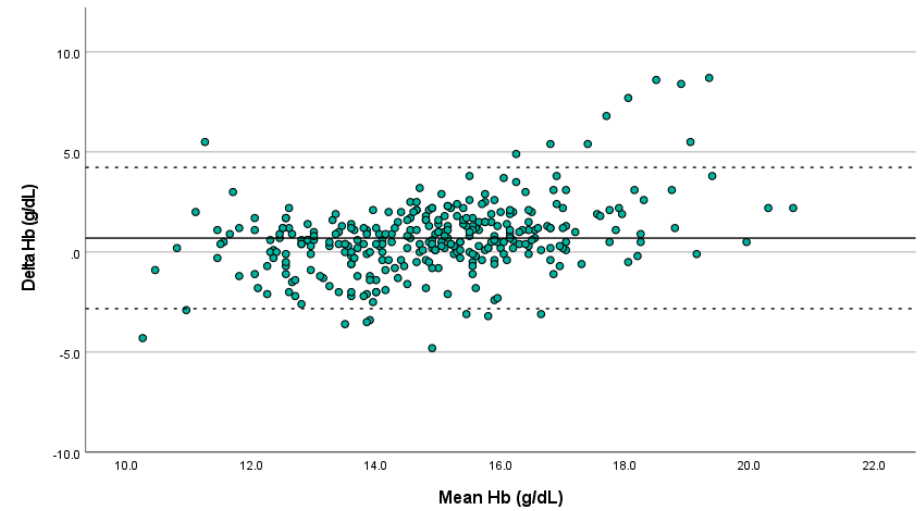
Figure 2. Bland Altman plot of G6PD activity (A) and haemoglobin levels (B) in cord blood comparing gold standard spectrophotometry to Biosensor

A



Delta G6PD=G6PD Biosensor- G6PD Spectrophotometry
Full horizontal line indicates mean difference (1.05IU/gHb); dotted horizontal lines indicate limits of agreement (-3.52 to 5.62IU/gHb)

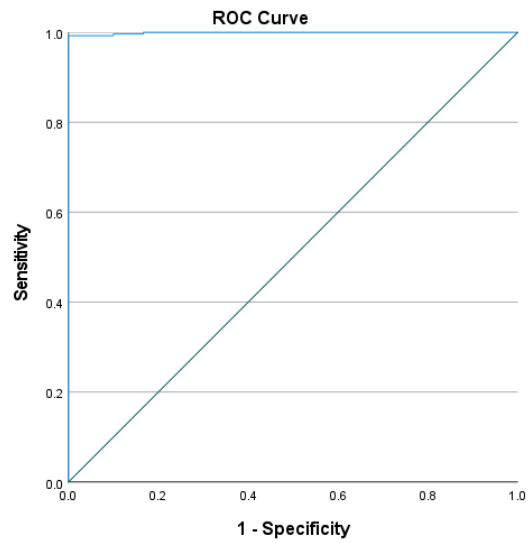
B



Delta Hb=Hb Biosensor- Hb Spectrophotometry
Full horizontal line indicates mean difference (0.70g/dL); dotted horizontal lines indicate limits of agreement (-2.83 to 4.23g/dL)

Figure 3. Receiver Operating Characteristic curve of Biosensor for 30% activity (A) and 70% activity (B) thresholds.

A) 30% activity



B) 70% activity

