

1 **DIFFERENTIAL SARS-COV-2 ANTIGEN SPECIFICITY OF THE HUMORAL**
2 **RESPONSE IN INACTIVATED VIRUS-VACCINATED, CONVALESCENT, AND**
3 **BREAKTHROUGH SUBJECTS**

4 Luisa F. Duarte^{1#}, Yaneisi Vázquez^{1#}, Benjamín Diethelm-Varela^{1#}, Valentina Pavez¹,
5 Roslye Berríos-Rojas¹, Jessica A. White², Alexis M. Kalergis^{1,3}, Susan M. Bueno¹ and Pablo
6 A. González^{1*}

7

8 ¹Millennium Institute on Immunology and Immunotherapy, Departamento de Genética
9 Molecular y Microbiología, Facultad de Ciencias Biológicas, Pontificia Universidad Católica
10 de Chile, Santiago, Chile.

11 ²PATH, 2201 Westlake Avenue, Suite 200, Seattle, WA 98121, USA

12 ³Departamento de Endocrinología, Facultad de Medicina, Pontificia Universidad Católica de
13 Chile, Santiago, Chile.

14 # Equal contribution.

15 *Correspondence to: pagonzalez@bio.puc.cl

16

17 **Keywords:** Inactivated Vaccine, CoronaVac, SARS-CoV-2, antigens, differential diagnosis,
18 biomarkers

19 **Abbreviations:** Severe Acute Respiratory Syndrome Coronavirus 2 (SARS-CoV-2); The
20 etiological agent of coronavirus disease 2019 (COVID-19); World Health Organization
21 (WHO); Geometric mean titer (GMT); Receiver operating characteristic (ROC); Polymerase
22 chain reaction (PCR); Optical density (OD); Binding antibody units (BAU); Area under the
23 curve (AUC).

24

25 **ABSTRACT**

26 Analytical methods for the differential determination between natural infection with SARS-
27 CoV-2 vs. immunity elicited by vaccination or infection after immunization (breakthrough
28 cases) represent attractive new research venues in the context of the ongoing COVID-19
29 pandemic caused by Severe Acute Respiratory Syndrome coronavirus 2 (SARS-CoV-2).
30 Herein, we set out to compare humoral responses against several SARS-CoV-2 structural and
31 non-structural proteins in infected unvaccinated (convalescent), vaccinated, as well as
32 vaccinated and infected (breakthrough) individuals. Our results indicate that immunization
33 with an inactivated SARS-CoV-2 vaccine (CoronaVac) induces significantly higher levels
34 of IgG antibodies against the membrane (M) protein of SARS-CoV-2 as compared to
35 convalescent subjects both, after the primary vaccination schedule and after a booster dose.
36 Moreover, we found that CoronaVac-immunized individuals, after receiving a third vaccine
37 shot, display equivalent levels of N-specific IgG antibodies as convalescent subjects.
38 Regarding non-structural viral proteins, for the two viral proteins ORF3a and NSP8, IgG
39 antibodies were produced in more than 50% of the convalescent subjects. Finally, a logistic
40 regression model and a receiver operating characteristic (ROC) analysis show that combined
41 detection of M and N proteins may be useful as a biomarker to differentiate breakthrough
42 cases from vaccinated and convalescent individuals that did not receive prior vaccination.
43 Taken together, these results suggest that multiple SARS-CoV-2 antigens may be used as
44 differential biomarkers for distinguishing natural infection from vaccination.

45 1. INTRODUCTION

46 Severe Acute Respiratory Syndrome coronavirus 2 (SARS-CoV-2), the etiological
47 agent of coronavirus disease 2019 (COVID-19), produces significant morbidity and mortality
48 worldwide that has caused significant strain on public health systems, altogether imposing
49 severe social and economic burdens to nations around the globe [1,2]. Starting the year 2021,
50 most countries worldwide have deployed massive vaccination campaigns that successfully
51 curb the worst outcomes of COVID-19. However, the immune responses elicited in
52 convalescent individuals, the vaccinated, and those vaccinated and infected (breakthrough)
53 cases remain to be studied in depth in the upcoming years in such a way to identify and better
54 understand potential correlates of protection against infection with this virus [3]. Worldwide,
55 more than a dozen vaccines have been approved by the World Health Organization (WHO),
56 which are based on different technological platforms, compositions and administration
57 schedules [4,5]. Importantly, whole inactivated SARS-CoV-2 vaccines account for nearly
58 half of the total number of doses administered in the world population, and CoronaVac
59 (Sinovac Biotech) has been approved in over 30 countries within mass vaccination
60 campaigns in low and middle-income countries [6], with favorable safety and
61 immunogenicity results [7–10]. The efficacy and effectiveness of this vaccine against
62 COVID-19-related hospitalizations and deaths are significant [11–16], especially when
63 immunity is reinforced with a booster dose [17–20].

64 Whole-virus vaccines have a variety of structural viral antigens, many of which are
65 not present in mRNA- or vector-based vaccines [7]. Importantly, whole-virus vaccines may
66 elicit, to some extent, immune responses that mimic natural infection with SARS-CoV-2.
67 However, because the profile of antigenic proteins presented in the context of infectious virus
68 and contained in the inactivated viral particles within the vaccine are not identical, we

69 hypothesized that natural infection versus inactivated-virus vaccination or breakthrough
70 cases elicits differential humoral responses against SARS-CoV-2 proteins. Thus, we sought
71 to identify these putative differences, which could eventually be used as biomarkers for the
72 differential serodiagnosis of individuals naturally infected with SARS-CoV-2 versus those
73 immunized with inactivated-virus vaccine or breakthrough cases undergoing infection after
74 vaccination.

75 The SARS-CoV-2 genome encodes four structural proteins, namely Spike (S),
76 nucleocapsid (N), membrane (M), and envelope (E), and 16 non-structural proteins (NSP1-
77 NSP16), along with several accessory proteins (ORF3a, 3d, 6, 7a, 7b, 8, 9b, 14, and 10) that
78 play key roles in immune evasion and the replication cycle of the virus [21,22]. Among these
79 proteins, the viral structural protein S is highly immunogenic, and the induction of binding-
80 and neutralizing anti-S antibodies by vaccines against SARS-CoV-2 have been the focus of
81 extensive investigation during the last two years [23–27]. However, antibodies against other
82 SARS-CoV-2 proteins, such as those produced against virus-inactivated vaccines, are less
83 known and thus, require further characterization for a better understanding of the kinetics
84 and extent of the host immune profiles generated against this virus and potentially identifying
85 correlates of protection.

86 In this study, we compared the humoral immune responses elicited against the N, M,
87 and E-structural proteins of SARS-CoV-2, as well as the non-structural ORF3a, and NSP8
88 proteins of this virus among unvaccinated convalescent individuals that survived SARS-
89 CoV-2 infection, and subjects immunized with the SARS-CoV-2-inactivated CoronaVac
90 vaccine at different stages during their vaccination and booster schedule. We also analyzed
91 and compared this humoral response in CoronaVac-vaccinated individuals later infected with
92 SARS-CoV-2 (breakthrough cases) [17]. Overall, our data show that anti-N IgG antibodies

93 are produced significantly in the vaccinated group only after administering a booster dose of
94 CoronaVac, and anti-M IgG antibody titers were higher in the vaccinated group as compared
95 to convalescent individuals. Conversely, convalescent individuals displayed high titers of
96 anti-N antibodies, which remained elevated for at least eight weeks after recovery from
97 SARS-CoV-2 infection. These individuals also displayed a seropositivity rate above 50% for
98 the NSP8 protein. Regarding breakthrough cases, an antibody pattern characteristic of an
99 anamnestic immune response was elicited, resulting in a substantial boost of titers against
100 surface antigens within the virus. Finally, we performed a receiver operating characteristic
101 (ROC) analysis to differentiate breakthrough cases between vaccinated volunteers and
102 convalescent individuals without previous vaccination. Importantly, we found at the protein
103 level that the antibody responses against the combination of the N and M viral proteins may
104 serve to discriminate between these individuals with an appropriate cutoff criterion.

105 2. MATERIALS AND METHODS

106 2.1 Subjects

107 Serum samples from subjects between 18 to 59 years and older than 60 years
108 belonging to the CoronaVac03CL Phase 3 scientific-clinic study carried out in Chile were
109 obtained from the following groups: i) pre-immune: sera obtained at the moment of the first
110 dose, ii) second dose + 2 weeks: sera obtained from subjects vaccinated with the second dose
111 of CoronaVac (28 days post-first dose) plus two weeks, iii) second dose + 4w: sera from
112 subjects vaccinated with the second dose of CoronaVac plus four weeks, iv) third dose + 4w:
113 sera from subjects vaccinated with the booster dose of CoronaVac (6 months after the first
114 dose) plus four weeks, vi) breakthrough + 2w: serum obtained from subjects vaccinated with
115 two doses of CoronaVac and then naturally infected with SARS-CoV-2, from whom the
116 samples were taken two weeks after a positive polymerase chain reaction (PCR) test, and vii)
117 breakthrough + 4w: serum from subjects vaccinated with two doses of CoronaVac and
118 infected with SARS-CoV-2, from whom the sample was taken four weeks after a positive
119 PCR test. At least 25 subjects were evaluated for the vaccinated group and 10 for the
120 breakthrough cases. Sera obtained from the biobank of clinical samples within the PATH
121 institution was grouped as follows: i) naive: sera from 10 subjects who were not exposed to
122 the virus and were taken before the year 2020, ii) convalescents: sera from 9 subjects who
123 were infected with SARS-CoV-2 and then blood samples were taken for serum recollection
124 at 1, 2, 4 and 8 weeks after symptom-onset, iii) 10 samples obtained from convalescent
125 subjects that were classified with low, mid and high titer against SARS-CoV-2, but the time
126 of the sample collection was not detailed (unspecified). The age of these subjects was
127 unknown. Table 1 summarizes the description of all samples included in this study. Blood
128 samples were obtained from volunteers recruited in the clinical trial CoronaVac03CL

129 (clinicaltrials.gov #NCT04651790) carried out in Chile starting in November 2020. The
130 study was approved by the sponsoring institution Ethical Committee (ID 200708006), each
131 Institutional Ethical Committee of the other sites, and the Public Health Institute of Chile
132 (ISP Chile, number 24204/20). Execution of the trials was conducted according to the current
133 Tripartite Guidelines for Good Clinical Practices, the Declaration of Helsinki and local
134 regulations.

135 **2.2 Dot blot**

136 To immobilize recombinant proteins on a solid matrix, 500 ng of each protein was
137 diluted in 20 mM phosphate buffer (mixture of monobasic and dibasic phosphate), 0.5 M
138 NaCl, and 8 M urea were spotted onto a nitrocellulose membrane (in 2 uL volume) (Thermo
139 Scientific). Membranes with spots were air-dried for 15 min and subsequently blocked with
140 10% BSA diluted in 0.05% Tween-20 in PBS, for 2 h at RT. After incubation, the membranes
141 were washed with 0.05% Tween-20 in PBS (twice). Next, the membranes were incubated
142 overnight at 4°C with a sera pool from naive, convalescents (+ 4 weeks), vaccinated with
143 second dose + 2 weeks, and breakthrough (PCR(+)) + 2 weeks subjects. A sera pool was
144 incubated in a dilution of 1/250 with 1% BSA diluted in 0.05% Tween-20 in PBS. As positive
145 control, all proteins (500 ng) were incubated with an anti-His Tag antibody conjugated with
146 biotin at a dilution of 1:3,000 in 1% BSA diluted in 0.05% Tween-20 in PBS (Supplementary
147 Figure 1). After incubation, the membranes were washed with 0.05% Tween-20 in PBS (three
148 times x 5 min) and incubated for 1 h at RT with 1:2,000 anti-human IgG-HRP (1 mg/ml, BD)
149 diluted in 1% BSA with 0.05% and Tween-20 in PBS. The membranes with an anti-His Tag-
150 biotin antibody (Genscript, # A00613) were incubated with Streptavidin-HRP (1:6,000;
151 Abcam #7403). Finally, membranes were washed with 0.05% Tween-20 in PBS (three
152 times), once with PBS, and then incubated with an enhanced chemiluminescence Western

153 blot detection system (Femto, ECL, Thermo Scientific # 34094). Proteins evaluated included
154 ORF1a polyprotein (Invitrogen, #RP-87701), ORF3a (LSBio, #LS-G145920), ORF8
155 (LSBio, #LS-G145919), NSP1 (R&D systems, #10666-CV), NSP8 (R&D systems, #10633-
156 CV), NSP9 (R&D systems, #10631-CV), NSP10 (R&D systems, #10630-CV), NSP14 (R&D
157 systems, #10667-CV), E (Sino Biological, #40609-V10E3) and ME (Sino Biological,
158 #40598-V07E).

159 **2.3 ELISA assays**

160 In-house indirect ELISA assays were performed to detect humoral immunity against
161 N-SARS-CoV-2 (R&D systems, #10474-CV), M (R&D systems, #10690-CV), E (Sino
162 Biological, #40609-V10E3), ORF3a (LSBio, #LS-G145920) and NSP8 (R&D systems,
163 #10633-CV). Briefly, high-binding 96-well ELISA plates (Corning, #9018) were activated
164 with 100 ng of N and M antigen dissolved in carbonate-bicarbonate buffer (Bioleged 1x,
165 #421701) for 1 h at 37°C and blocked with 10% m/w milk in PBS 1X - Tween 20 (0.05%)
166 overnight at 4°C. Denaturing buffer (20 mM monobasic and dibasic phosphate buffer, 0.5
167 NaCl, and 8 M urea) was used as co-acting buffer to evaluate anti-ORF3a, anti-E, and anti-
168 NSP8-SARS-CoV-2 (250 ng, 500 ng and 200 ng, respectively). Afterward, the plates were
169 incubated with sera from participants using serial dilution factors ranging from 1/250 to
170 1/16,000 (N and M) and 1/50 to 1/1,600 (E, NSP8, and ORF-3a proteins) for 1 h at 37°C
171 (diluted 1% m/w milk in PBS 1X - Tween 20 (0.05%)). In parallel, a WHO standard curve
172 (NIBSC code: 20/268) was performed from dilutions of 1/40 to 1/360. Then, the plates were
173 incubated with anti-human IgG-HRP (BD, # 555788) for 30 min at room temperature in
174 darkness. Finally, plates were resolved using commercial TMB (BD OptEIA, # 555214),
175 consisting of a substrate mixture, which was incubated at room temperature for 15 min in

176 darkness. This reaction was stopped using 2N H₂SO₄, and the absorbance at 450 nm was
177 read.

178 **2.4 Data analysis**

179 For all ELISA assays, corrected optical density (OD) values were calculated by
180 obtaining the average between each subject's two replicates and subtracting the
181 corresponding subject's blank (i.e., the OD measurement from the "inactivated" well) for
182 each dilution factor. An absorbance cutoff was calculated for each dilution factor to establish
183 the seropositivity threshold. For each subject, the antibody titer was defined as the highest
184 dilution factor where the corrected OD was higher than the cutoff value for the corresponding
185 dilution factor. Geometric Mean of Titers (GMTs) was calculated using all subject titers for
186 a given visit. A standard curve was used to plot the antibody responses against the M, N, and
187 NSP8 proteins in the samples as binding arbitrary units (BAU), by using the WHO
188 International Standard for SARS-CoV-2 antibody (NIBSC code: 20/268), which was
189 prepared according to the manufacturer's instructions [28]. Data were analyzed using the log
190 concentration transformed, and the final concentration for each sample was the average of
191 the product of the interpolated BAU from the standard curve and the sample dilution factor
192 required to achieve the OD₄₅₀ value that fell within the linear quantitative range. Samples
193 with undetermined concentrations at the lowest dilution tested were assigned the lower limit
194 of quantification (28.6; 23.6; and 13.5 BAU for N, M, and NSP8, respectively).

195 Statistical differences in GMT values among all the different evaluated times and
196 proteins by group were assessed using a two-way analysis of variance (ANOVA) with
197 Tukey's multiple comparison test. Comparisons between CoronaVac-vaccinated individuals
198 and convalescents subjects were assessed using the Kruskal-Wallis test with Dunn's multiple

199 comparisons test. The significance threshold was set at $\alpha = 0.05$. GraphPad Prism 9.0 was
200 used for data plotting, multiple logistic regression, and ROC curve statistical analyses.
201

202 **RESULTS**

203 *Kinetics and extent of SARS-CoV-2-specific antibodies responses in convalescents,*
204 *CoronaVac-vaccinated individuals, and breakthrough cases.*

205 To assess which are those antigens that contribute to the humoral response elicited
206 after natural infection, vaccination, or infection after vaccination (breakthrough cases), first
207 we performed dot blot analyses using a subset of non-structural (ORF1a, ORF3a, ORF8,
208 NSP1, NSP8, NSP9, NSP10, NSP14,) and structural (E and M) recombinant viral proteins
209 with serum pools from COVID-19 convalescent patients, CoronaVac-vaccinated individuals,
210 and breakthrough cases. Naïve individuals were also included as controls. In these
211 experiments, we detected some degree of differential immunoreactivity between the
212 evaluated groups, mainly for the M and E structural proteins and the non-structural proteins
213 ORF3a and NSP8 (**Supplementary Figure 1**). We then evaluated the kinetics of the specific-
214 IgG antibodies for these proteins and the structural N protein by ELISA in convalescent
215 individuals, subjects vaccinated with two or three doses of CoronaVac, and breakthrough
216 cases. Subject data and sampling times are detailed in Table 1.

217 As expected, CoronaVac-vaccinated individuals showed a humoral immune response
218 that was polarized towards structural components within the virion (**Figure 1A-C**).
219 Remarkably, N-specific IgG antibody titers were significantly elevated only four weeks after
220 administering the third dose, compared to naïve controls, pre-immune samples, and sera
221 obtained two weeks after the second dose. Conversely, M-specific antibodies titers showed
222 a significant increase four weeks after the second dose, similar to those obtained after the
223 booster dose (**Figure 1A**). There were no significant differences between vaccinated
224 individuals and the negative controls for the NSP8 and ORF3a antigens (**Figure 1B**). The

225 highest response in the vaccinated group was elicited against the N protein after the booster
226 dose, which reached 87% seropositivity. In contrast, only around 50% of the individuals had
227 N-specific antibodies after the second dose or M-specific antibodies after two or three doses
228 of the vaccine. On the other hand, approximately 20% of the vaccinated individuals displayed
229 a response against the NSP8 protein (**Figure 1C**).

230 Regarding the convalescent individuals, we detected significant differences in
231 antibody titers between patients and naïve controls when assessing reactivity towards the N-
232 structural protein and the NSP8-non-structural protein (**Figure 1D-F**). Sequential samples
233 from some individuals showed that the antibody response against the N protein was
234 significantly higher compared to naïve individuals starting two weeks after the onset of the
235 symptoms and was maintained for up to eight weeks (**Figure 1D**). Moreover, we observed
236 that the earliest antibody response in the convalescent group was elicited for the NSP8 protein
237 after one and two weeks from the symptom's onset (**Figure 1E**). The most immunogenic
238 protein in this group was the N protein, with seropositivity rates ranging from 78 to 89% at
239 two and four weeks after symptoms onset, respectively, followed by NSP8, which showed a
240 seropositivity rate of 70 and 63% after one or two weeks, respectively (**Figure 1F**).

241 We next investigated the specific-IgG antibody responses produced in individuals
242 with symptomatic SARS-CoV-2 infection who were previously vaccinated with two doses
243 of CoronaVac (breakthrough cases) (**Figure 1G-I**). In this case, the N-specific IgG antibodies
244 showed the highest levels at both times evaluated, two and four weeks after COVID-19
245 diagnosis, and showed 100% seropositivity rates. Although the antibody titers for the M
246 protein did not reach significant levels as compared to naïve controls, they showed high
247 seropositivity rates within 100 and 89% at two and four weeks after COVID-19 diagnosis,

248 respectively (**Figures 1G and I**). To a lesser extent, we also found a significant difference at
249 the antibody level between breakthrough cases and naïve controls for the NSP8 after two
250 weeks, with a seropositivity rate of 40% (**Figures 1H and I**).

251 To harmonize the assessment of the humoral immune response after natural infection,
252 vaccination, or in breakthrough cases, the WHO has recommended reporting the binding
253 activity results in binding antibody units (BAU), using the first international standard (IS)
254 for anti-SARS-CoV-2 immunoglobulin [29–31]. Antibody titers were obtained for the M, N,
255 and NSP8 proteins as BAU (**Supplementary Figure 2 and Supplementary Table 1**).
256 Antibody values for other viral proteins could not be reported as BAU, due to the low level
257 of detection.

258 Overall, our results show that CoronaVac induces a broad humoral immune response,
259 including high levels of N- and M-specific antibodies in an important percentage of
260 vaccinated individuals, which was enhanced after natural infection in breakthrough cases. On
261 the other hand, convalescent individuals who had not been vaccinated before infection
262 developed a modest but statistically significant increase in antibody response against non-
263 structural components of the virion.

264

265 ***SARS-CoV-2-IgG responses among CoronaVac-vaccinated individuals, COVID-19***
266 ***convalescent, and breakthrough subjects***

267 To further investigate differences in the antibody responses between CoronaVac-
268 vaccinated individuals and COVID-19 convalescent subjects, we analyzed the geometric
269 mean titers (GMTs) elicited in each group, those vaccinated with two or three doses of

270 CoronaVac, breakthrough cases after two doses of CoronaVac, and convalescent individuals
271 without prior vaccination. Time-points evaluated were four weeks after the second or booster
272 dose and four weeks after a positive PCR test for breakthrough cases. We also analyzed data
273 from convalescent individuals that had sample collection with unspecified dates and samples
274 from convalescent individuals whose samples were collected four weeks after symptom
275 onset. A summary of the GMT values and seropositivity rate obtained at these time points
276 are shown in **Table 2**.

277 Interestingly, the antibody responses were highest among breakthrough cases for the
278 structural proteins N and M. As shown in **Figure 2**, significant differences of 11 and 18-fold
279 were observed in terms of the magnitude of the anti-N and anti-M-specific IgG responses
280 between breakthrough cases and convalescent individuals (GMTs: 11313.7 vs. 1000 and
281 2939.5 vs. 161.4, respectively). Importantly, convalescent individuals also had binding anti-
282 M-specific IgG titers that were 4-fold lower than vaccinated individuals that received two or
283 three vaccine doses, which reached similar GMTs of 688.5 and 643.3, respectively (**Figures**
284 **2A and B**). We observed no significant difference in the overall levels of the anti-E-specific
285 antibody responses in vaccinated individuals compared to convalescents, suggesting that
286 infection or vaccination alone does not induce significant antibody responses against this
287 protein (**Figure 2C**).

288 Regarding the non-structural proteins evaluated, no differences were observed for the
289 NSP8 protein, as some vaccinated individuals displayed high titers against this protein, and
290 all groups reached GMTs of 92.3 and 87.1 after two or three vaccine doses, respectively.
291 Likewise, breakthrough cases reached a GMT of 107.2 and the convalescent group a GMT
292 of 149.4 (**Figure 2D**). These results suggest that vaccinated individuals may have had prior

293 exposure to other coronaviruses that elicit cross-reactivity, displaying a nonspecific antibody
294 immune response against this protein. However, this response was not boosted after natural
295 exposure to SARS-CoV-2. By contrast, we detected significantly higher ORF3a-specific
296 antibody titers in convalescent individuals than in CoronaVac-vaccinated subjects (GMT:
297 44.5 vs. 25 and 27.5 for two or three vaccine doses, respectively) (**Figure 2E**).

298 Finally, we performed a receiver operating characteristic (ROC) analysis to identify
299 which of the evaluated SARS-CoV-2 proteins may better differentiate CoronaVac-
300 vaccinated from convalescent individuals. Using this approach, the best performance was
301 obtained when testing structural proteins but depended on the number of doses administered
302 to the subjects. On the one hand, high area under the curve (AUC) values were obtained for
303 the N (0.72; 95%CI:0.56-0.88) and the M proteins (0.69; 95%CI:0.54-0.85) when comparing
304 vaccinated individuals with CoronaVac-vaccinated individuals receiving only two doses and
305 convalescents (**Figure 2F**). On the other hand, the N protein showed a low AUC value (0.55;
306 95%CI:0.38-0.72) when comparing vaccinated individuals receiving the third dose with
307 convalescents, and in this case, on the contrary, the highest AUC value was achieved for the
308 M protein (0.73; 95%CI:0.57-0.88) (**Figure 2G**).

309 In summary, these results show that vaccinated individuals have a broader immune
310 response and higher antibody titers against structural components of SARS-CoV-2 compared
311 to individuals who underwent a natural infection without prior vaccination.

312

313 *Combination of N- and M-specific antibody responses for differentiating breakthrough*
314 *cases from vaccinated-only, and convalescents individuals.*

315 As inactivated vaccines elicit a broad humoral immune response against various
316 antigens, the serological diagnosis of previously vaccinated individuals and the evaluation of
317 vaccine efficacy in a virus-exposed population is challenging. Next, we performed ROC
318 analyses to identify SARS-CoV-2 proteins that may differentiate the antibody responses
319 elicited in breakthrough cases from vaccinated-only individuals and convalescents subjects.

320 As shown in **Figure 3A**, when the humoral immune response elicited in breakthrough
321 cases is compared with that elicited by individuals vaccinated with two doses of CoronaVac,
322 we found AUC values of 0.92 (95%CI:0.83-1.0, N), 0.71 (95%CI:0.54-0.89, M), 0.55
323 (95%CI:0.35-0.75, E), 0.52 (95%CI:0.30-0.74, NSP8), and 0.55 (95%CI:0.33-0.77, ORF3a)
324 for each protein, suggesting that M and N proteins could be useful for discriminating between
325 both groups. We further compared individuals who received a booster dose (third dose) and
326 found a similar tendency with the highest AUC values obtained for the N and M proteins,
327 0.83 (95%CI:0.68-0.97), and 0.76 (95%CI:0.58-0.94), respectively (**Figure 3B**).
328 Remarkably, these proteins are also able to differentiate infected subjects without prior
329 vaccination (convalescents) from breakthrough cases (vaccinated, then infected), with AUC
330 values up to 0.90 (95%CI:0.77-1.0), for the N protein and 0.93 (95%CI:0.81-1.0), for the M
331 protein (**Figure 3C**). In addition, we performed multiple logistic regression analyses to
332 evaluate the capacity of the combined detection of N- and M-specific IgG antibodies to
333 distinguish breakthrough cases from the other groups evaluated. As shown in **Figures 3D-F**,
334 the combined data improved the AUC values obtained to 0.95 (95%CI:0.88-1.0), 0.88
335 (95%CI:0.75-1.0), and 0.98 (95%CI:0.95-1.0), respectively. Importantly, this approach
336 showed high negative and positive predictive powers of 92% and 80% for differentiating
337 breakthrough cases with vaccinated individuals that received two doses, and 90% and 73%

338 when compared with subjects vaccinated with the booster dose, and lastly, 90% and 89%
339 when comparing with convalescent individuals, suggesting this may be a valuable strategy
340 for serological diagnosis and vaccine efficacy evaluation. Moreover, scatter plots performed
341 with hypothetical cutoffs of IgG antibody titers showed that it is possible to cluster the
342 majority of the breakthrough cases in the quadrant with the highest values for N and M
343 antibody titers (Cutoff $\geq 1,500$ M or N-specific IgG antibody titers), as compared with
344 vaccinated-only individuals (two or three doses), or infected-only subjects (convalescents)
345 **(Figures 3G-I).**

346 Overall, these results suggest that the combination of N- and M-specific IgG antibody
347 levels could be a reliable biomarker for detecting vaccinated individuals who have had a mild
348 or asymptomatic SARS-CoV-2 infection and potentially differentiate infected individuals
349 from those with mixed immunity resulting from infection and vaccination with CoronaVac.

350 **DISCUSSION**

351 In the context of the COVID-19 pandemic and mass vaccination campaigns being
352 deployed around the world, a better understanding of the humoral immune response arising
353 from either natural infection, vaccination, or infection after vaccination is highly relevant as
354 a potential diagnostic tool that may help better determine epidemiological surveying and
355 public health strategies. This may also help identify potential new correlates of protection
356 against SARS-CoV-2 [32,33]. For the vaccinated individuals, we analyzed the immune
357 response elicited against a widely used inactivated SARS-CoV-2 vaccine (CoronaVac,
358 Sinovac Biotech's), given its significant deployment worldwide with billions of doses
359 administered so far. Because this vaccine consists of whole inactivated SARS-CoV-2, it is
360 composed of a diverse set of structural antigens that could be presented to the immune
361 system, and thus it is somewhat expected to elicit a humoral immune response that may
362 mirror natural infection [34].

363 Interestingly, antibodies raised against SARS-CoV-2 antigens were elicited at
364 significantly different levels in individuals recovering from natural infection, after
365 immunization with CoronaVac, and breakthrough cases. Furthermore, we found that
366 antibody titers directed against the M-SARS-CoV-2 protein were significantly higher in the
367 case of vaccinated individuals, as opposed to natural infection in unvaccinated individuals.
368 Importantly, we observed high titers of anti-N antibodies in individuals boosted with an
369 additional dose of inactivated SARS-CoV-2 vaccine, equivalent to those observed in
370 convalescent individuals. Regarding breakthrough cases, we found a potent immune response
371 for the two structural proteins N and M, suggesting that these humoral responses could be
372 used to differentially detect immunity elicited after natural infection in this vaccinated group,
373 as opposed to non-vaccinated infected individuals. Although we did not analyze potential

374 correlations between the elicited antibody responses and protection against COVID-19,
375 previous reports suggest that hybrid immunity, or additional antigen exposure after natural
376 infection before or after vaccination, is associated with a lower risk of reinfection, as well as
377 reduced COVID-19 hospitalization when compared to naturally acquired immunity after
378 infection alone [35,36]. Interestingly, high levels of IgG against the N protein, at the time of
379 hospital admission, has been correlated with worsen COVID-19 clinical courses [37], which
380 could be attributed to increased IL-6 production mediated by N-specific IgG antibodies
381 observed after COVID-19 cytokine storm [38]. On the contrary, high levels of IgG against
382 the N protein, detected after COVID-19 recovery, have been associated with a long-term
383 protective effect against re-infections [39]. The effect of other antibodies on the outcome of
384 COVID-19 has not been explored to date.

385 On the other hand, antibody titers against the ORF3a protein seemed to be elicited
386 almost exclusively in response to natural infection in non-vaccinated individuals
387 (convalescents) [40,41]. Therefore, ORF3a-SARS-CoV-2 may represent a biomarker to
388 differentiate natural SARS-CoV-2 infection from vaccination. Noteworthy, only a fraction
389 (50%) of the infected individuals responded to this antigen, which should be considered for
390 further analyses. Furthermore, NSP8-specific antibodies were elicited in a great percentage
391 of convalescent individuals at early time points (70% during the first week after symptom
392 onset). Although some individuals in the vaccinated group responded to this antigen, it is
393 unclear whether they were previously exposed to the virus before vaccination or whether it
394 corresponds to potential antibody cross-reactivity against other coronaviruses. However,
395 these findings need to be corroborated in future larger-scale studies to confirm the diagnostic
396 value of this protein and its potential use as a biomarker for SARS-CoV-2 infection.

397 Importantly, as discussed in the preceding paragraph, our results show that
398 immunization with CoronaVac, namely three doses, robustly elicits antibodies against the N
399 and M proteins of SARS-CoV-2 in human volunteers, which to our knowledge has not been
400 reported before, and which is consistent with the fact that inactivated SARS-CoV-2 vaccines
401 present a plethora of antigens to the immune system that elicits antibodies against multiple
402 viral proteins. Notably, as viral variants with multiple mutations in the S protein continue to
403 emerge, it is of considerable importance the induction of polyclonal responses elicited by
404 inactivated vaccines that could help to avoid the viral escape [10]. These data complement
405 our previous findings that reported high titers of anti-S-RBD antibodies and neutralizing
406 antibodies against SARS-CoV-2 in phase III clinical trials on adult and pediatric volunteers
407 [9].

408 On the other hand, our results complement findings previously reported for the
409 SARS-CoV-2 inactivated virus vaccine BBIBP-CorV, where the authors showed that the N
410 protein, NSP7, and S2-78 peptide may be applied independently or in combination for
411 effective discrimination between individuals vaccinated with two doses and convalescents
412 subjects. However, individuals vaccinated with three doses or breakthrough cases were not
413 included, and M-specific IgG response was not investigated [42]. In another study, the
414 combined use of ORF3b and ORF8 showed to be accurate serological markers for detection
415 of early and late SARS-CoV-2 infection, but further studies evaluating their potential to
416 differentiate convalescent and vaccinated individuals at different time points after
417 vaccination and/or with different vaccines are missing [43]. Moreover, the specific properties
418 of the antibodies elicited after vaccination or natural infection, other than neutralization
419 capacity, should be considered in future studies to accurately identify a correlate of protection
420 against COVID-19 [36,37].

421 Overall, our results indicate that CoronaVac is immunogenic and that the host can
422 produce various antibodies against structural proteins of SARS-CoV-2. This could allow for
423 a potential differential diagnosis based on humoral immune components present in the sera
424 among subjects undergoing natural infection, vaccinated, or breakthrough cases. Moreover,
425 our data show that immunization with an inactivated SARS-CoV-2 vaccine induces
426 significantly higher levels of antibodies against the structural protein M-SARS-CoV-2
427 compared to natural infection in unvaccinated subjects (convalescent subjects). Interestingly,
428 natural infection with SARS-CoV-2 elicits significantly higher titers of these antibodies
429 when the individuals were previously immunized (breakthrough cases) compared to
430 convalescent subjects. Additionally, we identified an antigen, ORF3a-SARS-CoV-2, against
431 which antibodies were produced in convalescent subjects at significantly higher titers than in
432 CoronaVac-immunized individuals.

433 Finally, it will be interesting to confirm the findings reported herein using high
434 throughput analyses that consider a significant number of samples accompanied with the
435 corresponding demographic information and details of the timing of the infection and
436 severity of the reported symptoms for non-vaccinated convalescent individuals and
437 breakthrough cases. Similarly, knowing the SARS-CoV-2 variant infecting the individuals
438 could shed light onto potential differences regarding the immunogenicity of these viruses.

439 Taken together, our study reveals different SARS-CoV-2 antigens that could be used
440 as differential biomarkers, alone or combined among them, for distinguishing between
441 natural infection-, vaccination-elicited immune memory, or infection after vaccination. Here,
442 we report that the structural M and N proteins are produced in a high percentage of vaccinated
443 individuals along with high titers, which are further enhanced after a natural infection. These
444 data could be helpful not only for serodiagnosis but also for evaluating vaccine efficacy

445 through blood sample determination in the actual context in which SARS-CoV-2 infection is
446 highly prevalent worldwide.

447 **FUNDING**

448 PATH facilitated sera panels donations for this work. The work was also supported by the
449 Bill & Melinda Gates Foundation (<https://www.gatesfoundation.org/>) via grants INV-
450 021239, and INV-016821. Under the grant conditions of the foundation, a Creative
451 Commons Attribution 4.0 generic License has already been assigned to the Author Accepted
452 Manuscript version that might arise from this submission. The funders did not have any
453 additional role in the study design, data collection and analysis, decision to publish, or
454 preparation of the manuscript. Laboratories providing samples used in this work: Microbial
455 Pathogenesis Laboratory and Molecular Biomedical Immunology Laboratory at FCB-UC
456 and accessed through the Washington Covid-19 Biorepository: The Everett Clinic and
457 Bloodworks Northwest. Scientific-clinical studies that generated serum samples evaluated in
458 this report (CoronaVac03CL) were supported by the Ministry of Health, Government of
459 Chile; The Confederation of Production and Commerce, Chile; the Consortium of
460 Universities for Vaccines and Therapies against COVID-19, Chile; the Chilean Public Health
461 Institute (ISP); the Millennium Institute on Immunology and Immunotherapy and Sinovac
462 Life Sciences Co. AMK, SMB and PAG are supported by the National Agency for Research
463 and Development (ANID) through the Fondo Nacional de Desarrollo Científico y
464 Tecnológico (FONDECYT) grants N°1190830, N°1170964, and N°1190864, respectively.
465 The Millennium Institute on Immunology and Immunotherapy (ICN09_016/ICN 2021_045;
466 former P09/016-F) supports AMK, SMB and PAG; The Innovation Fund for
467 Competitiveness FIC-R 2017 (BIP Code: 30488811-0) supports AMK, SMB and PAG. BDV
468 is supported by ANID through the National Doctoral Scholarship, fellow #21221163. LFD
469 is supported by ANID through the Postdoctoral FONDECYT grant # 3210473.

470

471 **ACKNOWLEDGMENTS**

472 Special thanks to Rami Scharf, Miren Iturriza-Gomara and Jorge Flores from PATH for their
473 support on experimental design and discussion. We also thank the Vice Presidency of
474 Research (VRI), the Direction of Technology Transfer and Development (DTD), the Legal
475 Affairs Department (DAJ) of the Pontificia Universidad Católica de Chile. We are also
476 grateful to the Administrative Directions of the School of Biological Sciences (FCB) and the
477 School of Medicine (FMed) of the Pontificia Universidad Católica de Chile for their
478 administrative support.

479

480 **REFERENCES**

481

482 1. World Health Organization Global Excess Deaths Associated with COVID-19,
483 January 2020 - December 2021.

484 2. Richards, F.; Kodjamanova, P.; Chen, X.; Li, N.; Atanasov, P.; Bennetts, L.;
485 Patterson, B.J.; Yektashenas, B.; Mesa-Frias, M.; Tronczynski, K.; et al.
486 Economic Burden of COVID-19: A Systematic Review. *ClinicoEconomics and*
487 *Outcomes Research* **2022**, *Volume 14*, 293–307, doi:10.2147/CEOR.S338225.

488 3. Krammer, F. A Correlate of Protection for SARS-CoV-2 Vaccines Is Urgently
489 Needed. *Nature Medicine* **2021**, *27*, 1147–1148, doi:10.1038/s41591-021-
490 01432-4.

491 4. Nagy, A.; Alhatlani, B. An Overview of Current COVID-19 Vaccine Platforms.
492 *Computational and Structural Biotechnology Journal* **2021**, *19*, 2508–2517,
493 doi:10.1016/j.csbj.2021.04.061.

494 5. Al-Jighefee, H.T.; Najjar, H.; Ahmed, M.N.; Qush, A.; Awwad, S.;
495 Kamareddine, L. COVID-19 Vaccine Platforms: Challenges and Safety
496 Contemplations. *Vaccines (Basel)* **2021**, *9*, 1196,
497 doi:10.3390/vaccines9101196.

498 6. Ranzani, O.T.; Hitchings, M.D.T.; Dorion, M.; D’Agostini, T.L.; de Paula,
499 R.C.; de Paula, O.F.P.; Villela, E.F. de M.; Torres, M.S.S.; de Oliveira, S.B.;
500 Schulz, W.; et al. Effectiveness of the CoronaVac Vaccine in Older Adults
501 during a Gamma Variant Associated Epidemic of Covid-19 in Brazil: Test
502 Negative Case-Control Study. *BMJ* **2021**, n2015, doi:10.1136/bmj.n2015.

503 7. Zhang, Y.; Zeng, G.; Pan, H.; Li, C.; Hu, Y.; Chu, K.; Han, W.; Chen, Z.; Tang,
504 R.; Yin, W.; et al. Safety, Tolerability, and Immunogenicity of an Inactivated
505 SARS-CoV-2 Vaccine in Healthy Adults Aged 18–59 Years: A Randomised,
506 Double-Blind, Placebo-Controlled, Phase 1/2 Clinical Trial. *The Lancet*
507 *Infectious Diseases* **2021**, *21*, 181–192, doi:10.1016/S1473-3099(20)30843-4.

508 8. Wu, Z.; Hu, Y.; Xu, M.; Chen, Z.; Yang, W.; Jiang, Z.; Li, M.; Jin, H.; Cui, G.;
509 Chen, P.; et al. Safety, Tolerability, and Immunogenicity of an Inactivated
510 SARS-CoV-2 Vaccine (CoronaVac) in Healthy Adults Aged 60 Years and
511 Older: A Randomised, Double-Blind, Placebo-Controlled, Phase 1/2 Clinical
512 Trial. *The Lancet Infectious Diseases* **2021**, *21*, 803–812, doi:10.1016/S1473-
513 3099(20)30987-7.

514 9. Bueno, S.M.; Abarca, K.; González, P.A.; Gálvez, N.M.S.; Soto, J.A.; Duarte,
515 L.F.; Schultz, B.M.; Pacheco, G.A.; González, L.A.; Vázquez, Y.; et al. Safety
516 and Immunogenicity of an Inactivated Severe Acute Respiratory Syndrome
517 Coronavirus 2 Vaccine in a Subgroup of Healthy Adults in Chile. *Clinical*
518 *Infectious Diseases* **2021**, doi:10.1093/cid/ciab823.

519 10. Melo-González, F.; Soto, J.A.; González, L.A.; Fernández, J.; Duarte, L.F.;
520 Schultz, B.M.; Gálvez, N.M.S.; Pacheco, G.A.; Ríos, M.; Vázquez, Y.; et al.
521 Recognition of Variants of Concern by Antibodies and T Cells Induced by a
522 SARS-CoV-2 Inactivated Vaccine. *Frontiers in Immunology* **2021**, *12*,
523 doi:10.3389/fimmu.2021.747830.

524 11. Jara, A.; Undurraga, E.A.; González, C.; Paredes, F.; Fontecilla, T.; Jara, G.;
525 Pizarro, A.; Acevedo, J.; Leo, K.; Leon, F.; et al. Effectiveness of an Inactivated

- 526 SARS-CoV-2 Vaccine in Chile. *New England Journal of Medicine* **2021**, 385,
527 875–884, doi:10.1056/NEJMoa2107715.
- 528 12. Ranzani, O.T.; Hitchings, M.D.T.; Dorion, M.; D’Agostini, T.L.; de Paula,
529 R.C.; de Paula, O.F.P.; Villela, E.F. de M.; Torres, M.S.S.; de Oliveira, S.B.;
530 Schulz, W.; et al. Effectiveness of the CoronaVac Vaccine in Older Adults
531 during a Gamma Variant Associated Epidemic of Covid-19 in Brazil: Test
532 Negative Case-Control Study. *BMJ* **2021**, n2015, doi:10.1136/bmj.n2015.
- 533 13. Duarte, L.F.; Gálvez, N.M.S.; Iturriaga, C.; Melo-González, F.; Soto, J.A.;
534 Schultz, B.M.; Urzúa, M.; González, L.A.; Vázquez, Y.; Ríos, M.; et al.
535 Immune Profile and Clinical Outcome of Breakthrough Cases After
536 Vaccination With an Inactivated SARS-CoV-2 Vaccine. *Frontiers in*
537 *Immunology* **2021**, 12, doi:10.3389/fimmu.2021.742914.
- 538 14. Tanriover, M.D.; Doğanay, H.L.; Akova, M.; Güner, H.R.; Azap, A.; Akhan,
539 S.; Köse, Ş.; Erdiñç, F.Ş.; Akalın, E.H.; Tabak, Ö.F.; et al. Efficacy and Safety
540 of an Inactivated Whole-Virion SARS-CoV-2 Vaccine (CoronaVac): Interim
541 Results of a Double-Blind, Randomised, Placebo-Controlled, Phase 3 Trial in
542 Turkey. *The Lancet* **2021**, 398, 213–222, doi:10.1016/S0140-6736(21)01429-
543 X.
- 544 15. Alencar, C.H.; Cavalcanti, L.P. de G.; Almeida, M.M. de; Barbosa, P.P.L.;
545 Cavalcante, K.K. de S.; Melo, D.N. de; de Brito Alves, B.C.F.; Heukelbach, J.
546 High Effectiveness of SARS-CoV-2 Vaccines in Reducing COVID-19-Related
547 Deaths in over 75-Year-Olds, Ceará State, Brazil. *Tropical Medicine and*
548 *Infectious Disease* **2021**, 6, 129, doi:10.3390/tropicalmed6030129.
- 549 16. Fiori, M.; Bello, G.; Wschebor, N.; Lecumberry, F.; Ferragut, A.; Mordecki, E.
550 Decoupling between SARS-CoV-2 Transmissibility and Population Mobility
551 Associated with Increasing Immunity from Vaccination and Infection in South
552 America. *Scientific Reports* **2022**, 12, 6874, doi:10.1038/s41598-022-10896-4.
- 553 17. Costa Clemens, S.A.; Weckx, L.; Clemens, R.; Almeida Mendes, A.V.; Ramos
554 Souza, A.; Silveira, M.B. v; da Guarda, S.N.F.; de Nobrega, M.M.; de Moraes
555 Pinto, M.I.; Gonzalez, I.G.S.; et al. Heterologous versus Homologous COVID-
556 19 Booster Vaccination in Previous Recipients of Two Doses of CoronaVac
557 COVID-19 Vaccine in Brazil (RHH-001): A Phase 4, Non-Inferiority, Single
558 Blind, Randomised Study. *The Lancet* **2022**, 399, 521–529,
559 doi:10.1016/S0140-6736(22)00094-0.
- 560 18. Farias, J.P.; da Silva, P. de S.; Fogaça, M.M.C.; Santana, I.V.R.; Luiz, W.B.;
561 Birbrair, A.; Amorim, J.H. The COVID-19 Humoral Immunological Status
562 Induced by CoronaVac and AstraZeneca Vaccines Significantly Benefits from
563 a Booster Shot with the Pfizer Vaccine. *Journal of Virology* **2022**,
564 doi:10.1128/jvi.00177-22.
- 565 19. Jara, A.; Undurraga, E.A.; Zubizarreta, J.R.; González, C.; Pizarro, A.;
566 Acevedo, J.; Leo, K.; Paredes, F.; Bralic, T.; Vergara, V.; et al. Effectiveness
567 of Homologous and Heterologous Booster Doses for an Inactivated SARS-
568 CoV-2 Vaccine: A Large-Scale Prospective Cohort Study. *The Lancet Global*
569 *Health* **2022**, 10, e798–e806, doi:10.1016/S2214-109X(22)00112-7.
- 570 20. Tabilo Valenzuela, P.B.; Flores Balter, G.; Saint-Pierre Contreras, G.; Conei
571 Valencia, D.; Moreno Calderón, C.; Bohle Venegas, C.; Guajardo Rivera, M.;
572 Silva Ojeda, F.; Vial Covarrubias, M.J. Cellular Immune Response in Patients

- 573 Immunized with Three Vaccine Doses of Different Vaccination Schemes
574 Authorized by the Chilean Ministry of Health in January 2022. *Life* **2022**, *12*,
575 534, doi:10.3390/life12040534.
- 576 21. Redondo, N.; Zaldívar-López, S.; Garrido, J.J.; Montoya, M. SARS-CoV-2
577 Accessory Proteins in Viral Pathogenesis: Knowns and Unknowns. *Frontiers*
578 *in Immunology* **2021**, *12*, doi:10.3389/fimmu.2021.708264.
- 579 22. Arya, R.; Kumari, S.; Pandey, B.; Mistry, H.; Bihani, S.C.; Das, A.; Prashar,
580 V.; Gupta, G.D.; Panicker, L.; Kumar, M. Structural Insights into SARS-CoV-
581 2 Proteins. *Journal of Molecular Biology* **2021**, *433*, 166725,
582 doi:10.1016/j.jmb.2020.11.024.
- 583 23. Xia, X. Domains and Functions of Spike Protein in SARS-Cov-2 in the Context
584 of Vaccine Design. *Viruses* **2021**, *13*, 109, doi:10.3390/v13010109.
- 585 24. Ke, Z.; Oton, J.; Qu, K.; Cortese, M.; Zila, V.; McKeane, L.; Nakane, T.;
586 Zivanov, J.; Neufeldt, C.J.; Cerikan, B.; et al. Structures and Distributions of
587 SARS-CoV-2 Spike Proteins on Intact Virions. *Nature* **2020**, *588*, 498–502,
588 doi:10.1038/s41586-020-2665-2.
- 589 25. Romero Ramírez, D.S.; Lara Pérez, M.M.; Carretero Pérez, M.; Suárez
590 Hernández, M.I.; Martín Pulido, S.; Pera Villacampa, L.; Fernández Vilar,
591 A.M.; Rivero Falero, M.; González Carretero, P.; Reyes Millán, B.; et al.
592 SARS-CoV-2 Antibodies in Breast Milk After Vaccination. *Pediatrics* **2021**,
593 *148*, doi:10.1542/peds.2021-052286.
- 594 26. Barnes, C.O.; Jette, C.A.; Abernathy, M.E.; Dam, K.-M.A.; Esswein, S.R.;
595 Gristick, H.B.; Malyutin, A.G.; Sharaf, N.G.; Huey-Tubman, K.E.; Lee, Y.E.;
596 et al. SARS-CoV-2 Neutralizing Antibody Structures Inform Therapeutic
597 Strategies. *Nature* **2020**, *588*, 682–687, doi:10.1038/s41586-020-2852-1.
- 598 27. Tea, F.; Ospina Stella, A.; Aggarwal, A.; Ross Darley, D.; Pilli, D.; Vitale, D.;
599 Merheb, V.; Lee, F.X.Z.; Cunningham, P.; Walker, G.J.; et al. SARS-CoV-2
600 Neutralizing Antibodies: Longevity, Breadth, and Evasion by Emerging Viral
601 Variants. *PLOS Medicine* **2021**, *18*, e1003656,
602 doi:10.1371/journal.pmed.1003656.
- 603 28. World Health Organization WHO/BS.2020.2403 Establishment of the WHO
604 International Standard and Reference Panel for Anti-SARS-CoV-2 Antibody.
- 605 29. Knezevic, I.; Mattiuzzo, G.; Page, M.; Minor, P.; Griffiths, E.; Nuebling, M.;
606 Moorthy, V. WHO International Standard for Evaluation of the Antibody
607 Response to COVID-19 Vaccines: Call for Urgent Action by the Scientific
608 Community. *The Lancet Microbe* **2022**, *3*, e235–e240, doi:10.1016/S2666-
609 5247(21)00266-4.
- 610 30. Infantino, M.; Pieri, M.; Nuccetelli, M.; Grossi, V.; Lari, B.; Tomassetti, F.;
611 Calugi, G.; Pancani, S.; Benucci, M.; Casprini, P.; et al. The WHO International
612 Standard for COVID-19 Serological Tests: Towards Harmonization of Anti-
613 Spike Assays. *International Immunopharmacology* **2021**, *100*, 108095,
614 doi:10.1016/j.intimp.2021.108095.
- 615 31. Kristiansen, P.A.; Page, M.; Bernasconi, V.; Mattiuzzo, G.; Dull, P.; Makar, K.;
616 Plotkin, S.; Knezevic, I. WHO International Standard for Anti-SARS-CoV-2
617 Immunoglobulin. *The Lancet* **2021**, *397*, 1347–1348, doi:10.1016/S0140-
618 6736(21)00527-4.

- 619 32. Earle, K.A.; Ambrosino, D.M.; Fiore-Gartland, A.; Goldblatt, D.; Gilbert, P.B.;
620 Siber, G.R.; Dull, P.; Plotkin, S.A. Evidence for Antibody as a Protective
621 Correlate for COVID-19 Vaccines. *Vaccine* **2021**, *39*, 4423–4428,
622 doi:10.1016/j.vaccine.2021.05.063.
- 623 33. Khoury, D.S.; Cromer, D.; Reynaldi, A.; Schlub, T.E.; Wheatley, A.K.; Juno,
624 J.A.; Subbarao, K.; Kent, S.J.; Triccas, J.A.; Davenport, M.P. Neutralizing
625 Antibody Levels Are Highly Predictive of Immune Protection from
626 Symptomatic SARS-CoV-2 Infection. *Nature Medicine* **2021**, *27*, 1205–1211,
627 doi:10.1038/s41591-021-01377-8.
- 628 34. Sadarangani, M.; Marchant, A.; Kollmann, T.R. Immunological Mechanisms
629 of Vaccine-Induced Protection against COVID-19 in Humans. *Nature Reviews*
630 *Immunology* **2021**, *21*, 475–484, doi:10.1038/s41577-021-00578-z.
- 631 35. Bates, T.A.; McBride, S.K.; Leier, H.C.; Guzman, G.; Lyski, Z.L.; Schoen, D.;
632 Winders, B.; Lee, J.-Y.; Lee, D.X.; Messer, W.B.; et al. Vaccination before or
633 after SARS-CoV-2 Infection Leads to Robust Humoral Response and
634 Antibodies That Effectively Neutralize Variants. *Science Immunology* **2022**, *7*,
635 doi:10.1126/sciimmunol.abn8014.
- 636 36. Nordström, P.; Ballin, M.; Nordström, A. Risk of SARS-CoV-2 Reinfection
637 and COVID-19 Hospitalisation in Individuals with Natural and Hybrid
638 Immunity: A Retrospective, Total Population Cohort Study in Sweden. *The*
639 *Lancet Infectious Diseases* **2022**, *22*, 781–790, doi:10.1016/S1473-
640 3099(22)00143-8.
- 641 37. Batra, M.; Tian, R.; Zhang, C.; Clarence, E.; Sacher, C.S.; Miranda, J.N.; de La
642 Fuente, J.R.O.; Mathew, M.; Green, D.; Patel, S.; et al. Role of IgG against N-
643 Protein of SARS-CoV2 in COVID19 Clinical Outcomes. *Scientific Reports*
644 **2021**, *11*, 3455, doi:10.1038/s41598-021-83108-0.
- 645 38. Nakayama, E.E.; Kubota-Koketsu, R.; Sasaki, T.; Suzuki, K.; Uno, K.;
646 Shimizu, J.; Okamoto, T.; Matsumoto, H.; Matsuura, H.; Hashimoto, S.; et al.
647 Anti-Nucleocapsid Antibodies Enhance the Production of IL-6 Induced by
648 SARS-CoV-2 N Protein. *Scientific Reports* **2022**, *12*, 8108,
649 doi:10.1038/s41598-022-12252-y.
- 650 39. Kohler, P.; Güsewell, S.; Seneghini, M.; Egger, T.; Leal, O.; Brucher, A.;
651 Lemmenmeier, E.; Möller, J.C.; Rieder, P.; Ruetti, M.; et al. Impact of Baseline
652 SARS-CoV-2 Antibody Status on Syndromic Surveillance and the Risk of
653 Subsequent COVID-19—a Prospective Multicenter Cohort Study. *BMC*
654 *Medicine* **2021**, *19*, 270, doi:10.1186/s12916-021-02144-9.
- 655 40. Dugan, H.L.; Stamper, C.T.; Li, L.; Changrob, S.; Asby, N.W.; Halfmann, P.J.;
656 Zheng, N.-Y.; Huang, M.; Shaw, D.G.; Cobb, M.S.; et al. Profiling B Cell
657 Immunodominance after SARS-CoV-2 Infection Reveals Antibody Evolution
658 to Non-Neutralizing Viral Targets. *Immunity* **2021**, *54*, 1290-1303.e7,
659 doi:10.1016/j.immuni.2021.05.001.
- 660 41. Cheng, L.; Zhang, X.; Chen, Y.; Wang, D.; Zhang, D.; Yan, S.; Wang, H.; Xiao,
661 M.; Liang, T.; Li, H.; et al. Dynamic Landscape Mapping of Humoral Immunity
662 to SARS-CoV-2 Identifies Non-Structural Protein Antibodies Associated with
663 the Survival of Critical COVID-19 Patients. *Signal Transduction and Targeted*
664 *Therapy* **2021**, *6*, 304, doi:10.1038/s41392-021-00718-w.

- 665
666
667
668
669
670
671
672
673
674
675

676
42. Ma, M.-L.; Shi, D.-W.; Li, Y.; Hong, W.; Lai, D.-Y.; Xue, J.-B.; Jiang, H.-W.; Zhang, H.-N.; Qi, H.; Meng, Q.-F.; et al. Systematic Profiling of SARS-CoV-2-Specific IgG Responses Elicited by an Inactivated Virus Vaccine Identifies Peptides and Proteins for Predicting Vaccination Efficacy. *Cell Discovery* **2021**, *7*, 67, doi:10.1038/s41421-021-00309-7.
 43. Hachim, A.; Kavian, N.; Cohen, C.A.; Chin, A.W.H.; Chu, D.K.W.; Mok, C.K.P.; Tsang, O.T.Y.; Yeung, Y.C.; Perera, R.A.P.M.; Poon, L.L.M.; et al. ORF8 and ORF3b Antibodies Are Accurate Serological Markers of Early and Late SARS-CoV-2 Infection. *Nature Immunology* **2020**, *21*, 1293–1301, doi:10.1038/s41590-020-0773-7.

677 **TABLES**

678

679 **Table 1.**

680

Group	Time point evaluated	Gender	Age	Total
Vaccinated	Pre-immune 2nd dose + 2 weeks 2nd dose + 4 weeks 3rd dose + 4 weeks	Female	18-59 years	12
			> 60 years	4
		Male	18-59 years	5
			> 60 years	5
Convalescents	1 week 2 weeks 4 weeks 8 weeks	Unknown	Unknown	10
	Unspecified	Unknown	Unknown	9
Breakthrough	2 weeks 4 weeks	Female	18-59 years	3
			> 60 years	0
		Male	18-59 years	4
			> 60 years	3
Naïve	Before the year 2020	Unknown	Unknown	10

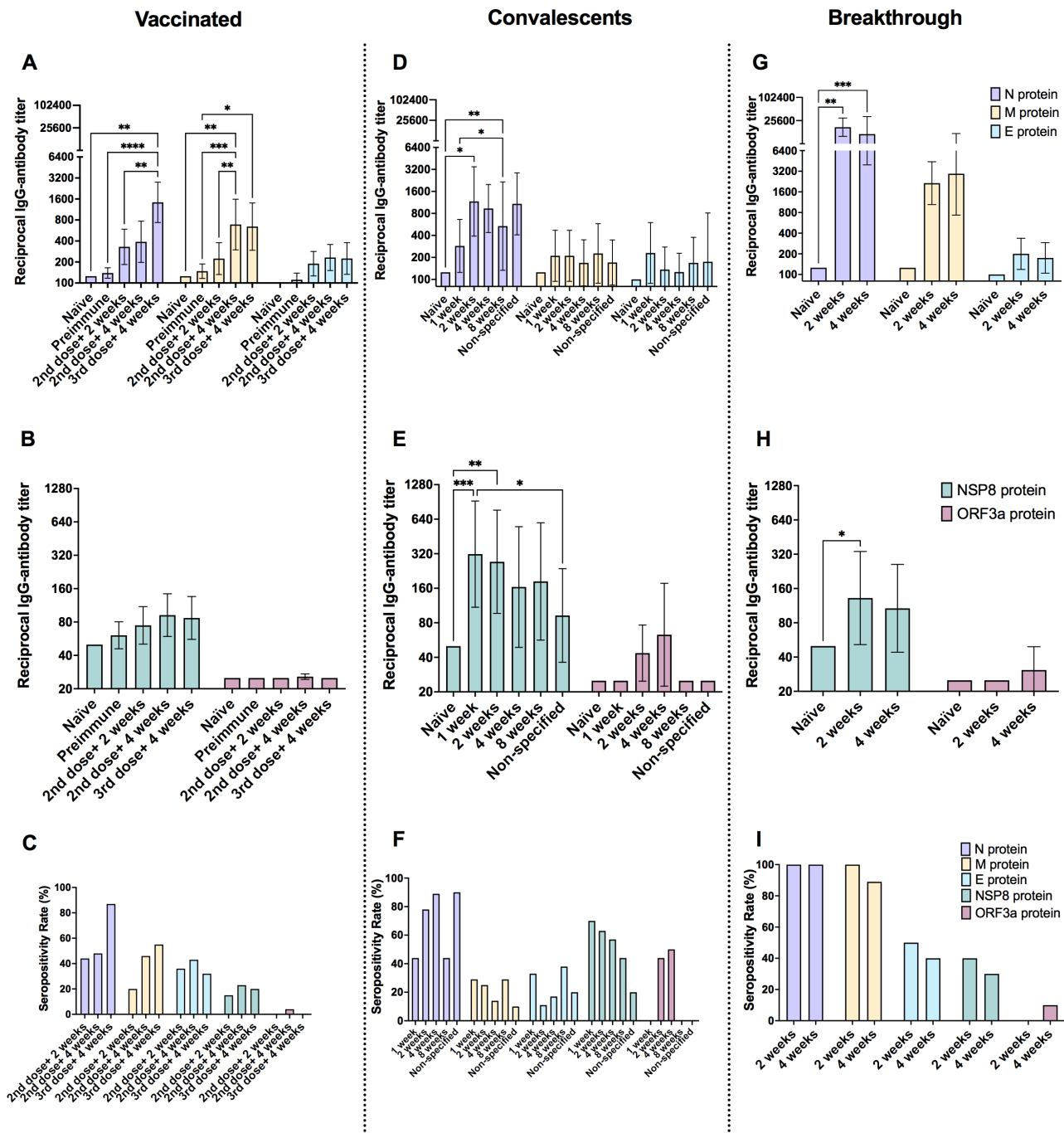
Table 2. Seroconversion rates and geometric mean titers (GMTs) of antibodies against SARS-Cov-2 proteins

ANTIBODIES DETECTED	INDICATORS	2ND DOSE + 4 WEEKS	3RD DOSE + 4 WEEKS	BREAKTHROUGH + 4 WEEKS	CONVALESCENTS + 4 WEEKS	CONVALESCENTS UNSPECIFIED
Anti-N IgG	GMT	389.58	1433.96	11313.71	933.03	1080.06
	95% CI	197.27-769.37	736.33 - 2792.54	3951.77 - 32390.55	438.27 - 1986.35	406.66 - 2868.58
	Seropositivity Rate (%)	44	88	100	90	89
Anti-M IgG	GMT	688.50	643.33	2939.47	168.24	170.10
	95% CI	298.68 - 1587.12	295.06 - 1402.67	734.28 - 11767.36	81.33 - 348.02	83.59 - 346.12
	Seropositivity Rate (%)	46	55	89	10	11
Anti-E IgG	GMT	232.03	224.49	174.11	125.99	174.11
	95% CI	151.12-356.25	133.11 - 378.60	104.33 - 290.56	69.57 - 228.18	37.34 - 811.82
	Seropositivity Rate (%)	43	33	40	29	20
Anti-NSP8 IgG	GMT	92.31	87.06	107.18	164.07	92.59
	95% CI	59.26 - 143.80	55.80 - 135.82	44.08, 260.61	48.85, 551.01	36.18, 236.97
	Seropositivity Rate (%)	27	24	30	57	22
Anti-ORF3a IgG	GMT	25.00	25.70	30.78	63.00	25.00
	95% CI	25.00 - 25.00	24.27 - 27.22	19.23 - 49.27	22.45 - 176.77	25.00 - 25.00
	Seropositivity Rate (%)	0	5	10	50	0

682
683

684 **FIGURE AND FIGURE LEGENDS**
685

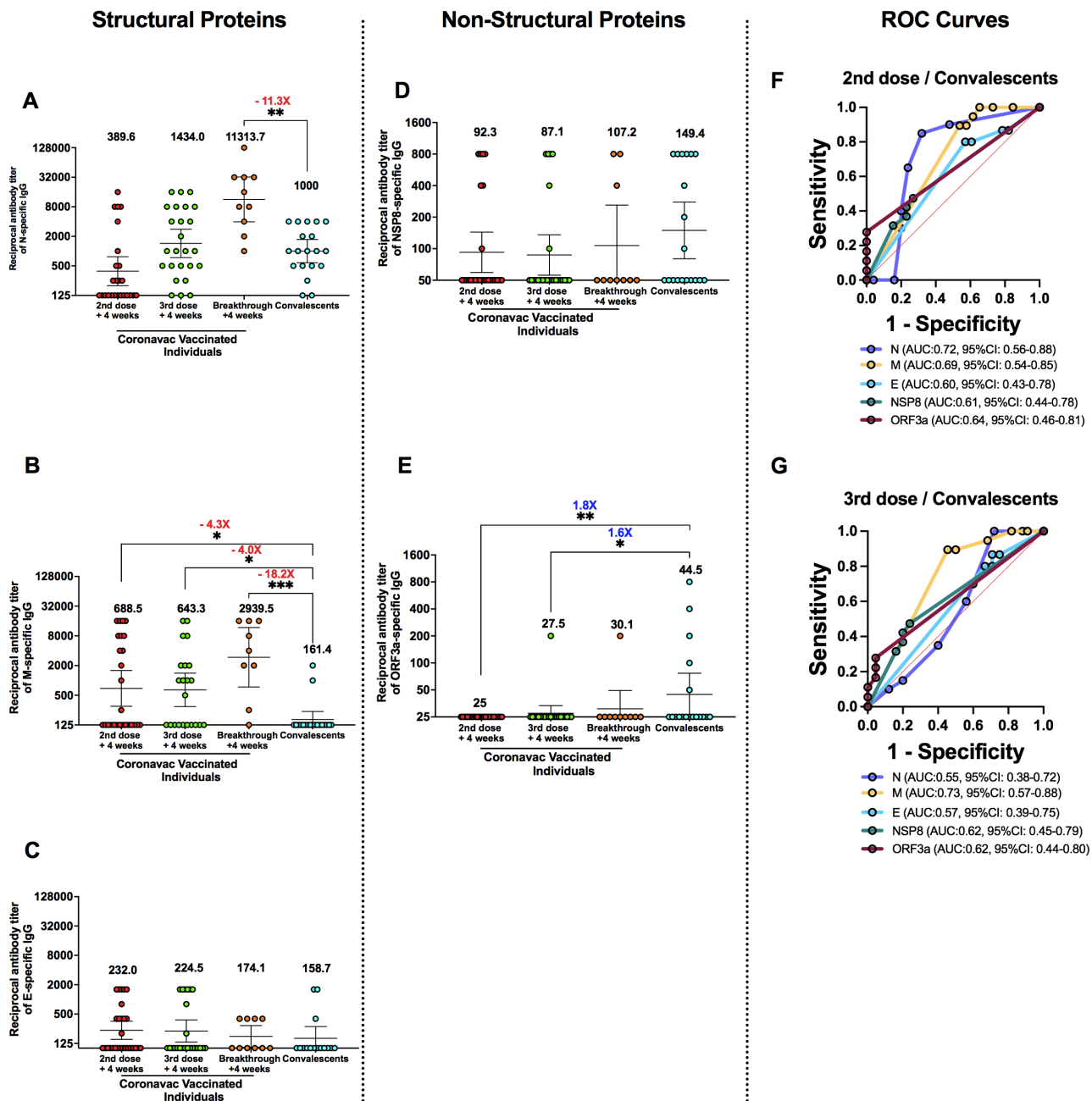
Figure 1



686 **Figure 1. Kinetics of specific anti-IgG levels against multiple structural and non-structural**
687 **SARS-CoV-2 proteins. A, B, and C.** Serum samples from CoronaVac-vaccinated individuals
688 were obtained at the moment of the first dose (pre-immune), two and four weeks after the second
689

690 dose, and four weeks after a booster dose. **D, E, and F.** Convalescent individual serum sampling
691 was performed at 1, 2, 4, and 8 weeks after recovering from SARS-CoV-2 infection. Nine
692 convalescent individuals were evaluated without information about the time of sample collection
693 (Unspecified). **G, H, and I.** Follow-up samples from CoronaVac breakthrough cases (right) were
694 obtained two and four weeks after a positive PCR result. Serum from ten naïve individuals was
695 added as controls. Reciprocal antibody titers elicited against structural SARS-CoV-2 proteins (N,
696 M, and E) are shown in the upper panel. Reciprocal antibody titers elicited against non-structural
697 SARS-CoV-2 proteins (NSP8 and ORF3a) are shown in the middle panel. The seropositivity rates
698 were determined for each protein, and the respective time-points evaluated correspond to the lower
699 panels. Bars show the Geometric Mean Titer (GMT), and the error bars indicate 95% CI. A two-
700 way ANOVA test was used with Tukey's multiple comparison post-test. * $p < 0.05$, ** $p < 0.01$,
701 *** $p < 0.001$, **** $p < 0.0001$.

Figure 2



702

703

704

Figure 2. Comparison of antibody levels between convalescent subjects and CoronaVac-

705

vaccinated individuals. Specific IgG antibodies titers in samples collected at four weeks after the

706

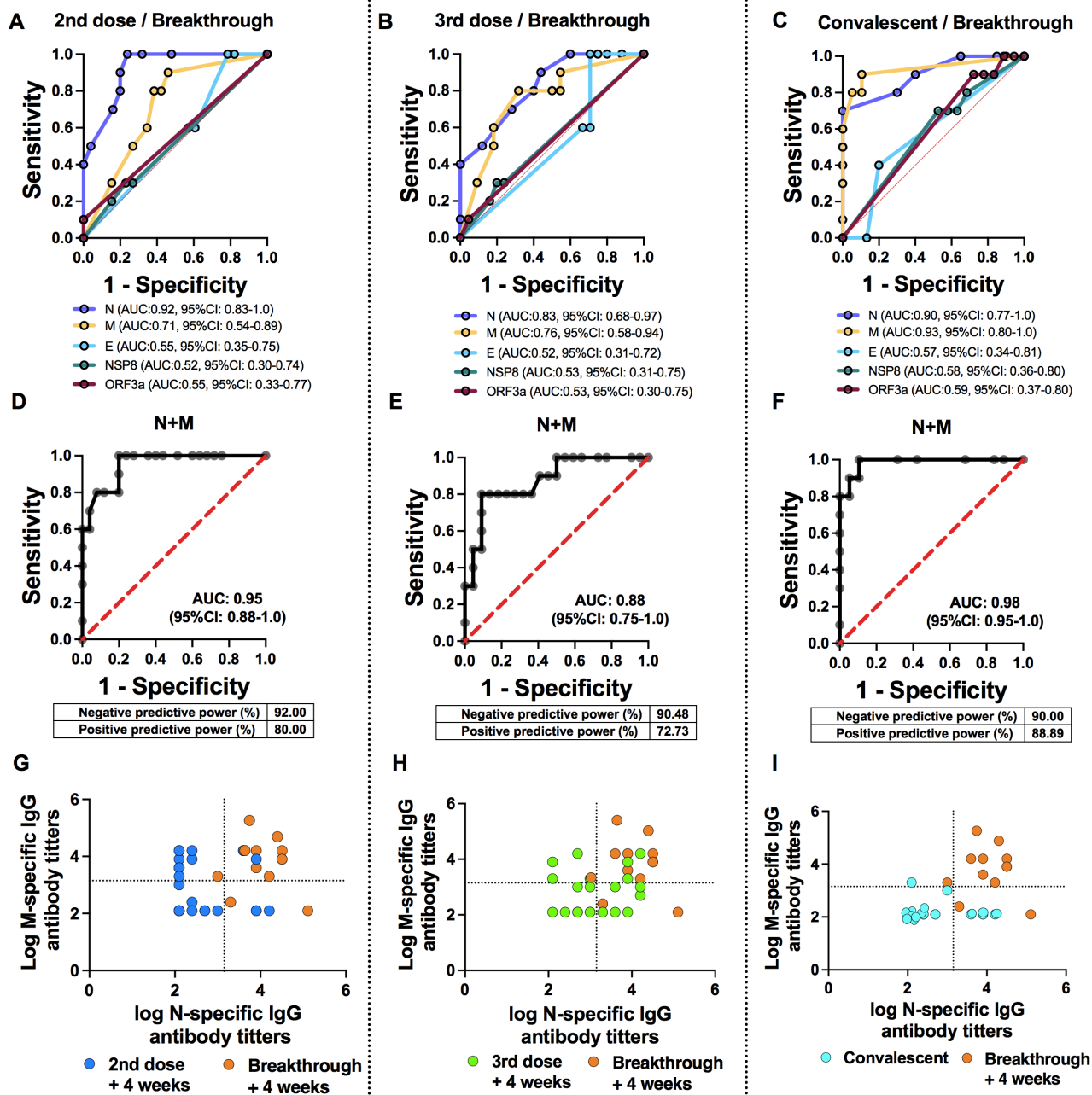
second or booster dose in individuals belonging to the vaccinated group and four weeks after the

707

diagnosis of SARS-CoV-2 infection by positive PCR result. Individuals from the breakthrough

708 group were compared with those from the convalescent group (samples obtained four weeks after
709 the recovery from SARS-CoV-2 infection and individuals for whom there is no data regarding
710 when the samples were collected). **A, B, and C.** Reciprocal antibody titers against N, M, and E-
711 specific IgG. **D and E.** Reciprocal IgG specific antibody titers against NSP-8 and ORF3a. The
712 numbers above the groups show the Geometric Mean Titer (GMT), and the error bars indicate the
713 95% CI. The numbers in red indicate the fold decrease. The blue text indicates fold increases. A
714 Kruskal-Wallis test was used with Dunn's multiple comparison post-test, * $p < 0.05$, ** $p < 0.01$,
715 *** $p < 0.001$. **F and G.** ROC analyses of IgG responses to the N (violet), M (yellow), E (blue),
716 NSP-8 (green), and ORF3a (pink) proteins to compare vaccinated individuals after the
717 administration of two or three doses of CoronaVac and convalescent subjects, respectively. Area
718 under the curve (AUC) values are indicated in parenthesis.

Figure 3



719
720
721

Figure 3. ROC analyses of IgG responses to structural and non-structural SARS-CoV-2 proteins for comparing CoronaVac breakthrough cases with vaccinated individuals and convalescent individuals. ROC curves were constructed to identify SARS-CoV-2 proteins that can differentiate breakthrough cases from **A.** individuals that received two doses of CoronaVac. **B.** individuals receiving three doses (two in the primary schedule, plus one booster) of CoronaVac

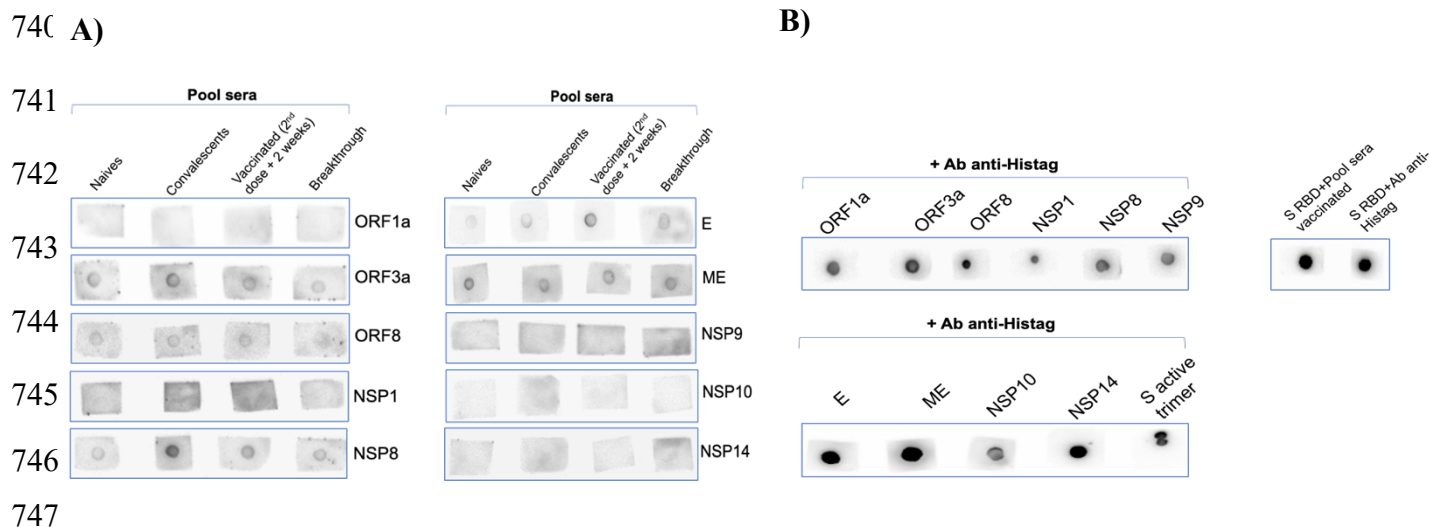
722
723
724
725

726 **C.** Convalescent individuals. Sera collected four weeks after recovery from infection, vaccination,
727 and breakthrough cases were analyzed. For the convalescent group, nine individuals with an
728 unspecified time of sample collection were included. **D, E, and F.** AUC values, negative predictive
729 power, and positive predictive power for the combinations of M and N antibodies titers to
730 differentiate the breakthrough cases from **D.** individuals that received two doses of CoronaVac. **E.**
731 individuals that received three doses of CoronaVac **F.** Convalescent individuals. **G, H and I.**
732 Scatter plots distributions along with cutoff values for IgG responses based on optimal Youden
733 values related to ROC curves: convalescent individuals (light blue), individuals vaccinated with
734 two (dark blue), or three (green) doses, and breakthrough cases (orange).
735

Supplementary Table 1. Geometric mean units (GMU) of antibodies against SARS-CoV-2 proteins

ANTIBODIES DETECTED	INDICATORS	2ND DOSE + 4 WEEKS	3RD DOSE + 4 WEEKS	BREAKTHROUGH +4 WEEKS	CONVALESCENTS + 4 WEEKS	CONVALESCENTS UNSPECIFIED INFECTION TIME
Anti-N IgG	GMU	79.1	197.2	1224.0	127.0	116.7
	95% CI	41.75- 150.2	96.7 - 402.1	495.4 - 3026	67.84 - 237.7	50.74 - 268.2
Anti- M IgG	GMU	246.1	163.9	586.0	51.26	31.9
	95% CI	136.3 - 444.2	94.75 -283.4	234.1 - 1467	27.53 - 95.46	15.92 - 63.89
Anti-NSP8 IgG	GMU	15.5	14.68	20.5	20.66	23.62
	95% CI	13.2- 18.31	13.0- 16.57	10.4- 40.4	12.5- 34.11	10.0- 55.59

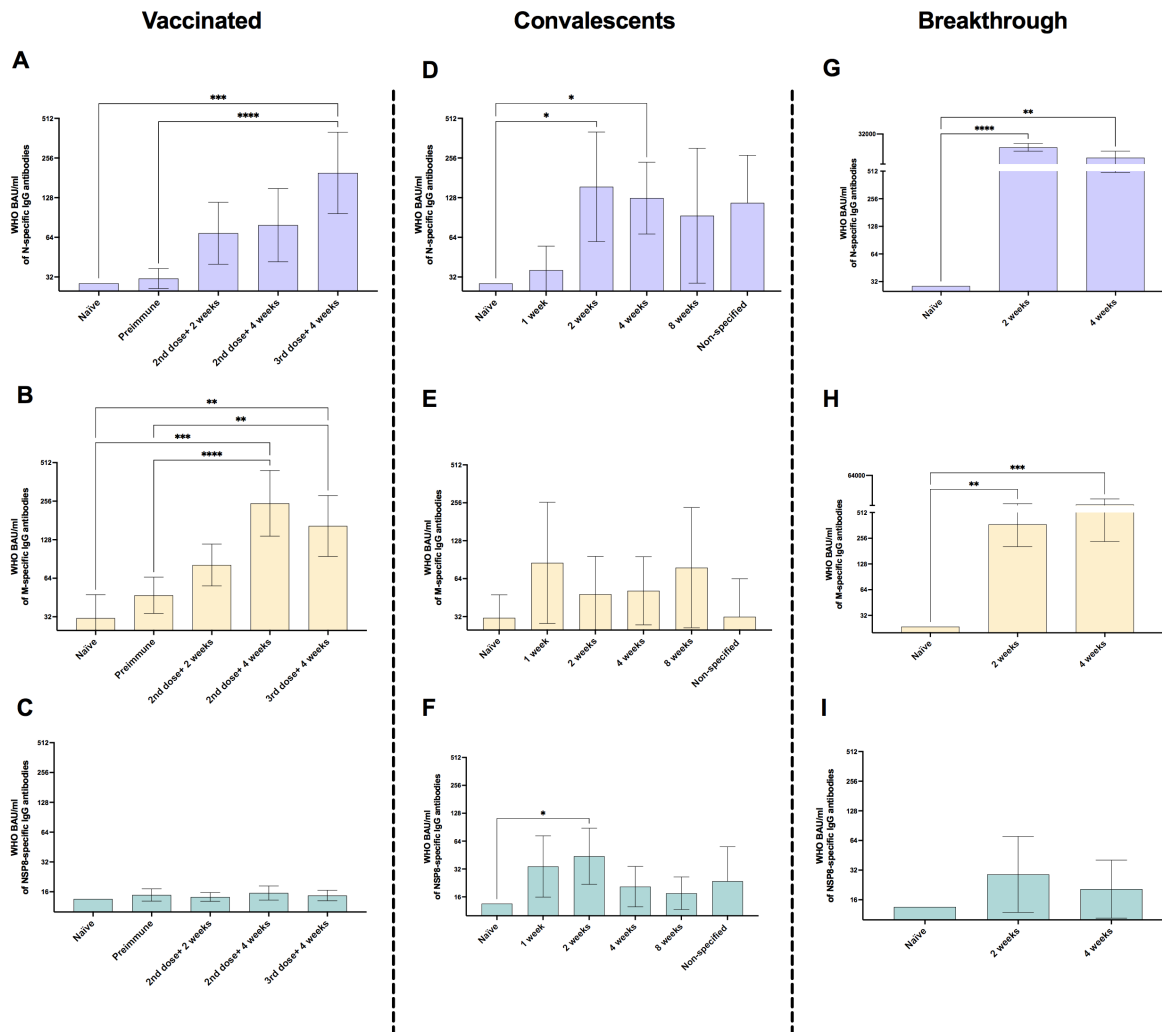
739 **Figure S1**



748 **Figure S1. Anti-SARS-COV-2 antibodies were detected by Dot Blot.** Five hundred nanograms
 749 (500 ng) of SARS-CoV-2 recombinant proteins (ORF1a, ORF3a, ORF8, NSP1, NSP8, NSP9,
 750 NSP10, NSP14, E (envelop), ME (membrane)) were immobilized in nitrocellulose membranes
 751 using 2 uL of proteins prepared in 8M Urea denaturant buffer. The membranes were blocked with
 752 10% BSA and incubated overnight at 4°C with a sera pool obtained from control naïve individuals,
 753 convalescents (PCR (+) + 4w), CoronaVac-vaccinated with 2nd dose + 2 weeks, and breakthrough
 754 (PCR (+) + 2 weeks) subjects (dilution 1/250). As positive controls, all proteins (500 ng) were
 755 incubated with an anti-HisTag antibody conjugated with biotin. After incubation with sera, the
 756 membranes were treated with anti-human IgG-HRP. Finally, the membranes were incubated with
 757 an enhanced chemiluminescence Western blot detection system (Femto, ECL).

758

Supplementary Figure 2



759

760

761

762

763

764

765

766

767

Figure S2. IgG level kinetics against structural and non-structural SARS-CoV-2 proteins expressed as WHO-binding antibody units (BAU). Serum samples from CoronaVac-vaccinated individuals were obtained at the first dose (pre-immune), two and four weeks after the second dose, and four weeks after a booster dose for evaluating **A**. N-specific IgG antibodies, **B**. M-specific IgG antibodies, **C**. NSP8-specific IgG antibodies. Serum sampling of convalescent individuals was performed at 1, 2, 4, and 8 weeks after recovery from SARS-CoV-2 infection. Nine convalescent individuals without information regarding the time of sample collection (Unspecified) were included for evaluating, **D**. N-specific IgG antibodies, **E**. M-specific IgG antibodies, **F**. NSP8-

768 specific IgG antibodies. Follow-up samples from breakthrough cases were obtained two and four
769 weeks after a positive PCR result for evaluating **G.** N-specific IgG antibodies, **H.** M-specific IgG
770 antibodies, and **I.** NSP8-specific IgG antibodies. Sera from ten naïve individuals were added as
771 controls. Bars show the Geometric Mean Units (GMU), and the error bars indicate 95% CI. A
772 Kruskal-Wallis test was used with Dunn's multiple comparison post-test, * $p < 0.05$, ** $p < 0.01$,
773 *** $p < 0.001$, **** $p < 0.0001$.