

1 **Increased disparity in routine infant vaccination during COVID-19**

2 Christiaan H. Righolt,<sup>1,2,c</sup> Gupreet Pabla,<sup>1</sup> Salaheddin M. Mahmud,<sup>1</sup>

3 <sup>1</sup>Vaccine and Drug Evaluation Centre, Department of Community Health Sciences, University of  
4 Manitoba, 337–750 McDermot Avenue, Winnipeg MB, R3E 0T5 Canada

5 <sup>2</sup>Children’s Hospital Research Institute of Manitoba, 513-715 McDermot Avenue, Winnipeg MB, R3E  
6 3P4

7 <sup>c</sup>Address for correspondence: Christiaan Righolt, Vaccine and Drug Evaluation Centre, Department of  
8 Community Health Sciences, University of Manitoba, 337–750 McDermot Avenue, Winnipeg MB, R3E  
9 0T5 Canada, Christiaan.Righolt@umanitoba.ca

10 Short title: COVID-19 and disparity in routine infant vaccination

11 Key words: Vaccine uptake, vaccine coverage, immunization, delay, early childhood

12 Abbreviations: COVID-19: coronavirus disease 2019; DTaP: Diphtheria, tetanus, and acellular pertussis;  
13 MH: Manitoba Health; MMR: measles, mumps, rubella

14 Funding

15 This work was funded by the Manitoba Medical Service Foundation (operating grant # 8-2021-03).  
16 SMM’s work is supported, in part, by funding from the Canada Research Chair Program. The opinions  
17 presented in the report do not necessarily reflect those of the funders and the funders had no role in the  
18 completion of the study.

19 Financial disclosures

20 CHR has received an unrestricted research grant from Pfizer for an unrelated study. GP has no financial  
21 relationship to disclose SMM received research funding from Assurex, GSK, Merck, Pfizer, Roche and  
22 Sanofi for unrelated studies and is/was a member of advisory boards for GSK, Merck, Sanofi and Seqirus.

23 Data statement

24 Data used in this article was derived from administrative health and social data as a secondary use. The  
25 data was provided under specific data sharing agreements only for approved use at the Manitoba Centre  
26 for Health Policy (MCHP). The original source data is not owned by the researchers or MCHP and as  
27 such cannot be provided to a public repository. The original data source and approval for use has been  
28 noted in the acknowledgments of the article. Where necessary, source data specific to this article or  
29 project may be reviewed at MCHP with the consent of the original data providers, along with the required  
30 privacy and ethical review bodies.

31 Ethics approval

32 This study was approved by the University of Manitoba Research Ethics Board and by the Manitoba  
33 Health Health Information Privacy Committee.

34

35 Synopsis

36 **Study question**

37 How did COVID-19 and its restrictions affect routine infant vaccine uptake?

38 **What's already known**

39 We know that vaccine uptake in infants decreased during the pandemic. We do not know whether this  
40 affected everyone equally or whether the pandemic worsened existing disparities in vaccine uptake.

41 **What this study adds**

42 Although vaccine uptake was not affected in wealthy urban neighborhoods, the reduction in uptake was  
43 largest, and continued on a downward trend, for groups with the lowest baseline vaccine uptake. Only  
44 two-thirds of children, instead of the 4/5th before the pandemic, in the remote, predominantly Indigenous  
45 Northern region received a measles vaccine by their second birthday.

46

47 Abstract

48 **Background**

49 COVID-19 restrictions and its impact on healthcare resources have reduced routine infant vaccine uptake,  
50 although some report that this effect was short-lived. These prior studies mostly described entire  
51 populations, but disparities in uptake may have changed during the pandemic due to differential access to  
52 healthcare.

53 **Objectives**

54 We aimed to examine disparities in the reduction in routine infant vaccine uptake during the COVID-19  
55 pandemic in Manitoba, Canada.

56 **Methods**

57 We assessed vaccine uptake for routine infant vaccines for a pre-pandemic and pandemic subcohort. We  
58 assessed how the reduction in vaccine uptake differed by gender, neighborhood income quintile and  
59 region of residence. For each evaluation age, we limited the pandemic subcohort to children reaching this  
60 milestone age on/before November 30, 2021.

61 **Results**

62 Vaccine uptake was about 5-10% lower during the pandemic. The groups most vulnerable to COVID-19  
63 saw the largest reductions in vaccine uptake, with an ongoing downward trend throughout the pandemic.  
64 Children in the lowest income neighborhoods saw a 17% reduction in diphtheria, tetanus, and acellular  
65 pertussis dose 4 uptake at 24 months, 4.4-fold that of high-income neighborhoods, and an 11% reduction  
66 in measles, mumps, rubella (MMR) vaccine uptake at 24 months, 5.6-fold that of high-income  
67 neighborhoods. The largest reductions were for low-income Northern residents and smallest for high-  
68 income Winnipeg residents, e.g. 16-fold larger for MMR at 24 months (79:94 pre-pandemic to 65:93  
69 during the pandemic).

70 **Conclusions**

71 While privileged children have similar high vaccine uptake as before the pandemic, children in  
72 populations hardest hit by COVID-19 continue seeing concerning reductions in routine infant vaccination.  
73 It is imperative that infant vaccination rates are increased, especially in communities with lower  
74 socioeconomic status, as a failure to do so could lead to persistent rebound epidemics in the most  
75 vulnerable populations.

76

77 Introduction

78 COVID-19 restrictions and its impact on healthcare resources have reduced routine infant vaccine  
79 uptake,<sup>1,2</sup> although some report that this effect was short-lived.<sup>3</sup> Many studies examined the population as  
80 a whole, but disparities (by socioeconomic status) in uptake may have changed during the pandemic due  
81 to differential access to healthcare. We examined the disparity and reduction of these vaccinations in  
82 Manitoba, a Canadian province with 1.3 million residents.

83 Methods

84 Manitoba Health (MH) is the publicly funded health insurance agency providing comprehensive health  
85 insurance to the province's residents. Coverage is universal, with no eligibility distinction based on age or  
86 income, and participation rates are very high (>99%).<sup>4</sup> Insured services include hospital, physician and  
87 preventive services including vaccinations. MH maintains several centralized, administrative electronic  
88 databases that are linkable using a unique personal health identification number (PHIN). The  
89 completeness and accuracy of these databases are well established.<sup>5,6</sup>

90 The MH Population Registry (MHPR) tracks addresses and dates of birth, death and health insurance  
91 coverage for all insured persons. The Manitoba Immunization Monitoring System (MIMS) and its  
92 successor the Public Health Information Management System (PHIMS) is the population-based province-  
93 wide registry that contains records of all childhood vaccinations administered in Manitoba since 1988 and  
94 all adult vaccinations since 2000.<sup>7</sup> Infant vaccination is primarily performed by physicians in Winnipeg,  
95 the main urban center in the province housing over half the population, and by public health nurses  
96 outside of Winnipeg. Information, including vaccine type and administration date, is captured either  
97 through direct data entry (for vaccines administered by public health staff) or through physician claims.  
98 Validation studies have shown high completeness and accuracy of MIMS data, with less than 2% of  
99 vaccinations coded incorrectly, and accurate service dates recorded 98% of the time.<sup>7</sup>

100 We identified a *study cohort* of all children born in Manitoba between January 2017 and November 2020  
101 from the MHPR. We split this study cohort into 3 subcohorts based on the start of the COVID-19 related  
102 restrictions in Manitoba on March 15, 2020 as well as the vaccine recommendation age and the evaluation  
103 age at which vaccine uptake was determined (Figure 1). The *pre-pandemic subcohort* consisted of  
104 children who reached the evaluation age before the start of restrictions. The *pandemic subcohort*  
105 consisted of children who reached the vaccine recommendation age after the start of restrictions. The  
106 *intermediate subcohort* consisted of children born between these subcohorts.

107 We linked these subcohorts to MIMS/PHIMS to assess vaccine uptake for routine infant vaccines (Table  
108 S1). We assessed how the reduction in vaccine uptake differed by gender, neighborhood income quintile  
109 (obtained from the 2016 Canadian census) and region of residence. For each evaluation age, we limited  
110 the pandemic subcohort to children who reached this evaluation age (12, 18, or 24 months) on/before  
111 November 30, 2021 and who resided in Manitoba from birth to the evaluation age to ensure their  
112 vaccination record was complete.

113 Results

114 Vaccine uptake was about 5-10% lower during the pandemic (Table 1, Table S2), affecting boys and girls  
115 similarly. Uptake in the intermediate subcohort was mostly similar to the pre-pandemic subcohort (Table  
116 S3). The groups most vulnerable to COVID-19<sup>8</sup> saw the largest reductions in vaccine uptake, with an  
117 ongoing downward trend throughout the pandemic (Figure 2). Children in the lowest income  
118 neighborhoods saw a 17% reduction in diphtheria, tetanus, and acellular pertussis (DTaP) dose 4 uptake  
119 at 24 months, 4.4-fold that of high-income neighborhoods, and an 11% reduction in measles, mumps,  
120 rubella (MMR) vaccine uptake at 24 months, 5.6-fold that of high-income neighborhoods. Uptake

121 reductions were largest in the ~75% Indigenous Northern region: 6-fold that of Winnipeg, which houses  
122 >50% of Manitobans, for MMR at 24 months.

123 Disparity by income increased in each region (Table S4): The lower the neighborhood income quintile,  
124 the higher was the reduction in vaccine uptake. Regions with lower pre-pandemic vaccine uptake saw the  
125 largest reductions during the pandemic. The largest reductions were for low-income Northern residents  
126 and smallest for high-income Winnipeg residents, e.g., 16-fold larger for MMR at 24 months (79:94 pre-  
127 pandemic to 65:93 during the pandemic; Table S4). Although reductions were small and rebounded in  
128 Winnipeg and high-income neighborhoods (Figure 2), low-income neighborhoods and other regions, most  
129 notably the Northern region, were on a continuous downward trend in vaccine uptake. These trends held  
130 across all vaccines.

### 131 Discussion

132 Reductions in routine infant vaccine uptake were largest, and continued on a downward trend, for groups  
133 with the lowest baseline vaccine uptake. COVID-19-related reassignment of public health nurses, who  
134 provide infant vaccination outside of Winnipeg, may explain some of these differences in vaccine uptake.  
135 In Quebec, overall vaccination rates rebounded quickly after an initial reduction;<sup>3</sup> in Ontario, vaccine  
136 uptake reduced and remained lower during the pandemic.<sup>9</sup> Neither of these other studies explicitly  
137 accounted for the intermediate subcohort or showed the precipitous and continuous decline we observed  
138 for the most vulnerable infants. A Louisiana study found that disadvantaged children (Medicaid  
139 beneficiaries in low-income households) had a 30% drop in vaccinations during the initial COVID-19  
140 restrictions,<sup>10</sup> but did not include a comparison with children in high-income households to compare with  
141 our observed increase in disparity. As other jurisdictions face similar disparities in access to healthcare,<sup>11</sup>  
142 it is likely that similar differential reductions in vaccine uptake occurred elsewhere.

143 Confounding is unlikely to bias these results, as most children in this analysis were conceived before the  
144 first case of COVID-19 in Manitoba. Any potential (differential) changes in birth rates due to COVID-19  
145 and its restrictions would occur for births after 2020. This study is limited by the completeness and  
146 timeliness of this data, although the quality of these databases are well-established.<sup>5</sup>

147 In conclusion, while privileged children have similar high vaccine uptake as before the pandemic,  
148 children in populations hardest hit by COVID-19 continue seeing concerning reductions in routine infant  
149 vaccination. Because current vaccine uptake is lower than the herd immunity threshold for many vaccine-  
150 preventable diseases, it is imperative that infant vaccination rates are increased, especially in communities  
151 with lower socioeconomic status, as a failure to do so could lead to persistent rebound epidemics in the  
152 most vulnerable populations.

153

154 Acknowledgements

155 The authors acknowledge the Manitoba Centre for Health Policy for use of data contained in the  
156 Manitoba Population Research Data Repository under project #2021-015 (HIPC #2020/2021–73, REB #  
157 HS24593(H2021:026). The results and conclusions are those of the authors and no official endorsement  
158 by the Manitoba Centre for Health Policy or Manitoba Health is intended or should be inferred. Data used  
159 in this study are from the Manitoba Population Research Data Repository housed at the Manitoba Centre  
160 for Health Policy, University of Manitoba and were derived from data provided by Manitoba Health.

161 Author contributions

162 CHR conceptualized and designed the study, oversaw the analysis, drafted the initial manuscript, and  
163 reviewed and revised the manuscript. GP performed the analysis, and reviewed and revised the  
164 manuscript. SMM conceptualized and designed the study, and reviewed and revised the manuscript.

165

166 Figure caption

167 **Figure 1.** Study cohort and subcohorts based on the start of the COVID-19 related restriction in Manitoba  
168 (on March 15, 2020), the age at which the vaccine is recommended (Table S1), and the evaluation age for  
169 vaccine uptake.

170 **Figure 2.** Vaccine uptake (percentage of the population) of DTaP (diphtheria, tetanus, and acellular  
171 pertussis) dose 3 at 12 months and dose 4 at 24 months, and MMR (measles, mumps, rubella) dose 1 at 18  
172 and 24 months by neighborhood income quintile (A) and regional health authority (B) according to month  
173 of birth. Winnipeg is the main urban center of Manitoba, housing >50% of the provincial population;  
174 Northern Manitoba is a remote, predominantly (~75%) Indigenous region.

175

176 References

- 177 1 McDonald HI, Tessier E, White JM, Woodruff M, Knowles C, Bates C, et al. Early impact of the  
178 coronavirus disease (COVID-19) pandemic and physical distancing measures on routine childhood  
179 vaccinations in England, January to April 2020. *Eurosurveillance* 2020;25:2000848.
- 180 2 Shet A, Carr K, Danovaro-Holliday MC, Sodha SV, Prosperi C, Wunderlich J, et al. Impact of the  
181 SARS-CoV-2 pandemic on routine immunisation services: Evidence of disruption and recovery from  
182 170 countries and territories. *The Lancet Global Health* 2022;10:e186–e194.
- 183 3 Kiely M, Mansour T, Brousseau N, Rafferty E, Paudel YR, Sadarangani M, et al. COVID-19 pandemic  
184 impact on childhood vaccination coverage in Quebec, Canada. *Human Vaccines &*  
185 *Immunotherapeutics* 2021;0:1–8.
- 186 4 Martens P, Nickel N, Lix L, Turner D, Prior H, Walld R, et al. *The cost of smoking: A Manitoba study.*  
187 Winnipeg: Manitoba Centre for Health Policy; 2015.
- 188 5 Roos LL, Mustard CA, Nicol JP, McLerran DF, Malenka DJ, Young TK, et al. Registries and  
189 administrative data: Organization and accuracy. *Medical Care* 1993;31:201–212.
- 190 6 Robinson JR, Young TK, Roos LL, Gelskey DE. Estimating the burden of disease: Comparing  
191 administrative data and self-reports. *Medical Care* 1997;35:932–947.
- 192 7 Roberts JD, Poffenroth LA, Roos LL, Bebhuk JD, Carter AO. Monitoring childhood immunizations: A  
193 Canadian approach. *American Journal of Public Health* 1994;84:1666.
- 194 8 Righolt CH, Zhang G, Sever E, Wilkinson K, Mahmud SM. Patterns and descriptors of COVID-19  
195 testing and lab-confirmed COVID-19 incidence in Manitoba, Canada, March 2020-May 2021: A  
196 population-based study. *The Lancet Regional Health - Americas* 2021;2:100038.
- 197 9 Ji C, Piché-Renaud P-P, Apajee J, Stephenson E, Forte M, Friedman JN, et al. Impact of the COVID-19  
198 pandemic on routine immunization coverage in children under 2 years old in Ontario, Canada: A  
199 retrospective cohort study. *Vaccine* 2022.
- 200 10 Walker B, Anderson A, Stoecker C, Shao Y, LaVeist TA, Callison K. COVID-19 and Routine  
201 Childhood and Adolescent Immunizations: Evidence from Louisiana Medicaid. *Vaccine*  
202 2022;40:837–840.
- 203 11 White DB, Villarroel L, Hick JL. Inequitable Access to Hospital Care — Protecting Disadvantaged  
204 Populations during Public Health Emergencies. *New England Journal of Medicine* 2021;385:2211–  
205 2214.



**Table 1 Changes in vaccine uptake (%) of routine childhood vaccines during the pandemic (data ending November 30, 2021).**

DTaP	Dose 3 uptake at 12 months <sup>a</sup>				Dose 4 uptake at 24 months <sup>b</sup>			
	Pre-pandemic	Pandemic	Relative change	Fold change	Pre-pandemic	Pandemic	Relative change	Fold change
Overall	80	74	-7%		71	64	-10%	
Gender								
Male	80	74	-8%	ref.	71	64	-10%	ref.
Female	79	74	-7%	0.9	71	64	-10%	1.0
Income quintile								
Q1 (lowest)	71	62	-13%	6.1	61	50	-17%	4.4
Q2	80	72	-10%	4.6	71	61	-14%	3.5
Q3	83	79	-5%	2.6	75	71	-6%	1.5
Q4	82	77	-7%	3.2	75	70	-8%	1.9
Q5 (highest)	85	84	-2%	ref.	79	76	-4%	ref.
Unknown	81	81	1%	-0.2	70	71	2%	-0.4
Residence								
Rural	70	60	-14%	5.5	62	53	-15%	2.3
Urban	87	85	-3%	ref.	79	74	-6%	ref.
Unknown	75	67	-12%	4.5	55	42	-23%	3.6
Regional health authority of residence								
Winnipeg	87	85	-3%	ref.	79	74	-6%	ref.
Interlake-Eastern	78	65	-16%	6.6	68	60	-11%	1.8
Northern	64	50	-22%	8.6	51	39	-25%	4.0
Southern	66	58	-12%	4.6	60	51	-15%	2.4
Prairie Mountain	82	77	-7%	2.6	74	68	-9%	1.4
Public Trustee / In CFS care	75	67	-12%	4.6	55	42	-23%	3.6
MMR	Dose 1 uptake at 18 months <sup>c</sup>				Dose 1 uptake at 24 months <sup>d</sup>			
	Pre-pandemic	Pandemic	Relative change	Fold change	Pre-pandemic	Pandemic	Relative change	Fold change
Overall	82	75	-9%		86	80	-7%	
Gender								
Male	82	75	-9%	ref.	86	80	-7%	ref.
Female	82	76	-8%	0.9	86	80	-7%	1.1
Income quintile								
Q1 (lowest)	76	66	-14%	3.5	83	73	-11%	5.6
Q2	83	74	-12%	3.0	88	80	-10%	4.7
Q3	84	79	-6%	1.5	87	84	-3%	1.5
Q4	83	77	-7%	1.9	87	81	-7%	3.3
Q5 (highest)	87	84	-4%	ref.	89	87	-2%	ref.
Unknown	84	82	-2%	0.5	87	86	-1%	0.5
Residence								

Rural	75	64	-15%	3.6	80	71	-12%	4.0
Urban	89	85	-4%	ref.	92	89	-3%	ref.
Unknown	80	60	-25%	6.1	81	53	-34%	11.5
Regional health authority of residence								
Winnipeg	89	85	-4%	ref.	92	89	-3%	ref.
Interlake-Eastern	80	70	-12%	3.1	83	78	-6%	2.3
Northern	76	57	-24%	6.3	85	71	-16%	6.0
Southern	68	60	-12%	3.2	73	64	-12%	4.5
Prairie Mountain	84	76	-10%	2.5	88	80	-9%	3.3
Public Trustee / In CFS care	80	60	-25%	6.5	81	53	-34%	12.4

DTaP = Diphtheria, tetanus, and acellular pertussis vaccine

MMR = Measles, mumps, and rubella vaccine

<sup>a</sup> Recommended age is 6 months; Pre-pandemic cohort, born January 1, 2017 - March 15, 2019; Pandemic cohort, born September 15, 2019 and later

<sup>b</sup> Recommended age is 18 months; Pre-pandemic cohort, born January 1, 2017 - March 15, 2018; Pandemic cohort, born September 15, 2018 and later

<sup>c</sup> Recommended age is 12 months; Pre-pandemic cohort, born January 1, 2017 - September 15, 2018; Pandemic cohort, born March 15, 2019 and later

<sup>d</sup> Recommended age is 12 months; Pre-pandemic cohort, born January 1, 2017 - March 15, 2018; Pandemic cohort, born March 15, 2019 and later

Recommended/evaluation age

6-month dose at 12 months



12-month dose at 18 months



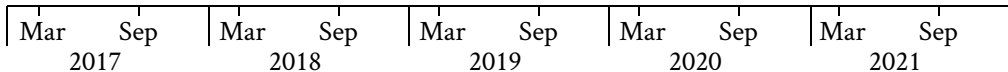
12-month dose at 24 months



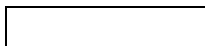
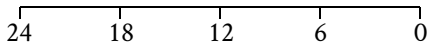
18-month dose at 24 months



Birth date



Age (months) at start of COVID-19 restrictions



Pre-pandemic subcohort, not affected by restrictions

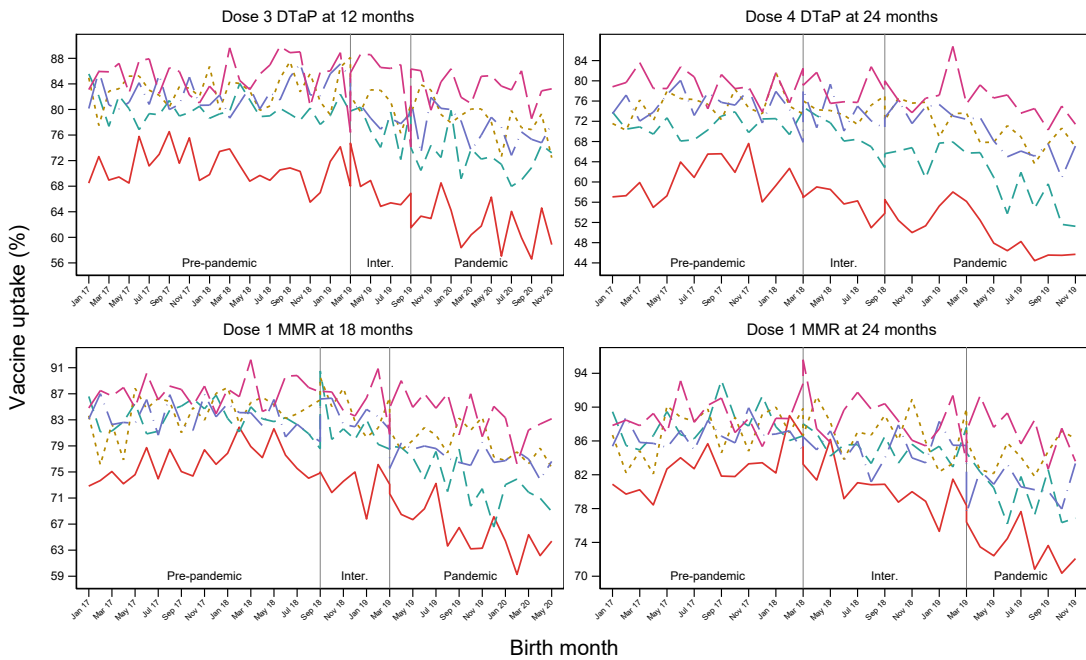


Intermediate subcohort, partially affected by restrictions



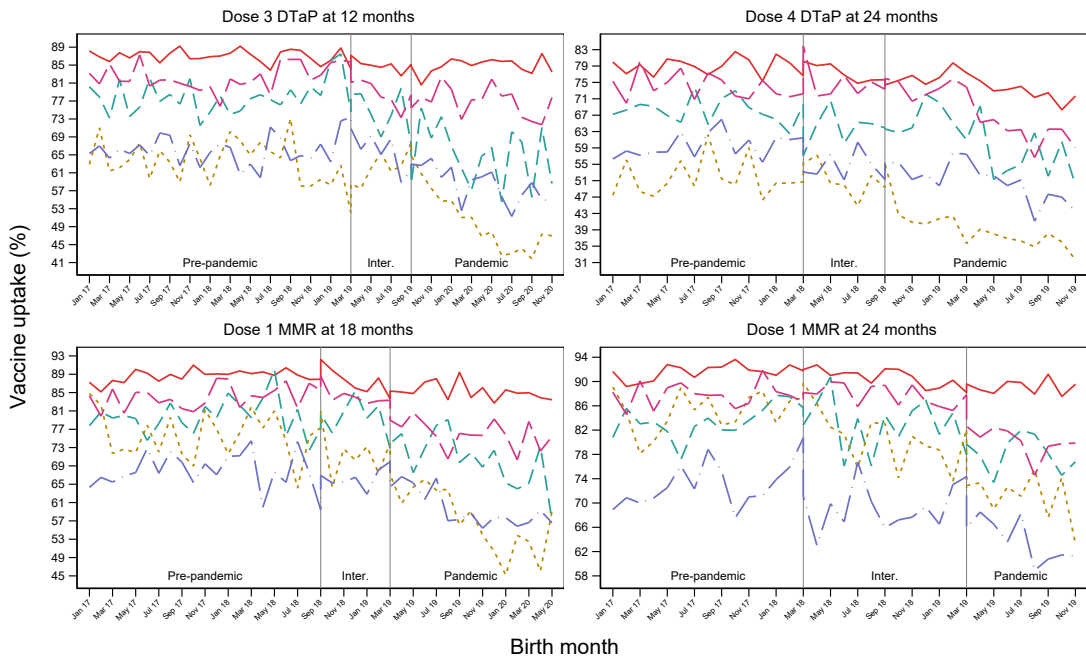
Pandemic subcohort, fully affected by restrictions

A)



Birth month

B)



Birth month

— Winnipeg — Interlake-Eastern - - - Northern - - - Southern - - - Prairie Mountain