

1                     **Influenza and pneumococcal vaccination and the risk of COVID-19:**  
2                                     **A systematic review and meta-analysis**

3

4

5

6

7

8                     **Georgia G. Kapoula<sup>1,2</sup>, Konstantina E. Vennou<sup>1</sup> and Pantelis G. Bagos<sup>1\*</sup>**

9

10

11                     <sup>1</sup>Department of Computer Science and Biomedical Informatics, University of Thessaly,  
12                                     Lamia, 35131, Greece

13                     <sup>2</sup>Department of Biochemistry, General Hospital of Lamia, Lamia 35100, Greece

14                                     \*Correspondence to: [pbagos@gmail.com](mailto:pbagos@gmail.com)

15

16

17

18

19

20

21 **ABSTRACT**

22 A number of studies have investigated the potential non-specific effects of some  
23 routinely administered vaccines (e.g. influenza, pneumococcal) on COVID-19 related  
24 outcomes, with contrasting results. In order to elucidate this discrepancy, we  
25 conducted a systematic review and meta-analysis to assess the association between  
26 seasonal influenza vaccination and pneumococcal vaccination with SARS-CoV-2  
27 infection and its clinical outcomes. PubMed and medRxiv databases were searched,  
28 up until November 2021. Random effects model was used in the meta-analysis to pool  
29 odds ratio (OR) and adjusted estimates with their 95% confidence intervals (CIs).  
30 Heterogeneity was quantitatively assessed using the Cochran's  $Q$  and the  $I^2$  index. Sub-  
31 group analysis, sensitivity analysis and assessment of publication bias were performed  
32 for all outcomes. In total 38 observational studies were included in the meta-analysis  
33 and there was substantial heterogeneity. Influenza and pneumococcal vaccination  
34 were associated with lower risk of SARS-Cov-2 infection (OR: 0.80, 95% CI: 0.75-  
35 0.86 and OR: 0.70, 95% CI: 0.57-0.88, respectively). Regarding influenza  
36 vaccination, it seems that the majority of studies did not properly adjust for all  
37 potential confounders, so when the analysis was limited to studies that adjusted for  
38 age, sex, comorbidities and socioeconomic indices, the association diminished. This is  
39 not the case regarding the pneumococcal vaccination, for which even after adjustment  
40 for such factors the association persisted. Regarding harder endpoints such as ICU  
41 admission and death, current data do not support the association. Possible  
42 explanations are discussed, including trained immunity, inadequate matching for  
43 socioeconomic indices and possible coinfection.

44

45 **Keywords:** Influenza vaccine; pneumococcal vaccine; SARS-CoV-2; systematic

46 review; meta-analysis.

47

## 48 INTRODUCTION

49 In 2020 in Wuhan, China cases of pneumonia were reported [1], caused by the SARS-  
50 CoV-2, which is a coronavirus (CoV) which lead to a pandemic outbreak. The  
51 coronaviruses belong in the *Nidovirales* order and in the *Coronaviridae* family, which  
52 has four genera divisions, the alpha, beta, gamma, and delta coronaviruses. All  
53 coronaviruses contain very large genomes, are enveloped, and non-segmented  
54 positive-sense ribonucleic acid (RNA) viruses [2]. Coronaviruses in humans mainly  
55 cause respiratory diseases, there are many viruses in this family with a large spectrum  
56 of diseases from the less-severe common cold to serious and highly fatal diseases  
57 such as the Severe Acute Respiratory Syndrome (SARS) and the Middle East  
58 Respiratory Syndrome (MERS). SARS-CoV-2 is a beta coronavirus in the same  
59 subgenus with the SARS-CoV-2 and shares RNA with it as well as with the MERS-  
60 CoV [3]. The novel coronavirus that we are facing can cause severe disease, a  
61 syndrome termed COVID-19. In 1<sup>st</sup> of April 2022 there have been 486,761,597  
62 confirmed cases and 6,142,735 confirmed deaths worldwide [4].

63 Seasonal influenza is another acute respiratory infection caused by the  
64 influenza viruses. Influenza viruses are part of the *Orthomyxoviridae* family, in which  
65 there are three main genera A, B and C [5]. They are RNA viruses with segmented,  
66 negative-strand genome. The diseases caused by influenza have a large range from  
67 mild to more severe and even death in high-risk groups [6]. As one can see both  
68 diseases are respiratory viral diseases, they co-exist at the same period and they can  
69 be clinically indistinguishable (fever, cough, nasal congestion or rhinorrhea, myalgia  
70 etc.) [7]. Another respiratory infection is pneumonia. The main causes of pneumonia  
71 are viruses, bacteria and fungi. One of the most common bacteria which cause

72 pneumonia (mainly in children) is *Streptococcus pneumonia* [8]. Some studies have  
73 shown co-infection of COVID-19 and influenza or COVID-19 and pneumonia [9].

74 One step towards the end of the pandemic is vaccination. There are ten  
75 vaccines approved by WHO [10]. Although many non SARS-CoV-2 vaccines have  
76 been tested for preventing SARS-CoV-2 infection or having a protective effect in the  
77 severity of the disease. The booster Bacillus Calmette-Guérin (BCG) vaccine was  
78 suggested, by many studies and even by a meta-analysis, to have beneficial effects on  
79 preventing COVID-19 infection [11-13]. Some preliminary studies suggest some  
80 protection against SARS-CoV-2 to be conferred from vaccination to other pathogens  
81 such as influenza [14] while others have produced contrasting results [15]. In this  
82 regard, we conducted a systematic review and meta-analysis to assess the overall  
83 association between influenza and pneumococcal vaccination and SARS-CoV-2  
84 infection.

85

## 86 **MATERIALS and METHODS**

87 A comprehensive search was performed to identify papers investigated influenza and  
88 pneumococcal vaccination and SARS-CoV-2 infection and severity of the disease.  
89 PubMed [16] and medRxiv [17] were investigated for relevant research articles.

90 The search terms for influenza vaccination were: ("Influenza Vaccines" OR  
91 "influenza vaccine" OR "flu vaccine" OR "anti-flu vaccine") AND ("sars-cov2" OR  
92 "covid-19" OR "2019-ncov" OR "2019nconv" OR "sars-cov2" OR "covid-19") in  
93 PubMed and "influenza vaccine" (abstract or title, match all words) in medRxiv. For  
94 the pneumococcal vaccination were: ("pneumococcal Vaccines" OR "pneumococcal  
95 vaccine") AND ("sars-cov2" OR "covid-19" OR "2019-ncov" OR "2019nconv" OR  
96 "sars-cov2" OR "covid-19") in PubMed and "pneumococcal vaccine" (abstract or title,

97 match all words) in medRxiv. To avoid selection bias no filter was applied in  
98 language, year, method etc. This systematic review was performed according to  
99 Preferred Reporting Items for Systematic Reviews and Meta-Analyses (PRISMA)  
100 guidelines [18], the STROBE Statement checklist [19] and other general guidelines  
101 [20]. The search was performed until 01/11/2021.

102 The information that was extracted from the selected studies was: Authors,  
103 Title, Year of publication, Country in which it was conducted, Study Design, Study  
104 population, Sample size, Gender, Comorbidities, COVID-19 outcome, the effect size  
105 related to relevant outcomes (e.g. OR, HR, RR) and other potentially relevant  
106 information. Since the risk for COVID-19 varies largely according to risk factors,  
107 studies not including adjusted odds ratio (OR), adjusted hazard ratio (HR) or adjusted  
108 relative risk (RR) as their effect size were excluded. We requested that the effect sizes  
109 were adjusted mainly for gender, age, race, comorbidities, smoking status etc.

110 The main inclusion criteria were: a) vaccination period for influenza or  
111 pneumococcal from autumn 2019 until autumn 2020, b) confirmed COVID-19  
112 infection with either real-time PCR, or serologic test, or according to WHO definition  
113 or laboratory confirmation (not specified), c) participants being adults and d)  
114 comparison of people infected with COVID-19 against non-infected ones using an  
115 adjusted estimate of OR, HR or RR (see above).

116 In order to assess the association between the two vaccines (influenza and  
117 pneumococcal) and COVID-19 outcome (infection, death, hospitalization, etc.), a  
118 random effects meta-analysis was performed, for each outcome, using as effect size  
119 the adjusted OR, or adjusted RR/HR, combined with their 95% confidence interval  
120 (CI) [21]. The between studies heterogeneity of the pooled estimates was quantified  
121 by means of the chi-square-based Cochran's  $Q$  statistic and the consistency index ( $I^2$ )

122 [22]. To assess publication bias, the rank correlation method of Begg and Mazumdar  
123 [23], and the fixed effects regression method of Egger [24] were applied. Subgroup  
124 analyses were performed to investigate the effect of various study level  
125 characteristics. Sensitivity analyses were performed by omitting one study at a time to  
126 assess studies with notable impact and examine the robustness of the overall effect.  
127 For all statistical analyses performed, the statistical software package STATA 13 [25]  
128 was used and results with  $p$ -value  $<0.05$  were considered statistically significant.

129

## 130 **RESULTS**

### 131 *Study selection and study characteristics*

132 The literature search from the two databases identified a total of 768 related to the  
133 influenza vaccination and 86 records for the pneumococcal vaccination search. After  
134 reading the titles for excluding duplicates, 674 and 79 unique publications remained  
135 for influenza and pneumococcal vaccination, respectively. The simultaneously titles  
136 and abstracts review led to a further rejection of 697 publications. The remaining 56  
137 articles were read in full copy, as well as the citations of the retrieved articles. Finally,  
138 38 publications met all the inclusion criteria for the quantitative analysis and were  
139 included in the final systematic review and meta-analysis. The PRISMA flow diagram  
140 of the study selection procedure is shown in Figure 1.

141 Among the included publications, 22 studies focused on the association  
142 between influenza vaccination and the risk of SARS-CoV-2 infection and 10 studies  
143 on the association between pneumococcal vaccination and the risk of SARS-CoV-2  
144 infection. These studies comprised a total of 55,917,587 individuals (COVID-19  
145 patients and non-COVID patients).

146 Out of the 38 publications included in the meta-analysis, 19 publications  
147 assessed the association of the influenza vaccination and COVID-19 clinical  
148 outcomes. The different outcomes included: a) need of hospitalization involving 15  
149 studies with 55,881,321 individuals (13,123,605 vaccinated and 42,758,116  
150 unvaccinated patients) b) administration of mechanical ventilation/invasive  
151 respiratory oxygen support described in 4 studies encompassing 255,735 patients, c)  
152 intensive care unit admission. This outcome was assessed in 11 studies involving  
153 446,924 vaccinated and not vaccinated patients and d) mortality which was assessed  
154 in 18 studies involving 407,409 vaccinated and not vaccinated COVID-19 patients.

155 Moreover, 4 studies assessed the association between pneumococcal  
156 vaccination and hospitalization enrolling 4,310 patients of which 1,333 were  
157 vaccinated and 2,977 were not vaccinated. Finally, 3 studies examined the association  
158 between pneumococcal vaccination and intensive care unit involving 1,231 patients  
159 (921 non-vaccinated Vs 310 vaccinated). The baseline characteristics of the included  
160 studies are listed in Table 1 (influenza vaccination and SARS-CoV-2 infection), Table  
161 2 (influenza vaccination and clinical outcomes) and Table 3 (pneumococcal  
162 vaccination and SARS-CoV-2 infection and clinical outcomes). Most studies enrolled  
163 individuals from the general population. Among them, five studies had as a  
164 population study health workers [26-30], one study involved only pregnant women  
165 [31], another study included only transplant recipients [32] and four studies were  
166 performed in older adults (age >65) [33-36]. The laboratory method (rt-PCR) used to  
167 diagnose of the disease was common in most of the included studies. The adjustment  
168 variables varied across studies with age, sex and comorbidities being the most  
169 common ones reflecting the known COVID-19 risk factors. Studies which did not



170 contain adjusted estimates (OR or RR/HR) as well as ecological studies were  
171 excluded from the meta-analysis and are summarized in Supplementary Table 1.

172

### 173 ***The association between influenza vaccination and SARS-CoV-2 infection***

174 The results of the random effects analysis are summarized in Table 4. The  
175 association of the influenza vaccination and SARS-CoV-2 infection is presented  
176 graphically in the forest plot in Figure 2. Influenza vaccination is shown to be  
177 associated with lower risk of SARS-CoV-2 infection (random effects model: pooled  
178 estimate 0.80, 95% CI: 0.75-0.86). The results of the statistical tests for publication  
179 bias (Begg's, Egger's test) are shown in Table 4. Both tests showed no evidence of  
180 publication bias for the pooled estimates of the association between influenza  
181 vaccination and SARS-CoV-19 infection ( $p$ -value >0.05). In the leave-one-out  
182 sensitivity analyses regarding the association between influenza vaccination and  
183 SARS-CoV-2 infection, the results showed that no individual study influenced the  
184 overall effect estimate.

185 The between-studies heterogeneity was substantial with  $I^2=70.1\%$ . In order to  
186 investigate the high degree of heterogeneity we performed subgroup analysis  
187 investigating the potential effect of study-level characteristics (study design, study  
188 population, effect size, adjustment factors, method for assessment of COVID-19 and  
189 continent). However, none of these factors seemed to play an important role, since in  
190 all cases the results of the subgroup analysis are quite close to the overall estimate  
191 (Table 5). It is worth noting however, that the association was diminished when the  
192 analysis was restricted to the 6 studies that adjusted for age, sex, comorbidities and  
193 some indices of socioeconomic status (like residence, income or education).

194           Moreover, two studies (Debisarum et al. [37], Erismis et al [30]) were  
195 scrutinized further as in their analysis they used only age and sex, respectively as  
196 adjustment variables. However, when both were excluded from the meta-analysis and  
197 the overall meta-analysis was repeated, the results did not differ from the overall  
198 estimate: OR 0.81 (95% CI: 0.75-0.87).

199

#### 200 ***The association between influenza vaccination and COVID-19 clinical outcomes***

201 The results of the meta-analysis that was conducted separately for each clinical  
202 outcome of interest are shown in Table 4. The results suggest a potential association  
203 between influenza vaccination and hospitalization (OR: 0.88, 95% CI: 0.81-0.96) and  
204 mechanical ventilation/invasive respiratory support (OR: 0.73, 95% CI: 0.58-0.92),  
205 but not with ICU admission (OR: 0.96, 95% CI: 0.88-1.06) and mortality (OR: 0.90,  
206 95% CI:0.81-1.01). Both Begg's and Egger's tests showed no evidence of publication  
207 bias for the pooled estimates of the association between influenza vaccination and  
208 COVID-19 related clinical outcomes (all  $p$ -values  $>0.05$ ). The summary of the  
209 publication bias tests is presented in Table 4. Figure 3 represents the forest plot for the  
210 association between influenza vaccination and COVID-19 related hospitalization and  
211 between influenza vaccination and mortality.

212           In the sensitivity analyses that followed, the pooled estimates were consistent  
213 when any single study was omitted. Subgroup analysis was performed to explain the  
214 between studies heterogeneity for the association of influenza vaccination and  
215 COVID-19 clinical outcomes (Table 6). Study design was not used as a variable in  
216 this subgroup analysis, as the majority of the studies were cohort studies with the  
217 exception of one cross-sectional study in the hospitalization outcome and two cross-  
218 sectional study investigating the mortality outcome. Study population was also not

219 used as the majority of the studies involved adults from the general population.  
220 Moreover, due to the limited studies reporting adjusted measures of the effect of the  
221 association between influenza vaccination and the need of mechanical ventilation,  
222 subgroup analysis could not be performed in this case.

223 We also investigated the effect of the study of Greco et al. [38], in which they  
224 were significant differences in terms of the age of the vaccinated and non-vaccinated  
225 group and the two groups were adjusted only for sex. When the study was excluded  
226 from the meta-analysis concerning the association between influenza vaccination and  
227 mortality, the results did not significantly differ from the ones in the overall meta-  
228 analysis (OR 0.90, 95% CI: 0.81-1.00).

229

230 ***The association between pneumococcal vaccination with SARS-CoV-2 infection***  
231 ***and its clinical outcomes***

232 A meta-analysis of the association between pneumococcal vaccination with SARS-  
233 CoV-2 infection, the need of hospitalization and ICU admission was performed. As a  
234 result, pneumococcal vaccination was shown to be associated with lower risk of  
235 COVID-19 infection (Figure 4, Table 7). The majority of the studies here (7 out of  
236 10) provided estimates adjusted for age, sex, comorbidities and some indices of  
237 socioeconomic status (like residence, income or education). Even when we restricted  
238 the analysis in this sample the overall effect did not change (OR: 0.61, 95% CI: 0.44-  
239 0.85).

240 The results of the meta-analysis regarding pneumococcal vaccination and the  
241 need of hospitalization showed that the vaccine seems to be associated with a higher  
242 risk for COVID-19 hospitalization. However, only four studies investigated the  
243 particular association, and additionally there was evidence for publication bias in this

244 analysis making the results questionable. Finally, pneumococcal vaccination was not  
245 associated with the need of intensive care but as before, only three studies  
246 investigated this association.

247

## 248 **DISCUSSION**

249       Influenza and COVID-19 are different respiratory viral diseases that can be  
250 clinically indistinguishable and co-exist at the same period. Some preliminary studies  
251 suggest some protection against SARS-CoV-2 to be conferred from vaccination to  
252 other pathogens such as influenza [14] while others have produced contrasting result  
253 [39]. There is also a limited number of studies that examined the association of the  
254 pneumococcal vaccine with the risk of developing SARS-CoV-2 infection and disease  
255 severity or risk of death on COVID-19 patients. In order to elucidate this discrepancy,  
256 we conducted a systematic review and meta-analysis to assess the association between  
257 seasonal influenza vaccination, pneumococcal vaccination and SARS-CoV-2  
258 infection as well as with clinical outcomes related to COVID-19 morbidity and  
259 mortality. Our study followed all the available guidelines and ultimately included 38  
260 publications that have evaluated the association of interest (24 studies on SARS-CoV-  
261 2 infection). Overall, our results indicate that influenza vaccination seems to be  
262 associated with lower risk for COVID-19 infection, as well as against hospitalization  
263 and mechanical ventilation, but no significant effect was found against “harder”  
264 endpoints like ICU admission and mortality. Specifically, the results of the meta-  
265 analysis showed that people vaccinated between autumn 2019 to autumn 2020, had up  
266 to 20% lower risk of COVID-19 infection. Similarly, if vaccinated individuals were  
267 infected by SARS-CoV-2 the risk of hospitalization would be reduced by 12% and the  
268 need of mechanical ventilation by 27%. As far as the pneumococcal vaccination is

269 concerned, the results show that it has a protective effect against SARS-CoV-2  
270 infection while it does not seem to have the same effect on COVID-19 hospitalization  
271 or ICU admission, although these analyses included a small number of studies.

272         During the last year, two systematic review and meta-analyses were published  
273 or the same topic, but the included studies were fewer than the ones included in our  
274 meta-analysis [40, 41]. In the study of Wang et al. a total of 9, 3, 2, and 3 studies were  
275 included for the association of influenza vaccination and SARS-CoV-2 infection,  
276 hospitalization, ICU admission and mortality respectively. The authors stated in their  
277 results that “the association between influenza vaccination and COVID-19 clinical  
278 outcomes was not statistically significant by random effects model while the results  
279 by fixed effects model was somehow significant”. They attribute this result to “the  
280 substantial heterogeneity between the small number of studies and participants  
281 involved in each outcome”. In their meta-analysis, Zeynali Bujani et al. [41] included  
282 9 studies for the association of influenza vaccine and COVID-19, among which were  
283 two studies excluded from our meta-analysis. The particular studies, of Jedi et al. [42]  
284 and Caban-Martinez et al. [43], were excluded as they reported effect sizes based on  
285 crude counts. Such data clearly violated our inclusion criteria, as we attempted to  
286 minimize the potential confounding by using only adjusted estimates. In addition, the  
287 study of Skowronski et al. [44] a retrospective analysis from Canada, which involved  
288 specimens collected during the 2010-2011 to 2016-2017 seasons, when specimens  
289 were tested for both influenza and non-influenza respiratory viruses (NIRVs),  
290 including some seasonal coronaviruses but not specific and exclusively SARS-CoV-2.

291         We performed the meta-analysis following strict criteria, we included all the  
292 available data and investigated every study level covariate that may have influenced  
293 the outcome. Nevertheless, the between studies heterogeneity was high and the

294 attempts to explain it using study-level covariates did not reveal anything of  
295 importance. In any case, heterogeneity is expected for many reasons that include the  
296 design of the study, the studied population, the sampling method, as well as the  
297 testing and vaccination policies in each country. In our analysis we included studies in  
298 which the seasonal influenza vaccination was administered between 2019 and 2020.  
299 The type of influenza vaccination and the exact date when the vaccines were  
300 administered was not specified in all studies and as influenza varies across years,  
301 results should be interpreted with caution regarding different influenza seasons. The  
302 testing policy implemented in each country also varied in the included studies, using  
303 different diagnostic tests. Most of the studies used molecular diagnosis with rt-PCR,  
304 few used antibody testing whereas some studies did not specify the laboratory method  
305 used. Furthermore, we must consider that national influenza immunization policies  
306 can vary significantly from country to country. These differences arise from  
307 insufficient information of the relevance of influenza infection from a clinical, social  
308 and economic point of view [45].

309 Our findings suggest that both vaccines are associated with a lower risk for  
310 SARS-CoV-2 infection, but not with “harder” endpoints such as ICU admission and  
311 death. The influenza vaccine was found additionally to be associated with decreased  
312 risk for hospitalization and need for mechanical ventilation. This association is  
313 counter-intuitive at first sight and hence needs to be explained. It is worth mentioning  
314 that BCG vaccine, a vaccine primarily used against tuberculosis (TB), which is  
315 mandatory in several countries [30], seems also to have a protective effect since a  
316 meta-analysis of data from 160 countries has shown that when the BCG vaccine  
317 coverage was over 70% there was a reduction in the COVID-19 infections [12]. Also  
318 some studies have found that mandatory BCG vaccination is associated with a

319 flattening of the curve in the spread of COVID-19 [46] and that differences in  
320 mortality produced by COVID-19 across countries are correlated with a country's  
321 BCG vaccination policy [47, 48]. However, these data come from ecological studies  
322 and thus need to be interpreted with caution.

323         Cross-reactivity is unlikely to exist between SARS-CoV-2 and influenza  
324 viruses, and thus other potential explanations should be considered. There is, for  
325 instance, some evidence that vaccines developed for a specific pathogen may have a  
326 wider role in protection against unrelated pathogens. Such cases include *Bacillus*  
327 *Calmette-Guérin* (BCG), measles and influenza [49]. The underlying mechanisms for  
328 such non-specific actions remain poorly understood, but a plausible suggested  
329 mechanism includes the induction of innate immune response following live  
330 attenuated vaccination, in a way that is independent of memory cells (T or B cells).  
331 This type of immunity, termed “trained innate immunity”, may confer non-specific  
332 protection against different pathogens, by inducing upregulation of recognition  
333 receptors (such as toll-like receptors) and secretion of proinflammatory cytokines  
334 (such as TNF-alpha and IL-6) in peripheral blood leucocytes and functional changes  
335 in natural killer cells [37, 50].

336         Nevertheless, other more plausible explanations should not be ruled out. The  
337 studies included in this meta-analysis are heterogeneous in many respects including  
338 their design, the study population and the inclusion criteria. In terms of their design all  
339 included studies were observational, so the risk of possible confounding should be  
340 considered. In such cases, when some important risk factors do exist (such as age,  
341 gender, and comorbidities), it would be unwise to perform the meta-analysis including  
342 crude estimates. However, even though we included only adjusted estimates, or  
343 studies with matched groups, the factors for which the adjustment were performed

344 were not the same across studies. For instance, most studies adjusted for age and sex,  
345 others for several comorbidities (and even in this case, not for the same  
346 comorbidities), and some others for additional factors such as area of residence or  
347 socioeconomic status. In the subgroup analysis we tried to investigate this effect, but  
348 we were unable to find systematic differences across studies.

349         Socioeconomic factors, such as educational level, household size and income  
350 have been reported to have a significant effect on the probability of being vaccinated  
351 against influenza [51], whereas the same factors have been consistently shown to play  
352 significant role in COVID-19 morbidity and mortality [52-54]. It is possible therefore  
353 to speculate that individuals who get vaccinated may pay more attention to their  
354 health status and lifestyle, and subsequently, they might have been more compliant to  
355 the various non-pharmaceutical interventions suggested for COVID-19 prevention,  
356 such as social distancing, wearing masks, hand hygiene practices and use of protective  
357 equipment, leading to a reduced potential risk of infection. Following the same  
358 rationale, since vaccinated individuals are under-represented in the lower  
359 socioeconomic categories (e.g. those who cannot work from home, those who need to  
360 use public transportation, or live in crowded households and so on), then these factors  
361 might explain the observed increased risk of getting COVID-19. This interpretation is  
362 also consistent with the results suggesting that vaccinated individuals are at increased  
363 risk of SARS-CoV-2 infection, but not at risk of ICU admission or death, since in  
364 these cases the comparison was made among those that were already infected, and the  
365 supposed confounding effect has been potentially removed.

366         Interestingly, when the analysis was restricted to the studies that adjusted for  
367 age, sex, comorbidities and some indices of socioeconomic status (like area of  
368 residence, income or education), the association of influenza vaccination with the risk



369 of SARS-CoV-2 infection was diminished. Thus, future and more carefully designed  
370 studies, that will adjust more thoroughly for socioeconomic indices, should be pursued  
371 to investigate this hypothesis. However, this observation does not seem to hold  
372 regarding the association of pneumococcal vaccination with SARS-CoV-2 infection,  
373 since the statistically significant association persists even after restricting the analysis  
374 in the studies that adjusted for the same factors. We need to mention, that even though  
375 the studies regarding pneumococcal vaccination were fewer in total, the majority of  
376 them provided estimates adjusted for socioeconomic indices, which is in contrast to  
377 what is the case for studies of influenza vaccine.

378 Most respiratory viral diseases may have as complication bacterial  
379 coinfections, or secondary infections (super-infections), which can worsen the clinical  
380 outcome increasing thus morbidity and mortality. However, it has been argued that  
381 the proportion of COVID-19 patients with bacterial coinfections and/or super-  
382 infections may be lower compared to what we have seen in patients suffering from  
383 influenza [55-57]. Nevertheless, since vaccination is beneficial per se, it has been  
384 suggested that pneumococcal vaccination can, to some extent, provide additional  
385 protection to the COVID-19 patients reducing the morbidity and mortality [58].  
386 Animal studies have also shown that an initial SARS-CoV-2 infection can increase  
387 susceptibility and pathogenicity to bacterial coinfection [59]. The limited number of  
388 available studies regarding the association of pneumococcal vaccination with  
389 hospitalization, ICU admission and death, did not allow us to test this hypothesis, but  
390 as we said the association of vaccination with SARS-CoV-2 infection remained  
391 significant even after adjustment for sex, age, comorbidities and socioeconomic  
392 indices, and this should be investigated in future studies.

393



395     **REFERENCES**

- 396     1.     Huang, C., et al., *Clinical features of patients infected with 2019 novel coronavirus in*  
397     *Wuhan, China*. *The Lancet*, 2020. **395**(10223): p. 497-506.
- 398     2.     Maier, H.J., E. Bickerton, and P. Britton, *Preface*. *Coronaviruses*. *Methods Mol Biol*,  
399     2015. **1282**: p. v.
- 400     3.     Lu, R., et al., *Genomic characterisation and epidemiology of 2019 novel coronavirus:*  
401     *implications for virus origins and receptor binding*. *Lancet* (London, England), 2020.  
402     **395**(10224): p. 565-574.
- 403     4.     (WHO), W.H.O. *Origin of SARS-CoV-2*. 2019; WHO/2019-  
404     nCoV/FAQ/Virus\_origin/2020.1].
- 405     5.     Bouvier, N.M. and P. Palese, *The biology of influenza viruses*. *Vaccine*, 2008. **26**  
406     **Suppl 4**(Suppl 4): p. D49-53.
- 407     6.     (WHO), W.H.O. *Influenza (Seasonal)*. 2018.
- 408     7.     Jiang, C., et al., *Comparative review of respiratory diseases caused by coronaviruses*  
409     *and influenza A viruses during epidemic season*. *Microbes Infect*, 2020. **22**(6-7): p.  
410     236-244.
- 411     8.     (WHO), W.H.O. *Pneumonia*. 2021.
- 412     9.     Xing, Q.-s., et al., *Precautions are Needed for COVID-19 Patients with Coinfection of*  
413     *Common Respiratory Pathogens*. *medRxiv*, 2020: p. 2020.02.29.20027698.
- 414     10.    Team, V.G.C.V.T. *COVID-19 Vaccine Tracker 2022*; Available from:  
415     <https://covid19.trackvaccines.org/>.
- 416     11.    Amirlak, L., et al., *Effectiveness of booster BCG vaccination in preventing Covid-19*  
417     *infection*. *Hum Vaccin Immunother*, 2021: p. 1-3.
- 418     12.    Joy, M., et al., *Is BCG associated with reduced incidence of COVID-19? A meta-*  
419     *regression of global data from 160 countries*. *Clinical epidemiology and global health*,  
420     2021. **9**: p. 202-203.
- 421     13.    Dolgikh, S., *Hospitalization Data Supports Correlation of Lower Covid-19 Severity vs.*  
422     *Universal BCG Immunization in the Early Phase of the Pandemic*. *medRxiv*, 2021.
- 423     14.    Mosaddeghi, P., et al., *Harnessing the non-specific immunogenic effects of available*  
424     *vaccines to combat COVID-19*. *Hum Vaccin Immunother*, 2021. **17**(6): p. 1650-1661.
- 425     15.    Kissling, E., et al., *Absence of association between 2019-20 influenza vaccination*  
426     *and COVID-19: Results of the European I-MOVE-COVID-19 primary care project,*  
427     *March-August 2020*. *Influenza Other Respir Viruses*, 2021. **15**(4): p. 429-438.
- 428     16.    *PubMed Help [Internet], in Bethesda (MD): National Center for Biotechnology*  
429     *Information (US); 2005-. PubMed Help. [Updated 2018 Mar 28].*  
430     *medRxiv*. 2019.
- 431     18.    Moher, D., et al., *Preferred reporting items for systematic reviews and meta-analyses:*  
432     *the PRISMA statement*. *PLoS Med*, 2009. **6**(7): p. e1000097.
- 433     19.    Morton, S.C., et al., *Standards and guidelines for observational studies: quality is in*  
434     *the eye of the beholder*. *Journal of Clinical Epidemiology*, 2016. **71**: p. 3-10.
- 435     20.    Forero, D.A., et al., *Ten simple rules for carrying out and writing meta-analyses*. *PLoS*  
436     *computational biology*, 2019. **15**(5): p. e1006922-e1006922.
- 437     21.    DerSimonian, R. and N. Laird, *Meta-analysis in clinical trials*. *Control Clin Trials*,  
438     1986. **7**(3): p. 177-88.
- 439     22.    Higgins, J.P., et al., *Measuring inconsistency in meta-analyses*. *Bmj*, 2003.  
440     **327**(7414): p. 557-60.
- 441     23.    Begg, C.B. and M. Mazumdar, *Operating characteristics of a rank correlation test for*  
442     *publication bias*. *Biometrics*, 1994. **50**(4): p. 1088-101.
- 443     24.    Egger, M., et al., *Bias in meta-analysis detected by a simple, graphical test*. *Bmj*,  
444     1997. **315**(7109): p. 629-34.
- 445     25.    StataCorp, *Stata 13 Base Reference Manual*. 2013, College Station, TX: Stata Press.
- 446     .
- 447     26.    Martinez-Baz, I., et al., *Influenza Vaccination and Risk of SARS-CoV-2 Infection in a*  
448     *Cohort of Health Workers*. *Vaccines (Basel)*, 2020. **8**(4).
- 449     27.    Massoudi, N. and B. Mohit, *A Case-Control Study of the 2019 Influenza Vaccine and*  
450     *Incidence of COVID-19 Among Healthcare Workers*. *J Clin Immunol*, 2021. **41**(2): p.  
451     324-334.
- 452     28.    Belingheri, M., et al., *Association between seasonal flu vaccination and COVID-19*  
453     *among healthcare workers*. *Occup Med (Lond)*, 2020. **70**(9): p. 665-671.

- 454 29. Rivas, M.N., et al., *BCG vaccination history associates with decreased SARS-CoV-2*  
455 *seroprevalence across a diverse cohort of health care workers*. J Clin Invest, 2021.  
456 **131**(2).
- 457 30. Erismis, B., et al., *Annual influenza vaccination effect on the susceptibility to COVID-*  
458 *19 infection*. Cent Eur J Public Health, 2021. **29**(1): p. 14-17.
- 459 31. de la Cruz Conty, M.L., et al., *Impact of Recommended Maternal Vaccination*  
460 *Programs on the Clinical Presentation of SARS-CoV-2 Infection: A Prospective*  
461 *Observational Study*. Vaccines (Basel), 2021. **9**(1).
- 462 32. Azzi, Y., et al., *COVID-19 infection in kidney transplant recipients at the epicenter of*  
463 *pandemics*. Kidney Int, 2020. **98**(6): p. 1559-1567.
- 464 33. Caratozzolo, S., et al., *The impact of COVID-19 on health status of home-dwelling*  
465 *elderly patients with dementia in East Lombardy, Italy: results from COVIDEM*  
466 *network*. Aging Clin Exp Res, 2020. **32**(10): p. 2133-2140.
- 467 34. Huang, K., et al., *Influenza vaccination and the risk of COVID-19 infection and severe*  
468 *illness in older adults in the United States*. Sci Rep, 2021. **11**(1): p. 11025.
- 469 35. Noale, M., et al., *The Association between Influenza and Pneumococcal Vaccinations*  
470 *and SARS-Cov-2 Infection: Data from the EPICoVID19 Web-Based Survey*.  
471 Vaccines (Basel), 2020. **8**(3).
- 472 36. Pastorino, R., et al., *Influenza and pneumococcal vaccinations are not associated to*  
473 *COVID-19 outcomes among patients admitted to a university hospital*. Vaccine, 2021.  
474 **39**(26): p. 3493-3497.
- 475 37. Debisarun, P.A., et al., *The effect of influenza vaccination on trained immunity: impact*  
476 *on COVID-19*. MedRxiv, 2020.
- 477 38. Greco, S., et al., *SARS-CoV-2 infection and H1N1 vaccination: does a relationship*  
478 *between the two factors really exist? A retrospective analysis of a territorial cohort in*  
479 *Ferrara, Italy*. Eur Rev Med Pharmacol Sci, 2021. **25**(6): p. 2795-2801.
- 480 39. Kissling, E., et al., *Absence of association between 2019-20 influenza vaccination*  
481 *and COVID-19: Results of the European I-MOVE-COVID-19 primary care project,*  
482 *March-August 2020*. Influenza and other respiratory viruses, 2021. **15**(4): p. 429-438.
- 483 40. Wang, R., M. Liu, and J. Liu, *The Association between Influenza Vaccination and*  
484 *COVID-19 and Its Outcomes: A Systematic Review and Meta-Analysis of*  
485 *Observational Studies*. Vaccines (Basel), 2021. **9**(5).
- 486 41. Zeynali Bujani, M., et al., *The Effect of Influenza Vaccination on COVID-19 Morbidity,*  
487 *Severity and Mortality: Systematic Review and Meta-Analysis*. Malays J Med Sci,  
488 2021. **28**(6): p. 20-31.
- 489 42. Jehi, L., et al., *Individualizing Risk Prediction for Positive Coronavirus Disease 2019*  
490 *Testing: Results From 11,672 Patients*. Chest, 2020. **158**(4): p. 1364-1375.
- 491 43. Caban-Martinez, A.J., et al., *Epidemiology of SARS-CoV-2 antibodies among*  
492 *firefighters/paramedics of a US fire department: a cross-sectional study*. Occup  
493 Environ Med, 2020. **77**(12): p. 857-861.
- 494 44. Skowronski, D.M., et al., *Influenza Vaccine Does Not Increase the Risk of*  
495 *Coronavirus or Other Noninfluenza Respiratory Viruses: Retrospective Analysis From*  
496 *Canada, 2010-2011 to 2016-2017*. Clin Infect Dis, 2020. **71**(16): p. 2285-2288.
- 497 45. Principi, N., et al., *Influenza immunization policies: Which could be the main reasons*  
498 *for differences among countries?* Human vaccines & immunotherapeutics, 2018.  
499 **14**(3): p. 684-692.
- 500 46. Berg, M.K., et al., *Mandated Bacillus Calmette-Guérin (BCG) vaccination predicts*  
501 *flattened curves for the spread of COVID-19*. Science advances, 2020. **6**(32): p.  
502 eabc1463.
- 503 47. Miller, A., et al., *Correlation between universal BCG vaccination policy and reduced*  
504 *mortality for COVID-19*. MedRxiv, 2020.
- 505 48. Singh, S., et al., *BCG vaccination impact on mortality and recovery rates in COVID-*  
506 *19: A meta-analysis*. Monaldi Archives for Chest Disease, 2021.
- 507 49. Covián, C., et al., *BCG-induced cross-protection and development of trained*  
508 *immunity: implication for vaccine design*. Frontiers in Immunology, 2019. **10**: p. 2806.
- 509 50. Long, B.R., et al., *Elevated frequency of gamma interferon-producing NK cells in*  
510 *healthy adults vaccinated against influenza virus*. Clinical and Vaccine Immunology,  
511 2008. **15**(1): p. 120-130.

- 512 51. Endrich, M.M., P.R. Blank, and T.D. Szucs, *Influenza vaccination uptake and*  
513 *socioeconomic determinants in 11 European countries*. *Vaccine*, 2009. **27**(30): p.  
514 4018-4024.
- 515 52. Rollston, R. and S. Galea, *COVID-19 and the social determinants of health*. 2020,  
516 SAGE Publications Sage CA: Los Angeles, CA. p. 687-689.
- 517 53. Patel, J., et al., *Poverty, inequality and COVID-19: the forgotten vulnerable*. *Public*  
518 *health*, 2020. **183**: p. 110.
- 519 54. Wachtler, B., et al., *Socioeconomic inequalities in the risk of SARS-CoV-2 infection—*  
520 *First results from an analysis of surveillance data from Germany*. 2020.
- 521 55. Lansbury, L., et al., *Co-infections in people with COVID-19: a systematic review and*  
522 *meta-analysis*. *Journal of Infection*, 2020. **81**(2): p. 266-275.
- 523 56. Feldman, C. and R. Anderson, *The role of co-infections and secondary infections in*  
524 *patients with COVID-19*. *Pneumonia*, 2021. **13**(1): p. 1-15.
- 525 57. Joseph, C., Y. Togawa, and N. Shindo, *Bacterial and viral infections associated with*  
526 *influenza*. *Influenza and other respiratory viruses*, 2013. **7**: p. 105-113.
- 527 58. Im, H., et al., *Promising Expectations for Pneumococcal Vaccination during COVID-*  
528 *19*. *Vaccines*, 2021. **9**(12): p. 1507.
- 529 59. Smith, A.P., et al., *Time-Dependent Increase in Susceptibility and Severity of*  
530 *Secondary Bacterial Infection during SARS-CoV-2 Infection*. *bioRxiv*, 2022.
- 531 60. Ragni, P., et al., *Association between Exposure to Influenza Vaccination and COVID-*  
532 *19 Diagnosis and Outcomes*. *Vaccines (Basel)*, 2020. **8**(4).
- 533 61. Vila-Corcoles, A., et al., *Influence of prior comorbidities and chronic medications use*  
534 *on the risk of COVID-19 in adults: a population-based cohort study in Tarragona,*  
535 *Spain*. *BMJ Open*, 2020. **10**(12): p. e041577.
- 536 62. Green, I., et al., *The association of previous influenza vaccination and coronavirus*  
537 *disease-2019*. *Hum Vaccin Immunother*, 2021. **17**(7): p. 2169-2175.
- 538 63. Conlon, A., et al., *Impact of the influenza vaccine on COVID-19 infection rates and*  
539 *severity*. *Am J Infect Control*, 2021. **49**(6): p. 694-700.
- 540 64. Bozek, A., et al., *Impact of influenza vaccination on the risk of SARS-CoV-2 infection*  
541 *in a middle-aged group of people*. *Hum Vaccin Immunother*, 2021. **17**(9): p. 3126-  
542 3130.
- 543 65. Kowalska, M., et al., *Association between Influenza Vaccination and Positive SARS-*  
544 *CoV-2 IgG and IgM Tests in the General Population of Katowice Region, Poland*.  
545 *Vaccines (Basel)*, 2021. **9**(5).
- 546 66. Fernandez-Prada, M., et al., *Personal and vaccination history as factors associated*  
547 *with SARS-CoV-2 infection*. *Med Clin (Engl Ed)*, 2021. **157**(5): p. 226-233.
- 548 67. King, J.P., H.Q. McLean, and E.A. Belongia, *Risk of symptomatic severe acute*  
549 *respiratory syndrome coronavirus 2 infection not associated with influenza*  
550 *vaccination in the 2019-2020 season*. *Influenza Other Respir Viruses*, 2021. **15**(6): p.  
551 697-700.
- 552 68. Pawlowski, C., et al., *Exploratory analysis of immunization records highlights*  
553 *decreased SARS-CoV-2 rates in individuals with recent non-COVID-19 vaccinations*.  
554 *Sci Rep*, 2021. **11**(1): p. 4741.
- 555 69. Zein, J.G., G. Whelan, and S.C. Erzurum, *Safety of influenza vaccine during COVID-*  
556 *19*. *Journal of Clinical and Translational Science*, 2021. **5**(1).
- 557 70. Xiang, Y., K.C. Wong, and H.C. So, *Exploring Drugs and Vaccines Associated with*  
558 *Altered Risks and Severity of COVID-19: A UK Biobank Cohort Study of All ATC*  
559 *Level-4 Drug Categories Reveals Repositioning Opportunities*. *Pharmaceutics*, 2021.  
560 **13**(9).
- 561 71. Alkathlan, M., et al., *Trends, Uptake, and Predictors of Influenza Vaccination Among*  
562 *Healthcare Practitioners During the COVID-19 Pandemic Flu Season (2020) and the*  
563 *Following Season (2021) in Saudi Arabia*. *J Multidiscip Healthc*, 2021. **14**: p. 2527-  
564 2536.
- 565 72. Pedote, P.D., et al., *Influenza Vaccination and Health Outcomes in COVID-19*  
566 *Patients: A Retrospective Cohort Study*. *Vaccines (Basel)*, 2021. **9**(4).
- 567 73. Gobbato, M., et al., *Clinical, demographical characteristics and hospitalisation of*  
568 *3,010 patients with Covid-19 in Friuli Venezia Giulia Region (Northern Italy). A*  
569 *multivariate, population-based, statistical analysis*. *Epidemiol Prev*, 2020. **44**(5-6  
570 Suppl 2): p. 226-234.

- 571 74. Yang, M.J., et al., *Influenza Vaccination and Hospitalizations Among COVID-19*  
572 *Infected Adults*. J Am Board Fam Med, 2021. **34**(Suppl): p. S179-S182.
- 573 75. Massari, M., et al., *Association of Influenza Vaccination and Prognosis in Patients*  
574 *Testing Positive to SARS-CoV-2 Swab Test: A Large-Scale Italian Multi-Database*  
575 *Cohort Study*. Vaccines (Basel), 2021. **9**(7).
- 576 76. Wilcox, C.R., N. Islam, and H. Dambha-Miller, *Association between influenza*  
577 *vaccination and hospitalisation or all-cause mortality in people with COVID-19: a*  
578 *retrospective cohort study*. BMJ Open Respir Res, 2021. **8**(1).
- 579 77. Ilic, I., et al., *Pneumonia in medical professionals during COVID-19 outbreak in*  
580 *cardiovascular hospital*. Int J Infect Dis, 2021. **103**: p. 188-193.
- 581 78. Taghioff, S.M., et al., *Examining the potential benefits of the influenza vaccine against*  
582 *SARS-CoV-2: A retrospective cohort analysis of 74,754 patients*. PLoS One, 2021.  
583 **16**(8): p. e0255541.
- 584 79. Fink, G., et al., *Inactivated trivalent influenza vaccination is associated with lower*  
585 *mortality among patients with COVID-19 in Brazil*. BMJ Evid Based Med, 2020.
- 586 80. Demkina, A.E., et al., *Risk factors for outcomes of COVID-19 patients: an*  
587 *observational study of 795 572 patients in Russia*. medRxiv, 2020.
- 588 81. Candelli, M., et al., *Effect of influenza vaccine on COVID-19 mortality: A retrospective*  
589 *study*. Internal and emergency medicine, 2021. **16**(7): p. 1849-1855.
- 590 82. Fernandez Ibanez, J.M., et al., *Influence of influenza vaccine and comorbidity on the*  
591 *evolution of hospitalized COVID-19 patients*. Med Clin (Barc), 2021.
- 592 83. Giannoglou, D., et al., *Predictors of mortality in hospitalized COVID-19 patients in*  
593 *Athens, Greece*. medRxiv, 2020.
- 594 84. Ortiz-Prado, E., et al., *Epidemiological, socio-demographic and clinical features of the*  
595 *early phase of the COVID-19 epidemic in Ecuador*. PLoS Negl Trop Dis, 2021. **15**(1):  
596 p. e0008958.

597



## PRISMA 2009 Flow Diagram

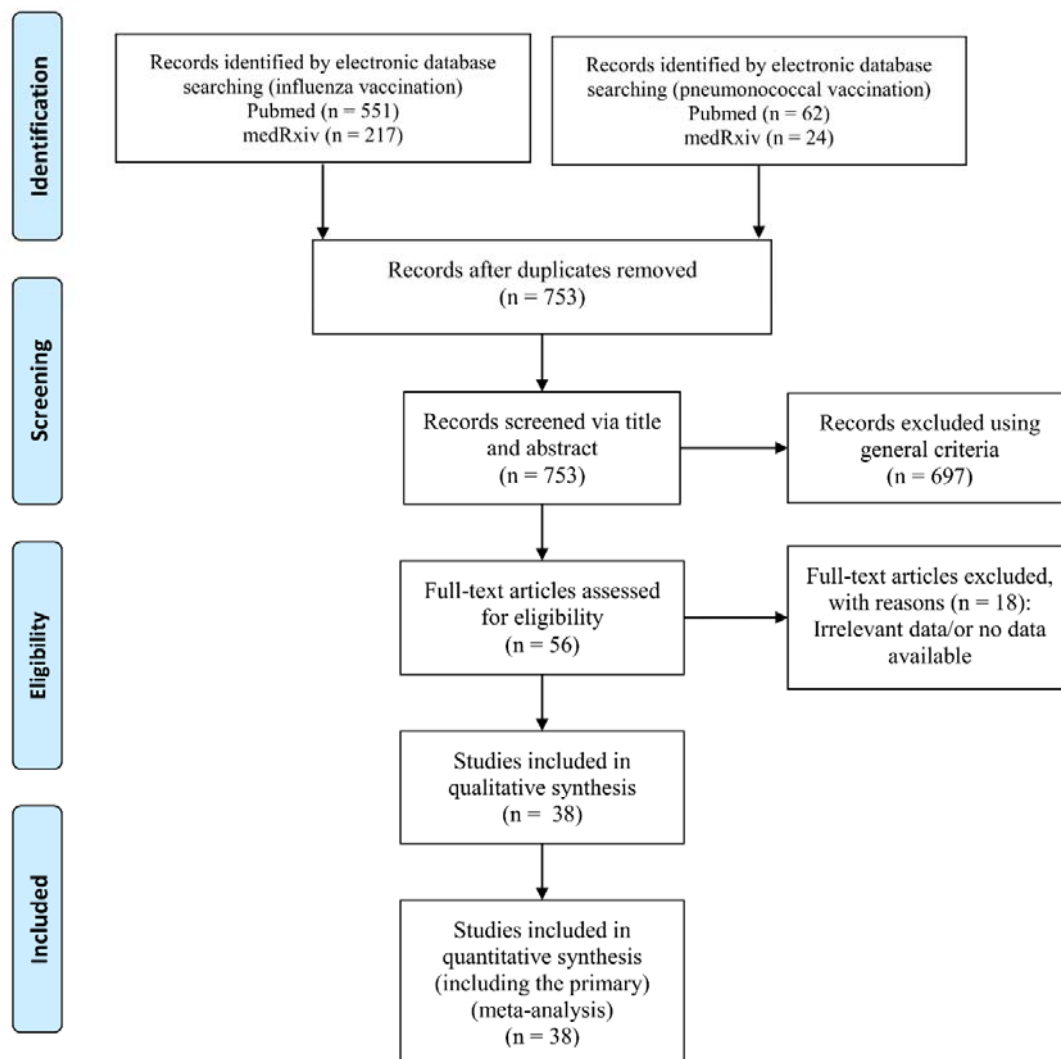


Figure 1 The PRISMA flow diagram for the included studies

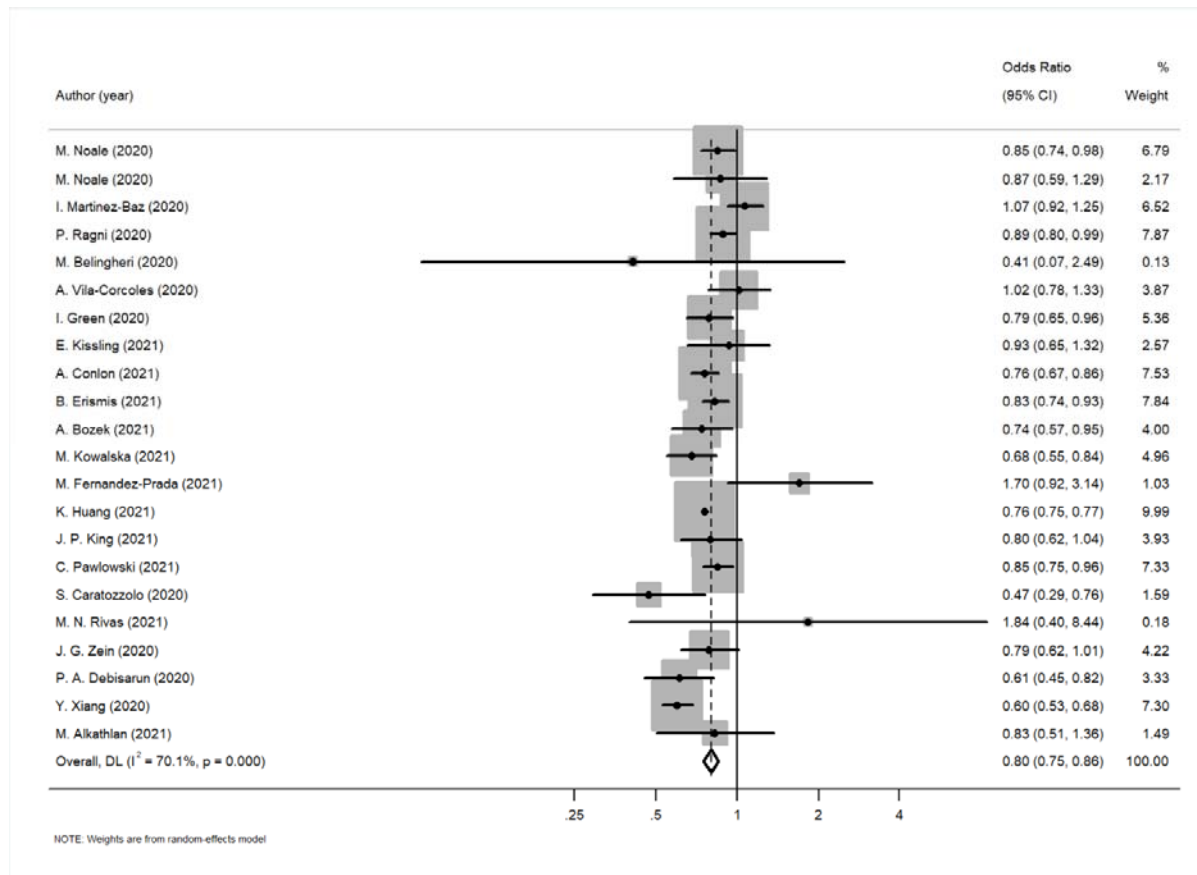


Figure 2 Forest plot for the association between influenza vaccination and SARS-Cov-2 infection

599

600



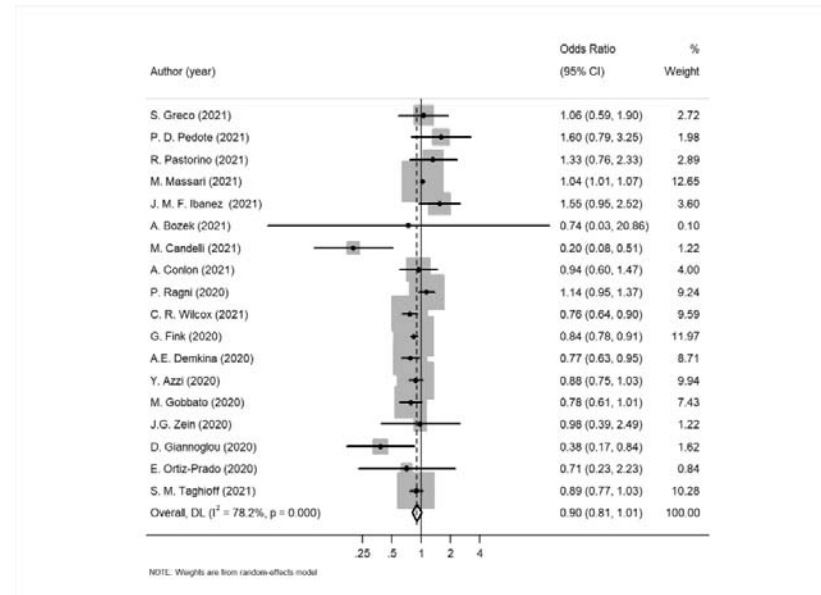
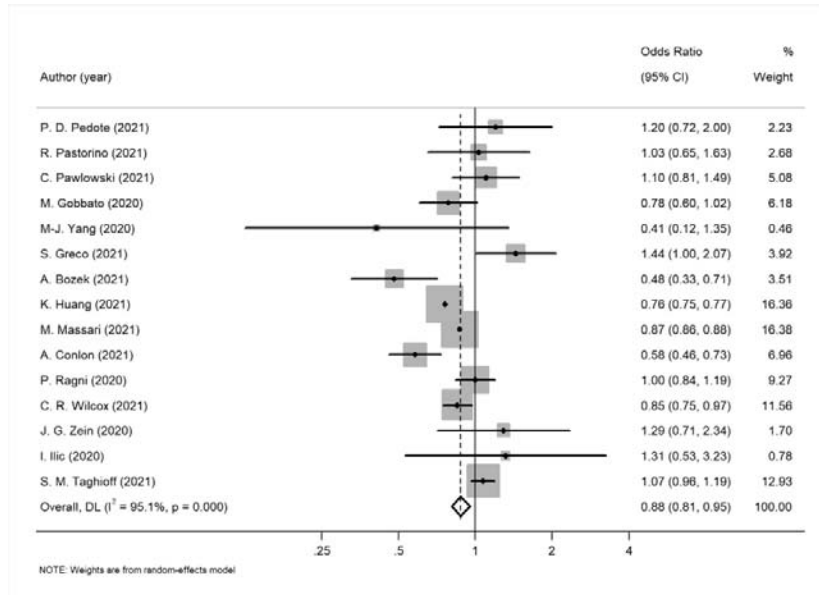


Figure 3 Left: Forest plot for the association between influenza vaccination and COVID-19 related hospitalization and Right: Forest plot for the association between influenza vaccination and mortality

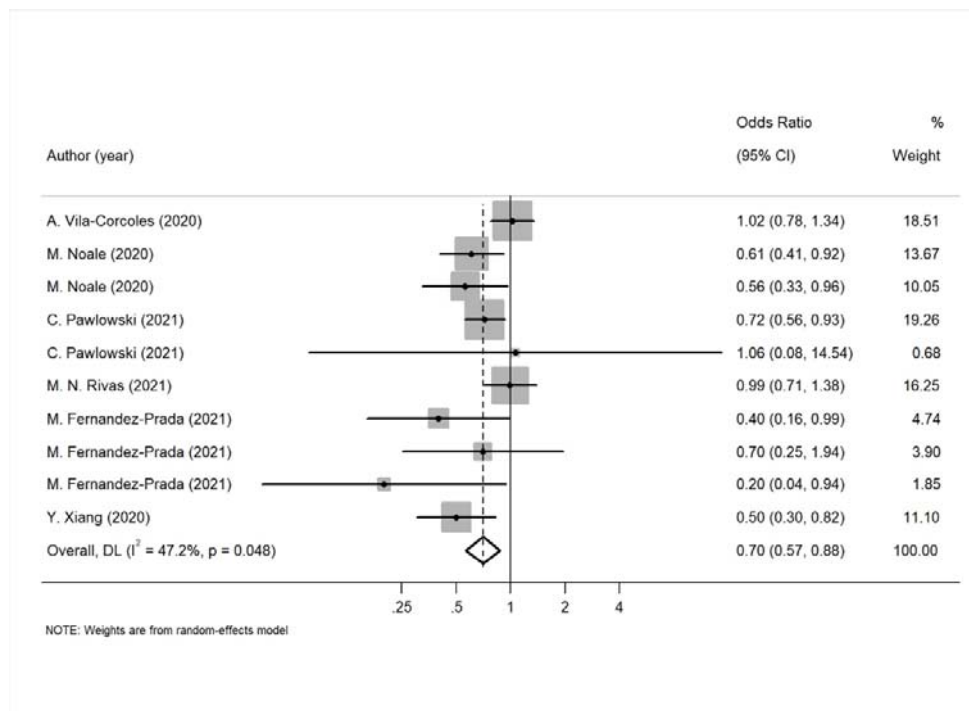


Figure 4 Forest plot for the association between pneumococcal vaccination and SARS-CoV-2 infection

Table 1 Baseline characteristics of the 21 publications, involving 22 studies that assessed the association between influenza vaccination and SARS-CoV-2 infection.

First Author's name	Year of publication	Country	study design/study population	Identification of COVID-19	Sample size	Effect size	Adjusted estimate	Adjusted factors
M. Noale et al. [35]	2020	Italy	Cross-sectional study/Adults-general population	rt-PCR	6,061	OR	0.85 (95% CI: 0.74-0.98)	age, sex, self-reported comorbidities, education, area of residence, smoking status
M. Noale et al. [35]	2020	Italy	Cross-sectional study/Old adults	rt-PCR	619	OR	0.87 (95% CI: 0.59-1.28)	sex, age, self-reported comorbidities, education, area of residence, smoking status
I. Martínez-Baz et al. [26]	2020	Spain	Prospective cohort study/Health workers	rt-PCR or Antibody Rapid test	9,745	OR	1.07(95% CI: 0.92-1.24)	age, sex, major chronic conditions, profession, and any ILI diagnosis in the previous five years.
P. Ragni et al. [60]	2020	Italy	Case control study/Adults-general population	rt-PCR	17,608	OR	0.89 (95% CI: 0.80-0.99)	age, sex, Charlson index score and time of the swab test
M. Belingheri et al. [28]	2020	Italy	Retrospective cohort study/Health workers	rt-PCR	3,520	OR	0.41 (95% CI: 0.07-2.39)	age, gender, number of flu vaccination uptakes
A. Vila-Córcoles et al. [61]	2020	Spain	Retrospective cohort study/Adults-general population	rt-PCR	79,083	HR	1.02 (95% CI: 0.79-1.32)	age, sex, comorbidities, residence and vaccination history
I. Green et al. [62]	2020	Israel	Retrospective cohort study/Adults-general population	rt-PCR	19,089	OR	0.79 (95% CI: 0.67-0.98)	age, gender, ethnicity, underlying medical conditions, obesity, and smoking status
E. Kissling et al. [15]	2021	Europe	Case-control study (multicenter)/Adults-general population	rt-PCR	2,147	OR	0.93 (95% CI: 0.66-1.32)	age, sex and chronic conditions, time of swab test
A. Conlon et al. [63]	2021	USA	Retrospective cohort study/Adults-general population	rt-PCR	27,201	OR	0.76 (95% CI: 0.68-0.86)	age, sex, ethnicity, race, BMI, Elixhauser score, comorbidities, smoking status
B. Erismis et al. [30]	2021	Turkey	Retrospective cohort study/Health	Not specified	203	RR	0.83 (95% CI: 0.75-0.93)	sex

			workers					
A. Bozek et al. [64]	2021	Poland	Retrospective cohort study (multicenter)/Adults-general population	rt-PCR	2,558	HR	0.74 (95% CI: 0.54-0.89)	age, sex, comorbidities, high economic status, BCG vaccination in the past
M. Kowalska et al. [65]	2021	Poland	Cross-sectional study/Adults-general population	IgG antibodies	5,376	OR	0.68 (95% CI: 0.55-0.83)	age, sex, comorbidities, previous COVID-19 contact or quarantine
M. Fernández-Prada et al. [66]	2021	Spain	Case-control study/Adults-general population	rt-PCR	188	OR	1.70 (95% CI: 0.97-3.25)	age, sex, patient location
K. Huang et al. [34]	2021	USA	Cross-sectional study/Old adults	Not specified	55,667,997	OR	0.76 (95% CI: 0.75-0.77)	age, sex, comorbidities
J. P. King et al. [67]	2021	USA	Prospective cohort study/Adults-general population	rt-PCR	1,356	OR	0.83 (95% CI: 0.63-1.10)	age, sample collection interval, sex, high-risk condition and month of onset
C. Pawlowski et al. [68]	2021	USA	Retrospective cohort study/Adults-general population	rt-PCR	12,791	RR	0.85 (95% CI: 0.75-0.96)	age, gender, race, ethnicity, county level COVID-19 incidence rate, county-level COVID-19 test positive rate, Elixhauser comorbidities, pregnancy, number of other vaccines
S. Caratozzolo et al. [33]	2020	Italy	Retrospective cohort study/Old adults	rt-PCR/or infection according to WHO definition	848	OR	0.47 (95% CI: 0.29-0.74)	age, sex, comorbidities, clinical dementia rating scale
M. N. Rivas et al. [29]	2021	USA	Retrospective cohort study/Health workers	IgG antibodies	6,087	OR	1.84 (95% CI: 0.57-11.3)	age, sex
J. G. Zein et al. [69]	2020	USA	Prospective cohort study/Adults-general population	Not specified	13,220	OR	0.79 (95% CI: 0.62-1.00)	age, sex, race and comorbidities
P. A. Debisarun et al. [37]	2020	Netherlands	Retrospective cohort study/Health workers	rt-PCR	6,856	RR	0.61 (95% CI: 0.46-0.82)	age

Y. Xiang et al. [70]	2020	UK	Prospective cohort study/Adults-general population	Laboratory confirmed	30,835	OR	0.60 (95% CI: 0.53-0.68)	age, sex, ethnic group, comorbidities, socioeconomic status, smoking status, anthropometric measures
M. Alkathlan et al. [71]	2021	Saudi Arabia	Cross-sectional study/Health workers	Laboratory confirmed	424	OR	0.83 (95% CI: 0.51-1.35)	age, sex, comorbidities, nationality, educational level, flu vaccine efficacy

OR=adjusted odds ratio, HR=hazard odds ratio, RR=relative risk, rt-PCR=Reverse transcription polymerase chain reaction

Table 2 Baseline characteristics of the 17 publications involving studies that assessed the association between influenza vaccination and COVID-19 clinical outcomes: (15 studies for hospitalization, 4 for Mechanical Ventilation/invasive respiratory support, 11 for Intensive care and 18 for mortality).

First Author's name	Year of publication	Country	Study design	Identification of COVID-19	Sample size	Effect size	Adjusted estimate	Adjusted factors
<b>HOSPITALIZATION</b>								
P. D. Pedote et al. [72]	2021	Italy	Retrospective cohort study	rt-PCR	662	OR	1.20 (95% CI: 0.70-1.90)	age, sex, chronic disease
R. Pastorino et al. [36]	2021	Italy	Prospective cohort study	rt-PCR	741	OR	1.03 (95% CI: 0.66-1.62)	age, sex, comorbidities
C. Pawlowski et al. [68]	2021	USA	Retrospective cohort study	rt-PCR	959	RR	1.10 (95% CI: 0.83-1.50)	age, gender, race, ethnicity, county level COVID-19 incidence rate, county-level COVID-19 test positive rate, Elixhauser comorbidities, pregnancy, number of other vaccines
M. Gobato et al. [73]	2020	Italy	Retrospective cohort study	Laboratory confirmed	3,010	OR	0.78 (95% CI: 0.61-1.01)	age, sex, comorbidities, medication, health district
M-J. Yang et al. [74]	2020	USA	Retrospective cohort study (single-centered)	Laboratory confirmed	2,005	OR	0.41 (95% CI: 0.28-0.59)	age, sex, ethnicity/race, comorbidities
S. Greco et al. [38]	2021	Italy	Retrospective cohort study (multicenter)	rt-PCR	952	OR	1.44 (95% CI: 1.01-2.05)	sex
A. Bozek et al. [64]	2021	Poland	Retrospective cohort study (multicenter)	rt-PCR	151	HR	0.48 (95% CI: 0.36-0.77)	age, sex, comorbidities, high economic status, BCG vaccination in the past
K. Huang et al. [34]	2021	USA	Cross-sectional study	Not specified	55,667,977	OR	0.76 (95% CI: 0.75-0.77)	age, sex, comorbidities
M. Massari et al. [75]	2021	Italy	Retrospective cohort study	rt-PCR	115,945	RR	0.87 (95% CI: 0.86-0.88)	age, sex, Charlson comorbidity index, ethnicity, drugs, comorbidities
A. Conlon et al. [63]	2021	USA	Retrospective cohort study	rt-PCR	1,218	OR	0.58 (95% CI: 0.46-0.73)	age, sex, ethnicity, race, BMI, Elixhauser score, comorbidities, smoking status

P. Ragni et al. [60]	2020	Italy	Prospective cohort study	rt-PCR	4,485	HR	1.00 (95% CI: 0.84-1.19)	age, comorbidities, exposure to influenza vaccination
C. R. Wilcox et al. [76]	2021	UK	Retrospective cohort study	rt-PCR	6,921	HR	0.85(95% CI: 0.75-0.97)	age, sex, BMI, socioeconomic status (IMD), smoking status, frailty score (electronic frailty index), pre-existing comorbidities and medication
J. G. Zein et al. [69]	2020	USA	Prospective cohort study	Not specified	1,434	OR	1.29 (95% CI: 0.72-2.31)	age, sex, race and comorbidities
I. Ilic et al. [77]	2020	Serbia	Retrospective cohort study	rt-PCR	107	OR	1.31 (95% CI: 0.54-3.17)	age, malignancy, hypertension, coronary artery disease, heart failure, diabetes mellitus, bronchial asthma, previous CVD, arrhythmia, BMI, current smoking
S. M. Taghioff et al. [78]	2021	Netherlands	Retrospective cohort study	Not specified	74,754	OR	1.07 (95% CI: 0.96-1.18)	age, race, ethnicity, gender, hypertension, diabetes, hyperlipidemia, chronic obstructive pulmonary disease (COPD), obesity, heart disease, and lifestyle habits such as smoking
<b>MECHANICAL VENTILATION/INVANSIVE RESPIRATORY SUPPORT</b>								
G. Fink et al. [79]	2020	Brazil	Retrospective cohort study	rt-PCR	39,745	OR	0.83 (95% CI: 0.77-0.89)	age, sex, race, educational attainment, comorbidities, treatment facility
A. Conlon et al. [63]	2021	USA	Retrospective cohort study	rt-PCR	1,218	OR	0.45 (95% CI: 0.27-0.78)	age, sex, ethnicity, race, BMI, Elixhauser score, comorbidities, smoking status
A. E. Demkina et al. [80]	2020	Russia	Cohort study	Clinically confirmed/ rt-PCR	214,751	OR	0.74 (95% CI: 0.54-1.01)	age, patient's gender, comorbidities

A. Bozek et al. [64]	2021	Poland	Retrospective cohort study (multicenter)	rt-PCR	21	OR	0.42 (95% CI: 0.02-9.96)	age, sex, comorbidities, high economic status, BCG vaccination in the past
<b>INTENSIVE CARE</b>								
M-J. Yang et al. [74]	2021	USA	Retrospective cohort study (single-centered)	rt-PCR	2,005	OR	0.31 (95% CI: 0.07-0.85)	age, sex, ethnicity/race, comorbidities
M. Massari et al. [75]	2021	Italy	Retrospective cohort study	rt-PCR	111,740	RR	1.01 (95% CI: 0.99-1.04)	age, sex, comorbidities, ethnicity, drugs
R. Pastorino et al. [36]	2021	Italy	Prospective cohort study	rt-PCR	99	OR	1.26 (95% CI: 0.74-2.21)	age, sex, comorbidities
A. Conlon et al. [63]	2021	USA	Retrospective cohort study	rt-PCR	1,218	OR	0.64 (95% CI: 0.41-1.00)	age, sex, ethnicity, race, BMI, Elixhauser score, comorbidities, smoking status
C. Pawlowski et al. [68]	2021	USA	Retrospective cohort study	rt-PCR	959	RR	1.10 (95% CI: 0.56-2.20)	age, gender, race, ethnicity, county level COVID-19 incidence rate, county-level COVID-19 test positive rate, Elixhauser comorbidities, pregnancy, number of other vaccines
G. Fink et al. [79]	2020	Brazil	Retrospective cohort study	rt-PCR	39,156	OR	0.93 (95% CI: 0.87-0.99)	age, sex, race, educational attainment, comorbidities, treatment facility
A. E. Demkina et al. [80]	2020	Russia	Retrospective cohort study	Clinically confirmed/ rt-PCR	214,751	OR	0.76 (95% CI: 0.59-0.97)	age, patient's gender, comorbidities
M. Candelli et al. [81]	2021	Italy	Retrospective cohort study	rt-PCR	602	OR	0.73 (95% CI: 0.35-1.56)	age, sex, comorbidities
M. L. de la Cruz Conty et al. [31]	2021	Spain	Prospective cohort study (multicenter)	rt-PCR	206	OR	1.92 (95% CI: 0.36-10.3)	age, sex, comorbidities
J. G. Zeinet al. [69]	2020	USA	Prospective cohort study	Not specified	1,434	OR	0.65 (95% CI: 0.22-1.79)	age, sex, race and comorbidities
S. M. Taghioff et al. [78]	2021	Netherlands	Retrospective cohort study	Not specified	74,754	OR	1.18 (95% CI: 1.00-1.39)	age, race, ethnicity, gender, hypertension, diabetes, hyperlipidemia, chronic obstructive pulmonary



								disease (COPD), obesity, heart disease, and lifestyle habits such as smoking
<b>MORTALITY</b>								
S. Greco et al. [38]	2021	Italy	Retrospective cohort study	rt-PCR	952	OR	1.06 (95% CI: 0.60-1.88)	sex
P. D. Pedote et al. [72]	2021	Italy	Retrospective cohort study	rt-PCR	662	OR	1.60 (95% CI: 0.80-3.20)	age, sex, chronic diseases
R. Pastorino et al. [36]	2021	Italy	Prospective cohort study	rt-PCR	97	OR	1.33 (95% CI: 0.77-2.31)	age, sex, comorbidities
M. Massari et al. [75]	2021	Italy	Retrospective cohort study	rt-PCR	115,945	RR	1.04 (95% CI: 1.01-1.06)	age, sex, comorbidities, ethnicity, drugs
J. M. Fernandez. Ibáñez et al. [82]	2021	Spain	Retrospective cohort study	rt-PCR	410	OR	1.55 (95% CI: 0.96-2.48)	sex, chronic diseases
A. Bozek et al. [64]	2021	Poland	Retrospective cohort study (multicenter)	rt-PCR	2,558	HR	0.74 (95% CI: 0.03-20.8)	age, sex, comorbidities, high economic status, BCG vaccination in the past
M. Candelli et al. [81]	2021	Italy	Retrospective cohort study	rt-PCR	602	OR	0.20 (95% CI: 0.08-0.51)	age, sex, comorbidities
A. Conlon et al. [63]	2021	USA	Retrospective cohort study	rt-PCR	1,218	HR	0.94 (95% CI: 0.61-1.47)	age, sex, ethnicity, race, BMI, Elixhauser score, comorbidities, smoking status
P. Ragni et al. [60]	2020	Italy	Prospective cohort study	rt-PCR	4,872	HR	1.14 (95% CI: 0.95-1.37)	age, comorbidities, exposure to influenza vaccination test
C. R Wilcox et al. [76]	2021	UK	Retrospective cohort study	rt-PCR	6,368	OR	0.76 (95% CI: 0.64-0.90)	age, sex, BMI, socioeconomic status (IMD), smoking status, frailty score (electronic frailty index), pre-existing comorbidities and medication
G. Fink et al. [79]	2020	Brazil	Retrospective cohort study	rt-PCR	53,752	OR	0.84 (95% CI: 0.78-0.91)	age, sex, race, educational attainment, comorbidities, treatment facility
A. E. Demkina et al. [80]	2020	Russia	Retrospective cohort study	Clinically confirmed/ rt-PCR	117,346	HR	0.78 (95% CI: 0.63-0.95)	age, patient's gender, comorbidities
Y. Azzi et al. [32]	2020	USA	Prospective cohort study	rt-PCR	229	OR	0.88 (95% CI: 0.70-0.96)	age, type of kidney transplant
M. Gobatto et al. [73]	2020	Italy	Retrospective cohort study	Laboratory confirmed	3,010	OR	0.78 (95% CI: 0.61-1.01)	age, sex, comorbidities, medication, health district

J. G. Zeinet al. [69]	2020	USA	Prospective cohort study	Not specified	14,654	OR	0.98 (95% CI: 0.39-2.43)	age, sex, race and comorbidities
D. Giannoglou et al. [83]	2020	Greece	Cross-sectional study	Not specified	512	OR	0.38 (95% CI: 0.17-0.81)	age, gender, comorbidities
E. Ortiz-Prado et al. [84]	2020	Ecuador	Cross-sectional study	rt-PCR	9,468	RR	1.40 (95% CI: 0.46-4.28)	age, gender, comorbidities
S. M. Taghioff et al [78]	2021	Netherlands	Retrospective cohort study	Not specified	74,754	OR	0.89 (95% CI: 0.77-1.03)	age, race, ethnicity, gender, hypertension, diabetes, hyperlipidemia, chronic obstructive pulmonary disease (COPD), obesity, heart disease, and lifestyle habits such as smoking.

*Table 3* Baseline characteristics of a) 6 publications, involving 10 studies, that assessed the association between pneumococcal vaccination and SARS-CoV-2 infection, b) 4 studies that assessed that assessed the association between pneumococcal vaccination and the risk of hospitalization and c) 3 studies that assessed that assessed the association between pneumococcal vaccination and the risk of intensive care.

First Author's name	Year of publication	Country	Study design	Identification of COVID-19	Sample size	Effect size	Adjusted estimate	Adjusted factors
<b>INFECTION</b>								
A. Vila-Córcoles et al. [61]	2020	Spain	Retrospective cohort study	rt-PCR	79,083	HR	1.02 (95% CI 0.78-1.33)	age, sex, comorbidities, residence and vaccination history
M. Noale et al. [35]	2020	Italy	Cross-sectional study	rt-PCR	6,061	OR	0.61 (95% CI 0.41-0.91)	sex, age, comorbidities, education, area of residence, smoking status
M. Noale et al. [35]	2020	Italy	Cross-sectional study (>65 years)	rt-PCR	619	OR	0.56 (95% CI 0.33-0.95)	sex, age, comorbidities, education, area of residence, smoking status
C. Pawlowski et al. [68]	2021	USA	Retrospective cohort study	rt-PCR	4,693	RR	0.72 (95% CI 0.56-0.92)	age, gender, race, ethnicity, county level COVID-19 incidence rate, county-level COVID-19 test positive rate, Elixhauser comorbidities, pregnancy, number of other vaccines
C. Pawlowski et al. [68]	2021	USA	Retrospective cohort study	rt-PCR	4,636	RR	1.06 (95% CI 0.81-137)	age, gender, race, ethnicity, county level COVID-19 incidence rate, county-level COVID-19 test positive rate, Elixhauser comorbidities, pregnancy, number of other vaccines
M. N. Rivas et al. [29]	2021	USA	Retrospective cohort study	IgG antibodies	6,083	OR	0.99 (95% CI 0.71-1.36)	age, sex
M. Fernández-Prada et al. [66]	2021	Spain	Case-control study	rt-PCR	188	OR	0.40 (95% CI 0.17-1.01)	age, sex and patient location
M. Fernández-Prada et al. [66]	2021	Spain	Test-negative case-control study	rt-PCR	187	OR	0.70 (95% CI: 0.28-2.10)	age, sex and patient location

M. Fernández-Prada et al. [66]	2021	Spain	Case-control study	rt-PCR	188	OR	0.20 (95% CI: 0.06-1.18)	age, sex and patient location
Y. Xiang et al. [70]	2020	UK	Prospective cohort study	Laboratory confirmed	30,835	OR	0.5 (95% CI: 0.31-0.82)	age, sex, ethnic group, comorbidities, socioeconomic status, smoking status, anthropometric measures
<b>HOSPITALIZATION</b>								
M. Gobato et al. [73]	2020	Italy	Retrospective cohort	Laboratory confirmed	3,010	OR	1.53 (95% CI: 1.91-1.97)	age, sex, comorbidities, medication, health district
R. Pastorino et al. [36]	2021	Italy	Prospective cohort study	rt-PCR	741	OR	0.96 (95% CI: 0.53-1.78)	age, sex, comorbidities
C. Pawlowski et al. [68]	2021	USA	Retrospective cohort study	rt-PCR	277	RR	1.30 (95% CI: 0.86-2.10)	age, gender, race, ethnicity, county level COVID-19 incidence rate, county-level COVID-19 test positive rate, Elixhauser comorbidities, pregnancy, number of other vaccines
C. Pawlowski et al. [68]	2021	USA	Retrospective cohort study	rt-PCR	282	RR	1.20 (95% CI: 0.71-2.20)	age, gender, race, ethnicity, county level COVID-19 incidence rate, county-level COVID-19 test positive rate, Elixhauser comorbidities, pregnancy, number of other vaccines
<b>INTENSIVE CARE UNIT</b>								
R. Pastorino et al. [36]	2021	Italy	Prospective cohort study	rt-PCR	741	OR	0.75 (95% CI: 0.35-1.61)	age, sex, comorbidities
C. Pawlowski et al. [68]	2021	USA	Retrospective cohort study	rt-PCR	254	RR	1.40 (95% CI: 0.48-3.90)	vaccinated and unvaccinated propensity score matching; demographics (age, gender, race, ethnicity), county level COVID-19 incidence rate, county-level

								COVID-19 test positive rate, Elixhauser comorbidities, pregnancy, number of other vaccines
C.Pawlowski et al. [68]	2021	USA	Retrospective cohort study	rt-PCR	236	RR	1.10 (95% CI: 0.46-2.40)	age, gender, race, ethnicity, county level COVID-19 incidence rate, county-level COVID-19 test positive rate, Elixhauser comorbidities, pregnancy, number of other vaccines

*Table 4* Effect sizes, heterogeneity statistics and results for publications bias of the association between influenza vaccination, SARS-CoV-2 infection as well as clinical outcomes.

<b>Outcomes</b>	<b>No. of studies</b>	<b>Adjusted estimates (95% CI)</b>	<b><i>p</i>-value</b>	<b><i>I</i><sup>2</sup> value (%)</b>	<b>Bias (<i>p</i>-value)</b>
SARS-CoV-2 infection	22	0.80 (0.75-0.86)	<0.01	70.1	Begg's test: 0.82 Egger's test: 0.19
Hospitalization	15	0.88 (0.81-0.95)	<0.01	95.1	Begg's test: 0.55 Egger's test: 0.62
Mechanical Ventilation/invasive respiratory support	4	0.73(0.58-0.92)	0.01	42.4	Begg's test: 0.73 Egger's test: 0.21
Intensive care unit admission	11	0.96 (0.88-1.06)	0.40	86.0	Begg's test: 0.76 Egger's test: 0.14
Mortality	18	0.90 (0.81-1.01)	0.07	78.2	Begg's test: 0.82 Egger's test: 0.07

Table 5 Subgroup analysis of the association between influenza vaccination and SARS-CoV-2 infection.

Subgroup variables	No. of studies	Adjusted estimate (95% CI)	p-value	I <sup>2</sup> value (%)
<b>Study Design</b>				
cross sectional study	5	0.76 (0.75-0.77)	<0.01	0.00
retrospective cohort study	10	0.80 (0.75-0.86)	<0.01	41.5
prospective cohort study	4	0.80 (0.56-1.08)	0.14	90.9
case-control study	3	0.99 (0.76-1.23)	0.93	51.7
<b>Study Population</b>				
adults-general population	13	0.80 (0.74-0.87)	<0.01	68.4
older adults	3	0.72 (0.56-0.92)	0.01	53.8
Health workers	6	0.84 (0.68-1.04)	0.12	66.6
<b>Effect Size</b>				
OR	17	0.80 (0.74-0.87)	<0.01	72.5
RR/HR	5	0.82 (0.73-0.92)	<0.01	46.4
<b>Adjustment Factors</b>				
age/sex/age and sex	5	0.86 (0.62-1.21)	0.40	63.5
age, sex and comorbidities	9	0.82 (0.73-0.92)	<0.01	78.4
age, sex, comorbidities, and socioeconomic status, education or residence	6	0.87 (0.68-1.11)	0.26	81.8
<b>COVID-19 test</b>				
rt-PCR	15	0.84 (0.77-0.92)	<0.01	57.7
IgG/IgM antibodies	2	0.83 (0.38-1.82)	0.64	37.9
Laboratory confirmed (not specified)	5	0.74 (0.66-0.83)	<0.01	74.9
<b>Continent</b>				
Europe	13	0.81 (0.70-0.93)	<0.01	79.7
N. America	6	0.76 (0.75-0.77)	<0.01	0.00
Asia	3	0.83 (0.77-0.90)	<0.01	0.00

Table 6 Subgroup analysis of the association between influenza vaccination and COVID-19 clinical outcomes.

Subgroup variables	No. of studies	Adjusted estimate (95% CI)	p-value	I <sup>2</sup> value (%)
<b>HOSPITALIZATION</b>				
<b>Effect Size</b>				
OR	10	0.92 (0.78-1.02)	0.40	86.6
RR/HR	5	0.87 (0.71-0.99)	0.03	71.0
<b>Adjusted Factors</b>				
age/sex/age and sex	1	1.44 (1.00-2.07)	0.05	89.8
age, sex and comorbidities	7	0.85 (0.71-1.03)	0.49	66.3
<b>COVID-19 test</b>				
rt-PCR	10	0.89 (0.78-1.02)	0.09	74.6
Laboratory confirmed/(not specified)	5	0.88 (0.67-1.12)	0.30	90.0
<b>Continent</b>				
Europe	10	0.93 (0.83-1.04)	0.21	75.7
N. America	5	0.80 (0.63-1.02)	0.07	73.1
<b>INTENSIVE CARE UNIT</b>				
<b>Effect Size</b>				
OR	9	0.91 (0.76-1.08)	0.26	55.9
HR	2	1.01 (0.99-1.04)	0.43	0.0
<b>COVID-19 test</b>				
rt-PCR	9	0.93 (0.84-1.03)	0.14	58.5
Laboratory confirmed/(not specified)	2	1.12 (0.80-1.57)	0.52	14.1
<b>Adjusted Factors</b>				
age, sex and comorbidities	4	0.87 (0.65-1.17)	0.35	17.6
<b>Continent</b>				
Europe	5	1.05 (0.95-1.16)	0.32	20.6
N. America	4	0.69 (0.47-1.02)	0.06	10.3
S. America	1	0.93 (0.87-0.99)	0.02	-
Asia	1	0.76 (0.59-0.98)	0.03	-
<b>MORTALITY</b>				
<b>Effect Size</b>				
OR	12	0.87 (0.76-0.99)	0.03	60.5
HR	6	0.99 (0.86-1.12)	0.82	46.3
<b>COVID-19 test</b>				



rt-PCR	14	0.93 (0.82-1.06)	0.27	80.3
Laboratory confirmed/(not specified)	4	0.81 (0.65-1.00)	0.05	37.1
<b>Adjusted Factors</b>				
age/sex/age and sex	3	1.07 (0.75-1.53)	0.70	59.2
age, sex and comorbidities	8	0.82 (0.61-1.10)	0.19	75.3
<b>Continent</b>				
Europe	12	0.94 (0.80-1.09)	0.40	75.3
N. America	3	0.89 (0.76-1.03)	0.12	0.0
S. America	2	0.84 (0.78-0.91)	<0.01	0.0
Asia	1	0.78 (0.63-0.95)	0.02	-

*Table 7* Effect sizes, heterogeneity statistics and results for publications bias of the association between pneumococcal vaccination and SARS-CoV-2 infection and outcomes.

<b>Outcomes</b>	<b>No. of studies</b>	<b>Adjusted estimates (95% CI)</b>	<b><i>p</i>-value</b>	<b><i>I</i><sup>2</sup> value (%)</b>	<b>Bias (<i>p</i>-value)</b>
SARS-Co V-2 infection	10	0.70 (0.57-0.88)	<0.01	47.2	Begg's test: 0.37 Egger's test: 0.11
Hospitalization	4	1.47 (1.30-1.67)	<0.01	11.4	Begg's test: 0.09 Egger's test: 0.05
Intensive care unit admission	3	0.99 (0.60- 1.64)	0.96	0.0	Begg's test: 0.30 Egger's test: 0.30